

Thank You for Your Participation

AECOM



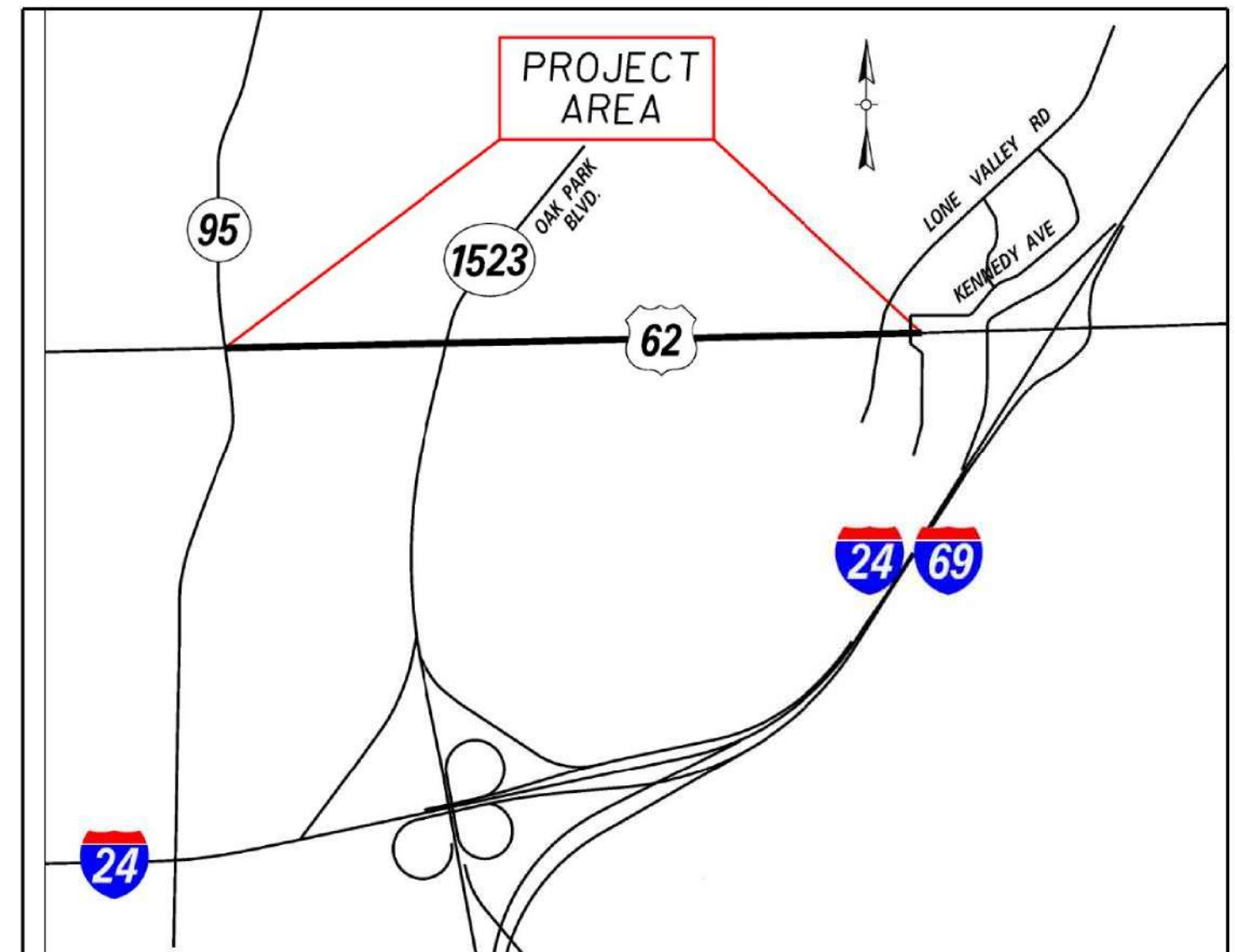
PUBLIC INFORMATION MEETING



Marshall County
ITEM # 1-398
US 62 WIDENING
(Between KY 95 and Lone Valley Road)
TUESDAY, February 7, 2023
5:30 P.M. TO 7:30 P.M. LOCAL TIME
Calvert City Civic Center
991 E 5th Ave. Calvert City KY 42029



AECOM



US 62 CORRIDOR IMPROVEMENTS

PURPOSE AND NEED OF THE PROJECT

The US 62 corridor serves as a major collector that provides access to Calvert City and the surrounding area. This portion of northern Marshall County has both manufacturing and tourism assets that are served by this route. This section of US 62 is also linked by two interchanges off I-24 / I-69. US 62 currently has an ADT of approximately 6,000 with a truck percentage of 17%. On the east end, this project ties into a project which brought a pedestrian path and other beautification measures to the section of US 62 from the interstate to KY Dam Village SRP. Calvert City also has plans to extend their pedestrian access along Lone Valley Road.

The purpose of this project is to improve congestion, safety, and traffic flow. In addition, this project will also address the need for turn lanes, evaluate any intersection issues, and consider pedestrian facilities to provide connectivity along the corridor.

EXISTING CONDITIONS

Within the project limits, the existing US 62 typical section varies from three to five lanes from the KY 95 intersection to KY 1523 (Oak Park Blvd.). From the KY 1523 to intersection to Lone Valley Road, the 62 corridor consists of 2 lanes and 10 foot shoulders.

The existing intersections at Lone Valley Road (unsignalized) and Kennedy Ave. (signalized) are approximately 300 feet apart. The close proximity of these intersections creates unsafe and unfavorable maneuvers for motorists.

US 62 CORRIDOR IMPROVEMENT CONSIDERATIONS

From the KY 95 intersection to KY 1523 (Oak Park Blvd.), US 62 will be widened and continue to serve as a partially five-lane roadway. The existing raised mountable median along this section will be removed to enhance left turning movements into adjacent businesses. Access locations for some of the existing business entrances may be modified to improve access and safety. A new exclusive right turn lane will be constructed on the US 62 westbound lane at the KY 95 intersection. Work on KY 95 will be limited to resurfacing, new pavement markings, and modifications to the existing traffic signal within the intersection.

From the KY 1523 (Oak Park Blvd.) intersection to Lone Valley Road, US 62 will be widened from 2 lanes to 3 lanes. The new 3 lane roadway will provide safer access for the existing business entrances along the route. Access locations for some of the existing businesses may be modified to improve safety by limiting the ingressing / egressing traffic flows. New outside shoulders along this section will be constructed to enhance safety. Work at KY 1523 (Oak Park Blvd.) will be limited to resurfacing, new pavement markings, and modifications to the existing traffic signal within the intersection.

NEW INTERSECTION CONSIDERATIONS AT LONE VALLEY ROAD

Numerous intersection configurations have been considered for the US 62 / Lone Valley Road intersection. These configurations have included both "Conventional" and "Roundabout" type intersection designs. All of the intersection configurations will be transitioned to tie into the existing US 62 4 lane roadway at EXIT 27 on I-24 / I-69. Note all options shown will remove the existing traffic signal at the intersection of US 62 / Kennedy Ave.. (See graphics on the following page and tonight's virtual visualization model(s) presentation).

"CONVENTIONAL" TYPE INTERSECTIONS

Of the "Conventional" Type intersection designs considered, (Alternate 2) is shown to extend existing Kennedy Ave. and construct a new intersection on Lone Valley Road just north of the current US 62 intersection. This option eliminates the existing traffic signal at the US 62 / Kennedy Ave. intersection. A new traffic signal would be constructed at the US 62 / Lone Valley Road intersection.

A second "Conventional" Type intersection design considered is (Alternate 4) shown closing the US 62 / Kennedy Ave. intersection and constructing a new "Backage Road" further north on Lone Valley Road. This option adds a "Backage Road" behind many of the existing businesses. This option also eliminates the existing traffic signal at the US 62 / Kennedy Ave. intersection and would construct a new traffic signal at the US 62 / Lone Valley Road intersection.

"ROUNDBABOUT" TYPE INTERSECTIONS

Of the "Roundabout" Type intersection designs considered, options were considered for combining the Lone Valley Road and Kennedy Ave. intersections. These intersection options included the (Alternate 1) Roundabout and (Alternate 3) "Oval" Type Roundabout. Both of these Roundabouts provide a "6-Leg" intersection design.

Note both Alternate 1 and Alternate 3 "Roundabout" Type intersection designs create free-flowing traffic movements thus eliminating the need for traffic signalization.

NEW INTERSECTION CONSIDERATIONS AT LONE VALLEY ROAD

(GRAPHICALLY SHOWN FOR INFORMATIONAL PURPOSES)



US 62 CORRIDOR IMPROVEMENTS



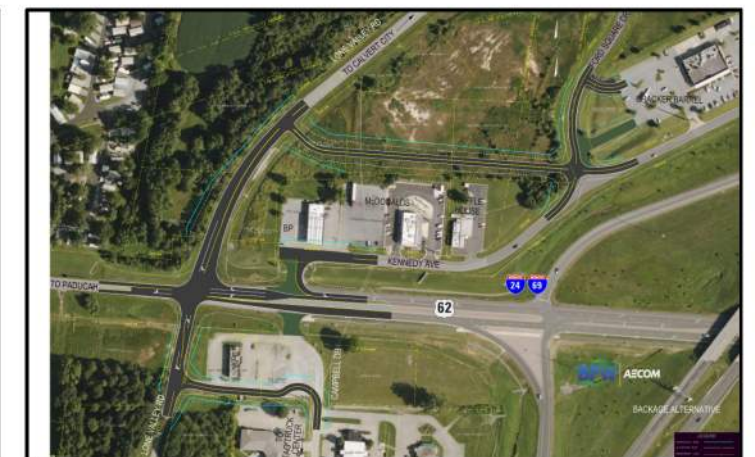
**ALTERNATE 1
ROUNDBABOUT**



**ALTERNATE 2
"CONVENTIONAL" TYPE INTERSECTION
EXTENDING KENNEDY AVENUE**



**ALTERNATE 3
"OVAL" ROUNDBABOUT**



**ALTERNATE 4
"CONVENTIONAL" TYPE INTERSECTION
WITH BACKAGE ROAD**