

Local Officials / Stakeholder Meeting No. 1

WESTERN

BARDSTOWN

CONNECTIVITY
STUDY

Kimley»Horn



APRIL 2018



Agenda

- Introductions / Opening Comments
- Study Overview
- Existing Conditions Inventory Overview
- Alternatives Development Procedures
- Public Involvement
- Meeting Review / Next Steps
- Interactive Group Activities / Discussion

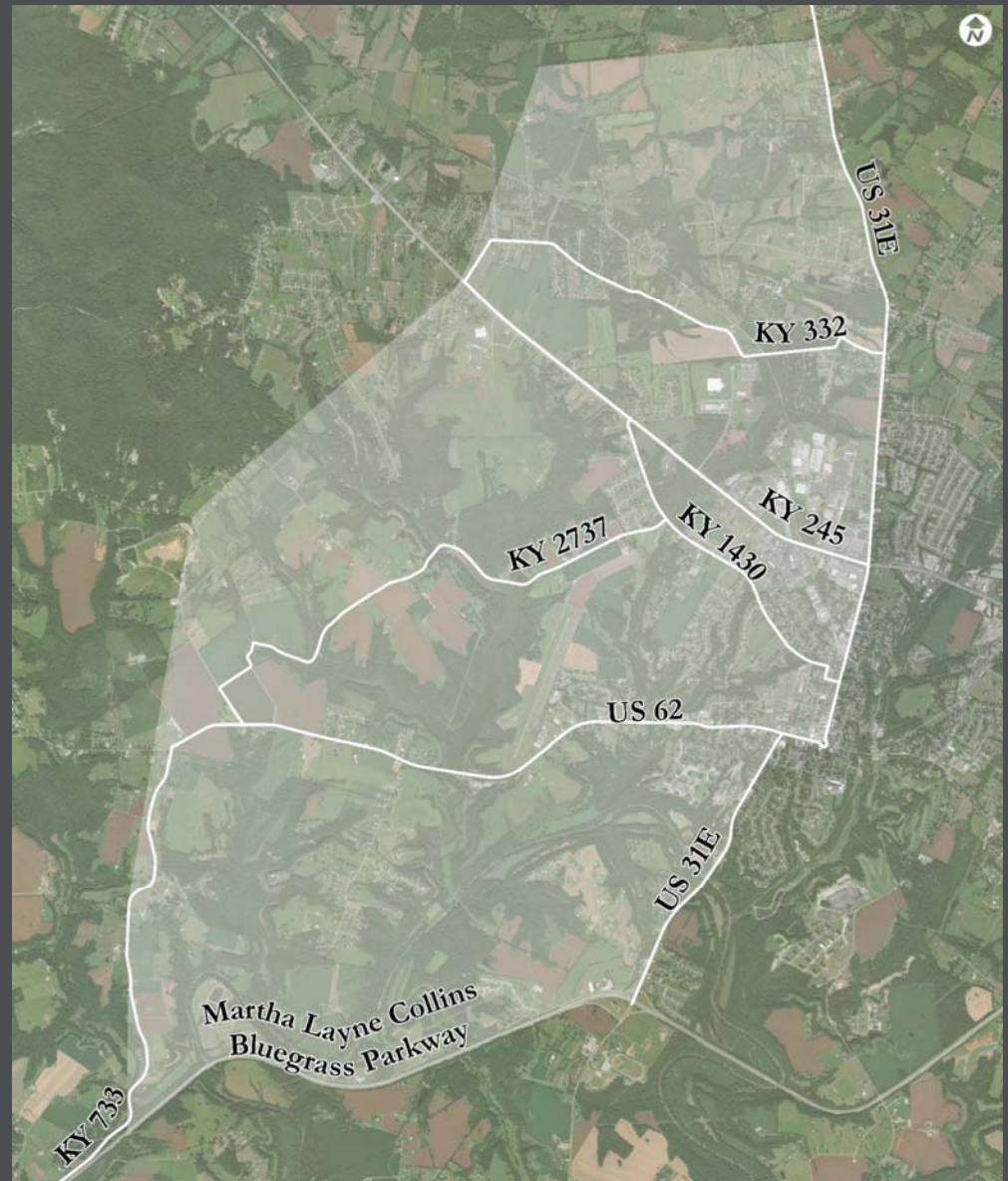
Study Overview

Study Background

- First Listed in 2014 Highway Plan (SPP Funding – New Route Study)
- Re-listed in 2016 Highway Plan as a Design Study
- Initial Alternatives Developed by KYTC
- Traffic Forecast Completed (July 2017)
 - Inner Bypass Scenario
 - Short Outer Bypass Scenario
 - Long Outer Bypass Scenario
- RFP Issued for Planning Services (August 2017)

Study Overview

Study Area



Study Overview

Draft Purpose and Need

PURPOSE

Improve multimodal accessibility and network connectivity to the west of Bardstown and reduce congestion in downtown Bardstown.

NEED

System Linkage Lack of north / south routes west of Bardstown

Capacity Truck traffic uses main route through downtown

Safety High crash locations through downtown

Modal Interrelationships No connectivity between truck routes and major employers

Study Overview

Scope of Work

- Task 1 – Existing Conditions Inventory
- Task 2 – Traffic Forecasting / Modeling
- Task 3 – Project Purpose and Need
- Task 4 – Environmental Overview / Socioeconomic Study
- Task 5 – Geotechnical Overview
- Task 6 – Analysis of Conditions and Improvement Alternatives
- Task 7 – Public Involvement
- Task 8 – Documentation

Study Overview

Schedule

Task	Month												
	2017	2018											
	December*	January	February	March	April	May	June	July	August	September	October	November	December
Existing Conditions Inventory													
Traffic Forecasting / Modeling													
Purpose and Need													
Environmental Overview / Socioeconomic Study													
Geotechnical Overview													
Analysis of Conditions and Improvement Alternatives													
Study Documentation													
Public Involvement													

Meetings Key

Project Team Meeting	●
LO/S Meeting	▲
Public Meeting	★
Resource Agency Mailing	◆

*NTP = December 20, 2017

Existing Conditions Inventory Review

Overview

- Study Area Projects
- Functional Classification
- Truck Routes and Major Employers
- Bicycle and Pedestrian Facilities
- Traffic Volumes
- Level of Service
- Crash Locations by Severity and Type
- High Crash Locations
- Travel Times
- Environmental Overview
- Socioeconomic Study

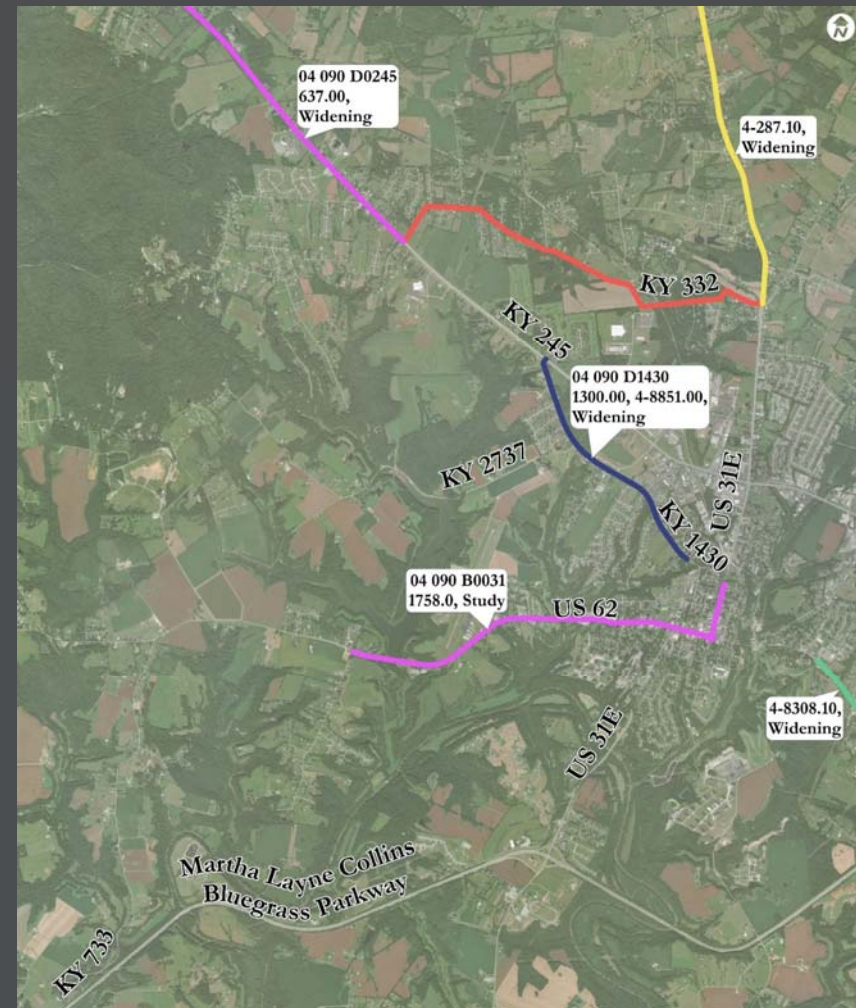
Existing Conditions Inventory Review

Planned and Committed Projects

- 2016 Six Year Highway Plan
- PIF
- Planned and Potential Transportation Improvements: Nelson County 2035
- PIF & 2016 Six Year Highway Plan
- 2016 Six Year Highway Plan & Planned and Potential Transportation Improvements: Nelson County 2035

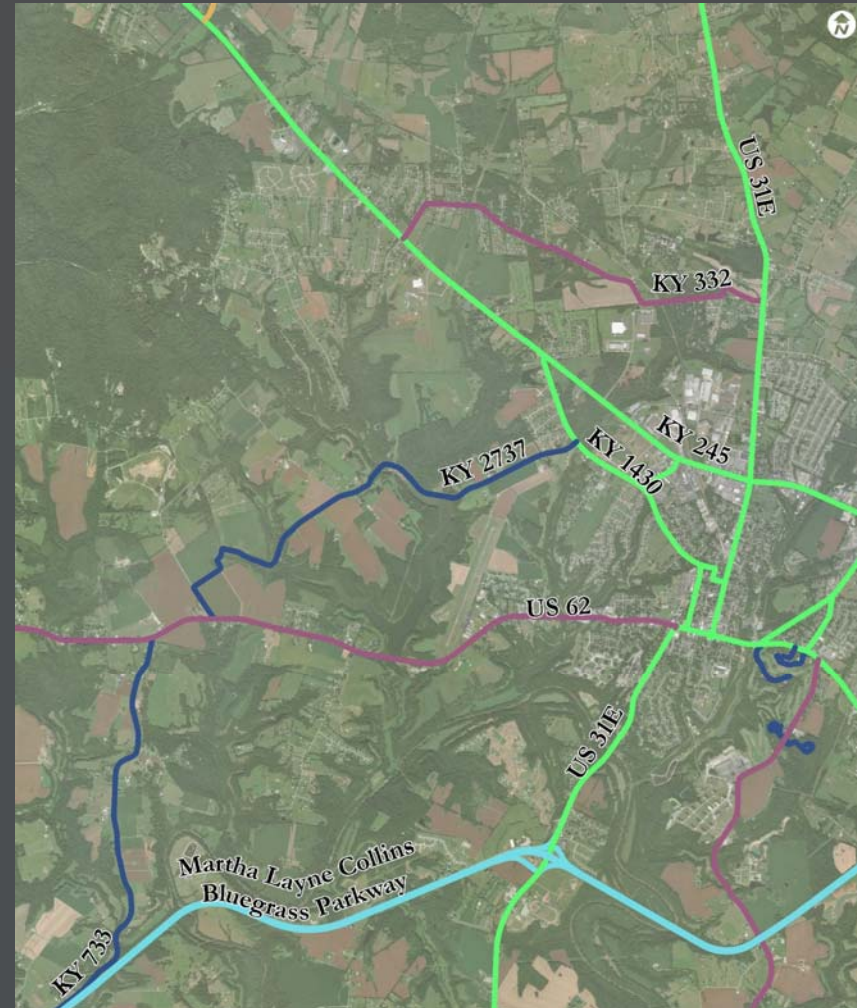
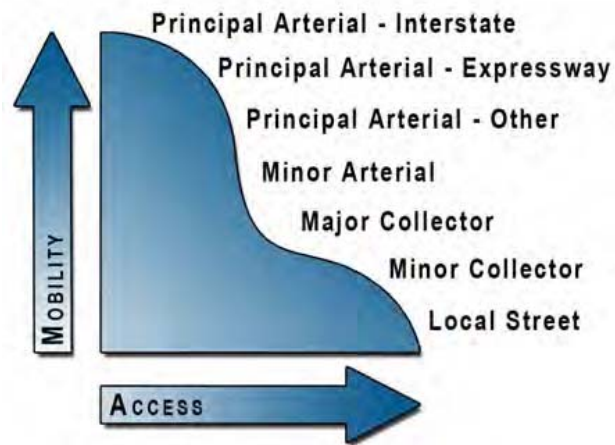
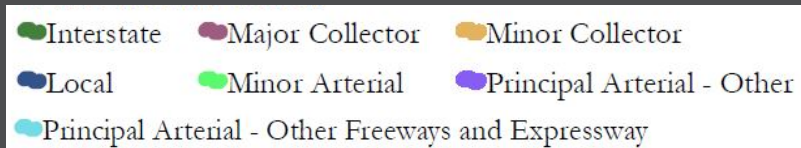
Projects of note:

- The extension of a shared use path on KY 245
- Item No. 4-8851.00
Templin Ave Widening
between Chambers Blvd
and Ben Irvin Rd/KY 2737



Existing Conditions Inventory Review

Functional Classifications



Existing Conditions Inventory Review

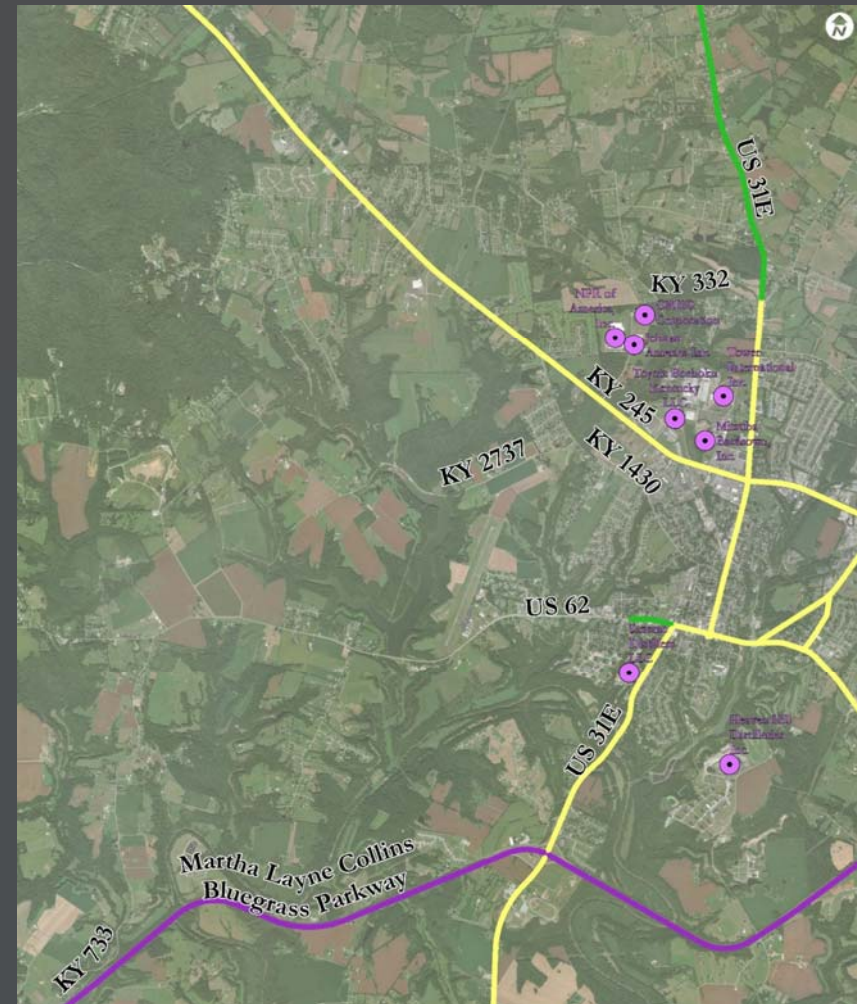
Truck Routes and Major Employers

Kentucky Highway Freight Network - Designations

- 1 - PHFN plus AADT > 7,000
- 2 - Remaining I, Pkwy and 4,000 < AADT < 7,000
- 3 - FC above Local, 500 < AADT < 4,000, regional connectivity
- 4 - AADT < 500 for local access or regional connectivity
- Major Employer (>100 Employees)

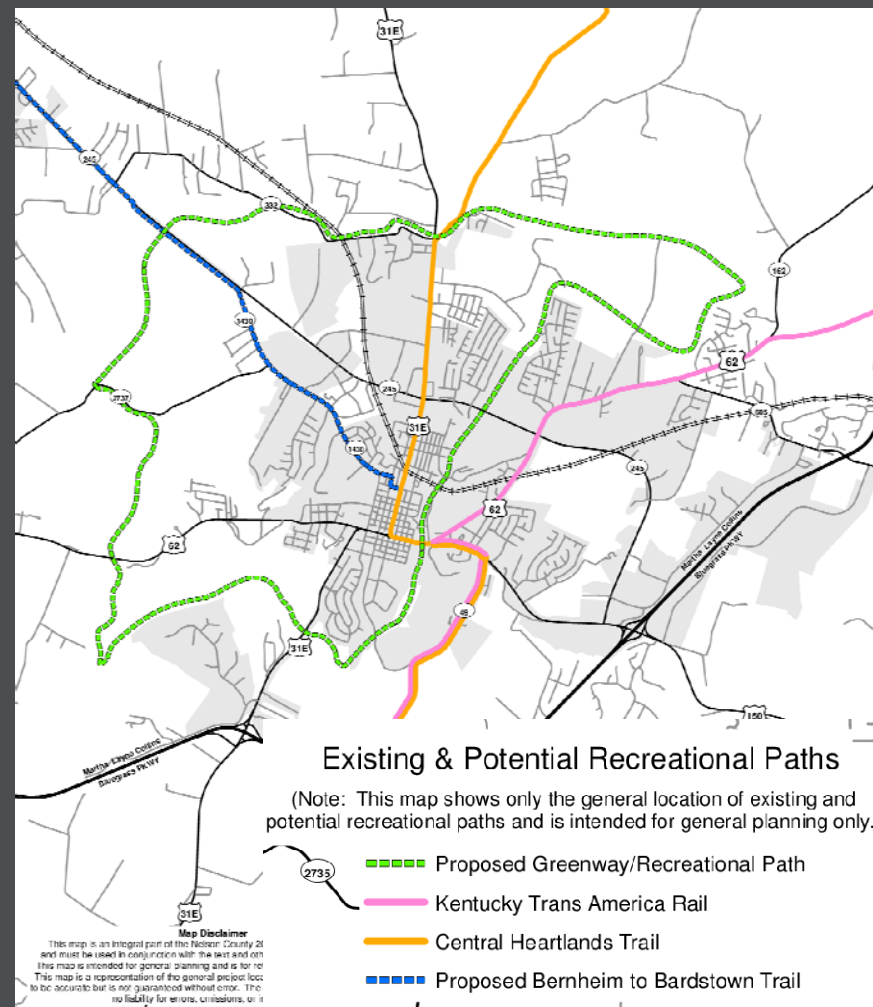
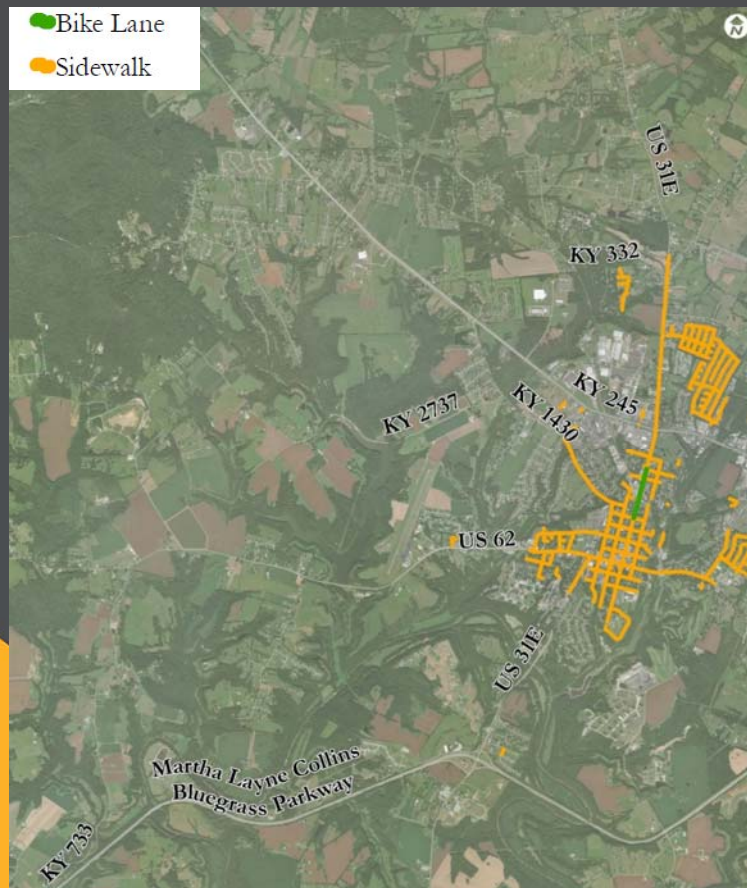
Study Area Major Employers :

- ORBIS Corporation
- Johan America, Inc.
- NPR of America, Inc.
- Tower International, Inc.
- Toyota Boshoku, Kentucky LLC
- Mitsuba Bardstown, Inc.
- Sazerac Distillers
- Heaven Hill Distilleries



Existing Conditions Inventory Review

Bicycle and Pedestrian Facilities

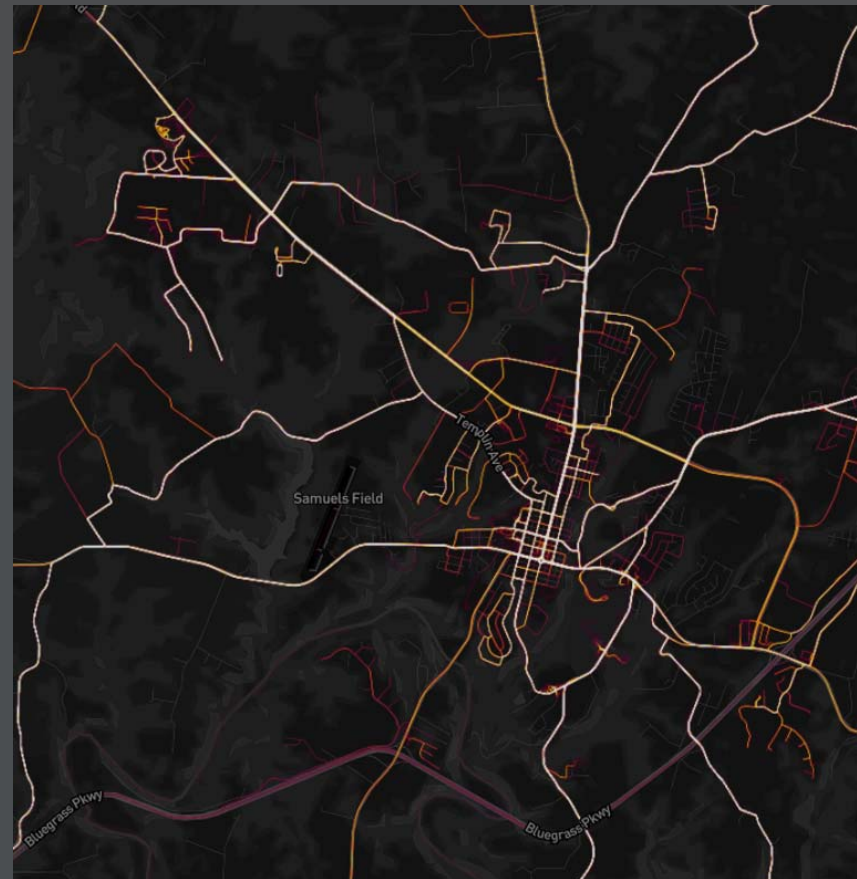


Existing Conditions Inventory Review

Bicycle and Pedestrian Facilities

Popular bike routes:

- US 31E from KY 332 to US 62
- Templin Ave
- N 5th St
- W. Broadway St
- Ben Irvin Rd
- US 62
- KY 733
- Stonehouse Flats area



Existing Conditions Inventory Review

Bicycle and Pedestrian Facilities

Popular run/walk routes:

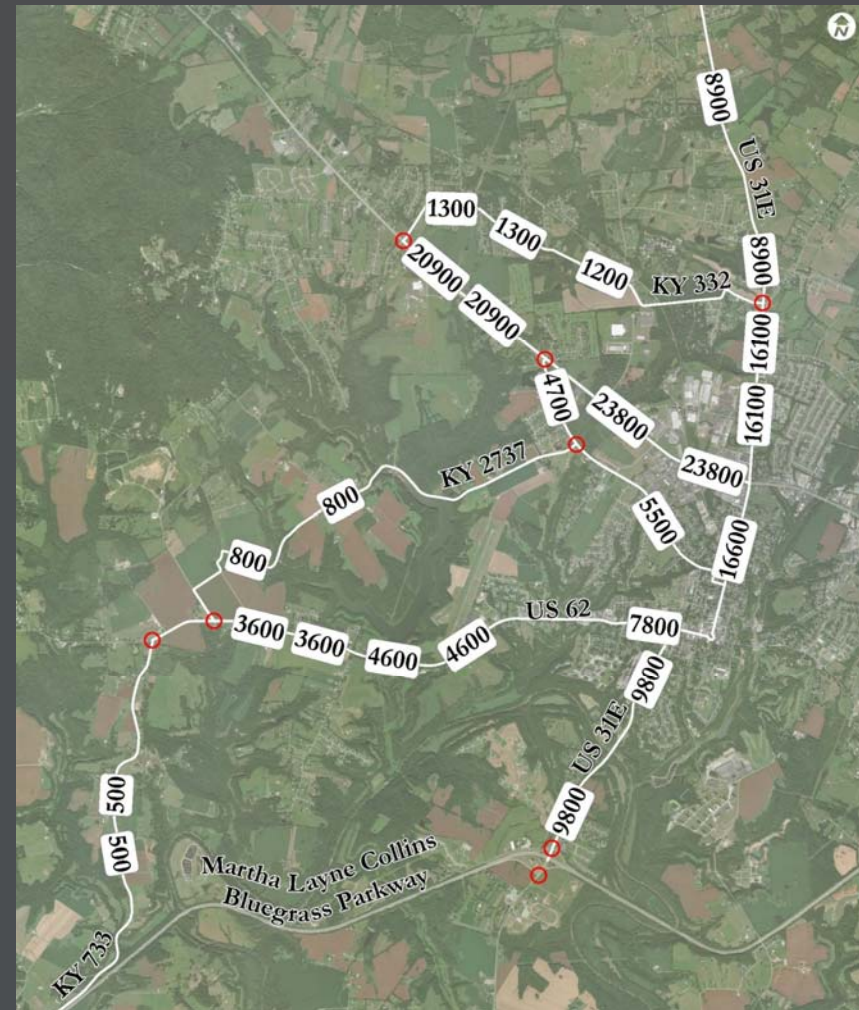
- General Downtown area
- Templin Ave
- KY 245
- US 31E



Existing Conditions Inventory Review

Traffic Volumes (ADT)

- 2017 (Existing) Traffic Volumes
- TMC (Turning Movement Counts)

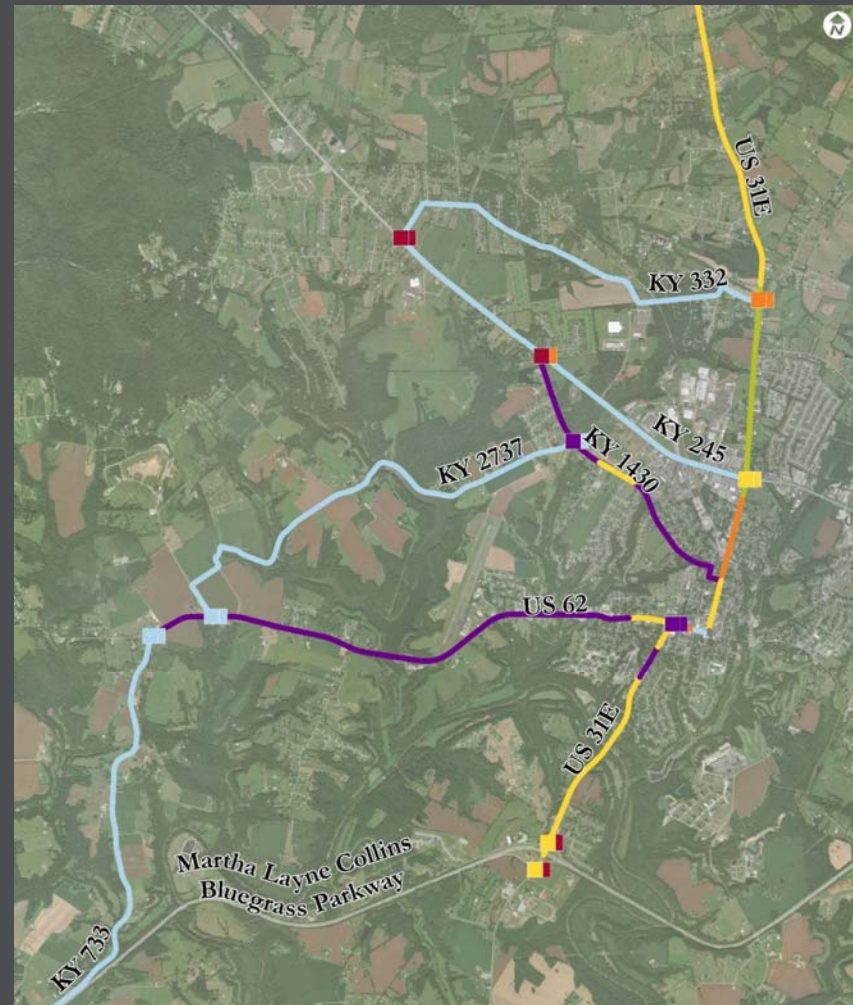


Existing Conditions Inventory Review

Level of Service (LOS)

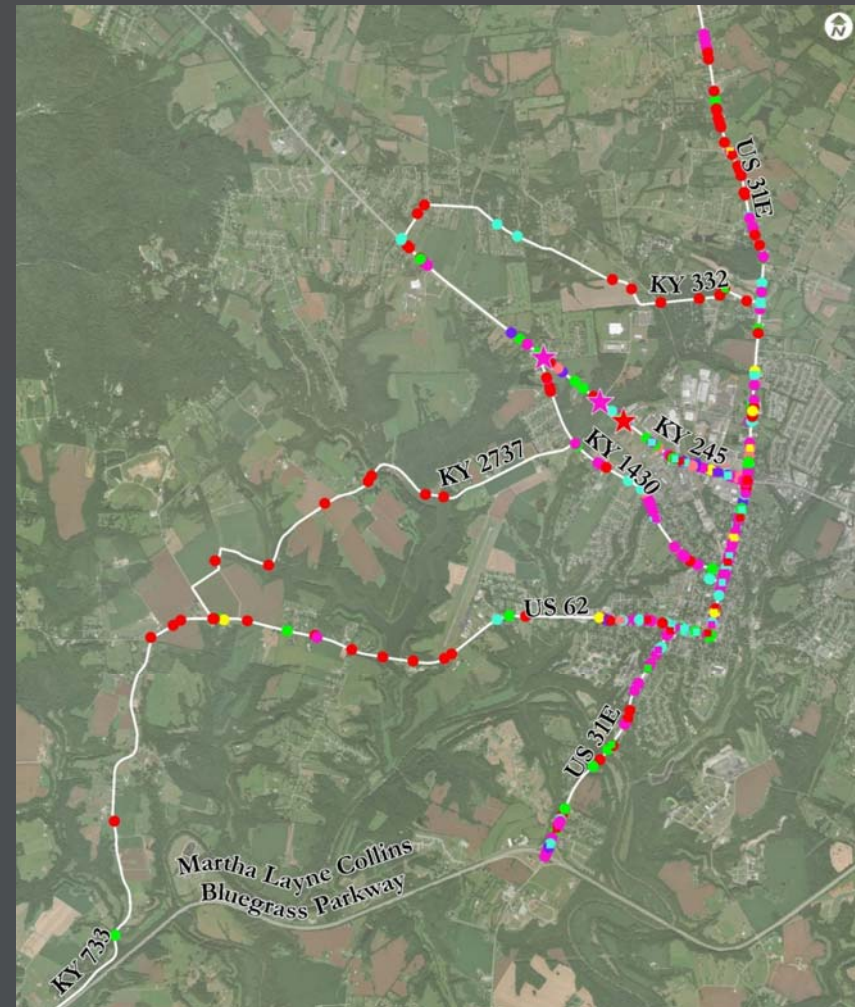
Intersection Levels of Service (AM/PM)		■ LOS C	■ LOS F
■ LOS A		■ LOS D	
■ LOS B		■ LOS E	

Segment Levels of Service		~ LOS C
~ LOS A		~ LOS D
~ LOS B		~ LOS E
		~ LOS F
		~ N/A, LOS undetermined for roundabout



Existing Conditions Inventory Review


Crash Locations by Severity and Type



Existing Conditions Inventory Review

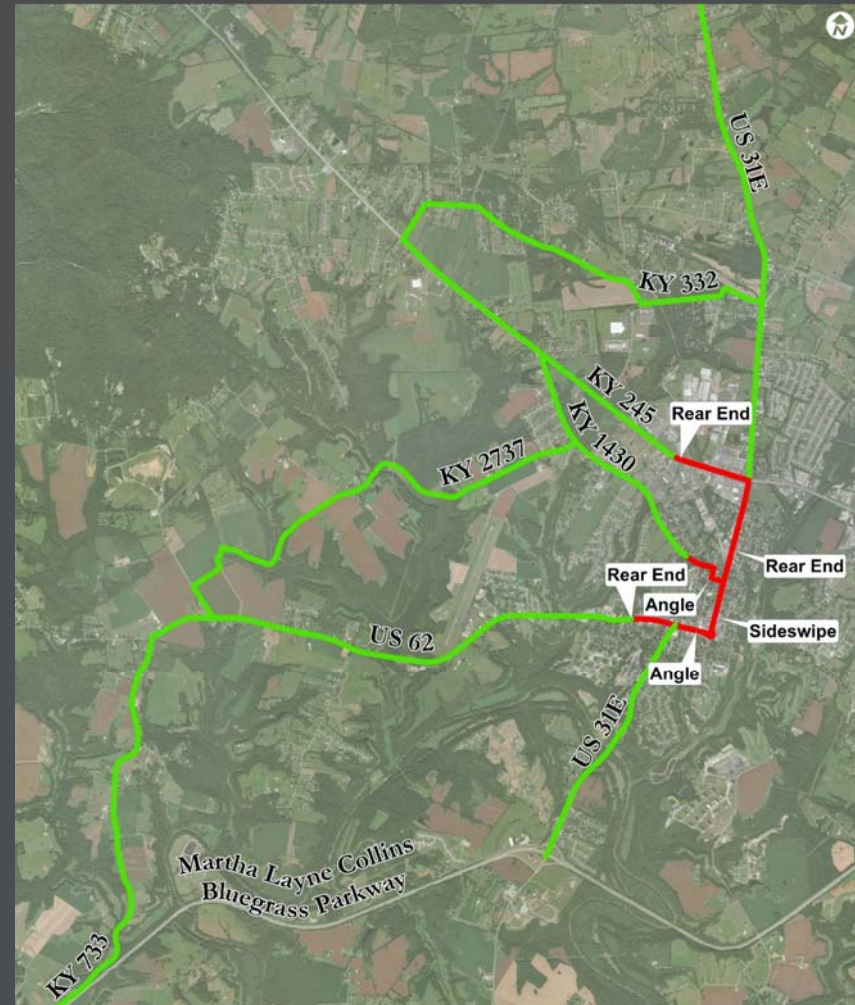
High Crash Locations

Critical Crash Rate Factors

 < 1.00

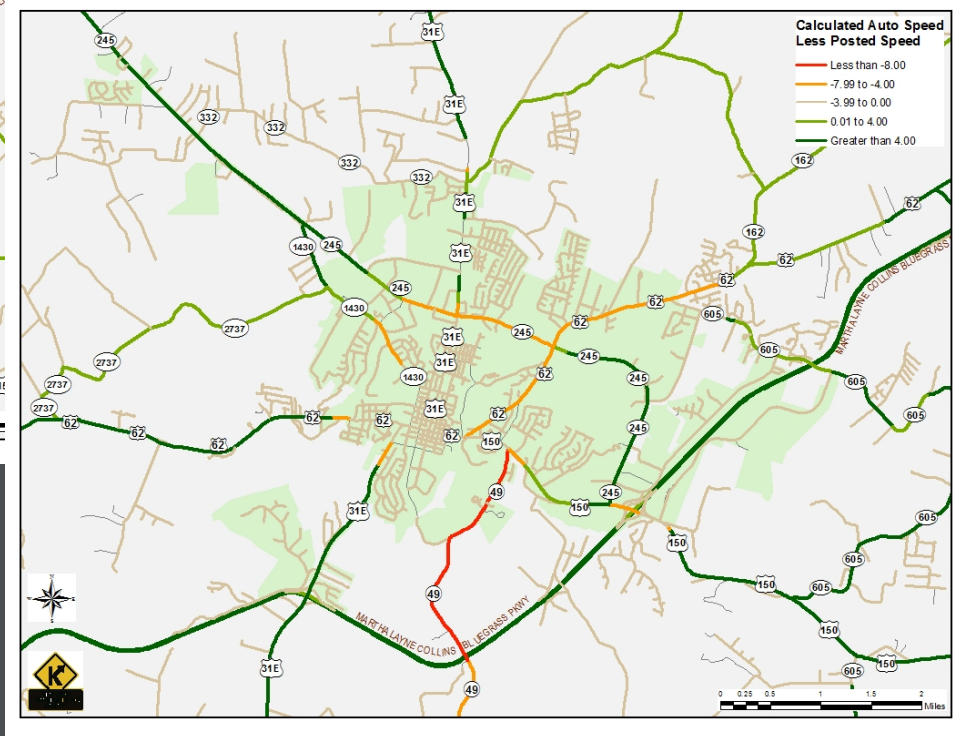
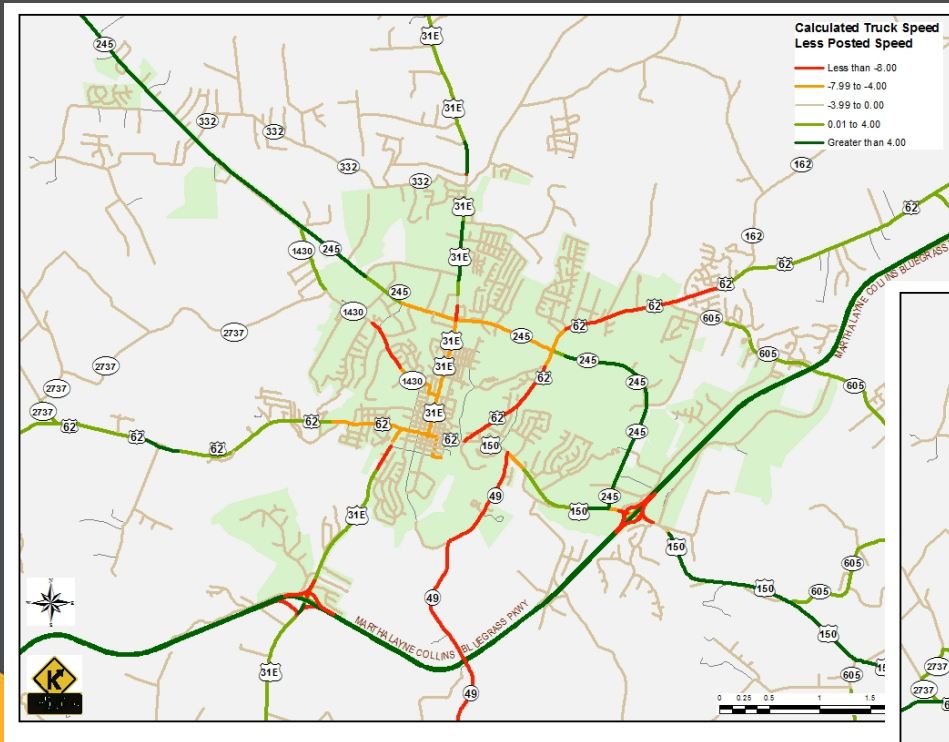
 > 1.00

Note: A Critical Rate Factor (CRF) > 1 indicates crashes likely do not occur randomly.



Existing Conditions Inventory Review

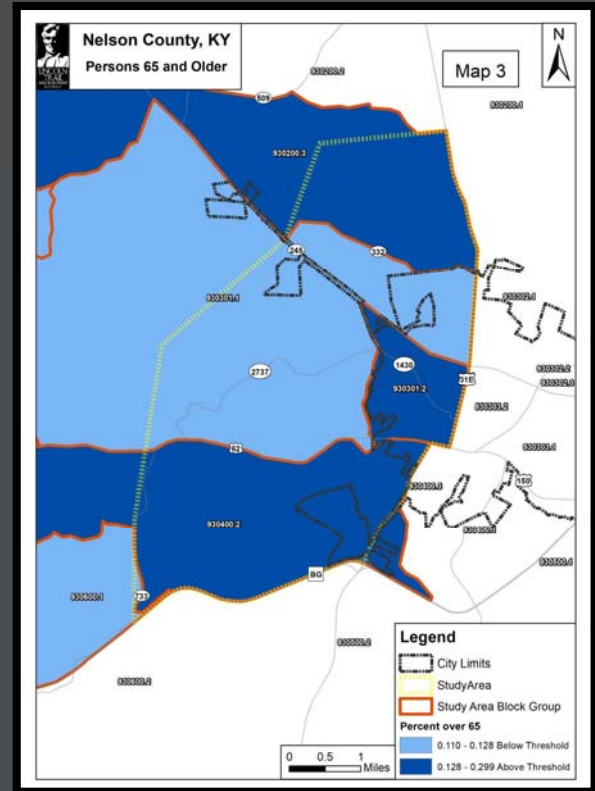
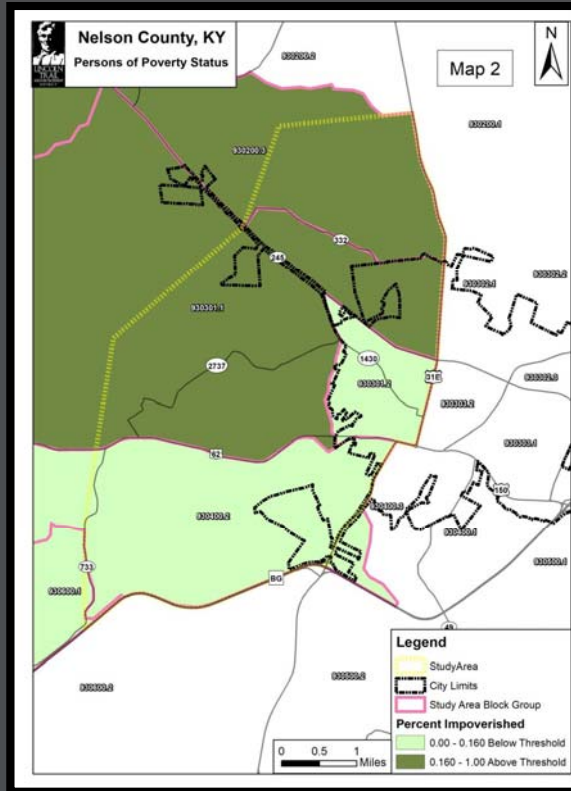
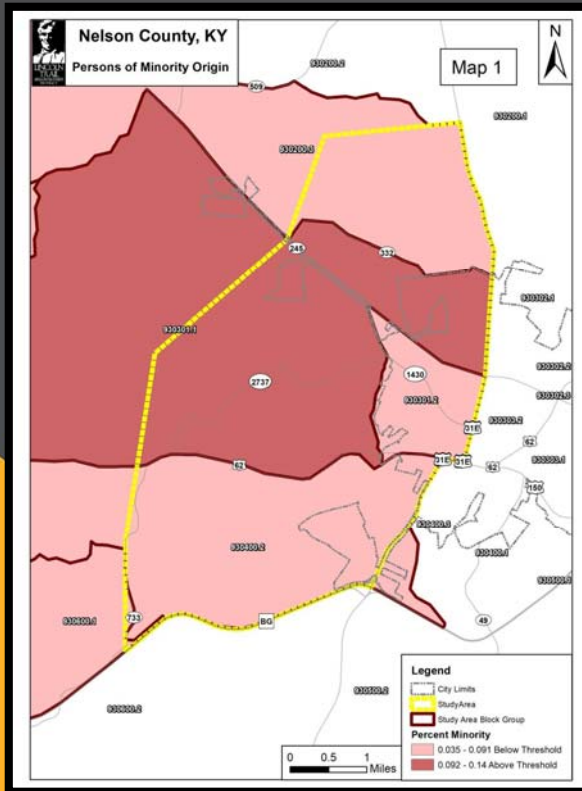
Travel Time by Segment



Existing Conditions Inventory Review

Socioeconomic Study

County		Total Pop	Minority	Poverty	Over 65	Disability	LEP
Nelson		44,564	9.1%	16.0%	12.8%	16.6%	1.0%
Census Tract	Block Group						
930600	1	3,081	4.89%	14.22%	12.35%	18.79%	0%
930301	1	5,303	14.02%	20.67%	11.01%	18.91%	3.9%
930400	2	3,409	5.16%	11.44%	13.55%	23.42%	0%
930301	2	5,303	7.89%	10.09%	29.84%	23.94%	2.5%
930200	3	7,800	3.5%	17.08%	16.58%	23.13%	0.8%



Existing Conditions Inventory Review

Environmental Overview

Legend

• Structures >50 YO	Env Justice Area	— US Highways
• National Register	Study Area	— State Roads
• Neighborhoods >50 YO	Bridge (Line)	— Local Roads
• Bardstown Historic District	Interstates	— County Boundary Lines
• Arch Survey - No Sites	Parkways	• Local Parks in Kentucky
• Arch Survey - Sites Found		

- Several homes > 50 years old especially along:
 - KY 245
 - KY 2737
 - US 62
- One local park Downtown
- Historic District Downtown
- Multiple National Register locations along US 31E and Downtown Bardstown.



Alternatives Development Procedures

- Alternative Type
 - Short-Term = Segments with Independent Connectivity
 - Long-Term = Full Corridors
- Initial Development and Evaluation
 - Up to 20
 - Evaluated based on logical termini, impacts, general feasibility
- Refined Evaluation
 - Up to 4
 - Evaluated based on ADT, Travel Time, Safety, Environmental Impacts, Geotechnical Impacts, and Cost Estimates

Public Meeting No. 1 Preview

Meeting Purpose: To help inform the understanding of existing conditions as well as the community's vision for connectivity within and through the study area

Information Station

- Information Wall
- Scrolling Presentation

Interactive Stations

- One Word
- Priority Pyramid
- Thought Wall
- Strong Places / Weak Places (Mapping Exercise)
- Tradeoffs

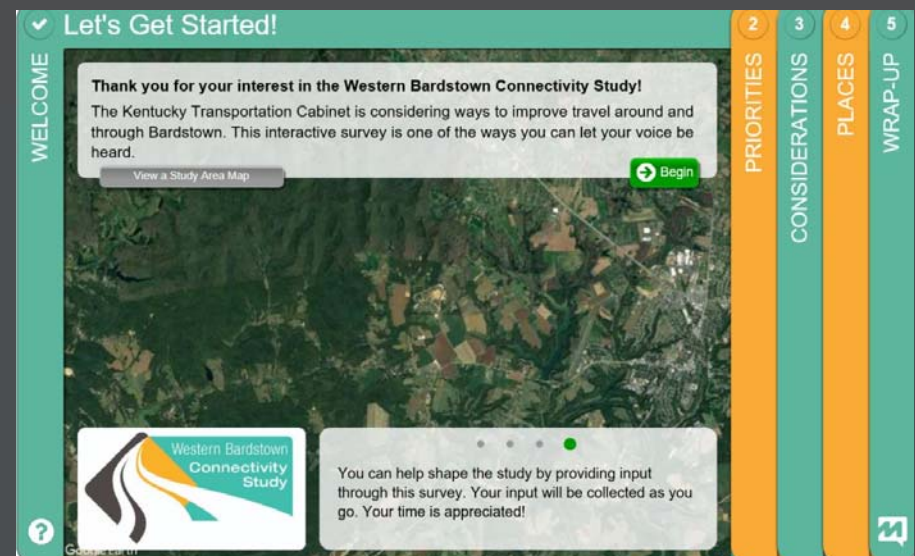


MetroQuest Survey Preview

- Online interactive survey to provide an additional opportunity for the public and stakeholders to offer input
- Designed to mirror the public meeting as closely as possible

Interactive Screens

- Welcome (Study Overview)
- Priorities (Similar to Priority Pyramid)
- Considerations (Similar to Trade-Offs)
- Places (Similar to Strong/Weak Places)
- Wrap-Up (Socioeconomic Inputs)



www.westernbardstownconnectivity.com

Next Steps

- Group Activity
 - Priority Pyramid
 - Trade-Offs
- Public Meeting No. 1
- Alternatives Development and Evaluation