

## How the KYTC Builds Roads

### Step 1: Long Range Planning

### Step 2: Six-Year Highway Plan - Establish Funding for Project

### Step 3: Project Specific Planning

- ▶ Determine project limits
- ▶ Verify funding needs
- ▶ Identify public concerns
- ▶ Verify project needs
- ▶ Identify project goals
- ▶ Identify environmental concerns
- ▶ Coordinate with resource agencies
- ▶ Make Project recommendations



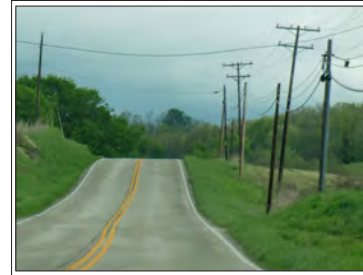
### Current Phase Step 4: Preliminary Design and Environmental Analysis

- ▶ Conduct field surveys
- ▶ Inventory existing resources to identify protected, endangered, important resources
- ▶ Identify and address public concerns by conducting meetings and distributing reports
- ▶ Develop alternatives
- ▶ Prepare environmental documentation
- ▶ Public Meetings



### Step 5: Final Design

- ▶ Develop final alignments
- ▶ Develop right-of-way needs
- ▶ Identify and address public comments
- ▶ Develop construction plans



### Step 6: Right-of-Way Purchase (Land Acquisition)

### Step 7: Utility Relocation

### Step 8: Construction

### Step 9: Maintenance

## Purpose and Need

The purpose of the US 68 Corridor Project is to provide a safer, more efficient connection between Greensburg and the Cumberland Parkway by improving substandard geometrics along the corridor. The existing alignment is characterized by horizontal and vertical curvature that does not satisfy current geometric design guidelines. Over the 12-year period between 2004 and 2016, there were 62 crashes reported between T. Davis Road and the Russell Creek Bridge south of Greensburg. Of these crashes, 39 (63 percent) were single vehicle collisions. With the new interchange opened to traffic at the Parkway, the demand for travel along the US 68 corridor is expected to increase. Addressing the substandard geometrics will extend previously implemented improvements along US 68 and provide a better connection between Greensburg, southern Green County, and northern Metcalfe County to the Cumberland Parkway.

## Procedure for Submitting Comments

Representatives of the Kentucky Transportation Cabinet and selected engineering consultants are available to answer questions you may have regarding this project. In addition, various exhibits are on display to assist you in understanding the facets of this project. You are encouraged to make an official comment that will be incorporated into the project summary.

To make a written statement, complete one of the questionnaires provided and leave it tonight with one of the representatives or mail it within 15 days to the address listed below.

Larry Krueger, PE  
Kentucky Transportation Cabinet – District 4  
634 East Dixie Highway  
Elizabethtown, KY 42701



# PUBLIC MEETING



## US 68 Corridor

from T. Davis Road to the US 68 Bridge over Russell Creek

Green County

KYTC Item No. 4-397.1

March 2016

The Kentucky Transportation Cabinet (KYTC) is seeking your input on US 68 in Green County. The project team – including the KYTC and its consultant team - has developed preliminary information and alternatives for US 68 from T. Davis Road to the US 68 Russell Creek Bridge. This is Your Opportunity to get involved. The purpose of this public meeting is to share information with you, answer your questions, listen to your concerns, and to get your input about the alternatives under consideration. After a short presentation, you will have an opportunity to talk with the project team and ask questions. Please turn in your comments today or mail to the District-4 office by April 19 at the address listed on the questionnaire.

Design for the portion of US 68 between the Russell Creek Bridge and KY 61 known as Vaughn Curve is going forward as part of a different project even though the environmental analysis has been done with this project. The display shown at this meeting illustrates how the proposed alternatives will meet with the new Vaughn Curve at the Russell Creek Bridge

## Contact Information

If you have any questions about the study, feel free to contact:

Gary Sharpe, PE, LS  
Project Manager  
Palmer Engineering  
400 Shoppers Drive  
Winchester, KY 40391  
(859) 744-1218  
GSharpe@palmernet.com

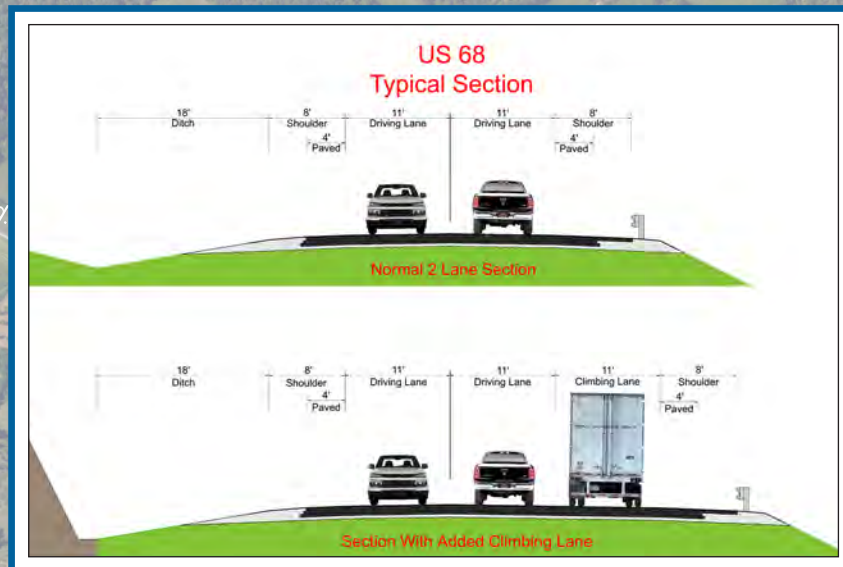
Larry Krueger, PE  
Project Manager  
KYTC District 4  
634 East Dixie Highway  
Elizabethtown, KY 42701  
(270) 766-5066  
Larry.Krueger@ky.gov



# Green Co. US 68

## Next Steps

Tonight's Public Meeting	March 29, 2016
Preliminary Line and Grade	Fall 2016
Submit Environmental Document	Fall 2016
Funding Needed for Right of Way, Utilities, and Construction	



US 68 Green County Item No. 04-397.1 Public Meeting, March 29, 2016					
	From T. Davis Rd. to S. Thurlow Rd.			S. Thurlow to Bridge	
	Yellow	Blue	Orange	Red	Li Blue
Length (ft.)	15,500	12,800	12,400	4,051	4,022
Maximum Grade %	3.20%	4.13%	5.50%	6.34%	6.34%
<b>Earthwork</b>					
Cut (cu yd.)	887,000	773,000	878,000	114,390	231,280
Fill (cu yd.)	890,000	768,000	872,000	7,030	6,590
Net (cu yd.)	-3,000	5,000	6,000	107,360	224,690
Disturb Limits (acres)	56.6 AC	47.9 AC	50.2 AC	10.5 AC	11.6 AC
BlueLine Stream Crossings	6	4	5	0	0
Crop Land Impacts	Med	Med	Med	Low	Low
Number of Parcels	36	28	25	8	8
Residential Acquisitions	4	3	2	0	0
Garage/Barns Acquisitions	5	4	3	1	1
Maintenance of Traffic	N/A	N/A	N/A	High	Med
Utility Impacts	Low	Low	Low	Med	Med
<b>Costs</b>					
Right of Way	\$2,300,000	\$1,800,000	\$1,400,000	\$200,000	\$200,000
Utilities	\$1,900,000	\$1,900,000	\$1,900,000	\$600,000	\$600,000
Construction	\$11,800,000	\$10,100,000	\$10,800,000	\$2,500,000	\$3,400,000
<b>Total</b>	<b>\$16,000,000</b>	<b>\$13,800,000</b>	<b>\$14,100,000</b>	<b>\$3,300,000</b>	<b>\$4,200,000</b>

End Project

