

Next Steps

The milestones for the US 150 Scoping Study are as follows:

Tonight's Public Meeting	May 2015
Complete Scoping Study	September 2015
Begin Preliminary Engineering for Priority Segment or Priority Spot Improvement	October 2015

Funding is needed for future phases of work.



Contact Information

If you have any questions about the study, feel free to contact:

Gary Sharpe, PE, PLS Project Manager Palmer Engineering 400 Shoppers Drive Winchester, KY 40392 GSharpe@palmernet.com (859)-744-1218	Charlie Allen, PE Co-Project Manager KYTC District 4 634 East Dixie Highway Elizabethtown, KY 42701 CharlieA.Allen@ky.gov (270) 766-5066
---	---

Procedure for Submitting Comments

Representatives of the Kentucky Transportation Cabinet and selected engineering consultants are available to answer questions you may have regarding this project. In addition, various exhibits are on display to assist you in understanding the facets of this project. You are encouraged to make an official comment that will be incorporated into the project summary.

To make a written statement, complete one of the questionnaires provided and leave it tonight with one of the representatives or mail it within 15 days to the address listed below.

Charlie Allen, PE
Kentucky Transportation Cabinet - District 4
P. O. Box 309
Elizabethtown, KY 42701



Public Meeting



US 150 Scoping Study
from Bluegrass Parkway to Springfield
Nelson and Washington County
KYTC Item No. 4-396.00



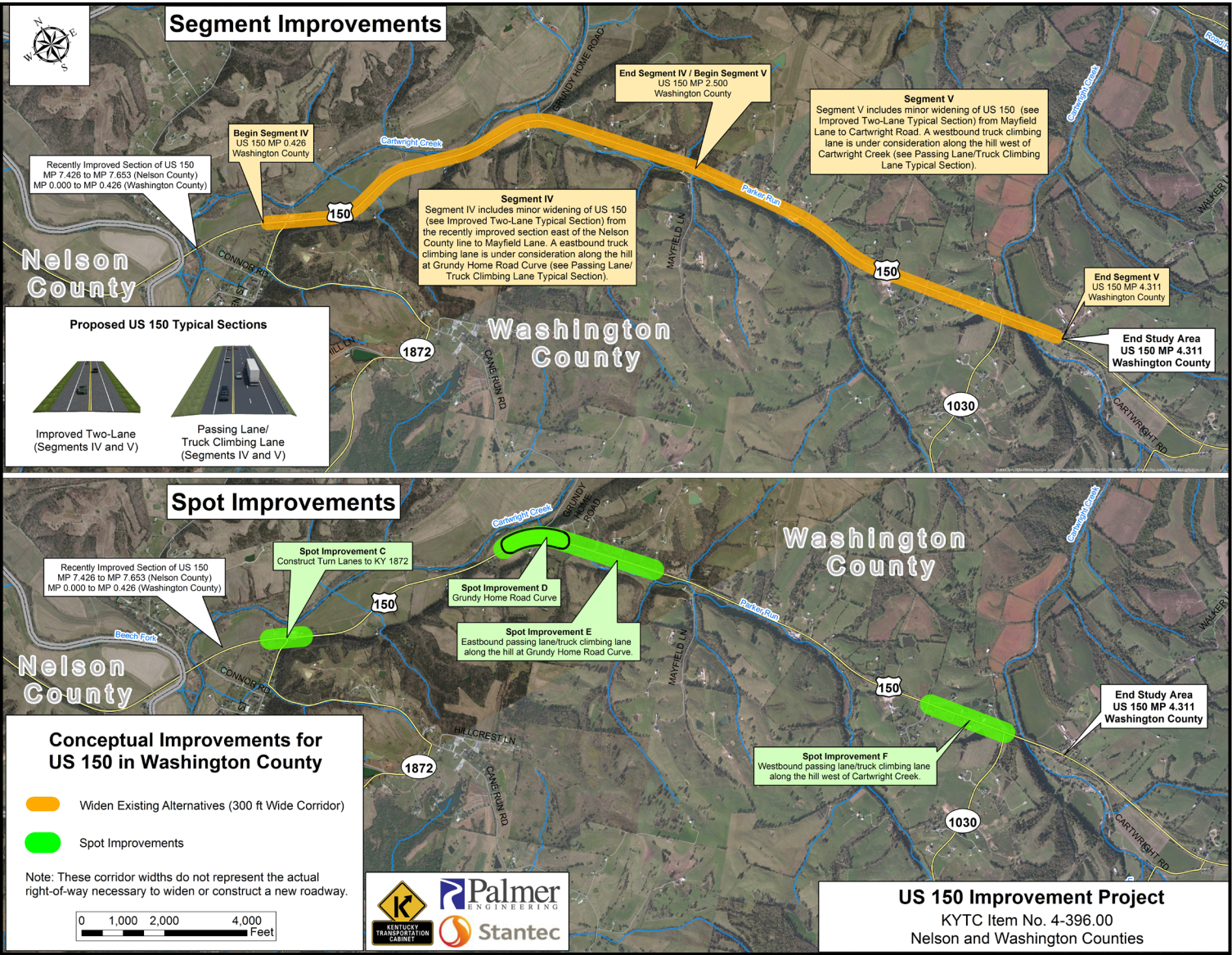
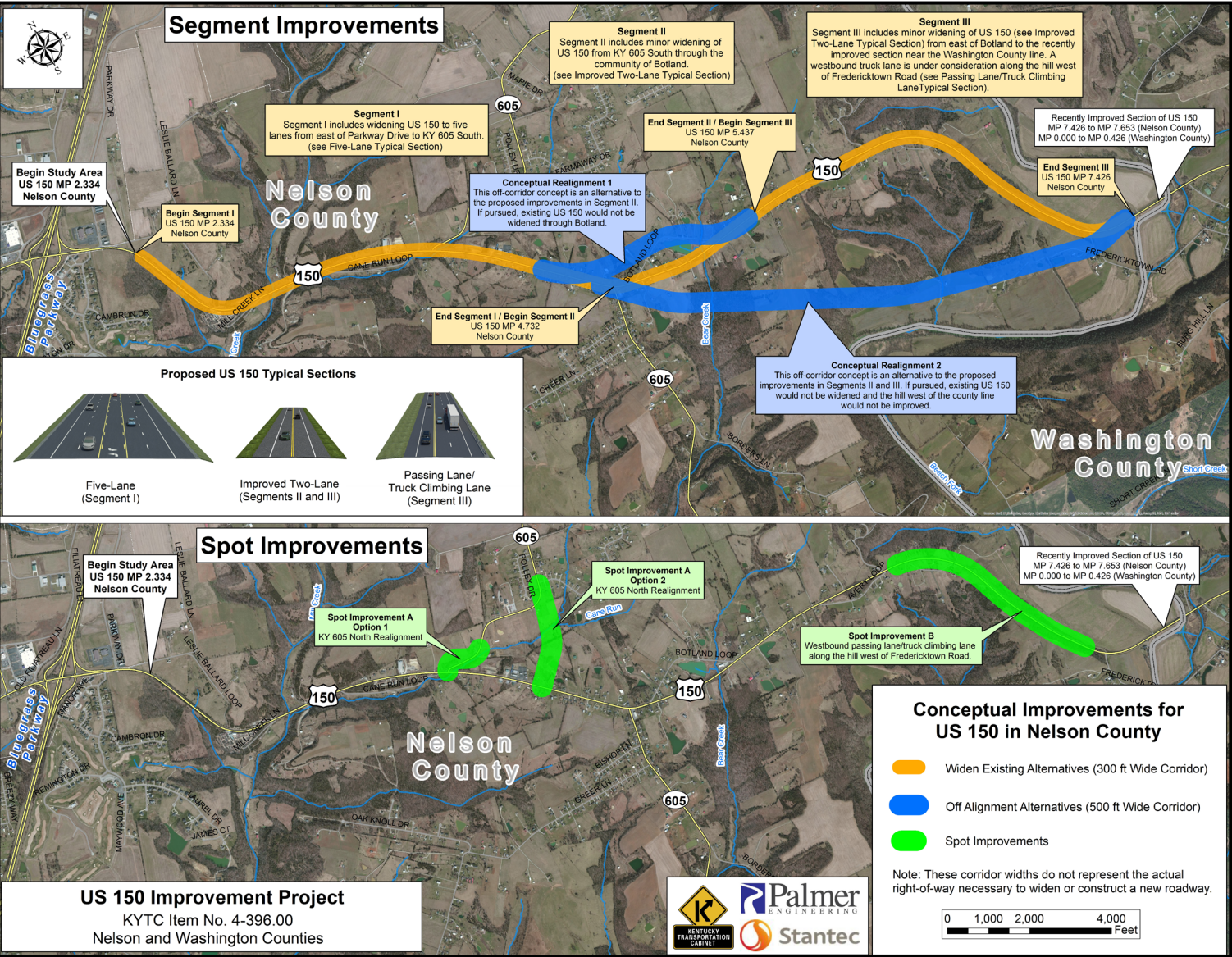
May 26, 2015 5:00 pm - 7:00 PM ET Parkway Baptist 2580 Springfield Rd, Bardstown, KY 40004	May 28, 2015 5:00 pm - 7:00 PM ET Washington County High School 300 W US Highway 150 Bypass Springfield, KY 40069
--	---

The Kentucky Transportation Cabinet (KYTC) is seeking your input on a study affecting US 150 in Nelson and Washington County. The US 150 Corridor Study is examining the need for and types of improvements necessary along the route between the Bluegrass Parkway and Springfield. The current study serves as the first step in establishing project goals, identifying environmental concerns, and evaluating preliminary alternatives. The project team--including the KYTC and its consultant team--has developed preliminary information and alternatives. This meeting is your opportunity to get involved with the study. The purpose of this public meeting is to share this information with you, listen to your concerns, and to get your input about the project under consideration. After a short presentation, you will have an opportunity to talk with the project team and ask questions.

Draft Purpose and Need Statement

The purpose of the US 150 Improvement Project is to enhance local and regional mobility, increase capacity where necessary, and to provide a safer, more efficient connection between the Bluegrass Parkway and Springfield, Kentucky. US 150 provides the only regional east/west connection for areas between the Bluegrass Parkway in Bardstown and I-75 in Mt. Vernon.





Existing Conditions

US 150 extends approximately 81 miles across the state from Louisville to Mt. Vernon, Kentucky. The US 150 study area, which was constructed in the 1950s and early 1960s, is a Rural Minor Arterial 10 miles in length between Parkway Drive, just east of the Bluegrass Parkway in Nelson County, and Cartwright Road just west of Springfield in Washington County. This portion of US 150 is a two-lane road with 11- to 12-foot lane widths and 3- to 4-foot paved shoulder widths. The posted speed limit throughout the corridor is 55 mph with the exception of a short section in Botland.



The study area has several horizontal and vertical curves that do not meet engineering criteria for a 55 mph design speed. These curves present a drivability issue and substandard stopping sight distances.

Crash data from the Kentucky State Police database indicates that 234 crashes were reported between January 1, 2010 and December 31, 2014. Critical crash rate factors (CRF) were calculated for the five-year study period. A CRF greater than 1.0 suggests crashes are likely not occurring at random. One segment of US 150, between the offset KY 605 intersections east of Bardstown, has a CRF greater than 1.0. In addition to this segment, there is one spot location with a CRF value greater than 1.0. This spot is located at the US 150 intersection with KY 605 (north).

Improvement Strategies

Improvement Strategies involved the development of five defined segments of US 150 from the Bluegrass Parkway to the already improved portion of US 150 west of Springfield. The newly improved section of US 150 at the Nelson-Washington County line was also excluded from the proposed improvements. In addition to the five defined segments that cover the entirety of US 150 from the Bluegrass Parkway to Springfield, six spot improvements have also been identified that could be constructed initially. These spot improvements would be constructed to tie to future improvements covered by one of the five segments.

