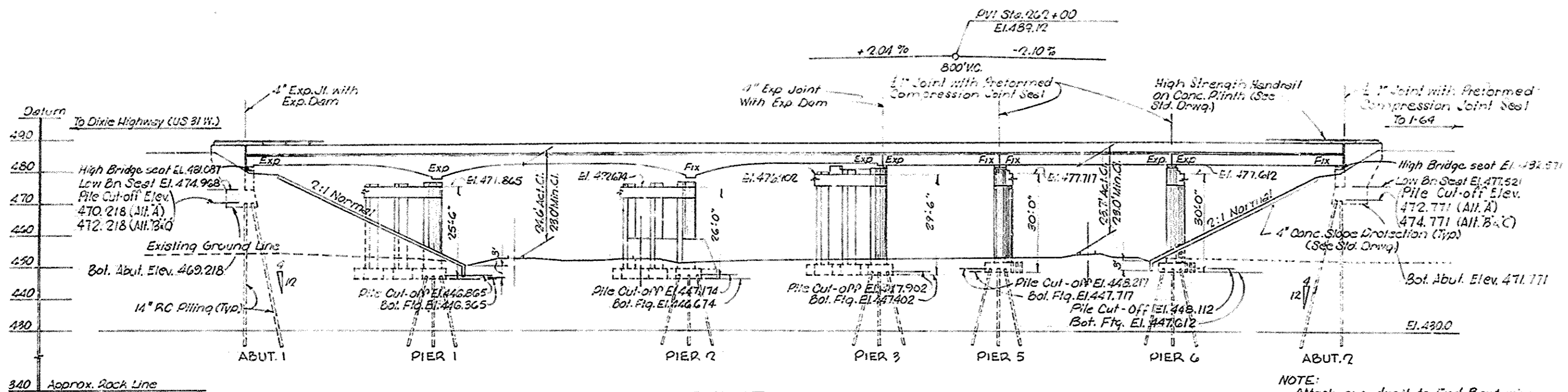
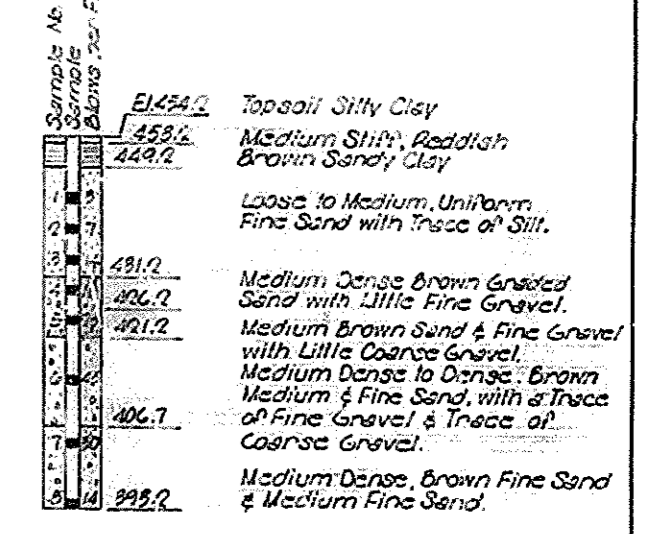


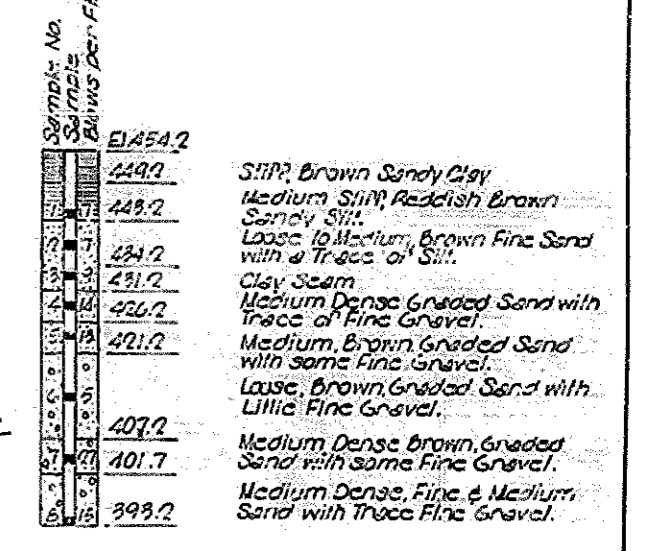
FED. ROAD DIST.	STATE	FED. AID PROJ. NO.	FISCAL YEAR	SHEET NO.	TOTAL SHEETS
7	KY.				



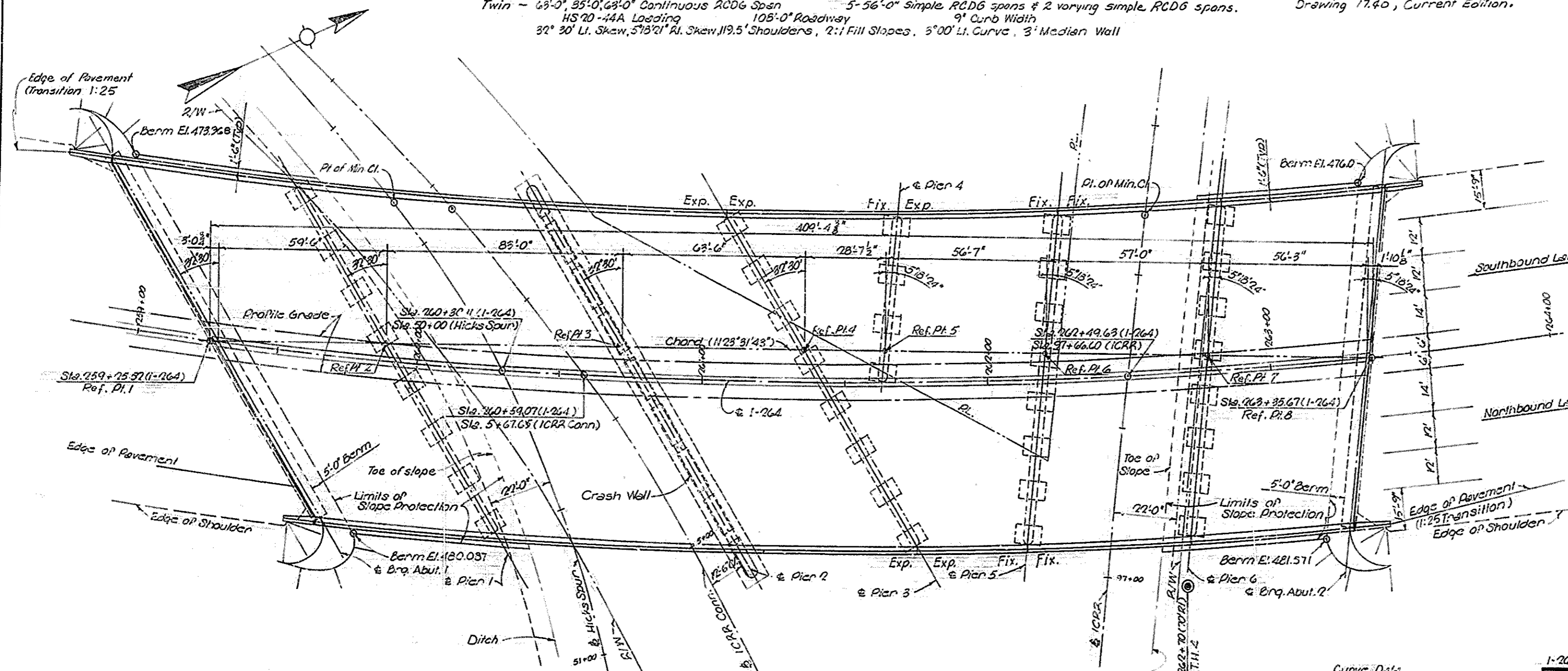
**TEST HOLE 2**  
 Sts. 261+15 (100%)



**TEST HOLE 4**  
 Sts. 262+70 (70' R1)



NOTE:  
 Shoes shall be located as follows:  
 End Bent 1 - E 125  
 End Bent 2 - Special  
 Pier 1 - E 300  
 Pier 2 - F 300  
 Pier 3 - E 125 Cant. Span  
 Pier 4 - Simple Span - Special  
 Pier 5 - Special  
 Pier 6 - Special



1-264 Over ICRR Wye Tracks Sheet 3 of 42

**COMMONWEALTH OF KENTUCKY**  
 DEPARTMENT OF HIGHWAYS  
 FRANKFORT  
 COUNTY OF  
**JEFFERSON**  
 SHAWNEE PARKWAY-LOUISVILLE  
 ROAD

STATION 262+49.63 PROJECT NO. SP56-898-28L

BRIDGE NUMBER 17363 DRAWING NO. 17363

DESIGNED BY: T. T. ...  
 CHECKED BY: M. C. ...  
 DATE: 10-5-68  
 DRAWN BY: ...  
 DATE: ...

Boring Number	Sample Number	Depth Feet	H.R.B. Class.	Textural Classification	Liquid Limit	Plasticity Index	Coarse Gravel	Fine Gravel	Coarse Sand	Medium Sand	Fine Sand	Silt	Clay
R-2	5-1	3	A-4(7)	Clayey Sand	25	7					40	38	22
	5-2	10	A-3	Fine Sand						10	85	5	
	5-3	15	A-3	"				10	8	22	57	3	
	5-4	20	A-1-b	Sand W/Gravel				2	4	62	30	2	
	5-5	25	"	"				26	18	38	16	2	
	5-6	30	"	"				8	10	43	36	3	
	5-7	35	"	"				13	17	33	35	2	
R-3	5-1	4	A-4(B)	Clayey Silt	27	8					31	49	20
R-4	5-1	14	A-3	Fine Sand						70	24	2	4
R-5	5-1	6	A-4(B)	Clayey Silt	30	9					23	51	26
R-6	5-2	15	A-3	Fine Sand				8	3	16	70	3	
	5-3	20	A-1-a	Sand W/Gravel			10	30	13	27	17	3	
	5-4	25	"	"			8	30	14	26	20	2	
	5-5	30	A-1-b	"				10	11	52	24	3	
R-7	5-1	5	A-4	Silt							15	72	13
R-8	5-2	9	A-3	Fine Sand				3	5	23	64	5	
	5-3	14	"	"				12	8	50	26	4	
	5-4	19	A-1-b	Sand W/Gravel				5	4	50	38	3	
	5-5	24	"	"				17	8	35	38	2	
	5-6	29	"	"				13	11	39	33	4	
	5-7	34	"	"				4	9	50	29	8	
	5-8	40	"	"									
R-9	5-1	3	A-6(10)	Clayey Silt	37	14					12	48	40
R-10	5-1	10	A-3	Fine Sand							72	19	9
	5-3	20	"	"						5	94	1	
	5-4	25	"	"						11	88	1	
	5-5	30	"	"						17	80	3	
	5-6	40	A-1-b	Sand W/Gravel			7	8	39	44	2		
R-11	5-1	6	A-4(B)	Clayey Sand	28	6					40	38	22
R-12	5-1	3	A-4(B)	Clayey Sand	28	9					57	21	22
R-14	5-1	3	A-4(B)	Clayey Sand	28	11					40	30	30
	5-2	10	A-4	Silty Sand							60	30	10
R-15	5-1	3	A-6(9)	Clayey Silt	33	12			4	8	53	35	
R-16	5-1	2	A-6(9)	Clayey Silt	36	13					20	50	30
	5-2	3	A-4(B)	Clayey Sand		6					40	38	22
	5-3	8	A-3	Fine Sand							56	2	2
R-17	5-1	2	A-6(10)	Clayey Silt	38	14					18	52	30
	5-2	5	A-2-4	Clayey Sand							66	14	20
R-18	5-1	9	A-3	Fine Sand							90	5	5
	5-2	17	A-2-4	Clayey Sand							80	5	15
	5-3	19	"	"							80	12	8
R-19	5-1	3	A-7-6	Silty Clay	41	16					15	45	40
R-20	5-1	10	A-3	Fine Sand							1	92	7
	5-2	15	"	"							18	79	3
	5-3	20	"	"							20	79	1
	5-4	25	"	"							5	90	5
	5-5	30	"	"				2	4	34	58	2	
	5-6	40	"	"				3	6	38	51	2	
	5-7	50	A-1-b	Sand W/Gravel			3	2	55	38	2		
R-21	5-1	2	A-6(9)	Clayey Silt	34	13					18	48	34
R-22	5-1	4	A-6(9)	Clayey Silt	33	13					26	42	32
	5-2	14	A-3	Fine Sand							2	90	3
	5-3	18	"	"							17	79	2
	5-4	23	"	"							10	83	2
R-23	5-1	6	A-4(B)	Clayey Sand	26	6					48	30	22
R-24	5-1	6	A-6(9)	Clayey Silt	32	13					5	52	43

Boring Number	Sample Number	Depth Feet	H.R.B. Class.	Textural Classification	Liquid Limit	Plasticity Index	Coarse Gravel	Fine Gravel	Coarse Sand	Medium Sand	Fine Sand	Silt	Clay
R-25	5-1	10	A-3	Fine Sand							3	95	2
	5-2	15	"	"							92	8	
	5-3	20	A-1-b	Sand W/Gravel					4	56	39	1	
	5-4	25	"	"				12	10	53	23	2	
	5-5	30	"	"				11	9	30	49	1	
	5-6	40	"	"				14	20	50	13	3	
	5-7	50	"	"				1	3	67	27	2	
	5-8	60	"	"				10	22	50	16	2	
R-26	5-1	4	A-4(B)	Clayey Silt	28	10					26	41	33
	5-2	16	A-3	Fine Sand							92	4	4
	5-3	21	"	"							93	3	4
R-27	5-1	3	A-4(B)	Clayey Silt	31	10					20	53	27
	5-2	7	A-3	Fine Sand							10	85	2
R-28	5-1	10	A-3	Fine Sand							1	10	88
	5-2	15	"	"							22	76	1
	5-3	20	"	"							4	95	1
	5-4	25	"	"							4	30	59
	5-5	30	A-1-b	Sand W/Gravel				4	6	30	37	47	2
	5-6	40	"	"				9	5	37	47	2	
	5-7	50	A-3	Fine Sand				12	11	39	35	3	
	5-8	60	A-1-b	Sand W/Gravel				1	3	38	55	3	
R-29	5-1	3	A-4(B)	Clayey Silt	26	8					16	48	36
	5-2	7	A-6(11)	Silty Clay	40	18					17	39	50
R-30	5-1	2	A-6(10)	Silty Clay	37	15					8	44	48
	5-2	7	A-2-4	Clayey Sand							77	6	17
	5-3	12	A-3	Fine Sand							38	54	6
	5-4	16	"	"							10	87	1
	5-5	21	"	"							34	64	2
R-32	5-1	3	A-4(A)	Clayey Sand	27	9					7	46	27
R-33	5-1	3	A-6(9)	Silty Clay	36	13					17	39	44
	5-2	10	A-3	Fine Sand							20	70	5
	5-3	18	A-4	Silty Sand							48	44	8
R-34	5-1	6	A-2-4	Clayey Sand	22	4					10	55	15
R-35	5-1	4	A-4(B)	Clayey Silt	27	8					27	48	25
R-36	5-1	5	A-4(7)	Clayey Silt	26	6					38	59	3
	5-2	12	A-3	Fine Sand							10	63	15
R-37	5-1	6	A-2-4	Clayey Sand							17	78	2
	5-2	10	A-3	Fine Sand							13	27	60
	5-3	17	A-7	Silty Clay									
R-38	5-1	10	A-3	Fine Sand							14	93	3
	5-2	15	"	"							5	87	8
	5-3	20	"	"								97	3
	5-4	25	A-1-b	Sand W/Gravel				10	20	45	22	3	
	5-5	30	A-1-a	"				12	37	19	16	11	5
	5-6	40	A-1-b	"				8	19	11	35	23	2
	5-7	50	A-3	Fine Sand					2	2	46	47	3
	5-8	60	"	"							1	94	5
R-39	5-1	10	A-4(6)	Silty Sand							52	42	6
	5-2	15	A-3	Fine Sand							6	82	8
	5-3	20	"	"							11	88	1
	5-4	25	A-1-b	Sand W/Gravel				10	10	40	38	2	
	5-5	30	A-1-a	"				34	22	24	18	2	
	5-6	40	A-1-b	"				14	10	43	33		
	5-7	50	A-1-a	"				25	28	35	12		
	5-8	60	A-1-b	"				2	2	69	25	2	
R-40	5-1	10	A-3	Fine Sand							10	89	1
	5-2	15	"	"							7	87	6
	5-3	20	"	"							18	78	4
	5-4	25	A-1-b	Sand W/Gravel				9	6	42	39	4	
	5-5	30	"	"				20	13	25	42		
	5-6	40	"	"				18	15	45	20	2	
	5-7	50	A-3	Fine Sand							2	36	61
	5-8	60	"	"							2	42	56

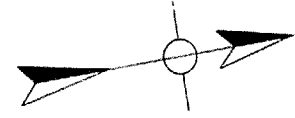
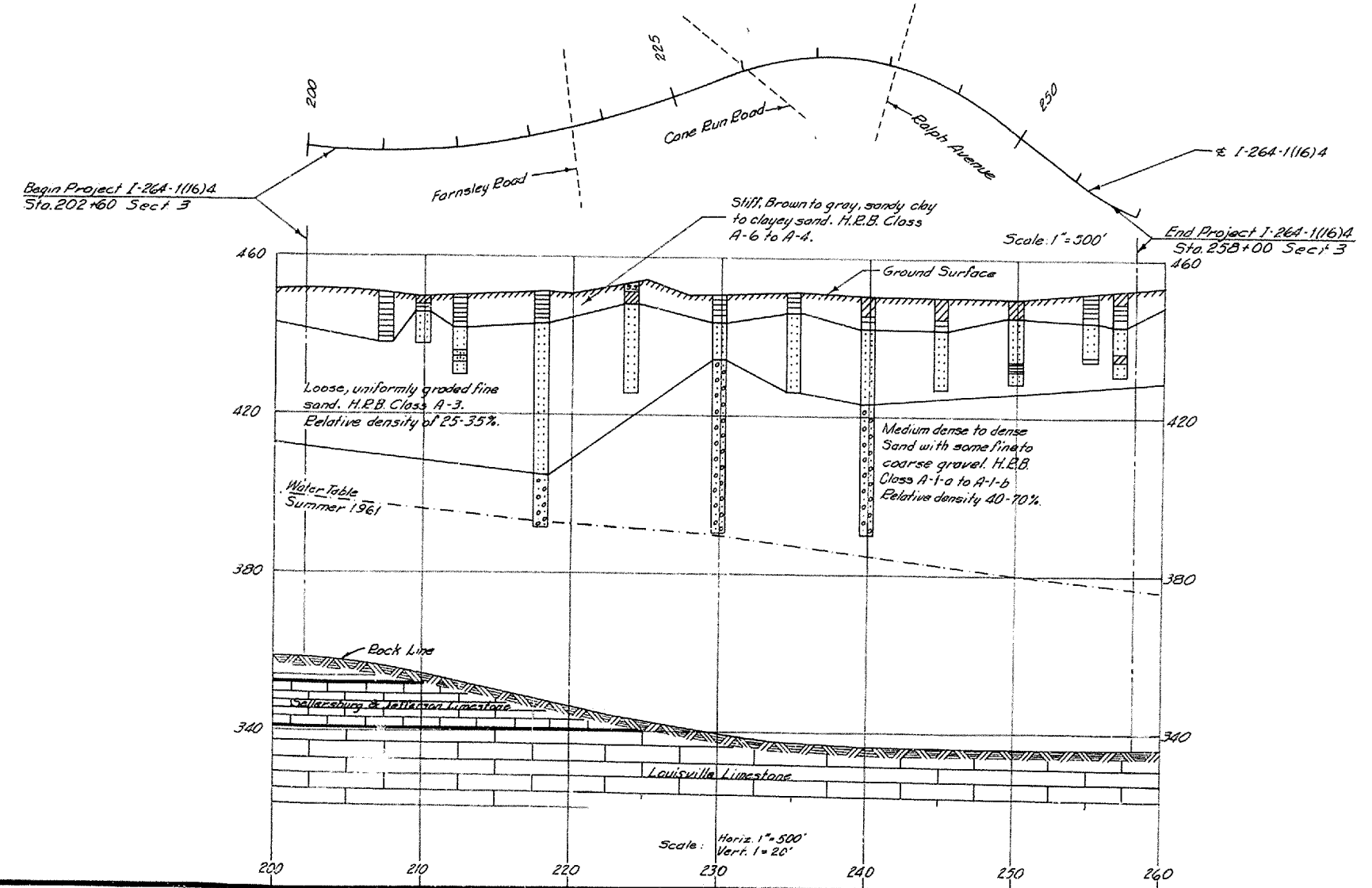
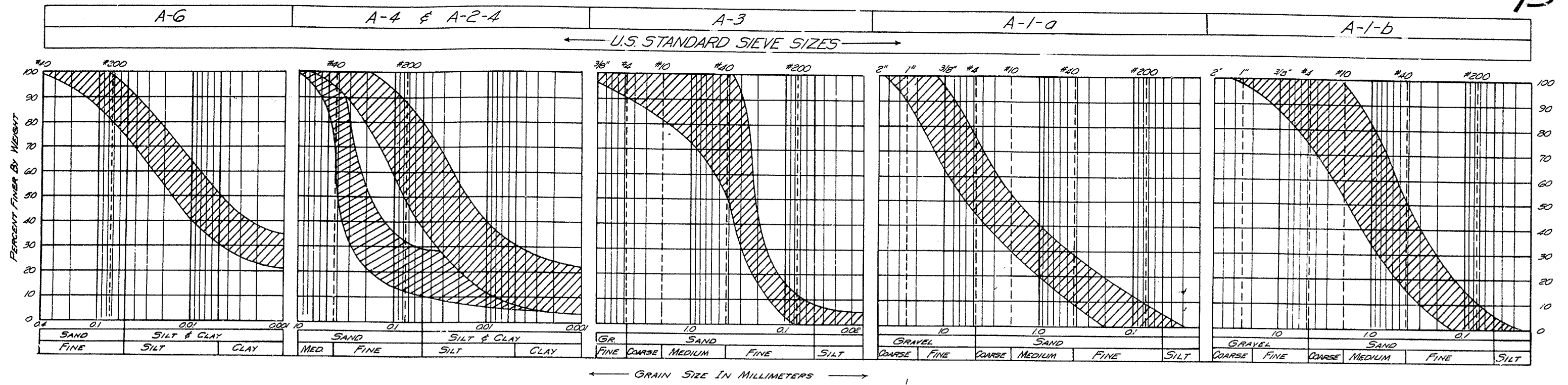
94

TABLE NO. 1 (CONT.)

										PERCENT OF							
Boring Number	Sample Number	Depth Feet	H.R.B. Class.	Textural Classification	Liquid Limit	Plasticity Index	Coarse Gravel	Fine Gravel	Coarse Sand	Medium Sand	Fine Sand	Silt	Clay				
R-41	5-1	3	A-6(9)	Clayey Silt	33	12					12	55	33				
	5-2	7	A-4(7)	Sandy Silt							32	56	12				
	5-3	15	A-3	Fine Sand							4	2	21				
R-43	5-1	4	A-2-4	Clayey Sand			13	30	8	21	20	12	8				
	5-2	14	A-1-a	Sand W/Gravel			47	39	2	5	7						
	5-3	17	"	"				20	35	37	8						
	5-4	32	"	"				15	16	46	21	2					
	5-5	39	A-1-b	"						12	68	20					
	5-6	51	"	"													
R-44	5-1	10	A-1-a	Sand W/Gravel				56	10	15	16	3					
	5-2	15	"	"				52	11	18	17	3					
	5-3	20	"	"				42	13	26	17	2					
	5-4	25	A-1-b	"				20	26	36	15	3					
	5-5	30	"	"				10	13	55	20	2					
	5-6	40	A-3	Fine Sand						18	82						
	5-7	50	A-1-b	Sand W/Gravel				1	2	47	49	1					
	5-8	60	A-3	Fine Sand				2	1	41	55	1					
R-45	5-1	10	A-4(B)	Clayey Silt	26	7					23	49	28				
	5-2	15	A-3														

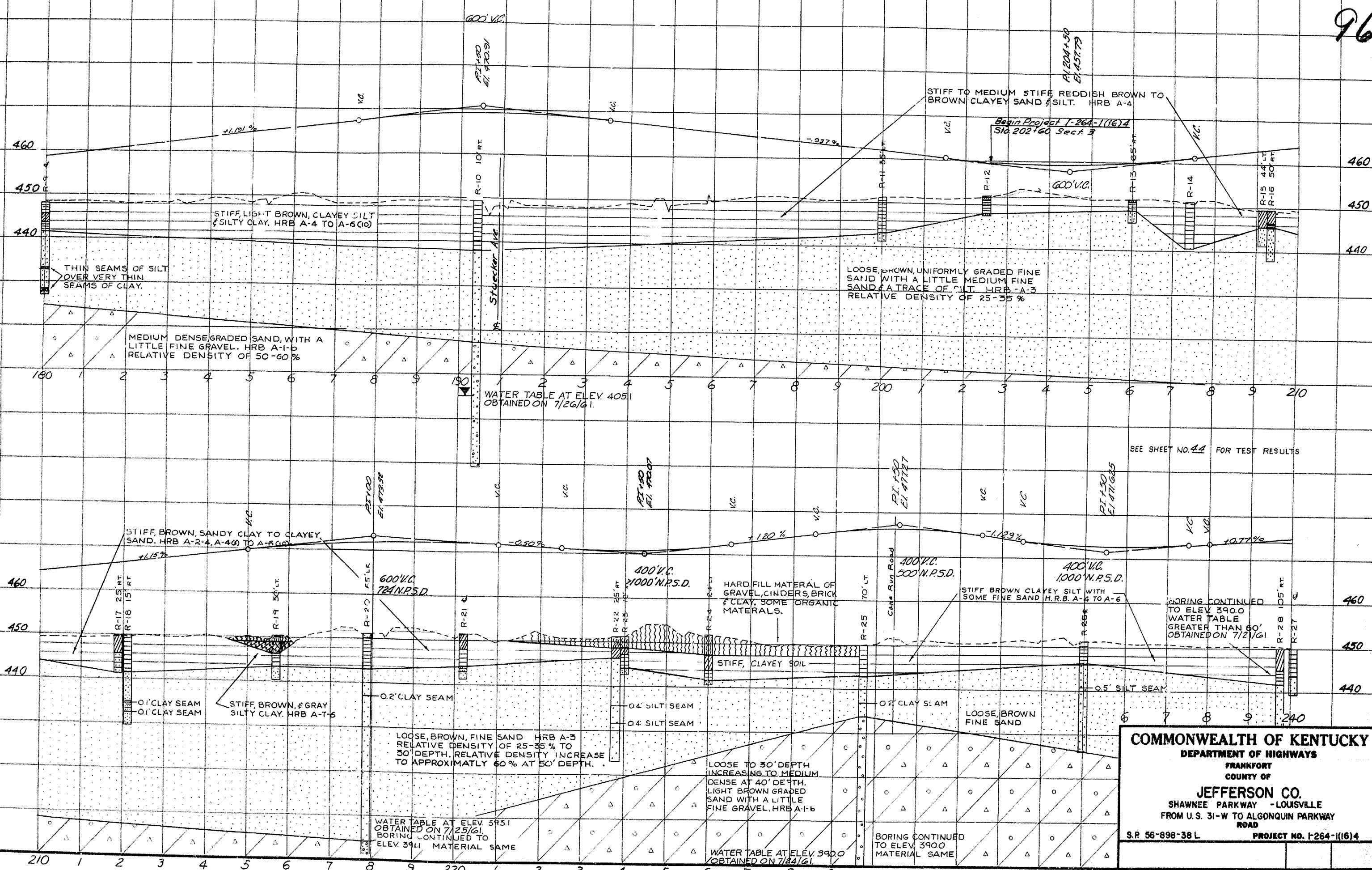
GRADATION LIMITS FOR MATERIALS TESTED ON THIS SECTION

95



**COMMONWEALTH OF KENTUCKY**  
 DEPARTMENT OF HIGHWAYS  
 FRANKFORT  
 COUNTY OF  
**JEFFERSON CO.**  
 SHAWNEE PARKWAY - LOUISVILLE  
 FROM U.S. 31-W TO ALGONQUIN PARKWAY  
 ROAD  
 S.P. 56-898-38 PROJECT NO. I-264-1(16)4

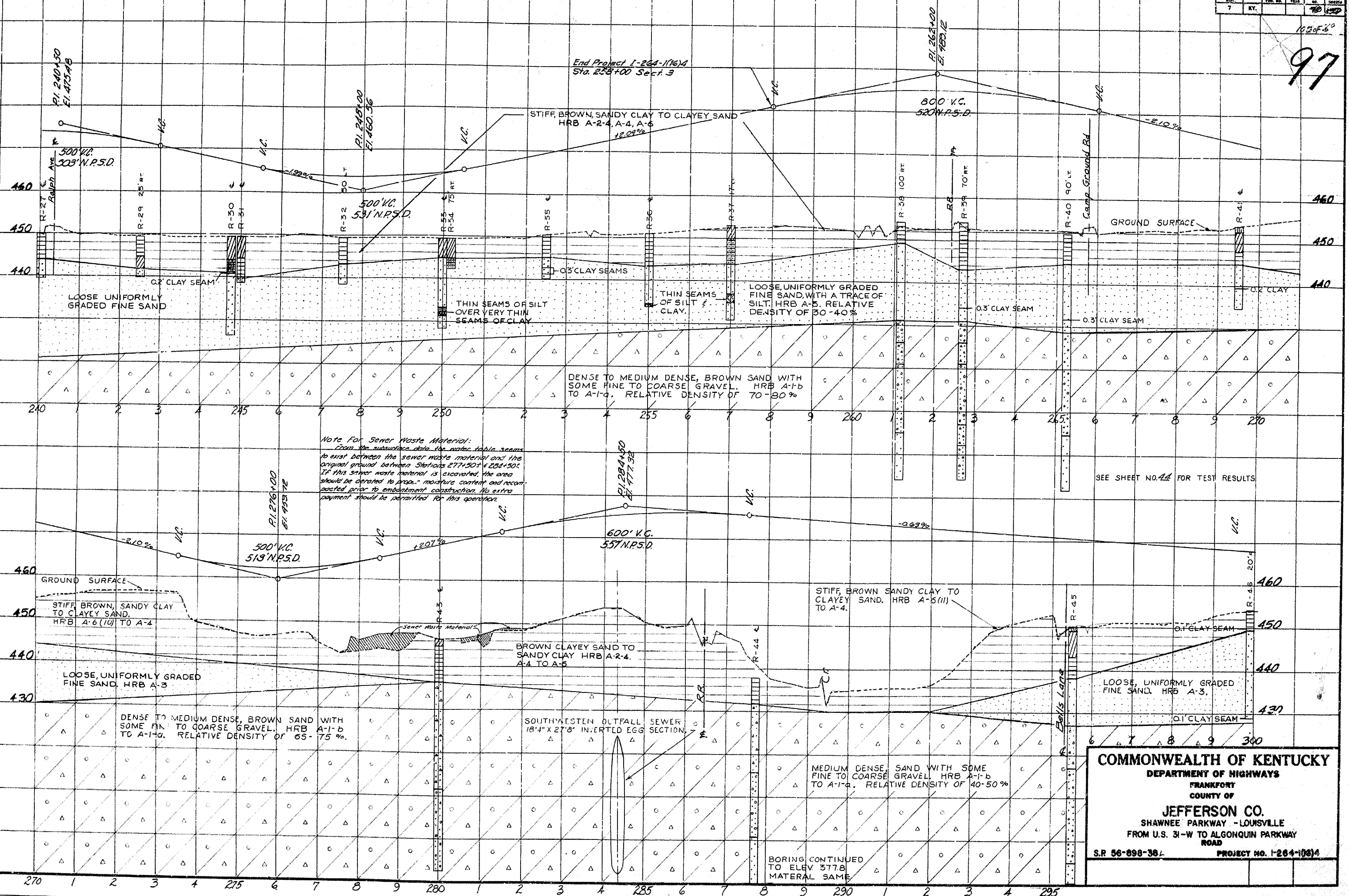




**COMMONWEALTH OF KENTUCKY**  
 DEPARTMENT OF HIGHWAYS  
 FRANKFORT  
 COUNTY OF  
**JEFFERSON CO.**  
 SHAWNEE PARKWAY - LOUISVILLE  
 FROM U.S. 31-W TO ALGONQUIN PARKWAY ROAD  
 S.R. 56-898-38 L PROJECT NO. F-264-1(16)4

CHECKED BY: J. L. ...  
 DATE: ...  
 DRAWN BY: ...  
 DATE: ...

End Project I-264-1(16)A  
Sta. 258+00 Sect. 3



**COMMONWEALTH OF KENTUCKY**  
 DEPARTMENT OF HIGHWAYS  
 FRANKFORT  
 COUNTY OF  
**JEFFERSON CO.**  
 SHAWNEE PARKWAY - LOUISVILLE  
 FROM U.S. 31-W TO ALGONQUIN PARKWAY ROAD  
 S.P. 56-898-38-1 PROJECT NO. I-264-1(16)A

BORING CONTINUED TO ELEV. 577.8  
MATERIAL SAME

SEE SHEET NO. 44 FOR TEST RESULTS