

# I-265 Programming Study



**PARSONS  
BRINCKERHOFF**

# I-265 Programming Study Agenda



- Project Overview
- Purpose and Need
- Existing Conditions
  - Environmental
  - Safety
  - Traffic
- Project Boards
- Next Steps

# I-265 Programming Study

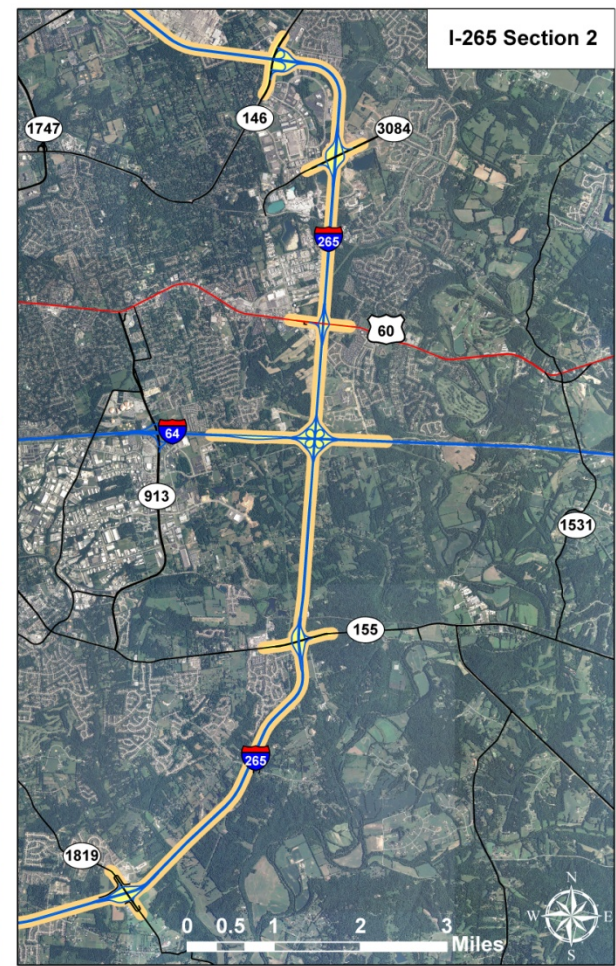
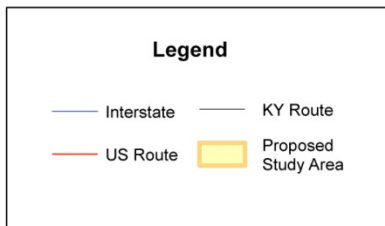
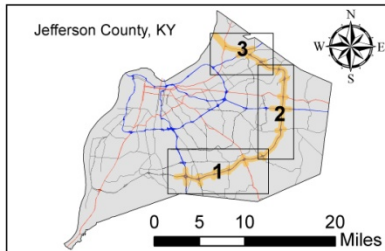
## Project Objective



### This Study will:

- Identify and evaluate improvements for I-265 from I-65 to the new East End Bridge in Louisville, KY.
- Focus on identifying short-term improvements that can be quickly and effectively implemented.
- Also identify long-term solutions.
- Prioritize projects to provide guidance on implementation.

# I-265 Programming Study Study Area



**I-265 Programming Study**

Study Area Overview

Date: 12/17/2013



# I-265 Programming Study Project Schedule



	I-265 Programming Study - Project Schedule																
	2013					2014											
	8	9	10	11	12	1	2	3	4	5	6	7	8	9	10	11	12
Project Management																	
Existing Conditions Inventory																	
Traffic Forecasting / Future Analysis																	
Public Involvement																	
Project Purpose and Need																	
Environmental Overview / Environmental Justice																	
Geotechnical Overview																	
Analysis of Conditions and Improvement																	
Final Report Documentation																	

## Public Involvement Activities

- (1) Local Officials & Stakeholder Meeting #1: January 2014
- (2) Public Meeting: September 2014
- (3) Local Officials & Stakeholder Meeting #2: September 2014

# I-265 Programming Study

## Purpose and Need



### ■ Purpose

"The purpose of the I-265 corridor programming study is to evaluate the safety and capacity of the corridor and to determine needed improvements and priorities as a result of the expected increased traffic due to major transportation and development changes in the Louisville Metro area."

# I-265 Programming Study

## Purpose and Need



- Need
  - Safety
  - Capacity
  - Congestion
  - Access
  - Economic Development

# I-265 Programming Study

## Existing Conditions



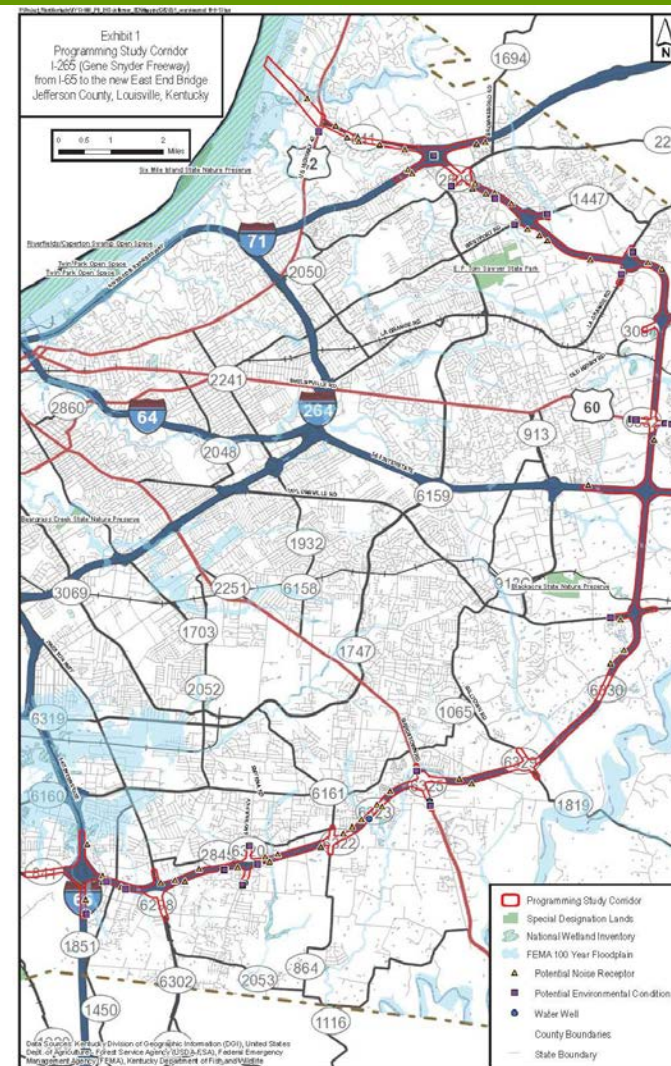
- Key Elements of the Existing Conditions Include:
  - Environmental Overview
  - Crash Analysis
  - Traffic Volumes / Level of Service / Capacity



# I-265 Programming Study Environmental Overview



- 38 Potential UST Sites of Concern
- Non-attainment area for PM<sub>2.5</sub> and Sulfur Dioxide
- 33 National Wetland Inventory Wetlands totaling 30.2 acres
- 15 stream crossings



# I-265 Programming Study

## Environmental Overview Cont'd



- The project area contains habitat for five federally listed endangered species:
  - Gray Bat (*Myotis Sodalis*)
  - Indiana Bat (*Myotis Sodalis*)
  - Clubshell (*Pleurobema claya*)
  - Running buffalo clover (*Trifolium stoloniferum*)
  - Kentucky glade cress (*Pseudanopthalmus troglodytes*)
- There are 26 other species whose habitat may be present within the corridor.
- Future surveys will be required to determine the presence of the species.

# I-265 Programming Study

## Cultural Historic Overview



### National Register of Historic Places Listings

3 Districts	9 Listed Properties	8 Recommended Properties	19 Properties Surveyed but Status Undetermined
----------------	------------------------	--------------------------------	--

# I-265 Programming Study

## Cultural Historic Overview (Districts)



- Three Historic Districts
  - Drumanard, Harrods Creek, and Country Estates of River Road

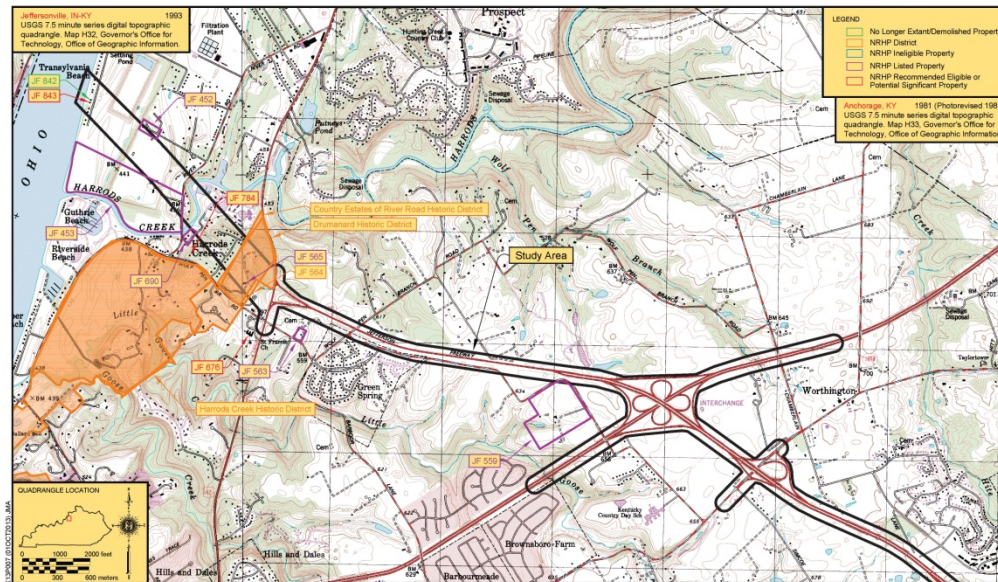


Figure 1b. Topographic maps showing NRHP-listed sites and districts, recommended eligible or potentially eligible sites, ineligible sites, and previously surveyed sites that are no longer extant within and adjacent to the current project study area.

# I-265 Programming Study

## Cultural Historic Overview (Listings)



### Barber House / Rosewell

- Transylvania Beach



### Cooper Memorial Church

- Preston Highway



### Bellevue

- Upper River Road



### Fitzhugh House / Drumanard

- Wolf Pen Branch Road



### Allison-Barrickman House

- Wolf Pen Branch Road



### Merriweather House

- Upper River Road

### Omer / Pound House

- Billtown Road

### Fishpool Plantation

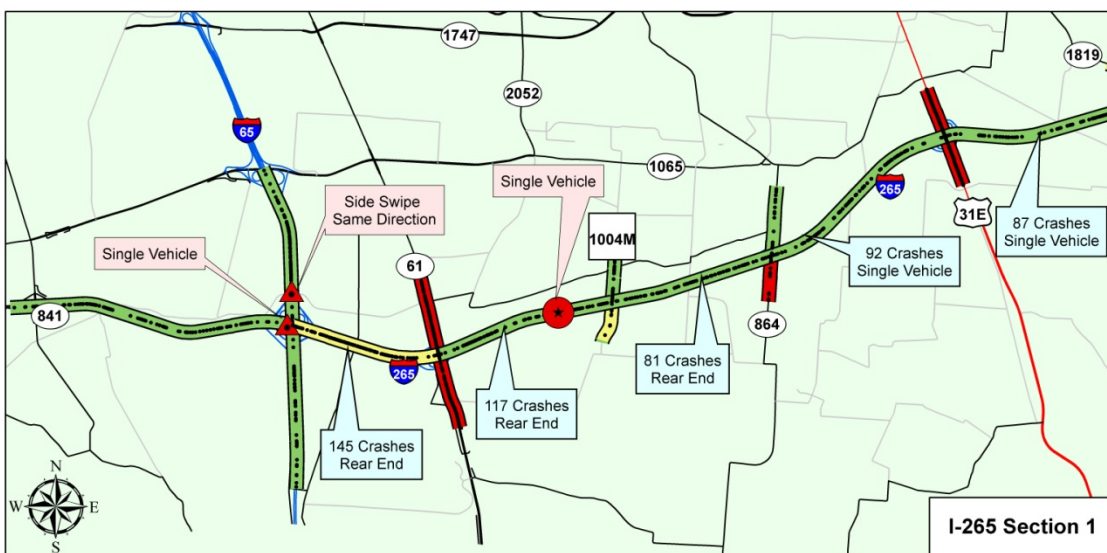
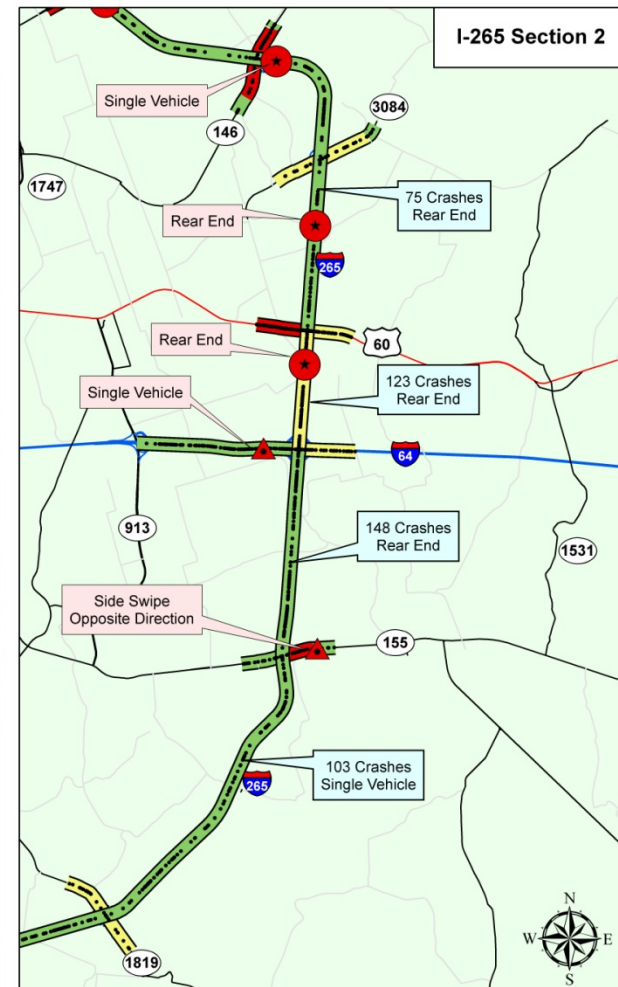
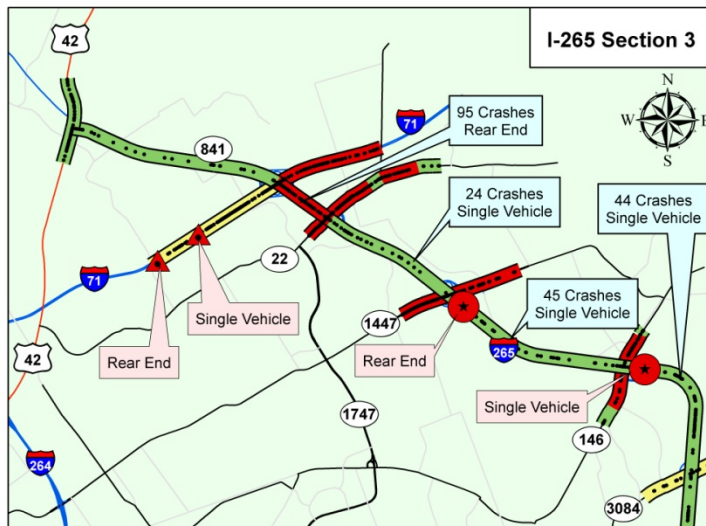
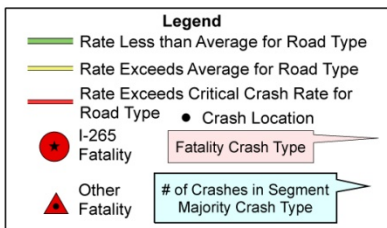
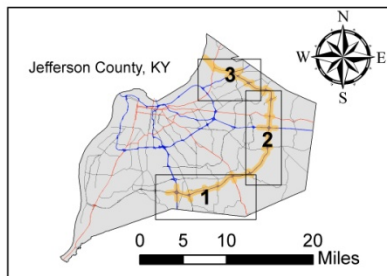
- Cooper Church Drive

### Cedarbrook Farm

- Springdale Road

# I-265 Programming Study

## Crash Map



I-265 Programming Study

Corridor Study Area  
Crash Rates and Locations

Date: 12/17/2013



# I-265 Programming Study Crash Rate Analysis



## I-265 Crash Info

- Data from 1/1/2010 through 12/31/2012
- 5 Fatal Crashes (5 total fatalities)
- 202 Injury Crashes

### Weather

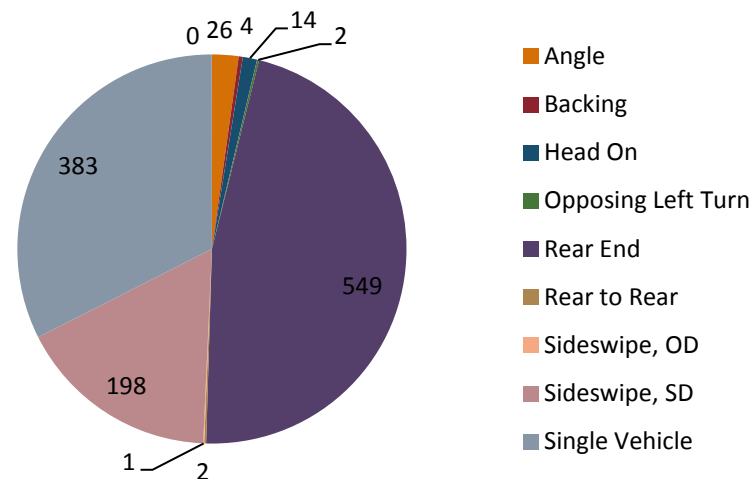
- 62% Clear

### Lighting

- 66% Daylight

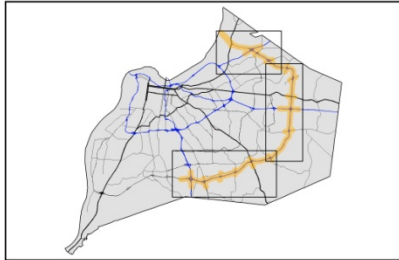
### ■ Crash Type

- 46.6% Rear End
- 32.5% Single Vehicle
- 16.8% Sideswipe Same Direction



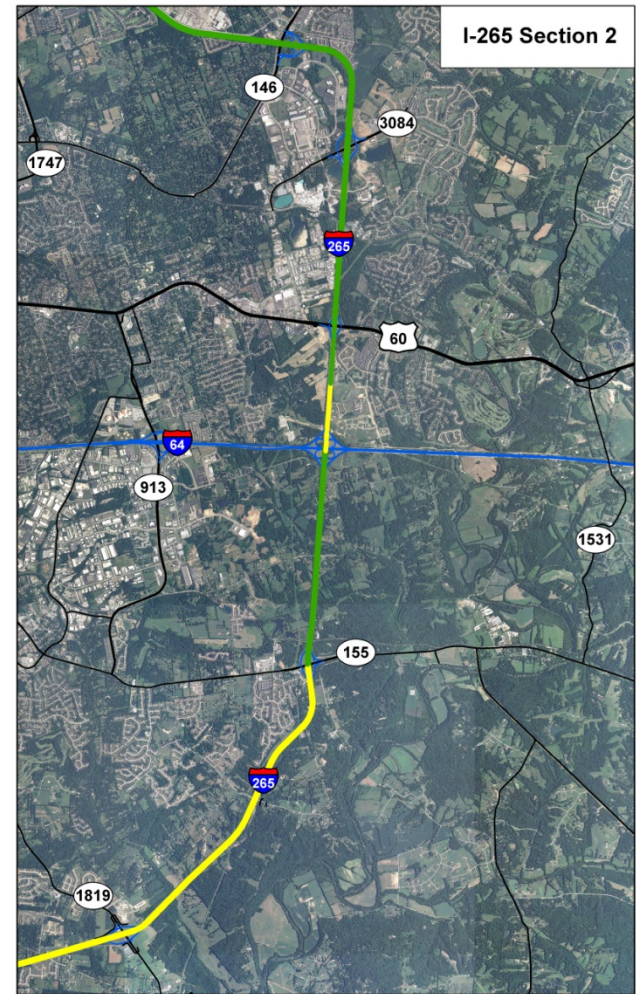
# I-265 Programming Study

## Existing Traffic Operations (AM)



**Legend**

- Interstate
- US Route
- LOS A-C
- LOS E-F
- KY Route
- Study Area
- LOS D



I-265 Programming Study

Existing AM LOS Map

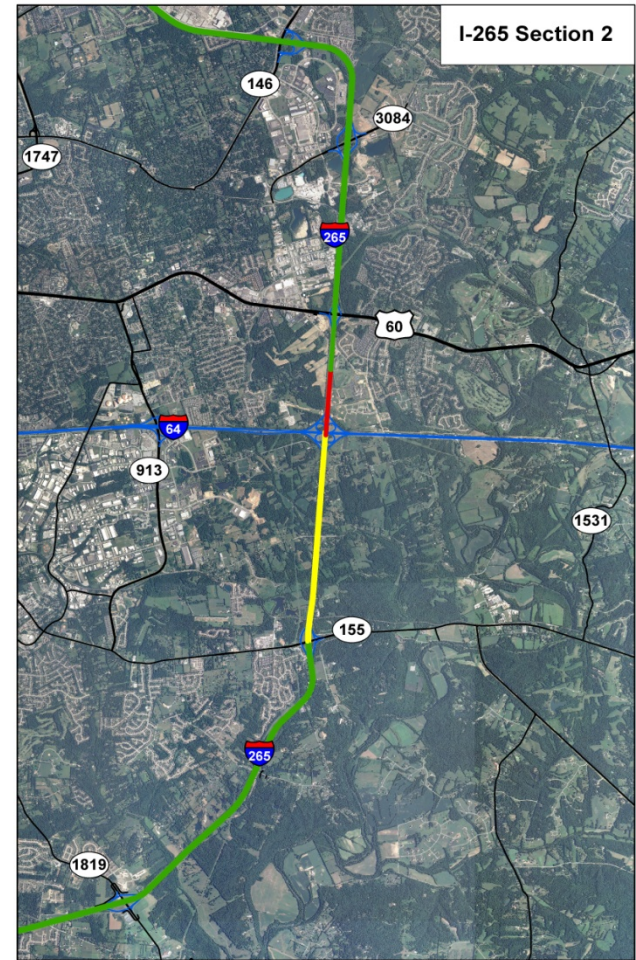
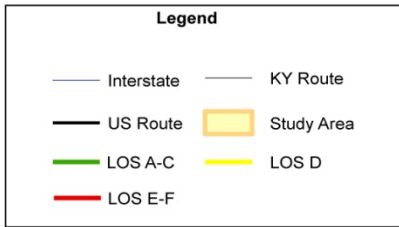
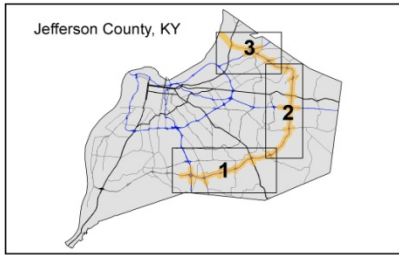
Date: 05/16/2014

**PARSONS  
BRINCKERHOFF**



# I-265 Programming Study

## Existing Traffic Operations (PM)



I-265 Programming Study

Existing PM LOS Map

Date: 06/16/2014



# I-265 Programming Study

## Future Year Analysis



- Traffic Volumes Developed for:
  - Year 2020
  - Year 2040
- Takes Into Account Numerous Projects:
  - KYTC 2012 Highway Plan
  - KYTC Statewide Transportation Improvement Program (STIP)
  - KYTC District 5 Unscheduled Projects List
  - KIPDA Metropolitan Transportation Plan (MTP)
  - KIPDA Transportation Improvement Plan (TIP)
  - Project Identification Forms (PIFs)

# I-265 Programming Study Project Boards



The study area is broken up into three segments and each is displayed at a station:

- 1) Visit the station(s) you are most interested in and look at the projects for that section of the study
- 2) Discuss any questions about projects with staff
- 3) Identify project issues / concerns
- 4) Rank order project priority: High / Medium / Low
- 5) Identify potential projects that are missing
- 6) Provide any other feedback

# I-265 Programming Study Wrap-Up / Next Steps



- 1) Make sure you turn in priority rankings before you leave!
- 2) Final report available through KYTC in January 2015