



## Introduction

### **Purpose:**

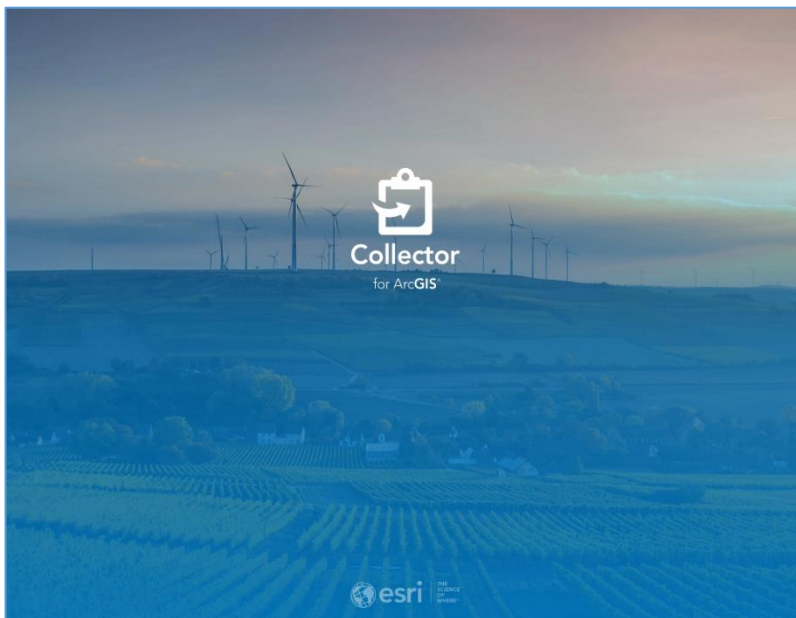
This document includes screenshots and steps on how to setup Collector for field ops. Please note the images may differ slightly from what you're seeing as updates are released.

## Installation

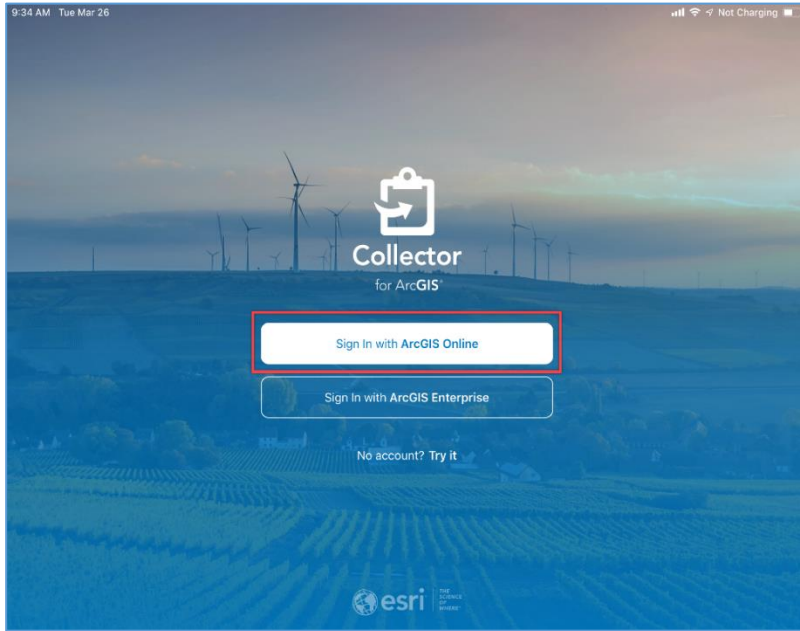
1. Open the **Collector for ArcGIS** app by clicking on the icon.



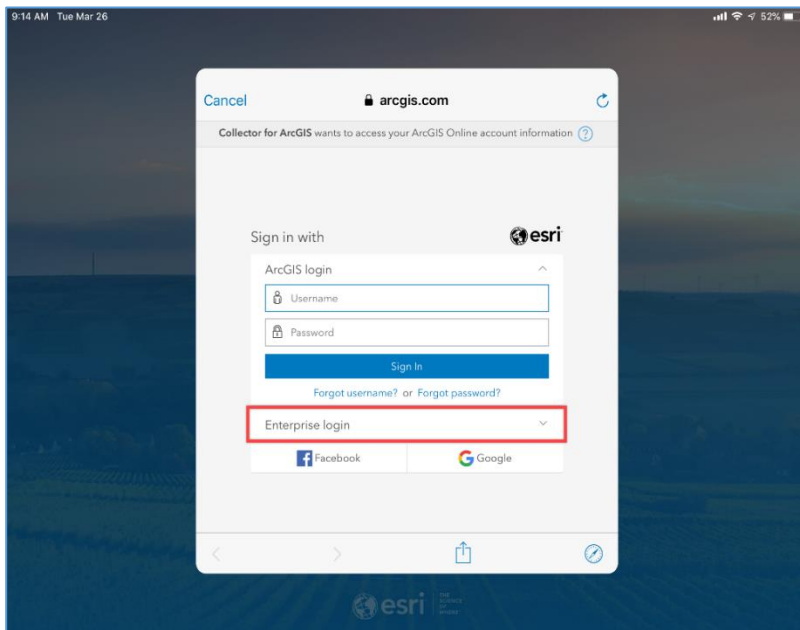
2. Wait for the **Collector for ArcGIS** application to initialize and load.



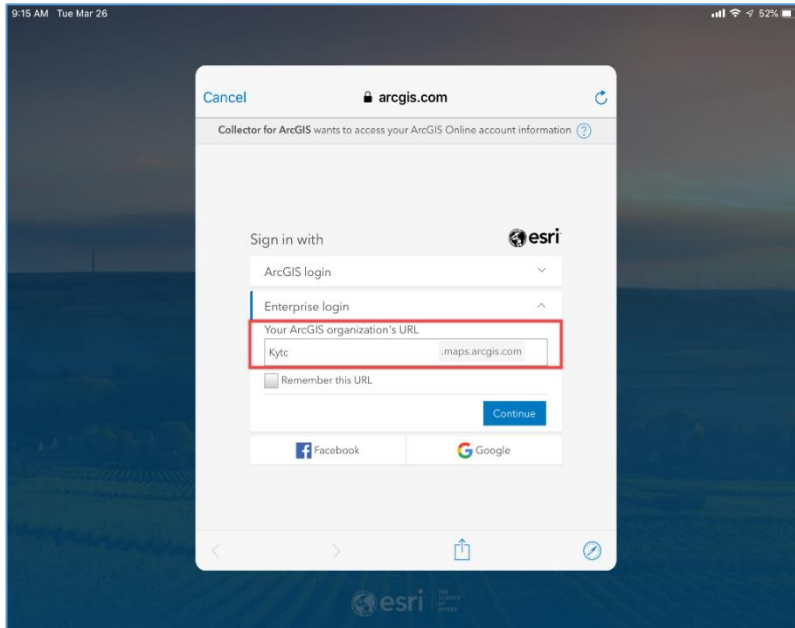
3. Click the **Sign In with ArcGIS Online** button.



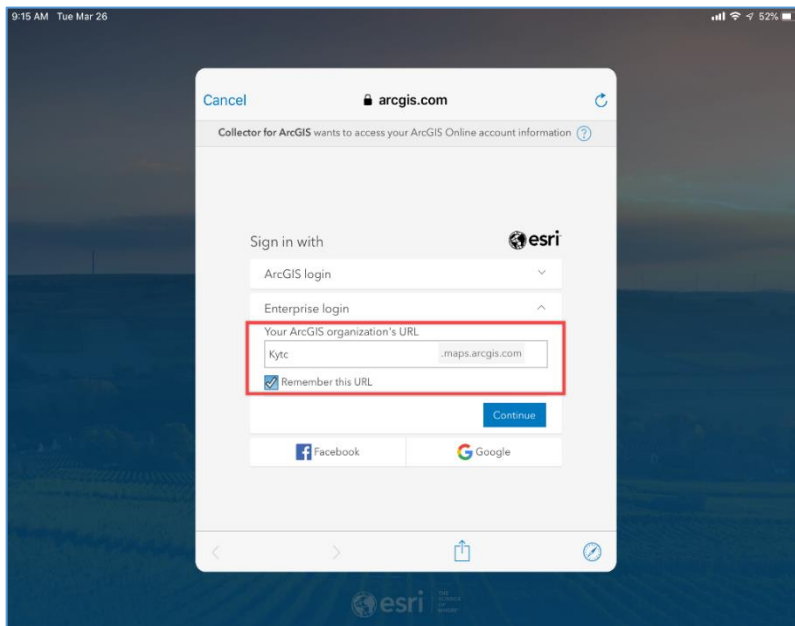
4. Click the **Enterprise Login** button.



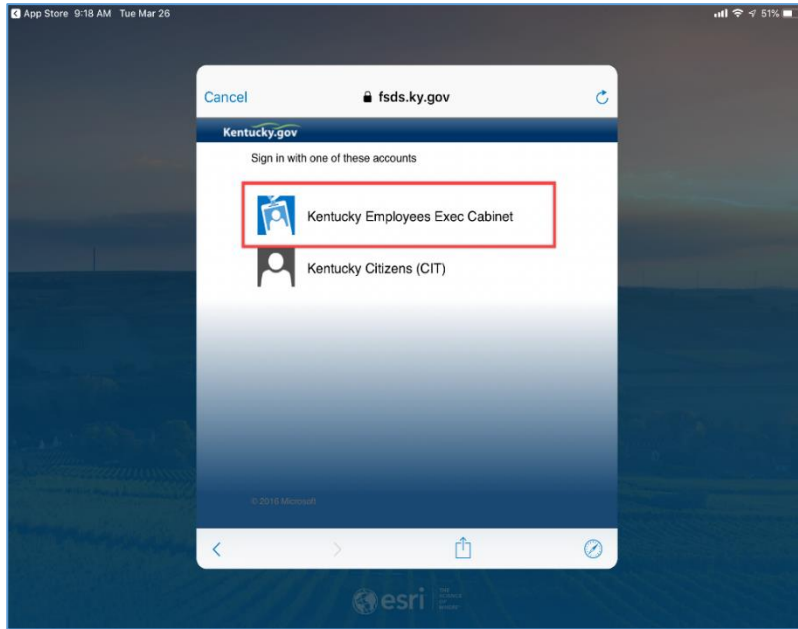
5. Enter "kytc" into the **Your ArcGIS Online Organization's URL** space.



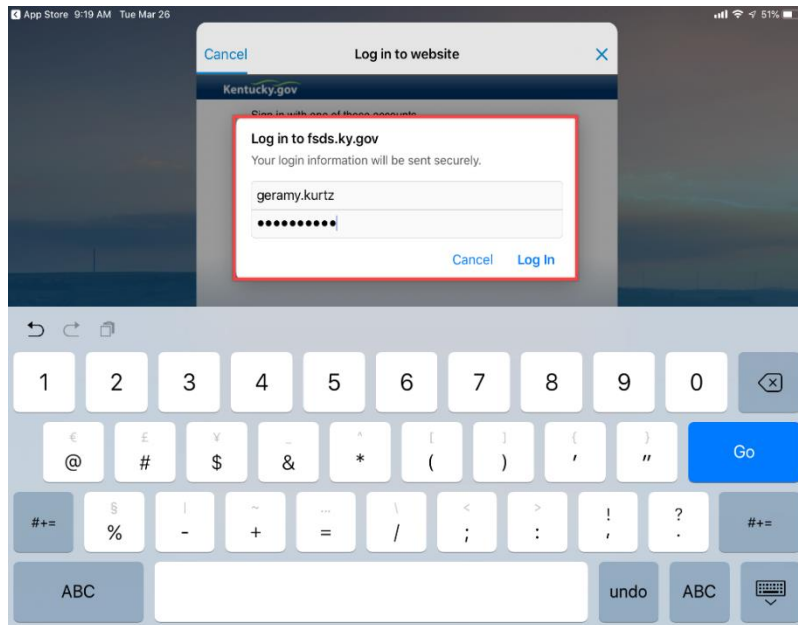
6. Select the **Remember this URL** checkbox.



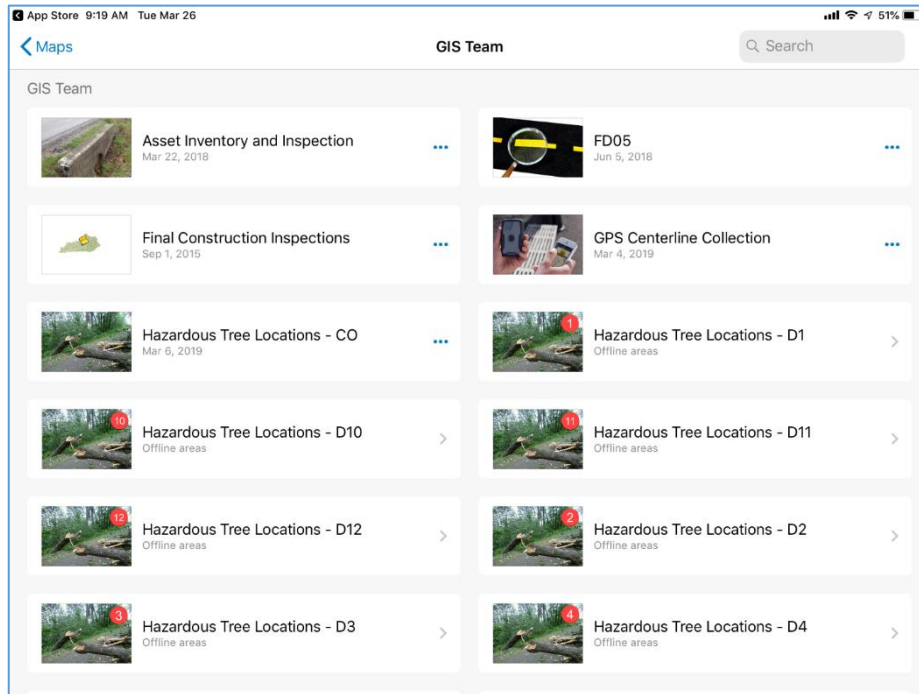
7. Click the **Kentucky Employees Exec Cabinet** button.



8. Log into **fds.ky.gov** with your AD Credentials.



9. Once you are logged in, you will see the following items:
  - a. The ArcGIS Online GIS groups you have access to;
  - b. The ArcGIS Online maps you have edit access to



10. You have successfully completed the tutorial and are ready for field collection.

## Contact Us

If you experience any issues or need assistance, please contact the GIS Support Branch at,

[KYTC.GIS@ky.gov](mailto:KYTC.GIS@ky.gov)