



CALL NO. 418

CONTRACT ID. 232961

FAYETTE - CLARK COUNTIES

FED/STATE PROJECT NUMBER 121GR23M001 - FE02

DESCRIPTION VARIOUS ROUTES IN CLARK AND FAYETTE COUNTIES ~ 4

LOCATIONS

WORK TYPE BRIDGE DECK RESTORATION & WATERPROOFING

PRIMARY COMPLETION DATE 11/30/2023

LETTING DATE: January 26,2023

Sealed Bids will be received electronically through the Bid Express bidding service until 10:00 AM EASTERN STANDARD TIME January 26,2023. Bids will be publicly announced at 10:00 AM EASTERN STANDARD TIME.

NO PLANS ASSOCIATED WITH THIS PROJECT.

REQUIRED BID PROPOSAL GUARANTY: Not less than 5% of the total bid.

TABLE OF CONTENTS

PART I	SCOPE OF WORK <ul style="list-style-type: none">• PROJECT(S), COMPLETION DATE(S), & LIQUIDATED DAMAGES• CONTRACT NOTES• STATE CONTRACT NOTES• SPECIAL NOTE(S) APPLICABLE TO PROJECT• ASBESTOS ABATEMENT REPORT• MATERIAL SUMMARY• BRIDGE DRAWINGS
PART II	SPECIFICATIONS AND STANDARD DRAWINGS <ul style="list-style-type: none">• SPECIFICATIONS REFERENCE• SUPPLEMENTAL SPECIFICATION• STANDARD DRAWINGS THAT APPLY
PART III	EMPLOYMENT, WAGE AND RECORD REQUIREMENTS <ul style="list-style-type: none">• LABOR AND WAGE REQUIREMENTS• EXECUTIVE BRANCH CODE OF ETHICS• KENTUCKY EQUAL EMPLOYMENT OPPORTUNITY ACT OF 1978 LOCALITY / STATE• PROJECT WAGE RATES / STATE FUNDED
PART IV	INSURANCE
PART V	BID ITEMS

PART I

SCOPE OF WORK

ADMINISTRATIVE DISTRICT - 07

CONTRACT ID - 232961

121GR23M001 - FE02

COUNTY - CLARK

PCN - MB02510172301
FE02 025 1017 B00051N 00.56

CABIN CREEK ROAD (CR 1017) BRIDGE 025B00051N OVER I-64 AT MP 00.56BRIDGE DECK RESTORATION & WATERPROOFING
GEOGRAPHIC COORDINATES LATITUDE 38:01:28.00 LONGITUDE 84:07:15.00
ADT

PCN - MB02510202301
FE02 025 1020 B00060N 03.48

WADES MILL ROAD (CR 1020) BRIDGE 025B00020N OVER I-64 AT MP 03.48BRIDGE DECK RESTORATION & WATERPROOFING
GEOGRAPHIC COORDINATES LATITUDE 38:03:24.00 LONGITUDE 84:02:53.00
ADT

PCN - MB02533682301
FE02 025 3368 B00068N 00.92

SCHOLLSVILLE ROAD (KY 2533) BRIDGE 025B00068N OVER KY 9000 AT MP 00.92BRIDGE DECK RESTORATION & WATERPROOFING
GEOGRAPHIC COORDINATES LATITUDE 37:58:38.00 LONGITUDE 84:03:09.00
ADT

COUNTY - FAYETTE

PCN - MB03411332301
FE02 034 1133 B00081N 01.79

ATHENS WALNUT HILL ROAD (CR 1133) BRIDGE 034B00081N OVER I-75 AT MP 01.79BRIDGE DECK RESTORATION & WATERPROOFING
GEOGRAPHIC COORDINATES LATITUDE 37:57:01.00 LONGITUDE 84:23:10.00
ADT

COMPLETION DATE(S):

COMPLETED BY 11/30/2023	APPLIES TO ENTIRE CONTRACT
30 CALENDAR Days	APPLIES TO 025B00051N
30 CALENDAR Days	APPLIES TO 025B00060N
30 CALENDAR Days	APPLIES TO 025B00068N
30 CALENDAR Days	APPLIES TO 034B00081N

CONTRACT NOTES

PROPOSAL ADDENDA

All addenda to this proposal must be applied when calculating bid and certified in the bid packet submitted to the Kentucky Department of Highways. Failure to use the correct and most recent addenda may result in the bid being rejected.

BID SUBMITTAL

Bidder must use the Department's electronic bidding software. The Bidder must download the bid file located on the Bid Express website (www.bidx.com) to prepare a bid packet for submission to the Department. The bidder must submit electronically using Bid Express.

JOINT VENTURE BIDDING

Joint venture bidding is permissible. All companies in the joint venture must be prequalified in one of the work types in the Qualifications for Bidders for the project. The bidders must get a vendor ID for the joint venture from the Division of Construction Procurement and register the joint venture as a bidder on the project. Also, the joint venture must obtain a digital ID from Bid Express to submit a bid. A joint bid bond of 5% may be submitted for both companies or each company may submit a separate bond of 5%.

UNDERGROUND FACILITY DAMAGE PROTECTION

The contractor shall make every effort to protect underground facilities from damage as prescribed in the Underground Facility Damage Protection Act of 1994, Kentucky Revised Statute KRS 367.4901 to 367.4917. It is the contractor's responsibility to determine and take steps necessary to be in compliance with federal and state damage prevention directives. When prescribed in said directives, the contractor shall submit Excavation Locate Requests to the Kentucky Contact Center (KY811) via web ticket entry. The submission of this request does not relieve the contractor from the responsibility of contacting non-member facility owners, whom shall be contacted through their individual Protection Notification Center. Non-compliance with these directives can result in the enforcement of penalties.

REGISTRATION WITH THE SECRETARY OF STATE BY A FOREIGN ENTITY

Pursuant to KRS 176.085(1)(b), an agency, department, office, or political subdivision of the Commonwealth of Kentucky shall not award a state contract to a person that is a foreign entity required by [KRS 14A.9-010](#) to obtain a certificate of authority to transact business in the Commonwealth ("certificate") from the Secretary of State under [KRS 14A.9-030](#) unless the person produces the certificate within fourteen (14) days of the bid or proposal opening. If the foreign entity is not required to obtain a certificate as provided in [KRS 14A.9-010](#), the foreign entity should identify the applicable exception. Foreign entity is defined within [KRS 14A.1-070](#).

For all foreign entities required to obtain a certificate of authority to transact business in the Commonwealth, if a copy of the certificate is not received by the contracting agency within the time frame identified above, the foreign entity's solicitation response shall be deemed non-responsive or the awarded contract shall be cancelled.

Businesses can register with the Secretary of State at <https://secure.kentucky.gov/sos/ftbr/welcome.aspx>.

SPECIAL NOTE FOR PROJECT QUESTIONS DURING ADVERTISEMENT

Questions about projects during the advertisement should be submitted in writing to the Division of Construction Procurement. This may be done by fax (502) 564-7299 or email to kytc.projectquestions@ky.gov. The Department will attempt to answer all submitted questions. The Department reserves the right not to answer if the question is not pertinent or does not aid in clarifying the project intent.

The deadline for posting answers will be 3:00 pm Eastern Daylight Time, the day preceding the Letting. Questions may be submitted until this deadline with the understanding that the later a question is submitted, the less likely an answer will be able to be provided.

The questions and answers will be posted for each Letting under the heading "Questions & Answers" on the Construction Procurement website (www.transportation.ky.gov/contract). The answers provided shall be considered part of this Special Note and, in case of a discrepancy, will govern over all other bidding documents.

HARDWOOD REMOVAL RESTRICTIONS

The US Department of Agriculture has imposed a quarantine in Kentucky and several surrounding states, to prevent the spread of an invasive insect, the emerald ash borer. Hardwood cut in conjunction with the project may not be removed from the state. Chipping or burning on site is the preferred method of disposal.

INSTRUCTIONS FOR EXCESS MATERIAL SITES AND BORROW SITES

Identification of excess material sites and borrow sites shall be the responsibility of the Contractor. The Contractor shall be responsible for compliance with all applicable state and federal laws and may wish to consult with the US Fish and Wildlife Service to seek protection under Section 10 of the Endangered Species Act for these activities.

ACCESS TO RECORDS

The contractor, as defined in KRS 45A.030 (9) agrees that the contracting agency, the Finance and Administration Cabinet, the Auditor of Public Accounts, and the Legislative Research Commission, or their duly authorized representatives, shall have access to any books, documents, papers, records, or other evidence, which are directly pertinent to this contract for the purpose of financial audit or program review. Records and other prequalification information confidentially

disclosed as part of the bid process shall not be deemed as directly pertinent to the contract and shall be exempt from disclosure as provided in KRS 61.878(1)(c). The contractor also recognizes that any books, documents, papers, records, or other evidence, received during a financial audit or program review shall be subject to the Kentucky Open Records Act, KRS 61.870 to 61.884.

In the event of a dispute between the contractor and the contracting agency, Attorney General, or the Auditor of Public Accounts over documents that are eligible for production and review, the Finance and Administration Cabinet shall review the dispute and issue a determination, in accordance with Secretary's Order 11-004.

BUILD AMERICA, BUY AMERICA ACT (BABA)

On November 15, 2021, President Biden signed into law the Infrastructure Investment and Jobs Act (IIJA), Pub. L. No. 117-58, includes the Build America, Buy America Act (“the Act”). Pub. L. No. 117-58, §§70901-52. The Act strengthens the Buy America preference to include “construction materials.” The current temporary waiver for **“construction materials”** will expire on November 10, 2022.

The Act will apply to construction materials as outlined in the guidance issued in OMB [M-22-11](#).

Construction Materials – Includes an article, material, or supply – other than an item of primarily iron or steel; a manufactured product; cement and cementitious materials; aggregates such as stone, sand, or gravel; or aggregate binding agents or additives – that is or consists primarily of:

- Non-ferrous metals
- Plastic/polymer-based products (including polyvinylchloride, composite building materials, and polymers used in fiber optic cables);
- Glass (including optic glass);
- Lumber; or
- Drywall.

Construction Materials only applies to items, materials, and supplies that are consumed in, incorporated into, or affixed to an infrastructure project.

Construction Materials does not apply to tools, equipment or supplies brought to the jobsite and removed before completion.

October 14, 2022

SPECIAL NOTE FOR RECIPROCAL PREFERENCE

RECIPROCAL PREFERENCE TO BE GIVEN BY PUBLIC AGENCIES TO RESIDENT BIDDERS

By reference, KRS 45A.490 to 45A.494 are incorporated herein and in compliance regarding the bidders residency. Bidders who want to claim resident bidder status should complete the Affidavit for Claiming Resident Bidder Status along with their bid in the electronic bidding software. Submittal of the Affidavit should be done along the bid in Bid Express.

April 30, 2018

**SPECIAL NOTES
DISTRICT NO. 7
BRIDGE DECK RESTORATION AND WATERPROOFING
CLARK – FAYETTE COUNTIES
CID 23960 ~ 121GR23M001**

FE02 025 1017 B00051N 00.56

Clark County ~ CR 1017 (Cabin Creek Road) over I-64

Geographic Coordinates

Latitude 38° 01' 28.00'' (38.0246)

Longitude -84° 07' 15.00'' (-84.1208)

Description

62'-93'-93'-62' RCDG Spans, Drawing No. 13162

FE02 025 1020 B00060N 03.48

Clark County ~ CR 1020 (Wades Mill Road) over I-64

Geographic Coordinates

Latitude 38° 03' 24.00'' (38.0568)

Longitude -84° 02' 53.00'' (-84.0481)

Description

49'-68'-68'-49' RCDG Spans, Drawing No. 13245

FE02 025 3368 B00068N 00.92

Clark County ~ KY 3368 (Schollsville Road) over KY 9000

Geographic Coordinates

Latitude 37° 58' 38.00'' (37.9773)

Longitude -84° 03' 09.00'' (-84.0526)

Description

52'-62'-62'-52' RCDG Spans, Drawing No. 14433

FE02 034 1133 B00081N 01.79

Fayette County ~ CR 1133 (Athens Walnut Hill Road) over I-75

Geographic Coordinates

Latitude 37° 57' 01.00'' (37.9053)

Longitude -84° 23' 10.00'' (-84.3861)

Description

57'-82'-82'-57' PCIB Span, Drawing No. 14820

**SPECIAL NOTES FOR BRIDGE DECK
RESTORATION AND WATERPROOFING**

SPECIAL NOTE FOR BRIDGE DECK RESTORATION AND WATERPROOFING
WITH CONCRETE OVERLAYS

SPECIAL NOTE FOR PREVENTIVE MAINTENANCE

SPECIAL NOTE FOR CONTRACT COMPLETION DATE AND PENALTIES ON
BRIDGE REPAIR CONTRACTS

SPECIAL NOTE FOR MAINTAINING AND CONTROLLING TRAFFIC

SPECIAL NOTE FOR BRIDGE DECK RESTORATION AND WATERPROOFING WITH CONCRETE OVERLAYS

1. DESCRIPTION. Perform all work in accordance with the Kentucky Transportation Cabinet, Department of Highway's Standard Specifications for Road and Bridge Construction and applicable Supplemental Specifications, the Standard Drawings (current editions), this Note, and the attached detail drawings. Section references are to the Standard Specifications. This work consists of the following: (1) Furnish all labor, materials, tools, and equipment, (2) Machine prep the existing slab, (3) Complete full-depth and partial depth repairs as directed by the Engineer, (4) Repair/replace damaged and corroded reinforcing bars, (5) Place new concrete overlay and epoxy-sand slurry in accordance with Section 606, (6) Complete asphalt approach pavement, and (7) Any other work specified as part of this contract. All construction will be in accordance with Section 606 unless otherwise specified.

2. MATERIALS.

- A. Latex Concrete.** See Section 606.03.17.
- B. Class "M" Concrete.** Use either "M1" or "M2". See Section 601.
- C. Bituminous Asphalt.** Use CL2 ASPH SURF 0.38D PG64-22.
- D. Epoxy-Sand Slurry.** See Section 606.03.10.

3. CONSTRUCTION.

- A. Machine Preparation of Existing Slab.** Remove concrete from existing slab to a depth of at least ¼" below the existing surface, and remove all patches completely, in accordance with the requirements of Section 606.03.03.
- B. Partial Depth Slab Repair and Latex Overlay.** Remove areas determined to be unsound by the Engineer via hydro-demolition or via hand held jackhammers weighing less than 45lbs in accordance with Section 606.02.10 D. Repair/Replace all damaged or severely corroded reinforcing bars prior to partial depth repair operation. The Department will not measure material removal and will consider this work incidental to the bid item "PARTIAL DEPTH PATCHING". Mix and place Latex Modified Concrete Overlay in accordance with Sections 606.03.08 and 606.03.17.
- C. Asphalt Approach Pavement.** Mill each existing asphalt approach to the distance indicated in the attached detailed drawings. Remove the bituminous material uniformly by making an edge key, so as to provide a smooth transition to the finished bridge when a new bituminous overlay of compacted depth of approximately 1½" is added to the approaches. The grinding depth may vary depending on the condition of the existing approach and final elevation of bridge end. Dispose of all removed material away from the site.
- D. Surface Texturing.** Texture the concrete surface of the overlay in accordance with Section 609.03.10.
- E. Pavement Markings.** Restore pavement markings to original patterns and/or as directed by the Engineer in accordance with Sections 713, 714 and 837. See Standard Drawings TPM-115 and TPM-207 Current Edition.
- F. Verifying Field Conditions.** The Contractor shall field verify all dimensions before ordering any material. New material that is unsuitable due to variation in existing structure shall be replaced at the Contractors expense.

- G. Damage to the Structure.** The Contractor shall bear all responsibility and expense for all damage to the structure during the repair work even to removal and replacement of a fallen span, should the fallen span result from the Contractor's actions.
4. **MEASUREMENT.** See Section 606 and the following:
- A. Machine Prep of Slab, Blast Cleaning, Epoxy Sand Slurry and Asphalt Approach Pavement.** The Department will measure the quantity in square yards.
 - B. Latex Modified Concrete for Overlay.** The Department will measure the quantity in cubic yards using the theoretical volume as follows for each bridge:
 - 026B00051N** (318'3"x24'0"x1.50") = 35.4 CY
 - 026B00060N** (237'2"x24'0"x1.50") = 26.4 CY
 - 026B00068N** (230'0"x24'0"x1.50") = 25.6 CY
 - 034B00081N** (282'6"x24'0"x1.50") = 31.4 CY
 - C. Partial Depth Patching.** The Department will measure the quantity in cubic yards by deducting the theoretical volume of bridge deck overlay (LMC) from the total volume (as indicated by the batch quantity tickets) of Concrete required to obtain the finished grade shown on the plans or established by the Engineer.
 - D. Concrete Class M Full Depth Patch.** The Department will measure the quantity in cubic yards.
 - E. Steel Reinforcement.** The Department will measure any reinforcing steel necessary for the partial or full depth patch in pounds.
 - F. Pave Striping-Perm 4 Inch.** The Department will measure the quantity in lineal feet.
5. **PAYMENT.** See Section 606 and the following:
- A. Machine Pre of Slab (08551).** The Department will make payment for the machine preparation of the existing slab.
 - B. Partial Depth Patching (24094EC).** The Department will make payment for removing exiting materials, furnishing and placing all new materials completed and accepted.
 - C. Concrete Class M Full Depth Patch (08526).** The Department will make payment for removing exiting materials, furnishing and placing all new materials.
 - D. Blast Cleaning (08549).** The Department will make payment for blast cleaning all surfaces specified.
 - E. Epoxy Sand Slurry (08504).** The Department will make payment for furnishing and placing all new materials as specified.
 - F. Concrete Latex Overlay (08534).** The Department will make payment for furnishing and placing all new material as specified.
 - G. Steel Reinforcement (08150).** The Department will make payment for steel reinforcement, if necessary.
 - H. Asphalt Approach Pavement (03304).** The Department will make payment for removing existing materials, furnishing and placing all new materials as specified.
 - I. Pave Striping-Perm 4 Inch (06514).** The Department will make payment for furnishing and placing permanent striping as specified.

SPECIAL NOTE FOR PREVENTIVE MAINTENANCE

1. DESCRIPTION.

Perform all work in accordance with the Kentucky Transportation Cabinet, Department of Highway's Standard Specifications for Road and Bridge Construction and applicable Supplemental Specifications, the Standard Drawings, (current editions), this Note and Attached Detailed Drawings. Section references are to the Standard Specifications. This work consists of the following: (1) Furnish all labor, materials, tools, and equipment, (2) Bridge Cleaning, (3) Concrete Coatings (4) Bearing Lubrication (5) Any other work specified as part of this contract.

2. MATERIALS.

A. Wash Water

Use clean potable water for all pressure washing.

B. Concrete Coatings

See The Division of Material's list of approved materials for concrete coatings and Section 821.

C. Bearing Lubricant

Use one of the lubricants from the following manufactures:

Manufacture	Lubricant
Bostik Inc.,	Never Seez - Mariner's Choice
Mobil Oil	Mobil Centaur Moly NLGI Grades 1 or 2
Certified Labs	Premalube #1 WG

3. CONSTRUCTION.

A. Bridge Cleaning.

All debris shall be removed from the bridge components. See attached detailed drawings addressing components having debris removal. Equipment for removing debris from the bridge components shall be determined by the Contractor, subject to the approval of the Engineer. The Contractor shall prevent any debris from entering any body of water, bridge drainage system, or traffic lanes. All debris removed shall be disposed of in a suitable off-site disposal facility. All vegetation present at areas of the bridge that are to be addressed in this proposal shall be removed as determined by the Engineer.

All cost to complete Debris Removal and Remove Vegetation as specified shall be included in the Lump Sum price for "Bridge Cleaning".

B. Stratified and Pack Rust Removal.

Stratified and pack rust shall be removed from all bearing devices and specified limits of beams. All existing bearing lubrication shall be removed. See attached detailed drawings for each bridge showing location and quantity of the bearing devices. Hand tools including wire brushes, scrapers or impact devices (hand hammers or power chisels) are to be used for removing stratified and pack rust. All surfaces to have stratified and pack rust removed shall be cleaned to an SSPC SP-2 level. All debris collected shall be disposed of in a suitable off-site disposal facility. **All cost to complete Stratified, Pack Rust Removal shall be considered incidental to the unit price bid for "Lubricate Bearing".**

C. Pressure Washing.

Specified bridge components shall be pressure washed. See attached detailed drawings addressing components to be pressure washed. All equipment for pressure washing shall be operated at a minimum pressure of up 4,000 psi with 0-degree spinner tip and/or fan tips as determined by the engineer at the working location with a minimum flow rate of 3.5 gal/minute provided that these pressures do not damage any components of the structure. Pressure and flow rates shall be reduced to a level satisfactory to the Engineer should any damage occur due to power washing procedures. Pressure washing shall be operated at distance of approximately six inches from and perpendicular to the surface. All pressure washing wands shall be equipped with a gauge to accurately determine the amount pressure used. Pressure washing of any bridge element will proceed from top of wash area to bottom of wash area. Wash water will not be released to a bridge element previously washed. Preform all pressure washing at temperatures above 40 degrees Fahrenheit. **All cost to complete Pressure Washing as specified shall be included in the Lump Sum price for “Bridge Cleaning”.**

D. Concrete Coatings Application.

Specified bridge components shall have concrete coating applied to as specified after bridge cleaning. See attached detailed drawings for addressing the bridge components. Use compressed air to remove any loose debris from the surfaces that are to be coated after power washing. See concrete coating diagram. All coatings shall be applied within manufacturers recommended dry film thickness range. For recommended conditions for application, see Section 614.03.02 and coatings supplier specifications. Allow the surfaces to be coated to dry before any coating is applied. The coating must be applied to a clean and dry surface. All coating application shall be executed using brushes, rollers, etc. No spray application will be permitted. The Department requires acceptance testing of samples obtained on a per-lot basis per-shipment. The Division of Materials will perform acceptance testing. See Section 821.04. The finish coat shall be Light Gray for Concrete. See Section 821.02. **All cost to complete Concrete Coating Application as specified shall be included in the Lump Sum price for “Concrete Coatings”.**

E. Bearing Lubrication Application.

Bearing devices shall be lubricated as specified after all stratified rust and pack rust is removed and power washing is complete, bearing devices shall have lubricant applied to all surfaces of the bearing including bearing plates and points of movement. See attached detailed drawings for each bridge showing location and quantity of the bearing devices. Allow bearing devices to dry before lubricant is applied. Preform all bearing lubrication application at temperatures above 40 degrees Fahrenheit or in accordance with manufactures specifications. **All cost to complete Bearing Lubrication Application as specified shall be included in the unit price Each for “Lubricate Bearing”.**

F. Sequence of Work.

Complete work in the sequence listed below:

1. Debris Removal
2. Stratified Rust Removal
3. Pressure Washing
4. Concrete Coating Application
- 5.. Bearing Lubrication Application

G. Inspection.

The Cabinet will provide inspection for all items required in this contract. Visual inspection will be required upon completion of each work item for each structure component or at the discretion of the Engineer at any time. All visual inspection shall be performed within arm's length distance.

1. **Debris Removal:** Visual Inspection.
2. **Stratified Rust or Pack Rust Removal:** Visual Inspection and Scraper
Test any surface cleaned to SSPC SP2 will be inspected by a dull scraper test to ascertain adherence of existing coating and a hammer test for tightness of pact rust.
3. **Power Washing:** Visual Inspection.
4. **Concrete Coating:**
Prime Coat Application Check for wet film thickness*, and defects in the Paint.
Finish Coat Application Check for wet film thickness*, paint appearance, color and quality of application.
5. **Bearing Lubrication.** Visual Inspection.

H. Verifying Field Conditions.

The Contractor shall be familiar with all conditions at each bridge site. The Cabinet will not consider any claims due to the Contractor having not familiarized themselves with requirements of this work.

I. Residual Lead.

Residual lead paint may still be on bridge. The Contractor is advised to take all necessary protective measures including worker safety and environmental regulations when performing surface preparation. The Department will not consider any claims based on residual lead paint.

J. Damage to the structure.

The Contractor shall bear all responsibility and expense for any and all damage to the structure during the repair work, even to the removal and replacement of a fallen span, should the fallen span result from the Contractors actions.

4. MEASUREMENT.

A. Bridge Cleaning.

The Cabinet will measure this item by Lump Sum, completed and accepted.

B. Concrete Coating.

The Cabinet will measure this item by Lump Sum, completed and accepted.

C. Bearing Lubrication: The Cabinet will measure this item by Each, completed and accepted.

5. PAYMENT.

A. Bridge Cleaning (24981EC).

Payment at the contract unit price for “Lump Sum” is full compensation for Debris Removal, Deck Drain Cleaning, Pressure Washing and all incidental items required to complete this work as specified in this note and attached detailed drawings.

B. Concrete Coating (24982EC).

Payment at the contract unit price for “Lump Sum” is full compensation for applying the concrete coatings and all incidental items required to complete this work as specified in this note and attached detailed drawings.

C. Bearing Lubrication (24983EC): Payment at the contract unit price “Each” is full compensation for applying bearing lubrication and all incidental items required to complete this work as specified in this note and attached detailed drawings.

**SPECIAL NOTE FOR CONTRACT COMPLETION DATE AND
PENALTIES ON BRIDGE REPAIR CONTRACTS**

1. **COMPLETION DATE.** The Contractor has the option of selecting the starting date for this Contract. Once selected, notify the Department in writing of the date selected at least two weeks prior to beginning work. All work is to be completed by the date listed below. An allotted number of Calendar days are assigned to each structure in this contract as shown below.

<u>STRUCTURE</u>	<u>NO. OF CALENDAR DAYS</u>	<u>COMPLETION DATE</u>
025B00051N	30	November 30, 2023
025B00060N	30	November 30, 2023
025B00068N	30	November 30, 2023
034B00081N	30	November 30, 2023

Contrary to Section 108.07.03, the Engineer will begin charging calendar days for a structure on the day the Contractor starts work or sets up traffic control on that particular structure. A **penalty of \$500.00 per day** will be assessed when the allotted number of calendar days is exceeded for each structure.

All construction must be completed in accordance with the weather limitations specified in Section 606 and/or Section 601 as applicable. No extension of Contract time will be granted due to inclement weather or temperature limitations that occur due to starting work on the Contract or a structure late in the construction season.

SPECIAL NOTE FOR TRAFFIC CONTROL ON BRIDGE REPAIR CONTRACTS

1. TRAFFIC CONTROL GENERAL

Except as provided herein, traffic shall be maintained in accordance with the Standard Specifications (current edition), Section 112. Except for the roadway and traffic control bid items listed, all items of work necessary to maintain and control traffic will be paid at the lump sum bid price to "Maintain and Control Traffic". Contrary to Section 106.01, traffic control devices used on this project may be new or used in new condition, at the beginning of the work and maintained in like new condition until completion of the work.

2. TRAFFIC COORDINATOR

Furnish a Traffic Coordinator as per Section 112. The Traffic Coordinator shall inspect the project maintenance of traffic, at least three times daily, or as directed by the Engineer, during the Contractor's operations and at any time a lane closure is in place. The personnel shall have access on the project to a radio or telephone to be used in case of emergencies or accidents. The Traffic Coordinator shall report all incidents throughout the work zone to the Engineer on the project. The Contractor shall furnish the name and telephone number where the Traffic Coordinator can be contacted at all times.

3. SIGNS

Contrary to Section 112.04.02, only long-term signs (sign intended to be continuously in place for more than 3 days) will be measured for payment; short term signs (signs intended to be left in place for 3 days or less) will not be measured for payment but will be incidental to Maintain and Control Traffic.

The contractor is to install warning signs for wide loads in advance of the bridge under the direction of the Engineer. The Department will not measure installation, maintenance, or removal for payment, and will consider these incidentals to Maintain and Control Traffic.

4. TEMPORARY PAVEMENT STRIPING

Skip lines and/or solid lines through the length of the tapers for lane closures and other striping as directed by the Engineer shall be temporarily covered with 6" black removable tape. Permanent removal of all other pavement striping for traffic control shall be considered incidental to Maintain and Control Traffic. Temporary pavement striping shall be paid only once per course in accordance with Section 112.04.07. The Contractor shall replace any temporary striping that becomes damaged or fails to adhere to the pavement before dark on the day of the notification. **A penalty of \$500.00 per day will be assessed** for failing to replace temporary striping within this time limit.

5. PROJECT PHASING & CONSTRUCTION PROCEDURES

One lane of traffic shall be maintained on each bridge in accordance with Standard Drawing No. TTC-100 and TTC-110 C.E. The minimum clear lane width required is as follows:

<u>Structure</u>	<u>Clear Lane Width</u>
025B00060N	12'-0"
025B00068N	12'-0"
034B00081N	12'-0"

6. DIVERSIONS (BYPASS DETOURS, 025B00051N)

The Contractor shall close the bridge to traffic and construct a detour to maintain traffic. See attached detailed drawing for the suggested detour plan. Once work on the structure begins that impacts traffic, ensure work progresses to minimize the effected time to the public. All materials that must be made specific for the project should be ordered and made prior to closure of the bridge so that delivery does not delay progress of the work until all materials that must be made specific for the project are ordered and made so that use of the detour is minimized. The diversion plan and project schedule shall be submitted as part of the traffic control plan. All cost to close the bridge and provide all detour items shall be included in the bid item for Diversions (Bypass Detours).

7. TEMPORARY SIGNAL

Provide, install, and maintain a temporary traffic signal as specified below. The Contractor must provide a 24-hour contact person and number available to maintain the temporary signals as needed.

<u>Structure</u>	<u>Signal</u>
025B00060N	2 Phase
025B00068N	2 Phase
034B00081N	2 Phase

8. ADDITIONAL LANE CLOSURES.

Shoulder, single closures will be permitted on I-64, and KY 9000 and shoulder, single and double lane closures will be permitted on I-75 for any necessary work below these structures. The shoulder and lane closures will be determined by the Engineer. All shoulder and lane closures shall be removed when not working. All cost shall be considered incidental to the lump sum bid for Maintain and Control Traffic.

Time restrictions for lane closures as follows:

025B00051N and 025B00060N ~ Lane closures will be permitted between **8:00 PM-5:00 AM** westbound and **9:00 PM-6:00 AM** eastbound.

025B00068N ~ No time restriction.

034B00081N ~ Single Lane closures will be permitted between **7:00 PM-5:00 AM**.

Double Lane closures will be permitted between **12:00 AM-5:00 AM**

9. MEASUREMENT.

Temporary Signs:

The Cabinet will measure this item by "Square Feet".

Maintain and Control Traffic and Diversion (Bypass Detours):

The Cabinet will measure this item by "Lump Sum".

Lane Closure, and Temp Signal 2 Phase:

The Cabinet will measure this item by "Each".

Pave Striping-Temp Rem Tape-B, W, and Y:

The Department will measure the quantity in "Linear Feet".

10. PAYMENT.

Temporary Signs (02562)

Payment at the contract unit price for “Square Feet” is full compensation for all items to complete this work as specified.

Maintain and Control Traffic (02650) and Diversions (Bypass Detours) (02671):

Payment at the contract unit price for “Lump Sum” is full compensation for all items to complete this work as specified.

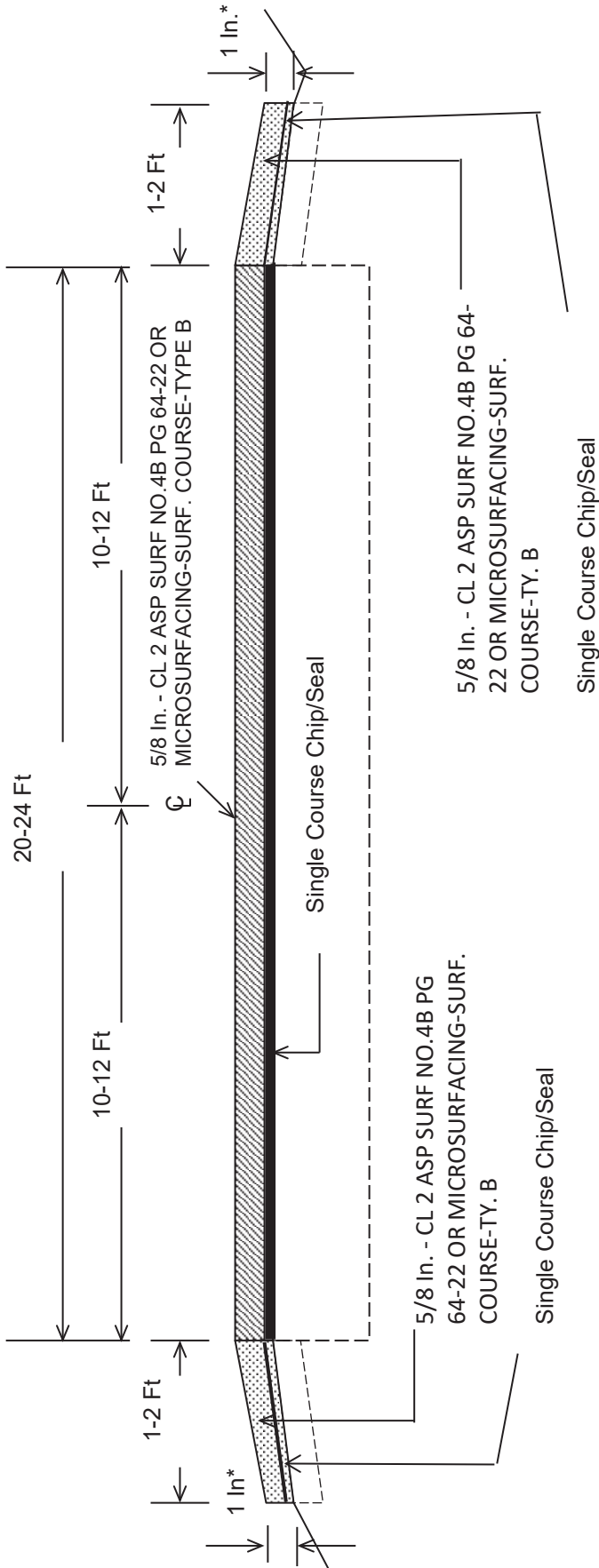
Lane Closure (02653) and Temp Signal 2 Phase (04933):

Payment at the contract unit price “Each” is full compensation for all items to complete this work as specified.

Pave Striping-Temp Rem Tape-B (06549), W (06550), and Y (06551):

Payment at the contract unit price “Lineal Feet” is full compensation for all items to complete this work as specified.

CLAY COUNTY
TYPICAL SECTION
FD05 026 0421 020-025
MP's 20.481 - 24.047



***Where Existing Site Conditions Permit**

MATERIAL SUMMARY

CONTRACT ID: 232961

121GR23M001 - FE02

MB02510172301

CABIN CREEK ROAD (CR 1017) BRIDGE 025B00051N OVER I-64 AT MP 00.56 BRIDGE DECK RESTORATION & WATERPROOFING.

Project Line No	Bid Code	DESCRIPTION	Quantity	Unit
0005	02650	MAINTAIN & CONTROL TRAFFIC - - APPLIES TO 025B00051N	1.00	LS
0010	02651	DIVERSIONS (BY-PASS DETOURS) - - APPLIES TO 025B00051N	1.00	LS
0015	03298	EXPAN JOINT REPLACE 4 IN	67.80	LF
0020	03299	ARMORED EDGE FOR CONCRETE	67.80	LF
0025	03304	BRIDGE OVERLAY APPROACH PAVEMENT	534.00	SQYD
0030	08150	STEEL REINFORCEMENT	270.00	LB
0035	08504	EPOXY SAND SLURRY	272.00	SQYD
0040	08526	CONC CLASS M FULL DEPTH PATCH	11.00	CUYD
0045	08534	CONCRETE OVERLAY-LATEX	35.40	CUYD
0050	08549	BLAST CLEANING	1,120.00	SQYD
0055	08551	MACHINE PREP OF SLAB	849.00	SQYD
0060	24094EC	PARTIAL DEPTH PATCHING	27.00	CUYD
0065	24981EC	BRIDGE CLEANING - - APPLIES TO 025B00051N	1.00	LS
0070	24982EC	CONCRETE COATING - - APPLIES TO 025B00051N	1.00	LS
0075	24983EC	BEARING LUBRICATION	8.00	EACH
0080	02569	DEMOBILIZATION	1.00	LS

MATERIAL SUMMARY

CONTRACT ID: 232961

121GR23M001 - FE02

MB02510202301

WADES MILL ROAD (CR 1020) BRIDGE 025B00020N OVER I-64 AT MP 03.48 BRIDGE DECK RESTORATION & WATERPROOFING.

Project Line No	Bid Code	DESCRIPTION	Quantity	Unit
0085	02562	TEMPORARY SIGNS	145.00	SQFT
0090	02650	MAINTAIN & CONTROL TRAFFIC - - APPLIES TO 025B00060N	1.00	LS
0095	02653	LANE CLOSURE	2.00	EACH
0100	03298	EXPAN JOINT REPLACE 4 IN	48.00	LF
0105	03299	ARMORED EDGE FOR CONCRETE	48.00	LF
0110	03304	BRIDGE OVERLAY APPROACH PAVEMENT	534.00	SQYD
0115	04933	TEMP SIGNAL 2 PHASE	1.00	EACH
0120	06549	PAVE STRIPING-TEMP REM TAPE-B	1,000.00	LF
0125	06550	PAVE STRIPING-TEMP REM TAPE-W	2,000.00	LF
0130	06551	PAVE STRIPING-TEMP REM TAPE-Y	2,000.00	LF
0135	08150	STEEL REINFORCEMENT	270.00	LB
0140	08504	EPOXY SAND SLURRY	229.00	SQYD
0145	08526	CONC CLASS M FULL DEPTH PATCH	8.00	CUYD
0150	08534	CONCRETE OVERLAY-LATEX	26.40	CUYD
0155	08549	BLAST CLEANING	861.00	SQYD
0160	08551	MACHINE PREP OF SLAB	633.00	SQYD
0165	24094EC	PARTIAL DEPTH PATCHING	20.00	CUYD
0170	24981EC	BRIDGE CLEANING - - APPLIES TO 025B00060N	1.00	LS
0175	24982EC	CONCRETE COATING - - APPLIES TO 025B00060N	1.00	LS
0180	24983EC	BEARING LUBRICATION	8.00	EACH
0185	02569	DEMOBILIZATION	1.00	LS

MATERIAL SUMMARY

CONTRACT ID: 232961

121GR23M001 - FE02

MB02533682301

SCHOLLSVILLE ROAD (KY 2533) BRIDGE 025B00068N OVER KY 9000 AT MP 00.92 BRIDGE DECK RESTORATION & WATERPROOFING.

Project Line No	Bid Code	DESCRIPTION	Quantity	Unit
0190	02562	TEMPORARY SIGNS	145.00	SQFT
0195	02650	MAINTAIN & CONTROL TRAFFIC - - APPLIES TO 025B00068N	1.00	LS
0200	02653	LANE CLOSURE	2.00	EACH
0205	03298	EXPAN JOINT REPLACE 4 IN	51.00	LF
0210	03299	ARMORED EDGE FOR CONCRETE	51.00	LF
0215	03304	BRIDGE OVERLAY APPROACH PAVEMENT	534.00	SQYD
0220	04933	TEMP SIGNAL 2 PHASE	1.00	EACH
0225	06549	PAVE STRIPING-TEMP REM TAPE-B	1,000.00	LF
0230	06550	PAVE STRIPING-TEMP REM TAPE-W	2,000.00	LF
0235	06551	PAVE STRIPING-TEMP REM TAPE-Y	2,000.00	LF
0240	08150	STEEL REINFORCEMENT	270.00	LB
0245	08504	EPOXY SAND SLURRY	171.00	SQYD
0250	08526	CONC CLASS M FULL DEPTH PATCH	8.00	CUYD
0255	08534	CONCRETE OVERLAY-LATEX	25.60	CUYD
0260	08549	BLAST CLEANING	784.00	SQYD
0265	08551	MACHINE PREP OF SLAB	614.00	SQYD
0270	24094EC	PARTIAL DEPTH PATCHING	20.00	CUYD
0275	24981EC	BRIDGE CLEANING - - APPLIES TO 025B00068N	1.00	LS
0280	24982EC	CONCRETE COATING - - APPLIES TO 025B00068N	1.00	LS
0285	24983EC	BEARING LUBRICATION	8.00	EACH
0290	02569	DEMOBILIZATION	1.00	LS

MATERIAL SUMMARY

CONTRACT ID: 232961

121GR23M001 - FE02

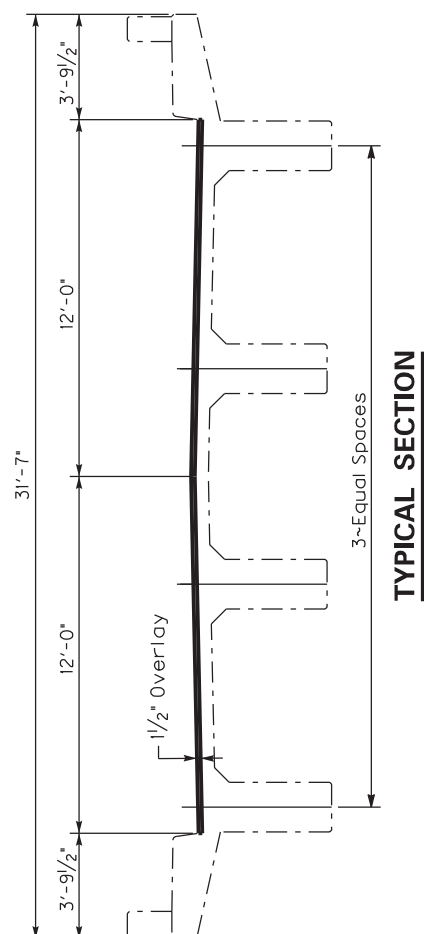
MB03411332301

ATHENS WALNUT HILL ROAD (CR 1133) BRIDGE 034B00081N OVER I-75 AT MP 01.79 BRIDGE DECK RESTORATION & WATERPROOFING.

Project Line No	Bid Code	DESCRIPTION	Quantity	Unit
0295	02562	TEMPORARY SIGNS	145.00	SQFT
0300	02650	MAINTAIN & CONTROL TRAFFIC - - APPLIES TO 034B00081N	1.00	LS
0305	02653	LANE CLOSURE	2.00	EACH
0310	03298	EXPAN JOINT REPLACE 4 IN	52.80	LF
0315	03299	ARMORED EDGE FOR CONCRETE	52.80	LF
0320	03304	BRIDGE OVERLAY APPROACH PAVEMENT	534.00	SQYD
0325	04933	TEMP SIGNAL 2 PHASE	1.00	EACH
0330	06549	PAVE STRIPING-TEMP REM TAPE-B	1,000.00	LF
0335	06550	PAVE STRIPING-TEMP REM TAPE-W	2,000.00	LF
0340	06551	PAVE STRIPING-TEMP REM TAPE-Y	2,000.00	LF
0345	08150	STEEL REINFORCEMENT	270.00	LB
0350	08504	EPOXY SAND SLURRY	241.00	SQYD
0355	08526	CONC CLASS M FULL DEPTH PATCH	9.00	CUYD
0360	08534	CONCRETE OVERLAY-LATEX	31.40	CUYD
0365	08549	BLAST CLEANING	994.00	SQYD
0370	08551	MACHINE PREP OF SLAB	754.00	SQYD
0375	24094EC	PARTIAL DEPTH PATCHING	24.00	CUYD
0380	24981EC	BRIDGE CLEANING - - APPLIES TO 034B00081N	1.00	LS
0385	24982EC	CONCRETE COATING - - APPLIES TO 034B00081N	1.00	LS
0390	24983EC	BEARING LUBRICATION	6.00	EACH
0395	02569	DEMOBILIZATION	1.00	LS



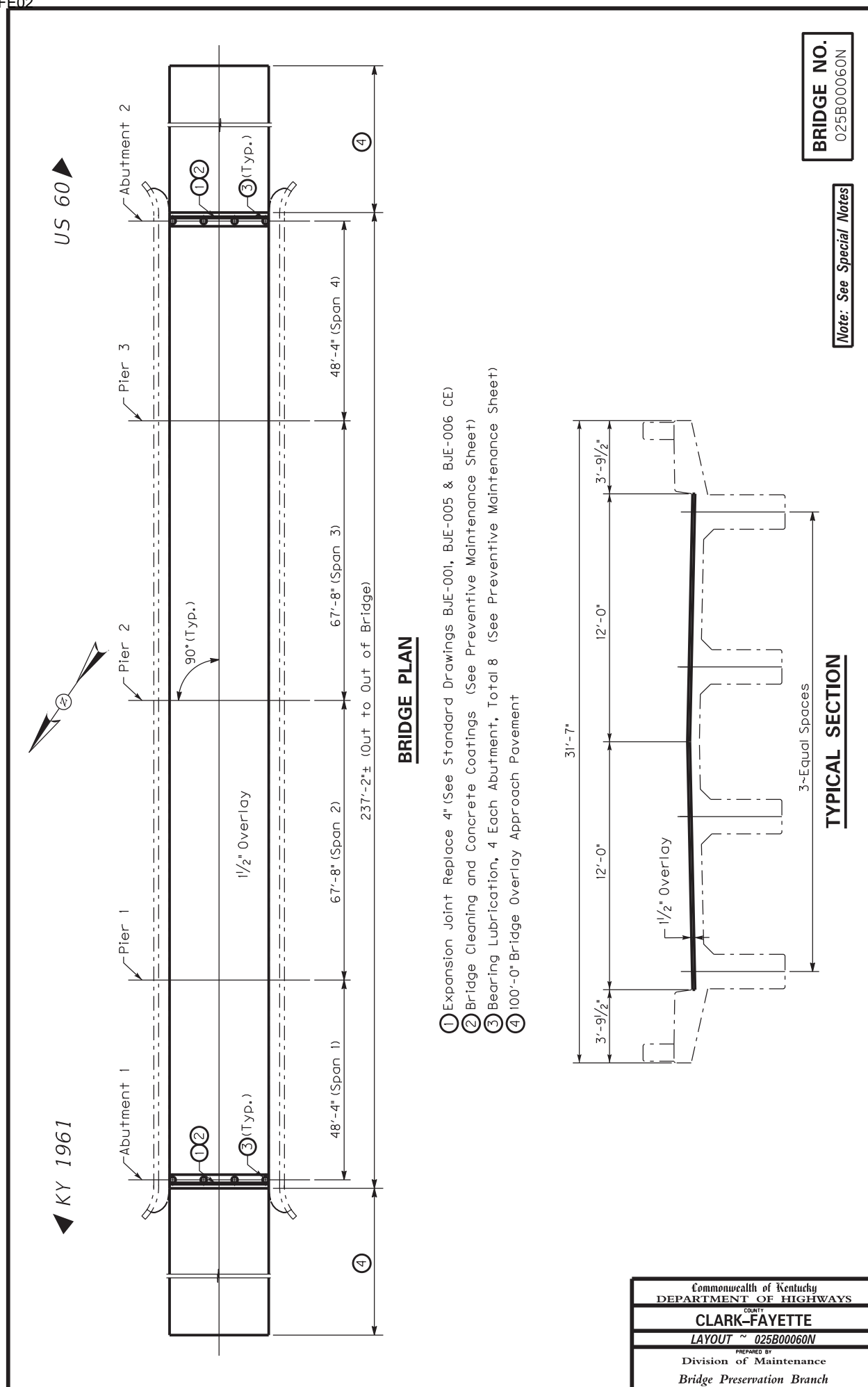
- ① Expansion Joint Replace 4" (See Standard Drawings BJE-001, BJE-005 & BJE-006 CE)
- ② Bridge Cleaning and Concrete Coatings (See Preventive Maintenance Sheet)
- ③ Bearing Lubrication, 4 Each Abutment, Total 8 (See Preventive Maintenance Sheet)
- ④ 100'-0" Bridge Overlay Approach Pavement



BRIDGE NO.
025B00051N

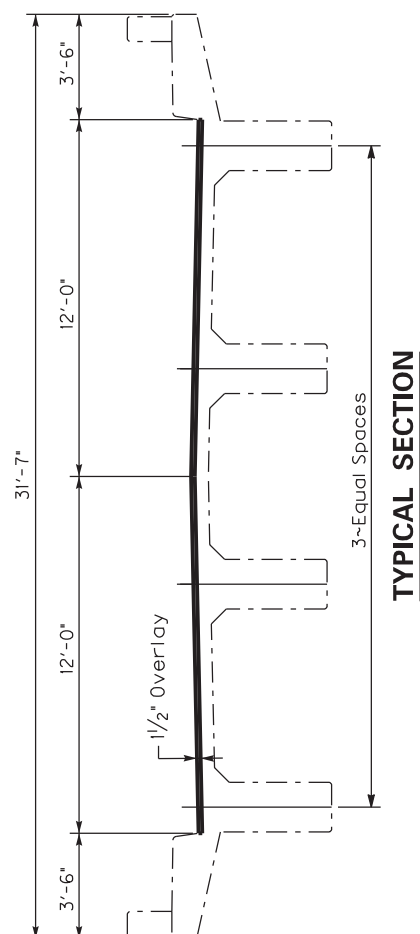
Note: See Special Notes

Commonwealth of Kentucky	
DEPARTMENT OF HIGHWAYS	
COUNTY	
CLARK-FAYETTE	
LAYOUT ~ 025B00051N	
PREPARED BY	
Division of Maintenance	
Bridge Preservation Branch	





- ① Expansion Joint Replace 4" (See Standard Drawings BUE-001, BUE-005 & BUE-006 CE)
- ② Bridge Cleaning and Concrete Coatings (See Preventive Maintenance Sheet)
- ③ Bearing Lubrication, 4 Each Abutment, Total 8 (See Preventive Maintenance Sheet)
- ④ 100'-0" Bridge Overlay Approach Pavement



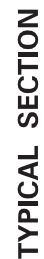
BRIDGE NO.
025B00068N

Note: See Special Notes

TYPICAL SECTION

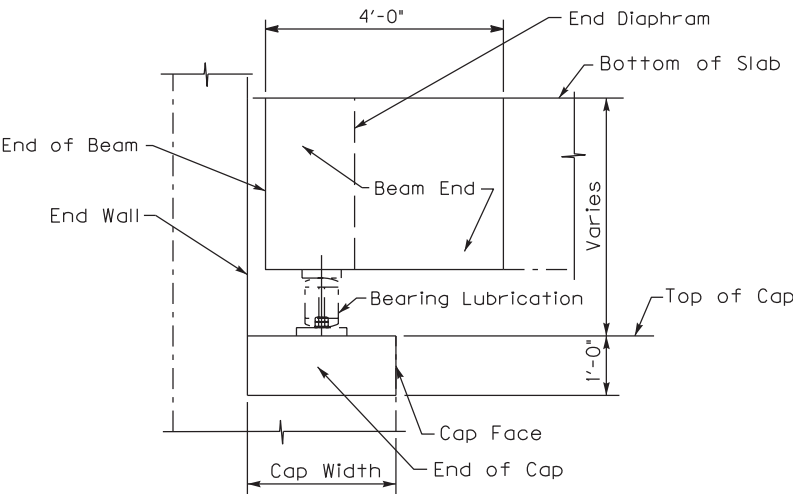


- ① Expansion Joint Replace 4" (See Standard Drawings BJE-001, BJE-005 & BJE-006 CE)
- ② Bridge Cleaning and Concrete Coatings (See Preventive Maintenance Sheet)
- ③ Bearing Lubrication, 3 Each Abutment/End Bent, Total 6 (See Preventive Maintenance Sheet)
- ④ 100'-0" Bridge Overlay Approach Pavement



BRIDGE NO.
034B00081N

Note: See Special Notes



Front Face of End Wall, Top and Face of Cap the Entire Length of Cap including Cap Ends, Beam Ends and End Diaphragms shall have debris removed pressure washed and have concrete coating applied as specified within the limits shown.

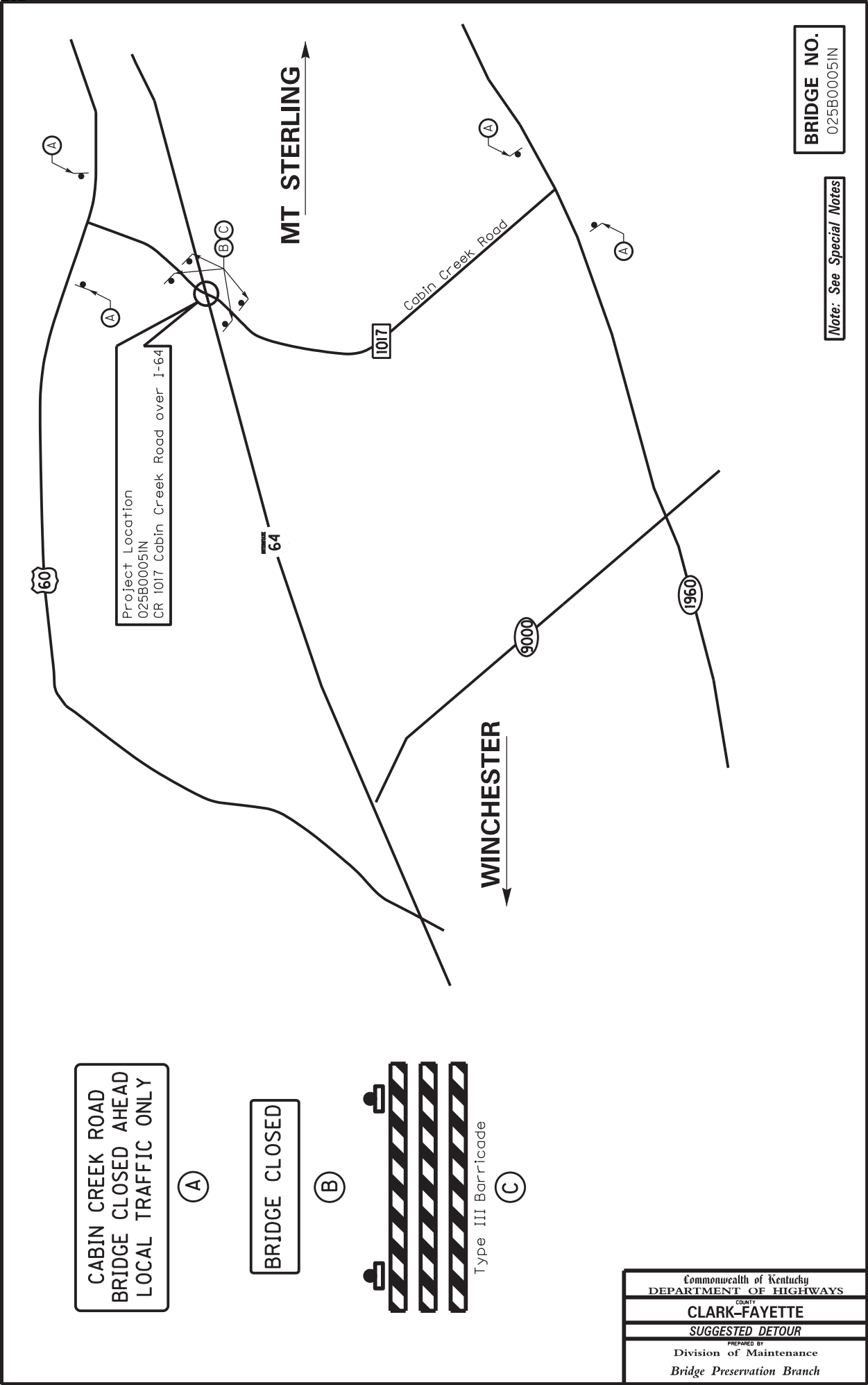
SECTION THROUGH END BENT AND BEAM END

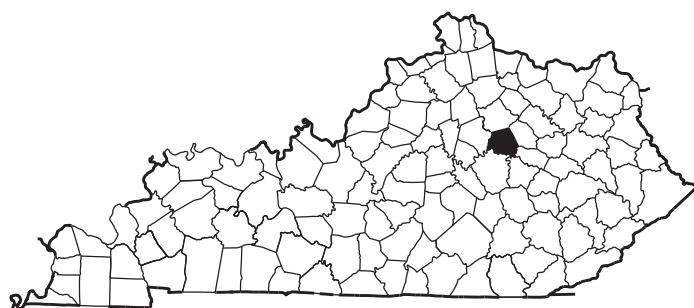
PREVENTIVE MAINTENANCE

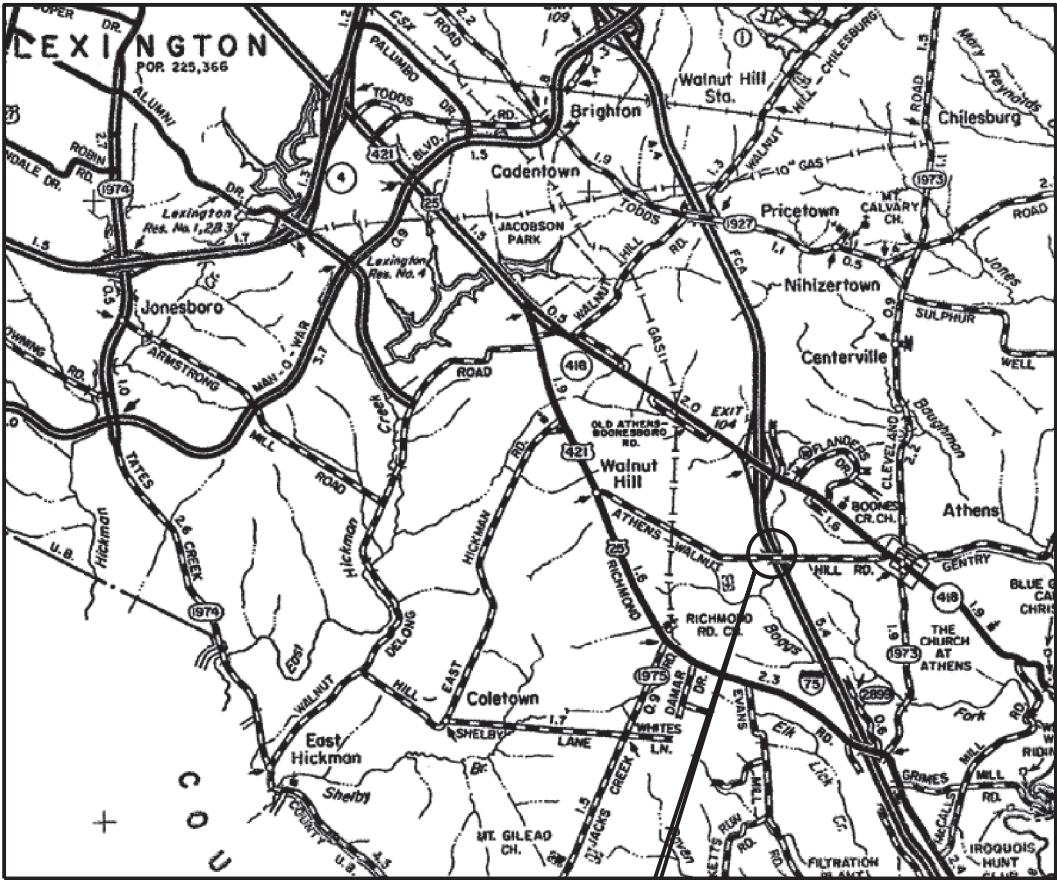
BRIDGE NO.
025B00051N
025B00060N
025B00068N
034B00081N

Note: See Special Notes

Commonwealth of Kentucky DEPARTMENT OF HIGHWAYS
COUNTY CLARK-FAYETTE
PREVENTIVE MAINTENANCE
PREPARED BY Division of Maintenance Bridge Preservation Branch

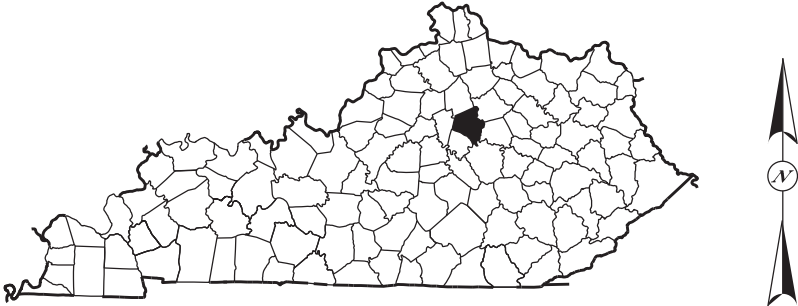






034B00081N
CR 1133 over I-75

LOCATION MAP ~ FAYETTE COUNTY



PART II

SPECIFICATIONS AND STANDARD DRAWINGS

SPECIFICATIONS REFERENCE

Any reference in the plans or proposal to previous editions of the *Standard Specifications for Road and Bridge Construction* and *Standard Drawings* are superseded by *Standard Specifications for Road and Bridge Construction, Edition of 2019* and *Standard Drawings, Edition of 2020*.

SUPPLEMENTAL SPECIFICATIONS

The contractor shall use the Supplemental Specifications that are effective at the time of letting.
The Supplemental Specifications can be found at the following link:

<http://transportation.ky.gov/Construction/Pages/Kentucky-Standard-Specifications.aspx>

**STANDARD DRAWINGS THAT APPLY
DISTRICT NO. 7
BRIDGE DECK RESTORATION AND WATERPROOFING
CLARK - FAYETTE COUNTIES
CID 232960 ~ 121GR23M001**

**TRAFFIC
~ *TEMPORARY* ~
TRAFFIC CONTROL**

LANE CLOSURE TWO LANE HIGHWAY	TTC-100 C.E.
LANE CLOSURE USING TRAFFIC SIGNALS	TTC-110 C.E.
LANE CLOSURE MILTI-LANE HIGHWAY CASE I.	TTC-115 C.E.
DOUBLE LANE CLOSURE	TTC-125 C.E.
SHOULDER CLOSURE.	TTC-135 C.E.

**BRIDGES
STANDARDS**

BRIDGE RESTORATION AND WATERPROOFING WITH CONCRETE OVERLAYS	BGX-009 C.E.
AMORED EDGES	BJE-001 C.E.
EXPANSION JOINT REPLACEMENT GENERAL NOTES	BJE-005 C.E.
EXPANSION JOINT REPLACEMENT 4" & 5"	BJE-006 C.E.

PART III

EMPLOYMENT, WAGE AND RECORD REQUIREMENTS

**TRANSPORTATION CABINET
DEPARTMENT OF HIGHWAYS**

**LABOR AND WAGE REQUIREMENTS
APPLICABLE TO OTHER THAN FEDERAL-AID SYSTEM PROJECTS**

- I. Application
- II. Nondiscrimination of Employees (KRS 344)

I. APPLICATION

1. These contract provisions shall apply to all work performed on the contract by the contractor with his own organization and with the assistance of workmen under his immediate superintendence and to all work performed on the contract by piecework, station work or by subcontract. The contractor's organization shall be construed to include only workmen employed and paid directly by the contractor and equipment owned or rented by him, with or without operators.

2. The contractor shall insert in each of his subcontracts all of the stipulations contained in these Required Provisions and such other stipulations as may be required.

3. A breach of any of the stipulations contained in these Required Provisions may be grounds for termination of the contract.

3. If the contractor is in control of apprenticeship or other training or retraining, including on-the-job training programs, he shall not discriminate against an individual because of his race, color, religion, national origin, sex, disability or age forty (40) and over, in admission to, or employment in any program established to provide apprenticeship or other training.

4. The contractor will send to each labor union or representative of workers with which he has a collective bargaining agreement or other contract or understanding, a notice to be provided advising the said labor union or workers' representative of the contractor's commitments under this section, and shall post copies of the notice in conspicuous places available to employees and applicants for employment. The contractor will take such action with respect to any subcontract or purchase order as the administering agency may direct as a means of enforcing such provisions, including sanctions for non-compliance.

Revised: January 25, 2017

II. NONDISCRIMINATION OF EMPLOYEES

**AN ACT OF THE KENTUCKY
GENERAL ASSEMBLY TO PREVENT
DISCRIMINATION IN EMPLOYMENT
KRS CHAPTER 344
EFFECTIVE JUNE 16, 1972**

The contract on this project, in accordance with KRS Chapter 344, provides that during the performance of this contract, the contractor agrees as follows:

1. The contractor shall not fail or refuse to hire, or shall not discharge any individual, or otherwise discriminate against an individual with respect to his compensation, terms, conditions, or privileges of employment, because of such individual's race, color, religion, national origin, sex, disability or age (forty and above); or limit, segregate, or classify his employees in any way which would deprive or tend to deprive an individual of employment opportunities or otherwise adversely affect his status as an employee, because of such individual's race, color, religion, national origin, sex, disability or age forty (40) and over. The contractor agrees to post in conspicuous places, available to employees and applicants for employment, notices to be provided setting forth the provisions of this nondiscrimination clause.

2. The contractor shall not print or publish or cause to be printed or published a notice or advertisement relating to employment by such an employer or membership in or any classification or referral for employment by the employment agency, indicating any preference, limitation, specification, or discrimination, based on race, color, religion, national origin, sex, or age forty (40) and over, or because the person is a qualified individual with a disability, except that such a notice or advertisement may indicate a preference, limitation, or specification based on religion, national origin, sex, or age forty (40) and over, or because the person is a qualified individual with a disability, when religion, national origin, sex, or age forty (40) and over, or because the person is a qualified individual with a disability, is a bona fide occupational qualification for employment.

EXECUTIVE BRANCH CODE OF ETHICS

In the 1992 regular legislative session, the General Assembly passed and Governor Brereton Jones signed Senate Bill 63 (codified as KRS 11A), the Executive Branch Code of Ethics, which states, in part:

KRS 11A.040 (7) provides:

No present or former public servant shall, within six (6) months following termination of his office or employment, accept employment, compensation, or other economic benefit from any person or business that contracts or does business with, or is regulated by, the state in matters in which he was directly involved during the last thirty-six (36) months of his tenure. This provision shall not prohibit an individual from returning to the same business, firm, occupation, or profession in which he was involved prior to taking office or beginning his term of employment, or for which he received, prior to his state employment, a professional degree or license, provided that, for a period of six (6) months, he personally refrains from working on any matter in which he was directly involved during the last thirty-six (36) months of his tenure in state government. This subsection shall not prohibit the performance of ministerial functions, including but not limited to filing tax returns, filing applications for permits or licenses, or filing incorporation papers, nor shall it prohibit the former officer or public servant from receiving public funds disbursed through entitlement programs.

KRS 11A.040 (9) states:

A former public servant shall not represent a person or business before a state agency in a matter in which the former public servant was directly involved during the last thirty-six (36) months of his tenure, for a period of one (1) year after the latter of:

- a) The date of leaving office or termination of employment; or
- b) The date the term of office expires to which the public servant was elected.

This law is intended to promote public confidence in the integrity of state government and to declare as public policy the idea that state employees should view their work as a public trust and not as a way to obtain private benefits.

If you have worked for the executive branch of state government within the past six months, you may be subject to the law's prohibitions. The law's applicability may be different if you hold elected office or are contemplating representation of another before a state agency.

Also, if you are affiliated with a firm which does business with the state and which employs former state executive-branch employees, you should be aware that the law may apply to them.

In case of doubt, the law permits you to request an advisory opinion from the Executive Branch Ethics Commission, 1025 Capital Center Drive, Suite 104, Frankfort, Kentucky 40601; telephone (502) 564-7954.

Revised: May 23, 2022

Kentucky Equal Employment Opportunity Act of 1978

The requirements of the Kentucky Equal Employment Opportunity Act of 1978 (KRS 45.560-45.640) shall apply to this Contract. The apparent low Bidder will be required to submit EEO forms to the Division of Construction Procurement, which will then forward to the Finance and Administration Cabinet for review and approval. No award will become effective until all forms are submitted and EEO/CC has certified compliance. The required EEO forms are as follows:

- EEO-1: Employer Information Report
- Affidavit of Intent to Comply
- Employee Data Sheet
- Subcontractor Report

These forms are available on the Finance and Administration's web page under ***Vendor Information, Standard Attachments and General Terms*** at the following address:
<https://www.eProcurement.ky.gov>.

Bidders currently certified as being in compliance by the Finance and Administration Cabinet may submit a copy of their approval letter in lieu of the referenced EEO forms.

For questions or assistance please contact the Finance and Administration Cabinet by email at **finance.contractcompliance@ky.gov** or by phone at 502-564-2874.

EMPLOYEE RIGHTS UNDER THE FAIR LABOR STANDARDS ACT

THE UNITED STATES DEPARTMENT OF LABOR WAGE AND HOUR DIVISION

FEDERAL MINIMUM WAGE

\$7.25

 PER HOUR

BEGINNING JULY 24, 2009

OVERTIME PAY

At least $1\frac{1}{2}$ times your regular rate of pay for all hours worked over 40 in a workweek.

CHILD LABOR

An employee must be at least **16** years old to work in most non-farm jobs and at least **18** to work in non-farm jobs declared hazardous by the Secretary of Labor.

Youths **14** and **15** years old may work outside school hours in various non-manufacturing, non-mining, non-hazardous jobs under the following conditions:

No more than

- **3** hours on a school day or **18** hours in a school week;
- **8** hours on a non-school day or **40** hours in a non-school week.

Also, work may not begin before **7 a.m.** or end after **7 p.m.**, except from June 1 through Labor Day, when evening hours are extended to **9 p.m.** Different rules apply in agricultural employment.

TIP CREDIT

Employers of "tipped employees" must pay a cash wage of at least \$2.13 per hour if they claim a tip credit against their minimum wage obligation. If an employee's tips combined with the employer's cash wage of at least \$2.13 per hour do not equal the minimum hourly wage, the employer must make up the difference. Certain other conditions must also be met.

ENFORCEMENT

The Department of Labor may recover back wages either administratively or through court action, for the employees that have been underpaid in violation of the law. Violations may result in civil or criminal action.

Employers may be assessed civil money penalties of up to \$1,100 for each willful or repeated violation of the minimum wage or overtime pay provisions of the law and up to \$11,000 for each employee who is the subject of a violation of the Act's child labor provisions. In addition, a civil money penalty of up to \$50,000 may be assessed for each child labor violation that causes the death or serious injury of any minor employee, and such assessments may be doubled, up to \$100,000, when the violations are determined to be willful or repeated. The law also prohibits discriminating against or discharging workers who file a complaint or participate in any proceeding under the Act.

ADDITIONAL INFORMATION

- Certain occupations and establishments are exempt from the minimum wage and/or overtime pay provisions.
- Special provisions apply to workers in American Samoa and the Commonwealth of the Northern Mariana Islands.
- Some state laws provide greater employee protections; employers must comply with both.
- The law requires employers to display this poster where employees can readily see it.
- Employees under 20 years of age may be paid \$4.25 per hour during their first 90 consecutive calendar days of employment with an employer.
- Certain full-time students, student learners, apprentices, and workers with disabilities may be paid less than the minimum wage under special certificates issued by the Department of Labor.

For additional information:



1-866-4-USWAGE

(1-866-487-9243)

TTY: 1-877-889-5627



WWW.WAGEHOUR.DOL.GOV

PART IV

INSURANCE

Refer to
Kentucky Standard Specifications for Road and Bridge Construction,
current edition

PART V

BID ITEMS

Report Date 1/3/23

Section: 0001 - BRIDGES

LINE	BID CODE	ALT	DESCRIPTION	QUANTITY	UNIT	UNIT PRIC	FP	AMOUNT
0010	02562		TEMPORARY SIGNS	435.00	SQFT		\$	
0020	02650		MAINTAIN & CONTROL TRAFFIC - APPLIES TO 025B00051N	1.00	LS		\$	
0030	02650		MAINTAIN & CONTROL TRAFFIC - APPLIES TO 025B00060N	1.00	LS		\$	
0040	02650		MAINTAIN & CONTROL TRAFFIC - APPLIES TO 025B00068N	1.00	LS		\$	
0050	02650		MAINTAIN & CONTROL TRAFFIC - APPLIES TO 034B00081N	1.00	LS		\$	
0060	02651		DIVERSIONS (BY-PASS DETOURS) - APPLIES TO 025B00051N	1.00	LS		\$	
0070	02653		LANE CLOSURE	6.00	EACH		\$	
0080	03298		EXPAN JOINT REPLACE 4 IN	219.60	LF		\$	
0090	03299		ARMORED EDGE FOR CONCRETE	219.60	LF		\$	
0100	03304		BRIDGE OVERLAY APPROACH PAVEMENT	2,136.00	SQYD		\$	
0110	04933		TEMP SIGNAL 2 PHASE	3.00	EACH		\$	
0120	06549		PAVE STRIPING-TEMP REM TAPE-B	3,000.00	LF		\$	
0130	06550		PAVE STRIPING-TEMP REM TAPE-W	6,000.00	LF		\$	
0140	06551		PAVE STRIPING-TEMP REM TAPE-Y	6,000.00	LF		\$	
0150	08150		STEEL REINFORCEMENT	1,080.00	LB		\$	
0160	08504		EPOXY SAND SLURRY	913.00	SQYD		\$	
0170	08526		CONC CLASS M FULL DEPTH PATCH	36.00	CUYD		\$	
0180	08534		CONCRETE OVERLAY-LATEX	118.80	CUYD		\$	
0190	08549		BLAST CLEANING	3,759.00	SQYD		\$	
0200	08551		MACHINE PREP OF SLAB	2,850.00	SQYD		\$	
0210	24094EC		PARTIAL DEPTH PATCHING	91.00	CUYD		\$	
0220	24981EC		BRIDGE CLEANING - APPLIES TO 025B00051N	1.00	LS		\$	
0230	24981EC		BRIDGE CLEANING - APPLIES TO 025B00060N	1.00	LS		\$	
0240	24981EC		BRIDGE CLEANING - APPLIES TO 025B00068N	1.00	LS		\$	
0250	24981EC		BRIDGE CLEANING - APPLIES TO 034B00081N	1.00	LS		\$	
0260	24982EC		CONCRETE COATING - APPLIES TO 025B00051N	1.00	LS		\$	
0270	24982EC		CONCRETE COATING - APPLIES TO 025B00060N	1.00	LS		\$	
0280	24982EC		CONCRETE COATING - APPLIES TO 025B00068N	1.00	LS		\$	
0290	24982EC		CONCRETE COATING - APPLIES TO 034B00081N	1.00	LS		\$	
0300	24983EC		BEARING LUBRICATION	30.00	EACH		\$	

Section: 0002 - DEMOB

LINE	BID CODE	ALT	DESCRIPTION	QUANTITY	UNIT	UNIT PRIC	FP	AMOUNT
0310	02569		DEMOBILIZATION	1.00	LS		\$	

232961

PROPOSAL BID ITEMS

Report Date 1/3/23