



CALL NO. 414

CONTRACT ID. 242954

JEFFERSON COUNTY

FED/STATE PROJECT NUMBER 056GR24M063

DESCRIPTION PRESTON HIGHWAY (KY 61)

WORK TYPE BRIDGE DECK RESTORATION & WATERPROOFING

PRIMARY COMPLETION DATE 11/15/2025

LETTING DATE: November 14,2024

Sealed Bids will be received electronically through the Bid Express bidding service until 10:00 AM EASTERN STANDARD TIME November 14,2024. Bids will be publicly announced at 10:00 AM EASTERN STANDARD TIME.

NO PLANS ASSOCIATED WITH THIS PROJECT.

REQUIRED BID PROPOSAL GUARANTY: Not less than 5% of the total bid.

TABLE OF CONTENTS

PART I	SCOPE OF WORK
	<ul style="list-style-type: none">• PROJECT(S), COMPLETION DATE(S), & LIQUIDATED DAMAGES• CONTRACT NOTES• STATE CONTRACT NOTES• SPECIAL NOTE(S) APPLICABLE TO PROJECT• BRIDGE DEMOLITION, RENOVATION AND ASBESTOS ABATEMENT• ASBESTOS ABATEMENT REPORT• MATERIAL SUMMARY• BRIDGE DRAWINGS
PART II	SPECIFICATIONS AND STANDARD DRAWINGS
	<ul style="list-style-type: none">• STANDARD AND SUPPLEMENTAL SPECIFICATIONS• STANDARD DRAWINGS THAT APPLY
PART III	EMPLOYMENT, WAGE AND RECORD REQUIREMENTS
	<ul style="list-style-type: none">• LABOR AND WAGE REQUIREMENTS• EXECUTIVE BRANCH CODE OF ETHICS• KENTUCKY EQUAL EMPLOYMENT OPPORTUNITY ACT OF 1978 LOCALITY / STATE• PROJECT WAGE RATES / STATE FUNDED
PART IV	INSURANCE
PART V	BID ITEMS

PART I
SCOPE OF WORK

ADMINISTRATIVE DISTRICT - 05

CONTRACT ID - 242954

056GR24M063

COUNTY - JEFFERSON

PCN - MB05600612401

FE02 056 0061 B00030N

PRESTON HIGHWAY (KY 61) BRIDGE 056B00030N OVER BLUE SPRING DITCH AT MP 05.00BRIDGE DECK
RESTORATION & WATERPROOFING

GEOGRAPHIC COORDINATES LATITUDE 38:09:09.00 LONGITUDE 85:41:40.00

ADT

PCN - MB05600612402

FE02 056 0061 B00031N

PRESTON HIGHWAY (KY 61) BRIDGE 056B00031N OVER NORTHERN DICH AT MP 04.82BRIDGE DECK
RESTORATION & WATERPROOFING

GEOGRAPHIC COORDINATES LATITUDE 38:09:00.00 LONGITUDE 85:41:35.00

ADT

PCN - MB05600612403

FE02 056 0061 B00032N

PRESTON HIGHWAY (KY 61) BRIDGE 056B00032N OVER WET WOODS CREEK AT MP 04.57BRIDGE DECK
RESTORATION & WATERPROOFING

GEOGRAPHIC COORDINATES LATITUDE 38:12:00.00 LONGITUDE 85:40:29.00

ADT

COMPLETION DATE(S):

COMPLETED BY 11/15/2025

APPLIES TO ENTIRE CONTRACT

CONTRACT NOTES

PROPOSAL ADDENDA

All addenda to this proposal must be applied when calculating bid and certified in the bid packet submitted to the Kentucky Department of Highways. Failure to use the correct and most recent addenda may result in the bid being rejected.

BID SUBMITTAL

Bidder must use the Department's electronic bidding software. The Bidder must download the bid file located on the Bid Express website (www.bidx.com) to prepare a bid packet for submission to the Department. The bidder must submit electronically using Bid Express.

JOINT VENTURE BIDDING

Joint venture bidding is permissible. All companies in the joint venture must be prequalified in one of the work types in the Qualifications for Bidders for the project. The bidders must get a vendor ID for the joint venture from the Division of Construction Procurement and register the joint venture as a bidder on the project. Also, the joint venture must obtain a digital ID from Bid Express to submit a bid. A joint bid bond of 5% may be submitted for both companies or each company may submit a separate bond of 5%.

UNDERGROUND FACILITY DAMAGE PROTECTION

The contractor shall make every effort to protect underground facilities from damage as prescribed in the Underground Facility Damage Protection Act of 1994, Kentucky Revised Statute KRS 367.4901 to 367.4917. It is the contractor's responsibility to determine and take steps necessary to be in compliance with federal and state damage prevention directives. When prescribed in said directives, the contractor shall submit Excavation Locate Requests to the Kentucky Contact Center (KY811) via web ticket entry. The submission of this request does not relieve the contractor from the responsibility of contacting non-member facility owners, whom shall be contacted through their individual Protection Notification Center. Non-compliance with these directives can result in the enforcement of penalties.

REGISTRATION WITH THE SECRETARY OF STATE BY A FOREIGN ENTITY

Pursuant to KRS 176.085(1)(b), an agency, department, office, or political subdivision of the Commonwealth of Kentucky shall not award a state contract to a person that is a foreign entity required by [KRS 14A.9-010](#) to obtain a certificate of authority to transact business in the Commonwealth ("certificate") from the Secretary of State under [KRS 14A.9-030](#) unless the person produces the certificate within fourteen (14) days of the bid or proposal opening. If the foreign entity is not required to obtain a certificate as provided in [KRS 14A.9-010](#), the foreign entity should identify the applicable exception. Foreign entity is defined within [KRS 14A.1-070](#).

For all foreign entities required to obtain a certificate of authority to transact business in the Commonwealth, if a copy of the certificate is not received by the contracting agency within the time frame identified above, the foreign entity's solicitation response shall be deemed non-responsive or the awarded contract shall be cancelled.

Businesses can register with the Secretary of State at <https://secure.kentucky.gov/sos/ftbr/welcome.aspx>.

SPECIAL NOTE FOR PROJECT QUESTIONS DURING ADVERTISEMENT

Questions about projects during the advertisement should be submitted in writing to the Division of Construction Procurement. This may be done by email to kytc.projectquestions@ky.gov. The Department will attempt to answer all submitted questions. The Department reserves the right not to answer if the question is not pertinent or does not aid in clarifying the project intent.

The deadline for posting answers will be 3:00 pm Eastern Daylight Time, the day preceding the Letting. Questions may be submitted until this deadline with the understanding that the later a question is submitted, the less likely an answer will be able to be provided.

The questions and answers will be posted for each Letting under the heading "Questions & Answers" on the Construction Procurement website (www.transportation.ky.gov/construction-procurement). The answers provided shall be considered part of this Special Note and, in case of a discrepancy, will govern over all other bidding documents.

HARDWOOD REMOVAL RESTRICTIONS

The US Department of Agriculture has imposed a quarantine in Kentucky and several surrounding states, to prevent the spread of an invasive insect, the emerald ash borer. Hardwood cut in conjunction with the project may not be removed from the state. Chipping or burning on site is the preferred method of disposal.

INSTRUCTIONS FOR EXCESS MATERIAL SITES AND BORROW SITES

Identification of excess material sites and borrow sites shall be the responsibility of the Contractor. The Contractor shall be responsible for compliance with all applicable state and federal laws and may wish to consult with the US Fish and Wildlife Service to seek protection under Section 10 of the Endangered Species Act for these activities.

ACCESS TO RECORDS

The state agency certifies that it is in compliance with the provisions of KRS 45A.150, "Access to contractor's books, documents, papers, records, or other evidence directly pertinent to the contract." The Contractor, as defined in KRS 45A.030, agrees that the contracting agency, the Finance and Administration Cabinet, the Auditor of Public Accounts, and the Legislative Research Commission, or their duly authorized representatives, shall have access to any books, documents, papers, records, or other evidence, which are directly pertinent to this agreement for

the purpose of financial audit or program review. The Contractor also recognizes that any books, documents, papers, records, or other evidence, received during a financial audit or program review shall be subject to the Kentucky Open Records Act, KRS 61.870 to 61.884. Records and other prequalification information confidentially disclosed as part of the bid process shall not be deemed as directly pertinent to the agreement and shall be exempt from disclosure as provided in KRS 61.878(1)(c).

BOYCOTT PROVISIONS

If applicable, the contractor represents that, pursuant to [KRS 45A.607](#), they are not currently engaged in, and will not for the duration of the contract engage in, the boycott of a person or an entity based in or doing business with a jurisdiction with which Kentucky can enjoy open trade. **Note:** The term Boycott does not include actions taken for bona fide business or economic reasons, or actions specifically required by federal or state law.

If applicable, the contractor verifies that, pursuant to KRS 41.480, they do not engage in, and will not for the duration of the contract engage in, in energy company boycotts as defined by KRS 41.472.

LOBBYING PROHIBITIONS

The contractor represents that they, and any subcontractor performing work under the contract, have not violated the agency restrictions contained in [KRS 11A.236](#) during the previous ten (10) years, and pledges to abide by the restrictions set forth in such statute for the duration of the contract awarded.

The contractor further represents that, pursuant to [KRS 45A.328](#), they have not procured an original, subsequent, or similar contract while employing an executive agency lobbyist who was convicted of a crime related to the original, subsequent, or similar contract within five (5) years of the conviction of the lobbyist.

Revised: 9/1/2024

1.0 BUY AMERICA REQUIREMENT.

Follow the “Buy America” provisions as required by 23 U.S.C. § 313 and 23 C.F.R. § 635.410. Except as expressly provided herein all manufacturing processes of steel or iron materials including but not limited to structural steel, guardrail materials, corrugated steel, culvert pipe, structural plate, prestressing strands, and steel reinforcing bars shall occur in the United States of America, including the application of:

- Coating,
- Galvanizing,
- Painting, and
- Other coating that protects or enhances the value of steel or iron products.

The following are exempt, unless processed or refined to include substantial amounts of steel or iron material, and may be used regardless of source in the domestic manufacturing process for steel or iron material:

- Pig iron,
- Processed, pelletized, and reduced iron ore material, or
- Processed alloys.

The Contractor shall submit a certification stating that all manufacturing processes involved with the production of steel or iron materials occurred in the United States.

Produce, mill, fabricate, and manufacture in the United States of America all aluminum components of bridges, tunnels, and large sign support systems, for which either shop fabrication, shop inspection, or certified mill test reports are required as the basis of acceptance by the Department.

Use foreign materials only under the following conditions:

- 1) When the materials are not permanently incorporated into the project; or
- 2) When the delivered cost of such materials used does not exceed 0.1 percent of the total Contract amount or \$2,500.00, whichever is greater.

The Contractor shall submit to the Engineer the origin and value of any foreign material used.

2.0 – BUILD AMERICA, BUY AMERICA (BABA)

Contractor shall comply with the Federal Highway Administration (FHWA) Buy America Requirement in 23 C.F.R. § 635.410 and all relevant provisions of the Build America, Buy America Act (BABA), contained within the Infrastructure Investment and Jobs Act, Pub. L. No. 117-58, §§ 70901-52 enacted November 15, 2021. The BABA requires iron, steel, manufactured products, and construction materials used in infrastructure projects funded by federal financial assistance to be produced in the United States. Comply with 2 C.F.R § 184.

BABA permits FHWA participation in the Contract only if domestic steel and iron will be used on the Project. To be considered domestic, all steel and iron used, and all products manufactured from steel and iron must be produced in the United States and all manufacturing processes, including application of a coating, for these materials must occur in the United States. Coating includes all processes that protect or enhance the value of the material to which the coating is applied. This requirement does not preclude a minimal use of foreign steel and iron materials, provided the cost of such materials does not exceed 0.1% of the total contract amount under the Contract or \$2,500.00 whichever is greater.

BABA permits FHWA participation in the Contract only if all “construction materials” as defined in the Act are made in the United States. The Buy America preference applies to the following construction materials

incorporated into infrastructure projects: non-ferrous metals; plastic and polymer-based products (including polyvinylchloride, composite building materials, and polymers used in fiber optic cables); glass (including optic glass); Fiber optic cable; optical fiber; lumber; engineered wood; and drywall. Contractor will be required to use construction materials produced in the United States on this Project. The Contractor shall submit a certification stating that all construction materials are certified to be BABA compliant.

Finally, BABA permits the continuation of FHWA's current general applicability waivers for manufactured products, raw materials, and ferryboat parts, but these waivers are subject to reevaluation, specifically the general applicability waiver for manufactured products.

The Contractor has completed and submitted, or shall complete and submit, to the Cabinet a Buy America/Build America, Buy America Certificate prior to the Cabinet issuing the notice to proceed, in the format below. After submittal, the Contractor is bound by its original certification.

A false certification is a criminal act in violation of 18 U.S.C. § 1001. The Contractor has the burden of proof to establish that it is in compliance.

At the Contractor's request, the Cabinet may, but is not obligated to, seek a waiver of Buy America requirements if grounds for the waiver exist under 23 C.F.R. § 635.410(c) or will comply with the applicable Buy America requirements if a waiver of those requirements is not available or not pursued by the Cabinet.

Please refer to the Federal Highway Administration's Buy America webpage for more information.

[Buy America - Construction Program Guide - Contract Administration - Construction - Federal Highway Administration \(dot.gov\)](#)

October 26, 2023 Letting

BUY AMERICA / BUILD AMERICA, BUY AMERICA (ACT) MATERIALS CERTIFICATE OF COMPLIANCE

The Contractor hereby certifies that it will comply with all relevant provisions of the Build America, Buy America Act, contained within the Infrastructure Investment and Jobs Act, Pub. L. NO. 117-58, §§ 70901-52, the requirements of 23 U.S.C. § 313, 23 C.F.R. § 635.410 and 2 C.F.R § 184.

Date Submitted: _____

Contractor: _____

Signature: _____

Printed Name: _____

Title: _____

NOTE: THIS CERTIFICATION IS IN ADDITION TO ANY AND ALL REQUIREMENTS OUTLINED IN THE CURRENT EDITION OF THE STANDARD SPECIFICATIONS FOR ROAD AND BRIDGE CONSTRUCTION AND/OR SPECIAL NOTES CONTAINED IN THE PROJECT PROPOSAL.

SPECIAL NOTE FOR RECIPROCAL PREFERENCE

RECIPROCAL PREFERENCE TO BE GIVEN BY PUBLIC AGENCIES TO RESIDENT BIDDERS

By reference, KRS 45A.490 to 45A.494 are incorporated herein and in compliance regarding the bidders residency. Bidders who want to claim resident bidder status should complete the Affidavit for Claiming Resident Bidder Status along with their bid in the electronic bidding software. Submittal of the Affidavit should be done along the bid in Bid Express.

April 30, 2018

**SPECIAL NOTES
DISTRICT NO. 5
JEFFERSON COUNTY
BRIDGE DECK RESTORATION AND WATERPROOFING
AND BRIDGE CLEANING AND PAINTING
CID 242954 ~ 056GR24M063**

FE02 056 0061 B00030N 05.00

Jefferson County ~ KY 61 (Preston Highway) over Blue Spring Ditch

Geographic Coordinates

Latitude 38° 09' 09.00" (38.1524)

Longitude -85° 41' 40.00" (-85.6945)

Description

1~60' Steel Span, Drawing No. 16040.

FE02 056 0061 B00031N 04.82

Jefferson County ~ KY 61 (Preston Highway) over Northern Ditch

Geographic Coordinates

Latitude 38° 09' 00.00" (38.1500)

Longitude -85° 41' 35.00" (-85.6932)

Description

1~80' Steel Span, Drawing No. 16050.

FE02 056 0061 B00032N 04.57

Jefferson County ~ KY 61 (Preston Highway) over Wet Woods Creek

Geographic Coordinates

Latitude 38° 00' 00.00" (38.1466)

Longitude -85° 41' 29.00" (-85.6913)

Description

1~60' Steel Span, Drawing No. 16041.

**SPECIAL NOTES FOR BRIDGE DECK
RESTORATION AND WATERPROOFING
CLEANING AND PAINTING**

SPECIAL NOTE FOR BRIDGE DECK RESTORATION AND WATERPROOFING
WITH CONCRETE OVERLAYS

SPECIAL NOTE FOR ELIMINATING LONGITUDINAL JOINTS ON BRIDGES

END BENT ENCASEMENT

SPECIAL NOTE BRIDGE CLEANING AND PAINTING

SPECIAL NOTE FOR UTILITIES AND SIGNS

SPECIAL NOTE FOR WEIGHT LIMITS ON STRUCTURE

SPECIAL NOTE FOR MAINTAINING AND CONTROLLING TRAFFIC

SPECIAL NOTE FOR BRIDGE DECK RESTORATION AND WATERPROOFING WITH CONCRETE OVERLAYS

- 1. DESCRIPTION.** Perform all work in accordance with the Kentucky Transportation Cabinet, Department of Highway's Standard Specifications for Road and Bridge Construction and applicable Supplemental Specifications, the Standard Drawings (current editions), this Note, and the attached detail drawings. Section references are to the Standard Specifications. This work consists of the following: (1) Furnish all labor, materials, tools, and equipment, (2) Machine prep the existing slab, (3) Complete full-depth and partial depth repairs as directed by the Engineer, (4) Repair/replace damaged and corroded reinforcing bars, (5) Place new concrete overlay and epoxy-sand slurry in accordance with Section 606, (6) Complete asphalt approach pavement, and (7) Any other work specified as part of this contract. All construction will be in accordance with Section 606 unless otherwise specified.
- 2. MATERIALS.**

 - A. Latex Concrete.** See Section 606.03.17.
 - B. Class "M" Concrete.** Use either "M1" or "M2". See Section 601.
 - C. Bituminous Asphalt.** Use CL2 ASPH SURF 0.38D PG64-22.
 - D. Epoxy-Sand Slurry.** See Section 606.03.10.
- 3. CONSTRUCTION.**

 - A. Machine Preparation of Existing Slab.** Remove concrete from existing slab to a depth of at least ¼" below the existing surface, and remove all patches completely, in accordance with the requirements of Section 606.03.03.
 - B. Partial Depth Slab Repair and Latex Overlay.** Remove areas determined to be unsound by the Engineer via hydro-demolition or via handheld jackhammers weighing less than 45lbs. in accordance with Section 606.02.10 D. Repair/Replace all damaged or severely corroded reinforcing bars prior to partial depth repair operation. The Department will not measure material removal and will consider this work incidental to the bid item "PARTIAL DEPTH PATCHING". Mix and place Latex Modified Concrete Overlay in accordance with Sections 606.03.08 and 606.03.17.
 - C. Asphalt Approach Pavement.** Mill each existing asphalt approach to the distance indicated in the attached detailed drawings. Remove the bituminous material uniformly by making an edge key, so as to provide a smooth transition to the finished bridge when a new bituminous overlay of compacted depth of approximately 1½" is added to the approaches. The grinding depth may vary depending on the condition of the existing approach and final elevation of bridge end. Dispose of all removed material away from the site.
 - D. Surface Texturing.** Texture the concrete surface of the overlay in accordance with Section 609.03.10.
 - E. Pavement Markings.** Restore pavement markings to original patterns and/or as directed by the Engineer in accordance with Sections 713, 714 and 837. See Standard Drawings TPM-115 and TPM-207 Current Edition.

- F. Verifying Field Conditions.** The Contractor shall field verify all dimensions before ordering any material. New material that is unsuitable due to variation in existing structure shall be replaced at the Contractors expense.
- G. Damage to the Structure.** The Contractor shall bear all responsibility and expense for all damage to the structure during the repair work even to removal and replacement of a fallen span, should the fallen span result from the Contractor's actions.
4. **MEASUREMENT.** See Section 606 and the following:
- A. Latex Modified Concrete for Overlay.** The Department will measure the quantity in cubic yards using the theoretical volume as follows for each bridge:
- | | |
|------------|-----------------------------------|
| 056B00030N | (64'2" x 72'0" x 1.5") = 21.4 CY |
| 056B00031N | (85'2" x 72'0" x 1.5") = 28.4 CY |
| 056B00032N | (64'10" x 72'0" x 1.5") = 21.6 CY |
- B. Machine Prep of Slab, Blast Cleaning, Epoxy Sand Slurry and Bridge Overlay Approach Pavement.** The Department will measure the removal of the existing overlay in square yards.
- C. Partial Depth Patching.** The Department will measure the quantity in cubic yards by deducting the theoretical volume of bridge deck overlay (LMC) from the total volume (as indicated by the batch quantity tickets) of Concrete required to obtain the finished grade shown on the plans or established by the Engineer.
- D. Concrete Class M Full Depth Patch and Concrete Latex Overlay.** The Department will measure the quantity in cubic yards.
- E. Steel Reinforcement.** The Department will measure any reinforcing steel necessary for the partial or full depth patch in pounds.
- F. Pave Striping-Perm 4 Inch.** The Department will measure the quantity in lineal feet.
5. **PAYMENT.** See Section 606 and the following:
- A. Remove Epoxy Bit Foreign Overlay (08510).** The Department will make payment for the removal of the existing overlay.
- B. Machine Prep of Slab (08551).** The Department will make payment for the machine preparation of the existing slab.
- C. Partial Depth Patching (24094EC).** The Department will make payment for removing exiting materials, furnishing and placing all new materials completed and accepted.
- D. Concrete Class M Full Depth Patch (08526).** The Department will make payment for removing exiting materials, furnishing, and placing all new materials.
- E. Blast Cleaning (08549).** The Department will make payment for blast cleaning all surfaces specified.
- F. Epoxy Sand Slurry (08504).** The Department will make payment for furnishing and placing all new materials as specified.
- G. Concrete Latex Overlay (08534).** The Department will make payment for furnishing and placing all new material as specified.

- H. Steel Reinforcement (08150).** The Department will make payment for steel reinforcement, if necessary.
- I. Asphalt Approach Pavement (03304).** The Department will make payment for removing existing materials, furnishing and placing all new materials as specified.
- J. Pave Striping-Perm 4 Inch (06514).** The Department will make payment for furnishing and placing permanent striping as specified.

SPECIAL NOTE FOR ELIMINATING LONGITUDINAL JOINTS ON BRIDGES

1. **DESCRIPTION.** Perform all work in accordance with the Kentucky Transportation Cabinet, Department of Highway's Standard Specifications for Road and Bridge Construction and applicable Supplemental Specifications, the Standard Drawings (current editions), this Note, and the Attached Detailed Drawings. Section references are to the Standard Specifications. This work consists of the following: (1) Furnish all labor, materials, tools, and equipment, (2) Remove existing concrete, armored edges and expansion device(s), (3) Place new concrete, steel reinforcement and armored edges as specified and (4) Any other work specified as part of this contract.

2. **MATERIALS.**
 - A. **Class "M" Concrete.** Use either "M1" or "M2". See Section 601.
 - B. **Steel Reinforcement.** Use Grade 60. See Section 602.
 - C. **Epoxy Bond Coat.** See Section 511.

3. **EQUIPMENT.**
 - A. **Hammer.** See Section 606.02.10 B.
 - B. **Sawing Equipment.** See Section 606.02.10 C.
 - C. **Hydraulic Impact Equipment.** See Section 606.02.10 D.

4. **CONSTRUCTION.**
 - A. **Remove Existing Materials.** Remove the existing longitudinal joint, joint filler, and specified areas of concrete as shown on the plans in accordance with Section 606.03.03 or as directed by the Engineer. Clean and leave all existing steel reinforcement encountered in place. Existing steel reinforcement may be bent and/or cut to accommodate new construction. Damaged steel reinforcement will be repaired/replaced as directed by the Engineer at no additional cost to the Department. Dispose of all removed material entirely away from the job site. This work is incidental to the contract unit price for "Eliminate Transverse Joint".
 - B. **Additional Steel Reinforcement.** Furnish for this work steel reinforcing bars as shown on the plans. Splice these bars to the existing longitudinal reinforcement in the deck and curb/sidewalk in the areas of removed concrete to tie the slabs together as shown on the plans. Ensure that all exposed steel reinforcement is tied in accordance with Section 602.03.04 prior to pouring the new Class "M" concrete.
 - C. **Stage Construction.** Installation of concrete in two (or more if specified) stages is necessary.
 - D. **Residual Lead.** Residual lead paint may still be on bridge. The Contractor is advised to take all necessary protective measures including worker safety and environmental regulations when performing surface preparation. The Department will not consider any claims based on residual lead paint.
 - E. **Verifying Field Conditions.** The Contractor shall field verify all dimensions before ordering any material. New material that is unsuitable due to variation in existing structure shall be replaced at the Contractors expense.

F. Damage to the Structure. The Contractor shall bear all responsibility and expense for any and all damage to the structure during the repair work even to removal and replacement of a fallen span, should the fallen span result from the Contractor's actions.

5. MEASUREMENT.

- A. Eliminate Transverse Joint.** The Department will measure the quantity in linear feet from plinth to plinth perpendicular to the centerline of the bridge.
- B. Steel Reinforcement.** See bill of reinforcement.

6. PAYMENT.

- A. Eliminate Transverse Joint (03300).** Payment at the contract unit price per linear foot is full compensation for furnishing equipment, labor, tools, and materials needed to complete removal and disposal of the specified existing materials, cleaning and straightening of existing steel reinforcement, furnishing and installing the concrete, armored edges and steel reinforcement and all incidental items necessary to complete the work within the specified pay limits as specified by this note and as shown on the attached detail drawings.
- B. Steel Reinforcement (08150).** Payment shall be by contract unit price per pound.

SPECIAL NOTE FOR END BENT ENCASEMENT

1. **DESCRIPTION.** Perform all work in accordance with the Kentucky Transportation Cabinet, Department of Highway's Standard Specifications for Road and Bridge Construction and applicable Supplemental Specifications, the Standard Drawings (Current Editions), this Note, and the attached detail drawings. Section references are to the Standard Specifications. This work consists of the following: (1) Furnish all labor, materials, tools, and equipment, (2) Remove existing concrete and expansion device(s) and/or bridge ends, (3) Install New concrete, armored edge and steel reinforcement as specified in this note and the attached detail drawings and (4) Any other work specified as part of this contract.
2. **MATERIALS.**
 - A. **Class "AA" Concrete.** See Section 601.
 - B. **Steel Reinforcement.** Use Grade 60. See Section 602.
 - C. **Structural Steel.** Use new, commercial grade steel suitable for welding. The Engineer will base acceptance on visual inspection.
 - D. **Armored Edged for Concrete and Expansion Joints:** See Standard Drawings BJE-001, BJE-003, BJE-005 and BJE-006 C.E. and Section 807.
 - E. **Epoxy Bond Coat.** See Section 511.
3. **EQUIPMENT.**
 - A. **Hammer.** Provide Power driven hammers lighter than nominal 45 lb. class.
 - B. **Sawing Equipment.** Sawing equipment shall be a concrete saw capable of sawing concrete to the specified depth.
 - C. **Hydraulic Impact Equipment.** Hydraulic Impact/Skid Steer Type Equipment with a maximum rated striking Energy of 360 ft-lbs are permitted only in areas of concrete removal more than 6 inches away from boundaries of surface areas to remain in service. The Contractor is to provide data information to the engineer on the equipment they wish to utilize to ensure compliance with this note.
4. **CONSTRUCTION.**
 - A. **Remove Existing Materials.** Remove existing expansion material and specified areas of concrete as shown on the attached detailed drawings. Clean and leave all existing steel reinforcement encountered in place. Damaged steel reinforcement will be repaired/replaced as directed by the Engineer at no additional cost to the Department. Dispose of all removed material entirely away from the job site.

- B. Placing Class AA Concrete, Armored Edges and Joint Seals.** After all specified existing materials have been removed; place new armored edges to match the grade of the existing bridge deck. (See attached detail drawings). Place the new Class "AA" concrete to match the grade of the existing bridge deck or and finish with broom strokes drawn transversely from curb to curb (See attached detail drawings). All new structural steel shall be cleaned and painted in accordance with requirements of Section 607.03.23, except that surfaces to come in contact with concrete are not to be painted. Blast clean all areas of existing concrete and structural steel to come in contact with new concrete until free of all laitance and deleterious substances immediately prior to the placement of the Class "AA" Concrete. The surface areas of existing concrete to come in contact with the new Class "AA" Concrete are to be coated with an epoxy bond coat immediately prior to placing new concrete in accordance with Section 511. The interfaces of the new and old concrete shall be as nearly vertical and horizontal as possible. . See Standard drawings BJE-001, BJE-003, BJE-005 and BJE-006 C.E. for Joint Seal installation.
- C. Steel Reinforcement.** Place all steel reinforcement as specified in this note, the attached detailed drawings and section 602 of the standard specification.
- D. Stage Construction.** Installation of concrete and armored edges in two (or more if specified) stages is necessary. Join the armored edges at or near the centerline of the roadway or lane line, field weld and grind smooth.
- E. Verifying Field Conditions.** The Contractor shall field verify all dimensions before ordering any material. New material that is unsuitable due to variation in existing structure shall be replaced at the Contractors expense.
- F. Damage to the Structure.** The Contractor shall bear all responsibility and expense for any and all damage to the structure during the repair work even to removal and replacement of a fall span, should the fallen span result from the Contractor's actions.
- G. Residual Lead.** Residual lead paint may still be on bridge. The Contractor is advised to take all necessary protective measures including worker safety and environmental regulations when performing surface preparation. The Department will not consider any claims based on residual lead paint.
- H. Shop Plans.** Shop plans will not be required. The Contractor is responsible for obtaining field measurements and supplying properly sized materials to complete the work.
- I. Order of Work.** All end bent encasement work must be completed before any cleaning and painting production operations in the adjacent area.
- 5. MEASUREMENT.**
- A. Remove Concrete Masonry.** The Department will measure the quantity in Cubic Yards
- B. Concrete Class AA.** The Department will measure the quantity in Cubic Yards.
- C. Armored Edge for Concrete, Replace Expansion Joint 1 IN and Replace Expansion Joint 4 IN.** The Department will measure the quantity in linear feet from gutter line to gutter line along the face of the bridge end.
- D. Steel Reinforcement.** See Section 602.

6. PAYMENT.

- A. Remove Concrete Masonry (02403).** Payment at the contract unit price per Cubic Yard is full compensation for removing specified materials including expansion devices as specified pay limits as specified by this note and as shown on the attached detailed drawings.
- B. Concrete Class AA (08104).** Payment at the contract unit price per Cubic Yard is full compensation for placing all new Class AA Concrete and all incidental items necessary to complete the work within the specified pay limits as specified by this note and as shown on the attached detailed drawings.
- C. Armored Edge for Concrete (03299), Replace Expansion Joint 1 IN. (03293) and Replace Expansion Joint 4 IN. (03298).** Payment at the contract unit price per linear foot is full compensation for placing new armored edge and any approach pavement repair, traffic striping repair and all incidental items necessary to complete the work within the specified pay limits as specified by this note and as shown on the attached detailed drawings.
- D. Steel Reinforcement (08150).** See Section 602.

SPECIAL NOTE BRIDGE CLEANING AND PAINTING

1. DESCRIPTION.

Perform all work in accordance with the Kentucky Transportation Cabinet, Department of Highway's Standard Specifications for Road and Bridge Construction and applicable Supplemental Specifications, the Standard Drawings, (current editions), this Note and Attached Detailed Drawings. Section references are to the Standard Specifications. This work consists of the following: (1) Furnish all labor, materials, tools, and equipment, (2) Cleaning and Painting and (3) Any other work specified as part of this contract.

2. CONSTRUCTION.

All structural steel shall be cleaned and painted in accordance with the Kentucky Transportation Cabinet, Department of Highways Standard Specifications for Road and Bridge Construction (current edition) Section 614.

All structural steel shall be Abrasive Blast Cleaned and Painted. See Section 614.03.09 for Abrasive Blast Cleaning and Painting.

3. RECYCABLE MATERIAL.

Contrary to Section 614.03.09 section 5 transport and recycling the Contractor shall send all recyclable debris and complete their supplier profile form to the recycler listed below instead of the supplier profile form from the Division of Construction's website given.

The recycler is: The Doe Run Company: Resource Recycling Division, HC1 Box 1395, HWY 10K, Boss, MO 65440, phone (573) 626-4813, fax (573) 626-3304, email www.doerun.com. The contractor will complete the Doe Run Supplier Profile Form and provide copies of it to both Doe Run and the Engineer prior to transporting the surface preparation debris.

The Contractor shall confirm that Doe Run will be accepting the recyclable debris before preparing their bid. Should Doe Run not be accepting the recyclable debris, the Contractor shall be responsible for classification of the recyclable debris.

If the recyclable debris is determined to be hazardous material, the Contractor shall dispose of the material as addressed in section 614.03.09 under "**Hazardous Waste**".

If the recyclable debris is determined to be non-hazardous material, it shall be disposed of as construction debris as addressed in section 614.03.09 under "**Industrial Waste**".

4. PRE-QUALIFICATION.

All Contractors and/or Sub-Contractors shall be Pre-qualified under I18B – Bridge Painting to perform all bridge painting work.

5. SEQUENCING.

All work required for the repairs specified in this must be completed prior to any cleaning and painting production operations commence.

6. DAMAGE TO STRUCTURE.

The Contractor shall bear all responsibility and expense for any and all damage to the structure during the painting work, even to the removal and replacement of a fallen span, should the fallen span result from the Contractors actions.

SPECIAL NOTE FOR UTILITIES AND SIGNS

All utilities, traffic signs shall be maintained and protected from damage.

All electric power that may on the structure shall be de-energized. The Contractor shall coordinate with the Department to have the power de-energized.

SPECIAL NOTE FOR WEIGHT LIMITS ON STRUCTURE

056B00030N is rated at **57** tons.

056B00031N is rated at **54** tons.

056B00032N is rated at **57** tons.

No equipment, materials, vehicles, trailers nor combination of thereof exceeding the load rating of each structure listed above shall be placed on or drive across the structure. If the Contractor chooses to stage from the bridge deck, he must submit a plan for approval by the KYTC Engineer showing placement and weight of all equipment.

SPECIAL NOTE FOR MAINTAIN AND CONTROL TRAFFIC

All lane closures on this project shall be in accordance with Kentucky Department of Highways Standard Drawings No. **TTC-115, TTC-120, TTC-135 and the FHWA Manual for Uniform Traffic Control Devices (current editions) unless otherwise specified.** Lane closures should be used only when absolutely necessary and kept to the shortest duration possible in order to minimize disruption to the traveling public. No work will be conducted over unprotected traffic at any location. At the discretion of the Engineer, lane closures may be restricted on holiday weekends. The contractor must submit a traffic control plan for review and approval by the KYTC Engineer 14 days prior to the Pre-Construction Conference.

1. EMERGENCY REPAIRS AND COORDINATION WITH OTHER CONTRACTS.

In the event it becomes necessary to make emergency repairs at this project by state forces or by other outside contractors, the (painting) contractor agrees to alter his work pattern as directed by the engineer so as not to interfere with the emergency work. The contractor shall be required to coordinate his efforts with those of any other contractor in the construction area.

2. TRAFFIC CONTROL DEVICES.

The contractor will be required to furnish all traffic control devices whenever his operations endanger or interfere with vehicular traffic as determined by the engineer. The contractor shall furnish any additional traffic control devices necessary to protect traffic and his workmen. Any costs associated with the added traffic control devices (including arrow boards) shall be incidental to the contract lump sum amount for "maintain and control traffic." Placement of all devices for lane closures shall start and proceed in the direction of flow of traffic. Removal of devices shall start at the end of the construction area and proceed toward oncoming traffic. The contractor shall provide for the installation of all necessary traffic control devices before beginning work and their immediate removal as soon as work is suspended or completed. During the fully operational periods, when no lane closures are permitted, all equipment shall be totally removed from the job site. Traffic control signs shall be removed or covered (if left in a curb lane).

3. VEHICLES.

The contractor's vehicles shall always move with and not across or against the flow of traffic. Vehicles shall enter or leave work areas in a manner that will not be hazardous to or interfere with normal roadway traffic. Vehicles shall not park or stop except within designated work areas.

Personal vehicles will not be permitted to park within the state right-of-way. The contractor's vehicles will be prohibited from crossing the roadway and all pedestrian movement of the contractor's personnel on the roadway will be limited to within the closed work areas.

4. TRUCK MOUNTED ATTENUATOR.

Any lane or shoulder closure will include the use of a Truck Mounted Attenuator placed between oncoming traffic and equipment or vehicles.

5. MISC.

The Contractor shall reduce the speed limit to **25 MPH** in areas signed for 35 MPH in and approaching the work zones unless otherwise noted.

The Engineer may elect to use Variable Message Boards when necessary.

6. LANE CLOSURES.

Maintain one 12' lane in each direction. All long term lane closures specified shall require temporary Concrete Barriers 9t (NO ALTERNATIVES ALLOWED) with delineators. Box Beam Stiffening PF Temporary Concrete Barrier shall be used in the joint replacement areas for phase 1 and phase 2 as determined by the Engineer. All temporary barrier for lane closures shall be use in accordance with Standard Drawings RBM-115, RBM 120, RBM-020 and TTC-120 C.E. Temporary Concrete Barriers shall remain the Contractor's property and shall be removed from the construction site upon completion of construction. All temporary traffic channeling device placement will be determined by the Engineer. All temporary traffic channeling devices used shall be consider incidental the lump sum bid for Maintain and Control Traffic. The Contractor shall submit their construction phasing plan 7 days prior to the pre-construction conference for approval.

7. MEASUREMENT.

A. Temporary Signs:

The Cabinet will measure this item by "Square Feet".

B. Maintain and Control Traffic:

The Cabinet will measure this item by "Lump Sum".

C. Lane Closure, Arrow Panel, Relocate Crash Cushion, Arrow Panel and Temporary Crash Cushion:

The Cabinet will measure this item by "Each".

D. Relocate Temporary Barrier, Concrete Barrier Wall type 9T and Pave Striping-Temp Rem Tape-B, W, Y:

Department will measure the quantity in "Linear Feet".

8. PAYMENT.

A. Temporary Signs (02562)

Payment at the contract unit price for "Square Feet" is full compensation for all item all items to complete this work as specified.

B. Maintain and Control Traffic (02650):

Payment at the contract unit price for "Lump Sum" is full compensation for all items To complete this work as specified.

C. Lane Closure (02653), Arrow Panel (02775), Relocate Crash Cushion (02898), Arrow Panel (02775) and Temporary Crash Cushion (20738NS112):

Payment at the contract unit price "Each" is full compensation for all items to complete this work as specified.

D. Relocate Temporary Barrier (02003), Concrete Barrier Wall Type 9T (03171) and Pave Striping-Temp Rem Tape-B (06549), W (06550), Y (06551):

Payment at the contract unit price "Lineal Feet" is full compensation for all items to complete this work as specified.

Special Note for Bridge Demolition, Renovation and Asbestos Abatement

If the project includes any bridge demolition or renovation, the successful bidder is required to notify Kentucky Division for Air Quality (KDAQ) via filing of form (DEP 7036) a minimum of 10 working days prior to commencement of any bridge demolition or renovation work.

Any available information regarding possible asbestos containing materials (ACM) on or within bridges to be affected by the project has been included in the bid documents. These are to be included with the Contractor's notification filed with the KDAQ. If not included in the bid documents, the Department will provide that information to the successful bidder for inclusion in the KDAQ notice as soon as possible. If there are no documents stating otherwise, the bidders should assume there are no asbestos containing materials that will in any way affect the work.



Andy Beshear
GOVERNOR

TRANSPORTATION CABINET

200 Mero Street
Frankfort, Kentucky 406 01

Jim Gray
SECRETARY

Asbestos Inspection Survey

To: Tom Mathews

District: Central Office

Date: October 11, 2024

Conducted By: O'Dail Lawson

Report Prepared By: O'Dail Lawson

Project and Structure Identification

Project Number: Jefferson CID 242954

Structure ID: 056B00030N

Structure Location: KY-61 (Preston Highway) over Blue Spring Ditch

Sample Description: Any suspect materials collected were negative for asbestos.

Inspection Date: October 9, 2024

Results and Recommendations

This asbestos survey was performed in accordance with the current USEPA regulations, specifically [40 CFR Part 61](#), Asbestos National Emissions Standards for Hazardous Air Pollutants (NESHAP) revision, final rule effective November 20, 1990.

The results of the samples collected were negative for the presence of asbestos above 1%. No abatement is required at this time. However, the [OSHA Standard 1926.1101](#) applies if any level of asbestos is present in the samples collected.

It is recommended that this report accompany the 10-Day Notice of Intent for Demolition ([Notification Form DEP 7036](#)) which is to be submitted to the Kentucky Division of Air Quality prior to abatement, demolition, or renovation of any building or structure in the Commonwealth. This form can be submitted electronically at the [EEC Forms Homepage](#)

MRS, INC.	<i>MRS, Inc. Analytical Laboratory Division</i>
------------------	---

332 West Broadway / Suite # 902
Louisville, Kentucky - 40202 - 2133

(502) 495-1212
Fax: (502) 491-7111

BULK SAMPLE ASBESTOS ANALYSIS

Analysis N# # 3410102 D Address: Jefferson - 056 B00030N
 Client Name: K Y T C
 Sampled By: O'Dail Lawson

Sample ID	Color	Layered	Fibrous	% FIBROUS ASBESTOS				% NON-ASBESTOS FIBERS			
				Chrysotile	Amosite	crocidolite	Others	Cellulose	Fiberglass	Syn. Fiber	Other/Mat.
# 30 -1	Black	Yes	No				None				100%

Methodology : EPA Method 600/R-93-116
 Date Analyzed : 10-Oct-24
 Analyst : Winterford Mensah

Reviewed By: *Winterford Mensah*
Signature

The test relates only to the items tested. This report does not represent endorsement by NVLAP or any agency of the U.S Government. Partial Reproduction of any part of this report is strictly prohibited. Samples shall be retained for (30) days.



Chain of Custody Record
Kentucky Transportation Cabinet
 200 Mero Street, 4th Floor West
 Frankfort, Kentucky 40622
 (502) 564-7250 fax (502) 564-5655

Address: O'Dail Lawson o'dail.lawson@ky.gov
 W4-06-06
 200 Mero Street
 Frankfort KY

Client Information KY TRANSPORTATION CABINET
 Area Square footage: N/A = Not Applicable

Phone: 502-564-5655
Fax: 502-564-5655
PO#: N/A = Not Applicable

Peterson Highway over Blue Sony Blvd.

Project ID Jefferson O56R00030W

Samplers (signature): *[Signature]*

Sample ID	Sample Description	Collected		Analysis Requested	Matrix	Color	Cont. Type	Preservative
		Date	Time					
30-1	Jeinir Compoms	10/18/24	13:00	Ashern ball	Ball	Black		N/A

Relinquished By: _____ Date/Time: _____

Received By: *[Signature]* Date/Time: *10/29/24*

Relinquished By: _____ Date/Time: _____

Received at Lab By: _____ Date/Time: _____



Andy Beshear
GOVERNOR

TRANSPORTATION CABINET

200 Mero Street
Frankfort, Kentucky 406 01

Jim Gray
SECRETARY

Asbestos Inspection Survey

To: Tom Mathews

District: Central Office

Date: October 11, 2024

Conducted By: O'Dail Lawson

Report Prepared By: O'Dail Lawson

Project and Structure Identification

Project Number: Jefferson CID 242954

Structure ID: 056B00031N

Structure Location: KY-61 (Preston Highway) over Northern Ditch

Sample Description: Any suspect materials collected were negative for asbestos.

Inspection Date: October 9, 2024

Results and Recommendations

This asbestos survey was performed in accordance with the current USEPA regulations, specifically [40 CFR Part 61](#), Asbestos National Emissions Standards for Hazardous Air Pollutants (NESHAP) revision, final rule effective November 20, 1990.

The results of the samples collected were negative for the presence of asbestos above 1%. No abatement is required at this time. However, the [OSHA Standard 1926.1101](#) applies if any level of asbestos is present in the samples collected.

It is recommended that this report accompany the 10-Day Notice of Intent for Demolition ([Notification Form DEP 7036](#)) which is to be submitted to the Kentucky Division of Air Quality prior to abatement, demolition, or renovation of any building or structure in the Commonwealth. This form can be submitted electronically at the [EEC Forms Homepage](#)

MRS, INC. *MRS, Inc. Analytical Laboratory Division*

332 West Broadway / Suite # 902
Louisville, Kentucky - 40202 - 2133

(502) 495-1212
Fax: (502) 491-7111

BULK SAMPLE ASBESTOS ANALYSIS

Analysis N# # 3410102 E Address: Jefferson - 056 B00031N
 Client Name: K Y T C
 Sampled By: O'Dail Lawson

Sample ID	Color	Layered	Fibrous	% FIBROUS ASBESTOS				% NON-ASBESTOS FIBERS			
				Chrysotile	Amosite	crocidolite	Others	Cellulose	Fiberglass	Syn. Fiber	Other/Mat.
# 31 - N	Black	Yes	No				None				100%

Methodology : EPA Method 600/R-93-116
 Date Analyzed : 10-Oct-24
 Analyst : Winterford Mensah

Reviewed By: 
 Signature

The test relates only to the items tested. This report does not represent endorsement by NVLAP or any agency of the U.S Government. Partial Reproduction of any part of this report is strictly prohibited. Samples shall be retained for (30) days.



Chain of Custody Record
 Kentucky Transportation Cabinet
 200 Mero Street, 4th Floor West
 Frankfort, Kentucky 40622
 (502) 564-7250 Fax (502) 564-5655

Person this bag over Thornton Ditch

O'Dail Lawson odail.lawson@ky.gov Client Information KY TRANSPORTATION CABINET
 W4-06-06 Area Square footage:
 Address: 200 Mero Street Frankfort KY
 Phone: Frankfort KY Fax: 502-564-5655 N/A = Not Applicable
 PO#: Project ID *Jefferson OS6 03000 31 N.*
 Samplers (signature): *[Signature]*

Sample ID	Sample Description	Collected		Analysis Requested	Matrix	Color	Cont. Type	Preservative
		Date	Time					
31-N	Joins Concreto	10/8/24	12:45	Asbestos Gulls	Rubber	Black		N/A

Relinquished By: _____ Date/Time: _____
 Received By: *Winters* Date/Time: *10/8/24*
 Relinquished By: _____ Date/Time: _____
 Received at Lab By: _____ Date/Time: _____



Andy Beshear
GOVERNOR

TRANSPORTATION CABINET

200 Mero Street
Frankfort, Kentucky 406 01

Jim Gray
SECRETARY

Asbestos Inspection Survey

To: Tom Mathews

District: Central Office

Date: October 11, 2024

Conducted By: O'Dail Lawson

Report Prepared By: O'Dail Lawson

Project and Structure Identification

Project Number: Jefferson CID 242954

Structure ID: 056B00032N

Structure Location: KY-61 (Preston Highway) over Wet Woods Creek

Sample Description: Any suspect materials collected were negative for asbestos.

Inspection Date: October 9, 2024

Results and Recommendations

This asbestos survey was performed in accordance with the current USEPA regulations, specifically [40 CFR Part 61](#), Asbestos National Emissions Standards for Hazardous Air Pollutants (NESHAP) revision, final rule effective November 20, 1990.

The results of the samples collected were negative for the presence of asbestos above 1%. No abatement is required at this time. However, the [OSHA Standard 1926.1101](#) applies if any level of asbestos is present in the samples collected.

It is recommended that this report accompany the 10-Day Notice of Intent for Demolition ([Notification Form DEP 7036](#)) which is to be submitted to the Kentucky Division of Air Quality prior to abatement, demolition, or renovation of any building or structure in the Commonwealth. This form can be submitted electronically at the [EEC Forms Homepage](#)

MRS, INC. *MRS, Inc. Analytical Laboratory Division*

332 West Broadway / Suite # 902
Louisville, Kentucky - 40202 - 2133

(502) 495-1212
Fax: (502) 491-7111

BULK SAMPLE ASBESTOS ANALYSIS

Analysis N# # 3410102 D Address: Jefferson - 056 B00032N
 Client Name: K Y T C
 Sampled By: O'Dail Lawson

		% FIBROUS ASBESTOS						% NON-ASBESTOS FIBERS			
Sample ID	Color	Layered	Fibrous	Chrysotile	Amosite	crocidolite	Others	Cellulose	Fiberglass	Syn. Fiber	Other/Mat.
# 30 -1	Black	Yes	No				None				100%

Methodology : EPA Method 600/R-93-116

Date Analyzed : 10-Oct-24

Analyst : Winterford Mensah

Reviewed By: 
Signature

The test relates only to the items tested. This report does not represent endorsement by NVLAP or any agency of the U.S Government. Partial Reproduction of any part of this report is strictly prohibited. Samples shall be retained for (30) days.



Chain of Custody Record
Kentucky Transportation Cabinet
 200 Mero Street, 4th Floor West
 Frankfort, Kentucky 40622
 (502) 564-7250 fax (502) 564-5655

O'Dail Lawson o'dail.lawson@ky.gov Client Information KY TRANSPORTATION CABINET
 W4-06-06 Area Square footage: *W4-061* Preserv Whiskey over War Woods Creek.
 Address: 200 Mero Street Frankfort KY
 Phone: Frankfort KY Fax: 502-564-5655 N/A = Not Applicable
 PO#:

Project ID: *Jefferson 05613 000322* Samplers (signature): *[Signature]*

Sample ID	Sample Description	Collected		Analysis Requested	Matrix	Color	Cont. Type	Preservative
		Date	Time					
32-1	Jeans Comps	10/9/24	12:30	Asbestos bulk	bin	black		N/A

Relinquished By: _____ Date/Time: _____
 Received By: *[Signature]* Date/Time: *10/09/24*
 Relinquished By: _____ Date/Time: _____
 Received at Lab By: _____ Date/Time: _____

ENVIRONMENTAL TRAINING CONCEPTS, INC
P. O. Box 99603 Louisville, KY 40269
(502)640-2951

Certification Number: ETC-AIR-031324-00278

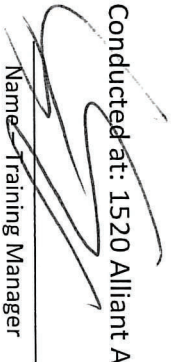
O'Dail Lawson

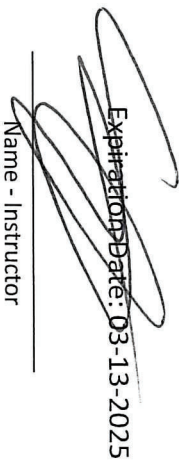
has on 03-13-2024 attended and successfully completed the requirements and passed the examination with a score of 70% or better on the entitled course.

ASBESTOS INSPECTOR REFRESHER

Training was in accordance with 40 CFR Part 763 (AHERA) approved by the Commonwealth of Kentucky, the Indiana Department of Environmental Management, Tennessee Department of Environment & Conservation and The Arkansas Department of Environmental Quality. The above student received requisite training for Asbestos Accreditation under Title II of the Toxic Substance Act (TSCA).

Conducted at: 1520 Alliant Ave., Louisville, KY


Name - Training Manager


Expiration Date: 03-13-2025
Name - Instructor

MATERIAL SUMMARY

CONTRACT ID: 242954

056GR24M063

MB05600612401

PRESTON HIGHWAY (KY 61) BRIDGE 056B00030N OVER BLUE SPRING DITCH AT MP 05.00 BRIDGE DECK RESTORATION & WATERPROOFING.

Project Line No	Bid Code	DESCRIPTION	Quantity	Unit
0005	02003	RELOCATE TEMP CONC BARRIER	730.00	LF
0010	02403	REMOVE CONCRETE MASONRY	15.80	CUYD
0015	02562	TEMPORARY SIGNS	145.00	SQFT
0020	02650	MAINTAIN & CONTROL TRAFFIC - - APPLIES TO 056B00030N	1.00	LS
0025	02653	LANE CLOSURE	4.00	EACH
0030	02671	PORTABLE CHANGEABLE MESSAGE SIGN	2.00	EACH
0035	02775	ARROW PANEL	2.00	EACH
0040	02898	RELOCATE CRASH CUSHION	2.00	EACH
0045	03171	CONCRETE BARRIER WALL TYPE 9T	730.00	LF
0050	03293	EXPAN JOINT REPLACE 1 IN	72.00	LF
0055	03299	ARMORED EDGE FOR CONCRETE	144.00	LF
0060	03304	BRIDGE OVERLAY APPROACH PAVEMENT	1,600.00	SQYD
0065	06514	PAVE STRIPING-PERM PAINT-4 IN	1,590.00	LF
0070	06549	PAVE STRIPING-TEMP REM TAPE-B	1,000.00	LF
0075	06550	PAVE STRIPING-TEMP REM TAPE-W	2,000.00	LF
0080	06551	PAVE STRIPING-TEMP REM TAPE-Y	2,000.00	LF
0085	08104	CONCRETE-CLASS AA	40.70	CUYD
0090	08150	STEEL REINFORCEMENT	3,268.00	LB
0095	08434	CLEAN & PAINT STRUCTURAL STEEL - - APPLIES TO 056B00030N	1.00	LS
0100	08504	EPOXY SAND SLURRY	39.00	SQYD
0105	08526	CONC CLASS M FULL DEPTH PATCH	1,200.00	CUYD
0110	08534	CONCRETE OVERLAY-LATEX	21.40	CUYD
0115	08549	BLAST CLEANING	553.00	SQYD
0120	08551	MACHINE PREP OF SLAB	30.00	SQYD
0125	20738NS112	TEMP CRASH CUSHION	2.00	EACH
0130	24094EC	PARTIAL DEPTH PATCHING	16.00	CUYD
0135	24275EC	ELIMINATE LONGITUDINAL JOINT	58.40	LF
0140	02568	MOBILIZATION	1.00	LS
0145	02569	DEMOBILIZATION	1.00	LS

MATERIAL SUMMARY

CONTRACT ID: 242954

056GR24M063

MB05600612402

PRESTON HIGHWAY (KY 61) BRIDGE 056B00031N OVER NORTHERN DICH AT MP 04.82 BRIDGE DECK RESTORATION & WATERPROOFING.

Project Line No	Bid Code	DESCRIPTION	Quantity	Unit
0150	02003	RELOCATE TEMP CONC BARRIER	770.00	LF
0155	02403	REMOVE CONCRETE MASONRY	20.00	CUYD
0160	02562	TEMPORARY SIGNS	145.00	SQFT
0165	02650	MAINTAIN & CONTROL TRAFFIC - - APPLIES TO 056B00031N	1.00	LS
0170	02653	LANE CLOSURE	4.00	EACH
0175	02671	PORTABLE CHANGEABLE MESSAGE SIGN	2.00	EACH
0180	02775	ARROW PANEL	2.00	EACH
0185	02898	RELOCATE CRASH CUSHION	2.00	EACH
0190	03171	CONCRETE BARRIER WALL TYPE 9T	770.00	LF
0195	03298	EXPAN JOINT REPLACE 4 IN	83.30	LF
0200	03299	ARMORED EDGE FOR CONCRETE	166.40	LF
0205	03304	BRIDGE OVERLAY APPROACH PAVEMENT	1,600.00	SQYD
0210	06514	PAVE STRIPING-PERM PAINT-4 IN	1,716.00	LF
0215	06549	PAVE STRIPING-TEMP REM TAPE-B	1,000.00	LF
0220	06550	PAVE STRIPING-TEMP REM TAPE-W	2,000.00	LF
0225	06551	PAVE STRIPING-TEMP REM TAPE-Y	2,000.00	LF
0230	08104	CONCRETE-CLASS AA	61.60	CUYD
0235	08150	STEEL REINFORCEMENT	4,352.00	LB
0240	08434	CLEAN & PAINT STRUCTURAL STEEL - - APPLIES TO 056B00031N	1.00	LS
0245	08504	EPOXY SAND SLURRY	52.00	SQYD
0250	08526	CONC CLASS M FULL DEPTH PATCH	1,200.00	CUYD
0255	08534	CONCRETE OVERLAY-LATEX	28.40	CUYD
0260	08549	BLAST CLEANING	732.00	SQYD
0265	08551	MACHINE PREP OF SLAB	681.00	SQYD
0270	20738NS112	TEMP CRASH CUSHION	2.00	EACH
0275	24094EC	PARTIAL DEPTH PATCHING	21.00	CUYD
0280	24275EC	ELIMINATE LONGITUDINAL JOINT	77.30	LF
0285	02568	MOBILIZATION	1.00	LS
0290	02569	DEMOBILIZATION	1.00	LS

MATERIAL SUMMARY

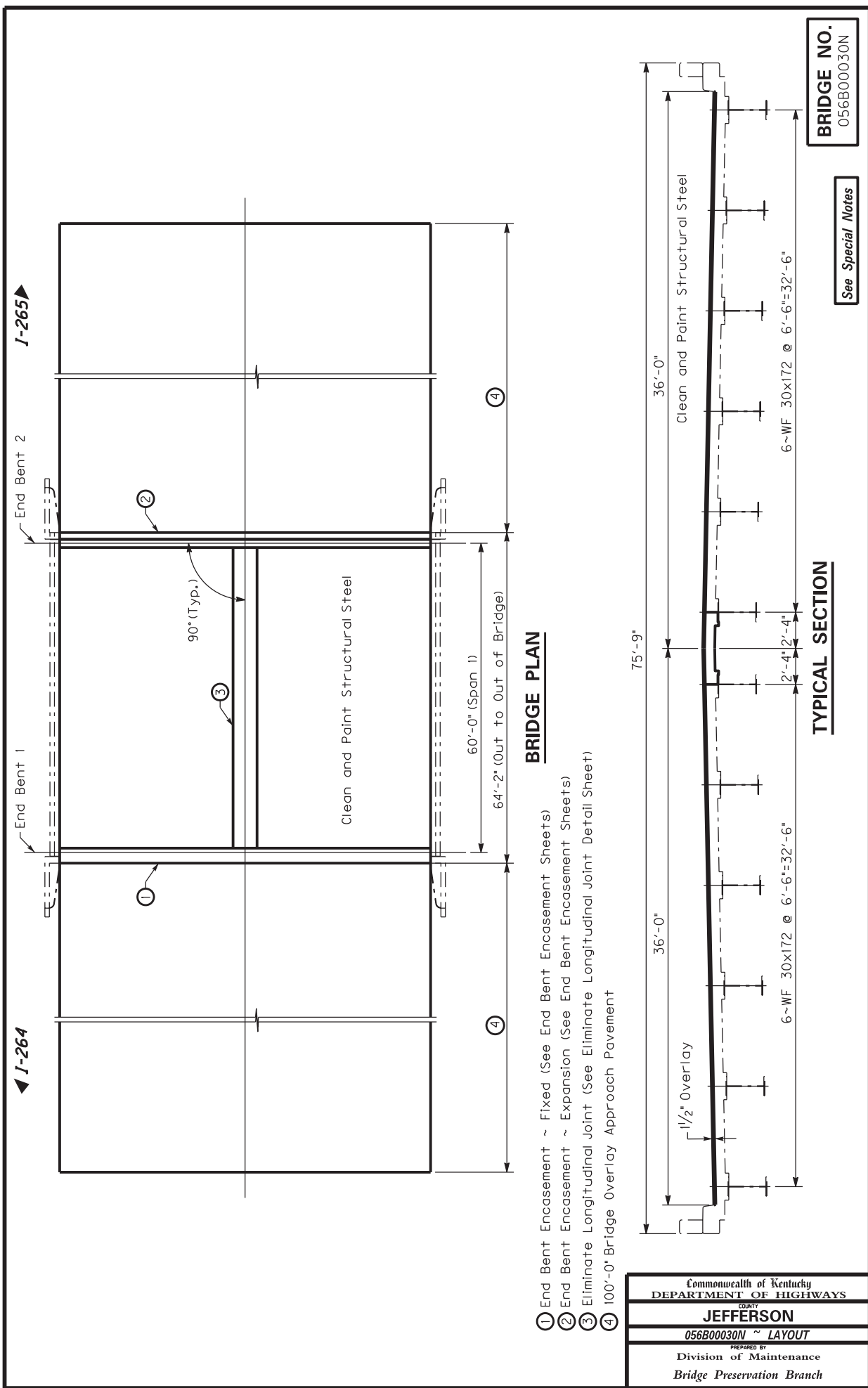
CONTRACT ID: 242954

056GR24M063

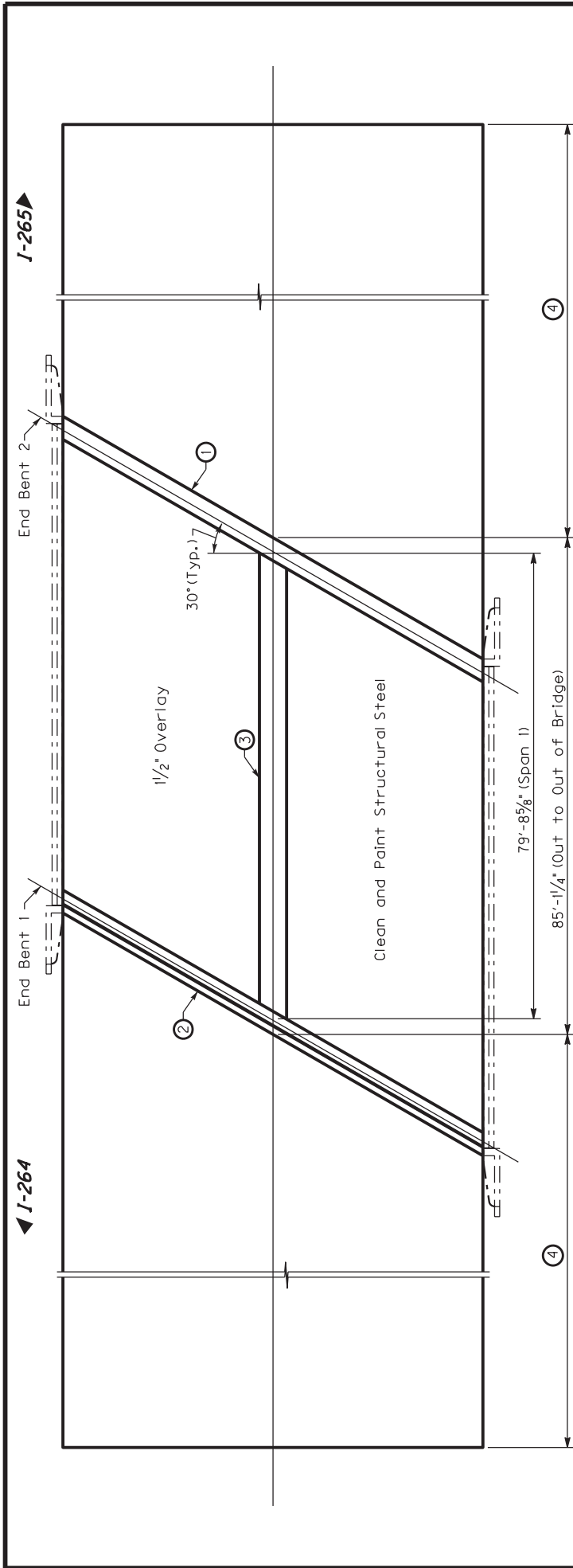
MB05600612403

PRESTON HIGHWAY (KY 61) BRIDGE 056B00032N OVER WET WOODS CREEK AT MP 04.57 BRIDGE DECK RESTORATION & WATERPROOFING.

Project Line No	Bid Code	DESCRIPTION	Quantity	Unit
0295	02003	RELOCATE TEMP CONC BARRIER	732.00	LF
0300	02403	REMOVE CONCRETE MASONRY	19.80	CUYD
0305	02562	TEMPORARY SIGNS	145.00	SQFT
0310	02650	MAINTAIN & CONTROL TRAFFIC - - APPLIES TO 056B00032N	1.00	LS
0315	02653	LANE CLOSURE	4.00	EACH
0320	02671	PORTABLE CHANGEABLE MESSAGE SIGN	2.00	EACH
0325	02775	ARROW PANEL	2.00	EACH
0330	02898	RELOCATE CRASH CUSHION	2.00	EACH
0335	03171	CONCRETE BARRIER WALL TYPE 9T	732.00	LF
0340	03293	EXPAN JOINT REPLACE 1 IN	83.20	LF
0345	03299	ARMORED EDGE FOR CONCRETE	166.40	LF
0350	03304	BRIDGE OVERLAY APPROACH PAVEMENT	1,600.00	SQYD
0355	06514	PAVE STRIPING-PERM PAINT-4 IN	1,590.00	LF
0360	06549	PAVE STRIPING-TEMP REM TAPE-B	1,000.00	LF
0365	06550	PAVE STRIPING-TEMP REM TAPE-W	2,000.00	LF
0370	06551	PAVE STRIPING-TEMP REM TAPE-Y	2,000.00	LF
0375	08104	CONCRETE-CLASS AA	54.30	CUYD
0380	08150	STEEL REINFORCEMENT	3,769.00	LB
0385	08434	CLEAN & PAINT STRUCTURAL STEEL - - APPLIES TO 056B00032N	1.00	LS
0390	08504	EPOXY SAND SLURRY	39.00	SQYD
0395	08526	CONC CLASS M FULL DEPTH PATCH	1,200.00	CUYD
0400	08534	CONCRETE OVERLAY-LATEX	21.40	CUYD
0405	08549	BLAST CLEANING	553.00	SQYD
0410	08551	MACHINE PREP OF SLAB	30.00	SQYD
0415	20738NS112	TEMP CRASH CUSHION	2.00	EACH
0420	24094EC	PARTIAL DEPTH PATCHING	16.00	CUYD
0425	24275EC	ELIMINATE LONGITUDINAL JOINT	57.50	LF
0430	02568	MOBILIZATION	1.00	LS
0435	02569	DEMOBILIZATION	1.00	LS

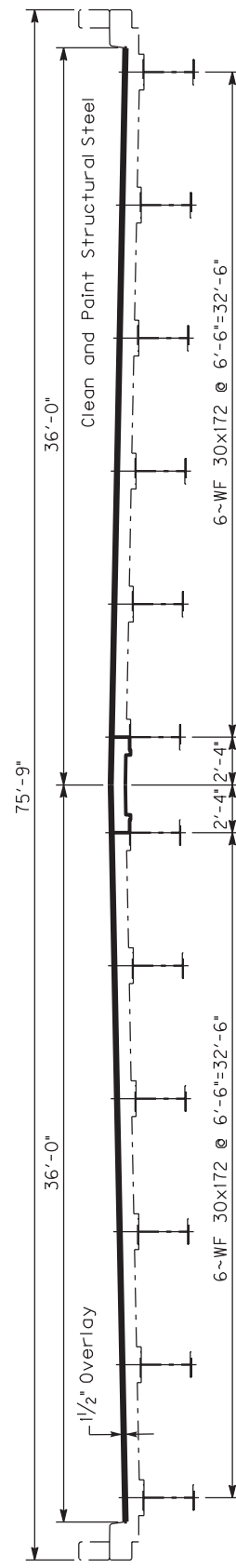


Commonwealth of Kentucky DEPARTMENT OF HIGHWAYS	
COUNTY OF JEFFERSON	
056B00030N ~ LAYOUT	
PREPARED BY Division of Maintenance Bridge Preservation Branch	



BRIDGE PLAN

- ① End Bent Encasement ~ Fixed (See End Bent Encasement Sheets)
- ② End Bent Encasement ~ Expansion (See End Bent Encasement Sheets)
- ③ Eliminate Longitudinal Joint (See Eliminate Longitudinal Joint Detail Sheet)
- ④ 100'-0" Bridge Overlay Approach Pavement

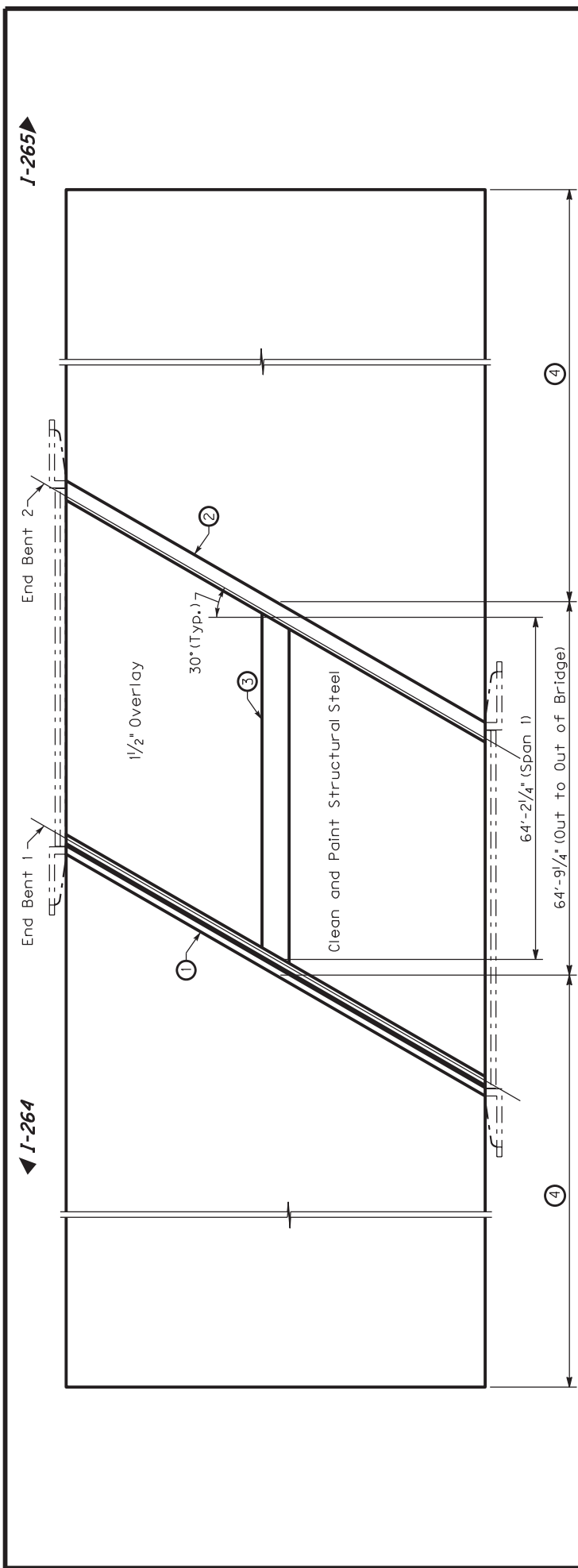


TYPICAL SECTION

BRIDGE NO.
056B00031N

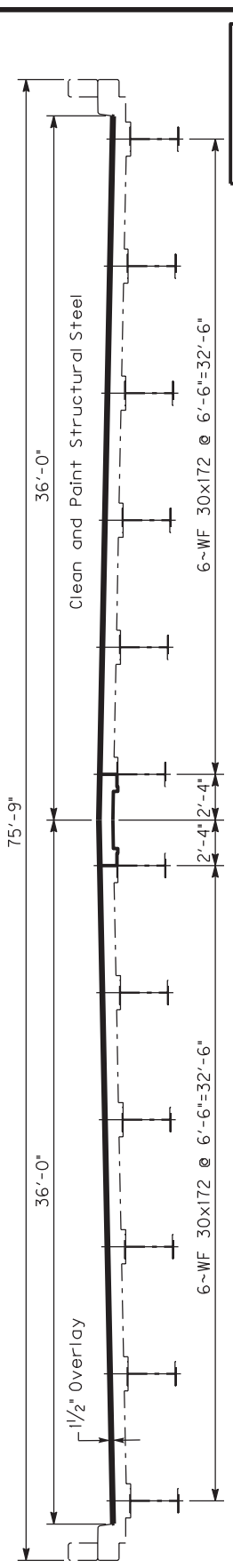
See Special Notes

Commonwealth of Kentucky DEPARTMENT OF HIGHWAYS	
COUNTY OF JEFFERSON	
056B00032N ~ LAYOUT	
PREPARED BY Division of Maintenance Bridge Preservation Branch	



BRIDGE PLAN

- ① End Bent Encasement ~ Fixed (See End Bent Encasement Sheets)
- ② End Bent Encasement ~ Expansion (See End Bent Encasement Sheets)
- ③ Eliminate Longitudinal Joint (See Eliminate Longitudinal Joint Detail Sheet)
- ④ 100'-0" Bridge Overlay Approach Pavement

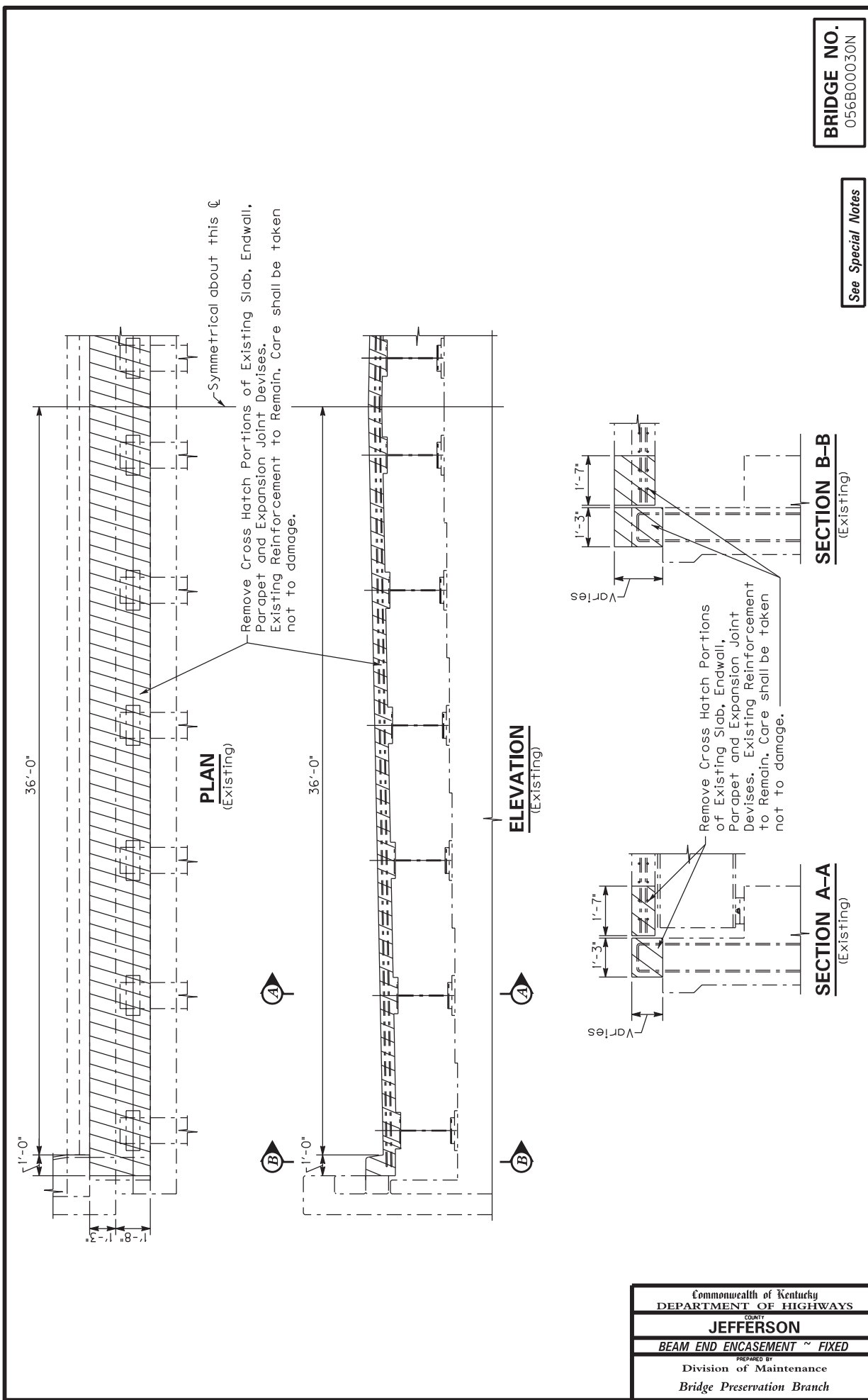


TYPICAL SECTION

BRIDGE NO.
056B00032N

See Special Notes

Commonwealth of Kentucky DEPARTMENT OF HIGHWAYS	
COUNTY OF JEFFERSON	
056B00031N ~ LAYOUT	
PREPARED BY Division of Maintenance Bridge Preservation Branch	



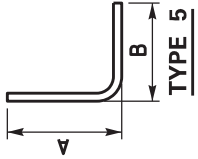
BRIDGE NO.
056B00030N

See Special Notes

Commonwealth of Kentucky DEPARTMENT OF HIGHWAYS
COUNTY OF JEFFERSON
BEAM END ENCASEMENT ~ FIXED
PREPARED BY Division of Maintenance Bridge Preservation Branch

BILL OF REINFORCEMENT ~ 056B00030N

MARK	TYPE	NO.	SIZE	LENGTH	LOCATION	A	B
A1	Str.	57	5	3- 8	Encasement		
A2	Str.	68	5	2- 6	Encasement		
A3	5S	57	5	5- 7	Encasement	3- 0	2- 7
A4	Str.	21	5	*25- 4	Encasement		



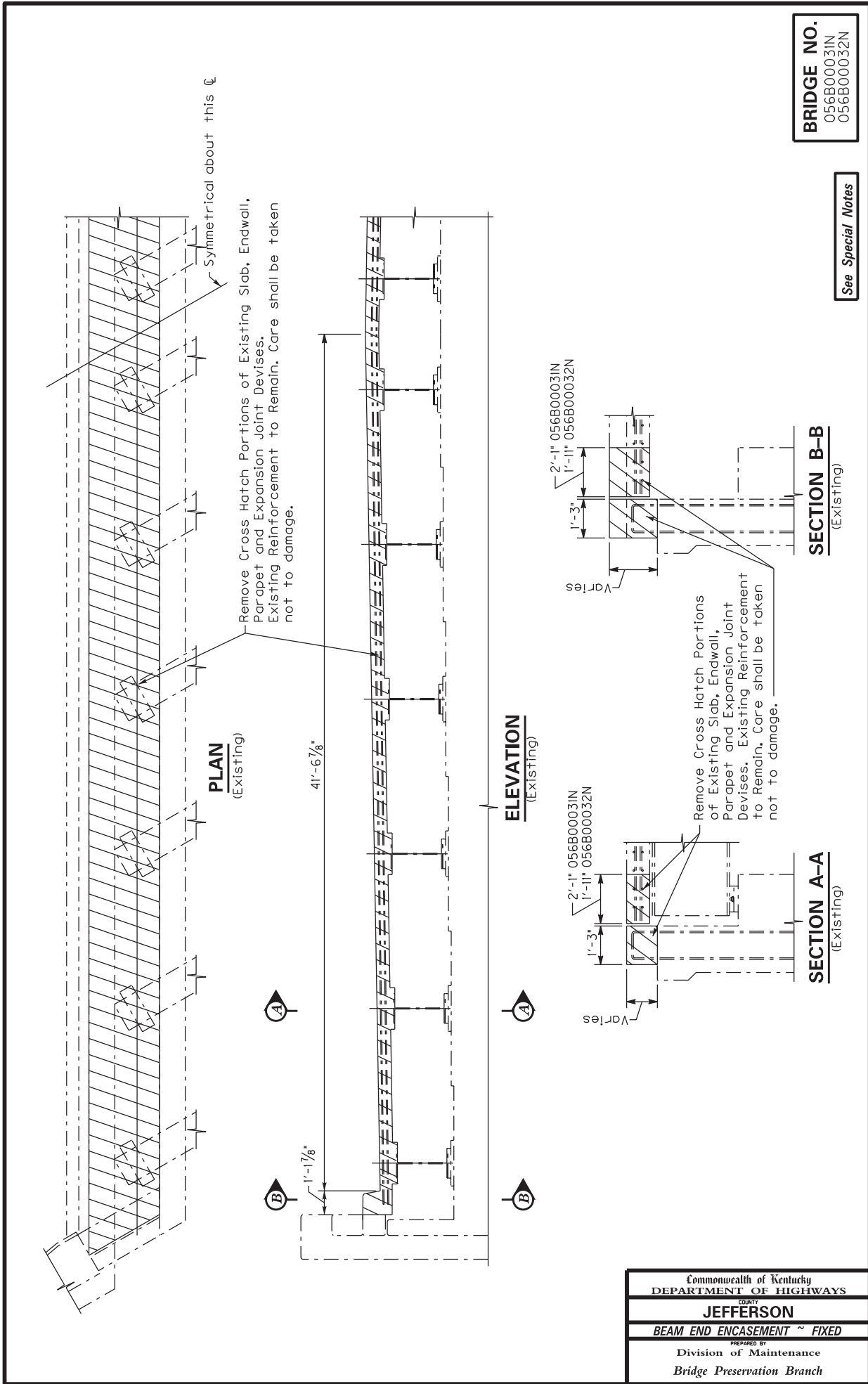
TYPE 5

Includes 3 lengths ~ 2'-2" Min. Lap.

BRIDGE NO.
056B00030N

See Special Notes

Commonwealth of Kentucky DEPARTMENT OF HIGHWAYS
COUNTY JEFFERSON
BEAM END ENCASEMENT ~ FIXED
PREPARED BY Division of Maintenance Bridge Preservation Branch



PLAN
(Existing)

ELEVATION
(Existing)

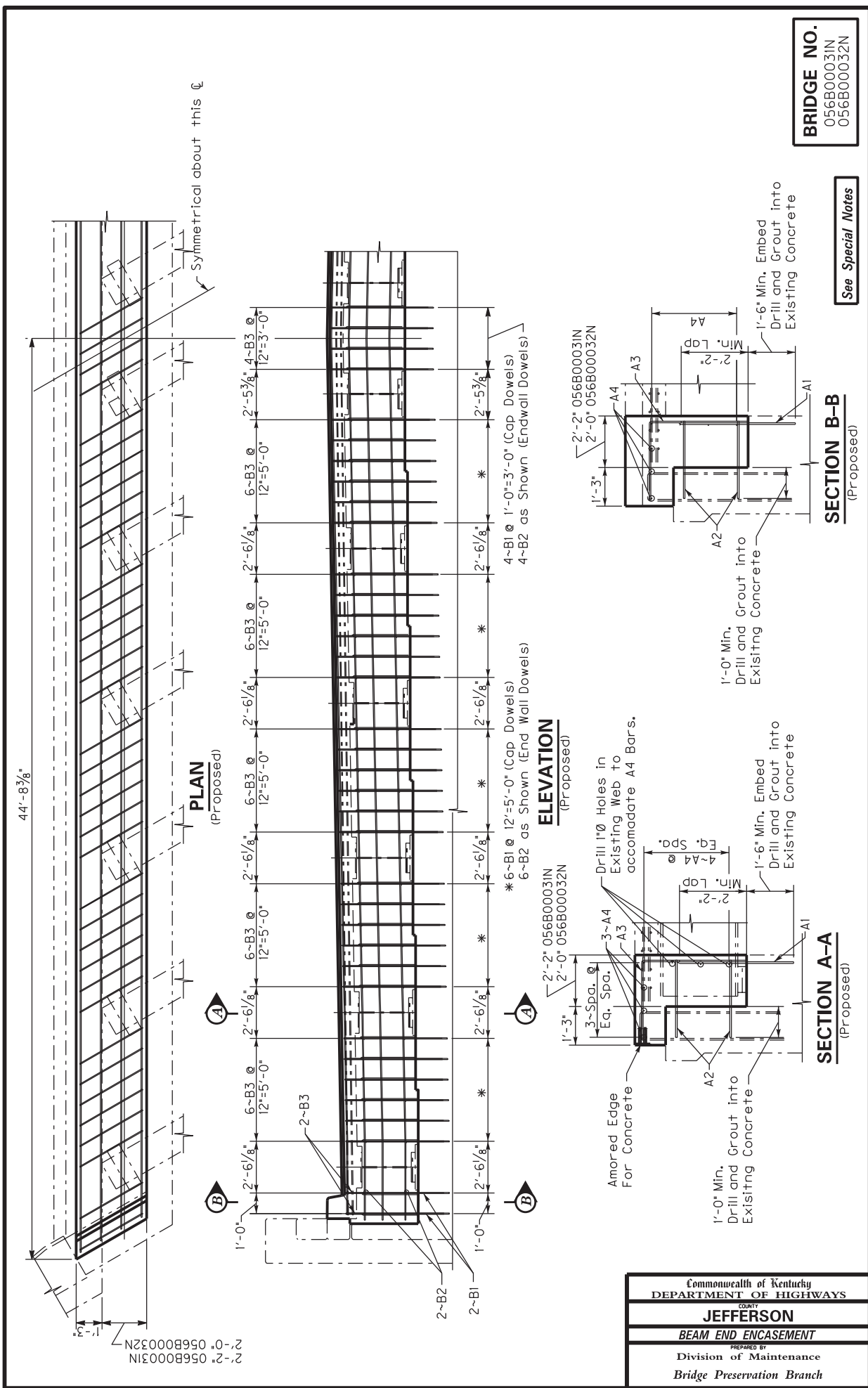
SECTION B-B
(Existing)

SECTION A-A
(Existing)

BRIDGE NO.
056B00031N
056B00032N

See Special Notes

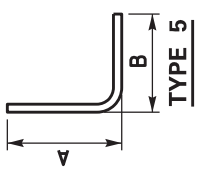
Commonwealth of Kentucky	
DEPARTMENT OF HIGHWAYS	
COUNTY OF	
JEFFERSON	
BEAM END ENCASEMENT ~ FIXED	
PREPARED BY	
Division of Maintenance	
Bridge Preservation Branch	



Commonwealth of Kentucky DEPARTMENT OF HIGHWAYS	
JEFFERSON	
BEAM END ENCASUREMENT	
PREPARED BY Division of Maintenance Bridge Preservation Branch	

BILL OF REINFORCEMENT ~ 056B00031N

MARK	TYPE	NO.	SIZE	LENGTH	LOCATION	A	B
B1	Str.	68	5	3- 8	Encasement		
B2	Str.	68	5	2- 6	Encasement		
B3	5s	68	5	6- 7	Encasement	3- 6	3- 1
B4	Str.	21	5	*30- 3	Encasement		

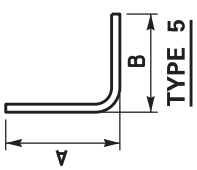


TYPE 5

Includes 3 lengths ~ 2'-2" Min. Lap.

BILL OF REINFORCEMENT ~ 056B00032N

MARK	TYPE	NO.	SIZE	LENGTH	LOCATION	A	B
B1	Str.	68	5	3- 8	Encasement		
B2	Str.	68	5	2- 6	Encasement		
B3	5s	68	5	5- 9	Encasement	3- 0	2- 11
B4	Str.	21	5	*30- 3	Encasement		



TYPE 5

Includes 3 lengths ~ 2'-2" Min. Lap.

BRIDGE NO.
056B00031N
056B00032N

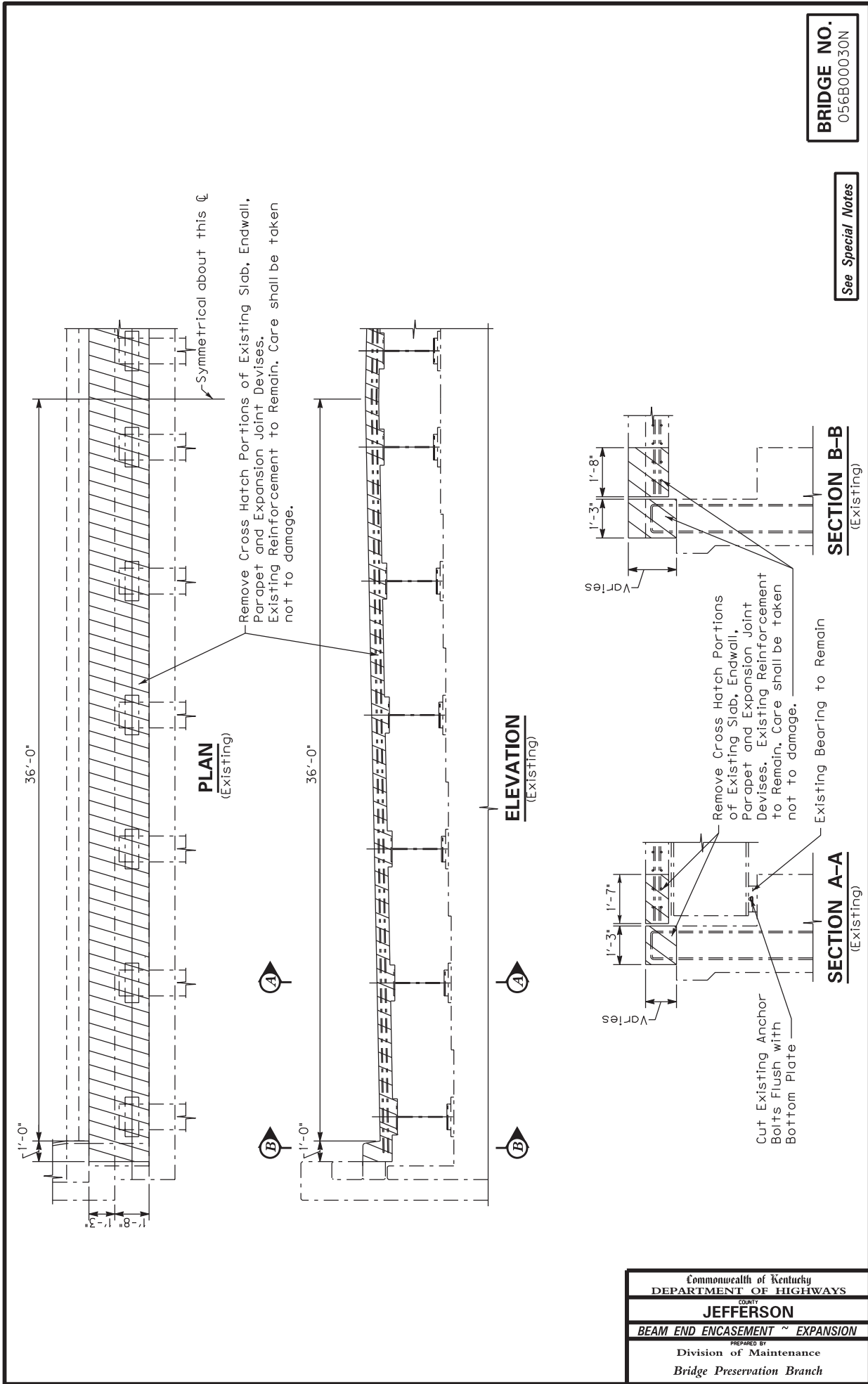
See Special Notes

Commonwealth of Kentucky
DEPARTMENT OF HIGHWAYS

COUNTY OF
JEFFERSON

BEAM END ENCASEMENT

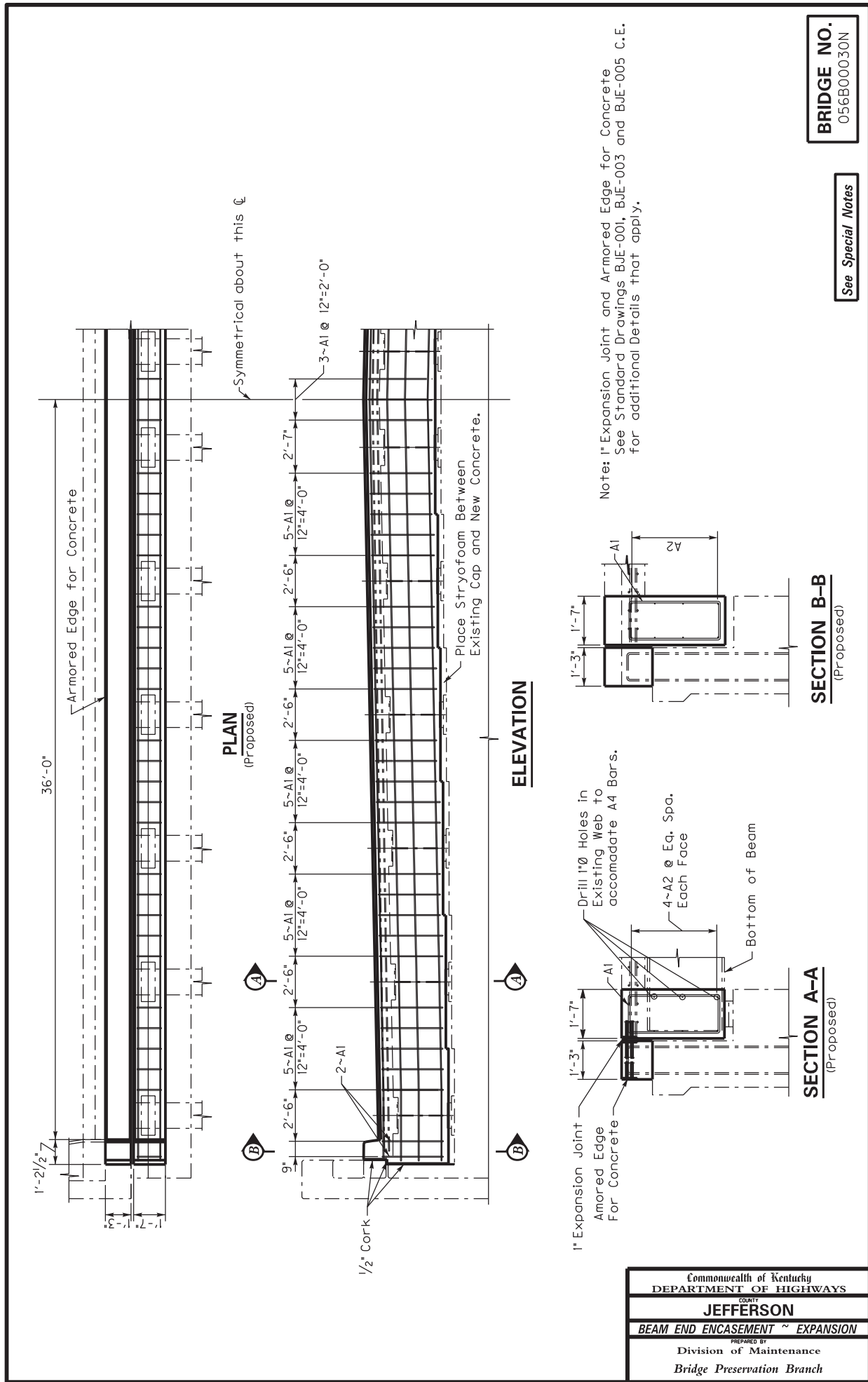
PREPARED BY
Division of Maintenance
Bridge Preservation Branch



BRIDGE NO.
056B00030N

See Special Notes

Commonwealth of Kentucky DEPARTMENT OF HIGHWAYS
JEFFERSON
BEAM END ENCASEMENT ~ EXPANSION
PREPARED BY Division of Maintenance Bridge Preservation Branch



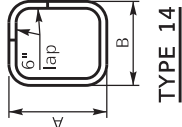
BRIDGE NO.
056B00030N

See Special Notes

Commonwealth of Kentucky DEPARTMENT OF HIGHWAYS
COUNTY OF JEFFERSON
BEAM END ENCASEMENT ~ EXPANSION
PREPARED BY Division of Maintenance Bridge Preservation Branch

BILL OF REINFORCEMENT ~ 056B00030M

MARK	TYPE	NO.	SIZE	LENGTH	LOCATION	A	B
A1	14S	57	5	9'- 1	Encasement	2- 11	1- 3
A2	Str.	24	5	*25'- 4	Encasement		



TYPE 14

Includes 3 lengths ~ 2'-2" Min. Lap.

BRIDGE NO.
056B00030N

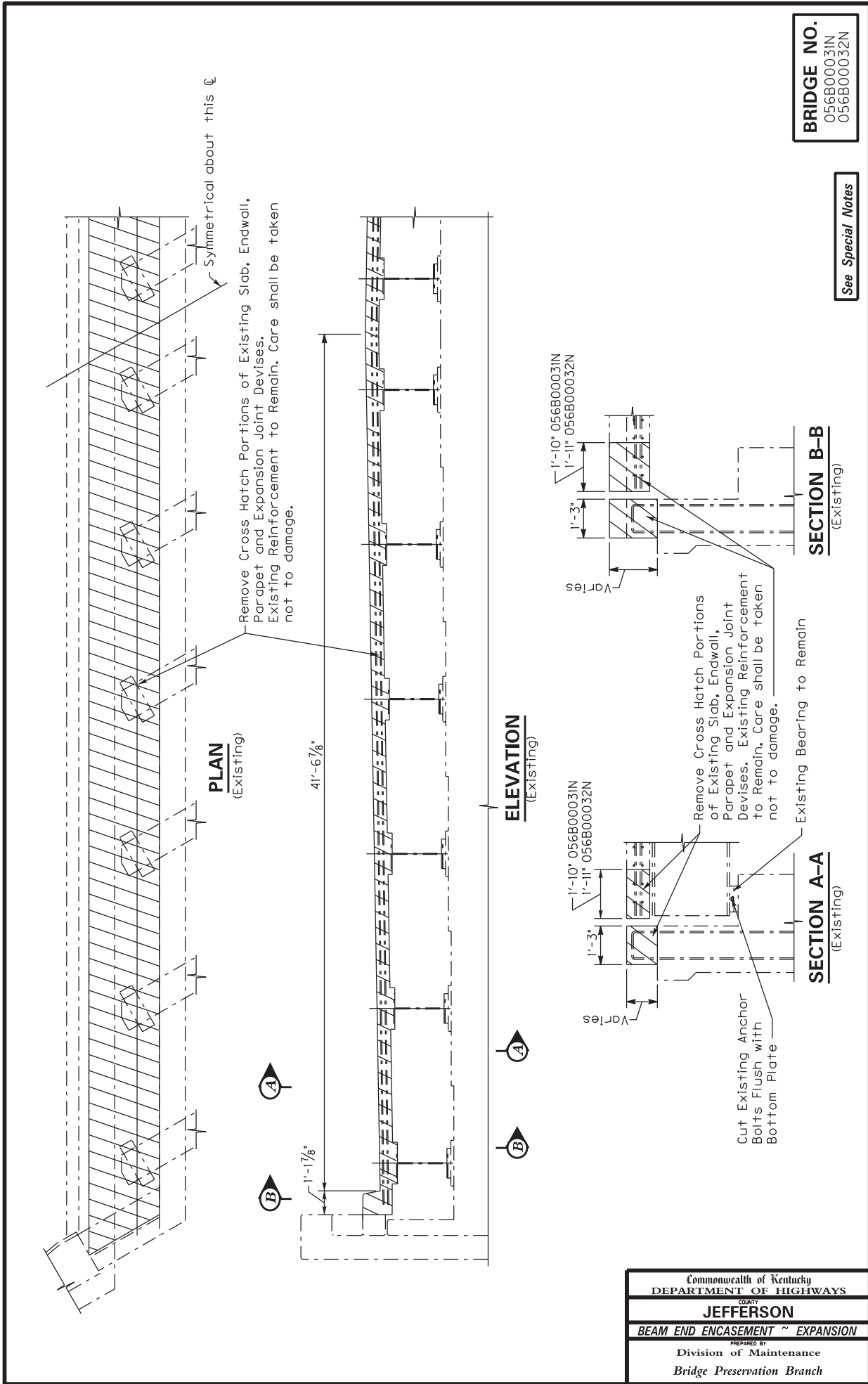
See Special Notes

Commonwealth of Kentucky
DEPARTMENT OF HIGHWAYS

COUNTY
JEFFERSON

BEAM END ENCASEMENT ~ EXPANSION

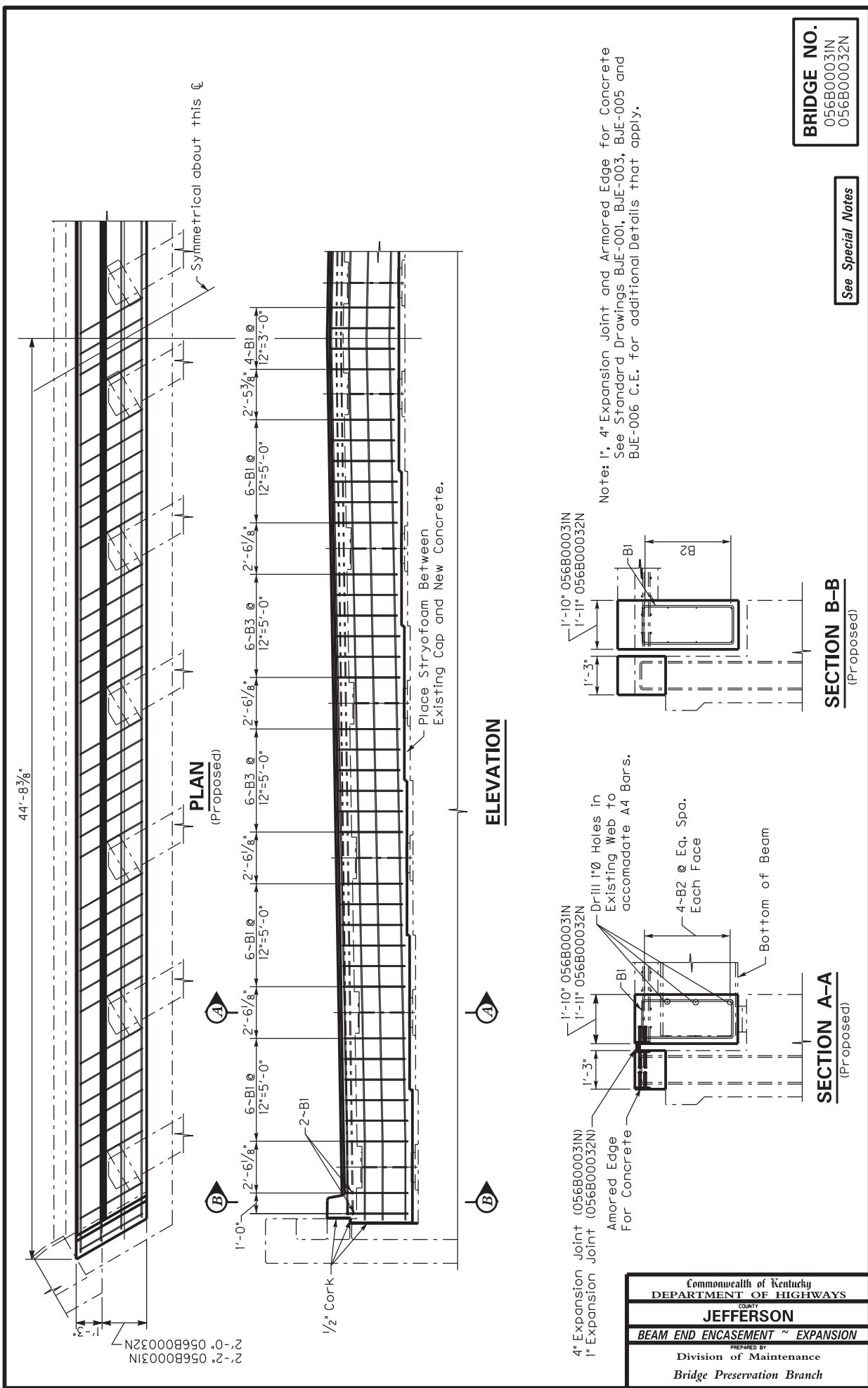
PREPARED BY
Division of Maintenance
Bridge Preservation Branch



BRIDGE NO.
056B00031N
056B00032N

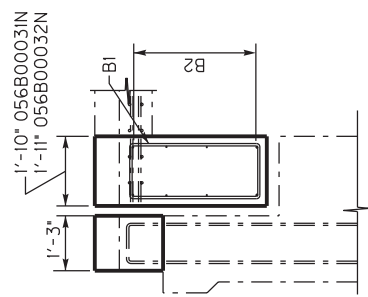
See Special Notes

Commonwealth of Kentucky DEPARTMENT OF HIGHWAYS
BY JEFFERSON
BEAM END ENCASEMENT ~ EXPANSION
PREPARED BY Division of Maintenance Bridge Preservation Branch



2'-2" 056B00031N
2'-0" 056B00032N

4" Expansion Joint (056B00031N)
1" Expansion Joint (056B00032N)
Amored Edge For Concrete



Drill 1"Ø Holes in Existing Web to accommodate A4 Bars.

4~B2 @ Ea. Spa.
Bottom of Beam

SECTION A-A
(Proposed)

Commonwealth of Kentucky
DEPARTMENT OF HIGHWAYS
COUNTY OF
JEFFERSON
BEAM END ENCASEMENT ~ EXPANSION
PREPARED BY
Division of Maintenance
Bridge Preservation Branch

Note: 1", 4" Expansion Joint and Armored Edge for Concrete See Standard Drawings BJE-001, BJE-003, BJE-005 and BJE-006 C.E. for additional Details that apply.

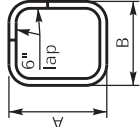
See Special Notes

BRIDGE NO.
056B00031N
056B00032N

SECTION B-B
(Proposed)

BILL OF REINFORCEMENT ~ 056B00031N

MARK	TYPE	NO.	SIZE	LENGTH	LOCATION	A	B
B1	14s	68	5	10- 3	Encasement	3- 3	1- 6
B2	Str.	24	5	*30- 3	Encasement		

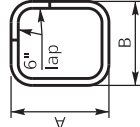


TYPE 14

Includes 3 lengths ~ 2'-2" Min. Lap.

BILL OF REINFORCEMENT ~ 056B00032N

MARK	TYPE	NO.	SIZE	LENGTH	LOCATION	A	B
B1	14s	68	5	9- 9	Encasement	2- 11	1- 7
B2	Str.	24	5	*30- 3	Encasement		



TYPE 14

Includes 3 lengths ~ 2'-2" Min. Lap.

BRIDGE NO.
056B00031N
056B00032N

See Special Notes

Commonwealth of Kentucky DEPARTMENT OF HIGHWAYS
PREPARED BY JEFFERSON
BEAM END ENCASEMENT
PREPARED BY Division of Maintenance Bridge Preservation Branch

BILL OF REINFORCEMENT ~ 056B00030N

MARK	TYPE	NO.	SIZE	LENGTH	LOCATION
S1	Str.	61	5	4-5	Bottom of Slab
S2	Str.	61	6	4-5	Top Slab
S3	Str.	6	4	*32-10	Bottom and Top of Slab

* 2~Lengths 1'-9" Min. Lap

BILL OF REINFORCEMENT ~ 056B00031N

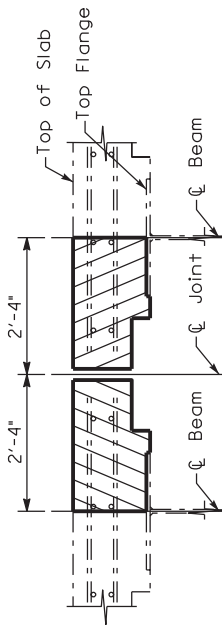
MARK	TYPE	NO.	SIZE	LENGTH	LOCATION
S1	Str.	100	5	4-5	Bottom of Slab
S2	Str.	100	6	4-5	Top Slab
S3	Str.	6	4	*43-4	Bottom and Top of Slab

* 2~Lengths 1'-9" Min. Lap

BILL OF REINFORCEMENT ~ 056B00032N

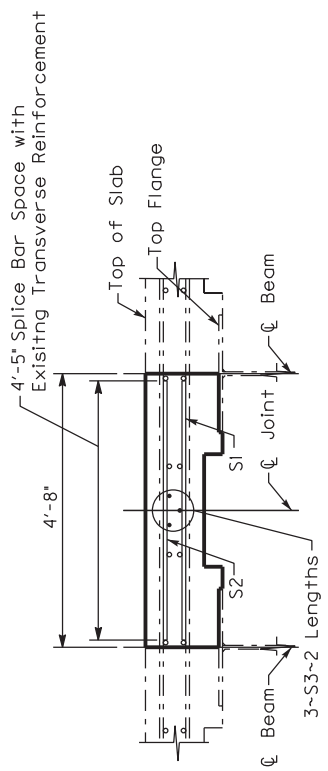
MARK	TYPE	NO.	SIZE	LENGTH	LOCATION
S1	Str.	61	5	4-5	Bottom of Slab
S2	Str.	61	6	4-5	Top Slab
S3	Str.	6	4	*32-10	Bottom and Top of Slab

* 2~Lengths 1'-9" Min. Lap



Note: Remove X-hatched areas of existing concrete & expansion device.

SECTION THROUGH SLAB
(Existing)



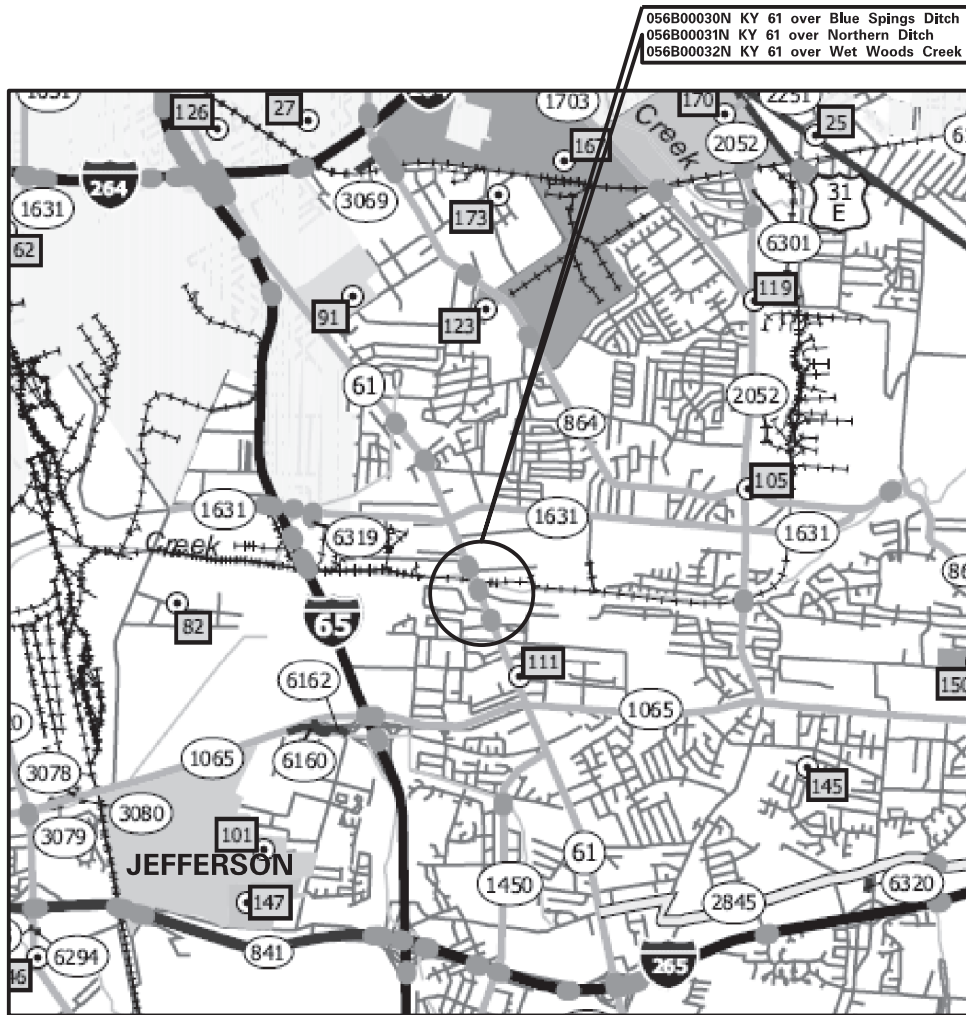
SECTION THROUGH SLAB
(Proposed)

ELIMINATE LONGITUDINAL JOINT

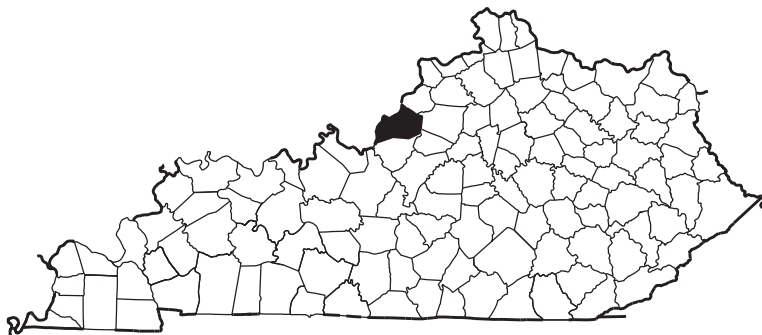
Commonwealth of Kentucky DEPARTMENT OF HIGHWAYS
BY MARTIN
ELIMINATE LONGITUDINAL JOINT DETAILS
PREPARED BY Division of Maintenance Bridge Preservation Branch

See Special Notes

BRIDGE NO.
056B00030N
056B00031N
056B00032N



LOCATION MAP ~ JEFFERSON COUNTY



Commonwealth of Kentucky DEPARTMENT OF HIGHWAYS
County JEFFERSON
LOCATION MAP
PREPARED BY Division of Maintenance Bridge Preservation Branch

PART II
SPECIFICATIONS AND STANDARD DRAWINGS

STANDARD SPECIFICATIONS

Any reference in the plans or proposal to previous editions of the *Standard Specifications for Road and Bridge Construction* and *Standard Drawings* are superseded by *Standard Specifications for Road and Bridge Construction, Edition of 2019* and *Standard Drawings, Edition of 2020*.

SUPPLEMENTAL SPECIFICATIONS

The contractor shall use the Supplemental Specifications that are effective at the time of letting. The Supplemental Specifications can be found at the following link:
<http://transportation.ky.gov/Construction/Pages/Kentucky-Standard-Specifications.aspx>

**DISTRICT NO. 5
JEFFERSON COUNTY
BRIDGE DECK RESTORATION AND WATERPROOFING
AND BRIDGE CLEANING AND PAINTING
CID 242998 ~ 056GR24M063**

**TRAFFIC
~ TEMPORARY ~
TRAFFIC CONTROL**

LANE CLOSURE MULTI-LANE HIGHWAY CASE I	TTC-115 C.E.
LANE CLOSURE MULTI-LANE HIGHWAY CASE II	TTC-120 C.E.
SHOULDER CLOSURE	TTC-135 C.E.

**ROADWAY
STANDARDS**

DELINEATORS FOR CONCRETE BARRIERS	RBM-020 C.E.
CONCRETE BARRIER WALL TYPE 9T (TEMPORARY)	RBM-115 C.E.
BOX BEAM STIFFING PF TEMPORARY BARRIER	
CONCRETE BARRIER	RBM-120 C.E.

**BRIDGES
STANDARDS**

BRIDGE RESTORATION AND WATERPROOFING WITH CONCRETE OVERLAYS	BGX-009 C.E.
AMORED EDGES	BJE-001 C.E.
EXPANSION JOINT REPLACEMENT 1"-3"	BJE-003 C.E.
EXPANSION JOINT REPLACEMENT GENERAL NOTES	BJE-005 C.E.
EXPANSION JOINT REPLACEMENT 4"&5"	BJE-006 C.E.

PART III

EMPLOYMENT, WAGE AND RECORD REQUIREMENTS

**TRANSPORTATION CABINET
DEPARTMENT OF HIGHWAYS**

**LABOR AND WAGE REQUIREMENTS
APPLICABLE TO OTHER THAN FEDERAL-AID SYSTEM PROJECTS**

- I. Application
- II. Nondiscrimination of Employees (KRS 344)

I. APPLICATION

1. These contract provisions shall apply to all work performed on the contract by the contractor with his own organization and with the assistance of workmen under his immediate superintendence and to all work performed on the contract by piecework, station work or by subcontract. The contractor's organization shall be construed to include only workmen employed and paid directly by the contractor and equipment owned or rented by him, with or without operators.

2. The contractor shall insert in each of his subcontracts all of the stipulations contained in these Required Provisions and such other stipulations as may be required.

3. A breach of any of the stipulations contained in these Required Provisions may be grounds for termination of the contract.

3. If the contractor is in control of apprenticeship or other training or retraining, including on-the-job training programs, he shall not discriminate against an individual because of his race, color, religion, national origin, sex, disability or age forty (40) and over, in admission to, or employment in any program established to provide apprenticeship or other training.

4. The contractor will send to each labor union or representative of workers with which he has a collective bargaining agreement or other contract or understanding, a notice to be provided advising the said labor union or workers' representative of the contractor's commitments under this section, and shall post copies of the notice in conspicuous places available to employees and applicants for employment. The contractor will take such action with respect to any subcontract or purchase order as the administrating agency may direct as a means of enforcing such provisions, including sanctions for non-compliance.

Revised: January 25, 2017

II. NONDISCRIMINATION OF EMPLOYEES

**AN ACT OF THE KENTUCKY
GENERAL ASSEMBLY TO PREVENT
DISCRIMINATION IN EMPLOYMENT
KRS CHAPTER 344
EFFECTIVE JUNE 16, 1972**

The contract on this project, in accordance with KRS Chapter 344, provides that during the performance of this contract, the contractor agrees as follows:

1. The contractor shall not fail or refuse to hire, or shall not discharge any individual, or otherwise discriminate against an individual with respect to his compensation, terms, conditions, or privileges of employment, because of such individual's race, color, religion, national origin, sex, disability or age (forty and above); or limit, segregate, or classify his employees in any way which would deprive or tend to deprive an individual of employment opportunities or otherwise adversely affect his status as an employee, because of such individual's race, color, religion, national origin, sex, disability or age forty (40) and over. The contractor agrees to post in conspicuous places, available to employees and applicants for employment, notices to be provided setting forth the provisions of this nondiscrimination clause.

2. The contractor shall not print or publish or cause to be printed or published a notice or advertisement relating to employment by such an employer or membership in or any classification or referral for employment by the employment agency, indicating any preference, limitation, specification, or discrimination, based on race, color, religion, national origin, sex, or age forty (40) and over, or because the person is a qualified individual with a disability, except that such a notice or advertisement may indicate a preference, limitation, or specification based on religion, national origin, sex, or age forty (40) and over, or because the person is a qualified individual with a disability, when religion, national origin, sex, or age forty (40) and over, or because the person is a qualified individual with a disability, is a bona fide occupational qualification for employment.

EXECUTIVE BRANCH CODE OF ETHICS

In the 1992 regular legislative session, the General Assembly passed and Governor Brereton Jones signed Senate Bill 63 (codified as KRS 11A), the Executive Branch Code of Ethics, which states, in part:

KRS 11A.040 (7) provides:

No present or former public servant shall, within six (6) months following termination of his office or employment, accept employment, compensation, or other economic benefit from any person or business that contracts or does business with, or is regulated by, the state in matters in which he was directly involved during the last thirty-six (36) months of his tenure. This provision shall not prohibit an individual from returning to the same business, firm, occupation, or profession in which he was involved prior to taking office or beginning his term of employment, or for which he received, prior to his state employment, a professional degree or license, provided that, for a period of six (6) months, he personally refrains from working on any matter in which he was directly involved during the last thirty-six (36) months of his tenure in state government. This subsection shall not prohibit the performance of ministerial functions, including but not limited to filing tax returns, filing applications for permits or licenses, or filing incorporation papers, nor shall it prohibit the former officer or public servant from receiving public funds disbursed through entitlement programs.

KRS 11A.040 (9) states:

A former public servant shall not represent a person or business before a state agency in a matter in which the former public servant was directly involved during the last thirty-six (36) months of his tenure, for a period of one (1) year after the latter of:

- a) The date of leaving office or termination of employment; or
- b) The date the term of office expires to which the public servant was elected.

This law is intended to promote public confidence in the integrity of state government and to declare as public policy the idea that state employees should view their work as a public trust and not as a way to obtain private benefits.

If you have worked for the executive branch of state government within the past six months, you may be subject to the law's prohibitions. The law's applicability may be different if you hold elected office or are contemplating representation of another before a state agency.

Also, if you are affiliated with a firm which does business with the state and which employs former state executive-branch employees, you should be aware that the law may apply to them.

In case of doubt, the law permits you to request an advisory opinion from the Executive Branch Ethics Commission, 1025 Capital Center Drive, Suite 104, Frankfort, Kentucky 40601; telephone (502) 564-7954.

Revised: May 23, 2022

Kentucky Equal Employment Opportunity Act of 1978

The requirements of the Kentucky Equal Employment Opportunity Act of 1978 (KRS 45.560-45.640) shall apply to this Contract. The apparent low Bidder will be required to submit EEO forms to the Division of Construction Procurement, which will then forward to the Finance and Administration Cabinet for review and approval. No award will become effective until all forms are submitted and EEO/CC has certified compliance. The required EEO forms are as follows:

- EEO-1: Employer Information Report
- Affidavit of Intent to Comply
- Employee Data Sheet
- Subcontractor Report

These forms are available on the Finance and Administration's web page under ***Vendor Information, Standard Attachments and General Terms*** at the following address:
<https://www.eProcurement.ky.gov>.

Bidders currently certified as being in compliance by the Finance and Administration Cabinet may submit a copy of their approval letter in lieu of the referenced EEO forms.

For questions or assistance please contact the Finance and Administration Cabinet by email at **finance.contractcompliance@ky.gov** or by phone at 502-564-2874.

EMPLOYEE RIGHTS UNDER THE FAIR LABOR STANDARDS ACT

THE UNITED STATES DEPARTMENT OF LABOR WAGE AND HOUR DIVISION

FEDERAL MINIMUM WAGE

\$7.25

 PER HOUR

BEGINNING JULY 24, 2009

OVERTIME PAY

At least 1½ times your regular rate of pay for all hours worked over 40 in a workweek.

CHILD LABOR

An employee must be at least **16** years old to work in most non-farm jobs and at least **18** to work in non-farm jobs declared hazardous by the Secretary of Labor.

Youths **14** and **15** years old may work outside school hours in various non-manufacturing, non-mining, non-hazardous jobs under the following conditions:

No more than

- **3** hours on a school day or **18** hours in a school week;
- **8** hours on a non-school day or **40** hours in a non-school week.

Also, work may not begin before **7 a.m.** or end after **7 p.m.**, except from June 1 through Labor Day, when evening hours are extended to **9 p.m.** Different rules apply in agricultural employment.

TIP CREDIT

Employers of “tipped employees” must pay a cash wage of at least \$2.13 per hour if they claim a tip credit against their minimum wage obligation. If an employee’s tips combined with the employer’s cash wage of at least \$2.13 per hour do not equal the minimum hourly wage, the employer must make up the difference. Certain other conditions must also be met.

ENFORCEMENT

The Department of Labor may recover back wages either administratively or through court action, for the employees that have been underpaid in violation of the law. Violations may result in civil or criminal action.

Employers may be assessed civil money penalties of up to \$1,100 for each willful or repeated violation of the minimum wage or overtime pay provisions of the law and up to \$11,000 for each employee who is the subject of a violation of the Act’s child labor provisions. In addition, a civil money penalty of up to \$50,000 may be assessed for each child labor violation that causes the death or serious injury of any minor employee, and such assessments may be doubled, up to \$100,000, when the violations are determined to be willful or repeated. The law also prohibits discriminating against or discharging workers who file a complaint or participate in any proceeding under the Act.

ADDITIONAL INFORMATION

- Certain occupations and establishments are exempt from the minimum wage and/or overtime pay provisions.
- Special provisions apply to workers in American Samoa and the Commonwealth of the Northern Mariana Islands.
- Some state laws provide greater employee protections; employers must comply with both.
- The law requires employers to display this poster where employees can readily see it.
- Employees under 20 years of age may be paid \$4.25 per hour during their first 90 consecutive calendar days of employment with an employer.
- Certain full-time students, student learners, apprentices, and workers with disabilities may be paid less than the minimum wage under special certificates issued by the Department of Labor.

For additional information:



1-866-4-USWAGE

(1-866-487-9243)

TTY: 1-877-889-5627



WWW.WAGEHOUR.DOL.GOV

PART IV
INSURANCE

Refer to
Kentucky Standard Specifications for Road and Bridge Construction,
current edition

PART V
BID ITEMS

PROPOSAL BID ITEMS

242954

Page 1 of 3

Report Date 10/10/24

Section: 0001 - BRIDGE ~ 056B00030N

LINE	BID CODE	ALT	DESCRIPTION	QUANTITY	UNIT	UNIT PRIC	FP	AMOUNT
0010	02003		RELOCATE TEMP CONC BARRIER	730.00	LF		\$	
0020	02403		REMOVE CONCRETE MASONRY	15.80	CUYD		\$	
0030	02562		TEMPORARY SIGNS	145.00	SQFT		\$	
0040	02650		MAINTAIN & CONTROL TRAFFIC - APPLIES TO 056B00030N	1.00	LS		\$	
0050	02653		LANE CLOSURE	4.00	EACH		\$	
0060	02671		PORTABLE CHANGEABLE MESSAGE SIGN	2.00	EACH		\$	
0070	02775		ARROW PANEL	2.00	EACH		\$	
0080	02898		RELOCATE CRASH CUSHION	2.00	EACH		\$	
0090	03171		CONCRETE BARRIER WALL TYPE 9T	730.00	LF		\$	
0100	03293		EXPAN JOINT REPLACE 1 IN	72.00	LF		\$	
0110	03299		ARMORED EDGE FOR CONCRETE	144.00	LF		\$	
0120	03304		BRIDGE OVERLAY APPROACH PAVEMENT	1,600.00	SQYD		\$	
0130	06514		PAVE STRIPING-PERM PAINT-4 IN	1,590.00	LF		\$	
0140	06549		PAVE STRIPING-TEMP REM TAPE-B	1,000.00	LF		\$	
0150	06550		PAVE STRIPING-TEMP REM TAPE-W	2,000.00	LF		\$	
0160	06551		PAVE STRIPING-TEMP REM TAPE-Y	2,000.00	LF		\$	
0170	08104		CONCRETE-CLASS AA	40.70	CUYD		\$	
0180	08150		STEEL REINFORCEMENT	3,268.00	LB		\$	
0190	08434		CLEAN & PAINT STRUCTURAL STEEL - APPLIES TO 056B00030N	1.00	LS		\$	
0200	08504		EPOXY SAND SLURRY	39.00	SQYD		\$	
0210	08526		CONC CLASS M FULL DEPTH PATCH	1,200.00	CUYD		\$	
0220	08534		CONCRETE OVERLAY-LATEX	21.40	CUYD		\$	
0230	08549		BLAST CLEANING	553.00	SQYD		\$	
0240	08551		MACHINE PREP OF SLAB	30.00	SQYD		\$	
0250	20738NS112		TEMP CRASH CUSHION	2.00	EACH		\$	
0260	24094EC		PARTIAL DEPTH PATCHING	16.00	CUYD		\$	
0270	24275EC		ELIMINATE LONGITUDINAL JOINT	58.40	LF		\$	

Section: 0002 - BRIDGE ~ 056B00031N

LINE	BID CODE	ALT	DESCRIPTION	QUANTITY	UNIT	UNIT PRIC	FP	AMOUNT
0280	02003		RELOCATE TEMP CONC BARRIER	770.00	LF		\$	
0290	02403		REMOVE CONCRETE MASONRY	20.00	CUYD		\$	
0300	02562		TEMPORARY SIGNS	145.00	SQFT		\$	
0310	02650		MAINTAIN & CONTROL TRAFFIC - APPLIES TO 056B00031N	1.00	LS		\$	
0320	02653		LANE CLOSURE	4.00	EACH		\$	
0330	02671		PORTABLE CHANGEABLE MESSAGE SIGN	2.00	EACH		\$	
0340	02775		ARROW PANEL	2.00	EACH		\$	
0350	02898		RELOCATE CRASH CUSHION	2.00	EACH		\$	
0360	03171		CONCRETE BARRIER WALL TYPE 9T	770.00	LF		\$	
0370	03298		EXPAN JOINT REPLACE 4 IN	83.30	LF		\$	
0380	03299		ARMORED EDGE FOR CONCRETE	166.40	LF		\$	
0390	03304		BRIDGE OVERLAY APPROACH PAVEMENT	1,600.00	SQYD		\$	
0400	06514		PAVE STRIPING-PERM PAINT-4 IN	1,716.00	LF		\$	

PROPOSAL BID ITEMS

242954

Page 2 of 3

Report Date 10/10/24

LINE	BID CODE	ALT	DESCRIPTION	QUANTITY	UNIT	UNIT PRIC	FP	AMOUNT
0410	06549		PAVE STRIPING-TEMP REM TAPE-B	1,000.00	LF		\$	
0420	06550		PAVE STRIPING-TEMP REM TAPE-W	2,000.00	LF		\$	
0430	06551		PAVE STRIPING-TEMP REM TAPE-Y	2,000.00	LF		\$	
0440	08104		CONCRETE-CLASS AA	61.60	CUYD		\$	
0450	08150		STEEL REINFORCEMENT	4,352.00	LB		\$	
0460	08434		CLEAN & PAINT STRUCTURAL STEEL - APPLIES TO 056B00031N	1.00	LS		\$	
0470	08504		EPOXY SAND SLURRY	52.00	SQYD		\$	
0480	08526		CONC CLASS M FULL DEPTH PATCH	1,200.00	CUYD		\$	
0490	08534		CONCRETE OVERLAY-LATEX	28.40	CUYD		\$	
0500	08549		BLAST CLEANING	732.00	SQYD		\$	
0510	08551		MACHINE PREP OF SLAB	681.00	SQYD		\$	
0520	20738NS112		TEMP CRASH CUSHION	2.00	EACH		\$	
0530	24094EC		PARTIAL DEPTH PATCHING	21.00	CUYD		\$	
0540	24275EC		ELIMINATE LONGITUDINAL JOINT	77.30	LF		\$	

Section: 0003 - BRIDGE ~ 056B00032N

LINE	BID CODE	ALT	DESCRIPTION	QUANTITY	UNIT	UNIT PRIC	FP	AMOUNT
0550	02003		RELOCATE TEMP CONC BARRIER	732.00	LF		\$	
0560	02403		REMOVE CONCRETE MASONRY	19.80	CUYD		\$	
0570	02562		TEMPORARY SIGNS	145.00	SQFT		\$	
0580	02650		MAINTAIN & CONTROL TRAFFIC - APPLIES TO 056B00032N	1.00	LS		\$	
0590	02653		LANE CLOSURE	4.00	EACH		\$	
0600	02671		PORTABLE CHANGEABLE MESSAGE SIGN	2.00	EACH		\$	
0610	02775		ARROW PANEL	2.00	EACH		\$	
0620	02898		RELOCATE CRASH CUSHION	2.00	EACH		\$	
0630	03171		CONCRETE BARRIER WALL TYPE 9T	732.00	LF		\$	
0640	03293		EXPAN JOINT REPLACE 1 IN	83.20	LF		\$	
0650	03299		ARMORED EDGE FOR CONCRETE	166.40	LF		\$	
0660	03304		BRIDGE OVERLAY APPROACH PAVEMENT	1,600.00	SQYD		\$	
0670	06514		PAVE STRIPING-PERM PAINT-4 IN	1,590.00	LF		\$	
0680	06549		PAVE STRIPING-TEMP REM TAPE-B	1,000.00	LF		\$	
0690	06550		PAVE STRIPING-TEMP REM TAPE-W	2,000.00	LF		\$	
0700	06551		PAVE STRIPING-TEMP REM TAPE-Y	2,000.00	LF		\$	
0710	08104		CONCRETE-CLASS AA	54.30	CUYD		\$	
0720	08150		STEEL REINFORCEMENT	3,769.00	LB		\$	
0730	08434		CLEAN & PAINT STRUCTURAL STEEL - APPLIES TO 056B00032N	1.00	LS		\$	
0740	08504		EPOXY SAND SLURRY	39.00	SQYD		\$	
0750	08526		CONC CLASS M FULL DEPTH PATCH	1,200.00	CUYD		\$	
0760	08534		CONCRETE OVERLAY-LATEX	21.40	CUYD		\$	
0770	08549		BLAST CLEANING	553.00	SQYD		\$	
0780	08551		MACHINE PREP OF SLAB	30.00	SQYD		\$	
0790	20738NS112		TEMP CRASH CUSHION	2.00	EACH		\$	
0800	24094EC		PARTIAL DEPTH PATCHING	16.00	CUYD		\$	
0810	24275EC		ELIMINATE LONGITUDINAL JOINT	57.50	LF		\$	

242954

PROPOSAL BID ITEMS

Page 3 of 3

Report Date 10/10/24

Section: 0004 - MOBILIZATION/DEMOBILIZATION

LINE	BID CODE	ALT	DESCRIPTION	QUANTITY	UNIT	UNIT PRIC	FP	AMOUNT
0820	02568		MOBILIZATION	1.00	LS		\$	
0830	02569		DEMOBILIZATION	1.00	LS		\$	