



**CALL NO. 413**

**CONTRACT ID. 244403**

**JEFFERSON COUNTY**

**FED/STATE PROJECT NUMBER 056GR24T012-FE04**

**DESCRIPTION VARIOUS ROUTES IN JEFFERSON COUNTY**

**WORK TYPE SIGNS-LIGHTING-SIGNALS**

**PRIMARY COMPLETION DATE 12/1/2024**

**LETTING DATE: July 18,2024**

Sealed Bids will be received electronically through the Bid Express bidding service until 10:00 AM EASTERN DAYLIGHT TIME July 18,2024. Bids will be publicly announced at 10:00 AM EASTERN DAYLIGHT TIME.

**NO PLANS ASSOCIATED WITH THIS PROJECT.**

**REQUIRED BID PROPOSAL GUARANTY: Not less than 5% of the total bid.**

## TABLE OF CONTENTS

PART I	SCOPE OF WORK
	<ul style="list-style-type: none"><li>• PROJECT(S), COMPLETION DATE(S), &amp; LIQUIDATED DAMAGES</li><li>• CONTRACT NOTES</li><li>• STATE CONTRACT NOTES</li><li>• SPECIAL NOTE(S) APPLICABLE TO PROJECT</li><li>• LIQUIDATED DAMAGES</li><li>• WASTE AND BORROW SITES</li><li>• COORDINATION OF WORK WITH OTHER CONTRACTS</li><li>• TRAFFIC CONTROL PLAN</li><li>• RIGHT OF WAY CERTIFICATION</li><li>• UTILITY IMPACT &amp; RAIL CERTIFICATION NOTES</li><li>• MATERIAL SUMMARY</li><li>• DETAIL SHEET(S)</li></ul>
PART II	SPECIFICATIONS AND STANDARD DRAWINGS
	<ul style="list-style-type: none"><li>• STANDARD AND SUPPLEMENTAL SPECIFICATIONS</li><li>• [SN-1I] PORTABLE CHANGEABLE SIGNS</li><li>• 2020 STANDARD DRAWINGS THAT APPLY</li></ul>
PART III	EMPLOYMENT, WAGE AND RECORD REQUIREMENTS
	<ul style="list-style-type: none"><li>• LABOR AND WAGE REQUIREMENTS</li><li>• EXECUTIVE BRANCH CODE OF ETHICS</li><li>• KENTUCKY EQUAL EMPLOYMENT OPPORTUNITY ACT OF 1978 LOCALITY / STATE</li><li>• PROJECT WAGE RATES / STATE FUNDED</li></ul>
PART IV	INSURANCE
PART V	BID ITEMS

**PART I**  
**SCOPE OF WORK**

## ADMINISTRATIVE DISTRICT - 05

**CONTRACT ID - 244403**

**056GR24T012-FE04**

**COUNTY - JEFFERSON**

**PCN - 0505609132401**

**FE04 056 0913 002-003**

KY 913 (BLANKENBAKER PARKWAY) (MP 2.600) SIGNAL AT THE INTERSECTION OF KY 913 AND THE I-64 EB RAMP (MP 2.700), A DISTANCE OF 0.10 MILES.SIGNS-LIGHTING-SIGNALS  
GEOGRAPHIC COORDINATES LATITUDE 38:13:17.33 LONGITUDE 85:32:19.34  
ADT 52,005

**PCN - 0505610202401**

**FE04 056 1020 004-005**

KY 1020 (NATIONAL TURNPIKE) (MP 4.200) SIGNAL AT THE INTERSECTION OF KY 1020 AND CS 1131F (TOLLS ROAD) (MP 4.300), A DISTANCE OF 0.10 MILES.SIGNS-LIGHTING-SIGNALS  
GEOGRAPHIC COORDINATES LATITUDE 38:08:08.26 LONGITUDE 85:45:08.34  
ADT 25,718

**PCN - 0505616942401**

**FE04 056 1694 000-001**

KY 1694 (SLEEPY HOLLOW ROAD) (MP 0.590) SIGNAL AT THE INTERSECTION OF KY 1694 AND CS 2558C (NORTON COMMONS RD) (MP 0.620), A DISTANCE OF 0.03 MILES.SIGNS-LIGHTING-SIGNALS  
GEOGRAPHIC COORDINATES LATITUDE 38:19:27.65 LONGITUDE 85:33:40.79  
ADT 11,187

### COMPLETION DATE(S):

COMPLETED BY 12/01/2024	APPLIES TO ENTIRE PROJECT
COMPLETED BY 11/01/2024	SEE COMPLETION DATE NOTE
COMPLETED BY 10/01/2024	SEE COMPLETION DATE NOTE

## **CONTRACT NOTES**

### **PROPOSAL ADDENDA**

All addenda to this proposal must be applied when calculating bid and certified in the bid packet submitted to the Kentucky Department of Highways. Failure to use the correct and most recent addenda may result in the bid being rejected.

### **BID SUBMITTAL**

Bidder must use the Department's electronic bidding software. The Bidder must download the bid file located on the Bid Express website ([www.bidx.com](http://www.bidx.com)) to prepare a bid packet for submission to the Department. The bidder must submit electronically using Bid Express.

### **JOINT VENTURE BIDDING**

Joint venture bidding is permissible. All companies in the joint venture must be prequalified in one of the work types in the Qualifications for Bidders for the project. The bidders must get a vendor ID for the joint venture from the Division of Construction Procurement and register the joint venture as a bidder on the project. Also, the joint venture must obtain a digital ID from Bid Express to submit a bid. A joint bid bond of 5% may be submitted for both companies or each company may submit a separate bond of 5%.

### **UNDERGROUND FACILITY DAMAGE PROTECTION**

The contractor shall make every effort to protect underground facilities from damage as prescribed in the Underground Facility Damage Protection Act of 1994, Kentucky Revised Statute KRS 367.4901 to 367.4917. It is the contractor's responsibility to determine and take steps necessary to be in compliance with federal and state damage prevention directives. When prescribed in said directives, the contractor shall submit Excavation Locate Requests to the Kentucky Contact Center (KY811) via web ticket entry. The submission of this request does not relieve the contractor from the responsibility of contacting non-member facility owners, whom shall be contacted through their individual Protection Notification Center. Non-compliance with these directives can result in the enforcement of penalties.

### **REGISTRATION WITH THE SECRETARY OF STATE BY A FOREIGN ENTITY**

Pursuant to KRS 176.085(1)(b), an agency, department, office, or political subdivision of the Commonwealth of Kentucky shall not award a state contract to a person that is a foreign entity required by [KRS 14A.9-010](#) to obtain a certificate of authority to transact business in the Commonwealth ("certificate") from the Secretary of State under [KRS 14A.9-030](#) unless the person produces the certificate within fourteen (14) days of the bid or proposal opening. If the foreign entity is not required to obtain a certificate as provided in [KRS 14A.9-010](#), the foreign entity should identify the applicable exception. Foreign entity is defined within [KRS 14A.1-070](#).

**For all foreign entities required to obtain a certificate of authority to transact business in the Commonwealth, if a copy of the certificate is not received by the contracting agency within the time frame identified above, the foreign entity's solicitation response shall be deemed non-responsive or the awarded contract shall be cancelled.**

Businesses can register with the Secretary of State at <https://secure.kentucky.gov/sos/ftbr/welcome.aspx>.

### **SPECIAL NOTE FOR PROJECT QUESTIONS DURING ADVERTISEMENT**

Questions about projects during the advertisement should be submitted in writing to the Division of Construction Procurement. This may be done by email to [kytc.projectquestions@ky.gov](mailto:kytc.projectquestions@ky.gov). The Department will attempt to answer all submitted questions. The Department reserves the right not to answer if the question is not pertinent or does not aid in clarifying the project intent.

The deadline for posting answers will be 3:00 pm Eastern Daylight Time, the day preceding the Letting. Questions may be submitted until this deadline with the understanding that the later a question is submitted, the less likely an answer will be able to be provided.

The questions and answers will be posted for each Letting under the heading "Questions & Answers" on the Construction Procurement website ([www.transportation.ky.gov/construction-procurement](http://www.transportation.ky.gov/construction-procurement)). The answers provided shall be considered part of this Special Note and, in case of a discrepancy, will govern over all other bidding documents.

### **HARDWOOD REMOVAL RESTRICTIONS**

The US Department of Agriculture has imposed a quarantine in Kentucky and several surrounding states, to prevent the spread of an invasive insect, the emerald ash borer. Hardwood cut in conjunction with the project may not be removed from the state. Chipping or burning on site is the preferred method of disposal.

### **INSTRUCTIONS FOR EXCESS MATERIAL SITES AND BORROW SITES**

Identification of excess material sites and borrow sites shall be the responsibility of the Contractor. The Contractor shall be responsible for compliance with all applicable state and federal laws and may wish to consult with the US Fish and Wildlife Service to seek protection under Section 10 of the Endangered Species Act for these activities.

### **ACCESS TO RECORDS**

The contractor, as defined in KRS 45A.030 (9) agrees that the contracting agency, the Finance and Administration Cabinet, the Auditor of Public Accounts, and the Legislative Research Commission, or their duly authorized representatives, shall have access to any books, documents, papers, records, or other evidence, which are directly pertinent to this contract for the purpose of financial audit or program review. Records and other prequalification information confidentially disclosed as part of the bid process shall not be deemed as directly pertinent to the contract and

shall be exempt from disclosure as provided in KRS 61.878(1)(c). The contractor also recognizes that any books, documents, papers, records, or other evidence, received during a financial audit or program review shall be subject to the Kentucky Open Records Act, KRS 61.870 to 61.884.

In the event of a dispute between the contractor and the contracting agency, Attorney General, or the Auditor of Public Accounts over documents that are eligible for production and review, the Finance and Administration Cabinet shall review the dispute and issue a determination, in accordance with Secretary's Order 11-004.

### **BOYCOTT PROVISIONS**

If applicable, the contractor represents that, pursuant to [KRS 45A.607](#), they are not currently engaged in, and will not for the duration of the contract engage in, the boycott of a person or an entity based in or doing business with a jurisdiction with which Kentucky can enjoy open trade. **Note:** The term Boycott does not include actions taken for bona fide business or economic reasons, or actions specifically required by federal or state law.

If applicable, the contractor verifies that, pursuant to KRS 41.480, they do not engage in, and will not for the duration of the contract engage in, in energy company boycotts as defined by KRS 41.472.

### **LOBBYING PROHIBITIONS**

The contractor represents that they, and any subcontractor performing work under the contract, have not violated the agency restrictions contained in [KRS 11A.236](#) during the previous ten (10) years, and pledges to abide by the restrictions set forth in such statute for the duration of the contract awarded.

The contractor further represents that, pursuant to [KRS 45A.328](#), they have not procured an original, subsequent, or similar contract while employing an executive agency lobbyist who was convicted of a crime related to the original, subsequent, or similar contract within five (5) years of the conviction of the lobbyist.

## 1.0 BUY AMERICA REQUIREMENT.

Follow the “Buy America” provisions as required by 23 U.S.C. § 313 and 23 C.F.R. § 635.410. Except as expressly provided herein all manufacturing processes of steel or iron materials including but not limited to structural steel, guardrail materials, corrugated steel, culvert pipe, structural plate, prestressing strands, and steel reinforcing bars shall occur in the United States of America, including the application of:

- Coating,
- Galvanizing,
- Painting, and
- Other coating that protects or enhances the value of steel or iron products.

The following are exempt, unless processed or refined to include substantial amounts of steel or iron material, and may be used regardless of source in the domestic manufacturing process for steel or iron material:

- Pig iron,
- Processed, pelletized, and reduced iron ore material, or
- Processed alloys.

The Contractor shall submit a certification stating that all manufacturing processes involved with the production of steel or iron materials occurred in the United States.

Produce, mill, fabricate, and manufacture in the United States of America all aluminum components of bridges, tunnels, and large sign support systems, for which either shop fabrication, shop inspection, or certified mill test reports are required as the basis of acceptance by the Department.

Use foreign materials only under the following conditions:

- 1) When the materials are not permanently incorporated into the project; or
- 2) When the delivered cost of such materials used does not exceed 0.1 percent of the total Contract amount or \$2,500.00, whichever is greater.

The Contractor shall submit to the Engineer the origin and value of any foreign material used.

## 2.0 – BUILD AMERICA, BUY AMERICA (BABA)

Contractor shall comply with the Federal Highway Administration (FHWA) Buy America Requirement in 23 C.F.R. § 635.410 and all relevant provisions of the Build America, Buy America Act (BABA), contained within the Infrastructure Investment and Jobs Act, Pub. L. No. 117-58, §§ 70901-52 enacted November 15, 2021. The BABA requires iron, steel, manufactured products, and construction materials used in infrastructure projects funded by federal financial assistance to be produced in the United States. Comply with 2 C.F.R § 184.

BABA permits FHWA participation in the Contract only if domestic steel and iron will be used on the Project. To be considered domestic, all steel and iron used, and all products manufactured from steel and iron must be produced in the United States and all manufacturing processes, including application of a coating, for these materials must occur in the United States. Coating includes all processes that protect or enhance the value of the material to which the coating is applied. This requirement does not preclude a minimal use of foreign steel and iron materials, provided the cost of such materials does not exceed 0.1% of the total contract amount under the Contract or \$2,500.00 whichever is greater.

BABA permits FHWA participation in the Contract only if all “construction materials” as defined in the Act are made in the United States. The Buy America preference applies to the following construction materials



incorporated into infrastructure projects: non-ferrous metals; plastic and polymer-based products (including polyvinylchloride, composite building materials, and polymers used in fiber optic cables); glass (including optic glass); Fiber optic cable; optical fiber; lumber; engineered wood; and drywall. Contractor will be required to use construction materials produced in the United States on this Project. The Contractor shall submit a certification stating that all construction materials are certified to be BABA compliant.

Finally, BABA permits the continuation of FHWA's current general applicability waivers for manufactured products, raw materials, and ferryboat parts, but these waivers are subject to reevaluation, specifically the general applicability waiver for manufactured products.

The Contractor has completed and submitted, or shall complete and submit, to the Cabinet a Buy America/Build America, Buy America Certificate prior to the Cabinet issuing the notice to proceed, in the format below. After submittal, the Contractor is bound by its original certification.

A false certification is a criminal act in violation of 18 U.S.C. § 1001. The Contractor has the burden of proof to establish that it is in compliance.

At the Contractor's request, the Cabinet may, but is not obligated to, seek a waiver of Buy America requirements if grounds for the waiver exist under 23 C.F.R. § 635.410(c) or will comply with the applicable Buy America requirements if a waiver of those requirements is not available or not pursued by the Cabinet.

Please refer to the Federal Highway Administration's Buy America webpage for more information.

[Buy America - Construction Program Guide - Contract Administration - Construction - Federal Highway Administration \(dot.gov\)](#)

October 26, 2023 Letting

**BUY AMERICA / BUILD AMERICA, BUY AMERICA (ACT) MATERIALS CERTIFICATE OF COMPLIANCE**

The Contractor hereby certifies that it will comply with all relevant provisions of the Build America, Buy America Act, contained within the Infrastructure Investment and Jobs Act, Pub. L. NO. 117-58, §§ 70901-52, the requirements of 23 U.S.C. § 313, 23 C.F.R. § 635.410 and 2 C.F.R § 184.

Date Submitted: \_\_\_\_\_

Contractor: \_\_\_\_\_

Signature: \_\_\_\_\_

Printed Name: \_\_\_\_\_

Title: \_\_\_\_\_

**NOTE: THIS CERTIFICATION IS IN ADDITION TO ANY AND ALL REQUIREMENTS OUTLINED IN THE CURRENT EDITION OF THE STANDARD SPECIFICATIONS FOR ROAD AND BRIDGE CONSTRUCTION AND/OR SPECIAL NOTES CONTAINED IN THE PROJECT PROPOSAL.**

## **SPECIAL NOTE FOR RECIPROCAL PREFERENCE**

### **RECIPROCAL PREFERENCE TO BE GIVEN BY PUBLIC AGENCIES TO RESIDENT BIDDERS**

By reference, KRS 45A.490 to 45A.494 are incorporated herein and in compliance regarding the bidders residency. Bidders who want to claim resident bidder status should complete the Affidavit for Claiming Resident Bidder Status along with their bid in the electronic bidding software. Submittal of the Affidavit should be done along the bid in Bid Express.

April 30, 2018

## Special Note for Radar Presence Detection Devices

---

### **INSTALL RADAR PRESENCE DETECTOR TYPE A**

*Install Radar Presence Detector Type A* shall consist of installation of a pole mounted radar presence sensor, sensor mounting bracket, sensor cables, interface boxes, lead-in cable, connectors (furnished by the Contractor), and controller interface assembly. The Install Radar Presence Detector Type A bid item shall include all labor required to provide a functional detection system. Radar Presence Detector Type A shall be installed and wired in accordance with the manufacturer's instructions. After the detector is installed and before the detector is powered on, the Contractor shall coordinate with District Traffic Division's representatives to schedule a time to perform the detector setup. The Contractor shall double check to verify that all wiring is correctly installed and connected before scheduling the setup work. Representatives from KYTC and/or the manufacturer or sales representative will assist with setup and calibration. The Contractor shall provide a bucket truck and operators at this time for final aiming of the sensors. The Contractor shall provide individuals capable of operating the setup software and learning the setup process so that future installations may be completed without assistance from others.

### **INSTALL RADAR ADVANCE DETECTOR TYPE B**

*Install Radar Advance Detector Type B* shall consist of installation of a pole mounted radar presence sensor, sensor mounting bracket, sensor cables, interface boxes, lead-in cable, connectors (furnished by the Contractor), and controller interface assembly. The Install Radar Advance Detector Type B bid item shall include all labor required to provide a functional detection system. Radar Advance Detector Type B shall be installed and wired in accordance with the manufacturer's instructions. After the detector is installed and before the detector is powered on, the Contractor shall coordinate with District Traffic Division's representatives to schedule a time to perform the detector setup. The Contractor shall double check to verify that all wiring is correctly installed and connected before scheduling the setup work. Representatives from KYTC and/or the manufacturer or sales representative will assist with setup and calibration. The Contractor shall provide a bucket truck and operators at this time for final aiming of the sensors. The Contractor shall provide individuals capable of operating the setup software and learning the setup process so that future installations may be completed without assistance from others.

## SPECIAL NOTES FOR COMPLETION DATES & LIQUIDATED DAMAGES

---

The ultimate fixed completion date for this project will be December 1, 2024. Liquidated Damages for failure to complete the project on time will be assessed following Section 108.09. Contrary to Section 108.09, Liquidated Damages will be assessed for the months of December through March.

Contrary to Section 108.09, Liquidated Damages will be assessed regardless of whether seasonal limitations prohibit the Contractor from performing work on the controlling operation. All liquidated damages will be applied accumulatively. All other applicable portions of Section 108 apply.

Contractor Shall Complete the Installations in the following order:

KY 1694 @ Stone School Road      (Proposed Completion 10/01/2024)

KY 1931 @ 64 EB On Ramp      (Proposed Completion 11/01/2024)

KY 1020 @ Tolls Lane      (Proposed Completion 12/01/2024)

## **SPECIAL PROVISION FOR WASTE AND BORROW SITES**

Obtain U.S. Army Corps of Engineer's approval before utilizing a waste or borrow site that involves "Waters of the United States". The Corps of Engineers defines "Waters of the United States" as perennial or intermittent streams, ponds or wetlands. The Corps of Engineers also considers ephemeral streams, typically dry except during rainfall but having a defined drainage channel, to be jurisdictional waters. Direct questions concerning any potential impacts to "Waters of the United States" to the attention of the appropriate District Office for the Corps of Engineers for a determination prior to disturbance. Be responsible for any fees associated with obtaining approval for waste and borrow sites from the U.S. Army Corps of Engineer or other appropriate regulatory agencies.

1-296 Waste & Borrow Sites  
01/02/2012

## **COORDINATION OF WORK WITH OTHER CONTRACTS**

Be advised, there may be an active project(s) adjacent to or within this project. The Engineer will coordinate the work of the Contractors. See Section 105.06.

1-3193 Coordination Contracts  
01/02/2012

## TRAFFIC CONTROL PLAN

---

### TRAFFIC CONTROL GENERAL

Except as provided herein, traffic shall be maintained in accordance with the current editions of the Manual on Uniform Traffic Control Devices (MUTCD), Standard Specifications, Supplemental Specifications, and the Standard and Sepia Drawings. Except for the roadway and traffic control bid items listed, all items of work necessary to maintain and control traffic shall be paid at the lump sum bid price to "Maintain and Control Traffic".

Contrary to Section 106.01, traffic control devices used on this project may be new, or used in like new condition, at the beginning of the work and maintained in like new condition until completion of the work. Any temporary traffic control items, devices, materials, and incidentals shall remain the property of the contractor unless otherwise addressed, when no longer needed.

### PROJECT PHASING & CONSTRUCTION PROCEDURES

Lane closures and mobile operations are permitted during the hours listed below for the KY 1020 and KY 913 locations:

- Sunday through Thursday nights 8:00 P.M. – 6:00 A.M.
- Friday & Saturday nights 8:00 P.M. – 7:00 A.M.

Lane closures and mobile operations are permitted during the hours listed below for the KY 1694 location:

- Daily 9:00 A.M. – 4:00 P.M.

Unless otherwise approved by the Engineer, lane closures will not be permitted on the following days:

Labor Day Weekend	3 pm Friday, August 30, 2024 – 8 pm Monday, September 2, 2024
Thanksgiving Holiday	3 pm Wednesday, November 27, 2024 – 8 pm Sunday, December 1, 2024
Christmas Holiday	7 am Tuesday, December 24, 2024 – 8 pm Wednesday, December 25, 2024
New Year's Day Holiday	7 am Tuesday, December 31, 2024 – 8 pm Wednesday, January 1, 2025

For all traffic, maintain one lane of traffic in each direction at all times during construction. The Engineer may permit minor operations with lane closures outside of these hours, with prior approval.

At the discretion of the Engineer, additional days and hours may be specified when lane closures will not be allowed.

The Department will provide public notification regarding lane closures. The Contractor shall submit proposed lane closure days and times to the Engineer at least 14 calendar days in advance for approval. Liquidated Damages will be assessed for each hour or fraction of an hour that a lane closure is in place outside of an approved time period. See the Special Notes for Completion Dates & Liquidated Damages for details on the Liquidated Damages amount.



Traffic Control Plan  
Page 2 of 8

## **LANE CLOSURES**

Long term lane closures shall not be allowed; therefore, lane closures will not be measured for payment. Do not leave lane closures in place during non-working hours and prohibited periods

## **TEMPORARY SIGNS**

Temporary signposts and splices shall be compliant with NCHRP 350 or MASH. Manufacturer's documentation validating this compliance shall be provided to the Engineer prior to installation. Temporary signs, including any splices, shall be installed according to manufacturer's specifications and installation recommendations. Contrary to section 112.04.02, only long-term temporary signs (temporary signs intended to be continuously in place for more than 3 days) will be measured for payment. Short-term temporary signs (temporary signs intended to be left in place for 3 days or less) will not be measured for payment but will be incidental to Maintain and Control Traffic.

## **CHANGEABLE MESSAGE SIGNS**

Two new (not used), trailer-mounted, Portable Changeable Message Signs, Model WANCO WTLMB(A), are to be purchased by the Contractor. **The Department will retain possession of the Portable Changeable Message Signs at the completion of the project.**

The Contractor will be required to undertake the placement and setup of the Portable Changeable Message Signs. The Engineer will determine placement locations and the messages to be displayed. Upon completion of the project, the Contractor shall deliver the Portable Changeable Message Signs to the KYTC Equipment Garage at 4334 Poplar Level Road, Louisville, KY 40218.

Relocation, installation, maintenance, and delivery of the Portable Changeable Message Signs at the completion of the project shall be incidental to the Bid Item: PORTABLE CHANGEABLE MESSAGE SIGN (Purchase and Supply).

Provide changeable message signs in advance of and within the project at locations determined by the Engineer. If work is in progress concurrently in both directions or if more than one lane closure is in place in the same direction of travel, provide additional changeable message signs as directed by the Engineer. Place changeable message signs approximately one mile in advance of the anticipated queue at each lane closure. As the actual queue lengthens and/or shortens, relocate or provide additional changeable message signs so that traffic has warning of slowed or stopped traffic at least one mile but not more than two miles before reaching the end of the actual queue. The Engineer may vary the designated locations as the work progresses. The Engineer will determine the messages to be displayed. In the event of damage or mechanical/electrical failure, repair or replace the Changeable Message Sign. If the damage or mechanical/electrical failure is identified during active work operations, repair or replace the Changeable Message Sign within 6 hours. If the damage or mechanical/electrical failure is identified when there are no active work operations on the project, repair or replace the Changeable Message Sign within 12 hours. The Department will measure for payment the maximum number of Changeable Message Signs in concurrent use at the same time on a single day on all sections of the contract. The Department will measure individual Changeable Message Signs only once for payment, regardless of how many times they are set, reset, removed, and/or relocated during the duration of the project. The

Traffic Control Plan  
Page 3 of 8

Department will not measure for payment any replacements for damaged Changeable Message Signs or any changeable message signs the Engineer directs to be replaced due to poor condition or readability. Retain possession of the Changeable Message Signs upon completion of the work.

**ARROW PANELS**

Use arrow panels as shown on the Standard Drawings or as directed by the Engineer. The Department will measure for payment the maximum number of arrow panels in concurrent use at the same time on a single day on all sections of the contract. The Department will measure individual Arrow Panels only once for payment, regardless of how many times they are set, reset, removed, and relocated during the duration of the project. The Department will not measure replacements for damaged Arrow Panels or for panels signs the Engineer directs be replaced due to poor condition or readability for payment. Retain possession of the Arrow Panels upon completion of the work.

**BARRICADES**

The Department will not measure barricades used in lieu of barrels and cones for channelization or delineation but shall be incidental to Maintain and Control Traffic according to Section 112.04.01.

**TEMPORARY ENTRANCES**

The Engineer will not require the Contractor to provide continuous access to farms, single family, duplex, or triplex residential properties during working hours; however, provide reasonable egress and ingress to each such property when actual operations are not in progress at that location. Limit the time during which a farm or residential entrance is blocked to the minimum length of time required for actual operations, not extended for the Contractor's convenience, and in no case exceeding six (6) hours. Notify all residents twenty-four hours in advance of any driveway or entrance closings and make any accommodations necessary to meet the access needs of disabled residents.

Except as allowed by the Phasing as specified above, maintain direct access to all side streets and roads, schools, churches, commercial properties, and apartments or apartment complexes of four or more units at all times. Access to fire hydrants must also be maintained at all times.

## USE AND PLACEMENT OF CHANGEABLE MESSAGE SIGNS

The following policy is based upon current Changeable Message Signs (CMS) standards and practice from many sources, including the Federal Highway Administration (FHWA), other State Departments of Transportation, and Traffic Safety Associations. It is understood that each CMS installation or use requires individual consideration due to the specific location or purpose. However, there will be elements that are constant in nearly all applications. Accordingly, these recommended guidelines bring a level of uniformity, while still being open to regional experience and engineering judgment.

### **Application**

The primary purpose of CMS is to advise the driver of unexpected traffic and routing situations. Examples of applications where CMS can be effective include:

- Closures (road, lane, bridge, ramp, shoulder, interstate)
- Changes in alignment or surface conditions
- Significant delays, congestion
- Construction/maintenance activities (delays, future activities)
- Detours/alternative routes
- Special events with traffic and safety implications
- Crash/incidents
- Vehicle restrictions (width, height, weight, flammable)
- Advance notice of new traffic control devices
- Real-time traffic conditions (must be kept up to date)
- Weather /driving conditions, environmental conditions, Roadway Weather Information Systems
- Emergency Situations
- Referral to Highway Advisory Radio (if available)
- Messages as approved by the County Engineer's Office

### **CMS should not be used for:**

- Replacement of static signs (e.g. ROAD WORK AHEAD), regulatory signage (e.g. speed limits), pavement markings, standard traffic control devices, conventional warning or guide signs.
- Replacement of lighted arrow board
- Advertising (Don't advertise the event unless clarifying "action" to be taken by driver – e.g. Speedway traffic next exit)
- Generic messages
- Test messages (portable signs only)
- Describe recurrent congestion (e.g. rush hour)
- Public service announcements (not traffic related)

Traffic Control Plan  
Page 5 of 8

### **Messages**

Basic principles that are important to providing proper messages and ensuring the proper operation of a CMS are:

- Visible for at least ½ mile under ideal daytime and nighttime conditions
- Legible from all lanes a minimum of 650 feet
- Entire message readable twice while traveling at the posted speed
- No more than two message panels should be used (three panels may be used on roadways where vehicles are traveling less than 45 mph). A panel is the message that fits on the face of the sign without flipping or scrolling.
- Each panel should convey a single thought; short and concise
- Do not use two unrelated panels on a sign
- Do not use the sign for two unrelated messages
- Should not scroll text horizontally or vertically
- Should not contain both the words left and right
- Use standardized abbreviations and messages
- Should be accurate and timely
- Avoid filler/unnecessary words and periods (hazardous, a, an, the)
- Avoid use of speed limits
- Use words (not numbers) for dates

### **Placement**

Placement of the CMS is important to ensure that the sign is visible to the driver and provides ample time to take any necessary action. Some of the following principles may only be applicable to controlled access roadways. The basic principles of placement for a CMS are:

- When 2 signs are needed, place on same side of roadway and at least 1,000 feet apart
- Place behind semi-rigid/rigid protection (guardrail, barrier) or outside of the clear zone
- Place 1,000 feet in advance of work zone; at least one mile ahead of decision point
- Normally place on right side of roadway; but should be placed closest to the affected lane so that either side is acceptable
- Signs should not be dual mounted (one on each side of roadway facing same direction)
- Point trailer hitch downstream
- Secure to immovable object to prevent theft (if necessary)
- Do not place in sags or just beyond crest
- Check for reflection of sun to prevent the blinding of motorist
- Should be turned ~3 degrees outward from perpendicular to the edge of pavement
- Bottom of sign should be 7 feet above the elevation of edge of roadway
- Should be removed when not in use

Traffic Control Plan  
Page 6 of 8

**Standard Abbreviations**

The following is a list of standard abbreviations to be used on CMS:

<u>Word</u>	<u>Abbrev</u>	<u>Example</u>
Access	ACCS	CRASH AHEAD/ USE ACCS RD NEXT RIGHT
Alternate	ALT	CRASH AHEAD/ USE ALT RTE NEXT RIGHT
Avenue	AVE	FIFTH AVE CLOSED/ DETOUR NEXT LEFT
Blocked	BLKD	FIFTH AVE BLKD/ MERGE LEFT
Boulevard	BLVD	MAIN BLVD CLOSED/ USE ALT RTE
Bridge	BRDG	SMITH BRDG CLOSED/ USE ALT RTE
Cardinal Directions	N, S, E, W	N I75 CLOSED/ DETOUR EXIT 30
Center	CNTR	CNTR LANE CLOSED/ MERGE LEFT
Commercial	COMM	OVRSZ COMM VEH/ USE I275
Condition	COND	ICY COND POSSIBLE
Congested	CONG	HVY CONG NEXT 3 MI
Construction	CONST	CONST WORK AHEAD/ EXPECT DELAYS
Downtown	DWNTN	DWNTN TRAF USE EX 40
Eastbound	E-BND	E-BND I64 CLOSED/ DETOUR EXIT 20
Emergency	EMER	EMER VEH AHEAD/ PREPARE TO STOP
Entrance, Enter	EX, EXT	DWNTN TRAF USE EX 40
Expressway	EXPWY	WTRSN EXPWY CLOSED/ DETOUR EXIT 10
Freeway	FRWY, FWY	GN SYNDR FWY CLOSED/ DETOUR EXIT 15
Hazardous Materials	HAZMAT	HAZMAT IN ROADWAY/ ALL TRAF EXIT 25
Highway	HWY	CRASH ON AA HWY/ EXPECT DELAYS
Hour	HR	CRASH ON AA HWY/ 2 HR DELAY
Information	INFO	TRAF INFO TUNE TO 1240 AM
Interstate	I	E-BND I64 CLOSED/ DETOUR EXIT 20
Lane	LN	LN CLOSED MERGE LEFT
Left	LFT	LANE CLOSED MERGE LFT
Local	LOC	LOC TRAF USE ALT RTE
Maintenance	MAINT	MAINT WRK ON BRDG/ SLOW
Major	MAJ	MAJ DELAYS I75/ USE ALT RTE
Mile	MI	CRASH 3 MI AHEAD/ USE ALT RTE
Minor	MNR	CRASH 3 MI MNR DELAY
Minutes	MIN	CRASH 3 MI/ 30 MIN DELAY
Northbound	N-BND	N-BND I75 CLOSED/ DETOUR EXIT 50
Oversized	OVRSZ	OVRSZ COMM VEH/ USE I275 NEXT RIGHT
Parking	PKING	EVENT PKING NEXT RGT
Parkway	PKWY	CUM PKWAY TRAF/ DETOUR EXIT 60
Prepare	PREP	CRASH 3 MI/ PREP TO STOP
Right	RGT	EVENT PKING NEXT RGT
Road	RD	HAZMAT IN RD/ ALL TRAF EXIT 25
Roadwork	RDWK	RDWK NEXT 4 MI/ POSSIBLE DELAYS
Route	RTE	MAJ DELAYS I75/ USE ALT RTE
Shoulder	SHLDR	SHLDR CLOSED NEXT 5 MI
Slippery	SLIP	SLIP COND POSSIBLE/ SLOW SPD
Southbound	S-BND	S-BND I75 CLOSED/ DETOUR EXIT 50
Speed	SPD	SLIP COND POSSIBLE/ SLOW SPD

Traffic Control Plan  
Page 7 of 8

**Standard Abbreviations** (cont.)

<u>Word</u>	<u>Abbrev</u>	<u>Example</u>
Street	ST	MAIN ST CLOSED/ USE ALT RTE
Traffic	TRAF	CUM PKWAY TRAF/ DETOUR EXIT 60
Vehicle	VEH	OVRSZ COMM VEH/ USE I275 NEXT RIGHT
Westbound	W-BND	W-BND I64 CLOSED/ DETOUR EXIT 50
Work	WRK	CONST WRK 2MI/ POSSIBLE DELAYS

Certain abbreviations are prone to inviting confusion because another word is abbreviated or could be abbreviated in the same way. DO NOT USE THESE ABBREVIATIONS:

<u>Abbrev</u>	<u>Intended Word</u>	<u>Word Erroneously Given</u>
ACC	Accident	Access (Road)
CLRS	Clears	Colors
DLY	Delay	Daily
FDR	Feeder	Federal
L	Left	Lane (merge)
LOC	Local	Location
LT	Light (traffic)	Left
PARK	Parking	Park
POLL	Pollution (index)	Poll
RED	Reduce	Red
STAD	Stadium	Standard
TEMP	Temporary	Temperature
WRNG	Warning	Wrong

**Typical Messages**

The following is a list of typical messages used on CMS. The list consists of the reason or problem that you want the driver to be aware of and the action that you want the driver to take.

<u>Reason/Problem</u>	<u>Action</u>
CRASH AHEAD	ALL TRAFFIC EXIT RT
CRASH/XX MILES	AVOID DELAY USE XX
XX ROAD CLOSED	CONSIDER ALT ROUTE
XX EXIT CLOSED	DETOUR
BRIDGE CLOSED	DETOUR XX MILES
BRIDGE/(SLIPPERY, ICE, ETC.)	DO NOT PASS
CENTER/LANE/CLOSED	EXPECT DELAYS
DELAY(S), MAJOR/DELAYS	FOLLOW ALT ROUTE
DEBRIS AHEAD	KEEP LEFT
DENSE FOG	KEEP RIGHT
DISABLED/VEHICLE	MERGE XX MILES
EMER/VEHICLES/ONLY	MERGE LEFT
EVENT PARKING	MERGE RIGHT
EXIT XX CLOSED	ONE-WAY TRAFFIC
FLAGGER XX MILES	PASS TO LEFT

Traffic Control Plan  
Page 8 of 8

**Typical Messages** (cont.)

**Reason/Problem**

FOG XX MILES  
FREEWAY CLOSED  
FRESH OIL  
HAZMAT SPILL  
ICE  
INCIDENT AHEAD  
LANES (NARROW, SHIFT, MERGE, ETC.)  
LEFT LANE CLOSED  
LEFT LANE NARROWS  
LEFT 2 LANES CLOSED  
LEFT SHOULDER CLOSED  
LOOSE GRAVEL  
MEDIAN WORK XX MILES  
MOVING WORK ZONE, WORKERS IN ROADWAY  
NEXT EXIT CLOSED  
NO OVERSIZED LOADS  
NO PASSING  
NO SHOULDER  
ONE LANE BRIDGE  
PEOPLE CROSSING  
RAMP CLOSED  
RAMP (SLIPPERY, ICE, ETC.)  
RIGHT LANE CLOSED  
RIGHT LANE NARROWS  
RIGHT SHOULDER CLOSED  
ROAD CLOSED  
ROAD CLOSED XX MILES  
ROAD (SLIPPERY, ICE, ETC.)  
ROAD WORK  
ROAD WORK (OR CONSTRUCTION) (TONIGHT, TODAY, TOMORROW, DATE)  
ROAD WORK XX MILES  
SHOULDER (SLIPPERY, ICE, SOFT, BLOCKED, ETC.)  
NEW SIGNAL XX MILES  
SLOW 1 (OR 2) - WAY TRAFFIC  
SOFT SHOULDER  
STALLED VEHICLES AHEAD  
TRAFFIC BACKUP  
TRAFFIC SLOWS  
TRUCK CROSSING  
TRUCKS ENTERING  
TOW TRUCK AHEAD  
UNEVEN LANES  
WATER ON ROAD  
WET PAINT  
WORK ZONE XX MILES  
WORKERS AHEAD

**Action**

PASS TO RIGHT  
PREPARE TO STOP  
REDUCE SPEED  
SLOW  
SLOW DOWN  
STAY IN LANE  
STOP AHEAD  
STOP XX MILES  
TUNE RADIO 1610 AM  
USE NN ROAD  
USE CENTER LANE  
USE DETOUR ROUTE  
USE LEFT TURN LANE  
USE NEXT EXIT  
USE RIGHT LANE  
WATCH FOR FLAGGER



KENTUCKY TRANSPORTATION CABINET  
Department of Highways  
DIVISION OF RIGHT OF WAY & UTILITIES

TC 62-226  
Rev. 01/2016  
Page 1 of 1

**RIGHT OF WAY CERTIFICATION**

<input checked="" type="checkbox"/>	<b>Original</b>	<input type="checkbox"/>	<b>Re-Certification</b>	<b>RIGHT OF WAY CERTIFICATION</b>			
<b>ITEM #</b>		<b>COUNTY</b>		<b>PROJECT # (STATE)</b>		<b>PROJECT # (FEDERAL)</b>	
n/a		Jefferson		FE04 056 1694 000-001		n/a	
<b>PROJECT DESCRIPTION</b>							
Signals at the intersection of KY 1694 (Sleepy Hollow Road) and CS 2558C (Norton Commons Blvd)							
<input checked="" type="checkbox"/>	<b>No Additional Right of Way Required</b>						
Construction will be within the limits of the existing right of way. The right of way was acquired in accordance to FHWA regulations under the Uniform Relocation Assistance and Real Property Acquisitions Policy Act of 1970, as amended. No additional right of way or relocation assistance were required for this project.							
<input type="checkbox"/>	<b>Condition # 1 (Additional Right of Way Required and Cleared)</b>						
All necessary right of way, including control of access rights when applicable, have been acquired including legal and physical possession. Trial or appeal of cases may be pending in court but legal possession has been obtained. There may be some improvements remaining on the right-of-way, but all occupants have vacated the lands and improvements, and KYTC has physical possession and the rights to remove, salvage, or demolish all improvements and enter on all land. Just Compensation has been paid or deposited with the court. All relocations have been relocated to decent, safe, and sanitary housing or that KYTC has made available to displaced persons adequate replacement housing in accordance with the provisions of the current FHWA directive.							
<input type="checkbox"/>	<b>Condition # 2 (Additional Right of Way Required with Exception)</b>						
The right of way has not been fully acquired, the right to occupy and to use all rights-of-way required for the proper execution of the project has been acquired. Some parcels may be pending in court and on other parcels full legal possession has not been obtained, but right of entry has been obtained, the occupants of all lands and improvements have vacated, and KYTC has physical possession and right to remove, salvage, or demolish all improvements. Just Compensation has been paid or deposited with the court for most parcels. Just Compensation for all pending parcels will be paid or deposited with the court prior to AWARD of construction contract							
<input type="checkbox"/>	<b>Condition # 3 (Additional Right of Way Required with Exception)</b>						
The acquisition or right of occupancy and use of a few remaining parcels are not complete and/or some parcels still have occupants. All remaining occupants have had replacement housing made available to them in accordance with 49 CFR 24.204. KYTC is hereby requesting authorization to advertise this project for bids and to proceed with bid letting even though the necessary right of way will not be fully acquired, and/or some occupants will not be relocated, and/or the just compensation will not be paid or deposited with the court for some parcels until after bid letting. KYTC will fully meet all the requirements outlined in 23 CFR 635.309(c)(3) and 49 CFR 24.102(j) and will expedite completion of all acquisitions, relocations, and full payments after bid letting and prior to AWARD of the construction contract or force account construction.							
Total Number of Parcels on Project		0	EXCEPTION (S) Parcel #		ANTICIPATED DATE OF POSSESSION WITH EXPLANATION		
Number of Parcels That Have Been Acquired							
Signed Deed							
Condemnation							
Signed ROE							
<b>Notes/ Comments (Use Additional Sheet if necessary)</b>							
LPA RW Project Manager				Right of Way Supervisor			
Printed Name				Printed Name		Tracy Lovell for Tom Boykin	
Signature				Signature			
Date				Date		6/10/24	
Right of Way Director				FHWA			
Printed Name				Printed Name			
Signature				Signature			
Date		Date: 2024.06.10 11:10:46 -05'00'		Date			





KENTUCKY TRANSPORTATION CABINET  
Department of Highways  
DIVISION OF RIGHT OF WAY & UTILITIES  
**RIGHT OF WAY CERTIFICATION**

TC 62-226  
Rev. 01/2016  
Page 1 of 1

<input checked="" type="checkbox"/>	<b>Original</b>	<input type="checkbox"/>	<b>Re-Certification</b>	<b>RIGHT OF WAY CERTIFICATION</b>			
<b>ITEM #</b>		<b>COUNTY</b>		<b>PROJECT # (STATE)</b>		<b>PROJECT # (FEDERAL)</b>	
n/a		Jefferson		FE04 056 0913 002-003		n/a	
<b>PROJECT DESCRIPTION</b>							
Signals at the intersection of KY 913 (Blankenbaker Parkway) and I-64 EB Ramp							
<input checked="" type="checkbox"/> <b>No Additional Right of Way Required</b>							
Construction will be within the limits of the existing right of way. The right of way was acquired in accordance to FHWA regulations under the Uniform Relocation Assistance and Real Property Acquisitions Policy Act of 1970, as amended. No additional right of way or relocation assistance were required for this project.							
<input type="checkbox"/> <b>Condition # 1 (Additional Right of Way Required and Cleared)</b>							
All necessary right of way, including control of access rights when applicable, have been acquired including legal and physical possession. Trial or appeal of cases may be pending in court but legal possession has been obtained. There may be some improvements remaining on the right-of-way, but all occupants have vacated the lands and improvements, and KYTC has physical possession and the rights to remove, salvage, or demolish all improvements and enter on all land. Just Compensation has been paid or deposited with the court. All relocations have been relocated to decent, safe, and sanitary housing or that KYTC has made available to displaced persons adequate replacement housing in accordance with the provisions of the current FHWA directive.							
<input type="checkbox"/> <b>Condition # 2 (Additional Right of Way Required with Exception)</b>							
The right of way has not been fully acquired, the right to occupy and to use all rights-of-way required for the proper execution of the project has been acquired. Some parcels may be pending in court and on other parcels full legal possession has not been obtained, but right of entry has been obtained, the occupants of all lands and improvements have vacated, and KYTC has physical possession and right to remove, salvage, or demolish all improvements. Just Compensation has been paid or deposited with the court for most parcels. Just Compensation for all pending parcels will be paid or deposited with the court prior to AWARD of construction contract							
<input type="checkbox"/> <b>Condition # 3 (Additional Right of Way Required with Exception)</b>							
The acquisition or right of occupancy and use of a few remaining parcels are not complete and/or some parcels still have occupants. All remaining occupants have had replacement housing made available to them in accordance with 49 CFR 24.204. KYTC is hereby requesting authorization to advertise this project for bids and to proceed with bid letting even though the necessary right of way will not be fully acquired, and/or some occupants will not be relocated, and/or the just compensation will not be paid or deposited with the court for some parcels until after bid letting. KYTC will fully meet all the requirements outlined in 23 CFR 635.309(c)(3) and 49 CFR 24.102(j) and will expedite completion of all acquisitions, relocations, and full payments after bid letting and prior to AWARD of the construction contract or force account construction.							
Total Number of Parcels on Project		0	EXCEPTION (S) Parcel #		ANTICIPATED DATE OF POSSESSION WITH EXPLANATION		
Number of Parcels That Have Been Acquired							
Signed Deed							
Condemnation							
Signed ROE							
<b>Notes/ Comments (Use Additional Sheet if necessary)</b>							
LPA RW Project Manager				Right of Way Supervisor			
Printed Name				Printed Name		Tracy Lovell for Tom Boykin	
Signature				Signature			
Date				Date		6/10/24	
Right of Way Director				FHWA			
Printed Name				Printed Name			
Signature				Signature			
Date		Date: 2024.06.10 07:55:00 -05'00'		Date			



KENTUCKY TRANSPORTATION CABINET  
Department of Highways  
DIVISION OF RIGHT OF WAY & UTILITIES

TC 62-226  
Rev. 01/2016  
Page 1 of 1

**RIGHT OF WAY CERTIFICATION**

<input checked="" type="checkbox"/>	<b>Original</b>	<input type="checkbox"/>	<b>Re-Certification</b>	<b>RIGHT OF WAY CERTIFICATION</b>			
<b>ITEM #</b>		<b>COUNTY</b>		<b>PROJECT # (STATE)</b>		<b>PROJECT # (FEDERAL)</b>	
n/a		Jefferson		FE04 056 1020 004-005		n/a	
<b>PROJECT DESCRIPTION</b>							
Signals at the intersection of KY 1020 (National Turnpike) and CS 1131F (Tolls Road)							
<input checked="" type="checkbox"/>	<b>No Additional Right of Way Required</b>						
Construction will be within the limits of the existing right of way. The right of way was acquired in accordance to FHWA regulations under the Uniform Relocation Assistance and Real Property Acquisitions Policy Act of 1970, as amended. No additional right of way or relocation assistance were required for this project.							
<input type="checkbox"/>	<b>Condition # 1 (Additional Right of Way Required and Cleared)</b>						
All necessary right of way, including control of access rights when applicable, have been acquired including legal and physical possession. Trial or appeal of cases may be pending in court but legal possession has been obtained. There may be some improvements remaining on the right-of-way, but all occupants have vacated the lands and improvements, and KYTC has physical possession and the rights to remove, salvage, or demolish all improvements and enter on all land. Just Compensation has been paid or deposited with the court. All relocations have been relocated to decent, safe, and sanitary housing or that KYTC has made available to displaced persons adequate replacement housing in accordance with the provisions of the current FHWA directive.							
<input type="checkbox"/>	<b>Condition # 2 (Additional Right of Way Required with Exception)</b>						
The right of way has not been fully acquired, the right to occupy and to use all rights-of-way required for the proper execution of the project has been acquired. Some parcels may be pending in court and on other parcels full legal possession has not been obtained, but right of entry has been obtained, the occupants of all lands and improvements have vacated, and KYTC has physical possession and right to remove, salvage, or demolish all improvements. Just Compensation has been paid or deposited with the court for most parcels. Just Compensation for all pending parcels will be paid or deposited with the court prior to AWARD of construction contract							
<input type="checkbox"/>	<b>Condition # 3 (Additional Right of Way Required with Exception)</b>						
The acquisition or right of occupancy and use of a few remaining parcels are not complete and/or some parcels still have occupants. All remaining occupants have had replacement housing made available to them in accordance with 49 CFR 24.204. KYTC is hereby requesting authorization to advertise this project for bids and to proceed with bid letting even though the necessary right of way will not be fully acquired, and/or some occupants will not be relocated, and/or the just compensation will not be paid or deposited with the court for some parcels until after bid letting. KYTC will fully meet all the requirements outlined in 23 CFR 635.309(c)(3) and 49 CFR 24.102(j) and will expedite completion of all acquisitions, relocations, and full payments after bid letting and prior to AWARD of the construction contract or force account construction.							
Total Number of Parcels on Project		0	EXCEPTION (S) Parcel #		ANTICIPATED DATE OF POSSESSION WITH EXPLANATION		
Number of Parcels That Have Been Acquired							
Signed Deed							
Condemnation							
Signed ROE							
<b>Notes/ Comments (Use Additional Sheet if necessary)</b>							
LPA RW Project Manager				Right of Way Supervisor			
Printed Name				Printed Name		Tracy Lovell for Tom Boykin	
Signature				Signature			
Date				Date		6/18/24	
Right of Way Director				FHWA			
Printed Name				Printed Name			
Signature				Signature			
Date		Date: 2024.06.10 11:07:58 -05'00'		Date			

## UTILITIES AND RAIL CERTIFICATION NOTE

### Jefferson County

FE04 056 1694 000-001	Signal at KY 1694 (Sleepy Hollow Rd) at CS 2558C (Norton Commons Blvd.)
FE04 056 0913 002-003	Signal at KY 913 (Blankenbaker Parkway) and I-64 EB On Ramp
FE04 056 1020 004-005	Signal at KY 1020 (National Turnpike) and CS 1131F (Tolls Road)

### GENERAL PROJECT NOTES ON UTILITIES

For all projects over 2000 linear feet, which are defined as a "Large Project" in KRS 367.4903(18), the awarded contractor shall initially mark the first 2000 linear feet minimally of proposed excavation or construction boundaries of the project to be worked using the procedure set forth in KRS 367.4909(9)(k). This temporary field locating of the project excavation boundary shall take place prior to submitting an excavation location request to the underground utility protection Kentucky Contact Center. For large projects, the awarded contractor shall work with the impacted utilities to determine when additional white lining of the remainder of the project site will take place. This provision shall not alter or relieve the awarded contractor from complying with requirements of KRS 367.4905 to 367.4917 in their entirety.

***NOTE: The information presented in this Utility Note is informational in nature and the information contained herein is not guaranteed.***

The contractor will be responsible for contacting all utility facility owners on the subject project to coordinate his/her activities. The contractor will coordinate his/her activities to minimize and, where possible, avoid conflicts with utility facilities. Due to the nature of the work proposed, it is unlikely to conflict with the existing utilities beyond minor facility adjustments. Where conflicts with utility facilities are unavoidable, the contractor will coordinate any necessary relocation work with the facility owner and Resident Engineer. The Kentucky Transportation Cabinet maintains the right to remove or alter portions of this contract if a utility conflict occurs. The utility facilities as noted in the previous section(s) have been determined using data garnered by varied means and with varying degrees of accuracy: from the facility owners, a result of S.U.E., field inspections, and/or reviews of record drawings. The facilities defined may not be inclusive of all utilities in the project scope and are not Level A quality, unless specified as such. It is the contractor's responsibility to verify all utilities and their respective locations before excavating.

The contractor shall make every effort to protect underground facilities from damage as prescribed in the Underground Facility Damage Protection Act of 1994, Kentucky Revised Statute KRS 367.4901 to 367.4917. It is the contractor's responsibility to determine and take steps necessary to be in compliance with federal and state damage prevention directives. The contractor is instructed to contact KY 811 for the location of existing underground utilities. Contact shall be made a minimum of two (2) and no more than ten (10) business days prior to excavation. The contractor shall submit Excavation Locate Requests to the Kentucky Contact Center (KY 811) via web ticket entry. The submission of this request does not relieve the contractor from the responsibility of contacting non-member facility owners, whom are to be contacted through their individual Protection Notification Center. It may be necessary for the contractor to contact the County Court Clerk to determine what utility companies have facilities in the area. Non-compliance with these directives can result in the enforcement of penalties.

## UTILITIES AND RAIL CERTIFICATION NOTE

Jefferson County	
FE04 056 1694 000-001	Signal at KY 1694 (Sleepy Hollow Rd) at CS 2558C (Norton Commons Blvd.)
FE04 056 0913 002-003	Signal at KY 913 (Blankenbaker Parkway) and I-64 EB On Ramp
FE04 056 1020 004-005	Signal at KY 1020 (National Turnpike) and CS 1131F (Tolls Road)

**NOTE: DO NOT DISTURB THE FOLLOWING UTILITIES LOCATED WITHIN THE PROJECT DISTURB LIMITS**

There are no known utility relocations within the project limits. If an unknown utility is encountered, the contractor will be responsible for arranging an on-site meeting with the utility owner/representative(s) and the Engineer to discuss potential impacts and solutions to either avoid the utility or relocate the utility. Depending on the solution selected, the Engineer will determine whether or not additional contract time is appropriate.

**\*The Contractor is fully responsible for protection of all utilities listed above\***

**THE FOLLOWING COMPANIES ARE RELOCATING/ADJUSTING THEIR UTILITIES WITHIN THE PROJECT LIMITS AND WILL BE COMPLETE PRIOR TO CONSTRUCTION**

None

**THE FOLLOWING COMPANIES HAVE FACILITIES TO BE RELOCATED/ADJUSTED BY THE COMPANY OR THE COMPANY'S SUBCONTRACTOR AND IS TO BE COORDINATED WITH THE ROAD CONTRACT**

None

**THE FOLLOWING COMPANIES HAVE FACILITIES TO BE RELOCATED/ADJUSTED BY THE ROAD CONTRACTOR AS INCLUDED IN THIS CONTRACT**

None

**RAIL COMPANIES HAVE FACILITIES IN CONJUNCTION WITH THIS PROJECT AS NOTED**

No Rail Involvement     Rail Involved     Rail Adjacent

## UTILITIES AND RAIL CERTIFICATION NOTE

### Jefferson County

- |                       |   |
|-----------------------|---|
| FE04 056 1694 000-001 | Signal at KY 1694 (Sleepy Hollow Rd) at CS 2558C (Norton Commons Blvd.) |
| FE04 056 0913 002-003 | Signal at KY 913 (Blankenbaker Parkway) and I-64 EB On Ramp             |
| FE04 056 1020 004-005 | Signal at KY 1020 (National Turnpike) and CS 1131F (Tolls Road)         |

### AREA UTILITIES CONTACT LIST AS PROVIDED BY KY 811

- |  |   |
|--|---|
| 1. All Points Broadband<br>148 Citizens Blvd<br>Simpsonville, KY 40067 | DJ Anderson, Regional Operations Manager<br>Cell (502) 390-6806<br><a href="mailto:DJAnderson@allpointsbroadband.com">DJAnderson@allpointsbroadband.com</a> |
|--|---|

Vince West, Regional Operations Manager  
Office (703) 554-6600  
Cell (502) 321-5802

[VWest@allpointsbroadband.com](mailto:VWest@allpointsbroadband.com)

#### Facility Map Requests to DJ & Vince

- |   |  |
|---|--|
| 2. Atmos Energy<br>105 Hudson Blvd<br>Shelbyville, KY 40065 | Jake Basham<br>Cell (270) 779-7381<br><a href="mailto:Jake.Basham@atmosenergy.com">Jake.Basham@atmosenergy.com</a> |
|---|--|

2850 Russellville Rd.  
Bowling Green, KY 42101

Taylor Collins  
(270)-577-4582

#### Facility Map Requests to Jake & Taylor

[taylor.collins@atmosenergy.com](mailto:taylor.collins@atmosenergy.com)

- |  |   |
|--|---|
| 3. AT&T KY<br>1340 E. John Rowan Blvd<br>Bardstown, KY 40004 | Scott Roche<br>Office (502) 348-4528<br>Cell (502) 827-4703<br><a href="mailto:SR8832@att.com">SR8832@att.com</a> |
|--|---|

3719 Bardstown Road, Louisville, KY 40218 **\*Use this address for agreements**

- |   |  |
|---|--|
| 4. AT&T Legacy<br>KY, WV<br>7555 E. Pleasant Valley Road, Suite 140<br>Independence, OH 44131 | Bill Taggart, Sr. Tech Project Manager OH, MI,<br><a href="mailto:WT2462@att.com">WT2462@att.com</a><br>Office (614) 868-2511<br>Cell (614) 370-5414 |
|---|--|

Don Garr, Cell (502) 741-8374

[DonGarr@outlook.com](mailto:DonGarr@outlook.com)

#### Facility Map Requests to Don & Bill

### 5. Boardwalk Pipelines (See Texas Gas Transmission, LLC)

- |   |  |
|---|--|
| 6. Center Point Energy<br>2520 Lincoln Drive<br>Clarksville, IN 47129 | Jeff Donnelly, Transmission Department<br>Office (812) 431-5670<br><a href="mailto:Jeff.Donnelly@centerpointenergy.com">Jeff.Donnelly@centerpointenergy.com</a><br>Chris Wood, Engineering Manager |
|---|--|

[Publicproject@centerpointenergy.com](mailto:Publicproject@centerpointenergy.com)

Facility Map Requests to [Publicproject@centerpointenergy.com](mailto:Publicproject@centerpointenergy.com)

## UTILITIES AND RAIL CERTIFICATION NOTE

### Jefferson County

FE04 056 1694 000-001	Signal at KY 1694 (Sleepy Hollow Rd) at CS 2558C (Norton Commons Blvd.)
FE04 056 0913 002-003	Signal at KY 913 (Blankenbaker Parkway) and I-64 EB On Ramp
FE04 056 1020 004-005	Signal at KY 1020 (National Turnpike) and CS 1131F (Tolls Road)

#### 7. CenturyLink Communications, LLC (See Lumen Technologies Inc.)

8. Charter Communications  
4701 Commerce Crossings Drive  
Louisville, KY 40229

Nathen L Howerton  
Office (502) 357-4318  
Cell (502) 639-6838  
[Nathen.Howerton@charter.com](mailto:Nathen.Howerton@charter.com)

Kevin Mercer  
Office (502) 357-4724  
Cell (502) 817-5055  
[Kevin.Mercer@charter.com](mailto:Kevin.Mercer@charter.com)

Michael York  
Cell (502) 548-1632  
[Michael.York@charter.com](mailto:Michael.York@charter.com)

#### Facility Map Requests to Nathen-Kevin-Mike

9. City of Taylorsville Sewer & Water  
70 Taylorsville Road, PO Box 279  
Taylorsville, KY 40071

Harold Compton  
(502) 477-3235  
Fax (502) 477-1310  
[HCompton@TaylorsvilleWater.org](mailto:HCompton@TaylorsvilleWater.org)

Sisler & Maggard  
220 Reynolds Rd  
Lexington, KY 40517

Kevin Sisler, Consultant  
(859) 271-2978, (859) 509-3799  
[Kevin.@SislerMaggard.com](mailto:Kevin.@SislerMaggard.com)  
Steve Biven, City Clerk  
(502) 477-3235 x106  
[SBiven@taylorsvillewater.org](mailto:SBiven@taylorsvillewater.org)

10. Crown Castle Network Operations  
10300 Ormsby Park Place, Suite 501  
Louisville, KY 40223

Mona Couch  
Office (317) 249-2029, Cell (317) 439-1578  
[Mona.Couch@crowncastle.com](mailto:Mona.Couch@crowncastle.com)  
Lisa Clark, Construction Manager  
(810) 223-3780  
[Lisa.Clark@crowncastle.com](mailto:Lisa.Clark@crowncastle.com)

#### Facility Map Requests to Mona, Lisa & Craig

Craig Brown, Manager-Network Construction  
Office (317) 819-8648, Cell (585) 402-8342  
[Craig.Brown@crowncastle.com](mailto:Craig.Brown@crowncastle.com)

## UTILITIES AND RAIL CERTIFICATION NOTE

### Jefferson County

FE04 056 1694 000-001	Signal at KY 1694 (Sleepy Hollow Rd) at CS 2558C (Norton Commons Blvd.)
FE04 056 0913 002-003	Signal at KY 913 (Blankenbaker Parkway) and I-64 EB On Ramp
FE04 056 1020 004-005	Signal at KY 1020 (National Turnpike) and CS 1131F (Tolls Road)

11. Crown Castle Fiber  
3310 Ruckreigel Parkway  
Jeffersontown, KY 40299

Lisa Clark, Construction Manager  
(810) 223-3780  
[Lisa.Clark@crowncastle.com](mailto:Lisa.Clark@crowncastle.com)  
Craig Brown, Manager-Network Construction  
Office (317) 819-8648, Cell (585) 402-8342  
[Craig.Brown@crowncastle.com](mailto:Craig.Brown@crowncastle.com)

12. Cogent Communications

Paul Becker, OSP Engineer  
(815) 557-8416  
[PBecker@cogentco.com](mailto:PBecker@cogentco.com)

13. Energy Transfer (See Mid-Valley Pipeline Company)

14. Fibertech (See Crown Castle Network Operation)

15. Indiana Gas Company Inc. (See Center Point Energy)

16. Insight Cablevision (See Charter Communications)

17. Indiana Utilities Corporation  
123 West Chestnut Street  
Corydon, Indiana 47112

Scott Schmitt  
Office (812) 738-3235  
Cell (812) 972-0539  
[ScottS@indianautilitiescorp.com](mailto:ScottS@indianautilitiescorp.com)  
Corey Thatcher, Field Technician  
Office (812) 738-3235  
Cell (812) 267-6936  
[CoreyT@indianautilitiescorp.com](mailto:CoreyT@indianautilitiescorp.com)  
Kevin Kinney  
Ron Timberlake

18. Intercarrier Networks, LLC  
Subsidiary of Great Plains Communications  
1600 Great Plains Center  
PO Box 500  
Blair, NE 68008

[CWulf@gpcom.com](mailto:CWulf@gpcom.com)  
Nancye Allison, Consultant  
Office (859) 231-9831  
Cell (502) 541-3442  
[N.Allison@finleyusa.com](mailto:N.Allison@finleyusa.com)  
Dustin Nobbe  
(812) 209-9012  
[DNobbe@gpcom.com](mailto:DNobbe@gpcom.com)

Finley Engineering Company, Inc.  
2456 Fortune Drive, Suite 105  
Lexington, KY 40509



## UTILITIES AND RAIL CERTIFICATION NOTE

### Jefferson County

FE04 056 1694 000-001	Signal at KY 1694 (Sleepy Hollow Rd) at CS 2558C (Norton Commons Blvd.)
FE04 056 0913 002-003	Signal at KY 913 (Blankenbaker Parkway) and I-64 EB On Ramp
FE04 056 1020 004-005	Signal at KY 1020 (National Turnpike) and CS 1131F (Tolls Road)

19. Jefferson County Public Schools (JCPS)

C B Young  
Building 6  
3001 Crittenden Drive  
Louisville, KY 40209

Jeff Hardy  
Office (502) 485-7975  
Cell (502) 379-9315  
[Jeff.Hardy@Jefferson.kyschools.us](mailto:Jeff.Hardy@Jefferson.kyschools.us)  
[JDHardy70@gmail.com](mailto:JDHardy70@gmail.com)  
Scott McMahan (Team Fishel)  
Office (502) 456-2900  
Cell (502) 664-9312

20. Kentucky Data Link (See Windstream)

21. Kentucky Wired, KCNA  
500 Mero Street – Suite 1-1 NC #59  
Frankfort, KY 40601

Erick Johnson  
Executive Advisor/Operations Project Manager  
Office (502) 330-0679  
[Erick.Johnson@ky.gov](mailto:Erick.Johnson@ky.gov)

Ledcor, Service Provider  
LTS Kentucky Managed Technical Services LLC  
2008 Mercer Rd. 2nd floor  
Lexington, KY 40511

Nick Blake  
Operations Manager  
Office (859) 286-8158  
Cell (859) 447-0781  
[Nick.Blake@Ledcor.com](mailto:Nick.Blake@Ledcor.com)

Facility Map Requests to [KIH.Technical.Services@ledcor.com](mailto:KIH.Technical.Services@ledcor.com) & [KY.OSPTeam@ledcor.com](mailto:KY.OSPTeam@ledcor.com)

22. LG&E KU (Electric)  
820 West Broadway  
Louisville, KY 40202  
LG&E Emergency Number (502) 589-1444  
LG&E and KU Emergency Number 1-800-331-7370

Caroline Justice  
Office (502) 627-3708  
[Caroline.Justice@LGE-KU.com](mailto:Caroline.Justice@LGE-KU.com)

23. LG&E (Gas)  
820 West Broadway  
Louisville, KY 40202  
Gas Emergency Number (502) 589-5511  
LG&E and KU Emergency Number 1-800-331-7370

Caroline Justice  
Office (502) 627-3708  
[Caroline.Justice@LGE-KU.com](mailto:Caroline.Justice@LGE-KU.com)

24. Level 3 (See Lumen Technologies Inc.)

25. Lighttower (See Crown Castle Network Operation)



## UTILITIES AND RAIL CERTIFICATION NOTE

### Jefferson County

FE04 056 1694 000-001	Signal at KY 1694 (Sleepy Hollow Rd) at CS 2558C (Norton Commons Blvd.)
FE04 056 0913 002-003	Signal at KY 913 (Blankenbaker Parkway) and I-64 EB On Ramp
FE04 056 1020 004-005	Signal at KY 1020 (National Turnpike) and CS 1131F (Tolls Road)

26. Louisville Water Company  
550 South Third Street  
Louisville, KY 40202

Pat Howard, PE  
Office (502) 569-3615  
Cell (502) 287-7568  
[PHoward@lwcky.com](mailto:PHoward@lwcky.com)  
[lwcgisproducts@louisvillewater.com](http://lwcgisproducts@louisvillewater.com)

27. Lumen Technologies Inc.  
11857 Commonwealth Drive  
Louisville, KY 40299

Tim Sewell  
[Tim.Sewell@lumen.com](mailto:Tim.Sewell@lumen.com)  
(502) 389-4812 / (502) 295-0940  
Richard Compton (Last day 11/10/2023)  
[Richard.Compton@lumen.com](mailto:Richard.Compton@lumen.com)  
Patrick Barks (Lead Engineer)  
[Patrick.Barks@lumen.com](mailto:Patrick.Barks@lumen.com)  
Cell (502) 389-4829 / Office (812) 341-7335

**10/13/20, all utility relocation/conflicts inquiries and road project notifications to**

[relocations@lumen.com](mailto:relocations@lumen.com)

### 28. MCI (See Verizon)

29. Marathon Pipeline, LLC  
539 South Main Street, Room X-05-018  
Findlay, OH 45840  
or

Landon Morris  
Senior Right of Way Specialist  
Cell: (419) 957-7792  
[LrMorris@marathonpetroleum.com](mailto:LrMorris@marathonpetroleum.com)  
Aron Velasquez  
Office (419) 421-3704  
[AdVelasquez@marathonpetroleum.com](mailto:AdVelasquez@marathonpetroleum.com)

20-C Industrial Drive  
Lexington, OH 44904

**Facility Map Requests to Landon**

### 30. Metro Network (See Lumen Technologies Inc.)

31. Metropolitan Sewer District  
700 West Liberty Street  
Louisville, KY 40203-1911

Taylor Friesz  
Office (502) 540-6163  
Cell (502) 530 5192  
[Taylor.Friesz@louisvillemsd.org](mailto:Taylor.Friesz@louisvillemsd.org)  
Greg Powell  
[Greg.Powell@LouisvilleMSD.org](mailto:Greg.Powell@LouisvilleMSD.org)

## UTILITIES AND RAIL CERTIFICATION NOTE

### Jefferson County

FE04 056 1694 000-001	Signal at KY 1694 (Sleepy Hollow Rd) at CS 2558C (Norton Commons Blvd.)
FE04 056 0913 002-003	Signal at KY 913 (Blankenbaker Parkway) and I-64 EB On Ramp
FE04 056 1020 004-005	Signal at KY 1020 (National Turnpike) and CS 1131F (Tolls Road)

32. Mid - Valley Pipeline Company  
4910 Limaburg Road  
Burlington, KY 41005

Richard (Todd) Calfee  
Office (859) 371-4469  
Cell (859) 630-8271  
Fax (866) 699-1185  
[Todd.Calfee@energytransfer.com](mailto:Todd.Calfee@energytransfer.com)  
Justin White  
Office (859) 371-4469  
Cell (859) 630-1823  
[Justin.White@energytransfer.com](mailto:Justin.White@energytransfer.com)  
Phillip Noel  
[Phillip.Noel@energytransfer.com](mailto:Phillip.Noel@energytransfer.com)

Facility Map Requests to Todd, Justin, & Phillip

33. National Fiber Optic Longhaul (See Lumen Technologies Inc.)

34. Ohio River Pipeline Corporation (See Center Point Energy)

35. Oldham County Environmental Authority (OECA, Sewer) (See MSD - Contacts pending 8/2020)

36. Quest Communication (See Lumen Technologies Inc.)

37. Shelby Energy Cooperative  
PO Box 311  
620 Old Finchville Road  
Shelbyville, KY 40065

Dylan Staples  
Manager of Engineering, Cell (502) 663-1395  
[Dylan@shelbyenergy.com](mailto:Dylan@shelbyenergy.com)  
Jason Ginn  
Cell (502) 643-2778  
[Jason@ShelbyEnergy.com](mailto:Jason@ShelbyEnergy.com)

Facility Map Requests to Dylan & Jason

38. Shelby Broadband (See All Points Broadband)

39. Spectrum (See Charter Communications)

40. Sprint (See T-Mobile)

41. SunocoLogistics (See Mid-Valley Pipeline Company)

## UTILITIES AND RAIL CERTIFICATION NOTE

### Jefferson County

FE04 056 1694 000-001	Signal at KY 1694 (Sleepy Hollow Rd) at CS 2558C (Norton Commons Blvd.)
FE04 056 0913 002-003	Signal at KY 913 (Blankenbaker Parkway) and I-64 EB On Ramp
FE04 056 1020 004-005	Signal at KY 1020 (National Turnpike) and CS 1131F (Tolls Road)

42. Texas Gas Transmission, LLC  
2332 Hwy 60 West  
Hardinsburg, KY 40143  
610 W 2nd Street  
PO Box 20008  
Owensboro, KY 42301

Howard K. Menser Jr., Area Manager  
Office (502) 491-0251  
Cell (502) 396-2418  
[Howard.Menser@bwpipelines.com](mailto:Howard.Menser@bwpipelines.com)  
Kevin Carman  
Cell (270) 779-3893  
[Kevin.Carman@bwpmlp.com](mailto:Kevin.Carman@bwpmlp.com)  
Amanda Isom  
(270) 688-5854  
(270) 231-7629  
Parrott, Joy <Joy.Parrott@bwpipelines.com>

10327 Gaslight Way  
Louisville, KY 40299

**Facility Map Requests to Kevin/Amanda/Thomas/Joy** [Amanda.Isom@bwpmlp.com](mailto:Amanda.Isom@bwpmlp.com)

### 43. Time Warner (See Charter Communications)

44. T-Mobile (Sprint) Fiber Optics  
3007 Tucumcari Dr.  
Sardinia, OH 45171

Steven T. Hughes  
Office (513) 459-5796  
Cell (814) 553-2300  
[Steven.Hughes1@T-Mobile.com](mailto:Steven.Hughes1@T-Mobile.com)

45. TRIMARC  
Public Safety & Transportation Systems  
901 West Main Street  
Louisville, KY 40202

Todd Hood  
Office (502) 290-7201  
Cell (270) 307-7456  
[Todd.Hood@peraton.com](mailto:Todd.Hood@peraton.com)

### 46. Vectren Energy Delivery of Indiana, Inc. (See Center Point Energy)

47. Verizon  
730 West Henry Street  
Indianapolis, IN 46225

Dean Boyers  
Office (615) 777-7855  
Cell (615) 507-5287  
[Dean.Boyers@verizon.com](mailto:Dean.Boyers@verizon.com)  
Jeffrey Tucker, Engr III Spec-Ntwk Eng & Ops  
Office (502) 830-1827  
Cell (502) 593-5585  
[Jeffrey.Tucker@verizon.com](mailto:Jeffrey.Tucker@verizon.com)  
Ronnie Kuerzi, Eng IV Spec-Ntwk Eng & Ops  
Cell (502) 780-2748  
[Ronald.Kuerzi@verizon.com](mailto:Ronald.Kuerzi@verizon.com)

Verizon  
2421 Holloway Road  
Louisville, KY 40299

**Facility Map Requests to Ronnie/Jeff**

## UTILITIES AND RAIL CERTIFICATION NOTE

### Jefferson County

FE04 056 1694 000-001	Signal at KY 1694 (Sleepy Hollow Rd) at CS 2558C (Norton Commons Blvd.)
FE04 056 0913 002-003	Signal at KY 913 (Blankenbaker Parkway) and I-64 EB On Ramp
FE04 056 1020 004-005	Signal at KY 1020 (National Turnpike) and CS 1131F (Tolls Road)

#### 48. W.U. TEL (See Verizon)

#### 49. Windstream

111 S. Main Street  
Elizabethtown, KY 42701

Windstream  
Steve Johnson, Sr Engineer OSP  
130 W New Circle Road, Suite 170  
Lexington, KY 40505

James Galvin  
Office (270) 765-1818  
Cell (270) 748-9249

[James.Galvin@windstream.com](mailto:James.Galvin@windstream.com)  
Steve Johnson, Sr Engineer OSP  
Office (859) 357-6209  
Cell (859) 321-2035

[Steve.Johnson@windstream.com](mailto:Steve.Johnson@windstream.com)  
Ronald (Todd) Moore  
(502) 818-7605  
[Ronald.Moore@windstream.com](mailto:Ronald.Moore@windstream.com)

**Facility Map Requests to James, Steve, Todd & [WCI.OSP.PERMITS@windstream.com](mailto:WCI.OSP.PERMITS@windstream.com)**

**Agreement's address: Windstream Holdings II, LLC, PO Box 9001116, Louisville, KY 40290-116**

#### 50. Zayo

9209 Castlegate Drive  
Indianapolis, IN 46256  
[zayo.relo.kentucky@zayo.com](mailto:zayo.relo.kentucky@zayo.com)

Jeff Beggs  
[Jeff.Beggs@zayo.com](mailto:Jeff.Beggs@zayo.com)  
765-655-3870

***NOTE: The Utilities Contact List is provided as informational only, and may not be a complete list of all Utility Companies with facilities in the project area.***

# MATERIAL SUMMARY

**CONTRACT ID: 244403**

**056GR24T012-FE04**

**0505609132401**

KY 913 (BLANKENBAKER PARKWAY) SIGNAL AT THE INTERSECTION OF KY 913 AND THE I-64 EB RAMP  
SIGNS-LIGHTING-SIGNALS, A DISTANCE OF .1 MILES.

Project Line No	Bid Code	DESCRIPTION	Quantity	Unit
0095	02562	TEMPORARY SIGNS	183.00	SQFT
0100	02650	MAINTAIN & CONTROL TRAFFIC - (JEFFERSON KY 913)	1.00	LS
0105	02775	ARROW PANEL	2.00	EACH
0110	04820	TRENCHING AND BACKFILLING	20.00	LF
0115	04844	CABLE-NO. 14/5C	320.00	LF
0120	04845	CABLE-NO. 14/7C	150.00	LF
0125	04886	MESSENGER-15400 LB	410.00	LF
0130	04932	INSTALL STEEL STRAIN POLE	2.00	EACH
0135	20188NS835	INSTALL LED SIGNAL-3 SECTION	2.00	EACH
0140	20266ES835	INSTALL LED SIGNAL- 4 SECTION	1.00	EACH
0145	20390NS835	INSTALL COORDINATING UNIT	1.00	EACH
0150	20408ES835	INSTALL LED BEACON-12 IN	3.00	EACH
0155	23157EN	TRAFFIC SIGNAL POLE BASE	9.00	CUYD
0160	24901EC	PVC CONDUIT-2 IN-SCHEDULE 80	80.00	LF
0165	24908EC	INSTALL SIGNAL CONTROLLER-TY ATC	1.00	EACH
0170	26119EC	INSTALL RADAR PRESENCE DETECTOR TYPE A	1.00	EACH
0175	02569	DEMOBILIZATION	1.00	LS

# MATERIAL SUMMARY

**CONTRACT ID: 244403**

**056GR24T012-FE04**

**0505610202401**

KY 1020 (NATIONAL TURNPIKE) SIGNAL AT THE INTERSECTION OF KY 1020 AND CS 1131F (TOLLS ROAD) SIGNS-LIGHTING-SIGNALS, A DISTANCE OF .1 MILES.

Project Line No	Bid Code	DESCRIPTION	Quantity	Unit
0180	02562	TEMPORARY SIGNS	183.00	SQFT
0185	02650	MAINTAIN & CONTROL TRAFFIC - (JEFFERSON KY 1020)	1.00	LS
0190	02775	ARROW PANEL	3.00	EACH
0195	04820	TRENCHING AND BACKFILLING	80.00	LF
0200	04845	CABLE-NO. 14/7C	2,450.00	LF
0205	04886	MESSENGER-15400 LB	375.00	LF
0210	04932	INSTALL STEEL STRAIN POLE	4.00	EACH
0215	20093NS835	INSTALL PEDESTRIAN HEAD-LED	4.00	EACH
0220	20188NS835	INSTALL LED SIGNAL-3 SECTION	6.00	EACH
0225	20266ES835	INSTALL LED SIGNAL- 4 SECTION	1.00	EACH
0230	20390NS835	INSTALL COORDINATING UNIT	1.00	EACH
0235	21743NN	INSTALL PEDESTRIAN DETECTOR	4.00	EACH
0240	23157EN	TRAFFIC SIGNAL POLE BASE	18.00	CUYD
0245	23222EC	INSTALL SIGNAL PEDESTAL	2.00	EACH
0250	24528ED	TETHER WIRE	375.00	LF
0255	24900EC	PVC CONDUIT-1 1/4 IN-SCHEDULE 80	60.00	LF
0260	24901EC	PVC CONDUIT-2 IN-SCHEDULE 80	80.00	LF
0265	24908EC	INSTALL SIGNAL CONTROLLER-TY ATC	1.00	EACH
0270	26119EC	INSTALL RADAR PRESENCE DETECTOR TYPE A	3.00	EACH
0275	26120EC	INSTALL RADAR ADVANCE DETECTOR TYPE B	2.00	EACH
0280	02569	DEMOBILIZATION	1.00	LS

# MATERIAL SUMMARY

**CONTRACT ID: 244403**

**056GR24T012-FE04**

**0505616942401**

KY 1694 (SLEEPY HOLLOW ROAD) SIGNAL AT THE INTERSECTION OF KY 1694 AND CS 2558C (NORTON COMMONS RD) SIGNS-LIGHTING-SIGNALS, A DISTANCE OF .03 MILES.

Project Line No	Bid Code	DESCRIPTION	Quantity	Unit
0005	02562	TEMPORARY SIGNS	183.00	SQFT
0010	02650	MAINTAIN & CONTROL TRAFFIC - (JEFFERSON KY 1694)	1.00	LS
0015	02671	PORTABLE CHANGEABLE MESSAGE SIGN - (PURCHASE AND SUPPLY)	2.00	EACH
0020	02775	ARROW PANEL	3.00	EACH
0025	04820	TRENCHING AND BACKFILLING	60.00	LF
0030	04845	CABLE-NO. 14/7C	2,300.00	LF
0035	04886	MESSENGER-15400 LB	850.00	LF
0040	04932	INSTALL STEEL STRAIN POLE	4.00	EACH
0045	20093NS835	INSTALL PEDESTRIAN HEAD-LED	8.00	EACH
0050	20188NS835	INSTALL LED SIGNAL-3 SECTION	10.00	EACH
0055	20390NS835	INSTALL COORDINATING UNIT	1.00	EACH
0060	21743NN	INSTALL PEDESTRIAN DETECTOR	8.00	EACH
0065	23157EN	TRAFFIC SIGNAL POLE BASE	17.00	CUYD
0070	23222EC	INSTALL SIGNAL PEDESTAL	2.00	EACH
0075	24900EC	PVC CONDUIT-1 1/4 IN-SCHEDULE 80	60.00	LF
0080	24908EC	INSTALL SIGNAL CONTROLLER-TY ATC	1.00	EACH
0085	26119EC	INSTALL RADAR PRESENCE DETECTOR TYPE A	2.00	EACH
0090	02569	DEMOBILIZATION	1.00	LS

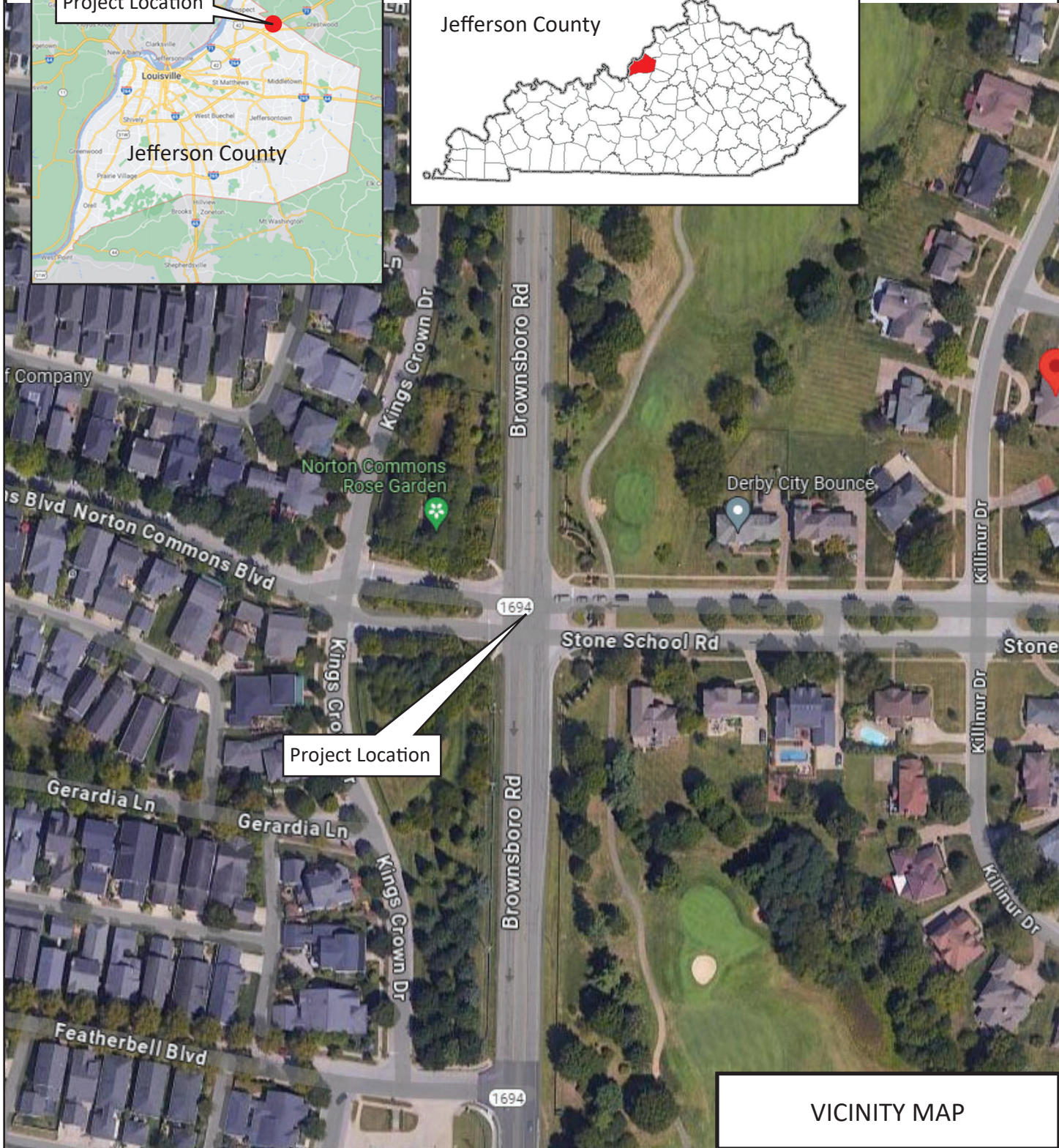


# COMMONWEALTH OF KENTUCKY DEPARTMENT OF HIGHWAYS

COUNTY OF	ITEM NO.
JEFFERSON	N/A

## JEFFERSON COUNTY

KY 1694 (Sleepy Hollow Road)  
at CS 2558C (Norton Commons Blvd)



VICINITY MAP





COUNTY OF JEFFERSON  
ITEM NO. 12  
SHEET NO.

USBR 07/16/2013  
DATE PLOTTED: July 6, 2023  
FILE NAME: C:\PWORK\KRYT.C\SHARES\WETZEL\222520\ALL SIGNAL STANDARDS.DWG  
E-SHEET NAME: 5/4/2021

**SPECIAL NOTE:**  
DISCONNECTS (SAFETY SWITCH AND METER BASE SHALL BE UL RATED FOR COMMERCIAL USE. DISCONNECTS (SAFETY SWITCH AND METER BASE SHALL BE UL RATED FOR COMMERCIAL USE. CONTRACTOR SHALL BE RESPONSIBLE TO CALCULATE THE MAXIMUM AVAILABLE FAULT CURRENT FOR THE SERVICE EQUIPMENT THAT IS INSTALLED. THE DISCONNECT SHALL BE INSTALLED WITH THE SYMMETRICAL RMS AMPERES AND THE DATE THAT THIS FAULT CURRENT IS CALCULATED. THE STICKER SHALL BE 4" LONG AND 4" WIDE AND BE METALCRAFT WITH .007 THICKNESS. WITH UV WHITE POLYCARBONATE MATERIAL, AND WITH MCT78 PRESSURE SENSITIVE ADHESIVE OR APPROVED EQUAL.

**NOTES:**  
ALL CONDUITS USED FOR THE TELEPHONE, GROUNDING, SPARES, AND SERVICE (INCLUDING FLEX CONDUIT IF IT IS RUN INSIDE THE POLE) THAT ARE INSTALLED ON THE POLE SHALL BE INSTALLED TO BID ITEM #937. THIS INCLUDES PROVIDING A MINIMUM OF 24 INCHES OF CONDUIT PAST THE EDGE OF THE CONCRETE PAD.  
ALL CONDUITS SHALL BE INSTALLED BETWEEN 4 TO 6 INCHES ABOVE THE CONCRETE PAD, AND THEY CANNOT EXCEED THE 6 INCH HEIGHT.  
SERVICE WIRES FOR BASE MOUNTED CABINETS MAY BE INSTALLED INSIDE THE POLE BASE. USE THE PROPER CONNECTIONS FOR TRANSITION FROM FLEXIBLE CONDUIT TO R 5 CONDUIT. FLEXIBLE CONDUIT SHALL NOT BLOCK THE HAND HOLE OR THE ABILITY TO ACCESS THE GROUNDING SYSTEM.

3-#6 STRANDED FOR SERVICE  
MOUNTING BRACKET (TYP.)  
MOUNTING STRAP (TYP.)  
BLADE STYLE ANTENNA AND ROUTER INSTALLATION - INSTALL ON THE BACKSIDE OF THE CABINET OPPOSITE THE MAIN POWER INSTALLATION. THE CONNECTION TO THE TOP OF THE CABINET SHALL BE MADE USING A BUSHING WITH THE PAIR OF THE CABINET. ALL WIRING SHALL BE RUN DOWN THE SIDE OF THE 19TH RACK. THE ROUTER SHALL BE INSTALLED ON THE PROVIDED BUSHING IN THE CABINET.

BLADE STYLE ANTENNA AND ROUTER INSTALLATION - INSTALL ON THE BACKSIDE OF THE CABINET OPPOSITE THE MAIN POWER INSTALLATION. THE CONNECTION TO THE TOP OF THE CABINET SHALL BE MADE USING A BUSHING WITH THE PAIR OF THE CABINET. ALL WIRING SHALL BE RUN DOWN THE SIDE OF THE 19TH RACK. THE ROUTER SHALL BE INSTALLED ON THE PROVIDED BUSHING IN THE CABINET.

SERVICE POLE WITH METER BASE SHALL BE INSTALLED TO BID ITEM #937. THIS INCLUDES PROVIDING A MINIMUM OF 24 INCHES OF CONDUIT PAST THE EDGE OF THE CONCRETE PAD, AND THEY CANNOT EXCEED THE 6 INCH HEIGHT.

CONCRETE PAD (TYP.)  
ANCHOR BOLT (TYP.)  
ENCLOSURE BASE  
GROUNDING CONDUCTOR  
GROUND ROD  
CONCRETE PAD (TYP.)  
ANCHOR BOLT (TYP.)  
ENCLOSURE BASE  
GROUNDING CONDUCTOR  
GROUND ROD

SPARE 1/2" SCHEDULE 80 PVC WITH END BELL BUSHING, AND CAPPED AT BOTH ENDS.  
3/4" SCHEDULE 80 PVC GROUNDING CONDUIT WITH END BELL BUSHING.

BLADE STYLE ANTENNA AND ROUTER INSTALLATION - INSTALL ON THE BACKSIDE OF THE CABINET OPPOSITE THE MAIN POWER INSTALLATION. THE CONNECTION TO THE TOP OF THE CABINET SHALL BE MADE USING A BUSHING WITH THE PAIR OF THE CABINET. ALL WIRING SHALL BE RUN DOWN THE SIDE OF THE 19TH RACK. THE ROUTER SHALL BE INSTALLED ON THE PROVIDED BUSHING IN THE CABINET.

CONCRETE PAD (TYP.)  
ANCHOR BOLT (TYP.)  
ENCLOSURE BASE  
GROUNDING CONDUCTOR  
GROUND ROD

CONCRETE PAD (TYP.)  
ANCHOR BOLT (TYP.)  
ENCLOSURE BASE  
GROUNDING CONDUCTOR  
GROUND ROD

CONCRETE PAD (TYP.)  
ANCHOR BOLT (TYP.)  
ENCLOSURE BASE  
GROUNDING CONDUCTOR  
GROUND ROD

CONCRETE PAD (TYP.)  
ANCHOR BOLT (TYP.)  
ENCLOSURE BASE  
GROUNDING CONDUCTOR  
GROUND ROD

CONCRETE PAD (TYP.)  
ANCHOR BOLT (TYP.)  
ENCLOSURE BASE  
GROUNDING CONDUCTOR  
GROUND ROD

CONCRETE PAD (TYP.)  
ANCHOR BOLT (TYP.)  
ENCLOSURE BASE  
GROUNDING CONDUCTOR  
GROUND ROD

CONCRETE PAD (TYP.)  
ANCHOR BOLT (TYP.)  
ENCLOSURE BASE  
GROUNDING CONDUCTOR  
GROUND ROD

CONCRETE PAD (TYP.)  
ANCHOR BOLT (TYP.)  
ENCLOSURE BASE  
GROUNDING CONDUCTOR  
GROUND ROD

CONCRETE PAD (TYP.)  
ANCHOR BOLT (TYP.)  
ENCLOSURE BASE  
GROUNDING CONDUCTOR  
GROUND ROD

CONCRETE PAD (TYP.)  
ANCHOR BOLT (TYP.)  
ENCLOSURE BASE  
GROUNDING CONDUCTOR  
GROUND ROD

CONCRETE PAD (TYP.)  
ANCHOR BOLT (TYP.)  
ENCLOSURE BASE  
GROUNDING CONDUCTOR  
GROUND ROD

CONCRETE PAD (TYP.)  
ANCHOR BOLT (TYP.)  
ENCLOSURE BASE  
GROUNDING CONDUCTOR  
GROUND ROD

CONCRETE PAD (TYP.)  
ANCHOR BOLT (TYP.)  
ENCLOSURE BASE  
GROUNDING CONDUCTOR  
GROUND ROD

CONCRETE PAD (TYP.)  
ANCHOR BOLT (TYP.)  
ENCLOSURE BASE  
GROUNDING CONDUCTOR  
GROUND ROD

CONCRETE PAD (TYP.)  
ANCHOR BOLT (TYP.)  
ENCLOSURE BASE  
GROUNDING CONDUCTOR  
GROUND ROD

CONCRETE PAD (TYP.)  
ANCHOR BOLT (TYP.)  
ENCLOSURE BASE  
GROUNDING CONDUCTOR  
GROUND ROD

CONCRETE PAD (TYP.)  
ANCHOR BOLT (TYP.)  
ENCLOSURE BASE  
GROUNDING CONDUCTOR  
GROUND ROD

CONCRETE PAD (TYP.)  
ANCHOR BOLT (TYP.)  
ENCLOSURE BASE  
GROUNDING CONDUCTOR  
GROUND ROD

CONCRETE PAD (TYP.)  
ANCHOR BOLT (TYP.)  
ENCLOSURE BASE  
GROUNDING CONDUCTOR  
GROUND ROD

CONCRETE PAD (TYP.)  
ANCHOR BOLT (TYP.)  
ENCLOSURE BASE  
GROUNDING CONDUCTOR  
GROUND ROD

CONCRETE PAD (TYP.)  
ANCHOR BOLT (TYP.)  
ENCLOSURE BASE  
GROUNDING CONDUCTOR  
GROUND ROD

CONCRETE PAD (TYP.)  
ANCHOR BOLT (TYP.)  
ENCLOSURE BASE  
GROUNDING CONDUCTOR  
GROUND ROD

CONCRETE PAD (TYP.)  
ANCHOR BOLT (TYP.)  
ENCLOSURE BASE  
GROUNDING CONDUCTOR  
GROUND ROD

CONCRETE PAD (TYP.)  
ANCHOR BOLT (TYP.)  
ENCLOSURE BASE  
GROUNDING CONDUCTOR  
GROUND ROD

CONCRETE PAD (TYP.)  
ANCHOR BOLT (TYP.)  
ENCLOSURE BASE  
GROUNDING CONDUCTOR  
GROUND ROD

CONCRETE PAD (TYP.)  
ANCHOR BOLT (TYP.)  
ENCLOSURE BASE  
GROUNDING CONDUCTOR  
GROUND ROD

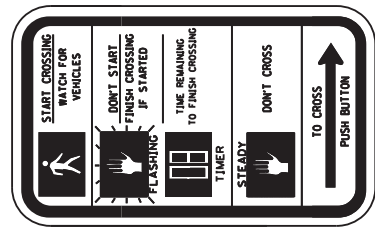
CONCRETE PAD (TYP.)  
ANCHOR BOLT (TYP.)  
ENCLOSURE BASE  
GROUNDING CONDUCTOR  
GROUND ROD

CONCRETE PAD (TYP.)  
ANCHOR BOLT (TYP.)  
ENCLOSURE BASE  
GROUNDING CONDUCTOR  
GROUND ROD

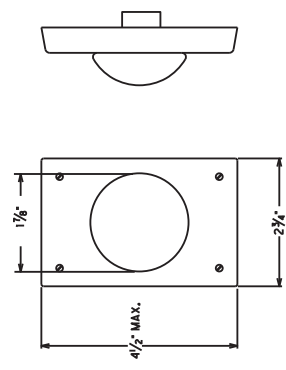




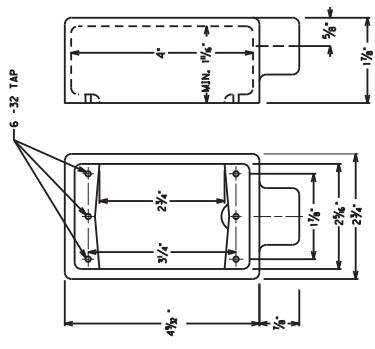
COUNTY OF	JEFFERSON
ITEM NO.	
SHEET NO.	T4



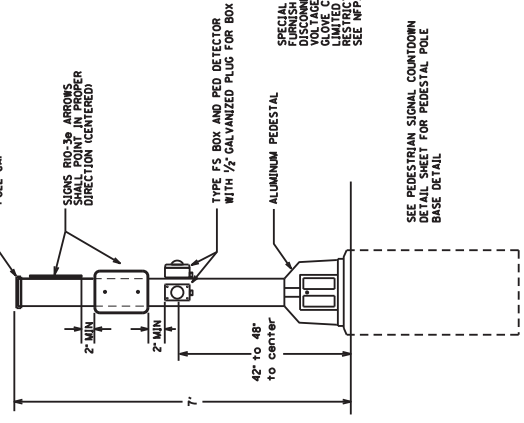
**RIO-3e SIGN (9' x 15')  
FOR COUNTDOWN ONLY**



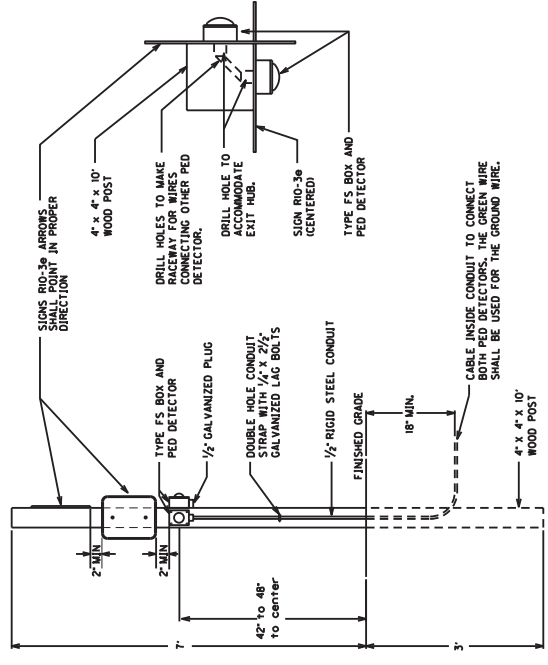
**PED DETECTOR**



**TYPE FS BOX FOR PED DETECTOR FOR USE WITH STEEL STRAIN POLE, WOOD POST, PEDESTAL, AND WOOD POLE**



**PEDESTAL POST DETAIL FOR PED DETECTORS & SIGNS**



**PEDECTOR ON WOOD POST DETAIL**

SPECIAL NOTE FOR TRANSFORMER DOOR:  
PEDESTRIAN SIGNALS SHALL BE DISCONNECTED WITH THE FOLLOWING INFORMATION:  
VOLTAGE (120 VOLTS)  
CLOSED APPROACH BOUNDARY (42 IN)  
RESTRICTED APPROACH BOUNDARY (CONTACT)  
SEE NFPA 70E FOR ADDITIONAL PPE REQUIRED

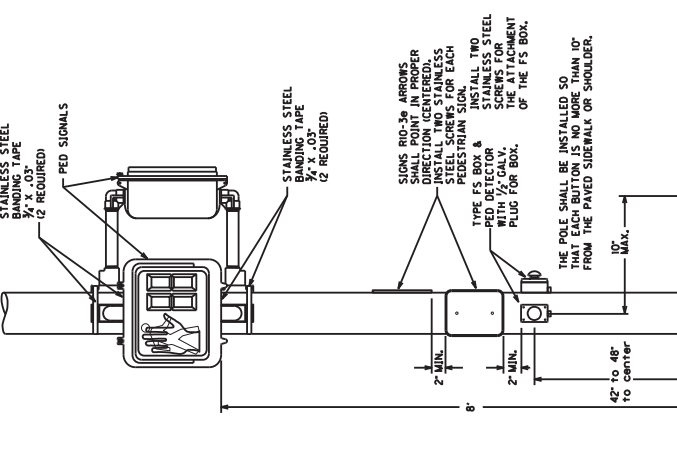
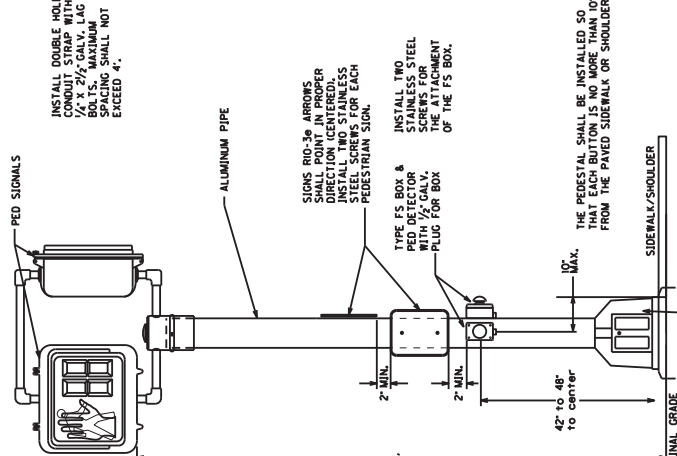
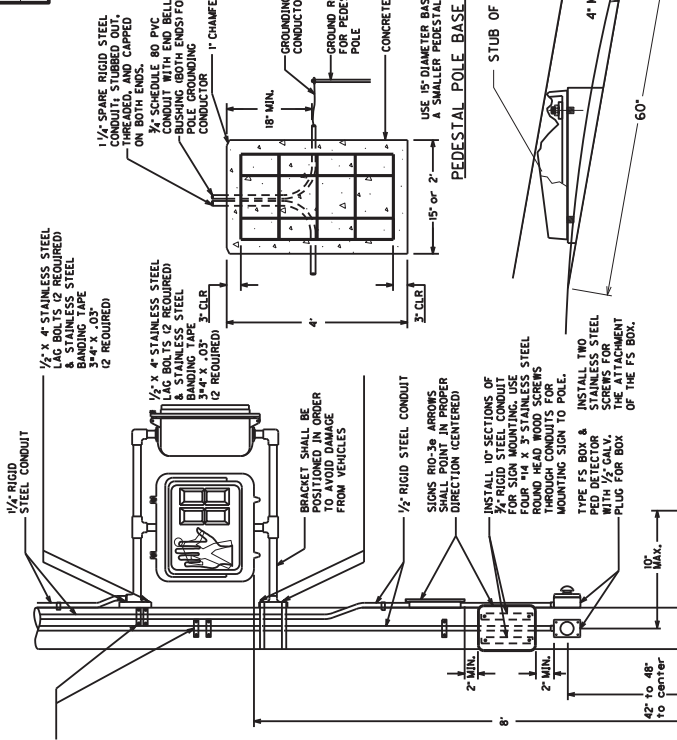
SEE PEDESTRIAN SIGNAL COUNTDOWN  
DETAIL SHEET FOR PEDESTAL POLE  
BASE DETAIL

10/18/2022

PEDESTRIAN DETECTOR DETAIL



SHEET NO.	15
ITEM NO.	
COUNTY OF	JEFFERSON



**WOOD POLE DETAIL FOR PED DETECTORS AND PED SIGNALS**

THE ANCHOR BOLTS AND CONDUITS SHALL NOT BE PROJECTED MORE THAN 4 INCHES ABOVE A GROUND LINE BETWEEN THE STRADDLING WHEELS OF A VEHICLE.

**BREAKAWAY SUPPORT STUB HEIGHT MEASUREMENT**

NOTE:  
THE PEDESTAL BASE DOOR SHALL HAVE A 4" BY 6" SHOCK HAZARD WARNING STICKER IF SMALLER TRANSFORMER BASE IS INSTALLED USE A 2" BY 3" INSTEAD. INSTALL 3" FROM THE TOP OF THE DOOR. THE STICKER SHALL BE METAL CUT THICKNESS WITH A STYLIZED MARK LABEL POLYCARBONATE MATERIAL AND WITH MCS3FL PRESSURE SENSITIVE ADHESIVE OR APPROVAL EQUAL. THIS SHALL BE INCIDENTAL TO THE PROJECT.  
SPECIAL NOTE FOR THE TRANSFORMER BASE: FURNISH A SHOCK HAZARD WARNING STICKER ON DISCONNECT WITH THE FOLLOWING INFORMATION:  
VOLTAGE (208/240)  
GLOVE CLASS (0)  
LIMITED APPROACH BOUNDARY (42 IN)  
RESTRICTED APPROACH BOUNDARY (CONTACT)  
SEE NFPA 70E FOR ADDITIONAL PPE REQUIRED

**WOOD POLE DETAIL FOR PED DETECTORS AND PED SIGNALS**

\* 9 x 1/2" STAINLESS STEEL PAN HEAD OR ROUND HEAD WOOD SCREWS SHALL BE USED TO SECURE TYPE FS BOX TO POLE. A MINIMUM OF 2 SCREWS PER BOX, INSTALLED DIAGONALLY, SHALL BE USED.

**BREAKAWAY FUSE CONNECTOR KIT**

FUSEHOLDER TERMINAL  
RECEPTACLE HOUSING  
RECEPTACLE TERMINAL  
CONNECTOR SCREW  
LINE CABLES

DETAILS OF TYPE HEB-JW-RYC CONNECTOR  
LOAD SIDE ASSEMBLY  
BREAKAWAY POINT  
LINE SIDE ASSEMBLY  
TYPE HEB-JW-RYC CONNECTOR SHOWN

SPECIAL NOTE FOR THE TRANSFORMER BASE: FUSED CONNECTOR KITS SHALL BE INSTALLED FOR ALL 208 VOLT WIRING IN TRANSFORMER BASES. THIS WILL ONLY BE NEEDED FOR PEDESTRAIN HEADS AND SIGNALS HEADS. PEDESTRAIN DETECTORS DO NOT REQUIRE FUSED CONNECTOR KITS. CONTRACTOR CAN USE ONE KIT FOR A COMMON NEUTRAL FOR ALL WIRE IN THE TRANSFORMER BASE. THERE SHALL BE A METAL LUG INSTALLED IN THE NEUTRAL WIRE KIT INSTEAD OF A FUSE.

**STEEL STRAIN POLE DETAIL FOR PED DETECTORS AND PED SIGNALS**

CONTRACTOR SHALL DRILL HOLES IN THE STEEL STRAIN DIAMETER. CONTRACTOR SHALL USE A ROUND FILE TO REMOVE ALL BURRS AND SHARP EDGES FROM THE HOLES. WIRES SHALL BE PROTECTED WITH HEAT SHRINK TUBING OR VINYL TAPE WHERE THEY PASS THROUGH THE HOLES.

SEE POLE BASE DETAIL SHEET FOR CONCRETE BASE DETAIL AND GROUNDING DETAILS

CONTRACTOR SHALL DRILL HOLES IN THE STEEL STRAIN DIAMETER. CONTRACTOR SHALL USE A ROUND FILE TO REMOVE ALL BURRS AND SHARP EDGES FROM THE HOLES. WIRES SHALL BE PROTECTED WITH HEAT SHRINK TUBING OR VINYL TAPE WHERE THEY PASS THROUGH THE HOLES.

NOTE:  
ALL GROUNDING AND SPARE CONDUITS THAT ARE INSTALLED IN THE CONCRETE PEDESTAL POLE BASE ARE INCIDENTAL TO BID ITEM 23222EC. THIS INCLUDES PROVIDING A MINIMUM OF 24 INCHES OF CONDUIT PAST THE EDGE OF THE CONCRETE BASE. AN ARROW SHALL BE ETCHED INTO THE TOP OF THE PEDESTAL BASE TO SHOW LOCATION AND DIRECTION OF THE SPARE CONDUIT.

**PEDESTAL POLE DETAIL FOR PED DETECTORS AND PED SIGNALS**

CONTRACTOR SHALL PROVIDE A MINIMUM OF 6 INCHES OF GROUND WIRE TO CONNECTING THE WIRE TO THE TRANSFORMER BASE.

LEAVE TOP OF GROUND RODS EXPOSED FOR ELECTRICAL INSPECTION.

PEDESTAL POLE GROUND - GROUND WIRE SHALL COME FROM THE GROUND ROD THROUGH THE PVC CONDUIT, CONNECTING TO A TRANSFORMER BASE AND THEN TO EACH RIGID STEEL GROUNDING BUSHING.

ALL GROUND RODS SHALL BE 24" FROM THE CONCRETE POLE BASE.

**PEDESTRIAN SIGNAL COUNTDOWN DETAIL**

10/18/2022



SHEET NO.	TR
ITEM NO.	
COUNTY OF	JEFFERSON

**FLASHING YELLOW ARROW SIGNAL WIRING AND SPECIAL REQUIREMENTS**

**THREE-SECTION FTA HEADS**  
**CONNECTION**      **COLOR**  
 RED ARROW      RED  
 STEADY YELLOW ARROW      PHASE 1 RED  
 FLASHING YELLOW ARROW      PHASE 1 YELLOW  
 NOT USED      PHASE 1 GREEN  
 NEUTRAL      N/A  
 EQUIPMENT GROUND      WHITE  
 NOT USED      WHITE/TRACER

THE CONTRACTOR MAY HAVE TO PROVIDE A CLAMP MESSASGER AND WIRE TIE FOR THE TETHER CABLE. THE MESSASGER AND WIRE TIE SHALL BE INSTALLED IN THE MIDDLE OF THE TETHER CABLE. THE CONTRACTOR SHALL BE RESPONSIBLE FOR THE PROTECTION OF ALL EXISTING UTILITIES AND SHALL BE RESPONSIBLE FOR THE PROTECTION OF ALL EXISTING SIGNAL HEADS. THE CONTRACTOR SHALL BE RESPONSIBLE FOR THE PROTECTION OF ALL EXISTING SIGNAL HEADS. THE CONTRACTOR SHALL BE RESPONSIBLE FOR THE PROTECTION OF ALL EXISTING SIGNAL HEADS.

**SIGNAL HEADS**



HEAD = A, 4B, 6A, 6B, 8A, & 8B



ALL COUNTDOWN  
PEDESTRIAN SIGNALS

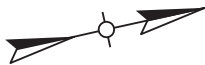
ALL INDICATIONS ARE M.F.D.  
ALL SIGNALS SHALL HAVE BACKSCATTERS  
REFLECTIVE DIAPHRAGMS

**RADAR DETECTION SCHEDULE**

LOOP	PHASE	SLOT	CHANNEL	SIZE	STOP BAR	0'
4	4	4	1	12X30	0'	0'
4	4	4	1	12X30	0'	0'

**WIRING SCHEDULE**

CABLE	ORIGIN	ENDING	CONNECTING
1-1/4"/7C	CONTROLLER	SH 2A & 2B	SH 2A & 2B
1-1/4"/7C	CONTROLLER	SH 2B	SH 4A & 4B
1-1/4"/7C	CONTROLLER	SH 4B	SH 4A & 4B
1-1/4"/7C	CONTROLLER	SH 5	SH 5
1-1/4"/7C	CONTROLLER	SH 6A	SH 6A & 6B
1-1/4"/7C	CONTROLLER	SH 8A	SH 8A & 8B
1-1/4"/7C	CONTROLLER	POLE C	PH 2A & 1PED DETECTOR
1-1/4"/7C	CONTROLLER	POLE D	PH 2B & 1PED DETECTOR
1-1/4"/7C	CONTROLLER	POLE B	PH 4A & 1PED DETECTOR
1-1/4"/7C	CONTROLLER	POLE C	PH 4B & 1PED DETECTOR
1-1/4"/7C	CONTROLLER	PED POLE A	PH 6A & 1PED DETECTOR
1-1/4"/7C	CONTROLLER	PED POLE B	PH 6B & 1PED DETECTOR
1-1/4"/7C	CONTROLLER	POLE D	PH 8A & 1PED DETECTOR
1-1/4"/7C	CONTROLLER	PED POLE A	PH 8B & 1PED DETECTOR



**STEEL STRAIN POLES**

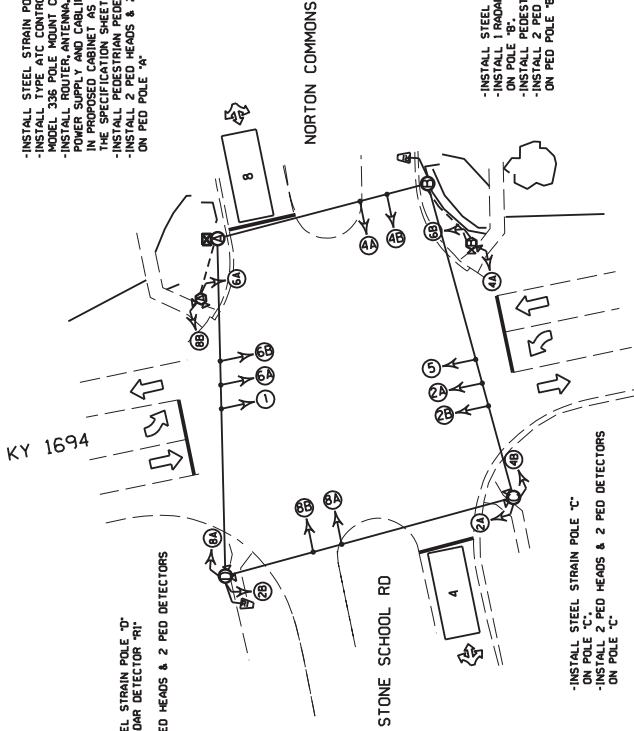
POLE	HEIGHT	SPAN	ALT. HT.	CALC. SERV. MOMENT	SAG	MAX. TETHER TENSION (LBS)
A	32'	A-B	28'	158 klp-ft	5%	3258
B	32'	B-A	30'	171 klp-ft	5%	2428
C	32'	B-C	30.5'	183 klp-ft	5%	2132
D	32'	C-D	28.5'	205 klp-ft	5%	1117

ALL MESSENGER IS 15,000 LB

A TETHER CABLE SHALL BE INSTALLED BETWEEN ALL POLES. THE BOTTOM OF ALL SIGNAL HEADS SHALL BE ATTACHED TO THE TETHER CABLE.

BE WILL PROVIDE RADAR DETECTION EQUIPMENT. CONTACT DAVID HUBER FOR PICKUP & IF ASSISTANCE IS NEEDED WITH INSTALLATION. CELL PHONE: 502-250-0883

- INSTALL STEEL STRAIN POLE "A"
- INSTALL 1 RADAR DETECTOR "R1" ON POLE "A"
- INSTALL 2 PED HEADS & 2 PED DETECTORS ON POLE "A"
- INSTALL STEEL STRAIN POLE "B"
- INSTALL 1 RADAR DETECTOR "R2" ON POLE "B"
- INSTALL 2 PED HEADS & 2 PED DETECTORS ON POLE "B"
- INSTALL STEEL STRAIN POLE "C"
- INSTALL 1 RADAR DETECTOR "R3" ON POLE "C"
- INSTALL 2 PED HEADS & 2 PED DETECTORS ON POLE "C"
- INSTALL STEEL STRAIN POLE "D"
- INSTALL 1 RADAR DETECTOR "R4" ON POLE "D"
- INSTALL 2 PED HEADS & 2 PED DETECTORS ON POLE "D"



SCALE 1" = 20'

**LEGEND**

<input checked="" type="checkbox"/>	POLE MOUNTED CONTROLLER
	STEEL STRAIN POLE
	PEDESTAL
	PEDESTRIAN PUSH BUTTON
	SIGNAL HEAD
	PEDESTRIAN HEAD
	VIDEO DETECTION ZONE
	L-25 PVC SCHEDULE 80 UNLESS OTHERWISE NOTED
	VIDEO CAMERA

**POLE LOCATIONS**

POLE	NORTHING/ EASTING
A	E 49755803.74
B	N 40695897.27
C	E 49755802.19
D	N 40695897.27
E	E 49755803.74
F	E 49755802.19
G	N 40695897.27
H	E 49755803.74

TRAFFIC SIGNAL PLAN SHEET  
KY 1694 @ NORTON COMMONS /  
STONE SCHOOL ROAD

Tim Tharpe - Director  
Phone (502) 564-3020  
FAX (502) 564-7759

**DIVISION OF TRAFFIC OPERATIONS  
PROJECT MATERIALS RELEASE FORM  
FOR SIGNAL AND LIGHTING**

**Note: Email form with signatures to KYTC's warehouse (kim.stamper@ky.gov) at least two (2) days prior to arrival for pickup. Ensure Contractor's delivery driver has a copy of form with signatures. Failure to do either may result in long delays or refusal to distribute materials upon arrival.**

Item Number:           n/a            
 County:           Jefferson            
 Description:           Signals: KY 1694 at Norton Commons/ Stone School Rd          

Cabinets	Master code	
1	T-01-0010	Pole Mounted 336 Cabinet
1	T-01-0105	ATC Controller
1	T-01-0106	1C w/Maxtime (this should go with item ATC controller)
1	T-01-0501	Conflict Monitor, Model 2018
3	T-01-0510	Isolator, Model 242 (1 for 2070, plus for ped detector and railroad)
10	T-01-0700	Load Switches

Signals	Master code	
10	T-02-0009	Siemens 3 Section Signal
10	T-02-0032	Siemen 3 section backplate
8	T-02-0090	Pedestrian signal housing
2	T-02-0300	LED Module 12" red arrow
4	T-02-0310	LED Module 12" yellow arrow
8	T-02-0330	LED Module 12" red ball
8	T-02-0340	LED Module 12" yellow ball
8	T-02-0350	LED Module 12" green ball

Special items	Master code	
1		Radar ( <b>PROVIDED BY D5</b> )
1	T-02-0504	Router (this includes power supply/antenna/cabling)
2	T-02-0660	Pedstl.top mntg.bkt Two-way
1	T-02-0670	Pedestal
8	T-06-0710	Ped Detector Pole Mount FSA Box
8	T-06-0730	Ped Button w/o Plunger
8	T-17-0015	9 X 15 Countdown Ped Sign DBL Sided

Poles	Master code	
4	T-04-0030	Steel Strain Pole 32 foot
0	T-02-0330	LED Module 12" red ball
0	T-02-0340	LED Module 12" yellow ball
0	T-02-0350	LED Module 12" green ball
0	T-02-0365	LED Countdown Pedestrian Module

Special items	Master code		
0	T-02-0400	Video Detection System Camera Detector, SP	# of left turns put here
0	T-02-0401	Camera Mounting System	
0	T-02-0500	MDS Radios 9810	
0	T-02-0504	Router (this includes power supply/antenna/cabling)	
0	T-02-0507	Ethernet/Serial Data Radio	
0	T-02-0510	Antenna 6 db omni	
0	T-02-0520	Antenna 10 db yagi	
0	T-02-0530	Antenna 9 db omni	
0	T-03-0230	Jumper 3' N-N RG-58	
0	T-03-0240	Jumper 60' N-N RG-213	
0	T-06-0800	Surge Protector for Radio	
0	T-09-0410	Sign Hanger for 48" signs	
0	T-09-0415	30 X 36 through 36 X 36 sign hanger (New)	
0	T-02-0650	Pedstl.top mntg.bkt One-way	
0	T-02-0660	Pedstl.top mntg.bkt Two-way	
0	T-02-0661	Post Top for Pedestal (each)	
0	T-02-0670	Pedestal	
0	T-06-0710	Ped Detector Pole Mount FSA Box	
0	T-06-0730	Ped Button w/o Plunger	
0	T-17-0015	9 X 15 Countdown Ped Sign DBL Sided	



Tim Tharpe - Director  
Phone (502) 564-3020

### DIVISION OF TRAFFIC OPERATIONS

Poles		
0	T-04-0010	Steel Strain Pole 28 foot
0	T-04-0020	Steel Strain Pole 30 foot
0	T-04-0030	Steel Strain Pole 32 foot
0	T-04-0040	Steel Strain Pole 34 foot
0	T-04-0051	Steel Strain Pole 36 foot
0	T-04-0054	Steel Strain Pole 38 foot
0	T-04-0055	Steel Strain Pole 40 foot

**REQUIRED**

Electrical Contractor Name \_\_\_\_\_

Electrical Contractor Supervisor \_\_\_\_\_ Contact number for Supervisor \_\_\_\_\_

Project Engineer \_\_\_\_\_ Contact number for Project Engineer \_\_\_\_\_

Project Engineer attests that the mentioned contractor is the actual electrical contractor on this project

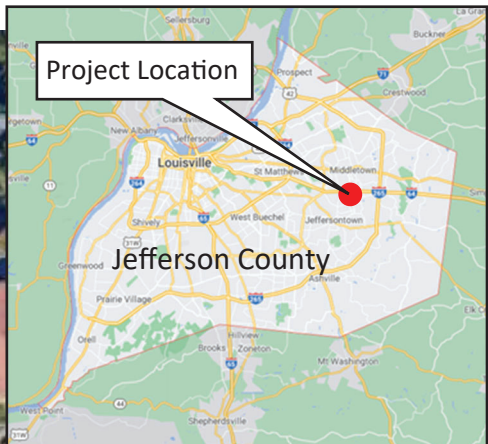
Signature of Project Engineer or Designee \_\_\_\_\_

# COMMONWEALTH OF KENTUCKY DEPARTMENT OF HIGHWAYS

## JEFFERSON COUNTY

KY 913 (Blankenbaker Parkway) at I-64 Eastbound On-Ramp

COUNTY OF	ITEM NO.
JEFFERSON	N/A



VICINITY MAP



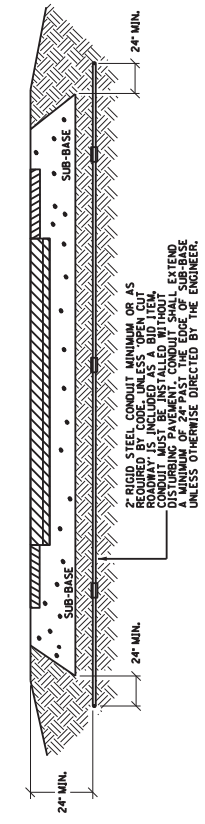
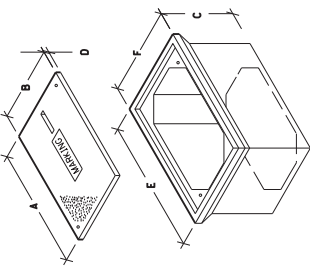




COUNTY OF	JEFFERSON
ITEM NO.	
SHEET NO.	13

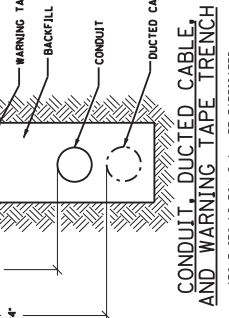
JUNCTION BOX DIMENSIONS (MINIMUM)						
	A	B	C	D	E	F
TYPE A	23"	14"	27"	2"	25"	15"
TYPE B	18"	11"	12"	1 1/4"	20"	13"
TYPE C	36"	24"	30"	3"	38"	26"

\* MINIMUM  
NOTE: STACKABLE BOXES ARE PERMITTED  
JUNCTION BOX



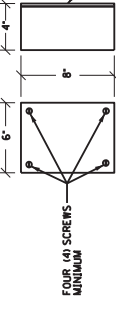
**CONDUIT INSTALLATION UNDER EXISTING PAVEMENT DETAIL**

DEPTHS SHOWN FOR CONDUIT AND WARNING TAPE SHALL BE AS SHOWN. CONTRACTOR SHALL PLACE AND COMPLETE BACKFILL IN 9" MAXIMUM LIFT TO THE SATISFACTION OF THE ENGINEER.

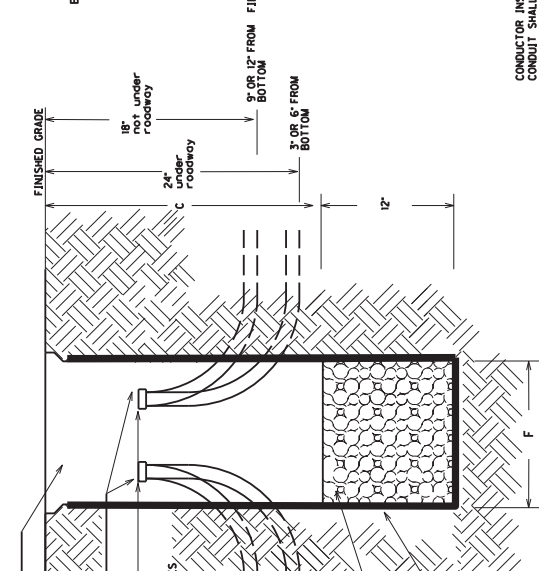
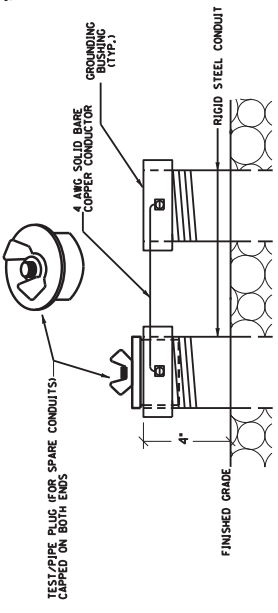


**CONDUIT, DUCTED CABLE, AND WARNING TAPE TRENCH**

ABOVE GROUND BOX SHALL BE FABRICATED FROM MINIMUM 1/2" GAUGE STEEL AND BOXES SHALL HAVE NO ANKERCUTS AND SHALL BE PROVIDED WITH A RESISTANT GASKET AND A MINIMUM OF FOUR SCREWS FOR ATTACHING TO THE CONDUIT. CABLE CLAMPS SHALL BE PROVIDED FOR CABLES ENTERING AND EXITING THE BOX.

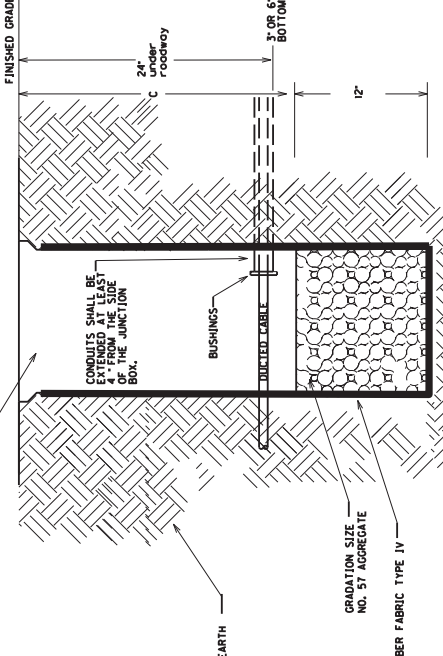
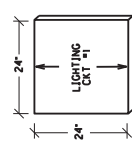
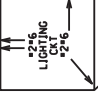


**ABOVE GROUND BOX**

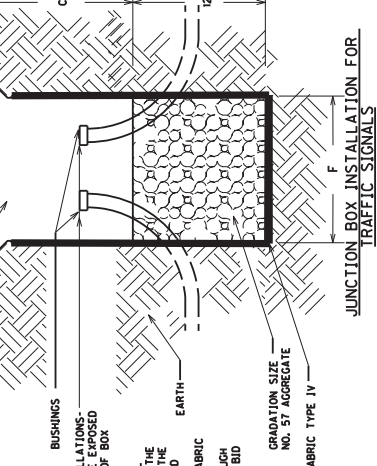


**JUNCTION BOX INSTALLATION FOR CONVENTIONAL LIGHTING**

BEFORE THE INSTALLATION OF THE #57 AGGREGATE AND JUNCTION BOX, THE CONTRACTOR SHALL INSTALL THE FABRIC TO THE EXTERIOR OF THE BOX WITH ADHESIVE. ANY FABRIC SHALL BE CUT ON V.S. AS NECESSARY TO ALLOW PASSAGE OF EACH INDIVIDUAL CONDUIT THROUGH THE FABRIC. THE FABRIC SHALL BE INCIDENTAL TO BID ITEMS 401, 2039MS835, OR 2039MS835.



**JUNCTION BOX INSTALLATION FOR HIGHMAST LIGHTING**



**JUNCTION BOX INSTALLATION FOR TRAFFIC SIGNALS**

**TEST PIPE PLUS (FOR SPARE CONDUITS) AND GROUNDING DETAIL CONCRETE CABLE MARKERS**

3/13/2017

**TRAFFIC SIGNAL AND ROADWAY LIGHTING JUNCTION BOX AND CONDUIT DETAILS**







Tim Tharpe - Director  
Phone (502) 564-3020  
FAX (502) 564-7759

**DIVISION OF TRAFFIC OPERATIONS**  
**PROJECT MATERIALS RELEASE FORM**  
**FOR SIGNAL AND LIGHTING**

**Note: Email form with signatures to KYTC's warehouse (kim.stamper@ky.gov) at least two (2) days prior to arrival for pickup. Ensure Contractor's delivery driver has a copy of form with signatures. Failure to do either may result in long delays or refusal to distribute materials upon arrival.**

Item Number:           n/a            
County:           Jefferson            
Description:           Signals: KY 913 (BLANKENBAKER PKWY) @ I-64EB ON RAMP          

Cabinets	Master code	
1	T-01-0020	Base Mounted 332 Cabinet
1	T-01-0105	ATC Controller
1	T-01-0106	1C w/Maxtime (this should go with item ATC controller)
1	T-01-0501	Conflict Monitor, Model 2018
1	T-01-0510	Isolator, Model 242 (1 for 2070, plus for ped detector and railroad)
4	T-01-0700	Load Switches

Signals	Master code	
3	T-02-0001	1-section beacon backplate
2	T-02-0009	Siemens 3 Section Signal
2	T-02-0032	Siemen 3 section backplate
1	T-02-0033	Siemen 4 secton 12" signal (poly)
1	T-02-0043	Siemen 4-sec. straight signal backplate
3	T-02-0080	12 inch red/yellowbeacon
1	T-02-0300	LED Module 12" red arrow
2	T-02-0310	LED Module 12" yellow arrow
4	T-02-0320	LED Module 12" green arrow
2	T-02-0330	LED Module 12" red ball
2	T-02-0340	LED Module 12" yellow ball
2	T-02-0350	LED Module 12" green ball

Special items	Master code	
1		Radar (PROVIDED BY D5)
1	T-02-0504	Router (this includes power supply/antenna/cabling)

Poles	Master code	
2	T-04-0051	Steel Strain Pole 36 foot
0	T-02-0320	LED Module 12" green arrow
0	T-02-0330	LED Module 12" red ball
0	T-02-0340	LED Module 12" yellow ball
0	T-02-0350	LED Module 12" green ball
0	T-02-0365	LED Countdown Pedestrian Module

Special items	Master code		
0	T-02-0400	Video Detection System Camera Detector, SP	# of left turns put here
0	T-02-0401	Camera Mounting System	
0	T-02-0500	MDS Radios 9810	
0	T-02-0504	Router (this includes power supply/antenna/cabling)	
0	T-02-0507	Ethernet/Serial Data Radio	
0	T-02-0510	Antenna 6 db omni	
0	T-02-0520	Antenna 10 db yagi	
0	T-02-0530	Antenna 9 db omni	
0	T-03-0230	Jumper 3' N-N RG-58	
0	T-03-0240	Jumper 60' N-N RG-213	
0	T-06-0800	Surge Protector for Radio	
0	T-09-0410	Sign Hanger for 48" signs	
0	T-09-0415	30 X 36 through 36 X 36 sign hanger (New)	
0	T-02-0650	Pedstl.top mntg.bkt One-way	
0	T-02-0660	Pedstl.top mntg.bkt Two-way	
0	T-02-0661	Post Top for Pedestal (each)	
0	T-02-0670	Pedestal	
0	T-06-0710	Ped Detector Pole Mount FSA Box	
0	T-06-0730	Ped Button w/o Plunger	
0	T-17-0015	9 X 15 Countdown Ped Sign DBL Sided	



Tim Tharpe - Director  
Phone (502) 564-3020

### DIVISION OF TRAFFIC OPERATIONS

Poles		
0	T-04-0010	Steel Strain Pole 28 foot
0	T-04-0020	Steel Strain Pole 30 foot
0	T-04-0030	Steel Strain Pole 32 foot
0	T-04-0040	Steel Strain Pole 34 foot
0	T-04-0051	Steel Strain Pole 36 foot
0	T-04-0054	Steel Strain Pole 38 foot
0	T-04-0055	Steel Strain Pole 40 foot

**REQUIRED**

Electrical Contractor Name \_\_\_\_\_

Electrical Contractor Supervisor \_\_\_\_\_ Contact number for Supervisor \_\_\_\_\_

Project Engineer \_\_\_\_\_ Contact number for Project Engineer \_\_\_\_\_

Project Engineer attests that the mentioned contractor is the actual electrical contractor on this project

Signature of Project Engineer or Designee \_\_\_\_\_

# COMMONWEALTH OF KENTUCKY DEPARTMENT OF HIGHWAYS

## JEFFERSON COUNTY

KY 1020 (National Turnpike) at CS 1131F (Tolls Lane)

COUNTY OF	ITEM NO.
JEFFERSON	N/A



VICINITY MAP

SHEET NO.	11
COUNTY OF	JEFFERSON

MATERIAL NOTES THAT ARE CONTRARY TO SECTION 835

REVISION: -21 WARNING TAPE  
REPLACE FIRST SENTENCE WITH THE FOLLOWING IN 834.33:  
PROVIDE DETECTABLE TYPE TAPE THAT IS 6 INCHES WIDE AND 7.0 MILS  
NOMINAL THICK.

REVISION: 16.07 SIGNAL TETHER CABLE  
PROVIDE TETHER CABLE THAT CONSISTS OF CLASS A, ZINC-COATED,  
COMMON GRADE STEEL AND EXTRA GALVANIZED PER ASTM A15-03.  
PROVIDE A MINIMUM 1/4 INCH DIAMETER AND 7 STRANDS WITH MINIMUM  
BREAKING STRENGTH 1,900 POUNDS.

REVISION: 16.08 SIGNAL TETHER STRANDWISE  
PROVIDE STRANDWISE THREADED IN AUTOMATIC JAW TYPE DEAD-END  
FOR 1/4 INCH GALVANIZED STEEL MESSENGER. USE HUBBELL 005200L OR  
APPROVED EQUAL.

REVISION: 16.09 SIGNAL TETHER STRANDLINK  
PROVIDE STRANDLINK TYPE WITH 1/4 INCH GALVANIZED STEEL  
MESSENGER. USE HUBBELL GUS5000 OR APPROVED EQUAL.

MEASUREMENT NOTES THAT ARE IN ADDITION TO SECTION T23

INSTALL SIGNAL CONTROLLER TYPE ATC. THE DEPARTMENT WILL MEASURE  
THE QUANTITY AS EACH INDIVIDUAL UNIT INSTALLED. THE DEPARTMENT WILL NOT  
MEASURE THE CONCRETE BASE, MOUNTING THE CABINET, CONNECTING THE SIGNAL  
AND DETECTORS, EXCAVATION, BACKFILLING, RESTORATION, ANY NECESSARY POLE  
MOUNTING HARDWARE, ELECTRICAL SERVICES, ELECTRICAL INSULATION FEES, AND  
ROUTING BUILDING CONSIDERATIONS. THE SECONDARY REMEDIATION SERVICE FOR  
PAVING AND CONSIDERATIONS WHEN MEASURING THE QUANTITY OF THE  
DEPARTMENT WILL ALSO NOT MEASURE CONNECTING THE INDUCTION LOOP  
AMPLIFIERS, PEDESTRIAN ISOLATORS, LOAD SWITCHES, MODEL 400 MODEM CARD  
FOR PAYMENT AND WILL CONSIDER THEM INCIDENTAL TO THIS ITEM OF  
WORK. THE DEPARTMENT WILL ALSO NOT MEASURE FURNISHING AND INSTALLING  
ELECTRICAL SERVICE CONDUCTORS, CONDUITS, ANCHORS, METER BASE, FUSED  
CUTOFF, FUSES, GROUND RODS, GROUND LUGS, AND GROUND WIRES FOR PAYMENT  
AND WILL CONSIDER THEM INCIDENTAL TO THIS ITEM OF WORK.

INSTALL RADAR PRESENCE DETECTOR TYPE A. SHALL CONSIST OF INSTALLATION OF A  
POLE MOUNTED RADAR PRESENCE SENSOR (SENSOR MOUNTING BRACKET, SENSOR CABLES,  
INTERFACE BOXES, LEAD-IN CABLE, CONNECTORS (FURNISHED BY CONTRACTOR), AND  
CONTROLLER INTERFACE ASSEMBLY, RADAR PRESENCE DETECTOR TYPE A BID ITEM SHALL  
INCLUDE ALL LABOR REQUIRED TO PROVIDE A FUNCTIONAL DETECTION SYSTEM. RADAR  
PRESENCE DETECTOR TYPE A SHALL BE INSTALLED AND WIRED IN ACCORDANCE WITH THE  
MANUFACTURER'S INSTRUCTIONS. AFTER THE DETECTOR IS INSTALLED AND BEFORE THE  
DETECTOR IS POWERED ON, THE CONTRACTOR SHALL COORDINATE WITH DISTRICT TRAFFIC  
DIVISION'S REPRESENTATIVES TO SCHEDULE A TIME TO PERFORM THE DETECTOR SETUP.  
THE CONTRACTOR SHALL CHECK, VERIFY, AND CONFIRM THE SETUP WORK REPRESENTATIVES  
FROM KYTC AND/OR THE MANUFACTURER OR SALES REPRESENTATIVE WILL ASSIST WITH  
SETUP AND CALIBRATION. THE CONTRACTOR SHALL PROVIDE A BUCKET TRUCK AND  
OPERATORS AT THIS TIME FOR FINAL AIMING OF THE SENSORS. THE CONTRACTOR SHALL  
PROVIDE INDIVIDUALS CAPABLE OF OPERATING THE SETUP SOFTWARE AND LEARNING THE  
SETUP PROCESS SO THAT FUTURE INSTALLATIONS MAY BE COMPLETED WITHOUT ASSISTANCE  
FROM OTHERS.

INSTALL RADAR ADVANCE DETECTOR TYPE B SHALL CONSIST OF INSTALLATION OF A POLE  
MOUNTED RADAR ADVANCE DETECTOR (SENSOR MOUNTING BRACKET, SENSOR CABLES,  
INTERFACE BOXES, LEAD-IN CABLE, CONNECTORS (FURNISHED BY CONTRACTOR) AND  
CONTROLLER INTERFACE ASSEMBLY, RADAR ADVANCE DETECTOR TYPE B BID ITEM SHALL  
INCLUDE ALL LABOR REQUIRED TO PROVIDE A FUNCTIONAL DETECTION SYSTEM. RADAR  
ADVANCE DETECTOR TYPE B SHALL BE INSTALLED AND WIRED IN ACCORDANCE WITH THE  
MANUFACTURER'S INSTRUCTIONS. AFTER THE DETECTOR IS INSTALLED AND BEFORE THE  
DETECTOR IS POWERED ON, THE CONTRACTOR SHALL COORDINATE WITH DISTRICT TRAFFIC  
DIVISION'S REPRESENTATIVES TO SCHEDULE A TIME TO PERFORM THE DETECTOR SETUP.  
THE CONTRACTOR SHALL DOUBLE CHECK TO VERIFY THAT ALL WIRING IS CORRECTLY  
INSTALLED, AND CONNECTED BEFORE BEGINNING THE WORK. REPRESENTATIVES  
FROM KYTC AND/OR THE MANUFACTURER OR SALES REPRESENTATIVE.

CONSTRUCTION AND MEASUREMENT NOTES THAT ARE CONTRARY TO SECTION T23  
SUBSECTION: 03.02 POLES AND BASES INSTALLATION. B)  
REVISION: REPLACE ENTIRE TABLE WITH THE FOLLOWING:

MAXIMUM SERVICE FORCES	DIAMETER (IN.)		DEPTH (FEET)		VERTICAL BARS		TIES OR SPIRAL	
	SOIL	ROCK	SOIL	ROCK	SIZE	TOTAL	BAR SIZE	SPACING OR PITCH (IN.)
0-25	6	6	6	5	0000000000000000	13	#4	2
25-50	6	6	6	5	0000000000000000	13	#4	2
50-75	6	6	6	5	0000000000000000	13	#4	2
75-100	6	6	6	5	0000000000000000	13	#4	2
100-150	6	6	6	5	0000000000000000	13	#4	2
150-200	6	6	6	5	0000000000000000	13	#4	2
200-250	6	6	6	5	0000000000000000	13	#4	2
250-300	6	6	6	5	0000000000000000	13	#4	2
300-350	6	6	6	5	0000000000000000	13	#4	2
350-400	6	6	6	5	0000000000000000	13	#4	2
400-450	6	6	6	5	0000000000000000	13	#4	2
450-500	6	6	6	5	0000000000000000	13	#4	2
500-600	6	6	6	5	0000000000000000	13	#4	2

03.12 WIRING INSTALLATION.  
SEE TRAFFIC OPERATIONS WEBSITE FOR WORD DOCUMENT TO REPLACE ALL  
CHARTS FOR WIRING TO SHOW CHANGES FOR EQUIPMENT GROUNDING.

TRAFFIC SIGNAL ESTIMATE OF QUANTITIES

TOTAL UNITS	CODE	ITEM DESCRIPTION
183	50 FT	2562 SIGNS
1	LP SUM	2569 DEMOBILIZATION (1,52)
1	LP SUM	2650 MAINTAIN & CONTROL TRAFFIC (52)
3	EACH	2775 FLASHING ARROW
80	LIN FT	4820 TRENCHING AND BACKFILLING
2,450	LIN FT	4845 CABLE-NO. 14/7C
375	LIN FT	4866 MESSENGER-15400 LB
4	EACH	4932 INSTALL STEEL STRAIN POLE
4	EACH	20093NS835 INSTALL PEDESTRIAN HEAD LED
6	EACH	2018NS835 INSTALL SIGNAL-3 SECTION LED
1	EACH	20266S835 INSTALL SIGNAL-4 SECTION LED
1	EACH	20390NS835 INSTALL COORDINATING UNIT
4	EACH	21743NN INSTALL PEDESTRIAN DETECTOR
18	CU YD	23957EN TRAFFIC SIGNAL POLE BASE
2	EACH	23222EC INSTALL SIGNAL PEDESTAL
60	LIN FT	24900EC PVC CONDUIT - 1 1/4 INCH - SCHEDULE 80
80	LIN FT	24909EC PVC CONDUIT - 2 INCH - SCHEDULE 80
1	EACH	24908EC INSTALL SIGNAL CONTROLLER-TY ATC
3	EACH	2619EC INSTALL RADAR PRESENCE DETECTOR TYPE A
2	EACH	26120EC INSTALL RADAR Advance DETECTOR TYPE B
375	LIN FT	24528ED TETHER WIRE

THE STANDARD SPECIFICATIONS FOR ROAD AND BRIDGE CONSTRUCTION, CURRENT  
EDITION, AND OTHER SPECIAL NOTES AND SPECIFICATIONS WILL APPLY ON THIS  
CONTRACT. THE STANDARD SPECIFICATIONS FOR ROAD AND BRIDGE CONSTRUCTION  
SEE SECTION 602 FOR SPIRAL REINFORCEMENT AND OTHER DETAILS.

THE CONTRACTOR SHALL MAKE AN INSPECTION OF THE PROJECT SITE PRIOR TO  
SUBMITTING A BID AND SHALL BE THOROUGHLY FAMILIARIZED WITH EXISTING  
CONDITIONS. SUBMISSIONS OF A BID WILL BE CONSIDERED AN AFFIRMATION OF THIS  
INSPECTION HAVING BEEN COMPLETED.

THE CONTRACTOR SHALL BE RESPONSIBLE FOR PICKING UP MATERIALS FOR INSTALL ITEMS  
E.G.S DISTRICT OR THE CONTRACTOR'S OFFICE. MATERIALS SHALL BE DELIVERED TO THE  
PROJECT SITE IN ACCORDANCE WITH THE SCHEDULED DELIVERY DATES. FAILURE TO  
ARRIVE TO FOLLOW THESE PROCEDURES MAY RESULT IN LONG DELAYS OR REFUSAL TO  
DISTRIBUTE MATERIALS UPON ARRIVAL.

- CONTRACTOR SHALL SECURE THE SIGNATURES OF KYTC'S PROJECT ENGINEER AND THE  
ELECTRICAL CONTRACTOR'S FOREMAN ON THE PROJECT MATERIALS RELEASE FORM. IF THE  
RELEASE FORM IS NOT IN THE PROPOSAL, CONTACT KIM STAMPER OR KERRY DECKER WITH  
THE DIVISION OF TRAFFIC OPERATIONS BY PHONE (502-782-8994/502-782-5536) OR  
EMAIL (KIM.STAMPER@KYTC.GOV/KERRY.DECKER@KYTC.GOV). PREARRANGE PICK UP OF MATERIALS.  
CONTRACTOR SHALL EMAIL THE PROJECT MATERIALS RELEASE FORM WITH REQUIRED  
SIGNATURES TO THE WAREHOUSE AT KIM.STAMPER@KYTC.GOV AND SHALL NOTIFY THE  
WAREHOUSE BY PHONE (502-782-8994/502-330-9153) OR EMAIL KIM.STAMPER@KYTC.GOV AT  
LEAST TWO (2) WORKING DAYS PRIOR TO ARRIVAL.
- CONTRACTOR SHALL ALSO CONTACT THE SIGNAL SYSTEM BRANCH OF THE DIVISION OF  
TRAFFIC OPERATIONS BY PHONE (502-782-5543/502-782-5547) OR EMAIL  
GEO.THOMPSON@KYTC.GOV/LARRY.FRISH@KYTC.GOV AT LEAST TWO (2) WORKING DAYS PRIOR TO  
ARRIVAL TO FACILITATE PROGRAMMING OF ROUTERS.
- CONTRACTOR SHALL FACILITATE DELIVERY OF EQUIPMENT TO THE WAREHOUSE (1239  
WILKINSON BOULEVARD, FRANKFORT, KY 40623) AT THE PREARRANGED DATE/TIME FOR  
MATERIAL PICK UP. TO FACILITATE THIS PROCESS, ENSURE CONTRACTOR'S DELIVERY  
DRIVER HAS A COPY OF THE PROJECT MATERIALS RELEASE FORM WITH THE REQUIRED  
SIGNATURES.

ADD SENTENCE TO SECTION 835.17: ALL WIRE SHALL HAVE WORDING ADDED TO THE OUTER  
JACKET THAT STATES : "PROPERTY OF KENTUCKY TRANSPORTATION CABINET 502 564  
0501".

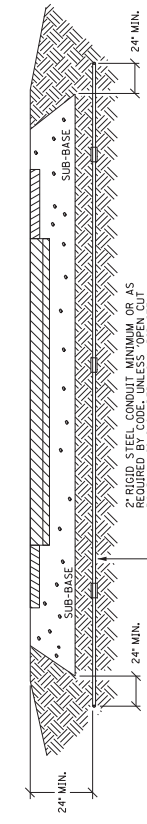
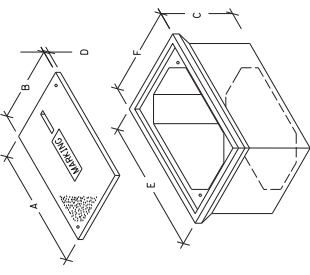
4-10-2023





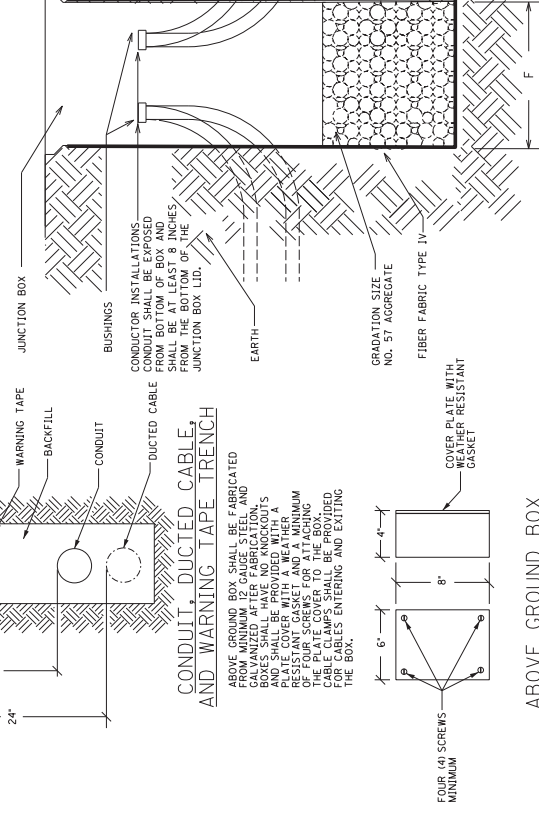
JUNCTION BOX DIMENSIONS (NOMINAL)						
	A	B	C	D	E	F
TYPE A	23"	14"	27"	2"	25"	15"
TYPE B	18"	11"	12"	1 1/4"	20"	13"
TYPE C	36"	24"	30"	3"	38"	26"

\* MINIMUM STACKABLE BOXES ARE PERMITTED  
JUNCTION BOX



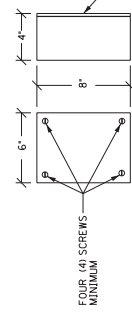
**CONDUIT INSTALLATION UNDER EXISTING PAVEMENT DETAIL**

DEPTHS SHOWN FOR CONDUIT AND CONDUIT BACKFILL SHALL BE AS SHOWN. CONTRACTOR SHALL PLACE AND COMPACT BACKFILL IN 9" MAXIMUM LIFT TO THE SATISFACTION OF THE ENGINEER.

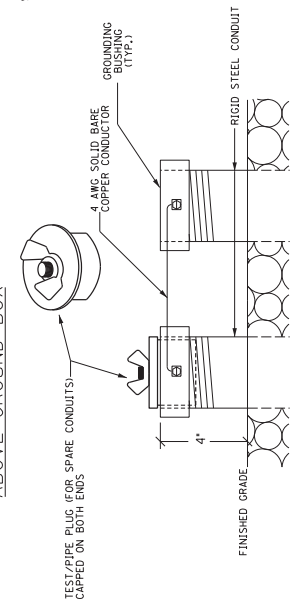


**CONDUIT, DUCTED CABLE, AND WARNING TAPE TRENCH**

ABOVE GROUND BOX SHALL BE FABRICATED FROM MINIMUM 1/2 GAUGE STEEL AND BOXES SHALL HAVE NO ANKERS AND SHALL BE PROVIDED WITH A RESISTANT GASKET AND A MINIMUM OF FOUR SCREWS FOR ATTACHING TO THE CONCRETE. CABLE CLAMPS SHALL BE PROVIDED FOR CABLES ENTERING AND EXITING THE BOX.



**ABOVE GROUND BOX**



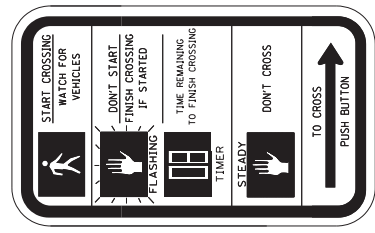
COURTY OF JEFFERSON  
ITEM NO.  
SHEET NO. T3

TRAFFIC SIGNAL AND ROADWAY LIGHTING  
JUNCTION BOX AND CONDUIT DETAILS

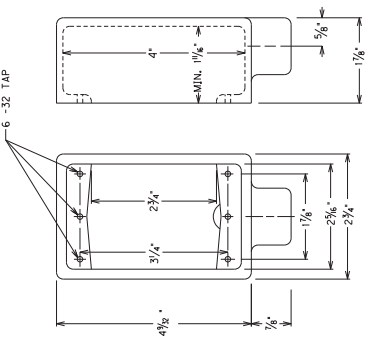
**TEST/PIPE PLUG(FOR SPARE CONDUITS) AND GROUNDING DETAIL CONCRETE CABLE MARKERS**

3/13/2017

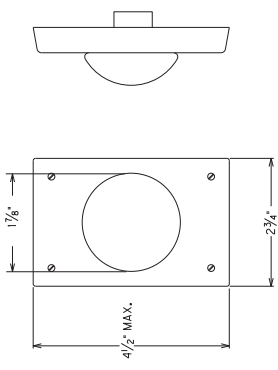
COUNTY OF	ITEM NO.	SHEET NO.
JEFFERSON		T4



RI0-3e SIGN (9' X 15')  
FOR COUNTDOWN ONLY

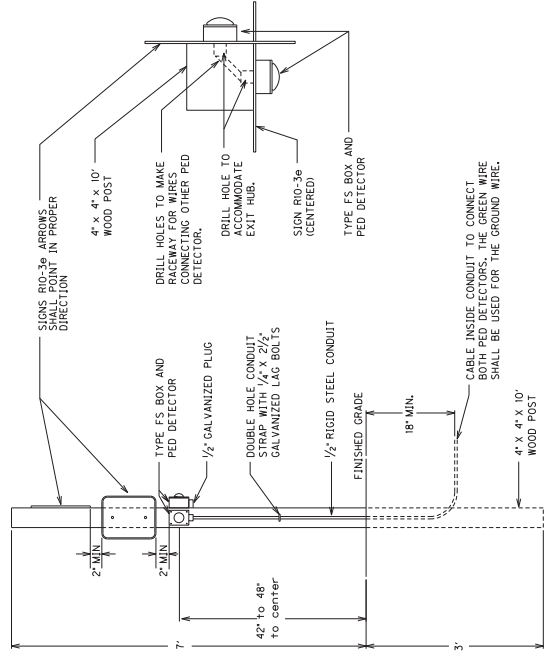


TYPE FS BOX FOR PED DETECTOR FOR USE WITH STEEL STRAIN POLE, WOOD POST, PEDESTAL, AND WOOD POLE

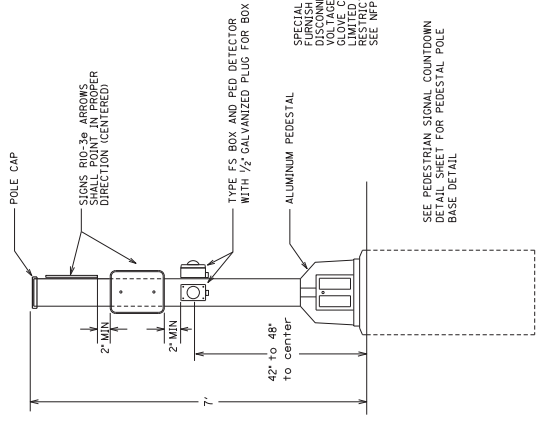


PED DETECTOR

48 X 1/2 PAN HEAD OR ROUND HEAD WOOD SCREWS 1/2" MIN. SPACING. MINIMUM OF 2 SCREWS FOR EACH BOX. SCREWS SHALL BE INSTALLED DIAGONALLY.



PED DETECTOR ON WOOD POST DETAIL



PEDESTAL POST DETAIL FOR PED DETECTORS & SIGNS

SPECIAL NOTE FOR TRANSFORMER DOOR: DISCONNECT WITH THE MAIN POWER ON VOLTAGE (120 VOLTS). SEE THE LIMITED APPROACH BOUNDARY (42 IN) RESTRICTED APPROACH BOUNDARY (CONTACT) SEE NFPA 70E FOR ADDITIONAL PPE REQUIRED

SEE PEDESTRIAN SIGNAL COUNTDOWN DETAIL SHEET FOR PEDESTAL POLE BASE DETAIL

10/18/2022

PEDESTRIAN DETECTOR DETAIL









ITEM NO.	COUNTY OF	SHEET NO.
	JEFFERSON	17

STEEL STRAIN POLES			
POLE	SEAN	ATT. HL	CALC. SERV. MOMENT SAG
A	A-B	28'	101 kip-ft
B	A-D	27'	147 kip-ft
C	B-C	30'	183 kip-ft
D	C-D	26'	205 kip-ft

MAX. TETHER TENSION (LBS)			
A-B	5767		
B-C	5671		
C-D	3306		
D-E	2982		

ALL MESSENGER IS 15,400 LB  
A TETHER CABLE SHALL BE INSTALLED BETWEEN ALL POLES THE BOTTOM OF ALL SIGNAL HEADS SHALL BE ATTACHED TO THE TETHER CABLE.

POLE LOCATIONS			
POLE	NORTHING/ EASTING		
A	N 4085823.74 E 4373738.29		
B	N 4320855.23 E 4920634.61		
C	N 3937186.35 E 4920634.61		
D	N 3937084.57 E 4742645.98		

INSTALL STEEL STRAIN POLE "A"  
INSTALL TYPE ATC CONTROLLER IN MODEL 332 BASE MOUNTED CABINET IN PROPOSED CABINET AS SHOWN ON POWER SUPPLY AND CABLING IN PROPOSED SHEETS  
INSTALL 4'-2" SCHEDULE 80 PVC FROM MODEL 332 CONTROLLER CABINET TO POLE "A"  
INSTALL 1 PED HEAD & 1 PED DETECTOR ON POLE "A"  
INSTALL 1 RADAR SENSOR "R1" ON POLE "A"

INSTALL STEEL STRAIN POLE "D"  
INSTALL 2 RADAR SENSORS "R2" ON POLE "D"  
INSTALL PEDESTRIAN PEDESTAL "A" ON POLE "D"  
INSTALL 2 PED HEADS & 2 PED DETECTORS ON POLE "D"

INSTALL STEEL STRAIN POLE "C"  
INSTALL 2 RADAR SENSORS "R3" & "R4" ON POLE "C"  
INSTALL 1 PEDESTRIAN PEDESTAL "B" ON POLE "C"  
INSTALL 1 PED HEAD & 1 PED DETECTOR ON POLE "C"

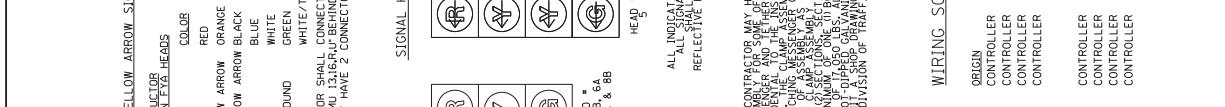
D5 WILL PROVIDE RADAR DETECTION EQUIPMENT.  
CONTACT DAVID HUBER FOR PICKUP  
CELL PHONE: 502-558-9883  
CONTACT DAVID HUBER FOR DETECTION ZONE PLACEMENT FOR ADVANCED RADAR SENSORS R3 AND R5



RADAR DETECTION SCHEDULE			
ZONE	PHASE	SLOT	CHANNEL
2A	2	12	1
2B	2	12	2
2C	2	13	1
2D	2	13	2
5	5	J1	1
6A	6	J2	1
6B	6	J2	2
6C	6	J3	1
6D	6	J3	2
8	8	J6	1

WIRING SCHEDULE			
CABLE	ORIGIN	ENDING	CONNECTING
1-1/4"/7C	CONTROLLER	SH 2A	SH 2A & 2B
1-1/4"/7C	CONTROLLER	SH 2B	SH 2A & 2B
1-1/4"/7C	CONTROLLER	SH 6A	SH 6A & 6B
1-1/4"/7C	CONTROLLER	SH 6B	SH 6A & 6B
1-1/4"/7C	CONTROLLER	SH 8A	SH 8A & 8B
1-1/4"/7C	CONTROLLER	PED POLE A	PH 4A & 1 PED DETECTOR
1-1/4"/7C	CONTROLLER	PED POLE B	PH 4B & 1 PED DETECTOR
1-1/4"/7C	CONTROLLER	POLE A	PH 6A & 1 PED DETECTOR
1-1/4"/7C	CONTROLLER	PED POLE A	PH 6B & 1 PED DETECTOR

CONTRACTOR MAY HAVE TO PROVIDE A CLAMP ASSEMBLY FOR SOME OF THE ATTACHMENTS OF THE MOUNTING TO THE INSTALLATION OF THE STEEL STRAIN POLES. THE CONTRACTOR SHALL BE RESPONSIBLE FOR PROVIDING THE MOUNTING ASSEMBLY AND SHALL BE THE SAME AS THE MOUNTING ASSEMBLY SHOWN ON SHEET 17. EACH CLAMP ASSEMBLY SHALL BE MADE OF A MINIMUM OF 1/2" X 1/2" X 1/2" GALVANNEAL STEEL. THE MOUNTING ASSEMBLY SHALL BE MADE OF 1/2" X 1/2" X 1/2" GALVANNEAL STEEL. THE MOUNTING ASSEMBLY SHALL BE MADE OF 1/2" X 1/2" X 1/2" GALVANNEAL STEEL. THE MOUNTING ASSEMBLY SHALL BE MADE OF 1/2" X 1/2" X 1/2" GALVANNEAL STEEL. THE MOUNTING ASSEMBLY SHALL BE MADE OF 1/2" X 1/2" X 1/2" GALVANNEAL STEEL.



FLASHING YELLOW ARROW SIGNAL WIRING AND SPECIAL REQUIREMENTS  
OUTPUT FILE CONNECTION FOR PFA ON PHASE 5  
PHASE 1 RED  
PHASE 5 YELLOW  
PHASE 2 GREEN  
PHASE 6 RED YELLOW PHASE 6  
WHITE  
WHITE/TRACER  
NOT USED  
EQUIPMENT GROUND  
GREEN  
CONTRACTOR SHALL LABEL THE CONNECTOR Labeled "R1" 48" 65" 85" TO THE CONNECTOR "C" BEHIND THE OUTPUT PANEL. IT IS A SOLID STATE CABINET (SIEMENS) ONLY HAVE 2 CONNECTORS WHICH SIMPLY NEED TO BE CONNECTED TOGETHER.

TRAFFIC SIGNAL PLAN SHEET  
KY 1020 (NATIONAL TURNPIKE) @  
TOLLS LN

Tim Tharpe - Director  
Phone (502) 564-3020  
FAX (502) 564-7759

**DIVISION OF TRAFFIC OPERATIONS  
PROJECT MATERIALS RELEASE FORM  
FOR SIGNAL AND LIGHTING**

**Note: Email form with signatures to KYTC's warehouse (kim.stamper@ky.gov) at least two (2) days prior to arrival for pickup. Ensure Contractor's delivery driver has a copy of form with signatures. Failure to do either may result in long delays or refusal to distribute materials upon arrival.**

Item Number:           n/a            
 County:           Jefferson            
 Description:           Signals: KY 1020 (NATIONAL TURNPIKE) @ TOLLS LN          

Cabinets	Master code	
1	T-01-0020	Base Mounted 332 Cabinet
1	T-01-0105	ATC Controller
1	T-01-0106	1C w/Maxtime (this should go with item ATC controller)
1	T-01-0501	Conflict Monitor, Model 2018
3	T-01-0510	Isolator, Model 242 (1 for 2070, plus for ped detector and railroad)
7	T-01-0700	Load Switches

Signals	Master code	
6	T-02-0009	Siemens 3 Section Signal
6	T-02-0032	Siemen 3 section backplate
1	T-02-0033	Siemen 4 section 12" signal (poly)
1	T-02-0043	Siemen 4-sec. straight signal backplate
4	T-02-0090	Pedestrian signal housing
1	T-02-0300	LED Module 12" red arrow
2	T-02-0310	LED Module 12" yellow arrow
1	T-02-0320	LED Module 12" green arrow
6	T-02-0330	LED Module 12" red ball
6	T-02-0340	LED Module 12" yellow ball
6	T-02-0350	LED Module 12" green ball
4	T-02-0365	LED Countdown Pedestrian Module

Special items	Master code	
1	T-02-0504	Router (this includes power supply/antenna/cabling)
1	T-02-0650	Pedstl.top mntg.bkt One-way
1	T-02-0660	Pedstl.top mntg.bkt Two-way
2	T-02-0670	Pedestal
4	T-06-0710	Ped Detector Pole Mount FSA Box
4	T-06-0730	Ped Button w/o Plunger
4	T-17-0015	9 X 15 Countdown Ped Sign DBL Sided
1		Radar (SUPPLIED BY D5)

Poles	Master code	
1	T-04-0030	Steel Strain Pole 32 foot
3	T-04-0040	Steel Strain Pole 34 foot

Special items	Master code		
0	T-02-0400	Video Detection System Camera Detector, SP	# of left turns put here
0	T-02-0401	Camera Mounting System	
0	T-02-0500	MDS Radios 9810	
0	T-02-0504	Router (this includes power supply/antenna/cabling)	
0	T-02-0507	Ethernet/Serial Data Radio	
0	T-02-0510	Antenna 6 db omni	
0	T-02-0520	Antenna 10 db yagi	
0	T-02-0530	Antenna 9 db omni	
0	T-03-0230	Jumper 3' N-N RG-58	
0	T-03-0240	Jumper 60' N-N RG-213	
0	T-06-0800	Surge Protector for Radio	
0	T-09-0410	Sign Hanger for 48" signs	
0	T-09-0415	30 X 36 through 36 X 36 sign hanger (New)	
0	T-02-0650	Pedstl.top mntg.bkt One-way	
0	T-02-0660	Pedstl.top mntg.bkt Two-way	
0	T-02-0661	Post Top for Pedestal (each)	
0	T-02-0670	Pedestal	
0	T-06-0710	Ped Detector Pole Mount FSA Box	
0	T-06-0730	Ped Button w/o Plunger	
0	T-17-0015	9 X 15 Countdown Ped Sign DBL Sided	

Tim Tharpe - Director  
Phone (502) 564-3020

### DIVISION OF TRAFFIC OPERATIONS

Poles		
0	T-04-0010	Steel Strain Pole 28 foot
0	T-04-0020	Steel Strain Pole 30 foot
0	T-04-0030	Steel Strain Pole 32 foot
0	T-04-0040	Steel Strain Pole 34 foot
0	T-04-0051	Steel Strain Pole 36 foot
0	T-04-0054	Steel Strain Pole 38 foot
0	T-04-0055	Steel Strain Pole 40 foot

**REQUIRED**

Electrical Contractor Name \_\_\_\_\_

Electrical Contractor Supervisor \_\_\_\_\_ Contact number for Supervisor \_\_\_\_\_

Project Engineer \_\_\_\_\_ Contact number for Project Engineer \_\_\_\_\_

Project Engineer attests that the mentioned contractor is the actual electrical contractor on this project

Signature of Project Engineer or Designee \_\_\_\_\_

**PART II**  
**SPECIFICATIONS AND STANDARD DRAWINGS**

### **STANDARD SPECIFICATIONS**

Any reference in the plans or proposal to previous editions of the *Standard Specifications for Road and Bridge Construction* and *Standard Drawings* are superseded by *Standard Specifications for Road and Bridge Construction, Edition of 2019* and *Standard Drawings, Edition of 2020*.

### **SUPPLEMENTAL SPECIFICATIONS**

The contractor shall use the Supplemental Specifications that are effective at the time of letting. The Supplemental Specifications can be found at the following link:  
<http://transportation.ky.gov/Construction/Pages/Kentucky-Standard-Specifications.aspx>

## **SPECIAL NOTE FOR PORTABLE CHANGEABLE MESSAGE SIGNS**

This Special Note will apply when indicated on the plans or in the proposal.

**1.0 DESCRIPTION.** Furnish, install, operate, and maintain variable message signs at the locations shown on the plans or designated by the Engineer. Remove and retain possession of variable message signs when they are no longer needed on the project.

### **2.0 MATERIALS.**

**2.1 General.** Use LED Variable Message Signs Class I, II, or III, as appropriate, from the Department's List of Approved Materials.

Unclassified signs may be submitted for approval by the Engineer. The Engineer may require a daytime and nighttime demonstration. The Engineer will make a final decision within 30 days after all required information is received.

**2.2 Sign and Controls.** All signs must:

- 1) Provide 3-line messages with each line being 8 characters long and at least 18 inches tall. Each character comprises 35 pixels.
- 2) Provide at least 40 preprogrammed messages available for use at any time. Provide for quick and easy change of the displayed message; editing of the message; and additions of new messages.
- 3) Provide a controller consisting of:
  - a) Keyboard or keypad.
  - b) Readout that mimics the actual sign display. (When LCD or LCD type readout is used, include backlighting and heating or otherwise arrange for viewing in cold temperatures.)
  - c) Non-volatile memory or suitable memory with battery backup for storing pre-programmed messages.
  - d) Logic circuitry to control the sequence of messages and flash rate.
- 4) Provide a serial interface that is capable of supporting complete remote control ability through land line and cellular telephone operation. Include communication software capable of immediately updating the message, providing complete sign status, and allowing message library queries and updates.
- 5) Allow a single person easily to raise the sign to a satisfactory height above the pavement during use, and lower the sign during travel.
- 6) Be Highway Orange on all exterior surfaces of the trailer, supports, and controller cabinet.
- 7) Provide operation in ambient temperatures from -30 to + 120 degrees Fahrenheit during snow, rain and other inclement weather.
- 8) Provide the driver board as part of a module. All modules are interchangeable, and have plug and socket arrangements for disconnection and reconnection. Printed circuit boards associated with driver boards have a conformable coating to protect against moisture.
- 9) Provide a sign case sealed against rain, snow, dust, insects, etc. The lens is UV stabilized clear plastic (polycarbonate, acrylic, or other approved material) angled to prevent glare.
- 10) Provide a flat black UV protected coating on the sign hardware, character PCB, and appropriate lens areas.
- 11) Provide a photocell control to provide automatic dimming.

- 12) Allow an on-off flashing sequence at an adjustable rate.
- 13) Provide a sight to aim the message.
- 14) Provide a LED display color of approximately 590 nm amber.
- 15) Provide a controller that is password protected.
- 16) Provide a security device that prevents unauthorized individuals from accessing the controller.
- 17) Provide the following 3-line messages preprogrammed and available for use when the sign unit begins operation:

/KEEP/RIGHT/=>=>=>/	/MIN/SPEED/**MPH/
/KEEP/LEFT/<=<=</	/ICY/BRIDGE/AHEAD/ /ONE
/LOOSE/GRAVEL/AHEAD/	LANE/BRIDGE/AHEAD/
/RD WORK/NEXT/**MILES/	/ROUGH/ROAD/AHEAD/
/TWO WAY/TRAFFIC/AHEAD/	/MERGING/TRAFFIC/AHEAD/
/PAINT/CREW/AHEAD/	/NEXT/***/MILES/
/REDUCE/SPEED/**MPH/	/HEAVY/TRAFFIC/AHEAD/
/BRIDGE/WORK/***0 FT/	/SPEED/LIMIT/**MPH/
/MAX/SPEED/**MPH/	/BUMP/AHEAD/
/SURVEY/PARTY/AHEAD/	/TWO/WAY/TRAFFIC/

\*Insert numerals as directed by the Engineer.  
Add other messages during the project when required by the Engineer.

**2.3 Power.**

- 1) Design solar panels to yield 10 percent or greater additional charge than sign consumption. Provide direct wiring for operation of the sign or arrow board from an external power source to provide energy backup for 21 days without sunlight and an on-board system charger with the ability to recharge completely discharged batteries in 24 hours.

**3.0 CONSTRUCTION.** Furnish and operate the variable message signs as designated on the plans or by the Engineer. Ensure the bottom of the message panel is a minimum of 7 feet above the roadway in urban areas and 5 feet above in rural areas when operating. Use Class I, II, or III signs on roads with a speed limit less than 55 mph. Use Class I or II signs on roads with speed limits 55 mph or greater.

Maintain the sign in proper working order, including repair of any damage done by others, until completion of the project. When the sign becomes inoperative, immediately repair or replace the sign. Repetitive problems with the same unit will be cause for rejection and replacement.

Use only project related messages and messages directed by the Engineer, unnecessary messages lessen the impact of the sign. Ensure the message is displayed in either one or 2 phases with each phase having no more than 3 lines of text. When no message is needed, but it is necessary to know if the sign is operable, flash only a pixel.

When the sign is not needed, move it outside the clear zone or where the Engineer directs. Variable Message Signs are the property of the Contractor and shall be removed from the project when no longer needed. The Department will not assume ownership of these signs.

**4.0 MEASUREMENT.** The final quantity of Variable Message Sign will be



11

the actual number of individual signs acceptably furnished and operated during the project. The Department will not measure signs replaced due to damage or rejection.

**5.0 PAYMENT.** The Department will pay for the Variable Message Signs at the unit price each. The Department will not pay for signs replaced due to damage or rejection. Payment is full compensation for furnishing all materials, labor, equipment, and service necessary to, operate, move, repair, and maintain or replace the variable message signs. The Department will make payment for the completed and accepted quantities under the following:

<u>Code</u>	<u>Pay Item</u>	<u>Pay Unit</u>
02671	Portable Changeable Message Sign	Each

Effective June 15, 2012

**2020 STANDARD DRAWINGS THAT APPLY**

---

**TRAFFIC**

**~ TEMPORARY ~**

**TRAFFIC CONTROL**

LANE CLOSURE TWO-LANE HIGHWAY .....	TTC-100-05
LANE CLOSURE MULTI-LANE HIGHWAY CASE I .....	TTC-115-04
SHOULDER CLOSURE .....	TTC-135-03

**PART III**

**EMPLOYMENT, WAGE AND RECORD REQUIREMENTS**

**TRANSPORTATION CABINET  
DEPARTMENT OF HIGHWAYS**

**LABOR AND WAGE REQUIREMENTS  
APPLICABLE TO OTHER THAN FEDERAL-AID SYSTEM PROJECTS**

- I. Application
- II. Nondiscrimination of Employees (KRS 344)

**I. APPLICATION**

1. These contract provisions shall apply to all work performed on the contract by the contractor with his own organization and with the assistance of workmen under his immediate superintendence and to all work performed on the contract by piecework, station work or by subcontract. The contractor's organization shall be construed to include only workmen employed and paid directly by the contractor and equipment owned or rented by him, with or without operators.

2. The contractor shall insert in each of his subcontracts all of the stipulations contained in these Required Provisions and such other stipulations as may be required.

3. A breach of any of the stipulations contained in these Required Provisions may be grounds for termination of the contract.

3. If the contractor is in control of apprenticeship or other training or retraining, including on-the-job training programs, he shall not discriminate against an individual because of his race, color, religion, national origin, sex, disability or age forty (40) and over, in admission to, or employment in any program established to provide apprenticeship or other training.

4. The contractor will send to each labor union or representative of workers with which he has a collective bargaining agreement or other contract or understanding, a notice to be provided advising the said labor union or workers' representative of the contractor's commitments under this section, and shall post copies of the notice in conspicuous places available to employees and applicants for employment. The contractor will take such action with respect to any subcontract or purchase order as the administrating agency may direct as a means of enforcing such provisions, including sanctions for non-compliance.

Revised: January 25, 2017

**II. NONDISCRIMINATION OF EMPLOYEES**

**AN ACT OF THE KENTUCKY  
GENERAL ASSEMBLY TO PREVENT  
DISCRIMINATION IN EMPLOYMENT  
KRS CHAPTER 344  
EFFECTIVE JUNE 16, 1972**

The contract on this project, in accordance with KRS Chapter 344, provides that during the performance of this contract, the contractor agrees as follows:

1. The contractor shall not fail or refuse to hire, or shall not discharge any individual, or otherwise discriminate against an individual with respect to his compensation, terms, conditions, or privileges of employment, because of such individual's race, color, religion, national origin, sex, disability or age (forty and above); or limit, segregate, or classify his employees in any way which would deprive or tend to deprive an individual of employment opportunities or otherwise adversely affect his status as an employee, because of such individual's race, color, religion, national origin, sex, disability or age forty (40) and over. The contractor agrees to post in conspicuous places, available to employees and applicants for employment, notices to be provided setting forth the provisions of this nondiscrimination clause.

2. The contractor shall not print or publish or cause to be printed or published a notice or advertisement relating to employment by such an employer or membership in or any classification or referral for employment by the employment agency, indicating any preference, limitation, specification, or discrimination, based on race, color, religion, national origin, sex, or age forty (40) and over, or because the person is a qualified individual with a disability, except that such a notice or advertisement may indicate a preference, limitation, or specification based on religion, national origin, sex, or age forty (40) and over, or because the person is a qualified individual with a disability, when religion, national origin, sex, or age forty (40) and over, or because the person is a qualified individual with a disability, is a bona fide occupational qualification for employment.

## EXECUTIVE BRANCH CODE OF ETHICS

In the 1992 regular legislative session, the General Assembly passed and Governor Brereton Jones signed Senate Bill 63 (codified as KRS 11A), the Executive Branch Code of Ethics, which states, in part:

KRS 11A.040 (7) provides:

No present or former public servant shall, within six (6) months following termination of his office or employment, accept employment, compensation, or other economic benefit from any person or business that contracts or does business with, or is regulated by, the state in matters in which he was directly involved during the last thirty-six (36) months of his tenure. This provision shall not prohibit an individual from returning to the same business, firm, occupation, or profession in which he was involved prior to taking office or beginning his term of employment, or for which he received, prior to his state employment, a professional degree or license, provided that, for a period of six (6) months, he personally refrains from working on any matter in which he was directly involved during the last thirty-six (36) months of his tenure in state government. This subsection shall not prohibit the performance of ministerial functions, including but not limited to filing tax returns, filing applications for permits or licenses, or filing incorporation papers, nor shall it prohibit the former officer or public servant from receiving public funds disbursed through entitlement programs.

KRS 11A.040 (9) states:

A former public servant shall not represent a person or business before a state agency in a matter in which the former public servant was directly involved during the last thirty-six (36) months of his tenure, for a period of one (1) year after the latter of:

- a) The date of leaving office or termination of employment; or
- b) The date the term of office expires to which the public servant was elected.

This law is intended to promote public confidence in the integrity of state government and to declare as public policy the idea that state employees should view their work as a public trust and not as a way to obtain private benefits.

If you have worked for the executive branch of state government within the past six months, you may be subject to the law's prohibitions. The law's applicability may be different if you hold elected office or are contemplating representation of another before a state agency.

Also, if you are affiliated with a firm which does business with the state and which employs former state executive-branch employees, you should be aware that the law may apply to them.

In case of doubt, the law permits you to request an advisory opinion from the Executive Branch Ethics Commission, 1025 Capital Center Drive, Suite 104, Frankfort, Kentucky 40601; telephone (502) 564-7954.

Revised: May 23, 2022

### **Kentucky Equal Employment Opportunity Act of 1978**

The requirements of the Kentucky Equal Employment Opportunity Act of 1978 (KRS 45.560-45.640) shall apply to this Contract. The apparent low Bidder will be required to submit EEO forms to the Division of Construction Procurement, which will then forward to the Finance and Administration Cabinet for review and approval. No award will become effective until all forms are submitted and EEO/CC has certified compliance. The required EEO forms are as follows:

- EEO-1: Employer Information Report
- Affidavit of Intent to Comply
- Employee Data Sheet
- Subcontractor Report

These forms are available on the Finance and Administration's web page under ***Vendor Information, Standard Attachments and General Terms*** at the following address:  
**<https://www.eProcurement.ky.gov>**.

Bidders currently certified as being in compliance by the Finance and Administration Cabinet may submit a copy of their approval letter in lieu of the referenced EEO forms.

For questions or assistance please contact the Finance and Administration Cabinet by email at **[finance.contractcompliance@ky.gov](mailto:finance.contractcompliance@ky.gov)** or by phone at 502-564-2874.

# EMPLOYEE RIGHTS UNDER THE FAIR LABOR STANDARDS ACT

THE UNITED STATES DEPARTMENT OF LABOR WAGE AND HOUR DIVISION

## FEDERAL MINIMUM WAGE

# \$7.25 PER HOUR

BEGINNING JULY 24, 2009

**OVERTIME PAY** At least 1½ times your regular rate of pay for all hours worked over 40 in a workweek.

**CHILD LABOR** An employee must be at least **16** years old to work in most non-farm jobs and at least **18** to work in non-farm jobs declared hazardous by the Secretary of Labor.

Youths **14** and **15** years old may work outside school hours in various non-manufacturing, non-mining, non-hazardous jobs under the following conditions:

**No more than**

- **3** hours on a school day or **18** hours in a school week;
- **8** hours on a non-school day or **40** hours in a non-school week.

Also, work may not begin before **7 a.m.** or end after **7 p.m.**, except from June 1 through Labor Day, when evening hours are extended to **9 p.m.** Different rules apply in agricultural employment.

**TIP CREDIT** Employers of “tipped employees” must pay a cash wage of at least \$2.13 per hour if they claim a tip credit against their minimum wage obligation. If an employee’s tips combined with the employer’s cash wage of at least \$2.13 per hour do not equal the minimum hourly wage, the employer must make up the difference. Certain other conditions must also be met.

**ENFORCEMENT** The Department of Labor may recover back wages either administratively or through court action, for the employees that have been underpaid in violation of the law. Violations may result in civil or criminal action.

Employers may be assessed civil money penalties of up to \$1,100 for each willful or repeated violation of the minimum wage or overtime pay provisions of the law and up to \$11,000 for each employee who is the subject of a violation of the Act’s child labor provisions. In addition, a civil money penalty of up to \$50,000 may be assessed for each child labor violation that causes the death or serious injury of any minor employee, and such assessments may be doubled, up to \$100,000, when the violations are determined to be willful or repeated. The law also prohibits discriminating against or discharging workers who file a complaint or participate in any proceeding under the Act.

### ADDITIONAL INFORMATION

- Certain occupations and establishments are exempt from the minimum wage and/or overtime pay provisions.
- Special provisions apply to workers in American Samoa and the Commonwealth of the Northern Mariana Islands.
- Some state laws provide greater employee protections; employers must comply with both.
- The law requires employers to display this poster where employees can readily see it.
- Employees under 20 years of age may be paid \$4.25 per hour during their first 90 consecutive calendar days of employment with an employer.
- Certain full-time students, student learners, apprentices, and workers with disabilities may be paid less than the minimum wage under special certificates issued by the Department of Labor.

For additional information:



# 1-866-4-USWAGE

(1-866-487-9243)

TTY: 1-877-889-5627



# WWW.WAGEHOUR.DOL.GOV



**PART IV**  
**INSURANCE**

Refer to  
*Kentucky Standard Specifications for Road and Bridge Construction,*  
current edition

**PART V**  
**BID ITEMS**

**PROPOSAL BID ITEMS**

244403

Page 1 of 1

Report Date 6/13/24

**Section: 0001 - ROADWAY**

LINE	BID CODE	ALT	DESCRIPTION	QUANTITY	UNIT	UNIT PRIC	FP	AMOUNT
0010	02562		TEMPORARY SIGNS	549.00	SQFT		\$	
0020	02650		MAINTAIN & CONTROL TRAFFIC (JEFFERSON KY 1020)	1.00	LS		\$	
0030	02650		MAINTAIN & CONTROL TRAFFIC (JEFFERSON KY 1694)	1.00	LS		\$	
0040	02650		MAINTAIN & CONTROL TRAFFIC (JEFFERSON KY 913)	1.00	LS		\$	
0050	02671		PORTABLE CHANGEABLE MESSAGE SIGN (PURCHASE AND SUPPLY)	2.00	EACH		\$	
0060	02775		ARROW PANEL	8.00	EACH		\$	

**Section: 0002 - SIGNALIZATION**

LINE	BID CODE	ALT	DESCRIPTION	QUANTITY	UNIT	UNIT PRIC	FP	AMOUNT
0070	04820		TRENCHING AND BACKFILLING	160.00	LF		\$	
0080	04844		CABLE-NO. 14/5C	320.00	LF		\$	
0090	04845		CABLE-NO. 14/7C	4,900.00	LF		\$	
0100	04886		MESSENGER-15400 LB	1,635.00	LF		\$	
0110	04932		INSTALL STEEL STRAIN POLE	10.00	EACH		\$	
0120	20093NS835		INSTALL PEDESTRIAN HEAD-LED	12.00	EACH		\$	
0130	20188NS835		INSTALL LED SIGNAL-3 SECTION	18.00	EACH		\$	
0140	20266ES835		INSTALL LED SIGNAL- 4 SECTION	2.00	EACH		\$	
0150	20390NS835		INSTALL COORDINATING UNIT	3.00	EACH		\$	
0160	20408ES835		INSTALL LED BEACON-12 IN	3.00	EACH		\$	
0170	21743NN		INSTALL PEDESTRIAN DETECTOR	12.00	EACH		\$	
0180	23157EN		TRAFFIC SIGNAL POLE BASE	44.00	CUYD		\$	
0190	23222EC		INSTALL SIGNAL PEDESTAL	4.00	EACH		\$	
0200	24528ED		TETHER WIRE	375.00	LF		\$	
0210	24900EC		PVC CONDUIT-1 1/4 IN-SCHEDULE 80	120.00	LF		\$	
0220	24901EC		PVC CONDUIT-2 IN-SCHEDULE 80	160.00	LF		\$	
0230	24908EC		INSTALL SIGNAL CONTROLLER-TY ATC	3.00	EACH		\$	
0240	26119EC		INSTALL RADAR PRESENCE DETECTOR TYPE A	6.00	EACH		\$	
0250	26120EC		INSTALL RADAR ADVANCE DETECTOR TYPE B	2.00	EACH		\$	

**Section: 0003 - DEMOBILIZATION**

LINE	BID CODE	ALT	DESCRIPTION	QUANTITY	UNIT	UNIT PRIC	FP	AMOUNT
0260	02569		DEMOBILIZATION	1.00	LS		\$	