



CALL NO. 409

CONTRACT ID. 252903

PULASKI COUNTY

FED/STATE PROJECT NUMBER 100GR23M093

DESCRIPTION PW 80 (HAL ROGERS PKWY)

WORK TYPE BRIDGE DECK RESTORATION & WATERPROOFING

PRIMARY COMPLETION DATE 11/1/2026

LETTING DATE: November 20,2025

Sealed Bids will be received electronically through the Bid Express bidding service until 10:00 AM EASTERN STANDARD TIME November 20,2025. Bids will be publicly announced at 10:00 AM EASTERN STANDARD TIME.

NO PLANS ASSOCIATED WITH THIS PROJECT.

REQUIRED BID PROPOSAL GUARANTY: Not less than 5% of the total bid.

TABLE OF CONTENTS

PART I	SCOPE OF WORK <ul style="list-style-type: none">• PROJECT(S), COMPLETION DATE(S), & LIQUIDATED DAMAGES• CONTRACT NOTES• STATE CONTRACT NOTES• SPECIAL NOTE(S) APPLICABLE TO PROJECT• BRIDGE DEMOLITION, RENOVATION AND ASBESTOS ABATEMENT• ASBESTOS ABATEMENT REPORT• MATERIAL SUMMARY• BRIDGE DRAWINGS
PART II	SPECIFICATIONS AND STANDARD DRAWINGS <ul style="list-style-type: none">• STANDARD AND SUPPLEMENTAL SPECIFICATIONS• STANDARD DRAWINGS THAT APPLY• STANDARD DRAWINGS THAT APPLY BRIDGE CLEANING AND PAINTING PROJECTS
PART III	EMPLOYMENT, WAGE AND RECORD REQUIREMENTS <ul style="list-style-type: none">• LABOR AND WAGE REQUIREMENTS• EXECUTIVE BRANCH CODE OF ETHICS• KENTUCKY EQUAL EMPLOYMENT OPPORTUNITY ACT OF 1978 LOCALITY / STATE• PROJECT WAGE RATES / STATE FUNDED
PART IV	BID ITEMS

PART I

SCOPE OF WORK

ADMINISTRATIVE DISTRICT - 08

CONTRACT ID - 252903
100GR23M093
COUNTY - PULASKI
PCN - MB10000802501
FE02 100 0080 B00080N

PW 80 (HAL ROGERS PKWY) BRIDGE 100B00080N (PW 80) OVER BUCK CREEK AT MILE POINT 31.06BRIDGE
DECK RESTORATION & WATERPROOFING SYP NO. 03-40002.00.
GEOGRAPHIC COORDINATES LATITUDE 37:09:09.00 LONGITUDE 84:26:17.00
ADT

PCN - MB10000802502
FE02 100 0080 B00082L

PW 80 (HAL ROGERS PKWY) BRIDGE 100B00082L (PW 80) OVER PITMAN CREEK AT MILE POINT 22.42BRIDGE
DECK RESTORATION & WATERPROOFING SYP NO. 03-40002.00.
GEOGRAPHIC COORDINATES LATITUDE 37:06:42.00 LONGITUDE 84:33:52.00
ADT

PCN - MB10000802504
FE02 100 0080 B00082R

PW 80 (HAL ROGERS PKWY) BRIDGE 100B00082R (PW 80) OVER PITMAN CREEK AT MILE POINT 22.41BRIDGE
DECK RESTORATION & WATERPROOFING SYP NO. 03-40002.00.
GEOGRAPHIC COORDINATES LATITUDE 37:06:42.00 LONGITUDE 84:33:52.00
ADT

COMPLETION DATE(S):

30 CALENDAR Days	APPLIES TO 100B00080N
30 CALENDAR Days	APPLIES TO 100B00082L
30 CALENDAR Days	APPLIES TO 100B00082R
COMPLETED BY 11/01/2026	APPLIES TO ENTIRE CONTRACT

CONTRACT NOTES

INSURANCE

Refer to Kentucky Standard Specifications for Road and Bridge Construction, current edition.

PROPOSAL ADDENDA

All addenda to this proposal must be applied when calculating bid and certified in the bid packet submitted to the Kentucky Department of Highways. Failure to use the correct and most recent addenda may result in the bid being rejected.

BID SUBMITTAL

Bidder must use the Department's electronic bidding software. The Bidder must download the bid file located on the Bid Express website (www.bidx.com) to prepare a bid packet for submission to the Department. The bidder must submit electronically using Bid Express.

JOINT VENTURE BIDDING

Joint venture bidding is permissible. All companies in the joint venture must be prequalified in one of the work types in the Qualifications for Bidders for the project. The bidders must get a vendor ID for the joint venture from the Division of Construction Procurement and register the joint venture as a bidder on the project. Also, the joint venture must obtain a digital ID from Bid Express to submit a bid. A joint bid bond of 5% may be submitted for both companies or each company may submit a separate bond of 5%.

UNDERGROUND FACILITY DAMAGE PROTECTION

The contractor shall make every effort to protect underground facilities from damage as prescribed in the Underground Facility Damage Protection Act of 1994, Kentucky Revised Statute KRS 367.4901 to 367.4917. It is the contractor's responsibility to determine and take steps necessary to be in compliance with federal and state damage prevention directives. When prescribed in said directives, the contractor shall submit Excavation Locate Requests to the Kentucky Contact Center (KY811) via web ticket entry. The submission of this request does not relieve the contractor from the responsibility of contacting non-member facility owners, whom shall be contacted through their individual Protection Notification Center. Non-compliance with these directives can result in the enforcement of penalties.

REGISTRATION WITH THE SECRETARY OF STATE BY A FOREIGN ENTITY

Pursuant to KRS 176.085(1)(b), an agency, department, office, or political subdivision of the Commonwealth of Kentucky shall not award a state contract to a person that is a foreign entity required by [KRS 14A.9-010](#) to obtain a certificate of authority to transact business in the Commonwealth ("certificate") from the Secretary of State under [KRS 14A.9-030](#) unless the person produces the certificate within fourteen (14) days of the bid or proposal opening. If the

foreign entity is not required to obtain a certificate as provided in [KRS 14A.9-010](#), the foreign entity should identify the applicable exception. Foreign entity is defined within [KRS 14A.1-070](#).

For all foreign entities required to obtain a certificate of authority to transact business in the Commonwealth, if a copy of the certificate is not received by the contracting agency within the time frame identified above, the foreign entity's solicitation response shall be deemed non-responsive or the awarded contract shall be cancelled.

Businesses can register with the Secretary of State at <https://secure.kentucky.gov/sos/ftbr/welcome.aspx>.

SPECIAL NOTE FOR PROJECT QUESTIONS DURING ADVERTISEMENT

Questions about projects during the advertisement should be submitted in writing to the Division of Construction Procurement. This may be done by email to kytc.projectquestions@ky.gov. The Department will attempt to answer all submitted questions. The Department reserves the right not to answer if the question is not pertinent or does not aid in clarifying the project intent.

The deadline for posting answers will be 3:00 pm Eastern Daylight Time, the day preceding the Letting. Questions may be submitted until this deadline with the understanding that the later a question is submitted, the less likely an answer will be able to be provided.

The questions and answers will be posted for each Letting under the heading "Questions & Answers" on the Construction Procurement website (www.transportation.ky.gov/construction-procurement). The answers provided shall be considered part of this Special Note and, in case of a discrepancy, will govern over all other bidding documents.

HARDWOOD REMOVAL RESTRICTIONS

The US Department of Agriculture has imposed a quarantine in Kentucky and several surrounding states, to prevent the spread of an invasive insect, the emerald ash borer. Hardwood cut in conjunction with the project may not be removed from the state. Chipping or burning on site is the preferred method of disposal.

INSTRUCTIONS FOR EXCESS MATERIAL SITES AND BORROW SITES

Identification of excess material sites and borrow sites shall be the responsibility of the Contractor. The Contractor shall be responsible for compliance with all applicable state and federal laws and may wish to consult with the US Fish and Wildlife Service to seek protection under Section 10 of the Endangered Species Act for these activities.

ACCESS TO RECORDS

The state agency certifies that it is in compliance with the provisions of KRS 45A.150, "Access to contractor's books, documents, papers, records, or other evidence directly pertinent to the contract." The Contractor, as defined in KRS 45A.030, agrees that the contracting agency, the

Finance and Administration Cabinet, the Auditor of Public Accounts, and the Legislative Research Commission, or their duly authorized representatives, shall have access to any books, documents, papers, records, or other evidence, which are directly pertinent to this agreement for the purpose of financial audit or program review. The Contractor also recognizes that any books, documents, papers, records, or other evidence, received during a financial audit or program review shall be subject to the Kentucky Open Records Act, KRS 61.870 to 61.884. Records and other prequalification information confidentially disclosed as part of the bid process shall not be deemed as directly pertinent to the agreement and shall be exempt from disclosure as provided in KRS 61.878(1)(c).

BOYCOTT PROVISIONS

If applicable, the contractor represents that, pursuant to [KRS 45A.607](#), they are not currently engaged in, and will not for the duration of the contract engage in, the boycott of a person or an entity based in or doing business with a jurisdiction with which Kentucky can enjoy open trade. **Note:** The term Boycott does not include actions taken for bona fide business or economic reasons, or actions specifically required by federal or state law.

If applicable, the contractor verifies that, pursuant to KRS 41.480, they do not engage in, and will not for the duration of the contract engage in, in energy company boycotts as defined by KRS 41.472.

LOBBYING PROHIBITIONS

The contractor represents that they, and any subcontractor performing work under the contract, have not violated the agency restrictions contained in [KRS 11A.236](#) during the previous ten (10) years, and pledges to abide by the restrictions set forth in such statute for the duration of the contract awarded.

The contractor further represents that, pursuant to [KRS 45A.328](#), they have not procured an original, subsequent, or similar contract while employing an executive agency lobbyist who was convicted of a crime related to the original, subsequent, or similar contract within five (5) years of the conviction of the lobbyist.

Revised: 1/1/2025

1.0 BUY AMERICA REQUIREMENT.

Follow the “Buy America” provisions as required by 23 U.S.C. § 313 and 23 C.F.R. § 635.410. Except as expressly provided herein all manufacturing processes of steel or iron materials including but not limited to structural steel, guardrail materials, corrugated steel, culvert pipe, structural plate, prestressing strands, and steel reinforcing bars shall occur in the United States of America, including the application of:

- Coating,
- Galvanizing,
- Painting, and
- Other coating that protects or enhances the value of steel or iron products.

The following are exempt, unless processed or refined to include substantial amounts of steel or iron material, and may be used regardless of source in the domestic manufacturing process for steel or iron material:

- Pig iron,
- Processed, pelletized, and reduced iron ore material, or
- Processed alloys.

The Contractor shall submit a certification stating that all manufacturing processes involved with the production of steel or iron materials occurred in the United States.

Produce, mill, fabricate, and manufacture in the United States of America all aluminum components of bridges, tunnels, and large sign support systems, for which either shop fabrication, shop inspection, or certified mill test reports are required as the basis of acceptance by the Department.

Use foreign materials only under the following conditions:

- 1) When the materials are not permanently incorporated into the project; or
- 2) When the delivered cost of such materials used does not exceed 0.1 percent of the total Contract amount or \$2,500.00, whichever is greater.

The Contractor shall submit to the Engineer the origin and value of any foreign material used.

2.0 – BUILD AMERICA, BUY AMERICA (BABA)

Contractor shall comply with the Federal Highway Administration (FHWA) Buy America Requirement in 23 C.F.R. § 635.410 and all relevant provisions of the Build America, Buy America Act (BABA), contained within the Infrastructure Investment and Jobs Act, Pub. L. No. 117-58, §§ 70901-52 enacted November 15, 2021. The BABA requires iron, steel, manufactured products, and construction materials used in infrastructure projects funded by federal financial assistance to be produced in the United States. Comply with 2 C.F.R § 184.

BABA permits FHWA participation in the Contract only if domestic steel and iron will be used on the Project. To be considered domestic, all steel and iron used, and all products manufactured from steel and iron must be produced in the United States and all manufacturing processes, including application of a coating, for these materials must occur in the United States. Coating includes all processes that protect or enhance the value of the material to which the coating is applied. This requirement does not preclude a minimal use of foreign steel and iron materials, provided the cost of such materials does not exceed 0.1% of the total contract amount under the Contract or \$2,500.00 whichever is greater.

BABA permits FHWA participation in the Contract only if all “construction materials” as defined in the Act are made in the United States. The Buy America preference applies to the following construction materials incorporated into infrastructure projects: non-ferrous metals; plastic and polymer-based products (including polyvinylchloride, composite building materials, and polymers used in fiber optic cables); glass (including optic glass); Fiber optic cable; optical fiber; lumber; engineered wood; and drywall. Contractor will be

required to use construction materials produced in the United States on this Project. The Contractor shall submit a certification stating that all construction materials are certified to be BABA compliant.

3.0 FINAL RULE – FHWA’S BUY AMERICA REGULATION TO TERMINATE GENERAL APPLICABILITY WAIVER FOR MANUFACTURED PRODUCTS

- **March 17, 2025** (effective date): For all Federal-aid projects obligated on or after March 15, 2025, all iron or steel products, as defined in § 635.410(c)(1)(iii), must comply with FHWA’s Buy America requirements for steel and iron in § 635.410(b). In addition, for all Federal-aid projects obligated on or after March 15, 2025, per § 635.410(c)(2), articles, materials, and supplies should be classified as an iron or steel product, a manufactured product, or another product as specified by law or in 2 CFR part 184 (such other products specified by law or in 2 CFR part 184 include “excluded materials” and “construction materials”); an article, material, or supply must not be considered to fall into multiple categories.
- **October 1, 2025:** The final assembly requirement will become effective for Federal-aid projects obligated on or after October 1, 2025. This means that, for manufactured product to be Buy America compliant, for Federal-aid projects obligated on or after October 1, 2025, final assembly of the manufactured product must occur in the United States.
- **October 1, 2026:** The 55 percent requirement will become effective for Federal-aid projects obligated on or after October 1, 2026. This means that, for manufactured product to be Buy America-compliant, for Federal-aid projects obligated on or after October 1, 2026, all manufactured products permanently incorporated into the project must both be manufactured in the United States (satisfy the final assembly requirement) and have the cost of the components of the manufactured product that are mined, produced, or manufactured in the United States be greater than 55 percent of the total cost of all components of the manufactured product (satisfy the 55 percent requirement).

4.0 – ADDITIONAL REQUIREMENTS

The Contractor has completed and submitted, or shall complete and submit, to the Cabinet a Buy America/Build America, Buy America Certificate prior to the Cabinet issuing the notice to proceed, in the format below. After submittal, the Contractor is bound by its original certification.

A false certification is a criminal act in violation of 18 U.S.C. § 1001. The Contractor has the burden of proof to establish that it’s in compliance.

At the Contractor’s request, the Cabinet may, but is not obligated to, seek a waiver of Buy America requirements if grounds for the waiver exist under 23 C.F.R. § 635.410(c) or will comply with the applicable Buy America requirements if a waiver of those requirements is not available or not pursued by the Cabinet.

Please refer to the Federal Highway Administration’s Buy America webpage for more information.

[Buy America - Construction Program Guide - Contract Administration - Construction - Federal Highway Administration \(dot.gov\)](#)

Effective - June 26, 2025, Letting

SPECIAL NOTE – BUY AMERICA REQUIREMENTS AND BUILD AMERICA, BUY AMERICA (BABA) ACT

05/05/2025

BUY AMERICA / BUILD AMERICA, BUY AMERICA (ACT) MATERIALS CERTIFICATE OF COMPLIANCE

The Contractor hereby certifies that it will comply with all relevant provisions of the Build America, Buy America Act, contained within the Infrastructure Investment and Jobs Act, Pub. L. NO. 117-58, §§ 70901-52, the requirements of 23 U.S.C. § 313, 23 C.F.R. § 635.410 and 2 C.F.R § 184.

Date Submitted:_____

Contractor:_____

Signature:_____

Printed Name:_____

Title:_____

NOTE: THIS CERTIFICATION IS IN ADDITION TO ANY AND ALL REQUIREMENTS OUTLINED IN THE CURRENT EDITION OF THE STANDARD SPECIFICATIONS FOR ROAD AND BRIDGE CONSTRUCTION AND/OR SPECIAL NOTES CONTAINED IN THE PROJECT PROPOSAL.

SPECIAL NOTE FOR RECIPROCAL PREFERENCE

RECIPROCAL PREFERENCE TO BE GIVEN BY PUBLIC AGENCIES TO RESIDENT BIDDERS

By reference, KRS 45A.490 to 45A.494 are incorporated herein and in compliance regarding the bidders residency. Bidders who want to claim resident bidder status should complete the Affidavit for Claiming Resident Bidder Status along with their bid in the electronic bidding software. Submittal of the Affidavit should be done along the bid in Bid Express.

April 30, 2018

**SPECIAL NOTES
DISTRICT NO. 8
BRIDGE DECK RESTORATION AND WATERPROOFING
PULASKI COUNTY
CID 252903 ~ 100GR23M093**

FE02 100 0080 B00080N 31.06

Pulaski County ~ Road (KY 80) over Buck Creek

Geographic Coordinates

Latitude 37° 09' 09.00" (37.1525)

Longitude -84° 26' 17.00" (-84.4380)

Description

100' - 140' - 100' Cont. Plate Girder Spans Drawing No. 19002.

FE02 100 0080 B00082L 22.42

Pulaski County ~ Road (KY 80) over Pitman Creek

Geographic Coordinates

Latitude 37° 06' 42.00" (37.1116)

Longitude -84° 33' 52.00" (-84.5644)

Description

60' - 75' - 60' PCIB Spans Drawing No. 18616.

FE02 100 0080 B00082R 22.41

Pulaski County ~ Road (KY80) over Pitman Creek

Geographic Coordinates

Latitude 37° 06' 42.00" (37.1116)

Longitude -84° 33' 52.00" (-84.5644)

Description

60' - 75' - 60' PCIB Spans Drawing No. 18616.

**SPECIAL NOTES FOR BRIDGE DECK
RESTORATION AND WATERPROOFING**

SPECIAL NOTE FOR BRIDGE DECK RESTORATION AND WATERPROOFING
WITH CONCRETE OVERLAYS

SPECIAL NOTE FOR PREVENTIVE MAINTENANCE

SPECIAL NOTE FOR BEAM REPAIR

SPECIAL NOTE FOR CONTRACT COMPLETION DATE AND PENALTIES ON
BRIDGE REPAIR CONTRACTS

SPECIAL NOTE FOR TRAFFIC CONTROL ON BRIDGE REPAIR CONTRACTS

SPECIAL NOTE FOR BRIDGE DECK RESTORATION AND WATERPROOFING WITH CONCRETE OVERLAYS

1. DESCRIPTION. Perform all work in accordance with the Kentucky Transportation Cabinet, Department of Highway's Standard Specifications for Road and Bridge Construction and applicable Supplemental Specifications, the Standard Drawings (current editions), this Note, and the attached detail drawings. Section references are to the Standard Specifications. This work consists of the following: (1) Furnish all labor, materials, tools, and equipment, (2) Machine prep the existing slab, (3) Complete full-depth and partial depth repairs as directed by the Engineer, (4) Repair/replace damaged and corroded reinforcing bars, (5) Place new concrete overlay and epoxy-sand slurry in accordance with Section 606, (6) Complete asphalt approach pavement, and (7) Any other work specified as part of this contract. All construction will be in accordance with Section 606 unless otherwise specified.

2. MATERIALS.

- A. Latex Concrete.** See Section 606.03.17.
- B. Class "M" Concrete.** Use either "M1" or "M2". See Section 601.
- C. Bituminous Asphalt.** Use CL2 ASPH SURF 0.38D PG64-22.
- D. Epoxy-Sand Slurry.** See Section 606.03.10.

3. CONSTRUCTION.

- A. Remove Existing Overlay.** In addition to Section 606.03.03, totally remove the existing concrete overlay by milling.
- B. Machine Preparation of Existing Slab.** Remove concrete from existing slab to a depth of at least ¼" below the existing surface, and remove all patches completely, in accordance with the requirements of Section 606.03.03.
- C. Partial Depth Slab Repair and Latex Overlay.** Remove areas determined to be unsound by the Engineer via hydro-demolition or via handheld jackhammers weighing less than 45lbs in accordance with Section 606.02.10 D. Repair/Replace all damaged or severely corroded reinforcing bars prior to partial depth repair operation. The Department will not measure material removal and will consider this work incidental to the bid item "PARTIAL DEPTH PATCHING". Mix and place Latex Modified Concrete Overlay in accordance with Sections 606.03.08 and 606.03.17.
- D. Asphalt Approach Pavement.** Mill each existing asphalt approach to the distance indicated in the attached detailed drawings. Remove the bituminous material uniformly by making an edge key, so as to provide a smooth transition to the finished bridge when a new bituminous overlay of compacted depth of approximately 1½" is added to the approaches. The grinding depth may vary depending on the condition of the existing approach and final elevation of bridge end. Dispose of all removed material away from the site.
- E. Surface Texturing.** Texture the concrete surface of the overlay in accordance with Section 609.03.10.
- F. Pavement Markings.** Restore pavement markings to original patterns and/or as directed by the Engineer in accordance with Sections 713, 714 and 837. See Standard Drawings TPM-115 and TPM-207 Current Edition.

- G. Verifying Field Conditions.** The Contractor shall field verify all dimensions before ordering any material. New material that is unsuitable due to variation in existing structure shall be replaced at the Contractors expense.
- H. Damage to the Structure.** The Contractor shall bear all responsibility and expense for all damage to the structure during the repair work even to removal and replacement of a fallen span, should the fallen span result from the Contractor's actions.
4. **MEASUREMENT.** See Section 606 and the following:
- A. Latex Modified Concrete for Overlay.** The Department will measure the quantity in cubic yards using the theoretical volume as follows for each bridge:
- | | |
|------------|-----------------------------------|
| 100B00080N | (345' x 44' x 1.5") = 70.28 CY |
| 100B00082L | (199'2" x 39'3" x 1.5") = 36.2 CY |
| 100B00082R | (199'2" x 39'3" x 1.5") = 36.2 CY |
- B. Machine Prep of Slab, Blast Cleaning, Epoxy Sand Slurry and Bridge Overlay Approach Pavement.** The Department will measure the removal of the existing overlay in square yards.
- C. Partial Depth Patching.** The Department will measure the quantity in cubic yards by deducting the theoretical volume of bridge deck overlay (LMC) from the total volume (as indicated by the batch quantity tickets) of Concrete required to obtain the finished grade shown on the plans or established by the Engineer.
- D. Concrete Class M Full Depth Patch and Concrete Latex Overlay.** The Department will measure the quantity in cubic yards.
- E. Steel Reinforcement.** The Department will measure any reinforcing steel necessary for the partial or full depth patch in pounds.
- F. Pave Striping-Perm 4 Inch.** The Department will measure the quantity in lineal feet.
5. **PAYMENT.** See Section 606 and the following:
- A. Machine Prep of Slab (08551).** The Department will make payment for the machine preparation of the existing slab.
- B. Partial Depth Patching (24094EC).** The Department will make payment for removing exiting materials, furnishing, and placing all new materials completed and accepted.
- C. Concrete Class M Full Depth Patch (08526).** The Department will make payment for removing exiting materials, furnishing, and placing all new materials.
- D. Blast Cleaning (08549).** The Department will make payment for blast cleaning all surfaces specified.
- E. Epoxy Sand Slurry (08504).** The Department will make payment for furnishing and placing all new materials as specified.
- F. Concrete Latex Overlay (08534).** The Department will make payment for furnishing and placing all new material as specified.
- G. Steel Reinforcement (08150).** The Department will make payment for steel reinforcement, if necessary.
- H. Asphalt Approach Pavement (03304).** The Department will make payment for removing existing materials, furnishing and placing all new materials as specified.

- I. Pave Striping-Perm 4 Inch (06514).** The Department will make payment for furnishing and placing permanent striping as specified.

SPECIAL NOTE FOR PREVENTIVE MAINTENANCE

1. DESCRIPTION.

Perform all work in accordance with the Kentucky Transportation Cabinet, Department of Highway's Standard Specifications for Road and Bridge Construction and applicable Supplemental Specifications, the Standard Drawings, (current editions), this Note and Attached Detailed Drawings. Section references are to the Standard Specifications. This work consists of the following: (1) Furnish all labor, materials, tools, and equipment, (2) Bridge Cleaning, (3) Concrete Coatings (4) Bearing Lubrication (5) Any other work specified as part of this contract.

2. MATERIALS.

A. Wash Water

Use clean potable water for all pressure washing.

B. Concrete Coatings

See The Division of Material's list of approved materials for concrete coatings and Section 821.

C. Bearing Lubricant

Use one of the lubricants from the following manufactures:

Manufacture	Lubricant
Bostik Inc.,	Never Seez - Mariner's Choice
Mobil Oil	Mobil Centaur Moly NLGI Grades 1 or 2
Certified Labs	Premalube #1 WG

3. CONSTRUCTION.

A. Bridge Cleaning.

All debris shall be removed from the bridge components. See attached detailed drawings addressing components having debris removal. Equipment for removing debris from the bridge components shall be determined by the Contractor, subject to the approval of the Engineer. The Contractor shall prevent any debris from entering any body of water, bridge drainage system, or traffic lanes. All debris removed shall be disposed of in a suitable off-site disposal facility. All vegetation present at areas of the bridge that are to be addressed in this proposal shall be removed as determined by the Engineer.

All cost to complete Debris Removal and Remove Vegetation as specified shall be included in the Lump Sum price for "Bridge Cleaning".

B. Stratified and Pack Rust Removal.

Stratified and pack rust shall be removed from all bearing devices and specified limits of beams. All existing bearing lubrication shall be removed. See attached detailed drawings for each bridge showing location and quantity of the bearing devices. Hand tools including wire brushes, scrapers or impact devices (hand hammers or power chisels) are to be used for removing stratified and pack rust. All surfaces to have stratified and pack rust removed shall be cleaned to an SSPC SP-2 level. All debris collected shall be disposed of in a suitable off-site disposal facility. **All cost to complete Stratified; Pack Rust Removal shall be considered incidental to the unit price bid for "Lubricate Bearing".**

C. Pressure Washing.

Specified bridge components shall be pressure washed. See attached detailed drawings addressing components to be pressure washed. All equipment for pressure washing shall be operated at a minimum pressure of up 4,000 psi with 0-degree spinner tip and/or fan tips as determined by the engineer at the working location with a minimum flow rate of 3.5 gal/minute provided that these pressures do not damage any components of the structure. Pressure and flow rates shall be reduced to a level satisfactory to the Engineer should any damage occur due to power washing procedures. Pressure washing shall be operated at distance of approximately six inches from and perpendicular to the surface. All pressure washing wands shall be equipped with a gauge to accurately determine the amount pressure used. Pressure washing of any bridge element will proceed from top of wash area to bottom of wash area. Wash water will not be released to a bridge element previously washed. Preform all pressure washing at temperatures above 40 degrees Fahrenheit. **All cost to complete Pressure Washing as specified shall be included in the Lump Sum price for “Bridge Cleaning”.**

D. Concrete Coatings Application.

Specified bridge components shall have concrete coating applied to as specified after bridge cleaning. See attached detailed drawings for addressing the bridge components. Use compressed air to remove any loose debris from the surfaces that are to be coated after power washing. See concrete coating diagram. All coatings shall be applied within manufacturers recommended dry film thickness range. For recommended conditions for application, see Section 614.03.02 and coatings supplier specifications. Allow the surfaces to be coated to dry before any coating is applied. The coating must be applied to a clean and dry surface. All coating application shall be executed using brushes, rollers, etc. No spray application will be permitted. The Department requires acceptance testing of samples obtained on a per-lot basis per-shipment. The Division of Materials will perform acceptance testing. See Section 821.04. The finish coat shall be Light Gray for Concrete. See Section 821.02. **All cost to complete Concrete Coating Application as specified shall be included in the Lump Sum price for “Concrete Coatings”.**

E. Bearing Lubrication Application.

Bearing devices shall be lubricated as specified after all stratified rust and pack rust is removed and power washing is complete, bearing devices shall have lubricant applied to all surfaces of the bearing including bearing plates and points of movement. See attached detailed drawings for each bridge showing location and quantity of the bearing devices. Allow bearing devices to dry before lubricant is applied. Preform all bearing lubrication application at temperatures above 40 degrees Fahrenheit or in accordance with manufactures specifications. **All cost to complete Bearing Lubrication Application as specified shall be included in the unit price Each for “Lubricate Bearing”.**

F. Sequence of Work.

Complete work in the sequence listed below:

1. Debris Removal
2. Stratified Rust Removal
3. Pressure Washing
4. Concrete Coating Application
- 5.. Bearing Lubrication Application

G. Inspection.

The Cabinet will provide inspection for all items required in this contract. Visual inspection will be required upon completion of each work item for each structure component or at the discretion of the Engineer at any time. All visual inspection shall be performed within arm's length distance.

1. **Debris Removal:** Visual Inspection.
2. **Stratified Rust or Pack Rust Removal:** Visual Inspection and Scraper
Test any surface cleaned to SSPC SP2 will be inspected by a dull scraper test to ascertain adherence of existing coating and a hammer test for tightness of pack rust.
3. **Power Washing:** Visual Inspection.
4. **Concrete Coating:**
Prime Coat Application Check for wet film thickness*, and defects in the Paint.
Finish Coat Application Check for wet film thickness*, paint appearance, color and quality of application.
5. **Bearing Lubrication.** Visual Inspection.

H. Verifying Field Conditions.

The Contractor shall be familiar with all conditions at each bridge site. The Cabinet will not consider any claims due to the Contractor having not familiarized themselves with requirements of this work.

I. Residual Lead.

Residual lead paint may still be on bridge. The Contractor is advised to take all necessary protective measures including worker safety and environmental regulations when performing surface preparation. The Department will not consider any claims based on residual lead paint.

J. Damage to the structure.

The Contractor shall bear all responsibility and expense for any and all damage to the structure during the repair work, even to the removal and replacement of a fallen span, should the fallen span result from the Contractors actions.

4. MEASUREMENT.

A. Bridge Cleaning.

The Cabinet will measure this item by Lump Sum, completed and accepted.

B. Concrete Coating.

The Cabinet will measure this item by Lump Sum, completed and accepted.

C. Bearing Lubrication: The Cabinet will measure this item by Each, completed and accepted.

5. PAYMENT.

A. Bridge Cleaning (24981EC).

Payment at the contract unit price for “Lump Sum” is full compensation for Debris Removal, Deck Drain Cleaning, Pressure Washing and all incidental items required to complete this work as specified in this note and attached detailed drawings.

B. Concrete Coating (24982EC).

Payment at the contract unit price for “Lump Sum” is full compensation for applying the concrete coatings and all incidental items required to complete this work as specified in this note and attached detailed drawings.

C. Bearing Lubrication (24983EC): Payment at the contract unit price “Each” is full compensation for applying bearing lubrication and all incidental items required to complete this work as specified in this note and attached detailed drawings.

SPECIAL NOTE FOR BEAM REPAIR

- 1. DESCRIPTION.** Perform all work in accordance with the Kentucky Transportation Cabinet, Department of Highway’s Standard Specifications for Road and

Bridge Construction and applicable Supplemental Specifications (Current Editions), this note and the attached detailed drawings. This work consists of the following: (1) Furnish all labor, materials, tools, and equipment. (2) Beam Repair. (3) Any other work specified as part of this contract.

2. MATERIALS.

D. Structural Steel.

ASTM Material, A709 Grade 50 Structural Steel Plates and Shapes. Minimum structural steel yield strength $F_y \sim 50,000$ psi.

E. High Strength Bolts.

All bolted connection shall be ASTM A325 3/4" diameter high strength bolts, nuts and washers. Holes shall be 13/16 diameter. Maintain a minimum 1 1/2" between the edge of any plate or angle and the center of the bolt hole. Furnish type 1 galvanized bolts as described in AASHTO M164.

F. Paint.

G. See Section 607.

3. CONSTRUCTION.

A. Beam Repair.

Fabricate and Install new steel as shown in the Detail Drawings.

B. High Strength Bolts.

Install all high strength bolted field connections using "direct tension indicators" (DTIs) in accordance with the Standard Specifications and ASTM F959. Install DTIs under the bolt head with the bumps facing the underside of the bolt head. Place a hardened washer under the nut tension connection from the nut side.

A. Cleaning and Painting.

Existing Steel. All existing faying surfaces where new steel is to be installed shall be cleaned and receive the prime coat in accordance with Section 607. Level of cleaning shall be to an **SSPC-SP 15** (Commercial Grade Power Tool Cleaning). All Power tools shall be equipped with vacuum shrouds and fitted with HEPA filters at their air exhausts. Maintain and operate all vacuum shrouded power tools to collect generated debris. Any existing paint that is damaged shall be recoated in accordance with Section 607.

New Structural Steel. All new structural steel shall receive shop surface preparation and shop applied prime coating in accordance with Section 607. Necessary touch up/repair of the shop applied prime coat on the new steel may be performed in the field. Intermediate and Finish coatings specified shall be field applied in accordance with Section 607. Brush and rollers must be used for all field applied coatings. No spray application will be permitted. All items necessary to complete cleaning and painting as specified in this note shall be considered incidental to the unit price bid for Beam Repair.

C. Verifying Field Conditions.

The Contractor shall field verify all plate and shape dimensions, bolt patterns and locations before ordering any material. New material that is unsuitable due to variation in existing structure shall be replaced at the Contractors expense.

D. Residual Lead. Residual Lead may still be present on bridge. The Contractor is advised to take all necessary protective measures including worker safety and environmental regulations when performing surface preparation and other work. The Department will not consider any claims based on residual lead paint.

E. Damage to the structure.

The Contractor shall bear all responsibility and expense for any and all damage to the structure during the repair work, even to the removal and replacement of a fallen span, should the fallen span result from the Contractors actions.

4. MEASUREMENT.

A. Beam Repair. The Department will measure the quantity as “Each” for Steel Repair.

5. PAYMENT.

A. Beam Repair (24093EC). Payment at the contract unit price for “Each” is full compensation for furnishing and installing all material as specified

**SPECIAL NOTE FOR CONTRACT COMPLETION DATE AND
PENALTIES ON BRIDGE REPAIR CONTRACTS**

- 1. COMPLETION DATE.** The Contractor has the option of selecting the starting date for this Contract. Once selected, notify the Department in writing of the date

selected at least two weeks prior to beginning work. All work is to be completed by the date listed below. An allotted number of Calendar days are assigned to each structure in this contract as shown below.

<u>STRUCTURE</u>	<u>NO. OF CALENDAR DAYS</u>	<u>COMPLETION DATE</u>
100B00080N	30	November 1, 2026
100B00082L	30	November 1, 2026
100B00082R	30	November 1, 2026

Contrary to Section 108.07.03, the Engineer will begin charging calendar days for a structure on the day the Contractor starts work or sets up traffic control on that particular structure. A **penalty of \$500.00 per day** will be assessed when the allotted number of calendar days is exceeded for each structure.

All construction must be completed in accordance with the weather limitations specified in Section 606 and/or Section 601 as applicable. No extension of Contract time will be granted due to inclement weather or temperature limitations that occur due to starting work on the Contract or a structure late in the construction season.

**SPECIAL NOTE FOR TRAFFIC CONTROL
ON BRIDGE REPAIR CONTRACTS**

1. TRAFFIC CONTROL GENERAL

Except as provided herein, traffic shall be maintained in accordance with the Standard Specifications (current edition), Section 112. Except for the roadway and traffic control

bid items listed, all items of work necessary to maintain and control traffic will be paid at the lump sum bid price to “Maintain and Control Traffic”. Contrary to Section 106.01, traffic control devices used on this project may be new or used in new condition, at the beginning of the work and maintained in like new condition until completion of the work.

2. TRAFFIC COORDINATOR

Furnish a Traffic Coordinator as per Section 112. The Traffic Coordinator shall inspect the project maintenance of traffic, at least three times daily, or as directed by the Engineer, during the Contractor’s operations and at any time a lane closure is in place. The personnel shall have access on the project to a radio or telephone to be used in case of emergencies or accidents. The Traffic Coordinator shall report all incidents throughout the work zone to the Engineer on the project. The Contractor shall furnish the name and telephone number where the Traffic Coordinator can be contacted at all times.

3. SIGNS

Contrary to Section 112.04.02, only long-term signs (sign intended to be continuously in place for more than 3 days) will be measured for payment; short term signs (signs intended to be left in place for 3 days or less) will not be measured for payment but will be incidental to Maintain and Control Traffic.

The contractor is to install warning signs for wide loads in advance of the bridge under the direction of the Engineer. The Department will not measure installation, maintenance, or removal for payment, and will consider these incidentals to Maintain and Control Traffic.

4. TEMPORARY PAVEMENT STRIPING

Skip lines and/or solid lines through the length of the tapers for lane closures and other striping as directed by the Engineer shall be temporarily covered with 6” black removable tape. Permanent removal of all other pavement striping for traffic control shall be considered incidental to Maintain and Control Traffic. Temporary pavement striping shall be paid only once per course in accordance with Section 112.04.07. The Contractor shall replace any temporary striping that becomes damaged or fails to adhere to the pavement before dark on the day of the notification. **A penalty of \$500.00 per day will be assessed for failing to replace temporary striping within this time limit.**

5. PROJECT PHASING & CONSTRUCTION PROCEDURES

Maintain one lane of traffic on each bridge at all times in accordance with Standard Drawing Nos. TTC-100 and TTC-110. The minimum clear lane width required is as follows:

<u>Structure</u>	<u>Clear Lane Width</u>
100B00080N	12’-0”
100B00082L	12’-0”
100B00082R	12’-0”

6. TEMPORARY SIGNAL

Provide, install, and maintain a temporary traffic signal as specified below. The Contractor must provide a 24-hour contact person and number available to maintain the temporary signals as needed.

Structure
100B00080N

Signal
2 Phase

7. MEASUREMENT.

Temporary Signs:

The Cabinet will measure this item by “Square Feet”.

Maintain and Control Traffic:

The Cabinet will measure this item by “Lump Sum”.

Lane Closure, and Temp Signal 2 Phase:

The Cabinet will measure this item by “Each”.

Pave Striping-Temp Rem Tape-B, W, and Y:

The Department will measure the quantity in “Linear Feet”.

8. PAYMENT.

Temporary Signs (02562):

Payment at the contract unit price for “Square Feet” is full compensation for all items to complete this work as specified.

Maintain and Control Traffic (02650):

Payment at the contract unit price for “Lump Sum” is full compensation for all items to complete this work as specified.

Lane Closure (02653) and Temp Signal 2 Phase (04933):

Payment at the contract unit price “Each” is full compensation for all items to complete this work as specified.

Pave Striping-Temp Rem Tape-B (06549), W (06550), and Y (06551):

Payment at the contract unit price “Lineal Feet” is full compensation for all items to complete this work as specified.

Special Note for Bridge Demolition, Renovation and Asbestos Abatement

If the project includes any bridge demolition or renovation, the successful bidder is required to notify Kentucky Division for Air Quality (KDAQ) via filing of form (DEP 7036) a minimum of 10 working days prior to commencement of any bridge demolition or renovation work.

Any available information regarding possible asbestos containing materials (ACM) on or within bridges to be affected by the project has been included in the bid documents. These are to be included with the Contractor's notification filed with the KDAQ. If not included in the bid documents, the Department will provide that information to the successful bidder for inclusion in the KDAQ notice as soon as possible. If there are no documents stating otherwise, the bidders should assume there are no asbestos containing materials that will in any way affect the work.



Andy Beshear
GOVERNOR

TRANSPORTATION CABINET

200 Mero Street
Frankfort, Kentucky 406 01

Jim Gray
SECRETARY

Asbestos Inspection Survey

To: James Brittain

District: Central Office

Date: August 14, 2025

Conducted By: O'Dail Lawson

Report Prepared By: O'Dail Lawson

Project and Structure Identification

Project Number: CID 252903

Structure ID: Pulaski 100B00080N

Structure Location: KY 80 over Buck Creek

Sample Description: Any suspect materials collected were negative for asbestos.

Inspection Date: August 5, 2025

Results and Recommendations

This asbestos survey was performed in accordance with the current USEPA regulations, specifically [40 CFR Part 61](#), Asbestos National Emissions Standards for Hazardous Air Pollutants (NESHAP) revision, final rule effective November 20, 1990.

The results of the samples collected were negative for the presence of asbestos above 1%. No abatement is required at this time. However, the [OSHA Standard 1926.1101](#) applies if any level of asbestos is present in the samples collected.

It is recommended that this report accompany the 10-Day Notice of Intent for Demolition ([Notification Form DEP 7036](#)) which is to be submitted to the Kentucky Division of Air Quality prior to abatement, demolition, or renovation of any building or structure in the Commonwealth. This form can be submitted electronically at the [EEC Forms Homepage](#)



(502) 568 - 2088 or (502) 495 - 1212
Fax: (502) 495 - 0566

Analysis N#	# 3508124	Address:	Pulaski County - 100B00080N
Client Name:	K Y T C		
Sampled By:	O'Dail Lawson		

[illegible]

Date Analyzed : 12-Aug-25
Analyst : Winterford Mensah

Reviewed By: Winterson Menzies
Signature

AIHA # 102459

AJHA #1 02459



Chain of Custody Record

Kentucky Transportation Cabinet

200 Mero Street, 4th Floor West

Frankfort, Kentucky 40622

(502) 564-7250 fax (502) 564-5655

[illegible]



Andy Beshear
GOVERNOR

TRANSPORTATION CABINET

200 Mero Street
Frankfort, Kentucky 406 01

Jim Gray
SECRETARY

Asbestos Inspection Survey

To: James Brittain

District: Central Office

Date: August 14, 2025

Conducted By: O'Dail Lawson

Report Prepared By: O'Dail Lawson

Project and Structure Identification

Project Number: CID 252903

Structure ID: Pulaski 100B00082L

Structure Location: KY 80 over Pittman Creek

Sample Description: Any suspect materials collected were negative for asbestos.

Inspection Date: August 5, 2025

Results and Recommendations

This asbestos survey was performed in accordance with the current USEPA regulations, specifically [40 CFR Part 61](#), Asbestos National Emissions Standards for Hazardous Air Pollutants (NESHAP) revision, final rule effective November 20, 1990.

The results of the samples collected were negative for the presence of asbestos above 1%. No abatement is required at this time. However, the [OSHA Standard 1926.1101](#) applies if any level of asbestos is present in the samples collected.

It is recommended that this report accompany the 10-Day Notice of Intent for Demolition ([Notification Form DEP 7036](#)) which is to be submitted to the Kentucky Division of Air Quality prior to abatement, demolition, or renovation of any building or structure in the Commonwealth. This form can be submitted electronically at the [EEC Forms Homepage](#)



Fax: (502) 495 - 0566

Analysis N#	# 3508124	Address:	Pulaski County - 100B00082L
Client Name:	K Y T C		
Sampled By:	O'Dail Lawson		

[illegible]

Reviewed By: Winterson Menado
Signature

AJHA #1 02459



Chain of Custody Record

Kentucky Transportation Cabinet

200 Mero Street, 4th Floor West

Frankfort, Kentucky 40622

(502) 564-7250 fax (502) 564-5655

O'Dail Lawson

W4-06-06

200 Metro Street

Frankfort

2002-564-5655

o'dail.lawson@ky.gov

KY

502-564-5655

N/A = Not Applicable

Client Information

Area Square footage:

KY TRANSPORTATION CABINET

Project ID

PO#:

Sample ID

Sample Description

Collected

Analysis Requested

Matrix

Color

Cont. Type

Preservative

82-1

Joire Marenm

9/5/05

10:50

Albers bn/lk

Rndln

shad

N/A

Received By:

Reinquinshed By:

Received at Lab By:

8/10/05

8/10/05

8/10/05

Signature

Signature

Signature

144

80

over

stirman

Cretk.

Tilmon ODail Lawson

Has met the requirements of 401 KAR 56:005 and is accredited as an:

Asbestos Inspector

Agency Interest Id: **159146**

License Number: **86094**

Issue Date: **03/11/2025**

Expiration Date: **03/05/2026**



ENVIRONMENTAL TRAINING CONCEPTS, INC

P.O. Box 99603 Louisville, KY 40269
(502)640-2951

Certification Number: ETC-AIR-030525-00169

O'Dail Lawson

has on 03-05-2025 attended and successfully completed the requirements and passed the examination with a score of 70% or better on the entitled course.

ASBESTOS INSPECTOR REFRESHER

Training was in accordance with 40 CFR Part 763 (AHERA) approved by the Commonwealth of Kentucky, the Indiana Department of Environmental Management, Tennessee Department of Environment & Conservation and The Arkansas Department of Environmental Quality. The above student received requisite training for Asbestos Accreditation under Title II of the Toxic Substance Act (TSCA).

Conducted at: 1520 Alliant Ave., Louisville, KY


Name - Training Manager

Expiration Date: 03-05-2026


Name - Instructor

MATERIAL SUMMARY

CONTRACT ID: 252903

100GR23M093

MB10000802501

PW 80 (HAL ROGERS PKWY) BRIDGE 100B00080N (PW 80) OVER BUCK CREEK AT MILE POINT 31.06 BRIDGE WITH GRADE DRAIN & SURFACE.

Project Line No	Bid Code	DESCRIPTION	Quantity	Unit
0005	02014	BARRICADE-TYPE III	1.00	EACH
0010	02562	TEMPORARY SIGNS	145.00	SQFT
0015	02650	MAINTAIN & CONTROL TRAFFIC	1.00	LS
0020	02653	LANE CLOSURE	2.00	EACH
0025	02697	EDGE LINE RUMBLE STRIPS	600.00	LF
0030	03294	EXPAN JOINT REPLACE 1 1/2 IN	45.60	LF
0035	03298	EXPAN JOINT REPLACE 4 IN	45.60	LF
0040	03299	ARMORED EDGE FOR CONCRETE	91.20	LF
0045	03304	BRIDGE OVERLAY APPROACH PAVEMENT	1,013.50	SQYD
0050	04933	TEMP SIGNAL 2 PHASE	1.00	EACH
0055	06515	PAVE STRIPING-PERM PAINT-6 IN	1,375.00	LF
0060	06549	PAVE STRIPING-TEMP REM TAPE-B	1,000.00	LF
0065	06550	PAVE STRIPING-TEMP REM TAPE-W	2,000.00	LF
0070	06551	PAVE STRIPING-TEMP REM TAPE-Y	2,000.00	LF
0075	08150	STEEL REINFORCEMENT	270.00	LB
0080	08504	EPOXY SAND SLURRY	256.00	SQYD
0085	08526	CONC CLASS M FULL DEPTH PATCH	18.30	CUYD
0090	08534	CONCRETE OVERLAY-LATEX	73.00	CUYD
0095	08549	BLAST CLEANING	526.00	SQYD
0100	08551	MACHINE PREP OF SLAB	1,748.00	SQYD
0105	24093EC	BEAM REPAIR	1.00	EACH
0110	24094EC	PARTIAL DEPTH PATCHING	55.00	CUYD
0115	24981EC	BRIDGE CLEANING - APPLIES TO 100B00080N	1.00	LS
0120	24982EC	CONCRETE COATING - APPLIES TO 100B00080N	1.00	LS
0125	24983EC	BEARING LUBRICATION	12.00	EACH
0130	25075EC	QUEUE PROTECTION VEHICLE	240.00	HOUR
0135	25117EC	FURNISH QUEUE PROTECTION VEHICLES	1.00	MONT
0140	26136EC	PORTABLE QUEUE WARNING ALERT SYSTEM	1.00	MONT
0145	26137EC	QUEUE WARNING PCMS	6.00	MONT
0150	26138EC	QUEUE WARNING PORTABLE RADAR SENSORS	6.00	MONT
0155	02569	DEMOBILIZATION	1.00	LS

MATERIAL SUMMARY

CONTRACT ID: 252903

100GR23M093

MB10000802502

PW 80 (HAL ROGERS PKWY) BRIDGE 100B00082L (PW 80) OVER PITMAN CREEK AT MILE POINT 22.42
BRIDGE WITH GRADE DRAIN & SURFACE.

Project Line No	Bid Code	DESCRIPTION	Quantity	Unit
0005	02003	RELOCATE TEMP CONC BARRIER	500.00	LF
0010	02562	TEMPORARY SIGNS	145.00	SQFT
0015	02650	MAINTAIN & CONTROL TRAFFIC	1.00	LS
0020	02653	LANE CLOSURE	2.00	EACH
0025	02697	EDGE LINE RUMBLE STRIPS	400.00	LF
0030	02775	ARROW PANEL	1.00	EACH
0035	02898	RELOCATE CRASH CUSHION	1.00	EACH
0040	03171	CONC BARRIER WALL TYPE 9T	500.00	LF
0045	03294	EXPAN JOINT REPLACE 1 1/2 IN	78.50	LF
0050	03299	ARMORED EDGE FOR CONCRETE	78.50	LF
0055	03304	BRIDGE OVERLAY APPROACH PAVEMENT	872.50	SQYD
0060	04933	TEMP SIGNAL 2 PHASE	1.00	EACH
0065	06515	PAVE STRIPING-PERM PAINT-6 IN	1,000.00	LF
0070	06549	PAVE STRIPING-TEMP REM TAPE-B	1,000.00	LF
0075	06550	PAVE STRIPING-TEMP REM TAPE-W	2,000.00	LF
0080	06551	PAVE STRIPING-TEMP REM TAPE-Y	2,000.00	LF
0085	08150	STEEL REINFORCEMENT	270.00	LB
0090	08504	EPOXY SAND SLURRY	148.00	SQYD
0095	08526	CONC CLASS M FULL DEPTH PATCH	9.50	CUYD
0100	08534	CONCRETE OVERLAY-LATEX	36.50	CUYD
0105	08549	BLAST CLEANING	418.00	SQYD
0110	08551	MACHINE PREP OF SLAB	869.00	SQYD
0115	24094EC	PARTIAL DEPTH PATCHING	27.50	CUYD
0120	25075EC	QUEUE PROTECTION VEHICLE	240.00	hour
0125	25117EC	FURNISH QUEUE PROTECTION VEHICLES	1.00	month
0130	26136EC	PORTABLE QUEUE WARNING ALERT SYSTEM	1.00	month
0135	26137EC	QUEUE WARNING PCMS	6.00	month
0140	26138EC	QUEUE WARNING PORTABLE RADAR SENSORS	6.00	month
0145	02569	DEMOBILIZATION	1.00	LS

MATERIAL SUMMARY

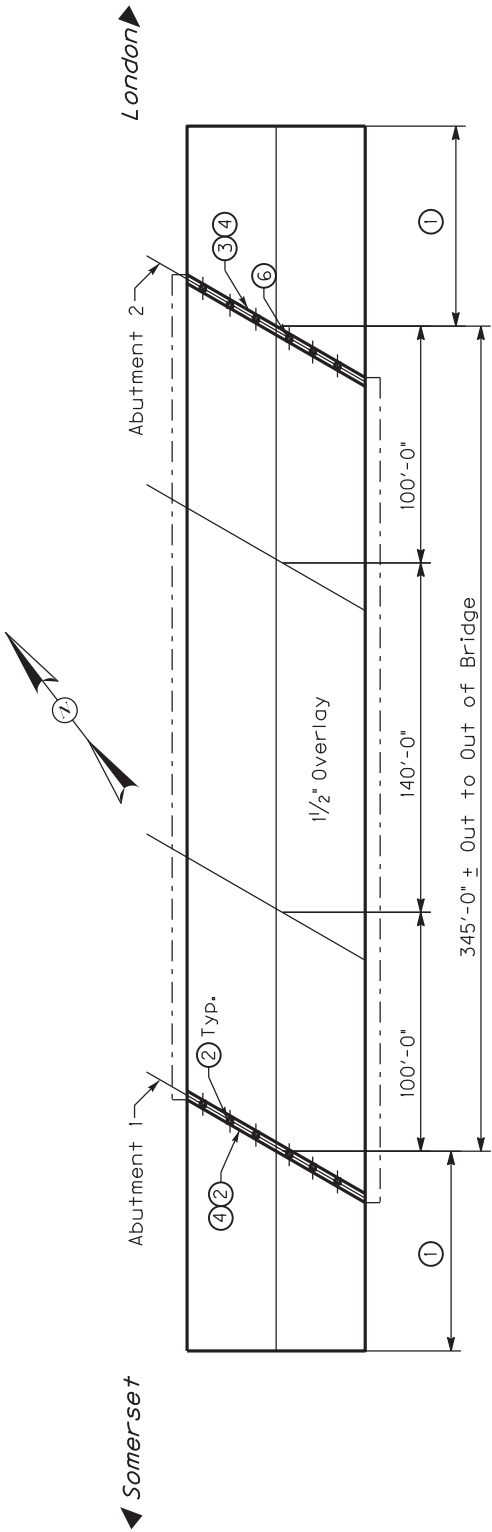
CONTRACT ID: 252903

100GR23M093

MB10000802504

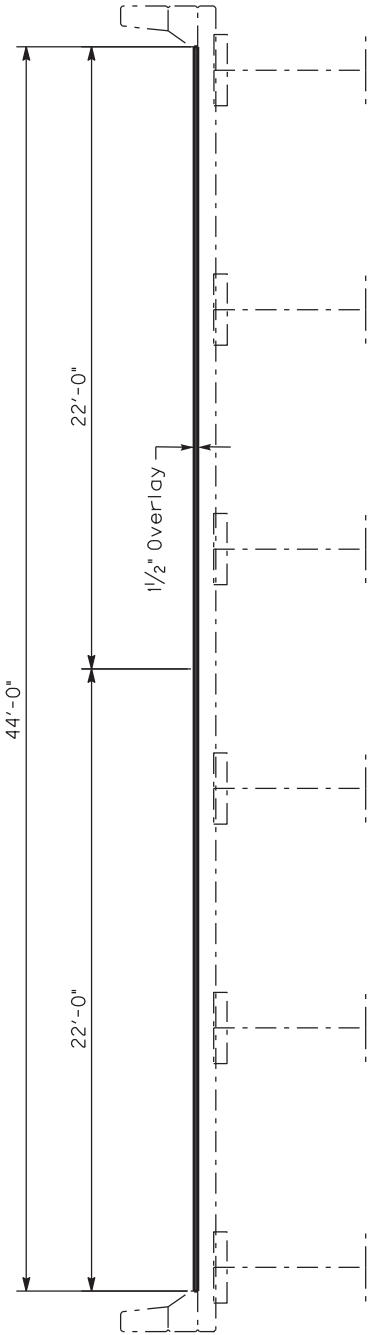
PW 80 (HAL ROGERS PKWY) BRIDGE 100B00082R (PW 80) OVER PITMAN CREEK AT MILE POINT 22.41
BRIDGE WITH GRADE DRAIN & SURFACE.

Project Line No	Bid Code	DESCRIPTION	Quantity	Unit
0005	02003	RELOCATE TEMP CONC BARRIER	500.00	LF
0010	02562	TEMPORARY SIGNS	145.00	SQFT
0015	02650	MAINTAIN & CONTROL TRAFFIC	1.00	LS
0020	02653	LANE CLOSURE	2.00	EACH
0025	02697	EDGE LINE RUMBLE STRIPS	400.00	LF
0030	02775	ARROW PANEL	1.00	EACH
0035	02898	RELOCATE CRASH CUSHION	1.00	EACH
0040	03171	CONC BARRIER WALL TYPE 9T	500.00	LF
0045	03294	EXPAN JOINT REPLACE 1 1/2 IN	78.50	LF
0050	03299	ARMORED EDGE FOR CONCRETE	78.50	LF
0055	03304	BRIDGE OVERLAY APPROACH PAVEMENT	872.50	SQYD
0060	04933	TEMP SIGNAL 2 PHASE	1.00	EACH
0065	06515	PAVE STRIPING-PERM PAINT-6 IN	1,000.00	LF
0070	06549	PAVE STRIPING-TEMP REM TAPE-B	1,000.00	LF
0075	06550	PAVE STRIPING-TEMP REM TAPE-W	2,000.00	LF
0080	06551	PAVE STRIPING-TEMP REM TAPE-Y	2,000.00	LF
0085	08150	STEEL REINFORCEMENT	270.00	LB
0090	08504	EPOXY SAND SLURRY	148.00	SQYD
0095	08526	CONC CLASS M FULL DEPTH PATCH	9.50	CUYD
0100	08534	CONCRETE OVERLAY-LATEX	36.50	CUYD
0105	08549	BLAST CLEANING	418.00	SQYD
0110	08551	MACHINE PREP OF SLAB	869.00	SQYD
0115	24094EC	PARTIAL DEPTH PATCHING	27.50	CUYD
0120	25075EC	QUEUE PROTECTION VEHICLE	240.00	hour
0125	25117EC	FURNISH QUEUE PROTECTION VEHICLES	1.00	month
0130	26136EC	PORTABLE QUEUE WARNING ALERT SYSTEM	1.00	month
0135	26137EC	QUEUE WARNING PCMS	6.00	month
0140	26138EC	QUEUE WARNING PORTABLE RADAR SENSORS	6.00	month
0145	02569	DEMOBILIZATION	1.00	LS



BRIDGE PLAN

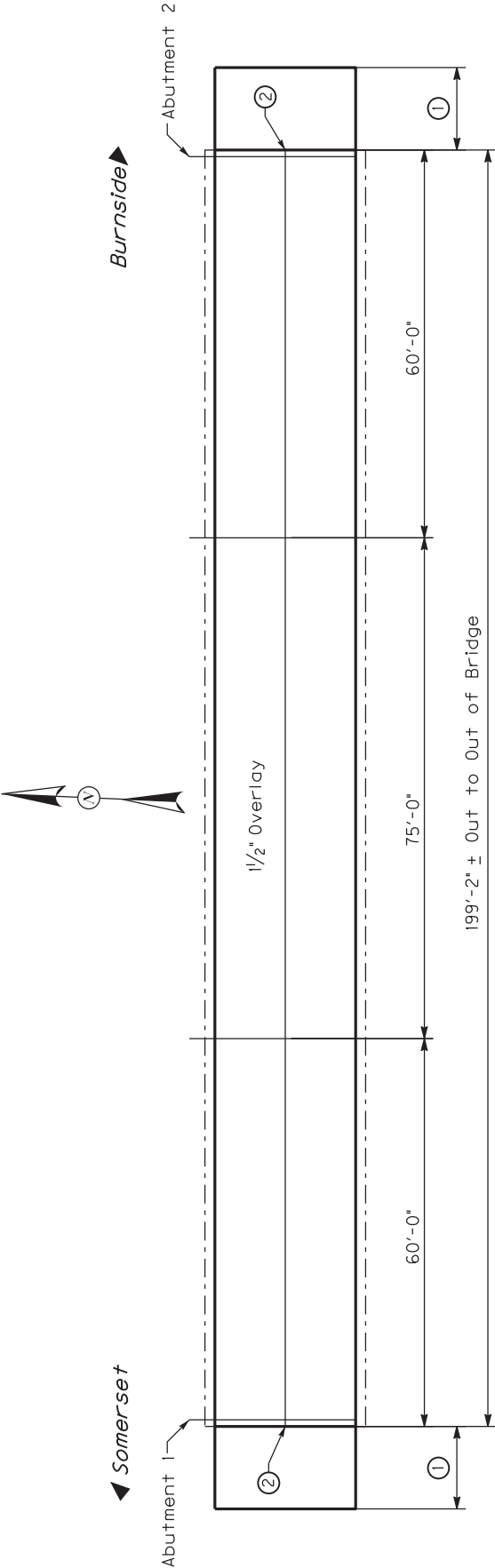
- ① 100'-0" Bridge Overlay Approach Pavement.
- ② Expansion Joint Replace 1 1/2" (See Standard Drawing BJE-001, BJE-005, & BJE-003 C.E.)
- ③ Expansion Joint Replace 4" (See Standard Drawing BJE-001, BJE-005, & BJE-006 C.E.)
- ④ Bridge Cleaning & Concrete Coating
- ⑤ Bearing Lubrication (12 Total)
- ⑥ Beam Repair (Beam 4 at Abutment 4)



TYPICAL SECTION

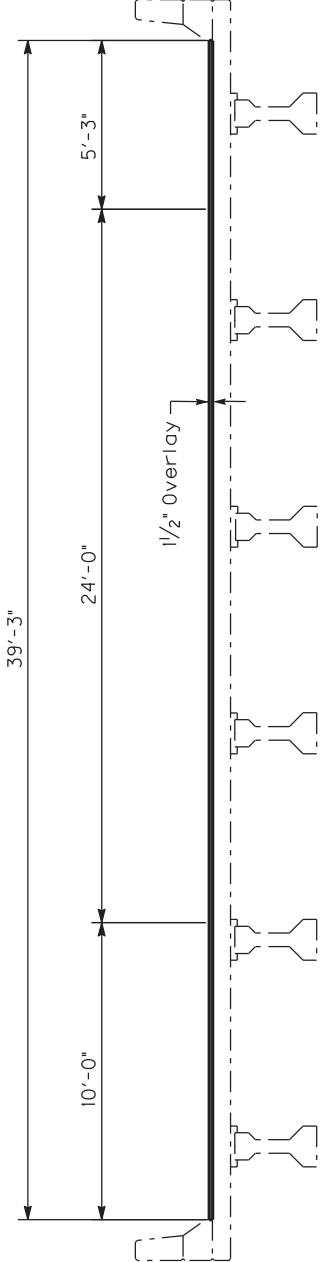
BRIDGE NO.
100B00080N

Note: See Special Notes



BRIDGE PLAN

- 1 100'-0" Bridge Overlay Approach Pavement.
- 2 Expansion Joint Replace 1" (See Standard Drawing BJE-001, BJE-005, & BJE-006 C.E.)



TYPICAL SECTION

BRIDGE NO.
100B00082L

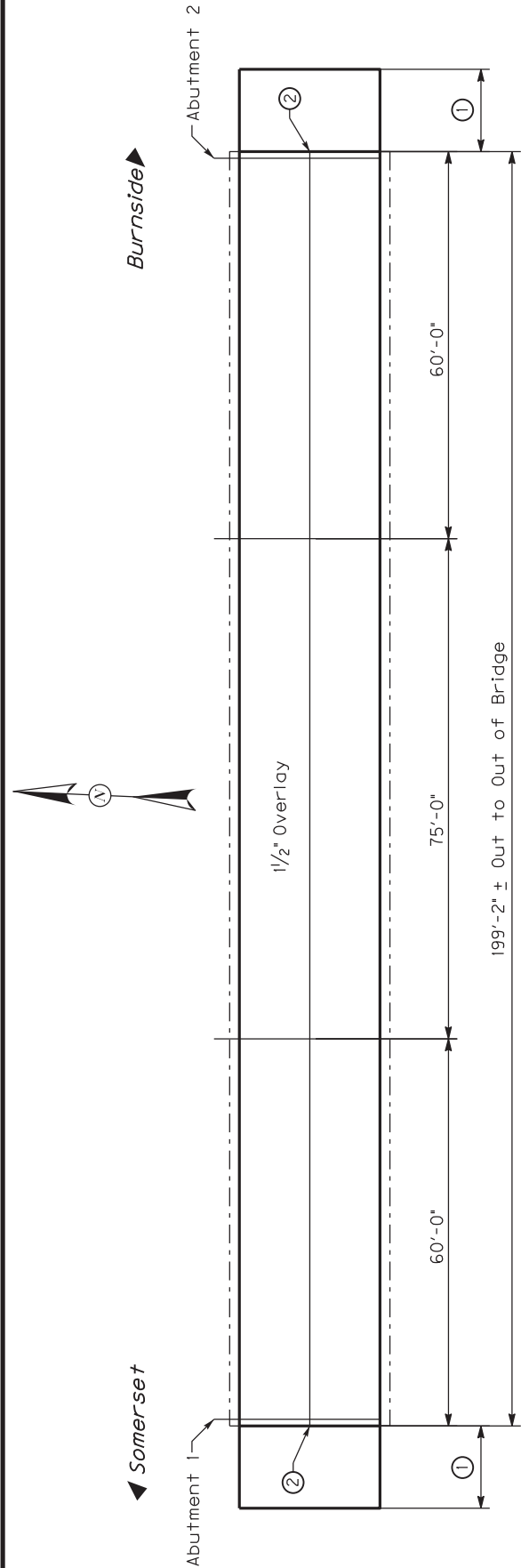
Note: See Special Notes

Commonwealth of Kentucky
DEPARTMENT OF HIGHWAYS

COUNTY
PULASKI

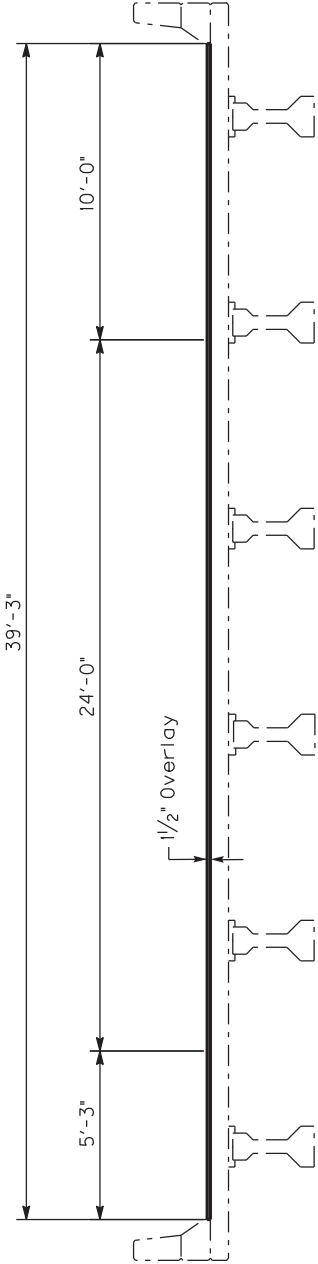
LAYOUT ~ 100B00082L

PREPARED BY
Division of Maintenance
Bridge Preservation Branch



BRIDGE PLAN

- ① 100'-0\" Bridge Overlay Approach Pavement.
- ② Expansion Joint Replace 1\" (See Standard Drawing BJE-001, BJE-005, & BJE-006 C.E.)

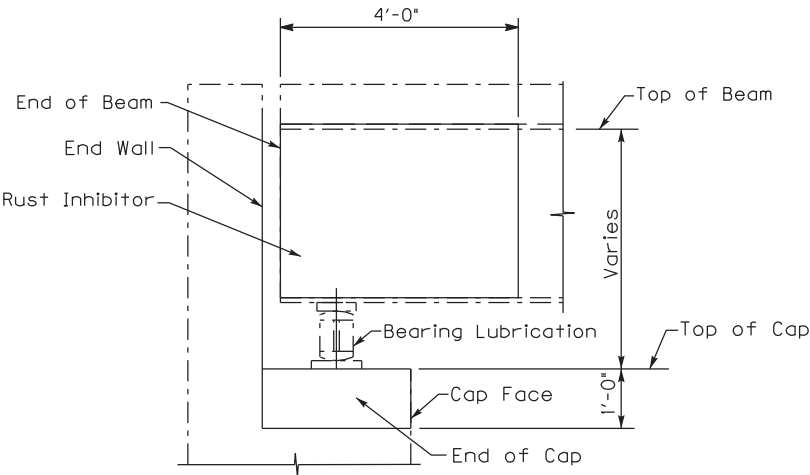


TYPICAL SECTION

BRIDGE NO.
100B00082R

Note: See Special Notes

Commonwealth of Kentucky DEPARTMENT OF HIGHWAYS	
COUNTY PULASKI	
LAYOUT ~ 100B00082R	
PREPARED BY Division of Maintenance Bridge Preservation Branch	



SECTION THROUGH END BENT CAP AND BEAM END

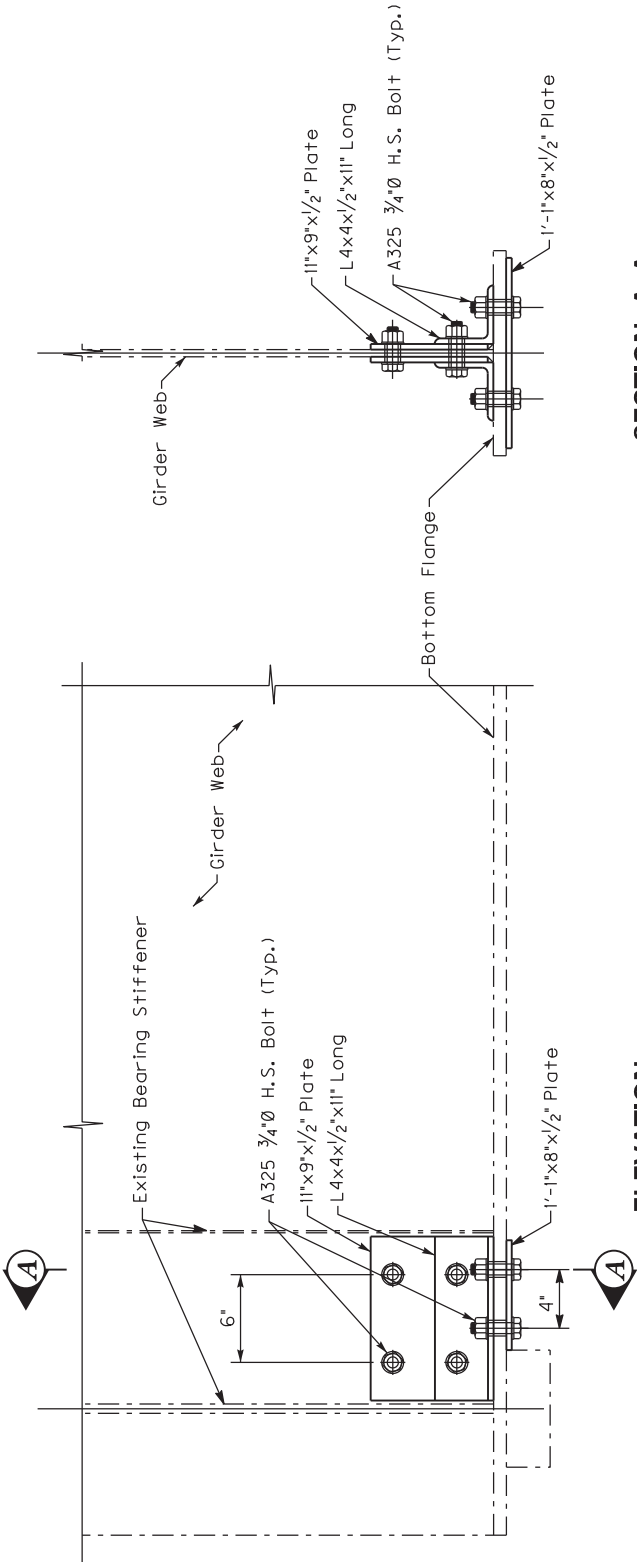
PREVENTIVE MAINTENANCE

Note: Top and face of cap the entire length including cap ends and front face of end bent back wall shall be cleaned and have concrete coating applied as specified within the limits shown. Apply rust inhibitor to beams and lubricate bearings as specified.

BRIDGE NO.
100B00080N

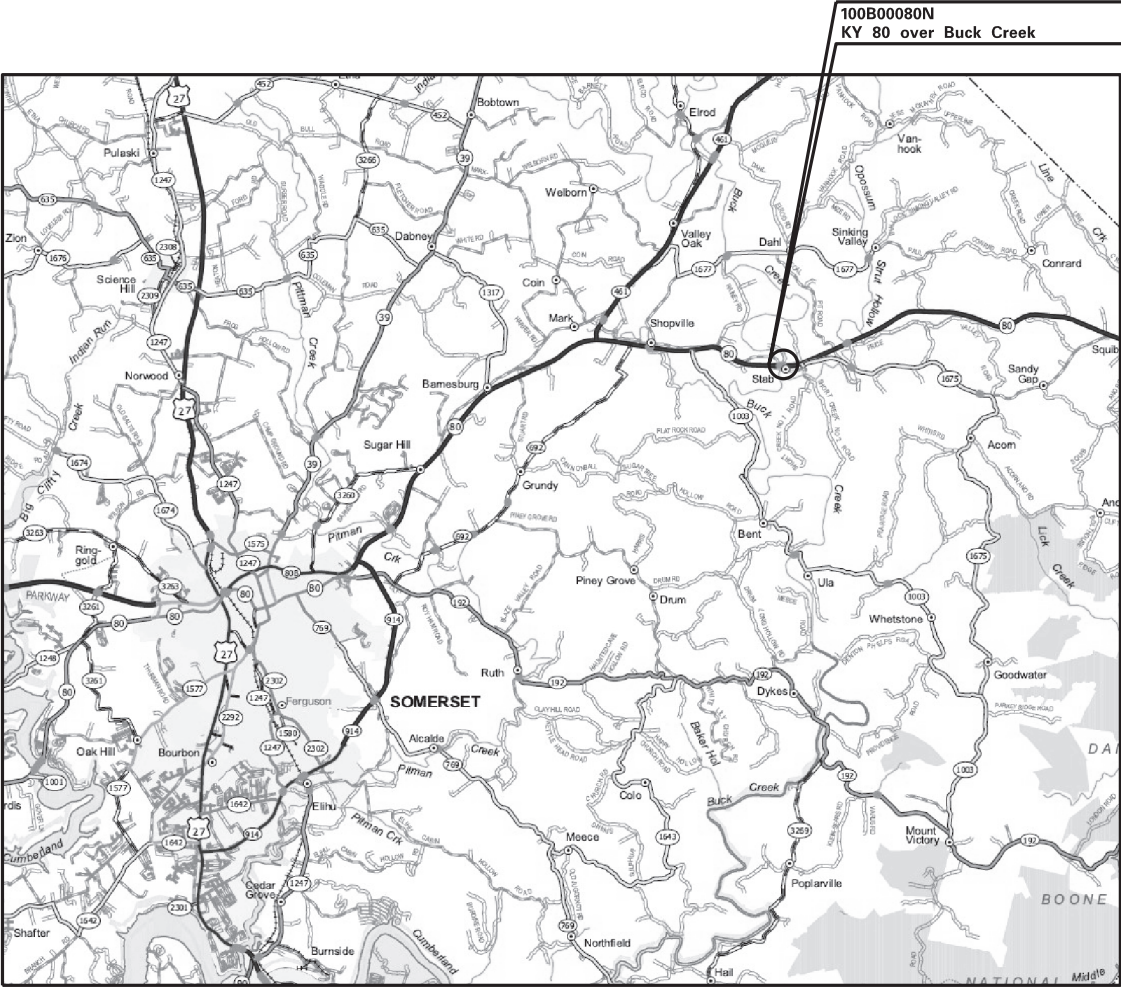
Note: See Special Notes

Commonwealth of Kentucky
DEPARTMENT OF HIGHWAYS
COUNTY
PULASKI
PREVENTIVE MAINTENANCE
PREPARED BY
Division of Maintenance
Bridge Preservation Branch

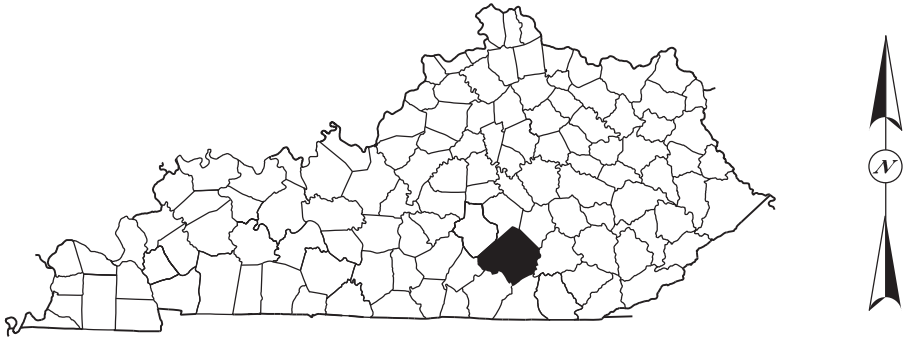


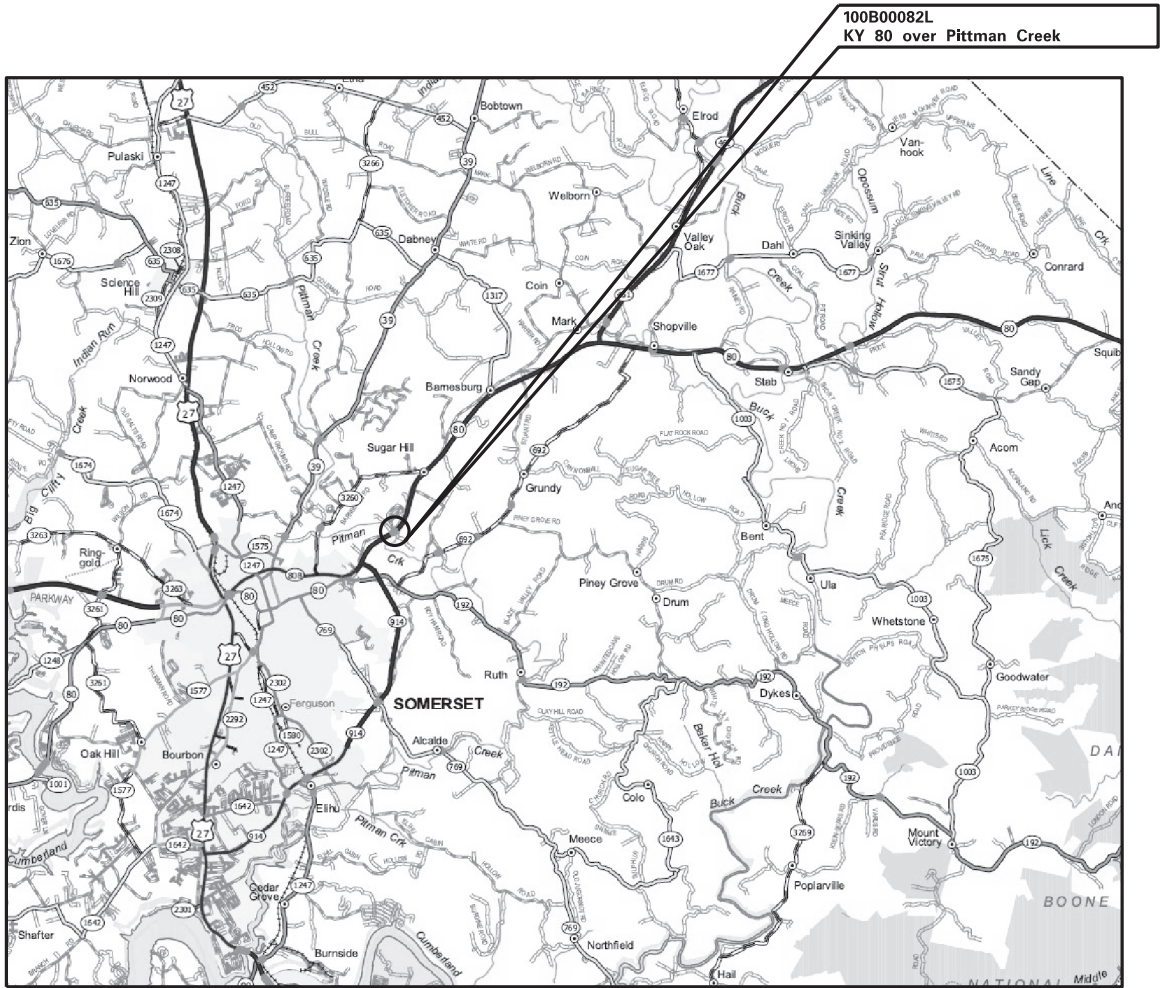
BRIDGE NO.
100B00080N

Note: See Special Notes

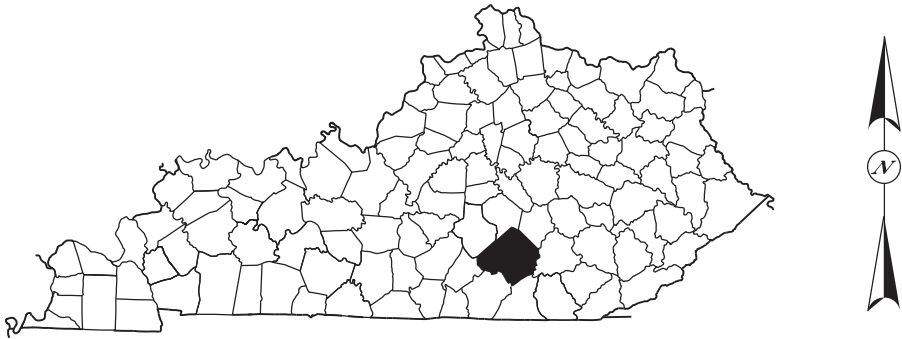


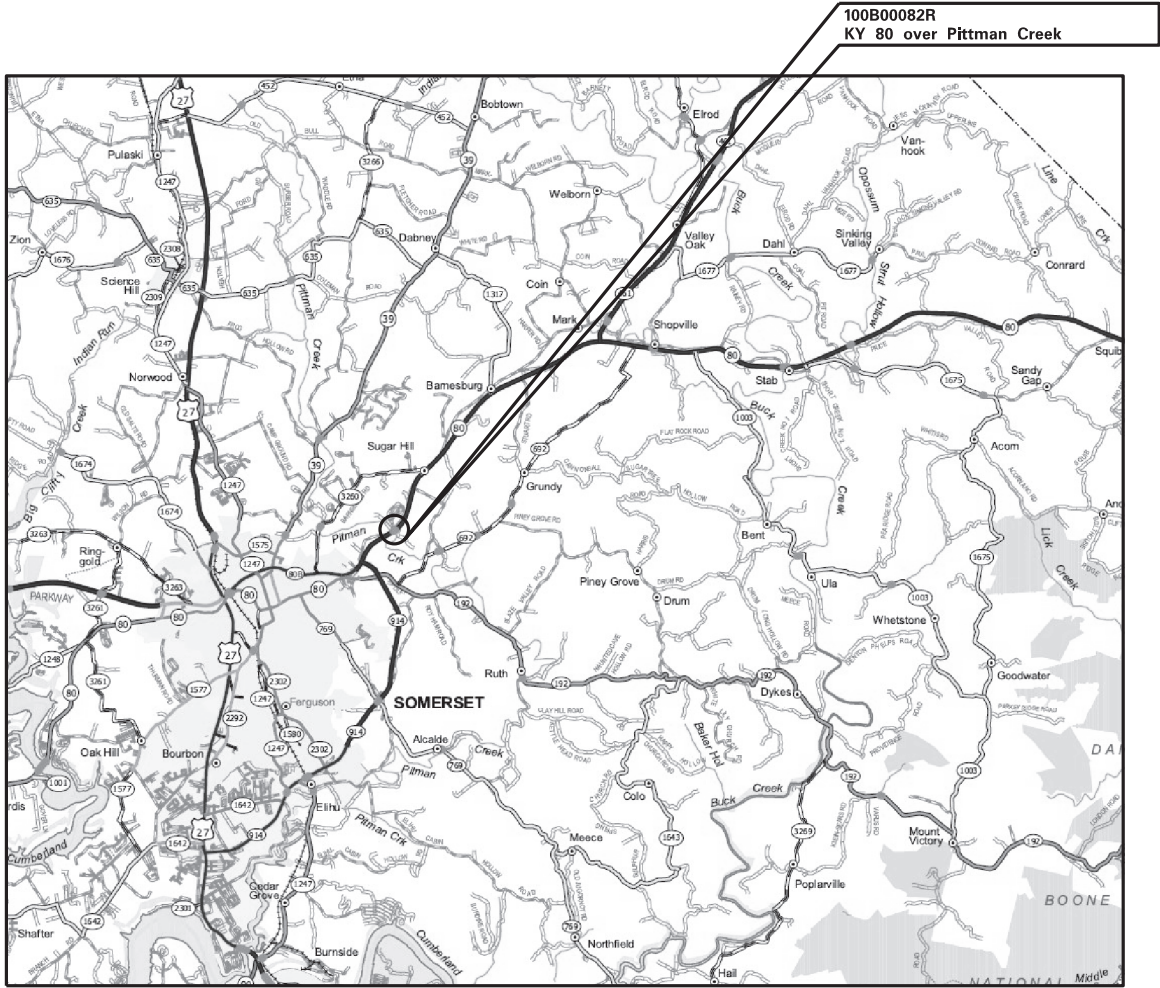
LOCATION MAP ~ PULASKI COUNTY



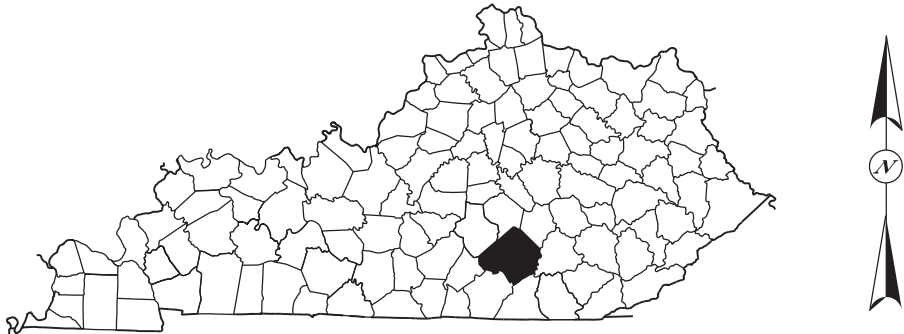


LOCATION MAP ~ PULASKI COUNTY





LOCATION MAP ~ PULASKI COUNTY



PART II

SPECIFICATIONS AND STANDARD DRAWINGS

STANDARD SPECIFICATIONS

Any reference in the plans or proposal to previous editions of the *Standard Specifications for Road and Bridge Construction* and *Standard Drawings* are superseded by *Standard Specifications for Road and Bridge Construction, Edition of 2019* and *Standard Drawings, Edition of 2020*.

SUPPLEMENTAL SPECIFICATIONS

The contractor shall use the Supplemental Specifications that are effective at the time of letting. The Supplemental Specifications can be found at the following link:
<http://transportation.ky.gov/Construction/Pages/Kentucky-Standard-Specifications.aspx>

2020 STANDARD DRAWINGS THAT APPLY

ROADWAY
~ *BARRIERS* ~

ENERGY ABSORPTION DEVICES

CRASH CUSHION TYPE VI-BTRBE-100-10

CONCRETE MEDIAN BARRIERS

DELINEATORS FOR CONCRETE BARRIERSRBM-020-09

CONCRETE BARRIER WALL TYPE 9T (TEMPORARY)RBM-115-10

TRAFFIC
~ **TEMPORARY** ~
TRAFFIC CONTROL

LANE CLOSURE TWO-LANE HIGHWAYTTC-100-04

LANE CLOSURE USING TRAFFIC SIGNALSTTC-110-03

LANE CLOSURE MULTI-LANE HIGHWAY CASE ITTC-115-03

LANE CLOSURE MULTI-LANE HIGHWAY CASE IITTC-120-03

DEVICES

DOUBLE FINES ZONES SIGNSTTD-120-02

PAVEMENT CONDITION WARNING SIGNSTTD-125-02

BRIDGES
MISCELLANEOUS STANDARDS

BRIDGE RESTORATION AND WATERPROOFING WITH CONCRETE OVERLAYSBGX-009-04

JOINTS

NEOPRENE EXPANSION DAMS AND ARMORED EDGESBJE-001-13

2020 KENTUCKY STANDARD DRAWINGS
SUPPLEMENTS TO STANDARD SPECIFICATIONS
TABLE OF CONTENTS

~ FENCES AND GATES ~
CHAIN LINK FENCE

CHAIN LINK FENCE 4’ TO 6’ HIGHRFC-001-08

TRAFFIC
~ TEMPORARY ~
TRAFFIC CONTROL

LANE CLOSURE TWO-LANE HIGHWAYTTC-100-04
LANE CLOSURE USING TRAFFIC SIGNALS.....TTC-110-03
LANE CLOSURE MULTI-LANE HIGHWAY CASE I.....TTC-115-03
LANE CLOSURE MULTI-LANE HIGHWAY CASE IITTC-120-03

DEVICES

DOUBLE FINES ZONES SIGNS.....TTD-120-02
PAVEMENT CONDITION WARNING SIGNS.....TTD-125-02

PART III

EMPLOYMENT, WAGE AND RECORD REQUIREMENTS

**TRANSPORTATION CABINET
DEPARTMENT OF HIGHWAYS**

**LABOR AND WAGE REQUIREMENTS
APPLICABLE TO OTHER THAN FEDERAL-AID SYSTEM PROJECTS**

- I. Application
- II. Nondiscrimination of Employees (KRS 344)

I. APPLICATION

1. These contract provisions shall apply to all work performed on the contract by the contractor with his own organization and with the assistance of workmen under his immediate superintendence and to all work performed on the contract by piecework, station work or by subcontract. The contractor's organization shall be construed to include only workmen employed and paid directly by the contractor and equipment owned or rented by him, with or without operators.

2. The contractor shall insert in each of his subcontracts all of the stipulations contained in these Required Provisions and such other stipulations as may be required.

3. A breach of any of the stipulations contained in these Required Provisions may be grounds for termination of the contract.

3. If the contractor is in control of apprenticeship or other training or retraining, including on-the-job training programs, he shall not discriminate against an individual because of his race, color, religion, national origin, sex, disability or age forty (40) and over, in admission to, or employment in any program established to provide apprenticeship or other training.

4. The contractor will send to each labor union or representative of workers with which he has a collective bargaining agreement or other contract or understanding, a notice to be provided advising the said labor union or workers' representative of the contractor's commitments under this section, and shall post copies of the notice in conspicuous places available to employees and applicants for employment. The contractor will take such action with respect to any subcontract or purchase order as the administering agency may direct as a means of enforcing such provisions, including sanctions for non-compliance.

Revised: January 25, 2017

II. NONDISCRIMINATION OF EMPLOYEES

**AN ACT OF THE KENTUCKY
GENERAL ASSEMBLY TO PREVENT
DISCRIMINATION IN EMPLOYMENT
KRS CHAPTER 344
EFFECTIVE JUNE 16, 1972**

The contract on this project, in accordance with KRS Chapter 344, provides that during the performance of this contract, the contractor agrees as follows:

1. The contractor shall not fail or refuse to hire, or shall not discharge any individual, or otherwise discriminate against an individual with respect to his compensation, terms, conditions, or privileges of employment, because of such individual's race, color, religion, national origin, sex, disability or age (forty and above); or limit, segregate, or classify his employees in any way which would deprive or tend to deprive an individual of employment opportunities or otherwise adversely affect his status as an employee, because of such individual's race, color, religion, national origin, sex, disability or age forty (40) and over. The contractor agrees to post in conspicuous places, available to employees and applicants for employment, notices to be provided setting forth the provisions of this nondiscrimination clause.

2. The contractor shall not print or publish or cause to be printed or published a notice or advertisement relating to employment by such an employer or membership in or any classification or referral for employment by the employment agency, indicating any preference, limitation, specification, or discrimination, based on race, color, religion, national origin, sex, or age forty (40) and over, or because the person is a qualified individual with a disability, except that such a notice or advertisement may indicate a preference, limitation, or specification based on religion, national origin, sex, or age forty (40) and over, or because the person is a qualified individual with a disability, when religion, national origin, sex, or age forty (40) and over, or because the person is a qualified individual with a disability, is a bona fide occupational qualification for employment.

EXECUTIVE BRANCH CODE OF ETHICS

The Executive Branch Code of Ethics created by Kentucky Revised Statutes (KRS) Chapter 11A, effective July 14, 1992, establishes the ethical standards that govern the conduct of all executive branch employees. The Executive Branch Code of Ethics, which states, in part:

KRS 11A.040 (7) provides:

A present or former public servant listed in KRS 11A.010(9)(a) to (g) shall not, within one (1) year following termination of his or her office or employment, accept employment, compensation, or other economic benefit from any person or business that contracts or does business with, or is regulated by, the state in matters in which he was directly involved during the last thirty-six (36) months of his tenure. This provision shall not prohibit an individual from returning to the same business, firm, occupation, or profession in which he was involved prior to taking office or beginning his term of employment, or for which he received, prior to his state employment, a professional degree or license, provided that, for a period of one (1) year, he or she personally refrains from working on any matter in which he was directly involved during the last thirty-six (36) months of his or her tenure in state government. This subsection shall not prohibit the performance of ministerial functions, including but not limited to filing tax returns, filing applications for permits or licenses, or filing incorporation papers, nor shall it prohibit the former officer or public servant from receiving public funds disbursed through entitlement programs.

KRS 11A.040 (9) states:

A former public servant shall not represent a person or business before a state agency in a matter in which the former public servant was directly involved during the last thirty-six (36) months of his tenure, for a period of one (1) year after the latter of:

- a) The date of leaving office or termination of employment; or
- b) The date the term of office expires to which the public servant was elected.

This law is intended to promote public confidence in the integrity of state government and to declare as public policy the idea that state employees should view their work as a public trust and not to obtain private benefits.

If you have worked for the executive branch of state government within the past year, you may be subject to the law's prohibitions. The law's applicability may be different if you hold elected office or are contemplating representation of another before a state agency.

Also, if you are affiliated with a firm which does business with the state and which employs former state executive-branch employees, you should be aware that the law may apply to them.

In case of doubt, the law permits you to request an advisory opinion from the Executive Branch Ethics Commission, 1025 Capital Center Drive, Suite 105, Frankfort, Kentucky 40601; telephone (502) 564-7954.

Revised: March 11, 2025

Kentucky Equal Employment Opportunity Act of 1978

The requirements of the Kentucky Equal Employment Opportunity Act of 1978 (KRS 45.560-45.640) shall apply to this Contract. The apparent low Bidder will be required to submit EEO forms to the Division of Construction Procurement, which will then forward to the Finance and Administration Cabinet for review and approval. No award will become effective until all forms are submitted and EEO/CC has certified compliance. The required EEO forms are as follows:

- EEO-1: Employer Information Report
- Affidavit of Intent to Comply
- Employee Data Sheet
- Subcontractor Report

These forms are available on the Finance and Administration's web page under ***Vendor Information, Standard Attachments and General Terms*** at the following address:
<https://www.eProcurement.ky.gov>.

Bidders currently certified as being in compliance by the Finance and Administration Cabinet may submit a copy of their approval letter in lieu of the referenced EEO forms.

For questions or assistance please contact the Finance and Administration Cabinet by email at **finance.contractcompliance@ky.gov** or by phone at 502-564-2874.

EMPLOYEE RIGHTS UNDER THE FAIR LABOR STANDARDS ACT

THE UNITED STATES DEPARTMENT OF LABOR WAGE AND HOUR DIVISION

FEDERAL MINIMUM WAGE

\$7.25

 PER HOUR

BEGINNING JULY 24, 2009

OVERTIME PAY

At least $1\frac{1}{2}$ times your regular rate of pay for all hours worked over 40 in a workweek.

CHILD LABOR

An employee must be at least **16** years old to work in most non-farm jobs and at least **18** to work in non-farm jobs declared hazardous by the Secretary of Labor.

Youths **14** and **15** years old may work outside school hours in various non-manufacturing, non-mining, non-hazardous jobs under the following conditions:

No more than

- **3** hours on a school day or **18** hours in a school week;
- **8** hours on a non-school day or **40** hours in a non-school week.

Also, work may not begin before **7 a.m.** or end after **7 p.m.**, except from June 1 through Labor Day, when evening hours are extended to **9 p.m.** Different rules apply in agricultural employment.

TIP CREDIT

Employers of "tipped employees" must pay a cash wage of at least \$2.13 per hour if they claim a tip credit against their minimum wage obligation. If an employee's tips combined with the employer's cash wage of at least \$2.13 per hour do not equal the minimum hourly wage, the employer must make up the difference. Certain other conditions must also be met.

ENFORCEMENT

The Department of Labor may recover back wages either administratively or through court action, for the employees that have been underpaid in violation of the law. Violations may result in civil or criminal action.

Employers may be assessed civil money penalties of up to \$1,100 for each willful or repeated violation of the minimum wage or overtime pay provisions of the law and up to \$11,000 for each employee who is the subject of a violation of the Act's child labor provisions. In addition, a civil money penalty of up to \$50,000 may be assessed for each child labor violation that causes the death or serious injury of any minor employee, and such assessments may be doubled, up to \$100,000, when the violations are determined to be willful or repeated. The law also prohibits discriminating against or discharging workers who file a complaint or participate in any proceeding under the Act.

ADDITIONAL INFORMATION

- Certain occupations and establishments are exempt from the minimum wage and/or overtime pay provisions.
- Special provisions apply to workers in American Samoa and the Commonwealth of the Northern Mariana Islands.
- Some state laws provide greater employee protections; employers must comply with both.
- The law requires employers to display this poster where employees can readily see it.
- Employees under 20 years of age may be paid \$4.25 per hour during their first 90 consecutive calendar days of employment with an employer.
- Certain full-time students, student learners, apprentices, and workers with disabilities may be paid less than the minimum wage under special certificates issued by the Department of Labor.

For additional information:



1-866-4-USWAGE

(1-866-487-9243)

TTY: 1-877-889-5627



WWW.WAGEHOUR.DOL.GOV

U.S. Department of Labor | Wage and Hour Division

PART IV

BID ITEMS

252903

Section: 0001 - BRIDGE - 100B00080N

LINE	BID CODE	ALT	DESCRIPTION	QUANTITY	UNIT	UNIT PRIC	FP	AMOUNT
0010	02014		BARRICADE-TYPE III	1.00	EACH		\$	
0020	02562		TEMPORARY SIGNS	145.00	SQFT		\$	
0030	02650		MAINTAIN & CONTROL TRAFFIC	1.00	LS		\$	
0040	02653		LANE CLOSURE	2.00	EACH		\$	
0050	02697		EDGE LINE RUMBLE STRIPS	600.00	LF		\$	
0060	03294		EXPAN JOINT REPLACE 1 1/2 IN	45.60	LF		\$	
0070	03298		EXPAN JOINT REPLACE 4 IN	45.60	LF		\$	
0080	03299		ARMORED EDGE FOR CONCRETE	91.20	LF		\$	
0090	03304		BRIDGE OVERLAY APPROACH PAVEMENT	1,013.50	SQYD		\$	
0100	04933		TEMP SIGNAL 2 PHASE	1.00	EACH		\$	
0110	06515		PAVE STRIPING-PERM PAINT-6 IN	1,375.00	LF		\$	
0120	06549		PAVE STRIPING-TEMP REM TAPE-B	1,000.00	LF		\$	
0130	06550		PAVE STRIPING-TEMP REM TAPE-W	2,000.00	LF		\$	
0140	06551		PAVE STRIPING-TEMP REM TAPE-Y	2,000.00	LF		\$	
0150	08150		STEEL REINFORCEMENT	270.00	LB		\$	
0160	08504		EPOXY SAND SLURRY	256.00	SQYD		\$	
0170	08526		CONC CLASS M FULL DEPTH PATCH	18.30	CUYD		\$	
0180	08534		CONCRETE OVERLAY-LATEX	73.00	CUYD		\$	
0190	08549		BLAST CLEANING	526.00	SQYD		\$	
0200	08551		MACHINE PREP OF SLAB	1,748.00	SQYD		\$	
0210	24093EC		BEAM REPAIR	1.00	EACH		\$	
0220	24094EC		PARTIAL DEPTH PATCHING	55.00	CUYD		\$	
0230	24981EC		BRIDGE CLEANING APPLIES TO 100B00080N	1.00	LS		\$	
0240	24982EC		CONCRETE COATING APPLIES TO 100B00080N	1.00	LS		\$	
0250	24983EC		BEARING LUBRICATION	12.00	EACH		\$	
0260	25075EC		QUEUE PROTECTION VEHICLE	240.00	hour		\$	
0270	25117EC		FURNISH QUEUE PROTECTION VEHICLES	1.00	month		\$	
0280	26136EC		PORTABLE QUEUE WARNING ALERT SYSTEM	1.00	month		\$	
0290	26137EC		QUEUE WARNING PCMS	6.00	month		\$	
0300	26138EC		QUEUE WARNING PORTABLE RADAR SENSORS	6.00	month		\$	

Section: 0002 - BRIDGE - 100B00082L

LINE	BID CODE	ALT	DESCRIPTION	QUANTITY	UNIT	UNIT PRIC	FP	AMOUNT
0310	02003		RELOCATE TEMP CONC BARRIER	500.00	LF		\$	
0320	02562		TEMPORARY SIGNS	145.00	SQFT		\$	
0330	02650		MAINTAIN & CONTROL TRAFFIC	1.00	LS		\$	
0340	02653		LANE CLOSURE	2.00	EACH		\$	
0350	02697		EDGE LINE RUMBLE STRIPS	400.00	LF		\$	
0360	02775		ARROW PANEL	1.00	EACH		\$	

Report Date 10/29/25

LINE	BID CODE	ALT	DESCRIPTION	QUANTITY	UNIT	UNIT PRIC	FP	AMOUNT
0370	02898		RELOCATE CRASH CUSHION	1.00	EACH		\$	
0380	03171		CONC BARRIER WALL TYPE 9T	500.00	LF		\$	
0390	03294		EXPAN JOINT REPLACE 1 1/2 IN	78.50	LF		\$	
0400	03299		ARMORED EDGE FOR CONCRETE	78.50	LF		\$	
0410	03304		BRIDGE OVERLAY APPROACH PAVEMENT	872.50	SQYD		\$	
0420	04933		TEMP SIGNAL 2 PHASE	1.00	EACH		\$	
0430	06515		PAVE STRIPING-PERM PAINT-6 IN	1,000.00	LF		\$	
0440	06549		PAVE STRIPING-TEMP REM TAPE-B	1,000.00	LF		\$	
0450	06550		PAVE STRIPING-TEMP REM TAPE-W	2,000.00	LF		\$	
0460	06551		PAVE STRIPING-TEMP REM TAPE-Y	2,000.00	LF		\$	
0470	08150		STEEL REINFORCEMENT	270.00	LB		\$	
0480	08504		EPOXY SAND SLURRY	148.00	SQYD		\$	
0490	08526		CONC CLASS M FULL DEPTH PATCH	9.50	CUYD		\$	
0500	08534		CONCRETE OVERLAY-LATEX	36.50	CUYD		\$	
0510	08549		BLAST CLEANING	418.00	SQYD		\$	
0520	08551		MACHINE PREP OF SLAB	869.00	SQYD		\$	
0530	24094EC		PARTIAL DEPTH PATCHING	27.50	CUYD		\$	
0540	25075EC		QUEUE PROTECTION VEHICLE	240.00	HOURL		\$	
0550	25117EC		FURNISH QUEUE PROTECTION VEHICLES	1.00	MONT		\$	
0560	26136EC		PORTABLE QUEUE WARNING ALERT SYSTEM	1.00	MONT		\$	
0570	26137EC		QUEUE WARNING PCMS	6.00	MONT		\$	
0580	26138EC		QUEUE WARNING PORTABLE RADAR SENSORS	6.00	MONT		\$	

Section: 0003 - BRIDGE - 100B00082L

LINE	BID CODE	ALT	DESCRIPTION	QUANTITY	UNIT	UNIT PRIC	FP	AMOUNT
0590	02003		RELOCATE TEMP CONC BARRIER	500.00	LF		\$	
0600	02562		TEMPORARY SIGNS	145.00	SQFT		\$	
0610	02650		MAINTAIN & CONTROL TRAFFIC	1.00	LS		\$	
0620	02653		LANE CLOSURE	2.00	EACH		\$	
0630	02697		EDGE LINE RUMBLE STRIPS	400.00	LF		\$	
0640	02775		ARROW PANEL	1.00	EACH		\$	
0650	02898		RELOCATE CRASH CUSHION	1.00	EACH		\$	
0660	03171		CONC BARRIER WALL TYPE 9T	500.00	LF		\$	
0670	03294		EXPAN JOINT REPLACE 1 1/2 IN	78.50	LF		\$	
0680	03299		ARMORED EDGE FOR CONCRETE	78.50	LF		\$	
0690	03304		BRIDGE OVERLAY APPROACH PAVEMENT	872.50	SQYD		\$	
0700	04933		TEMP SIGNAL 2 PHASE	1.00	EACH		\$	
0710	06515		PAVE STRIPING-PERM PAINT-6 IN	1,000.00	LF		\$	
0720	06549		PAVE STRIPING-TEMP REM TAPE-B	1,000.00	LF		\$	
0730	06550		PAVE STRIPING-TEMP REM TAPE-W	2,000.00	LF		\$	
0740	06551		PAVE STRIPING-TEMP REM TAPE-Y	2,000.00	LF		\$	
0750	08150		STEEL REINFORCEMENT	270.00	LB		\$	
0760	08504		EPOXY SAND SLURRY	148.00	SQYD		\$	
0770	08526		CONC CLASS M FULL DEPTH PATCH	9.50	CUYD		\$	
0780	08534		CONCRETE OVERLAY-LATEX	36.50	CUYD		\$	
0790	08549		BLAST CLEANING	418.00	SQYD		\$	

Report Date 10/29/25

LINE	BID CODE	ALT	DESCRIPTION	QUANTITY	UNIT	UNIT PRIC	FP	AMOUNT
0800	08551		MACHINE PREP OF SLAB	869.00	SQYD		\$	
0810	24094EC		PARTIAL DEPTH PATCHING	27.50	CUYD		\$	
0820	25075EC		QUEUE PROTECTION VEHICLE	240.00	HOUR		\$	
0830	25117EC		FURNISH QUEUE PROTECTION VEHICLES	1.00	MONT		\$	
0840	26136EC		PORTABLE QUEUE WARNING ALERT SYSTEM	1.00	MONT		\$	
0850	26137EC		QUEUE WARNING PCMS	6.00	MONT		\$	
0860	26138EC		QUEUE WARNING PORTABLE RADAR SENSORS	6.00	MONT		\$	

Section: 0004 - DEMOBILIZATION

LINE	BID CODE	ALT	DESCRIPTION	QUANTITY	UNIT	UNIT PRIC	FP	AMOUNT
0870	02569		DEMOBILIZATION	1.00	LS		\$	