



**CALL NO. 408**

**CONTRACT ID. 122418**

**KNOX COUNTY**

**FED/STATE PROJECT NUMBER 061GR12P093-FE01**

**DESCRIPTION REPLACE GUARDRAIL ON VARIOUS ROUTES IN KNOX COUNTY**

**WORK TYPE GUARDRAIL**

**PRIMARY COMPLETION DATE 11/30/2012**

**LETTING DATE: June 15, 2012**

Sealed Bids will be received electronically through the Bid Express bidding service until 10:00 AM EASTERN DAYLIGHT TIME June 15, 2012. Bids will be publicly announced at 10:00 AM EASTERN DAYLIGHT TIME.

**REQUIRED BID PROPOSAL GUARANTY:** Not less than 5% of the total bid.

**TABLE OF CONTENTS**

PART I	SCOPE OF WORK <ul style="list-style-type: none"><li>• PROJECT(S), COMPLETION DATE(S), &amp; LIQUIDATED DAMAGES</li><li>• CONTRACT NOTES</li><li>• STATE CONTRACT NOTES</li><li>• WASTE AND BORROW SITES</li><li>• GUARDRAIL</li><li>• TRAFFIC CONTROL PLAN</li><li>• UTILITY CLEARANCE</li><li>• SKETCH MAP(S)</li><li>• MATERIAL SUMMARY</li><li>• SUMMARY SHEET(S)</li><li>• GUARDRAIL DELIVERY VERIFICATION SHEET</li></ul>
PART II	SPECIFICATIONS AND STANDARD DRAWINGS <ul style="list-style-type: none"><li>• SPECIFICATIONS REFERENCE</li><li>• STANDARD DRAWINGS THAT APPLY</li><li>• DELINEATORS FOR GUARDRAIL</li><li>• GUARDRAIL COMPONENT</li></ul>
PART III	EMPLOYMENT, WAGE AND RECORD REQUIREMENTS <ul style="list-style-type: none"><li>• LABOR AND WAGE REQUIREMENTS</li><li>• EXECUTIVE BRANCH CODE OF ETHICS</li><li>• KENTUCKY EQUAL EMPLOYMENT OPPORTUNITY ACT OF 1978</li><li>• PROJECT WAGE RATES</li></ul>
PART IV	INSURANCE
PART V	BID ITEMS

**PART I**  
**SCOPE OF WORK**

CONTRACT ID - 122418

ADMINISTRATIVE DISTRICT - 11

PROJECT(S) IDENTIFICATION AND DESCRIPTION:

COUNTY - KNOX  
061GR12P093-FE01

REPLACE GUARDRAIL ON VARIOUS ROUTES IN KNOX COUNTY

COUNTY - KNOX  
FE01 061 0006 000-014

PES - MP06100061201

DISHMAN SPRINGS-WILTON ROAD (KY 6) FROM 0.233 MILES FROM THE KNOX AND WHITLEY COUNTY LINE (MP 0.233) EXTENDING 0.118 MILES FROM RICHLAND CREEK (MP 13.595), A DISTANCE OF 20.00 MILES. GUARDRAIL.

GEOGRAPHIC COORDINATES LATITUDE 36^52'12" LONGITUDE 83^59'50"

AVERAGE DAILY TRAFFIC - 1592

AVERAGE MAINLINE WIDTH - 20.0 FEET

COUNTY - KNOX  
FE01 061 0011 002-018

PES - MP06100111202

GAUSDALE-GIRDLER ROAD (KY 11) FROM 0.322 MILES NORTH OF MATLOCK HOLLOW ROAD (MP 2.099) EXTENDING 0.465 MILES SOUTH OF COLLINS FORK CULVERT (MP 17.125), A DISTANCE OF 15.03 MILES. GUARDRAIL.

GEOGRAPHIC COORDINATES LATITUDE 36^50'40" LONGITUDE 83^53'50"

AVERAGE DAILY TRAFFIC - 3268

AVERAGE MAINLINE WIDTH - 20.0 FEET

COUNTY - KNOX  
FE01 061 0225 012-014

PES - MP06102251201

KAY JAY ROAD (KY 225) FROM 0.056 MILES NORTH OF WALTON ROAD (MP 12.086) EXTENDING 0.002 MILES SOUTH OF DWIGHT KINDE ROAD (MP 13.854), A DISTANCE OF 1.77 MILES. GUARDRAIL.

GEOGRAPHIC COORDINATES LATITUDE 36^50'20" LONGITUDE 83^51'27"

AVERAGE DAILY TRAFFIC - 752

AVERAGE MAINLINE WIDTH - 20.0 FEET

COUNTY - KNOX  
FE01 061 0229 004-009

PES - MP06102291201

BARBOURVILLE ROAD (KY 229) FROM 0.074 MILES SOUTH OF BIG RICHLAND CREEK BRIDGE (MP 4.021) EXTENDING NORTH TO 0.002 MILES SOUTH OF KY 1304 (MP 8.118), A DISTANCE OF 4.10 MILES. GUARDRAIL.

GEOGRAPHIC COORDINATES LATITUDE 36^58'31" LONGITUDE 85^55'33"

AVERAGE DAILY TRAFFIC - 1185

AVERAGE MAINLINE WIDTH - 20.0 FEET

COUNTY - KNOX  
FE01 061 1232 001-002

PES - MP06112321202

KY 1232 FROM EL TORO LANE (MP 1.863) EXTENDING NORTH TO 0.050 MILE NORTH OF HAZEL FORK BRIDGE (MP 1.956), A DISTANCE OF 0.09 MILES. GUARDRAIL.

GEOGRAPHIC COORDINATES LATITUDE 36^56'42" LONGITUDE 84^03'10"

AVERAGE DAILY TRAFFIC - 1881

AVERAGE MAINLINE WIDTH - 20.0 FEET

COMPLETION DATE(S):

COMPLETION DATE - November 30, 2012

APPLIES TO ENTIRE CONTRACT

## **CONTRACT NOTES**

### **PROPOSAL ADDENDA**

All addenda to this proposal must be applied when calculating bid and certified in the bid packet submitted to the Kentucky Department of Highways. Failure to use the correct and most recent addenda may result in the bid being rejected.

### **BID SUBMITTAL**

Bidder must use the Department's Expedite Bidding Program available on the Internet web site of the Department of Highways, Division of Construction Procurement. ([www.transportation.ky.gov/contract](http://www.transportation.ky.gov/contract))

The Bidder must download the bid file located on the Bid Express website ([www.bidx.com](http://www.bidx.com)) to prepare a bid packet for submission to the Department. The bidder must submit electronically using Bid Express.

### **JOINT VENTURE BIDDING**

Joint venture bidding is permissible. All companies in the joint venture must be prequalified in one of the work types in the Qualifications for Bidders for the project. The bidders must get a vendor ID for the joint venture from the Division of Construction Procurement and register the joint venture as a bidder on the project. Also, the joint venture must obtain a digital ID from Bid Express to submit a bid. A joint bid bond of 5% may be submitted for both companies or each company may submit a separate bond of 5%.

### **UNDERGROUND FACILITY DAMAGE PROTECTION**

The contractor is advised that the Underground Facility Damage Protection Act of 1994, became law January 1, 1995. It is the contractor's responsibility to determine the impact of the act regarding this project, and take all steps necessary to be in compliance with the provision of the act.

### **SPECIAL NOTE FOR PIPE INSPECTION**

Contrary to Section 701.03.08 of the 2012 Standard Specifications for Road and Bridge Construction and Kentucky Method 64-114, certification by the Kentucky Transportation Center for prequalified Contractors to perform laser/video inspection is not required on this contract. It will continue to be a requirement for the Contractor performing any laser/video pipe inspection to be prequalified for this specialized item with the Kentucky Transportation Cabinet-Division of Construction Procurement.

### **REGISTRATION WITH THE SECRETARY OF STATE BY A FOREIGN ENTITY**

Pursuant to KRS 176.085(1)(b), an agency, department, office, or political subdivision of the Commonwealth of Kentucky shall not award a state contract to a person that is a foreign entity required by [KRS 14A.9-010](#) to obtain a certificate of authority to transact business in the Commonwealth (“certificate”) from the Secretary of State under [KRS 14A.9-030](#) unless the person produces the certificate within fourteen (14) days of the bid or proposal opening. If the foreign entity is not required to obtain a certificate as provided in [KRS 14A.9-010](#), the foreign entity should identify the applicable exception. Foreign entity is defined within [KRS 14A.1-070](#).

**For all foreign entities required to obtain a certificate of authority to transact business in the Commonwealth, if a copy of the certificate is not received by the contracting agency within the time frame identified above, the foreign entity’s solicitation response shall be deemed non-responsive or the awarded contract shall be cancelled.**

Businesses can register with the Secretary of State at <https://secure.kentucky.gov/sos/ftbr/welcome.aspx>.

### **SPECIAL NOTE FOR PROJECT QUESTIONS DURING ADVERTISEMENT**

Questions about projects during the advertisement should be submitted in writing to the Division of Construction Procurement. This may be done by fax (502) 564-7299 or email to [kytc.projectquestions@ky.gov](mailto:kytc.projectquestions@ky.gov). The Department will attempt to answer all submitted questions. The Department reserves the right not to answer if the question is not pertinent or does not aid in clarifying the project intent.

The deadline for posting answers will be 3:00 pm Eastern Daylight Time, the day preceding the Letting. Questions may be submitted until this deadline with the understanding that the later a question is submitted, the less likely an answer will be able to be provided.

The questions and answers will be posted for each Letting under the heading “Questions & Answers” on the Construction Procurement website ([www.transportation.ky.gov/contract](http://www.transportation.ky.gov/contract)). The answers provided shall be considered part of this Special Note and, in case of a discrepancy, will govern over all other bidding documents.

### **ACCESS TO RECORDS**

The contractor, as defined in KRS 45A.030 (9) agrees that the contracting agency, the Finance and Administration Cabinet, the Auditor of Public Accounts, and the Legislative Research Commission, or their duly authorized representatives, shall have access to any books, documents, papers, records, or other evidence, which are directly pertinent to this

contract for the purpose of financial audit or program review. Records and other prequalification information confidentially disclosed as part of the bid process shall not be deemed as directly pertinent to the contract and shall be exempt from disclosure as provided in KRS 61.878(1)(c). The contractor also recognizes that any books, documents, papers, records, or other evidence, received during a financial audit or program review shall be subject to the Kentucky Open Records Act, KRS 61.870 to 61.884.

In the event of a dispute between the contractor and the contracting agency, Attorney General, or the Auditor of Public Accounts over documents that are eligible for production and review, the Finance and Administration Cabinet shall review the dispute and issue a determination, in accordance with Secretary's Order 11-004. (See attachment)

10/18/2011

**SPECIAL NOTE FOR RECIPROCAL PREFERENCE**

**Reciprocal preference to be given by public agencies to resident bidders**

**By reference, KRS 45A.490 to 45A.494 are incorporated herein and in compliance regarding the bidders residency. Bidders who want to claim resident bidder status should complete the Affidavit for Claiming Resident Bidder Status along with their bid in the Expedite Bidding Program. Submittal of the Affidavit should be done along with the bid in Bid Express.**

03/01/2011



## **SPECIAL PROVISION FOR WASTE AND BORROW SITES**

Obtain U.S. Army Corps of Engineer's approval before utilizing a waste or borrow site that involves "Waters of the United States". The Corps of Engineers defines "Waters of the United States" as perennial or intermittent streams, ponds or wetlands. The Corps of Engineers also considers ephemeral streams, typically dry except during rainfall but having a defined drainage channel, to be jurisdictional waters. Direct questions concerning any potential impacts to "Waters of the United States" to the attention of the appropriate District Office for the Corps of Engineers for a determination prior to disturbance. Be responsible for any fees associated with obtaining approval for waste and borrow sites from the U.S. Army Corps of Engineer or other appropriate regulatory agencies.

1-296 Waste & Borrow Sites  
01/02/2012

## SPECIAL NOTES FOR GUARDRAIL

---

### I. DESCRIPTION

Except as specified herein, perform all work in accordance with the Department's Standard and Supplemental Specifications and Standard and Sepia Drawings, current editions. Article references are to the Standard Specifications.

Furnish all equipment, labor, materials, and incidentals for the following work items:

(1) Site preparation; (2) Remove existing guardrail systems; (3) Construct Guardrail, End Treatments, and Terminal Sections, as applicable; (4) Delineators for guardrail; (5) Maintain and control traffic; and (6) all other work specified as part of this contract.

### II. MATERIALS

Except as specified herein, provide for all materials to be sampled and tested in accordance with the Department's Sampling Manual and make the materials available for sampling a sufficient time in advance of the use of the materials to allow for the necessary time for testing.

**A. Maintain and Control Traffic.** See Traffic Control Plan.

**B. Guardrail.** Furnish guardrail system components according to section 814 and the Standard Drawings; except use steel posts only, no alternates. Furnish approximately 134 Extra Length Posts (9 foot length, steel-no alternates).

**C. Delineators for Guardrail.** Furnish bidirectional white, white and/or yellow Delineators for Guardrail according to the Delineators for Guardrail Sepia Drawing.

### III. CONSTRUCTION METHODS

**A. Maintain and Control Traffic.** See Traffic Control Plan.

**B. Site Preparation.** Remove existing guardrail system including the guardrail end treatments, Bridge End connectors and all other elements of the existing guardrail system as per Section 719, except that the Contractor will take possession of all concrete posts and all concrete associated with existing bridge and/or guardrail end treatments. Locate all disposal areas off the Right of Way. Be responsible for all site preparation, including but not limited to, clearing and grubbing, excavation, embankment, and removal of all obstructions or any other items; regrading, reshaping, adding and compacting of suitable materials on the existing shoulders to provide proper template or foundation for the

guardrail; filling voids left as the result of removing existing guardrail and guard posts with dry sand; temporary pollution and erosion control; disposal, of excess and waste materials and debris; and final dressing, cleanup, and seeding and protection. Perform all site preparation as approved or directed by the engineer.

**C. Guardrail.** Except as specified herein, construct guardrail system according to Section 719 and the Standard Drawings. Locations listed on the summary and/or shown on the drawings are approximate only. The Engineer will determine the exact termini for individual guardrail installations at the time of construction. Unless directed otherwise by the Engineer, provide a minimum two (2) foot shoulder width. Construct radii at entrances and road intersections as directed by the Engineer.

Erect guardrail to the lines and grades shown on current Standard Drawings or as directed by the Engineer by any method approved by the Engineer which allows construction of the guardrail to the true grade without apparent sags.

When removing existing guardrail and installing new guardrail, do not leave the blunt end exposed where it would be hazardous to the public. When it is not practical to complete the construction of the guardrail and the permanent end treatments and terminal sections first, provide a temporary end by connecting at least 25 feet of rail to the last post, and by slightly flaring, and burying the end of the rail completely into the existing shoulder. If left overnight, place a drum with bridge panel in advance of the guardrail end and maintain during use.

**D. Delineators for Guardrail.** Construct Delineators for Guardrail according to the Delineators for Guardrail Sepia Drawing.

**E. Property Damage.** Be responsible for all damage to public and/or private property resulting from the work. Restore damaged roadway features and private property at no additional cost to the Department.

**F. Coordination with Utility Companies.** Locate all underground, above ground and overhead utilities prior to beginning construction. Be responsible for contacting and maintaining liaison with all utility companies that have utilities located within the project limits. Do not disturb existing overhead or underground utilities. It is not anticipated that any utility facilities will need to be relocated and/or adjusted; however, in the event that it is discovered that the work does require that utilities be relocated and/or adjusted, the utility companies will work concurrently with the Contractor while relocating their facilities. Be responsible for repairing all utility damage that occurs as a result of guardrail operations at no additional cost to the Department.

**G. Right of Way Limits.** The Department has not established exact limits of the Right-of-Way. Limit work activities to obvious Right-of-Way, permanent or temporary easements, and work areas secured by the Department through consent and release of the adjacent property owners. Be responsible for all encroachments onto private lands.

**H. Disposal of Waste.** Dispose of all removed concrete, debris, and other waste and debris off the Right-of-Way at sites obtained by the Contractor at no additional cost to the Department. See Special; Note for Waste and Borrow.

**I. Final Dressing, Clean Up, and Seeding and Protection.** Apply Class A Final Dressing to all disturbed areas, both on and off the Right-of-Way. Sow all disturbed earthen areas according to the Special Notes for Erosion Control.

#### **IV. METHOD OF MEASUREMENT**

**A. Maintain and Control Traffic.** See Traffic Control Plan.

**B. Site preparation.** Other than the bid items listed, the Department will not measure Site Preparation for separate payment but shall be incidental to Guardrail, End Treatments, Bridge End Connectors, and Terminal Sections as applicable.

**C. Guardrail and Guardrail Removal.** See Section 719.

**D. Delineators for Guardrail.** See Delineators for Guardrail Sepia Drawing.

**E. Remove Guardrail End Treatment.** The Department will measure Remove Guardrail End Treatment as each.

#### **V. BASIS OF PAYMENT**

**A. Maintain and Control Traffic.** See Traffic Control Plan.

**B. Guardrail and Guardrail Removal.** See Section 719.

**C. Delineators for Guardrail.** See Delineators for Guardrail Sepia Drawing.

## **TRAFFIC CONTROL PLAN**

---

### **TRAFFIC CONTROL GENERAL**

Except as provided herein, maintain and control traffic in accordance with the Standard and Supplemental Specifications and the Standard and Sepia Drawings, current editions. Except for the roadway and traffic control bid items listed, all items of work necessary to maintain and control traffic will be paid at the lump sum bid price to "Maintain and Control Traffic".

Contrary to Section 106.01, furnish new, or used in like new condition, traffic control devices at the beginning of the work and maintain in like new condition until completion of the work.

### **PROJECT PHASING & CONSTRUCTION PROCEDURES**

The Engineer may specify days and hours when lane closures will not be allowed.

Maintain alternating one way traffic during construction. Provide a minimum clear lane width of 10 feet; however, provide for passage of vehicles of up to 16 feet in width. If traffic should be stopped due to construction operations, and a school bus on an official run arrives on the scene, make provisions for the passage of the bus as quickly as possible.

### **LANE CLOSURES**

Do not leave lane closures in place during non-working hours.

### **SIGNS**

Contrary to section 112.04.02, only long term signs (signs intended to be continuously in place for more than 3 days) will be measured for payment; short term signs (signs intended to be left in place for 3 days or less) will not be measured for payment but will be incidental to Maintain and Control Traffic.

### **CHANGEABLE MESSAGE SIGNS**

If deemed necessary by the Engineer, the Department will furnish, operate, and maintain Changeable Message Signs.

## **BARRICADES**

The Department will not measure barricades used in lieu of barrels and cones for channelization or delineation, but shall be incidental to Maintain and Control Traffic according to Section 112.04.01.

The Department will measure barricades used to protect pavement removal areas in individual units Each. The Department will measure for payment the maximum number of barricades in concurrent use at the same time on a single day on all sections of the contract. The Department will measure individual barricades only once for payment, regardless of how many times they are set, reset, removed, and relocated during the duration of the project. The Department will not measure replacements for damaged barricades the Engineer directs to be replaced due to poor condition or reflectivity. Retain possession of the Barricades upon completion of construction.

## **PAVEMENT MARKINGS**

If there is to be a deviation from the existing striping plan, the Engineer will furnish the Contractor a striping plan prior to placement of the final surface course.

Install Temporary Striping according to Section 112 with the following exception:

If the Contractor's operations or phasing requires temporary markings that must subsequently be removed from the final surface course, use an approved removable lane tape; however, the Department will not measure removable lane tape for separate payment, but will measure and pay for removable lane tape as temporary striping.

## **PAVEMENT EDGE DROP-OFFS**

Do not allow a pavement edge between opposing directions of traffic or lanes that traffic is expected to cross in a lane change situation with an elevation difference greater than 1½". Place Warning signs (MUTCD W8-11 or W8-9A) in advance of and at 1500' intervals throughout the drop-off area. Dual post the signs on both sides of the traveled way. Wedge all transverse transitions between resurfaced and unresurfaced areas which traffic may cross with asphalt mixture for leveling and wedging. Remove the wedges prior to placement of the final surface course.

Protect pavement edges that traffic is not expected to cross, except accidentally, as follows:

Less than 2" - No protection required.

2" to 4" - Place plastic drums, vertical panels, or barricades every 50 feet. During daylight working hours only, the Engineer will allow the Contractor to use cones in lieu of plastic drums, panels, and barricades. Wedge the drop-off with DGA or asphalt mixture for leveling and wedging with a 1:1 or flatter slope in daylight hours, or 3:1 or flatter slope during nighttime hours, when work is not active in the drop-off area.

Greater than 4' - Protect drop-offs greater than 4 inches within 10 feet of traffic by placing drums, vertical panels, or barricades every 25 feet. The Engineer will not allow the use of cones in lieu of drums, vertical panels, or barricades for drop-offs greater than 4". Place Type III Barricades directly in front of the drop-off facing on coming traffic in both directions of travel. Provide warning signs as shown on the Standard Drawings or as directed by the Engineer

Pedestrians & Bicycles - Protect pedestrian and bicycle traffic as directed by the engineer.

## SPECIAL NOTES FOR UTILITY CLEARANCE IMPACT ON CONSTRUCTION Knox County

### Guardrail Replacement

The Contractor is advised to contact the BUD one-call system; however, the Contractor should be aware that owners of underground facilities are not required to be members of the BUD one-call system. It may be necessary for the Contractor to contact the County Court Clerk to determine what utility companies have facilities in the project area. BUD NUMBER: (Call Before You Dig)

Telephone Number: 811 or 1-800-752-6007

The Contractor may not enter these areas to perform any work without permission from the Cabinet's Resident Engineer. Permission to work in these areas shall not be granted unless the Contractor has submitted a detailed work plan outlining the following:

1. The type of work to be performed,
2. A schedule of the work,
3. A plan that shows how the Contractor will coordinate with utility companies and their Contractors,
4. The methods the Contractor will adopt to protect existing utilities.

### COORDINATION WITH UTILITY FACILITY OWNERS

The Contractor will be responsible for contacting all utility facility owners on the subject project to have existing facilities located in the field. The Contractor will coordinate his activities with the utility facility owners to minimize and, where possible, avoid conflicts with utility facilities. Where conflicts with utility facilities are unavoidable the Contractor will coordinate any necessary relocation work with the facility owner. There will be no damages awarded for delays caused by necessary utility relocations and/or adjustments.

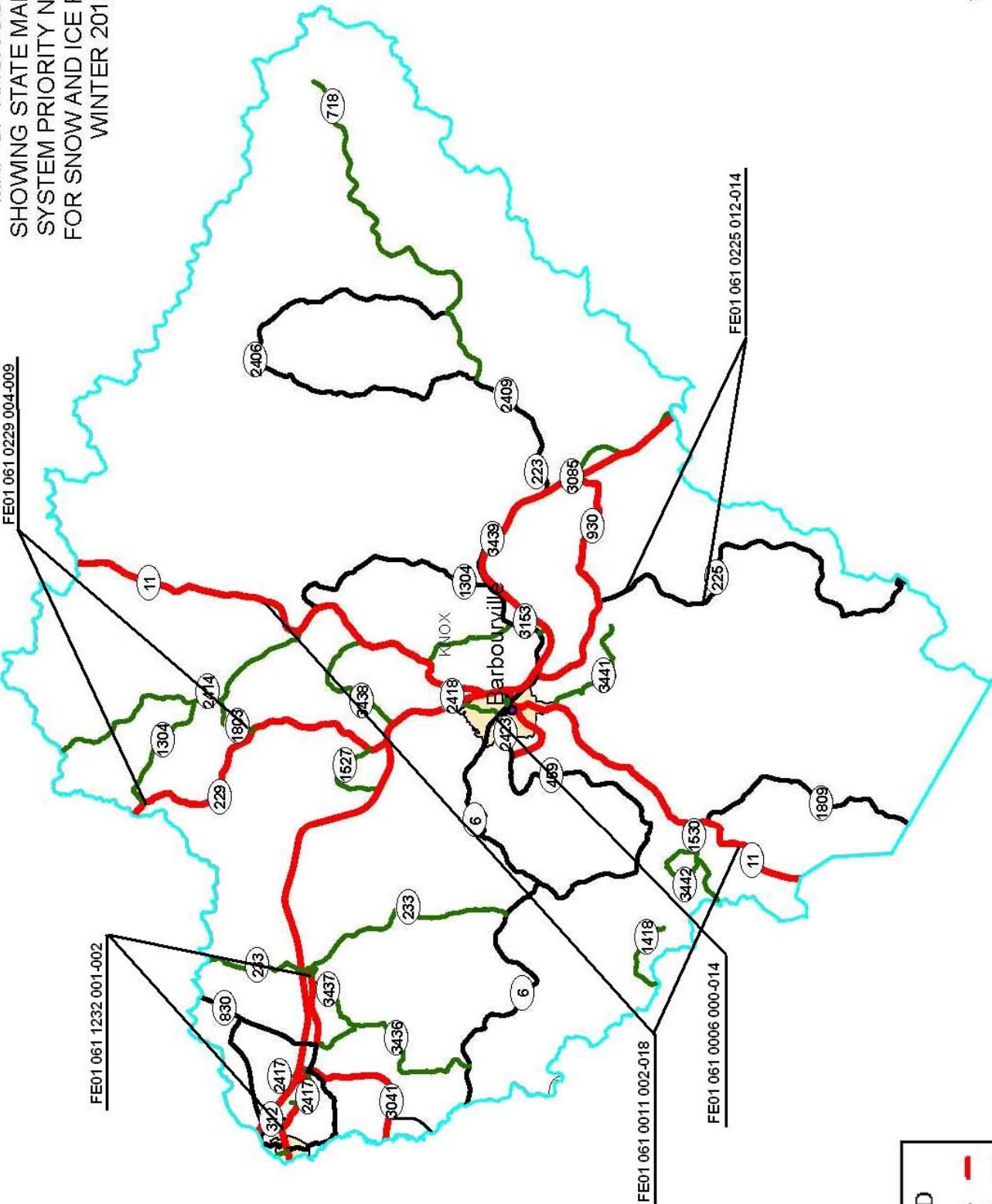
### PROTECTION OF UTILITY FACILITIES

The location of utility facilities shown on the plans may not be exact or complete. It will be the Contractor's responsibility to locate the utility facilities before excavation by calling the utility facility owner and/or the BUD one-call system. The Contractor shall determine the exact location and elevation of underground utility facilities by hand digging to expose utilities before beginning excavation in the area of underground utility facilities. The cost for repair and any other associated costs for any damage to utility facilities caused by the Contractor's operation will be borne by the Contractor. In instances where a utility impact is identified by these field measures, the Cabinet will determine a course of action. The Cabinet will assess the complexity of the

Conflict, and then determine if the utility may be avoided by minor redesign, or if the impacting scoped work must be removed. The Contractor accepts that minor redesign or scope revisions may occur if impacts are identified.



DEPARTMENT OF HIGHWAYS  
MAP OF KNOX COUNTY  
SHOWING STATE MAINTAINED  
SYSTEM PRIORITY NETWORK  
FOR SNOW AND ICE REMOVAL  
WINTER 2012



LEGEND

Priority A

Priority B

Priority C

MATERIAL SUMMARY

CONTRACT ID: 122418

FE01 061 0006 000-014

PES NO: MP06100061201

DISHMAN SPRINGS-WILTON ROAD (KY 6) FROM 0.233 MILES FROM THE KNOX AND WHITLEY COUNTY  
LINE (MP 0.233) EXTENDING 0.118 MILES FROM RICHLAND CREEK (MP 13.595), A DISTANCE  
OF 20.000000 MILES.

LINE NO	BID CODE	DESCRIPTION	QUANTITY	UNIT
0010	01987	DELINEATOR FOR GUARDRAIL B/W	136.00	EACH
0020	02351	GUARDRAIL-STEEL W BEAM-S FACE	75.00	LF
0030	02360	GUARDRAIL TERMINAL SECTION NO 1	4.00	EACH
0040	02367	GUARDRAIL END TREATMENT TYPE 1	67.00	EACH
0050	02381	REMOVE GUARDRAIL	50.00	LF
0060	02396	REMOVE GUARDRAIL END TREATMENT	67.00	EACH
0070	02399	EXTRA LENGTH GUARDRAIL POST	5.00	EACH
0080	02562	SIGNS	210.00	SQFT
0090	02650	MAINTAIN & CONTROL TRAFFIC KY 6	1.00	LS
0100	02569	DEMOBILIZATION	1.00	LS

FE01 061 0011 002-018

PES NO: MP06100111202

GAUSDALE-GIRDLER ROAD (KY 11) FROM 0.322 MILES NORTH OF MATLOCK HOLLOW ROAD (MP 2.  
099) EXTENDING 0.465 MILES SOUTH OF COLLINS FORK CULVERT (MP 17.125), A DISTANCE OF  
15.030000 MILES.

LINE NO	BID CODE	DESCRIPTION	QUANTITY	UNIT
0010	01987	DELINEATOR FOR GUARDRAIL B/W	198.00	EACH
0020	02351	GUARDRAIL-STEEL W BEAM-S FACE	9,637.50	LF
0030	02360	GUARDRAIL TERMINAL SECTION NO 1	23.00	EACH
0040	02367	GUARDRAIL END TREATMENT TYPE 1	51.00	EACH
0050	02381	REMOVE GUARDRAIL	9,562.50	LF
0060	02396	REMOVE GUARDRAIL END TREATMENT	57.00	EACH
0080	02399	EXTRA LENGTH GUARDRAIL POST	100.00	EACH
0090	02562	SIGNS	350.00	SQFT
0100	02650	MAINTAIN & CONTROL TRAFFIC KY 11	1.00	LS
0110	02569	DEMOBILIZATION	1.00	LS

FE01 061 0225 012-014

PES NO: MP06102251201

KAY JAY ROAD (KY 225) FROM 0.056 MILES NORTH OF WALTON ROAD (MP 12.086) EXTENDING 0.  
002 MILES SOUTH OF DWIGHT KINDE ROAD (MP 13.854), A DISTANCE OF 1.770000 MILES.

LINE NO	BID CODE	DESCRIPTION	QUANTITY	UNIT
0010	01987	DELINEATOR FOR GUARDRAIL B/W	2.00	EACH
0020	02351	GUARDRAIL-STEEL W BEAM-S FACE	37.50	LF
0030	02360	GUARDRAIL TERMINAL SECTION NO 1	2.00	EACH
0040	02367	GUARDRAIL END TREATMENT TYPE 1	10.00	EACH
0050	02381	REMOVE GUARDRAIL	25.00	LF
0060	02396	REMOVE GUARDRAIL END TREATMENT	10.00	EACH
0070	02399	EXTRA LENGTH GUARDRAIL POST	4.00	EACH
0080	02562	SIGNS	250.00	SQFT
0090	02650	MAINTAIN & CONTROL TRAFFIC KY 225	1.00	LS
0100	02569	DEMOBILIZATION	1.00	LS

MATERIAL SUMMARY

CONTRACT ID: 122418

FE01 061 0229 004-009

PES NO: MP06102291201

BARBOURVILLE ROAD (KY 229) FROM 0.074 MILES SOUTH OF BIG RICHLAND CREEK BRIDGE (MP 4.021) EXTENDING NORTH TO 0.002 MILES SOUTH OF KY 1304 (MP 8.118), A DISTANCE OF 4.100000 MILES.

LINE NO	BID CODE	DESCRIPTION	QUANTITY	UNIT
0010	01987	DELINEATOR FOR GUARDRAIL B/W	4.00	EACH
0020	02351	GUARDRAIL-STEEL W BEAM-S FACE	125.00	LF
0030	02367	GUARDRAIL END TREATMENT TYPE 1	10.00	EACH
0040	02381	REMOVE GUARDRAIL	125.00	LF
0050	02396	REMOVE GUARDRAIL END TREATMENT	10.00	EACH
0060	02399	EXTRA LENGTH GUARDRAIL POST	25.00	EACH
0070	02562	SIGNS	500.00	SQFT
0080	02650	MAINTAIN & CONTROL TRAFFIC KY 229	1.00	LS
0090	02569	DEMOBILIZATION	1.00	LS

FE01 061 1232 001-002

PES NO: MP06112321202

KY 1232 FROM EL TORO LANE (MP 1.863) EXTENDING NORTH TO 0.050 MILE NORTH OF HAZEL FORK BRIDGE (MP 1.956), A DISTANCE OF 0.090000 MILES.

LINE NO	BID CODE	DESCRIPTION	QUANTITY	UNIT
0010	01987	DELINEATOR FOR GUARDRAIL B/W	2.00	EACH
0020	02367	GUARDRAIL END TREATMENT TYPE 1	2.00	EACH
0030	02396	REMOVE GUARDRAIL END TREATMENT	2.00	EACH
0040	02562	SIGNS	200.00	SQFT
0050	02650	MAINTAIN & CONTROL TRAFFIC KY 1232	1.00	LS
0060	02569	DEMOBILIZATION	1.00	LS

# Knox County Guardrail Removal Summary Sheet

Road	M.P.	Length	End Treatments
KY 6	0.233		2
KY 6	0.25		2
KY 6	0.829		1
KY 6	0.843		2
KY 6	2.005		2
KY 6	2.129		2
KY 6	2.584		1
KY 6	2.629		2
KY 6	2.674		1
KY 6	2.735		1
KY 6	2.95		1
KY 6	3.08		1
KY 6	3.295		1
KY 6	3.515		1
KY 6	3.665		1
KY 6	3.739		1
KY 6	3.775		1
KY 6	3.78		1
KY 6	3.99		1
KY 6	4.048		1
KY 6	4.178		1
KY 6	4.387		1
KY 6	4.7		1
KY 6	5.375		1
KY 6	5.618		1
KY 6	5.66		1
KY 6	5.77		1
KY 6	6.11		1
KY 6	6.202		2
KY 6	6.515		1
KY 6	6.808		1
KY 6	6.855		1
KY 6	6.935		1
KY 6	7.46		1
KY 6	7.53	12.5	
KY 6	7.533		1
KY 6	7.703		1
KY 6	7.711		1
KY 6	7.903		1
KY 6	8.323		1
KY 6	8.334		1
KY 6	8.36		1
KY 6	8.397		1

Knox County Guardrail Removal Summary Sheet

Road	M.P.	Length	End Treatments
KY 6	8.49		1
KY 6	8.735		1
KY 6	8.768		1
KY 6	8.786	12.5	
KY 6	8.802		1
KY 6	8.988		1
KY 6	9.16		1
KY 6	9.51		1
KY 6	9.665		1
KY 6	9.7		1
KY 6	9.856	12.5	
KY 6	9.866	12.5	
KY 6	10.312		1
KY 6	10.345		1
KY 6	10.535		1
KY 6	11.117		1
KY 6	13.029		1
KY 6	13.053		1
KY 6	13.411		1
KY 6	13.595		2
Total		0	67

Totals	0	67
--------	---	----

COUNTY-----|Knox  
ROUTE #-----|Ky 6  
BEGIN PROJECT---|

DISTRICT 11  
DATA FOR GUARDRAIL ESTIMATE

END PROJECT-----|

END TREATMENT TYPES

5/10/2012															
MILEPOINT (FROM)	MILEPOINT (TO)	LENGTH (FT)	LENGTH (m)	(BEGIN)					RADIUS RAIL	(END)					NOTES
				TERM. SECT.	2a	1	4	7		TERM SECT	2a	1	4	7	
0.233	0.233	0.000	0.000			1									Left
0.233	0.233	0.000	0.000			1									Right
0.250	0.250	0.000	0.000			1									Left
0.250	0.250	0.000	0.000			1									Right
0.829	0.829	0.000	0.000			1									Left
0.843	0.843	0.000	0.000			1									Right
0.843	0.843	0.000	0.000			1									Left
2.005	2.005	0.000	0.000			1									Right
2.005	2.005	0.000	0.000			1									Left
2.129	2.129	0.000	0.000			1									Right
2.129	2.129	0.000	0.000			1									Left
2.584	2.584	0.000	0.000			1									Right
2.629	2.629	0.000	0.000			1									Left
2.629	2.629	0.000	0.000			1									Right
2.674	2.674	0.000	0.000			1									Left
2.735	2.735	0.000	0.000			1									Right
2.950	2.950	0.000	0.000			1									Right
3.080	3.080	0.000	0.000			1									Right
3.295	3.295	0.000	0.000			1									Right
3.515	3.515	0.000	0.000			1									Right
3.665	3.665	0.000	0.000			1									Right
3.739	3.739	0.000	0.000			1									Right
3.775	3.775	0.000	0.000			1									Right
3.780	3.780	0.000	0.000			1									Right
3.990	3.990	0.000	0.000			1									Right
4.048	4.048	0.000	0.000			1									Right
4.178	4.178	0.000	0.000			1									Right
4.387	4.387	0.000	0.000			1									Right
4.700	4.700	0.000	0.000			1									Left
5.375	5.375	0.000	0.000			1									Left
5.618	5.618	0.000	0.000			1									Left
5.660	5.660	0.000	0.000			1									Left
5.770	5.770	0.000	0.000			1									Left
6.110	6.110	0.000	0.000			1									Right
				0	0	34	0	0	0	0	0	0	0	0	0

TOTAL FT.

0

0

m

TOTAL #RAIL

0

TOTAL RADIUS

0.00

0.00

m

RAILS L.F.

0.00

0.00

m

(END TREATMENT TOTALS)

TERM SECT

0

2A

0

1

34

4

0

7

0

COUNTY-----| **Knox**  
ROUTE #-----| **Ky 6**  
BEGIN PROJECT---|  
  
END PROJECT-----|

DISTRICT 11  
DATA FOR GUARDRAIL ESTIMATE

5/10/2012

END TREATMENT TYPES

5/10/2012				(BEGIN)					RADIUS	(END)					NOTES
MILEPOINT (FROM)	MILEPOINT (TO)	LENGTH (FT)	LENGTH (m)	TERM. SECT.2a	1	4	7	RAIL	TERM SECT	2a	1	4	7		
6.202	6.202	0.000	0.000			1								Right	
6.202	6.202	0.000	0.000			1								Left	
6.515	6.515	0.000	0.000			1								Left	
6.808	6.808	0.000	0.000			1								Right	
6.855	6.855	0.000	0.000			1								Left	
6.935	6.935	0.000	0.000			1								Left	
7.460	7.460	0.000	0.000			1								Left	
7.530	7.530	0.000	0.000	1				1						Left	
7.533	7.533	0.000	0.000			1								Left	
7.703	7.703	0.000	0.000			1								Right	
7.711	7.711	0.000	0.000			1								Right	
7.903	7.903	0.000	0.000			1								Right	
8.323	8.323	0.000	0.000			1								Right	
8.334	8.334	0.000	0.000			1								Right	
8.360	8.360	0.000	0.000			1								Right	
8.397	8.397	0.000	0.000			1								Right	
8.490	8.490	0.000	0.000			1								Left	
8.735	8.735	0.000	0.000			1								Left	
8.768	8.768	0.000	0.000			1								Left	
8.786	8.786	0.000	0.000	1				1						Right	
8.802	8.802	0.000	0.000			1								Left	
8.988	8.988	0.000	0.000			1								Left	
9.160	9.160	0.000	0.000			1								Left	
9.510	9.510	0.000	0.000			1								Left	
9.665	9.665	0.000	0.000			1								Left	
9.700	9.700	0.000	0.000			1								Left	
9.856	9.856	0.000	0.000	1				1						Right	
9.866	9.866	0.000	0.000	1				1						Left	
10.312	10.312	0.000	0.000			1								Right	
10.345	10.345	0.000	0.000			1								Left	
10.535	10.535	0.000	0.000			1								Left	
11.117	11.117	0.000	0.000			1								Left	
13.029	13.029	0.000	0.000			1								Left	
13.053	13.053	0.000	0.000			1								Right	
				4	0	30	0	0	4	0	0	0	0	0	

TOTAL FT.

0

0

m

TOTAL #RAIL

0

TOTAL RADIUS

75.00

19.82

m

RAILS L.F.

75.00

19.82

m

(END TREATMENT TOTALS)

TERM	SECT	4
2A		0
1		30
4		0
7		0





Knox County Guardrail Removal Summary Sheet

Road	M.P.	Length	End Treatments
KY 11	2.099		1
KY 11	2.142	287.5	1
KY 11	2.172	100	1
KY 11	2.266		1
KY 11	2.333		1
KY 11	2.455		1
KY 11	2.488		1
KY 11	2.625		1
KY 11	2.625		1
KY 11	2.655		1
KY 11	2.751		1
KY 11	2.783		1
KY 11	2.815		1
KY 11	4.325		1
KY 11	4.359		1
KY 11	5.75		1
KY 11	5.86		1
KY 11	5.93		1
KY 11	5.93		1
KY 11	6.333		1
KY 11	6.518		1
KY 11	6.614		1
KY 11	6.671		1
KY 11	6.717		1
KY 11	10.792	112.5	1
KY 11	10.792	1087.5	1
KY 11	11		1
KY 11	11.082	12.5	1
KY 11	11.085	12.5	
KY 11	11.489		1
KY 11	11.512	1062.5	1
KY 11	11.735	1400	2
KY 11	11.981		1
KY 11	12.169		1
KY 11	12.331		1
KY 11	12.356		1
KY 11	12.47		1
KY 11	12.977	225	3
KY 11	12.996	125	3
KY 11	13.041	250	1
KY 11	13.041	250	1
KY 11	13.255		1

Knox County Guardrail Removal Summary Sheet

Road	M.P.	Length	End Treatments
KY 11	13.386		
KY 11	13.406	12.5	
KY 11	13.406	337.5	1
KY 11	13.53	200	3
KY 11	13.586	125	
KY 11	13.586	125	
KY 11	13.713	150	1
KY 11	13.739	225	
KY 11	13.78	1950	
KY 11	14.652		1
KY 11	14.659	12.5	
KY 11	14.702	175	
KY 11	14.74	12.5	
KY 11	14.767	12.5	
KY 11	14.783	12.5	
KY 11	14.807		1
KY 11	14.829	12.5	
KY 11	14.834	12.5	
KY 11	14.875	12.5	
KY 11	14.859	12.5	
KY 11	14.862	12.5	
KY 11	14.885	12.5	
KY 11	15.069	725	2
KY 11	16.544	487.5	2
KY 11	17.125		1
Total		9562.5	57

Totals	9562.5	57
--------	--------	----

COUNTY-----|Knox  
ROUTE #-----|KY 11  
BEGIN PROJECT----

DISTRICT 11  
DATA FOR GUARDRAIL ESTIMATE

END PROJECT-----|

END TREATMENT TYPES

5/10/2012																							
		(BEGIN)												(END)									
MILEPOINT (FROM)	MILEPOINT (TO)	LENGTH (FT)	LENGTH (m)	TERM. SECT.2a	1	4	Bridge Type A	Connector			RADIUS RAIL	TERM SECT	2a	1	4	Bridge Type A	Connector			NOTES			
2.099	2.099	0.000	0.000				1													Right			
2.142	2.196	287.500	87.652				1													Left			
2.172	2.189	100.000	30.488				1													Left			
2.266	2.266	0.000	0.000				1													Right			
2.333	2.333	0.000	0.000				1													Right			
2.455	2.455	0.000	0.000				1													Right			
2.488	2.488	0.000	0.000				1													Right			
2.625	2.625	0.000	0.000				1													Right			
2.625	2.625	0.000	0.000				1													Left			
2.655	2.655	0.000	0.000				1													Right			
2.751	2.751	0.000	0.000				1													Right			
2.783	2.783	0.000	0.000				1													Right			
2.815	2.815	0.000	0.000				1													Right			
4.325	4.325	0.000	0.000				1													Left			
4.359	4.359	0.000	0.000				1													Right			
5.750	5.750	0.000	0.000				1													Left			
5.860	5.860	0.000	0.000				1													Right			
5.930	5.930	0.000	0.000				1													Left			
5.930	5.930	0.000	0.000				1													Right			
6.333	6.333	0.000	0.000				1													Left			
6.518	6.518	0.000	0.000				1													Left			
6.614	6.614	0.000	0.000				1													Right			
6.671	6.671	0.000	0.000				1													Right			
6.717	6.717	0.000	0.000				1													Right			
10.792	10.811	112.500	34.299				1													Right			
10.792	10.996	1087.500	331.555				1													Left			
11.000	11.000	0.000	0.000				1													Left			
11.082	11.082	0.000	0.000	1							1									Left			
11.085	11.085	0.000	0.000	1							1									Left			
11.489	11.489	0.000	0.000				1													Left			
11.512	11.709	1050.000	320.122	1							1				1					Left			
11.735	12.000	1400.000	426.829				1								1					Left			
11.981	11.981	0.000	0.000				1													Right			
12.169	12.169	0.000	0.000				1													Left			
					3	0	31	0				0	3	0	0	2	0				0		

TOTAL FT.	4037.5	1231	m	(END TREATMENT TOTALS)				
TOTAL #RAIL	323							
TOTAL RADIUS								
RAILS L.F.	50	14.86	m	4	TERM	SECT	3	
					2A		0	
					1		33	
					4		0	
					Bridge Connector		0	

COUNTY-----|Knox  
ROUTE #-----|11  
BEGIN PROJECT-----|  
DISTRICT 11  
DATA FOR GUARDRAIL ESTIMATE

END PROJECT-----|  
END TREATMENT TYPES

5/10/2012												(END)						
MILEPOINT (FROM)	MILEPOINT (TO)	LENGTH (FT)	LENGTH (m)	TERM. SECT. 2a 1 4				Type A Bridge Connector	RADIUS RAIL	TERM	2a	1	4	Type A	NOTES			
										SECT					Bridge Connector			
12.331	12.331	0.000	0.000			1									Right			
12.356	12.356	0.000	0.000			1									Left			
12.470	12.470	0.000	0.000			1									Left			
12.977	13.019	225.000	68.598			1									1 Left			
12.996	13.019	125.000	38.110			1									1 Right			
13.041	13.087	250.000	76.220					1				1			Right			
13.041	13.087	250.000	76.220					1				1			Left			
13.255	13.255	0.000	0.000			1									Right			
13.386	13.386	0.000	0.000					1							Right			
13.406	13.406	0.000	0.000	1					1						Right			
13.406	13.468	337.500	102.896					1					1		Left			
13.530	13.566	200.000	60.976			1									1 Right			
13.586	13.605	112.500	34.299					1	1	1					Right			
13.586	13.605	112.500	34.299					1	1	1					Left			
13.713	13.737	137.500	41.921			1			1	1					Right			
13.739	13.771	175.000	53.354	1					2	1					Right			
13.780	14.146	1937.500	590.701	1					2	1					Right			
14.652	14.652	0.000	0.000			1									Right			
14.659	14.659	0.000	0.000	1					1						Right			
14.702	14.729	150.000	45.732	1					2	1					Right			
14.740	14.740	0.000	0.000	1					1						Right			
14.767	14.767	0.000	0.000	1					1						Right			
14.783	14.783	0.000	0.000	1					1						Right			
14.829	14.829	0.000	0.000	1					1						Right			
14.807	14.807	0.000	0.000			1									Left			
14.875	14.875	0.000	0.000	1					1						Left			
14.834	14.834	0.000	0.000	1					1						Right			
14.859	14.859	0.000	0.000	1					1						Right			
14.862	14.862	0.000	0.000	1					1						Right			
14.885	14.885	0.000	0.000	1					1						Right			
15.069	15.206	725.000	221.037			1						1			Right			
16.544	16.635	487.500	148.628			1						1			Left			
17.125	17.125	0.000	0.000			1									Left			
0.000	0.000	0.000	0.000															
				14	0	13	0	6		20	6	0	5	0	3	0		

TOTAL FT.	5225	1593	m	(END TREATMENT TOTALS)			
TOTAL #RAIL	418						
TOTAL RADIUS							
RAILS L.F.	325.00	99.09	m				
				TERM SECT	20		
				2A	0		
				1	18		
				4	0		
				bridge connector	9		

Knox County Guardrail Removal Summary Sheet

Road	M.P.	Length	End Treatments
KY 225	12.086		1
KY 225	12.366		1
KY 225	13.165	12.5	
KY 225	13.197	12.5	
KY 225	13.456		1
KY 225	13.508		1
KY 225	13.535		1
KY 225	13.562		1
KY 225	13.571		1
KY 225	13.854		1
KY 225	13.6		1
KY 225	13.854		1
Totals		25	10

Totals	25	10
--------	----	----

## END TREATMENT TYPES

(BEGIN)

(END)

[illegible]

(END TREATMENT TOTALS)

TERM	SECT	
2A		0
1		10
4		0
7		0

TOTAL RADIUS		
RAILS L.F.	37.5	9.91m

Knox County Guardrail Removal Summary Sheet

Road	M.P.	LF of guardrail removal	Remove End Treatments
KY 229	4.021		1
KY 229	4.057		1
KY 229	4.733		2
KY 229	4.755		1
KY 229	4.778		1
KY 229	7.176		1
KY 229	7.323		1
KY 229	8		1
KY 229	8.118	125	1
	Sheet Totals	125	10

COUNTY-----	Knox	
ROUTE #-----	Ky 229	DISTRICT 11
BEGIN PROJECT---	4.021	DATA FOR GUARDRAIL ESTIMATE

END PROJECT-----| 8.118

## END TREATMENT TYPES

5/10/2012

[illegible]

<b>TOTAL FT.</b>	<b>125</b>	<b>38</b> m
------------------	------------	-------------

(END TREATMENT TOTALS)

TOTAL #RAIL	10
-------------	----

TOTAL RADIUS		
RAILS L.F.	0.00	0.00 m

TERM	SECT	
2A		0
1		10
4		0
7		0



# Knox County Guardrail Removal Summary Sheet

Road	M.P.	Length	End Treatments
KY 1232	1.863		1
KY 1232	1.956		1

Sheet Total		2
-------------	--	---

## END TREATMENT TYPES

(BEGIN)				(END)			
.				RADIUS	TERM		
.2a	1	4	7	RAIL	SECT	2a	1 4 7 NOTES

0 0 2 0 0 0 0 0 0 0 0 0

(END TREATMENT TOTALS)

TERM	SECT	
2A		0
1		2
4		0
7		0

TOTAL RADIUS		
RAILS L.F.	0.00	0.00 m

GUARDRAIL DELIVERY VERIFICATION SHEET

CONTRACT ID \_\_\_\_\_

DESCRIPTION	UNIT	QUANTITIES	
		FIELD VERIFIED	DELIVERED
GUARDRAIL STEEL W BEAM	LF		
GUARDRAIL STEEL THRIE BEAM	LF		
GUARDRAIL THRIE BEAM-W BEAM CONNECTOR	EA		
GUARDRAIL TERMINAL SECTION No. 1	EA		
GUARDRAIL TERMINAL SECTION No. 2	EA		
GUARDRAIL TERMINAL SECTION No. 3	EA		
GUARDRAIL THRIE BEAM TERMINAL SECTION	EA		
CRASH CUSHION TYPE VI	EA		
CRASH CUSHION TYPE VII	EA		
CRASH CUSHION TYPE IX/IX-A	EA		
GUARDRAIL END TREATMENT TYPE 1	EA		
GUARDRAIL END TREATMENT TYPE 2A	EA		
GUARDRAIL END TREATMENT TYPE 3	EA		
GUARDRAIL END TREATMENT TYPE 4A	EA		
GUARDRAIL END TREATMENT TYPE 7	EA		
GUARDRAIL CONNECTOR TO BRIDGE END TYPE A/A-1	EA		
GUARDRAIL CONNECTOR TO BRIDGE END TYPE E/E-1	EA		
GUARDRAIL CONNECTOR TO BRIDGE END TYPE C	EA		
GUARDRAIL CONNECTOR TO BRIDGE END TYPE D	EA		
GUARDRAIL CONNECTOR TO CONC MED PIER	EA		
GUARDRAIL CONNECTOR TO CONC SHLDR PIER	EA		
GUARDRAIL POSTS-STEEL	EA		
GUARDRAIL OFFSET BLOCK TYPE 4	EA		
GUARDRAIL OFFSET BLOCK STEEL	EA		
GUARDRAIL OFFSET BLOCK THRIE BEAM	EA		
GUARDRAIL BACK-UP PLATE W BEAM	EA		
GUARDRAIL BACK-UP PLATE THRIE BEAM	EA		
GUARDRAIL NUTS, BOLTS, & WASHERS	BAG		

NOTES:

1. Dispose of concrete foundations and timber posts off the Right-of-Way at sites obtained by the Contractor at no additional cost to the Department.

2. Salvage and deliver removed guardrail system components, other than concrete foundations and timber posts, according to Section 719.03.07.

3. Prior to removing the materials from the project site, obtain the Contractor's and Engineer's representative's signatures.

4. Upon delivery, obtain the Bailey Bridge Lot's representative's signature and submit this completed form to the Engineer.

5. The Department will not measure removed guardrail components for payment without completed delivery verification sheet(s).

	PRINTED NAME	SIGNATURE	DATE
RESIDENT ENGINEER'S REPRESENTATIVE	_____	_____	_____
CONTRACTOR'S REPRESENTATIVE	_____	_____	_____
BAILEY BRIDGE LOT'S REPRESENTATIVE	_____	_____	_____

**PART II**

**SPECIFICATIONS AND STANDARD DRAWINGS**

### **SPECIFICATIONS REFERENCE**

Any reference in the plans or proposal to previous editions of the *Standard Specifications for Road and Bridge Construction* and *Standard Drawings* are superseded by *Standard Specifications for Road and Bridge Construction, Edition of 2012* and *Standard Drawings, Edition of 2012 with the 2012 Revision*.

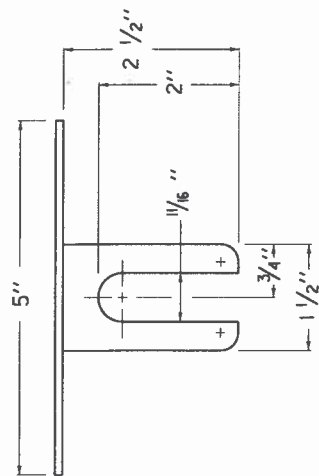
2012 STANDARD DRAWINGS THAT APPLY

TYPICAL GUARDRAIL INSTALLATIONS.....	RBI-001-10
TYPICAL GUARDRAIL INSTALLATIONS.....	RBI-002-06
INSTALLATION OF GUARDRAIL END TREATMENT TYPE 1 .....	RBI-004-04
STEEL BEAM GUARDRAIL (W-BEAM).....	RBR-001-11
GUARDRAIL COMPONENTS .....	RBR-005-10
GUARDRAIL TERMINAL SECTIONS.....	RBR-010-05
GUARDRAIL POSTS .....	RBR-015-04
GUARDRAIL POSTS .....	RBR-016-04
GUARDRAIL END TREATMENT TYPE 1 .....	RBR-020-05
TEMPORARY SILT FENCE.....	RDX-210-02
TEMPORARY SILT FENCE WITH WOVEN WIRE FABRIC FENCE .....	RDX-215
SILT TRAP - TYPE A.....	RDX-220-04
SILT TRAP - TYPE B .....	RDX-225
MISCELLANEOUS STANDARDS PART 1 .....	RGX-001-05
NETTING .....	RRE-002-04
LANE CLOSURE TWO-LANE HIGHWAY CASE I.....	TTC-100-03
LANE CLOSURE TWO-LANE HIGHWAY CASE II.....	TTC-105-02
SHOULDER CLOSURE.....	TTC-135-01
POST SPLICING DETAIL .....	TTD-110-01

NOTES

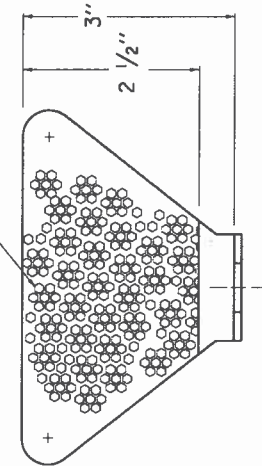
1. THE DELINEATOR'S SHAPE AND DIMENSIONS ARE SHOWN FOR ILLUSTRATION PURPOSES ONLY. TYPES OF DELINEATORS PERMITTED SHALL BE FROM THE LIST OF APPROVED MATERIALS.
2. DELINEATOR SHALL BE MEASURED AND PAID FOR AT THE CONTRACT UNIT PRICE EACH AND SHALL INCLUDE ALL MATERIALS AND LABOR NECESSARY FOR ONE COMPLETE INSTALLATION.
3. 

CODE	PAY ITEM	PAY UNIT
1982	DELINEATOR FOR GUARDRAIL - MONO DIRECTIONAL WHITE	EACH
1983	DELINEATOR FOR GUARDRAIL - MONO DIRECTIONAL YELLOW	EACH
1987	DELINEATOR FOR GUARDRAIL - BI-DIRECTIONAL WHITE	EACH
4. GUARDRAIL DELINEATORS SHALL BE REQUIRED ON ALL GUARDRAIL.
5. DELINEATORS SHALL BE MANUFACTURED FROM 12 GA. GALVANIZED STEEL.
6. DIMENSIONS SHOWN ARE APPROXIMATE AND ARE SUBJECT TO MANUFACTURER'S TOLERANCES.
7. WHEN CONCRETE BARRIERS EXTEND ACROSS BRIDGE STRUCTURES IN LIEU OF STEEL BEAM GUARDRAIL, DELINEATORS SHALL BE INSTALLED AT SAME VERTICAL ALIGNMENT AS ON THE GUARDRAIL, AND DELINEATORS SHALL COMPLY WITH CURRENT SEP1A DRAWING 004.
8. DELINEATORS SHALL BE INSTALLED IN ACCORDANCE WITH MANUFACTURER'S RECOMMENDATIONS.

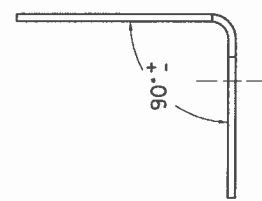


PLAN VIEW

TYPE XI SHEETING,  
YELLOW OR WHITE

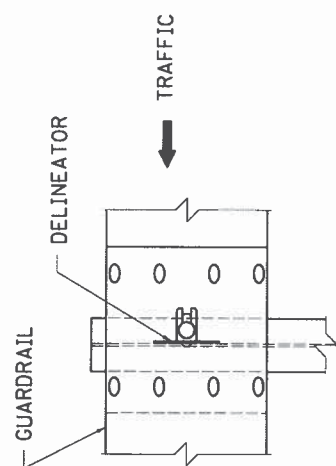


FRONT VIEW

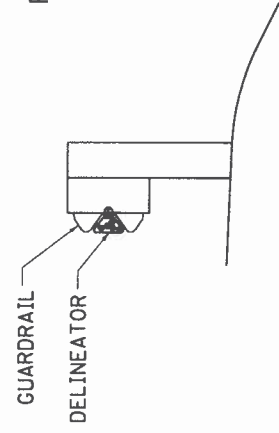


SIDE VIEW

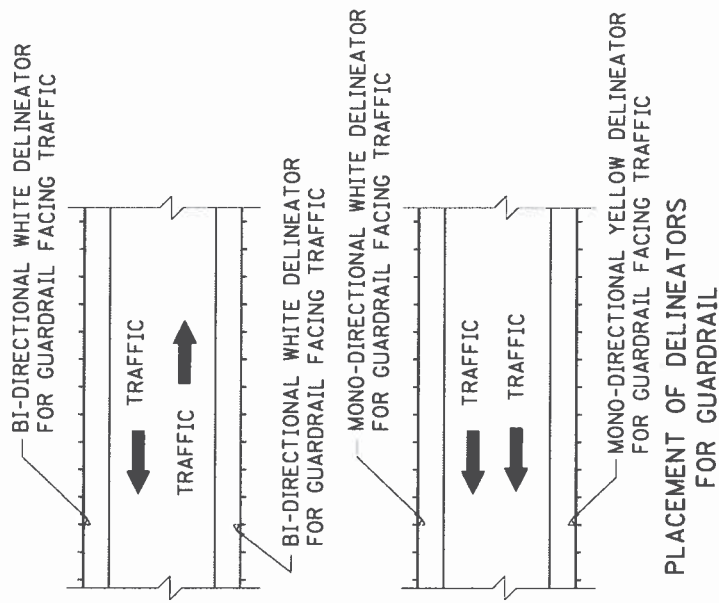
NOTE: DIMENSIONS SHOWN ARE FOR ONE VERSION OF A WEB-MOUNTED GUARDRAIL DELINEATOR. DELINEATORS WITH ALTERNATE DIMENSIONS MAY BE CONSIDERED FOR INCLUSION ON THE APPROVED PRODUCTS LIST.



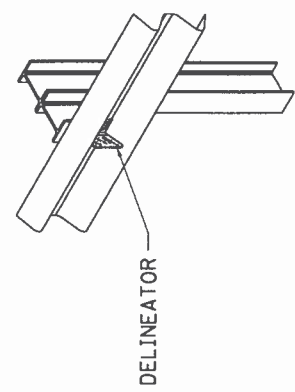
FRONT VIEW



SIDE VIEW



PLACEMENT OF DELINEATORS  
FOR GUARDRAIL



ISOMETRIC VIEW

APPROXIMATE DELINEATOR SPACING	
TANGENT	100'
CURVE	50'

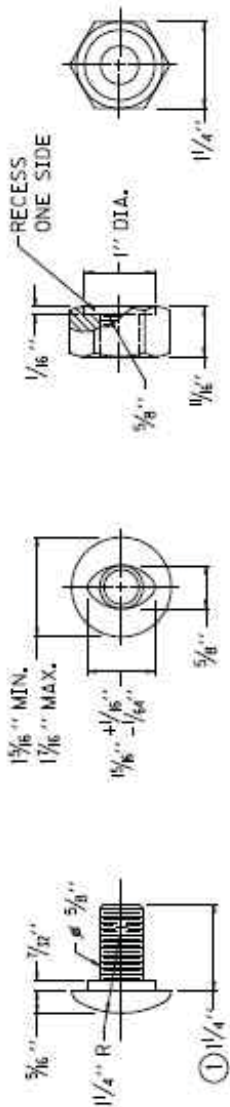
SPACING SHOULD BE ADJUSTED IN CURVES SO THAT SEVERAL DELINEATORS ARE ALWAYS SIMULTANEOUSLY VISIBLE TO THE ROAD USER.

KENTUCKY DEPARTMENT OF HIGHWAYS	DELINEATORS FOR GUARDRAIL
SUBMITTED: <i>[Signature]</i> DATE: 4-1-2011	
DIRECTOR DIVISION OF DESIGN	

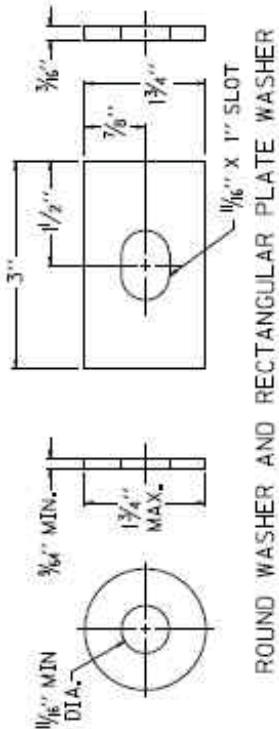
COUNTY OF	JTB#	SHEET NO.

NOTES

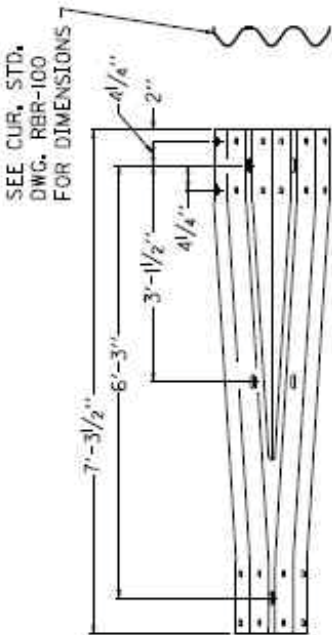
- ① RAIL BOLT SIMILAR EXCEPT LENGTH.
- ② THE THRIE BEAM TO "W" BEAM CONNECTOR SHALL COMPLY WITH AASHTO M-180 CLASS A, TYPE 2 EXCEPT WHERE IN CONFLICT WITH THIS DETAIL.



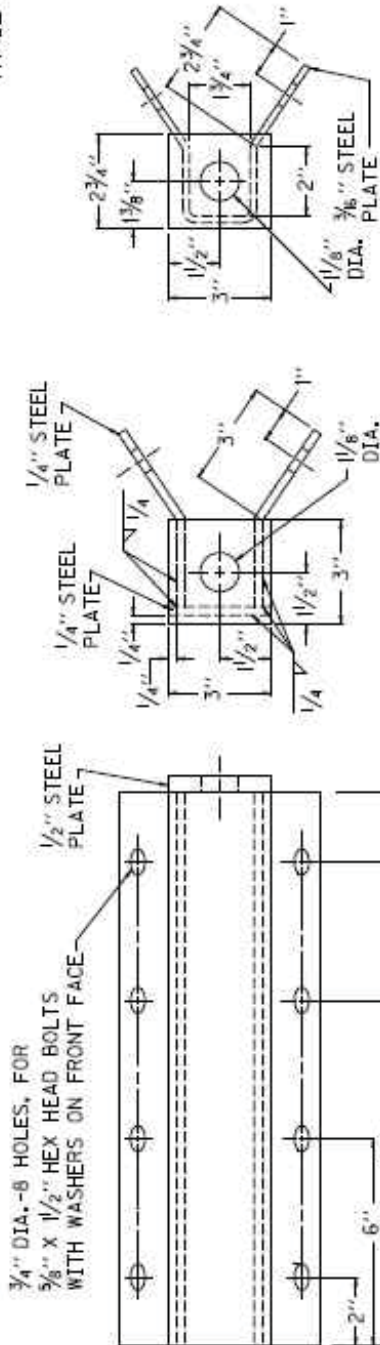
5/8" BUTTON HEAD BOLT AND RECESSED NUT



ROUND WASHER AND RECTANGULAR PLATE WASHER

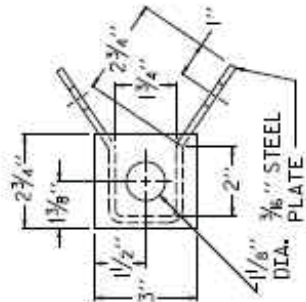


THRIE BEAM TO "W" BEAM CONNECTOR ②



ALTERNATE NO. 1

RAIL ANCHOR ASSEMBLY



ALTERNATE NO. 2

KENTUCKY DEPARTMENT OF HIGHWAYS
GUARDRAIL COMPONENTS
SUBMITTED: 6-15-2012 DATE: 6-15-2012 008



## **PART III**

### **EMPLOYMENT, WAGE AND RECORD REQUIREMENTS**

**TRANSPORTATION CABINET  
DEPARTMENT OF HIGHWAYS**

**LABOR AND WAGE REQUIREMENTS  
APPLICABLE TO OTHER THAN FEDERAL-AID SYSTEM PROJECTS**

- I. Application
- II. Nondiscrimination of Employees (KRS 344)
- III. Payment of Predetermined Minimum Wages
- IV. Statements and Payrolls

**I. APPLICATION**

1. These contract provisions shall apply to all work performed on the contract by the contractor with his own organization and with the assistance of workmen under his immediate superintendence and to all work performed on the contract by piecework, station work or by subcontract. The contractor's organization shall be construed to include only workmen employed and paid directly by the contractor and equipment owned or rented by him, with or without operators.

2. The contractor shall insert in each of his subcontracts all of the stipulations contained in these Required Provisions and such other stipulations as may be required.

3. A breach of any of the stipulations contained in these Required Provisions may be grounds for termination of the contract.

**II. NONDISCRIMINATION OF EMPLOYEES**

**AN ACT OF THE KENTUCKY  
GENERAL ASSEMBLY TO PREVENT  
DISCRIMINATION IN EMPLOYMENT  
KRS CHAPTER 344  
EFFECTIVE JUNE 16, 1972**

The contract on this project, in accordance with KRS Chapter 344, provides that during the performance of this contract, the contractor agrees as follows:

1. The contractor shall not fail or refuse to hire, or shall not discharge any individual, or otherwise discriminate against an individual with respect to his compensation, terms, conditions, or privileges of employment, because of such individual's race, color, religion, national origin, sex, disability or age (between forty and seventy); or limit, segregate, or classify his employees in any way which would deprive or tend to deprive an individual of employment opportunities or otherwise adversely affect his status as an employee, because of such individual's race, color, religion, national origin, sex, disability or age (between forty and seventy). The contractor agrees to post in conspicuous places, available to employees and applicants for employment, notices to be provided setting forth the provisions of this nondiscrimination clause.

2. The contractor shall not print or publish or cause to be printed or published a notice or advertisement relating to employment by such an employer or membership in or any classification or referral for employment by the employment agency, indicating any preference, limitation, specification, or discrimination, based on race, color, religion, national origin, sex, disability or age (between forty and seventy), except that such notice or advertisement may indicate a preference, limitation, or specification based on religion, or national origin when religion, or national origin is a bona fide occupational qualification for employment.

3. If the contractor is in control of apprenticeship or other training or retraining, including on-the-job training programs, he shall not discriminate against an individual

because of his race, color, religion, national origin, sex, disability or age (between forty and seventy), in admission to, or employment in any program established to provide apprenticeship or other training.

4. The contractor will send to each labor union or representative of workers with which he has a collective bargaining agreement or other contract or understanding, a notice to be provided advising the said labor union or workers' representative of the contractor's commitments under this section, and shall post copies of the notice in conspicuous places available to employees and applicants for employment. The contractor will take such action with respect to any subcontract or purchase order as the administering agency may direct as a means of enforcing such provisions, including sanctions for non-compliance.

**III. PAYMENT OF PREDETERMINED MINIMUM WAGES**

1. These special provisions are supplemented elsewhere in the contract by special provisions which set forth certain predetermined minimum wage rates. The contractor shall pay not less than those rates.

2. The minimum wage determination schedule shall be posted by the contractor, in a manner prescribed by the Department of Highways, at the site of the work in prominent places where it can be easily seen by the workers.

**IV. STATEMENTS AND PAYROLLS**

1. All contractors and subcontractors affected by the terms of KRS 337.505 to 337.550 shall keep full and accurate payroll records covering all disbursements of wages to their employees to whom they are required to pay not less than the prevailing rate of wages. Payrolls and basic records relating thereto will be maintained during the course of the work and preserved for a period of one (1) year from the date of completion of this contract.

2. The payroll records shall contain the name, address and social security number of each employee, his correct classification, rate of pay, daily and weekly number of hours worked, itemized deductions made and actual wages paid.

3. The contractor shall make his daily records available at the project site for inspection by the State Department of Highways contracting office or his authorized representative.

Periodic investigations shall be conducted as required to assure compliance with the labor provisions of the contract. Interrogation of employees and officials of the contractor shall be permitted during working hours.

Aggrieved workers, Highway Managers, Assistant District Engineers, Resident Engineers and Project Engineers shall report all complaints and violations to the Division of Contract Procurement.

The contractor shall be notified in writing of apparent violations. The contractor may correct the reported violations and notify the Department of Highways of the action taken or may request an informal hearing. The request for hearing shall be in writing within ten (10) days after receipt of the notice of the reported violation. The contractor may submit

records and information which will aid in determining the true facts relating to the reported violations.

Any person or organization aggrieved by the action taken or the findings established as a result of an informal hearing by the Division of Contract Procurement may request a formal hearing.

4. The wages of labor shall be paid in legal tender of the United States, except that this condition will be considered satisfied if payment is made by a negotiable check, on a solvent bank, which may be cashed readily by the employee in the local community for the full amount, without discount or collection charges of any kind. Where checks are used for payments, the contractor shall make all necessary arrangements for them to be cashed and shall give information regarding such arrangements.

5. No fee of any kind shall be asked or accepted by the contractor or any of his agents from any person as a condition of employment on the project.

6. No laborers shall be charged for any tools used in performing their respective duties except for reasonably avoidable loss or damage thereto.

7. Every employee on the work covered by this contract shall be permitted to lodge, board, and trade where and with whom he elects and neither the contractor nor his agents, nor his employees shall directly or indirectly require as a condition of employment that an employee shall lodge, board or trade at a particular place or with a particular person.

8. Every employee on the project covered by this contract shall be an employee of either the prime contractor or an approved subcontractor.

9. No charge shall be made for any transportation furnished by the contractor or his agents to any person employed on the work.

10. No individual shall be employed as a laborer or mechanic on this contract except on a wage basis, but this shall not be construed to prohibit the rental of teams, trucks or other equipment from individuals.

No Covered employee may be employed on the work except in accordance with the classification set forth in the schedule mentioned above; provided, however, that in the event additional classifications are required, application shall be made by the contractor to the Department of Highways and (1) the Department shall request appropriate classifications and rates from the proper agency, or (2) if there is urgent need for additional classification to avoid undue delay in the work, the contractor may employ such workmen at rates deemed comparable to rates established for similar classifications provided he has made written application through the Department of Highways, addressed to the proper agency, for the supplemental rates. The contractor shall retroactively adjust, upon receipt of the supplemental rates schedule, the wages of any employee paid less than the established rate and may adjust the wages of any employee overpaid.

11. No contractor or subcontractor contracting for any part of the contract work which may require or involve the employment of laborers or mechanics shall require or permit any laborer or mechanic in any work-week in which he is employed on such work, to work in excess of eight hours in any calendar day or in excess of forty hours in such work-week unless such laborer or mechanic receives compensation at a rate not less than one and one half times his basic rate of pay for all hours worked in excess of eight hours in any calendar day or in excess of forty hours in such work-week. A laborer, workman or mechanic and an employer may enter into a written agreement or a collective bargaining agreement to work more than eight (8) hours a calendar day but not more than ten (10) hours a calendar day for the straight time hourly rate. This agreement shall be in writing and shall be executed prior to the employee working in excess of eight (8) hours, but not more than ten (10) hours, in any one (1) calendar day.

12. Payments to the contractor may be suspended or withheld due to failure of the contractor to pay any laborer or

mechanic employed or working on the site of the work, all or part of the wages required under the terms of the contract. The Department may suspend or withhold payments only after the contractor has been given written notice of the alleged violation and the contractor has failed to comply with the wage determination of the Department of Highways.

13. Contractors and subcontractors shall comply with the sections of Kentucky Revised Statutes, Chapter 337 relating to contracts for Public Works.

Revised 2-16-95

## EXECUTIVE BRANCH CODE OF ETHICS

In the 1992 regular legislative session, the General Assembly passed and Governor Brereton Jones signed Senate Bill 63 (codified as KRS 11A), the Executive Branch Code of Ethics, which states, in part:

KRS 11A.040 (6) provides:

No present or former public servant shall, within six (6) months of following termination of his office or employment, accept employment, compensation or other economic benefit from any person or business that contracts or does business with the state in matters in which he was directly involved during his tenure. This provision shall not prohibit an individual from returning to the same business, firm, occupation, or profession in which he was involved prior to taking office or beginning his term of employment, provided that, for a period of six (6) months, he personally refrains from working on any matter in which he was directly involved in state government. This subsection shall not prohibit the performance of ministerial functions, including, but not limited to, filing tax returns, filing applications for permits or licenses, or filing incorporation papers.

KRS 11A.040 (8) states:

A former public servant shall not represent a person in a matter before a state agency in which the former public servant was directly involved, for a period of one (1) year after the latter of:

- a) The date of leaving office or termination of employment; or
- b) The date the term of office expires to which the public servant was elected.

This law is intended to promote public confidence in the integrity of state government and to declare as public policy the idea that state employees should view their work as a public trust and not as a way to obtain private benefits.

If you have worked for the executive branch of state government within the past six months, you may be subject to the law's prohibitions. The law's applicability may be different if you hold elected office or are contemplating representation of another before a state agency.

Also, if you are affiliated with a firm which does business with the state and which employs former state executive-branch employees, you should be aware that the law may apply to them.

In case of doubt, the law permits you to request an advisory opinion from the Executive Branch Ethics Commission, Room 136, Capitol Building, 700 Capitol Avenue, Frankfort, Kentucky 40601; telephone (502) 564-7954.

### **Kentucky Equal Employment Opportunity Act of 1978**

The requirements of the Kentucky Equal Employment Opportunity Act of 1978 (KRS 45.560-45.640) shall apply to this Contract. The apparent low Bidder will be required to submit EEO forms to the Division of Construction Procurement, which will then forward to the Finance and Administration Cabinet for review and approval. No award will become effective until all forms are submitted and EEO/CC has certified compliance. The required EEO forms are as follows:

- EEO-1: Employer Information Report
- Affidavit of Intent to Comply
- Employee Data Sheet
- Subcontractor Report

These forms are available on the Finance and Administration's web page under ***Vendor Information, Standard Attachments and General Terms*** at the following address:  
**<https://www.eProcurement.ky.gov>**.

Bidders currently certified as being in compliance by the Finance and Administration Cabinet may submit a copy of their approval letter in lieu of the referenced EEO forms.

For questions or assistance please contact the Finance and Administration Cabinet by email at **[finance.contractcompliance@ky.gov](mailto:finance.contractcompliance@ky.gov)** or by phone at 502-564-2874.

KENTUCKY LABOR CABINET  
PREVAILING WAGE DETERMINATION  
CURRENT REVISION  
HIGHWAY CONSTRUCTION LOCALITY NO. II

Determination No. CR-11-II-HWY

Project No.  
Highway

Date of Determination: August 4, 2011

This schedule of the prevailing rate of wages for Locality No. II including the counties of ADAIR, BARREN, BELL, BREATHITT, CASEY, CLAY, CLINTON, CUMBERLAND, ESTILL, FLOYD, GARRARD, GREEN, HARLAN, HART, JACKSON, JOHNSON, KNOTT, KNOX, LAUREL, LAWRENCE, LEE, LESLIE, LETCHER, LINCOLN, MCCREARY, MAGOFFIN, MARTIN, MENIFEE, METCALFE, MONROE, MORGAN, OWSLEY, PERRY, PIKE, POWELL, PULASKI, ROCKCASTLE, RUSSELL, TAYLOR, WAYNE, WHITLEY, and WOLFE has been determined in accordance with the provisions of KRS 337.505 to 337.550. This determination shall be referred to as Prevailing Wage Determination No. CR-11-II-HWY.

The following schedule of rates is to be used for highway construction projects advertised or awarded by the Kentucky Transportation Cabinet. This includes any contracts for the relocation of any utilities or other incidental construction projects advertised or awarded by public authorities as a result of the highway construction project.

Apprentices or trainees shall be permitted to work in accordance with Administrative Regulations adopted by the Commissioner of the Department of Workplace Standards. Copies of these regulations will be furnished upon request to any interested person.

Overtime is to be computed at not less than one and one-half (1 1/2) times the indicated BASE RATE for all hours worked in excess of eight (8) hours per day, or in excess of forty (40) hours per week. However, KRS 337.540 permits an employee and employer to agree, in writing, that the employee will be compensated at a straight time base rate for hours worked in excess of eight (8) hours in any one calendar day, but not more than ten (10) hours worked in any one calendar day, if such written agreement is prior to the over eight (8) hours in a calendar day actually being worked, or where provided for in a collective bargaining agreement. The fringe benefit rate is to be paid for each hour worked at a straight time rate for all hours worked. Fringe benefit amounts are applicable for all hours worked except when otherwise noted. Welders will receive rate for craft in which welding is incidental.

No laborer, workman or mechanic shall be paid at a rate less than that of the General Laborer except those classified as bona fide apprentices registered with the Kentucky State Apprenticeship Supervisor unless otherwise specified in this schedule of wage rates.

  
Michael Donta, Deputy Commissioner  
Department of Workplace Standards

**CLASSIFICATIONS****RATE AND FRINGE BENEFITS****BOILERMAKERS:**

BASE RATE	\$24.65
FRINGE BENEFIT	12.94

**BRICKLAYERS:**

Bricklayers:

BASE RATE	\$22.90
FRINGE BENEFITS	8.50

Stone Mason:

BASE RATE	\$21.50
FRINGE BENEFITS	8.50

**CARPENTERS:**

Carpenters:

BASE RATE	\$22.40
FRINGE BENEFITS	8.75

Piledrivers:

BASE RATE	\$22.05
FRINGE BENEFITS	8.75

**CEMENT MASONS:**

BASE RATE	\$21.25
FRINGE BENEFITS	8.50

**ELECTRICIANS:**

*BASE RATE	\$29.36
FRINGE BENEFITS	10.55

\*When workmen are required to work from bosum chairs, trusses, stacks, tanks, scaffolds, catwalks, radio and T.V. towers, structural steel (open, unprotected, unfloored raw steel), and bridges or similar hazardous locations where workmen are subject to a direct fall, except where using JLG's and bucket trucks up to 75 feet: Add 25% to workman's base rate for 50 to 75 feet, and add 50% to workman's base rate for over 75 feet.

LINEMAN:

*BASE RATE	\$30.09
FRINGE BENEFITS	10.94

EQUIPMENT OPERATOR:

*BASE RATE	\$26.90
FRINGE BENEFITS	10.31

GROUNDSMAN:

*BASE RATE	\$17.79
FRINGE BENEFITS	8.51

**IRONWORKERS:**

BASE RATE	\$ 25.77
FRINGE BENEFITS	18.54

CLASSIFICATIONSRATE AND FRINGE BENEFITS**LABORERS:**

General laborer, flagman, steam jenny:	BASE RATE	\$20.84
	FRINGE BENEFITS	8.75
Batch truck dumper, deck hand or scow man, hand blade operator:	BASE RATE	\$20.84
	FRINGE BENEFITS	8.75
Power driven tool operator of the following: wagon drill, chain saw, sand blaster, concrete chipper, pavement breaker, vibrator, power wheelbarrow, power buggy, sewer pipe layer, bottom men, dry cement handler, concrete rubber, mason tender:	BASE RATE	\$21.09
	FRINGE BENEFITS	8.75
Asphalt lute and rakerman, side rail setter:	BASE RATE	\$21.14
	FRINGE BENEFITS	8.75
Gunnite nozzle man, gunnite operator:	BASE RATE	\$21.14
	FRINGE BENEFITS	8.75
Tunnel laborer (free air):	BASE RATE	\$21.14
	FRINGE BENEFITS	8.75
Tunnel mucker (free air):	BASE RATE	\$21.74
	FRINGE BENEFITS	8.75
Tunnel miner, blaster and driller (free air):	BASE RATE	\$21.74
	FRINGE BENEFITS	8.75
Caisson worker:	BASE RATE	\$21.74
	FRINGE BENEFITS	8.75
Powderman:	BASE RATE	\$21.44
	FRINGE BENEFITS	8.75
Drill operator of percussion type drills which are both powered and propelled by an independent air supply:	BASE RATE	\$22.64
	FRINGE BENEFITS	8.75

---



**CLASSIFICATIONS****RATE AND FRINGE BENEFITS****OPERATING ENGINEERS:****Group A:**

Auto patrol, batcher plant, bituminous paver, cable-way, clamshell, concrete mixer (21 cu. ft. or over), concrete pump, crane, crusher plant, derrick, derrick boat, ditching and trenching machine, dragline, dredge engineer, elevator (regardless of ownership when used for hoisting any building material), elevating grader and all types of loaders, hoe-type machine, hoisting engine, locomotive, LeTourneau or carry-all scoop, bulldozer, mechanic, orangepeel bucket, piledriver, power blade, roller (bituminous), roller (earth), roller (rock), scarifier, shovel, tractor shovel, truck crane, well points, winch truck, push dozer, grout pump, high lift, fork lift (regardless of lift height), all types of boom cats, multiple operator, core drill, tow or push boat, A-Frame winch truck, concrete paver, gradeall, hoist, hyster, material pump, pumpcrete, ross carrier, sheepfoot, sideboom, throttle-valve man, rotary drill, power generator, mucking machine, rock spreader attached to equipment, scoopmobile, KeCal loader, tower cranes (French, German and other types), hydrocrane, tugger, backfiller guries, self-propelled compactor, self-contained hydraulic percussion drill:

BASE RATE	\$23.80
FRINGE BENEFITS	8.75

**Group B:**

All air compressors (200 cu. ft. per min. or greater capacity), bituminous mixer, concrete mixer (under 21 cu. ft.), welding machine, form grader, tractor (50 H.P. and over), bull float, finish machine, outboard motor boat, brakeman, mechanic helper, whirly oiler, tractair and road widening trencher, articulating trucks:

BASE RATE	\$21.55
FRINGE BENEFITS	8.75

**Group B2:**

Greaser on grease facilities servicing heavy equipment:

BASE RATE	\$21.90
FRINGE BENEFITS	8.75

**Group C:**

Bituminous distributor, cement gun, conveyor, mud jack, paving joint machine, pump, tamping machine, tractors (under 50 H.P.), vibrator, oiler, air compressors (under 200 cu. ft. per min. capacity), concrete saw, burlap and curing machine, hydro seeder, power form handling equipment, deckhand oiler, hydraulic post driver:

BASE RATE	\$21.31
FRINGE BENEFITS	8.75

---

**PAINTERS:**

All Excluding Bridges:

BASE RATE	\$19.92
FRINGE BENEFITS	9.57

Bridges:

BASE RATE	\$23.92
FRINGE BENEFITS	10.07

---

<u>CLASSIFICATIONS</u>	<u>RATE AND FRINGE BENEFITS</u>	
<b>PLUMBERS:</b>	BASE RATE	\$22.52
	FRINGE BENEFITS	7.80
<hr/>		
<b>SHEET METAL:</b>	BASE RATE	\$20.40
	FRINGE BENEFITS	7.80
<hr/>		
<b>TRUCK DRIVERS:</b>		
Truck helper and warehouseman:	BASE RATE	\$21.10
	FRINGE BENEFITS	8.75
Driver, winch truck and A-Frame when used in transporting materials:	BASE RATE	\$21.46
	FRINGE BENEFITS	8.75
Driver, (semi-trailer or pole trailer), driver (dump truck, tandem axle), driver of distributor:	BASE RATE	\$21.45
	FRINGE BENEFITS	8.75
Driver on mixer trucks (all types):	BASE RATE	\$21.45
	FRINGE BENEFITS	8.75
Truck mechanic:	BASE RATE	\$21.38
	FRINGE BENEFITS	8.75
Driver (3 tons and under), tire changer and truck mechanic helper:	BASE RATE	\$21.15
	FRINGE BENEFITS	8.75
Driver on pavement breakers:	BASE RATE	\$21.46
	FRINGE BENEFITS	8.75
Driver (over 3 tons), driver (truck mounted rotary drill):	BASE RATE	\$21.45
	FRINGE BENEFITS	8.75
Driver, Euclid and other heavy earth moving equipment and Low Boy:	BASE RATE	\$21.46
	FRINGE BENEFITS	8.75
Greaser on greasing facilities:	BASE RATE	\$21.15
	FRINGE BENEFITS	8.75

ERRATUM

Refer to the Locality Number and Determination Number listed below published by the Kentucky Labor Cabinet, Division of Employment Standards, Apprenticeship and Mediation dated August 4, 2011.

Locality: Highway Construction Locality No. II, including the following counties: Adair, Barren, Breathitt, Casey, Clay, Clinton, Cumberland, Estill, Floyd, Garrard, Green, Harlan, Hart, Jackson, Johnson, Knott, Knox, Laurel, Lawrence, Lee, Leslie, Letcher, Lincoln, McCreary, Magoffin, Martin, Menifee, Metcalfe, Monroe, Morgan, Owsley, Perry, Pike, Powell, Pulaski, Rockcastle, Russell, Taylor, Wayne, Whitley and Wolfe.

Determination Number: CR-II-II-HWY

---

**DELETE:**

Ironworkers	BASE RATE	\$25.77
	FRINGE BENEFIT	18.54

**INSERT:**

Ironworker (Structural)	BASE RATE	\$22.50
	FRINGE BENEFIT	8.75

Ironworker (Reinforcing)	BASE RATE	\$22.30
	FRINGE BENEFIT	8.75

---



Michael L. Dixon, Commissioner  
Department of Workplace Standards  
Kentucky Labor Cabinet  
Frankfort, KY 40601

This 8<sup>th</sup> day of November, 2011.

ERRATUM

Refer to the Locality Number and Determination Number listed below published by the Kentucky Labor Cabinet, Division of Employment Standards, Apprenticeship and Mediation dated August 4, 2011.

Locality: Highway Construction Locality No. II, including the following counties: Adair, Barren, Breathitt, Casey, Clay, Clinton, Cumberland, Estill, Floyd, Garrard, Green, Harlan, Hart, Jackson, Johnson, Knott, Knox, Laurel, Lawrence, Lee, Leslie, Letcher, Lincoln, McCreary, Magoffin, Martin, Menifee, Metcalfe, Monroe, Morgan, Owsley, Perry, Pike, Powell, Pulaski, Rockcastle, Russell, Taylor, Wayne, Whitley and Wolfe.

Determination Number: CR-II-II-HWY

**DELETE:**

Ironworker (Structural)	BASE RATE	\$22.50
	FRINGE BENEFIT	8.75
Ironworker (Reinforcing)	BASE RATE	\$22.30
	FRINGE BENEFIT	8.75

**INSERT:**

Ironworkers	BASE RATE	\$25.77
	FRINGE BENEFIT	18.54

---

  
Michael L. Dixon, Commissioner  
Department of Workplace Standards  
Kentucky Labor Cabinet  
Frankfort, KY 40601

This 4<sup>TH</sup> day of May, 2012.

### **Kentucky Determination No. CR-11-II-HWY dated August 04, 2011**

Fringe benefit amounts are applicable for all hours worked except when otherwise noted.

No laborer, workman or mechanic shall be paid at a rate less than that of the General Laborer except those classified as bona fide apprentices registered with the Kentucky State Apprenticeship Supervisor unless otherwise specified in this schedule of wage rates.

These rates are listed pursuant to the Kentucky Determination No. CR-11-II HWY dated August 04, 2011, erratum dated November 8, 2011, and erratum dated May 4, 2012. Apprentices or trainees shall be permitted to work as such subject to Administrative Regulations adopted by the Commissioner of Workplace Standards. Copies of these regulations will be furnished upon request from any interested person.

Before using apprentices on the job the contractor shall present to the Contracting Officer written evidence of registration of such employees in a program of a State apprenticeship and training agency approved and recognized by the U. S. Bureau of Apprenticeship and Training. In the absence of such a State agency, the contractor shall submit evidence of approval and registration by the U. S. Bureau of Apprenticeship and Training.

The contractor shall submit to the Contracting Officer, written evidence of the established apprenticeship-journeyman ratios and wage rates in the project area, which will be the basis for establishing such ratios and rates for the project under the applicable contract provisions.

**Kentucky Determination No. CR-11-II-HWY dated August 04, 2011**

**TO: EMPLOYERS/EMPLOYEES**

**PREVAILING WAGE SCHEDULE:**

The wages indicated on this wage schedule are the least permitted to be paid for the occupations indicated. When an employee works in more than one classification, the employer must record the number of hours worked in each classification at the prescribed hourly base rate.

**OVERTIME:**

Overtime is to be paid after an employee works eight (8) hours a day or forty (40) hours a week, whichever gives the employee the greater wages. At least time and one-half the base rate is required for all overtime. A laborer, workman or mechanic and an employer may enter into a written agreement or a collective bargaining agreement to work more than eight (8) hours a calendar day but not more than ten (10) hours a calendar day for the straight time hourly rate.

Wage violations or questions should be directed to the designated Engineer or to the undersigned.

Ryan Griffith, Director  
Division of Construction Procurement  
Frankfort, Kentucky 40622

## **PART IV**

## **INSURANCE**

## INSURANCE

The Contractor shall procure and maintain the following insurance in addition to the insurance required by law:

- 1) Commercial General Liability-Occurrence form – not less than \$2,000,000 General aggregate, \$2,000,000 Products & Completed Aggregate, \$1,000,000 Personal & Advertising, \$1,000,000 each occurrence.
- 2) Automobile Liability- \$1,000,000 per accident
- 3) Employers Liability:
  - a) \$100,000 Each Accident Bodily Injury
  - b) \$500,000 Policy limit Bodily Injury by Disease
  - c) \$100,000 Each Employee Bodily Injury by Disease
- 4) The insurance required above must be evidenced by a Certificate of Insurance and this Certificate of Insurance must contain one of the following statements:
  - a) "policy contains no deductible clauses."
  - b) "policy contains \_\_\_\_\_ (amount) deductible property damage clause but company will pay claim and collect the deductible from the insured."
- 5) KENTUCKY WORKMEN'S COMPENSATION INSURANCE. The contractor shall furnish evidence of coverage of all his employees or give evidence of self-insurance by submitting a copy of a certificate issued by the Workmen's Compensation Board.

The cost of insurance is incidental to all contract items. All subcontractors must meet the same minimum insurance requirements.



**PART V**

**BID ITEMS**

CONTRACT ID: 122418  
COUNTY: KNOX  
PROPOSAL: 061GR12P093-FE01

PAGE: 1  
LETTING: 06/15/12  
CALL NO: 408

LINE NO	ITEM	DESCRIPTION	APPROXIMATE UNIT QUANTITY	UNIT PRICE	AMOUNT
SECTION 0001 ROADWAY					
0010	01987	DELINEATOR FOR GUARDRAIL BI DIRECTIONAL	HITE 342.000 EACH		
0020	02351	GUARDRAIL-STEEL W BEAM-S FACE	9,875.000 LF		
0030	02360	GUARDRAIL TERMINAL SECTION NO 1	29.000 EACH		
0040	02367	GUARDRAIL END TREATMENT TYPE 1	140.000 EACH		
0050	02381	REMOVE GUARDRAIL	9,762.500 LF		
0060	02396	REMOVE GUARDRAIL END TREATMENT	146.000 EACH		
0070	02399	EXTRA LENGTH GUARDRAIL POST	134.000 EACH		
0080	02562	SIGNS	1,510.000 SQFT		
0090	02650	MAINTAIN & CONTROL TRAFFIC KY 11	( 1.00) LS		
0100	02650	MAINTAIN & CONTROL TRAFFIC KY 1232	( 1.00) LS		
0110	02650	MAINTAIN & CONTROL TRAFFIC KY 225	( 1.00) LS		
0120	02650	MAINTAIN & CONTROL TRAFFIC KY 229	( 1.00) LS		
0130	02650	MAINTAIN & CONTROL TRAFFIC KY 6	( 1.00) LS		
SECTION 0002 DEMOBILIZATION					
0140	02569	DEMOBILIZATION (AT LEAST 1.5%)	LUMP		
		TOTAL BID			