



CALL NO. 405

CONTRACT ID. 212284

PIKE COUNTY

FED/STATE PROJECT NUMBER 098GR21P076-FD51

DESCRIPTION KY 1441, KY 1469, KY 2061, KY 3226, KY 3414, KY 3415

WORK TYPE FLOOD REPAIR FOR FEMA

PRIMARY COMPLETION DATE 6/30/2022

LETTING DATE: July 23,2021

Sealed Bids will be received electronically through the Bid Express bidding service until 10:00 am EASTERN DAYLIGHT TIME July 23,2021. Bids will be publicly announced at 10:00 am EASTERN DAYLIGHT TIME.

NO PLANS ASSOCIATED WITH THIS PROJECT.

REQUIRED BID PROPOSAL GUARANTY: Not less than 5% of the total bid.

TABLE OF CONTENTS

PART I	SCOPE OF WORK <ul style="list-style-type: none">• PROJECT(S), COMPLETION DATE(S), & LIQUIDATED DAMAGES• CONTRACT NOTES• STATE CONTRACT NOTES• SPECIAL NOTE(S) APPLICABLE TO PROJECT• WASTE AND BORROW SITES• COORDINATION OF WORK WITH OTHER CONTRACTS• SHOULDER PREPARATION• GUARDRAIL• TRAFFIC CONTROL PLAN• EROSION CONTROL PLAN FOR MAINTENANCE PROJECTS• SKETCH MAP(S)• MATERIAL SUMMARY• SUMMARY SHEET(S)• DETAIL SHEET(S)• DETAIL SHEETS FOR SLIDE REPAIR
PART II	SPECIFICATIONS AND STANDARD DRAWINGS <ul style="list-style-type: none">• SPECIFICATIONS REFERENCE• SUPPLEMENTAL SPECIFICATION• STANDARD DRAWINGS THAT APPLY
PART III	EMPLOYMENT, WAGE AND RECORD REQUIREMENTS <ul style="list-style-type: none">• LABOR AND WAGE REQUIREMENTS• EXECUTIVE BRANCH CODE OF ETHICS• KENTUCKY EQUAL EMPLOYMENT OPPORTUNITY ACT OF 1978 LOCALITY / STATE• PROJECT WAGE RATES / STATE FUNDED
PART IV	INSURANCE
PART V	BID ITEMS

PART I
SCOPE OF WORK

ADMINISTRATIVE DISTRICT - 12

CONTRACT ID - 212284
098GR21P076-FD51
COUNTY - PIKE
PCN - MP09814412101
FD51 098 1441 000-006

POMPAY MOUNTAIN ROAD (KY 1441) (MP 5.086) FROM 0.203 MILES SOUTH OF COAL RIDGE ROAD EXTENDING NORTH TO 0.597 MILES SOTH OF KY 3418 (MP 5.934), A DISTANCE OF 0.85 MILES.FLOOD REPAIR FOR FEMA
GEOGRAPHIC COORDINATES LATITUDE 37:27:42.00 LONGITUDE 82:25:21.00

PCN - MP09814692101
FD51 098 1469 008-011

LONG FORK ROAD (KY 1469) FROM 250 FEET EAST OF HAMPTON ROAD EXTENDING EAST TO 160 FEET EAST OF OLD LONG FORK ROAD CONNECTOR, A DISTANCE OF 02.72 MILES.FLOOD REPAIR FOR FEMA
GEOGRAPHIC COORDINATES LATITUDE 37:33:38.00 LONGITUDE 82:15:48.00

PCN - MP09820612101
FD51 098 2061 002-004

COWPEN ROAD (KY 2061) (MP 2.005) FROM 0.122 MILES SOUTH OF ADKINS LANE EXTENDING NORTY TO 0.258 MILES SOUTH OF KY 3218 (MP 3.377), A DISTANCE OF 01.37 MILES.FLOOD REPAIR FOR FEMA
GEOGRAPHIC COORDINATES LATITUDE 37:33:22.00 LONGITUDE 82:33:01.00

PCN - MP09832262101
FD51 098 3226 001-004

GREASY CREEK ROAD (KY 3226) (MP 1.063) FROM 0.625 MILES WEST OF GILLESPI BRANCH EXTENDING EAST TO 0.155 MILES WEST OF RAILROAD STREET (MP 3.042), A DISTANCE OF 01.98 MILES.FLOOD REPAIR FOR FEMA
GEOGRAPHIC COORDINATES LATITUDE 37:24:21.00 LONGITUDE 82:28:07.00

PCN - MP09834142101
FD51 098 3414 003-004

LEFT FORK OF LONG FORK ROAD (KY 3414) (MP 3.058) FROM 1.34 MILES WEST OF PETTY FORK EXTENDING EAST TO 0.34 MILES WEST OF KY 1459 (MP 3.066), A DISTANCE OF 0.01 MILES.FLOOD REPAIR FOR FEMA
GEOGRAPHIC COORDINATES LATITUDE 37:17:30.00 LONGITUDE 82:39:30.00

PCN - MP09834152101
FD51 098 3415 003-004

LITTLE ROBINSON CREEK ROAD (KY 3415) (MP 0.192) FROM 200 FFET NORTH OF LITTLE ROBINSON CREEK BOTTOM EXTENDING NORTH TO 300 FEET NORTH OF LITTLE ROBINSON CREEK BOTTOM (MP 0.212), A DISTANCE OF 0.02 MILES.FLOOD REPAIR FOR FEMA
GEOGRAPHIC COORDINATES LATITUDE 37:22:12.00 LONGITUDE 82:35:07.00

COMPLETION DATE(S):

COMPLETED BY 06/30/2022

SPECIFIED COMLETION DATE - ALL
ITEMS IN CONTRACT

CONTRACT NOTES

PROPOSAL ADDENDA

All addenda to this proposal must be applied when calculating bid and certified in the bid packet submitted to the Kentucky Department of Highways. Failure to use the correct and most recent addenda may result in the bid being rejected.

BID SUBMITTAL

Bidder must use the Department's electronic bidding software. The Bidder must download the bid file located on the Bid Express website (www.bidx.com) to prepare a bid packet for submission to the Department. The bidder must submit electronically using Bid Express.

JOINT VENTURE BIDDING

Joint venture bidding is permissible. All companies in the joint venture must be prequalified in one of the work types in the Qualifications for Bidders for the project. The bidders must get a vendor ID for the joint venture from the Division of Construction Procurement and register the joint venture as a bidder on the project. Also, the joint venture must obtain a digital ID from Bid Express to submit a bid. A joint bid bond of 5% may be submitted for both companies or each company may submit a separate bond of 5%.

UNDERGROUND FACILITY DAMAGE PROTECTION

The contractor shall make every effort to protect underground facilities from damage as prescribed in the Underground Facility Damage Protection Act of 1994, Kentucky Revised Statute KRS 367.4901 to 367.4917. It is the contractor's responsibility to determine and take steps necessary to be in compliance with federal and state damage prevention directives. When prescribed in said directives, the contractor shall submit Excavation Locate Requests to the Kentucky Contact Center (KY811) via web ticket entry. The submission of this request does not relieve the contractor from the responsibility of contacting non-member facility owners, whom shall be contacted through their individual Protection Notification Center. Non-compliance with these directives can result in the enforcement of penalties.

REGISTRATION WITH THE SECRETARY OF STATE BY A FOREIGN ENTITY

Pursuant to KRS 176.085(1)(b), an agency, department, office, or political subdivision of the Commonwealth of Kentucky shall not award a state contract to a person that is a foreign entity required by [KRS 14A.9-010](#) to obtain a certificate of authority to transact business in the Commonwealth ("certificate") from the Secretary of State under [KRS 14A.9-030](#) unless the person produces the certificate within fourteen (14) days of the bid or proposal opening. If the foreign entity is not required to obtain a certificate as provided in [KRS 14A.9-010](#), the foreign entity should identify the applicable exception. Foreign entity is defined within [KRS 14A.1-070](#).

For all foreign entities required to obtain a certificate of authority to transact business in the Commonwealth, if a copy of the certificate is not received by the contracting agency within the time frame identified above, the foreign entity's solicitation response shall be deemed non-responsive or the awarded contract shall be cancelled.

Businesses can register with the Secretary of State at <https://secure.kentucky.gov/sos/ftbr/welcome.aspx>.

SPECIAL NOTE FOR PROJECT QUESTIONS DURING ADVERTISEMENT

Questions about projects during the advertisement should be submitted in writing to the Division of Construction Procurement. This may be done by fax (502) 564-7299 or email to kytc.projectquestions@ky.gov. The Department will attempt to answer all submitted questions. The Department reserves the right not to answer if the question is not pertinent or does not aid in clarifying the project intent.

The deadline for posting answers will be 3:00 pm Eastern Daylight Time, the day preceding the Letting. Questions may be submitted until this deadline with the understanding that the later a question is submitted, the less likely an answer will be able to be provided.

The questions and answers will be posted for each Letting under the heading "Questions & Answers" on the Construction Procurement website (www.transportation.ky.gov/contract). The answers provided shall be considered part of this Special Note and, in case of a discrepancy, will govern over all other bidding documents.

HARDWOOD REMOVAL RESTRICTIONS

The US Department of Agriculture has imposed a quarantine in Kentucky and several surrounding states, to prevent the spread of an invasive insect, the emerald ash borer. Hardwood cut in conjunction with the project may not be removed from the state. Chipping or burning on site is the preferred method of disposal.

INSTRUCTIONS FOR EXCESS MATERIAL SITES AND BORROW SITES

Identification of excess material sites and borrow sites shall be the responsibility of the Contractor. The Contractor shall be responsible for compliance with all applicable state and federal laws and may wish to consult with the US Fish and Wildlife Service to seek protection under Section 10 of the Endangered Species Act for these activities.

ACCESS TO RECORDS

The contractor, as defined in KRS 45A.030 (9) agrees that the contracting agency, the Finance and Administration Cabinet, the Auditor of Public Accounts, and the Legislative Research Commission, or their duly authorized representatives, shall have access to any books, documents, papers, records, or other evidence, which are directly pertinent to this contract for the purpose of financial audit or program review. Records and other prequalification information confidentially

disclosed as part of the bid process shall not be deemed as directly pertinent to the contract and shall be exempt from disclosure as provided in KRS 61.878(1)(c). The contractor also recognizes that any books, documents, papers, records, or other evidence, received during a financial audit or program review shall be subject to the Kentucky Open Records Act, KRS 61.870 to 61.884.

In the event of a dispute between the contractor and the contracting agency, Attorney General, or the Auditor of Public Accounts over documents that are eligible for production and review, the Finance and Administration Cabinet shall review the dispute and issue a determination, in accordance with Secretary's Order 11-004.

April 30, 2018

SPECIAL NOTE FOR RECIPROCAL PREFERENCE

RECIPROCAL PREFERENCE TO BE GIVEN BY PUBLIC AGENCIES TO RESIDENT BIDDERS

By reference, KRS 45A.490 to 45A.494 are incorporated herein and in compliance regarding the bidders residency. Bidders who want to claim resident bidder status should complete the Affidavit for Claiming Resident Bidder Status along with their bid in the electronic bidding software. Submittal of the Affidavit should be done along the bid in Bid Express.

April 30, 2018

SPECIAL NOTE FOR MARKING REPAIR LOCATIONS

There is ample information in this proposal for the sites in this Contract to be located in the field by potential contractors. Make a thorough inspection of the site prior to submitting a bid and be thoroughly familiar with the existing conditions so that the work can be expeditiously performed after a contract is awarded. The Department will consider submission of a bid evidence of this inspection having been made.

The Department will not provide additional markings in the field before the letting date.

SPECIAL NOTES FOR SLIDE REPAIR DRILLED RAILROAD RAILS

I. DESCRIPTION

Except as provided herein, perform all work in accordance with the Department's 2019 Standard and Supplemental Specifications, Special Provisions and Special Notes, and Standard and Sepia Drawings, current editions. Article references are to the Standard Specifications. Perform the following work:

- (1) Maintain and Control Traffic; (2) Site Preparation and Erosion Control; (3) Excavation; (4) Furnish and install Drilled Railroad Rails; (5) Furnish and install wall cribbing; (6) Furnish and install geotextile fabric and backfill the cribbed railroads rails; (7) Reconstruct shoulders; (8) Furnish and install guardrail; (9) Remove and reset guardrail; (9) Staking; (10) Restoration and final dressing; and (11) All other work required by the contract.

II. MATERIALS & EQUIPMENT

Except as provided herein or as directed by the Engineer, the Department will sample and test all materials in accordance with the Department's Sampling Manual. Make the materials available for sampling a sufficient time in advance of the use of the materials to allow for the necessary time for testing unless otherwise specified in these Notes.

A. Maintain and Control Traffic. See Traffic Control Plan.

B. Erosion Control. See Special Note for Erosion Control.

C. Railroad Rails. Furnish new or recycled used railroad rails classified with a nominal weight of 132 lb/yd or greater. Use only visibly straight recycled railroad rails with no splices. The Engineer will verify rail nominal weights by manufacturer's stamp. Provide Certification for nominal weight if the manufacturer's stamp is unidentifiable.

D. Wall Cribbing. Furnish Steel "W" Beam Guardrail elements, new or used, in 12.5 foot lengths. Use only structurally sound and rust free straight elements. The Engineer will use visual inspection to determine acceptability. The Engineer may approve other material deemed capable of permanently restraining the granular backfill.

E. Backfill Material for Drilled Sockets. Furnish the following for backfill material for drilled sockets: concrete; free flowing sand; pea gravel; crushed limestone; or crushed sandstone. Use backfill material with one hundred percent (100%) passing a one-half (1/2) inch sieve. Do not use auger tailings. The Engineer will use visual inspection and/or material testing, as applicable to determine acceptability.

Special Note for Slide Repair
Page 2 of 6

F. Backfill for Crib Wall. Furnish Crushed Limestone Size No. 2 or Size No. 23 meeting the requirements of Section 805. The Engineer will use visual inspection and/or material testing to determine acceptability.

G. Seeding and Protection. Furnish Seed Mixture No. 1. See Special Note for Erosion Control.

H. Geotextile Fabric. Furnish Geotextile Fabric Class 2 according to Section 843.

I. Guardrail. See Special Note for Guardrail.

J. Offset Drill. Use a truck or track mounted drill capable of drilling a 9-5/8 to 12 inch diameter hole as required by the railroad rails diameter in soil and rock, capable of installing railroad steel up to forty (40) feet in length and weighing up to 140 lbs. per linear yard minimum. Equip the drill with rigging to lift entire lengths of rail and place and seat in the bottom of drilled holes. The drill must be capable of drilling and installing railroad rails in a double or triple row arrangement if necessary (see Figure 3). Drill must be capable to reach out (offset) a minimum of 6 (six) feet from side of drill carrier vehicle to center of drilled hole and be capable of installing the drilled steel a minimum of 4 feet from paved shoulder. Drill rig configuration should minimize protruding into opposing lane of traffic, allowing opposite lane of traffic to remain open as much as possible.

III. CONSTRUCTION METHODS

A. Maintain and Control Traffic. See Traffic Control Plan.

B. Staking. See Special Note for Staking,

C. Erosion Control. See Special Note for Erosion Control.

D. Site Preparation. Be responsible for all site preparation, including but not limited to, clearing and grubbing, excavation, embankment, removal of trees and stumps, and removal of all obstructions or any other items; regrading, reshaping, adding and compacting of suitable materials on the existing shoulders to provide proper template or foundation for the guardrail; temporary pollution and erosion control; disposal, of excess and waste materials and debris; and final dressing, cleanup, and seeding and protection. The Department has not determined the area to be Cleared and Grubbed and the bidder must draw his own conclusions. If roadway signs are in the drilled areas, be responsible for removing, storing, protecting, and resetting the signs. Cover any remaining signs that are not applicable during construction. Replace signs damaged by Contractor's operations or negligence at no additional cost to the Department.

Special Note for Slide Repair
Page 3 of 6

E. Drilled Railroad Rails. See attached summary for site locations and estimated quantities of materials required. Contrary to the attached tables and drawings for drilled railroad rails, install only one (1) row of railroad rails on three (3) foot centers. The Department has not determined the depth to solid rock and the bidder must draw his own conclusions.

THE DEPARTMENT WILL ALLOW ABSOLUTELY NO CHANGE IN SCOPE OF WORK OR INCREASE IN QUANTITIES WITHOUT PRIOR WRITTEN APPROVAL FROM THE SECTION ENGINEER OR THE DISTRICT ENGINEER. THE DEPARTMENT WILL NOT BE LIABLE FOR PAYMENTS DUE TO UNAUTHORIZED ADDITIONAL WORK.

Install used railroad rail piling in drilled sockets in rock or stable material under the landslides (see Figure 1) or the eroded areas (see Figure 2) as project location dictates or as directed by the Engineer. Drill the socket and install the railroad rails into holes at slide locations. Drill sockets into solid rock, if possible. The Department will monitor each hole, which will serve as a sounding for the rail to be installed in it. Embed the railroad rail into solid rock no less than one-half the free end length of the rail (See figure 1 and figure 2). If solid rock cannot be obtained, the Engineer will determine the length of embedment required in other stable foundation. Allow adequate size of the drilled socket to allow free insertion of the railroad rail, but the maximum socket size is 1 foot in diameter.

After drilling each hole, immediately install railroad rail with the flanges positioned perpendicular to the direction of the landslide or break (see Figure 3, Case II and Case III). Determine the length of rail needed to reestablish pavement and shoulder typical section. Install rails into the drilled holes and seat the rail to provide firm bearing in the bottom of drilled holes. Cut off excess rail flush with the proposed ground line. Use cutoffs elsewhere in the project if possible; retain possession of unusable cutoffs.

After installing each railroad rail, immediately backfill the drilled hole with the approved materials. Shovel the backfill material into the hole in small amounts. Avoid bridging between the rail and the sides of the hole. Do not use auger tailings as backfill material.

If double or triple rows are required, when approved stagger the rows to obtain the required spacing. Keep the spacing between the rows of rails as close as is practical; do not space between the rows of more than two (2) feet, if possible. See Figure 3 Case II and Case III for the diagrams showing two (2) or three (3) rows of rails. Select the spacing as per Table 1 for all 132 pounds per yard rail or greater. The Department shall approve the selection prior to work being performed.

Special Note for Slide Repair
Page 4 of 6

F. Installation of Wall Cribbing. Crib any exposed portion of railroad rail before placing backfill. Install cribbing as shown on Figure 1 or Figure 2 and the typical section or as directed by the Engineer. Extend wall cribbing two (2) feet below the existing ground line or 12 feet below the proposed roadway elevation, whichever is deeper. If bedded rock is encountered, install the cribbing to the bedded rock only. Install wall cribbing on the railroad rail piling. Lap, bolt or weld, and attach cribbing solid to the drilled railroad rails. The Engineer may direct changes to these procedures.

G. Excavation and Backfill for Embankment Repair. Excavate each repair area as directed by the Engineer to provide a platform for drilling the used railroad rails; place cribbing and granular backfill; and excavation as necessary for slopes, ditches, shoulders, and drainage. Limit damage to or removal of the existing pavement. The Engineer may direct that the excavating equipment bucket size and width be adjusted to achieve the excavation minimizing damage to the pavement, utilities, drill steel, etc. After drilling, place geotextile fabric, and then backfill behind cribbed railroad rails. Construct backfill up to approximately four (4) inches below the existing pavement elevation. Place the backfill in lifts of two (2) feet or less in such a way as to limit settlement to the area and tamp with excavator bucket. Roll the final lift with excavation equipment to ensure the backfill is fully compacted.

The Department will prepare the shoulder with DGA up to the approximate existing pavement elevation and width of the surrounding typical section or to a minimum width of four (4) feet at each slide location. Do not pond water on the shoulder area or at the shoulder edge. Allow the Department to reconstruct the shoulder before installing guardrail. If required asphalt paving will be by others.

H. Guardrail. See Special Note for Guardrail.

I. Restoration, Final Dressing, Seeding and Protection. Do not use excavated spoil material from the site as fill material. Warp and tie slopes into adjacent undisturbed slopes and ditches. Provide positive drainage upon completion of construction. Apply Final Dressing Class A to all disturbed earthen areas, both on and off the right-of-way. Sow with Seed Mixture No. 1.

J. Disposal of Waste. Waste debris from tree and brush removal and excavation on the Right-of-Way at locations designate by the Engineer. Do not use excavation from the site as fill material or waste in flood prone areas or streams. If suitable locations do not exist dispose of the debris at sites off the Right-of-Way obtained by the Contractor at no additional cost to the Department. Dispose of all removed concrete and other waste and debris off the Right-of-Way at sites obtained by the Contractor at no additional cost to the Department. See Special Note for Waste and Borrow.

Special Note for Slide Repair
Page 5 of 6

K. On-Site Inspection. Make a thorough inspection of the site prior to submitting a bid and be thoroughly familiar with the existing conditions so that the work can be expeditiously performed after a contract is awarded. The Department will consider submission of a bid evidence of this inspection having been made.

L. Right of Way Limits. The Department has not established exact limits of the Right-of-Way. Limit work activities to obvious Right-of-Way, permanent or temporary easements, and work areas secured by the Department through consent and release of the adjacent property owners. Be responsible for all encroachments onto private lands.

M. Property Damage. Be responsible for all damage to public and/or private property resulting from the work. Restore damaged roadway features and private property at no additional cost to the Department.

N. Coordination with Utility Companies. Locate all underground, above ground and overhead utilities prior to beginning construction. Be responsible for contacting and maintaining liaison with all utility companies that have utilities located within the project limits. Do not disturb existing overhead or underground utilities. It is not anticipated that any utility facilities will need to be relocated and/or adjusted; however, in the event that it is discovered that the work does require that utilities be relocated and/or adjusted, the utility companies will work concurrently with the Contractor while relocating their facilities. Be responsible for repairing all utility damage that occurs as a result of the Contractor's operations at no additional cost to the Department.

O. Final Dressing, Clean Up, and Seeding and Protection. Apply Class A Final Dressing to all disturbed areas, both on and off the Right-of-Way. Sow all disturbed earthen areas according to the Special Note for Erosion Control.

IV. METHOD OF MEASUREMENT

A. Maintain and Control Traffic. See Traffic Control Plan.

B. Site Preparation. The Department will measure Site Preparation as a single Lump Sum for the sites listed for payment on the project. The Department will not measure Clearing and Grubbing, Final Dressing, Seeding and Protection, and Waste Disposal, but shall be incidental to Site Preparation.

C. Erosion Control. See Special Note for Erosion Control.

D. Railroad Rails-Drilled. The Department will measure Drilled Railroad Rails in Linear Feet of finished in-place length. The Department will not measure cutoffs, excess, and waste. If the Engineer determines from the sounding obtained at a drilled socket that railroad rail piling cannot be used in that socket, the Department will measure the depth of the socket, and 50% of the depth shall be paid as "Railroad Rails-Drilled".

Special Note for Slide Repair
Page 6 of 6

E. Wall Cribbing. The Department will measure Cribbing in square feet of finished in-place area. The Department will not measure laps, cutoffs, excess, and waste.

F. Geotextile Fabric Class 2. See Section 214.04. The Department will field measure the quantity in square yards of finished in place area. The Department will not measure laps, seams, cut offs, excess, or waste.

G. Excavation and Backfill. The Department will field measure Excavation and Backfill in cubic yards according to Section 204.04.08.

V. BASIS OF PAYMENT

A. Maintain and Control Traffic. See Traffic Control Plan.

B. Site Preparation. Accept payment at the Contract Lump Sum unit price as full compensation for all materials, labor, and equipment for all site preparation, including but not limited to, clearing and grubbing, excavation, embankment, and removal of all obstructions or any other items; disposal, of excess and waste materials and debris; and final dressing, cleanup, and seeding and protection.

C. Erosion Control. See Special Note for Erosion Control.

D. Railroad Rail-Drilled. Accept payment at the Contract unit price as full compensation for all materials, labor, equipment, and incidentals for drilling the socket, furnishing and installing the railroad rails, and backfilling the socket around the installed rail.

E. Wall Cribbing. Accept payment at the Contract unit price as full compensation for all materials, labor, equipment, and incidentals for furnishing, installing, and attaching the cribbing on the drilled railroad rails.

F. Geotextile Fabric Class 2. Accept payment at the Contract unit price as full compensation for all materials, labor, equipment, and incidentals for furnishing and installing the Geotextile Fabric.

G. Excavation and Backfill. Accept payment at the Contract unit price as full compensation for all materials, labor, equipment, and incidentals for excavating and backfilling the cribbed railroad rails.

SPECIAL NOTE FOR CONTRACTOR STAKING

Contrary to Section 201, perform only the following items:

1. Be responsible for field layout of the drilled railroad rails on designated spacing; and
2. Control the drilling and setting of the railroad rails to ensure the rails are plumb and installed at the designated spacing; and
3. Determine the height of rail that is needed to reestablish pavement and shoulder typical section and mark cut-offs; and
4. Establish proper slope elevations and ratios, shoulder widths, existing ditch profiles, and final ditch profiles to insure positive drainage during and upon completion of construction.

Except as provided herein, the Department will perform Staking.

Contrary to Section 201, the Department will not measure Contractor Staking for separate payment, but shall be incidental to the applicable items of the work.

SPECIAL PROVISION FOR WASTE AND BORROW SITES

Obtain U.S. Army Corps of Engineer's approval before utilizing a waste or borrow site that involves "Waters of the United States". The Corps of Engineers defines "Waters of the United States" as perennial or intermittent streams, ponds or wetlands. The Corps of Engineers also considers ephemeral streams, typically dry except during rainfall but having a defined drainage channel, to be jurisdictional waters. Direct questions concerning any potential impacts to "Waters of the United States" to the attention of the appropriate District Office for the Corps of Engineers for a determination prior to disturbance. Be responsible for any fees associated with obtaining approval for waste and borrow sites from the U.S. Army Corps of Engineer or other appropriate regulatory agencies.

1-296 Waste & Borrow Sites
01/02/2012

COORDINATION OF WORK WITH OTHERS

Be advised, there may be active project(s) adjacent to or within this project. These may be KYTC administered contracts, work being performed as part of a KYTC issued encroachment permit, or work being performed by Department forces. The Engineer will coordinate the work of any other Contractors, permit holders, or the Department's forces. See Sections 105.06, 107.06 and 107.14 of the 2019 Standard Specifications.

SPECIAL NOTE FOR SHOULDER PREPARATION

The Department will grade, shape, and compact the shoulder shown on the typical section to provide proper template and foundation for the guardrail.

SPECIAL NOTES FOR GUARDRAIL

I. DESCRIPTION

Except as specified herein, perform all work in accordance with the Department's 2019 Standard and Supplemental Specifications and Standard and Sepia Drawings, current editions. Article references are to the Standard Specifications.

Furnish all equipment, labor, materials, and incidentals for the following work items:

(1) Site preparation; (2) Remove existing guardrail systems; (3) Construct Guardrail; (4) Delineators for guardrail; (5) Maintain and control traffic; and (6) all other work specified as part of this contract.

II. MATERIALS

Except as specified herein, provide for all materials to be sampled and tested in accordance with the Department's Sampling Manual and make the materials available for sampling a sufficient time in advance of the use of the materials to allow for the necessary time for testing.

A. Maintain and Control Traffic. See Traffic Control Plan.

B. Guardrail. Furnish guardrail system components according to section 814 and the Standard and Sepia Drawings; except use steel posts only, no alternates.

C. Delineators for Guardrail. Furnish Delineators for Guardrail according to Standard Drawing RBR-055-01.

D. Erosion Control. See Special Notes for Erosion Control.

III. CONSTRUCTION METHODS

A. Maintain and Control Traffic. See Traffic Control Plan.

B. Site Preparation. Be responsible for all site preparation, including but not limited to, clearing and grubbing, excavation, embankment, and removal of all obstructions or any other items; regrading, reshaping, adding and compacting of suitable materials on the existing shoulders to provide proper template or foundation for the guardrail; filling voids left as the result of removing existing guardrail and guard posts with dry sand; temporary pollution and erosion control; disposal, of excess and waste materials and debris; and final dressing, cleanup, and seeding and protection. Perform all site preparation as approved or directed by the Engineer.

Guardrail

Page 2 of 4

C. Remove Guardrail. Remove existing guardrail as shown on the Summary or as directed by the Engineer according to Section 719.03.03 and 719.03.07, except take possession of all timber posts.

D. Remove and Reset Guardrail. Except as specified herein, remove and reset guardrail system according to Section 719 and the Standard and Sepia Drawings. Store and protect the guardrail until reset. Consider locations listed on the summary and/or shown on the drawings to be approximate only. The Engineer will determine the exact termini for individual guardrail installations at the time of construction. Unless directed otherwise by the Engineer, match the existing shoulder width.

Erect guardrail to the lines and grades shown on current Standard Drawings or as directed by the Engineer by any method approved by the Engineer which allows construction of the guardrail to the true grade without apparent sags.

When removing and resetting existing guardrail, do not leave the blunt end exposed where it would be hazardous to the public. When it is not practical to complete the construction of the guardrail and the permanent end treatments and terminal sections first, provide a temporary end by connecting at least 25 feet of rail to the last post, and by slightly flaring, and burying the end of the rail completely into the existing shoulder. If left overnight, place a drum with bridge panel in advance of the guardrail end and maintain during use.

E. Guardrail. Except as specified herein, construct guardrail system according to Section 719 and the Standard and Sepia Drawings. Consider locations listed on the summary and/or shown on the drawings to be approximate only. The Engineer will determine the exact termini for individual guardrail installations at the time of construction. Unless directed otherwise by the Engineer, match the existing shoulder width.

Erect guardrail to the lines and grades shown on current Standard Drawings or as directed by the Engineer by any method approved by the Engineer which allows construction of the guardrail to the true grade without apparent sags.

When removing installing new guardrail, do not leave the blunt end exposed where it would be hazardous to the public. When it is not practical to complete the construction of the guardrail and the permanent end treatments and terminal sections first, provide a temporary end by connecting at least 25 feet of rail to the last post, and by slightly flaring, and burying the end of the rail completely into the existing shoulder. If left overnight, place a drum with bridge panel in advance of the guardrail end and maintain during use.

F. Delineators for Guardrail. Install delineators for guardrail according to Standard Drawing RBR-055-01.

G. Property Damage. Be responsible for all damage to public and/or private property resulting from the work. Restore damaged roadway features and private property at no additional cost to the Department.

Guardrail
Page 3 of 4

H. Coordination with Utility Companies. Locate all underground, above ground and overhead utilities prior to beginning construction. Be responsible for contacting and maintaining liaison with all utility companies that have utilities located within the project limits. Do not disturb existing overhead or underground utilities. It is not anticipated that any utility facilities will need to be relocated and/or adjusted; however, in the event that it is discovered that the work does require that utilities be relocated and/or adjusted, the utility companies will work concurrently with the Contractor while relocating their facilities. Be responsible for repairing all utility damage that occurs as a result of guardrail operations at no additional cost to the Department.

I. Right of Way Limits. The Department has not established exact limits of the Right-of-Way. Limit work activities to obvious Right-of-Way, permanent or temporary easements, and work areas secured by the Department through consent and release of the adjacent property owners. Be responsible for all encroachments onto private lands.

J. Disposal of Waste. Dispose of all removed concrete, timber posts, and other waste and debris off the Right-of-Way at sites obtained by the Contractor at no additional cost to the Department. See Special; Note for Waste and Borrow.

K. Final Dressing, Clean Up, and Seeding and Protection. Apply Class A Final Dressing to all disturbed areas, both on and off the Right-of-Way. Sow all disturbed earthen areas according to the Special Notes for Erosion Control.

L. Erosion Control. See Special Notes for Erosion Control.

IV. METHOD OF MEASUREMENT

A. Maintain and Control Traffic. See Traffic Control Plan.

B. Site preparation. The Department will measure Site Preparation as one (1) Lump Sum.

C. Remove and Reset Guardrail. The department will measure removing, storing, protecting, and resetting guardrail in linear feet at the face of the rail.

D. Guardrail and Remove Guardrail. See Section 719.04.

E. Delineators for Guardrail. See Standard Drawing RBR-055-01.

F. Erosion Control. See Special Notes for Erosion Control.

Guardrail
Page 4 of 4

V. BASIS OF PAYMENT

A. Maintain and Control Traffic. See Traffic Control Plan.

B. Site Preparation. Accept payment at the Contract Lump Sum unit price as full compensation for all materials, labor, and equipment for all site preparation, including but not limited to, clearing and grubbing, excavation, embankment, and removal of all obstructions or any other items; disposal, of excess and waste materials and debris; and final dressing, cleanup, and seeding and protection.

C. Remove and Reset Guardrail. Accept payment at the Contract unit price as full compensation for all materials, labor, and equipment for removing, storing, protecting, and resetting guardrail.

D. Guardrail and Remove Guardrail. See Section 719.05.

E. Delineators for Guardrail. See Standard Drawing RBR-055-01.

F. Erosion Control. See Special Notes for Erosion Control.

TRAFFIC CONTROL PLAN FOR SLIDE CORRECTION

TRAFFIC CONTROL GENERAL

Except as specified herein, maintain and control traffic in accordance with the 2019 Standard and Supplemental Specifications, Special Notes and Special Provisions, and the Standard and Sepia Drawings, current editions. Except for the roadway and traffic control bid items listed, furnish all other items necessary to maintain and control traffic incidental to the Contract lump sum price Maintain and Control Traffic.

Contrary to Section 106.01, furnish new, or used in like new condition, traffic control devices, at the beginning of the work and maintain the devices in like new condition until completion of the work.

PROJECT PHASING & CONSTRUCTION PROCEDURES

At the discretion of the Engineer, the Department may specify days and hours when lane or shoulder closures will not be allowed. Prior to beginning work at each site, provide a proposed lane closure and work schedule for the approval of the Engineer. The Department will provide public notification. Notify the Engineer immediately and obtain prior approval of any proposed deviations from the approved schedule.

Maintain alternating one-way traffic during construction. Unless directed otherwise by the Engineer, provide a minimum clear lane width of eight (8) feet, but make provision for passage of vehicles of up to sixteen (16) feet in width. If traffic is stopped due to construction operations, and a school bus on an official run arrives on the scene, immediately make provisions for the passage of the bus.

If the Engineer determines that work site conditions require all traffic be stopped while drilling operations are in progress, stop traffic for the length of time required to drill and set one rail. Allow all waiting traffic to pass before starting the next hole. If an emergency vehicle or school bus is present in the queue, stop drilling and allow traffic to pass immediately.

LANE & SHOULDER CLOSURES

If required by an operation in progress, obtain the Engineer's permission to leave a lane or shoulder closure in place for the duration of that operation. The Engineer may put time limits or other restrictions on the closure.

Do not store equipment or materials on shoulders during non-working hours.

Traffic Control Plan for Slide Correction
Page 2 of 3

CHANGEABLE MESSAGE SIGNS

If deemed necessary by the Engineer, the Department will furnish, operate, and maintain Changeable Message Signs

SIGNS

The Engineer may require additional signing and/or traffic control devices in addition to the items shown on the Standard Drawings. Sign posts and splices shall be compliant with NCHRP 350 or MASH. Manufacturer's documentation validating this compliance shall be provided to the Engineer prior to installation. Signs, including any splices, shall be installed according to manufacturer's specifications and installation recommendations. Contrary to section 112.04.02, the Department will measure only long term signs (signs intended to be continuously in place for more than 3 days) for payment. The Department will not measure; short term signs (signs intended to be left in place for 3 days or less) for payment, but shall be incidental to Maintain and Control Traffic. Contrary to Section 112.04.02, the Department will measure individual signs only once for payment, regardless of how many times they are erected or relocated. The Department will not measure replacements for damaged signs directed by the Engineer to be replaced due to poor condition or reflectivity.

BARRICADES

The Department will not measure Barricades used in lieu of barrels and cones for channelization or delineation, but shall be incidental to Maintain and Control Traffic according to Section 112.04.01. The Department will measure Barricades used for protection of pavement and shoulder removal areas according to Section 112.04.04. Retain possession of the barricades upon completion of the work.

PAVEMENT EDGE DROP-OFFS

Do not allow a difference in elevation of a pavement edge between opposing directions of traffic or lanes that traffic is expected to cross in a lane change situation greater than 1½". Place warning signs ((MUTCD W8-9, W8-9A, or W8-11) in advance of and at 1500 feet intervals throughout the drop-off area. Dual post the signs on both sides of the traveled way. Wedge transverse transitions between that traffic may cross with asphalt mixture for leveling and wedging or DGA.

Treat pavement edges that traffic is not expected to cross, except accidentally, as follows:

Less than 2" - No protection required.

2" to 4" - Place plastic drums, vertical panels, or barricades every 50 feet. The Engineer will allow cones to be used in lieu of plastic drums, panels, and barricades

Traffic Control Plan for Slide Correction

Page 3 of 3

during daylight working hours only. Wedge drop-offs within 10 feet of traffic with DGA or asphalt mixture for leveling and wedging as directed or approved by the Engineer with a 1:1 or flatter slope in daylight working hours, or 3:1 or flatter slope during nighttime hours or when work is not active in the drop-off area.

Greater than 4" – Protect drop-offs greater than 4 inches within 10 feet of traffic by placing drums, vertical panels, or barricades every 25 feet. The Engineer will not allow the use of cones in lieu of drums, vertical panels, or barricades for drop-offs greater than 4". Place Type III Barricades directly in front of the drop-off facing on coming traffic in both directions of travel. Provide warning signs as shown on the Standard Drawings or as directed by the Engineer.

Bicyclists and Pedestrians – Protect bicyclists and pedestrians as directed by the Engineer.

SPECIAL NOTE FOR EROSION CONTROL

I. DESCRIPTION

Perform all erosion and water pollution control work in accordance with the Department's Standard and Interim Supplemental Specifications, Special Provisions and Special Notes, and Standard and Sepia Drawings, current editions, and as directed by the Engineer. Section references are to the Standard Specifications. This work shall consist of:

(1) Developing and preparing a Best Management Practices Plan (BMP) tailored to suit the specific construction phasing for each site within the project; (2) Preparing the project site for construction, including locating, furnishing, installing, and maintaining temporary and/or permanent erosion and water pollution control measures as required by the BMP prior to beginning any earth disturbing activity on the project site; (3) Clearing and grubbing and removal of all obstructions as required for construction; (4) Removing all erosion control devices when no longer needed; (5) Restoring all disturbed areas as nearly as possible to their original condition; (6) Preparing seedbeds and permanently seeding all disturbed areas; (7) Providing a Kentucky Erosion Prevention and Sediment Control Program (KEPSC-RI) qualified inspector; and (8) Performing any other work to prevent erosion and/or water pollution as specified by this contract, required by the BMP, or as directed by the Engineer.

II. MATERIALS

Furnish materials in accordance with these notes, the Standard Specifications and Interim Supplemental Specifications, and applicable Special Provisions and Special Notes, and Standard and Sepia Drawings, current editions. Provide for all materials to be sampled and tested in accordance with the Department's Sampling Manual. Unless directed otherwise by the Engineer, make the materials available for sampling a sufficient time in advance of the use of the materials to allow for the necessary time for testing.

III. CONSTRUCTION

Be advised, these Erosion Control Plan Notes do not constitute a BMP plan for the project. Jointly with the Engineer, prepare a site specific BMP plan for each drainage area within the project in accordance with Section 213. Provide a unique BMP at each project site using good engineering practices taking into account existing site conditions, the type of work to be performed, and the construction phasing, methods and techniques to be utilized to complete the work. Be responsible for all erosion prevention, sediment control, and water pollution prevention measures required by the BMP for each site. Represent and warrant compliance with the Clean Water Act (33 USC Section 1251 et seq.), the 404 Permit, the 401 Water Quality Certification, and applicable state and

Erosion Control

Page 2 of 4

local government agency laws, regulations, rules, specifications, and permits. Contrary to Section 105.05, in case of discrepancy between these notes, the Standard Specifications, Interim Supplemental Specifications, Special and Special Notes, Standard and Sepia Drawings, and such state and local government agency requirements, adhere to the most restrictive requirement.

Conduct operations in such a manner as to minimize the amount of disturbed ground during each phase of the construction and limit the haul roads to the minimum required to perform the work. Preserve existing vegetation not required to be removed by the work or the contract. Seed and/or mulch disturbed areas at the earliest opportunity. Use silt fence, silt traps, temporary ditches, brush barriers, erosion control blankets, sodding, channel lining, and other erosion control measures in a timely manner as required by the BMP and as directed or approved by the Engineer. Prevent sediment laden water from leaving the project, entering an existing drainage structure, or entering a stream.

Provide for erosion control measures to be in place and functioning prior to any earth disturbance within a drainage area. Compute the volume and size of silt control devices necessary to control sediment during each phase of construction. Remove sediment from silt traps before they become a maximum of $\frac{1}{2}$ full. Maintain silt fence by removing accumulated trappings and/or replacing the geotextile fabric when it becomes clogged, damaged, or deteriorated, or when directed by the Engineer. Properly dispose of all materials trapped by erosion control devices at approved sites off the right of way obtained by the Contractor at no additional cost to the Department (See Special Note for Waste and Borrow).

As work progresses, add or remove erosion control measures as required by the BMP applicable to the Contractor's project phasing and construction methods and techniques. Update the volume calculations and modify the BMP as necessary throughout the duration of the project. Ensure that an updated BMP is kept on site and available for public inspection throughout the life of the project.

After all construction is complete, restore all disturbed areas in accordance with Section 212. Completely remove all temporary erosion control devices not required as part of the permanent erosion control from the construction site. Prior to removal, obtain the Engineer's concurrence of items to be removed. Grade the remaining exposed earth (both on and off the Right of-Way) as nearly as possible to its original condition, or as directed by the Engineer. Prepare the seed bed areas and sow all exposed earthen areas with the applicable seed mixture(s) according to Section 212.03.03.

Erosion Control
Page 3 of 4

IV. MEASUREMENT

Erosion Control Blanket. If required by the BMP, the Department will measure Erosion Control Blanket according to Section 212.04.07.

Sodding. If required by the BMP, the Department will measure Sodding according to Section 212.04.08.

Channel Lining. If required by the BMP, the Department will measure Channel Lining according to Sections 703.04.04-703.04.07.

Erosion Control. Contrary to Sections 212.04, 213.04, and 703.04 other than Erosion Control Blankets, Sodding, and Channel Lining, the Department will measure Erosion Control as one lump sum. The Department will not measure developing, updating, and maintaining a BMP plan for each site; providing a KEPSC-RI qualified inspector; locating, furnishing, installing, inspecting, maintaining, and removing erosion and water pollution control items; Roadway Excavation, Borrow Excavation, Embankment In Place, Topsoil Furnished and Placed, and Spreading Stockpiled Topsoil; Topdressing Fertilizer, Temporary and Permanent Seeding and Protection, Special Seeding Crown Vetch, and Temporary Mulch; Sedimentation Basin and Clean Sedimentation Basin, Silt Trap Type "A" and Clean Silt Trap Type "A"; Silt Trap Type "B" and Clean Silt Trap Type "B"; Silt Trap Type "C" and Clean Silt Trap Type "C"; Temporary Silt Fence and Clean Temporary Silt Fence; Plants, Vines, Shrubs, and Trees; Gabion and Dumped Stone Deflectors and Riffle Structures; Boulders; Temporary Ditches and clean Temporary Ditches; Geotextile Fabric, and all other erosion and water pollution control items required by the BMP or the Engineer, but shall be incidental to Erosion Control.

V. BASIS OF PAYMENT

Erosion Control Blanket. If not listed as a bid item, but required by the BMP, the Department will pay for Erosion Control Blankets as Extra Work according to Sections 104.03 and 109.04.

Sodding. If not listed as a bid item, but required by the BMP, the Department will pay for Sodding as Extra Work according to Sections 104.03 and 109.04.

Channel Lining. If not listed as a bid item, but required by the BMP, the Department will pay for Channel Lining as Extra Work according to Sections 104.03 and 109.04.

Erosion Control. Contrary to Sections 212.05 and 213.05, other than Erosion Control Blanket, Sodding, and Channel Lining, payment at the Contract lump sum price for Erosion Control, shall be full compensation for all materials, equipment, labor and incidentals necessary to complete the erosion and water pollution control work as specified in these notes, Sections 212 and 213, the Supplemental Specifications, applicable Special Provisions and Special Notes, and Standard and Sepia Drawings, including but not limited to developing, updating, and maintaining a BMP plan for each site; providing a KEPSC-RI qualified inspector; locating, furnishing, installing, inspecting,

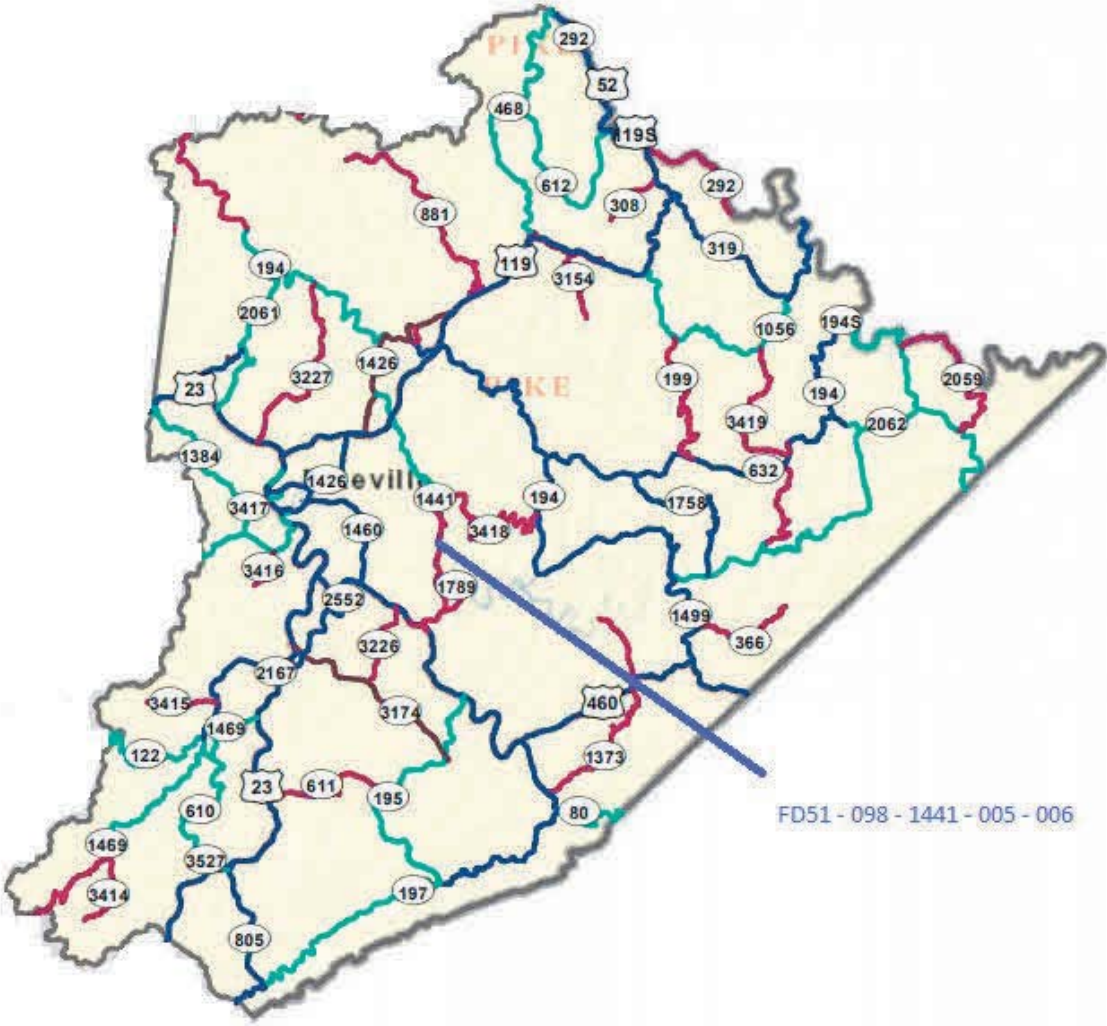
Erosion Control

Page 4 of 4

maintaining, and removing erosion and water pollution control items; Roadway Excavation, Borrow Excavation, Embankment In Place, Topsoil Furnished and Placed, and Spreading Stockpiled Topsoil; Topdressing Fertilizer, Temporary and Permanent Seeding and Protection, Special Seeding Crown Vetch, and Temporary Mulch; Sedimentation Basin and Clean Sedimentation Basin, Silt Trap Type "A" and Clean Silt Trap Type "A"; Silt Trap Type "B" and Clean Silt Trap Type "B"; Silt Trap Type "C" and Clean Silt Trap Type "C"; Temporary Silt Fence and Clean Temporary Silt Fence; Plants, Vines, Shrubs, and Trees; Gabion and Dumped Stone Deflectors and Riffle Structures; Boulders; Temporary Ditches and clean Temporary Ditches; Geotextile Fabric and all other erosion and water pollution control items required by the BMP or the Engineer.

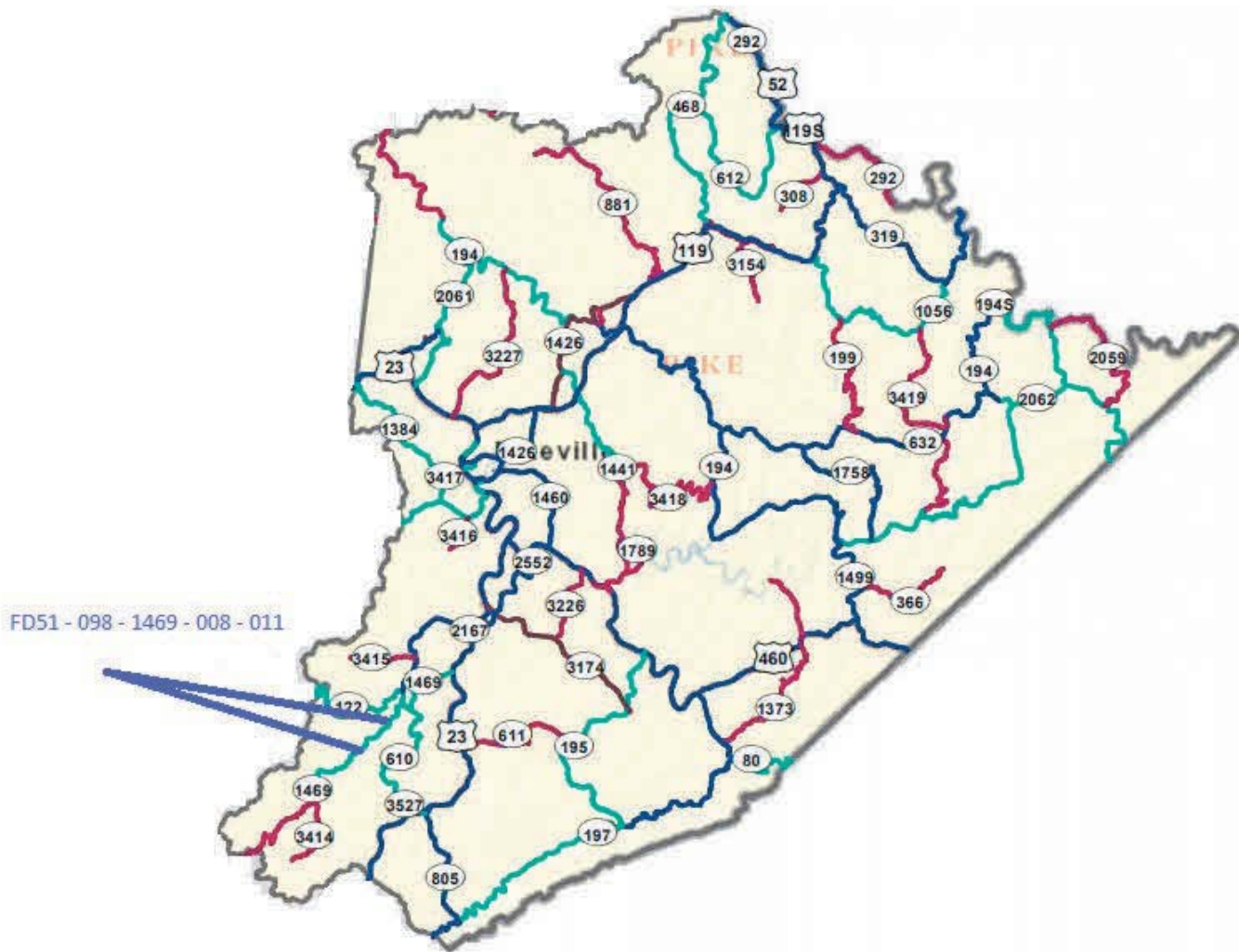
1-561 Erosion Control Note for Maintenance Projects
02/20/2017

KY 1441 Break Repair
Project Map
FEMA

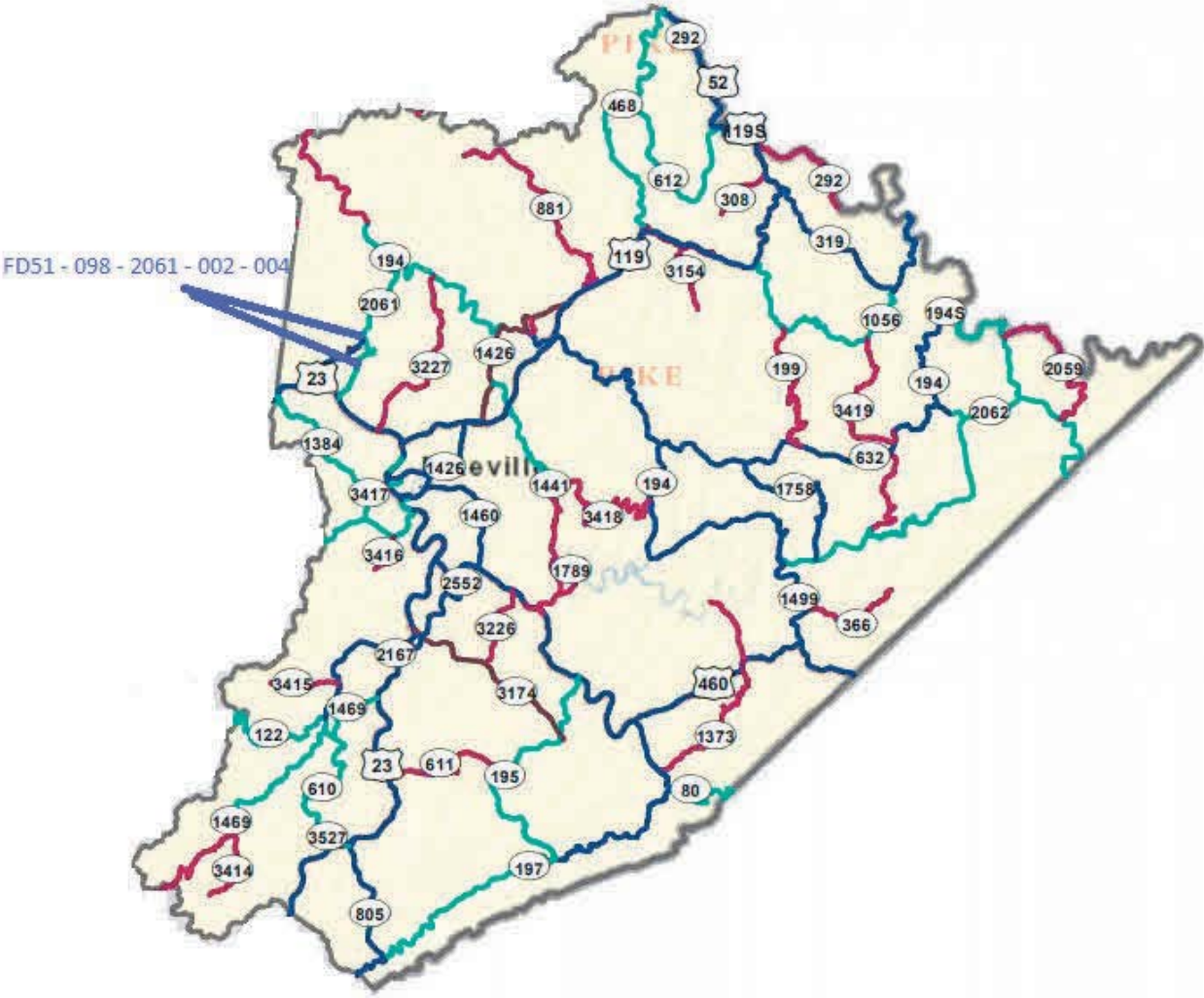


FD51 - 098 - 1441 - 005 - 006

KY 1469 Break Repair
Project Map
FEMA

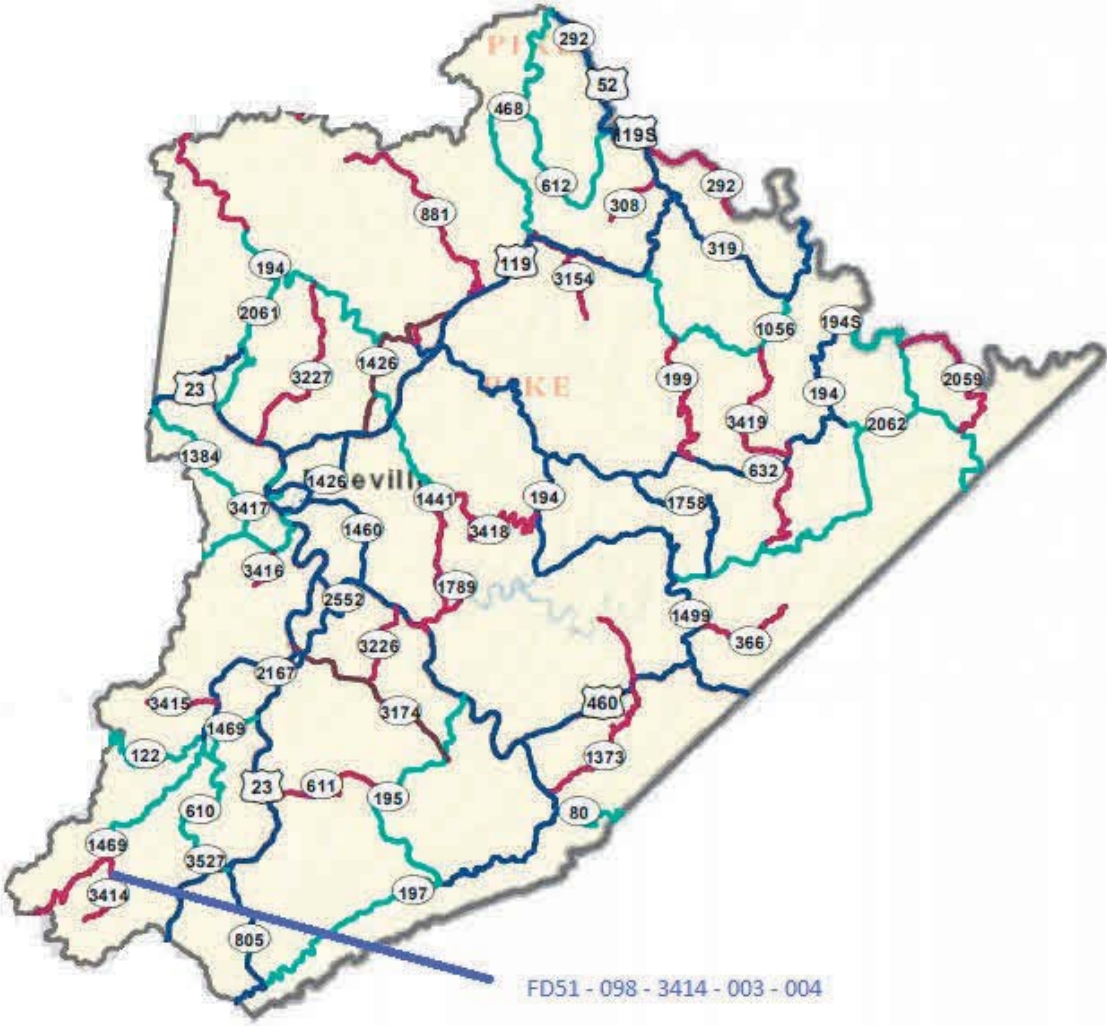


KY 2061 Break Repair
Project Map
FEMA



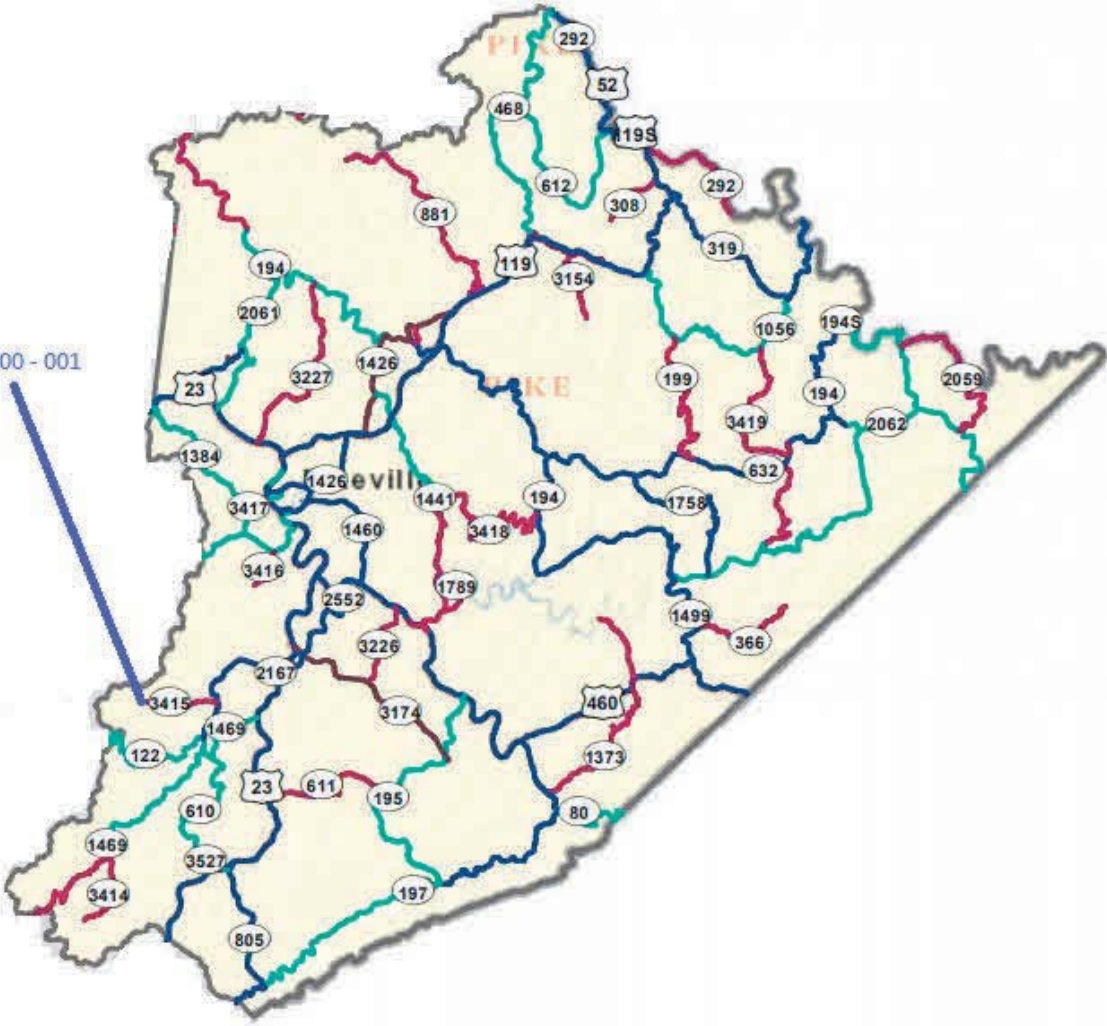
FD51 - 098 - 3226 - 001 - 004

KY 3414 Break Repair
Project Map
FEMA



KY 3415 Break Repair
Project Map
FEMA

FD51 - 098 - 3415 - 000 - 001



MATERIAL SUMMARY

CONTRACT ID: 212284

098GR21P076-FD51

MP09814412101

POMPAY MOUNTAIN ROAD (KY 1441) FROM 0.203 MILES SOUTH OF COAL RIDGE ROAD EXTENDING NORTH TO 0.597 MILES SOTH OF KY 3418 FLOOD REPAIR FOR FEMA, A DISTANCE OF .85 MILES.

Project Line No	Bid Code	DESCRIPTION	Quantity	Unit
0105	01987	DELINEATOR FOR GUARDRAIL BI DIRECTIONAL WHITE	4.00	EACH
0110	02014	BARRICADE-TYPE III	4.00	EACH
0115	02351	GUARDRAIL-STEEL W BEAM-S FACE	62.50	LF
0120	02371	GUARDRAIL END TREATMENT TYPE 7	4.00	EACH
0125	02381	REMOVE GUARDRAIL	62.50	LF
0130	02562	TEMPORARY SIGNS	300.00	SQFT
0135	02603	FABRIC-GEOTEXTILE CLASS 2	72.00	SQYD
0140	02650	MAINTAIN & CONTROL TRAFFIC - (KY 1441)	1.00	LS
0145	03234	RAILROAD RAILS-DRILLED	353.00	LF
0150	03235	EXCAVATION AND BACKFILL	21.00	CUYD
0155	03236	CRIBBING	176.00	SQFT
0160	20257NC	SITE PREPARATION - KY 1441 SITE 1	1.00	LS
0165	20257NC	SITE PREPARATION - KY 1441 SITE 2	1.00	LS
0170	21415ND	EROSION CONTROL - KY 1441 SITE 1	1.00	LS
0175	21415ND	EROSION CONTROL - KY 1441 SITE 2	1.00	LS
0180	02569	DEMOBILIZATION	1.00	LS

MATERIAL SUMMARY

CONTRACT ID: 212284

098GR21P076-FD51

MP09814692101

LONG FORK ROAD (KY 1469) FROM 250 FEET EAST OF HAMPTON ROAD EXTENDING EAST TO 160 FEET EAST OF OLD LONG FORK ROAD CONNECTOR FLOOD REPAIR FOR FEMA, A DISTANCE OF 2.72 MILES.

Project Line No	Bid Code	DESCRIPTION	Quantity	Unit
0005	01987	DELINEATOR FOR GUARDRAIL BI DIRECTIONAL WHITE	13.00	EACH
0010	02014	BARRICADE-TYPE III	8.00	EACH
0015	02351	GUARDRAIL-STEEL W BEAM-S FACE	62.50	LF
0020	02371	GUARDRAIL END TREATMENT TYPE 7	2.00	EACH
0025	02383	REMOVE & RESET GUARDRAIL	312.50	LF
0030	02562	TEMPORARY SIGNS	300.00	SQFT
0035	02603	FABRIC-GEOTEXTILE CLASS 2	760.00	SQYD
0040	02650	MAINTAIN & CONTROL TRAFFIC - (KY 1469)	1.00	LS
0045	03234	RAILROAD RAILS-DRILLED	3,651.00	LF
0050	03235	EXCAVATION AND BACKFILL	332.00	CUYD
0055	03236	CRIBBING	1,922.00	SQFT
0060	20257NC	SITE PREPARATION - KY 1469 SITE 1	1.00	LS
0065	20257NC	SITE PREPARATION - KY 1469 SITE 2	1.00	LS
0070	20257NC	SITE PREPARATION - KY 1469 SITE 3	1.00	LS
0075	20257NC	SITE PREPARATION - KY 1469 SITES 4 & 5	1.00	LS
0080	21415ND	EROSION CONTROL - KY 1469 SITE 1	1.00	LS
0085	21415ND	EROSION CONTROL - KY 1469 SITE 2	1.00	LS
0090	21415ND	EROSION CONTROL - KY 1469 SITE 3	1.00	LS
0095	21415ND	EROSION CONTROL - KY 1469 SITES 4 & 5	1.00	LS
0100	02569	DEMOBILIZATION	1.00	LS

MATERIAL SUMMARY

CONTRACT ID: 212284

098GR21P076-FD51

MP09820612101

COWPEN ROAD (KY 2061) FROM 0.122 MILES SOUTH OF ADKINS LANE EXTENDING NORTY TO 0.258 MILES SOUTH OF KY 3218 FLOOD REPAIR FOR FEMA, A DISTANCE OF 1.37 MILES.

Project Line No	Bid Code	DESCRIPTION	Quantity	Unit
0185	01987	DELINEATOR FOR GUARDRAIL BI DIRECTIONAL WHITE	8.00	EACH
0190	02014	BARRICADE-TYPE III	4.00	EACH
0195	02383	REMOVE & RESET GUARDRAIL	212.50	LF
0200	02562	TEMPORARY SIGNS	300.00	SQFT
0205	02603	FABRIC-GEOTEXTILE CLASS 2	491.00	SQYD
0210	02650	MAINTAIN & CONTROL TRAFFIC - (KY 2061)	1.00	LS
0215	03234	RAILROAD RAILS-DRILLED	3,545.00	LF
0220	03235	EXCAVATION AND BACKFILL	243.00	CUYD
0225	03236	CRIBBING	1,141.00	SQFT
0230	20257NC	SITE PREPARATION - KY 2061 SITE 1	1.00	LS
0235	20257NC	SITE PREPARATION - KY 2061 SITE 2	1.00	LS
0240	20257NC	SITE PREPARATION - KY 2061 SITE 3	1.00	LS
0245	21415ND	EROSION CONTROL - KY 2061 SITE 1	1.00	LS
0250	21415ND	EROSION CONTROL - KY 2061 SITE 2	1.00	LS
0255	21415ND	EROSION CONTROL - KY 2061 SITE 3	1.00	LS
0260	02569	DEMOBILIZATION	1.00	LS

MATERIAL SUMMARY

CONTRACT ID: 212284

098GR21P076-FD51

MP09832262101

GREASY CREEK ROAD (KY 3226) FROM 0.625 MILES WEST OF GILLESPI BRANCH EXTENDING EAST TO 0.155 MILES WEST OF RAILROAD STREET FLOOD REPAIR FOR FEMA, A DISTANCE OF 1.98 MILES.

Project Line No	Bid Code	DESCRIPTION	Quantity	Unit
0265	01987	DELINEATOR FOR GUARDRAIL BI DIRECTIONAL WHITE	5.00	EACH
0270	02014	BARRICADE-TYPE III	4.00	EACH
0275	02351	GUARDRAIL-STEEL W BEAM-S FACE	87.50	LF
0280	02371	GUARDRAIL END TREATMENT TYPE 7	2.00	EACH
0285	02383	REMOVE & RESET GUARDRAIL	50.00	LF
0290	02562	TEMPORARY SIGNS	300.00	SQFT
0295	02603	FABRIC-GEOTEXTILE CLASS 2	405.00	SQYD
0300	02650	MAINTAIN & CONTROL TRAFFIC - (KY 3226)	1.00	LS
0305	03234	RAILROAD RAILS-DRILLED	987.00	LF
0310	03235	EXCAVATION AND BACKFILL	97.00	CUYD
0315	03236	CRIBBING	893.00	SQFT
0320	20257NC	SITE PREPARATION - KY 3226 SITE 1	1.00	LS
0325	20257NC	SITE PREPARATION - KY 3226 SITE 2	1.00	LS
0330	21415ND	EROSION CONTROL - KY 3226 SITE 1	1.00	LS
0335	21415ND	EROSION CONTROL - KY 3226 SITE 2	1.00	LS
0340	02569	DEMOBILIZATION	1.00	LS

CONTRACT ID: 212284

098GR21P076-FD51

MP09834142101

LEFT FORK OF LONG FORK ROAD (KY 3414) FROM 1.34 MILES WEST OF PETTY FORK EXTENDING EAST TO 0.34 MILES WEST OF KY 1459 FLOOD REPAIR FOR FEMA, A DISTANCE OF .01 MILES.

Project Line No	Bid Code	DESCRIPTION	Quantity	Unit
0345	01987	DELINEATOR FOR GUARDRAIL BI DIRECTIONAL WHITE	2.00	EACH
0350	02014	BARRICADE-TYPE III	2.00	EACH
0355	02351	GUARDRAIL-STEEL W BEAM-S FACE	50.00	LF
0360	02371	GUARDRAIL END TREATMENT TYPE 7	2.00	EACH
0365	02562	TEMPORARY SIGNS	150.00	SQFT
0370	02603	FABRIC-GEOTEXTILE CLASS 2	98.00	SQYD
0375	02650	MAINTAIN & CONTROL TRAFFIC - (KY 3414)	1.00	LS
0380	03234	RAILROAD RAILS-DRILLED	383.00	LF
0385	03235	EXCAVATION AND BACKFILL	36.00	CUYD
0390	03236	CRIBBING	317.00	SQFT
0395	20257NC	SITE PREPARATION - KY 3414 SITE 1	1.00	LS
0400	21415ND	EROSION CONTROL - KY 3414 SITE 1	1.00	LS
0405	02569	DEMOBILIZATION	1.00	LS

MATERIAL SUMMARY

CONTRACT ID: 212284

098GR21P076-FD51

MP09834152101

LITTLE ROBINSON CREEK ROAD (KY 3415) FROM 200 FFET NORTH OF LITTLE ROBINSON CREEK BOTTOM
EXTENDING NORTH TO 300 FEET NORTH OF LITTLE ROBINSON CREEK BOTTOM FLOOD REPAIR FOR FEMA,
A DISTANCE OF .02 MILES.

Project Line No	Bid Code	DESCRIPTION	Quantity	Unit
0410	01987	DELINEATOR FOR GUARDRAIL BI DIRECTIONAL WHITE	3.00	EACH
0415	02014	BARRICADE-TYPE III	2.00	EACH
0420	02351	GUARDRAIL-STEEL W BEAM-S FACE	100.00	LF
0425	02371	GUARDRAIL END TREATMENT TYPE 7	2.00	EACH
0430	02562	TEMPORARY SIGNS	150.00	SQFT
0435	02603	FABRIC-GEOTEXTILE CLASS 2	192.00	SQYD
0440	02650	MAINTAIN & CONTROL TRAFFIC - (KY 3415)	1.00	LS
0445	03234	RAILROAD RAILS-DRILLED	891.00	LF
0450	03235	EXCAVATION AND BACKFILL	64.00	CUYD
0455	03236	CRIBBING	570.00	SQFT
0460	20257NC	SITE PREPARATION - KY 3415 SITE 1	1.00	LS
0465	21415ND	EROSION CONTROL - KY 3415 SITE 1	1.00	LS
0470	02569	DEMOBILIZATION	1.00	LS

Site	Begin	End	Length	Cribbing Depth	Excavation Width	Depth to Rock	Number of Rows	Rail Spacing (FT)	Cribbing Amount (SQ FT)	Drilled RR RailsSteel (FT)	Excav. & Backfill (CU YD)	Geotextile Fabric Class 2 (SQ YD)	
1	5.086	5.092	32	4	3	12	1	3	128	216	15	50	
2	5.931	5.934	16	3	3	13	1	3	48	137	6	22	
TOTALS										176	353	21	72

SITE SUMMARY KY 1469

Site	Begin	End	Length	Cribbing Depth	Excavation Width	Depth to Rock	Number of Rows	Rail Spacing (FT)	Cribbing Amount (SQ FT)	Drilled RR RailsSteel (FT)	Excav. & Backfill (CU YD)	Geotextile Fabric Class 2 (SQ YD)	
1	8.121	8.131	50	4	2	20	1	3	201	540	15	68	
2	8.765	8.778	69	5	3	21	1	3	343	756	39	123	
3	9.298	9.317	100	6	6	22	1	3	602	1,155	134	270	
4	10.823	10.836	69	7	5	20	1	3	480	720	89	184	
5	10.837	10.845	42	7	5	20	1	3	296	480	55	115	
TOTALS										1,922	3,651	332	760

SITE SUMMARY KY 2061

Site	Begin	End	Length	Cribbing Depth	Excavation Width	Depth to Rock	Number of Rows	Rail Spacing (FT)	Cribbing Amount (SQ FT)	Drilled RR RailsSteel (FT)	Excav. & Backfill (CU YD)	Geotextile Fabric Class 2 (SQ YD)
1	2.005	2.020	79	7	8	22	2	3	560	1,848	165	267
2	3.310	3.323	69	5	4	28	1	3	343	1,008	51	138
3	3.368	3.377	48	5	3	27	1	3	238	689	27	86
TOTALS										3,545	243	491

SITE SUMMARY KY 3226

Site	Begin	End	Length	Cribbing Depth	Excavation Width	Depth to Rock	Number of Rows	Rail Spacing (FT)	Cribbing Amount (SQ FT)	Drilled RR RailsSteel (FT)	Excav. & Backfill (CU YD)	Geotextile Fabric Class 2 (SQ YD)
1	1.063	1.078	79	4	4	15	1	3	560	630	47	267
2	3.033	3.042	48	7	4	14	1	3	333	357	50	138
TOTALS									893	987	97	405

Site	Begin	End	Length	Cribbing Depth	Excavation Width	Depth to Rock	Number of Rows	Rail Spacing (FT)	Cribbing Amount (SQ FT)	Drilled RR RailsSteel (FT)	Excav. & Backfill (CU YD)	Geotextile Fabric Class 2 (SQ YD)		
1	3.058	3.066	40	8	3	17	1	3	317	383	36	98		
TOTALS											317	383	36	98

SITE SUMMARY KY 3415

Site	Begin	End	Length	Cribbing Depth	Excavation Width	Depth to Rock	Number of Rows	Rail Spacing (FT)	Cribbing Amount (SQ FT)	Drilled RR RailsSteel (FT)	Excav. & Backfill (CU YD)	Geotextile Fabric Class 2 (SQ YD)
1	0.192	0.210	95	6	3	18	1	3	570	891	64	192
TOTALS									570	891	64	192

GUARDRAIL SUMMARY - KY 1441

NEW GUARDRAIL							REMOVE GUARDRAIL				
LANE	END TREAT.	BEGIN MILEPOINT	END MILEPOINT	END TREAT.	LIN FEET	REMARKS	LANE	BEGIN MILEPOINT	END MILEPOINT	LIN FEET	REMARKS
South Bound	Type 7	5.086	5.093	Type 7	37.5		South Bound	5.086	5.092	37.5	
South Bound	Type 7	5.931	5.934	Type 7	25.0		South Bound	5.931	9.934	37.5	

Totals = 62.5

Totals = 0.0

- Type 10
- Type 2A0
- Type 30
- Type 40
- Type 74

Terminal Sect No. 1

GUARDRAIL SUMMARY - KY 1469

NEW GUARDRAIL						REMOVE & RESET GUARDRAIL				
LANE	END TREAT.	BEGIN MILEPOINT	END MILEPOINT	LIN FEET	REMARKS	LANE	BEGIN MILEPOINT	END MILEPOINT	LIN FEET	REMARKS
East Bound	Type 7	8.121	8.131	62.5	Remove 62.5 ft. Existing guardrail					
						East Bound	8.765	8.775	75.0	
						East Bound	9.298	9.317	112.5	
						East Bound	10.829	10.836	75.0	
						East Bound	10.837	10.845	50.0	
				Totals =	62.5					Totals = 312.5

Type 10

Type 2A0

Type 30

Type 40

Type 72

Terminal Sect No. 10

GUARDRAIL SUMMARY - KY 2061

NEW GUARDRAIL							REMOVE & RESET GUARDRAIL				
LANE	END TREAT.	BEGIN MILEPOINT	END MILEPOINT	END TREAT.	LIN FEET	REMARKS	LANE	BEGIN MILEPOINT	END MILEPOINT	LIN FEET	REMARKS
							South Bound	2.005	2.020	87.5	
							South Bound	3.310	3.323	75.0	
							South Bound	3.368	3.377	50.0	

Totals = 0.0

Totals = 212.5

Type 1	0
Type 2A	0
Type 3	0
Type 4	0
Type 7	0
Terminal Sect No. 1	0

GUARDRAIL SUMMARY - KY 3226

NEW GUARDRAIL							REMOVE & RESET GUARDRAIL				
LANE	END TREAT.	BEGIN MILEPOINT	END MILEPOINT	END TREAT.	LIN FEET	REMARKS	LANE	BEGIN MILEPOINT	END MILEPOINT	LIN FEET	REMARKS
East Bound	Type 7	1.063	1.079	Type 7	87.5						
							East Bound	3.033	3.042	50.0	

Totals = 87.5

Totals = 50.0

Type 1	0
Type 2A	0
Type 3	0
Type 4	0
Type 7	2
Terminal Sect No. 1	0

GUARDRAIL SUMMARY - KY 3414

NEW GUARDRAIL							REMOVE & RESET GUARDRAIL				
LANE	END TREAT.	BEGIN MILEPOINT	END MILEPOINT	END TREAT.	LIN FEET	REMARKS	LANE	BEGIN MILEPOINT	END MILEPOINT	LIN FEET	REMARKS
East Bound	Type 7	3.058	3.066	Type 7	50.0						

Totals = 50.0

Totals = 0.0

Type 1	0
Type 2A	0
Type 3	0
Type 4	0
Type 7	2
Terminal Sect No. 1	0

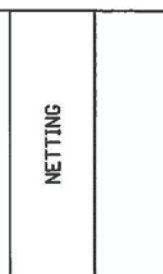
GUARDRAIL SUMMARY - KY 3415

NEW GUARDRAIL							REMOVE & RESET GUARDRAIL				
LANE	END TREAT.	BEGIN MILEPOINT	END MILEPOINT	END TREAT.	LIN FEET	REMARKS	LANE	BEGIN MILEPOINT	END MILEPOINT	LIN FEET	REMARKS
East Bound	Type 7	0.192	0.210	Type 7	100.0						

Totals = 100.0

Totals = 0.0

Type 1	0
Type 2A	0
Type 3	0
Type 4	0
Type 7	2
Terminal Sect No. 1	0



TYPICAL SECTION DEPICTING INSTALLATION OF RECYCLED RAILROAD RAIL PLACED IN DRILLED SOCKET FOR LANDSLIDE CORRECTION

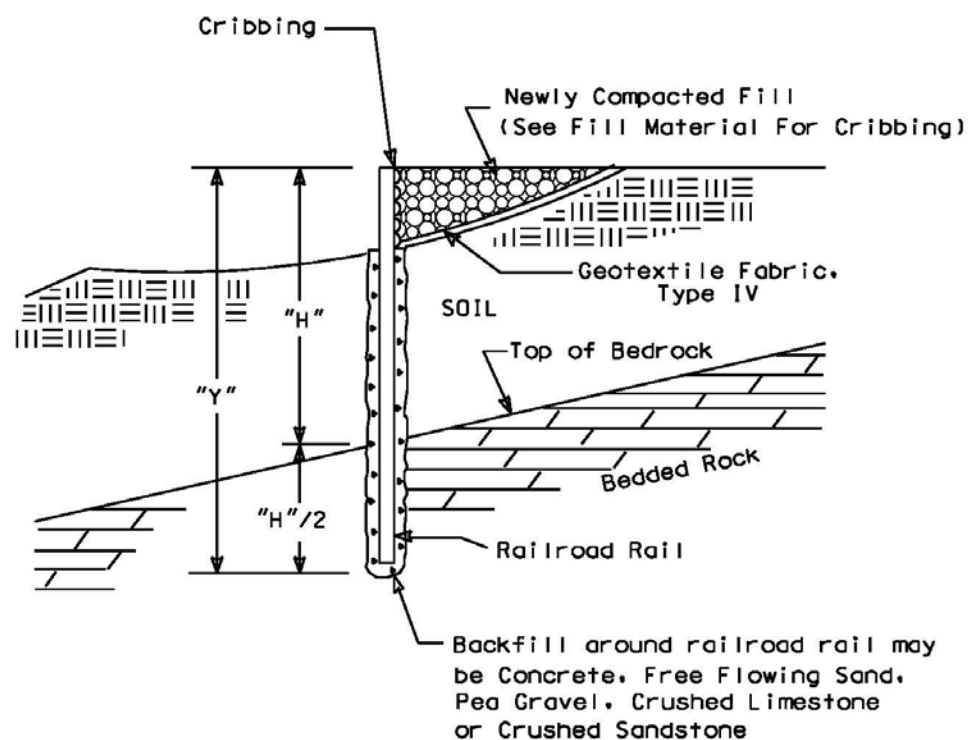
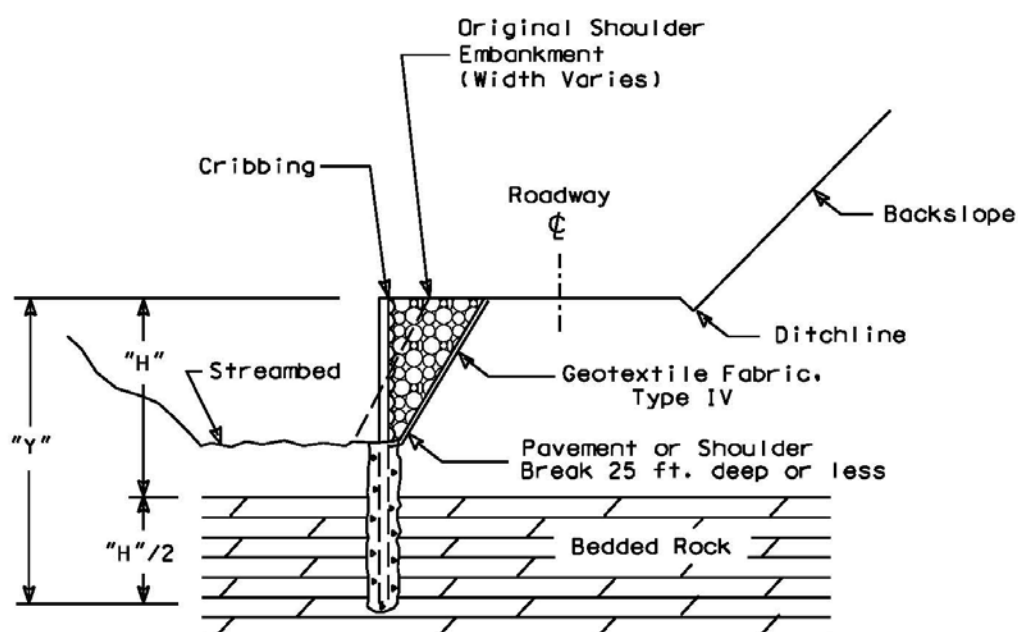


Figure 1

TYPICAL CROSS SECTION OF ROADWAY REPAIRS UTILIZING RECYCLED RAILROAD RAILS IN DRILLED SOCKETS FOR EMBANKMENT EROSION CORRECTION

NOTE:
Spacing from edge to
edge of drilled
socket : 3 ft. max.



NOTE :
"H"/2 Depth of Rail into bedded rock =
1/3 total length where rock is present.

Figure 2

ALTERNATE SCHEMES FOR INSTALLING RAILROAD RAILS
IN DRILLED SOCKETS

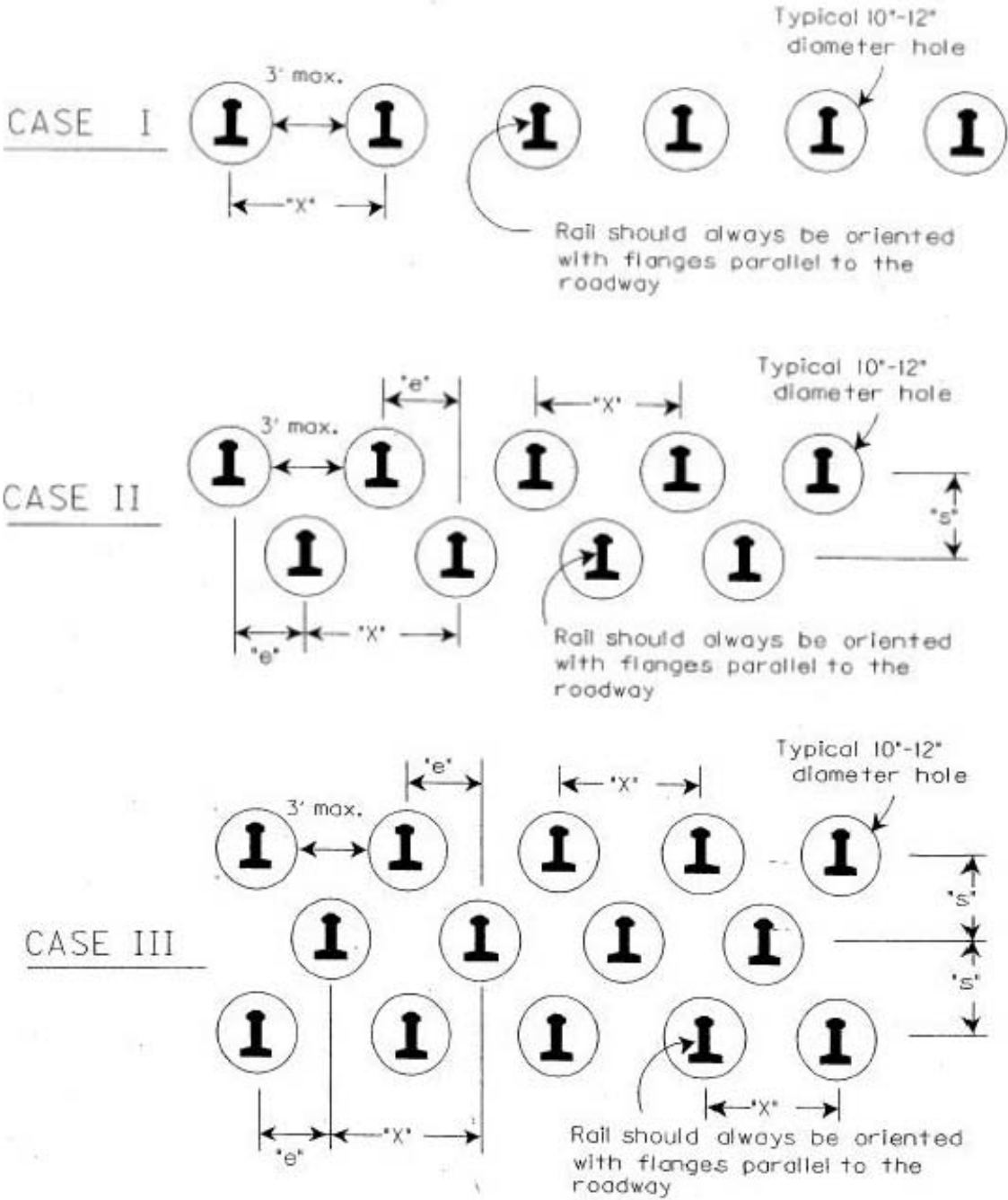


FIGURE 3

DESIGN CHART FOR 130LBS/YD TO 133 LBS/YD RECYCLED (USED) RAILROAD RAILS
FACTOR OF SAFETY = 1

Soil Depth to Bedded Rock "H" (Feet)	Minimum Embedment into Bedded Rock "H/2" (Feet)	Total Length of Installed Railroad Rail "Y" (Feet)	Required Number of Rows	Maximum Spacing Between Rails "X" (Max. 48") (Inches)	Effective Spacing Between Rows of Rails "e" (Inches)
8	4	12	1	48	N/A
9	4.5	13.5	1	48	N/A
10	5	15	1	48	N/A
11	5.5	16.5	1	48	N/A
12	6	18	1	48	N/A
13	6.5	19.5	1	48	N/A
14	7	21	1	32	N/A
15	7.5	22.5	2	48	24
16	8	24	2	44	22
17	8.5	25.5	2	36	18
18	9	27	2	28	14
19	9.5	28.5	2	24	12
20	10	30	3	33	11
21	10.5	31.5	3	28.5	9.5
>21	N/A	N/A	N/A	N/A	N/A

NOTES: 1. REFER TO FIGURES 1, 2, & 3 FOR DIMENSIONS SHOWN
2. FOR SOIL DEPTHS "H" GREATER THAN 21 FEET CONTACT THE ENGINEER.

TABLE I

IDENTIFICATION OF RAILROAD RAIL SIZES

- 1. Typically classified in units of lbs-per-yard.
Examples :
155 lbs/yd, 140 lbs/yd, 132 lbs/yd, 90 lbs/yd
- 2. Each rail has a classification stamped in web:
Example :
112 25 RE OH ILLINOIS USA 1935 IIIII
↑
Weight in lbs/yd

PART II

SPECIFICATIONS AND STANDARD DRAWINGS

SPECIFICATIONS REFERENCE

Any reference in the plans or proposal to previous editions of the *Standard Specifications for Road and Bridge Construction* and *Standard Drawings* are superseded by *Standard Specifications for Road and Bridge Construction, Edition of 2019* and *Standard Drawings, Edition of 2020*.

SUPPLEMENTAL SPECIFICATIONS

The contractor shall use the Supplemental Specifications that are effective at the time of letting.
The Supplemental Specifications can be found at the following link:

<http://transportation.ky.gov/Construction/Pages/Kentucky-Standard-Specifications.aspx>

2020 KENTUCKY STANDARD DRAWINGS

TYPICAL GUARDRAIL INSTALLATIONS	RBI-001-12
TYPICAL GUARDRAIL INSTALLATIONS	RBI-002-07
STEEL BEAM GUARDRAIL (“W”-BEAM)	RBR-001-13
GUARDRAIL COMPONENTS	RBR-005-11
STEEL GUARDRAIL POSTS.....	RBR-015-06
GUARDRAIL SYSTEM TRANSITION	RBR-018
GUARDRAIL END TREATMENT TYPE 7	RBR-050-08
GUARDRAIL END TREATMENT TYPE 7 ALTERNATE ANCHOR.....	RBR-051-01
DELINEATORS FOR GUARDRAIL	RBR-055-01
MISCELLANEOUS STANDARDS	RGX-001-06
ONE POINT PROCTER FAMILY OF CURVES.....	RGX-200-01
APPROACHES, ENTRANCES, AND MAIL BOX TURNOUT.....	RPM-110-07
LANE CLOSURE TWO-LANE HIGHWAY	TTC-100-05
SHOULDER CLOSURE.....	TTC-135-03
PAVEMENT CONDITION WARNING SIGNS.....	TTD-125-03

PART III

EMPLOYMENT, WAGE AND RECORD REQUIREMENTS

**TRANSPORTATION CABINET
DEPARTMENT OF HIGHWAYS**

**LABOR AND WAGE REQUIREMENTS
APPLICABLE TO OTHER THAN FEDERAL-AID SYSTEM PROJECTS**

- I. Application
- II. Nondiscrimination of Employees (KRS 344)

I. APPLICATION

1. These contract provisions shall apply to all work performed on the contract by the contractor with his own organization and with the assistance of workmen under his immediate superintendence and to all work performed on the contract by piecework, station work or by subcontract. The contractor's organization shall be construed to include only workmen employed and paid directly by the contractor and equipment owned or rented by him, with or without operators.

2. The contractor shall insert in each of his subcontracts all of the stipulations contained in these Required Provisions and such other stipulations as may be required.

3. A breach of any of the stipulations contained in these Required Provisions may be grounds for termination of the contract.

3. If the contractor is in control of apprenticeship or other training or retraining, including on-the-job training programs, he shall not discriminate against an individual because of his race, color, religion, national origin, sex, disability or age forty (40) and over, in admission to, or employment in any program established to provide apprenticeship or other training.

4. The contractor will send to each labor union or representative of workers with which he has a collective bargaining agreement or other contract or understanding, a notice to be provided advising the said labor union or workers' representative of the contractor's commitments under this section, and shall post copies of the notice in conspicuous places available to employees and applicants for employment. The contractor will take such action with respect to any subcontract or purchase order as the administering agency may direct as a means of enforcing such provisions, including sanctions for non-compliance.

Revised: January 25, 2017

II. NONDISCRIMINATION OF EMPLOYEES

**AN ACT OF THE KENTUCKY
GENERAL ASSEMBLY TO PREVENT
DISCRIMINATION IN EMPLOYMENT
KRS CHAPTER 344
EFFECTIVE JUNE 16, 1972**

The contract on this project, in accordance with KRS Chapter 344, provides that during the performance of this contract, the contractor agrees as follows:

1. The contractor shall not fail or refuse to hire, or shall not discharge any individual, or otherwise discriminate against an individual with respect to his compensation, terms, conditions, or privileges of employment, because of such individual's race, color, religion, national origin, sex, disability or age (forty and above); or limit, segregate, or classify his employees in any way which would deprive or tend to deprive an individual of employment opportunities or otherwise adversely affect his status as an employee, because of such individual's race, color, religion, national origin, sex, disability or age forty (40) and over. The contractor agrees to post in conspicuous places, available to employees and applicants for employment, notices to be provided setting forth the provisions of this nondiscrimination clause.

2. The contractor shall not print or publish or cause to be printed or published a notice or advertisement relating to employment by such an employer or membership in or any classification or referral for employment by the employment agency, indicating any preference, limitation, specification, or discrimination, based on race, color, religion, national origin, sex, or age forty (40) and over, or because the person is a qualified individual with a disability, except that such a notice or advertisement may indicate a preference, limitation, or specification based on religion, national origin, sex, or age forty (40) and over, or because the person is a qualified individual with a disability, when religion, national origin, sex, or age forty (40) and over, or because the person is a qualified individual with a disability, is a bona fide occupational qualification for employment.

EXECUTIVE BRANCH CODE OF ETHICS

In the 1992 regular legislative session, the General Assembly passed and Governor Brereton Jones signed Senate Bill 63 (codified as KRS 11A), the Executive Branch Code of Ethics, which states, in part:

KRS 11A.040 (7) provides:

No present or former public servant shall, within six (6) months following termination of his office or employment, accept employment, compensation, or other economic benefit from any person or business that contracts or does business with, or is regulated by, the state in matters in which he was directly involved during the last thirty-six (36) months of his tenure. This provision shall not prohibit an individual from returning to the same business, firm, occupation, or profession in which he was involved prior to taking office or beginning his term of employment, or for which he received, prior to his state employment, a professional degree or license, provided that, for a period of six (6) months, he personally refrains from working on any matter in which he was directly involved during the last thirty-six (36) months of his tenure in state government. This subsection shall not prohibit the performance of ministerial functions, including but not limited to filing tax returns, filing applications for permits or licenses, or filing incorporation papers, nor shall it prohibit the former officer or public servant from receiving public funds disbursed through entitlement programs.

KRS 11A.040 (9) states:

A former public servant shall not represent a person or business before a state agency in a matter in which the former public servant was directly involved during the last thirty-six (36) months of his tenure, for a period of one (1) year after the latter of:

- a) The date of leaving office or termination of employment; or
- b) The date the term of office expires to which the public servant was elected.

This law is intended to promote public confidence in the integrity of state government and to declare as public policy the idea that state employees should view their work as a public trust and not as a way to obtain private benefits.

If you have worked for the executive branch of state government within the past six months, you may be subject to the law's prohibitions. The law's applicability may be different if you hold elected office or are contemplating representation of another before a state agency.

Also, if you are affiliated with a firm which does business with the state and which employs former state executive-branch employees, you should be aware that the law may apply to them.

In case of doubt, the law permits you to request an advisory opinion from the Executive Branch Ethics Commission, 3 Fountain Place, Frankfort, Kentucky 40601; telephone (502) 564-7954.

Revised: January 27, 2017

Kentucky Equal Employment Opportunity Act of 1978

The requirements of the Kentucky Equal Employment Opportunity Act of 1978 (KRS 45.560-45.640) shall apply to this Contract. The apparent low Bidder will be required to submit EEO forms to the Division of Construction Procurement, which will then forward to the Finance and Administration Cabinet for review and approval. No award will become effective until all forms are submitted and EEO/CC has certified compliance. The required EEO forms are as follows:

- EEO-1: Employer Information Report
- Affidavit of Intent to Comply
- Employee Data Sheet
- Subcontractor Report

These forms are available on the Finance and Administration's web page under ***Vendor Information, Standard Attachments and General Terms*** at the following address:
<https://www.eProcurement.ky.gov>.

Bidders currently certified as being in compliance by the Finance and Administration Cabinet may submit a copy of their approval letter in lieu of the referenced EEO forms.

For questions or assistance please contact the Finance and Administration Cabinet by email at **finance.contractcompliance@ky.gov** or by phone at 502-564-2874.

EMPLOYEE RIGHTS UNDER THE FAIR LABOR STANDARDS ACT

THE UNITED STATES DEPARTMENT OF LABOR WAGE AND HOUR DIVISION

FEDERAL MINIMUM WAGE

\$7.25

 PER HOUR

BEGINNING JULY 24, 2009

OVERTIME PAY

At least $1\frac{1}{2}$ times your regular rate of pay for all hours worked over 40 in a workweek.

CHILD LABOR

An employee must be at least **16** years old to work in most non-farm jobs and at least **18** to work in non-farm jobs declared hazardous by the Secretary of Labor.

Youths **14** and **15** years old may work outside school hours in various non-manufacturing, non-mining, non-hazardous jobs under the following conditions:

No more than

- **3** hours on a school day or **18** hours in a school week;
- **8** hours on a non-school day or **40** hours in a non-school week.

Also, work may not begin before **7 a.m.** or end after **7 p.m.**, except from June 1 through Labor Day, when evening hours are extended to **9 p.m.** Different rules apply in agricultural employment.

TIP CREDIT

Employers of "tipped employees" must pay a cash wage of at least \$2.13 per hour if they claim a tip credit against their minimum wage obligation. If an employee's tips combined with the employer's cash wage of at least \$2.13 per hour do not equal the minimum hourly wage, the employer must make up the difference. Certain other conditions must also be met.

ENFORCEMENT

The Department of Labor may recover back wages either administratively or through court action, for the employees that have been underpaid in violation of the law. Violations may result in civil or criminal action.

Employers may be assessed civil money penalties of up to \$1,100 for each willful or repeated violation of the minimum wage or overtime pay provisions of the law and up to \$11,000 for each employee who is the subject of a violation of the Act's child labor provisions. In addition, a civil money penalty of up to \$50,000 may be assessed for each child labor violation that causes the death or serious injury of any minor employee, and such assessments may be doubled, up to \$100,000, when the violations are determined to be willful or repeated. The law also prohibits discriminating against or discharging workers who file a complaint or participate in any proceeding under the Act.

ADDITIONAL INFORMATION

- Certain occupations and establishments are exempt from the minimum wage and/or overtime pay provisions.
- Special provisions apply to workers in American Samoa and the Commonwealth of the Northern Mariana Islands.
- Some state laws provide greater employee protections; employers must comply with both.
- The law requires employers to display this poster where employees can readily see it.
- Employees under 20 years of age may be paid \$4.25 per hour during their first 90 consecutive calendar days of employment with an employer.
- Certain full-time students, student learners, apprentices, and workers with disabilities may be paid less than the minimum wage under special certificates issued by the Department of Labor.

For additional information:



1-866-4-USWAGE

(1-866-487-9243)

TTY: 1-877-889-5627



WWW.WAGEHOUR.DOL.GOV

U.S. Department of Labor | Wage and Hour Division

PART IV

INSURANCE

Refer to
Kentucky Standard Specifications for Road and Bridge Construction,
current edition

PART V

BID ITEMS

212284

PROPOSAL BID ITEMS

Report Date 6/25/21

Page 1 of 2

Section: 0001 - ROADWAY

LINE	BID CODE	ALT	DESCRIPTION	QUANTITY	UNIT	UNIT PRIC	FP	AMOUNT
0010	01987		DELINEATOR FOR GUARDRAIL BI DIRECTIONAL WHITE	35.00	EACH		\$	
0020	02014		BARRICADE-TYPE III	24.00	EACH		\$	
0030	02351		GUARDRAIL-STEEL W BEAM-S FACE	362.50	LF		\$	
0040	02371		GUARDRAIL END TREATMENT TYPE 7	12.00	EACH		\$	
0050	02381		REMOVE GUARDRAIL	62.50	LF		\$	
0060	02383		REMOVE & RESET GUARDRAIL	575.00	LF		\$	
0070	02562		TEMPORARY SIGNS	1,500.00	SQFT		\$	
0080	02603		FABRIC-GEOTEXTILE CLASS 2	2,018.00	SQYD		\$	
0090	02650		MAINTAIN & CONTROL TRAFFIC (KY 1441)	1.00	LS		\$	
0100	02650		MAINTAIN & CONTROL TRAFFIC (KY 1469)	1.00	LS		\$	
0110	02650		MAINTAIN & CONTROL TRAFFIC (KY 2061)	1.00	LS		\$	
0120	02650		MAINTAIN & CONTROL TRAFFIC (KY 3226)	1.00	LS		\$	
0130	02650		MAINTAIN & CONTROL TRAFFIC (KY 3414)	1.00	LS		\$	
0140	02650		MAINTAIN & CONTROL TRAFFIC (KY 3415)	1.00	LS		\$	
0150	03234		RAILROAD RAILS-DRILLED	9,810.00	LF		\$	
0160	03235		EXCAVATION AND BACKFILL	793.00	CUYD		\$	
0170	03236		CRIBBING	5,019.00	SQFT		\$	
0180	20257NC		SITE PREPARATION KY 1441 SITE 1	1.00	LS		\$	
0190	20257NC		SITE PREPARATION KY 1441 SITE 2	1.00	LS		\$	
0200	20257NC		SITE PREPARATION KY 1469 SITE 1	1.00	LS		\$	
0210	20257NC		SITE PREPARATION KY 1469 SITE 2	1.00	LS		\$	
0220	20257NC		SITE PREPARATION KY 1469 SITE 3	1.00	LS		\$	
0230	20257NC		SITE PREPARATION KY 1469 SITES 4 & 5	1.00	LS		\$	
0240	20257NC		SITE PREPARATION KY 2061 SITE 1	1.00	LS		\$	
0250	20257NC		SITE PREPARATION KY 2061 SITE 2	1.00	LS		\$	
0260	20257NC		SITE PREPARATION KY 2061 SITE 3	1.00	LS		\$	
0270	20257NC		SITE PREPARATION KY 3226 SITE 1	1.00	LS		\$	
0280	20257NC		SITE PREPARATION KY 3226 SITE 2	1.00	LS		\$	
0290	20257NC		SITE PREPARATION KY 3414 SITE 1	1.00	LS		\$	
0300	20257NC		SITE PREPARATION KY 3415 SITE 1	1.00	LS		\$	
0310	21415ND		EROSION CONTROL KY 1441 SITE 1	1.00	LS		\$	

Report Date 6/25/21

LINE	BID CODE	ALT	DESCRIPTION	QUANTITY	UNIT	UNIT PRIC	FP	AMOUNT
0320	21415ND		EROSION CONTROL KY 1441 SITE 2	1.00	LS		\$	
0330	21415ND		EROSION CONTROL KY 1469 SITE 1	1.00	LS		\$	
0340	21415ND		EROSION CONTROL KY 1469 SITE 2	1.00	LS		\$	
0350	21415ND		EROSION CONTROL KY 1469 SITE 3	1.00	LS		\$	
0360	21415ND		EROSION CONTROL KY 1469 SITES 4 & 5	1.00	LS		\$	
0370	21415ND		EROSION CONTROL KY 2061 SITE 1	1.00	LS		\$	
0380	21415ND		EROSION CONTROL KY 2061 SITE 2	1.00	LS		\$	
0390	21415ND		EROSION CONTROL KY 2061 SITE 3	1.00	LS		\$	
0400	21415ND		EROSION CONTROL KY 3226 SITE 1	1.00	LS		\$	
0410	21415ND		EROSION CONTROL KY 3226 SITE 2	1.00	LS		\$	
0420	21415ND		EROSION CONTROL KY 3414 SITE 1	1.00	LS		\$	
0430	21415ND		EROSION CONTROL KY 3415 SITE 1	1.00	LS		\$	

Section: 0002 - DEMOBILIZATION

LINE	BID CODE	ALT	DESCRIPTION	QUANTITY	UNIT	UNIT PRIC	FP	AMOUNT
0440	02569		DEMOBILIZATION	1.00	LS		\$	