



CALL NO. 403

CONTRACT ID. 232901

BRECKINRIDGE COUNTY

FED/STATE PROJECT NUMBER 014GR23M026

DESCRIPTION CLOVER PORT-McQUADY ROAD (KY 105) AND HWY 259 (KY 259)

WORK TYPE BRIDGE DECK RESTORATION & WATERPROOFING

PRIMARY COMPLETION DATE 7/1/2024

LETTING DATE: July 20,2023

Sealed Bids will be received electronically through the Bid Express bidding service until 10:00 AM EASTERN DAYLIGHT TIME July 20,2023. Bids will be publicly announced at 10:00 AM EASTERN DAYLIGHT TIME.

NO PLANS ASSOCIATED WITH THIS PROJECT.

REQUIRED BID PROPOSAL GUARANTY: Not less than 5% of the total bid.

TABLE OF CONTENTS

PART I	SCOPE OF WORK <ul style="list-style-type: none">• PROJECT(S), COMPLETION DATE(S), & LIQUIDATED DAMAGES• CONTRACT NOTES• STATE CONTRACT NOTES• SPECIAL NOTE(S) APPLICABLE TO PROJECT• ASBESTOS ABATEMENT REPORT• MATERIAL SUMMARY• BRIDGE DRAWINGS
PART II	SPECIFICATIONS AND STANDARD DRAWINGS <ul style="list-style-type: none">• STANDARD AND SUPPLEMENTAL SPECIFICATIONS• STANDARD DRAWINGS THAT APPLY
PART III	EMPLOYMENT, WAGE AND RECORD REQUIREMENTS <ul style="list-style-type: none">• LABOR AND WAGE REQUIREMENTS• EXECUTIVE BRANCH CODE OF ETHICS• KENTUCKY EQUAL EMPLOYMENT OPPORTUNITY ACT OF 1978 LOCALITY / STATE• PROJECT WAGE RATES / STATE FUNDED
PART IV	INSURANCE
PART V	BID ITEMS

PART I

SCOPE OF WORK

ADMINISTRATIVE DISTRICT - 04

CONTRACT ID - 232901

014GR23M026

COUNTY - BRECKINRIDGE

PCN - MB01401052301
FE02 014 0105 B00044N

CLOVERPORT-MC QUADY RD (KY 0105) BRIDGE OVER TAR FORK OF CLOVER CREEK AT MP 16.92BRIDGE
DECK RESTORATION & WATERPROOFING
GEOGRAPHIC COORDINATES LATITUDE 37:49:19.00 LONGITUDE 86:37:06.00
ADT

PCN - MB01402592301
FE02 014 0259 B00019N

HWY 259 (KY 259) BRIDGE OVER SINKING CREEK AT MP 18.97BRIDGE DECK RESTORATION &
WATERPROOFING
GEOGRAPHIC COORDINATES LATITUDE 37:53:42.00 LONGITUDE 86:29:04.00
ADT

COMPLETION DATE(S):

COMPLETED BY 07/01/2024	APPLIES TO ENTIRE CONTRACT
30 CALENDAR Days	APPLIES TO 014B000019N
30 CALENDAR Days	APPLIES TO 014B000044N

CONTRACT NOTES

PROPOSAL ADDENDA

All addenda to this proposal must be applied when calculating bid and certified in the bid packet submitted to the Kentucky Department of Highways. Failure to use the correct and most recent addenda may result in the bid being rejected.

BID SUBMITTAL

Bidder must use the Department's electronic bidding software. The Bidder must download the bid file located on the Bid Express website (www.bidx.com) to prepare a bid packet for submission to the Department. The bidder must submit electronically using Bid Express.

JOINT VENTURE BIDDING

Joint venture bidding is permissible. All companies in the joint venture must be prequalified in one of the work types in the Qualifications for Bidders for the project. The bidders must get a vendor ID for the joint venture from the Division of Construction Procurement and register the joint venture as a bidder on the project. Also, the joint venture must obtain a digital ID from Bid Express to submit a bid. A joint bid bond of 5% may be submitted for both companies or each company may submit a separate bond of 5%.

UNDERGROUND FACILITY DAMAGE PROTECTION

The contractor shall make every effort to protect underground facilities from damage as prescribed in the Underground Facility Damage Protection Act of 1994, Kentucky Revised Statute KRS 367.4901 to 367.4917. It is the contractor's responsibility to determine and take steps necessary to be in compliance with federal and state damage prevention directives. When prescribed in said directives, the contractor shall submit Excavation Locate Requests to the Kentucky Contact Center (KY811) via web ticket entry. The submission of this request does not relieve the contractor from the responsibility of contacting non-member facility owners, whom shall be contacted through their individual Protection Notification Center. Non-compliance with these directives can result in the enforcement of penalties.

REGISTRATION WITH THE SECRETARY OF STATE BY A FOREIGN ENTITY

Pursuant to KRS 176.085(1)(b), an agency, department, office, or political subdivision of the Commonwealth of Kentucky shall not award a state contract to a person that is a foreign entity required by [KRS 14A.9-010](#) to obtain a certificate of authority to transact business in the Commonwealth ("certificate") from the Secretary of State under [KRS 14A.9-030](#) unless the person produces the certificate within fourteen (14) days of the bid or proposal opening. If the foreign entity is not required to obtain a certificate as provided in [KRS 14A.9-010](#), the foreign entity should identify the applicable exception. Foreign entity is defined within [KRS 14A.1-070](#).

For all foreign entities required to obtain a certificate of authority to transact business in the Commonwealth, if a copy of the certificate is not received by the contracting agency within the time frame identified above, the foreign entity's solicitation response shall be deemed non-responsive or the awarded contract shall be cancelled.

Businesses can register with the Secretary of State at <https://secure.kentucky.gov/sos/ftbr/welcome.aspx>.

SPECIAL NOTE FOR PROJECT QUESTIONS DURING ADVERTISEMENT

Questions about projects during the advertisement should be submitted in writing to the Division of Construction Procurement. This may be done by fax (502) 564-7299 or email to kytc.projectquestions@ky.gov. The Department will attempt to answer all submitted questions. The Department reserves the right not to answer if the question is not pertinent or does not aid in clarifying the project intent.

The deadline for posting answers will be 3:00 pm Eastern Daylight Time, the day preceding the Letting. Questions may be submitted until this deadline with the understanding that the later a question is submitted, the less likely an answer will be able to be provided.

The questions and answers will be posted for each Letting under the heading "Questions & Answers" on the Construction Procurement website (www.transportation.ky.gov/contract). The answers provided shall be considered part of this Special Note and, in case of a discrepancy, will govern over all other bidding documents.

HARDWOOD REMOVAL RESTRICTIONS

The US Department of Agriculture has imposed a quarantine in Kentucky and several surrounding states, to prevent the spread of an invasive insect, the emerald ash borer. Hardwood cut in conjunction with the project may not be removed from the state. Chipping or burning on site is the preferred method of disposal.

INSTRUCTIONS FOR EXCESS MATERIAL SITES AND BORROW SITES

Identification of excess material sites and borrow sites shall be the responsibility of the Contractor. The Contractor shall be responsible for compliance with all applicable state and federal laws and may wish to consult with the US Fish and Wildlife Service to seek protection under Section 10 of the Endangered Species Act for these activities.

ACCESS TO RECORDS

The contractor, as defined in KRS 45A.030 (9) agrees that the contracting agency, the Finance and Administration Cabinet, the Auditor of Public Accounts, and the Legislative Research Commission, or their duly authorized representatives, shall have access to any books, documents, papers, records, or other evidence, which are directly pertinent to this contract for the purpose of financial audit or program review. Records and other prequalification information confidentially

disclosed as part of the bid process shall not be deemed as directly pertinent to the contract and shall be exempt from disclosure as provided in KRS 61.878(1)(c). The contractor also recognizes that any books, documents, papers, records, or other evidence, received during a financial audit or program review shall be subject to the Kentucky Open Records Act, KRS 61.870 to 61.884.

In the event of a dispute between the contractor and the contracting agency, Attorney General, or the Auditor of Public Accounts over documents that are eligible for production and review, the Finance and Administration Cabinet shall review the dispute and issue a determination, in accordance with Secretary's Order 11-004.

BUILD AMERICA, BUY AMERICA ACT (BABA)

On November 15, 2021, President Biden signed into law the Infrastructure Investment and Jobs Act (IIJA), Pub. L. No. 117-58, includes the Build America, Buy America Act (“the Act”). Pub. L. No. 117-58, §§70901-52. The Act strengthens the Buy America preference to include “construction materials.” The current temporary waiver for **“construction materials”** will expire on November 10, 2022.

The Act will apply to construction materials as outlined in the guidance issued in OMB [M-22-11](#).

Construction Materials – Includes an article, material, or supply – other than an item of primarily iron or steel; a manufactured product; cement and cementitious materials; aggregates such as stone, sand, or gravel; or aggregate binding agents or additives – that is or consists primarily of:

- Non-ferrous metals
- Plastic/polymer-based products (including polyvinylchloride, composite building materials, and polymers used in fiber optic cables);
- Glass (including optic glass);
- Lumber; or
- Drywall.

Construction Materials only applies to items, materials, and supplies that are consumed in, incorporated into, or affixed to an infrastructure project.

Construction Materials does not apply to tools, equipment or supplies brought to the jobsite and removed before completion.

BOYCOTT PROVISIONS

If applicable, the contractor represents that, pursuant to [KRS 45A.607](#), they are not currently engaged in, and will not for the duration of the contract engage in, the boycott of a person or an entity based in or doing business with a jurisdiction with which Kentucky can enjoy open trade.

Note: The term Boycott does not include actions taken for bona fide business or economic reasons, or actions specifically required by federal or state law.

If applicable, the contractor verifies that, pursuant to KRS 41.480, they do not engage in, and will not for the duration of the contract engage in, in energy company boycotts as defined by KRS 41.472.

LOBBYING PROHIBITIONS

The contractor represents that they, and any subcontractor performing work under the contract, have not violated the agency restrictions contained in [KRS 11A.236](#) during the previous ten (10) years, and pledges to abide by the restrictions set forth in such statute for the duration of the contract awarded.

The contractor further represents that, pursuant to [KRS 45A.328](#), they have not procured an original, subsequent, or similar contract while employing an executive agency lobbyist who was convicted of a crime related to the original, subsequent, or similar contract within five (5) years of the conviction of the lobbyist.

February 1, 2023

SPECIAL NOTE FOR RECIPROCAL PREFERENCE

RECIPROCAL PREFERENCE TO BE GIVEN BY PUBLIC AGENCIES TO RESIDENT BIDDERS

By reference, KRS 45A.490 to 45A.494 are incorporated herein and in compliance regarding the bidders residency. Bidders who want to claim resident bidder status should complete the Affidavit for Claiming Resident Bidder Status along with their bid in the electronic bidding software. Submittal of the Affidavit should be done along the bid in Bid Express.

April 30, 2018

**SPECIAL NOTES
DISTRICT NO. 4
BRIDGE DECK RESTORATION AND WATERPROOFING
BRECKINRIDGE COUNTY
CID 232901 ~ 014GR23M026**

FE02 014 0105 B00044N 16.92

Breckinridge County ~ KY 105 (Cloverport – McQuady Road) over Tar Fork of Clover Creek

Geographic Coordinates

Latitude 37° 49' 19.00'' (37.8219)

Longitude -86° 37' 06.00'' (-86.6183)

Description

45'- 45'- 45' R.C.D.G. Span, Drawing No. 13126/ G-624

FE02 014 0259 B00019N 18.97

Breckinridge County ~ KY 259 over Sinking Creek

Geographic Coordinates

Latitude 37° 53' 42.00'' (37.8950)

Longitude -86° 29' 04.00'' (-86.4844)

Description

65'- 90'- 65' Continuous R.C.D.G. Span, Drawing No. 17291

**SPECIAL NOTES FOR BRIDGE DECK
RESTORATION AND WATERPROOFING**

SPECIAL NOTE FOR BRIDGE DECK RESTORATION AND WATERPROOFING
WITH CONCRETE OVERLAYS

SPECIAL NOTE FOR ELIMINATING TRANSVERSE JOINTS ON BRIDGES

SPECIAL NOTE FOR PREVENTIVE MAINTENANCE

SPECIAL NOTE FOR DECK DRAIN RETROFIT

SPECIAL NOTE FOR FILL REPAIR

SPECIAL NOTE FOR CONTRACT COMPLETION DATE AND PENALTIES ON
BRIDGE REPAIR CONTRACTS

SPECIAL NOTE FOR MAINTAINING AND CONTROLLING TRAFFIC

SPECIAL NOTE FOR STRUCTURE REMOVAL AND RENOVATIONS

SPECIAL NOTE FOR BRIDGE DECK RESTORATION AND WATERPROOFING WITH CONCRETE OVERLAYS

1. DESCRIPTION. Perform all work in accordance with the Kentucky Transportation Cabinet, Department of Highway's Standard Specifications for Road and Bridge Construction and applicable Supplemental Specifications, the Standard Drawings (current editions), this Note, and the attached detail drawings. Section references are to the Standard Specifications. This work consists of the following: (1) Furnish all labor, materials, tools, and equipment, (2) Machine prep the existing slab, (3) Complete full-depth and partial depth repairs as directed by the Engineer, (4) Repair/replace damaged and corroded reinforcing bars, (5) Place new concrete overlay and epoxy-sand slurry in accordance with Section 606, (6) Complete asphalt approach pavement, and (7) Any other work specified as part of this contract. All construction will be in accordance with Section 606 unless otherwise specified.

2. MATERIALS.

- A. Latex Concrete.** See Section 606.03.17.
- B. Class "M" Concrete.** Use either "M1" or "M2". See Section 601.
- C. Bituminous Asphalt.** Use CL2 ASPH SURF 0.38D PG64-22.
- D. Epoxy-Sand Slurry.** See Section 606.03.10.

3. CONSTRUCTION.

- A. Remove Existing Overlay.** In addition to Section 606.03.03, totally remove the existing concrete overlay by milling.
- B. Machine Preparation of Existing Slab.** Remove concrete from existing slab to a depth of at least ¼" below the existing surface, and remove all patches completely, in accordance with the requirements of Section 606.03.03.
- C. Partial Depth Slab Repair and Latex Overlay.** Remove areas determined to be unsound by the Engineer via hydro-demolition or via handheld jackhammers weighing less than 45lbs in accordance with Section 606.02.10 D. Repair/Replace all damaged or severely corroded reinforcing bars prior to partial depth repair operation. The Department will not measure material removal and will consider this work incidental to the bid item "PARTIAL DEPTH PATCHING". Mix and place Latex Modified Concrete Overlay in accordance with Sections 606.03.08 and 606.03.17.
- D. Asphalt Approach Pavement.** Mill each existing asphalt approach to the distance indicated in the attached detailed drawings. Remove the bituminous material uniformly by making an edge key, so as to provide a smooth transition to the finished bridge when a new bituminous overlay of compacted depth of approximately 1½" is added to the approaches. The grinding depth may vary depending on the condition of the existing approach and final elevation of bridge end. Dispose of all removed material away from the site.
- E. Surface Texturing.** Texture the concrete surface of the overlay in accordance with Section 609.03.10.
- F. Pavement Markings.** Restore pavement markings to original patterns and/or as directed by the Engineer in accordance with Sections 713, 714 and 837. See Standard Drawings TPM-115 and TPM-207 Current Edition.

- G. Verifying Field Conditions.** The Contractor shall field verify all dimensions before ordering any material. New material that is unsuitable due to variation in existing structure shall be replaced at the Contractors expense.
- H. Damage to the Structure.** The Contractor shall bear all responsibility and expense for all damage to the structure during the repair work even to removal and replacement of a fallen span, should the fallen span result from the Contractor's actions.
4. **MEASUREMENT.** See Section 606 and the following:
- A. Latex Modified Concrete for Overlay.** The Department will measure the quantity in cubic yards using the theoretical volume as follows for each bridge:
- | | |
|------------|-------------------------------|
| 014B00044N | (144' x 24' x 1.5") = 16.0 CY |
| 014B00019N | (6602 SF x 1.5") = 30.6 CY |
- B. Remove Epoxy Bit Foreign Overlay, Machine Prep of Slab, Blast Cleaning, Epoxy Sand Slurry and Bridge Overlay Approach Pavement.** The Department will measure the removal of the existing overlay in square yards.
- C. Partial Depth Patching.** The Department will measure the quantity in cubic yards by deducting the theoretical volume of bridge deck overlay (LMC) from the total volume (as indicated by the batch quantity tickets) of Concrete required to obtain the finished grade shown on the plans or established by the Engineer.
- D. Concrete Class M Full Depth Patch and Concrete Latex Overlay.** The Department will measure the quantity in cubic yards.
- E. Steel Reinforcement.** The Department will measure any reinforcing steel necessary for the partial or full depth patch in pounds.
- F. Pave Striping-Perm 4 Inch.** The Department will measure the quantity in lineal feet.
5. **PAYMENT.** See Section 606 and the following:
- A. Remove Epoxy Bit Foreign Overlay (08510)(014B00044N).** The Department will make payment for the removal of the existing overlay.
- B. Machine Prep of Slab (08551)(014B00019N).** The Department will make payment for the machine preparation of the existing slab.
- C. Partial Depth Patching (24094EC).** The Department will make payment for removing exiting materials, furnishing and placing all new materials completed and accepted.
- D. Concrete Class M Full Depth Patch (08526).** The Department will make payment for removing exiting materials, furnishing and placing all new materials.
- E. Blast Cleaning (08549).** The Department will make payment for blast cleaning all surfaces specified.
- F. Epoxy Sand Slurry (08504).** The Department will make payment for furnishing and placing all new materials as specified.
- G. Concrete Latex Overlay (08534).** The Department will make payment for furnishing and placing all new material as specified.
- H. Steel Reinforcement (08150).** The Department will make payment for steel reinforcement, if necessary.

- I. Asphalt Approach Pavement (03304).** The Department will make payment for removing existing materials, furnishing, and placing all new materials as specified.
- J. Pave Striping-Perm 4 Inch (06514).** The Department will make payment for furnishing and placing permanent striping as specified.

SPECIAL NOTE FOR ELIMINATING TRANSVERSE JOINTS ON BRIDGES

- 1. DESCRIPTION.** Perform all work in accordance with the Kentucky Transportation Cabinet, Department of Highway's Standard Specifications for Road and Bridge Construction and applicable Supplemental Specifications, the Standard Drawings (current editions), this Note, and the Attached Detailed Drawings. Section references are to the Standard Specifications. This work consists of the following: (1) Furnish all labor, materials, tools, and equipment, (2) Remove existing concrete and expansion device(s), (3) Place new concrete and steel reinforcement as specified and (4) Any other work specified as part of this contract. See attached detailed drawings.
- 2. MATERIALS.**
 - A. Class "M" Concrete.** Use either "M1" or "M2". See Section 601.
 - B. Epoxy Coated Steel Reinforcement.** Use Grade 60. See Section 602.
 - C. Epoxy Bond Coat.** See Section 511.
- 3. EQUIPMENT.**
 - A. Hammer.** See Section 606.02.10 B.
 - B. Sawing Equipment.** See Section 606.02.10 C.
 - C. Hydraulic Impact Equipment.** See Section 606.02.10 D.
- 4. CONSTRUCTION.**
 - A. Remove Existing Materials.** Remove the existing transverse joints, joint filler, and specified areas of concrete as shown on the plans or as directed by the Engineer. Clean and leave all existing steel reinforcement encountered in place. Damaged steel reinforcement will be repaired/replaced as directed by the Engineer at no additional cost to the Department.
Dispose of all removed material entirely away from the job site. This work is incidental to the contract unit price for "Eliminate Transverse Joint".
 - B. Additional Steel Reinforcement.** Furnish for this work steel reinforcing bars as shown on the plans. Splice these bars to the existing longitudinal reinforcement in the deck and curb/sidewalk in the areas of removed concrete to tie the slabs together as shown on the plans. Ensure that all exposed steel reinforcement is tied in accordance with Section 602.03.04 prior to pouring the new Class "M" concrete.
 - C. Place New Concrete.** Blast-clean all areas of existing concrete and structural steel to come in contact with new concrete until free of all laitance and deleterious substances immediately prior to the placement of the Class "M" Concrete. The surface areas of existing concrete to come in contact with the new Class "M" Concrete are to be coated with an epoxy bond coat immediately prior to placing new concrete in accordance with Section 511. The interfaces of the new and old concrete shall be as nearly vertical and horizontal as possible. Place new Class "M" Concrete to the specified grade and finish to receive the new overlay or as shown on the plans. On the sidewalk and curb, place the new concrete to original grade and finish to match the existing curb/sidewalk. Repair all pavement striping that is disturbed.
 - D. Stage Construction.** Installation of concrete in two (or more if specified) stages is necessary.

- E. Residual Lead.** Residual lead paint may still be on bridge. The Contractor is advised to take all necessary protective measures including worker safety and environmental regulations when performing surface preparation. The Department will not consider any claims based on residual lead paint.
- F. Verifying Field Conditions.** The Contractor shall field verify all dimensions before ordering any material. New material that is unsuitable due to variation in existing structure shall be replaced at the Contractors expense.
- G. Damage to the Structure.** The Contractor shall bear all responsibility and expense for any and all damage to the structure during the repair work even to removal and replacement of a fallen span, should the fallen span result from the Contractor's actions.

5. MEASUREMENT.

- A. Eliminate Transverse Joint.** The Department will measure the quantity in linear feet from plinth to plinth perpendicular to the centerline of the bridge.
- B. Steel Reinforcement.** See Section 602.

6. PAYMENT.

- A. Eliminate Transverse Joint (03300).** Payment at the contract unit price per linear foot is full compensation for furnishing equipment, labor, tools and materials needed to complete removal and disposal of the specified existing materials, cleaning and straightening of existing steel reinforcement, furnishing and installing the concrete, repairing traffic striping and all incidental items necessary to complete the work within the specified pay limits as specified by this note and as shown on the attached detail drawings.
- B. Epoxy Coated Steel Reinforcement (08151).** See Section 602.

SPECIAL NOTES FOR DECK DRAIN RETROFIT

1. DESCRIPTION. Perform all work in accordance with the Kentucky Transportation Cabinet, Department of Highway's Standard Specifications for Road and Bridge Construction and applicable Supplemental Specifications, the Standard Drawings, (current editions), this note, and the attached detail drawings. This work consists of: (1) Furnish all labor, materials, tools, and equipment, (2) Install Deck Drain Retrofit and (3) Any other work specified as part of this contract.

2. MATERIALS

- A. Poly-methyl Methacrylate (PMMA).** Use new, commercial grade, ¼" thick Poly-methyl methacrylate known as acrylic glass or its various trade names, like Plexiglass®. The Engineer will base acceptance on visual inspection.
- B. Anchors.** Will allow galvanized all-thread ½"x6" or an approved alternate.
- C. Grout.** See Section 511.

3. CONSTRUCTION

- A. Install Deck Drain Retrofit.** Place PMMA glass as shown in attached detail drawing.
- B. Clean Deck Drains.** All deck drains shall be clean of debris. All cost to clean the deck drains shall be considered incidental to the unit price bid for deck drain retrofit.
- C. Verifying Field Conditions.** The Contractor shall field verify all dimensions before ordering any material. New material that is unsuitable due to variation in existing structure shall be replaced at the Contractors expense.
- D. Damage to the Structure.** The Contractor shall bear all responsibility and expense for all damage to the structure during the repair work even to removal and replacement of a fallen span, should the fallen span result from the Contractor's actions.

4. MEASUREMENT

- A. Deck Drain Retrofit.** The Department will measure this quantity as each.

5. PAYMENT

- A. Deck Drain Retrofit (24692EC).** Payment at the contract unit price per each is full compensation for furnishing and installing new acrylic glass panels, and all incidental items necessary to complete the work within the specified pay limits as specified by this note and as shown on the attached detail drawing.

SPECIAL NOTE FOR FILL REPAIR

- 1. DESCRIPTION.** Perform all work in accordance with the Kentucky Transportation Cabinet, Department of Highway's Standard Specifications for Road and Bridge Construction and applicable Supplemental Specifications, the Standard Drawings (Current Editions), this Note, and the attached detail drawings. Section references are to the Standard Specifications. This work consists of the following: (1) Furnish all labor, materials, tools, and equipment, (2) Place all flowable fill and all cyclopean stone rip rap and (3) Any other work specified as part of this contract.
- 2. MATERIALS.**
 - A. Flowable Fill.** See Section 601.
 - B. Cyclopean Stone Rip Rap.** See Section 703.
- 3. CONSTRUCTION.**
 - A. Placing Flowable Fill.** Place flowable as shown in the attached detailed drawings and in accordance with Section 601.
 - B. Placing Cyclopean Stone Rip Rap.** Place cyclopean stone rip rap as shown in the attached detailed drawings and in accordance with Section 703.
- 5. MEASUREMENT.**
 - A. Flowable Fill.** The Department will measure the quantity in Cubic Yards
 - B. Cyclopean Stone Rip Rap.** The Department will measure the quantity in Tons.
- 6. PAYMENT.**
 - A. Flowable Fill (02220).** Payment at the contract unit price per Cubic Yard is full compensation for placing all flowable fill and all incidental items necessary to complete the work within the specified pay limits as specified by this note and as shown on the attached detailed drawings.
 - B. Cyclopean Stone Rip Rap (08019).** Payment at the contract unit price per Ton is full compensation for placing all cyclopean stone rip rap and all incidental items necessary to complete the work within the specified pay limits as specified by this note and as shown on the attached detailed drawings.

**SPECIAL NOTE FOR CONTRACT COMPLETION DATE AND
PENALTIES ON BRIDGE REPAIR CONTRACTS**

1. **COMPLETION DATE.** The Contractor has the option of selecting the starting date for this Contract. Once selected, notify the Department in writing of the date selected at least two weeks prior to beginning work. All work is to be completed by the date listed below. An allotted number of Calendar days are assigned to each structure in this contract as shown below.

<u>STRUCTURE</u>	<u>NO. OF CALENDAR DAYS</u>	<u>COMPLETION DATE</u>
014B00044N	30	July 1, 2024
014B00019N	30	July 1, 2024

Contrary to Section 108.07.03, the Engineer will begin charging calendar days for a structure on the day the Contractor starts work or sets up traffic control on that particular structure. A **penalty of \$500.00 per day** will be assessed when the allotted number of calendar days is exceeded for each structure.

All construction must be completed in accordance with the weather limitations specified in Section 606 and/or Section 601 as applicable. No extension of Contract time will be granted due to inclement weather or temperature limitations that occur due to starting work on the Contract or a structure late in the construction season.

**SPECIAL NOTE FOR TRAFFIC CONTROL
ON BRIDGE REPAIR CONTRACTS**

1. TRAFFIC CONTROL GENERAL

Except as provided herein, traffic shall be maintained in accordance with the Standard Specifications (current edition), Section 112. Except for the roadway and traffic control bid items listed, all items of work necessary to maintain and control traffic will be paid at the lump sum bid price to “Maintain and Control Traffic”. Contrary to Section 106.01, traffic control devices used on this project may be new or used in new condition, at the beginning of the work and maintained in like new condition until completion of the work.

2. TRAFFIC COORDINATOR

Furnish a Traffic Coordinator as per Section 112. The Traffic Coordinator shall inspect the project maintenance of traffic, at least three times daily, or as directed by the Engineer, during the Contractor’s operations and at any time a lane closure is in place. The personnel shall have access on the project to a radio or telephone to be used in case of emergencies or accidents. The Traffic Coordinator shall report all incidents throughout the work zone to the Engineer on the project. The Contractor shall furnish the name and telephone number where the Traffic Coordinator can be contacted at all times.

3. SIGNS

Contrary to Section 112.04.02, only long-term signs (sign intended to be continuously in place for more than 3 days) will be measured for payment; short term signs (signs intended to be left in place for 3 days or less) will not be measured for payment but will be incidental to Maintain and Control Traffic.

The contractor is to install warning signs for wide loads in advance of the bridge under the direction of the Engineer. The Department will not measure installation, maintenance, or removal for payment, and will consider these incidentals to Maintain and Control Traffic.

4. TEMPORARY PAVEMENT STRIPING

Skip lines and/or solid lines through the length of the tapers for lane closures and other striping as directed by the Engineer shall be temporarily covered with 6” black removable tape. Permanent removal of all other pavement striping for traffic control shall be considered incidental to Maintain and Control Traffic. Temporary pavement striping shall be paid only once per course in accordance with Section 112.04.07. The Contractor shall replace any temporary striping that becomes damaged or fails to adhere to the pavement before dark on the day of the notification. **A penalty of \$500.00 per day will be assessed** for failing to replace temporary striping within this time limit.

5. PROJECT PHASING & CONSTRUCTION PROCEDURES

Maintain one lane of traffic on each bridge at all times in accordance with Standard Drawing No. TTC-100, TTC-110, TTC-115 or TTC-120. The minimum clear lane width required is as follows:

<u>Structure</u>	<u>Clear Lane Width</u>
014B00044N	10’-0”
014B00019N	12’-0”

6. TEMPORARY SIGNAL

Provide, install, and maintain a temporary traffic signal as specified below. The Contractor must provide a 24-hour contact person and number available to maintain the temporary signals as needed.

<u>Structure</u>	<u>Signal</u>
014B00044N	2 Phase
014B00019N	2 Phase

7. MEASUREMENT.

Temporary Signs:

The Cabinet will measure this item by “Square Feet”.

Maintain and Control Traffic and Diversion (Bypass Detours):

The Cabinet will measure this item by “Lump Sum”.

Lane Closure, and Temp Signal 2 Phase:

The Cabinet will measure this item by “Each”.

Pave Striping-Temp Rem Tape-B, W, and Y:

The Department will measure the quantity in “Linear Feet”.

8. PAYMENT.

Temporary Signs (02562):

Payment at the contract unit price for “Square Feet” is full compensation for all items to complete this work as specified.

Maintain and Control Traffic (02650) and Diversions (Bypass Detours) (02671):

Payment at the contract unit price for “Lump Sum” is full compensation for all items to complete this work as specified.

Lane Closure (02653) and Temp Signal 2 Phase (04933):

Payment at the contract unit price “Each” is full compensation for all items to complete this work as specified.

Pave Striping-Temp Rem Tape-B (06549), W (06550), and Y (06551):

Payment at the contract unit price “Lineal Feet” is full compensation for all items to complete this work as specified.



Andy Beshear
GOVERNOR

TRANSPORTATION CABINET

200 Mero Street
Frankfort, Kentucky 406 01

Jim Gray
SECRETARY

Asbestos Inspection Survey

To: Tom Mathews

District: Central Office

Date: February 16, 2023

Conducted By: O'Dail Lawson

Report Prepared By: O'Dail Lawson

Project and Structure Identification

Project Number: Breckenridge County

Structure ID: 014B00019N

Structure Location: KY 259 over Sinking Creek

Sample Description: Any suspect materials collected were negative for asbestos.

Inspection Date: February 8, 2023

Results and Recommendations

The results of the samples collected were negative for the presence of asbestos above 1%.
No abatement is required at this time.

It is recommended that this report accompany the 10-Day Notice of Intent for Demolition ([Notification Form DEP 7036](#)) which is to be submitted to the Kentucky Division of Air Quality prior to abatement, demolition, or renovation of any building or structure in the Commonwealth.

BULK SAMPLE ASBESTOS ANALYSIS

Analysis N#	# 3302147 B	Address:	Breckinridge - 014B00019N
Client Name:	KYTC		
Sampled By:	O'Dail Lawson		

[illegible]

Date Analyzed : 14-Feb-23

Analyst : Winterford Mensah

Reviewed By:

Vintgers Menard
Signature

The test relates only to the items tested. This report does not represent endorsement by NVLAP or any agency of the U.S. Government. Partial Reproduction of any part of this report is strictly prohibited. Samples shall be retained for (30) days.

AIHA # 102459

AJHA #1 02459



Kentucky Transportation Cabinet

200 Mero Street, 5th Floor West
Frankfort, Kentucky 40622
(502) 564-7250 fax (502) 564-5655

O'Dail Lawson o'dail.lawson@ky.gov

KYTC

Address: 200 Mero Street

Frankfort KY

Phone: 502-782-5020

Fax: 502-564-5655

N/A = Not Applicable

PO#:

Project ID	Bredinridge 014300019N.
------------	-------------------------

Client Information KY TRANSPORTATION CABINET

Results Code:

N/A = Not Applicable

Samplers (signature):

Project ID	Bredinridge 014300019N.
------------	-------------------------

[illegible]

Relinquished By:

Date/Time:

Received By:

Date/Time:

Date/Time: 2/08/23

Relinquished By:

Date/Time:

Received at Lab By:

Date/Time:

KYTC COC

ENVIRONMENTAL TRAINING CONCEPTS, INC

P.O Box 99603 Louisville, KY 40269
(502)640-2951

Certification Number: ETC-AIR-031522-00137

O'Dail Lawson

has on 03-15-2022, attended and successfully completed the requirements and passed the examination with a score of 70% of better on the entitled course.

ASBESTOS INSPECTOR REFRESHER

Training was in accordance with 40 CFR Part 763 (AHERA) approved by the Commonwealth of Kentucky, the Indiana Department of Environmental Management, Tennessee Department of Environment & Conservation and The Arkansas Department of Environmental Quality. The above student received requisite training for Asbestos Accreditation under Title II of the Toxic Substance Act (TSCA).

Conducted at: 1220 KY Mills Drive, Louisville, KY

Name - Training Manager

Expiration Date: 03-15-2023

Name - Instructor



Andy Beshear
GOVERNOR

TRANSPORTATION CABINET

200 Mero Street
Frankfort, Kentucky 406 01

Jim Gray
SECRETARY

Asbestos Inspection Survey

To: Tom Mathews

District: Central Office

Date: February 16, 2023

Conducted By: O'Dail Lawson

Report Prepared By: O'Dail Lawson

Project and Structure Identification

Project Number: Breckenridge County

Structure ID: 014B00044N

Structure Location: KY 105 over Tar Fork of Clover Creek

Sample Description: Any suspect materials collected were negative for asbestos.

Inspection Date: February 8, 2023

Results and Recommendations

The results of the samples collected were negative for the presence of asbestos above 1%.
No abatement is required at this time.

It is recommended that this report accompany the 10-Day Notice of Intent for Demolition ([Notification Form DEP 7036](#)) which is to be submitted to the Kentucky Division of Air Quality prior to abatement, demolition, or renovation of any building or structure in the Commonwealth.

MRS, Inc. Analytical Laboratory Division

(502) 495-1212
Fax: (502) 491-7111

BULK SAMPLE ASBESTOS ANALYSIS

Analysis N#	# 3302147 C	Address:	Breckinridge - 014B00044N
Client Name:	KYTC		
Sampled By:	O'Dail Lawson		

[illegible]

Reviewed By: Wintgers Mencia
Signature

The test relates only to the items tested. This report does not represent endorsement by NVLAP or any agency of the U.S. Government. Partial Reproduction of any part of this report is strictly prohibited. Samples shall be retained for (30) days.

AJHA #1 02459



Chain of Custody Record

Kentucky Transportation Cabinet

200 Mero Street, 5th Floor West
Frankfort, Kentucky 40622
(502) 564-7250 fax (502) 564-5655

O'Dail Lawson o'dail.lawson@ky.gov

KYTC

Address: 200 Mero Street

Frankfort
KY

Phone: 502-782-5020

Fax: 502-564-5655

PO#:

Client Information

Results Code:

N/A = Not Applicable

Samplers (signature):

Project ID

Breckin Ridge

014 B 000442

[illegible]

Relinquished By:

Date/Time:

Received By:

Date/Time:

Relinquished By:

Date/Time:

Received at Lab By:

Date/Time:

KYTC COC

Page 1

ENVIRONMENTAL TRAINING CONCEPTS, INC

P.O Box 99603 Louisville, KY 40269
(502)640-2951

Certification Number: ETC-AIR-031522-00137

O'Dail Lawson

has on 03-15-2022, attended and successfully completed the requirements and passed the examination with a score of 70% of better on the entitled course.

ASBESTOS INSPECTOR REFRESHER

Training was in accordance with 40 CFR Part 763 (AHERA) approved by the Commonwealth of Kentucky, the Indiana Department of Environmental Management, Tennessee Department of Environment & Conservation and The Arkansas Department of Environmental Quality. The above student received requisite training for Asbestos Accreditation under Title II of the Toxic Substance Act (TSCA).

Conducted at: 1220 KY Mills Drive, Louisville, KY

Name - Training Manager

Expiration Date: 03-15-2023

Name - Instructor

MATERIAL SUMMARY

CONTRACT ID: 232901

014GR23M026

MB01401052301

CLOVERPORT-MC QUADY RD (KY 0105) BRIDGE OVER TAR FORK OF CLOVER CREEK AT MP 16.92 BRIDGE DECK RESTORATION & WATERPROOFING.

Project Line No	Bid Code	DESCRIPTION	Quantity	Unit
0005	02220	FLOWABLE FILL	64.00	CUYD
0010	02562	TEMPORARY SIGNS	145.00	SQFT
0015	02650	MAINTAIN & CONTROL TRAFFIC - APPLIES TO 014B00044N	1.00	LS
0020	02653	LANE CLOSURE	2.00	EACH
0025	03299	ARMORED EDGE FOR CONCRETE	48.00	LF
0030	03300	ELIMINATE TRANSVERSE JOINT	52.00	LF
0035	03304	BRIDGE OVERLAY APPROACH PAVEMENT	267.00	SQYD
0040	04933	TEMP SIGNAL 2 PHASE	1.00	EACH
0045	06514	PAVE STRIPING-PERM PAINT-4 IN	300.00	LF
0050	06549	PAVE STRIPING-TEMP REM TAPE-B	1,000.00	LF
0055	06550	PAVE STRIPING-TEMP REM TAPE-W	2,000.00	LF
0060	06551	PAVE STRIPING-TEMP REM TAPE-Y	2,000.00	LF
0065	08019	CYCLOPEAN STONE RIP RAP	55.50	TON
0070	08150	STEEL REINFORCEMENT	350.00	LB
0075	08504	EPOXY SAND SLURRY	107.00	SQYD
0080	08510	REM EPOXY BIT FOREIGN OVERLAY	384.00	SQYD
0085	08526	CONC CLASS M FULL DEPTH PATCH	3.20	CUYD
0090	08534	CONCRETE OVERLAY-LATEX	16.00	CUYD
0095	08549	BLAST CLEANING	491.00	SQYD
0100	24094EC	PARTIAL DEPTH PATCHING	11.20	CUYD
0105	24692EC	DECK DRAIN RETROFIT	18.00	EACH
0110	02569	DEMOBILIZATION	1.00	LS

MATERIAL SUMMARY

CONTRACT ID: 232901

014GR23M026

MB01402592301

HWY 259 (KY 259) BRIDGE OVER SINKING CREEK AT MP 18.97 BRIDGE DECK RESTORATION & WATERPROOFING.

Project Line No	Bid Code	DESCRIPTION	Quantity	Unit
0115	02562	TEMPORARY SIGNS	145.00	SQFT
0120	02650	MAINTAIN & CONTROL TRAFFIC - APPLIES TO 014B00019N	1.00	LS
0125	02653	LANE CLOSURE	2.00	EACH
0130	03298	EXPAN JOINT REPLACE 4 IN	62.20	LF
0135	03299	ARMORED EDGE FOR CONCRETE	62.20	LF
0140	03304	BRIDGE OVERLAY APPROACH PAVEMENT	667.00	SQYD
0145	04933	TEMP SIGNAL 2 PHASE	1.00	EACH
0150	06514	PAVE STRIPING-PERM PAINT-4 IN	1,000.00	LF
0155	06549	PAVE STRIPING-TEMP REM TAPE-B	1,000.00	LF
0160	06550	PAVE STRIPING-TEMP REM TAPE-W	2,000.00	LF
0165	06551	PAVE STRIPING-TEMP REM TAPE-Y	2,000.00	LF
0170	08150	STEEL REINFORCEMENT	270.00	LB
0175	08504	EPOXY SAND SLURRY	126.50	SQYD
0180	08526	CONC CLASS M FULL DEPTH PATCH	3.10	CUYD
0185	08534	CONCRETE OVERLAY-LATEX	30.60	CUYD
0190	08549	BLAST CLEANING	860.00	SQYD
0195	08551	MACHINE PREP OF SLAB	734.00	SQYD
0200	24094EC	PARTIAL DEPTH PATCHING	23.00	CUYD
0205	24981EC	BRIDGE CLEANING - APPLIES TO 014B00019N	1.00	LS
0210	24982EC	CONCRETE COATING - APPLIES TO 014B00019N	1.00	LS
0215	24983EC	BEARING LUBRICATION - APPLIES TO 014B00019N	8.00	EACH
0220	02569	DEMOBILIZATION	1.00	LS



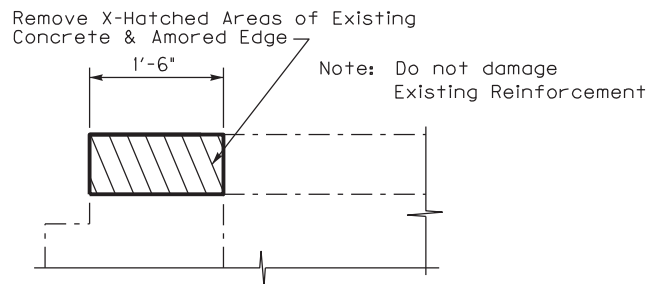
- ① Expansion Joint Replace 4" (See Standard Drawing BJE-001, BJE-005, & BJE-006 C.E.)
- ② Bridge Cleaning and Concrete Coatings (See Details ~ 3)
- ③ 100'-0" Bridge Overlay Approach Pavement.



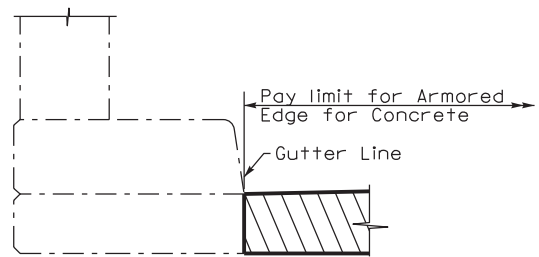
Note: See Special Notes

TYPICAL SECTION



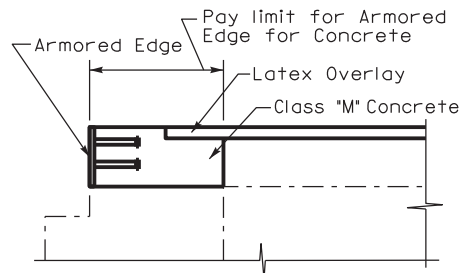


SECTION THROUGH SLAB END
(Existing)

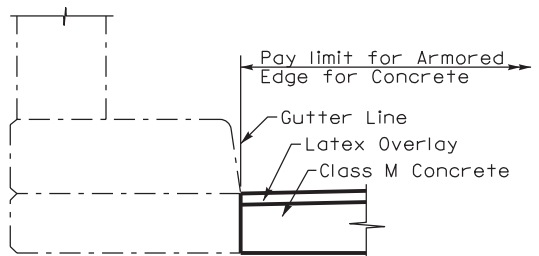


SECTION THROUGH PAPAPET
(Existing)

Note: See Standard Drawings
BJE-001 and BJE-005 for
Additional Notes and Details.



SECTION THROUGH SLAB END
(Proposed)

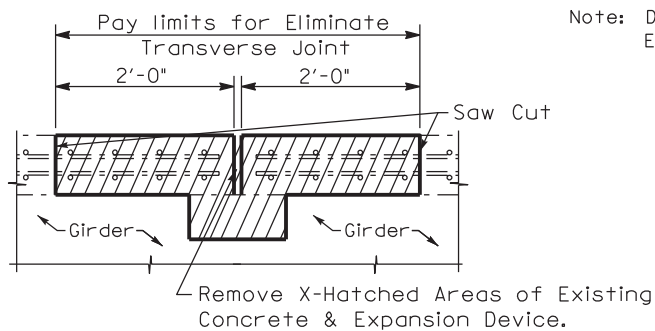


SECTION THROUGH PAPAPET
(Proposed)

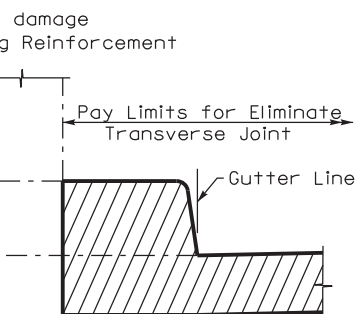
AMORED EDGE FOR CONCRETE

BRIDGE NO.
014B00044N

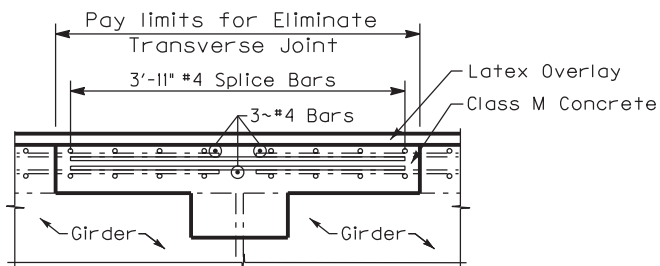
Note: See Special Notes



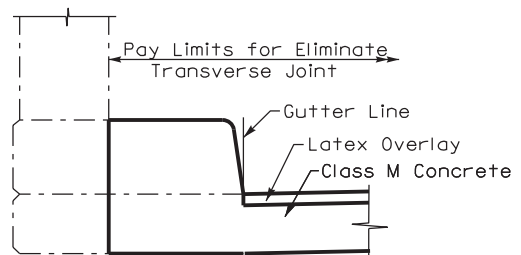
SECTION THROUGH JOINT
(Existing)



SECTION THROUGH PAPAPET
(Existing)



SECTION THROUGH JOINT
(Proposed)

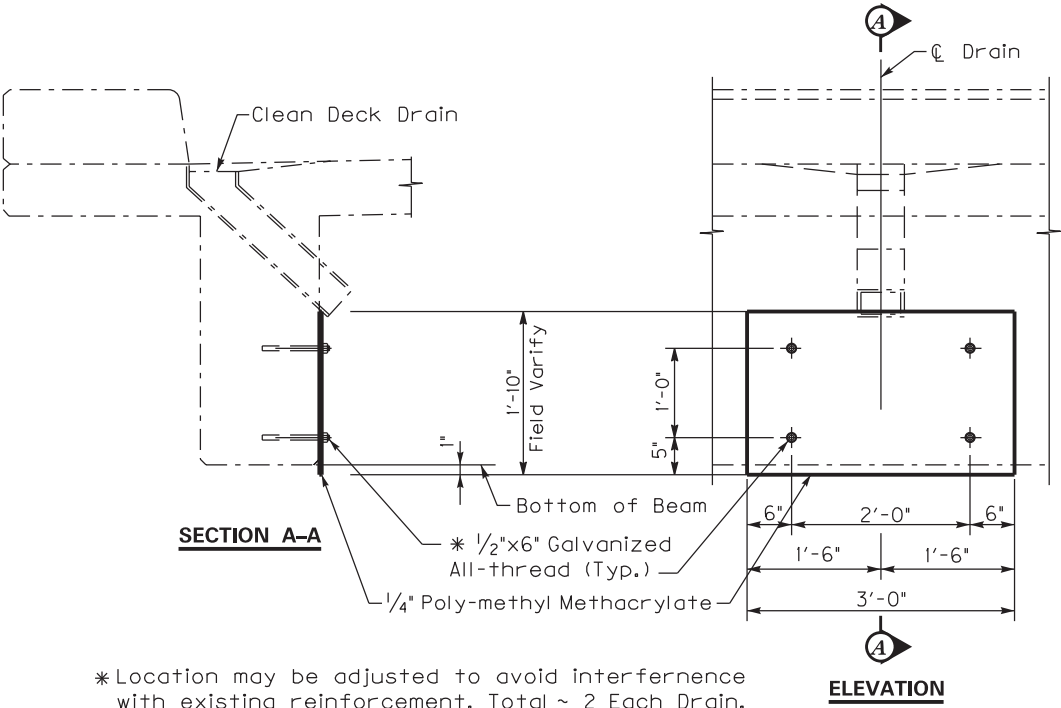


SECTION THROUGH PAPAPET
(Proposed)

ELIMINATE TRANSVERSE JOINT

BRIDGE NO.
014B00044N

Note: See Special Notes

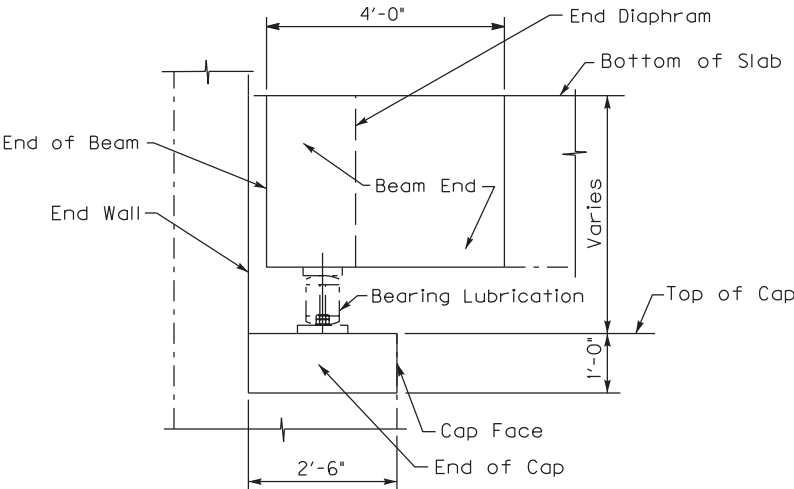


DECK DRAIN RETROFIT

BRIDGE NO.
014B00044N

Note: See Special Notes

Commonwealth of Kentucky DEPARTMENT OF HIGHWAYS
COUNTY BRECKINRIDGE
DETAILS ~ 2
PREPARED BY Division of Maintenance Bridge Preservation Branch



Front Face of End Wall, Top and Face of Cap the Entire Length of Cap including Cap Ends, Beam Ends and End Diaphragms shall have debris removed pressure washed and have concrete coating applied as specified within the limits shown.

SECTION THROUGH ABUTMENT AND BEAM END

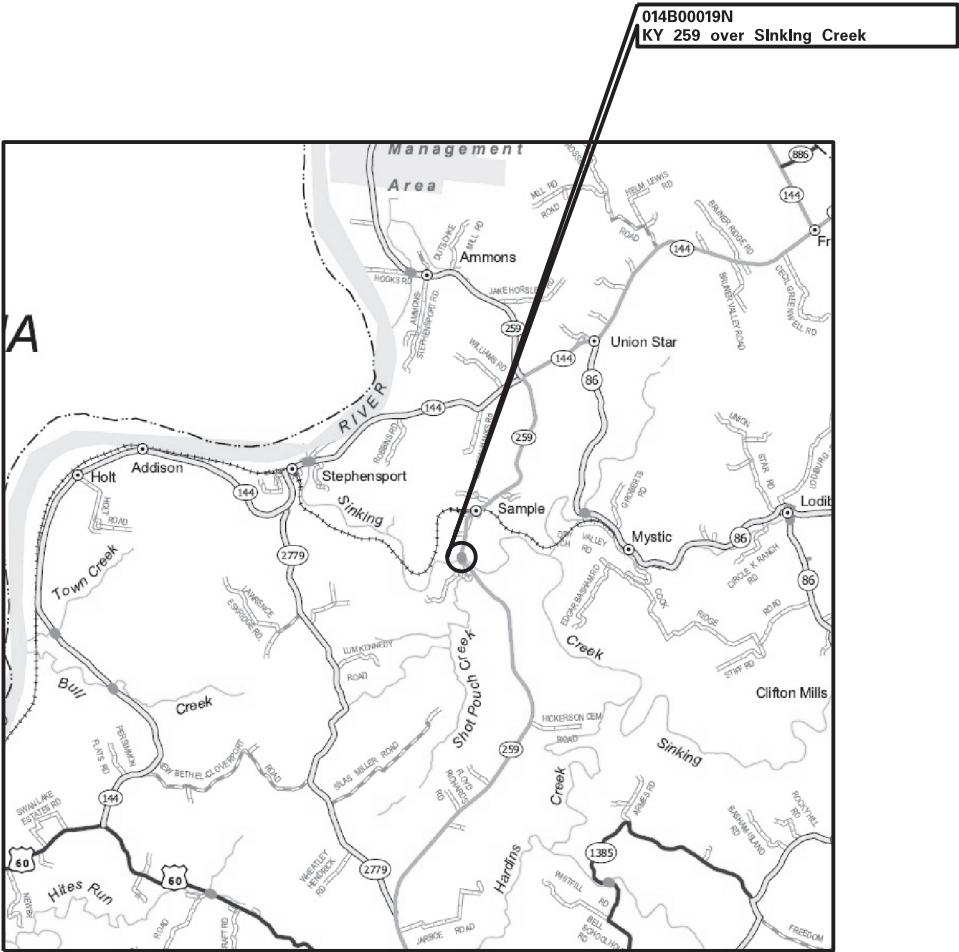
PREVENTIVE MAINTENANCE

BRIDGE NO.
014B00019N

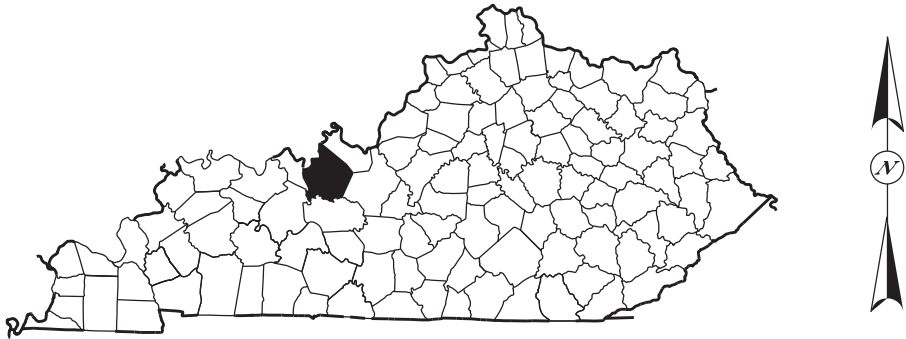
Note: See Special Notes

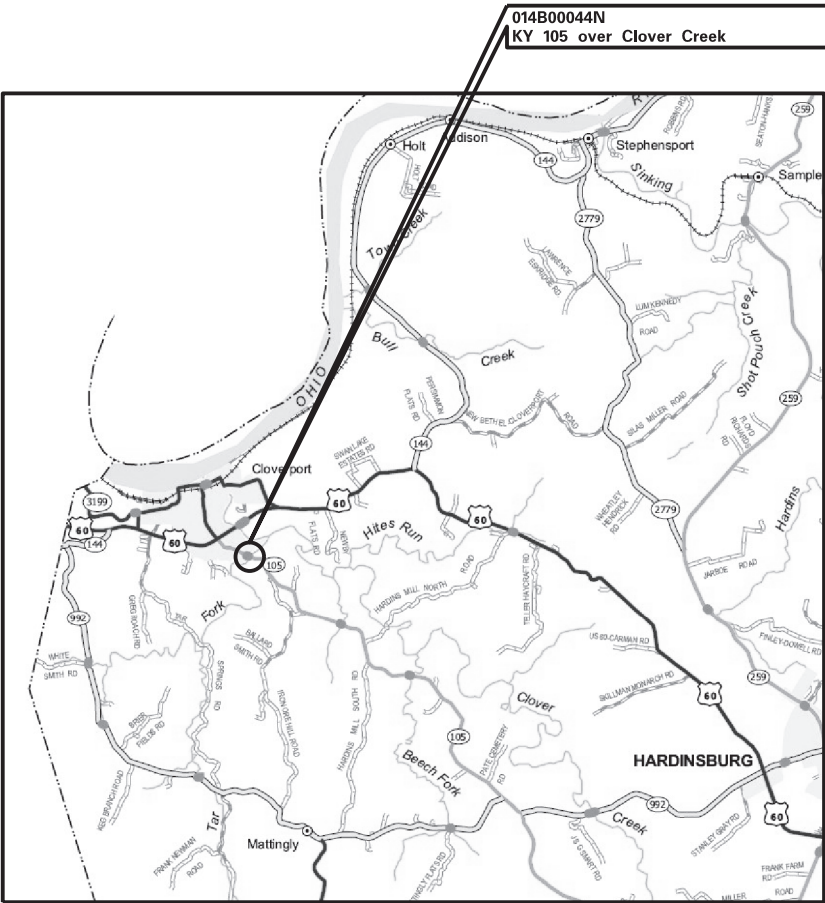
Commonwealth of Kentucky DEPARTMENT OF HIGHWAYS
COUNTY BRECKINRIDGE
<i>DETAILS ~ 3</i>
PREPARED BY Division of Maintenance Bridge Preservation Branch



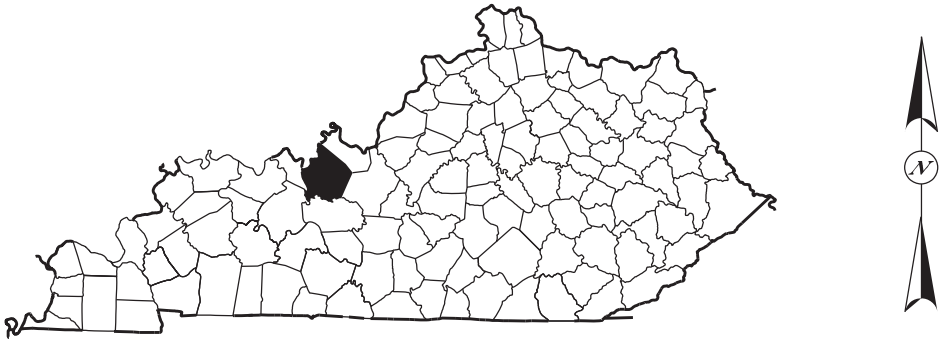


LOCATION MAP ~ BRECKINRIDGE COUNTY





LOCATION MAP ~ BRECKINRIDGE COUNTY



PART II

SPECIFICATIONS AND STANDARD DRAWINGS

STANDARD SPECIFICATIONS

Any reference in the plans or proposal to previous editions of the *Standard Specifications for Road and Bridge Construction* and *Standard Drawings* are superseded by *Standard Specifications for Road and Bridge Construction, Edition of 2019* and *Standard Drawings, Edition of 2020*.

SUPPLEMENTAL SPECIFICATIONS

The contractor shall use the Supplemental Specifications that are effective at the time of letting. The Supplemental Specifications can be found at the following link:
<http://transportation.ky.gov/Construction/Pages/Kentucky-Standard-Specifications.aspx>

STANDARD DRAWINGS THAT APPLY
DISTRICT NO. 4
BRIDGE DECK RESTORATION AND WATERPROOFING
BRECKINRIDGE COUNTY
CID 232901 ~ 014GR23M026

TRAFFIC
~ *TEMPORARY* ~
TRAFFIC CONTROL

LANE CLOSURE TWO LANE HIGHWAY	TTC-100 C.E.
LANE CLOSURE USING TRAFFIC SIGNALS	TTC-110 C.E.

BRIDGES
STANDARDS

BRIDGE RESTORATION AND WATERPROOFING	
WITH CONCRETE OVERLAYS	BGX-009 C.E.
AMORED EDGES	BJE-001 C.E.
EXPANSION JOINT REPLACEMENT GENERAL NOTES	BJE-005 C.E.
EXPANSION JOINT REPLACEMENT 4” & 5”	BJE-006 C.E.

PART III

EMPLOYMENT, WAGE AND RECORD REQUIREMENTS

**TRANSPORTATION CABINET
DEPARTMENT OF HIGHWAYS**

**LABOR AND WAGE REQUIREMENTS
APPLICABLE TO OTHER THAN FEDERAL-AID SYSTEM PROJECTS**

- I. Application
- II. Nondiscrimination of Employees (KRS 344)

I. APPLICATION

1. These contract provisions shall apply to all work performed on the contract by the contractor with his own organization and with the assistance of workmen under his immediate superintendence and to all work performed on the contract by piecework, station work or by subcontract. The contractor's organization shall be construed to include only workmen employed and paid directly by the contractor and equipment owned or rented by him, with or without operators.

2. The contractor shall insert in each of his subcontracts all of the stipulations contained in these Required Provisions and such other stipulations as may be required.

3. A breach of any of the stipulations contained in these Required Provisions may be grounds for termination of the contract.

3. If the contractor is in control of apprenticeship or other training or retraining, including on-the-job training programs, he shall not discriminate against an individual because of his race, color, religion, national origin, sex, disability or age forty (40) and over, in admission to, or employment in any program established to provide apprenticeship or other training.

4. The contractor will send to each labor union or representative of workers with which he has a collective bargaining agreement or other contract or understanding, a notice to be provided advising the said labor union or workers' representative of the contractor's commitments under this section, and shall post copies of the notice in conspicuous places available to employees and applicants for employment. The contractor will take such action with respect to any subcontract or purchase order as the administering agency may direct as a means of enforcing such provisions, including sanctions for non-compliance.

Revised: January 25, 2017

II. NONDISCRIMINATION OF EMPLOYEES

**AN ACT OF THE KENTUCKY
GENERAL ASSEMBLY TO PREVENT
DISCRIMINATION IN EMPLOYMENT
KRS CHAPTER 344
EFFECTIVE JUNE 16, 1972**

The contract on this project, in accordance with KRS Chapter 344, provides that during the performance of this contract, the contractor agrees as follows:

1. The contractor shall not fail or refuse to hire, or shall not discharge any individual, or otherwise discriminate against an individual with respect to his compensation, terms, conditions, or privileges of employment, because of such individual's race, color, religion, national origin, sex, disability or age (forty and above); or limit, segregate, or classify his employees in any way which would deprive or tend to deprive an individual of employment opportunities or otherwise adversely affect his status as an employee, because of such individual's race, color, religion, national origin, sex, disability or age forty (40) and over. The contractor agrees to post in conspicuous places, available to employees and applicants for employment, notices to be provided setting forth the provisions of this nondiscrimination clause.

2. The contractor shall not print or publish or cause to be printed or published a notice or advertisement relating to employment by such an employer or membership in or any classification or referral for employment by the employment agency, indicating any preference, limitation, specification, or discrimination, based on race, color, religion, national origin, sex, or age forty (40) and over, or because the person is a qualified individual with a disability, except that such a notice or advertisement may indicate a preference, limitation, or specification based on religion, national origin, sex, or age forty (40) and over, or because the person is a qualified individual with a disability, when religion, national origin, sex, or age forty (40) and over, or because the person is a qualified individual with a disability, is a bona fide occupational qualification for employment.

EXECUTIVE BRANCH CODE OF ETHICS

In the 1992 regular legislative session, the General Assembly passed and Governor Brereton Jones signed Senate Bill 63 (codified as KRS 11A), the Executive Branch Code of Ethics, which states, in part:

KRS 11A.040 (7) provides:

No present or former public servant shall, within six (6) months following termination of his office or employment, accept employment, compensation, or other economic benefit from any person or business that contracts or does business with, or is regulated by, the state in matters in which he was directly involved during the last thirty-six (36) months of his tenure. This provision shall not prohibit an individual from returning to the same business, firm, occupation, or profession in which he was involved prior to taking office or beginning his term of employment, or for which he received, prior to his state employment, a professional degree or license, provided that, for a period of six (6) months, he personally refrains from working on any matter in which he was directly involved during the last thirty-six (36) months of his tenure in state government. This subsection shall not prohibit the performance of ministerial functions, including but not limited to filing tax returns, filing applications for permits or licenses, or filing incorporation papers, nor shall it prohibit the former officer or public servant from receiving public funds disbursed through entitlement programs.

KRS 11A.040 (9) states:

A former public servant shall not represent a person or business before a state agency in a matter in which the former public servant was directly involved during the last thirty-six (36) months of his tenure, for a period of one (1) year after the latter of:

- a) The date of leaving office or termination of employment; or
- b) The date the term of office expires to which the public servant was elected.

This law is intended to promote public confidence in the integrity of state government and to declare as public policy the idea that state employees should view their work as a public trust and not as a way to obtain private benefits.

If you have worked for the executive branch of state government within the past six months, you may be subject to the law's prohibitions. The law's applicability may be different if you hold elected office or are contemplating representation of another before a state agency.

Also, if you are affiliated with a firm which does business with the state and which employs former state executive-branch employees, you should be aware that the law may apply to them.

In case of doubt, the law permits you to request an advisory opinion from the Executive Branch Ethics Commission, 1025 Capital Center Drive, Suite 104, Frankfort, Kentucky 40601; telephone (502) 564-7954.

Revised: May 23, 2022

Kentucky Equal Employment Opportunity Act of 1978

The requirements of the Kentucky Equal Employment Opportunity Act of 1978 (KRS 45.560-45.640) shall apply to this Contract. The apparent low Bidder will be required to submit EEO forms to the Division of Construction Procurement, which will then forward to the Finance and Administration Cabinet for review and approval. No award will become effective until all forms are submitted and EEO/CC has certified compliance. The required EEO forms are as follows:

- EEO-1: Employer Information Report
- Affidavit of Intent to Comply
- Employee Data Sheet
- Subcontractor Report

These forms are available on the Finance and Administration's web page under ***Vendor Information, Standard Attachments and General Terms*** at the following address:
<https://www.eProcurement.ky.gov>.

Bidders currently certified as being in compliance by the Finance and Administration Cabinet may submit a copy of their approval letter in lieu of the referenced EEO forms.

For questions or assistance please contact the Finance and Administration Cabinet by email at **finance.contractcompliance@ky.gov** or by phone at 502-564-2874.

EMPLOYEE RIGHTS UNDER THE FAIR LABOR STANDARDS ACT

THE UNITED STATES DEPARTMENT OF LABOR WAGE AND HOUR DIVISION

FEDERAL MINIMUM WAGE

\$7.25 PER HOUR

BEGINNING JULY 24, 2009

OVERTIME PAY

At least 1½ times your regular rate of pay for all hours worked over 40 in a workweek.

CHILD LABOR

An employee must be at least **16** years old to work in most non-farm jobs and at least **18** to work in non-farm jobs declared hazardous by the Secretary of Labor.

Youths **14** and **15** years old may work outside school hours in various non-manufacturing, non-mining, non-hazardous jobs under the following conditions:

No more than

- **3** hours on a school day or **18** hours in a school week;
- **8** hours on a non-school day or **40** hours in a non-school week.

Also, work may not begin before **7 a.m.** or end after **7 p.m.**, except from June 1 through Labor Day, when evening hours are extended to **9 p.m.** Different rules apply in agricultural employment.

TIP CREDIT

Employers of “tipped employees” must pay a cash wage of at least \$2.13 per hour if they claim a tip credit against their minimum wage obligation. If an employee’s tips combined with the employer’s cash wage of at least \$2.13 per hour do not equal the minimum hourly wage, the employer must make up the difference. Certain other conditions must also be met.

ENFORCEMENT

The Department of Labor may recover back wages either administratively or through court action, for the employees that have been underpaid in violation of the law. Violations may result in civil or criminal action.

Employers may be assessed civil money penalties of up to \$1,100 for each willful or repeated violation of the minimum wage or overtime pay provisions of the law and up to \$11,000 for each employee who is the subject of a violation of the Act’s child labor provisions. In addition, a civil money penalty of up to \$50,000 may be assessed for each child labor violation that causes the death or serious injury of any minor employee, and such assessments may be doubled, up to \$100,000, when the violations are determined to be willful or repeated. The law also prohibits discriminating against or discharging workers who file a complaint or participate in any proceeding under the Act.

ADDITIONAL INFORMATION

- Certain occupations and establishments are exempt from the minimum wage and/or overtime pay provisions.
- Special provisions apply to workers in American Samoa and the Commonwealth of the Northern Mariana Islands.
- Some state laws provide greater employee protections; employers must comply with both.
- The law requires employers to display this poster where employees can readily see it.
- Employees under 20 years of age may be paid \$4.25 per hour during their first 90 consecutive calendar days of employment with an employer.
- Certain full-time students, student learners, apprentices, and workers with disabilities may be paid less than the minimum wage under special certificates issued by the Department of Labor.

For additional information:



1-866-4-USWAGE

(1-866-487-9243)

TTY: 1-877-889-5627



WWW.WAGEHOUR.DOL.GOV

PART IV

INSURANCE

Refer to
Kentucky Standard Specifications for Road and Bridge Construction,
current edition

PART V

BID ITEMS

Report Date 6/16/23

Section: 0001 - BRIDGE

LINE	BID CODE	ALT	DESCRIPTION	QUANTITY	UNIT	UNIT PRIC	FP	AMOUNT
0010	02220		FLOWABLE FILL	64.00	CUYD		\$	
0020	02562		TEMPORARY SIGNS	290.00	SQFT		\$	
0030	02650		MAINTAIN & CONTROL TRAFFIC APPLIES TO 014B00019N	1.00	LS		\$	
0040	02650		MAINTAIN & CONTROL TRAFFIC APPLIES TO 014B00044N	1.00	LS		\$	
0050	02653		LANE CLOSURE	4.00	EACH		\$	
0060	03298		EXPAN JOINT REPLACE 4 IN	62.20	LF		\$	
0070	03299		ARMORED EDGE FOR CONCRETE	110.20	LF		\$	
0080	03300		ELIMINATE TRANSVERSE JOINT	52.00	LF		\$	
0090	03304		BRIDGE OVERLAY APPROACH PAVEMENT	934.00	SQYD		\$	
0100	04933		TEMP SIGNAL 2 PHASE	2.00	EACH		\$	
0110	06514		PAVE STRIPING-PERM PAINT-4 IN	1,300.00	LF		\$	
0120	06549		PAVE STRIPING-TEMP REM TAPE-B	2,000.00	LF		\$	
0130	06550		PAVE STRIPING-TEMP REM TAPE-W	4,000.00	LF		\$	
0140	06551		PAVE STRIPING-TEMP REM TAPE-Y	4,000.00	LF		\$	
0150	08019		CYCLOPEAN STONE RIP RAP	55.50	TON		\$	
0160	08150		STEEL REINFORCEMENT	620.00	LB		\$	
0170	08504		EPOXY SAND SLURRY	233.50	SQYD		\$	
0180	08510		REM EPOXY BIT FOREIGN OVERLAY	384.00	SQYD		\$	
0190	08526		CONC CLASS M FULL DEPTH PATCH	6.30	CUYD		\$	
0200	08534		CONCRETE OVERLAY-LATEX	46.60	CUYD		\$	
0210	08549		BLAST CLEANING	1,351.00	SQYD		\$	
0220	08551		MACHINE PREP OF SLAB	734.00	SQYD		\$	
0230	24094EC		PARTIAL DEPTH PATCHING	34.20	CUYD		\$	
0240	24692EC		DECK DRAIN RETROFIT	18.00	EACH		\$	
0250	24981EC		BRIDGE CLEANING APPLIES TO 014B00019N	1.00	LS		\$	
0260	24982EC		CONCRETE COATING APPLIES TO 014B00019N	1.00	LS		\$	
0270	24983EC		BEARING LUBRICATION APPLIES TO 014B00019N	8.00	EACH		\$	

Section: 0002 - DEMOBILIZATION

LINE	BID CODE	ALT	DESCRIPTION	QUANTITY	UNIT	UNIT PRIC	FP	AMOUNT
0280	02569		DEMOBILIZATION	1.00	LS		\$	