



CALL NO. 402

CONTRACT ID. 222470

JEFFERSON COUNTY

FED/STATE PROJECT NUMBER 056GR22P086 - FD05

DESCRIPTION JEFFERSON COUNTY (KY 3064, KY 3216, & KY 3217)

WORK TYPE ASPHALT RESURFACING

PRIMARY COMPLETION DATE 11/15/2023

LETTING DATE: December 08,2022

Sealed Bids will be received electronically through the Bid Express bidding service until 10:00 AM EASTERN STANDARD TIME December 08,2022. Bids will be publicly announced at 10:00 AM EASTERN STANDARD TIME.

NO PLANS ASSOCIATED WITH THIS PROJECT.

REQUIRED BID PROPOSAL GUARANTY: Not less than 5% of the total bid.

TABLE OF CONTENTS

PART I	SCOPE OF WORK <ul style="list-style-type: none">• PROJECT(S), COMPLETION DATE(S), & LIQUIDATED DAMAGES• CONTRACT NOTES• STATE CONTRACT NOTES• SURFACING AREAS• ASPHALT MIXTURE• INCIDENTAL SURFACING• FUEL AND ASPHALT PAY ADJUSTMENT• COMPACTION OPTION B• SPECIAL NOTE(S) APPLICABLE TO PROJECT• WASTE AND BORROW SITES• NON-TRACKING TACK COAT• MANHOLE ADJUSTMENT LOUISVILLE MSD• COORDINATION OF WORK WITH OTHER CONTRACTS• TYPICAL SECTION DIMENSIONS• SIDEWALK RAMPS & DETECTABLE WARNINGS• TRAFFIC CONTROL PLAN 4 LANE• TRAFFIC SIGNAL LOOP DETECTORS• SKETCH MAP(S)• MATERIAL SUMMARY• SUMMARY SHEET(S)• TYPICAL SECTION(S)• DETAIL SHEET(S)• BRIDGE DETAIL FOR PAVING PROJECT
PART II	SPECIFICATIONS AND STANDARD DRAWINGS <ul style="list-style-type: none">• SPECIFICATIONS REFERENCE• SUPPLEMENTAL SPECIFICATION• 2020 STANDARD DRAWINGS THAT APPLY
PART III	EMPLOYMENT, WAGE AND RECORD REQUIREMENTS <ul style="list-style-type: none">• LABOR AND WAGE REQUIREMENTS• EXECUTIVE BRANCH CODE OF ETHICS• KENTUCKY EQUAL EMPLOYMENT OPPORTUNITY ACT OF 1978 LOCALITY / STATE• PROJECT WAGE RATES / STATE FUNDED
PART IV	INSURANCE
PART V	BID ITEMS

PART I

SCOPE OF WORK

ADMINISTRATIVE DISTRICT - 05

CONTRACT ID - 222470
056GR22P086 - FD05
COUNTY - JEFFERSON
PCN - MP05630642201
FD05 056 3064 000-002

PORTLAND AVE/NORTHWESTERN PKWY (KY 3064) (MP 0.000) BEGIN AT US 150 EXTENDING EAST TO KY 3216 (MP 1.601), A DISTANCE OF 01.60 MILES.ASPHALT RESURFACING
GEOGRAPHIC COORDINATES LATITUDE 38:16:23.00 LONGITUDE 85:47:45.00
ADT 3,967
PCN - MP05632162201
FD05 056 3216 000-001

N 38TH STREET (KY 3216) (MP 0.000) BEGIN AT BANK STREET EXTENDING NORTH TO NORTHWESTERN PARKWAY (MP 0.155), A DISTANCE OF 0.15 MILES.ASPHALT RESURFACING
GEOGRAPHIC COORDINATES LATITUDE 38:16:23.00 LONGITUDE 85:48:35.00
ADT 1,209
PCN - MP05632172201
FD05 056 3217 000-001

N 37TH STREET (KY 3217) (MP 0.000) BEGIN AT KY 3064 EXTENDING NORTH TO KY 3082 (MP 0.153), A DISTANCE OF 0.15 MILES.ASPHALT RESURFACING
GEOGRAPHIC COORDINATES LATITUDE 38:16:24.00 LONGITUDE 85:49:29.00
ADT 1,212

COMPLETION DATE(S):
COMPLETED BY 11/15/2023 APPLIES TO ENTIRE CONTRACT

CONTRACT NOTES

PROPOSAL ADDENDA

All addenda to this proposal must be applied when calculating bid and certified in the bid packet submitted to the Kentucky Department of Highways. Failure to use the correct and most recent addenda may result in the bid being rejected.

BID SUBMITTAL

Bidder must use the Department's electronic bidding software. The Bidder must download the bid file located on the Bid Express website (www.bidx.com) to prepare a bid packet for submission to the Department. The bidder must submit electronically using Bid Express.

JOINT VENTURE BIDDING

Joint venture bidding is permissible. All companies in the joint venture must be prequalified in one of the work types in the Qualifications for Bidders for the project. The bidders must get a vendor ID for the joint venture from the Division of Construction Procurement and register the joint venture as a bidder on the project. Also, the joint venture must obtain a digital ID from Bid Express to submit a bid. A joint bid bond of 5% may be submitted for both companies or each company may submit a separate bond of 5%.

UNDERGROUND FACILITY DAMAGE PROTECTION

The contractor shall make every effort to protect underground facilities from damage as prescribed in the Underground Facility Damage Protection Act of 1994, Kentucky Revised Statute KRS 367.4901 to 367.4917. It is the contractor's responsibility to determine and take steps necessary to be in compliance with federal and state damage prevention directives. When prescribed in said directives, the contractor shall submit Excavation Locate Requests to the Kentucky Contact Center (KY811) via web ticket entry. The submission of this request does not relieve the contractor from the responsibility of contacting non-member facility owners, whom shall be contacted through their individual Protection Notification Center. Non-compliance with these directives can result in the enforcement of penalties.

REGISTRATION WITH THE SECRETARY OF STATE BY A FOREIGN ENTITY

Pursuant to KRS 176.085(1)(b), an agency, department, office, or political subdivision of the Commonwealth of Kentucky shall not award a state contract to a person that is a foreign entity required by [KRS 14A.9-010](#) to obtain a certificate of authority to transact business in the Commonwealth ("certificate") from the Secretary of State under [KRS 14A.9-030](#) unless the person produces the certificate within fourteen (14) days of the bid or proposal opening. If the foreign entity is not required to obtain a certificate as provided in [KRS 14A.9-010](#), the foreign entity should identify the applicable exception. Foreign entity is defined within [KRS 14A.1-070](#).

For all foreign entities required to obtain a certificate of authority to transact business in the Commonwealth, if a copy of the certificate is not received by the contracting agency within the time frame identified above, the foreign entity's solicitation response shall be deemed non-responsive or the awarded contract shall be cancelled.

Businesses can register with the Secretary of State at <https://secure.kentucky.gov/sos/ftbr/welcome.aspx>.

SPECIAL NOTE FOR PROJECT QUESTIONS DURING ADVERTISEMENT

Questions about projects during the advertisement should be submitted in writing to the Division of Construction Procurement. This may be done by fax (502) 564-7299 or email to kytc.projectquestions@ky.gov. The Department will attempt to answer all submitted questions. The Department reserves the right not to answer if the question is not pertinent or does not aid in clarifying the project intent.

The deadline for posting answers will be 3:00 pm Eastern Daylight Time, the day preceding the Letting. Questions may be submitted until this deadline with the understanding that the later a question is submitted, the less likely an answer will be able to be provided.

The questions and answers will be posted for each Letting under the heading "Questions & Answers" on the Construction Procurement website (www.transportation.ky.gov/contract). The answers provided shall be considered part of this Special Note and, in case of a discrepancy, will govern over all other bidding documents.

HARDWOOD REMOVAL RESTRICTIONS

The US Department of Agriculture has imposed a quarantine in Kentucky and several surrounding states, to prevent the spread of an invasive insect, the emerald ash borer. Hardwood cut in conjunction with the project may not be removed from the state. Chipping or burning on site is the preferred method of disposal.

INSTRUCTIONS FOR EXCESS MATERIAL SITES AND BORROW SITES

Identification of excess material sites and borrow sites shall be the responsibility of the Contractor. The Contractor shall be responsible for compliance with all applicable state and federal laws and may wish to consult with the US Fish and Wildlife Service to seek protection under Section 10 of the Endangered Species Act for these activities.

ACCESS TO RECORDS

The contractor, as defined in KRS 45A.030 (9) agrees that the contracting agency, the Finance and Administration Cabinet, the Auditor of Public Accounts, and the Legislative Research Commission, or their duly authorized representatives, shall have access to any books, documents, papers, records, or other evidence, which are directly pertinent to this contract for the purpose of financial audit or program review. Records and other prequalification information confidentially

disclosed as part of the bid process shall not be deemed as directly pertinent to the contract and shall be exempt from disclosure as provided in KRS 61.878(1)(c). The contractor also recognizes that any books, documents, papers, records, or other evidence, received during a financial audit or program review shall be subject to the Kentucky Open Records Act, KRS 61.870 to 61.884.

In the event of a dispute between the contractor and the contracting agency, Attorney General, or the Auditor of Public Accounts over documents that are eligible for production and review, the Finance and Administration Cabinet shall review the dispute and issue a determination, in accordance with Secretary's Order 11-004.

BUILD AMERICA, BUY AMERICA ACT (BABA)

On November 15, 2021, President Biden signed into law the Infrastructure Investment and Jobs Act (IIJA), Pub. L. No. 117-58, includes the Build America, Buy America Act (“the Act”). Pub. L. No. 117-58, §§70901-52. The Act strengthens the Buy America preference to include “construction materials.” The current temporary waiver for **“construction materials”** will expire on November 10, 2022.

The Act will apply to construction materials as outlined in the guidance issued in OMB [M-22-11](#).

Construction Materials – Includes an article, material, or supply – other than an item of primarily iron or steel; a manufactured product; cement and cementitious materials; aggregates such as stone, sand, or gravel; or aggregate binding agents or additives – that is or consists primarily of:

- Non-ferrous metals
- Plastic/polymer-based products (including polyvinylchloride, composite building materials, and polymers used in fiber optic cables);
- Glass (including optic glass);
- Lumber; or
- Drywall.

Construction Materials only applies to items, materials, and supplies that are consumed in, incorporated into, or affixed to an infrastructure project.

Construction Materials does not apply to tools, equipment or supplies brought to the jobsite and removed before completion.

October 14, 2022

SPECIAL NOTE FOR RECIPROCAL PREFERENCE

RECIPROCAL PREFERENCE TO BE GIVEN BY PUBLIC AGENCIES TO RESIDENT BIDDERS

By reference, KRS 45A.490 to 45A.494 are incorporated herein and in compliance regarding the bidders residency. Bidders who want to claim resident bidder status should complete the Affidavit for Claiming Resident Bidder Status along with their bid in the electronic bidding software. Submittal of the Affidavit should be done along the bid in Bid Express.

April 30, 2018

SURFACING AREAS (KY 3064)

The Department estimates the mainline surfacing width to be varied 36 to 65 feet.

The Department estimates the total mainline area to be surfaced to be 45,145 square yards.

The Department estimates the shoulder width to be N/A foot on each side.

The Department estimates the total shoulder area to be surfaced to be N/A square yards.

SURFACING AREAS KY 3216

The Department estimates the mainline surfacing width to be 32 feet.

The Department estimates the total mainline area to be surfaced to be 3,091 square yards.

The Department estimates the shoulder width to be N/A foot on each side.

The Department estimates the total shoulder area to be surfaced to be N/A square yards.

SURFACING AREAS KY 3217

The Department estimates the mainline surfacing width to be 37 feet.

The Department estimates the total mainline area to be surfaced to be 3,653 square yards.

The Department estimates the shoulder width to be N/A foot on each side.

The Department estimates the total shoulder area to be surfaced to be N/A square yards.

ASPHALT MIXTURE

Unless otherwise noted, the Department estimates the rate of application for all asphalt mixtures to be 110 lbs/sy per inch of depth.

INCIDENTAL SURFACING

The Department has included in the quantities of asphalt mixtures established in the proposal estimated quantities required for resurfacing or surfacing mailbox turnouts, farm field entrances, residential and commercial entrances, curve widening, ramp gores and tapers, and road and street approaches, as applicable. Pave these areas to the limits as shown on Standard Drawing RPM-110-06 or as directed by the Engineer. In the event signal detectors are present in the intersecting streets or roads, pave the crossroads to the right of way limit or back of the signal detector, whichever is the farthest back of the mainline. Surface or resurface these areas as directed by the Engineer. The Department will not measure placing and compacting for separate payment but shall be incidental to the Contract unit price for the asphalt mixtures.

FUEL AND ASPHALT PAY ADJUSTMENT

The Department has included the Contract items Asphalt Adjustment and Fuel Adjustment for possible future payments at an established Contract unit price of \$1.00. The Department will calculate actual adjustment quantities after work is completed. If existing Contract amount is insufficient to pay all items on the contract with the adjustments, the Department will establish additional monies with a change order.

OPTION B

Be advised that the Department will control and accept compaction of asphalt mixtures furnished on this project under OPTION B in accordance with Sections 402 and 403.

Special Note for Thermo Striping Application

Contrary to Section 714.02.05 of the Standard Specifications for Road and Bridge Construction, thermoplastic application will be required to be by ribbon gun at all locations that are to be applied over milled rumble strips in lieu of an extrusion application.

SPECIAL NOTE FOR PAVEMENT MARKING MODIFICATIONS

Per Section 713.03.01 of the Standard Specifications, the Contractor shall still be required to submit a record of existing pavement markings prior to beginning resurfacing activities. The Department requests these records be submitted at least two weeks prior to milling or paving in order to coordinate any desired changes between the District Traffic Engineer and the Contractor. All changes will be returned to the Contractor to ensure the desired modifications can be performed during final surfacing. As the Contractor is responsible for implementing any pavement marking changes, it is highly recommended any questions are addressed to the Project Engineer prior to striping. Any incorrect markings will be removed and replaced with the proper markings at the Contractor's expense and in a manner approved by the Engineer.

SPECIAL NOTE FOR ON-STREET PARKING RESTRICTIONS

On routes which contain areas with on-street parking, advance warning shall be given to residents and businesses prior to resurfacing activities commencing. Signage advertising the dates and times when parking will be restricted shall be purchased and installed by the Contractor, at no expense to the Department and shall be considered incidental to the bid item for MAINTAIN AND CONTROL TRAFFIC. The "NO STOPPING" signs shall be installed a minimum of two business days (48 hours) prior to any parking restrictions and shall be removed as soon as the restrictions are no longer applicable.

Signs shall be installed along the side(s) of the route where stopping will be restricted, at a maximum spacing of 80 feet between signs. At intersecting side streets and/or alleys, place signs a maximum of 30 feet in each direction from the approach, along the route to be resurfaced.

No Stopping signs shall be purchased from Louisville Metro Public Works in order to utilize towing services provided by the Louisville Metro Police Department. The Contractor shall contact Jerry Cantrell or Marvin Smith at LMPW at (502) 574-8037 or Jerry.Cantrell@LouisvilleKy.gov; Marvin.Smith@LouisvilleKy.gov to place their sign order. LMPW will need a minimum of two weeks notice of the sign needs to ensure they have adequate

quantity in stock. The Contractor will need to specify the quantity of signs needed, the dates and times restrictions will be in place and the day the signs will need to be acquired.

The cost is anticipated to be \$6.75 per sign. The Contractor shall remit payment and obtain signs at the LMPW office at 444 South 5th Street, 4th Floor in Downtown Louisville. Signs may be re-used, on this project, as long as they are in like-new and legible condition and date and time restrictions still apply.



SPECIAL NOTE FOR UTILITY/INLET ADJUSTMENT

Quantities established for manhole, water valve & inlet adjustments are approximate and actual quantities and locations shall be determined by the Engineer during the course of the resurfacing work. It is anticipated some adjustments will be required following paving to ensure facilities are flush with the final surface. For all adjustments made following the resurfacing, 3,500 psi concrete shall be used for all pavement restoration.

ADJUST INLET – This item shall include all work necessary to adjust the existing inlet to approximate roadway elevation or as directed by the Engineer. Adjustment may include minor repairs to the existing structure. Ensure the adjustment does not negatively impact drainage to the inlet. Any damaged frames and/or grates shall be replaced, either with materials supplied by Louisville MSD or paid for by the KYTC. Adjustments are to be performed using brick, mortar and/or concrete having a compressive strength of 3,000 psi prior to being exposed to vehicular traffic.

SPECIAL NOTE FOR LOW CLEARANCE BRIDGES

The Contractor is advised that there are three bridge underpasses on KY 3064 that have low clearances. Be advised of all posted low clearance requirements and make the necessary preparations to perform the required work while maintaining safe passage. No claims shall be accepted for any specialized work required at these bridges.

Low Clearance Bridges:

- Mile point 0.830 – posted 14’6”
- Mile point 1.567 – posted 14’0”
- Mile point 1.588 – posted 14’0”

INSTALL RADAR PRESENCE DETECTOR TYPE A (KY 3217)

Install Radar Presence Detector Type A shall consist of installation of a pole mounted radar presence sensor, sensor mounting bracket, sensor cables, interface boxes, lead-in cable, connectors (furnished by contractor), and controller interface assembly. Radar Presence Detector Type A bid item shall include all labor required to provide a functional detection system. Radar Presence Detector Type A shall be installed and wired in accordance with the manufacturer’s instructions. After the detector is installed and before the detector is powered on, the contractor shall coordinate with District Traffic Division’s representatives to schedule a time to perform the detector setup. The contractor shall double check to verify that all wiring is correctly installed and connected before scheduling the setup work. Representatives from KYTC and/or the manufacturer or salesrepresentative will assist with setup and calibration. The contractor shall provide a bucket truck and operators at this time for final aiming of the sensors. The contractor shall provide individuals capable of operating the setup software and learning the setup process so that future installations may be completed without assistance from others.

Special Note for Historic Concrete Mix

When specified as Historic, provide a Class A concrete mix conforming to Kentucky Standard Specification Section 601 with the following exceptions:

- Approved coarse aggregate shall be #8 or #9m river gravel. The coarse aggregate shall be at least 50% of the total aggregate in the mix with river sand being the fine aggregate.
- Achieve a “historic” weathered finish by use of a water based, pigmented, top surface retarder resulting in a surface depth etch of up to 1/8 inch. Apply and remove the surface retarder in accordance with manufacturer’s recommendations.
- Placement and removal of the surface retarder shall be considered incidental to the placed concrete.

SPECIAL PROVISION FOR WASTE AND BORROW SITES

Obtain U.S. Army Corps of Engineer's approval before utilizing a waste or borrow site that involves "Waters of the United States". The Corps of Engineers defines "Waters of the United States" as perennial or intermittent streams, ponds or wetlands. The Corps of Engineers also considers ephemeral streams, typically dry except during rainfall but having a defined drainage channel, to be jurisdictional waters. Direct questions concerning any potential impacts to "Waters of the United States" to the attention of the appropriate District Office for the Corps of Engineers for a determination prior to disturbance. Be responsible for any fees associated with obtaining approval for waste and borrow sites from the U.S. Army Corps of Engineer or other appropriate regulatory agencies.

1-296 Waste & Borrow Sites
01/02/2012

SPECIAL NOTE FOR NON-TRACKING TACK COAT

1. DESCRIPTION AND USEAGE. This specification covers the requirements and practices for applying a non-tracking tack asphalt coating. Place this material on the existing pavement course, prior to placement of a new asphalt pavement layer. Use when expedited paving is necessary or when asphalt tracking would negatively impact the surrounding area. This material is not suitable for other uses. Ensure material can “break” within 15 minutes under conditions listed in 3.2.
2. MATERIALS, EQUIPMENT, AND PERSONNEL.

- 2.1 Non-Tracking Tack. Provide material conforming to Subsection 2.1.1.
- 2.1.1 Provide a tack conforming to the following material requirements:

Property	Specification	Test Procedure
Viscosity, SFS, 77 ° F	20 – 100	AASHTO T 72
Sieve, %	0.3 max.	AASHTO T 59
Asphalt Residue ¹ , %	50 min.	AASHTO T 59
Oil Distillate, %	1.0 max.	AASHTO T 59
Residue Penetration, 77 ° F	0 - 30	AASHTO T 49
Original Dynamic Shear (G*/sin δ), 82 ° C	1.0 min.	AASHTO T 315
Softening Point, ° F	149 min.	AASHTO T 53
Solubility, %	97.5 min.	AASHTO T 44

¹ Bring sample to 212 °F over a 10-15 minute period. Maintain 212 °F for 15-20 minutes or until 30-40 mL of water has distilled. Continue distillation as specified in T59.

- 2.2. Equipment. Provide a distributor truck capable of heating, circulating, and spraying the tack between 170 °F and 180 °F. Do not exceed 180 °F. Circulate the material while heating. Provide the correct nozzles that is recommend by the producer to ensure proper coverage of tack is obtained. Ensure the bar can be raised to between 14” and 18” from the roadway.
- 2.3. Personnel. Ensure the tack supplier has provided training to the contractor on the installation procedures for this product. Make a technical representative from the supplier available at the request of the Engineer.

3. CONSTRUCTION.

3.1 Surface Preparation. Prior to the application of the non-tracking tack, ensure the pavement surface is thoroughly dry and free from dust or any other debris that would inhibit adhesion. Clean the surface by scraping, sweeping, and the use of compressed air. Ensure this preparation process occurs shortly before application to prevent the return of debris on to the pavement. If rain is expected within one hour after application, do not apply material. Apply material only when the surface is dry, and no precipitation is expected.

3.2 Non-tracking Tack Application. Placement of non-tracking tack is not permitted from October 1st to May 15th. When applying material, ensure the roadway temperature is a minimum of 40°F and rising. Prior to application, demonstrate competence in applying the tack according to this note to the satisfaction of the Engineer. Heat the tack in the distributor to between 170 – 180 °F. After the initial heating, between 170 – 180 °F, the material may be sprayed between 165 °F and 180 °F. Do not apply outside this temperature range. Apply material at a minimum rate of 0.70 pounds (0.08 gallons) per square yard. Ensure full coverage of the material on the pavement surface. Full coverage of this material is critical. Increase material application rate if needed to achieve full coverage. Schedule the work so that, at the end of the day's production, all non-tracking tack is covered with the asphalt mixture. If for some reason the non-tracking tack cannot be covered by an asphalt mixture, ensure the non-tracking tack material is clean and reapply the non-tracking tack prior to placing the asphalt mixture. Do not heat material more than twice in one day.

3.3 Non-tracking Tack Certification. Furnish the tack certification to the Engineer stating the material conforms to all requirements herein prior to use.

3.4 Sampling and Testing. The Department will require a sample of non-tracking tack be taken from the distributor at a rate of one sample per 15,000 tons of mix. Take two 1 gallon samples of the heated material and forward the sample to the Division of Materials for testing within 7 days. Ensure the product temperature is between 170 and 180 °F at the time of sampling.

4. MEASUREMENT. The Department will measure the quantity of non-tracking tack in tons. The Department will not measure for payment any extra materials, labor, methods, equipment, or construction techniques used to satisfy the requirements of this note. The Department will not measure for payment any trial applications of non-tracking tack, the cleaning of the pavement surface, or furnishing and placing the non-tracking tack. The Department will consider all such items incidental to the non-tracking tack.
5. PAYMENT. The Department will pay for the non-tracking tack at the Contract unit bid price and apply an adjustment for each manufacturer's lot of material based on the degree of compliance as defined in the following schedule. Non-tracking tack will not be permitted for use from October 1st to May 15th. During this timeframe, the department will allow the use of an approved asphalt emulsion in lieu of a non-tracking tack product but will not adjust the unit bid price of the material. When a sample fails on two or more tests, the Department may add the deductions, but the total deduction will not exceed 100 percent.

Non-Tracking Tack Price Adjustment Schedule						
Test	Specification	100% Pay	90% Pay	80% Pay	50% Pay	0% Pay
Viscosity, SFS, 77 ° F	20 – 100	19 - 102	17 - 18	15 - 16	14	≤13
			103 - 105	106 - 107	108 - 109	≥ 110
Sieve, %	0.30 max.	≤ 0.40	0.41 - 0.50	0.51 - 0.60	0.61 - 0.70	≥ 0.71
Asphalt Residue, %	50 min.	≥49.0	48.5 – 48.9	48.0 – 48.4	47.5-47.9	≤ 47.4
Oil Distillate, %	1.0 max.	≤1.0	1.1-1.5	1.6 - 1.7	1.8-1.9	>2.0
Residue Penetration, 77 ° F.	30 max.	≤ 31	32 - 33	34 - 35	36 - 37	≥ 38
Original Dynamic Shear (G*/sin δ), 82 ° C	1.0 min.	≥0.95	0.92 – 0.94	0.90 – 0.91	0.85 - 0.89	≤ 0.84
Softening Point, ° F	149 min.	≥145	142 - 144	140 - 141	138 - 139	≤ 137
Solubility, %	97.5 min.	≥ 97.0	96.8 – 96.9	96.6 – 96.7	96.4 – 96.5	≤ 96.3

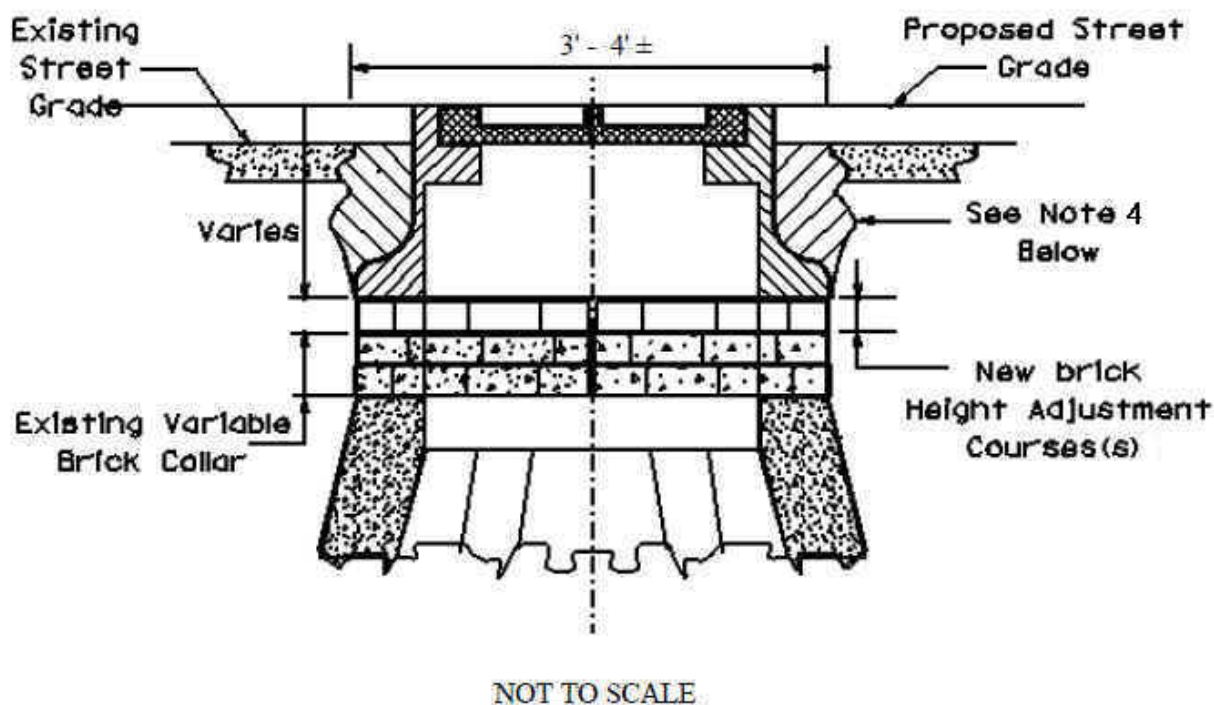
Code
24970EC

Pay Item
Asphalt Material for Tack Non-Tracking

Pay Unit
Ton

Revised: May 23, 2022

**SPECIAL NOTE FOR MANHOLE ADJUSTMENT
LOUISVILLE METROPOLITAN SEWER DISTRICT (MSD)**



CONSTRUCTION NOTES:

1. The Engineer will determine whether manhole adjustments are to be made prior to or after milling and/or resurfacing.
2. Reuse existing frames, grates, and covers. Use other materials conforming to MSD's Technical Specifications. Obtain these specifications from MSD's Engineering Division Office, 400 South Sixth Street, Louisville, KY 40202.
3. Report any missing or damaged frame, grate, or cover discovered by the Contractor to MSD's inspector. Obtain replacement hardware items from MSD's Storage Yard, 151 Cabel Street, Louisville, KY, upon presentation of an MSD inspector's validated Stores Requisition and exchange for the damaged hardware items.
4. Adjust manhole frame and grates with brick and mortar as shown on the drawing or as directed by the Engineer. Do not use wood shims or blocks to adjust or reset the frame height. Fill cross-hatched area with concrete having a minimum 28-day compressive strength of 2000 psi. Use first class workmanship in conformity with MSD's Technical Specifications.
5. Adjust catch basin frames and grates in similar manner as manhole adjustments as approved by the Engineer.
6. Louisville MSD and/or the Engineer may inspect manhole and/or catch basin frame height adjustments. Make corrections as directed by the Engineer at no additional cost to the Department.
7. The Department will measure and pay Adjust Manhole Frame to Grade according to Sections 403.04.02 and 403.05.01 or Sections 408.04.04 and 408.05.02 as applicable.

COORDINATION OF WORK WITH OTHERS

Be advised, there are active project(s) adjacent to or within this project. These may be KYTC administered contracts or work being performed as part of a KYTC issued encroachment permit. The Engineer will help coordinate the work of any other Contractors or permit holders within the limits of this project. See Sections 105.06, 107.06 and 107.14 of the Standard Specifications.

Coordination with Others D-5

SPECIAL NOTE FOR TYPICAL SECTION DIMENSIONS

Consider the dimensions shown on the typical sections for pavement and shoulder widths and thickness' to be nominal or typical dimensions. The Engineer may direct or approve varying the actual dimensions to be constructed to fit existing conditions. Do not widen existing pavement or shoulders unless specified elsewhere in this proposal or directed by the engineer.

1-3725 Typical Section Dimensions
01/02/2012

SPECIAL NOTE FOR CONSTRUCTION OF SIDEWALK RAMPS

GENERAL

Unless otherwise stated in the contract, or as directed by or with prior approval from the Engineer, construct sidewalk ramps and adjacent roadway features in accordance with Section 505 of the Standard Specifications; Supplemental Specifications; Standard Drawings RPM-100-10, RPM-150-08, RPM-152-08, RPM-170-09, RPM-172-07, RGX-040-03; current editions as applicable.

Saw cut existing sidewalks, curb and gutter, and pavement, if present, and reconstruct sidewalk ramps with detectable warnings as directed or approved by the Engineer. Unless specified otherwise in the Contract, construct concrete sidewalk with 4" nominal minimum required thickness; however, if the existing sidewalk thickness is found to be greater or less than the thickness specified, transition the thickness as directed by the Engineer.

During the work to bring the existing sidewalk ramps into current ADA standards, the elevation of the new ramp may be above the grade of the existing roadway. Following completion of the new sidewalk ramp, if a grade difference of 1/2" or greater exists between any portion of the new ramp and roadway, and more than 14 days will pass prior to beginning resurfacing, the Contractor will be required to install asphalt wedges to ensure the sidewalk facilities remain accessible until resurfacing activities begin. Failure to maintain access to the new sidewalk ramps could result in Liquidated Damages being applied at a rate of \$200/day after 14 days. All liquidated damages will be applied cumulatively.

Except as required by the work or directed by the Engineer, do not disturb drainage pipes, catch basins and other roadway features on public or private property. Restore and/or re-install any damaged and/or disturbed features and private property in like kind materials and design at no additional cost to the Department. Dispose of all waste off the right of way at sites obtained by the Contractor at no additional cost to the Department (see SPECIAL PROVISION FOR WASTE AND BORROW SITES). Following completion of the concrete work, backfill and regrade all disturbed areas to ensure they are flush with the sidewalk and back slopes match or are flatter than the pre-construction conditions. Seed and protect all disturbed earthen areas using Seed Mix Type I. Remove all construction debris, rocks and other undesirable material from the disturbed areas prior to seeding.

If the sidewalk ramp work is located at a signalized intersection, the sidewalk Contractor is to coordinate with the electrical Contractor and Engineer to ensure the necessary electrical components are located and installed prior to installing the new sidewalk ramp, such as but not limited to conduit and junction boxes. Following construction of new sidewalk, the Department will not be responsible for additional work required to complete the installation of the required electrical components due to improper planning or coordination. Any damage resulting to traffic signal or other electrical facilities shall be repaired at no cost to the Department (see SPECIAL NOTE FOR TRAFFIC SIGNAL LOOP DETECTORS for more information).

The Contractor shall be responsible to ensure that all sidewalk ramp landings meet flush with the final asphalt surface and maintain positive drainage following the completion of the concrete work and resurfacing, regardless of the existing conditions. This work should be coordinated between the sidewalk and paving Contractors to ensure the final product does not cause standing water or negatively affects the ride quality of the roadway.

Install curb & gutter and header curbs as closely as possible to the standard drawing as field conditions permit or as directed by the Engineer. For example, header curb shall have a thickness of 7 inches and minimum depth of 12 inches below the pavement surface with the top modified to match surrounding conditions. Also, curb and gutter shall have a gutter depth of at least 8 inches with the thickness and curb varying to match existing conditions. Unless otherwise directed by the Engineer or if field conditions prohibit, ensure minimum 1-inch/1-foot (8.33%) transitions on all curb drawdowns, both adjacent to the roadway and parallel with the sidewalk and sidewalk ramp.

MEASUREMENT & PAYMENT (see attached payment example for additional detail)

SIDEWALK-4 IN CONCRETE – The Department will measure the new sidewalk and sidewalk ramps in accordance with Section 505.04 of the current Standard Specifications. The Department will not measure Roadway Excavation or Embankment in Place, but shall consider this work to be incidental to the bid item SIDEWALK-4 IN CONCRETE. Accept payment at the Contract unit price per square yard as full compensation for all labor, materials, equipment, and incidentals required for removal and disposal of existing sidewalk, excavation and embankment, construction of the sidewalk and ramps, and restoration of disturbed features in accordance with these notes or as directed by the Engineer. The bid item for SIDEWALK-4 IN CONCRETE will **NOT** include any curb and/or gutter along the edge of pavement, even if the curb and/or gutter is poured monolithic with the sidewalk. However, any curb not continually adjacent to the edge of pavement will be included in the measured square area of sidewalk and no additional compensation will be made regardless of depth or height (ie. back curb, curb returns, etc.). In the event that a small utility or curb box hood requires adjusting as part of this work, no additional compensation shall be made and will be considered incidental to the bid item for SIDEWALK-4 IN CONCRETE.

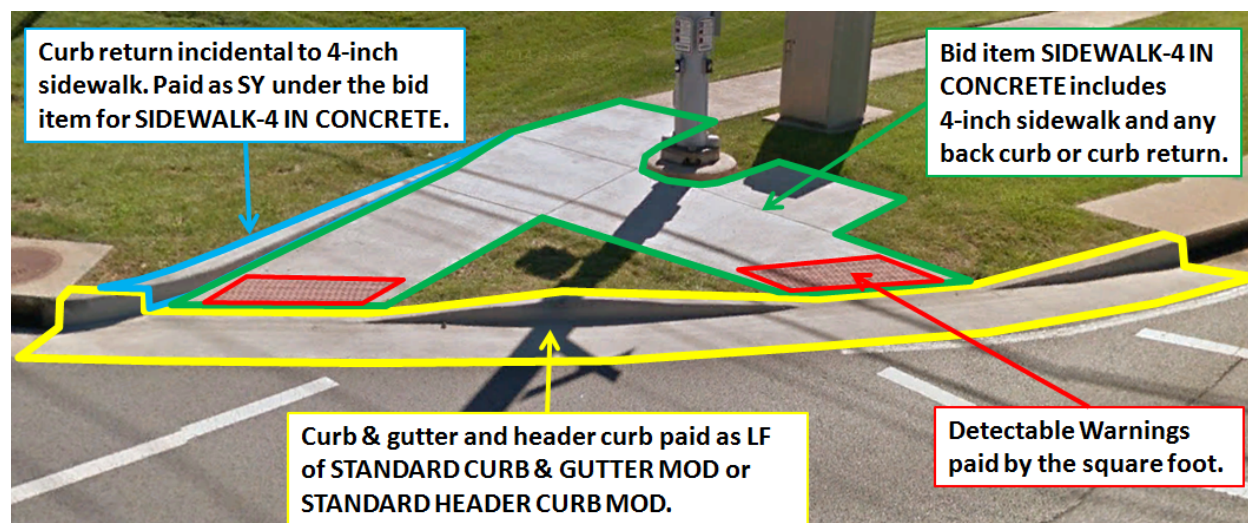
DETECTABLE WARNINGS – The Department will measure and make payment for Detectable Warnings in accordance with Section 505 of the Standard Specifications, Standard Drawing RGX-040-02 and Sepia 028, current editions.

STANDARD CURB AND GUTTER – The Department will measure and make payment for curb and gutter in accordance with Section 506 of the current Standard Specifications. Curb and gutter will be measured for the full length installed, including the area between the sidewalk ramp and roadway pavement. Accept payment at the Contract unit price per linear foot as full compensation for all labor, materials, equipment and incidentals required for removal and disposal of the existing curb and gutter, grade adjustments, transitions, restoration of adjacent pavement and disturbed areas, and all other work necessary to install the new curb and gutter to meet current ADA standards, Standard Drawing RPM-100-09 and the satisfaction of the Engineer. In the event that a small utility or curb box hood requires adjusting as part of this work, no additional compensation shall be made and will be considered incidental to the bid item for STANDARD CURB AND GUTTER.

STANDARD HEADER CURB – The Department will measure and make payment for header curb in accordance with Section 506 of the current Standard Specifications. Header curb will be measured for the full length installed, including the area between the sidewalk ramp and roadway pavement. Accept payment at the Contract unit price per linear foot as full compensation for all labor, materials, equipment and incidentals required for removal and disposal of the existing curb, grade adjustments, transitions, restoration of adjacent pavement and disturbed areas, and all other work necessary to install the new header curb to meet current ADA standards, Standard Drawing RPM-100-09 and the satisfaction of the Engineer. In the event that a small utility or curb box hood requires adjusting as part of this work, no

additional compensation shall be made and will be considered incidental to the bid item for STANDARD HEADER CURB.

SIDEWALK RAMP PAYMENT EXAMPLE



TRAFFIC CONTROL PLAN

TRAFFIC CONTROL GENERAL

Except as provided herein, traffic shall be maintained in accordance with the current editions of the Manual on Uniform Traffic Control Devices (MUTCD), Standard Specifications, and the Standard and Sepia Drawings. Except for the roadway and traffic control bid items listed, all items of work necessary to maintain and control traffic will be paid at the lump sum bid price to “Maintain and Control Traffic”.

Contrary to Section 106.01, traffic control devices used on this project may be new, or used in like new condition, at the beginning of the work and maintained in like new condition until completion of the work. Any temporary traffic control items, devices, materials, and incidentals shall remain the property of the contractor unless otherwise addressed, when no longer needed.

PROJECT PHASING & CONSTRUCTION PROCEDURES

LANE CLOSURES & MOBILE OPERATIONS ARE PERMITTED DURING THE FOLLOWING HOURS:

- Monday through Friday 8:00 A.M. – 4:00 P.M.
- Saturday and Sunday 8:00 A.M. – 8:00 P.M.

LANE CLOSURES WILL NOT BE PERMITTED ON THE FOLLOWING DAYS:

Christmas Holiday	Friday, December 23, 2022 – Sunday, December 25, 2022
New Year’s Day Holiday	Saturday, December 31, 2022 – Sunday, January 1, 2023
Easter Weekend	Friday, April 7, 2023 – Sunday, April 9, 2023
Thunder Over Louisville	Saturday, April 22, 2023 – Sunday, April 23, 2023
KY Derby	Friday, May 5, 2023 – Sunday, May 7, 2023
Memorial Day Weekend	Friday, May 26, 2023 – Monday, May 29, 2023
Independence Day	Saturday, July 1, 2023 – Tuesday, July 4, 2023
Labor Day Weekend	Friday, September 1, 2023 – Monday, September 4, 2023

The Engineer may specify additional days and hours when lane closures will not be allowed, including for various events within or near the project.

At locations with three or more lanes, maintain one lane of traffic in each direction at all times

Traffic Control Plan
Page 2 of 5

during construction. At locations with two lanes, maintain alternating one way traffic during construction and provide a minimum clear lane width of 10 feet (KY 3064), 12 feet (KY 3216), and 11 feet (KY 3217). At locations with one lane, such as at exit and entrance ramps, a partial lane closure is permitted during construction, as long as a minimum clear lane width of 10 feet is maintained. NOTE: During any lane closure or partial lane closure, make provisions for the passage of vehicles of up to 16 feet in width. If traffic should be stopped due to construction operations, and a school bus or emergency vehicle on an official run arrives on the scene, make provisions for the passage of the school bus or emergency vehicle as quickly as possible.

Take these restrictions into account in submitting bid. The Department will not consider any claims for money or grant contract time extensions for any delays to the Contractor as a result of these restrictions.

LANE CLOSURES & LIQUIDATED DAMAGES

Long term lane closures shall not be allowed; therefore, lane closures will not be measured for payment. Do not leave lane closures in place during non-working hours.

In the event that lane closures are in place outside of the days and/or times listed above, Liquidated Damages shall be applied as follows:

- \$ 1,000 for the first hour or fraction thereof
- \$ 2,500 for any additional hour or fraction thereof

A lane closure shall be defined as any traffic control device or Contract worker or vehicle in the traveled way that could potentially impact the flow of traffic. This includes but not limited to signs, barricades, barrels, cones, arrow boards, flaggers and Contractor work vehicles.

All liquidated damages will be applied cumulatively.

Traffic Control Plan
Page 3 of 5

TEMPORARY SIGNS

Temporary sign posts and splices shall be compliant with NCHRP 350 or MASH. Manufacturer's documentation validating this compliance shall be provided to the Engineer prior to installation. Temporary signs, including any splices, shall be installed according to manufacturer's specifications and installation recommendations. Contrary to section 112.04.02, only long-term temporary signs (temporary signs intended to be continuously in place for more than 3 days) will be measured for payment. Short-term temporary signs (temporary signs intended to be left in place for 3 days or less) will not be measured for payment but will be incidental to Maintain and Control Traffic.

ARROW PANELS

Use arrow panels as shown on the Standard Drawings or as directed by the Engineer. The Department will measure for payment the maximum number of arrow panels in concurrent use at the same time on a single day on all sections of the contract. The Department will measure for payment the maximum number of Arrow Panels in concurrent use at the same time on a single day on all sections of the contract. The Department will measure individual Arrow Panels only once for payment, regardless of how many times they are set, reset, removed, and relocated during the duration of the project. The Department will not measure replacements for damaged Arrow Panels or for panels signs the Engineer directs be replaced due to poor condition or readability for payment. Retain possession of the Arrow Panels upon completion of the work.

TEMPORARY ENTRANCES

The Engineer will not require the Contractor to provide continuous access to farms, single family, duplex, or triplex residential properties during working hours; however, provide reasonable egress and ingress to each such property when actual operations are not in progress at that location. Limit the time during which a farm or residential entrance is blocked to the minimum length of time required for actual operations, not extended for the Contractor's convenience, and in no case exceeding six (6) hours. Notify all residents twenty-four hours in advance of any driveway or entrance closings and make any accommodations necessary to meet the access needs of disabled residents.

Except as allowed by the Phasing as specified above, maintain direct access to all side streets and roads, schools, churches, commercial properties and apartments or apartment complexes of four or more units at all times.

The Department will measure asphalt materials required to construct and maintain any temporary entrances which may be necessary to provide temporary access; however, the Department will not measure aggregates, excavation, and/or embankment, but shall be incidental to Maintain and Control Traffic. The Engineer will determine the type of surfacing material, asphalt or aggregate, to be used at each entrance.

Traffic Control Plan
Page 4 of 5

TRAFFIC SIGNAL LOOPS

Install traffic signal loops according to the Special Notes for Traffic Signal Loop Replacement. Coordinate the placement of the loops with the Engineer.

THERMOPLASTIC INTERSECTION

Consider the locations listed on the summary as approximate only. Prior to milling and/or resurfacing, locate and document the locations of the existing markings. After resurfacing, install the markings per the contract plans, Engineer, KYTC Standards and MUTCD.

BARRICADES

The Department will not measure barricades used in lieu of barrels and cones for channelization or delineation, but shall be incidental to Maintain and Control Traffic according to Section 112.04.01.

The Department will measure barricades used to protect pavement removal areas in individual units Each. The Department will measure for payment the maximum number of barricades in concurrent use at the same time on a single day on all sections of the contract. The Department will measure individual barricades only once for payment, regardless of how many times they are set, reset, removed, and relocated during the duration of the project. The Department will not measure replacements for damaged barricades the Engineer directs to be replaced due to poor condition or reflectivity. Retain possession of the Barricades upon completion of the work.

PAVEMENT MARKINGS

If there is to be a deviation from the existing striping plan, the Engineer will furnish the Contractor a striping plan prior to placement of the final surface course. Install Temporary Striping according to Section 112 with the following exceptions:

1. Include edge lines in Temporary Striping; and
2. Place Temporary or Permanent Striping before opening a lane to traffic; and
3. If the Contractor's operations or phasing requires temporary markings that must subsequently be removed from the final surface course, use an approved removable lane tape; however, the Department will not measure removable lane tape for separate payment, but will measure and pay for removable lane tape as temporary striping.

Traffic Control Plan
Page 5 of 5

PAVEMENT EDGE DROP-OFFS

Do not allow a pavement edge between opposing directions of traffic or lanes that traffic is expected to cross in a lane change situation with an elevation difference greater than 1½". Place Warning signs (MUTCD W8-11 or W8-9A) in advance of and at 1500' intervals throughout the drop-off area. Dual post the signs on both sides of the traveled way. Wedge all transverse transitions between resurfaced and unresurfaced areas which traffic may cross with asphalt mixture for leveling and wedging. Remove the wedges prior to placement of the final surface course.

Protect pavement edges that traffic is not expected to cross, except accidentally, as follows:

Less than 2" - No protection required.

2" to 4" - Place plastic drums, vertical panels, or barricades every 50 feet. During daylight working hours only, the Engineer will allow the Contractor to use cones in lieu of plastic drums, panels, and barricades. Wedge the drop-off with DGA or asphalt mixture for leveling and wedging with a 1:1 or flatter slope in daylight hours, or 3:1 or flatter slope during nighttime hours, when work is not active in the drop-off area.

Greater than 4' - Protect drop-offs greater than 4 inches within 10 feet of traffic by placing drums, vertical panels, or barricades every 25 feet. The Engineer will not allow the use of cones in lieu of drums, vertical panels, or barricades for drop-offs greater than 4". Place Type III Barricades directly in front of the drop-off facing oncoming traffic in both directions of travel. Provide warning signs as shown on the Standard Drawings or as directed by the Engineer

Pedestrians & Bicycles - Protect pedestrian and bicycle traffic as directed by the engineer.

SPECIAL NOTE FOR TRAFFIC SIGNAL LOOP DETECTORS

1.0 DESCRIPTION. Be advised that there are existing traffic signal loop detectors within the construction limits of this project. Except as specified herein, perform traffic signal loop replacement in accordance with the Department's Standard/Supplemental Specifications, Special Provisions, Special Notes, and Standard/Sepia Drawings, current editions and as directed by the Engineer. Article references are to the Standard Specifications. Furnish all materials, labor, equipment, and incidentals for replacement of traffic signal loop installation(s) and all other work specified as part of this contract.

1.1 Pre-bid Requirements. Conform to Subsection 723.03.17

2.0 MATERIALS. Except as specified herein, furnish materials in accordance with Subsection 732.02 and Section 835. Provide for materials to be sampled and tested in accordance with the Department's Sampling Manual. Make materials available for sampling a sufficient time in advance of the use of the materials to allow for the necessary time for testing, unless otherwise specified in this Special Note.

2.1 Maintain and Control Traffic. See Traffic Control Plan.

2.2 Sand. Furnish natural sand meeting the requirements of Subsection 804.04.01.

2.3 Seeding. Furnish Seed Mix Type I.

2.4 Loop Saw Slot and Fill. Furnish loop sealant, backer rod, and non-shrink grout according to the Saw Slot Detail.

2.5 Junction Boxes. Furnish junction box type B, #57 aggregate, and geotextile filter type IV according to junction box detail.

2.6 Cable No. 14/1 Pair (Lead-in). Furnish cable that is specified in Section 835. Cable shall be ran splice free. This shall include splice kits to connect to the loop wire.

2.7 Conduit. Furnish and install appropriate conduit from transitions to the roadway, junction boxes and poles. See details below.

3.0 CONSTRUCTION. Except as specified herein, install and test Traffic Signal Loop Detectors in accordance with Section 723 and the drawings.

3.1 Testing. Conform to Subsection 723.03.17 (A)

3.2 Coordination. Conform to Subsection 723.03.17 (B)

3.3 Connection. Conform to Subsection 723.03.17 (C)

3.4 Maintain and Control Traffic. See Traffic Control Plan.

3.5 Milling. Conform to Subsection 723.03.17 (F)

3.6 Loop Saw Slot and Fill. Conform to Subsection 723.03.13 (A).

Traffic Signal Loop Detectors
Page 2 of 9

- 3.7 Backfilling and Disturbed Areas. Conform to Subsection 723.03.11.
- 3.8 Removal. Conform to Subsection 723.03.16.
- 3.9 Property/Roadway Damage. Conform to Subsection 723.03.17 (J).
- 3.10 Right-of-Way Limits. Conform to Subsection 723.03.17 (K).
- 3.11 Utility Clearance. Conform to Subsection 716.03.01.

3.12 Control. Obtain the Engineer’s approval of all designs required to be furnished by the Contractor prior to incorporation into the work. The Department reserves the right to permit other contractors, state forces, public utility companies, and others to do work during the construction within the limits of, or adjacent to, the project. Conduct operations and cooperate with such other parties so that interference with each other’s work will be reduced to a minimum. The Contractor agrees to make no claims against the Department for additional compensation due to delays or other conditions created by the operations of such other parties. Should a difference of opinion arise as to the rights of the Contractor and others working within the limits of, or adjacent to, the project, the Engineer will decide as to the respective rights of the various parties involved in order to ensure the completion of the work in general harmony and in a satisfactory manner, and the Engineer’s decision shall be final and binding upon the Contractor.

- 3.13 Bore and Jack. Conform to Subsection 723.03.06 (I).
- 3.14 Open Cut Roadway. Conform to Subsection 723.03.06 (I).

4.0 MEASUREMENT. See Subsection 723.04 for bid item notes. Additional bid items include the following:

4.1 Loop Test. The Department will measure the quantity as each individual unit loop tested. The Department will not measure disconnection, reconnection, traffic control, re-splicing per specifications, before and after testing per note above, and any associated hardware for payment and will consider them incidental to this item of work.

4.2 Remove Signal Equipment. The department will measure the quantity by each. The department will not measure backfilling and the disposal or transportation of equipment and materials associated with any structural or electrical component of the signal system including, but not limited to pole bases, poles, junction boxes, cabinets, and wood poles for payment and will consider them incidental to this item of work.

5.0 PAYMENT. The Department will make payment for the completed and accepted quantities of listed items according to Subsection 723.05 in addition to the following:

<u>Code</u>	<u>Pay Item</u>	<u>Pay Unit</u>
Conduit 1”	4792	Linear Foot
PVC Conduit – 1 ¼ inch – sch 80	24900EC	Linear Foot

Traffic Signal Loop Detectors
Page 3 of 9

PVC Conduit – 2 inch – sch 80	24901EC	Linear Foot
Conduit 2”	4795	Linear Foot
Electrical Junction Box type B	4811	Each
Loop Test	24963ED	Each
Trenching and Backfilling	4820	Linear Foot
Loop Wire	4830	Linear Foot
Cable-No. 14/1 Pair	4850	Linear Foot ¹
Loop Saw Slot and Fill	4895	Linear Foot ¹
Bore and Jack Conduit	21543EN	Linear Foot ³
Open Cut Roadway	4821	Linear Foot ³
Remove Signal Equipment	24955ED	each

The Department will consider payment as full compensation for all work required under these notes and the Standard Specifications.

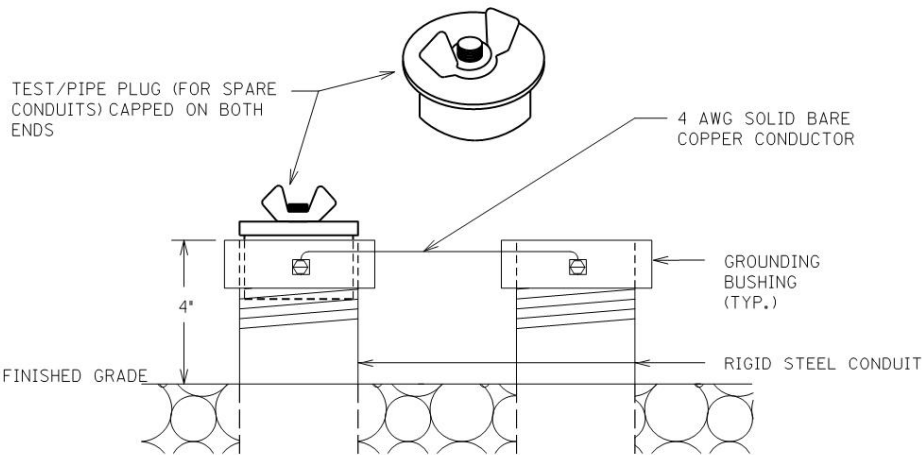
Contrary to section 723:

SUBSECTION: 03.13 Loop Installation.

REVISION: Replace first sentence note with the following:

twist unshielded loop wire (imsa 51-7) with 3 to 5 turns from the start of homerun to the inside conduit, junction box, cabinet, or pole. Twist unshielded loop wires (imsa 51-7) with 3 to 5 turns per foot from the start of the homerun to the junction box, cabinet, or pole. Slot can be widen to .5" to .625" to help with the installation of the twisted wire.

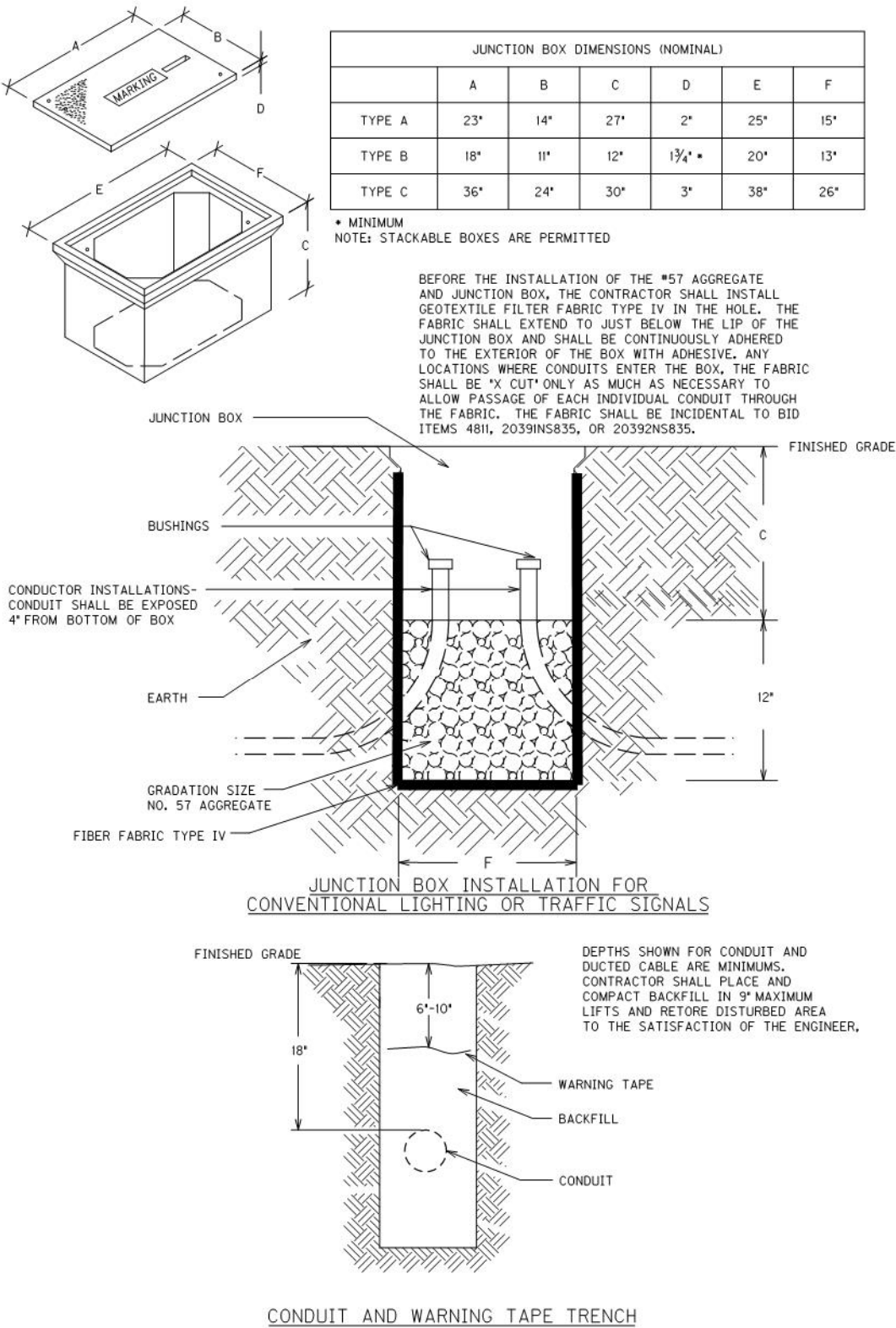
Traffic Signal Loop Detectors
Page 4 of 9



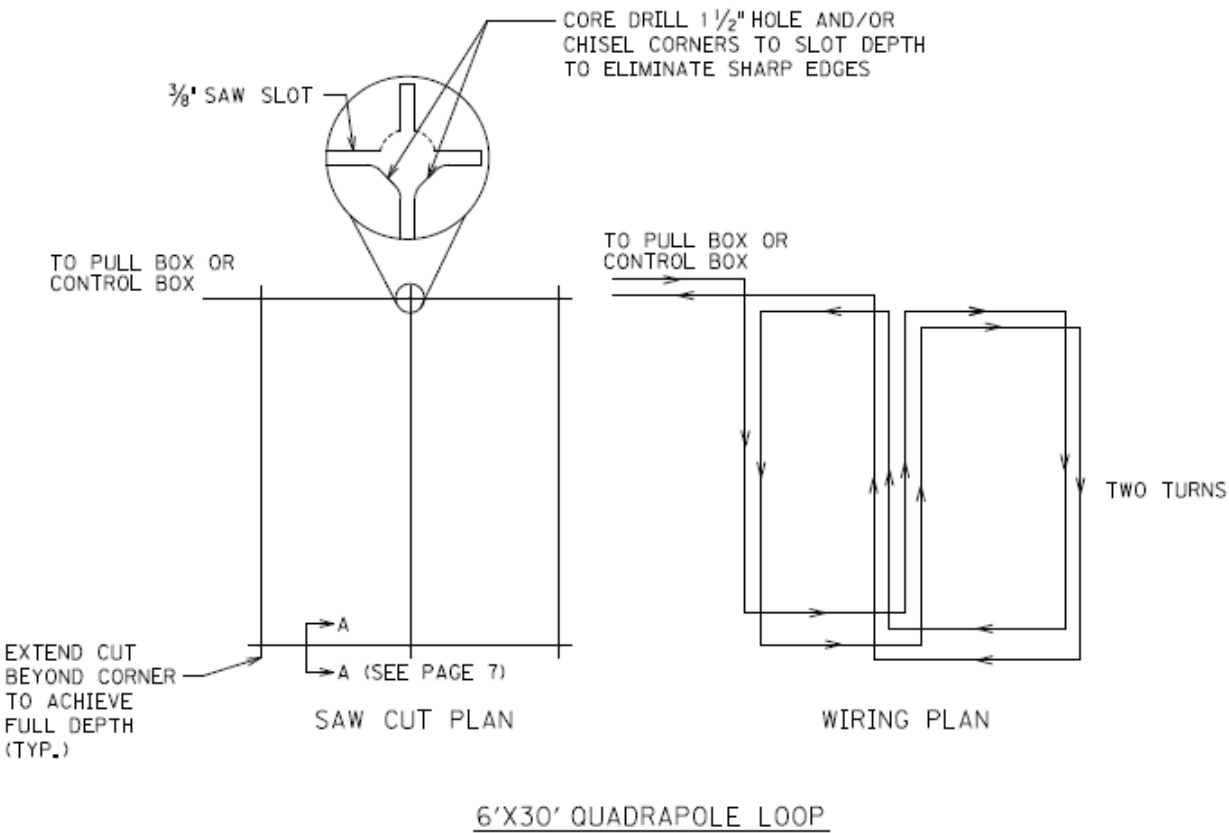
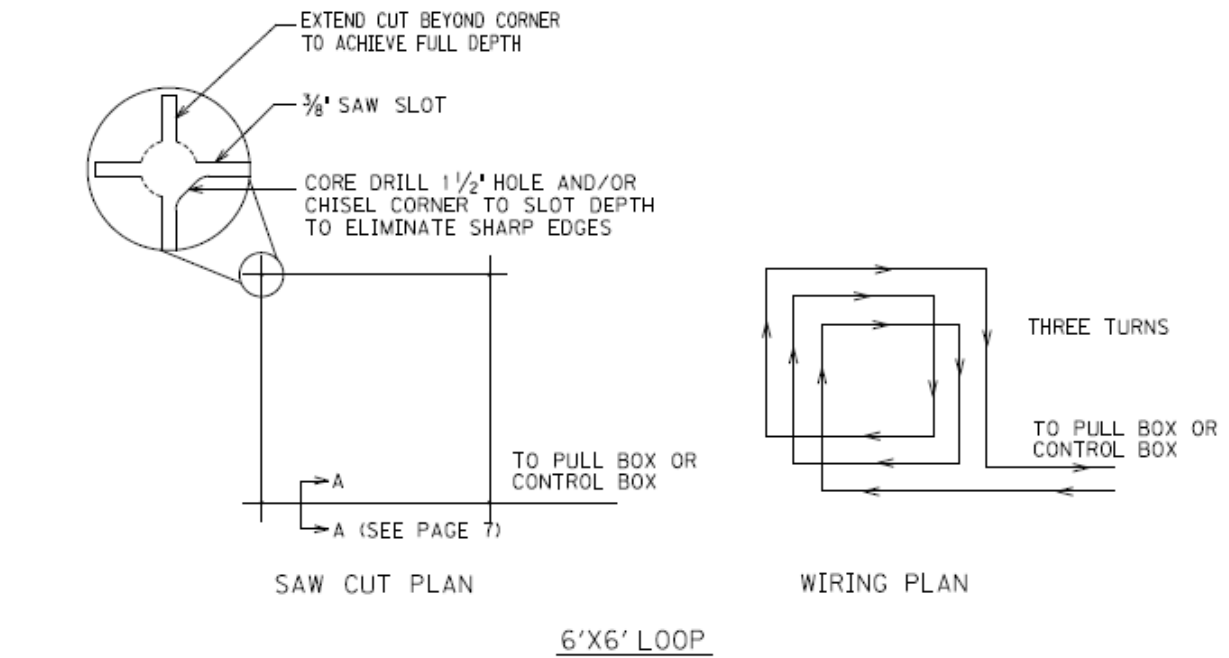
TEST/PIPE PLUG(FOR SPARE CONDUITS) AND GROUNDING DETAIL

Traffic Signal Loop Detectors

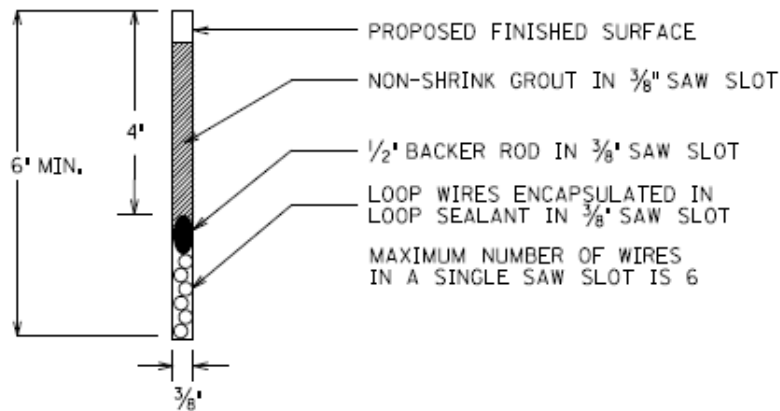
Page 5 of 9



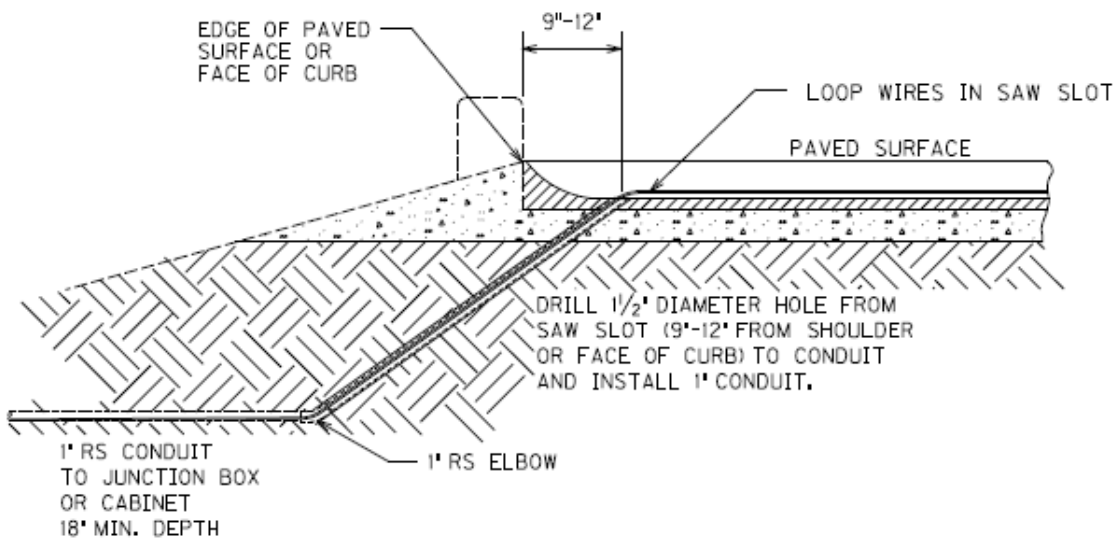
Traffic Signal Loop Detectors
Page 6 of 9



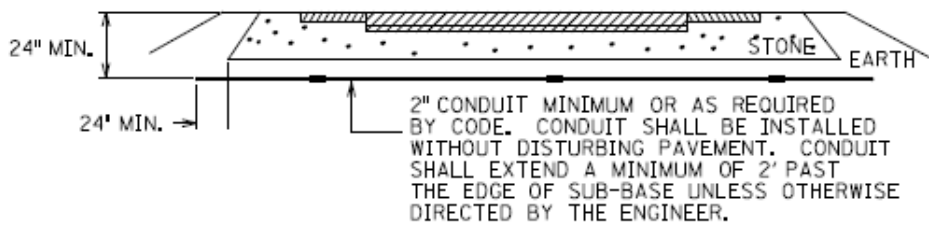
Traffic Signal Loop Detectors
Page 7 of 9



SECTION A-A (SAW SLOT DETAIL)



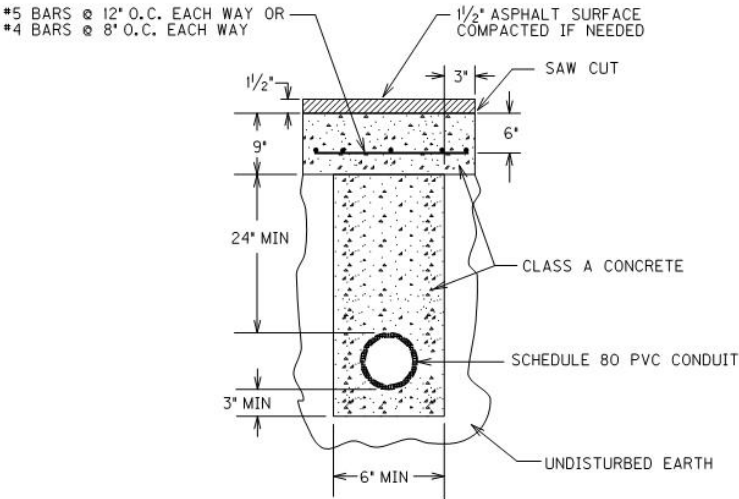
SAW SLOT EDGE OF PAVEMENT TRANSITION



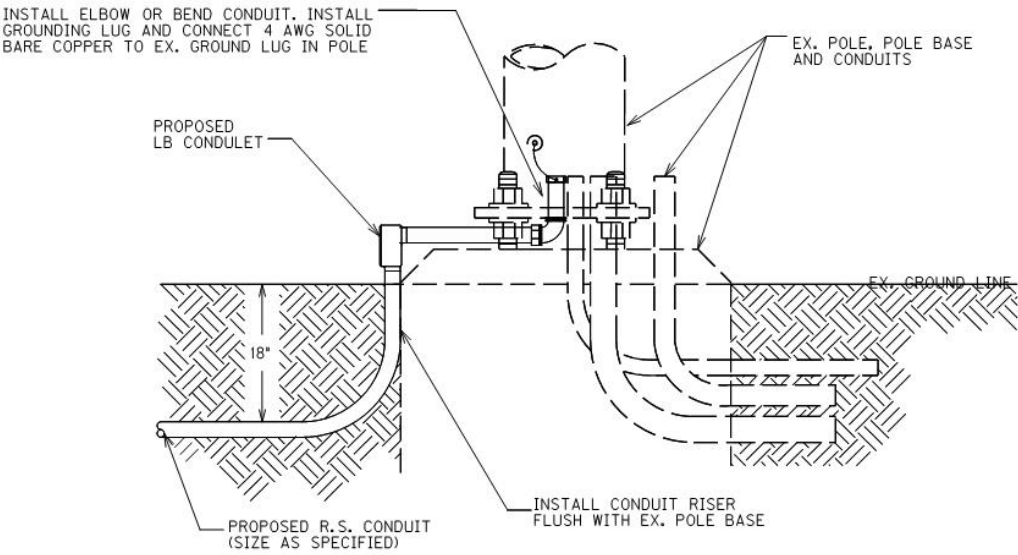
CONDUIT UNDER EXISTING PAVEMENT DETAIL

Traffic Signal Loop Detectors

Page 8 of 9

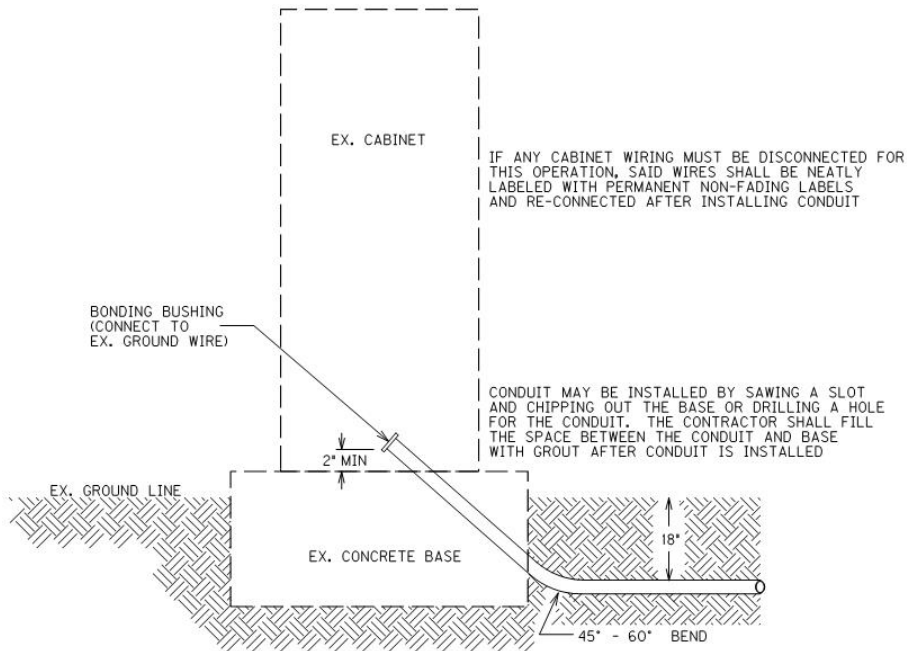


OPEN CUT PAVEMENT DETAIL



CONDUIT INSTALLATION IN EX. POLE BASE

Traffic Signal Loop Detectors
Page 9 of 9



CONDUIT INSTALLATION IN EX. CABINET BASE

Update: 4-5-2022

FD05 056 3064 000-002







MATERIAL SUMMARY

CONTRACT ID: 222470

056GR22P086 - FD05

MP05630642201

PORTLAND AVE/NORTHWESTERN PKWY (KY 3064) BEGIN AT US 150 EXTENDING EAST TO KY 3216
ASPHALT RESURFACING, A DISTANCE OF 1.6 MILES.

Project Line No	Bid Code	DESCRIPTION	Quantity	Unit
0005	00190	LEVELING & WEDGING PG64-22	281.00	TON
0010	00301	CL2 ASPH SURF 0.38D PG64-22	2,500.00	TON
0015	01719	ADJUST INLET	2.00	EACH
0020	01792	ADJUST MANHOLE	6.00	EACH
0025	01876	STANDARD HEADER CURB MOD	243.00	LF
0030	01876	STANDARD HEADER CURB MOD - (HISTORICAL MIX)	400.00	LF
0035	02562	TEMPORARY SIGNS	750.00	SQFT
0040	02650	MAINTAIN & CONTROL TRAFFIC	1.00	LS
0045	02676	MOBILIZATION FOR MILL & TEXT	1.00	LS
0050	02677	ASPHALT PAVE MILLING & TEXTURING	2,500.00	TON
0055	02720	SIDEWALK-4 IN CONCRETE	173.00	SQYD
0060	02720	SIDEWALK-4 IN CONCRETE - (HISTORICAL MIX)	289.00	SQYD
0065	02775	ARROW PANEL	2.00	EACH
0070	03425	ADJUST WATER VALVE	12.00	EACH
0075	04792	CONDUIT-1 IN - (TRAFFIC LOOPS)	25.00	LF
0080	04811	ELECTRICAL JUNCTION BOX TYPE B - (TRAFFIC LOOPS)	4.00	EACH
0085	04820	TRENCHING AND BACKFILLING - (TRAFFIC LOOPS)	55.00	LF
0090	04830	LOOP WIRE - (TRAFFIC LOOPS)	1,875.00	LF
0095	04895	LOOP SAW SLOT AND FILL - (TRAFFIC LOOPS)	750.00	LF
0100	06510	PAVE STRIPING-TEMP PAINT-4 IN	3,200.00	LF
0105	06515	PAVE STRIPING-PERM PAINT-6 IN	3,800.00	LF
0110	06517	PAVE STRIPING-PERM PAINT-12 IN	300.00	LF
0115	06542	PAVE STRIPING-THERMO-6 IN W	144.00	LF
0120	06546	PAVE STRIPING-THERMO-12 IN W	120.00	LF
0125	06565	PAVE MARKING-THERMO X-WALK-6 IN	2,090.00	LF
0130	06568	PAVE MARKING-THERMO STOP BAR-24IN	298.00	LF
0135	06569	PAVE MARKING-THERMO CROSS-HATCH	310.00	SQFT
0140	10020NS	FUEL ADJUSTMENT	5,270.00	DOLL
0145	10030NS	ASPHALT ADJUSTMENT	13,238.00	DOLL
0150	20071EC	JOINT ADHESIVE	25,400.00	LF
0155	20782NS714	PAVE MARKING THERMO-BIKE	10.00	EACH
0160	22520EN	PAVE MARKING-THERMO YIELD BAR-36 IN	170.00	LF
0165	23158ES505	DETECTABLE WARNINGS - (NEW)	348.00	SQFT
0170	23158ES505	DETECTABLE WARNINGS - (RETROFIT)	40.00	SQFT
0175	23261EC	PAVE MARK-THERMO-X-WALK-24 IN	740.00	LF
0180	24683ED	PAVE MARKING-THERMO DOTTED LANE EXTEN	50.00	LF
0185	24900EC	PVC CONDUIT-1 1/4 IN-SCHEDULE 80 - (TRAFFIC LOOPS)	55.00	LF
0190	24963ED	LOOP TEST - (TRAFFIC LOOPS)	5.00	EACH
0195	24970EC	ASPHALT MATERIAL FOR TACK NON-TRACKING	18.00	TON
0200	02569	DEMOBILIZATION	1.00	LS

MATERIAL SUMMARY

CONTRACT ID: 222470

056GR22P086 - FD05

MP05632162201

N 38TH STREET (KY 3216) BEGIN AT BANK STREET EXTENDING NORTH TO NORTHWESTERN PARKWAY
ASPHALT RESURFACING, A DISTANCE OF .15 MILES.

Project Line No	Bid Code	DESCRIPTION	Quantity	Unit
0205	00190	LEVELING & WEDGING PG64-22	48.00	TON
0210	00301	CL2 ASPH SURF 0.38D PG64-22	180.00	TON
0215	02562	TEMPORARY SIGNS	190.00	SQFT
0220	02650	MAINTAIN & CONTROL TRAFFIC	1.00	LS
0225	02676	MOBILIZATION FOR MILL & TEXT	1.00	LS
0230	02677	ASPHALT PAVE MILLING & TEXTURING	180.00	TON
0235	02720	SIDEWALK-4 IN CONCRETE	7.00	SQYD
0240	03240	BASE FAILURE REPAIR	55.00	SQYD
0245	06510	PAVE STRIPING-TEMP PAINT-4 IN	210.00	LF
0250	06515	PAVE STRIPING-PERM PAINT-6 IN	210.00	LF
0255	06565	PAVE MARKING-THERMO X-WALK-6 IN	80.00	LF
0260	23158ES505	DETECTABLE WARNINGS - (NEW)	8.00	SQFT
0265	24970EC	ASPHALT MATERIAL FOR TACK NON-TRACKING	2.00	TON
0270	02569	DEMOBILIZATION	1.00	LS

MATERIAL SUMMARY

CONTRACT ID: 222470

056GR22P086 - FD05

MP05632172201

N 37TH STREET (KY 3217) BEGIN AT KY 3064 EXTENDING NORTH TO KY 3082 ASPHALT RESURFACING, A DISTANCE OF .15 MILES.

Project Line No	Bid Code	DESCRIPTION	Quantity	Unit
0275	00190	LEVELING & WEDGING PG64-22	55.00	TON
0280	00301	CL2 ASPH SURF 0.38D PG64-22	205.00	TON
0285	02562	TEMPORARY SIGNS	170.00	SQFT
0290	02650	MAINTAIN & CONTROL TRAFFIC	1.00	LS
0295	02676	MOBILIZATION FOR MILL & TEXT	1.00	LS
0300	02677	ASPHALT PAVE MILLING & TEXTURING	205.00	TON
0305	03240	BASE FAILURE REPAIR	35.00	SQYD
0310	06510	PAVE STRIPING-TEMP PAINT-4 IN	205.00	LF
0315	06515	PAVE STRIPING-PERM PAINT-6 IN	205.00	LF
0320	06546	PAVE STRIPING-THERMO-12 IN W	215.00	LF
0325	06565	PAVE MARKING-THERMO X-WALK-6 IN	84.00	LF
0330	06568	PAVE MARKING-THERMO STOP BAR-24IN	33.00	LF
0335	06573	PAVE MARKING-THERMO STR ARROW	3.00	EACH
0340	06574	PAVE MARKING-THERMO CURV ARROW	2.00	EACH
0345	06576	PAVE MARKING-THERMO ONLY	1.00	EACH
0350	23158ES505	DETECTABLE WARNINGS - (RETROFIT)	16.00	SQFT
0355	26119EC	INSTALL RADAR PRESENCE DETECTOR TYPE A - (KY 3217)	2.00	EACH
0360	24970EC	ASPHALT MATERIAL FOR TACK NON-TRACKING	2.00	TON
0365	02569	DEMOBILIZATION	1.00	LS

JEFFERSON COUNTY
THERMOPLASTIC INTERSECTION PAVEMENT MARKINGS SUMMARY
FD05 056 3064 000-002

MILE POINT	INTERSECTION	CROSSWALK		STOP BARS	WHITE STRIPING		YIELD BAR	DOTTED LN	CROSS HATCH	BIKE SYMBOL AND SHARROW EACH
		6 INCH LF	24 INCH LF		6 INCH LF	12 INCH LF				
0.378	25th Street	180	100	18			40			
0.445	26th Street	250		60						
1.100	Northwestern Pkwy/33rd St	580		120	24	120		50	130	
	33rd to 34th Streets									2
1.202	34th Street	540	320	50	60		65		90	
	34th to 35th Streets									2
1.305	35th Street	540	320	50	60		65		90	
	35th to 38th Streets									6
PROJECT TOTALS		2090	740	298	144	120	170	50	310	10

Sidewalks & Detectable Warnings Summary
Jefferson County
FD05 056 3064 000-002

Intersection	Mile Point	Ramp Location	Ramp Type	4" Sidewalk SQYD	4" Sidewalk HISTORICAL SQYD	Header Curb Mod LF	Header Curb Mod HISTORICAL LF	Detectable Warning Retrofit SQFT	Detectable Warning New SQFT
23rd Street	0.196	NW	1	18		25			18
		NW	3	26		35			36
25th Street	0.378	SW	2	26		30			12
26th Street	0.469	NW	1	28		35			18
		SE	1					20	
27th Street	0.573	SW	1					20	
30th Street	0.812	NE	1	20		30.00			16.00
		NW	1	12		20.00			10.00
	0.903	NE	1	25		40.00			20.00
31st Street	0.919	SE	1	18		28.00			16.00
		NE	1x2		30.00		40.00		20.00
		SE	1x2		40.00		60.00		20.00
		NW	1x2		34.00		40.00		20.00
33rd St/Northwestern Pkwy	1.100	SW	1x2		35.00		50.00		20.00
34th Street	1.202	SW	3		32.00		45.00		36.00
35th St/Cedar Grove Ter	1.305	SW	1x2		30.00		40.00		20.00
		SE	3		25.00		30.00		20.00
36th Street	1.407	SW	3		30.00		40.00		26.00
		SE	1		18.00		30.00		10.00
37th Street	1.510	SW	1		15.00		25.00		10.00
PROJECT TOTALS				173	289	243	400	40	348

JEFFERSON COUNTY
TRAFFIC LOOP SUMMARY

FD05 056 3064 000-002

INTERSECTION	SAW, SLOT AND FILL		LOOP WIRE		CONDUIT 1 INCH		PVC CONDUIT 1 1/4 INCH		CABLE NO. 14		JUNCTION TYPE B		REMOVE AND REPLACE SIDEWALK		Trenching and Backfilling		Loop Test		NOTES
	LF	LF	LF	LF	LF	LF	LF	LF	EA	EA	EA	EA	SQ YD	EA	EA	EA	EA	EA	
Northwestern Pkwy/33rd St																			
NB 33rd St	140		350		5		10				1				10		1		1 6X30 STOP BAR LOOP
SB 33rd St	140		350		5		10				1				10		1		1 6X30 STOP BAR LOOP
WB Northwestern Pkwy	150		375		5		15				1				15		1		1 6X30 STOP BAR LOOP
WB Portland Ave	320		800		10		20				1				20		2		2 6X30 STOP BAR LOOP
Total	750		1875		25		55		0		4		0		55		5		

1. Quantities are for estimating purposes only. The Contractor shall field measure and inspect items to verify quantities.
2. 2 - 1 1/4 inch conduits may be used in place of 2" conduit. Field verify conduit to match existing facilities/tie-in to poles/cabinets. specifications.
Only replace existing conduit if damaged.

Grand Total	750	1875	25	55	0	4	0	55	5	
-------------	-----	------	----	----	---	---	---	----	---	--

MPT.	INTERSECTION	X-WALKS 6 INCH LF	STP BARS 24 INCH LF	CURVE EA	ARROWS STR EA	COMB EA	"ONLY" EA	"STOP" EA	CATRAXX 6 INCH LF	NOTES
0	Bank St.	80								
TOTAL		80								

Sidewalks & Detectable Warnings Summary
Jefferson County
FD05 056 3216 000-001

Intersection	Mile Point	Ramp Location	4" Sidewalk SQYD	Detectable Warning (NEW) SQFT
Pflanz Ave.	0.107	SE	7.00	8.00
PROJECT TOTALS			7	8

[illegible]

**Jefferson County
SECTION PAVEMENT
FD05 056 3217 000-001**

[illegible]

Sidewalks & Detectable Warnings Summary

Jefferson County

FD05 056 3217 000-001

Intersection	Mile Point	Ramp Location	4" Sidewalk SQYD	Detectable Warning (New) SQFT	Detectable Warning (Retrofit) SQFT
Pflanz Ave.	0.048	NE	-	-	8
		SE	-	-	8
PROJECT TOTALS			0	0	16

Jefferson County

RADAR PRESENCE DETECTOR SUMMARY

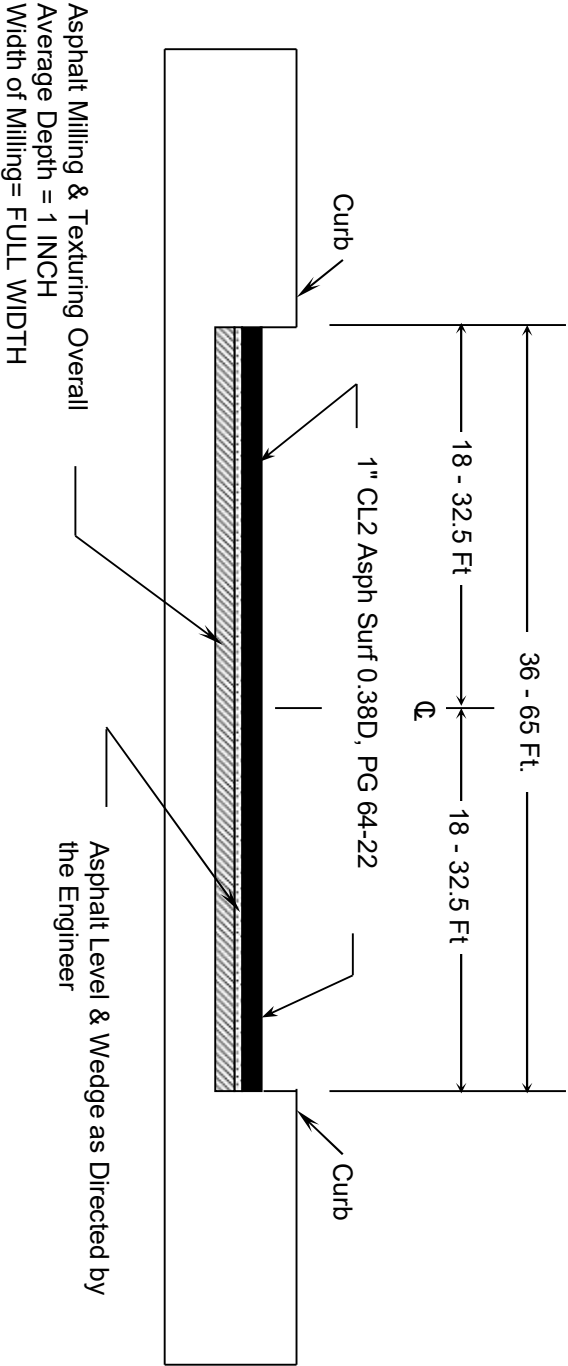
FD05 056 3217 000-001

MPT.	INTERSECTION	RADAR PRESENCE DETECTOR TYPE A EA
0.153	BANK ST	2
TOTAL		2

NOTES:

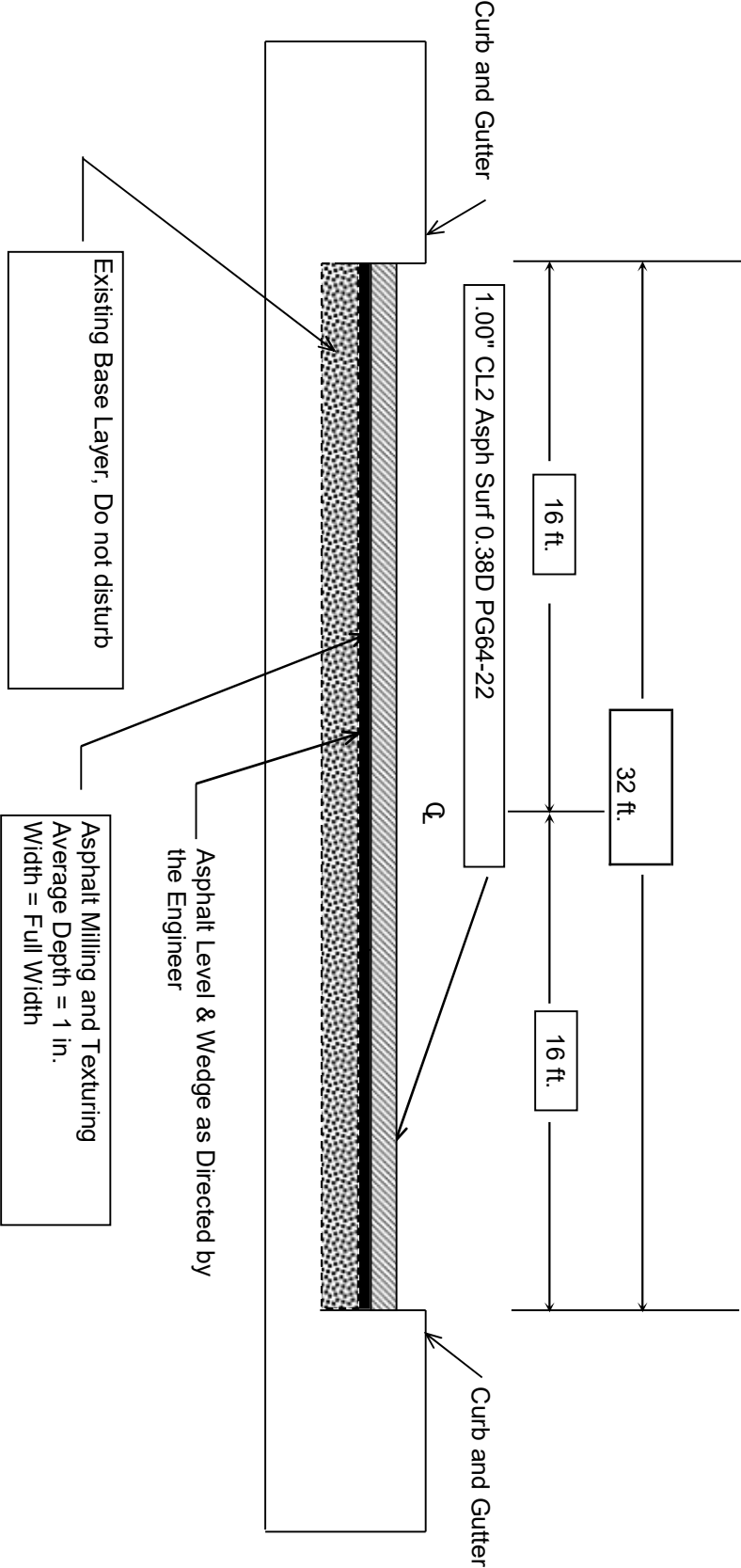
[illegible]

Jefferson County
TYPICAL SECTION
FD05 056 3064 000-002
MP 0.000 to 1.601

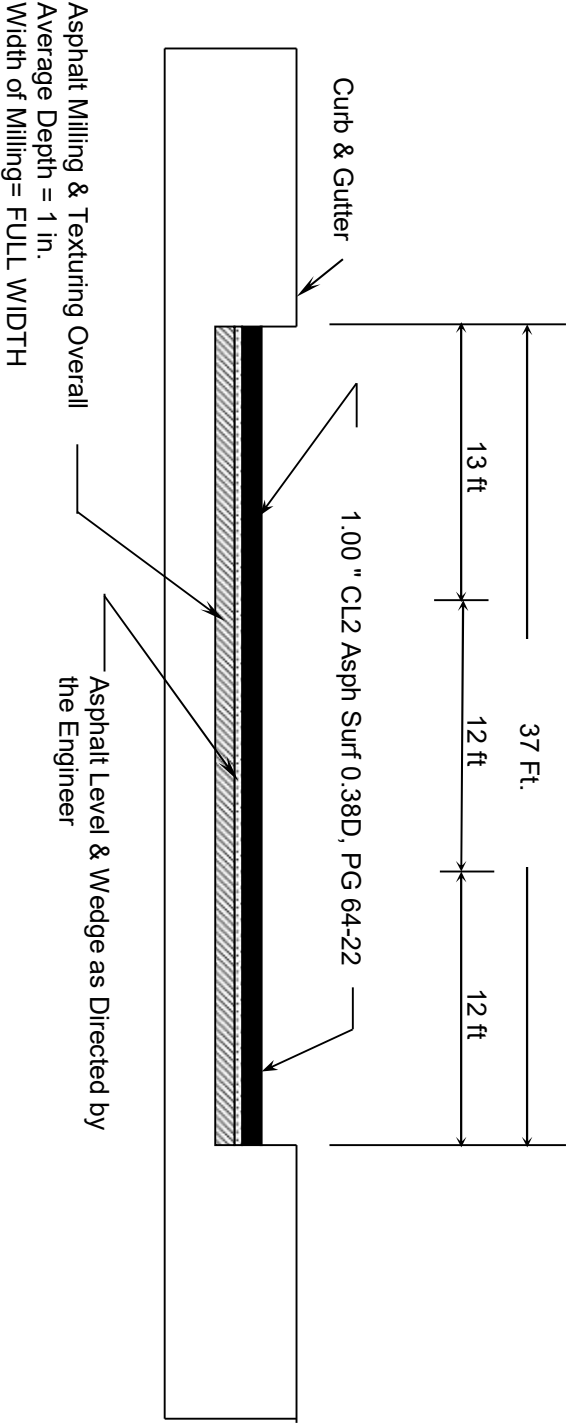


TYPICAL SECTION

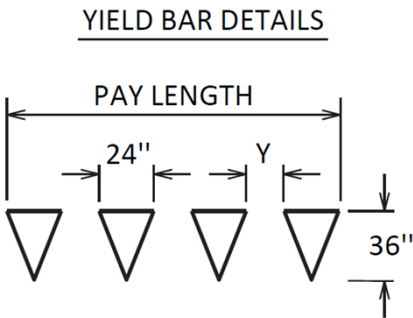
Jefferson County
FD05 056 3216 000-001
MP 0.000 - 0.155



Jefferson County
FD05 056 3217 000-001
TYPICAL SECTION
MP 0.000 - 0.153



YIELD BAR PAVEMENT MARKING DETAIL



NOTE: SPACING (Y) BETWEEN
TRIANGLES SHOULD BE 3" - 12"

Triangles should be evenly spaced. The spacing (Y) between triangles will depend on the width of the lane the yield bar is for. Unless otherwise directed by the Engineer, space the triangles according to the lane width as follows:

<u>Lane Width</u>	<u># of Triangles</u>	<u>Spacing (Y)</u>
9'	4	4"
10'	4	8"
11'	5	3"
12'	5	6"

In the event of larger lane widths, install triangles on equal spacing, as close to the 3" minimum as possible.

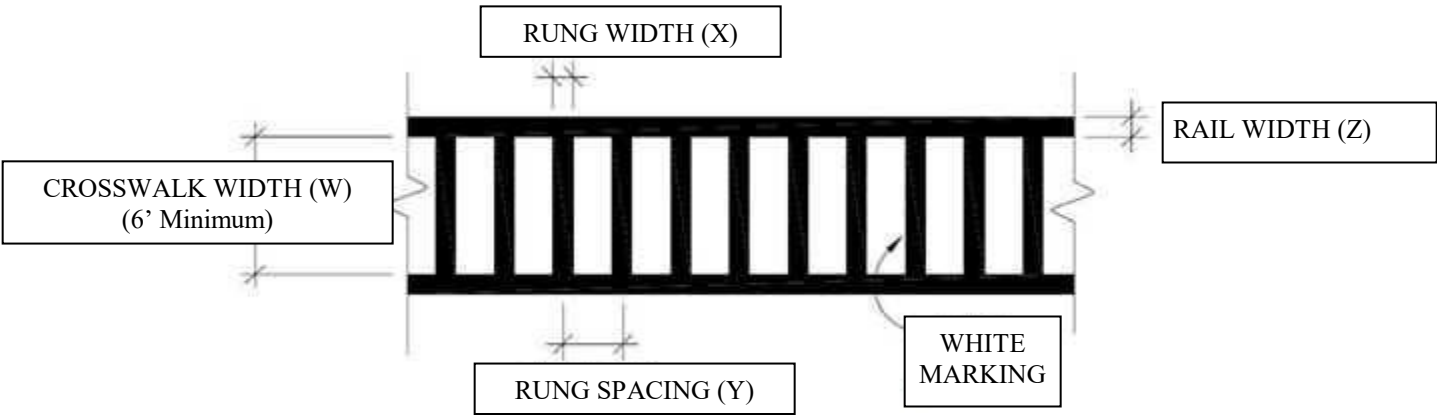
Refer to Section 717 of the Standard Specifications for Road and Bridge Construction, current edition, for more information concerning Material and Construction specifications.

The Department will measure Yield Bars in Linear Feet. The measurement will include the void space between triangles. See Section 717.04 for additional measurement information.

The Department will make payment for the completed and accepted quantities under the following:

<u>Code</u>	<u>Pay Item</u>	<u>Pay Unit</u>
22520EN	Pave Marking-Thermo Yield Bar-36 Inch	Linear Foot
26165ES717	Pave Mark TY 1 Tape Yield Bar-36 IN	Linear Foot

LADDER STYLE CROSSWALK DETAIL



Ladder Style Crosswalks consist of white markings that produce rails and rungs. The overall crosswalk width (W), rung width (X), rung spacing (Y), and rail width (Z) are to be installed as specified above or as specified on the plans and/or summary sheets (the latter case is typically because there are multiple crosswalks with different dimensions). If this detail, the plans, and/or summary sheets do not specify the dimensions, then construct the Ladder Style Crosswalks as directed by the District Traffic Engineer and/or the Engineer.

Refer to Section 717 of the Standard Specifications for Road and Bridge Construction, current edition, for more information concerning Material and Construction specifications.

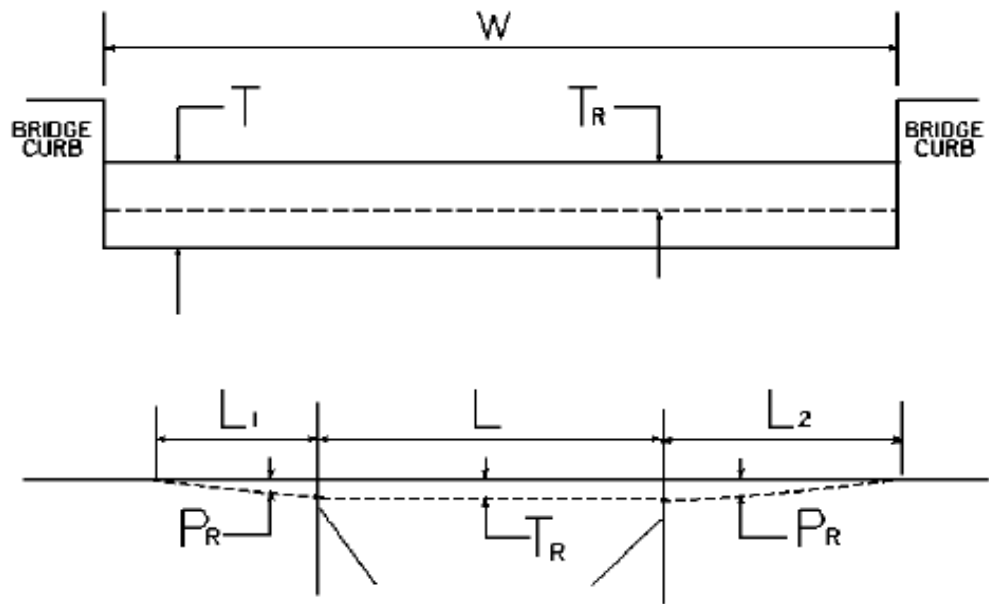
The Department will measure the sum of the lengths of the rails in linear feet and make payment under the X-Walk bid item with a description containing the applicable rail width and material type.

The Department will measure the sum of the lengths of the rungs in linear feet and make payment under the X-Walk bid item with a description containing the applicable rung width and material type.

When listed in the bid items, the Department will make payment for the completed and accepted quantities of Ladder Style Crosswalks under the following:

Code	Pay Item	Pay Unit
06565	Pave Marking-Thermo X-Walk-6 Inch	Linear Foot
06566	Pave Marking-Thermo X-Walk-12 Inch	Linear Foot
23261EC	Pave Mark-Thermo-X-Walk-24 Inch	Linear Foot
23251ES717	Pave Mark TY 1 Tape X-Walk-6 Inch	Linear Foot
23264ES717	Pave Mark TY 1 Tape X-Walk-12 Inch	Linear Foot
26164ES717	Pave Mark TY 1 Tape X-Walk-24 Inch	Linear Foot

BRIDGE DETAIL FOR PAVING PROJECT



W = bridge width curb to curb
T = thickness of existing asphalt overlay
L = length of bridge
L₁ & L₂ = length of approach pavement to be removed
T_R = thickness to be removed and replaced on bridge
P_R = thickness to be removed and replaced on pavement
Note: L₁ & L₂ lengths shall be determined by using a transition rate of 100 ft/in of thickness

Route	Bridge No.	MP	W (ft)	T (in)	L ₁ (ft)	L ₂ (ft)	T _R (in)	L (ft)	P _R (in)
KY 3064	R00601N	0.83	44.00		0.00	0.00		60.00	

FYI - Rail Road Bridge, Project is a complete Mill and Fill

PART II

SPECIFICATIONS AND STANDARD DRAWINGS

SPECIFICATIONS REFERENCE

Any reference in the plans or proposal to previous editions of the *Standard Specifications for Road and Bridge Construction* and *Standard Drawings* are superseded by *Standard Specifications for Road and Bridge Construction, Edition of 2019* and *Standard Drawings, Edition of 2020*.

SUPPLEMENTAL SPECIFICATIONS

The contractor shall use the Supplemental Specifications that are effective at the time of letting.
The Supplemental Specifications can be found at the following link:

<http://transportation.ky.gov/Construction/Pages/Kentucky-Standard-Specifications.aspx>

2020 KENTUCKY STANDARD DRAWINGS

CURVE WIDENING AND SUPERELEVATION TRANSITIONS	RGS-001-07
SUPERELEVATION FOR MULTILANE PAVEMENT	RGS-002-06
MISCELLANEOUS STANDARDS	RGX-001-06
APPROACHES, ENTRANCES, AND MAIL BOX TURNOUT	RPM-110-07
LANE CLOSURE MULTI-LANE HIGHWAY CASE I.....	TTC-115-04
LANE CLOSURE MULTI-LANE HIGHWAY CASE II	TTC-120-04
SHOULDER CLOSURE	TTC-135-02
PAVEMENT CONDITION WARNING SIGNS.....	TTD-125-02
MOBILE OPERATION FOR PAINT STRIPING CASE III.....	TTS-110-02
MOBILE OPERATION FOR PAINT STRIPING CASE IV	TTS-115-02
DETECTABLE WARNINGS	RGX-040-03
CONCRETE ENTRANCE PAVEMENT AND SIDEWALK.....	RPM-150-08
CONCRETE ENTRANCE PAVEMENT AND SIDEWALK.....	RPM-152-08
SIDEWALK RAMPS	RPM-170-09
CURB AND GUTTER, CURBS AND VALLEY GUTTER	RPM-100-11

PART III

EMPLOYMENT, WAGE AND RECORD REQUIREMENTS

TRANSPORTATION CABINET
DEPARTMENT OF HIGHWAYS

LABOR AND WAGE REQUIREMENTS
APPLICABLE TO OTHER THAN FEDERAL-AID SYSTEM PROJECTS

- I. Application
- II. Nondiscrimination of Employees (KRS 344)

I. APPLICATION

1. These contract provisions shall apply to all work performed on the contract by the contractor with his own organization and with the assistance of workmen under his immediate superintendence and to all work performed on the contract by piecework, station work or by subcontract. The contractor's organization shall be construed to include only workmen employed and paid directly by the contractor and equipment owned or rented by him, with or without operators.

2. The contractor shall insert in each of his subcontracts all of the stipulations contained in these Required Provisions and such other stipulations as may be required.

3. A breach of any of the stipulations contained in these Required Provisions may be grounds for termination of the contract.

3. If the contractor is in control of apprenticeship or other training or retraining, including on-the-job training programs, he shall not discriminate against an individual because of his race, color, religion, national origin, sex, disability or age forty (40) and over, in admission to, or employment in any program established to provide apprenticeship or other training.

4. The contractor will send to each labor union or representative of workers with which he has a collective bargaining agreement or other contract or understanding, a notice to be provided advising the said labor union or workers' representative of the contractor's commitments under this section, and shall post copies of the notice in conspicuous places available to employees and applicants for employment. The contractor will take such action with respect to any subcontract or purchase order as the administrating agency may direct as a means of enforcing such provisions, including sanctions for non-compliance.

Revised: January 25, 2017

II. NONDISCRIMINATION OF EMPLOYEES

AN ACT OF THE KENTUCKY
GENERAL ASSEMBLY TO PREVENT
DISCRIMINATION IN EMPLOYMENT
KRS CHAPTER 344
EFFECTIVE JUNE 16, 1972

The contract on this project, in accordance with KRS Chapter 344, provides that during the performance of this contract, the contractor agrees as follows:

1. The contractor shall not fail or refuse to hire, or shall not discharge any individual, or otherwise discriminate against an individual with respect to his compensation, terms, conditions, or privileges of employment, because of such individual's race, color, religion, national origin, sex, disability or age (forty and above); or limit, segregate, or classify his employees in any way which would deprive or tend to deprive an individual of employment opportunities or otherwise adversely affect his status as an employee, because of such individual's race, color, religion, national origin, sex, disability or age forty (40) and over. The contractor agrees to post in conspicuous places, available to employees and applicants for employment, notices to be provided setting forth the provisions of this nondiscrimination clause.

2. The contractor shall not print or publish or cause to be printed or published a notice or advertisement relating to employment by such an employer or membership in or any classification or referral for employment by the employment agency, indicating any preference, limitation, specification, or discrimination, based on race, color, religion, national origin, sex, or age forty (40) and over, or because the person is a qualified individual with a disability, except that such a notice or advertisement may indicate a preference, limitation, or specification based on religion, national origin, sex, or age forty (40) and over, or because the person is a qualified individual with a disability, when religion, national origin, sex, or age forty (40) and over, or because the person is a qualified individual with a disability, is a bona fide occupational qualification for employment.

EXECUTIVE BRANCH CODE OF ETHICS

In the 1992 regular legislative session, the General Assembly passed and Governor Brereton Jones signed Senate Bill 63 (codified as KRS 11A), the Executive Branch Code of Ethics, which states, in part:

KRS 11A.040 (7) provides:

No present or former public servant shall, within six (6) months following termination of his office or employment, accept employment, compensation, or other economic benefit from any person or business that contracts or does business with, or is regulated by, the state in matters in which he was directly involved during the last thirty-six (36) months of his tenure. This provision shall not prohibit an individual from returning to the same business, firm, occupation, or profession in which he was involved prior to taking office or beginning his term of employment, or for which he received, prior to his state employment, a professional degree or license, provided that, for a period of six (6) months, he personally refrains from working on any matter in which he was directly involved during the last thirty-six (36) months of his tenure in state government. This subsection shall not prohibit the performance of ministerial functions, including but not limited to filing tax returns, filing applications for permits or licenses, or filing incorporation papers, nor shall it prohibit the former officer or public servant from receiving public funds disbursed through entitlement programs.

KRS 11A.040 (9) states:

A former public servant shall not represent a person or business before a state agency in a matter in which the former public servant was directly involved during the last thirty-six (36) months of his tenure, for a period of one (1) year after the latter of:

- a) The date of leaving office or termination of employment; or
- b) The date the term of office expires to which the public servant was elected.

This law is intended to promote public confidence in the integrity of state government and to declare as public policy the idea that state employees should view their work as a public trust and not as a way to obtain private benefits.

If you have worked for the executive branch of state government within the past six months, you may be subject to the law's prohibitions. The law's applicability may be different if you hold elected office or are contemplating representation of another before a state agency.

Also, if you are affiliated with a firm which does business with the state and which employs former state executive-branch employees, you should be aware that the law may apply to them.

In case of doubt, the law permits you to request an advisory opinion from the Executive Branch Ethics Commission, 1025 Capital Center Drive, Suite 104, Frankfort, Kentucky 40601; telephone (502) 564-7954.

Revised: May 23, 2022

Kentucky Equal Employment Opportunity Act of 1978

The requirements of the Kentucky Equal Employment Opportunity Act of 1978 (KRS 45.560-45.640) shall apply to this Contract. The apparent low Bidder will be required to submit EEO forms to the Division of Construction Procurement, which will then forward to the Finance and Administration Cabinet for review and approval. No award will become effective until all forms are submitted and EEO/CC has certified compliance. The required EEO forms are as follows:

- EEO-1: Employer Information Report
- Affidavit of Intent to Comply
- Employee Data Sheet
- Subcontractor Report

These forms are available on the Finance and Administration's web page under ***Vendor Information, Standard Attachments and General Terms*** at the following address:
<https://www.eProcurement.ky.gov>.

Bidders currently certified as being in compliance by the Finance and Administration Cabinet may submit a copy of their approval letter in lieu of the referenced EEO forms.

For questions or assistance please contact the Finance and Administration Cabinet by email at **finance.contractcompliance@ky.gov** or by phone at 502-564-2874.

EMPLOYEE RIGHTS UNDER THE FAIR LABOR STANDARDS ACT

THE UNITED STATES DEPARTMENT OF LABOR WAGE AND HOUR DIVISION

FEDERAL MINIMUM WAGE

\$7.25 PER HOUR

BEGINNING JULY 24, 2009

- OVERTIME PAY

At least 1½ times your regular rate of pay for all hours worked over 40 in a workweek.
- CHILD LABOR

An employee must be at least **16** years old to work in most non-farm jobs and at least **18** to work in non-farm jobs declared hazardous by the Secretary of Labor.

Youths **14** and **15** years old may work outside school hours in various non-manufacturing, non-mining, non-hazardous jobs under the following conditions:

No more than

 - **3** hours on a school day or **18** hours in a school week;
 - **8** hours on a non-school day or **40** hours in a non-school week.

Also, work may not begin before **7 a.m.** or end after **7 p.m.**, except from June 1 through Labor Day, when evening hours are extended to **9 p.m.** Different rules apply in agricultural employment.
- TIP CREDIT

Employers of “tipped employees” must pay a cash wage of at least \$2.13 per hour if they claim a tip credit against their minimum wage obligation. If an employee’s tips combined with the employer’s cash wage of at least \$2.13 per hour do not equal the minimum hourly wage, the employer must make up the difference. Certain other conditions must also be met.
- ENFORCEMENT

The Department of Labor may recover back wages either administratively or through court action, for the employees that have been underpaid in violation of the law. Violations may result in civil or criminal action.

Employers may be assessed civil money penalties of up to \$1,100 for each willful or repeated violation of the minimum wage or overtime pay provisions of the law and up to \$11,000 for each employee who is the subject of a violation of the Act’s child labor provisions. In addition, a civil money penalty of up to \$50,000 may be assessed for each child labor violation that causes the death or serious injury of any minor employee, and such assessments may be doubled, up to \$100,000, when the violations are determined to be willful or repeated. The law also prohibits discriminating against or discharging workers who file a complaint or participate in any proceeding under the Act.
- ADDITIONAL INFORMATION

- Certain occupations and establishments are exempt from the minimum wage and/or overtime pay provisions.
 - Special provisions apply to workers in American Samoa and the Commonwealth of the Northern Mariana Islands.
 - Some state laws provide greater employee protections; employers must comply with both.
 - The law requires employers to display this poster where employees can readily see it.
 - Employees under 20 years of age may be paid \$4.25 per hour during their first 90 consecutive calendar days of employment with an employer.
 - Certain full-time students, student learners, apprentices, and workers with disabilities may be paid less than the minimum wage under special certificates issued by the Department of Labor.



For additional information:

1-866-4-USWAGE
(1-866-487-9243) TTY: 1-877-889-5627

WWW.WAGEHOUR.DOL.GOV



U.S. Wage and Hour Division

PART IV

INSURANCE

Refer to
Kentucky Standard Specifications for Road and Bridge Construction,
current edition

PART V

BID ITEMS

222470

PROPOSAL BID ITEMS

Report Date 11/4/22

Page 1 of 2

Section: 0001 - PAVING

LINE	BID CODE	ALT	DESCRIPTION	QUANTITY	UNIT	UNIT PRIC	FP	AMOUNT
0010	00190		LEVELING & WEDGING PG64-22	384.00	TON		\$	
0020	00301		CL2 ASPH SURF 0.38D PG64-22	2,885.00	TON		\$	
0030	01719		ADJUST INLET	2.00	EACH		\$	
0040	01792		ADJUST MANHOLE	6.00	EACH		\$	
0050	01876		STANDARD HEADER CURB MOD	243.00	LF		\$	
0060	01876		STANDARD HEADER CURB MOD (HISTORICAL MIX)	400.00	LF		\$	
0070	02562		TEMPORARY SIGNS	1,110.00	SQFT		\$	
0080	02650		MAINTAIN & CONTROL TRAFFIC	1.00	LS		\$	
0090	02650		MAINTAIN & CONTROL TRAFFIC	1.00	LS		\$	
0100	02650		MAINTAIN & CONTROL TRAFFIC	1.00	LS		\$	
0110	02676		MOBILIZATION FOR MILL & TEXT	1.00	LS		\$	
0120	02676		MOBILIZATION FOR MILL & TEXT	1.00	LS		\$	
0130	02676		MOBILIZATION FOR MILL & TEXT	1.00	LS		\$	
0140	02677		ASPHALT PAVE MILLING & TEXTURING	2,885.00	TON		\$	
0150	02720		SIDEWALK-4 IN CONCRETE	180.00	SQYD		\$	
0160	02720		SIDEWALK-4 IN CONCRETE (HISTORICAL MIX)	289.00	SQYD		\$	
0170	02775		ARROW PANEL	2.00	EACH		\$	
0180	03240		BASE FAILURE REPAIR	90.00	SQYD		\$	
0190	03425		ADJUST WATER VALVE	12.00	EACH		\$	
0200	04792		CONDUIT-1 IN (TRAFFIC LOOPS)	25.00	LF		\$	
0210	04811		ELECTRICAL JUNCTION BOX TYPE B (TRAFFIC LOOPS)	4.00	EACH		\$	
0220	04820		TRENCHING AND BACKFILLING (TRAFFIC LOOPS)	55.00	LF		\$	
0230	04830		LOOP WIRE (TRAFFIC LOOPS)	1,875.00	LF		\$	
0240	04895		LOOP SAW SLOT AND FILL (TRAFFIC LOOPS)	750.00	LF		\$	
0250	06510		PAVE STRIPING-TEMP PAINT-4 IN	3,615.00	LF		\$	
0260	06515		PAVE STRIPING-PERM PAINT-6 IN	4,215.00	LF		\$	
0270	06517		PAVE STRIPING-PERM PAINT-12 IN	300.00	LF		\$	
0280	06542		PAVE STRIPING-THERMO-6 IN W	144.00	LF		\$	
0290	06546		PAVE STRIPING-THERMO-12 IN W	335.00	LF		\$	
0300	06565		PAVE MARKING-THERMO X-WALK-6 IN	2,254.00	LF		\$	
0310	06568		PAVE MARKING-THERMO STOP BAR-24IN	331.00	LF		\$	
0320	06569		PAVE MARKING-THERMO CROSS-HATCH	310.00	SQFT		\$	
0330	06573		PAVE MARKING-THERMO STR ARROW	3.00	EACH		\$	
0340	06574		PAVE MARKING-THERMO CURV ARROW	2.00	EACH		\$	
0350	06576		PAVE MARKING-THERMO ONLY	1.00	EACH		\$	
0360	10020NS		FUEL ADJUSTMENT	5,270.00	DOLL	\$1.00	\$	\$5,270.00
0370	10030NS		ASPHALT ADJUSTMENT	13,238.00	DOLL	\$1.00	\$	\$13,238.00
0380	20071EC		JOINT ADHESIVE	25,400.00	LF		\$	
0390	20782NS714		PAVE MARKING THERMO-BIKE	10.00	EACH		\$	
0400	22520EN		PAVE MARKING-THERMO YIELD BAR-36 IN	170.00	LF		\$	
0410	23158ES505		DETECTABLE WARNINGS (NEW)	356.00	SQFT		\$	

Report Date 11/4/22

LINE	BID CODE	ALT	DESCRIPTION	QUANTITY	UNIT	UNIT PRIC	FP	AMOUNT
0420	23158ES505		DETECTABLE WARNINGS (RETROFIT)	56.00	SQFT		\$	
0430	23261EC		PAVE MARK-THERMO-X-WALK-24 IN	740.00	LF		\$	
0440	24683ED		PAVE MARKING-THERMO DOTTED LANE EXTEN	50.00	LF		\$	
0450	24900EC		PVC CONDUIT-1 1/4 IN-SCHEDULE 80 (TRAFFIC LOOPS)	55.00	LF		\$	
0460	24963ED		LOOP TEST (TRAFFIC LOOPS)	5.00	EACH		\$	
0470	24970EC		ASPHALT MATERIAL FOR TACK NON-TRACKING	22.00	TON		\$	
0480	26119EC		INSTALL RADAR PRESENCE DETECTOR TYPE A (KY 3217)	2.00	EACH		\$	

Section: 0002 - DEMOBILIZATION

LINE	BID CODE	ALT	DESCRIPTION	QUANTITY	UNIT	UNIT PRIC	FP	AMOUNT
0490	02569		DEMOBILIZATION	1.00	LS		\$	