



CALL NO. 402

CONTRACT ID. 212904

BATH - BOYD - ROWAN - CARTER COUNTIES

FED/STATE PROJECT NUMBER 121GR21M035 - FD04

DESCRIPTION PREVENTATIVE MAINTENANCE FOR BRIDGES IN DISTRICT 9.

WORK TYPE BRIDGE DECK RESTORATION & WATERPROOFING

PRIMARY COMPLETION DATE 11/15/2021

LETTING DATE: April 23,2021

Sealed Bids will be received electronically through the Bid Express bidding service until 10:00 am EASTERN DAYLIGHT TIME April 23,2021. Bids will be publicly announced at 10:00 am EASTERN DAYLIGHT TIME.

NO PLANS ASSOCIATED WITH THIS PROJECT.

REQUIRED BID PROPOSAL GUARANTY: Not less than 5% of the total bid.

TABLE OF CONTENTS

PART I	SCOPE OF WORK <ul style="list-style-type: none">PROJECT(S), COMPLETION DATE(S), & LIQUIDATED DAMAGESCONTRACT NOTESSTATE CONTRACT NOTESSPECIAL NOTE(S) APPLICABLE TO PROJECTLIQUIDATED DAMAGESTRAFFIC CONTROL PLANSKETCH MAP(S)MATERIAL SUMMARYBRIDGE DRAWINGS
PART II	SPECIFICATIONS AND STANDARD DRAWINGS <ul style="list-style-type: none">SPECIFICATIONS REFERENCESUPPLEMENTAL SPECIFICATION
PART III	EMPLOYMENT, WAGE AND RECORD REQUIREMENTS <ul style="list-style-type: none">LABOR AND WAGE REQUIREMENTSEXECUTIVE BRANCH CODE OF ETHICSKENTUCKY EQUAL EMPLOYMENT OPPORTUNITY ACT OF 1978 LOCALITY / STATEPROJECT WAGE RATES / STATE FUNDED
PART IV	INSURANCE
PART V	BID ITEMS

PART I

SCOPE OF WORK

ADMINISTRATIVE DISTRICT - 09

CONTRACT ID - 212904
121GR21M035 - FD04
COUNTY - BATH
PCN - MB00600642101
FD04 006 0064 B00054L

INTERSTATE 64 (MP 121.824). BRIDGE OVER SLATE CREEK.BRIDGE DECK RESTORATION & WATERPROOFING
SYP NO. 09-10066.00.
GEOGRAPHIC COORDINATES LATITUDE 38:07:53.00 LONGITUDE 83:44:31.00

PCN - MB00600642102
FD04 006 0064 B00054R

INTERSTATE 64 (MP 121.824). BRIDGE OVER SLATE CREEK.BRIDGE DECK RESTORATION & WATERPROOFING
SYP NO. 09-10066.00.
GEOGRAPHIC COORDINATES LATITUDE 38:07:53.00 LONGITUDE 83:44:31.00

COUNTY - BOYD
PCN - MB01000642103
FD04 010 0064 B00009R

INTERSTATE 64 (MP 181.377). BRIDGE OVER US 60 WILLIAMS CREEK.BRIDGE DECK RESTORATION &
WATERPROOFING SYP NO. 09-10066.00.
GEOGRAPHIC COORDINATES LATITUDE 38:21:56.00 LONGITUDE 82:46:18.00

COUNTY - CARTER
PCN - MB02200642104
FD04 022 0064 B00084L

INTERSTATE 64 (MP 150.134). BRIDGE OVER FLEMING FORK RD.BRIDGE DECK RESTORATION &
WATERPROOFING SYP NO. 09-10066.00.
GEOGRAPHIC COORDINATES LATITUDE 38:17:49.00 LONGITUDE 83:18:38.00

PCN - MB02200642105
FD04 022 0064 B00084R

INTERSTATE 64 (MP 150.134). BRIDGE OVER FLEMING FORK RD.BRIDGE DECK RESTORATION &
WATERPROOFING SYP NO. 09-10066.00.
GEOGRAPHIC COORDINATES LATITUDE 38:17:49.00 LONGITUDE 83:18:38.00

PCN - MB02200642106
FD04 022 0064 B00089R

INTERSTATE 64 (MP 151.641). BRIDGE OVER FLAT FORK RD.BRIDGE DECK RESTORATION &
WATERPROOFING SYP NO. 09-10066.00.
GEOGRAPHIC COORDINATES LATITUDE 38:18:21.00 LONGITUDE 83:17:06.00

PCN - MB02200642107
FD04 022 0064 B00091R

INTERSTATE 64 (MP 158.126). BRIDGE OVER FLEMING FORK RD.BRIDGE DECK RESTORATION &
WATERPROOFING SYP NO. 09-10066.00.
GEOGRAPHIC COORDINATES LATITUDE 38:19:28.00 LONGITUDE 83:10:39.00

PCN - MB02200642108
FD04 022 0064 B00092R

INTERSTATE 64 (MP 159.246). BRIDGE OVER FLEMING FORK RD.BRIDGE DECK RESTORATION &
WATERPROOFING SYP NO. 09-10066.00.
GEOGRAPHIC COORDINATES LATITUDE 38:19:23.00 LONGITUDE 83:09:27.00

PCN - MB02200642109
FD04 022 0064 B00096R

INTERSTATE 64 (MP 170.973). BRIDGE OVER BARRET CREEK.BRIDGE DECK RESTORATION & WATERPROOFING SYP NO. 09-10066.00.
GEOGRAPHIC COORDINATES LATITUDE 38:20:35.00 LONGITUDE 82:57:12.00

COUNTY - ROWAN

PCN - MB10300642110
FD04 103 0064 B00056L

INTERSTATE 64 (MP 137.289). BRIDGE OVER KY 32.BRIDGE DECK RESTORATION & WATERPROOFING SYP NO. 09-10066.00.
GEOGRAPHIC COORDINATES LATITUDE 38:11:32.00 LONGITUDE 83:28:43.00

PCN - MB10300642111
FD04 103 0064 B00056R

INTERSTATE 64 (MP 137.289). BRIDGE OVER KY 32.BRIDGE DECK RESTORATION & WATERPROOFING SYP NO. 09-10066.00.
GEOGRAPHIC COORDINATES LATITUDE 38:11:32.00 LONGITUDE 83:28:43.00

COMPLETION DATE(S):
COMPLETED BY 11/15/2021 APPLIES TO ENTIRE PROPOSAL

CONTRACT NOTES

PROPOSAL ADDENDA

All addenda to this proposal must be applied when calculating bid and certified in the bid packet submitted to the Kentucky Department of Highways. Failure to use the correct and most recent addenda may result in the bid being rejected.

BID SUBMITTAL

Bidder must use the Department's electronic bidding software. The Bidder must download the bid file located on the Bid Express website (www.bidx.com) to prepare a bid packet for submission to the Department. The bidder must submit electronically using Bid Express.

JOINT VENTURE BIDDING

Joint venture bidding is permissible. All companies in the joint venture must be prequalified in one of the work types in the Qualifications for Bidders for the project. The bidders must get a vendor ID for the joint venture from the Division of Construction Procurement and register the joint venture as a bidder on the project. Also, the joint venture must obtain a digital ID from Bid Express to submit a bid. A joint bid bond of 5% may be submitted for both companies or each company may submit a separate bond of 5%.

UNDERGROUND FACILITY DAMAGE PROTECTION

The contractor shall make every effort to protect underground facilities from damage as prescribed in the Underground Facility Damage Protection Act of 1994, Kentucky Revised Statute KRS 367.4901 to 367.4917. It is the contractor's responsibility to determine and take steps necessary to be in compliance with federal and state damage prevention directives. When prescribed in said directives, the contractor shall submit Excavation Locate Requests to the Kentucky Contact Center (KY811) via web ticket entry. The submission of this request does not relieve the contractor from the responsibility of contacting non-member facility owners, whom shall be contacted through their individual Protection Notification Center. Non-compliance with these directives can result in the enforcement of penalties.

REGISTRATION WITH THE SECRETARY OF STATE BY A FOREIGN ENTITY

Pursuant to KRS 176.085(1)(b), an agency, department, office, or political subdivision of the Commonwealth of Kentucky shall not award a state contract to a person that is a foreign entity required by [KRS 14A.9-010](#) to obtain a certificate of authority to transact business in the Commonwealth ("certificate") from the Secretary of State under [KRS 14A.9-030](#) unless the person produces the certificate within fourteen (14) days of the bid or proposal opening. If the foreign entity is not required to obtain a certificate as provided in [KRS 14A.9-010](#), the foreign entity should identify the applicable exception. Foreign entity is defined within [KRS 14A.1-070](#).

For all foreign entities required to obtain a certificate of authority to transact business in the Commonwealth, if a copy of the certificate is not received by the contracting agency within the time frame identified above, the foreign entity's solicitation response shall be deemed non-responsive or the awarded contract shall be cancelled.

Businesses can register with the Secretary of State at <https://secure.kentucky.gov/sos/ftbr/welcome.aspx>.

SPECIAL NOTE FOR PROJECT QUESTIONS DURING ADVERTISEMENT

Questions about projects during the advertisement should be submitted in writing to the Division of Construction Procurement. This may be done by fax (502) 564-7299 or email to kytc.projectquestions@ky.gov. The Department will attempt to answer all submitted questions. The Department reserves the right not to answer if the question is not pertinent or does not aid in clarifying the project intent.

The deadline for posting answers will be 3:00 pm Eastern Daylight Time, the day preceding the Letting. Questions may be submitted until this deadline with the understanding that the later a question is submitted, the less likely an answer will be able to be provided.

The questions and answers will be posted for each Letting under the heading "Questions & Answers" on the Construction Procurement website (www.transportation.ky.gov/contract). The answers provided shall be considered part of this Special Note and, in case of a discrepancy, will govern over all other bidding documents.

HARDWOOD REMOVAL RESTRICTIONS

The US Department of Agriculture has imposed a quarantine in Kentucky and several surrounding states, to prevent the spread of an invasive insect, the emerald ash borer. Hardwood cut in conjunction with the project may not be removed from the state. Chipping or burning on site is the preferred method of disposal.

INSTRUCTIONS FOR EXCESS MATERIAL SITES AND BORROW SITES

Identification of excess material sites and borrow sites shall be the responsibility of the Contractor. The Contractor shall be responsible for compliance with all applicable state and federal laws and may wish to consult with the US Fish and Wildlife Service to seek protection under Section 10 of the Endangered Species Act for these activities.

ACCESS TO RECORDS

The contractor, as defined in KRS 45A.030 (9) agrees that the contracting agency, the Finance and Administration Cabinet, the Auditor of Public Accounts, and the Legislative Research Commission, or their duly authorized representatives, shall have access to any books, documents, papers, records, or other evidence, which are directly pertinent to this contract for the purpose of financial audit or program review. Records and other prequalification information confidentially

disclosed as part of the bid process shall not be deemed as directly pertinent to the contract and shall be exempt from disclosure as provided in KRS 61.878(1)(c). The contractor also recognizes that any books, documents, papers, records, or other evidence, received during a financial audit or program review shall be subject to the Kentucky Open Records Act, KRS 61.870 to 61.884.

In the event of a dispute between the contractor and the contracting agency, Attorney General, or the Auditor of Public Accounts over documents that are eligible for production and review, the Finance and Administration Cabinet shall review the dispute and issue a determination, in accordance with Secretary's Order 11-004.

April 30, 2018

SPECIAL NOTE FOR RECIPROCAL PREFERENCE

RECIPROCAL PREFERENCE TO BE GIVEN BY PUBLIC AGENCIES TO RESIDENT BIDDERS

By reference, KRS 45A.490 to 45A.494 are incorporated herein and in compliance regarding the bidders residency. Bidders who want to claim resident bidder status should complete the Affidavit for Claiming Resident Bidder Status along with their bid in the electronic bidding software. Submittal of the Affidavit should be done along the bid in Bid Express.

April 30, 2018

SPECIAL NOTE FOR PREVENTIVE MAINTENANCE

1. DESCRIPTION.

Perform all work in accordance with the Kentucky Transportation Cabinet, Department of Highway’s Standard Specifications for Road and Bridge Construction and applicable Supplemental Specifications, the Standard Drawings, (current editions), this Note and Attached Detailed Drawings. Section references are to the Standard Specifications. This work consists of the following: (1) Furnish all labor, materials, tools, and equipment, (2) Bridge Cleaning, (3) Concrete Coatings (4) Bearing Lubrication, (5) Bridge Deck Sealing and (6) Any other work specified as part of this contract.

2. SUBMITTALS

The Contractor shall comply with the submittal requirements detailed in Section 108 of the Standard Specifications for Road and Bridge Construction (Current Edition) and submit the following **written** items to the Project Engineer **14 days** prior to the Pre-Construction Conference:

- A. A detailed Progress of Work Schedule.
- B. Traffic Control Plan.
- C. Manufacturers’ recommended Film Thickness and application conditions for the concrete coating system to be used.
- D. Manufactures’ specification and recommendations for concrete sealant to be used on bridge deck.

All submittals must be received, accepted and/or approved by the KYTC Engineer prior to beginning any work.

3. MATERIALS.

A. Wash Water

Use clean potable water for all pressure washing.

B. Concrete Coatings

See The Division of Material’s list of approved materials for concrete coatings and Section 821.

C. Bearing Lubricant

Use one of the lubricants from the following manufactures:

Manufacture	Lubricant
Bostik Inc.,	Never Seez - Mariner’s Choice
Mobil Oil	Mobil Centaur Moly NLGI Grades 1 or 2
Certified Labs	Premalube #1 WG

D. Concrete Sealant

Maufacture	Sealer
Protectosil BHN	Evonik Industries
Protectosil 300	Evonik Industries
TK-590-40 Tri-Silane 40%	TK Products
Certivex Penseal 244 O/W 80	Vexcon
Master Protect H 440 VT	BASF
SW-244-100 DOT	Chemical Products Industries, Inc.
TK-590-1 MS Tri-Silane	TK Products

4. CONSTRUCTION.

A. Bridge Cleaning.

All debris shall be removed from the bridge components. See attached detailed drawings addressing components having debris removal. Equipment for removing debris from the bridge components shall be determined by the Contractor, subject to the approval of the Engineer. The Contractor shall prevent any debris from entering any body of water, bridge drainage system, or traffic lanes. All debris removed shall be disposed of in a suitable off-site disposal facility. Prior to all cleaning work, the Contractor shall confirm that any bridge drainage system is not blocked by un-removable debris.

A blocked drainage system is considered to be one from which debris cannot be removed using the means specified in this note. If the Engineer has been notified, and concurs that the drainage system is blocked prior to performing other cleaning work, then proceed at the direction of the engineer. If the Contractor does not inspect the bridge drainage system and notify the engineer prior to beginning work any blocked drains will be considered to be the result of the Contractor's operations, and all clearing and cleaning of the drainage system shall be done as part of the work of the specification. All vegetation present at areas of the bridge that are to be addressed in this proposal shall be removed as determined by the Engineer.

All cost to complete Debris Removal, Clean Deck Drains and Remove Vegetation shall as specified shall be included in the Lump Sum price for "Bridge Cleaning".

B. Stratified and Pack Rust Removal.

Stratified and pack rust shall be removed from all bearing devices. All existing bearing lubrication shall be removed. See attached detailed drawings for each bridge showing location and quantity of the bearing devices. Hand tools including wire brushes, scrapers or impact devices (hand hammers or power chisels) are to be used for removing stratified and pack rust. All surfaces to have stratified and pack rust removed shall be cleaned to an SSPC SP-2 level. All debris collected shall be disposed of in a suitable off-site disposal facility. **All cost to complete Stratified, Pack Rust Removal and removal of existing bearing lubricant shall be considered incidental to the unit price bid for "Lubricate Bearing".**

C. Pressure Washing.

Specified bridge components shall be pressure washed. See attached detailed drawings addressing components to be pressure washed. All equipment for pressure washing shall be operated at a minimum pressure of up 4,000 psi with 0 degree spinner tip and/or fan tips as determined by the engineer at the working location with a minimum flow rate of 3.5 gal/minute provided that these pressures do not damage any components of the structure. Pressure and flow rates shall be reduced to a level satisfactory to the Engineer should any damage occur due to power washing procedures. Pressure washing shall be operated at distance of approximately six inches from and perpendicular to the surface. All pressure washing wands shall be equipped with a gauge to accurately determine the amount pressure used. Pressure washing of any bridge element will proceed from top of wash area to bottom of wash area. Wash water will not be released to a bridge element previously washed. Perform all pressure washing at temperatures above 40 degrees Fahrenheit.

All cost to complete Pressure Washing as specified shall be included in the Lump Sum price for “Bridge Cleaning”.

D. Concrete Coatings Application.

Specified bridge components shall have concrete coating applied to as specified after bridge cleaning. See attached detailed drawings for addressing the bridge components. Use compressed air to remove any loose debris from the surfaces that are to be coated after power washing. See concrete coating diagram. All coatings shall be applied within manufacturers recommended dry film thickness range. For recommended conditions for application, see Section 614.03.02 and coatings supplier specifications.

Allow the surfaces to be coated to dry before any coating is applied. The coating must be applied to a clean and dry surface. All coating application shall be executed using brushes, rollers, etc. No spray application will be permitted. The Department requires acceptance testing of samples obtained on a per-lot basis per-shipment. The Division of Materials will perform acceptance testing. See Section 821.04. The finish coat shall be Light Gray for Concrete. See Section 821.02.

All cost to complete Concrete Coating Application as specified shall be included in the Lump Sum price for “Concrete Coatings”.

E. Bearing Lubrication Application.

Bearing devices on bridge ends shall be lubricated as specified after all stratified rust and pack rust is removed and power washing is complete, bearing devices shall have lubricant applied to all surfaces of the bearing including bearing plates and points of movement. See attached detailed drawings for each bridge showing location and quantity of the bearing devices. Allow bearing devices to dry before lubricant is applied. Perform all bearing lubrication application at temperatures above 40 degrees Fahrenheit or in accordance with manufactures specifications. **All cost to complete Bearing Lubrication Application as specified shall be included in the unit price Each for “Lubricate Bearing”**

F. Seal Bridge Deck.

Cleaning the Bridge Deck. Dry clean concrete surfaces to remove all loose debris. Remove all visible hydrocarbons from the surface with detergent approved by the manufacturer of the deck sealant. Pressure wash all surfaces to be sealed at 2000 to 3000 psi. Install pressure gauges at each wand to verify pressure. Use 30° fan tip or as recommended by the manufacturer of the deck sealant. Hold pressure washing wand a minimum of 45° from the deck with a maximum stand-off distance of 12 inches.

This includes the entire surface area of the bridge deck, interior faces and top of parapet walls including the end bent/abutment wing walls.

Seal the Bridge Deck. All concrete to be sealed must be clean and dry. Monitor weather conditions prior to sealer application. Refer to manufacturer’s recommendations for proper ambient conditions. Do not apply sealer if precipitation is anticipated within the time stated by the manufacturer. Allow the deck to dry 24 hours (after washing or rain event) before sealer application. The deck can be reopened to traffic while drying.

Sealer must be applied within 48 hours of washing or the deck must be rewashed. Divide the deck into predefined areas of specific square footage to aid in determining usage. Comply with manufacturer’s usage

recommendation. Using a low pressure pump, apply sealer and spread evenly with broom or squeegee; do not allow pooling to remain. When each predefined area is complete, measure the amount of sealer used to verify proper usage. After sealing, follow manufacturer's recommended cure time before opening to traffic. This includes the entire surface area of the bridge deck, interior faces and top of parapet walls including the end bent/abutment wing walls. **All cost to complete Deck Sealing as specified shall be included in the Lump Sum price for "Seal Bridge Deck".**

G. Sequence of Work.

Complete work in the sequence listed below:

1. Debris Removal
2. Stratified Rust Removal
3. Pressure Washing
4. Concrete Coating Application
5. Bearing Lubrication Application
6. Seal Bridge Deck

H. Inspection.

The Cabinet will provide inspection for all items required in this contract. Visual inspection will be required upon completion of each work item for each structure component or at the discretion of the Engineer at any time. All visual inspection shall be performed within arm's length distance.

1. **Debris Removal:** Visual Inspection.
2. **Stratified Rust or Pack Rust Removal:** Visual Inspection and Scraper
Test any surface cleaned to SSPC SP2 will be inspected by a dull scraper test to ascertain adherence of existing coating and a hammer test for tightness of pack rust.
3. **Power Washing:** Visual Inspection.
4. **Concrete Coating:**
Prime Coat Application Check for wet film thickness*, and defects in the Paint.
Finish Coat Application Check for wet film thickness*, paint appearance, color and quality of application.
5. **Bearing Lubrication.** Visual Inspection.
6. **Seal Bridge Deck.** Visual Inspection.

I. Verifying Field Conditions.

The Contractor shall be familiar with all conditions at each bridge site. The Cabinet will not consider any claims due to the Contractor having not familiarized themselves with requirements of this work.

J. Residual Lead.

Residual lead paint may still be on bridge. The Contractor is advised to take all necessary protective measures including worker safety and environmental regulations when performing surface preparation. The Department will not consider any claims based on residual lead paint.

K. Damage to the structure.

The Contractor shall bear all responsibility and expense for any and all damage to the structure during the repair work, even to the removal and replacement of a fallen span, should the fallen span result from the Contractors actions.

5. MEASUREMENT.

A. Bridge Cleaning.

The Cabinet will measure this item by Lump Sum, completed and accepted.

B. Concrete Coating.

The Cabinet will measure this item by Lump Sum, completed and accepted.

C. Bearing Lubrication:

The Cabinet will measure this item by Each completed and accepted.

D. Seal Bridge Deck.

The Cabinet will measure the item by Lump Sum, completed and accepted.

6. PAYMENT.

A. Bridge Cleaning (24981EC).

Payment at the contract unit price for “Lump Sum” is full compensation for Debris Removal, Deck Drain Cleaning, Pressure Washing and all incidental items required to complete this with as specified in this note and attached detailed drawings.

B. Concrete Coating (24982EC).

Payment at the contract unit price for “Lump Sum” is full compensation for applying the concrete coatings and all incidental items required to complete this work as specified in this note and attached detailed drawings.

C. Bearing Lubrication (24983EC): Payment at the contract unit price “Each” is full compensation for applying bearing lubrication and all incidental items required to complete this work as specified in this note and attached detailed drawings.

D. Seal Bridge Deck (24439EC). Payment at the contract unit price for lump sum is full compensation for all item to complete the work as specified in this note and attached detailed drawings.

SPECIAL NOTE FOR MAINTAIN AND CONTROL TRAFFIC

All lane closures on this project shall be in accordance with Kentucky Department of Highways Standard Drawings **No. TTC 115, TTC 135 and the FHWA Manual for Uniform Traffic Control Devices (Current Editions)** unless otherwise specified. Lane closures should be used only when absolutely necessary and kept to the shortest duration possible in order to minimize disruption to the traveling public. No work will be conducted over unprotected traffic at any location. At the discretion of the Engineer, lane closures may be restricted on holiday weekends.

The contractor shall be required to submit in writing, to the department, his complete work schedule 14 days prior to the Pre-Construction Conference. The contractor shall be required to coordinate his efforts with those of any other contractor in the construction area so as to eliminate any lane closures which conflict with this traffic note.

1. EMERGENCY REPAIRS AND COORDINATION WITH OTHER CONTRACTS

In the event it becomes necessary to make emergency repairs at this project by state forces or by other outside contractors, the (painting) contractor shall agree to alter his work pattern as directed by the engineer so as not to interfere with the emergency work.

2. TRAFFIC CONTROL DEVICES

The contractor shall be required to furnish all traffic control devices whenever his operations endanger or interfere with vehicular traffic as determined by the engineer. The contractor shall furnish any additional traffic control devices necessary to protect traffic and his workmen. Any costs associated with the added traffic control devices (including arrow boards) shall be incidental to the contract lump sum amount for "maintain and control traffic." Placement of all devices for lane closures shall start and proceed in the direction of flow of traffic. Removal of devices shall start at the end of the construction area and proceed toward oncoming traffic. The contractor shall provide for the installation of all necessary traffic control devices before beginning work and their immediate removal as soon as work is suspended or completed. During the fully operational periods, when no lane closures are permitted, all equipment shall be totally removed from the job site. Traffic control signs shall be removed or covered (if left in a curb lane).

3. VEHICLES

The contractor's vehicles shall always move with and not across or against the flow of traffic. Vehicles shall enter or leave work areas in a manner that will not be hazardous to or interfere with normal roadway traffic. Vehicles shall not park or stop except within designated work areas. Personal vehicles shall not be permitted to park within the state right-of-way. The contractor's vehicles shall be prohibited from crossing the roadway and all pedestrian movement of the contractor's personnel on the roadway shall be limited to within the closed work area.

4. TRUCK MOUNTED ATTENUATOR

Any lane or shoulder closure will include the use of a Truck Mounted Attenuator placed between oncoming traffic and equipment or vehicles.

5. MISC.

The Contractor shall reduce the speed limit to **55 MPH** in areas signed for 70 MPH.

The use of Double Fine Zones may be used at the Contractor's discretion.

The Engineer may elect to use Variable Message Boards when necessary.

11. NARRATIVE (All Bridges)

Maintain a 12'-0" usable lane each direction. Shoulder closures may be used. All lane closures and shoulder closures must be removed when not working. Lane closures for will be permitted to stay in place for the expansion joint replacement work if required for that bridge.

MEASUREMENT.

A. Maintain and Control Traffic: The Department will measure the quantity by Lump Sum, completed and accepted.

PAYMENT.

A. Maintain and Control Traffic (02650). Payment of the contract lump sum amount for "maintain and control traffic" shall be full compensation for all items necessary to maintain and control traffic as specified for this project. All traffic control items shall remain the property of the contractor when the work is complete.

NOTES FOR BRIDGE PIER AND SOFFIT CONCRETE PATCHING

These Notes or designated portions thereof, apply where so indicated on the plans, proposals or bidding instruction.

- I. DESCRIPTION.** Perform all work in accordance with the Department's 2019 Standard Specifications, and applicable Supplemental Specifications, the attached sketches, and these Notes. Section references are to the Standard Specifications.

This work consists of: (1) Furnish all labor, materials, tools, and equipment; (2) Remove existing spalled/delaminated concrete; (3) Prepare the existing surface for concrete patching; (4) Place hook fasteners and welded wire fabric over surfaces to be repaired (where applicable); (5) Apply concrete patching as specified by this note and as shown on the attached detail drawings; (6) Finish and cure the new Concrete Patches; (7) Maintain & control traffic; and, (8) Any other work specified as part of this contract.

II. MATERIALS.

- A. Concrete.** Approved Concrete Product for Vertical and Overhead Repair Patch.
- B. Steel Reinforcement.** Use Grade 60. See Section 602
- C. Welded Steel Wire Fabric (WWF).** Conform to Section 811
- D. Hook Fasteners.** Use commercial grade galvanized hook fasteners. Minimum 3/16" diameter.

III. CONSTRUCTION.

- A. Concrete Removal and Preparation.** The Contractor, as directed by the Engineer shall locate and remove all loose, spalled, deteriorated and delaminated concrete. Sounding shall be used to locate delaminated areas. Care shall be exercised not to damage areas of sound concrete or reinforcing steel during concrete removal operations. Unless specifically *directed by the Engineer*, depth of removal shall not exceed 6 inches. Concrete removal shall be in accordance with a sequence approved by the Engineer.

Concrete removal shall be accomplished by chipping with hand picks, chisels or light duty pneumatic or electric chipping hammers (not to exceed 15 lbs.). If sound concrete is encountered before existing reinforcing steel is exposed, the surface shall be prepared and repaired without further removal of the concrete. When corroded reinforcing steel is exposed, concrete removal shall continue until there is a minimum ¾ inch clearance around the exposed, corroded reinforcing bar. Care shall be taken to not damage bond to adjacent non-exposed reinforcing steel during concrete removal processes.

The perimeter of all areas where concrete is removed shall be tapered at an approximately 45° angle, except that the outer edges of all chipped areas shall be saw cut to minimum depth of ¾ inch to prevent featheredging unless otherwise approved by the Engineer.

After all deteriorated concrete has been removed; the repair surface to receive concrete patching shall be prepared by abrasive blast cleaning. Abrasive blast

cleaning shall remove all fractured surface concrete and all traces of any unsound material or contaminants such as oil, grease, dirt, slurry, or any materials which could interfere with the bond of freshly placed concrete.

The Contractor shall dispose all removed material off State Right Of Way in an approved site.

- B. Steel Reinforcement.** All corroded reinforcing steel exposed during concrete removal shall have corrosion products removed by abrasive grit blasting or wire brush whichever is more appropriate. Furnish for replacement, as directed by the Engineer, additional linear feet of steel reinforcing bars ½" diameter by 20-foot lengths. Place these bars in areas deemed by the Engineer to require additional reinforcement. Field cutting and bending is permitted. Deliver unused bars to the nearest County Maintenance Barn. Payment will be made in accordance with Section 602.

Reinforcing steel displaying deep pitting or loss of more than 20 percent of cross-sectional area shall be removed and replaced. Such bars shall be placed in accordance with the recommendations of ACI 506R, Sections 5.4 and 5.5. In particular, bars shall not be bundled in lapped splices, but shall be placed such that the minimum spacing around each bar is three times the maximum aggregate size to allow for proper encapsulation with concrete patching.

Intersecting reinforcing bars shall be tightly secured to each other using tie wire and adequately supported to minimize movement during concrete placement.

Welded wire fabric (WWF) shall be provided as shown on the attached sketches and at each repair area larger than 1 square foot if the depth of the repair exceeds 3 inches from the original dimension of the repaired member. Sheets of adjoining WWF shall be lapped by at least one and one-half spaces at all intersections, in both directions, and be securely fastened. WWF fabric shall be supported no closer than ½ inch to the prepared concrete surface and shall have a minimum concrete cover of 1.5 inches.

WWF shall be fastened to preset anchors on a grid not more than 12 inches square. Large knots of tie wire which could result in sand pockets and voids during patching shall be avoided.

- C. Hook Fasteners.** Hook fasteners shall be positioned at the spacing as stated above or as directed by the Engineer. Any given area shall have a minimum of four anchors. The WWF shall not move or deform excessively during concrete patching. Maximum hook fastener spacing shall not exceed 2 feet on a grid pattern over the entire repair area.

Hook fasteners shall be of commercial grade galvanized steel with a minimum diameter of 3/16". They may be mechanically set or grouted, as approved by the Engineer.

The Department will randomly select hook fasteners to be tested to verify pullout force is sufficient. If any anchors fail to meet the minimum acceptable pullout value, corrective measures shall be taken by the Contractor and further testing will be conducted.

- D. Concrete Patching.** Place and finish the new concrete for the patching area in accordance with the manufacturer's recommendations, as shown on the attached detail drawings, or as directed by the Engineer. The Engineer shall approve the Contractor's method of placing and consolidating the concrete prior to the beginning of this operation.
- E. Curing.** On completion of finishing operation, patching concrete shall immediately be prevented from drying out and cracking by fogging, wetting, and/or any appropriate method approved by the Engineer. Curing shall continue for duration recommended by the product manufacturer.

Each Contractor submitting a bid for this work shall make a thorough inspection of the site prior to submitting his bid and shall thoroughly familiarize himself with existing conditions so that the work can be expeditiously performed after a contract is awarded. Submission of a bid will be considered evidence of this inspection having been made. Any claims resulting from site conditions will not be honored by the Department. Quantities given are approximate. The quantity for "Concrete Patching Repair" shall be bid with the contingency that quantities may be increased, decreased, or eliminated by the Engineer. Dispose of all removed material entirely away from the job site as approved by the Engineer. This work is incidental to the contract unit price for "Concrete Patching Repair".

IV. MEASUREMENT

- A. Concrete Patching.** The Department will measure the quantity per square feet of each area restored.
- B. Steel Reinforcement.** See Section 602.
- C. Welded Wire Fabric & Hook Fasteners.** Welded Wire Fabric and Hook Fasteners will not be measured for payment, but shall be considered incidental to "Concrete Patching Repair".

V. PAYMENT

- A. Concrete Patching Repair.** Payment at the contract unit price per square feet is full compensation for the following: (1) Furnish all labor, materials, tools, equipment; (2) preparation of specified bents including removing and disposing of specified existing materials; (3) place, finish and cure new concrete patches; and (4) all incidentals necessary to complete the work as specified by this note and as shown on the attached detail drawings.
- B. Steel Reinforcement.** See Section 602.

The Department will consider payment as full compensation for all work required by these notes and detail drawings.

SPECIAL NOTE FOR ELIMINATING TRANSVERSE JOINTS ON BRIDGES

- I. DESCRIPTION.** Perform all work in accordance with the Kentucky Transportation Cabinet, Department of Highway's 2019 Standard Specifications for Road and Bridge Construction.

Remove existing concrete and existing joint material to eliminate the transverse joint. Install additional reinforcing steel and place concrete.

II. MATERIALS.

A. Class "M" Concrete. Use either "M1" or "M2". See Section 601.

B. Steel Reinforcement. Use Grade 60. See Section 602.

C. Epoxy Bond Coat. See Section 511.

III. EQUIPMENT.

A. Hammers. See Section 606.02.10 B.

B. Sawing Equipment. See Section 606.02.10 C.

C. Hydraulic Impact Equipment. See Section 606.02.10 D.

IV. CONSTRUCTION.

A. Location of joints to be eliminated:

103B00056L both interior joints

103B00056R both interior joints

B. Remove Existing Materials. Remove the existing transverse joints, joint filler, and specified areas of concrete as shown on the plans, in accordance with Section 606.02.10 and 606.03.03, and as directed by the Engineer. Clean and leave all existing steel reinforcement encountered in place. Damaged steel reinforcement will be repaired/replaced as directed by the Engineer at no additional cost to the Department. Dispose of all removed material entirely away from the job site. This work is incidental to the contract unit price for "Eliminate Transverse Joint".

C. Additional Steel Reinforcement. Furnish for this work steel reinforcing bars as shown on the plans. Splice these bars to the existing longitudinal reinforcement in the deck and curb/sidewalk in the areas of removed concrete to tie the slabs together as shown on the plans. Ensure that all exposed steel reinforcement is tied in accordance with Section 602.03.04 prior to pouring the new Class "M" concrete.

D. Place New Concrete. Blast clean all areas of existing concrete and structural steel to come in contact with new concrete until free of all laitance and deleterious substances immediately prior to the placement of the Class "M" Concrete. The surface areas of existing concrete to come in contact with the new Class "M" Concrete are to be coated with an epoxy bond coat immediately prior to placing new concrete in accordance with Section 511. The interfaces of the new and old concrete shall be as nearly vertical and horizontal as possible.

Place new Class "M" Concrete to the specified grade and finish to receive the new overlay or as shown on the plans. On the sidewalk and curb, place the new concrete to original grade and finish to match the existing curb/sidewalk.

V. MEASUREMENT.

- A. Eliminate Transverse Joint.** The Department will measure the quantity in linear feet from plinth to plinth of the bridge.
- B. Steel Reinforcement.** See Section 602.

VI. PAYMENT.

- A. Eliminate Transverse Joint.** Payment at the contract unit price per linear foot is full compensation for furnishing equipment, labor, tools and materials needed to complete removal and disposal of the specified existing materials, cleaning and straightening of existing steel reinforcement, furnishing and installing the concrete, and all incidental items necessary to complete the work (except the overlay material if specified elsewhere in the contract) within the specified pay limits as indicated on the drawings.
- B. Steel Reinforcement.** See Section 602.

SPECIAL NOTE FOR PARTIAL DEPTH PATCHING

- I. DESCRIPTION.** Perform all work in accordance with the Kentucky Transportation Cabinet, Department of Highway's 2019 Standard Specifications for Road and Bridge Construction and applicable Supplemental Specifications, the Standard Drawings, this Note, and the attached detail drawings. Section references are to the Standard Specifications.

This work consists of the following: (1) Furnish all labor, materials, tools, and equipment; (2) Complete partial depth repairs as directed by the Engineer; (3) Any other work specified as part of this contract.

All construction will be in accordance with Section 606 unless otherwise specified.

II. MATERIALS.

- A. Latex Concrete.** See Section 606.03.17. (OR)
B. Class "M" Concrete. Use either "M1" or "M2". See Section 601.

III. CONSTRUCTION.

- A. Partial Depth Slab Repair.** Remove areas determined to be unsound by the Engineer via hand held jackhammers weighing less than 45lbs in accordance with Section 606.02.10 D. Repair/Replace all damaged or severely corroded reinforcing bars prior to partial depth repair operation. The Department will not measure material removal and will consider this work incidental to the bid item "PARTIAL DEPTH PATCHING". Mix and place Latex Modified Concrete or Class M concrete in accordance with Sections 606.03.08 and 606.03.17 and 601.

IV. MEASUREMENT. See Section 606 and the following:

- A. Partial Depth Slab Repair.** The Department will measure the quantity in **CUBIC FEET**. This is a different bid item than the one the department typically uses for overlays. When the bridge is not getting an overlay, the department uses this bid item #02110 that once again, **is measured in CUBIC FEET**.

V. PAYMENT. See Section 606 and the following:

- A. Partial Depth Patching.** The Department will make payment for the Partial Depth Patching under bid item #2110 "PARTIAL DEPTH PATCHING". Payment will be for the quantity per **CUBIC FEET** complete in place.

SPECIAL NOTE FOR BRIDGE JOINT SEAL REPLACEMENT

I. **DESCRIPTION.** Perform all work in accordance with the Kentucky Transportation Cabinet, Department of Highway’s 2012 Standard Specifications for Road and Bridge Construction and applicable Supplemental Specifications, the Standard Drawings, this Note, and the attached detail drawings. Section references are to the Standard Specifications.

This work consists of the following: (1) Furnish all labor, materials, tools, and equipment; (2) Remove existing bridge joint seals; (3) Measure existing joint size and coordinate with chosen manufacturer for correct replacement size (4) Install new joint seals; (5) Any other work specified as part of this contract.

All construction will be in accordance with Section 606 unless otherwise specified.

II. **MATERIALS.**

A. **(2”, 2 ½”) Joint Seal.** It shall have a cellular, or micro-cell, polyurethane foam impregnated with a hydrophobic acrylic emulsion, or a hydrophobic polymer. The polyurethane foam external facing shall be factory coated and cured with highway-grade, fuel resistant silicone or a highway-grade elastomeric coating at a width greater than the maximum joint expansion.

III. **CONSTRUCTION.**

A. **Remove Existing Materials.** Remove existing Expansion Dam as shown on the attached sketches. Remove debris and/or expansion joint filler as directed by the Engineer. Clean and leave all existing steel reinforcement encountered in place. Damaged steel reinforcement will be repaired/replaced as directed by the Engineer at no additional cost to the Department.

Dispose of all removed material entirely away from the job site. This work is incidental to the contract unit price for "Joint Seal Replacement".

B. **(2”, 2 ½”) Joint Seal.** Seal shall be installed in accordance with manufacturer’s recommendations concerning approved adhesives, welds between sticks and appurtenances, and adhesion to concrete deck or armored edges. Joint seal is to be installed ½” recessed from the surface.

C. **Location of joint seals to be replaced:**

022B00091R	each end joint
022B00092R	each end joint
022B00096R	each end joint
010B00009R	each end joint
022B00054L,R	2 interior joints (where bridge transitions from continuous RCDG to simple RCDG)
103B00056L,R	each end joint
022B00084L,R	each end joint
022B00089R	each end joint

D. Shop Plans. Shop plans will not be required. The Contractor is responsible for obtaining field measurements and supplying properly sized materials to complete the work.

IV. MEASUREMENT.

A. Joint Seal Replacement – 2", 2 ½". The Department will measure the quantity in linear feet from gutterline to gutterline along the centerline of the joint.

V. PAYMENT. See Section 606 and the following:

A. Joint Seal Replacement – 2", 2 ½". Payment at the contract unit price per linear foot is full compensation for removing specified existing materials, furnishing and installing neoprene strip seal or pre-compressed horizontal expansion joint system and all incidental items necessary to complete the work within the specified pay limits as specified by this note and as shown on the attached detail drawings.

SPECIAL NOTE FOR CONTRACT COMPLETION DATE AND LIQUIDATED DAMAGES ON BRIDGE REPAIR CONTRACTS

- I. COMPLETION DATE.** The Contractor has the option of selecting the starting date for this Contract. Once selected, notify the Department in writing of the date selected at least two weeks prior to beginning work. All work is to be completed by November 15, 2021.

- II. LIQUIDATED DAMAGES.** Liquidated damages will be assessed the Contractor in accordance with the Transportation Cabinet, Department of Highway's 2019 Standard Specifications for Road and Bridge Construction, Section 108.09, when either the allotted number of calendar days or the November 15, 2021 date is exceeded.

Contrary to the Standard Specifications, liquidated damages will be assessed the Contractor during the months of December, January, February and March when the contract time has expired on any individual bridge or bridges. Contract time will be charged during these months.

All construction must be completed in accordance with the weather limitations specified in Section 606 and/or Section 601 as applicable. No extension of Contract time will be granted due to inclement weather or temperature limitations that occur due to starting work on the Contract or a structure late in the construction season.

SPECIAL NOTE FOR TRAFFIC CONTROL ON BRIDGE REPAIR CONTRACTS

I. TRAFFIC CONTROL GENERAL

Except as provided herein, traffic shall be maintained in accordance with the 2019 Standard Specifications, Section 112. Except for the roadway and traffic control bid items listed, all items of work necessary to maintain and control traffic will be paid at the lump sum bid price to "Maintain and Control Traffic".

Contrary to Section 106.01, traffic control devices used on this project may be new or used in new condition, at the beginning of the work and maintained in like new condition until completion of the work.

II. TRAFFIC COORDINATOR

Furnish a Traffic Coordinator as per Section 112. The Traffic Coordinator shall inspect the project maintenance of traffic, at least three times daily, or as directed by the Engineer, during the Contractor's operations and at any time a lane closure is in place. The personnel shall have access on the project to a radio or telephone to be used in case of emergencies or accidents.

The Traffic Coordinator shall report all incidents throughout the work zone to the Engineer on the project. The Contractor shall furnish the name and telephone number where the Traffic Coordinator can be contacted at all times.

III. SIGNS

Contrary to Section 112.04.02, only long term signs (sign intended to be continuously in place for more than 3 days) will be measured for payment; short term signs (signs intended to be left in place for 3 days or less) will not be measured for payment but will be incidental to Maintain and Control Traffic.

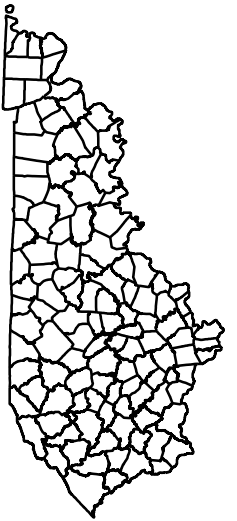
The contractor is to install warning signs for wide loads in advance of the bridge under the direction of the Engineer. The Department will not measure installation, maintenance, or removal for payment, and will consider these incidentals to Maintain and Control Traffic.

IV. TEMPORARY PAVEMENT STRIPING

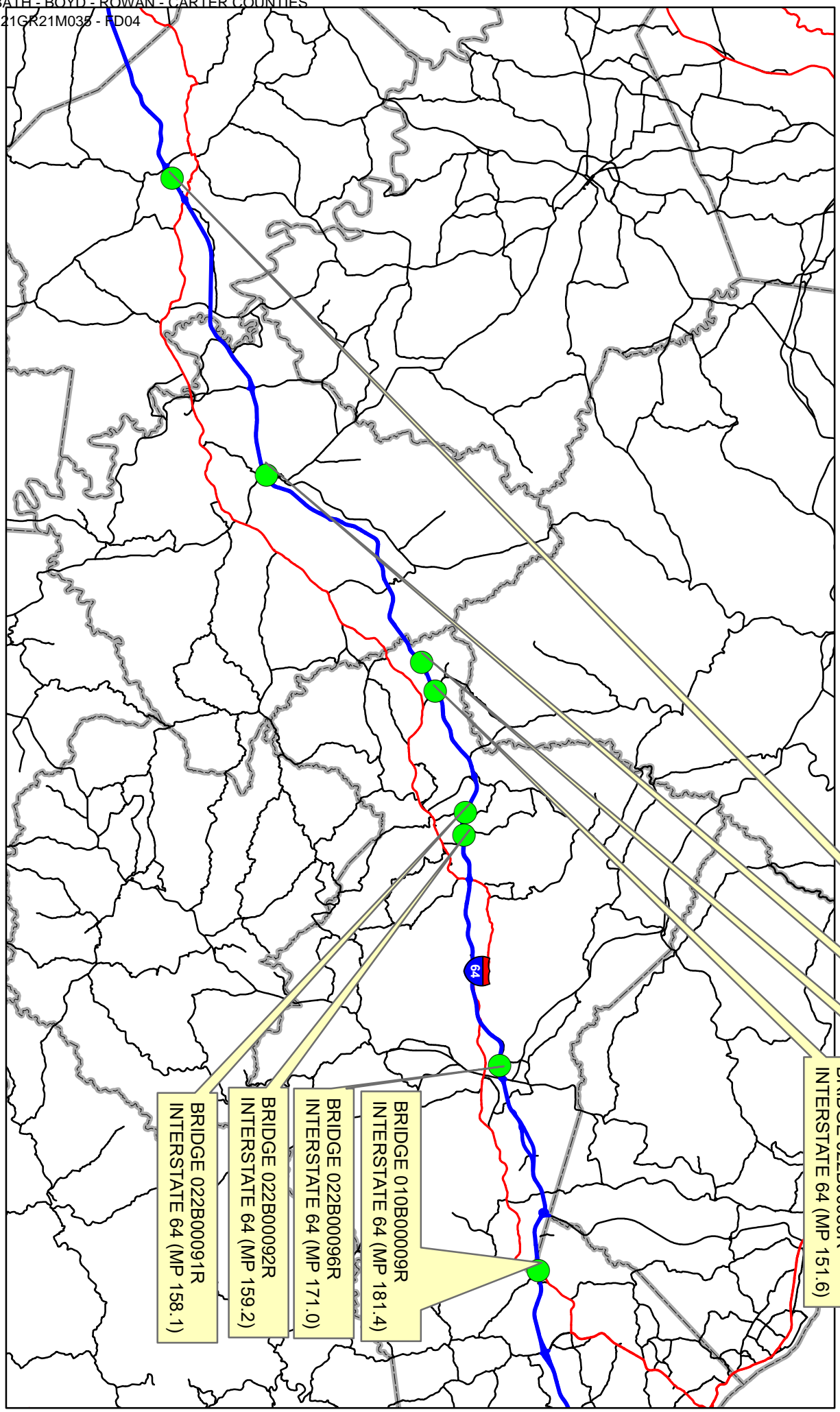
Skip lines and/or solid lines through the length of the tapers for lane closures and other striping as directed by the Engineer shall be temporarily covered with 6" black removable tape. Permanent removal of all other pavement striping for traffic control shall be considered incidental to Maintain and Control Traffic. Temporary pavement striping shall be paid only once per course in accordance with Section 112.04.07. The Contractor shall replace any temporary striping that becomes damaged or fails to adhere to the pavement before dark on the day of the notification. Liquidated damages shall be assessed to the Contractor at a rate of \$500 per day for failing to replace temporary striping within this time limit.

V. PROJECT PHASING & CONSTRUCTION PROCEDURES

The Contractor shall maintain one lane of traffic on the Interstate at all times in accordance with Standard Drawing No. TTC-115 and TTC-135



BATH, ROWAN, CARTER & BOYD COUNTIES



BRIDGE 006B00054L,R
INTERSTATE 64 (MP 121.8)

BRIDGE 103B00056L,R
INTERSTATE 64 (MP 137.3)

BRIDGE 022B00084L,R
INTERSTATE 64 (MP 150.1)

BRIDGE 022B00089R
INTERSTATE 64 (MP 151.6)

BRIDGE 010B00009R
INTERSTATE 64 (MP 181.4)

BRIDGE 022B00096R
INTERSTATE 64 (MP 171.0)

BRIDGE 022B00092R
INTERSTATE 64 (MP 159.2)

BRIDGE 022B00091R
INTERSTATE 64 (MP 158.1)

MATERIAL SUMMARY

CONTRACT ID: 212904

121GR21M035 - FD04

MB00600642101

INTERSTATE 64 (MP 121.824). BRIDGE OVER SLATE CREEK. BRIDGE DECK RESTORATION & WATERPROOFING.

Project Line No	Bid Code	DESCRIPTION	Quantity	Unit
0005	02110	PARTIAL DEPTH PATCHING	20.00	CUFT
0010	02650	MAINTAIN & CONTROL TRAFFIC - APPLIES TO 006B00054L	1.00	LS
0015	08540	JOINT SEALING	64.60	LF
0020	22146EN	CONCRETE PATCHING REPAIR	100.00	SQFT
0025	24439EC	SEAL BRIDGE DECK - APPLIES TO 006b00054L	1.00	LS
0030	24981EC	BRIDGE CLEANING - APPLIES TO BRIDGE 006B00054L	1.00	LS
0035	24982EC	CONCRETE COATING - APPLIES TO BRIDGE 006B00054L	1.00	LS
0040	24983EC	BEARING LUBRICATION	8.00	EACH
0045	02569	DEMOBILIZATION	1.00	LS

CONTRACT ID: 212904

121GR21M035 - FD04

MB00600642102

INTERSTATE 64 (MP 121.824). BRIDGE OVER SLATE CREEK. BRIDGE DECK RESTORATION & WATERPROOFING.

Project Line No	Bid Code	DESCRIPTION	Quantity	Unit
0050	02110	PARTIAL DEPTH PATCHING	20.00	CUFT
0055	02650	MAINTAIN & CONTROL TRAFFIC - APPLIES TO 006B00054R	1.00	LS
0060	08540	JOINT SEALING	64.60	LF
0065	22146EN	CONCRETE PATCHING REPAIR	100.00	SQFT
0070	24439EC	SEAL BRIDGE DECK - APPLIES TO 006B00054R	1.00	LS
0075	24981EC	BRIDGE CLEANING - APPLIES TO 006B00054R	1.00	LS
0080	24982EC	CONCRETE COATING - APPLIES TO 006B00054R	1.00	LS
0085	24983EC	BEARING LUBRICATION	8.00	EACH
0090	02569	DEMOBILIZATION	1.00	LS

MATERIAL SUMMARY

CONTRACT ID: 212904

121GR21M035 - FD04

MB01000642103

INTERSTATE 64 (MP 181.377). BRIDGE OVER US 60 WILLIAMS CREEK. BRIDGE DECK RESTORATION & WATERPROOFING.

Project Line No	Bid Code	DESCRIPTION	Quantity	Unit
0095	02650	MAINTAIN & CONTROL TRAFFIC - APPLIES TO 010B00009R	1.00	LS
0100	08540	JOINT SEALING - APPLIES TO 010B00009R	69.30	LF
0105	22146EN	CONCRETE PATCHING REPAIR	50.00	SQFT
0110	24439EC	SEAL BRIDGE DECK - APPLIES TO 010B00009R	1.00	LS
0115	24981EC	BRIDGE CLEANING - APPLIES TO 010B00009R	1.00	LS
0120	24982EC	CONCRETE COATING - APPLIES TO 010B00009R	1.00	LS
0125	24983EC	BEARING LUBRICATION	12.00	EACH
0130	02569	DEMOBILIZATION	1.00	LS

CONTRACT ID: 212904

121GR21M035 - FD04

MB02200642104

INTERSTATE 64 (MP 150.134). BRIDGE OVER FLEMING FORK RD. BRIDGE DECK RESTORATION & WATERPROOFING.

Project Line No	Bid Code	DESCRIPTION	Quantity	Unit
0135	02650	MAINTAIN & CONTROL TRAFFIC - APPLIES TO 022B00084L	1.00	LS
0140	08540	JOINT SEALING	83.70	LF
0145	24439EC	SEAL BRIDGE DECK - APPLIES TO 022B00084L	1.00	LS
0150	24981EC	BRIDGE CLEANING - APPLIES TO 022B00084L	1.00	LS
0155	24982EC	CONCRETE COATING - APPLIES TO 022B00084L	1.00	LS
0160	24983EC	BEARING LUBRICATION	10.00	EACH
0165	02569	DEMOBILIZATION	1.00	LS

MATERIAL SUMMARY

CONTRACT ID: 212904

121GR21M035 - FD04

MB02200642105

INTERSTATE 64 (MP 150.134). BRIDGE OVER FLEMING FORK RD. BRIDGE DECK RESTORATION & WATERPROOFING.

Project Line No	Bid Code	DESCRIPTION	Quantity	Unit
0170	02650	MAINTAIN & CONTROL TRAFFIC - APPLIES TO 022B00084R	1.00	LS
0175	08540	JOINT SEALING	83.70	LF
0180	24439EC	SEAL BRIDGE DECK - APPLIES TO 022B00084R	1.00	LS
0185	24981EC	BRIDGE CLEANING - APPLIES TO 022B00084R	1.00	LS
0190	24982EC	CONCRETE COATING - APPLIES TO 022B00084R	1.00	LS
0195	24983EC	BEARING LUBRICATION	10.00	EACH
0200	02569	DEMOBILIZATION	1.00	LS

CONTRACT ID: 212904

121GR21M035 - FD04

MB02200642106

INTERSTATE 64 (MP 151.641). BRIDGE OVER FLAT FORK RD. BRIDGE DECK RESTORATION & WATERPROOFING.

Project Line No	Bid Code	DESCRIPTION	Quantity	Unit
0205	02110	PARTIAL DEPTH PATCHING	10.00	CUFT
0210	02650	MAINTAIN & CONTROL TRAFFIC - APPLIES TO 022B00089R	1.00	LS
0215	08540	JOINT SEALING	71.40	LF
0220	22146EN	CONCRETE PATCHING REPAIR	150.00	SQFT
0225	24439EC	SEAL BRIDGE DECK - APPLIES TO 022B00089R	1.00	LS
0230	24981EC	BRIDGE CLEANING - APPLIES TO 022B00089R	1.00	LS
0235	24982EC	CONCRETE COATING - APPLIES TO 022B00089R	1.00	LS
0240	24983EC	BEARING LUBRICATION	8.00	EACH
0245	02569	DEMOBILIZATION	1.00	LS

MATERIAL SUMMARY

CONTRACT ID: 212904

121GR21M035 - FD04

MB02200642107

INTERSTATE 64 (MP 158.126). BRIDGE OVER FLEMING FORK RD. BRIDGE DECK RESTORATION & WATERPROOFING.

Project Line No	Bid Code	DESCRIPTION	Quantity	Unit
0250	02110	PARTIAL DEPTH PATCHING	10.00	CUFT
0255	02650	MAINTAIN & CONTROL TRAFFIC - APPLIES TO 022B00091R	1.00	LS
0260	08540	JOINT SEALING	89.30	LF
0265	22146EN	CONCRETE PATCHING REPAIR	100.00	SQFT
0270	24439EC	SEAL BRIDGE DECK - APPLIES TO 022B00091R	1.00	LS
0275	24981EC	BRIDGE CLEANING - APPLIES TO 022B00091R	1.00	LS
0280	24982EC	CONCRETE COATING - APPLIES TO 022B00091R	1.00	LS
0285	24983EC	BEARING LUBRICATION	12.00	EACH
0290	02569	DEMOBILIZATION	1.00	LS

CONTRACT ID: 212904

121GR21M035 - FD04

MB02200642108

INTERSTATE 64 (MP 159.246). BRIDGE OVER FLEMING FORK RD. BRIDGE DECK RESTORATION & WATERPROOFING.

Project Line No	Bid Code	DESCRIPTION	Quantity	Unit
0295	02110	PARTIAL DEPTH PATCHING	10.00	CUFT
0300	02650	MAINTAIN & CONTROL TRAFFIC - APPLIES TO 022B00092R	1.00	LS
0305	08540	JOINT SEALING	82.20	LF
0310	22146EN	CONCRETE PATCHING REPAIR	75.00	SQFT
0315	24439EC	SEAL BRIDGE DECK - APPLIES TO 022B00092R	1.00	LS
0320	24981EC	BRIDGE CLEANING - APPLIES TO 022B00092R	1.00	LS
0325	24982EC	CONCRETE COATING - APPLIES TO 022B00092R	1.00	LS
0330	24983EC	BEARING LUBRICATION	10.00	EACH
0335	02569	DEMOBILIZATION	1.00	LS

MATERIAL SUMMARY

CONTRACT ID: 212904

121GR21M035 - FD04

MB02200642109

INTERSTATE 64 (MP 170.973). BRIDGE OVER BARRET CREEK. BRIDGE DECK RESTORATION & WATERPROOFING.

Project Line No	Bid Code	DESCRIPTION	Quantity	Unit
0340	02110	PARTIAL DEPTH PATCHING	10.00	CUFT
0345	02650	MAINTAIN & CONTROL TRAFFIC - APPLIES TO 022B00096R	1.00	LS
0350	08540	JOINT SEALING	215.00	LF
0355	22146EN	CONCRETE PATCHING REPAIR	50.00	SQFT
0360	24439EC	SEAL BRIDGE DECK - APPLIES TO 022B00096R	1.00	LS
0365	24981EC	BRIDGE CLEANING - APPLIES TO 022B00096R	1.00	LS
0370	24982EC	CONCRETE COATING - APPLIES TO 022B00096R	1.00	LS
0375	02569	DEMOBILIZATION	1.00	LS

CONTRACT ID: 212904

121GR21M035 - FD04

MB10300642110

INTERSTATE 64 (MP 137.289). BRIDGE OVER KY 32. BRIDGE DECK RESTORATION & WATERPROOFING.

Project Line No	Bid Code	DESCRIPTION	Quantity	Unit
0380	02650	MAINTAIN & CONTROL TRAFFIC - APPLIES TO 103B00056L	1.00	LS
0385	03300	ELIMINATE TRANSVERSE JOINT	87.00	LF
0390	08150	STEEL REINFORCEMENT	1,068.80	LB
0395	08540	JOINT SEALING	81.10	LF
0400	22146EN	CONCRETE PATCHING REPAIR	100.00	SQFT
0405	24439EC	SEAL BRIDGE DECK - APPLIES TO 103B00056L	1.00	LS
0410	24981EC	BRIDGE CLEANING - APPLIES TO 103B00056L	1.00	LS
0415	24982EC	CONCRETE COATING - APPLIES TO 103B00056L	1.00	LS
0420	24983EC	BEARING LUBRICATION	12.00	EACH
0425	02569	DEMOBILIZATION	1.00	LS

MATERIAL SUMMARY

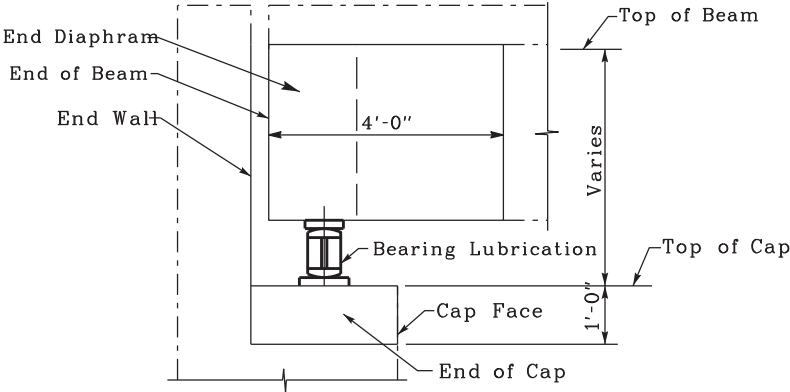
CONTRACT ID: 212904

121GR21M035 - FD04

MB10300642111

INTERSTATE 64 (MP 137.289). BRIDGE OVER KY 32. BRIDGE DECK RESTORATION & WATERPROOFING.

Project Line No	Bid Code	DESCRIPTION	Quantity	Unit
0430	02650	MAINTAIN & CONTROL TRAFFIC - APPLIES TO 103B00056R	1.00	LS
0435	03300	ELIMINATE TRANSVERSE JOINT	87.00	LF
0440	08150	STEEL REINFORCEMENT	1,068.80	LB
0445	08540	JOINT SEALING	81.10	LF
0450	22146EN	CONCRETE PATCHING REPAIR	100.00	SQFT
0455	24439EC	SEAL BRIDGE DECK - APPLIES TO 103B00056R	1.00	LS
0460	24981EC	BRIDGE CLEANING - APPLIES TO 103B00056R	1.00	LS
0465	24982EC	CONCRETE COATING - APPLIES TO 103B00056R	1.00	LS
0470	24983EC	BEARING LUBRICATION	12.00	EACH
0475	02569	DEMOBILIZATION	1.00	LS



SECTION THROUGH END BENT/ABUMENT CAP

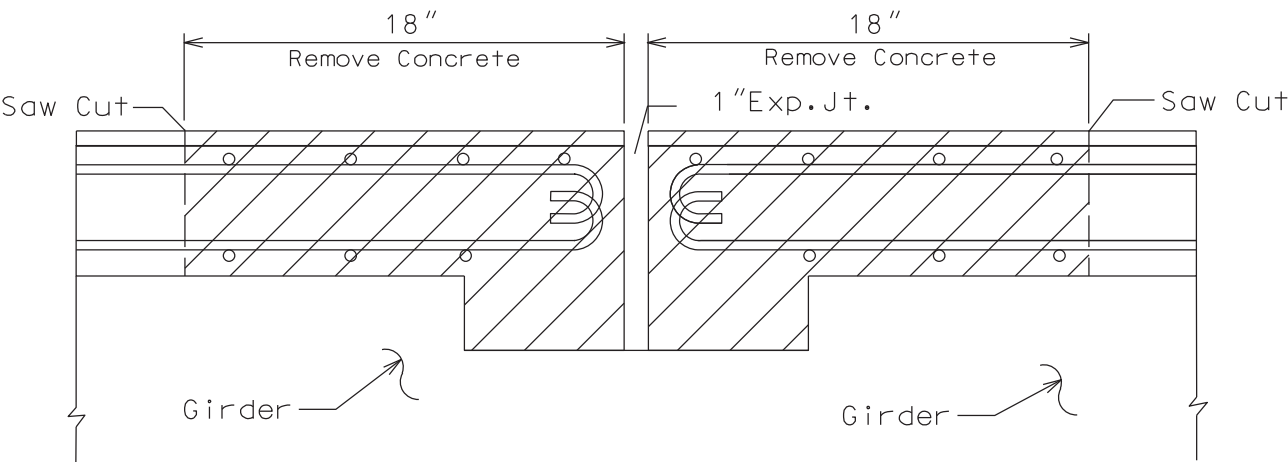
PREVENTIVE MAINTENANCE

Note: Clean and apply concrete coatings to the top and face of cap the entire length including cap ends, front face of end bent back, end diaphraghs and beam ends as specified within the limits shown. Lubricate bearings as specified.

See Special Note for Preventive Maintenance

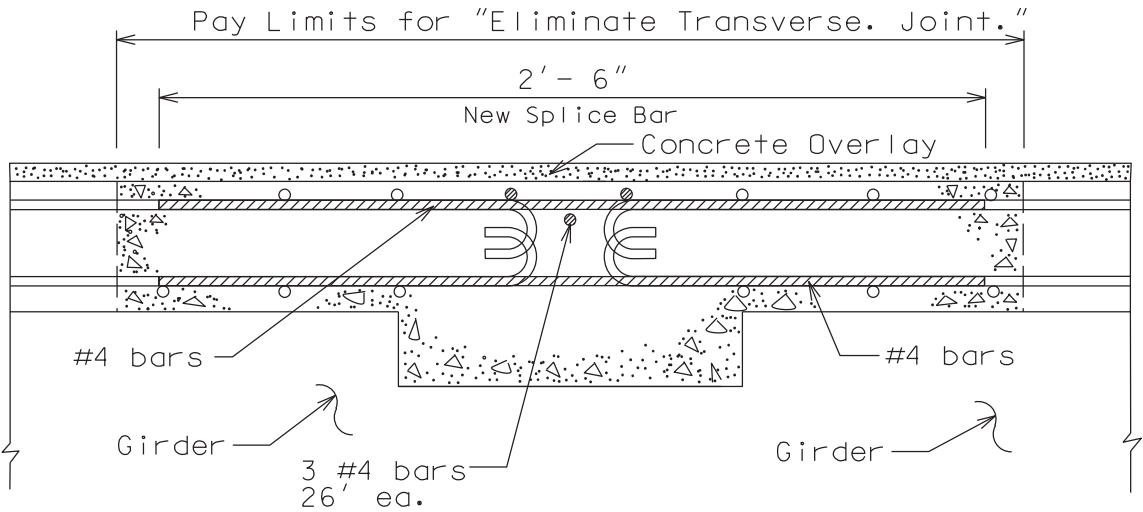
Commonwealth of Kentucky DEPARTMENT OF HIGHWAYS
INTERSTATE 64
PREVENTIVE MAINTENANCE
<small>PREPARED BY</small> Division of Maintenance Bridge Preservation Branch

ELIMINATE TRANSVERSE
JOINT DETAIL



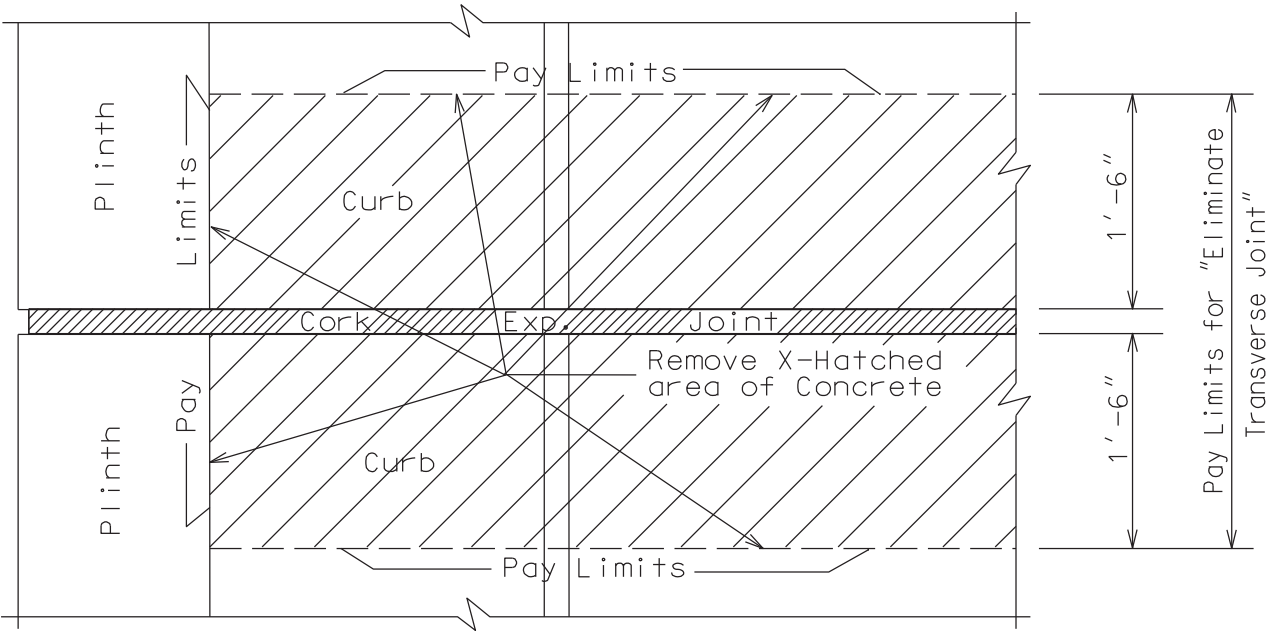
NOTE: Do not disturb existing
Steel Reinforcement

EXISTING SECTION
@ Transverse Joint

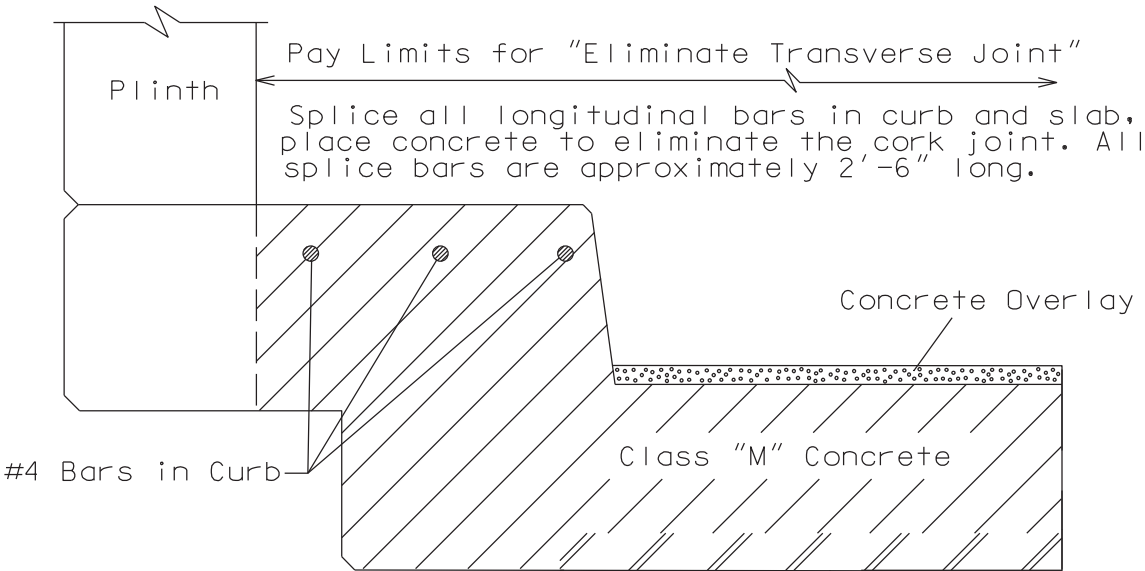


PROPOSED SECTION
@ Transverse Joint

ELIMINATE TRANSVERSE
JOINT DETAIL



EXISTING PLAN VIEW @ CURB



PROPOSED SECTION @ CURB

PART II

SPECIFICATIONS AND STANDARD DRAWINGS

SPECIFICATIONS REFERENCE

Any reference in the plans or proposal to previous editions of the *Standard Specifications for Road and Bridge Construction* and *Standard Drawings* are superseded by *Standard Specifications for Road and Bridge Construction, Edition of 2019* and *Standard Drawings, Edition of 2020*.

SUPPLEMENTAL SPECIFICATIONS

The contractor shall use the Supplemental Specifications that are effective at the time of letting.
The Supplemental Specifications can be found at the following link:

<http://transportation.ky.gov/Construction/Pages/Kentucky-Standard-Specifications.aspx>

PART III

EMPLOYMENT, WAGE AND RECORD REQUIREMENTS

**TRANSPORTATION CABINET
DEPARTMENT OF HIGHWAYS**

**LABOR AND WAGE REQUIREMENTS
APPLICABLE TO OTHER THAN FEDERAL-AID SYSTEM PROJECTS**

- I. Application
- II. Nondiscrimination of Employees (KRS 344)

I. APPLICATION

1. These contract provisions shall apply to all work performed on the contract by the contractor with his own organization and with the assistance of workmen under his immediate superintendence and to all work performed on the contract by piecework, station work or by subcontract. The contractor's organization shall be construed to include only workmen employed and paid directly by the contractor and equipment owned or rented by him, with or without operators.

2. The contractor shall insert in each of his subcontracts all of the stipulations contained in these Required Provisions and such other stipulations as may be required.

3. A breach of any of the stipulations contained in these Required Provisions may be grounds for termination of the contract.

3. If the contractor is in control of apprenticeship or other training or retraining, including on-the-job training programs, he shall not discriminate against an individual because of his race, color, religion, national origin, sex, disability or age forty (40) and over, in admission to, or employment in any program established to provide apprenticeship or other training.

4. The contractor will send to each labor union or representative of workers with which he has a collective bargaining agreement or other contract or understanding, a notice to be provided advising the said labor union or workers' representative of the contractor's commitments under this section, and shall post copies of the notice in conspicuous places available to employees and applicants for employment. The contractor will take such action with respect to any subcontract or purchase order as the administering agency may direct as a means of enforcing such provisions, including sanctions for non-compliance.

Revised: January 25, 2017

II. NONDISCRIMINATION OF EMPLOYEES

**AN ACT OF THE KENTUCKY
GENERAL ASSEMBLY TO PREVENT
DISCRIMINATION IN EMPLOYMENT
KRS CHAPTER 344
EFFECTIVE JUNE 16, 1972**

The contract on this project, in accordance with KRS Chapter 344, provides that during the performance of this contract, the contractor agrees as follows:

1. The contractor shall not fail or refuse to hire, or shall not discharge any individual, or otherwise discriminate against an individual with respect to his compensation, terms, conditions, or privileges of employment, because of such individual's race, color, religion, national origin, sex, disability or age (forty and above); or limit, segregate, or classify his employees in any way which would deprive or tend to deprive an individual of employment opportunities or otherwise adversely affect his status as an employee, because of such individual's race, color, religion, national origin, sex, disability or age forty (40) and over. The contractor agrees to post in conspicuous places, available to employees and applicants for employment, notices to be provided setting forth the provisions of this nondiscrimination clause.

2. The contractor shall not print or publish or cause to be printed or published a notice or advertisement relating to employment by such an employer or membership in or any classification or referral for employment by the employment agency, indicating any preference, limitation, specification, or discrimination, based on race, color, religion, national origin, sex, or age forty (40) and over, or because the person is a qualified individual with a disability, except that such a notice or advertisement may indicate a preference, limitation, or specification based on religion, national origin, sex, or age forty (40) and over, or because the person is a qualified individual with a disability, when religion, national origin, sex, or age forty (40) and over, or because the person is a qualified individual with a disability, is a bona fide occupational qualification for employment.

EXECUTIVE BRANCH CODE OF ETHICS

In the 1992 regular legislative session, the General Assembly passed and Governor Brereton Jones signed Senate Bill 63 (codified as KRS 11A), the Executive Branch Code of Ethics, which states, in part:

KRS 11A.040 (7) provides:

No present or former public servant shall, within six (6) months following termination of his office or employment, accept employment, compensation, or other economic benefit from any person or business that contracts or does business with, or is regulated by, the state in matters in which he was directly involved during the last thirty-six (36) months of his tenure. This provision shall not prohibit an individual from returning to the same business, firm, occupation, or profession in which he was involved prior to taking office or beginning his term of employment, or for which he received, prior to his state employment, a professional degree or license, provided that, for a period of six (6) months, he personally refrains from working on any matter in which he was directly involved during the last thirty-six (36) months of his tenure in state government. This subsection shall not prohibit the performance of ministerial functions, including but not limited to filing tax returns, filing applications for permits or licenses, or filing incorporation papers, nor shall it prohibit the former officer or public servant from receiving public funds disbursed through entitlement programs.

KRS 11A.040 (9) states:

A former public servant shall not represent a person or business before a state agency in a matter in which the former public servant was directly involved during the last thirty-six (36) months of his tenure, for a period of one (1) year after the latter of:

- a) The date of leaving office or termination of employment; or
- b) The date the term of office expires to which the public servant was elected.

This law is intended to promote public confidence in the integrity of state government and to declare as public policy the idea that state employees should view their work as a public trust and not as a way to obtain private benefits.

If you have worked for the executive branch of state government within the past six months, you may be subject to the law's prohibitions. The law's applicability may be different if you hold elected office or are contemplating representation of another before a state agency.

Also, if you are affiliated with a firm which does business with the state and which employs former state executive-branch employees, you should be aware that the law may apply to them.

In case of doubt, the law permits you to request an advisory opinion from the Executive Branch Ethics Commission, 3 Fountain Place, Frankfort, Kentucky 40601; telephone (502) 564-7954.

Revised: January 27, 2017

Kentucky Equal Employment Opportunity Act of 1978

The requirements of the Kentucky Equal Employment Opportunity Act of 1978 (KRS 45.560-45.640) shall apply to this Contract. The apparent low Bidder will be required to submit EEO forms to the Division of Construction Procurement, which will then forward to the Finance and Administration Cabinet for review and approval. No award will become effective until all forms are submitted and EEO/CC has certified compliance. The required EEO forms are as follows:

- EEO-1: Employer Information Report
- Affidavit of Intent to Comply
- Employee Data Sheet
- Subcontractor Report

These forms are available on the Finance and Administration's web page under ***Vendor Information, Standard Attachments and General Terms*** at the following address:
<https://www.eProcurement.ky.gov>.

Bidders currently certified as being in compliance by the Finance and Administration Cabinet may submit a copy of their approval letter in lieu of the referenced EEO forms.

For questions or assistance please contact the Finance and Administration Cabinet by email at **finance.contractcompliance@ky.gov** or by phone at 502-564-2874.

EMPLOYEE RIGHTS UNDER THE FAIR LABOR STANDARDS ACT

THE UNITED STATES DEPARTMENT OF LABOR WAGE AND HOUR DIVISION

FEDERAL MINIMUM WAGE

\$7.25 PER HOUR

BEGINNING JULY 24, 2009

- OVERTIME PAY** At least 1½ times your regular rate of pay for all hours worked over 40 in a workweek.
- CHILD LABOR** An employee must be at least **16** years old to work in most non-farm jobs and at least **18** to work in non-farm jobs declared hazardous by the Secretary of Labor.
- Youths **14** and **15** years old may work outside school hours in various non-manufacturing, non-mining, non-hazardous jobs under the following conditions:
- No more than*
- **3** hours on a school day or **18** hours in a school week;
 - **8** hours on a non-school day or **40** hours in a non-school week.
- Also, work may not begin before **7 a.m.** or end after **7 p.m.**, except from June 1 through Labor Day, when evening hours are extended to **9 p.m.** Different rules apply in agricultural employment.
- TIP CREDIT** Employers of “tipped employees” must pay a cash wage of at least \$2.13 per hour if they claim a tip credit against their minimum wage obligation. If an employee’s tips combined with the employer’s cash wage of at least \$2.13 per hour do not equal the minimum hourly wage, the employer must make up the difference. Certain other conditions must also be met.
- ENFORCEMENT** The Department of Labor may recover back wages either administratively or through court action, for the employees that have been underpaid in violation of the law. Violations may result in civil or criminal action.
- Employers may be assessed civil money penalties of up to \$1,100 for each willful or repeated violation of the minimum wage or overtime pay provisions of the law and up to \$11,000 for each employee who is the subject of a violation of the Act’s child labor provisions. In addition, a civil money penalty of up to \$50,000 may be assessed for each child labor violation that causes the death or serious injury of any minor employee, and such assessments may be doubled, up to \$100,000, when the violations are determined to be willful or repeated. The law also prohibits discriminating against or discharging workers who file a complaint or participate in any proceeding under the Act.
- ADDITIONAL INFORMATION**
- Certain occupations and establishments are exempt from the minimum wage and/or overtime pay provisions.
 - Special provisions apply to workers in American Samoa and the Commonwealth of the Northern Mariana Islands.
 - Some state laws provide greater employee protections; employers must comply with both.
 - The law requires employers to display this poster where employees can readily see it.
 - Employees under 20 years of age may be paid \$4.25 per hour during their first 90 consecutive calendar days of employment with an employer.
 - Certain full-time students, student learners, apprentices, and workers with disabilities may be paid less than the minimum wage under special certificates issued by the Department of Labor.

For additional information:



1-866-4-USWAGE

(1-866-487-9243)

TTY: 1-877-889-5627



WWW.WAGEHOUR.DOL.GOV

PART IV

INSURANCE

Refer to
Kentucky Standard Specifications for Road and Bridge Construction,
current edition

PART V

BID ITEMS

Section: 0001 - BRIDGE

LINE	BID CODE	ALT	DESCRIPTION	QUANTITY	UNIT	UNIT PRIC	FP	AMOUNT
0010	02110		PARTIAL DEPTH PATCHING	80.00	CUFT		\$	
0020	02650		MAINTAIN & CONTROL TRAFFIC APPLIES TO 006B00054L	1.00	LS		\$	
0030	02650		MAINTAIN & CONTROL TRAFFIC APPLIES TO 006B00054R	1.00	LS		\$	
0040	02650		MAINTAIN & CONTROL TRAFFIC APPLIES TO 010B00009R	1.00	LS		\$	
0050	02650		MAINTAIN & CONTROL TRAFFIC APPLIES TO 022B00084L	1.00	LS		\$	
0060	02650		MAINTAIN & CONTROL TRAFFIC APPLIES TO 022B00084R	1.00	LS		\$	
0070	02650		MAINTAIN & CONTROL TRAFFIC APPLIES TO 022B00089R	1.00	LS		\$	
0080	02650		MAINTAIN & CONTROL TRAFFIC APPLIES TO 022B00091R	1.00	LS		\$	
0090	02650		MAINTAIN & CONTROL TRAFFIC APPLIES TO 022B00092R	1.00	LS		\$	
0100	02650		MAINTAIN & CONTROL TRAFFIC APPLIES TO 022B00096R	1.00	LS		\$	
0110	02650		MAINTAIN & CONTROL TRAFFIC APPLIES TO 103B00056L	1.00	LS		\$	
0120	02650		MAINTAIN & CONTROL TRAFFIC APPLIES TO 103B00056R	1.00	LS		\$	
0130	03300		ELIMINATE TRANSVERSE JOINT	174.00	LF		\$	
0140	08150		STEEL REINFORCEMENT	2,137.60	LB		\$	
0150	08540		JOINT SEALING	916.70	LF		\$	
0160	08540		JOINT SEALING APPLIES TO 010B00009R	69.30	LF		\$	
0170	22146EN		CONCRETE PATCHING REPAIR	825.00	SQFT		\$	
0180	24439EC		SEAL BRIDGE DECK APPLIES TO 006b00054L	1.00	LS		\$	
0190	24439EC		SEAL BRIDGE DECK APPLIES TO 006B00054R	1.00	LS		\$	
0200	24439EC		SEAL BRIDGE DECK APPLIES TO 010B00009R	1.00	LS		\$	
0210	24439EC		SEAL BRIDGE DECK APPLIES TO 022B00084L	1.00	LS		\$	
0220	24439EC		SEAL BRIDGE DECK APPLIES TO 022B00084R	1.00	LS		\$	
0230	24439EC		SEAL BRIDGE DECK APPLIES TO 022B00089R	1.00	LS		\$	
0240	24439EC		SEAL BRIDGE DECK APPLIES TO 022B00091R	1.00	LS		\$	
0250	24439EC		SEAL BRIDGE DECK APPLIES TO 022B00092R	1.00	LS		\$	
0260	24439EC		SEAL BRIDGE DECK APPLIES TO 022B00096R	1.00	LS		\$	
0270	24439EC		SEAL BRIDGE DECK APPLIES TO 103B00056L	1.00	LS		\$	
0280	24439EC		SEAL BRIDGE DECK APPLIES TO 103B00056R	1.00	LS		\$	
0290	24981EC		BRIDGE CLEANING APPLIES TO 006B00054R	1.00	LS		\$	

Report Date 3/23/21

LINE	BID CODE	ALT	DESCRIPTION	QUANTITY	UNIT	UNIT PRIC	FP	AMOUNT
0300	24981EC		BRIDGE CLEANING APPLIES TO 010B00009R	1.00	LS		\$	
0310	24981EC		BRIDGE CLEANING APPLIES TO 022B00084L	1.00	LS		\$	
0320	24981EC		BRIDGE CLEANING APPLIES TO 022B00084R	1.00	LS		\$	
0330	24981EC		BRIDGE CLEANING APPLIES TO 022B00089R	1.00	LS		\$	
0340	24981EC		BRIDGE CLEANING APPLIES TO 022B00091R	1.00	LS		\$	
0350	24981EC		BRIDGE CLEANING APPLIES TO 022B00092R	1.00	LS		\$	
0360	24981EC		BRIDGE CLEANING APPLIES TO 022B00096R	1.00	LS		\$	
0370	24981EC		BRIDGE CLEANING APPLIES TO 103B00056L	1.00	LS		\$	
0380	24981EC		BRIDGE CLEANING APPLIES TO 103B00056R	1.00	LS		\$	
0390	24981EC		BRIDGE CLEANING APPLIES TO BRIDGE 006B00054L	1.00	LS		\$	
0400	24982EC		CONCRETE COATING APPLIES TO 006B00054R	1.00	LS		\$	
0410	24982EC		CONCRETE COATING APPLIES TO 010B00009R	1.00	LS		\$	
0420	24982EC		CONCRETE COATING APPLIES TO 022B00084L	1.00	LS		\$	
0430	24982EC		CONCRETE COATING APPLIES TO 022B00084R	1.00	LS		\$	
0440	24982EC		CONCRETE COATING APPLIES TO 022B00089R	1.00	LS		\$	
0450	24982EC		CONCRETE COATING APPLIES TO 022B00091R	1.00	LS		\$	
0460	24982EC		CONCRETE COATING APPLIES TO 022B00092R	1.00	LS		\$	
0470	24982EC		CONCRETE COATING APPLIES TO 022B00096R	1.00	LS		\$	
0480	24982EC		CONCRETE COATING APPLIES TO 103B00056L	1.00	LS		\$	
0490	24982EC		CONCRETE COATING APPLIES TO 103B00056R	1.00	LS		\$	
0500	24982EC		CONCRETE COATING APPLIES TO BRIDGE 006B00054L	1.00	LS		\$	
0510	24983EC		BEARING LUBRICATION	102.00	EACH		\$	

Section: 0002 - DEMOBILIZATION

LINE	BID CODE	ALT	DESCRIPTION	QUANTITY	UNIT	UNIT PRIC	FP	AMOUNT
0520	02569		DEMOBILIZATION	1.00	LS		\$	