



CALL NO. 401

CONTRACT ID. 202901

VARIOUS COUNTIES

FED/STATE PROJECT NUMBER 121GR20M016-FE02

DESCRIPTION DISTRICT 8 BRIDGE OVERLAYS.

WORK TYPE BRIDGE DECK RESTORATION & WATERPROOFING

PRIMARY COMPLETION DATE 11/15/2020

LETTING DATE: February 21,2020

Sealed Bids will be received electronically through the Bid Express bidding service until 10:00 am EASTERN STANDARD TIME February 21,2020. Bids will be publicly announced at 10:00 am EASTERN STANDARD TIME.

NO PLANS ASSOCIATED WITH THIS PROJECT.

REQUIRED BID PROPOSAL GUARANTY: Not less than 5% of the total bid.

TABLE OF CONTENTS

PART I	SCOPE OF WORK
	<ul style="list-style-type: none">• PROJECT(S), COMPLETION DATE(S), & LIQUIDATED DAMAGES• CONTRACT NOTES• STATE CONTRACT NOTES• SPECIAL NOTE(S) APPLICABLE TO PROJECT• LIQUIDATED DAMAGES• TRAFFIC CONTROL PLAN• SKETCH MAP(S)• MATERIAL SUMMARY• BRIDGE DRAWINGS
PART II	SPECIFICATIONS AND STANDARD DRAWINGS
	<ul style="list-style-type: none">• SPECIFICATIONS REFERENCE• SUPPLEMENTAL SPECIFICATION• STANDARD DRAWINGS THAT APPLY
PART III	EMPLOYMENT, WAGE AND RECORD REQUIREMENTS
	<ul style="list-style-type: none">• LABOR AND WAGE REQUIREMENTS• EXECUTIVE BRANCH CODE OF ETHICS• KENTUCKY EQUAL EMPLOYMENT OPPORTUNITY ACT OF 1978 LOCALITY / STATE• PROJECT WAGE RATES / STATE FUNDED
PART IV	INSURANCE
PART V	BID ITEMS

PART I
SCOPE OF WORK

ADMINISTRATIVE DISTRICT - 08

CONTRACT ID - 202901

121GR20M016-FE02

COUNTY - ADAIR

PCN - MB00102062001
FE02 001 0206 B00008N

KY 206 (MP 13.578). BRIDGE OVER BARNETT CREEK.BRIDGE DECK RESTORATION & WATERPROOFING
GEOGRAPHIC COORDINATES LATITUDE 37:12:43.00 LONGITUDE 85:05:31.00

PCN - MB00102062002
FE02 001 0206 B00009N

KY 206 (MP 14.744). BRIDGE OVER SPRUCE PINE CREEK.BRIDGE DECK RESTORATION & WATERPROOFING
GEOGRAPHIC COORDINATES LATITUDE 37:12:39.00 LONGITUDE 85:04:17.00

COUNTY - CLINTON

PCN - MB02713512001
FE02 027 1351 B00014N

KY 1351 (MP 1.564). BRIDGE OVER ILL WILL CREEK.BRIDGE DECK RESTORATION & WATERPROOFING
GEOGRAPHIC COORDINATES LATITUDE 36:43:58.00 LONGITUDE 85:13:58.00

COUNTY - CUMBERLAND

PCN - MB02900902001
FE02 029 0090 B00020N

KY 90 (MP 8.242). BRIDGE OVER DUTCH CREEK.BRIDGE DECK RESTORATION & WATERPROOFING
GEOGRAPHIC COORDINATES LATITUDE 36:49:06.00 LONGITUDE 85:26:54.00

COUNTY - LINCOLN

PCN - MB06900782001
FE02 069 0078 B00023N

KY 78 (MP 5.778). BRIDGE OVER HANGING FORK.BRIDGE DECK RESTORATION & WATERPROOFING
GEOGRAPHIC COORDINATES LATITUDE 37:29:12.00 LONGITUDE 84:45:45.00

COUNTY - WAYNE

PCN - MB11607762001
FE02 116 0776 B00019N

KY 776 (MP 7.404). BRIDGE OVER SINKING CREEK.BRIDGE DECK RESTORATION & WATERPROOFING
GEOGRAPHIC COORDINATES LATITUDE 36:49:53.00 LONGITUDE 84:41:47.00

PCN - MB11607902001
FE02 116 0790 B00023N

KY 790 (MP 2.026). BRIDGE OVER SINKING CREEK.BRIDGE DECK RESTORATION & WATERPROOFING
GEOGRAPHIC COORDINATES LATITUDE 36:50:21.00 LONGITUDE 84:41:25.00

COMPLETION DATE(S):

COMPLETED BY 11/15/2020	APPLIES TO ENTIRE CONTRACT
30 CALENDAR Days	APPLIES TO BRIDGE 001B00008N.
30 CALENDAR Days	APPLIES TO BRIDGE 001B00009N.
30 CALENDAR Days	APPLIES TO BRIDGE 027B00014N.
30 CALENDAR Days	APPLIES TO BRIDGE 029B00020N.
30 CALENDAR Days	APPLIES TO BRIDGE 069B00023N.
30 CALENDAR Days	APPLIES TO BRIDGE 116B00019N.
30 CALENDAR Days	APPLIES TO BRIDGE 116B00023N.

CONTRACT NOTES

PROPOSAL ADDENDA

All addenda to this proposal must be applied when calculating bid and certified in the bid packet submitted to the Kentucky Department of Highways. Failure to use the correct and most recent addenda may result in the bid being rejected.

BID SUBMITTAL

Bidder must use the Department's electronic bidding software. The Bidder must download the bid file located on the Bid Express website (www.bidx.com) to prepare a bid packet for submission to the Department. The bidder must submit electronically using Bid Express.

JOINT VENTURE BIDDING

Joint venture bidding is permissible. All companies in the joint venture must be prequalified in one of the work types in the Qualifications for Bidders for the project. The bidders must get a vendor ID for the joint venture from the Division of Construction Procurement and register the joint venture as a bidder on the project. Also, the joint venture must obtain a digital ID from Bid Express to submit a bid. A joint bid bond of 5% may be submitted for both companies or each company may submit a separate bond of 5%.

UNDERGROUND FACILITY DAMAGE PROTECTION

The contractor shall make every effort to protect underground facilities from damage as prescribed in the Underground Facility Damage Protection Act of 1994, Kentucky Revised Statute KRS 367.4901 to 367.4917. It is the contractor's responsibility to determine and take steps necessary to be in compliance with federal and state damage prevention directives. When prescribed in said directives, the contractor shall submit Excavation Locate Requests to the Kentucky Contact Center (KY811) via web ticket entry. The submission of this request does not relieve the contractor from the responsibility of contacting non-member facility owners, whom shall be contacted through their individual Protection Notification Center. Non-compliance with these directives can result in the enforcement of penalties.

REGISTRATION WITH THE SECRETARY OF STATE BY A FOREIGN ENTITY

Pursuant to KRS 176.085(1)(b), an agency, department, office, or political subdivision of the Commonwealth of Kentucky shall not award a state contract to a person that is a foreign entity required by [KRS 14A.9-010](#) to obtain a certificate of authority to transact business in the Commonwealth ("certificate") from the Secretary of State under [KRS 14A.9-030](#) unless the person produces the certificate within fourteen (14) days of the bid or proposal opening. If the foreign entity is not required to obtain a certificate as provided in [KRS 14A.9-010](#), the foreign entity should identify the applicable exception. Foreign entity is defined within [KRS 14A.1-070](#).

For all foreign entities required to obtain a certificate of authority to transact business in the Commonwealth, if a copy of the certificate is not received by the contracting agency within the time frame identified above, the foreign entity's solicitation response shall be deemed non-responsive or the awarded contract shall be cancelled.

Businesses can register with the Secretary of State at <https://secure.kentucky.gov/sos/ftbr/welcome.aspx>.

SPECIAL NOTE FOR PROJECT QUESTIONS DURING ADVERTISEMENT

Questions about projects during the advertisement should be submitted in writing to the Division of Construction Procurement. This may be done by fax (502) 564-7299 or email to kytc.projectquestions@ky.gov. The Department will attempt to answer all submitted questions. The Department reserves the right not to answer if the question is not pertinent or does not aid in clarifying the project intent.

The deadline for posting answers will be 3:00 pm Eastern Daylight Time, the day preceding the Letting. Questions may be submitted until this deadline with the understanding that the later a question is submitted, the less likely an answer will be able to be provided.

The questions and answers will be posted for each Letting under the heading "Questions & Answers" on the Construction Procurement website (www.transportation.ky.gov/contract). The answers provided shall be considered part of this Special Note and, in case of a discrepancy, will govern over all other bidding documents.

HARDWOOD REMOVAL RESTRICTIONS

The US Department of Agriculture has imposed a quarantine in Kentucky and several surrounding states, to prevent the spread of an invasive insect, the emerald ash borer. Hardwood cut in conjunction with the project may not be removed from the state. Chipping or burning on site is the preferred method of disposal.

INSTRUCTIONS FOR EXCESS MATERIAL SITES AND BORROW SITES

Identification of excess material sites and borrow sites shall be the responsibility of the Contractor. The Contractor shall be responsible for compliance with all applicable state and federal laws and may wish to consult with the US Fish and Wildlife Service to seek protection under Section 10 of the Endangered Species Act for these activities.

ACCESS TO RECORDS

The contractor, as defined in KRS 45A.030 (9) agrees that the contracting agency, the Finance and Administration Cabinet, the Auditor of Public Accounts, and the Legislative Research Commission, or their duly authorized representatives, shall have access to any books, documents, papers, records, or other evidence, which are directly pertinent to this contract for the purpose of financial audit or program review. Records and other prequalification information confidentially

disclosed as part of the bid process shall not be deemed as directly pertinent to the contract and shall be exempt from disclosure as provided in KRS 61.878(1)(c). The contractor also recognizes that any books, documents, papers, records, or other evidence, received during a financial audit or program review shall be subject to the Kentucky Open Records Act, KRS 61.870 to 61.884.

In the event of a dispute between the contractor and the contracting agency, Attorney General, or the Auditor of Public Accounts over documents that are eligible for production and review, the Finance and Administration Cabinet shall review the dispute and issue a determination, in accordance with Secretary's Order 11-004.

April 30, 2018

SPECIAL NOTE FOR RECIPROCAL PREFERENCE

RECIPROCAL PREFERENCE TO BE GIVEN BY PUBLIC AGENCIES TO RESIDENT BIDDERS

By reference, KRS 45A.490 to 45A.494 are incorporated herein and in compliance regarding the bidders residency. Bidders who want to claim resident bidder status should complete the Affidavit for Claiming Resident Bidder Status along with their bid in the electronic bidding software. Submittal of the Affidavit should be done along the bid in Bid Express.

April 30, 2018

SPECIAL NOTE FOR BRIDGE RESTORATION AND WATERPROOFING WITH CONCRETE OVERLAYS

- I. DESCRIPTION.** Perform all work in accordance with the Kentucky Transportation Cabinet, Department of Highway's 2019 Standard Specifications for Road and Bridge Construction and applicable Supplemental Specifications, the Standard Drawings, this Note, and the attached detail drawings. Section references are to the Standard Specifications.

This work consists of the following: (1) Furnish all labor, materials, tools, and equipment; (2) Remove the existing overlay; (3) Complete full-depth and partial depth repairs as directed by the Engineer; (4) Repair/replace damaged and corroded reinforcing bars; (5) Place new concrete overlay and epoxy-sand slurry in accordance with Section 606; (6) Complete asphalt approach pavement; (7) Maintain and control traffic; and (8) Any other work specified as part of this contract.

All construction will be in accordance with Section 606 unless otherwise specified.

II. MATERIALS.

- A. Latex Concrete.** See Section 606.03.17.
- B. Class "M" Concrete.** Use either "M1" or "M2". See Section 601.
- C. Bituminous Asphalt.** Use CL2 ASPH SURF 0.38D PG64-22.
- D. Epoxy-Sand Slurry.** See Section 606.03.10.

III. CONSTRUCTION.

- A. Remove Existing Overlay.** In addition to Section 606.03.03, totally remove the existing concrete overlay by milling.
- B. Partial Depth Slab Repair and Latex Overlay.** Remove areas determined to be unsound by the Engineer via hydrodemolition or via hand held jackhammers weighing less than 45lbs in accordance with Section 606.02.10 D. Repair/Replace all damaged or severely corroded reinforcing bars prior to partial depth repair operation. The Department will not measure material removal and will consider this work incidental to the bid item "PARTIAL DEPTH PATCHING". Mix and place Latex Modified Concrete Overlay in accordance with Sections 606.03.08 and 606.03.17.
- C. Asphalt Approach Pavement.** Mill each existing asphalt approach for a distance of 50' from the bridge end. Remove the bituminous material uniformly by making an edge key, so as to provide a smooth transition to the finished bridge when a new bituminous overlay of compacted depth of approximately 1½" is added to the approaches. The grinding depth may vary depending of the condition of the existing approach and final elevation of bridge end. Dispose of all removed material away from the site.
- D. Surface Texturing.** Texture the concrete surface of the overlay in accordance with Section 609.03.10.

IV. MEASUREMENT. See Section 606 and the following:

- A. Latex Modified Concrete for Overlay.** The Department will measure the quantity in cubic yards using the theoretical volume as follows for each bridge:

001B00008N	(99' x 24' x 2.0")	= 14.7 cuyd
001B00009N	(99' x 20' x 2.0")	= 12.2 cuyd
027B00014N	(114' x 20' x 2.0")	= 14.1 cuyd
029B00020N	(152' x 24' x 2.0")	= 22.5 cuyd
069B00023N	(192' x 24' x 2.0")	= 28.4 cuyd
116B00019N	(99' x 22' x 2.0")	= 13.4 cuyd
116B00023N	(144' x 20' x 2.0")	= 17.8 cuyd

- B. Latex Modified Concrete for Partial Depth Patching and variable thickness of Overlay.** The Department will measure the quantity in cubic yards by deducting the theoretical volume of bridge deck overlay (LMC) from the total volume (as indicated by the batch quantity tickets) of Concrete required to obtain the finished grade shown on the Plans or established by the Engineer.
- C. Remove Existing Overlay.** The Department will measure the removal of the existing overlay in square yards, which shall include all labor, equipment, and material needed to complete this work.
- D. Steel Reinforcement.** The Department will measure any reinforcing steel necessary for the partial or full depth patch in pounds, which shall include all labor, equipment, and material needed to complete this work.
- E. Asphalt Approach Pavement.** The Department will measure the quantity in square yards, which shall include all labor, equipment, and material needed to complete this work.

V. PAYMENT. See Section 606 and the following:

- A. Latex Modified Concrete for Overlay.** The Department will make payment for the Latex Modified Concrete under bid item #08534 "CONCRETE OVERLAY – LATEX" for the theoretical quantity.
- B. Latex Modified Concrete for Partial Depth Patching and variable thickness of Overlay.** The Department will make payment for the Partial Depth Patching under bid item #24094EC "PARTIAL DEPTH PATCHING". Payment will be for the quantity per cubic yard complete in place.
- C. Remove Existing Overlay.** The Department will make payment for the removal of the existing overlay under the bid item #08510 "REM EPOXY BIT FOREIGN OVERLAY". Payment will be for the square yard complete.
- D. Steel Reinforcement.** The Department will make payment for steel reinforcement, if necessary, under bid item #08150 "STEEL REINFORCEMENT". Payment will be at the unit price per pound.
- E. Asphalt Approach Pavement.** The Department will make payment for the completed and accepted quantity of this work under the bid item #03304 "BRIDGE OVERLAY APPROACH PAVEMENT".

SPECIAL NOTE FOR REPLACING EXPANSION DAMS AND/OR INSTALLING ARMORED EDGES FOR CONCRETE ON BRIDGES

I. DESCRIPTION. Perform all work in accordance with the Kentucky Transportation Cabinet, Department of Highway's 2019 Standard Specifications for Road and Bridge Construction and applicable Supplemental Specifications, the Standard Drawings, this Note, and the attached detail drawings. Section references are to the Standard Specifications.

This work consists of the following: (1) Furnish all labor, materials, tools, and equipment; (2) Remove existing concrete and expansion device(s) and/or bridge ends; (3) Install armored edges and new concrete as specified and in accordance with the attached detail drawings; (4) Install new joint seals (where required); (5) Maintain and control traffic; and (6) Any other work specified as part of this contract.

II. MATERIALS.

A. Class "M" Concrete. Use either "M1" or "M2". See Section 601.

B. Structural Steel. Use new, commercial grade steel suitable for welding. The Engineer will base acceptance on visual inspection.

C. Stud Anchors. The armored edge stud anchors are 3/4" x 6" embedded stud shear connectors conforming to ASTM A108, Grade 1015 (Nelson Studs or equal).

D. Steel Reinforcement. Use Grade 60. See Section 602.

E. Epoxy Bond Coat. See Section 511.

III. EQUIPMENT.

A. Hammers. See Section 606.02.10 B.

B. Sawing Equipment. See Section 606.02.10 C.

C. Hydraulic Impact Equipment. See Section 606.02.10 D.

IV. CONSTRUCTION.

A. Remove Existing Materials. Remove existing Expansion Dam, Bridge End, Armored Edges and specified areas of concrete as shown on the attached sketches. Remove debris and/or expansion joint filler as directed by the Engineer. Clean and leave all existing steel reinforcement encountered in place. Damaged steel reinforcement will be repaired/replaced as directed by the Engineer at no additional cost to the Department.

Dispose of all removed material entirely away from the job site. This work is incidental to the contract unit price for "Expansion Joint Replacement" or "Armored Edge for Concrete".

B. Place New Concrete and Armored Edges. After all specified existing materials have been removed; place new armored edges to match the grade of the proposed overlay or to match the original grade (See attached detail drawings). Place the new Class "M" concrete to the scarified grade and finish to receive the new overlay or place the new Class "M" concrete to the original grade and finish with broom strokes drawn transversely from curb to curb.

All new structural steel shall be cleaned and painted in accordance with requirements of Section 607.03.23, except that surfaces to come in contact with concrete are not to be painted.

Blast clean all areas of existing concrete and structural steel to come in contact with new concrete until free of all laitance and deleterious substances immediately prior to the placement of the Class "M" Concrete. The surface areas of existing concrete to come in contact with the new Class "M" Concrete are to be coated with an epoxy bond coat immediately prior to placing new concrete in accordance with Section 511. The interfaces of the new and old concrete shall be as nearly vertical and horizontal as possible.

- C. Additional Steel Reinforcement.** Furnish for replacement, as directed by the Engineer, 10,000 linear feet of #4 steel reinforcing bars in 20' lengths. Place these bars in areas deemed by the Engineer to require additional reinforcement. Field cutting and bending is permitted. Do not place any additional steel reinforcement above the height of the top row of Nelson Studs on the armored edges. Ensure that all exposed steel reinforcement is tied in accordance with Section 602.03.04 prior to pouring the new Class "M" concrete. Deliver unused bars to the Local County Maintenance Barn. Payment will be made in accordance with Section 602.
- D. Stage Construction.** Installation of concrete and armored edges in two (or more if specified) stages is necessary. Join the armored edges at or near the centerline of the roadway or lane line, field weld and grind smooth.
- E. Shop Plans.** Shop plans will not be required. The Contractor is responsible for obtaining field measurements and supplying properly sized materials to complete the work.

V. MEASUREMENT.

- A. Armored Edge for Concrete.** The Department will measure the quantity in linear feet from gutterline to gutterline along the face of the bridge end.
- B. Steel Reinforcement.** See Section 602.

VI. PAYMENT.

- A. Armored Edge for Concrete.** Payment at the contract unit price per linear foot is full compensation for removing specified existing materials, furnishing and installing the new armored edges, concrete and all incidental items necessary to complete the work (except the overlay material) within the specified pay limits as specified by this note and as shown on the attached detail drawings.
- B. Steel Reinforcement.** See Section 602.

SPECIAL NOTE FOR ELIMINATING TRANSVERSE JOINTS ON BRIDGES

- I. **DESCRIPTION.** Perform all work in accordance with the Kentucky Transportation Cabinet, Department of Highway's 2019 Standard Specifications for Road and Bridge Construction.

Remove existing concrete and existing joint material to eliminate the transverse joint. Install additional reinforcing steel and place concrete.
- II. **MATERIALS.**
 - A. **Class "M" Concrete.** Use either "M1" or "M2". See Section 601.
 - B. **Steel Reinforcement.** Use Grade 60. See Section 602.
 - C. **Epoxy Bond Coat.** See Section 511.
- III. **EQUIPMENT.**
 - A. **Hammers.** See Section 606.02.10 B.
 - B. **Sawing Equipment.** See Section 606.02.10 C.
 - C. **Hydraulic Impact Equipment.** See Section 606.02.10 D.
- IV. **CONSTRUCTION.**
 - A. **Remove Existing Materials.** Remove the existing transverse joints, joint filler, and specified areas of concrete as shown on the plans, in accordance with Section 606.02.10 and 606.03.03, and as directed by the Engineer. Clean and leave all existing steel reinforcement encountered in place. Damaged steel reinforcement will be repaired/replaced as directed by the Engineer at no additional cost to the Department. Dispose of all removed material entirely away from the job site. This work is incidental to the contract unit price for "Eliminate Transverse Joint".
 - B. **Additional Steel Reinforcement.** Furnish for this work steel reinforcing bars as shown on the plans. Splice these bars to the existing longitudinal reinforcement in the deck and curb/sidewalk in the areas of removed concrete to tie the slabs together as shown on the plans. Ensure that all exposed steel reinforcement is tied in accordance with Section 602.03.04 prior to pouring the new Class "M" concrete.
 - C. **Place New Concrete.** Blast clean all areas of existing concrete and structural steel to come in contact with new concrete until free of all laitance and deleterious substances immediately prior to the placement of the Class "M" Concrete. The surface areas of existing concrete to come in contact with the new Class "M" Concrete are to be coated with an epoxy bond coat immediately prior to placing new concrete in accordance with Section 511. The interfaces of the new and old concrete shall be as nearly vertical and horizontal as possible.

Place new Class "M" Concrete to the specified grade and finish to receive the new overlay or as shown on the plans. On the sidewalk and curb, place the new concrete to original grade and finish to match the existing curb/sidewalk.
- V. **MEASUREMENT.**
 - A. **Eliminate Transverse Joint.** The Department will measure the quantity in linear feet from plinth to plinth perpendicular to the centerline of the bridge.

B. Steel Reinforcement. See Section 602.

VI. PAYMENT.

A. Eliminate Transverse Joint. Payment at the contract unit price per linear foot is full compensation for furnishing equipment, labor, tools and materials needed to complete removal and disposal of the specified existing materials, cleaning and straightening of existing steel reinforcement, furnishing and installing the concrete, and all incidental items necessary to complete the work (except the overlay material if specified elsewhere in the contract) within the specified pay limits as indicated on the drawings.

B. Steel Reinforcement. See Section 602.

**SPECIAL NOTE FOR CONTRACT COMPLETION DATE AND
LIQUIDATED DAMAGES ON BRIDGE REPAIR CONTRACTS**

- I. COMPLETION DATE.** The Contractor has the option of selecting the starting date for this Contract. Once selected, notify the Department in writing of the date selected at least two weeks prior to beginning work. All work is to be completed by November 15, 2020. An allotted number of Calendar days are assigned to each structure in this contract as shown below.

<u>STRUCTURE</u>	<u>NO. OF CALENDAR DAYS</u>	<u>COMPLETION DATE</u>
001B00008N	30	November 15, 2020
001B00009N	30	November 15, 2020
027B00014N	30	November 15, 2020
029B00020N	30	November 15, 2020
069B00023N	30	November 15, 2020
116B00019N	30	November 15, 2020
116B00023N	30	November 15, 2020

Contrary to Section 108.07.02, the Engineer will begin charging calendar days for a structure on the day the Contractor starts work or sets up traffic control on that particular structure.

- II. LIQUIDATED DAMAGES.** Liquidated damages will be assessed the Contractor in accordance with the Transportation Cabinet, Department of Highway's 2019 Standard Specifications for Road and Bridge Construction, Section 108.09, when either the allotted number of calendar days or the November 15, 2020 date is exceeded.

Contrary to the Standard Specifications, liquidated damages will be assessed the Contractor during the months of December, January, February and March when the contract time has expired on any individual bridge or bridges. Contract time will be charged during these months.

All construction must be completed in accordance with the weather limitations specified in Section 606 and/or Section 601 as applicable. No extension of Contract time will be granted due to inclement weather or temperature limitations that occur due to starting work on the Contract or a structure late in the construction season.

SPECIAL NOTE FOR TRAFFIC CONTROL ON BRIDGE REPAIR CONTRACTS

I. TRAFFIC CONTROL GENERAL

Except as provided herein, traffic shall be maintained in accordance with the 2019 Standard Specifications, Section 112. Except for the roadway and traffic control bid items listed, all items of work necessary to maintain and control traffic will be paid at the lump sum bid price to “Maintain and Control Traffic”.

Contrary to Section 106.01, traffic control devices used on this project may be new or used in new condition, at the beginning of the work and maintained in like new condition until completion of the work.

II. TRAFFIC COORDINATOR

Furnish a Traffic Coordinator as per Section 112. The Traffic Coordinator shall inspect the project maintenance of traffic, at least three times daily, or as directed by the Engineer, during the Contractor’s operations and at any time a lane closure is in place. The personnel shall have access on the project to a radio or telephone to be used in case of emergencies or accidents.

The Traffic Coordinator shall report all incidents throughout the work zone to the Engineer on the project. The Contractor shall furnish the name and telephone number where the Traffic Coordinator can be contacted at all times.

III. SIGNS

Contrary to Section 112.04.02, only long term signs (sign intended to be continuously in place for more than 3 days) will be measured for payment; short term signs (signs intended to be left in place for 3 days or less) will not be measured for payment but will be incidental to Maintain and Control Traffic.

The contractor is to install warning signs for wide loads in advance of the bridge under the direction of the Engineer. The Department will not measure installation, maintenance, or removal for payment, and will consider these incidentals to Maintain and Control Traffic.

IV. TEMPORARY PAVEMENT STRIPING

Skip lines and/or solid lines through the length of the tapers for lane closures and other striping as directed by the Engineer shall be temporarily covered with 6” black removable tape. Permanent removal of all other pavement striping for traffic control shall be considered incidental to Maintain and Control Traffic. Temporary pavement striping shall be paid only once per course in accordance with Section 112.04.07. The Contractor shall replace any temporary striping that becomes damaged or fails to adhere to the pavement before dark on the day of the notification. Liquidated damages shall be assessed to the Contractor at a rate of \$500 per day for failing to replace temporary striping within this time limit.

V. PROJECT PHASING & CONSTRUCTION PROCEDURES

Maintain one lane of traffic during construction in accordance with Standard Drawing No. TTC-110 for lane closures, and the attached detail drawing. The minimum clear lane width required is as follows:

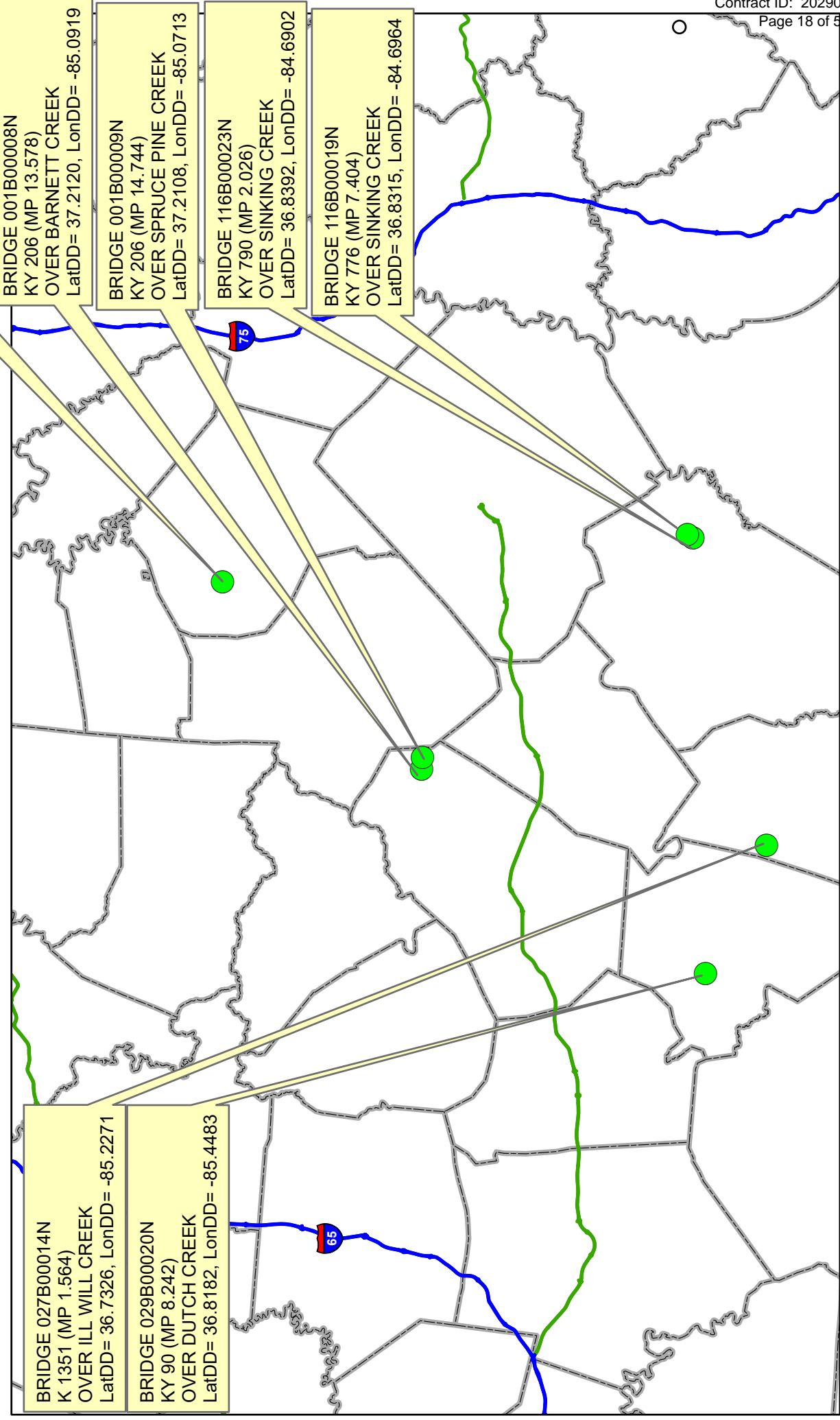
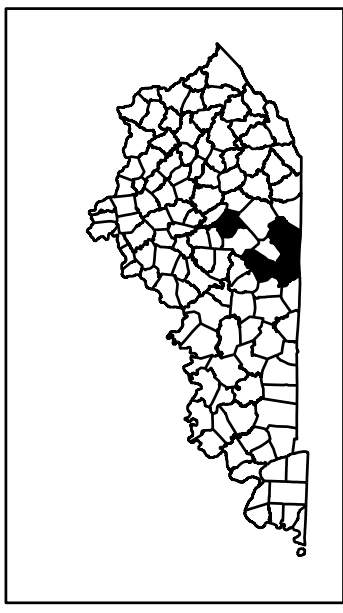
001B00008N	11' -6"
001B00009N	9' -6"
027B00014N	11' -6"
029B00020N	11' -6"
069B00023N	11' -6"
116B00019N	10' -6"
116B00023N	9' -6"

VI. TEMPORARY SIGNAL

Provide, install, and maintain a temporary 2 phase, or multi phase, traffic signal, as specified below for each bridge. The Contractor must provide a 24-hour contact person and number available to maintain the temporary signals as needed.

001B00008N	2 phase
001B00009N	2 phase
027B00014N	2 phase
029B00020N	multi phase
069B00023N	multi phase
116B00019N	multi phase
116B00023N	2 phase

Adair, Clinton, Cumberland, Lincoln, & Wayne Counties



BRIDGE 069B00023N
KY 78 (MP 5.778)
OVER HANGING FORK
LatDD= 37.4867, LonDD= -84.7625

BRIDGE 001B00008N
KY 206 (MP 13.578)
OVER BARNETT CREEK
LatDD= 37.2120, LonDD= -85.0919

BRIDGE 001B00009N
KY 206 (MP 14.744)
OVER SPRUCE PINE CREEK
LatDD= 37.2108, LonDD= -85.0713

BRIDGE 116B00023N
KY 790 (MP 2.026)
OVER SINKING CREEK
LatDD= 36.8392, LonDD= -84.6902

BRIDGE 116B00019N
KY 776 (MP 7.404)
OVER SINKING CREEK
LatDD= 36.8315, LonDD= -84.6964

BRIDGE 027B00014N
K 1351 (MP 1.564)
OVER ILL WILL CREEK
LatDD= 36.7326, LonDD= -85.2271

BRIDGE 029B00020N
KY 90 (MP 8.242)
OVER DUTCH CREEK
LatDD= 36.8182, LonDD= -85.4483

MATERIAL SUMMARY

CONTRACT ID: 202901

121GR20M016-FE02

MB00102062001

KY 206 (MP 13.578). BRIDGE OVER BARNETT CREEK. BRIDGE DECK RESTORATION & WATERPROOFING.

Project Line No	Bid Code	DESCRIPTION	Quantity	Unit
0005	02562	TEMPORARY SIGNS	149.00	SQFT
0010	02650	MAINTAIN & CONTROL TRAFFIC - APPLIES TO 001B00008N	1.00	LS
0015	02653	LANE CLOSURE	2.00	EACH
0020	03299	ARMORED EDGE FOR CONCRETE	48.00	LF
0025	03300	ELIMINATE TRANSVERSE JOINT	54.60	LF
0030	03304	BRIDGE OVERLAY APPROACH PAVEMENT	266.70	SQYD
0035	04933	TEMP SIGNAL 2 PHASE	1.00	EACH
0040	06514	PAVE STRIPING-PERM PAINT-4 IN	796.00	LF
0045	06549	PAVE STRIPING-TEMP REM TAPE-B	500.00	LF
0050	06550	PAVE STRIPING-TEMP REM TAPE-W	1,000.00	LF
0055	06551	PAVE STRIPING-TEMP REM TAPE-Y	2,000.00	LF
0060	08150	STEEL REINFORCEMENT	868.40	LB
0065	08504	EPOXY SAND SLURRY	77.00	SQYD
0070	08510	REM EPOXY BIT FOREIGN OVERLAY	264.00	SQYD
0075	08526	CONC CLASS M FULL DEPTH PATCH	10.00	CUYD
0080	08534	CONCRETE OVERLAY-LATEX	14.70	CUYD
0085	08549	BLAST CLEANING	341.00	SQYD
0090	24094EC	PARTIAL DEPTH PATCHING	7.30	CUYD
0095	02569	DEMOBILIZATION	1.00	LS

MATERIAL SUMMARY

CONTRACT ID: 202901

121GR20M016-FE02

MB00102062002

KY 206 (MP 14.744). BRIDGE OVER SPRUCE PINE CREEK. BRIDGE DECK RESTORATION & WATERPROOFING.

Project Line No	Bid Code	DESCRIPTION	Quantity	Unit
0100	02562	TEMPORARY SIGNS	149.00	SQFT
0105	02650	MAINTAIN & CONTROL TRAFFIC - APPLIES TO 001B00009N.	1.00	LS
0110	02653	LANE CLOSURE	2.00	EACH
0115	03299	ARMORED EDGE FOR CONCRETE	40.00	LF
0120	03300	ELIMINATE TRANSVERSE JOINT	46.60	LF
0125	03304	BRIDGE OVERLAY APPROACH PAVEMENT	222.00	SQYD
0130	04933	TEMP SIGNAL 2 PHASE	1.00	EACH
0135	06514	PAVE STRIPING-PERM PAINT-4 IN	464.00	LF
0140	06549	PAVE STRIPING-TEMP REM TAPE-B	500.00	LF
0145	06550	PAVE STRIPING-TEMP REM TAPE-W	1,000.00	LF
0150	06551	PAVE STRIPING-TEMP REM TAPE-Y	2,000.00	LF
0155	08150	STEEL REINFORCEMENT	868.40	LB
0160	08504	EPOXY SAND SLURRY	77.00	SQYD
0165	08510	REM EPOXY BIT FOREIGN OVERLAY	220.00	SQYD
0170	08526	CONC CLASS M FULL DEPTH PATCH	10.00	CUYD
0175	08534	CONCRETE OVERLAY-LATEX	12.20	CUYD
0180	08549	BLAST CLEANING	297.00	SQYD
0185	22146EN	CONCRETE PATCHING REPAIR	1.00	SQFT
0190	24094EC	PARTIAL DEPTH PATCHING	6.10	CUYD
0195	02569	DEMOBILIZATION	1.00	LS

MATERIAL SUMMARY

CONTRACT ID: 202901

121GR20M016-FE02

MB02713512001

KY 1351 (MP 1.564). BRIDGE OVER ILL WILL CREEK. BRIDGE DECK RESTORATION & WATERPROOFING.

Project Line No	Bid Code	DESCRIPTION	Quantity	Unit
0200	02562	TEMPORARY SIGNS	149.00	SQFT
0205	02650	MAINTAIN & CONTROL TRAFFIC - APPLIES TO 027B00014N	1.00	LS
0210	02653	LANE CLOSURE	2.00	EACH
0215	03299	ARMORED EDGE FOR CONCRETE	56.60	LF
0220	03300	ELIMINATE TRANSVERSE JOINT	64.60	LF
0225	03302	REPAIR CONCRETE CURB	1.00	LF
0230	03304	BRIDGE OVERLAY APPROACH PAVEMENT	222.00	SQYD
0235	04933	TEMP SIGNAL 2 PHASE	1.00	EACH
0240	06514	PAVE STRIPING-PERM PAINT-4 IN	428.00	LF
0245	06549	PAVE STRIPING-TEMP REM TAPE-B	500.00	LF
0250	06550	PAVE STRIPING-TEMP REM TAPE-W	1,000.00	LF
0255	06551	PAVE STRIPING-TEMP REM TAPE-Y	2,000.00	LF
0260	08150	STEEL REINFORCEMENT	868.40	LB
0265	08504	EPOXY SAND SLURRY	97.10	SQYD
0270	08510	REM EPOXY BIT FOREIGN OVERLAY	253.00	SQYD
0275	08526	CONC CLASS M FULL DEPTH PATCH	25.00	CUYD
0280	08534	CONCRETE OVERLAY-LATEX	14.10	CUYD
0285	08549	BLAST CLEANING	350.00	SQYD
0290	23879EC	ACRYLIC GLASS	24.00	SQFT
0295	24094EC	PARTIAL DEPTH PATCHING	7.00	CUYD
0300	02569	DEMOBILIZATION	1.00	LS

MATERIAL SUMMARY

CONTRACT ID: 202901

121GR20M016-FE02

MB02900902001

KY 90 (MP 8.242). BRIDGE OVER DUTCH CREEK. BRIDGE DECK RESTORATION & WATERPROOFING.

Project Line No	Bid Code	DESCRIPTION	Quantity	Unit
0305	02562	TEMPORARY SIGNS	149.00	SQFT
0310	02650	MAINTAIN & CONTROL TRAFFIC - APPLIES TO 029B00020N	1.00	LS
0315	02653	LANE CLOSURE	2.00	EACH
0320	03299	ARMORED EDGE FOR CONCRETE	48.00	LF
0325	03300	ELIMINATE TRANSVERSE JOINT	84.00	LF
0330	03302	REPAIR CONCRETE CURB	60.00	LF
0335	03304	BRIDGE OVERLAY APPROACH PAVEMENT	267.00	SQYD
0340	04934	TEMP SIGNAL MULTI PHASE	1.00	EACH
0345	06514	PAVE STRIPING-PERM PAINT-4 IN	1,008.00	LF
0350	06549	PAVE STRIPING-TEMP REM TAPE-B	500.00	LF
0355	06550	PAVE STRIPING-TEMP REM TAPE-W	1,000.00	LF
0360	06551	PAVE STRIPING-TEMP REM TAPE-Y	2,000.00	LF
0365	08150	STEEL REINFORCEMENT	1,169.00	LB
0370	08504	EPOXY SAND SLURRY	129.50	SQYD
0375	08510	REM EPOXY BIT FOREIGN OVERLAY	405.00	SQYD
0380	08526	CONC CLASS M FULL DEPTH PATCH	39.00	CUYD
0385	08534	CONCRETE OVERLAY-LATEX	22.50	CUYD
0390	08549	BLAST CLEANING	535.00	SQYD
0395	23879EC	ACRYLIC GLASS	28.40	SQFT
0400	24094EC	PARTIAL DEPTH PATCHING	11.30	CUYD
0405	02569	DEMOBILIZATION	1.00	LS

MATERIAL SUMMARY

CONTRACT ID: 202901

121GR20M016-FE02

MB06900782001

KY 78 (MP 5.778). BRIDGE OVER HANGING FORK. BRIDGE DECK RESTORATION & WATERPROOFING.

Project Line No	Bid Code	DESCRIPTION	Quantity	Unit
0410	02562	TEMPORARY SIGNS	149.00	SQFT
0415	02650	MAINTAIN & CONTROL TRAFFIC - APPLIES TO 069B00023N	1.00	LS
0420	02653	LANE CLOSURE	2.00	EACH
0425	03299	ARMORED EDGE FOR CONCRETE	67.90	LF
0430	03300	ELIMINATE TRANSVERSE JOINT	106.20	LF
0435	03304	BRIDGE OVERLAY APPROACH PAVEMENT	533.00	SQYD
0440	04934	TEMP SIGNAL MULTI PHASE	1.00	EACH
0445	06514	PAVE STRIPING-PERM PAINT-4 IN	1,168.00	LF
0450	06549	PAVE STRIPING-TEMP REM TAPE-B	500.00	LF
0455	06550	PAVE STRIPING-TEMP REM TAPE-W	1,000.00	LF
0460	06551	PAVE STRIPING-TEMP REM TAPE-Y	2,000.00	LF
0465	08150	STEEL REINFORCEMENT	1,169.00	LB
0470	08504	EPOXY SAND SLURRY	110.20	SQYD
0475	08510	REM EPOXY BIT FOREIGN OVERLAY	512.00	SQYD
0480	08526	CONC CLASS M FULL DEPTH PATCH	6.00	CUYD
0485	08534	CONCRETE OVERLAY-LATEX	28.40	CUYD
0490	08549	BLAST CLEANING	622.00	SQYD
0495	24094EC	PARTIAL DEPTH PATCHING	14.20	CUYD
0500	02569	DEMOBILIZATION	1.00	LS

MATERIAL SUMMARY

CONTRACT ID: 202901

121GR20M016-FE02

MB11607762001

KY 776 (MP 7.404). BRIDGE OVER SINKING CREEK. BRIDGE DECK RESTORATION & WATERPROOFING.

Project Line No	Bid Code	DESCRIPTION	Quantity	Unit
0505	02562	TEMPORARY SIGNS	149.00	SQFT
0510	02650	MAINTAIN & CONTROL TRAFFIC - APPLIES TO 116B00019N	1.00	LS
0515	02653	LANE CLOSURE	2.00	EACH
0520	03299	ARMORED EDGE FOR CONCRETE	44.00	LF
0525	03300	ELIMINATE TRANSVERSE JOINT	52.00	LF
0530	03304	BRIDGE OVERLAY APPROACH PAVEMENT	244.00	SQYD
0535	04934	TEMP SIGNAL MULTI PHASE	1.00	EACH
0540	06514	PAVE STRIPING-PERM PAINT-4 IN	796.00	LF
0545	06549	PAVE STRIPING-TEMP REM TAPE-B	500.00	LF
0550	06550	PAVE STRIPING-TEMP REM TAPE-W	1,000.00	LF
0555	06551	PAVE STRIPING-TEMP REM TAPE-Y	2,000.00	LF
0560	08150	STEEL REINFORCEMENT	868.40	LB
0565	08504	EPOXY SAND SLURRY	84.30	SQYD
0570	08510	REM EPOXY BIT FOREIGN OVERLAY	242.00	SQYD
0575	08526	CONC CLASS M FULL DEPTH PATCH	23.00	CUYD
0580	08534	CONCRETE OVERLAY-LATEX	13.40	CUYD
0585	08549	BLAST CLEANING	326.00	SQYD
0590	23879EC	ACRYLIC GLASS	16.66	SQFT
0595	24094EC	PARTIAL DEPTH PATCHING	6.70	CUYD
0600	02569	DEMOBILIZATION	1.00	LS

MATERIAL SUMMARY

CONTRACT ID: 202901

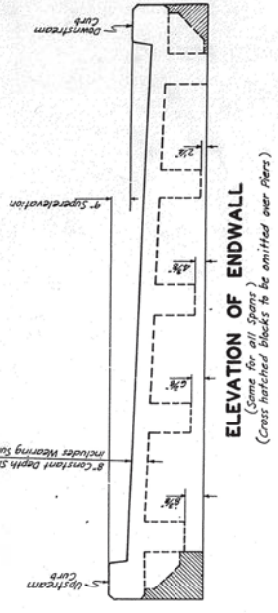
121GR20M016-FE02

MB11607902001

KY 790 (MP 2.026). BRIDGE OVER SINKING CREEK. BRIDGE DECK RESTORATION & WATERPROOFING.

Project Line No	Bid Code	DESCRIPTION	Quantity	Unit
0605	02562	TEMPORARY SIGNS	149.00	SQFT
0610	02650	MAINTAIN & CONTROL TRAFFIC - APPLIES TO 116B00023N	1.00	LS
0615	02653	LANE CLOSURE	2.00	EACH
0620	03299	ARMORED EDGE FOR CONCRETE	40.00	LF
0625	03300	ELIMINATE TRANSVERSE JOINT	48.00	LF
0630	03304	BRIDGE OVERLAY APPROACH PAVEMENT	222.00	SQYD
0635	04933	TEMP SIGNAL 2 PHASE	1.00	EACH
0640	06514	PAVE STRIPING-PERM PAINT-4 IN	488.00	LF
0645	06549	PAVE STRIPING-TEMP REM TAPE-B	500.00	LF
0650	06550	PAVE STRIPING-TEMP REM TAPE-W	1,000.00	LF
0655	06551	PAVE STRIPING-TEMP REM TAPE-Y	2,000.00	LF
0660	08150	STEEL REINFORCEMENT	868.40	LB
0665	08504	EPOXY SAND SLURRY	122.70	SQYD
0670	08510	REM EPOXY BIT FOREIGN OVERLAY	320.00	SQYD
0675	08526	CONC CLASS M FULL DEPTH PATCH	5.00	CUYD
0680	08534	CONCRETE OVERLAY-LATEX	17.80	CUYD
0685	08549	BLAST CLEANING	443.00	SQYD
0690	23879EC	ACRYLIC GLASS	81.00	SQFT
0695	24094EC	PARTIAL DEPTH PATCHING	8.90	CUYD
0700	02569	DEMOBILIZATION	1.00	LS

001B00008N



REVISIONS TO 30'-0" R.C. DECK GIRDER SPANS

REVISED ESTIMATE OF QUANTITIES
(For One End Span)

Concrete, Class "A"
Reinforcement 45.2 Cu. Yds.
12600. Lbs.

Concrete, Class "A"
Reinforcement (For One Intermediate Span)
44.5 Cu. Yds.
12000. Lbs.

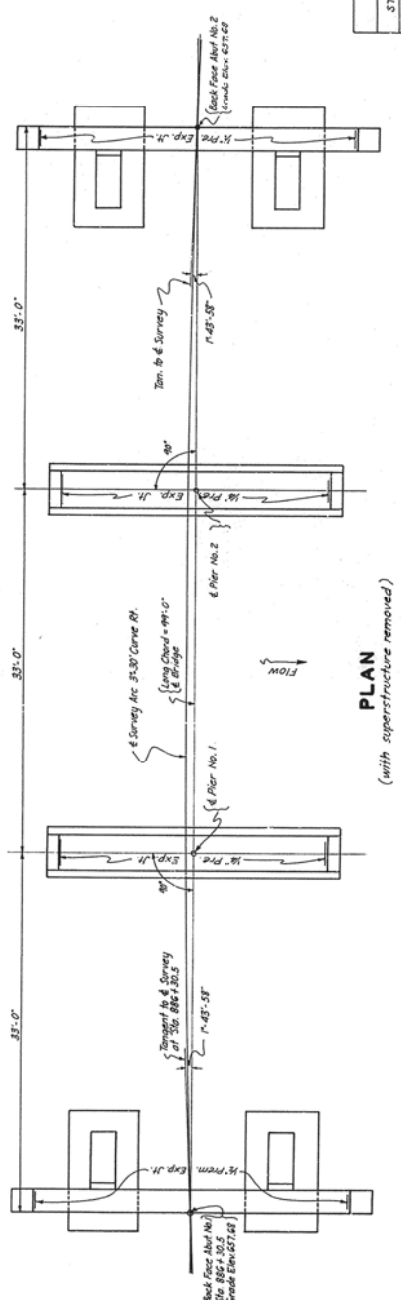
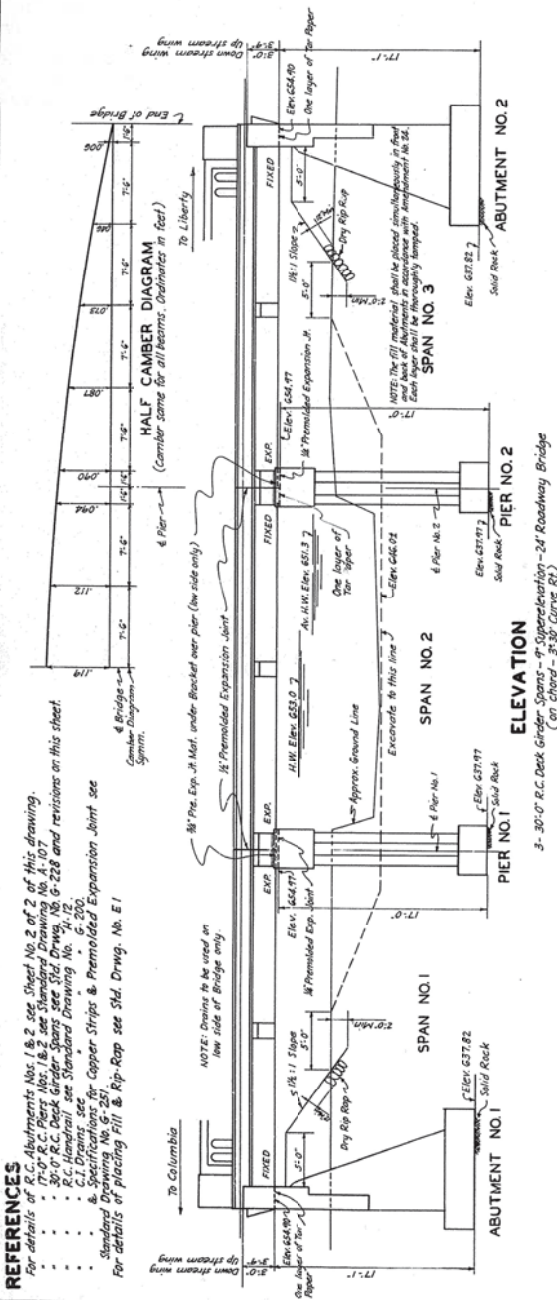
TOTAL ESTIMATE OF QUANTITIES

Concrete, Class "A"
275.9 Cu. Yds.
Concrete, Class "D"
57500. Lbs.
Structure Excavation (Unclassified)
550.0 Cu. Yds.
Excavation, (Channel Change)
See Road Plans.
Dry Rip Rap
720.0 Sq. Yds.

A-107
G-228
G-500
G-501
H-12
E-1

BRIDGE OVER BARNETT'S CREEK
COMMONWEALTH OF KENTUCKY
DEPARTMENT OF HIGHWAYS
FRANKFORT
COUNTY OF
ADAIR
COLUMBIA-LIBERTY
ROAD
PROJECT NO.
STATION 886+50
M.P. 1-50-2
DATE 4/7/54

STATION	LOCATION	ELEV. SOLID ROCK
885+50	15' Lt.	640.6
	6	640.1
	15' Rt.	640.0
886+00	15' Lt.	640.9
	6	640.1
	15' Rt.	640.2
886+50	15' Lt.	638.6
	6	638.8
	15' Rt.	639.0
886+75	15' Lt.	638.5
	6	639.3
	15' Rt.	639.2
887+50	15' Lt.	638.9
	6	638.9
	15' Rt.	638.8
888+00	15' Lt.	638.7
	6	638.7
	15' Rt.	638.7



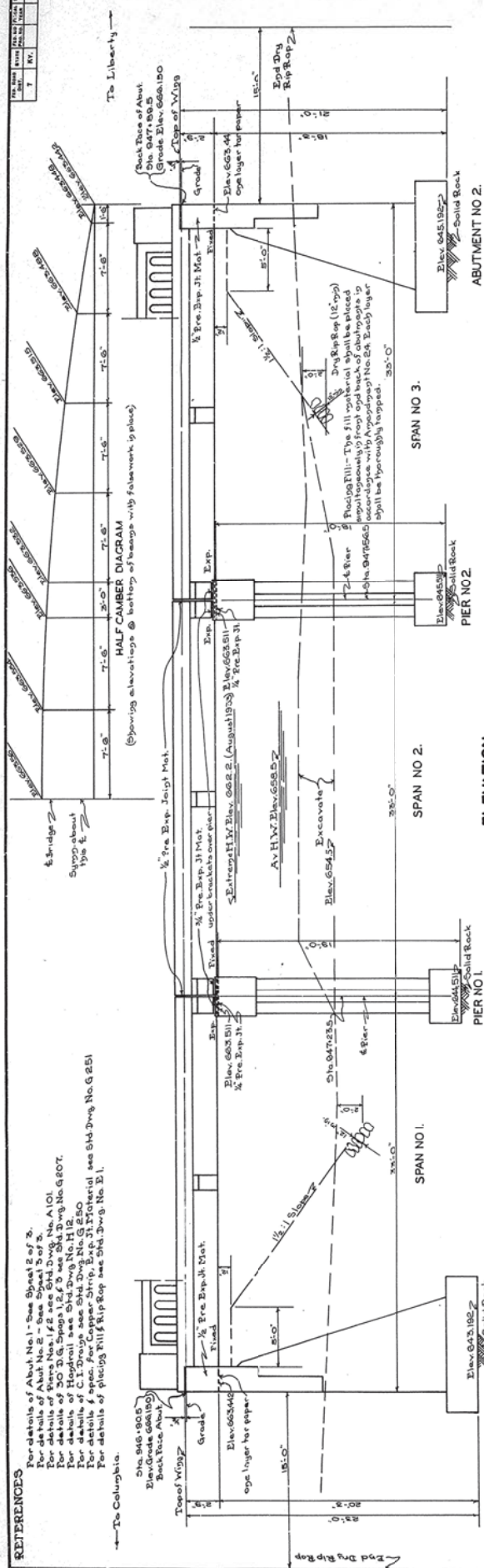
GENERAL NOTE

SPECIFICATIONS - State Highway Department, Kentucky (MS2 Standard with amendments).
DESIGN LOAD - Bridge designed for H-15 loading as specified in A.A.S.H.O. Specifications 1945.
CONCRETE - Class "A" concrete to be used thruout except in handrail.
REINFORCEMENT - Dimension shown from face of concrete is clear distance. Precast mortar or concrete blocks, supporting reinforcement shall be spaced not farther apart than 30 diameters of the supported bar.
BEVELED EDGES - All exposed edges shall be beveled 1/8" unless otherwise noted.
TAK PAPER - To be commercial grade tar paper or roofing felt approximately 1/16" thick.
BORING DATA - The subsurface data shown hereon was obtained by borings at the locations indicated and represents the best information available to the Department of Highways only and does not constitute a warranty of the accuracy of the data. The Department of Highways does not give any guarantee as to the accuracy of data furnished or as to conditions which will actually be found to exist when the work is being executed.

REFERENCES

- For details of R.C. Abutments Nos. 1 & 2, see Sheet No. 2 of 2 of this drawing.
- For details of R.C. Piers Nos. 1 & 2, see Standard Drawing No. A-107.
- For details of R.C. Deck Girder Spans see Std. Drawg. No. G-228 and revisions on this sheet.
- R.C. Handrail, see Standard Drawing No. J-12.
- For details of Copper Strips & Premoiled Expansion Joint see Standard Drawing No. G-251.
- For details of placing Fill & Rip-Rap see Std. Drawg. No. E-1.

JUN 19 1983



001B00009N

ELEVATION 3-30' DECK GIRDER SPANS (20' Roadway Bridge)

TOTAL ESTIMATE OF QUANTITIES
 Concrete - class 'A' 260.3 cu yds.
 Concrete - class 'D' 11.4 cu yds.
 Reinforcement - 5120 lbs.
 Structure Excavating Unclassified 500 cu yds.
 See Road Flaps
 Dry Rip Rap (12 Mip) 500 cu yds.

GENERAL NOTE

- Specifications - State Highway Department, Kentucky, (1938 Standards with amendments)
- Design Load - Bridge designed for H-15 loading as specified by A.A.S.H.O. Specifications, 1935.
- Concrete - Class 'D' concrete to be used in piers and abutments. All exposed edges shall be beveled 7/8 unless otherwise noted.
- Reinforcement - Reinforcing bars of concrete in their original condition shall be permitted. Reinforcing bars shall be spaced not farther apart than 30 diameters of the bar.
- For Super - To be commercial grade for paper or roofing felt approximately 1/8 inch.

Being data - The subsurface data shown herein was obtained by borings at the locations indicated and represents the best information available to the Department of Highways at the date of the report. The borings were run in accordance with the specifications for borings and the results are given in the accompanying report. The Department of Highways does not give any guarantee as to the accuracy of data furnished or as to conditions which will actually be found to exist when the work is being executed.

LOG OF SOUNDINGS	
Station	Solid Rock Elevations
04100	645.0
04150	645.5
04200	645.0
04250	645.5
04300	645.0
04350	645.5
04400	645.0
04450	645.5
04500	645.0
04550	645.5

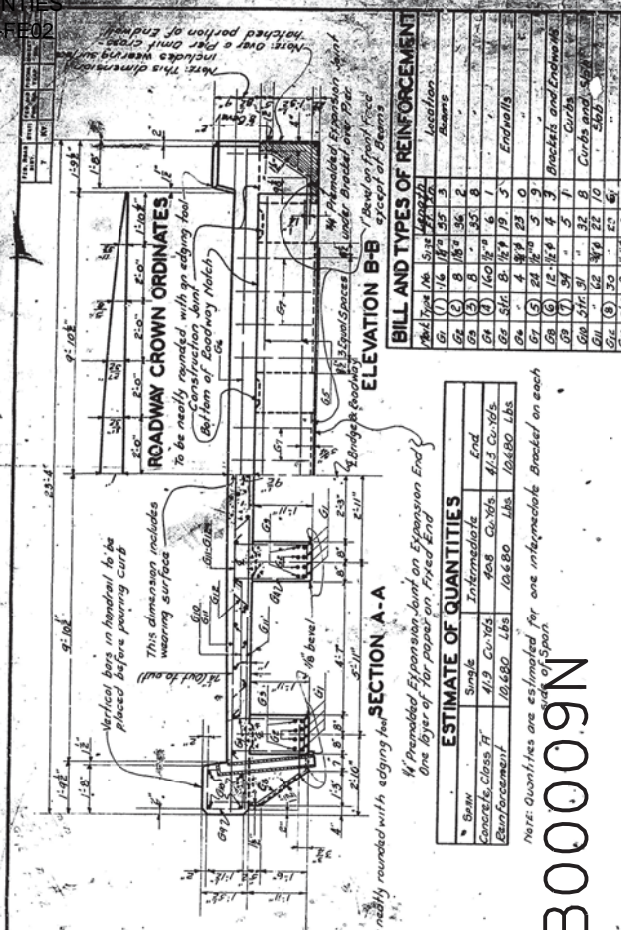
REFERENCES
 For details of Abut. No. 1 - See Sheet 2 of 2.
 For details of Abut. No. 2 - See Sheet 3 of 3.
 For details of Piers Nos. 1 & 2 see Sld. Draw. No. A 101.
 For details of Piers Nos. 3 & 4 see Sld. Draw. No. G 807.
 For details of Roadway see Sld. Draw. No. H 12.
 For details of C.I. Drains see Sld. Draw. No. G 250.
 For details of Super. For Copper Strip, Exp. J.I. Referential see Sld. Draw. No. G 251.
 For details of Pile 09 Rip Rap see Sld. Draw. No. B 1.
 To Columbia.

BRIDGE OVER SPRUCE PINE CREEK SHEET 1 OF 3

COMMONWEALTH OF KENTUCKY
 DEPARTMENT OF HIGHWAYS
 FRANKFORT
 COUNTY OF
ADAIR
 COLUMBIA - LIBERTY
 ROAD

STATION 047-40
 PROJECT NO.
 MP# 1-50-3
 DATE 7/35

JUN 12 1963



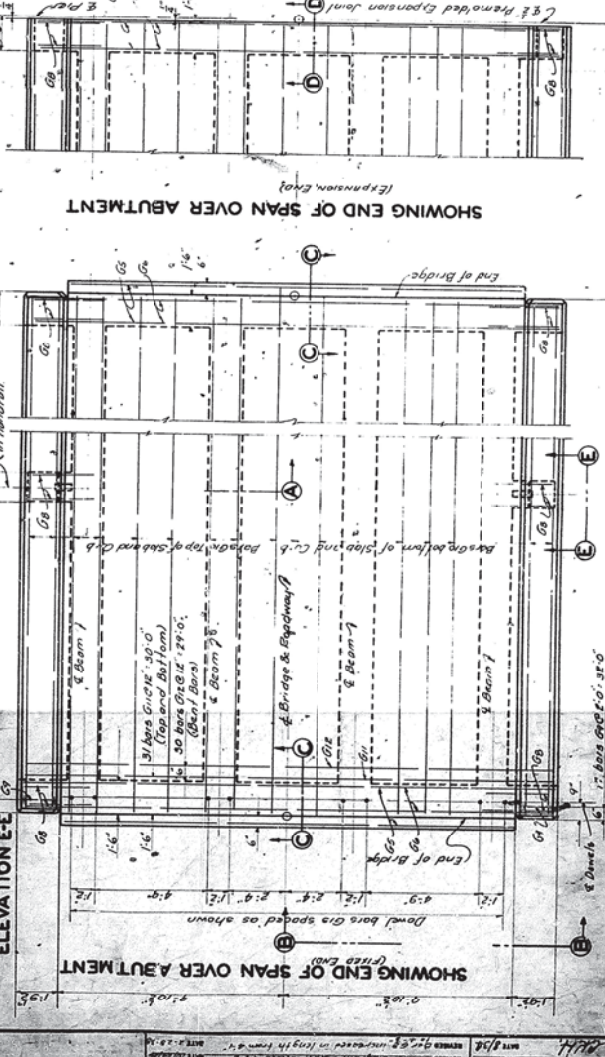
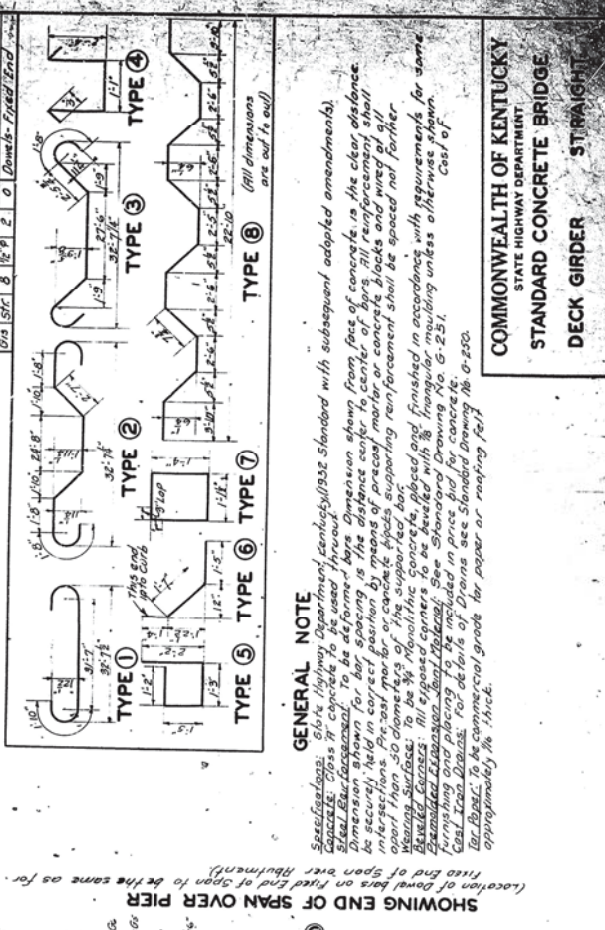
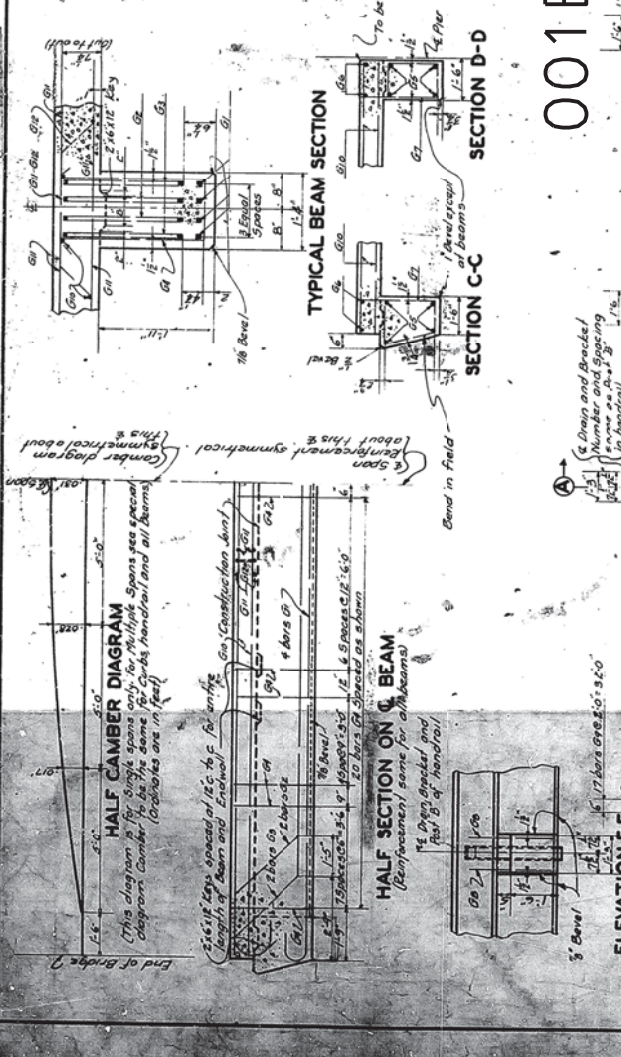
BILL AND TYPES OF REINFORCEMENT

No.	Type	No.	Size	Quantity	Location
1	Bar	1	1/2"	1.55	3
2	Bar	2	1/2"	1.55	3
3	Bar	3	1/2"	1.55	3
4	Bar	4	1/2"	1.55	3
5	Bar	5	1/2"	1.55	3
6	Bar	6	1/2"	1.55	3
7	Bar	7	1/2"	1.55	3
8	Bar	8	1/2"	1.55	3
9	Bar	9	1/2"	1.55	3
10	Bar	10	1/2"	1.55	3
11	Bar	11	1/2"	1.55	3
12	Bar	12	1/2"	1.55	3
13	Bar	13	1/2"	1.55	3
14	Bar	14	1/2"	1.55	3
15	Bar	15	1/2"	1.55	3
16	Bar	16	1/2"	1.55	3
17	Bar	17	1/2"	1.55	3
18	Bar	18	1/2"	1.55	3
19	Bar	19	1/2"	1.55	3
20	Bar	20	1/2"	1.55	3
21	Bar	21	1/2"	1.55	3
22	Bar	22	1/2"	1.55	3
23	Bar	23	1/2"	1.55	3
24	Bar	24	1/2"	1.55	3
25	Bar	25	1/2"	1.55	3
26	Bar	26	1/2"	1.55	3
27	Bar	27	1/2"	1.55	3
28	Bar	28	1/2"	1.55	3
29	Bar	29	1/2"	1.55	3
30	Bar	30	1/2"	1.55	3
31	Bar	31	1/2"	1.55	3
32	Bar	32	1/2"	1.55	3
33	Bar	33	1/2"	1.55	3
34	Bar	34	1/2"	1.55	3
35	Bar	35	1/2"	1.55	3
36	Bar	36	1/2"	1.55	3
37	Bar	37	1/2"	1.55	3
38	Bar	38	1/2"	1.55	3
39	Bar	39	1/2"	1.55	3
40	Bar	40	1/2"	1.55	3
41	Bar	41	1/2"	1.55	3
42	Bar	42	1/2"	1.55	3
43	Bar	43	1/2"	1.55	3
44	Bar	44	1/2"	1.55	3
45	Bar	45	1/2"	1.55	3
46	Bar	46	1/2"	1.55	3
47	Bar	47	1/2"	1.55	3
48	Bar	48	1/2"	1.55	3
49	Bar	49	1/2"	1.55	3
50	Bar	50	1/2"	1.55	3

ESTIMATE OF QUANTITIES

Bar	Simple	Intermediate	End
Concrete, Class F	41.9 Cu.Yds.	40.8 Cu.Yds.	41.3 Cu.Yds.
Reinforcement	10,680 Lbs.	10,680 Lbs.	10,680 Lbs.

Note: Quantities are estimated for one intermediate bracket on each side of span.



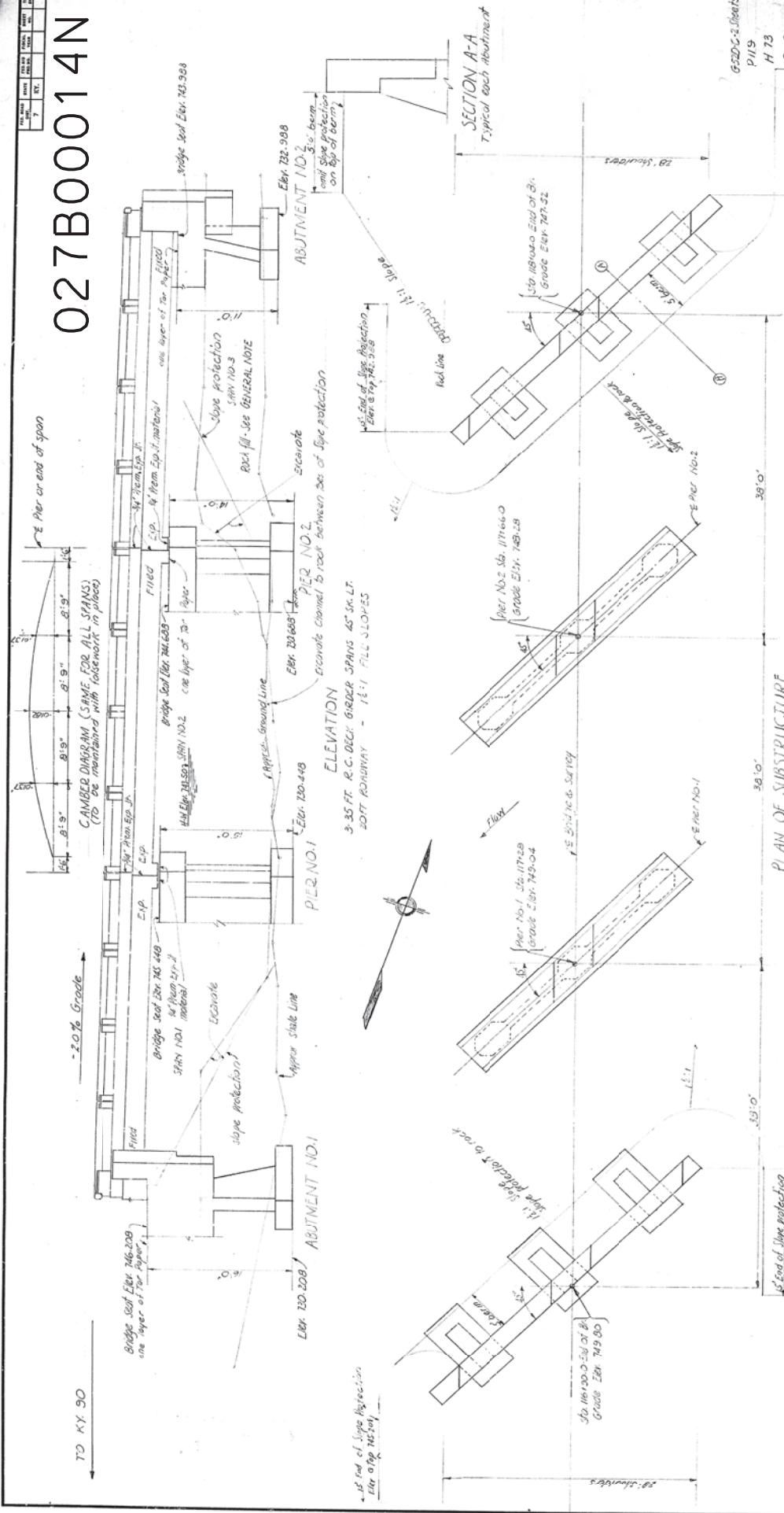
ESTIMATE OF QUANTITIES

Bar	Simple	Intermediate	End
Concrete, Class F	41.9 Cu.Yds.	40.8 Cu.Yds.	41.3 Cu.Yds.
Reinforcement	10,680 Lbs.	10,680 Lbs.	10,680 Lbs.

GENERAL NOTE
Specialties: 60% Highway Department, capacity 1932 Standard with subsequent adopted amendments).
Steel Reinforcement: To be deformed bars Dimension shown from face of concrete in the clear distance.
Expansion Joints: The spacing in the distance over to center of bars. All reinforcement shall be spaced in accordance with the provisions of the Specification for Reinforcing Steel Bars and shall be spaced not farther than 50 diameters of the largest bar. The supporting reinforcement shall be spaced not farther than 50 diameters of the largest bar.
Expansion Joints: To be 3/4 Monolithic concrete, placed and finished in accordance with requirements for same.
Expansion Joints: All exposed corners to be beveled with 1/8" triangular mauling unless otherwise shown.
Expansion Joints: Forming and placing in accordance with Standard Drawing No. G-251.
Expansion Joints: Cast Iron Drains: For details of Drains see Standard Drawing No. G-251.
Expansion Joints: Tar Paper: To be commercial grade tar paper or roofing felt approximately 1/8" thick.

COMMONWEALTH OF KENTUCKY
STATE HIGHWAY DEPARTMENT
STANDARD CONCRETE BRIDGE
DECK GIRDER STRAIGHT
30' SPAN
20' ROADWAY

027B00014N



GENERAL NOTES

PLANNING
Kentucky Department of Highways was stationed with amendments.
DESIGN LOAD
Class A Concrete to be used throughout except in Handrail. Class D concrete to be used in Handrail.
REINFORCEMENT
Dimensions shown from face of concrete are clear distances. Dimensions for bar spacing are to center of bars.
BILLED LINES
All exposed faces to be finished unless otherwise shown. See Emergency Revision No. 10 for floor drains in Joint Material. The note. The cost of these items to be included in the unit price bid for TAR PAPER.
FLOOR DRAIN
To be commercial grade tar paper or roofing felt approximately 1/8" thick.
FLOOR DRAIN
To be gray iron castings conforming to A.S.T.M. Spec. A8-48. Granite and bronze castings are not permitted.
SLOPE PROTECTION
To be dry mix gun or concrete slope wall in accordance with sub. 201 KAR 316 or precast concrete blocks in accordance with sub. 201 KAR 316.
If in construction the District Engineer finds suitable rock material in the cut above the bridge to use instead of the slope paving. Then slope paving may be omitted.

PLAN OF SUBSTRUCTURE

ITEM	DESCRIPTION	QUANTITY	UNIT	AMOUNT
1	CONCRETE CLASS A	43.92	CU YDS	70.50
2	CONCRETE CLASS D	36.04	CU YDS	20.20
3	REINFORCEMENT	3426	LB	30.30
4	TAR PAPER	2334	SQ YDS	20.80
5	FLOOR DRAIN	1050	EA	105.00
6	GRANITE	10090	CU YDS	1009.00
7	BRONZE	2482	LB	1018.80
8	CASTINGS	6-1	EA	219.00
9	GRANITE	287.4	CU YDS	147.184
10	BRONZE	6-1	EA	140.120
11	CASTINGS	6-1	EA	120.120

Excavation Channel Channel Charge - See Road Plans

COMMONWEALTH OF KENTUCKY
DEPARTMENT OF HIGHWAYS
FRANKFORT
COUNTY OF CLINTON
THE HIGHWAY
STATION 117+87.0
BRIDGE NUMBER 10915
PROJECT NO. 027B00014N

NO.	DATE	BY	REVISION
1			
2			
3			
4			

027B00014N

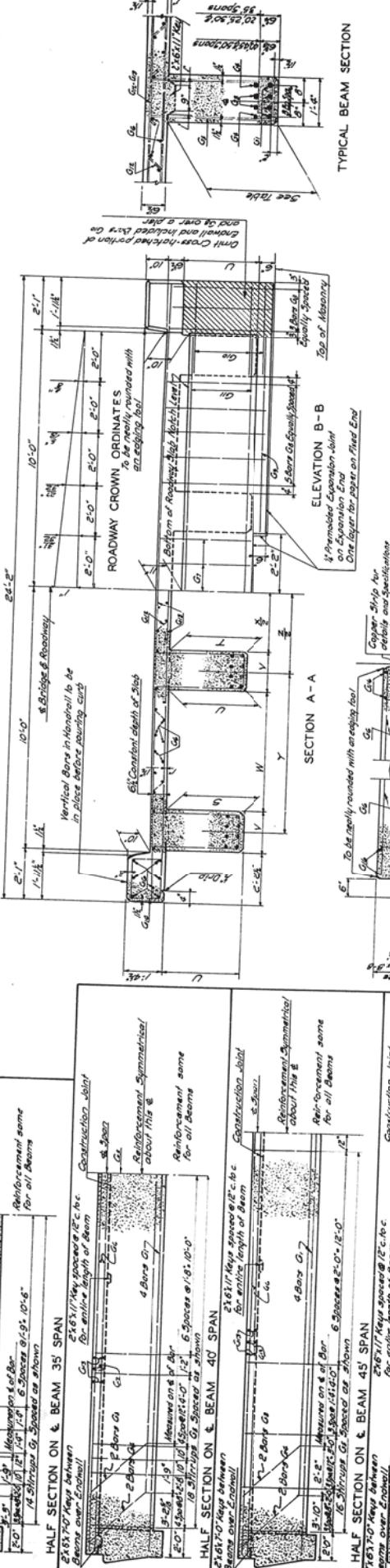
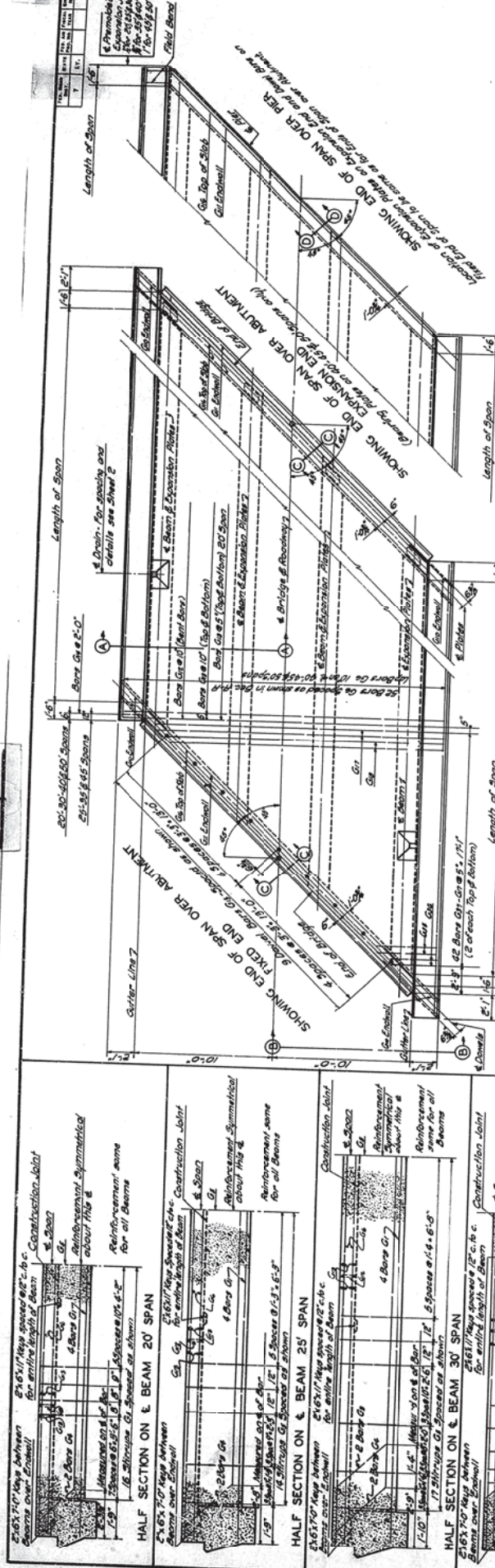
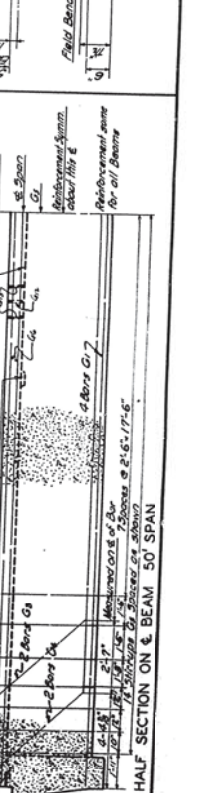
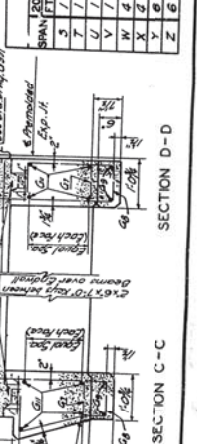


TABLE OF DIMENSIONS

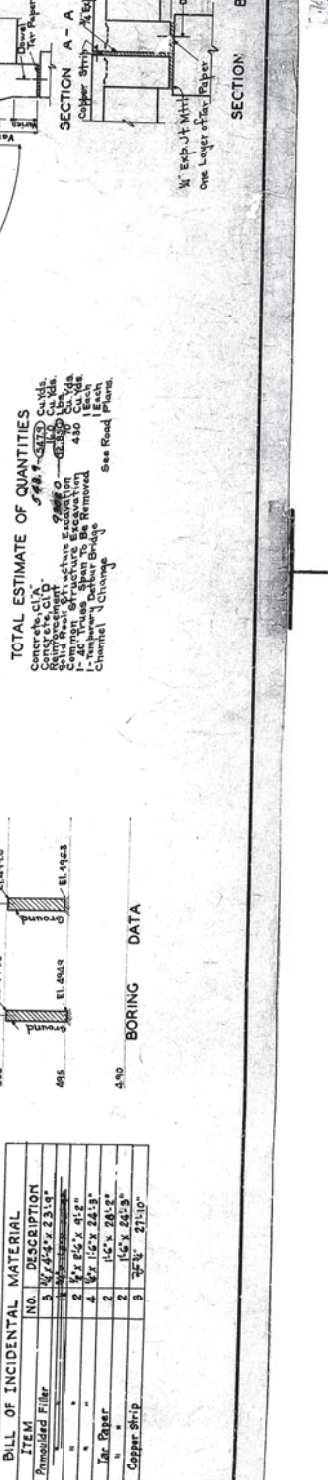
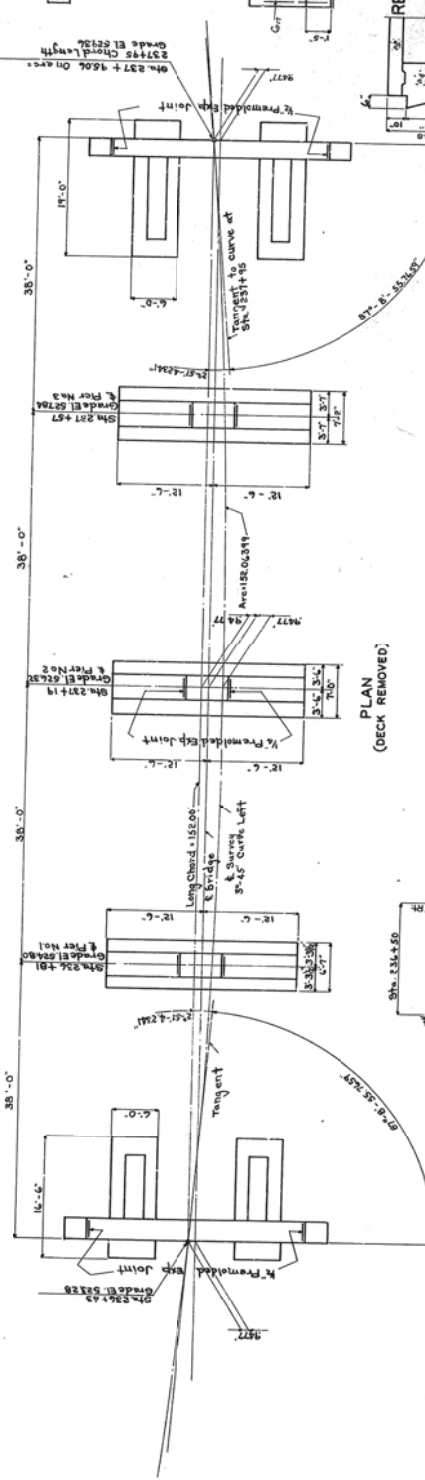
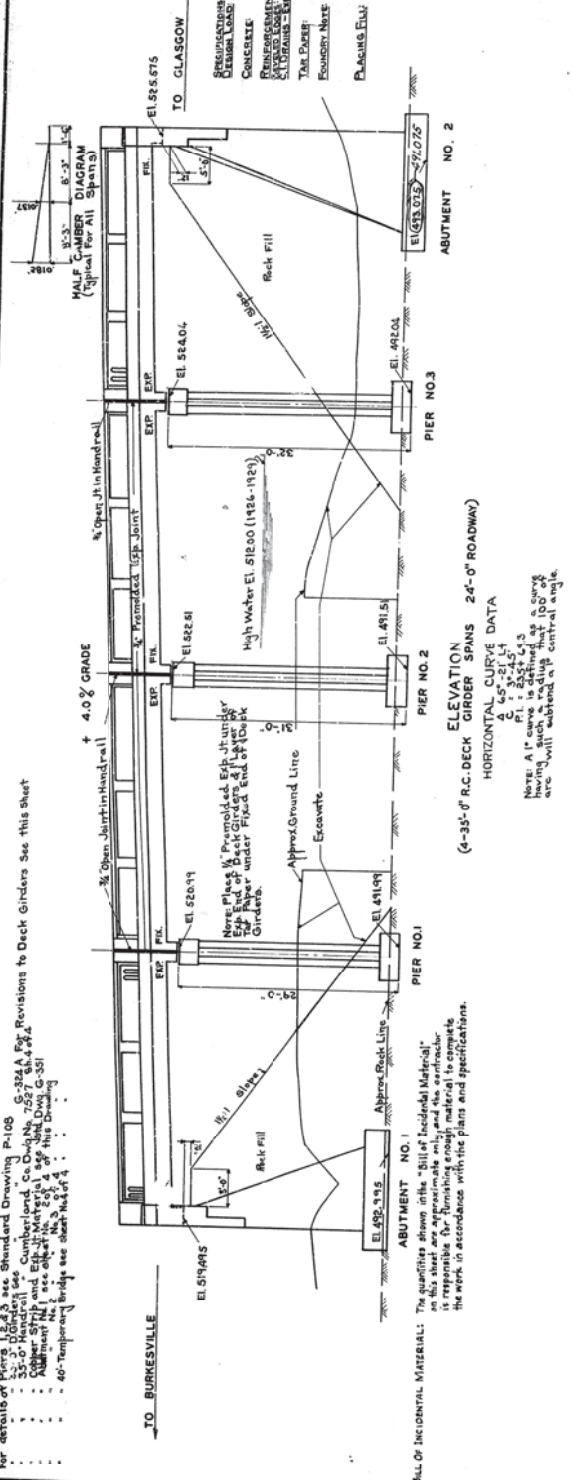
SPAN	20 FT.	25 FT.	30 FT.	35 FT.	40 FT.	45 FT.	50 FT.
1	1	1	1	1	1	1	1
2	1	1	1	1	1	1	1
3	1	1	1	1	1	1	1
4	1	1	1	1	1	1	1
5	1	1	1	1	1	1	1
6	1	1	1	1	1	1	1
7	1	1	1	1	1	1	1
8	1	1	1	1	1	1	1
9	1	1	1	1	1	1	1
10	1	1	1	1	1	1	1
11	1	1	1	1	1	1	1
12	1	1	1	1	1	1	1
13	1	1	1	1	1	1	1
14	1	1	1	1	1	1	1
15	1	1	1	1	1	1	1
16	1	1	1	1	1	1	1
17	1	1	1	1	1	1	1
18	1	1	1	1	1	1	1
19	1	1	1	1	1	1	1
20	1	1	1	1	1	1	1
21	1	1	1	1	1	1	1
22	1	1	1	1	1	1	1
23	1	1	1	1	1	1	1
24	1	1	1	1	1	1	1
25	1	1	1	1	1	1	1
26	1	1	1	1	1	1	1
27	1	1	1	1	1	1	1
28	1	1	1	1	1	1	1
29	1	1	1	1	1	1	1
30	1	1	1	1	1	1	1
31	1	1	1	1	1	1	1
32	1	1	1	1	1	1	1
33	1	1	1	1	1	1	1
34	1	1	1	1	1	1	1
35	1	1	1	1	1	1	1
36	1	1	1	1	1	1	1
37	1	1	1	1	1	1	1
38	1	1	1	1	1	1	1
39	1	1	1	1	1	1	1
40	1	1	1	1	1	1	1
41	1	1	1	1	1	1	1
42	1	1	1	1	1	1	1
43	1	1	1	1	1	1	1
44	1	1	1	1	1	1	1
45	1	1	1	1	1	1	1
46	1	1	1	1	1	1	1
47	1	1	1	1	1	1	1
48	1	1	1	1	1	1	1
49	1	1	1	1	1	1	1
50	1	1	1	1	1	1	1



COMMONWEALTH OF KENTUCKY
DEPARTMENT OF HIGHWAYS
STANDARD CONCRETE BRIDGE
DECK GIRDERS
45° SKEW
20 FT. ROADWAY
SPANS 20' TO 50'

Sheet 1 of 2
A-G-300-C

029B00020N



REFERENCES:
 For details of Piers, Abutments, and Deck Girders see Standard Drawing P-108
 for details of:
 - 35'-0" Handrail see Standard Drawing P-108
 - Abutment and Deck Girders see Standard Drawing P-108
 - 40'-0" Temporary Bridge see Standard Drawing P-108

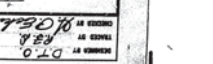
NOTE: The quantities shown in this Bill of Incidental Material are approximate only and do not constitute a contract. The work is to be done in accordance with the plans and specifications.

BILL OF INCIDENTAL MATERIAL

ITEM	NO.	DESCRIPTION
Premolded Filler	1	3' x 2' x 2' x 2' x 2'
"	2	2' x 2' x 2' x 2' x 2'
"	3	1' x 2' x 2' x 2' x 2'
"	4	1' x 2' x 2' x 2' x 2'
"	5	1' x 2' x 2' x 2' x 2'
"	6	1' x 2' x 2' x 2' x 2'
"	7	1' x 2' x 2' x 2' x 2'
"	8	1' x 2' x 2' x 2' x 2'
"	9	1' x 2' x 2' x 2' x 2'
"	10	1' x 2' x 2' x 2' x 2'

ESTIMATE OF ADDITIONAL QUANTITIES
 Concrete, Clear A
 Premolded Jct. Joint
 Bridge Deck
 End Wall Elevation
 Layer of her paper
 END WALL ELEVATION
 (Over Abutments)

REVISIONS TO ENDWALLS OF DECK GIRDERS
 Note: Place C1 Drains on
 inside of curve only



COMMONWEALTH OF KENTUCKY
 DEPARTMENT OF HIGHWAYS
 COUNTY OF CUMBERLAND
CUMBERLAND - GLASGOW
 BURKESVILLE - GLASGOW

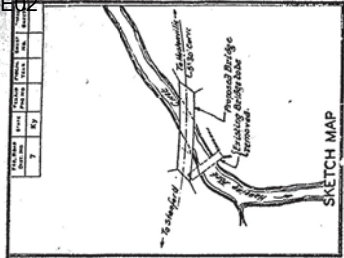
STATION 237 + 10 ROAD PROPOSED 885 1888
 M.P. 29-127-11
 PROJECT 7539
 CUMBERLAND Co. 75275H44
 G-351
 6-28-54
 ALL RIGHTS RESERVED

GENERAL NOTE
 The quantities shown in this Bill of Incidental Material are approximate only and do not constitute a contract. The work is to be done in accordance with the plans and specifications.

BILL AND TYPES OF REINFORCEMENT (ONE SPAN)

Member	No. of Bars	Length	Location	Type
GA (1)	13	18'	Top	1
GA (2)	13	18'	Bottom	2
GA (3)	13	18'	Top	3
GA (4)	13	18'	Bottom	4
GA (5)	13	18'	Top	5
GA (6)	13	18'	Bottom	6
GA (7)	13	18'	Top	7
GA (8)	13	18'	Bottom	8
GA (9)	13	18'	Top	9
GA (10)	13	18'	Bottom	10

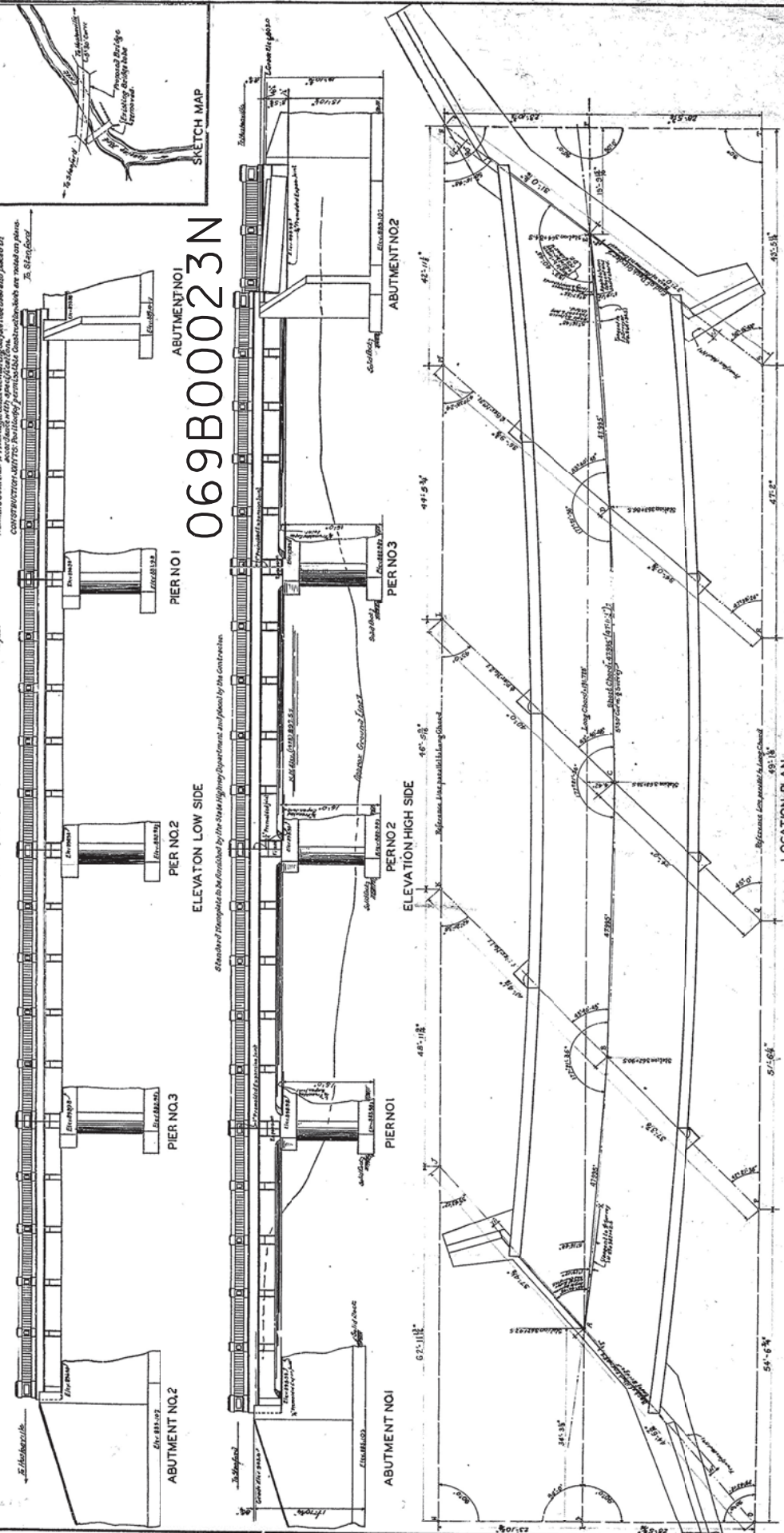
Note: This bill replaces Item G₂ shown on SHEET 029A
 TYPE 1 (All dimensions are out to out)



GENERAL NOTE
 SPECIFICATIONS: 2018 Kentucky Department of Transportation, Kentucky, KDOT
 CONTRACT: 2018-2019 Construction Contract 43-4000-0001
 REVISIONS: None
 DRAWING DATE: 10/15/18
 DRAWING SCALE: 1" = 40' (Horizontal) and 1" = 10' (Vertical)

TOTAL ESTIMATE OF QUANTITIES
 Concrete - Class 40
 Reinforcement - 100%
 Formwork - 100%
 Excavation - 100%
 Backfill - 100%
 Other - 100%

REFERENCES
 The above scheme of reference lines and points is given to describe the alignment of the bridge, and must be unambiguously carried out. DO NOT ATTEMPT TO RUN IN ENTIRE CURVE BY POINT. Set ELEVATION AND TURN POINTS TO THE RIGHT OF THE ROAD. The reference line of alignment is parallel to and 10 feet above the centerline of the road. The reference line of alignment is parallel to and 10 feet above the centerline of the road. The reference line of alignment is parallel to and 10 feet above the centerline of the road.



INSTRUCTIONS FOR STAKING OUT BRIDGE
 The above scheme of reference lines and points is given to describe the alignment of the bridge, and must be unambiguously carried out. DO NOT ATTEMPT TO RUN IN ENTIRE CURVE BY POINT. Set ELEVATION AND TURN POINTS TO THE RIGHT OF THE ROAD. The reference line of alignment is parallel to and 10 feet above the centerline of the road. The reference line of alignment is parallel to and 10 feet above the centerline of the road. The reference line of alignment is parallel to and 10 feet above the centerline of the road.

LOCATION PLAN
 4-45-07 LECK GARDERS - 45° KEY ON 3-30 CURVE

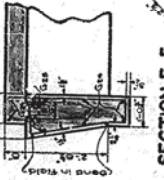
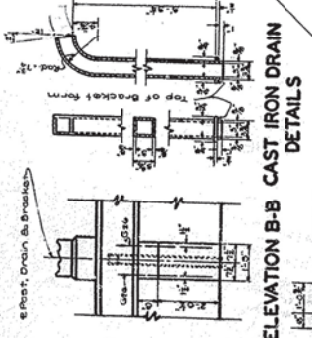
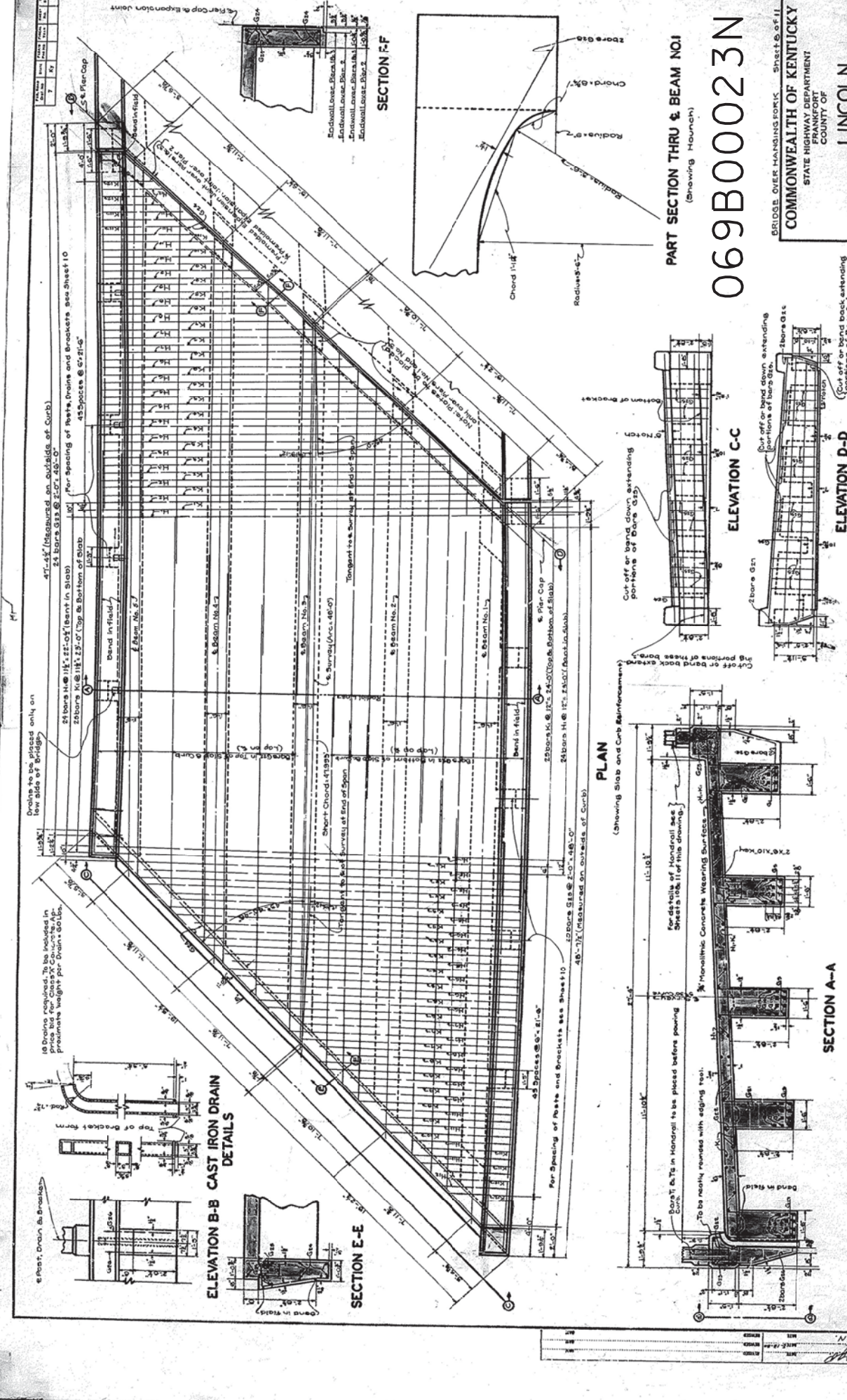
CALCULATIONS
 Stationing is carried on actual distances. Short chord lengths are 4.195 (3-11/16)'. Curve calculations are as follows: $W = 44'$, $R = 121.95'$, $\Delta = 45^\circ$, $L = 121.95'$, $E = 20.37'$, $M = 18.75'$, $T = 114.87'$, $P = 114.87'$, $S = 114.87'$, $Q = 114.87'$, $R = 114.87'$, $S = 114.87'$, $T = 114.87'$, $U = 114.87'$, $V = 114.87'$, $W = 114.87'$, $X = 114.87'$, $Y = 114.87'$, $Z = 114.87'$.

COMM. N. ALTH OF KENTUCKY
 STATE HIGHWAY DEPARTMENT
 COUNTY OF FRANKFORT

LINGOLN
 STANFORD-HUSTONVILLE

ROAD PROJECT NO. 43-4000-0001
 STATION 863+88.5

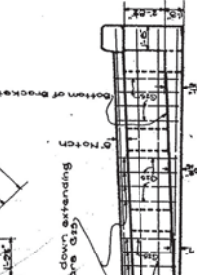
DATE: 10/15/18
 DRAWN BY: [Signature]
 CHECKED BY: [Signature]



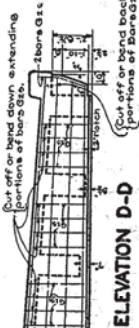
SECTION E-E

SECTION F-F

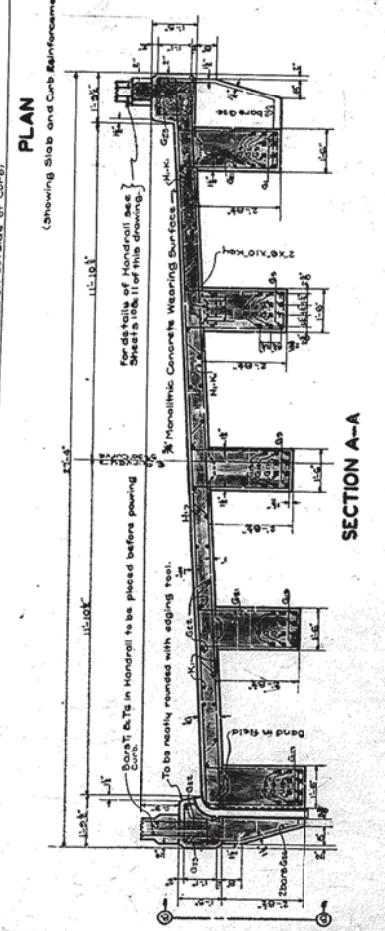
PART SECTION THRU & BEAM NO.1
(Showing Haunch)



ELEVATION C-C



ELEVATION D-D



SECTION A-A

DETAILS OF 4-45° R.C. DECK GIRDER SPANS - 45° SKEW RIGHT 5°-30' CURVE LEFT.

BRIDGE OVER HANSHURK Fork
SHEET 511
COMMONWEALTH OF KENTUCKY
STATE HIGHWAY DEPARTMENT
FRANKFORD COUNTY
LINCOLN
STANFORD-HUSTONVILLE
ROAD PROJECT NO.
STATION 88+35.6
DESIGNED BY
DRAWN BY
CHECKED BY
APPROVED BY

069B00023N

DRAWN BY: R.M. BLOOM
CHECKED BY: J.C. HUGHES
DATE: 12/2/51

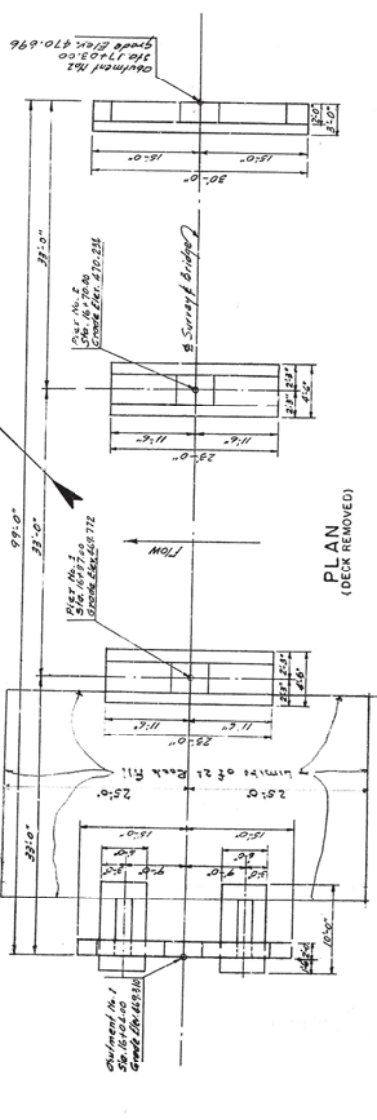
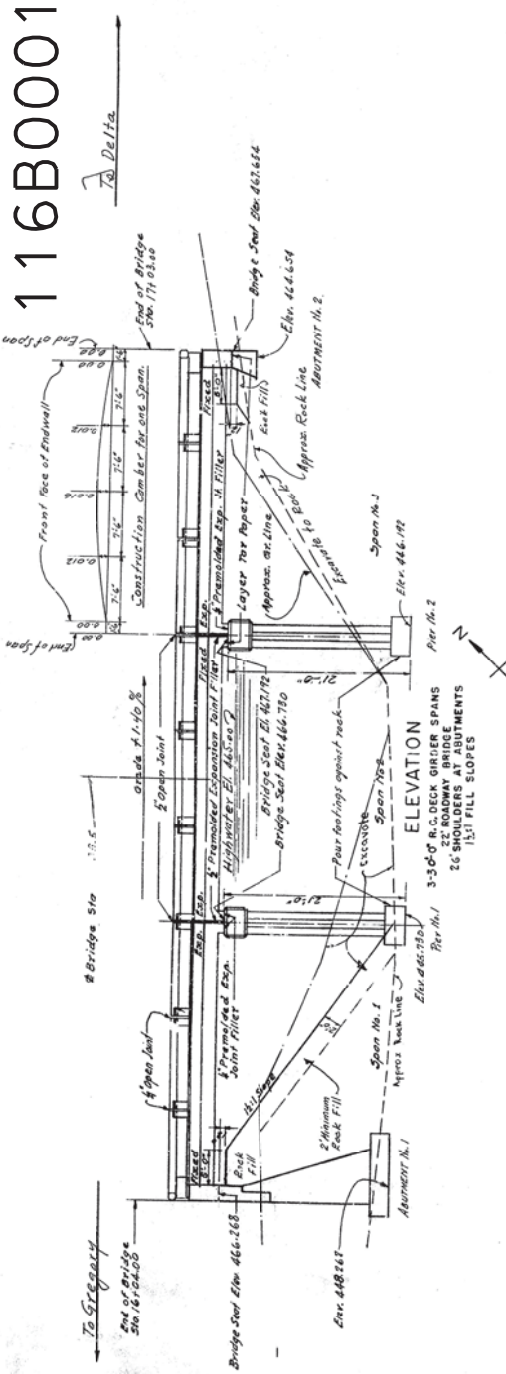
116B00019N

ITEM	SHEET NUMBER	CLASSIFICATION	QUANTITY	UNIT	REMARKS	CHANNEL CHANGE	
						CONCRETE	STEEL
LAYOUT SHEET	1	CONCRETE	10.00	CU YD			
ABUTMENT 2	2	CONCRETE	10.00	CU YD			
PIER 1	3	CONCRETE	10.00	CU YD			
PIER 2	4	CONCRETE	10.00	CU YD			
SPAN 1	5	CONCRETE	10.00	CU YD			
SPAN 2	6	CONCRETE	10.00	CU YD			
SPAN 3	7	CONCRETE	10.00	CU YD			
HANDRAIL	8	CONCRETE	10.00	CU YD			
SOUNDINGS	9	CONCRETE	10.00	CU YD			
TOTALS			131.35				

ITEM	NO. OF PILES	SIZE AND LOCATION
PREPARED JOINT MATL	2	1/2" x 2 1/2" x 12' 0"
"	2	1/2" x 2 1/2" x 12' 0"
"	1	1/2" x 2 1/2" x 12' 0"
"	1	1/2" x 2 1/2" x 12' 0"
Cast Iron Drains	12	See Notes - 2" Dia
Copper Strip	2	1/2" x 2 1/2" x 12' 0"
Steel Exp. Joint Matl	4	1/2" x 2 1/2" x 12' 0"

GENERAL NOTE

Specifications:—Department of Highways
Design Load:—Bridge designed for HS-20 loading as specified in A.A.S.H.O. 1957 Specifications.
Concrete:—To be used in usual mix except in handrails.
Reinforcement:—Dimensions from face of concrete to bars are clear distances except as otherwise shown.
Drains:—The cost of these items to be included in the unit price bid for Class 2 concrete.
Exp. Joint Material, for Paper and Copper Strip
Bentled Edges:—The deformation of all reinforcing bars shall conform to A.S.T.M. Specifications A-601-59. See Emergency Provision No. 10 to be completed.
For Paper:—Class 2 and Class 20 concrete on the bridge superstructure shall be constructed with the same mix as the concrete used for the abutments and piers.
For Paper:—Class 2 and Class 20 concrete on the bridge superstructure shall be constructed with the same mix as the concrete used for the abutments and piers.
For Paper:—Class 2 and Class 20 concrete on the bridge superstructure shall be constructed with the same mix as the concrete used for the abutments and piers.



BRIDGE OVER DRINKING CREEK SHEET 1 OF 4
COMMONWEALTH OF KENTUCKY
 DEPARTMENT OF HIGHWAYS
 FRANKFORT
 COUNTY OF
WAYNE
 GREGORY - DELTA ROAD
 STATION 16+63.50 PROJECT NO. KY 16-274-4
 BRIDGE NUMBER 116B00019N
 DATE 11/12/52
 DRAWN BY H. G. HARRIS
 CHECKED BY J. H. HARRIS

LAYOUT

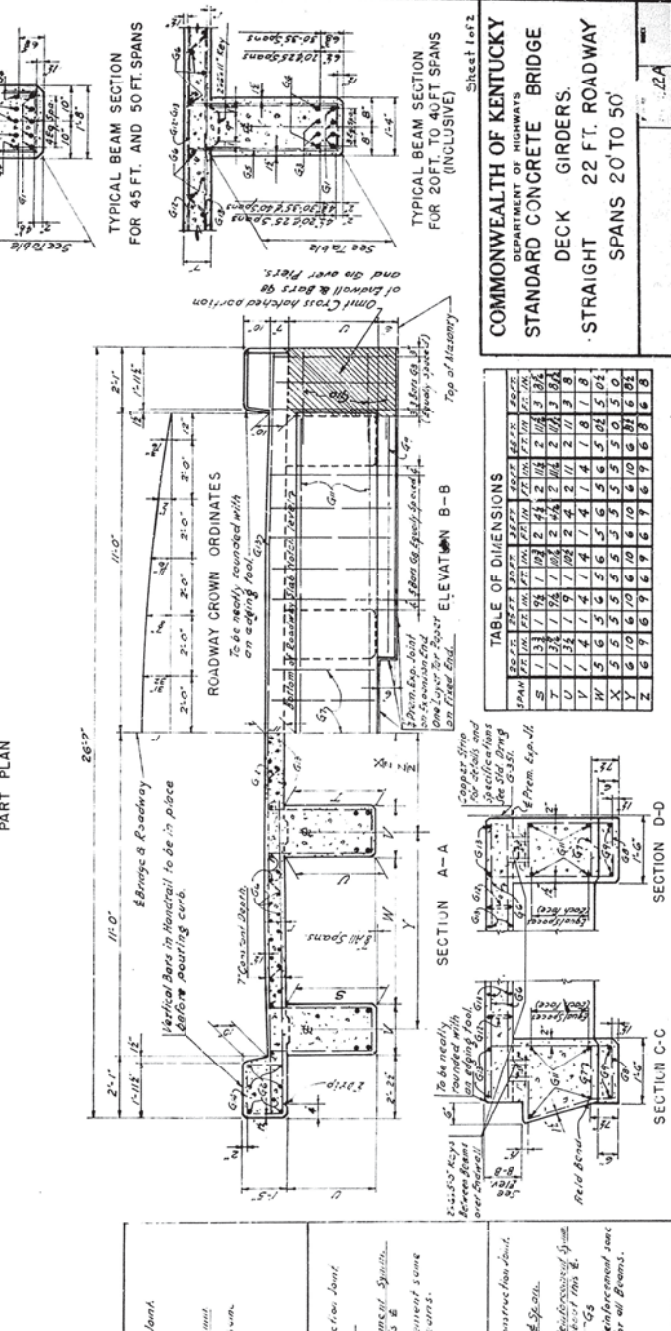
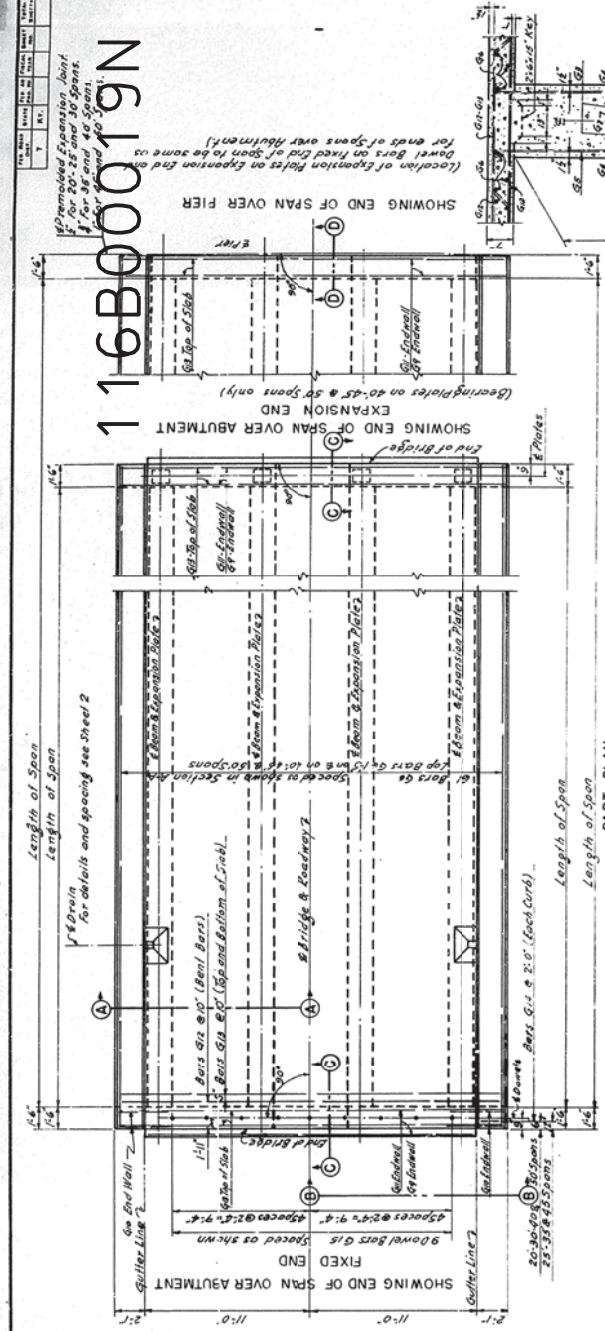
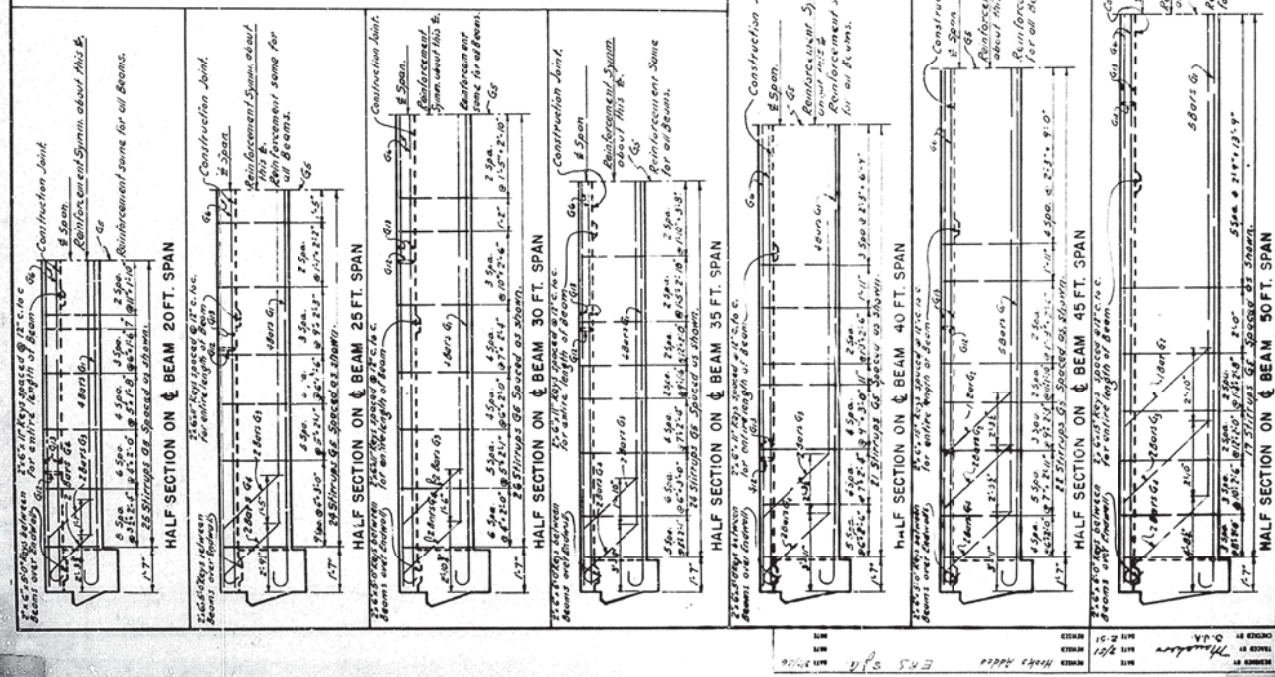
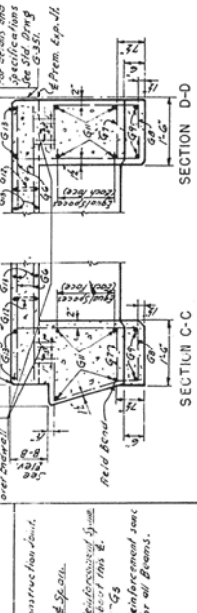


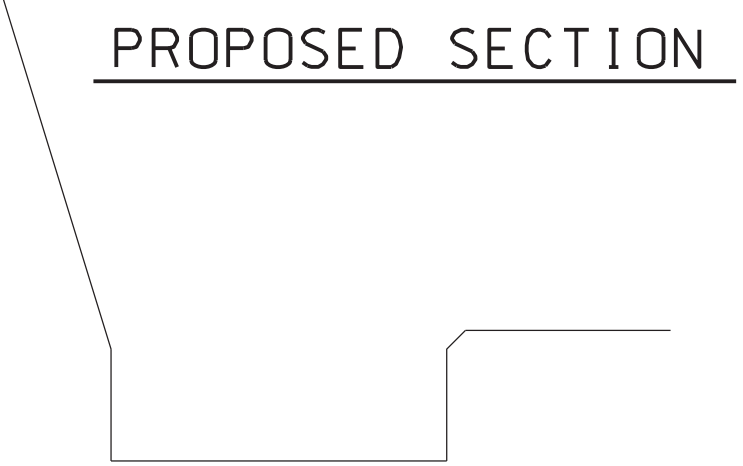
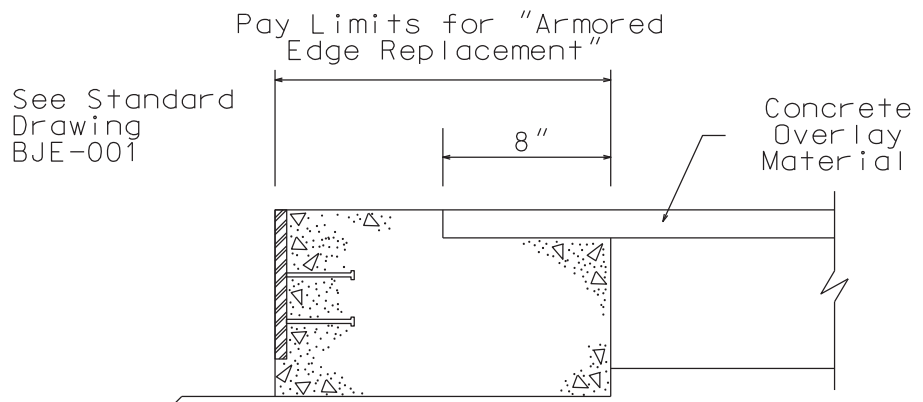
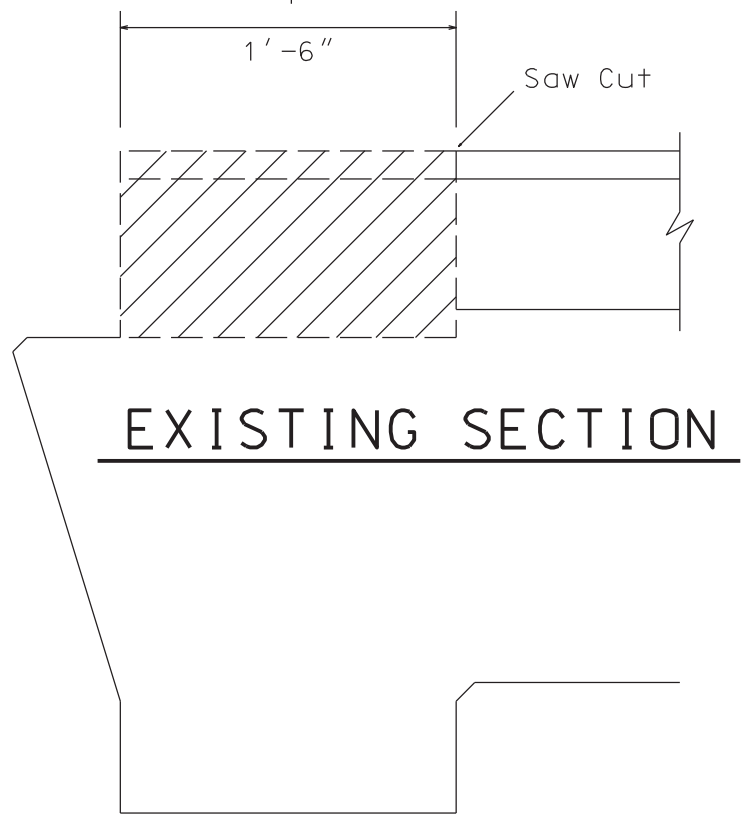
TABLE OF DIMENSIONS

SPAN	20 FT.	25 FT.	30 FT.	35 FT.	40 FT.	45 FT.	50 FT.
1	1	1	1	1	1	1	1
2	1	1	1	1	1	1	1
3	1	1	1	1	1	1	1
4	1	1	1	1	1	1	1
5	1	1	1	1	1	1	1
6	1	1	1	1	1	1	1
7	1	1	1	1	1	1	1
8	1	1	1	1	1	1	1
9	1	1	1	1	1	1	1
10	1	1	1	1	1	1	1
11	1	1	1	1	1	1	1
12	1	1	1	1	1	1	1
13	1	1	1	1	1	1	1
14	1	1	1	1	1	1	1
15	1	1	1	1	1	1	1
16	1	1	1	1	1	1	1
17	1	1	1	1	1	1	1
18	1	1	1	1	1	1	1
19	1	1	1	1	1	1	1
20	1	1	1	1	1	1	1

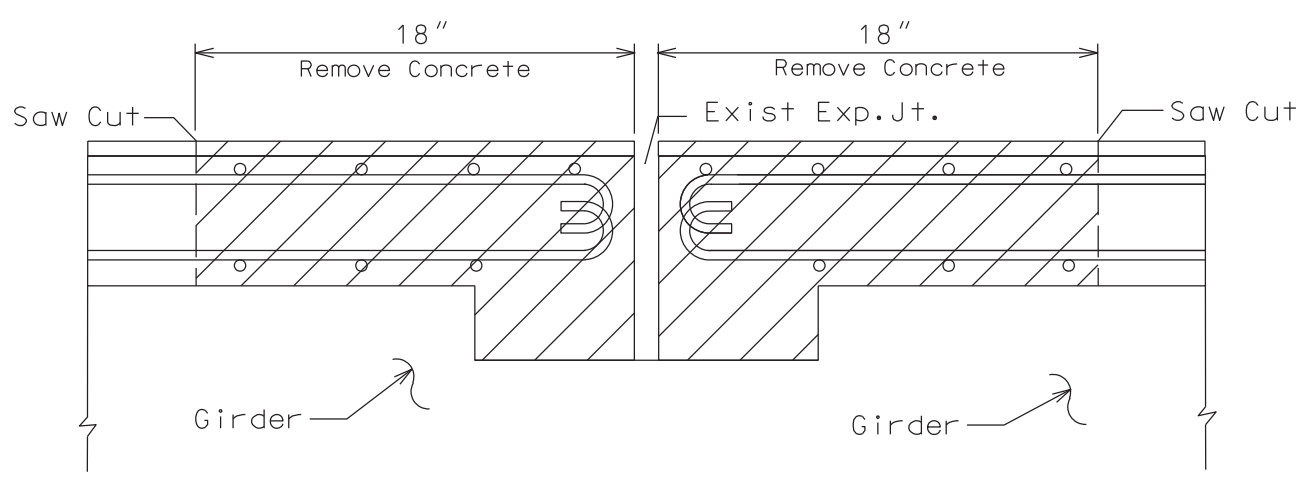


ARMORED EDGE DETAIL

Remove X-Hatched Areas of
Concrete & Expansion Device

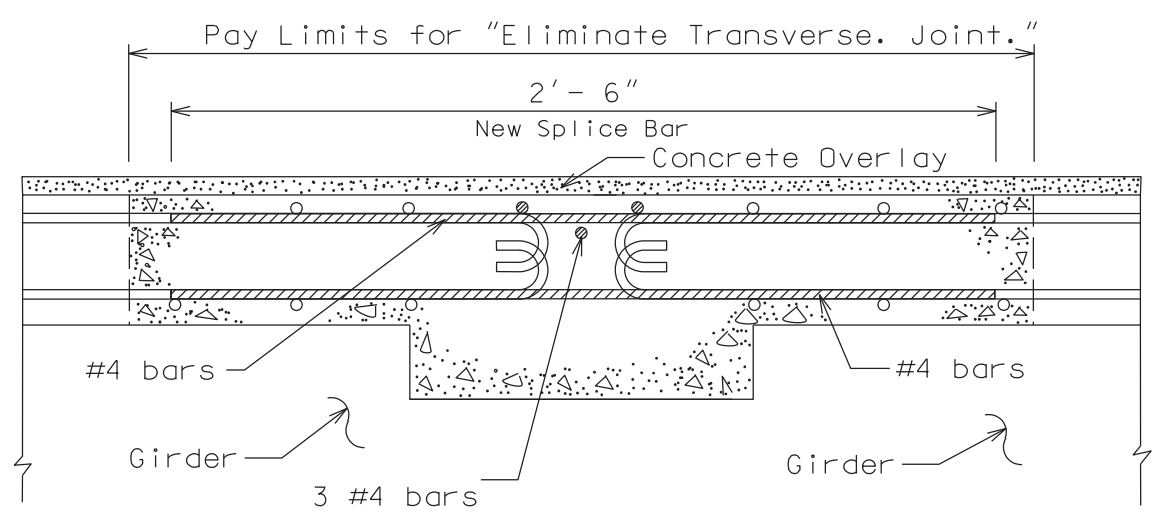


ELIMINATE TRANSVERSE JOINT DETAIL



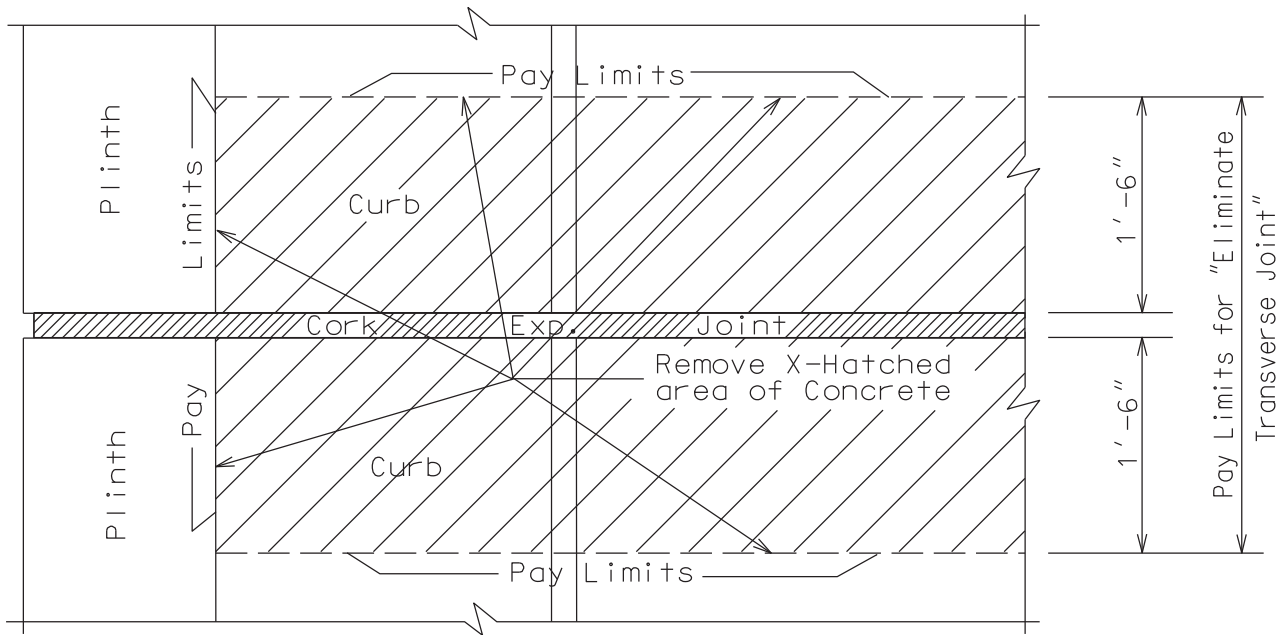
NOTE: Do not disturb existing Steel Reinforcement

EXISTING SECTION @ Transverse Joint

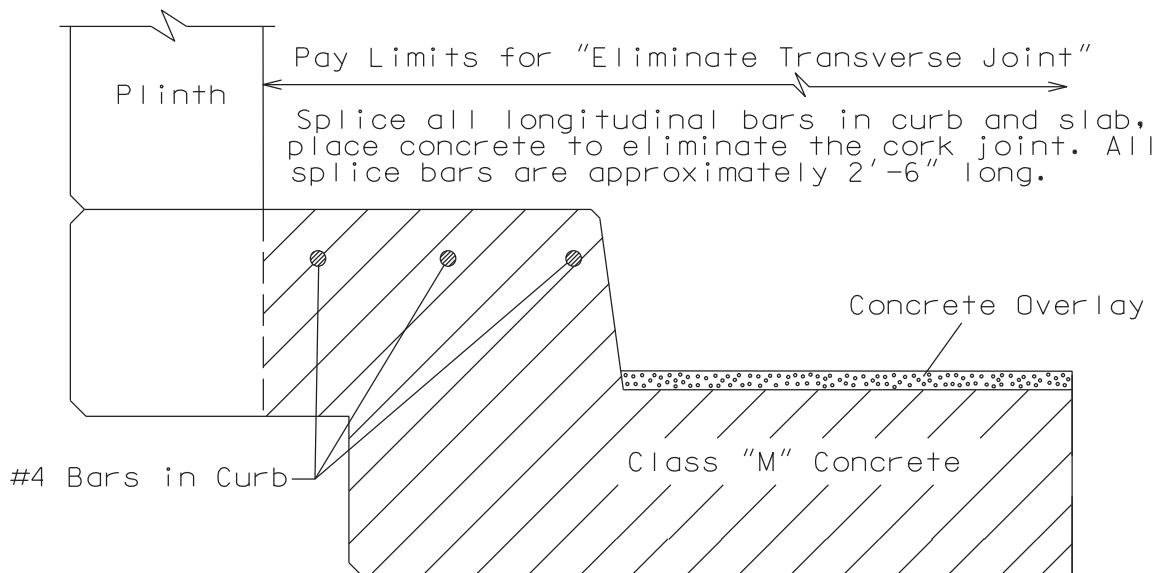


PROPOSED SECTION @ Transverse Joint

ELIMINATE TRANSVERSE JOINT DETAIL

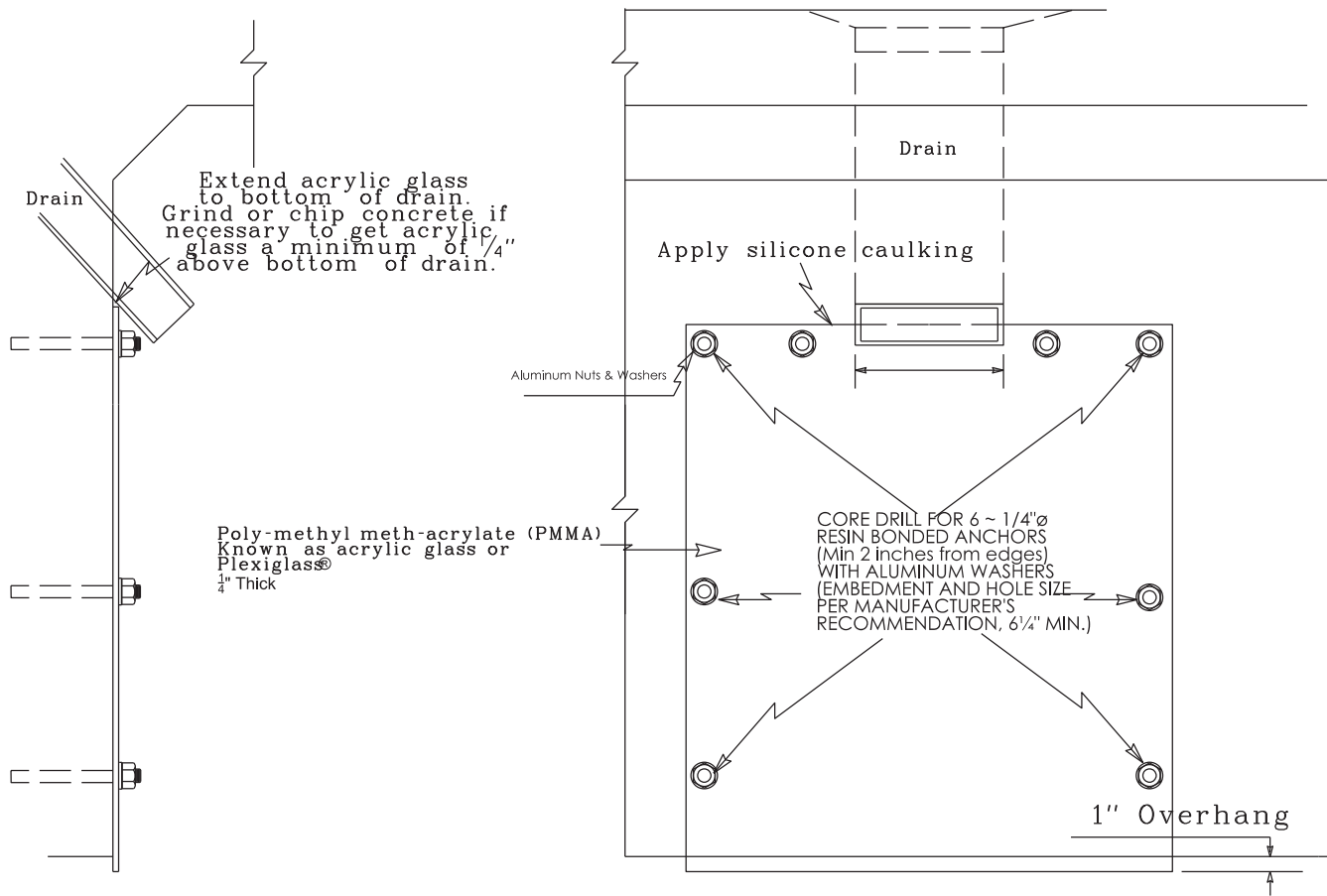


EXISTING PLAN VIEW @ CURB



PROPOSED SECTION @ CURB

ACRYLIC GLASS DETAIL



SECTION
NOT TO SCALE

PLAN
NOT TO SCALE

027B00014N	12 drains, 12"x 24" pieces = 24 sqft
029B00020N	8 drains, 16"x 32" pieces = 28.4 sqft
116B00019N	12 drains, 10"x 20" pieces = 16.66 sqft
116B00023N	18 drains, 18"x 36" pieces = 81sqft

PART II
SPECIFICATIONS AND STANDARD DRAWINGS

SPECIFICATIONS REFERENCE

Any reference in the plans or proposal to previous editions of the *Standard Specifications for Road and Bridge Construction* and *Standard Drawings* are superseded by *Standard Specifications for Road and Bridge Construction, Edition of 2019* and *Standard Drawings, Edition of 2016*.

SUPPLEMENTAL SPECIFICATIONS

The contractor shall use the Supplemental Specifications that are effective at the time of letting.
The Supplemental Specifications can be found at the following link:

<http://transportation.ky.gov/Construction/Pages/Kentucky-Standard-Specifications.aspx>

STANDARD DRAWINGS THAT APPLY

TRAFFIC
~ TEMPORARY ~
TRAFFIC CONTROL

LANE CLOSURE USING TRAFFIC SIGNALS TTC-110

DEVICES

POST SPLICING DETAIL TTD-110

BRIDGES

MISCELLANEOUS STANDARDS

BRIDGE RESTORATION AND WATERPROOFING
WITH CONCRETE OVERLAYS BGX-009-04

JOINTS

NEOPRENE EXPANSION DAMS AND ARMORED EDGES BJE-001-11

PART III

EMPLOYMENT, WAGE AND RECORD REQUIREMENTS

**TRANSPORTATION CABINET
DEPARTMENT OF HIGHWAYS**

**LABOR AND WAGE REQUIREMENTS
APPLICABLE TO OTHER THAN FEDERAL-AID SYSTEM PROJECTS**

- I. Application
- II. Nondiscrimination of Employees (KRS 344)

I. APPLICATION

1. These contract provisions shall apply to all work performed on the contract by the contractor with his own organization and with the assistance of workmen under his immediate superintendence and to all work performed on the contract by piecework, station work or by subcontract. The contractor's organization shall be construed to include only workmen employed and paid directly by the contractor and equipment owned or rented by him, with or without operators.

2. The contractor shall insert in each of his subcontracts all of the stipulations contained in these Required Provisions and such other stipulations as may be required.

3. A breach of any of the stipulations contained in these Required Provisions may be grounds for termination of the contract.

3. If the contractor is in control of apprenticeship or other training or retraining, including on-the-job training programs, he shall not discriminate against an individual because of his race, color, religion, national origin, sex, disability or age forty (40) and over, in admission to, or employment in any program established to provide apprenticeship or other training.

4. The contractor will send to each labor union or representative of workers with which he has a collective bargaining agreement or other contract or understanding, a notice to be provided advising the said labor union or workers' representative of the contractor's commitments under this section, and shall post copies of the notice in conspicuous places available to employees and applicants for employment. The contractor will take such action with respect to any subcontract or purchase order as the administrating agency may direct as a means of enforcing such provisions, including sanctions for non-compliance.

Revised: January 25, 2017

II. NONDISCRIMINATION OF EMPLOYEES

**AN ACT OF THE KENTUCKY
GENERAL ASSEMBLY TO PREVENT
DISCRIMINATION IN EMPLOYMENT
KRS CHAPTER 344
EFFECTIVE JUNE 16, 1972**

The contract on this project, in accordance with KRS Chapter 344, provides that during the performance of this contract, the contractor agrees as follows:

1. The contractor shall not fail or refuse to hire, or shall not discharge any individual, or otherwise discriminate against an individual with respect to his compensation, terms, conditions, or privileges of employment, because of such individual's race, color, religion, national origin, sex, disability or age (forty and above); or limit, segregate, or classify his employees in any way which would deprive or tend to deprive an individual of employment opportunities or otherwise adversely affect his status as an employee, because of such individual's race, color, religion, national origin, sex, disability or age forty (40) and over. The contractor agrees to post in conspicuous places, available to employees and applicants for employment, notices to be provided setting forth the provisions of this nondiscrimination clause.

2. The contractor shall not print or publish or cause to be printed or published a notice or advertisement relating to employment by such an employer or membership in or any classification or referral for employment by the employment agency, indicating any preference, limitation, specification, or discrimination, based on race, color, religion, national origin, sex, or age forty (40) and over, or because the person is a qualified individual with a disability, except that such a notice or advertisement may indicate a preference, limitation, or specification based on religion, national origin, sex, or age forty (40) and over, or because the person is a qualified individual with a disability, when religion, national origin, sex, or age forty (40) and over, or because the person is a qualified individual with a disability, is a bona fide occupational qualification for employment.

EXECUTIVE BRANCH CODE OF ETHICS

In the 1992 regular legislative session, the General Assembly passed and Governor Brereton Jones signed Senate Bill 63 (codified as KRS 11A), the Executive Branch Code of Ethics, which states, in part:

KRS 11A.040 (7) provides:

No present or former public servant shall, within six (6) months following termination of his office or employment, accept employment, compensation, or other economic benefit from any person or business that contracts or does business with, or is regulated by, the state in matters in which he was directly involved during the last thirty-six (36) months of his tenure. This provision shall not prohibit an individual from returning to the same business, firm, occupation, or profession in which he was involved prior to taking office or beginning his term of employment, or for which he received, prior to his state employment, a professional degree or license, provided that, for a period of six (6) months, he personally refrains from working on any matter in which he was directly involved during the last thirty-six (36) months of his tenure in state government. This subsection shall not prohibit the performance of ministerial functions, including but not limited to filing tax returns, filing applications for permits or licenses, or filing incorporation papers, nor shall it prohibit the former officer or public servant from receiving public funds disbursed through entitlement programs.

KRS 11A.040 (9) states:

A former public servant shall not represent a person or business before a state agency in a matter in which the former public servant was directly involved during the last thirty-six (36) months of his tenure, for a period of one (1) year after the latter of:

- a) The date of leaving office or termination of employment; or
- b) The date the term of office expires to which the public servant was elected.

This law is intended to promote public confidence in the integrity of state government and to declare as public policy the idea that state employees should view their work as a public trust and not as a way to obtain private benefits.

If you have worked for the executive branch of state government within the past six months, you may be subject to the law's prohibitions. The law's applicability may be different if you hold elected office or are contemplating representation of another before a state agency.

Also, if you are affiliated with a firm which does business with the state and which employs former state executive-branch employees, you should be aware that the law may apply to them.

In case of doubt, the law permits you to request an advisory opinion from the Executive Branch Ethics Commission, 3 Fountain Place, Frankfort, Kentucky 40601; telephone (502) 564-7954.

Revised: January 27, 2017

Kentucky Equal Employment Opportunity Act of 1978

The requirements of the Kentucky Equal Employment Opportunity Act of 1978 (KRS 45.560-45.640) shall apply to this Contract. The apparent low Bidder will be required to submit EEO forms to the Division of Construction Procurement, which will then forward to the Finance and Administration Cabinet for review and approval. No award will become effective until all forms are submitted and EEO/CC has certified compliance. The required EEO forms are as follows:

- EEO-1: Employer Information Report
- Affidavit of Intent to Comply
- Employee Data Sheet
- Subcontractor Report

These forms are available on the Finance and Administration's web page under ***Vendor Information, Standard Attachments and General Terms*** at the following address:
<https://www.eProcurement.ky.gov>.

Bidders currently certified as being in compliance by the Finance and Administration Cabinet may submit a copy of their approval letter in lieu of the referenced EEO forms.

For questions or assistance please contact the Finance and Administration Cabinet by email at **finance.contractcompliance@ky.gov** or by phone at 502-564-2874.

EMPLOYEE RIGHTS UNDER THE FAIR LABOR STANDARDS ACT

THE UNITED STATES DEPARTMENT OF LABOR WAGE AND HOUR DIVISION

FEDERAL MINIMUM WAGE

\$7.25

 PER HOUR

BEGINNING JULY 24, 2009

OVERTIME PAY At least 1½ times your regular rate of pay for all hours worked over 40 in a workweek.

CHILD LABOR An employee must be at least **16** years old to work in most non-farm jobs and at least **18** to work in non-farm jobs declared hazardous by the Secretary of Labor.

Youths **14** and **15** years old may work outside school hours in various non-manufacturing, non-mining, non-hazardous jobs under the following conditions:

No more than

- **3** hours on a school day or **18** hours in a school week;
- **8** hours on a non-school day or **40** hours in a non-school week.

Also, work may not begin before **7 a.m.** or end after **7 p.m.**, except from June 1 through Labor Day, when evening hours are extended to **9 p.m.** Different rules apply in agricultural employment.

TIP CREDIT Employers of “tipped employees” must pay a cash wage of at least \$2.13 per hour if they claim a tip credit against their minimum wage obligation. If an employee’s tips combined with the employer’s cash wage of at least \$2.13 per hour do not equal the minimum hourly wage, the employer must make up the difference. Certain other conditions must also be met.

ENFORCEMENT The Department of Labor may recover back wages either administratively or through court action, for the employees that have been underpaid in violation of the law. Violations may result in civil or criminal action.

Employers may be assessed civil money penalties of up to \$1,100 for each willful or repeated violation of the minimum wage or overtime pay provisions of the law and up to \$11,000 for each employee who is the subject of a violation of the Act’s child labor provisions. In addition, a civil money penalty of up to \$50,000 may be assessed for each child labor violation that causes the death or serious injury of any minor employee, and such assessments may be doubled, up to \$100,000, when the violations are determined to be willful or repeated. The law also prohibits discriminating against or discharging workers who file a complaint or participate in any proceeding under the Act.

ADDITIONAL INFORMATION

- Certain occupations and establishments are exempt from the minimum wage and/or overtime pay provisions.
- Special provisions apply to workers in American Samoa and the Commonwealth of the Northern Mariana Islands.
- Some state laws provide greater employee protections; employers must comply with both.
- The law requires employers to display this poster where employees can readily see it.
- Employees under 20 years of age may be paid \$4.25 per hour during their first 90 consecutive calendar days of employment with an employer.
- Certain full-time students, student learners, apprentices, and workers with disabilities may be paid less than the minimum wage under special certificates issued by the Department of Labor.

For additional information:



1-866-4-USWAGE

(1-866-487-9243) TTY: 1-877-889-5627



WWW.WAGEHOUR.DOL.GOV

PART IV
INSURANCE

Refer to
Kentucky Standard Specifications for Road and Bridge Construction,
current edition

PART V
BID ITEMS

PROPOSAL BID ITEMS

202901

Page 1 of 1

Report Date 1/24/20

Section: 0001 - BRIDGE

LINE	BID CODE	ALT	DESCRIPTION	QUANTITY	UNIT	UNIT PRIC	FP	AMOUNT
0010	02562		TEMPORARY SIGNS	1,043.00	SQFT		\$	
0020	02650		MAINTAIN & CONTROL TRAFFIC APPLIES TO 001B00008N	1.00	LS		\$	
0030	02650		MAINTAIN & CONTROL TRAFFIC APPLIES TO 001B00009N.	1.00	LS		\$	
0040	02650		MAINTAIN & CONTROL TRAFFIC APPLIES TO 027B00014N	1.00	LS		\$	
0050	02650		MAINTAIN & CONTROL TRAFFIC APPLIES TO 029B00020N	1.00	LS		\$	
0060	02650		MAINTAIN & CONTROL TRAFFIC APPLIES TO 069B00023N	1.00	LS		\$	
0070	02650		MAINTAIN & CONTROL TRAFFIC APPLIES TO 116B00019N	1.00	LS		\$	
0080	02650		MAINTAIN & CONTROL TRAFFIC APPLIES TO 116B00023N	1.00	LS		\$	
0090	02653		LANE CLOSURE	14.00	EACH		\$	
0100	03299		ARMORED EDGE FOR CONCRETE	344.50	LF		\$	
0110	03300		ELIMINATE TRANSVERSE JOINT	456.00	LF		\$	
0120	03302		REPAIR CONCRETE CURB	61.00	LF		\$	
0130	03304		BRIDGE OVERLAY APPROACH PAVEMENT	1,976.70	SQYD		\$	
0140	04933		TEMP SIGNAL 2 PHASE	4.00	EACH		\$	
0150	04934		TEMP SIGNAL MULTI PHASE	3.00	EACH		\$	
0160	06514		PAVE STRIPING-PERM PAINT-4 IN	5,148.00	LF		\$	
0170	06549		PAVE STRIPING-TEMP REM TAPE-B	3,500.00	LF		\$	
0180	06550		PAVE STRIPING-TEMP REM TAPE-W	7,000.00	LF		\$	
0190	06551		PAVE STRIPING-TEMP REM TAPE-Y	14,000.00	LF		\$	
0200	08150		STEEL REINFORCEMENT	6,680.00	LB		\$	
0210	08504		EPOXY SAND SLURRY	697.80	SQYD		\$	
0220	08510		REM EPOXY BIT FOREIGN OVERLAY	2,216.00	SQYD		\$	
0230	08526		CONC CLASS M FULL DEPTH PATCH	118.00	CUYD		\$	
0240	08534		CONCRETE OVERLAY-LATEX	123.10	CUYD		\$	
0250	08549		BLAST CLEANING	2,914.00	SQYD		\$	
0260	22146EN		CONCRETE PATCHING REPAIR	1.00	SQFT		\$	
0270	23879EC		ACRYLIC GLASS	150.06	SQFT		\$	
0280	24094EC		PARTIAL DEPTH PATCHING	61.50	CUYD		\$	

Section: 0002 - DEMOBILIZATION

LINE	BID CODE	ALT	DESCRIPTION	QUANTITY	UNIT	UNIT PRIC	FP	AMOUNT
0290	02569		DEMOBILIZATION	1.00	LS		\$	