



CALL NO. 401

CONTRACT ID. 212412

TAYLOR - WASHINGTON COUNTIES

FED/STATE PROJECT NUMBER 121GR21P079-FD04

DESCRIPTION KY 53 (WASHINGTON COUNTY) & KY 1061 (TAYLOR COUNTY)

WORK TYPE GUARDRAIL

PRIMARY COMPLETION DATE 8/1/2022

LETTING DATE: October 22,2021

Sealed Bids will be received electronically through the Bid Express bidding service until 10:00 am EASTERN DAYLIGHT TIME October 22,2021. Bids will be publicly announced at 10:00 am EASTERN DAYLIGHT TIME.

NO PLANS ASSOCIATED WITH THIS PROJECT.

REQUIRED BID PROPOSAL GUARANTY: Not less than 5% of the total bid.

TABLE OF CONTENTS

| | |
|----------|--|
| PART I | SCOPE OF WORK <ul style="list-style-type: none">• PROJECT(S), COMPLETION DATE(S), & LIQUIDATED DAMAGES• CONTRACT NOTES• STATE CONTRACT NOTES• DGA BASE FOR SHOULDERS• SPECIAL NOTE(S) APPLICABLE TO PROJECT• WASTE AND BORROW SITES• COORDINATION OF WORK WITH OTHER CONTRACTS• SHOULDER PREPARATION• GUARDRAIL• TYPICAL SECTION DIMENSIONS• TRAFFIC CONTROL PLAN• EROSION CONTROL PLAN FOR MAINTENANCE PROJECTS• UTILITY IMPACT & RAIL CERTIFICATION NOTES• SKETCH MAP(S)• MATERIAL SUMMARY• SUMMARY SHEET(S)• TYPICAL SECTION(S)• DETAIL SHEET(S) |
| PART II | SPECIFICATIONS AND STANDARD DRAWINGS <ul style="list-style-type: none">• SPECIFICATIONS REFERENCE• SUPPLEMENTAL SPECIFICATION• STANDARD DRAWINGS THAT APPLY |
| PART III | EMPLOYMENT, WAGE AND RECORD REQUIREMENTS <ul style="list-style-type: none">• LABOR AND WAGE REQUIREMENTS• EXECUTIVE BRANCH CODE OF ETHICS• KENTUCKY EQUAL EMPLOYMENT OPPORTUNITY ACT OF 1978 LOCALITY / STATE• PROJECT WAGE RATES / STATE FUNDED |
| PART IV | INSURANCE |
| PART V | BID ITEMS |

PART I

SCOPE OF WORK

ADMINISTRATIVE DISTRICT - 04

CONTRACT ID - 212412
121GR21P079-FD04
COUNTY - TAYLOR
PCN - MP10910612101
FD04 109 1061 001-003

LONE VALLEY ROAD (KY 1061) (MP 1.983) FROM 0.274 MILES EAST OF ROBIN ROAD EXTENDING EAST TO 0.026 MILES WEST OF STRAWBERRY FARM ROAD (MP 2.019), A DISTANCE OF 0.04 MILES.GUARDRAIL SYP NO. 04-04320.00.
GEOGRAPHIC COORDINATES LATITUDE 37:16:39.00 LONGITUDE 85:21:22.00

COUNTY - WASHINGTON
PCN - MP11500532102
FD04 115 0053 000-001

LAWRENCEBURG ROAD (KY 53) (MP 0.336) FROM 0.336 MILES EAST OF KY 555 EXTENDING EAST TO 0.380 MILES EAST OF KY 555 (MP 0.380), A DISTANCE OF 0.04 MILES.GUARDRAIL SYP NO. 04-04323.00.
GEOGRAPHIC COORDINATES LATITUDE 37:47:46.00 LONGITUDE 85:09:06.00

COMPLETION DATE(S):

COMPLETED BY 08/01/2022

SPECIFIED COMPLETION DATE -
ALL ITEMS IN CONTRACT

CONTRACT NOTES

PROPOSAL ADDENDA

All addenda to this proposal must be applied when calculating bid and certified in the bid packet submitted to the Kentucky Department of Highways. Failure to use the correct and most recent addenda may result in the bid being rejected.

BID SUBMITTAL

Bidder must use the Department's electronic bidding software. The Bidder must download the bid file located on the Bid Express website (www.bidx.com) to prepare a bid packet for submission to the Department. The bidder must submit electronically using Bid Express.

JOINT VENTURE BIDDING

Joint venture bidding is permissible. All companies in the joint venture must be prequalified in one of the work types in the Qualifications for Bidders for the project. The bidders must get a vendor ID for the joint venture from the Division of Construction Procurement and register the joint venture as a bidder on the project. Also, the joint venture must obtain a digital ID from Bid Express to submit a bid. A joint bid bond of 5% may be submitted for both companies or each company may submit a separate bond of 5%.

UNDERGROUND FACILITY DAMAGE PROTECTION

The contractor shall make every effort to protect underground facilities from damage as prescribed in the Underground Facility Damage Protection Act of 1994, Kentucky Revised Statute KRS 367.4901 to 367.4917. It is the contractor's responsibility to determine and take steps necessary to be in compliance with federal and state damage prevention directives. When prescribed in said directives, the contractor shall submit Excavation Locate Requests to the Kentucky Contact Center (KY811) via web ticket entry. The submission of this request does not relieve the contractor from the responsibility of contacting non-member facility owners, whom shall be contacted through their individual Protection Notification Center. Non-compliance with these directives can result in the enforcement of penalties.

REGISTRATION WITH THE SECRETARY OF STATE BY A FOREIGN ENTITY

Pursuant to KRS 176.085(1)(b), an agency, department, office, or political subdivision of the Commonwealth of Kentucky shall not award a state contract to a person that is a foreign entity required by [KRS 14A.9-010](#) to obtain a certificate of authority to transact business in the Commonwealth ("certificate") from the Secretary of State under [KRS 14A.9-030](#) unless the person produces the certificate within fourteen (14) days of the bid or proposal opening. If the foreign entity is not required to obtain a certificate as provided in [KRS 14A.9-010](#), the foreign entity should identify the applicable exception. Foreign entity is defined within [KRS 14A.1-070](#).

For all foreign entities required to obtain a certificate of authority to transact business in the Commonwealth, if a copy of the certificate is not received by the contracting agency within the time frame identified above, the foreign entity's solicitation response shall be deemed non-responsive or the awarded contract shall be cancelled.

Businesses can register with the Secretary of State at <https://secure.kentucky.gov/sos/ftbr/welcome.aspx>.

SPECIAL NOTE FOR PROJECT QUESTIONS DURING ADVERTISEMENT

Questions about projects during the advertisement should be submitted in writing to the Division of Construction Procurement. This may be done by fax (502) 564-7299 or email to kytc.projectquestions@ky.gov. The Department will attempt to answer all submitted questions. The Department reserves the right not to answer if the question is not pertinent or does not aid in clarifying the project intent.

The deadline for posting answers will be 3:00 pm Eastern Daylight Time, the day preceding the Letting. Questions may be submitted until this deadline with the understanding that the later a question is submitted, the less likely an answer will be able to be provided.

The questions and answers will be posted for each Letting under the heading "Questions & Answers" on the Construction Procurement website (www.transportation.ky.gov/contract). The answers provided shall be considered part of this Special Note and, in case of a discrepancy, will govern over all other bidding documents.

HARDWOOD REMOVAL RESTRICTIONS

The US Department of Agriculture has imposed a quarantine in Kentucky and several surrounding states, to prevent the spread of an invasive insect, the emerald ash borer. Hardwood cut in conjunction with the project may not be removed from the state. Chipping or burning on site is the preferred method of disposal.

INSTRUCTIONS FOR EXCESS MATERIAL SITES AND BORROW SITES

Identification of excess material sites and borrow sites shall be the responsibility of the Contractor. The Contractor shall be responsible for compliance with all applicable state and federal laws and may wish to consult with the US Fish and Wildlife Service to seek protection under Section 10 of the Endangered Species Act for these activities.

ACCESS TO RECORDS

The contractor, as defined in KRS 45A.030 (9) agrees that the contracting agency, the Finance and Administration Cabinet, the Auditor of Public Accounts, and the Legislative Research Commission, or their duly authorized representatives, shall have access to any books, documents, papers, records, or other evidence, which are directly pertinent to this contract for the purpose of financial audit or program review. Records and other prequalification information confidentially

disclosed as part of the bid process shall not be deemed as directly pertinent to the contract and shall be exempt from disclosure as provided in KRS 61.878(1)(c). The contractor also recognizes that any books, documents, papers, records, or other evidence, received during a financial audit or program review shall be subject to the Kentucky Open Records Act, KRS 61.870 to 61.884.

In the event of a dispute between the contractor and the contracting agency, Attorney General, or the Auditor of Public Accounts over documents that are eligible for production and review, the Finance and Administration Cabinet shall review the dispute and issue a determination, in accordance with Secretary's Order 11-004.

April 30, 2018

SPECIAL NOTE FOR RECIPROCAL PREFERENCE

RECIPROCAL PREFERENCE TO BE GIVEN BY PUBLIC AGENCIES TO RESIDENT BIDDERS

By reference, KRS 45A.490 to 45A.494 are incorporated herein and in compliance regarding the bidders residency. Bidders who want to claim resident bidder status should complete the Affidavit for Claiming Resident Bidder Status along with their bid in the electronic bidding software. Submittal of the Affidavit should be done along the bid in Bid Express.

April 30, 2018

DGA BASE FOR SHOULDER (KY 53)

Unless otherwise noted, the Department estimates the rate of application for DGA Base for Shoulders to be 115 lbs/sy per inch of depth. The Department will not measure necessary grading and/or shaping of existing or proposed shoulders prior to placing of DGA Base, or furnishing and constructing DGA shoulders, but shall be incidental to the Contract Lump Sum Unit Price for Earthwork.

**SPECIAL NOTE FOR CONTRACTOR STAKING
WASHINGTON COUNTY
KY 53**

Perform the following items:

1. Contrary to Section 201.03.01, be responsible for items normally performed by the Department; and
2. Develop a detailed Traffic Control Plan (TCP) for the Bore and Jack Encasement Pipe Operations and Embankment Construction. Obtain the Engineer's approval of the TCP prior beginning work; and
3. Establish proper embankment slope elevations, ratios, and shoulder widths to insure positive drainage during and upon completion of construction; and
4. Establish encasement pipe lines, grades, and flow line elevations to insure positive drainage during and upon completion of construction; and
5. Verify fill cover height for encasement pipe and obtain the Engineer's approval of the pipe gage and coating.
6. Perform all items required by Section 201.03.01 and the work.

Contrary to Section 201.04.01, the Department will not measure Contractor Staking on KY 53 for separate payment, but shall be incidental to the applicable items of the work.

**SPECIAL NOTES FOR EMBANKMENT
WASHINGTON COUNTY
KY 53**

I. DESCRIPTION

Except as provided herein, perform all work in accordance with the Department's 2019 Standard Specifications, Supplemental Specifications, Standard and Sepia Drawings, and Special Notes and Special Provisions, current editions. Article references are to the Standard Specifications. Perform the following work:

(1) Maintain and Control Traffic; (2) Site Preparation and Erosion Control; (3) Construct Embankment; (4) Staking; (5) Restoration and final dressing; and (6) All other work required by the contract.

II. MATERIALS

Provide for sampling and testing of all materials in accordance with the Department's Sampling Manual. Make materials available for sampling a sufficient time in advance of the use of the materials to allow for the necessary time for testing unless otherwise specified in these notes. Furnish all materials necessary to complete Embankment according to these notes and the Standard Specifications.

A. Maintain and Control Traffic. See Traffic Control Plan.

B. Erosion Control. See Special Note for Erosion Control.

C. Embankment. Obtain suitable borrow material to construct the embankment as described in these notes and the attached drawings. Rock, concrete, asphalt, and/or other fragmented material may be used at the discretion of the Engineer, provided it is located properly in the embankment and sized appropriately. Provide a suitable material where necessary to establish vegetation. The Engineer will approve or reject the material by visual inspection. All material will be subject to rejection if deemed unsuitable for any reason by the Engineer.

D. Dense Graded Aggregate. See Section 302.02. Do not furnish Crushed Stone Base in lieu of Dense Graded Aggregate (DGA).

E. Seeding and Protection. Furnish Seed Mixture Type II. See Special Note for Erosion Control.

III. CONSTRUCTION METHODS

A. Maintain and Control Traffic. See Traffic Control Plan.

Embankment
Page 2 of 4

B. Staking. See Special Note for Staking.

C. Site Preparation. Be responsible for all site preparation, including but not limited to, clearing and grubbing, excavation, embankment, removal of trees and stumps, and removal of all obstructions or any other items; disposal, of excess and waste materials and debris; and final dressing, cleanup, and seeding and protection. The Department has not determined the area to be Cleared and Grubbed and the bidder must draw his own conclusions. Limit clearing and grubbing to the absolute minimum required to construct the work. Perform all site preparation only as approved or directed by the Engineer.

D. Erosion Control. See Special Note for Erosion Control.

E. Embankment. Place embankment in lifts and compact according to the Standard Specifications where possible. Bench lifts into the existing fill where possible as directed by the Engineer. When the embankment reaches an elevation where level lifts are not feasible as determined by the Engineer, complete the embankment as a wedge. Compact using steel tracked equipment such as a dozer, excavator, or track loader (compact track loaders shall not be acceptable).

F Shoulders. Prepare the shoulders with DGA up to the approximate existing pavement elevation and width of the surrounding typical section or to a minimum width of (2) feet. Do not pond water on the shoulder area or at the shoulder edge.

G. Disposal of Waste. Do not use excavation from the site as fill material or waste in flood prone areas or streams. Dispose of waste and debris at sites off the Right-of-Way obtained by the Contractor at no additional cost to the Department. See Special Note for Waste and Borrow.

H. Restoration, Final Dressing, Seeding and Protection. Warp and tie slopes into adjacent undisturbed slopes and ditches. Provide positive drainage upon completion of construction. Apply Final Dressing Class A to all disturbed earthen areas, both on and off the right-of-way. Sow with Seed Mixture Type II. See Special Note for Erosion Control.

I. On-Site Inspection. Make a thorough inspection of the site prior to submitting a bid and be thoroughly familiar with the existing conditions so that the work can be expeditiously performed after a contract is awarded. The Department will consider submission of a bid evidence of this inspection having been made.

J. Right of Way Limits. The Department has not established exact limits of the Right-of- Way. Limit work activities to obvious Right-of-Way, permanent or temporary easements, and work areas secured by the Department through consent and release of the adjacent property owners. Be responsible for all encroachments onto private lands.

Embankment
Page 3 of 4

K. Property Damage. Be responsible for all damage to public and/or private property resulting from the work. Restore damaged roadway features and private property at no additional cost to the Department.

L. Coordination with Utility Companies. Locate all underground, above ground and overhead utilities prior to beginning construction. Be responsible for contacting and maintaining liaison with all utility companies that have utilities located within the project limits. Do not disturb existing overhead or underground utilities. It is not anticipated that any utility facilities will need to be relocated and/or adjusted; however, in the event that it is discovered that the work does require that utilities be relocated and/or adjusted, the utility companies will work concurrently with the Contractor while relocating their facilities. Be responsible for repairing all utility damage that occurs as a result of the Contractor's operations at no additional cost to the Department.

M. Final Dressing, Clean Up, and Seeding and Protection. Apply Class A Final Dressing to all disturbed areas, both on and off the Right-of-Way. Sow all disturbed earthen areas according to the Special Note for Erosion Control.

IV. MEASUREMENT

A. Maintain and Control Traffic. See Traffic Control Plan.

B. Erosion Control. See Special Note for Erosion Control.

C. Staking. See Special note for Staking.

D. Site Preparation. The Department will **NOT** measure Site Preparation for separate payment, but shall be incidental to Earthwork.

D. Embankment. The Department will **NOT** measure Embankment for separate payment, but shall be incidental to Earthwork.

E. Dense Graded Aggregate. The department will not measure DGA for separate payment, but shall be incidental to Earthwork.

F. Earthwork. The Department will measure Earthwork as 1 Lump Sum.

V. BASIS OF PAYMENT

A. Maintain and Control Traffic. See Traffic Control Plan.

B. Erosion Control. See Special Note for Erosion Control.

Embankment
Page 4 of 4

C. Earthwork. Accept payment at the contract lump sum price for Earthwork as full compensation for all labor, equipment, materials, and incidentals required for all site preparation, including but not limited to, clearing and grubbing, excavation, embankment, removal of trees and stumps, and removal of all obstructions or any other items; disposal of excess and waste materials and debris; construction of embankments; construction of shoulders; and final dressing, cleanup, and seeding and protection.

**SPECIAL NOTES FOR ENCASEMENT PIPE
WASHINGTON COUNTY
KY 53**

I. DESCRIPTION

Except as provided herein, perform all work in accordance with the Department's 2019 Standard Specifications, Supplemental Specifications, Standard and Sepia Drawings, and Special Notes and Special Provisions, current editions. Article references are to the Standard Specifications. This project shall consist of furnishing all labor, equipment, materials, and incidentals to construct a new 24 Inch Steel Encasement Pipe under KY 53 near milepoint 0.357. This work shall include the following:

- (1) Staking; (2) Safeloading existing culvert pipe; (3) Bore and Jack Encasement Pipe; and (4) All other work required to furnish and install the encasement pipe.

II. MATERIALS

Provide for sampling and testing of all materials in accordance with the Department's Sampling Manual. Make materials available for sampling a sufficient time in advance of the use of the materials to allow for the necessary time for testing unless otherwise specified in these notes. Furnish all materials necessary according to these notes and the Standard Specifications.

A. Maintain and Control Traffic. See Traffic Control Plan.

B. Steel Encasement Pipe, 24 Inch Bore and Jack. See Section 706.02.

C. Safeloading. See Section 708.02.

D. Erosion Control. See Special Note for Erosion Control.

III. CONSTRUCTION METHODS

A. Maintain and Control Traffic. See Traffic Control Plan.

B. Staking. Contrary to Section 201.03.01, the Department will not provide control points. The Contractor shall perform an initial survey to determine the proposed encasement pipe location and length. Coordinate with the Engineer to determine inlet and outlet locations and elevations. The contractor shall provide adequate control during construction to facilitate installation of the encasement pipe at the approved line and grade. See Special Note for Staking.

Bore & Jack Encasement Pipe
Page 2 of 3

C. Steel Encasement Pipe, 24 Inch Bore and Jack. Install pipe by Bore and Jack methods. A carrier pipe is not required. Except as provided herein, construct the encasement pipe according to section 706.03.02.

D. Safeloading Existing Culvert. Currently the existing culvert can only be accessed on the inlet end. Place flowable fill or grout by such means to ensure the complete filling of the existing culvert. See Section 708.03.04.

F. Property Damage. Be responsible for all damage to public and/or private property resulting from the work. Restore damaged roadway features and private property at no additional cost to the Department.

G. Coordination with Utility Companies. Locate all underground, above ground and overhead utilities prior to beginning construction. Be responsible for contacting and maintaining liaison with all utility companies that have utilities located within the project limits. Do not disturb existing overhead or underground utilities. No utility facilities will be relocated and/or adjusted for this project; the Contractor shall work around all facilities. Be responsible for repairing all utility damage that occurs as a result of guardrail operations at no additional cost to the Department. **NOTE: AN EXISTING FIBER OPTIC TELEPHONE CABLE IS LOCATED IN THE EMBANKMENT ON THE SOUTH SIDE OF THE ROADWAY. AVOID THE FIBER OPTIC CABLE DURING BORING AND JACKING OPERATIONS.**

H. On-Site Inspection. Make a thorough inspection of the site prior to submitting bid and be thoroughly familiar with existing conditions so that the work can be expeditiously performed after a contract is awarded. The Department will consider submission of a bid as evidence of this inspection having been made. The Department will not consider any claims resulting from site conditions.

I. Right of Way Limits. The Department has not established exact limits of the Right-of-Way. Limit work activities to obvious Right-of-Way, permanent or temporary easements, and work areas secured by the Department through consent and release of the adjacent property owners. Be responsible for all encroachments onto private lands.

L. Disposal of Waste. Dispose of all removed concrete, debris, and other waste and debris off the Right-of-Way at sites obtained by the Contractor at no additional cost to the Department.

J. Final Dressing, Clean Up, and Seeding and Protection. Apply Class A Final Dressing to all disturbed areas, both on and off the Right-of-Way. Sow all disturbed earthen areas according to the Special Notes for Erosion Control.

K. Erosion Control. See Special Notes for Erosion Control.

Bore & Jack Encasement Pipe
Page 3 of 3

IV. METHOD OF MEASUREMENT

The Department will measure only the items listed for payment. All other items required to complete the construction of the work described in this note shall be incidental to the bid items listed.

A. Maintain and Control Traffic. See Traffic Control Plan.

B. Staking. See Special Note for Staking.

C. Steel Encasement Pipe, 24 Inch Bore and Jack. The Department will measure the completed encasement pipe according to Section 706.04.02; except the Department will **NOT** measure any work performed or backfill required if a bore hole must be abandoned for any reason.

D. Safeloading. See Section 708.04.06.

E. Erosion Control. See Special Notes for Erosion Control.

V. BASIS OF PAYMENT

A. Maintain and Control Traffic. See Traffic Control Plan.

B. Steel Encasement Pipe, 24 Inch Bore and Jack. See Section 706.05.

C. Safeloading. See Section 708.05.

D. Erosion Control. See Special Notes for Erosion Control.

SPECIAL PROVISION FOR WASTE AND BORROW SITES

Obtain U.S. Army Corps of Engineer's approval before utilizing a waste or borrow site that involves "Waters of the United States". The Corps of Engineers defines "Waters of the United States" as perennial or intermittent streams, ponds or wetlands. The Corps of Engineers also considers ephemeral streams, typically dry except during rainfall but having a defined drainage channel, to be jurisdictional waters. Direct questions concerning any potential impacts to "Waters of the United States" to the attention of the appropriate District Office for the Corps of Engineers for a determination prior to disturbance. Be responsible for any fees associated with obtaining approval for waste and borrow sites from the U.S. Army Corps of Engineer or other appropriate regulatory agencies.

1-296 Waste & Borrow Sites
01/02/2012

COORDINATION OF WORK WITH OTHERS

Be advised, there may be active project(s) adjacent to or within this project. These may be KYTC administered contracts, work being performed as part of a KYTC issued encroachment permit, or work being performed by Department forces. The Engineer will coordinate the work of any other Contractors, permit holders, or the Department's forces. See Sections 105.06, 107.06 and 107.14 of the 2019 Standard Specifications.

SPECIAL NOTE FOR SHOULDER PREPARATION

Grade, shape, and compact shoulder as shown on the typical section and as directed by the Engineer to provide proper template and foundation for the guardrail. The Department will not measure grading, shaping, and compacting shoulders for separate payment, but shall be incidental to the Guardrail.

**SPECIAL NOTES FOR GUARDRAIL
WASHINGTON COUNTY
KY 53**

I. DESCRIPTION

Except as specified herein, perform all work in accordance with the Department's 2019 Standard and Supplemental Specifications and Standard and Sepia Drawings, current editions. Article references are to the Standard Specifications.

Furnish all equipment, labor, materials, and incidentals for the following work items:

(1) Site preparation; (2) Culvert replacement; (3) Embankment construction; (4) Erosion control; (5) Guardrail, End Treatments, Bridge End Connectors, and Terminal Sections, as applicable; (6) Delineators for guardrail; (7) Maintain and control traffic; and (8) all other work specified as part of this contract.

II. MATERIALS

Except as specified herein, provide for all materials to be sampled and tested in accordance with the Department's Sampling Manual and make the materials available for sampling a sufficient time in advance of the use of the materials to allow for the necessary time for testing.

A. Maintain and Control Traffic. See Traffic Control Plan.

B. Encasement Pipe. See Special Notes for Encasement Pipe.

C. Embankment. See Special Note for Embankment.

D. Erosion Control. See Special Note for Erosion Control.

E. Guardrail Systems. Furnish guardrail system components according to section 814 and the Standard Drawings; except use steel posts only, no alternates.

F. Delineators for Guardrail. See Standard Drawing RBR-055-01.

III. CONSTRUCTION METHODS

A. Maintain and Control Traffic. See Traffic Control Plan.

B. Site Preparation. Be responsible for all site preparation, including but not limited to, clearing and grubbing, excavation, and removal of all obstructions or any other items; regrading, reshaping, adding and compacting of suitable materials on the existing shoulders

Guardrail
KY 53
Page 2 of 4

to provide proper template or foundation for the guardrail; temporary pollution and erosion control; disposal, of excess and waste materials and debris; and final dressing, cleanup, and seeding and protection. Perform all site preparation as approved or directed by the engineer.

C. Culvert Replacement. Replace the existing culvert with 24 inch Encasement Pipe. Perform culvert replacement prior to Guardrail construction as detailed in the Special Note for Encasement Pipe.

D. Remove and Relay Entrance Pipe. Remove and Relay 15 inch Entrance Pipe at approximate milepoint 0.337 as shown on the drawings according to Section 701.03.11.

E. Embankment. Construct embankment prior to Guardrail construction as detailed in the Special Note for Embankment.

F. Guardrail Systems. Except as specified herein, construct guardrail system according to Section 719 and the Standard Drawings. Locations listed on the summary and/or shown on the drawings are approximate only. The Engineer will determine the exact termini for individual guardrail installations at the time of construction. Unless directed otherwise by the Engineer, provide a minimum two (2) foot shoulder width. Construct radii at entrances and road intersections as directed by the Engineer. Erect guardrail to the lines and grades shown on current Standard Drawings or as directed by the Engineer by any method approved by the Engineer that allows construction of the guardrail to the true grade without apparent sags.

When installing guardrail, do not leave the blunt end exposed where it would be hazardous to the public. When it is not practical to complete the construction of the guardrail and the permanent end treatments and terminal sections first, provide a temporary end by connecting at least 25 feet of rail to the last post, and by slightly flaring, and burying the end of the rail completely into the existing shoulder. If left overnight, place a drum with bridge panel in advance of the guardrail end and maintain during use.

G. Delineators for Guardrail. Construct Bi-Directional Delineators for Guardrail according to Standard Drawing RBR-055-01.

H. Property Damage. Be responsible for all damage to public and/or private property resulting from the work. Restore damaged roadway features and private property at no additional cost to the Department.

Guardrail
KY 53
Page 3 of 4

I. Coordination with Utility Companies. Locate all underground, above ground and overhead utilities prior to beginning construction. Be responsible for contacting and maintaining liaison with all utility companies that have utilities located within the project limits. Do not disturb existing overhead or underground utilities. No utility facilities will be relocated and/or adjusted for this project; the Contractor shall work around all facilities. Be responsible for repairing all utility damage that occurs as a result of guardrail operations at no additional cost to the Department. **NOTE: AN EXISTING FIBER OPTIC TELEPHONE CABLE IS LOCATED IN THE EMBANKMENT ON THE SOUTH SIDE OF THE ROADWAY. AVOID THE FIBER OPTIC CABLE DURING GUARDRAIL INSTALLATION.**

J. On-Site Inspection. Make a thorough inspection of the site prior to submitting bid and be thoroughly familiar with existing conditions so that the work can be expeditiously performed after a contract is awarded. The Department will consider submission of a bid as evidence of this inspection having been made. The Department will not consider any claims resulting from site conditions.

K. Right of Way Limits. The Department has not established exact limits of the Right-of-Way. Limit work activities to obvious Right-of-Way, permanent or temporary easements, and work areas secured by the Department through consent and release of the adjacent property owners. Be responsible for all encroachments onto private lands.

L. Disposal of Waste. Dispose of all removed concrete, debris, and other waste and debris off the Right-of-Way at sites obtained by the Contractor at no additional cost to the Department.

M. Final Dressing, Clean Up, and Seeding and Protection. Apply Class A Final Dressing to all disturbed areas, both on and off the Right-of-Way. Sow all disturbed earthen areas according to the Special Notes for Erosion Control.

O. Erosion Control. See Special Notes for Erosion Control.

IV. METHOD OF MEASUREMENT

A. Maintain and Control Traffic. See Traffic Control Plan.

B. Site preparation. Other than the bid items listed, the Department will not measure Site Preparation for separate payment but shall be incidental to Guardrail, End Treatments, Bridge End Connectors, and Terminal Sections as applicable.

C. Remove and Relay Entrance Pipe. See Section 701.04.

D. Culvert Replacement. See Special Note Encasement Pipe.

Guardrail
KY 53
Page 4 of 4

E. Embankment. See Special Note for Embankment.

F Guardrail System. See Section 719.04.

G. Delineators for Guardrail. See Standard Drawing RBR-060.

H. Erosion Control. See Special Notes for Erosion Control.

V. BASIS OF PAYMENT

A. Maintain and Control Traffic. See Traffic Control Plan.

B. Remove and Relay Entrance Pipe. See Section 701.04.

C. Culvert Replacement. See Special Note for 24 Inch Encasement Pipe.

D. Embankment. See Special Note for Embankment.

E. Guardrail. See Section 719.05.

F. Delineators for Guardrail. See Standard Drawing RBR-060.

G. Erosion Control. See Special Notes for Erosion Control.

**SPECIAL NOTES FOR GUARDRAIL
TAYLOR COUNTY
KY 1061**

I. DESCRIPTION

Except as specified herein, perform all work in accordance with the Department's 2019 Standard and Supplemental Specifications and Standard and Sepia Drawings, current editions. Article references are to the Standard Specifications.

Furnish all equipment, labor, materials, and incidentals for the following work items:

(1) Site preparation; (2) Erosion control; (3) Guardrail, End Treatments, Bridge End Connectors, and Terminal Sections, as applicable; (4) Delineators for guardrail; (5) Maintain and control traffic; and (6) all other work specified as part of this contract.

II. MATERIALS

Except as specified herein, provide for all materials to be sampled and tested in accordance with the Department's Sampling Manual and make the materials available for sampling a sufficient time in advance of the use of the materials to allow for the necessary time for testing.

A. Maintain and Control Traffic. See Traffic Control Plan.

B. Erosion Control. See Special Note for Erosion Control.

C. Guardrail Systems. Furnish guardrail system components according to section 814 and the Standard Drawings; except use steel posts only, no alternates.

D. Delineators for Guardrail. See Standard Drawing RBR-055-01.

III. CONSTRUCTION METHODS

A. Maintain and Control Traffic. See Traffic Control Plan.

B. Site Preparation. Be responsible for all site preparation, including but not limited to, clearing and grubbing, excavation, and removal of all obstructions or any other items; regrading, reshaping, adding and compacting of suitable materials on the existing shoulders to provide proper template or foundation for the guardrail; temporary pollution and erosion control; disposal, of excess and waste materials and debris; and final dressing, cleanup, and seeding and protection. Perform all site preparation as approved or directed by the engineer.

Guardrail
KY 1061
Page 2 of 3

C. Guardrail Systems. Except as specified herein, construct guardrail system according to Section 719 and the Standard Drawings. Locations listed on the summary and/or shown on the drawings are approximate only. The Engineer will determine the exact termini for individual guardrail installations at the time of construction. Unless directed otherwise by the Engineer, provide a minimum one (1) foot shoulder width. Construct radii at entrances and road intersections as directed by the Engineer. Erect guardrail to the lines and grades shown on current Standard Drawings or as directed by the Engineer by any method approved by the Engineer that allows construction of the guardrail to the true grade without apparent sags.

When installing guardrail, do not leave the blunt end exposed where it would be hazardous to the public. When it is not practical to complete the construction of the guardrail and the permanent end treatments and terminal sections first, provide a temporary end by connecting at least 25 feet of rail to the last post, and by slightly flaring, and burying the end of the rail completely into the existing shoulder. If left overnight, place a drum with bridge panel in advance of the guardrail end and maintain during use.

D. Delineators for Guardrail. Construct Bi-Directional Delineators for Guardrail according to Standard Drawing RBR-055-01.

E. Property Damage. Be responsible for all damage to public and/or private property resulting from the work. Restore damaged roadway features and private property at no additional cost to the Department.

F. Coordination with Utility Companies. Locate all underground, above ground and overhead utilities prior to beginning construction. Be responsible for contacting and maintaining liaison with all utility companies that have utilities located within the project limits. Do not disturb existing overhead or underground utilities. It is not anticipated any utility facilities will be relocated and/or adjusted for this project; the Contractor shall work around all facilities. Be responsible for repairing all utility damage that occurs as a result of guardrail operations at no additional cost to the Department.

G. On-Site Inspection. Make a thorough inspection of the site prior to submitting bid and be thoroughly familiar with existing conditions so that the work can be expeditiously performed after a contract is awarded. The Department will consider submission of a bid as evidence of this inspection having been made. The Department will not consider any claims resulting from site conditions.

H. Right of Way Limits. The Department has not established exact limits of the Right-of-Way. Limit work activities to obvious Right-of-Way, permanent or temporary easements, and work areas secured by the Department through consent and release of the adjacent property owners. Be responsible for all encroachments onto private lands.

Guardrail
KY 1061
Page 3 of 3

I. Disposal of Waste. Dispose of all removed concrete, debris, and other waste and debris off the Right-of-Way at sites obtained by the Contractor at no additional cost to the Department.

J. Final Dressing, Clean Up, and Seeding and Protection. Apply Class A Final Dressing to all disturbed areas, both on and off the Right-of-Way. Sow all disturbed earthen areas according to the Special Notes for Erosion Control.

K. Erosion Control. See Special Notes for Erosion Control.

IV. METHOD OF MEASUREMENT

A. Maintain and Control Traffic. See Traffic Control Plan.

B. Site preparation. Other than the bid items listed, the Department will not measure Site Preparation for separate payment but shall be incidental to Guardrail, End Treatments, Bridge End Connectors, and Terminal Sections as applicable.

C Guardrail System. See Section 719.04.

D. Delineators for Guardrail. See Standard Drawing RBR-060.

E. Erosion Control. See Special Notes for Erosion Control.

V. BASIS OF PAYMENT

A. Maintain and Control Traffic. See Traffic Control Plan.

B. Guardrail System. See Section 719.05.

C. Delineators for Guardrail. See Standard Drawing RBR-060.

D. Erosion Control. See Special Notes for Erosion Control.

SPECIAL NOTE FOR TYPICAL SECTION DIMENSIONS

Consider the dimensions shown on the typical sections for pavement and shoulder widths and thickness' to be nominal or typical dimensions. The Engineer may direct or approve varying the actual dimensions to be constructed to fit existing conditions. Do not widen existing pavement or shoulders unless specified elsewhere in this proposal or directed by the engineer.

1-3725 Typical Section Dimensions
01/02/2012

SPECIAL NOTE FOR TRAFFIC CONTROL WASHINGTON COUNTY KY 53

TRAFFIC CONTROL GENERAL

Except as provided herein, maintain and control traffic accordance with the 2019 Standard Specifications, section 112. Be responsible for developing and implementing a Traffic Control Plan (TCP) according to the Standard Drawings and the Manual on Uniform Traffic Control for Devices for Streets and Highways (UUTCD), current editions. Obtain the Engineer's approval of the TCP plan prior to beginning work. Provide at a minimum the items listed in this note, however this note does not relieve the contractor of other items that may be necessary to comply with current standards. Except for the roadway and traffic control bid items listed, the Department will measure and pay all items of work necessary to maintain and control traffic at the Contract Lump Sum bid price to "Maintain and Control Traffic".

Contrary to section 106.01, traffic control devices used on this project may be new, or used in like new condition, at the beginning of the work and maintained in like new condition until completion of the work.

PHASING & CONSTRUCTION

At the discretion of the Engineer, the Department may specify days and hours when road, lane, or shoulder closures will not be allowed. Prior to beginning work, provide a proposed lane closure and work schedule for approval of the Engineer. The Department will provide public notification. Notify the Engineer immediately and obtain prior approval of any proposed deviations from the approved schedule.

Complete all work while maintaining alternating one-way traffic with a clear lane width of ten (10) feet; however provide for passage of vehicles up to 16 feet in width. The Department will provide public notification. Submit to the Engineer a proposed work schedule and lane closure for approval at least 14 calendar days prior to the beginning work.

SIGNS

Sign posts and splices shall be compliant with NCHRP 350 or MASH. Manufacturer's documentation validating this compliance shall be provided to the Engineer prior to installation. Signs, including any splices, shall be installed according to manufacturer's specifications and installation recommendations. Contrary to section 112.04.02, the Department will **NOT** measure signs for payment, but shall be incidental to Maintain and Control Traffic.

Traffic Control Plan
KY 53
Page 2 of 3

LANE & SHOULDER CLOSURES

Do **NOT** leave lane closures in place during non-working hours. Do **NOT** store materials or equipment on shoulders during non-working hours. Protect partially completed guardrail systems with a lane closure during non-working hours.

CHANGEABLE MESSAGE SIGNS

If deemed necessary by the Engineer, the Department will furnish, operate, and maintain Changeable Message Signs.

BARRICADES

The Department will not measure Barricades used in lieu of barrels and cones for channelization or delineation, but shall be incidental to Maintain and Control Traffic according to Section 112.04.01. The Department will measure barricades to protect shoulder drop-offs greater than 4 inches.

PAVEMENT DROP-OFF

Do not allow a difference in elevation of a pavement edge between opposing directions of traffic or lanes that traffic may cross in a lane change situation greater than 1½". Place warning signs (MUTCD W8-9, W8-9A, or W8-11) in advance of and at 1500 foot intervals throughout the drop-off area. Dual post the signs on both sides of the traveled way. Wedge transverse transitions that traffic may cross with asphalt mixture for leveling and wedging or DGA.

Treat pavement edges that traffic is not expected to cross, except accidentally, as follows:

Less than 2" - No protection required.

2" to 4" - Place plastic drums, vertical panels, or barricades every 50 feet. The Engineer will allow cones in lieu of plastic drums, panels, and barricades during daylight working hours only. Wedge drop-offs within 10 feet of traffic with DGA or asphalt mixture for leveling and wedging as directed or approved by the Engineer with a 1:1 or flatter slope during daylight working hours, or 3:1 or flatter slope during nighttime hours or when work is not active in the drop-off area.

Greater than 4" to 12" - Protect drop-offs greater than 4 inches within 10 feet of traffic by placing drums, vertical panels, or barricades every 25 feet. The Engineer will not allow the use of cones in lieu of drums, vertical panels, or barricades for drop-offs greater than 4". Place Type III Barricades directly in front of the drop-off facing on coming traffic in both directions

Traffic Control Plan
KY 53
Page 3 of 3

of travel. Provide warning signs as shown on the Standard Drawings or as directed by the Engineer.

Greater than 12” - Provide positive separation. Provide special reflective devices or steady burn lights for barriers used for overnight installations as approved by the Engineer.

Bicyclists and Pedestrians - Protect bicyclists and pedestrians as directed by the Engineer.

TRAFFIC CONTROL PLAN TAYLOR COUNTY KY 1061

TRAFFIC CONTROL GENERAL

Except as specified herein, maintain and control traffic in accordance with the 2019 Standard and Supplemental Specifications, Special provisions and Special Notes, and the Standard and Sepia Drawings, current editions. Except for the roadway and traffic control bid items listed, furnish all other items necessary to maintain and control traffic incidental to the Contract lump sum price to Maintain and Control Traffic.

Contrary to Section 106.01, furnish new, or used in like new condition, traffic control devices, at the beginning of the work and maintain the devices in like new condition until completion of the work.

PROJECT PHASING & CONSTRUCTION PROCEDURES

At the discretion of the Engineer, the Department may specify days and hours when lane closures will not be allowed. Prior to beginning work, provide a proposed lane closure and work schedule for the approval of the Engineer. The Department will provide public notification. Notify the Engineer immediately and obtain prior approval of any proposed deviations from the approved schedule.

Maintain alternating one-way traffic during construction. Unless directed otherwise by the Engineer, provide a minimum clear lane width of 10 feet; however, provide for passage of vehicles up to 16 feet in width. If traffic should be stopped due to construction operations, and a school bus on an official run arrives on the scene, immediately make provisions for the passage of the bus.

LANE & SHOULDER CLOSURES

Do not leave lane closures in place during non-working hours. Do not store materials or equipment on shoulders during non-working hours. Protect partially completed guard rail system with a lane closure during non-working hours.

CHANGEABLE MESSAGE SIGNS

If deemed necessary by the Engineer, the Department will furnish, operate, and maintain Changeable Message Signs.

Traffic Control Plan
KY 1061
Page 2 of 2

SIGNS

Sign posts and splices shall be compliant with NCHRP 350 or MASH. Manufacturer's documentation validating this compliance shall be provided to the Engineer prior to installation. Signs, including any splices, shall be installed according to manufacturer's specifications and installation recommendations. Contrary to section 112.04.02, only long-term signs (signs intended to be continuously in place for more than 3 days) will be measured for payment. Short-term signs (signs intended to be left in place for 3 days or less) will not be measured for payment but will be incidental to Maintain and Control Traffic.

BARRICADES

The Department will not measure Barricades used in lieu of barrels and cones for channelization or delineation, but shall be incidental to Maintain and Control Traffic according to Section 112.04.01.

PAVEMENT EDGE DROP-OFFS

Treat pavement edges that traffic is not expected to cross, except accidentally, as follows:

Less than 2" - No protection required.

2" to 4" - Place plastic drums, vertical panels, or barricades every 50 feet. The Engineer will allow cones in lieu of plastic drums, panels, and barricades during daylight working hours only. Wedge drop-offs within 10 feet of traffic with DGA as directed or approved by the Engineer with a 1:1 or flatter slope in daylight working hours, or 3:1 or flatter slope during nighttime hours or when work is not active in the drop-off area.

Pedestrians and Bicyclists – Protect Pedestrians and Bicyclists as directed by the Engineer.

SPECIAL NOTE FOR EROSION CONTROL KY 53

I. DESCRIPTION

Perform all erosion and water pollution control work in accordance with the Department's Standard and Interim Supplemental Specifications, Special Provisions and Special Notes, and Standard and Sepia Drawings, current editions, and as directed by the Engineer. Section references are to the Standard Specifications. This work shall consist of:

(1) Developing and preparing a Best Management Practices Plan (BMP) tailored to suit the specific construction phasing for each site within the project; (2) Preparing the project site for construction, including locating, furnishing, installing, and maintaining temporary and/or permanent erosion and water pollution control measures as required by the BMP prior to beginning any earth disturbing activity on the project site; (3) Clearing and grubbing and removal of all obstructions as required for construction; (4) Removing all erosion control devices when no longer needed; (5) Restoring all disturbed areas as nearly as possible to their original condition; (6) Preparing seedbeds and permanently seeding all disturbed areas; (7) Providing a Kentucky Erosion Prevention and Sediment Control Program (KEPSC) qualified inspector; and (8) Performing any other work to prevent erosion and/or water pollution as specified by this contract, required by the BMP, or as directed by the Engineer.

II. MATERIALS

Furnish materials in accordance with these notes, the Standard Specifications and Interim Supplemental Specifications, and applicable Special Provisions and Special Notes, and Standard and Sepia Drawings, current editions. Provide for all materials to be sampled and tested in accordance with the Department's Sampling Manual. Unless directed otherwise by the Engineer, make the materials available for sampling a sufficient time in advance of the use of the materials to allow for the necessary time for testing.

III. CONSTRUCTION

Be advised, these Erosion Control Plan Notes do not constitute a BMP plan for the project. Jointly with the Engineer, prepare a site specific BMP plan for each drainage area within the project in accordance with Section 213. Provide a unique BMP at each project site using good engineering practices taking into account existing site conditions, the type of work to be performed, and the construction phasing, methods and techniques to be utilized to complete the work. Be responsible for all erosion prevention, sediment control, and water pollution prevention measures required by the BMP for each site. Represent and warrant compliance with the Clean Water Act (33 USC

Erosion Control KY 53
Page 2 of 3

Section 1251 et seq.), the 404 Permit, the 401 Water Quality Certification, and applicable state and local government agency laws, regulations, rules, specifications, and permits. Contrary to Section 105.05, in case of discrepancy between these notes, the Standard Specifications, Interim Supplemental Specifications, Special and Special Notes, Standard and Sepia Drawings, and such state and local government agency requirements, adhere to the most restrictive requirement.

Conduct operations in such a manner as to minimize the amount of disturbed ground during each phase of the construction and limit the haul roads to the minimum required to perform the work. Preserve existing vegetation not required to be removed by the work or the contract. Seed and/or mulch disturbed areas at the earliest opportunity. Use silt fence, silt traps, temporary ditches, brush barriers, erosion control blankets, sodding, channel lining, and other erosion control measures in a timely manner as required by the BMP and as directed or approved by the Engineer. Prevent sediment laden water from leaving the project, entering an existing drainage structure, or entering a stream.

Provide for erosion control measures to be in place and functioning prior to any earth disturbance within a drainage area. Compute the volume and size of silt control devices necessary to control sediment during each phase of construction. Remove sediment from silt traps before they become a maximum of ½ full. Maintain silt fence by removing accumulated trappings and/or replacing the geotextile fabric when it becomes clogged, damaged, or deteriorated, or when directed by the Engineer. Properly dispose of all materials trapped by erosion control devices at approved sites off the right of way obtained by the Contractor at no additional cost to the Department (See Special Note for Waste and Borrow).

As work progresses, add or remove erosion control measures as required by the BMP applicable to the Contractor's project phasing and construction methods and techniques. Update the volume calculations and modify the BMP as necessary throughout the duration of the project. Ensure that an updated BMP is kept on site and available for public inspection throughout the life of the project.

After all construction is complete, restore all disturbed areas in accordance with Section 212. Completely remove all temporary erosion control devices not required as part of the permanent erosion control from the construction site. Prior to removal, obtain the Engineer's concurrence of items to be removed. Grade the remaining exposed earth (both on and off the Right-of-Way) as nearly as possible to its original condition, or as directed by the Engineer. Prepare the seed bed areas and sow all exposed earthen areas with the applicable seed mixture(s) according to Section 212.03.03.

IV. MEASUREMENT

Erosion Control. Contrary to Sections 212.04, 213.04, and 703.04 the Department will measure Erosion Control as one lump sum. The Department will not measure developing, updating, and maintaining a BMP plan for each site; providing a KEPSC qualified inspector; locating, furnishing, installing, inspecting, maintaining, and removing erosion and water pollution control items; Roadway Excavation, Borrow Excavation, Embankment In Place, Topsoil Furnished and Placed,

Erosion Control KY 53
Page 3 of 3

and Spreading Stockpiled Topsoil; Topdressing Fertilizer, Temporary and Permanent Seeding and Protection, Special Seeding Crown Vetch, and Temporary Mulch; Sedimentation Basin and Clean Sedimentation Basin, Silt Trap Type "A" and Clean Silt Trap Type "A"; Silt Trap Type "B" and Clean Silt Trap Type "B"; Silt Trap Type "C" and Clean Silt Trap Type "C"; Temporary Silt Fence and Clean Temporary Silt Fence; Plants, Vines, Shrubs, and Trees; Gabion and Dumped Stone Deflectors and Riffle Structures; Boulders; Temporary Ditches and clean Temporary Ditches; Geotextile Fabric, and all other erosion and water pollution control items required by the BMP or the Engineer, but shall be incidental to Erosion Control.

V. Basis of Payment

Erosion Control. Contrary to Sections 212.05 and 213.05 payment at the Contract lump sum price for Erosion Control, shall be full compensation for all materials, equipment, labor and incidentals necessary to complete the erosion and water pollution control work as specified in these notes, Sections 212 and 213, the Supplemental Specifications, applicable Special Provisions and Special Notes, and Standard and Sepia Drawings, including but not limited to developing, updating, and maintaining a BMP plan for each site; providing a KEPSC qualified inspector; locating, furnishing, installing, inspecting, maintaining, and removing erosion and water pollution control items; Roadway Excavation, Borrow Excavation, Embankment In Place, Topsoil Furnished and Placed, and Spreading Stockpiled Topsoil; Topdressing Fertilizer, Temporary and Permanent Seeding and Protection, Special Seeding Crown Vetch, and Temporary Mulch; Sedimentation Basin and Clean Sedimentation Basin, Silt Trap Type "A" and Clean Silt Trap Type "A"; Silt Trap Type "B" and Clean Silt Trap Type "B"; Silt Trap Type "C" and Clean Silt Trap Type "C"; Temporary Silt Fence and Clean Temporary Silt Fence; Plants, Vines, Shrubs, and Trees; Gabion and Dumped Stone Deflectors and Riffle Structures; Boulders; Temporary Ditches and clean Temporary Ditches; Geotextile Fabric and all other erosion and water pollution control items required by the BMP or the Engineer.

SPECIAL NOTE FOR EROSION CONTROL KY 1061

I. DESCRIPTION

Perform all erosion and water pollution control work in accordance with the Department's Standard and Interim Supplemental Specifications, Special Provisions and Special Notes, and Standard and Sepia Drawings, current editions, and as directed by the Engineer. Section references are to the Standard Specifications. This work shall consist of:

(1) Developing and preparing a Best Management Practices Plan (BMP) tailored to suit the specific construction phasing for each site within the project; (2) Preparing the project site for construction, including locating, furnishing, installing, and maintaining temporary and/or permanent erosion and water pollution control measures as required by the BMP prior to beginning any earth disturbing activity on the project site; (3) Clearing and grubbing and removal of all obstructions as required for construction; (4) Removing all erosion control devices when no longer needed; (5) Restoring all disturbed areas as nearly as possible to their original condition; (6) Preparing seedbeds and permanently seeding all disturbed areas; (7) Providing a Kentucky Erosion Prevention and Sediment Control Program (KEPSC-RI) qualified inspector; and (8) Performing any other work to prevent erosion and/or water pollution as specified by this contract, required by the BMP, or as directed by the Engineer.

II. MATERIALS

Furnish materials in accordance with these notes, the Standard Specifications and Interim Supplemental Specifications, and applicable Special Provisions and Special Notes, and Standard and Sepia Drawings, current editions. Provide for all materials to be sampled and tested in accordance with the Department's Sampling Manual. Unless directed otherwise by the Engineer, make the materials available for sampling a sufficient time in advance of the use of the materials to allow for the necessary time for testing.

III. CONSTRUCTION

Be advised, these Erosion Control Plan Notes do not constitute a BMP plan for the project. Jointly with the Engineer, prepare a site specific BMP plan for each drainage area within the project in accordance with Section 213. Provide a unique BMP at each project site using good engineering practices taking into account existing site conditions, the type of work to be performed, and the construction phasing, methods and techniques to be utilized to complete the work. Be responsible for all erosion prevention, sediment control, and water pollution prevention measures required by the BMP for each site. Represent and warrant compliance with the Clean Water Act (33 USC

Erosion Control KY 1061

Page 2 of 3

Section 1251 et seq.), the 404 Permit, the 401 Water Quality Certification, and applicable state and local government agency laws, regulations, rules, specifications, and permits. Contrary to Section 105.05, in case of discrepancy between these notes, the Standard Specifications, Interim Supplemental Specifications, Special and Special Notes, Standard and Sepia Drawings, and such state and local government agency requirements, adhere to the most restrictive requirement.

Conduct operations in such a manner as to minimize the amount of disturbed ground during each phase of the construction and limit the haul roads to the minimum required to perform the work. Preserve existing vegetation not required to be removed by the work or the contract. Seed and/or mulch disturbed areas at the earliest opportunity. Use silt fence, silt traps, temporary ditches, brush barriers, erosion control blankets, sodding, channel lining, and other erosion control measures in a timely manner as required by the BMP and as directed or approved by the Engineer. Prevent sediment laden water from leaving the project, entering an existing drainage structure, or entering a stream.

Provide for erosion control measures to be in place and functioning prior to any earth disturbance within a drainage area. Compute the volume and size of silt control devices necessary to control sediment during each phase of construction. Remove sediment from silt traps before they become a maximum of $\frac{1}{2}$ full. Maintain silt fence by removing accumulated trappings and/or replacing the geotextile fabric when it becomes clogged, damaged, or deteriorated, or when directed by the Engineer. Properly dispose of all materials trapped by erosion control devices at approved sites off the right of way obtained by the Contractor at no additional cost to the Department (See Special Note for Waste and Borrow).

As work progresses, add or remove erosion control measures as required by the BMP applicable to the Contractor's project phasing and construction methods and techniques. Update the volume calculations and modify the BMP as necessary throughout the duration of the project. Ensure that an updated BMP is kept on site and available for public inspection throughout the life of the project.

After all construction is complete, restore all disturbed areas in accordance with Section 212. Completely remove all temporary erosion control devices not required as part of the permanent erosion control from the construction site. Prior to removal, obtain the Engineer's concurrence of items to be removed. Grade the remaining exposed earth (both on and off the Right-of-Way) as nearly as possible to its original condition, or as directed by the Engineer. Prepare the seed bed areas and sow all exposed earthen areas with the applicable seed mixture(s) according to Section 212.03.03.

Erosion Control KY 1061
Page 3 of 3

IV. MEASUREMENT

Erosion Control Blanket. If required by the BMP, the Department will measure Erosion Control Blanket according to Section 212.04.07.

Sodding. If required by the BMP, the Department will measure Sodding according to Section 212.04.08.

Channel Lining. If required by the BMP, the Department will measure Channel Lining according to Sections 703.04.04-703.04.07.

Erosion Control. Contrary to Sections 212.04, 213.04, and 703.04 other than Erosion Control Blankets, Sodding, and Channel Lining, the Department will **NOT** measure Erosion Control for separate payment. The Department will not measure developing, updating, and maintaining a BMP plan for each site; providing a KEPSC-RI qualified inspector; locating, furnishing, installing, inspecting, maintaining, and removing erosion and water pollution control items; Roadway Excavation, Borrow Excavation, Embankment In Place, Topsoil Furnished and Placed, and Spreading Stockpiled Topsoil; Topdressing Fertilizer, Temporary and Permanent Seeding and Protection, Special Seeding Crown Vetch, and Temporary Mulch; Sedimentation Basin and Clean Sedimentation Basin, Silt Trap Type “A” and Clean Silt Trap Type “A”; Silt Trap Type “B” and Clean Silt Trap Type “B”; Silt Trap Type “C” and Clean Silt Trap Type “C”; Temporary Silt Fence and Clean Temporary Silt Fence; Plants, Vines, Shrubs, and Trees; Gabion and Dumped Stone Deflectors and Riffle Structures; Boulders; Temporary Ditches and clean Temporary Ditches; Geotextile Fabric, and all other erosion and water pollution control items required by the BMP or the Engineer, but shall be incidental to the applicable items of work.

V. BASIS OF PAYMENT

Erosion Control Blanket. If not listed as a bid item, but required by the BMP, the Department will pay for Erosion Control Blankets as Extra Work according to Sections 104.03 and 109.04.

Sodding. If not listed as a bid item, but required by the BMP, the Department will pay for Sodding as Extra Work according to Sections 104.03 and 109.04.

Channel Lining. If not listed as a bid item, but required by the BMP, the Department will pay for Channel Lining as Extra Work according to Sections 104.03 and 109.04.

UTILITIES AND RAIL CERTIFICATION NOTE

Washington County
KY 53
0.300 mile point to 0.660 mile point
Item 04-4323

GENERAL PROJECT NOTE ON UTILITY PROTECTION

NOTE: DO NOT DISTURB THE FOLLOWING UTILITIES LOCATED WITHIN THE PROJECT DISTURB LIMITS

Salt River Electric
KU
LG&E
AT&T
Springfield Water

The Contractor is fully responsible for protection of all utilities listed above

THE FOLLOWING COMPANIES ARE RELOCATING/ADJUSTING THEIR UTILITIES WITHIN THE PROJECT LIMITS AND WILL BE COMPLETE PRIOR TO CONSTRUCTION

No utilities are required to be relocated or adjusted.

THE FOLLOWING COMPANIES HAVE FACILITIES TO BE RELOCATED/ADJUSTED BY THE COMPANY OR THE COMPANY’S SUBCONTRACTOR AND IS TO BE COORDINATED WITH THE ROAD CONTRACT

No utility relocation are to be coordinated with the road contract.

THE FOLLOWING COMPANIES HAVE FACILITIES TO BE RELOCATED/ADJUSTED BY THE ROAD CONTRACTOR AS INCLUDED IN THIS CONTRACT

No utilities are to be relocated or adjusted by the road contractor.

THE FOLLOWING RAIL COMPANIES HAVE FACILITIES IN CONJUNCTION WITH THIS PROJECT AS NOTED

☒ No Rail Involved ☐ Minimal Rail Involved (See Below) ☐ Rail Involved (See Below)

UTILITIES AND RAIL CERTIFICATION NOTE

**Washington County
KY 53
0.300 mile point to 0.660 mile point
Item 04-4323**

UNDERGROUND FACILITY DAMAGE PROTECTION – BEFORE YOU DIG

The contractor shall make every effort to protect underground facilities from damage as prescribed in the Underground Facility Damage Protection Act of 1994, Kentucky Revised Statute KRS 367.4901 to 367.4917. It is the contractor's responsibility to determine and take steps necessary to be in compliance with federal and state damage prevention directives. The contractor is instructed to contact KY 811 for the location of existing underground utilities. Contact shall be made a minimum of two (2) and no more than ten (10) business days prior to excavation.

The contractor shall submit Excavation Locate Requests to the Kentucky Contact Center (KY 811) via web ticket entry. The submission of this request does not relieve the contractor from the responsibility of contacting non-member facility owners, whom are to be contacted through their individual Protection Notification Center. It may be necessary for the contractor to contact the County Court Clerk to determine what utility companies have facilities in the area. Non-compliance with these directives can result in the enforcement of penalties.

SPECIAL CAUTION NOTE – PROTECTION OF UTILITIES

The contractor will be responsible for contacting all utility facility owners on the subject project to coordinate his activities. The contractor will coordinate his activities to minimize and, where possible, avoid conflicts with utility facilities. Due to the nature of the work proposed, it is unlikely to conflict with the existing utilities beyond minor facility adjustments. Where conflicts with utility facilities are unavoidable, the contractor will coordinate any necessary relocation work with the

UTILITIES AND RAIL CERTIFICATION NOTE

**Washington County
KY 53
0.300 mile point to 0.660 mile point
Item 04-4323**

facility owner and Resident Engineer. The Kentucky Transportation Cabinet maintains the right to remove or alter portions of this contract if a utility conflict occurs.

The utility facilities as noted in the previous section(s) have been determined using data garnered by varied means and with varying degrees of accuracy: from the facility owners, a result of S.U.E., field inspections, and/or reviews of record drawings. The facilities defined may not be inclusive of all utilities in the project scope and are not Level A quality, unless specified as such. It is the contractor's responsibility to verify all utilities and their respective locations before excavating.

Please Note: The information presented in this Utility Note is informational in nature and the information contained herein is not guaranteed.

AREA UTILITIES CONTACT LIST

| <u>Utility Company/Agency</u> | <u>Contact Name</u> | <u>Contact Information</u> |
|--------------------------------------|---------------------|---|
| Salt River Electric | Daniel Carrico | dcarrico@srelectric.com 502-373-7730 |
| Kentucky Utilities | Larry Gilpin | larry.Gilpin@lge-ku.com 270-465-7721 |
| LG&E | Caroline Justice | caroline.justice@lge-ku.com 502-627-3708 |
| AT&T | Scott Roche | sr8832@att.com 502-348-4528 |
| Springfield Water & Sewer Commission | David Bartley | davidabartley@springfieldwater.org 859-336-5454 |

UTILITIES AND RAIL CERTIFICATION NOTE

**Taylor County
Guardrail Project
KY 1061 M.P. 1.950-2.050
Item 04-4320**

GENERAL PROJECT NOTE ON UTILITY PROTECTION

NOTE: DO NOT DISTURB THE FOLLOWING UTILITIES LOCATED WITHIN THE PROJECT DISTURB LIMITS

Green-Taylor Water Dist.
City of Campbellsville (water)
Comcast Communications
Atmos Energy (gas)
Taylor County RECC
Windstream

The Contractor is fully responsible for protection of all utilities listed above

THE FOLLOWING COMPANIES ARE RELOCATING/ADJUSTING THEIR UTILITIES WITHIN THE PROJECT LIMITS AND WILL BE COMPLETE PRIOR TO CONSTRUCTION

No utilities are required to be relocated or adjusted

THE FOLLOWING COMPANIES HAVE FACILITIES TO BE RELOCATED/ADJUSTED BY THE COMPANY OR THE COMPANY'S SUBCONTRACTOR AND IS TO BE COORDINATED WITH THE ROAD CONTRACT

No utility relocation are to be coordinated with the road contract.

THE FOLLOWING COMPANIES HAVE FACILITIES TO BE RELOCATED/ADJUSTED BY THE ROAD CONTRACTOR AS INCLUDED IN THIS CONTRACT

No utilities are to be relocated or adjusted by the road contract

THE FOLLOWING RAIL COMPANIES HAVE FACILITIES IN CONJUNCTION WITH THIS PROJECT AS NOTED

☒ No Rail Involved ☐ Minimal Rail Involved (See Below) ☐ Rail Involved (See Below)

UTILITIES AND RAIL CERTIFICATION NOTE

**Taylor County
Guardrail Project
KY 1061 M.P. 1.950-2.050
Item 04-4320**

UNDERGROUND FACILITY DAMAGE PROTECTION – BEFORE YOU DIG

The contractor shall make every effort to protect underground facilities from damage as prescribed in the Underground Facility Damage Protection Act of 1994, Kentucky Revised Statute KRS 367.4901 to 367.4917. It is the contractor's responsibility to determine and take steps necessary to be in compliance with federal and state damage prevention directives. The contractor is instructed to contact KY 811 for the location of existing underground utilities. Contact shall be made a minimum of two (2) and no more than ten (10) business days prior to excavation.

The contractor shall submit Excavation Locate Requests to the Kentucky Contact Center (KY 811) via web ticket entry. The submission of this request does not relieve the contractor from the responsibility of contacting non-member facility owners, whom are to be contacted through their individual Protection Notification Center. It may be necessary for the contractor to contact the County Court Clerk to determine what utility companies have facilities in the area. Non-compliance with these directives can result in the enforcement of penalties.

SPECIAL CAUTION NOTE – PROTECTION OF UTILITIES

The contractor will be responsible for contacting all utility facility owners on the subject project to coordinate his activities. The contractor will coordinate his activities to minimize and, where possible, avoid conflicts with utility facilities. Due to the nature of the work proposed, it is unlikely to conflict with the existing utilities beyond minor facility adjustments. Where conflicts with utility

UTILITIES AND RAIL CERTIFICATION NOTE

Taylor County
Guardrail Project
KY 1061 M.P. 1.950-2.050
Item 04-4320

facilities are unavoidable, the contractor will coordinate any necessary relocation work with the facility owner and Resident Engineer. The Kentucky Transportation Cabinet maintains the right to remove or alter portions of this contract if a utility conflict occurs.

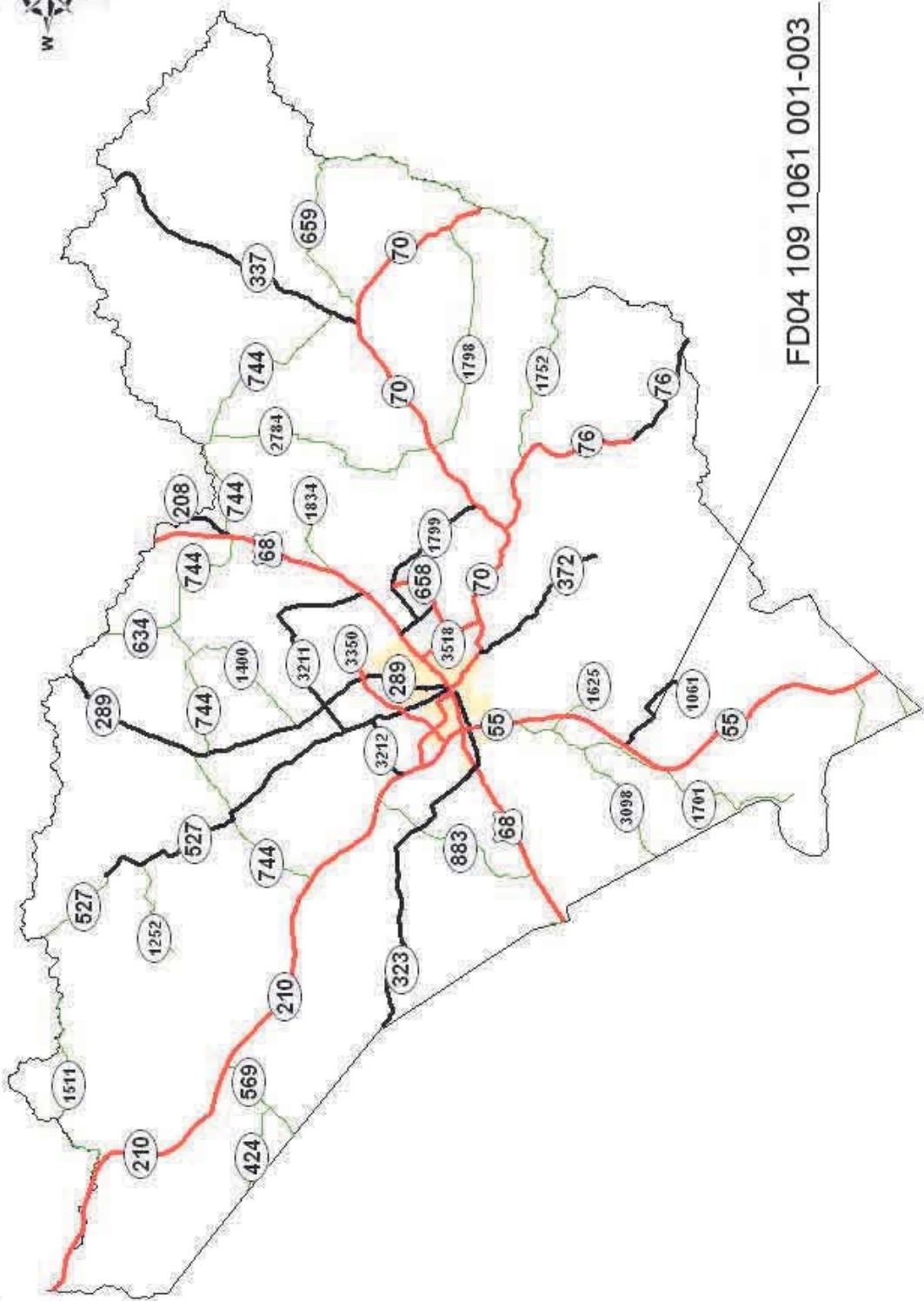
The utility facilities as noted in the previous section(s) have been determined using data garnered by varied means and with varying degrees of accuracy: from the facility owners, a result of S.U.E., field inspections, and/or reviews of record drawings. The facilities defined may not be inclusive of all utilities in the project scope and are not Level A quality, unless specified as such. It is the contractor’s responsibility to verify all utilities and their respective locations before excavating.

Please Note: The information presented in this Utility Note is informational in nature and the information contained herein is not guaranteed.

AREA UTILITIES CONTACT LIST

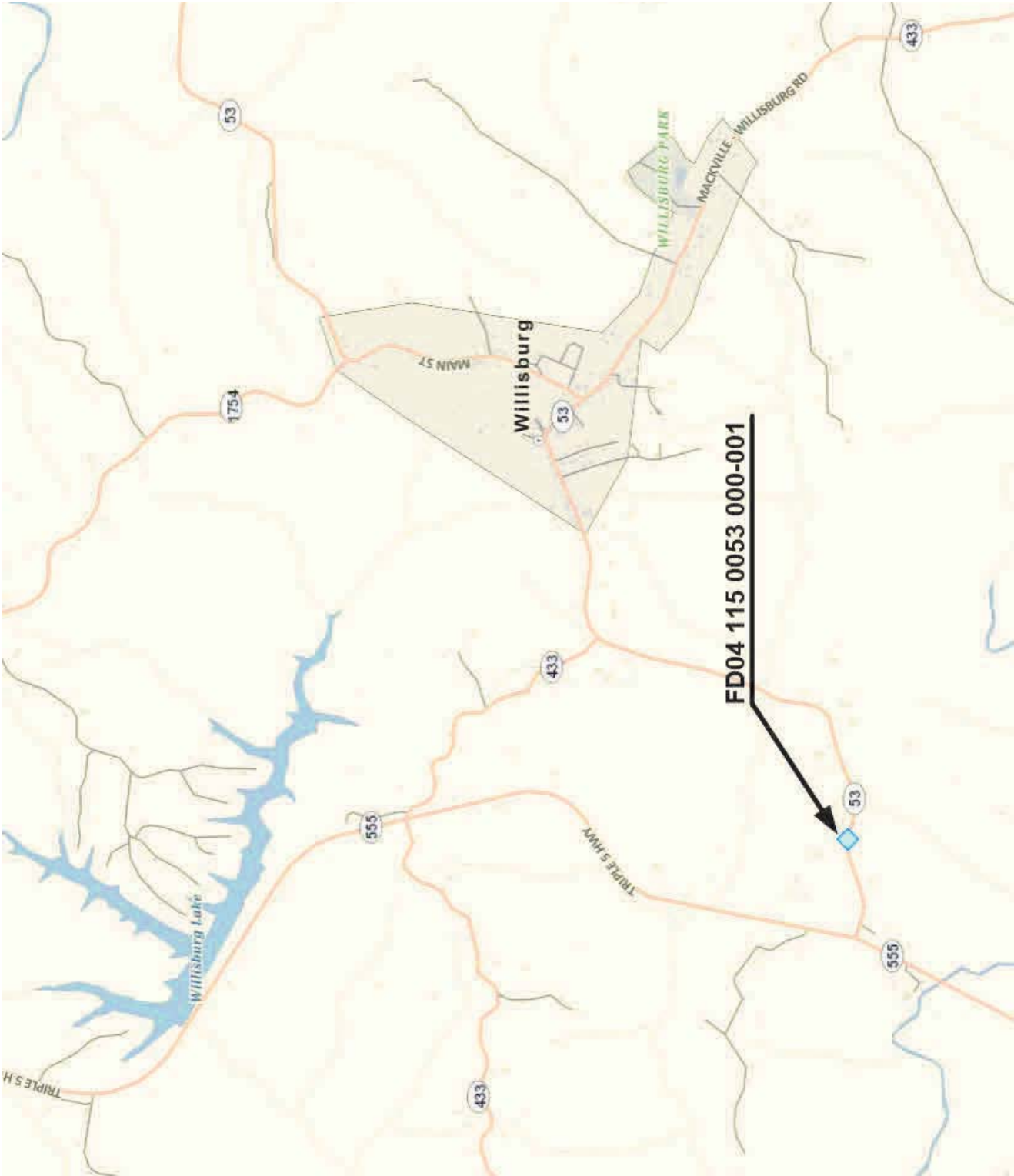
| <u>Utility Company/Agency</u> | <u>Contact Name</u> | <u>Contact Information</u> |
|--------------------------------|---------------------|---|
| Green-Taylor Water | Andrew Tucker | atucker450@gmail.com 270-308-5268 |
| City of Campbellsville (water) | Josh Pedigo | josh.pedigo@campbellsville.us 270-789-3133 |
| Comcast | Steve Gaddie | Stephen_Gaddie@comcast.com 270-401-1543 |
| Atmos Energy(gas) | Silas Bohlen | SilasBohlen@atmosenergy.com 270-685-8020 |
| Taylor County Electric | Mike Skaggs | mskaggs@tcrecc.com 270-465-4101 |
| Windstream | Steve Johnson | SteveJohnson@windstream.com 859-357-6209 |
| Kentucky Utilities | Caroline Justice | Caroline.Justice@lge-ku.com 502-627-3708 |

DEPARTMENT OF HIGHWAYS
MAP OF
TAYLOR COUNTY



FD04 109 1061 001-003

WASHINGTON COUNTY



MATERIAL SUMMARY

CONTRACT ID: 212412

121GR21P079-FD04

MP10910612101

LONE VALLEY ROAD (KY 1061) FROM 0.274 MILES EAST OF ROBIN ROAD EXTENDING EAST TO 0.026 MILES WEST OF STRAWBERRY FARM ROAD GUARDRAIL, A DISTANCE OF .04 MILES.

| Project Line No | Bid Code | DESCRIPTION | Quantity | Unit |
|-----------------|----------|---|----------|------|
| 0070 | 01987 | DELINEATOR FOR GUARDRAIL BI DIRECTIONAL WHITE | 5.00 | EACH |
| 0075 | 02360 | GUARDRAIL TERMINAL SECTION NO 1 | 2.00 | EACH |
| 0080 | 02562 | TEMPORARY SIGNS | 150.00 | SQFT |
| 0085 | 02650 | MAINTAIN & CONTROL TRAFFIC - (KY 1061) | 1.00 | LS |
| 0090 | 21802EN | G/R STEEL W BEAM-S FACE (7 FT POST) | 200.00 | LF |
| 0095 | 02569 | DEMOBILIZATION | 1.00 | LS |

CONTRACT ID: 212412

121GR21P079-FD04

MP11500532102

LAWRENCEBURG ROAD (KY 53) FROM 0.336 MILES EAST OF KY 555 EXTENDING EAST TO 0.380 MILES EAST OF KY 555 GUARDRAIL, A DISTANCE OF .04 MILES.

| Project Line No | Bid Code | DESCRIPTION | Quantity | Unit |
|-----------------|----------|---|----------|------|
| 0005 | 01312 | REMOVE AND RELAY PIPE - (15 INCH ENTRANCE) | 28.00 | LF |
| 0010 | 01987 | DELINEATOR FOR GUARDRAIL BI DIRECTIONAL WHITE | 13.00 | EACH |
| 0015 | 02014 | BARRICADE-TYPE III | 2.00 | EACH |
| 0020 | 02360 | GUARDRAIL TERMINAL SECTION NO 1 | 1.00 | EACH |
| 0025 | 02371 | GUARDRAIL END TREATMENT TYPE 7 | 3.00 | EACH |
| 0030 | 02562 | TEMPORARY SIGNS | 200.00 | SQFT |
| 0035 | 02650 | MAINTAIN & CONTROL TRAFFIC - (KY 53) | 1.00 | LS |
| 0040 | 02690 | SAFELOADING | 7.00 | CUYD |
| 0045 | 20196ED | EARTHWORK - (KY 53) | 1.00 | LS |
| 0050 | 21415ND | EROSION CONTROL | 1.00 | LS |
| 0055 | 21802EN | G/R STEEL W BEAM-S FACE (7 FT POST) | 512.50 | LF |
| 0060 | 24668EC | STEEL ENCASEMENT PIPE - 24 INCH (BORE & JACK) | 100.00 | LF |
| 0065 | 02569 | DEMOBILIZATION | 1.00 | LS |

GUARDRAIL SUMMARY KY 53

| NEW GUARDRAIL | | | | | | | REMOVE GUARDRAIL | | | | |
|---------------|-----------------------------|-----------------|---------------|------------|----------|---------|------------------|-----------------|---------------|----------|---------|
| LANE | END TREAT. | BEGIN MILEPOINT | END MILEPOINT | END TREAT. | LIN FEET | REMARKS | LANE | BEGIN MILEPOINT | END MILEPOINT | LIN FEET | REMARKS |
| | | | | | | | | | | | |
| Left | Radius & Term Sect No. 1 | 0.337 | 0.377 | Type 7 | 212.5 | | | | | | |
| Right | Type 7 | 0.317 | 0.373 | Type 7 | 300.0 | | | | | | |
| | | | | | | | | | | | |

End Treatment Type 1 0
End Treatment Type 3 0
End Treatment Type 4A 0
End Treatment Type 7 3
Terminal Section No. 1 1

GUARDRAIL SUMMARY KY 1061

| NEW GUARDRAIL | | | | | | | REMOVE GUARDRAIL | | | | |
|---------------|-----------------------------|-----------------|---------------|-----------------------------|----------|---------|------------------|-----------------|---------------|----------|---------|
| LANE | END TREAT. | BEGIN MILEPOINT | END MILEPOINT | END TREAT. | LIN FEET | REMARKS | LANE | BEGIN MILEPOINT | END MILEPOINT | LIN FEET | REMARKS |
| | | | | | | | | | | | |
| West | Radius & Term Sect No. 1 | 1.983 | 2.019 | Radius & Term Sect No. 1 | 200.0 | | | | | | |
| | | | | | | | | | | | |

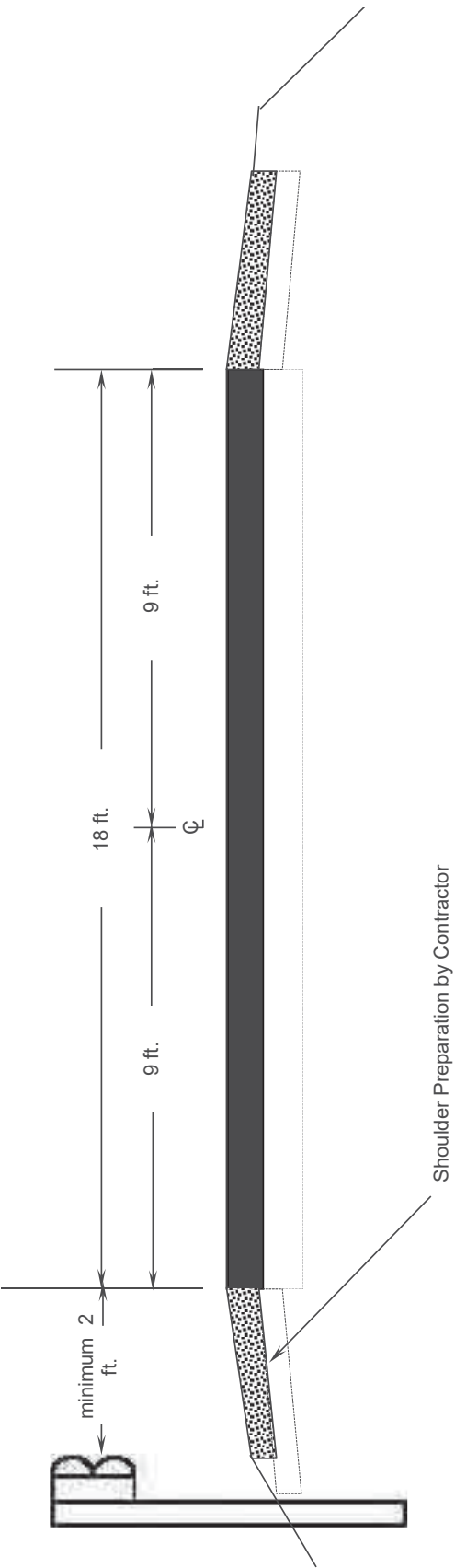
TOTALS

200.0

0.0

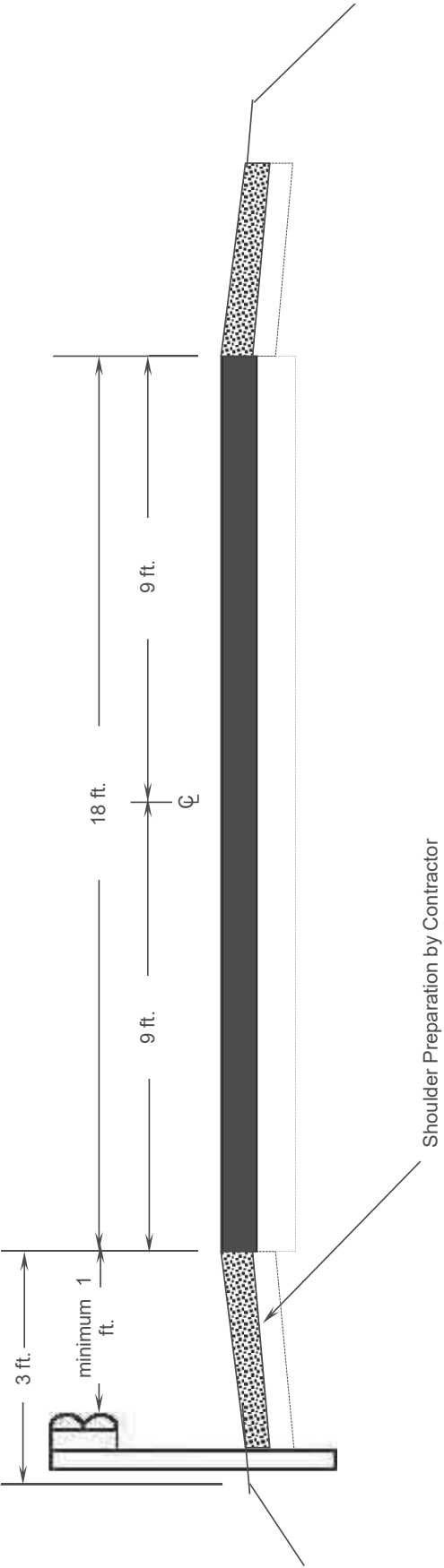
- End Treatment Type 10
- End Treatment Type 30
- End Treatment Type 4A0
- End Treatment Type 70
- Terminal Section No. 12

TYPICAL SECTION
FED04 115 0053 000-001



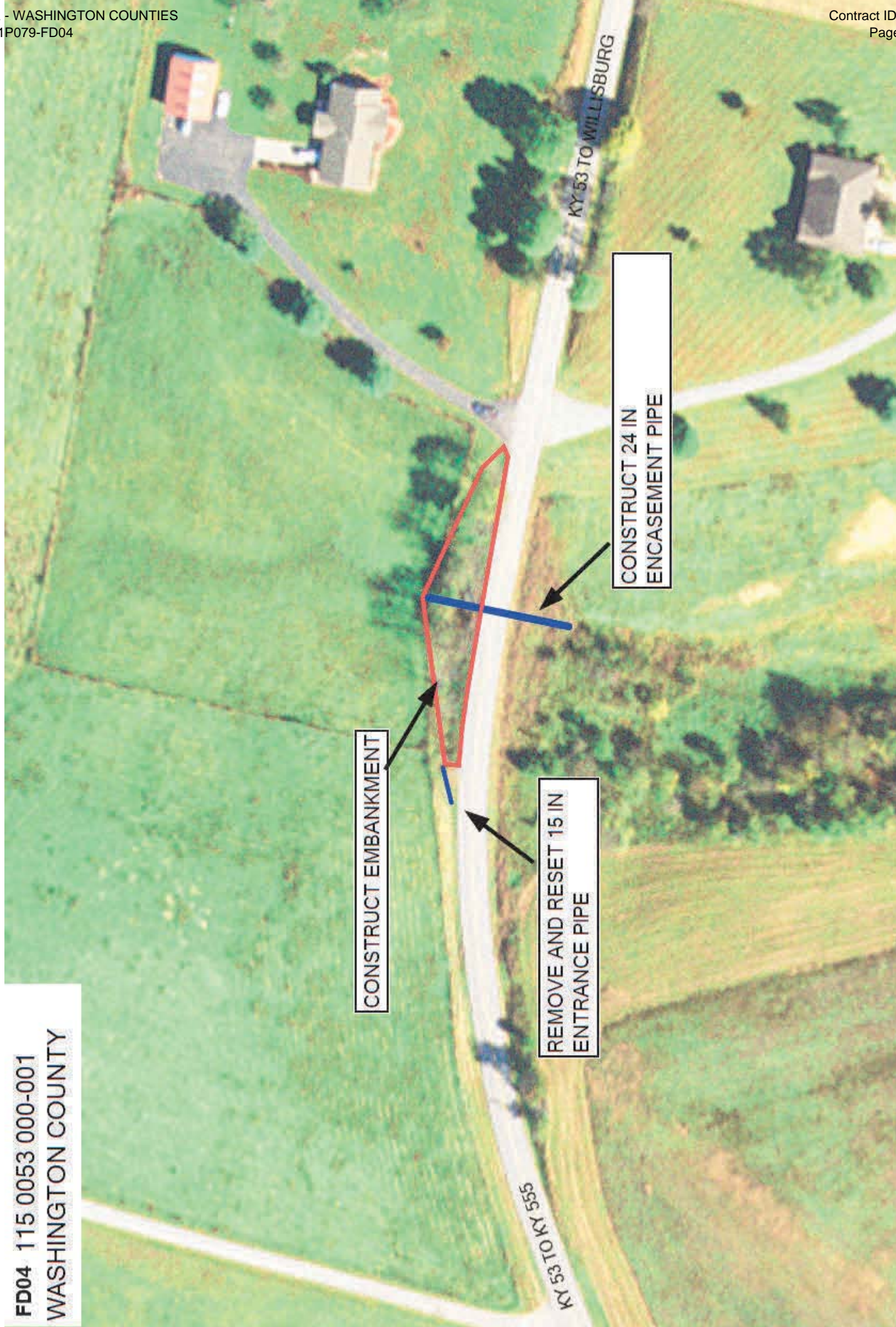
NOTES: Typical Right or Left
N.T.S.

TYPICAL SECTION
FED04 109 1061 001-003



NOTES: Typical Right or Left
N.T.S.

FD04 115 0053 000-001
WASHINGTON COUNTY



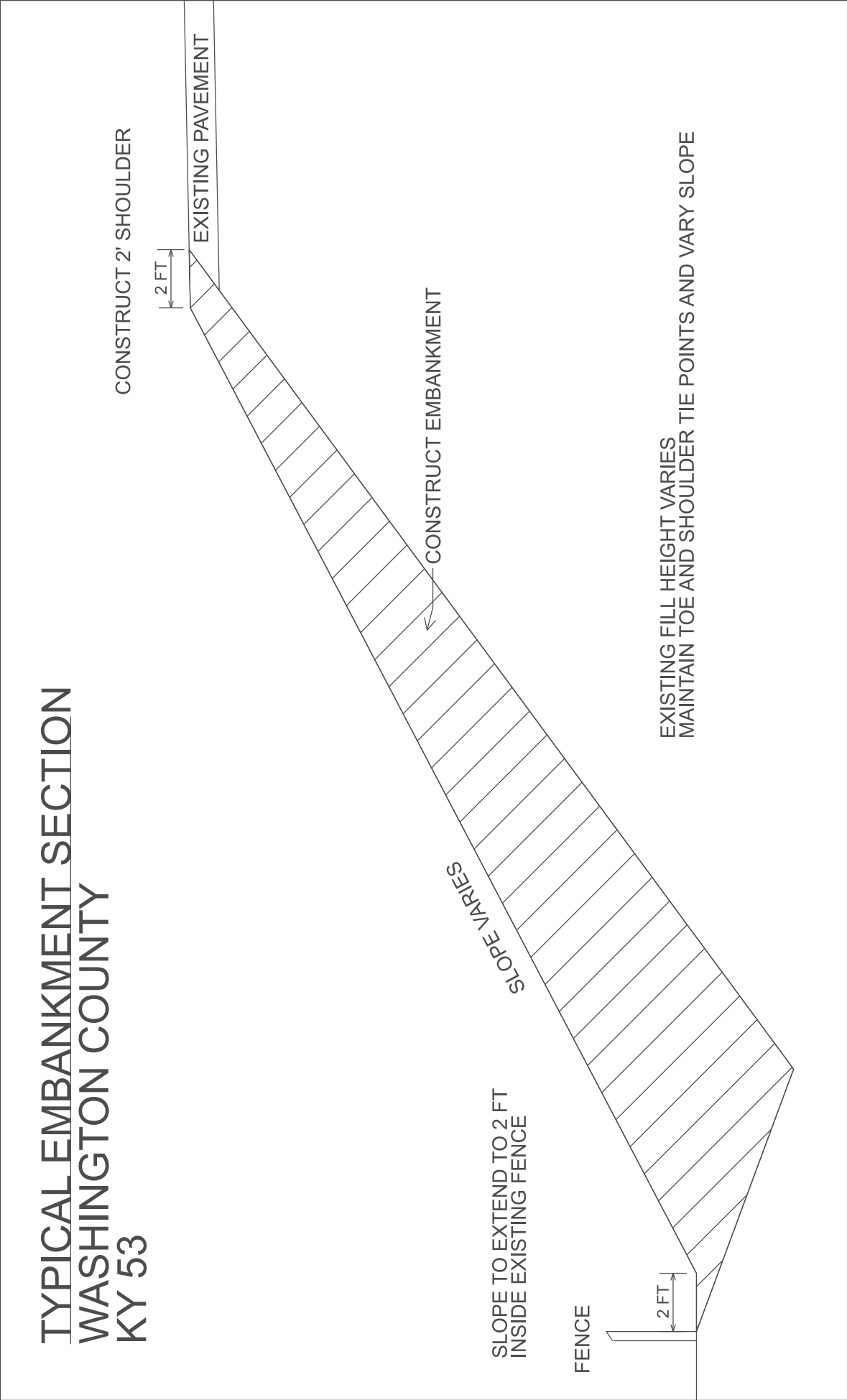
CONSTRUCT EMBANKMENT

REMOVE AND RESET 15 IN
ENTRANCE PIPE

CONSTRUCT 24 IN
ENCASEMENT PIPE

KY 53 TO WILLISBURG

KY 53 TO KY 355





PART II

SPECIFICATIONS AND STANDARD DRAWINGS

SPECIFICATIONS REFERENCE

Any reference in the plans or proposal to previous editions of the *Standard Specifications for Road and Bridge Construction* and *Standard Drawings* are superseded by *Standard Specifications for Road and Bridge Construction, Edition of 2019* and *Standard Drawings, Edition of 2020*.

SUPPLEMENTAL SPECIFICATIONS

The contractor shall use the Supplemental Specifications that are effective at the time of letting.
The Supplemental Specifications can be found at the following link:

<http://transportation.ky.gov/Construction/Pages/Kentucky-Standard-Specifications.aspx>

2020 KENTUCKY STANDARD DRAWINGS

| | |
|---|------------|
| TYPICAL GUARDRAIL INSTALLATIONS | RBI-001-12 |
| TYPICAL GUARDRAIL INSTALLATIONS | RBI-002-07 |
| STEEL BEAM GUARDRAIL (“W”-BEAM)..... | RBR-001-13 |
| GUARDRAIL COMPONENTS..... | RBR-005-11 |
| GUARDRAIL TERMINAL SECTIONS | RBR-010-06 |
| STEEL GUARDRAIL POSTS..... | RBR-015-06 |
| GUARDRAIL SYSTEM TRANSITION | RBR-018 |
| DELINEATORS FOR GUARDRAIL..... | RBR-055-01 |
| TEMPORARY SILT FENCE | RDX-210-03 |
| TEMPORARY SILT FENCE WITH WOVEN WIRE FENCE FABRIC | RDX-215-01 |
| SILT TRAP - TYPE A..... | RDX-220-05 |
| SILT TRAP - TYPE B..... | RDX-225-01 |
| SILT TRAP - TYPE C..... | RDX-230-01 |
| CURVE WIDENING AND SUPERELEVATION TRANSITIONS | RGS-001-07 |
| MISCELLANEOUS STANDARDS..... | RGX-001-06 |
| TYPICAL EMBANKMENT FOUNDATION BENCHES | RGX-010-04 |
| ONE POINT PROCTER FAMILY OF CURVES | RGX-200-01 |
| APPROACHES, ENTRANCES, AND MAIL BOX TURNOUT | RPM-110-07 |
| LANE CLOSURE TWO-LANE HIGHWAY | TTC-100-05 |
| SHOULDER CLOSURE | TTC-135-03 |
| PAVEMENT CONDITION WARNING SIGNS..... | TTD-125-03 |

PART III

EMPLOYMENT, WAGE AND RECORD REQUIREMENTS

**TRANSPORTATION CABINET
DEPARTMENT OF HIGHWAYS**

**LABOR AND WAGE REQUIREMENTS
APPLICABLE TO OTHER THAN FEDERAL-AID SYSTEM PROJECTS**

- I. Application
- II. Nondiscrimination of Employees (KRS 344)

I. APPLICATION

1. These contract provisions shall apply to all work performed on the contract by the contractor with his own organization and with the assistance of workmen under his immediate superintendence and to all work performed on the contract by piecework, station work or by subcontract. The contractor's organization shall be construed to include only workmen employed and paid directly by the contractor and equipment owned or rented by him, with or without operators.

2. The contractor shall insert in each of his subcontracts all of the stipulations contained in these Required Provisions and such other stipulations as may be required.

3. A breach of any of the stipulations contained in these Required Provisions may be grounds for termination of the contract.

3. If the contractor is in control of apprenticeship or other training or retraining, including on-the-job training programs, he shall not discriminate against an individual because of his race, color, religion, national origin, sex, disability or age forty (40) and over, in admission to, or employment in any program established to provide apprenticeship or other training.

4. The contractor will send to each labor union or representative of workers with which he has a collective bargaining agreement or other contract or understanding, a notice to be provided advising the said labor union or workers' representative of the contractor's commitments under this section, and shall post copies of the notice in conspicuous places available to employees and applicants for employment. The contractor will take such action with respect to any subcontract or purchase order as the administering agency may direct as a means of enforcing such provisions, including sanctions for non-compliance.

Revised: January 25, 2017

II. NONDISCRIMINATION OF EMPLOYEES

**AN ACT OF THE KENTUCKY
GENERAL ASSEMBLY TO PREVENT
DISCRIMINATION IN EMPLOYMENT
KRS CHAPTER 344
EFFECTIVE JUNE 16, 1972**

The contract on this project, in accordance with KRS Chapter 344, provides that during the performance of this contract, the contractor agrees as follows:

1. The contractor shall not fail or refuse to hire, or shall not discharge any individual, or otherwise discriminate against an individual with respect to his compensation, terms, conditions, or privileges of employment, because of such individual's race, color, religion, national origin, sex, disability or age (forty and above); or limit, segregate, or classify his employees in any way which would deprive or tend to deprive an individual of employment opportunities or otherwise adversely affect his status as an employee, because of such individual's race, color, religion, national origin, sex, disability or age forty (40) and over. The contractor agrees to post in conspicuous places, available to employees and applicants for employment, notices to be provided setting forth the provisions of this nondiscrimination clause.

2. The contractor shall not print or publish or cause to be printed or published a notice or advertisement relating to employment by such an employer or membership in or any classification or referral for employment by the employment agency, indicating any preference, limitation, specification, or discrimination, based on race, color, religion, national origin, sex, or age forty (40) and over, or because the person is a qualified individual with a disability, except that such a notice or advertisement may indicate a preference, limitation, or specification based on religion, national origin, sex, or age forty (40) and over, or because the person is a qualified individual with a disability, when religion, national origin, sex, or age forty (40) and over, or because the person is a qualified individual with a disability, is a bona fide occupational qualification for employment.

EXECUTIVE BRANCH CODE OF ETHICS

In the 1992 regular legislative session, the General Assembly passed and Governor Brereton Jones signed Senate Bill 63 (codified as KRS 11A), the Executive Branch Code of Ethics, which states, in part:

KRS 11A.040 (7) provides:

No present or former public servant shall, within six (6) months following termination of his office or employment, accept employment, compensation, or other economic benefit from any person or business that contracts or does business with, or is regulated by, the state in matters in which he was directly involved during the last thirty-six (36) months of his tenure. This provision shall not prohibit an individual from returning to the same business, firm, occupation, or profession in which he was involved prior to taking office or beginning his term of employment, or for which he received, prior to his state employment, a professional degree or license, provided that, for a period of six (6) months, he personally refrains from working on any matter in which he was directly involved during the last thirty-six (36) months of his tenure in state government. This subsection shall not prohibit the performance of ministerial functions, including but not limited to filing tax returns, filing applications for permits or licenses, or filing incorporation papers, nor shall it prohibit the former officer or public servant from receiving public funds disbursed through entitlement programs.

KRS 11A.040 (9) states:

A former public servant shall not represent a person or business before a state agency in a matter in which the former public servant was directly involved during the last thirty-six (36) months of his tenure, for a period of one (1) year after the latter of:

- a) The date of leaving office or termination of employment; or
- b) The date the term of office expires to which the public servant was elected.

This law is intended to promote public confidence in the integrity of state government and to declare as public policy the idea that state employees should view their work as a public trust and not as a way to obtain private benefits.

If you have worked for the executive branch of state government within the past six months, you may be subject to the law's prohibitions. The law's applicability may be different if you hold elected office or are contemplating representation of another before a state agency.

Also, if you are affiliated with a firm which does business with the state and which employs former state executive-branch employees, you should be aware that the law may apply to them.

In case of doubt, the law permits you to request an advisory opinion from the Executive Branch Ethics Commission, 3 Fountain Place, Frankfort, Kentucky 40601; telephone (502) 564-7954.

Revised: January 27, 2017

Kentucky Equal Employment Opportunity Act of 1978

The requirements of the Kentucky Equal Employment Opportunity Act of 1978 (KRS 45.560-45.640) shall apply to this Contract. The apparent low Bidder will be required to submit EEO forms to the Division of Construction Procurement, which will then forward to the Finance and Administration Cabinet for review and approval. No award will become effective until all forms are submitted and EEO/CC has certified compliance. The required EEO forms are as follows:

- EEO-1: Employer Information Report
- Affidavit of Intent to Comply
- Employee Data Sheet
- Subcontractor Report

These forms are available on the Finance and Administration's web page under ***Vendor Information, Standard Attachments and General Terms*** at the following address:
<https://www.eProcurement.ky.gov>.

Bidders currently certified as being in compliance by the Finance and Administration Cabinet may submit a copy of their approval letter in lieu of the referenced EEO forms.

For questions or assistance please contact the Finance and Administration Cabinet by email at **finance.contractcompliance@ky.gov** or by phone at 502-564-2874.

EMPLOYEE RIGHTS UNDER THE FAIR LABOR STANDARDS ACT

THE UNITED STATES DEPARTMENT OF LABOR WAGE AND HOUR DIVISION

FEDERAL MINIMUM WAGE

\$7.25 PER HOUR

BEGINNING JULY 24, 2009

OVERTIME PAY

At least 1½ times your regular rate of pay for all hours worked over 40 in a workweek.

CHILD LABOR

An employee must be at least **16** years old to work in most non-farm jobs and at least **18** to work in non-farm jobs declared hazardous by the Secretary of Labor.

Youths **14** and **15** years old may work outside school hours in various non-manufacturing, non-mining, non-hazardous jobs under the following conditions:

No more than

- **3** hours on a school day or **18** hours in a school week;
- **8** hours on a non-school day or **40** hours in a non-school week.

Also, work may not begin before **7 a.m.** or end after **7 p.m.**, except from June 1 through Labor Day, when evening hours are extended to **9 p.m.** Different rules apply in agricultural employment.

TIP CREDIT

Employers of "tipped employees" must pay a cash wage of at least \$2.13 per hour if they claim a tip credit against their minimum wage obligation. If an employee's tips combined with the employer's cash wage of at least \$2.13 per hour do not equal the minimum hourly wage, the employer must make up the difference. Certain other conditions must also be met.

ENFORCEMENT

The Department of Labor may recover back wages either administratively or through court action, for the employees that have been underpaid in violation of the law. Violations may result in civil or criminal action.

Employers may be assessed civil money penalties of up to \$1,100 for each willful or repeated violation of the minimum wage or overtime pay provisions of the law and up to \$11,000 for each employee who is the subject of a violation of the Act's child labor provisions. In addition, a civil money penalty of up to \$50,000 may be assessed for each child labor violation that causes the death or serious injury of any minor employee, and such assessments may be doubled, up to \$100,000, when the violations are determined to be willful or repeated. The law also prohibits discriminating against or discharging workers who file a complaint or participate in any proceeding under the Act.

ADDITIONAL INFORMATION

- Certain occupations and establishments are exempt from the minimum wage and/or overtime pay provisions.
- Special provisions apply to workers in American Samoa and the Commonwealth of the Northern Mariana Islands.
- Some state laws provide greater employee protections; employers must comply with both.
- The law requires employers to display this poster where employees can readily see it.
- Employees under 20 years of age may be paid \$4.25 per hour during their first 90 consecutive calendar days of employment with an employer.
- Certain full-time students, student learners, apprentices, and workers with disabilities may be paid less than the minimum wage under special certificates issued by the Department of Labor.

For additional information:



1-866-4-USWAGE

(1-866-487-9243)

TTY: 1-877-889-5627



WWW.WAGEHOUR.DOL.GOV

PART IV

INSURANCE

Refer to
Kentucky Standard Specifications for Road and Bridge Construction,
current edition

PART V

BID ITEMS

Section: 0001 - ROADWAY

| LINE | BID CODE | ALT | DESCRIPTION | QUANTITY | UNIT | UNIT PRIC | FP | AMOUNT |
|------|----------|-----|--|----------|------|-----------|----|--------|
| 0010 | 01312 | | REMOVE AND RELAY PIPE (15 INCH ENTRANCE) | 28.00 | LF | | \$ | |
| 0020 | 01987 | | DELINEATOR FOR GUARDRAIL BI DIRECTIONAL WHITE | 18.00 | EACH | | \$ | |
| 0030 | 02014 | | BARRICADE-TYPE III | 2.00 | EACH | | \$ | |
| 0040 | 02360 | | GUARDRAIL TERMINAL SECTION NO 1 | 3.00 | EACH | | \$ | |
| 0050 | 02371 | | GUARDRAIL END TREATMENT TYPE 7 | 3.00 | EACH | | \$ | |
| 0060 | 02562 | | TEMPORARY SIGNS | 350.00 | SQFT | | \$ | |
| 0070 | 02650 | | MAINTAIN & CONTROL TRAFFIC (KY 1061) | 1.00 | LS | | \$ | |
| 0080 | 02650 | | MAINTAIN & CONTROL TRAFFIC (KY 53) | 1.00 | LS | | \$ | |
| 0090 | 02690 | | SAFELOADING | 7.00 | CUYD | | \$ | |
| 0100 | 20196ED | | EARTHWORK (KY 53) | 1.00 | LS | | \$ | |
| 0110 | 21415ND | | EROSION CONTROL | 1.00 | LS | | \$ | |
| 0120 | 21802EN | | G/R STEEL W BEAM-S FACE (7 FT POST) | 712.50 | LF | | \$ | |
| 0130 | 24668EC | | STEEL ENCASEMENT PIPE 24 INCH (BORE & JACK) | 100.00 | LF | | \$ | |

Section: 0002 - DEMOBILIZATION

| LINE | BID CODE | ALT | DESCRIPTION | QUANTITY | UNIT | UNIT PRIC | FP | AMOUNT |
|------|----------|-----|----------------|----------|------|-----------|----|--------|
| 0140 | 02569 | | DEMOBILIZATION | 1.00 | LS | | \$ | |