



**CALL NO. 367**

**CONTRACT ID. 222467**

**HICKMAN COUNTY**

**FED/STATE PROJECT NUMBER CPTL 053 8000 000-001**

**DESCRIPTION COLUMBUS-BELMONT STATE PARK MAIN ROAD, PARKING LOTS,  
& PATHS**

**WORK TYPE ASPHALT SURFACE WITH GRADE & DRAIN**

**PRIMARY COMPLETION DATE 10/31/2022**

**LETTING DATE: June 23,2022**

Sealed Bids will be received electronically through the Bid Express bidding service until 10:00 AM EASTERN DAYLIGHT TIME June 23,2022. Bids will be publicly announced at 10:00 AM EASTERN DAYLIGHT TIME.

**NO PLANS ASSOCIATED WITH THIS PROJECT.**

**REQUIRED BID PROPOSAL GUARANTY: Not less than 5% of the total bid.**

## TABLE OF CONTENTS

PART I	SCOPE OF WORK
	<ul style="list-style-type: none"><li>• PROJECT(S), COMPLETION DATE(S), &amp; LIQUIDATED DAMAGES</li><li>• CONTRACT NOTES</li><li>• STATE CONTRACT NOTES</li><li>• SURFACING AREAS</li><li>• ASPHALT MIXTURE</li><li>• DGA BASE FOR SHOULDERS</li><li>• INCIDENTAL SURFACING</li><li>• COMPACTION OPTION B</li><li>• SPECIAL NOTE(S) APPLICABLE TO PROJECT</li><li>• LIQUIDATED DAMAGES</li><li>• WASTE AND BORROW SITES</li><li>• NON-TRACKING TACK COAT</li><li>• COORDINATION OF WORK WITH OTHER CONTRACTS</li><li>• ASPHALT MIX PAVEMENT WEDGE MONOLITHIC OPERATION</li><li>• SHOULDER PREPARATION</li><li>• EDGE KEY (BY LINEAR FEET)</li><li>• TYPICAL SECTION DIMENSIONS</li><li>• SIDEWALK RAMPS &amp; DETECTABLE WARNINGS SY</li><li>• TRAFFIC CONTROL PLAN</li><li>• PARKING LOT STRIPING</li><li>• DURABLE PAVEMENT EDGE DETAILS</li><li>• EROSION CONTROL PLAN FOR MAINTENANCE PROJECTS</li><li>• GENERAL UTILITY NOTES</li><li>• SKETCH MAP(S)</li><li>• SUMMARY SHEET(S)</li><li>• TYPICAL SECTION(S)</li><li>• DETAIL SHEET(S)</li></ul>
PART II	SPECIFICATIONS AND STANDARD DRAWINGS
	<ul style="list-style-type: none"><li>• SPECIFICATIONS REFERENCE</li><li>• SUPPLEMENTAL SPECIFICATION</li><li>• STANDARD DRAWINGS THAT APPLY</li></ul>
PART III	EMPLOYMENT, WAGE AND RECORD REQUIREMENTS
	<ul style="list-style-type: none"><li>• LABOR AND WAGE REQUIREMENTS</li><li>• EXECUTIVE BRANCH CODE OF ETHICS</li><li>• KENTUCKY EQUAL EMPLOYMENT OPPORTUNITY ACT OF 1978 LOCALITY / STATE</li><li>• PROJECT WAGE RATES / STATE FUNDED</li></ul>
PART IV	INSURANCE
PART V	BID ITEMS

**PART I**  
**SCOPE OF WORK**

## ADMINISTRATIVE DISTRICT - 01

**CONTRACT ID - 222467**

**CPTL 053 8000 000-001**

**COUNTY - HICKMAN**

**PCN - MP05380002201**

**CPTL 053 8029 000-001**

COLUMBUS-BELMONT STATE PARK MAIN ROAD, PARKING LOTS, & PATHS (MP 0) VARIUS DRIVES, PARKING LOTS & PATHS WITHIN THE PARK (MP 1), A DISTANCE OF 01.00 MILES.ASPHALT SURFACE WITH GRADE & DRAIN

GEOGRAPHIC COORDINATES LATITUDE 36:45:55.00 LONGITUDE 89:06:39.00

ADT 200

**COMPLETION DATE(S):**

COMPLETED BY 10/31/2022

SPECIFIED COMPLETION DATE -  
ALL ITEMS IN CONTRACT

## **CONTRACT NOTES**

### **PROPOSAL ADDENDA**

All addenda to this proposal must be applied when calculating bid and certified in the bid packet submitted to the Kentucky Department of Highways. Failure to use the correct and most recent addenda may result in the bid being rejected.

### **BID SUBMITTAL**

Bidder must use the Department's electronic bidding software. The Bidder must download the bid file located on the Bid Express website ([www.bidx.com](http://www.bidx.com)) to prepare a bid packet for submission to the Department. The bidder must submit electronically using Bid Express.

### **JOINT VENTURE BIDDING**

Joint venture bidding is permissible. All companies in the joint venture must be prequalified in one of the work types in the Qualifications for Bidders for the project. The bidders must get a vendor ID for the joint venture from the Division of Construction Procurement and register the joint venture as a bidder on the project. Also, the joint venture must obtain a digital ID from Bid Express to submit a bid. A joint bid bond of 5% may be submitted for both companies or each company may submit a separate bond of 5%.

### **UNDERGROUND FACILITY DAMAGE PROTECTION**

The contractor shall make every effort to protect underground facilities from damage as prescribed in the Underground Facility Damage Protection Act of 1994, Kentucky Revised Statute KRS 367.4901 to 367.4917. It is the contractor's responsibility to determine and take steps necessary to be in compliance with federal and state damage prevention directives. When prescribed in said directives, the contractor shall submit Excavation Locate Requests to the Kentucky Contact Center (KY811) via web ticket entry. The submission of this request does not relieve the contractor from the responsibility of contacting non-member facility owners, whom shall be contacted through their individual Protection Notification Center. Non-compliance with these directives can result in the enforcement of penalties.

### **REGISTRATION WITH THE SECRETARY OF STATE BY A FOREIGN ENTITY**

Pursuant to KRS 176.085(1)(b), an agency, department, office, or political subdivision of the Commonwealth of Kentucky shall not award a state contract to a person that is a foreign entity required by [KRS 14A.9-010](#) to obtain a certificate of authority to transact business in the Commonwealth ("certificate") from the Secretary of State under [KRS 14A.9-030](#) unless the person produces the certificate within fourteen (14) days of the bid or proposal opening. If the foreign entity is not required to obtain a certificate as provided in [KRS 14A.9-010](#), the foreign entity should identify the applicable exception. Foreign entity is defined within [KRS 14A.1-070](#).

**For all foreign entities required to obtain a certificate of authority to transact business in the Commonwealth, if a copy of the certificate is not received by the contracting agency within the time frame identified above, the foreign entity's solicitation response shall be deemed non-responsive or the awarded contract shall be cancelled.**

Businesses can register with the Secretary of State at <https://secure.kentucky.gov/sos/ftbr/welcome.aspx>.

#### **SPECIAL NOTE FOR PROJECT QUESTIONS DURING ADVERTISEMENT**

Questions about projects during the advertisement should be submitted in writing to the Division of Construction Procurement. This may be done by fax (502) 564-7299 or email to [kytc.projectquestions@ky.gov](mailto:kytc.projectquestions@ky.gov). The Department will attempt to answer all submitted questions. The Department reserves the right not to answer if the question is not pertinent or does not aid in clarifying the project intent.

The deadline for posting answers will be 3:00 pm Eastern Daylight Time, the day preceding the Letting. Questions may be submitted until this deadline with the understanding that the later a question is submitted, the less likely an answer will be able to be provided.

The questions and answers will be posted for each Letting under the heading "Questions & Answers" on the Construction Procurement website ([www.transportation.ky.gov/contract](http://www.transportation.ky.gov/contract)). The answers provided shall be considered part of this Special Note and, in case of a discrepancy, will govern over all other bidding documents.

#### **HARDWOOD REMOVAL RESTRICTIONS**

The US Department of Agriculture has imposed a quarantine in Kentucky and several surrounding states, to prevent the spread of an invasive insect, the emerald ash borer. Hardwood cut in conjunction with the project may not be removed from the state. Chipping or burning on site is the preferred method of disposal.

#### **INSTRUCTIONS FOR EXCESS MATERIAL SITES AND BORROW SITES**

Identification of excess material sites and borrow sites shall be the responsibility of the Contractor. The Contractor shall be responsible for compliance with all applicable state and federal laws and may wish to consult with the US Fish and Wildlife Service to seek protection under Section 10 of the Endangered Species Act for these activities.

#### **ACCESS TO RECORDS**

The contractor, as defined in KRS 45A.030 (9) agrees that the contracting agency, the Finance and Administration Cabinet, the Auditor of Public Accounts, and the Legislative Research Commission, or their duly authorized representatives, shall have access to any books, documents, papers, records, or other evidence, which are directly pertinent to this contract for the purpose of financial audit or program review. Records and other prequalification information confidentially

disclosed as part of the bid process shall not be deemed as directly pertinent to the contract and shall be exempt from disclosure as provided in KRS 61.878(1)(c). The contractor also recognizes that any books, documents, papers, records, or other evidence, received during a financial audit or program review shall be subject to the Kentucky Open Records Act, KRS 61.870 to 61.884.

In the event of a dispute between the contractor and the contracting agency, Attorney General, or the Auditor of Public Accounts over documents that are eligible for production and review, the Finance and Administration Cabinet shall review the dispute and issue a determination, in accordance with Secretary's Order 11-004.

April 30, 2018

## **SPECIAL NOTE FOR RECIPROCAL PREFERENCE**

### **RECIPROCAL PREFERENCE TO BE GIVEN BY PUBLIC AGENCIES TO RESIDENT BIDDERS**

By reference, KRS 45A.490 to 45A.494 are incorporated herein and in compliance regarding the bidders residency. Bidders who want to claim resident bidder status should complete the Affidavit for Claiming Resident Bidder Status along with their bid in the electronic bidding software. Submittal of the Affidavit should be done along the bid in Bid Express.

April 30, 2018



### **SURFACING AREAS -COLUMBUS BELMONT STATE PARK**

Total Area to be Resurfaced = 25,235.7 SY

Total Shoulder Area (DGA) =7682.3 SY

See Attached Detail Drawings and Summary sheets

See Typical Sections

### **ASPHALT MIXTURE**

Unless otherwise noted, the Department estimates the rate of application for all asphalt mixtures to be 110 lbs/sy per inch of depth.

### **DGA BASE FOR SHOULDERS**

Unless otherwise noted, the Department estimates the rate of application for DGA Base for Shoulders to be 115 lbs/sy per inch of depth. The Department will not measure necessary grading and/or shaping of existing shoulders prior to placing of DGA Base, but shall be incidental to the Contract unit price per ton for DGA Base.

Accept payment at the Contract unit price per ton as full compensation for all labor, materials, equipment, and incidentals for grading and/or shaping of existing shoulders and furnishing, placing, and compacting the DGA Base.

### **INCIDENTAL SURFACING**

The Department has included in the quantities of asphalt mixtures established in the proposal estimated quantities required for resurfacing or surfacing mailbox turnouts, farm field entrances, residential and commercial entrances, curve widening, ramp gores and tapers, and road and street approaches, as applicable. Pave these areas to the limits as shown on Standard Drawing RPM-110-07 or as directed by the Engineer. In the event signal detectors are present in the intersecting streets or roads, pave the crossroads to the right of way limit or back of the signal detector, whichever is the farthest back of the mainline. Surface or resurface these areas as directed by the Engineer. The Department will not measure placing and compacting for separate payment but shall be incidental to the Contract unit price for the asphalt mixtures.

### **OPTION B**

Be advised that the Department will control and accept compaction of asphalt mixtures furnished on this project under OPTION B in accordance with Sections 402 and 403.

## SPECIAL NOTES COLUMBUS BELMONT STATE PARK

---

### I. DESCRIPTION

Except as specified herein, perform all work according to the Department's 2019 Standard and Supplemental Specifications, applicable Special Provisions and Special Notes, and Standard and Sepia Drawings, current editions. Section references are to the Standard Specifications. Furnish all materials, labor, equipment, and incidentals for the following work:

(1) Maintain and Control Traffic; (2) Staking, (3) Remove existing 36 Inch culvert pipe and Remove Existing Headwalls, (4) Construct new Culvert Pipe; (5) Construct Slope & Flared Inlet & Outlets; (6) Construct Channel Lining; (7) Construct Turf Reinforcement Mat Type I, (8) Perform Ditching, (9) Clean Pipe Structure, (10) Construct Curb, (11) Construct Sidewalk ramp, (12) Place Bollards, (13) Construct Sidewalk-4 Inch, (14) Construct Precast Vehicle Stops and Remove Existing Vehicle Stops, (15) Resurface State Park Road, Parking Lots, Multi-Use Paths, Campground Area, and Stripe the areas, (16) And all other work required by the Specifications, Standard Drawings, Special Notes, drawings in the proposal, and the Engineer.

### II. MATERIALS

The Department will sample and test all materials according to Department's Sampling Manual. Make materials available for sampling a sufficient time in advance of the use of the materials to allow for the necessary time for testing, unless otherwise specified in these notes.

**A. Maintain and Control Traffic.** See Traffic Control Plan

**B. Erosion Control.** See Special Notes for Erosion Control Plan.

**C. Culvert Pipe.** Furnish culvert pipe conforming to Section 810 *designed for a nominal fill cover height of 18 inches and pH range medium*. Verify maximum and minimum fill cover height required for new pipe prior to construction and obtain the Engineer's approval of the class or gauge of pipe and type of coating prior to delivering pipe to the project. Furnish approved connecting bands or pipe anchors.

**D. Backfill.** Furnish Flowable Fill, and Granular Backfill, and Class 2 Asphalt Base 0.75D PG64-22.

**E. Sloped and Flared Box Inlet-Outlet- 36".** Furnish Sloped and Flared Box Inlet-Outlet according to Standard Drawing RDB-105-06.

Special Notes  
Page 2 of 6

**F. Slope/Ditch Protection.** Furnish Channel Lining Class II.

**G. Precast Vehicle Stop.** See Std Drawing RPM-130-04 and attached Detail sheet.

**H. Bollard.** Furnish “Iron Age Grates-Main Street Bollard” or an equivalent manufacturer’s bollards. **See attached material sheet for the Bollards.**

III. **CONSTRUCTION METHODS**

**A. Maintain and Control Traffic.** See Traffic Control Plan.

**B. Erosion Control.** See Special Notes for Erosion Control and **Detail Sheets for the Location of Erosion Control Blanket.**

**C. Site Preparation.** Be responsible for all site preparation, including but not limited to saw cutting and removing pavement; clearing and grubbing, and incidental excavation and backfilling; removal of existing pipe, headwalls and any obstructions or items; restoration of pavements, slopes, and all disturbed areas; final dressing and cleanup; and disposal of materials. Perform all site preparation only as approved or directed by the Engineer.

**D. Removing Pipe and Excavation. Remove existing culvert pipe at the approximate location shown on the attached detail sheets.** The Engineer will determine the actual location at the time of construction. Saw cut the existing asphalt pavement and base to a neat edge prior to excavation and removal of the existing pipe. Obtain the Engineer’s approval of trench width prior to cutting pavement. Excavate trench and remove pipe as directed or approved by the Engineer without disturbing existing underground utilities. Waste excavated materials and removed pipe at approved sites and off the right of way obtained by the Contractor at no additional cost to the Department.

**E. Culvert Pipe.** Construct the 36” culvert pipe **at the approximate location shown on the attached detail sheet.** The Engineer will establish final centerline, flow lines and skew to obtain the best fit of the existing ditches and channels. Construct pipe bedding according to Section 701.03.03 and the applicable Standard or Sepia Drawings. Use approved connecting bands or concrete anchors as required. Prior to backfilling pipe, obtain the Engineer's approval of the pipe installation. Provide Positive drainage upon completion of pipe installation.

**F. Culvert Pipe Backfill.** Backfill culvert pipe with flowable fill to within six inches of the existing pavement grade. Extend flowable fill to a minimum of 1 foot beyond the edge of the normal paved shoulder width. Backfill the remainder of the pipe with flowable fill or other allowable materials according to Section 701.03.06.

Special Notes  
Page 3 of 6

**G. Pavement Restoration.** Restore the pavement over the flowable fill with six inches of asphalt base placed in three-inch maximum thickness courses. The Engineer will not require asphalt prime prior to constructing base. **Seal the asphalt base with asphalt mixture for Leveling and Wedging.** Do not place final surfacing until the engineer determines that the trench backfill have sufficiently stabilized.

**H. Channel Lining.** Construct Class II Channel Lining around the inlet and outlet of the 36 Inch pipe. Place the channel lining to conform to the approximate existing slopes without impeding positive drainage. **Also construct Channel Lining Class II in the eroded Ditch area adjacent to the main parking lot.** In addition to the requirements of Section 703, the Engineer may require additional hand placement. Any excavation and/or Fabric-Geotextile Fabric Class 1 required to place the channel lining is incidental to the lining. See Detail sheets for location.

**I. Turf Reinforcement Mat, Type I.** Construct Turf Reinforcement Mat, Type I in the channel area from the outlet of the pipe extending through the drainage area. Place the Turf Reinforcement Mat to conform to the approximate existing slopes without impeding positive drainage. See Detail Sheet for location.

**J. Ditching.** Perform ditching in the eroded ditch area adjacent to the main parking lot and road and at poorly draining areas. Any embankment or excavation required is incidental to ditching. Place Channel Lining Class II at ditching locations specified above and as directed by the Engineer. See standard specifications section 209.03.01. See Detail sheets for location.

**K. Concrete Sidewalk- 4 Inch.** See Detail sheets for location.

**L. Sidewalk Ramp Type 2.** See Detail sheets. Construct as per Std Drawing RPM-170-09.

**M. Clean Pipe Structure.** See Detail sheets for location.

**N. Remove Precast Vehicle Stops.** Prior to resurfacing an area, remove the existing precast vehicle stops. The Department will measure Remove Vehicle Stops in individual units Each. Accept payment at the Contract unit price Each as full compensation for all labor, materials, equipment, and incidental for removing, and disposing of the vehicle stops. Dispose of the existing vehicle stops properly off the State right of way and off the State Park property.

**O. Precast Vehicle Stop.** After resurfacing and placing the parking lot striping, place the new Precast Vehicle stops in the existing parking areas at the parking spaces from where the existing vehicle stops were removed. Conform to the parking lot striping. Each Precast Vehicle Stop will be 6 FT in length. Also, add Precast Vehicle Stops in new parking spaces in the overflow parking lot at the convention center.

Special Notes  
Page 4 of 6

**P. Bollards/Removable Bollards.** Install Bollards as per manufacturers' specifications. See detail sheets for Bollard locations and detail sheets for Bollard information.

**Q. Header Curb Standard-Modified.** See attached detail sheets.

**R. Pavement Striping.** See detail sheets for locations and striping notes for requirements.

**S. Pavement Paint, Symbols and Words.** See detail sheets for locations and striping notes for requirements.

**T. Final Dressing Clean Up and Seeding and Protection.** After all work is completed, remove all waste and debris from the job site. Grade all disturbed areas to blend with the adjacent roadway features and to provide a suitable seed bed. Perform Class A Final dressing on all disturbed areas. Seed and protect all disturbed earthen areas according to the Special Notes for Erosion Control.

**U. Restoration.** Be responsible for all damage to public and/or private property resulting from the work. Restore any roadway features or private property disturbed by the work or the Contractor's operations in like kind materials and design as approved by the Engineer and the property owner(s).

**V. On-Site Inspection.** Prior to submitting a bid, make a thorough inspection of the site and become thoroughly familiarize with existing conditions so that the work can be expeditiously performed after a contract is awarded. The Department will consider submission of a bid as evidence of this inspection having been made and will not honor any claims resulting from site conditions.

**W. Caution.** Consider information in this proposal and the types and quantities of work listed to be approximate only and do not take as an accurate or complete evaluation of the materials and conditions to be encountered during construction. The bidder must draw his own conclusion as to the conditions encountered. The Department does not give any guarantee as to the accuracy of the data and no claim will be considered for additional compensation or time extension if the conditions encountered are not in accordance with the information shown.

**X. Right-of-Way Limits.** The Department has not established or determined exact Right-of-Way limits. Limit work activities and operations to obvious Right-of-Way and work areas secured by the Department through Consent and Release of the adjacent property owners. Be responsible for all encroachments onto private lands.

**Y. Waste.** Dispose of all waste off the right-of-way at approved sites obtained by the Contractor at no additional cost to the Department. See Special Notes for Waste and Borrow.

Special Notes  
Page 5 of 6

**Z. Before you Dig.** The contractor is instructed to call 1-800-752-6007 to reach KY 811, the one-call system for information on the location of existing underground utilities. The call is to be placed a minimum of two (2) and no more than ten (10) business days prior to excavation. The contractor should be aware that owners of underground facilities are not required to be members of the KY 811 one-call Before-U-Dig (BUD) service. The contractor must coordinate excavation with the utility owners, including those who do not subscribe to KY 811. It may be necessary for the contractor to contact the County Court Clerk to determine what utility companies have facilities in the area.

**IV. METHOD OF MEASUREMENT**

**A. Maintain and Control Traffic.** See Traffic Control Plan.

**B. Site Preparation.** Other than the bid items listed, site preparation will not be measured for payment, but shall be incidental to 36 " Culvert pipe.

**C. Erosion Control.** See Special Notes for Erosion Control.

**D. Culvert Pipe.** See Section 701.04.

**E. Sloped and Flared Box Inlet-Outlet- 36".** See RPM-105-06..

**F. Remove Precast Vehicle Stops.** The Department will measure Remove Vehicle Stops in individual units Each.

**G. Precast Vehicle Stop.** The Department will measure Precast Vehicle Stops in Units of LF.

**H. Bollard and Removable Bollard.** The Bollards will be measured for payment as Each.

**I. Header Curb Standard- Modified.** The header curb will be measured for payment as Linear Ft.

**V. BASIS OF PAYMENT.**

**A. Maintain and Control Traffic.** See Traffic Control Plan.

**B. Culvert Pipe.** Payment at the contract unit price per linear foot shall be full compensation for all labor, materials, equipment, and incidentals **for site preparation; installing pipe, and backfill; restoring pavement, slopes, and other disturbed features; final dressing and cleanup, and disposal of all waste.**

Special Notes  
Page 6 of 6

**C. Sloped and Flared Box Inlet-Outlet- 36 Inch.** Payment at the contract unit price per Each shall be full compensation for all labor, materials, equipment, and incidentals for site preparation, installing the Inlet-Outlet, slope restoration, and other disturbed features, final dressing and cleanup, and disposal of all waste.

**D. Erosion Control.** See Special Notes for Erosion Control.

**E. Remove Precast Vehicle Stops.** Payment at the Contract unit price Each shall be full compensation for all labor, materials, equipment, and incidental for removing, and disposing of the vehicle stops. Dispose of existing vehicle stops properly off the state right of way and off the State Park property.

**F. Precast Vehicle Stop.** Payment at the Contract unit price Each shall be full compensation for all labor, materials, equipment, and incidental for the vehicle stops.

**G. Bollard and Removable Bollard.** Payment at the contract unit price Each shall be full compensation for all labor, materials, equipment, and incidentals for site preparation; installing the Bollards, repair of any disturbed features; final dressing and cleanup, and disposal of all waste.

**H. Header Curb Standard-Modified.** Payment at the contract unit price Each shall be full compensation for all labor, materials, equipment, and incidentals for site preparation; installing the curb, repair of any disturbed features; final dressing and cleanup, and disposal of all waste.

**SPECIAL NOTE FOR CONTRACT STARTING & COMPLETION DATE  
& LIQUIDATED DAMAGES  
COLUMBUS BELMONT STATE PARK**

**COMPLETION DATE:** Complete all work by **October 31, 2022**

Give the State Park Manager a minimum of 2 Weeks' notice, prior to beginning work.

Contact the Engineer and Cindy Lynch State Park Manager at Park Phone Number (270) 677-2327, or Cell Number (270) 556-8012 and email [Cindy.Lynch@ky.gov](mailto:Cindy.Lynch@ky.gov).

Do not perform any work on the following dates:

May 27-30, 2022

July 1-4, 2022

September 2-5, 2022

Civil War Days October 2-9<sup>th</sup>, 2022

October 21-24, 2022

**This project will have a fixed completion date (SEE ABOVE) for completion of all work associated with this project.**

**LIQUIDATED DAMAGES:** Perform all construction in accordance with the weather limitations specified in the Standard and Supplemental Specifications, as applicable. The Department will not grant any extension of Contract time due to inclement weather or temperature limitations that occur during the construction season. The Department will assess Liquidated damages in accordance with Section 108.09.

Contrary to Section 108.09 of the Standard Specifications, Liquidated Damages per the Standard Specifications will be charged during the months of December through March for all work that is not completed.



## **SPECIAL PROVISION FOR WASTE AND BORROW SITES**

Obtain U.S. Army Corps of Engineer's approval before utilizing a waste or borrow site that involves "Waters of the United States". The Corps of Engineers defines "Waters of the United States" as perennial or intermittent streams, ponds or wetlands. The Corps of Engineers also considers ephemeral streams, typically dry except during rainfall but having a defined drainage channel, to be jurisdictional waters. Direct questions concerning any potential impacts to "Waters of the United States" to the attention of the appropriate District Office for the Corps of Engineers for a determination prior to disturbance. Be responsible for any fees associated with obtaining approval for waste and borrow sites from the U.S. Army Corps of Engineer or other appropriate regulatory agencies.

1-296 Waste & Borrow Sites  
01/02/2012

### SPECIAL NOTE FOR NON-TRACKING TACK COAT

1. DESCRIPTION AND USEAGE. This specification covers the requirements and practices for applying a non-tracking tack asphalt coating. Place this material on the existing pavement course, prior to placement of a new asphalt pavement layer. Use when expedited paving is necessary or when asphalt tracking would negatively impact the surrounding area. This material is not suitable for other uses. Ensure material can “break” within 15 minutes under conditions listed in 3.2.

2. MATERIALS, EQUIPMENT, AND PERSONNEL.

2.1 Non-Tracking Tack. Provide material conforming to Subsection 2.1.1.

2.1.1 Provide a tack conforming to the following material requirements:

Property	Specification	Test Procedure
Viscosity, SFS, 77 ° F	20 – 100	AASHTO T 72
Sieve, %	0.3 max.	AASHTO T 59
Asphalt Residue <sup>1</sup> , %	50 min.	AASHTO T 59
Oil Distillate, %	1.0 max.	AASHTO T 59
Residue Penetration, 77 ° F	0 - 30	AASHTO T 49
Original Dynamic Shear (G*/sin δ), 82 ° C	1.0 min.	AASHTO T 315
Softening Point, ° F	149 min.	AASHTO T 53
Solubility, %	97.5 min.	AASHTO T 44

<sup>1</sup> Bring sample to 212 °F over a 10-15 minute period. Maintain 212 °F for 15-20 minutes or until 30-40 mL of water has distilled. Continue distillation as specified in T59.

2.2. Equipment. Provide a distributor truck capable of heating, circulating, and spraying the tack between 170 °F and 180 °F. Do not exceed 180 °F. Circulate the material while heating. Provide the correct nozzles that is recommend by the producer to ensure proper coverage of tack is obtained. Ensure the bar can be raised to between 14” and 18” from the roadway.

2.3. Personnel. Ensure the tack supplier has provided training to the contractor on the installation procedures for this product. Make a technical representative from the supplier available at the request of the Engineer.

3. CONSTRUCTION.

3.1 Surface Preparation. Prior to the application of the non-tracking tack, ensure the pavement surface is thoroughly dry and free from dust or any other debris that would inhibit adhesion. Clean the surface by scraping, sweeping, and the use of compressed air. Ensure this preparation process occurs shortly before application to prevent the return of debris on to the pavement. If rain is expected within one hour after application, do not apply material. Apply material only when the surface is dry, and no precipitation is expected.

- 3.2 Non-tracking Tack Application. Placement of non-tracking tack is not permitted from October 1<sup>st</sup> to May 15<sup>th</sup>. When applying material, ensure the roadway temperature is a minimum of 40°F and rising. Prior to application, demonstrate competence in applying the tack according to this note to the satisfaction of the Engineer. Heat the tack in the distributor to between 170 – 180 °F. After the initial heating, between 170 – 180 °F, the material may be sprayed between 165 °F and 180 °F. Do not apply outside this temperature range. Apply material at a minimum rate of 0.70 pounds (0.08 gallons) per square yard. Ensure full coverage of the material on the pavement surface. Full coverage of this material is critical. Increase material application rate if needed to achieve full coverage. Schedule the work so that, at the end of the day's production, all non-tracking tack is covered with the asphalt mixture. If for some reason the non-tracking tack cannot be covered by an asphalt mixture, ensure the non-tracking tack material is clean and reapply the non-tracking tack prior to placing the asphalt mixture. Do not heat material more than twice in one day.
- 3.3 Non-tracking Tack Certification. Furnish the tack certification to the Engineer stating the material conforms to all requirements herein prior to use.
- 3.4 Sampling and Testing. The Department will require a sample of non-tracking tack be taken from the distributor at a rate of one sample per 15,000 tons of mix. Take two 1 gallon samples of the heated material and forward the sample to the Division of Materials for testing within 7 days. Ensure the product temperature is between 170 and 180 °F at the time of sampling.
4. MEASUREMENT. The Department will measure the quantity of non-tracking tack in tons. The Department will not measure for payment any extra materials, labor, methods, equipment, or construction techniques used to satisfy the requirements of this note. The Department will not measure for payment any trial applications of non-tracking tack, the cleaning of the pavement surface, or furnishing and placing the non-tracking tack. The Department will consider all such items incidental to the non-tracking tack.
5. PAYMENT. The Department will pay for the non-tracking tack at the Contract unit bid price and apply an adjustment for each manufacturer's lot of material based on the degree of compliance as defined in the following schedule. Non-tracking tack will not be permitted for use from October 1<sup>st</sup> to May 15<sup>th</sup>. During this timeframe, the department will allow the use of an approved asphalt emulsion in lieu of a non-tracking tack product but will not adjust the unit bid price of the material. When a sample fails on two or more tests, the Department may add the deductions, but the total deduction will not exceed 100 percent.

Non-Tracking Tack Price Adjustment Schedule						
Test	Specification	100% Pay	90% Pay	80% Pay	50% Pay	0% Pay
Viscosity, SFS, 77 ° F	20 – 100	19 - 102	17 - 18	15 - 16	14	≤13
			103 - 105	106 - 107	108 - 109	≥ 110
Sieve, %	0.30 max.	≤ 0.40	0.41 - 0.50	0.51 - 0.60	0.61 - 0.70	≥ 0.71
Asphalt Residue, %	50 min.	≥49.0	48.5 – 48.9	48.0 – 48.4	47.5-47.9	≤ 47.4
Oil Distillate, %	1.0 max.	≤1.0	1.1-1.5	1.6 - 1.7	1.8-1.9	>2.0
Residue Penetration, 77 ° F.	30 max.	≤ 31	32 - 33	34 - 35	36 - 37	≥ 38
Original Dynamic Shear (G*/sin δ), 82 ° C	1.0 min.	≥0.95	0.92 – 0.94	0.90 – 0.91	0.85 - 0.89	≤ 0.84
Softening Point, ° F	149 min.	≥145	142 - 144	140 - 141	138 - 139	≤ 137
Solubility, %	97.5 min.	≥ 97.0	96.8 – 96.9	96.6 – 96.7	96.4 – 96.5	≤ 96.3

<u>Code</u>	<u>Pay Item</u>	<u>Pay Unit</u>
24970EC	Asphalt Material for Tack Non-Tracking	Ton

Revised: May 23, 2022

## **COORDINATION OF WORK WITH OTHER CONTRACTS**

---

Be advised, there may be active project(s) adjacent to or within this project. These may be KYTC administered contracts, work being performed by Department of Highways forces, or work being performed by Department of Parks forces. The Engineer will coordinate the work of the Contractor and others within the limits of this project. See Sections 105.06, 107.06 and 107.14.

## SPECIAL NOTE FOR PAVEMENT WEDGE AND SHOULDER MONOLITHIC OPERATION

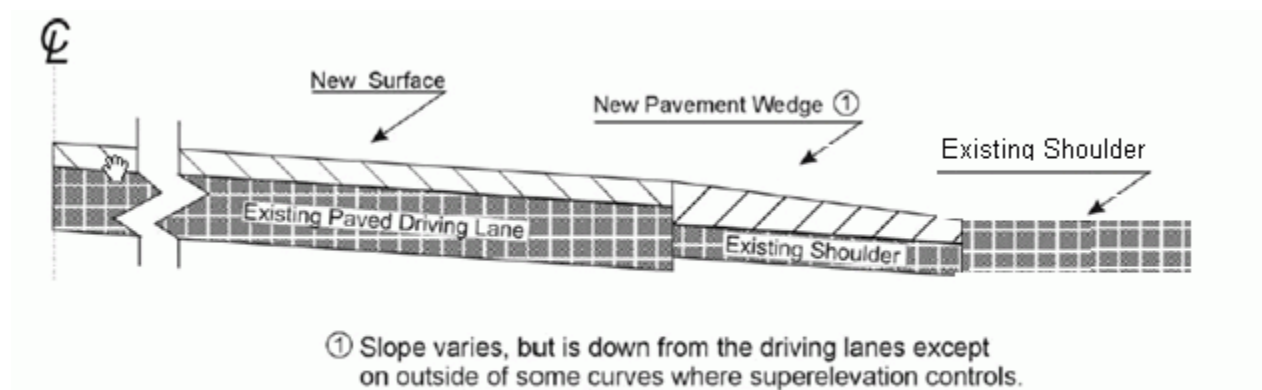
**1.0 MATERIALS.** Provide an Asphalt Surface Mixture conforming to Section 403 of the Standard Specifications, as applicable to the project, for the pavement wedge.

**2.0 CONSTRUCTION.** Place the specified Asphalt Surface Mixture on shoulders monolithically with the driving lane. Prime the existing shoulder with tack material as the Engineer directs before placing the wedge. Construct according to Section 403.03 of the Standard Specifications.

Equip the paver with a modified screed that extends the full width of the wedge being placed and is tapered to produce a wedge. Obtain the Engineer's approval of the modified screed before placing shoulder wedge monolithically with the driving lane.

The wedge may vary in thickness at the edge of the milled area in the shoulder. If the area to receive the shoulder wedge is milled prior to placement, during rolling operations pinch the outside edge of the new inlay wedge to match the existing shoulder elevation not being resurfaced. Unless required otherwise by the Contract, construct rolled or sawed rumble strips according to Section 403.03.08, as applicable.

The following sketch is primarily for the computation of quantities; however, the wedge will result in a similar cross-section where sufficient width exists. Do not construct a shoulder for placing the wedge unless specified elsewhere in the Contract.



**3.0 MEASUREMENT.** The Department will measure Asphalt Surface Mixture placed as the pavement wedge according to Section 403.

**4.0 PAYMENT.** The Department will make payment for the completed and accepted quantities of Asphalt Surface Mixtures on pavement wedges according to Section 403.

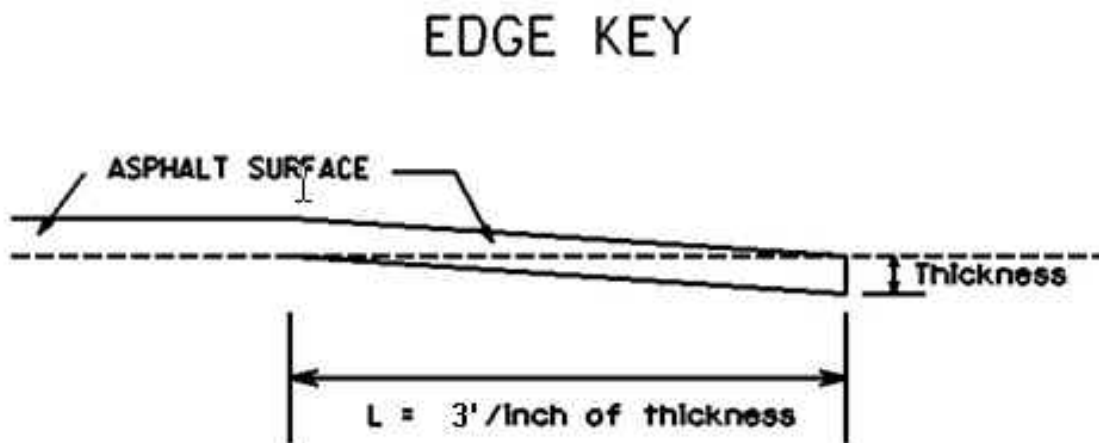
## **SPECIAL NOTE FOR SHOULDER PREPARATION**

---

Grade, shape, and compact shoulders as shown on the typical sections and as directed by the Engineer to provide proper template for the shoulders. The Department will not measure grading, shaping, and compacting shoulders for separate payment, but shall be incidental to the Dense Graded Aggregate (DGA) placed on the shoulder.

### SPECIAL NOTE FOR EDGE KEY COLUMBUS - BELMONT STATE PARK

Construct Edge Keys at the beginning of project, end of project, at railroad crossings, and at intersections with ramps, as applicable. Unless specified in the Contract or directed by the Engineer, do not construct edge keys at intersecting streets, roads, alleys, or entrances. Cut out the existing asphalt surface to the required depth and width shown on the drawing and heel the new surface into the existing surface. The Department will measure the Edge Key at the joint as the width of the pavement perpendicular to the centerline in linear feet. The Department will pay for this work at the Contract unit price per linear foot, which shall be full compensation for all labor, materials, equipment, and incidentals for removal and disposal of the existing asphalt surface required to construct the edge key.



**Thickness = 1 Inches**

**L = 3 LF**

**L = Length of Edge Key**



### **SPECIAL NOTE FOR TYPICAL SECTION DIMENSIONS**

Consider the dimensions shown on the typical sections for pavement and shoulder widths and thickness' to be nominal or typical dimensions. The Engineer may direct or approve varying the actual dimensions to be constructed to fit existing conditions. Do not widen existing pavement or shoulders unless specified elsewhere in this proposal or directed by the engineer.

1-3725 Typical Section Dimensions  
01/02/2012

## **SPECIAL NOTE FOR SIDEWALK RAMPS & DETECTABLE WARNINGS**

---

### **GENERAL**

Unless otherwise stated in the contract, or as directed by or with prior approval from the Engineer, construct Sidewalk Ramps and Detectable Warnings in accordance with Section 505 of the 2008 Standard Specifications; Supplemental Specifications, current edition; Standard Drawings RPM-160 and RPM-172, current editions; and Sepia Drawings 012, 013, 014, and 015, current editions. Saw cut existing sidewalks, curb and gutter, and pavement, if present, as directed by the Engineer. The sidewalk thickness specified in the contract is the nominal minimum required thickness; transition the thickness as directed by the Engineer if the existing sidewalk thickness is found to be greater or less than the thickness specified.

Except as required by the work, do not disturb drainage pipe, catch basins, and other roadway features, appurtenances and installations. Restore any roadway features, appurtenances and installations damaged by the work in like kind materials and design at no additional cost to the Department. Dispose of all waste off the right of way at sites obtained by the Contractor at no additional cost to the Department (see Special Note for Waste and Borrow).

### **MEASUREMENT & PAYMENT**

**SIDEWALK RAMPS** – The Department will measure Sidewalk Ramps as Sidewalk - 4 Inch Concrete in accordance with Section 505.04. Payment at the Contract unit price per square yard shall be full compensation for all labor, materials, equipment, and incidentals required for saw cutting, removal and disposal of existing sidewalk, curb and gutter, and pavement; undercut excavation, backfill, and embankment; construction of the sidewalk ramps, reconstruction of the adjacent curb and/or sidewalk as necessary to install the sidewalk ramps; and restoration of disturbed features in accordance with these notes or as directed by the Engineer.

**DETECTABLE WARNINGS EXISTING RAMPS** – The Department will measure Detectable Warnings in square feet. Payment at the Contract unit price per square foot shall be full compensation for all labor, materials, equipment, and incidentals required for saw cutting, removal and disposal of existing side walk, curb and gutter; under cut excavation and backfill if required; construction of the detectable warnings in the existing sidewalk ramps; reconstruction of the adjacent sidewalk, curb and/or gutter as necessary to install the detectable warnings; and restoration of disturbed features in accordance with these notes or as directed by the Engineer

**DETECTABLE WARNINGS NEW RAMPS** – The Department will measure and pay for Detectable Warnings in accordance with Standard Drawing RPM-170-09.

## TRAFFIC CONTROL PLAN COLUMBUS BELMONT STATE PARK

---

### TRAFFIC CONTROL GENERAL

Except as specified herein, maintain and control traffic in accordance with the 2019 Standard and Supplemental Specifications, Special Provisions and Special Notes, and the Standard and Sepia Drawings, current editions. Except for the roadway and traffic control bid items listed, furnish all other items necessary to maintain and control traffic incidental to the Contract lump sum price Maintain and Control Traffic.

Contrary to Section 106.01, furnish new, or used in like new condition, traffic control devices, at the beginning of the work and maintain the devices in like new condition until completion of the work.

### PROJECT PHASING & CONSTRUCTION PROCEDURES

Do not erect lane closures in the parking lots, path or other closures or perform any work during the following days and hours:

Do not perform any work on the following dates:

May 27-30, 2022

July 1-4, 2022

September 2-5, 2022

Civil War Days October 2-9<sup>th</sup>, 2022

October 21-24, 2022

Contact the Engineer and Cindy Lynch, the State Park Manager at Park Phone Number (270) 677-2327, or Cell Number (270) 556-8012 and email [Cindy.Lynch@ky.gov](mailto:Cindy.Lynch@ky.gov).

The Engineer may specify additional days and hours when lane or lot closures will not be allowed. Prior to beginning work, provide a proposed closure and work schedule for the approval of the Engineer and the State Park Manager. The Department will provide public notification. Notify the Engineer immediately and obtain prior approval of any proposed deviations from the approved schedule.

### ROAD, LANE & LOT CLOSURES

*Close the main state park road for the Removal and replacement of the Pipe Culvert and headwalls for a maximum of 5 calendar days. The closure dates must be approved in advance by the Engineer and the State Park Manager. Lane Closures will be incidental to "Maintain and Control Traffic" and will not be paid separately. NOTE: Once the existing pipe has been removed, the contractor must work continuously until the culvert pipe and backfill up to surface level has been replaced.*

Traffic Control Plan  
Page 2 of 3

*Except as approved by the Engineer, do not leave road lanes, path and/or parking lot closures in place during non-working hours.*

Maintain one way, two way, or alternating one way traffic during asphalt construction as approved by the Engineer. Unless directed otherwise by the Engineer, provide a minimum clear lane width of 9 feet.

## **CHANGEABLE MESSAGE SIGNS**

If deemed necessary by the Engineer, the Department will furnish, operate, and maintain Changeable Message Signs.

## **SIGNS**

The Engineer may require additional signing and/or traffic control devices in addition to the items shown on the Standard Drawings. Sign posts and splices shall be compliant with NCHRP 350 or MASH. Manufacturer's documentation validating this compliance shall be provided to the Engineer prior to installation. Signs, including any splices, shall be installed according to manufacturer's specifications and installation recommendations. Contrary to section 112.04.02, the Department will measure only long-term signs (signs intended to be continuously in place for more than 3 days) for payment. The Department will not measure; short term signs (signs intended to be left in place for 3 days or less) for payment but shall be incidental to Maintain and Control Traffic. Contrary to Section 112.04.02, the Department will measure individual signs only once for payment, regardless of how many times they are erected or relocated. The Department will not measure replacements for damaged signs directed by the Engineer to be replaced due to poor condition or reflectivity.

## **BARRICADES**

The Department will NOT measure Barricades used in lieu of barrels and cones for channelization or delineation, but shall be incidental to Maintain and Control Traffic according to Section 112.04.01. The Department will NOT measure Barricades that are used for road or lot closures and protection of culvert removal areas according to Section 112.04.04. **Place Type III Barricades immediately in front of culvert pipe removal areas. All Barricades will be incidental to the "Maintain and Control Traffic" Bid item.** Retain possession of the barricades upon completion of the work.

## **PAVEMENT MARKINGS**

See Special Notes for Parking Lot Striping.

Traffic Control Plan  
Page 3 of 3

### **PAVEMENT EDGE DROP-OFFS**

Do not allow a difference in elevation of a pavement edge between opposing directions of traffic or lanes that traffic is expected to cross in a lane change situation greater than 1½". Place warning signs ((MUTCD W8-9, W8-9A, or W8-11) in advance of and at 1500 feet intervals throughout the drop-off area. Dual post the signs on both sides of the traveled way. Wedge transverse transitions between newly surfaced pavement and the existing pavement areas that traffic may cross with asphalt mixture for leveling and wedging. Remove wedges prior to placement of the final surface course.

Treat pavement edges that traffic is not expected to cross, except accidentally, as follows:

Less than 2" - No protection required.

2" to 4" - Place plastic drums, vertical panels, or barricades every 50 feet. The Engineer will allow cones to be used in lieu of plastic drums, panels, and barricades during daylight working hours only. Wedge drop-offs within 8 feet of traffic with DGA or asphalt mixture for leveling and wedging as directed or approved by the Engineer with a 1:1 or flatter slope in daylight working hours, or 3:1 or flatter slope during nighttime hours or when work is not active in the drop-off area.

## SPECIAL NOTE FOR STRIPING ROAD AND PARKING AREAS COLUMBUS BELMONT STATE PARK

---

### I. DESCRIPTION

Except as specified herein, perform all work in accordance with the Department's 2019 Standard and Supplemental Specifications, Special Provisions and Special Notes, and Standard and Sepia Drawings, current editions. Article references are to the Standard Specifications. This work shall consist of the following:

(1) Placing Striping on the Main Park Road; (2) Placing parking lot striping; (3) Placing Pavement Paint Handicap Symbols, Pavement Marking- Paint Arrows and Pavement Marking, Words, and (5) all other work specified as part of this contract.

### II. MATERIALS

Allow for materials to be sampled and tested in accordance with the Department's Sampling Manual and make the materials available for sampling a sufficient time in advance of the use of the materials to allow for the necessary time for testing.

**A. Maintain and Control Traffic.** See Traffic Control Plan.

**B. Parking Lot Striping, Symbols, Arrows and Words.** Furnish paint for Parking Lot Striping conforming to Section 842. Furnish white, yellow, and blue paint as applicable.

**C. Pavement Striping Temporary and Permanent Paint 4 Inch Stripes.** Furnish paint conforming to Section 842.

### III. CONSTRUCTION METHODS

**A. Maintain and Control Traffic.** See Traffic Control Plan.

**B. Parking Lot Striping, Symbols, Arrows and Words.** Install Parking lot Striping, Pavement Paint Handicap Symbol, Pavement Marking- Paint Arrows and Pavement Marking, Words in accordance with Section 713 requirements for 4-inch waterborne paint or as directed by the Engineer; however, the Department will not require binder surface preparation on concrete pavements. **Parking Area Striping Details are included in the proposal. See attached Details.** If there is any discrepancy between the proposed striping detail sheets and the existing striping, immediately notify the Engineer. Obtain resolution of the conflict from the Engineer before placing the striping in such areas.

## Parking Lot Striping

Page 2 of 2

**C. Pavement Striping Temporary and Permanent Paint.** Temporary and Permanent striping will be constructed in accordance with Section 713. **All Road striping will be 4-Inch width.**

### IV. METHOD OF MEASUREMENT

**A. Maintain and Control Traffic.** See Traffic Control Plan.

**B. Parking Lot Striping.** The Department will measure Parking Lot Striping in linear feet.

**C. Pavement Marking- Paint- Handicap Symbol.** The Department will measure Pavement Paint-Handicap Symbol in individual units, Each.

**D. Pavement Marking- Paint Words.** The Department will measure Pavement Marking Paint Words in individual units, Each.

**E. Pavement Marking- Paint Arrows.** The Department will measure Pavement Marking Paint Arrows in individual units, Each.

### V. BASIS OF PAYMENT

**A. Maintain and Control Traffic.** See Traffic Control Plan.

**B. Parking Lot Striping.** Accept payment at the contract unit price per linear as full compensation for all materials, equipment, labor, and incidentals necessary to complete the work.

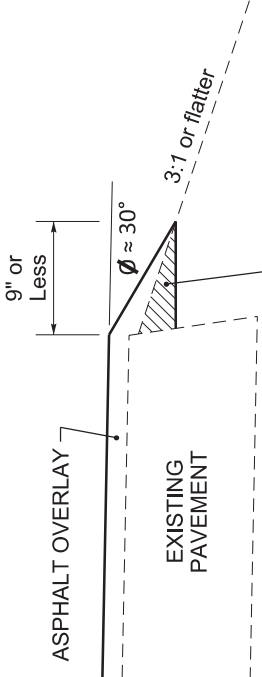
**C. Pavement Paint- Symbols.** Accept payment at the contract unit price each as full compensation for all materials, equipment, labor, and incidentals necessary to complete the work.

**D. Pavement Paint-Words.** Accept payment at the contract unit price each as full compensation for all materials, equipment, labor, and incidentals necessary to complete the work.

**E. Pavement Marking- Paint Arrows.** Accept payment at the contract unit price each as full compensation for all materials, equipment, labor and incidentals necessary to complete the work.

DURABLE PAVEMENT EDGE DETAIL

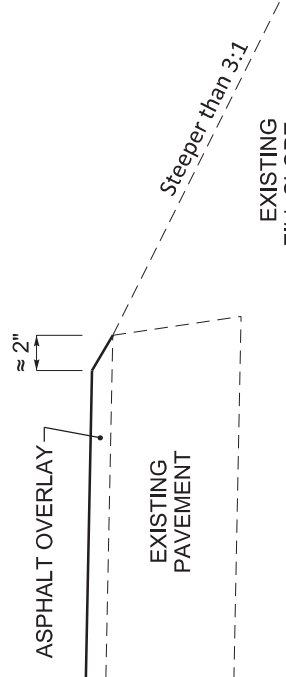
(Resurfacing adjacent to fill slope or ditch foreslope that is 3:1 or less)



PREPARE SHOULDER ACCORDING TO STANDARD SPECIFICATIONS

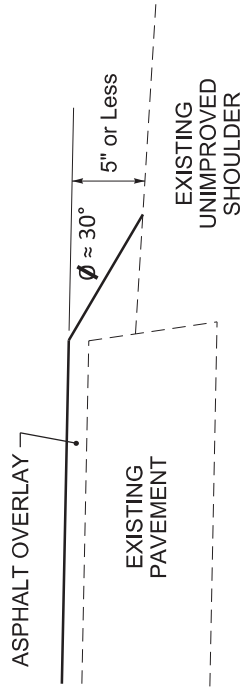
DURABLE PAVEMENT EDGE DETAIL

(Resurfacing adjacent to fill slope or ditch foreslope that is steeper than 3:1)



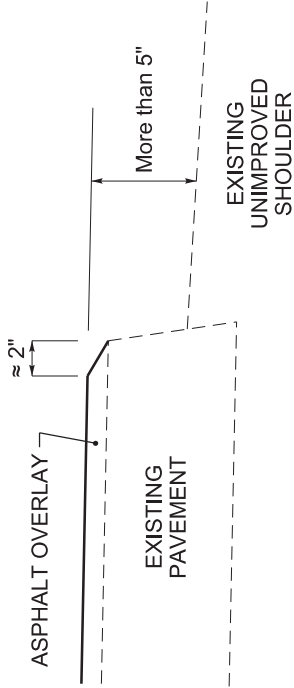
DURABLE PAVEMENT EDGE DETAIL

(Resurfacing adjacent to low shoulder with dropoff of 5 inches or less)



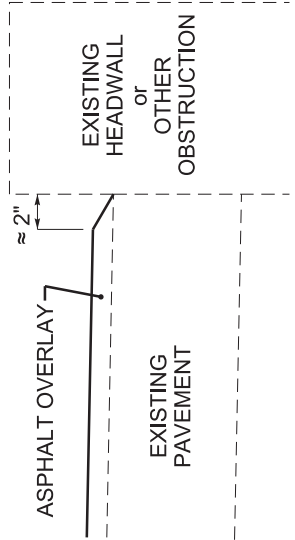
DURABLE PAVEMENT EDGE DETAIL

(Resurfacing adjacent to low shoulder with dropoff of more than 5 inches)



DURABLE PAVEMENT EDGE DETAIL

(Resurfacing adjacent to an obstruction, such as an existing headwall)



NOTES

1. DETAILS DO NOT APPLY TO OVERLAYS LESS THAN 1 INCH THICK.
2. THE DURABLE PAVEMENT EDGE DEVICE MAY BE DISENGAGED AT DRIVEWAYS, SIDE STREETS, HIGH SHOULDERS, AND OTHER LOCATIONS NOT FEASIBLE TO CONSTRUCT, AS APPROVED BY THE ENGINEER.

DRAWING NOT TO SCALE

DURABLE PAVEMENT EDGE DETAILS



## **SPECIAL NOTE FOR EROSION CONTROL COLUMBUS BELMONT STATE PARK**

---

### **I. DESCRIPTION**

Perform all erosion and water pollution control work in accordance with the Department's Standard and Interim Supplemental Specifications, Special Provisions and Special Notes, and Standard and Sepia Drawings, current editions, and as directed by the Engineer. Section references are to the Standard Specifications. This work shall consist of:

(1) Developing and preparing a Best Management Practices Plan (BMP) tailored to suit the specific construction phasing for each site within the project; (2) Preparing the project site for construction, including locating, furnishing, installing, and maintaining temporary and/or permanent erosion and water pollution control measures as required by the BMP prior to beginning any earth disturbing activity on the project site; (3) Clearing and grubbing and removal of all obstructions as required for construction; (4) Removing all erosion control devices when no longer needed; (5) Restoring all disturbed areas as nearly as possible to their original condition; (6) Preparing seedbeds and permanently seeding all disturbed areas; (7) Providing a Kentucky Erosion Prevention and Sediment Control Program (KEPSC-RI) qualified inspector; and (8) Performing any other work to prevent erosion and/or water pollution as specified by this contract, required by the BMP, or as directed by the Engineer.

### **II. MATERIALS**

Furnish materials in accordance with these notes, the Standard Specifications and Interim Supplemental Specifications, and applicable Special Provisions and Special Notes, and Standard and Sepia Drawings, current editions. Provide for all materials to be sampled and tested in accordance with the Department's Sampling Manual. Unless directed otherwise by the Engineer, make the materials available for sampling a sufficient time in advance of the use of the materials to allow for the necessary time for testing.

### **III. CONSTRUCTION**

Be advised, these Erosion Control Plan Notes do not constitute a BMP plan for the project. Jointly with the Engineer, prepare a site-specific BMP plan for each drainage area within the project in accordance with Section 213. Provide a unique BMP at each project site using good engineering practices considering existing site conditions, the type of work to be performed, and the construction phasing, methods, and techniques to be utilized to complete the work. Be responsible for all erosion prevention, sediment control, and water pollution prevention measures required by the BMP for each site. Represent and warrant compliance with the Clean Water Act (33 USC Section 1251 et

## Erosion Control

### Page 2 of 3

seq.), the 404 Permit, the 401 Water Quality Certification, and applicable state and local government agency laws, regulations, rules, specifications, and permits. Contrary to Section 105.05, in case of discrepancy between these notes, the Standard Specifications, Interim Supplemental Specifications, Special and Special Notes, Standard and Sepia Drawings, and such state and local government agency requirements, adhere to the most restrictive requirement.

Conduct operations in such a manner as to minimize the amount of disturbed ground during each phase of the construction and limit the haul roads to the minimum required to perform the work. Preserve existing vegetation not required to be removed by the work or the contract. Seed and/or mulch disturbed areas at the earliest opportunity. Use silt fence, silt traps, temporary ditches, brush barriers, erosion control blankets, sodding, channel lining, and other erosion control measures in a timely manner as required by the BMP and as directed or approved by the Engineer. Prevent sediment laden water from leaving the project, entering an existing drainage structure, or entering a stream.

Provide for erosion control measures to be in place and functioning prior to any earth disturbance within a drainage area. Compute the volume and size of silt control devices necessary to control sediment during each phase of construction. Remove sediment from silt traps before they become a maximum of ½ full. Maintain silt fence by removing accumulated trappings and/or replacing the geotextile fabric when it becomes clogged, damaged, or deteriorated, or when directed by the Engineer. Properly dispose of all materials trapped by erosion control devices at approved sites off the right of way obtained by the Contractor at no additional cost to the Department (See Special Note for Waste and Borrow).

As work progresses, add or remove erosion control measures as required by the BMP applicable to the Contractor's project phasing and construction methods and techniques. Update the volume calculations and modify the BMP as necessary throughout the duration of the project. Ensure that an updated BMP is kept on site and available for public inspection throughout the life of the project.

After all construction is complete, restore all disturbed areas in accordance with Section 212. Completely remove all temporary erosion control devices not required as part of the permanent erosion control from the construction site. Prior to removal, obtain the Engineer's concurrence of items to be removed. Grade the remaining exposed earth (both on and off the Right-of-Way) as nearly as possible to its original condition, or as directed by the Engineer. Prepare the seed bed areas and sow all exposed earthen areas with the applicable seed mixture(s) according to Section 212.03.03.

## IV. MEASUREMENT

**Erosion Control Blanket.** If required by the BMP, the Department will measure Erosion Control Blanket according to Section 212.04.07.

**Sodding.** If required by the BMP, the Department will measure Sodding according to Section 212.04.08.

Erosion Control  
Page 3 of 3

**Channel Lining.** If required by the BMP, the Department will measure Channel Lining according to Sections 703.04.04-703.04.07.

**Erosion Control.** Contrary to Sections 212.04, 213.04, and 703.04 other than Erosion Control Blankets, Sodding, and Channel Lining, and the bid items listed, the Department will not measure Erosion Control. The Department will not measure developing, updating, and maintaining a BMP plan for each site; providing a KEPSC-RI qualified inspector; locating, furnishing, installing, inspecting, maintaining, and removing erosion and water pollution control items; Roadway Excavation, Borrow Excavation, Embankment In Place, Topsoil Furnished and Placed, and Spreading Stockpiled Topsoil; Topdressing Fertilizer, Temporary and Permanent Seeding and Protection, Special Seeding Crown Vetch, and Temporary Mulch; Sedimentation Basin and Clean Sedimentation Basin, Silt Trap Type "A" and Clean Silt Trap Type "A"; Silt Trap Type "B" and Clean Silt Trap Type "B"; Silt Trap Type "C" and Clean Silt Trap Type "C"; Temporary Silt Fence and Clean Temporary Silt Fence; Plants, Vines, Shrubs, and Trees; Gabion and Dumped Stone Deflectors and Riffle Structures; Boulders; Temporary Ditches and clean Temporary Ditches; Geotextile Fabric, and all other erosion and water pollution control items required by the BMP or the Engineer, but shall be incidental to the applicable items of work.

## V. Basis of Payment

**Erosion Control Blanket.** If not listed as a bid item, but required by the BMP, the Department will pay for Erosion Control Blankets as Extra Work according to Sections 104.03 and 109.04.

**Sodding.** If not listed as a bid item, but required by the BMP, the Department will pay for Sodding as Extra Work according to Sections 104.03 and 109.04.

**Channel Lining.** If not listed as a bid item, but required by the BMP, the Department will pay for Channel Lining as Extra Work according to Sections 104.03 and 109.04.

## GENERAL UTILITY NOTES

---

The contractor is instructed to call 1-800-752-6007 to reach KY 811, the one-call system for information on the location of existing underground utilities. The call is to be placed a minimum of two (2) and no more than ten (10) business days prior to excavation. The contractor should be aware that owners of underground facilities are not required to be members of the KY 811 one-call Before-U-Dig (BUD) service. The contractor must coordinate excavation with the utility owners, including those who do not subscribe to KY 811. It may be necessary for the contractor to contact the County Court Clerk to determine what utility companies have facilities in the area. The Department of Parks owned facilities may not be located through the KY 811 one-call Before-U-Dig (BUD) service; contact the Park Manager to verify their locations..

# COLUMBUS-BELMONT STATE PARK



MISSISSIPPI RIVER

Trench (.6 mi.)

A  
B  
C  
Snack Bar  
Gift Shop  
Restrooms  
Miniature Golf

D  
Museum

Convention Center

Service Road (foot travel allowed)

Log Cabin

Camground  
Registration

Hwy 58-80



80

- Road
- Trail
- Building
- Playground
- Storm shelter
- Shelter
- Camping
- Sanitary station
- Bath house
- Boat ramp

GENERAL SUMMARY				
COLUMBUS BELMONT STATE PARK				
BID CODE	ITEM	UNIT	NOTE	QUANTITY
00001	DGA BASE	TON		884
00301	CL2 ASPH SURF 0.38 D, PG64-22	TON	1	1388
00190	LEVELING AND WEDGING PG64-22	TON		419
00468	36 INCH CULVERT PIPE	LF		32
01453	SLOPED & FLARED BOX INLET-OUTLET- 36 INCH	EACH		2
01876	HEADER CURB STANDARD- MOD	LF		103
02237	DITCHING	LF		185
02483	CHANNEL LINING CLASS II	TON		62
02562	TEMPORARY SIGNS	SF		69
02569	DEMOBILIZATION	LS		1
02625	REMOVE HEADWALL	EACH		2
01310	REMOVE PIPE	LF		26
02650	MAINTAIN AND CONTROL TRAFFIC	LS		1
02720	SIDEWALK- 4 INCH CONCRETE	SY		5
02726	STAKING	LS		1
03262	CLEAN PIPE STRUCTURE	EACH		1
03288	SIDEWALK RAMP TYPE 2	EACH		1
03000	REMOVABLE BOLLARD	EACH		2
21341ND	BOLLARDS	EACH		24
05985	SEEDING & PROTECTION	SY		1805
05997	TOPSOIL FURNISHED AND PLACED	CY		602
06510	PAVE STRIPING - TEMP PAINT - 4 IN	LF		2703
06514	PAVE STRIPING - PERM PAINT- 4 IN	LF		2703
23274EN11F	TURF REINFORCEMENT MAT 1	SY		110
02673	PRECAST VEHICLE STOP (6 FT)	LF		342
24176EC	REMOVE PRECAST VEHICLE STOPS	EACH		48
06601NC	PAVEMENT MARKING- PAINT WORDS	EACH		6
20206EC	PAVEMENT MARKING- HANDICAP SYMBOL	EACH		5
20208NC	PAVEMENT MARKING- ARROWS	EACH		4
02585	EDGE KEY	LF		20
6571	PAVE MARKING-PAINT PARKING LOT (WHITE)	LF		3005
6571	PAVE MARKING-PAINT PARKING LOT (BLUE)	LF		276
23158ES505	DETECTABLE WARNINGS	SF		48
24970EC	ASPHALT MATERIAL FOR TACK, NON-TRACKING	TON		12.4
2721	REMOVE CONCRETE SIDEWALK	SY		5

<b>PAVING SUMMARY</b>				
<b>COLUMBUS BELMONT STATE PARK</b>				
<b>BID CODE</b>	<b>ITEM</b>	<b>NOTES</b>	<b>UNIT</b>	
00001	DGA	2	TON	884
00190	LEVELING AND WEDGING PG64-22	1,6	TON	419
00301	CL2 ASPH SURF 0.38D PG64-22	1	TON	1388
05985	SEED AND PROTECTION	2	SY	1806
05997	TOPSOIL FURNISHED AND PLACED	2	CY	602
24970EC	ASPHALT MATERIAL FOR TACK, NON-TRACKING	3	TON	12.4

NOTES:

1. Estimated at 110 lbs. per sq. yd. per inch of depth.
2. Estimated at 115 lbs. per sq. yd. per inch of depth
3. Estimated at 0.7 lbs. per sq.yd. (Tack)
4. Seed and Protection and Topsoil bid items will be used on the Multi-Use Path shoulders.

\*Quantities are carried over and included in General Summary.

***Columbus Belmont State Park***

**Main Road and Main Parking area**

Description	Quantity	Comments
Mainline Pave Length (FT) X 20 FT (width)	33078 SF	Place 1 inch Asphalt Surface over Roadway Class 2 Asph Surf 0.38D, PG 64-22
Mainline Shoulder Length (FT) X Width (2 FT Each Side) DGA Shoulder	5796 SF	Roadway Length = 1299 FT Shoulder AREA Place 2 FT Each side of DGA- 2 inches Thick ((1299 FT X 4)/9 X 230) /2000 = 66.4 TONS
Leveling and Wedging (40%)		Leveling and Wedging will be included on the total of Surface Quantities
Non-Tracking Asphalt Material for Tack (Tons)		Tack (0.7 LBS/ SQ YD) Quantities will include total Surface area
Edge Key (LF)	20 LF	Use Edge Key on Main Line Road at Begin Road Surfacing
Culvert Pipe, 36 inch (LF) 1.5 FT Cover Height	32 FT	Type of Pipe, Alternates, PH Medium
Remove Pipe (LF)	26	Remove Existing Metal Pipe on Main Road
Remove Existing Headwall	2 Each	Remove Existing Concrete Headwalls
36" Sloped and Flared Inlet-Outlet	2 Each	Concrete Sloped and Flared Headwall
Turf Reinforcement Mat Type 1 (Square Yard)	110 SY	As per Spec Book, Use at Outlet of 36 " Pipe (90 FT Length X 11 FT Width/ 9) = 110 SY
Clean Pipe Structure (EACH)	1 Each	20 FT of 24" Metal Pipe, Do not disturb Rock pedway over Pipe
Ditching (LF)	185 LF	Ditch along some areas of the main road/Parking Area to deter erosion and to drain water away from the roadway



**Columbus Belmont State park**

Channel Lining Type II (Length FT X Width FT)/9 = SY 0.5 Ton Per SQ YD/1 FT Depth	61.6 tons	Add Channel lining to ditches along some roadway as specified to deter erosion, and Culvert Inlet 185 FT X 6 FT)/9 = 123.3 SY X 0.5 Ton = 61.6 Ton
Pavement Striping- Temporary Paint, 4 Inch LF	2703 LF	Restriping Main Roadway. Same Quantity as Permanent, Added Single Yellow Line 105 LF
Pavement Striping, Permanent Paint, 4 Inch LF	2703 LF	Restripe the mainline roadway with Yellow double Lines. 2 Times Roadway Length Added Single Yellow Line 105 LF
Staking (Lump Sum)	1	
Temporary Signs (SFT)	69 SF	
Maintain and Control Traffic (LS)	1	
<b>Main Parking Lot Area Lower Level</b>		
Pavement Parking Area (SF)	45034 SF	(8720 SF + 36315 SF) = 45034 SF
Parking Lot Striping (White) (LF)	1121	Includes approximate quantity for No Parking Stripe area
Parking Lot Striping (Blue) LF	144	
Parking Lot Symbols (Each)	3	3 Painted Handicap Symbols
Painted Straight Arrows (EACH)	2	2 Arrows in the Parking Lot
Painted Words (Each)	4	Words "No Parking"
Remove Vehicle Stops (Each)	10	Existing Vehicle Stops in Main Parking Area to Remove, Do not reset, Replace with new vehicle stops

Columbus Belmont State park

Precast Vehicle Stops (LF)	60 LF		Place in Same location as the Removed Vehicle Stops 10 Stops X 6 FT Length = 60 LF
Removable Bollards (Each)	2		Removable Bollards are at ends to allow larger vehicles for maintenance
Bollards (Each)	24		Bollards Placed along Parking Area, 2 Removable, 24 Not Removable
Detectable Warnings (SF)	32 SF		2- 4 FT X 4 FT Warnings in main parking area
Header Curb Standard, MOD (Length LF)	103 LF		Header Curb along Parking area (See Detail Sheet)

**Columbus Belmont State Park  
 Main Convention Center Parking Area**

Description	Quantities	Comments
Parking Area (SF)	33,022 SF	Do NOT change the number of parking spaces in the Main Parking Area *Parking lane Areas are INCLUDED IN THE Parking Lot AREA CALCULATIONS
Length of White Parking Lot Striping (LF)	1425 LF	Parking lane Areas are INCLUDED IN THE Parking Lot AREA CALCULATIONS
Length of Blue Parking Lot Striping (LF)	132 LF	Parking lane Areas are INCLUDED IN THE Parking Lot AREA CALCULATIONS
Parking lot Symbol (Each)	2 Each	Measure and restripe ADA parking as it is presently. Do not make changes unless required by Std Drawing
Remove Concrete Sidewalk	5 SY	See attached drawing for location of sidewalk 5 FT X 15FT = 45SF/9 = 5 SY
4 in Sidewalk (Length X Width) /9 = SY	5 SY	Replace Broken up sidewalk at parking lot from overflow to main parking area 5 FT X 15FT = 45/9 = 5 SY
Precast Vehicle Stops- 6 FT (LF)	38 Vehicle stops	Place Vehicle Stops in the Parking Area at Existing locations, And add 9 additional Vehicle Stops at the new striped parking areas 6 FT X 38 = 228 LF
Remove Precast Vehicle Stops (Each)	38 Each	Remove Existing Vehicle Stops in the parking lot area
<b>Overflow Convention Center Parking Area</b>		
Parking Area (SF)	11,402 SF	Parking Area includes the existing and added parking spaces
Additional Parking Space, Each (Width X Length)	7	Each Parking Spot 16FT X 9FT See attached Drawing for location of added parking spaces, Surface area is included in the Parking Lot Area
No. of Existing Parking Spaces	2	
Length of White Parking Lot Striping (LF)	324 LF	Parking Area Striping and Hatching
Precast Vehicle Stops- 6 FT	56 LF	Add 9 precast Vehicle Stops to added parking spaces 9FT X 6FT= 56 LF
Handicap Ramp Type 2	1 Each	See attached Drawing for location of ADA Ramp
Detectable Warning (SF)	16 SF	Add Detectable Warning at the New ADA Ramp 4X4=16 SF

**Columbus Belmont State Park**

**Paths to Shelter Areas, Museum and Convention Center (Open to vehicular Traffic)**

**Description**

**Resurface Asphalt Paths**

**Quantities**

**Comments**

*Path Areas 10 FT Wide (See attached drawing for location)	40638 SF	26771 + 9483 + 2295 + 2089SF = 40,638 SF Path areas 40,638 SF/9 = 4515.3 SY Place 1 inch Asphalt Surface over Path areas
*Shoulder Path Areas ( Width= 2FT Each Side) See Typical Section		Shouldering Material will be SOIL (4063.8 LF X 4 ft)/9 = 1806.13 SY
Seeding and Protection (SY) FOR SHOULDER AREA	1806.1 SY	SEE SHOULDER AREA
*Soil Furnished and placed (CY) SHOULDER AREA	602.1 CY	Shouldering Material will be SOIL (4064 x 4 x 1 ft/depth)/27 = 602.1 CY

\* See attached Path areas designated on drawings

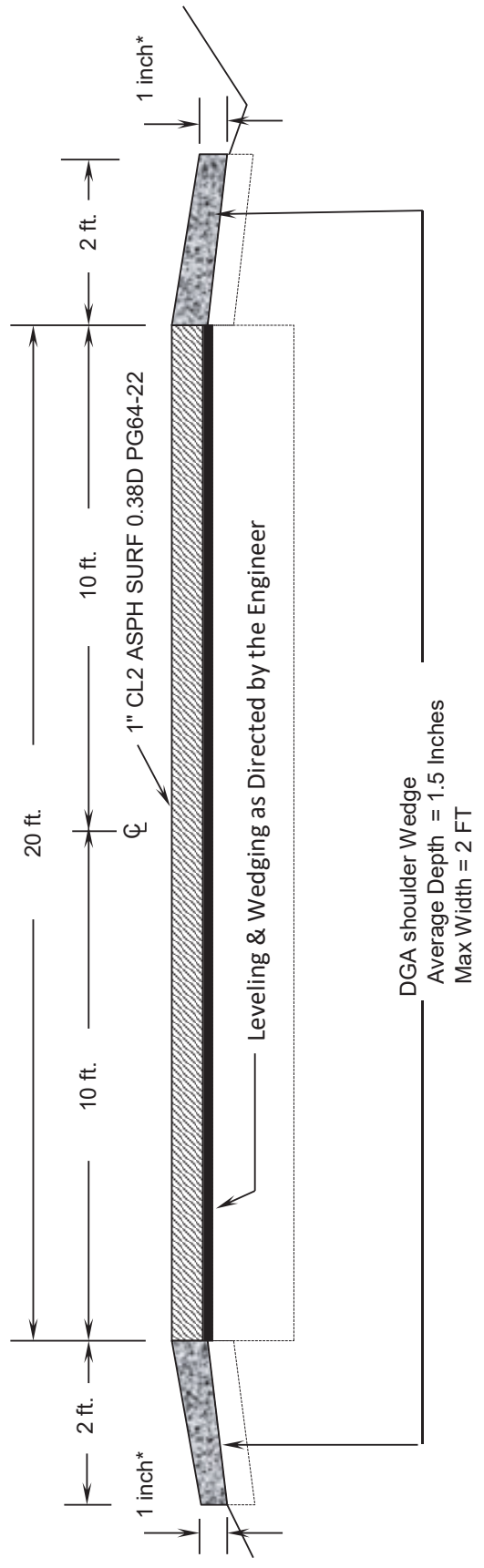
**Campground Roads and Camper Pads**

**Description**

**Resurface Asphalt Campground Road and Asphalt Camper Pads**

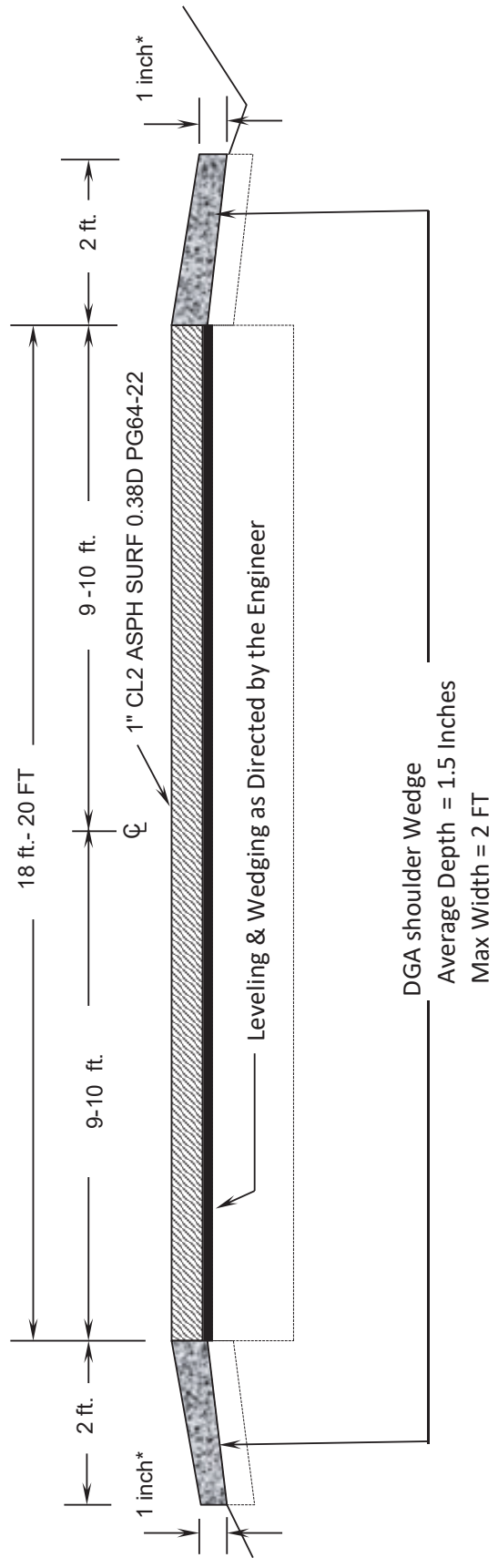
Campground Road Area, Includes CAMPER PAD Area (18FT to 20 FT Wide) Avg 19 FT	63947 SF	28604 + 14414 + 20929 SF = 63947 SF/9 = (7105.2 SY) Place 1 inch Asphalt Surface over Campground Road and Camper Pads *Area for each Camper Pad is included in the CAMPGROUND ROAD/CAMPER AREA
Campground Road Shoulder 2 FT on Each Side (DGA Material)		Shoulder material will be DGA. Construct 2 inch deep. 63,947 SF/9 = 7105.2 SY X (115 X2)/2000 = 817.1 Tons
Campground Pads (Avg) Length (FT) X Width (FT) 62 FT X 17 FT (FOR INFORMATION ONLY)		*The area for the Camper Pads is included in the CAMPGROUND ROAD/CAMPER AREA
Campground Road Painted Straight Arrows (Each)	2	Place painted arrows at approximate same location along the Campground Road

**TYPICAL SECTION**  
**Columbus Belmont State Park**  
**Main Road**



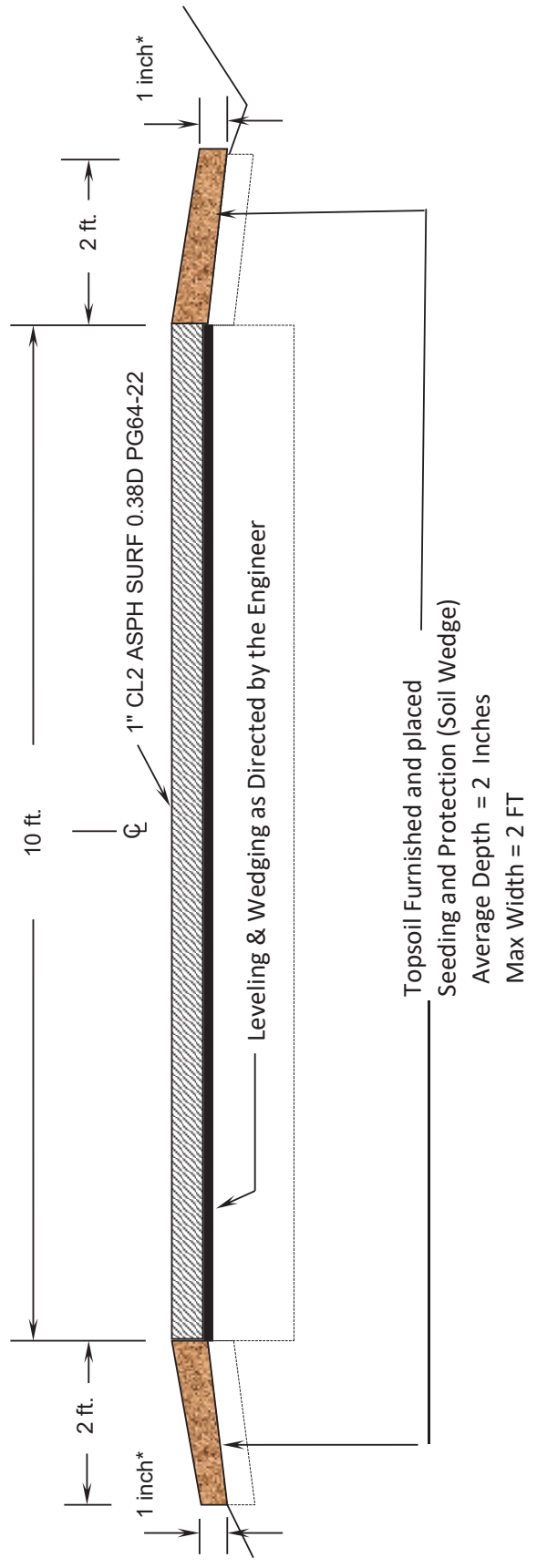
**\* 1" MAXIMUM DROP-OFF AS EXISTING SITE CONDITIONS PERMIT**

**TYPICAL SECTION**  
**Columbus Belmont State Park**  
**Main Campground Road**



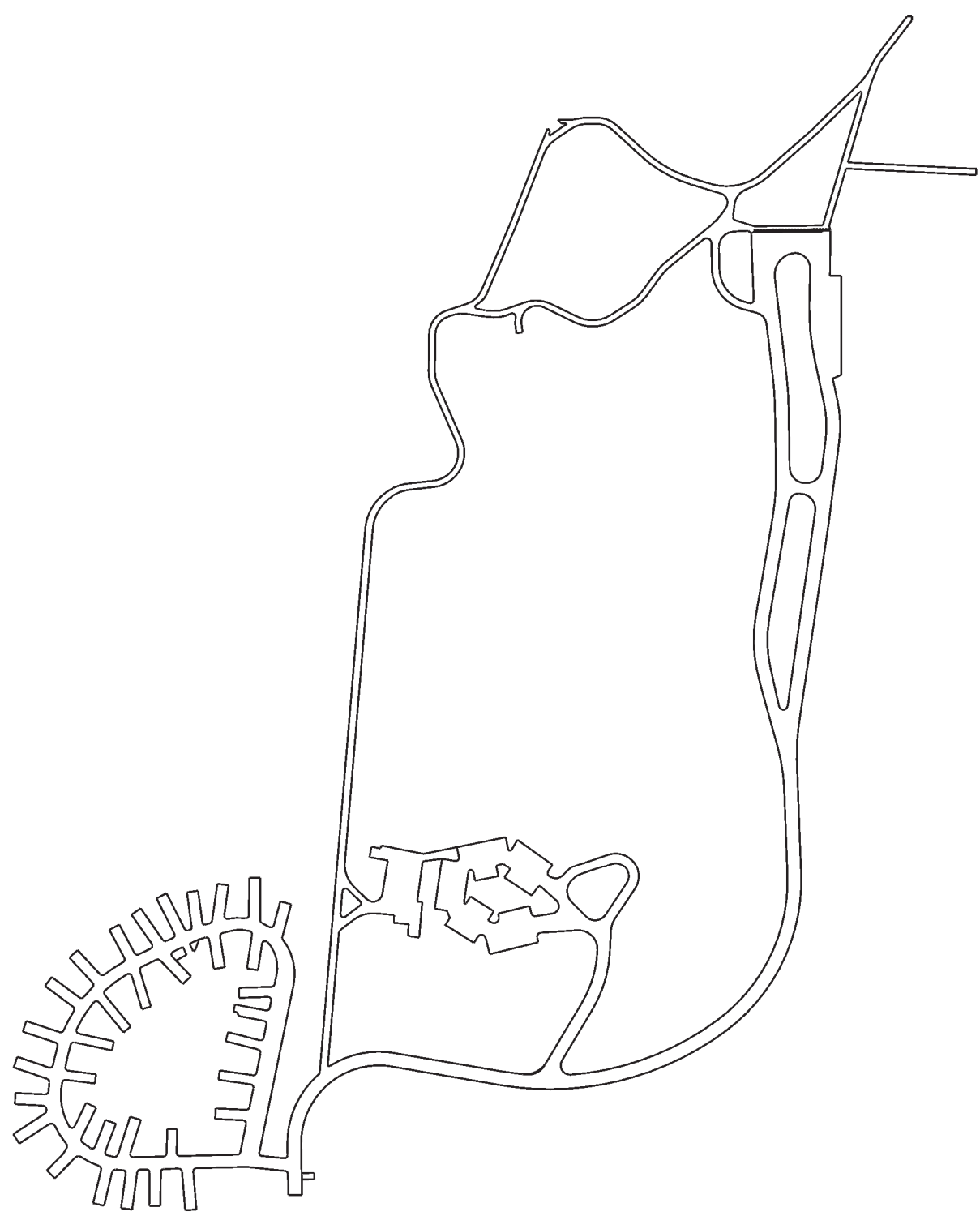
**\* 1" MAXIMUM DROP-OFF AS EXISTING SITE CONDITIONS PERMIT**

**TYPICAL SECTION**  
**Columbus Belmont State Park**  
**Multi-Use Trails**



**\* 1" MAXIMUM DROP-OFF AS EXISTING SITE CONDITIONS PERMIT**

COUNTY OF	ITEM NO.
HICKMAN	



SCALE: 1"=125'

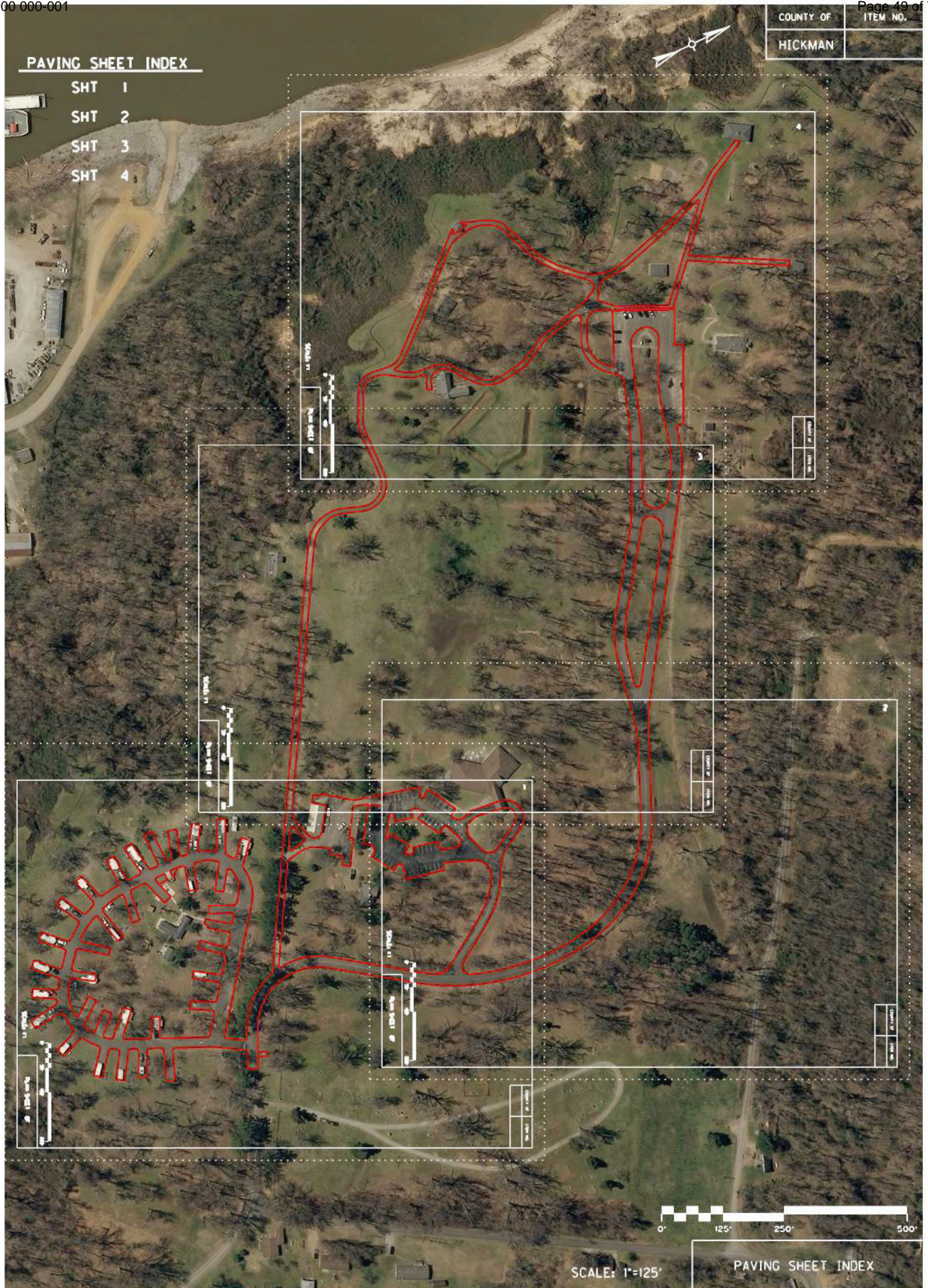
OVERVIEW SHEET  
COLUMBUS BELMONT



COUNTY OF	ITEM NO.
HICKMAN	

**PAVING SHEET INDEX**

- SHT 1
- SHT 2
- SHT 3
- SHT 4

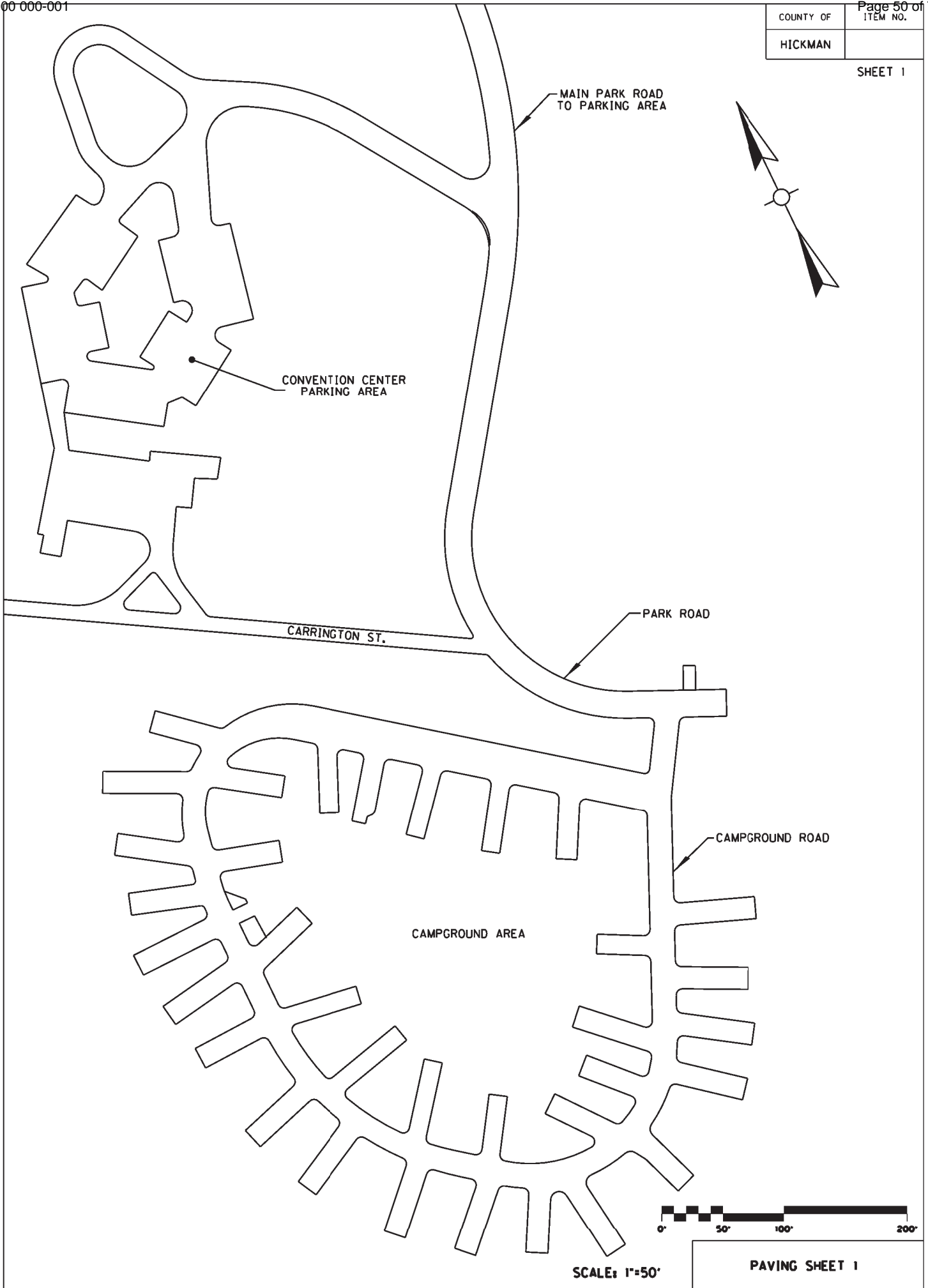


SCALE: 1"=125'

PAVING SHEET INDEX

COUNTY OF	ITEM NO.
HICKMAN	

SHEET 1

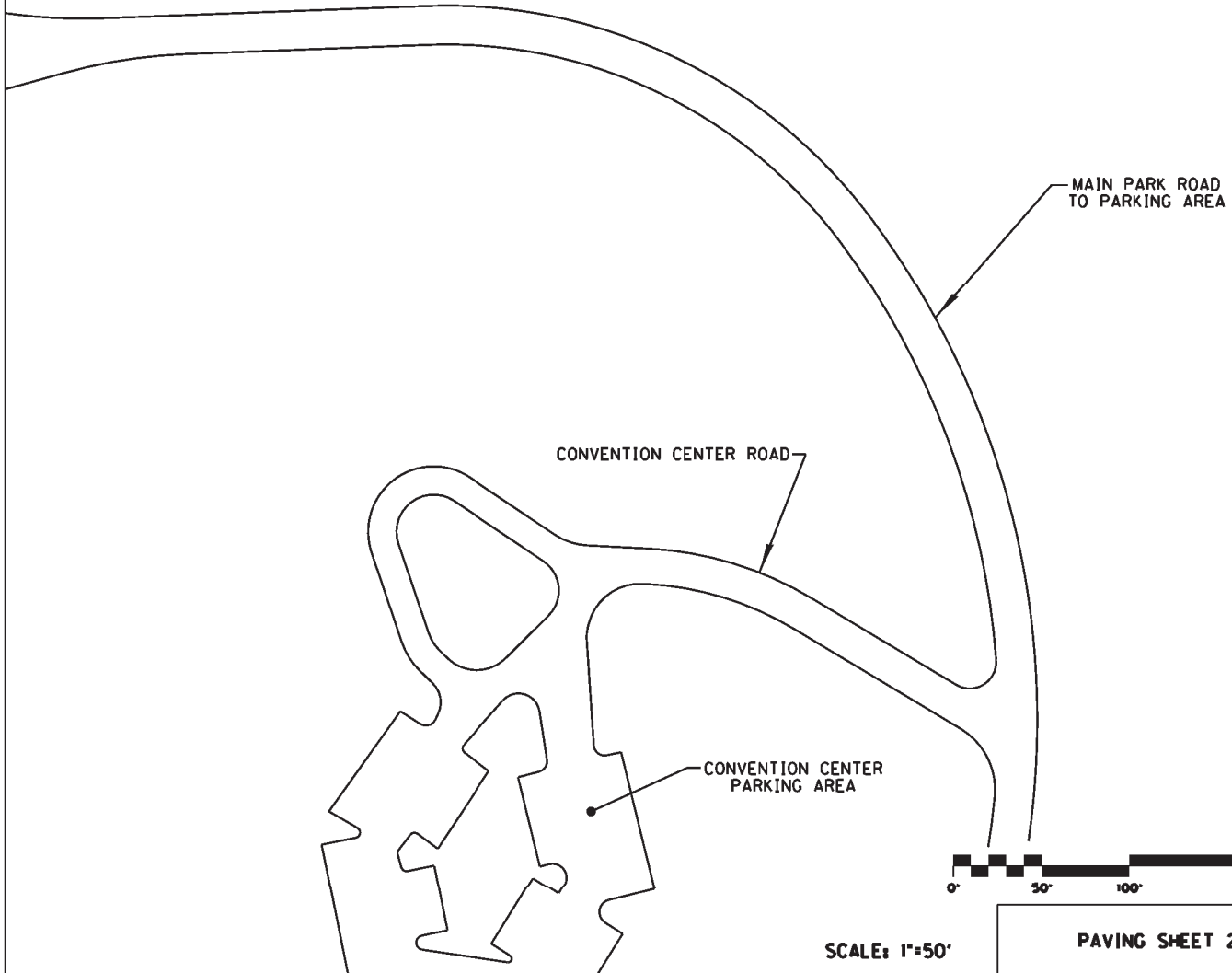
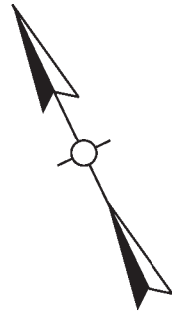


SCALE: 1"=50'

PAVING SHEET 1

COUNTY OF	ITEM NO.
HICKMAN	

SHEET 2

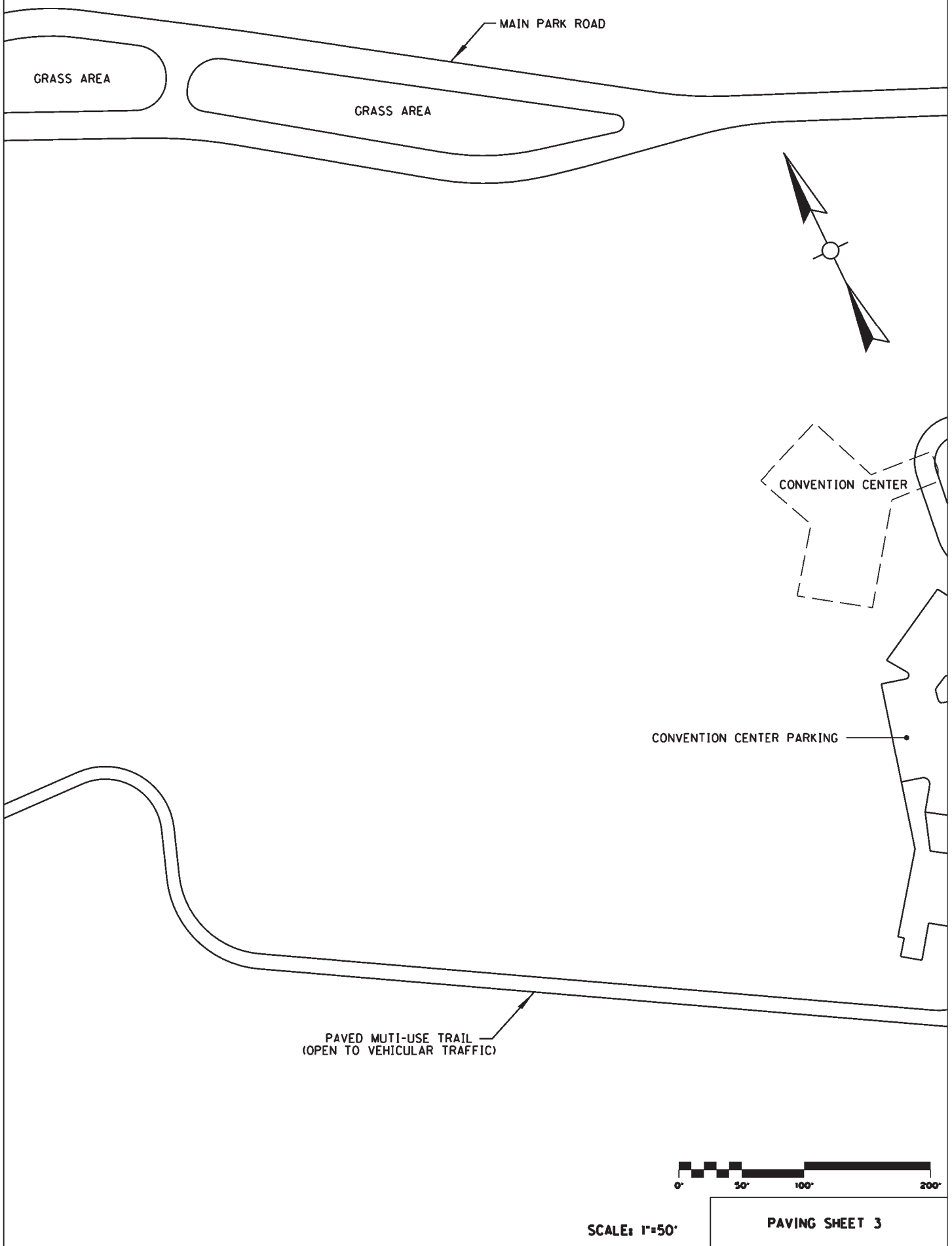


SCALE: 1"=50'

PAVING SHEET 2

COUNTY OF	ITEM NO.
HICKMAN	

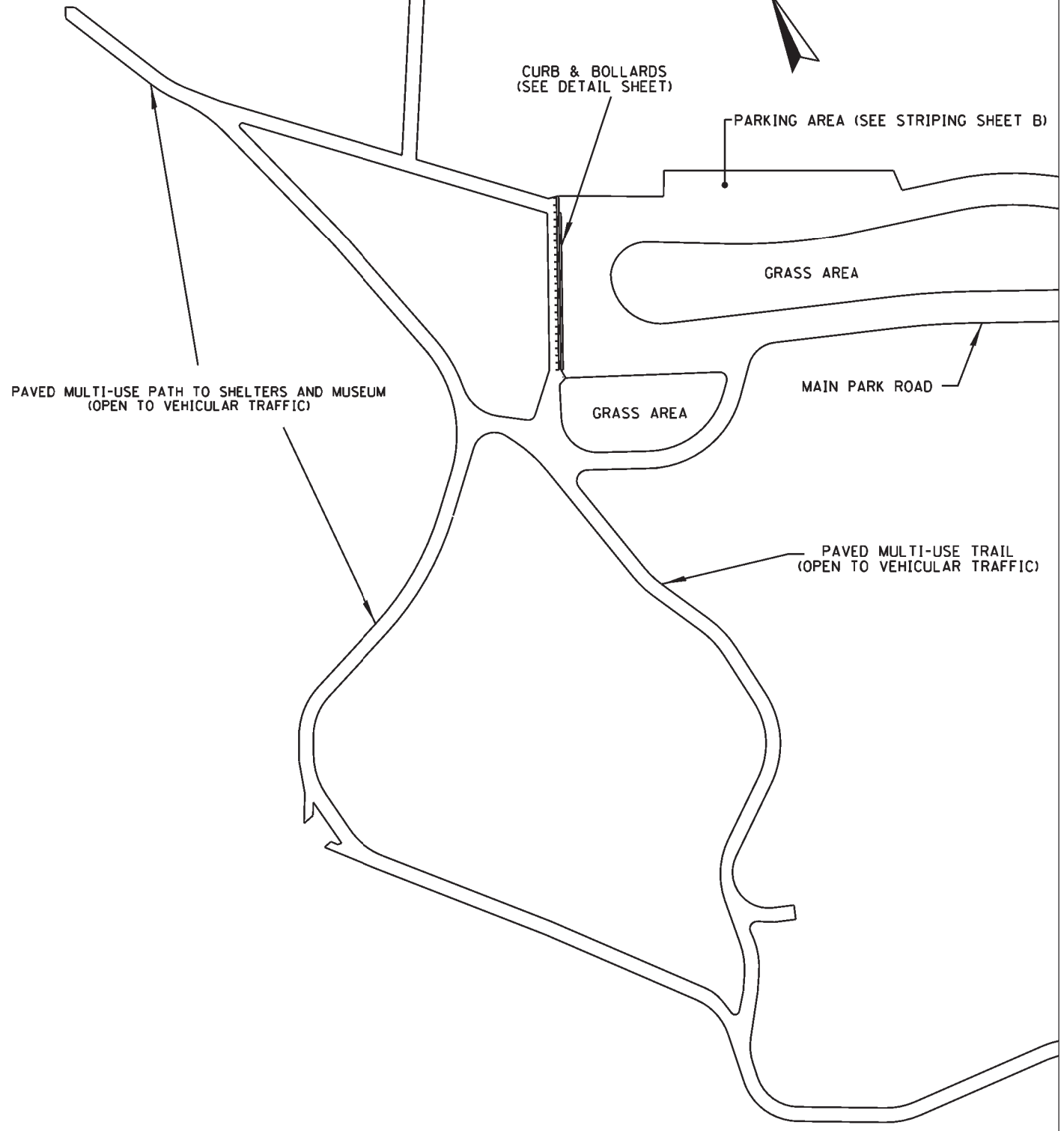
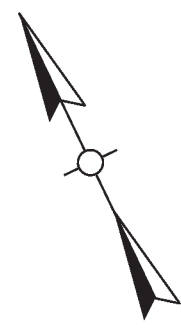
SHEET 3



SCALE: 1"=50'

PAVING SHEET 3

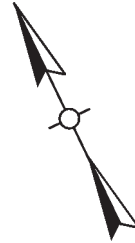
COUNTY OF	ITEM NO.
HICKMAN	



SCALE: 1"=50'

PAVING SHEET 4

COUNTY OF	ITEM NO.
HICKMAN	



SEE KDOT STD DWG.  
RPX-100-03 FOR  
HANDICAP PARKING  
SPACE DETAILS

36'x36' HANDICAP  
PAVE MARKING

SINGLE SOLID 4"  
STRIPE-PAINT (TYP.)  
WHITE

REMOVE EXISTING DAMAGE  
CONCRETE, CONSTRUCT  
NEW SIDEWALK

REMOVE SIDEWALK & CONSTRUCT  
NEW ADA SIDEWALK RAMP TYPE 2  
(SEE KYTC STD. DWG. RPM-170-09)

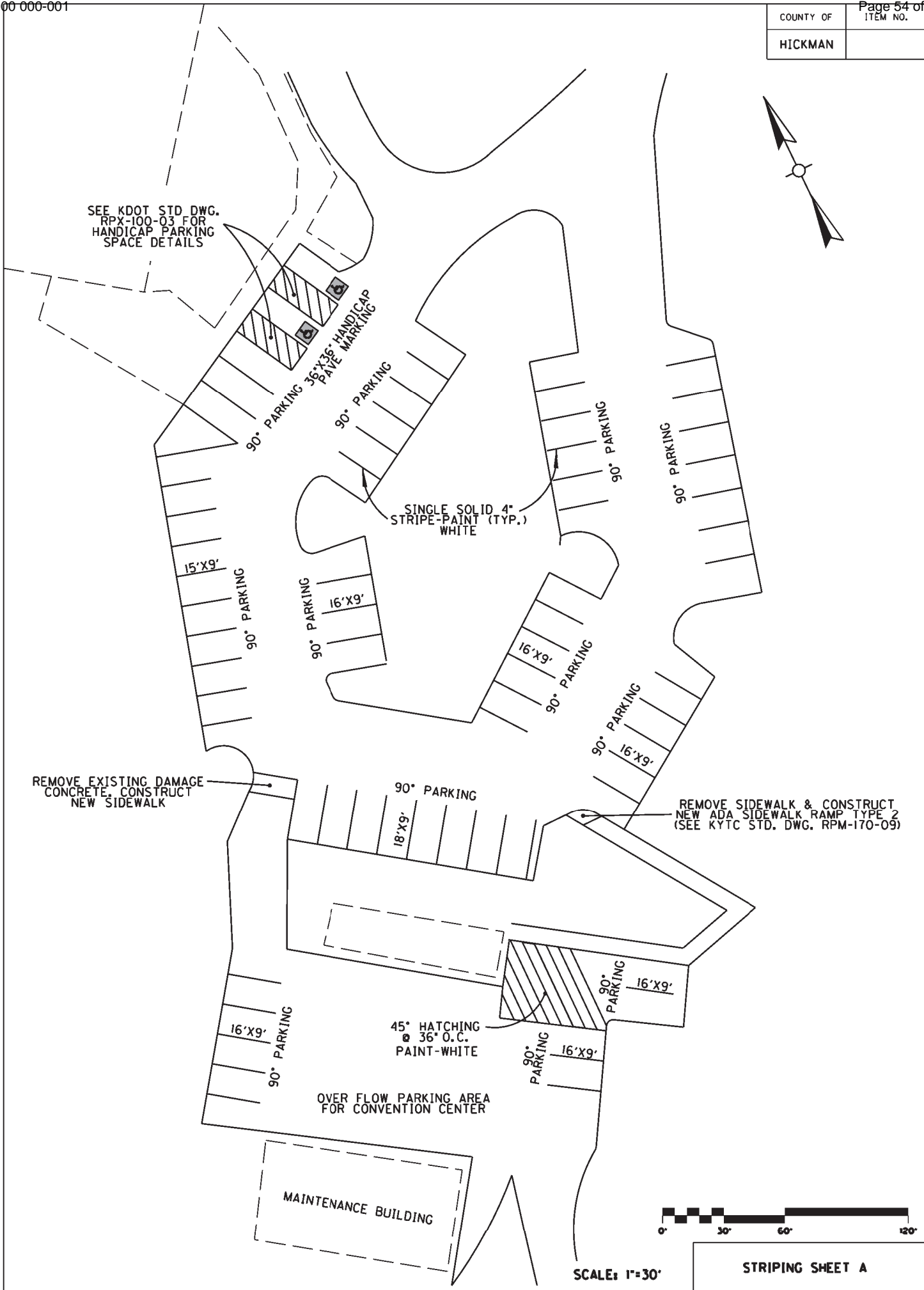
45° HATCHING  
@ 36" O.C.  
PAINT-WHITE

OVER FLOW PARKING AREA  
FOR CONVENTION CENTER

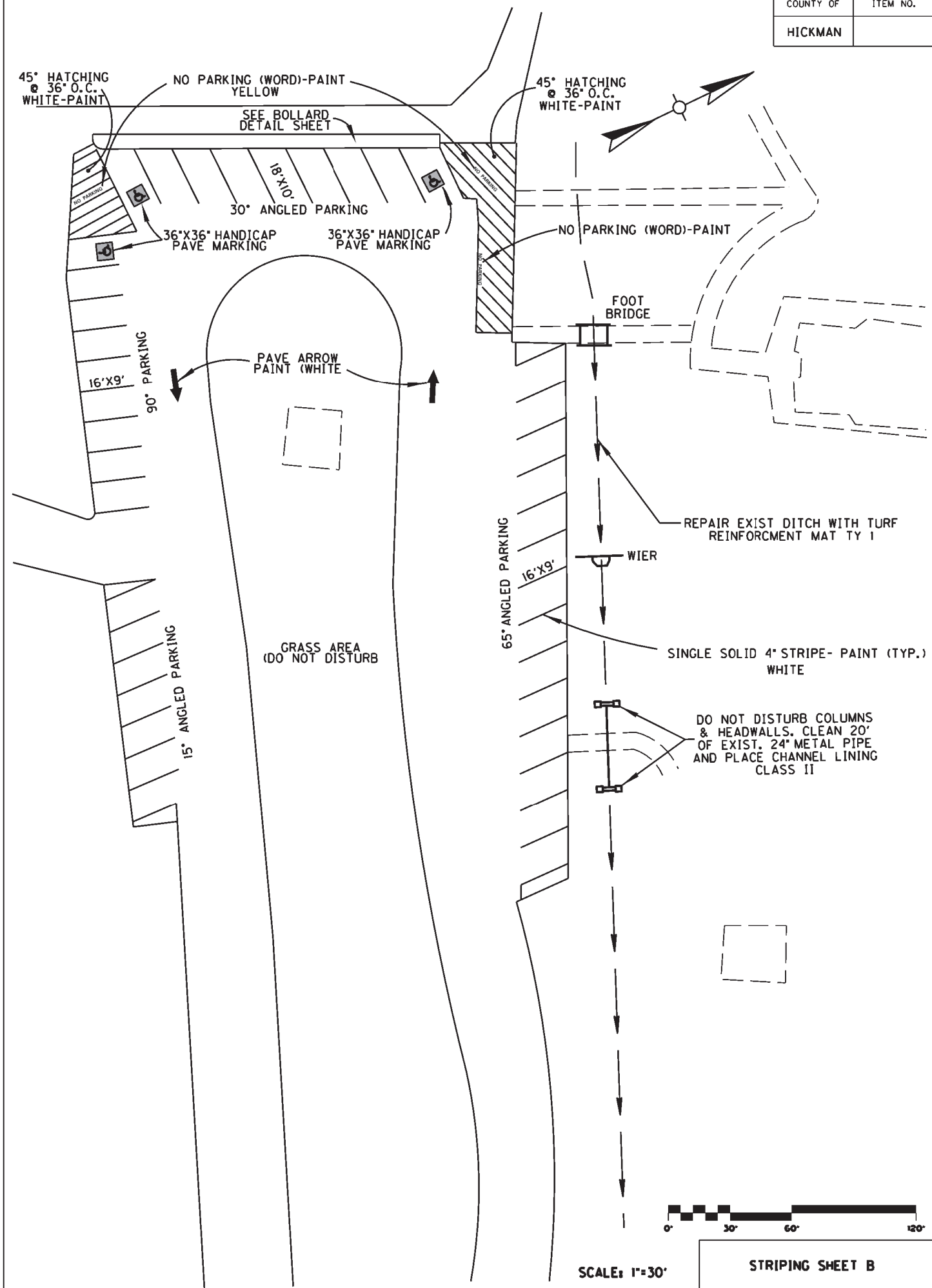


SCALE: 1"=30'

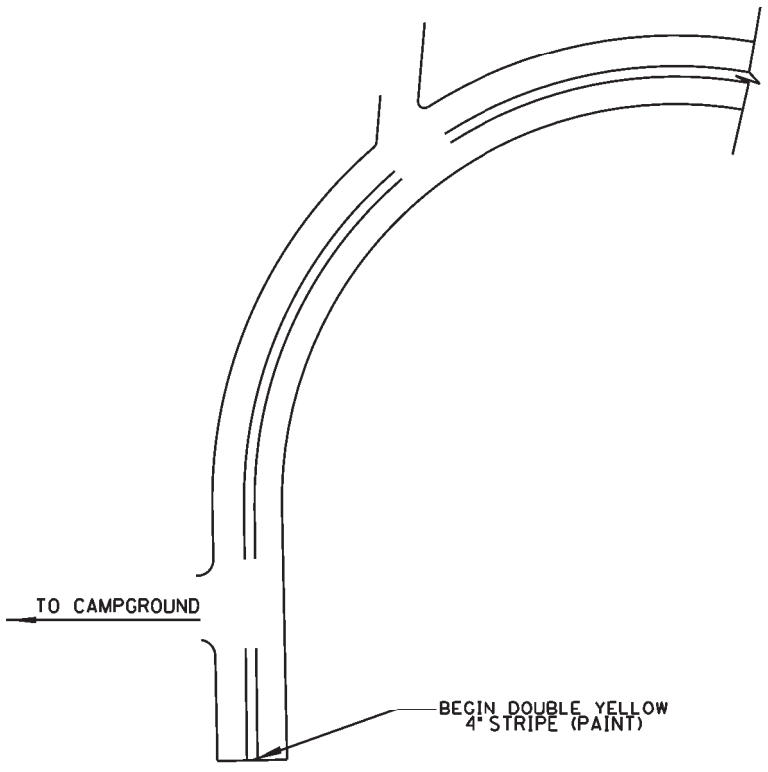
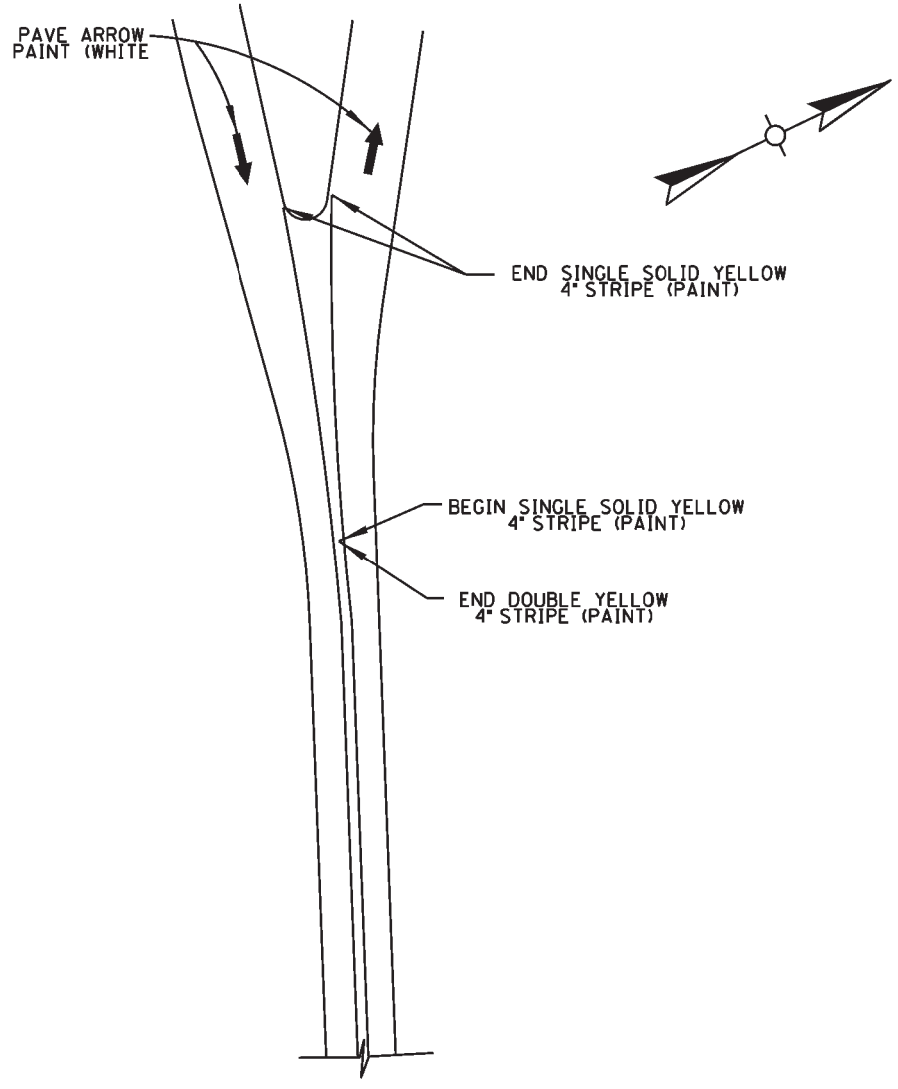
STRIPING SHEET A



COUNTY OF	ITEM NO.
HICKMAN	



COUNTY OF	ITEM NO.
HICKMAN	



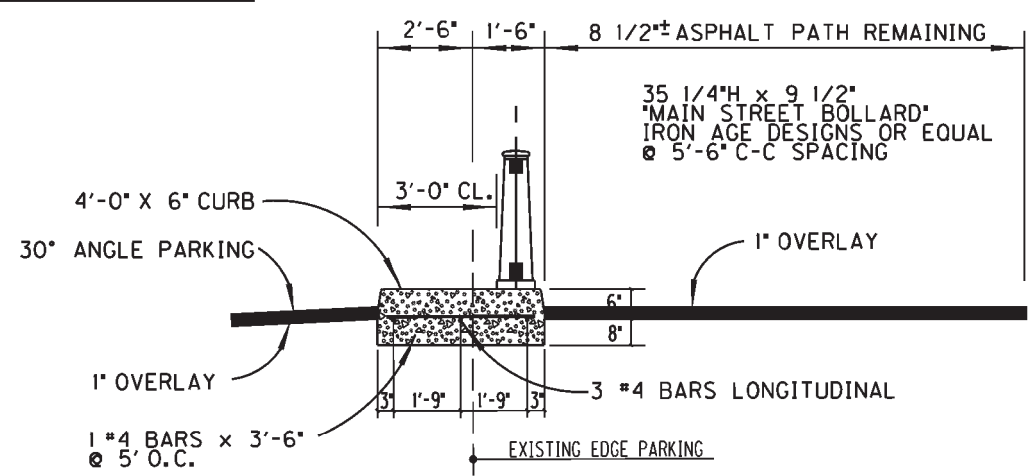
SCALE: 1"=30'

STRIPING SHEET C

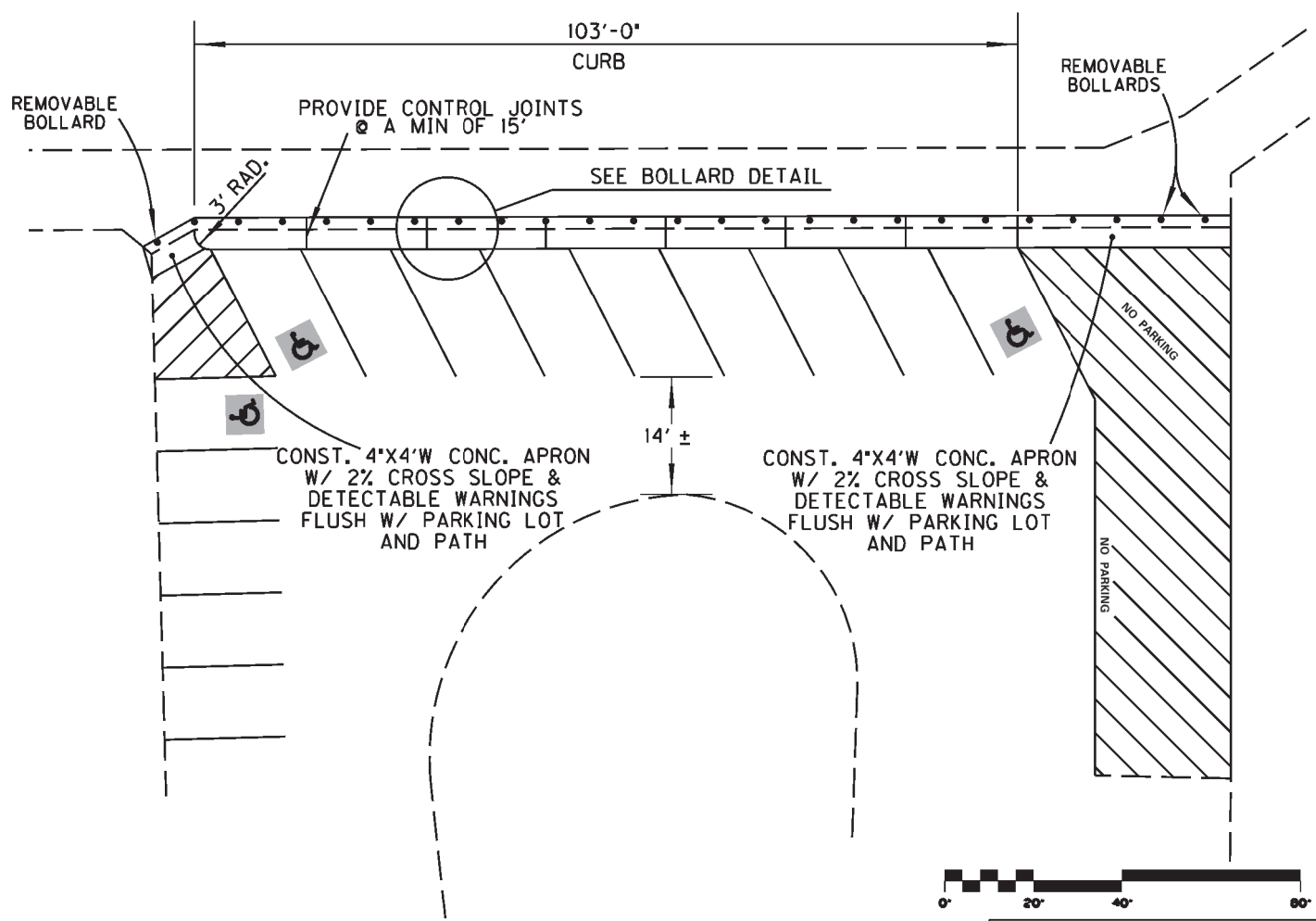
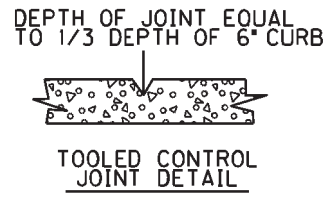


COUNTY OF	Page 57 of 75 ITEM NO.
HICKMAN	

SEE KYTC STD DWG.  
 RPM-100-11 FOR  
 STANDARD CURB DETAIL



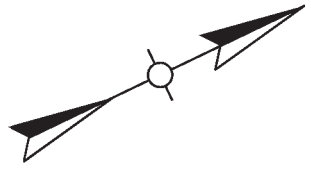
**BOLLARD DETAIL**



SCALE: 1"=20'

**BOLLARD & CURB DETAIL**

COUNTY OF	ITEM NO.
HICKMAN	



CONVENTION CENTER PARKING



REMOVE & REPLACE 32' OF 36" CULVERT  
PIPE W/ 2- 36" SLOPED & FLARED HEADWALLS  
PLACE CHANNEL LINING CLASS II  
@ THE INLET & OUTLET OF PIPE

PARK WILL REMOVE  
TREE IMPEDING FLOW.  
RE-LINE 90% OF DITCH  
WITH TURF  
REINFORCEMENT  
MAT TY I



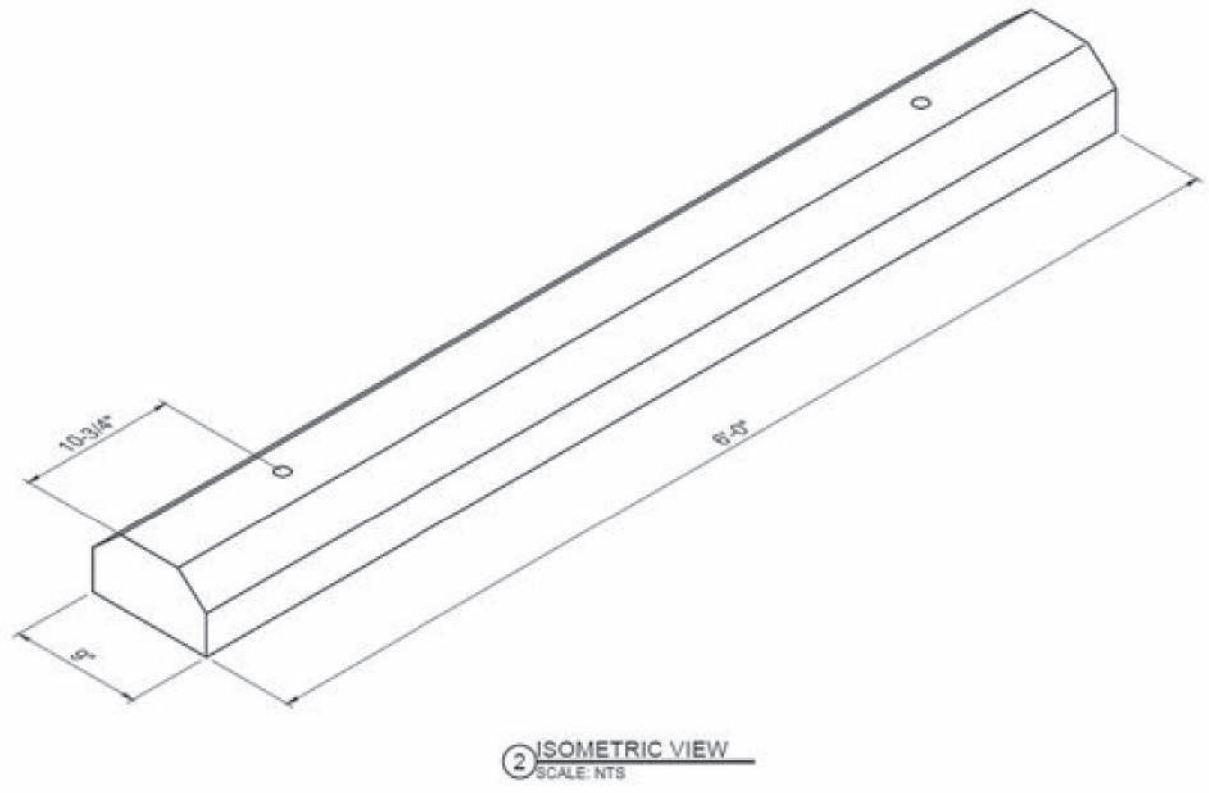
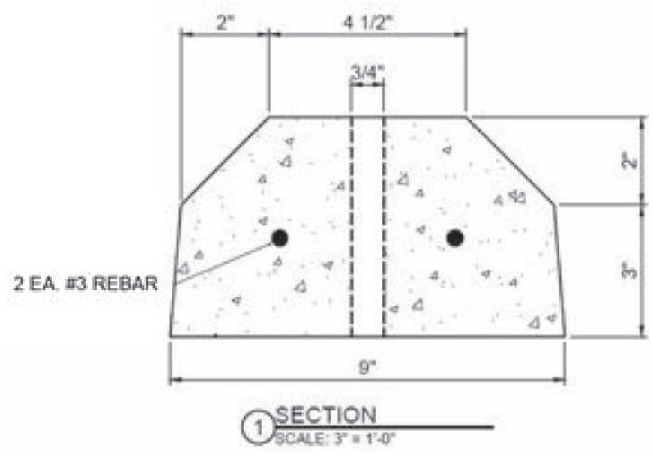
MAIN PARK ROAD



SCALE: 1"=20'

DITCH & PIPE REPAIR

COUNTY OF	ITEM NO.
HICKMAN	

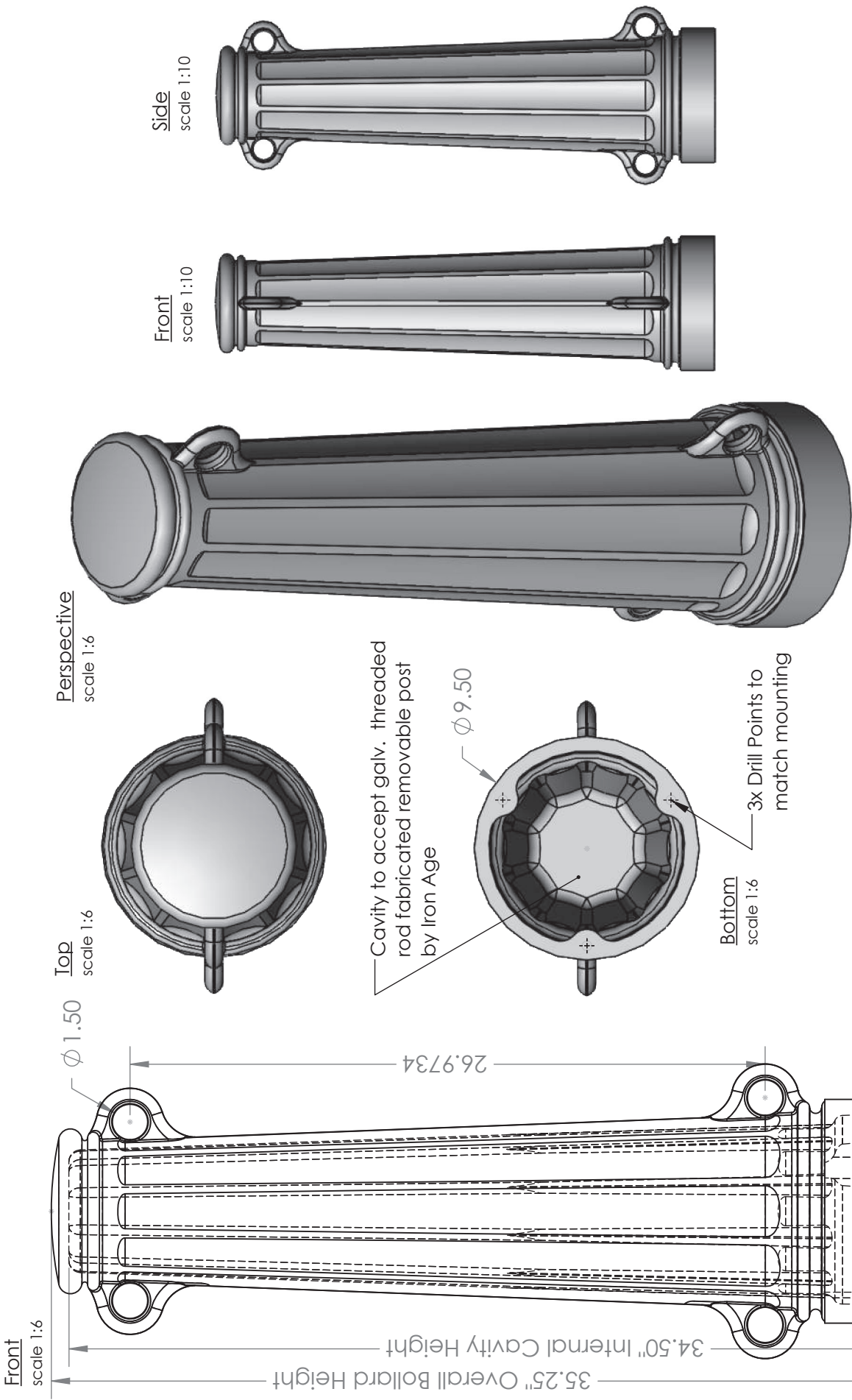


PARKING STOP DETAIL

- NOTES:
- 1. REBAR AMERICAN GRADE 60 SIZE #3.
  - 2. 4000 PSI CONCRETE 28 DAYS.
  - 3. WEIGHT 200 POUNDS.

NTS

PARKING STOP DETAIL



**IRON AGE DESIGNS**  
 2104 SW 152nd st #4  
 Burien, WA 98166  
 TEL 206.276.0925  
 FAX 206.257.0318  
 www.ironagedesigns.com

**Bothell Bollard**

JOB NO. 170206PC\_BothellBollards  
 DWG. NO. 06-BOTH.B.36in  
 Drawn by: JH  
 Date: 9/25/17  
 Scale: Not to Scale

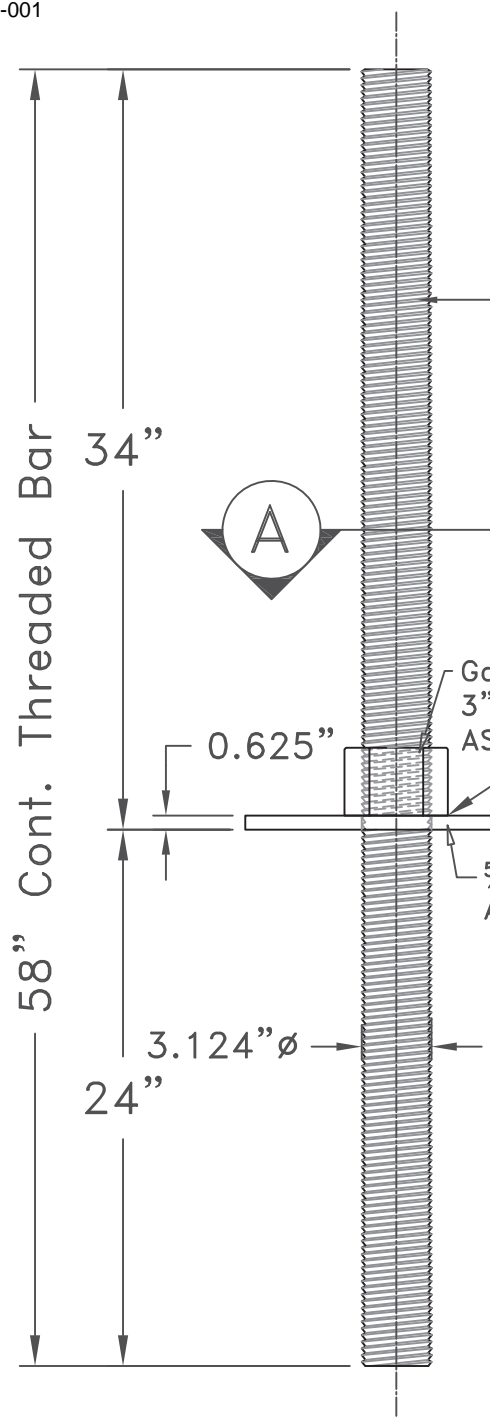
**NOTES:**

1. Material: cast aluminum ASTM B26 356.2/T6
2. Finish: Powdercoat TBD
3. Typical Cast Thickness 1/2" ~3/4"
4. Fits mounting by: Iron Age
5. Weight approx. 38 lbs
6. Due to casting inconsistencies all dimensions are nominal

ALL DOMESTIC STEEL

# Steel Bollard Insert

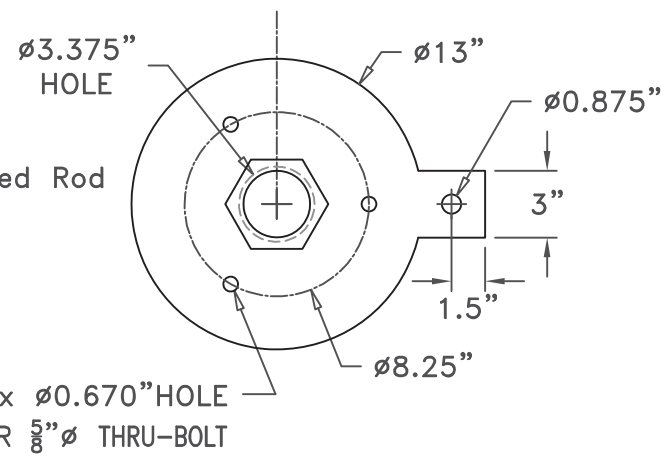
Approx. Weight 137 lbs



3" dia. 150 KSI  
ASTM A722-07  
Threaded Bar  
[3.125" nom. O.D.]  
Galvanized



### Cross-Cut 'A'

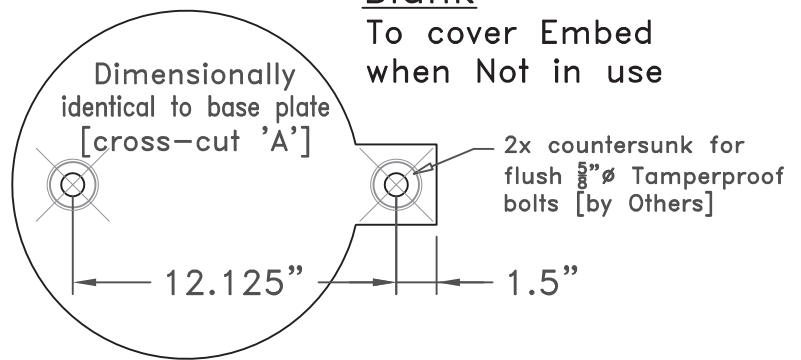


Galv. Nut for 3" dia. Threaded Rod  
ASTM A29  
5/16"  
 $\frac{5}{8}"$  thk plate  
ASTM A36

ALL-THREAD ASSEMBLY BOLTS  
TO CAST BOLLARD HERE

### Blank

To cover Embed  
when Not in use



### NOTES:

1. Material: A36 mild steel
2. Finish: Galvanized
3. Fits Custom 36" Bollard manufactured by: Iron Age™



**IRON AGE**  
DESIGNS

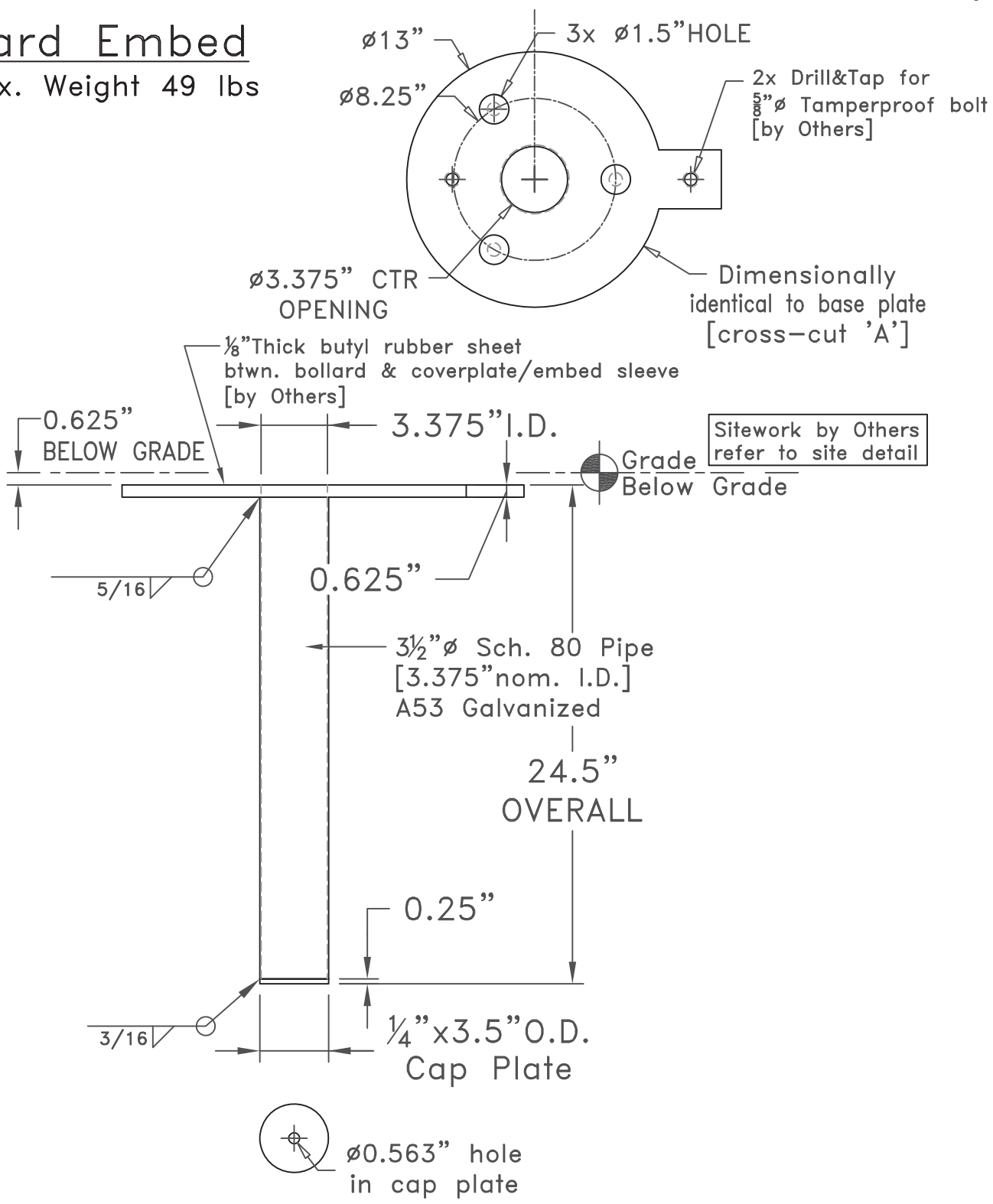
2104 SW 152nd st #4 TEL 206.276.0925  
Burién, WA 98166 FAX 206.257.0318  
www.ironagedesigns.com

Custom Removable Bollard  
Mounting System  
drawing no. Bothell\_Bollard\_boltdn

drawn by: JH  
scale: NTS  
date: 09/25/17

# Bollard Embed

Approx. Weight 49 lbs



ALL DOMESTIC STEEL

**IRON AGE DESIGNS**  
 2104 SW 152nd st #4 TEL 206.276.0925  
 Burien, WA 98166 FAX 206.257.0318  
 www.ironagedesigns.com

- NOTES:**
1. Material: A53&A36 mild steel
  2. Finish: Galvanized
  3. Fits Custom 36" Bollard manufactured by: Iron Age™

Custom Removable Bollard Mounting System  
 drawing no. Bothell\_Bollard\_Boltdn  
 drawn by: JH  
 scale: NTS  
 date: 09/25/17

**PART II**  
**SPECIFICATIONS AND STANDARD DRAWINGS**

### **SPECIFICATIONS REFERENCE**

Any reference in the plans or proposal to previous editions of the *Standard Specifications for Road and Bridge Construction* and *Standard Drawings* are superseded by *Standard Specifications for Road and Bridge Construction, Edition of 2019* and *Standard Drawings, Edition of 2020*.



## **SUPPLEMENTAL SPECIFICATIONS**

The contractor shall use the Supplemental Specifications that are effective at the time of letting.  
The Supplemental Specifications can be found at the following link:

<http://transportation.ky.gov/Construction/Pages/Kentucky-Standard-Specifications.aspx>

## 2020 KENTUCKY STANDARD DRAWINGS COLUMBUS-BELMONT STATE PARK

---

### ROADWAY ~ DRAINAGE ~

SLOPED BOXES

SLOPED AND FLARED BOX INLET-OUTLET 18"-24"-30"-36" ALL SKEWS .....	RDB-105-06
GRATES FOR SLOPED AND FLARED BOX INLET-OUTLET .....	RDB-106-05
CHANNEL LINING CLASS II AND III .....	RDD-040-05

TYPICAL DRAINAGE INSTALLATIONS

CULVERT, ENTRANCE & STORM SEWER PIPE TYPES & COVER HEIGHTS.....	RDI-002-05
PIPE BEDDING FOR CULVERTS, ENTRANCE AND STORM SEWER PIPE.....	RDI-020-10
COATINGS, LININGS AND PAVINGS FOR NON-STRUCTURAL PLATE PIPE .....	RDI-035-02
EROSION CONTROL BLANKET CHANNEL INSTALLATION.....	RDI-041-01

### ~ GENERAL ~

MISCELLANEOUS STANDARDS

MISCELLANEOUS STANDARDS .....	RGX-001-06
DETECTABLE WARNINGS .....	RGX-040-03

### ~ PAVEMENT ~

MEDIANS, CURBS, APPROACHES, ENTRANCES, ETC.

CURB AND GUTTER CURBS AND VALLEY GUTTER.....	RPM-100-11
APPROACHES, ENTRANCES, MAILBOX TURNOUT .....	RPM-110-07
PRECAST VEHICLE STOP .....	RPM-130-04
SIDEWALK RAMPS .....	RPM-170-09
ACCESSIBLE PARKING SPACE DETAILS.....	RPX-100-03

### ~ TEMPORARY ~

TRAFFIC CONTROL

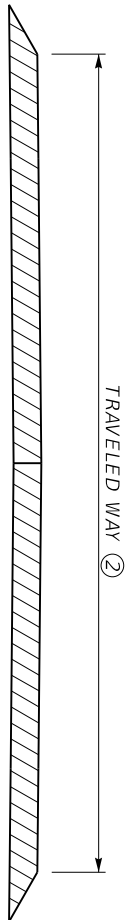
LANE CLOSURE TWO-LANE HIGHWAY .....	TTC-100-05
MOBILE OPERATION FOR PAINT STRIPING CASE I.....	TTS-100-02

## REFERENCES

- 1 Kentucky Transportation Cabinet, Department of Highways, Standard Specifications for Road and Bridge Construction, Edition of 2019.
2. FHWA Manual on Uniform Traffic Control Devices (MUTCD), latest edition.
- 3.Active Sepia List

### TRAFFIC, ~ PERMANENT ~

PAVEMENT STRIPING DETAILS FOR TWO-LANE TWO-WAY ROADWAYS .....	Sepia 17
---	----------



TWO LANE ROADWAY  
PAVEMENT CROSS-SECTION

TRAVELED WAY	TYPE OF PAVEMENT STRIPING	NON-STATE PRIMARY ROUTES				STATE PRIMARY ROUTES	
		WIDTH	MATERIAL	WIDTH	MATERIAL	WIDTH	MATERIAL*
< 16'	④ EDGELINE STRIPES ONLY	4"	PAINT	4"	PAINT	6"	THERMO (ASHPALT) TYPE I TAPE (CONCRETE)
16' TO < 20'	EDGELINE STRIPES ONLY OR CENTERLINE STRIPE ONLY	4"	PAINT	4"	PAINT	6"	THERMO (ASHPALT) TYPE I TAPE (CONCRETE)
>=20'	③ CENTERLINE AND EDGELINE STRIPES	4" ⑤	PAINT	6"	PAINT	6"	THERMO (ASHPALT) TYPE I TAPE (CONCRETE)

\*OTHER DURABLE NON-WATERBORNE MARKINGS MAY BE USED WITH APPROVAL FROM THE DIVISION OF TRAFFIC OPERATIONS.

~ NOTES ~

1. INSTALL PAVEMENT STRIPING ON TWO LANE, TWO WAY ROADWAYS AS DETAILED IN THE ABOVE TABLE AND IN ACCORDANCE WITH THE PAVEMENT MARKINGS AND DELINEATION CHAPTER OF THE TRAFFIC OPERATIONS GUIDANCE MANUAL. CONTACT THE DIVISION OF TRAFFIC OPERATIONS FOR ADDITIONAL GUIDANCE IF NECESSARY.
- ② THE TRAVELED WAY IS THE PORTION OF ROADWAY FOR THE MOVEMENT OF VEHICLES, EXCLUSIVE OF THE SHOULDERS.
- ③ ON TWO LANE, TWO WAY ROADWAYS THAT HAVE A TOTAL PAVEMENT WIDTH (W) THAT IS 20 FT OR GREATER, BUT LESS THAN 22 FT, EDGELINE RUMBLE STRIPS ARE NOT A STANDARD APPLICATION, BUT THEY MAY BE INSTALLED. THE DIVISION OF TRAFFIC OPERATIONS IS AVAILABLE TO ASSIST WITH THE DETERMINATION OF WHETHER OR NOT TO INSTALL EDGELINE RUMBLE STRIPS ON PAVEMENT WIDTHS LESS THAN 22 FT, AS WELL AS THE DIMENSION AND PLACEMENT DETAILS OF THE RUMBLE STRIPS AND PAVEMENT STRIPING.  
ON TWO LANE, TWO WAY ROADWAYS THAT HAVE A TOTAL PAVEMENT WIDTH (W) THAT IS 22 FT OR GREATER, BUT LESS THAN 34 FT, INSTALL PAVEMENT STRIPING AS DETAILED IN THE ABOVE TABLE AND IN CONJUNCTION WITH CENTERLINE AND EDGELINE RUMBLE STRIPS AS DETAILED ON TPR-120.
- ④ EDGELINES MAY BE OMITTED FROM ROADWAYS THAT HAVE A TOTAL PAVEMENT WIDTH (W) THAT IS 34 FT OR GREATER. INSTALL PAVEMENT STRIPING AS DETAILED IN THE ABOVE TABLE AND IN CONJUNCTION WITH CENTERLINE AND SHOULDERS RUMBLE STRIPS AS DETAILED ON TPR-125.
- ④ EDGELINES MAY BE OMITTED FROM ROADWAYS WITH A TRAVELED WAY WIDTH LESS THAN 16 FEET WITH THE APPROVAL OF THE DIVISION OF TRAFFIC OPERATIONS.
- ⑤ EDGELINES MAY BE OMITTED ON NON-STATE PRIMARY ROUTES WITH A TRAVELED WAY WIDTH GREATER THAN OR EQUAL TO 20 FEET AND AN ADT LESS THAN 1,000.
6. EDGELINES MAY BE OMITTED, BASED ON ENGINEERING JUDGMENT, IN AREAS WHERE THE PAVEMENT EDGE IS DELINEATED BY PHYSICAL OBJECTS SUCH AS CURBS, PARKING SPACES, OR OTHER MARKINGS. EDGELINES SHOULD BE INSTALLED ON ROADWAYS WITH CURB AND CUTTER IF THE POSTED SPEED LIMIT IS 45 MPH OR GREATER.

DRAWING NOT TO SCALE

USE WITH CUR. STD. DWGS.  
TPR-120 & TPR-125

KENTUCKY

DEPARTMENT OF HIGHWAYS

PAVEMENT STRIPING  
DETAILS FOR TWO LANE  
TWO WAY ROADWAYS

SUBMITTED  06-09-21  
DIVISION DIRECTOR DATE

## **PART III**

### **EMPLOYMENT, WAGE AND RECORD REQUIREMENTS**

**TRANSPORTATION CABINET  
DEPARTMENT OF HIGHWAYS**

**LABOR AND WAGE REQUIREMENTS  
APPLICABLE TO OTHER THAN FEDERAL-AID SYSTEM PROJECTS**

- I. Application
- II. Nondiscrimination of Employees (KRS 344)

**I. APPLICATION**

1. These contract provisions shall apply to all work performed on the contract by the contractor with his own organization and with the assistance of workmen under his immediate superintendence and to all work performed on the contract by piecework, station work or by subcontract. The contractor's organization shall be construed to include only workmen employed and paid directly by the contractor and equipment owned or rented by him, with or without operators.

2. The contractor shall insert in each of his subcontracts all of the stipulations contained in these Required Provisions and such other stipulations as may be required.

3. A breach of any of the stipulations contained in these Required Provisions may be grounds for termination of the contract.

3. If the contractor is in control of apprenticeship or other training or retraining, including on-the-job training programs, he shall not discriminate against an individual because of his race, color, religion, national origin, sex, disability or age forty (40) and over, in admission to, or employment in any program established to provide apprenticeship or other training.

4. The contractor will send to each labor union or representative of workers with which he has a collective bargaining agreement or other contract or understanding, a notice to be provided advising the said labor union or workers' representative of the contractor's commitments under this section, and shall post copies of the notice in conspicuous places available to employees and applicants for employment. The contractor will take such action with respect to any subcontract or purchase order as the administrating agency may direct as a means of enforcing such provisions, including sanctions for non-compliance.

Revised: January 25, 2017

**II. NONDISCRIMINATION OF EMPLOYEES**

**AN ACT OF THE KENTUCKY  
GENERAL ASSEMBLY TO PREVENT  
DISCRIMINATION IN EMPLOYMENT  
KRS CHAPTER 344  
EFFECTIVE JUNE 16, 1972**

The contract on this project, in accordance with KRS Chapter 344, provides that during the performance of this contract, the contractor agrees as follows:

1. The contractor shall not fail or refuse to hire, or shall not discharge any individual, or otherwise discriminate against an individual with respect to his compensation, terms, conditions, or privileges of employment, because of such individual's race, color, religion, national origin, sex, disability or age (forty and above); or limit, segregate, or classify his employees in any way which would deprive or tend to deprive an individual of employment opportunities or otherwise adversely affect his status as an employee, because of such individual's race, color, religion, national origin, sex, disability or age forty (40) and over. The contractor agrees to post in conspicuous places, available to employees and applicants for employment, notices to be provided setting forth the provisions of this nondiscrimination clause.

2. The contractor shall not print or publish or cause to be printed or published a notice or advertisement relating to employment by such an employer or membership in or any classification or referral for employment by the employment agency, indicating any preference, limitation, specification, or discrimination, based on race, color, religion, national origin, sex, or age forty (40) and over, or because the person is a qualified individual with a disability, except that such a notice or advertisement may indicate a preference, limitation, or specification based on religion, national origin, sex, or age forty (40) and over, or because the person is a qualified individual with a disability, when religion, national origin, sex, or age forty (40) and over, or because the person is a qualified individual with a disability, is a bona fide occupational qualification for employment.

## EXECUTIVE BRANCH CODE OF ETHICS

In the 1992 regular legislative session, the General Assembly passed and Governor Brereton Jones signed Senate Bill 63 (codified as KRS 11A), the Executive Branch Code of Ethics, which states, in part:

KRS 11A.040 (7) provides:

No present or former public servant shall, within six (6) months following termination of his office or employment, accept employment, compensation, or other economic benefit from any person or business that contracts or does business with, or is regulated by, the state in matters in which he was directly involved during the last thirty-six (36) months of his tenure. This provision shall not prohibit an individual from returning to the same business, firm, occupation, or profession in which he was involved prior to taking office or beginning his term of employment, or for which he received, prior to his state employment, a professional degree or license, provided that, for a period of six (6) months, he personally refrains from working on any matter in which he was directly involved during the last thirty-six (36) months of his tenure in state government. This subsection shall not prohibit the performance of ministerial functions, including but not limited to filing tax returns, filing applications for permits or licenses, or filing incorporation papers, nor shall it prohibit the former officer or public servant from receiving public funds disbursed through entitlement programs.

KRS 11A.040 (9) states:

A former public servant shall not represent a person or business before a state agency in a matter in which the former public servant was directly involved during the last thirty-six (36) months of his tenure, for a period of one (1) year after the latter of:

- a) The date of leaving office or termination of employment; or
- b) The date the term of office expires to which the public servant was elected.

This law is intended to promote public confidence in the integrity of state government and to declare as public policy the idea that state employees should view their work as a public trust and not as a way to obtain private benefits.

If you have worked for the executive branch of state government within the past six months, you may be subject to the law's prohibitions. The law's applicability may be different if you hold elected office or are contemplating representation of another before a state agency.

Also, if you are affiliated with a firm which does business with the state and which employs former state executive-branch employees, you should be aware that the law may apply to them.

In case of doubt, the law permits you to request an advisory opinion from the Executive Branch Ethics Commission, 1025 Capital Center Drive, Suite 104, Frankfort, Kentucky 40601; telephone (502) 564-7954.

Revised: May 23, 2022

### **Kentucky Equal Employment Opportunity Act of 1978**

The requirements of the Kentucky Equal Employment Opportunity Act of 1978 (KRS 45.560-45.640) shall apply to this Contract. The apparent low Bidder will be required to submit EEO forms to the Division of Construction Procurement, which will then forward to the Finance and Administration Cabinet for review and approval. No award will become effective until all forms are submitted and EEO/CC has certified compliance. The required EEO forms are as follows:

- EEO-1: Employer Information Report
- Affidavit of Intent to Comply
- Employee Data Sheet
- Subcontractor Report

These forms are available on the Finance and Administration's web page under ***Vendor Information, Standard Attachments and General Terms*** at the following address:  
**<https://www.eProcurement.ky.gov>**.

Bidders currently certified as being in compliance by the Finance and Administration Cabinet may submit a copy of their approval letter in lieu of the referenced EEO forms.

For questions or assistance please contact the Finance and Administration Cabinet by email at **[finance.contractcompliance@ky.gov](mailto:finance.contractcompliance@ky.gov)** or by phone at 502-564-2874.

# EMPLOYEE RIGHTS UNDER THE FAIR LABOR STANDARDS ACT

THE UNITED STATES DEPARTMENT OF LABOR WAGE AND HOUR DIVISION

## FEDERAL MINIMUM WAGE

# \$7.25

 PER HOUR

BEGINNING JULY 24, 2009

**OVERTIME PAY** At least 1½ times your regular rate of pay for all hours worked over 40 in a workweek.

**CHILD LABOR** An employee must be at least **16** years old to work in most non-farm jobs and at least **18** to work in non-farm jobs declared hazardous by the Secretary of Labor.

Youths **14** and **15** years old may work outside school hours in various non-manufacturing, non-mining, non-hazardous jobs under the following conditions:

**No more than**

- **3** hours on a school day or **18** hours in a school week;
- **8** hours on a non-school day or **40** hours in a non-school week.

Also, work may not begin before **7 a.m.** or end after **7 p.m.**, except from June 1 through Labor Day, when evening hours are extended to **9 p.m.** Different rules apply in agricultural employment.

**TIP CREDIT** Employers of “tipped employees” must pay a cash wage of at least \$2.13 per hour if they claim a tip credit against their minimum wage obligation. If an employee’s tips combined with the employer’s cash wage of at least \$2.13 per hour do not equal the minimum hourly wage, the employer must make up the difference. Certain other conditions must also be met.

**ENFORCEMENT** The Department of Labor may recover back wages either administratively or through court action, for the employees that have been underpaid in violation of the law. Violations may result in civil or criminal action.

Employers may be assessed civil money penalties of up to \$1,100 for each willful or repeated violation of the minimum wage or overtime pay provisions of the law and up to \$11,000 for each employee who is the subject of a violation of the Act’s child labor provisions. In addition, a civil money penalty of up to \$50,000 may be assessed for each child labor violation that causes the death or serious injury of any minor employee, and such assessments may be doubled, up to \$100,000, when the violations are determined to be willful or repeated. The law also prohibits discriminating against or discharging workers who file a complaint or participate in any proceeding under the Act.

### ADDITIONAL INFORMATION

- Certain occupations and establishments are exempt from the minimum wage and/or overtime pay provisions.
- Special provisions apply to workers in American Samoa and the Commonwealth of the Northern Mariana Islands.
- Some state laws provide greater employee protections; employers must comply with both.
- The law requires employers to display this poster where employees can readily see it.
- Employees under 20 years of age may be paid \$4.25 per hour during their first 90 consecutive calendar days of employment with an employer.
- Certain full-time students, student learners, apprentices, and workers with disabilities may be paid less than the minimum wage under special certificates issued by the Department of Labor.

For additional information:



# 1-866-4-USWAGE

(1-866-487-9243)

TTY: 1-877-889-5627



# WWW.WAGEHOUR.DOL.GOV



**PART IV**  
**INSURANCE**

Refer to  
*Kentucky Standard Specifications for Road and Bridge Construction,*  
current edition

**PART V**  
**BID ITEMS**

**PROPOSAL BID ITEMS**

222467

Page 1 of 1

Report Date 6/14/22

**Section: 0001 - ROADWAY**

LINE	BID CODE	ALT	DESCRIPTION	QUANTITY	UNIT	UNIT PRIC	FP	AMOUNT
0010	00001		DGA BASE	884.00	TON		\$	
0020	00190		LEVELING & WEDGING PG64-22	419.00	TON		\$	
0030	00301		CL2 ASPH SURF 0.38D PG64-22	1,388.00	TON		\$	
0040	00468		CULVERT PIPE-36 IN	32.00	LF		\$	
0050	01310		REMOVE PIPE	26.00	LF		\$	
0060	01453		S & F BOX INLET-OUTLET-36 IN	2.00	EACH		\$	
0070	01876		STANDARD HEADER CURB MOD	103.00	LF		\$	
0080	02237		DITCHING	185.00	LF		\$	
0090	02483		CHANNEL LINING CLASS II	62.00	TON		\$	
0100	02562		TEMPORARY SIGNS	69.00	SQFT		\$	
0110	02585		EDGE KEY	20.00	LF		\$	
0120	02625		REMOVE HEADWALL	2.00	EACH		\$	
0130	02650		MAINTAIN & CONTROL TRAFFIC	1.00	LS		\$	
0140	02673		PRECAST VEHICLE STOP (6 FEET)	342.00	LF		\$	
0150	02720		SIDEWALK-4 IN CONCRETE	5.00	SQYD		\$	
0160	02721		REMOVE CONCRETE SIDEWALK	5.00	SQYD		\$	
0170	02726		STAKING	1.00	LS		\$	
0180	03262		CLEAN PIPE STRUCTURE	1.00	EACH		\$	
0190	03288		SIDEWALK RAMP TYPE 2	1.00	EACH		\$	
0200	05985		SEEDING AND PROTECTION	1,805.00	SQYD		\$	
0210	05997		TOPSOIL FURNISHED AND PLACED	602.10	CUYD		\$	
0220	06510		PAVE STRIPING-TEMP PAINT-4 IN CENTERLINES	2,703.00	LF		\$	
0230	06514		PAVE STRIPING-PERM PAINT-4 IN CENTERLINES	2,703.00	LF		\$	
0240	06571		PAVE MARKING-PAINT PARKING LOT (BLUE)	276.00	LF		\$	
0250	06571		PAVE MARKING-PAINT PARKING LOT (WHITE)	3,005.00	LF		\$	
0260	06601NC		PAVE MARKING-PAINT WORDS	6.00	EACH		\$	
0270	20206EC		PAVE MARK HANDICAP SYMBOL - BLUE PAINT	5.00	EACH		\$	
0280	20208NC		PAVE MARK-PAINT ARROWS	4.00	EACH		\$	
0290	21341ND		BOLLARDS	24.00	EACH		\$	
0300	23158ES505		DETECTABLE WARNINGS	48.00	SQFT		\$	
0310	23274EN11F		TURF REINFORCEMENT MAT 1	110.00	SQYD		\$	
0320	24176EC		REMOVE PRECAST VEHICLE STOP	48.00	EACH		\$	
0330	24970EC		ASPHALT MATERIAL FOR TACK NON- TRACKING	12.40	TON		\$	
0340	30000		REMOVABLE BOLLARD	2.00	EACH		\$	

**Section: 0002 - DEMOBILIZATION**

LINE	BID CODE	ALT	DESCRIPTION	QUANTITY	UNIT	UNIT PRIC	FP	AMOUNT
0350	02569		DEMOBILIZATION	1.00	LS		\$	