



**CALL NO. 344**

**CONTRACT ID. 122333**

**PERRY COUNTY**

**FED/STATE PROJECT NUMBER FD04 SPP 097 0015 010-012**

**DESCRIPTION WHITESBURG-HAZARD-JACKSON ROAD (KY 15)**

**WORK TYPE JPC PAVEMENT**

**PRIMARY COMPLETION DATE (SEE SPECIAL NOTES)**

**LETTING DATE: August 17, 2012**

Sealed Bids will be received electronically through the Bid Express bidding service until 10:00 AM EASTERN DAYLIGHT TIME August 17, 2012. Bids will be publicly announced at 10:00 AM EASTERN DAYLIGHT TIME.

**REQUIRED BID PROPOSAL GUARANTY:** Not less than 5% of the total bid.

**TABLE OF CONTENTS**

<b>PART I</b>	<b>SCOPE OF WORK</b> <ul style="list-style-type: none"><li>• PROJECT(S), COMPLETION DATE(S), &amp; LIQUIDATED DAMAGES</li><li>• CONTRACT NOTES</li><li>• STATE CONTRACT NOTES</li><li>• EXPEDITE WORK ORDER</li><li>• SIGNIFICANT PROJECT -PROJECT TRAFFIC COORDINATOR (PTC)</li><li>• SURFACING AREAS</li><li>• ASPHALT MIXTURE</li><li>• DGA BASE</li><li>• DGA BASE FOR SHOULDERS</li><li>• INCIDENTAL SURFACING</li><li>• FUEL AND ASPHALT PAY ADJUSTMENT</li><li>• SPECIAL NOTE(S) APPLICABLE TO PROJECT</li><li>• WASTE AND BORROW SITES</li><li>• ASPHALT MILLING AND TEXTURING</li><li>• TYPICAL SECTION DIMENSIONS</li><li>• TRAFFIC CONTROL PLAN</li><li>• TRAFFIC CONTROL FOR DURABLE PAVEMENT MARKINGS</li><li>• EROSION CONTROL PLAN FOR MAINTENANCE PROJECTS</li><li>• CONTRACT COMPLETION DATE AND LIQUIDATED DAMAGES</li><li>• SKETCH MAP(S)</li><li>• TYPICAL SECTION(S)</li><li>• DETAIL SHEET(S)</li></ul>
<b>PART II</b>	<b>SPECIFICATIONS AND STANDARD DRAWINGS</b> <ul style="list-style-type: none"><li>• SPECIFICATIONS REFERENCE</li><li>• SUPPLEMENTAL SPECIFICATION</li><li>• [SN-1I] PORTABLE CHANGEABLE SIGNS</li><li>• STANDARD DRAWINGS THAT APPLY</li></ul>
<b>PART III</b>	<b>EMPLOYMENT, WAGE AND RECORD REQUIREMENTS</b> <ul style="list-style-type: none"><li>• LABOR AND WAGE REQUIREMENTS</li><li>• EXECUTIVE BRANCH CODE OF ETHICS</li><li>• KENTUCKY EQUAL EMPLOYMENT OPPORTUNITY ACT OF 1978</li><li>• PROJECT WAGE RATES</li></ul>
<b>PART IV</b>	<b>INSURANCE</b>
<b>PART V</b>	<b>BID ITEMS</b>

**PART I**  
**SCOPE OF WORK**

CONTRACT ID - 122333

ADMINISTRATIVE DISTRICT - 10

PROJECT(S) IDENTIFICATION AND DESCRIPTION:

COUNTY - PERRYPCN - MP09700151201

FD04 SPP 097 0015 010-012

WHITESBURG-HAZARD-JACKSON ROAD (KY 15) FROM 0.012 MILES SOUTH OF BULLDOG LANE (MP 10.912)  
EXTENDING NORTH TO 0.617 MILE SOUTH OF MESSER BRANCH BRIDGE (MP 11.081), A DISTANCE OF 0.  
17 MILES. JPC PAVEMENT. SYP NO. 10-02021.00.

GEOGRAPHIC COORDINATES LATITUDE 37^14'36" LONGITUDE 83^11'09"

AVERAGE DAILY TRAFFIC - 11432AVERAGE MAINLINE WIDTH - 40.0 FEET

COMPLETION DATE(S):

SEE SPECIAL NOTES

APPLIES TO ENTIRE CONTRACT

## **CONTRACT NOTES**

### **PROPOSAL ADDENDA**

All addenda to this proposal must be applied when calculating bid and certified in the bid packet submitted to the Kentucky Department of Highways. Failure to use the correct and most recent addenda may result in the bid being rejected.

### **BID SUBMITTAL**

Bidder must use the Department's Expedite Bidding Program available on the Internet web site of the Department of Highways, Division of Construction Procurement. ([www.transportation.ky.gov/contract](http://www.transportation.ky.gov/contract))

The Bidder must download the bid file located on the Bid Express website ([www.bidx.com](http://www.bidx.com)) to prepare a bid packet for submission to the Department. The bidder must submit electronically using Bid Express.

### **JOINT VENTURE BIDDING**

Joint venture bidding is permissible. All companies in the joint venture must be prequalified in one of the work types in the Qualifications for Bidders for the project. The bidders must get a vendor ID for the joint venture from the Division of Construction Procurement and register the joint venture as a bidder on the project. Also, the joint venture must obtain a digital ID from Bid Express to submit a bid. A joint bid bond of 5% may be submitted for both companies or each company may submit a separate bond of 5%.

### **UNDERGROUND FACILITY DAMAGE PROTECTION**

The contractor is advised that the Underground Facility Damage Protection Act of 1994, became law January 1, 1995. It is the contractor's responsibility to determine the impact of the act regarding this project, and take all steps necessary to be in compliance with the provision of the act.

### **SPECIAL NOTE FOR PIPE INSPECTION**

Contrary to Section 701.03.08 of the 2012 Standard Specifications for Road and Bridge Construction and Kentucky Method 64-114, certification by the Kentucky Transportation Center for prequalified Contractors to perform laser/video inspection is not required on this contract. It will continue to be a requirement for the Contractor performing any laser/video pipe inspection to be prequalified for this specialized item with the Kentucky Transportation Cabinet-Division of Construction Procurement.

## **REGISTRATION WITH THE SECRETARY OF STATE BY A FOREIGN ENTITY**

Pursuant to KRS 176.085(1)(b), an agency, department, office, or political subdivision of the Commonwealth of Kentucky shall not award a state contract to a person that is a foreign entity required by [KRS 14A.9-010](#) to obtain a certificate of authority to transact business in the Commonwealth (“certificate”) from the Secretary of State under [KRS 14A.9-030](#) unless the person produces the certificate within fourteen (14) days of the bid or proposal opening. If the foreign entity is not required to obtain a certificate as provided in [KRS 14A.9-010](#), the foreign entity should identify the applicable exception. Foreign entity is defined within [KRS 14A.1-070](#).

**For all foreign entities required to obtain a certificate of authority to transact business in the Commonwealth, if a copy of the certificate is not received by the contracting agency within the time frame identified above, the foreign entity’s solicitation response shall be deemed non-responsive or the awarded contract shall be cancelled.**

Businesses can register with the Secretary of State at <https://secure.kentucky.gov/sos/ftbr/welcome.aspx>.

## **SPECIAL NOTE FOR PROJECT QUESTIONS DURING ADVERTISEMENT**

Questions about projects during the advertisement should be submitted in writing to the Division of Construction Procurement. This may be done by fax (502) 564-7299 or email to [kytc.projectquestions@ky.gov](mailto:kytc.projectquestions@ky.gov). The Department will attempt to answer all submitted questions. The Department reserves the right not to answer if the question is not pertinent or does not aid in clarifying the project intent.

The deadline for posting answers will be 3:00 pm Eastern Daylight Time, the day preceding the Letting. Questions may be submitted until this deadline with the understanding that the later a question is submitted, the less likely an answer will be able to be provided.

The questions and answers will be posted for each Letting under the heading “Questions & Answers” on the Construction Procurement website ([www.transportation.ky.gov/contract](http://www.transportation.ky.gov/contract)). The answers provided shall be considered part of this Special Note and, in case of a discrepancy, will govern over all other bidding documents.

## **ACCESS TO RECORDS**

The contractor, as defined in KRS 45A.030 (9) agrees that the contracting agency, the Finance and Administration Cabinet, the Auditor of Public Accounts, and the Legislative Research Commission, or their duly authorized representatives, shall have access to any books, documents, papers, records, or other evidence, which are directly pertinent to this

contract for the purpose of financial audit or program review. Records and other prequalification information confidentially disclosed as part of the bid process shall not be deemed as directly pertinent to the contract and shall be exempt from disclosure as provided in KRS 61.878(1)(c). The contractor also recognizes that any books, documents, papers, records, or other evidence, received during a financial audit or program review shall be subject to the Kentucky Open Records Act, KRS 61.870 to 61.884.

In the event of a dispute between the contractor and the contracting agency, Attorney General, or the Auditor of Public Accounts over documents that are eligible for production and review, the Finance and Administration Cabinet shall review the dispute and issue a determination, in accordance with Secretary's Order 11-004. (See attachment)

10/18/2011

**SPECIAL NOTE FOR RECIPROCAL PREFERENCE**

**Reciprocal preference to be given by public agencies to resident bidders**

**By reference, KRS 45A.490 to 45A.494 are incorporated herein and in compliance regarding the bidders residency. Bidders who want to claim resident bidder status should complete the Affidavit for Claiming Resident Bidder Status along with their bid in the Expedite Bidding Program. Submittal of the Affidavit should be done along with the bid in Bid Express.**

03/01/2011



### **EXPEDITE PROJECT WORK ORDER**

The Contractor may request that the Department expedite the work order for this project to allow for maximization of time to complete the work. In order for the Department to accomplish this task, the Contractor may be required to “hand carry” all required project documentation to facilitate the process. Immediately UPON NOTIFICATION OF AWARD OF THE CONTRACT, deliver required project documentation to:

Division of Construction Procurement  
200 Mero St.  
Frankfort, KY 40602

### **PROJECT TRAFFIC COORDINATOR (PTC)**

Be advised this project is a significant project pursuant to section 112.03.12.

### **SURFACING AREAS**

The Department estimates the mainline surfacing width to vary 24-36 feet.

The Department estimates the total mainline area to be surfaced with JPC pavement to be 3,700 square yards.

The Department estimates the shoulder width to vary 4-10 feet on right side northbound.

The Department’s estimate of the total shoulder area to be surfaced with JPC pavement is included in the mainline surfacing area.

### **ASPHALT MIXTURE**

Unless otherwise noted, the Department estimates the rate of application for all asphalt mixtures to be 110 lbs/sy per inch of depth.

### **DGA BASE**

Unless otherwise noted, the Department estimates the rate of application for DGA Base to be 115 lbs/sy per inch of depth. The Department will not measure necessary grading, shaping, and/or compacting of existing base prior to placing of DGA Base, but shall be incidental to the Contract unit price per ton for DGA Base.

Accept payment at the Contract unit price per ton as full compensation for all labor, materials, equipment, and incidentals for grading, shaping, and/or compacting of existing base and furnishing, placing, and compacting the DGA Base.

### **DGA BASE FOR SHOULDERS**

Unless otherwise noted, the Department estimates the rate of application for DGA Base for Shoulders to be 115 lbs/sy per inch of depth. The Department will not measure necessary grading, shaping, and/or compacting of existing shoulders prior to placing of DGA Base, but shall be incidental to the Contract unit price per ton for DGA Base.

Accept payment at the Contract unit price per ton as full compensation for all labor, materials, equipment, and incidentals for grading, shaping, and/or compacting of existing shoulders and furnishing, placing, and compacting the DGA Base.

### **INCIDENTAL SURFACING**

The Department has included in the quantities of asphalt mixtures established in the proposal estimated quantities required for resurfacing or surfacing mailbox turnouts, farm field entrances, residential and commercial entrances, curve widening, ramp gores and tapers, and road and street approaches, as applicable. Pave these areas to the limits as shown on Standard Drawing RPM-110-06 or as directed by the Engineer. In the event signal detectors are present in the intersecting streets or roads, pave the crossroads to the right of way limit or back of the signal detector, whichever is the farthest back of the mainline. Surface or resurface these areas as directed by the Engineer. The Department will not measure placing and compacting for separate payment but shall be incidental to the Contract unit price for the asphalt mixtures.

**FUEL PAY ADJUSTMENT**

The Department has included the Contract item Fuel Adjustment for possible future payments at an established Contract unit price of \$1.00. The Department will calculate actual adjustment quantities after work is completed. If existing Contract amount is insufficient to pay all items on the contract with the adjustments, the Department will establish additional monies with a change order.

## SPECIAL NOTE FOR JPC INTERSECTION PAVEMENT

---

### I. DESCRIPTION

Except as specified herein, construct Jointed Plain Concrete (JPC) Pavement in accordance with the Department's Standard and Supplemental Specifications, Special Provisions and Special Notes, and Standard and Sepia Drawings, current editions, and as directed by the Engineer. Section references are to the Standard Specifications. Furnish all materials, labor, equipment, and incidentals for the following work:

- (1) Remove existing asphalt pavement and replace with JPC Pavement;
- (2) Remove guardrail and abandoned pedestrian bridge piers; and (3) Maintain and control traffic; and (4) All other work specified as part of this contract.

### II. MATERIALS

The Department will sample and test all materials according to the Department's Sampling Manual. Make the materials available for sampling a sufficient time in advance of use, to allow for the necessary time for testing, unless otherwise specified in these notes.

**A. Maintain and Control Traffic.** See Traffic Control Plan.

**B. Base Stabilization.** Use Geotextile Fabric Type III and DGA. Do not furnish Crushed Stone Base in lieu of DGA.

**C. Jointed Plain Cement Concrete Pavement.** Use JPC Pavement/24. At Contractor's request, and at no additional cost to the Department, the Engineer may approve other high early strength rapid setting concrete. The Department will allow either central mixing or truck mixing. Furnish dowels for JPC Shoulders.

**D. Asphalt/Concrete Lap Joint.** See Special Note for Asphalt/Concrete Lap Joint.

**E. Shoulders.** Use DGA and JPC Pavement/24 or Leveling and Wedging PG64-22, as applicable.

**F. Joint Sealant.** Use Hot-Poured Elastic, no alternates.

### III. CONSTRUCTION METHODS

**A. Maintain and Control Traffic.** See Traffic Control Plan.

**B. Shoulder Preparation and Restoration.** Prior to placing any lane closures that require shifting traffic onto existing shoulders, patch the shoulder as directed by the Engineer using

JPC Intersection  
Page 2 of 5

DGA and Leveling and Wedging PG64-22. Remove failed materials and perform additional patching as directed by the Engineer during the time the shoulder is used as a travel lane. Upon completion of JPC Pavement, surface remaining asphalt shoulders designated by the Engineer with Leveling and Wedging PG64-22.

**C. Site Preparation.** Be responsible for all site preparation, including but not limited to, incidental excavation and backfilling; removal of all obstructions or any other items; disposal of materials; sweeping and removal of debris; shoulder preparation and restoration; temporary and permanent erosion and pollution control; final dressing, clean up, and seeding; and all incidentals. Perform all Site Preparation only as approved or directed by the Engineer.

**D. Pavement Removal.** Consider pavement removal locations and dimensions shown on the drawings to be approximate only; the Engineer will determine exact locations and dimensions at the time of construction. Prior to removal, saw-cut existing asphalt pavement at locations directed by the Engineer to provide a neat edge where new concrete will adjoin existing asphalt. Remove existing asphalt pavement by milling and texturing. After milling asphalt, if necessary to provide for the specified thickness of the replacement JPC Pavement, mill underlying stone base. Segregate asphalt cuttings from stone base cuttings. Do not allow asphalt or stone cuttings to become contaminated during milling operations with mud, earth, or other deleterious materials. See Special Note for Asphalt Pavement Milling and Texturing.

**E. Concrete Pavement Replacement.** Prior to pavement removal and placing JPC Pavement, obtain the Engineer's approval of proposed method of construction for ensuring and establishing a smooth profile. Immediately after removing asphalt pavement, stabilize the base as directed by the Engineer with DGA and Geotextile Fabric Type III and place the replacement JPC in a continuous operation in accordance with the Traffic Control Plan Phasing and as directed by the Engineer. Construct the replacement JPC Pavement with a minimum depth of 11 inches; however, transition the finished grade to match adjacent pavement that is to remain in place; therefore, the actual thickness of the pavement may be greater than 11 inches in some areas. Include dowels in the JPC shoulders. Consolidate the concrete, strike off, machine finish with a vibrating or roller screed, and straightedge the plastic concrete with a straightedge conforming to Section 501.02.18. Test the profile of the finished pavement with a 10 foot straightedge according to Section 501.03.19. Provide positive drainage upon completion of construction.

**F. Asphalt/Concrete Lap Joint.** See Special Note for Asphalt/Concrete Lap Joint.

**G. Joint Sealing.** Saw, clean, and seal transverse and longitudinal joints as shown on the Standard Drawings and as directed the Engineer.

JPC Intersection  
Page 3 of 5

**H. Remove Guardrail.** Remove guardrail according to Section 719.03.03 and 719.03.07; however, contrary to Section 719.03.07, deliver salvaged guardrail materials to the Department's Perry County Maintenance facility. Remove the guardrail concurrent with the Phase I placement of the JPC pavement (see Traffic Control Plan)

**I. Remove Abandoned Pedestrian Bridge Piers.** Remove abandoned northbound side and southbound side pedestrian bridge piers, including steps, ramps, and foundations according to Section 203. Remove the northbound side pier concurrent with the Phase I placement of the JPC pavement (see Traffic Control Plan).

**J. Disposal of Waste.** Dispose of all waste and debris off the right-of-way at sites obtained by the Contractor at no additional cost to the Department. See Special Note for Waste and Borrow.

**K. Pavement Markings.** See Traffic Control Plan.

**L. On-Site Inspection.** Prior to submitting a bid, make a thorough inspection of the site and become thoroughly familiar with the existing conditions so that the work can be expeditiously performed after a contract is awarded. The Department will consider submission of a bid as evidence of this inspection having been made. The Department will not honor any claims resulting from site conditions.

**M. Property Damage and Restoration.** Be responsible for all damage to public and/or private property resulting from the work. Repair or replace all damaged roadway features in like kind materials and design at no additional cost to the Department. Repair or replace damaged private property in like kind materials and design to the satisfaction of the owner at no additional cost to the Department or the owner.

**N. Caution.** Consider information shown on the drawings and in this proposal and the types and quantities of work listed are approximate only, and not as an accurate or complete evaluation of the material and conditions to be encountered during construction. The bidder must draw his own conclusion as to the conditions encountered. The Department does not give any guarantee as to the accuracy of the data and no claim will be considered for additional compensation or Contract time if the conditions encountered are not in accordance with the information shown.

**O. Utility Clearance.** Determine the location of all underground and overhead utilities prior to construction. It is not anticipated that utility facilities will need to be relocated and/or adjusted; however, in the event that work does require relocation and/or adjustment, the utility companies will work concurrently with the Contractor while relocating their facilities.

JPC Intersection  
Page 4 of 5

**P. Ditching and Shouldering, Final Dressing, Clean Up, and Seeding and Protection.**

After other work is completed, remove all waste and debris from the construction sites. Remove all temporary shoulder widening and perform Ditching and Shouldering. Perform Class A final dressing on all disturbed areas. Sow disturbed earthen areas with Seed Mixture No. 1.

**Q. Coordination of Work.** Be advised that other projects may be in progress within or in the near vicinity of this project. Take into consideration that the traffic control of those projects may affect this project and the traffic control of this project may affect those projects. Coordinate the work on this project with the work of the other contractors. In case of a conflict, the Engineer will determine the relative priority to give to work phasing on the various projects.

#### **IV. METHOD OF MEASUREMENT**

The Department will measure only the bid items listed. All other items required to complete the construction shall be incidental to the listed bid items.

**A. Maintain and Control Traffic.** See Traffic Control Plan.

**B. Site Preparation.** Other than the bid items listed, The Department will not measure Site Preparation for payment, but shall be incidental to the other items of the work.

**C. Shoulder Preparation and Restoration.** The Department will measure DGA and Leveling and Wedging in Tons. The Department will not measure other items for shoulder preparation and restoration but shall be incidental to the other items of work.

**D. Saw Cutting Pavement.** The Department will not measure saw cutting pavement, but shall be incidental to Asphalt Milling and Texturing and Asphalt/Concrete Lap Joint as applicable.

**E. Remove Pavement.** The Department will measure removed and segregated asphalt pavement and underlying stone base as Asphalt Pavement Milling and Texturing in Tons, regardless of classification.

**F. Base Stabilization.** The Department will measure DGA used for base stabilization in Tons. The Department will measure Geotextile Fabric Type III in square yards of actual in place area; the Department will not measure laps, cut-offs, excess, and waste.

**G. JPC Pavement/24.** See Section 502.04.01 and Section 501.04.01.

**H. Joint Sealing.** The Department will not measure Joint Sealing for payment, but will be incidental to JPC Pavement/24.

JPC Intersection  
Page 5 of 5

**I. Smooth Dowels, Deformed Tie Bars, and Hook Bolts.** The Department will not measure smooth dowels, deformed tie bars and hook bolts, but shall be incidental to JPC Pavement/24.

**I. Asphalt/Concrete Lap Joint.** See Special Note for Asphalt/Concrete Lap Joint.

#### **IV. BASIS OF PAYMENT**

The Department will make payment only for the bid items listed. All other items required to complete the construction shall be incidental to the bid items listed.

**A. Maintain and Control Traffic.** See Traffic Control Plan.

**B. Remove Pavement.** Accept payment at the contract unit price per ton of Asphalt Milling and Texturing as full compensation for all labor, equipment, materials, and incidentals for saw cutting and removing existing pavement, underlying DGA or other stone base; delivering segregated asphalt cuttings and stone base cuttings to the Department's Perry County Maintenance Facility, and disposing of waste and debris.

**C. Base Stabilization.** Accept payment at the Contract unit prices per ton of DGA and per square yard of Geotextile Fabric Type III as full compensation for all labor, equipment, materials, and incidentals for stabilizing the existing base prior to placing JPC/24.

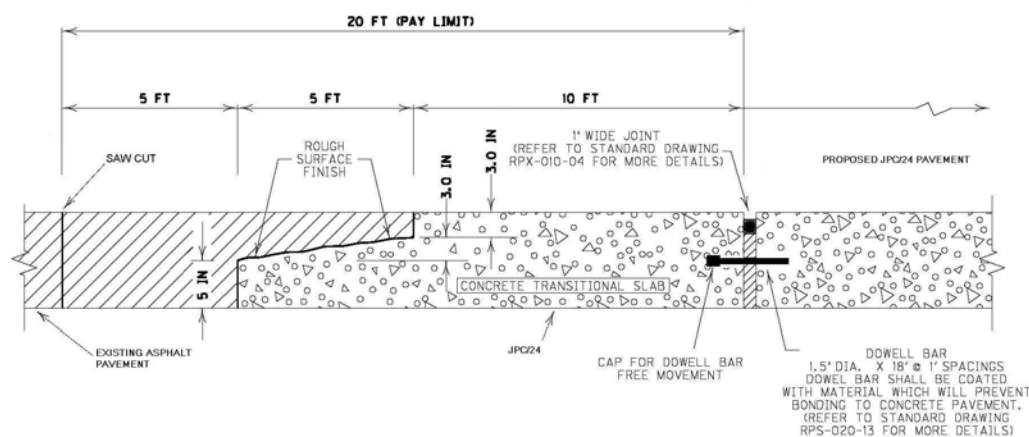
**D. JPC Pavement/24.** See Section 502.05.

**E. Asphalt/Concrete Lap Joint.** See Special Note for Asphalt/Concrete Lap Joint.

## SPECIAL NOTE FOR ASPHALT/CONCRETE LAP JOINT

Construct Asphalt/Concrete Lap joint at the Bulldog Lane intersection. Construct key for concrete lap when placing the JPC pavement. After placing JPC pavement, saw cut the existing asphalt surface and remove the existing asphalt pavement, to the required length, depth, and width shown on the drawing. Refill the trench with Class 3 Asphalt Base 0.75D PG64-22 and Class 3 Asphalt Surface 0.38B PG64-22 and heel the new surface into the concrete key. The Engineer will determine the lift thickness of each course at the time of construction.

The Department will measure the Asphalt/Concrete Lap Joint as the width of the pavement at the joint perpendicular to the centerline in linear feet. The Department will pay for this work at the Contract unit price per linear foot, which shall be full compensation for all labor, materials, equipment, and incidentals for constructing the JPC concrete key, saw cutting the existing asphalt pavement, removal and disposal of the existing asphalt surface, and placing asphalt base and surface within the indicated pay limit as required to construct the lap joint.



### ASPHALT/CONCRETE LAP JOINT (KY 15/BULLDOG LANE INTERSECTION)

NOT TO SCALE



### **SPECIAL NOTE FOR STAKING**

In addition to the requirements of Section 201, perform the following:

1. Contrary to Section 201.03.01, perform items 1-3 usually performed by the Engineer; and
2. Verify intersection and lane profile, alignment, and superelevation and prepare a Drainage Development Worksheet to provide for positive drainage upon completion of construction; and
3. Prior to incorporating into the work, obtain the Engineers approval of all designs and revisions to be provided by the Contractor; and
4. Produce and furnish to the Engineer "As Built" plans; and
5. Perform any and all other staking operations required to control and construct the work.

## **SPECIAL PROVISION FOR WASTE AND BORROW SITES**

Obtain U.S. Army Corps of Engineer's approval before utilizing a waste or borrow site that involves "Waters of the United States". The Corps of Engineers defines "Waters of the United States" as perennial or intermittent streams, ponds or wetlands. The Corps of Engineers also considers ephemeral streams, typically dry except during rainfall but having a defined drainage channel, to be jurisdictional waters. Direct questions concerning any potential impacts to "Waters of the United States" to the attention of the appropriate District Office for the Corps of Engineers for a determination prior to disturbance. Be responsible for any fees associated with obtaining approval for waste and borrow sites from the U.S. Army Corps of Engineer or other appropriate regulatory agencies.

1-296 Waste & Borrow Sites  
01/02/2012

### **SPECIAL NOTE FOR ASPHALT MILLING AND TEXTURING**

Consider pavement removal locations and dimensions shown on the drawings to be approximate only; the Engineer will determine exact locations and dimensions at the time of construction. Prior to removal, saw-cut existing asphalt pavement at locations directed by the Engineer to provide a neat edge where new concrete will adjoin existing asphalt. Remove existing asphalt pavement by milling and texturing. After milling asphalt, if necessary to provide for the specified thickness of the replacement JPC Pavement, mill underlying stone base. Segregate asphalt cuttings from stone base cuttings. Do not allow asphalt or stone cuttings to become contaminated during milling operations with mud, earth, or other deleterious materials.

Contrary to Section 408, the Department will retain possession of the segregated asphalt and stone cuttings, if any, obtained from the milling operations. Deliver the segregated materials to the State Maintenance facility in Perry County.

**NOTICE TO CONTRACTOR: The Department considers transfer of millings to the state maintenance facility to be a part of the construction project, therefore truck operators are subject to receiving prevailing wages.**

### **SPECIAL NOTE FOR TYPICAL SECTION DIMENSIONS**

Consider the milepoints and dimensions shown on the typical sections for pavement and shoulder location, width, and thickness to be approximate locations and nominal or typical dimensions. The Engineer may direct or approve varying the actual locations and dimensions to be constructed to fit existing conditions. Do not widen existing pavement or shoulders unless specified elsewhere in this proposal or directed by the engineer.

## **TRAFFIC CONTROL PLAN**

---

### **TRAFFIC CONTROL GENERAL**

Except as provided herein, maintain and control traffic in accordance with the Standard and Supplemental Specifications and the Standard and Sepia Drawings, current editions. Except for the roadway and traffic control bid items listed, all items of work necessary to maintain and control traffic will be paid at the lump sum bid price to "Maintain and Control Traffic".

Contrary to Section 106.01, furnish new, or used in like new condition, traffic control devices at the beginning of the work and maintain in like new condition until completion of the work.

### **PROJECT PHASING & CONSTRUCTION PROCEDURES**

Provide a minimum clear lane width of 10 feet; however, provide for passage of vehicles of up to 16 feet in width. If traffic should be stopped due to construction operations, and a school bus on an official run arrives on the scene, make provisions for the passage of the bus as quickly as possible. The Engineer may specify days and hours when lane closures will not be allowed.

Construct JPC pavement in two phases (see Detail Sheets).

PHASE I – Maintain 1 lane of northbound KY 15 traffic and 2 lanes of southbound KY 15 traffic at all times during construction. Remove asphalt pavement and Construct JPC/24 pavement in northbound right lane and right shoulder. Remove guardrail and abandoned northbound side pedestrian bridge pier during the Phase I lane closure. Complete removal of the guardrail and bridge pier and placement of the Phase I JPC/24 pavement within 10 calendar days after erecting first Phase I Lane closure.

PHASE II – Maintain 1 lane of traffic in each direction at all times during construction. Construct JPC/24 pavement in two northbound left lanes. Complete placement of Phase II JPC/24 pavement within 10 calendar days after erecting first Phase II Lane closure.

Remove the abandoned south side pedestrian bridge pier between the hours of 6:00 p.m to 6:00 a.m. only. Maintain 2 lanes of northbound KY 15 traffic and 1 lane of southbound KY 15 traffic at all times during pier removal.

Use the minimum lane closures required by active work in progress as determined by the Engineer for all other other items of the work.

The Department will allow night work on this project. Obtain the Engineer's approval of the method of lighting prior to performing night work.

## Traffic Control Plan

### Page 2 of 11

Take these restrictions into account in submitting bid. The Department will not consider any claims for money or grant contract time extensions for any delays to the Contractor as a result of these restrictions.

## **LANE CLOSURES**

Do not leave lane closures in place during non-working hours except for the minimum time required for JPC Pavement curing and strength testing. Open JPC Pavement on schedule.

The Department will measure only one (1) lane closure for each JPC Pavement phase. The Department will not measure lane closures for other work.

## **PUBLIC INFORMATION PLAN**

This project is considered a significant project according to Section 112.03.12. The Department will prepare a public information plan. Submit a proposed schedule of lane closures to the Engineer for approval 14 calendar days prior to beginning work. Notify the Engineer immediately and obtain the Engineer's approval of any proposed deviations from the approved work schedule.

## **SIGNS**

Contrary to section 112.04.02, only long term signs (signs intended to be continuously in place for more than 3 days) will be measured for payment; short term signs (signs intended to be left in place for 3 days or less) will not be measured for payment but will be incidental to Maintain and Control Traffic.

## **CHANGEABLE MESSAGE SIGNS**

Provide changeable message signs in advance of and within the project at locations determined by the Engineer. If work is in progress concurrently in both directions or if more than one lane closure is in place in the same direction of travel, provide additional changeable message signs as directed by the Engineer. Place changeable message signs one mile in advance of the anticipated queue at each lane closure. As the actual queue lengthens and/or shortens, relocate or provide additional changeable message signs so that traffic has warning of slowed or stopped traffic at least one mile but not more than two miles before reaching the end of the actual queue. The Engineer may vary the designated locations as the work progresses. The Engineer will determine the messages to be displayed. In the event of damage or mechanical/electrical failure, repair or replace the Changeable Message Sign within 24 hours. The Department will measure for payment the maximum number of Changeable Message Signs in concurrent use at the same time on a single day on all sections of the contract. The Department will measure individual Changeable Message Signs only once for payment, regardless of how many times they are set, reset, removed, and relocated during the duration of

Traffic Control Plan  
Page 3 of 11

the project. The Department will not measure replacements for damaged Changeable Message Signs or for signs the Engineer directs be replaced due to poor condition or readability. Retain possession of the Changeable Message Signs upon completion of the work.

## **ARROW PANELS**

Use arrow panels as shown on the Standard Drawings or as directed by the Engineer. The Department will measure for payment the maximum number of arrow panels in concurrent use at the same time on a single day on all sections of the contract. The Department will measure for payment the maximum number of Changeable Message Signs in concurrent use at the same time on a single day on all sections of the contract. The Department will measure individual Arrow Panels only once for payment, regardless of how many times they are set, reset, removed, and relocated during the duration of the project. The Department will not measure replacements for damaged Arrow Panels or for panels signs the Engineer directs be replaced due to poor condition or readability for payment. Retain possession of the Arrow Panels upon completion of the work.

## **TEMPORARY ENTRANCES**

The Engineer will not require the Contractor to provide continuous access to farms, single family, duplex, or triplex residential properties during working hours; however, provide reasonable egress and ingress to each such property when actual operations are not in progress at that location. Limit the time during which a farm or residential entrance is blocked to the minimum length of time required for actual operations, not extended for the Contractor's convenience, and in no case exceeding six (6) hours. Notify all residents twenty-four hours in advance of any driveway or entrance closings and make any accommodations necessary to meet the access needs of disabled residents.

Except as allowed by the Phasing as specified above, maintain direct access to all side streets and roads, schools, churches, commercial properties and apartments or apartment complexes of four or more units at all times.

The Department will measure asphalt materials required to construct and maintain any temporary entrances which may be necessary to provide temporary access; however, the Department will not measure aggregates, excavation, and/or embankment, but shall be incidental to Maintain and Control Traffic. The Engineer will determine the type of surfacing material, asphalt or aggregate, to be used at each entrance.

## **TRAFFIC SIGNALS**

Relocate signal heads, adjust signal timing and phasing, or place signal indications on flashing red/yellow as determined by the Engineer. Provide flaggers to supplement the adjusted signals as required by the work in progress. Upon completion of the work return the signal heads to their original location.

## **BARRICADES**

The Department will not measure barricades used in lieu of barrels and cones for channelization or delineation, but shall be incidental to Maintain and Control Traffic according to Section 112.04.01.

The Department will measure barricades used to protect pavement removal areas in individual units. Each. The Department will measure for payment the maximum number of barricades in concurrent use at the same time on a single day on all sections of the contract. The Department will measure individual barricades only once for payment, regardless of how many times they are set, reset, removed, and relocated during the duration of the project. The Department will not measure replacements for damaged barricades the Engineer directs to be replaced due to poor condition or reflectivity. Retain possession of the Barricades upon completion of the work.

## **PAVEMENT STRIPING**

If there is to be a deviation from the existing striping plan, the Engineer will furnish the Contractor a striping plan prior to placement of the JPC Pavement. Install Permanent and Temporary Striping according to Section 112 with the following exceptions:

1. Include edge lines in Temporary Striping; and
2. Place Temporary or Permanent Striping before opening a lane to traffic; and
3. For temporary striping, use an approved removable lane tape; and
4. For Permanent Striping on JPC pavement, use Durable Tape Type 1.

## **INTERSECTION MARKINGS**

Consider the locations listed on the summary as approximate only. Prior to pavement removal, locate and document the locations of the existing markings. After construction is complete, replace the markings at their approximate existing locations or as directed by Engineer. Place markings not existing prior to resurfacing as directed by the Engineer.

For markings on asphalt pavement use Thermoplastic Intersection Markings. For markings on JPC pavement, use Type 1 Tape Intersection Markings



Traffic Control Plan  
Page 5 of 11

## PAVEMENT EDGE DROP-OFFS

Do not allow a pavement edge between opposing directions of traffic or lanes that traffic is expected to cross in a lane change situation with an elevation difference greater than 1½". Place Warning signs (MUTCD W8-11 or W8-9A) in advance of and at 1500' intervals throughout the drop-off area. Dual post the signs on both sides of the traveled way. Wedge all transverse transitions between resurfaced and unresurfaced areas which traffic may cross with asphalt mixture for leveling and wedging. Remove the wedges prior to placement of the final surface course.

Protect pavement edges that traffic is not expected to cross, except accidentally, as follows:

Less than 2" - No protection required.

2" to 4" - Place plastic drums, vertical panels, or barricades every 50 feet. During daylight working hours only, the Engineer will allow the Contractor to use cones in lieu of plastic drums, panels, and barricades. Wedge the drop-off with DGA or cuttings from milling a 1:1 or flatter slope in daylight hours, or 3:1 or flatter slope during nighttime hours, when work is not active in the drop-off area.

Greater than 4" - Protect drop-offs greater than 4 inches by placing drums, vertical panels, or barricades every 25 feet. The Engineer will not allow the use of cones in lieu of drums, vertical panels, or barricades for drop-offs greater than 4". Place Type III Barricades directly in front of the drop-off facing on coming traffic in both directions of travel. Provide warning signs as shown on the Standard Drawings or as directed by the Engineer. Wedge the drop-off with DGA or asphalt mixture for leveling and wedging with a 1:1 or flatter slope in daylight hours, or 3:1 or flatter slope during nighttime hours, when work is not active in the drop-off area. The Engineer will not permit or allow drop-offs greater than 4 inches within 10 feet of traffic during non working hours.

Pedestrians & Bicycles - Protect pedestrian and bicycle traffic as directed by the engineer.

## **USE AND PLACEMENT OF CHANGEABLE MESSAGE SIGNS**

The following policy is based upon current Changeable Message Signs (CMS) standards and practice from many sources, including the Federal Highway Administration (FHWA), other State Departments of Transportation, and Traffic Safety Associations. It is understood that each CMS installation or use requires individual consideration due to the specific location or purpose. However, there will be elements that are constant in nearly all applications. Accordingly these recommended guidelines bring a level of uniformity, while still being open to regional experience and engineering judgment.

### **Application**

The primary purpose of CMS is to advise the driver of unexpected traffic and routing situations. Examples of applications where CMS can be effective include:

- Closures (road, lane, bridge, ramp, shoulder, interstate)
- Changes in alignment or surface conditions
- Significant delays, congestion
- Construction/maintenance activities (delays, future activities)
- Detours/alternative routes
- Special events with traffic and safety implications
- Crash/incidents
- Vehicle restrictions (width, height, weight, flammable)
- Advance notice of new traffic control devices
- Real-time traffic conditions (must be kept up to date)
- Weather /driving conditions, environmental conditions, Roadway Weather Information Systems
- Emergency Situations
- Referral to Highway Advisory Radio (if available)
- Messages as approved by the County Engineer's Office

### **CMS should not be used for:**

- Replacement of static signs (e.g. road work ahead), regulatory signage (e.g. speed limits), pavement markings, standard traffic control devices, conventional warning or guide signs.
- Replacement of lighted arrow board
- Advertising (Don't advertise the event unless clarifying "action" to be taken by driver – e.g. Speedway traffic next exit)
- Generic messages
- Test messages (portable signs only)
- Describe recurrent congestion (e.g. rush hour)
- Public service announcements (not traffic related)

Traffic Control Plan  
Page 7 of 11

### **Messages**

Basic principles that are important to providing proper messages and insuring the proper operation of a CMS are:

- Visible for at least ½ mile under ideal daytime and nighttime conditions
- Legible from all lanes a minimum of 650 feet
- Entire message readable twice while traveling at the posted speed
- Nor more than two message panels should be used (three panels may be used on roadways where vehicles are traveling less than 45 mph). A panel is the message that fits on the face of the sign without flipping or scrolling.
- Each panel should convey a single thought; short and concise
- Do not use two unrelated panels on a sign
- Do not use the sign for two unrelated messages
- Should not scroll text horizontally or vertically
- Should not contain both the words left and right
- Use standardized abbreviations and messages
- Should be accurate and timely
- Avoid filler/unnecessary words and periods (hazardous, a, an, the)
- Avoid use of speed limits
- Use words (not numbers) for dates

### **Placement**

Placement of the CMS is important to insure that the signs is visible to the driver and provides ample time to take any necessary action. Some of the following principles may only be applicable to controlled access roadways. The basic principles of placement for a CMS are:

- When 2 signs are needed, place on same side of roadway and at least 1,000 feet apart
- Place behind semi-rigid/rigid protection (guardrail, barrier) or outside of the clear zone
- Place 1,000 feet in advance of work zone; at least one mile ahead of decision point
- Normally place on right side of roadway; but should be placed closest to the affected lane so that either side is acceptable
- Signs should not be dual mounted (one on each side of roadway facing same direction)
- Point trailer hitch downstream
- Secure to immovable object to prevent thief (if necessary)
- Do not place in sags or just beyond crest
- Check for reflection of sun to prevent the blinding of motorist
- Should be turned ~3 degrees outward from perpendicular to the edge of pavement
- Bottom of sign should be 7 feet above the elevation of edge of roadway
- Should be removed when not in use
-

Traffic Control Plan  
Page 8 of 11

### Standard Abbreviations

The following is a list of standard abbreviations to be used on CMS.

<b><u>Word</u></b>	<b><u>Abbrev.</u></b>	<b><u>Example</u></b>
Access	ACCS	ACCIDENT AHEAD/USE ACCS RD NEXT RIGHT
Alternate	ALT	ACCIDENT AHEAD/USE ALT RTE NEXT RIGHT
Avenue	AVE	FIFTH AVE CLOSED/DETOUR NEXT LEFT
Blocked	BLKD	FIFTH AVE BLKD/MERGE LEFT
Boulevard	BLVD	MAIN BLVD CLOSED/USE ALT RTE
Bridge	BRDG	SMITH BRDG CLOSED/USE ALT RTE
Cardinal Directions	N, S, E, W	N I75 CLOSED/ DETOUR EXIT 30
Center	CNTR	CNTR LANE CLOSED/MERGE LEFT
Commercial	COMM	OVRSZ COMM VEH/USE I275
Condition	COND	ICY COND POSSIBLE
Congested	CONG	HVY CONG NEXT 3 MI
Construction	CONST	CONST WORK AHEAD/EXPECT DELAYS
Downtown	DWNTN	DWNTN TRAF USE EX 40
Eastbound	E-BND	E-BND I64 CLOSED/DETOUR EXIT 20
Emergency	EMER	EMER VEH AHEAD/PREPARE TO STOP
Entrance, Enter	EX, EXT	DWNTN TRAF USE EX 40
Expressway	EXPWY	WTRSN EXPWY CLOSED/DETOUR EXIT 10
Freeway	FRWY, FWY	GN SYNDR FWY CLOSED/DETOUR EXIT 15
Hazardous Materials	HAZMAT	HAZMAT IN ROADWAY/ALL TRAF EXIT 25
Highway	HWY	ACCIDENT ON AA HWY/EXPECT DELAYS
Hour	HR	ACCIDENT ON AA HWY/2 HR DELAY
Information	INFO	TRAF INFO TUNE TO 1240 AM
Interstate	I	E-BND I64 CLOSED/DETOUR EXIT 20
Lane	LN	LN CLOSED/MERGE LEFT
Left	LFT	LANE CLOSED/MERGE LFT
Local	LOC	LOC TRAF USE ALT RTE
Maintenance	MAINT	MAINT WRK ON BRDG/SLOW
Major	MAJ	MAJ DELWAYS I75/USE ALT RTE

Traffic Control Plan  
Page 9 of 11

Mile	MI	ACCIDENT 3 MI AHEAD/ USE ALT RTE
Minor	MNR	ACCIDENT 3 MI MNR DELAY
Minutes	MIN	ACCIDENT 3 MI/30 MIN DELAY
Northbound	N-BND	N-BND I75 CLOSED/ DETOUR EXIT 50
Oversized	OVRSZ	OVRSZ COMM VEH/USE I275 NEXT RIGHT
Parking	PKING	EVENT PKING NEXT RGT
Parkway	PKWY	CUM PKWAY TRAF/DETOUR EXIT 60
Prepare	PREP	ACCIDENT 3 MIL/PREP TO STOP
Right	RGT	EVENT PKING NEXT RGT
Road	RD	HAZMAT IN RD/ALL TRAF EXIT 25
Roadwork	RDWK	RDWK NEXT 4 MI/POSSIBLE DELAYS
Route	RTE	MAJ DELAYS I75/USE ALT RTE
Shoulder	SHLDR	SHLDR CLOSED NEXT 5 MI
Slippery	SLIP	SLIP COND POSSIBLE/ SLOW SPD
Southbound	S-BND	S-BND I75 CLOSED/DETOUR EXIT 50
Speed	SPD	SLIP COND POSSIBLE/ SLOW SPD
Street	ST	MAIN ST CLOSED/USE ALT RTE
Traffic	TRAF	CUM PKWAY TRAF/DETOUR EXIT 60
Vehicle	VEH	OVRSZ COMM VEH/USE I275 NEXT RIGHT
Westbound	W-BND	W-BND I64 CLOSED/DETOUR EXIT 50
Work	WRK	CONST WRK 2MI/POSSIBLE DELAYS

Certain abbreviations are prone to inviting confusion because another word is abbreviated or could be abbreviated in the same way. DO NO USE THESE ABBREVIATIONS.

<u>Abbrev.</u>	<u>Intended Word</u>	<u>Word Erroneously Given</u>
ACC	Accident	Access (Road)
CLRS	Clears	Colors
DLY	Delay	Daily
FDR	Feeder	Federal
L	Left	Lane (merge)
LOC	Local	Location
LT	Light (traffic)	Left
PARK	Parking	Park
POLL	Pollution (index)	Poll
RED	Reduce	Red
STAD	Stadium	Standard

TEMP WRNG	Temporary Warning	Temperature Wrong
--------------	----------------------	----------------------

TYPICAL MESSAGES

The following is a list of typical messages used on CMS. The list consists of the reason or problem that you want the driver to be aware of and the action that you want the driver to take.

<u>Reason/Problem</u>	Action
ACCIDENT	ALL TRAFFIC EXIT RT
ACCIDENT/XX MILES	AVOID DELAY USE XX
XX ROAD CLOSED	CONSIDER ALT ROUTE
XX EXIT CLOSED	DETOUR
BRIDGE CLOSED	DETOUR XX MILES
BRIDGE/(SLIPPERY, ICE, ETC.)	DO NOT PASS
CENTER/LANE/CLOSED	EXPECT DELAYS
DELAY(S), MAJOR/DELAYS	FOLLOW ALT ROUTE
DEBRIS AHEAD	KEEP LEFT
DENSE FOG	KEEP RIGHT
DISABLED/VEHICLE	MERGE XX MILES
EMER/VEHICLES/ONLY	MERGE LEFT
EVENT PARKING	MERGE RIGHT
EXIT XX CLOSED	ONE-WAY TRAFFIC
FLAGGER XX MILES	PASS TO LEFT
FOG XX MILES	PASS TO RIGHT
FREEWAY CLOSED	PREPARE TO STOP
FRESH OIL	REDUCE SPEED
HAZMAT SPILL	SLOW
ICE	SLOW DOWN
INCIDENT AHEAD	STAY IN LANE
LANES (NARROW, SHIFT, MERGE, ETC.)	STOP AHEAD
LEFT LANE CLOSED	STOP XX MILES
LEFT LANE NARROWS	TUNE RADIO 1610 AM
LEFT 2 LANES CLOSED	USE NN ROAD
LEFT SHOULDER CLOSED	USE CENTER LANE
LOOSE GRAVEL	USE DETOUR ROUTE
MEDIAN WORK XX MILES	USE LEFT TURN LANE
MOVING WORK ZONE, WORKERS IN ROADWAY	USE NEXT EXIT
NEXT EXIT CLOSED	USE RIGHT LANE
NO OVERSIZED LOADS	WATCH FOR FLAGGER
NO PASSING	
NO SHOULDER	
ONE LANE BRIDGE	

Traffic Control Plan  
Page 11 of 11

PEOPLE CROSSING  
RAMP CLOSED  
RAMP (SLIPPERY, ICE, ETC.)  
RIGHT LANE CLOSED  
RIGHT LANE NARROWS  
RIGHT SHOULDER CLOSED  
ROAD CLOSED  
ROAD CLOSED XX MILES  
ROAD (SLIPPERY, ICE, ETC.)  
ROAD WORK  
ROAD WORK (OR CONSTRUCTION) (TONIGHT, TODAY, TOMORROW, DATE)  
ROAD WORK XX MILES  
SHOULDER (SLIPPERY, ICE, SOFT, BLOCKED, ETC.)  
NEW SIGNAL XX MILES  
SLOW 1 (OR 2) - WAY TRAFFIC  
SOFT SHOULDER  
STALLED VEHICLES AHEAD  
TRAFFIC BACKUP  
TRAFFIC SLOWS  
TRUCK CROSSING  
TRUCKS ENTERING  
TOW TRUCK AHEAD  
UNEVEN LANES  
WATER ON ROAD  
WET PAINT  
WORK ZONE XX MILES  
WORKERS AHEAD

## **TRAFFIC CONTROL FOR DURABLE PAVEMENT MARKINGS AND THERMOPLASTIC STRIPING**

---

Except as provided herein, maintain and control traffic in accordance with the Standard and Supplemental Specifications and the Standard and Sepia Drawings, current editions. Except for the roadway and traffic control bid items listed, all items of work necessary to maintain and control traffic will be paid at the lump sum bid price to "Maintain and Control Traffic". Contrary to Section 106.01, furnish new, or used in like new condition, traffic control devices at the beginning of the work and maintain in like new condition until completion of the work. Do not install Thermoplastic Markings on bridge decks. Provide egress and ingress to all ramps, side roads, and entrances at all times

### **TWO-LANE, TWO-WAY ROADWAYS:**

Place durable markings and thermoplastic striping according to the Standard Drawings TTS-130-01 and TTS-135-01. Accomplish the work in only one lane and affect the adjacent lane as little as possible. Provide egress and ingress to all ramps, side roads, and entrances at all times. Sign approaches to the immediate work area in accordance with Standard Drawings TTC-100-03 and TTC-105-02. Install the signs on approved temporary mountings.

### **MULTI-LANE ROADWAYS:**

Place durable markings and thermoplastic striping behind stationary lane closures or as a mobile operation. Obtain the Engineer's approval for stationary lane closures prior to use. Sign approved stationary lane closures according to Standard Drawings TTC-115-02 and TTC-125-02. If the Contractor desires an interior lane closure, prepare a plan and obtain the Engineer's approval prior to use. Perform mobile operations according to Standard Drawing TTS-120-01 and TTS-125-01. Install the signs for mobile operations on approved temporary mountings on both sides of the traveled way.

Restrict the work area to not more than one lane of traffic plus 24 inches maximum of only one adjacent lane in each direction of travel. Provide a minimum lane width of 10 feet; however, provide for passage of vehicles of up to 16 feet in width. Limit the length of a lane closure to not exceed 1 mile in urban areas or 3 miles in rural areas as designated by the Engineer. Do not erect more than one lane closure in each direction of travel unless there is at least 2 miles separation between lane closures and both lane closures are in the same lane.



## **SPECIAL NOTE FOR EROSION CONTROL**

---

### **I. DESCRIPTION**

Except as provided herein, perform all erosion and water pollution control work in accordance with the Department's Standard and Supplemental Specifications, and Standard and Sepia Drawings, current editions, and as directed by the Engineer. Section references are to the Standard Specifications. This work shall consist of:

(1) Developing and preparing a Best Management Practices Plan (BMP) tailored to suit the specific construction phasing for each site within the project; (2) Preparing the project site(s) for construction, including locating, furnishing, installing, and maintaining temporary and/or permanent erosion and water pollution control measures as required by the BMP prior to beginning any earth disturbing activity on the project site; (3) Clearing and grubbing and removal of all obstructions as required for construction; (4) Removing all erosion control devices when no longer needed; (5) Restoring all disturbed areas as nearly as possible to their original condition; (6) Preparing seedbeds and permanently seeding all disturbed areas; (7) Providing a Kentucky Erosion Prevention and Sediment Control Program (KEPSC) qualified inspector; and (8) Performing any other work to prevent erosion and/or water pollution as specified by this contract, required by the BMP, or as directed by the Engineer.

### **II. MATERIALS**

Except as provided herein, furnish all materials for erosion and water pollution control work in accordance with the Department's Standard and Supplemental Specifications, and Standard and Sepia Drawings, current editions, and as directed by the Engineer.

Provide for all materials to be sampled and tested in accordance with the Department's Sampling Manual. Unless directed otherwise by the Engineer, make the materials available for sampling a sufficient time in advance of the use of the materials to allow for the necessary time for testing.

### **III. CONSTRUCTION**

Except as provided herein, construct all erosion and water pollution control work in accordance with the Department's Standard and Supplemental Specifications, and Standard and Sepia Drawings, current editions, and as directed by the Engineer.

## Erosion Control

### Page 2 of 3

Be advised, these Erosion Control Plan Notes do not constitute a BMP plan for the project. Jointly with the Engineer, prepare a site specific BMP plan for each drainage area within the project in accordance with Section 213 and the supplemental specifications. Provide a unique BMP at each project site using good engineering practices taking into account existing site conditions, the type of work to be performed, and the construction phasing, methods and techniques to be utilized to complete the work. Be responsible for all erosion prevention, sediment control, and water pollution prevention measures required by the BMP for each site. Represent and warrant compliance with the Clean Water Act (33 USC Section 1251 et seq.), the 404 Permit, the 401 Water Quality Certification, and applicable state and local government agency laws, regulations, rules, specifications, and permits. Contrary to Section 105.05, in case of discrepancy between these notes, the Standard Specifications, interim Supplemental Specifications, Special and Special Notes, Standard and Sepia Drawings, and such state and local government agency requirements, adhere to the most restrictive requirement.

Conduct operations in such a manner as to minimize the amount of disturbed ground during each phase of the construction and limit the haul roads to the minimum required to perform the work.. Preserve existing vegetation not required to be removed by the work or the contract. Seed and/or mulch disturbed areas at the earliest opportunity. Use silt fence, silt traps, temporary ditches, brush barriers, erosion control blankets, sodding, channel lining, and other erosion control measures in a timely manner as required by the BMP and as directed or approved by the Engineer. Prevent sediment laden water from leaving the project, entering an existing drainage structure, or entering a stream.

Provide for erosion control measures to be in place and functioning prior to any earth disturbance within a drainage area. Compute the volume and size of silt control devices necessary to control sediment during each phase of construction. Remove sediment from silt traps before they become a maximum of ½ full. Maintain silt fence by removing accumulated trappings and/or replacing the geotextile fabric when it becomes clogged, damaged, or deteriorated, or when directed by the Engineer. Properly dispose of all materials trapped by erosion control devices at approved sites off the right of way obtained by the Contractor at no additional cost to the Department (See Special Note for Waste and Borrow).

As work progresses, add or remove erosion control measures as required by the BMP applicable to the Contractor's project phasing and construction methods and techniques. Update the volume calculations and modify the BMP as necessary throughout the duration of the project. Ensure that an updated BMP is kept on site and available for public inspection throughout the life of the project.

After all construction is complete, restore all disturbed areas in accordance with Section 212. completely remove all temporary erosion control devices not required as part of the permanent erosion control from the construction site. Prior to removal, obtain the Engineer's concurrence of items to be removed. Grade the remaining exposed earth (both on and off the Right of-Way) as nearly as possible to its original condition, or as directed by the Engineer. Prepare the seed bed areas and sow all exposed earthen areas with the applicable seed mixture(s) according to Section 212.03.03.

Erosion Control  
Page 3 of 3

#### **IV. MEASUREMENT**

Contrary to Section 212.04 and 213.04, the Department will not measure Erosion Control items for separate payment, but shall be incidental to Pavement Removal, DGA, Leveling and Wedging, JPC Pavement, and Ditching and Shouldering, as applicable.

## **SPECIAL NOTES FOR COMPLETION DATE & LIQUIDATED DAMAGES**

---

Select a date to begin work subject to the following conditions:

Complete removal of guardrail and northbound side bridge pier and placement of Phase I JPC/24 pavement within 10 Calendar Days after erecting Phase I lane closure ; and  
Complete placement of Phase II JPC/24 pavement within 10 Calendar Days after erecting Phase II lane closure; and  
Once work begins, complete all work within 75 Calendar Days; and  
Regardless of the date work begins, complete all work no later than December 1, 2012.

In addition to the requirements of Section 108.09, the Department will assess Liquidated Damages in the amount of \$2,000 per hour for each hour or part of an hour a lane closure for Phase I and/or Phase II placement of JPC/24 pavement remains in place beyond the 10 Calendar Days allowed or during other days and hours prohibited by the Traffic Control Plan or the Engineer.

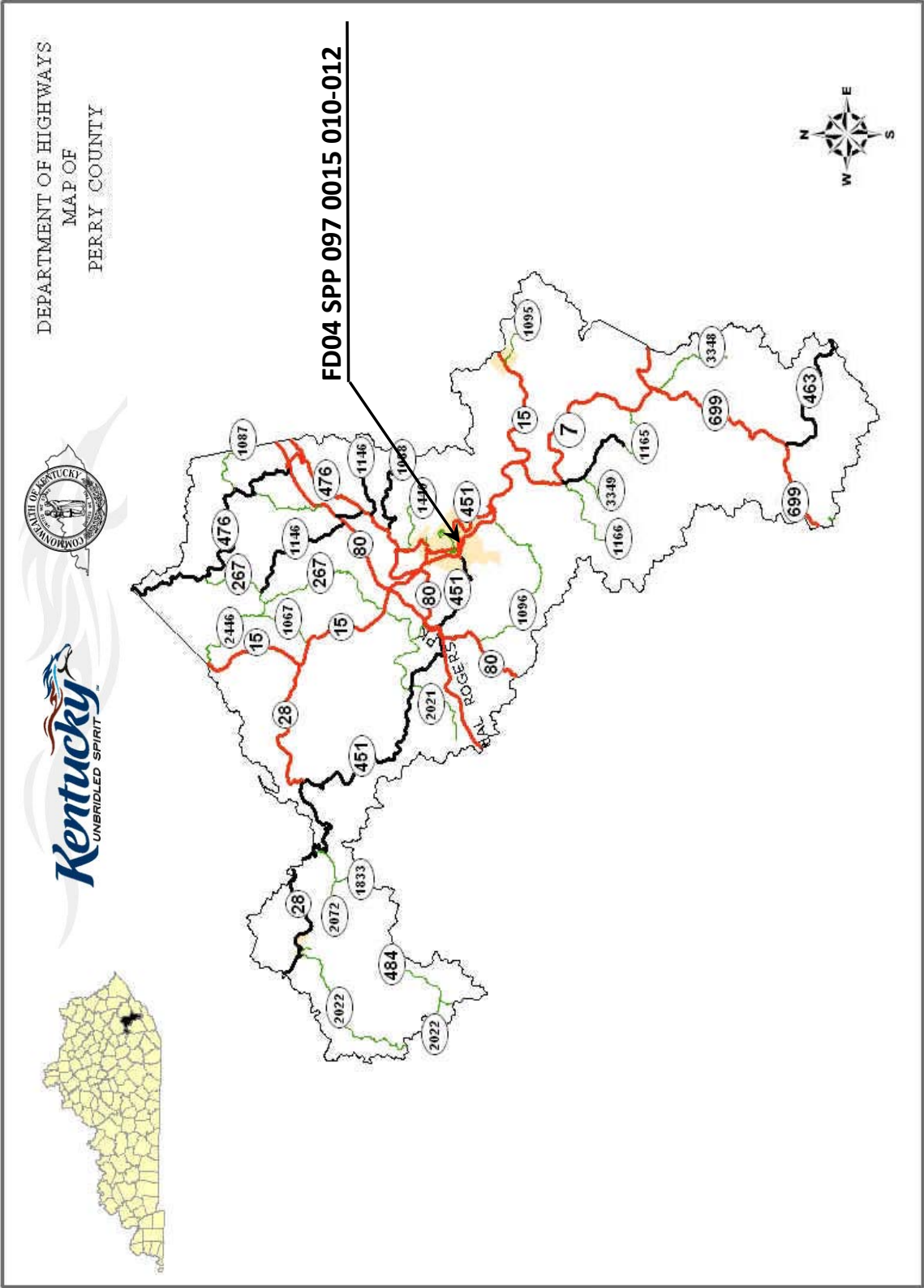
The Department will assess Liquidated Damages in the amount specified in Section 108.09 whenever work remains uncompleted beyond the applicable Calendar Days allowed or the Specified Completion Date, whichever occurs first.

Contrary to section 108.09, the Department will assess Liquidated Damages for the months of December through March.

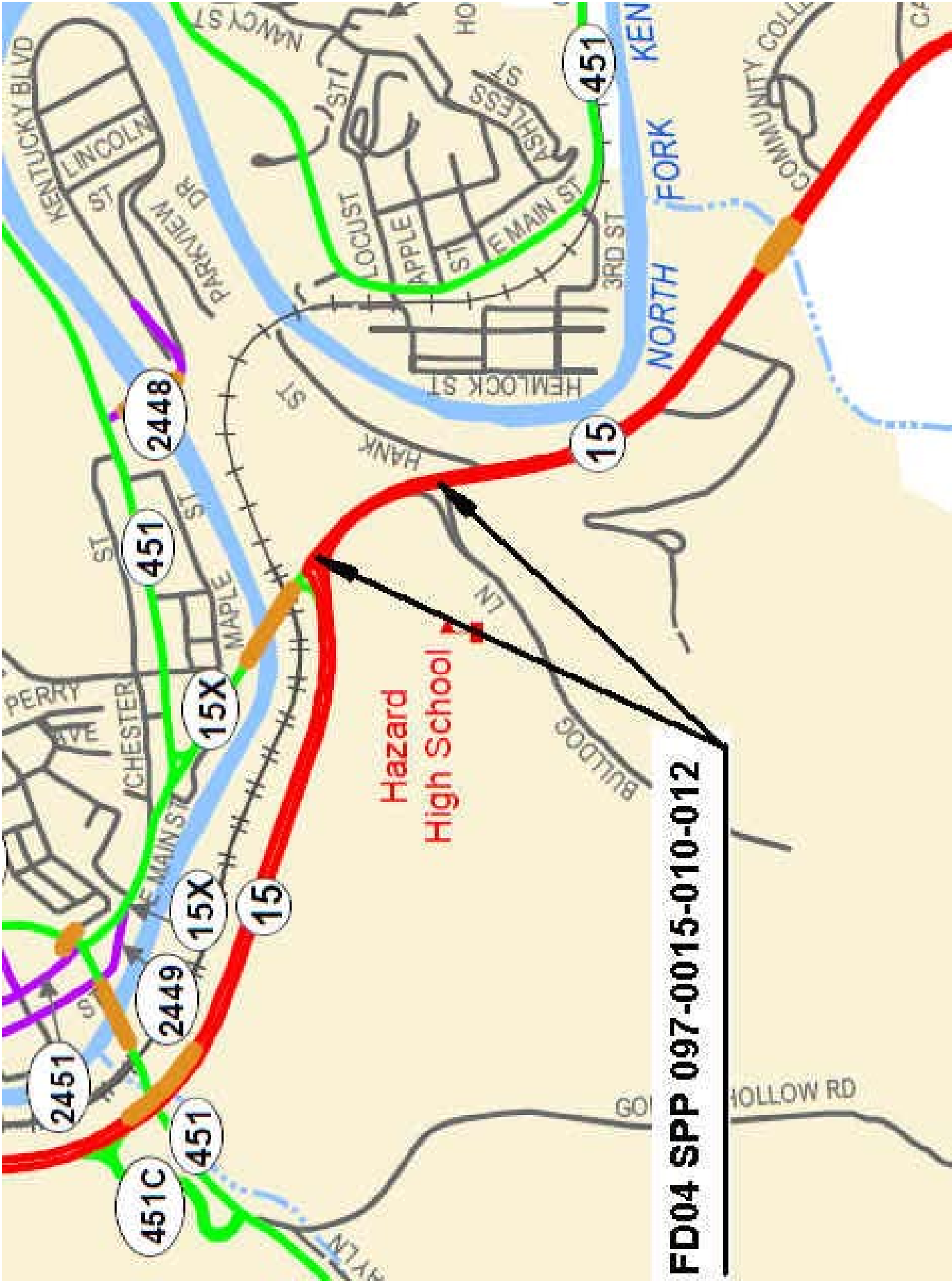
Contrary to Section 108.09, the Department will assess Liquidated Damages regardless of whether seasonal limitations prohibit the Contractor from performing work on the controlling operation.

All liquidated damages will be applied accumulatively.

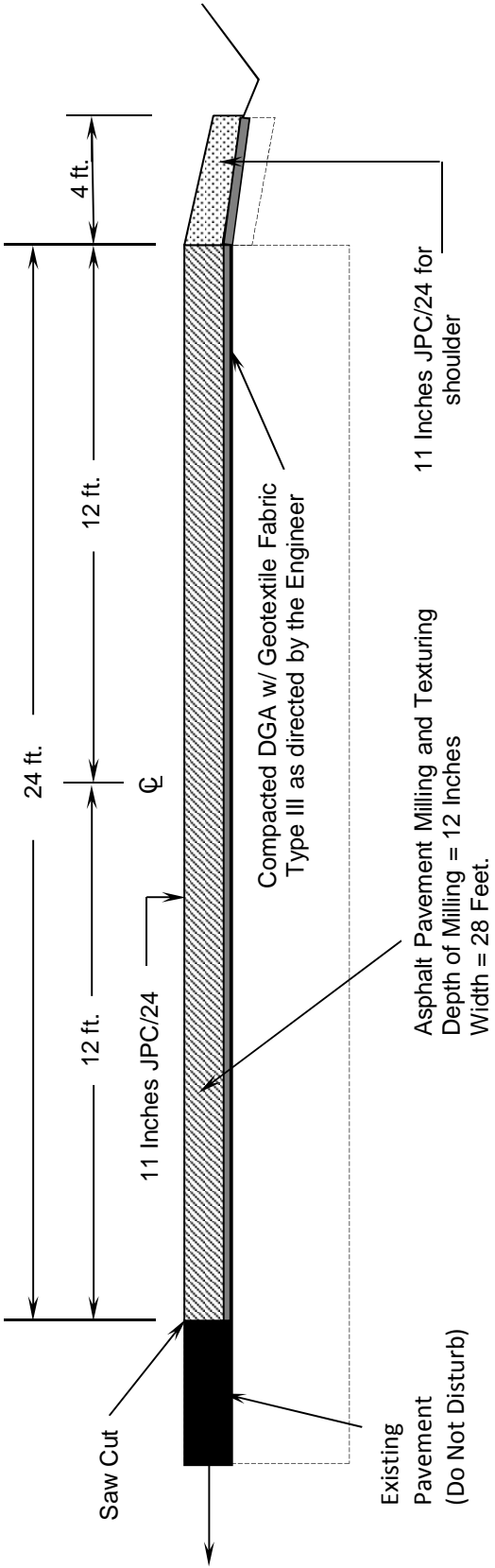
All other applicable portions of Section 108 apply.



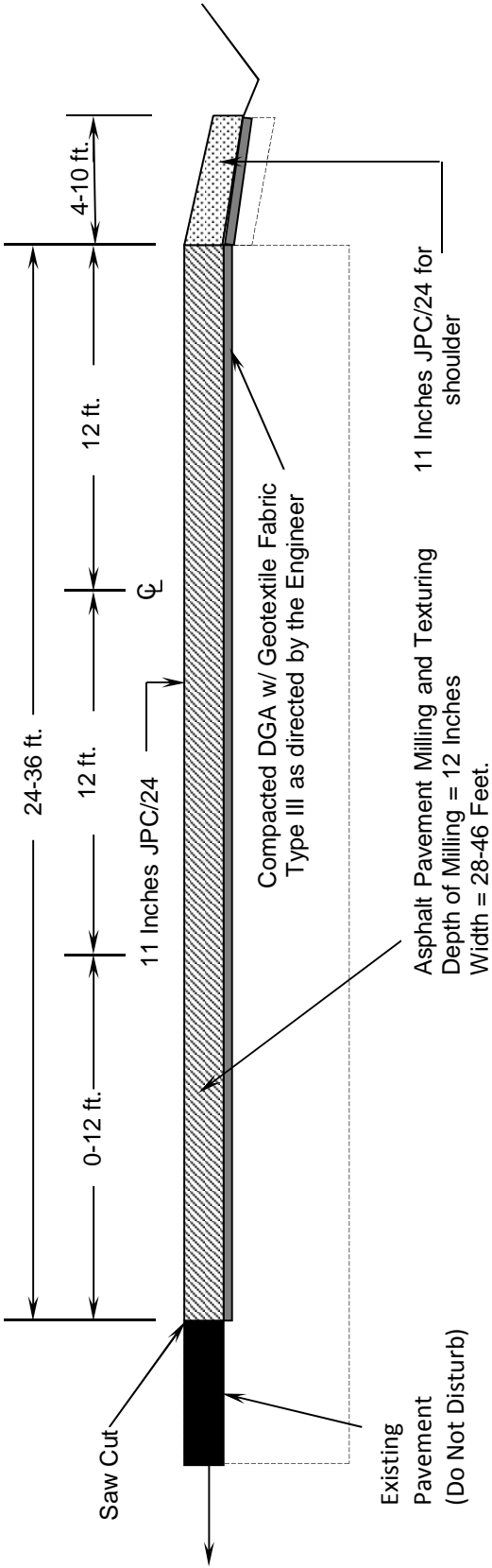
PERRY COUNTY



**TYPICAL SECTION**  
**MILEPOINT 10.912-11.001**

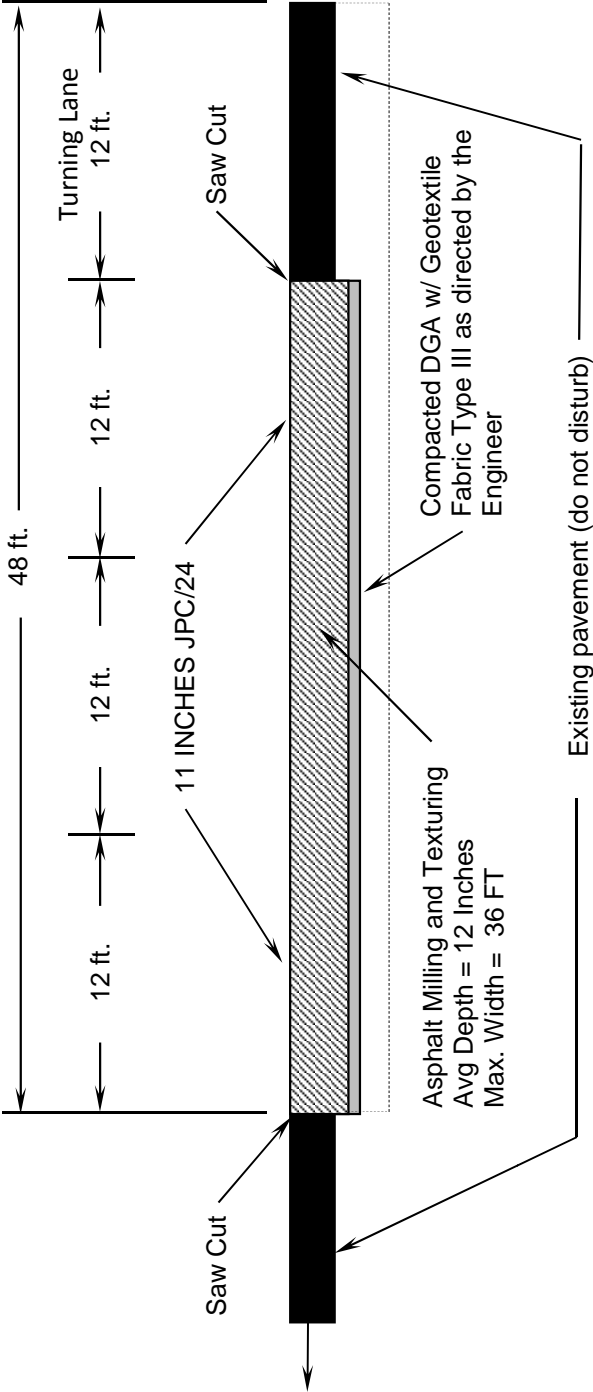


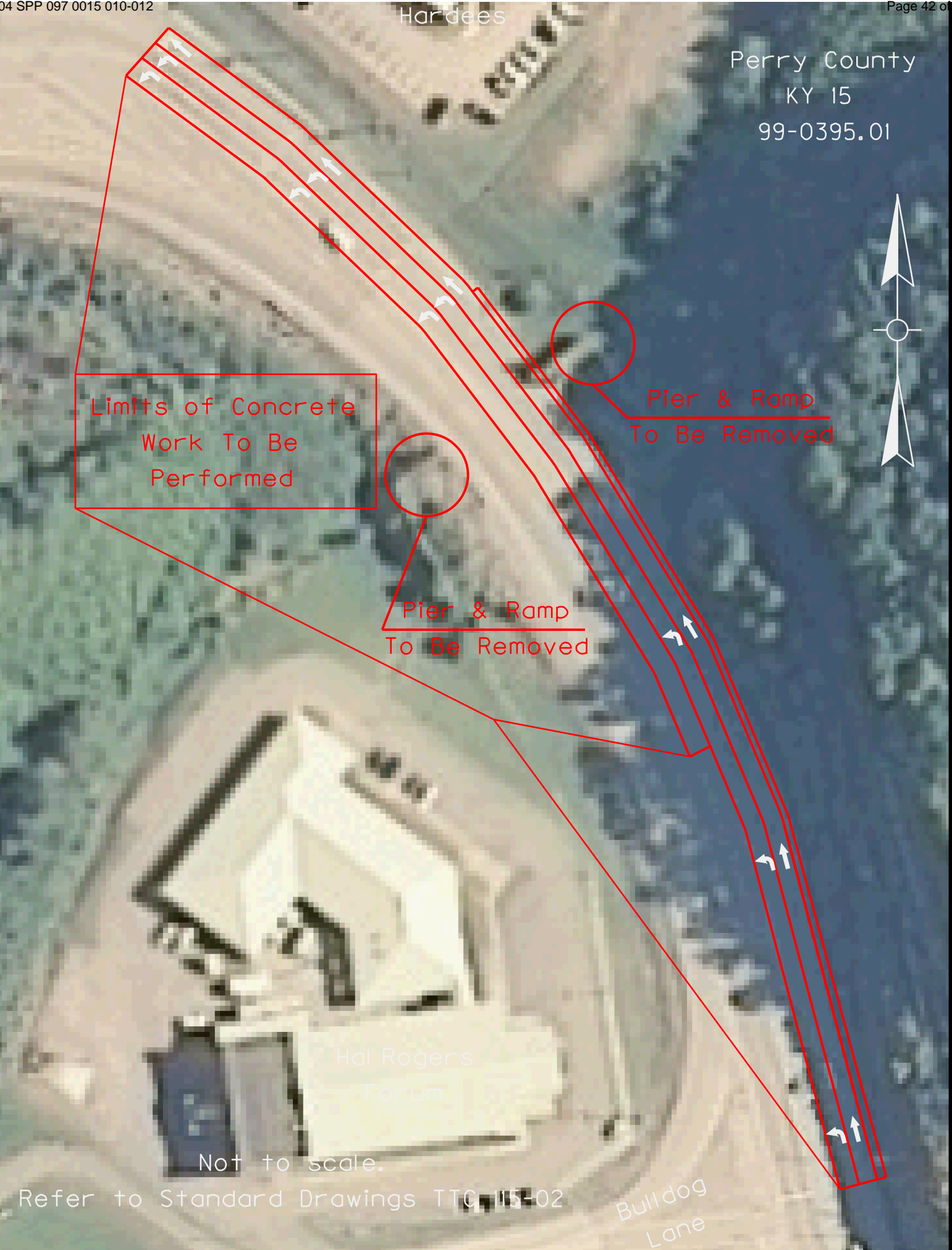
**TYPICAL SECTION**  
**MILEPOINT 11.001 TO MP 11.037**





**TYPICAL SECTION  
MILEPOINT 11.037-11.081**





Hardees

Perry County  
KY 15  
99-0395.01

Limits of Concrete  
Work To Be  
Performed

Pier & Ramp  
To Be Removed

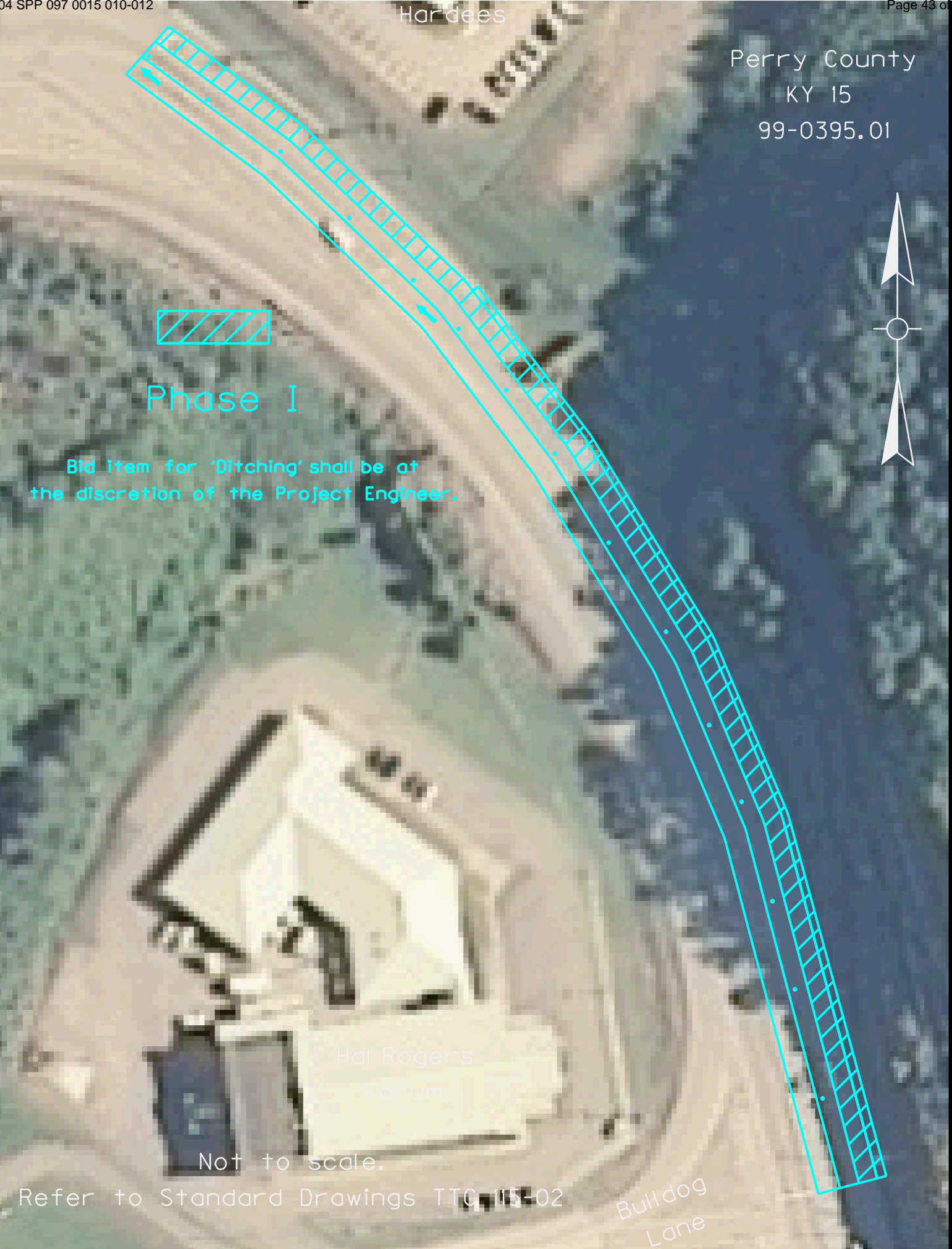
Pier & Ramp  
To Be Removed

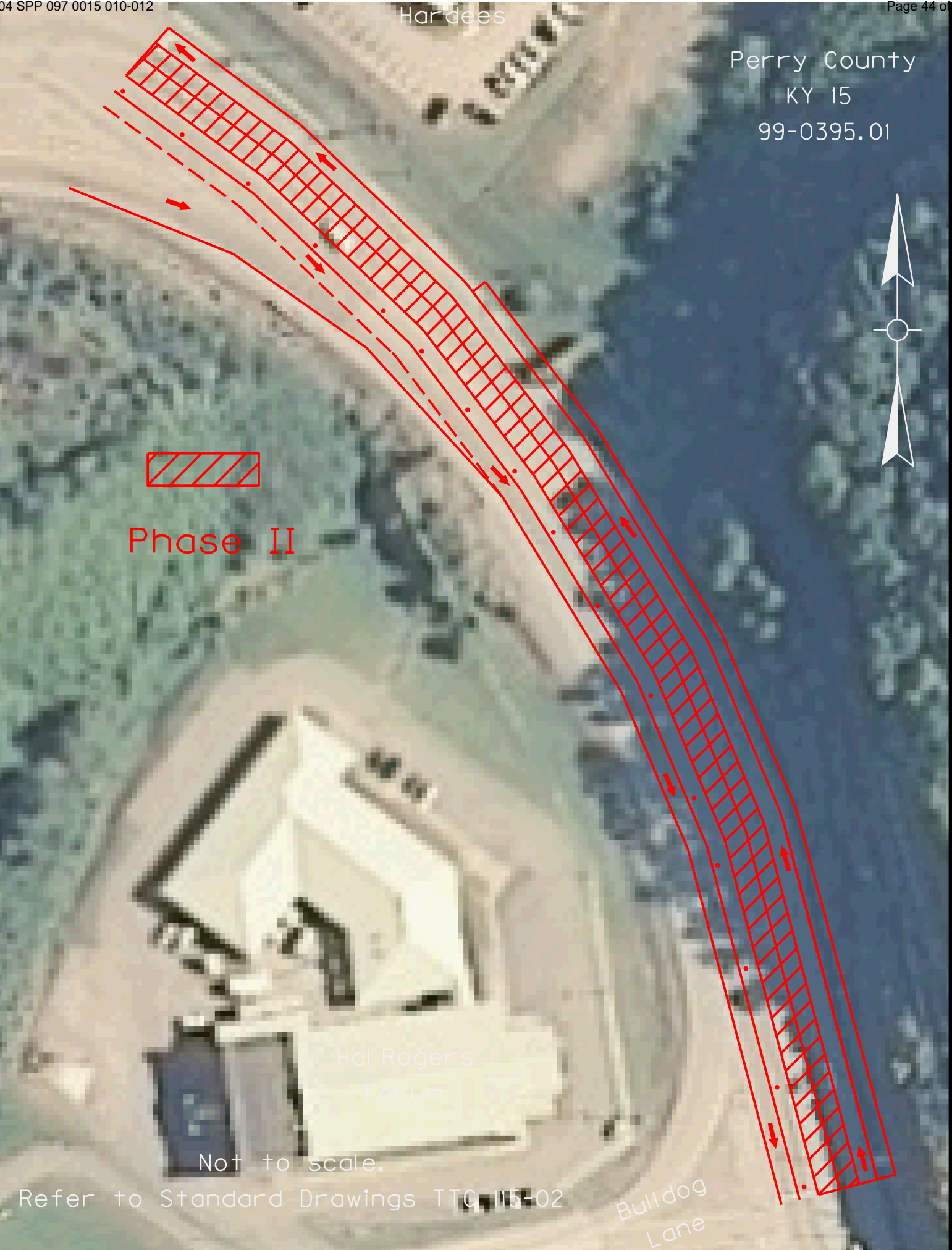
Hal Rogers  
Forum

Not to scale.

Refer to Standard Drawings TTC 115-02

Bulldog  
Lane





**PART II**

**SPECIFICATIONS AND STANDARD DRAWINGS**

### **SPECIFICATIONS REFERENCE**

Any reference in the plans or proposal to previous editions of the *Standard Specifications for Road and Bridge Construction* and *Standard Drawings* are superseded by *Standard Specifications for Road and Bridge Construction, Edition of 2012* and *Standard Drawings, Edition of 2012 with the 2012 Revision*.

**Supplemental Specifications to the Standard Specifications for Road and  
Bridge Construction, 2012 Edition**

**(Effective with the August 17, 2012 Letting)**

<b>Subsection:</b>	402.03.02 Contractor Quality Control and Department Acceptance.
<b>Part:</b>	D) Testing Responsibilities.
<b>Number:</b>	4) Density.
<b>Revision:</b>	Replace the second sentence of the Option A paragraph with the following: Perform coring by the end of the following work day.
<b>Subsection:</b>	606.03.17 Special Requirements for Latex Concrete Overlays.
<b>Part:</b>	A) Existing Bridges and New Structures.
<b>Number:</b>	1) Prewetting and Grout-Bond Coat.
<b>Revision:</b>	Add the following sentence to the last paragraph: Do not apply a grout-bond coat on bridge decks prepared by hydrodemolition.
<b>Subsection:</b>	609.03 Construction.
<b>Revision:</b>	Replace Subsection 609.03.01 with the following: 609.03.01 A) Swinging the Spans. Before placing concrete slabs on steel spans or precast concrete release the temporary erection supports under the bridge and swing the span free on its supports. 609.03.01 B) Lift Loops. Cut all lift loops flush with the top of the precast beam once the beam is placed in the final location and prior to placing steel reinforcement. At locations where lift loops are cut, paint the top of the beam with galvanized or epoxy paint.

## **SPECIAL NOTE FOR PORTABLE CHANGEABLE MESSAGE SIGNS**

This Special Note will apply when indicated on the plans or in the proposal.

**1.0 DESCRIPTION.** Furnish, install, operate, and maintain variable message signs at the locations shown on the plans or designated by the Engineer. Remove and retain possession of variable message signs when they are no longer needed on the project.

## **2.0 MATERIALS.**

**2.1 General.** Use LED Variable Message Signs Class I, II, or III, as appropriate, from the Department's List of Approved Materials.

Unclassified signs may be submitted for approval by the Engineer. The Engineer may require a daytime and nighttime demonstration. The Engineer will make a final decision within 30 days after all required information is received.

### **2.2 Sign and Controls.** All signs must:

- 1) Provide 3-line messages with each line being 8 characters long and at least 18 inches tall. Each character comprises 35 pixels.
- 2) Provide at least 40 preprogrammed messages available for use at any time. Provide for quick and easy change of the displayed message; editing of the message; and additions of new messages.
- 3) Provide a controller consisting of:
  - a) Keyboard or keypad.
  - b) Readout that mimics the actual sign display. (When LCD or LCD type readout is used, include backlighting and heating or otherwise arrange for viewing in cold temperatures.)
  - c) Non-volatile memory or suitable memory with battery backup for storing pre-programmed messages.
  - d) Logic circuitry to control the sequence of messages and flash rate.
- 4) Provide a serial interface that is capable of supporting complete remote control ability through land line and cellular telephone operation. Include communication software capable of immediately updating the message, providing complete sign status, and allowing message library queries and updates.
- 5) Allow a single person easily to raise the sign to a satisfactory height above the pavement during use, and lower the sign during travel.
- 6) Be Highway Orange on all exterior surfaces of the trailer, supports, and controller cabinet.
- 7) Provide operation in ambient temperatures from -30 to + 120 degrees Fahrenheit during snow, rain and other inclement weather.
- 8) Provide the driver board as part of a module. All modules are interchangeable, and have plug and socket arrangements for disconnection and reconnection. Printed circuit boards associated with driver boards have a conformable coating to protect against moisture.
- 9) Provide a sign case sealed against rain, snow, dust, insects, etc. The lens is UV stabilized clear plastic (polycarbonate, acrylic, or other approved material) angled to prevent glare.
- 10) Provide a flat black UV protected coating on the sign hardware, character PCB, and appropriate lens areas.
- 11) Provide a photocell control to provide automatic dimming.



11

- 12) Allow an on-off flashing sequence at an adjustable rate.
- 13) Provide a sight to aim the message.
- 14) Provide a LED display color of approximately 590 nm amber.
- 15) Provide a controller that is password protected.
- 16) Provide a security device that prevents unauthorized individuals from accessing the controller.
- 17) Provide the following 3-line messages preprogrammed and available for use when the sign unit begins operation:

/KEEP/RIGHT/⇒⇒⇒/	/MIN/SPEED/**MPH/
/KEEP/LEFT/⇐⇐⇐/	/ICY/BRIDGE/AHEAD/ /ONE
/LOOSE/GRAVEL/AHEAD/	LANE/BRIDGE/AHEAD/
/RD WORK/NEXT/**MILES/	/ROUGH/ROAD/AHEAD/
/TWO WAY/TRAFFIC/AHEAD/	/MERGING/TRAFFIC/AHEAD/
/PAINT/CREW/AHEAD/	/NEXT/**/MILES/
/REDUCE/SPEED/**MPH/	/HEAVY/TRAFFIC/AHEAD/
/BRIDGE/WORK/**0 FT/	/SPEED/LIMIT/**MPH/
/MAX/SPEED/**MPH/	/BUMP/AHEAD/
/SURVEY/PARTY/AHEAD/	/TWO/WAY/TRAFFIC/

\*Insert numerals as directed by the Engineer.

Add other messages during the project when required by the Engineer.

### 2.3 Power.

- 1) Design solar panels to yield 10 percent or greater additional charge than sign consumption. Provide direct wiring for operation of the sign or arrow board from an external power source to provide energy backup for 21 days without sunlight and an on-board system charger with the ability to recharge completely discharged batteries in 24 hours.

**3.0 CONSTRUCTION.** Furnish and operate the variable message signs as designated on the plans or by the Engineer. Ensure the bottom of the message panel is a minimum of 7 feet above the roadway in urban areas and 5 feet above in rural areas when operating. Use Class I, II, or III signs on roads with a speed limit less than 55 mph. Use Class I or II signs on roads with speed limits 55 mph or greater.

Maintain the sign in proper working order, including repair of any damage done by others, until completion of the project. When the sign becomes inoperative, immediately repair or replace the sign. Repetitive problems with the same unit will be cause for rejection and replacement.

Use only project related messages and messages directed by the Engineer, unnecessary messages lessen the impact of the sign. Ensure the message is displayed in either one or 2 phases with each phase having no more than 3 lines of text. When no message is needed, but it is necessary to know if the sign is operable, flash only a pixel.

When the sign is not needed, move it outside the clear zone or where the Engineer directs. Variable Message Signs are the property of the Contractor and shall be removed from the project when no longer needed. The Department will not assume ownership of these signs.

**4.0 MEASUREMENT.** The final quantity of Variable Message Sign will be

11

the actual number of individual signs acceptably furnished and operated during the project. The Department will not measure signs replaced due to damage or rejection.

**5.0 PAYMENT.** The Department will pay for the Variable Message Signs at the unit price each. The Department will not pay for signs replaced due to damage or rejection. Payment is full compensation for furnishing all materials, labor, equipment, and service necessary to, operate, move, repair, and maintain or replace the variable message signs. The Department will make payment for the completed and accepted quantities under the following:

<u>Code</u>	<u>Pay Item</u>	<u>Pay Unit</u>
02671	Portable Changeable Message Sign	Each

Effective June 15, 2012

## 2012 STANDARD DRAWINGS THAT APPLY

---

SILT TRAP - TYPE A .....	RDX-220-04
TEMPORARY SILT FENCE.....	RDX-210-02
SILT TRAP - TYPE B .....	RDX-225
SILT TRAP - TYPE C .....	RDX-230
CURVE WIDENING AND SUPERELEVATION TRANSITIONS.....	RGS-001-06
SUPERELEVATION FOR MULTILANE PAVEMENTS .....	RGS-002-05
MISCELLANEOUS STANDARDS PART 1 .....	RGX-001-05
APPROACHES, ENTRANCES, AND MAIL BOX TURNOUT.....	RPM-110-06
RUMBLE STRIPS TYPE III .....	RPM-145-03
JOINTED PLAIN CONCRETE PAVEMENT .....	RPN-015-04
CONCRETE PAVEMENT JOINTS - TYPES AND SPACING.....	RPN-020-03
CONCRETE PAVEMENT JOINT DETAILS.....	RPS-010-10
EXPANSION AND CONTRACTION JOINTS - LOAD TRANSFER ASSEMBLIES .....	RPS-020-13
CONCRETE PAVEMENT JOINTS - TYPES AND SPACING.....	RPS-030-05
CONCRETE PAVEMENT JOINTS - TYPES AND SPACING.....	RPS-031-05
CONCRETE PAVEMENT JOINTS - TYPES AND SPACING.....	RPS-032-05
CONCRETE PAVEMENT JOINTS - TYPES AND SPACING.....	RPS-033-06
CONCRETE PAVEMENT JOINTS - TYPES AND SPACING.....	RPS-034-06
CONCRETE PAVEMENT JOINTS - TYPES AND SPACING.....	RPS-035-05
CONCRETE PAVEMENT JOINTS - TYPES AND SPACING.....	RPS-036-05
CONCRETE PAVEMENT JOINTS - TYPES AND SPACING.....	RPS-037-05
CONCRETE PAVEMENT JOINTS - TYPES AND SPACING.....	RPS-038-05
CONCRETE PAVEMENT JOINTS - TYPES AND SPACING.....	RPS-039-05
HOT POURED ELASTIC JOINT SEALS FOR CONCRETE PAVEMENT.....	RPX-015-03
NETTING.....	RRE-002-04
LANE CLOSURE TWO-LANE HIGHWAY CASE I.....	TTC-100-03
LANE CLOSURE TWO-LANE HIGHWAY CASE II.....	TTC-105-02
LANE CLOSURE MULTI-LANE HIGHWAY CASE I.....	TTC-115-02
DOUBLE LANE CLOSURE .....	TTC-125-02
SHOULDER CLOSURE.....	TTC-135-01
POST SPLICING DETAIL .....	TTD-110-01
PAVEMENT CONDITION WARNING SIGNS.....	TTD-125-01
MOBILE OPERATION FOR PAINT STRIPING CASE I.....	TTS-100-01
MOBILE OPERATION FOR PAINT STRIPING CASE II.....	TTS-105-01
MOBILE OPERATION FOR PAINT STRIPING CASE III .....	TTS-110-01
MOBILE OPERATION FOR PAINT STRIPING CASE IV .....	TTS-115-01
MOBILE OPERATION FOR DURABLE STRIPING CASE I .....	TTS-120-01
MOBILE OPERATION FOR DURABLE STRIPING CASE II.....	TTS-125-01
MOBILE OPERATION FOR DURABLE STRIPING CASE III.....	TTS-130-01
MOBILE OPERATION FOR DURABLE STRIPING CASE IV.....	TTS-135-01

## **PART III**

### **EMPLOYMENT, WAGE AND RECORD REQUIREMENTS**

**TRANSPORTATION CABINET  
DEPARTMENT OF HIGHWAYS**

**LABOR AND WAGE REQUIREMENTS  
APPLICABLE TO OTHER THAN FEDERAL-AID SYSTEM PROJECTS**

- I. Application
- II. Nondiscrimination of Employees (KRS 344)
- III. Payment of Predetermined Minimum Wages
- IV. Statements and Payrolls

**I. APPLICATION**

1. These contract provisions shall apply to all work performed on the contract by the contractor with his own organization and with the assistance of workmen under his immediate superintendence and to all work performed on the contract by piecework, station work or by subcontract. The contractor's organization shall be construed to include only workmen employed and paid directly by the contractor and equipment owned or rented by him, with or without operators.

2. The contractor shall insert in each of his subcontracts all of the stipulations contained in these Required Provisions and such other stipulations as may be required.

3. A breach of any of the stipulations contained in these Required Provisions may be grounds for termination of the contract.

**II. NONDISCRIMINATION OF EMPLOYEES**

**AN ACT OF THE KENTUCKY  
GENERAL ASSEMBLY TO PREVENT  
DISCRIMINATION IN EMPLOYMENT  
KRS CHAPTER 344  
EFFECTIVE JUNE 16, 1972**

The contract on this project, in accordance with KRS Chapter 344, provides that during the performance of this contract, the contractor agrees as follows:

1. The contractor shall not fail or refuse to hire, or shall not discharge any individual, or otherwise discriminate against an individual with respect to his compensation, terms, conditions, or privileges of employment, because of such individual's race, color, religion, national origin, sex, disability or age (between forty and seventy); or limit, segregate, or classify his employees in any way which would deprive or tend to deprive an individual of employment opportunities or otherwise adversely affect his status as an employee, because of such individual's race, color, religion, national origin, sex, disability or age (between forty and seventy). The contractor agrees to post in conspicuous places, available to employees and applicants for employment, notices to be provided setting forth the provisions of this nondiscrimination clause.

2. The contractor shall not print or publish or cause to be printed or published a notice or advertisement relating to employment by such an employer or membership in or any classification or referral for employment by the employment agency, indicating any preference, limitation, specification, or discrimination, based on race, color, religion, national origin, sex, disability or age (between forty and seventy), except that such notice or advertisement may indicate a preference, limitation, or specification based on religion, or national origin when religion, or national origin is a bona fide occupational qualification for employment.

3. If the contractor is in control of apprenticeship or other training or retraining, including on-the-job training programs, he shall not discriminate against an individual

because of his race, color, religion, national origin, sex, disability or age (between forty and seventy), in admission to, or employment in any program established to provide apprenticeship or other training.

4. The contractor will send to each labor union or representative of workers with which he has a collective bargaining agreement or other contract or understanding, a notice to be provided advising the said labor union or workers' representative of the contractor's commitments under this section, and shall post copies of the notice in conspicuous places available to employees and applicants for employment. The contractor will take such action with respect to any subcontract or purchase order as the administering agency may direct as a means of enforcing such provisions, including sanctions for non-compliance.

**III. PAYMENT OF PREDETERMINED MINIMUM WAGES**

1. These special provisions are supplemented elsewhere in the contract by special provisions which set forth certain predetermined minimum wage rates. The contractor shall pay not less than those rates.

2. The minimum wage determination schedule shall be posted by the contractor, in a manner prescribed by the Department of Highways, at the site of the work in prominent places where it can be easily seen by the workers.

**IV. STATEMENTS AND PAYROLLS**

1. All contractors and subcontractors affected by the terms of KRS 337.505 to 337.550 shall keep full and accurate payroll records covering all disbursements of wages to their employees to whom they are required to pay not less than the prevailing rate of wages. Payrolls and basic records relating thereto will be maintained during the course of the work and preserved for a period of one (1) year from the date of completion of this contract.

2. The payroll records shall contain the name, address and social security number of each employee, his correct classification, rate of pay, daily and weekly number of hours worked, itemized deductions made and actual wages paid.

3. The contractor shall make his daily records available at the project site for inspection by the State Department of Highways contracting office or his authorized representative.

Periodic investigations shall be conducted as required to assure compliance with the labor provisions of the contract. Interrogation of employees and officials of the contractor shall be permitted during working hours.

Aggrieved workers, Highway Managers, Assistant District Engineers, Resident Engineers and Project Engineers shall report all complaints and violations to the Division of Contract Procurement.

The contractor shall be notified in writing of apparent violations. The contractor may correct the reported violations and notify the Department of Highways of the action taken or may request an informal hearing. The request for hearing shall be in writing within ten (10) days after receipt of the notice of the reported violation. The contractor may submit

records and information which will aid in determining the true facts relating to the reported violations.

Any person or organization aggrieved by the action taken or the findings established as a result of an informal hearing by the Division of Contract Procurement may request a formal hearing.

4. The wages of labor shall be paid in legal tender of the United States, except that this condition will be considered satisfied if payment is made by a negotiable check, on a solvent bank, which may be cashed readily by the employee in the local community for the full amount, without discount or collection charges of any kind. Where checks are used for payments, the contractor shall make all necessary arrangements for them to be cashed and shall give information regarding such arrangements.

5. No fee of any kind shall be asked or accepted by the contractor or any of his agents from any person as a condition of employment on the project.

6. No laborers shall be charged for any tools used in performing their respective duties except for reasonably avoidable loss or damage thereto.

7. Every employee on the work covered by this contract shall be permitted to lodge, board, and trade where and with whom he elects and neither the contractor nor his agents, nor his employees shall directly or indirectly require as a condition of employment that an employee shall lodge, board or trade at a particular place or with a particular person.

8. Every employee on the project covered by this contract shall be an employee of either the prime contractor or an approved subcontractor.

9. No charge shall be made for any transportation furnished by the contractor or his agents to any person employed on the work.

10. No individual shall be employed as a laborer or mechanic on this contract except on a wage basis, but this shall not be construed to prohibit the rental of teams, trucks or other equipment from individuals.

No Covered employee may be employed on the work except in accordance with the classification set forth in the schedule mentioned above; provided, however, that in the event additional classifications are required, application shall be made by the contractor to the Department of Highways and (1) the Department shall request appropriate classifications and rates from the proper agency, or (2) if there is urgent need for additional classification to avoid undue delay in the work, the contractor may employ such workmen at rates deemed comparable to rates established for similar classifications provided he has made written application through the Department of Highways, addressed to the proper agency, for the supplemental rates. The contractor shall retroactively adjust, upon receipt of the supplemental rates schedule, the wages of any employee paid less than the established rate and may adjust the wages of any employee overpaid.

11. No contractor or subcontractor contracting for any part of the contract work which may require or involve the employment of laborers or mechanics shall require or permit any laborer or mechanic in any work-week in which he is employed on such work, to work in excess of eight hours in any calendar day or in excess of forty hours in such work-week unless such laborer or mechanic receives compensation at a rate not less than one and one half times his basic rate of pay for all hours worked in excess of eight hours in any calendar day or in excess of forty hours in such work-week. A laborer, workman or mechanic and an employer may enter into a written agreement or a collective bargaining agreement to work more than eight (8) hours a calendar day but not more than ten (10) hours a calendar day for the straight time hourly rate. This agreement shall be in writing and shall be executed prior to the employee working in excess of eight (8) hours, but not more than ten (10) hours, in any one (1) calendar day.

12. Payments to the contractor may be suspended or withheld due to failure of the contractor to pay any laborer or

mechanic employed or working on the site of the work, all or part of the wages required under the terms of the contract. The Department may suspend or withhold payments only after the contractor has been given written notice of the alleged violation and the contractor has failed to comply with the wage determination of the Department of Highways.

13. Contractors and subcontractors shall comply with the sections of Kentucky Revised Statutes, Chapter 337 relating to contracts for Public Works.

Revised 2-16-95

## EXECUTIVE BRANCH CODE OF ETHICS

In the 1992 regular legislative session, the General Assembly passed and Governor Brereton Jones signed Senate Bill 63 (codified as KRS 11A), the Executive Branch Code of Ethics, which states, in part:

KRS 11A.040 (6) provides:

No present or former public servant shall, within six (6) months of following termination of his office or employment, accept employment, compensation or other economic benefit from any person or business that contracts or does business with the state in matters in which he was directly involved during his tenure. This provision shall not prohibit an individual from returning to the same business, firm, occupation, or profession in which he was involved prior to taking office or beginning his term of employment, provided that, for a period of six (6) months, he personally refrains from working on any matter in which he was directly involved in state government. This subsection shall not prohibit the performance of ministerial functions, including, but not limited to, filing tax returns, filing applications for permits or licenses, or filing incorporation papers.

KRS 11A.040 (8) states:

A former public servant shall not represent a person in a matter before a state agency in which the former public servant was directly involved, for a period of one (1) year after the latter of:

- a) The date of leaving office or termination of employment; or
- b) The date the term of office expires to which the public servant was elected.

This law is intended to promote public confidence in the integrity of state government and to declare as public policy the idea that state employees should view their work as a public trust and not as a way to obtain private benefits.

If you have worked for the executive branch of state government within the past six months, you may be subject to the law's prohibitions. The law's applicability may be different if you hold elected office or are contemplating representation of another before a state agency.

Also, if you are affiliated with a firm which does business with the state and which employs former state executive-branch employees, you should be aware that the law may apply to them.

In case of doubt, the law permits you to request an advisory opinion from the Executive Branch Ethics Commission, Room 136, Capitol Building, 700 Capitol Avenue, Frankfort, Kentucky 40601; telephone (502) 564-7954.

### **Kentucky Equal Employment Opportunity Act of 1978**

The requirements of the Kentucky Equal Employment Opportunity Act of 1978 (KRS 45.560-45.640) shall apply to this Contract. The apparent low Bidder will be required to submit EEO forms to the Division of Construction Procurement, which will then forward to the Finance and Administration Cabinet for review and approval. No award will become effective until all forms are submitted and EEO/CC has certified compliance. The required EEO forms are as follows:

- EEO-1: Employer Information Report
- Affidavit of Intent to Comply
- Employee Data Sheet
- Subcontractor Report

These forms are available on the Finance and Administration's web page under ***Vendor Information, Standard Attachments and General Terms*** at the following address:  
**<https://www.eProcurement.ky.gov>**.

Bidders currently certified as being in compliance by the Finance and Administration Cabinet may submit a copy of their approval letter in lieu of the referenced EEO forms.

For questions or assistance please contact the Finance and Administration Cabinet by email at **[finance.contractcompliance@ky.gov](mailto:finance.contractcompliance@ky.gov)** or by phone at 502-564-2874.



KENTUCKY LABOR CABINET  
PREVAILING WAGE DETERMINATION  
CURRENT REVISION  
HIGHWAY CONSTRUCTION LOCALITY NO. II

Determination No. CR-11-II-HWY

Project No.  
Highway

Date of Determination: August 4, 2011

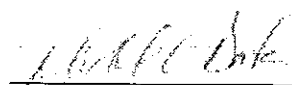
This schedule of the prevailing rate of wages for Locality No. II including the counties of ADAIR, BARREN, BELL, BREATHITT, CASEY, CLAY, CLINTON, CUMBERLAND, ESTILL, FLOYD, GARRARD, GREEN, HARLAN, HART, JACKSON, JOHNSON, KNOTT, KNOX, LAUREL, LAWRENCE, LEE, LESLIE, LETCHER, LINCOLN, MCCREARY, MAGOFFIN, MARTIN, MENIFEE, METCALFE, MONROE, MORGAN, OWSLEY, PERRY, PIKE, POWELL, PULASKI, ROCKCASTLE, RUSSELL, TAYLOR, WAYNE, WHITLEY, and WOLFE has been determined in accordance with the provisions of KRS 337.505 to 337.550. This determination shall be referred to as Prevailing Wage Determination No. CR-11-II-HWY.

The following schedule of rates is to be used for highway construction projects advertised or awarded by the Kentucky Transportation Cabinet. This includes any contracts for the relocation of any utilities or other incidental construction projects advertised or awarded by public authorities as a result of the highway construction project.

Apprentices or trainees shall be permitted to work in accordance with Administrative Regulations adopted by the Commissioner of the Department of Workplace Standards. Copies of these regulations will be furnished upon request to any interested person.

Overtime is to be computed at not less than one and one-half (1 1/2) times the indicated BASE RATE for all hours worked in excess of eight (8) hours per day, or in excess of forty (40) hours per week. However, KRS 337.540 permits an employee and employer to agree, in writing, that the employee will be compensated at a straight time base rate for hours worked in excess of eight (8) hours in any one calendar day, but not more than ten (10) hours worked in any one calendar day, if such written agreement is prior to the over eight (8) hours in a calendar day actually being worked, or where provided for in a collective bargaining agreement. The fringe benefit rate is to be paid for each hour worked at a straight time rate for all hours worked. Fringe benefit amounts are applicable for all hours worked except when otherwise noted. Welders will receive rate for craft in which welding is incidental.

No laborer, workman or mechanic shall be paid at a rate less than that of the General Laborer except those classified as bona fide apprentices registered with the Kentucky State Apprenticeship Supervisor unless otherwise specified in this schedule of wage rates.

  
Michael Donta, Deputy Commissioner  
Department of Workplace Standards

**CLASSIFICATIONS**

**RATE AND FRINGE BENEFITS**

**BOILERMAKERS:**

BASE RATE	\$24.65
FRINGE BENEFIT	12.94

**BRICKLAYERS:**

Bricklayers:

BASE RATE	\$22.90
FRINGE BENEFITS	8.50

Stone Mason:

BASE RATE	\$21.50
FRINGE BENEFITS	8.50

**CARPENTERS:**

Carpenters:

BASE RATE	\$22.40
FRINGE BENEFITS	8.75

Piledrivers:

BASE RATE	\$22.05
FRINGE BENEFITS	8.75

**CEMENT MASONS:**

BASE RATE	\$21.25
FRINGE BENEFITS	8.50

**ELECTRICIANS:**

*BASE RATE	\$29.36
FRINGE BENEFITS	10.55

\*When workmen are required to work from bosum chairs, trusses, stacks, tanks, scaffolds, catwalks, radio and T.V. towers, structural steel (open, unprotected, unfloored raw steel), and bridges or similar hazardous locations where workmen are subject to a direct fall, except where using JLG's and bucket trucks up to 75 feet: Add 25% to workman's base rate for 50 to 75 feet, and add 50% to workman's base rate for over 75 feet.

LINEMAN:

*BASE RATE	\$30.09
FRINGE BENEFITS	10.94

EQUIPMENT OPERATOR:

*BASE RATE	\$26.90
FRINGE BENEFITS	10.31

GROUNDSMAN:

*BASE RATE	\$17.79
FRINGE BENEFITS	8.51

**IRONWORKERS:**

BASE RATE	\$ 25.77
FRINGE BENEFITS	18.54

CLASSIFICATIONS

RATE AND FRINGE BENEFITS

**LABORERS:**

General laborer, flagman, steam jenny:	BASE RATE	\$20.84
	FRINGE BENEFITS	8.75
Batch truck dumper, deck hand or scow man, hand blade operator:	BASE RATE	\$20.84
	FRINGE BENEFITS	8.75
Power driven tool operator of the following: wagon drill, chain saw, sand blaster, concrete chipper, pavement breaker, vibrator, power wheelbarrow, power buggy, sewer pipe layer, bottom men, dry cement handler, concrete rubber, mason tender:	BASE RATE	\$21.09
	FRINGE BENEFITS	8.75
Asphalt lute and rakerman, side rail setter:	BASE RATE	\$21.14
	FRINGE BENEFITS	8.75
Gunnite nozzle man, gunnite operator:	BASE RATE	\$21.14
	FRINGE BENEFITS	8.75
Tunnel laborer (free air):	BASE RATE	\$21.14
	FRINGE BENEFITS	8.75
Tunnel mucker (free air):	BASE RATE	\$21.74
	FRINGE BENEFITS	8.75
Tunnel miner, blaster and driller (free air):	BASE RATE	\$21.74
	FRINGE BENEFITS	8.75
Caisson worker:	BASE RATE	\$21.74
	FRINGE BENEFITS	8.75
Powderman:	BASE RATE	\$21.44
	FRINGE BENEFITS	8.75
Drill operator of percussion type drills which are both powered and propelled by an independent air supply:	BASE RATE	\$22.64
	FRINGE BENEFITS	8.75

## CLASSIFICATIONS

## RATE AND FRINGE BENEFITS

### **OPERATING ENGINEERS:**

#### **Group A:**

Auto patrol, batcher plant, bituminous paver, cable-way, clamshell, concrete mixer (21 cu. ft. or over), concrete pump, crane, crusher plant, derrick, derrick boat, ditching and trenching machine, dragline, dredge engineer, elevator (regardless of ownership when used for hoisting any building material), elevating grader and all types of loaders, hoe-type machine, hoisting engine, locomotive, LeTourneau or carry-all scoop, bulldozer, mechanic, orangepeel bucket, piledriver, power blade, roller (bituminous), roller (earth), roller (rock), scarifier, shovel, tractor shovel, truck crane, well points, winch truck, push dozer, grout pump, high lift, fork lift (regardless of lift height), all types of boom cats, multiple operator, core drill, tow or push boat, A-Frame winch truck, concrete paver, gradeall, hoist, hyster, material pump, pumpcrete, ross carrier, sheepfoot, sideboom, throttle-valve man, rotary drill, power generator, mucking machine, rock spreader attached to equipment, scoopmobile, KeCal loader, tower cranes (French, German and other types), hydrocrane, tugger, backfiller guries, self-propelled compactor, self-contained hydraulic percussion drill:

BASE RATE	\$23.80
FRINGE BENEFITS	8.75

#### **Group B:**

All air compressors (200 cu. ft. per min. or greater capacity), bituminous mixer, concrete mixer (under 21 cu. ft.), welding machine, form grader, tractor (50 H.P. and over), bull float, finish machine, outboard motor boat, brakeman, mechanic helper, whirly oiler, tractair and road widening trencher, articulating trucks:

BASE RATE	\$21.55
FRINGE BENEFITS	8.75

#### **Group B2:**

Greaser on grease facilities servicing heavy equipment:

BASE RATE	\$21.90
FRINGE BENEFITS	8.75

#### **Group C:**

Bituminous distributor, cement gun, conveyor, mud jack, paving joint machine, pump, tamping machine, tractors (under 50 H.P.), vibrator, oiler, air compressors (under 200 cu. ft. per min. capacity), concrete saw, burlap and curing machine, hydro seeder, power form handling equipment, deckhand oiler, hydraulic post driver:

BASE RATE	\$21.31
FRINGE BENEFITS	8.75

---

### **PAINTERS:**

All Excluding Bridges:

BASE RATE	\$19.92
FRINGE BENEFITS	9.57

Bridges:

BASE RATE	\$23.92
FRINGE BENEFITS	10.07

---

<u>CLASSIFICATIONS</u>	<u>RATE AND FRINGE BENEFITS</u>	
<b>PLUMBERS:</b>	BASE RATE	\$22.52
	FRINGE BENEFITS	7.80
<hr/>		
<b>SHEET METAL:</b>	BASE RATE	\$20.40
	FRINGE BENEFITS	7.80
<hr/>		
<b>TRUCK DRIVERS:</b>		
Truck helper and warehouseman:	BASE RATE	\$21.10
	FRINGE BENEFITS	8.75
Driver, winch truck and A-Frame when used in transporting materials:	BASE RATE	\$21.46
	FRINGE BENEFITS	8.75
Driver, (semi-trailer or pole trailer), driver (dump truck, tandem axle), driver of distributor:	BASE RATE	\$21.45
	FRINGE BENEFITS	8.75
Driver on mixer trucks (all types):	BASE RATE	\$21.45
	FRINGE BENEFITS	8.75
Truck mechanic:	BASE RATE	\$21.38
	FRINGE BENEFITS	8.75
Driver (3 tons and under), tire changer and truck mechanic helper:	BASE RATE	\$21.15
	FRINGE BENEFITS	8.75
Driver on pavement breakers:	BASE RATE	\$21.46
	FRINGE BENEFITS	8.75
Driver (over 3 tons), driver (truck mounted rotary drill):	BASE RATE	\$21.45
	FRINGE BENEFITS	8.75
Driver, Euclid and other heavy earth moving equipment and Low Boy:	BASE RATE	\$21.46
	FRINGE BENEFITS	8.75
Greaser on greasing facilities:	BASE RATE	\$21.15
	FRINGE BENEFITS	8.75
<hr/>		

ERRATUM

Refer to the Locality Number and Determination Number listed below published by the Kentucky Labor Cabinet, Division of Employment Standards, Apprenticeship and Mediation dated August 4, 2011.

Locality: Highway Construction Locality No. II, including the following counties: Adair, Barren, Breathitt, Casey, Clay, Clinton, Cumberland, Estill, Floyd, Garrard, Green, Harlan, Hart, Jackson, Johnson, Knott, Knox, Laurel, Lawrence, Lee, Leslie, Letcher, Lincoln, McCreary, Magoffin, Martin, Menifee, Metcalfe, Monroe, Morgan, Owsley, Perry, Pike, Powell, Pulaski, Rockcastle, Russell, Taylor, Wayne, Whitley and Wolfe.

Determination Number: CR-II-II-HWY

---

**DELETE:**

Ironworkers	BASE RATE	\$25.77
	FRINGE BENEFIT	18.54

**INSERT:**

Ironworker (Structural)	BASE RATE	\$22.50
	FRINGE BENEFIT	8.75

Ironworker (Reinforcing)	BASE RATE	\$22.30
	FRINGE BENEFIT	8.75

---



Michael L. Dixon, Commissioner  
Department of Workplace Standards  
Kentucky Labor Cabinet  
Frankfort, KY 40601

This 8<sup>th</sup> day of November, 2011.

ERRATUM

Refer to the Locality Number and Determination Number listed below published by the Kentucky Labor Cabinet, Division of Employment Standards, Apprenticeship and Mediation dated August 4, 2011.

Locality: Highway Construction Locality No. II, including the following counties: Adair, Barren, Breathitt, Casey, Clay, Clinton, Cumberland, Estill, Floyd, Garrard, Green, Harlan, Hart, Jackson, Johnson, Knott, Knox, Laurel, Lawrence, Lee, Leslie, Letcher, Lincoln, McCreary, Magoffin, Martin, Menifee, Metcalfe, Monroe, Morgan, Owsley, Perry, Pike, Powell, Pulaski, Rockcastle, Russell, Taylor, Wayne, Whitley and Wolfe.

Determination Number: CR-II-II-HWY

**DELETE:**

Ironworker (Structural)	BASE RATE	\$22.50
	FRINGE BENEFIT	8.75
Ironworker (Reinforcing)	BASE RATE	\$22.30
	FRINGE BENEFIT	8.75

**INSERT:**

Ironworkers	BASE RATE	\$25.77
	FRINGE BENEFIT	18.54

---

  
Michael L. Dixon, Commissioner  
Department of Workplace Standards  
Kentucky Labor Cabinet  
Frankfort, KY 40601

This 4<sup>TH</sup> day of May, 2012.

**Kentucky Determination No. CR-11-II-HWY dated August 04, 2011**

Fringe benefit amounts are applicable for all hours worked except when otherwise noted.

No laborer, workman or mechanic shall be paid at a rate less than that of the General Laborer except those classified as bona fide apprentices registered with the Kentucky State Apprenticeship Supervisor unless otherwise specified in this schedule of wage rates.

These rates are listed pursuant to the Kentucky Determination No. CR-11-II HWY dated August 04, 2011, erratum dated November 8, 2011, and erratum dated May 4, 2012. Apprentices or trainees shall be permitted to work as such subject to Administrative Regulations adopted by the Commissioner of Workplace Standards. Copies of these regulations will be furnished upon request from any interested person.

Before using apprentices on the job the contractor shall present to the Contracting Officer written evidence of registration of such employees in a program of a State apprenticeship and training agency approved and recognized by the U. S. Bureau of Apprenticeship and Training. In the absence of such a State agency, the contractor shall submit evidence of approval and registration by the U. S. Bureau of Apprenticeship and Training.

The contract or shall submit to the Contracting Officer, written evidence of the established apprenticeship-journeyman ratios and wage rates in the project area, which will be the basis for establishing such ratios and rates for the project under the applicable contract provisions.



**Kentucky Determination No. CR-11-II-HWY dated August 04, 2011**

**TO: EMPLOYERS/EMPLOYEES**

**PREVAILING WAGE SCHEDULE:**

The wages indicated on this wage schedule are the least permitted to be paid for the occupations indicated. When an employee works in more than one classification, the employer must record the number of hours worked in each classification at the prescribed hourly base rate.

**OVERTIME:**

Overtime is to be paid after an employee works eight (8) hours a day or forty (40) hours a week, whichever gives the employee the greater wages. At least time and one-half the base rate is required for all overtime. A laborer, workman or mechanic and an employer may enter into a written agreement or a collective bargaining agreement to work more than eight (8) hours a calendar day but not more than ten (10) hours a calendar day for the straight time hourly rate.

Wage violations or questions should be directed to the designated Engineer or to the undersigned.

Ryan Griffith, Director  
Division of Construction Procurement  
Frankfort, Kentucky 40622

## **PART IV**

## **INSURANCE**

## INSURANCE

The Contractor shall procure and maintain the following insurance in addition to the insurance required by law:

- 1) Commercial General Liability-Occurrence form – not less than \$2,000,000 General aggregate, \$2,000,000 Products & Completed Aggregate, \$1,000,000 Personal & Advertising, \$1,000,000 each occurrence.
- 2) Automobile Liability- \$1,000,000 per accident
- 3) Employers Liability:
  - a) \$100,000 Each Accident Bodily Injury
  - b) \$500,000 Policy limit Bodily Injury by Disease
  - c) \$100,000 Each Employee Bodily Injury by Disease
- 4) The insurance required above must be evidenced by a Certificate of Insurance and this Certificate of Insurance must contain one of the following statements:
  - a) "policy contains no deductible clauses."
  - b) "policy contains \_\_\_\_\_ (amount) deductible property damage clause but company will pay claim and collect the deductible from the insured."
- 5) KENTUCKY WORKMEN'S COMPENSATION INSURANCE. The contractor shall furnish evidence of coverage of all his employees or give evidence of self-insurance by submitting a copy of a certificate issued by the Workmen's Compensation Board.

The cost of insurance is incidental to all contract items. All subcontractors must meet the same minimum insurance requirements.

**PART V**

**BID ITEMS**

CONTRACT ID: 122333  
COUNTY: PERRY  
PROPOSAL: FD04 SPP 097 0015 010-012

PAGE: 1  
LETTING: 08/17/12  
CALL NO: 344

LINE NO	ITEM	DESCRIPTION	APPROXIMATE UNIT QUANTITY	UNIT PRICE	AMOUNT
SECTION 0001 ROADWAY					
0010	00001	DGA BASE	250.000 TON		
0020	00190	LEVELING & WEDGING PG64-22	20.000 TON		
0030	02014	BARRICADE-TYPE III	12.000 EACH		
0040	02025	JPC PAVEMENT-11 IN/24	3,700.000 SQYD		
0050	02381	REMOVE GUARDRAIL	187.500 LF		
0060	02562	SIGNS	500.000 SQFT		
0070	02575	DITCHING AND SHOULDERING	892.000 LF		
0080	02598	FABRIC-GEOTEXTILE TYPE III	3,700.000 SQYD		
0090	02650	MAINTAIN & CONTROL TRAFFIC	( 1.00) LS		
0100	02653	LANE CLOSURE JPC PAVEMENT PHASE I	1.000 EACH		
0110	02653	LANE CLOSURE JPC PAVEMENT PHASE II	1.000 EACH		
0120	02671	PORTABLE CHANGEABLE MESSAGE SIGN	3.000 EACH		
0130	02676	MOBILIZATION FOR MILL & TEXT	( 1.00) LS		
0140	02677	ASPHALT PAVE MILLING & TEXTURING	2,450.000 TON		
0150	02695	RUMBLE STRIPS TYPE 3	700.000 LF		
0160	02726	STAKING	( 1.00) LS		
0170	02731	REMOVE STRUCTURE NORTHBOUND SIDE PIER	( 1.00) LS		
0180	02731	REMOVE STRUCTURE SOUTHBOUND SIDE PIER	( 1.00) LS		
0190	02775	ARROW PANEL	3.000 EACH		
0200	06510	PAVE STRIPING-TEMP PAINT-4 IN	1,530.000 LF		

CONTRACT ID: 122333  
COUNTY: PERRY  
PROPOSAL: FD04 SPP 097 0015 010-012

PAGE: 2  
LETTING: 08/17/12  
CALL NO: 344

LINE NO	ITEM	DESCRIPTION	APPROXIMATE UNIT QUANTITY	UNIT PRICE	AMOUNT
0210	06549	PAVE STRIPING-TEMP REM TAPE-B 6 INCHES	2,500.000 LF		
0220	06550	PAVE STRIPING-TEMP REM TAPE-W 4 INCHES	2,500.000 LF		
0230	06551	PAVE STRIPING-TEMP REM TAPE-Y 4 INCHES	2,500.000 LF		
0240	06554	PAVE STRIPING-DUR TY 1-4 IN W	2,000.000 LF		
0250	06555	PAVE STRIPING-DUR TY 1-4 IN Y	1,000.000 LF		
0260	06568	PAVE MARKING-THERMO STOP BAR-24IN	36.000 LF		
0270	10020NS	FUEL ADJUSTMENT	553.000 DOLL	1.00	553.00
0280	20094ES835	TEMP RELOCATION OF SIGNAL HEAD	6.000 EACH		
0290	23237EN10W	WATERBLAST STRIPE REMOVAL	4,000.000 LF		
0300	23253ES717	PAVE MARK TY 1 TAPE CROSS HATCH	6,850.000 SQFT		
0310	23255ES717	PAVE MARK TY 1 TAPE-STRAIGHT ARROW	5.000 EACH		
0320	23270ES717	PAVE MARK TY 1 TAPE-CURV ARROW	9.000 EACH		
0330	24529EN	ASPHALT/CONCRETE LAP JOINT	28.000 LF		
SECTION 0002 DEMOBILIZATION					
0340	02569	DEMOBILIZATION (AT LEAST 1.5%)	LUMP		
		TOTAL BID			