



**COMMONWEALTH OF KENTUCKY  
TRANSPORTATION CABINET**  
Frankfort, Kentucky 40622  
[www.transportation.ky.gov/](http://www.transportation.ky.gov/)

**Matthew G. Bevin**  
Governor

**Greg Thomas**  
Secretary

May 24, 2017

CALL NO. 344  
CONTRACT ID NO. 172219  
ADDENDUM # 1

Subject: Bullitt County, FE06 015 1020 002-003  
Letting May 26, 2017

(1)Added - Note - Page 19(a) of 32

Proposal revisions are available at <http://transportation.ky.gov/Construction-Procurement/>.

If you have any questions, please contact us at 502-564-3500.

Sincerely,

A handwritten signature in cursive script that reads "Rachel Mills".

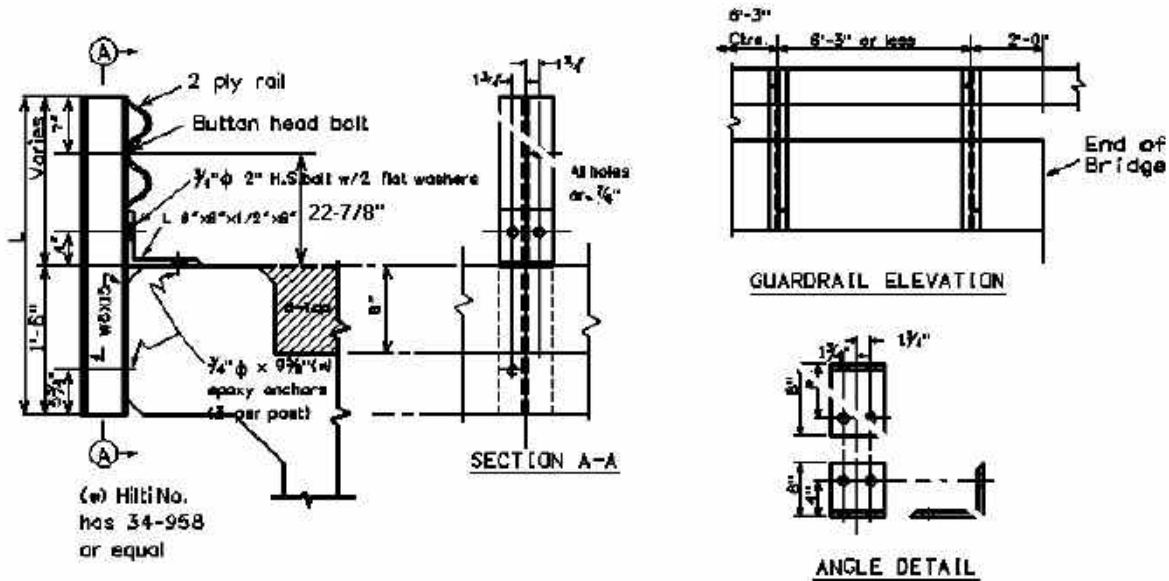
Rachel Mills, P.E.  
Director  
Division of Construction Procurement

RM:ks  
Enclosures



An Equal Opportunity Employer M/F/D

**GUARDRAIL ON BRIDGE, CASE I  
BLACKTOP FLUSH WITH CURB OR ABOVE  
FE06 015 1020 002-003**



Bridge MP	D =	W =	L =	No. Posts	LF of 2 PLY Rail
2.800	N/A	22	6	8	50

L = Length of Guardrail Post                      D = Curb Height                      W = Width of Bridge Curb

**WARRANTS:** When guardrail can be bolted to the back of the bridge curb, and where the bridge surface is flush with the curb top, and where the clear distance between the faces of the guardrail is less than 20 Feet, remove existing concrete and/or guardrail bridge rail and use Case I Bridge Guardrail.

- NOTES:**
1. If asphalt paving is included in the Contract and the dimension from the top of the existing riding surface to the top of the curb is 2 inches or less, pave the surface flush to the top of the curb, and use Case I Bridge Guardrail.
  2. Do not use Case I Bridge Guardrail if existing pavement is not flush with the pavement and asphalt pavement is not included in the Contract or if the dimension from top of the existing riding surface to the top of the curb is greater than 2 inches.