



CALL NO. 339

CONTRACT ID. 243017

KENTON COUNTY

FED/STATE PROJECT NUMBER CB06 059 2043 003-004

DESCRIPTION GREEN ROAD (KY 2043)

WORK TYPE ASPHALT SURFACE WITH GRADE & DRAIN

PRIMARY COMPLETION DATE 11/15/2024

LETTING DATE: April 25,2024

Sealed Bids will be received electronically through the Bid Express bidding service until 10:00 AM EASTERN DAYLIGHT TIME April 25,2024. Bids will be publicly announced at 10:00 AM EASTERN DAYLIGHT TIME.

NO PLANS ASSOCIATED WITH THIS PROJECT.

REQUIRED BID PROPOSAL GUARANTY: Not less than 5% of the total bid.

TABLE OF CONTENTS

PART I	SCOPE OF WORK
	<ul style="list-style-type: none">• PROJECT(S), COMPLETION DATE(S), & LIQUIDATED DAMAGES• CONTRACT NOTES• STATE CONTRACT NOTES• ASPHALT MIXTURE• INCIDENTAL SURFACING• COMPACTION OPTION B• SPECIAL NOTE(S) APPLICABLE TO PROJECT• TRAFFIC CONTROL PLAN 2 LANE• DURABLE PAVEMENT EDGE DETAILS• SKETCH MAP(S)• TYPICAL SECTION(S)• DETAIL SHEET(S)
PART II	SPECIFICATIONS AND STANDARD DRAWINGS
	<ul style="list-style-type: none">• STANDARD AND SUPPLEMENTAL SPECIFICATIONS• [SN-1I] PORTABLE CHANGEABLE SIGNS• STANDARD DRAWINGS THAT APPLY
PART III	EMPLOYMENT, WAGE AND RECORD REQUIREMENTS
	<ul style="list-style-type: none">• LABOR AND WAGE REQUIREMENTS• EXECUTIVE BRANCH CODE OF ETHICS• KENTUCKY EQUAL EMPLOYMENT OPPORTUNITY ACT OF 1978 LOCALITY / STATE• PROJECT WAGE RATES / STATE FUNDED
PART IV	INSURANCE
PART V	BID ITEMS

PART I
SCOPE OF WORK

ADMINISTRATIVE DISTRICT - 06

CONTRACT ID - 243017

CB06 059 2043 003-004

COUNTY - KENTON

PCN - 0605920432401

CB06 059 2043 003-004

GREEN ROAD (KY 2043) (MP 3.380) FROM BIDGE ID 059B00023N, NORTH 0.076 MILES, EXTENDING NORTHWARDLY TOWARDS KY16. (MP 3.400), A DISTANCE OF 0.02 MILES.ASPHALT RESURFACING
GEOGRAPHIC COORDINATES LATITUDE 38:51:53.53 LONGITUDE 84:33:40.43
ADT 578

COMPLETION DATE(S):

COMPLETED BY 11/15/2024

APPLIES TO ENTIRE CONTRACT

CONTRACT NOTES

PROPOSAL ADDENDA

All addenda to this proposal must be applied when calculating bid and certified in the bid packet submitted to the Kentucky Department of Highways. Failure to use the correct and most recent addenda may result in the bid being rejected.

BID SUBMITTAL

Bidder must use the Department's electronic bidding software. The Bidder must download the bid file located on the Bid Express website (www.bidx.com) to prepare a bid packet for submission to the Department. The bidder must submit electronically using Bid Express.

JOINT VENTURE BIDDING

Joint venture bidding is permissible. All companies in the joint venture must be prequalified in one of the work types in the Qualifications for Bidders for the project. The bidders must get a vendor ID for the joint venture from the Division of Construction Procurement and register the joint venture as a bidder on the project. Also, the joint venture must obtain a digital ID from Bid Express to submit a bid. A joint bid bond of 5% may be submitted for both companies or each company may submit a separate bond of 5%.

UNDERGROUND FACILITY DAMAGE PROTECTION

The contractor shall make every effort to protect underground facilities from damage as prescribed in the Underground Facility Damage Protection Act of 1994, Kentucky Revised Statute KRS 367.4901 to 367.4917. It is the contractor's responsibility to determine and take steps necessary to be in compliance with federal and state damage prevention directives. When prescribed in said directives, the contractor shall submit Excavation Locate Requests to the Kentucky Contact Center (KY811) via web ticket entry. The submission of this request does not relieve the contractor from the responsibility of contacting non-member facility owners, whom shall be contacted through their individual Protection Notification Center. Non-compliance with these directives can result in the enforcement of penalties.

REGISTRATION WITH THE SECRETARY OF STATE BY A FOREIGN ENTITY

Pursuant to KRS 176.085(1)(b), an agency, department, office, or political subdivision of the Commonwealth of Kentucky shall not award a state contract to a person that is a foreign entity required by [KRS 14A.9-010](#) to obtain a certificate of authority to transact business in the Commonwealth ("certificate") from the Secretary of State under [KRS 14A.9-030](#) unless the person produces the certificate within fourteen (14) days of the bid or proposal opening. If the foreign entity is not required to obtain a certificate as provided in [KRS 14A.9-010](#), the foreign entity should identify the applicable exception. Foreign entity is defined within [KRS 14A.1-070](#).

For all foreign entities required to obtain a certificate of authority to transact business in the Commonwealth, if a copy of the certificate is not received by the contracting agency within the time frame identified above, the foreign entity's solicitation response shall be deemed non-responsive or the awarded contract shall be cancelled.

Businesses can register with the Secretary of State at <https://secure.kentucky.gov/sos/ftbr/welcome.aspx>.

SPECIAL NOTE FOR PROJECT QUESTIONS DURING ADVERTISEMENT

Questions about projects during the advertisement should be submitted in writing to the Division of Construction Procurement. This may be done by email to kytc.projectquestions@ky.gov. The Department will attempt to answer all submitted questions. The Department reserves the right not to answer if the question is not pertinent or does not aid in clarifying the project intent.

The deadline for posting answers will be 3:00 pm Eastern Daylight Time, the day preceding the Letting. Questions may be submitted until this deadline with the understanding that the later a question is submitted, the less likely an answer will be able to be provided.

The questions and answers will be posted for each Letting under the heading "Questions & Answers" on the Construction Procurement website (www.transportation.ky.gov/construction-procurement). The answers provided shall be considered part of this Special Note and, in case of a discrepancy, will govern over all other bidding documents.

HARDWOOD REMOVAL RESTRICTIONS

The US Department of Agriculture has imposed a quarantine in Kentucky and several surrounding states, to prevent the spread of an invasive insect, the emerald ash borer. Hardwood cut in conjunction with the project may not be removed from the state. Chipping or burning on site is the preferred method of disposal.

INSTRUCTIONS FOR EXCESS MATERIAL SITES AND BORROW SITES

Identification of excess material sites and borrow sites shall be the responsibility of the Contractor. The Contractor shall be responsible for compliance with all applicable state and federal laws and may wish to consult with the US Fish and Wildlife Service to seek protection under Section 10 of the Endangered Species Act for these activities.

ACCESS TO RECORDS

The contractor, as defined in KRS 45A.030 (9) agrees that the contracting agency, the Finance and Administration Cabinet, the Auditor of Public Accounts, and the Legislative Research Commission, or their duly authorized representatives, shall have access to any books, documents, papers, records, or other evidence, which are directly pertinent to this contract for the purpose of financial audit or program review. Records and other prequalification information confidentially disclosed as part of the bid process shall not be deemed as directly pertinent to the contract and

shall be exempt from disclosure as provided in KRS 61.878(1)(c). The contractor also recognizes that any books, documents, papers, records, or other evidence, received during a financial audit or program review shall be subject to the Kentucky Open Records Act, KRS 61.870 to 61.884.

In the event of a dispute between the contractor and the contracting agency, Attorney General, or the Auditor of Public Accounts over documents that are eligible for production and review, the Finance and Administration Cabinet shall review the dispute and issue a determination, in accordance with Secretary's Order 11-004.

BOYCOTT PROVISIONS

If applicable, the contractor represents that, pursuant to [KRS 45A.607](#), they are not currently engaged in, and will not for the duration of the contract engage in, the boycott of a person or an entity based in or doing business with a jurisdiction with which Kentucky can enjoy open trade. **Note:** The term Boycott does not include actions taken for bona fide business or economic reasons, or actions specifically required by federal or state law.

If applicable, the contractor verifies that, pursuant to KRS 41.480, they do not engage in, and will not for the duration of the contract engage in, in energy company boycotts as defined by KRS 41.472.

LOBBYING PROHIBITIONS

The contractor represents that they, and any subcontractor performing work under the contract, have not violated the agency restrictions contained in [KRS 11A.236](#) during the previous ten (10) years, and pledges to abide by the restrictions set forth in such statute for the duration of the contract awarded.

The contractor further represents that, pursuant to [KRS 45A.328](#), they have not procured an original, subsequent, or similar contract while employing an executive agency lobbyist who was convicted of a crime related to the original, subsequent, or similar contract within five (5) years of the conviction of the lobbyist.

1.0 BUY AMERICA REQUIREMENT.

Follow the “Buy America” provisions as required by 23 U.S.C. § 313 and 23 C.F.R. § 635.410. Except as expressly provided herein all manufacturing processes of steel or iron materials including but not limited to structural steel, guardrail materials, corrugated steel, culvert pipe, structural plate, prestressing strands, and steel reinforcing bars shall occur in the United States of America, including the application of:

- Coating,
- Galvanizing,
- Painting, and
- Other coating that protects or enhances the value of steel or iron products.

The following are exempt, unless processed or refined to include substantial amounts of steel or iron material, and may be used regardless of source in the domestic manufacturing process for steel or iron material:

- Pig iron,
- Processed, pelletized, and reduced iron ore material, or
- Processed alloys.

The Contractor shall submit a certification stating that all manufacturing processes involved with the production of steel or iron materials occurred in the United States.

Produce, mill, fabricate, and manufacture in the United States of America all aluminum components of bridges, tunnels, and large sign support systems, for which either shop fabrication, shop inspection, or certified mill test reports are required as the basis of acceptance by the Department.

Use foreign materials only under the following conditions:

- 1) When the materials are not permanently incorporated into the project; or
- 2) When the delivered cost of such materials used does not exceed 0.1 percent of the total Contract amount or \$2,500.00, whichever is greater.

The Contractor shall submit to the Engineer the origin and value of any foreign material used.

2.0 – BUILD AMERICA, BUY AMERICA (BABA)

Contractor shall comply with the Federal Highway Administration (FHWA) Buy America Requirement in 23 C.F.R. § 635.410 and all relevant provisions of the Build America, Buy America Act (BABA), contained within the Infrastructure Investment and Jobs Act, Pub. L. No. 117-58, §§ 70901-52 enacted November 15, 2021. The BABA requires iron, steel, manufactured products, and construction materials used in infrastructure projects funded by federal financial assistance to be produced in the United States. Comply with 2 C.F.R § 184.

BABA permits FHWA participation in the Contract only if domestic steel and iron will be used on the Project. To be considered domestic, all steel and iron used, and all products manufactured from steel and iron must be produced in the United States and all manufacturing processes, including application of a coating, for these materials must occur in the United States. Coating includes all processes that protect or enhance the value of the material to which the coating is applied. This requirement does not preclude a minimal use of foreign steel and iron materials, provided the cost of such materials does not exceed 0.1% of the total contract amount under the Contract or \$2,500.00 whichever is greater.

BABA permits FHWA participation in the Contract only if all “construction materials” as defined in the Act are made in the United States. The Buy America preference applies to the following construction materials

incorporated into infrastructure projects: non-ferrous metals; plastic and polymer-based products (including polyvinylchloride, composite building materials, and polymers used in fiber optic cables); glass (including optic glass); Fiber optic cable; optical fiber; lumber; engineered wood; and drywall. Contractor will be required to use construction materials produced in the United States on this Project. The Contractor shall submit a certification stating that all construction materials are certified to be BABA compliant.

Finally, BABA permits the continuation of FHWA's current general applicability waivers for manufactured products, raw materials, and ferryboat parts, but these waivers are subject to reevaluation, specifically the general applicability waiver for manufactured products.

The Contractor has completed and submitted, or shall complete and submit, to the Cabinet a Buy America/Build America, Buy America Certificate prior to the Cabinet issuing the notice to proceed, in the format below. After submittal, the Contractor is bound by its original certification.

A false certification is a criminal act in violation of 18 U.S.C. § 1001. The Contractor has the burden of proof to establish that it is in compliance.

At the Contractor's request, the Cabinet may, but is not obligated to, seek a waiver of Buy America requirements if grounds for the waiver exist under 23 C.F.R. § 635.410(c) or will comply with the applicable Buy America requirements if a waiver of those requirements is not available or not pursued by the Cabinet.

Please refer to the Federal Highway Administration's Buy America webpage for more information.

[Buy America - Construction Program Guide - Contract Administration - Construction - Federal Highway Administration \(dot.gov\)](#)

October 26, 2023 Letting

SPECIAL NOTE – BUY AMERICA REQUIREMENTS AND BUILD AMERICA, BUY AMERICA (BABA) ACT

10/26/2023

BUY AMERICA / BUILD AMERICA, BUY AMERICA (ACT) MATERIALS CERTIFICATE OF COMPLIANCE

The Contractor hereby certifies that it will comply with all relevant provisions of the Build America, Buy America Act, contained within the Infrastructure Investment and Jobs Act, Pub. L. NO. 117-58, §§ 70901-52, the requirements of 23 U.S.C. § 313, 23 C.F.R. § 635.410 and 2 C.F.R § 184.

Date Submitted: _____

Contractor: _____

Signature: _____

Printed Name: _____

Title: _____

NOTE: THIS CERTIFICATION IS IN ADDITION TO ANY AND ALL REQUIREMENTS OUTLINED IN THE CURRENT EDITION OF THE STANDARD SPECIFICATIONS FOR ROAD AND BRIDGE CONSTRUCTION AND/OR SPECIAL NOTES CONTAINED IN THE PROJECT PROPOSAL.

SPECIAL NOTE FOR RECIPROCAL PREFERENCE

RECIPROCAL PREFERENCE TO BE GIVEN BY PUBLIC AGENCIES TO RESIDENT BIDDERS

By reference, KRS 45A.490 to 45A.494 are incorporated herein and in compliance regarding the bidders residency. Bidders who want to claim resident bidder status should complete the Affidavit for Claiming Resident Bidder Status along with their bid in the electronic bidding software. Submittal of the Affidavit should be done along the bid in Bid Express.

April 30, 2018

ASPHALT MIXTURE

Unless otherwise noted, the Department estimates the rate of application for all asphalt mixtures to be 110 lbs/sy per inch of depth.

INCIDENTAL SURFACING

The Department has included in the quantities of asphalt mixtures established in the proposal estimated quantities required for resurfacing or surfacing mailbox turnouts, farm field entrances, residential and commercial entrances, curve widening, ramp gores and tapers, and road and street approaches, as applicable. Pave these areas to the limits as shown on Standard Drawing RPM-110-06 or as directed by the Engineer. In the event signal detectors are present in the intersecting streets or roads, pave the crossroads to the right of way limit or back of the signal detector, whichever is the farthest back of the mainline. Surface or resurface these areas as directed by the Engineer. The Department will not measure placing and compacting for separate payment but shall be incidental to the Contract unit price for the asphalt mixtures.

OPTION B

Be advised that the Department will control and accept compaction of asphalt mixtures furnished on this project under OPTION B in accordance with Sections 402 and 403.

**SPECIAL NOTE
TRAFFIC CONTROL PLAN
CB06 059 2043 003-004
ROAD CLOSURE**

TRAFFIC CONTROL GENERAL

Except as provided herein, traffic shall be maintained in accordance with the 2 Lane Roadway Plan.

PROJECT PHASING & CONSTRUCTION PROCEDURES

The roadway may be closed while Kenton County Schools are out of session:

May 28th to August 14th, 2024

TRAFFIC CONTROL PLAN

TRAFFIC CONTROL GENERAL

Except as provided herein, maintain and control traffic in accordance with the Standard and Supplemental Specifications and the Standard and Sepia Drawings, current editions. Except for the roadway and traffic control bid items listed, all items of work necessary to maintain and control traffic will be paid at the lump sum bid price to "Maintain and Control Traffic".

Contrary to Section 106.01, furnish new, or used in like new condition, traffic control devices at the beginning of the work and maintain in like new condition until completion of the work.

PROJECT PHASING & CONSTRUCTION PROCEDURES

The Engineer may specify days and hours when lane closures will not be allowed.

Maintain alternating one way traffic during construction. Provide a minimum clear lane width of 10 feet; however, provide for passage of vehicles of up to 16 feet in width. If traffic should be stopped due to construction operations, and a school bus on an official run arrives on the scene, make provisions for the passage of the bus as quickly as possible.

LANE CLOSURES

Do not leave lane closures in place during non-working hours.

SIGNS

Sign posts and splices shall be compliant with NCHRP 350 or MASH. Manufacturer's documentation validating this compliance shall be provided to the Engineer prior to installation. Signs, including any splices, shall be installed according to manufacturer's specifications and installation recommendations. Contrary to section 112.04.02, only long-term signs (signs intended to be continuously in place for more than 3 days) will be measured for payment. Short-term signs (signs intended to be left in place for 3 days or less) will not be measured for payment but will be incidental to Maintain and Control Traffic.

CHANGEABLE MESSAGE SIGNS

If deemed necessary by the Engineer, the Department will furnish, operate, and maintain Changeable Message Signs.

Traffic Control Plan
Page 2 of 3

TEMPORARY ENTRANCES

The Engineer will not require the Contractor to provide continuous access to farms, single family, duplex, or triplex residential properties during working hours; however, provide reasonable egress and ingress to each such property when actual operations are not in progress at that location. Limit the time during which a farm or residential entrance is blocked to the minimum length of time required for actual operations, not extended for the Contractor's convenience, and in no case exceeding six (6) hours. Notify all residents twenty-four hours in advance of any driveway or entrance closings and make any accommodations necessary to meet the access needs of disabled residents.

Except as allowed by the Phasing as specified above, maintain direct access to all side streets and roads, schools, churches, commercial properties and apartments or apartment complexes of four or more units at all times.

The Department will measure asphalt materials required to construct and maintain any temporary entrances which may be necessary to provide temporary access; however, the Department will not measure aggregates, excavation, and/or embankment, but shall be incidental to Maintain and Control Traffic. The Engineer will determine the type of surfacing material, asphalt or aggregate, to be used at each entrance.

BARRICADES

The Department will not measure barricades used in lieu of barrels and cones for channelization or delineation, but shall be incidental to Maintain and Control Traffic according to Section 112.04.01.

The Department will measure barricades used to protect pavement removal areas in individual units. Each. The Department will measure for payment the maximum number of barricades in concurrent use at the same time on a single day on all sections of the contract. The Department will measure individual barricades only once for payment, regardless of how many times they are set, reset, removed, and relocated during the duration of the project. The Department will not measure replacements for damaged barricades the Engineer directs to be replaced due to poor condition or reflectivity. Retain possession of the Barricades upon completion of construction.

PAVEMENT MARKINGS

If there is to be a deviation from the existing striping plan, the Engineer will furnish the Contractor a striping plan prior to placement of the final surface course.

Traffic Control Plan
Page 3 of 3

Install Temporary Striping according to Section 112 with the following exception:

If the Contractor's operations or phasing requires temporary markings that must subsequently be removed from the final surface course, use an approved removable lane tape; however, the Department will not measure removable lane tape for separate payment, but will measure and pay for removable lane tape as temporary striping.

PAVEMENT EDGE DROP-OFFS

Do not allow a pavement edge between opposing directions of traffic or lanes that traffic is expected to cross in a lane change situation with an elevation difference greater than 1½". Place Warning signs (MUTCD W8-11 or W8-9A) in advance of and at 1500' intervals throughout the drop-off area. Dual post the signs on both sides of the traveled way. Wedge all transverse transitions between resurfaced and unresurfaced areas which traffic may cross with asphalt mixture for leveling and wedging. Remove the wedges prior to placement of the final surface course.

Protect pavement edges that traffic is not expected to cross, except accidentally, as follows:

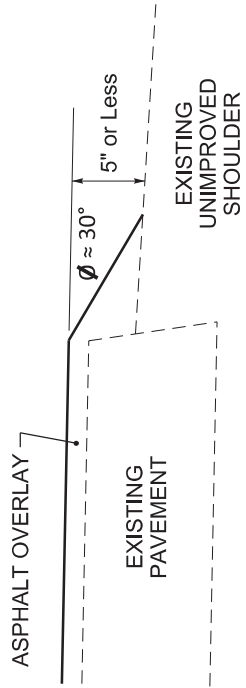
Less than 2" - No protection required.

2" to 4" - Place plastic drums, vertical panels, or barricades every 50 feet. During daylight working hours only, the Engineer will allow the Contractor to use cones in lieu of plastic drums, panels, and barricades. Wedge the drop-off with DGA or asphalt mixture for leveling and wedging with a 1:1 or flatter slope in daylight hours, or 3:1 or flatter slope during nighttime hours, when work is not active in the drop-off area.

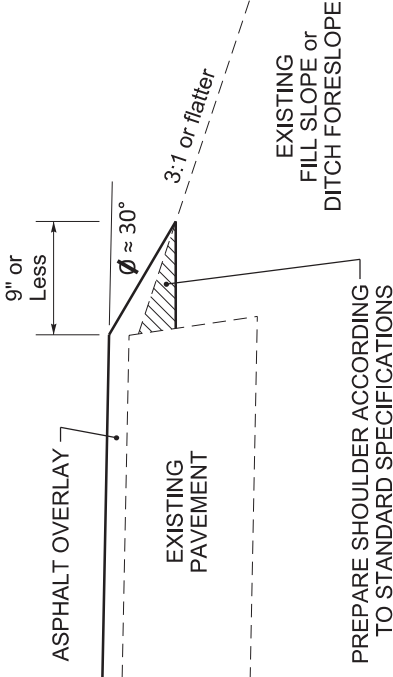
Greater than 4" - Protect drop-offs greater than 4 inches within 10 feet of traffic by placing drums, vertical panels, or barricades every 25 feet. The Engineer will not allow the use of cones in lieu of drums, vertical panels, or barricades for drop-offs greater than 4". Place Type III Barricades directly in front of the drop-off facing on coming traffic in both directions of travel. Provide warning signs as shown on the Standard Drawings or as directed by the Engineer

Pedestrians & Bicycles - Protect pedestrian and bicycle traffic as directed by the engineer.

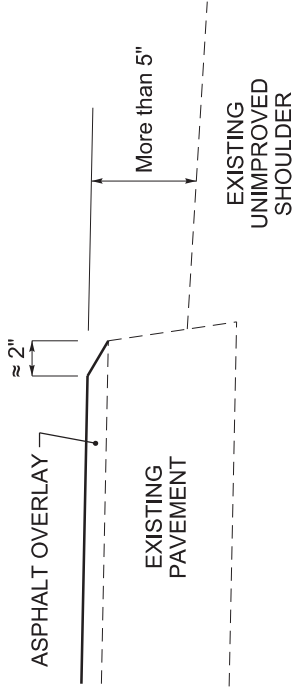
DURABLE PAVEMENT EDGE DETAIL
 (Resurfacing adjacent to low shoulder
 with dropoff of 5 inches or less)



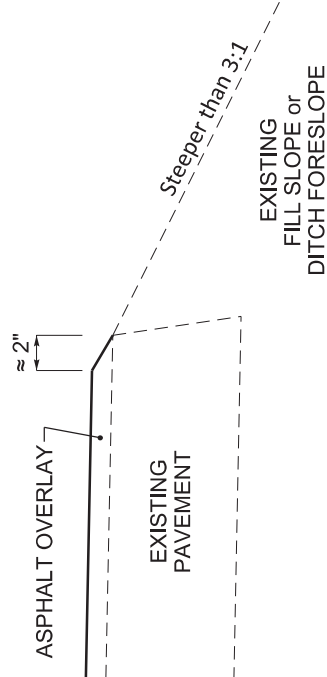
DURABLE PAVEMENT EDGE DETAIL
 (Resurfacing adjacent to fill slope or
 ditch foreslope that is 3:1 or less)



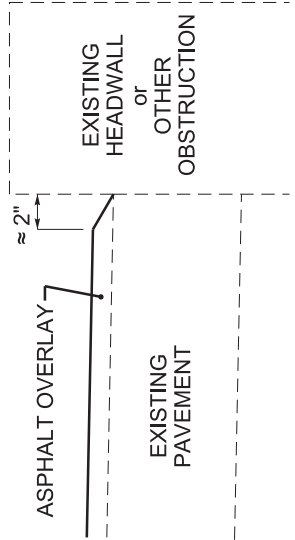
DURABLE PAVEMENT EDGE DETAIL
 (Resurfacing adjacent to low shoulder
 with dropoff of more than 5 inches)



DURABLE PAVEMENT EDGE DETAIL
 (Resurfacing adjacent to fill slope or
 ditch foreslope that is steeper than 3:1)



DURABLE PAVEMENT EDGE DETAIL
 (Resurfacing adjacent to an obstruction,
 such as an existing headwall)

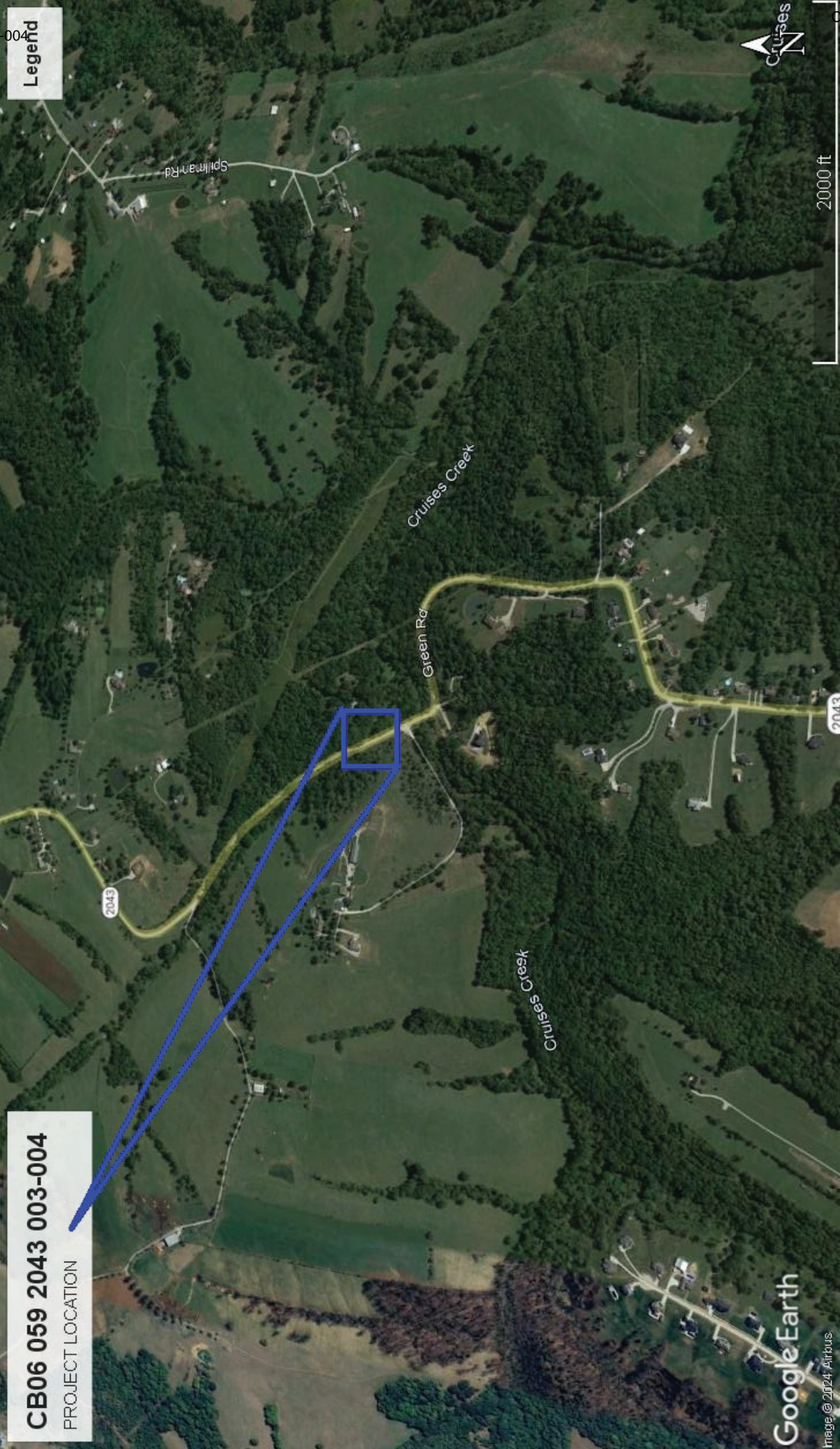


NOTES

1. DETAILS DO NOT APPLY TO OVERLAYS LESS THAN 1 INCH THICK.
2. THE DURABLE PAVEMENT EDGE DEVICE MAY BE DISENGAGED AT DRIVEWAYS, SIDE STREETS, HIGH SHOULDERS, AND OTHER LOCATIONS NOT FEASIBLE TO CONSTRUCT, AS APPROVED BY THE ENGINEER.

DRAWING NOT TO SCALE

DURABLE PAVEMENT EDGE
 DETAILS



Legend

CB06 059 2043 003-004
PROJECT LOCATION

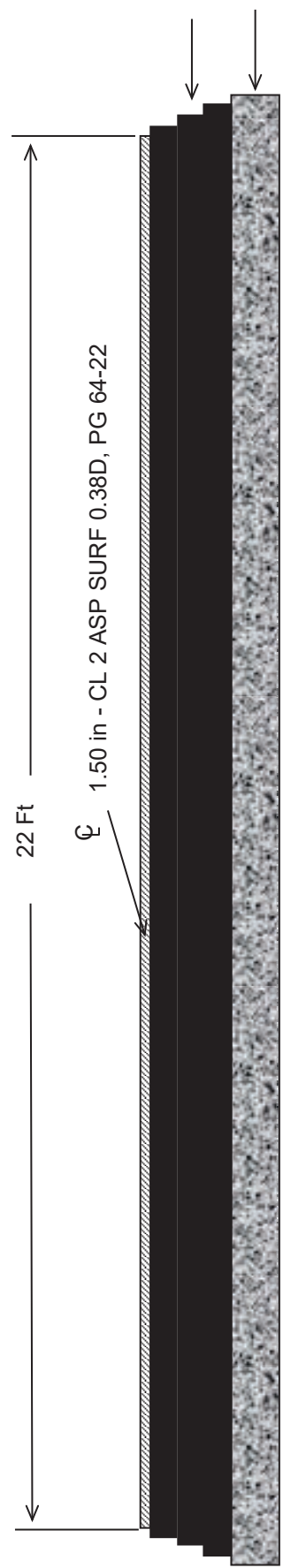


2000 ft

Google Earth

Image © 2024 Airbus

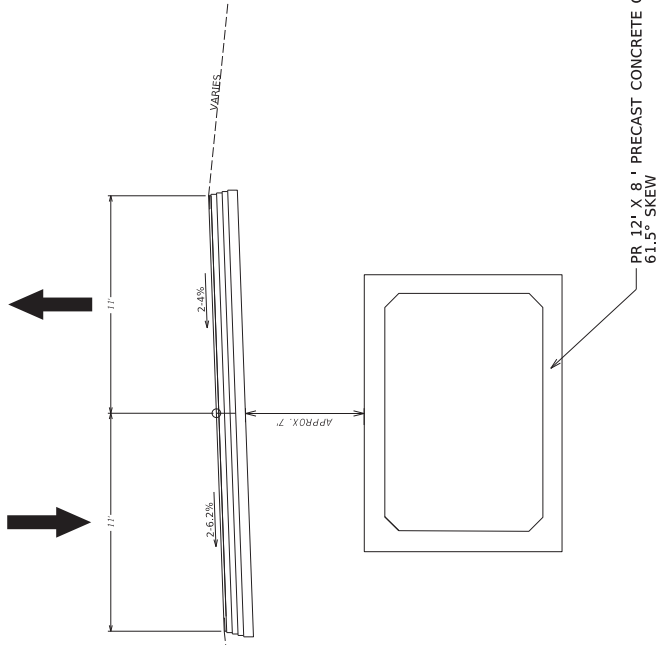
**KENTON COUNTY
CB06 059 2043 003-004
TYPICAL SECTION**



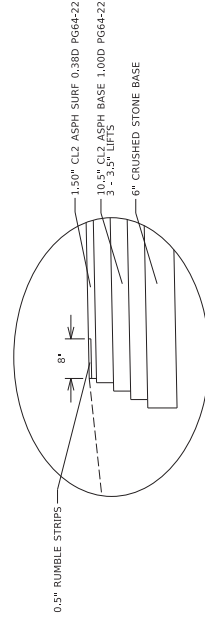
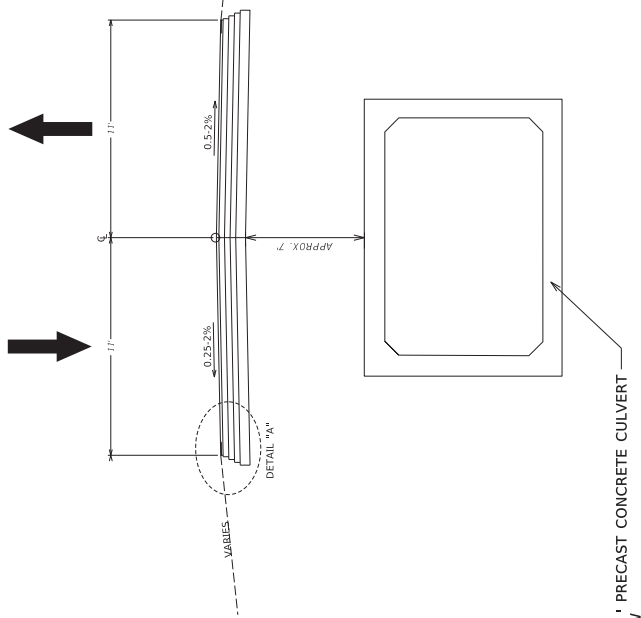
***Where Existing Site Conditions Permit**

TSPAVESURFACEshd
Typical Section

SUPERELEVATED ROADWAY TYPICAL SECTION



NORMAL ROADWAY TYPICAL SECTION



DETAIL "A"

 COMMONWEALTH OF KENTUCKY DEPARTMENT OF HIGHWAYS	USER: GJANK	DATE PLOTTED: 9/7/2025 7:58:02 PM	FILE NAME: I:\21114 - SW DESIGN\2114A1 - KY 2043 KENTON COPHASE\ELECTRONIC ENGINEERING DATA LEED\SHEET CONTAINERS\ROADWAY.DGN	KY 2043 DRAINAGE IMPROVEMENTS: ROADWAY TYPICAL SECTIONS	NOT TO SCALE	COUNTY OF KENTON
				ITEM NO. N/A	SHEET NO. R2	

PAVING SUMMARY

ITEM CODE	ITEM	UNIT	KY 2043	TEMPORARY DRIVEWAY	PROJECT TOTAL
00301	CL2 ASPH SURF 0.380 PG84-22	TON	53	385	53
00312	CL2 ASPH BASE 1.000 PG84-22	TON	244	21	265
00003	CRUSHED STONE BASE				

PAVING AREAS

ITEM	TEMPORARY DRIVEWAY		PROJECT TOTAL
	KY 2043	TEMPORARY DRIVEWAY	
ASPHALT PAVEMENT (FULL DEPTH)			
1.5" CL2 ASPH SURF 0.380 PG84-22	638		638
3.5" CL2 ASPH BASE 1.000 PG84-22	647		647
3.5" CL2 ASPH BASE 1.000 PG84-22	667		667
3.5" CL2 ASPH BASE 1.000 PG84-22	688		688
6" CRUSHED STONE BASE	708	60	768

PAVEMENT SUMMARY NOTES

ALL ASPHALT MIXTURES SHALL BE ESTIMATED AT 110 LBS. PER SQ. YD. PER INCH OF DEPTH, UNLESS NOTED OTHERWISE.
CRUSHED STONE BASE SHALL BE ESTIMATED AT 115 LBS. PER SQ. YD. PER INCH OF DEPTH, UNLESS NOTED OTHERWISE.

GENERAL SUMMARY

ITEM	DESCRIPTION	UNIT	KY 2043	PROJECT TOTAL
02562	TEMPORARY SIGNS	SOFT	73	73
00971	PORTABLE MESSAGE SIGN	EA	2	2
00974	BARRICADE-TYPE III	EA	6	6
00950	MAINTAIN AND CONTROL TRAFFIC	LS	1	1
02726	STAKES	LS	1	1
02705	REMOVE FENCE	LF	186	186
02705	FENCE-TEMP	LF	320	320
02545	CLEANING AND GRUBBING	LS	1	1
24275C	TEMPORARY CONCRETE CONSTRUCTION	②	LS	1
02320	MANAGEMENT IN PLACE	②	LS	1
20135D	SAV CUT	②	LS	1
00002	STRUCTURE EXCAVABLE ROCK	CUYD	19	19
00003	FOUNDATION PREPARATION	LS	1	1
20065B 0	TEMPORARY PIPE	LF	35	35
Z00001F	PIPE REINFORCEMENT MAT 1	①	SO	50
02701	TEMP SILT FENCE	LF	276	276
02703	SILT TRAP TYPE A	①	EACH	1
02704	SILT TRAP TYPE B	①	EACH	1
02705	SILT TRAP TYPE C	①	EACH	1
02706	CLEAN SILT TRAP TYPE A	①	EACH	1
02707	CLEAN SILT TRAP TYPE B	①	EACH	1
02708	CLEAN SILT TRAP TYPE C	①	SO	1
00952	TOP MULCH	①	SO	484
00953	TOP SEEDING AND PROTECTION	①	SO	360
00955	SEEDING AND PROTECTION	①	SO	1210
00956	EROSION CONTROL BLANKET	①	SO	760
00957	EDGELINE RUMBLE STRIPS	LF	600	600
00514	PAVE STRIPING-TEMP-PARK-IN	LF	600	600
02263	FENCE-WOODEN WIRE TYPE 2	LF	188	188
02589	DEMOLITION	LS	1	1

GENERAL SUMMARY NOTES

- EROSION CONTROL ITEMS
- AT INLET. BYPASS PUMPING INCIDENTAL TO THIS ITEM.
- CONTRACTOR SHALL CONTACT AND COORDINATE WITH ANY OWNERS ALONG EXISTING FENCE THAT HAS LIVESTOCK.

EARTHWORK TOTALS
 EMBANKMENT:
 9296 CYD TOTAL EMB REQ'D
 EXCAVATION
 8741 CYD TOTAL EXC AVAILABLE
 ESTIMATE FOR EARTHWORK CALCULATIONS IS FOR DESIGN ONLY. THE CONTRACTOR IS ADVISED THAT THE EARTHWORK CALCULATIONS SHOWN ARE FOR INFORMATION ONLY.

GENERAL NOTES

SPECIFICATIONS

REFERENCES TO THE SPECIFICATIONS ARE TO THE CURRENT EDITION OF THE KENTUCKY DEPARTMENT OF HIGHWAYS STANDARD SPECIFICATIONS FOR ROAD AND BRIDGE CONSTRUCTION INCLUDING ANY CURRENT SUPPLEMENTAL SPECIFICATIONS. ALL REFERENCES TO THE AASHTO SPECIFICATIONS ARE TO THE AASHTO LRFD BRIDGE DESIGN SPECIFICATIONS, 9TH EDITION WITH INTERIMS.

BENCH MARKS

DO NOT DISTURB N.G.S. (U.S.G.S.) BENCH MARKS IN ANY MANNER UNLESS DIRECTED BY THE ENGINEER.

STANDARD DRAWINGS

STANDARD DRAWINGS ARE NOT ATTACHED TO THESE PLANS. A STANDARD DRAWING BOOK AND THE HEADWALL SUPPLEMENT BOOK MAY BE OBTAINED FROM THE POLICY SUPPORT BRANCH OF THE DEPARTMENT OF ADMINISTRATIVE SERVICES IN FRANKFORT, KENTUCKY AT (502) 564-3670.

ASPHALT PAVEMENT RIDE QUALITY

PAVEMENT RIDEABILITY REQUIREMENTS, IN ACCORDANCE WITH SECTION 410 OF THE STANDARD SPECIFICATIONS, SHALL APPLY ON THIS PROJECT.

COMPACTION OF ASPHALT MIXTURES

WILL ACCEPT THE COMPACTION OF ASPHALT MIXTURES FURNISHED ON THIS PROJECT BY OPTION B ACCORDING TO SUBSECTIONS 402.03.02 AND 403.03.10 OF THE STANDARD SPECIFICATIONS.

BEFORE YOU DIG

CALL 1-800-732-6597 TOLL FREE A MINIMUM OF TWO AND NO MORE THAN THREE BUSINESS DAYS BEFORE THE START OF ANY EXCAVATION. ADVISE THE LOCATION OF EXISTING UNDERGROUND UTILITIES WHICH SUBSCRIBE TO THE BEFORE-DIG (BUD) SERVICE. COORDINATE EXCAVATION WITH THE BUD SERVICE. PROVIDE THE BUD SERVICE WITH THE PROJECT NUMBER TO BID. SHOW ALL UTILITIES AND A CONTACT PERSON FOR EACH COMPANY ON SHEET NO. 3 OF THE PLANS.

COMPLETION OF THE STRUCTURE

THE CONTRACTOR IS REQUIRED TO COMPLETE THE STRUCTURE IN ACCORDANCE WITH THE PLANS AND SPECIFICATIONS. MATERIAL, LABOR, OR CONSTRUCTION OPERATIONS NOT OTHERWISE SPECIFIED, ARE TO BE INCLUDED IN THE BID ITEM MOST APPROPRIATE TO THE WORK INVOLVED.

PRECAST REINFORCED CONCRETE BOX SECTIONS

CONTRARY TO STANDARD DRAWING NO. R01-100, ASSOCIATE HS 25 LOADING WITH TABLE 1-4. MODIFY THE REQUIRED STEEL TO REFLECT THE GREATER LIVE LOADING. SEE THE APPENDICES IN ASTM C789 AND ASTM C850. THE CALCULATIONS FOR THIS GREATER LIVE LOAD MAY CHANGE THE TABLE NO. DEPICTED ON THE DESIGN PLANS.

DEPARTMENT OF THE ARMY PERMIT AND WATER QUALITY CERTIFICATION APPROVALS

A DEPARTMENT OF THE ARMY (DA) PERMIT, WHICH MAY REQUIRE APPROVAL OF A STATE WATER QUALITY CERTIFICATION FROM THE KENTUCKY DIVISION OF WATER, REGULATES THIS PROJECT AT ONE OR MORE LOCATIONS. PERFORM ALL APPLICABLE WORK IN COMPLIANCE WITH THE CONDITIONS STATED IN THE DA PERMIT AND THE APPROVED WATER QUALITY CERTIFICATION. POST A COPY OF THE DA PERMIT AND THE WATER QUALITY CERTIFICATION IN A CONSPICUOUS PLACE AT THE PROJECT SITE. IF A DA PERMIT OR WATER QUALITY CERTIFICATION APPROVAL IS PENDING, DO NOT WORK IN OR DISTURB THE DESIGNATED AREA(S) UNTIL OBTAINING THE APPROPRIATE APPROVAL(S). REFER TO NOTICE(S) CONTAINED IN THE CONTRACT BID PROPOSAL FOR DESIGNATED AREA(S) WHERE WORK IS PROHIBITED BY THE ABSENCE OF APPROVAL.

BOX CULVERT HEADWALLS

INLET AND OUTLET BOX CULVERT HEADWALLS/WINGWALLS ARE NON-STANDARD DIMENSIONS. REFERENCES TO THE STANDARD DRAWINGS ARE PROVIDED FOR INFORMATIONAL PURPOSES. THE CULVERT HEADWALLS/WINGWALLS SHOULD MATCH THE GEOMETRY SHOWN IN THE PLANS. THE GEOTECHNICAL DESIGN PARAMETERS AND REQUIREMENTS ARE PROVIDED IN THE GEOTECHNICAL REPORT S-084-2022 FOR THIS STRUCTURE. THE DESIGN SHALL BE PERFORMED AND STAMPED BY A LICENSED KENTUCKY PROFESSIONAL ENGINEER. UNIT PRICE BID FOR EACH BOX CULVERT HEADWALL SHALL INCLUDE DESIGN, LABOR, MATERIAL AND ANY INCIDENTALS NECESSARY TO CONSTRUCT THE HEADWALLS/WINGWALLS IN ACCORDANCE WITH THE NON-STANDARD DESIGN, PLANS, AND SPECIFICATIONS.

THE CONTROL OF ACCESS ON THIS PROJECT SHALL BE BY PERMIT.



COMMONWEALTH OF KENTUCKY
DEPARTMENT OF HIGHWAYS

KY 2043 DRAINAGE IMPROVEMENTS: GENERAL NOTES

DATE PLOTTED: 9/20/25 7:08:02 PM

FILE NAME: I:\21114 - SW DESIGN\2114\A1 - KY 2043 KENTON COPHASE2\ELECTRONIC ENGINEERING DATA\EDDSHEET\CONTAINERS\KY_2043_B_SUMMARY.DWG

ITEM NO.	N/A	COUNTY OF KENTON
SHEET NO.	R/C	

Utility Owners

NORTHERN KENTUCKY WATERSERVICE DISTRICT
 2835 CRESCENT SPRINGS RD
 ERLANGER, KY 41018
 CONTACT: KYLE RYAN
 EMAIL: KRYAN@NKYWATER.ORG

OWEN ELECTRIC COOPERATIVE
 8100 EWING BLVD SUITE 220
 FLORENCE, KY 41042
 (800) 372-7612

DUKE ENERGY
 1262 COX AVE
 ERLANGER, KY 41018
 (800) 544-6900
 CONTACT: JAMES FREY
 EMAIL: JAMES.FREY@DUKE-ENERGY.COM

Corporate Limits	ADA Ramp	Headstone	Sign group (4)
County Line	Anchor Pole	Interstate Shield	Station Stamp
Easement	Benchmark	Iron Pin	Storm Manhole
Fence COA	Bike Lane Symbol	Light Pole	Stub Power
Mineral Parcel	+ BOLLARD	Low Wire	Stub Telephone
Property Line	+ MAG	Mag Nail	Survey Cross Notch
Right of Way Line	Centerline	Mailbox	Survey Curb Notch
All Overhead	Centerline Stationing	Manhole	Survey Nail
Utility Lines	Control Monument	Mile Marker Post	Survey Spike
Electric Line	Control Point	Mineral Parcel	Survey Stone Marker
Underground	Core Hole	Monitoring Well	Swamp
Underground Duct	Crash Cushion TY 6 D	Parking Meter	Telephone Booth
Sanitary Force Main	Crash Cushion TY 6 A	Pedestrian Signal	Telephone Junction Box
Telephone Underground Cable	Crash Cushion TY 9A	Risks/Pipes	Telephone Line Overhead
Telephone Underground Duct	Crash Cushion TY 9	PK Nail	Telephone Manhole
Fiber Optic Cable	Cross Notch	Point (Misc)	Telephone Pedestal
Television Line Underground	Curb Box Inlet	Pole	Telephone Pole
Water Main	Curb Notch	Pole (Light)	Temporary Benchmark
Storm Sewer	Combination Pole	Post	Traffic Light
Cable Guardrail	Delineator Post	Power Pole	Traffic Signal Control Box
Ditch	Drop Box	Quarry	Traffic Signal Junction Box
Edge of Water	Existing Spring	Random (Ground Shot)	Traffic Signal Pole
Fence Hedge	Electric Manhole	Railroad Mile Marker	Traverse Point
Fence	Electric Meter	Railroad Spike	Tree
Flow Line/Thalweg/Int. Stream or Ditch	Electric Pedestal	Right of Way Marker	TV Junction Box
Guardrail	Electric Pole	Right of Way Monument	Utility Pole
Railroad	Electric Junction Box	RR Traffic Signal Pole	Underground Storage Tank
Shrub Line	Fire Hydrant	RW Parcel	Utility Test Hole
Sink Hole	Flag Pole	Sanitary Cleanout	Water Line Marker
Tree Line	Force Main Sewer Valve	Sanitary Manhole	Water Meter
Wall (WSM or DSM)	Fuel Tank Inlet	Satellite Dish	Water Spigot
Blue Line Stream	Fuel Tank Vent	Septic Tank Cleanout	Water Valve
Regulated Floodway	Gasline Marker	Service Pole	Water Well
ROZ Line	Gas Meter	Sewer Air Release Valve	Yard Light
	Gas Monitoring Well	Shrub	Yard Sprinkler
	Gas Valve	Sign	Water Sprinkler
	Gas Vent	Sign Post (Single)	Water Valve
	Gas Well	Sign Post (2 posts)	Water Well
	Guldwires & Anchors		Yard Sprinkler
			Water Valve

COMMONWEALTH OF KENTUCKY
 DEPARTMENT OF HIGHWAYS

DATE PLOTTED: 9/20/25 2:58:02 PM

FILE NAME: I132114 - SW DESIGN 2114141 - KY 2043 DRAINAGE IMPROVEMENTS_2043_E_PLANDGN

USER: GJANK

ITEM NO. N/A
 COUNTY OF KENTON
 SHEET NO. P3

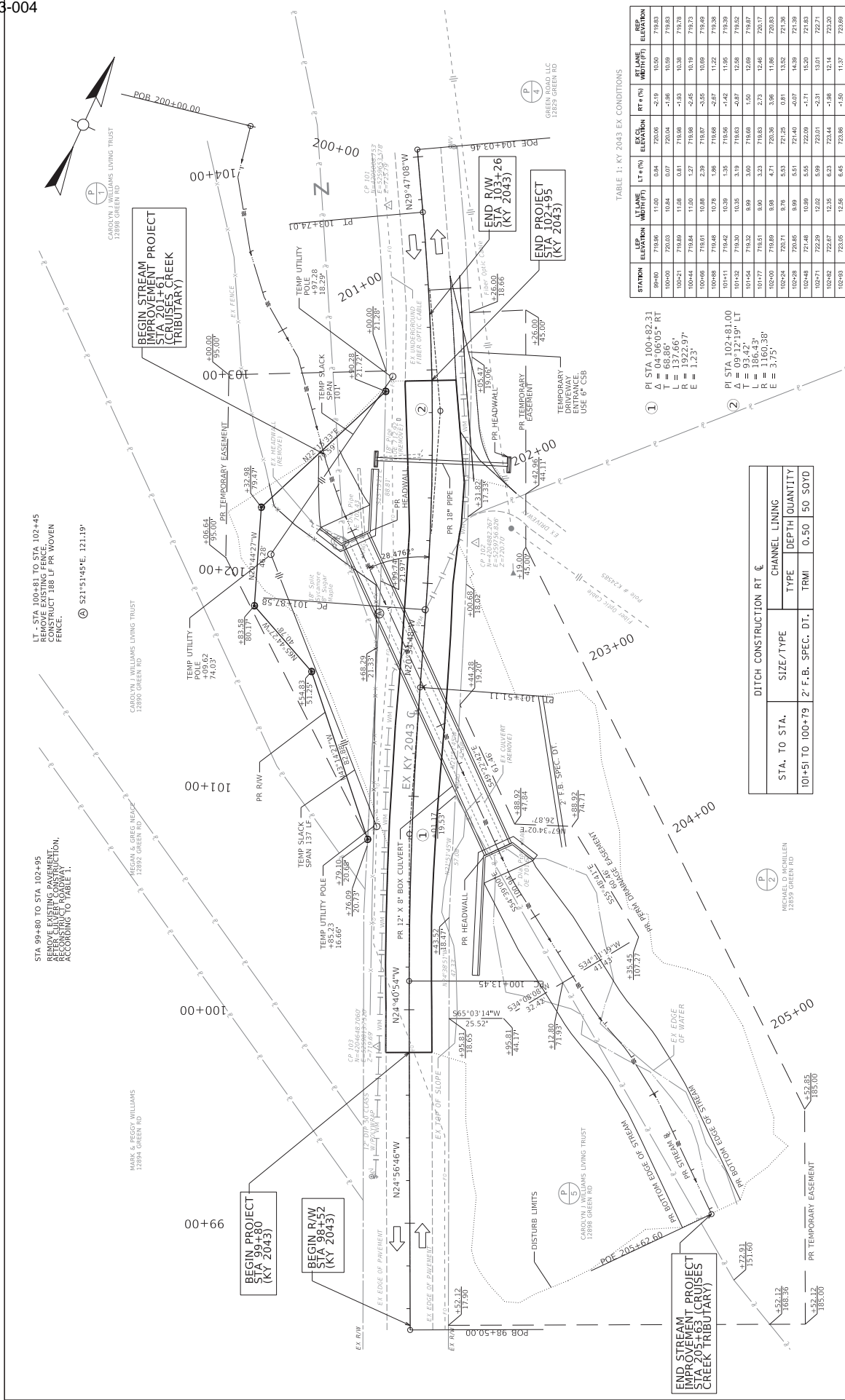


TABLE 1: KY 2043 EX CONDITIONS

STATION	ELEVATION	UTL. (ft)	LT. (ft)	EXCL. ELEVATION	RT. (ft)	REP. ELEVATION
98+00	719.86	11.00	0.84	720.05	-2.19	719.83
100+00	720.03	10.64	0.07	720.04	-1.06	719.97
100+21	719.89	11.08	0.81	719.90	-1.03	719.78
100+44	719.84	11.00	1.27	719.90	-2.45	719.73
100+66	718.61	10.58	2.39	718.67	-3.55	718.49
100+88	719.46	10.78	1.86	718.68	-2.87	718.38
101+11	719.42	10.35	1.35	718.56	-1.42	718.39
101+32	719.30	10.35	3.19	718.63	-0.97	718.32
101+54	719.52	8.99	3.60	718.68	1.50	718.87
101+77	718.51	8.99	3.23	718.63	2.73	720.17
102+00	719.89	8.98	4.71	720.36	3.91	718.96
102+24	720.71	9.76	5.51	721.25	0.01	721.38
102+48	721.48	10.99	5.51	722.09	-1.71	721.63
102+71	722.29	12.02	5.99	723.01	-2.51	722.71
102+94	722.07	12.35	6.23	723.44	-1.08	723.20
103+00	723.05	12.56	6.45	723.96	-1.00	723.09

PI STA 100+82.31
 $\Delta = 04^{\circ}06'05''$ RT
 $T = 63.86'$
 $R = 1922.97'$
 $E = 1.23'$

PI STA 102+81.00
 $\Delta = 09^{\circ}12'19''$ LT
 $T = 186.43'$
 $R = 1160.38'$
 $E = 3.75'$

DITCH CONSTRUCTION RT ϵ

STA. TO STA.	SIZE/TYPE	CHANNEL LINING	DEPTH	QUANTITY
101+51 TO 100+79	2' F.B. SPEC. DT.	TRMI	0.50	150 SOYD



HORIZONTAL SCALE: 1" = 20'

KY 2043 DRAINAGE IMPROVEMENTS: PLAN SHEET

COMMONWEALTH OF KENTUCKY
DEPARTMENT OF HIGHWAYS

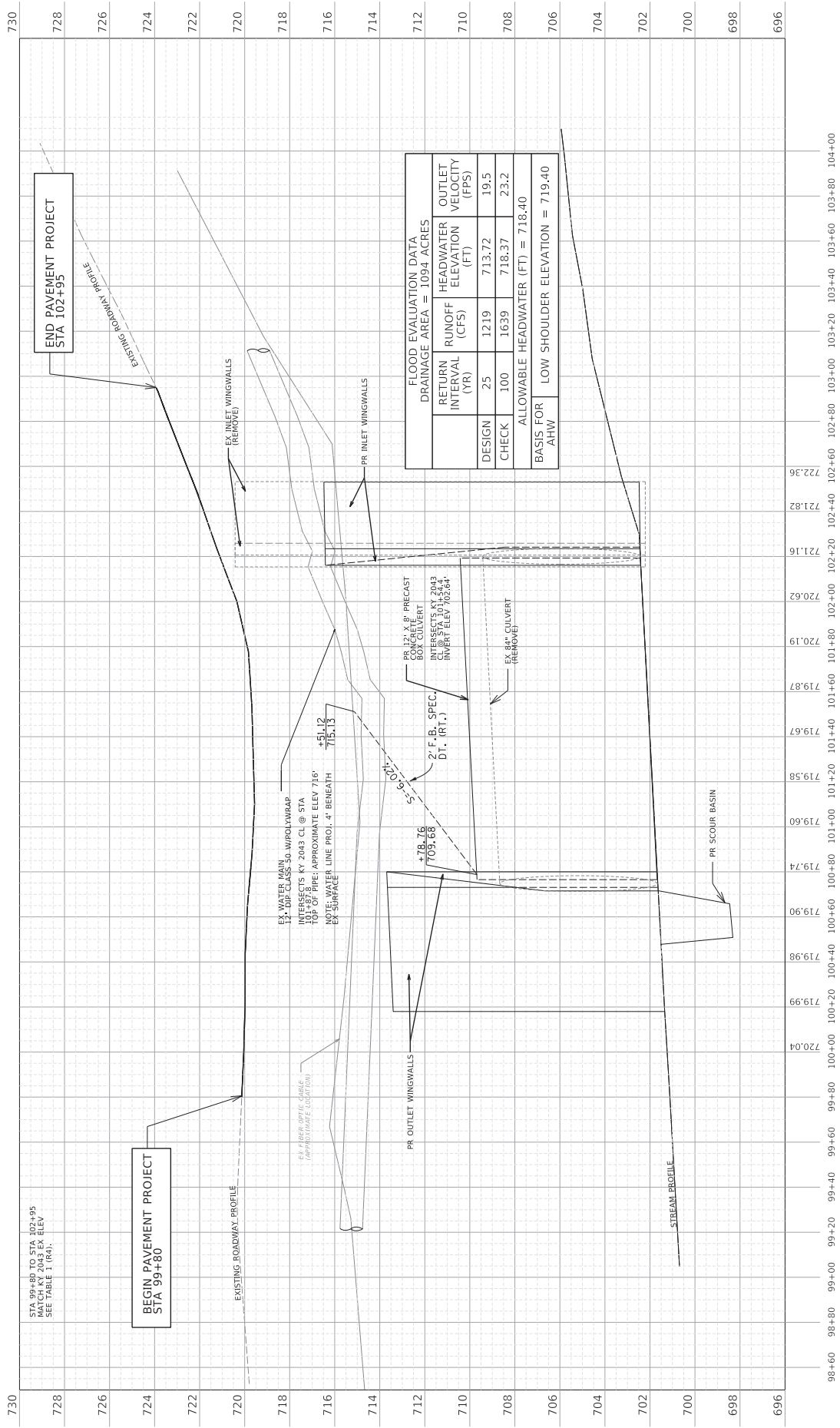
DATE PLOTTED: 9/20/20 2:58:02 PM

FILE NAME: 11231114 - SW DESIGN 2114141 - KY 2043 KENTON COPHASE 2 ELECTRONIC ENGINEERING DATA LEEDSHEET CONTAINERS/ROADWAY.DGN

USER: GJKS

ITEM NO. N/A
SHEET NO. 84

COUNTY OF KENTON



ITEM NO. N/A COUNTY OF KENTON
 SHEET NO. P5

STA 98+50 TO STA 104+00

FILE NAME: 1131114 - SW DESIGN 2134343 - KY 2043 KENTON COPPHASE2/ELECTRONIC ENGINEERING DATA (EEDSHEET CONTAINERS\KY_2043_R_DRAIN.DGN)

HORIZONTAL SCALE: 1"=20'
 VERTICAL SCALE: 1"=2'

DATE PLOTTED: 9/20/05 2:02:02 PM

USER: GJAKS

KY 2043 DRAINAGE IMPROVEMENTS: ROADWAY PROFILE

COMMONWEALTH OF KENTUCKY
 DEPARTMENT OF HIGHWAYS

Copyright © 2005 by the Commonwealth of Kentucky, Department of Highways

POINT	DESCRIPTION	STATE PLANE COORDINATES			STATION
		NORTH (Y)	EAST (X)	ELEV. (Z)	
POB	KY 2043 CL	4204652.27	5259828.38	720.06	99+80.0
PC	KY 2043 CL	4204682.63	5259814.33	720.00	100+13.5
PI	KY 2043 CL	4204745.20	5259785.57	719.72	100+82.3
PT	KY 2043 CL	4204809.66	5259761.37	719.67	101+51.1
PC	KY 2043 CL	4204843.80	5259748.55	720.06	101+87.6
PI	KY 2043 CL	4204931.26	5259715.71	723.39	102+81.0
POE	KY 2043 CL	4204942.48	5259706.19	723.93	102+95.0
PT	KY 2043 CL	4204809.66	5259669.31	723.93	103+74.0

POINT	DESCRIPTION	STATE PLANE COORDINATES			STATION	OFFSET
		NORTH (Y)	EAST (X)	ELEV. (Z)		
CP 101	5/8" Rebar & Cap	4205008.75	5259653.58	725.79	99+82.94	14.77' LT
CP 102	5/8" Rebar & Cap	4204882.27	5259756.83	720.70	102+20.07	21.73' RT
CP 103	5/8" Rebar & Cap	4204648.71	5259813.75	719.69	103+78.72	15.43' LT

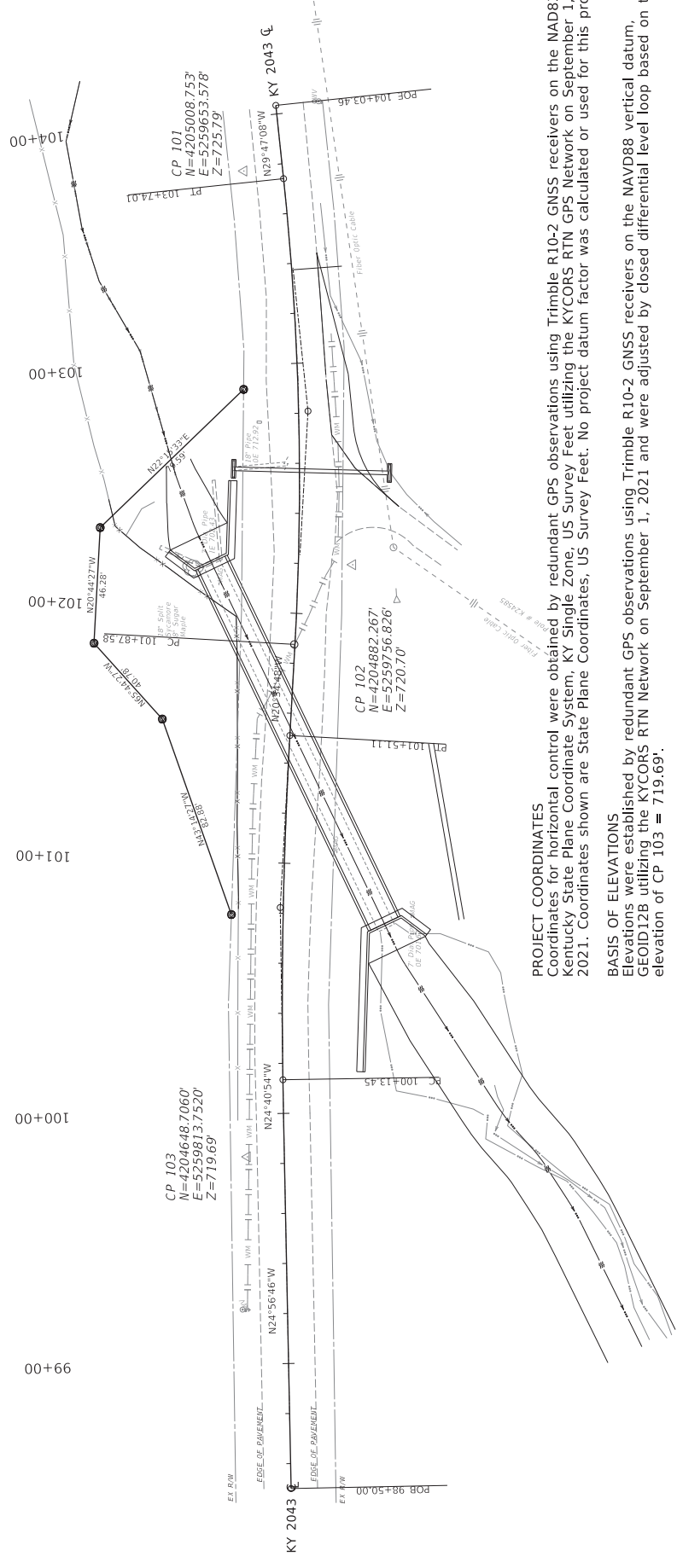
This survey control adjustment passed the Chi-Square test at the 95% significance level.

STATION	STATE PLANE COORDINATES			OFFSET
	NORTHING (Y)	EASTING (X)	OFFSET	
100+79.10	4204734.75	5259768.86	20.73'	
101+54.83	4204795.13	5259712.08	51.25'	
101+83.58	4204811.88	5259674.90	80.17'	
102+32.98	4204855.16	5259658.51	79.47'	
102+90.28	4204928.82	5259688.66	21.72'	

COORDINATE CONTROL POINTS

COORDINATE CONTROL POINTS

RIGHT OF WAY MONUMENT POINTS



PROJECT COORDINATES

Coordinates for horizontal control were obtained by redundant GPS observations using Trimble R10-2 GNSS receivers on the NAD83 Kentucky State Plane Coordinate System, KY Single Zone, US Survey Feet utilizing the KYCORS RTN GPS Network on September 1, 2021. Coordinates shown are State Plane Coordinates, US Survey Feet. No project datum factor was calculated or used for this project.

BASIS OF ELEVATIONS

Elevations were established by redundant GPS observations using Trimble R10-2 GNSS receivers on the NAVD88 vertical datum, GEOID12B utilizing the KYCORS RTN Network on September 1, 2021 and were adjusted by closed differential level loop based on the elevation of CP 103 = 719.69'.

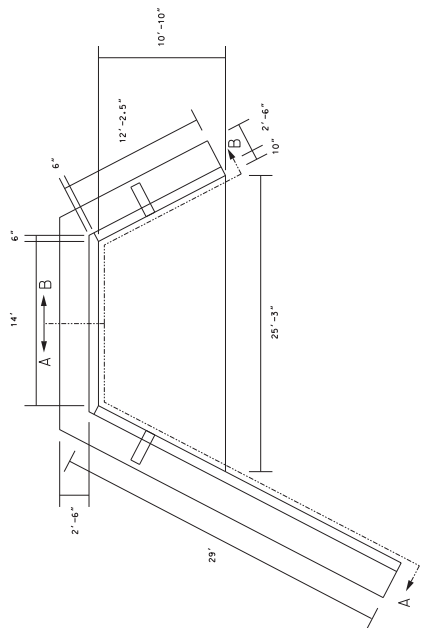
COMMONWEALTH OF KENTUCKY
 DEPARTMENT OF HIGHWAYS

KY 2043 DRAINAGE IMPROVEMENTS: COORDINATE CONTROL SHEET

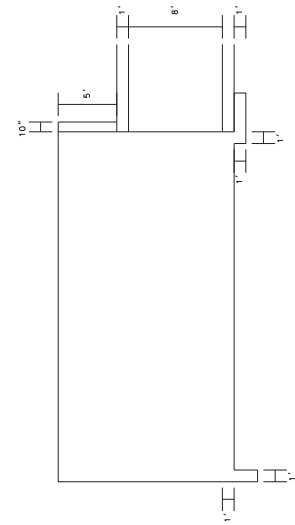
HORIZONTAL SCALE
 1" = 20'

ITEM NO. N/A
 COUNTY OF KENTON
 SHEET NO. R8

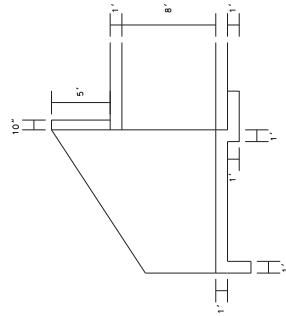
DATE PLOTTED: 9/22/2025 2:08:02 PM
 FILE NAME: I:\31114 - SW DESIGN\2114311 - KY 2043 KENTON COPRAISE\CONTRACT PLAN SET\CONTRM\DWG_21043_E_PLAN.DWG
 USER: GRANK



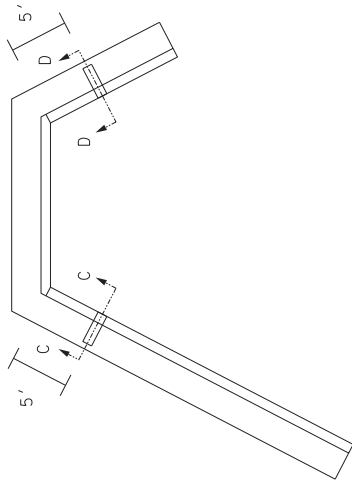
PLAN VIEW



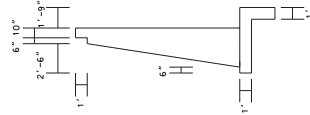
SECTION A-A



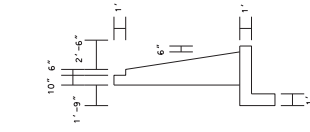
SECTION B-B



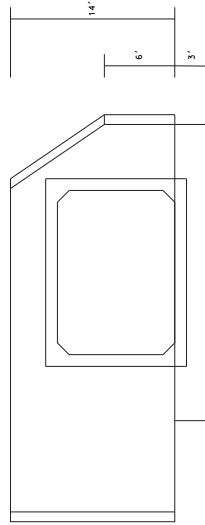
PLAN VIEW
 WITHOUT PAVING



SECTION C-C

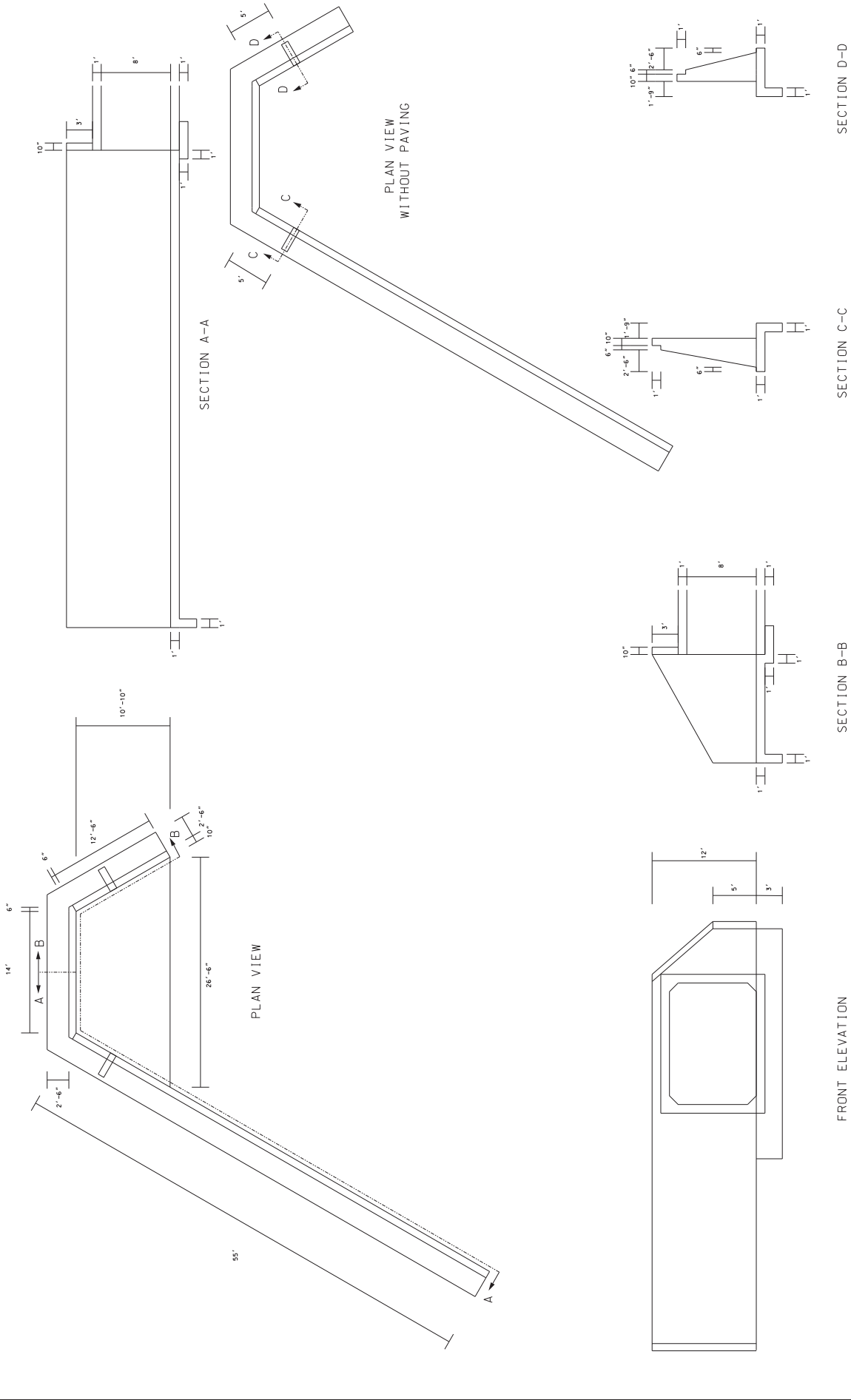


SECTION D-D

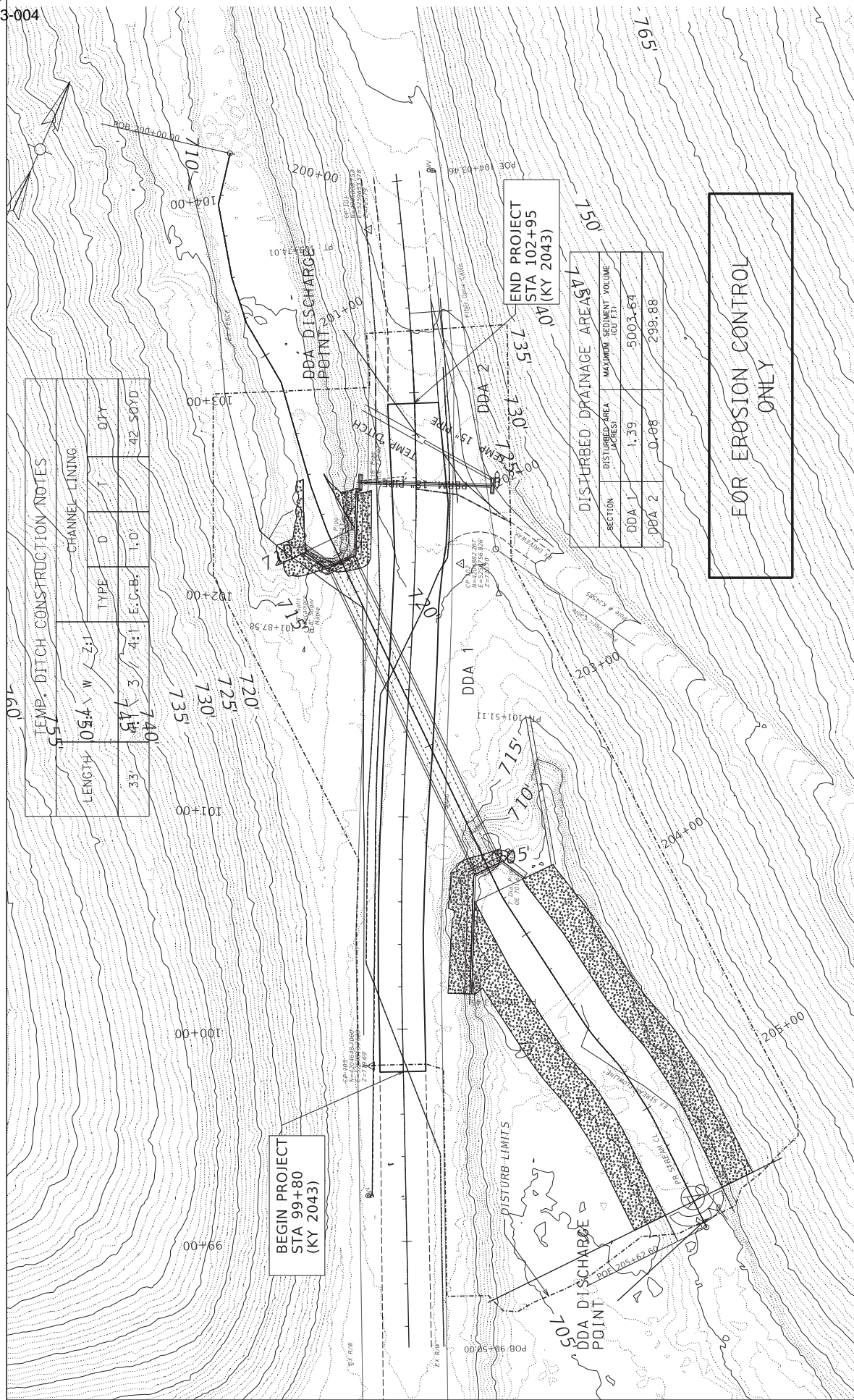


FRONT ELEVATION

	USER: GJANK	DATE PLOTTED: 9/7/2005 7:08:02 PM	FILE NAME: I:\21114 - SW DESIGN\2114\041 - KY 2043 KENTON COPPHASE\CONTRACT PLAN SET\CONTRACT PLAN SET\DRAWING_2104_3_A\INLET.DWG	HORIZONTAL SCALE SCALE: 1" = 5'		INLET HEADWALL	COUNTY OF KENTON
	OPERATIONS Designer: V10.16.2.267	KY 2043 DRAINAGE IMPROVEMENTS: HEADWALL DETAIL SHEET	HORIZONTAL SCALE SCALE: 1" = 5'	ITEM NO.: N/A SHEET NO.: P9	COUNTY OF KENTON		



	USER: GJANK	DATE PLOTTED: 9/17/2025 7:08:02 PM	FILE NAME: I:\21114 - SW DESIGN\2114\41 - KY 2043 KENTON COPPHASE\CONTRACT PLAN SET\CONTRACT PLAN SET\JUNKLAW.DGN	HORIZONTAL SCALE SCALE: 1" = 5'		OUTLET HEADWALL	COUNTY OF KENTON
	OPERATIONS Designer #10162-267	KY 2043 DRAINAGE IMPROVEMENTS: HEADWALL DETAIL SHEET	HORIZONTAL SCALE SCALE: 1" = 5'	SECTION B-B	SECTION C-C	SECTION D-D	ITEM NO.: N/A SHEET NO.: RLD



TEMP. DITCH CONSTRUCTION NOTES

LENGTH	W	Z	TYPE	CHANNEL LINING	
				D	T
33'	5.4'	1	E.G.-B.	1.0'	0.75'
74.0'	3	4:1			42.50YD

DISTURBED DRAINAGE AREA

SECTION	DISTURBED AREA (ACRES)	MAXIMUM SEDIMENT VOLUME (CU FT)
DDA 1	1.39	5003.64
DDA 2	0.08	299.88

FOR EROSION CONTROL ONLY

**BEGIN PROJECT
 STA 99+80
 (KY 2043)**

**END PROJECT
 STA 102+95
 (KY 2043)**

COMMONWEALTH OF KENTUCKY
 DEPARTMENT OF HIGHWAYS

OPERATIONS Designer: 410.162.267

USER: GARDN

FILE NAME: 11231114 - SW DESIGN 2114141 - KY 2043 KENTON COPHASE CONTRACT PLAN SEPCORROWAYWAY_2141_2_PLAN.DGN

HORIZONTAL SCALE
 SCALE: 1" = 20'

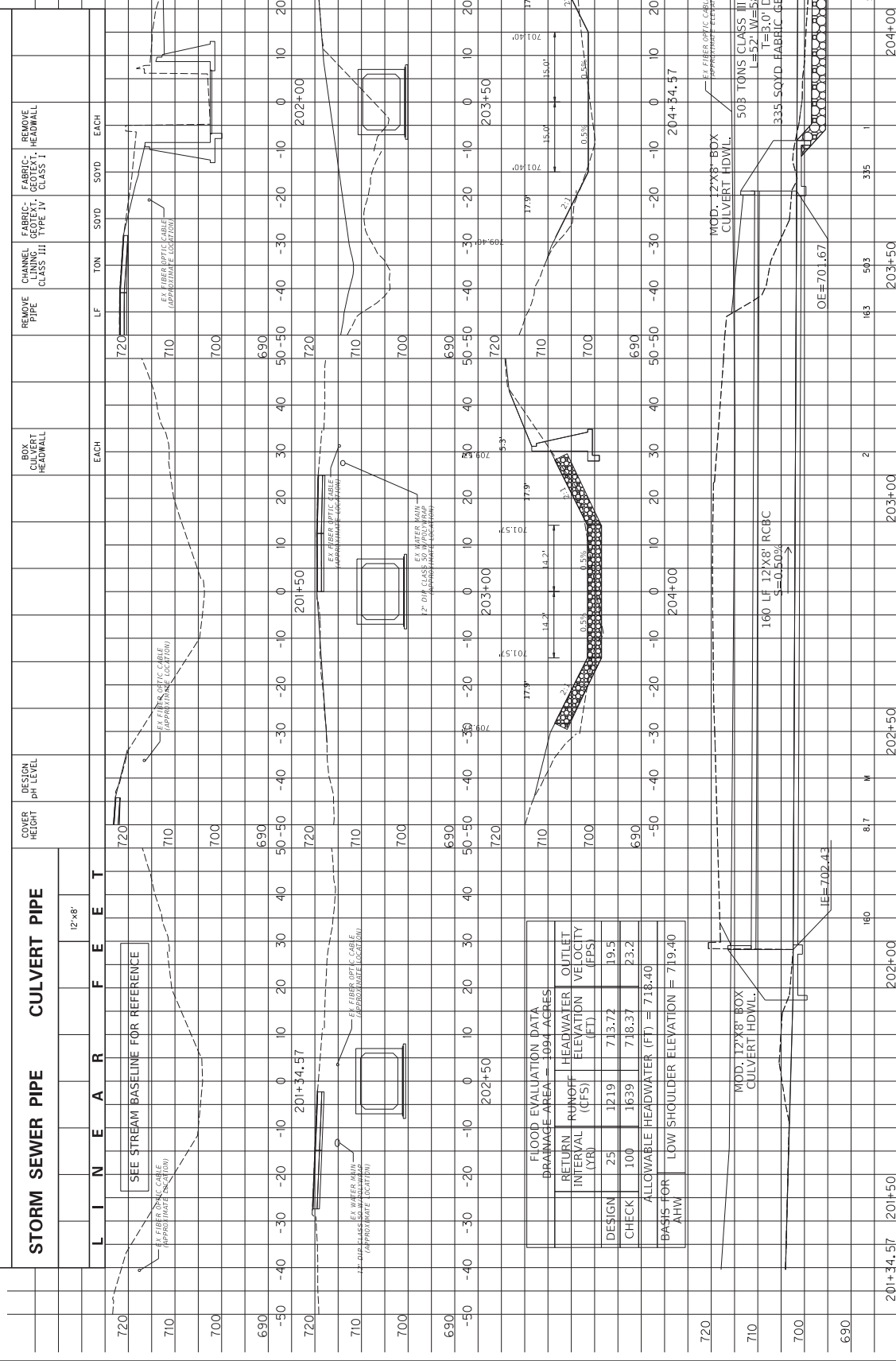
VERTICAL SCALE
 SCALE: 1" = 20'

ITEM NO. N/A
 COUNTY OF KENTON
 SHEET NO. R13

KY 2043 DRAINAGE IMPROVEMENTS: EROSION CONTROL PLAN SHEET

STA 98+50 TO STA 104+00

PIPE DRAINAGE SHEET 1 of 2



FLOOD EVALUATION DATA
DRAINAGE AREA = 1.094 ACRES

RETURN INTERVAL (YR)	RUNOFF (CFS)	HEADWATER ELEVATION (FT)	OUTLET VELOCITY (FPS)
25	1219	713.72	19.5
100	1639	718.37	23.2

ALLOWABLE HEADWATER (FT) = 718.40
BASIS FOR LOW SHOULDER ELEVATION = 719.40

COMMONWEALTH OF KENTUCKY
DEPARTMENT OF HIGHWAYS

DATE PLOTTED: 9/20/2025 2:58:02 PM
USER: s3mmw002

FILE NAME: I:\21114 - SW DESIGN\2114A1 - KY 2043 KENTON COPHASE2\ELECTRONIC ENGINEERING DATA\DRAINAGE\SW_2043_BOX_CULVERT_PIPESHEET.DWG

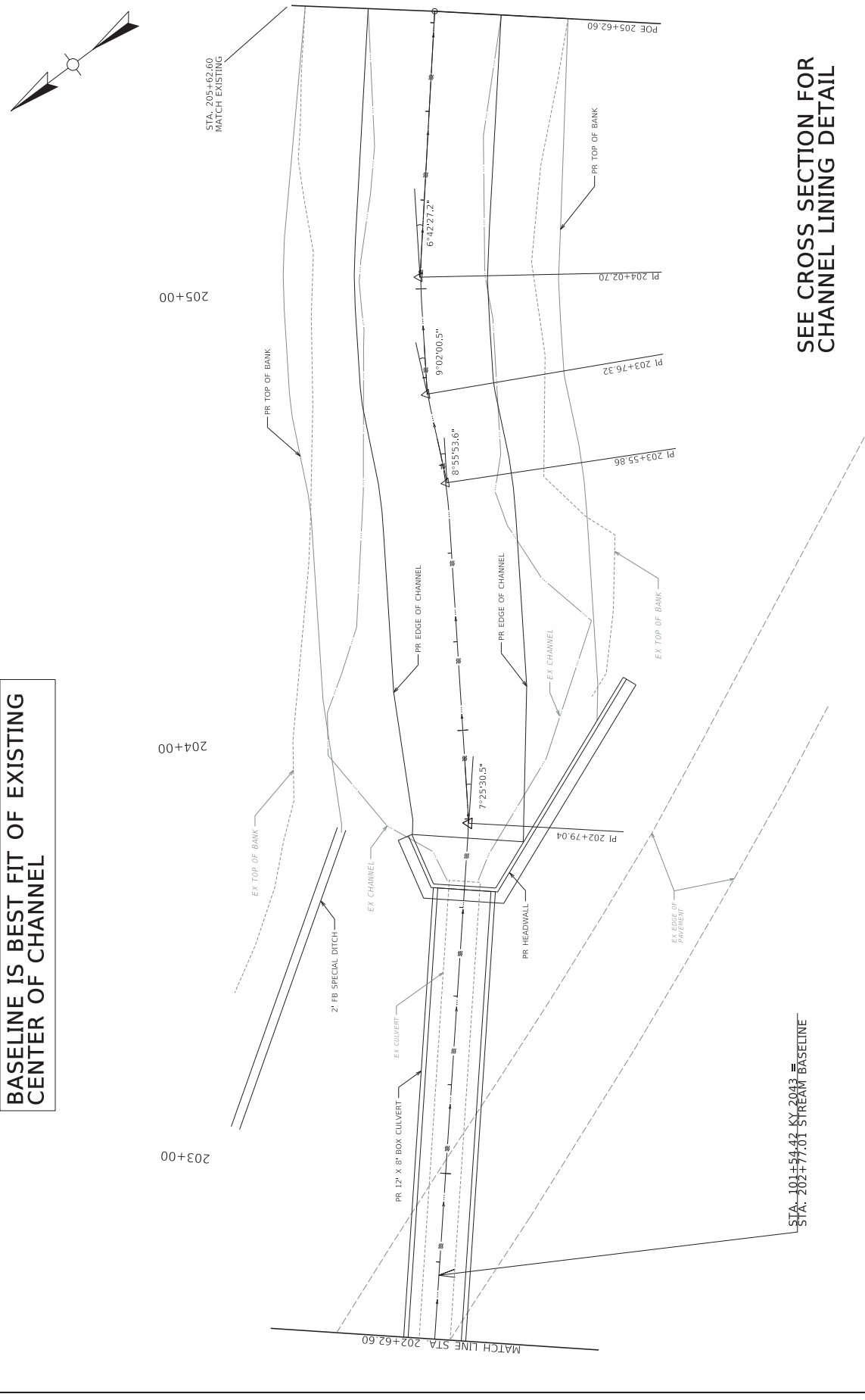
ITEM NO. N/A
SHEET NO. R14

STREAM BASELINE
STA 201+35 TO 204+35

SCALE: 1" = 10'
SCALE: 1" = 10'

HORIZONTAL SCALE: 1" = 40'
VERTICAL SCALE: 1" = 4'

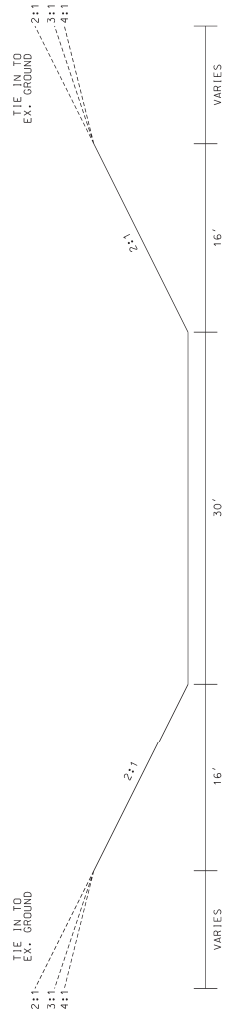
**BASELINE IS BEST FIT OF EXISTING
 CENTER OF CHANNEL**



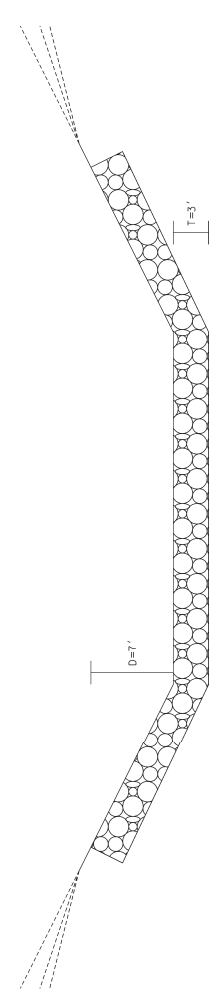
STA: 101+54.42 KY 2043
 STA: 202+77.01 STREAM BASELINE

**SEE CROSS SECTION FOR
 CHANNEL LINING DETAIL**

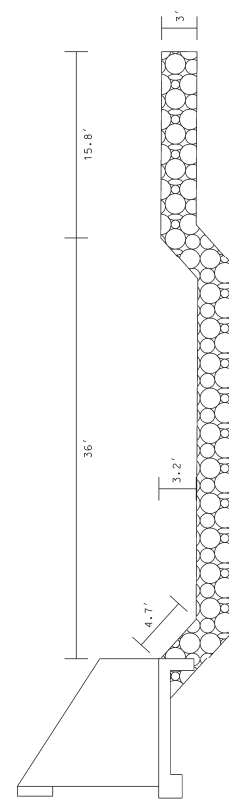
<p>COMMONWEALTH OF KENTUCKY DEPARTMENT OF HIGHWAYS</p>	USER: GJANK	FILE NAME: 1127114 - SW DESIGN 2134341 - KY 2043 KENTON COPHASE/CONTRACT PLAN SET/CONTRACT/2043_8_JUNILINER.DGN	HORIZONTAL SCALE SCALE: 1" = 10'		STA 202+63 TO STA 205+63	ITEM NO. N/A SHEET NO. RL7	COUNTY OF KENTON
	KY 2043 DRAINAGE IMPROVEMENTS: STREAM - BASELINE						



CROSS SECTION VIEW NO OUTLET PROTECTION



CROSS SECTION VIEW WITH OUTLET PROTECTION



PROFILE VIEW OF RIPRAP BASIN

 COMMONWEALTH OF KENTUCKY DEPARTMENT OF HIGHWAYS	USER: GANIS	DATE PLOTTED: 9/1/2025 7:08:02 PM	FILE NAME: U:\21114 - SW (65602114).A - KY 2043 KENTON COPPASELECTRONIC ENGINEERING DATA (EED)SHEET CONTAINERS\GARWAY.DGN	HORIZONTAL SCALE: 1" = 5' SCALE: 1" = 5'	 0' 5' 10' 20'	DOWN STREAM CHANNEL	ITEM NO. RMA	COUNTY OF KENTON
							SHEET NO. R18	R18

KY 2043 DRAINAGE IMPROVEMENTS: DETAIL SHEET

OPERATIONS Designer #10 (R-2-267)

GEOTECHNICAL NOTES

1. ALL FOOTING EXCAVATIONS IN BEDROCK SHALL BE CUT NEATLY SO THAT NO FORMING OR BACKFILLING IS NECESSARY IN THE CONSTRUCTION OF THE PORTIONS OF THE FOOTINGS LOCATED IN ROCK. CONCRETE SHOULD BE PLACED DIRECTLY AGAINST THE CUT ROCK FACES. MASS CONCRETE SHOULD BE PLACED IN THE EXCAVATION FROM THE TOP OF THE FOOTING TO THE BEDROCK SURFACE WHERE THE FOOTING DOES NOT EXTEND TO THE BEDROCK SURFACE.
2. THE BEDROCK AT THIS LOCATION IS HIGHLY SUSCEPTIBLE TO WEATHERING AND SOFTENING IN THE PRESENCE OF WATER. WATER MUST BE KEPT OUT OF THE FOOTING EXCAVATIONS. THE FOOTING STEEL AND CONCRETE SHOULD BE PLACED THE SAME DAY AS OR AS SOON AS PRACTICAL AFTER THE FOOTING EXCAVATION IS MADE. IF THE BEDROCK BECOMES SOFTENED AT BEARING ELEVATION, THE SOFTENED MATERIAL SHOULD BE UNDERCUT TO UNWEATHERED MATERIAL PRIOR TO PLACING THE CONCRETE.
3. FOR GRANULAR REPLACEMENT TO BEDROCK BELOW THE CULVERT BARREL, UTILIZE "GRANULAR EMBANKMENT," NON-ERODIBLE ONLY, MEETING THE MATERIAL REQUIREMENTS OF SECTION 805 IN THE CURRENT EDITION OF THE STANDARD SPECIFICATIONS FOR ROAD AND BRIDGE CONSTRUCTION. CONTRARY TO THE STANDARD SPECIFICATIONS, THE MAXIMUM SIZE LIMIT FOR "GRANULAR EMBANKMENT" IS 4".
4. SOLID ROCK EXCAVATION WILL BE REQUIRED TO REACH REQUIRED FOOTING ELEVATIONS.
5. IF THE BEDROCK BECOMES SOFTENED AT BEARING ELEVATION, THE SOFTENED MATERIAL SHOULD BE UNDERCUT TO UNWEATHERED MATERIAL PRIOR TO PLACING THE CONCRETE. SEASONAL GROUNDWATER FLUCTUATIONS MAY CAUSE GROUNDWATER INFILTRATION INTO THE FOOTING EXCAVATIONS AND A DEWATERING METHOD MAY BE NECESSARY.
6. MASS CONCRETE WILL BE REQUIRED FOR CONSTRUCTION OF EMBEDDED FOOTINGS.
7. CHANNEL LINING/SLOPE PROTECTION WILL BE REQUIRED AT THE INLET AND OUTLET MEETING THE REQUIREMENTS OF SECTIONS 703 & 805 OF THE STANDARD SPECIFICATIONS FOR ROAD AND BRIDGE CONSTRUCTION, CURRENT EDITION. USE MATERIAL THAT IS CLASSIFIED AS NON-ERODIBLE. PLACE A CLASS 2 (SEPARATION) GEOTEXTILE FABRIC, IN ACCORDANCE WITH SECTIONS 214 & 843 OF THE STANDARD SPECIFICATIONS FOR ROAD AND BRIDGE CONSTRUCTION, CURRENT EDITION, BETWEEN THE EMBANKMENT/GROUND AND THE SLOPE PROTECTION/CHANNEL LINING.
8. TEMPORARY SHEETING OR SHORING/COFFERDAMS AND/OR A DEWATERING METHOD WILL BE REQUIRED FOR INSTALLATION OF THE FOOTINGS.



OpenRoads Designer v10 (6.2.267)
USER: c6666

KY 2043 DRAINAGE IMPROVEMENTS- GEOTECHNICAL NOTES

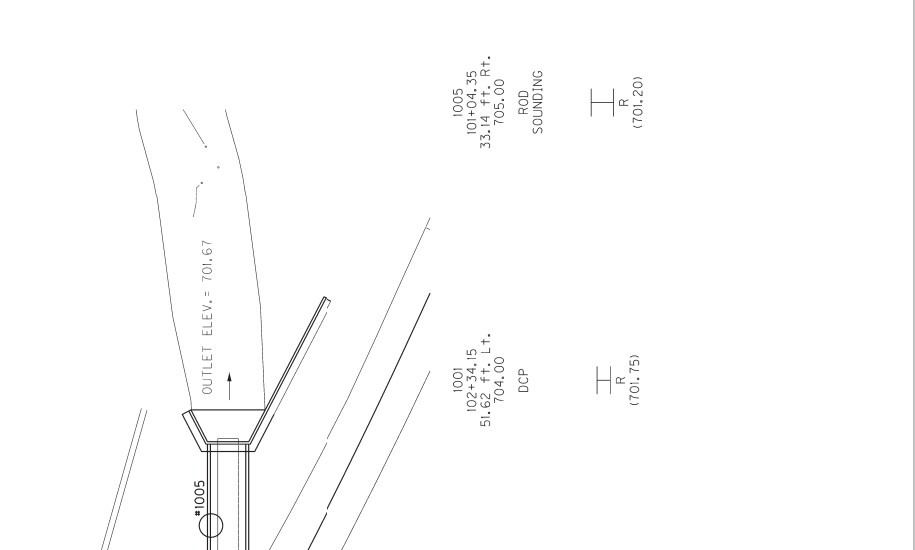
FILE NAME: U121114 - SW (65602114)A1 - KY 2043 RESTOR COPPHASE/CONTRACT PLAN SET-DOWNROADWAYEY_ZPA3_B_AUGULARI.DGN

ITEM NO.	104
COUNTY OF	KENTON
SHEET NO.	119

SUBSURFACE DATA

Plan Scale 1" = 40'

Profile Scale:
 Vertical 1" = 10'
 Horizontal not to scale



Hole No. Station Offset Elev. (Estimated datum approximated elevations)	Soil Type	Remarks
1004 102+96.93 68.86 ft. Lt. 704.00	ROD SOUNDING	(702.50)
1003 102+81.38 63.49 ft. Lt. 704.00	DCP	(702.50)
1002 102+54.77 55.67 ft. Lt. 704.00	DCP	(701.75)
1001 102+34.15 51.62 ft. Lt. 704.00	DCP	(701.75)
1005 101+04.35 33.14 ft. Rt. 705.00	ROD SOUNDING	(701.20)

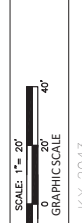
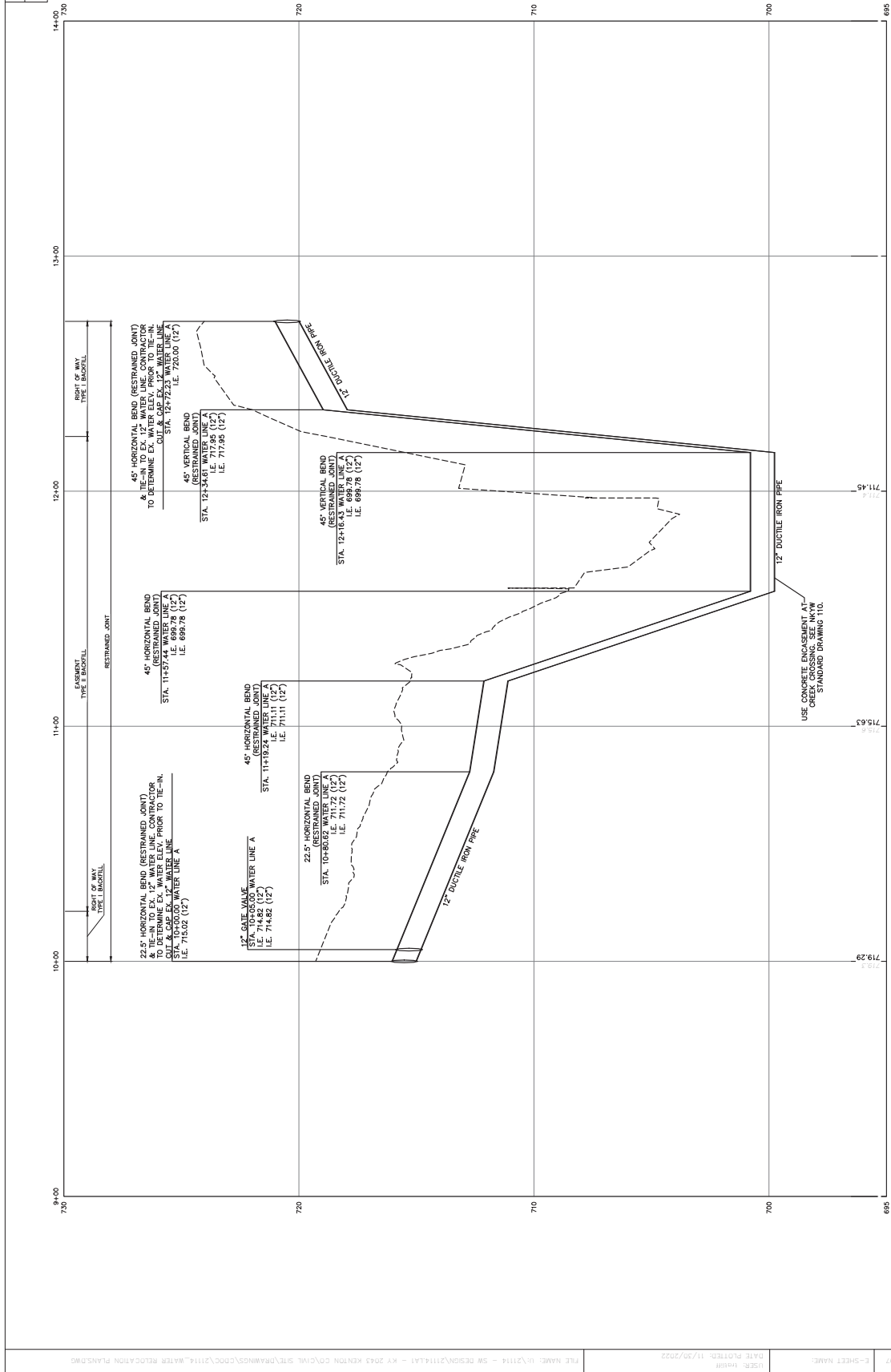
Datum _____
 The Presumptive Factored Bearing Resistance at the Service Limit State is
 8 ksf for Spread Footings on Competent Unweathered Bedrock

ITEM NO.	104
COUNTY OF	KENTON
SHEET NO.	R20

KY 2043 DRAINAGE IMPROVEMENTS: SUBSURFACE DATA

OPERATOR'S Designer: 110 16-2-267 USER: canis FILE NAME: U121114 - SW DESIGN2114.LA1 - KY 2043 KENTON COPPHASE2/CONTRACT PLAN SET/DRAINAGE/KEY_ZPA3_B_AUGULARY.DGN

SHEET NO.	003
ITEM NO.	N/A
COUNTY OF	KENTON
DATE	



KY 2043

WATER RELOCATION PROFILE SHEET

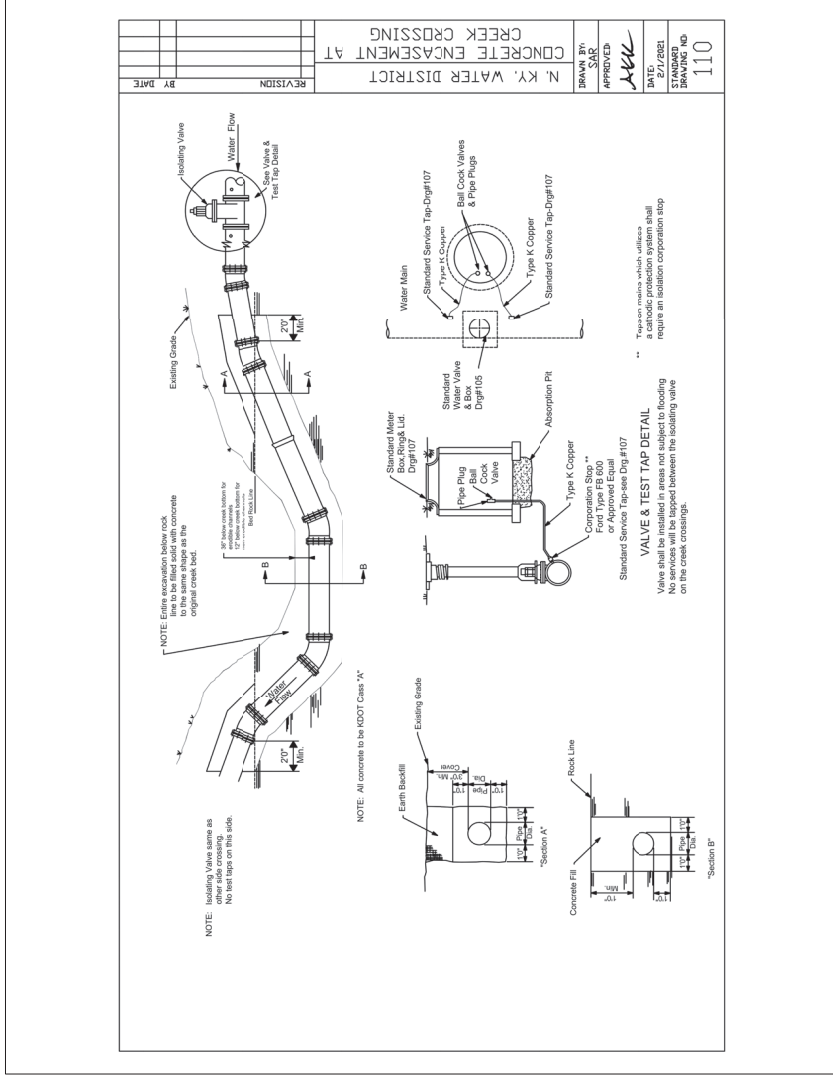
FILE NAME:	R:\2114 - SR DESIGN\11414 - KY 2043 KENTON CO\DWG\SR\DRAWINGS\2003\114 WATER RELOCATION PLANS.DWG
DATE PLOTTED:	11/20/2003
USER:	msb
C-SHEET NAME:	Water Profile 11.19.03

WATERLINE PROFILE
 1"=20' H 1"=52' V

COUNTY OF	ITEM NO.	SHEET
KENTON	N/A	104



KY 2043
 WATER RELOCATION DETAIL



PART II
SPECIFICATIONS AND STANDARD DRAWINGS

STANDARD SPECIFICATIONS

Any reference in the plans or proposal to previous editions of the *Standard Specifications for Road and Bridge Construction* and *Standard Drawings* are superseded by *Standard Specifications for Road and Bridge Construction, Edition of 2019* and *Standard Drawings, Edition of 2020*.

SUPPLEMENTAL SPECIFICATIONS

The contractor shall use the Supplemental Specifications that are effective at the time of letting. The Supplemental Specifications can be found at the following link:
<http://transportation.ky.gov/Construction/Pages/Kentucky-Standard-Specifications.aspx>

SPECIAL NOTE FOR PORTABLE CHANGEABLE MESSAGE SIGNS

This Special Note will apply when indicated on the plans or in the proposal.

1.0 DESCRIPTION. Furnish, install, operate, and maintain variable message signs at the locations shown on the plans or designated by the Engineer. Remove and retain possession of variable message signs when they are no longer needed on the project.

2.0 MATERIALS.

2.1 General. Use LED Variable Message Signs Class I, II, or III, as appropriate, from the Department's List of Approved Materials.

Unclassified signs may be submitted for approval by the Engineer. The Engineer may require a daytime and nighttime demonstration. The Engineer will make a final decision within 30 days after all required information is received.

2.2 Sign and Controls. All signs must:

- 1) Provide 3-line messages with each line being 8 characters long and at least 18 inches tall. Each character comprises 35 pixels.
- 2) Provide at least 40 preprogrammed messages available for use at any time. Provide for quick and easy change of the displayed message; editing of the message; and additions of new messages.
- 3) Provide a controller consisting of:
 - a) Keyboard or keypad.
 - b) Readout that mimics the actual sign display. (When LCD or LCD type readout is used, include backlighting and heating or otherwise arrange for viewing in cold temperatures.)
 - c) Non-volatile memory or suitable memory with battery backup for storing pre-programmed messages.
 - d) Logic circuitry to control the sequence of messages and flash rate.
- 4) Provide a serial interface that is capable of supporting complete remote control ability through land line and cellular telephone operation. Include communication software capable of immediately updating the message, providing complete sign status, and allowing message library queries and updates.
- 5) Allow a single person easily to raise the sign to a satisfactory height above the pavement during use, and lower the sign during travel.
- 6) Be Highway Orange on all exterior surfaces of the trailer, supports, and controller cabinet.
- 7) Provide operation in ambient temperatures from -30 to + 120 degrees Fahrenheit during snow, rain and other inclement weather.
- 8) Provide the driver board as part of a module. All modules are interchangeable, and have plug and socket arrangements for disconnection and reconnection. Printed circuit boards associated with driver boards have a conformable coating to protect against moisture.
- 9) Provide a sign case sealed against rain, snow, dust, insects, etc. The lens is UV stabilized clear plastic (polycarbonate, acrylic, or other approved material) angled to prevent glare.
- 10) Provide a flat black UV protected coating on the sign hardware, character PCB, and appropriate lens areas.
- 11) Provide a photocell control to provide automatic dimming.

- 12) Allow an on-off flashing sequence at an adjustable rate.
- 13) Provide a sight to aim the message.
- 14) Provide a LED display color of approximately 590 nm amber.
- 15) Provide a controller that is password protected.
- 16) Provide a security device that prevents unauthorized individuals from accessing the controller.
- 17) Provide the following 3-line messages preprogrammed and available for use when the sign unit begins operation:

/KEEP/RIGHT/=>=>=>/	/MIN/SPEED/**MPH/
/KEEP/LEFT/<<<</	/ICY/BRIDGE/AHEAD/ /ONE
/LOOSE/GRAVEL/AHEAD/	LANE/BRIDGE/AHEAD/
/RD WORK/NEXT/**MILES/	/ROUGH/ROAD/AHEAD/
/TWO WAY/TRAFFIC/AHEAD/	/MERGING/TRAFFIC/AHEAD/
/PAINT/CREW/AHEAD/	/NEXT/***/MILES/
/REDUCE/SPEED/**MPH/	/HEAVY/TRAFFIC/AHEAD/
/BRIDGE/WORK/***0 FT/	/SPEED/LIMIT/**MPH/
/MAX/SPEED/**MPH/	/BUMP/AHEAD/
/SURVEY/PARTY/AHEAD/	/TWO/WAY/TRAFFIC/

*Insert numerals as directed by the Engineer.
Add other messages during the project when required by the Engineer.

2.3 Power.

- 1) Design solar panels to yield 10 percent or greater additional charge than sign consumption. Provide direct wiring for operation of the sign or arrow board from an external power source to provide energy backup for 21 days without sunlight and an on-board system charger with the ability to recharge completely discharged batteries in 24 hours.

3.0 CONSTRUCTION. Furnish and operate the variable message signs as designated on the plans or by the Engineer. Ensure the bottom of the message panel is a minimum of 7 feet above the roadway in urban areas and 5 feet above in rural areas when operating. Use Class I, II, or III signs on roads with a speed limit less than 55 mph. Use Class I or II signs on roads with speed limits 55 mph or greater.

Maintain the sign in proper working order, including repair of any damage done by others, until completion of the project. When the sign becomes inoperative, immediately repair or replace the sign. Repetitive problems with the same unit will be cause for rejection and replacement.

Use only project related messages and messages directed by the Engineer, unnecessary messages lessen the impact of the sign. Ensure the message is displayed in either one or 2 phases with each phase having no more than 3 lines of text. When no message is needed, but it is necessary to know if the sign is operable, flash only a pixel.

When the sign is not needed, move it outside the clear zone or where the Engineer directs. Variable Message Signs are the property of the Contractor and shall be removed from the project when no longer needed. The Department will not assume ownership of these signs.

4.0 MEASUREMENT. The final quantity of Variable Message Sign will be

11

the actual number of individual signs acceptably furnished and operated during the project. The Department will not measure signs replaced due to damage or rejection.

5.0 PAYMENT. The Department will pay for the Variable Message Signs at the unit price each. The Department will not pay for signs replaced due to damage or rejection. Payment is full compensation for furnishing all materials, labor, equipment, and service necessary to, operate, move, repair, and maintain or replace the variable message signs. The Department will make payment for the completed and accepted quantities under the following:

<u>Code</u>	<u>Pay Item</u>	<u>Pay Unit</u>
02671	Portable Changeable Message Sign	Each

Effective June 15, 2012

2020 STANDARD DRAWINGS THAT APPLY

ROADWAY

~GENERAL~

MISCELLANEOUS STANDARDS

MISCELLANEOUS STANDARDS PART 1.....RGX-001-06

~PAVEMENT~

MEDIANS, CURBS, APPROACHES, ENTRANCES, ETC.

APPROACHES, ENTRANCES, AND MAIL BOX TURNOUT.....RPM-110-07

TRAFFIC

~TEMPORARY~

DEVICES

LANE CLOSURE TWO-LANE HIGHWAYTTC-100-04

PART III

EMPLOYMENT, WAGE AND RECORD REQUIREMENTS

**TRANSPORTATION CABINET
DEPARTMENT OF HIGHWAYS**

**LABOR AND WAGE REQUIREMENTS
APPLICABLE TO OTHER THAN FEDERAL-AID SYSTEM PROJECTS**

- I. Application
- II. Nondiscrimination of Employees (KRS 344)

I. APPLICATION

1. These contract provisions shall apply to all work performed on the contract by the contractor with his own organization and with the assistance of workmen under his immediate superintendence and to all work performed on the contract by piecework, station work or by subcontract. The contractor's organization shall be construed to include only workmen employed and paid directly by the contractor and equipment owned or rented by him, with or without operators.

2. The contractor shall insert in each of his subcontracts all of the stipulations contained in these Required Provisions and such other stipulations as may be required.

3. A breach of any of the stipulations contained in these Required Provisions may be grounds for termination of the contract.

3. If the contractor is in control of apprenticeship or other training or retraining, including on-the-job training programs, he shall not discriminate against an individual because of his race, color, religion, national origin, sex, disability or age forty (40) and over, in admission to, or employment in any program established to provide apprenticeship or other training.

4. The contractor will send to each labor union or representative of workers with which he has a collective bargaining agreement or other contract or understanding, a notice to be provided advising the said labor union or workers' representative of the contractor's commitments under this section, and shall post copies of the notice in conspicuous places available to employees and applicants for employment. The contractor will take such action with respect to any subcontract or purchase order as the administrating agency may direct as a means of enforcing such provisions, including sanctions for non-compliance.

Revised: January 25, 2017

II. NONDISCRIMINATION OF EMPLOYEES

**AN ACT OF THE KENTUCKY
GENERAL ASSEMBLY TO PREVENT
DISCRIMINATION IN EMPLOYMENT
KRS CHAPTER 344
EFFECTIVE JUNE 16, 1972**

The contract on this project, in accordance with KRS Chapter 344, provides that during the performance of this contract, the contractor agrees as follows:

1. The contractor shall not fail or refuse to hire, or shall not discharge any individual, or otherwise discriminate against an individual with respect to his compensation, terms, conditions, or privileges of employment, because of such individual's race, color, religion, national origin, sex, disability or age (forty and above); or limit, segregate, or classify his employees in any way which would deprive or tend to deprive an individual of employment opportunities or otherwise adversely affect his status as an employee, because of such individual's race, color, religion, national origin, sex, disability or age forty (40) and over. The contractor agrees to post in conspicuous places, available to employees and applicants for employment, notices to be provided setting forth the provisions of this nondiscrimination clause.

2. The contractor shall not print or publish or cause to be printed or published a notice or advertisement relating to employment by such an employer or membership in or any classification or referral for employment by the employment agency, indicating any preference, limitation, specification, or discrimination, based on race, color, religion, national origin, sex, or age forty (40) and over, or because the person is a qualified individual with a disability, except that such a notice or advertisement may indicate a preference, limitation, or specification based on religion, national origin, sex, or age forty (40) and over, or because the person is a qualified individual with a disability, when religion, national origin, sex, or age forty (40) and over, or because the person is a qualified individual with a disability, is a bona fide occupational qualification for employment.

EXECUTIVE BRANCH CODE OF ETHICS

In the 1992 regular legislative session, the General Assembly passed and Governor Brereton Jones signed Senate Bill 63 (codified as KRS 11A), the Executive Branch Code of Ethics, which states, in part:

KRS 11A.040 (7) provides:

No present or former public servant shall, within six (6) months following termination of his office or employment, accept employment, compensation, or other economic benefit from any person or business that contracts or does business with, or is regulated by, the state in matters in which he was directly involved during the last thirty-six (36) months of his tenure. This provision shall not prohibit an individual from returning to the same business, firm, occupation, or profession in which he was involved prior to taking office or beginning his term of employment, or for which he received, prior to his state employment, a professional degree or license, provided that, for a period of six (6) months, he personally refrains from working on any matter in which he was directly involved during the last thirty-six (36) months of his tenure in state government. This subsection shall not prohibit the performance of ministerial functions, including but not limited to filing tax returns, filing applications for permits or licenses, or filing incorporation papers, nor shall it prohibit the former officer or public servant from receiving public funds disbursed through entitlement programs.

KRS 11A.040 (9) states:

A former public servant shall not represent a person or business before a state agency in a matter in which the former public servant was directly involved during the last thirty-six (36) months of his tenure, for a period of one (1) year after the latter of:

- a) The date of leaving office or termination of employment; or
- b) The date the term of office expires to which the public servant was elected.

This law is intended to promote public confidence in the integrity of state government and to declare as public policy the idea that state employees should view their work as a public trust and not as a way to obtain private benefits.

If you have worked for the executive branch of state government within the past six months, you may be subject to the law's prohibitions. The law's applicability may be different if you hold elected office or are contemplating representation of another before a state agency.

Also, if you are affiliated with a firm which does business with the state and which employs former state executive-branch employees, you should be aware that the law may apply to them.

In case of doubt, the law permits you to request an advisory opinion from the Executive Branch Ethics Commission, 1025 Capital Center Drive, Suite 104, Frankfort, Kentucky 40601; telephone (502) 564-7954.

Revised: May 23, 2022

Kentucky Equal Employment Opportunity Act of 1978

The requirements of the Kentucky Equal Employment Opportunity Act of 1978 (KRS 45.560-45.640) shall apply to this Contract. The apparent low Bidder will be required to submit EEO forms to the Division of Construction Procurement, which will then forward to the Finance and Administration Cabinet for review and approval. No award will become effective until all forms are submitted and EEO/CC has certified compliance. The required EEO forms are as follows:

- EEO-1: Employer Information Report
- Affidavit of Intent to Comply
- Employee Data Sheet
- Subcontractor Report

These forms are available on the Finance and Administration's web page under ***Vendor Information, Standard Attachments and General Terms*** at the following address:
<https://www.eProcurement.ky.gov>.

Bidders currently certified as being in compliance by the Finance and Administration Cabinet may submit a copy of their approval letter in lieu of the referenced EEO forms.

For questions or assistance please contact the Finance and Administration Cabinet by email at **finance.contractcompliance@ky.gov** or by phone at 502-564-2874.

EMPLOYEE RIGHTS UNDER THE FAIR LABOR STANDARDS ACT

THE UNITED STATES DEPARTMENT OF LABOR WAGE AND HOUR DIVISION

FEDERAL MINIMUM WAGE

\$7.25

 PER HOUR

BEGINNING JULY 24, 2009

OVERTIME PAY At least 1½ times your regular rate of pay for all hours worked over 40 in a workweek.

CHILD LABOR An employee must be at least **16** years old to work in most non-farm jobs and at least **18** to work in non-farm jobs declared hazardous by the Secretary of Labor.

Youths **14** and **15** years old may work outside school hours in various non-manufacturing, non-mining, non-hazardous jobs under the following conditions:

No more than

- **3** hours on a school day or **18** hours in a school week;
- **8** hours on a non-school day or **40** hours in a non-school week.

Also, work may not begin before **7 a.m.** or end after **7 p.m.**, except from June 1 through Labor Day, when evening hours are extended to **9 p.m.** Different rules apply in agricultural employment.

TIP CREDIT Employers of “tipped employees” must pay a cash wage of at least \$2.13 per hour if they claim a tip credit against their minimum wage obligation. If an employee’s tips combined with the employer’s cash wage of at least \$2.13 per hour do not equal the minimum hourly wage, the employer must make up the difference. Certain other conditions must also be met.

ENFORCEMENT The Department of Labor may recover back wages either administratively or through court action, for the employees that have been underpaid in violation of the law. Violations may result in civil or criminal action.

Employers may be assessed civil money penalties of up to \$1,100 for each willful or repeated violation of the minimum wage or overtime pay provisions of the law and up to \$11,000 for each employee who is the subject of a violation of the Act’s child labor provisions. In addition, a civil money penalty of up to \$50,000 may be assessed for each child labor violation that causes the death or serious injury of any minor employee, and such assessments may be doubled, up to \$100,000, when the violations are determined to be willful or repeated. The law also prohibits discriminating against or discharging workers who file a complaint or participate in any proceeding under the Act.

ADDITIONAL INFORMATION

- Certain occupations and establishments are exempt from the minimum wage and/or overtime pay provisions.
- Special provisions apply to workers in American Samoa and the Commonwealth of the Northern Mariana Islands.
- Some state laws provide greater employee protections; employers must comply with both.
- The law requires employers to display this poster where employees can readily see it.
- Employees under 20 years of age may be paid \$4.25 per hour during their first 90 consecutive calendar days of employment with an employer.
- Certain full-time students, student learners, apprentices, and workers with disabilities may be paid less than the minimum wage under special certificates issued by the Department of Labor.

For additional information:



1-866-4-USWAGE

(1-866-487-9243)

TTY: 1-877-889-5627



WWW.WAGEHOUR.DOL.GOV

PART IV
INSURANCE

Refer to
Kentucky Standard Specifications for Road and Bridge Construction,
current edition

PART V
BID ITEMS

PROPOSAL BID ITEMS

243017

Page 1 of 2

Report Date 3/21/24

Section: 0001 - ROADWAY

LINE	BID CODE	ALT	DESCRIPTION	QUANTITY	UNIT	UNIT PRIC	FP	AMOUNT
0010	00003		CRUSHED STONE BASE	265.00	TON		\$	
0020	00212		CL2 ASPH BASE 1.00D PG64-22	385.00	TON		\$	
0030	00301		CL2 ASPH SURF 0.38D PG64-22	53.00	TON		\$	
0040	00462		CULVERT PIPE-18 IN	126.00	LF		\$	
0050	01204		PIPE CULVERT HEADWALL-18 IN	2.00	EACH		\$	
0060	01310		REMOVE PIPE	226.00	LF		\$	
0070	01314		PLUG PIPE	2.00	EACH		\$	
0080	02014		BARRICADE-TYPE III	6.00	EACH		\$	
0090	02230		EMBANKMENT IN PLACE	9,296.00	CUYD		\$	
0100	02259		FENCE-TEMP	320.00	LF		\$	
0110	02263		FENCE-WOVEN WIRE TYPE 2	376.00	LF		\$	
0120	02265		REMOVE FENCE	188.00	LF		\$	
0130	02484		CHANNEL LINING CLASS III	509.00	TON		\$	
0140	02545		CLEARING AND GRUBBING (KY 2043)	1.00	LS		\$	
0150	02562		TEMPORARY SIGNS	73.00	SQFT		\$	
0160	02602		FABRIC-GEOTEXTILE CLASS 1	680.00	SQYD		\$	
0170	02603		FABRIC-GEOTEXTILE CLASS 2	93.00	SQYD		\$	
0180	02625		REMOVE HEADWALL	2.00	EACH		\$	
0190	02650		MAINTAIN & CONTROL TRAFFIC (KY 2043)	1.00	LS		\$	
0200	02671		PORTABLE CHANGEABLE MESSAGE SIGN	2.00	EACH		\$	
0210	02697		EDGE LINE RUMBLE STRIPS	630.00	LF		\$	
0220	02701		TEMP SILT FENCE	276.00	LF		\$	
0230	02703		SILT TRAP TYPE A	1.00	EACH		\$	
0240	02704		SILT TRAP TYPE B	1.00	EACH		\$	
0250	02705		SILT TRAP TYPE C	1.00	EACH		\$	
0260	02706		CLEAN SILT TRAP TYPE A	1.00	EACH		\$	
0270	02707		CLEAN SILT TRAP TYPE B	1.00	EACH		\$	
0280	02708		CLEAN SILT TRAP TYPE C	1.00	EACH		\$	
0290	02726		STAKING (KY 2043)	1.00	LS		\$	
0300	05950		EROSION CONTROL BLANKET	760.00	SQYD		\$	
0310	05952		TEMP MULCH	4,864.00	SQYD		\$	
0320	05953		TEMP SEEDING AND PROTECTION	3,630.00	SQYD		\$	
0330	05985		SEEDING AND PROTECTION	1,210.00	SQYD		\$	
0340	06514		PAVE STRIPING-PERM PAINT-4 IN	630.00	LF		\$	
0350	08002		STRUCTURE EXCAV-SOLID ROCK	139.00	CUYD		\$	
0360	08003		FOUNDATION PREPARATION (KY 2043)	1.00	LS		\$	
0370	14005		W ENCASEMENT CONCRETE	52.00	LF		\$	
0380	14050		W PIPE DCTL IRON RSTRND JOINT 12 IN	273.00	LF		\$	
0390	14097		W TIE-IN 12 INCH	2.00	EACH		\$	
0400	14108		W VALVE 12 INCH	1.00	EACH		\$	
0410	14124		W VALVE SPECIAL	1.00	EACH		\$	
0420	20092ES611		PRECAST CONCRETE BOX CULVERT	320.00	LF		\$	
0430	20166ES810		TEMPORARY PIPE	36.00	LF		\$	
0440	20430ED		SAW CUT	69.00	LF		\$	

PROPOSAL BID ITEMS

243017

Page 2 of 2

Report Date 3/21/24

LINE	BID CODE	ALT	DESCRIPTION	QUANTITY	UNIT	UNIT PRIC	FP	AMOUNT
0450	23274EN11F		TURF REINFORCEMENT MAT 1	50.00	SQYD		\$	
0460	24279EC		TEMPORARY COFFERDAM CONSTRUCTION (KY 2043)	1.00	LS		\$	
0470	24695ED		BOX CULVERT HEADWALL	2.00	EACH		\$	

Section: 0002 - DEMOBILIZATION

LINE	BID CODE	ALT	DESCRIPTION	QUANTITY	UNIT	UNIT PRIC	FP	AMOUNT
0480	02569		DEMOBILIZATION	1.00	LS		\$	