



CALL NO. 336

CONTRACT ID. 232066

LYON COUNTY

FED/STATE PROJECT NUMBER FE07 072 0024 053-055

DESCRIPTION PADUCAH - TENNESEE STATE LINE ROAD WEIGH STATIONS (I-24)

WORK TYPE LIGHTING

PRIMARY COMPLETION DATE 3/1/2024

LETTING DATE: January 26,2023

Sealed Bids will be received electronically through the Bid Express bidding service until 10:00 AM EASTERN STANDARD TIME January 26,2023. Bids will be publicly announced at 10:00 AM EASTERN STANDARD TIME.

NO PLANS ASSOCIATED WITH THIS PROJECT.

REQUIRED BID PROPOSAL GUARANTY: Not less than 5% of the total bid.

TABLE OF CONTENTS

PART I	SCOPE OF WORK <ul style="list-style-type: none">• PROJECT(S), COMPLETION DATE(S), & LIQUIDATED DAMAGES• CONTRACT NOTES• STATE CONTRACT NOTES• NATIONAL HIGHWAY• DGA BASE• SPECIAL NOTE(S) APPLICABLE TO PROJECT• WASTE AND BORROW SITES• COORDINATION OF WORK WITH OTHER CONTRACTS• TRAFFIC CONTROL PLAN• EROSION CONTROL PLAN FOR MAINTENANCE PROJECTS• SKETCH MAP(S)• DETAIL SHEET(S)
PART II	SPECIFICATIONS AND STANDARD DRAWINGS <ul style="list-style-type: none">• SPECIFICATIONS REFERENCE• SUPPLEMENTAL SPECIFICATION• STANDARD DRAWINGS THAT APPLY
PART III	EMPLOYMENT, WAGE AND RECORD REQUIREMENTS <ul style="list-style-type: none">• LABOR AND WAGE REQUIREMENTS• EXECUTIVE BRANCH CODE OF ETHICS• KENTUCKY EQUAL EMPLOYMENT OPPORTUNITY ACT OF 1978 LOCALITY / STATE• PROJECT WAGE RATES / STATE FUNDED
PART IV	INSURANCE
PART V	BID ITEMS

PART I
SCOPE OF WORK

ADMINISTRATIVE DISTRICT - 01

CONTRACT ID - 232066
FE07 072 0024 053-055
COUNTY - LYON
PCN - MP07200242301
FE07 072 0024 053-055

PADUCAH - TENNESEE STATE LINE ROAD (I-24) (MP 53.700) I-24 WEIGH STATIONS (MP 54.200), A DISTANCE OF 0.50 MILES.LIGHTING
GEOGRAPHIC COORDINATES LATITUDE 36:58:37.00 LONGITUDE 87:54:05.00
ADT

COMPLETION DATE(S):
COMPLETED BY 03/01/2024 SPECIFIED COMPLETION DATE - ALL ITEMS IN CONTRACT

CONTRACT NOTES

PROPOSAL ADDENDA

All addenda to this proposal must be applied when calculating bid and certified in the bid packet submitted to the Kentucky Department of Highways. Failure to use the correct and most recent addenda may result in the bid being rejected.

BID SUBMITTAL

Bidder must use the Department's electronic bidding software. The Bidder must download the bid file located on the Bid Express website (www.bidx.com) to prepare a bid packet for submission to the Department. The bidder must submit electronically using Bid Express.

JOINT VENTURE BIDDING

Joint venture bidding is permissible. All companies in the joint venture must be prequalified in one of the work types in the Qualifications for Bidders for the project. The bidders must get a vendor ID for the joint venture from the Division of Construction Procurement and register the joint venture as a bidder on the project. Also, the joint venture must obtain a digital ID from Bid Express to submit a bid. A joint bid bond of 5% may be submitted for both companies or each company may submit a separate bond of 5%.

UNDERGROUND FACILITY DAMAGE PROTECTION

The contractor shall make every effort to protect underground facilities from damage as prescribed in the Underground Facility Damage Protection Act of 1994, Kentucky Revised Statute KRS 367.4901 to 367.4917. It is the contractor's responsibility to determine and take steps necessary to be in compliance with federal and state damage prevention directives. When prescribed in said directives, the contractor shall submit Excavation Locate Requests to the Kentucky Contact Center (KY811) via web ticket entry. The submission of this request does not relieve the contractor from the responsibility of contacting non-member facility owners, whom shall be contacted through their individual Protection Notification Center. Non-compliance with these directives can result in the enforcement of penalties.

REGISTRATION WITH THE SECRETARY OF STATE BY A FOREIGN ENTITY

Pursuant to KRS 176.085(1)(b), an agency, department, office, or political subdivision of the Commonwealth of Kentucky shall not award a state contract to a person that is a foreign entity required by [KRS 14A.9-010](#) to obtain a certificate of authority to transact business in the Commonwealth ("certificate") from the Secretary of State under [KRS 14A.9-030](#) unless the person produces the certificate within fourteen (14) days of the bid or proposal opening. If the foreign entity is not required to obtain a certificate as provided in [KRS 14A.9-010](#), the foreign entity should identify the applicable exception. Foreign entity is defined within [KRS 14A.1-070](#).

For all foreign entities required to obtain a certificate of authority to transact business in the Commonwealth, if a copy of the certificate is not received by the contracting agency within the time frame identified above, the foreign entity's solicitation response shall be deemed non-responsive or the awarded contract shall be cancelled.

Businesses can register with the Secretary of State at <https://secure.kentucky.gov/sos/ftbr/welcome.aspx>.

SPECIAL NOTE FOR PROJECT QUESTIONS DURING ADVERTISEMENT

Questions about projects during the advertisement should be submitted in writing to the Division of Construction Procurement. This may be done by fax (502) 564-7299 or email to kytc.projectquestions@ky.gov. The Department will attempt to answer all submitted questions. The Department reserves the right not to answer if the question is not pertinent or does not aid in clarifying the project intent.

The deadline for posting answers will be 3:00 pm Eastern Daylight Time, the day preceding the Letting. Questions may be submitted until this deadline with the understanding that the later a question is submitted, the less likely an answer will be able to be provided.

The questions and answers will be posted for each Letting under the heading "Questions & Answers" on the Construction Procurement website (www.transportation.ky.gov/contract). The answers provided shall be considered part of this Special Note and, in case of a discrepancy, will govern over all other bidding documents.

HARDWOOD REMOVAL RESTRICTIONS

The US Department of Agriculture has imposed a quarantine in Kentucky and several surrounding states, to prevent the spread of an invasive insect, the emerald ash borer. Hardwood cut in conjunction with the project may not be removed from the state. Chipping or burning on site is the preferred method of disposal.

INSTRUCTIONS FOR EXCESS MATERIAL SITES AND BORROW SITES

Identification of excess material sites and borrow sites shall be the responsibility of the Contractor. The Contractor shall be responsible for compliance with all applicable state and federal laws and may wish to consult with the US Fish and Wildlife Service to seek protection under Section 10 of the Endangered Species Act for these activities.

ACCESS TO RECORDS

The contractor, as defined in KRS 45A.030 (9) agrees that the contracting agency, the Finance and Administration Cabinet, the Auditor of Public Accounts, and the Legislative Research Commission, or their duly authorized representatives, shall have access to any books, documents, papers, records, or other evidence, which are directly pertinent to this contract for the purpose of financial audit or program review. Records and other prequalification information confidentially

disclosed as part of the bid process shall not be deemed as directly pertinent to the contract and shall be exempt from disclosure as provided in KRS 61.878(1)(c). The contractor also recognizes that any books, documents, papers, records, or other evidence, received during a financial audit or program review shall be subject to the Kentucky Open Records Act, KRS 61.870 to 61.884.

In the event of a dispute between the contractor and the contracting agency, Attorney General, or the Auditor of Public Accounts over documents that are eligible for production and review, the Finance and Administration Cabinet shall review the dispute and issue a determination, in accordance with Secretary's Order 11-004.

BUILD AMERICA, BUY AMERICA ACT (BABA)

On November 15, 2021, President Biden signed into law the Infrastructure Investment and Jobs Act (IIJA), Pub. L. No. 117-58, includes the Build America, Buy America Act (“the Act”). Pub. L. No. 117-58, §§70901-52. The Act strengthens the Buy America preference to include “construction materials.” The current temporary waiver for **“construction materials”** will expire on November 10, 2022.

The Act will apply to construction materials as outlined in the guidance issued in OMB [M-22-11](#).

Construction Materials – Includes an article, material, or supply – other than an item of primarily iron or steel; a manufactured product; cement and cementitious materials; aggregates such as stone, sand, or gravel; or aggregate binding agents or additives – that is or consists primarily of:

- Non-ferrous metals
- Plastic/polymer-based products (including polyvinylchloride, composite building materials, and polymers used in fiber optic cables);
- Glass (including optic glass);
- Lumber; or
- Drywall.

Construction Materials only applies to items, materials, and supplies that are consumed in, incorporated into, or affixed to an infrastructure project.

Construction Materials does not apply to tools, equipment or supplies brought to the jobsite and removed before completion.

October 14, 2022

SPECIAL NOTE FOR RECIPROCAL PREFERENCE

RECIPROCAL PREFERENCE TO BE GIVEN BY PUBLIC AGENCIES TO RESIDENT BIDDERS

By reference, KRS 45A.490 to 45A.494 are incorporated herein and in compliance regarding the bidders residency. Bidders who want to claim resident bidder status should complete the Affidavit for Claiming Resident Bidder Status along with their bid in the electronic bidding software. Submittal of the Affidavit should be done along the bid in Bid Express.

April 30, 2018

NATIONAL HIGHWAY

Be advised this project is on the NATIONAL HIGHWAY SYSTEM.

DGA BASE

Unless otherwise noted, the Department estimates the rate of application for DGA Base to be 115 lbs/sy per inch of depth.

SPECIAL NOTES FOR HIGH ROADWAY LIGHTING

I. DESCRIPTION

Except as specified herein, perform all work in accordance with the Department's 2019 Standard and Supplemental Specifications, Special Notes and Special Provisions, and 2020 Standard and Sepia Drawings, current editions. Article references are to the Standard Specifications.

Furnish all equipment, labor, materials, and incidentals for the following work items:

(1) Site preparation and erosion control; (2) Roadway Lighting (3) Maintain and Control traffic; and (4) All other work specified as part of this contract.

II. MATERIALS

Except as specified herein, provide for all materials to be sampled and tested in accordance with the Department's Sampling Manual and make the materials available for sampling a sufficient time in advance of the use of the materials to allow for the necessary time for testing.

A. Maintain and Control Traffic. See Traffic Control Plan.

B. Roadway Lighting. Unless directed otherwise by the Engineer, furnish system components according to Sections 716 and 834, the Plans, and the Standard and Sepia Drawings.

C. Dense Graded Aggregate. Furnish Dense Graded Aggregate (DGA) according to Section 302.02. Do not furnish Crushed Stone Base in lieu of DGA.

E. Erosion Control. See Special Notes for Erosion Control.

III. CONSTRUCTION METHODS

A. Maintain and Control Traffic. See Traffic Control Plan.

B. Site Preparation. Be responsible for all site preparation, including but not limited to, clearing and grubbing, excavation, embankment, and removal of all obstructions or any other items; regrading, reshaping, adding and compacting of suitable materials to provide proper template or foundation for the Roadway Lighting; temporary pollution and erosion control; disposal, of excess and waste materials and debris; and final dressing, cleanup, and seeding and protection. Perform all site preparation as approved or directed by the Engineer.

Roadway Lighting

Page 2 of 3

C. Roadway Lighting. Except as specified herein, construct Roadway Lighting according to Section 716, 834, the Plans, and the Standard and Sepia Drawings. Consider the locations shown on the Plans to be approximate only. The Engineer will determine the exact individual installations at the time of construction.

D. Salvage Material. The Department will retain ownership of the existing salvageable components, as determined by the Engineer, from the removed lighting. Deliver the components to the Traffic Operations Storage Facility in District 1.

E. Property Damage. Be responsible for all damage to public and/or private property resulting from the work. Restore damaged pavement, roadway features, and private property in like kind materials and design at no additional cost to the Department.

F. Coordination with Utility Companies. Locate all underground, above ground and overhead utilities prior to beginning construction. Be responsible for contacting and maintaining liaison with all utility companies that have utilities located within the project limits. Do not disturb existing overhead or underground utilities. In the event it is discovered that the work requires that utilities be relocated and/or adjusted, the utility companies will work concurrently with the Contractor while relocating their facilities. Be responsible for repairing all utility damage that occurs due to the work at no additional cost to the Department.

G. Right of Way Limits. The Department has not established exact limits of the Right-of-Way. Limit work activities to obvious Right-of-Way, permanent or temporary easements, and work areas secured by the Department through consent and release of the adjacent property owners. Be responsible for all encroachments onto private lands.

H. Disposal of Waste. Dispose of all removed concrete, debris, and other waste and debris off the Right-of-Way at sites obtained by the Contractor at no additional cost to the Department. See Special Note for Waste and Borrow.

I. Final Dressing, Clean Up, and Seeding and Protection. Apply Class A Final Dressing to all disturbed areas, both on and off the Right-of-Way. Sow all disturbed earthen areas according to the Special Notes for Erosion Control.

J. Erosion Control. See Special Notes for Erosion Control.

IV. METHOD OF MEASUREMENT

Consider any and all items of work required by the Standard or Supplemental Specifications; the plans; Special Provisions, Special Notes, and these notes; the Standard or Sepia Drawings; or the Engineer for which no bid item is listed to be incidental to the other items of work.

A. Maintain and Control Traffic. See Traffic Control Plan.

Roadway Lighting
Page 3 of 3

B. Site preparation. Other than the bid items listed, the Department will not measure Site Preparation for separate payment but shall be incidental to the applicable items of work.

D. Erosion Control. See Special Notes for Erosion Control.

C. Roadway Lighting. See Section 716 and 834 and the Plans. Other than the listed items, the Department will not measure any item of work, but shall be incidental to the listed items.

V. BASIS OF PAYMENT

A. Maintain and Control Traffic. See Traffic Control Plan.

B. Roadway Lighting. See Sections 716 and 834 and the Plans

SPECIAL PROVISION FOR WASTE AND BORROW SITES

Obtain U.S. Army Corps of Engineer's approval before utilizing a waste or borrow site that involves "Waters of the United States". The Corps of Engineers defines "Waters of the United States" as perennial or intermittent streams, ponds or wetlands. The Corps of Engineers also considers ephemeral streams, typically dry except during rainfall but having a defined drainage channel, to be jurisdictional waters. Direct questions concerning any potential impacts to "Waters of the United States" to the attention of the appropriate District Office for the Corps of Engineers for a determination prior to disturbance. Be responsible for any fees associated with obtaining approval for waste and borrow sites from the U.S. Army Corps of Engineer or other appropriate regulatory agencies.

1-296 Waste & Borrow Sites
01/02/2012

COORDINATION OF WORK WITH OTHER CONTRACTS

Be advised, there may be active project(s) adjacent to or within this project. These may be KYTC administered contracts, work being performed as part of a KYTC issued encroachment permit, or work being performed by Department forces. The Engineer will coordinate the work of the Contractor and others within the limits of this project. See Sections 105.06, 107.06 and 107.14.

TRAFFIC CONTROL PLAN

TRAFFIC CONTROL GENERAL

Except as provided herein, maintain and control traffic in accordance with the 2019 Standard and Supplemental Specifications and the 2020 Standard and Sepia Drawings, current editions. Except for the roadway and traffic control bid items listed, the Department will measure and pay for all items of work necessary to maintain and control traffic at the Contract lump sum bid price to "Maintain and Control Traffic".

Contrary to Section 106.01, furnish new, or used in like new condition, traffic control devices at the beginning of the work and maintain in like new condition until completion of the work.

PROJECT PHASING & CONSTRUCTION PROCEDURES

Do not close any through lanes on I-24 at any time during construction. At the discretion of the Engineer, the Department may specify days and hours when shoulder closures will not be allowed. Prior to beginning work at each site, informally partner with the Engineer and the Kentucky State Police Commercial Vehicle Enforcement and provide a proposed work schedule for the approval of the Engineer. The Department will provide public notification. Notify the Engineer immediately and obtain prior approval of any proposed deviations from the approved schedule.

On I-24 Ramps and within the weigh station, provide a minimum clear lane width of twelve (12) feet; however, provide for passage of vehicles of up to 16 feet in width. If traffic should be stopped due to construction operations, and a school bus on an official run arrives on the scene, make provisions for the passage of the bus as quickly as possible.

SHOULDER CLOSURES

Do not store materials or equipment on shoulders during non-working hours.

PARKING LOT CLOSURES

The Contractor may close up to ½ of individual parking lots at any one time for removal and/or rewiring of existing lighting. The Engineer may specify days and hours when parking lot closures will not be allowed. Obtain the Engineer's prior approval of the traffic control for the closures.

Traffic Control Plan
Page 2 of 3

SIGNS

Sign posts and splices shall be compliant with NCHRP 350 or MASH. Manufacturer's documentation validating this compliance shall be provided to the Engineer prior to installation. Signs, including any splices, shall be installed according to manufacturer's specifications and installation recommendations. Contrary to section 112.04.02, only long-term signs (signs intended to be continuously in place for more than 3 days) will be measured for payment. Short-term signs (signs intended to be left in place for 3 days or less) will not be measured for payment but will be incidental to Maintain and Control Traffic.

ARROW BOARDS & CHANGEABLE MESSAGE SIGNS

If deemed necessary by the Engineer, the Department will furnish, operate, and maintain Arrow Boards and Changeable Message Signs.

BARRICADES

The Department will not measure barricades used in lieu of barrels and cones for channelization or delineation, but shall be incidental to Maintain and Control Traffic.

PAVEMENT EDGE DROP-OFFS

Do not allow a pavement edge between opposing directions of traffic or lanes that traffic is expected to cross in a lane change situation with an elevation difference greater than 1½". Place Warning signs (MUTCD W8-11 or W8-9A) in advance of and at 1,500' intervals throughout the drop-off area. Dual post the signs on both sides of the traveled way. Wedge all transverse transitions areas which traffic may cross with asphalt mixture for leveling and wedging. Remove the wedges prior to placement of the final surface course.

Protect pavement edges that traffic is not expected to cross, except accidentally, as follows:

Less than 2" - No protection required.

2" to 4" - Protect drop-offs within 10 feet of traffic by placing plastic drums, vertical panels, or barricades spaced as directed by the Engineer. During daylight working hours only, the Engineer will allow the Contractor to use cones in lieu of plastic drums, panels, and barricades. Wedge the drop-off with DGA with a 1:1 or flatter slope in daylight hours, or 3:1 or flatter slope during nighttime hours, when work is not active in the drop-off area.

Traffic Control Plan
Page 3 of 3

Greater than 4' - Protect drop-offs greater than 4 inches within 10 feet of traffic by placing drums, vertical panels, or barricades as directed by the Engineer. The Engineer will not allow the use of cones in lieu of drums, vertical panels, or barricades for drop-offs greater than 4". Place Type III Barricades directly in front of the drop-off facing oncoming traffic. Provide warning signs as shown on the Standard Drawings or as directed by the Engineer.

SPECIAL NOTE FOR EROSION CONTROL

I. DESCRIPTION

Perform all erosion and water pollution control work in accordance with the Department's Standard and Interim Supplemental Specifications, Special Provisions and Special Notes, and Standard and Sepia Drawings, current editions, and as directed by the Engineer. Section references are to the Standard Specifications. This work shall consist of:

(1) Developing and preparing a Best Management Practices Plan (BMP) tailored to suit the specific construction phasing for each site within the project; (2) Preparing the project site for construction, including locating, furnishing, installing, and maintaining temporary and/or permanent erosion and water pollution control measures as required by the BMP prior to beginning any earth disturbing activity on the project site; (3) Clearing and grubbing and removal of all obstructions as required for construction; (4) Removing all erosion control devices when no longer needed; (5) Restoring all disturbed areas as nearly as possible to their original condition; (6) Preparing seedbeds and permanently seeding all disturbed areas; (7) Providing a Kentucky Erosion Prevention and Sediment Control Program (KEPSC-RI) qualified inspector; and (8) Performing any other work to prevent erosion and/or water pollution as specified by this contract, required by the BMP, or as directed by the Engineer.

II. MATERIALS

Furnish materials in accordance with these notes, the Standard Specifications and Interim Supplemental Specifications, and applicable Special Provisions and Special Notes, and Standard and Sepia Drawings, current editions. Provide for all materials to be sampled and tested in accordance with the Department's Sampling Manual. Unless directed otherwise by the Engineer, make the materials available for sampling a sufficient time in advance of the use of the materials to allow for the necessary time for testing.

III. CONSTRUCTION

Be advised, these Erosion Control Plan Notes do not constitute a BMP plan for the project. Jointly with the Engineer, prepare a site specific BMP plan for each drainage area within the project in accordance with Section 213. Provide a unique BMP at each project site using good engineering practices taking into account existing site conditions, the type of work to be performed, and the construction phasing, methods and techniques to be utilized to complete the work. Be responsible for all erosion prevention, sediment control, and water pollution prevention measures required by the BMP for each site. Represent and warrant compliance with the Clean Water Act (33 USC Section 1251 et seq.), the 404 Permit, the 401 Water Quality Certification, and applicable state and

Erosion Control

Page 2 of 3

local government agency laws, regulations, rules, specifications, and permits. Contrary to Section 105.05, in case of discrepancy between these notes, the Standard Specifications, Interim Supplemental Specifications, Special and Special Notes, Standard and Sepia Drawings, and such state and local government agency requirements, adhere to the most restrictive requirement.

Conduct operations in such a manner as to minimize the amount of disturbed ground during each phase of the construction and limit the haul roads to the minimum required to perform the work. Preserve existing vegetation not required to be removed by the work or the contract. Seed and/or mulch disturbed areas at the earliest opportunity. Use silt fence, silt traps, temporary ditches, brush barriers, erosion control blankets, sodding, channel lining, and other erosion control measures in a timely manner as required by the BMP and as directed or approved by the Engineer. Prevent sediment laden water from leaving the project, entering an existing drainage structure, or entering a stream.

Provide for erosion control measures to be in place and functioning prior to any earth disturbance within a drainage area. Compute the volume and size of silt control devices necessary to control sediment during each phase of construction. Remove sediment from silt traps before they become a maximum of $\frac{1}{2}$ full. Maintain silt fence by removing accumulated trappings and/or replacing the geotextile fabric when it becomes clogged, damaged, or deteriorated, or when directed by the Engineer. Properly dispose of all materials trapped by erosion control devices at approved sites off the right of way obtained by the Contractor at no additional cost to the Department (See Special Note for Waste and Borrow).

As work progresses, add or remove erosion control measures as required by the BMP applicable to the Contractor's project phasing and construction methods and techniques. Update the volume calculations and modify the BMP as necessary throughout the duration of the project. Ensure that an updated BMP is kept on site and available for public inspection throughout the life of the project.

After all construction is complete, restore all disturbed areas in accordance with Section 212. Completely remove all temporary erosion control devices not required as part of the permanent erosion control from the construction site. Prior to removal, obtain the Engineer's concurrence of items to be removed. Grade the remaining exposed earth (both on and off the Right of-Way) as nearly as possible to its original condition, or as directed by the Engineer. Prepare the seed bed areas and sow all exposed earthen areas with the applicable seed mixture(s) according to Section 212.03.03.

IV. MEASUREMENT

Erosion Control Blanket. If required by the BMP, the Department will measure Erosion Control Blanket according to Section 212.04.07.

Sodding. If required by the BMP, the Department will measure Sodding according to Section 212.04.08.

Erosion Control
Page 3 of 3

Channel Lining. If required by the BMP, the Department will measure Channel Lining according to Sections 703.04.04-703.04.07.

Erosion Control. Contrary to Sections 212.04, 213.04, and 703.04 other than Erosion Control Blankets, Sodding, and Channel Lining, the Department will **NOT** measure Erosion Control for separate payment. The Department will not measure developing, updating, and maintaining a BMP plan for each site; providing a KEPSC-RI qualified inspector; locating, furnishing, installing, inspecting, maintaining, and removing erosion and water pollution control items; Roadway Excavation, Borrow Excavation, Embankment In Place, Topsoil Furnished and Placed, and Spreading Stockpiled Topsoil; Topdressing Fertilizer, Temporary and Permanent Seeding and Protection, Special Seeding Crown Vetch, and Temporary Mulch; Sedimentation Basin and Clean Sedimentation Basin, Silt Trap Type "A" and Clean Silt Trap Type "A"; Silt Trap Type "B" and Clean Silt Trap Type "B"; Silt Trap Type "C" and Clean Silt Trap Type "C"; Temporary Silt Fence and Clean Temporary Silt Fence; Plants, Vines, Shrubs, and Trees; Gabion and Dumped Stone Deflectors and Riffle Structures; Boulders; Temporary Ditches and clean Temporary Ditches; Geotextile Fabric, and all other erosion and water pollution control items required by the BMP or the Engineer, but shall be incidental to the applicable items of work.

V. BASIS OF PAYMENT

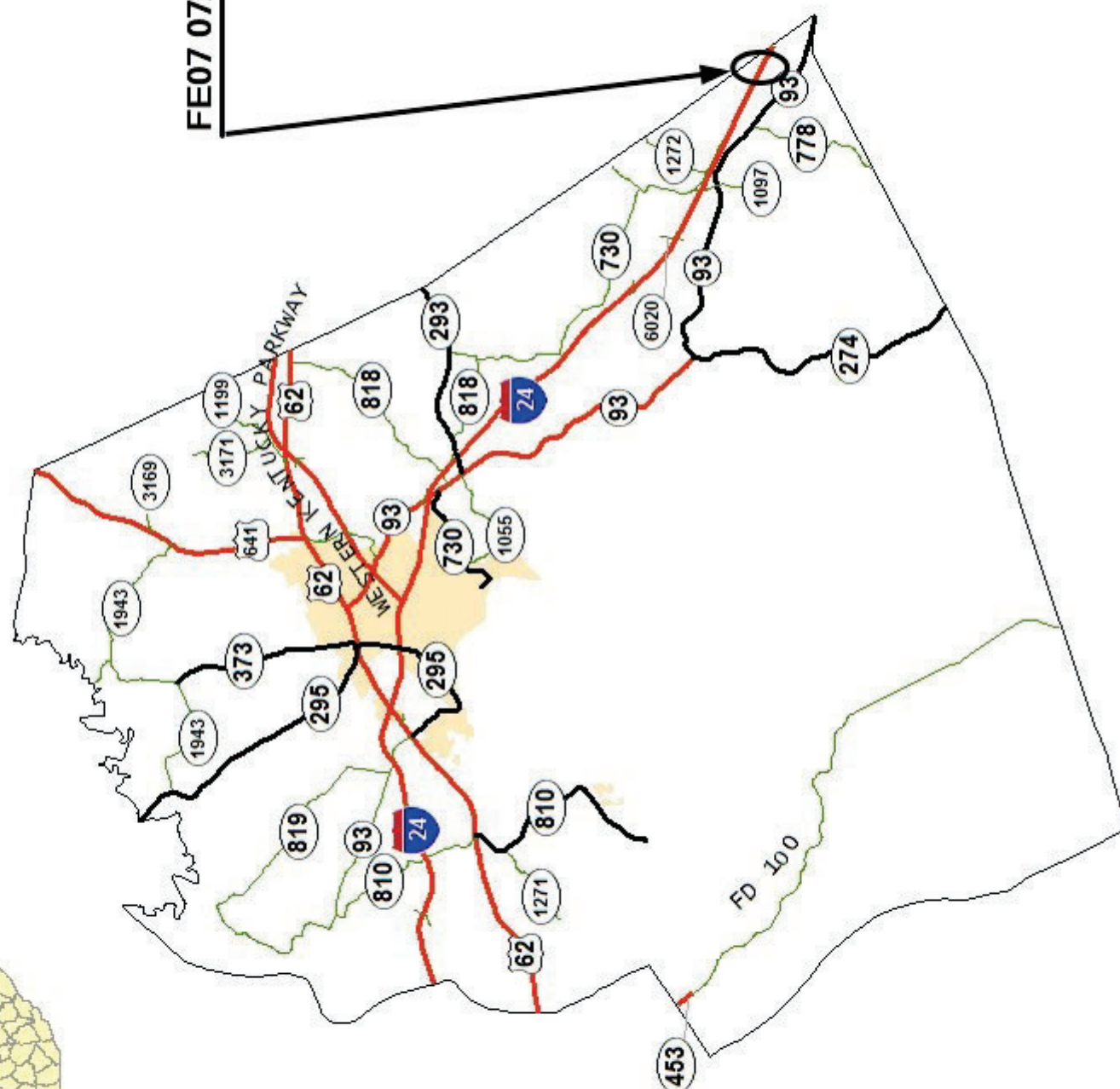
Erosion Control Blanket. If not listed as a bid item, but required by the BMP, the Department will pay for Erosion Control Blankets as Extra Work according to Sections 104.03 and 109.04.

Sodding. If not listed as a bid item, but required by the BMP, the Department will pay for Sodding as Extra Work according to Sections 104.03 and 109.04.

Channel Lining. If not listed as a bid item, but required by the BMP, the Department will pay for Channel Lining as Extra Work according to Sections 104.03 and 109.04.



DEPARTMENT OF HIGHWAYS
MAP OF
LYON COUNTY



FE07 072 0024 053-054



The following are the required Specifications for the LED Fixture:

1. The Luminaire shall be listed by a National Recognized Testing Laboratory (NRTL) as defined by the U.S. Department of Labor. The testing laboratory must be listed by OSHA in its scope of recognition for the applicable tests being performed. The testing laboratory must be listed by OSHA in its scope of recognition for products sold in the United States may be found on the U.S. Department of Labor's web site: <http://www.osha.gov/>
2. The Luminaire shall be listed and labeled by a NRTL or CSA as being in compliance with UL 1598 and suitable for use in wet locations.
3. Key components including LED drivers, LED light sources, and surge protection devices shall be RoHS compliant.
4. The housing shall have an IESNA rating of IP 65 or greater.
5. The luminaire shall have an International Electrotechnical Commission (IEC) Class II ingress protection (IP) rating of IP 65 or greater.
6. The luminaire shall have an Electromagnetic Interference (EMI) requirements as defined by FCC 47 CFR Part 15; CISPR15, CISPR22 Class A (120Vmin), EN61000-3-2, -3-3, -4-4, -4-5.
7. Shall be tested according to the most current version of Illuminating Engineering Society of North America (IESNA) LM-79.
8. Shall have lumen maintenance measured in accordance with the most current version of Illuminating Engineering Society of North America (IESNA) LM-80.
9. Shall have long term lumen maintenance documented according to the most current version of Illuminating Engineering Society of North America (IESNA) TM-21.
10. The fixture shall have a diecast aluminum housing.
11. The luminaire finish shall be corrosion resistant with a polyester powdercoat of 2.5 mil nominal thickness. Finish shall pass per ASTM D1654 after 3000 hours of testing per ASTM B117.
12. All hardware on the exterior of the housing including cover and latch shall be stainless steel, zinc or steel with zinc alloy electroplate and chromate top coat.
13. The luminaire shall be easy to open when properly mounted and shall have replacement parts not requiring tools (i.e. "tool-less entry").
14. The luminaire shall have a vibration rating of 3G per the American National Standard (ANSI) IEEE C136.31, Table 2 Roadway Lighting Equipment -Luminaire Vibration for both normal applications and bridge and overpass applications.

DESIGN CRITERIA FOR LED HIGH MAST AT WEIGH STATION SEE STATISTICAL AREA ON SHEET T13

- OVERALL CRITERIA
- 1. LUMINAIRE SHALL BE MOUNTED AT 40' LED LUMINAIRE
 - 2. ALL LUMINAIRE SHALL HAVE THE NEMA LABEL INSTALLED ON THE BOTTOM OF THE FIXTURE TO VERIFY THE WATTAGE. LABEL: A2
 - 3. LUMINAIRE WATTAGE LUMINAIRE NUMBER IN CIRCUIT CIRCUIT NUMBER
 - 4. ALL TYPE A LUMINAIRE ARE MOUNTED AT 40' LED LUMINAIRE
 - 5. 5/12/2022

EXISTING LUMINAIRE DESIGNATION EXAMPLE

SPECIAL NOTE:
ALL LUMINAIRE SHALL HAVE THE NEMA LABEL INSTALLED ON THE BOTTOM OF THE FIXTURE TO VERIFY THE WATTAGE. LABEL: A2

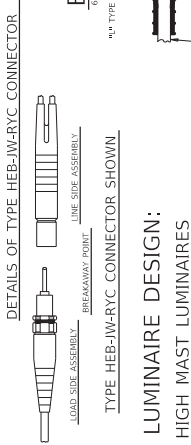
2 - 7 - A

TYPE V DISTRIBUTION
LAMP WATTAGE: CAN NOT EXCEED 429 WATTS

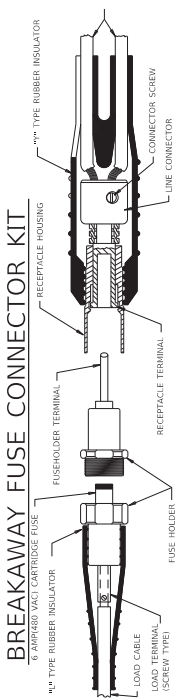
TYPE V DISTRIBUTION
LAMP WATTAGE: CAN NOT EXCEED 429 WATTS

ALL POLE LOCATIONS, ARM LENGTHS, AND ORIENTATION OF LUMINAIRE (TO CURVE/ROAD) SHOULD BE MAINTAINED DUE TO UTILITIES/DRAINAGE/RIGHT-OF-WAY.

14. The luminaire shall be designed to allow water shedding.
15. The luminaire shall have a passive cooling method shall be employed to manage thermal output of LED light engine and power supply.
16. The luminaire shall have a label per ANSI C136.22 that states operating voltage and current range. The label must be clearly visible on the inside of the housing.
17. The luminaire shall fully operate in a temperature range of -40 degrees C up to 40 degrees C (-40 degrees F to 104 degrees F).
18. In retrofit applications, the LED luminaire shall not be more wattage than the original HP5 fixture if you are replacing one for one. For the optimized proposal, we will allow the wattage to be greater than the original proposed luminaire.
19. The luminaire shall have an integral power supply (electronic driver). The power supply shall not have a manual, field-adjustable setting for current output.
20. The luminaire shall have a power supply (electronic driver) that will operate on a 480 volt single phase at 60 hertz.
21. The luminaire shall have a power supply (electronic driver) that has a power factor of .90 or greater at full load.
22. The luminaire shall have a power supply (electronic driver) that has total harmonic distortion of 20% or less at full load.
23. The luminaire shall have power supply (electronic driver) output ripple of less than 15%.
24. The luminaire shall have power supply (electronic driver) with a rated life of 100,000 hours with a luminaire operated at an ambient temperature of 25° C (77° F).
25. The luminaire shall have an isolated power supply (electronic driver) output.
26. The luminaire shall have a power supply (electronic driver) that has thermal overload protection.
27. The luminaire shall have a power supply (electronic driver) that is self-limited short circuit protected and over load protected.
28. The luminaire shall not use any active thermal cutback, such as in order to protect the luminaire from overheating.
29. The luminaire shall have a power supply (electronic driver) that is terminated with quick disconnect wire harnesses for easy maintenance. Wire nut termination is not acceptable.
30. The luminaire shall have a terminal block for terminating wiring to the luminaire. The terminal block shall be a 3 station, tunnel lug terminal board that will accommodate #6 thru #18 AWG pole wire.
31. Fixture shall have a surge protection that meets 10KV/5KA per ANSI/IEEE C62.41.
32. The luminaire shall have life rating on all electrical components of 100,000 hours greater when operated at full lumen output at 25 degrees C.
33. All LED components shall be L70 rated when operated in a luminaire at 25 degrees C (77 degrees F) at 100,000 hours.
34. Electrical components shall be protected per ANSI/IEEE standard C62.41, for Class C applications.
35. The LED shall fully operate in a temperature range -40 degrees C to 40 degrees C (-40 degrees F to 104 degrees F).
36. The LED shall lose no more than a 15% optical intensity of initial delivered lumens due to thermal loading when operated at 25° C (77° F)



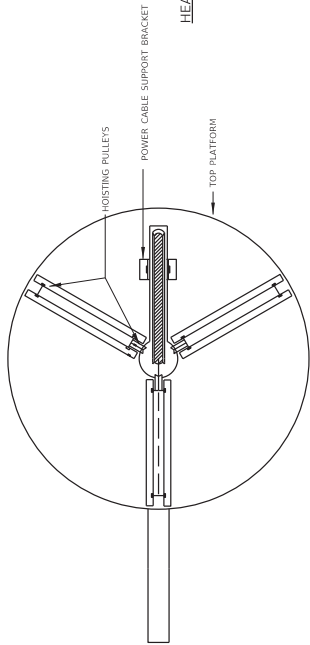
37. The LED shall have a rated life of 100,000 hours when operated at 40 °C.
38. The LED shall have a minimum luminaire efficacy of 120 lumens/watt.
39. The Correlated Color Temperature (CCT) shall be 4000K with a variance of 250K, white, that conforms to LM-79. The Correlated Color Temperature (CCT) shall be 5000K with a variance of 250K, white, that conforms to LM-79 (HIGH CRI).
40. The minimum color rendering index (CRI) shall not be less than 70.
41. The optics shall have a completely sealed optical system.
42. The optical system shall have an (IEC) (IP) rating of 66 or greater.
43. The optics shall have an Illuminating Engineering Society of North America (IESNA) rating of Type A.
44. The luminaire shall not exceed 3/highmast fixture backlight rating shall not exceed 5).
45. Uplight rating shall not exceed 3/4.
46. Glare rating shall not exceed 3/4.
47. The Light Loss Factor (LLF) shall be calculated for each fixture as follows:
LLF = LLD X LDD
48. Lamp Lumen Depreciation Factor (LLD) shall be the specified percentage of LED Lamp Lumen maintenance at 70,000 hours at 25° C (77° F) from the TM-21 report. This LDD shall be calculated from the LDD reported in the LM-80 and TM-21 reports. This report shall be submitted for verification.
49. Luminaire Dirt Depreciation (LDD)= .9
45. The TM-21 Report must show the drive current used for the submitted case scenario. The report can show a larger drive current to represent a worst case scenario.
46. The Lumen Maintenance Life L80 from the TM-21 Report must not be below 80% at 70,000 hours at 25° C (77° F).
47. The manufacturer shall provide certified test laboratories IES photometrics high power testing facility. The manufacturer shall be approved by a NREL accredited testing laboratory for the specific model being submitted.
48. The luminaire shall be equipped with a shorting cap and a 7-pin photcontrol receptacle that meets ANSI 2013 standard C136.41
49. The luminaire shall be equipped with a shorting cap and a 7-pin photcontrol receptacle that meets ANSI 2013 standard C136.41 (A,B,C,D) and the distribution type. This label shall be submitted and approved by the project engineer.
50. The luminaire shall have a QR code label that can be scanned and identify the model number and serial number for each individual fixture. This label shall be submitted and approved by the project engineer.
51. WARRANTY: The Manufacturer shall ensure that the LED Luminaire have a minimum standard warranty of 10 years for all parts, materials, paint finish, and shipping (both ways) required to repair or replace the luminaire. The warranty shall begin upon the date the luminaire is received. The warranty support shall be available from the manufacturer via telephone within 24 hours of the time the call is made from KYTC, and this support shall be made available from factory certified personnel or factory certified installers at 50% additional cost.
52. MINIMUM REQUIRED SUBMITTALS:
Luminaire specification sheet.
LED driver specification sheet.
TM-79 Luminaire photometric report.
TM-21 Luminaire lumen maintenance report.
Temperatures of the luminaire.
LM-80 Lumen maintenance as defined.
Backlight, Uplight, Glare (BUG) rating of the luminaire.
TM-21 calculations as defined.
Certified test lab IES photometric reports.
Including intensity and chromaticity data.
Instructions for installation and maintenance.



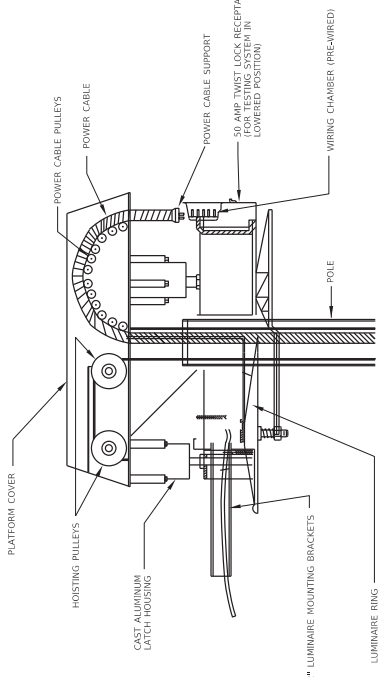
DRAWING TITLE: LED HIGH MAST NOTES

HORIZONTAL SCALE: Full Size 1 = 1

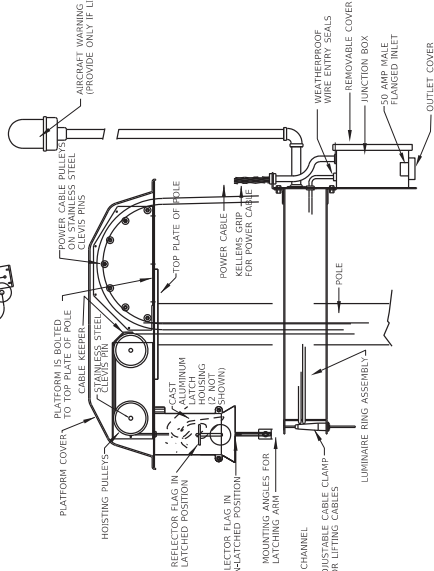
ITEM NO.	COUNTY OF LYON
NA	LYON
SHEET NO.	T2



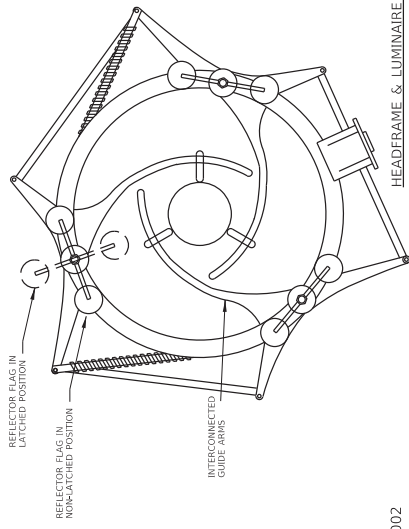
HEADFRAME ASSEMBLY - TOP VIEW



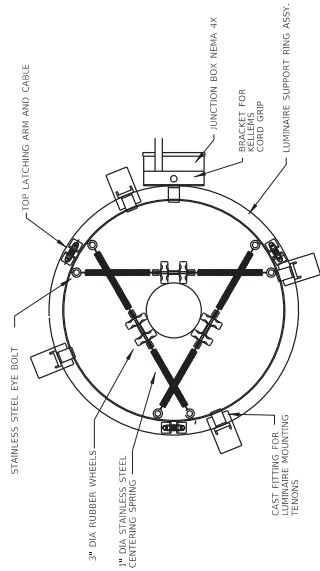
VIEW A-A



VIEW B-B



LUMINAIRE RING ASSEMBLY - TOP VIEW



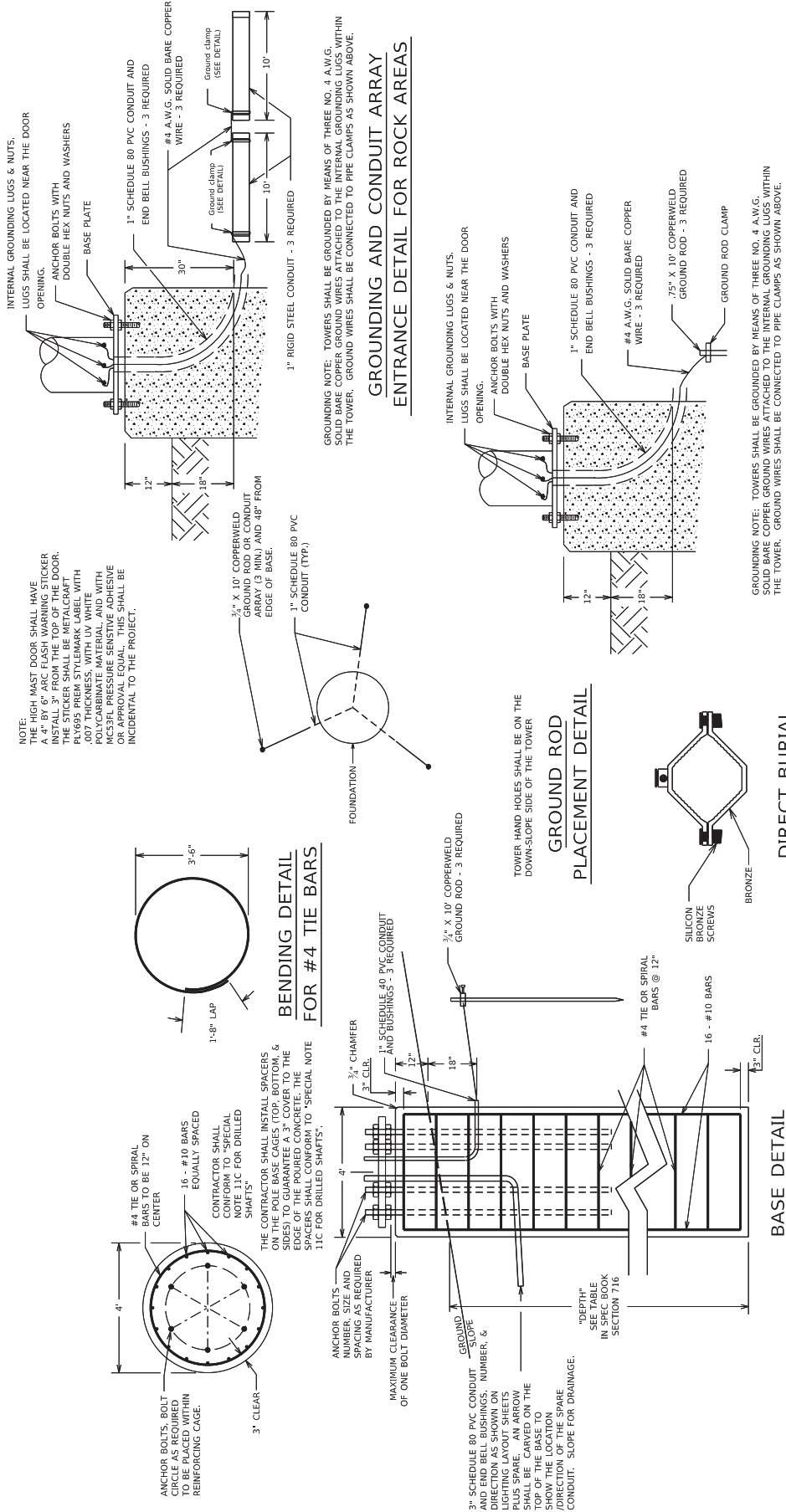
HEADFRAME & LUMINAIRE RING DETAILS - LATERAL LATCHING TYPE

HEADFRAME & LUMINAIRE RING DETAILS - ROTARY LATCHING TYPE

7/2002

	COMMONWEALTH OF KENTUCKY DEPARTMENT OF HIGHWAYS	DRAWING TITLE: HIGH MAST LOWERING DEVICE	HORIZONTAL SCALE SCALE: Full Size 1 = 1	FILE NAME: C:\P\WORK\COPY OF T&E\SWANEGOR\0207278\WEST-EAST BOUND WEIGH STATION.DGN	ITEM NO. NA	SHEET NO. T3	COUNTY OF LYON

BASE DESIGN FOR UP TO 120' HIGH MAST POLES
(WITH A MAXIMUM OF TWELVE LUMINAIRES)



NOTES:
1. CONDUITS SHALL BE INSTALLED AT LEAST 6 INCHES FROM THE BOTTOM OF THE DOOR FRAME. ALL CONDUITS USED FOR THE GROUNDING AND CONDUCTORS ARE INCIDENTAL TO BID ITEM "23101EN". THIS INCLUDES PROVIDING A MINIMUM OF 24 INCHES OF CONDUIT PAST THE EDGE OF THE POLE BASE.

GROUNDING NOTE: TOWERS SHALL BE GROUNDED BY MEANS OF THREE NO. 4 A.W.G. SOLID BARE COPPER WIRES ATTACHED TO THE INTERNAL GROUNDING LUGS WITHIN THE TOWER. GROUND WIRES SHALL BE CONNECTED TO PIPE CLAMPS AS SHOWN ABOVE.

GROUNDING NOTE: TOWERS SHALL BE GROUNDED BY MEANS OF THREE NO. 4 A.W.G. SOLID BARE COPPER WIRES ATTACHED TO THE INTERNAL GROUNDING LUGS WITHIN THE TOWER. GROUND WIRES SHALL BE CONNECTED TO PIPE CLAMPS AS SHOWN ABOVE.

7/26/2022

COMMONWEALTH OF KENTUCKY
DEPARTMENT OF HIGHWAYS

DRAWING TITLE: HIGH MAST CONCRETE BASE

HORIZONTAL SCALE: Full Size 1 = 1

FILE NAME: C:\P\WORK\COPY OF FED SWANEY\G0207127\WEST-EAST BOUND STATION\CON

ITEM NO. NA
SHEET NO. 74
COUNTY OF LYON



SPECIAL NOTE FOR THE HIGHMAST POLE DOOR:
FURNISH AN ARC FLASH AND SHOCK HAZARD
WARNING STICKER ON DISCONNECT/CABINET WITH
THE FOLLOWING INFORMATION:
VOLTAGE (480 VOLT)
GLOVE CLASS (0)
LIMITED APPROACH BOUNDARY (120 IN)
RESTRICTED APPROACH BOUNDARY (12 IN)
MINIMUM CLOTHING ARC RATING (CAT 2)
SEE NFPA 70E FOR ADDITIONAL PPE REQUIRED

WIRING ARRANGEMENT AT TOWER LOCATIONS

POLE GROUNDING LUG (3 REQ.)

NUMBER OF PORTABLE POWER UNITS TO BE SUPPLIED

1-30-2020




 COMMONWEALTH OF KENTUCKY
 DEPARTMENT OF HIGHWAYS

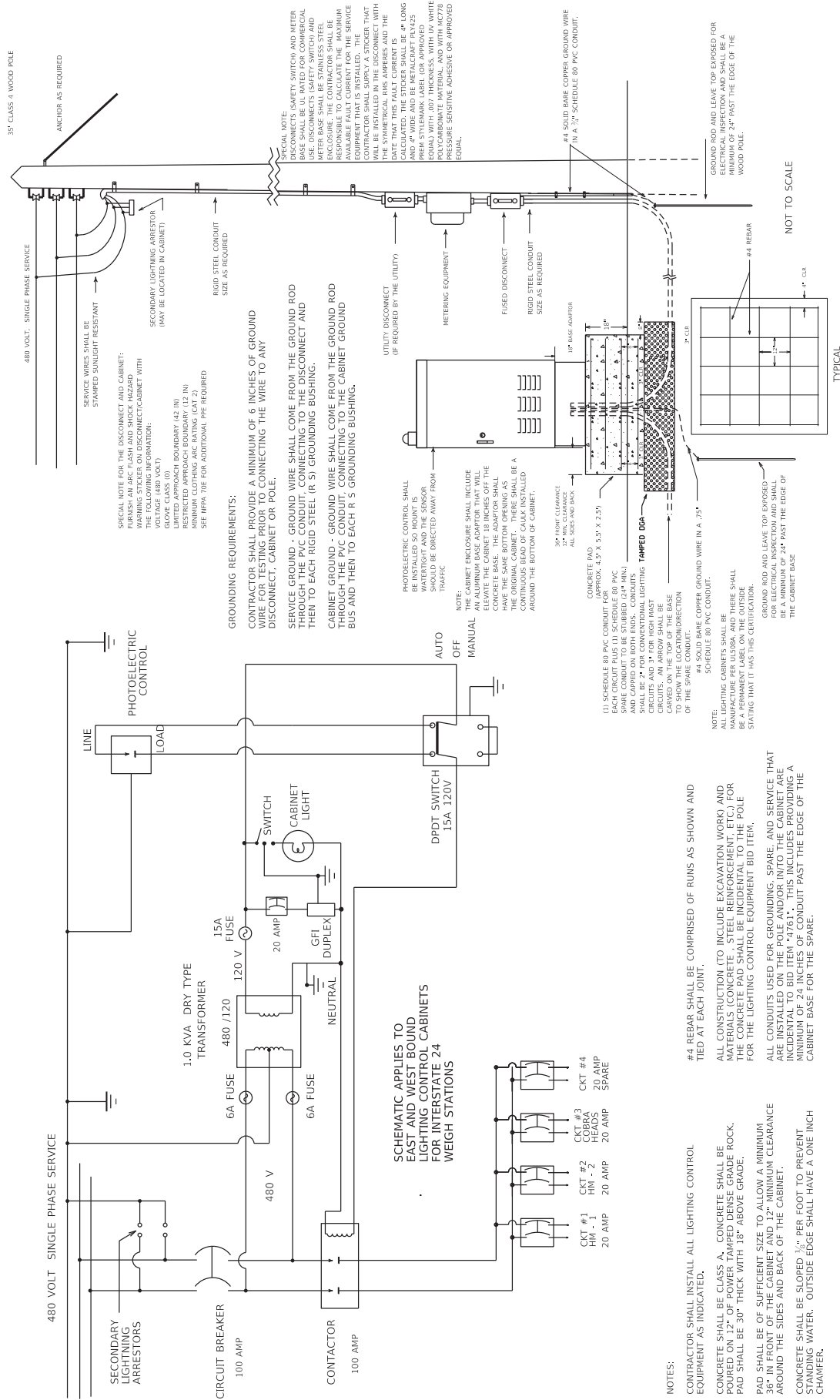
DRAWING TITLE: HIGH MAST POLE

HORIZONTAL SCALE
SCALE: Full Size 1" = 1'

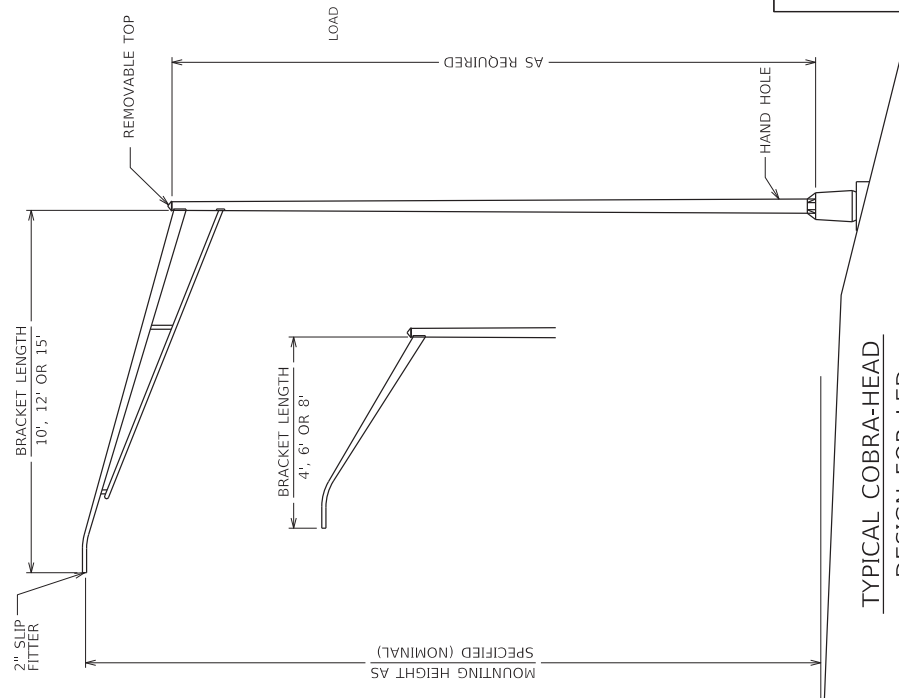
FILE NAME: C:\P\WORK\COPY OF TED SWANSEGA\D2071278\WEST-EAST BOUND WEIGH STATION.DGN

OpenRoads Designer v10.16.2.267

ITEM NO. NA COUNTY OF LYON
SHEET NO. T5



9/23/2021

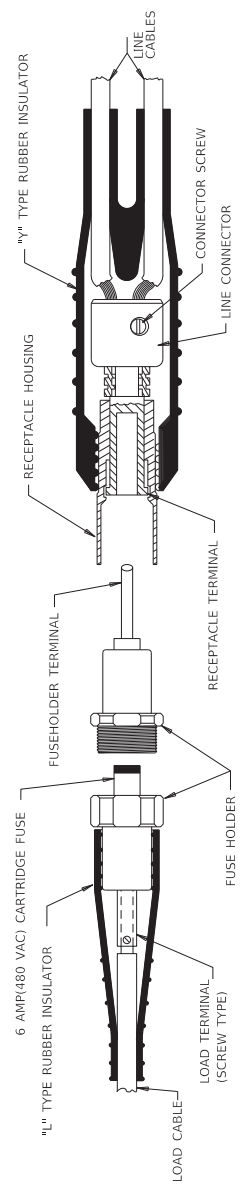


TYPICAL COBRA-HEAD DESIGN FOR LED LUMINAIRES

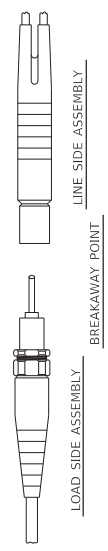
SPECIAL NOTE:
ALL LUMINAIRES SHALL HAVE THE NEMA LABEL
INSTALL ON THE BOTTOM OF THE FIXTURE TO
VERIFY THE WATTAGE.

4-24-2017

BREAKAWAY FUSE CONNECTOR KIT



DETAILS OF TYPE HEB-JW-RYC CONNECTOR

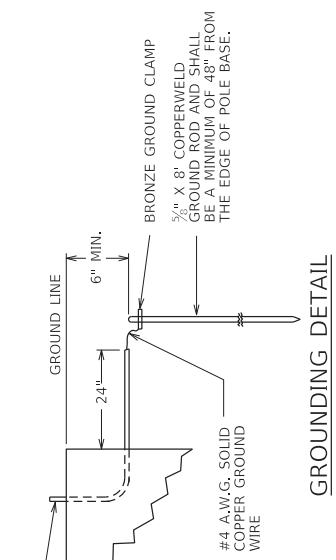


TYPE HEB-JW-RYC CONNECTOR SHOWN

LUMINAIRE DESIGNATION EXAMPLE



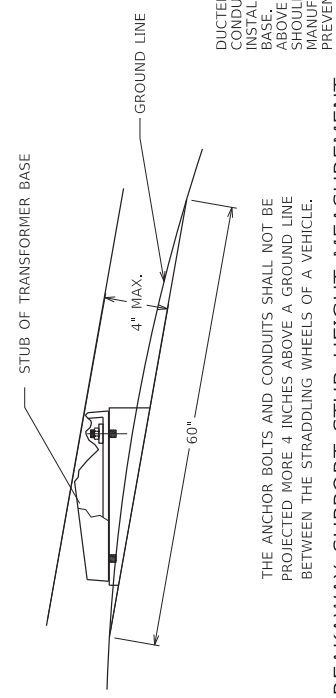
NOTE: IF NO SETBACK DIMENSION IS INDICATED, THE MAST ARM LENGTH DENOTES THE DISTANCE FROM THE RIGHT EDGE OF PAVEMENT TO CENTER OF POLE BASE.



GROUNDING DETAIL

7/8" SCHEDULE 80 PVC CONDUIT (WITH BUSHING) FOR GROUND WIRE (EACH BASE) AND SHALL BE A MIN OF 24" FROM THE EDGE OF THE POLE BASE.

DUCTED CABLE INSTALLED THROUGH 3" CONDUIT CROSSINGS TO LUMINAIRE POLE BASE: INSTALL DUCTED CABLE INTO THE POLE BASE. THE DUCT SHOULD BE EXTENDED 1" ABOVE THE CONDUIT. THE CONDUIT SWEEP SHOULD BE INSTALLED ACCORDING TO THE MANUFACTURER OF THE DUCTED CABLE TO PREVENT THE DUCTED CABLE FROM CRIMPING.



BREAKAWAY SUPPORT STUB HEIGHT MEASUREMENT

IF DUCTED CABLE INSTALLED BETWEEN POLE BASES:
INSTALL RIGID STEEL DUCTED CABLE GROUNDING. USE CONDUIT WITH ADHESIVE GROUTING. THE RIGID CONDUIT SHALL BE THE SAME SIZE AS THE DUCTED CABLE WHICH ATTACHES TO THE RIGID STEEL CONDUIT. ALTERNATELY IF DUCTED CABLE IS USED, THE CONTRACTOR CAN INSTALL RIGID STEEL CONDUIT TWO TIMES THE SIZE OF THE DUCT AND RUN THE SWEEP FOR THE THIS CONDUIT. THE SWEEP FOR THE CONDUIT SHALL BE INCREASED TO ADHERE TO THE BENDING RADIUS RECOMMENDED BY THE MANUFACTURER OF THE DUCT.

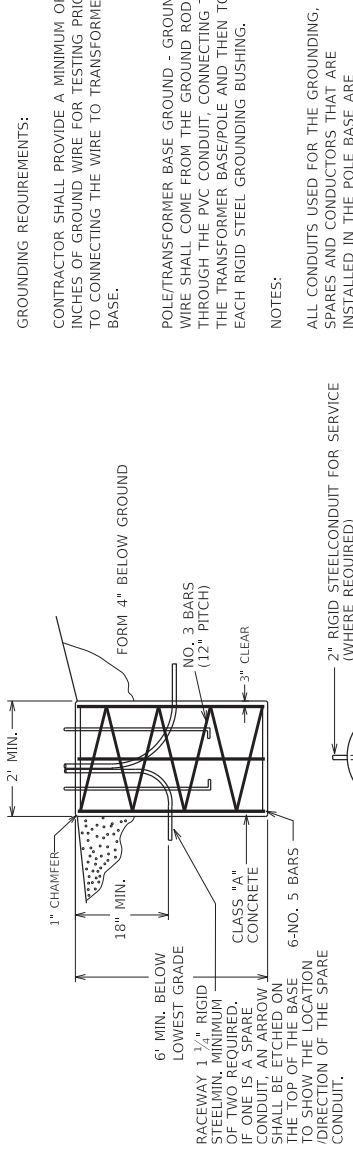
GROUNDING BUSHINGS

TO GROUND LUG IN TRANSFORMER BASE OR POLE SHAFT

TO GROUND ROD

TO GROUND ROD

TYPICAL GROUNDING DETAIL



CONTRACTOR SHALL PROVIDE A MINIMUM OF 6 INCHES OF GROUND WIRE FOR TESTING PRIOR TO CONNECTING THE WIRE TO TRANSFORMER BASE.

POLE/TRANSFORMER BASE GROUND - GROUND WIRE SHALL COME FROM THE GROUND ROD THROUGH THE PVC CONDUIT, CONNECTING TO THE TRANSFORMER BASE/POLE AND THEN TO EACH RIGID STEEL GROUNDING BUSHING.

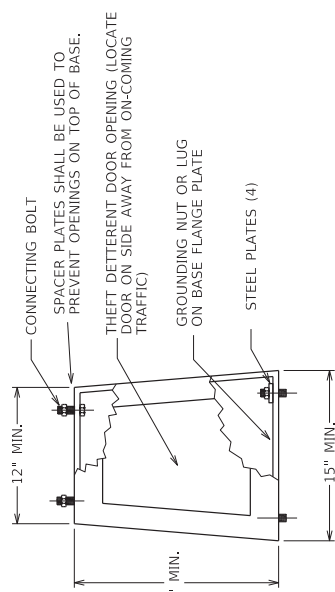
NOTES:

ALL CONDUITS USED FOR THE GROUNDING, SPARES AND CONDUCTORS THAT ARE INSTALLED IN THE POLE BASE ARE INCIDENTAL TO BID ITEM "4740". THIS INCLUDES PROVIDING A MINIMUM OF 24 INCHES OF CONDUIT PAST THE EDGE OF THE POLE BASE.

NOTE: PRECAST CONCRETE BASES ARE NOT ACCEPTABLE

FOUNDATION DETAIL

ALL POLE BASES SHALL HAVE A MINIMUM OF TWO CONDUITS (NOT INCLUDING GROUND CONDUIT). THE SPARE CONDUIT SHALL BE 180 DEGREE FROM THE CONDUIT FOR THE CONDUCTORS.



TYPICAL

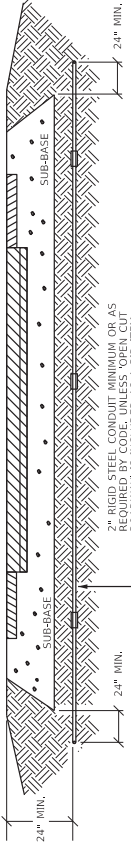
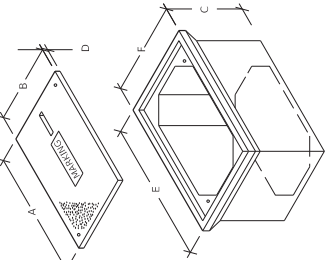
CAST ALUMINUM TRANSFORMER BASE

CONCRETE BASES SHALL BE POURED LEVEL. NO MORE THAN A .375" GAP SHALL EXIST BETWEEN CONCRETE BASE AND TRANSFORMER BASE WHEN THE POLE IS PLUMBED.

SPECIAL NOTE FOR TRANSFORMER BASES:
FURNISH AN ARC FLASH AND SHOCK HAZARD WARNING STICKER ON TRANSFORMER BASE WITH THE FOLLOWING INFORMATION:
A 4" BY 6" ARC FLASH WARNING STICKER
INSTALL 3" FROM THE TOP OF THE DOOR.
THE STICKER SHALL BE METALCRAFT PLY695 PREM STYLEMARK LABEL WITH .007 THICKNESS, WITH UV WHITE POLYCARBONATE MATERIAL, AND WITH MC53FL PRESSURE SENSITIVE ADHESIVE OR APPROVAL EQUAL. THIS SHALL BE INCIDENTAL TO PROJECT.

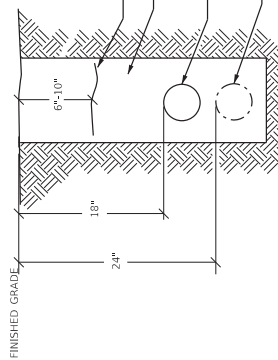
JUNCTION BOX DIMENSIONS (NOMINAL)						
	A	B	C	D	E	F
TYPE A	23"	14"	27"	2"	25"	15"
TYPE B	18"	11"	12"	1 1/2"	20"	13"
TYPE C	36"	24"	30"	3"	38"	26"

MINIMUM
NOTE: STACKABLE
BOXES ARE PERMITTED



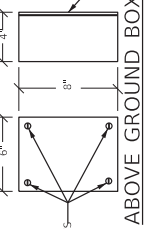
CONDUIT INSTALLATION UNDER EXISTING PAVEMENT DETAIL

DEPTHS SHOWN FOR CONDUIT AND
DUCTED CABLE ARE MINIMUMS.
CONTRACTOR SHALL PLACE AND
COMPILE BACKFILL TO PROTECT
CABLES AND BEFORE DISTURBED AREA
TO THE SATISFACTION OF THE ENGINEER.

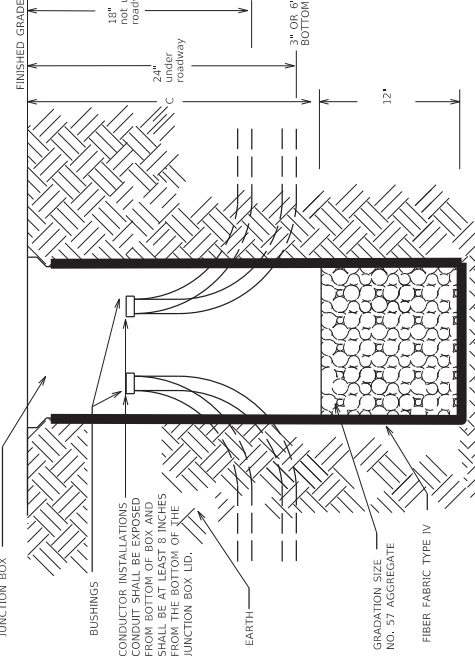
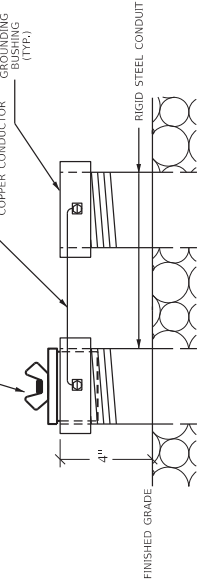


CONDUIT, DUCTED CABLE,
AND WARNING TAPE DETAIL

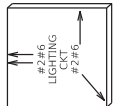
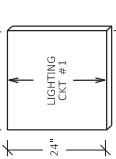
ABOVE GROUND BOX SHALL BE FABRICATED FROM MINIMUM 12 GAUGE STEEL AND
GALVANIZED AFTER FABRICATION. BOXES SHALL HAVE NO KNOCKOUTS AND SHALL
BE PROVIDED WITH A PLATE COVER WITH A WEATHER RESISTANT GASKET AND A
COVER PLATE WITH A WEATHER RESISTANT GASKET. CABLE CLAMPS SHALL BE PROVIDED FOR CABLES ENTERING AND EXITING THE BOX.



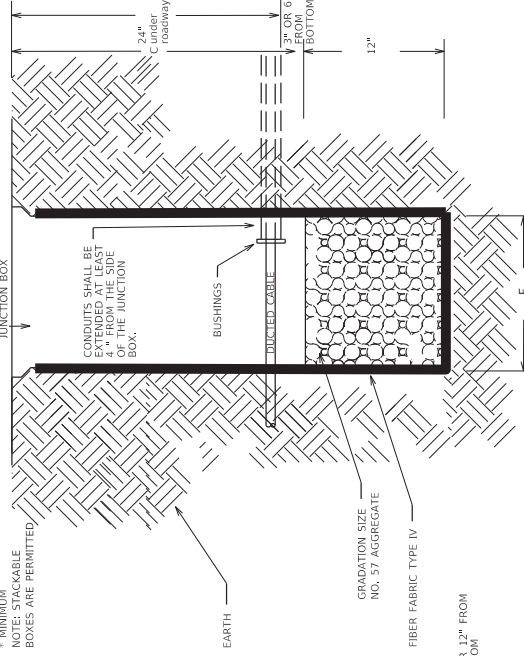
TEST/PIPE PLUG (FOR SPARE CONDUITS)
CAPPED ON BOTH ENDS



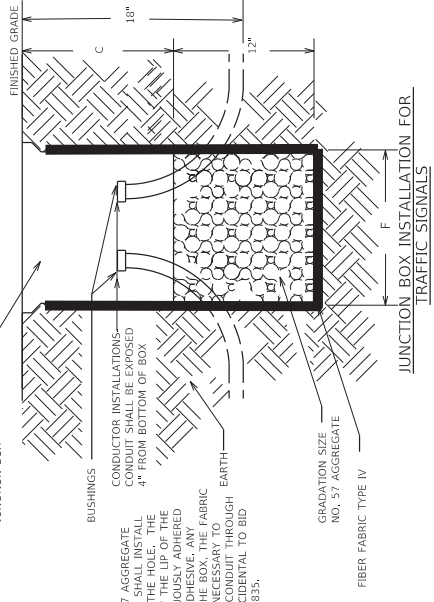
BEFORE THE INSTALLATION OF THE #57 AGGREGATE
AND JUNCTION BOX, THE CONTRACTOR SHALL INSTALL
A 2\"/>



JUNCTION BOX INSTALLATION FOR
CONVENTIONAL LIGHTING

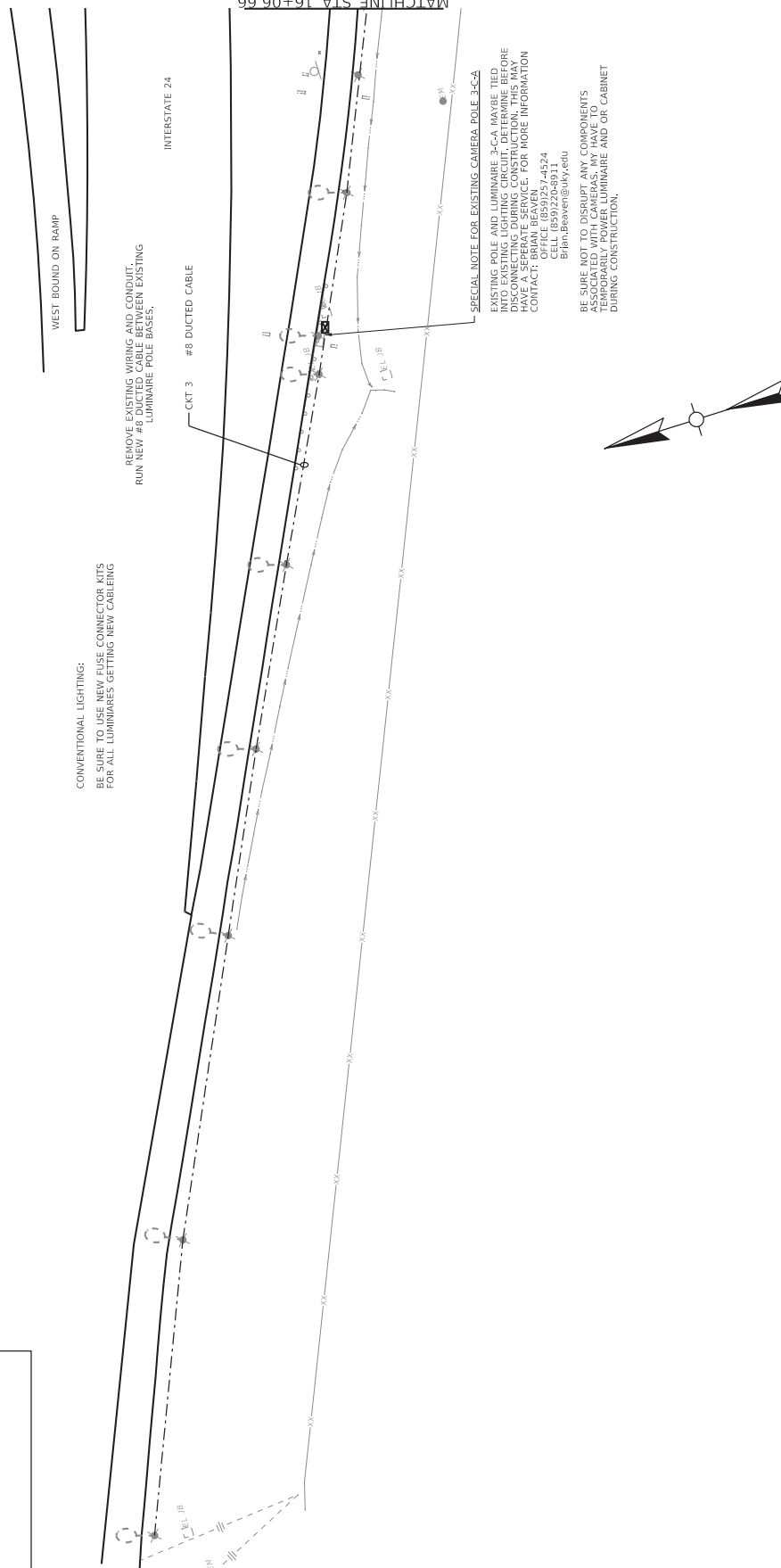


JUNCTION BOX INSTALLATION FOR
HIGHMAST LIGHTING



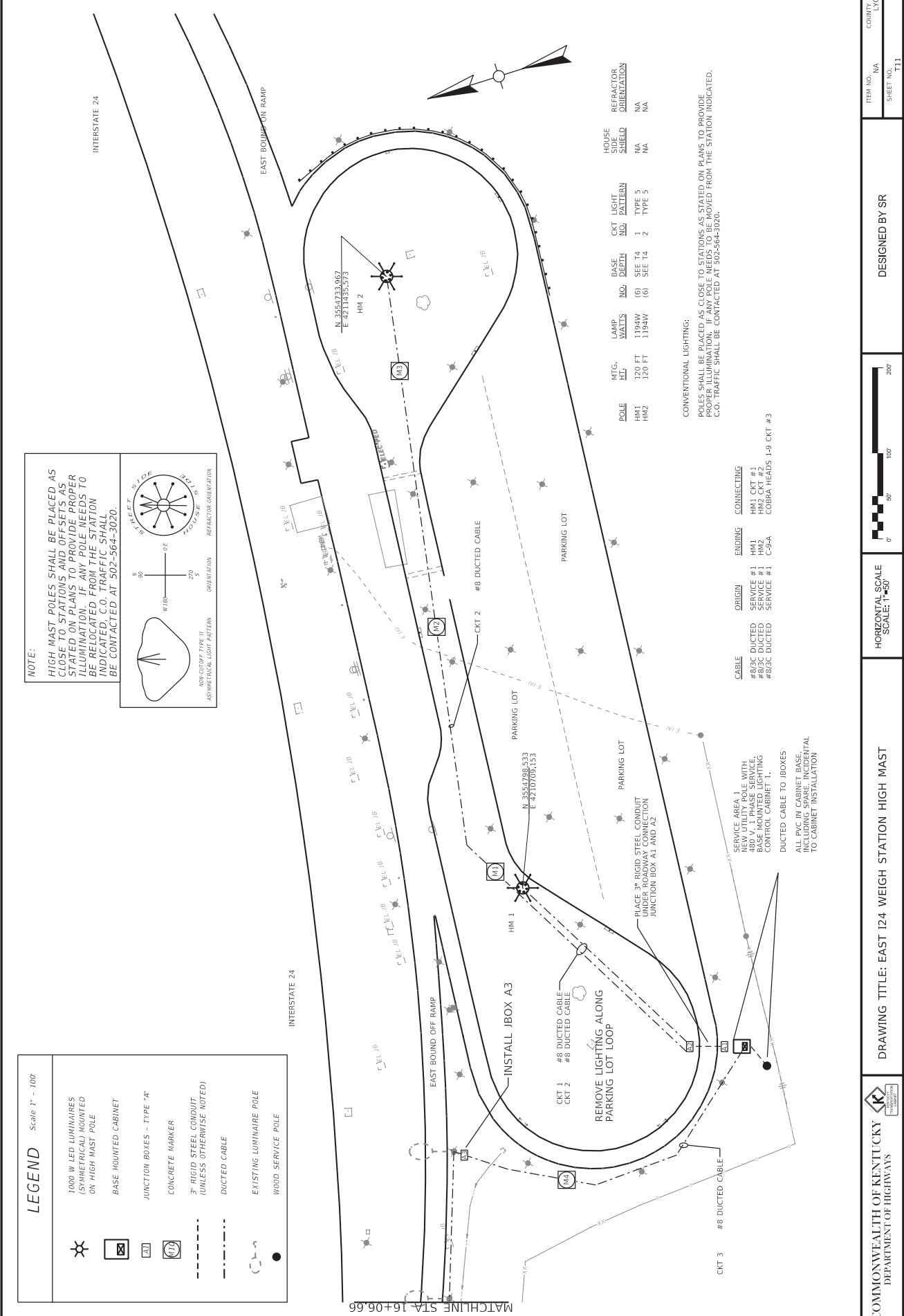
CONCRETE CABLE MARKERS

3/13/2017 TEST/PIPE PLUG(FOR SPARE CONDUITS) AND GROUNDING DETAIL



SPECIAL NOTE FOR EXISTING CAMERA POLE 3-C-A
EXISTING POLE AND LUMINAIRE 3-C-A MAYBE TIED INTO EXISTING LIGHTING CIRCUIT. DETERMINE BEFORE DISCONNECTING DURING CONSTRUCTION. THIS MAY BE AVOIDED BY PROVIDING MORE INFORMATION.
CONTACT: BRIAN BEAVEN
OFFICE (859)257-4524
CELL (859)220-8911
brian.beaven@uky.edu

BE SURE NOT TO DISRUPT ANY COMPONENTS ASSOCIATED WITH THE CAMERAS. WE HAVE TO DISCONNECT WITH THE CAMERA AND OR CABINET DURING CONSTRUCTION.



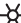







NOTE:
HIGH MAST POLES SHALL BE PLACED AS CLOSE TO STATIONS AND OFFSETS AS STATED ON PLANS TO PROVIDE PROPER ILLUMINATION. IF ANY POLE NEEDS TO BE RELOCATED FROM THE STATION INDICATED, C.O. TRAFFIC SHALL BE CONTACTED AT 502-564-3020.

NON-DUCT TYPE II

ASYMMETRICAL LIGHT PATTERN

ORIENTATION

REFLECTOR ORIENTATION

LEGEND		Scale 1" = 100'
	1000 W LED LUMINAIRES (SYMMETRICAL) MOUNTED ON HIGH MAST POLE	
	BASE MOUNTED CABINET	
	JUNCTION BOXES - TYPE "A"	
	CONCRETE MARKER	
	3" RIGID STEEL CONDUIT (UNLESS OTHERWISE NOTED)	
	DUCTED CABLE	
	EXISTING LUMINAIRE POLE	
	WOOD SERVICE POLE	

MTG.	LAMP	BASE	CKT	LIGHT	HOUSE	REFRACTOR
HT.	WATTS	NO.	DEPTH	NO.	SIDE	ORIENTATION
HM1	120 FT	1194W	(6)	SEE T4	1	TYPE 5
HM2	120 FT	1194W	(6)	SEE T4	2	TYPE 5
					NA	NA
					NA	NA

CONVENTIONAL LIGHTING:
POLES SHALL BE PLACED AS CLOSE TO STATIONS AS STATED ON PLANS TO PROVIDE PROPER ILLUMINATION. IF ANY POLE NEEDS TO BE MOVED FROM THE STATION INDICATED, C.O. TRAFFIC SHALL BE CONTACTED AT 502-564-3020.

CABLE	ORIGIN	ENDING	CONNECTING
#8/C DUCTED	SERVICE #1	HM1	HM1 CKT #1
#8/C DUCTED	SERVICE #1	HM2	HM2 CKT #2
#8/C DUCTED	SERVICE #1	C-9-A	COBRA HEADS 1-9 CKT #3

SERVICE AREA 1
NEW UTILITY POLE WITH
BASE MOUNTED SERVICE
CONTROL CABINET 1.
DUCTED CABLE TO JBOXES
ALL PVC IN CABINET BASE,
DUCTED CABLE IDENTICAL
TO CABINET INSTALLATION

DRAWING TITLE: EAST I24 WEIGH STATION HIGH MAST

DESIGNED BY SR

HORIZONTAL SCALE
SCALE: 1"=50'

ITEM NO. NA

SHEET NO. T11

COUNTY OF LYON

LEGEND

Scale 1" = 100'

NOTE:

HIGH MAST POLES SHALL BE PLACED AS CLOSE TO STATIONS AND OFFSETS AS STATED ON PLANS TO PROVIDE PROPER ILLUMINATION. IF ANY POLE NEEDS TO BE RELOCATED FROM THE STATION INDICATED, C.O. TRAFFIC SHALL BE CONTACTED AT 502-564-3020.

ASMETRICAL LIGHT PATTERN

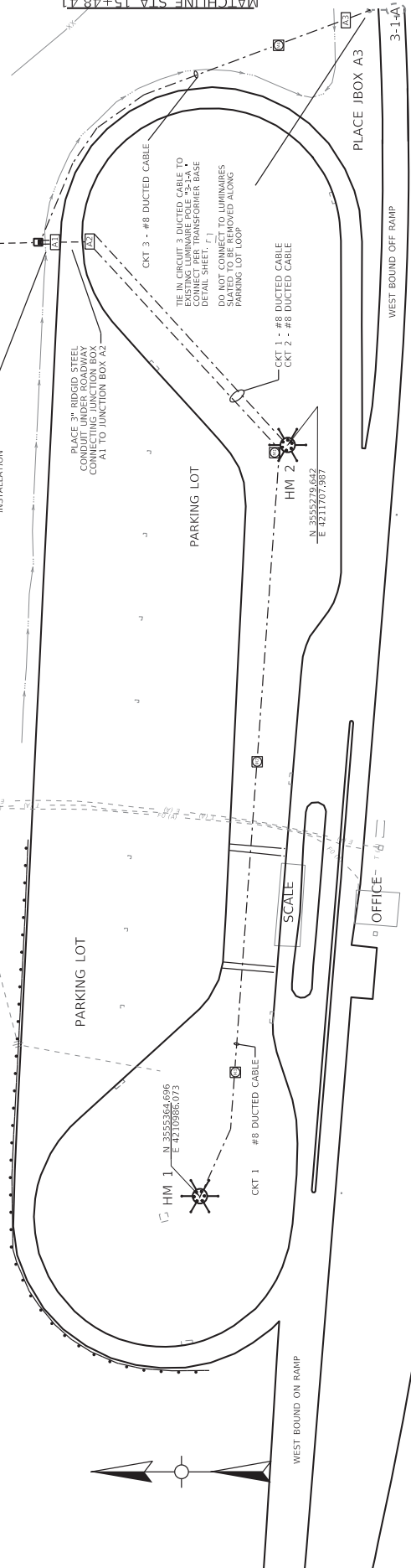
REFRACTOR ORIENTATION

NON-CUTOFF TYPE II

CABLE	ORIGIN	ENDING	CONNECTING
#83C DUCTED	SERVICE 2	HM1	HM1 CKT #1
#83C DUCTED	SERVICE 2	HM2	HM2 CKT #2
#83C DUCTED	SERVICE 2	3-8-A	COBRA HEADS 1-8 CKT #3

SERVICE AREA 2
NEW UTILITY POLE WITH
480 V, 1 PHASE SERVICE,
BASE MOUNTED LIGHTING
CONTROL CABINET #2

DUCTED CABLE TO JBOXES
INCLUDING SPARE CONDUITS,
INCIDENTAL TO CABINET BASE
INSTALLATION



POLE	MTG. HGT.	LAMP WATTS	BASE NO.	DUCTED CABLE	REFRACTOR ORIENTATION	HOUSE SIDE SHIELD
HM1	120 FT	1194W	(6)	SEE T4	NA	NA
HM2	120 FT	1194W	(6)	SEE T4	NA	NA

DRAWING TITLE: WEST I24 WEIGH STATION HIGH MAST

HORIZONTAL SCALE: 1"=50'

DESIGNED BY SR

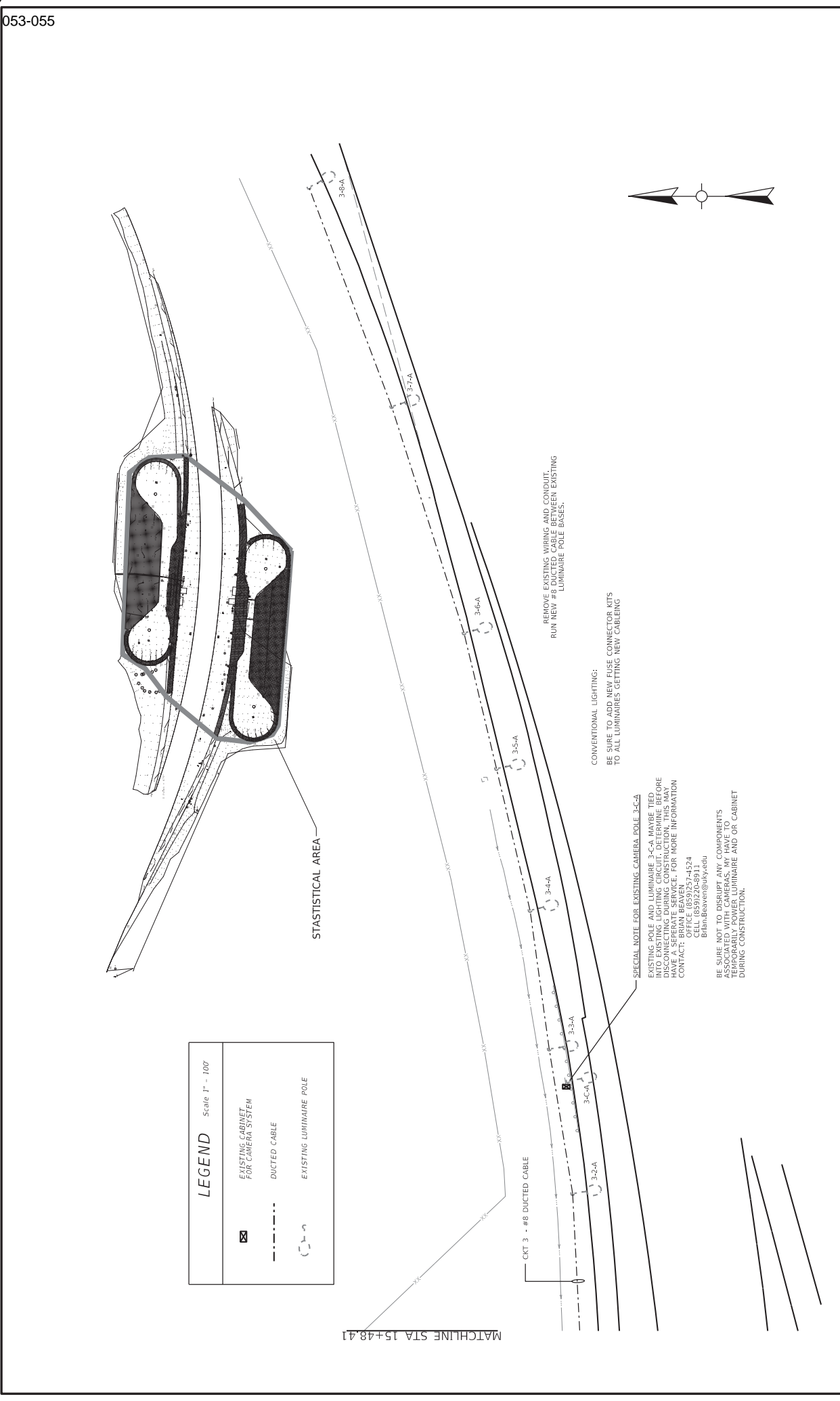
ITEM NO.

NA

COUNTY OF LYON

SHEET NO.

T12



DRAWING TITLE: WEST I24 OFF RAMP COBRA HEAD CONNECTIONS



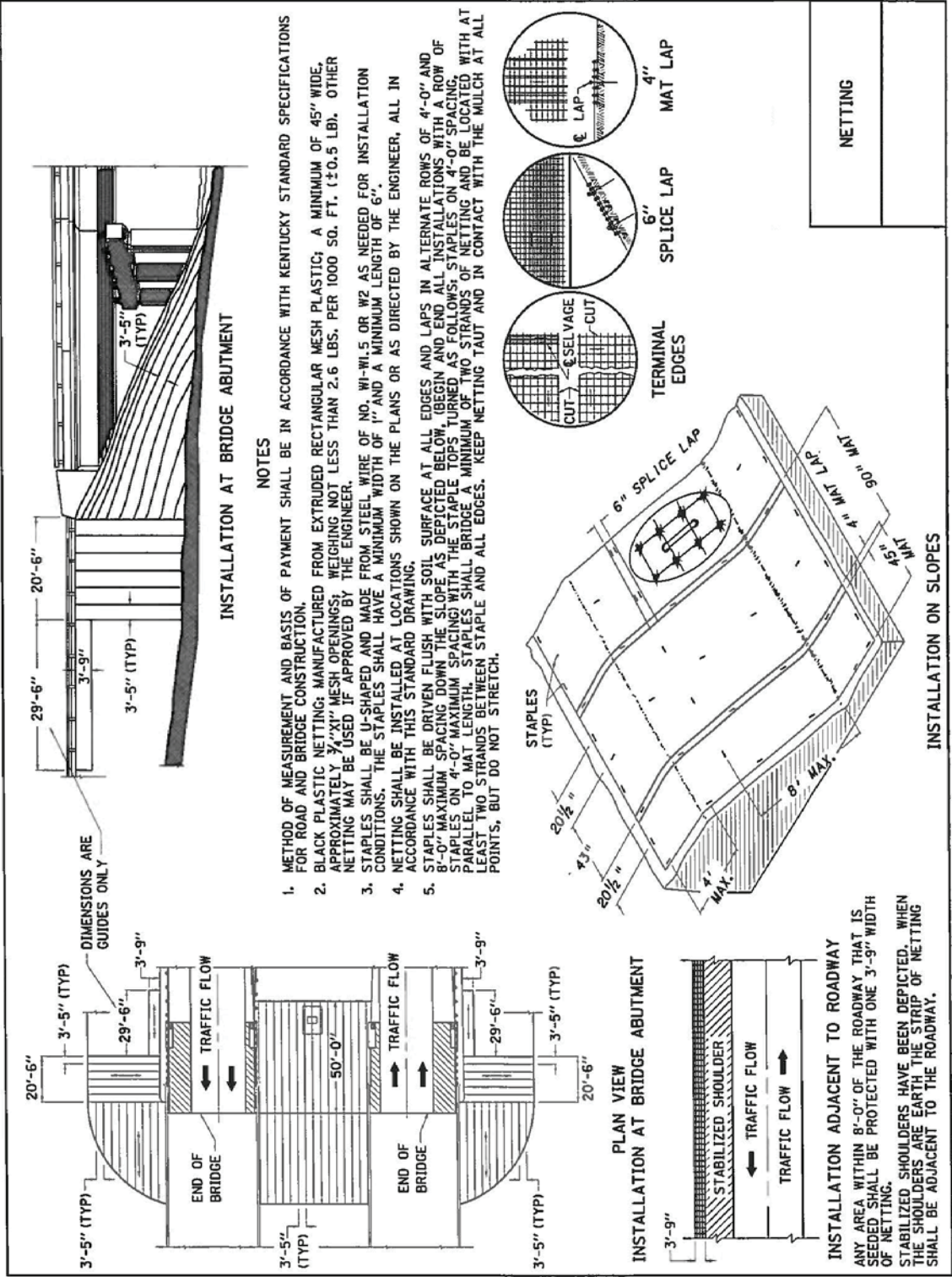
COMMONWEALTH OF KENTUCKY
DEPARTMENT OF HIGHWAYS



FILE NAME: C:\P\WORK\COPY OF FED SWANEY\G02071278\WEST-EAST BOUND WEIGH STATION.DGN

USER: shannon.r686

OpenRoads Designer v10.16.2.287



PART II

SPECIFICATIONS AND STANDARD DRAWINGS

SPECIFICATIONS REFERENCE

Any reference in the plans or proposal to previous editions of the *Standard Specifications for Road and Bridge Construction* and *Standard Drawings* are superseded by *Standard Specifications for Road and Bridge Construction, Edition of 2019* and *Standard Drawings, Edition of 2020*.

SUPPLEMENTAL SPECIFICATIONS

The contractor shall use the Supplemental Specifications that are effective at the time of letting.
The Supplemental Specifications can be found at the following link:

<http://transportation.ky.gov/Construction/Pages/Kentucky-Standard-Specifications.aspx>

APPLICABLE 2020 KENTUCKY STANDARD DRAWINGS

JUNCTION BOX TYPE – A	BGX-021
EROSION CONTROL BLANKET SLOPE INSTALLATION.....	RDI-040-01
TEMPORARY SILT FENCE.....	RDX-210-03
TEMPORARY SILT FENCE WITH WOVEN WIRE FENCE FABRIC.....	RDX-215-01
SILT TRAP - TYPE B.....	RDX-225-01
SILT TRAP - TYPE C.....	RDX-230-01
MISCELLANEOUS STANDARDS.....	RGX-001-06
SHOULDER CLOSURE	TTC-135-03
PAVEMENT CONDITION WARNING SIGNS.....	TTD-125-06
SPEED ZONE SIGNING FOR WORK ZONES	TTD-130

PART III

EMPLOYMENT, WAGE AND RECORD REQUIREMENTS

**TRANSPORTATION CABINET
DEPARTMENT OF HIGHWAYS**

**LABOR AND WAGE REQUIREMENTS
APPLICABLE TO OTHER THAN FEDERAL-AID SYSTEM PROJECTS**

- I. Application
- II. Nondiscrimination of Employees (KRS 344)

I. APPLICATION

1. These contract provisions shall apply to all work performed on the contract by the contractor with his own organization and with the assistance of workmen under his immediate superintendence and to all work performed on the contract by piecework, station work or by subcontract. The contractor's organization shall be construed to include only workmen employed and paid directly by the contractor and equipment owned or rented by him, with or without operators.

2. The contractor shall insert in each of his subcontracts all of the stipulations contained in these Required Provisions and such other stipulations as may be required.

3. A breach of any of the stipulations contained in these Required Provisions may be grounds for termination of the contract.

3. If the contractor is in control of apprenticeship or other training or retraining, including on-the-job training programs, he shall not discriminate against an individual because of his race, color, religion, national origin, sex, disability or age forty (40) and over, in admission to, or employment in any program established to provide apprenticeship or other training.

4. The contractor will send to each labor union or representative of workers with which he has a collective bargaining agreement or other contract or understanding, a notice to be provided advising the said labor union or workers' representative of the contractor's commitments under this section, and shall post copies of the notice in conspicuous places available to employees and applicants for employment. The contractor will take such action with respect to any subcontract or purchase order as the administering agency may direct as a means of enforcing such provisions, including sanctions for non-compliance.

Revised: January 25, 2017

II. NONDISCRIMINATION OF EMPLOYEES

**AN ACT OF THE KENTUCKY
GENERAL ASSEMBLY TO PREVENT
DISCRIMINATION IN EMPLOYMENT
KRS CHAPTER 344
EFFECTIVE JUNE 16, 1972**

The contract on this project, in accordance with KRS Chapter 344, provides that during the performance of this contract, the contractor agrees as follows:

1. The contractor shall not fail or refuse to hire, or shall not discharge any individual, or otherwise discriminate against an individual with respect to his compensation, terms, conditions, or privileges of employment, because of such individual's race, color, religion, national origin, sex, disability or age (forty and above); or limit, segregate, or classify his employees in any way which would deprive or tend to deprive an individual of employment opportunities or otherwise adversely affect his status as an employee, because of such individual's race, color, religion, national origin, sex, disability or age forty (40) and over. The contractor agrees to post in conspicuous places, available to employees and applicants for employment, notices to be provided setting forth the provisions of this nondiscrimination clause.

2. The contractor shall not print or publish or cause to be printed or published a notice or advertisement relating to employment by such an employer or membership in or any classification or referral for employment by the employment agency, indicating any preference, limitation, specification, or discrimination, based on race, color, religion, national origin, sex, or age forty (40) and over, or because the person is a qualified individual with a disability, except that such a notice or advertisement may indicate a preference, limitation, or specification based on religion, national origin, sex, or age forty (40) and over, or because the person is a qualified individual with a disability, when religion, national origin, sex, or age forty (40) and over, or because the person is a qualified individual with a disability, is a bona fide occupational qualification for employment.

EXECUTIVE BRANCH CODE OF ETHICS

In the 1992 regular legislative session, the General Assembly passed and Governor Brereton Jones signed Senate Bill 63 (codified as KRS 11A), the Executive Branch Code of Ethics, which states, in part:

KRS 11A.040 (7) provides:

No present or former public servant shall, within six (6) months following termination of his office or employment, accept employment, compensation, or other economic benefit from any person or business that contracts or does business with, or is regulated by, the state in matters in which he was directly involved during the last thirty-six (36) months of his tenure. This provision shall not prohibit an individual from returning to the same business, firm, occupation, or profession in which he was involved prior to taking office or beginning his term of employment, or for which he received, prior to his state employment, a professional degree or license, provided that, for a period of six (6) months, he personally refrains from working on any matter in which he was directly involved during the last thirty-six (36) months of his tenure in state government. This subsection shall not prohibit the performance of ministerial functions, including but not limited to filing tax returns, filing applications for permits or licenses, or filing incorporation papers, nor shall it prohibit the former officer or public servant from receiving public funds disbursed through entitlement programs.

KRS 11A.040 (9) states:

A former public servant shall not represent a person or business before a state agency in a matter in which the former public servant was directly involved during the last thirty-six (36) months of his tenure, for a period of one (1) year after the latter of:

- a) The date of leaving office or termination of employment; or
- b) The date the term of office expires to which the public servant was elected.

This law is intended to promote public confidence in the integrity of state government and to declare as public policy the idea that state employees should view their work as a public trust and not as a way to obtain private benefits.

If you have worked for the executive branch of state government within the past six months, you may be subject to the law's prohibitions. The law's applicability may be different if you hold elected office or are contemplating representation of another before a state agency.

Also, if you are affiliated with a firm which does business with the state and which employs former state executive-branch employees, you should be aware that the law may apply to them.

In case of doubt, the law permits you to request an advisory opinion from the Executive Branch Ethics Commission, 1025 Capital Center Drive, Suite 104, Frankfort, Kentucky 40601; telephone (502) 564-7954.

Revised: May 23, 2022

Kentucky Equal Employment Opportunity Act of 1978

The requirements of the Kentucky Equal Employment Opportunity Act of 1978 (KRS 45.560-45.640) shall apply to this Contract. The apparent low Bidder will be required to submit EEO forms to the Division of Construction Procurement, which will then forward to the Finance and Administration Cabinet for review and approval. No award will become effective until all forms are submitted and EEO/CC has certified compliance. The required EEO forms are as follows:

- EEO-1: Employer Information Report
- Affidavit of Intent to Comply
- Employee Data Sheet
- Subcontractor Report

These forms are available on the Finance and Administration's web page under ***Vendor Information, Standard Attachments and General Terms*** at the following address:
<https://www.eProcurement.ky.gov>.

Bidders currently certified as being in compliance by the Finance and Administration Cabinet may submit a copy of their approval letter in lieu of the referenced EEO forms.

For questions or assistance please contact the Finance and Administration Cabinet by email at **finance.contractcompliance@ky.gov** or by phone at 502-564-2874.

EMPLOYEE RIGHTS UNDER THE FAIR LABOR STANDARDS ACT

THE UNITED STATES DEPARTMENT OF LABOR WAGE AND HOUR DIVISION

FEDERAL MINIMUM WAGE

\$7.25

 PER HOUR

BEGINNING JULY 24, 2009

OVERTIME PAY

At least $1\frac{1}{2}$ times your regular rate of pay for all hours worked over 40 in a workweek.

CHILD LABOR

An employee must be at least **16** years old to work in most non-farm jobs and at least **18** to work in non-farm jobs declared hazardous by the Secretary of Labor.

Youths **14** and **15** years old may work outside school hours in various non-manufacturing, non-mining, non-hazardous jobs under the following conditions:

No more than

- **3** hours on a school day or **18** hours in a school week;
- **8** hours on a non-school day or **40** hours in a non-school week.

Also, work may not begin before **7 a.m.** or end after **7 p.m.**, except from June 1 through Labor Day, when evening hours are extended to **9 p.m.** Different rules apply in agricultural employment.

TIP CREDIT

Employers of "tipped employees" must pay a cash wage of at least \$2.13 per hour if they claim a tip credit against their minimum wage obligation. If an employee's tips combined with the employer's cash wage of at least \$2.13 per hour do not equal the minimum hourly wage, the employer must make up the difference. Certain other conditions must also be met.

ENFORCEMENT

The Department of Labor may recover back wages either administratively or through court action, for the employees that have been underpaid in violation of the law. Violations may result in civil or criminal action.

Employers may be assessed civil money penalties of up to \$1,100 for each willful or repeated violation of the minimum wage or overtime pay provisions of the law and up to \$11,000 for each employee who is the subject of a violation of the Act's child labor provisions. In addition, a civil money penalty of up to \$50,000 may be assessed for each child labor violation that causes the death or serious injury of any minor employee, and such assessments may be doubled, up to \$100,000, when the violations are determined to be willful or repeated. The law also prohibits discriminating against or discharging workers who file a complaint or participate in any proceeding under the Act.

ADDITIONAL INFORMATION

- Certain occupations and establishments are exempt from the minimum wage and/or overtime pay provisions.
- Special provisions apply to workers in American Samoa and the Commonwealth of the Northern Mariana Islands.
- Some state laws provide greater employee protections; employers must comply with both.
- The law requires employers to display this poster where employees can readily see it.
- Employees under 20 years of age may be paid \$4.25 per hour during their first 90 consecutive calendar days of employment with an employer.
- Certain full-time students, student learners, apprentices, and workers with disabilities may be paid less than the minimum wage under special certificates issued by the Department of Labor.

For additional information:



1-866-4-USWAGE

(1-866-487-9243)

TTY: 1-877-889-5627



WWW.WAGEHOUR.DOL.GOV

PART IV

INSURANCE

Refer to
Kentucky Standard Specifications for Road and Bridge Construction,
current edition

PART V

BID ITEMS

Report Date 12/22/22

Section: 0001 - LIGHTING

LINE	BID CODE	ALT	DESCRIPTION	QUANTITY	UNIT	UNIT PRIC	FP	AMOUNT
0010	02562		TEMPORARY SIGNS	750.00	SQFT		\$	
0020	02650		MAINTAIN & CONTROL TRAFFIC	1.00	LS		\$	
0030	04714		POLE 120 FT MTG HT HIGH MAST	4.00	EACH		\$	
0040	04761		LIGHTING CONTROL EQUIPMENT	2.00	EACH		\$	
0050	04780		FUSED CONNECTOR KIT	34.00	EACH		\$	
0060	04797		CONDUIT-3 IN	90.00	LF		\$	
0070	04800		MARKER	8.00	EACH		\$	
0080	04820		TRENCHING AND BACKFILLING	6,500.00	LF		\$	
0090	04860		CABLE-NO. 8/3C DUCTED	7,500.00	LF		\$	
0100	04940		REMOVE LIGHTING WITH BRACKET ARM LUMINAIRE	1.00	LS		\$	
0110	20391NS835		ELECTRICAL JUNCTION BOX TYPE A	6.00	EACH		\$	
0120	21543EN		BORE AND JACK CONDUIT	100.00	LF		\$	
0130	23161EN		POLE BASE-HIGH MAST	40.00	CUYD		\$	
0140	24749EC		HIGH MAST LED LUMINAIRE	24.00	EACH		\$	

Section: 0002 - DEMOBILIZATION

LINE	BID CODE	ALT	DESCRIPTION	QUANTITY	UNIT	UNIT PRIC	FP	AMOUNT
0150	02569		DEMOBILIZATION	1.00	LS		\$	