



CALL NO. 333

CONTRACT ID. 212974

SCOTT COUNTY

FED/STATE PROJECT NUMBER FE02 105 0608 B00146N

DESCRIPTION FROGTOWN ROAD (KY 608)

WORK TYPE BRIDGE REPAIRS

PRIMARY COMPLETION DATE 7/31/2022

LETTING DATE: December 10,2021

Sealed Bids will be received electronically through the Bid Express bidding service until 10:00 am EASTERN STANDARD TIME December 10,2021. Bids will be publicly announced at 10:00 am EASTERN STANDARD TIME.

NO PLANS ASSOCIATED WITH THIS PROJECT.

REQUIRED BID PROPOSAL GUARANTY: Not less than 5% of the total bid.

TABLE OF CONTENTS

PART I	SCOPE OF WORK <ul style="list-style-type: none">PROJECT(S), COMPLETION DATE(S), & LIQUIDATED DAMAGESCONTRACT NOTESSTATE CONTRACT NOTESSPECIAL NOTE(S) APPLICABLE TO PROJECTBRIDGE DRAWINGS
PART II	SPECIFICATIONS AND STANDARD DRAWINGS <ul style="list-style-type: none">SPECIFICATIONS REFERENCESUPPLEMENTAL SPECIFICATIONSTANDARD DRAWINGS THAT APPLY
PART III	EMPLOYMENT, WAGE AND RECORD REQUIREMENTS <ul style="list-style-type: none">LABOR AND WAGE REQUIREMENTSEXECUTIVE BRANCH CODE OF ETHICSKENTUCKY EQUAL EMPLOYMENT OPPORTUNITY ACT OF 1978 LOCALITY / STATEPROJECT WAGE RATES / STATE FUNDED
PART IV	INSURANCE
PART V	BID ITEMS

PART I
SCOPE OF WORK

ADMINISTRATIVE DISTRICT - 07

CONTRACT ID - 212974

FE02 105 0608 B00146N 03.37

COUNTY - SCOTT

PCN - MB10508062101

FE02 105 0608 B00146N

FROGTOWN ROAD (KY 608) BRIDGE 105B00146N OVER I-75 AT MP 03.37BRIDGE REPAIRS
GEOGRAPHIC COORDINATES LATITUDE 38:25:57.00 LONGITUDE 84:34:19.00

COMPLETION DATE(S):

COMPLETED BY 07/31/2022 APPLIES TO ENTIRE CONTRACT

CONTRACT NOTES

PROPOSAL ADDENDA

All addenda to this proposal must be applied when calculating bid and certified in the bid packet submitted to the Kentucky Department of Highways. Failure to use the correct and most recent addenda may result in the bid being rejected.

BID SUBMITTAL

Bidder must use the Department's electronic bidding software. The Bidder must download the bid file located on the Bid Express website (www.bidx.com) to prepare a bid packet for submission to the Department. The bidder must submit electronically using Bid Express.

JOINT VENTURE BIDDING

Joint venture bidding is permissible. All companies in the joint venture must be prequalified in one of the work types in the Qualifications for Bidders for the project. The bidders must get a vendor ID for the joint venture from the Division of Construction Procurement and register the joint venture as a bidder on the project. Also, the joint venture must obtain a digital ID from Bid Express to submit a bid. A joint bid bond of 5% may be submitted for both companies or each company may submit a separate bond of 5%.

UNDERGROUND FACILITY DAMAGE PROTECTION

The contractor shall make every effort to protect underground facilities from damage as prescribed in the Underground Facility Damage Protection Act of 1994, Kentucky Revised Statute KRS 367.4901 to 367.4917. It is the contractor's responsibility to determine and take steps necessary to be in compliance with federal and state damage prevention directives. When prescribed in said directives, the contractor shall submit Excavation Locate Requests to the Kentucky Contact Center (KY811) via web ticket entry. The submission of this request does not relieve the contractor from the responsibility of contacting non-member facility owners, whom shall be contacted through their individual Protection Notification Center. Non-compliance with these directives can result in the enforcement of penalties.

REGISTRATION WITH THE SECRETARY OF STATE BY A FOREIGN ENTITY

Pursuant to KRS 176.085(1)(b), an agency, department, office, or political subdivision of the Commonwealth of Kentucky shall not award a state contract to a person that is a foreign entity required by [KRS 14A.9-010](#) to obtain a certificate of authority to transact business in the Commonwealth ("certificate") from the Secretary of State under [KRS 14A.9-030](#) unless the person produces the certificate within fourteen (14) days of the bid or proposal opening. If the foreign entity is not required to obtain a certificate as provided in [KRS 14A.9-010](#), the foreign entity should identify the applicable exception. Foreign entity is defined within [KRS 14A.1-070](#).

For all foreign entities required to obtain a certificate of authority to transact business in the Commonwealth, if a copy of the certificate is not received by the contracting agency within the time frame identified above, the foreign entity's solicitation response shall be deemed non-responsive or the awarded contract shall be cancelled.

Businesses can register with the Secretary of State at <https://secure.kentucky.gov/sos/ftbr/welcome.aspx>.

SPECIAL NOTE FOR PROJECT QUESTIONS DURING ADVERTISEMENT

Questions about projects during the advertisement should be submitted in writing to the Division of Construction Procurement. This may be done by fax (502) 564-7299 or email to kytc.projectquestions@ky.gov. The Department will attempt to answer all submitted questions. The Department reserves the right not to answer if the question is not pertinent or does not aid in clarifying the project intent.

The deadline for posting answers will be 3:00 pm Eastern Daylight Time, the day preceding the Letting. Questions may be submitted until this deadline with the understanding that the later a question is submitted, the less likely an answer will be able to be provided.

The questions and answers will be posted for each Letting under the heading "Questions & Answers" on the Construction Procurement website (www.transportation.ky.gov/contract). The answers provided shall be considered part of this Special Note and, in case of a discrepancy, will govern over all other bidding documents.

HARDWOOD REMOVAL RESTRICTIONS

The US Department of Agriculture has imposed a quarantine in Kentucky and several surrounding states, to prevent the spread of an invasive insect, the emerald ash borer. Hardwood cut in conjunction with the project may not be removed from the state. Chipping or burning on site is the preferred method of disposal.

INSTRUCTIONS FOR EXCESS MATERIAL SITES AND BORROW SITES

Identification of excess material sites and borrow sites shall be the responsibility of the Contractor. The Contractor shall be responsible for compliance with all applicable state and federal laws and may wish to consult with the US Fish and Wildlife Service to seek protection under Section 10 of the Endangered Species Act for these activities.

ACCESS TO RECORDS

The contractor, as defined in KRS 45A.030 (9) agrees that the contracting agency, the Finance and Administration Cabinet, the Auditor of Public Accounts, and the Legislative Research Commission, or their duly authorized representatives, shall have access to any books, documents, papers, records, or other evidence, which are directly pertinent to this contract for the purpose of financial audit or program review. Records and other prequalification information confidentially

disclosed as part of the bid process shall not be deemed as directly pertinent to the contract and shall be exempt from disclosure as provided in KRS 61.878(1)(c). The contractor also recognizes that any books, documents, papers, records, or other evidence, received during a financial audit or program review shall be subject to the Kentucky Open Records Act, KRS 61.870 to 61.884.

In the event of a dispute between the contractor and the contracting agency, Attorney General, or the Auditor of Public Accounts over documents that are eligible for production and review, the Finance and Administration Cabinet shall review the dispute and issue a determination, in accordance with Secretary's Order 11-004.

April 30, 2018

SPECIAL NOTE FOR RECIPROCAL PREFERENCE

RECIPROCAL PREFERENCE TO BE GIVEN BY PUBLIC AGENCIES TO RESIDENT BIDDERS

By reference, KRS 45A.490 to 45A.494 are incorporated herein and in compliance regarding the bidders residency. Bidders who want to claim resident bidder status should complete the Affidavit for Claiming Resident Bidder Status along with their bid in the electronic bidding software. Submittal of the Affidavit should be done along the bid in Bid Express.

April 30, 2018

**SPECIAL NOTES
DISTRICT NO. 7
BRIDGE REPAIRS
SCOTT COUNTY
CID 212974**

FE02 105 0806 B00146N 03.37

Scott County ~ KY 906 (Frog Town Road) over I-75 NB

Geographic Coordinates

Latitude ~ 38° 25' 57.00"

Longitude ~ -84° 34' 19.00"

Description

57'-133'-57' PCIB Spans, Drawing No. 24554.

SPECIAL NOTES FOR BRIDGE REPAIRS

SPECIAL NOTE FOR CONTRACT COMPLETION DATE AND PENALTIES ON
BRIDGE REPAIR CONTRACTS

SPECIAL NOTE FOR MAINTAINING AND CONTROLLING TRAFFIC

**SPECIAL NOTE FOR CONTRACT COMPLETION DATE AND
PENALTIES ON BRIDGE REPAIR CONTRACTS**

- 1. COMPLETION DATE.** The Contractor has the option of selecting the starting date for this Contract. Once selected, notify the Department in writing of the date selected at least two weeks prior to beginning work. All work is to be completed by **July 31, 2022**.

Contrary to Section 108.07.03, A **penalty of \$500.00 per day** will be assessed work not completed by the specified completion day.

All construction must be completed in accordance with the weather limitations specified in Section 606 and/or Section 601 as applicable. No extension of Contract time will be granted due to inclement weather or temperature limitations that occur due to starting work on the Contract or a structure late in the construction season.

SPECIAL NOTE FOR TRAFFIC CONTROL ON BRIDGE REPAIR CONTRACTS

1. TRAFFIC CONTROL GENERAL

Except as provided herein, traffic shall be maintained in accordance with the Standard Specifications (current edition), Section 112. Except for the roadway and traffic control bid items listed, all items of work necessary to maintain and control traffic will be paid at the lump sum bid price to "Maintain and Control Traffic". Contrary to Section 106.01, traffic control devices used on this project may be new or used in new condition, at the beginning of the work and maintained in like new condition until completion of the work.

2. TRAFFIC COORDINATOR

Furnish a Traffic Coordinator as per Section 112. The Traffic Coordinator shall inspect the project maintenance of traffic, at least three times daily, or as directed by the Engineer, during the Contractor's operations and at any time a lane closure is in place. The personnel shall have access on the project to a radio or telephone to be used in case of emergencies or accidents. The Traffic Coordinator shall report all incidents throughout the work zone to the Engineer on the project. The Contractor shall furnish the name and telephone number where the Traffic Coordinator can be contacted at all times.

3. SIGNS

Contrary to Section 112.04.02, only long-term signs (sign intended to be continuously in place for more than 3 days) will be measured for payment; short term signs (signs intended to be left in place for 3 days or less) will not be measured for payment but will be incidental to Maintain and Control Traffic.

The contractor is to install warning signs for wide loads in advance of the bridge under the direction of the Engineer. The Department will not measure installation, maintenance, or removal for payment, and will consider these incidentals to Maintain and Control Traffic.

4. TEMPORARY PAVEMENT STRIPING

Skip lines and/or solid lines through the length of the tapers for lane closures and other striping as directed by the Engineer shall be temporarily covered with 6" black removable tape. Permanent removal of all other pavement striping for traffic control shall be considered incidental to Maintain and Control Traffic. Temporary pavement striping shall be paid only once per course in accordance with Section 112.04.07. The Contractor shall replace any temporary striping that becomes damaged or fails to adhere to the pavement before dark on the day of the notification. **A penalty of \$500.00 per day will be assessed** for failing to replace temporary striping within this time limit.

5. PROJECT PHASING & CONSTRUCTION PROCEDURES

One lane of traffic shall always be maintained in accordance with Standard Drawing No. TTC-110 and TTC-115. The minimum clear lane width required shall be **12'-0"**.

6. TEMPORARY SIGNAL

Provide, install, and maintain a temporary **2 Phase** traffic signal as specified below. The Contractor must provide a 24-hour contact person and number available to maintain the temporary signals as needed.

8. TEMPORARY CONCTETE BARRIERS.

The area of the lane closure that is to have the bridge deck removed shall require temporary Concrete Barriers 9t. See Standard Drawings RBM-115 and RBM-120. Should box beam stiffening be required (see attached bridge drawings) the cost shall be considered incidental to the unit price bid for Concrete Barrier Wall Type 9T. Provide one side mounted wall delineator per each section of barrier. See Standard Drawing RBM-020 for types. Not direct payment will be made for delineators.

9. CRASH CUSHSIONS / END TREATMENTS.

To the satisfaction of the Engineer extend temporary barrier wall out of the clear zone. If temporary barrier is not extended out of the clear zone to the satisfaction of the Engineer provide crash cushions /end treatments that comply with MASH 19 for the barrier wall. All cost to provide crash cushions / end treatments shall be considered incidental to the unit price bid for Concrete Barrier Wall Type 9T.

10. ADDITIONAL LANE CLOSURES.

Shoulder, single lane and multi lane closures will be permitted for I-75 for any necessary work below the structure. Shoulder and lane closures will be determined by the Engineer. All shoulder and lane closures shall be removed when not working. All cost for addition lane closures shall be considered incidental to the lump sum bid for Maintain and Control Traffic.

11. MEASUREMENT.

Temporary Signs:

The Cabinet will measure this item by "Square Feet".

Maintain and Control Traffic:

The Cabinet will measure this item by "Lump Sum".

Lane Closure, and Temp Signal 2:

The Cabinet will measure this item by "Each".

Concrete Barrier Wall type 9T, Pave Striping-Temp Rem Tape-B, W, and Y:

The Department will measure the quantity in "Linear Feet".

12. PAYMENT.

Temporary Signs (02562)

Payment at the contract unit price for “Square Feet” is full compensation for all items to complete this work as specified.

Maintain and Control Traffic (02650):

Payment at the contract unit price for “Lump Sum” is full compensation for all items to complete this work as specified.

Lane Closure (02653) and Temp Signal 2 Phase (04933):

Payment at the contract unit price “Each” is full compensation for all items to complete this work as specified.

Concrete Barrier Wall Type 9T (03171), Pave Striping-Temp Rem Tape-B (06549), W (06550), and Y (06551):

Payment at the contract unit price “Lineal Feet” is full compensation for all items to complete this work as specified.

INDEX OF SHEETS	
Sheet No.	Description
S1	Title Sheet
S2	General Notes
S3	General Notes
S4	General Notes
S5	General Notes
S6	General Notes
S7	General Notes
S8	General Notes
S9	General Notes
S10	General Notes
S11	General Notes
S12	General Notes
SPECIAL NOTES	
Special Note for Construction Date and Penalties on Bridge Repair Contracts	
Special Note for Traffic Control on Bridge Repair Contracts	
SPECIAL PROVISIONS	
69 Embankment at Bridge End Bent Structures	
STANDARD DRAWINGS	
RBM-115-10 Temporary Concrete Barrier Type 9T	
RBM-120-02 Box Beam Sillfilling	
SPECIFICATIONS	
2019 Standard Specifications for Road and Bridge Construction	
2017 AASHTO LRBD Bridge Design Specifications	

TRANSPORTATION CABINET
DEPARTMENT OF HIGHWAYS

SCOTT COUNTY
FROGTOWN ROAD
KY 608 OVER NORTHBOUND I-75
STA. 0+00.00

ESTIMATE OF QUANTITIES

BID ITEM CODE	BID ITEM	UNIT	QTY	UNIT PRICE	TOTAL
08104	Concrete Class A	C.Y.	35.7	6332	225,852.4
08105	Concrete Class B	C.Y.	18	151	2,718
08106	Concrete Class C	C.Y.	18	151	2,718
08107	Concrete Class D	C.Y.	18	151	2,718
08108	Concrete Class E	C.Y.	18	151	2,718
08109	Concrete Class F	C.Y.	18	151	2,718
08110	Concrete Class G	C.Y.	18	151	2,718
08111	Concrete Class H	C.Y.	18	151	2,718
08112	Concrete Class I	C.Y.	18	151	2,718
08113	Concrete Class J	C.Y.	18	151	2,718
08114	Concrete Class K	C.Y.	18	151	2,718
08115	Concrete Class L	C.Y.	18	151	2,718
08116	Concrete Class M	C.Y.	18	151	2,718
08117	Concrete Class N	C.Y.	18	151	2,718
08118	Concrete Class O	C.Y.	18	151	2,718
08119	Concrete Class P	C.Y.	18	151	2,718
08120	Concrete Class Q	C.Y.	18	151	2,718
08121	Concrete Class R	C.Y.	18	151	2,718
08122	Concrete Class S	C.Y.	18	151	2,718
08123	Concrete Class T	C.Y.	18	151	2,718
08124	Concrete Class U	C.Y.	18	151	2,718
08125	Concrete Class V	C.Y.	18	151	2,718
08126	Concrete Class W	C.Y.	18	151	2,718
08127	Concrete Class X	C.Y.	18	151	2,718
08128	Concrete Class Y	C.Y.	18	151	2,718
08129	Concrete Class Z	C.Y.	18	151	2,718
08130	Concrete Class AA	C.Y.	18	151	2,718
08131	Concrete Class AB	C.Y.	18	151	2,718
08132	Concrete Class AC	C.Y.	18	151	2,718
08133	Concrete Class AD	C.Y.	18	151	2,718
08134	Concrete Class AE	C.Y.	18	151	2,718
08135	Concrete Class AF	C.Y.	18	151	2,718
08136	Concrete Class AG	C.Y.	18	151	2,718
08137	Concrete Class AH	C.Y.	18	151	2,718
08138	Concrete Class AI	C.Y.	18	151	2,718
08139	Concrete Class AJ	C.Y.	18	151	2,718
08140	Concrete Class AK	C.Y.	18	151	2,718
08141	Concrete Class AL	C.Y.	18	151	2,718
08142	Concrete Class AM	C.Y.	18	151	2,718
08143	Concrete Class AN	C.Y.	18	151	2,718
08144	Concrete Class AO	C.Y.	18	151	2,718
08145	Concrete Class AP	C.Y.	18	151	2,718
08146	Concrete Class AQ	C.Y.	18	151	2,718
08147	Concrete Class AR	C.Y.	18	151	2,718
08148	Concrete Class AS	C.Y.	18	151	2,718
08149	Concrete Class AT	C.Y.	18	151	2,718
08150	Concrete Class AU	C.Y.	18	151	2,718
08151	Concrete Class AV	C.Y.	18	151	2,718
08152	Concrete Class AW	C.Y.	18	151	2,718
08153	Concrete Class AX	C.Y.	18	151	2,718
08154	Concrete Class AY	C.Y.	18	151	2,718
08155	Concrete Class AZ	C.Y.	18	151	2,718
08156	Concrete Class BA	C.Y.	18	151	2,718
08157	Concrete Class BB	C.Y.	18	151	2,718
08158	Concrete Class BC	C.Y.	18	151	2,718
08159	Concrete Class BD	C.Y.	18	151	2,718
08160	Concrete Class BE	C.Y.	18	151	2,718
08161	Concrete Class BF	C.Y.	18	151	2,718
08162	Concrete Class BG	C.Y.	18	151	2,718
08163	Concrete Class BH	C.Y.	18	151	2,718
08164	Concrete Class BI	C.Y.	18	151	2,718
08165	Concrete Class BJ	C.Y.	18	151	2,718
08166	Concrete Class BK	C.Y.	18	151	2,718
08167	Concrete Class BL	C.Y.	18	151	2,718
08168	Concrete Class BM	C.Y.	18	151	2,718
08169	Concrete Class BN	C.Y.	18	151	2,718
08170	Concrete Class BO	C.Y.	18	151	2,718
08171	Concrete Class BP	C.Y.	18	151	2,718
08172	Concrete Class BQ	C.Y.	18	151	2,718
08173	Concrete Class BR	C.Y.	18	151	2,718
08174	Concrete Class BS	C.Y.	18	151	2,718
08175	Concrete Class BT	C.Y.	18	151	2,718
08176	Concrete Class BU	C.Y.	18	151	2,718
08177	Concrete Class BV	C.Y.	18	151	2,718
08178	Concrete Class BW	C.Y.	18	151	2,718
08179	Concrete Class BX	C.Y.	18	151	2,718
08180	Concrete Class BY	C.Y.	18	151	2,718
08181	Concrete Class BZ	C.Y.	18	151	2,718
08182	Concrete Class CA	C.Y.	18	151	2,718
08183	Concrete Class CB	C.Y.	18	151	2,718
08184	Concrete Class CC	C.Y.	18	151	2,718
08185	Concrete Class CD	C.Y.	18	151	2,718
08186	Concrete Class CE	C.Y.	18	151	2,718
08187	Concrete Class CF	C.Y.	18	151	2,718
08188	Concrete Class CG	C.Y.	18	151	2,718
08189	Concrete Class CH	C.Y.	18	151	2,718
08190	Concrete Class CI	C.Y.	18	151	2,718
08191	Concrete Class CJ	C.Y.	18	151	2,718
08192	Concrete Class CK	C.Y.	18	151	2,718
08193	Concrete Class CL	C.Y.	18	151	2,718
08194	Concrete Class CM	C.Y.	18	151	2,718
08195	Concrete Class CN	C.Y.	18	151	2,718
08196	Concrete Class CO	C.Y.	18	151	2,718
08197	Concrete Class CP	C.Y.	18	151	2,718
08198	Concrete Class CQ	C.Y.	18	151	2,718
08199	Concrete Class CR	C.Y.	18	151	2,718
08200	Concrete Class CS	C.Y.	18	151	2,718
08201	Concrete Class CT	C.Y.	18	151	2,718
08202	Concrete Class CU	C.Y.	18	151	2,718
08203	Concrete Class CV	C.Y.	18	151	2,718
08204	Concrete Class CW	C.Y.	18	151	2,718
08205	Concrete Class CX	C.Y.	18	151	2,718
08206	Concrete Class CY	C.Y.	18	151	2,718
08207	Concrete Class CZ	C.Y.	18	151	2,718
08208	Concrete Class DA	C.Y.	18	151	2,718
08209	Concrete Class DB	C.Y.	18	151	2,718
08210	Concrete Class DC	C.Y.	18	151	2,718
08211	Concrete Class DD	C.Y.	18	151	2,718
08212	Concrete Class DE	C.Y.	18	151	2,718
08213	Concrete Class DF	C.Y.	18	151	2,718
08214	Concrete Class DG	C.Y.	18	151	2,718
08215	Concrete Class DH	C.Y.	18	151	2,718
08216	Concrete Class DI	C.Y.	18	151	2,718
08217	Concrete Class DJ	C.Y.	18	151	2,718
08218	Concrete Class DK	C.Y.	18	151	2,718
08219	Concrete Class DL	C.Y.	18	151	2,718
08220	Concrete Class DM	C.Y.	18	151	2,718
08221	Concrete Class DN	C.Y.	18	151	2,718
08222	Concrete Class DO	C.Y.	18	151	2,718
08223	Concrete Class DP	C.Y.	18	151	2,718
08224	Concrete Class DQ	C.Y.	18	151	2,718
08225	Concrete Class DR	C.Y.	18	151	2,718
08226	Concrete Class DS	C.Y.	18	151	2,718
08227	Concrete Class DT	C.Y.	18	151	2,718
08228	Concrete Class DU	C.Y.	18	151	2,718
08229	Concrete Class DV	C.Y.	18	151	2,718
08230	Concrete Class DW	C.Y.	18	151	2,718
08231	Concrete Class DX	C.Y.	18	151	2,718
08232	Concrete Class DY	C.Y.	18	151	2,718
08233	Concrete Class DZ	C.Y.	18	151	2,718
08234	Concrete Class EA	C.Y.	18	151	2,718
08235	Concrete Class EB	C.Y.	18	151	2,718
08236	Concrete Class EC	C.Y.	18	151	2,718
08237	Concrete Class ED	C.Y.	18	151	2,718
08238	Concrete Class EE	C.Y.	18	151	2,718
08239	Concrete Class EF	C.Y.	18	151	2,718
08240	Concrete Class EG	C.Y.	18	151	2,718
08241	Concrete Class EH	C.Y.	18	151	2,718
08242	Concrete Class EI	C.Y.	18	151	2,718
08243	Concrete Class EJ	C.Y.	18	151	2,718
08244	Concrete Class EK	C.Y.	18	151	2,718
08245	Concrete Class EL	C.Y.	18	151	2,718
08246	Concrete Class EM	C.Y.	18	151	2,718
08247	Concrete Class EN	C.Y.	18	151	2,718
08248	Concrete Class EO	C.Y.	18	151	2,718
08249	Concrete Class EP	C.Y.	18	151	2,718
08250	Concrete Class EQ	C.Y.	18	151	2,718
08251	Concrete Class ER	C.Y.	18	151	2,718
08252	Concrete Class ES	C.Y.	18	151	2,718
08253	Concrete Class ET	C.Y.	18	151	2,718
08254	Concrete Class EU	C.Y.	18	151	2,718
08255	Concrete Class EV	C.Y.	18	151	2,718
08256	Concrete Class EW	C.Y.	18	151	2,718
08257	Concrete Class EX	C.Y.	18	151	2,718
08258	Concrete Class EY	C.Y.	18	151	2,718
08259	Concrete Class EZ	C.Y.	18	151	2,718
08260	Concrete Class FA	C.Y.	18	151	2,718
08261	Concrete Class FB	C.Y.	18	151	2,718
08262	Concrete Class FC	C.Y.	18	151	2,718
08263	Concrete Class FD	C.Y.	18	151	2,718
08264	Concrete Class FE	C.Y.	18	151	2,718
08265	Concrete Class FF	C.Y.	18	151	2,718
08266	Concrete Class FG	C.Y.	18	151	2,718
08267	Concrete Class FH	C.Y.	18	151	2,718
08268	Concrete Class FI	C.Y.	18	151	2,718
08269	Concrete Class FJ	C.Y.	18	151	2,718
08270	Concrete Class FK	C.Y.	18	151	2,718
08271	Concrete Class FL	C.Y.	18	151	2,718
08272	Concrete Class FM	C.Y.	18	151	2,718
08273	Concrete Class FN	C.Y.	18	151	2,718
08274	Concrete Class FO	C.Y.	18	151	2,718
08275	Concrete Class FP	C.Y.	18	151	2,718
08276	Concrete Class FQ	C.Y.	18	151	2,718
08277	Concrete Class FR	C.Y.	18	151	2,718
08278	Concrete Class FS	C.Y.	18	151	2,718
08279	Concrete Class FT	C.Y.	18	151	2,718
08280	Concrete Class FU	C.Y.	18	151	2,718
08281	Concrete Class FV	C.Y.	18	151	2,718
08282	Concrete Class FW	C.Y.	18	151	2,718
08283	Concrete Class FX	C.Y.	18	151	2,718
08284	Concrete Class FY	C.Y.	18	151	2,718
08285	Concrete Class FZ	C.Y.	18	151	2,718
08286	Concrete Class GA	C.Y.	18	151	2,718
08287	Concrete Class GB	C.Y.	18	151	2,718
08288	Concrete Class GC	C.Y.	18	151	2,718
08289	Concrete Class GD	C.Y.	18	151	2,718
08290	Concrete Class GE	C.Y.	18	151	2,718
08291	Concrete Class GF	C.Y.	18	151	2,718
08292	Concrete Class GG	C.Y.	18	151	2,718
08293	Concrete Class GH	C.Y.	18	151	2,718
08294	Concrete Class GI	C.Y.	18	151	2,718
08295	Concrete Class GJ	C.Y.	18	151	2,718
08296	Concrete Class GK	C.Y.	18	151	2,718
08297	Concrete Class GL	C.Y.	18	151	2,718
08298	Concrete Class GM	C.Y.	18	151	2,718
08299	Concrete Class GN	C.Y.	18	151	2,718
08300	Concrete Class GO	C.Y.	18	151	2,718
08301	Concrete Class GP	C.Y.	18	151	2,718
08302	Concrete Class GQ	C.Y.	18	151	2,718
08303	Concrete Class GR	C.Y.	18	151	2,718
08304	Concrete Class GS	C.Y.	18	151	2,718
08305	Concrete Class GT	C.Y.	18	151	2,718
08306	Concrete Class GU	C.Y.	18	151	2,718
08307	Concrete Class GV	C.Y.	18	151	2,718
08308	Concrete Class GW	C.Y.	18	151	2,718
08309	Concrete Class GX	C.Y.	18	151	2,718
08310	Concrete Class GY	C.Y.	18	151	2,718
08311	Concrete Class GZ	C.Y.	18	151	2,718
08312	Concrete Class HA	C.Y.	18	151	2,718
08313	Concrete Class HB	C.Y.	18	151	2,718
08314	Concrete Class HC	C.Y.	18	151	2,718
08315	Concrete Class HD	C.Y.	18	151	2,718
08316	Concrete Class HE	C.Y.	18	151	2,718
08317	Concrete Class HF	C.Y.	18	151	2,718
08318	Concrete Class HG	C.Y.	18	151	2,718
08319	Concrete Class HH				

GENERAL NOTES

SPECIFICATIONS: All references to the Specifications are to the current edition of the Kentucky Department of Highways Standard Specifications for Road and Bridge Construction with current Supplemental Specifications. All references to the AASHTO Specifications are to the 17th edition of the AASHTO Standard Specifications for Highway Bridges.

DESIGN LOAD: The original bridge is designed for a HS-25 live load.

DESIGN STRESSES: Concrete Class "A" ~ f'c = 3500 psi
Concrete Class "AA" ~ f'c = 4000 psi
Steel Reinforcement ~ fy = 60,000 psi

DESIGN METHOD: All damaged members are replaced in kind. The original bridge was designed by the load factor method.

REINFORCEMENT: Dimensions shown from the face of concrete to bars are to center of bars unless otherwise shown. Spacing of bars is from center to center of bars. Clear distance to face of concrete is 2" unless otherwise noted. Any reinforcing bars designated by suffix (e) in the plans shall be epoxy coated in accordance with section 811.1.10 of the Standard Specifications. Any reinforcing bars designated by suffix (s) in a bill of reinforcement shall be considered a stirrup for purposes of bend diameters.

BEVELED EDGES: Bevel all exposed edges 3/4", unless otherwise noted.

COMPLETION OF THE STRUCTURE: The Contractor is required to complete the structure in accordance with the plans and specifications. Material, labor or construction operations, not otherwise specified, are to be included in the bid item most appropriate to the work involved. This may include cofferdams, shoring, excavations, backfilling, removal of all or parts of existing structures, phase construction, incidental materials, labor or anything else required to complete the structure.

SHOP DRAWINGS: Submit shop drawings that are required by the plans and specifications directly to the Division of Structural Design. If any changes in the design plans are proposed by a fabricator or supplier, submit those changes to the Department through the Contractor.

DIMENSIONS: Dimensions are for a normal temperature of 60 degrees Fahrenheit. Layout dimensions are horizontal dimensions.

SUPERSTRUCTURE SLAB: Ensure the entire superstructure slab is poured continuously, out to out, before allowing any concrete to set.

MASONRY COATING: Apply masonry coating to match existing in accordance with the specifications.

CONCRETE: Class AA concrete is to be used throughout this repair. Class D is to be used for the prestress beam.

ELECTRICAL: Conduit to be 3" diameter galvanized steel to match existing. Provide expansion fitting at end of diaphragm. All costs incidental to unit price bid for conduit. See existing plans for location off end of bridge. Match existing placement and depth.

SITE INSPECTION: The contractor shall familiarize themselves with all conditions at the bridge site. Submission of a bid shall be considered evidence that the contractor has performed a site inspection and understands the existing conditions and all applicable requirements in these plans. The cabinet will not consider any claims due to changed site conditions.

DAMAGE TO STRUCTURE: The contractor shall bear all responsibility and expense for any and all damage to the structure during repair work, even to the removal and replacement of the entire structure, should it be damaged by the contractors actions or inaction.

DIMENSIONS & ELEVATIONS: The existing bridge drawing number is 24554. All dimensions and elevations given in these plans are based on field surveyed data and dimensions from the old plans. Prior to beginning work or ordering any materials, the contractor shall verify all dimensions and elevations. No claim will be honored by the Department of Highways regarding site conditions.

CONCRETE REMOVAL: Saw cut a line 1" deep where necessary to help ensure removal of concrete in all lines. All costs incidental to price bid for Remove Concrete Masonry.

STRUCTURE GRANULAR BACKFILL: Class 2 geotextile fabric required for backfill. Class 2 geotextile fabric is incidental to structure granular backfill. Provision 69. Geotextile fabric is incidental to structure granular backfill.

CONSTRUCTIONS: Sheeting, shoring, dewatering, cofferdams, etc. may be required for construction. All costs incidental to structure lump sum price bid for Foundation Preparation.

BEARING PADS: Reuse existing bearing pads. If pads are damaged, replace with new. All costs incidental to price bid for Prestressed beam.

BRIDGE OVERLAY APPROACH PAVEMENT: After completing the Foundation Preparation and placing the Structural Granular Backfill mill the remaining existing asphalt approach pavement to a distance of 50 feet from the end of bridge. Remove the bituminous material uniformly by making an edge key, so as to provide a smooth transition to the finished bridge when a new bituminous overlay of compacted depth of approximately 1 1/2" is added to the approaches. The grinding depth may vary depending the condition of the existing approach and final elevation of bridge end. Dispose of all removed material away from the site. Use CL2 ASPH SURF 0.38D PG64-22 Bituminous Asphalt. Where the full pavement structure is removed for structure construction, provide a minimum of 1 1/2" CL2 ASPH SURF 0.38D PG64-22 as part of the overlay work. Provide a minimum of 1 1/2" CL2 ASPH SURF 0.38D PG64-22. 766 CL3 ASPH BASE 0.75D PG64-22 in two lifts of 4 inches and 3 inches, and 10 inches of DGA Base. All cost to complete this work as specified shall be included in unit price bid Square Yards for Bridge Overlay Approach Pavement.

The following abbreviations may have been used in the preparation of these plans:

bet.	Between	Tan	Tangent
b.f.	Back Face	Thru	Through
BOF	Bottom of Footing	TOF	Top of Footing
BOS	Bottom of Slab	TOS	Top of Slab
bot.	Bottom	Tot.	Total
Brig.	Bearing	Typ.	Typical
C to C	Center to Center	Vert.	Vertical
c.e.	Current Edition	W.P.	Working Point
C.Y.	Cubic Yard	Yd.	Yard
Chd.	Chord		
Cl.	Center Line		
Clc.	Clearance		
Conc.	Concrete		
Cu.	Cubic		
Dwg.	Drawing		
e.f.	Each Face		
El.	Elevation		
eq.	Equal		
Est.	Estimate		
Ext.	Exterior		
F to F	Face to Face		
f.f.	Front Face		
f.s.	Far Side		
f.	Front		
ft.	Feet		
I.D.	Inside Diameter		
In.	Inch		
Int.	Interior		
L	Left		
LBS	Pounds		
LBS.	Pounds		
M	Meter		
MPH	Miles per Hour		
n.s.	Near Side		
O.D.	Outside Diameter		
Opp.	Opposite		
PC	Point of Curve		
Perp.	Perpendicular		
PCC	Precast Concrete		
PCCD	Precast Prestressed Concrete		
PSI	Pounds per Square Inch		
PT	Point of Tangent		
R	Radius		
RCBC	Reinforced Concrete Box Culvert		
RCDG	Reinforced Concrete Deck Girder		
Req'd.	Required		
RR	Railroad		
Shld	Shoulder		
spa.	Spaces		
Sta.	Station		
Str.	Strutted		
Str.	Straight		

	COMMONWEALTH OF KENTUCKY DEPARTMENT OF HIGHWAYS		REVISION	DATE	PREPARED BY Division of Structural Design	DATE: DESIGNED BY: J. Van Zee DETAILED BY: B. Miller	CHECKED BY M. Baithawing J. Van Zee	GENERAL NOTES CROSSING I-75 NORTHBOUND	ROUTE KY 608	ITEM NO. S2	COUNTY OF SCOTT DRAWING NUMBER 28453

MicroStation v10.16.0.80

USER: Joseph Vance

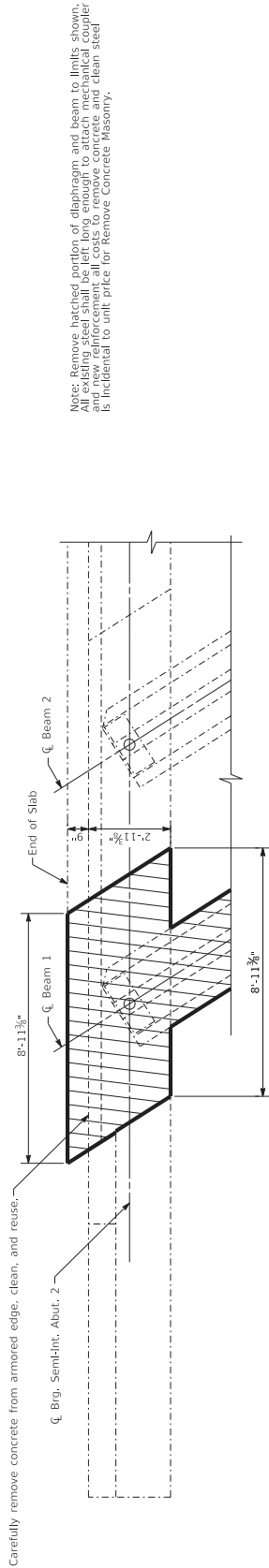
DATE PLOTTED: 27-OCT-2021

FILE NAME: I30BR407/Scott-Frogman Road Bridge over I75 collision28453.dgn

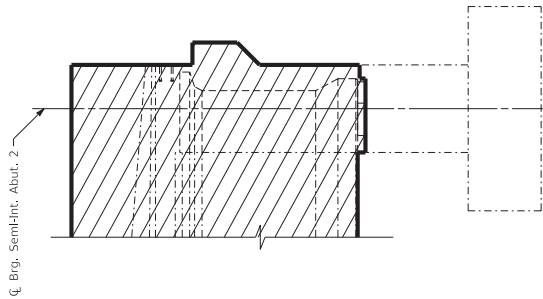




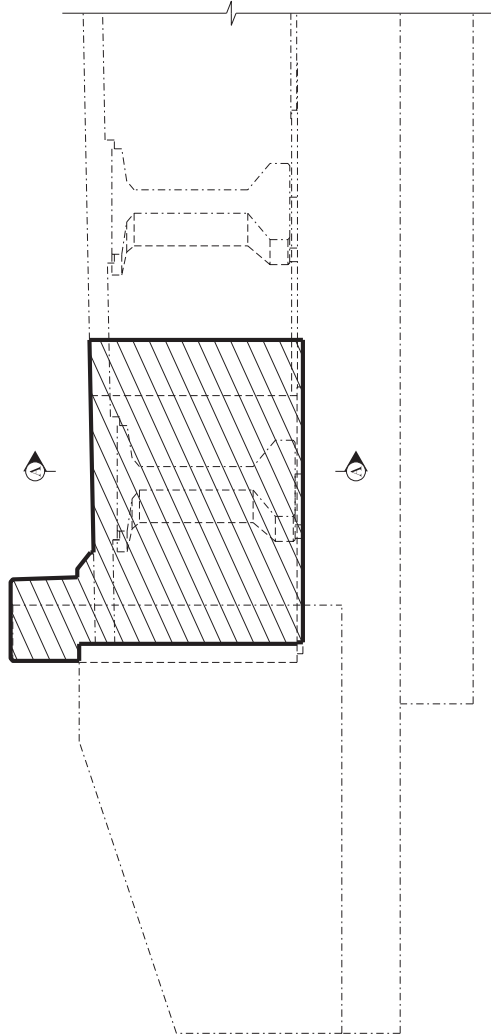
Note: Remove hatched portion of barrier, deck, diaphragms, and span 3 beam 1 to limits shown. All existing steel shall be left long enough to attach mechanical coupler and new reinforcement. All costs to remove concrete, clean steel is incidental to unit price bid for remove concrete masonry.



PLAN
~Superstructure not shown~



SECTION A-A

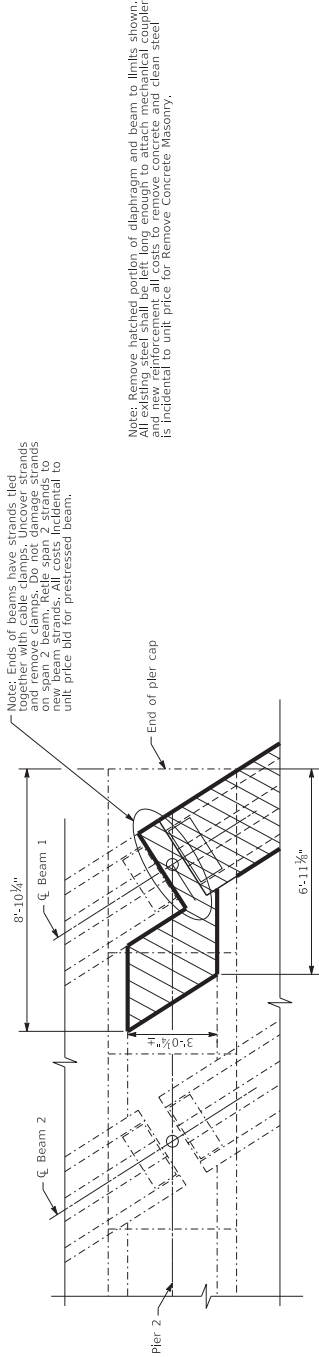


ELEVATION @ SEMI-INT. ABUT. 2

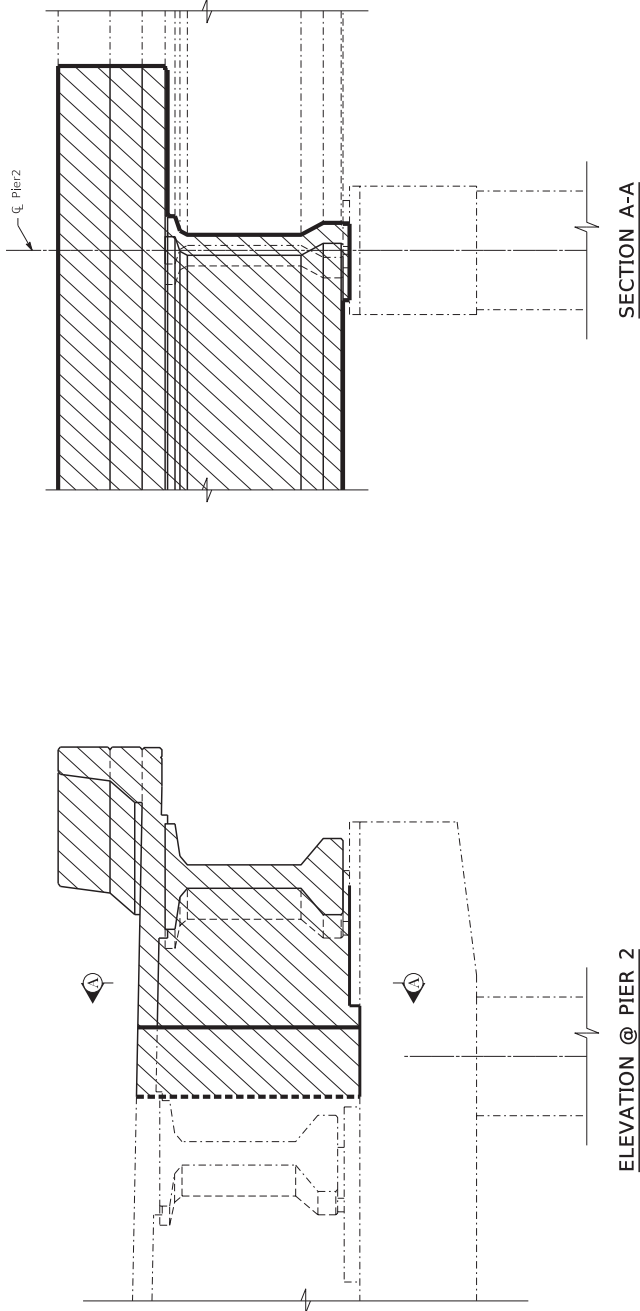
Note: Remove hatched portion of diaphragm and beam to limits shown. All reinforcement to be removed and replaced with new reinforcement and new reinforcement all costs to remove concrete and clean steel is incidental to unit price for Remove Concrete Masonry.

	COMMONWEALTH OF KENTUCKY DEPARTMENT OF HIGHWAYS	REVISION	DATE	PREPARED BY Division of Structural Design	DATE: DESIGNED BY: J. Van Zee DETAILED BY: B. Miller	CHECKED BY M. Bartholomew J. Van Zee	ABUTMENT #2 REMOVAL DETAILS		ROUTE KY 608	ITEM NO. SS	COUNTY OF SCOTT
							CROSSING I-75 NORTHBOUND	DRAWING NUMBER 28453			

MicroStation v10.16.0.80 USER: Joseph Vance DATE PLOTTED: 27-OCT-2021 FILE NAME: I:\Bentley\Scott Program Road Bridge over I75 collision\28453.dgn

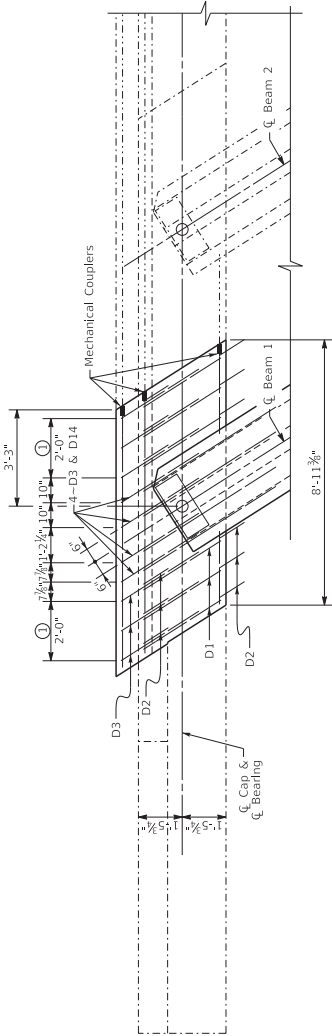


PLAN
~Superstructure not shown~



COMMONWEALTH OF KENTUCKY DEPARTMENT OF HIGHWAYS	REVISION	DATE	PREPARED BY Division of Structural Design	DATE: DESIGNED BY: J. Van Zee DETAILED BY: B. Miller	CHECKED BY M. Bawthawing J. Van Zee	ROUTE KY 608	PIER #2 REMOVAL DETAILS CROSSING I-75 NORTHBOUND	ITEM NO. S6	COUNTY OF SCOTT DRAWING NUMBER 28453

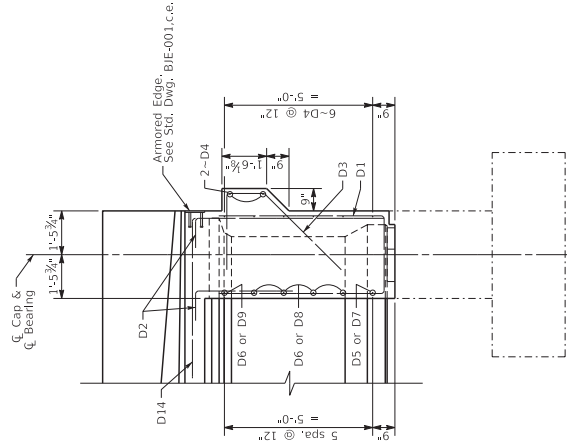
DATE PLOTTED: 27-OCT-2021
USER: Joseph Vance
FILE NAME: I060807/Scott Program Road Bridge over I75 collision28453.dgn



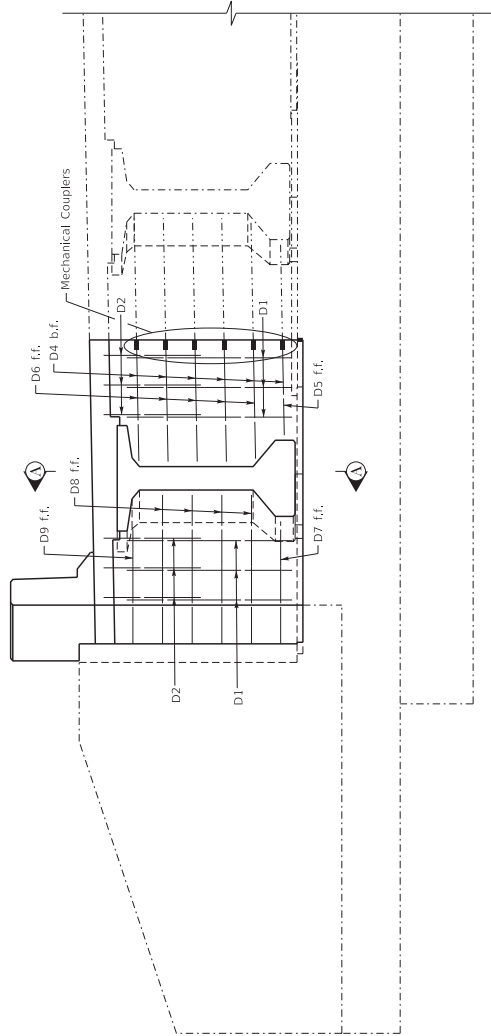
PLAN

-Superstructure not shown-

① 3-D1, 6-D2 & 3-D3 sets @ 12" = 2'-0"



SECTION A-A



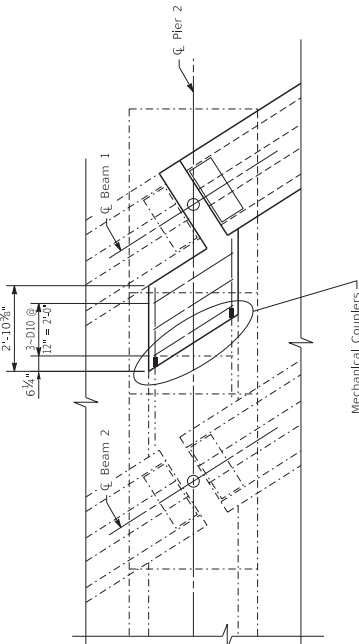
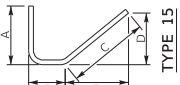
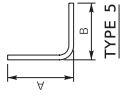
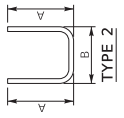
ELEVATION @ ABUTMENT 2

	COMMONWEALTH OF KENTUCKY DEPARTMENT OF HIGHWAYS	REVISION	DATE	PREPARED BY Division of Structural Design	DATE: DESIGNED BY: J. Van Zee DETAILED BY: B. Miller	CHECKED BY M. Barthawing J. Van Zee	ROUTE KY 608	ABUTMENT #2 DIAPHRAGM CROSSING I-75 NORTHBOUND	ITEM NO. S7	COUNTY OF SCOTT

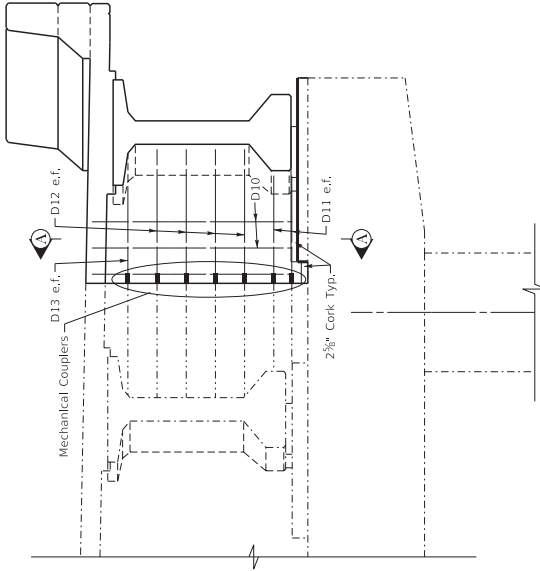
DATE PLOTTED: 27-OCT-2021
USER: Joseph Vance
FILE NAME: R000407/Scott Program Road Bridge over I75 collision/28453.dgn

BILL OF REINFORCEMENT

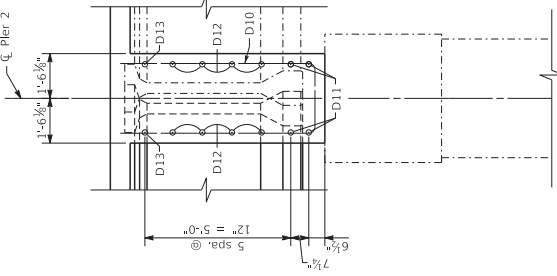
MARK	TYPE	NO.	SIZE	LENGTH	LOCATION	A/E	B/F	C/G
D1e	2#	6	5	14'-1	Semi-Int. Abut. Diaph.	5'-7	3'-11/4	
D1e	12	5	5	7'-2	Semi-Int. Abut. Diaph.	3'-3	1'-1	
D3e	15	10	5	7'-2	Semi-Int. Abut. Diaph.	2'-5 3/4	1'-3 1/4	3'-7 2'-5 3/4
D4e	Str.	8	5	8'-9	Semi-Int. Abut. Diaph.	2'-6 3/4		
D5e	Str.	1	5	3'-2	Semi-Int. Abut. Diaph.			
D6e	Str.	5	5	4'-1	Semi-Int. Abut. Diaph.			
D7e	Str.	1	5	2'-10	Semi-Int. Abut. Diaph.			
D8e	Str.	4	5	3'-9	Semi-Int. Abut. Diaph.			
D9e	Str.	1	5	15'-9	Semi-Int. Abut. Diaph.			
D11e	Str.	3	5	2'-10	Pier 2 Diaphragm			
D12e	Str.	4	5	4'-1	Pier 2 Diaphragm			
D13e	Str.	2	5	3'-2	Pier 2 Diaphragm			
D14e	Str.	4	5	11'-2	Semi-Int. Abut. Diaph.	6'-4	5'-0	



PLAN
~Superstructure not shown~



ELEVATION @ PIER 2



SECTION A-A

COMMONWEALTH OF KENTUCKY
DEPARTMENT OF HIGHWAYS

REVISION

DATE

PREPARED BY
Division of
Structural Design

DESIGNED BY: J. Van Zee
DETAILED BY: B. Miller

CHECKED BY
M. Balthawing
J. Van Zee

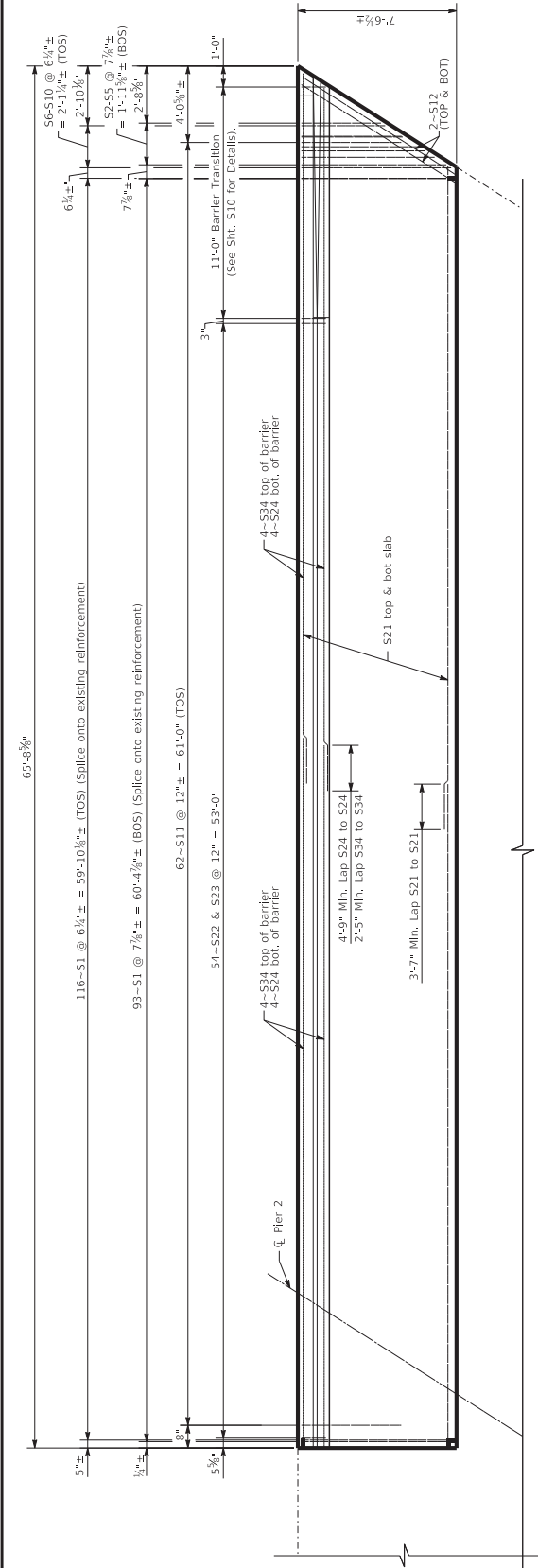
ROUTE
KY 608

PIER #2 DIAPHRAGM
CROSSING
I-75 NORTHBOUND

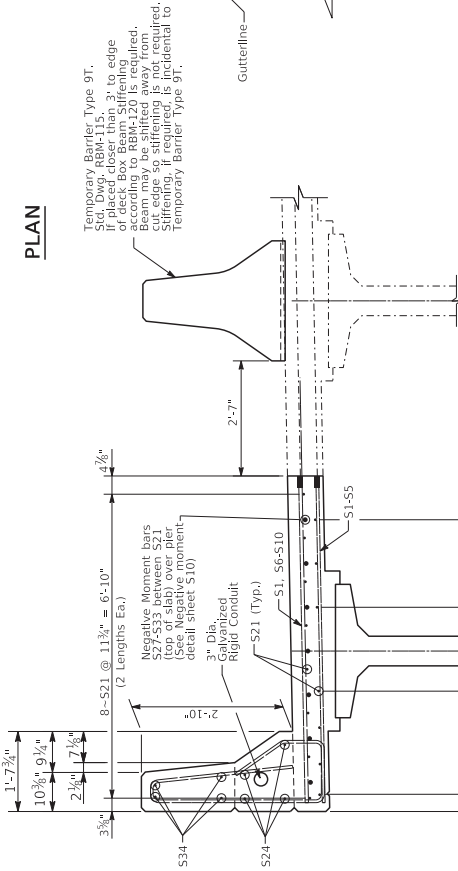
ITEM NO.
S8

COUNTY OF
SCOTT

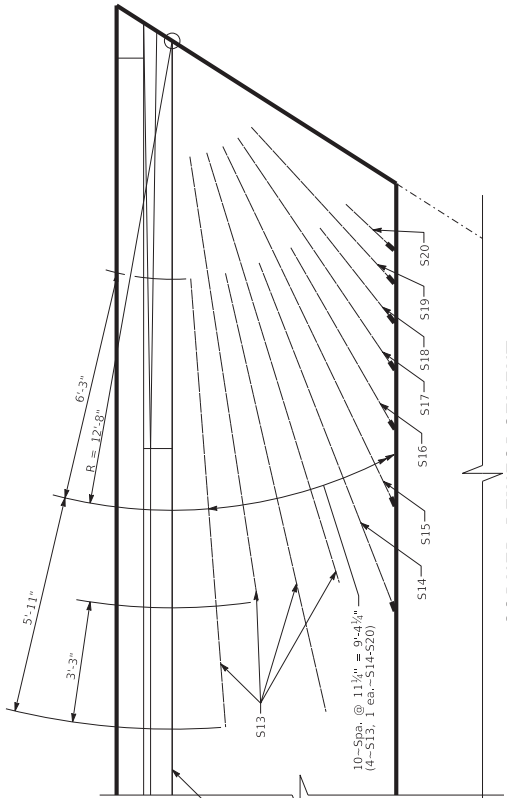
DRAWING NUMBER
28453



PLAN



TYPICAL SECTION



CORNER REINFORCEMENT

	COMMONWEALTH OF KENTUCKY DEPARTMENT OF HIGHWAYS	DATE: 27-OCT-2021	REVISION	PREPARED BY Division of Structural Design	DESIGNED BY: J. Van Zee CHECKED BY: M. Barthawing DETAILED BY: B. Miller	ROUTE KY 608	PARTIAL SLAB REPLACEMENT CROSSING I-75 NORTHBOUND	ITEM NO. S9	COUNTY OF SCOTT	DRAWING NUMBER 28453

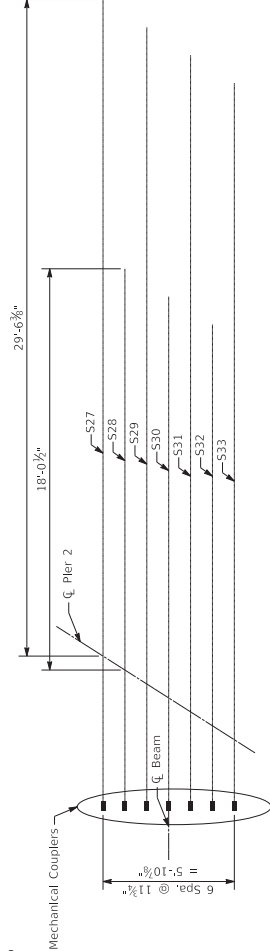
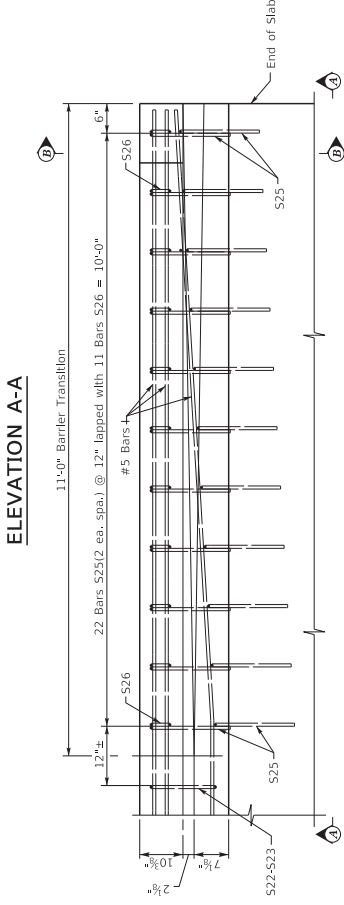
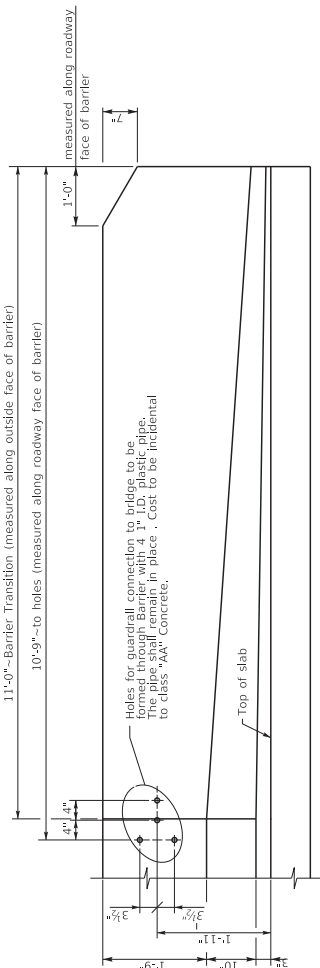
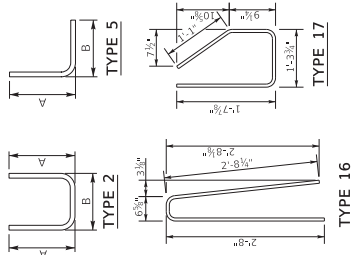
FILE NAME: I06R407/Scott Program Road Bridge over I75 collision28453.dgn

USER: Joseph Vance

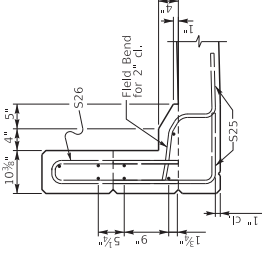
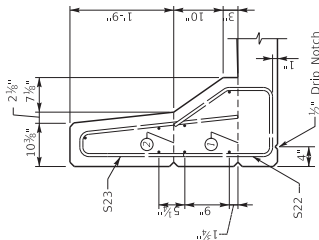
MicroStation v10.16.0.80

BILL OF REINFORCEMENT

MARK	TYPE	NO.	SIZE	LENGTH	LOCATION
S1e	S1r	209	5	7-4	Top & Bot. of Slab
S2e	S1r	1	5	6-10	Bottom of Slab
S3e	S1r	1	5	5-10	Bottom of Slab
S4e	S1r	1	5	5-9	Bottom of Slab
S5e	S1r	1	5	5-9	Bottom of Slab
S6e	S1r	1	5	7-3	Bottom of Slab
S7e	S1r	1	5	6-5	Top of Slab
S8e	S1r	1	5	5-7	Top of Slab
S9e	S1r	1	5	4-9	Top of Slab
S10e	S1r	1	5	3-11	Top of Slab
S11e	S1r	62	4	4-9	Top of Slab
S12e	S1r	4	6	8-9	Top & Bot. of Slab
S13e	S1r	4	6	8-9	Corner: Re in for cement
S14e	S1r	4	6	10-2	Corner: Re in for cement
S15e	S1r	1	6	10-10	Corner: Re in for cement
S16e	S1r	1	6	10-10	Corner: Re in for cement
S17e	S1r	1	6	7-8	Corner: Re in for cement
S18e	S1r	1	6	3-4	Corner: Re in for cement
S19e	S1r	1	6	5-9	Corner: Re in for cement
S20e	S1r	1	6	1-10	Corner: Re in for cement
S21e	S1r	30	6	34-7	Slab
S22e	S1r	5	5	5-5	Barrier
S23e	S1r	16	5	5-5	Barrier
S24e	S1r	8	8	33-10	Barrier
S25e	S1r	5	22	5	Bot. Barrier
S26e	S1r	28	11	5	Barrier: Transition
S27e	S1r	1	8	36-6	Barrier: Transition
S28e	S1r	1	8	34-5	Negat'lve Moment
S29e	S1r	1	8	25-5	Negat'lve Moment
S30e	S1r	1	8	35-3	Negat'lve Moment
S31e	S1r	1	8	23-2	Negat'lve Moment
S32e	S1r	1	8	21-1	Negat'lve Moment
S33e	S1r	1	8	32-9	Negat'lve Moment
S34e	S1r	8	5	33-10	Top of Barr:



NEGATIVE MOMENT REINFORCEMENT LAYOUT BEAM LINE 1



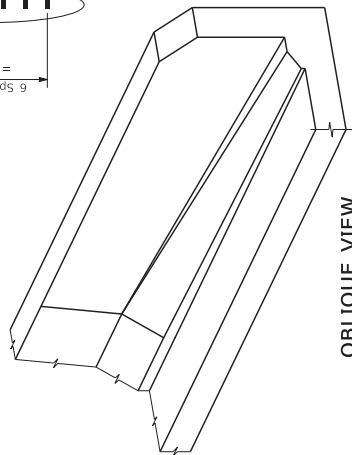
TYPICAL BARRIER SECTION

- ① Mandatory roughened construction joint. Concrete above this joint is to be placed after slab has been properly cured and included in the bid concrete and steel quantities on the title sheet.
- ② Permissible construction joint. "V-Groove" rustication joint is required if construction joint is used. $\frac{1}{4}$ " Open joints are not required.

SECTION B-B

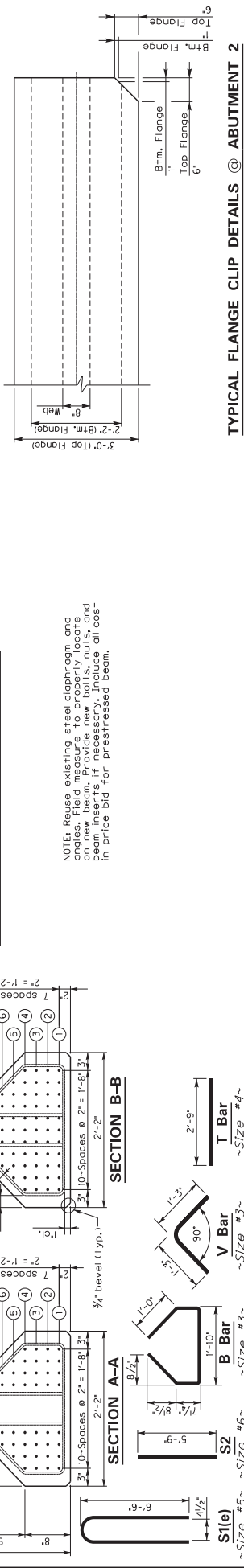
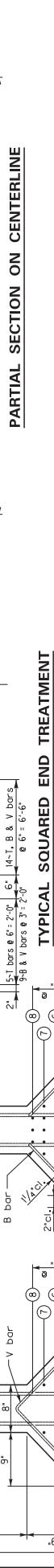
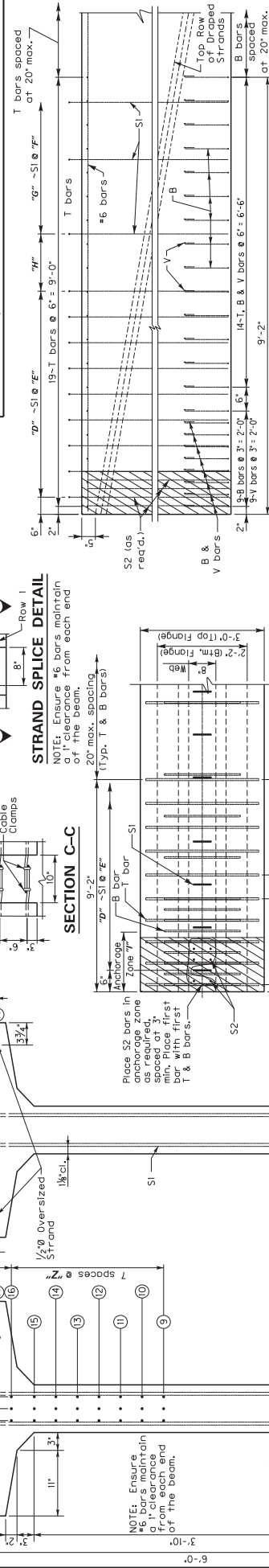
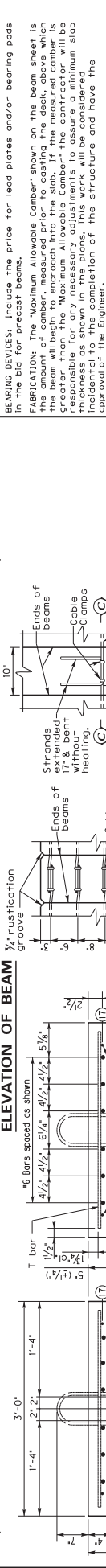
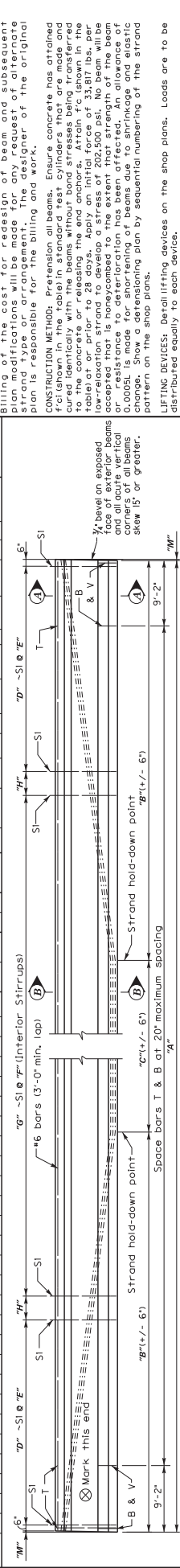


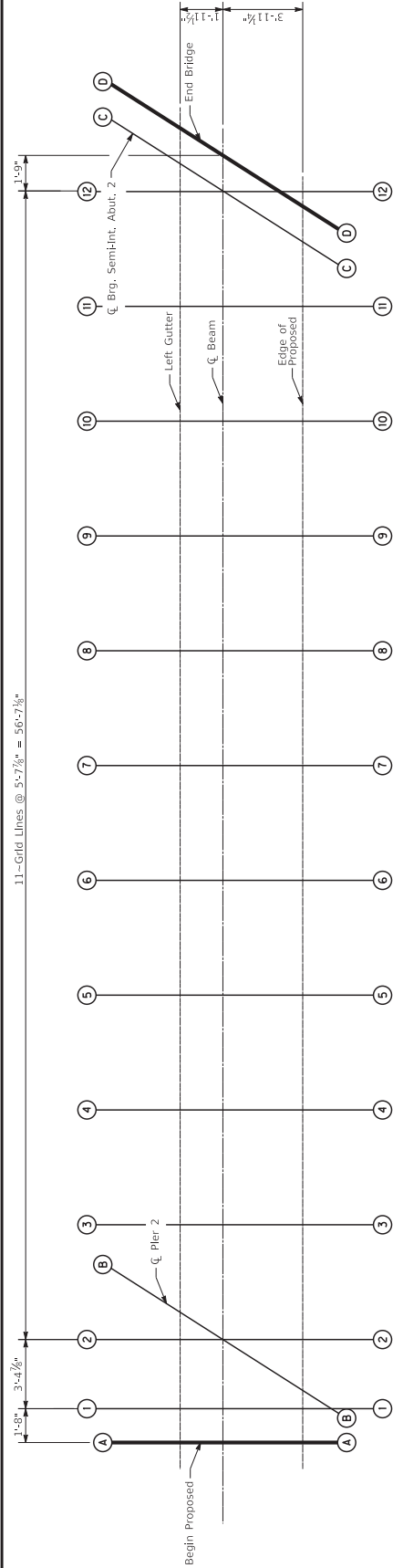
■V-Groove■ Rustication



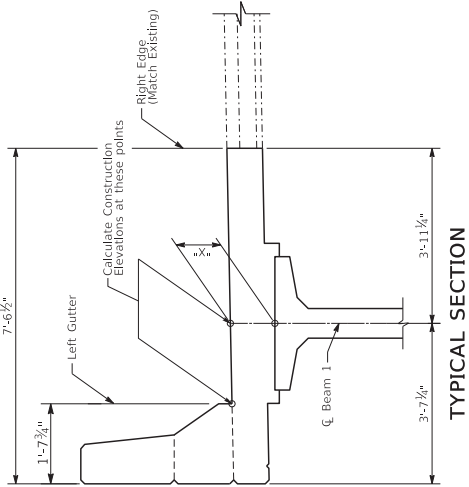
OBLIQUE VIEW

Mark	Strand Data with number indicated in rows																Beam Data (measured along centerline)													Maximum Allowable Camber	General Notes
	Midspan (SECTION B-B)								End (SECTION A-A)								Dimensions														
	1	2	3	4	5	6	7	8	1	2	3	4	5	6	7	8	A	B	C	D	E	F	G	H	I	J	M				
88	11	(2)	(3)	(4)	(5)	(6)	(7)	(8)	11	(2)	(3)	(4)	(5)	(6)	(7)	(8)	1	36-43"	N/A	N/A	6"	1"	1-0"	45	7 1/2"	1-5/8"	2"	50438	3.3071"	CONCRETE: Ensure prestressed girder concrete is in accordance with these plans and specifications. PRESTRESSING: Ensure that strands are 1/2" (lower) sized diameter, 0.167 sq. in., uncoated seven - wire stress relieved, low-relaxing conforming to AASHTO M 203, Grade 270.	





GRID LAYOUT



TYPICAL SECTION

NOTES FOR CONSTRUCTION ELEVATIONS ON PRESTRESSED BEAM

Contractor shall calculate all construction elevations required on this structure in accordance with these notes and the table above. All costs for surveying and calculations shall be included in the lump sum price bid for Staking.

Prior to removing any concrete, contractor shall take shots and record elevations at top of existing deck at the left gutter and beam #1 at the grid line locations and record in the Top Slab Surveyed El. (#1)

After beam is erected, shots must be taken at the top of beam #1 at the grid line locations shown on the plan view. These shots must be recorded in the Top Beam Surveyed El. (#4) columns under Beam 1.

Read and record all elevations to three decimal places.

Calculate the Left Gutter Construction Elevation by taking the number recorded in column #1 and adding column #2. Record the result in column #3 of the Left Gutter.

Calculate the "X" dimensions over Beam 1 for setting the template over the beam by taking the surveyed elevation recorded in Column #1, add column #2, and subtract the surveyed elevation recorded in column #4. The result is the "X" dimension. The "X" dimension is the distance from the beam centerline to the left gutter centerline. The "X" dimension is used to set the template over the beam by measuring dimension "X" above the top of the beams for the top of the template. Do not set the template by measuring dimension "X" above the top of the beams for the top of the template. Do not set the template by measuring dimension "X" above the top of the beams for the top of the template.

Under no circumstances should any temporary supports be supporting any portions of any girders when taking initial elevations, top of beam shots, or pouring the concrete deck.

Construct the barrier to roadway grade. Do not add camber to the barrier.

CONSTRUCTION ELEVATIONS

LOCATION	LEFT GUTTER			BEAM 1		
	TOP SLAB SURVEYED E.L. (ft)	Deflection (in)	Const. E.L. (1+33) (ft)	TOP SLAB SURVEYED E.L. (ft)	Deflection (in)	Surveyed Top of Beam E.L. (ft)
Skew Line AA		0.000			0.000	
Skew Line BB		0.000			0.000	
Skew Line CC		0.000			0.000	
Skew Line DD		0.000			0.000	
Skew Line EE		0.000			0.000	
Skew Line FF		0.000			0.000	
Skew Line GG		0.001			0.001	
Skew Line HH		0.003			0.003	
Skew Line II		0.004			0.004	
Skew Line JJ		0.004			0.004	
Skew Line KK		0.004			0.005	
Skew Line LL		0.004			0.004	
Skew Line MM		0.003			0.003	
Skew Line NN		0.001			0.000	
Skew Line OO		0.000				
Skew Line PP		0.000				
Skew Line QQ		0.000				
Skew Line RR		0.000				
Skew Line SS		0.000				
Skew Line TT		0.000				
Skew Line UU		0.000				
Skew Line VV		0.000				
Skew Line WW		0.000				
Skew Line XX		0.000				
Skew Line YY		0.000				
Skew Line ZZ		0.000				

COMMONWEALTH OF KENTUCKY
DEPARTMENT OF HIGHWAYS

DATE: 27-OCT-2021

REVISION

DATE: 27-OCT-2021

REVISION

GENERAL NOTES

CROSSING

1-75 NORTHBOUND

CHECKED BY

M. Barthawing

DESIGNED BY

J. Van Zee

DATE

27-OCT-2021

ITEM NO.

512

COUNTY OF

SCOTT

DRAWING NUMBER

28453

FILE NAME: I:\0608\07\Scott Program Road Bridge over I75 collab\28453.dgn

USER: Joseph Vance

MicroStation v16.0.0.80

PART II

SPECIFICATIONS AND STANDARD DRAWINGS

SPECIFICATIONS REFERENCE

Any reference in the plans or proposal to previous editions of the *Standard Specifications for Road and Bridge Construction* and *Standard Drawings* are superseded by *Standard Specifications for Road and Bridge Construction, Edition of 2019* and *Standard Drawings, Edition of 2020*.

SUPPLEMENTAL SPECIFICATIONS

The contractor shall use the Supplemental Specifications that are effective at the time of letting.
The Supplemental Specifications can be found at the following link:

<http://transportation.ky.gov/Construction/Pages/Kentucky-Standard-Specifications.aspx>

**STANDARD DRAWINGS THAT APPLY
DISTRICT NO. 7
BRIDGE REPAIRS
SCOTT COUNTY
CID 212974**

**TRAFFIC
~ *TEMPORARY* ~
TRAFFIC CONTROL**

LANE CLOSURE TWO LANE HIGHWAY.	TTC-100 C.E.
LANE CLOSURE USING TRAFFIC SIGNALS.	TTC-110 C.E.

**ROADWAY
STANDARDS**

DELINEATORS FOR CONCRETE BARRIERS	RBM-020 C.E.
CONCRETE BARRIER WALL TYPE 9T (TEMPORARY)	RBM-115 C.E.
BOX BEAM STIFFENING PF TEMPORARY CONCRETE BARRER	RBM-120 C.E.

PART III

EMPLOYMENT, WAGE AND RECORD REQUIREMENTS

**TRANSPORTATION CABINET
DEPARTMENT OF HIGHWAYS**

**LABOR AND WAGE REQUIREMENTS
APPLICABLE TO OTHER THAN FEDERAL-AID SYSTEM PROJECTS**

- I. Application
- II. Nondiscrimination of Employees (KRS 344)

I. APPLICATION

1. These contract provisions shall apply to all work performed on the contract by the contractor with his own organization and with the assistance of workmen under his immediate superintendence and to all work performed on the contract by piecework, station work or by subcontract. The contractor's organization shall be construed to include only workmen employed and paid directly by the contractor and equipment owned or rented by him, with or without operators.

2. The contractor shall insert in each of his subcontracts all of the stipulations contained in these Required Provisions and such other stipulations as may be required.

3. A breach of any of the stipulations contained in these Required Provisions may be grounds for termination of the contract.

3. If the contractor is in control of apprenticeship or other training or retraining, including on-the-job training programs, he shall not discriminate against an individual because of his race, color, religion, national origin, sex, disability or age forty (40) and over, in admission to, or employment in any program established to provide apprenticeship or other training.

4. The contractor will send to each labor union or representative of workers with which he has a collective bargaining agreement or other contract or understanding, a notice to be provided advising the said labor union or workers' representative of the contractor's commitments under this section, and shall post copies of the notice in conspicuous places available to employees and applicants for employment. The contractor will take such action with respect to any subcontract or purchase order as the administering agency may direct as a means of enforcing such provisions, including sanctions for non-compliance.

Revised: January 25, 2017

II. NONDISCRIMINATION OF EMPLOYEES

**AN ACT OF THE KENTUCKY
GENERAL ASSEMBLY TO PREVENT
DISCRIMINATION IN EMPLOYMENT
KRS CHAPTER 344
EFFECTIVE JUNE 16, 1972**

The contract on this project, in accordance with KRS Chapter 344, provides that during the performance of this contract, the contractor agrees as follows:

1. The contractor shall not fail or refuse to hire, or shall not discharge any individual, or otherwise discriminate against an individual with respect to his compensation, terms, conditions, or privileges of employment, because of such individual's race, color, religion, national origin, sex, disability or age (forty and above); or limit, segregate, or classify his employees in any way which would deprive or tend to deprive an individual of employment opportunities or otherwise adversely affect his status as an employee, because of such individual's race, color, religion, national origin, sex, disability or age forty (40) and over. The contractor agrees to post in conspicuous places, available to employees and applicants for employment, notices to be provided setting forth the provisions of this nondiscrimination clause.

2. The contractor shall not print or publish or cause to be printed or published a notice or advertisement relating to employment by such an employer or membership in or any classification or referral for employment by the employment agency, indicating any preference, limitation, specification, or discrimination, based on race, color, religion, national origin, sex, or age forty (40) and over, or because the person is a qualified individual with a disability, except that such a notice or advertisement may indicate a preference, limitation, or specification based on religion, national origin, sex, or age forty (40) and over, or because the person is a qualified individual with a disability, when religion, national origin, sex, or age forty (40) and over, or because the person is a qualified individual with a disability, is a bona fide occupational qualification for employment.

EXECUTIVE BRANCH CODE OF ETHICS

In the 1992 regular legislative session, the General Assembly passed and Governor Brereton Jones signed Senate Bill 63 (codified as KRS 11A), the Executive Branch Code of Ethics, which states, in part:

KRS 11A.040 (7) provides:

No present or former public servant shall, within six (6) months following termination of his office or employment, accept employment, compensation, or other economic benefit from any person or business that contracts or does business with, or is regulated by, the state in matters in which he was directly involved during the last thirty-six (36) months of his tenure. This provision shall not prohibit an individual from returning to the same business, firm, occupation, or profession in which he was involved prior to taking office or beginning his term of employment, or for which he received, prior to his state employment, a professional degree or license, provided that, for a period of six (6) months, he personally refrains from working on any matter in which he was directly involved during the last thirty-six (36) months of his tenure in state government. This subsection shall not prohibit the performance of ministerial functions, including but not limited to filing tax returns, filing applications for permits or licenses, or filing incorporation papers, nor shall it prohibit the former officer or public servant from receiving public funds disbursed through entitlement programs.

KRS 11A.040 (9) states:

A former public servant shall not represent a person or business before a state agency in a matter in which the former public servant was directly involved during the last thirty-six (36) months of his tenure, for a period of one (1) year after the latter of:

- a) The date of leaving office or termination of employment; or
- b) The date the term of office expires to which the public servant was elected.

This law is intended to promote public confidence in the integrity of state government and to declare as public policy the idea that state employees should view their work as a public trust and not as a way to obtain private benefits.

If you have worked for the executive branch of state government within the past six months, you may be subject to the law's prohibitions. The law's applicability may be different if you hold elected office or are contemplating representation of another before a state agency.

Also, if you are affiliated with a firm which does business with the state and which employs former state executive-branch employees, you should be aware that the law may apply to them.

In case of doubt, the law permits you to request an advisory opinion from the Executive Branch Ethics Commission, 3 Fountain Place, Frankfort, Kentucky 40601; telephone (502) 564-7954.

Revised: January 27, 2017

Kentucky Equal Employment Opportunity Act of 1978

The requirements of the Kentucky Equal Employment Opportunity Act of 1978 (KRS 45.560-45.640) shall apply to this Contract. The apparent low Bidder will be required to submit EEO forms to the Division of Construction Procurement, which will then forward to the Finance and Administration Cabinet for review and approval. No award will become effective until all forms are submitted and EEO/CC has certified compliance. The required EEO forms are as follows:

- EEO-1: Employer Information Report
- Affidavit of Intent to Comply
- Employee Data Sheet
- Subcontractor Report

These forms are available on the Finance and Administration's web page under ***Vendor Information, Standard Attachments and General Terms*** at the following address:
<https://www.eProcurement.ky.gov>.

Bidders currently certified as being in compliance by the Finance and Administration Cabinet may submit a copy of their approval letter in lieu of the referenced EEO forms.

For questions or assistance please contact the Finance and Administration Cabinet by email at **finance.contractcompliance@ky.gov** or by phone at 502-564-2874.

EMPLOYEE RIGHTS UNDER THE FAIR LABOR STANDARDS ACT

THE UNITED STATES DEPARTMENT OF LABOR WAGE AND HOUR DIVISION

FEDERAL MINIMUM WAGE

\$7.25 PER HOUR

BEGINNING JULY 24, 2009

- OVERTIME PAY** At least 1½ times your regular rate of pay for all hours worked over 40 in a workweek.
- CHILD LABOR** An employee must be at least **16** years old to work in most non-farm jobs and at least **18** to work in non-farm jobs declared hazardous by the Secretary of Labor.
- Youths **14** and **15** years old may work outside school hours in various non-manufacturing, non-mining, non-hazardous jobs under the following conditions:
- No more than*
- **3** hours on a school day or **18** hours in a school week;
 - **8** hours on a non-school day or **40** hours in a non-school week.
- Also, work may not begin before **7 a.m.** or end after **7 p.m.**, except from June 1 through Labor Day, when evening hours are extended to **9 p.m.** Different rules apply in agricultural employment.
- TIP CREDIT** Employers of “tipped employees” must pay a cash wage of at least \$2.13 per hour if they claim a tip credit against their minimum wage obligation. If an employee’s tips combined with the employer’s cash wage of at least \$2.13 per hour do not equal the minimum hourly wage, the employer must make up the difference. Certain other conditions must also be met.
- ENFORCEMENT** The Department of Labor may recover back wages either administratively or through court action, for the employees that have been underpaid in violation of the law. Violations may result in civil or criminal action.
- Employers may be assessed civil money penalties of up to \$1,100 for each willful or repeated violation of the minimum wage or overtime pay provisions of the law and up to \$11,000 for each employee who is the subject of a violation of the Act’s child labor provisions. In addition, a civil money penalty of up to \$50,000 may be assessed for each child labor violation that causes the death or serious injury of any minor employee, and such assessments may be doubled, up to \$100,000, when the violations are determined to be willful or repeated. The law also prohibits discriminating against or discharging workers who file a complaint or participate in any proceeding under the Act.
- ADDITIONAL INFORMATION**
- Certain occupations and establishments are exempt from the minimum wage and/or overtime pay provisions.
 - Special provisions apply to workers in American Samoa and the Commonwealth of the Northern Mariana Islands.
 - Some state laws provide greater employee protections; employers must comply with both.
 - The law requires employers to display this poster where employees can readily see it.
 - Employees under 20 years of age may be paid \$4.25 per hour during their first 90 consecutive calendar days of employment with an employer.
 - Certain full-time students, student learners, apprentices, and workers with disabilities may be paid less than the minimum wage under special certificates issued by the Department of Labor.



For additional information:

1-866-4-USWAGE
(1-866-487-9243) TTY: 1-877-889-5627

WWW.WAGEHOUR.DOL.GOV



U.S. Wage and Hour Division

PART IV

INSURANCE

Refer to
Kentucky Standard Specifications for Road and Bridge Construction,
current edition

PART V

BID ITEMS

Section: 0001 - BRIDGES

LINE	BID CODE	ALT	DESCRIPTION	QUANTITY	UNIT	UNIT PRIC	FP	AMOUNT
0010	02231		STRUCTURE GRANULAR BACKFILL	18.00	CUYD		\$	
0020	02403		REMOVE CONCRETE MASONRY	51.30	CUYD		\$	
0030	02562		TEMPORARY SIGNS	145.00	SQFT		\$	
0040	02650		MAINTAIN & CONTROL TRAFFIC	1.00	LS		\$	
0050	02653		LANE CLOSURE	1.00	EACH		\$	
0060	02726		STAKING	1.00	LS		\$	
0070	02998		MASONRY COATING	151.00	SQYD		\$	
0080	03171		CONCRETE BARRIER WALL TYPE 9T	300.00	LF		\$	
0090	03304		BRIDGE OVERLAY APPROACH PAVEMENT	155.60	SQYD		\$	
0100	04797		CONDUIT-3 IN	95.70	LF		\$	
0110	04933		TEMP SIGNAL 2 PHASE	1.00	EACH		\$	
0120	06549		PAVE STRIPING-TEMP REM TAPE-B - 105B00083N	1,000.00	LF		\$	
0130	06550		PAVE STRIPING-TEMP REM TAPE-W - 105B00083N	2,000.00	LF		\$	
0140	06551		PAVE STRIPING-TEMP REM TAPE-Y - 105B00083N	2,000.00	LF		\$	
0150	08003		FOUNDATION PREPARATION	1.00	LS		\$	
0160	08104		CONCRETE-CLASS AA	35.70	CUYD		\$	
0170	08140		MECHANICAL REINF COUPLER #5 EPOXY COATED	241.00	EACH		\$	
0180	08141		MECHANICAL REINF COUPLER #6 EPOXY COATED	26.00	EACH		\$	
0190	08151		STEEL REINFORCEMENT-EPOXY COATED	6,332.00	LB		\$	
0200	08637		PRECAST PC I BEAM TYPE 7	56.70	LF		\$	
0210	24405EC		MECHANICAL REINF COUPLER-#8 EPOXY COATED	11.00	EACH		\$	

Section: 0002 - DEMOB

LINE	BID CODE	ALT	DESCRIPTION	QUANTITY	UNIT	UNIT PRIC	FP	AMOUNT
0220	02569		DEMOBILIZATION	1.00	LS		\$	