



CALL NO. 329

CONTRACT ID. 252986

BELL COUNTY

FED/STATE PROJECT NUMBER FE02 007 0217 B00064N

DESCRIPTION KY 217 (HWY 217)

WORK TYPE BRIDGE SUPERSTRUCTURE REPLACEMENT

PRIMARY COMPLETION DATE 11/15/2025

LETTING DATE: June 26,2025

Sealed Bids will be received electronically through the Bid Express bidding service until 10:00 AM EASTERN DAYLIGHT TIME June 26,2025. Bids will be publicly announced at 10:00 AM EASTERN DAYLIGHT TIME.

NO PLANS ASSOCIATED WITH THIS PROJECT.

REQUIRED BID PROPOSAL GUARANTY: Not less than 5% of the total bid.

TABLE OF CONTENTS

PART I	SCOPE OF WORK <ul style="list-style-type: none">• PROJECT(S), COMPLETION DATE(S), & LIQUIDATED DAMAGES• CONTRACT NOTES• STATE CONTRACT NOTES• SPECIAL NOTE(S) APPLICABLE TO PROJECT• ELECTRONIC DELIVERY MANAGEMENT SYSTEM (E-TICKETING) ASPHALT• BRIDGE DEMOLITION, RENOVATION AND ASBESTOS ABATEMENT• RIGHT OF WAY CERTIFICATION• UTILITY IMPACT & RAIL CERTIFICATION NOTES• PERMIT(S)
PART II	SPECIFICATIONS AND STANDARD DRAWINGS <ul style="list-style-type: none">• STANDARD AND SUPPLEMENTAL SPECIFICATIONS
PART III	EMPLOYMENT, WAGE AND RECORD REQUIREMENTS <ul style="list-style-type: none">• LABOR AND WAGE REQUIREMENTS• EXECUTIVE BRANCH CODE OF ETHICS• KENTUCKY EQUAL EMPLOYMENT OPPORTUNITY ACT OF 1978 LOCALITY / STATE• PROJECT WAGE RATES / STATE FUNDED
PART IV	BID ITEMS

PART I
SCOPE OF WORK

ADMINISTRATIVE DISTRICT - 11

CONTRACT ID - 252986
FE02 007 0217 B00064N
COUNTY - BELL
PCN - MB00702172586
FE02 007 0217 B00064N

KY 217 (HWY 217) BRIDGE OVER BROWNIES CREEKBRIDGE REPLACEMENT
GEOGRAPHIC COORDINATES LATITUDE 36:42:20.00 LONGITUDE 83:33:00.00
ADT

COMPLETION DATE(S):
COMPLETED BY 11/15/2025 APPLIES TO ENTIRE CONTRACT (SEE SPECIAL NOTE)
120 CALENDAR Days APPLIES TO 007B00064N (SEE SPECIAL NOTE)

CONTRACT NOTES

INSURANCE

Refer to Kentucky Standard Specifications for Road and Bridge Construction, current edition.

PROPOSAL ADDENDA

All addenda to this proposal must be applied when calculating bid and certified in the bid packet submitted to the Kentucky Department of Highways. Failure to use the correct and most recent addenda may result in the bid being rejected.

BID SUBMITTAL

Bidder must use the Department's electronic bidding software. The Bidder must download the bid file located on the Bid Express website (www.bidx.com) to prepare a bid packet for submission to the Department. The bidder must submit electronically using Bid Express.

JOINT VENTURE BIDDING

Joint venture bidding is permissible. All companies in the joint venture must be prequalified in one of the work types in the Qualifications for Bidders for the project. The bidders must get a vendor ID for the joint venture from the Division of Construction Procurement and register the joint venture as a bidder on the project. Also, the joint venture must obtain a digital ID from Bid Express to submit a bid. A joint bid bond of 5% may be submitted for both companies or each company may submit a separate bond of 5%.

UNDERGROUND FACILITY DAMAGE PROTECTION

The contractor shall make every effort to protect underground facilities from damage as prescribed in the Underground Facility Damage Protection Act of 1994, Kentucky Revised Statute KRS 367.4901 to 367.4917. It is the contractor's responsibility to determine and take steps necessary to be in compliance with federal and state damage prevention directives. When prescribed in said directives, the contractor shall submit Excavation Locate Requests to the Kentucky Contact Center (KY811) via web ticket entry. The submission of this request does not relieve the contractor from the responsibility of contacting non-member facility owners, whom shall be contacted through their individual Protection Notification Center. Non-compliance with these directives can result in the enforcement of penalties.

REGISTRATION WITH THE SECRETARY OF STATE BY A FOREIGN ENTITY

Pursuant to KRS 176.085(1)(b), an agency, department, office, or political subdivision of the Commonwealth of Kentucky shall not award a state contract to a person that is a foreign entity required by [KRS 14A.9-010](#) to obtain a certificate of authority to transact business in the Commonwealth ("certificate") from the Secretary of State under [KRS 14A.9-030](#) unless the person produces the certificate within fourteen (14) days of the bid or proposal opening. If the

foreign entity is not required to obtain a certificate as provided in [KRS 14A.9-010](#), the foreign entity should identify the applicable exception. Foreign entity is defined within [KRS 14A.1-070](#).

For all foreign entities required to obtain a certificate of authority to transact business in the Commonwealth, if a copy of the certificate is not received by the contracting agency within the time frame identified above, the foreign entity's solicitation response shall be deemed non-responsive or the awarded contract shall be cancelled.

Businesses can register with the Secretary of State at <https://secure.kentucky.gov/sos/ftbr/welcome.aspx>.

SPECIAL NOTE FOR PROJECT QUESTIONS DURING ADVERTISEMENT

Questions about projects during the advertisement should be submitted in writing to the Division of Construction Procurement. This may be done by email to kytc.projectquestions@ky.gov. The Department will attempt to answer all submitted questions. The Department reserves the right not to answer if the question is not pertinent or does not aid in clarifying the project intent.

The deadline for posting answers will be 3:00 pm Eastern Daylight Time, the day preceding the Letting. Questions may be submitted until this deadline with the understanding that the later a question is submitted, the less likely an answer will be able to be provided.

The questions and answers will be posted for each Letting under the heading "Questions & Answers" on the Construction Procurement website (www.transportation.ky.gov/construction-procurement). The answers provided shall be considered part of this Special Note and, in case of a discrepancy, will govern over all other bidding documents.

HARDWOOD REMOVAL RESTRICTIONS

The US Department of Agriculture has imposed a quarantine in Kentucky and several surrounding states, to prevent the spread of an invasive insect, the emerald ash borer. Hardwood cut in conjunction with the project may not be removed from the state. Chipping or burning on site is the preferred method of disposal.

INSTRUCTIONS FOR EXCESS MATERIAL SITES AND BORROW SITES

Identification of excess material sites and borrow sites shall be the responsibility of the Contractor. The Contractor shall be responsible for compliance with all applicable state and federal laws and may wish to consult with the US Fish and Wildlife Service to seek protection under Section 10 of the Endangered Species Act for these activities.

ACCESS TO RECORDS

The state agency certifies that it is in compliance with the provisions of KRS 45A.150, "Access to contractor's books, documents, papers, records, or other evidence directly pertinent to the contract." The Contractor, as defined in KRS 45A.030, agrees that the contracting agency, the

Finance and Administration Cabinet, the Auditor of Public Accounts, and the Legislative Research Commission, or their duly authorized representatives, shall have access to any books, documents, papers, records, or other evidence, which are directly pertinent to this agreement for the purpose of financial audit or program review. The Contractor also recognizes that any books, documents, papers, records, or other evidence, received during a financial audit or program review shall be subject to the Kentucky Open Records Act, KRS 61.870 to 61.884. Records and other prequalification information confidentially disclosed as part of the bid process shall not be deemed as directly pertinent to the agreement and shall be exempt from disclosure as provided in KRS 61.878(1)(c).

BOYCOTT PROVISIONS

If applicable, the contractor represents that, pursuant to [KRS 45A.607](#), they are not currently engaged in, and will not for the duration of the contract engage in, the boycott of a person or an entity based in or doing business with a jurisdiction with which Kentucky can enjoy open trade. **Note:** The term Boycott does not include actions taken for bona fide business or economic reasons, or actions specifically required by federal or state law.

If applicable, the contractor verifies that, pursuant to KRS 41.480, they do not engage in, and will not for the duration of the contract engage in, in energy company boycotts as defined by KRS 41.472.

LOBBYING PROHIBITIONS

The contractor represents that they, and any subcontractor performing work under the contract, have not violated the agency restrictions contained in [KRS 11A.236](#) during the previous ten (10) years, and pledges to abide by the restrictions set forth in such statute for the duration of the contract awarded.

The contractor further represents that, pursuant to [KRS 45A.328](#), they have not procured an original, subsequent, or similar contract while employing an executive agency lobbyist who was convicted of a crime related to the original, subsequent, or similar contract within five (5) years of the conviction of the lobbyist.

Revised: 1/1/2025

1.0 BUY AMERICA REQUIREMENT.

Follow the “Buy America” provisions as required by 23 U.S.C. § 313 and 23 C.F.R. § 635.410. Except as expressly provided herein all manufacturing processes of steel or iron materials including but not limited to structural steel, guardrail materials, corrugated steel, culvert pipe, structural plate, prestressing strands, and steel reinforcing bars shall occur in the United States of America, including the application of:

- Coating,
- Galvanizing,
- Painting, and
- Other coating that protects or enhances the value of steel or iron products.

The following are exempt, unless processed or refined to include substantial amounts of steel or iron material, and may be used regardless of source in the domestic manufacturing process for steel or iron material:

- Pig iron,
- Processed, pelletized, and reduced iron ore material, or
- Processed alloys.

The Contractor shall submit a certification stating that all manufacturing processes involved with the production of steel or iron materials occurred in the United States.

Produce, mill, fabricate, and manufacture in the United States of America all aluminum components of bridges, tunnels, and large sign support systems, for which either shop fabrication, shop inspection, or certified mill test reports are required as the basis of acceptance by the Department.

Use foreign materials only under the following conditions:

- 1) When the materials are not permanently incorporated into the project; or
- 2) When the delivered cost of such materials used does not exceed 0.1 percent of the total Contract amount or \$2,500.00, whichever is greater.

The Contractor shall submit to the Engineer the origin and value of any foreign material used.

2.0 – BUILD AMERICA, BUY AMERICA (BABA)

Contractor shall comply with the Federal Highway Administration (FHWA) Buy America Requirement in 23 C.F.R. § 635.410 and all relevant provisions of the Build America, Buy America Act (BABA), contained within the Infrastructure Investment and Jobs Act, Pub. L. No. 117-58, §§ 70901-52 enacted November 15, 2021. The BABA requires iron, steel, manufactured products, and construction materials used in infrastructure projects funded by federal financial assistance to be produced in the United States. Comply with 2 C.F.R § 184.

BABA permits FHWA participation in the Contract only if domestic steel and iron will be used on the Project. To be considered domestic, all steel and iron used, and all products manufactured from steel and iron must be produced in the United States and all manufacturing processes, including application of a coating, for these materials must occur in the United States. Coating includes all processes that protect or enhance the value of the material to which the coating is applied. This requirement does not preclude a minimal use of foreign steel and iron materials, provided the cost of such materials does not exceed 0.1% of the total contract amount under the Contract or \$2,500.00 whichever is greater.

BABA permits FHWA participation in the Contract only if all “construction materials” as defined in the Act are made in the United States. The Buy America preference applies to the following construction materials incorporated into infrastructure projects: non-ferrous metals; plastic and polymer-based products (including polyvinylchloride, composite building materials, and polymers used in fiber optic cables); glass (including optic glass); Fiber optic cable; optical fiber; lumber; engineered wood; and drywall. Contractor will be

required to use construction materials produced in the United States on this Project. The Contractor shall submit a certification stating that all construction materials are certified to be BABA compliant.

3.0 FINAL RULE – FHWA’S BUY AMERICA REGULATION TO TERMINATE GENERAL APPLICABILITY WAIVER FOR MANUFACTURED PRODUCTS

- **March 17, 2025** (effective date): For all Federal-aid projects obligated on or after March 15, 2025, all iron or steel products, as defined in § 635.410(c)(1)(iii), must comply with FHWA’s Buy America requirements for steel and iron in § 635.410(b). In addition, for all Federal-aid projects obligated on or after March 15, 2025, per § 635.410(c)(2), articles, materials, and supplies should be classified as an iron or steel product, a manufactured product, or another product as specified by law or in 2 CFR part 184 (such other products specified by law or in 2 CFR part 184 include “excluded materials” and “construction materials”); an article, material, or supply must not be considered to fall into multiple categories.
- **October 1, 2025:** The final assembly requirement will become effective for Federal-aid projects obligated on or after October 1, 2025. This means that, for manufactured product to be Buy America compliant, for Federal-aid projects obligated on or after October 1, 2025, final assembly of the manufactured product must occur in the United States.
- **October 1, 2026:** The 55 percent requirement will become effective for Federal-aid projects obligated on or after October 1, 2026. This means that, for manufactured product to be Buy America-compliant, for Federal-aid projects obligated on or after October 1, 2026, all manufactured products permanently incorporated into the project must both be manufactured in the United States (satisfy the final assembly requirement) and have the cost of the components of the manufactured product that are mined, produced, or manufactured in the United States be greater than 55 percent of the total cost of all components of the manufactured product (satisfy the 55 percent requirement).

4.0 – ADDITIONAL REQUIREMENTS

The Contractor has completed and submitted, or shall complete and submit, to the Cabinet a Buy America/Build America, Buy America Certificate prior to the Cabinet issuing the notice to proceed, in the format below. After submittal, the Contractor is bound by its original certification.

A false certification is a criminal act in violation of 18 U.S.C. § 1001. The Contractor has the burden of proof to establish that it’s in compliance.

At the Contractor’s request, the Cabinet may, but is not obligated to, seek a waiver of Buy America requirements if grounds for the waiver exist under 23 C.F.R. § 635.410(c) or will comply with the applicable Buy America requirements if a waiver of those requirements is not available or not pursued by the Cabinet.

Please refer to the Federal Highway Administration’s Buy America webpage for more information.

[Buy America - Construction Program Guide - Contract Administration - Construction - Federal Highway Administration \(dot.gov\)](#)

Effective - June 26, 2025, Letting

BUY AMERICA / BUILD AMERICA, BUY AMERICA (ACT) MATERIALS CERTIFICATE OF COMPLIANCE

The Contractor hereby certifies that it will comply with all relevant provisions of the Build America, Buy America Act, contained within the Infrastructure Investment and Jobs Act, Pub. L. NO. 117-58, §§ 70901-52, the requirements of 23 U.S.C. § 313, 23 C.F.R. § 635.410 and 2 C.F.R § 184.

Date Submitted:_____

Contractor:_____

Signature:_____

Printed Name:_____

Title:_____

NOTE: THIS CERTIFICATION IS IN ADDITION TO ANY AND ALL REQUIREMENTS OUTLINED IN THE CURRENT EDITION OF THE STANDARD SPECIFICATIONS FOR ROAD AND BRIDGE CONSTRUCTION AND/OR SPECIAL NOTES CONTAINED IN THE PROJECT PROPOSAL.

SPECIAL NOTE FOR RECIPROCAL PREFERENCE

RECIPROCAL PREFERENCE TO BE GIVEN BY PUBLIC AGENCIES TO RESIDENT BIDDERS

By reference, KRS 45A.490 to 45A.494 are incorporated herein and in compliance regarding the bidders residency. Bidders who want to claim resident bidder status should complete the Affidavit for Claiming Resident Bidder Status along with their bid in the electronic bidding software. Submittal of the Affidavit should be done along the bid in Bid Express.

April 30, 2018

**SPECIAL NOTES
DISTRICT NO. 11
BELL COUNTY
BRIDGE SUPERSTRUCTURE REPLACEMENT
CID 252986**

FE02 007 0217 B00064N 08.78

Bell County ~ KY 271 over Brownies Creek

Geographic Coordinates

Latitude 36° 42' 20.00" (36.7057)

Longitude -83° 33' 00.00" (-83.5501)

Description

2~30' PPC Box Beam Span Spans.

SPECIAL NOTES FOR BRIDGE REPLACEMENT

SPECIAL NOTE FOR CONCRETE SEALING

SPECIAL NOTE FOR CONTRACT COMPLETION DATE AND PENALTIES ON
BRIDGE REPAIR CONTRACTS

SPECIAL NOTE FOR BRIDGE PLANS

SPECIAL NOTE FOR CONCRETE SEALING

These Notes or designated portions thereof, apply where so indicated on the plans, proposals or bidding instruction.

I. DESCRIPTION. Perform all work in accordance with the Department's 2019 Standard Specifications, and applicable Supplemental Specifications, the attached sketches, and these Notes. Section references are to the Standard Specifications.

This work consists of: (1) Furnish all labor, materials, tools, and equipment; (2) Clean the bridge deck; (3) Seal the bridge deck; (4) Maintain & control traffic; and, (5) Any other work specified as part of this contract.

II. MATERIALS.

A. Sealer. Use a sealer from the KYTC list of approved materials.

B. Coverage Rate: Follow all manufacturers recommendations for coverage rates except the application rate must not exceed the square footage coverage rate per gallon of sealer as given in the chart below. If the manufacturer recommends a coverage rate greater than given in the table below, apply sealer at the rate given in the table below for the chosen sealers silane percentage.

% Silane	Coverage rate (ft ² /gallon)
100	300
40	120
20	60

III. CONSTRUCTION.

A. Curing Compound. Contrary to Section 609.03.12 of the specifications, curing compound is not to be used on this deck due to potentially causing issues with the concrete sealer. During the deck pour, finishing, and tining operations the Class AA concrete shall be kept continuously moist with the use of a mister until burlap or curing blankets are applied to the surface. At no point should water be pooling or running off the surface or the surface of the concrete be allowed to become dry. After the burlap or curing blankets are installed, cure in accordance with the specifications. Include all costs in the unit price bid for Class AA concrete. Failure to properly cure the concrete in accordance with this note and the specifications may result in weakened or cracked concrete. If the concrete is weakened or cracked due to improper curing, the contractor will be responsible for providing alternates to fix the issues to the Engineer for review and the contractor will be solely responsible for all costs to do so, up to complete replacement. Do not begin any construction on fixing any issues without approval of the Engineer.

- B. Contract Time.** Concrete Sealing may need to be installed after contract time has elapsed in a separate mobilization and after the Engineer has declared the project otherwise complete. Liquidated damages shall not be charged provided Concrete Sealing is complete within 60 days after the last concrete pour on the structure. When the Contractor has not completed Concrete Sealing within the time frame allotted, Liquidated Damages shall be charged at 25 percent of the original contract daily charge from the expiration of the time allowed until the Contractor completes the work except the Department will not deduct liquidated damages when weather limitations prohibit the Contractor from performing the work.
- C. Cleaning the Deck.** Dry clean the deck to remove all loose debris. Remove all visible hydrocarbons from the surface with detergent approved by the manufacturer of the deck sealant. Pressure wash all surfaces to be sealed at 2000 to 3000 psi. Install pressure gauges at each wand to verify pressure. Use 30° fan tip or as recommended by the manufacturer of the deck sealant. Hold pressure washing wand a minimum of 45° from the deck with a maximum stand-off distance of 12 inches.
- D. Sealing the Deck.** Allow new concrete to cure a minimum 28 days prior to application of sealer. Monitor weather conditions prior to sealer application. Refer to manufacturer's recommendations for proper ambient conditions. Do not apply sealer if precipitation is anticipated within the time stated by the manufacturer. Allow the deck to dry 24 hours (after washing or rain event) before sealer application. The deck can be reopened to traffic while drying. Sealer must be applied within 48 hours of washing or the deck must be rewashed. Divide the deck into predefined areas of specific square footage to aid in determining usage. Comply with manufacturer's usage recommendation. Using a low pressure pump, apply sealer and spread evenly with broom or squeegee; do not allow pooling to remain. When each predefined area is complete, measure the amount of sealer used to verify proper usage. After sealing, follow manufacturer's recommended cure time before opening to traffic. On vertical surfaces, apply the sealer in a flooding application from the bottom up, so the material runs down 6 to 8 inches below the spray pattern.
- E. Inspection:** Monitor all aspects of the project to assure compliance to this specification. Observe and document general conditions during the entirety of the project. Verify that each phase of work has been satisfactorily completed prior to beginning the next phase. Phases are described as follows:
1. Dry cleaning to remove loose debris, verify and document:
 - a. All debris has been removed and disposed of properly.
 2. Removal of hydrocarbons, verify and document:
 - a. The manufacturer's recommended detergent is used for removal.
 - b. Hydrocarbons have been satisfactorily removed.
 3. Pressure washing, verify and document:
 - a. Washing pressure at the wand.
 - b. Tip size used.
 - c. Wash angle and stand-off distance.

- d. The deck is satisfactorily cleaned.
- 4. Sealer application, verify and document:
 - a. Proper cure time for new concrete.
 - b. Deck surface is dry.
 - 1. Document time since washed.
 - 2. Was deck opened to traffic after washing?
 - c. Ambient conditions.
 - 1. Document ambient temperature, surface temperature, relative humidity, and dew point.
 - d. Application and distribution method.
 - e. Coverage to be complete and even.
 - f. Material is not allowed to remain pooled.
 - g. Monitor material usage.
 - h. No traffic until proper cure time is allowed.

IV. MEASUREMENT

- A. **Concrete Sealing.** The Department will measure the quantity per square feet of each area sealed.
- B. **Mobilization – For Concrete Surface Treatment.** The Department will pay the lump sum bid for an additional mobilization when Concrete Sealing must be performed after the Engineer has deemed the project complete except for Concrete Sealing, structure is opened to traffic, and Contractor has fully demobilized.

V. PAYMENT

- A. **23378EC - Concrete Sealing – Sq. Ft.** Payment at the contract unit price per square feet is full compensation for the following: (1) Furnish all labor, materials, tools, and equipment; (2) Clean the bridge deck; (3) Seal the bridge deck; (4) Maintain & control traffic; and, (5) Any other work specified as part of this contract.
- B. **26233EC - Mobilization – For Concrete Surface Treatment – L.S.** Payment at the contract lump sum price bid shall be full compensation for the Contractor to remobilize on the project to perform Concrete Sealing as detailed herein this special note.

**SPECIAL NOTE FOR CONTRACT COMPLETION DATE AND
PENALTIES ON BRIDGE REPAIR CONTRACTS**

- 1. COMPLETION DATE.** The Contractor has the option of selecting the starting date for this Contract. Once selected, notify the Department in writing of the date selected at least two weeks prior to beginning work. All work is to be completed by the date listed below. An allotted number of Calendar days are assigned to the structure in this contract as shown below.

<u>STRUCTURE</u>	<u>NO. OF CALENDAR DAYS</u>	<u>COMPLETION DATE</u>
007B00064N	120	November 15, 2025

Contrary to Section 108.07.03, the Engineer will begin charging calendar days for a structure on the day the Contractor starts work or sets up traffic control on that particular structure. A **penalty of \$500.00 per day** will be assessed when the allotted number of calendar days is exceeded for each structure.

All construction must be completed in accordance with the weather limitations specified in Section 606 and/or Section 601 as applicable. No extension of Contract time will be granted due to inclement weather or temperature limitations that occur due to starting work on the Contract or a structure late in the construction season.

SPECIAL NOTE FOR BRIDGE PLANS

See Project Related Information for Bridge Plans.
Bridge Drawing Number 28975 with Roadway Plans.

SPECIAL NOTE FOR ELECTRONIC DELIVERY MANAGEMENT SYSTEM (e-Ticketing) ASPHALT

This Special Note will apply when indicated on the plans or in the proposal. Section references herein are to the Department's Standard Specifications for Road and Bridge Construction current edition.

1.0 DESCRIPTION. Incorporate an e-Ticketing Delivery Software for weighed asphalt material delivered to the project to report loads and provide daily running totals of weighed asphalt material for pay items and incidental work during the construction processes from the point of measurement and loading to the point of incorporation to the project.

2.0 MATERIALS AND EQUIPMENT. Contractor shall supply material data in JavaScript Object Notation (JSON) documents to the KYTC e-Ticketing Delivery Software (KYTC e-Ticketing Portal) via Application Programming Interface (API) or direct connection. Test and verify that ticket data can be shared from the original source no fewer than 30 days prior to material placement activities. An e-Ticketing Delivery Software supplier can provide a qualified representative for on-site technical assistance during the initial setup, pre-construction verifications, and data management and processing as needed during the Project to maintain material data delivery capabilities. Virtual meetings may be hosted in lieu of on-site meetings when deemed appropriate by the Engineer.

Provide e-Ticketing Delivery Software that will meet the following:

1. The e-Ticketing Delivery Software shall be fully integrated with the Contractor's Load Read-Out scale system at the material source location.
2. The e-Ticketing Delivery Software shall provide real-time delivery to KYTC e-Ticketing Portal.
3. Transmit any updates to the ticket data within 5 minutes of a change.

3.0 CONSTRUCTION. Provide the Engineer with the manufacturer's specifications and all required documentation for data access at the pre-construction conference.

A. Construction Requirements

1. Install and operate software in accordance with the manufacturer's specifications.
2. Verify that all pertinent information is provided by the software within the requirements of this Special Note.

B. Data Deliverables

Provide to the Engineer a means in which to gather report summaries by way of iOS apps, web pages, or any other method at the disposal of the Engineer. The Engineer may request data at any time during the project.

1. Asphalt Material

a. Real-time Continuous Data Items

Provide the Engineer access to JSON documents capable of being transmitted through the KYTC's e-Ticketing Portal that displays the following information in real-time with a web-based system compatible with iOS and Windows environments.

- Each Truck
 - Supplier Name
 - Supplier Address
 - Supplier Phone
 - Plant location
 - Date
 - Time at source
 - Project Location

- Contract ID#
- Carrier Name
- Unique Truck ID
- Description of Material
- Mix Design Number
- Gross, Tare and Net Weight
- Weighmaster

4.0 MEASUREMENT. The Department will not measure the electronic delivery management system.

5.0 PAYMENT. The Department will not measure this work for payment and will consider all items contained in this note to be incidental to the asphalt mixtures on the project, as applicable.

May 5, 2025

Special Note for Bridge Demolition, Renovation and Asbestos Abatement

If the project includes any bridge demolition or renovation, the successful bidder is required to notify Kentucky Division for Air Quality (KDAQ) via filing of form (DEP 7036) a minimum of 10 working days prior to commencement of any bridge demolition or renovation work.

Any available information regarding possible asbestos containing materials (ACM) on or within bridges to be affected by the project has been included in the bid documents. These are to be included with the Contractor's notification filed with the KDAQ. If not included in the bid documents, the Department will provide that information to the successful bidder for inclusion in the KDAQ notice as soon as possible. If there are no documents stating otherwise, the bidders should assume there are no asbestos containing materials that will in any way affect the work.



KENTUCKY TRANSPORTATION CABINET
Department of Highways
DIVISION OF RIGHT OF WAY & UTILITIES

TC 62-226
Rev. 01/2016
Page 1 of 1

RIGHT OF WAY CERTIFICATION

<input checked="" type="checkbox"/>	Original	<input type="checkbox"/>	Re-Certification	RIGHT OF WAY CERTIFICATION	
ITEM #		COUNTY	PROJECT # (STATE)		PROJECT # (FEDERAL)
N/A		Bell	1100 FE02 007 625B00064N		N/A
PROJECT DESCRIPTION					
Bridge replacement over Brownies Creek KY 217 Bell County superstructure replacement with substructure rehab.					
<input checked="" type="checkbox"/>	No Additional Right of Way Required				
Construction will be within the limits of the existing right of way. The right of way was acquired in accordance to FHWA regulations under the Uniform Relocation Assistance and Real Property Acquisitions Policy Act of 1970, as amended. No additional right of way or relocation assistance were required for this project.					
<input type="checkbox"/>	Condition # 1 (Additional Right of Way Required and Cleared)				
All necessary right of way, including control of access rights when applicable, have been acquired including legal and physical possession. Trial or appeal of cases may be pending in court but legal possession has been obtained. There may be some improvements remaining on the right-of-way, but all occupants have vacated the lands and improvements, and KYTC has physical possession and the rights to remove, salvage, or demolish all improvements and enter on all land. Just Compensation has been paid or deposited with the court. All relocations have been relocated to decent, safe, and sanitary housing or that KYTC has made available to displaced persons adequate replacement housing in accordance with the provisions of the current FHWA directive.					
<input type="checkbox"/>	Condition # 2 (Additional Right of Way Required with Exception)				
The right of way has not been fully acquired, the right to occupy and to use all rights-of-way required for the proper execution of the project has been acquired. Some parcels may be pending in court and on other parcels full legal possession has not been obtained, but right of entry has been obtained, the occupants of all lands and improvements have vacated, and KYTC has physical possession and right to remove, salvage, or demolish all improvements. Just Compensation has been paid or deposited with the court for most parcels. Just Compensation for all pending parcels will be paid or deposited with the court prior to AWARD of construction contract					
<input type="checkbox"/>	Condition # 3 (Additional Right of Way Required with Exception)				
The acquisition or right of occupancy and use of a few remaining parcels are not complete and/or some parcels still have occupants. All remaining occupants have had replacement housing made available to them in accordance with 49 CFR 24.204. KYTC is hereby requesting authorization to advertise this project for bids and to proceed with bid letting even though the necessary right of way will not be fully acquired, and/or some occupants will not be relocated, and/or the just compensation will not be paid or deposited with the court for some parcels until after bid letting. KYTC will fully meet all the requirements outlined in 23 CFR 635.309(c)(3) and 49 CFR 24.102(j) and will expedite completion of all acquisitions, relocations, and full payments after bid letting and prior to AWARD of the construction contract or force account construction.					
Total Number of Parcels on Project		N/A	EXCEPTION (S) Parcel #	ANTICIPATED DATE OF POSSESSION WITH EXPLANATION	
Number of Parcels That Have Been Acquired					
Signed Deed					
Condemnation					
Signed ROE					
Notes/ Comments (Text is limited. Use additional sheet if necessary.)					
"As far as ROW, we believe the work can be done within the existing ROW and do not plan to purchase property or acquire temporary easements" Per email from David Deitz Pamer engineering 4/26/2025					
LPA RW Project Manager			Right of Way Supervisor		
Printed Name			Printed Name	Digitally signed by Greg Combs	
Signature			Signature	Date: 2025.04.28 10:35:59 -04'00'	
Date			Date		
Right of Way Director			FHWA		
Printed Name	2025.04.28		Printed Name		
Signature			Signature		
Date	17:48:20 -04'00'		Date		

UTILITIES AND RAIL CERTIFICATION NOTE

Bell County
No federal number available
FE02 007 625 B00064N
SUPERSTRUCTURE REPLACEMENT WITH SUBSTRUCTURE REHAB ON KY 217 OVER BROWNIES CREEK

PROJECT NOTES ON UTILITIES

Please Note: The information presented in this Utility Note is informational in nature and the information contained herein is not guaranteed.

The contractor will be responsible for contacting all utility facility owners on the subject project to coordinate his activities. The contractor will coordinate his activities to minimize and, where possible, avoid conflicts with utility facilities. Due to the nature of the work proposed, it is unlikely to conflict with the existing utilities beyond minor facility adjustments. Where conflicts with utility facilities are unavoidable, the contractor will coordinate any necessary relocation work with the facility owner and Resident Engineer. The Kentucky Transportation Cabinet maintains the right to remove or alter portions of this contract if a utility conflict occurs. The utility facilities as noted in the previous section(s) have been determined using data garnered by varied means and with varying degrees of accuracy: from the facility owners, a result of S.U.E., field inspections, and/or reviews of record drawings. The facilities defined may not be inclusive of all utilities in the project scope and are not Level A quality, unless specified as such. It is the contractor's responsibility to verify all utilities and their respective locations before excavating.

The contractor shall make every effort to protect underground facilities from damage as prescribed in the Underground Facility Damage Protection Act of 1994, Kentucky Revised Statute KRS 367.4901 to 367.4917. It is the contractor's responsibility to determine and take steps necessary to be in compliance with federal and state damage prevention directives. The contractor is instructed to contact KY 811 for the location of existing underground utilities. Contact shall be made a minimum of two (2) and no more than ten (10) business days prior to excavation. The contractor shall submit Excavation Locate Requests to the Kentucky Contact Center (KY 811) via web ticket entry. The submission of this request does not relieve the contractor from the responsibility of contacting non-member facility owners, whom are to be contacted through their individual Protection Notification Center. It may be necessary for the contractor to contact the County Court Clerk to determine what utility companies have facilities in the area. Non-compliance with these directives can result in the enforcement of penalties.

Utility coordination efforts determined that no significant utility relocation work is required to complete the project. Any work pertaining to these utility facilities is defined in the bid package and is to be carried out as instructed by the Kentucky Transportation Cabinet. The contractor will be responsible for any coordination or adjustments that are discussed or quantified in the proposal.

UTILITIES AND RAIL CERTIFICATION NOTE

Bell County

No federal number available

FE02 007 625 B00064N

SUPERSTRUCTURE REPLACEMENT WITH SUBSTRUCTURE REHAB ON KY 217 OVER BROWNIES CREEK

NOTE: DO NOT DISTURB THE FOLLOWING FACILITIES LOCATED WITHIN THE PROJECT DISTURB LIMITS

- AT&T - KY – Communication
- KU - Electric
- CVE- Electric
- Pineville Utility Commission – Water
- Delta Natural Gas Co., Inc. – Gas

The Contractor is fully responsible for protection of all utilities listed above

THE FOLLOWING FACILITY OWNERS ARE RELOCATING/ADJUSTING THEIR FACILITIES WITHIN THE PROJECT LIMITS AND WILL BE COMPLETE PRIOR TO CONSTRUCTION

Not Applicable

THE FOLLOWING FACILITY OWNERS HAVE FACILITIES TO BE RELOCATED/ADJUSTED BY THE OWNER OR THEIR SUBCONTRACTOR AND IS TO BE COORDINATED WITH THE ROAD CONTRACT

Not Applicable

THE FOLLOWING FACILITY OWNERS HAVE FACILITIES TO BE RELOCATED/ADJUSTED BY THE ROAD CONTRACTOR AS INCLUDED IN THIS CONTRACT

Not Applicable

RAIL COMPANIES HAVE FACILITIES IN CONJUNCTION WITH THIS PROJECT AS NOTED

☒ No Rail Involvement Rail Involved ☐ Rail Adjacent

UTILITIES AND RAIL CERTIFICATION NOTE

Bell County
No federal number available
FE02 007 625 B00064N
SUPERSTRUCTURE REPLACEMENT WITH SUBSTRUCTURE REHAB ON KY 217 OVER BROWNIES CREEK

AREA FACILITY OWNER CONTACT LIST

Facility Owner	Address	Contact Name	Phone	Email
Delta Natural Gas Co., Inc. - Natural Gas	3617 Lexington Road, Winchester, KY 40391	Brent Means	(859) 744-6171 Ext. 1134	bmeans@deltagas.com
AT&T - KY - Communication	29 Willis Branch, Prestonsburg, KY 41653	Jack Salyers	(606) 424-9328	js2299@att.com
Kentucky Utilities - Electric	48 KU Drive, Fourmile, KY 40939	John Alderson	(606) 337-0321	john.alderson@lge-ku.com
Cumberland Valley Electric - Electric	6219 North US 25E, Gray, KY 40734	Mark Abner	(606) 521-5955	mark.abner@cumberlandvalley.coop
Pineville Utility Commission - Water	P.O. Box 277, 151 N. Pine Street, Pineville, KY 40977	Robbie Partin	(606) 337-6611	robbiepartin@bellsouth.net

KENTUCKY TRANSPORTATION CABINET
Department of Highways
DIVISION OF ENVIRONMENTAL ANALYSIS
CATEGORICAL EXCLUSION DETERMINATIONTC 58-48
Rev. 12/2020
Page 1 of 1**1. PROJECT SUMMARY**

Item #: Bridge #007B00064N

Project Sponsor: KYTC

Route(s): KY 217

County: Bell

Project Description:

The proposed project will replace the superstructure of Bridge No. 007B00064N (BL-391) on KY-217 over Brownies Creek in Bell County. The bridge inspection report indicates that the bridge was constructed in 1967, and is located on KY-217 approximately 0.5 miles south of its junction with KY-987. The bridge is a multiple box beam bridge with a concrete slab deck that rests on masonry abutments. The resource is classified as being in "poor" condition in the bridge inspection report. The purpose of the proposed project is to repair the existing bridge, which is currently closed to traffic, requiring a 20-mile detour for area residents. The project is needed due to the deteriorated condition of the existing superstructure. To re-establish the crossing, the superstructure will be completely replaced. The existing substructures, two abutments and one pier, will be maintained supporting new superstructure. Minor modifications will be made to the top of the substructures to work with the geometry of the new superstructure. In addition, the project will include minor repairs to existing substructures to extend their service life. See Appendix A for Location Map and Appendix B for Plans.

2. ENVIRONMENTAL DETERMINATION

Functional Area	Determination	Comments/Commitments/Mitigation
Public and Resource Agency Controversy	No	
Total acreage of fee simple ROW	0	No additional Right of Way required for project construction
Number of Total Relocations	0	No relocations involved
Community Impact Analysis	No	No disproportionate or adverse effects to Title VI populations
Section 106: Architectural Historic	No Effect	No historic properties affected (SHPO 10/25/23); See App. C
Section 106: Archaeological Resources	No Effect	No historic properties affected (SHPO 4/16/24); See App. C
Section 4(f)	No 4(f) Properties	
Section 6(f)	No 6(f) Properties	
Noise	Not a Type I	
Air Quality Impacts	No	
Hazardous Materials Impacts	No	No asbestos on structure; See Appendix D
Section 7: T&E Species	Not Likely to Adversely Affect	No tree clearing required for project; NO Effect for BSD.
Anticipated Feet of Stream Impacts	100	Temp crossing may be used; piers to be repaired not replaced
Anticipated Acreage of Wetland Impacts		NA
Anticipated Permits	Yes	Nationwide #3; General WQC
Other: KPDES Stormwater Permit		Required for contractor disturbance >1.0 acre
Other:		
Other:		

Based on the criteria listed above, in review of the most recent Categorical Exclusion Agreement between KYTC and FHWA, the subject project is determined to be considered a Categorical Exclusion, Level CEMP.

3. ENVIRONMENTAL DOCUMENT APPROVAL

Based on the information obtained during the environmental review process and included as attachments to this form, the project is determined to be a Categorical Exclusion under 23 CFR part 771 pursuant to the National Environmental Policy Act and complies with all other applicable environmental laws, regulations, and Executive Orders. The project action does not have a reasonably foreseeable significant effect on the natural and human environment.

<div></div> <div>District Environmental Coordinator</div>	<div></div> <div>Date</div>	<div><i>Dora Alexander</i></div> <div>Project Manager</div>	<div><i>5/12/25</i></div> <div>Date</div>
<div><i>Casey Claunch</i></div> <div>Environmental Project Manager</div>	<div><i>5/12/25</i></div> <div>Date</div>	<div></div> <div>Director of Environmental Analysis</div>	<div></div> <div>Date</div>
<div></div> <div>Recommended by FHWA</div>	<div></div> <div>Date</div>	<div></div> <div>Federal Highway Administration</div>	<div></div> <div>Date</div>



Appendix A: Location Map





Appendix B:

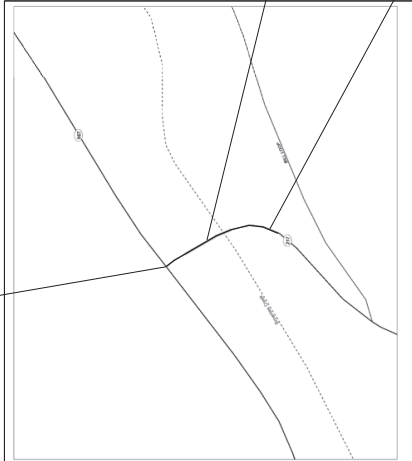
Plans

COMMONWEALTH OF KENTUCKY DEPARTMENT OF HIGHWAYS



PLANS OF PROPOSED PROJECT BELL County KY 217 OVER BROWNIES CREEK

END CONST.
STA. 2+23.96



STA. 1+27.54 TO STA. 1+87.71
CONST. 2' SPAN 29'-4" X 29'-4"
PPC SPREAD BOX BEAM, CB 12X48
H10 LIVE LOAD
DRAWING NO. 28975

BEGIN CONST.
STA. 0+30.53

LAYOUT MAP

BEFORE YOU DIG

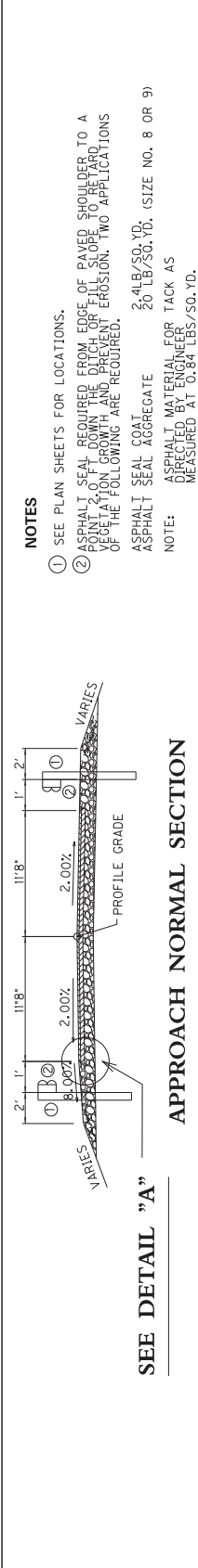
The contractor is instructed to call 1-800-752-6007 to reach KY 811, the one-call system for information on the location of existing underground utilities. The call is to be placed a minimum of two (2) and no more than ten (10) business days prior to excavation. The contractor must coordinate with the KY 811 one-call service. The contractor must coordinate excavation with the utility owners, including those whom do not subscribe to KY 811. It is the contractor's responsibility to contact the County Clerk to determine what utility companies have facilities in the area.

PROJECT NUMBER: 1100 FE02 007 625B00064N

PROJECT DESCRIPTION: KY 217 OVER BROWNIES CREEK

FILE NAME: C:\P\WORK\KIP\KIP\BEN-H022626400_00000_XX_XX_LAYOUT.DGN

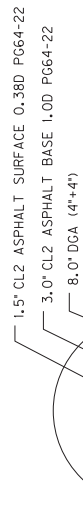
DESIGN CRITERIA	INDEX OF SHEETS
CLASS OF HIGHWAY TYPE OF TERRAIN DESIGN SPEED REQUIRED NPSD REQUIRED PSD LEVEL OF SERVICE ADT PRESENT () ADT FUTURE () D % T %	LAYOUT SHEET AND COORD. CONT. LEGEND SUMMARY OF QUANTITIES PLAN AND PROFILE SHEETS CROSS SECTION SHEETS
DESIGNED	STANDARD DRAWINGS
LATITUDE 36 DEGREES 42 MINUTES 20 SECONDS NORTH LONGITUDE 83 DEGREES 33 MINUTES 1 SECONDS WEST	RBR-001-12 TYPICAL GUARDRAIL INSTALLATIONS RBR-001-13 STEEL BEAM GUARDRAIL "W" BEAM RBR-001-14 GUARDRAIL END TREATMENT TYPE 1 RBR-030-05 GUARDRAIL END TREATMENT TYPE 3 RBR-030-06 GUARDRAIL END TREATMENT TYPE 4 RBR-035-01 GUARDRAIL END TREATMENT TYPE 1 RBR-035-02 GUARDRAIL END TREATMENT TYPE 2 RBR-035-03 GUARDRAIL END TREATMENT TYPE 3 RBR-035-04 GUARDRAIL END TREATMENT TYPE 4 RBR-035-05 GUARDRAIL END TREATMENT TYPE 5 RBR-035-06 GUARDRAIL END TREATMENT TYPE 6 RBR-035-07 GUARDRAIL END TREATMENT TYPE 7 RBR-035-08 GUARDRAIL END TREATMENT TYPE 8 RBR-035-09 GUARDRAIL END TREATMENT TYPE 9 RBR-035-10 GUARDRAIL END TREATMENT TYPE 10 RBR-035-11 GUARDRAIL END TREATMENT TYPE 11 RBR-035-12 GUARDRAIL END TREATMENT TYPE 12 RBR-035-13 GUARDRAIL END TREATMENT TYPE 13 RBR-035-14 GUARDRAIL END TREATMENT TYPE 14 RBR-035-15 GUARDRAIL END TREATMENT TYPE 15 RBR-035-16 GUARDRAIL END TREATMENT TYPE 16 RBR-035-17 GUARDRAIL END TREATMENT TYPE 17 RBR-035-18 GUARDRAIL END TREATMENT TYPE 18 RBR-035-19 GUARDRAIL END TREATMENT TYPE 19 RBR-035-20 GUARDRAIL END TREATMENT TYPE 20 RBR-035-21 GUARDRAIL END TREATMENT TYPE 21 RBR-035-22 GUARDRAIL END TREATMENT TYPE 22 RBR-035-23 GUARDRAIL END TREATMENT TYPE 23 RBR-035-24 GUARDRAIL END TREATMENT TYPE 24 RBR-035-25 GUARDRAIL END TREATMENT TYPE 25 RBR-035-26 GUARDRAIL END TREATMENT TYPE 26 RBR-035-27 GUARDRAIL END TREATMENT TYPE 27 RBR-035-28 GUARDRAIL END TREATMENT TYPE 28 RBR-035-29 GUARDRAIL END TREATMENT TYPE 29 RBR-035-30 GUARDRAIL END TREATMENT TYPE 30 RBR-035-31 GUARDRAIL END TREATMENT TYPE 31 RBR-035-32 GUARDRAIL END TREATMENT TYPE 32 RBR-035-33 GUARDRAIL END TREATMENT TYPE 33 RBR-035-34 GUARDRAIL END TREATMENT TYPE 34 RBR-035-35 GUARDRAIL END TREATMENT TYPE 35 RBR-035-36 GUARDRAIL END TREATMENT TYPE 36 RBR-035-37 GUARDRAIL END TREATMENT TYPE 37 RBR-035-38 GUARDRAIL END TREATMENT TYPE 38 RBR-035-39 GUARDRAIL END TREATMENT TYPE 39 RBR-035-40 GUARDRAIL END TREATMENT TYPE 40 RBR-035-41 GUARDRAIL END TREATMENT TYPE 41 RBR-035-42 GUARDRAIL END TREATMENT TYPE 42 RBR-035-43 GUARDRAIL END TREATMENT TYPE 43 RBR-035-44 GUARDRAIL END TREATMENT TYPE 44 RBR-035-45 GUARDRAIL END TREATMENT TYPE 45 RBR-035-46 GUARDRAIL END TREATMENT TYPE 46 RBR-035-47 GUARDRAIL END TREATMENT TYPE 47 RBR-035-48 GUARDRAIL END TREATMENT TYPE 48 RBR-035-49 GUARDRAIL END TREATMENT TYPE 49 RBR-035-50 GUARDRAIL END TREATMENT TYPE 50 RBR-035-51 GUARDRAIL END TREATMENT TYPE 51 RBR-035-52 GUARDRAIL END TREATMENT TYPE 52 RBR-035-53 GUARDRAIL END TREATMENT TYPE 53 RBR-035-54 GUARDRAIL END TREATMENT TYPE 54 RBR-035-55 GUARDRAIL END TREATMENT TYPE 55 RBR-035-56 GUARDRAIL END TREATMENT TYPE 56 RBR-035-57 GUARDRAIL END TREATMENT TYPE 57 RBR-035-58 GUARDRAIL END TREATMENT TYPE 58 RBR-035-59 GUARDRAIL END TREATMENT TYPE 59 RBR-035-60 GUARDRAIL END TREATMENT TYPE 60 RBR-035-61 GUARDRAIL END TREATMENT TYPE 61 RBR-035-62 GUARDRAIL END TREATMENT TYPE 62 RBR-035-63 GUARDRAIL END TREATMENT TYPE 63 RBR-035-64 GUARDRAIL END TREATMENT TYPE 64 RBR-035-65 GUARDRAIL END TREATMENT TYPE 65 RBR-035-66 GUARDRAIL END TREATMENT TYPE 66 RBR-035-67 GUARDRAIL END TREATMENT TYPE 67 RBR-035-68 GUARDRAIL END TREATMENT TYPE 68 RBR-035-69 GUARDRAIL END TREATMENT TYPE 69 RBR-035-70 GUARDRAIL END TREATMENT TYPE 70 RBR-035-71 GUARDRAIL END TREATMENT TYPE 71 RBR-035-72 GUARDRAIL END TREATMENT TYPE 72 RBR-035-73 GUARDRAIL END TREATMENT TYPE 73 RBR-035-74 GUARDRAIL END TREATMENT TYPE 74 RBR-035-75 GUARDRAIL END TREATMENT TYPE 75 RBR-035-76 GUARDRAIL END TREATMENT TYPE 76 RBR-035-77 GUARDRAIL END TREATMENT TYPE 77 RBR-035-78 GUARDRAIL END TREATMENT TYPE 78 RBR-035-79 GUARDRAIL END TREATMENT TYPE 79 RBR-035-80 GUARDRAIL END TREATMENT TYPE 80 RBR-035-81 GUARDRAIL END TREATMENT TYPE 81 RBR-035-82 GUARDRAIL END TREATMENT TYPE 82 RBR-035-83 GUARDRAIL END TREATMENT TYPE 83 RBR-035-84 GUARDRAIL END TREATMENT TYPE 84 RBR-035-85 GUARDRAIL END TREATMENT TYPE 85 RBR-035-86 GUARDRAIL END TREATMENT TYPE 86 RBR-035-87 GUARDRAIL END TREATMENT TYPE 87 RBR-035-88 GUARDRAIL END TREATMENT TYPE 88 RBR-035-89 GUARDRAIL END TREATMENT TYPE 89 RBR-035-90 GUARDRAIL END TREATMENT TYPE 90 RBR-035-91 GUARDRAIL END TREATMENT TYPE 91 RBR-035-92 GUARDRAIL END TREATMENT TYPE 92 RBR-035-93 GUARDRAIL END TREATMENT TYPE 93 RBR-035-94 GUARDRAIL END TREATMENT TYPE 94 RBR-035-95 GUARDRAIL END TREATMENT TYPE 95 RBR-035-96 GUARDRAIL END TREATMENT TYPE 96 RBR-035-97 GUARDRAIL END TREATMENT TYPE 97 RBR-035-98 GUARDRAIL END TREATMENT TYPE 98 RBR-035-99 GUARDRAIL END TREATMENT TYPE 99 RBR-035-100 GUARDRAIL END TREATMENT TYPE 100
% RESTRICTED SD LEVEL OF SERVICE MAX. DISTANCE W/O PASSING	



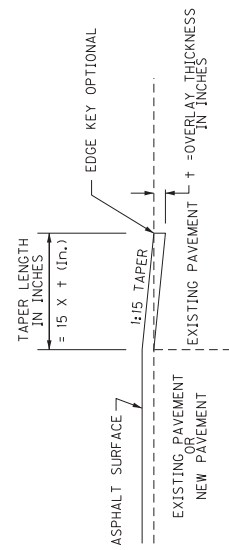
NOTES

- ① SEE PLAN SHEETS FOR LOCATIONS.
 - ② ASPHALT SEAL REQUIRED FROM EDGE OF PAVED SHOULDER TO A POINT 2' OUT DOWN THE DITCH OR FILL SLOPE, TO BE TARD POINTS OF CONSTRUCTION AND PREVENT EROSION. TWO APPLICATIONS OF THE FOLLOWING ARE REQUIRED.
- ASPHALT SEAL COAT AGGREGATE 2.4LB/SQ.YD. (SIZE NO. 8 OR 9)
ASPHALT SEAL 20 LB/SQ.YD.
NOTE: ASPHALT MATERIAL FOR TACK AS DIRECTED BY ENGINEER MEASURED AT 0.84 LBS/SQ.YD.

APPROACH NORMAL SECTION



DETAIL "A"



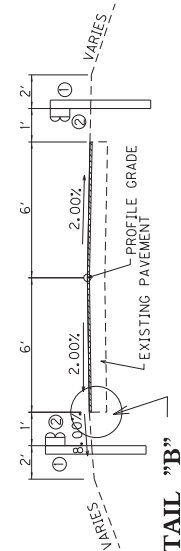
EDGE KEY TAPER



DETAIL "B"

SEE DETAIL "B"

OVERLAY NORMAL SECTION

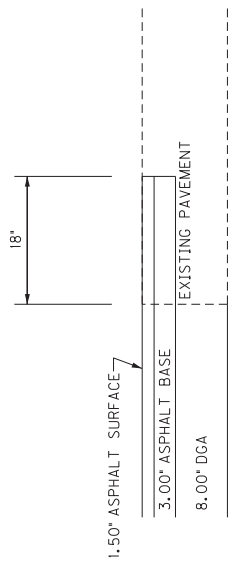


BASIS OF COORDINATES

Coordinates for horizontal control were obtained from GPS methods and adjusted to the National NAD83/FBN System.
Coordinate are based on State Plane Coordinate System Single Zone and in U.S. SURVEY FEET.

BASIS OF ELEVATIONS

Elevations were derived from GPS methods and are adjusted to the NAVD88 Vertical Datum. Geoid model used was Geoid03.



LONITUDINAL EDGE KEY

SEE BRIDGE LAYOUT SHEET FOR BRIDGE TYPICAL SECTION

BRIDGE SECTION

POINT	DESCRIPTION	State Plane Coordinates		STATION	OFFSET
		NORTH (Y)	EAST (X)		
1	CP 1 - TPCS	3424079.680	5566198.194	2 + 01.48	57.32' RT
2	CP 2 - MAG NAIL	3424015.172	5566087.413	2 + 00.65	64.03' LT

COORDINATE CONTROL POINTS

POINT	DESCRIPTION	State Plane Coordinates		STATION
		NORTH (Y)	EAST (X)	
1	POB	3423875.610	5566144.458	0 + 00
2	PC 1	3423883.906	5566154.371	0 + 12.93
3	PI 1	3423910.137	5566185.714	0 + 53.80
4	PT 1	3423950.910	5566188.531	0 + 90.21
5	PC 2	3423952.960	5566188.672	0 + 92.26
6	PI 2	3423971.096	5566189.925	1 + 10.44
7	PT 2	3423986.560	5566180.367	1 + 27.44
8	POE	3424068.666	5566129.619	2 + 23.96

CENTERLINE COORD. CONTROL

ROADWAY GENERAL SUMMARY				
ITEM	DESCRIPTION	NOTES	UNIT	TOTAL PROJECT
1987	DELINEATOR FOR GUARDRAIL B/W		EACH	7
2091	REMOVE PAVEMENT		SQ YD	96
2200	ROADWAY EXCAVATION	1	CU YD	20
2351	GUARDRAIL - STEEL W BEAM - S FACE		LF	212.5
2367	GUARDRAIL END TREATMENT TYPE 1		EACH	1
2371	GUARDRAIL END TREATMENT TYPE 7		EACH	1
2373	GUARDRAIL END TREATMENT TYPE 3		EACH	1
2391	GUARDRAIL END TREATMENT TYPE 4A		EACH	1
2399	EXTRA LENGTH GUARDRAIL POST	2	EACH	34
2569	DEMOLITION		LS	1
2585	EDGE KEY		LF	60
2650	MAINTAIN AND CONTROL TRAFFIC		LS	1
2726	STAKING		LS	1
2731	REMOVE STRUCTURE	3	LS	1
5552	TEMPORARY MULCH		SQ YD	1064
5953	TEMP SEEDING AND PROTECTION		SQ YD	806
5963	INITIAL FERTILIZER		TON	0.04
5964	20-10-10 FERTILIZER		TON	0.02
5985	SEEDING AND PROTECTION		SQ YD	779
20191ED	OBJECT MARKER TY 3		EACH	2
20418ED	REMOVE & RELOCATE SIGNS		EACH	4
21289ED	LONGITUDINAL EDGE KEY		LF	53

- NOTES:
- 1

EARTHWORK TOTALS

18 CY

20 CY
- 2

EXCAVATION
- 2

EXTRA LENGTH GUARDRAIL POSTS TO BE USED
- 2

IN PLACE OF STANDARD LENGTH GUARDRAIL POSTS
- 3

REMOVAL OF THE STRUCTURE INCLUDES THE REMOVAL OF THE CONCRETE SLAB, REMOVAL OF THE BRIDGE SHALL INCLUDE THE TRANSPORTATION AND DISPOSAL OF ALL MATERIALS AND STRUCTURES. ALL MATERIAL REMOVED FROM THE STRUCTURE SHALL BE THE PROPERTY OF THE CONTRACTOR.

PAVING SUMMARY				
ITEM CODE	ITEM	TONS		PROJECT TOTAL
1	DGA BASE ④	65		65
100	ASPHALT SEAL AGGREGATE ⑤	1.0		1.0
103	ASPHALT SEAL COAT ⑥	0.1		0.1
212	CL2 ASPHALT BASE 1.00D PG64-22	13		13
301	CL2 ASPHALT SURFACE 0.38D PG64-22	18		18
356	ASPHALT MATERIAL FOR TACK ⑦	0.09		0.09

- NOTES:
- ④

ESTIMATED AT 115 LBS. PER SQ. YD. PER INCH OF DEPTH
- ⑤

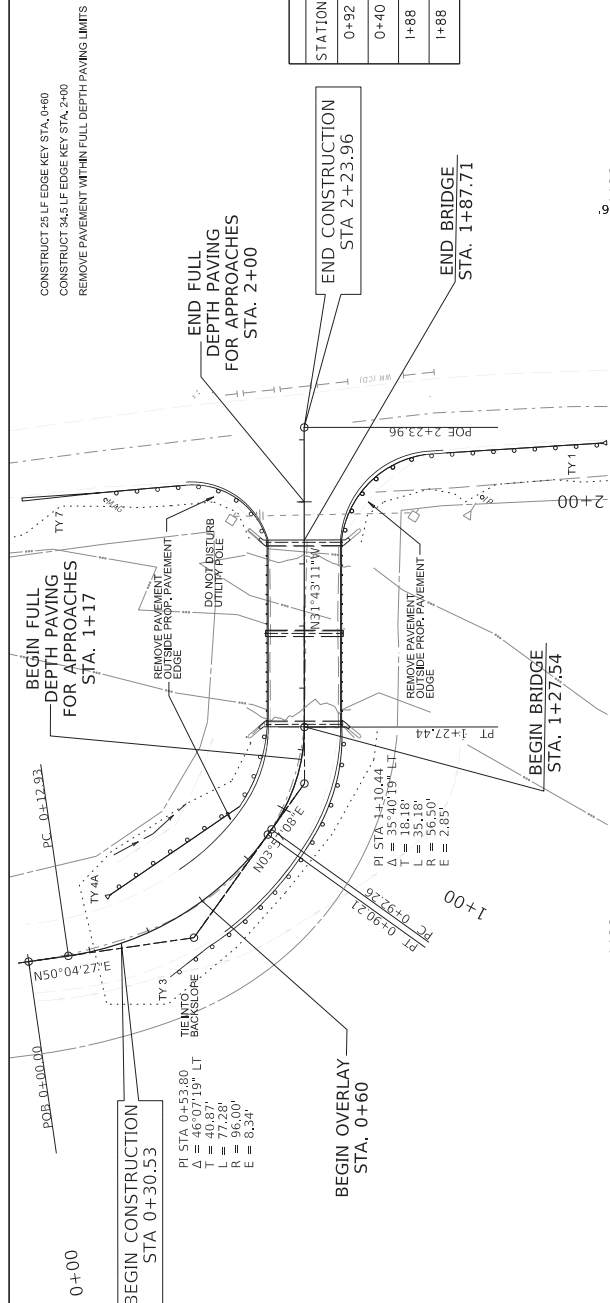
ESTIMATED AT 20 LBS/SY
- ⑥

ESTIMATED AT 2.4 LBS/SY
- ⑦

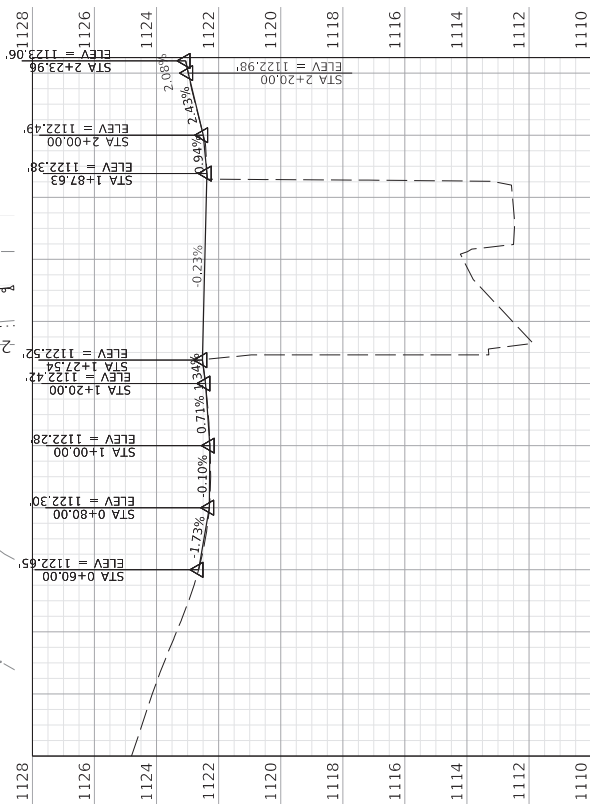
ESTIMATED AT 0.84 LBS/SY
- ⑧

ESTIMATED AT 110 LBS. PER SQ. YD. PER INCH OF DEPTH, UNLESS NOTED OTHERWISE

PAVING AREAS						
ITEM	KY 217	S Q U A R E Y A R D S				PROJECT TOTAL
FULL DEPTH DGA BASE	45.5				45.5	
8.0" DGA BASE	70.5				70.5	
3.0" CL2 ASPHALT BASE 1.00D PG64-22	76.5				76.5	
1.50" CL2 ASPHALT SURFACE 0.38D PG64-22	216				216	
ASPHALT MATERIAL FOR TACK	216				216	
ASPHALT SEAL COAT ⑥	97				97	
ASPHALT SEAL AGGREGATE ⑧	97				97	



GUARDRAIL SUMMARY				
STATION -	STATION	LT/RT	BACK END COND. TYPE	AHEAD END COND. TYPE
0+92 -	1+28	LT	25 END TREATMENT TYPE 4A	BRIDGE RAILING SYSTEM
0+40 -	1+28	RT	100 END TREATMENT TYPE 13	BRIDGE RAILING SYSTEM
1+88 -	2+05	LT	37.5 BRIDGE RAILING SYSTEM	END TREATMENT TYPE 1
1+88 -	2+15	RT	50 BRIDGE RAILING SYSTEM	END TREATMENT TYPE 1



GENERAL NOTES

SPECIFICATIONS:

ALL REFERENCES TO THE STANDARD SPECIFICATIONS ARE TO THE CURRENT EDITION OF THE KENTUCKY DEPARTMENT OF HIGHWAYS STANDARD SPECIFICATIONS FOR ROAD AND BRIDGE CONSTRUCTION. THE STANDARD SPECIFICATIONS FOR ROAD AND BRIDGE CONSTRUCTION TO THE AASHTO SPECIFICATIONS ARE TO THE 10TH EDITION OF THE AASHTO LRFD BRIDGE DESIGN SPECIFICATIONS.

LIVE LOAD:

THIS BRIDGE IS DESIGNED FOR KYHL-93 WHICH IS 1.25 TIMES THE HL-93 LIVE LOAD.

FUTURE WEARING SURFACE:

THE BRIDGE HAS BEEN DESIGNED FOR A FUTURE WEARING SURFACE WEIGHT OF 15 PSF.

MATERIAL DESIGN SPECIFICATIONS:

FOR CLASS "A" REINFORCED CONCRETE: F_C = 3500 PSI
FOR CLASS "A" REINFORCED CONCRETE: F_C = 4000 PSI
FOR STEEL REINFORCEMENT: F_y = 60,000 PSI

MATERIAL SPECIFICATIONS:

AASHTO SPECIFICATIONS OR ASTM, CURRENT EDITION, AS DESIGNATED BELOW SHALL GOVERN THE MATERIALS FURNISHED.

AASHTO M-31 DEFORMED AND PLAIN BILLET-STEEL FOR CONCRETE REINFORCEMENT, GRADE 60

CONCRETE:

CLASS "A" CONCRETE IS TO BE USED THROUGHOUT THE SLAB. PRESTRESSED GORDER CONCRETE SHALL BE IN ACCORDANCE WITH THE STANDARD DWG. BDP-406-05 AND BDP-401-06. ALL OTHER CONCRETE SHALL BE CLASS "A" UNLESS OTHERWISE NOTED.

DIMENSIONS:

DIMENSIONS ARE FOR A NORMAL TEMPERATURE OF 60 DEGREES F. LAYOUT DIMENSIONS ARE HORIZONTAL MEASUREMENTS. STATIONING AND ELEVATIONS ARE IN FEET.

REINFORCEMENT:

DIMENSIONS SHOWN FROM THE FACE OF CONCRETE TO BARS ARE TO CENTER OF BARS UNLESS OTHERWISE SHOWN. SPACING OF BARS IS FROM CENTER TO CENTER OF BARS. CLEAR DISTANCE TO FACE OF CONCRETE IS 2 INCHES UNLESS OTHERWISE NOTED. ANY REINFORCING BARS DESIGNATED BY SUFFIX (E) IN THE PLANS SHALL BE EPOXY COATED IN ACCORDANCE WITH SECTION 811.10 OF THE STANDARD SPECIFICATIONS.

ANY REINFORCING BARS DESIGNATED BY SUFFIX (S) IN A BILL OF REINFORCEMENT SHALL BE CONSIDERED A STIRUP BAR FOR PURPOSES OF BEND DIAMETERS.

BEVELED EDGES:

ALL EXPOSED EDGES SHALL BE BEVELED ¾" UNLESS OTHERWISE SHOWN.

COMPLETION OF THE STRUCTURE:

THE CONTRACTOR IS REQUIRED TO COMPLETE THE STRUCTURE IN ACCORDANCE WITH THE PLANS AND SPECIFICATIONS. MATERIAL LABOR OR CONSTRUCTION OPERATIONS, NOT OTHERWISE SPECIFIED, ARE TO BE INCLUDED IN THE BID ITEM MOST APPROPRIATE TO THE WORK INVOLVED. THIS MAY INCLUDE COFFERDAMS, SHORING, EXCAVATIONS, BACKFILLING, REMOVAL OF ALL OR PARTS OF EXISTING STRUCTURE, OR ANY OTHER NECESSARY CONSTRUCTION, INCIDENTAL MATERIALS, LABOR, OR ANYTHING ELSE REQUIRED TO COMPLETE THE STRUCTURE.

CONSTRUCTION PHASING AND MAINTENANCE OF TRAFFIC:

THE CONTRACTOR SHALL ARRANGE TO DO THE WORK IN ACCORDANCE WITH THE PLANS AND MAINTENANCE OF TRAFFIC NOTES AS SHOWN ON THE ROADWAY PLANS DURING CONSTRUCTION OF THIS PROJECT.

GUARDRAIL:

SIDE MOUNTED MGS RAILING SYSTEM SHALL BE INSTALLED PER STANDARD DRAWING BH5-011.

SHOP DRAWINGS:

SUBMIT SHOP DRAWINGS THAT ARE REQUIRED BY THE PLANS AND SPECIFICATIONS DIRECTLY TO THE KENTUCKY DEPARTMENT OF HIGHWAYS. SUBMIT SHOP DRAWINGS TO THE KENTUCKY DEPARTMENT OF HIGHWAYS SUPPLIER. SUBMIT THOSE CHANGES TO THE CONSULTANT. SUBMIT ALL FINAL APPROVED SHOP DRAWINGS TO THE DIVISION OF STRUCTURAL DESIGN.

UTILITIES:

BEFORE BEGINNING WORK, LOCATE ALL EXISTING UTILITIES, CONSIDER LOCATION OF UTILITIES SHOWN ON THE DRAWINGS TO BE APPROXIMATE AND FOR INFORMATIONAL PURPOSES ONLY. THE DEPARTMENT DOES NOT WARRANT THE LOCATIONS AND ASSUMES NO RESPONSIBILITY FOR THE ACCURACY OR COMPLETENESS, AND THE CONTRACTOR SHALL BE RESPONSIBLE FOR THE LOCATION, DEPTH, AND DETERMINATION, EXCEPT AS SHOWN ON THE PLANS, WORK AROUND AND DO NOT DISTURB EXISTING UTILITIES.

VERIFYING FIELD CONDITIONS:

THE CONTRACTOR SHALL FIELD VERIFY ALL DIMENSIONS BEFORE ORDERING MATERIAL. NEW MATERIAL THAT THE CONTRACTOR HAS ORDERED FOR THIS PROJECT SHALL BE REPLACED AT THE CONTRACTOR'S EXPENSE.

CONSTRUCTION IDENTIFICATION:

APPLY STENCILS FOR STRUCTURES IN ACCORDANCE WITH STANDARD DRAWING BGX-006, c.e., THE CONTRACTOR SHALL BE RESPONSIBLE FOR THE IDENTIFICATION OF THE STRUCTURE AND THE EQUIPMENT, AND LABOR NECESSARY TO DO THE WORK FOR WHICH NO DIRECT PAYMENT WILL BE MADE.

TEMPORARY SUPPORTS:

TEMPORARY SUPPORTS OR SHORING WILL NOT BE PERMITTED UNDER THE BEAMS WHEN POURING THE CONCRETE DECK SLAB OR WHEN TAKING "TOP OF BEAM" ELEVATIONS.

CONCRETE SEALING:

APPLY CONCRETE SEALER IN ACCORDANCE WITH THE SPECIAL NOTE FOR CONCRETE SEALING TO THE SUPERSTRUCTURE LIMITS SHOWN ON THE SUPERSTRUCTURE DETAIL SHEET.

SPECIFICATIONS CONTRARY TO THE STANDARD DRAWINGS:

WHERE THE PLANS AND SPECIFICATIONS DIFFER FROM THE STANDARD DRAWINGS, THE PLANS AND SPECIFICATIONS SHALL CONTROL.

PAYMENT FOR PRECAST CONCRETE BEAMS:



THE BASIS OF PAYMENT FOR THE PRESTRESSED CONCRETE BEAMS SHALL BE AT THE CONTRACT UNIT PRICE PER LINEAR FOOT OF BEAM, IN ACCORDANCE WITH THE SPECIFICATIONS.

ARMORED EDGE:

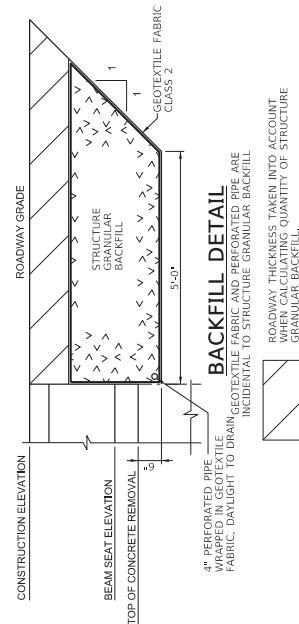
FABRICATE ARMORED EDGE TO MATCH CROSS SLOPE AND PARABOLIC CROWN AT EACH END OF BRIDGE.

 COMMONWEALTH OF KENTUCKY DEPARTMENT OF HIGHWAYS	REVISION		DATE		 Palmer ENGINEERING		PREPARED BY		FILE NAME: pwr\PE01PW01\pwr\parks\palmer.net\palmer_Engineering\documents\Kentucky\TransStructure\plans\cgn\007B00064N_502_GenNotes.dgn																		
							DATE: MAY 2025		CHECKED BY		GENERAL NOTES																
							DESIGNED BY: D.H. DEITZ		S.A. SERGENT		CROSSING																
							DETAILED BY: M.B. HAGGARD		D.H. DEITZ		BROWNIES CREEK																
								ROUTE		KY 217		SHEET NO.		502		BRIDGE ID		007B00064N		COUNTY OF		BELL		DRAWING NUMBER		28975	



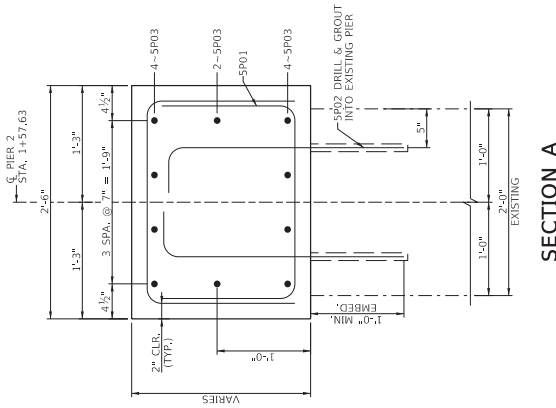
 COMMONWEALTH OF KENTUCKY DEPARTMENT OF HIGHWAYS	REVISION	DATE	PREPARED BY  Palmer ENGINEERING		DATE:	MAY, 2025	CHECKED BY:	S.A. SERGENT D.H. DEITZ		ITEM NO.	SERVICE ID	COUNTY OF
					DESIGNED BY:	D.H. DEITZ				ROUTE	007B00064N	BELL
					DETAILED BY:	M.B. HAGGARD				SHEET NO.	KY 217	DRAWING NUMBER
											S03	28975
2. CB12 BOX BEAM SUPERSTRUCTURE. SEE BDP-006-05 FOR DETAILS												
LAYOUT CROSSING BROWNISS CREEK												

[illegible]

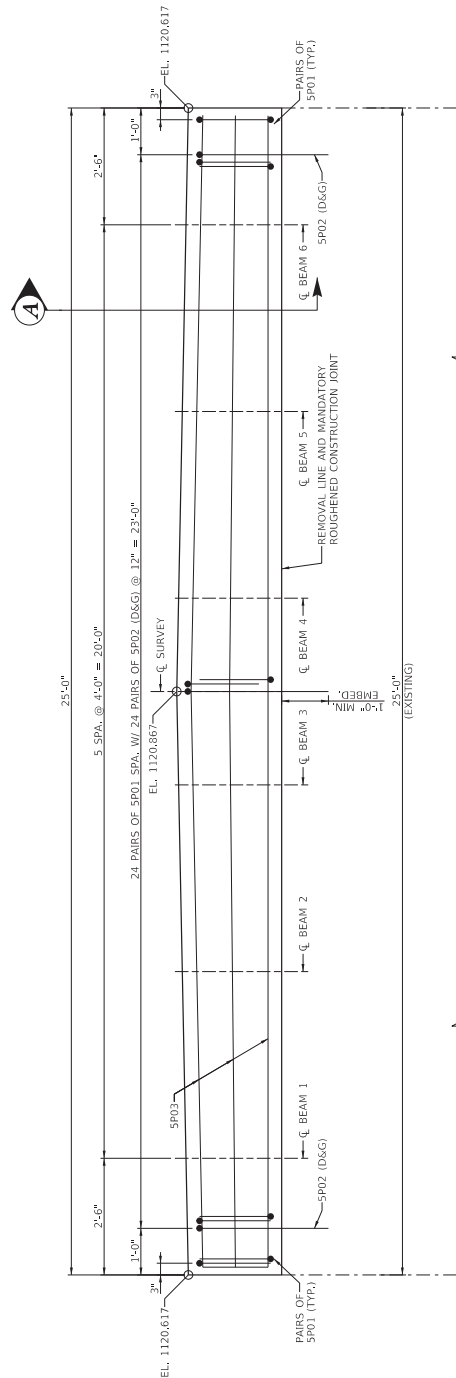
[illegible]

[illegible]

OpenRoads Designer v23.00.01.11

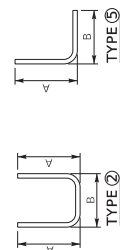


SECTION A

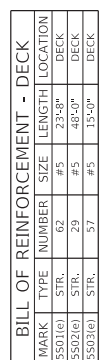


ELEVATION
(NEW CONSTRUCTION)

BILL OF REINFORCEMENT - PIER						
MARK	TYPE	NUMBER	SIZE	LENGTH	LOCATION	"A"
5901(E)	2	52	#5	4'-6"	PIER 2	1'-2"
5902(E)	5	48	#5	2'-3"	PIER 2	2'-2"
5903(E)	STP	10	#5	2'-15.5"	PIER 2	8"





 COMMONWEALTH OF KENTUCKY DEPARTMENT OF HIGHWAYS	REVISION		DATE		PREPARED BY  Palmer ENGINEERING		DATE PLOTTED: 05:43 PM on 04/30/2025		USER: mcknab	
			DATE: MAY, 2025		CHECKED BY S.A. SERGENT		ITEM NO.		SURFACE IS 007B00064N	
			DESIGNED BY: D.H. DEITZ		S.A. SERGENT		ROUTE KY 217		SHEET NO. S08	
			DETAILED BY: M.B. HAGGARD		D.H. DEITZ		CROSSING BROWNIES CREEK		DRAWING NUMBER 2897.5	
FILE NAME: j:\pcor\EVING\p\work\updates\palmer\c\palmer\Engineering\Documents\Kentucky\Trans\STW\B\figs_may_2024\43_ D11_mcknab_KY 217\Struc\Tol\J\ans_007\007-008-009-010-011-012-013-014-015-016-017-018-019-020-021-022-023-024-025-026-027-028-029-030-031-032-033-034-035-036-037-038-039-040-041-042-043-044-045-046-047-048-049-050-051-052-053-054-055-056-057-058-059-060-061-062-063-064-065-066-067-068-069-070-071-072-073-074-075-076-077-078-079-080-081-082-083-084-085-086-087-088-089-090-091-092-093-094-095-096-097-098-099-100-101-102-103-104-105-106-107-108-109-110-111-112-113-114-115-116-117-118-119-120-121-122-123-124-125-126-127-128-129-130-131-132-133-134-135-136-137-138-139-140-141-142-143-144-145-146-147-148-149-150-151-152-153-154-155-156-157-158-159-160-161-162-163-164-165-166-167-168-169-170-171-172-173-174-175-176-177-178-179-180-181-182-183-184-185-186-187-188-189-190-191-192-193-194-195-196-197-198-199-200-201-202-203-204-205-206-207-208-209-210-211-212-213-214-215-216-217-218-219-220-221-222-223-224-225-226-227-228-229-230-231-232-233-234-235-236-237-238-239-240-241-242-243-244-245-246-247-248-249-250-251-252-253-254-255-256-257-258-259-260-261-262-263-264-265-266-267-268-269-270-271-272-273-274-275-276-277-278-279-280-281-282-283-284-285-286-287-288-289-290-291-292-293-294-295-296-297-298-299-300-301-302-303-304-305-306-307-308-309-310-311-312-313-314-315-316-317-318-319-320-321-322-323-324-325-326-327-328-329-330-331-332-333-334-335-336-337-338-339-340-341-342-343-344-345-346-347-348-349-350-351-352-353-354-355-356-357-358-359-360-361-362-363-364-365-366-367-368-369-370-371-372-373-374-375-376-377-378-379-380-381-382-383-384-385-386-387-388-389-390-391-392-393-394-395-396-397-398-399-400-401-402-403-404-405-406-407-408-409-410-411-412-413-414-415-416-417-418-419-420-421-422-423-424-425-426-427-428-429-430-431-432-433-434-435-436-437-438-439-440-441-442-443-444-445-446-447-448-449-450-451-452-453-454-455-456-457-458-459-460-461-462-463-464-465-466-467-468-469-470-471-472-473-474-475-476-477-478-479-480-481-482-483-484-485-486-487-488-489-490-491-492-493-494-495-496-497-498-499-500-501-502-503-504-505-506-507-508-509-510-511-512-513-514-515-516-517-518-519-520-521-522-523-524-525-526-527-528-529-530-531-532-533-534-535-536-537-538-539-540-541-542-543-544-545-546-547-548-549-550-551-552-553-554-555-556-557-558-559-560-561-562-563-564-565-566-567-568-569-570-571-572-573-574-575-576-577-578-579-580-581-582-583-584-585-586-587-588-589-590-591-592-593-594-595-596-597-598-599-600-601-602-603-604-605-606-607-608-609-610-611-612-613-614-615-616-617-618-619-620-621-622-623-624-625-626-627-628-629-630-631-632-633-634-635-636-637-638-639-640-641-642-643-644-645-646-647-648-649-650-651-652-653-654-655-656-657-658-659-660-661-662-663-664-665-666-667-668-669-670-671-672-673-674-675-676-677-678-679-680-681-682-683-684-685-686-687-688-689-690-691-692-693-694-695-696-697-698-699-700-701-702-703-704-705-706-707-708-709-710-711-712-713-714-715-716-717-718-719-720-721-722-723-724-725-726-727-728-729-730-731-732-733-734-735-736-737-738-739-740-741-742-743-744-745-746-747-748-749-750-751-752-753-754-755-756-757-758-759-760-761-762-763-764-765-766-767-768-769-770-771-772-773-774-775-776-777-778-779-780-781-782-783-784-785-786-787-788-789-790-791-792-793-794-795-796-797-798-799-800-801-802-803-804-805-806-807-808-809-810-811-812-813-814-815-816-817-818-819-820-821-822-823-824-825-826-827-828-829-830-831-832-833-834-835-836-837-838-839-840-841-842-843-844-845-846-847-848-849-850-851-852-853-854-855-856-										



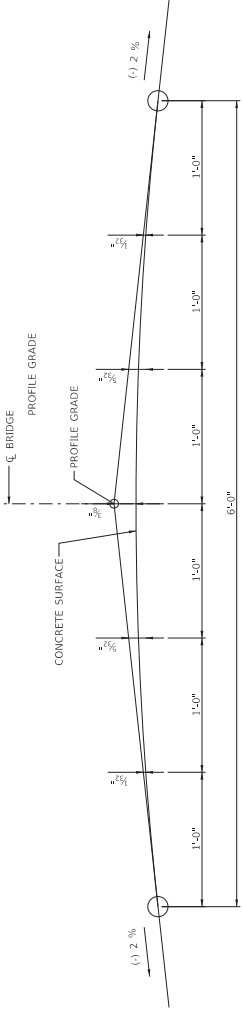
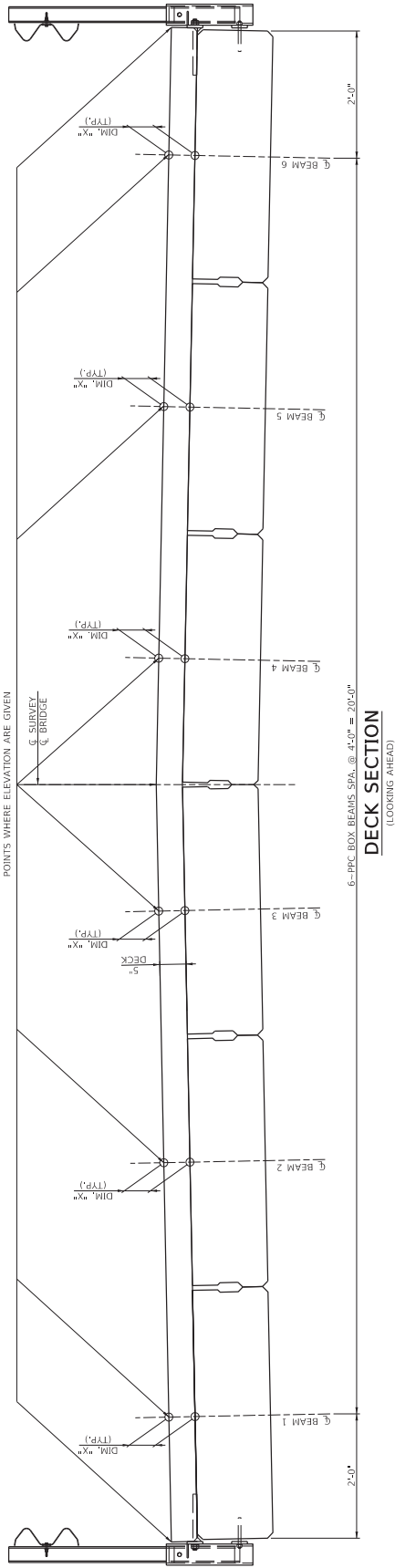
NOTES:

1. THE ENTIRE
OF THE SUB
SHALL REF
2. CONTRARY
WILL CAUSE
AT THE CE
IS CALCUL
AND MN


<div><div>COMMONWEALTH OF KENTUCKY DEPARTMENT OF HIGHWAYS</div></div>	REVISION		DATE		PREPARED BY		DATE:		CHECKED BY		ITEM NO.		BRIDGE ID		COUNTY OF		
					 Palmer ENGINEERING		MAY, 2025		S.A. SERGENT				007B00064N		BELL		
							DESIGNED BY: D.H. DEITZ		D.H. DEITZ				SHEET NO.		DRAWING NUMBER		
							DETAILED BY: M.B. HAGGARD		D.H. DEITZ		DECK DETAILS		ROUTE		2397/5		
										CROSSING		KY 217		S09			
										BROWNIES CREEK							



LINE	LEFT FASCIA			CL BEAM 1			CL BEAM 2			CL BEAM 3			PROFILE GRADE			CL BEAM 4			CL BEAM 5			CL BEAM 6			RIGHT FASCIA				
	CONST. ELEV.	TOP OF BEAM	DIM. "+"	CONST. ELEV.	TOP OF BEAM	DIM. "+"	CONST. ELEV.	TOP OF BEAM	DIM. "+"	CONST. ELEV.	TOP OF BEAM	DIM. "+"	CONST. ELEV.	TOP OF BEAM	DIM. "+"	CONST. ELEV.	TOP OF BEAM	DIM. "+"	CONST. ELEV.	TOP OF BEAM	DIM. "+"	CONST. ELEV.	TOP OF BEAM	DIM. "+"	CONST. ELEV.	TOP OF BEAM	DIM. "+"		
A-A	1122,280	1122,280		1122,320	1122,320		1122,318	1122,318		1122,398	1122,398		1122,480	1122,480		1122,520	1122,480		1122,478	1122,478		1122,398	1122,398		1122,320	1122,320		1122,280	
B-B	1122,278	1122,278		1122,318	1122,318		1122,318	1122,318		1122,398	1122,398		1122,478	1122,478		1122,518	1122,478		1122,478	1122,478		1122,398	1122,398		1122,318	1122,318		1122,278	
1-1	1122,272	1122,272		1122,312	1122,312		1122,312	1122,312		1122,392	1122,392		1122,472	1122,472		1122,512	1122,472		1122,472	1122,472		1122,392	1122,392		1122,312	1122,312		1122,272	
2-2	1122,265	1122,265		1122,305	1122,305		1122,305	1122,305		1122,383	1122,383		1122,463	1122,463		1122,503	1122,463		1122,463	1122,463		1122,383	1122,383		1122,303	1122,303		1122,265	
3-3	1122,238	1122,238		1122,278	1122,278		1122,278	1122,278		1122,358	1122,358		1122,438	1122,438		1122,478	1122,438		1122,438	1122,438		1122,358	1122,358		1122,278	1122,278		1122,238	
C-C	1122,211	1122,211		1122,251	1122,251		1122,251	1122,251		1122,331	1122,331		1122,411	1122,411		1122,451	1122,411		1122,411	1122,411		1122,331	1122,331		1122,251	1122,251		1122,211	
4-4	1122,202	1122,202		1122,242	1122,242		1122,242	1122,242		1122,322	1122,322		1122,402	1122,402		1122,442	1122,402		1122,402	1122,402		1122,322	1122,322		1122,242	1122,242		1122,202	
5-5	1122,189	1122,189		1122,229	1122,229		1122,229	1122,229		1122,309	1122,309		1122,389	1122,389		1122,429	1122,389		1122,389	1122,389		1122,309	1122,309		1122,229	1122,229		1122,189	
6-6	1122,162	1122,162		1122,202	1122,202		1122,202	1122,202		1122,282	1122,282		1122,362	1122,362		1122,402	1122,362		1122,362	1122,362		1122,282	1122,282		1122,202	1122,202		1122,162	
D-D	1122,143	1122,143		1122,183	1122,183		1122,183	1122,183		1122,263	1122,263		1122,343	1122,343		1122,383	1122,343		1122,343	1122,343		1122,263	1122,263		1122,183	1122,183		1122,143	



NOTES FOR ELEVATIONS TAKEN ON PRESTRESSED CONCRETE BOX BEAMS
TAKE ELEVATIONS ON TOP OF BEAM AT POINTS INDICATED BY THE
GRID LAYOUT. THE BEAM ELEVATIONS ARE TO BE READ TO THREE
DECIMALS, AND ENTERED IN TABLES UNDER "TOP OF BEAM ELEVATIONS".
COMPUTE DIMENSION "X" AS FOLLOWS:
"CONSTRUCTION ELEVATION" MINUS "TOP OF BEAM" ELEVATION EQUALS
DIMENSION "X". CONSTRUCTION ELEVATIONS INCLUDE CAMBER DUE TO
WEIGHT OF CONCRETE SLAB AND BARRIER. MEASURING OF DIMENSION
"X" SHOULD BE DONE AFTER THE BEAMS HAVE BEEN CAST AND THE
DAMAGE, AND ERRORS IN ERECTION THAT PRODUCE REVERSE CAMBERS,
SAGS, AND UNSIGHTLY FASCIA BEAMS.
FOR SETTING TEMPORARIES, MEASURE DIMENSION "X" ABOVE TOP OF BEAMS
FOR TOP OF TEMPLATE. DO NOT SET TEMPLATE BY ELEVATIONS.
TEMPORARY SUPPORTS OR SHORING WILL NOT BE PERMITTED UNDER THE
GIRDERS WHEN POURING THE CONCRETE FLOOR SLAB OR WHEN TAKING
"TOP OF BEAM" ELEVATIONS.
NOTE TO RESIDENT: THE "MAXIMUM ALLOWABLE CAMBER" SHOWN ON THE
BEAM SHEET IS THE AMOUNT OF CAMBER, MEASURED PRIOR TO CASTING
THE DECK, ABOVE WHICH THE BEAM WILL BEGIN TO ENROACH INTO THE
SLAB.

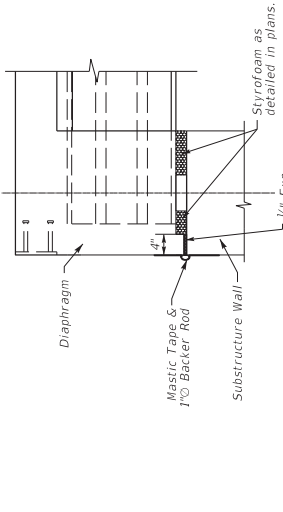
 COMMONWEALTH OF KENTUCKY DEPARTMENT OF HIGHWAYS	DATE PLOTTED: 05:43 PM on 04/30/2025										FILE NAME: pwr\FW01W010\pwr\mkt\kdc\palmer Engineering\documents\kentucky\TransSW\bridge\Sheet_2024\AS_D11_Bell_KY 217\Structural\Plans\007B00064N_S11_C1402.dgn									
	USER: mblush4n																			
	DATE: MAY 2025										CROSSING									
	DESIGNED BY: D.H. DEITZ										CONSTRUCTION ELEVATIONS									
	DETAILED BY: M.B. HAGGARD										BROWNISS CREEK									
CHECKED BY: S.A. SERGEANT										ROUTE										
D.H. DEITZ										KY 217										
007B00064N										SHEET NO.										
S11										DRAWING NUMBER										
28975										BELL										



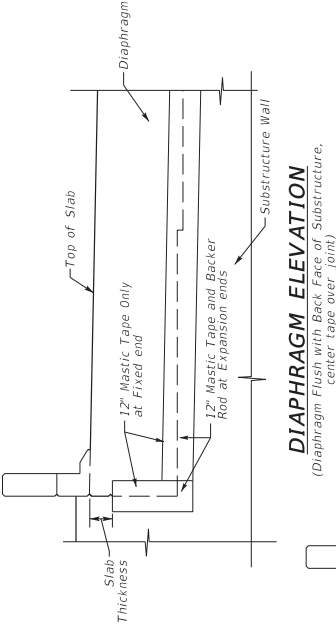
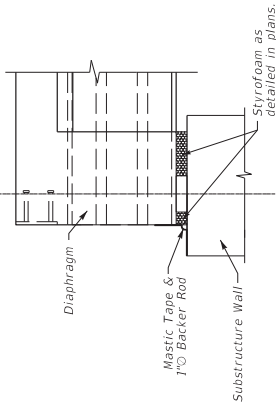
003, c.e.

SHOWING PADS FOR BEAM TYPES B27-B42 & CB27-CB42

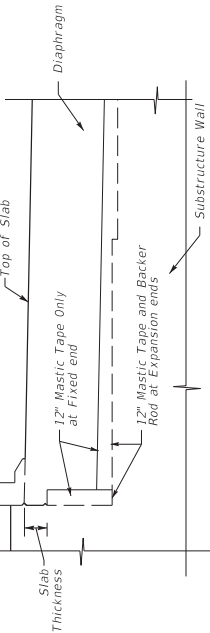
*Expansion Joint Material:
AASHTO M153
Type-I Sponge Rubber



EXPANSION END
(Flush Diaphragm and Substructure)



DIAPHRAGM ELEVATION
(Diaphragm Flush with Back Face of Substructure,
center tape over joint)

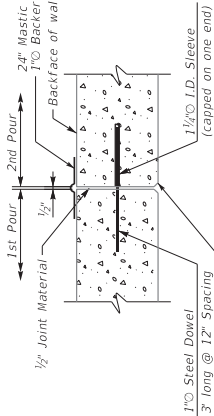


DIAPHRAGM ELEVATION
(Offset Diaphragm and Substructure)

MASTIC TAPE APPLICATION AT BRIDGE ENDS

This cost of labor, materials, and incidental items for furnishing and installing
Mastic Tape shall be considered incidental to the unit price bid for Concrete
Class 'A' and no separate measurement or payment shall be made.

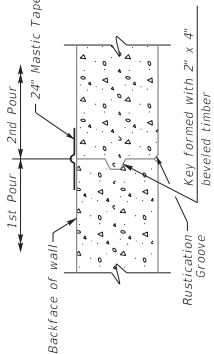
Note: Center Mastic Tape over joint.



EXPANSION JOINT

Rustication Groove
and Commercial Grade
Caulking Compound
(Color to match
concrete)

NOTE:
Maintain 2 inch clearance from ends
of longitudinal reinforcement to edge
of expansion joint.



CONTRACTION JOINT

MASTIC TAPE APPLICATION AT RETAINING WALLS



DRAWING TITLE: SEPIA 048 - JOINT WATERPROOFING

OverRoads Designer 023.00.01.11

FILE NAME: C:\PW\WORK\KIPFW\MICHAEL-H0225986\07B0064N\SL3_SEPIA048.dgn

USER: m24ash

SUBMITTED 10/25/2024
DATE

ITEM NO. COUNTY OF
SHEET NO. BELL
S13

GENERAL NOTES

MASTIC TAPE: Mastic Tape used to seal joints is to meet the requirements of ASTM C-877 Type I, II, or III. The joint is to be covered with 12-inch wide mastic tape. Prior to application, the joint surface shall be clean and free of dirt, debris, or deleterious material. Primer, if required by the tape mfg., shall be applied for a minimum width of nine inches on each side of the joint.

Mastic Tape shall be either:

EZ-WRAP RUBBER by PRESS-SEAL GASKET CORPORATION,
CADDIS by THE ZIP RUBBER CO. INC.,
or approved equal.

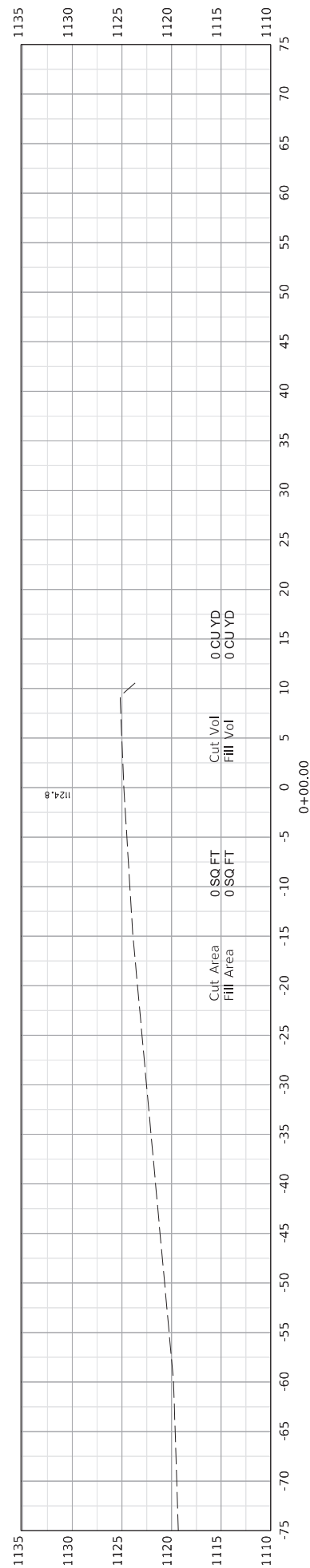
Mastic Tape shall cover the joint continuously unless otherwise shown in the plans. Mastic Tape shall be applied with a minimum of six inches and in accordance with the mfg's. recommendations with the overlap running downhill.

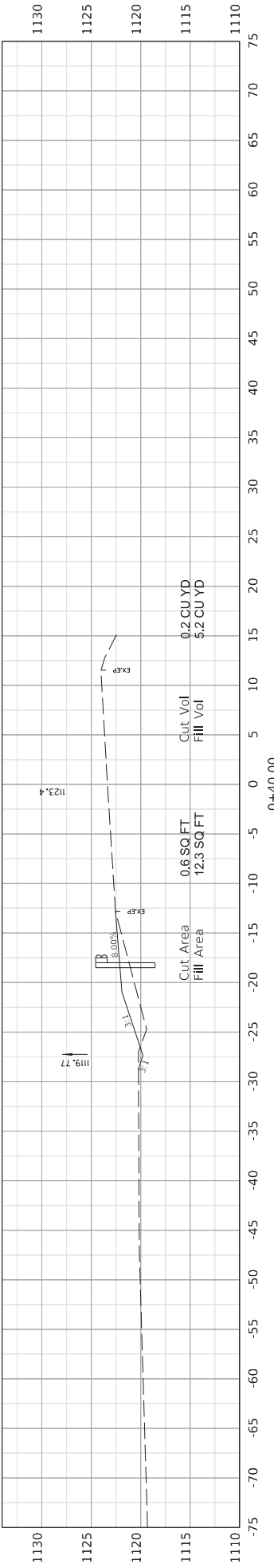
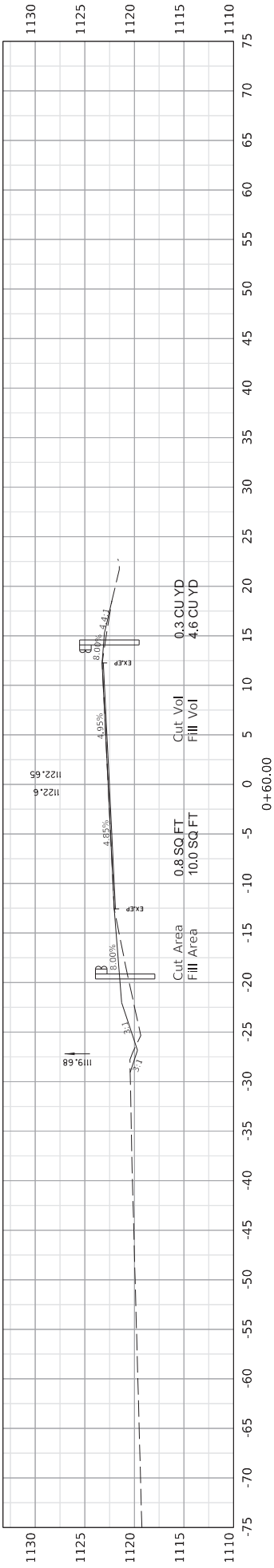
All preformed expansion joint material, caulking, mastic tape, pipe sleeve and equipment and labor necessary to complete the joints are incidental to the square foot bid for Retaining Walls.

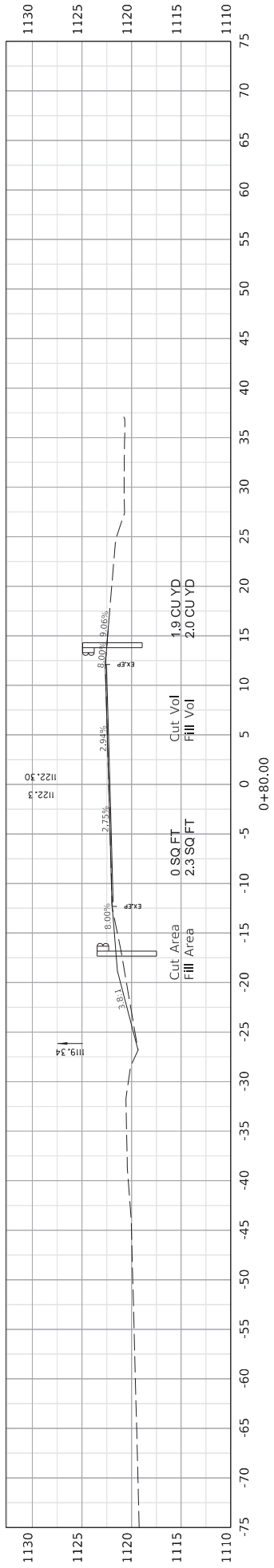
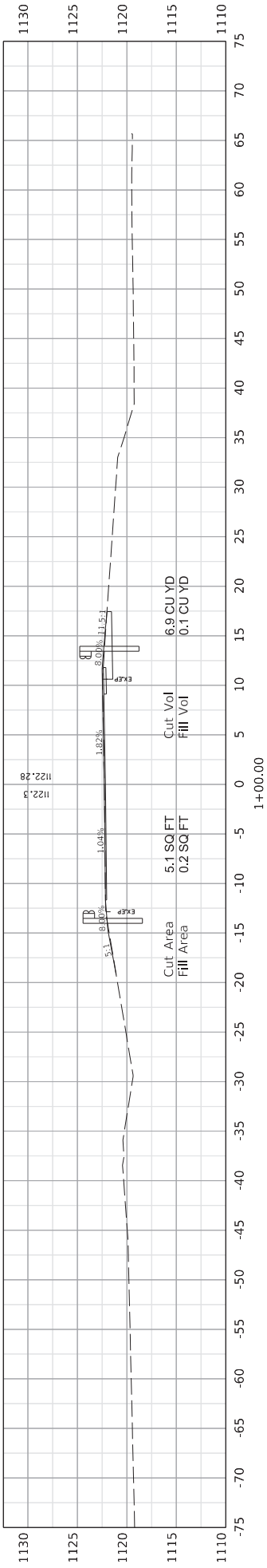
FIXED END
(Offset Diaphragm and Substructure)

FIXED END
(Flush Diaphragm and Substructure)

EXPANSION END
(Offset Diaphragm and Substructure)







COMMONWEALTH OF KENTUCKY
DEPARTMENT OF HIGHWAYS

DRAWING TITLE: CROSS SECTIONS

HORIZONTAL SCALE
SCALE: 1" = 5'

ITEM NO.
SHEET NO.

COUNTY OF
BELL

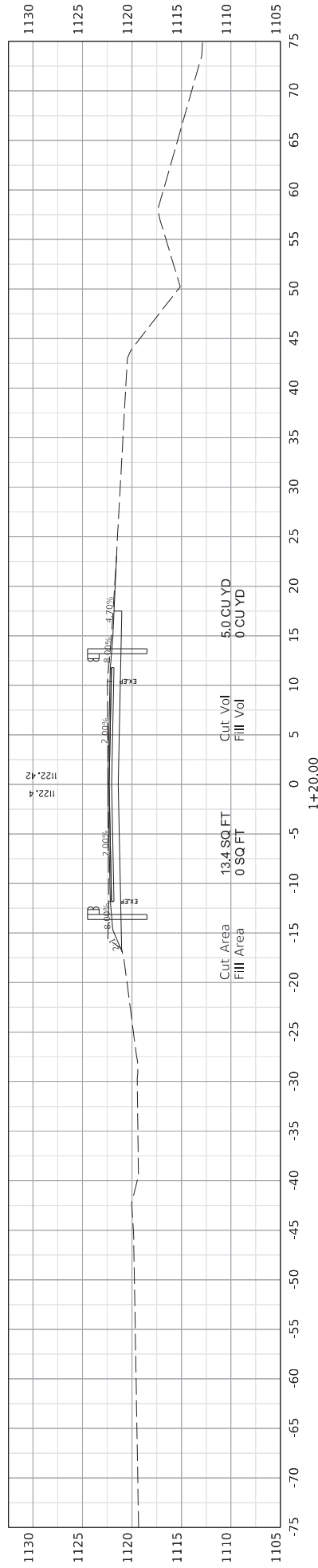
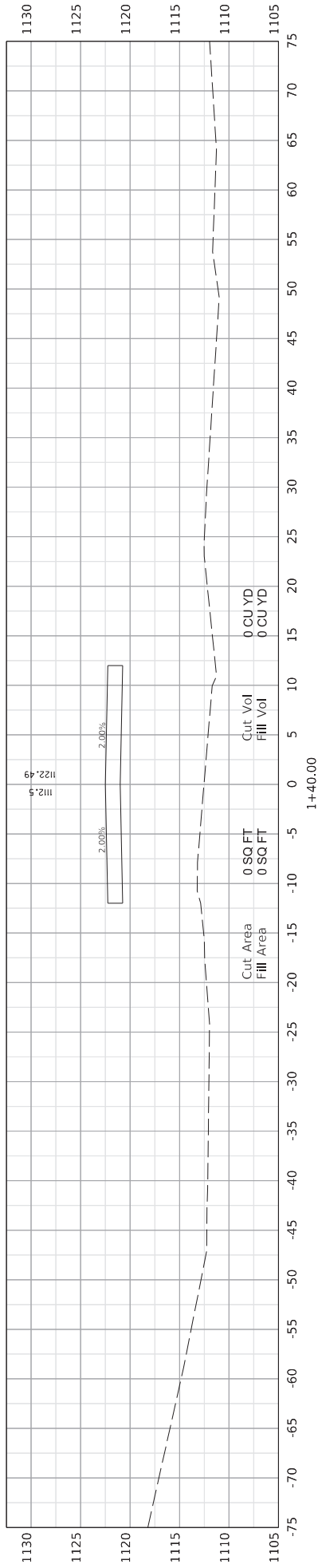
STA. 0+80.00 TO STA. 1+00.00

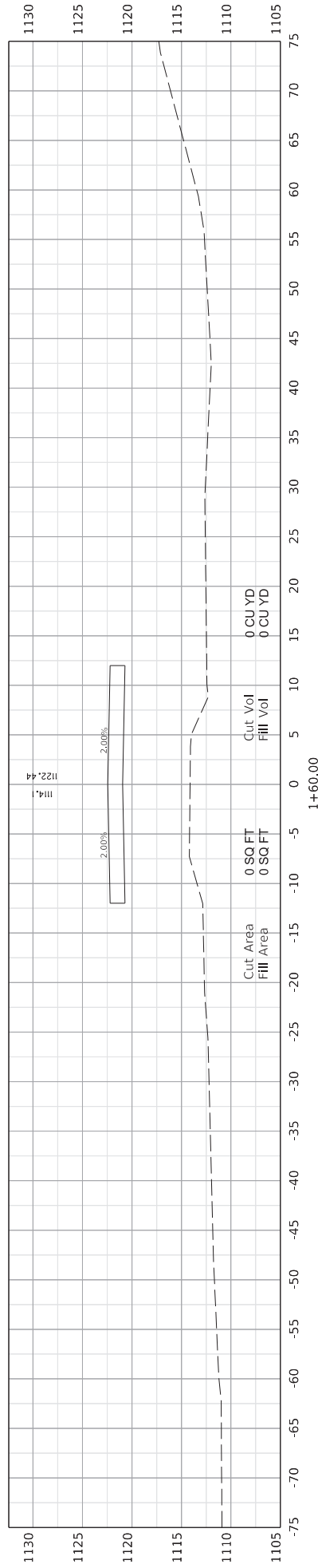
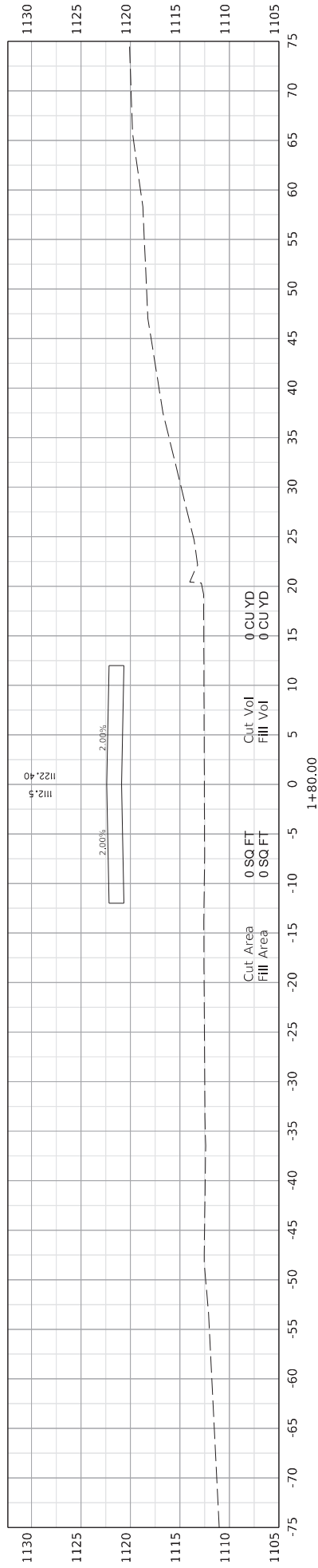
X3

FILE NAME: C:\P\WORK\KIP\KIP\BELL\H02226400_X3000_X3_CROSS SECTIONS.dwg

USER: bench

Download Designer v23.00.01.11







COMMONWEALTH OF KENTUCKY
DEPARTMENT OF HIGHWAYS

DRAWING TITLE: CROSS SECTIONS

FILE NAME: C:\PW\WORK\KIPHEW\BEN-HD2266400_XXXXLXXL_CROSS SECTIONS_JANLINE.DGN

HORIZONTAL SCALE
SCALE: 1" = 5'

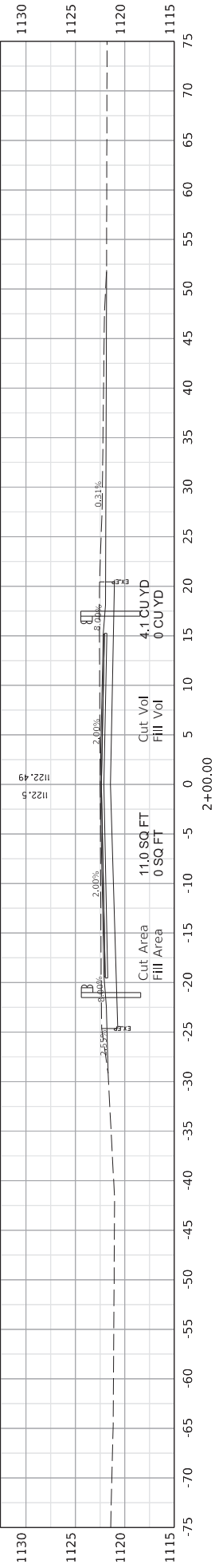
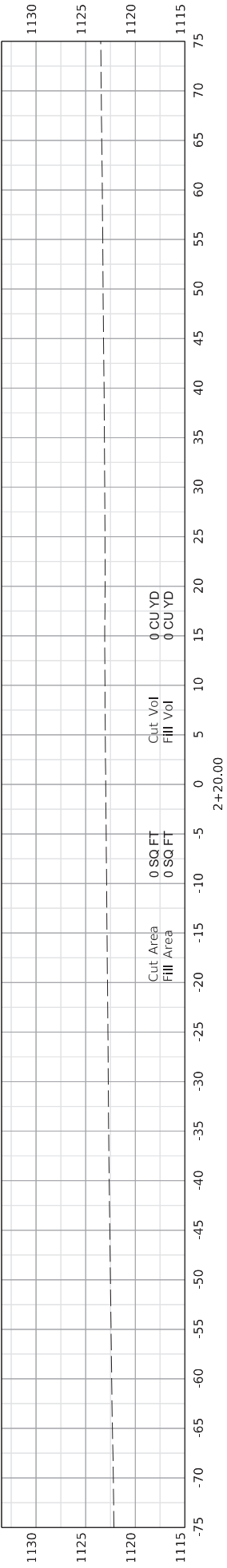
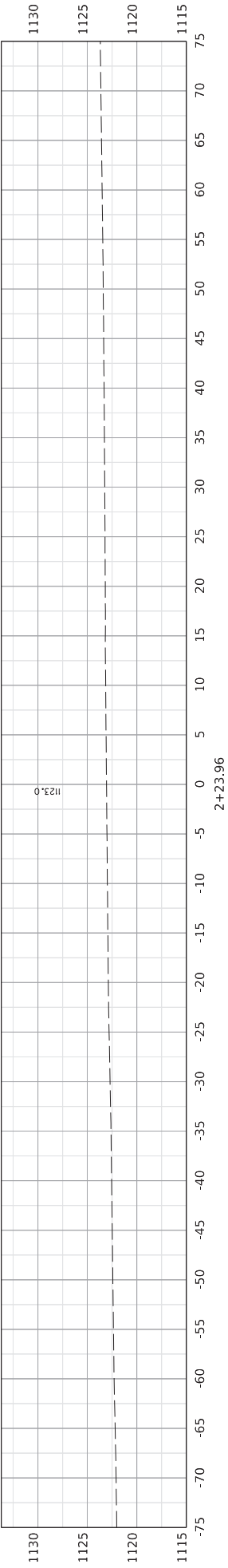


0' 5' 10' 20'

STA. 1+60.00 TO STA. 1+80.00

ITEM NO.
SHEET NO.

COUNTY OF BELL
XS



**COMMONWEALTH OF KENTUCKY**
DEPARTMENT OF HIGHWAYS

DRAWING TITLE: CROSS SECTIONS

HORIZONTAL SCALE
SCALE: 1" = 5'


0' 5' 10' 20'

ITEM NO.
SHEET NO.

COUNTY OF
BELL

STA. 2+00.00 TO STA. 2+23.96

FILE NAME: C:\PW\WORK\HPS\W\BEN-HD2266400_XXXXLXXL_CROSS SECTIONS_MAINLINE.DGN

USER: bench

Download Designer 23.00.01.11



Appendix C:

Section 106 Consultation



ANDY BESHEAR
GOVERNOR

TOURISM, ARTS AND HERITAGE CABINET
KENTUCKY HERITAGE COUNCIL
THE STATE HISTORIC PRESERVATION OFFICE

LINDY CASEBIER
SECRETARY

JACQUELINE COLEMAN
LT. GOVERNOR

410 HIGH STREET
FRANKFORT, KENTUCKY 40601
(502) 564-7005
www.heritage.ky.gov

CRAIG A. POTTS
EXECUTIVE DIRECTOR &
STATE HISTORIC PRESERVATION OFFICER

May 5, 2025

Hunter Pace
Palmer Engineering
400 Shoppers Drive,
Winchester, KY 40361
Email: hpacer@palmernet.com

RE: Revised: *A Phase I Archaeological of Approximately 1.6 Acres for the KYTC Bridge #007B00064N Replacement Project Along KY 217 in Bell County, Kentucky*
Report by: Vincent Versluis, Jesse Robinson, and Philip Poulter
KYTC Item #: N/A; Bridge # 007B00064N

Dear Mr. Pace,

Thank you for your recent digital submission of an revised archaeological report concerning the above-referenced bridge replacement. We understand that the Federal Highway Administration is the lead federal agency. The bridge spanning Brownies Creek in Bell County will be replaced. The new bridge will reuse the existing substructure and be in the same location. No cultural resources were identified during this investigation.

KYTC, through qualified designated consultants, recommends a determination of **No Historic Properties Affected** for this undertaking. We concur with this determination and accept this report without further revisions. Should you have any questions or concerns, or should plans for this undertaking change, please feel free to contact Ellis Codd of my staff at ellis.codd@ky.gov.

Sincerely,

Craig Potts
Executive Director and
State Historic Preservation Officer

KHC#: 250838
CP: ec
e-cc: Dora Alexander (KYTC)



An Equal Opportunity Employer M/F/D



Statewide Bridge Delivery Program

KENTUCKY HIGHWAY DEPARTMENT DISTRICT #10 BRIDGES

Bell County Bridge

#007B00064N

KYTC Item No.: NA

Cultural Historic Summary

KENTUCKY TRANSPORTATION CABINET

April 28, 2025

Kentucky Bridge Program Form for Architectural History

KYTC No: NA	Bridge No: 007B00064N
Route: KY-217	Year Built:1967
County: Bell	Bridge Project Type: Replacement
KHC Site Check: 4/10/2025	Lat/Long: 36.705670, -83.550148

Project Type Listed in the FHWA/KYTC/ACHP Section 106 Programmatic Agreement 2019:

- Attachment #2-11. Bridge rehabilitation, reconstruction, or replacement Replacement

Area of Potential Effects: 150-foot buffer from the centerline of the Project per the Section 106 PA and as indicated on the attached maps.

Program Comment Bridge Type: Yes

Are there Historical Resources within the Project APE (per KHC database): No
NRHP-listed or potentially eligible sites/districts (>50 years): No

Is the bridge eligible for the NRHP: No

Are there Identified Sites in the APE: Yes

Site #	Eligibility	Effect	Resource Type
1 BL-391	Not Eligible	N/A	Bridge 007B00064N
2 BL-392	Not Eligible	N/A	Cubbage Elementary School
3 BL-393	Not Eligible	N/A	Barn

Discuss Basis For Finding:
Photographs: Yes
Aerial/Topography Maps: Yes
Other: Fieldwork

POTENTIAL TO AFFECT HISTORIC PROPERTIES (If Adverse or No Adverse complete page 2 only, if No Historic Properties Affected, complete page 3 only): No Historic Properties Effected
Historic Context: A Context for Common Historic Bridge Types, NCHRP Project 25-25, Task15, prepared for the National Cooperative Highway Research Program, Transportation Research Council, National Research Council. Prepared by Parsons Brinkerhoff and Engineering and Industrial Heritage, October 2005

ATTACHMENTS:
Map showing topography, APE, Identified Historic Resources: Yes
Relevant Photographs: Yes
KHC Survey Form(s): Yes
Project Plans: No

Date of Field Investigation:	4/11/2025	As Conducted by:	Amber Stimpson, Palmer
Date of Desktop Review:	4/25/2025	QA/QC Determined by:	David Waldner, Palmer

Eligibility and effect as determined by:

Organization	Name	Title	Date
KYTC DEA:		Historic Preservation Coordinator	
KYSHPO:	Kimberly Busby	Historic Preservation Coordinator	4/30/25

Kentucky Bridge Program Form for Architectural History

KYTC No: NA	Bridge No: 007B00064N
Route: KY-217	Year Built: 1967
County: Bell	Bridge Project Type: Replacement
KHC Site Check: 4/10/2025	Lat/Long: 36.705670, -83.550148

(complete this page for projects with No Historic Properties Affected)

Please see Attachment 1 for a more detailed discussion of eligibility and effects.

1. Project Description:

The proposed project will replace the superstructure of Bridge No. 007B00064N (BL-391) on KY-217 over Brownies Creek in Bell County. The bridge inspection report indicates that the bridge was constructed in 1967, and is located on KY-217 approximately 0.5 miles south of its junction with KY-987. The bridge is a multiple box beam bridge with a concrete slab deck that rests on masonry abutments. The resource is classified as being in “poor” condition in the bridge inspection report. The purpose of the proposed project is to repair the existing bridge, which is currently closed to traffic, requiring a 20-mile detour for area residents. The project is needed due to the deteriorated condition of the existing superstructure. To re-establish the crossing, the superstructure will be completely replaced. The existing substructures, two abutments and one pier, will be maintained supporting the new superstructure. Minor modifications will be made to the top of the substructures to work with the geometry of the new superstructure. In addition, the project will include minor repairs to the existing substructures to extend their service life.

2. Eligibility Recommendations:

Bridge No. 007B00064N (Field Site 1/BL-391) was constructed c. 1967 and is covered under the Program Comment. As Bridge No. 007B00064N (BL-391) was constructed c. 1967, it is covered under the Program Comment issued in 2012 by the Advisory Council on Historic Preservation for Post-1945 Concrete and Steel Bridges (Program Comment). As such, federal agencies are relieved from the Section 106 requirement to consider the effects of undertakings on the covered resources.

The parcel southwest of the bridge is occupied by Cubbage Elementary School, a c. 1960s Mid-Century Modern school (Field Site 2; BL-392). The school is located approximately 638’ southwest of the bridge. Other resources on the property include a later Head Start preschool building, a concrete block concession stand, a ranch house, shed, and basketball court. The school is no longer in use and in derelict condition due to neglect and being repeatedly vandalized. Palmer recommends BL-392 and its ancillary resources are Not Eligible for listing in the National Register due to a lack of integrity and significance.

Northwest of the bridge lies Field Site 3/BL-393, which is a barn that was not accessible at the time of survey, thus the condition, design, materials and orientation of the barn are not entirely known. The barn is located approximately 1,207’ northwest of the bridge and separated from the project by dense forest. An online search for a history of the barn or of this property yielded zero results and it appears the farmhouse and other outbuildings that may have been associated with the resource are no longer extant, potentially diminishing the barn’s integrity of association. Nothing available from existing sources suggests that the barn might be considered eligible for the NRHP. Based on the information available in the current historical record regarding this property, it is unlikely the resource is significant and is recommended as Not Eligible for the NRHP.

3. Effect Recommendations:

In accordance with the Program Comment, Section 106 review has been addressed for Bridge 007B00064N (Field Site 1/BL-391) and no further review or analysis is required.

The Cubbage Elementary School (Field Site 2; BL-392) and ancillary structures are considered Not Eligible for the NRHP; therefore, an effects determination is not applicable.

Though the barn (Field Site 3/BL-393) was inaccessible at the time of survey, information gathered suggests that it is likely not eligible for the NRHP. Due to the distance from the project, topography that separates the barn from the project area, and inaccessibility for survey, additional efforts to document the structure are neither considered necessary or prudent. The project would have No Effect on the resource.

A finding of No Historic Properties Affected is recommended for the project.



Attachment 1

Cultural Historic Project Summary Sheet

Bell County Bridge #007B00064N

Project Description:

The proposed project will replace the superstructure of Bridge No. 007B00064N (BL-391) on KY-217 over Brownies Creek in Bell County. The bridge inspection report indicates that the bridge was constructed in 1967, and is located on KY-217 approximately 0.5 miles south of its junction with KY-987. The bridge is a multiple box beam bridge with a concrete slab deck that rests on masonry abutments. The resource is classified as being in “poor” condition in the bridge inspection report. The purpose of the proposed project is to repair the existing bridge, which is currently closed to traffic, requiring a 20-mile detour for area residents. The project is needed due to the deteriorated condition of the existing superstructure. To re-establish the crossing, the superstructure will be completely replaced. The existing substructures, two abutments and one pier, will be maintained supporting the new superstructure. Minor modifications will be made to the top of the substructures to work with the geometry of the new superstructure. In addition, the project will include minor repairs to the existing substructures to extend their service life.

Survey and Eligibility

No previously surveyed resources appeared in the proposed project area when the KHC Site CheckWeb Service was accessed on April 10, 2025. However, since the commencement of this study, BL-391, BL-392 and BL-393 have been added to the Site Check and appear on the image enclosed in Attachment 2.

The bridge inspection report indicates Bridge No. 097B00064N was constructed in 1967, and is located on KY-217 approximately 0.5 miles south of where KY-217 meets KY-987. Bridge No. 007B00064N (BL-391) is a multiple box beam bridge with a concrete slab deck that rests on masonry abutments. The resource is classified as being in “poor” condition in the bridge inspection report. Metal guardrails are stationed on the east and west sides of the bridge.

Bell Co. Bridge No. 007B00064N

KYTC Item No. N/A

Bridge No. 097B00065N (Field Site 1/BL-391) was constructed c. 1967 and is covered under the Program Comment. Palmer recommends Bridge No. 007B00064N is **Not Eligible** for listing in the National Register.

Field Site 2/BL-392 lies southwest of Bridge No. 007B00064N and is occupied by the c. 1960s Cabbage Elementary School which was built in the Mid-Century Modern style. Historic aerials indicate the primary dwelling was built between 1960 and 1969. The Bell County PVA records does not list an address number for the school but the numbers "8601" appears on the north elevation of the ranch house that is located south of the school. Thus, the address appears in the report as 8601 KY-217. The school is in derelict condition due to neglect. Thus, Palmer recommends BL-392 and its ancillary resources are **Not Eligible** for listing in the National Register due to a lack of integrity and significance.

Northwest of the bridge lies Field Site 3/BL-393, which is a barn that was not accessible at the time of survey, thus the condition, design, materials and orientation of the barn are not entirely known. The barn is located approximately 1,207' northwest of the bridge and separated from the project by dense forest. An online search for a history of the barn or of this property yielded zero results and it appears the farmhouse and other outbuildings that may have been associated with the resource are no longer extant, potentially diminishing the barn's integrity of association. Nothing available from existing sources suggests that the barn might be considered eligible for the NRHP. Based on the information available in the current historical record regarding this property, it is unlikely the resource is significant and is recommended as Not Eligible for the NRHP.

Determination of Effect:

In accordance with the Program Comment, Section 106 review has been addressed for Bridge 007B00064N (Field Site 1/BL-391) and no further review or analysis is required.

The Cabbage Elementary School (Field Site 2; BL-392) and ancillary structures are considered Not Eligible for the NRHP; therefore, an effects determination is not applicable.

Though the barn (Field Site 3/BL-393) was inaccessible at the time of survey, information gathered suggests that it is likely not eligible for the NRHP. additional efforts to document the structure are neither considered necessary or prudent. As a resource determined to be Not Eligible for the NRHP, an effect determination is not provided. Were the site to be considered potentially eligible, the project would have No Effect on the resource due to the distance from the project and dense forest separating the barn from the project area.

A finding of No Historic Properties Affected is recommended for the project.

KHC Site Check Results



Image of KHC Site Check Web Service dated April 28, 2025. When the site was accessed on April 10, 2025, BL-391-BL-393 did not appear in the search results for the project area.

SUPERSTRUCTURE GEOMETRY

of Main Spans (45):2

of Approach Spans (46):0

Main Material (43 A):5 Prestressed Concrete

Main Design (43 B):05 Multiple Box Beam

Max Span Length (48):29.90 ft.

Structure Length (49):60.00 ft.

NBIS Length (37):Long Enough

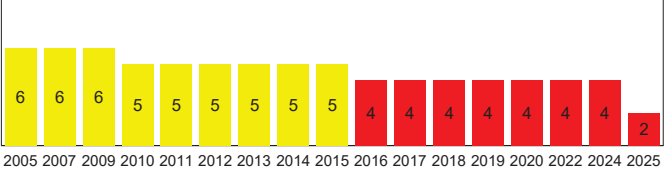
Temp Structure (103):Not Applicable (P)

Skew (34):0°

Structure Flared (35):0 No flare

Parallel Structure (101):No || bridge exists

Approach Alignment (72):4 Minimum Tolerable



Year	Condition
2005	6
2007	6
2009	6
2010	5
2011	5
2012	5
2013	5
2014	5
2015	5
2016	4
2017	4
2018	4
2019	4
2020	4
2022	4
2024	4
2025	2

SUPERSTRUCTURE CONDITION

Superstructure Rating (59):2 Critical

Structure Evaluation (67):0 Closed

SUBSTRUCTURE GEOMETRY

Navigation Control (38):Permit Not Required

Nav Vert Clearance (39):0.00 ft.

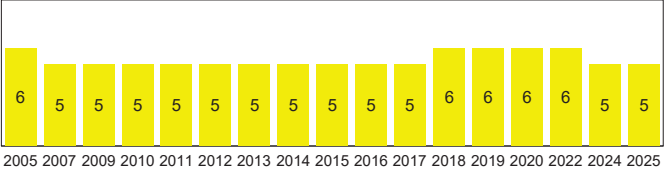
Nav Horiz Clearance (40):0.00 ft.

Pier Protection (111):Not Applicable (P)

Lift Bridge Vertical Clearance (116):0.00 ft.

Scour Rating (113):8 Stable Above Footing

Waterway Adequacy (71):7 Above Minimum



Year	Condition
2005	6
2007	5
2009	5
2010	5
2011	5
2012	5
2013	5
2014	5
2015	5
2016	5
2017	5
2018	6
2019	6
2020	6
2022	6
2024	5
2025	5

SUBSTRUCTURE CONDITION

Substructure Rating (60):5 Fair

Channel Rating (61):5 Bank Prot Eroded

KYTC FIELDS

Overlay:Yes

Overlay Type:Asphalt

Overlylay Thickness:4.00 in.

Overlay Year:2015

Cross Section:Yes

Cross Section Date:02/07/2017

Scour Observed:Minor Scour

Scour Risk :Low Risk

Scour Analysis/Assessment :Completed by Ogden

Scour POA :Not Required

Scour POA Date :

Next Cross Section Due Date :05/16/2026

ROUTE ON STRUCTURE: KY-217

ROADWAY LOCATION

Pos Prefix (5A):Route On Structure

Kind of Hwy (5B):3 State Hwy

Route Num (5D):00217

LRS Route (13A/B):

Milepost (11):8.78 mi

Suffix (5E):0 N/A (NBI)

Lanes On (28A):2

Detour Length (19):20.00 mi

ROADWAY CLASSIFICATION

Funct Class (26):07 Rural Mjr Collector

Level Service (5C):1 Mainline

NHS (104):0 Not on NHS

Defense Hwy (100):0 Not a STRAHNET hwy

Toll Facility (20):3 On free road

ADT (29):305 Cars/Day

Pct Trucks (109):4.00%

ADT Year (30):2022

CLEARANCES

Vertical (10):99.99 ft.

Min Vert Over (53):99.99 ft.

Vert Ref (54A):N Feature not hwy or RR

Undrclearnce (54B):0.00 ft.

Horizontal (47):21.98 ft.

Min Lat Left (56):0.00 ft.

Min Lat Right (55B):0.00 ft.

Horiz Ref (55A):N Feature not hwy or RR

Underclearance (69):N Not applicable (NBI)

Inspection Report

Tue 04/15/2025
Page 2 of 12







Bell Co. Bridge No. 007B00064N

KYTC Item No. N/A

Resources within the 150 ft APE

Field Site No. 1

BL-391

Bridge No. 007B00064N

0 KY-217

Miracle, KY 40856

36.705670, -83.550148



Figure 1. Facing south towards Bridge No. 007B00064N (BL-391) on KY-217.

According to the KYTC's inspection report for Bridge No. 007B00064N (BL-391) the resource was constructed c. 1967 and is located approximately 0.5 miles south of where KY-217 meets KY-987. The bridge should appear on the Varilla, KY topographic quadrangle in 1974 Bridge No. 007B00064N (BL-391) is a multiple box beam bridge with a concrete slab deck that rests on masonry abutments. The resource is classified as being in "poor" condition in the bridge inspection report. Metal guardrails are stationed on the east and west sides of the bridge.

NRHP Evaluation: Not Required

The bridge is covered under the Program Comment issued in 2012 by the Advisory Council on Historic Preservation for Post-1945 Concrete and Steel Bridges (Program Comment). As such, federal agencies are relieved from the Section 106 requirement to consider the effects of undertakings on these covered resources.

Bell Co. Bridge No. 007B00064N

KYTC Item No. N/A



Figure 2. Facing north towards Bridge No. 007B00064N (BL-391) on KY-217.



Figure 3. Facing east from the deck of Bridge No. 007B00064N (BL-391) on KY-217.

Bell Co. Bridge No. 007B00064N

KYTC Item No. N/A



Figure 4. Facing west from the deck of Bridge No. 007B00064N (BL-391) on KY-217.



Figure 5. Facing northwest towards Bridge No. 007B00064N (BL-391) on KY-217.

Bell Co. Bridge No. 007B00064N

KYTC Item No. N/A



Figure 6. Facing northeast towards Bridge No. 007B00064N (BL-391n KY-217).



Figure 7. Evidence of failure to beams in Span 2. Image courtesy of the KYTC bridge inspection report for Bridge No. 007B00064N (BL-391).

Bell Co. Bridge No. 007B00064N

KYTC Item No. N/A

Field Site No. 2

BL-392

Cubbage Elementary School

8601 KY-217

Miracle, KY 40856

36.703870, -83.551447



Figure 8. North elevation of the former Cubbage Elementary School (BL-392).

Historic aerials indicate the former Cubbage Elementary School building located on the same parcel as ranch house addressed at 8601 KY-217 was constructed between 1960 and 1969. The property first appears at this location on the Varilla, KY topographic quadrangle in 1974, the previous quadrangle dates to 1963. The previous Cubbage Elementary School is visible in the c. 1960 historic aerial.

Bell Co. Bridge No. 007B00064N

KYTC Item No. N/A



Figure 9. Location of previous Cubbage Elementary School building as indicated by the c. 1960 historic aerials. Image courtesy of <https://www.historicaerials.com/>.



Figure 10. In the c. 1969 aerial image the form of the school matches the existing school indicating the building was constructed between 1960 and 1969. Image courtesy of <https://www.historicaerials.com/>.

Bell Co. Bridge No. 007B00064N

KYTC Item No. N/A

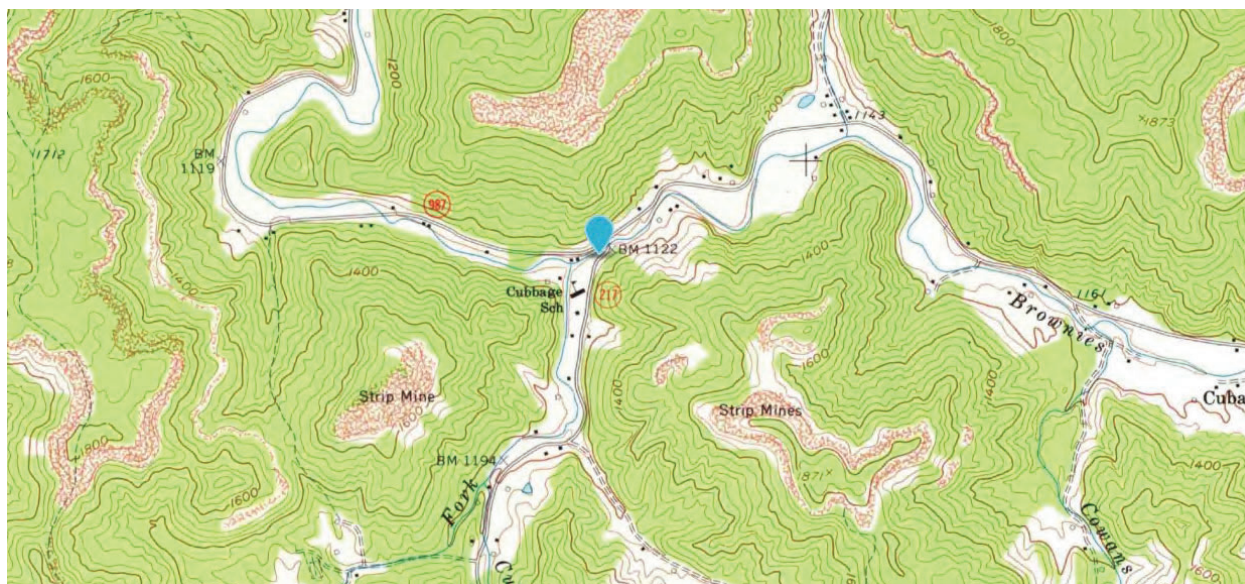


Figure 11. Image of the c. 1974 Varilla, KY topographic quadrangle map. The location of BL-392 is indicated on the map. Image courtesy of <https://ngmndb.usgs.gov/>

The one-story, frame school has a flat roof, brick veneer siding and a poured concrete foundation. The school sits on a flat area nestled between two hills covered in dense stands of mature trees and faces north towards Brownies Creek. Unlike the building's predecessor, this school was built approximately 400' south of the tributary, possibly to protect against flooding. The north elevation of the school is a ribbon of multi-light horizontal windows encased in metal framing. Fenestration on the main façade is asymmetrically placed with the main entrance located near the far east end of the building. The metal double-leaf entry doors feature a multi-light side-light and transom. Metal letters placed at the edge of the flat roof above the door spell, "Cubbage Elementary School," adding to the school's Mid-Century Modern look. Evidence of vandalism of the school is conspicuous. While a few of the windows have been boarded up, most of the lights are broken, leaving the interior vulnerable to the elements.

A second entrance to the school is located on the east side. The doors are metal, double-leaf and stand beneath a metal, shed-roof awning. Metal bars have been installed over the windows on the south side of the east entrance and a window A/C unit extends from the lower sash of the window. The east entrance to the school faces a paved parking area and a satellite dish stands near the northeast corner of the building. A basketball court (BL-392E) lies at the far northeast end of the school's front lawn.

The use of multi-light windows is repeated on the south elevation and an entry door is located at the east end of the building. The door is sheltered by a shed-roof awning. Many of the windows on the south elevation are also broken allowing a clear view of the interior classrooms, which show clear signs of neglect and vandalism.

Bell Co. Bridge No. 007B00064N

KYTC Item No. N/A

A brick chimney rises above the roof and a sidewalk sheltered by a canopy stretches from the elementary school to the pre-school building (BL-392A) that stands directly south of BL-392.

The one-story frame pre-school building has a metal, side-gable roof, aluminum siding and a poured concrete foundation. Historic aerials indicate the head start pre-school was constructed between 1969 and 1983. The building is two-bays-wide and faces north. Fenestration on the north side of the building is limited to two entry doors. The south elevation of the structure features groups of divided light windows and brick veneer siding. The building is currently being used for storage.

Less than 20' south of the pre-school building stands a one-story concrete block building (BL-392B) with a metal, front-gable roof and a poured concrete foundation. Historic aerials indicate the building was constructed between 1969 and 1983. The building faces north and has a square, fixed-light window on the main façade. The window includes a circular cutout at face level and a rectangular cutout at the bottom, indicating the building likely functioned as a concession stand or ticket booth. The gable roof, which extends past the façade is supported by wooden brackets and rafters are visible in the eaves. A human-sized door is located on the south elevation

Approximately 172' south of the school stands a one-story ranch house (BL-392C) with a metal, side-gable roof, concrete block and brick veneer siding and a concrete block foundation. Historic aerials indicate the home was constructed between 1960 and 1969. According to the current tenant, who is leasing the home from her niece, the house originally housed the school janitor who lived on-site. The home is five-bays-wide and faces north towards the elementary school. Fenestration on the north elevation is carport-window-door-window-window. Windows are wood, 2/2, double-hung sash with decorative shutters and concrete sills. The main entrance is slightly recessed beneath the wide eaves of the roof. A tripartite picture window is located on the east side of the entry door. The numbers "8601" have been posted between the picture window and the main entry door.

The use of wood, 2/2, double-hung sash windows is repeated on the remaining elevations. The carport appears to be a later addition and is sheathed in composite wood siding. According to the current tenant, blasts from a neighboring coal operation are causing structural damage to the home. Based on the surveyor's conversation with the tenant, it is likely the home will be vacated in the future.

Southwest of the home stands a one-story, frame shed (BL-392D) with an asphalt shingle, side-gable roof, vertical board siding and a pier foundation. Historic aerials show the shed was added to the landscape between 1969 and 1983. The shed faces east and features double-leaf doors on the east side. Rafters are visible in the eaves and lawn rakes and other lawn implements hang from nails that project from the exterior walls on the north and west sides of the building.

Bell Co. Bridge No. 007B00064N

KYTC Item No. N/A

An online search for information about the school yielded scant results. The integrity of the resource has diminished over time by neglect and the vandalism that has been permitted to occur.

NRHP Evaluation: Not Eligible

The school and its ancillary resources do not appear to be associated with any known historic events or trends in the area (Criterion A). These resources do not appear to be related to any persons important or significant in local, state or national events (Criterion B) nor do these resources appear to be eligible under Criterion C as they do not appear to be the work of a master or convey distinctive characteristics of a type, period or method of construction unique to historic architecture in Bell County and therefore are recommended as not eligible for listing in the NR.

Effect: Not applicable.



Figure 12. North and east elevations of Cubbage Elementary School (BL-392).

Bell Co. Bridge No. 007B00064N

KYTC Item No. N/A



Figure 13. South and east elevations of Cubbage Elementary School (BL-392).



Figure 14. North and east elevations of the Head Start preschool building (BL-392A). A footbridge is pictured in the foreground.

Bell Co. Bridge No. 007B00064N

KYTC Item No. N/A



Figure 15. North and west elevations of Head Start preschool building (BL-392A).



Figure 16. South and east elevations of the Head Start preschool building (BL-392A).

Bell Co. Bridge No. 007B00064N

KYTC Item No. N/A



Figure 17. South and west of preschool building (BL-392A).



Figure 21. North elevation of concrete block concession stand/ticket booth (BL-392B).

Bell Co. Bridge No. 007B00064N

KYTC Item No. N/A



Figure 18. North and east elevations of concrete block concession stand/ticket booth (BL-392B).



Figure 19. North elevation of ranch house (BL-392C).

Bell Co. Bridge No. 007B00064N

KYTC Item No. N/A



Figure 20. North and west elevations of ranch house (BL-392C).



Figure 21. South and west elevations of ranch house (BL-392C).

Bell Co. Bridge No. 007B00064N

KYTC Item No. N/A



Figure 22. South and east elevations of ranch house (BL-392C).



Figure 23. East elevation of ranch house (BL-392C).

Bell Co. Bridge No. 007B00064N

KYTC Item No. N/A



Figure 24. North and east elevations of shed (BL-392D).



Figure 25. Basketball court (BL-392E) at the northeast end of the Cubbage Elementary School's (BL-392) front lawn.

Bell Co. Bridge No. 007B00064N

KYTC Item No. N/A

Field Site No. 3

BL-393

Barn

0 KY-987

Miracle, KY 40856

36.706488, -83.554143



Figure 26. Facing northeast towards entrance that leads to barn (BL-393).

Northwest of Bridge No. 007B00064N is parcel of land currently owned by Darrell and Elma Boatright. The property is described as being “14 acres on Brownies Creek” in the Bell County PVA records. The southeast boundary of the parcel (151-30-00-007.00) overlaps the APE boundary for the proposed project. Google Earth aerial images indicate the parcel is occupied by a barn. Historic aeriels further indicate the barn was constructed between 1960 and 1983. The surveyor was unable to access the property during the time of survey. Thus, the condition, design, materials and orientation of the barn are unknown. An online search for a history of the barn or of this property yielded zero results and it appears the farmhouse and other outbuildings that may have been associated with the resource are no longer extant, potentially diminishing the barn’s integrity of association. Based on the lack of information available in the current historical record regarding this property, it is unlikely the resource is significant. The barn is located approximately 1,207’ northwest of the proposed project area.

Bell Co. Bridge No. 007B00064N

KYTC Item No. N/A



Figure 27. Historic aerial image dating to c. 1983. Based on historic aerial imagery, the barn (BL-393) was constructed between 1960 and 1983. Image courtesy of <https://www.historicaerials.com/>.

NRHP Evaluation: Not Eligible

Though the property was inaccessible at the time of survey, an online search for a history of the barn or of this property yielded zero results and it appears the farmhouse and other outbuildings that may have been associated with the resource are no longer extant, potentially diminishing the barn's integrity of association. Nothing available from existing sources suggests that the barn might be considered eligible for the NRHP. This resource does not appear to be associated with any known historic events or trends in the area (Criterion A). These resources do not appear to be related to any persons important or significant in local, state or national events (Criterion B) nor do these resources appear to be eligible under Criterion C as they do not appear to be the work of a master or convey distinctive characteristics of a type, period or method of construction unique to historic architecture in Bell County and therefore are recommended as not eligible for listing in the NR.

Effect: Not Applicable.

Bell Co. Bridge No. 007B00064N

KYTC Item No. N/A

Bibliography

Abner, Amanda B. "A Contextual Study of Kentucky's Slab, Girder, Beam, and Arch Bridges and Culverts Prior to 1960." *University of Kentucky*, 2010.



Appendix D: Asbestos Survey



ASBESTOS SURVEY RESULTS

Prepared for: Hunter Pace, Environmental Project Manager
Palmer Engineering

Prepared by: Jared Looney, PE
AI Number 175162
License Number 80485

Structure: ID 007B0064N
KY 217 over Brownies Creek
Bell County, Kentucky

Prepared: May 9, 2025

National Emissions Standards for Hazardous Air Pollutants (NESHAP) standards require a thorough survey by an accredited (licensed) inspector prior to any demolition or renovation of a facility. As a result, Third Rock Consultants, LLC (Third Rock) was retained by Palmer Engineering to conduct a pre-demolition asbestos survey for the above-referenced project. According to Kentucky Transportation Cabinet's (KYTC) Bridge Data Miner, the bridge was constructed in 1967.

METHODOLOGY

A survey was conducted May 7, 2025, to determine if asbestos-suspect materials are present, including Category I non-friable, Category II non-friable, and friable materials. All work was conducted in accordance with applicable NESHAP standards. Upon inspection, the asbestos-suspect material was observed and sampled from the following three (3) locations:

- 1) Approximately 55 square feet of black expansion material in horizontal joint of the northwest abutment
- 2) Approximately 55 square feet of black expansion material in horizontal joint of the southeast abutment
- 3) Approximately 55 square feet of black expansion material in the horizontal joint of the pier

One (1) sample was collected from each location listed above. All samples were delivered under chain-of-custody to McCall and Spero Environmental, Inc. as samples 1, 2, and 3, respectively.

RESULTS

Laboratory analysis revealed all samples contained less than 1% asbestos.



RECOMMENDATIONS

No regulated asbestos containing material (RACM) was identified, therefore no asbestos-specific work practices are recommended. Note that the Kentucky Division for Air Quality (KDAQ) must be notified at least 10 working days prior to any demolition activities by submitting KDAQ Form 7036 to the appropriate regional office or via the Kentucky Energy and Environment Cabinet's eForm's website (Form ID 70).

LIMITATIONS

The findings and conclusions of this report are based solely on the conditions present at the structure during the inspection date. Although great care has been taken by Third Rock to conduct a thorough, accurate inspection, and report, Third Rock disclaims all liability for any errors, omissions, or inaccuracies in the information provided, whether due to inadvertence or otherwise, and for any consequence arising therefrom. The information provided hereunder neither claims to be nor constitutes legal or medical advice. Third Rock shall not be liable for any special, consequential, or exemplary damage resulting, in whole or in part, from the customer's use of the information. Liability on the part of Third Rock is limited to the monetary value paid for this report.

REFERENCES

Google Earth. [Accessed May 6, 2025]. <https://www.google.com/earth>.

Kentucky Transportation Cabinet. Bridge Data Miner. [Accessed May 6, 2025].

ATTACHMENTS

Inspection Photo Log
Laboratory Chain-of-Custody
Analytical Results
KDAQ Form 7036
Inspector Credentials



01 - Bridge Deck - Facing SE.jpeg



02 - Bridge Below Deck - Facing NW.jpeg



03 - Bridge Abutment - Facing E.jpeg



04 - Sample 1 Abutment Joint - Facing NW .jpeg



Asbestos Survey Results

ID 007B0064N

KY 217 over Brownies Creek, Bell County, Kentucky

Photo Log



05 - Sample 2 Pier Joint - Facing N.jpeg



06 - Sample 3 Abutment Joint - Facing SE.jpeg

SUMMARY OF PLM BULK ANALYSIS RESULTS

Page 1

Project Name: Structure ID - 007B00064N Project
McCall & Spero Environmental Project No. MSE-P585TRC

MSE # P585TRC	SAMPLE # DESCRIPTION	ASBESTOS TYPE & %	OTHER FIBROUS MATERIAL & %	% NON-FIBROUS MATERIAL	COLOR
001	1 Expansion Joint Mastic	ND**	Cellulose / 15%	85%	Black
002	2 Expansion Joint Mastic	ND**	Cellulose / 15%	85%	Black
003	3 Expansion Joint Mastic	ND**	Cellulose / 15%	85%	Black

NOTES:

ND = None Detected
CR = Crocidolite

CH = Chrysotile
AN = Anthophyllite

A = Amosite
TR = Tremolite

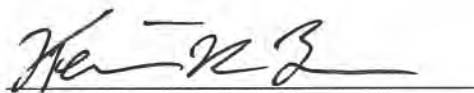
AC = Actinolite

For samples consisting of separate components, each component is analyzed and reported separately.

Results apply only to items tested. Quantification is accurate to within $\pm 10\%$. Results from this report must not be reproduced, except in full, with the approval of McCall & Spero Environmental, Inc. This report must not be used to claim product endorsement by NVLAP or any agency of the U.S. Government.

** EPA recommends that bulk materials found negative for asbestos or less than one percent asbestos by polarized light microscopy that fall into one of five dominantly nonfriable categories be reanalyzed by an additional method, such as transmission electron microscopy. (EPA Notice of Advisory, FR Vol. 59, No. 146 & Test Method EPA 600/ R-93/ 116). EPA Interim Method for the Determination of Asbestos in Bulk Insulation Samples as found in 40 CFR, Part 763, Subpart E, Appendix E.

Analyst: Kevin R. Bean, B.A.



McCall & Spero Environmental, Inc.

DEP 70308

**NOTIFICATION OF ASBESTOS
ABATEMENT/DEMOLITION/RENOVATION**
(Instructions for completing form on back)

File this form with Regional Office where project will be performed

Kentucky Division for Air Quality
300 Sower Boulevard, 2nd Floor
Frankfort, KY 40601

PAGE 1 OF

INITIAL SUBMITTAL DATE

REVISION DATE

NOTIFICATION #

OFFICE USE ONLY

ID #

LOG #

Contractor

Address

City

Phone

Owner

Address

City

Phone

Project Location

Address

City

Facility Age (yrs.)

#Floors Affected

State

Zip

Contact Person

State

Zip

Contact Person

State

Zip

Size of Facility or Affected Part (sq.ft.)

Present and Prior Use of Facility

TYPE OF PROJECT (CHECK ONLY ONE):

Renovation

Demolition

Ordered Demolition

Emergency

Long-term

PROJECT DATES:

Start Removal

End Removal

Start Renovation/Demolition

End Renovation/Demolition

Amount of ACM to be Removed:

	Regulated ACM (FACM)	Category II nonfriable ACM (optional)	Category I nonfriable ACM (optional)
Linear Feet			
Square Feet			
Cubic Feet			

Description of planned renovation/demolition, including abatement methods & demo/reno methods.

Description of affected facility components

Asbestos detection technique

Amount of Cat. I & II nonfriable ACM involved but will not be removed:

Describe physical characteristics that make it nonfriable and methods to keep it nonfriable (optional):

Describe contingency plan should nonfriable ACM become friable or additional ACM be uncovered during renovation/ demolition:

Transporter

Address

City

State

Zip

Phone

Disposal Site

Address

City

State

Zip

I hereby certify that at least one person trained as required by 40 CFR 61.145(c)(8) will supervise the abatement work described herein. (optional for strictly non-friable work)

Submitted by:

Company Name:

INSTRUCTIONS FOR COMPLETING FORM DEP7036: NOTIFICATION OF ASBESTOS ABATEMENT/DEMOLITION/RENOVATION

Filing Deadline: This form must be completed and filed with the Kentucky Division for Air Quality at least ten (10) working days before starting any asbestos removal, demolition, or other work which will disturb asbestos-containing material (ACM) in Kentucky facilities outside Jefferson County and in schools statewide, including Jefferson County. File with appropriate Regional Office.

Renotification: If developments occur that invalidate information on a notification (e.g., changes in dates, amounts, locations), file a revised form within the time frames specified in 401 KAR 58:025. Notifications may be numbered in the top-left corner (optional). First two digits are project year; remaining digits are project number (e.g., the first project in 1999 is 99-1).

Attachments: Attachments may be included to provide additional information, propose alternative procedures, declare nonfriable removal, identify secondary transporters, etc.

Line-by-Line Instructions:

Contractor/Owner: the contractor is the asbestos remover (or, for zero-asbestos demolitions, the demolition contractor). The owner is the entity having the work done.

Project Location: The location at the address given where the work is taking place (e.g., which building/floor/room?).

Present/Prior Use: Enter the present and prior use(s) of the facility.

Type of Project: Each choice shown in this category has a specific description under 401 KAR 58:025:
Emergency renovations result from a sudden, unexpected event. If the project is an emergency renovation, attach a detailed description of the sudden, unexpected event that necessitated removal. Include the exact date and hour the event occurred and explain how the event caused an unsafe condition, or would cause equipment damage or unreasonable financial burden.
Planned renovations are renovations that do not qualify as emergency renovations.
A long-term notification is a type of planned renovation which involves a number of nonscheduled small-scale removals whose annual total exceeds the NESHAP threshold amounts and can be estimated based on past years' experience. File yearly estimate at least 10 working days before the beginning of the calendar year for which a long-term notification is being given.
Demolitions involve the wrecking or taking out of a load-supporting structural member, such as a load-bearing beam or wall. Tearing down a structure, dismantling it piecemeal, and moving it from one place to another are all considered demolitions.
Ordered demolitions must result from a demolition order issued by a government agency because the building is structurally unsound and in danger of imminent collapse. For ordered demolitions, attach to the notification a signed, dated copy of order that includes demolition deadlines and name/title/authority of the government representative issuing the order.

Project Dates: Schedules must be precise and accurate. The "start removal" date is the date the removers arrive on-site and begin physically preparing the work area for removal. "End removal" is the date the removers dismantle the work area after cleaning and clearing it. If circumstances arise that invalidate previously submitted start dates, a revised notification must be submitted showing the updated, correct start date. If the start date has been moved up, submit written renotification at least ten working days before the new start date. If the start date has been moved back, telephone the Division as soon as possible before the original date and submit written renotification no later than the original start date.

Schedules for renovation and demolition (next line after removal schedule) are handled similarly, except that renotification is required only for schedule changes involving demolitions, not renovations.

Amount of ACM: In this table, enter the amount and type (RACM, Category I, and/or Category II) of asbestos that will be removed. Although the regulation does not require you to identify the amount of nonfriable ACM that will be removed, the table provides space for nonfriable ACM to accommodate those notifiers who choose to document these removals.

Description of project: Describe the demolition or renovation work to be performed and method(s) to be used, including work practices and engineering controls to be used.

Asbestos Detection Technique: Give a general description of the asbestos survey, for example, "AHERA-style survey by accredited inspector; samples analyzed by PLM."

Amount of nonfriable ...: If all nonfriable ACM will be properly removed, enter "NA."

Contingency Plans: If Category II nonfriable ACM becomes crumbled, pulverized, or reduced to powder, or if additional RACM is discovered, describe procedures to be followed. For example, "Move demolition activity away from ACM immediately; remove the ACM using regulation-required procedures." Even "Stop work, call Division for Air Quality" is OK.



Jared Looney, PE, Licensed Inspector
5 Years Experience
5 Years with Third Rock

Education

BS in Biosystems and Agricultural Engineering,
University of Kentucky 2019

Licenses / Certifications

Kentucky PE #39486
Tennessee PE #130329
KEPSC Inspector #221100113
MSD EPSC Contractor #15764021
MSD QPC Inspector #202139
TN EPSC Level I #146379
TN EPSC Level 2 #1146379-D2
Asbestos Inspector License #74088
Lead Inspector #C111622-03
OSHA Hazwoper 40-Hr

Memberships / Associations

National Society of Professional Engineers
Kentucky Stormwater Association

Third Rock Consultants, LLC

Jared is a licensed professional engineer who specializes in erosion prevention and sediment control (EPSC), underground storage tank (UST) and hazardous materials (HazMat) preliminary site assessment, asbestos-containing material (ACM) inspection, and lead-based paint (LBP) inspection. He's authored numerous ASTM Standard E1527 Phase I Environmental Site Assessments (ESAs) and conducted ACM and LBP inspections for both public and private clients in Kentucky.

Relevant specialized training includes:

OSHA 40-Hour HAZWOPER, 2024 (Attached)
AHERA Annual Refresher Course, 2023 (Attached)
Asbestos Accreditation under TSCA Title II, 2022 (Attached)
Lead Training Inspector Course, 2022 (Attached)
Turner School of Construction Management, 2022
ASTM E1527 Environmental Site Assessment, 2022
EPSC Design Principles for Construction Sites, 2022
Fundamentals of EPSC for Construction Sites, 2022
MSD Qualified Post-Construction Inspector Training, 2021
MSD EPSC Ordinance / Contractor Training, 2021



Certificate of Completion

This certifies that

Jared Looney
has successfully completed

OSHA 40 Hour HAZWOPER Training – 29 CFR 1910.120 (e)

In accordance with Federal OSHA Regulations 29 CFR 1910.120(e) and 29 CFR 1926.65(e).

CEUs Earned: 4.0



5660391-1



Scan this
QR code or Visit

hazwoper-osha.com/certificate-verification

12441-123-12586	07/04/24	07/03/25
Certificate No.	Issue Date	Expiry Date

11901 Santa Monica Blvd. Suite 414
Los Angeles, CA 90025 USA
(866) HAZ-OSHA (429-6742) or (310) 498-0546
www.hazwoper-osha.com

Michael J. Conroy

Michael Conroy
Instructor #: 0753



HAZWOPER OSHA Training, LLC

Annual refresher training is required.

THE ASBESTOS INSTITUTE

Certifies that

Jared Looney

has attended and received instruction in the EPA approved course

AHERA Building Inspector Refresher

on

October 30, 2024

and successfully completed and passed the competency exam.

Certificate:
ON-188748-19200-103024

Date of Examination:
30-Oct-2024

Date of Expiration:
30-Oct-2025

J. Cavness
Director

Approved Instructor

FL Course # CRS228

THE ASBESTOS INSTITUTE
20033 N. 19th Ave, Building 6, Phoenix, AZ 85027
602-864-6564 – www.theasbestosinstitute.com

The person receiving this certificate has completed the requisite training for asbestos accreditation under TSCA Title II.



Environmental Management Institute at Ivy Tech Community College

9301 E 59th St. Indianapolis IN 46216

(317) 917-5900 | Indianapolis-EMI@ivytech.edu | IvyTech.edu/EMI

This confirms that

Jared Looney

completed the required initial training for
Asbestos Accreditation under TSCA Title II in

Asbestos Building Inspector

on October 4-6, 2022, and passed the exam with a score of 70 or
higher on October 6, 2022.



A handwritten signature in blue ink, reading 'Kelly R. Brooks'.

Kelly R. Brooks, Interim Director

Expires: October 6, 2023

Certificate No: A222-138



Lead Consortium
2504 Pleasant Avenue
Hamilton, Ohio 45015
513-232-2806
www.leadconsortium.org



Ohio Provider Number: 0121
Kentucky Approved Course

Training course meets the requirements as outlined by the State of Indiana under 410 IAC 32-3-3

CERTIFIES THAT

Jared Looney
2526 Regency Rd Ste 180
Lexington, Kentucky 40503
SSN xxx-xx-5650

has successfully completed

The APPROVED Lead Training COURSE for INSPECTOR
and has passed the required examination in that discipline

Under civil and criminal penalties of law for the making or submission of false or fraudulent statements or representations (18 U.S.C. 1001 & 15 U.S.C. 2615), I certify that this training complies with the applicable requirements of Title IV of the "Toxic Substances Control Act", 40 CFR Part 745, and any other applicable Federal, State or local requirements, as amended.


Course date: 11/14/2022 -11/16/2022
Exam/Issuance date: 11/16/2022
Certificate No. C111622-03

Program Manager/Principal Instructor

Training Location: 2300 East Kemper Road-Suite 14A
Cincinnati, OH 45241



Appendix E: ***Section 7 Consultation***

	<p align="center">Kentucky Transportation Cabinet Federal Highway Administration NO EFFECT FINDING</p>		
KYTC Item No:	N/A	Route:	KY-217 Bridge Repair Project, Bridge No. 007B00064N
Quadrangle(s):	Varilla	County(ies):	Bell
Project Description: (Type of improvement, areas to be impacted, crossroad improvements, easements, etc.)			
<p>The Kentucky Transportation Cabinet (KYTC) is proposing to repair the KY-217 bridge over Brownies Creek in Bell County, Kentucky. The purpose of the proposed project is to repair the existing bridge over Brownies Creek (Bridge No. 007B00064N) which is currently closed to traffic, requiring a 20-mile detour for area residents. The project is needed due to the bridge's deteriorated condition of the existing superstructure. To re-establish the crossing the superstructure will be completely replaced. The existing substructures, 2 abutments and 1 pier, will be maintained supporting the new superstructure. Minor modifications will be made to the top of the substructures to work with the geometry of the new superstructure. In addition, the project will include minor repairs to the existing substructures to extend their service life.</p>			
Listed Species: (Attach copy of USFWS county list, KSNPC website and KDFWR website)			
<p>gray bat (<i>Myotis grisescens</i>); Indiana bat (<i>Myotis sodalis</i>); northern long-eared bat (<i>Myotis septentrionalis</i>); tricolored bat (<i>Perimyotis subflavus</i>); whooping crane (<i>Grus americana</i>); blackside dace (<i>Phoxinus cumberlandensis</i>); eastern hellbender (<i>Cryptobranchus alleganiensis alleganiensis</i>); and monarch butterfly (<i>Danaus plexippus</i>).</p>			
Methodologies: (Methods of assessment, who, what, when, resources, etc.)			
<p>Palmer Engineering biologist reviewed GIS information for the area of the proposed action including, but not limited to, aerial imagery, topography, soil maps, stream characteristics, and species location records. Following records review, field investigations were conducted on April 14, 2025 to identify threatened and endangered species habitat within the project study area limits.</p>			
Results: (Compare habitat used by listed species with available habitat)			
<p>The monarch butterfly (<i>Danaus plexippus</i>) is listed as "Proposed Threatened" and the tricolored bat and eastern hellbender are listed as "Proposed Endangered". These species are not currently afforded protection under the ESA. Should the status of these species be elevated to either threatened or endangered prior to construction, site specific analysis would be required under Section 7 of the ESA.</p> <p>The non-essential, experimental population of whooping crane is a population that has been established within its historical range under section 10(j) of the ESA, to aid in recovery of the species. The Service has determined that a non-essential population is not necessary for the continued existence of the species. Thus, for the purposes of consultation, non-essential, experimental populations are treated as threatened species on National Wildlife Refuges and National Park Lands (requiring consultation under section 7(a)(2) of the ESA) and as a proposed species on private lands (no section 7(a)(2) requirements, but Federal agencies must not jeopardize their existence).</p> <p>The blackside dace is known to inhabit small upland headwater streams with watersheds of less than 3 mi² that are approximately 2-5 m (6-16 ft) wide with riffle and pool areas about equal (60:40 ratio), and substrates of sand, sandstone, and shale (Burr and Warren 1986, Etnier and Starnes 1993). The species is known to occur in shallower pools with cover ranging from bedrock, rubble, undercut banks, or brush, and generally is associated with lush riparian vegetation, canopy cover greater than 70%, cool water, and silt free conditions. In addition, research shows that conductivity thresholds associated with reduced blackside dace abundance are about 240 microsiemens per centimeter (µS/cm and above (Hitt 2020). Based on the habitat assessment it was determined that Brownies Creek within the project study area does not provide suitable habitat for the blackside dace. This determination was made based on several factors, including watershed size, stream width and depth, in-stream habitat, riparian zone width, and water quality. The watershed size of Brownies Creek within the project study area was calculated to be 17.1 mi², with stream widths ranging from 10-17 m (30-50 ft), well above the known watershed size for the species of approximately 3 mi² and known stream widths of 2-5 m (6-16 ft). In-stream habitat within the study area of Brownies Creek ranged from</p>			

fair, upstream of the KY-217 bridge, to poor downstream of the bridge, and was dominated by gravel with fines such as silt and sand covering pool substrates. Stream depth within the study area of Brownies Creek ranged from 0.4-1.5 m (1.3-5 ft), much deeper than the shallower stream depths preferred by the species. Specific conductance was measured within the project study area and found to be 231 $\mu\text{S}/\text{cm}$ or just below 240 $\mu\text{S}/\text{cm}$, the threshold associated with reduced blackside dace abundance. The narrow riparian zone along Brownies Creek within the project study area has also been heavily impacted by anthropomorphic activities, lacking mature woody species that provide canopy cover, which provides shade and impacts water temperatures. Therefore, a “no habitat, no effect” determination has been made for the blackside dace.

The Indiana bat and northern long-eared bat utilize a variety of forested habitats for both summer foraging and roosting. Though only Indiana and northern long-eared bats roost in trees, forested habitat is also important to gray bats as well for foraging and commuting purposes. Indiana bats, northern long-eared bats, and gray bats commonly utilize forested corridors along streams. Forested bat habitat (summer) will be affected by this project, therefore summer habitat for the listed bat species (roosting/foraging) will be affected.

The Indiana, northern long-eared, and gray bats winter (hibernate) in caves, underground mines, or other similar structures. Gray bats also use these structures and other structures, such as rockshelters and other karst features, during the summer for roosting and forming maternity colonies. No caves, underground mines, or other habitat of this type will be impacted by this project. Therefore, the project will have “no effect” on winter or summer habitat for gray bats or winter habitat for Indiana or northern long-eared bats. Impacts to the Indiana and gray bat will be addressed under the terms of the Programmatic Biological Opinion on the Effects of Transportation Project in Kentucky on the Indiana Bat and Gray Bat (April 2020).

Habitat for the Indiana bat, northern long-eared bat, and gray bat were found to be present in the Project Area, therefore, the potential impacts of the project on these species will be further analyzed in accordance with the requirements of Section 7 consultation.

Determinations:

No habitat, No effect for: blackside dace

The project has been assessed in accordance with the provisions of Section 7 of the Endangered Species Act. As a designated representative of the FHWA, the KYTC has determined that the project will have No Effect on any listed species or their critical habitat, and further Section 7(a)(2) consultation with the Service is not required.

Cassondra Cruikshank

KYTC Signature

5/8/25

Date

Cassondra Cruikshank

Print Name

E.A.T.S. Milestones updated

NA

Name

Date



United States Department of the Interior



FISH AND WILDLIFE SERVICE
Kentucky Ecological Services Field Office
J C Watts Federal Building, Room 265
330 West Broadway
Frankfort, KY 40601-8670
Phone: (502) 695-0467 Fax: (502) 695-1024
Email Address: kentuckyes@fws.gov
<https://www.fws.gov/office/kentucky-ecological-services>

In Reply Refer To:

04/25/2025 16:03:01 UTC

Project Code: 2025-0081337

Project Name: Brownies Creek Bridge Replacement Project (Bridge # 007B00064N)

Subject: List of threatened and endangered species that may occur in your proposed project location or may be affected by your proposed project

To Whom It May Concern:

The enclosed species list identifies threatened, endangered, proposed and candidate species, as well as proposed and final designated critical habitat, that may occur within the boundary of your proposed project and/or may be affected by your proposed project. The species list fulfills the requirements of the U.S. Fish and Wildlife Service (Service) under section 7(c) of the Endangered Species Act (Act) of 1973, as amended (16 U.S.C. 1531 *et seq.*).

New information based on updated surveys, changes in the abundance and distribution of species, changed habitat conditions, or other factors could change this list. Please feel free to contact us if you need more current information or assistance regarding the potential impacts to federally proposed, listed, and candidate species and federally designated and proposed critical habitat. Please note that under 50 CFR 402.12(e) of the regulations implementing section 7 of the Act, the accuracy of this species list should be verified after 90 days. This verification can be completed formally or informally as desired. The Service recommends that verification be completed by visiting the IPaC website at regular intervals during project planning and implementation for updates to species lists and information. An updated list may be requested through the IPaC system by completing the same process used to receive the enclosed list.

The purpose of the Act is to provide a means whereby threatened and endangered species and the ecosystems upon which they depend may be conserved. Under sections 7(a)(1) and 7(a)(2) of the Act and its implementing regulations (50 CFR 402 *et seq.*), Federal agencies are required to utilize their authorities to carry out programs for the conservation of threatened and endangered species and to determine whether projects may affect threatened and endangered species and/or designated critical habitat.

Project code: 2025-0081337

04/25/2025 16:03:01 UTC

A Biological Assessment is required for construction projects (or other undertakings having similar physical impacts) that are major Federal actions significantly affecting the quality of the human environment as defined in the National Environmental Policy Act (42 U.S.C. 4332(2)(c)). For projects other than major construction activities, the Service suggests that a biological evaluation similar to a Biological Assessment be prepared to determine whether the project may affect listed or proposed species and/or designated or proposed critical habitat. Recommended contents of a Biological Assessment are described at 50 CFR 402.12.

If a Federal agency determines, based on the Biological Assessment or biological evaluation, that listed species and/or designated critical habitat may be affected by the proposed project, the agency is required to consult with the Service pursuant to 50 CFR 402. In addition, the Service recommends that candidate species, proposed species and proposed critical habitat be addressed within the consultation. More information on the regulations and procedures for section 7 consultation, including the role of permit or license applicants, can be found in the "Endangered Species Consultation Handbook" at:

<https://www.fws.gov/sites/default/files/documents/endangered-species-consultation-handbook.pdf>

Migratory Birds: In addition to responsibilities to protect threatened and endangered species under the Endangered Species Act (ESA), there are additional responsibilities under the Migratory Bird Treaty Act (MBTA) and the Bald and Golden Eagle Protection Act (BGEPA) to protect native birds from project-related impacts. Any activity, intentional or unintentional, resulting in take of migratory birds, including eagles, is prohibited unless otherwise permitted by the U.S. Fish and Wildlife Service (50 C.F.R. Sec. 10.12 and 16 U.S.C. Sec. 668(a)). For more information regarding these Acts, see <https://www.fws.gov/program/migratory-bird-permit/what-we-do..>

The MBTA has no provision for allowing take of migratory birds that may be unintentionally killed or injured by otherwise lawful activities. It is the responsibility of the project proponent to comply with these Acts by identifying potential impacts to migratory birds and eagles within applicable NEPA documents (when there is a federal nexus) or a Bird/Eagle Conservation Plan (when there is no federal nexus). Proponents should implement conservation measures to avoid or minimize the production of project-related stressors or minimize the exposure of birds and their resources to the project-related stressors. For more information on avian stressors and recommended conservation measures, see <https://www.fws.gov/library/collections/threats-birds>.

In addition to MBTA and BGEPA, Executive Order 13186: *Responsibilities of Federal Agencies to Protect Migratory Birds*, obligates all Federal agencies that engage in or authorize activities that might affect migratory birds, to minimize those effects and encourage conservation measures that will improve bird populations. Executive Order 13186 provides for the protection of both migratory birds and migratory bird habitat. For information regarding the implementation of Executive Order 13186, please visit <https://www.fws.gov/partner/council-conservation-migratory-birds>.

We appreciate your concern for threatened and endangered species. The Service encourages Federal agencies to include conservation of threatened and endangered species into their project planning to further the purposes of the Act. Please include the Consultation Code in the header of

this letter with any request for consultation or correspondence about your project that you submit to our office.

Attachment(s):

- Official Species List

OFFICIAL SPECIES LIST

This list is provided pursuant to Section 7 of the Endangered Species Act, and fulfills the requirement for Federal agencies to "request of the Secretary of the Interior information whether any species which is listed or proposed to be listed may be present in the area of a proposed action".

This species list is provided by:

Kentucky Ecological Services Field Office
J C Watts Federal Building, Room 265
330 West Broadway
Frankfort, KY 40601-8670
(502) 695-0467

Project code: 2025-0081337

04/25/2025 16:03:01 UTC

PROJECT SUMMARY

Project Code: 2025-0081337
Project Name: Brownies Creek Bridge Replacement Project (Bridge # 007B00064N)
Project Type: Bridge - Replacement
Project Description: Bridge replacement project
Project Location:

The approximate location of the project can be viewed in Google Maps: <https://www.google.com/maps/@36.7056724,-83.54994893929856,14z>



Counties: Bell County, Kentucky

ENDANGERED SPECIES ACT SPECIES

There is a total of 8 threatened, endangered, or candidate species on this species list.

Species on this list should be considered in an effects analysis for your project and could include species that exist in another geographic area. For example, certain fish may appear on the species list because a project could affect downstream species. Note that 2 of these species should be considered only under certain conditions.

IPaC does not display listed species or critical habitats under the sole jurisdiction of NOAA Fisheries¹, as USFWS does not have the authority to speak on behalf of NOAA and the Department of Commerce.

See the "Critical habitats" section below for those critical habitats that lie wholly or partially within your project area under this office's jurisdiction. Please contact the designated FWS office if you have questions.

-
1. [NOAA Fisheries](#), also known as the National Marine Fisheries Service (NMFS), is an office of the National Oceanic and Atmospheric Administration within the Department of Commerce.

MAMMALS

NAME	STATUS
<p>Gray Bat <i>Myotis grisescens</i></p> <p>No critical habitat has been designated for this species.</p> <p>This species only needs to be considered under the following conditions:</p> <ul style="list-style-type: none">The project area includes potential gray bat habitat. <p>Species profile: https://ecos.fws.gov/ecp/species/6329</p> <p>General project design guidelines: https://ipac.ecosphere.fws.gov/project/KEXDZTBYDNAJJDWCYBTPSCTODA/documents/generated/6422.pdf</p>	Endangered
<p>Indiana Bat <i>Myotis sodalis</i></p> <p>There is final critical habitat for this species. Your location does not overlap the critical habitat.</p> <p>This species only needs to be considered under the following conditions:</p> <ul style="list-style-type: none">The project area includes known 'swarming 1' habitat. <p>Species profile: https://ecos.fws.gov/ecp/species/5949</p> <p>General project design guidelines: https://ipac.ecosphere.fws.gov/project/KEXDZTBYDNAJJDWCYBTPSCTODA/documents/generated/6422.pdf</p>	Endangered
<p>Northern Long-eared Bat <i>Myotis septentrionalis</i></p> <p>No critical habitat has been designated for this species.</p> <p>Species profile: https://ecos.fws.gov/ecp/species/9045</p> <p>General project design guidelines: https://ipac.ecosphere.fws.gov/project/KEXDZTBYDNAJJDWCYBTPSCTODA/documents/generated/6422.pdf</p>	Endangered
<p>Tricolored Bat <i>Perimyotis subflavus</i></p> <p>No critical habitat has been designated for this species.</p> <p>Species profile: https://ecos.fws.gov/ecp/species/10515</p>	Proposed Endangered

BIRDS

NAME	STATUS
<p>Whooping Crane <i>Grus americana</i></p> <p>Population: U.S.A. (AL, AR, CO, FL, GA, ID, IL, IN, IA, KY, LA, MI, MN, MS, MO, NC, NM, OH, SC, TN, UT, VA, WI, WV, western half of WY)</p> <p>No critical habitat has been designated for this species.</p> <p>Species profile: https://ecos.fws.gov/ecp/species/758</p>	Experimental Population, Non-Essential

AMPHIBIANS

NAME	STATUS
<p>Eastern Hellbender <i>Cryptobranchus alleganiensis alleganiensis</i></p> <p>No critical habitat has been designated for this species.</p> <p>Species profile: https://ecos.fws.gov/ecp/species/9039</p>	Proposed Endangered

FISHES

NAME	STATUS
<div>Blackside Dace <i>Phoxinus cumberlandensis</i></div> <div>No critical habitat has been designated for this species. Species profile: https://ecos.fws.gov/ecp/species/4775 General project design guidelines: https://ipac.ecosphere.fws.gov/project/KEXDZTBYDNAJJDWCYBTPSCTODA/documents/generated/5224.pdf</div>	Threatened

INSECTS

NAME	STATUS
<div>Monarch Butterfly <i>Danaus plexippus</i></div> <div>There is proposed critical habitat for this species. Your location does not overlap the critical habitat. Species profile: https://ecos.fws.gov/ecp/species/9743</div>	Proposed Threatened

CRITICAL HABITATS

THERE ARE NO CRITICAL HABITATS WITHIN YOUR PROJECT AREA UNDER THIS OFFICE'S JURISDICTION.

YOU ARE STILL REQUIRED TO DETERMINE IF YOUR PROJECT(S) MAY HAVE EFFECTS ON ALL ABOVE LISTED SPECIES.

IPAC USER CONTACT INFORMATION

Agency: Kentucky Transportation Cabinet
Name: Robert Oney
Address: 400 Shoppers Drive
Address Line 2: P.O. Box 747
City: Winchester
State: KY
Zip: 40392-0747
Email: robertoney@msn.com
Phone: 8592006061

LEAD AGENCY CONTACT INFORMATION

Lead Agency: Army Corps of Engineers



United States Department of the Interior



FISH AND WILDLIFE SERVICE
Kentucky Ecological Services Field Office
J C Watts Federal Building, Room 265
330 West Broadway
Frankfort, KY 40601-8670
Phone: (502) 695-0467 Fax: (502) 695-1024
Email Address: kentuckyes@fws.gov

In Reply Refer To: 05/08/2025 18:08:00 UTC
Project code: 2025-0081337
Project Name: Brownies Creek Bridge Replacement Project (Bridge # 007B00064N)

Federal Nexus: yes
Federal Action Agency (if applicable): Army Corps of Engineers

Subject: Technical assistance for 'Brownies Creek Bridge Replacement Project (Bridge # 007B00064N)'

Dear Robert Oney:

This letter records your determination using the Information for Planning and Consultation (IPaC) system provided to the U.S. Fish and Wildlife Service (Service) on May 08, 2025, for 'Brownies Creek Bridge Replacement Project (Bridge # 007B00064N)' (here forward, Project). This project has been assigned Project Code 2025-0081337 and all future correspondence should clearly reference this number. **Please carefully review this letter. Your Endangered Species Act (Act) requirements may not be complete.**

Ensuring Accurate Determinations When Using IPaC

The Service developed the IPaC system and associated species' determination keys in accordance with the Endangered Species Act of 1973 (ESA; 87 Stat. 884, as amended; 16 U.S.C. 1531 et seq.) and based on a standing analysis. All information submitted by the Project proponent into IPaC must accurately represent the full scope and details of the Project.

Failure to accurately represent or implement the Project as detailed in IPaC or the Northern Long-eared Bat and Tricolored Bat Range-wide Determination Key (Dkey), invalidates this letter. ***Answers to certain questions in the DKey commit the project proponent to implementation of conservation measures that must be followed for the ESA determination to remain valid. Note that conservation measures for northern long-eared bat and tricolored bat may differ. If both bat species are present in the action area and the key suggests more conservative measures for one of the species for your project, the Project may need to apply***

the most conservative measures in order to avoid adverse effects. If unsure which conservation measures should be applied, please contact the appropriate Ecological Services Field Office

Determination for the Northern Long-Eared Bat and Tricolored Bat

Based upon your IPaC submission and a standing analysis completed by the Service, your project has reached the following effect determination(s):

Species	Listing Status	Determination
Northern Long-eared Bat (<i>Myotis septentrionalis</i>)	Endangered	NLAA
Tricolored Bat (<i>Perimyotis subflavus</i>)	Proposed Endangered	NLAA

Federal agencies must consult with U.S. Fish and Wildlife Service under section 7(a)(2) of the Endangered Species Act (ESA) when an action *may affect* a listed species. Tricolored bat is proposed for listing as endangered under the ESA, but not yet listed. For actions that may affect a proposed species, agencies cannot consult, but they can *confer* under the authority of section 7(a)(4) of the ESA. Such conferences can follow the procedures for a consultation and be adopted as such if and when the proposed species is listed. Should the tricolored bat be listed, agencies must review projects that are not yet complete, or projects with ongoing effects within the tricolored bat range that previously received a NE or NLAA determination from the key to confirm that the determination is still accurate.

Other Species and Critical Habitat that May be Present in the Action Area

The IPaC-assisted determination key for the northern long-eared bat and tricolored bat does not apply to the following ESA-protected species and/or critical habitat that also may occur in your Action area:

- Blackside Dace *Phoxinus cumberlandensis* Threatened
- Eastern Hellbender *Cryptobranchus alleganiensis alleganiensis* Proposed Endangered
- Gray Bat *Myotis grisescens* Endangered
- Indiana Bat *Myotis sodalis* Endangered
- Monarch Butterfly *Danaus plexippus* Proposed Threatened
- Whooping Crane *Grus americana* Experimental Population, Non-Essential

You may coordinate with our Office to determine whether the Action may cause prohibited take of the animal species listed above. Note that if a new species is listed that may be affected by the identified action before it is complete, additional review is recommended to ensure compliance with the Endangered Species Act.

Next Steps

Consultation with the Service is necessary. The project has a federal nexus (e.g., Federal funds, permit, etc.), but you are not the federal action agency or its designated (in writing) non-federal representative. Therefore, the ESA consultation status is incomplete and no project activities

should occur until consultation between the Service and the Federal action agency (or designated non-federal representative), is completed.

As the federal agency or designated non-federal representative deems appropriate, they should submit their determination of effects to the Service by doing the following.

1. Log into IPaC using an agency email account and click on My Projects, click "Search by record locator" to find this Project using **610-161827346**. (Alternatively, the originator of the project in IPaC can add the agency representative to the project by using the Add Member button on the project home page.)
2. Review the answers to the Northern Long-eared Bat and Tricolored Bat Range-wide Determination Key to ensure that they are accurate.
3. Click on Review/ Finalize to convert the 'not likely to adversely affect' technical assistance letter to a concurrence letter. Download the concurrence letter for your files if needed.

If no changes occur with the Project or there are no updates on listed species, no further consultation/coordination for this project is required for the northern long-eared bat. However, the Service recommends that project proponents re-evaluate the Project in IPaC if: 1) the scope, timing, duration, or location of the Project changes (includes any project changes or amendments); 2) new information reveals the Project may impact (positively or negatively) federally listed species or designated critical habitat; or 3) a new species is listed, or critical habitat designated. If any of the above conditions occurs, additional coordination with the Service should take place before project implements any changes which are final or commits additional resources.

If you have any questions regarding this letter or need further assistance, please contact the Kentucky Ecological Services Field Office and reference Project Code 2025-0081337 associated with this Project.

Action Description

You provided to IPaC the following name and description for the subject Action.

1. Name

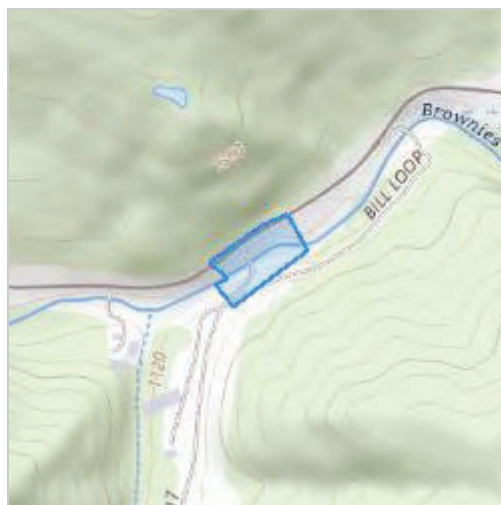
Brownies Creek Bridge Replacement Project (Bridge # 007B00064N)

2. Description

The following description was provided for the project 'Brownies Creek Bridge Replacement Project (Bridge # 007B00064N)':

Bridge replacement project

The approximate location of the project can be viewed in Google Maps: <https://www.google.com/maps/@36.7056724,-83.54994893929856,14z>



DETERMINATION KEY RESULT

Based on the answers provided, the proposed Action is consistent with a determination of “may affect, but not likely to adversely affect” for a least one species covered by this determination key.

QUALIFICATION INTERVIEW

1. Does the proposed project include, or is it reasonably certain to cause, intentional take of listed bats or any other listed species?

Note: Intentional take is defined as take that is the intended result of a project. Intentional take could refer to research, direct species management, surveys, and/or studies that include intentional handling/encountering, harassment, collection, or capturing of any individual of a federally listed threatened, endangered or proposed species?

No

2. Is the action area wholly within Zone 2 of the year-round active area for northern long-eared bat and/or tricolored bat?

Automatically answered

No

3. Does the action area intersect Zone 1 of the year-round active area for northern long-eared bat and/or tricolored bat?

Automatically answered

No

4. Does any component of the action involve leasing, construction or operation of wind turbines? Answer 'yes' if the activities considered are conducted with the intention of gathering survey information to inform the leasing, construction, or operation of wind turbines.

Note: For federal actions, answer ‘yes’ if the construction or operation of wind power facilities is either (1) part of the federal action or (2) would not occur but for a federal agency action (federal permit, funding, etc.).

No

5. Is the proposed action authorized, permitted, licensed, funded, or being carried out by a Federal agency in whole or in part?

Yes

6. Is the Federal Highway Administration (FHWA), Federal Railroad Administration (FRA), or Federal Transit Administration (FTA) funding or authorizing the proposed action, in whole or in part?

No

7. Are you an employee of the federal action agency or have you been officially designated in writing by the agency as its designated non-federal representative for the purposes of Endangered Species Act Section 7 informal consultation per 50 CFR § 402.08?

Note: This key may be used for federal actions and for non-federal actions to facilitate section 7 consultation and to help determine whether an incidental take permit may be needed, respectively. This question is for information purposes only.

No

8. Is the lead federal action agency the Environmental Protection Agency (EPA) or Federal Communications Commission (FCC)? Is the Environmental Protection Agency (EPA) or Federal Communications Commission (FCC) funding or authorizing the proposed action, in whole or in part?

No

9. Is the lead federal action agency the Federal Energy Regulatory Commission (FERC)?

No

10. [Semantic] Is the action area located within 0.5 miles of a known bat hibernaculum?

Note: The map queried for this question contains proprietary information and cannot be displayed. If you need additional information, please contact your State wildlife agency.

Automatically answered

No

11. Does the action area contain any winter roosts or caves (or associated sinkholes, fissures, or other karst features), mines, rocky outcroppings, or tunnels that could provide habitat for hibernating bats?

No

12. Will the action cause effects to a bridge?

Note: Covered bridges should be considered as bridges in this question.

Yes

13. Has a site-specific bridge assessment following [USFWS guidelines](#) been completed?

Note: For information on conducting a bridge/structure assessment, please see Appendix K in the USFWS' Range-wide Indiana Bat and Northern Long-eared Bat Survey Guidelines at: <https://www.fws.gov/media/range-wide-indiana-bat-and-northern-long-eared-bat-survey-guidelines> Additional resources can be found at: <https://www.fws.gov/media/bats-and-transportation-structures-references-and-additional-resources> and a training video is located at: <https://www.youtube.com/watch?v=iuFwkT7q8Ws>.

Yes

14. Was evidence of bat use found during the bridge assessment?

No

SUBMITTED DOCUMENTS

- *Bats on Bridge data sheet 04_14_2025.pdf* <https://ipac.ecosphere.fws.gov/project/KEXDZTBYDNAJJDWCYBTPSCTODA/projectDocuments/161358152>

15. Did you coordinate with your local Ecological Services Field Office (ESFO) and receive approval of the bridge assessment results? If NO, please contact the appropriate local ESFO before completing this determination key.

Yes

16. Will the action result in effects to a culvert or tunnel at any time of year?

No

17. Are trees present within 1000 feet of the action area?

Note: If there are trees within the action area that are of a sufficient size to be potential roosts for bats answer "Yes". If unsure, additional information defining suitable summer habitat for the northern long-eared bat and tricolored bat can be found in Appendix A of the USFWS' Range-wide Indiana Bat and Northern long-eared bat Survey Guidelines at: <https://www.fws.gov/media/range-wide-indiana-bat-and-northern-long-eared-bat-survey-guidelines>.

Yes

18. Does the action include the intentional exclusion of bats from a building or structure?

Note: Exclusion is conducted to deny bats' entry or reentry into a building. To be effective and to avoid harming bats, it should be done according to established standards. If your action includes bat exclusion and you are unsure whether northern long-eared bats or tricolored bats are present, answer "Yes." Answer "No" if there are no signs of bat use in the building/structure. If unsure, contact your local Ecological Services Field Office to help assess whether northern long-eared bats or tricolored bats may be present. Contact a Nuisance Wildlife Control Operator (NWCO) for help in how to exclude bats from a structure safely without causing harm to the bats (to find a NWCO certified in bat standards, search the Internet using the search term "National Wildlife Control Operators Association bats"). Also see the White-Nose Syndrome Response Team's guide for bat control in structures.

No

19. Does the action involve removal, modification, or maintenance of a human-made structure (barn, house, or other building) **known or suspected to contain roosting bats**?

No

20. Will the action cause construction of one or more new roads open to the public?

For federal actions, answer 'yes' when the construction or operation of these facilities is either (1) part of the federal action or (2) would not occur but for an action taken by a federal agency (federal permit, funding, etc.).

No

21. Will the action include or cause any construction or other activity that is reasonably certain to increase average night-time traffic permanently or temporarily on one or more existing roads? **Note:** For federal actions, answer 'yes' when the construction or operation of these facilities is either (1) part of the federal action or (2) would not occur but for an action taken by a federal agency (federal permit, funding, etc.).

No

22. Will the action include or cause any construction or other activity that is reasonably certain to increase the number of travel lanes on an existing thoroughfare?

For federal actions, answer 'yes' when the construction or operation of these facilities is either (1) part of the federal action or (2) would not occur but for an action taken by a federal agency (federal permit, funding, etc.).

No

23. Will the proposed Action involve the creation of a new water-borne contaminant source (e.g., leachate pond, pits containing chemicals that are not NSF/ANSI 60 compliant)?

Note: For information regarding NSF/ANSI 60 please visit <https://www.nsf.org/knowledge-library/nsf-ansi-standard-60-drinking-water-treatment-chemicals-health-effects>

No

24. Will the proposed action involve the creation of a new point source discharge from a facility other than a water treatment plant or storm water system?

No

25. Will the proposed action involve blasting or drilling?

No

26. Will the action involve military training (e.g., smoke operations, obscurant operations, exploding munitions, artillery fire, range use, helicopter or fixed wing aircraft use)?

No

27. Will the proposed action involve the use of herbicides or other pesticides other than herbicides (e.g., fungicides, insecticides, or rodenticides)?

No

28. Will the action include or cause activities that are reasonably certain to cause chronic or intense nighttime noise (above current levels of ambient noise in the area) in suitable summer habitat for the northern long-eared bat or tricolored bat during the active season?

Chronic noise is noise that is continuous or occurs repeatedly again and again for a long time. Sources of chronic or intense noise that could cause adverse effects to bats may include, but are not limited to: road traffic; trains; aircraft; industrial activities; gas compressor stations; loud music; crowds; oil and gas extraction; construction; and mining.

Note: Additional information defining suitable summer habitat for the northern long-eared bat and tricolored bat can be found in Appendix A of the USFWS' Range-wide Indiana Bat and Northern long-eared bat Survey Guidelines at: <https://www.fws.gov/media/range-wide-indiana-bat-and-northern-long-eared-bat-survey-guidelines>.

No

29. Does the action include, or is it reasonably certain to cause, the use of permanent or temporary artificial lighting within 1000 feet of suitable northern long-eared bat or tricolored bat roosting habitat?

Note: Additional information defining suitable summer habitat for the northern long-eared bat and tricolored bat can be found in Appendix A of the USFWS' Range-wide Indiana Bat and Northern long-eared bat Survey Guidelines at: <https://www.fws.gov/media/range-wide-indiana-bat-and-northern-long-eared-bat-survey-guidelines>.

No

30. Will the action include tree cutting or other means of knocking down or bringing down trees, tree topping, or tree trimming?

No

31. Will the proposed action result in the use of prescribed fire?

Note: If the prescribed fire action includes other activities than application of fire (e.g., tree cutting, fire line preparation) please consider impacts from those activities within the previous representative questions in the key. This set of questions only considers impacts from flame and smoke.

No

32. Does the action area intersect the northern long-eared bat species list area?

Automatically answered

Yes

33. [Semantic] Is the action area located within 0.25 miles of a culvert that is known to be occupied by northern long-eared or tricolored bats?

Automatically answered

No

34. [Semantic] Is the action area located within 150 feet of a documented northern long-eared bat roost site?

Note: The map queried for this question contains proprietary information and cannot be displayed. If you need additional information, please contact your State wildlife agency.

Automatically answered

No

35. Is suitable summer habitat for the northern long-eared bat present within 1000 feet of project activities?
If unsure, answer "Yes."

Note: Additional information defining suitable summer habitat for the northern long-eared bat and tricolored bat can be found in Appendix A of the USFWS' Range-wide Indiana Bat and Northern long-eared bat Survey Guidelines at: <https://www.fws.gov/media/range-wide-indiana-bat-and-northern-long-eared-bat-survey-guidelines>.

Yes

36. Does the action area intersect the tricolored bat species list area?

Automatically answered

Yes

37. [Semantic] Is the action area located within 0.25 miles of a culvert that is known to be occupied by northern long-eared or tricolored bats?

Note: The map queried for this question contains proprietary information and cannot be displayed. If you need additional information, please contact your State wildlife agency.

Automatically answered

No

38. Is suitable summer habitat for the tricolored bat present within 1000 feet of project activities?
(If unsure, answer ""Yes."")

Note: If there are trees within the action area that may provide potential roosts for tricolored bats (e.g., clusters of leaves in live and dead deciduous trees, Spanish moss (*Tillandsia usneoides*), clusters of dead pine needles of large live pines) answer ""Yes."" For a complete definition of suitable summer habitat for the tricolored bat, please see Appendix A in the [Service's Range-wide Indiana Bat and Northern long-eared Bat Survey Guidelines](#).

Yes

39. Do you have any documents that you want to include with this submission?

No

PROJECT QUESTIONNAIRE

IPAC USER CONTACT INFORMATION

Agency: Kentucky Transportation Cabinet
Name: Robert Oney
Address: 400 Shoppers Drive
Address Line 2: P.O. Box 747
City: Winchester
State: KY
Zip: 40392-0747
Email: robertoney@msn.com
Phone: 8592006061

LEAD AGENCY CONTACT INFORMATION

Lead Agency: Army Corps of Engineers

PART II

SPECIFICATIONS AND STANDARD DRAWINGS

STANDARD SPECIFICATIONS

Any reference in the plans or proposal to previous editions of the *Standard Specifications for Road and Bridge Construction* and *Standard Drawings* are superseded by *Standard Specifications for Road and Bridge Construction, Edition of 2019* and *Standard Drawings, Edition of 2020*.

SUPPLEMENTAL SPECIFICATIONS

The contractor shall use the Supplemental Specifications that are effective at the time of letting. The Supplemental Specifications can be found at the following link:
<http://transportation.ky.gov/Construction/Pages/Kentucky-Standard-Specifications.aspx>

PART III

EMPLOYMENT, WAGE AND RECORD REQUIREMENTS

**TRANSPORTATION CABINET
DEPARTMENT OF HIGHWAYS**

**LABOR AND WAGE REQUIREMENTS
APPLICABLE TO OTHER THAN FEDERAL-AID SYSTEM PROJECTS**

- I. Application
- II. Nondiscrimination of Employees (KRS 344)

I. APPLICATION

1. These contract provisions shall apply to all work performed on the contract by the contractor with his own organization and with the assistance of workmen under his immediate superintendence and to all work performed on the contract by piecework, station work or by subcontract. The contractor's organization shall be construed to include only workmen employed and paid directly by the contractor and equipment owned or rented by him, with or without operators.

2. The contractor shall insert in each of his subcontracts all of the stipulations contained in these Required Provisions and such other stipulations as may be required.

3. A breach of any of the stipulations contained in these Required Provisions may be grounds for termination of the contract.

3. If the contractor is in control of apprenticeship or other training or retraining, including on-the-job training programs, he shall not discriminate against an individual because of his race, color, religion, national origin, sex, disability or age forty (40) and over, in admission to, or employment in any program established to provide apprenticeship or other training.

4. The contractor will send to each labor union or representative of workers with which he has a collective bargaining agreement or other contract or understanding, a notice to be provided advising the said labor union or workers' representative of the contractor's commitments under this section, and shall post copies of the notice in conspicuous places available to employees and applicants for employment. The contractor will take such action with respect to any subcontract or purchase order as the administering agency may direct as a means of enforcing such provisions, including sanctions for non-compliance.

Revised: January 25, 2017

II. NONDISCRIMINATION OF EMPLOYEES

**AN ACT OF THE KENTUCKY
GENERAL ASSEMBLY TO PREVENT
DISCRIMINATION IN EMPLOYMENT
KRS CHAPTER 344
EFFECTIVE JUNE 16, 1972**

The contract on this project, in accordance with KRS Chapter 344, provides that during the performance of this contract, the contractor agrees as follows:

1. The contractor shall not fail or refuse to hire, or shall not discharge any individual, or otherwise discriminate against an individual with respect to his compensation, terms, conditions, or privileges of employment, because of such individual's race, color, religion, national origin, sex, disability or age (forty and above); or limit, segregate, or classify his employees in any way which would deprive or tend to deprive an individual of employment opportunities or otherwise adversely affect his status as an employee, because of such individual's race, color, religion, national origin, sex, disability or age forty (40) and over. The contractor agrees to post in conspicuous places, available to employees and applicants for employment, notices to be provided setting forth the provisions of this nondiscrimination clause.

2. The contractor shall not print or publish or cause to be printed or published a notice or advertisement relating to employment by such an employer or membership in or any classification or referral for employment by the employment agency, indicating any preference, limitation, specification, or discrimination, based on race, color, religion, national origin, sex, or age forty (40) and over, or because the person is a qualified individual with a disability, except that such a notice or advertisement may indicate a preference, limitation, or specification based on religion, national origin, sex, or age forty (40) and over, or because the person is a qualified individual with a disability, when religion, national origin, sex, or age forty (40) and over, or because the person is a qualified individual with a disability, is a bona fide occupational qualification for employment.

EXECUTIVE BRANCH CODE OF ETHICS

The Executive Branch Code of Ethics created by Kentucky Revised Statutes (KRS) Chapter 11A, effective July 14, 1992, establishes the ethical standards that govern the conduct of all executive branch employees. The Executive Branch Code of Ethics, which states, in part:

KRS 11A.040 (7) provides:

A present or former public servant listed in KRS 11A.010(9)(a) to (g) shall not, within one (1) year following termination of his or her office or employment, accept employment, compensation, or other economic benefit from any person or business that contracts or does business with, or is regulated by, the state in matters in which he was directly involved during the last thirty-six (36) months of his tenure. This provision shall not prohibit an individual from returning to the same business, firm, occupation, or profession in which he was involved prior to taking office or beginning his term of employment, or for which he received, prior to his state employment, a professional degree or license, provided that, for a period of one (1) year, he or she personally refrains from working on any matter in which he was directly involved during the last thirty-six (36) months of his or her tenure in state government. This subsection shall not prohibit the performance of ministerial functions, including but not limited to filing tax returns, filing applications for permits or licenses, or filing incorporation papers, nor shall it prohibit the former officer or public servant from receiving public funds disbursed through entitlement programs.

KRS 11A.040 (9) states:

A former public servant shall not represent a person or business before a state agency in a matter in which the former public servant was directly involved during the last thirty-six (36) months of his tenure, for a period of one (1) year after the latter of:

- a) The date of leaving office or termination of employment; or
- b) The date the term of office expires to which the public servant was elected.

This law is intended to promote public confidence in the integrity of state government and to declare as public policy the idea that state employees should view their work as a public trust and not to obtain private benefits.

If you have worked for the executive branch of state government within the past year, you may be subject to the law's prohibitions. The law's applicability may be different if you hold elected office or are contemplating representation of another before a state agency.

Also, if you are affiliated with a firm which does business with the state and which employs former state executive-branch employees, you should be aware that the law may apply to them.

In case of doubt, the law permits you to request an advisory opinion from the Executive Branch Ethics Commission, 1025 Capital Center Drive, Suite 105, Frankfort, Kentucky 40601; telephone (502) 564-7954.

Revised: March 11, 2025

Kentucky Equal Employment Opportunity Act of 1978

The requirements of the Kentucky Equal Employment Opportunity Act of 1978 (KRS 45.560-45.640) shall apply to this Contract. The apparent low Bidder will be required to submit EEO forms to the Division of Construction Procurement, which will then forward to the Finance and Administration Cabinet for review and approval. No award will become effective until all forms are submitted and EEO/CC has certified compliance. The required EEO forms are as follows:

- EEO-1: Employer Information Report
- Affidavit of Intent to Comply
- Employee Data Sheet
- Subcontractor Report

These forms are available on the Finance and Administration's web page under ***Vendor Information, Standard Attachments and General Terms*** at the following address:
<https://www.eProcurement.ky.gov>.

Bidders currently certified as being in compliance by the Finance and Administration Cabinet may submit a copy of their approval letter in lieu of the referenced EEO forms.

For questions or assistance please contact the Finance and Administration Cabinet by email at **finance.contractcompliance@ky.gov** or by phone at 502-564-2874.

EMPLOYEE RIGHTS UNDER THE FAIR LABOR STANDARDS ACT

THE UNITED STATES DEPARTMENT OF LABOR WAGE AND HOUR DIVISION

FEDERAL MINIMUM WAGE

\$7.25

 PER HOUR

BEGINNING JULY 24, 2009

OVERTIME PAY

At least $1\frac{1}{2}$ times your regular rate of pay for all hours worked over 40 in a workweek.

CHILD LABOR

An employee must be at least **16** years old to work in most non-farm jobs and at least **18** to work in non-farm jobs declared hazardous by the Secretary of Labor.

Youths **14** and **15** years old may work outside school hours in various non-manufacturing, non-mining, non-hazardous jobs under the following conditions:

No more than

- **3** hours on a school day or **18** hours in a school week;
- **8** hours on a non-school day or **40** hours in a non-school week.

Also, work may not begin before **7 a.m.** or end after **7 p.m.**, except from June 1 through Labor Day, when evening hours are extended to **9 p.m.** Different rules apply in agricultural employment.

TIP CREDIT

Employers of "tipped employees" must pay a cash wage of at least \$2.13 per hour if they claim a tip credit against their minimum wage obligation. If an employee's tips combined with the employer's cash wage of at least \$2.13 per hour do not equal the minimum hourly wage, the employer must make up the difference. Certain other conditions must also be met.

ENFORCEMENT

The Department of Labor may recover back wages either administratively or through court action, for the employees that have been underpaid in violation of the law. Violations may result in civil or criminal action.

Employers may be assessed civil money penalties of up to \$1,100 for each willful or repeated violation of the minimum wage or overtime pay provisions of the law and up to \$11,000 for each employee who is the subject of a violation of the Act's child labor provisions. In addition, a civil money penalty of up to \$50,000 may be assessed for each child labor violation that causes the death or serious injury of any minor employee, and such assessments may be doubled, up to \$100,000, when the violations are determined to be willful or repeated. The law also prohibits discriminating against or discharging workers who file a complaint or participate in any proceeding under the Act.

ADDITIONAL INFORMATION

- Certain occupations and establishments are exempt from the minimum wage and/or overtime pay provisions.
- Special provisions apply to workers in American Samoa and the Commonwealth of the Northern Mariana Islands.
- Some state laws provide greater employee protections; employers must comply with both.
- The law requires employers to display this poster where employees can readily see it.
- Employees under 20 years of age may be paid \$4.25 per hour during their first 90 consecutive calendar days of employment with an employer.
- Certain full-time students, student learners, apprentices, and workers with disabilities may be paid less than the minimum wage under special certificates issued by the Department of Labor.

For additional information:



1-866-4-USWAGE

(1-866-487-9243)

TTY: 1-877-889-5627



WWW.WAGEHOUR.DOL.GOV

PART IV

BID ITEMS

Section: 0001 - PAVING

LINE	BID CODE	ALT	DESCRIPTION	QUANTITY	UNIT	UNIT PRIC	FP	AMOUNT
0010	00001		DGA BASE	65.00	TON		\$	
0020	00100		ASPHALT SEAL AGGREGATE	1.00	TON		\$	
0030	00103		ASPHALT SEAL COAT	.10	TON		\$	
0040	00212		CL2 ASPH BASE 1.00D PG64-22	13.00	TON		\$	
0050	00301		CL2 ASPH SURF 0.38D PG64-22	18.00	TON		\$	
0060	00356		ASPHALT MATERIAL FOR TACK	.09	TON		\$	

Section: 0002 - ROADWAY

LINE	BID CODE	ALT	DESCRIPTION	QUANTITY	UNIT	UNIT PRIC	FP	AMOUNT
0070	01987		DELINEATOR FOR GUARDRAIL BI DIRECTIONAL WHITE	7.00	EACH		\$	
0080	02091		REMOVE PAVEMENT	96.00	SQYD		\$	
0090	02200		ROADWAY EXCAVATION	20.00	CUYD		\$	
0100	02351		GUARDRAIL-STEEL W BEAM-S FACE	212.50	LF		\$	
0110	02367		GUARDRAIL END TREATMENT TYPE 1	1.00	EACH		\$	
0120	02371		GUARDRAIL END TREATMENT TYPE 7	1.00	EACH		\$	
0130	02373		GUARDRAIL END TREATMENT TYPE 3	1.00	EACH		\$	
0140	02391		GUARDRAIL END TREATMENT TYPE 4A	1.00	EACH		\$	
0150	02399		EXTRA LENGTH GUARDRAIL POST	34.00	EACH		\$	
0160	02585		EDGE KEY	60.00	LF		\$	
0170	02650		MAINTAIN & CONTROL TRAFFIC	1.00	LS		\$	
0180	02726		STAKING	1.00	LS		\$	
0190	02731		REMOVE STRUCTURE	1.00	LS		\$	
0200	05952		TEMP MULCH	1,064.00	SQYD		\$	
0210	05953		TEMP SEEDING AND PROTECTION	806.00	SQYD		\$	
0220	05963		INITIAL FERTILIZER	.04	TON		\$	
0230	05964		MAINTENANCE FERTILIZER	.02	TON		\$	
0240	05985		SEEDING AND PROTECTION	779.00	SQYD		\$	
0250	20191ED		OBJECT MARKER TY 3	2.00	EACH		\$	
0260	20418ED		REMOVE & RELOCATE SIGNS	4.00	EACH		\$	
0270	21289ED		LONGITUDINAL EDGE KEY	53.00	LF		\$	

Section: 0003 - BRIDGE - 007B00064N

LINE	BID CODE	ALT	DESCRIPTION	QUANTITY	UNIT	UNIT PRIC	FP	AMOUNT
0280	02231		STRUCTURE GRANULAR BACKFILL	42.70	CUYD		\$	
0290	02403		REMOVE CONCRETE MASONRY	10.80	CUYD		\$	
0300	02998		MASONRY COATING	153.00	SQYD		\$	
0310	03299		ARMORED EDGE FOR CONCRETE	48.00	LF		\$	
0320	08001		STRUCTURE EXCAVATION-COMMON	82.80	CUYD		\$	
0330	08100		CONCRETE-CLASS A	10.30	CUYD		\$	
0340	08104		CONCRETE-CLASS AA	28.20	CUYD		\$	
0350	08151		STEEL REINFORCEMENT-EPOXY COATED	6,367.00	LB		\$	
0360	08661		PRECAST PC BOX BEAM CB12-48	360.50	LF		\$	

Report Date 5/22/25

LINE	BID CODE	ALT	DESCRIPTION	QUANTITY	UNIT	UNIT PRIC	FP	AMOUNT
0370	23378EC		CONCRETE SEALING	1,746.00	SQFT		\$	
0380	25017ED		RAIL SYSTEM SIDE MOUNTED MGS	113.00	LF		\$	

Section: 0004 - DEMOBILIZATION

LINE	BID CODE	ALT	DESCRIPTION	QUANTITY	UNIT	UNIT PRIC	FP	AMOUNT
0390	02569		DEMOBILIZATION	1.00	LS		\$	