



**CALL NO. 321**

**CONTRACT ID. 214110**

**LAUREL COUNTY**

**FED/STATE PROJECT NUMBER FE04 063 0025 012-013**

**DESCRIPTION NORTH MAIN STREET (US 25)**

**WORK TYPE SIGNS-LIGHTING-SIGNALS**

**PRIMARY COMPLETION DATE 11/30/2021**

**LETTING DATE: July 23,2021**

Sealed Bids will be received electronically through the Bid Express bidding service until 10:00 am EASTERN DAYLIGHT TIME July 23,2021. Bids will be publicly announced at 10:00 am EASTERN DAYLIGHT TIME.

**NO PLANS ASSOCIATED WITH THIS PROJECT.**

**REQUIRED BID PROPOSAL GUARANTY:** Not less than 5% of the total bid.



**TABLE OF CONTENTS**

|          |   |
|----------|---|
| PART I   | SCOPE OF WORK <ul style="list-style-type: none"><li>• PROJECT(S), COMPLETION DATE(S), &amp; LIQUIDATED DAMAGES</li><li>• CONTRACT NOTES</li><li>• STATE CONTRACT NOTES</li><li>• LIQUIDATED DAMAGES</li><li>• WASTE AND BORROW SITES</li><li>• COORDINATION OF WORK WITH OTHER CONTRACTS</li><li>• TRAFFIC CONTROL PLAN</li><li>• UTILITY IMPACT &amp; RAIL CERTIFICATION NOTES</li><li>• DETAIL SHEET(S)</li></ul> |
| PART II  | SPECIFICATIONS AND STANDARD DRAWINGS <ul style="list-style-type: none"><li>• SPECIFICATIONS REFERENCE</li><li>• SUPPLEMENTAL SPECIFICATION</li></ul>  |
| PART III | EMPLOYMENT, WAGE AND RECORD REQUIREMENTS <ul style="list-style-type: none"><li>• LABOR AND WAGE REQUIREMENTS</li><li>• EXECUTIVE BRANCH CODE OF ETHICS</li><li>• KENTUCKY EQUAL EMPLOYMENT OPPORTUNITY ACT OF 1978<br/>LOCALITY / STATE</li><li>• PROJECT WAGE RATES / STATE FUNDED</li></ul>   |
| PART IV  | INSURANCE   |
| PART V   | BID ITEMS   |



# **PART I**

## **SCOPE OF WORK**



**ADMINISTRATIVE DISTRICT - 11**

**CONTRACT ID - 214110**  
**FE04 063 0025 012-013**  
**COUNTY - LAUREL**  
**PCN - 1106300252101**

NORTH MAIN STREET (US 25) (MP 12.042) FROM 0.019 MILES SOUTH OF THIRD STREET EXTENDING  
NORTHERLY TO 0.019 MILES NORTH OF KY1006. (MP 12.182), A DISTANCE OF 0.14 MILES.SIGNS-LIGHTING-  
SIGNALS  
GEOGRAPHIC COORDINATES LATITUDE 37:07:42.10 LONGITUDE 84:04:59.66

**COMPLETION DATE(S):**  
COMPLETED BY 11/30/2021                      APPLIES TO ENTIRE CONTRACT



## **CONTRACT NOTES**

### **PROPOSAL ADDENDA**

All addenda to this proposal must be applied when calculating bid and certified in the bid packet submitted to the Kentucky Department of Highways. Failure to use the correct and most recent addenda may result in the bid being rejected.

### **BID SUBMITTAL**

Bidder must use the Department's electronic bidding software. The Bidder must download the bid file located on the Bid Express website ([www.bidx.com](http://www.bidx.com)) to prepare a bid packet for submission to the Department. The bidder must submit electronically using Bid Express.

### **JOINT VENTURE BIDDING**

Joint venture bidding is permissible. All companies in the joint venture must be prequalified in one of the work types in the Qualifications for Bidders for the project. The bidders must get a vendor ID for the joint venture from the Division of Construction Procurement and register the joint venture as a bidder on the project. Also, the joint venture must obtain a digital ID from Bid Express to submit a bid. A joint bid bond of 5% may be submitted for both companies or each company may submit a separate bond of 5%.

### **UNDERGROUND FACILITY DAMAGE PROTECTION**

The contractor shall make every effort to protect underground facilities from damage as prescribed in the Underground Facility Damage Protection Act of 1994, Kentucky Revised Statute KRS 367.4901 to 367.4917. It is the contractor's responsibility to determine and take steps necessary to be in compliance with federal and state damage prevention directives. When prescribed in said directives, the contractor shall submit Excavation Locate Requests to the Kentucky Contact Center (KY811) via web ticket entry. The submission of this request does not relieve the contractor from the responsibility of contacting non-member facility owners, whom shall be contacted through their individual Protection Notification Center. Non-compliance with these directives can result in the enforcement of penalties.

### **REGISTRATION WITH THE SECRETARY OF STATE BY A FOREIGN ENTITY**

Pursuant to KRS 176.085(1)(b), an agency, department, office, or political subdivision of the Commonwealth of Kentucky shall not award a state contract to a person that is a foreign entity required by [KRS 14A.9-010](#) to obtain a certificate of authority to transact business in the Commonwealth ("certificate") from the Secretary of State under [KRS 14A.9-030](#) unless the person produces the certificate within fourteen (14) days of the bid or proposal opening. If the foreign entity is not required to obtain a certificate as provided in [KRS 14A.9-010](#), the foreign entity should identify the applicable exception. Foreign entity is defined within [KRS 14A.1-070](#).



**For all foreign entities required to obtain a certificate of authority to transact business in the Commonwealth, if a copy of the certificate is not received by the contracting agency within the time frame identified above, the foreign entity's solicitation response shall be deemed non-responsive or the awarded contract shall be cancelled.**

Businesses can register with the Secretary of State at <https://secure.kentucky.gov/sos/ftbr/welcome.aspx>.

### **SPECIAL NOTE FOR PROJECT QUESTIONS DURING ADVERTISEMENT**

Questions about projects during the advertisement should be submitted in writing to the Division of Construction Procurement. This may be done by fax (502) 564-7299 or email to [kytc.projectquestions@ky.gov](mailto:kytc.projectquestions@ky.gov). The Department will attempt to answer all submitted questions. The Department reserves the right not to answer if the question is not pertinent or does not aid in clarifying the project intent.

The deadline for posting answers will be 3:00 pm Eastern Daylight Time, the day preceding the Letting. Questions may be submitted until this deadline with the understanding that the later a question is submitted, the less likely an answer will be able to be provided.

The questions and answers will be posted for each Letting under the heading "Questions & Answers" on the Construction Procurement website ([www.transportation.ky.gov/contract](http://www.transportation.ky.gov/contract)). The answers provided shall be considered part of this Special Note and, in case of a discrepancy, will govern over all other bidding documents.

### **HARDWOOD REMOVAL RESTRICTIONS**

The US Department of Agriculture has imposed a quarantine in Kentucky and several surrounding states, to prevent the spread of an invasive insect, the emerald ash borer. Hardwood cut in conjunction with the project may not be removed from the state. Chipping or burning on site is the preferred method of disposal.

### **INSTRUCTIONS FOR EXCESS MATERIAL SITES AND BORROW SITES**

Identification of excess material sites and borrow sites shall be the responsibility of the Contractor. The Contractor shall be responsible for compliance with all applicable state and federal laws and may wish to consult with the US Fish and Wildlife Service to seek protection under Section 10 of the Endangered Species Act for these activities.

### **ACCESS TO RECORDS**

The contractor, as defined in KRS 45A.030 (9) agrees that the contracting agency, the Finance and Administration Cabinet, the Auditor of Public Accounts, and the Legislative Research Commission, or their duly authorized representatives, shall have access to any books, documents, papers, records, or other evidence, which are directly pertinent to this contract for the purpose of financial audit or program review. Records and other prequalification information confidentially



disclosed as part of the bid process shall not be deemed as directly pertinent to the contract and shall be exempt from disclosure as provided in KRS 61.878(1)(c). The contractor also recognizes that any books, documents, papers, records, or other evidence, received during a financial audit or program review shall be subject to the Kentucky Open Records Act, KRS 61.870 to 61.884.

In the event of a dispute between the contractor and the contracting agency, Attorney General, or the Auditor of Public Accounts over documents that are eligible for production and review, the Finance and Administration Cabinet shall review the dispute and issue a determination, in accordance with Secretary's Order 11-004.

April 30, 2018



## **SPECIAL NOTE FOR RECIPROCAL PREFERENCE**

### **RECIPROCAL PREFERENCE TO BE GIVEN BY PUBLIC AGENCIES TO RESIDENT BIDDERS**

By reference, KRS 45A.490 to 45A.494 are incorporated herein and in compliance regarding the bidders residency. Bidders who want to claim resident bidder status should complete the Affidavit for Claiming Resident Bidder Status along with their bid in the electronic bidding software. Submittal of the Affidavit should be done along the bid in Bid Express.

April 30, 2018



## **SPECIAL NOTES FOR COMPLETION DATES & LIQUIDATED DAMAGES**

---

The ultimate fixed completion date for this project will be **November 30, 2021**.  
Liquidated Damages for failure to complete the project on time will be assessed following  
Section 108.09.

Contrary to Section 108.09, Liquidated Damages will be assessed for the months of December  
through March.

Contrary to Section 108.09, Liquidated Damages will be assessed regardless of whether  
seasonal limitations prohibit the Contractor from performing work on the controlling operation.

All liquidated damages will be applied accumulatively.

All other applicable portions of Section 108 apply.



## **SPECIAL PROVISION FOR WASTE AND BORROW SITES**

Obtain U.S. Army Corps of Engineer's approval before utilizing a waste or borrow site that involves "Waters of the United States". The Corps of Engineers defines "Waters of the United States" as perennial or intermittent streams, ponds or wetlands. The Corps of Engineers also considers ephemeral streams, typically dry except during rainfall but having a defined drainage channel, to be jurisdictional waters. Direct questions concerning any potential impacts to "Waters of the United States" to the attention of the appropriate District Office for the Corps of Engineers for a determination prior to disturbance. Be responsible for any fees associated with obtaining approval for waste and borrow sites from the U.S. Army Corps of Engineer or other appropriate regulatory agencies.

1-296 Waste & Borrow Sites  
01/02/2012



## **COORDINATION OF WORK WITH OTHER CONTRACTS**

Be advised, there may be an active project(s) adjacent to or within this project. The Engineer will coordinate the work of the Contractors. See Section 105.06.

1-3193 Coordination Contracts  
01/02/2012



**TRAFFIC CONTROL PLAN**

---

**TRAFFIC CONTROL GENERAL**

Except as provided herein, traffic shall be maintained in accordance with the current editions of the Manual on Uniform Traffic Control Devices (MUTCD), Standard Specifications, and the Standard and Sepia Drawings. Except for the roadway and traffic control bid items listed, all items of work necessary to maintain and control traffic will be paid at the lump sum bid price to “Maintain and Control Traffic”.

Contrary to Section 106.01, traffic control devices used on this project may be new, or used in like new condition, at the beginning of the work and maintained in like new condition until completion of the work. Any temporary traffic control items, devices, materials, and incidentals shall remain the property of the contractor unless otherwise addressed, when no longer needed.

**PROJECT PHASING & CONSTRUCTION PROCEDURES**

Do not erect lane closures on the following days:

|                          |   |
|--------------------------|---|
| Independence Day Weekend | Saturday, July 3, 2021 – Monday, July 5, 2021           |
| World Chicken Festival   | Monday, September 20, 2021 – Sunday, September 26, 2021 |
| Labor Day Weekend        | Friday, September 3, 2021 – Monday, September 6, 2021   |
| Thanksgiving Holiday     | Thursday, November 25, 2021 – Sunday, November 28, 2021 |

The Engineer may specify additional days when lane closures will not be allowed.

For mainline traffic, maintain one lane of traffic in each direction at all times during construction. Road closures will be permitted on the side streets, but only one intersection may have side street closures at any given time.

If traffic should be stopped due to construction operations, and a school bus or emergency vehicle on an official run arrives on the scene, make provisions for the passage of the school bus or emergency vehicle as quickly as possible.

The Department will allow night work on this project. Obtain the Engineer’s approval of the method of lighting prior to performing night work.

Take these restrictions into account in submitting bid. The Department will not consider any claims for money or grant contract time extensions for any delays to the Contractor as a result of these restrictions.



Traffic Control Plan  
Page 2 of 9

## **LANE CLOSURES**

Do not leave lane closures in place during non-working hours or prohibited periods, unless otherwise approved by the Engineer. No long term lane closures (more than 3 days) will be allowed; therefore, lane closures will not be measured for payment.

## **TEMPORARY SIGNS**

Temporary sign posts and splices shall be compliant with NCHRP 350 or MASH. Manufacturer's documentation validating this compliance shall be provided to the Engineer prior to installation. Temporary signs, including any splices, shall be installed according to manufacturer's specifications and installation recommendations. Contrary to section 112.04.02, only long-term temporary signs (temporary signs intended to be continuously in place for more than 3 days) will be measured for payment. Short-term temporary signs (temporary signs intended to be left in place for 3 days or less) will not be measured for payment but will be incidental to Maintain and Control Traffic.

## **CHANGEABLE MESSAGE SIGNS**

If deemed necessary, Portable Changeable Message Signs will be provided by the Department. The Contractor may be asked to assist in the placement and setup of the portable changeable message signs. The Engineer will determine placement locations and the messages to be displayed.

## **ARROW PANELS**

Use arrow panels as shown on the Standard Drawings or as directed by the Engineer. The Department will measure for payment the maximum number of arrow panels in concurrent use at the same time on a single day on all sections of the contract. The Department will measure individual Arrow Panels only once for payment, regardless of how many times they are set, reset, removed, and relocated during the duration of the project. The Department will not measure replacements for damaged Arrow Panels or for panels signs the Engineer directs be replaced due to poor condition or readability for payment. Retain possession of the Arrow Panels upon completion of the work.

## **TEMPORARY ENTRANCES**

The Engineer will not require the Contractor to provide continuous access to farms, single family, duplex, or triplex residential properties during working hours; however, provide reasonable egress and ingress to each such property when actual operations are not in progress at that location. Limit



## Traffic Control Plan

### Page 3 of 9

the time during which a farm or residential entrance is blocked to the minimum length of time required for actual operations, not extended for the Contractor's convenience, and in no case exceeding six (6) hours. Notify all residents twenty-four hours in advance of any driveway or entrance closings and make any accommodations necessary to meet the access needs of disabled residents.

Except as allowed by the Phasing as specified above, maintain direct access to all side streets and roads, schools, churches, commercial properties and apartments or apartment complexes of four or more units at all times.

The Department will measure asphalt materials required to construct and maintain any temporary entrances which may be necessary to provide temporary access; however, the Department will not measure aggregates, excavation, and/or embankment, but shall be incidental to Maintain and Control Traffic. The Engineer will determine the type of surfacing material, asphalt or aggregate, to be used at each entrance.

## **BARRICADES**

The Department will not measure barricades used in lieu of barrels and cones for channelization or delineation, but shall be incidental to Maintain and Control Traffic according to Section 112.04.01.

The Department will measure barricades used to protect pavement removal areas in individual units. Each. The Department will measure for payment the maximum number of barricades in concurrent use at the same time on a single day on all sections of the contract. The Department will measure individual barricades only once for payment, regardless of how many times they are set, reset, removed, and relocated during the duration of the project. The Department will not measure replacements for damaged barricades the Engineer directs to be replaced due to poor condition or reflectivity. Retain possession of the Barricades upon completion of the work.

## **PAVEMENT MARKINGS**

If there is to be a deviation from the existing striping plan, the Engineer will furnish the Contractor a striping plan prior to placement of the final surface course. Install Temporary Striping according to Section 112 with the following exceptions:

1. Include edge lines in Temporary Striping; and
2. Place Temporary or Permanent Striping before opening a lane to traffic; and
3. If the Contractor's operations or phasing requires temporary markings that must subsequently be removed from the final surface course, use an approved removable lane tape; however, the Department will not measure removable lane tape for separate payment, but will measure and pay for removable lane tape as temporary striping.



Traffic Control Plan  
Page 4 of 9

## PAVEMENT EDGE DROP-OFFS

Do not allow a pavement edge between opposing directions of traffic or lanes that traffic is expected to cross in a lane change situation with an elevation difference greater than 1½". Place Warning signs (MUTCD W8-11 or W8-9A) in advance of and at 1500' intervals throughout the drop-off area. Dual post the signs on both sides of the traveled way. Wedge all transverse transitions between resurfaced and unresurfaced areas which traffic may cross with asphalt mixture for leveling and wedging. Remove the wedges prior to placement of the final surface course.

Protect pavement edges that traffic is not expected to cross, except accidentally, as follows:

Less than 2" - No protection required.

2" to 4" - Place plastic drums, vertical panels, or barricades every 50 feet. During daylight working hours only, the Engineer will allow the Contractor to use cones in lieu of plastic drums, panels, and barricades. Wedge the drop-off with DGA or asphalt mixture for leveling and wedging with a 1:1 or flatter slope in daylight hours, or 3:1 or flatter slope during nighttime hours, when work is not active in the drop-off area.

Greater than 4' - Protect drop-offs greater than 4 inches within 10 feet of traffic by placing drums, vertical panels, or barricades every 25 feet. The Engineer will not allow the use of cones in lieu of drums, vertical panels, or barricades for drop-offs greater than 4". Place Type III Barricades directly in front of the drop-off facing oncoming traffic in both directions of travel. Provide warning signs as shown on the Standard Drawings or as directed by the Engineer

Pedestrians & Bicycles - Protect pedestrian and bicycle traffic as directed by the engineer.



Traffic Control Plan  
Page 5 of 9

## **USE AND PLACEMENT OF CHANGEABLE MESSAGE SIGNS**

The following policy is based upon current Changeable Message Signs (CMS) standards and practice from many sources, including the Federal Highway Administration (FHWA), other State Departments of Transportation, and Traffic Safety Associations. It is understood that each CMS installation or use requires individual consideration due to the specific location or purpose. However, there will be elements that are constant in nearly all applications. Accordingly these recommended guidelines bring a level of uniformity, while still being open to regional experience and engineering judgment.

### **Application**

The primary purpose of CMS is to advise the driver of unexpected traffic and routing situations. Examples of applications where CMS can be effective include:

- Closures (road, lane, bridge, ramp, shoulder, interstate)
- Changes in alignment or surface conditions
- Significant delays, congestion
- Construction/maintenance activities (delays, future activities)
- Detours/alternative routes
- Special events with traffic and safety implications
- Crash/incidents
- Vehicle restrictions (width, height, weight, flammable)
- Advance notice of new traffic control devices
- Real-time traffic conditions (must be kept up to date)
- Weather /driving conditions, environmental conditions, Roadway Weather Information Systems
- Emergency Situations
- Referral to Highway Advisory Radio (if available)
- Messages as approved by the County Engineer's Office

### **CMS should not be used for:**

- Replacement of static signs (e.g. road work ahead), regulatory signage (e.g. speed limits), pavement markings, standard traffic control devices, conventional warning or guide signs.
- Replacement of lighted arrow board
- Advertising (Don't advertise the event unless clarifying "action" to be taken by driver – e.g. Speedway traffic next exit)
- Generic messages
- Test messages (portable signs only)
- Describe recurrent congestion (e.g. rush hour)
- Public service announcements (not traffic related)



## Traffic Control Plan Page 6 of 9

### **Messages**

Basic principles that are important to providing proper messages and insuring the proper operation of a CMS are:

- Visible for at least ½ mile under ideal daytime and nighttime conditions
- Legible from all lanes a minimum of 650 feet
- Entire message readable twice while traveling at the posted speed
- No more than two message panels should be used (three panels may be used on roadways where vehicles are traveling less than 45 mph). A panel is the message that fits on the face of the sign without flipping or scrolling.
- Each panel should convey a single thought; short and concise
- Do not use two unrelated panels on a sign
- Do not use the sign for two unrelated messages
- Should not scroll text horizontally or vertically
- Should not contain both the words left and right
- Use standardized abbreviations and messages
- Should be accurate and timely
- Avoid filler/unnecessary words and periods (hazardous, a, an, the)
- Avoid use of speed limits
- Use words (not numbers) for dates

### **Placement**

Placement of the CMS is important to insure that the sign is visible to the driver and provides ample time to take any necessary action. Some of the following principles may only be applicable to controlled access roadways. The basic principles of placement for a CMS are:

- When 2 signs are needed, place on same side of roadway and at least 1,000 feet apart
- Place behind semi-rigid/rigid protection (guardrail, barrier) or outside of the clear zone
- Place 1,000 feet in advance of work zone; at least one mile ahead of decision point
- Normally place on right side of roadway; but should be placed closest to the affected lane so that either side is acceptable
- Signs should not be dual mounted (one on each side of roadway facing same direction)
- Point trailer hitch downstream
- Secure to immovable object to prevent theft (if necessary)
- Do not place in sags or just beyond crest
- Check for reflection of sun to prevent the blinding of motorist
- Should be turned ~3 degrees outward from perpendicular to the edge of pavement
- Bottom of sign should be 7 feet above the elevation of edge of roadway
- Should be removed when not in use



Traffic Control Plan  
Page 7 of 9

**Standard Abbreviations**

The following is a list of standard abbreviations to be used on CMS:

| <b><u>Word</u></b>  | <b><u>Abbrev</u></b> | <b><u>Example</u></b>                  |
|---------------------|----------------------|--|
| Access              | ACCS                 | ACCIDENT AHEAD/ USE ACCS RD NEXT RIGHT |
| Alternate           | ALT                  | ACCIDENT AHEAD/ USE ALT RTE NEXT RIGHT |
| Avenue              | AVE                  | FIFTH AVE CLOSED/ DETOUR NEXT LEFT     |
| Blocked             | BLKD                 | FIFTH AVE BLKD/ MERGE LEFT             |
| Boulevard           | BLVD                 | MAIN BLVD CLOSED/ USE ALT RTE          |
| Bridge              | BRDG                 | SMITH BRDG CLOSED/ USE ALT RTE         |
| Cardinal Directions | N, S, E, W           | N I75 CLOSED/ DETOUR EXIT 30           |
| Center              | CNTR                 | CNTR LANE CLOSED/ MERGE LEFT           |
| Commercial          | COMM                 | OVRSZ COMM VEH/ USE I275               |
| Condition           | COND                 | ICY COND POSSIBLE                      |
| Congested           | CONG                 | HVY CONG NEXT 3 MI                     |
| Construction        | CONST                | CONST WORK AHEAD/ EXPECT DELAYS        |
| Downtown            | DWNTN                | DWNTN TRAF USE EX 40                   |
| Eastbound           | E-BND                | E-BND I64 CLOSED/ DETOUR EXIT 20       |
| Emergency           | EMER                 | EMER VEH AHEAD/ PREPARE TO STOP        |
| Entrance, Enter     | EX, EXT              | DWNTN TRAF USE EX 40                   |
| Expressway          | EXPWY                | WTRSN EXPWY CLOSED/ DETOUR EXIT 10     |
| Freeway             | FRWY, FWY            | GN SYNDR FWY CLOSED/ DETOUR EXIT 15    |
| Hazardous Materials | HAZMAT               | HAZMAT IN ROADWAY/ ALL TRAF EXIT 25    |
| Highway             | HWY                  | ACCIDENT ON AA HWY/ EXPECT DELAYS      |
| Hour                | HR                   | ACCIDENT ON AA HWY/ 2 HR DELAY         |
| Information         | INFO                 | TRAF INFO TUNE TO 1240 AM              |
| Interstate          | I                    | E-BND I64 CLOSED/ DETOUR EXIT 20       |
| Lane                | LN                   | LN CLOSED MERGE LEFT                   |
| Left                | LFT                  | LANE CLOSED MERGE LFT                  |
| Local               | LOC                  | LOC TRAF USE ALT RTE                   |
| Maintenance         | MAINT                | MAINT WRK ON BRDG/ SLOW                |
| Major               | MAJ                  | MAJ DELAYS I75/ USE ALT RTE            |
| Mile                | MI                   | ACCIDENT 3 MI AHEAD/ USE ALT RTE       |
| Minor               | MNR                  | ACCIDENT 3 MI MNR DELAY                |
| Minutes             | MIN                  | ACCIDENT 3 MI/ 30 MIN DELAY            |
| Northbound          | N-BND                | N-BND I75 CLOSED/ DETOUR EXIT 50       |
| Oversized           | OVRSZ                | OVRSZ COMM VEH/ USE I275 NEXT RIGHT    |
| Parking             | PKING                | EVENT PKING NEXT RGT                   |
| Parkway             | PKWY                 | CUM PKWAY TRAF/ DETOUR EXIT 60         |
| Prepare             | PREP                 | ACCIDENT 3 MI/ PREP TO STOP            |
| Right               | RGT                  | EVENT PKING NEXT RGT                   |
| Road                | RD                   | HAZMAT IN RD/ ALL TRAF EXIT 25         |
| Roadwork            | RDWK                 | RDWK NEXT 4 MI/ POSSIBLE DELAYS        |
| Route               | RTE                  | MAJ DELAYS I75/ USE ALT RTE            |
| Shoulder            | SHLDR                | SHLDR CLOSED NEXT 5 MI                 |
| Slippery            | SLIP                 | SLIP COND POSSIBLE/ SLOW SPD           |
| Southbound          | S-BND                | S-BND I75 CLOSED/ DETOUR EXIT 50       |
| Speed               | SPD                  | SLIP COND POSSIBLE/ SLOW SPD           |



Traffic Control Plan  
Page 8 of 9

**Standard Abbreviations** (cont)

| <b><u>Word</u></b> | <b><u>Abbrev</u></b> | <b><u>Example</u></b>               |
|--------------------|----------------------|-------------------------------------|
| Street             | ST                   | MAIN ST CLOSED/ USE ALT RTE         |
| Traffic            | TRAF                 | CUM PKWAY TRAF/ DETOUR EXIT 60      |
| Vehicle            | VEH                  | OVRSZ COMM VEH/ USE I275 NEXT RIGHT |
| Westbound          | W-BND                | W-BND I64 CLOSED/ DETOUR EXIT 50    |
| Work               | WRK                  | CONST WRK 2MI/ POSSIBLE DELAYS      |

Certain abbreviations are prone to inviting confusion because another word is abbreviated or could be abbreviated in the same way. DO NO USE THESE ABBREVIATIONS:

| <b><u>Abbrev</u></b> | <b><u>Intended Word</u></b> | <b><u>Word Erroneously Given</u></b> |
|----------------------|-----------------------------|--------------------------------------|
| ACC                  | Accident                    | Access (Road)                        |
| CLRS                 | Clears                      | Colors                               |
| DLY                  | Delay                       | Daily                                |
| FDR                  | Feeder                      | Federal                              |
| L                    | Left                        | Lane (merge)                         |
| LOC                  | Local                       | Location                             |
| LT                   | Light (traffic)             | Left                                 |
| PARK                 | Parking                     | Park                                 |
| POLL                 | Pollution (index)           | Poll                                 |
| RED                  | Reduce                      | Red                                  |
| STAD                 | Stadium                     | Standard                             |
| TEMP                 | Temporary                   | Temperature                          |
| WRNG                 | Warning                     | Wrong                                |

**Typical Messages**

The following is a list of typical messages used on CMS. The list consists of the reason or problem that you want the driver to be aware of and the action that you want the driver to take.

| <b><u>Reason/Problem</u></b> | <b><u>Action</u></b> |
|------------------------------|----------------------|
| ACCIDENT                     | ALL TRAFFIC EXIT RT  |
| ACCIDENT/XX MILES            | AVOID DELAY USE XX   |
| XX ROAD CLOSED               | CONSIDER ALT ROUTE   |
| XX EXIT CLOSED               | DETOUR               |
| BRIDGE CLOSED                | DETOUR XX MILES      |
| BRIDGE/(SLIPPERY, ICE, ETC.) | DO NOT PASS          |
| CENTER/LANE/CLOSED           | EXPECT DELAYS        |
| DELAY(S), MAJOR/DELAYS       | FOLLOW ALT ROUTE     |
| DEBRIS AHEAD                 | KEEP LEFT            |
| DENSE FOG                    | KEEP RIGHT           |
| DISABLED/VEHICLE             | MERGE XX MILES       |
| EMER/VEHICLES/ONLY           | MERGE LEFT           |
| EVENT PARKING                | MERGE RIGHT          |
| EXIT XX CLOSED               | ONE-WAY TRAFFIC      |
| FLAGGER XX MILES             | PASS TO LEFT         |
| FOG XX MILES                 | PASS TO RIGHT        |



Traffic Control Plan  
Page 9 of 9

**Typical Messages (cont)**

**Reason/Problem**

FREEWAY CLOSED  
FRESH OIL  
HAZMAT SPILL  
ICE  
INCIDENT AHEAD  
LANES (NARROW, SHIFT, MERGE, ETC.)  
LEFT LANE CLOSED  
LEFT LANE NARROWS  
LEFT 2 LANES CLOSED  
LEFT SHOULDER CLOSED  
LOOSE GRAVEL  
MEDIAN WORK XX MILES  
MOVING WORK ZONE, WORKERS IN ROADWAY  
NEXT EXIT CLOSED  
NO OVERSIZED LOADS  
NO PASSING  
NO SHOULDER  
ONE LANE BRIDGE  
PEOPLE CROSSING  
RAMP CLOSED  
RAMP (SLIPPERY, ICE, ETC.)  
RIGHT LANE CLOSED  
RIGHT LANE NARROWS  
RIGHT SHOULDER CLOSED  
ROAD CLOSED  
ROAD CLOSED XX MILES  
ROAD (SLIPPERY, ICE, ETC.)  
ROAD WORK  
ROAD WORK (OR CONSTRUCTION) (TONIGHT, TODAY, TOMORROW, DATE)  
ROAD WORK XX MILES  
SHOULDER (SLIPPERY, ICE, SOFT, BLOCKED, ETC.)  
NEW SIGNAL XX MILES  
SLOW 1 (OR 2) - WAY TRAFFIC  
SOFT SHOULDER  
STALLED VEHICLES AHEAD  
TRAFFIC BACKUP  
TRAFFIC SLOWS  
TRUCK CROSSING  
TRUCKS ENTERING  
TOW TRUCK AHEAD  
UNEVEN LANES  
WATER ON ROAD  
WET PAINT  
WORK ZONE XX MILES  
WORKERS AHEAD

**Action**

PREPARE TO STOP  
REDUCE SPEED  
SLOW  
SLOW DOWN  
STAY IN LANE  
STOP AHEAD  
STOP XX MILES  
TUNE RADIO 1610 AM  
USE NN ROAD  
USE CENTER LANE  
USE DETOUR ROUTE  
USE LEFT TURN LANE  
USE NEXT EXIT  
USE RIGHT LANE  
WATCH FOR FLAGGER



## UTILITIES AND RAIL CERTIFICATION NOTE

**Laurel County -  
FE04 063 0025 012-013  
Replace Traffic Signals Along US25 (South Main St)**

---

*Utility coordination efforts conducted by the project sponsor have determined that no significant utility relocation work is required to complete the project. The contractor should confirm this before beginning work. Any work pertaining to these utility facilities is defined in the bid package and is to be carried out as instructed by the Kentucky Transportation Cabinet. The contractor will be responsible for any coordination or adjustments that are discussed or quantified in the proposal.*

**THE FOLLOWING RAIL COMPANIES HAVE FACILITIES IN CONJUNCTION WITH THIS PROJECT AS NOTED**

☒ **No Rail Involved**      ☐ **Minimal Rail Involved (See Below)**      ☐ **Rail Involved (See Below)**

**UNDERGROUND FACILITY DAMAGE PROTECTION – BEFORE YOU DIG**

The contractor shall make every effort to protect underground facilities from damage as prescribed in the Underground Facility Damage Protection Act of 1994, Kentucky Revised Statute KRS 367.4901 to 367.4917. It is the contractor's responsibility to determine and take steps necessary to be in compliance with federal and state damage prevention directives. The contractor is instructed to contact KY 811 for the location of existing underground utilities. Contact shall be made a minimum of two (2) and no more than ten (10) business days prior to excavation.

The contractor shall submit Excavation Locate Requests to the Kentucky Contact Center (KY 811) via web ticket entry. The submission of this request does not relieve the contractor from the responsibility of contacting non-member facility owners, whom are to be contacted through their individual Protection Notification Center. It may be necessary for the contractor to contact the County Court Clerk to determine what utility companies have facilities in the area. Non-compliance with these directives can result in the enforcement of penalties.

### **SPECIAL CAUTION NOTE – PROTECTION OF UTILITIES**

The contractor will be responsible for contacting all utility facility owners on the subject project to coordinate his activities. The contractor will coordinate his activities to minimize and, where possible, avoid conflicts with utility facilities. Due to the nature of the work proposed, it is unlikely to conflict with the existing utilities beyond minor facility adjustments. Where conflicts with utility facilities are unavoidable, the contractor will coordinate any necessary relocation work with the facility owner and the Engineer. The Kentucky Transportation Cabinet maintains the right to remove or alter portions of this contract if a utility conflict occurs.

The utility facilities as noted in the previous section(s) have been determined using data garnered by varied means and with varying degrees of accuracy: from the facility owners, a result of S.U.E., field inspections, and/or reviews of record drawings. The facilities defined may not be inclusive of all utilities in the project scope and are not Level A quality, unless specified as such. It is the contractor's responsibility to verify all utilities and their respective locations before excavating.

***Please Note: The information presented in this Utility Note is informational in nature and the information contained herein is not guaranteed.***



UTILITIES AND RAIL CERTIFICATION NOTE

Laurel County -  
FE04 063 0025 012-013  
Replace Traffic Signals Along US25 (South Main St)

AREA UTILITIES CONTACT LIST

| <u>Utility Company/Agency</u> | <u>Contact Name</u> | <u>Contact Information</u> |
|-------------------------------|---------------------|----------------------------|
| London Utility Commission     | Steve Baker         | 606-864-2103               |
| KU                            | David Laun          | 606-864-2821               |
| Windstream                    | Bryan Reed          | 606-309-8438               |
| Delta Gas                     | Rob Nellipowitz     | 859-744-6171x1167          |

***NOTE: The Utilities Contact List is provided as informational only, and may not be a complete list of all Utility Companies with facilities in the project area.***



COMMONWEALTH OF KENTUCKY

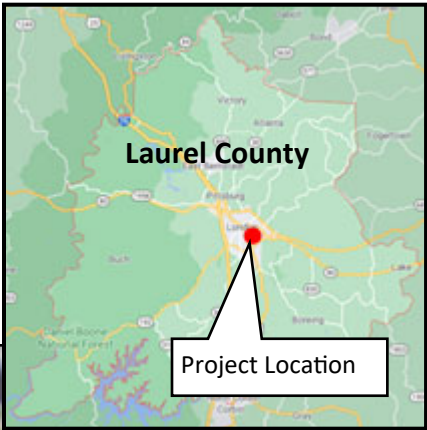
DEPARTMENT OF HIGHWAYS

|           |  |
|-----------|--|
| COUNTY OF |  |
| LAUREL    |  |

LAUREL COUNTY

US 25 — S. MAIN STREET

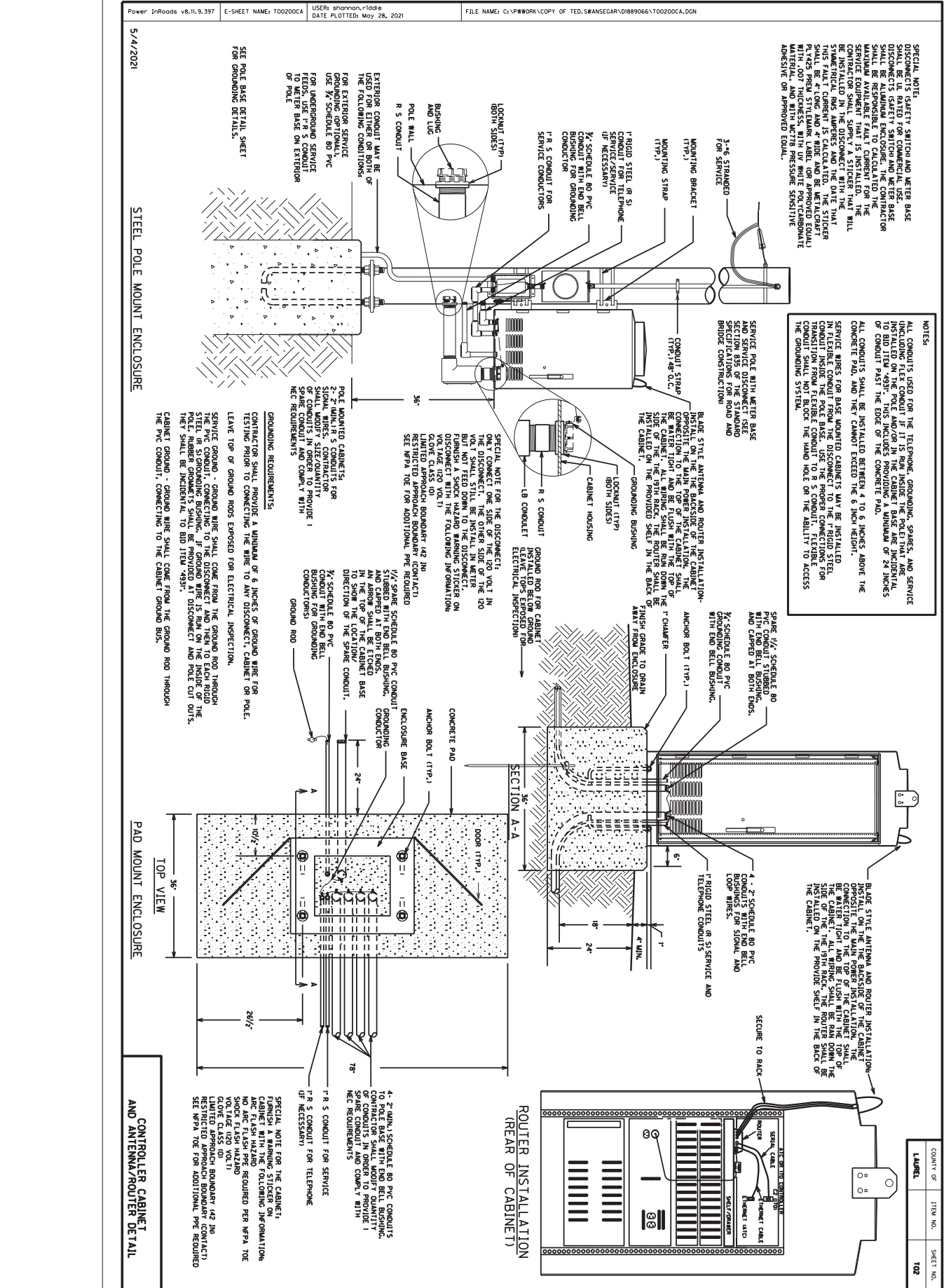
FE04 063 0052 012-013





[illegible]

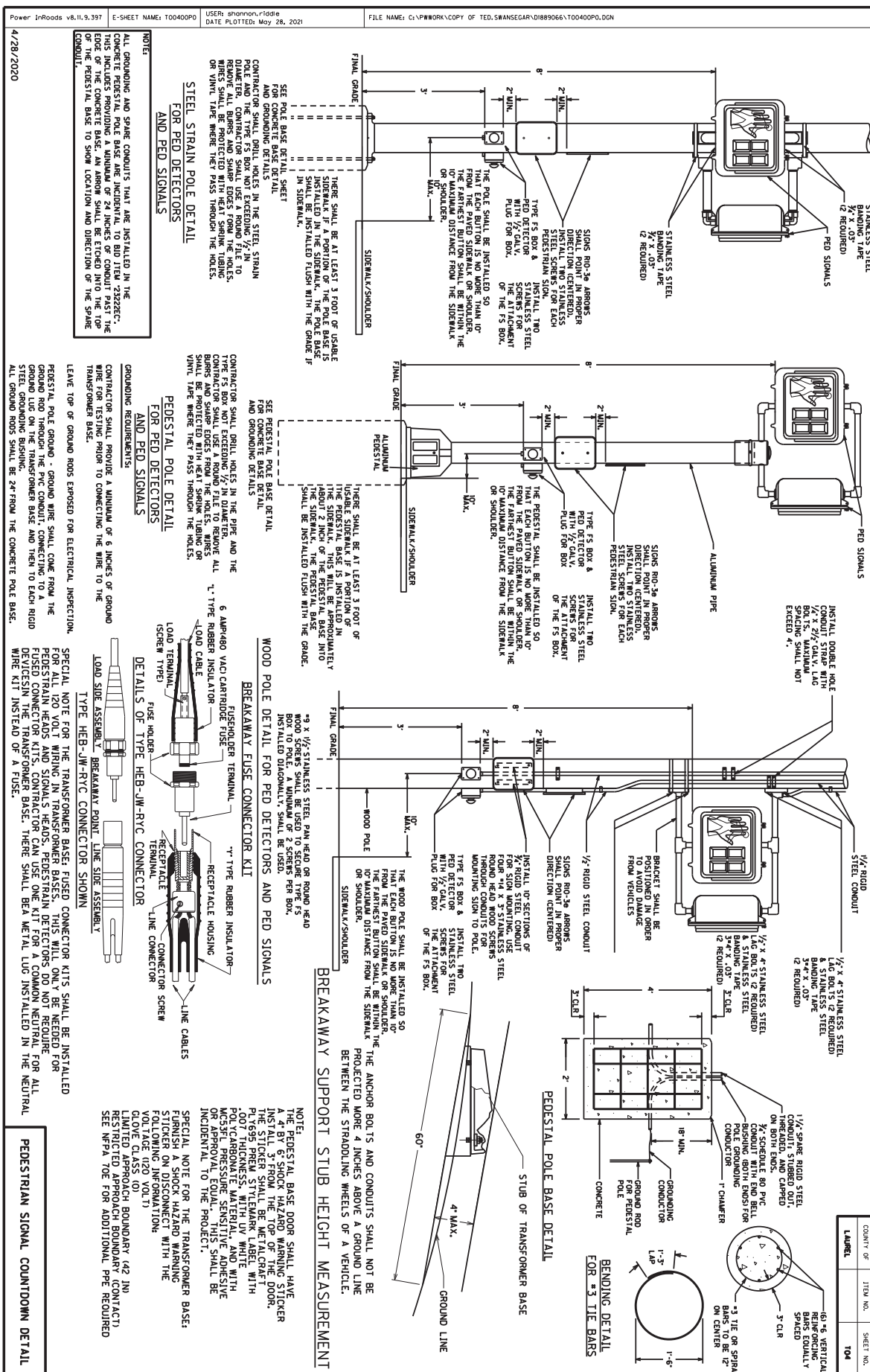




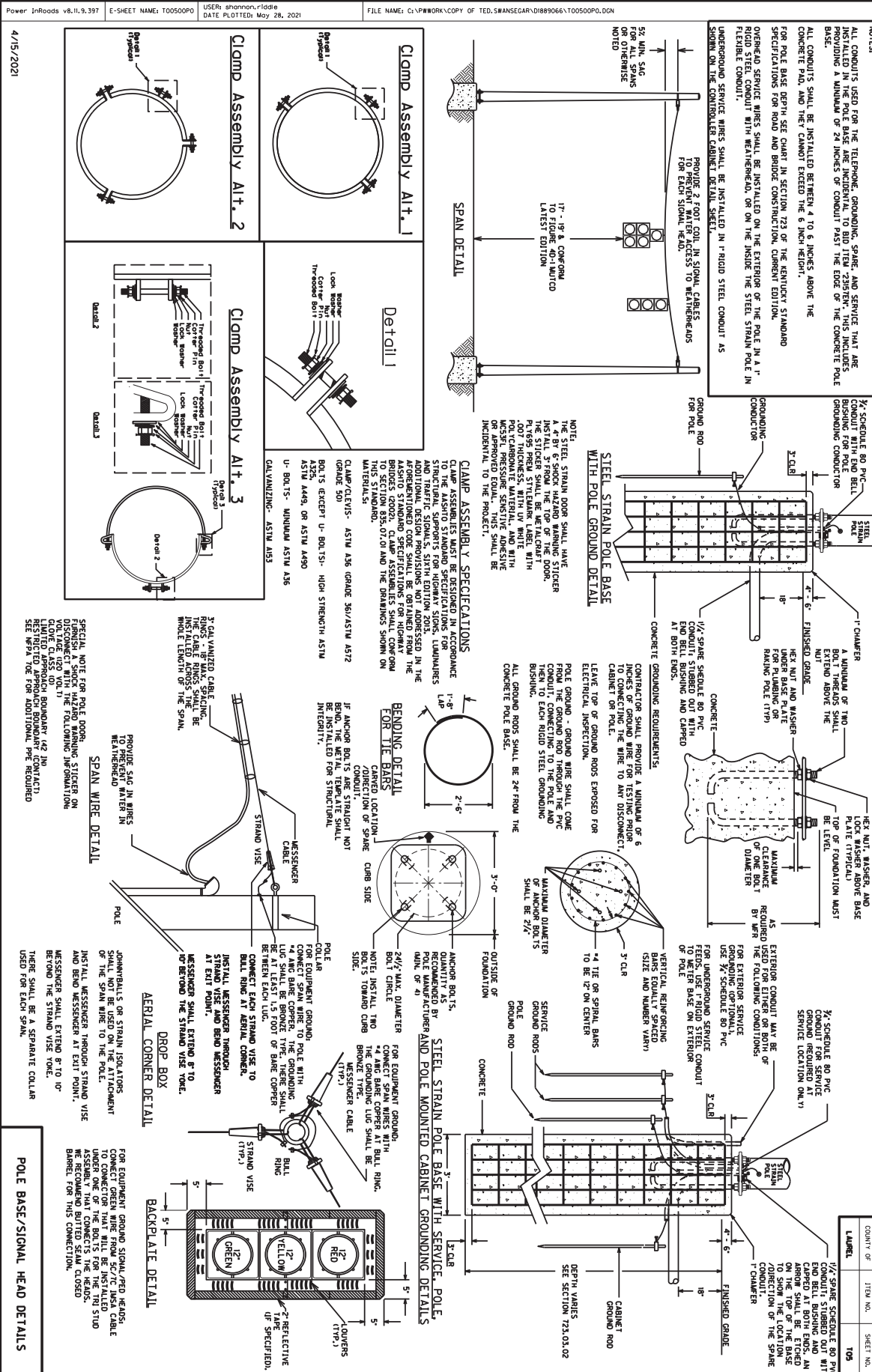




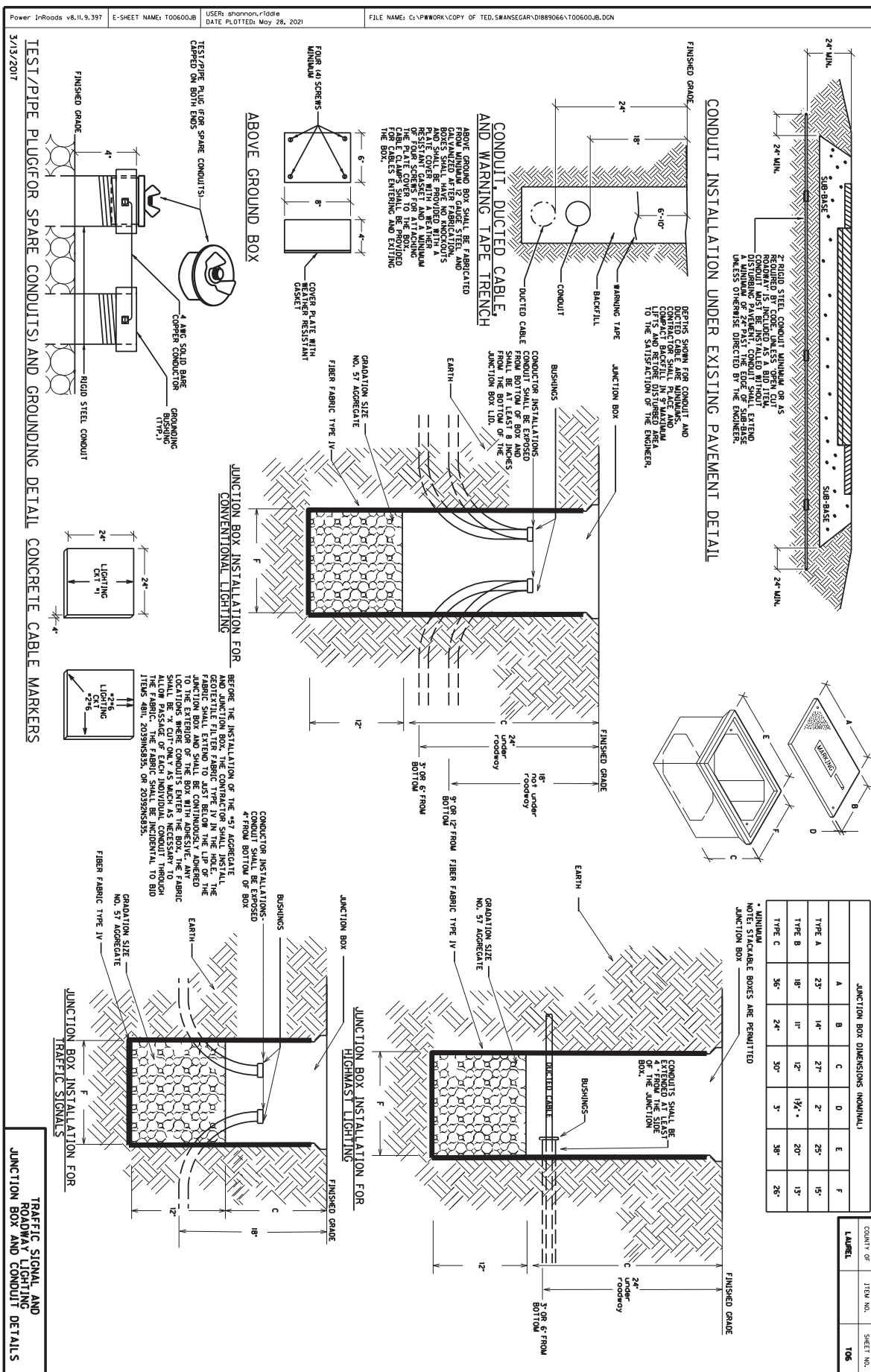


















Power: 110V/60Hz v5.11.9.2017

E-SHEET NAME: T008005

USER: sharon-j.pskoc

DATE PLOTTED: May 28, 2021

FILE NAME: C:\PWORK\COPY OF TED.SWAN\GOWD18800601008005G.DGN

### WIRING SCHEDULE

| CABLE   | CONDUIT | BOXING     | CONNECTING                 |
|---------|---------|------------|----------------------------|
| 1-14/5C | CONTR   | SH 2A & 4B | SH 2A & 4B                 |
| 1-14/5C | CONTR   | SH 4A & 4B | SH 4A & 4B                 |
| 1-14/5C | CONTR   | SH 6A      | SH 6A & 6B                 |
| 1-14/5C | CONTR   | SH 8B      | SH 8A & 8B                 |
| 1-14/7C | CONTR   | SH 1       | SH 5                       |
| 1-14/7C | CONTR   | SH 5       | PH 2C, 4C & 2 PED DETECTOR |
| 1-14/7C | CONTR   | POLE A     | PH 2D, 8C & 2 PED DETECTOR |
| 1-14/7C | CONTR   | POLE B     | PH 2D, 8D & 2 PED DETECTOR |
| 1-14/7C | CONTR   | POLE C     | PH 4D, 6C & 2 PED DETECTOR |
| 1-14/7C | CONTR   | POLE D     |                            |

### STEEL STRAIN POLES

| POLE | HEIGHT | SEAM | ALT. HGT. | CALC. SERV. MOMENT | SAG |
|------|--------|------|-----------|--------------------|-----|
| A    | 30'    | A-B  | 23.0'     | 99.76 k-ft         | 5%  |
| B    | 30'    | A-D  | 25.5'     |                    |     |
| B    | 30'    | B-A  | 24.0'     | 96.31 k-ft         | 5%  |
| C    | 30'    | B-C  | 25.5'     |                    |     |
| C    | 30'    | C-B  | 25.5'     | 96.34 k-ft         | 5%  |
| D    | 30'    | C-D  | 23.0'     |                    |     |
| D    | 30'    | D-A  | 25.5'     | 102.96 k-ft        | 5%  |
|      |        | D-C  | 22.0'     |                    |     |

**INSTALL STEEL STRAIN POLE "A" AT**  
N 3574637.283 LAT 37° 7' 42.871"  
E 540710.54 LON -84° 5' 01.25"  
INSTALL TYPE A/C CONTROLLER IN  
CONDUIT 1/2" SCH 80 PVC CONDUIT  
FROM CONTROLLER TO POLE "D"ON POLE "D" BRAD PRESENCE DETECTORS  
TYPE "W" AND ALL ASSOCIATED COMPONENTS  
INSTALL IN CABINE, ROUTER, ANTENNA  
AND POWER SUPPLY

**INSTALL STEEL STRAIN POLE "B" AT**  
N 3574637.283 LAT 37° 7' 42.871"  
E 540710.54 LON -84° 5' 01.25"  
INSTALL TYPE A/C CONTROLLER IN  
CONDUIT 1/2" SCH 80 PVC CONDUIT  
FROM CONTROLLER TO POLE "D"ON POLE "D" BRAD PRESENCE DETECTORS  
TYPE "W" AND ALL ASSOCIATED COMPONENTS  
INSTALL IN CABINE, ROUTER, ANTENNA  
AND POWER SUPPLY

**INSTALL STEEL STRAIN POLE "C" AT**  
N 3574637.283 LAT 37° 7' 42.871"  
E 540710.54 LON -84° 5' 01.25"  
INSTALL TYPE A/C CONTROLLER IN  
CONDUIT 1/2" SCH 80 PVC CONDUIT  
FROM CONTROLLER TO POLE "D"ON POLE "D" BRAD PRESENCE DETECTORS  
TYPE "W" AND ALL ASSOCIATED COMPONENTS  
INSTALL IN CABINE, ROUTER, ANTENNA  
AND POWER SUPPLY

**INSTALL STEEL STRAIN POLE "D" AT**  
N 3574637.283 LAT 37° 7' 42.871"  
E 540710.54 LON -84° 5' 01.25"  
INSTALL TYPE A/C CONTROLLER IN  
CONDUIT 1/2" SCH 80 PVC CONDUIT  
FROM CONTROLLER TO POLE "D"ON POLE "D" BRAD PRESENCE DETECTORS  
TYPE "W" AND ALL ASSOCIATED COMPONENTS  
INSTALL IN CABINE, ROUTER, ANTENNA  
AND POWER SUPPLY

### DETECTION SCHEDULE

| LOOP | PHASE | SLOT | CHANNEL | SIZE | TURNS | STOP BAR |
|------|-------|------|---------|------|-------|----------|
| 1    | 11    | 1    | N/A     |      | 0"    |          |
| 2    | 12    | 1    | N/A     |      | 0"    |          |
| 4    | 16    | 1    | N/A     |      | 0"    |          |
| 5    | 11    | 1    | N/A     |      | 0"    |          |
| 6    | 12    | 1    | N/A     |      | 0"    |          |
| 8    | 16    | 1    | N/A     |      | 0"    |          |

### FLASHING YELLOW ARROW SIGNAL WIRING AND SPECIAL REQUIREMENTS

**7-CONDUCTOR CABLE SECTION FOR FLY ON PHASE**

| CONNECTION                                      | COLOR  | OUTPUT FILE CONNECTION FOR FLY ON PHASE |
|---|--------|---|
| RED ARROW                                       | RED    | PHASE 1 RED                             |
| STEADY YELLOW ARROW                             | ORANGE | PHASE 5 YELLOW                          |
| FLASHING YELLOW ARROW WHITE/TRACE/PHASE 1 GREEN | GREEN  | PHASE 5 GREEN                           |
| GREEN ARROW                                     | GREEN  | PHASE 1 GREEN                           |
| NEUTRAL   | WHITE  | PHASE 2 WHITE                           |
| NOT USED  | BLUE   | PHASE 6 WHITE                           |
| NOT USED  | BLACK  |   |

THE CONTRACTOR SHALL CONNECT THE CONNECTOR LABELED "2P" 4P" 6P" 8P" TO THE CONNECTOR "CHU 13.6A" BEHIND THE OUTPUT PANEL. IF IT IS A SOLID STATE CABINET (SIDEWIND) THEY HAVE 2 CONNECTIONS WHICH SIMPLY NEED TO BE CONNECTED TOGETHER.

### SIGNAL HEADS

ALL INDICATORS L.E.D.

HEAD " 2A, 4B, 6C, 8D  
BA & 8B  
HEAD " 1 & 5

### LEGEND

SCALE 1" = 20'

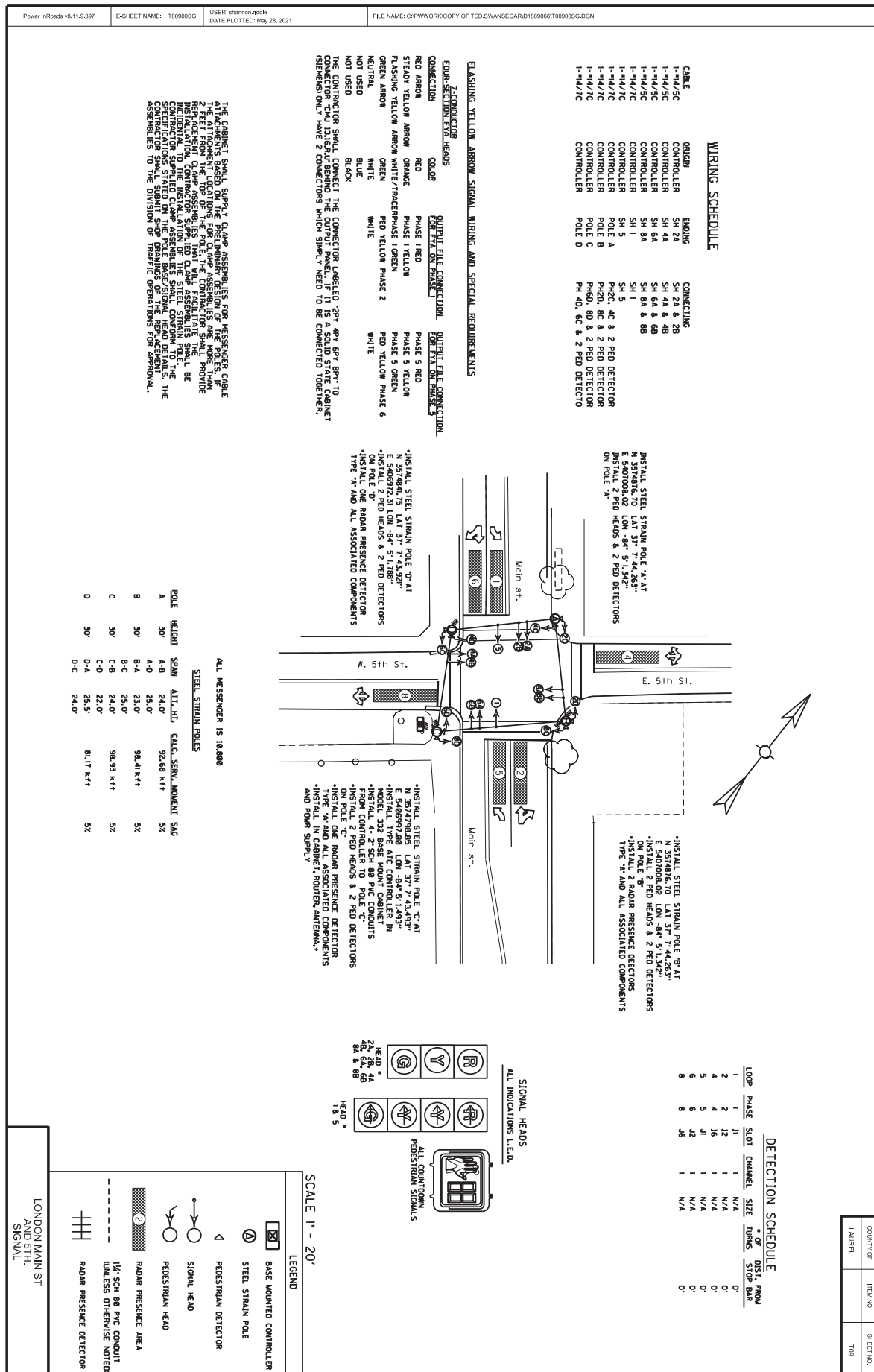
- BASE MOUNTED CONTROLLER
- STEEL STRAIN POLE
- PEDESTRIAN DETECTOR
- SIGNAL HEAD
- PEDESTRIAN HEAD
- RADAR PRESENCE AREA
- RADAR PRESENCE DETECTOR

UNLESS OTHERWISE NOTED

LONDON MAIN ST AND 4TH ST SIGNAL

| COUNTY OF | ITEM NO. | SHEET NO. |
|-----------|----------|-----------|
| LAIKEL    |          | 708       |







PROJECT MATERIALS RELEASE FORM  
FOR SIGNAL AND LIGHTING

Note: Email form with signatures to KYTC's warehouse (kim.stamper@ky.gov) at least two (2) days prior to arrival for pickup. Ensure Contractor's delivery driver has a copy of form with signatures. Failure to do either may result in long delays or refusal to distribute materials upon arrival.

Item Number: \_\_\_\_\_  
County: 63  
Description: US 25 London Main st signals at 3rd, 4th & 5th

| Cabinets | Master code |  |
|----------|-------------|--|
| 3        | T-01-0020   | Base Mounted 332 Cabinet   |
| 3        | T-01-0105   | ATC Controller   |
| 3        | T-01-0106   | 1C w/Maxtime (this should go with item ATC controller)               |
| 3        | T-01-0501   | Conflict Monitor, Model 2018   |
| 9        | T-01-0510   | Isolator, Model 242 (1 for 2070, plus for ped detector and railroad) |
| 18       | T-01-0600   | Loop Detector, Model 222   |
| 17       | T-01-0700   | Load Switches  |

| Signals |           |   |
|---------|-----------|---|
| 24      | T-02-0009 | Siemens 3 Section Signal                |
| 24      | T-02-0032 | Siemen 3 section backplate              |
| 5       | T-02-0033 | Siemen 4 secton 12" signal (poly)       |
| 5       | T-02-0043 | Siemen 4-sec. straight signal backplate |
| 24      | T-02-0090 | Pedestrian signal housing               |
| 5       | T-02-0300 | LED Module 12" red arrow                |
| 10      | T-02-0310 | LED Module 12" yellow arrow             |
| 5       | T-02-0320 | LED Module 12" green arrow              |
| 24      | T-02-0330 | LED Module 12" red ball                 |
| 24      | T-02-0340 | LED Module 12" yellow ball              |
| 24      | T-02-0350 | LED Module 12" green ball               |
| 24      | T-02-0365 | LED Countdown Pedestrian Module         |

| Special items |           |   |
|---------------|-----------|---|
| 3             | T-02-0504 | Router (this includes power supply/antenna/cabling) |
| 1             | T-02-0660 | Pedstl.top mntg.bkt Two-way                         |
| 1             | T-02-0670 | Pedestal  |
| 24            | T-06-0710 | Ped Detector Pole Mount FSA Box                     |
| 24            | T-06-0730 | Ped Button w/o Plunger                              |
| 24            | T-17-0015 | 9 X 15 Countdown Ped Sign DBL Sided                 |

| Poles |           |                           |
|-------|-----------|---------------------------|
| 12    | T-04-0020 | Steel Strain Pole 30 foot |

Electrical Contractor Name  
Electrical Contractor Supervisor  
Project Engineer  
Project Engineer attests that the mentioned contractor is the actual electrical contractor on this project  
Signature of Project Engineer or Designee

\_\_\_\_\_  
\_\_\_\_\_  
\_\_\_\_\_  
\_\_\_\_\_  
\_\_\_\_\_

Contact number for Supervisor  
Contact number for Project Engineer  
\_\_\_\_\_  
\_\_\_\_\_



**PART II**

**SPECIFICATIONS AND STANDARD DRAWINGS**



### **SPECIFICATIONS REFERENCE**

Any reference in the plans or proposal to previous editions of the *Standard Specifications for Road and Bridge Construction* and *Standard Drawings* are superseded by *Standard Specifications for Road and Bridge Construction, Edition of 2019* and *Standard Drawings, Edition of 2020*.



## **SUPPLEMENTAL SPECIFICATIONS**

The contractor shall use the Supplemental Specifications that are effective at the time of letting.  
The Supplemental Specifications can be found at the following link:

<http://transportation.ky.gov/Construction/Pages/Kentucky-Standard-Specifications.aspx>



## **PART III**

### **EMPLOYMENT, WAGE AND RECORD REQUIREMENTS**



**TRANSPORTATION CABINET  
DEPARTMENT OF HIGHWAYS**

**LABOR AND WAGE REQUIREMENTS  
APPLICABLE TO OTHER THAN FEDERAL-AID SYSTEM PROJECTS**

- I. Application
- II. Nondiscrimination of Employees (KRS 344)

**I. APPLICATION**

1. These contract provisions shall apply to all work performed on the contract by the contractor with his own organization and with the assistance of workmen under his immediate superintendence and to all work performed on the contract by piecework, station work or by subcontract. The contractor's organization shall be construed to include only workmen employed and paid directly by the contractor and equipment owned or rented by him, with or without operators.

2. The contractor shall insert in each of his subcontracts all of the stipulations contained in these Required Provisions and such other stipulations as may be required.

3. A breach of any of the stipulations contained in these Required Provisions may be grounds for termination of the contract.

3. If the contractor is in control of apprenticeship or other training or retraining, including on-the-job training programs, he shall not discriminate against an individual because of his race, color, religion, national origin, sex, disability or age forty (40) and over, in admission to, or employment in any program established to provide apprenticeship or other training.

4. The contractor will send to each labor union or representative of workers with which he has a collective bargaining agreement or other contract or understanding, a notice to be provided advising the said labor union or workers' representative of the contractor's commitments under this section, and shall post copies of the notice in conspicuous places available to employees and applicants for employment. The contractor will take such action with respect to any subcontract or purchase order as the administering agency may direct as a means of enforcing such provisions, including sanctions for non-compliance.

Revised: January 25, 2017

**II. NONDISCRIMINATION OF EMPLOYEES**

**AN ACT OF THE KENTUCKY  
GENERAL ASSEMBLY TO PREVENT  
DISCRIMINATION IN EMPLOYMENT  
KRS CHAPTER 344  
EFFECTIVE JUNE 16, 1972**

The contract on this project, in accordance with KRS Chapter 344, provides that during the performance of this contract, the contractor agrees as follows:

1. The contractor shall not fail or refuse to hire, or shall not discharge any individual, or otherwise discriminate against an individual with respect to his compensation, terms, conditions, or privileges of employment, because of such individual's race, color, religion, national origin, sex, disability or age (forty and above); or limit, segregate, or classify his employees in any way which would deprive or tend to deprive an individual of employment opportunities or otherwise adversely affect his status as an employee, because of such individual's race, color, religion, national origin, sex, disability or age forty (40) and over. The contractor agrees to post in conspicuous places, available to employees and applicants for employment, notices to be provided setting forth the provisions of this nondiscrimination clause.

2. The contractor shall not print or publish or cause to be printed or published a notice or advertisement relating to employment by such an employer or membership in or any classification or referral for employment by the employment agency, indicating any preference, limitation, specification, or discrimination, based on race, color, religion, national origin, sex, or age forty (40) and over, or because the person is a qualified individual with a disability, except that such a notice or advertisement may indicate a preference, limitation, or specification based on religion, national origin, sex, or age forty (40) and over, or because the person is a qualified individual with a disability, when religion, national origin, sex, or age forty (40) and over, or because the person is a qualified individual with a disability, is a bona fide occupational qualification for employment.



## EXECUTIVE BRANCH CODE OF ETHICS

In the 1992 regular legislative session, the General Assembly passed and Governor Brereton Jones signed Senate Bill 63 (codified as KRS 11A), the Executive Branch Code of Ethics, which states, in part:

KRS 11A.040 (7) provides:

No present or former public servant shall, within six (6) months following termination of his office or employment, accept employment, compensation, or other economic benefit from any person or business that contracts or does business with, or is regulated by, the state in matters in which he was directly involved during the last thirty-six (36) months of his tenure. This provision shall not prohibit an individual from returning to the same business, firm, occupation, or profession in which he was involved prior to taking office or beginning his term of employment, or for which he received, prior to his state employment, a professional degree or license, provided that, for a period of six (6) months, he personally refrains from working on any matter in which he was directly involved during the last thirty-six (36) months of his tenure in state government. This subsection shall not prohibit the performance of ministerial functions, including but not limited to filing tax returns, filing applications for permits or licenses, or filing incorporation papers, nor shall it prohibit the former officer or public servant from receiving public funds disbursed through entitlement programs.

KRS 11A.040 (9) states:

A former public servant shall not represent a person or business before a state agency in a matter in which the former public servant was directly involved during the last thirty-six (36) months of his tenure, for a period of one (1) year after the latter of:

- a) The date of leaving office or termination of employment; or
- b) The date the term of office expires to which the public servant was elected.

This law is intended to promote public confidence in the integrity of state government and to declare as public policy the idea that state employees should view their work as a public trust and not as a way to obtain private benefits.

If you have worked for the executive branch of state government within the past six months, you may be subject to the law's prohibitions. The law's applicability may be different if you hold elected office or are contemplating representation of another before a state agency.

Also, if you are affiliated with a firm which does business with the state and which employs former state executive-branch employees, you should be aware that the law may apply to them.

In case of doubt, the law permits you to request an advisory opinion from the Executive Branch Ethics Commission, 3 Fountain Place, Frankfort, Kentucky 40601; telephone (502) 564-7954.

Revised: January 27, 2017



### **Kentucky Equal Employment Opportunity Act of 1978**

The requirements of the Kentucky Equal Employment Opportunity Act of 1978 (KRS 45.560-45.640) shall apply to this Contract. The apparent low Bidder will be required to submit EEO forms to the Division of Construction Procurement, which will then forward to the Finance and Administration Cabinet for review and approval. No award will become effective until all forms are submitted and EEO/CC has certified compliance. The required EEO forms are as follows:

- EEO-1: Employer Information Report
- Affidavit of Intent to Comply
- Employee Data Sheet
- Subcontractor Report

These forms are available on the Finance and Administration's web page under ***Vendor Information, Standard Attachments and General Terms*** at the following address:  
**<https://www.eProcurement.ky.gov>**.

Bidders currently certified as being in compliance by the Finance and Administration Cabinet may submit a copy of their approval letter in lieu of the referenced EEO forms.

For questions or assistance please contact the Finance and Administration Cabinet by email at **[finance.contractcompliance@ky.gov](mailto:finance.contractcompliance@ky.gov)** or by phone at 502-564-2874.



# EMPLOYEE RIGHTS UNDER THE FAIR LABOR STANDARDS ACT

THE UNITED STATES DEPARTMENT OF LABOR WAGE AND HOUR DIVISION

## FEDERAL MINIMUM WAGE

**\$7.25** PER HOUR

BEGINNING JULY 24, 2009

### OVERTIME PAY

At least 1½ times your regular rate of pay for all hours worked over 40 in a workweek.

### CHILD LABOR

An employee must be at least **16** years old to work in most non-farm jobs and at least **18** to work in non-farm jobs declared hazardous by the Secretary of Labor.

Youths **14** and **15** years old may work outside school hours in various non-manufacturing, non-mining, non-hazardous jobs under the following conditions:

**No more than**

- **3** hours on a school day or **18** hours in a school week;
- **8** hours on a non-school day or **40** hours in a non-school week.

Also, work may not begin before **7 a.m.** or end after **7 p.m.**, except from June 1 through Labor Day, when evening hours are extended to **9 p.m.** Different rules apply in agricultural employment.

### TIP CREDIT

Employers of “tipped employees” must pay a cash wage of at least \$2.13 per hour if they claim a tip credit against their minimum wage obligation. If an employee’s tips combined with the employer’s cash wage of at least \$2.13 per hour do not equal the minimum hourly wage, the employer must make up the difference. Certain other conditions must also be met.

### ENFORCEMENT

The Department of Labor may recover back wages either administratively or through court action, for the employees that have been underpaid in violation of the law. Violations may result in civil or criminal action.

Employers may be assessed civil money penalties of up to \$1,100 for each willful or repeated violation of the minimum wage or overtime pay provisions of the law and up to \$11,000 for each employee who is the subject of a violation of the Act’s child labor provisions. In addition, a civil money penalty of up to \$50,000 may be assessed for each child labor violation that causes the death or serious injury of any minor employee, and such assessments may be doubled, up to \$100,000, when the violations are determined to be willful or repeated. The law also prohibits discriminating against or discharging workers who file a complaint or participate in any proceeding under the Act.

### ADDITIONAL INFORMATION

- Certain occupations and establishments are exempt from the minimum wage and/or overtime pay provisions.
- Special provisions apply to workers in American Samoa and the Commonwealth of the Northern Mariana Islands.
- Some state laws provide greater employee protections; employers must comply with both.
- The law requires employers to display this poster where employees can readily see it.
- Employees under 20 years of age may be paid \$4.25 per hour during their first 90 consecutive calendar days of employment with an employer.
- Certain full-time students, student learners, apprentices, and workers with disabilities may be paid less than the minimum wage under special certificates issued by the Department of Labor.

For additional information:



**1-866-4-USWAGE**

(1-866-487-9243)

TTY: 1-877-889-5627



**WWW.WAGEHOUR.DOL.GOV**



## **PART IV**

## **INSURANCE**

Refer to  
*Kentucky Standard Specifications for Road and Bridge Construction,*  
current edition



**PART V**

**BID ITEMS**



Section: 0001 - SIGNALS

| LINE | BID CODE   | ALT | DESCRIPTION                               | QUANTITY | UNIT | UNIT PRIC | FP | AMOUNT |
|------|------------|-----|---|----------|------|-----------|----|--------|
| 0010 | 02562      |     | TEMPORARY SIGNS                           | 3.00     | SQFT |           | \$ |        |
| 0020 | 02650      |     | MAINTAIN & CONTROL TRAFFIC                | 1.00     | LS   |           | \$ |        |
| 0030 | 02775      |     | ARROW PANEL                               | 2.00     | EACH |           | \$ |        |
| 0040 | 04844      |     | CABLE-NO. 14/5C                           | 1,550.00 | LF   |           | \$ |        |
| 0050 | 04845      |     | CABLE-NO. 14/7C                           | 3,050.00 | LF   |           | \$ |        |
| 0060 | 04885      |     | MESSENGER-10800 LB                        | 690.00   | LF   |           | \$ |        |
| 0070 | 04932      |     | INSTALL STEEL STRAIN POLE                 | 12.00    | EACH |           | \$ |        |
| 0080 | 20093NS835 |     | INSTALL PEDESTRIAN HEAD-LED               | 24.00    | EACH |           | \$ |        |
| 0090 | 20188NS835 |     | INSTALL LED SIGNAL-3 SECTION              | 24.00    | EACH |           | \$ |        |
| 0100 | 20266ES835 |     | INSTALL LED SIGNAL- 4 SECTION             | 5.00     | EACH |           | \$ |        |
| 0110 | 20390NS835 |     | INSTALL COORDINATING UNIT                 | 3.00     | EACH |           | \$ |        |
| 0120 | 21743NN    |     | INSTALL PEDESTRIAN DETECTOR               | 24.00    | EACH |           | \$ |        |
| 0130 | 23157EN    |     | TRAFFIC SIGNAL POLE BASE                  | 43.00    | CUYD |           | \$ |        |
| 0140 | 23222EC    |     | INSTALL SIGNAL PEDESTAL                   | 1.00     | EACH |           | \$ |        |
| 0150 | 24601EC    |     | INSTALL<br>POLE MOUNTED SIGN              | 14.00    | EACH |           | \$ |        |
| 0160 | 24901EC    |     | PVC CONDUIT-2 IN-SCHEDULE 80              | 150.00   | LF   |           | \$ |        |
| 0170 | 24908EC    |     | INSTALL SIGNAL CONTROLLER-TY ATC          | 3.00     | EACH |           | \$ |        |
| 0180 | 24955ED    |     | REMOVE SIGNAL EQUIPMENT                   | 3.00     | EACH |           | \$ |        |
| 0190 | 26119EC    |     | INSTALL RADAR PRESENCE DETECTOR<br>TYPE A | 17.00    | EACH |           | \$ |        |

Section: 0002 - DEMOBILIZATION

| LINE | BID CODE | ALT | DESCRIPTION    | QUANTITY | UNIT | UNIT PRIC | FP | AMOUNT |
|------|----------|-----|----------------|----------|------|-----------|----|--------|
| 0200 | 02569    |     | DEMOBILIZATION | 1.00     | LS   |           | \$ |        |