



**CALL NO. 301**

**CONTRACT ID. 251109**

**GREEN COUNTY**

**FED/STATE PROJECT NUMBER FD04 044 0068 014-019**

**DESCRIPTION US 68**

**WORK TYPE GRADE & DRAIN WITH ASPHALT SURFACE**

**PRIMARY COMPLETION DATE 9/1/2026**

**LETTING DATE: June 26,2025**

Sealed Bids will be received electronically through the Bid Express bidding service until 10:00 AM EASTERN DAYLIGHT TIME June 26,2025. Bids will be publicly announced at 10:00 AM EASTERN DAYLIGHT TIME.

**NO PLANS ASSOCIATED WITH THIS PROJECT.**

**REQUIRED BID PROPOSAL GUARANTY:** Not less than 5% of the total bid.

TABLE OF CONTENTS

PART I	SCOPE OF WORK <ul style="list-style-type: none"><li>PROJECT(S), COMPLETION DATE(S), &amp; LIQUIDATED DAMAGES</li><li>CONTRACT NOTES</li><li>STATE CONTRACT NOTES</li><li>ASPHALT MIXTURE</li><li>INCIDENTAL SURFACING</li><li>FUEL AND ASPHALT PAY ADJUSTMENT</li><li>ASPHALT PAVEMENT RIDE QUALITY CAT A</li><li>COMPACTION OPTION A</li><li>TREE REMOVAL</li><li>NON-TRACKING TACK COAT</li><li>ELECTRONIC DELIVERY MANAGEMENT SYSTEM (E-TICKETING) ASPHALT</li><li>ELECTRONIC DELIVERY MANAGEMENT SYSTEM (E-TICKETING) AGGREGATE</li><li>EXPERIMENTAL KYCT AND HAMBURG TESTING</li><li>DOUBLE ASPHALT SEAL COAT</li><li>RIGHT OF WAY CERTIFICATION</li><li>UTILITY IMPACT &amp; RAIL CERTIFICATION NOTES</li><li>KPDES STORM WATER PERMIT, BMP AND ENOI</li><li>GUARDRAIL DELIVERY VERIFICATION SHEET</li></ul>
PART II	SPECIFICATIONS AND STANDARD DRAWINGS <ul style="list-style-type: none"><li>STANDARD AND SUPPLEMENTAL SPECIFICATIONS</li><li>[SN-1I] PORTABLE CHANGEABLE MESSAGE SIGNS</li></ul>
PART III	EMPLOYMENT, WAGE AND RECORD REQUIREMENTS <ul style="list-style-type: none"><li>LABOR AND WAGE REQUIREMENTS</li><li>EXECUTIVE BRANCH CODE OF ETHICS</li><li>KENTUCKY EQUAL EMPLOYMENT OPPORTUNITY ACT OF 1978 LOCALITY / STATE</li><li>PROJECT WAGE RATES / STATE FUNDED</li></ul>
PART IV	BID ITEMS

# **PART I**

## **SCOPE OF WORK**

**ADMINISTRATIVE DISTRICT - 04**

**CONTRACT ID - 251109**  
**FD04 044 0068 014-019**  
**COUNTY - GREEN**  
**PCN - DE04400682509**  
**FD04 044 0068 014-019**

US 68 IMPROVE SAFETY & PASSING OPPORTUNITIES ALONG US 68 FROM KY61 IN GREEN COUNTY TO KY 323  
IN TAYLOR COUNTY, A DISTANCE OF 08.01 MILES.GRADE & DRAIN WITH ASPHALT SURFACE SYP NO.  
04-80102.00.  
GEOGRAPHIC COORDINATES LATITUDE 37:18:22.00 LONGITUDE 85:26:14.00  
ADT 10,100

**COMPLETION DATE(S):**  
COMPLETED BY 09/01/2026                      APPLIES TO ENTIRE CONTRACT

## **CONTRACT NOTES**

### **INSURANCE**

Refer to Kentucky Standard Specifications for Road and Bridge Construction, current edition.

### **PROPOSAL ADDENDA**

All addenda to this proposal must be applied when calculating bid and certified in the bid packet submitted to the Kentucky Department of Highways. Failure to use the correct and most recent addenda may result in the bid being rejected.

### **BID SUBMITTAL**

Bidder must use the Department's electronic bidding software. The Bidder must download the bid file located on the Bid Express website ([www.bidx.com](http://www.bidx.com)) to prepare a bid packet for submission to the Department. The bidder must submit electronically using Bid Express.

### **JOINT VENTURE BIDDING**

Joint venture bidding is permissible. All companies in the joint venture must be prequalified in one of the work types in the Qualifications for Bidders for the project. The bidders must get a vendor ID for the joint venture from the Division of Construction Procurement and register the joint venture as a bidder on the project. Also, the joint venture must obtain a digital ID from Bid Express to submit a bid. A joint bid bond of 5% may be submitted for both companies or each company may submit a separate bond of 5%.

### **UNDERGROUND FACILITY DAMAGE PROTECTION**

The contractor shall make every effort to protect underground facilities from damage as prescribed in the Underground Facility Damage Protection Act of 1994, Kentucky Revised Statute KRS 367.4901 to 367.4917. It is the contractor's responsibility to determine and take steps necessary to be in compliance with federal and state damage prevention directives. When prescribed in said directives, the contractor shall submit Excavation Locate Requests to the Kentucky Contact Center (KY811) via web ticket entry. The submission of this request does not relieve the contractor from the responsibility of contacting non-member facility owners, whom shall be contacted through their individual Protection Notification Center. Non-compliance with these directives can result in the enforcement of penalties.

### **REGISTRATION WITH THE SECRETARY OF STATE BY A FOREIGN ENTITY**

Pursuant to KRS 176.085(1)(b), an agency, department, office, or political subdivision of the Commonwealth of Kentucky shall not award a state contract to a person that is a foreign entity required by [KRS 14A.9-010](#) to obtain a certificate of authority to transact business in the Commonwealth ("certificate") from the Secretary of State under [KRS 14A.9-030](#) unless the person produces the certificate within fourteen (14) days of the bid or proposal opening. If the

foreign entity is not required to obtain a certificate as provided in [KRS 14A.9-010](#), the foreign entity should identify the applicable exception. Foreign entity is defined within [KRS 14A.1-070](#).

**For all foreign entities required to obtain a certificate of authority to transact business in the Commonwealth, if a copy of the certificate is not received by the contracting agency within the time frame identified above, the foreign entity's solicitation response shall be deemed non-responsive or the awarded contract shall be cancelled.**

Businesses can register with the Secretary of State at <https://secure.kentucky.gov/sos/ftbr/welcome.aspx>.

### **SPECIAL NOTE FOR PROJECT QUESTIONS DURING ADVERTISEMENT**

Questions about projects during the advertisement should be submitted in writing to the Division of Construction Procurement. This may be done by email to [kytc.projectquestions@ky.gov](mailto:kytc.projectquestions@ky.gov). The Department will attempt to answer all submitted questions. The Department reserves the right not to answer if the question is not pertinent or does not aid in clarifying the project intent.

The deadline for posting answers will be 3:00 pm Eastern Daylight Time, the day preceding the Letting. Questions may be submitted until this deadline with the understanding that the later a question is submitted, the less likely an answer will be able to be provided.

The questions and answers will be posted for each Letting under the heading "Questions & Answers" on the Construction Procurement website ([www.transportation.ky.gov/construction-procurement](http://www.transportation.ky.gov/construction-procurement)). The answers provided shall be considered part of this Special Note and, in case of a discrepancy, will govern over all other bidding documents.

### **HARDWOOD REMOVAL RESTRICTIONS**

The US Department of Agriculture has imposed a quarantine in Kentucky and several surrounding states, to prevent the spread of an invasive insect, the emerald ash borer. Hardwood cut in conjunction with the project may not be removed from the state. Chipping or burning on site is the preferred method of disposal.

### **INSTRUCTIONS FOR EXCESS MATERIAL SITES AND BORROW SITES**

Identification of excess material sites and borrow sites shall be the responsibility of the Contractor. The Contractor shall be responsible for compliance with all applicable state and federal laws and may wish to consult with the US Fish and Wildlife Service to seek protection under Section 10 of the Endangered Species Act for these activities.

### **ACCESS TO RECORDS**

The state agency certifies that it is in compliance with the provisions of KRS 45A.150, "Access to contractor's books, documents, papers, records, or other evidence directly pertinent to the contract." The Contractor, as defined in KRS 45A.030, agrees that the contracting agency, the

Finance and Administration Cabinet, the Auditor of Public Accounts, and the Legislative Research Commission, or their duly authorized representatives, shall have access to any books, documents, papers, records, or other evidence, which are directly pertinent to this agreement for the purpose of financial audit or program review. The Contractor also recognizes that any books, documents, papers, records, or other evidence, received during a financial audit or program review shall be subject to the Kentucky Open Records Act, KRS 61.870 to 61.884. Records and other prequalification information confidentially disclosed as part of the bid process shall not be deemed as directly pertinent to the agreement and shall be exempt from disclosure as provided in KRS 61.878(1)(c).

### **BOYCOTT PROVISIONS**

If applicable, the contractor represents that, pursuant to [KRS 45A.607](#), they are not currently engaged in, and will not for the duration of the contract engage in, the boycott of a person or an entity based in or doing business with a jurisdiction with which Kentucky can enjoy open trade. **Note:** The term Boycott does not include actions taken for bona fide business or economic reasons, or actions specifically required by federal or state law.

If applicable, the contractor verifies that, pursuant to KRS 41.480, they do not engage in, and will not for the duration of the contract engage in, in energy company boycotts as defined by KRS 41.472.

### **LOBBYING PROHIBITIONS**

The contractor represents that they, and any subcontractor performing work under the contract, have not violated the agency restrictions contained in [KRS 11A.236](#) during the previous ten (10) years, and pledges to abide by the restrictions set forth in such statute for the duration of the contract awarded.

The contractor further represents that, pursuant to [KRS 45A.328](#), they have not procured an original, subsequent, or similar contract while employing an executive agency lobbyist who was convicted of a crime related to the original, subsequent, or similar contract within five (5) years of the conviction of the lobbyist.

Revised: 1/1/2025

## 1.0 BUY AMERICA REQUIREMENT.

Follow the “Buy America” provisions as required by 23 U.S.C. § 313 and 23 C.F.R. § 635.410. Except as expressly provided herein all manufacturing processes of steel or iron materials including but not limited to structural steel, guardrail materials, corrugated steel, culvert pipe, structural plate, prestressing strands, and steel reinforcing bars shall occur in the United States of America, including the application of:

- Coating,
- Galvanizing,
- Painting, and
- Other coating that protects or enhances the value of steel or iron products.

The following are exempt, unless processed or refined to include substantial amounts of steel or iron material, and may be used regardless of source in the domestic manufacturing process for steel or iron material:

- Pig iron,
- Processed, pelletized, and reduced iron ore material, or
- Processed alloys.

The Contractor shall submit a certification stating that all manufacturing processes involved with the production of steel or iron materials occurred in the United States.

Produce, mill, fabricate, and manufacture in the United States of America all aluminum components of bridges, tunnels, and large sign support systems, for which either shop fabrication, shop inspection, or certified mill test reports are required as the basis of acceptance by the Department.

Use foreign materials only under the following conditions:

- 1) When the materials are not permanently incorporated into the project; or
- 2) When the delivered cost of such materials used does not exceed 0.1 percent of the total Contract amount or \$2,500.00, whichever is greater.

The Contractor shall submit to the Engineer the origin and value of any foreign material used.

## 2.0 – BUILD AMERICA, BUY AMERICA (BABA)

Contractor shall comply with the Federal Highway Administration (FHWA) Buy America Requirement in 23 C.F.R. § 635.410 and all relevant provisions of the Build America, Buy America Act (BABA), contained within the Infrastructure Investment and Jobs Act, Pub. L. No. 117-58, §§ 70901-52 enacted November 15, 2021. The BABA requires iron, steel, manufactured products, and construction materials used in infrastructure projects funded by federal financial assistance to be produced in the United States. Comply with 2 C.F.R § 184.

BABA permits FHWA participation in the Contract only if domestic steel and iron will be used on the Project. To be considered domestic, all steel and iron used, and all products manufactured from steel and iron must be produced in the United States and all manufacturing processes, including application of a coating, for these materials must occur in the United States. Coating includes all processes that protect or enhance the value of the material to which the coating is applied. This requirement does not preclude a minimal use of foreign steel and iron materials, provided the cost of such materials does not exceed 0.1% of the total contract amount under the Contract or \$2,500.00 whichever is greater.

BABA permits FHWA participation in the Contract only if all “construction materials” as defined in the Act are made in the United States. The Buy America preference applies to the following construction materials incorporated into infrastructure projects: non-ferrous metals; plastic and polymer-based products (including polyvinylchloride, composite building materials, and polymers used in fiber optic cables); glass (including optic glass); Fiber optic cable; optical fiber; lumber; engineered wood; and drywall. Contractor will be



required to use construction materials produced in the United States on this Project. The Contractor shall submit a certification stating that all construction materials are certified to be BABA compliant.

### **3.0 FINAL RULE – FHWA’S BUY AMERICA REGULATION TO TERMINATE GENERAL APPLICABILITY WAIVER FOR MANUFACTURED PRODUCTS**

- **March 17, 2025** (effective date): For all Federal-aid projects obligated on or after March 15, 2025, all iron or steel products, as defined in § 635.410(c)(1)(iii), must comply with FHWA’s Buy America requirements for steel and iron in § 635.410(b). In addition, for all Federal-aid projects obligated on or after March 15, 2025, per § 635.410(c)(2), articles, materials, and supplies should be classified as an iron or steel product, a manufactured product, or another product as specified by law or in 2 CFR part 184 (such other products specified by law or in 2 CFR part 184 include “excluded materials” and “construction materials”); an article, material, or supply must not be considered to fall into multiple categories.
- **October 1, 2025:** The final assembly requirement will become effective for Federal-aid projects obligated on or after October 1, 2025. This means that, for manufactured product to be Buy America compliant, for Federal-aid projects obligated on or after October 1, 2025, final assembly of the manufactured product must occur in the United States.
- **October 1, 2026:** The 55 percent requirement will become effective for Federal-aid projects obligated on or after October 1, 2026. This means that, for manufactured product to be Buy America-compliant, for Federal-aid projects obligated on or after October 1, 2026, all manufactured products permanently incorporated into the project must both be manufactured in the United States (satisfy the final assembly requirement) and have the cost of the components of the manufactured product that are mined, produced, or manufactured in the United States be greater than 55 percent of the total cost of all components of the manufactured product (satisfy the 55 percent requirement).

### **4.0 – ADDITIONAL REQUIREMENTS**

The Contractor has completed and submitted, or shall complete and submit, to the Cabinet a Buy America/Build America, Buy America Certificate prior to the Cabinet issuing the notice to proceed, in the format below. After submittal, the Contractor is bound by its original certification.

A false certification is a criminal act in violation of 18 U.S.C. § 1001. The Contractor has the burden of proof to establish that it’s in compliance.

At the Contractor’s request, the Cabinet may, but is not obligated to, seek a waiver of Buy America requirements if grounds for the waiver exist under 23 C.F.R. § 635.410(c) or will comply with the applicable Buy America requirements if a waiver of those requirements is not available or not pursued by the Cabinet.

Please refer to the Federal Highway Administration’s Buy America webpage for more information.

[Buy America - Construction Program Guide - Contract Administration - Construction - Federal Highway Administration \(dot.gov\)](#)

Effective - June 26, 2025, Letting

**BUY AMERICA / BUILD AMERICA, BUY AMERICA (ACT) MATERIALS CERTIFICATE OF COMPLIANCE**

The Contractor hereby certifies that it will comply with all relevant provisions of the Build America, Buy America Act, contained within the Infrastructure Investment and Jobs Act, Pub. L. NO. 117-58, §§ 70901-52, the requirements of 23 U.S.C. § 313, 23 C.F.R. § 635.410 and 2 C.F.R § 184.

Date Submitted:\_\_\_\_\_

Contractor:\_\_\_\_\_

Signature:\_\_\_\_\_

Printed Name:\_\_\_\_\_

Title:\_\_\_\_\_

**NOTE: THIS CERTIFICATION IS IN ADDITION TO ANY AND ALL REQUIREMENTS OUTLINED IN THE CURRENT EDITION OF THE STANDARD SPECIFICATIONS FOR ROAD AND BRIDGE CONSTRUCTION AND/OR SPECIAL NOTES CONTAINED IN THE PROJECT PROPOSAL.**

## **SPECIAL NOTE FOR RECIPROCAL PREFERENCE**

### **RECIPROCAL PREFERENCE TO BE GIVEN BY PUBLIC AGENCIES TO RESIDENT BIDDERS**

By reference, KRS 45A.490 to 45A.494 are incorporated herein and in compliance regarding the bidders residency. Bidders who want to claim resident bidder status should complete the Affidavit for Claiming Resident Bidder Status along with their bid in the electronic bidding software. Submittal of the Affidavit should be done along the bid in Bid Express.

April 30, 2018

### **ASPHALT MIXTURE**

Unless otherwise noted, the Department estimates the rate of application for all asphalt mixtures to be 110 lbs/sy per inch of depth.

### **INCIDENTAL SURFACING**

The Department has included in the quantities of asphalt mixtures established in the proposal estimated quantities required for resurfacing or surfacing mailbox turnouts, farm field entrances, residential and commercial entrances, curve widening, ramp gores and tapers, and road and street approaches, as applicable. Pave these areas to the limits as shown on Standard Drawing RPM-110-06 or as directed by the Engineer. In the event signal detectors are present in the intersecting streets or roads, pave the crossroads to the right of way limit or back of the signal detector, whichever is the farthest back of the mainline. Surface or resurface these areas as directed by the Engineer. The Department will not measure placing and compacting for separate payment but shall be incidental to the Contract unit price for the asphalt mixtures.

### **FUEL AND ASPHALT PAY ADJUSTMENT**

The Department has included the Contract items Asphalt Adjustment and Fuel Adjustment for possible future payments at an established Contract unit price of \$1.00. The Department will calculate actual adjustment quantities after work is completed. If existing Contract amount is insufficient to pay all items on the contract with the adjustments, the Department will establish additional monies with a change order.

### **ASPHALT PAVEMENT RIDE QUALITY CATEGORY A**

The Department will apply Pavement Rideability Requirements on this project in accordance with Section 410, Category A.

### **OPTION A**

Be advised that the Department will accept compaction of asphalt mixtures furnished for driving lanes and ramps, at 1 inch (25mm) or greater, on this project according to OPTION A in accordance with Section 402 and Section 403 of the current Standard Specifications. The Department will require joint cores as described in Section 402.03.02 for surface mixtures only. The Department will accept compaction of all other asphalt mixtures according to OPTION B.

## ***SPECIAL NOTE***

### **For Tree Removal**

**Green and Taylor Counties  
IMPROVE SAFETY AND PASSING OPPORTUNITIES ALONG US  
68 FROM KY 61 IN GREEN COUNTY TO KY 323 IN TAYLOR  
COUNTY  
Item No. 4-80102**

NO CLEARING OF TREES 5 INCHES OR GREATER (DIAMETER BREAST  
HEIGHT) FROM MAY 15 - JULY 31

**If there are any questions regarding this note, please contact Danny Peake, Director,  
Division of Environmental Analysis, 200 Mero Street, Frankfort, KY 40601, Phone:  
(502) 564-7250.**

## SPECIAL NOTE FOR NON-TRACKING TACK COAT

1. DESCRIPTION AND USEAGE. This specification covers the requirements and practices for applying a non-tracking tack asphalt coating. Place this material on the existing pavement course, prior to placement of a new asphalt pavement layer. Use when expedited paving is necessary or when asphalt tracking would negatively impact the surrounding area. This material is not suitable for other uses. Ensure material can “break” within 15 minutes under conditions listed in 3.2.
2. MATERIALS, EQUIPMENT, AND PERSONNEL.

2.1 Non-Tracking Tack. Provide material conforming to Subsection 2.1.1.

2.1.1 Provide a tack conforming to the following material requirements:

Property	Specification	Test Procedure
Viscosity, SFS, 77 ° F	20 – 100	AASHTO T 72
Sieve, %	0.3 max.	AASHTO T 59
Asphalt Residue <sup>1</sup> , %	50 min.	AASHTO T 59
Oil Distillate, %	1.0 max.	AASHTO T 59
Residue Penetration, 77 ° F	0 - 30	AASHTO T 49
Original Dynamic Shear (G*/sin δ), 82 ° C	1.0 min.	AASHTO T 315
Softening Point, ° F	149 min.	AASHTO T 53
Solubility, %	97.5 min.	AASHTO T 44

<sup>1</sup> Bring sample to 212 °F over a 10-15 minute period. Maintain 212 °F for 15-20 minutes or until 30-40 mL of water has distilled. Continue distillation as specified in T59.

- 2.2. Equipment. Provide a distributor truck capable of heating, circulating, and spraying the tack between 170 °F and 180 °F. Do not exceed 180 °F. Circulate the material while heating. Provide the correct nozzles that is recommend by the producer to ensure proper coverage of tack is obtained. Ensure the bar can be raised to between 14” and 18” from the roadway.
- 2.3. Personnel. Ensure the tack supplier has provided training to the contractor on the installation procedures for this product. Make a technical representative from the supplier available at the request of the Engineer.

## 3. CONSTRUCTION.

3.1 Surface Preparation. Prior to the application of the non-tracking tack, ensure the pavement surface is thoroughly dry and free from dust or any other debris that would inhibit adhesion. Clean the surface by scraping, sweeping, and the use of compressed air. Ensure this preparation process occurs shortly before application to prevent the return of debris on to the pavement. If rain is expected within one hour after application, do not apply material. Apply material only when the surface is dry, and no precipitation is expected.

3.2 Non-tracking Tack Application. Placement of non-tracking tack is not permitted from October 1<sup>st</sup> to May 15<sup>th</sup>. When applying material, ensure the roadway temperature is a minimum of 40°F and rising. Prior to application, demonstrate competence in applying the tack according to this note to the satisfaction of the Engineer. Heat the tack in the distributor to between 170 – 180 °F. After the initial heating, between 170 – 180 °F, the material may be sprayed between 165 °F and 180 °F. Do not apply outside this temperature range. Apply material at a minimum rate of 0.70 pounds (0.08 gallons) per square yard. Ensure full coverage of the material on the pavement surface. Full coverage of this material is critical. Increase material application rate if needed to achieve full coverage. Schedule the work so that, at the end of the day's production, all non-tracking tack is covered with the asphalt mixture. If for some reason the non-tracking tack cannot be covered by an asphalt mixture, ensure the non-tracking tack material is clean and reapply the non-tracking tack prior to placing the asphalt mixture. Do not heat material more than twice in one day.

3.3 Non-tracking Tack Certification. Furnish the tack certification to the Engineer stating the material conforms to all requirements herein prior to use.

3.4 Sampling and Testing. The Department will require a sample of non-tracking tack be taken from the distributor at a rate of one sample per 15,000 tons of mix. Take two 1 gallon samples of the heated material and forward the sample to the Division of Materials for testing within 7 days. Ensure the product temperature is between 170 and 180 °F at the time of sampling.

4. MEASUREMENT. The Department will measure the quantity of non-tracking tack in tons. The Department will not measure for payment any extra materials, labor, methods, equipment, or construction techniques used to satisfy the requirements of this note. The Department will not measure for payment any trial applications of non-tracking tack, the cleaning of the pavement surface, or furnishing and placing the non-tracking tack. The Department will consider all such items incidental to the non-tracking tack.
5. PAYMENT. The Department will pay for the non-tracking tack at the Contract unit bid price and apply an adjustment for each manufacturer's lot of material based on the degree of compliance as defined in the following schedule. Non-tracking tack will not be permitted for use from October 1<sup>st</sup> to May 15<sup>th</sup>. During this timeframe, the department will allow the use of an approved asphalt emulsion in lieu of a non-tracking tack product but will not adjust the unit bid price of the material. When a sample fails on two or more tests, the Department may add the deductions, but the total deduction will not exceed 100 percent.

Non-Tracking Tack Price Adjustment Schedule						
Test	Specification	100% Pay	90% Pay	80% Pay	50% Pay	0% Pay
Viscosity, SFS, 77 ° F	20 – 100	19 - 102	17 - 18	15 - 16	14	≤13
			103 - 105	106 - 107	108 - 109	≥ 110
Sieve, %	0.30 max.	≤ 0.40	0.41 - 0.50	0.51 - 0.60	0.61 - 0.70	≥ 0.71
Asphalt Residue, %	50 min.	≥49.0	48.5 – 48.9	48.0 – 48.4	47.5-47.9	≤ 47.4
Oil Distillate, %	1.0 max.	≤1.0	1.1-1.5	1.6 - 1.7	1.8-1.9	>2.0
Residue Penetration, 77 ° F.	30 max.	≤ 31	32 - 33	34 - 35	36 - 37	≥ 38
Original Dynamic Shear (G*/sin δ), 82 ° C	1.0 min.	≥0.95	0.92 – 0.94	0.90 – 0.91	0.85 - 0.89	≤ 0.84
Softening Point, ° F	149 min.	≥145	142 - 144	140 - 141	138 - 139	≤ 137
Solubility, %	97.5 min.	≥ 97.0	96.8 – 96.9	96.6 – 96.7	96.4 – 96.5	≤ 96.3

Code  
24970EC

Pay Item  
Asphalt Material for Tack Non-Tracking

Pay Unit  
Ton

Revised: May 23, 2022



## **SPECIAL NOTE FOR ELECTRONIC DELIVERY MANAGEMENT SYSTEM (e-Ticketing) ASPHALT**

This Special Note will apply when indicated on the plans or in the proposal. Section references herein are to the Department's Standard Specifications for Road and Bridge Construction current edition.

**1.0 DESCRIPTION.** Incorporate an e-Ticketing Delivery Software for weighed asphalt material delivered to the project to report loads and provide daily running totals of weighed asphalt material for pay items and incidental work during the construction processes from the point of measurement and loading to the point of incorporation to the project.

**2.0 MATERIALS AND EQUIPMENT.** Contractor shall supply material data in JavaScript Object Notation (JSON) documents to the KYTC e-Ticketing Delivery Software (KYTC e-Ticketing Portal) via Application Programming Interface (API) or direct connection. Test and verify that ticket data can be shared from the original source no fewer than 30 days prior to material placement activities. An e-Ticketing Delivery Software supplier can provide a qualified representative for on-site technical assistance during the initial setup, pre-construction verifications, and data management and processing as needed during the Project to maintain material data delivery capabilities. Virtual meetings may be hosted in lieu of on-site meetings when deemed appropriate by the Engineer.

Provide e-Ticketing Delivery Software that will meet the following:

1. The e-Ticketing Delivery Software shall be fully integrated with the Contractor's Load Read-Out scale system at the material source location.
2. The e-Ticketing Delivery Software shall provide real-time delivery to KYTC e-Ticketing Portal.
3. Transmit any updates to the ticket data within 5 minutes of a change.

**3.0 CONSTRUCTION.** Provide the Engineer with the manufacturer's specifications and all required documentation for data access at the pre-construction conference.

### **A. Construction Requirements**

1. Install and operate software in accordance with the manufacturer's specifications.
2. Verify that all pertinent information is provided by the software within the requirements of this Special Note.

### **B. Data Deliverables**

Provide to the Engineer a means in which to gather report summaries by way of iOS apps, web pages, or any other method at the disposal of the Engineer. The Engineer may request data at any time during the project.

#### **1. Asphalt Material**

##### **a. Real-time Continuous Data Items**

Provide the Engineer access to JSON documents capable of being transmitted through the KYTC's e-Ticketing Portal that displays the following information in real-time with a web-based system compatible with iOS and Windows environments.

- Each Truck
  - Supplier Name
  - Supplier Address
  - Supplier Phone
  - Plant location
  - Date
  - Time at source
  - Project Location

- Contract ID#
- Carrier Name
- Unique Truck ID
- Description of Material
- Mix Design Number
- Gross, Tare and Net Weight
- Weighmaster

**4.0 MEASUREMENT.** The Department will not measure the electronic delivery management system.

**5.0 PAYMENT.** The Department will not measure this work for payment and will consider all items contained in this note to be incidental to the asphalt mixtures on the project, as applicable.

May 5, 2025

## **SPECIAL NOTE FOR ELECTRONIC DELIVERY MANAGEMENT SYSTEM (e-Ticketing) AGGREGATE**

This Special Note will apply when indicated on the plans or in the proposal. Section references herein are to the Department's Standard Specifications for Road and Bridge Construction current edition.

**1.0 DESCRIPTION.** Incorporate an e-Ticketing Delivery Software for weighed aggregate material delivered to the project to report loads and provide daily running totals of weighed aggregate material for pay items and incidental work during the construction processes from the point of measurement and loading to the point of incorporation to the project.

**2.0 MATERIALS AND EQUIPMENT.** Contractor shall supply material data in JavaScript Object Notation (JSON) documents to the KYTC e-Ticketing Delivery Software (KYTC e-Ticketing Portal) via Application Programming Interface (API) or direct connection. Test and verify that ticket data can be shared from the original source no fewer than 30 days prior to material placement activities. An e-Ticketing Delivery Software supplier can provide a qualified representative for on-site technical assistance during the initial setup, pre-construction verifications, and data management and processing as needed during the Project to maintain material data delivery capabilities. Virtual meetings may be hosted in lieu of on-site meetings when deemed appropriate by the Engineer.

Provide e-Ticketing Delivery Software that will meet the following:

1. The e-Ticketing Delivery Software shall be fully integrated with the Contractor's Load Read-Out scale system at the material source location.
2. The e-Ticketing Delivery Software shall provide real-time delivery to KYTC e-Ticketing Portal.
3. Transmit any updates to the ticket data within 5 minutes of a change.

**3.0 CONSTRUCTION.** Provide the Engineer with the manufacturer's specifications and all required documentation for data access at the pre-construction conference.

### **A. Construction Requirements**

1. Install and operate software in accordance with the manufacturer's specifications.
2. Verify that all pertinent information is provided by the software within the requirements of this Special Note.

### **B. Data Deliverables**

Provide to the Engineer a means in which to gather report summaries by way of iOS apps, web pages, or any other method at the disposal of the Engineer. The Engineer may request data at any time during the project.

#### **1. Aggregate Material**

##### **a. Real-time Continuous Data Items**

Provide the Engineer access to JSON documents capable of being transmitted through the KYTC's e-Ticketing Portal that displays the following information in real-time with a web-based system compatible with iOS and Windows environments.

- Each Truck
  - Supplier Name
  - Supplier Address
  - Supplier Phone
  - Plant location
  - Date
  - Time at source
  - Project Location

- Contract ID#
- Carrier Name
- Unique Truck ID
- Description of Material
- Load Number
- Gross, Tare and Net Weight
- Weighmaster

**4.0 MEASUREMENT.** The Department will measure the electronic delivery management system as a lump sum item.

**5.0 PAYMENT.** The Department will make payment for the completed and accepted quantities under the following:

1. Payment is full compensation for all work associated with providing all required equipment, training, and documentation.
2. Payment will be full compensation for costs related to providing the e-Ticketing Delivery Software, including integration with plant load-out systems, and report viewing/exporting process. All quality control procedures including the software representative’s technical support and on-site training shall be included in the Contract lump sum price.

<u>Code</u>	<u>Pay Item</u>	<u>Pay Unit</u>
26248EC	ELECTRONIC DELIVERY MGMT SYSTEM-AGG	LS

May 5, 2025

## **SPECIAL NOTE FOR EXPERIMENTAL KYCT AND HAMBURG TESTING**

### **1.0 General**

**1.1 Description.** The KYCT (Kentucky Method for Cracking Test) and the Hamburg test results will help determine if the mixture is susceptible to cracking and rutting. During the experimental phase, data will be gathered and analyzed by the Department to determine the durability of the bituminous mixes. Additionally, the data will help the Department to create future performance-based specifications which will include the KYCT and Hamburg test methods.

### **2.0 Equipment**

**2.1 KYCT Testing Equipment.** The Department will require a Marshall Test Press with digital recordation capabilities. Other CT testing equipment may be used for testing with prior approval by the Department.

**2.2 Water Baths.** One or more water baths will be required that can maintain a temperature of 77° +/- 1.8° F with a digital thermometer showing the water bath temperature. Also, one water bath shall have the ability to suspend gyratory specimen fully submerged in water in accordance with AASHTO T-166, current edition.

**2.3 Hamburg Wheel Track Testing.** The department encourages the use of the PTI APA/Hamburg Jr. test equipment to perform the loaded wheel testing. The Department will allow different equipment for the Hamburg testing, but the testing device must be approved by the Department prior to testing.

**2.4 Gyratory Molds.** Gyratory molds will be required to assist in the production of gyratory specimens in accordance with AASHTO T-312, current edition.

**2.5 Ovens.** Adequate (minimum of two ovens) will be required to accommodate the additional molds and asphalt mixture necessary to perform the acceptance testing as outlined in Section 402 of the Kentucky Standard Specifications for Road and Bridge Construction, current edition.

**2.6 Department Equipment.** The Department will provide gyratory molds, PINE 850 Test Press with digital recordation, and CT testing equipment to assist during this experimental phase so data can be gathered. Hamburg test specimens will be submitted to the Division of Materials for testing on the PTI APA/Hamburg Jr if the asphalt contractor or district materials office does not have an approved Hamburg testing device.

### **3.0 Testing Requirements**

**3.1 Acceptance Testing.** Perform all acceptance testing and aggregate gradation as according with Section 402 and Section 403 of the Kentucky Standard Specifications for Road and Bridge Construction, current edition.

**3.2 KYCT Testing.** Perform crack resistance analysis (KYCT) in accordance with the current Kentucky Method for KYCT Index Testing during the mix design phase and during the plant production of all surface mixtures. For mix design approvals, submit KYCT results on the Department MixPack. For Class 4 mixtures, submit ingredient materials to the Division of Materials for verification.

**3.2.1 KYCT Frequency.** Obtain an adequate sample of hot mix asphalt to ensure the acceptance testing, gradation, and KYCT gyratory samples can be fabricated and is representative of the bituminous mixture. Acceptance specimens shall be fabricated first, then immediately after, fabricate the KYCT samples with the gyratory compactor in accordance with Section 2.4 of this Special Note. Analysis of the KYCT specimens and gradation will be required one per subplot produced from the same asphalt material and at the same time as the acceptance specimen is sampled and tested.

**3.2.2 Number of Specimens and Conditioning.** Fabricate specimens in accordance with the Kentucky Method for KYCT Index Testing. Contrary to the method, for field specimens, fabricate a minimum of 3 and up to 6 test specimens. The specimens shall be compacted at the temperature in accordance with KM 64-411. KYCT mix design specimens shall be short-term conditioned uncovered for four hours at compaction temperature in accordance with KM 64-411. Contrary to the Kentucky Method, plant produced bituminous material shall be short-term conditioned immediately after sampling for two hours uncovered in the oven at compaction temperature in accordance with KM 64-411. Additionally, fabricated specimens shall be allowed to cool in air (fan is permissible) for 30 minutes +/- 5 minutes and conditioned in a 77 °F water bath for 30 minutes +/- 5 minutes. To ensure confidence and reliability of the test results provided by KYCT testing and Hamburg testing, reheating of the asphalt mixture is prohibited.

**3.2.3 Record Times.** For each subplot, record the time required between drying aggregates in the plant to KYCT specimen fabrication. The production time may vary due to the time that the bituminous material is held in the silo. Record the preconditioning time when the time exceeds the one-hour specimen cool down time as required in accordance with The Kentucky Method for KYCT Index Testing. The preconditioning time may exceed an hour if the technician is unable to complete the test on the same day or within the specified times as outlined in The Kentucky Method for KYCT Index Testing. The production time and the preconditioning time shall be recorded on the AMAW.

**3.2.4 File Name.** As according to section 7.12 of The Kentucky Method for KYCT Index Testing, save the filename with the following format: "CID\_Approved Mix Number\_Lot Number\_Sublot Number\_Date"

**3.3 Hamburg Testing.** Perform the rut resistance analysis (Hamburg) in accordance with AASTHO T-324, not to exceed 20,000 passes for all bituminous mixtures during the mix design phase and production. For mix design approvals, submit Hamburg results on the Department MixPack. For Class 4 mixtures, submit ingredient materials to the Division of Materials for informational verification.

**3.3.1 Hamburg Testing Frequency.** Perform testing and analysis per lot of material. The plant produced bituminous material sampled for the Hamburg test does not have to be obtained at the same time as the acceptance and KYCT sample. If the Hamburg test sample is not obtained at the same time as the KYCT sample, determine the Maximum Specific Gravity of the KYCT sample in accordance with AASHTO T-209 coinciding with the Hamburg specimens.

**3.3.2 Record Times.** Record the production time as according to section 3.2.3 in this special note. Also record the time that the specimens were fabricated and the time the Hamburg testing was started. All times shall be recorded on the AMAW.

**3.3.3 File Name.** Save the Excel spreadsheet with the following file name; “Hamburg\_CID\_Approved Mix Number\_Lot Number\_Sublot Number\_Date” and upload the file into the AMAW.

#### **4.0 Data**

Submit the AMAW and all test data that was obtained for acceptance, gradation, KYCT, and Hamburg testing within five working days once all testing has been completed for a lot to Central Materials Lab and the District Materials Engineer. Also, any data and or comments that the asphalt contractor or district personnel deem informational during this experimental phase, shall also be submitted to the Central Materials Lab and the District Materials Engineer. Any questions or comments regarding any item in this Special Note can be directed to the Central Office, Division of Materials, Asphalt Branch.

#### **5.0 Payment**

Any additional labor and testing equipment that is required to fabricate and test the KYCT and Hamburg specimens shall be considered incidental to the asphalt surface line item. The Department will perform the testing for the KYCT and Hamburg specimens if a producer does not possess the proper equipment.

June 15<sup>th</sup>, 2022

## **SPECIAL NOTE FOR DOUBLE ASPHALT SEAL COAT**

Use RS-2 or RS-2C asphalt material that is compatible with the seal aggregate. Apply the first course of asphalt seal coat at the rate of 3.2 lbs/sy of asphalt and 30 lbs/sy of size #78 seal coat aggregate. Apply the second course at 2.8 lbs/sy of asphalt and 20 lbs/sy of size #9M seal coat aggregate. The Engineer may adjust the rate of application as conditions warrant. Use caution in applying liquid asphalt material to avoid over spray getting on curbs, gutter, barrier walls, bridges, guardrail, and other roadway appurtenances.

The Department will not measure any surface preparation required prior to applying the asphalt seal coat, but shall be incidental to “Asphalt Material for Asphalt Seal Coat”.

1-3215 Double Asphalt Seal Coat  
01/02/2012





KENTUCKY TRANSPORTATION CABINET  
Department of Highways  
DIVISION OF RIGHT OF WAY & UTILITIES

TC 62-226  
Rev. 01/2016  
Page 1 of 1

RIGHT OF WAY CERTIFICATION

<input checked="" type="checkbox"/>	Original	<input type="checkbox"/>	Re-Certification	RIGHT OF WAY CERTIFICATION	
ITEM #		COUNTY	PROJECT # (STATE)		PROJECT # (FEDERAL)
04-80102		Green/Taylor	FD04 044 0068 014-019 FD04 109 0068 000-004		N/A
PROJECT DESCRIPTION					
IMPROVE SAFETY AND PASSING OPPORTUNITIES ALONG US 68 FROM KY 61 IN GREEN COUNTY TO KY 323 IN TAYLOR COUNTY					
<input checked="" type="checkbox"/>	<b>No Additional Right of Way Required</b>				
Construction will be within the limits of the existing right of way. The right of way was acquired in accordance to FHWA regulations under the Uniform Relocation Assistance and Real Property Acquisitions Policy Act of 1970, as amended. No additional right of way or relocation assistance were required for this project.					
<input type="checkbox"/>	<b>Condition # 1 (Additional Right of Way Required and Cleared)</b>				
All necessary right of way, including control of access rights when applicable, have been acquired including legal and physical possession. Trial or appeal of cases may be pending in court but legal possession has been obtained. There may be some improvements remaining on the right-of-way, but all occupants have vacated the lands and improvements, and KYTC has physical possession and the rights to remove, salvage, or demolish all improvements and enter on all land. Just Compensation has been paid or deposited with the court. All relocations have been relocated to decent, safe, and sanitary housing or that KYTC has made available to displaced persons adequate replacement housing in accordance with the provisions of the current FHWA directive.					
<input type="checkbox"/>	<b>Condition # 2 (Additional Right of Way Required with Exception)</b>				
The right of way has not been fully acquired, the right to occupy and to use all rights-of-way required for the proper execution of the project has been acquired. Some parcels may be pending in court and on other parcels full legal possession has not been obtained, but right of entry has been obtained, the occupants of all lands and improvements have vacated, and KYTC has physical possession and right to remove, salvage, or demolish all improvements. Just Compensation has been paid or deposited with the court for most parcels. Just Compensation for all pending parcels will be paid or deposited with the court prior to AWARD of construction contract					
<input type="checkbox"/>	<b>Condition # 3 (Additional Right of Way Required with Exception)</b>				
The acquisition or right of occupancy and use of a few remaining parcels are not complete and/or some parcels still have occupants. All remaining occupants have had replacement housing made available to them in accordance with 49 CFR 24.204. KYTC is hereby requesting authorization to advertise this project for bids and to proceed with bid letting even though the necessary right of way will not be fully acquired, and/or some occupants will not be relocated, and/or the just compensation will not be paid or deposited with the court for some parcels until after bid letting. KYTC will fully meet all the requirements outlined in 23 CFR 635.309(c)(3) and 49 CFR 24.102(j) and will expedite completion of all acquisitions, relocations, and full payments after bid letting and prior to AWARD of the construction contract or force account construction.					
Total Number of Parcels on Project		0	EXCEPTION (S) Parcel #	ANTICIPATED DATE OF POSSESSION WITH EXPLANATION	
Number of Parcels That Have Been Acquired					
Signed Deed		0			
Condemnation					
Signed ROE		0			
Notes/ Comments (Text is limited. Use additional sheet if necessary.)					
LPA RW Project Manager			Right of Way Supervisor		
Printed Name			Printed Name	Michael H Price	
Signature			Signature		
Date			Date	5/6/2025	
Right of Way Director			FHWA		
Printed Name			Printed Name		
Signature			Signature		
Date	Digitally signed by Kelly Divine Date: 2025.05.06 07:50:17 -05'00'		Date		

## UTILITIES AND RAIL CERTIFICATION NOTE

**Green County**  
**FD04 044 0068 014-019**  
**FD04 109 0068 000-004**  
**Mile point: 14.260 TO 18.380**  
**IMPROVE SAFETY AND PASSING OPPORTUNITIES ALONG US 68 FROM KY 61 IN GREEN**  
**COUNTY TO KY 323 IN TAYLOR COUNTY. (2020CCN) (2022CCR) (2024CCR)**  
**ITEM NUMBER: 04-80102.00**

### PROJECT NOTES ON UTILITIES

For all projects under 2000 Linear feet which require a normal excavation locate request pursuant to KRS 367.4901-4917, the awarded contractor shall field mark the proposed excavation or construction boundaries of the project (also called white lining) using the procedure set forth in KRS 367.4909(9)(k). For all projects over 2000 linear feet, which are defined as a "Large Project" in KRS 367.4903(18), the awarded contractor shall initially mark the first 2000 linear feet minimally of proposed excavation or construction boundaries of the project to be worked using the procedure set forth in KRS 367.4909(9)(k). This temporary field locating of the project excavation boundary shall take place prior to submitting an excavation location request to the underground utility protection Kentucky Contact Center. For large projects, the awarded contractor shall work with the impacted utilities to determine when additional white lining of the remainder of the project site will take place. This provision shall not alter or relieve the awarded contractor from complying with requirements of KRS 367.4905 to 367.4917 in their entirety.

Please Note: The information presented in this Utility Note is informational in nature and the information contained herein is not guaranteed.

The contractor will be responsible for contacting all utility facility owners on the subject project to coordinate his activities. The contractor will coordinate his activities to minimize and, where possible, avoid conflicts with utility facilities. Due to the nature of the work proposed, it is unlikely to conflict with the existing utilities beyond minor facility adjustments. Where conflicts with utility facilities are unavoidable, the contractor will coordinate any necessary relocation work with the facility owner and Resident Engineer. The Kentucky Transportation Cabinet maintains the right to remove or alter portions of this contract if a utility conflict occurs. The utility facilities as noted in the previous section(s)

## UTILITIES AND RAIL CERTIFICATION NOTE

**Green County**  
**FD04 044 0068 014-019**  
**FD04 109 0068 000-004**  
**Mile point: 14.260 TO 18.380**  
**IMPROVE SAFETY AND PASSING OPPORTUNITIES ALONG US 68 FROM KY 61 IN GREEN**  
**COUNTY TO KY 323 IN TAYLOR COUNTY. (2020CCN) (2022CCR) (2024CCR)**  
**ITEM NUMBER: 04-80102.00**

have been determined using data garnered by varied means and with varying degrees of accuracy: from the facility owners, a result of S.U.E., field inspections, and/or reviews of record drawings. The facilities defined may not be inclusive of all utilities in the project scope and are not Level A quality, unless specified as such. It is the contractor's responsibility to verify all utilities and their respective locations before excavating.

The contractor shall make every effort to protect underground facilities from damage as prescribed in the Underground Facility Damage Protection Act of 1994, Kentucky Revised Statute KRS 367.4901 to 367.4917. It is the contractor's responsibility to determine and take steps necessary to be in compliance with federal and state damage prevention directives. The contractor is instructed to contact KY 811 for the location of existing underground utilities. Contact shall be made a minimum of two (2) and no more than ten (10) business days prior to excavation. The contractor shall submit Excavation Locate Requests to the Kentucky Contact Center (KY 811) via web ticket entry. The submission of this request does not relieve the contractor from the responsibility of contacting non-member facility owners, whom are to be contacted through their individual Protection Notification Center. It may be necessary for the contractor to contact the County Court Clerk to determine what utility companies have facilities in the area. Non-compliance with these directives can result in the enforcement of penalties.

## UTILITIES AND RAIL CERTIFICATION NOTE

**Green County**  
**FD04 044 0068 014-019**  
**FD04 109 0068 000-004**  
**Mile point: 14.260 TO 18.380**  
**IMPROVE SAFETY AND PASSING OPPORTUNITIES ALONG US 68 FROM KY 61 IN GREEN**  
**COUNTY TO KY 323 IN TAYLOR COUNTY. (2020CCN) (2022CCR) (2024CCR)**  
**ITEM NUMBER: 04-80102.00**

**NOTE: DO NOT DISTURB THE FOLLOWING FACILITIES LOCATED WITHIN THE PROJECT  
DISTURB LIMITS**

Taylor County RECC – Electric – Has facilities Lt. Sta 481+75, Lt. Sta 544+90

Green-Taylor Water District – Water – Has existing facility crossing at Sta 212+10, 222+35, 234+05, 245+70, 267+40, 282+00, 295+05, 314+50, 320+15, 343+55, 362+90, 394+18, 419+00, 456+00, 484+30, 499+00, 518+00, 529+75, 536+00, 541+85, 541+92, 542+10,

Green County Sanitation Dist. No. 1 – Sewer – Has an existing sewer crossing at approximate Sta 147+25.

Campbellsville Water & Sewer – Sewer – has an existing 4-inch force main approximately Rt. Sta 579+25 to 558+80, then cross under roadway to Lt. Sta 558+80 and extends off R/W.

Windstream Holdings II, LLC – Communication – Has an existing 600 Pair copper cable Lt. Sta 559+00 to 568+25.

City of Campbellsville Water – has existing 6-inch water line on the north side of US 68 running parallel to the roadway crossing under KY 323 at approximately Sta. 568+15 to 569+00 and continues paralleling US 68 on the north side.

**\*The Contractor is fully responsible for protection of all utilities listed above\***

## UTILITIES AND RAIL CERTIFICATION NOTE

**Green County**  
**FD04 044 0068 014-019**  
**FD04 109 0068 000-004**  
**Mile point: 14.260 TO 18.380**  
**IMPROVE SAFETY AND PASSING OPPORTUNITIES ALONG US 68 FROM KY 61 IN GREEN**  
**COUNTY TO KY 323 IN TAYLOR COUNTY. (2020CCN) (2022CCR) (2024CCR)**  
**ITEM NUMBER: 04-80102.00**

**THE FOLLOWING FACILITY OWNERS ARE RELOCATING/ADJUSTING THEIR FACILITIES  
WITHIN THE PROJECT LIMITS AND WILL BE COMPLETE PRIOR TO CONSTRUCTION**

Not Applicable

**THE FOLLOWING FACILITY OWNERS HAVE FACILITIES TO BE RELOCATED/ADJUSTED  
BY THE OWNER OR THEIR SUBCONTRACTOR AND IS TO BE COORDINATED WITH THE  
ROAD CONTRACT**

Green-Taylor Water District – Has an existing 8-inch water line on the north side of US 68 running parallel and then turns heading south crossing under US 68 at approximately Sta. 568+00, then turns heading east under KY 323 at approximately Sta. 603+77 and continues paralleling US 68. This line will be relocated to cross from left to right of Sta 566+50, then goes to Sta. 570+00 on the south side of US 68 and ties back into the existing 8-inch line Rt Sta. 570+00. This work is anticipated to be completed by November 1, 2025.

Atmos Energy – Has an existing 4” gas line that parallels US 68 on the north side and crosses under KY 323 from approximately Sta. 568+00 to 569+25. This gas line will be relocated further back on KY 323 and is anticipated to be completed by November 1, 2025.

UTILITIES AND RAIL CERTIFICATION NOTE

Green County

FD04 044 0068 014-019

FD04 109 0068 000-004

Mile point: 14.260 TO 18.380

IMPROVE SAFETY AND PASSING OPPORTUNITIES ALONG US 68 FROM KY 61 IN GREEN COUNTY TO KY 323 IN TAYLOR COUNTY. (2020CCN) (2022CCR) (2024CCR)

ITEM NUMBER: 04-80102.00

Windstream Holdings, LLC. – has a buried cable on the north side of US 68 from approximately Lt Sta. 568+25 to 569+25 which will have to be relocated. This work is anticipated to be completed by November 1, 2025.

THE FOLLOWING FACILITY OWNERS HAVE FACILITIES TO BE RELOCATED/ADJUSTED BY THE ROAD CONTRACTOR AS INCLUDED IN THIS CONTRACT

Not Applicable

RAIL COMPANIES HAVE FACILITIES IN CONJUNCTION WITH THIS PROJECT AS NOTED

☒ No Rail Involvement    ☐ Rail Involved    ☐ Rail Adjacent

**UTILITIES AND RAIL CERTIFICATION NOTE**

**Green County**  
**FD04 044 0068 014-019**  
**FD04 109 0068 000-004**  
**Mile point: 14.260 TO 18.380**  
**IMPROVE SAFETY AND PASSING OPPORTUNITIES ALONG US 68 FROM KY 61 IN GREEN**  
**COUNTY TO KY 323 IN TAYLOR COUNTY. (2020CCN) (2022CCR) (2024CCR)**  
**ITEM NUMBER: 04-80102.00**

## UTILITIES AND RAIL CERTIFICATION NOTE

**Green County**  
**FD04 044 0068 014-019**  
**FD04 109 0068 000-004**  
**Mile point: 14.260 TO 18.380**  
**IMPROVE SAFETY AND PASSING OPPORTUNITIES ALONG US 68 FROM KY 61 IN GREEN**  
**COUNTY TO KY 323 IN TAYLOR COUNTY. (2020CCN) (2022CCR) (2024CCR)**  
**ITEM NUMBER: 04-80102.00**

### AREA FACILITY OWNER CONTACT LIST

Facility Owner	Address	Contact Name	Phone	Email
Campbellsville Water & Sewer - Sewer	110 S Columbia Ave Suite A Campbellsville ky 42718	Josh Pedigo	2707893133	josh.pedigo@campbellsville.us
Campbellsville Water & Sewer - Water	110 S Columbia Ave Suite A Campbellsville ky 42718	Josh Pedigo	2707893133	josh.pedigo@campbellsville.us
Atmos Energy - Natural Gas	3275 Highland Pointe Drive Owensboro KY 42303	Silas Bohlen	2706858020	silas.bohlen@atmosenergy.com
Green County Sanitation Dist. No. 1 - Sewer	250 Industrial Park Rd. Greensburg Ky 42743	Marty Glanzer	2704031192	martyglanzer@yahoo.com



UTILITIES AND RAIL CERTIFICATION NOTE

**Green County**  
**FD04 044 0068 014-019**  
**FD04 109 0068 000-004**  
**Mile point: 14.260 TO 18.380**  
**IMPROVE SAFETY AND PASSING OPPORTUNITIES ALONG US 68 FROM KY 61 IN GREEN COUNTY TO KY 323 IN TAYLOR COUNTY. (2020CCN) (2022CCR) (2024CCR)**  
**ITEM NUMBER: 04-80102.00**

Green-Taylor Water District - Water	250 Industrial Park Road Greensburg KY 42743	Josh Riggle	2709324947	gm.greentaylor@gmail.com
Taylor County RECC - Electric	625 West Main St. Campbellsville KY 42719	Mike Skaggs	2704031297	muskaggs@tcrecc.com
Windstream Holdings II, LLC - Communication	932 Citation Boulevard Lexington KY 40511	Steve Johnson	8593576209	steve.johnson@windstream.com

KyTC BMP Plan for Project CID ## - #####



**Kentucky Transportation Cabinet**

**Highway District 4**

**And**

**\_\_\_\_\_ (2), Construction**

**Kentucky Pollutant Discharge Elimination System**

**Permit KYR10**

**Best Management Practices (BMP) plan**

**Groundwater protection plan**

**For Highway Construction Activities**

**For**

**IMPROVE SAFETY AND PASSING  
OPPORTUNITIES ALONG US 68 FROM KY 61 IN  
GREEN COUNTY TO KY 323 IN TAYLOR COUNTY.**

**Project: CID ## - #####**

## KyTC BMP Plan for Project CID ## - #####

### Project information

Note – (1) = Design (2) = Construction (3) = Contractor

1. Owner – Kentucky Transportation Cabinet, District \_\_ (1)
2. Resident Engineer:  
Eric Farmer, Cambellsville Section Office
3. Contractor name: (2)  
Address: (2)  
  
Phone number: (2)  
Contact: (2)  
Contractors agent responsible for compliance with the KPDES  
permit requirements (3):
4. Project Control Number (2)
5. Route (Address)  
US 68
6. Latitude/Longitude (project mid-point) dd/mm/ss, dd/mm/ss  
37.306214  
-85.437122
7. County (project mid-point)  
Green/Taylor
8. Project start date (date work will begin): (2)
9. Projected completion date: (2)

## KyTC BMP Plan for Project CID ## - #####

### A. Site description:

1. Nature of Construction Activity (from letting project description)

IMPROVE SAFETY AND PASSING OPPORTUNITIES ALONG US 68 FROM KY 61 IN GREEN COUNTY TO KY 323 IN TAYLOR COUNTY.

2. Order of major soil disturbing activities (2) and (3)

3. Projected volume of material to be moved  
20, 660 CU YD

4. Estimate of total project area (acres)

199 Acres

5. Estimate of area to be disturbed (acres)  
10 Acres

6. Post construction runoff coefficient will be included in the project drainage folder. Persons needing information pertaining to the runoff coefficient will contact the resident engineer to request this information.(1)

7. Data describing existing soil condition  
Existing soil to be excavated is roadway embankment

8. Data describing existing discharge water quality (if any) (2)  
No existing Water quality data exist

9. Receiving water name (1)  
Unnamed Tributaries to Mill Creek, Rocky Run, Green River, Little Meadow Creek, Little Pittman Creek and Buckhorn Creek

10. TMDLs and Pollutants of Concern in Receiving Waters:  
No TMDL Streams

11. Site map – Project layout sheet plus the erosion control sheets in the project plans that depict Disturbed Drainage Areas (DDAs) and related information. These sheets depict the existing project conditions with areas delineated by DDA (drainage area bounded by watershed breaks and right of way limits), the storm water discharge locations (either as a point discharge or as overland flow) and the areas that drain to each

## KyTC BMP Plan for Project CID ## - #####

discharge point. These plans define the limits of areas to be disturbed and the location of control measures. Controls will be either site specific as designated by the designer or will be annotated by the contractor and resident engineer before disturbance commences. The project layout sheet shows the surface waters and wetlands.

### 12. Potential sources of pollutants:

The primary source of pollutants is solids that are mobilized during storm events. Other sources of pollutants include oil/fuel/grease from servicing and operating construction equipment, concrete washout water, sanitary wastes and trash/debris. (3)

## B. Sediment and Erosion Control Measures:

1. Plans for highway construction projects will include erosion control sheets that depict Disturbed Drainage Areas (DDAs) and related information. These plan sheets will show the existing project conditions with areas delineated by DDA within the right of way limits, the discharge points and the areas that drain to each discharge point. Project managers and designers will analyze the DDAs and identify Best Management Practices (BMPs) that are site specific. The balance of the BMPs for the project will be listed in the bid documents for selection and use by the contractor on the project with approval by the resident engineer.

Projects that do not have DDAs annotated on the erosion control sheets will employ the same concepts for development and managing BMP plans.

2. Following award of the contract, the contractor and resident engineer will annotate the erosion control sheets showing location and type of BMPs for each of the DDAs that will be disturbed at the outset of the project. This annotation will be accompanied by an order of work that reflects the order or sequence of major soil moving activities. The remaining DDAs are to be designated as "Do Not Disturb" until the contractor and resident engineer prepare the plan for BMPs to be employed. The initial BMP's shall be for the first phase (generally Clearing and Grubbing) and shall be modified as needed as the project changes phases. The BMP Plan will be modified to reflect disturbance in additional DDA's as the work progresses. All DDA's will have adequate BMP's in place before being disturbed.

### KyTC BMP Plan for Project CID ## - ####

3. As DDAs are prepared for construction, the following will be addressed for the project as a whole or for each DDA as appropriate:

- Construction Access – This is the first land-disturbing activity. As soon as construction begins, bare areas will be stabilized with gravel and temporary mulch and/or vegetation.
- At the beginning of the project, all DDAs for the project will be inspected for areas that are a source of storm water pollutants. Areas that are a source of pollutants will receive appropriate cover or BMPs to arrest the introduction of pollutants into storm water. Areas that have not been opened by the contractor will be inspected periodically (once per month) to determine if there is a need to employ BMPs to keep pollutants from entering storm water.
- Clearing and Grubbing – The following BMP's will be considered and used where appropriate.
  - Leaving areas undisturbed when possible.
  - Silt basins to provide silt volume for large areas.
  - Silt Traps Type A for small areas.
  - Silt Traps Type C in front of existing and drop inlets which are to be saved
  - Diversion ditches to catch sheet runoff and carry it to basins or traps or to divert it around areas to be disturbed.
  - Brush and/or other barriers to slow and/or divert runoff.
  - Silt fences to catch sheet runoff on short slopes. For longer slopes, multiple rows of silt fence may be considered.
  - Temporary Mulch for areas which are not feasible for the fore mentioned types of protections.
  - Non-standard or innovative methods.
- Cut & Fill and placement of drainage structures - The BMP Plan will be modified to show additional BMP's such as:
  - Silt Traps Type B in ditches and/or drainways as they are completed
  - Silt Traps Type C in front of pipes after they are placed
  - Channel Lining
  - Erosion Control Blanket
  - Temporary mulch and/or seeding for areas where construction activities will be ceased for 21 days or more.
  - Non-standard or innovative methods
- Profile and X-Section in place – The BMP Plan will be modified to show elimination of BMP's which had to be removed and the addition of new BMP's as the roadway was shaped. Probably changes include:
  - Silt Trap Type A, Brush and/or other barriers, Temporary Mulch, and any other BMP which had to be removed for final grading to take place.

## KyTC BMP Plan for Project CID ## - ####

- Additional Silt Traps Type B and Type C to be placed as final drainage patterns are put in place.
- Additional Channel Lining and/or Erosion Control Blanket.
- Temporary Mulch for areas where Permanent Seeding and Protection cannot be done within 21 days.
- Special BMP's such as Karst Policy
- Finish Work (Paving, Seeding, Protect, etc.) – A final BMP Plan will result from modifications during this phase of construction. Probably changes include:
  - Removal of Silt Traps Type B from ditches and drainways if they are protected with other BMP's which are sufficient to control erosion, i.e. Erosion Control Blanket or Permanent Seeding and Protection on moderate grades.
  - Permanent Seeding and Protection
  - Placing Sod
  - Planting trees and/or shrubs where they are included in the project
- BMP's including Storm Water Management Devices such as velocity dissipation devices and Karst policy BMP's to be installed during construction to control the pollutants in storm water discharges that will occur after construction has been completed are : No permanent BMPs are being proposed.

## C. Other Control Measures

1. No solid materials, including building materials, shall be discharged to waters of the commonwealth, except as authorized by a Section 404 permit.
2. Waste Materials

All waste materials that may leach pollutants (paint and paint containers, caulk tubes, oil/grease containers, liquids of any kind, soluble materials, etc.) will be collected and stored in appropriate covered waste containers. Waste containers shall be removed from the project site on a sufficiently frequent basis as to not allow wastes to become a source of pollution. All personnel will be instructed regarding the correct procedure for waste disposal. Wastes will be disposed in accordance with appropriate regulations. Notices stating these practices will be posted in the office.

3. Hazardous Waste

All hazardous waste materials will be managed and disposed of in the manner specified by local or state regulation. The contractor shall notify the Section Engineer if there any hazardous wastes being generated at the

## KyTC BMP Plan for Project CID ## - #####

project site and how these wastes are being managed. Site personnel will be instructed with regard to proper storage and handling of hazardous wastes when required. The Transportation Cabinet will file for generator, registration when appropriate, with the Division of Waste Management and advise the contractor regarding waste management requirements.

### 4. Spill Prevention

The following material management practices will be used to reduce the risk of spills or other exposure of materials and substances to the weather and/or runoff.

#### ➤ **Good Housekeeping:**

The following good housekeeping practices will be followed onsite during the construction project.

- An effort will be made to store only enough product required to do the job
- All materials stored onsite will be stored in a neat, orderly manner in their appropriate containers and, if possible, under a roof or other enclosure
- Products will be kept in their original containers with the original manufacturer's label
- Substances will not be mixed with one another unless recommended by the manufacturer
- Whenever possible, all of the product will be used up before disposing of the container
- Manufacturers' recommendations for proper use and disposal will be followed
- The site contractor will inspect daily to ensure proper use and disposal of materials onsite

#### ➤ **Hazardous Products:**

These practices will be used to reduce the risks associated with any and all hazardous materials.

- Products will be kept in original containers unless they are not resealable
- Original labels and material safety data sheets (MSDS) will be reviewed and retained
- Contractor will follow procedures recommended by the manufacturer when handling hazardous materials
- If surplus product must be disposed of, manufacturers' or state/local recommended methods for proper disposal will be followed



## KyTC BMP Plan for Project CID ## - #####

### **The following product-specific practices will be followed onsite:**

#### **➤ Petroleum Products:**

Vehicles and equipment that are fueled and maintained on site will be monitored for leaks, and receive regular preventative maintenance to reduce the chance of leakage. Petroleum products onsite will be stored in tightly sealed containers, which are clearly labeled and will be protected from exposure to weather.

The contractor shall prepare an Oil Pollution Spill Prevention Control and Countermeasure plan when the project that involves the storage of petroleum products in 55 gallon or larger containers with a total combined storage capacity of 1,320 gallons. This is a requirement of 40 CFR 112.

This project (will / will not) (3) have over 1,320 gallons of petroleum products with a total capacity, sum of all containers 55 gallon capacity and larger.

#### **➤ Fertilizers:**

Fertilizers will be applied at rates prescribed by the contract, standard specifications or as directed by the resident engineer. Once applied, fertilizer will be covered with mulch or blankets or worked into the soil to limit exposure to storm water. Storage will be in a covered shed. The contents of any partially used bags of fertilizer will be transferred to a sealable plastic bin to avoid spills.

#### **➤ Paints:**

All containers will be tightly sealed and stored indoors or under roof when not being used. Excess paint or paint wash water will not be discharged to the drainage or storm sewer system but will be properly disposed of according to manufacturers' instructions or state and local regulations.

#### **➤ Concrete Truck Washout:**

Concrete truck mixers and chutes will not be washed on pavement, near storm drain inlets, or within 75 feet of any ditch, stream, wetland, lake, or sinkhole. Where possible, excess concrete and wash water will be discharged to areas prepared for pouring new concrete, flat areas to be paved that are away from ditches or drainage system features, or other locations that will not drain off site. Where this approach is not possible, a shallow earthen wash basin will be excavated away from ditches to receive the wash water

#### **➤ Spill Control Practices**

## KyTC BMP Plan for Project CID ## - #####

In addition to the good housekeeping and material management practices discussed in the previous sections of this plan, the following practices will be followed for spill prevention and cleanup:

- Manufacturers' recommended methods for spill cleanup will be clearly posted. All personnel will be made aware of procedures and the location of the information and cleanup supplies.
- Materials and equipment necessary for spill cleanup will be kept in the material storage area. Equipment and materials will include as appropriate, brooms, dust pans, mops, rags, gloves, oil absorbents, sand, sawdust, and plastic and metal trash containers.
- All spills will be cleaned up immediately after discovery.
- The spill area will be kept well ventilated and personnel will wear appropriate protective clothing to prevent injury from contact with a hazardous substance.
- Spills of toxic or hazardous material will be reported to the appropriate state/local agency as required by KRS 224 and applicable federal law.
- The spill prevention plan will be adjusted as needed to prevent spills from reoccurring and improve spill response and cleanup.
- Spills of products will be cleaned up promptly. Wastes from spill clean up will be disposed in accordance with appropriate regulations.

### **D. Other State and Local Plans**

This BMP plan shall include any requirements specified in sediment and erosion control plans, storm water management plans or permits that have been approved by other state or local officials. Upon submittal of the NOI, other requirements for surface water protection are incorporated by reference into and are enforceable under this permit (even if they are not specifically included in this BMP plan). This provision does not apply to master or comprehensive plans, non-enforceable guidelines or technical guidance documents that are not identified in a specific plan or permit issued for the construction site by state or local officials. (1)

## KyTC BMP Plan for Project CID ## - #####

### E. Maintenance

1. The BMP plan shall include a clear description of the maintenance procedures necessary to keep the control measures in good and effective operating condition.
- Maintenance of BMPs during construction shall be a result of weekly and post rain event inspections with action being taken by the contractor to correct deficiencies.
  - Post Construction maintenance will be a function of normal highway maintenance operations. Following final project acceptance by the cabinet, district highway crews will be responsible for identification and correction of deficiencies regarding ground cover and cleaning of storm water BMPs. The project manager shall identify any BMPs that will be for the purpose of post construction storm water management with specific guidance for any non-routine maintenance. (1)

### F. Inspections

Inspection and maintenance practices that will be used to maintain erosion and sediment controls:

- All erosion prevention and sediment control measures will be inspected at least once each week and following any rain of one-half inch or more.
- Inspections will be conducted by individuals that have successfully completed the KEPSC-RI course as required by Section 213.02.02 of the Standard Specifications for Road and Bridge Construction, current edition.
- Inspection reports will be written, signed, dated, and kept on file.
- Areas at final grade will be seeded and mulched within 14 days.
- Areas that are not at final grade where construction has ceased for a period of 21 days or longer and soil stock piles shall receive temporary mulch no later than 14 days from the last construction activity in that area.
- All measures will be maintained in good working order; if a repair is necessary, it will be initiated within 24 hours of being reported.
- Built-up sediment will be removed from behind the silt fence before it has reached halfway up the height of the fence.
- Silt fences will be inspected for bypassing, overtopping, undercutting, depth of sediment, tears, and to ensure attachment to secure posts.

## KyTC BMP Plan for Project CID ## - #####

- Sediment basins will be inspected for depth of sediment, and built-up sediment will be removed when it reaches 50 percent of the design capacity and at the end of the job.
- Diversion dikes and berms will be inspected and any breaches promptly repaired. Areas that are eroding or scouring will be repaired and re-seeded / mulched as needed.
- Temporary and permanent seeding and mulching will be inspected for bare spots, washouts, and healthy growth. Bare or eroded areas will be repaired as needed.
- All material storage and equipment servicing areas that involve the management of bulk liquids, fuels, and bulk solids will be inspected weekly for conditions that represent a release or possible release of pollutants to the environment.

### **G. Non – Storm Water discharges**

It is expected that non-storm water discharges may occur from the site during the construction period. Examples of non-storm water discharges include:

- Water from water line flushings.
- Water from cleaning concrete trucks and equipment.
- Pavement wash waters (where no spills or leaks of toxic or hazardous materials have occurred).
- Uncontaminated groundwater and rain water (from dewatering during excavation).

All non-storm water discharges will be directed to the sediment basin or to a filter fence enclosure in a flat vegetated infiltration area or be filtered via another approved commercial product.

### **H. Groundwater Protection Plan (3)**

This plan serves as the groundwater protection plan as required by 401 KAR 5:037.

- Contractors statement: (3)

The following activities, as enumerated by 401 KAR 5:037 Section 2 that require the preparation and implementation of a groundwater protection plan, will or may be may be conducted as part of this construction project:

KyTC BMP Plan for Project CID ## - #####

\_\_\_\_\_ 2. (e) land treatment or land disposal of a pollutant;

\_\_\_\_\_ 2. (f) Storing, ..., or related handling of hazardous waste, solid waste or special waste, ..., in tanks, drums, or other containers, or in piles, (This does not include wastes managed in a container placed for collection and removal of municipal solid waste for disposal off site);

\_\_\_\_\_ 2. (g) .... Handling of materials in bulk quantities (equal or greater than 55 gallons or 100 pounds net dry weight transported held in an individual container) that, if released to the environment, would be a pollutant;

\_\_\_\_\_ 2. (j) Storing or related handling of road oils, dust suppressants, ...., at a central location;

\_\_\_\_\_ 2. (k) Application or related handling of road oils, dust suppressants or deicing materials, (does not include use of chloride-based deicing materials applied to roads or parking lots);

\_\_\_\_\_ 2. (m) Installation, construction, operation, or abandonment of wells, bore holes, or core holes, (this does not include bore holes for the purpose of explosive demolition);

Or, check the following only if there are no qualifying activities

\_\_\_\_\_ There are no activities for this project as listed in 401 KAR 5:037 Section 2 that require the preparation and implementation of a groundwater protection plan.

The contractor is responsible for the preparation of a plan that addresses the

401 KAR 5:037 Section 3. (3) Elements of site specific groundwater protection plan:

- (a) General information about this project is covered in the Project information;
- (b) Activities that require a groundwater protection plan have been identified above;
- (c) Practices that will protect groundwater from pollution are addressed in section C. Other control measures.
- (d) Implementation schedule – all practices required to prevent pollution of groundwater are to be in place prior to conducting the activity;
- (e) Training is required as a part of the ground water protection plan. All employees of the contractor, sub-contractor and resident engineer personnel will be trained to understand the nature and requirements of this plan as they pertain to their job

## KyTC BMP Plan for Project CID ## - #####

function(s). Training will be accomplished within one week of employment and annually thereafter. A record of training will be maintained by the contractor with a copy provide to the resident engineer.

- (f) Areas of the project and groundwater plan activities will be inspected as part of the weekly sediment and erosion control inspections
- (g) Certification (see signature page.)

## KyTC BMP Plan for Project CID ## - #####

### Contractor and Resident Engineer Plan certification

The contractor that is responsible for implementing this BMP plan is identified in the Project Information section of this plan.

The following certification applies to all parties that are signatory to this BMP plan:

I certify under penalty of law that this document and all attachments were prepared under my direction or supervision in accordance with a system designed to assure that qualified personnel properly gathered and evaluated the information submitted. Based on my inquiry of the person or persons who manage the system, or those persons directly responsible for gathering the information, the information submitted is, to the best of my knowledge and belief, true, accurate, and complete. I am aware that there are significant penalties for submitting false information, including the possibility of fine and imprisonment for knowing violations. Further, this plan complies with the requirements of 401 KAR 5:037. By this certification, the undersigned state that the individuals signing the plan have reviewed the terms of the plan and will implement its provisions as they pertain to ground water protection.

### Resident Engineer and Contractor Certification:

#### (2) Resident Engineer signature

Signed \_\_\_\_\_ title \_\_\_\_\_, \_\_\_\_\_  
Typed or printed name<sup>2</sup> signature

(3) Signed \_\_\_\_\_ title \_\_\_\_\_, \_\_\_\_\_  
Typed or printed name<sup>1</sup> signature

1. Contractors Note: to be signed by a person who is the owner, a responsible corporate officer, a general partner or the proprietor or a person designated to have the authority to sign reports by such a person in accordance with 401 KAR 5:060 Section 9. This delegation shall be in writing to: Manager, KPDES Branch, Division of Water, 14 Reilly Road, Frankfort Kentucky 40601. Reference the Project Control Number (PCN) and KPDES number when one has been issued.

2. KyTC note: to be signed by the Chief District Engineer or a person designated to have the authority to sign reports by such a person (usually the resident engineer) in accordance with 401 KAR 5:060 Section 9. This delegation shall be in writing to: Manager, KPDES Branch, Division of Water, 14 Reilly Road, Frankfort Kentucky 40601 Reference the Project Control Number (PCN) and KPDES number when one has been issued.

KyTC BMP Plan for Project CID ## - #####

Sub-Contractor Certification

The following sub-contractor shall be made aware of the BMP plan and responsible for implementation of BMPs identified in this plan as follows:

Subcontractor

Name:  
Address:  
Address:

Phone:

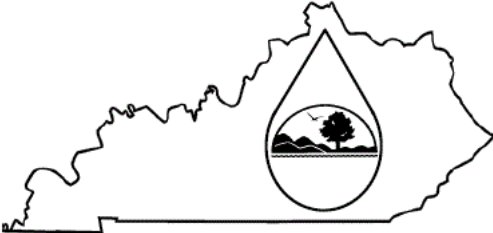
The part of BMP plan this subcontractor is responsible to implement is:

I certify under penalty of law that I understand the terms and conditions of the general Kentucky Pollutant Discharge Elimination System permit that authorizes the storm water discharges, the BMP plan that has been developed to manage the quality of water to be discharged as a result of storm events associated with the construction site activity and management of non-storm water pollutant sources identified as part of this certification.

Signed \_\_\_\_\_title\_\_\_\_\_, \_\_\_\_\_  
Typed or printed name<sup>1</sup>signature

1. Sub Contractor Note: to be signed by a person who is the owner, a responsible corporate officer, a general partner or the proprietor or a person designated to have the authority to sign reports by such a person in accordance with 401 KAR 5:060 Section 9. This delegation shall be in writing to: Manager, KPDES Branch, Division of Water, 14 Reilly Road, Frankfort Kentucky 40601. Reference the Project Control Number (PCN) and KPDES number when one has been issued.





KENTUCKY POLLUTION DISCHARGE

ELIMINATION SYSTEM (KPDES)

Notice of Intent (NOI) for coverage of Storm Water Discharge  
Associated with Construction Activities Under the KPDES Storm  
Water General Permit KYR100000

Click here for Instructions (Controls/KYR10%20Instructions.pdf)

Click here to obtain information and a copy of the KPDES General Permit.  
([https://eec.ky.gov/Environmental-  
Protection/Water/PermitCert/KPDES/Documents/KYR10PermitPage.pdf](https://eec.ky.gov/Environmental-Protection/Water/PermitCert/KPDES/Documents/KYR10PermitPage.pdf))

(\*) indicates a required field; (✓) indicates a field may be required  
based on user input or is an optionally required field

Reason for Submittal:(*) Application for New Permit Coverage		Agency Interest ID: Agency Interest ID		Permit Number:(✓) KPDES Permit Number	
If change to existing permit coverage is requested, describe the changes for which modification of coverage is being sought:(✓)					
ELIGIBILITY: Stormwater discharges associated with construction activities disturbing individually one (1) acre or more, including, in the case of a common plan of development, contiguous construction activities that cumulatively equal one (1) acre or more of disturbance.					
COVERAGE: Applicants shall complete and submit the eNOI-SWCA a minimum of seven (7) days before the proposed date for commencement of construction activities. Applicants shall receive written notification from the Division of Water before being authorized to discharge under the terms of the KYR10 General Permit.					
EXCLUSIONS: The following are excluded from coverage under this general permit: 1) Are conducted at or on properties that have obtained an individual KPDES permit for the discharge of other wastewaters which requires the development and implementation of a Best Management Practices (BMP) plan; 2) Any operation that the DOW determines an individual permit would better address the discharges from that operation; 3) Any project that discharges to an Impaired Water listed in the most recent Integrated Report, §305(b) as impaired for sediment and for which an approved TMDL has been developed.					
SECTION I -- FACILITY OPERATOR INFORMATION (PERMITTEE)					
Company Name:(✓) KYTC District 4		First Name:(✓) Bradley		M.I.: MI	Last Name:(✓) Bottoms
Mailing Address:(*) 634 East Dixie Ave		City:(*) Elizabethtown		State:(*) Kentucky	Zip:(*) 42701
eMail Address:(*) bradley.bottoms@ky.gov		Business Phone:(*) 270-766-5066		Alternate Phone: 270-766-5066	
Additional Facility Operator information(Co-Permittee) required ?(*) No					
SECTION II -- GENERAL SITE LOCATION INFORMATION					
Project Name:(*) CID 25-XXXX - US 68 Safety and Mobility Improvements		Status of Owner/Operator(*) State Government		SIC Code(*) 1611 Highway and Street Constr	
Company Name:(✓) KYTC District 4		First Name:(✓) Bradley		M.I.: MI	Last Name:(✓) Bottoms
Site Physical Address:(*) US 68					
City:(*) Campbellsville		State:(*) Kentucky		Zip:(*) 42718	
County:(*) Taylor		Latitude(decimal degrees)(*)DMS to DD Converter ( <a href="https://www.fcc.gov/media/radio/dms-decimal">https://www.fcc.gov/media/radio/dms-decimal</a> ) 37.306214		Longitude(decimal degrees)(*) -85.437122	

SECTION III -- SPECIFIC SITE ACTIVITY INFORMATION	
Project Description:(*) <div>IMPROVE SAFETY AND PASSING OPPORTUNITIES ALONG US 68 FROM KY 61 IN GREEN COUNTY TO KY 323 IN TAYLOR COUNTY.</div>	
Was the pre-development land used for agriculture ?(*) <div>No</div>	Will there be demolition of any structure built or renovated before January 1, 1980 ? (*) <div>No</div>
Select the type of construction site (check all that apply)(*) <div><div><input type="checkbox"/> Single-Family Residential</div><div><input type="checkbox"/> Multi-Family Residential</div><div><input type="checkbox"/> Commercial</div><div><input type="checkbox"/> Industrial</div><div><input type="checkbox"/> Institutional</div><div><input checked="" type="checkbox"/> Highway or Road</div><div><input type="checkbox"/> Utility</div><div><input type="checkbox"/> Other</div></div>	
a. For single projects provide the following information	
Total Number of Acres in Project:(✓) <div>199</div>	Total Number of Acres Disturbed:(✓) <div>10</div>
Anticipated Start Date:(✓) <div></div>	Anticipated Completion Date:(✓) <div></div>
b. For common plans of development provide the following information	
Total Number of Acres in Project:(✓) <div># Acre(s)</div>	Total Number of Acres Disturbed:(✓) <div># Acre(s)</div>
Number of individual lots in development, if applicable:(✓) <div># lot(s)</div>	Number of lots in development:(✓) <div># lot(s)</div>
Total acreage of lots intended to be developed:(✓) <div>Project Acres</div>	Number of acres intended to be disturbed at any one time:(✓) <div>Disturbed Acres</div>
Anticipated Start Date:(✓) <div></div>	Anticipated Completion Date:(✓) <div></div>
List Building Contractor(s) at the time of Application:(✓) <div><div><div><div>+ Company Name</div><div></div></div><div></div></div></div>	
SECTION IV -- INFORMATION IS ALWAYS REQUIRED FOR ONSITE POINT OF DISCHARGE AND RECEIVING WATER	
Discharge Point(s):(*) <div></div>	

	Unnamed Tributary?	Latitude	Longitude	Receiving Water Name		
1	Yes	37.27177431	-85.49512648	Mill Creek	Delete	
2	Yes	37.29663747	-85.46103399	Rocky Run	Delete	
3	Yes	37.29796309	-85.45732575	Rocky Run	Delete	
4	Yes	37.29852935	-85.45419637	Rocky Run	Delete	
5	Yes	37.29857905	-85.45407462	Rocky Run	Delete	
6	Yes	37.29980716	-85.45059621	Green River	Delete	
7	Yes	37.30323186	-85.44369206	Green River	Delete	
8	Yes	37.30412928	-85.44181986	Green River	Delete	
9	Yes	37.30584692	-85.43872922	Green River	Delete	
10	Yes	37.30908254	-85.43228366	Little Pittman Creek	Delete	



This grid can be edited either directly on this page or by editing the information in an excel sheet.  
If you would like to edit this information in an excel sheet, first use the right button (export) to download the sheet.  
After adding your data, save the sheet, and use the left button (import) to import the same file to this grid.

SECTION V -- Section V MUST BE COMPLETED IF WITHIN A MS4 AREA

Name of MS4:

Campbellsville MS4

SECTION VI -- WILL THE PROJECT REQUIRE CONSTRUCTION ACTIVITIES IN A WATER BODY, FLOODPLAIN OR THE RIPARIAN ZONE?

Will the project require construction activities in a water body or the riparian zone?: (\*)

No

If Yes, describe scope of activity: (✓)

Describe the scope of activity

Is a Clean Water Act 404 permit required?:(\*)

Is a Clean Water Act 401 Water Quality Certification required?:(\*)

SECTION VII -- NOI PREPARER INFORMATION

First Name:(\*)

Joseph

M.I.:

MI

Last Name:(\*)

Ferguson

Company Name:(\*)

KYTC District 4

Mailing Address:(\*)

634 East Dixie Ave

City:(\*)

Elizabethtown

State:(\*)

Kentucky

Zip:(\*)

42701

eMail Address:(\*)

joseph.ferguson@ky.gov

Business Phone:(\*)

270-766-5066

Alternate Phone:

- - -

SECTION VIII -- ATTACHMENTS

Facility Location Map:(\*)

Upload file

Supplemental Information:

Upload file

SECTION IX -- CERTIFICATION

I certify under penalty of law that this document and all attachments were prepared under my direction or supervision in accordance with a system designed to assure that qualified personnel properly gather and evaluate the information submitted. Based on my inquiry of the person or persons who manage the system, or those persons directly responsible for gathering the information submitted is, to the best of my knowledge and belief, true, accurate, and complete. I am aware that there are significant penalties for submitting false information, including the possibility of fine and imprisonment for knowing violations.

Signature:(\*)

Bradley Bottoms

Title:(\*)

Chief District Engineer

First Name:(\*)

Bradley

M.I.:

MI

Last Name:(\*)

Bottoms

eMail Address:(\*)

bradley.bottoms@ky.gov

Business Phone:(\*)

270-766-5066

Alternate Phone:

- - -

Signature Date:(\*)

Date

Click to Save Values for Future Retrieval

Click to Submit to EEC



## ***SPECIAL NOTE***

### **Filing of eNOI for KPDES Construction Stormwater Permit**

**County: Nelson**  
**Item No.: 4-8909**

**Route: New Route**  
**KDOW Submittal ID: 504947**  
9cb9d2db-703f-4505-  
83d5-d5ee3b6eae06

**Project Description:**

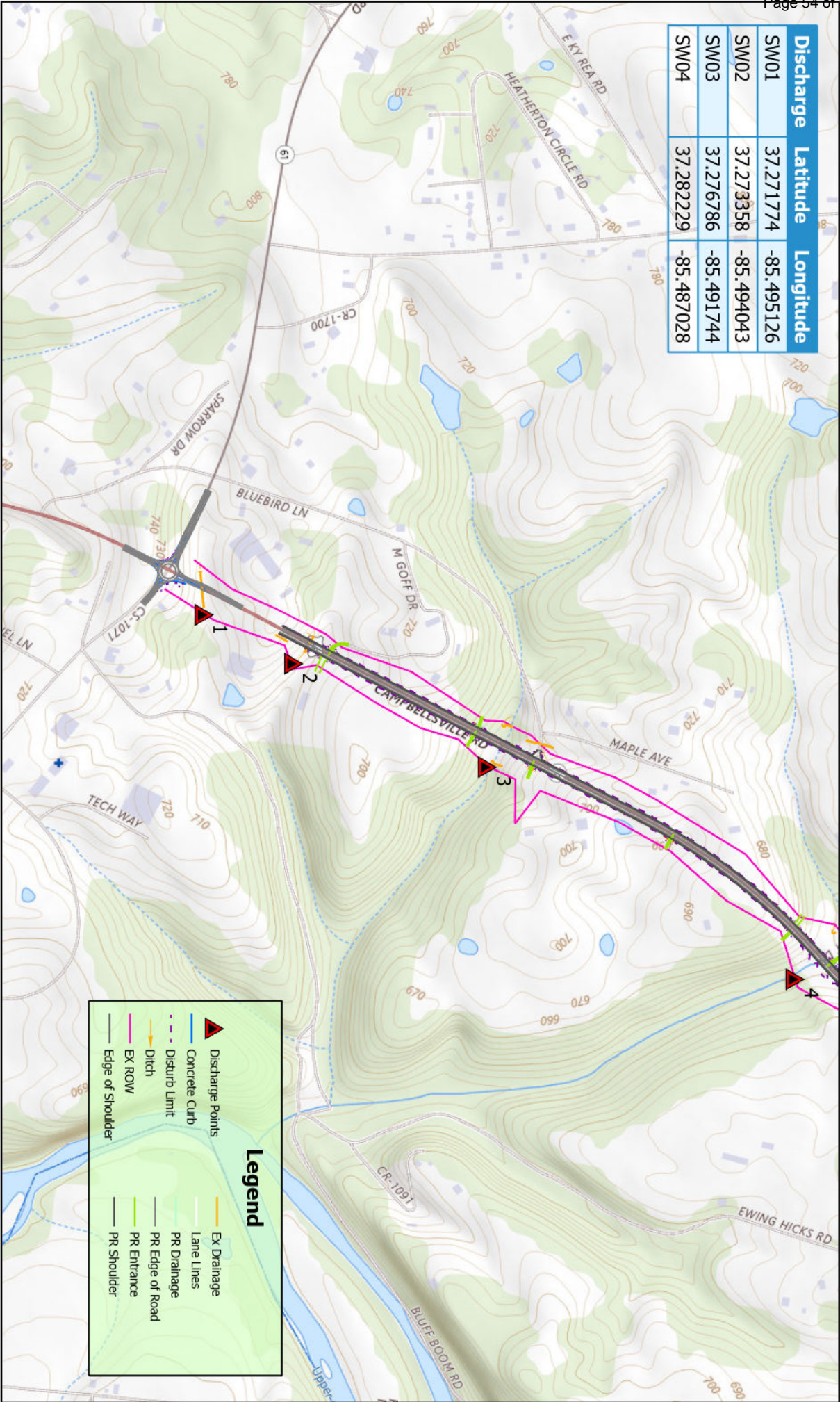
**IMPROVE SAFETY AND PASSING OPPORTUNITIES ALONG US 68 FROM  
KY 61 IN GREEN COUNTY TO KY 323 IN TAYLOR COUNTY.**

**A Notice of Intent for obtaining coverage under the Kentucky Pollutant Discharge Elimination System (KPDES) General Permit for Stormwater Discharges Associated with Construction Activities (KYR10) has been drafted, copy of which is attached. Upon award, the Contractor will be identified in Section III of the form as the “Building Contractor” and it will be submitted for approval to the Kentucky Division of Water. The Contractor shall be responsible for advancing the work in a manner that is compliant with all applicable and appropriate KYTC specifications for sediment and erosion control as well as meeting the requirements of the KYR10 permit and the KDOW.**

**If there are any questions regarding this note, please contact Danny Peake, Director, Division of Environmental Analysis, TCOB, 200 Mero Street, Frankfort, KY 40622, Phone: (502) 564-7250.**



Discharge	Latitude	Longitude
SW01	37.271774	-85.495126
SW02	37.273358	-85.494043
SW03	37.276786	-85.491744
SW04	37.282229	-85.487028



# 4-80102 - KPDES Map

USGS The National Map, National Boundaries Dataset, 3DEP Elevation Program, Geographic Names Information System, National Hydrography Dataset, National Land Cover Database, National Structures Dataset, and National Transportation Dataset; USGS Global Ecosystems; US Census Bureau TIGER/Line data; USFS Road data; Natural Earth Data; U.S. Department of State HUI; NOAA National Centers for Environmental

Coordinate System: WGS 1984 Web Mercator Auxiliary Sphere

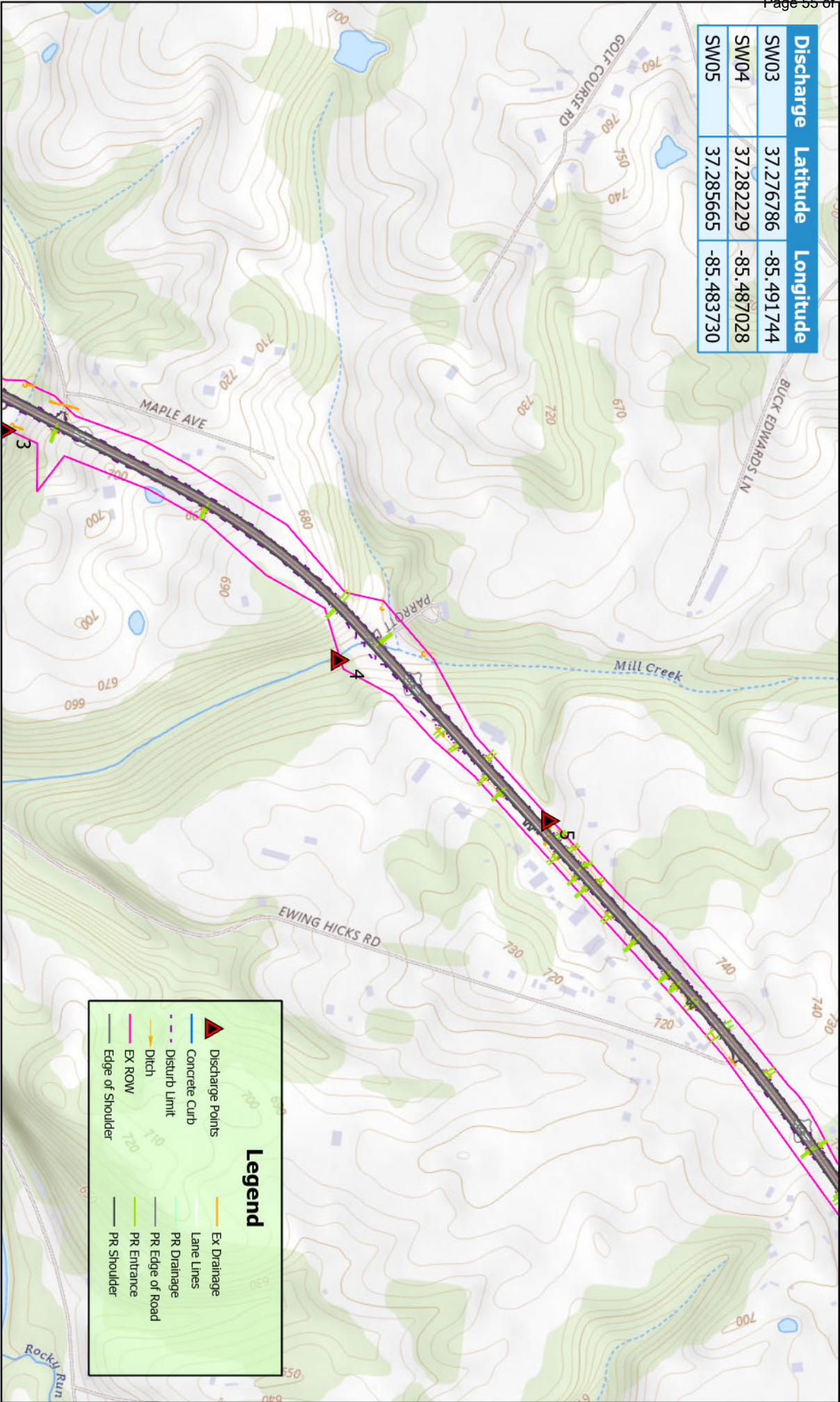
## 2025

0 0.13 0.25 0.5 Km





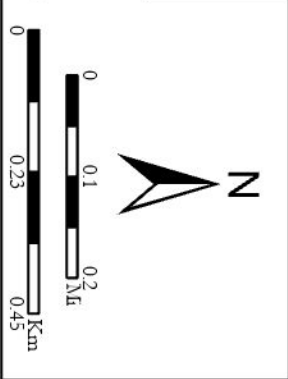
Discharge	Latitude	Longitude
SW03	37.276786	-85.491744
SW04	37.282229	-85.487028
SW05	37.285665	-85.483730



USGS The National Map, National Boundaries Dataset, 3DEP Elevation Program, Geographic Names Information System, National Hydrography Dataset, National Land Cover Database, National Structures Dataset, and National Transportation Dataset; USGS Global Ecosystems; US Census Bureau TIGER/Line data; USFS Road data; Natural Earth Data; U.S. Department of State HUI; NOAA National Centers for Environmental

4-80102 - KPDES Map

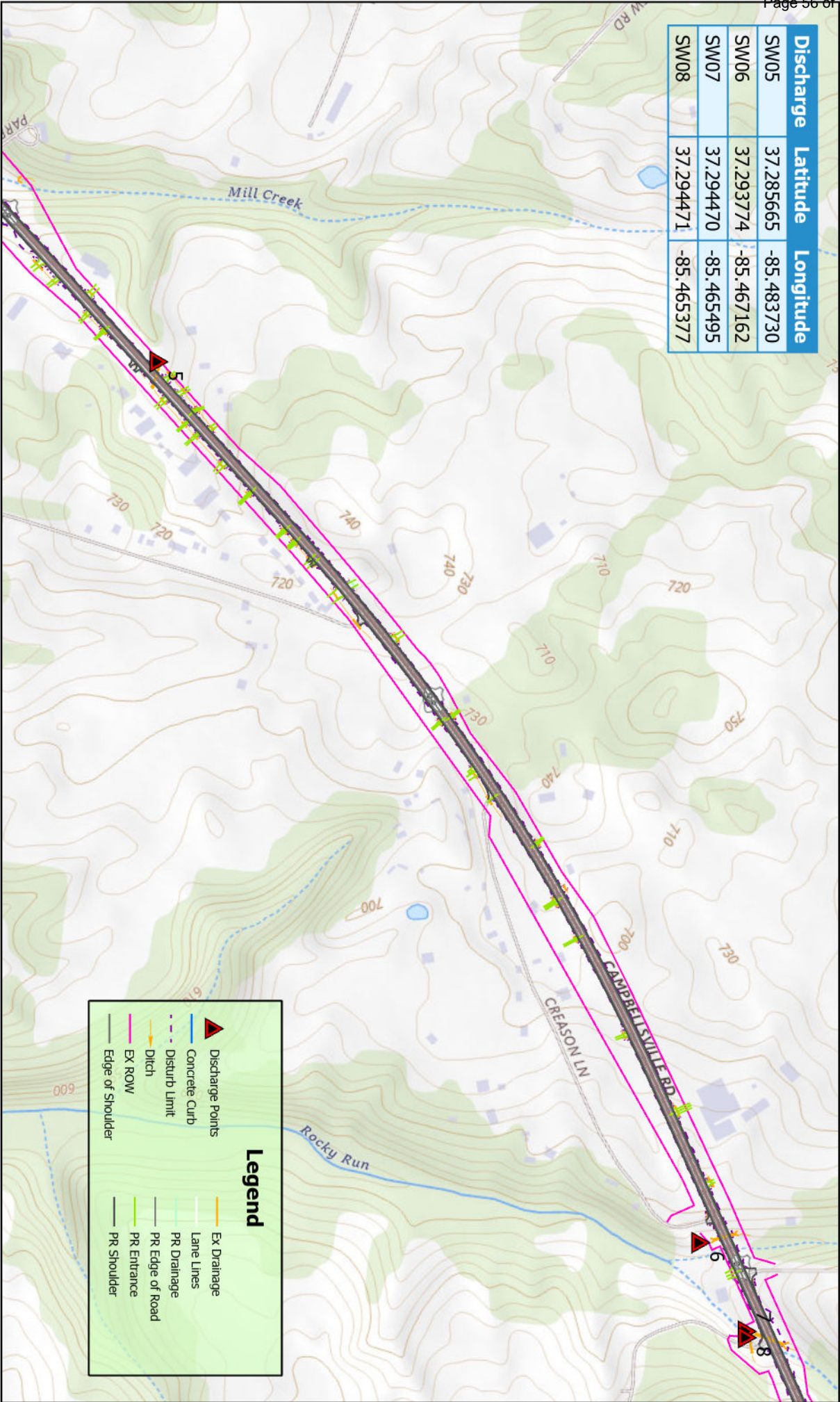
2025



Coordinate System: WGS 1984 Web Mercator Auxiliary Sphere



Discharge	Latitude	Longitude
SW05	37.285665	-85.483730
SW06	37.293774	-85.467162
SW07	37.294470	-85.465495
SW08	37.294471	-85.465377

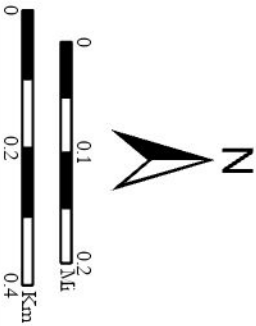


# 4-80102 - KPDES Map

USGS The National Map, National Boundaries Dataset, 3DEP Elevation Program, Geographic Names Information System, National Hydrography Dataset, National Land Cover Database, National Structures Dataset, and National Transportation Dataset; USGS Global Ecosystems; US Census Bureau TIGER/Line data; USFS Road data; Natural Earth Data; US Department of State HUI; NOAA National Centers for Environmental

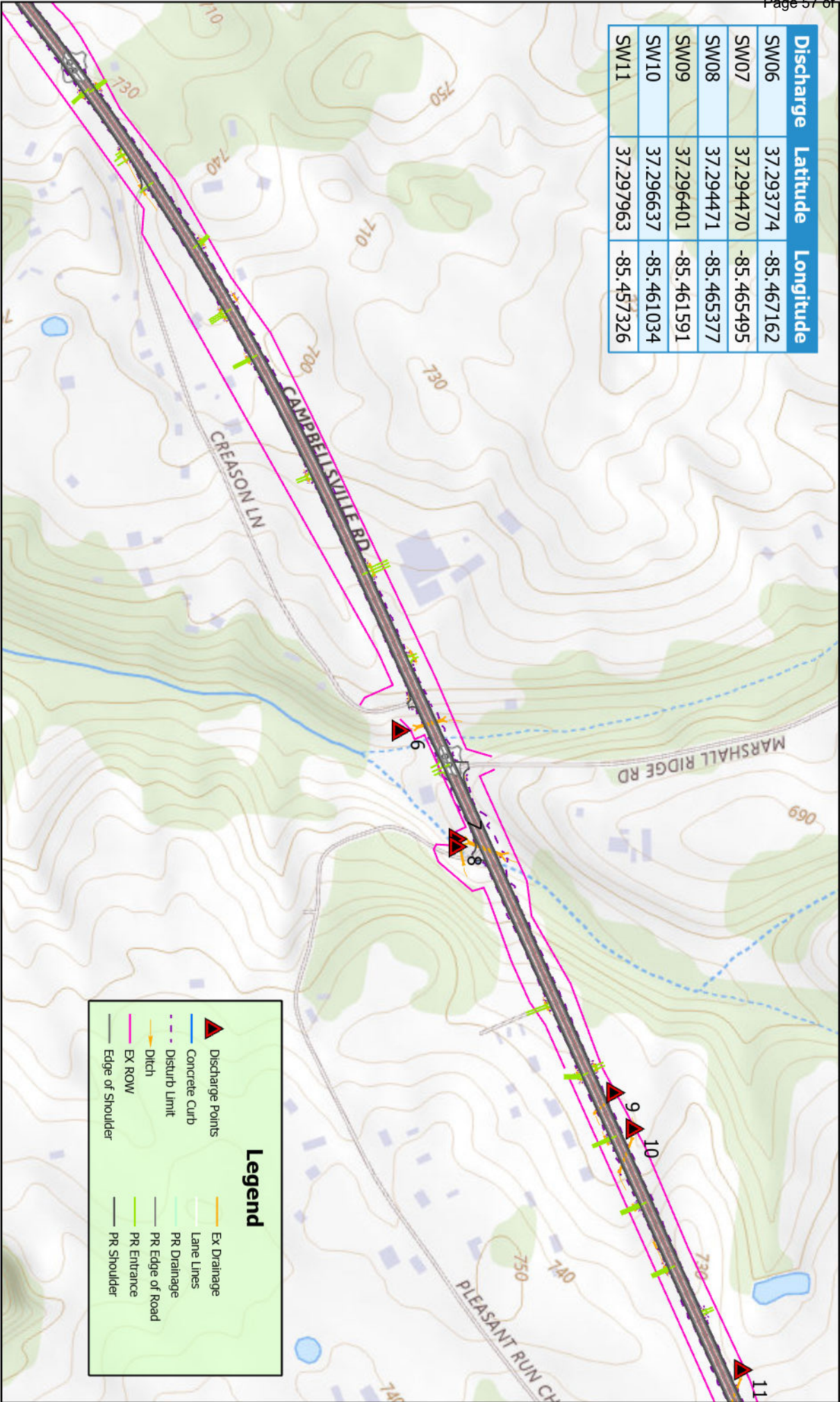
Coordinate System: WGS 1984 Web Mercator Auxiliary Sphere

2025





Discharge	Latitude	Longitude
SW06	37.293774	-85.467162
SW07	37.294470	-85.465495
SW08	37.294471	-85.465377
SW09	37.296401	-85.461591
SW10	37.296637	-85.461034
SW11	37.297963	-85.457326



▲ Discharge Points

— Concrete Curb

--- Disturb Limit

— Ditch

— EX ROW

— Edge of Shoulder

— Ex Drainage

— Lane Lines

— PR Drainage

— PR Edge of Road

— PR Entrance

— PR Shoulder

**Legend**



USGS The National Map, National Boundaries Dataset, 3DEP Elevation Program, Geographic Names Information System, National Hydrography Dataset, National Land Cover Database, National Structures Dataset, and National Transportation Dataset; USGS Global Ecosystems; U.S. Census Bureau TIGER/Line data; USFS Road data; Natural Earth Data; U.S. Department of State HUI; NOAA National Centers for Environmental

# 4-80102 - KPDES Map

2025

Coordinate System: WGS 1984 Web Mercator Auxiliary Sphere

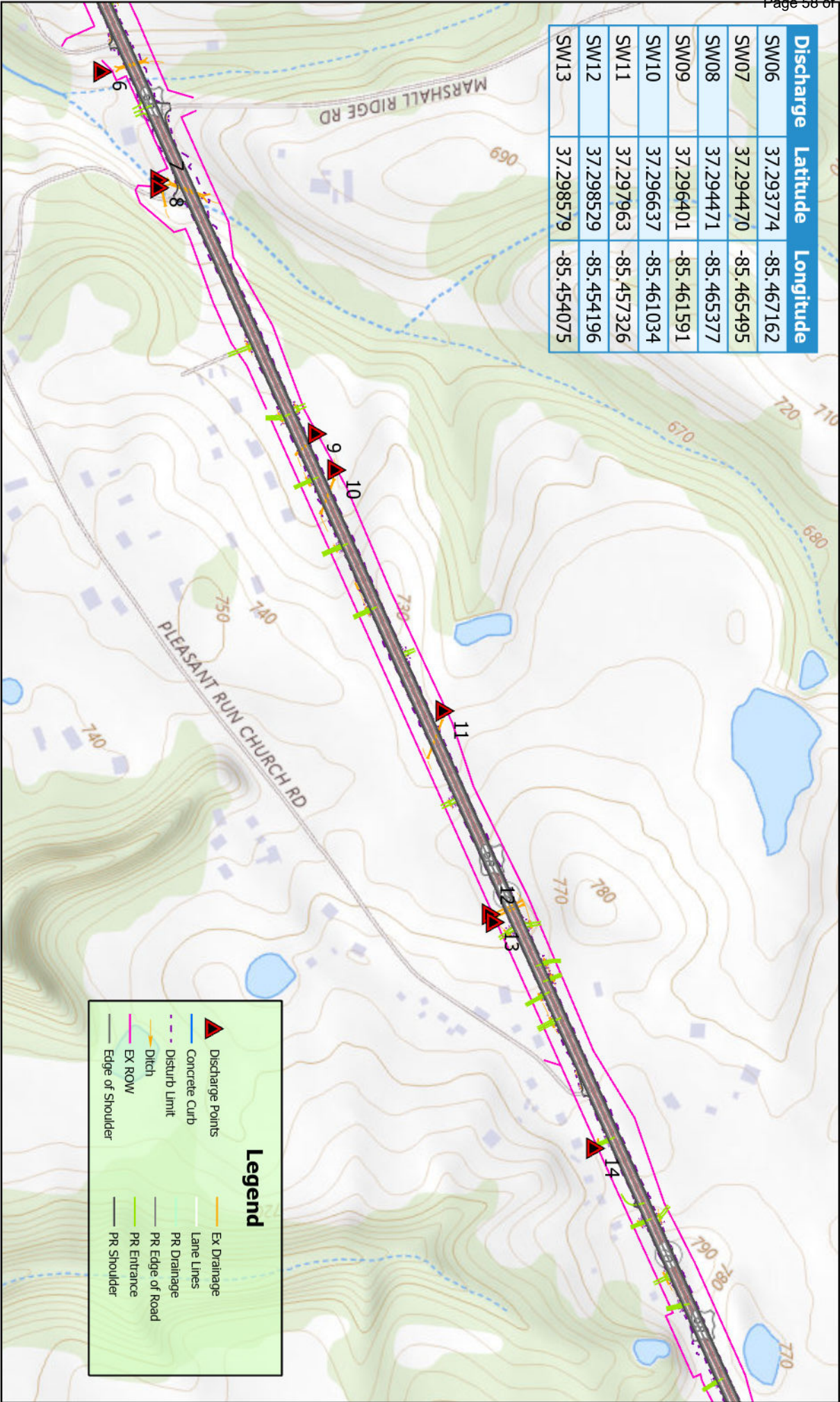
N

0 0.07 0.15 0.35 Km

0 0.17 0.35 Km



Discharge	Latitude	Longitude
SW06	37.293774	-85.467162
SW07	37.294470	-85.465495
SW08	37.294471	-85.465377
SW09	37.296401	-85.461591
SW10	37.296637	-85.461034
SW11	37.297963	-85.457326
SW12	37.298529	-85.454196
SW13	37.298579	-85.454075



▲ Discharge Points

— Concrete Curb

--- Disturb Limit

— Ditch

— EX ROW

— Edge of Shoulder

— Ex Drainage

— Lane Lines

— PR Drainage

— PR Edge of Road

— PR Entrance

— PR Shoulder

**Legend**



USGS The National Map: National Boundaries Dataset, 3DEP Elevation Program, Geographic Names Information System, National Hydrography Dataset, National Land Cover Database, National Structures Dataset, and National Transportation Dataset; USGS Global Ecosystems; US Census Bureau TIGER/Line data; USFS Road data; Natural Earth Data; US Department of State HUI; NOAA National Centers for Environmental

# 4-80102 - KPDES Map

2025

Coordinate System: WGS 1984 Web Mercator Auxiliary Sphere

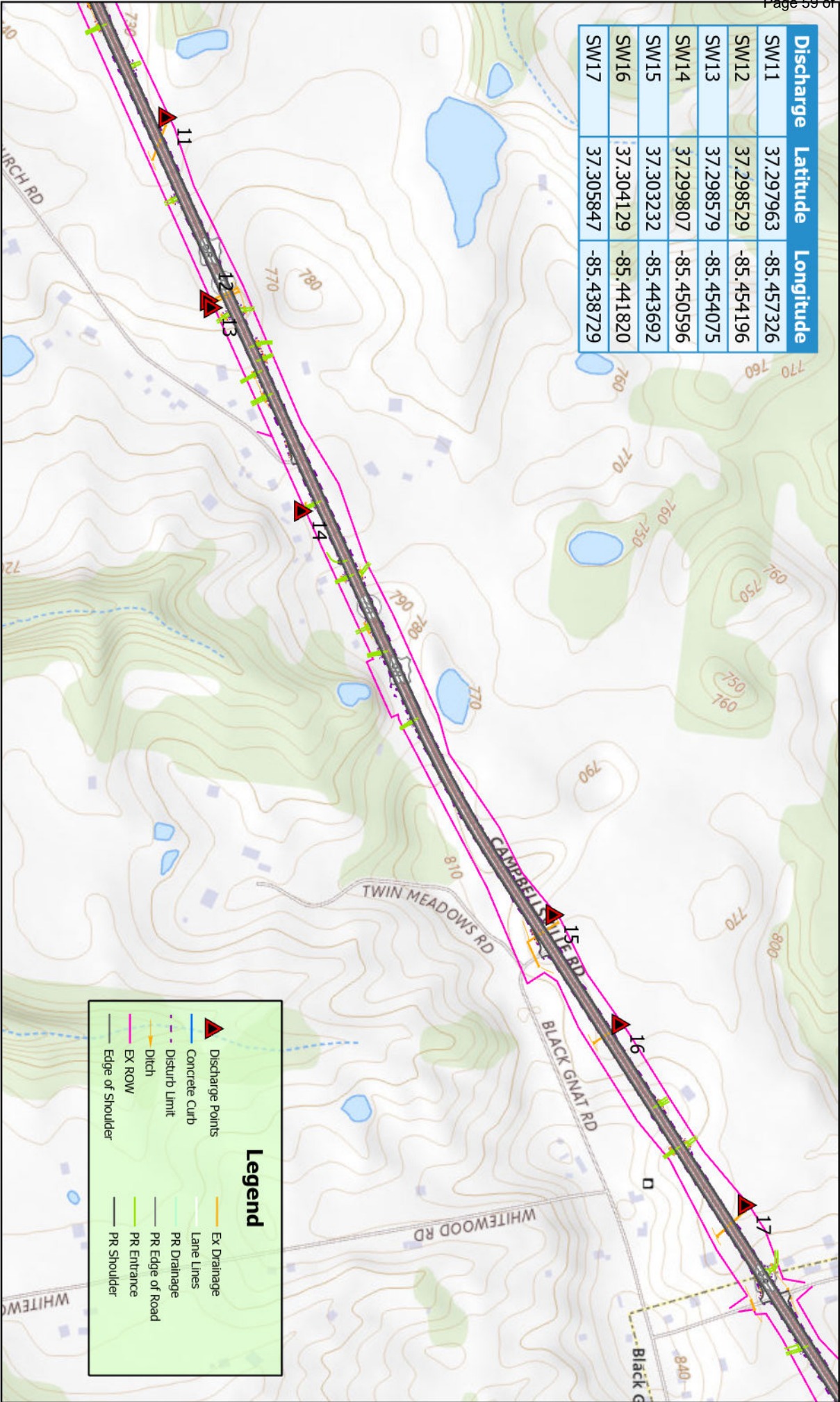
N

0 0.07 0.15 0.35 Km

0 0.17 0.35 Km



Discharge	Latitude	Longitude
SW11	37.297963	-85.457326
SW12	37.298529	-85.454196
SW13	37.298579	-85.454075
SW14	37.299807	-85.450596
SW15	37.303232	-85.443692
SW16	37.304129	-85.441820
SW17	37.305847	-85.438729

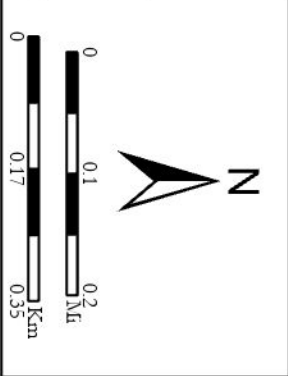


USGS The National Map, National Boundaries Dataset, 3DEP Elevation Program, Geographic Names Information System, National Hydrography Dataset, National Land Cover Database, National Structures Dataset, and National Transportation Dataset; USGS Global Ecosystems; US Census Bureau TIGER/Line data; USFS Road data; Natural Earth Data; U.S. Department of State HUI; NOAA National Centers for Environmental

# 4-80102 - KPDES Map

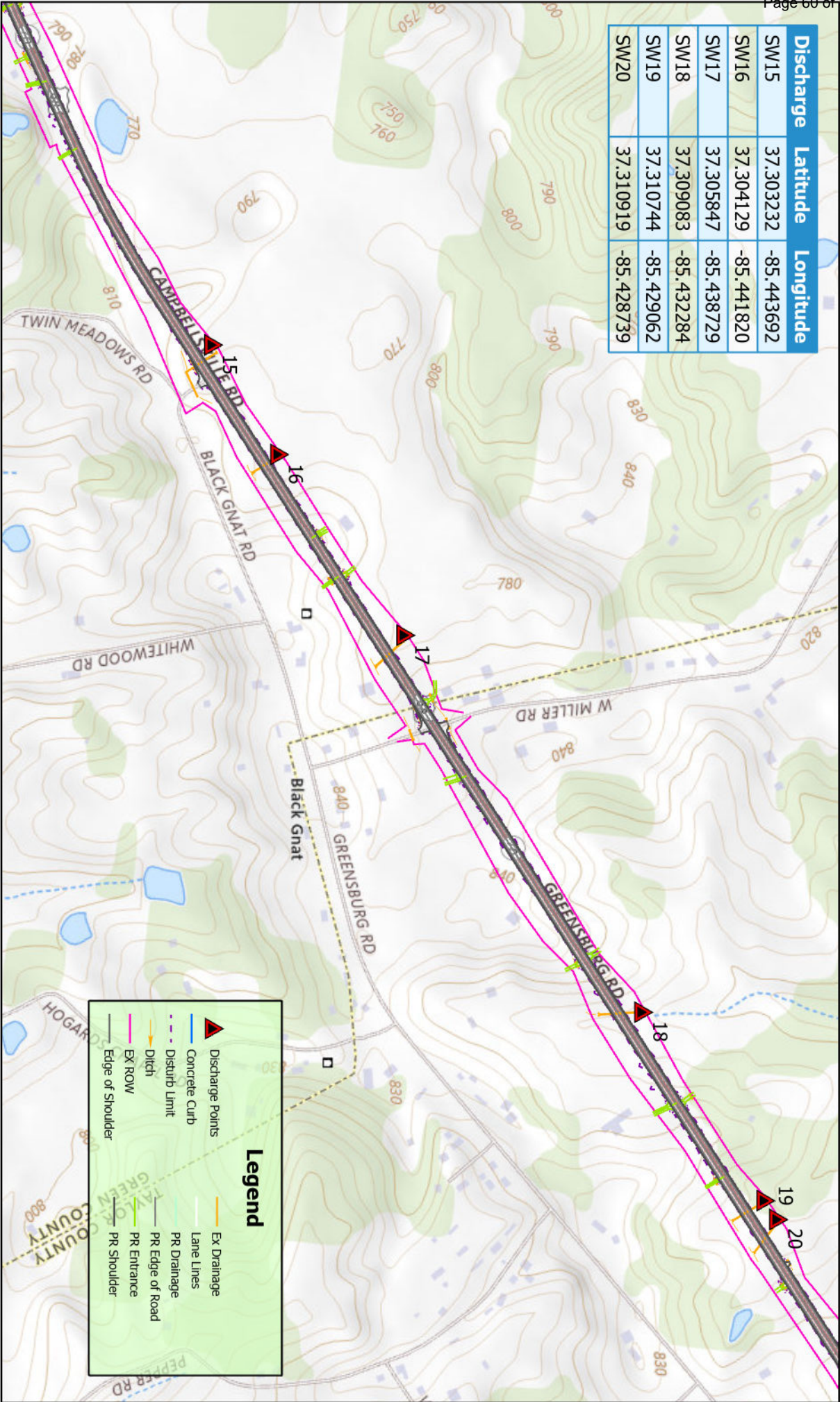
## 2025

Coordinate System: WGS 1984 Web Mercator Auxiliary Sphere





Discharge	Latitude	Longitude
SW15	37.303232	-85.443692
SW16	37.304129	-85.441820
SW17	37.305847	-85.438729
SW18	37.309083	-85.432284
SW19	37.310744	-85.429062
SW20	37.310919	-85.428739

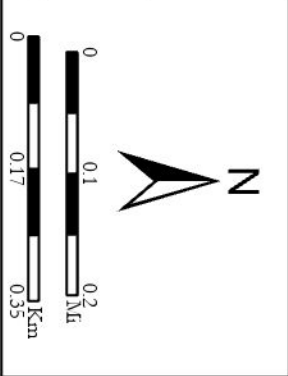


USGS The National Map, National Boundaries Dataset, 3DEP Elevation Program, Geographic Names Information System, National Hydrography Dataset, National Land Cover Database, National Structures Dataset, and National Transportation Dataset; USGS Global Ecosystems; US Census Bureau TIGER/Line data; USFS Road data; Natural Earth Data; U.S. Department of State HUI; NOAA National Centers for Environmental

# 4-80102 - KPDES Map

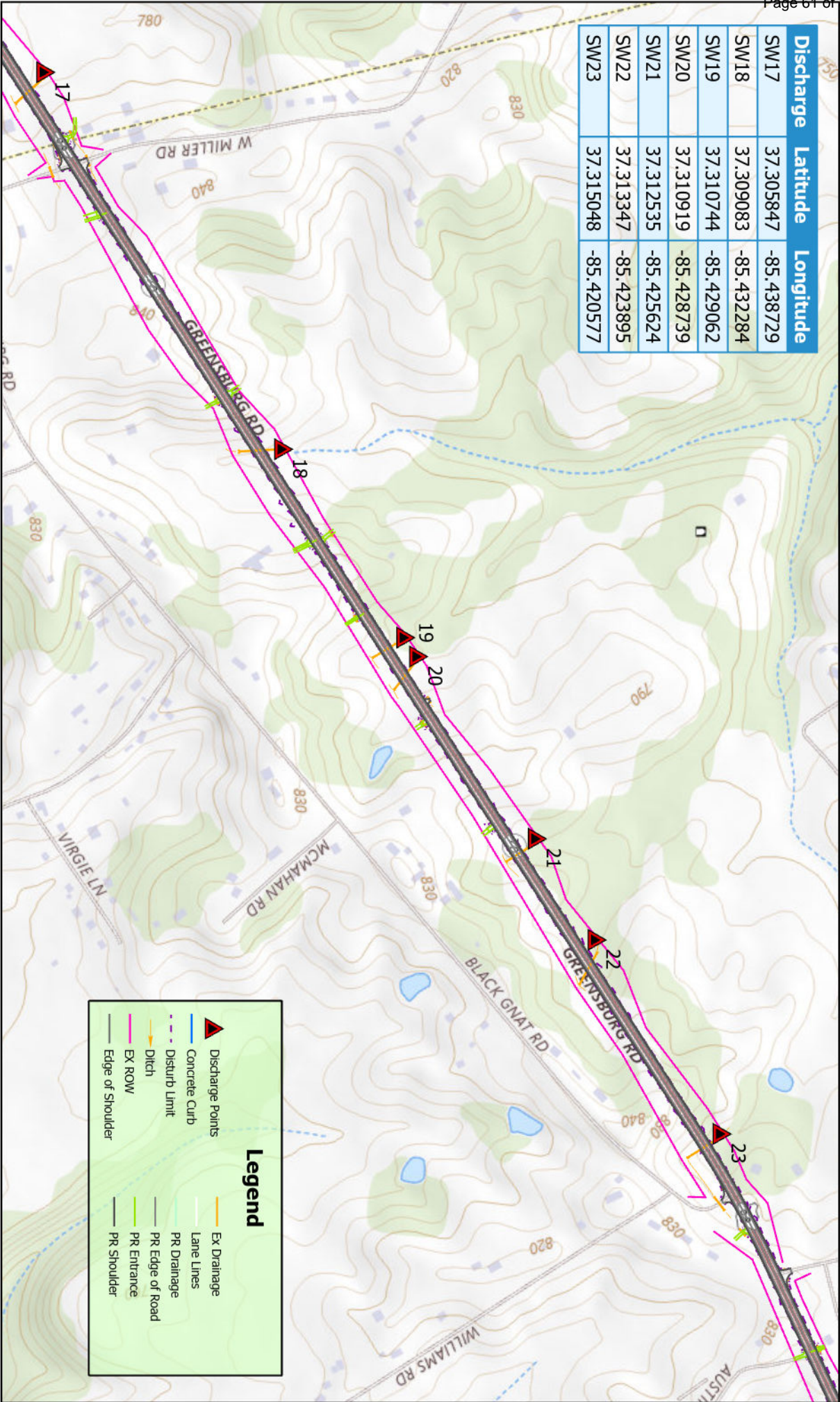
Coordinate System: WGS 1984 Web Mercator Auxiliary Sphere

## 2025





Discharge	Latitude	Longitude
SW17	37.305847	-85.438729
SW18	37.309083	-85.432284
SW19	37.310744	-85.429062
SW20	37.310919	-85.428739
SW21	37.312535	-85.425624
SW22	37.313347	-85.423895
SW23	37.315048	-85.420577

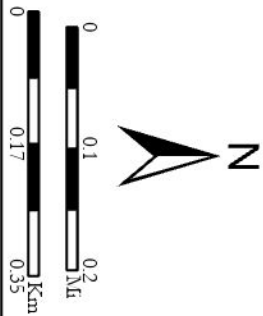


# 4-80102 - KPDES Map

USGS The National Map, National Boundaries Dataset, 3DEP Elevation Program, Geographic Names Information System, National Hydrography Dataset, National Land Cover Database, National Structures Dataset, and National Transportation Dataset; USGS Global Ecosystems; US Census Bureau TIGER/Line data; USFS Road data; Natural Earth Data; US Department of State HUI; NOAA National Centers for Environmental

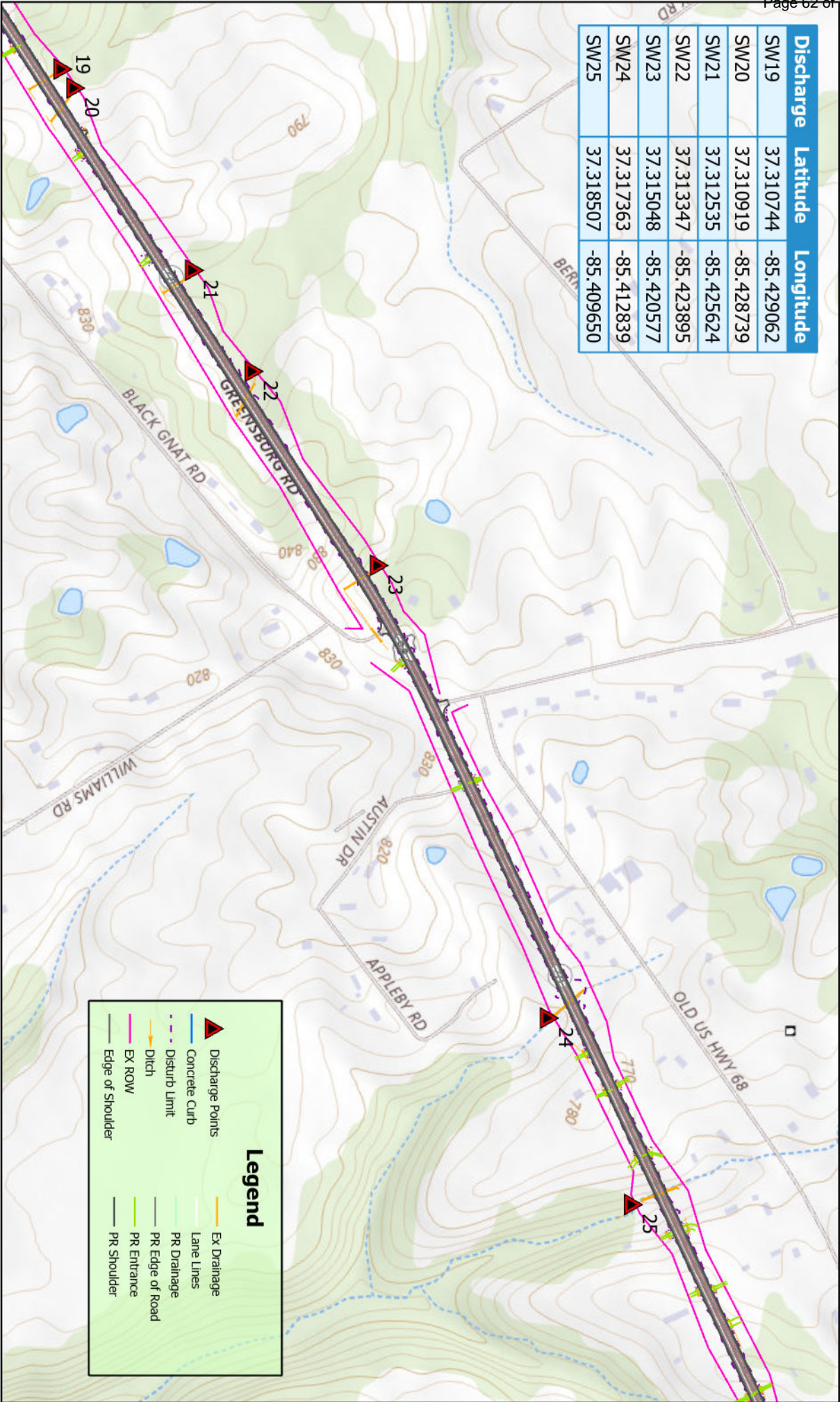
Coordinate System: WGS 1984 Web Mercator Auxiliary Sphere

2025





Discharge	Latitude	Longitude
SW19	37.310744	-85.429062
SW20	37.310919	-85.428739
SW21	37.312535	-85.425624
SW22	37.313347	-85.423895
SW23	37.315048	-85.420577
SW24	37.317363	-85.412839
SW25	37.318507	-85.409650

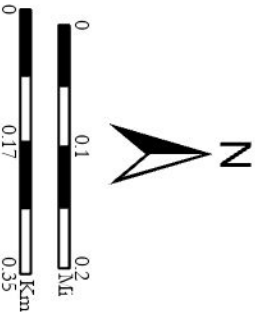


# 4-80102 - KPDES Map

USGS The National Map, National Boundaries Dataset, 3DEP Elevation Program, Geographic Names Information System, National Hydrography Dataset, National Land Cover Database, National Structures Dataset, and National Transportation Dataset; USGS Global Ecosystems; US Census Bureau TIGER/Line data; USFS Road data; Natural Earth Data; U.S. Department of State HUI; NOAA National Centers for Environmental

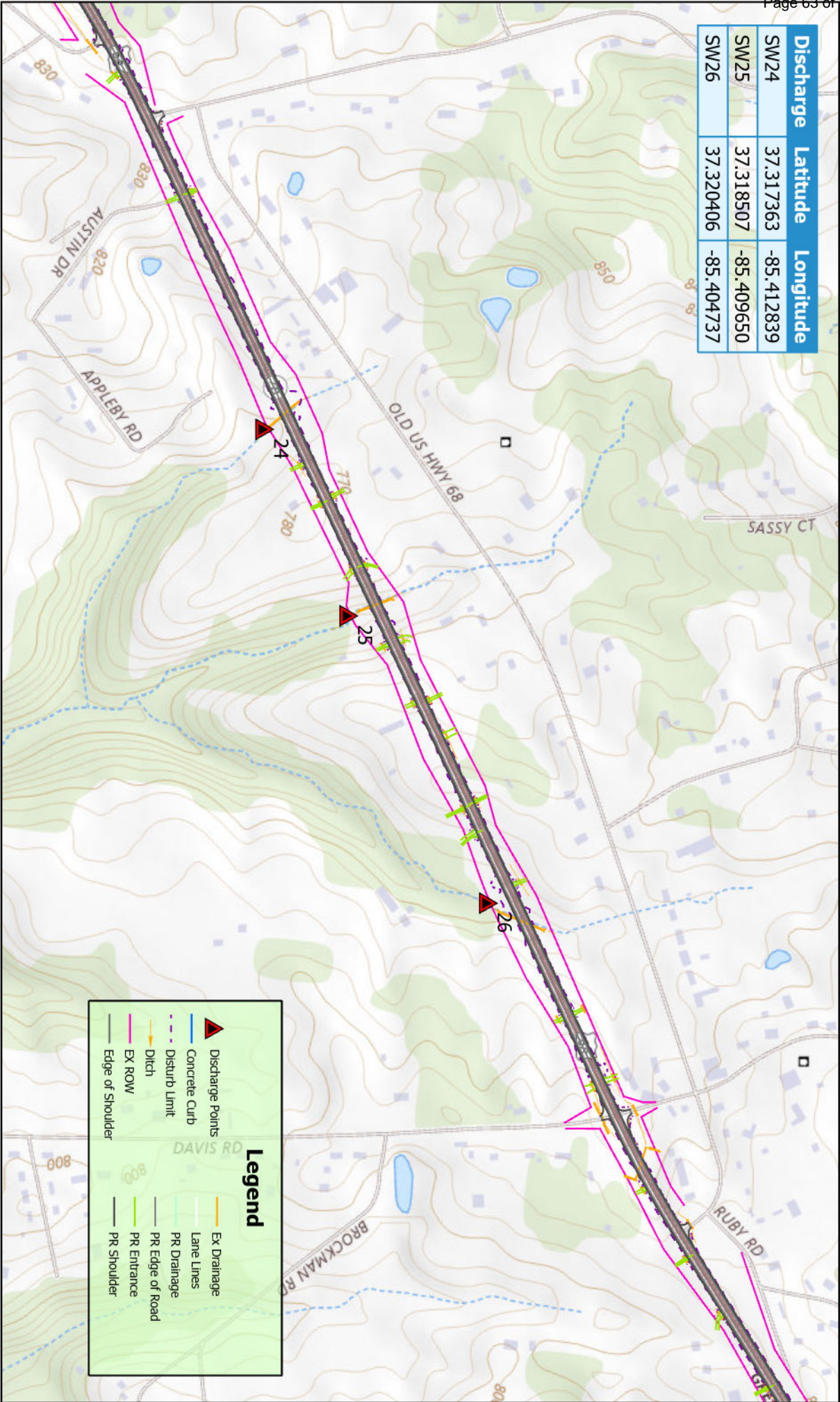
Coordinate System: WGS 1984 Web Mercator Auxiliary Sphere

2025





Discharge	Latitude	Longitude
SW24	37.317363	-85.412839
SW25	37.318507	-85.409650
SW26	37.320406	-85.404737



▲ Discharge Points

— Concrete Curb

--- Disturb Limit

— Ditch

— EX ROW

— Edge of Shoulder

— Ex Drainage

— Lane Lines

— PR Drainage

— PR Edge of Road

— PR Entrance

— PR Shoulder

Legend



USGS The National Map, National Boundaries Dataset, 3DEP Elevation Program, Geographic Names Information System, National Hydrography Dataset, National Land Cover Database, National Structures Dataset, and National Transportation Dataset; USGS Global Ecosystems; US Census Bureau TIGER/Line data; USFS Road data; Natural Earth Data; US Department of State HUI; NOAA National Centers for Environmental

4-80102 - KPDES Map

2025

N

0 0.1 0.2 0.35

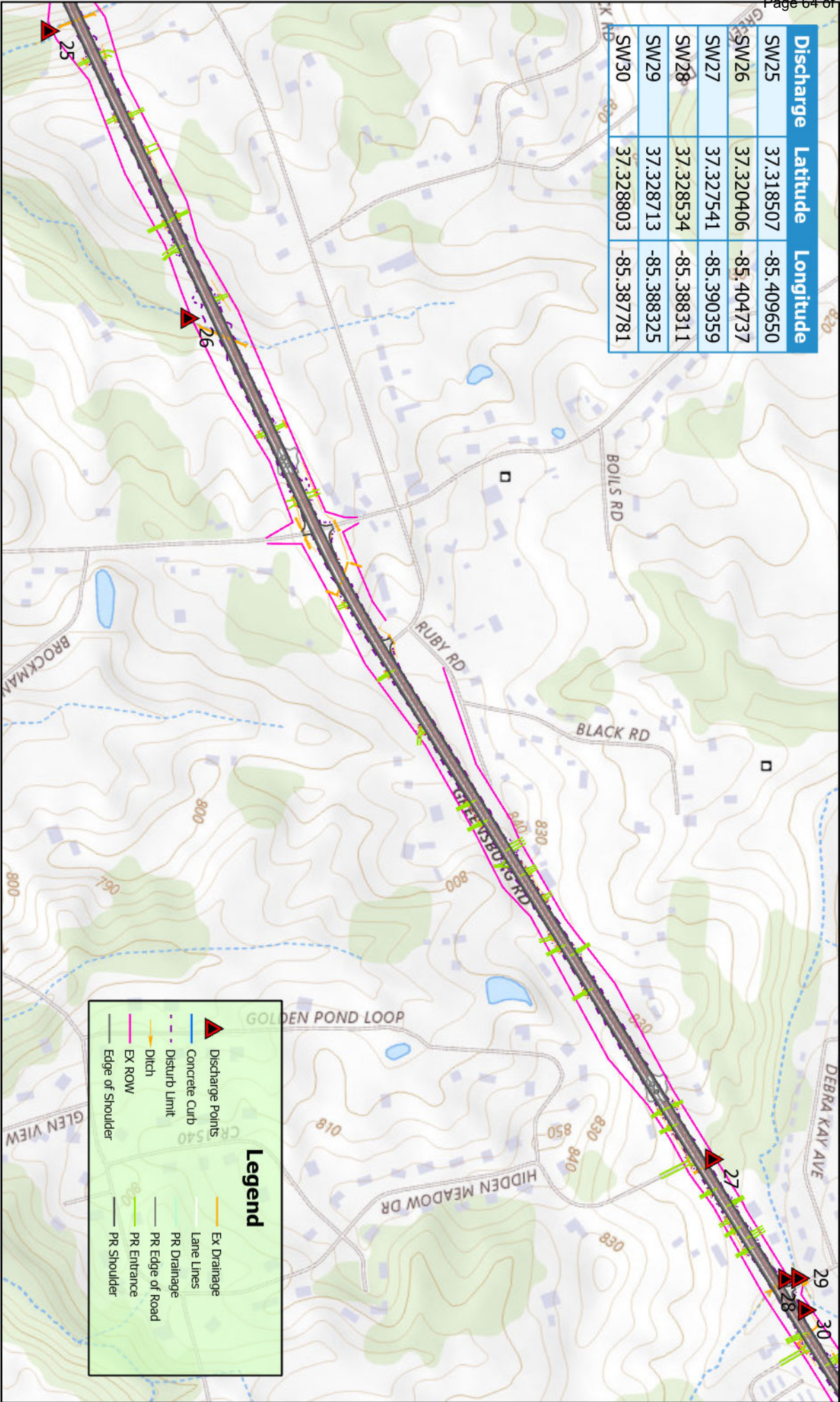
0 0.17 Km

0 0.1 0.2 0.35

0 0.17 Miles



Discharge	Latitude	Longitude
SW25	37.318507	-85.409650
SW26	37.320406	-85.404737
SW27	37.327541	-85.390359
SW28	37.328534	-85.388311
SW29	37.328713	-85.388325
SW30	37.328803	-85.387781

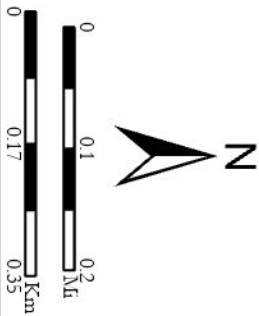


# 4-80102 - KPDES Map

USGS The National Map, National Boundaries Dataset, 3DEP Elevation Program, Geographic Names Information System, National Hydrography Dataset, National Land Cover Database, National Structures Dataset, and National Transportation Dataset; USGS Global Ecosystems; U.S. Census Bureau TIGER/Line data; USFS Road data; Natural Earth Data; U.S. Department of State HUI; NOAA National Centers for Environmental

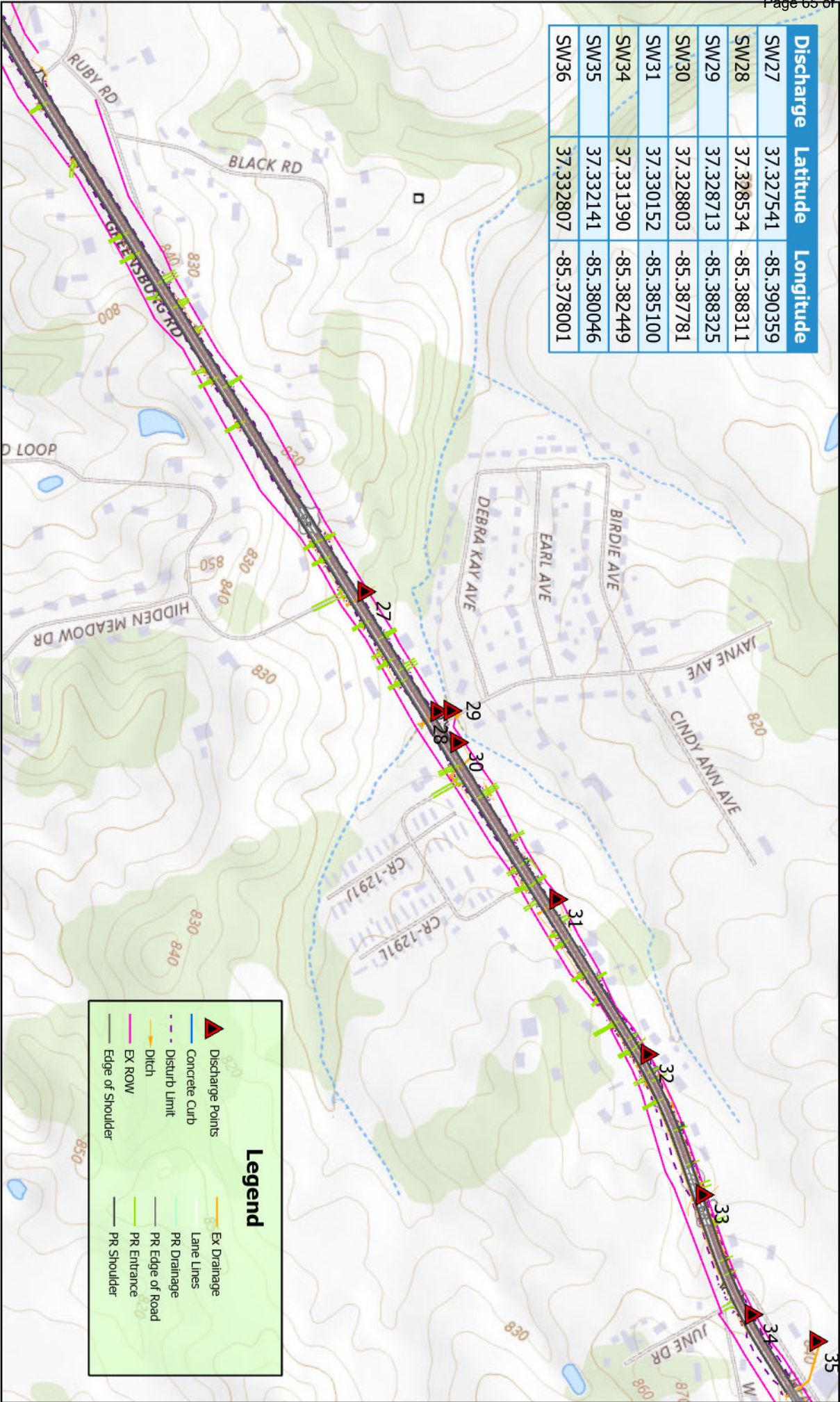
Coordinate System: WGS 1984 Web Mercator Auxiliary Sphere

2025





Discharge	Latitude	Longitude
SW27	37.327541	-85.390359
SW28	37.328534	-85.388311
SW29	37.328713	-85.388325
SW30	37.328803	-85.387781
SW31	37.330152	-85.385100
SW34	37.331390	-85.382449
SW35	37.332141	-85.380046
SW36	37.332807	-85.378001

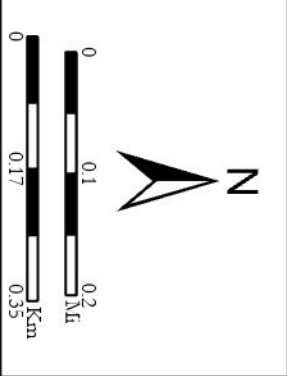


USGS The National Map, National Boundaries Dataset, 3DEP Elevation Program, Geographic Names Information System, National Hydrography Dataset, National Land Cover Database, National Structures Dataset, and National Transportation Dataset; USGS Global Ecosystems; US Census Bureau TIGER/Line data; USFS Road data; Natural Earth Data; U.S. Department of State HTU; NOAA National Centers for Environmental

# 4-80102 - KPDES Map

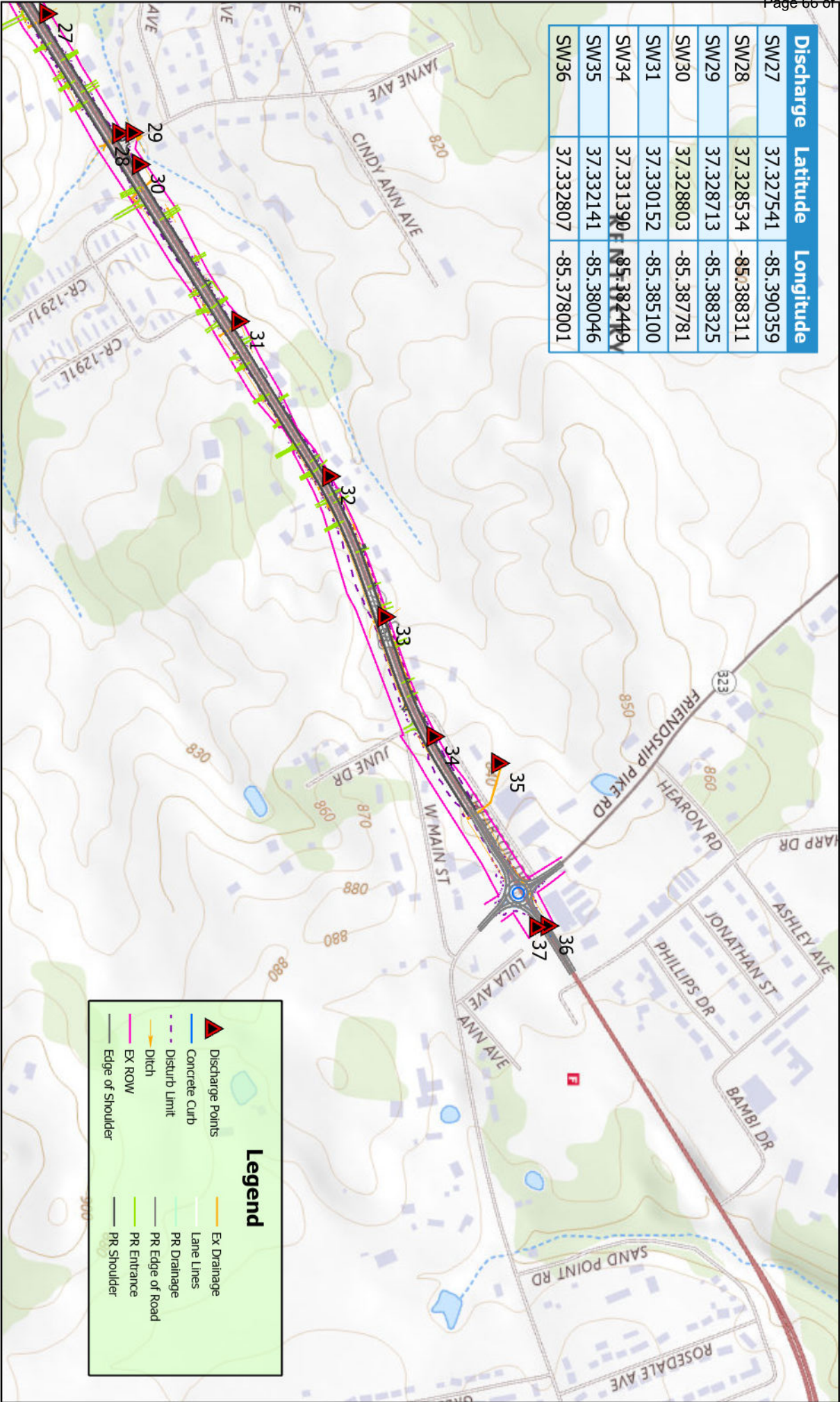
Coordinate System: WGS 1984 Web Mercator Auxiliary Sphere

## 2025





Discharge	Latitude	Longitude
SW27	37.327541	-85.390359
SW28	37.328534	-85.388311
SW29	37.328713	-85.388325
SW30	37.328803	-85.387781
SW31	37.330152	-85.385100
SW34	37.331390	-85.382449
SW35	37.332141	-85.380046
SW36	37.332807	-85.378001



▲ Discharge Points

— Concrete Curb

- - - Disturb Limit

— Ditch

— EX ROW

— Edge of Shoulder

— Ex Drainage

— Lane Lines

— PR Drainage

— PR Edge of Road

— PR Entrance

— PR Shoulder

Legend



USGS The National Map, National Boundaries Dataset, 3DEP Elevation Program, Geographic Names Information System, National Hydrography Dataset, National Land Cover Database, National Structures Dataset, and National Transportation Dataset; USGS Global Ecosystems; US Census Bureau TIGER/Line data; USFS Road data; Natural Earth Data; U.S. Department of State HUI; NOAA National Centers for Environmental

4-80102 - KPDES Map

2025

N

0 0.1 0.2

0 0.17 0.35

Km

0 0.1 0.2

0 0.17 0.35

Km

Contract Id: \_\_\_\_\_ Contractor: \_\_\_\_\_

Section Engineer: \_\_\_\_\_ District & County: \_\_\_\_\_

DESCRIPTION	UNIT	QTY LEAVING PROJECT	QTY RECEIVED@BB YARD
GUARDRAIL (Includes End treatments & crash cushions)	LF	_____	_____
STEEL POSTS	EACH	_____	_____
STEEL BLOCKS	EACH	_____	_____
WOOD OFFSET BLOCKS	EACH	_____	_____
BACK UP PLATES	EACH	_____	_____
CRASH CUSHION	EACH	_____	_____
NUTS, BOLTS, WASHERS	BAG/BCKT	_____	_____
DAMAGED RAIL TO MAINT. FACILITY	LF	_____	_____
DAMAGED POSTS TO MAINT. FACILITY	EACH	_____	_____

**\*Required Signatures before Leaving Project Site**

Printed Section Engineer’s Representative\_\_\_\_\_ & Date\_\_\_\_\_

Signature Section Engineer’s Representative\_\_\_\_\_ & Date\_\_\_\_\_

Printed Contractor’s Representative\_\_\_\_\_ & Date\_\_\_\_\_

Signature Contractor’s Representative\_\_\_\_\_ & Date\_\_\_\_\_

**\*Required Signatures after Arrival at Bailey Bridge Yard (All material on truck must be counted & the quantity received column completed before signatures)**

Printed Bailey Bridge Yard Representative\_\_\_\_\_ & Date\_\_\_\_\_

Signature Bailey Bridge Yard Representative\_\_\_\_\_ & Date\_\_\_\_\_

Printed Contractor’s Representative\_\_\_\_\_ & Date\_\_\_\_\_

Signature Contractor’s Representative\_\_\_\_\_ & Date\_\_\_\_\_

\*\*Payment for the bid item remove guardrail will be based upon the quantities shown in the Bailey Bridge Yard received column. Payment will not be made for guardrail removal until the guardrail verification sheets are electronically submitted to the Section Engineer by the Bailey Bridge Yard Representative.

**PART II**

**SPECIFICATIONS AND STANDARD DRAWINGS**

### **STANDARD SPECIFICATIONS**

Any reference in the plans or proposal to previous editions of the *Standard Specifications for Road and Bridge Construction* and *Standard Drawings* are superseded by *Standard Specifications for Road and Bridge Construction, Edition of 2019* and *Standard Drawings, Edition of 2020*.

### **SUPPLEMENTAL SPECIFICATIONS**

The contractor shall use the Supplemental Specifications that are effective at the time of letting. The Supplemental Specifications can be found at the following link:  
<http://transportation.ky.gov/Construction/Pages/Kentucky-Standard-Specifications.aspx>

## **SPECIAL NOTE FOR PORTABLE CHANGEABLE MESSAGE SIGNS**

This Special Note will apply when indicated on the plans or in the proposal.

**1.0 DESCRIPTION.** Furnish, install, operate, and maintain variable message signs at the locations shown on the plans or designated by the Engineer. Remove and retain possession of variable message signs when they are no longer needed on the project.

## **2.0 MATERIALS.**

**2.1 General.** Use LED Variable Message Signs Class I, II, or III, as appropriate, from the Department's List of Approved Materials.

Unclassified signs may be submitted for approval by the Engineer. The Engineer may require a daytime and nighttime demonstration. The Engineer will make a final decision within 30 days after all required information is received.

### **2.2 Sign and Controls.** All signs must:

- 1) Provide 3-line messages with each line being 8 characters long and at least 18 inches tall. Each character comprises 35 pixels.
- 2) Provide at least 40 preprogrammed messages available for use at any time. Provide for quick and easy change of the displayed message; editing of the message; and additions of new messages.
- 3) Provide a controller consisting of:
  - a) Keyboard or keypad.
  - b) Readout that mimics the actual sign display. (When LCD or LCD type readout is used, include backlighting and heating or otherwise arrange for viewing in cold temperatures.)
  - c) Non-volatile memory or suitable memory with battery backup for storing pre-programmed messages.
  - d) Logic circuitry to control the sequence of messages and flash rate.
- 4) Provide a serial interface that is capable of supporting complete remote control ability through land line and cellular telephone operation. Include communication software capable of immediately updating the message, providing complete sign status, and allowing message library queries and updates.
- 5) Allow a single person easily to raise the sign to a satisfactory height above the pavement during use, and lower the sign during travel.
- 6) Be Highway Orange on all exterior surfaces of the trailer, supports, and controller cabinet.
- 7) Provide operation in ambient temperatures from -30 to + 120 degrees Fahrenheit during snow, rain and other inclement weather.
- 8) Provide the driver board as part of a module. All modules are interchangeable, and have plug and socket arrangements for disconnection and reconnection. Printed circuit boards associated with driver boards have a conformable coating to protect against moisture.
- 9) Provide a sign case sealed against rain, snow, dust, insects, etc. The lens is UV stabilized clear plastic (polycarbonate, acrylic, or other approved material) angled to prevent glare.
- 10) Provide a flat black UV protected coating on the sign hardware, character PCB, and appropriate lens areas.
- 11) Provide a photocell control to provide automatic dimming.

11

- 12) Allow an on-off flashing sequence at an adjustable rate.
- 13) Provide a sight to aim the message.
- 14) Provide a LED display color of approximately 590 nm amber.
- 15) Provide a controller that is password protected.
- 16) Provide a security device that prevents unauthorized individuals from accessing the controller.
- 17) Provide the following 3-line messages preprogrammed and available for use when the sign unit begins operation:

/KEEP/RIGHT/⇒⇒⇒/	/MIN/SPEED/**MPH/
/KEEP/LEFT/⇐⇐⇐/	/ICY/BRIDGE/AHEAD/ /ONE
/LOOSE/GRAVEL/AHEAD/	LANE/BRIDGE/AHEAD/
/RD WORK/NEXT/**MILES/	/ROUGH/ROAD/AHEAD/
/TWO WAY/TRAFFIC/AHEAD/	/MERGING/TRAFFIC/AHEAD/
/PAINT/CREW/AHEAD/	/NEXT/**/MILES/
/REDUCE/SPEED/**MPH/	/HEAVY/TRAFFIC/AHEAD/
/BRIDGE/WORK/**0 FT/	/SPEED/LIMIT/**MPH/
/MAX/SPEED/**MPH/	/BUMP/AHEAD/
/SURVEY/PARTY/AHEAD/	/TWO/WAY/TRAFFIC/

\*Insert numerals as directed by the Engineer.

Add other messages during the project when required by the Engineer.

### 2.3 Power.

- 1) Design solar panels to yield 10 percent or greater additional charge than sign consumption. Provide direct wiring for operation of the sign or arrow board from an external power source to provide energy backup for 21 days without sunlight and an on-board system charger with the ability to recharge completely discharged batteries in 24 hours.

**3.0 CONSTRUCTION.** Furnish and operate the variable message signs as designated on the plans or by the Engineer. Ensure the bottom of the message panel is a minimum of 7 feet above the roadway in urban areas and 5 feet above in rural areas when operating. Use Class I, II, or III signs on roads with a speed limit less than 55 mph. Use Class I or II signs on roads with speed limits 55 mph or greater.

Maintain the sign in proper working order, including repair of any damage done by others, until completion of the project. When the sign becomes inoperative, immediately repair or replace the sign. Repetitive problems with the same unit will be cause for rejection and replacement.

Use only project related messages and messages directed by the Engineer, unnecessary messages lessen the impact of the sign. Ensure the message is displayed in either one or 2 phases with each phase having no more than 3 lines of text. When no message is needed, but it is necessary to know if the sign is operable, flash only a pixel.

When the sign is not needed, move it outside the clear zone or where the Engineer directs. Variable Message Signs are the property of the Contractor and shall be removed from the project when no longer needed. The Department will not assume ownership of these signs.

**4.0 MEASUREMENT.** The final quantity of Variable Message Sign will be

11  
the actual number of individual signs acceptably furnished and operated during the project. The Department will not measure signs replaced due to damage or rejection.

**5.0 PAYMENT.** The Department will pay for the Variable Message Signs at the unit price each. The Department will not pay for signs replaced due to damage or rejection. Payment is full compensation for furnishing all materials, labor, equipment, and service necessary to, operate, move, repair, and maintain or replace the variable message signs. The Department will make payment for the completed and accepted quantities under the following:

<u>Code</u>	<u>Pay Item</u>	<u>Pay Unit</u>
02671	Portable Changeable Message Sign	Each

Effective June 15, 2012



## **PART III**

### **EMPLOYMENT, WAGE AND RECORD REQUIREMENTS**

**TRANSPORTATION CABINET  
DEPARTMENT OF HIGHWAYS**

**LABOR AND WAGE REQUIREMENTS  
APPLICABLE TO OTHER THAN FEDERAL-AID SYSTEM PROJECTS**

- I. Application
- II. Nondiscrimination of Employees (KRS 344)

**I. APPLICATION**

1. These contract provisions shall apply to all work performed on the contract by the contractor with his own organization and with the assistance of workmen under his immediate superintendence and to all work performed on the contract by piecework, station work or by subcontract. The contractor's organization shall be construed to include only workmen employed and paid directly by the contractor and equipment owned or rented by him, with or without operators.

2. The contractor shall insert in each of his subcontracts all of the stipulations contained in these Required Provisions and such other stipulations as may be required.

3. A breach of any of the stipulations contained in these Required Provisions may be grounds for termination of the contract.

3. If the contractor is in control of apprenticeship or other training or retraining, including on-the-job training programs, he shall not discriminate against an individual because of his race, color, religion, national origin, sex, disability or age forty (40) and over, in admission to, or employment in any program established to provide apprenticeship or other training.

4. The contractor will send to each labor union or representative of workers with which he has a collective bargaining agreement or other contract or understanding, a notice to be provided advising the said labor union or workers' representative of the contractor's commitments under this section, and shall post copies of the notice in conspicuous places available to employees and applicants for employment. The contractor will take such action with respect to any subcontract or purchase order as the administering agency may direct as a means of enforcing such provisions, including sanctions for non-compliance.

Revised: January 25, 2017

**II. NONDISCRIMINATION OF EMPLOYEES**

**AN ACT OF THE KENTUCKY  
GENERAL ASSEMBLY TO PREVENT  
DISCRIMINATION IN EMPLOYMENT  
KRS CHAPTER 344  
EFFECTIVE JUNE 16, 1972**

The contract on this project, in accordance with KRS Chapter 344, provides that during the performance of this contract, the contractor agrees as follows:

1. The contractor shall not fail or refuse to hire, or shall not discharge any individual, or otherwise discriminate against an individual with respect to his compensation, terms, conditions, or privileges of employment, because of such individual's race, color, religion, national origin, sex, disability or age (forty and above); or limit, segregate, or classify his employees in any way which would deprive or tend to deprive an individual of employment opportunities or otherwise adversely affect his status as an employee, because of such individual's race, color, religion, national origin, sex, disability or age forty (40) and over. The contractor agrees to post in conspicuous places, available to employees and applicants for employment, notices to be provided setting forth the provisions of this nondiscrimination clause.

2. The contractor shall not print or publish or cause to be printed or published a notice or advertisement relating to employment by such an employer or membership in or any classification or referral for employment by the employment agency, indicating any preference, limitation, specification, or discrimination, based on race, color, religion, national origin, sex, or age forty (40) and over, or because the person is a qualified individual with a disability, except that such a notice or advertisement may indicate a preference, limitation, or specification based on religion, national origin, sex, or age forty (40) and over, or because the person is a qualified individual with a disability, when religion, national origin, sex, or age forty (40) and over, or because the person is a qualified individual with a disability, is a bona fide occupational qualification for employment.

## EXECUTIVE BRANCH CODE OF ETHICS

The Executive Branch Code of Ethics created by Kentucky Revised Statutes (KRS) Chapter 11A, effective July 14, 1992, establishes the ethical standards that govern the conduct of all executive branch employees. The Executive Branch Code of Ethics, which states, in part:

KRS 11A.040 (7) provides:

A present or former public servant listed in KRS 11A.010(9)(a) to (g) shall not, within one (1) year following termination of his or her office or employment, accept employment, compensation, or other economic benefit from any person or business that contracts or does business with, or is regulated by, the state in matters in which he was directly involved during the last thirty-six (36) months of his tenure. This provision shall not prohibit an individual from returning to the same business, firm, occupation, or profession in which he was involved prior to taking office or beginning his term of employment, or for which he received, prior to his state employment, a professional degree or license, provided that, for a period of one (1) year, he or she personally refrains from working on any matter in which he was directly involved during the last thirty-six (36) months of his or her tenure in state government. This subsection shall not prohibit the performance of ministerial functions, including but not limited to filing tax returns, filing applications for permits or licenses, or filing incorporation papers, nor shall it prohibit the former officer or public servant from receiving public funds disbursed through entitlement programs.

KRS 11A.040 (9) states:

A former public servant shall not represent a person or business before a state agency in a matter in which the former public servant was directly involved during the last thirty-six (36) months of his tenure, for a period of one (1) year after the latter of:

- a) The date of leaving office or termination of employment; or
- b) The date the term of office expires to which the public servant was elected.

This law is intended to promote public confidence in the integrity of state government and to declare as public policy the idea that state employees should view their work as a public trust and not to obtain private benefits.

If you have worked for the executive branch of state government within the past year, you may be subject to the law's prohibitions. The law's applicability may be different if you hold elected office or are contemplating representation of another before a state agency.

Also, if you are affiliated with a firm which does business with the state and which employs former state executive-branch employees, you should be aware that the law may apply to them.

In case of doubt, the law permits you to request an advisory opinion from the Executive Branch Ethics Commission, 1025 Capital Center Drive, Suite 105, Frankfort, Kentucky 40601; telephone (502) 564-7954.

Revised: March 11, 2025

### **Kentucky Equal Employment Opportunity Act of 1978**

The requirements of the Kentucky Equal Employment Opportunity Act of 1978 (KRS 45.560-45.640) shall apply to this Contract. The apparent low Bidder will be required to submit EEO forms to the Division of Construction Procurement, which will then forward to the Finance and Administration Cabinet for review and approval. No award will become effective until all forms are submitted and EEO/CC has certified compliance. The required EEO forms are as follows:

- EEO-1: Employer Information Report
- Affidavit of Intent to Comply
- Employee Data Sheet
- Subcontractor Report

These forms are available on the Finance and Administration's web page under ***Vendor Information, Standard Attachments and General Terms*** at the following address:  
**<https://www.eProcurement.ky.gov>**.

Bidders currently certified as being in compliance by the Finance and Administration Cabinet may submit a copy of their approval letter in lieu of the referenced EEO forms.

For questions or assistance please contact the Finance and Administration Cabinet by email at **[finance.contractcompliance@ky.gov](mailto:finance.contractcompliance@ky.gov)** or by phone at 502-564-2874.

# EMPLOYEE RIGHTS UNDER THE FAIR LABOR STANDARDS ACT

THE UNITED STATES DEPARTMENT OF LABOR WAGE AND HOUR DIVISION

## FEDERAL MINIMUM WAGE

# \$7.25

 PER HOUR

BEGINNING JULY 24, 2009

### OVERTIME PAY

At least  $1\frac{1}{2}$  times your regular rate of pay for all hours worked over 40 in a workweek.

### CHILD LABOR

An employee must be at least **16** years old to work in most non-farm jobs and at least **18** to work in non-farm jobs declared hazardous by the Secretary of Labor.

Youths **14** and **15** years old may work outside school hours in various non-manufacturing, non-mining, non-hazardous jobs under the following conditions:

#### *No more than*

- **3** hours on a school day or **18** hours in a school week;
- **8** hours on a non-school day or **40** hours in a non-school week.

Also, work may not begin before **7 a.m.** or end after **7 p.m.**, except from June 1 through Labor Day, when evening hours are extended to **9 p.m.** Different rules apply in agricultural employment.

### TIP CREDIT

Employers of "tipped employees" must pay a cash wage of at least \$2.13 per hour if they claim a tip credit against their minimum wage obligation. If an employee's tips combined with the employer's cash wage of at least \$2.13 per hour do not equal the minimum hourly wage, the employer must make up the difference. Certain other conditions must also be met.

### ENFORCEMENT

The Department of Labor may recover back wages either administratively or through court action, for the employees that have been underpaid in violation of the law. Violations may result in civil or criminal action.

Employers may be assessed civil money penalties of up to \$1,100 for each willful or repeated violation of the minimum wage or overtime pay provisions of the law and up to \$11,000 for each employee who is the subject of a violation of the Act's child labor provisions. In addition, a civil money penalty of up to \$50,000 may be assessed for each child labor violation that causes the death or serious injury of any minor employee, and such assessments may be doubled, up to \$100,000, when the violations are determined to be willful or repeated. The law also prohibits discriminating against or discharging workers who file a complaint or participate in any proceeding under the Act.

### ADDITIONAL INFORMATION

- Certain occupations and establishments are exempt from the minimum wage and/or overtime pay provisions.
- Special provisions apply to workers in American Samoa and the Commonwealth of the Northern Mariana Islands.
- Some state laws provide greater employee protections; employers must comply with both.
- The law requires employers to display this poster where employees can readily see it.
- Employees under 20 years of age may be paid \$4.25 per hour during their first 90 consecutive calendar days of employment with an employer.
- Certain full-time students, student learners, apprentices, and workers with disabilities may be paid less than the minimum wage under special certificates issued by the Department of Labor.

For additional information:



# 1-866-4-USWAGE

(1-866-487-9243)

TTY: 1-877-889-5627



# WWW.WAGEHOUR.DOL.GOV

**PART IV**

**BID ITEMS**

251109

Section: 0001 - PAVING

LINE	BID CODE	ALT	DESCRIPTION	QUANTITY	UNIT	UNIT PRIC	FP	AMOUNT
0010	00003		CRUSHED STONE BASE	26,921.00	TON		\$	
0020	00078		CRUSHED AGGREGATE SIZE NO 2	3,241.00	TON		\$	
0030	00100		ASPHALT SEAL AGGREGATE	399.00	TON		\$	
0040	00103		ASPHALT SEAL COAT	38.00	TON		\$	
0050	00190		LEVELING & WEDGING PG64-22	7,428.00	TON		\$	
0060	00223		CL3 ASPH BASE 0.75D PG64-22	47,209.00	TON		\$	
0070	00388		CL3 ASPH SURF 0.38B PG64-22	22,192.00	TON		\$	
0080	02084		JPC PAVEMENT-8 IN	916.00	SQYD		\$	
0090	02098		CEM CONC ENT PAVEMENT-4 IN	354.00	SQYD		\$	
0100	24970EC		ASPHALT MATERIAL FOR TACK NON-TRACKING	86.00	TON		\$	

Section: 0002 - ROADWAY

LINE	BID CODE	ALT	DESCRIPTION	QUANTITY	UNIT	UNIT PRIC	FP	AMOUNT
0110	00440		ENTRANCE PIPE-15 IN	204.00	LF		\$	
0120	00441		ENTRANCE PIPE-18 IN	169.00	LF		\$	
0130	00443		ENTRANCE PIPE-24 IN	48.00	LF		\$	
0140	01310		REMOVE PIPE	4.00	LF		\$	
0150	01690		FLUME INLET TYPE 1	5.00	EACH		\$	
0160	01691		FLUME INLET TYPE 2	3.00	EACH		\$	
0170	01810		STANDARD CURB AND GUTTER	2,003.00	LF		\$	
0180	01825		ISLAND CURB AND GUTTER	1,387.00	LF		\$	
0190	01875		STANDARD HEADER CURB	2,150.00	LF		\$	
0200	01987		DELINEATOR FOR GUARDRAIL BI DIRECTIONAL WHITE	195.00	EACH		\$	
0210	02014		BARRICADE-TYPE III	8.00	EACH		\$	
0220	02015		CEMENT CONCRETE ISLAND	1,198.00	SQYD		\$	
0230	02200		ROADWAY EXCAVATION	47,483.00	CUYD		\$	
0240	02223		GRANULAR EMBANKMENT	6,280.00	CUYD		\$	
0250	02237		DITCHING	1,375.00	LF		\$	
0260	02360		GUARDRAIL TERMINAL SECTION NO 1	11.00	EACH		\$	
0270	02367		GUARDRAIL END TREATMENT TYPE 1	46.00	EACH		\$	
0280	02381		REMOVE GUARDRAIL	15,350.00	LF		\$	
0290	02545		CLEARING AND GRUBBING GREEN: 0.85 ACRES	1.00	LS		\$	
0300	02562		TEMPORARY SIGNS	426.00	SQFT		\$	
0310	02585		EDGE KEY	1,907.00	LF		\$	
0320	02602		FABRIC-GEOTEXTILE CLASS 1	50,784.00	SQYD		\$	
0330	02607		FABRIC-GEOTEXTILE CLASS 2 FOR PIPE	1,173.00	SQYD	\$2.00	\$	\$2,346.00
0340	02650		MAINTAIN & CONTROL TRAFFIC GREEN	1.00	LS		\$	
0350	02650		MAINTAIN & CONTROL TRAFFIC TAYLOR	1.00	LS		\$	
0360	02671		PORTABLE CHANGEABLE MESSAGE SIGN	8.00	EACH		\$	

Report Date 5/27/25

LINE	BID CODE	ALT	DESCRIPTION	QUANTITY	UNIT	UNIT PRIC	FP	AMOUNT
0370	02690		SAFELOADING	4.84	CUYD		\$	
0380	02697		EDGE LINE RUMBLE STRIPS	83,166.00	LF		\$	
0390	02726		STAKING GREEN	1.00	LS		\$	
0400	02726		STAKING TAYLOR	1.00	LS		\$	
0410	04935		TEMP SIGNAL GREEN	1.00	LS		\$	
0420	04935		TEMP SIGNAL TAYLOR	1.00	LS		\$	
0430	05950		EROSION CONTROL BLANKET	1,375.00	SQYD		\$	
0440	05952		TEMP MULCH	35,129.00	SQYD		\$	
0450	05953		TEMP SEEDING AND PROTECTION	35,129.00	SQYD		\$	
0460	05985		SEEDING AND PROTECTION	35,129.00	SQYD		\$	
0470	06511		PAVE STRIPING-TEMP PAINT-6 IN	950,000.00	LF		\$	
0480	06568		PAVE MARKING-THERMO STOP BAR-24IN	48.00	LF		\$	
0490	06574		PAVE MARKING-THERMO CURV ARROW	52.00	EACH		\$	
0500	06578		PAVE MARKING-THERMO MERGE ARROW	18.00	EACH		\$	
0510	10020NS		FUEL ADJUSTMENT	143,857.00	DOLL	\$1.00	\$	\$143,857.00
0520	10030NS		ASPHALT ADJUSTMENT	277,842.00	DOLL	\$1.00	\$	\$277,842.00
0530	20430ED		SAW CUT	4,360.00	LF		\$	
0540	21289ED		LONGITUDINAL EDGE KEY	4,360.00	LF		\$	
0550	21553EN		EMBANKMENT	17,300.00	CUYD		\$	
0560	21554EN		EXCAVATION	3,360.00	CUYD		\$	
0570	21802EN		G/R STEEL W BEAM-S FACE (7 FT POST)	1,310.00	LF		\$	
0580	22520EN		PAVE MARKING-THERMO YIELD BAR-36 IN	48.00	LF		\$	
0590	22664EN		WATER BLASTING EXISTING STRIPE	225,000.00	LF		\$	
0600	23158ES505		DETECTABLE WARNINGS	285.00	SQFT		\$	
0610	23875NC		REMOVE THERMOPLASTIC ARROWS	35.00	EACH		\$	
0620	23971EC		CLEAN SLOPE	400.00	LF		\$	
0630	24115EC		ROUNABOUT ARROW	8.00	EACH		\$	
0640	24683ED		PAVE MARKING-THERMO DOTTED LANE EXTEN	120.00	LF		\$	
0650	24955ED		REMOVE SIGNAL EQUIPMENT	2.00	EACH		\$	
0660	24995EC		PAVE STRIPING-SPRAY THERMO-6 IN W	94,378.00	LF		\$	
0670	24996EC		PAVE STRIPING-SPRAY THERMO-6 IN Y	117,071.00	LF		\$	
0680	25090EC		SINUSOIDAL RUMBLE STRIPS	143,484.00	LF		\$	
0690	26248EC		ELECTRONIC DELIVERY MGMT SYSTEM - AGG	1.00	LS		\$	

Section: 0003 - DRAINAGE

LINE	BID CODE	ALT	DESCRIPTION	QUANTITY	UNIT	UNIT PRIC	FP	AMOUNT
0700	00462		CULVERT PIPE-18 IN	18.00	LF		\$	
0710	00464		CULVERT PIPE-24 IN	45.00	LF		\$	
0720	01204		PIPE CULVERT HEADWALL-18 IN	1.00	EACH		\$	
0730	01208		PIPE CULVERT HEADWALL-24 IN	2.00	EACH		\$	
0740	23497EC		REMOVE CULVERT PIPE HEADWALL	3.00	EACH		\$	



Report Date 5/27/25

Section: 0004 - SIGNALIZATION

LINE	BID CODE	ALT	DESCRIPTION	QUANTITY	UNIT	UNIT PRIC	FP	AMOUNT
0750	24955ED		REMOVE SIGNAL EQUIPMENT	2.00	EACH		\$	

Section: 0005 - LIGHTING

LINE	BID CODE	ALT	DESCRIPTION	QUANTITY	UNIT	UNIT PRIC	FP	AMOUNT
0760	04701		POLE 40 FT MTG HT	26.00	EACH		\$	
0770	04722		BRACKET 8 FT	12.00	EACH		\$	
0780	04723		BRACKET 10 FT	4.00	EACH		\$	
0790	04724		BRACKET 12 FT	10.00	EACH		\$	
0800	04740		POLE BASE	26.00	EACH		\$	
0810	04750		TRANSFORMER BASE	26.00	EACH		\$	
0820	04761		LIGHTING CONTROL EQUIPMENT	2.00	EACH		\$	
0830	04780		FUSED CONNECTOR KIT	52.00	EACH		\$	
0840	04820		TRENCHING AND BACKFILLING	3,225.00	LF		\$	
0850	04832		WIRE-NO. 12	4,075.00	LF		\$	
0860	04873		POLE 45 FT WOODEN	2.00	EACH		\$	
0870	04940		REMOVE LIGHTING	1.00	LS		\$	
0880	20391NS835		ELECTRICAL JUNCTION BOX TYPE A	4.00	EACH		\$	
0890	20454NS835		TEMPORARY LIGHTING GREEN	1.00	LS		\$	
0900	20454NS835		TEMPORARY LIGHTING TAYLOR	1.00	LS		\$	
0910	21543EN		BORE AND JACK CONDUIT	670.00	LF		\$	
0920	23778EC		WIRE-NO. 10	6,175.00	LF		\$	
0930	24589ED		LED LUMINAIRE	26.00	EACH		\$	
0940	24900EC		PVC CONDUIT-1 1/4 IN-SCHEDULE 80	3,060.00	LF		\$	
0950	24901EC		PVC CONDUIT-2 IN-SCHEDULE 80	965.00	LF		\$	

Section: 0006 - LANDSCAPING

LINE	BID CODE	ALT	DESCRIPTION	QUANTITY	UNIT	UNIT PRIC	FP	AMOUNT
0960	20000ES724		TREE REDBUD 7'2" CALIPER B&B	6.00	EACH		\$	
0970	20001ES724		SHRUB BRANYWINE VIBURNUM 5'-6' B&B	9.00	EACH		\$	
0980	20001ES724		SHRUB GOLD COAST JUNIPER 2'-3' B&B	27.00	EACH		\$	
0990	20001ES724		SHRUB HONEY MAID HOLLY 6'-8' B&B	3.00	EACH		\$	
1000	20001ES724		SHRUB SHORE JUNIPER	66.00	EACH		\$	
1010	20001ES724		SHRUB WINTERBERRY 3'-5' B&B	24.00	EACH		\$	
1020	23646EC		CONTAINER PLANTS CATMINT #3	63.00	EACH		\$	
1030	23646EC		CONTAINER PLANTS LITTLE BLUE STEM #3	27.00	EACH		\$	

Report Date 5/27/25

LINE	BID CODE	ALT	DESCRIPTION	QUANTITY	UNIT	UNIT PRIC	FP	AMOUNT
1040	23646EC		CONTAINER PLANTS STRAWBERRY CANDY DAY LILY #3	111.00	EACH		\$	
1050	26257EC		DECORATIVE ROCK BLACK LAVA ROCK 3" DEEP	3,000.00	SQFT		\$	

Section: 0007 - DEMOBILIZATION &/OR MOBILIZATION

LINE	BID CODE	ALT	DESCRIPTION	QUANTITY	UNIT	UNIT PRIC	FP	AMOUNT
1060	02568		MOBILIZATION	1.00	LS		\$	
1070	02569		DEMOBILIZATION	1.00	LS		\$	