



COMMONWEALTH OF KENTUCKY  
TRANSPORTATION CABINET

[www.transportation.ky.gov/](http://www.transportation.ky.gov/)

Andy Beshear  
GOVERNOR

Jim Gray  
SECRETARY

November 23, 2020

CALL NO. 110  
CONTRACT ID NO. 205171  
ADDENDUM # 1

Subject: ELLIOTT COUNTY, STP BRZ 9030 (267)  
Letting December 11, 2020

(1)Added - Bridge Rehabilitation Plans- Pages 1-13 of 13

Proposal revisions are available at <http://transportation.ky.gov/Construction-Procurement/>.

If you have any questions, please contact us at 502-564-3500.

Sincerely,

A handwritten signature in black ink that reads "Rachel Mills".

Rachel Mills, P.E.  
Director  
Division of Construction Procurement

RM:mr  
Enclosures



NTY  
(267)

SHOP DRAWINGS: The fabricator shall submit all required shop plans, by email to [SHOP.XXXXXXXX@doccs.e-builder.net](mailto:SHOP.XXXXXXXX@doccs.e-builder.net), for review. The shop plans shall include the shop plans, shop drawings, and shop drawings. The shop plans shall be submitted to the Department of Highways, 225 West 10th Street, Des Moines, Iowa 50319. The Department of Highways will make review comments on these electronic submissions as needed and, if required, shall return them to the fabricator for corrections and resubmittal. Upon acceptable reconciliation of all comments, files shall be sent to the Bridging Kentucky Shop Plan Coordinator for distribution. Only plans submitted directly to the Shop Plan Coordinator will be distributed. Additionally, only plans electronically stamped "distributed by the Bridging Kentucky Shop Plan Coordinator" will be distributed. The Department of Highways will not require the submission of paper copies. The Engineer of Record reserves the right to require such copies on a case by case basis. When any changes to the design plans are proposed, the shop drawings reflecting these changes shall be submitted through the process above.

Notes: The designation in the email XXXXXXXX@doccs.e-builder.net refers to the Bridge ID number. The location of the shop drawings is located on the Title Sheet. SI of the Bridge Plans. Example: SHOP.04280009@doccs.e-builder.net


LEAD PAINT (RESIDUAL): The Contractor is advised to take all necessary protective measures, including worker safety and environmental regulations, when performing surface preparation and/or removal work. The Department will not consider any claims on residual lead paint.

STRUCTURAL STEEL REPAIRS: Repairs shall be completed in accordance with the attached special note and the notes and details on each plan sheet. Locations, quantities, and estimated weights (where applicable) for each repair are shown in the table on this sheet. Locations of contingency repairs will be as directed by the Engineer.

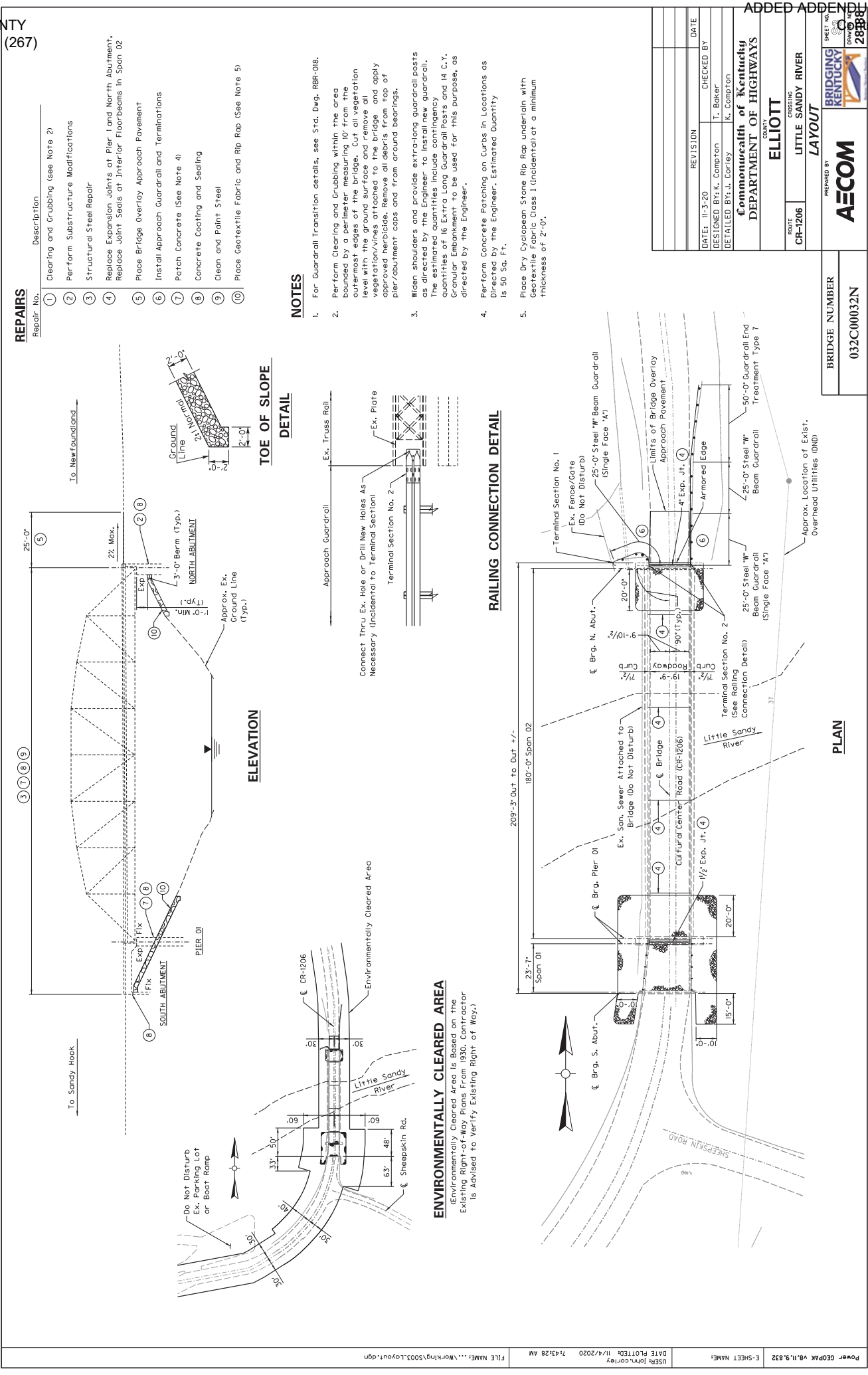
DATE:	II-3-20	REVISION	CHECKED BY
DESIGNED BY:	Mr. K. Compton		T. Baker
DETAILED BY:	J. Corley		K. Compton

Commonwealth of Kentucky  
DEPARTMENT OF HIGHWAYS  
COUNTY

[illegible]

with The	BIDGE NUMBER	032C00032N	
	<div style="text-align: center;">  <p><b>AECOM</b></p> </div>		
		PREPARED BY <b>GENERAL NOTES</b>	
ROUTE <b>CR-1206</b>		CROSSING <b>LITTLE SANDY RIVER</b>	
		SHEET NO. <b>BRIDGING KENTUCKY</b> DRAWING NO. <b>28B88</b>	

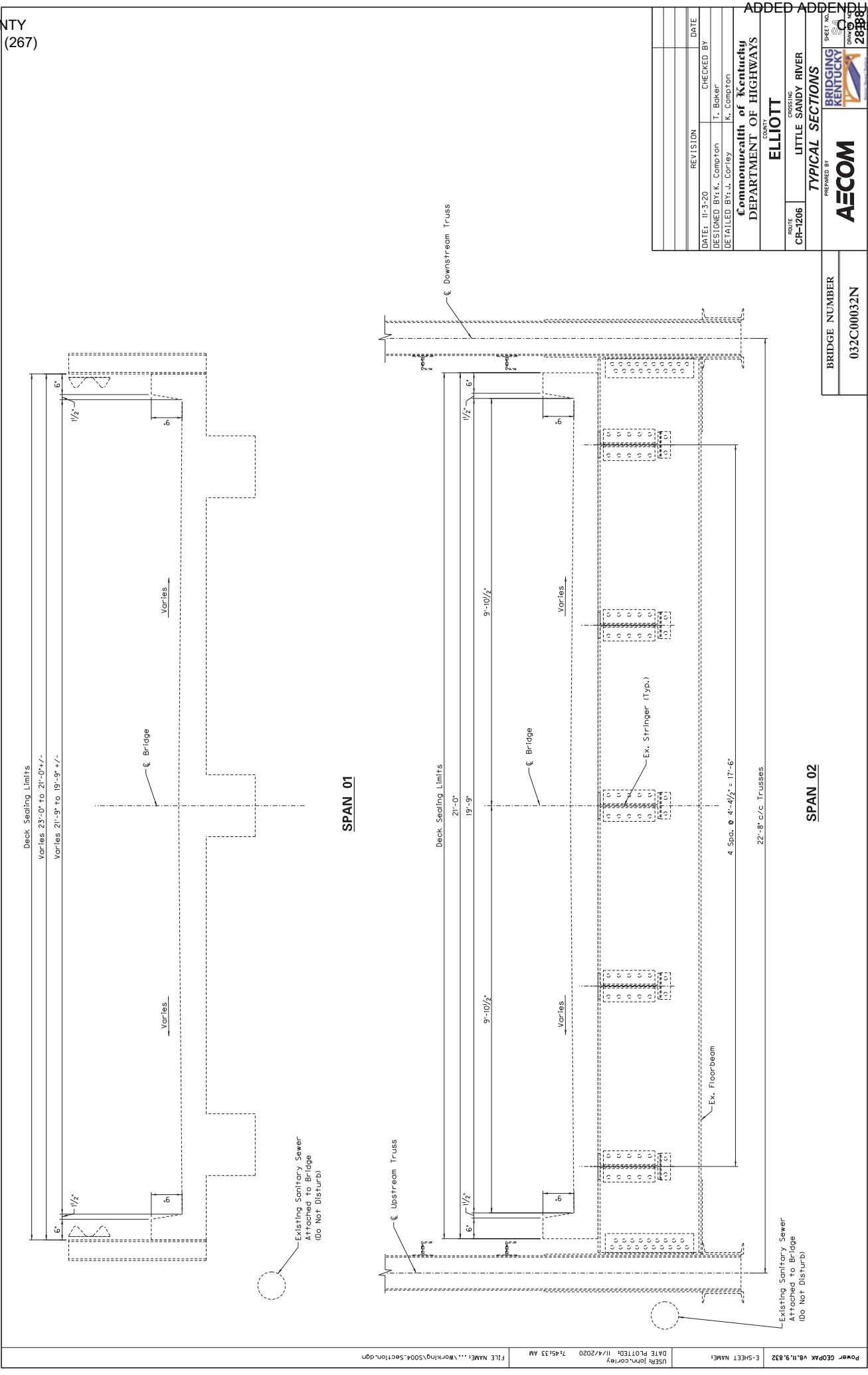
OTT  
CROSSING  
CANDY RIVER



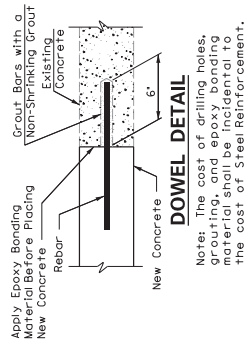
FILE NAME: ...Working\5003.Layout.dgn

USBR John Corley  
DATE PLOTTED: 11/4/2020 7:43:28 AM

Power GEOPAK v8.11.9.832  
E-SHEET NAME:



DATE: 11-3-20	REVISION	DATE
DESIGNED BY: K. Compton	CHECKED BY	
DETAILED BY: J. Corley	T. Baker	
Commonwealth of Kentucky DEPARTMENT OF HIGHWAYS		
CROSSING LITTLE SANDY RIVER		
ROUTE CR-1206		
TYPICAL SECTIONS		
PREPARED BY AECOM		
BRIDGING KENTUCKY		
SHEET NO. 288		

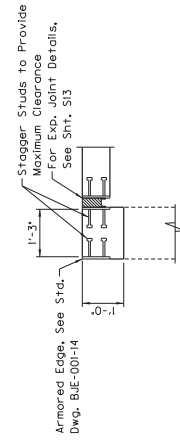
[illegible]

### DOWEL DETAIL

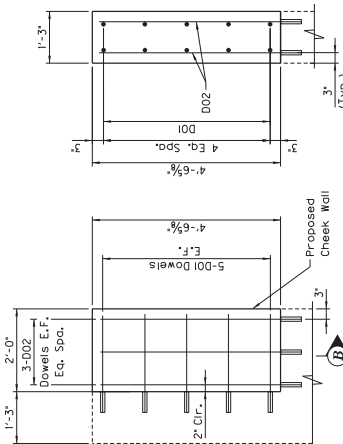
**Note:** The cost of drilling holes, grouting, and epoxy bonding material shall be incidental to the cost of Steel Reinforcement.

(Proposed)  
(Looking North)

(Looking North)



## SECTION B-B



## SECTION A-A

## NOTES

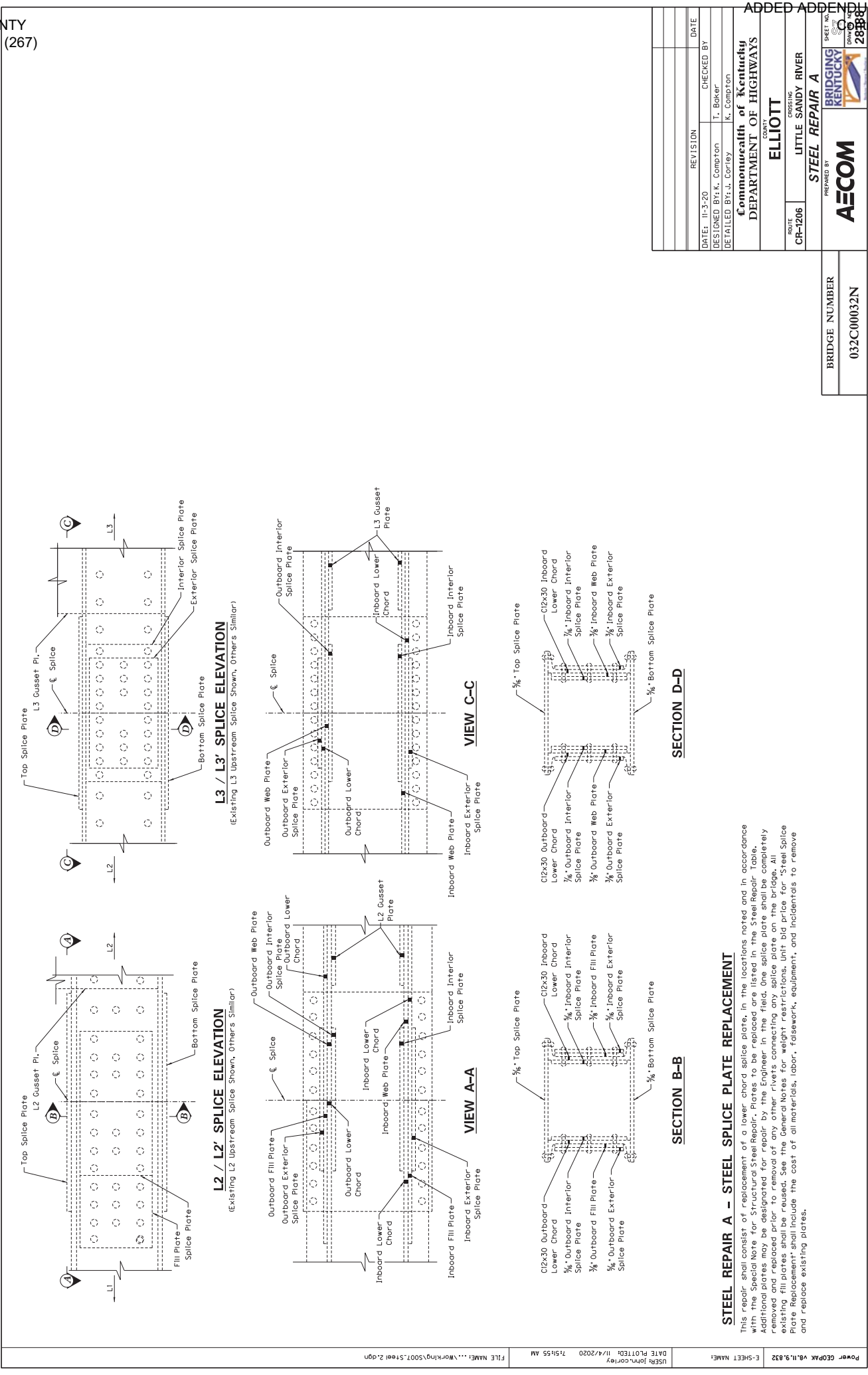
1. Coat Pier and both Abutments according to the Special Note for Concrete Coating.
2. See Sheet S13 for Partial Section At Expansion Joint.

[illegible]

BRIDGE NUMBER  
032C00032N





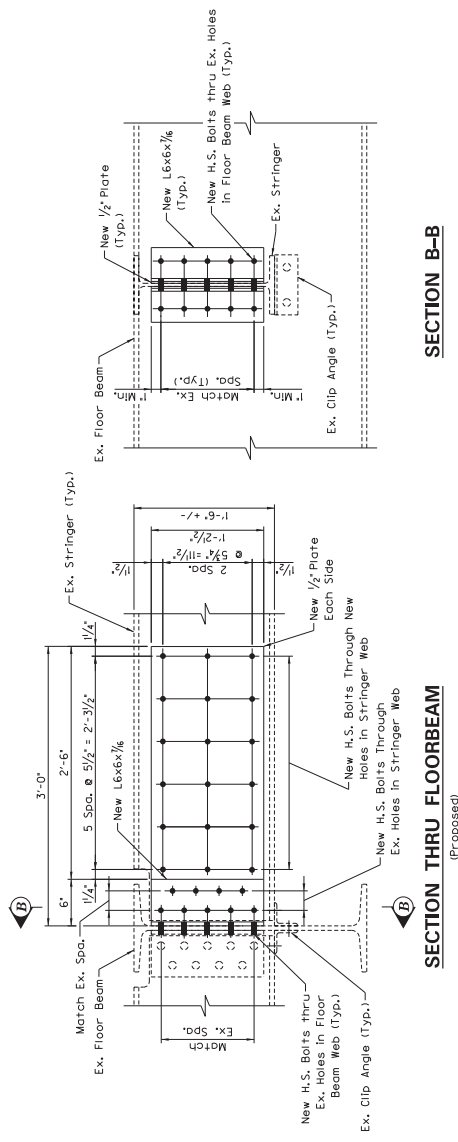


FILE NAME: ...Work\h\9\5007.5\steel 2.dgn



USBR John Corley  
DATE PLOTTED: 11/4/2020 7:51:55 AM

Power GEOPAK v8.11.9.832  
E-SHEET NAME:





## STEEL REPAIR B - STRINGER REPAIR

LEGEND		Denotes member or connection to be removed and/or replaced	
		REVISION	CHECKED BY
DATE: 11-3-20		DESIGNED BY: K. Compton	T. Baker
DETAILED BY: J. Corley		K. Compton	
Commonwealth of Kentucky			
DEPARTMENT OF HIGHWAYS			
		COUNTY	ELLIOTT
ROUTE		CROSSING	
CR-1206		LITTLE SANDY RIVER	
		STEEL REPAIR B	
		PREPARED BY	
		AECOM	
		BRIDGING KENTUCKY	
			
		28	

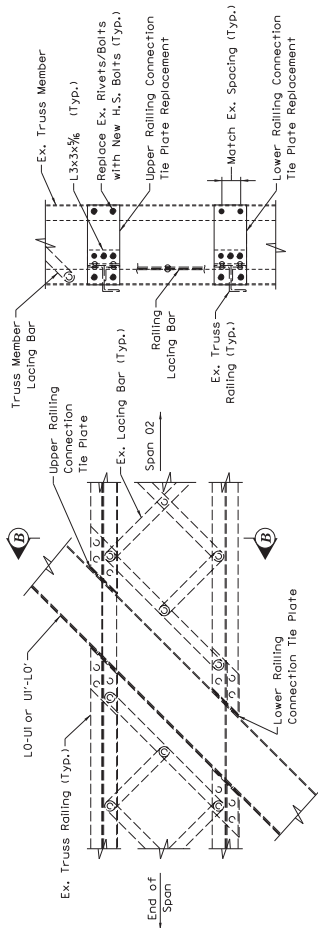
STEEL REPAIR C - BOLT / RIVET REPLACEMENT

This repair shall consist of replacing all loose, significantly deteriorated, or missing rivets or bolts throughout the truss span on 02. The kind, size and quantity of rivets or bolts to be replaced shall be determined by the Engineer. This repair shall include the replacement of rivets and bolts that are not included with other repair details. The approximate number of existing rivets and bolts to be replaced is 200.

The Engineer shall designate all rivet or bolt replacement locations in the field. This work shall be bid with the contingency that quantities may be increased or decreased by the Engineer.

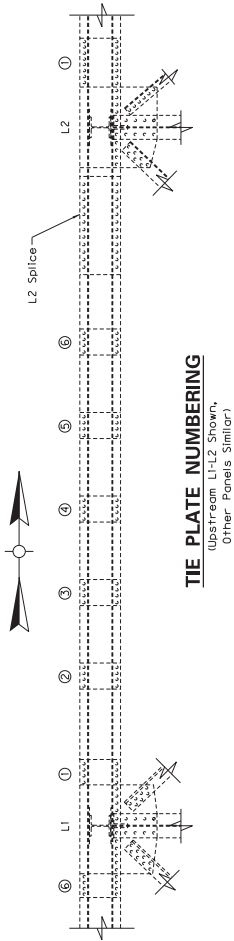
The unit price bid for each rivet or bolt replacement as described above shall include the cost of all materials, labor, access, falsework, equipment, and incidentals to complete the work.

The contractor shall remove and fully replace one bolt or rivet prior to removing another within 25 feet.



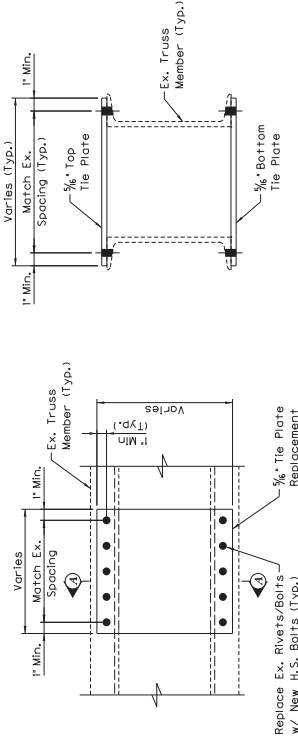
TYPICAL RAILING CONNECTION TO END POST

SECTION B-B



TIE PLATE NUMBERING

Upstream L1-L2 Shown,  
Other Panels Similar



TYPICAL TIE PLATE REPAIR PLAN

SECTION A-A

STEEL REPAIR D - STEEL TIE PLATE REPLACEMENT

This repair shall consist of replacing a truss member tie plate, in the locations noted and in accordance with the Special Note for Structural Steel Repair. Locations to be repaired are listed in the Steel Repair Table on Sheet 52. The plates are numbered South to North between panel points (see Tie Plate Numbering Detail). The Engineer may designate additional locations to be repaired in the field. The contractor shall remove and fully replace one tie plate prior to removing another within 25 feet. The unit bid price for Steel Tie Plate Replacement shall include the cost of all materials, labor, equipment, tools, falsework, and incidentals to remove and replace the existing plates.

DATE: 11-3-20	REVISION	DATE
DESIGNED BY: K. Compton	CHECKED BY	
DETAILED BY: J. Corley	T. Baker	
Commonwealth of Kentucky DEPARTMENT OF HIGHWAYS		
COUNTY ELLIOTT		
ROUTE CR-1206	CROSSING LITTLE SANDY RIVER	
PROJECT STEEL REPAIRS C & D		
PREPARED BY AECOM		
BRIDGING KENTUCKY 28836		

BRIDGE NUMBER  
032C00032N



- Staggered Rows

1. LLB = Lower Lateral Bracing
2. LLB angle sizes and number of connectors per connection from LLB to connection plate varies per panel point. Location with 3" LLB and 4 connectors shown. See LLB Angle Table for information on other locations.

- Indicates New H.S. Bolts In New Shop or Field drilled Holes
- Indicates New H.S. Bolts in Existing holes

 Denotes removal

## STEEL REPAIR E - LOWER LATERAL BRACING REPAIR

This repair shall consist of replacement of portions of the lower lateral bracing angles and connection plates, in the locations noted and in accordance with the Special Note for Structural Steel Repair. Locations to be repaired are listed in the Steel Repair Table on Sheet 52. The Engineer may designate additional locations to be repaired in the field. Repairs at multiple panel points shall not be performed simultaneously or in conjunction with Steel Repairs F or G. Repairs shall not be performed if wind speeds are anticipated to be greater than 20 mph. The unit bid price for "Lower Lateral Bracing Repair" shall include the cost of all materials and labor, falsework, equipment, and incidentals to remove the existing portions of the lower lateral bracing and connection plate and install the proposed plates and angles.

## LOWER CHORD PANEL CONNECTION

 (Locations with Ex. LLB Angle Oriented Up) (Proposed) |

### LOWER CHORD PANEL CONNECTION

 Locations with Ex. LLB Angle Oriented Down) (Proposed) |

**AECOM**

032C00032N



Contractor may replace lattice bars in-kind or use the alternate lattice plate detail. See Special Note for Structural Steel Repair.


**STEEL REPAIR F - PORTAL REPAIR**

This repair shall consist of removing and replacing damaged portions of the south portal strut in kind and in accordance with the Special Note for Structural Steel Repair. Repair shall not be performed in conjunction with Repairs E or G. Repair shall not be performed if wind speeds are anticipated to be greater than 20 mph. The unit bid price for "Steel Repair - Portal Repair" shall include the cost of all materials, labor, equipment, tools, falsework, and incidentals to complete the work.



**STEEL REPAIR G - SWAY BRACING REPAIR**

This repair shall consist of heat straightening distorted sway bracing straps in accordance with the Special Note for Heat Straightening. Repairs at multiple panel points with Repairs E or F. Repair shall not be performed in conjunction with Repairs E or F. Repair shall not be performed if wind speeds are anticipated to be greater than 20 mph. The unit bid price for "Steel Repair - Sway Bracing Repair" shall include the cost of all materials, labor, equipment, tools, fakeswork, and incidentals to complete the work.

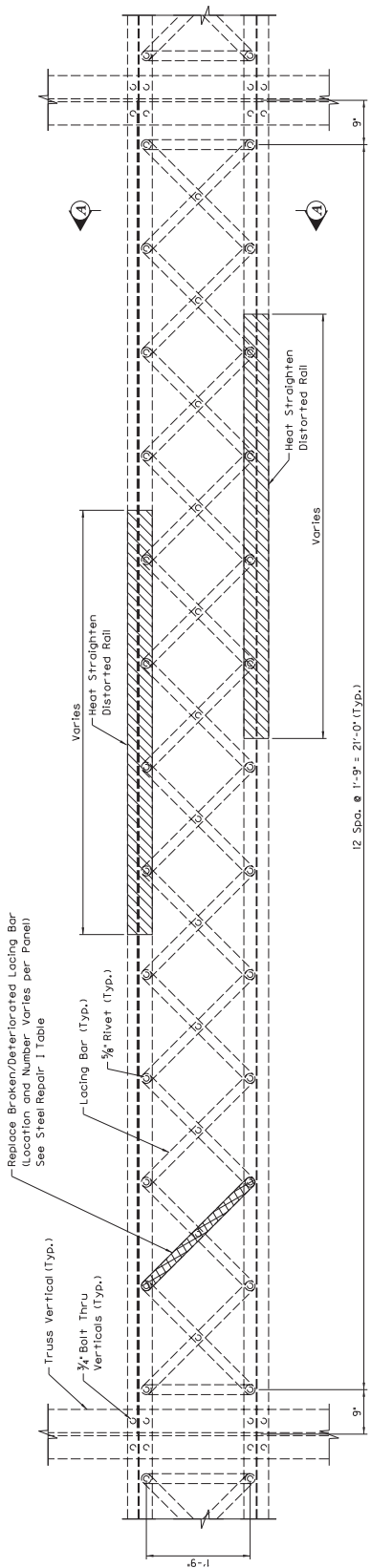
DATE: 11-3-20		REVISION		DATE	
DESIGNED BY: K. Compton		T. Baker		CHECKED BY	
DETAILED BY: J. Corley		K. Compton			
<p align="center"> <b>Commonwealth of Kentucky</b>  <b>DEPARTMENT OF HIGHWAYS</b> </p>					
<p align="center"> <b>ELIOTT</b>  <small>BRIDGE</small> </p>					
ROUTE		CR-1206		CROSSING LITTLE SANDY RIVER	
				<b>STEEL REPAIRS F &amp; G</b>	
PREPARED BY		SHEET NO. <b>78538</b> OF <b>78538</b> DRAWING NO. <b>78538</b> 			
AECOM					

BRIDGE NUMBER  
032C00032N

Denotes member or connection to be repaired and/or replaced

### LEGEND



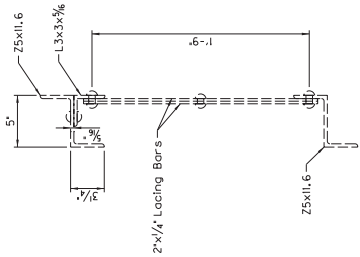


12 Spa. @ 1'-9\"/>

TYPICAL RAILING PANEL ELEVATION

STEEL REPAIR I DATA		
Panel	Approx. No. Required	
	DS	US
L0-L1	7	4
L1-L2	12	1
L2-L3	14	7
L3-L4	14	5
L4-L3'	12	3
L3'-L2'	5	6
L2'-L1'	13	11
L1'-L0'	8	8
Total	130	

Notes: Location and number show in table is an approximate.  
Actual location and number of repairs shall be designated  
by the Engineer in the field.



SECTION A-A

STEEL REPAIR H - STEEL RAILING STRAIGHTENING

This repair shall consist of straightening a deformed truss railing as shown and in accordance with the Special Note for Heat Straightening. Areas to be repaired shall be designated by the Engineer in the field. The unit bid price for steel railing straightening shall include the cost of all materials, labor, equipment, tools, falsework, and incidentals to heat straighten one rail section (top or bottom between panel points).

STEEL REPAIR I - STEEL LACING BAR REPLACEMENT

This repair shall consist of replacing a steel lacing bar in the truss railing as shown and in accordance with the Special Note for Structural Steel Replacement. Areas to be repaired shall be designated by the Engineer in the field. The unit bid price for 'Steel Lacing Bar Replacement' shall include the cost of all materials, labor, equipment, tools, falsework, and incidentals to remove and replace one lacing bar.

LEGEND



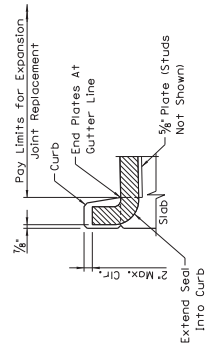
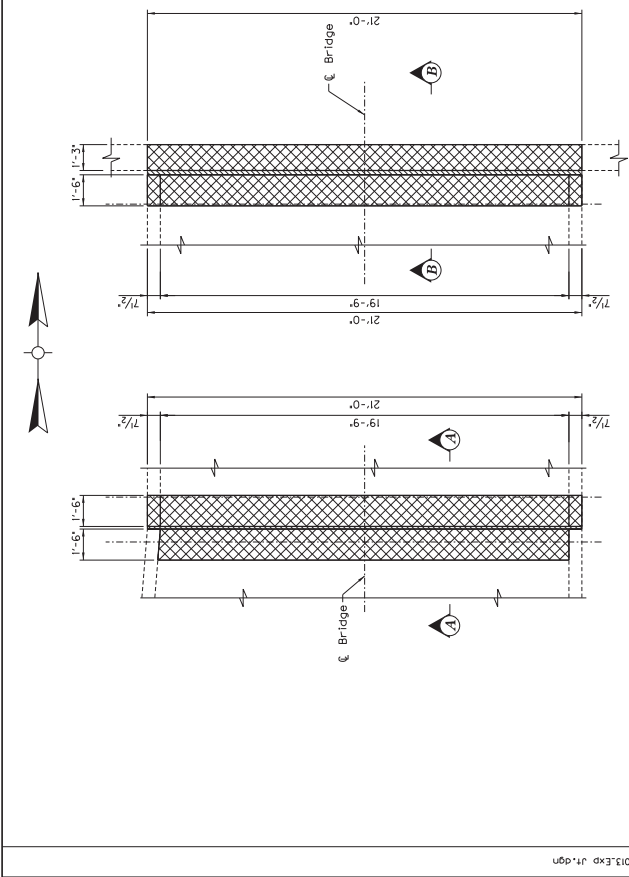
Denotes location of Steel Railing Straightening



Denotes location of Steel Lacing Bar Replacement

DATE: 11-3-20	REVISION	DATE
DESIGNED BY: K. Compton	CHECKED BY: T. Baker	
DETAILED BY: J. Corley	K. Compton	
Commonwealth of Kentucky DEPARTMENT OF HIGHWAYS		
PROJECT ELLIOTT		
ROUTE CR-1206	CROSSING LITTLE SANDY RIVER	
PREPARED BY STEEL REPAIR H & I		
AECOM		
BRIDGING KENTUCKY		
SHEET NO. 28838		

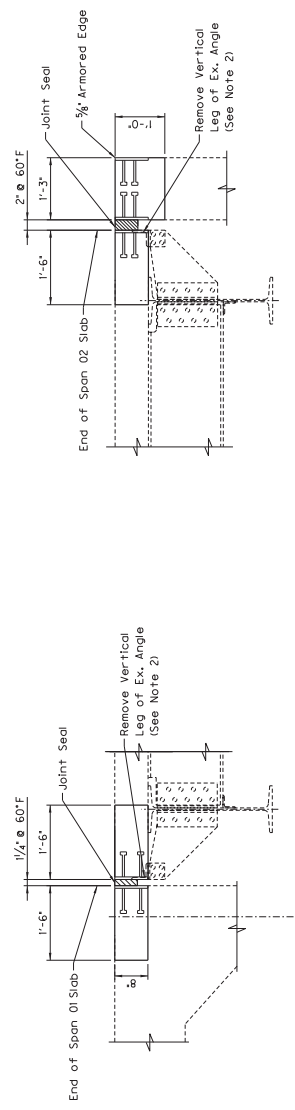
BRIDGE NUMBER
032C00032N



**LEGEND**

Limits of Remove and Replacement, See Note 2

- NOTES**
- 1. For additional notes and details, see Std. Dwg. BJE-001-14, BJE-003, BJE-005, and BJE-006.
  - 2. Reseal joints in truss deck over interior floorbeams in accordance with the Special Note for Joint Seal Replacement.



DATE: 11-3-20	DESIGNED BY: K. Compton	CHECKED BY: T. Baker
DETAILS BY: J. Corley	K. Compton	
Commonwealth of Kentucky DEPARTMENT OF HIGHWAYS		
COUNTY: ELLIOTT		
ROUTE: CR-1206	CROSSING: LITTLE SANDY RIVER	
EXPANSION JOINT DETAILS		
PREPARED BY: AECOM		
BRIDGE NUMBER: 032C00032N		