



CALL NO. 106

CONTRACT ID. 071173

JACKSON COUNTY

FED/STATE PROJECT NUMBER BRO 421-2 (040)

LETTING DATE: November 16, 2007

Sealed Bids will be received in the Division of Construction Procurement and/or the Auditorium located on the 1st floor of the Transportation Cabinet Office Building until 10:00 AM EASTERN STANDARD TIME November 16, 2007. Bids will be publicly opened and read at 10:00 AM EASTERN STANDARD TIME.

ROAD AND/OR BRIDGE PLANS

DBE CERTIFICATION REQUIRED

REQUIRED BID PROPOSAL GUARANTY: Not less than 5% of the total bid.

(Check guaranty submitted: Cashier's Check Certified Check Bid Bond)

BID BONDS WHEN SUBMITTED WILL BE RETAINED WITH THE PROPOSAL

DBE General Plan Included

BID

PROPOSAL ISSUED TO: _____

SPECIMEN

Address

City

State

Zip

TABLE OF CONTENTS

PART I	SCOPE OF WORK
	<ul style="list-style-type: none">• PROJECT(S), COMPLETION DATE(S), & LIQUIDATED DAMAGES• CONTRACT NOTES• CONTRACT DBE GOAL• FEDERAL CONTRACT NOTES• GENERAL DBE PARTICIPATION PLAN• ASPHALT MIXTURE• INCIDENTAL SURFACING• FUEL AND ASPHALT PAY ADJUSTMENT• OPTION A• PROJECT IDENTIFICATION SIGN• WASTE AND BORROWED SITES• RIGHT OF WAY NOTES• UTILITY CLEARANCE• DEPT OF ARMY - NATIONWIDE PERMIT• WATER QUALITY CERTIFICATION• KPDES STORM WATER PERMIT, BMP AND NOI• COMMUNICATING ALL PROMISES
PART II	SPECIFICATIONS AND STANDARD DRAWINGS
	<ul style="list-style-type: none">• SPECIFICATIONS REFERENCE• SUPPLEMENTAL SPECIFICATIONS• [SN-10U] RIGHT OF WAY MONUMENTS
PART III	EMPLOYMENT, WAGE AND RECORD REQUIREMENTS
	<ul style="list-style-type: none">• FEDERAL-AID CONSTRUCTION CONTRACTS - FHWA 1273• NONDISCRIMINATION OF EMPLOYEES• EXECUTIVE BRANCH CODE OF ETHICS• PROJECT WAGE RATES• NOTICE OF REQUIREMENT FOR AFFIRMATIVE ACTION TO ENSURE EEO
PART IV	INSURANCE
PART V	STATEMENT OF INCOMPLETED WORK
PART VI	BID ITEMS

PART VII CERTIFICATION

- PROVISIONS RELATED TO SENATE BILL 258 (1994)
- NON-COLLUSION CERTIFICATION
- CERTIFICATION OF ORGANIZATION(S)
- CERTIFICATION OF PERFORMANCE
- CERTIFICATION FOR FEDERAL-AID CONTRACTS
- CERTIFICATION OF BID PROPOSAL / DBE

PART I
SCOPE OF WORK

CONTRACT ID - 071173

ADMINISTRATIVE DISTRICT - 11

PROJECT(S) IDENTIFICATION AND DESCRIPTION:

COUNTY - JACKSON

PCN - DE05504210773

BRO 421-2 (040)

BRADSHAW-GRAY HAWK ROAD (US 421) REPLACE BRIDGE OVER MCCAMMON CREEK 1.4 MILES NW OF
JUNCTION KY 1071, A DISTANCE OF 0.20 MILES. BRIDGE WITH GRADE, DRAIN & SURFACE. SYP NO.
11-01059.00.

GEOGRAPHIC COORDINATES LATITUDE 37^24'00" LONGITUDE 83^57'00"

COMPLETION DATE(S):

45 WORKING DAYS

APPLIES TO ENTIRE CONTRACT

CONTRACT NOTES

PROPOSAL ADDENDA

All addenda to this proposal must be incorporated into the proposal when the bid is submitted to the Kentucky Department of Highways. Failure to use the correct and most recent bid sheet(s) may result in the bid being rejected.

BID SUBMITTAL

Bidder must use the Department's Highway Bid Program available on the Internet web site of the Department of Highways, Division of Construction Procurement. (www.transportation.ky.gov/contract)

The Bidder must download the bid items created from the web site to prepare a bid proposal for submission to the Department. The bidder must insert the completed bid item sheets printed from the Program into the bidder's proposal and submit with the disk created by said program.

JOINT VENTURE BIDDING

Joint Venture bidding is permissible. However, both companies MUST purchase a bidding proposal. Either proposal may be submitted but must contain the company names and signatures of both parties where required. A joint bid bond of 5% may be submitted for both companies or each company may submit a separate bond of 5%.

UNDERGROUND FACILITY DAMAGE PROTECTION

The contractor is advised that the Underground Facility Damage Protection Act of 1994, became law January 1, 1995. It is the contractor's responsibility to determine the impact of the act regarding this project, and take all steps necessary to be in compliance with the provision of the act.

CONTRACT DBE GOAL

The Disadvantaged Business Enterprise (DBE) goal established for this contract is 3% of the total value of the contract.

The contractor shall exercise all necessary and reasonable steps to ensure that Disadvantaged Business Enterprises participate in at least the percent of the contract as set forth above as goals for this contract.

FEDERAL CONTRACT NOTES

The Kentucky Department of Highways, in accordance with the Regulations of the United States Department of Transportation 23 CFR 635.112 (h), hereby notifies all bidders that failure by a bidder to comply with all applicable sections of the 2004 Kentucky Standard Specifications, including, but not limited to the following, may result in a bid not being considered responsive and thus not eligible to be considered for award:

102.02 Current Capacity Rating
102.08 Irregular Proposals
102.09 Proposal Guaranty

102.10 Delivery of Proposals
102.14 Disqualification of Bidders

CIVIL RIGHTS ACT OF 1964

The Kentucky Department of Highways, in accordance with the provisions of Title VI of the Civil Rights Act of 1964 (78 Stat. 252) and the Regulations of the Federal Department of Transportation (49 C.F.R., Part 21), issued pursuant to such Act, hereby notifies all bidders that it will affirmatively insure that the contract entered into pursuant to this advertisement will be awarded to the lowest responsible bidder without discrimination on the ground of race, color, or national origin.

NOTICE TO ALL BIDDERS

To report bid rigging activities call: 1-800-424-9071.

The U.S. Department of Transportation (DOT) operates the above toll-free "hotline" Monday through Friday, 8:00 a.m. to 5:00 p.m. eastern time. Anyone with knowledge of possible bid rigging, bidder collusion, or other fraudulent activities should use the "hotline" to report such activities.

The "hotline" is part of the DOT's continuing effort to identify and investigate highway construction contract fraud and abuse and is operated under the direction of the DOT Inspector General. All information will be treated confidentially and caller anonymity will be respected.

FHWA 1273

The requirements of Paragraph VI of FHWA 1273 does not apply to projects with a total cost of less than \$1,000,000.00.

SECOND TIER SUBCONTRACTS

Second Tier subcontracts on federally assisted projects shall be permitted. However, in the case of DBE's, second tier subcontracts will only be permitted where the other subcontractor is also a DBE. All second tier subcontracts shall have the consent of both the Contractor and the Engineer.

DISADVANTAGED BUSINESS ENTERPRISE PROGRAM

It is the policy of the Kentucky Transportation Cabinet ("the Cabinet") that Disadvantaged Business Enterprises ("DBE") shall have the opportunity to participate in the performance of highway construction projects financed in whole or in part by Federal Funds in order to create a level playing field for all businesses who wish to contract with the Cabinet. To that end, the Cabinet will comply with the regulations found in 49 CFR Part 26, and the definitions and requirements contained therein shall be adopted as if set out verbatim herein.

The Cabinet, contractors, subcontractors, and sub-recipients shall not discriminate on the basis of race, color, national origin, or sex in the performance of work performed pursuant to Cabinet contracts. The contractor shall carry out applicable requirements of 49 CFR 26 in the award and administration of federally assisted highway construction projects. The contractor will include this provision in all its subcontracts and supply agreements pertaining to contracts with the Cabinet.

Failure by the contractor to carry out these requirements is a material breach of its contract with the Cabinet, which may result in the termination of the contract or such other remedy as the Cabinet deems necessary.

OBLIGATION OF CONTRACTORS

Each contractor prequalified to perform work on Cabinet projects shall designate and make known to the Cabinet a liaison officer who is assigned the responsibility of effectively administering and promoting an active program for utilization of DBEs.

If a formal goal has not been designated for the contract, all contractors are encouraged to consider DBEs for subcontract work as well as for the supply of material and services needed to perform this work.

Contractors are encouraged to use the services of banks owned and controlled by minorities and women.

CERTIFICATION OF CONTRACT GOAL

Contractors shall include the following certification in bids for projects for which a DBE goal has been established. BIDS SUBMITTED WHICH DO NOT INCLUDE CERTIFICATION OF DBE PARTICIPATION WILL NOT BE READ PUBLICLY. These bids will not be considered for award by the Cabinet and they will be returned to the bidder.

“The bidder certifies that it has secured participation by Disadvantaged Business Enterprises (“DBE”) in the amount of ____ percent of the total value of this contract and that the DBE participation is in compliance with the requirements of 49 CFR 26 and the policies of the Kentucky Transportation Cabinet pertaining to the DBE Program.”

The certification statement is located on the last page of this proposal. All contractors must certify their DBE participation on that page. DBEs utilized in achieving the DBE goal must be certified and prequalified for the work items at the time the bid is submitted.

DBE PARTICIPATION PLAN

All bidders are encouraged to submit their General DBE Participation Plan with their bid on the official form. Lowest responsive bidders whose bid packages include DBE Participation Plans may be awarded the contract at the next Awards Committee meeting provided that the DBE goal is met. The DBE Participation Plan shall include the following:

1. Name and address of DBE Subcontractor(s) and/or supplier(s) intended to be used in the proposed project;
2. Description of the work each is to perform including the work item , unit, quantity, unit price and total amount of the work to be performed by the individual DBE;
3. The dollar value of each proposed DBE subcontract and the percentage of total project contract value this represents. DBE participation may be counted as follows;
 - a) If DBE suppliers and manufactures assume actual and contractual responsibility, the dollar value of materials to be furnished will be counted toward the goal as follows:
 - The entire expenditure paid to a DBE manufacturer;
 - 60 percent of expenditures to DBE suppliers that are not manufacturers provided the supplier is a regular dealer in the product involved. A regular dealer must be engaged in, as its principal business and in its own name, the sale of products to the public, maintain an inventory and own and operate distribution equipment; and
 - the amount of fees or commissions charged by the DBE firms for a bona fide service, such as professional, technical, consultant, or managerial services and assistance in the procurement of essential personnel, facilities, equipment, materials, supplies, delivery of materials and supplies or for furnishing bonds, or insurance, providing such fees or commissions are determined to be reasonable and customary.
 - b) The dollar value of services provided by DBEs such as quality control testing, equipment repair and maintenance, engineering, staking, etc.;

- c) The dollar value of joint ventures. DBE credit for joint ventures will be limited to the dollar amount of the work actually performed by the DBE in the joint venture;
4. Written and signed documentation of the bidder's commitment to use a DBE contractor whose participation is being utilized to meet the DBE goal; and
5. Written and signed confirmation from the DBE that it is participating in the contract as provided in the prime contractor's commitment.

The apparent low bidder who does not submit a General DBE Participation Plan with the bid shall submit it within 10 calendar days after receipt of notification that they are the apparent low bidder. The project will not be considered for award prior to submission and approval of the apparent low bidder's DBE Participation Plan.

Detailed DBE Participation Plan forms will be included in the Contractor Package presented to successful bidders following the awarding of the project. The Detailed DBE Participation Plan must be completed and returned to Contract Procurement in accordance with Cabinet policy. A copy of the blank estimate will be included with the Detailed DBE Participation Plan to list sequence items by PCN (Project Control Number).

Changes to DBE Participation Plans must be approved by the Cabinet. The Cabinet may consider extenuating circumstances including, but not limited to, changes in the nature or scope of the project, the inability or unwillingness of a DBE to perform the work in accordance with the bid, and/or other circumstances beyond the control of the prime contractor.

CONSIDERATION OF GOOD FAITH EFFORTS REQUESTS

If the DBE participation submitted in the bid by the apparent lowest responsive bidder does not meet or exceed the DBE contract goal, the apparent lowest responsive bidder must submit a Good Faith Effort Package to satisfy the Cabinet that sufficient good faith efforts were made to meet the contract goals prior to submission of the bid. Efforts to increase the goal after bid submission will not be considered in justifying the good faith effort, unless the contractor can show that the proposed DBE was solicited prior to the letting date. DBEs utilized in achieving the DBE goal must be certified and prequalified for the work items at the time the bid is submitted. One complete set and nine (9) copies of this information must be received in the office of the Division of Contract Procurement no later than 12:00 noon of the tenth calendar day after receipt of notification that they are the apparent low bidder.

Where the information submitted includes repetitious solicitation letters it will be acceptable to submit a sample representative letter along with a distribution list of the firms solicited. Documentation of DBE quotations shall be a part of the good faith effort submittal as necessary to demonstrate compliance with the factors listed below which the Cabinet considers in judging good faith efforts. This documentation may include written

subcontractors' quotations, telephone log notations of verbal quotations, or other types of quotation documentation.

The Good Faith Effort Package shall include, but may not be limited to information showing evidence of the following:

1. Whether the bidder attended any pre-bid meetings that were scheduled by the Cabinet to inform DBEs of subcontracting opportunities;
2. Whether the bidder provided solicitations through all reasonable and available means;
3. Whether the bidder provided written notice to all DBEs listed in the DBE directory at the time of the letting who are prequalified in the areas of work that the bidder will be subcontracting;
4. Whether the bidder followed up initial solicitations of interest by contacting DBEs to determine with certainty whether they were interested. If a reasonable amount of DBEs within the targeted districts do not provide an intent to quote or no DBEs are prequalified in the subcontracted areas, the bidder must notify the DBE Liaison in the Office of Minority Affairs to give notification of the bidder's inability to get DBE quotes;
5. Whether the bidder selected portions of the work to be performed by DBEs in order to increase the likelihood of meeting the contract goals. This includes, where appropriate, breaking out contract work items into economically feasible units to facilitate DBE participation, even when the prime contractor might otherwise perform these work items with its own forces;
6. Whether the bidder provided interested DBEs with adequate and timely information about the plans, specifications, and requirements of the contract;
7. Whether the bidder negotiated in good faith with interested DBEs not rejecting them as unqualified without sound reasons based on a thorough investigation of their capabilities. Any rejection should be so noted in writing with a description as to why an agreement could not be reached;
8. Whether quotations were received from interested DBE firms but were rejected as unacceptable without sound reasons why the quotations were considered unacceptable. The fact that the DBE firm's quotation for the work is not the lowest quotation received will not in itself be considered as a sound reason for rejecting the quotation as unacceptable. The fact that the bidder has the ability and/or desire to perform the contract work with its own forces will not be considered a sound reason for rejecting a DBE quote. Nothing in this provision shall be construed to require the bidder to accept unreasonable quotes in order to satisfy DBE goals;
9. Whether the bidder specifically negotiated with subcontractors to assume part of the responsibility to meet the contract DBE goal when the work to be subcontracted includes potential DBE participation;
10. Whether the bidder made any efforts and/or offered assistance to interested DBEs in obtaining the necessary equipment, supplies, materials, insurance and/or bonding to satisfy the work requirements of the bid proposal; and
11. Any other evidence that the bidder submits which may show that the bidder has made reasonable good faith efforts to include DBE participation.

FAILURE TO MEET GOOD FAITH REQUIREMENT

Where the apparent lowest responsive bidder fails to submit sufficient participation by DBE firms to meet the contract goal and upon a determination by the Good Faith Committee based upon the information submitted that the apparent lowest responsive bidder failed to make sufficient reasonable efforts to meet the contract goal, the bidder will be offered the opportunity to meet in person for administrative reconsideration. The bidder will be notified of the Committee's decision within 24 hours of its decision. The bidder will have 24 hours to request reconsideration of the Committee's decision. The reconsideration meeting will be held within two days of the receipt of a request by the bidder for reconsideration.

The request for reconsideration will be heard by the Office of the Secretary. The bidder will have the opportunity to present written documentation or argument concerning the issue of whether it met the goal or made an adequate good faith effort. The bidder will receive a written decision on the reconsideration explaining the basis for the finding that the bidder did or did not meet the goal or made adequate Good Faith efforts to do so.

The result of the reconsideration process is not administratively appealable to the Cabinet or to the United States Department of Transportation.

The Cabinet reserves the right to award the contract to the next lowest responsive bidder or to rebid the contract in the event that the contract is not awarded to the low bidder as the result of a failure to meet the good faith requirement.

SANCTIONS FOR FAILURE TO MEET DBE REQUIREMENTS OF THE PROJECT

Failure by the prime contractor to fulfill the DBE requirements of a project under contract or to demonstrate good faith efforts to meet the goal constitutes a breach of contract. When this occurs, the Cabinet will hold the prime contractor accountable, as would be the case with all other contract provisions. Therefore, the contractor's failure to carry out the DBE contract requirements shall constitute a breach of contract and as such the Cabinet reserves the right to exercise all administrative remedies at its disposal including, but not limited to the following:

- Disallow credit toward the DBE goal;
- Withholding progress payments;
- Withholding payment to the prime in an amount equal to the unmet portion of the contract goal; and/or
- Termination of the contract.

PROMPT PAYMENT

The prime contractor will be required to pay the DBE within seven (7) working days after he or she has received payment from the Kentucky Transportation Cabinet for work performed or materials furnished.

CONTRACTOR REPORTING

All contractors must keep detailed records and provide reports to the Cabinet on their progress in meeting the DBE requirement on any highway contract. These records may include, but shall not be limited to payroll, lease agreements, cancelled payroll checks, executed subcontracting agreements, etc. Prime contractors will be required to submit certified reports on monies paid to each DBE subcontractor or supplier utilized to meet a DBE goal.

Prime contractors will incorporate a requirement into DBE subcontracts, including supply contracts, that DBEs must provide to the Division of Construction, a copy of all checks received from the prime contractor within seven days of receipt of payment for work performed on Cabinet projects. Checks to DBE subcontractors must include the PCN number, estimate number, and the sequence and quantity.

DEFAULT OR DECERTIFICATION OF THE DBE

If the DBE subcontractor or supplier is decertified or defaults in the performance of its work, and the overall goal cannot be credited for the uncompleted work, the prime contractor may utilize a substitute DBE or elect to fulfill the DBE goal with another DBE on a different work item. If after exerting good faith effort in accordance with the Cabinet's Good Faith Effort policies and procedures, the prime contractor is unable to replace the DBE, then the unmet portion of the goal may be waived at the discretion of the Cabinet.

ASPHALT MIXTURE

The rate of application for all asphalt mixtures shall be estimated at 110 lbs/sy per inch of depth, unless otherwise noted.

INCIDENTAL SURFACING

The quantities established in the proposal include estimated quantities required for resurfacing or surfacing mailbox turnouts, farm field entrances, residential and commercial entrances, and road and street approaches. These items are to be paved to the limits as shown on Standard Drawing RPM 110 or to the limits as directed by the Engineer. In the event signal detectors are present in the intersecting streets or roads, the paving of the crossroads shall be to the right of way limit or back of the signal detector, whichever is the farthest back of the mainline. These areas are to be surfaced or resurfaced as directed by the Engineer and no direct payment will be allowed for placing and compacting.

FUEL AND ASPHALT PAY ADJUSTMENT

These contract items Lot Pay Adjustment, Asphalt Adjustment and Fuel Adjustment, are for possible future payments. Additional monies may need to be setup with an additional change order if existing contract amount is insufficient to pay all items on the contract. Unit price is \$1.00. Quantity will be actual adjustment after work is completed.

OPTION A

The Contractor is advised that the compaction of asphalt mixtures furnished for driving lanes and ramps, at 25mm (1 inch) or greater, on this project will be accepted according to OPTION A in accordance with Section 402 and Section 403 of the *2004 Standard Specification*. Joint cores as described in subsection 402.03.02 are required for surface mixtures only. The compaction of all other asphalt mixtures will be accepted by OPTION B.

SPECIAL NOTE FOR PROJECT IDENTIFICATION SIGNS

When directed by the Engineer, install Project Identification Signs furnished by the Department at each end of the project. The signs furnished by the Department will be approximately 44" X 72" or 72" X 120" aluminum sign blanks with standard color reflective sheeting with the applicable county and project names affixed. The Engineer will determine the size and location of the signs, if any, to be used on the project(s) at the time of construction.

Pick up the signs to be furnished by the Department at the District Traffic Operations Facility. Furnish posts and hardware for mounting the signs. Install the signs at locations determined by the Engineer. Maintain the signs during the duration of the project. Upon completion of the work, remove the signs and return them to District Traffic Operations Facility. Retain possession of the posts and hardware.

The Department will measure installation of the Project Identification Signs in individual units, Each. Payment at the contract unit price Each shall be full compensation for all labor, materials, equipment, and incidentals required for picking up, installing, maintaining, and returning the project identification signs furnished by the Department.

<u>Code</u>	<u>Pay Item</u>	<u>Pay Unit</u>
20588NC	Install Project Identification Signs	Each

SPECIAL PROVISION FOR WASTE AND BORROW SITES

The contractor is advised that it is their responsibility to gain U.S. Army Corp of Engineer's approval before utilizing a waste or borrow site that involves "Waters of the United States". "Waters of the United States" are defined as perennial or intermittent streams, ponds or wetlands. Ephemeral streams are also considered jurisdictional waters, and are typically dry except during rainfall, but have a defined drainage channel. Questions concerning any potential impacts to "Waters..." should be brought to the attention of the appropriate District Office for the Corps of Engineers for a determination, prior to disturbance. Any fees associated with obtaining approval from the U.S. Army Corp of Engineer or other appropriate regulatory agencies for waste and borrow sites is the responsibility of the contractor.

Right-of-Way Certification Form

Federal Funded

Original

State Funded

Re-Certification

This form must be completed and submitted to FHWA with the PS&E package for federal-aid funded Interstate, Appalachia, and Mega projects. This form shall also be submitted to FHWA for **all** federal-aid projects that fall under conditions No. 2 & 3 outlined elsewhere in this form. For all other federal-aid projects, this form shall be completed and retained in the KYTC project file.

Date: 10-09-07

Project #: FD52 C055 7376001R

County: JACKSON

Item #: 11-1059.00

Federal #: BRO 421-2 (033)

Letting Date: 11-16-07

Description of project: Manchester – Mckee Road

Projects that require **NO** new or additional right-of-way acquisitions and/or relocations

The proposed transportation improvement will be built within the existing rights-of-way and there are no properties to be acquired, individuals and families ("relocatees") to be relocated, or improvements to be removed as a part of this project.

Projects that require new or additional right-of-way acquisitions and/or relocations

Per 23 CFR 635.309, the KYTC hereby certify that all relocatees have been relocated to decent, safe, and sanitary housing or that KYTC has made available to relocatees adequate replacement housing in accordance with the provisions of the current FHWA directive(s) covering the administration of the Highway Relocation Assistance Program **and** that at least one of the following three conditions has been met. **(Check those that apply.)**

1. All necessary rights-of-way, including control of access rights when applicable, have been acquired including legal and physical possession. Trial or appeal of cases may be pending in court but legal possession has been obtained. There may be some improvements remaining on the right-of-way, but all occupants have vacated the lands and improvements, and KYTC has physical possession and the rights to remove, salvage, or demolish these improvements and enter on all land. **Fair market value has been paid or deposited with the court.**

2. Although all necessary rights-of-way have not been fully acquired, the right to occupy and to use all rights-of-way required for the proper execution of the project has been acquired. Trial or appeal of some parcels may be pending in court and on other parcels full legal possession has not been obtained, but an Interlocutory Judgment has been granted, the occupants of all lands and improvements have vacated, and KYTC has physical possession and right to remove, salvage, or demolish these improvements. **Fair market value has been paid or deposited with the court for most parcels. Fair market value for all pending parcels will be paid or deposited with the court prior to start of construction. (See note.)**

Note: The KYTC shall re-submit a right-of-way re-certification form for this project prior to the start of construction (**Notice to Proceed**), verifying that fair market value for all parcels has been paid or deposited with the court.

Right-of-Way Certification Form



3. The acquisition or right of occupancy and use of a **few** remaining parcels are not complete and/or some parcels still have occupants. However, all remaining occupants have had replacement housing made available to them in accordance with 49 CFR 24.204. The KYTC is hereby requesting authorization to advertise this project for bids and to proceed with physical construction even though the necessary rights-of-way will not be fully acquired, and/or some occupants will not be relocated, and/or the fair market value will not be paid or deposited with the court for some parcels at the start of construction. KYTC will fully meet all the requirements outlined in 23 CFR 309(c) (3) and 49 CFR 102(j) and will expedite completion of all acquisitions, relocations, and full payments after construction starts. A full explanation and reason for this request, including identification of each such parcel and dates on which acquisitions, payments, and relocations will be completed, is attached to this certification form for FHWA consideration and approval. (See note.)

Note: The KYTC may request authorization on this basis only in unique and unusual circumstances. Proceeding to construction of projects on this basis shall be the exception and never become the rule. In all FHWA-approved cases, the KYTC shall make extraordinary efforts to expedite completion of the acquisition, payment for all affected parcels, and the relocation of all relocatees promptly 30 days after start of construction.

Approved: David Hensley District ROW Supervisor
Printed Name Approved

Approved: Paul M^c Carley For Steve Damron
Printed Name 10-10-07 Director of ROW & Utilities or Designee
Approved

Approved: Olivia Michael Olivia Michael
Printed Name 10/10/07 FHWA, Right-of-Way Officer
Approved

Right-of-Way Certification Form

Date: 10-09-07

Project #: FD52 C055 7376001R

County: JACKSON

Item #: 11-1059.00

Federal #: BRO 421-2 (033)

Letting Date: _____

This project has 3 total number of parcels to be acquired, and 0 total number of individual or families to be relocated, as well as 0 total number of businesses to be relocated.

- 3 Parcels were acquired by a signed fee simple deed and fair market value has been paid (**Type 1**)
- _____ Parcels have been acquired through condemnation and IOJ granted by the court and fair market value has been deposited with the court (**Type 1 certification**)
- _____ Parcels have **not** been acquired at this time but can be Re-certified as acquired prior to Notice to Proceed for construction. (*explain below for each parcel*) (**Type 2 certification**)
- _____ Parcels have been acquired or have a "right of Entry" but the fair market value has not been paid or has not been posted with the court, and they can not be re-certified prior to construction. (These parcels require an explanation below for each one as well as FHWA approval. (**Type 3 only**))
- _____ Some displacees have not been relocated from all parcels: (*explain below for each parcel*) (*notes to plans may be required*)

Parcel #	Name/Station	Explanation for delayed acquisition, delayed relocation, or delayed payment of fair market value	Proposed date of payment or of relocation

There are 0 billboards and/or 0 cemeteries involved on this project.
 There are 0 water or monitoring wells on parcels 0 and 0. All have been acquired and are the responsibility of the project contractor to close/cap.

**UTILITY NOTES TO BE INCLUDED IN THE PROPOSAL
SPECIAL NOTES FOR UTILITY CLEARANCE
IMPACT ON CONSTRUCTION**

**Jackson County,
BRO 421-2 (33)
FD52 055 69556 01U
Replace Bridge & Approaches on
US-421 over McCammon Creek
Item No. 11 – 1059.0**

Jackson Energy Cooperartive: Work will start when Right of Way is acquired.

Peoples Rural Telephone: PRT facilities will relocate their facilities when poles have been set by Jackson Energy.

Jackson County Water: Work will start when Right of Way is acquired.

There are NO Railroad facilities involved.

PROTECTION OF UTILITIES

The location of utilities provided in the contract documents has been furnished by the facility owners and/or by reviewing record drawings and may not be accurate. It will be the roadway contractor's responsibility to locate utilities before excavating by calling the various utility owners and by examining any supplemental information supplied by the cabinet. If necessary, the roadway contractor shall determine the exact location and elevation of utilities by hand digging to expose utilities before excavating in the area of a utility. The cost for repair and any other associated costs for any damage to utilities caused by the roadway contractor's operations shall be borne by the roadway contractor.

The contractor is advised to contact the BUD one-call system; however, the Contractor should be aware that owners of underground facilities are not required to be members of the BUD on-call system. It may be necessary for the Contractor to contact the County Court Clerk to determine what utility companies have facilities in the project area.

N O T I C E

**DEPARTMENT OF THE ARMY
CORPS OF ENGINEERS
(NATIONWIDE PERMIT AUTHORIZATION)**

PROJECT: Jackson County, Item No. 11-1059.00
Bridge Replacement

The Section 404 activities for this project have been previously permitted under the authority of the Department of the Army Nationwide Permit No. 14 "Linear Transportation Crossings". In order for this authorization to be valid, the attached conditions must be followed. The contractor shall post a copy of this Nationwide Permit in a conspicuous location at the project site for the duration of construction and comply with the general conditions as required.

To more readily expedite construction, the contractor may elect to alter the design or perform the work in a manner different from what was originally proposed and specified. Prior to commencing such alternative work, the contractor shall obtain **written** permission from the Division of Construction and the Corps of Engineers. A copy of any request to the Corps of Engineers to alter this proposal and subsequent responses shall be forwarded to the Division of Environmental Analysis, DA Permit Coordinator, for office records and for informational purposes.



DEPARTMENT OF THE ARMY
NASHVILLE DISTRICT, CORPS OF ENGINEERS
3701 Bell Road
NASHVILLE, TENNESSEE 37214-2660

May 18, 2007

REPLY TO
ATTENTION OF:

Regulatory Branch

SUBJECT: Renewal of Previously Authorized Nationwide Permits in
the Cumberland River Basin of Kentucky

Mr. Daniel R. Peake
Division of Environmental Analysis
Kentucky Transportation Cabinet
200 Mero Street
Frankfort, Kentucky 40622

Dear Mr. Peake:

This is in response to your March 15, 2007, request for reauthorization of several projects which had previously been verified as complying with the January 2002 Nationwide Permits.

I have reviewed the files and determined that the projects as listed on the enclosed spreadsheet meet the criteria for authorization under the terms and conditions of Nationwide Permit No. 14, which became effective on March 19, 2007. All work must be performed in accordance with the enclosed terms and conditions.

The Kentucky Division of Water (KDOW) reauthorized Nationwide Permit #14 on May 11, 2007. A copy of the KDOW certification is enclosed for your information. You may wish to contact KDOW to determine whether an individual water quality certification is required for any of these projects. If an individual certification is required, the nationwide permit is not valid until the certification has been obtained.

Other conditions, such as tree cutting restrictions necessary to address Indiana Bat concerns, were included on the original permit verification letters. Those conditions remain valid and are incorporated by reference into this reauthorization.

This verification is valid for two years from the date of this letter. If the projects are not completed within this time frame, you must contact us for reverification.

-2-

If you have any question regarding this matter, please contact me at the above address, telephone (615) 369-7508.

Sincerely,

William L. James
Chief, Eastern Regulatory Section
Operations Division

Enclosures

Reauthorization of Previously Authorized Nationwide Permits in the Cumberland River Basin of Kentucky			
Corps File #	KTC Item #	County	Remarks
2003-00103	11-102.01	Bell	Reauthorized
2004-00444	8-55.07	Pulaski	Reauthorized
2004-01356	11-1049	Harlan	Reauthorized
2004-01401	11-279.23	Whitley	Work authorized under NWP #14 already completed and reauthorization not required. Individual 404 permit for remainder of this segment is valid until 1 August 2010.
2004-01673	8-1030	Cumberland	Reauthorized
2004-01925	11-120.9	Whitley	Reauthorized
2005-01320	11-278.21	Laurel	Reauthorized
2005-01641	8-55.04	Pulaski	Reauthorized
2005-01688	8-105	Pulaski	Reauthorized. May require individual WQC from Kentucky Division of Water.
2005-02302	8-259	Pulaski	Reauthorized
2006-00648	11-1054	Knox/Whitley	Reauthorized
2006-01127	11-1053	Knox	Reauthorized
2006-01303	2-7000.00	Christian	Reauthorized
2006-01536	11-1059	Jackson	Reauthorized
2006-01969	11-1057	Jackson	Reauthorized
2006-02319	2-100.4	Christian	Reauthorization not required. Individual 404 permit is valid until 16 February 2012.



**US Army Corps
of Engineers**®
Nashville District

Department of the Army Permit

Regulatory Branch
3701 Bell Road
Nashville, TN 37214-2660

July 19, 2006

File No.	1145b1
200601536	

Applicant Name Kentucky Transportation Cabinet Department of Highways, KYTC Item # 11-1059.00	Lake NA	County Jackson	State KY
Address: Mr. Roy Collins Transportation Cabinet Office Building Suite W5-22-02 200 Mero Street Frankfort, Kentucky 40622	River/Stream Mile M ^c Cammon Branch Mile 3.0 tributary to Laurel Fork Mile 4.9 R		
	Location See Map	Lot No(s) NA	

We have reviewed your application for a Department of the Army (DA) Permit. The work listed below is approved subject to **all conditions and plans attached to or submitted in support of this permit.**

NATIONWIDE PERMIT (NWP) The following activity is approved under authority of NWP subject to the enclosed General and Activity-Specific NWP conditions:

#14 Linear Transportation Projects for your proposed highway bridge replacement.

The verification that the work is approved under authority of this NWP is valid until **March 18, 2007**. This verification is valid until the NWP is modified, reissued, or revoked. All of the existing NWP's are scheduled to be modified, reissued or revoked prior to March 18, 2007. It is incumbent on you to remain informed of changes to the NWP's. We will issue a public notice when the NWP's are reissued. Furthermore, if you commence or are under contract to commence this activity before the date that the relevant nationwide permit is modified or revoked, you will have twelve (12) months from the date of the modification or revocation of the NWP to complete the activity under present terms and conditions of this nationwide permit.

If changes in the location or plans of the proposed work are necessary, revised plans should be submitted promptly to this office. No deviation should be made to the approved plans without first obtaining approval from this office.

As soon as the authorized work has been completed and all conditions have been met, you must sign the enclosed "Compliance Certification" and send it back to the Corps office checked on the form.

This permit is subject to the General Certification by the Kentucky Division of Water and the Conditions thereof enclosed.

You are responsible for obtaining any other federal, state, and local approvals which may be required for the activity.

If I can be of further assistance, please contact me at the address above or by telephoning (615) 369-7512.

G. Scott Fanning
Regulatory Specialist

Enclosures:
Compliance Certificate
NWP General and Activity-Specific Conditions
KY General Certification
Applicant Plans and Location Map

Copies Furnished:

Kentucky Division of Water
Frankfort Office Park
14 Reilly Road
Frankfort, Kentucky 40601

CELRN-OP-LAU/R

ATTENTION

YOU ARE REQUIRED TO SUBMIT THIS SIGNED CERTIFICATION REGARDING THE COMPLETED ACTIVITY AND ANY REQUIRED MITIGATION.

I hereby certify that the work authorized by **Permit No. 200601536** and any required mitigation was done in accordance with the Corps of Engineers authorization, including any general or special conditions.

Permittee Signature

Date

Submit this signed certification to the office checked below:



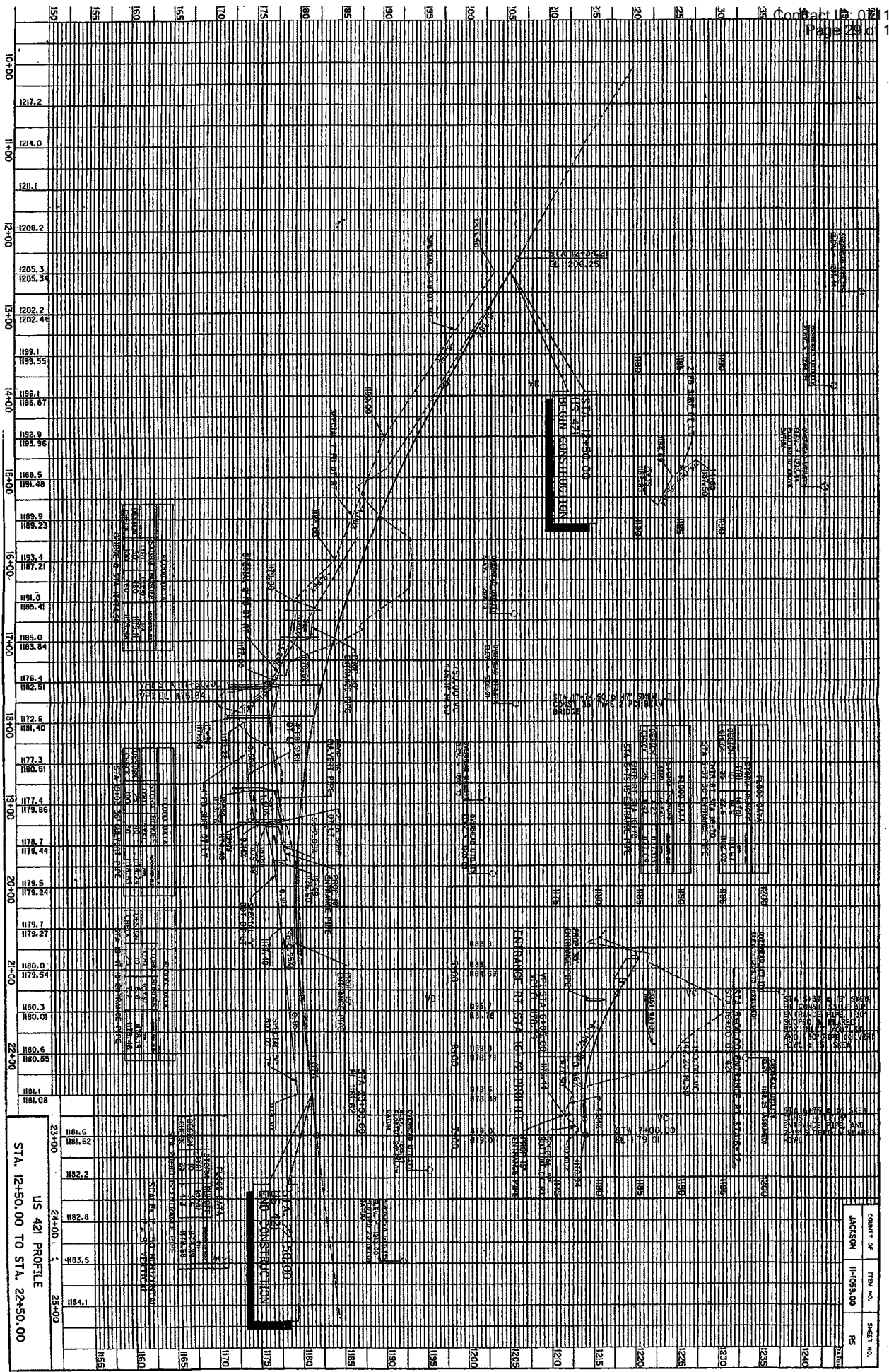
U.S. Army Corps of Engineers
Regulatory Branch
3701 Bell Road
Nashville, TN 37214



Eastern Regulatory Field Office
P.O. Box 465
Lenoir City, TN 37771



Western Regulatory Field Office
2042 Beltline Road, Southwest
Building C, Suite 415
Decatur, AL 35601



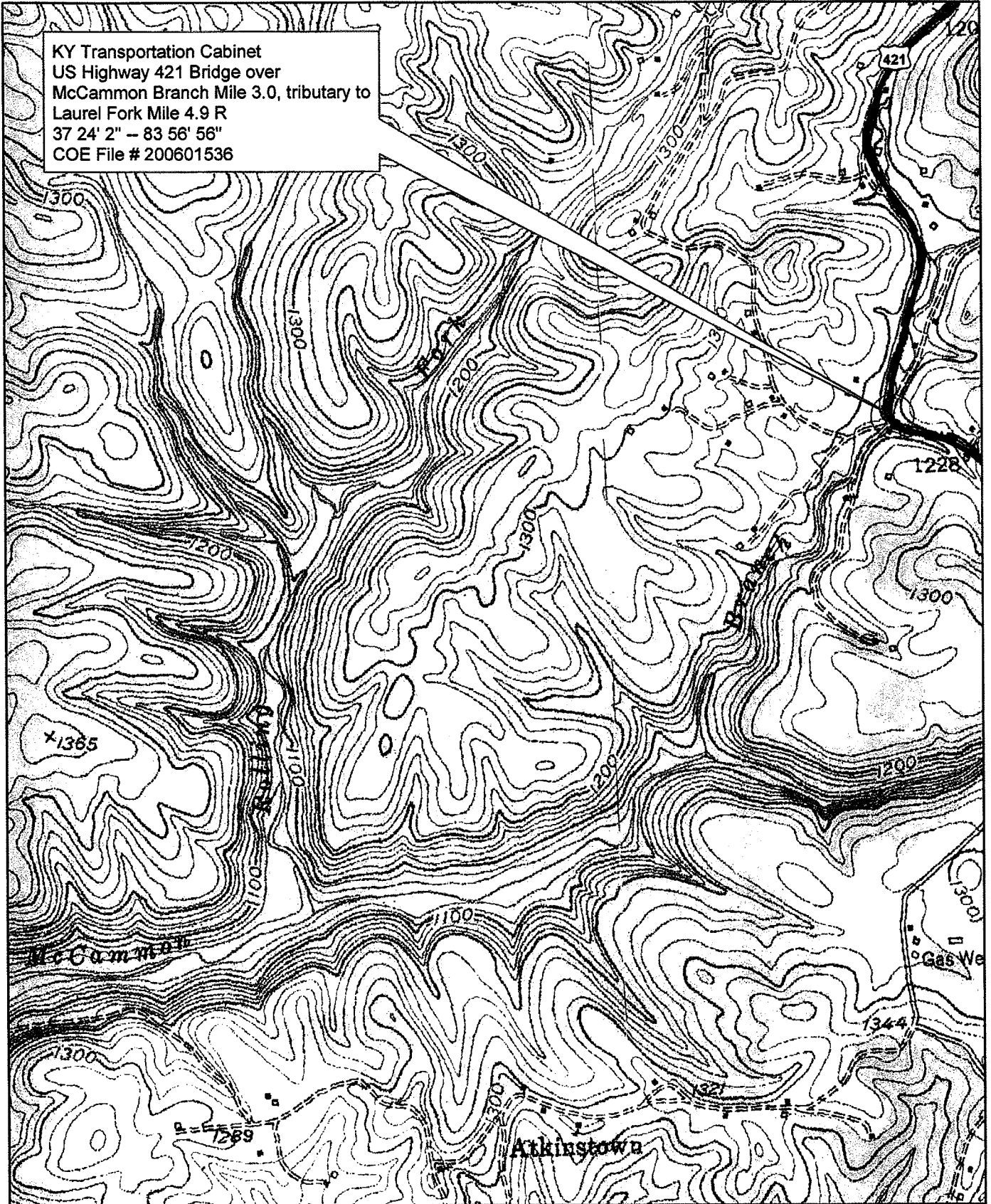
US 421 PROFILE
STA. 12+50.00 TO STA. 22+50.00

COUNTY OF	JACKSON
TRIP NO.	11-059, 00
SHEET NO.	88



200601536

KY Transportation Cabinet
US Highway 421 Bridge over
McCammon Branch Mile 3.0, tributary to
Laurel Fork Mile 4.9 R
37 24' 2" - 83 56' 56"
COE File # 200601536





**US Army Corps
of Engineers.**
Nashville District

Nationwide Permit Conditions

The following General Conditions must be followed in order for any authorization by NWP to be valid:

- 1. Navigation.** (a) No activity may cause more than a minimal adverse effect on navigation. (b) Any safety lights and signals prescribed by the US Coast Guard, through regulations or otherwise, must be installed and maintained at the permittee's expense on authorized facilities in navigable waters of the US. (c) The permittee understands and agrees that, if future operations by the US require the removal, relocation, or other alteration, of the structure or work herein authorized, or if, in the opinion of the Secretary of the Army or his authorized representative, said structure or work shall cause unreasonable obstruction to the free navigation of the navigable waters, the permittee will be required, upon due notice from the Corps of Engineers, to remove, relocate, or alter the structural work or obstructions caused thereby, without expense to the US. No claim shall be made against the US on account of any such removal or alteration.
- 2. Aquatic Life Movements.** No activity may substantially disrupt the necessary life cycle movements of those species of aquatic life indigenous to the waterbody, including those species that normally migrate through the area, unless the activity's primary purpose is to impound water. Culverts placed in streams must be installed to maintain low flow conditions.
- 3. Spawning Areas.** Activities in spawning areas during spawning seasons must be avoided to the maximum extent practicable. Activities that result in the physical destruction (e.g., through excavation, fill, or downstream smothering by substantial turbidity) of an important spawning area are not authorized.
- 4. Migratory Bird Breeding Areas.** Activities in waters of the US that serve as breeding areas for migratory birds must be avoided to the maximum extent practicable.
- 5. Shellfish Beds.** No activity may occur in areas of concentrated shellfish populations, unless the activity is related to a shellfish harvesting activity authorized by NWP 4 and 48.
- 6. Suitable Material.** No activity may use unsuitable material (e.g., trash, debris, car bodies, asphalt, etc.). Material used for construction or discharged must be free from toxic pollutants in toxic amounts (see Section 307 of the Clean Water Act).
- 7. Water Supply Intakes.** No activity may occur in the proximity of a public water supply intake, except where the activity is for the repair or improvement of public water supply intake structures or adjacent bank stabilization.
- 8. Adverse Effects from Impoundments.** If the activity creates an impoundment of water, adverse effects to the aquatic system due to accelerating the passage of water, and/or restricting its flow must be minimized to the maximum extent practicable.
- 9. Management of Water Flows.** To the maximum extent practicable, the preconstruction course, condition, capacity, and location of open waters must be maintained for each activity, including stream channelization and storm water management activities, except as provided below. The activity must be constructed to withstand expected high flows. The activity must not restrict or impede the passage of normal or high flows, unless the primary purpose of the activity is to impound water or manage high flows. The activity may alter the preconstruction course; condition, capacity, and location of open waters if it benefits the aquatic environment (e.g. stream restoration or relocation activities).

10. **Fills Within 100-Year Floodplains.** The activity must comply with applicable FEMA-approved state or local floodplain management requirements.

11. **Equipment.** Heavy equipment working in wetlands or mudflats must be placed on mats, or other measures must be taken to minimize soil disturbance.

12. **Soil Erosion and Sediment Controls.** Appropriate soil erosion and sediment controls must be used and maintained in effective operating condition during construction, and all exposed soil and other fills, as well as any work below the ordinary high water mark or high tide line, must be permanently stabilized at the earliest practicable date. Permittees are encouraged to perform work within waters of the US during periods of low-flow or no-flow.

13. **Removal of Temporary Fills.** Temporary fills must be removed in their entirety and the affected areas returned to pre-construction elevations and revegetated, as appropriate.

14. **Proper Maintenance.** Any authorized structure or fill shall be properly maintained, including maintenance to ensure public safety.

15. **Wild and Scenic Rivers.** No activity may occur in a component of the National Wild and Scenic River System, or in a river officially designated by Congress as a "study river" for possible inclusion in the system while the river is in an official study status, unless the appropriate Federal agency with direct management responsibility for such river, has determined in writing that the proposed activity will not adversely affect the Wild and Scenic River designation or study status. Information on Wild and Scenic Rivers may be obtained from the appropriate Federal land management agency in the area (e.g., National Park Service, US Forest Service, US Fish and Wildlife Service).

16. **Tribal Rights.** No activity or its operation may impair reserved tribal rights, including, but not limited to, reserved water rights and treaty fishing and hunting rights.

17. **Endangered Species.** (a) No activity is authorized under any NWP which is likely to jeopardize the continued existence of a threatened or endangered species or a species proposed for such designation, as identified under the Federal Endangered Species Act (ESA), or which will destroy or adversely modify the critical habitat of such species. Non-federal permittees shall notify the District Engineer if any listed species or designated critical habitat might be affected or is in the vicinity of the project, or is located in the designated critical habitat and shall not begin work on the activity until notified by the District Engineer that the requirements of the ESA have been satisfied and that the activity is authorized. For activities that may affect Federally-listed species or designated critical habitat, the notification must include the name(s) of the endangered or threatened species that may be affected by the proposed work or that utilize the designated critical habitat that may be affected by the proposed work. As a result of formal or informal consultation with the FWS, the District Engineer may add species-specific regional endangered species conditions to the NWP.

(b) Authorization of an activity by a NWP does not authorize the "take" of a threatened or endangered species as defined under the ESA. In the absence of separate authorization (e.g., an ESA Section 10 Permit, a Biological Opinion with "incidental take" provisions, etc.) from the USFWS or the NMFS, both lethal and non-lethal "takes" of protected species are in violation of the ESA. Information on the location of threatened and endangered species and their critical habitat can be obtained directly from the offices of the USFWS and NMFS or their World Wide Webpages at <http://www.fws.gov/> and <http://www.noaa.gov/fisheries.html> respectively.

18. Historic Properties. No activity which may affect historic properties listed or eligible for listing, in the National Register of Historic Places is authorized, until the District Engineer has complied with the provisions of 33 CFR Part 325, Appendix C. The prospective permittee must notify the District Engineer if the authorized activity may affect any historic properties listed, determined to be eligible, or which the prospective permittee has reason to believe may be eligible for listing on the National Register of Historic Places, and shall not begin the activity until notified by the District Engineer that the requirements of the National Historic Preservation Act have been satisfied and that the activity is authorized. Information on the location and existence of historic resources can be obtained from the State Historic Preservation Office Officer or Tribal Historic Preservation Officer, as appropriate, and the National Register of Historic Places (see 33 CFR 330.4(g)). For activities that may affect historic properties listed in, or eligible for listing in, the National Register of Historic Places, the notification must state which historic property may be affected by the proposed work or include a vicinity map indicating the location of the historic property. Prospective permittees should be aware that section 110k of the NHPA (16 USC 470h-2(k)) prevents the Corps from granting a permit or other assistance to an applicant who, with intent to avoid the requirements of Section 106 of the NHPA, has intentionally significantly adversely affected a historic property to which the permit would relate, or having legal power to prevent it, allowed such significant adverse effect to occur.

19. Designated Critical Resource Waters. Critical resource waters including state natural heritage sites, and outstanding national resource waters or other waters officially designated by a state as having particular environmental or ecological significance and identified by the district engineer after notice and opportunity for public comment. The district engineer may also designate additional critical resource waters after notice and opportunity for comment. (a) Discharges of dredged or fill material into waters of the US are not authorized by NWP 7, 12, 14, 16, 17, 21, 29, 31, 35, 39, 40, 42, 43, 44, 49, and 50 for any activity within, or directly affecting, critical resource waters, including wetlands adjacent to such waters. (b) For NWP 3, 8, 10, 13, 15, 18, 19, 22, 23, 25, 27, 28, 30, 33, 34, 36, 37, and 38, notification is required in accordance with general condition 27, for any activity proposed in the designated critical resource waters including wetlands adjacent to those waters. The district engineer may authorize activities under these NWPs only after it is determined that the impacts to the critical resource waters will be no more than minimal.

20. Mitigation. The activity must be constructed to avoid and minimize adverse effects, both temporary and permanent, to waters of the US to the maximum extent practicable at the project site (i.e. on site). Mitigation in all its forms (avoiding, minimizing, rectifying, reducing, or compensating) will be required to the extent necessary to ensure that the adverse effects to the aquatic environment are minimal.

21. Water Quality. The activity must comply with case specific conditions added by the Corps or by the state, Indian Tribe, or USEPA in its section 401 Water Quality Certification. Where States and authorized Tribes, or EPA where applicable, have not previously certified compliance of an NWP with CWA Section 401, individual 401 Water Quality Certification must be obtained for that NWP (see 33 CFR 330.4(c)). The district engineer or State or Tribe may require additional water quality management measures to ensure that the authorized activity does not result in more than minimal degradation of water quality.

22. Coastal Zone Management. (Not applicable in Nashville District.)

23. Regional and Case-By-Case Conditions. The activity must comply with any regional conditions that may have been added by the Division Engineer (see 33 CFR 330.4(e)) and with any case specific conditions added by the Corps or by the state, Indian Tribe, or U.S. EPA in its section 401 Water Quality Certification.

24. Use of Multiple Nationwide Permits. The use of more than one NWP for a single and complete project is prohibited, except when the acreage loss of waters of the US authorized by the NWPs does not exceed the acreage limit of the NWP with the highest specified acreage limit. For example, if a road crossing over tidal water is constructed under NWP14, with

associated bank stabilization authorized by NWP 13, the maximum acreage loss of waters of the US for the total project cannot exceed 1.3-acre.

25. Transfer of Nationwide Permit Verifications. If the permittee sells the property associated with NWP verification, the permittee may transfer the NWP verification to the new owner by submitting a letter to the appropriate Corps district office to validate the transfer. A copy of the NWP verification must be attached to the letter, and the letter must contain the following statement: When the structures or work authorized by this NWP are still in existence at the time the property is transferred, the terms and conditions of this NWP, including any special conditions, will continue to be binding on the new owner(s) of the property. To validate the transfer and the associated liabilities associated with compliance with its terms and conditions, have the transferee sign and date below:

Transferee _____ Date _____

26. Compliance Certification. Every permittee who has received a Nationwide permit verification from the Corps will submit a signed certification regarding the completed work and any required mitigation. The certification form is included with this verification.

27. Pre-Construction Notification. N/A as a permit condition for this verification letter. (For full text of this condition, refer to page 11194 of the Federal Register, Vol. 72, No. 47, Monday, March 12, 2007 at <http://www.usace.army.mil/inet/functions/cw/becw/reg/>.)

28. Single and Complete Project. The activity must be a single and complete project. The same NWP cannot be used more than once for the same single and complete project.

Further Information:

1. District Engineers have authority to determine if an activity complies with the terms and conditions of an NWP.
2. NWPs do not obviate the need to obtain other Federal, state, or local permits, approvals, or authorizations required by law.
3. NWPs do not grant any property rights or exclusive privileges.
4. NWPs do not authorize any injury to the property or rights of others.
5. NWPs do not authorize interference with any existing or proposed Federal project.



**US Army Corps
of Engineers** ®

Nationwide Permit

No. 14, Linear Transportation Projects

Activities required for the construction, expansion, modification, or improvement of linear transportation crossings (e.g., highways, railways, trails, airport runways, and taxiways) in waters of the US, including wetlands, if the activity meets the following criteria:

- a. The discharge does not cause the loss of greater than 1/2-acre of waters of the US;
- b. The width of the fill is limited to the minimum necessary for the crossing;
- c. This permit does not authorize stream channelization, and the authorized activities must not cause more than minimal changes to the hydraulic flow characteristics of the stream, increase flooding, or cause more than minimal degradation of water quality of any stream (see General Conditions 9 and 21);
- d. This permit cannot be used to authorize non-linear features commonly associated with transportation projects, such as vehicle maintenance or storage buildings, parking lots, train stations, or aircraft hangars; and
- e. The crossing is a single and complete project for crossing waters of the US. Where a road segment (i.e., the shortest segment of a road with independent utility that is part of a larger project) has multiple crossings of streams (several single and complete projects) the Corps will consider whether it should use its discretionary authority to require an Individual Permit. (Sections 10 and 404)

N O T I C E

DIVISION OF WATER (WATER QUALITY CERTIFICATION)

PROJECT: Jackson County, Item No. 11-1059.00
Bridge Replacement

The Division of Water has previously approved the Section 401 activities for this project by issuance of a General Water Quality Certification for Nationwide Permit #14, "Linear Transportation Projects". In order for this authorization to be valid, the attached conditions must be followed. The contractor shall post a copy of this Water Quality Certification in a conspicuous location at the project site for the duration of construction and comply with the general conditions as required.

To more readily expedite construction, the contractor may elect to alter the design or perform the work in a manner different from what was originally proposed and specified. Prior to commencing such alternative work, the contractor shall obtain **written** permission from the Division of Construction and the appropriate permit agency. A copy of any request to alter this proposal and subsequent responses shall be forwarded to the Division of Environmental Analysis, DA Permit Coordinator, for office records and for informational purposes.



ENVIRONMENTAL AND PUBLIC PROTECTION CABINET

Ernie Fletcher
Governor

Teresa J. Hill
Secretary

Capital Plaza Tower
500 Mero Street, 5th Floor
Frankfort, Kentucky 40601
Phone: (502) 564-5525
Fax: (502) 564-3354
www.eppc.ky.gov

General Certification--Nationwide Permit # 14 Linear Transportation Projects

This General Certification is effective March 19, 2007, in conformity with the requirements of Section 401 of the Clean Water Act of 1977, as amended (33 U.S.C. §1341), as well as Kentucky Statute KRS 224.16-050.

Agricultural operations, as defined by KRS 224.71-100(1) conducting activities pursuant to KRS 224.71-100 (3), (4), (5), (6), or (10) are deemed to have certification if they are implementing an Agriculture Water Quality Plan pursuant to KRS 224.71-145.

For all other operations, the Commonwealth of Kentucky hereby certifies under Section 401 of the Clean Water Act (CWA) that it has reasonable assurances that applicable water quality standards under Kentucky Administrative Regulations Title 401, Chapter 5, established pursuant to Sections 301, 302, 304, 306 and 307 of the CWA, will not be violated for the activity covered under NATIONWIDE PERMIT 14, namely Linear Transportation Projects, provided that the following conditions are met:

1. This general certification shall not apply to nationwide permits issued for individual crossings that are part of a larger road segment project where the cumulative, unmitigated wetland impacts within a 14-HUC total one (1) acre or more.
2. The individual stream crossing will impact less than 300 linear feet of intermittent or perennial streams, unless excluded by condition # 3. Impacts to ephemeral streams are not limited under this general certification.
3. This general certification shall not apply to nationwide permits issued for individual crossings which meet condition # 2 but that are part of a larger road segment project where the cumulative, unmitigated intermittent and perennial stream impacts within a 14-HUC exceed 500 linear feet.
4. The activity will not occur within waters of the Commonwealth identified by the Kentucky Division of Water as Outstanding State or National Resource Waters, Cold Water Aquatic Habitat, or Exceptional Waters.

**General Certification--Nationwide Permit #14
Linear Transportation Crossings
Page Two**

5. Stream impacts covered under this nationwide permit and undertaken by those persons defined as an agricultural operation under the Agricultural Water Quality Act must be completed in compliance with the Kentucky Agricultural Water Quality Plan.
6. Projects that do not meet the conditions of this general certification require an individual Section 401 water quality certification.
7. Activities qualifying for coverage under this general water quality certification are subject to the following conditions:
 - Stream crossings shall be constructed in such a manner that does not impede the movement of aquatic organisms.
 - Measures shall be taken to prevent or control spills of fuels, lubricants, or other toxic materials used in construction from entering the watercourse.
 - In areas not riprapped or otherwise stabilized, revegetation of stream banks and riparian zones shall occur concurrently with project progression. At a minimum, revegetation will approximate pre-disturbance conditions.
 - To the maximum extent practicable, all in stream work under this certification shall be performed during low flow.
 - Heavy equipment, e.g. bulldozers, backhoes, draglines, etc., if required for this project, should not be used or operated within the stream channel. In those instances where such in stream work is unavoidable, then it shall be performed in such a manner and duration as to minimize turbidity and disturbance to substrates and bank or riparian vegetation.
 - Any fill shall be of such composition that it will not adversely affect the biological, chemical, or physical properties of the receiving waters and/or cause violations of water quality standards. If riprap is utilized, it is to be of such weight and size that bank stress or slump conditions will not be created because of its placement.
 - If there are water supply intakes located downstream that may be affected by increased turbidity and suspended solids, the permittee shall notify the operator when work will be done.

**General Certification--Nationwide Permit #14
Linear Transportation Crossings
Page Three**

- Removal of existing riparian vegetation should be restricted to the minimum necessary for project construction.
- Should evidence of stream pollution or jurisdictional wetland impairment and/or violations of water quality standards occur as a result of this activity (either from a spill or other forms of water pollution), the Kentucky Division of Water shall be notified immediately by calling 800/928-2380.

Non-compliance with the conditions of this general certification or violation of Kentucky state water quality standards may result in civil penalties.

This general certification will expire on March 19, 2012, or sooner if the USACE makes significant changes to this nationwide permit.

KyTC BMP Plan for Project PCN ## - #####



Kentucky Transportation Cabinet

Highway District 11

And

_____ **(2), Construction**

**Kentucky Pollutant Discharge Elimination System
Permit KYR10**

Best Management Practices (BMP) plan

Groundwater protection plan

For Highway Construction Activities

For

**[US 421 Replace Bridge and Approaches at
McCammon Creek]**

Project: PCN ## - #####

KyTC BMP Plan for Project PCN ## - ####

Project information

Note – (1) = Design (2) = Construction (3) = Contractor

1. Owner – Kentucky Transportation Cabinet, District 11
2. Resident Engineer: (2)
3. Contractor name: (2)
Address: (2)

Phone number: (2)
Contact: (2)
Contractors agent responsible for compliance with the KPDES permit requirements (3):
4. Project Control Number (2)
5. Route (Address) US 421
6. Latitude/Longitude (project mid-point) dd/mm/ss, dd/mm/ss 37 degrees 24 minutes North / 83 degrees 57 minutes West
7. County (project mid-point) Jackson
8. Project start date (date work will begin): (2)
9. Projected completion date: (2)

KyTC BMP Plan for Project PCN ## - #####

A. Site description:

1. Nature of Construction Activity (from letting project description) Bridge Replacement
2. Order of major soil disturbing activities (2) and (3)
3. Projected volume of material to be moved 16512 Cu Yd
4. Estimate of total project area (acres) 4.5
5. Estimate of area to be disturbed (acres) 2.57
6. Post construction runoff coefficient will be included in the project drainage folder. Persons needing information pertaining to the runoff coefficient will contact the resident engineer to request this information. Data describing existing soil condition (2)
7. Data describing existing discharge water quality (if any) No information for this item. (2)
8. Receiving water name McCammon Creek
9. TMDLs and Pollutants of Concern in Receiving Waters: (1 DEA)
10. Site map – Project layout sheet plus the erosion control sheets in the project plans that depict Disturbed Drainage Areas (DDAs) and related information. These sheets depict the existing project conditions with areas delineated by DDA (drainage area bounded by watershed breaks and right of way limits), the storm water discharge locations (either as a point discharge or as overland flow) and the areas that drain to each discharge point. These plans define the limits of areas to be disturbed and the location of control measures. Controls will be either site specific as designated by the designer or will be annotated by the contractor and resident engineer before disturbance commences. The project layout sheet shows the surface waters and wetlands.
11. Potential sources of pollutants:

The primary source of pollutants is solids that are mobilized during storm events. Other sources of pollutants include oil/fuel/grease from servicing and operating construction equipment, concrete washout water, sanitary wastes and trash/debris. (3)

KyTC BMP Plan for Project PCN ## - #####

B. Sediment and Erosion Control Measures:

1. Plans for highway construction projects will include erosion control sheets that depict Disturbed Drainage Areas (DDAs) and related information. These plan sheets will show the existing project conditions with areas delineated by DDA within the right of way limits, the discharge points and the areas that drain to each discharge point. Project managers and designers will analyze the DDAs and identify Best Management Practices (BMPs) that are site specific. The balance of the BMPs for the project will be listed in the bid documents for selection and use by the contractor on the project with approval by the resident engineer.

Projects that do not have DDAs annotated on the erosion control sheets will employ the same concepts for development and managing BMP plans.

2. Following award of the contract, the contractor and resident engineer will annotate the erosion control sheets showing location and type of BMPs for each of the DDAs that will be disturbed at the outset of the project. This annotation will be accompanied by an order of work that reflects the order or sequence of major soil moving activities. The remaining DDAs are to be designated as "Do Not Disturb" until the contractor and resident engineer prepare the plan for BMPs to be employed. The initial BMP's shall be for the first phase (generally Clearing and Grubbing) and shall be modified as needed as the project changes phases. The BMP Plan will be modified to reflect disturbance in additional DDA's as the work progresses. All DDA's will have adequate BMP's in place before being disturbed.
3. As DDAs are prepared for construction, the following will be addressed for the project as a whole or for each DDA as appropriate:
 - Construction Access – This is the first land-disturbing activity. As soon as construction begins, bare areas will be stabilized with gravel and temporary mulch and/or vegetation.
 - At the beginning of the project, all DDAs for the project will be inspected for areas that are a source of storm water pollutants. Areas that are a source of pollutants will receive appropriate cover or BMPs to arrest the introduction of pollutants into storm water. Areas that have not been opened by the contractor will be inspected periodically (once per month) to determine if there is a need to employ BMPs to keep pollutants from entering storm water.

KyTC BMP Plan for Project PCN ## -

- Clearing and Grubbing – The following BMP's will be considered and used where appropriate.
 - Leaving areas undisturbed when possible.
 - Silt basins to provide silt volume for large areas.
 - Silt Traps Type A for small areas.
 - Silt Traps Type C in front of existing and drop inlets which are to be saved
 - Diversion ditches to catch sheet runoff and carry it to basins or traps or to divert it around areas to be disturbed.
 - Brush and/or other barriers to slow and/or divert runoff.
 - Silt fences to catch sheet runoff on short slopes. For longer slopes, multiple rows of silt fence may be considered.
 - Temporary Mulch for areas which are not feasible for the fore mentioned types of protections.
 - Non-standard or innovative methods.
- Cut & Fill and placement of drainage structures - The BMP Plan will be modified to show additional BMP's such as:
 - Silt Traps Type B in ditches and/or drainways as they are completed
 - Silt Traps Type C in front of pipes after they are placed
 - Channel Lining
 - Erosion Control Blanket
 - Temporary mulch and/or seeding for areas where construction activities will be ceased for 21 days or more.
 - Non-standard or innovative methods
- Profile and X-Section in place – The BMP Plan will be modified to show elimination of BMP's which had to be removed and the addition of new BMP's as the roadway was shaped. Probably changes include:
 - Silt Trap Type A, Brush and/or other barriers, Temporary Mulch, and any other BMP which had to be removed for final grading to take place.
 - Additional Silt Traps Type B and Type C to be placed as final drainage patterns are put in place.
 - Additional Channel Lining and/or Erosion Control Blanket.
 - Temporary Mulch for areas where Permanent Seeding and Protection cannot be done within 21 days.
 - Special BMP's such as Karst Policy
- Finish Work (Paving, Seeding, Protect, etc.) – A final BMP Plan will result from modifications during this phase of construction. Probably changes include:
 - Removal of Silt Traps Type B from ditches and drainways if they are protected with other BMP's which are sufficient to control erosion, i.e. Erosion Control Blanket or Permanent Seeding and Protection on moderate grades.

KyTC BMP Plan for Project PCN ## -

- Permanent Seeding and Protection
 - Placing Sod
 - Planting trees and/or shrubs where they are included in the project
- BMP's including Storm Water Management Devices such as velocity dissipation devices and Karst policy BMP's to be installed during construction to control the pollutants in storm water discharges that will occur after construction has been completed are : The project does not include storm water BMPs or flow controls.
-

C. Other Control Measures

1. No solid materials, including building materials, shall be discharged to waters of the commonwealth, except as authorized by a Section 404 permit.

2. Waste Materials

All waste materials that may leach pollutants (paint and paint containers, caulk tubes, oil/grease containers, liquids of any kind, soluble materials, etc.) will be collected and stored in appropriate covered waste containers. Waste containers shall be removed from the project site on a sufficiently frequent basis as to not allow wastes to become a source of pollution. All personnel will be instructed regarding the correct procedure for waste disposal. Wastes will be disposed in accordance with appropriate regulations. Notices stating these practices will be posted in the office.

3. Hazardous Waste

All hazardous waste materials will be managed and disposed of in the manner specified by local or state regulation. The contractor shall notify the Resident Engineer if there any hazardous wastes being generated at the project site and how these wastes are being managed. Site personnel will be instructed with regard to proper storage and handling of hazardous wastes when required. The Transportation Cabinet will file for generator, registration when appropriate, with the Division of Waste Management and advise the contractor regarding waste management requirements.

4. Spill Prevention

The following material management practices will be used to reduce the risk of spills or other exposure of materials and substances to the weather and/or runoff.

- **Good Housekeeping:**

KyTC BMP Plan for Project PCN ## -

The following good housekeeping practices will be followed onsite during the construction project.

- An effort will be made to store only enough product required to do the job
- All materials stored onsite will be stored in a neat, orderly manner in their appropriate containers and, if possible, under a roof or other enclosure
- Products will be kept in their original containers with the original manufacturer's label
- Substances will not be mixed with one another unless recommended by the manufacturer
- Whenever possible, all of the product will be used up before disposing of the container
- Manufacturers' recommendations for proper use and disposal will be followed
- The site contractor will inspect daily to ensure proper use and disposal of materials onsite

➤ **Hazardous Products:**

These practices will be used to reduce the risks associated with any and all hazardous materials.

- Products will be kept in original containers unless they are not resealable
- Original labels and material safety data sheets (MSDS) will be reviewed and retained
- Contractor will follow procedures recommended by the manufacturer when handling hazardous materials
- If surplus product must be disposed of, manufacturers' or state/local recommended methods for proper disposal will be followed

The following product-specific practices will be followed onsite:

➤ **Petroleum Products:**

Vehicles and equipment that are fueled and maintained on site will be monitored for leaks, and receive regular preventative maintenance to reduce the chance of leakage. Petroleum products onsite will be stored in tightly sealed containers, which are clearly labeled and will be protected from exposure to weather.

The contractor shall prepare an Oil Pollution Spill Prevention Control and Countermeasure plan when the project that involves the storage of petroleum

KyTC BMP Plan for Project PCN ## -

products in 55 gallon or larger containers with a total combined storage capacity of 1,320 gallons. This is a requirement of 40 CFR 112.

This project (will / will not) (3) have over 1,320 gallons of petroleum products with a total capacity, sum of all containers 55 gallon capacity and larger.

➤ **Fertilizers:**

Fertilizers will be applied at rates prescribed by the contract, standard specifications or as directed by the resident engineer. Once applied, fertilizer will be covered with mulch or blankets or worked into the soil to limit exposure to storm water. Storage will be in a covered shed. The contents of any partially used bags of fertilizer will be transferred to a sealable plastic bin to avoid spills.

➤ **Paints:**

All containers will be tightly sealed and stored indoors or under roof when not being used. Excess paint or paint wash water will not be discharged to the drainage or storm sewer system but will be properly disposed of according to manufacturers' instructions or state and local regulations.

➤ **Concrete Truck Washout:**

Concrete truck mixers and chutes will not be washed on pavement, near storm drain inlets, or within 75 feet of any ditch, stream, wetland, lake, or sinkhole. Where possible, excess concrete and wash water will be discharged to areas prepared for pouring new concrete, flat areas to be paved that are away from ditches or drainage system features, or other locations that will not drain off site. Where this approach is not possible, a shallow earthen wash basin will be excavated away from ditches to receive the wash water

➤ **Spill Control Practices**

In addition to the good housekeeping and material management practices discussed in the previous sections of this plan, the following practices will be followed for spill prevention and cleanup:

- Manufacturers' recommended methods for spill cleanup will be clearly posted. All personnel will be made aware of procedures and the location of the information and cleanup supplies.
- Materials and equipment necessary for spill cleanup will be kept in the material storage area. Equipment and materials will include as appropriate, brooms, dust pans, mops, rags, gloves, oil absorbents, sand, sawdust, and plastic and metal trash containers.
- All spills will be cleaned up immediately after discovery.

KyTC BMP Plan for Project PCN ## -

- The spill area will be kept well ventilated and personnel will wear appropriate protective clothing to prevent injury from contact with a hazardous substance.
- Spills of toxic or hazardous material will be reported to the appropriate state/local agency as required by KRS 224 and applicable federal law.
- The spill prevention plan will be adjusted as needed to prevent spills from reoccurring and improve spill response and cleanup.
- Spills of products will be cleaned up promptly. Wastes from spill clean up will be disposed in accordance with appropriate regulations.

D. Other State and Local Plans

This BMP plan shall include any requirements specified in sediment and erosion control plans, storm water management plans or permits that have been approved by other state or local officials. Upon submittal of the NOI, other requirements for surface water protection are incorporated by reference into and are enforceable under this permit (even if they are not specifically included in this BMP plan). This provision does not apply to master or comprehensive plans, non-enforceable guidelines or technical guidance documents that are not identified in a specific plan or permit issued for the construction site by state or local officials. N/A

E. Maintenance

1. The BMP plan shall include a clear description of the maintenance procedures necessary to keep the control measures in good and effective operating condition.
- Maintenance of BMPs during construction shall be a result of weekly and post rain event inspections with action being taken by the contractor to correct deficiencies.
 - Post Construction maintenance will be a function of normal highway maintenance operations. Following final project acceptance by the cabinet, district highway crews will be responsible for identification and correction of deficiencies regarding ground cover and cleaning of storm water BMPs. The project manager shall identify any BMPs that will be for the purpose of post construction storm water management with specific guidance for any non-routine maintenance. N/A

F. Inspections

KyTC BMP Plan for Project PCN ## -

Inspection and maintenance practices that will be used to maintain erosion and sediment controls:

- All erosion prevention and sediment control measures will be inspected at least once each week and following any rain of one-half inch or more.
- Inspections will be conducted by individuals that have received KyTC Grade Level II training or other qualification as prescribed by the cabinet that includes instruction concerning sediment and erosion control.
- Inspection reports will be written, signed, dated, and kept on file.
- Areas at final grade will be seeded and mulched within 14 days.
- Areas that are not at final grade where construction has ceased for a period of 21 days or longer and soil stock piles shall receive temporary mulch no later than 14 days from the last construction activity in that area.
- All measures will be maintained in good working order; if a repair is necessary, it will be initiated within 24 hours of being reported.
- Built-up sediment will be removed from behind the silt fence before it has reached halfway up the height of the fence.
- Silt fences will be inspected for bypassing, overtopping, undercutting, depth of sediment, tears, and to ensure attachment to secure posts.
- Sediment basins will be inspected for depth of sediment, and built-up sediment will be removed when it reaches 70 percent of the design capacity and at the end of the job.
- Diversion dikes and berms will be inspected and any breaches promptly repaired. Areas that are eroding or scouring will be repaired and re-seeded / mulched as needed.
- Temporary and permanent seeding and mulching will be inspected for bare spots, washouts, and healthy growth. Bare or eroded areas will be repaired as needed.
- All material storage and equipment servicing areas that involve the management of bulk liquids, fuels, and bulk solids will be inspected weekly for conditions that represent a release or possible release of pollutants to the environment.

G. Non – Storm Water discharges

It is expected that non-storm water discharges may occur from the site during the construction period. Examples of non-storm water discharges include:

- Water from water line flushings.

KyTC BMP Plan for Project PCN ## -

- Water form cleaning concrete trucks and equipment.
- Pavement wash waters (where no spills or leaks of toxic or hazardous materials have occurred).
- Uncontaminated groundwater and rain water (from dewatering during excavation).

All non-storm water discharges will be directed to the sediment basin or to a filter fence enclosure in a flat vegetated infiltration area or be filtered via another approved commercial product.

H. Groundwater Protection Plan (3)

This plan serves as the groundwater protection plan as required by 401 KAR 5:037.

- Contractors statement: (3)

The following activities, as enumerated by 401 KAR 5:037 Section 2 that require the preparation and implementation of a groundwater protection plan, will or may be may be conducted as part of this construction project:

_____ 2. (e) land treatment or land disposal of a pollutant;

_____ 2. (f) Storing, ..., or related handling of hazardous waste, solid waste or special waste, ..., in tanks, drums, or other containers, or in piles, (This does not include wastes managed in a container placed for collection and removal of municipal solid waste for disposal off site);

_____ 2. (g) Handling of materials in bulk quantities (equal or greater than 55 gallons or 100 pounds net dry weight transported held in an individual container) that, if released to the environment, would be a pollutant;

_____ 2. (j) Storing or related handling of road oils, dust suppressants,, at a central location;

_____ 2. (k) Application or related handling of road oils, dust suppressants or deicing materials, (does not include use of chloride-based deicing materials applied to roads or parking lots);

_____ 2. (m) Installation, construction, operation, or abandonment of wells, bore holes, or core holes, (this does not include bore holes for the purpose of explosive demolition);

Or, check the following only if there are no qualifying activities

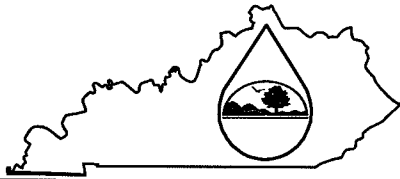
KyTC BMP Plan for Project PCN ## - #####

_____ There are no activities for this project as listed in 401 KAR 5:037 Section 2 that require the preparation and implementation of a groundwater protection plan.

The contractor is responsible for the preparation of a plan that addresses the

401 KAR 5:037 Section 3. (3) Elements of site specific groundwater protection plan:

- (a) General information about this project is covered in the Project information;
- (b) Activities that require a groundwater protection plan have been identified above;
- (c) Practices that will protect groundwater from pollution are addressed in section C. Other control measures.
- (d) Implementation schedule – all practices required to prevent pollution of groundwater are to be in place prior to conducting the activity;
- (e) Training is required as a part of the ground water protection plan. All employees of the contractor, sub-contractor and resident engineer personnel will be trained to understand the nature and requirements of this plan as they pertain to their job function(s). Training will be accomplished within one week of employment and annually thereafter. A record of training will be maintained by the contractor with a copy provide to the resident engineer.
- (f) Areas of the project and groundwater plan activities will be inspected as part of the weekly sediment and erosion control inspections
- (g) Certification (see signature page.)



**Kentucky Pollutant Discharge Elimination System
(KPDES)
Notice of Intent (NOI)
for Storm Water Discharges
Associated with Industrial Activity Under the
KPDES General Permit**

Submission of this Notice of Intent constitutes notice that the party identified in Section I of this form intends to be authorized by a KPDES permit issued for storm water discharges associated with industrial activity. Becoming a permittee obligates such discharger to comply with the terms and conditions of the permit.

ALL NECESSARY INFORMATION MUST BE PROVIDED ON THIS FORM (See Instructions on back)

I. Facility Operator Information

Name:	KyTC District 11	Phone:	606-598-2145
Address:	P.O. Box 250	Status of Owner/Operator:	S
City, State, Zip Code:	Manchester, KY, 40962		

II. Facility/Site Location Information

Name:	KyTC PCN ##-####		
Address:	US 421		
City, State, Zip Code:	Gray Hawk, KY, 40434		
County:	Jackson		
Site Latitude: (degrees/minutes/seconds)	37-24	Site Longitude: (degrees/minutes/seconds)	83-57

III. Site Activity Information

MS4 Operator Name:			
Receiving Water Body:	Pond Creek		
Are there existing quantitative data?	Yes <input type="checkbox"/> If Yes, submit with this form. No <input checked="" type="checkbox"/>		
SIC or Designated Activity Code Primary	1622	2nd	1611
If this facility is a member of a Group Application, enter Group Application Number:			
If you have other existing KPDES Permits, enter Permit Numbers:			

IV. Additional Information Required FOR CONSTRUCTION ACTIVITIES ONLY

Project Start Date:	Completion Date:
Estimated Area to be disturbed (in acres):	2.57
Is the Storm Water Pollution Prevention Plan in Compliance with State and/or Local Sediment and Erosion Plans?	Yes <input checked="" type="checkbox"/> No <input type="checkbox"/>

V. Certification: I certify under penalty of law that this document and all attachments were prepared under my direction or supervision in accordance with a system designed to assure that qualified personnel properly gather and evaluate the information submitted. Based on my inquiry of the person or persons who manage the system, or those persons directly responsible for gathering the information, the information submitted is, to the best of my knowledge and belief, true, accurate, and complete. I am aware that there are significant penalties for submitting false information, including the possibility of fine and imprisonment for knowing violations.

Printed or Typed Name:	Mike Calebs, P.E.
Signature:	Date:

- Comment [K1]:** The Facility Operator for KyTC will be the District that is managing the project.
- Comment [K2]:** The name will be the project control number that is assigned at letting. It will be added to the NOI either by the Division of Construction or by the District. This number is to be returned from the Division of Water on the permit letter.
- Comment [K3]:** The address line will be the federal or state route number (s). This field is limited to 30 characters.
- Comment [K4]:** This information is to be the "Post Office" closest to the point chosen for the site location Latitude/Longitude. It must be in the county identified in the County field.
- Comment [K5]:** The site Latitude/Longitude establishes the county that is entered in this field.
- Comment [K6]:** Site Latitude/Longitude is to be the approximate center of the project to the nearest second.
- Comment [K7]:** Enter the name of the MS4 (s) when the project falls inside of an MS4 jurisdiction (s) and discharges storm water to the MS4 storm sewer system. (See instructions for section III).
- Comment [K8]:** There may be up to three named water bodies entered in this field. Use one name when the project is within one river basin. Use additional names when the project crosses river basin boundaries. The receiving water body name selected should be the name of the branch, fork, creek, river or lake that describes the watershed where the project is located. That is, it carries all of the storm water run off from that portion of the project, is within a ... [1]
- Comment [K9]:** The SIC code for linear highway projects is 1611. The code for a bridge is 1622. Projects that involve both linear work and bridge ... [2]
- Comment [K10]:** This field will not be filled in unless there is more than one contract for the exact same project (or project segment) For example, if a ... [3]
- Comment [K11]:** To be completed by the district. This will be the date by which work that involves preparation for or actual disturbance of soil will begin.
- Comment [K12]:** To be completed by the District. This will be the projected completion date based on the project start date plus the contract duration.
- Comment [K13]:** This is to be the total of the project Disturbed Drainage Areas (DDAs).
- Comment [K14]:** The design project manager is to confirm compliance with local (city or county storm water authority) requirements. Note: M ... [4]
- Comment [K15]:** This is to be signed by a "Principal executive officer" For KyTC, this will be the Chief District Engineer. This signature authority ... [5]

WHO MUST FILE A NOTICE OF INTENT (NOI) FORM

Federal law at 40 CFR Part 122 prohibits point source discharges of stormwater associated with industrial activity to a water body of the Commonwealth of Kentucky without a Kentucky Pollutant Discharge Elimination System (KPDES) permit. The operator of an industrial activity that has such a storm water discharge must submit a NOI to obtain coverage under the KPDES Storm Water General Permit. If you have questions about whether you need a permit under the KPDES Storm Water program, or if you need information as to whether a particular program is administered by the state agency, call the Storm Water Contact, Industrial Section, Kentucky Division of Water at (502) 564-3410.

WHERE TO FILE NOI FORM

NOIs must be sent to the following address:

Section Supervisor
Inventory & Data Management Section
KPDES Branch, Division of Water
Frankfort Office Park
14 Reilly Road
Frankfort, KY 40601

COMPLETING THE FORM

Type or print legibly in the appropriate areas only. If you have any questions regarding the completion of this form call the Storm Water Contact, Industrial Section, at (502) 564-3410.

SECTION I - FACILITY OPERATOR INFORMATION

Give the legal name of the person, firm, public organization, or any other entity that operates the facility or site described in this application. The name of the operator may or may not be the same as the name of the facility. The responsible party is the legal entity that controls the facility's operation, rather than the plant or site manager. Do not use a colloquial name. Enter the complete address and telephone number of the operator.

Enter the appropriate letter to indicate the legal status of the operator of the facility.

F = Federal M = Public (other than federal or state)
S = State P = Private

SECTION II - FACILITY/SITE LOCATION INFORMATION

Enter the facility's or site's official or legal name and complete street address, including city, state, and ZIP code.

SECTION III - SITE ACTIVITY INFORMATION

If the storm water discharges to a municipal separate storm sewer system (MS4), enter the name of the operator of the MS4 (e.g., municipality name, county name) and the receiving water of the discharge from the MS4. (A MS4 is defined as a conveyance or system of conveyances (including roads with drainage systems, municipal streets, catch basins, curbs, gutters, ditches, man-made channels, or storm drains) that is owned or operated by a state, city, town, borough, county, parish, district, association, or other public body which is designed or used for collecting or conveying storm water.)

If the facility discharges storm water directly to receiving water(s), enter the name of the receiving water.

Indicate whether or not the owner or operator of the facility has existing quantitative data that represent the characteristics and concentration of pollutants in storm water discharges. If data is available submit with this form.

List, in descending order of significance, up to four 4-digit standard industrial classification (SIC) codes that best describe the principal products or services provided at the facility or site identified in Section II of this application.

If the facility listed in Section II has participated in Part 1 of an approved storm water group application and a group number has been assigned, enter the group application number in the space provided.

If there are other KPDES permits presently issued for the facility or site listed in Section II, list the permit numbers.

SECTION IV - ADDITIONAL INFORMATION REQUIRED FOR CONSTRUCTION ACTIVITIES ONLY

Construction activities must complete Section IV in addition of Sections I through III. Only construction activities need to complete Section IV.

Enter the project start date and the estimated completion date for the entire development plan.

Provide an estimate of the total number of acres of the site on which soil will be disturbed (round to the nearest acre).

Indicate whether the storm water pollution prevention plan for the site is in compliance with approved state and/or local sediment and erosion plans, permits, or storm water management plans.

SECTION V - CERTIFICATION

Federal statutes provide for severe penalties for submitting false information on this application form. Federal regulations require this application to be signed as follows:

For a corporation: by a responsible corporate officer, which means: (i) president, secretary, treasurer, or vice-president of the corporation in charge of a principal business function, or any other person who performs similar policy or decision making functions, or (ii) the manager of one or more manufacturing, production, or operating facilities employing more than 250 persons or having gross annual sales or expenditures exceeding \$25 million (in second-quarter 1980 dollars), if authority to sign documents has been assigned or delegated to the manager in accordance with corporate procedures;

For a partnership or sole proprietorship: by a general partner or the proprietor; or

For a municipality, state, Federal, or other public facility: by either a principal executive officer or ranking elected official.

<u>Item No.</u>				<u>Project Mgr.</u>
11 - 1059				QUENTIN SMITH
			<u>County</u>	JACKSON
			<u>Route</u>	US-421
<u>CAP #</u>	<u>Date of Promise</u>	<u>Promise made to:</u>	<u>Location of Promise</u>	
1				
<u>CAP Description</u>				
NO CAPS				
2	18-SEP-07	George T. Hays	Parcel 1	
<u>CAP Description</u>				
WE AGREED TO PLACE A NOTE IN THE PLANS ASKING THE CONTRACTOR TO TALK WITH PROPERTY OWNER ABOUT PLACEMENT OF WASTE ON HIS PROPERTY.				

PART II

SPECIFICATIONS AND STANDARD DRAWINGS

SPECIFICATIONS REFERENCE

Any reference in the plans or proposal to the *Standard Specifications for Road and Bridge Construction, Edition of 2000*, and *Standard Drawings, Edition of 2000* are superseded by *Standard Specifications for Road and Bridge Construction, Edition of 2004* and *Standard Drawings, Edition of 2003*.

Special Notes [SN] and Special Provisions [SP] marked with an asterisk * and listed under Part II of the Table of Contents within this proposal can be referenced in the *Standard Specifications for Road and Bridge Construction, Edition of 2004*. Special Notes and Special Provisions not marked with an asterisk will be attached to this proposal.

**Supplemental Specifications to The Standard Specifications
for Road and Bridge Construction, 2004 Edition**
(Effective with the November 16, 2007 Letting)

<p>SUBSECTION: 105.07 COOPERATION WITH UTILITIES. REVISION: In the last paragraph, replace “KRS 367 Sections 1 through 10” with “KRS 367.4901 through 367.4917”</p>
<p>SUBSECTION: 107.11 Use of Explosives. REVISION: Replace “Department of Mines and Minerals” with “Office of Mine Safety and Licensing”.</p>
<p>SUBSECTION: 108.01 SUBCONTRACTING OF CONTRACT. REVISION: Replace the second and third sentence of the first paragraph with the following:</p> <p style="padding-left: 40px;">When the Engineer gives such consent, the Engineer will allow the Contractor to subcontract a portion, but the Contractor must perform with his own organization work amounting to no less than 30 percent of the total Contract cost. The Department will not allow any subcontractor to exceed the percentage to be performed by the Contractor and will require the Contractor to maintain a supervisory role over the entire project.</p>
<p>SUBSECTION: 109.07 PRICE ADJUSTMENT. REVISION: Replace the section with the following:</p> <p style="padding-left: 40px;">109.07 PRICE ADJUSTMENTS. Due to the fluctuating costs of petroleum products, the Department will adjust the compensation of specified liquid asphalt items and diesel fuel in contracts when contract quantity thresholds are met.</p> <p style="padding-left: 40px;">109.07.01 Liquid Asphalt. The Department will compare the Kentucky Average Price Index (KAPI), for the month that the Contract is let, to the index for the month that the Contractor places the material on the project to determine the percent change. When the original contract quantity for asphalt items is equal to or greater than 3,000 tons and when the average price of the liquid asphalt products increases or decreases more than 5 percent, the Department will adjust the Contractor’s compensation. The KAPI is calculated monthly using the average price, per ton at the terminal, from the active suppliers of liquid asphalt.</p> <p style="padding-left: 40px;"><u>Adjustable Contract Items:</u></p> <ul style="list-style-type: none"> • Asphalt Curing Seal • Asphalt Material for Prime • Asphalt Base, All Classes • Asphalt Binder • Asphalt Surface, All Classes • Sand Asphalt Surface • Asphalt Open-Graded Surface • Asphalt Seal Coat • Asphalt Mixture for Leveling and Wedging • Drainage Blanket - Type II - Asphalt <p style="padding-left: 40px;">The Department will determine the price adjustment using the following formulas:</p> <p style="padding-left: 40px;"><u>When PC is greater than PL</u> Asphalt Price Adjustment = $(Q \times A) / 100 \times PL \times [(PC - PL) / PL - 0.05]$</p> <p style="padding-left: 40px;"><u>When PC is less than PL</u> Asphalt Price Adjustment = $(Q \times A) / 100 \times PL \times [(PC - PL) / PL + 0.05]$</p> <p style="padding-left: 40px;">Where: Q = Tons of material or mixture placed each month. A = Percent of material or mixture that is asphalt. PL = KAPI for the month that the Contract is let. PC = KAPI for the month that the Contractor places the material or mixture.</p> <p style="padding-left: 40px;">The job-mix formula for asphalt base, binder, and surface mixtures determines “A”, which is the percent of asphalt. For recycled mixtures, the Department will determine the adjustment for the new asphalt cement only. The Department will consider materials for prime and seal as 100 percent asphalt.</p>

**Supplemental Specifications to The Standard Specifications
for Road and Bridge Construction, 2004 Edition**
(Effective with the November 16, 2007 Letting)

Revision
Continued

109.07.02 Fuel. The Department will adjust the Contractor's compensation when the average price of diesel fuel increases or decreases more than 5 percent and the original Contract quantity for the item on which the fuel is consumed is equal to or greater than the threshold quantities listed in the following table.

<u>Item</u>	<u>Threshold Quantity</u>	<u>Fuel/Work</u>
Roadway Excavation	10,000 cubic yards	0.25
Embankment-in-Place	10,000 cubic yards	0.25
Borrow Excavation	10,000 cubic yards	0.25
DGA Base or Crushed Stone Base	5,000 tons	0.52
Stabilized Aggregate Base	5,000 tons	0.52
Drainage Blanket, Cement Treated or Untreated	5,000 tons	0.52
Drainage Blanket, Asphalt Treated	5,000 tons	3.00
Crushed Sandstone Base (Cement Treated)	5,000 tons	0.52
Hot-Mixed Asphalt Mixtures for Pavements or Shoulders	3,000 tons ⁽¹⁾	3.00
PCC Pavement, Base, or Shoulders	2,000 square yards ⁽²⁾	0.14

⁽¹⁾Total of all hot mixed asphalt Contract items.

⁽²⁾Total of all JPC pavement, JPC shoulder, and PCC base, Contract items.

The Department will determine the price adjustment using the following formulas:

When PC is greater than PL

$$\text{Fuel Price Adjustment} = Q \times F \times PL \times [(PC-PL)/PL - 0.05]$$

When PC is less than PL

$$\text{Fuel Price Adjustment} = Q \times F \times PL \times [(PC-PL)/PL + 0.05]$$

Where:

Q = Quantity for applicable item placed or performed that month.

F = The fuel to work unit ratio for each applicable item.

PL = Average reseller price of diesel fuel, excluding taxes, discounts, and superfund line items, in the Kentucky region for the month that the Contract is let.

PC = Average reseller price of diesel fuel, excluding taxes, discounts, and superfund line items, in the Kentucky region for the month that the Contractor uses the fuel on the project.

109.07.03 Payments and Deductions. When thresholds are met, the Department will adjust the Contractor's compensation for each eligible pay item, paid or deducted, monthly.

If later price decreases indicate that the Department made an overpayment, the Department will withhold the overpayment from succeeding pay estimates on the project, or the Contractor shall immediately refund the over payment to the Department.

When the Contractor places materials during any month after the month that the Contract time (including all approved time extensions) expires, the Department will use the average price for the month that the Contractor places the material or the average price for the last month of the Contract time; whichever is least.

The Department will not grant a time extension for any overrun in the Contract amount due to payments made according to this section. The Department will not make any additional compensation due to adjustments made according to this section.

The Department will adjust the Contractor's compensation on the following months pay estimate and on the final pay estimate. The Department will make the final adjustment of the Contractor's compensation on the final estimate for the project.

**Supplemental Specifications to The Standard Specifications
for Road and Bridge Construction, 2004 Edition**
(Effective with the November 16, 2007 Letting)

<p>SUBSECTION: 110.01 MOBILIZATION. REVISION: Replace the third paragraph with the following:</p>	<p>Do not bid an amount for Mobilization that exceeds 5 percent of the sum of the total amounts bid for all items in the Bid Proposal, excluding Mobilization, Demobilization, and contingent amounts established for adjustments and incentives. The Department will automatically adjust any bids in excess of this amount to 5 percent for bid comparisons. The Department will base the award on the maximum allowable bid of 5 percent. If any errors in unit bid prices for other Contract items in a Contractor's Bid Proposal are discovered after bid opening and such errors reduce the total amount bid for all other items, excluding Mobilization, Demobilization, and contingent amounts established for adjustments and incentives, so that the percent bid for Mobilization is larger than 5 percent, the Department will adjust the amount bid for Mobilization to 5 percent of the sum of the corrected total bid amounts.</p>						
<p>SUBSECTION: 110.02 DEMOBILIZATION. REVISION: Replace the first sentence of the third paragraph with the following:</p>	<p>Do not bid an amount for Demobilization that is less than 1.5 percent of the sum of the total amounts bid for all other items in the Bid Proposal, excluding Mobilization, Demobilization, and contingent amounts established for adjustments and incentives.</p>						
<p>SUBSECTION: 206.03.03 Compaction. REVISION: Replace "KM 64-412" with "KM 64-002"</p>							
<p>SUBSECTION: 206.04.01 Embankment-in-Place. REVISION: Replace the first sentence of the sixth paragraph with the following:</p>	<p>When payment is made for Embankment-in-Place, the Department will make payment for all embankment constructed on the project, including roadway embankment, refill in cuts, and embankment placed in embankment benches.</p>						
<p>SUBSECTION: 212.03.03 Permanent Seeding and Protection. PART: Replace Parts A) and B) with the following: REVISION: A) Seed Mixtures for Permanent Seeding.</p>	<table style="width: 100%; border-collapse: collapse;"> <tr> <td style="padding: 5px;">Seed Mix Type I:</td> <td style="padding: 5px;"> 30% Kentucky 31 Tall Fescue (<i>Festuca arundinacea</i>) 20% Creeping Red Fescue (<i>Festuca rubra</i>) 35% Hard Fescue (<i>Festuca (Festuca longifolia)</i>) 10% Ryegrass, Perennial (<i>Lolium perenne</i>) 5% White Dutch Clover (<i>Trifolium repens</i>) </td> </tr> <tr> <td style="padding: 5px;">Seed Mix Type II:</td> <td style="padding: 5px;"> 60% Kentucky 31 Tall Fescue (<i>Festuca arundinacea</i>) 20% Ryegrass, Perennial (<i>Lolium perenne</i>) 20% (based on pure live seed, PLS) Little Bluestem (<i>Schizachyrium scoparium</i>) </td> </tr> <tr> <td style="padding: 5px;">Seed Mix Type III:</td> <td style="padding: 5px;"> 40% Kentucky 31 Tall Fescue (<i>Festuca arundinacea</i>) 15% Perennial Ryegrass <i>Lolium perenne</i>) 20% Sericea Lespedeza (<i>Lespedeza cuneata</i>) 25% (based on pure live seed, PLS) Little Bluestem (<i>Schizachyrium scoparium</i>) </td> </tr> </table> <p style="margin-left: 40px;">1) Permanent Seeding on Slopes 3:1 or Less. Apply seed mix Type I at a minimum application rate of 100 pounds per acre.</p> <p style="margin-left: 40px;">2) Permanent Seeding on Slopes Greater than 3:1 in Highway Districts 4, 5, 6, and 7. Apply seed mix Type II at a minimum application rate of 100 pounds per acre plus a nurse crop of either Cereal Rye or German Foxtail-Millet based on the time of year. During the months of June through August, apply 10 pounds of German Foxtail-Millet (<i>Setaria italica</i>). During the months of September through May, apply 56 pounds of Cereal Rye (<i>Secale cereale</i>). If adjacent to golf courses replace the crown vetch with Kentucky 31 Tall Fescue</p>	Seed Mix Type I:	30% Kentucky 31 Tall Fescue (<i>Festuca arundinacea</i>) 20% Creeping Red Fescue (<i>Festuca rubra</i>) 35% Hard Fescue (<i>Festuca (Festuca longifolia)</i>) 10% Ryegrass, Perennial (<i>Lolium perenne</i>) 5% White Dutch Clover (<i>Trifolium repens</i>)	Seed Mix Type II:	60% Kentucky 31 Tall Fescue (<i>Festuca arundinacea</i>) 20% Ryegrass, Perennial (<i>Lolium perenne</i>) 20% (based on pure live seed, PLS) Little Bluestem (<i>Schizachyrium scoparium</i>)	Seed Mix Type III:	40% Kentucky 31 Tall Fescue (<i>Festuca arundinacea</i>) 15% Perennial Ryegrass <i>Lolium perenne</i>) 20% Sericea Lespedeza (<i>Lespedeza cuneata</i>) 25% (based on pure live seed, PLS) Little Bluestem (<i>Schizachyrium scoparium</i>)
Seed Mix Type I:	30% Kentucky 31 Tall Fescue (<i>Festuca arundinacea</i>) 20% Creeping Red Fescue (<i>Festuca rubra</i>) 35% Hard Fescue (<i>Festuca (Festuca longifolia)</i>) 10% Ryegrass, Perennial (<i>Lolium perenne</i>) 5% White Dutch Clover (<i>Trifolium repens</i>)						
Seed Mix Type II:	60% Kentucky 31 Tall Fescue (<i>Festuca arundinacea</i>) 20% Ryegrass, Perennial (<i>Lolium perenne</i>) 20% (based on pure live seed, PLS) Little Bluestem (<i>Schizachyrium scoparium</i>)						
Seed Mix Type III:	40% Kentucky 31 Tall Fescue (<i>Festuca arundinacea</i>) 15% Perennial Ryegrass <i>Lolium perenne</i>) 20% Sericea Lespedeza (<i>Lespedeza cuneata</i>) 25% (based on pure live seed, PLS) Little Bluestem (<i>Schizachyrium scoparium</i>)						

**Supplemental Specifications to The Standard Specifications
for Road and Bridge Construction, 2004 Edition
(Effective with the November 16, 2007 Letting)**

revision continued	<p>3) Permanent Seeding on Slopes Greater than 3:1 in Highway Districts 1, 2, 3, 8, 9, 10, 11, and 12. Apply seed mix Type III at a minimum application rate of 100 pounds per acre plus a nurse crop of either Cereal Rye or German Foxtail-Millet based on the time of year. During the months of June through August, apply 10 pounds of German Foxtail-Millet (<i>Setaria italica</i>). During the months of September through May, apply 56 pounds of Cereal Rye (<i>Secale cereale</i>). If adjacent to crop land or golf course replace the <i>Sericea Lespedeza</i> with Kentucky 31 Tall Fescue.</p> <p>B) Procedures for Permanent Seeding. Include a seeding plan in the Best Management Practices plan (BMP) according to Section 213. Prepare a seedbed and incorporate fertilizer and agricultural limestone as needed. Do not apply dry agricultural Limestone when it may generate a traffic hazard. Remove all rock and dirt clods over 4 inches in diameter from the surface of the seedbed. Unless the Engineer directs otherwise, track all slopes 3:1 or greater. Ensure that tracking is performed up and down and not across. Native Grass seed should be calculated figuring seed on a pure live seed basis (PLS), using the least amount of inert matter available. Seed and mulch to produce a uniform vegetation cover using the seeding rates as indicated to each application. Mulch with clean, weed free straw. Place straw to an approximate 2-inch loose depth (2 tons per acre) and anchor it into the soil by mechanically crimping it into the soil surface or applying tackifier to provide a protective cover. For the periods of March 1 through May 15 and from September 1 through November 1, the Department will allow the option of using hydromulch at minimum rate of 1,500 pounds per acre in place of straw with tackifier. Regardless of materials used, ensure the protective cover holds until seeding is acceptably established according to part G) of this subsection.</p>
SUBSECTION: REVISION:	213.03.01 Best Management Practices (BMP). Replace the second and third sentence of the first paragraph with the following: Include erosion control for all off right of way work performed under a Department acquired permit. Ensure that the BMP provides storage for 3,600 cubic feet of water per surface acre disturbed.
SUBSECTION: REVISION:	213.03.02 Progress Requirements. Add the following after the first sentence of the third paragraph: Seed and mulch areas at final grade within 14 days. Temporary mulch areas not at final grade if work stops for longer than 21 days. Temporary mulch soil stock piles within 14 days of the last construction activity in that area.
SUBSECTION: REVISION:	213.03.03 Inspection and Maintenance Replace both "0.1-inch" references with "0.5-inch". Add the following sentence to the end of the second paragraph: Initiate corrective action within 24 hours of any reported deficiency.
SUBSECTION: PART: REVISION:	213.03.05 Temporary Control Measures. B) Silt Checks. B) Silt Checks. Use one of the following types: 1) Silt Check Type II - Crushed stone such as cyclopean stone riprap, quarry run stone, or other size material approved by the Engineer, dumped in place and shaped to the configuration required. 2) Silt Check Type III - Blasted or broken rock dumped in place and shaped to the configuration required. Remove and properly dispose of sediment deposited at silt checks as necessary. When no longer needed, remove the silt checks and dispose of surplus materials as excavated materials according to Section 204. Seed and protect the entire area disturbed, as directed. Do not leave silt checks in place after completion of the project unless allowed by the Engineer or specified in the Plans.

**Supplemental Specifications to The Standard Specifications
for Road and Bridge Construction, 2004 Edition**
(Effective with the November 16, 2007 Letting)

<p>SUBSECTION: 213.03.05 Temporary Control Measures. PART: F) Temporary Seeding and Protection. REVISION: Replace the first sentence with the following:</p>	<p>Apply seed mix Type I at a minimum application rate of 100 pounds per acre plus a nurse crop of either Cereal Rye or German Foxtail-Millet based on the time of year. During the months of June through August, apply 10 pounds of German Foxtail-Millet (<i>Setaria italica</i>). During the months of September through May, apply 56 pounds of Cereal Rye (<i>Secale cereale</i>). Obtain the Engineer's approval for the seed before use.</p>
<p>SUBSECTION: 213.03.05 Temporary Control Measures. PART: G) Temporary Mulch. REVISION: Replace the last sentence with the following:</p>	<p>Place temporary mulch to an approximate 2-inch loose depth (2 tons per acre) and apply tackifier.</p>
<p>SUBSECTION: 213.04.15 Temporary Silt Ditch. REVISION: Replace with the following:</p>	<p>The Department will measure the quantity in linear feet.</p>
<p>SUBSECTION: 213.04 MEASUREMENT. REVISION: Add the following Subsection:</p>	<p>213.04.24 Clean Temporary Silt Ditch. The Department will measure the quantity in linear feet along the ditch line.</p>
<p>SUBSECTION: 213.05 PAYMENT. REVISION: Add the following lines:</p>	<p>20594 Temporary Silt Ditch Linear Foot 20601 Clean Temporary Silt Ditch Linear Foot</p>
<p>SUBSECTION: 303.03.01 Mixture PART: C) Cement Treated Mixture. REVISION: Delete the "For asphalt pavements" from the second paragraph.</p>	
<p>SUBSECTION: 303.03.01 Mixture PART: C) Cement Treated Mixture. REVISION: Delete requirement "2".</p>	
<p>SUBSECTION: 401.02.01 All Asphalt Mixing Plants. REVISION: Replace the third paragraph and numbers 1) and 2) with the following:</p>	<p>When plants are in operation, the Department will require one computer on the site of operations for the purpose of recording and submitting test data. Ensure the computer is installed with and utilize the following minimum system requirements: Microsoft Office 2003 Professional (full installation).</p>
<p>SUBSECTION: 402.03.02 Acceptance. PART: D) Testing Responsibilities. NUMBER: 4) Density. REVISION: Replace the first sentence of the third paragraph with the following:</p>	<p>For surface mixtures placed on driving lanes and ramps, furnish 2 cores per subplot to the nearest laboratory facility (Contractor or Department lab) for density determination by the Engineer.</p>
<p>SUBSECTION: 402.03.02 Acceptance. PART: H) Unsatisfactory Work. NUMBER: 1) Based on Lab Data. REVISION: Replace the "AASHTO MP2" references in the second paragraph with "AASHTO M 323".</p>	
<p>SUBSECTION: 402.04 MEASUREMENT. REVISION: Replace the last sentence with the following:</p>	<p>The Department will not measure construction of rolled rumble strips or pavement wedge texturing for payment and will consider them incidental to the asphalt mixture.</p>

**Supplemental Specifications to The Standard Specifications
for Road and Bridge Construction, 2004 Edition**
(Effective with the November 16, 2007 Letting)

<p>SUBSECTION: 402.04.01 Weight. REVISION: Replace first sentence of the second paragraph with the following:</p>	<p>The Department will determine the bulk, oven-dry specific gravity for the fine and coarse aggregates according to KM64-605 and AASHTO T 85, respectively.</p>												
<p>SUBSECTION: 402.04.02 Thickness on New Construction. REVISION: Delete the third paragraph and add the following at the end of the subsection:</p>	<p>The Department will not measure initial thickness check coring or coring of corrective work for payment and will consider it incidental to the asphalt mixture.</p>												
<p>SUBSECTION: 402.05.02 PARTS: Lot Pay Adjustment Schedule, Compaction Option A, Base and Binder Mixtures Lot Pay Adjustment Schedule, Compaction Option A, Surface Mixtures Lot Pay Adjustment Schedule, Compaction Option B Mixtures REVISION: Replace the VMA table with the following:</p>	<table border="1" style="margin-left: auto; margin-right: auto;"> <thead> <tr> <th colspan="2" style="text-align: center;">VMA</th> </tr> <tr> <th style="text-align: center;">Pay Value</th> <th style="text-align: center;">Deviation From Minimum</th> </tr> </thead> <tbody> <tr> <td style="text-align: center;">1.00</td> <td style="text-align: center;">≤ 0.5 below min. VMA</td> </tr> <tr> <td style="text-align: center;">0.95</td> <td style="text-align: center;">0.6-1.0 below min.</td> </tr> <tr> <td style="text-align: center;">0.90⁽²⁾</td> <td style="text-align: center;">1.1-1.5 below min.</td> </tr> <tr> <td style="text-align: center;">⁽¹⁾/₍₂₎</td> <td style="text-align: center;">> 1.5 below min.</td> </tr> </tbody> </table>	VMA		Pay Value	Deviation From Minimum	1.00	≤ 0.5 below min. VMA	0.95	0.6-1.0 below min.	0.90 ⁽²⁾	1.1-1.5 below min.	⁽¹⁾ / ₍₂₎	> 1.5 below min.
VMA													
Pay Value	Deviation From Minimum												
1.00	≤ 0.5 below min. VMA												
0.95	0.6-1.0 below min.												
0.90 ⁽²⁾	1.1-1.5 below min.												
⁽¹⁾ / ₍₂₎	> 1.5 below min.												
<p>SUBSECTION: 403.03.03 Preparation of Mixture. PART: A) Mixture Composition. REVISION: Replace the “AASHTO MP2” reference in the first paragraph with “AASHTO M 323”.</p>	<p>From the aggregate requirements list, delete 3) Type C.</p>												
<p>SUBSECTION: 403.03.03 Preparation of Mixture. PART: C) Mix Design Criteria. REVISION: Replace the “AASHTO MP2” references with “AASHTO M 323”.</p>	<p>Replace the “AASHTO PP28” references in the second paragraph with “AASHTO R 35”.</p>												
<p>SUBSECTION: 403.03.03 Preparation of Mixture. PART: C) Mix Design Criteria. NUMBER 1) Preliminary Mix Design. REVISION: Add the following footnote to the table and associate it with the ESAL’s field “<0.3”:</p>	<p>* For CL1 ASPH SURF 0.38D PG64-22 only.</p>												
<p>SUBSECTION: 403.03.06 Thickness Tolerances. PART: B) New Construction. REVISION: Replace the first paragraph with the following:</p>	<p>Under the Engineer’s supervision, perform coring for thickness checks according to KM 64-420, as soon as practical after completion of all, or a major portion, of the asphalt base. The Engineer will measure the cores. Fill all core holes either with compacted asphalt mixture or non-shrink grout. Complete all remedial overlay work before placing the final course.</p>												

**Supplemental Specifications to The Standard Specifications
for Road and Bridge Construction, 2004 Edition**
(Effective with the November 16, 2007 Letting)

SUBSECTION: 403.03.08 Rumble Strips.
REVISION: Replace with the following:

403.03.08 Shoulder Rumble Strips and Pavement Wedge Texturing.

A) Shoulder Rumble Strips.

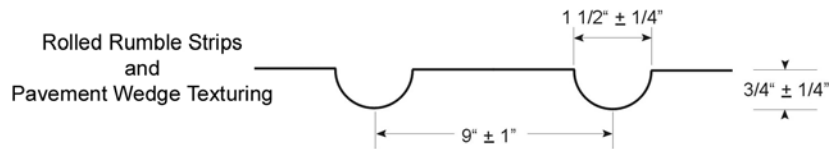
1) Interstates and Parkways. Construct sawed rumble strips on all mainline shoulders to the dimensions shown below. Do not place rumble strips on ramps.

2) Other Roads. Construct rolled rumble strips on shoulders of facilities with posted speed limits greater than 45 MPH. Unless specified in the plans or directed by the Engineer, do not construct rumble strips on facilities with posted speed limits of 45 MPH or less.

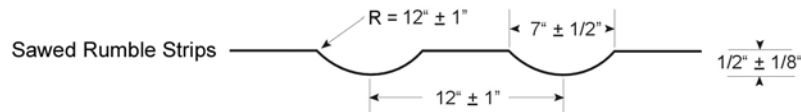
Construct rolled rumble strips on mainline shoulders to the dimensions shown below. On shoulders less than 3 feet wide, shorten the width and distance of the strips as the Engineer directs. Time the rolling operation so indentations are at the specified size and depth without causing unacceptable displacement of the asphalt mat. Correct unacceptable rolled rumble strips by sawing.

B) Pavement Wedge Texturing. Perform texturing on all pavement wedges constructed monolithically with the mainline or constructed using a surface mixture. When furnishing Asphalt Mixture for Pavement Wedge, binder, or a base mixture for the wedge, the Department will not require texturing.

Texture to the dimensions shown below. On wedges less than 3 feet, shorten the length and distance of the texturing as the Engineer directs. Time the rolling operation so indentations are at the specified size and depth without causing unacceptable displacement of the asphalt mat.



Place one foot out from the mainline pavement and to a width of 2 feet.



Place one foot out from the mainline pavement and to a width of 16 inches.

SUBSECTION: 403.04.03 Asphalt Mixtures.
REVISION: Replace the second sentence with the following:

The Department will not measure rolled rumble strips or pavement wedge texturing for payment and will consider them incidental to this bid item.

SUBSECTION: 403.04.07 Sawed Rumble Strips.
REVISION: Add the following subsection:

403.04.07 Sawed Rumble Strips. The Department will measure the quantity in linear feet. When rolled in rumble strips are specified, the Department will not measure sawed rumble strips for payment and will consider them incidental to the asphalt mixture.

**Supplemental Specifications to The Standard Specifications
for Road and Bridge Construction, 2004 Edition**
(Effective with the November 16, 2007 Letting)

SUBSECTION:	403.05 PAYMENT						
REVISION:	Add the following bid item:						
	<table border="0"> <thead> <tr> <th align="left"><u>Code</u></th> <th align="left"><u>Pay Item</u></th> <th align="left"><u>Pay Unit</u></th> </tr> </thead> <tbody> <tr> <td>20362</td> <td>Shoulder Rumble Strips – Sawed</td> <td>Linear Foot</td> </tr> </tbody> </table>	<u>Code</u>	<u>Pay Item</u>	<u>Pay Unit</u>	20362	Shoulder Rumble Strips – Sawed	Linear Foot
<u>Code</u>	<u>Pay Item</u>	<u>Pay Unit</u>					
20362	Shoulder Rumble Strips – Sawed	Linear Foot					
SUBSECTION:	501.03.20 Opening to Public Traffic.						
REVISION:	Delete the last sentence of the first paragraph.						
SUBSECTION:	501.03.21 Tolerance in Pavement Thickness.						
REVISION:	Add the following: Core the pavement as the Engineer directs.						
SUBSECTION:	501.04.06 Thickness.						
REVISION:	Add the following: The Department will not measure coring for payment and will consider it incidental to the concrete pay items.						
SUBSECTION:	502.03 CONSTRUCTION.						
PART:	C) Curing and Protecting Pavement.						
NUMBER:	3)						
REVISION:	Replace the last sentence with the following: The Department will allow permanent removal of the cover when the concrete attains the required opening strength of 3,000 psi.						
SUBSECTION:	502.03 CONSTRUCTION.						
PART:	D) Strength Testing and Opening to Traffic.						
NUMBER:	2) Testing.						
REVISION:	Replace the second paragraph with the following: When the average compressive strength is 3,000 psi, the Department will allow the pavement to be opened to traffic and will test the remaining sets of cylinders at the required age. When the average compressive strength is less than 3,000 psi at the required age, do not open the pavement to traffic until the pavement has been in place for 7 days. The Engineer may accept the pavement based on additional testing.						
SUBSECTION:	503.03.09 Ride Quality.						
REVISION:	Replace parts 5) and 6) with the following: 5) Perform corrective work to achieve the required IRI by regrinding the entire width of the traffic lane at areas having a high IRI. The Engineer may exclude pavement areas where grinding alone will not correct deficiency. 6) The Department will create a strip chart when the test results show that the IRI is greater than 60 or upon request for lower IRI values.						
SUBSECTION:	601.03.02 Concrete Producer Responsibilities.						
REVISION:	Replace the first sentence with the following: Use a concrete producer from the List of Approved Materials when the quantity of concrete delivered to the project in a plastic condition is 250 cubic yards or more. Ensure that the concrete producer complies with the following requirements:						

**Supplemental Specifications to The Standard Specifications
for Road and Bridge Construction, 2004 Edition**
(Effective with the November 16, 2007 Letting)

SUBSECTION: 601.03.02 Concrete Producer Responsibilities. PART: C) Quality Control. REVISION: Replace the first paragraph with the following: Take full responsibility for the batch weight calculations and quality control of concrete mixtures at the plant. Ensure that the Level II concrete technician is present when work is in progress and is responsible for inspecting trucks, batch weight calculations, monitoring batching, making mixture adjustments, reviewing the slump, air content and unit weight tests, and monitoring the concrete temperature, all to provide concrete to the project conforming to specifications. A Level I concrete technician is responsible for testing production material for slump, entrained air, unit weight and temperature of the mixture. Ensure the technician performs all sampling and testing according to the appropriate Kentucky Methods. Delete the third paragraph.
SUBSECTION: 601.03.02 Concrete Producer Responsibilities. PART: F) Records. REVISION: Retain all concrete technician records, test results and batch tickets pertaining to concrete produced for a Department project for at least 3 years after formal acceptance of the project. Make all records available to the Engineer and the Contractor on the project for review upon request.
SUBSECTION: 601.03.02 Concrete Producer Responsibilities. PART: G) Mix Designs. REVISION: Replace the last sentence of the first paragraph with the following: Before producing any concrete for the project, submit a proposed mixture design to the Engineer and obtain the District Materials engineer's or the Central Office Material's approval. Submit the mix design electronically using the Concrete Mix Design Spreadsheet located on the Division of Materials Website. Spreadsheets require the minimum system requirements: Microsoft Office 2003 Professional (full installation).
SUBSECTION: 601.03.02 Concrete Producer Responsibilities. PART: G) Mix Designs. NUMBER: 1) New Mixture Designs. REVISION: Replace the first sentence with the following: Base the proposed mix design on standard Department methods unless the District Materials Engineer, or Central Office Materials approves otherwise.
SUBSECTION: 601.03.02 Concrete Producer Responsibilities. PART: G) Mix Designs. NUMBER: 1) New Mixture Designs. LETTER: b) REVISION: Replace the second sentence with the following: The District Materials Engineer or Central Office Materials will provide an average value of the specific gravity aggregate absorption.
SUBSECTION: 601.03.02 Concrete Producer Responsibilities. PART: G) Mix Designs. NUMBER: 1) New Mixture Designs. LETTER: g) REVISION: Replace the fourth and fifth sentence with the following: Central Office Materials will observe all phases of the trial batches. Have the producer submit a report containing mix proportions and test results for slump, air content, water/cement ratio, unit weight, and compressive strength for each trial batch to the Engineer for Central Office Materials review and approval.

**Supplemental Specifications to The Standard Specifications
for Road and Bridge Construction, 2004 Edition**
(Effective with the November 16, 2007 Letting)

SUBSECTION: 601.03.02 Concrete Producer Responsibilities. PART: G) Mix Designs. NUMBER: 2) Approval. REVISION: Replace the first sentence with the following: The District Materials Engineer or Central Office Materials will base approval of the mixture design on the following criteria:
SUBSECTION: 601.03.02 Concrete Producer Responsibilities. PART: G) Mix Designs. NUMBER: 3) Changes in Approved Mix Designs. REVISION: Replace the first sentence with the following: Do not change the source of supply of the mixture ingredients without the District Materials Engineer's or Central Office Materials written permission. Replace the third sentence with the following: Upon the District Materials Engineer's or Central Office Materials written approval, the Department will allow the use of aggregate from the new source.
SUBSECTION: 601.03.03 Proportioning and Requirements. PART: A) Concrete. TABLE: INGREDIENT PROPORTIONS AND REQUIREMENTS FOR VARIOUS CLASSES OF CONCRETE REVISION: Under Class of Concrete replace "AAA ⁽⁹⁾ " with "AAA ⁽⁸⁾ "
SUBSECTION: 601.03.03 Proportioning and Requirements. PART: A) Concrete. FOOTNOTE: (6) REVISION: Add the following after the first sentence of the first paragraph: For products with voids, the slump may be increased to 7 inches. Replace the "0.3" requirement for Spring and Fall mix designs with "0.37".
SUBSECTION: 601.03.03 Proportioning and Requirements. PART: A) Concrete. FOOTNOTE: (7) REVISION: Replace with the following: The precast fabricator may increase the slump of Class A concrete to a maximum of 7 inches provided the fabricator uses a high range water reducer (Type F and G) and maximum water/cement ratio of 0.46.
SUBSECTION: 601.03.03 Proportioning and Requirements. PART: E) Measuring. NUMBER: 3) Water. REVISION: Delete the last sentence of the second paragraph.

**Supplemental Specifications to The Standard Specifications
for Road and Bridge Construction, 2004 Edition**
(Effective with the November 16, 2007 Letting)

SUBSECTION: 601.03.03 Proportioning and Requirements. PART: E) Measuring. NUMBER: 4) Measuring Admixtures. REVISION: Replace with the following: 4) Measuring Admixtures. Introduce liquid admixtures into the concrete batch along with, or as part of, the mixing water. Keep air-entraining admixtures completely separate from all other admixtures until introduction into the batch. Maintain and equip dispensing equipment to ensure no chlorides are introduced into any Department mix. Use approved dispensing equipment with a meter, gauge, or scale that can accurately be pre-set for the needed amount of admixture and can consistently deliver quantities of admixture to successive batches at any setting with satisfactory accuracy. The dispensing equipment must be visible to the batch operator if the actual dispensed amounts are not recorded on the computer batch ticket. Ensure admixture dispensers are inspected, calibrated and certified every 6 months. The Department may allow admixtures to be added, to the truck, at the project site provided the Engineer's approval is obtained first.
SUBSECTION: 601.03.04 Classes and Primary Uses. REVISION: Add the following part: R) Dry Cast. Precast units.
SUBSECTION: 601.03.05 Admixtures. REVISION: Replace the last sentence of the fourth paragraph with the following: Store admixtures where the liquid temperatures can be maintained between 32 and 110 °F.
SUBSECTION: 601.03.09 Placing Concrete. PART: D) Weather Limitations and Protection. REVISION: Delete the last sentence of paragraph two.
SUBSECTION: 605.03 CONSTRUCTION. REVISION: Insert the following sentence after the first sentence: Ensure all non-composite box beam concrete contains an approved corrosion inhibitor from the List of Approved Materials.
SUBSECTION: 605.03.03 Casting. REVISION: Delete the first sentence in the first paragraph. Add the following after the first sentence of the third paragraph: Do not vibrate Self-Consolidating Concrete (SCC).
SUBSECTION: 605.03.04 Tack welding. REVISION: Replace the first sentence with the following: When tack welding steel reinforcement, use ASTM A 706 steel and conform to the following conditions.
SUBSECTION: 605.03.04 Tack Welding. NUMBER: 3) REVISION: Replace the first sentence with the following: Tack weld only at intersections of bars except do not tack weld in any bend or within 2 bar diameters of a bend.
SUBSECTION: 605.03.04 Tack Welding. NUMBER: 5) REVISION: Replace the last sentence with the following: Each sample must meet the minimum requirement for elongation, ductility, tensile and yield strength of the bar stock.

**Supplemental Specifications to The Standard Specifications
for Road and Bridge Construction, 2004 Edition**
(Effective with the November 16, 2007 Letting)

SUBSECTION: 605.03.04 Tack Welding. NUMBER: 6) REVISION: Delete the last sentence.
SUBSECTION: 605.03.04 Tack Welding. REVISION: Change footnote "(4) (d)" to "(5)"
SUBSECTION: 605.03.07 Removal of Forms and Surface Finish. REVISION: Add the following sentence before the last sentence of the paragraph: Finish dry cast products according to the Precast/Prestressed Concrete Manual.
SUBSECTION: 611.02.01 Concrete. REVISION: Replace with the following: Conform to Subsections 601.02 and 601.03 and the Precast/Prestress Concrete Manual.
SUBSECTION: 611.03.02 Precast Unit Construction. REVISION: Replace "AASHTO C 1433" with "ASTM C 1433"
SUBSECTION: 611.03.02 Precast Unit Construction. NUMBER: 2) REVISION: Replace with the paragraph with the following: Mark all box culverts sections with the following information on the inside top of each section with letters no less than 2 inches high: a) Span, rise, maximum and minimum design earth cover, and KY Table 3. b) Date of manufacture. c) Name and trademark of the manufacturer. For entrance and exit box sections, indent the required information. Mark interior sections by indenting or with waterproof paint.
SUBSECTION: 701.02.05 Backfill Materials. PART: A) Granular Backfill. NUMBER: 1) REVISION: Remove "A2" from the list of acceptable materials.
SUBSECTION: 701.03.03 Pipe Bedding. REVISION: Replace with the following: 701.03.03 Pipe Bedding. A) Reinforced Concrete Pipe. Construct bedding according to the Standard Drawings and this section. 1) Type 1 Installation. When working on a rock foundation, place bedding to a depth of 6 inches or equal to $B_c/12$, the pipe diameter in inches divided by 12, whichever is greater. For all other foundations, place a minimum of 4 inches of bedding. Shape the bedding to conform to the invert shape throughout the entire width and length of the proposed structure. Compact the bedding, but leave the center third of the pipe diameter ($B_c/3$) uncompacted. Place and compact additional bedding material in lifts 6 inches or less to an elevation of 0.30 the culvert diameter. 2) Type 4 Installation. When working on a rock foundation, place bedding to a depth of 6 inches or equal to $B_c/12$, the pipe diameter in inches divided by 12, whichever is greater. For all other foundations, place a minimum of 4 inches of bedding. B) Corrugated Metal, Thermoplastic, and Structural Plate Pipe. Place and compact bedding to provide 4 inches of bedding below the outside invert of the pipe after shaping. Shape the bedding to conform to the invert shape throughout the entire width and length of the proposed structure. Place and compact additional bedding material in lifts 6 inches or less to an elevation of 0.30 the culvert diameter.

**Supplemental Specifications to The Standard Specifications
for Road and Bridge Construction, 2004 Edition**
(Effective with the November 16, 2007 Letting)

<p>SUBSECTION: 701.03.06 Initial Backfill. PART: A) Reinforced Concrete REVISION: Replace with the following:</p>	<p>A) Reinforced Concrete Pipe.</p> <ol style="list-style-type: none"> 1) Type 1 Installation. When the top of the pipe is not within one pipe diameter of the subgrade, backfill with granular backfill, additional bedding material, or flowable fill from the top of the bedding to an elevation equal to 1/2 the pipe diameter, and either granular backfill, flowable fill, or embankment material in 6-inch lifts to an elevation of one-foot above the pipe. 2) Type 4 Installation. Backfill from the top of the bedding with granular backfill, flowable fill, or embankment material in 6-inch lifts to an elevation of one-foot above the pipe. The Department will allow Type 4 installations for median drains and pipe installations located 35 feet or more from the edge of shoulder, back of curb, or any paved surface.
<p>SUBSECTION: 701.05 PAYMENT. REVISION: Replace bid item “2599 Fabric-Geotextile, Type IV Square Yard” with “21433ES214 Fabric-Geotextile, Type IV for Pipe Square Yard⁽²⁾”</p>	<p>Replace foot note “** The unit bid price is \$2.00 per square yard for Geotextile Fabric, Type III” with “⁽²⁾The unit price is \$2.00 per square yard for Fabric-Geotextile, Type IV for Pipe”</p>
<p>SUBSECTION: 710.02.15 Plastic Adjusting Rings. REVISION: Replace this section with:</p>	<p>710.02.15 Plastic or Rubber Adjusting Rings. Provide plastic or rubber adjusting rings that are on the Department’s List of Approved Materials.</p>
<p>SUBSECTION: 710.03.03 Adjusted Small Drainage Structures. REVISION: Replace the last sentence of the first paragraph:</p>	<p>For plastic or rubber adjusting rings, install and seal according to the manufacturer’s recommendations.</p>
<p>SUBSECTION: 711.02 MATERIALS. REVISION: Replace with the following:</p>	<p>Conform to the Contract requirements.</p>
<p>SUBSECTION: 713.03 CONSTRUCTION. REVISION: Add the following after the third paragraph:</p>	<p>Offset longitudinal lines at least 2 inches from longitudinal pavement construction joints. Offset longitudinal lane lines on multi-lane highways 2 inches towards the median.</p>
<p>SUBSECTION: 714.03.06 Proving Period for Durable Markings. PART: B) Failure. REVISION: Replace the first sentence with the following:</p>	<p>During the proving period, the Department will consider markings defective when the retroreflectivity falls below the minimum required or the material fails to meet the other requirements of A) above. Additionally, when more than 10 percent of any one-mile section or individual gore area is defective, the Department will consider the entire section defective.</p>
<p>SUBSECTION: 716.03.08 Testing. REVISION: Replace “10 megohms” with “100 megohms”</p>	
<p>SUBSECTION: 721.03 CONSTRUCTION. REVISION: Replace the third paragraph with the following:</p>	<p>Install fence 18 inches inside the right-of-way line or in other locations specifically indicated.</p>
<p>SUBSECTION: 723.03 CONSTRUCTION. REVISION: Replace the first sentence of the fourth paragraph with the following:</p>	<p>Set right-of-way markers within 12 inches of the right-of-way line.</p>

**Supplemental Specifications to The Standard Specifications
for Road and Bridge Construction, 2004 Edition
(Effective with the November 16, 2007 Letting)**

SUBSECTION:	724.02.01 Plants.
REVISION:	Replace the reference “American Association of Nurserymen” with “American Nursery and Landscape Association”.
SUBSECTION:	801.01 REQUIREMENTS.
REVISION:	Add the following sentence after the third sentence of the first paragraph: Mills must request and be approved by the Department to supply cement with an SO ₃ content above the value in Table 1 of ASTM C 150.
SUBSECTION:	804.01.03 Conglomerate Sand.
REVISION:	Replace second sentence of the paragraph with the following: Conglomerate sand may include some material which has been produced by crushing larger pieces of the parent material.
SUBSECTION:	804.02 Approval.
REVISION:	Replace first sentence of the second paragraph with the following: The Department will consider a source for inclusion on the Aggregate Source List when the aggregate producer complies with KM 64-608 and provides the following:
SUBSECTION:	804.03 Concrete.
REVISION:	Second sentence in first paragraph should be a separate paragraph immediately following the first and should read as follows: Provide natural, crushed, or conglomerate sand. The Department will allow any combination of natural, crushed, or conglomerate sand when the combination is achieved in the concrete plant weigh hopper. The Engineer may allow other sands. Use natural or conglomerate sands as fine aggregates in concrete intended as a wearing surface for traffic. Conform to the following:
SUBSECTION:	804.04.03 Polish-Resistant Aggregate.
REVISION:	Add the following paragraph: Provide a signed certification from the aggregate producer for the manufactured polish-resistant fine aggregate stating that the aggregate is supplied from the approved parent material as found on the Department’s List of Approved Materials, Polish-Resistant Aggregate Source List and Guidelines on the Division of Materials’ webpage.
SUBSECTION:	804.04.04 Requirements for Combined Aggregates.
PART:	D) Absorption.
REVISION:	Delete the first sentence and replace the second sentence with the following: Provide total combined fine aggregates having a water absorption of no more than 4.0 percent.
SUBSECTION:	804.11 Sampling and Testing.
REVISION:	For Absorption (Fine Aggregate), replace method “AASHTO T 84” with “KM 64-605”
SUBSECTION:	805.02 Approval.
REVISION:	Replace first sentence of the second paragraph with the following: The Department will consider a source for inclusion on the Aggregate Source List when the aggregate producer complies with KM 64-608 and provides the following:

**Supplemental Specifications to The Standard Specifications
for Road and Bridge Construction, 2004 Edition**
(Effective with the November 16, 2007 Letting)

SUBSECTION:	805.04.01 JPC Base, JPC Pavement, JPC Shoulders, and Concrete for Bridge Decks.
REVISION:	Replace the subsection heading and first sentence with the following: 805.04.01 JPC Base, JPC Pavement, JPC Shoulders, Concrete for Bridge Decks, and Precast Products. Add the following paragraph: Provide a signed certification from the aggregate producer for the approved freeze-thaw coarse aggregate stating that the aggregate is supplied from the approved parent material as found on the Department's List of Approved Materials and Concrete Aggregate Restriction List.
SUBSECTION:	805.04.01 JPC Base, JPC Shoulders, and Concrete for Bridge Decks.
PART:	3)
REVISION:	Replace the "tests" with "test" in the last sentence.
SUBSECTION:	805.05.05 Polish-Resistant Aggregate.
REVISION:	Add the following paragraph: Provide a signed certification from the aggregate producer for the manufactured polish-resistant coarse aggregate stating that the aggregate is supplied from the approved parent material as found on the Department's List of Approved Materials, Polish-Resistant Aggregate Source List and Guidelines on the Division of Materials' webpage.
SUBSECTION:	805.13.01 Cyclopean Stone Riprap and Channel Lining Class III.
REVISION:	Replace the subsection with the following: 805.13.01 Cyclopean Stone Riprap and/or Channel Lining Class III. Provide material meeting the general requirements of Section 805. Ensure that 100 percent passes through a square opening of 16 inches by 16 inches, and no more than 20 percent passes through square openings of 8 inches by 8 inches. The Department may allow stones of smaller sizes for filling voids in the upper surface and dressing to the proper slope.
SUBSECTION:	806.03.01 General Requirements.
TEST:	Dynamic Shear
REVISION:	Replace the 100% pay range "5,000-5,500" with "0-5,500"
SUBSECTION:	806.03.03 Modification.
REVISION:	Replace the first sentence with the following: Use only styrene-butadiene (SB) or styrene-butadiene-styrene (SBS) modifiers.
SUBSECTION:	810.02 APPROVAL.
REVISION:	Replace reference "KM 114" with "KM 115".
SUBSECTION:	810.03.06 Identification and Markings.
REVISION:	Delete the following text from the first paragraph: "When the manufacturer has more than one plant, include the plant letter assigned by the Division of Materials after the date of manufacture as follows: L-Louisville N-London" Delete the following paragraph: "The Department will not require the certification on the shipment approval form to be notarized. The Department will not require the information under "Pipe Data" on the approval form when the manufacture's shipment ticket is attached and contains the necessary information."

**Supplemental Specifications to The Standard Specifications
for Road and Bridge Construction, 2004 Edition**
(Effective with the November 16, 2007 Letting)

SUBSECTION: 811.02.01 Requirements. REVISION: Replace the subsection with the following: Furnish bar reinforcement for bridges, cast-in-place culverts, and cast-in-place retaining walls that conforms to ASTM A 615 (billet) or ASTM A 996 (rail). ASTM A 706 steel is acceptable with prior approval of the Division of Materials. Do not weld any steel bar reinforcement unless it is ASTM A 706 rebar. The Engineer will accept rail steel bar reinforcement in straight lengths only. Do not use rail steel reinforcement where field bending is allowed or required.
SUBSECTION: 811.09.02 Dowel Bars. REVISION: Replace the reference to "ASTM A 616" with "ASTM A 996" Insert the following sentence between the third and fourth sentence of the first paragraph: Broken or sheared ends are acceptable with prior approval of the Division of Materials.
SUBSECTION: 811.06 BAR MATS. REVISION: Replace the subsection with the following: Conform to ASTM A 184 and fabricate by welding deformed Grade 60 weldable bars.
SUBSECTION: 811.09.02 Dowel Bars. REVISION: Replace the first paragraph with the following: Furnish dowel bars that are plain round bars conforming to ASTM A 706, A 615, A 996, or A 617 with respect to mechanical properties only. Provide either Grade 40, 50 or 60 steel. Saw cut the free ends of the dowels and ensure that they are free of burrs or projections. Broken or sheared ends are acceptable with prior approval of the Division of Materials. Coat dowel bars according to AASHTO M 254 with the following exceptions for Type B coatings:
SUBSECTION: 811.10.02 Epoxy Coating Material. REVISION: Replace both the reference to "ASTM D 3963 Annex" and "ASTM D 3963" with "AASHTO M 284".
SUBSECTION: 812.01.02 Hot-Rolled Carbon Steel Sheets and Strip of Structural Quality, Grade 33 (Corrugated Steel Plank for Bridge Floors). REVISION: Replace the reference to "ASTM A 570" with "ASTM A 1011"

**Supplemental Specifications to The Standard Specifications
for Road and Bridge Construction, 2004 Edition**
(Effective with the November 16, 2007 Letting)

SUBSECTION: 827.04 SEED.

REVISION: Replace with the following:

827.04 SEED. Conform to the requirements outlined in the “Kentucky Seed Law and Provisions for Seed Certification in Kentucky” and the “Regulations under the Kentucky Seed Law”, with following exceptions:

- 1) Obtain seed only through registered dealers that are permitted for labeling of seed.
- 2) Ensure all deliveries and shipments of premixed seed are accompanied with a master blend sheet.
- 3) Ensure all bags and containers have an acceptable seed tag attached.
- 4) The Department may sample the seed at the job site at any time.

Do not use seed (grasses, native grasses, and legumes) if the weed seed is over one percent, total germination (including hard seed) is less than 80 percent, if the seed test date is over 9 months old exclusive of the month tested, or if the limits of noxious weed seed is exceeded.

Ensure that noxious weed seeds contained in any seed or seed mixture does not exceed the maximum permitted rate of occurrence per pound.

<u>Name of Kind</u>	<u>Max. No. Seeds (per pound)*</u>
Balloon Vine (<i>Cardiospermum halicacabum</i>)	0
Purple Moonflower (<i>Ipomoea turbinata</i>)	0
Canada Thistle (<i>Cirsium Arvense</i>)	0
Johnsongrass (<i>Sorghum halepense</i> and <i>Sorghum almum</i> and perennial rhizomatous derivatives of these species)	0
Quackgrass (<i>Elytrigia Repens</i>)	0
Annual Bluegrass (<i>Poa annua</i>)	120
Buckhorn Plantain (<i>Plantago lanceolata</i>)	120
Corncockle (<i>Agrostemma githago</i>)	18
Dodder (<i>Cuscuta</i> spp.)	18
Giant Foxtail (<i>Setaria faberii</i>)	18
Oxeye Daisy (<i>Chrysanthemum leucanthemum</i>)	120
Sorrel (<i>Rumex acetosella</i>)	120
Wild Onion and Wild Garlic (<i>Allium</i> spp.)	18

* Seed or seed mixtures that contain in excess of 120 total noxious seeds per pound is prohibited

Wildflower seed shall not be planted until approved by the MCL.

**Supplemental Specifications to The Standard Specifications
for Road and Bridge Construction, 2004 Edition**
(Effective with the November 16, 2007 Letting)

REQUIREMENTS FOR SEEDS			
	Purity (Min. %)	Germination (Min. %) Including Hard Seed and Dormant Seed	Hard Seed (Max. %) Allowed in Germination
Grasses			
Bentgrass (<i>Argrostis palustris</i>)	98	85	-
Bermudagrass, common (<i>Cynodon dactylon</i>)	97	85	-
Bluegrass, Kentucky (<i>Poa pratensis</i>)	98	85	-
Brome, smooth (<i>Bromus inermis</i>)	95	80	-
Canarygrass, reed (<i>Phalaris arundinacea</i>)	95	80	-
Fescue, chewings (<i>Festuca rubra</i> var. <i>commutata</i>)	97	85	-
Fescue, hard (<i>Festuca trachyphlla</i>)	97	85	-
Fescue, meadow (<i>Festuca elatior</i>)	97	85	-
Fescue, red (<i>Festuca rubra</i>)	97	85	-
Fescue, tall (<i>Festuca arundinacca</i>)	97	85	-
Orchardgrass (<i>Dactylis glomerata</i>)	97	85	-
Redtop (<i>Agrostic alba</i>)	95	80	-
Ryegrass, annual, common or Italian (<i>Lotium multiflorum</i>)	97	85	-
Ryegrass, perennial (<i>Lolium perenne</i>)	97	85	-
Lovegrass, Weeping (<i>Eragrostic curvula</i>)	96	80	-
Oat (<i>Avena Sativa</i>)	98	85	-
Rye (<i>Secale cereale</i>)	98	85	-
Timothy (<i>Phleum pratense</i>)	98	85	-
Wheat, common (<i>Triticum aestivum</i>)	98	85	-
Legumes			
Alfalfa (<i>Medicago sativa</i>)	98	85	25
Clover, alsike (<i>Trifolium hybridum</i>)	97	85	25
Clover, ladino (<i>Trifolium repens</i>)	98	85	25
Clover, white (<i>Trifolium repens</i>)	98	85	25
Crownvetch (<i>Coronilla varia</i>)	97	85	25
Lespedeza, Korean (<i>Lespedeza stipulacea</i>)	97	85	20
Lespedeza, Sericea (<i>Lespedeza cuneata</i>)	97	85	20
Sweetclover, white (<i>Melilotus alba</i>)	98	85	25
Sweetclover, yellow (<i>Melilotus officinalis</i>)	98	85	25
Trefoil, birdsfoot (<i>Lotus corniculatus</i>)	97	85	25
Native Grasses			
Little Bluestem (<i>Schizachyrium scoparium</i>)	85	80	-
Big Blustem (<i>Andropogon gerardii</i>)	85	80	-
Indian Grass (<i>Sorghastrum nutans</i>)	85	80	-
Switchgrass (<i>Panicum virgatum</i>)	85	80	-

**Supplemental Specifications to The Standard Specifications
for Road and Bridge Construction, 2004 Edition**
(Effective with the November 16, 2007 Letting)

SUBSECTION: REVISION:	<p>827.07 EROSION CONTROL BLANKET. Replace the subsection with the following:</p> <p>827.07 EROSION CONTROL BLANKET. Use a blanket from the Department's List of Approved Materials. Blankets must be machine constructed with two-sided netting filled with curled wood fiber mat, straw, or a straw and coconut fiber combination. Ensure the blanket is smolder resistant without the use of chemical additives.</p> <ul style="list-style-type: none">A) Dimensions. Furnish in strips with a minimum width of 4 feet and length of 50 feet.B) Weight.<ul style="list-style-type: none">1) Curled Wood Fiber. Ensure a minimum mass per unit area of 7.25 ounces per square yard according to ASTM D 6475.2) Straw. Ensure a minimum mass per unit area of 7.5 ounces per square yard according to ASTM D 6475.3) Straw/Coconut Fiber. Ensure a minimum mass per unit area of 6.75 ounces per square yard according to ASTM D 6475.C) Fill. Ensure the fill is evenly distributed throughout the blanket.<ul style="list-style-type: none">1) Curled Wood Fiber. Use curled wood fiber of consistent thickness with at least 80 percent of its fibers 6 inches or longer in length.2) Straw. Use only weed free agricultural straw.2) Straw/Coconut Fiber. Conform to the straw requirements above and ensure the coconut fiber is evenly distributed throughout the blanket and accounts for 30% or more of the fill.D) Netting. Use photodegradable extruded plastic mesh or netting, with a maximum spacing width of one inch square, on both sides of the blanket. Secure the netting by stitching or other method to ensure the blanket retains its integrity.E) Staples. Use steel wire U-shaped staples with a minimum diameter of 0.09 inches (11 gauge), a minimum width of one inch, and a minimum length of 6 inches. Use a heavier gauge when working in rocky or clay soils and longer lengths in sandy soils. Provide staples with colored tops when requested by the Engineer.F) Performance.<ul style="list-style-type: none">1) C-Factor. Ensure the ratio of soil loss from protected slope to ratio of soil loss from unprotected is ≤ 0.15 for a slope of 3:1 when tested according to ECTC method 2 (2-inch/hour for 30 minutes).2) Shear Stress. Ensure the blanket can sustain a minimum shear stress of 1.75 pounds per square foot without physical damage or excess erosion (> 0.5 inches soil loss) when tested according to ECTC Method 3.
SUBSECTION: REVISION:	<p>828.02 APPROVAL. Add the following:</p> <p>The Department will continue to include the masonry coatings on the list contingent upon receiving an annual certification containing the following information:</p> <ul style="list-style-type: none">1) A statement that the masonry coating to be furnished during the particular calendar year is of the same composition as that previously approved for inclusion on the approved list.2) A statement that the masonry coating conforms to the appropriate requirements of the Kentucky Standard Specifications for Road and Bridge Construction.3) A statement that notification will be made to the Division of Materials of any changes in composition for review and approval before furnishing the material to projects.
SUBSECTION: TABLE: REVISION:	<p>843.01.02 Acceptance Procedures for Non-Specification Fabric. GRAB STRENGTH PAYMENT REDUCTION Add the following note:</p> <p>The Department will use the lowest value of MACHINE and CROSS for the reduction calculation.</p>

**Supplemental Specifications to The Standard Specifications
for Road and Bridge Construction, 2004 Edition**
(Effective with the November 16, 2007 Letting)

SUBSECTION: 844.02.01 Fly Ash. PART: 1) REVISION: Delete the last sentence.
SUBSECTION: 844.02.01 Fly Ash. REVISION: Replace the subsection with the following: 844.02.01 Fly Ash. Select from the Department's List of Approved Materials for fly ash sources. To be placed on the list, furnish samples and ASTM C 618 test data developed over the previous 3 months, and confirm to the requirements in KM 64-325.

10U

SPECIAL NOTE FOR RIGHT-OF-WAY MONUMENTS

This Special Note will apply when indicated on the plans or in the proposal.

1.0 DESCRIPTION. Furnish and install right-of-way monuments at the location and with the type shown on the plans.

2.0 MATERIALS. Furnish Aluminum Alloy monuments specified on the Standard Drawing.

3.0 CONSTRUCTION. Install right-of-way monuments at the earliest opportunity on a project as determined by the project manager. Install right-of-way monuments under the direct supervision of a Kentucky Licensed Professional Land Surveyor.

Establish right-of-way monuments from existing Primary or Supplemental control monuments with an accuracy of 1:15,000 or greater.

Place right-of-way monument information on a Control Monument Information Sheet (Exhibit 300-04 of the Highway Design Manual) provided by the Department. Place the completed Control Monument Information Sheet in a final survey report. Completely fill out the Control Monument Information Sheet, including the signature and registration number of the Kentucky Licensed Professional Land Surveyor in charge of the monumentation. Submit the Final Survey Report to the KYTC Survey Coordinator in the Division of Highway Design and the Engineer.

Reset all monuments disturbed or destroyed during or prior to construction, with the same accuracy as stated previously. Update the Control Monument Information Sheet with any new data and include in the Final Survey Report. Ensure the Kentucky Licensed Professional Land Surveyor in charge of the re-monumentation signs and places his registration number on the updated Control Monument Information Sheet. Submit the updated Final Survey Report to the KYTC Survey Coordinator in the Division of Highway Design, the Engineer, and the Kentucky Licensed Professional Land Surveyor who set the original monuments.

Right-of-way monuments that cannot be established at the planned location due to inaccessibility should be witnessed by a witness right-of-way monument on both lines and labeled as such (see Standard Drawing).

Use a 6-foot long orange witness post to aid in locating right-of-way monuments. Set the witness post within the public right-of-way and within one foot of the monument location. Label the witness post to denote that the point is KYTC right-of-way (See Standard Drawing).

4.0 MEASUREMENT AND PAYMENT. The Department will measure the quantity by each individual unit.

5.0 PAYMENT. The Department will make payment for the completed and accepted quantities under the following:

<u>Code</u>	<u>Pay Item</u>	<u>Pay Unit</u>
2429	Right-of-Way Monument, Type 1	Each
2430	Right-of-Way Monument, Type 1A	Each
2431	Witness R/W Monument Type 2	Each
2432	Witness Post	Each

December 13, 2005

PART III

EMPLOYMENT, WAGE AND RECORD REQUIREMENTS

**REQUIRED CONTRACT PROVISIONS
FEDERAL-AID CONSTRUCTION CONTRACTS**

	Page
I. General-----	1
II. Nondiscrimination-----	1
III. Nonsegregated Facilities-----	3
IV. Payment of Predetermined Minimum Wage-----	3
V. Statements and Payrolls-----	6
VI. Record of Materials, Supplies, and Labor-----	6
VII. Subletting or Assigning the Contract-----	7
VIII. Safety: Accident Prevention-----	7
IX. False Statements Concerning Highway Projects-----	7
X. Implementation of Clean Air Act and Federal Water Pollution Control Act-----	8
XI. Certification Regarding Debarment, Suspension, Ineligibility, and Voluntary Exclusion-----	8
XII. Certification Regarding Use of Contract Funds for Lobbying-----	9

ATTACHMENTS

- A. Employment Preference for Appalachian Contracts
(included in Appalachian contracts only)

I. GENERAL

1. These contract provisions shall apply to all work performed on the contract by the contractor's own organization and with the assistance of workers under the contractor's immediate superintendence and to all work performed on the contract by piecework, station work, or by subcontract.

2. Except as otherwise provided for in each section, the contractor shall insert in each subcontract all of the stipulations contained in these Required Contract Provisions, and further require their inclusion in any lower tier subcontract or purchase order that may in turn be made. The Required Contract Provisions shall not be incorporated by reference in any case. The prime contractor shall be responsible for compliance by any subcontractor or lower tier subcontractor with these Required Contract Provisions.

3. A breach of any of the stipulations contained in these Required Contract Provisions shall be sufficient grounds for termination of the contract.

4. A breach of the following clauses of the Required Contract Provisions may also be grounds for debarment as provided in 29 CFR 5.12:

- Section I, paragraph 2;
- Section IV, paragraphs 1, 2, 3, 4, and 7;
- Section V, paragraphs 1 and 2a through 2g.

5. Disputes arising out of the labor standards provisions of Section IV (except paragraph 5) and Section V of these Required Contract Provisions shall not be subject to the general disputes clause of this contract. Such disputes shall be resolved in accordance with the procedures of the U.S. Department of Labor (DOL) as set forth in 29 CFR 5, 6, and 7. Disputes within the meaning of this clause include disputes between the contractor (or any of its subcontractors) and the contracting agency, the DOL, or the contractor's employees or their representatives.

6. **Selection of Labor:** During the performance of this contract, the contractor shall not:

a. discriminate against labor from any other State, possession, or territory of the United States (except for employment preference for Appalachian contracts, when applicable, as specified in Attachment A), or

b. employ convict labor for any purpose within the limits of the project unless it is labor performed by convicts who are on parole, supervised release, or probation.

II. NONDISCRIMINATION

(Applicable to all Federal-aid construction contracts and to all related subcontracts of \$10,000 or more.)

1. **Equal Employment Opportunity:** Equal employment opportunity (EEO) requirements not to discriminate and to take affirmative action to assure equal opportunity as set forth under laws, executive orders, rules, regulations (28 CFR 35, 29 CFR 1630 and 41 CFR 60) and orders of the Secretary of Labor as modified by the provisions prescribed herein, and imposed pursuant to 23 U.S.C. 140 shall constitute the EEO and specific affirmative action standards for the contractor's project activities under this contract. The Equal Opportunity Construction Contract Specifications set forth under 41 CFR 60-4.3 and the provisions of the American Disabilities Act of 1990 (42 U.S.C. 12101 *et seq.*) set forth under 28 CFR 35 and 29 CFR 1630 are incorporated by reference in this contract. In the execution of this contract, the contractor agrees to comply with the following minimum specific requirement activities of EEO:

a. The contractor will work with the State highway agency (SHA) and the Federal Government in carrying out EEO obligations and in their review of his/her activities under the contract.

b. The contractor will accept as his operating policy the following statement:

"It is the policy of this Company to assure that applicants are employed, and that employees are treated during employment, without regard to their race, religion, sex, color, national origin, age or disability. Such action shall include: employment, upgrading, demotion, or transfer; recruitment or recruitment advertising; layoff or termination; rates of pay or other forms of compensation; and selection for training, including apprenticeship, preapprenticeship, and/or on-the-job training."

2. **EEO Officer:** The contractor will designate and make known to the SHA contracting officers an EEO Officer who will have the responsibility for and must be capable of effectively administering and promoting an active contractor program of EEO and who must be assigned adequate authority and responsibility to do so.

3. **Dissemination of Policy:** All members of the contractor's staff who are authorized to hire, supervise, promote, and discharge employees, or who recommend such action, or who are substantially involved in such action, will be made fully cognizant of, and will implement, the contractor's EEO policy and contractual responsibilities to provide EEO in each grade and classification of employment. To ensure that the above agreement will be met, the following actions will be taken as a minimum:

a. Periodic meetings of supervisory and personnel office employees will be conducted before the start of work and then not less often than once every six months, at which time the contractor's EEO policy and its implementation will be reviewed and explained. The meetings will be conducted by the EEO Officer.

b. All new supervisory or personnel office employees will be given a thorough indoctrination by the EEO Officer, covering all major aspects of the contractor's EEO obligations within thirty days following their reporting for duty with the contractor.

c. All personnel who are engaged in direct recruitment for the project will be instructed by the EEO Officer in the contractor's procedures for locating and hiring minority group employees.

d. Notices and posters setting forth the contractor's EEO policy will be placed in areas readily accessible to employees, applicants for employment and potential employees.

e. The contractor's EEO policy and the procedures to implement such policy will be brought to the attention of employees by means of meetings, employee handbooks, or other appropriate means.

4. **Recruitment:** When advertising for employees, the contractor will include in all advertisements for employees the notation: "An Equal Opportunity Employer." All such advertisements will be placed in publications having a large circulation among minority groups in the area from which the project work force would normally be derived.

a. The contractor will, unless precluded by a valid bargaining agreement, conduct systematic and direct recruitment through public and private employee referral sources likely to yield qualified minority group applicants. To meet this requirement, the contractor will identify sources of potential minority group employees, and establish with such identified sources procedures whereby minority group applicants may be referred to the contractor for employment consideration.

b. In the event the contractor has a valid bargaining agreement providing for exclusive hiring hall referrals, he is expected to observe the provisions of that agreement to the extent that the system permits the contractor's compliance with EEO contract provisions. (The DOL has held that where implementation of such agreements have the effect of discriminating against minorities or women, or obligates the contractor to do the same, such implementation violates Executive Order 11246, as amended.)

c. The contractor will encourage his present employees to refer minority group applicants for employment. Information and procedures with regard to referring minority group applicants will be discussed with employees.

5. **Personnel Actions:** Wages, working conditions, and employee benefits shall be established and administered, and personnel actions of every type, including hiring, upgrading, promotion, transfer, demotion, layoff, and termination, shall be taken without regard to race, color, religion, sex, national origin, age or disability. The following procedures shall be followed:

a. The contractor will conduct periodic inspections of project sites to insure that working conditions and employee facilities do not indicate discriminatory treatment of project site personnel.

b. The contractor will periodically evaluate the spread of wages paid within each classification to determine any evidence of discriminatory wage practices.

c. The contractor will periodically review selected personnel actions in depth to determine whether there is evidence of discrimination. Where evidence is found, the contractor will promptly take corrective action. If the review indicates that the discrimination may extend beyond the actions reviewed, such corrective action shall include all affected persons.

d. The contractor will promptly investigate all complaints of alleged discrimination made to the contractor in connection with his obligations under this contract, will attempt to resolve such complaints, and will take appropriate corrective action within a reasonable time. If the investigation indicates that the discrimination may affect persons other than the complainant, such corrective action shall include such other persons. Upon completion of each investigation, the contractor will inform every complainant of all of his avenues of appeal.

6. **Training and Promotion:**

a. The contractor will assist in locating, qualifying, and increasing the skills of minority group and women employees, and applicants for employment.

b. Consistent with the contractor's work force requirements and as permissible under Federal and State regulations, the contractor shall make full use of training programs, i.e., apprenticeship, and on-the-job training programs for the geographical area of contract performance. Where feasible, 25 percent of apprentices or trainees in each occupation shall be in their first year of apprenticeship or training. In the event a special provision for training is provided under this contract, this subparagraph will be superseded as indicated in the special provision.

c. The contractor will advise employees and applicants for employment of available training programs and entrance requirements for each.

d. The contractor will periodically review the training and promotion potential of minority group and women employees and will encourage eligible employees to apply for such training and promotion.

7. **Unions:** If the contractor relies in whole or in part upon unions as a source of employees, the contractor will use his/her best efforts to obtain the cooperation of such unions to increase opportunities for minority groups and women within the unions, and to effect referrals by such unions of minority and female employees. Actions by the contractor either directly or through a contractor's association acting as agent will include the procedures set forth below:

a. The contractor will use best efforts to develop, in cooperation with the unions, joint training programs aimed toward qualifying more minority group members and women for membership in the unions and increasing the skills of minority group employees and women so that they may qualify for higher paying employment.

b. The contractor will use best efforts to incorporate an EEO clause into each union agreement to the end that such union will be contractually bound to refer applicants without regard to their race, color, religion, sex, national origin, age or disability.

c. The contractor is to obtain information as to the referral practices and policies of the labor union except that to the extent such information is within the exclusive possession of the labor union and such labor union refuses to furnish such information to the contractor, the contractor shall so certify to the SHA and shall set forth what efforts have been made to obtain such information.

d. In the event the union is unable to provide the contractor with a reasonable flow of minority and women referrals within the time limit set forth in the collective bargaining agreement, the contractor will, through independent recruitment efforts, fill the employment vacancies without regard to race, color, religion, sex, national origin,

age or disability; making full efforts to obtain qualified and/or qualifiable minority group persons and women. (The DOL has held that it shall be no excuse that the union with which the contractor has a collective bargaining agreement providing for exclusive referral failed to refer minority employees.) In the event the union referral practice prevents the contractor from meeting the obligations pursuant to Executive Order 11246, as amended, and these special provisions, such contractor shall immediately notify the SHA.

8. Selection of Subcontractors, Procurement of Materials and Leasing of Equipment: The contractor shall not discriminate on the grounds of race, color, religion, sex, national origin, age or disability in the selection and retention of subcontractors, including procurement of materials and leases of equipment.

a. The contractor shall notify all potential subcontractors and suppliers of his/her EEO obligations under this contract.

b. Disadvantaged business enterprises (DBE), as defined in 49 CFR 23, shall have equal opportunity to compete for and perform subcontracts which the contractor enters into pursuant to this contract. The contractor will use his best efforts to solicit bids from and to utilize DBE subcontractors or subcontractors with meaningful minority group and female representation among their employees. Contractors shall obtain lists of DBE construction firms from SHA personnel.

c. The contractor will use his best efforts to ensure subcontractor compliance with their EEO obligations.

9. Records and Reports: The contractor shall keep such records as necessary to document compliance with the EEO requirements. Such records shall be retained for a period of three years following completion of the contract work and shall be available at reasonable times and places for inspection by authorized representatives of the SHA and the FHWA.

a. The records kept by the contractor shall document the following:

(1) The number of minority and non-minority group members and women employed in each work classification on the project;

(2) The progress and efforts being made in cooperation with unions, when applicable, to increase employment opportunities for minorities and women;

(3) The progress and efforts being made in locating, hiring, training, qualifying, and upgrading minority and female employees; and

(4) The progress and efforts being made in securing the services of DBE subcontractors or subcontractors with meaningful minority and female representation among their employees.

b. The contractors will submit an annual report to the SHA each July for the duration of the project, indicating the number of minority, women, and non-minority group employees currently engaged in each work classification required by the contract work. This information is to be reported on Form FHWA-1391. If on-the-job training is being required by special provision, the contractor will be required to collect and report training data.

III. NONSEGREGATED FACILITIES

(Applicable to all Federal-aid construction contracts and to all related subcontracts of \$10,000 or more.)

a. By submission of this bid, the execution of this contract or subcontract, or the consummation of this material supply agreement or purchase order, as appropriate, the bidder, Federal-aid construction contractor, subcontractor, material supplier, or vendor, as appropriate, certifies that the firm does not maintain or provide for its employees any segregated facilities at any of its establishments, and that the firm does not permit its employees to perform their services at any location, under its control, where segregated facilities are maintained. The firm agrees that a breach of this certification is a violation of the EEO provisions of this contract. The firm further certifies that no employee will be denied access to adequate facilities on the basis of sex or disability.

b. As used in this certification, the term "segregated facilities" means any waiting rooms, work areas, restrooms and washrooms, restaurants and other eating areas, timeclocks, locker rooms, and other storage or dressing areas, parking lots, drinking fountains, recreation or entertainment areas, transportation, and housing facilities provided for employees which are segregated by explicit directive, or are, in fact, segregated on the basis of race, color, religion, national origin, age or disability, because of habit, local custom, or otherwise. The only exception will be for the disabled when the demands for accessibility override (e.g. disabled parking).

c. The contractor agrees that it has obtained or will obtain identical certification from proposed subcontractors or material suppliers prior to award of subcontracts or consummation of material supply agreements of \$10,000 or more and that it will retain such certifications in its files.

IV. PAYMENT OF PREDETERMINED MINIMUM WAGE

(Applicable to all Federal-aid construction contracts exceeding \$2,000 and to all related subcontracts, except for projects located on roadways classified as local roads or rural minor collectors, which are exempt.)

1. General:

a. All mechanics and laborers employed or working upon the site of the work will be paid unconditionally and not less often than once a week and without subsequent deduction or rebate on any account [except such payroll deductions as are permitted by regulations (29 CFR 3) issued by the Secretary of Labor under the Copeland Act (40 U.S.C. 276c)] the full amounts of wages and bona fide fringe benefits (or cash equivalents thereof) due at time of payment. The payment shall be computed at wage rates not less than those contained in the wage determination of the Secretary of Labor (hereinafter "the wage determination") which is attached hereto and made a part hereof, regardless of any contractual relationship which may be alleged to exist between the contractor or its subcontractors and such laborers and mechanics. The wage determination (including any additional classifications and wage rates conformed under paragraph 2 of this Section IV and the DOL poster (WH-1321) or Form FHWA-1495) shall be posted at all times by the contractor and its subcontractors at the site of the work in a prominent and accessible place where it can be easily seen by the workers. For the purpose of this Section, contributions made or costs reasonably anticipated for bona fide fringe benefits under Section 1(b)(2) of the Davis-Bacon Act (40 U.S.C. 276a) on behalf of laborers or mechanics are considered wages paid to such laborers or mechanics, subject to the provisions of Section IV, paragraph 3b, hereof. Also, for the purpose of this Section, regular contributions made or costs incurred for more than a weekly period (but not less often than quarterly) under plans, funds, or programs, which cover the particular weekly period, are deemed to be constructively made or incurred during such weekly period. Such laborers and mechanics

shall be paid the appropriate wage rate and fringe benefits on the wage determination for the classification of work actually performed, without regard to skill, except as provided in paragraphs 4 and 5 of this Section IV.

b. Laborers or mechanics performing work in more than one classification may be compensated at the rate specified for each classification for the time actually worked therein, provided, that the employer's payroll records accurately set forth the time spent in each classification in which work is performed.

c. All rulings and interpretations of the Davis-Bacon Act and related acts contained in 29 CFR 1, 3, and 5 are herein incorporated by reference in this contract.

2. Classification:

a. The SHA contracting officer shall require that any class of laborers or mechanics employed under the contract, which is not listed in the wage determination, shall be classified in conformance with the wage determination.

b. The contracting officer shall approve an additional classification, wage rate and fringe benefits only when the following criteria have been met:

(1) the work to be performed by the additional classification requested is not performed by a classification in the wage determination;

(2) the additional classification is utilized in the area by the construction industry;

(3) the proposed wage rate, including any bona fide fringe benefits, bears a reasonable relationship to the wage rates contained in the wage determination; and

(4) with respect to helpers, when such a classification prevails in the area in which the work is performed.

c. If the contractor or subcontractors, as appropriate, the laborers and mechanics (if known) to be employed in the additional classification or their representatives, and the contracting officer agree on the classification and wage rate (including the amount designated for fringe benefits where appropriate), a report of the action taken shall be sent by the contracting officer to the DOL, Administrator of the Wage and Hour Division, Employment Standards Administration, Washington, D.C. 20210. The Wage and Hour Administrator, or an authorized representative, will approve, modify, or disapprove every additional classification action within 30 days of receipt and so advise the contracting officer or will notify the contracting officer within the 30-day period that additional time is necessary.

d. In the event the contractor or subcontractors, as appropriate, the laborers or mechanics to be employed in the additional classification or their representatives, and the contracting officer do not agree on the proposed classification and wage rate (including the amount designated for fringe benefits, where appropriate), the contracting officer shall refer the questions, including the views of all interested parties and the recommendation of the contracting officer, to the Wage and Hour Administrator for determination. Said Administrator, or an authorized representative, will issue a determination within 30 days of receipt and so advise the contracting officer or will notify the contracting officer within the 30-day period that additional time is necessary

e. The wage rate (including fringe benefits where appropriate) determined pursuant to paragraph 2c or 2d of this Section IV shall be paid to all workers performing work in the additional classification from the first day on which work is performed in the classification.

3. Payment of Fringe Benefits:

a. Whenever the minimum wage rate prescribed in the contract for a class of laborers or mechanics includes a fringe benefit which is not expressed as an hourly rate, the contractor or subcontractors, as appropriate, shall either pay the benefit as stated in the wage determination or shall pay another bona fide fringe benefit or an hourly case equivalent thereof.

b. If the contractor or subcontractor, as appropriate, does not make payments to a trustee or other third person, he/she may consider as a part of the wages of any laborer or mechanic the amount of any costs reasonably anticipated in providing bona fide fringe benefits under a plan or program, provided, that the Secretary of Labor has found, upon the written request of the contractor, that the applicable standards of the Davis-Bacon Act have been met. The Secretary of Labor may require the contractor to set aside in a separate account assets for the meeting of obligations under the plan or program.

4. Apprentices and Trainees (Programs of the U.S. DOL) and Helpers:

a. Apprentices:

(1) Apprentices will be permitted to work at less than the predetermined rate for the work they performed when they are employed pursuant to and individually registered in a bona fide apprenticeship program registered with the DOL, Employment and Training Administration, Bureau of Apprenticeship and Training, or with a State apprenticeship agency recognized by the Bureau, or if a person is employed in his/her first 90 days of probationary employment as an apprentice in such an apprenticeship program, who is not individually registered in the program, but who has been certified by the Bureau of Apprenticeship and Training or a State apprenticeship agency (where appropriate) to be eligible for probationary employment as an apprentice.

(2) The allowable ratio of apprentices to journeyman-level employees on the job site in any craft classification shall not be greater than the ratio permitted to the contractor as to the entire work force under the registered program. Any employee listed on a payroll at an apprentice wage rate, who is not registered or otherwise employed as stated above, shall be paid not less than the applicable wage rate listed in the wage determination for the classification of work actually performed. In addition, any apprentice performing work on the job site in excess of the ratio permitted under the registered program shall be paid not less than the applicable wage rate on the wage determination for the work actually performed. Where a contractor or subcontractor is performing construction on a project in a locality other than that in which its program is registered, the ratios and wage rates (expressed in percentages of the journeyman-level hourly rate) specified in the contractor's or subcontractor's registered program shall be observed.

(3) Every apprentice must be paid at not less than the rate specified in the registered program for the apprentice's level of progress, expressed as a percentage of the journeyman-level hourly rate specified in the applicable wage determination. Apprentices shall be paid fringe benefits in accordance with the provisions of the apprenticeship program. If the apprenticeship program does not specify fringe benefits, apprentices must be paid the full amount of fringe benefits listed on the wage determination for the applicable

classification. If the Administrator for the Wage and Hour Division determines that a different practice prevails for the applicable apprentice classification, fringes shall be paid in accordance with that determination.

(4) In the event the Bureau of Apprenticeship and Training, or a State apprenticeship agency recognized by the Bureau, withdraws approval of an apprenticeship program, the contractor or subcontractor will no longer be permitted to utilize apprentices at less than the applicable predetermined rate for the comparable work performed by regular employees until an acceptable program is approved.

b. Trainees:

(1) Except as provided in 29 CFR 5.16, trainees will not be permitted to work at less than the predetermined rate for the work performed unless they are employed pursuant to and individually registered in a program which has received prior approval, evidenced by formal certification by the DOL, Employment and Training Administration.

(2) The ratio of trainees to journeyman-level employees on the job site shall not be greater than permitted under the plan approved by the Employment and Training Administration. Any employee listed on the payroll at a trainee rate who is not registered and participating in a training plan approved by the Employment and Training Administration shall be paid not less than the applicable wage rate on the wage determination for the classification of work actually performed. In addition, any trainee performing work on the job site in excess of the ratio permitted under the registered program shall be paid not less than the applicable wage rate on the wage determination for the work actually performed.

(3) Every trainee must be paid at not less than the rate specified in the approved program for his/her level of progress, expressed as a percentage of the journeyman-level hourly rate specified in the applicable wage determination. Trainees shall be paid fringe benefits in accordance with the provisions of the trainee program. If the trainee program does not mention fringe benefits, trainees shall be paid the full amount of fringe benefits listed on the wage determination unless the Administrator of the Wage and Hour Division determines that there is an apprenticeship program associated with the corresponding journeyman-level wage rate on the wage determination which provides for less than full fringe benefits for apprentices, in which case such trainees shall receive the same fringe benefits as apprentices.

(4) In the event the Employment and Training Administration withdraws approval of a training program, the contractor or subcontractor will no longer be permitted to utilize trainees at less than the applicable predetermined rate for the work performed until an acceptable program is approved.

c. Helpers:

Helpers will be permitted to work on a project if the helper classification is specified and defined on the applicable wage determination or is approved pursuant to the conformance procedure set forth in Section IV.2. Any worker listed on a payroll at a helper wage rate, who is not a helper under an approved definition, shall be paid not less than the applicable wage rate on the wagedetermination for the classification of work actually performed.

5. Apprentices and Trainees (Programs of the U.S. DOT):

Apprentices and trainees working under apprenticeship and skill training programs which have been certified by the Secretary of

Transportation as promoting EEO in connection with Federal-aid highway construction programs are not subject to the requirements of paragraph 4 of this Section IV. The straight time hourly wage rates for apprentices and trainees under such programs will be established by the particular programs. The ratio of apprentices and trainees to journeymen shall not be greater than permitted by the terms of the particular program.

6. Withholding:

The SHA shall upon its own action or upon written request of an authorized representative of the DOL withhold, or cause to be withheld, from the contractor or subcontractor under this contract or any other Federal contract with the same prime contractor, or any other Federally-assisted contract subject to Davis-Bacon prevailing wage requirements which is held by the same prime contractor, as much of the accrued payments or advances as may be considered necessary to pay laborers and mechanics, including apprentices, trainees, and helpers, employed by the contractor or any subcontractor the full amount of wages required by the contract. In the event of failure to pay any laborer or mechanic, including any apprentice, trainee, or helper, employed or working on the site of the work, all or part of the wages required by the contract, the SHA contracting officer may, after written notice to the contractor, take such action as may be necessary to cause the suspension of any further payment, advance, or guarantee of funds until such violations have ceased.

7. Overtime Requirements:

No contractor or subcontractor contracting for any part of the contract work which may require or involve the employment of laborers, mechanics, watchmen, or guards (including apprentices, trainees, and helpers described in paragraphs 4 and 5 above) shall require or permit any laborer, mechanic, watchman, or guard in any workweek in which he/she is employed on such work, to work in excess of 40 hours in such workweek unless such laborer, mechanic, watchman, or guard receives compensation at a rate not less than one-and-one-half times his/her basic rate of pay for all hours worked in excess of 40 hours in such workweek.

8. Violation:

Liability for Unpaid Wages; Liquidated Damages: In the event of any violation of the clause set forth in paragraph 7 above, the contractor and any subcontractor responsible thereof shall be liable to the affected employee for his/her unpaid wages. In addition, such contractor and subcontractor shall be liable to the United States (in the case of work done under contract for the District of Columbia or a territory, to such District or to such territory) for liquidated damages. Such liquidated damages shall be computed with respect to each individual laborer, mechanic, watchman, or guard employed in violation of the clause set forth in paragraph 7, in the sum of \$10 for each calendar day on which such employee was required or permitted to work in excess of the standard work week of 40 hours without payment of the overtime wages required by the clause set forth in paragraph 7.

9. Withholding for Unpaid Wages and Liquidated Damages:

The SHA shall upon its own action or upon written request of any authorized representative of the DOL withhold, or cause to be withheld, from any monies payable on account of work performed by the contractor or subcontractor under any such contract or any other Federal contract with the same prime contractor, or any other Federally-assisted contract subject to the Contract Work Hours and Safety Standards Act, which is held by the same prime contractor, such sums as may be determined to be necessary to satisfy any

liabilities of such contractor or subcontractor for unpaid wages and liquidated damages as provided in the clause set forth in paragraph 8 above.

V. STATEMENTS AND PAYROLLS

(Applicable to all Federal-aid construction contracts exceeding \$2,000 and to all related subcontracts, except for projects located on roadways classified as local roads or rural collectors, which are exempt.)

1. Compliance with Copeland Regulations (29 CFR 3):

The contractor shall comply with the Copeland Regulations of the Secretary of Labor which are herein incorporated by reference.

2. Payrolls and Payroll Records:

a. Payrolls and basic records relating thereto shall be maintained by the contractor and each subcontractor during the course of the work and preserved for a period of 3 years from the date of completion of the contract for all laborers, mechanics, apprentices, trainees, watchmen, helpers, and guards working at the site of the work.

b. The payroll records shall contain the name, social security number, and address of each such employee; his or her correct classification; hourly rates of wages paid (including rates of contributions or costs anticipated for bona fide fringe benefits or cash equivalent thereof the types described in Section 1(b)(2)(B) of the Davis Bacon Act); daily and weekly number of hours worked; deductions made; and actual wages paid. In addition, for Appalachian contracts, the payroll records shall contain a notation indicating whether the employee does, or does not, normally reside in the labor area as defined in Attachment A, paragraph 1. Whenever the Secretary of Labor, pursuant to Section IV, paragraph 3b, has found that the wages of any laborer or mechanic include the amount of any costs reasonably anticipated in providing benefits under a plan or program described in Section 1(b)(2)(B) of the Davis Bacon Act, the contractor and each subcontractor shall maintain records which show that the commitment to provide such benefits is enforceable, that the plan or program is financially responsible, that the plan or program has been communicated in writing to the laborers or mechanics affected, and show the cost anticipated or the actual cost incurred in providing benefits. Contractors or subcontractors employing apprentices or trainees under approved programs shall maintain written evidence of the registration of apprentices and trainees, and ratios and wage rates prescribed in the applicable programs.

c. Each contractor and subcontractor shall furnish, each week in which any contract work is performed, to the SHA resident engineer a payroll of wages paid each of its employees (including apprentices, trainees, and helpers, described in Section IV, paragraphs 4 and 5, and watchmen and guards engaged on work during the preceding weekly payroll period). The payroll submitted required to be maintained under paragraph 2b of this Section V. This information may be submitted in any form desired. Optional Form WH-347 is available for this purpose and may be purchased from the Superintendent of Documents (Federal stock number 029-005-0014-1), U.S. Government Printing Office, Washington, D.C. 20402. The prime contractor is responsible for the submission of copies of payrolls by all subcontractors.

d. Each payroll submitted shall be accompanied by a "Statement of Compliance," signed by the contractor or subcontractor or his/her agent who pays or supervises the payment of the persons employed under the contract and shall certify the following:

(1) that the payroll for the payroll period contains the information required to be maintained under paragraph 2b of this Section V and that such information is correct and complete;

(2) that such laborer or mechanic (including each helper, apprentice, and trainee) employed on the contract during the payroll period has been paid the full weekly wages earned, without rebate, either directly or indirectly, and that no deductions have been made either directly or indirectly from the full wages earned, other than permissible deductions as set forth in the Regulations, 29 CFR 3;

(3) that each laborer or mechanic has been paid not less than the applicable wage rate and fringe benefits or cash equivalent for the classification of work performed, as specified in the applicable wage determination incorporated into the contract.

e. The weekly submission of a properly executed certification set forth on the reverse side of Optional Form WH-347 shall satisfy the requirement for submission of the "Statement of Compliance" required by paragraph 2d of this Section V.

f. The falsification of any of the above certifications may subject the contractor to civil or criminal prosecution under 18 U.S.C. 1001 and 31 U.S.C. 231.

g. The contractor or subcontractor shall make the records required under paragraph 2b of this Section V available for inspection, copying, or transcription by authorized representatives of the SHA, the FHWA, or the DOL, and shall permit such representatives to interview employees during working hours on the job. If the contractor or subcontractor fails to submit the required records or to make them available, the SHA, the FHWA, the DOL, or all may, after written notice to the contractor, sponsor, applicant, or owner, take such actions as may be necessary to cause the suspension of any further payment, advance, or guarantee of funds. Furthermore, failure to submit the required records upon request or to make such records available may be grounds for debarment action pursuant to 29 CFR 5.12.

VI. RECORD OF MATERIALS, SUPPLIES, AND LABOR

1. On all Federal-aid contracts on the National Highway System, except those which provide solely for the installation of protective devices at railroad grade crossings, those which are constructed on a force account or direct labor basis, highway beautification contracts, and contracts for which the total final construction cost for roadway and bridge is less than \$1,000,000 (23 CFR 635) the contractor shall:

a. Become familiar with the list of specific materials and supplies contained in Form FHWA-47, "Statement of Materials and Labor Used by Contractor of Highway Construction Involving Federal Funds," prior to the commencement of work under this contract.

b. Maintain a record of the total cost of all materials and supplies purchased for and incorporated in the work, and also of the quantities of those specific materials and supplies listed on Form FHWA-47, and in the units shown on Form FHWA-47.

c. Furnish, upon the completion of the contract, to the SHA resident engineer on Form FHWA-47 together with the data required in paragraph 1b relative to materials and supplies, a final labor summary of all contract work indicating the total hours worked and the total amount earned.

2. At the prime contractor's option, either a single report covering all contract work or separate reports for the contractor and for each subcontract shall be submitted.

VII. SUBLETTING OR ASSIGNING THE CONTRACT

1. The contractor shall perform with its own organization contract work amounting to not less than 30 percent (or a greater percentage if specified elsewhere in the contract) of the total original contract price, excluding any specialty items designated by the State. Specialty items may be performed by subcontract and the amount of any such specialty items performed may be deducted from the total original contract price before computing the amount of work required to be performed by the contractor's own organization (23 CFR 635).

a. "Its own organization" shall be construed to include only workers employed and paid directly by the prime contractor and equipment owned or rented by the prime contractor, with or without operators. Such term does not include employees or equipment of a subcontractor, assignee, or agent of the prime contractor.

b. "Specialty Items" shall be construed to be limited to work that requires highly specialized knowledge, abilities, or equipment not ordinarily available in the type of contracting organizations qualified and expected to bid on the contract as a whole and in general are to be limited to minor components of the overall contract.

2. The contract amount upon which the requirements set forth in paragraph 1 of Section VII is computed includes the cost of material and manufactured products which are to be purchased or produced by the contractor under the contract provisions.

3. The contractor shall furnish (a) a competent superintendent or supervisor who is employed by the firm, has full authority to direct performance of the work in accordance with the contract requirements, and is in charge of all construction operations (regardless of who performs the work) and (b) such other of its own organizational resources (supervision, management, and engineering services) as the SHA contracting officer determines is necessary to assure the performance of the contract.

4. No portion of the contract shall be sublet, assigned or otherwise disposed of except with the written consent of the SHA contracting officer, or authorized representative, and such consent when given shall not be construed to relieve the contractor of any responsibility for the fulfillment of the contract. Written consent will be given only after the SHA has assured that each subcontract is evidenced in writing and that it contains all pertinent provisions and requirements of the prime contract.

VIII. SAFETY: ACCIDENT PREVENTION

1. In the performance of this contract the contractor shall comply with all applicable Federal, State, and local laws governing safety, health, and sanitation (23 CFR 635). The contractor shall provide all safeguards, safety devices and protective equipment and take any other needed actions as it determines, or as the SHA contracting officer may determine, to be reasonably necessary to protect the life and health of employees on the job and the safety of the public and to protect property in connection with the performance of the work covered by the contract.

2. It is a condition of this contract, and shall be made a condition of each subcontract, which the contractor enters into pursuant to this contract, that the contractor and any subcontractor shall not permit any employee, in performance of the contract, to work in surroundings or under conditions which are unsanitary, hazardous or dangerous to his/her health or safety, as determined under construction safety and health standards (29 CFR 1926) promulgated by the Secretary of Labor, in accordance with Section 107 of the Contract Work Hours and Safety Standards Act (40 U.S.C. 333).

3. Pursuant to 29 CFR 1926.3, it is a condition of this contract that the Secretary of Labor or authorized representative thereof, shall have right of entry to any site of contract performance to inspect or investigate the matter of compliance with the construction safety and health standards and to carry out the duties of the Secretary under Section 107 of the Contract Work Hours and Safety Standards Act (40 U.S.C. 333).

IX. FALSE STATEMENTS CONCERNING HIGHWAY PROJECTS

In order to assure high quality and durable construction in conformity with approved plans and specifications and a high degree of reliability on statements and representations made by engineers, contractors, suppliers, and workers on Federal-aid highway projects, it is essential that all persons concerned with the project perform their functions as carefully, thoroughly, and honestly as possible. Willful falsification, distortion, or misrepresentation with respect to any facts related to the project is a violation of Federal law. To prevent any misunderstanding regarding the seriousness of these and similar acts, the following notice shall be posted on each Federal-aid highway project (23 CFR 635) in one or more places where it is readily available to all persons concerned with the project:

NOTICE TO ALL PERSONNEL ENGAGED ON FEDERAL-AID HIGHWAY PROJECTS

18 U.S.C. 1020 reads as follows:

"Whoever, being an officer, agent, or employee of the United States, or of any State or Territory, or whoever, whether a person, association, firm, or corporation, knowingly makes any false statement, false representation, or false report as to the character, quality, quantity, or cost of the material used or to be used, or the quantity or quality of the work performed or to be performed, or the cost thereof in connection with the submission of plans, maps, specifications, contracts, or costs of construction on any highway or related project submitted for approval to the Secretary of Transportation; or

Whoever knowingly makes any false statement, false representation, false report or false claim with respect to the character, quality, quantity, or cost of any work performed or to be performed, or materials furnished or to be furnished, in connection with the construction of any highway or related project approved by the Secretary of Transportation; or

Whoever knowingly makes any false statement or false representation as to material fact in any statement, certificate, or report submitted pursuant to provisions of the Federal-aid Roads Act approved July 1, 1916, (39 Stat. 355), as amended and supplemented;

Shall be fined not more than \$10,000 or imprisoned not more than 5 years or both."

X. IMPLEMENTATION OF CLEAN AIR ACT AND FEDERAL WATER POLLUTION CONTROL ACT

(Applicable to all Federal-aid construction contracts and to all related subcontracts of \$100,000 or more.)

By submission of this bid or the execution of this contract, or subcontract, as appropriate, the bidder, Federal-aid construction contractor, or subcontractor, as appropriate, will be deemed to have stipulated as follows:

1. That any facility that is or will be utilized in the performance of this contract, unless such contract is exempt under the Clean Air Act, as amended (42 U.S.C. 1857 et seq., as amended by Pub.L. 91-604), and under the Federal Water Pollution Control Act, as amended (33 U.S.C. 1251 et seq., as amended by Pub.L. 92-500), Executive Order 11738, and regulations in implementation thereof (40 CFR 15) is not listed, on the date of contract award, on the U.S. Environmental Protection Agency (EPA) List of Violating Facilities pursuant to 40 CFR 15.20.

2. That the firm agrees to comply and remain in compliance with all the requirements of Section 114 of the Clean Air Act and Section 308 of the Federal Water Pollution Control Act and all regulations and guidelines listed thereunder.

3. That the firm shall promptly notify the SHA of the receipt of any communication from the Director, Office of Federal Activities, EPA, indicating that a facility that is or will be utilized for the contract is under consideration to be listed on the EPA List of Violating Facilities.

4. That the firm agrees to include or cause to be included the requirements of paragraph 1 through 4 of this Section X in every nonexempt subcontract, and further agrees to take such action as the government may direct as a means of enforcing such requirements.

**XI. CERTIFICATION REGARDING DEBARMENT,
SUSPENSION, INELIGIBILITY AND VOLUNTARY
EXCLUSION**

1. Instructions for Certification - Primary Covered Transactions:

(Applicable to all Federal-aid contracts - 49 CFR 29)

a. By signing and submitting this proposal, the prospective primary participant is providing the certification set out below.

b. The inability of a person to provide the certification set out below will not necessarily result in denial of participation in this covered transaction. The prospective participant shall submit an explanation of why it cannot provide the certification set out below. The certification or explanation will be considered in connection with the department or agency's determination whether to enter into this transaction. However, failure of the prospective primary participant to furnish a certification or an explanation shall disqualify such a person from participation in this transaction.

c. The certification in this clause is a material representation of fact upon which reliance was placed when the department or agency determined to enter into this transaction. If it is later determined that the prospective primary participant knowingly rendered an erroneous certification, in addition to other remedies available to the Federal Government, the department or agency may terminate this transaction for cause of default.

d. The prospective primary participant shall provide immediate written notice to the department or agency to whom this proposal is submitted if any time the prospective primary participant learns that its certification was erroneous when submitted or has become erroneous by reason of changed circumstances.

e. The terms "covered transaction," "debarred," "suspended," "ineligible," "lower tier covered transaction," "participant," "person," "primary covered transaction," "principal," "proposal," and "voluntarily excluded," as used in this clause, have the meanings set out in the Definitions and Coverage sections of rules implementing Executive Order 12549. You may contact the department or agency to which

this proposal is submitted for assistance in obtaining a copy of those regulations.

f. The prospective primary participant agrees by submitting this proposal that, should the proposed covered transaction be entered into, it shall not knowingly enter into any lower tier covered transaction with a person who is debarred, suspended, declared ineligible, or voluntarily excluded from participation in this covered transaction, unless authorized by the department or agency entering into this transaction.

g. The prospective primary participant further agrees by submitting this proposal that it will include the clause titled "Certification Regarding Debarment, Suspension, Ineligibility and Voluntary Exclusion-Lower Tier Covered Transaction," provided by the department or agency entering into this covered transaction, without modification, in all lower tier covered transactions and in all solicitations for lower tier covered transactions.

h. A participant in a covered transaction may rely upon a certification of a prospective participant in a lower tier covered transaction that is not debarred, suspended, ineligible, or voluntarily excluded from the covered transaction, unless it knows that the certification is erroneous. A participant may decide the method and frequency by which it determines the eligibility of its principals. Each participant may, but is not required to, check the nonprocurement portion of the "Lists of Parties Excluded From Federal Procurement or Nonprocurement Programs" (Nonprocurement List) which is compiled by the General Services Administration.

i. Nothing contained in the foregoing shall be construed to require establishment of a system of records in order to render in good faith the certification required by this clause. The knowledge and information of participant is not required to exceed that which is normally possessed by a prudent person in the ordinary course of business dealings.

j. Except for transactions authorized under paragraph f of these instructions, if a participant in a covered transaction knowingly enters into a lower tier covered transaction with a person who is suspended, debarred, ineligible, or voluntarily excluded from participation in this transaction, in addition to other remedies available to the Federal Government, the department or agency may terminate this transaction for cause or default.

* * * * *

Certification Regarding Debarment, Suspension, Ineligibility and Voluntary Exclusion--Primary Covered Transactions

1. The prospective primary participant certifies to the best of its knowledge and belief, that it and its principals:

a. Are not presently debarred, suspended, proposed for debarment, declared ineligible, or voluntarily excluded from covered transactions by any Federal department or agency;

b. Have not within a 3-year period preceding this proposal been convicted of or had a civil judgement rendered against them for commission of fraud or a criminal offense in connection with obtaining, attempting to obtain, or performing a public (Federal, State or local) transaction or contract under a public transaction; violation of Federal or State antitrust statutes or commission of embezzlement, theft, forgery, bribery, falsification or destruction of records, making false statements, or receiving stolen property;

c. Are not presently indicted for or otherwise criminally or civilly charged by a governmental entity (Federal, State or local) with commission of any of the offenses enumerated in paragraph 1b of this certification; and

d. Have not within a 3-year period preceding this application/proposal had one or more public transactions (Federal, State or local) terminated for cause or default.

2. Where the prospective primary participant is unable to certify to any of the statements in this certification, such prospective participant shall attach an explanation to this proposal.

2. Instructions for Certification - Lower Tier Covered Transactions:

(Applicable to all subcontracts, purchase orders and other lower tier transactions of \$25,000 or more - 49 CFR 29)

a. By signing and submitting this proposal, the prospective lower tier is providing the certification set out below.

b. The certification in this clause is a material representation of fact upon which reliance was placed when this transaction was entered into. If it is later determined that the prospective lower tier participant knowingly rendered an erroneous certification, in addition to other remedies available to the Federal Government, the department, or agency with which this transaction originated may pursue available remedies, including suspension and/or debarment.

c. The prospective lower tier participant shall provide immediate written notice to the person to which this proposal is submitted if at any time the prospective lower tier participant learns that its certification was erroneous by reason of changed circumstances.

d. The terms "covered transaction," "debarred," "suspended," "ineligible," "primary covered transaction," "participant," "person," "principal," "proposal," and "voluntarily excluded," as used in this clause, have the meanings set out in the Definitions and Coverage sections of rules implementing Executive Order 12549. You may contact the person to which this proposal is submitted for assistance in obtaining a copy of those regulations.

e. The prospective lower tier participant agrees by submitting this proposal that, should the proposed covered transaction be entered into, it shall not knowingly enter into any lower tier covered transaction with a person who is debarred, suspended, declared ineligible, or voluntarily excluded from participation in this covered transaction, unless authorized by the department or agency with which this transaction originated.

f. The prospective lower tier participant further agrees by submitting this proposal that it will include this clause titled "Certification Regarding Debarment, Suspension, Ineligibility and Voluntary Exclusion-Lower Tier Covered Transaction," without modification, in all lower tier covered transactions and in all solicitations for lower tier covered transactions.

g. A participant in a covered transaction may rely upon a certification of a prospective participant in a lower tier covered transaction that is not debarred, suspended, ineligible, or voluntarily excluded from the covered transaction, unless it knows that the certification is erroneous. A participant may decide the method and frequency by which it determines the eligibility of its principals. Each participant may, but is not required to, check the Nonprocurement List.

h. Nothing contained in the foregoing shall be construed to require establishment of a system of records in order to render in good faith the certification required by this clause. The knowledge and information of participant is not required to exceed that which is normally possessed by a prudent person in the ordinary course of business dealings.

i. Except for transactions authorized under paragraph e of these instructions, if a participant in a covered transaction knowingly enters into a lower tier covered transaction with a person who is suspended, debarred, ineligible, or voluntarily excluded from participation in this transaction, in addition to other remedies available to the Federal Government, the department or agency with which this transaction originated may pursue available remedies, including suspension and/or debarment.

Certification Regarding Debarment, Suspension, Ineligibility and Voluntary Exclusion--Lower Tier Covered Transactions:

1. The prospective lower tier participant certifies, by submission of this proposal, that neither it nor its principals is presently debarred, suspended, proposed for debarment, declared ineligible, or voluntarily excluded from participation in this transaction by any Federal department or agency.

2. Where the prospective lower tier participant is unable to certify to any of the statements in this certification, such prospective participant shall attach an explanation to this proposal.

XII. CERTIFICATION REGARDING USE OF CONTRACT FUNDS FOR LOBBYING

(Applicable to all Federal-aid construction contracts and to all related subcontracts which exceed \$100,000 - 49 CFR 20)

1. The prospective participant certifies, by signing and submitting this bid or proposal, to the best of his or her knowledge and belief, that:

a. No Federal appropriated funds have been paid or will be paid, by or on behalf of the undersigned, to any person for influencing or attempting to influence an officer or employee of any Federal agency, a Member of Congress, an officer or employee of Congress, or an employee of a Member of Congress in connection with the awarding of any Federal contract, the making of any Federal grant, the making of any Federal loan, the entering into of any cooperative agreement, and the extension, continuation, renewal, amendment, or modification of any Federal contract, grant, loan, or cooperative agreement.

b. If any funds other than Federal appropriated funds have been paid or will be paid to any person for influencing or attempting to influence an officer or employee of any Federal agency, a Member of Congress, an officer or employee of Congress, or an employee of a Member of Congress in connection with this Federal contract, grant, loan, or cooperative agreement, the undersigned shall complete and

submit Standard Form-LLL, "Disclosure Form to Report Lobbying," in accordance with its instructions.

2. This certification is a material representation of fact upon which reliance was placed when this transaction was made or entered into. Submission of this certification is a prerequisite for making or entering into this transaction imposed by 31 U.S.C. 1352. Any person who fails to file the required certification shall be subject to a civil penalty of not less than \$10,000 and not more than \$100,000 for each such failure.

3. The prospective participant also agrees by submitting his or her bid or proposal that he or she shall require that the language of this certification be included in all lower tier subcontracts, which exceed \$100,000 and that all such recipients shall certify and disclose accordingly.

**KENTUCKY TRANSPORTATION CABINET
DEPARTMENT OF HIGHWAYS**

**EMPLOYMENT REQUIREMENTS
RELATING TO
NONDISCRIMINATION OF EMPLOYEES
(APPLICABLE TO FEDERAL-AID SYSTEM CONTRACTS)**

**AN ACT OF THE KENTUCKY GENERAL ASSEMBLY
TO PREVENT DISCRIMINATION IN EMPLOYMENT**

**KRS CHAPTER 344
EFFECTIVE JUNE 16, 1972**

The contract on this project, in accordance with KRS Chapter 344, provides that during the performance of this contract, the contractor agrees as follows:

1. The contractor shall not fail or refuse to hire, or shall not discharge any individual, or otherwise discriminate against an individual with respect to his compensation, terms, conditions, or privileges of employment, because of such individual's race, color, religion, national origin, sex, disability or age (between forty and seventy); or limit, segregate, or classify his employees in any way which would deprive or tend to deprive an individual of employment opportunities or otherwise adversely affect his status as an employee, because of such individual's race, color, religion, national origin, sex, disability or age (between forty and seventy). The contractor agrees to post in conspicuous places, available to employees and applicants for employment, notices to be provided setting forth the provisions of this nondiscrimination clause.

2. The contractor shall not print or publish or cause to be printed or published a notice or advertisement relating to employment by such an employer or membership in or any classification or referral for employment by the employment agency, indicating any preference, limitation, specification, or discrimination, based on race, color, religion, national origin, sex, disability or age (between forty and seventy), except that such notice or advertisement may indicate a preference, limitation, or specification based on religion, or national origin when religion, or national origin is a bona fide occupational qualification for employment.

3. If the contractor is in control of apprenticeship or other training or retraining, including on-the-job training programs, he shall not discriminate against an individual because of his race, color, religion, national origin, sex, disability or age (between forty and seventy), in admission to, or employment in any program established to

provide apprenticeship or other training.

4. The contractor will send to each labor union or representative of workers with which he has a collective bargaining agreement or other contract or understanding, a notice to be provided advising the said labor union or workers' representative of the contractor's commitments under this section, and shall post copies of the notice in conspicuous places available to employees and applicants for employment. The contractor will take such action with respect to any subcontract or purchase order as the administering agency may direct as a means of enforcing such provisions, including sanctions for non-compliance.

REVISED: 12-3-92

EXECUTIVE BRANCH CODE OF ETHICS

In the 1992 regular legislative session, the General Assembly passed and Governor Brereton Jones signed Senate Bill 63 (codified as KRS 11A), the Executive Branch Code of Ethics, which states, in part:

KRS 11A.040 (6) provides:

No present or former public servant shall, within six (6) months of following termination of his office or employment, accept employment, compensation or other economic benefit from any person or business that contracts or does business with the state in matters in which he was directly involved during his tenure. This provision shall not prohibit an individual from returning to the same business, firm, occupation, or profession in which he was involved prior to taking office or beginning his term of employment, provided that, for a period of six (6) months, he personally refrains from working on any matter in which he was directly involved in state government. This subsection shall not prohibit the performance of ministerial functions, including, but not limited to, filing tax returns, filing applications for permits or licenses, or filing incorporation papers.

KRS 11A.040 (8) states:

A former public servant shall not represent a person in a matter before a state agency in which the former public servant was directly involved, for a period of one (1) year after the latter of:

- a) The date of leaving office or termination of employment; or
- b) The date the term of office expires to which the public servant was elected.

This law is intended to promote public confidence in the integrity of state government and to declare as public policy the idea that state employees should view their work as a public trust and not as a way to obtain private benefits.

If you have worked for the executive branch of state government within the past six months, you may be subject to the law's prohibitions. The law's applicability may be different if you hold elected office or are contemplating representation of another before a state agency.

Also, if you are affiliated with a firm which does business with the state and which employs former state executive-branch employees, you should be aware that the law may apply to them.

In case of doubt, the law permits you to request an advisory opinion from the Executive Branch Ethics Commission, Room 136, Capitol Building, 700 Capitol Avenue, Frankfort, Kentucky 40601; telephone (502) 564-7954.

**TRANSPORTATION CABINET
DIVISION OF CONSTRUCTION PROCUREMENT
COMPLIANCE SECTION
PROJECT WAGE RATES**

HIGHWAY BASIC HOURLY RATES	FRINGE BENEFIT PAYMENTS COMBINED
---	---

CRAFTS

Boilermakers	24.65.....	12.94
Bricklayers:	20.35.....	7.80
Stone Mason	18.95.....	7.80
Carpenters:	20.10.....	8.30
Cement Masons:.....	18.70.....	7.80
Electricians:	*22.60.....	6.97

*When workmen are required to work from bosum chairs, trusses, stacks, tanks, scaffolds, catwalks, radio and T. V. towers, structural steel (open, unprotected, unfloored raw steel), and bridges or similar hazardous locations where workmen are subject to a direct fall, except where using JLG's and bucket trucks up to 75 feet: Add 25% to workman's base rate for 50 to 75 feet, and add 50% to workman's base rate for over 75 feet.

Ironworkers, Reinforcing:.....	20.00.....	8.30
Ironworkers, Structural:	20.20.....	8.30
Painters		
All Excluding Bridges	19.92.....	9.57
Bridges	23.92.....	10.07
Piledrivers:	19.75.....	8.30
Plumbers	22.52.....	7.80
Sheet Metal Worker	20.40.....	7.80

Welders - Receive rate for craft in which welding is incidental.

LABORERS:

General laborer, flagperson, steam jenny.	BASE RATE	18.15
	FRINGE BENEFITS	8.30
Batch truck dumper, deck hand or scow man, hand blade operator.	BASE RATE	18.40
	FRINGE BENEFITS	8.30
Power driven tool operator of the following: wagon drill, chain saw, sand blaster, concrete chipper, pavement breaker, vibrator, power wheelbarrow and power buggy, sewer pipe layer, bottom men, dry cement handler, concrete rubber, mason tender.	BASE RATE	18.50
	FRINGE BENEFITS	8.30

**TRANSPORTATION CABINET
DIVISION OF CONSTRUCTION PROCUREMENT
COMPLIANCE SECTION
PROJECT WAGE RATES**

LABORERS: (continue)

Asphalt lute and rakerman, side rail setter.	BASE RATE18.55 FRINGE BENEFITS8.30
Gunnite nozzle man, gunnite operator.	BASE RATE18.65 FRINGE BENEFITS8.30
Tunnel laborer (free air).	BASE RATE18.70 FRINGE BENEFITS 8.30
Tunnel mucker (free air).	BASE RATE18.75 FRINGE BENEFITS8.30
Tunnel miner, blaster and driller (free air).	BASE RATE19.10 FRINGE BENEFITS8.30
Caisson worker.	BASE RATE19.65 FRINGE BENEFITS8.30
Powderman.	BASE RATE19.75 FRINGE BENEFITS8.30
Drill operator of percussion type drills which are both powered and propelled by an independent air supply.	BASE RATE20.95 FRINGE BENEFITS8.30

TRUCK DRIVERS:

Truckhelper and warehouseman.	BASE RATE18.40 FRINGE BENEFITS8.30
Driver, winch truck and A-Frame when used in transporting materials.	BASE RATE18.50 FRINGE BENEFITS8.30

**TRANSPORTATION CABINET
DIVISION OF CONSTRUCTION PROCUREMENT
COMPLIANCE SECTION
PROJECT WAGE RATES**

Driver, (semi-trailer or pole trailer), driver (dump truck, tandem axle), driver of distributor.	BASE RATE18.60 FRINGE BENEFITS8.30
Driver on mixer trucks (all types).	BASE RATE18.65 FRINGE BENEFITS8.30
Truck mechanic	BASE RATE18.70 FRINGE BENEFITS8.30
Driver (3 tons and under), tire changer and truck mechanic helper.	BASE RATE18.73 FRINGE BENEFITS8.30
Driver on pavement breakers.	BASE RATE18.75 FRINGE BENEFITS8.30
Driver (over 3 tons), driver (truck mounted rotary drill).	BASE RATE18.94 FRINGE BENEFITS8.30
Driver, Euclid and other heavy earth moving equipment, Low boy	BASE RATE19.51 FRINGE BENEFITS8.30
Greaser on greasing facilities.	BASE RATE19.60 FRINGE BENEFITS8.30

OPERATING ENGINEERS:

Group A

Auto patrol, batcher plant, bituminous paver, cable-way, clamshell, concrete mixer (21 cu. ft. or over), concrete pump, crane, crusher plant, derrick, derrick boat, ditching and trenching machine, dragline, dredge engineer, elevator (regardless of ownership when used for hoisting any building material), elevating grader and all types of loaders, hoe-type machine, hoisting engine, locomotive, LeTourneau or carry-all scoop, bulldozer, mechanic, orangepeel bucket, piledriver, power blade, roller (bituminous), roller (earth), roller (rock), scarifier, shovel, tractor shovel, truck crane, well points, winch truck, push dozer, grout pump, high lift, fork lift (regardless of lift height), all types of boom cats, multiple operator, core drill, tow or push boat, A-Frame winch truck, concrete paver, gradeall, hoist, hyster, material pump, pumpcrete, ross carrier, sheep foot, sideboom, throttle-valve man, rotary drill, power generator, mucking machine, rock spreader attached to equipment, scoopmobile, KeCal loader, tower cranes (French, German and other types), hydrocrane,

**TRANSPORTATION CABINET
DIVISION OF CONSTRUCTION PROCUREMENT
COMPLIANCE SECTION
PROJECT WAGE RATES**

OPERATING ENGINEERS: (continued)

tugger, backfiller, gurries, self-propelled compactor, self –contained hydraulic percussion drill.

BASE RATE21.50
FRINGE BENEFITS8.30

Group B

All air compressors (200 cu. ft. per min. or greater capacity), bituminous mixer, concrete mixer (under 21 cu. ft.), welding machine, form grader, tractor (50 H.P. and over), bull float, finish machine, outboard motor boat, brakeman, whirly oiler, tractair and road widening trencher, articulating trucks, mechanic helper.

BASE RATE19.25
FRINGE BENEFITS8.30

Group B2

Greaser on grease facilities servicing heavy equipment

BASE RATE19.60
FRINGE BENEFITS8.30

Group C

Bituminous distributor, cement gun, conveyor, mud jack, paving joint machine, pump, tamping machine, tractors (under 50 H.P.), vibrator, oiler, air compressors (under 200 cu. ft. per min. capacity), concrete saw, burlap and curing machine, hydro seeder, power form handling equipment, deckhand oiler, hydraulic post driver.

BASE RATE19.01
FRINGE BENEFITS8.30

Fringe benefit amounts are applicable for all hours worked except when otherwise noted.

No laborer, workman or mechanic shall be paid at a rate less than that of the General Laborer except those classified as bona fide apprentices.

These rates are listed pursuant to the Kentucky Determination No. CR-06-II-HWY dated July 10, 2007 and/or Federal Decision No. KY 20070026 dated February 9, 2007.

NOTE: Both Kentucky Determination No. CR-05-II-HWY and Federal Decision No. KY20070026 dated February 9, 2007 apply to this project. This set of wage rates contains a combination of these two wage decisions.

**TRANSPORTATION CABINET
DIVISION OF CONSTRUCTION PROCUREMENT
COMPLIANCE SECTION
PROJECT WAGE RATES**

Apprentices or trainees shall be permitted to work as such subject to Administrative Regulations adopted by the Commissioner of Workplace Standards. Copies of these regulations will be furnished upon request from any interested person.

Before using apprentices on the job the contractor shall present to the Contracting Officer written evidence of registration of such employees in a program of a State apprenticeship and training agency approved and recognized by the U. S. Bureau of Apprenticeship and Training. In the absence of such a State agency, the contractor shall submit evidence of approval and registration by the U. S. Bureau of Apprenticeship and Training.

The contractor shall submit to the Contracting Officer, written evidence of the established apprenticeship-journeyman ratios and wage rates in the project area, which will be the basis for establishing such ratios and rates for the project under the applicable contract provisions.

TO: EMPLOYERS/EMPLOYEES

PREVAILING WAGE SCHEDULE:

The wages indicated on this wage schedule are the least permitted to be paid for the occupations indicated. When an employee works in more than one classification, the employer must record the number of hours worked in each classification at the prescribed hourly base rate.

OVERTIME:

Overtime is to be paid after an employee works eight (8) hours a day or forty (40) hours a week, whichever gives the employee the greater wages. At least time and one-half the base rate is required for all overtime. A laborer, workman or mechanic and an employer may enter into a written agreement or a collective bargaining agreement to work more than eight (8) hours a calendar day but not more than ten (10) hours a calendar day for the straight time hourly rate. Wage violations or questions should be directed to the designated Engineer or to the undersigned.

Steve Waddle, Director
Division of Construction Procurement
Frankfort, Kentucky 40622

**NOTICE OF REQUIREMENT FOR AFFIRMATIVE ACTION
TO ENSURE EQUAL EMPLOYMENT OPPORTUNITY
(Executive Order 11246)**

1. The Offeror's or Bidder's attention is called to the "Equal Opportunity Clause" and the "Standard Federal Equal Employment Specifications" set forth herein.
2. The goals and timetables for minority and female participation, expressed in percentage terms for the Contractor's aggregate work force in each trade on all construction work in the covered area, are as follows:

GOALS FOR MINORITY PARTICIPATION IN EACH TRADE	GOALS FOR FEMALE PARTICIPATION IN EACH TRADE
7.0%	6.9%

These goals are applicable to all the Contractor's construction work (whether or not it is Federal or federally-assisted) performed in the covered area. If the contractor performs construction work in a geographical area located outside of the covered area, it shall apply the goals established for such geographical area where the work is actually performed. With regard to this second area, the contractor also is subject to the goals for both its federally involved and non-federally involved construction.

The Contractor's compliance with the Executive Order and the regulations in CFR Part 60-4 shall be based on its implementation of the Equal Opportunity Clause, specific affirmative action obligations required by the specifications set forth in 41 CFR 60-4, 3(a), and its efforts to meet the goals. The hours of minority and female employment and training must be substantially uniform throughout the length of the contract, and in each trade, and the contractor shall make a good faith effort to employ minorities and women evenly on each of its projects. The transfer of minority or female employees or trainees from Contractor to Contractor or from project to project for the sole purpose of meeting the Contractor's goals shall be a violation of the contract, the Executive Order and the regulations in 41 CFR Part 60-4. Compliance with the goals will be measured against the total work hours performed.

3. The Contractor shall provide written notification to the Director of the Office of Federal Contract Compliance Programs within ten (10) working days of award of any construction subcontract in excess of \$10,000.00 at any tier for construction work under the contract resulting from this solicitation. The notification shall list the name, address and telephone number of the subcontractor; employer identification number of the subcontractor; estimated dollar amount of the subcontract; estimated starting and completion dates of the subcontract; and the geographical area in which the subcontract is to be performed. The notification shall be mailed to:

**Evelyn Teague, Regional Director
Office of Federal Contract Compliance Programs
61 Forsyth Street, SW, Suite 7B75
Atlanta, Georgia 30303-8609**

4. As used in this Notice, and in the contract resulting from this solicitation, the "**covered area**" is Jackson County.

PART IV

INSURANCE

INSURANCE

The Contractor shall carry the following insurance in addition to the insurance required by law:

1. Contractor's Public Liability Insurance not less than \$100,000.00 for damages arising out of bodily injuries to or death to one person. Not less than \$300,000.00 for damages arising out of bodily injuries to or death to two or more persons.
2. Contractor's Property Damages Liability Insurance. Not less than \$100,000.00 for all damages arising out of injury or destruction of property in any one accident. Not less than \$300,000.00 for all damages during the policy period.
3. Contractor's Protective Public Liability and Property Damage Insurance. The contractor shall furnish evidence with respect to operations performed for him by subcontractors that he carries in his own behalf for the above stipulated amounts.
4. The insurance required above must be evidenced by a Certificate of Insurance and this Certificate of Insurance must contain one of the following statements:
 - a. "policy contains no deductible clauses."
 - b. "policy contains _____ (amount) deductible property damage clause but company will pay claim and collect the deductible from the insured."
5. WORKMEN'S COMPENSATION INSURANCE. The contractor shall furnish evidence of coverage of all his employees or give evidence of self-insurance by submitting a copy of a certificate issued by the Workmen's Compensation Board.

PART V

STATEMENT OF INCOMPLETE WORK

STATEMENT OF INCOMPLETED WORK

All active prime contracts must be reported. This includes prime contracts with public and private owners and joint-ventured contracts. The names of the joint venturers must be shown when reporting these projects. A machine or typed listing reporting the status of each contract is acceptable when attached to this report; however, the total amounts on the itemized listing must be reported in the space provided below:

CONTRACT WITH	PROJECT IDENTIFICATION	PRIME CONTRACT AMOUNT	EARNINGS THROUGH LAST APPROVED ESTIMATE	TOTAL AMOUNT OF WORK REMAINING
TOTAL (Attach Summary if not itemized above)		\$	\$	\$

PART VI

BID ITEMS

TRANSPORTATION CABINET

Department of Highways

FRANKFORT, KY 40622

Sheet No: 1

Contract ID: 07-1173

JACKSON COUNTY

BRO 421-2 (040)

Letting: 11/16/07

THE BIDDER MUST MAKE THE EXTENSIONS AND ADDITIONS
SHOWING TOTAL AMOUNT BID USING FIGURES ONLY

Item No.	Code No.	Item	Approximate Quantity	Unit	Unit Price Dollars	Amount Dollars
		ROADWAY			.	.
0010	00003	CRUSHED STONE BASE	2,154.00	TON	.	.
0020	00020	TRAFFIC BOUND BASE	156.00	TON	.	.
0030	00078	CRUSHED AGGREGATE SIZE NO 2	1.00	TON	.	.
0040	00100	ASPHALT SEAL AGGREGATE	25.00	TON	.	.
0050	00214	CL3 ASPH BASE 1.00D PG64-22	1,627.00	TON	.	.
0060	00291	EMULSIFIED ASPHALT RS-2	3.00	TON	.	.
0070	00440	ENTRANCE PIPE-15 INCH	20.00	LF	.	.
0080	00443	ENTRANCE PIPE-24 INCH	34.00	LF	.	.
0090	00522	STORM SEWER PIPE-18 INCH	186.00	LF	.	.
0100	00528	STORM SEWER PIPE-36 INCH	192.00	LF	.	.
0110	01000	PERFORATED PIPE-4 INCH	38.00	LF	.	.
0120	01010	NON-PERFORATED PIPE-4 INCH	8.00	LF	.	.
0130	01028	PERF PIPE HEADWALL TY 3-4 INCH	1.00	EACH	.	.
0140	01451	S & F BOX INLET-OUTLET-24 INCH	1.00	EACH	.	.
0150	01538	DROP BOX INLET TYPE 7	1.00	EACH	.	.
0160	01544	DROP BOX INLET TYPE 11	1.00	EACH	.	.
0170	01891	ISLAND HEADER CURB TYPE 2	50.00	LF	.	.
0180	02014	BARRICADE-TYPE III	2.00	EACH	.	.
0190	02159	TEMPORARY DITCH	1,050.00	LF	.	.
0200	02200	ROADWAY EXCAVATION	16,516.00	CUYD	.	.
0210	02242	WATER	300.00	MGAL	.	.
0220	02351	GUARDRAIL-STEEL W BEAM-S FACE	512.50	LF	.	.
0230	02360	GUARDRAIL TERMINAL SECTION NO 1	3.00	EACH	.	.
0240	02363	GUARDRAIL CONNECTOR TO BRIDGE END TY A	4.00	EACH	.	.
0250	02381	REMOVE GUARDRAIL	290.00	LF	.	.
0260	02391	GUARDRAIL END TREATMENT TYPE 4A	1.00	EACH	.	.

TRANSPORTATION CABINET

Department of Highways

FRANKFORT, KY 40622

Sheet No: 2

Contract ID: 07-1173

JACKSON COUNTY

BRO 421-2 (040)

Letting: 11/16/07

THE BIDDER MUST MAKE THE EXTENSIONS AND ADDITIONS
SHOWING TOTAL AMOUNT BID USING FIGURES ONLY

Item No.	Code No.	Item	Approximate Quantity	Unit	Unit Price Dollars	Amount Dollars
0270	02429	RIGHT-OF-WAY MONUMENT TYPE 1	7.00	EACH	.	.
0280	02432	WITNESS POST	7.00	EACH	.	.
0290	02484	CHANNEL LINING CLASS III	594.00	TON	.	.
0300	02545	CLEARING AND GRUBBING 2.6 ACRES	1.00	LS	.	.
0310	02562	SIGNS	100.00	SQFT	.	.
0320	02599	FABRIC-GEOTEXTILE TYPE IV	12,230.00	SQYD	.	.
0330	02650	MAINTAIN & CONTROL TRAFFIC	1.00	LS	.	.
0340	02676	MOBILIZATION FOR MILL & TEXT	1.00	LS	.	.
0350	02677	ASPH PAVE MILLING & TEXTURING	40.00	TON	.	.
0360	02690	SAFELOADING	5.00	CUYD	.	.
0370	02701	TEMPORARY SILT FENCE	1,050.00	LF	.	.
0380	02703	SILT TRAP TYPE A	6.00	EACH	.	.
0390	02704	SILT TRAP TYPE B	6.00	EACH	.	.
0400	02706	CLEAN SILT TRAP TYPE A	18.00	EACH	.	.
0410	02707	CLEAN SILT TRAP TYPE B	18.00	EACH	.	.
0420	02709	CLEAN TEMPORARY SILT FENCE	3,150.00	LF	.	.
0430	02726	STAKING	1.00	LS	.	.
0440	02731	REMOVE STRUCTURE	1.00	LS	.	.
0450	05950	EROSION CONTROL BLANKET	220.00	SQYD	.	.
0460	05952	TEMPORARY MULCH	12,450.00	SQYD	.	.
0470	05953	TEMP SEEDING AND PROTECTION	6,600.00	SQYD	.	.
0480	05966	TOPDRESSING FERTILIZER	0.25	TON	.	.
0490	05985	SEEDING AND PROTECTION	7,775.00	SQYD	.	.
0500	05989	SPECIAL SEEDING CROWN VETCH	2,960.00	SQYD	.	.
0510	06514	PAVE STRIPING-PERM PAINT-4 IN	4,000.00	LF	.	.
0520	08100	CONCRETE-CLASS A	5.65	CUYD	.	.

TRANSPORTATION CABINET

Department of Highways

FRANKFORT, KY 40622

Sheet No: 3

Contract ID: 07-1173

JACKSON COUNTY

BRO 421-2 (040)

Letting: 11/16/07

THE BIDDER MUST MAKE THE EXTENSIONS AND ADDITIONS
SHOWING TOTAL AMOUNT BID USING FIGURES ONLY

Item No.	Code No.	Item	Approximate Quantity	Unit	Unit Price Dollars	Amount Dollars
0530	08150	STEEL REINFORCEMENT	372.00	LB	.	.
0540	10000NS	LOT PAY ADJUSTMENT	3,816.00	DOLL	1.0000	3,816.00
0550	10020NS	FUEL ADJUSTMENT	1,239.00	DOLL	1.0000	1,239.00
0560	20194ED	REMOVE & RESET TRAFFIC SIGN	1.00	EACH	.	.
0570	20496NS843	SILT TRAP TYPE C	3.00	EACH	.	.
0580	20497NS843	CLEAN SILT TRAP TYPE C	9.00	EACH	.	.
0590	20588NC	INSTALL PROJECT IDENTIFICATION SIGNS	2.00	EACH	.	.
0600	21727ES403	CL3 ASPH SURF 0.38B PG64-22	281.00	TON	.	.
		BRIDGE			.	.
0610	02998	MASONRY COATING	336.40	SQYD	.	.
0620	03299	ARMORED EDGE FOR CONCRETE	125.80	LF	.	.
0630	08001	STRUCTURE EXCAVATION-COMMON	484.00	CUYD	.	.
0640	08002	STRUCTURE EXCAV-SOLID ROCK	129.00	CUYD	.	.
0650	08100	CONCRETE-CLASS A	291.60	CUYD	.	.
0660	08104	CONCRETE-CLASS AA	75.40	CUYD	.	.
0670	08150	STEEL REINFORCEMENT	27,293.00	LB	.	.
0680	08151	STEEL REINFORCEMENT-EPOXY COATED	16,383.00	LB	.	.
0690	08160	STRUCTURAL STEEL	1.00	LS	.	.
		25081 LBS				
0700	08170	SHEAR CONNECTORS	1.00	LS	.	.
		945				
0710	21532ED	RAIL SYSTEM TYPE III	89.90	LF	.	.
		DEMobilIZATION			.	.
0720	02569	DEMobilIZATION	1.00	LS	.	.
TOTAL BID					\$.

PART VII
CERTIFICATIONS

PROVISIONS RELATIVE TO SENATE BILL 258 (1994)

During the performance of the contract, the contractor agrees to comply with applicable provisions of:

1. KRS 136 Corporation and Utility Taxes
2. KRS 139 Sale and Use Taxes
3. KRS 141 Income Taxes
4. KRS 337 Wages and Hours
5. KRS 338 Occupational Safety and Health of Employees
6. KRS 341 Unemployment Compensation
7. KRS 342 Workers Compensation

Any final determinations of a violation by the contractor within the previous five (5) years pursuant to the applicable statutes above are revealed as follows:

NON-COLLUSION CERTIFICATION

COMMONWEALTH OF KENTUCKY

COUNTY _____

PROJECT NO. _____

I, _____, _____, under
(Name of officer signing certification) (Title)

penalty of perjury under the laws of the United States, do hereby certify that

(Insert name of Individual, Joint Venture, Co-partnership, or Corporation submitting bid)

its agent, officers or employees have not directly or indirectly entered into any agreement, participated in any collusion, or otherwise taken action in restraint of free competitive bidding in connection with this proposal.

(Signature)

(Title)

REVISED: 8-23-89

NON-COLLUSION CERTIFICATION

COMMONWEALTH OF KENTUCKY

COUNTY _____

PROJECT NO. _____

I, _____, _____, under
(Name of officer signing certification) (Title)

penalty of perjury under the laws of the United States, do hereby certify that

(Insert name of Individual, Joint Venture, Co-partnership, or Corporation submitting bid)

its agent, officers or employees have not directly or indirectly entered into any agreement, participated in any collusion, or otherwise taken action in restraint of free competitive bidding in connection with this proposal.

(Signature)

(Title)

REVISED: 8-23-89

CERTIFICATION OF ORGANIZATION(S)

COMMONWEALTH OF KENTUCKY

COUNTY _____

PROJECT NO. _____

I, _____, _____, under penalty
(President or Authorized Official of Bidder) (Title)

perjury under the laws of the United States, do hereby certify that, except as noted below,

(Insert name of individual, Joint Venture, Co-Partnership or Corporation Submitting Bid)

any person associated therewith in the capacity of (owner, partner, director, officer, principal investigator, project director, manager, auditor, or any position involving the Administration of Federal Funds): is not currently under suspension, debarment, voluntary exclusion, or determination of ineligibility by any federal agency; has not been suspended, debarred, voluntarily excluded or determined ineligible by any federal agency within the past 3 years; does not have a proposed debarment pending; and has not been indicted, convicted, or had a civil judgement rendered against (it) by a court of competent jurisdiction in any matter involving fraud or official misconduct within the past 3 years.

Please list below any exceptions to the foregoing, to whom it applies, initiating agency and dates of action.

Exceptions: _____

(Signature)

(Title)

CERTIFICATION OF PERFORMANCE

Certification with regard to the Performance of Previous Contracts or Subcontracts subject to the Equal Opportunity Clause and the filing of Required Reports.

The bidder _____, proposed subcontractor _____, hereby certifies that he has _____, has not _____, participated in a previous contract or subcontract subject to the equal opportunity clause, as required by Executive Orders 10925, 11114, or 11246, and that he has _____, has not _____, filed with the Joint Reporting Committee, the Director of the Office of Federal Contract Compliance, a Federal Government contracting or administering agency, or the Former President's Committee on Equal Employment Opportunity, all reports due under the applicable filing requirements.

(Company)

By: _____

(Title)

Date: _____

NOTE: The above certification is required by the Equal Employment Opportunity Regulations of the Secretary of Labor (41 CFR 60-1.7(b) (1)), and must be submitted by bidders and proposed subcontractors only in connection with the contracts and subcontracts which are subject to the equal opportunity clause. Contracts and subcontracts which are exempt from the equal opportunity clause are set forth in 41 CFR 60-1.5. (Generally only contracts or subcontracts of \$10,000 or under are exempt.)

Currently, Standard Form 100 (EEO-1) is the only report required by the Executive Orders of their implementing regulation.

Proposed prime contractors and subcontractors who have participated in a previous contract or subcontract subject to the Executive Orders and have not filed reports should note that 41 CFR 60-1.7(b) (1) prevents the award of contracts and subcontracts unless such contractor submits a report covering the delinquent period or such other period specified by the Federal Highway Administration or by the Director, Office of Federal Contract Compliance, U.S. Department of Labor.

CERTIFICATION FOR FEDERAL-AID CONTRACT

The prospective participant certifies, by signing and submitting this bid or proposal, to the best of his or her knowledge and belief, that:

1. No Federal appropriated funds have been paid or will be paid, by or on behalf of the undersigned, to any person for influencing or attempting to influence an officer or employee of any Federal agency, a Member of Congress, an officer or employee of Congress, or an employee of a Member of Congress in connection with the awarding of any Federal contract, the making of any Federal grant, the making of any Federal loan, the entering into of any cooperative agreement, and the extension, continuation, renewal, amendment, or modification of any Federal contract, grant, loan, or cooperative agent.
2. If any funds other than Federal appropriated funds have been paid or will be paid to any person for influencing or attempting to influence an officer or employee of any Federal agency, a Member of Congress, an officer or employee of Congress, or an employee of a Member of Congress in connection with this Federal contract, grant, loan, or cooperative agreement, the undersigned shall complete and submit Standard Form-LLL, "Disclosure Form to Report Lobbying," in accordance with its instructions.

This certification is a material representation of fact which reliance was placed when this transaction was made or entered into. Submission of this certification is a prerequisite for making or entering into this transaction imposed by Section 1352, Title 31, U.S. Code. Any person who fails to file the required certification shall be subject to a civil penalty of not less than \$10,000 and not more than \$100,000 for each such failure.

The prospective participant also agrees by submitting his or her bid or proposal that he or she shall require that the language of this certification be included in all lower tier subcontracts, which exceed \$100,000 and that all such subrecipients shall certify and disclose accordingly.

(Insert name of Individual, Joint Venture, Co-partnership, or Corporation submitting bid)

(Signature)

(Title)

CERTIFICATION OF BID PROPOSAL / DBE

We (I) propose to furnish all labor, equipment and materials necessary to construct and/or improve the subject project in accordance with the plans, the Transportation Cabinet's Standard Specifications for Road and Bridge Construction, current edition, special provisions, notes applicable to the project as indicated herein and all addenda issued on this project subsequent to purchase of proposal.

We (I) attach a bid proposal guaranty as provided in the special provisions in an amount not less than 5% of the total bid. We agree to execute a contract in accordance with this bid proposal within 15 calendar days after the receipt of the notice of award for the project.

We (I) have examined the site of proposed work, project plans, specifications, special provisions, and notes applicable to the project referred to herein. We understand that the quantities shown herein are estimated quantities subject to increase or decrease as provided in the specifications.

We (I) acknowledge receipt of all addendum(s) (if applicable) and have made the necessary revisions to the bid proposal. We have considered all addendum(s) in the calculation of the submitted bid and applied the updated bid items, which are included.

- No Addendum(s) have been posted

“The bidder certifies that it has secured participation by Disadvantaged Business Enterprises (“DBE”) in the amount of _____ percent of the total value of this contract and that the DBE participation is in compliance with the requirements of 49 CFR 26 and the policies of the Kentucky Transportation Cabinet pertaining to the DBE Program.”

Name of Contracting Firm

BY: _____
Authorized Agent (Signature) Title

Address City State Zip Code

Telephone Number

When two or more organizations bid as a joint venture, enter names of each organization and an authorized agent for each organization must sign above.