



TRANSPORTATION CABINET

Frankfort, Kentucky 40622
www.transportation.ky.gov/

Steven L. Beshear
Governor

Joe Prather
Secretary

September 17, 2009

CALL NO. 100
CONTRACT ID NO. 091059
ADDENDUM # 1

Subject: Jefferson County, ARRA 264-1 (164)
Letting September 25, 2009

- (1) Revised - Table of Contents - Page 2 of 225
- (2) Added - Expedite Project Work Order Paragraph - Page 15 of 225
- (3) Deleted - Special Notes - Pages 73-80 of 225
- (4) Added - Public Information Plan - Pages 170(a)-170(b) of 225
- (5) Added - Special Note for CPM Scheduling - Pages 170(c)-170(j) of 225
- (6) Added - ARRA Notes - Pages 170(k)-170(z) of 225
- (7) Added - Special Provision - Pages 192(a)-192(b) of 225
- (8) Revised - Wage Rates - Pages 206-216 of 225
- (9) Revised - Bid Items - Pages 221-225(a) of 225

Proposal revisions are available at <http://transportation.ky.gov/contract/>.

If you have any questions, please contact us at 502-564-3500.

Sincerely,

Ryan Griffith
Director
Division of Construction Procurement

Enclosures
RG:ks



An Equal Opportunity Employer M/F/D

TABLE OF CONTENTS

PART I	SCOPE OF WORK
	<ul style="list-style-type: none">• PROJECT(S), COMPLETION DATE(S), & LIQUIDATED DAMAGES• CONTRACT NOTES• FEDERAL CONTRACT NOTES• EXPEDITE WORK ORDER• ASPHALT MIXTURE• DGA BASE• DGA BASE FOR SHOULDERS• INCIDENTAL SURFACING• JPC RIDE QUALITY• SPECIAL NOTE(S) APPLICABLE TO PROJECT• AMERICAN RECOVERY AND REINVESTMENT ACT OF 2009• RIGHT OF WAY NOTES• UTILITY CLEARANCE• COMMUNICATING ALL PROMISES
PART II	SPECIFICATIONS AND STANDARD DRAWINGS
	<ul style="list-style-type: none">• SPECIFICATIONS REFERENCE• SUPPLEMENTAL SPECIFICATIONS• [SP-82] GENERAL PROGRESS SCHEDULE
PART III	EMPLOYMENT, WAGE AND RECORD REQUIREMENTS
	<ul style="list-style-type: none">• FEDERAL-AID CONSTRUCTION CONTRACTS - FHWA 1273• NONDISCRIMINATION OF EMPLOYEES• EXECUTIVE BRANCH CODE OF ETHICS• PROJECT WAGE RATES• NOTICE OF REQUIREMENT FOR AFFIRMATIVE ACTION TO ENSURE EEO
PART IV	INSURANCE
PART V	BID ITEMS

EXPEDITE PROJECT WORK ORDER

Be advised that the Contractor may request that the Department expedite the work order for this project to allow for maximization of time to complete the work. In order for the Department to accomplish this task, the Contractor may be required to “hand carry” all required project documentation to facilitate the process immediately UPON NOTIFICATION OF AWARD OF THE CONTRACT.

ASPHALT MIXTURE

The rate of application for all asphalt mixtures shall be estimated at 110 lbs/sy per inch of depth, unless otherwise noted.

DGA BASE

The rate of application for DGA Base shall be estimated at 115 lbs/sy per inch of depth.

DGA BASE FOR SHOULDERS

The rate of application shall be estimated at 115 lbs/sy per inch of depth. Payment for necessary grading and/or shaping of existing shoulders prior to placing of Dense Graded Aggregate Base shall be included in the unit price bid per ton for Dense Graded Aggregate Base.

INCIDENTAL SURFACING

The quantities established in the proposal include estimated quantities required for resurfacing or surfacing mailbox turnouts, farm field entrances, residential and commercial entrances, and road and street approaches. These items are to be paved to the limits as shown on Standard Drawing RPM 110 or to the limits as directed by the Engineer. In the event signal detectors are present in the intersecting streets or roads, the paving of the crossroads shall be to the right of way limit or back of the signal detector, whichever is the farthest back of the mainline. These areas are to be surfaced or resurfaced as directed by the Engineer and no direct payment will be allowed for placing and compacting.

JPC RIDE QUALITY

JPC Pavement Smoothness requirements shall apply on this project in accordance with Section 501 of the current Standard Specifications.

INTERSTATE 264 PAVEMENT REHABILITATION PROJECT
M.P. 12.7 TO M.P. 18.4
ITEM # 5-2045.00 AND 5-2047.00
PUBLIC INFORMATION PLAN

The primary goal of the Public Information Plan (PIP) is to inform the motoring public and area stakeholders of project information including Maintenance of Traffic (MOT) which includes lane closures. The KYTC District 5 Public Information Officer (PIO) will coordinate and disseminate to stakeholders and the media appropriate information regarding the construction plans.

LOCAL STAKEHOLDERS

- Elected Officials
 - State Senator Denise Harper Angel – (502) 452-9130; denise.harperangel@lrc.ky.gov
 - State Senator Tim Shaughnessy – (502) 584-1920; tim.shaughnessy@lrc.ky.gov
 - State Senator Julie Denton – (502) 489-9058; julie.denton@lrc.ky.gov
 - State Representative Jim Wayne – (502) 451-8262; jim.wayne@lrc.ky.gov
 - State Representative Tom Burch – (502) 454-4002; tom.burch@lrc.ky.gov
 - State Representative Mary Lou Marzian – (502) 451-5032; MaryLou.Marzian@lrc.ky.gov
 - State Representative Steve Riggs – (502) 564-8100; steve.riggs@lrc.ky.gov
 - State Representative Scott Brinkman – (502) 893-8769; scott.brinkman@lrc.ky.gov
 - Metro Councilman Jim King – (502) 574-1110; jim.king@louisvilleky.gov
 - Metro Councilman Tom Owen – (502) 574-1108; tom.owen@louisvilleky.gov
 - Metro Councilman Ken Fleming – (502) 574-1107; ken.fleming@louisvilleky.gov
 - Metro Councilman Jon Ackerson – (502) 574-1118; jon.ackerson@louisvilleky.gov
 - Metro Councilman Brent Ackerson – (502) 574-1126; brent.ackerson@louisvilleky.gov

- Local Agencies
 - Rick Caple, Director of Transportation for Jefferson County Public Schools – (502) 485-3470; richard.caple@jefferson.kyschools.us
 - Barry Barker, Transit Authority of the River City (TARC) – (502) 561-5100; jbarrybarker@ridetarc.org
 - Lt. Doug Sweeney, Louisville Metro Police Department Traffic Division – (502) 574-2445; doug.sweeney@louisvilleky.gov
 - Mark Giuffre, UPS – (502) 329-3060; mgiuffre@ups.com
 - Virgie Long, Overdimensional Permits – (502) 564-7150; virgie.long@ky.gov
 - Ted Pullen, Louisville Metro Public Works – (502) 574-5810; ted.pullen@louisvilleky.gov

- Utility Companies
 - Local utility companies are kept apprised of this project at the monthly utility coordination meetings hosted by District 5

- Neighborhoods and their Mayors

Mayor Jerry Abramson – (502) 574-2003; jerry.abramson@louisvilleky.gov

TRUCKING FIRMS AND OUT OF STATE STAKEHOLDERS

Information will be distributed electronically to trucking firms via Rick Taylor at the Department of Vehicle Regulation (502-564-4540; rick.taylor@ky.gov). Information will also be posted on the 511 website (www.511.ky.gov) and on the 511 telephone information system.

PRESENTATIONS

A project description including anticipated schedule will be provided to the media, stakeholders and other emergency service agencies via e-mail prior to construction. Information will be provided to these groups via traffic advisories, press releases, the District 5 website and the weekly District 5 Road Show of Construction and Maintenance Activities.

MEDIA RELATIONS

The District PIO will prepare an initial news release regarding the contract award for the project. The PIO will conduct interviews with the media throughout the project duration to keep the public informed of construction progress. Traffic advisories will be submitted to the media when a change in the MOT occurs. The contractor must provide to the PIO via the Resident Engineer notification of any change in the MOT at least three (3) days prior to the change.

Special Note for CPM Scheduling

A. General.

Contrary to Kentucky Standard Specifications 108.07.04, additional contract time will only be added when the Engineer deems the critical path of the project has been effected. Create the progress schedule required for this project using the critical path method (CPM). The Contractor shall designate a Schedule Representative who shall be responsible for coordinating with the Engineer during the preparation and maintenance of the schedule. The contractor shall submit an interim schedule followed by a baseline schedule, or only a baseline schedule, depending on when the contractor starts work as described below.

B. Interim Schedule.

If the Contractor starts work within 15 days of the Notice to Begin Work, they shall submit an interim schedule. The interim schedule will be in CPM schedule format. The interim schedule shall include detailed activities for the work to be accomplished during the first 30 days of the Contract, and summary activities for the balance of the work. The interim schedule, if required, shall be submitted at the Preconstruction Conference. No work shall begin without the submission of an interim schedule.

C. Baseline Schedule.

The Contractor shall submit a baseline schedule as outlined in the submission requirements section (C.2) within 15 days of the Notice to Begin Work. No pay estimates will be processed after 15 days without the submission of the baseline schedule. The baseline schedule will be in CPM schedule format and as described below. The Engineer will review the baseline schedule and will “accept”, “accept as noted” or “reject” the schedule within 21 days of receipt. If the Engineer does not provide written notification regarding the disposition of the baseline schedule within 21 days, the submission will be considered “accepted.”

For baseline schedules that are “accepted as noted”, the Contractor shall make the necessary revisions and resubmit the revised schedule within 14 days. The Engineer will only “reject” baseline schedules that are not in compliance with contract requirements.

For baseline schedules that are “rejected”, the Engineer shall indicate in writing portions of the schedule that are not in compliance with the contract requirements. The Project Engineer shall conduct a mandatory meeting with the Contractor and the Contractor’s Schedule Representative within 14 days of the Engineer’s written notice. The purpose of this meeting is to resolve disputes with the baseline schedule so that it may be resubmitted. The Contractor shall provide clarification and all additional information necessary for the Engineer within 7 days of this meeting. The Contractor shall submit the revised Baseline Schedule to the Engineer for review and acceptance within 7 days of this meeting.

No pay estimates will be generated until the baseline schedule is “accepted” or “accepted as noted.” In the event the baseline schedule is not “accepted” within 120 days of the Notice to Begin Work, all work shall cease on the project until the baseline schedule is “accepted”. The incurred delays from the “cease work order” will be the contractor’s responsibility and will not be considered for time extension. Any claims associated with time impacts for work performed or delay experienced prior to the baseline schedule being “accepted” or “accepted as noted” will be evaluated at the sole discretion of the Engineer. “Acceptance” by the Engineer will not relieve the Contractor of their responsibilities for compliance with specifications and contract requirements or for the accuracy or feasibility of the schedule.

“Acceptance” of the baseline schedule does not revise the Contract Documents. The baseline schedule must be “accepted” or “accepted as noted” by the Engineer prior to the Engineer evaluating any contractor claims associated with time impacts.

The Engineer’s review of the baseline schedule will be for compliance with the specifications and contract requirements. “Acceptance” by the Engineer will not relieve the Contractor of any of their responsibilities for the accuracy or feasibility of the schedule.

1. Schedule Requirements.

Generate and submit an electronic copy of the baseline schedule using Primavera Contractor 5.0 Deluxe by Primavera Systems Inc., Bala Cynwyd, PA, or equivalent electronically transferable software. The Contractor’s costs associated with these provisions should be incorporated into the bid item for the progress schedule.

Provide a calendar day schedule that shows the various activities of work in sufficient detail to demonstrate a reasonable and workable plan to complete the Project by the Original Contract Completion Date. Show the order and interdependence of activities and the sequence for accomplishing the work. Describe all activities in sufficient detail so that the Engineer can readily identify the work and measure the progress of each activity. The baseline schedule must reflect the scope of work, required phasing, maintenance of traffic requirements, interim completion dates, the Completion Date, and other project milestones established in the Contract Documents. Include activities for submittals, working drawings, shop drawing preparation, submittal review time for the Department shop drawings, material procurement and fabrication, and the delivery of materials, plant, and equipment, and other similar activities.

The Contractor shall be responsible for assuring all work, including all subcontractor’s work, is included in the schedule. The Contractor shall be responsible for assuring that all work sequences are logical and that the schedule indicates a coordinated plan.

Failure by the Contractor to include any element of work required for performance of the Contract shall not excuse the Contractor from completing all work within the required time. Omissions and errors will be corrected as described in Section F or H in this note and will not affect contract time.

a) *Administrative Identifier Information.*

- | | |
|-------------------|--|
| 1. Project Number | 7. Date of Notice to Begin Work |
| 2. County | 8. Completion Date |
| 3. Route Number | 9. Contractor's Name |
| 4. Item Number | 10. Contractor's Dated Signature |
| 5. CID Number | 11. KYTC's Dated Accepted
Signature |
| 6. Award Date | |

b) *Project Activities.*

- i. Activity Identification (ID): Assign each activity a unique identification number. Activity ID length shall not exceed 10 characters. Assign baseline Activity ID's in sequences of 10 (e.g.; A1000, A1010, A1020). This will allow modifications and additional items to be placed into the Identification scheme easily. Once accepted, the Activity ID shall be used for the duration of the project.
- ii. Activity Description: Each activity shall have a narrative description consisting of a verb or work function (e.g.; form, pour, excavate, pier #2) and an object (e.g.; slab, footing, underdrain).
- iii. Activity Original Duration: Assign planned duration in calendar days for each activity. Do not exceed a duration of 20 calendar days for any construction activity unless approved by the Engineer. Do not represent the maintenance of traffic, erosion control, and other similar items as single activities extending to the Completion Date. Break these Contract Items into component activities in order to meet the duration requirements of this paragraph.
- iv. Activity Relationships:
 - All activities, except the first activity, shall have a predecessor(s). All activities, except the final activity, shall have a successor(s).
 - Use only finish-to-start relationships with no leads or lags to link activities, or use start-to-start relationships with lags no greater than the predecessor duration to link activities.
 - Use of finish-to-finish relationship is permitted when both activities are already linked with a start-to-start relationship.

c) *Project Milestones.*

- i. Start Project: The Contractor shall include as the first milestone in the schedule, a milestone named "Start Project". The date used for this milestone is the date the contract is executed and signed by the Department.
- ii. End Project Milestone: The Contractor shall include as the last activity in the project schedule, a milestone named "End Project". The date used for this milestone is considered the project completion date.
- iii. Start Phase Milestone: The Contractor shall include as the first activity for a project phase, an activity named "Start Phase X", where "X" identifies the phase of work. The Contractor may include additional milestones but, as a minimum, must include all contractual milestones.

- iv. End Phase Milestone: The Contractor shall include as the last activity in a project phase, an activity named "End Phase X" where "X" identifies the phase of work. The Contractor may include additional milestones, but at a minimum contractual milestones.

d) Schedule Options.

The schedule may only be calculated using retained logic. Show open ends as non-critical. Schedule durations are to be contiguous. The project calendar will be based on the Contractor's plan for completing the project. However, the scheduling increment (hours or days) will be stipulated during the Preconstruction Conference. All days must remain active unless the Contractor is instructed not to work by contract documents. Total float shall be calculated as finish float.

2. Submission Requirements.

Submit all schedules within the time frames specified. Submit the schedule and information in electronic file format via email, and compact disc (CD) compatible with the Engineer's computer. Submit the following information along with the electronic baseline schedule:

- a) A baseline schedule in a bar chart format including the Administrative Identifier Information discussed in Section C.1.a on the first page of the schedule. For each activity on the chart, indicate the Activity ID, Activity Description, Original Duration, Remaining Duration, Total Float, Early Start Date, Early Finish Date, and Percent Complete. Use arrows to show the relationships among activities.
- b) A baseline schedule in a bar chart format, on paper. Identify the critical path of the project on the bar chart in red. The critical path is defined as; the longest path of activities in the project that determines the project completion date. The activities that make-up the critical path of activities are the "Critical Activities."

3. Submittal Cover Memo.

All submittals shall be accompanied with a brief cover memo containing:

- Identification of the submission as the Baseline Schedule
- Administrative Identifier Information (see section C.1.a)
- Any critical notes as determined by the Contractor

An example Cover Memo is provided in this note.

D. Float.

Use of float suppression techniques, such as; preferential sequencing (arranging critical path through activities more susceptible to Department caused delay), lag logic restraints, unrealistic activity durations, zero total or free float constraints, extending activity times, or imposing constraint dates other than as required by the contract, shall be cause for rejection of the project schedule or its updates. Schedules with negative float will also not be accepted.

1. Definitions of Float.

Total Float is the length of time along a given network path that the actual start and finish of activity(s) can be delayed without delaying the project completion date. Project Float is the length of time between the End Project Milestone and the Contract Completion Date.

2. Ownership of Float.

Float available in the schedule, at any time shall not be considered for the exclusive use of either the Department or the Contractor. During the course of contract execution, any float generated due to the efficiencies of either party is not for the sole use of the party generating the float; rather it is a shared commodity to be reasonably used by either party. Efficiencies gained as a result of favorable weather within a calendar month, where the number of days of normally anticipated weather is less than expected, will also contribute to the Project Float. A schedule showing work completing in less time than the contract time, and accepted by the Department, will be considered to have Project Float. Project Float will be a resource available to both the Department and the Contractor. No time extensions will be granted nor delay damages paid unless a delay occurs which impacts the project's critical path, consumes all available float and extends the work beyond the Contract Completion Date.

3. Negative Float.

Negative float is not allowed. Schedules with negative float will not be accepted. Negative float will not be a basis for requesting time extensions. Any extension of time will be addressed in accordance with the Section F. Scheduled completion date(s) that extend beyond the contract (or phase) completion date(s) may be used in computations for assessment of liquidated damages. The use of this computation is not to be construed as an order by the Department to accelerate the project.

E. Monthly Update Schedule.

A monthly update schedule is a schedule in which only progress is updated from the prior data date to the current data date. Work added and/or excusable delays encountered since the prior data date must be represented as a schedule revision as described in Section E.

1. Update Requirements.

Each month on a date set at the Preconstruction Conference and until Formal Acceptance, submit an updated schedule and all required information with a data date of the last day of the preceding month. The date for submission and data date may be adjusted to accommodate regularly scheduled progress meetings. Submit the monthly updated bar chart on paper and a copy of the updated schedule in electronic format in Section C.2. The Engineer shall "accept" or "reject" the schedule update within 5 days of receipt of the updated CPM schedule. The Engineer may withhold estimates if the updated schedule is not submitted as required by this section. For each updated schedule, identify the actual start and finish dates for all completed activities and the actual start date and remaining duration for all activities in progress. Provide a written narrative that identifies any

changes or shifts in the critical path and submit reasons for the changes or shifts in the critical path.

Submit the following with each updated schedule:

- a) CPM Schedule in Bar Chart Format
- b) Electronic files (formatted as described above)

2. Submittal Cover Memo.

All update submittals shall be accompanied with a brief cover memo containing all the information require in the Baseline Submittal Cover Memo per section C.3 with the addition of:

- Baseline Report
 - Narrative of baseline expectations
 - Project completion status per baseline expectations
- Logic Report
 - Logic Modification Report per section F
 - Narrative of all logic changes and reasoning
 - Two separate CPM submissions; one reflecting the schedule without changes in logic, the other reflecting the proposed logic and the effects.
 - Description of fragnet required per section F
- Progress Report
 - Narrative of all schedule changes since last update
 - Details of each change including impact of change on the schedule, float consumption or addition, and reason causing change when float is consumed

F. Revisions.

The Work may require and/or the Contractor may make revisions to the CPM schedule. Addition of new activities (fragnets required) or new calendars or changes to existing activities, calendars or logic constitute a revision. All revisions must be reported in a Logic Modification Report. The Logic Modification Report is a separate CPM update which includes all the changes recommended by the contractor within the current monthly update schedule. It shall include a Narrative explanation of the necessary changes accompanying the monthly update schedule. Any revision which modifies the critical path or impacts an interim date or project completion date is considered a Logic Modification. A fragnet is defined as the sequence of new activities that are proposed to be added to the existing schedule. The fragnet shall identify the predecessors to the new activities and demonstrate the impacts to successor activities. If submitted as a fragnet, the Contractor shall compute two Finish Dates. The first Finish Date shall be computed without consideration of any impact by the fragnet. The second Finish Date shall be computed with consideration of any impact by the fragnet. The Contractor shall also

submit a written narrative stating the reason for the proposed revisions. The Engineer shall “accept” or “reject” proposed revisions within ten days of receipt of appropriate schedules and narrative. All approved revisions will be incorporated into the Monthly Update Schedule which will become the Revised Monthly Update Schedule.

G. Time Extensions.

The Work may require and/or the Contractor may request an extension of the Completion Date. Perform the following analysis to compute the duration of the time extension. Submit two paper copies and two electronic copies of each analysis performed.

1. Determine project progress prior to circumstance(s) necessitating the time extension. Unless the Engineer requests an interim schedule updated to the date of the circumstance alleging to have caused delay, the previous accepted monthly update shall be used to display the prior progress of the project. This schedule is referred to as the Un-impacted Schedule
2. Prepare a fragmentary network (fragnet) depicting the circumstance that is believed to have delayed the project.
3. Insert the fragnet into the Un-impacted Schedule, run the schedule calculations and determine the finish date. This schedule is referred to as the Impacted Schedule.
4. Compare the Impacted Schedule finish date with the Un-impacted Schedule finish date in order to determine the duration of any warranted time extension.

Submit the impacted schedule with the request for time extension. Include a narrative report describing the effects of new activities and relationships to interim and contract completion dates. All time extensions approved by the Engineer will be incorporated into the monthly update with the fragnet used to determine impacts incorporated into the schedule.

H. Recovery Schedule.

If the Monthly Update Schedule or Revised Monthly Update Schedule projects a finish date for the Project more than 14 calendar days later than the Contract Completion Date, submit a recovery schedule showing a plan to finish by the current Completion Date. The acceptance of any schedule projecting a completion date for the Project beyond the Current Contract Completion Date does not constitute approval of a time extension or an order to accelerate. All changes to completion dates and orders to accelerate must be made via Change Order. The Department will withhold Estimates until the Engineer “accepts” the recovery schedule. The Engineer will use the schedule to evaluate time extensions and associated costs requested by the Contractor. In the event the current Completion Date is in dispute, the recovery schedule will need to be submitted once the dispute has been resolved.

I. Basis of Payment.

The Department will make partial payments according to Section 109.05 of the standard specifications and as modified by the following schedule:

1. The Department will release 50 percent of the lump sum amount bid for Project CPM Schedule to the Contractor with the first regular estimate payable after the Engineer has “accepted” the CPM Baseline schedule submission and the Department has received the scheduling software.
2. The Department will release an additional 25 percent of the lump sum amount bid for Project CPM Schedule to the Contractor with the first regular estimate payable after 50 percent of the original contract amount is complete.
3. The Department will release the remaining 25 percent of the lump sum amount bid for Project CPM Schedule to the Contractor with the first regular estimate payable after project completion.

The Department will pay for the accepted quantities at the contract price as follows:

<u>Code</u>	<u>Pay Item</u>	<u>Pay Unit</u>
-----	Project CPM Schedule	Lump Sum

The Department will consider payment as full compensation for all work required in this provision.

**SPECIAL NOTES FOR PROJECTS FUNDED BY THE AMERICAN
RECOVERY AND REINVESTMENT ACT OF 2009**

**SPECIAL NOTE FOR DAVIS-BACON PREVAILING WAGE RATES FOR
PROJECTS FUNDED BY THE AMERICAN RECOVERY AND
REINVESTMENT ACT OF 2009**

This Special Note will apply when indicated on the plans,
in the proposal, or by addendum.

Davis-Bacon Prevailing Wage Rates (Section 1606) - Prevailing wage rate requirements apply to all Recovery Act funded construction projects regardless of location (including projects on local roads or rural minor collectors, and Transportation Enhancement projects outside the highway right-of-way). Contracting agencies must include the appropriate wage rate information in the contract and also include a contract provision that overrides the general applicability provisions in form FHWA-1273, Section IV and V.

April 3, 2009

**SPECIAL NOTE FOR PROJECTS FUNDED BY THE AMERICAN RECOVERY
AND REINVESTMENT ACT OF 2009 AS THEY RELATE TO THE
GOVERNMENT ACCOUNTABILITY OFFICE AND THE OFFICE OF
INSPECTOR GENERAL**

This Special Note will apply when indicated on the plans,
in the proposal, or by addendum.

**Requirement for Section 902 of the Recovery Act relating to Government
Accountability Office (GOA) as follows:**

Required Contract Provision to Implement Recovery Act Section 902:

Section 902 of the American Recovery and Reinvestment Act (Recovery Act) of 2009 requires that each contract awarded using Recovery Act funds must include a provision that provides the U.S. Comptroller General and his representatives with the authority to:

“(1) to examine any records of the contractor or any of its subcontractors, or any State or local agency administering such contract, that directly pertain to, and involve transactions relating to, the contract or subcontract; and

(2) To interview any officer or employee of the contractor or any of its subcontractors, or of any State or local government agency administering the contract, regarding such transactions.”

Accordingly, the Comptroller General and his representatives shall have the authority and rights as provided under Section 902 of the Recovery Act with respect to this contract, which is funded with funds made available under the Recovery Act. Section 902 further states that nothing in this section shall be interpreted to limit or restrict in any way any existing authority of the Comptroller General.

**Requirement for Section 1515(a) of the Recovery Act relating to Office of Inspector
General (OIG) as follows:**

Section 1515(a) of the Recovery Act provides authority for any representatives of the Inspector General to examine any records or interview any employee or officers working on this contract. The contractor is advised that representatives of the inspector general have the authority to examine any record and interview any employee or officer of the contractor, its subcontractors or other firms working on this contract. Section 1515(b) further provides that nothing in this section shall be interpreted to limit or restrict in any way any existing authority of an inspector general.

**SPECIAL NOTE FOR PERIODIC REPORTS REQUIRED BY
THE AMERICAN RECOVERY AND REINVESTMENT ACT OF 2009**

This Special Note will apply when indicated on the plans,
in the proposal, or by addendum.

1.0 DESCRIPTION. This work consists of collecting and reporting data as required by the American Recovery and Reinvestment Act of 2009 (Recovery Act).

2.0 REPORTING. The Contractor shall complete the Monthly Employment Report form, FHWA-1589, for their employees and a separate form for each of their respective subcontractors as well. This form contains information about the number of employees, total hours for employees, total wages for employees, and other information as required by the Recovery Act. The Department will provide the necessary Excel file after the award of the contract. The initial submittal shall be before the Notice to Proceed. All remaining submittals shall be no later than the seventh Calendar Day of each month thereafter for the full life of the contract even if no work is performed during any month. See the following web link for filling out form FHWA-1589:
http://www.fhwa.dot.gov/economicrecovery/forms/arra_reporting_req_2_1.pdf

The Contractor shall also need their Data Universal Numbering System or DUNS number as described in the Recovery Act Reporting Requirements. See the following web link for obtaining a DUNS number:
http://www.whitehouse.gov/omb/grants/duns_num_guide.pdf

3.0 MEASUREMENT AND PAYMENT. The Department will not measure this work for payment and will consider all collection and reporting of data to be incidental to the project. Failure by the Contractor to report the required data as outlined in Section 2.0 shall result in the holding of the Contractor's estimate for payment.

Monthly Employment Report (Form: FHWA-1589)

This form is a guide for the States in providing employment information on each Recovery Act project. Monthly employment information on each Recovery Act project is used by States for meeting the reporting requirements of Sections 1201 and 1512. In order for States to fulfill their reporting obligations, the States must collect and analyze certain employment data for each Recovery Act funded contract. The data requirement in Recovery Act extends beyond the number of workers at the work site and, therefore, FHWA has produced a form for guidance to the States. This data to be reported is identified below and will be used by the States in developing Form 1587, which is to be submitted to FHWA. Since States may not currently collect this data, the States should develop a new specification for each Recovery Act-funded contract in order to obtain this information from contractors and consultants. In doing so, the States should use the provided model form and require the reporting of this data from the prime contractor or consultant. The prime contractor or consultant shall complete a report for each month from the date of the Notice to Proceed until completion of the contract or September, 2012 whichever occurs sooner. This report is only required for contracts that use Recovery Act funds. States should require contractors and consultants to provide the required information for their own workforce as well as the workforce of all subcontractors that were active on their Recovery Act funded project(s) for the reporting month. It will be up to each State to determine when they obtain the necessary data from their contractors or consultants, keeping in mind that the summary form is due from the State to the FHWA Division no later than the 20th day of each month for the preceding month's data.

It is the State DOT's responsibility to report the number of jobs on projects managed by funding recipients, such as other state agencies or local governments. The State DOT must make arrangements with each Recovery Act funding recipient to assure each recipient reports the required data in a timely manner.

The States shall require the following data be provided by each contractor, consultant and funding recipient working on an Recovery Act project. The primary contractor or consultant for each project shall be responsible for reporting their firm as well as all sub-contractors data.

Format: The State, contractors, or consultant may use the FHWA provided model form, but the use of the model form is optional and at the discretion of the State.

Due date: As determined by the State, until September 2012.

Due to: To be sent by each Recovery Act funded project prime contractor or consultant to the designated office in each State DOT or Federal Lands Division Office.

Coding Instructions

BOX 1. Report Month: The month and year covered by the report, as *mm/yyyy* (e.g. "May 2009" would be coded as "05/2009").

- BOX 2. **Contracting agency:** The name of the contracting agency. Enter "State" for State DOT projects. For non-State projects, enter the name of the contracting agency (other State agency, Federal agency, tribe, MPO, city, county, or other funding recipient).
- BOX 3. **Federal-aid project number:** The State assigned federal-aid project number, consistent with the seven digit format reported in FMIS. For example, the project STM-1222(12) should be reported as "1222012"
- BOX 4. **State project number or identification number:** The project number or ID, as assigned by the State or its funding recipient, consistent with the format reported in FMIS.
- BOX 5. **Project location:** The 2 digit State Federal Information Processing Standard (FIPS) code for the project. If the project is being performed for Federal Lands, provide the 4 digit FLH Division or Federal Land Managing Agency (FLMA) region code. See Appendix A for a list of the State FIPS and FLMA region codes.
- BOX 6. **Contractor name and address:** The name and address of the contracting or consulting firm shall include the name, street address, city, state, and zip code.
- BOX 7. **Contractor DUNS number:** The unique nine-digit number issued by Dun & Bradstreet. Followed by the optional 4 digit DUNS Plus number. Reported as "999999999.9999"
- BOX 8. **Employment data:** The prime contractor or consultant will report the direct, on-the-project jobs for their workforce and the workforce of their sub-contractors active during the reporting month. These jobs data include employees actively engaged in projects who work on the jobsite, in the project office, in the home office or telework from a home or other alternative office location. This also includes any engineering personnel, inspectors, sampling and testing technicians, and lab technicians performing work directly in support of the Recovery Act funded project. This does not include material suppliers such as steel, culverts, guardrail, and tool suppliers. States should include in their reports all direct labor associated with the Recovery Act project such as design, construction, and inspection. The States reports should include their own project labor, including permanent, temporary, and contract project staff. States are asked not to include estimated indirect labor, such as material testing, material production or estimated macro-economic impacts. FHWA will be estimating all indirect labor based on the information provided in this form along with other FHWA data. The form requests specifically:
- a. **Subcontractor name:** The name of each subcontractor or sub-consultant that was active on the project for the reporting month.
 - b. **Employees:** The number of project employees on the contractor's or consultant's workforce that month, and the number of project employees for each of the active subcontractors for the reporting month. Do not include material suppliers. Total field at bottom will be automatically calculated and reported as a whole number.

- c. **Hours:** The total hours on the specified project for all employees reported on the contractor's or consultant's project workforce that month, and the total hours for all project employees reported for each of the active subcontractors that month. Total field at bottom will be automatically calculated and reported as a whole number.
- d. **Payroll:** The total dollar amount of wages paid by the contractor or consultant that month for employees on the specified project, and the total dollar amount of wages paid by each of the active subcontractors that month. Payroll only includes wages and does not include overhead or indirect costs. Total field at bottom will be automatically calculated and will be rounded to the nearest whole dollar and reported as a whole number.

BOX 9. Prepared by:

- a. **Name:** Indicate the person responsible for preparation of the form. By completing the form the person certifies that they are knowledgeable of the hours worked and employment status for all the employees. Contractors, consultants, and their subs are responsible to maintain data to support the employment form and make it available to the State should they request supporting materials.
- b. **Date:** The date that the contractor completed the employment form. Reported as "*mm/dd/yyyy*." (e.g. "May 1, 2009" would be coded as "05/01/2009").

**MONTHLY EMPLOYMENT REPORT
AMERICAN RECOVERY AND REINVESTMENT ACT**

1. Report Month: (mm/yyyy)		2. Contracting Agency	
3. Federal-Aid Project Number		4. State Project Number or ID Number	5. Project Location: State, County or Federal Region
6. CONTRACTOR NAME AND ADDRESS Name: _____ Address: _____ City: _____ State: _____ Zip: _____			
7. Contractor/Subcontractor DUNS Number:			

8. Employment Data			
	EMPLOYEES	HOURS	PAYROLL
Prime Contractor Direct, On-Project Jobs (see guidance for definitions)			
Subcontractor Direct, On-Project Jobs			
Subcontractor Name			
Prime and Subcontractor Totals	0	0	0.00

9. PREPARED BY CEO or Payroll Official:		DATE:
Name: _____		
Title: _____		

**SPECIAL NOTE FOR SIGNS ON PROJECTS BEING FUNDED BY THE
AMERICAN RECOVERY AND REINVESTMENT ACT OF 2009**

This Special Note will apply where indicated in the proposal. Section references herein are to the Department’s 2008 Standard Specifications for Road and Bridge Construction.

1.0 Description. Furnish, install, and maintain Recovery Act signs as shown in the proposal or designated by the Engineer. Two Recovery Act signs will be required for each project. See the sign detail sheet for exact dimensions for the sign.

Speed Limit (MPH)	“A” Dimension	“B” Dimension
65 or Greater	120 inches	84 inches
55 or Less	84 inches	60 inches

2.0 Materials. Recovery Act signs shall be constructed and installed in accordance with signing details included with this note. Conform to Sections 830, 832 and 833.

3.0 Construction. Recovery Act signs should be placed where they can be easily identified with the corresponding projects and in a location that does not conflict with higher priority signs (temporary or permanent), traffic signals or any temporary traffic control device. In no case shall these signs be installed such that it obscures the view of other traffic control devices.

Recovery Act signs shall not be installed at the following locations: Near any traffic control device, roadway structure, exit and entrance ramps, intersections, highway-rail grade crossings, and areas of limited sight distance.

The signs installed on roadways with a speed limit of 65 mph or greater shall be installed using traffic notes for temporary signs on wood posts. All other signs should be installed using two Type II channel posts as shown in the attached detail. Sign bracing will be required as shown in the attached details.

4.0 Measurement. The Department will measure the quantity in square feet. The Department will not measure sign maintenance, posts, mounting, installation or any required bracing for payment and will consider them incidental to this item of work.

5.0 Payment. The Department will make payment for the completed and accepted under the following:

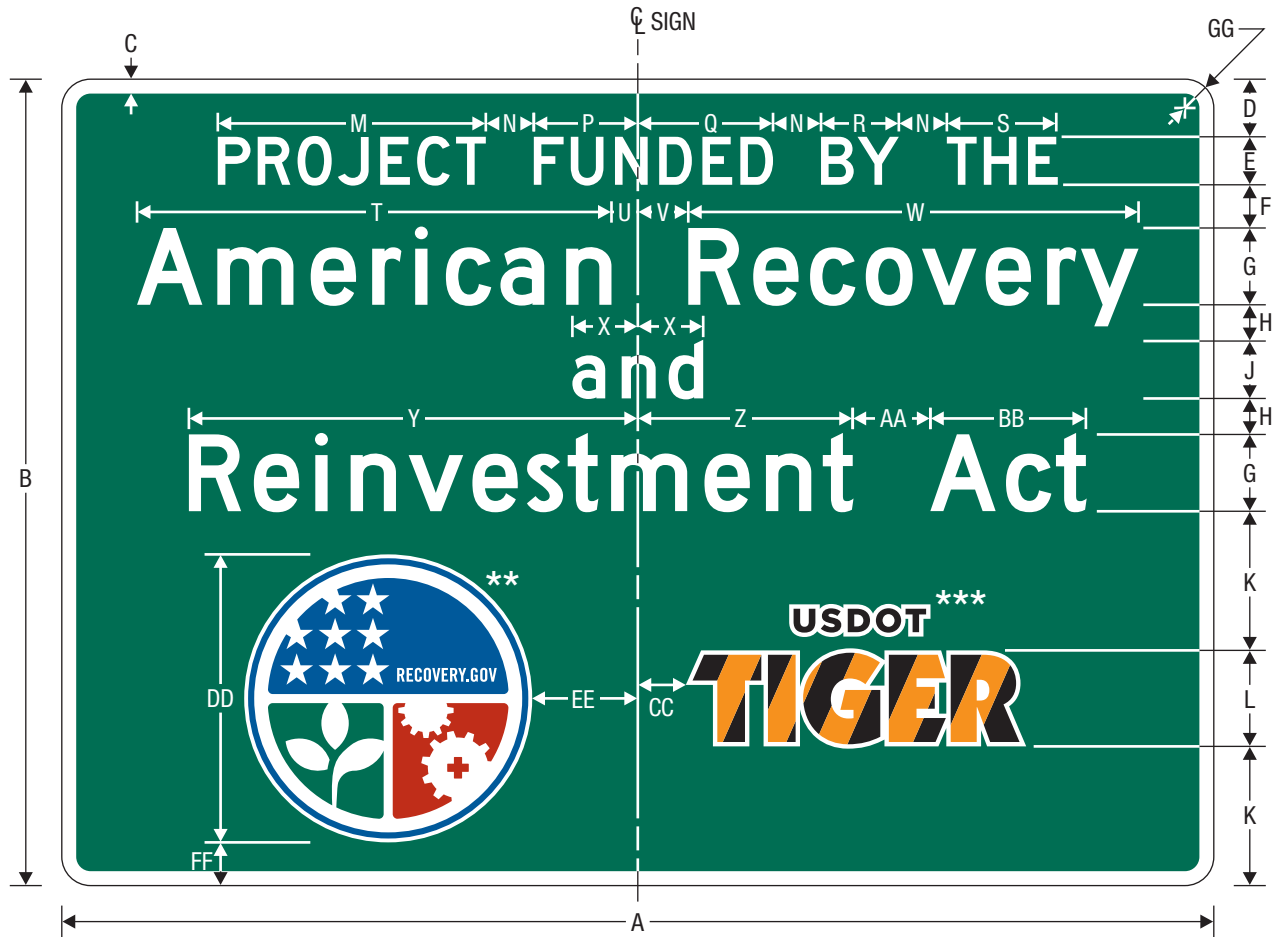
<u>Code</u>	<u>Pay Item</u>	<u>Pay Unit</u>
02562	Signs	Square Foot

PROJECT FUNDING SOURCE SIGN ASSEMBLY AMERICAN RECOVERY AND REINVESTMENT ACT SIGN LAYOUT DETAILS



PROJECT FUNDING SOURCE
SIGN ASSEMBLY

PROJECT FUNDING SOURCE SIGN ASSEMBLY AMERICAN RECOVERY AND REINVESTMENT ACT SIGN LAYOUT DETAILS



PROJECT FUNDING SOURCE SIGN

NOTE: SIGN SHALL NOT BE INSTALLED WITHOUT PROJECT FUNDING SOURCE PLAQUE (SEE SHEET 3).

Dimensions in inches

A	B	C	D	E	F	G	H	J	K	L	M	N	P
120	84	1.5	6	5 D	4.5	8 D*	3.75	6 D*(45LC)	14.5	10	27.917	5	10.831
84	60	1	5	4 C	3.5	6 C*	3	4 D*(3LC)	9.25	7	19.047	4	7.362

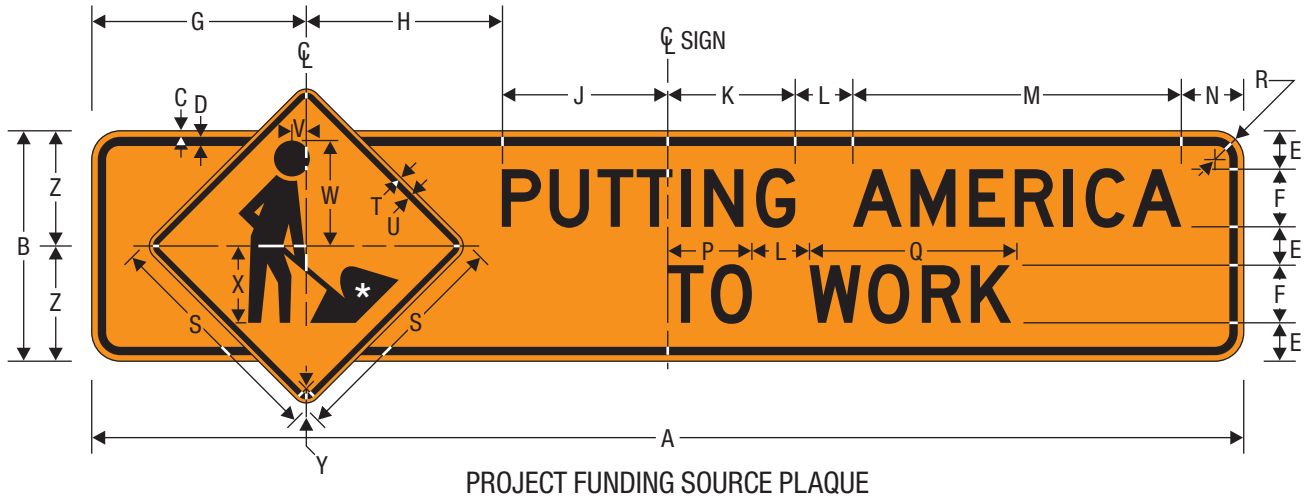
Q	R	S	T	U	V	W	X	Y	Z	AA	BB	CC	DD
14.087	8.106	11.556	49.42	2.742	5.258	46.904	6.812	46.76	22.472	8	16.288	5	30
9.484	5.162	7.763	31.722	2.415	3.585	30.552	4.542	30.911	14.737	6	10.175	4	21

EE	FF	GG
11	4.5	3
7.5	2.25	2.25

- * Increase character spacing 50%
- ** See Pictograph page 4
- *** See Pictograph page 5

COLORS: LEGEND, BORDER — WHITE (RETROREFLECTIVE)
BACKGROUND — GREEN (RETROREFLECTIVE)

PROJECT FUNDING SOURCE SIGN ASSEMBLY AMERICAN RECOVERY AND REINVESTMENT ACT SIGN LAYOUT DETAILS



NOTE: PLAQUE SHALL NOT BE INSTALLED WITHOUT SIGN (SEE SHEET 2).

* See *Standard Highway Signs* Page 6-59 for symbol design.

Dimensions in inches

A	B	C	D	E	F	G	H	J	K	L	M	N	P
120	24	0.625	0.875	4	6 D	22.349	20.370	17.281	13.28	6	34.22	6.5	8.765
84	18	0.375	0.625	3.5	4 D	16.607	15.686	9.707	10.667	4	22.813	5	5.843

Q	R	S	T	U	V	W	X	Y	Z
21.013	3	24	0.375	0.625	1.5	11	8	1.5	12
14.009	2.25	18	0.375	0.625	1	7	6	1.5	9

COLORS: LEGEND, BORDER — BLACK
BACKGROUND — ORANGE (RETROREFLECTIVE)

PROJECT FUNDING SOURCE SIGN ASSEMBLY AMERICAN RECOVERY AND REINVESTMENT ACT SIGN LAYOUT DETAILS



RECOVERY
Vector-Based, Vinyl-Ready Pictograph

- | | |
|--------------------------|---------------------------|
| COLORS: LEGEND, OUTLINE | — WHITE (RETROREFLECTIVE) |
| BORDER | — BLUE (RETROREFLECTIVE) |
| BACKGROUND (UPPER) | — BLUE (RETROREFLECTIVE) |
| BACKGROUND (LOWER RIGHT) | — RED (RETROREFLECTIVE) |
| BACKGROUND (LOWER LEFT) | — GREEN (RETROREFLECTIVE) |

PROJECT FUNDING SOURCE SIGN ASSEMBLY AMERICAN RECOVERY AND REINVESTMENT ACT SIGN LAYOUT DETAILS



USDOT TIGER
Vector-Based, Vinyl-Ready Pictograph

COLORS: OUTLINE — WHITE (RETROREFLECTIVE)
USDOT LEGEND — BLACK
TIGER DIAGONALS — BLACK,
ORANGE (RETROREFLECTIVE)

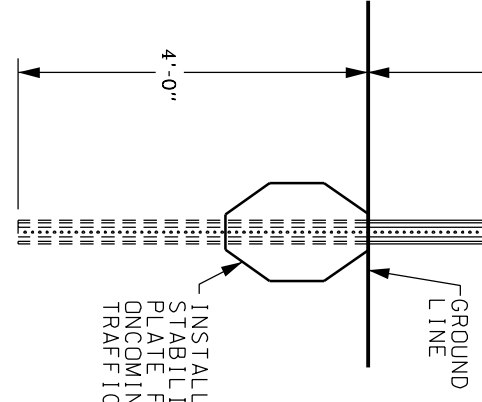
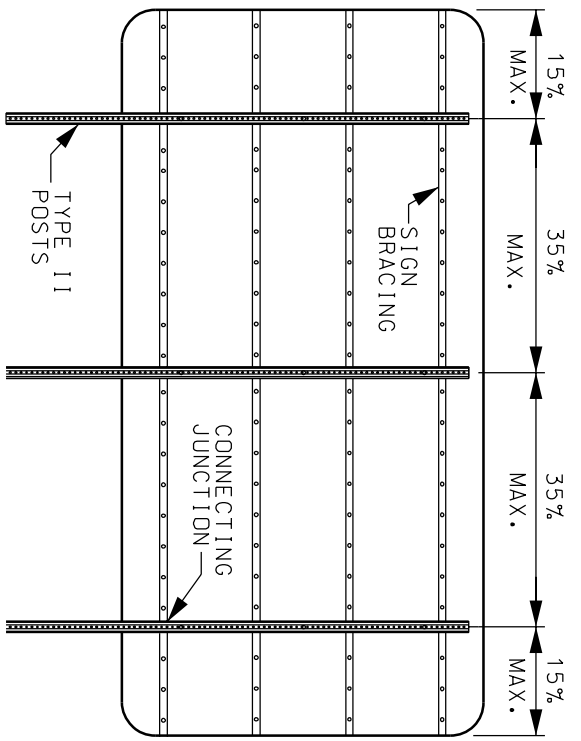
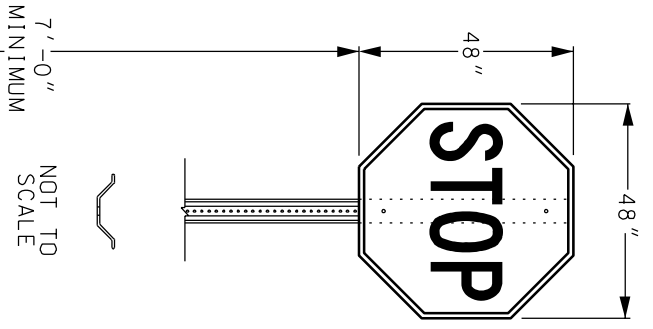
Traffic Notes For Temporary Signs

The Contractor shall use 6 inch x 8 inch (nominal) pressure treated southern pine wood posts to mount the large temporary signs. The posts that are exposed to traffic shall have two (2) holes, three (3") inches in diameter drilled through each post in a vertical arrangement perpendicular to traffic. The first hole should be four inches (4") from the ground and the second hole, eighteen inches (18") from the ground.

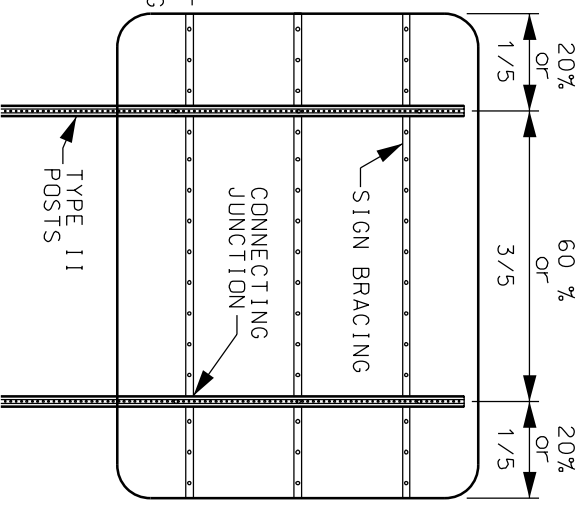
A seven-foot (7') or more clear path should exist between the supporting posts. The bottom edge of the sign panel should have at least seven foot (7') clearance above the ground. Posts shall be embedded a minimum of 48 inches.

Bolt signs to the wood posts using three 5 inch galvanized lag bolts in each post, with galvanized washers on both sides. The top and bottom bolts shall be placed a minimum of 12 inches from the top and bottom edges respectively, with the third bolt centered on the sign.

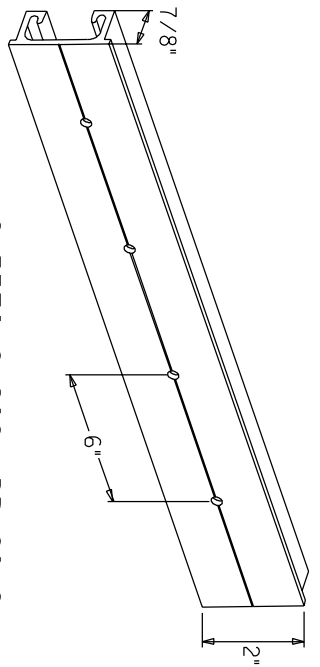
For additional details see the Federal Highway Administration memorandum HNG-14/SS-25 dated 6/4/91, HNG-14/SS-36 dated 9/3/93 and HNG-14/SS-27 dated 5/15/92.



TYPE II
CHANNEL POST
WITH SOIL STABILIZER



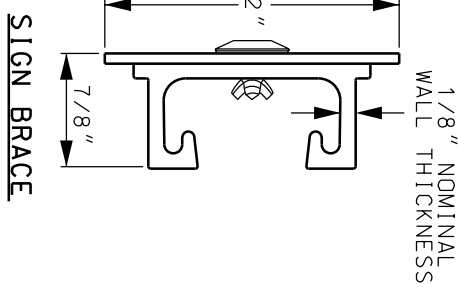
2 POST - BRACING DIAGRAM



SHEETING SIGN BRACING

NOTE:
ALUMINUM SIGN BRACING
2" MOUNTING SURFACE
X 7/8" DEPTH X 1/8"
NOMINAL WALL THICKNESS

6061-T6 ALUMINUM ALLOY,
PUNCHED WITH 3/16" DIAMETER
HOLES ON 6" CENTERS FOR
ATTACHMENT OF SIGN
SUBSTRATE USING RIVETS



- NOTES:
1. VERTICAL SPACING NOT TO EXCEED 36" BETWEEN BRACES OR 12" FROM TOP OR BOTTOM OF SIGN TO FIRST BRACE.
 2. MAXIMUM AREA PER CONNECTING JUNCTION = 16 SQ. FT.
 3. LENGTH OF BRACE TO BE A MINIMUM OF TOTAL SIGN WIDTH LESS 4", NOT TO EXTEND BEYOND RIGHT OR LEFT EDGE OF SIGN.
 4. POSTS, BRACING, AND SOIL STABILISHER SHALL BE INCIDENTAL TO SIGNS.

SHEETING SIGN
POST AND BRACING DETAIL

SPECIAL PROVISION FOR GENERAL PROGRESS SCHEDULE

This Special Provision will apply when indicated on the plans or in the proposal. Section references herein are to the Department's 2008 Standard Specifications for Road and Bridge Construction.

1.0 DESCRIPTION. Prepare and maintain a progress schedule for the project using the critical path method.

2.0 MATERIALS. Reserved.

3.0 CONSTRUCTION. Submit a progress schedule consisting of an activity network analysis as described herein.

3.1 Network Analysis System. Include a Gantt chart that is partitioned by major work elements of the project and shows the activities for each work element.

The Gantt chart must show the order and interdependence of activities and the sequence in which the work is to be accomplished. Follow the basic concept of a network analysis to show how the start of a given activity is dependent on the completion of preceding activities. Include any restrictions and any project milestones as indicated in the proposal or otherwise known.

Include in the network activities, the submittal and approval of samples of materials and shop drawings; the procurement of critical materials and equipment, and fabrication of special material or equipment and their installation and testing. Show contract required dates for completion of all or parts of the work.

Show on the Gantt chart the minimum number of activities necessary to accurately reflect the flow of work. Determine and identify the critical path and identify where float or slack exists.

Additionally, include with the Gantt chart a tabulation of each activity. Furnish the following information as a minimum for each activity:

- 1) preceding and succeeding event or work item numbers
- 2) activity description
- 3) estimated duration of activities (in days)
- 4) early start date
- 5) early finish date
- 6) late start date
- 7) late finish date
- 8) free float (in days)
- 9) total float (in days)

The original or updated schedule documents should describe the upcoming 45 days of activities in Level 1 detail and the remainder of the project in at least Level 2 detail. The levels of detail are described according to the following:

- 1) Level 1. This level of detail presents a logically flowing schedule of the daily activities required to complete the project. The maximum activity length should be 10-days unless approved by the Engineer. Locations and/or stations numbers should be used to further describe activities.
- 2) Level 2. This level of detail presents the logical progression of activities required to complete the controlling items of work, in the time limits allotted in the contract documents, to the satisfaction of the Engineer.

3.2 Submission and Review Procedures. Submit the complete proposed project schedule, consisting of the network analysis described above at the preconstruction conference.

Participate with the Engineer in a review of the proposed project schedule at a project schedule review meeting to be conducted within 10-days following the preconstruction conference. Resubmit all necessary revisions within 10 days after the initial review. When a change in the method of operation or scheduling is desired, notify the Engineer in writing of the proposed change.

Provide 4 copies of the initial project schedule submittal and subsequent revisions for review. Ensure all submitted diagrams are legible.

3.3 Monthly Updates. Submit a report of the actual construction progress by updating the project schedule each month. Reflect the work as-built within 2 working days of the date of the report, and reflect the work remaining to be done as planned. The updated schedule should follow the requirements of the network analysis system described in part 3.1. Provide 4 copies.

Establish the dates of submittal with the Engineer at the schedule review meeting. If an updated project schedule is not provided by the established date, the Engineer will not process pay estimates until it is.

3.4 Significant Changes. Update and resubmit the project schedule revisions whenever a situation arises or an event occurs that significantly affects the progress of the work. If an updated project schedule is not provided after significant changes occur, the Engineer will not process pay estimates until it is.

3.5 Float. Float is the amount of time between the early start date and the late start date, or the early finish date and the late finish date, of any of the activities on the project schedule. The Department will consider extensions of time only when the critical path determining the schedule finish date of the project is affected.

4.0 MEASUREMENT. The Department will measure the CPM Schedule as Lump Sum.

5.0 PAYMENT. The Department will make payment for the completed and accepted quantities under the following:

<u>Code</u>	<u>Pay Item</u>	<u>Pay Unit</u>
02570	Project CPM Schedule	Lump Sum

The Department will consider payment as full compensation for all work required in this provision.

January 1, 2008

**TRANSPORTATION CABINET
DIVISION OF CONSTRUCTION PROCUREMENT
COMPLIANCE SECTION
PROJECT WAGE RATES**

HIGHWAY BASIC HOURLY RATES	FRINGE BENEFIT PAYMENTS COMBINED
<u>CRAFTS:</u>	
Breckinridge County:	
Bricklayers	26.47.....12.28
Bullitt, Carroll, Grayson, Hardin, Henry, Jefferson, Larue, Marion, Meade, Nelson, Oldham, Shelby, Spencer and Trimble Counties:	
Bricklayers	24.11.....9.97
Bracken, Gallatin, Grant, Mason and Robertson Counties:	
Bricklayers	26.12.....9.73
Boyd, Carter, Elliott, Fleming, Greenup, Lewis and Rowan Counties:	
Bricklayers	25.80.....14.88
Anderson, Bath, Bourbon, Boyle, Clark, Fayette, Franklin, Harrison, Jessamine, Madison, Mercer, Montgomery, Nicholas, Owen, Scott, Washington and Woodford Counties:	
Bricklayers (Layout Men).....	24.36.....9.97
Bricklayers	24.11.....9.97
Refractory/Acid Brick/Glass.....	24.61.....9.97
All Counties	
Carpenters:	24.84.....10.23
Divers	37.64.....10.23
Piledrivermen.....	25.09.....10.23
Bracken and Grant Counties:	
Millwrights.....	27.55.....15.39
Anderson, Bath, Bourbon, Boyle, Clark, Fayette, Franklin, Harrison, Jessamine, Madison, Mercer, Montgomery, Nicholas, Owen, Scott and Woodford Counties:	
Millwrights.....	22.95.....13.50
Boyd, Carter, Elliott, Fleming, Greenup, Lewis, Mason, Robertson, and Rowan Counties:	
Millwrights.....	30.60.....13.78
Breckinridge, Bullitt, Carroll, Gallatin, Grayson, Hardin, Henry, Jefferson, Larue, Marion, Meade, Nelson, Oldham, Shelby, Spencer, Trimble and Washington Counties:	
Millwrights.....	24.18.....15.64
Bracken, Gallatin and Grant Counties:	
Electricians.....	26.11.....13.32
Sound Communications:	
Technician.....	20.45.....6.95

**TRANSPORTATION CABINET
DIVISION OF CONSTRUCTION PROCUREMENT
COMPLIANCE SECTION
PROJECT WAGE RATES**

HIGHWAY BASIC HOURLY RATES	FRINGE BENEFIT PAYMENTS COMBINED
---	---

CRAFTS: (continued)

Boyd, Carter, Elliott and Rowan Counties:

Electricians:

Cable Splicers	32.68	18.13
Electricians.....	31.12	18.08

Anderson, Bath, Bourbon, Boyle, Breckinridge, Bullitt, Carroll, Clark, Fayette, Franklin, Grayson, Hardin, Harrison, Henry, Jefferson, Jessamine, Larue, Madison, Marion, Meade, Mercer, Montgomery, Nelson, Nicholas, Oldham, Owen, Robertson, Scott, Shelby, Spencer, Trimble, Washington and Woodford Counties:

Electricians.....	28.30	12.55
-------------------	-------------	-------

Fleming, Greenup, Lewis and Mason Counties:

Electricians.....	30.55.....	11.87
-------------------	------------	-------

Bourbon (Northern third, including Townships of Jackson, Millersburg, Ruddel Mills & Shawhan); Carroll (Eastern third, including the Township of Ghent); Fleming (Western part, excluding Townships of Beechburg, Colfax, Elizaville, Flemingsburg, Flemingsburg Junction, Foxport, Grange City, Hillsboro, Hilltop, Mount Carmel, Muses Mills, Nepton, Pecksville, Plummers Landing, Plummers Mill, Poplar Plains, Ringos Mills, Tilton & Wallingford); Mason (Western two-thirds, including Townships of Dover, Lewisburg, Mays Lick, Maysville, Minerva, Moranburg, Murphysville, Ripley, Sardis, Shannon, South Ripley & Washington);

Nicholas (Townships of Barefoot, Barterville, Carlisle, Ellisville, Headquarters, Henryville, Morningglory, Myers & Oakland Mills); Owen (Townships of Beechwood, Bromley, Fairbanks, Holbrook, Jonesville, Long Ridge, Lusby's Mill, New, New Columbus, New Liberty, Owenton, Poplar Grove, Rockdale, Sanders, Teresita & Wheatley); Scott (Northern two-thirds, including Townships of Biddle, Davis, Delaplain, Elmville, Longlick, Muddy Ford, Oxford, Rogers Gap, Sadieville, Skinnersburg & Stonewall) & Bracken, Gallatin, Grant, Harrison & Robertson Counties:

Ironworkers:

Fence Erector	23.55.....	16.72
Structural.....	26.17.....	16.72

Bourbon (Southern two-thirds, including Townships of Austerlity, Centerville, Clintonville, Elizabeth, Hutchison, Littlerock, North Middletown & Paris); Carroll (Western two-thirds, including Townships of Carrollton, Easterday, English, Locust, Louis, Prestonville & Worthville); Clark (Western two-thirds, including Townships of Becknerville, Flanagan, Ford, Pine Grove, Winchester & Wyandotte); Owen (Eastern eighth, including Townships of Glenmary, Gratz, Monterey, Perry Park & Tacketts Mill); Scott (Southern third, including Townships of Georgetown, Great Crossing, Newtown, Stamping Ground & Woodlake); Anderson, Boyle, Breckinridge, Bullitt, Fayette, Franklin, Grayson, Hardin, Henry, Jefferson,

**TRANSPORTATION CABINET
DIVISION OF CONSTRUCTION PROCUREMENT
COMPLIANCE SECTION
PROJECT WAGE RATES**

HIGHWAY BASIC HOURLY RATES	FRINGE BENEFIT PAYMENTS COMBINED
---	---

CRAFTS: (continued)

Jessamine, Larue, Madison, Marion, Meade, Mercer, Nelson, Oldham, Shelby, Spencer, Trimble, Washington & Woodford Counties:

Ironworkers24.78.....17.04

Bourbon (Northern third, including Townships of Jackson, Millersburg, Ruddel Mills & Shawhan); Carroll (Eastern third, including the Townships of Ghent); Fleming (Western part, excluding Townships of Beechburg, Colfax, Elizaville, Flemingsburg, Flemingsburg Junction, Foxport, Grange City, Hillsboro, Hilltop, Mount Carmel, Muses Mills, Nepton, Pecksville, Plummers Landing, Plummers Mill, Poplar Plains, Ringos Mills, Tilton & Wallingford); Mason (Western two-thirds, including Townships of Dover, Lewisburg, Mays Lick, Maysville, Minerva, Moranburg, Murphysville, Ripley, Sardis, Shannon, South Ripley & Washington); Nicholas (Townships of Barefoot, Barterville, Carlisle, Ellisville, Headquarters, Henryville, Morningglory, Myers & Oakland Mills); Owen (Townships of Beechwood, Bromley, Fairbanks, Holbrook, Jonesville, Long Ridge, Lusby's Mill, New, New Columbus, New Liberty, Owenton, Poplar Grove, Rockdale, Sanders, Teresita & Wheatley); Scott (Northern two-thirds, including Townships of Biddle, Davis, Delaplain, Elmville, Longlick, Muddy Ford, Oxford, Rogers Gap, Sadieville, Skinnersburg & Stonewall); Bracken, Gallatin, Grant, Harrison & Robertson Counties:

Ironworkers:

Up to and including 30- mile radius of Hamilton County, Ohio Courthouse.....26.20.....16.70
Beyond 30- mile radius of Hamilton County, Ohio Courthouse26.45.....16.70

Clark (Eastern third, including Townships of Bloomingdale, Hunt, Indian Fields, Kiddville, Loglick, Rightangele & Thomson); Fleming (Townships of Beechburg, Colfax, Elizaville, Flemingsburg, Flemingsburg Junction, Foxport, Grange City, Hillsboro, Hilltop, Mount Carmel, Muses Mills, Nepton, Pecksville, Plummers Landing, Plummers Mill, Poplar Plains, Ringos Mills, Tilton & Wallingford); Mason (Eastern third, including Townships of Helena, Marshall, Orangeburg, Plumville & Springdale); Nicholas (Eastern eighth, including the Township of Moorefield Sprout); Bath, Boyd, Carter, Elliott, Greenup, Lewis, Montgomery & Rowan Counties:

Ironworkers:

Zone 128.3817.37
Zone 228.7817.37
Zone 330.3817.37

Zone 1 - Up to 10 mi. radius of union hall, Ashland, KY, 1643 Greenup Avenue;

Zone 2 - 10 to 50 mi. radius of union hall;

Zone 3 - 50 mi. radius and beyond.

**TRANSPORTATION CABINET
DIVISION OF CONSTRUCTION PROCUREMENT
COMPLIANCE SECTION
PROJECT WAGE RATES**

HIGHWAY BASIC HOURLY RATES	FRINGE BENEFIT PAYMENTS COMBINED
<u>CRAFTS:</u> (continued)	
Anderson, Breckinridge, Bullitt, Carroll, Grayson, Hardin, Henry, Jefferson, Larue, Marion, Meade, Nelson, Oldham, Shelby, Spencer, Trimble and Washington Counties:	
Painters:	
Brush & Roller	18.509.84
Spray, Sand Blast, Power Tools, Water Blast & Steam Cleaning	19.509.84
Bracken, Gallatin, Grant, Mason, and Owen Counties:	
Painters:	
(Heavy and Highway Bridges- Guardrails–Lightpoles-Striping):	
Bridge/Equipment Tender and Containment Builder	20.496.83
Brush and Roller	23.106.83
Elevated Tanks; Steeplejack Work; Bridge & Lead Abatement	
24.10	6.83
Sand Blasting & Water Blasting	23.856.83
Spray	23.606.83
Bath, Bourbon, Boyle, Clark, Fayette, Fleming, Franklin, Harrison, Jessamine, Madison, Mercer, Montgomery, Nicholas, Robertson, Scott and Woodford Counties	
Painters:	
Brush & Roller	21.305.90
Elevated Tanks; Steeplejack Work; Bridge & Lead Abatement	
22.30	5.90
Sandblasting & Waterblasting	22.055.90
Spray	21.805.90
Bridge/Equipment Tender and/or Containment Builder	
18.90	5.90
Boyd, Carter, Elliott, Greenup, Lewis and Rowan Counties	
Painters:	
Bridges	27.8310.00
All Other Work	24.8310.00

**TRANSPORTATION CABINET
DIVISION OF CONSTRUCTION PROCUREMENT
COMPLIANCE SECTION
PROJECT WAGE RATES**

HIGHWAY BASIC HOURLY RATES	FRINGE BENEFIT PAYMENTS COMBINED
---	---

CRAFTS: (continued)

Breckinridge, Bullitt, Carroll (Western Half), Franklin (Western three-fourths), Grayson, Hardin, Henry, Jefferson, Larue, Marion, Meade, Nelson, Oldham, Shelby, Spencer, Trimble and Washington Counties:

Plumber 30.00 13.63

Boyd, Carter, Elliott, Greenup, Lewis and Rowan Counties:

Plumbers and Steamfitters 30.45 14.57

Bracken, Carroll (Eastern Half), Gallatin, Grant, Mason, Owen and Robertson Counties:

Pipefitters and Plumbers 28.39 14.30

LABORERS:

Bath, Bourbon, Boyd, Boyle, Bracken, Carter, Clark, Elliott, Fayette, Fleming, Franklin, Gallatin, Grant, Greenup, Harrison, Jessamine, Lewis, Madison, Mason, Mercer, Montgomery, Nicholas, Owen, Robertson, Rowan, Scott, & Woodford Counties:

GROUP 1 - Aging and Curing of Concrete, Asbestos Abatement Worker, Asphalt Plant, Asphalt, Batch Truck Dump, Carpenter Tender, Cement Mason Tender, Cleaning of Machines, Concrete, Demolition, Dredging, Environmental - Nuclear, Radiation, Toxic and Hazardous Waste - Level D, Flagperson, Grade Checker, Hand Digging and Hand Back Filling, Highway Marker Placer, Landscaping Mesh Handler and Placer, Puddler, Railroad, Rip-Rap and Grouter, Right-of-Way Sign, Guard rail and Fence Installer, Signal Person, Sound Barrier Installer, Storm and Sanitary Sewer, Swamper, Truck Spotter and Dumper, and Wrecking of Concrete Forms, General Cleanup.

BASE RATE 20.36

FRINGE BENEFITS 9.90

Group 2 - Batter Board Man (Sanitary And Storm Sewer), Brickmason Tender, Mortar Mixer Operator, Scaffold Builder, Burner and Welder, Bushhammer, Chain Saw Operator, Concrete Saw Operator, Deckhand Scow Man, Dry Cement Handler, Environmental - Nuclear, Radiation, Toxic and Hazardous Waste - Level C, Forklift Operator for Masonary, Form Setter, Green Concrete Cutting, Hand Operated Grouter and Grinder Machine Operator, Jackhammer, Pavement Breaker, Paving Joint Machine, Pipelayer, Plastic Pipe Fusion, Power Driven Georgia Buggy and Wheel Barrow, Power Post Hole Digger, Precast Manhole Setter, Walk-Behind Tamper, Walk-Behind Trencher, Sand Blaster, Concrete Chipper, Surface Grinder, Vibrator Operator and Wagon Driller.

BASE RATE 20.61

FRINGE BENEFITS 9.90

**TRANSPORTATION CABINET
DIVISION OF CONSTRUCTION PROCUREMENT
COMPLIANCE SECTION
PROJECT WAGE RATES**

LABORERS: (continued)

GROUP 3 - Asphalt Luteman and Raker, Gunnite Nozzleman, Gunnite Operator and Mixer, Grout Pump Operator, Side Rail Setter, Rail Paved Ditch, Screw Operator, Tunnel (Free Air) and Water Blaster.

BASE RATE20.66
FRINGE BENEFITS9.90

GROUP 4 - Caisson Worker (Free Air), Cement Finisher, Environmental - Nuclear, Radiation, Toxic and Hazardous Waste - Levels A and B, Miner and Driller (Free Air), Tunnel Blaster and Tunnel Mucker (Free Air), Directional & Horizontal Boring, Air Track Drillers (all types), Powdermen & Blasters, Troxler & Concrete Tester if Laborer is Utilized.

BASE RATE21.26
FRINGE BENEFITS9.90

LABORERS:

Anderson, Bullitt, Carroll, Hardin, Henry, Jefferson, Larue, Marion, Meade, Nelson, Oldham, Shelby, Spencer, Trimble & Washington Counties:

GROUP 1 - Aging and Curing of Concrete, Asbestos Abatement Worker, Asphalt Plant, Asphalt, Batch Truck Dump, Carpenter Tender, Cement Mason Tender, Cleaning of Machines, Concrete, Demolition, Dredging, Environmental - Nuclear, Radiation, Toxic and Hazardous Waste - Level D, Flagperson, Grade Checker, Hand Digging and Hand Back Filling, Highway Marker Placer, Landscaping Mesh Handler and Placer, Puddler, Railroad, Rip-Rap and Grouter, Right-of-Way Sign, Guardrail and Fence Installer, Signal Person, Sound Barrier Installer, Storm and Sanitary Sewer, Swamper, Truck Spotter and Dumper, and Wrecking of Concrete Forms, General Cleanup.

BASE RATE20.51
FRINGE BENEFITS9.75

Group 2 - Batter Board Man (Sanitary And Storm Sewer), Brickmason Tender, Mortar Mixer Operator, Scaffold Builder, Burner and Welder, Bushhammer, Chain Saw Operator, Concrete Saw Operator, Deckhand Scow Man, Dry Cement Handler, Environmental - Nuclear, Radiation, Toxic and Hazardous Waste - Level C, Forklift Operator for Masonary, Form Setter, Green Concrete Cutting, Hand Operated Grouter and Grinder Machine Operator, Jackhammer, Pavement Breaker, Paving Joint Machine, Pipelayer, Plastic Pipe Fusion, Power Driven Georgia Buggy and Wheel Barrow, Power Post Hole Digger, Precast Manhole Setter, Walk-Behind Tamper, Walk-Behind Trencher, Sand Blaster, Concrete Chipper, Surface Grinder, Vibrator Operator and Wagon Driller.

BASE RATE20.76
FRINGE BENEFITS9.75

**TRANSPORTATION CABINET
DIVISION OF CONSTRUCTION PROCUREMENT
COMPLIANCE SECTION
PROJECT WAGE RATES**

LABORERS: (continued)

GROUP 3 - Asphalt Luteman and Raker, Gunnite Nozzleman, Gunnite Operator and Mixer, Grout Pump Operator, Side Rail Setter, Rail Paved Ditch, Screw Operator, Tunnel (Free Air) and Water Blaster.

BASE RATE20.81
FRINGE BENEFITS9.75

GROUP 4 - Caisson Worker (Free Air), Cement Finisher, Environmental - Nuclear, Radiation, Toxic and Hazardous Waste - Levels A and B, Miner and Driller (Free Air), Tunnel Blaster and Tunnel Mucker (Free Air), Directional & Horizontal Boring, Air Track Drillers (all types), Powdermen & Blasters, Troxler & Concrete Tester if Laborer is Utilized.

BASE RATE21.41
FRINGE BENEFITS9.75

LABORERS:

Breckinridge & Grayson Counties:

GROUP 1 - Aging and curing of concrete, Asbestos Abatement Worker, Asphalt Plant, Asphalt, Batch Truck Dump, Carpenter Tender, Cement Mason Tender, Cleaning of Machines, Concrete, Demolition, Dredging, Environmental - Nuclear, Radiation, Toxic and Hazardous Waste - Level D, Flagperson, Grade Checker, Hand Digging and Hand Back Filling, Highway Marker Placer, Landscaping Mesh Handler and Placer, Puddler, Railroad, Rip-Rap and Grouter, Right-of-Way Sign, Guard rail and Fence Installer, Signal Person, Sound Barrier Installer, Storm and Sanitary Sewer, Swamper, Truck Spotter and Dumper, and Wrecking of Concrete Forms, General Cleanup.

BASE RATE20.76
FRINGE BENEFITS9.50

Group 2 - Batter Board Man (Sanitary And Storm Sewer), Brickmason Tender, Mortar Mixer Operator, Scaffold Builder, Burner and Welder, Bushhammer, Chain Saw Operator, Concrete Saw Operator, Deckhand Scow Man, Dry Cement Handler, Environmental - Nuclear, Radiation, Toxic and Hazardous Waste - Level C, Forklift Operator for Masonary, Form Setter, Green Concrete Cutting, Hand Operated Grouter and Grinder Machine Operator, Jackhammer, Pavement Breaker, Paving Joint Machine, Pipelayer, Plastic Pipe Fusion, Power Driven Georgia Buggy and Wheel Barrow, Power Post Hole Digger, Precast Manhole Setter, Walk-Behind Tamper, Walk-Behind Trencher, Sand Blaster, Concrete Chipper, Surface Grinder, Vibrator Operator and Wagon Driller.

BASE RATE21.01
FRINGE BENEFITS9.50

**TRANSPORTATION CABINET
DIVISION OF CONSTRUCTION PROCUREMENT
COMPLIANCE SECTION
PROJECT WAGE RATES**

LABORERS: (continued)

GROUP 3 - Asphalt Luteman and Raker, Gunnite Nozzleman, Gunnite Operator and Mixer, Grout Pump Operator, Side Rail Setter, Rail Paved Ditch, Screw Operator, Tunnel (Free Air) and Water Blaster.

BASE RATE21.06
FRINGE BENEFITS9.50

GROUP 4 - Caisson Worker (Free Air), Cement Finisher, Environmental - Nuclear, Radiation, Toxic and Hazardous Waste - Levels A and B, Miner and Driller (Free Air), Tunnel Blaster and Tunnel Mucker (Free Air), Directional & Horizontal Boring, Air Track Drillers (all types), Powdermen & Blasters, Troxler & Concrete Tester if Laborer is Utilized.

BASE RATE21.66
FRINGE BENEFITS9.50

TRUCK DRIVER CLASSIFICATIONS: TEAMSTERS **BASE RATE**

GROUP 1 - Mobile Batch Truck Tender 16.57

GROUP 2 - Greaser, Tire Changer and Mechanic Tender 16.68

GROUP 3 - Single Axle Dump, Flatbed, Semi-trailer or Pole Trailer when used to pull building materials and equipment, Tandem Axle Dump, Distributor, Mixer and Truck Mechanic 16.86

GROUP 4 - Euclid & Other Heavy Earthmoving Equipment & Lowboy, Articulator Cat, 5-Axle Vehicle, Winch & A-Frame when used in transporting materials, Ross Carrier, Forklift when used to transport building materials and Pavement Breaker16.96

FRINGE BENEFITS.....7.34

OPERATING ENGINEERS:

A-Frame Winch Truck, Auto Patrol, Backfiller, Batcher Plant, Bituminous Paver, Bituminous Transfer Machine, Boom Cat, Bulldozer, Mechanic, Cableway, Carry-All Scoop, Carry Deck Crane, Central Compressor Plant, Clamshell, Concrete Mixer (21 Cu. Ft. or Over), Concrete Paver, Truck-Mounted Concrete Pump, Core Drill, Crane, Crusher Plant, Derrick, Derrick Boat, Ditching and Trenching Machine, Dragline, Dredge Operator, Dredge Engineer, Elevating Grader and Loaders, Grade-All, Gurries, Heavy Equipment Robotics Operator/Mechanic, High Lift, Hoe-Type Machine, Hoist (two or more drums), Hoisting Engine (two or more drums), Horizontal Directional Drill Operator, Hydrocrane, Hyster, Kecal Loader, Letourneau, Locomotive,

**TRANSPORTATION CABINET
DIVISION OF CONSTRUCTION PROCUREMENT
COMPLIANCE SECTION
PROJECT WAGE RATES**

OPERATING ENGINEERS: (continued)

Mechanically Operated Laser Screed, Mechanic Welder, Mucking Machine, Motor Scraper, Orangepeel Bucket, Piledriver, Power Blade, Pumpcrete, Push Dozer, Rock Spreader Attached to Equipment, Rotary Drill, Roller (Bituminous), Scarifier, Scoopmobile, Shovel, Side Boom, Subgrader, Tailboom, Telescoping Type Forklift, Tow or Push Boat, Tower Crane (French, German and other types), Tractor Shovel and Truck Crane, Tunnel Mining Machines, Including Moles, Shields or similar types of Tunnel Mining Equipment.

BASE RATE24.60
FRINGE BENEFITS12.65

Air Compressor (over 900 cu. ft. per min.), Bituminous Mixer, Boom Type Tamping Machine, Bull Float, Concrete Mixer (under 21 cu. ft.), Dredge Engineer, Electric Vibrator Compactor/Self-Propelled Compactor, Elevator (one drum or Buck Hoist), Elevator (when used to hoist building material), Finish Machine, Fireman & Hoist (one drum), Flexplane, Forklift (regardless of lift height), Form Grader, Joint Sealing Machine, Outboard Motor Boat, Power Sweeper (riding type), Roller (rock), Ross Carrier, Skid Mounted Or Trailer Mounted Concrete Pump, Skid Steer Machine with all attachments, Switchman or Brakeman, Throttle Valve Person, Tractair and Road Widening Trencher, Tractor (50 H.P. or over), Truck Crane Oiler, Tugger, Welding Machine, Well Points and Whirley Oiler.

BASE RATE22.18
FRINGE BENEFITS12.65

All off road material handling equipment, including Articulating Dump Trucks, Greaser on Grease facilities servicing heavy equipment.

BASE RATE22.56
FRINGE BENEFITS12.65

Bituminous Distributor, Burlap and Curing Machine, Cement Gun, Concrete Saw, Conveyor, Deckhand Oiler, Grout Pump, Hydraulic Post Driver, Hydro Seeder, Mud Jack, Oiler, Paving Joint Machine, Power Form Handling Equipment, Pump, Roller (Earth), Steerman, Tamping Machine, Tractor (under 50 H.P.) and Vibrator.

BASE RATE21.92
FRINGE BENEFITS12.65

Cranes - with Booms 150 ft. and over (including jib), and where the length of the Boom in combination with the length of the piling leads equals or exceeds 150 ft. - \$1.00 over Group 1 rate.

**TRANSPORTATION CABINET
DIVISION OF CONSTRUCTION PROCUREMENT
COMPLIANCE SECTION
PROJECT WAGE RATES**

Employees assigned to work below ground level are to be paid 10% above basic wage rate. This does not apply to open cut work.

WELDERS - Receive rate for craft in which welding is incidental.

Fringe benefit amounts are applicable for all hours worked except when otherwise noted.

These rates are listed pursuant to Kentucky Determination No. CR-09-III HWY dated July 1, 2009 and/or Federal Decision Number KY20080027 dated February 8, 2008 modification #0 dated February 8, 2008, modification #1 dated March 7, 2008, modification #2 dated April 4, 2008, modification #3 dated May 2, 2008, modification #4 dated June 6, 2008, modification #5 dated July 4, 2008, modification #6 dated August 1, 2008, modification #7 dated August 15, 2008, modification #8 dated September 5, 2008, modification #9 dated October 3, 2008, modification #10 dated December 5, 2008, modification #11 dated January 2, 2009, modification #12 dated February 6, 2009, modification #13 dated March 6, 2009, modification #14 dated April 3, 2009, modification #15 dated June 5, 2009, modification #16 dated July 3, 2009, modification #17 dated July 24, 2009, modification #18 dated August 7, 2009, modification #19 dated September 4, 2009 and modification #20 dated September 11, 2009.

No Laborer, workman or mechanic shall be paid at a rate less than that of a Journeyman except those classified as bona fide apprentices.

Apprentices or trainees shall be permitted to work as such subject to Administrative Regulations adopted by the Commissioner of Workplace Standards. Copies of these regulations will be furnished upon request from any interested person.

Before using apprentices on the job the contractor shall present to the Contracting Officer written evidence of registration of such employees in a program of a State apprenticeship and training agency approved and recognized by the U. S. Bureau of Apprenticeship and Training. In the absence of such a State agency, the contractor shall submit evidence of approval and registration by the U. S. Bureau of Apprenticeship and Training.

The contractor shall submit to the Contracting Officer, written evidence of the established apprenticeship-journeyman ratios and wage rates in the project area, which will be the basis for establishing such ratios and rates for the project under the applicable contract provisions.

**TRANSPORTATION CABINET
DIVISION OF CONSTRUCTION PROCUREMENT
COMPLIANCE SECTION
PROJECT WAGE RATES**

TO: EMPLOYERS/EMPLOYEES

PREVAILING WAGE SCHEDULE:

The wages indicated on this wage schedule are the least permitted to be paid for the occupations indicated. When an employee works in more than one classification, the employer must record the number of hours worked in each classification at the prescribed hourly base rate.

OVERTIME:

Overtime is to be paid after an employee works eight (8) hours a day or forty (40) hours a week, whichever gives the employee the greater wages. At least time and one-half the base rate is required for all overtime. A laborer, workman or mechanic and an employer may enter into a written agreement or a collective bargaining agreement to work more than eight (8) hours a calendar day but not more than ten (10) hours a calendar day for the straight time hourly rate. Wage violations or questions should be directed to the designated Engineer or the undersigned.

Ryan Griffith, Director
Division of Construction Procurement
Frankfort, Kentucky 40622

CONTRACT ID: 091059
COUNTY: JEFFERSON
PROPOSAL: ARRA 264-1(164)

PAGE: 1
LETTING: 09/25/09
CALL NO: 100

LINE NO	ITEM	DESCRIPTION	APPROXIMATE QUANTITY	UNIT	UNIT PRICE	AMOUNT
SECTION 0001 ROADWAY						
0010	00001	DGA BASE	3,000.000	TON		
0020	00078	CRUSHED AGGREGATE SIZE NO 2	25.000	TON		
0030	00100	ASPHALT SEAL AGGREGATE	178.000	TON		
0040	00291	EMULSIFIED ASPHALT RS-2	22.000	TON		
0050	00462	CULVERT PIPE-18 IN	135.000	LF		
0060	00464	CULVERT PIPE-24 IN	135.000	LF		
0070	00471	CULVERT PIPE-54 IN	24.000	LF		
0080	01000	PERFORATED PIPE-4 IN	1,000.000	LF		
0090	01010	NON-PERFORATED PIPE-4 IN	500.000	LF		
0100	01020	PERF PIPE HEADWALL TY 1-4 IN	3.000	EACH		
0110	01024	PERF PIPE HEADWALL TY 2-4 IN	5.000	EACH		
0120	01028	PERF PIPE HEADWALL TY 3-4 IN	5.000	EACH		
0130	01451	S & F BOX INLET-OUTLET-24 IN	2.000	EACH		
0140	01490	DROP BOX INLET TYPE 1	1.000	EACH		
0150	01568	DROP BOX INLET TYPE 13S	1.000	EACH		
0160	01608	CONC MED BARR BOX INLET TY 12B1	2.000	EACH		
0170	01650	JUNCTION BOX	3.000	EACH		
0180	01691	FLUME INLET TYPE 2	3.000	EACH		
0190	01740	CORED HOLE DRAINAGE BOX CON-4 IN	2.000	EACH		
0200	01756	MANHOLE TYPE A	1.000	EACH		

CONTRACT ID: 091059
COUNTY: JEFFERSON
PROPOSAL: ARRA 264-1(164)

PAGE: 2
LETTING: 09/25/09
CALL NO: 100

LINE NO	ITEM	DESCRIPTION	APPROXIMATE QUANTITY	UNIT	UNIT PRICE	AMOUNT
0210	01845	ISLAND INTEGRAL CURB	112.000	LF		
0220	01904	REMOVE CURB	300.000	LF		
0230	01953	CONC MEDIAN BARRIER TYPE 12B2	324.000	LF		
0240	01982	DELINEATOR FOR GUARDRAIL-WHITE	235.000	EACH		
0250	01983	DELINEATOR FOR GUARDRAIL-YELLOW	45.000	EACH		
0260	01984	DELINEATOR FOR BARRIER-WHITE	250.000	EACH		
0270	01985	DELINEATOR FOR BARRIER-YELLOW	619.000	EACH		
0280	02025	JPC PAVEMENT-11 IN/24	52,650.000	SQYD		
0290	02058	REMOVE PCC PAVEMENT	52,650.000	SQYD		
0300	02060	PCC PAVEMENT DIAMOND GRINDING	374,092.000	SQYD		
0310	02115	SAW-CLEAN-RESEAL TVERSE JOINT	322,524.000	LF		
0320	02116	SAW-CLEAN-RESEAL LONGIT JOINT	338,622.000	LF		
0330	02220	FLOWABLE FILL	50.000	CUYD		
0340	02223	GRANULAR EMBANKMENT	30.000	CUYD		
0350	02237	DITCHING	15,000.000	LF		
0360	02351	GUARDRAIL-STEEL W BEAM-S FACE	15,875.000	LF		
0370	02363	GUARDRAIL CONNECTOR TO BRIDGE END TY A	6.000	EACH		
0380	02367	GUARDRAIL END TREATMENT TYPE 1	18.000	EACH		
0390	02369	GUARDRAIL END TREATMENT TYPE 2A	18.000	EACH		
0400	02373	GUARDRAIL END TREATMENT TYPE 3	1.000	EACH		
0410	02381	REMOVE GUARDRAIL	17,075.000	LF		

CONTRACT ID: 091059
COUNTY: JEFFERSON
PROPOSAL: ARRA 264-1(164)

PAGE: 3
LETTING: 09/25/09
CALL NO: 100

LINE NO	ITEM	DESCRIPTION	APPROXIMATE QUANTITY	UNIT	UNIT PRICE	AMOUNT
0420	02387	GUARDRAIL CONNECTOR TO BRIDGE END TY A-1	13.000	EACH		
0430	02391	GUARDRAIL END TREATMENT TYPE 4A	1.000	EACH		
0440	02483	CHANNEL LINING CLASS II	750.000	TON		
0450	02562	SIGNS	4,600.000	SQFT		
0460	02570	PROJECT CPM SCHEDULE (ADDED: 9-17-09)	(1.00)	LS		
0470	02598	FABRIC-GEOTEXTILE TYPE III	1,350.000	SQYD		
0480	02599	FABRIC-GEOTEXTILE TYPE IV	1,000.000	SQYD		
0490	02650	MAINTAIN & CONTROL TRAFFIC	(1.00)	LS		
0500	02671	PORTABLE CHANGEABLE MESSAGE SIGN	8.000	EACH		
0510	02714	SHOULDERING	20,000.000	LF		
0520	02775	ARROW PANEL	6.000	EACH		
0530	05950	EROSION CONTROL BLANKET	9,000.000	SQYD		
0540	06412	STEEL POST MILE MARKERS	13.000	EACH		
0550	06417	FLEXIBLE DELINEATOR POST-W	720.000	EACH		
0560	06418	FLEXIBLE DELINEATOR POST-Y	422.000	EACH		
0570	06511	PAVE STRIPING-TEMP PAINT-6 IN	857,000.000	LF		
0580	06556	PAVE STRIPING-DUR TY 1-6 IN W	117,647.000	LF		
0590	06557	PAVE STRIPING-DUR TY 1-6 IN Y	63,540.000	LF		
0600	06560	PAVE STRIPING-DUR TY 1-12 IN W	22,407.000	LF		
0610	06592	PAVEMENT MARKER TYPE V-B W/R	3,756.000	EACH		
0620	06600	REMOVE PAVEMENT MARKER TYPE V	2,633.000	EACH		

CONTRACT ID: 091059
COUNTY: JEFFERSON
PROPOSAL: ARRA 264-1(164)

PAGE: 4
LETTING: 09/25/09
CALL NO: 100

LINE NO	ITEM	DESCRIPTION	APPROXIMATE QUANTITY	UNIT	UNIT PRICE	AMOUNT
0630	08100	CONCRETE-CLASS A	5.470	CUYD		
0640	08150	STEEL REINFORCEMENT	385.000	LB		
0650	08904	CRASH CUSHION TY VI CLASS C	2.000	EACH		
0660	20366NN	REPLACE GRATE	6.000	EACH		
0670	20833ND	REPLACE MANHOLE	2.000	EACH		
0680	21173EC	SAW-CLEAN-RESEAL RANDOM CRACKS	4,000.000	LF		
0690	21415ND	EROSION CONTROL	(1.00)	LS		
0700	21481ED	POLYMER PAVEMENT REPAIR	2,000.000	CUFT		
0710	21553EN	EMBANKMENT	1,000.000	CUYD		
0720	23237EN10W	WATERBLAST STRIPE REMOVAL	290,215.000	LF		
0730	23627EC	REMOVE AND REPLACE FENCE POST	5.000	EACH		
0740	23628EC	CORED HOLE DRAINAGE CONN TO HEADWALL	1.000	EACH		
0750	23629EC	REPAIR HEADWALL	1.000	EACH		
SECTION 0002 BRIDGE						
0760	03294	EXPAN JOINT REPLACE 1 1/2 IN	450.000	LF		
0770	03295	EXPAN JOINT REPLACE 2 IN	1,950.000	LF		
0780	03296	EXPAN JOINT REPLACE 2 1/2 IN	700.000	LF		
0790	03306	JACK & SUPPORT BRIDGE SPAN	1.000	EACH		
0800	22146EN	CONCRETE PATCHING REPAIR	170.000	SQFT		
0810	23630EC	ARMORED EDGE FOR CONCRETE	(1.00)	LS		
0820	23631EC	RESET BEARING PAD	1.000	EACH		
SECTION 0003 SIGNING						

CONTRACT ID: 091059
COUNTY: JEFFERSON
PROPOSAL: ARRA 264-1(164)

PAGE: 5
LETTING: 09/25/09
CALL NO: 100

LINE NO	ITEM	DESCRIPTION	APPROXIMATE QUANTITY	UNIT	UNIT PRICE	AMOUNT
0830	06407	SBM ALUM SHEET SIGNS .125 IN	75.000	SQFT		
0840	06408	SBM GALV STEEL PANEL SIGNS	105.000	SQFT		
0850	06410	STEEL POST TYPE 1	56.000	LF		
0860	06451	REMOVE SIGN SUPPORT BEAM	4.000	EACH		
0870	06490	CLASS A CONCRETE FOR SIGNS	0.920	CUYD		
0880	21596ND	GMSS TYPE D	4.000	EACH		
SECTION 0004 LIGHTING						
0890	04795	CONDUIT-2 IN	550.000	LF		
0900	04810	JUNCTION BOX-ELECTRICAL	1.000	EACH		
0910	04833	WIRE-NO. 8	1,100.000	LF		
SECTION 0005 TRAFFIC LOOPS						
0920	04795	CONDUIT-2 IN	330.000	LF		
0930	04820	TRENCHING AND BACKFILLING	270.000	LF		
0940	04829	PIEZOELECTRIC SENSOR	76.000	EACH		
0950	04830	LOOP WIRE	16,258.000	LF		
0960	04895	LOOP SAW SLOT AND FILL	2,996.000	LF		
0970	20359NN	GALVANIZED STEEL CABINET 20 IN X 20 IN	6.000	EACH		
0980	20360ES818	WOOD POST 4 IN X 4 IN	6.000	EACH		
0990	20391NS835	JUNCTION BOX TYPE A	12.000	EACH		
SECTION 0006 MOB AND DEMOB						
1000	02568	MOBILIZATION (NO MORE THAN 5%)		LUMP		

CONTRACT ID: 091059
COUNTY: JEFFERSON
PROPOSAL: ARRA 264-1(164)

PAGE: 6
LETTING: 09/25/09
CALL NO: 100

LINE NO	ITEM	DESCRIPTION	APPROXIMATE QUANTITY	UNIT	UNIT PRICE	AMOUNT
1010	02569	DEMOBILIZATION (AT LEAST 1.5%)		LUMP		
		TOTAL BID				