



**TRANSPORTATION CABINET**

Frankfort, Kentucky 40622  
www.transportation.ky.gov/

**Steven L. Beshear**  
Governor

**Michael W. Hancock, P.E.**  
Secretary

June 13, 2012

CALL NO. 100  
CONTRACT ID NO. 122600  
ADDENDUM # 2

Subject: Carroll County, IM 0712 (070)  
Letting June 15, 2012

- (1) Revised - Typical Section - Page 63 of 106
- (2) Revised - Bid Items - Pages 105-106 of 106

Proposal revisions are available at <http://transportation.ky.gov/Construction-Procurement/>.

If you have any questions, please contact us at 502-564-3500.

Sincerely,

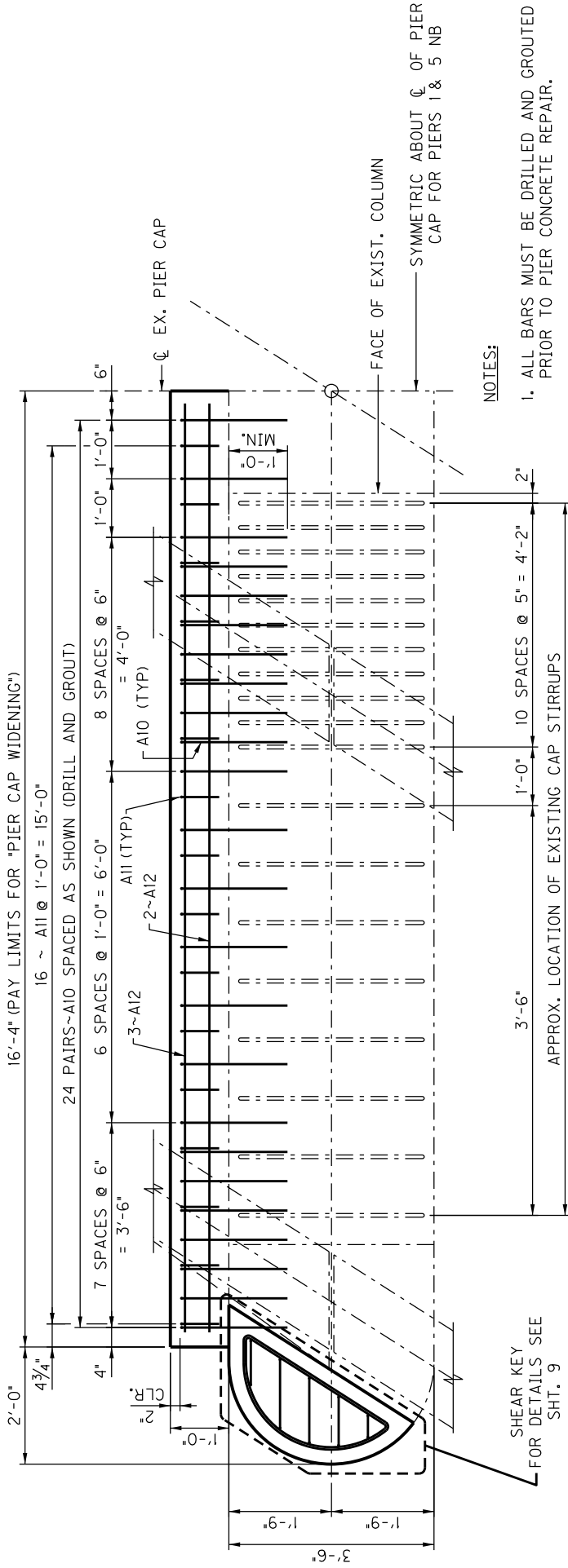
A handwritten signature in blue ink that reads "Ryan Griffith".

Ryan Griffith  
Director  
Division of Construction Procurement

RG:ks  
Enclosures



An Equal Opportunity Employer M/F/D

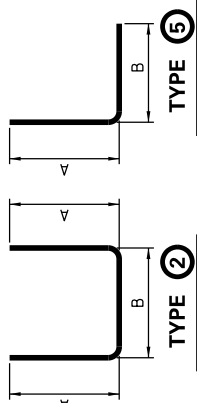
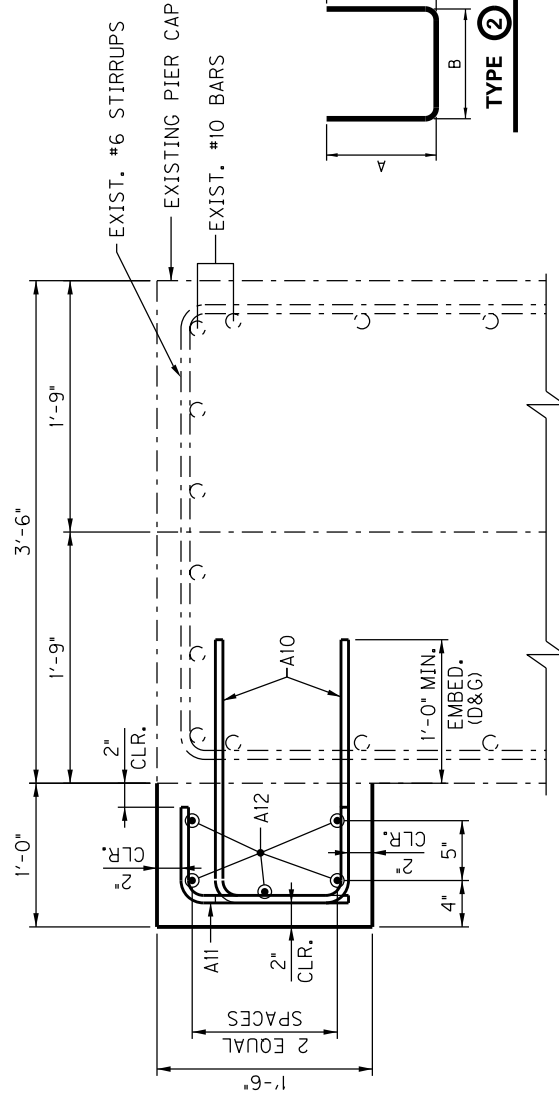


**NOTES:**

1. ALL BARS MUST BE DRILLED AND GROUTED PRIOR TO PIER CONCRETE REPAIR.
2. THE CONTRACTOR SHALL LOCATE AND AVOID EXISTING MAIN LONGITUDINAL REINFORCEMENT AND SHEAR STIRRUPS DURING THE DRILLING AND GROUTING OPERATIONS. BARS TO BE PLACED BY DRILLING AND GROUTING MAY BE SHIFTED SLIGHTLY TO AVOID EXISTING REINFORCEMENT.
3. ROUGHEN CONCRETE SURFACE THAT WILL COME IN CONTACT WITH NEW CLASS "M" CONCRETE TO A FULL AMPLITUDE OF 1/4".

**PLAN**

(PIER 5 SB, PIERS 1 & 5 NB)



BILL OF REINFORCEMENT (1/2 CAP)						
MARK	TYPE	NUMBER	SIZE	LENGTH	A	B
A10		5	2'-6"	1'-10"	0'-8"	
A11		2	16	2'-6"	0'-8"	1'-2"
A12	STR.	5	5	15'-10"		

FD52 021 0071 039-040

**Commonwealth of Kentucky**  
**DEPARTMENT OF HIGHWAYS**  
COUNTY  
**Carroll**

ROUTE **I-71** CROSSING  
**MILL CREEK & MILL CREEK ROAD**

PREPARED BY  
**Division of Maintenance**  
**Bridge Preservation Branch**

SHEET NO. **10**  
DRAWING NO. **106**

**TYPICAL SECTION THRU CAP**

NOT TO SCALE

Item Number  
**6-02035.00**

CONTRACT ID: 122600  
COUNTY: CARROLL  
PROPOSAL: IM 0712 (070)

PAGE: 1  
LETTING: 06/15/12  
CALL NO: 100

LINE NO	ITEM	DESCRIPTION	APPROXIMATE QUANTITY	UNIT	UNIT PRICE	AMOUNT
SECTION 0001 BRIDGE						
0010	02003	RELOCATE TEMP CONC BARRIER	1,172.000	LF		
0020	02363	GUARDRAIL CONNECTOR TO BRIDGE END TY A	8.000	EACH		
0030	02562	SIGNS	920.000	SQFT		
0040	02650	MAINTAIN & CONTROL TRAFFIC B000038L	( 1.00)	LS		
0050	02650	MAINTAIN & CONTROL TRAFFIC B00038R	( 1.00)	LS		
0060	02653	LANE CLOSURE	4.000	EACH		
0070	02671	PORTABLE CHANGEABLE MESSAGE SIGN	4.000	EACH		
0080	02898	RELOCATE CRASH CUSHION	2.000	EACH		
0090	02900	INSTALL TEMP CRASH CUSHION	2.000	EACH		
0100	03171	CONCRETE BARRIER WALL TYPE 9T	1,172.000	LF		
0101	03297	EXPAN JOINT REPLACE 3 IN (ADDED: 6-13-13)	142.300	LF		
0110	03299	ARMORED EDGE FOR CONCRETE	142.400	LF		
0120	03300	ELIMINATE TRANSVERSE JOINT (REVISED: 6-13-12)	213.420	LF		
0130	03304	BRIDGE OVERLAY APPROACH PAVEMENT	2,000.000	SQYD		
0140	06542	PAVE STRIPING-THERMO-6 IN W	1,134.000	LF		
0150	06543	PAVE STRIPING-THERMO-6 IN Y	872.000	LF		
0160	06549	PAVE STRIPING-TEMP REM TAPE-B	2,400.000	LF		
0170	06550	PAVE STRIPING-TEMP REM TAPE-W	5,944.000	LF		
0180	06551	PAVE STRIPING-TEMP REM TAPE-Y	5,944.000	LF		
0190	08151	STEEL REINFORCEMENT-EPOXY COATED	5,354.000	LB		

CONTRACT ID: 122600  
COUNTY: CARROLL  
PROPOSAL: IM 0712 (070)

PAGE: 2  
LETTING: 06/15/12  
CALL NO: 100

LINE NO	ITEM	DESCRIPTION	APPROXIMATE QUANTITY	UNIT	UNIT PRICE	AMOUNT
0200	08504	EPOXY SAND SLURRY	174.200	SQYD		
0210	08526	CONC CLASS M FULL DEPTH PATCH	9.900	CUYD		
0220	08534	CONCRETE OVERLAY-LATEX	107.400	CUYD		
0230	08549	BLAST CLEANING	2,390.000	SQYD		
0240	08550	HYDRODEMOLITION	2,240.000	SQYD		
0250	20214ED	CLEARING BRIDGE SITE	( 1.00)	LS		
0260	20214ED	CLEARING BRIDGE SITE	( 1.00)	LS		
0270	21415ND	EROSION CONTROL	( 1.00)	LS		
0280	21415ND	EROSION CONTROL	( 1.00)	LS		
0290	21532ED	RAIL SYSTEM TYPE III	1,344.000	LF		
0300	22146EN	CONCRETE PATCHING REPAIR	885.000	SQFT		
0310	23262EC	INSTALL SHEAR KEY	8.000	EACH		
0320	23263EC	PIER CAP WIDENING	81.250	LF		
0330	24094EC	PARTIAL DEPTH PATCHING	30.500	CUYD		
SECTION 0002 DEMOBILIZATION						
0340	02569	DEMOBILIZATION (AT LEAST 1.5%)		LUMP		
		TOTAL BID				