

KENTUCKY DEPARTMENT OF HIGHWAYS

RUSSELL COUNTY

BOWLING GREEN - SOMERSET PARKWAY

RELOC. U.S. 127 (NO. 2) OVER B.S.P.

FOR: A.A. SPADING, INC. CONSULTING ENGINEERS, INC.
 PLANS PREPARED BY: KROBOTH ENGINEERS, INC.
 DATE: 6-20-20
 CHECKED BY: P.P.P.
 DESIGNED BY: P.P.P.
 TRACED BY: P.P.P.

REFERENCE & ESTIMATE OF QUANTITIES														
Item Location	Sheet No.	Concrete	Concrete	Steel	Structural	High	Protective Coating	Structure Excavation	Piles, Steel,		Slope Prot.	End Bent	Electrical	
		Class "A" (Cu. Yds)	Class "AA" (Cu. Yds)	Reinforce- ment (Lbs)	Steel Lump Sum	Strength Handrail (Lin. Ft.)	Styrene Butadiene Oil (Gal.) (Sp. Yds)	Common Solid Rock (Cu. Yds)	12 BPE 53 Furnish (Lin. Ft.)	Drive (Lin. Ft.)	4' Concrete Slope Wall (Sq. Yds)	Backfill (Cu. Yds)	Conduit (Lump Sum)	
Title & Quantities	1													
Notes	2													
Layout	3													
Pile Record	4													
End Bent 1	5,6	73.5	29.8	8457			2	10	200	1340	1340	510	65	
Pier 1	7	66.2		15688			5		80	360	360			
Pier 2	8	91.9		22678			5		260	50				
Pier 3	8	91.9		22678			5		230	50				
End Bent 2	5,6	73.5	29.8	8457			2	10	200	470	470	480	65	
Spans 1, 2, 3 & 4	9, 10, 11, 12		604.9	160411			75	1420						
High Strength Handrail	3				578									
Construction Elevations	13, 14													
Electrical Conduit	15													
Soundings	16													
Sub-total Substructure		399.0	59.6	77958	—	—	19	20	970	100	2170	2170	990	130
Sub-total Superstructure		—	604.9	160411	①	578	75	1420	—	—	—	—	—	②
Total		399.0	664.5	238369	①	578	94	1440	970	100	2170	2170	990	130

① Approximate Weight of Structural Steel = 564,300 Lbs.
 ② Approximate Length of Electrical Conduit = 300 L.F.

BILL OF INCIDENTAL MATERIAL			
Item	No.	Description	Location
Four Bolt Insert Assembly	4	See Note Sh. 3 & 6	End Bent Wings
Joint Sealing Compound	2	1" x 3/8" x 71'-0"	Expansion Joints @ End Bents

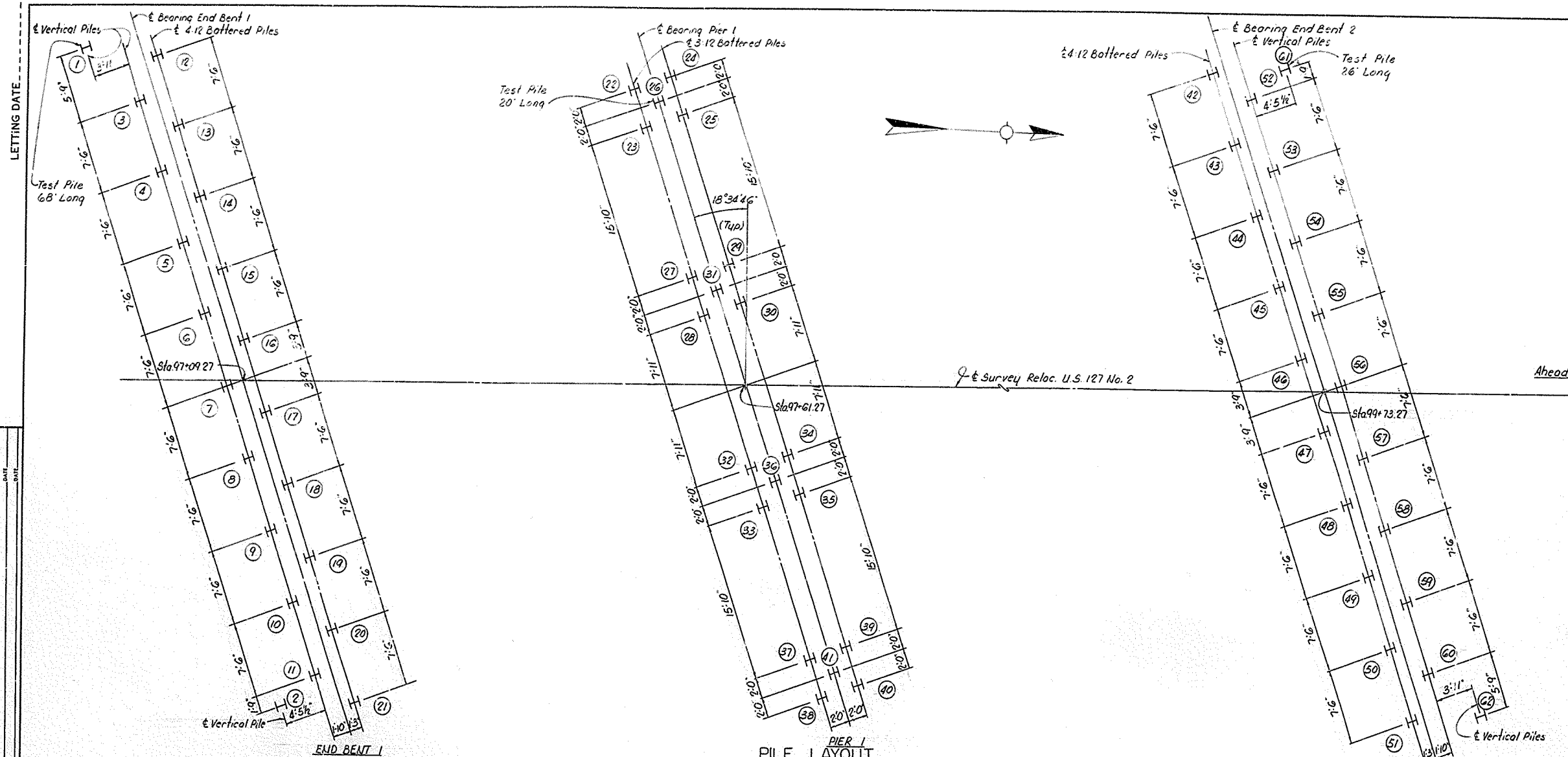
- SPECIAL PROVISIONS**
- No. 8A Linseed Oil Protective Coating
 - No. 12 Joint Sealing Compound
 - No. 30B Membrane Curing of Concrete Structure
 - No. 35B Class "AA" Concrete
 - No. 77B Styrene-Butadiene Protective Coating
 - No. 79 Concrete Bridge Deck Finishing Machine
 - No. 80A Blast Cleaning and Painting Structural Steel

- REFERENCES**
- (Standard Drawing listed below are the Current Edition and are to be used with these plans)
- | | | | | |
|-------|-------|--------|--------|--------|
| AEI-D | G35AC | PR2A-A | AWS 2A | 17.40A |
| | H19C | SF2B | SP 1 | |

Reloc. U.S. 127 (No. 2) over B.S.P. Sheet 1 of 16

COMMONWEALTH OF KENTUCKY
 DEPARTMENT OF HIGHWAYS
 FRANKFORT
 COUNTY OF
RUSSELL
 BOWLING GREEN - SOMERSET PKWY.
 ROAD
 STATION 1721+07.45
 CONSTRUCTION PROJECT NO. _____

BSP 4-2
 P. E. PROJECT NO. SP 104-648-11
 MAINTENANCE PROJECT NO. _____
 DRAWING NO.
 18275



PILE LAYOUT
(All to be 12 B.P.53, See Std. Drwg. P212A, Current Edition)

END BENT 1					PIER 1					END BENT 2				
Pile No.	Cut off Elevation	Tip of Pile Elevation	Pile Length (Lin. Ft.)	Calculated Bearing Capacity (Tons)	Pile No.	Cut off Elevation	Tip of Pile Elevation	Pile Length (Lin. Ft.)	Calculated Bearing Capacity (Tons)	Pile No.	Cut off Elevation	Tip of Pile Elevation	Pile Length (Lin. Ft.)	Calculated Bearing Capacity (Tons)
1	1057.67				22	1037.52				42	1059.56			
2	"				23	"				43	"			
3	"				24	"				44	"			
4	"				25	"				45	"			
5	"				26	"				46	"			
6	"				27	"				47	"			
7	"				28	"				48	"			
8	"				29	"				49	"			
9	"				30	"				50	"			
10	"				31	"				51	"			
11	"				32	"				52	"			
12	"				33	"				53	"			
13	"				34	"				54	"			
14	"				35	"				55	"			
15	"				36	"				56	"			
16	"				37	"				57	"			
17	"				38	"				58	"			
18	"				39	"				59	"			
19	"				40	"				60	"			
20	"				41	"				61	"			
21	"									62	"			

PILE RECORD: AFTER ALL PILES HAVE BEEN DRIVEN, THE RESIDENT ENGINEER SHALL RECORD FOR EACH PILE, THE TIP-OF-PILE ELEVATION AS DRIVEN, THE LENGTH OF PILE IN PLACE AND THE CALCULATED BEARING CAPACITY AND SHALL RETURN ONE BLUE PRINT COPY OF THIS SHEET WITH THIS DATA TO THE DIRECTOR OF THE DIVISION OF BRIDGES SO THAT THE DATA MAY BE RECORDED ON THE ORIGINAL PLANS. LENGTHS OF PILES IN PLACE SHOWN HEREON ARE THE ACTUAL LENGTHS OF PILES IN THE FINISHED STRUCTURE BELOW CUTOFF ELEVATION AND ARE NOT NECESSARILY PAY ITEMS. THIS PILE RECORD DOES NOT REPLACE OTHER RECORDS OF PILES REQUIRED TO BE KEPT AND SUBMITTED BY THE RESIDENT ENGINEER.

PILE RECORD

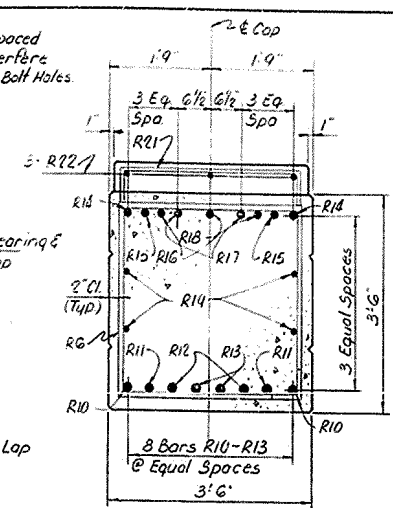
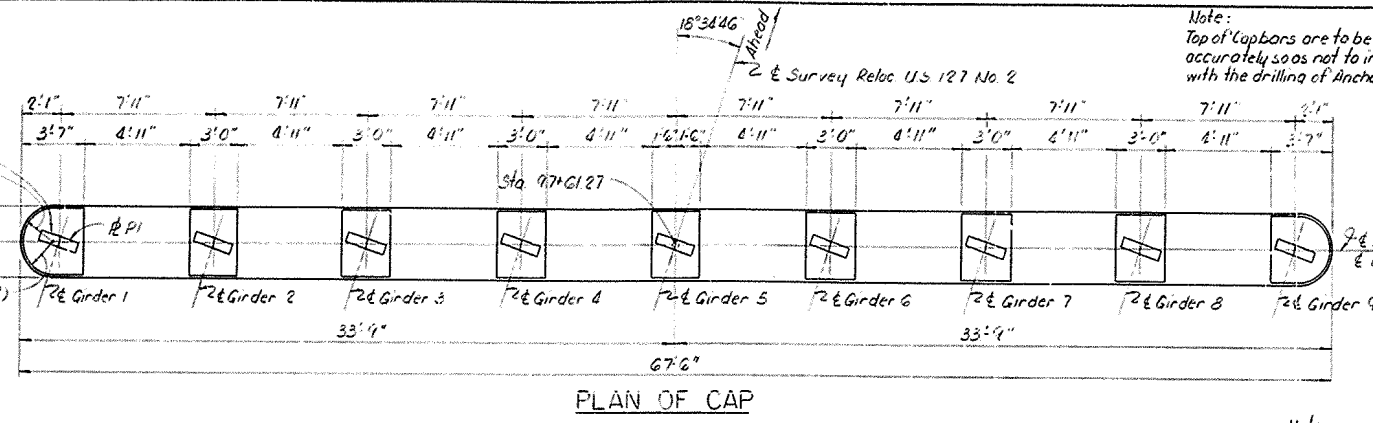
Reloc. U.S. 127 No. 2 over B.S.P.

Sheet 4

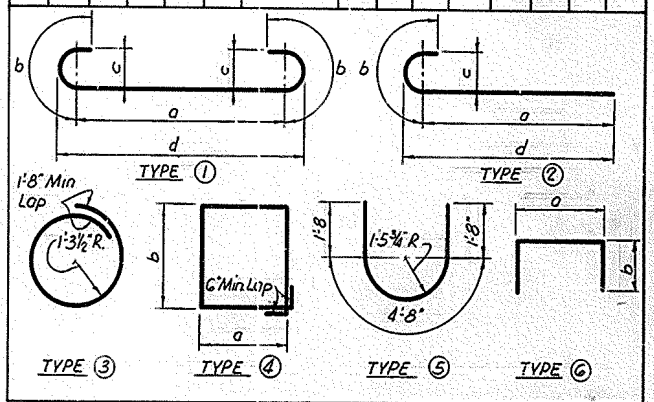
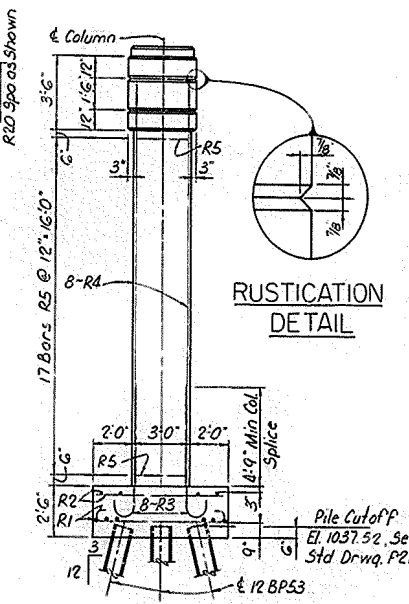
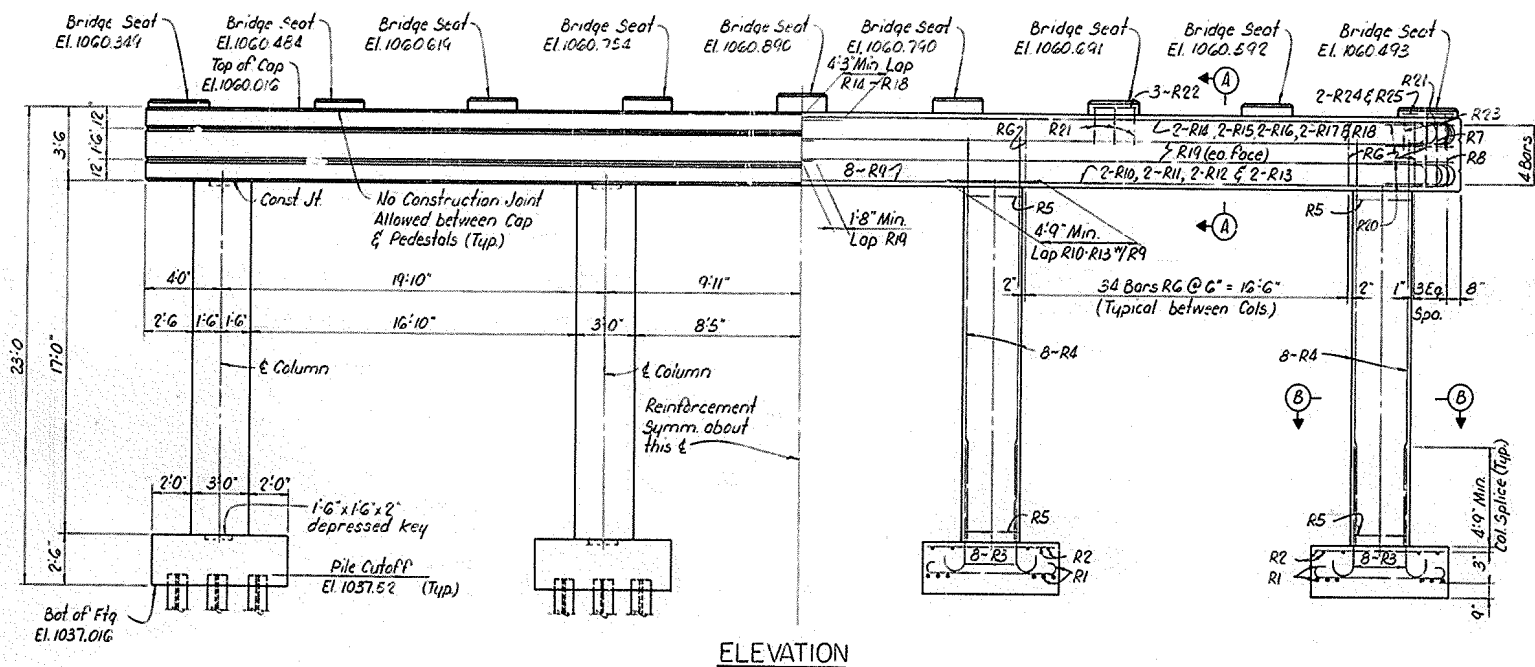
COMMONWEALTH OF KENTUCKY
DEPARTMENT OF HIGHWAYS
FRANKFORT
COUNTY OF
RUSSELL
BOWLING GREEN-SOMERSET PKWY.
ROAD
STATION 4721+07.45
CONSTRUCTION PROJECT NO. MAINTENANCE PROJECT NO. DRAWING NO. 18275

DESIGNED BY: AF, RAS
CHECKED BY: BAP, BHP
DATE: 6-70
BY: BAP, BHP

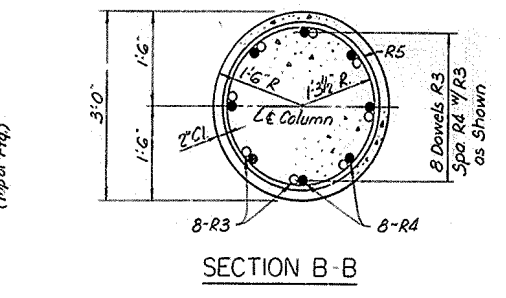
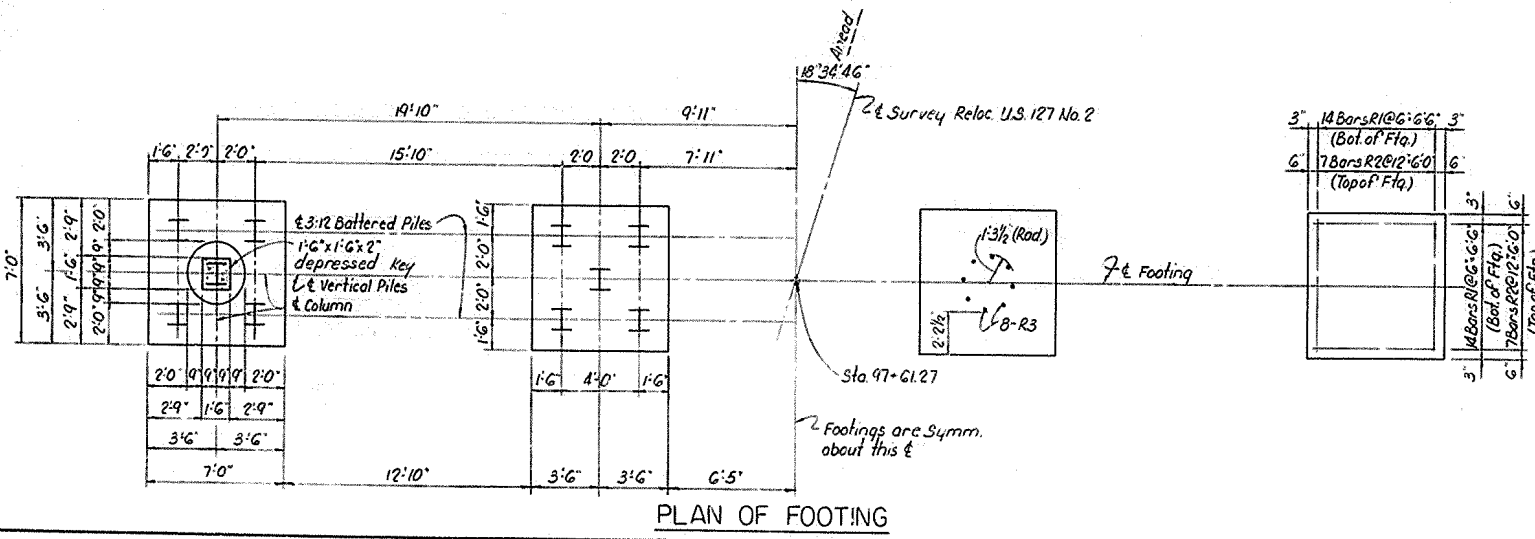
For location of Anchor Bolt Holes See Sh. 8 For Detail of Base R See Sh. 10



BILL OF REINFORCEMENT												
MARK	TYPE	NO	BAR SIZE	LOCATION	a		b		c		d	
					Ft.	In.	Ft.	In.	Ft.	In.	Ft.	In.
R1	①	112	#6	Footings	6	2	1	0	0	6	6	8
R2	Str	56	#5									
R3	②	32	#11		5	9	2	0	1	2 1/4	6	4 1/2
R4	Str	32	#11	Columns								
R5	③	68	#4									
R6	④	106	#6	Cap	3	2	3	2				
R7	⑤	2	#6		2	2	3	2				
R8	⑥	2	#6		1	5	3	2				
R9	Str	8	#11		24	7						
R10	⑦	4	#11		24	4	2	0	1	2 1/4	24	11 1/2
R11	⑧	4	#11		25	0	2	0	1	2 1/4	25	7 1/2
R12	⑨	4	#11		25	4	2	0	1	2 1/4	25	11 1/2
R13	⑩	4	#11		25	5	2	0	1	2 1/4	26	0 1/2
R14	⑪	4	#10		34	0	1	10	1	0 3/4	34	6 3/4
R15	⑫	4	#10		34	7	1	10	1	0 3/4	35	1 3/4
R16	⑬	4	#10		34	11	1	10	1	0 3/4	35	5 3/4
R17	⑭	4	#10		35	1	1	10	1	0 3/4	35	7 3/4
R18	⑮	2	#10		35	2	1	10	1	0 3/4	35	8 3/4
R19	Str	8	#4									
R20	⑯	8	#4									
R21	⑰	25	#5	Pedestal	5	1	2	3				
R22	Str	21	#4									
R23	⑱	2	#5		1	5	1	8				
R24	Str	4	#4									
R25	Str	2	#4									



ESTIMATE OF QUANTITIES		
Item	Location	PIER 1
Concrete, Class A*	(Cu. Yds.)	68.2
Steel Reinforcement	(Lbs.)	15,688



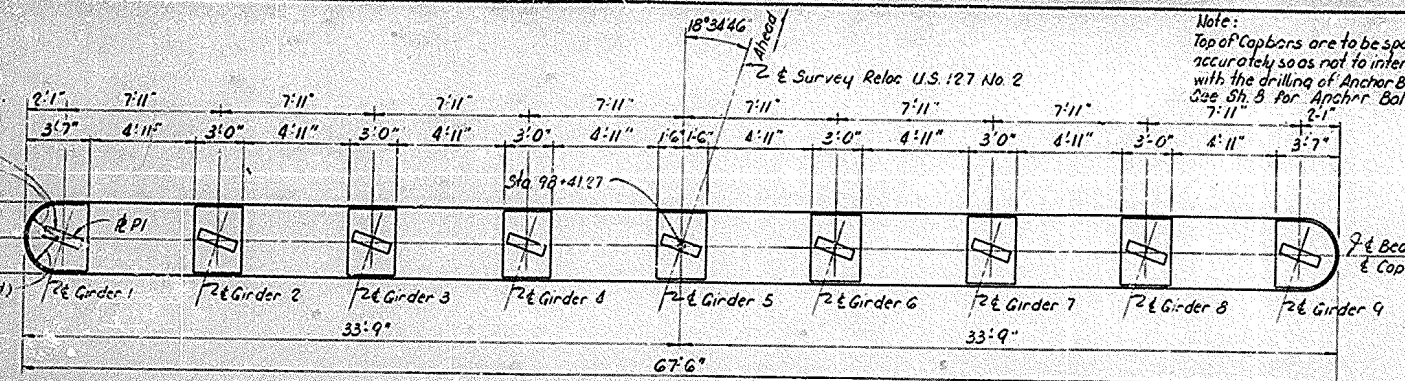
Reloc. U.S. 127 No. 2 over B.S.P. Sheet 7

COMMONWEALTH OF KENTUCKY
 DEPARTMENT OF HIGHWAYS
 FRANKFORT
 COUNTY OF
RUSSELL
 BOWLING GREEN-SOMERSET PKWY.
 ROAD
 STATION 4721+07.45 P.E. PROJECT NO.
 CONSTRUCTION PROJECT NO. MAINTENANCE PROJECT NO.

DRAWING NO. 18275

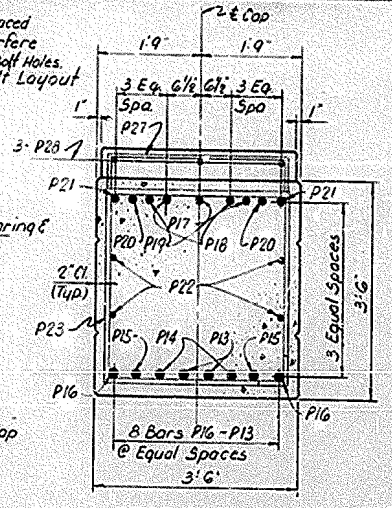
LETTING DATE:

For location of Anchor Bolt Holes See Sh. B For Detail of Base R See Sh. 10



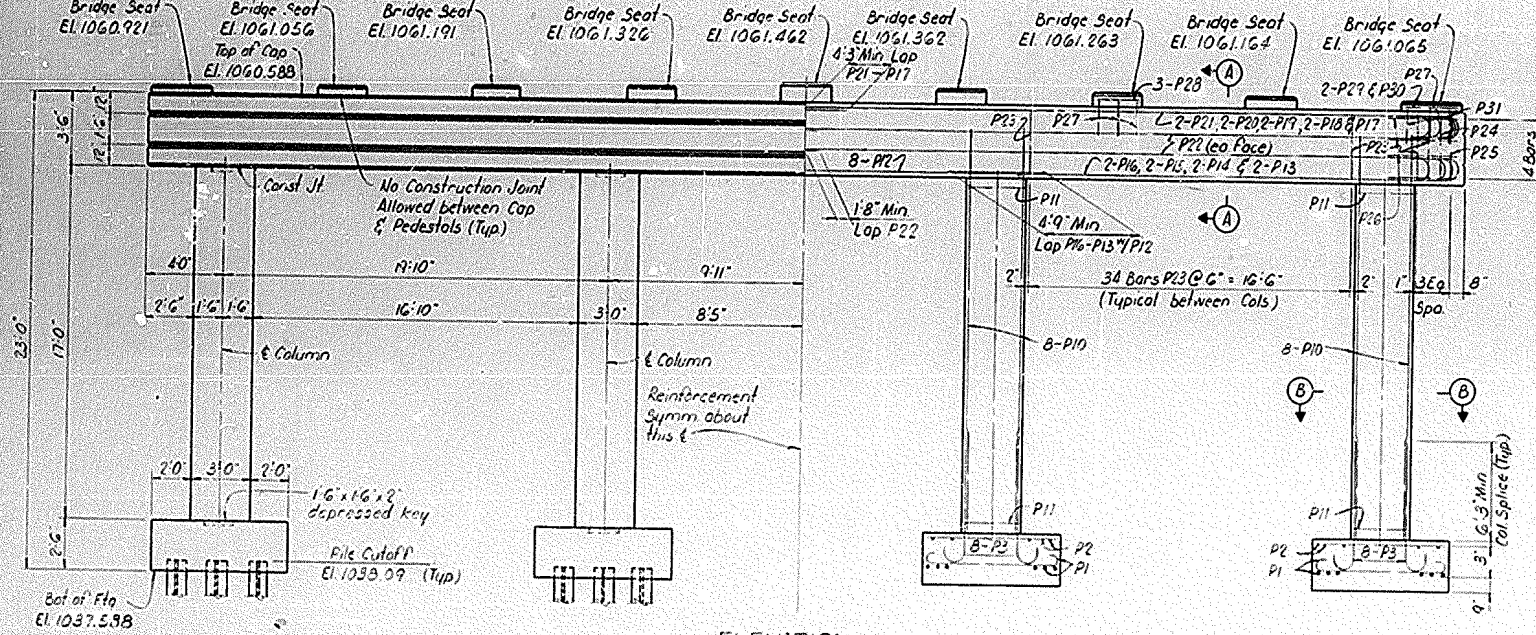
PLAN OF CAP

Note: Top of Cap bars are to be spaced accurately so as not to interfere with the drilling of Anchor Bolt Holes. See Sh. B For Anchor Bolt Layout

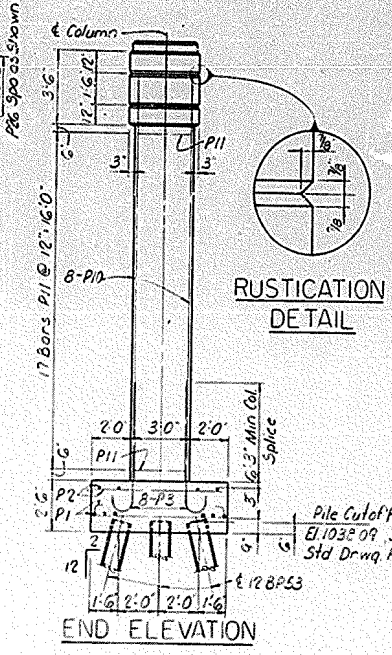


SECTION A-A

Note: Bars P16-P19 Lap #P12



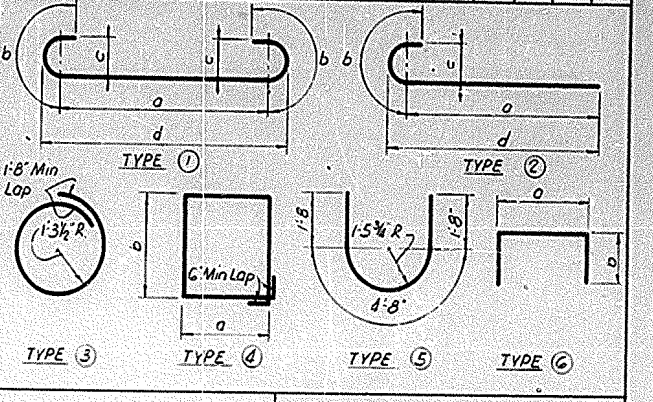
ELEVATION



RUSTICATION DETAIL

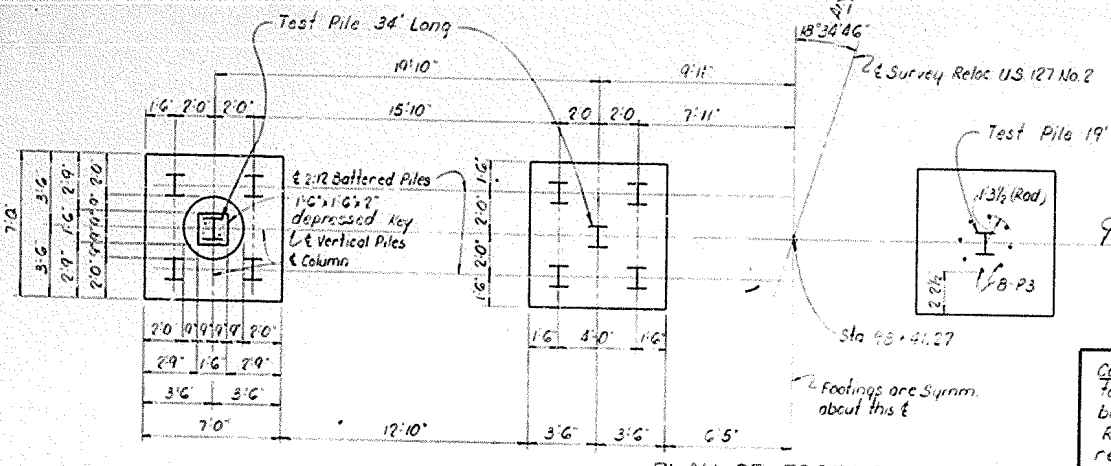
END ELEVATION

BILL OF REINFORCEMENT													
MARK	TYPE	NO	BAR SIZE	LENGTH Ft	LOCATION	a		b		c		d	
						Ft	In	Ft	In	Ft	In	Ft	In
P1	(1)	112	#7	8	Footing	6	1	2	0	7	6	8	
P2	Str.	56	#5	6									
P3	(2)	32	#11	10									
P10	Str.	32	#11	19	Column								
P11	(3)	63	#4	9									
P12	Str.	8	#11	24	Cap								
P16	(2)	4	#11	27		25	5	2	0	1	2 1/4	26	0 1/2
P14	(2)	4	#11	27		25	4	2	0	1	2 1/4	25	1 1/2
P15	(2)	4	#11	27		25	0	2	0	1	2 1/4	25	7 1/2
P16	(2)	4	#11	26		24	4	2	0	1	2 1/4	24	1 1/2
P17	(2)	2	#10	37		35	2	1	10	1	0 3/4	35	8 3/4
P18	(2)	4	#10	36		35	1	1	10	1	0 3/4	35	7 3/4
P19	(2)	4	#10	36		34	11	1	10	1	0 3/4	35	5 3/4
P20	(2)	4	#10	36		34	7	1	10	1	0 3/4	35	1 3/4
P21	(2)	4	#10	35		34	0	1	10	1	0 3/4	34	6 3/4
P22	Str.	3	#4	32									
P23	(4)	106	#6	13		3	2	3	2				
P24	(4)	2	#6	11		2	2	3	2				
P25	(4)	2	#6	9		1	5	3	2				
P26	(5)	8	#4	8									
P27	(6)	25	#5	7	Pedestal	3	1	2	4				
P28	Str.	21	#4	2									
P29	Str.	4	#4	1									
P30	Str.	2	#4	3									
P31	(6)	2	#5	4		1	5	1	8				



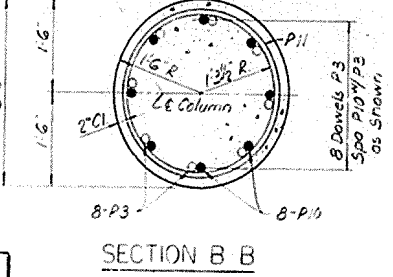
ESTIMATE OF QUANTITIES		
Item	Location	PIER 2
Concrete, Class "A"	(Cu Yds)	6.82
Steel Reinforcement (Used) (Lbs)		16,553
(Not Used) (Lbs)		6,125

REINFORCEMENT NOT USED
From Stopped Pier
4-P3 12-P6
12-P4 12-P7
12-P5 58-P8
32-P9



PLAN OF FOOTING

Construction Revision Procedure: Excavate all rock to Elev. 1023 ±. Rock ledges that may intercept battered piles below Elev. 1023 ± should be removed. Refill of excavation shall meet Earth Core requirements of Std. Drwg. SF2B. Drive piles as shown on this sheet.

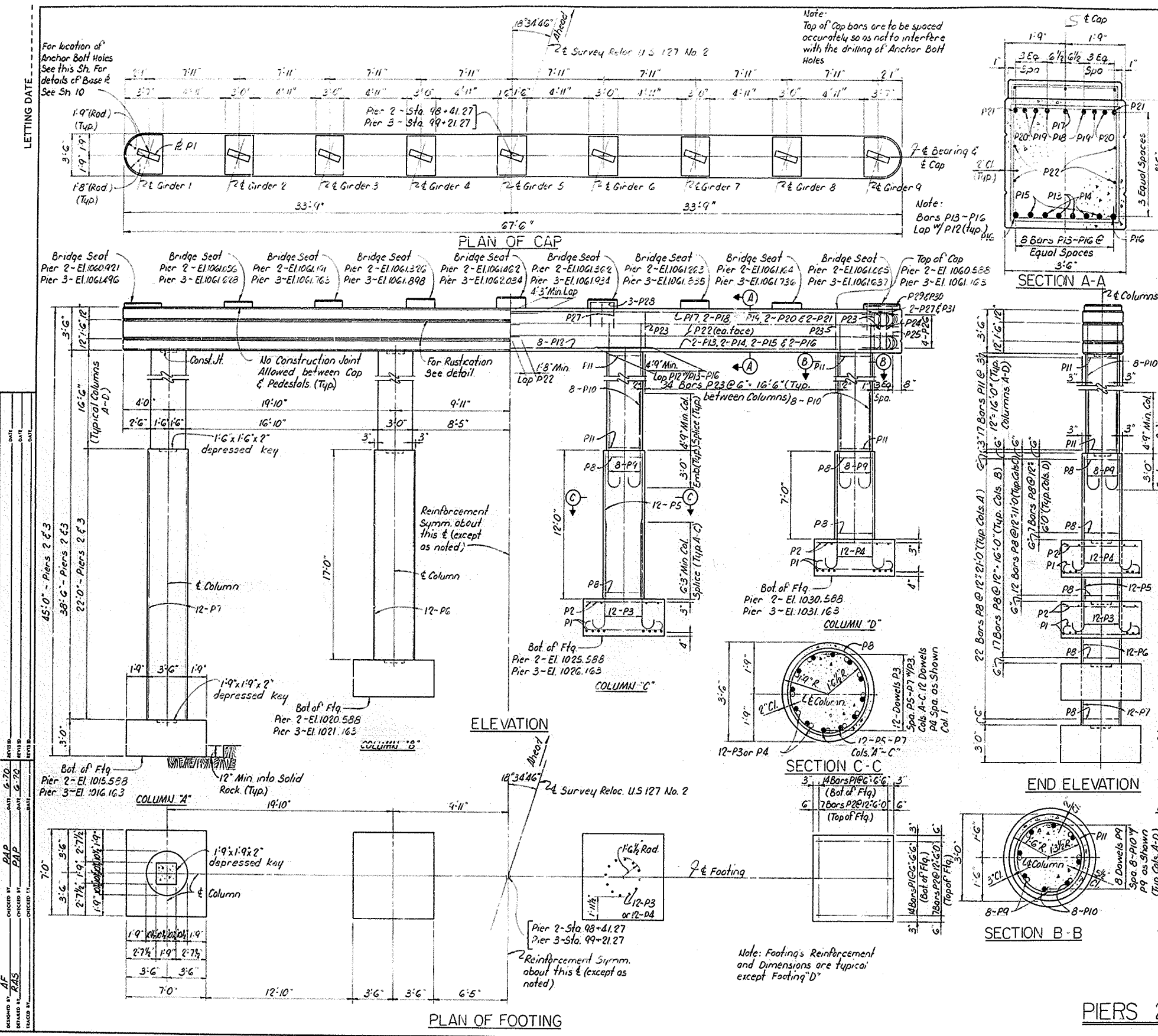


SECTION B-B

PIER 2

Reloc. U.S. 127 No. 2 over B.S.P. Sheet BA

COMMONWEALTH OF KENTUCKY
DEPARTMENT OF HIGHWAYS
FRANKFORT
COUNTY OF
RUSSELL
BOWLING GREEN SOMERSET PKWY.
ROAD
STATION 8721+07.85 P.E. PROJECT NO.
CONSTRUCTION PROJECT NO. MAINTENANCE PROJECT NO. DRAWING NO.
18275



Note:
Top of Cap bars are to be spaced accurately so as not to interfere with the drilling of Anchor Bolt Holes

Note:
Bars P13-P16 Lap w/ P12 (top)

Note: Footing's Reinforcement and Dimensions are typical except Footing 'D'

BILL OF REINFORCEMENT

MARK	TYPE	NUMBER	BAR SIZE	LENGTH	LOCATION	a		b		c		d	
						Ft.	In.	Ft.	In.	Ft.	In.	Ft.	In.
P1	①	112	#7	8	Footing	6	1	1	2	0	7	6	8
P2	Str.	56	#5	6									
P3	②	36	#11	10		8	2	2	0	1	2 1/4	5	9 1/2
P4	②	12	#11	10		8	9	2	0	1	2 1/4	9	4 1/2
P5	Str.	12	#11	11	Column 'C'								
P6	Str.	12	#11	16	Column 'B'								
P7	Str.	12	#11	2	Column 'A'								
P8	③	58	#4	11	Columns	1	6 1/2						
P9	②	32	#11	9		7	2	2	0	1	2 1/4	7	9 1/2
P10	Str.	32	#11	19									
P11	③	68	#4	9		1	3 1/2						
P12	Str.	8	#11	24	Cap								
P13	②	4	#11	27		25	5	2	0	1	2 1/4	26	0 1/2
P14	②	4	#11	27		25	4	2	0	1	2 1/4	25	1 1/2
P15	②	4	#11	27		25	0	2	0	1	2 1/4	25	7 1/2
P16	②	4	#11	26		24	4	2	0	1	2 1/4	24	1 1/2
P17	②	2	#10	37		35	2	1	10	1	0 3/4	35	8 1/2
P18	②	4	#10	36		35	1	1	10	1	0 3/4	35	7 1/2
P19	②	4	#10	36		34	11	1	10	1	0 3/4	35	5 1/2
P20	②	4	#10	36		34	7	1	10	1	0 3/4	35	1 1/2
P21	②	4	#10	35		34	10	1	10	1	0 3/4	34	6 3/8
P22	Str.	8	#4	32									
P23	④	106	#6	13		3	2	3	2				
P24	④	2	#6	11		2	2	3	2				
P25	④	2	#6	9		1	5	3	2				
P26	⑤	8	#4	8									
P27	⑥	25	#5	7	pedestal	3	1	2	4				
P28	Str.	21	#4	2									
P29	Str.	4	#4	1									
P30	Str.	2	#4	3									
P31	⑥	2	#5	4		1	5	1	8				

ESTIMATE OF QUANTITIES

Item	Location	PIER 2	PIER 3
Concrete Class 'A'	(Cu. Yds.)	91.9	91.9
Steel Reinforcement	(Lbs.)	22,678	22,678

Reloc. U.S. 127 No. 2 over B.S.P. Sheet 8

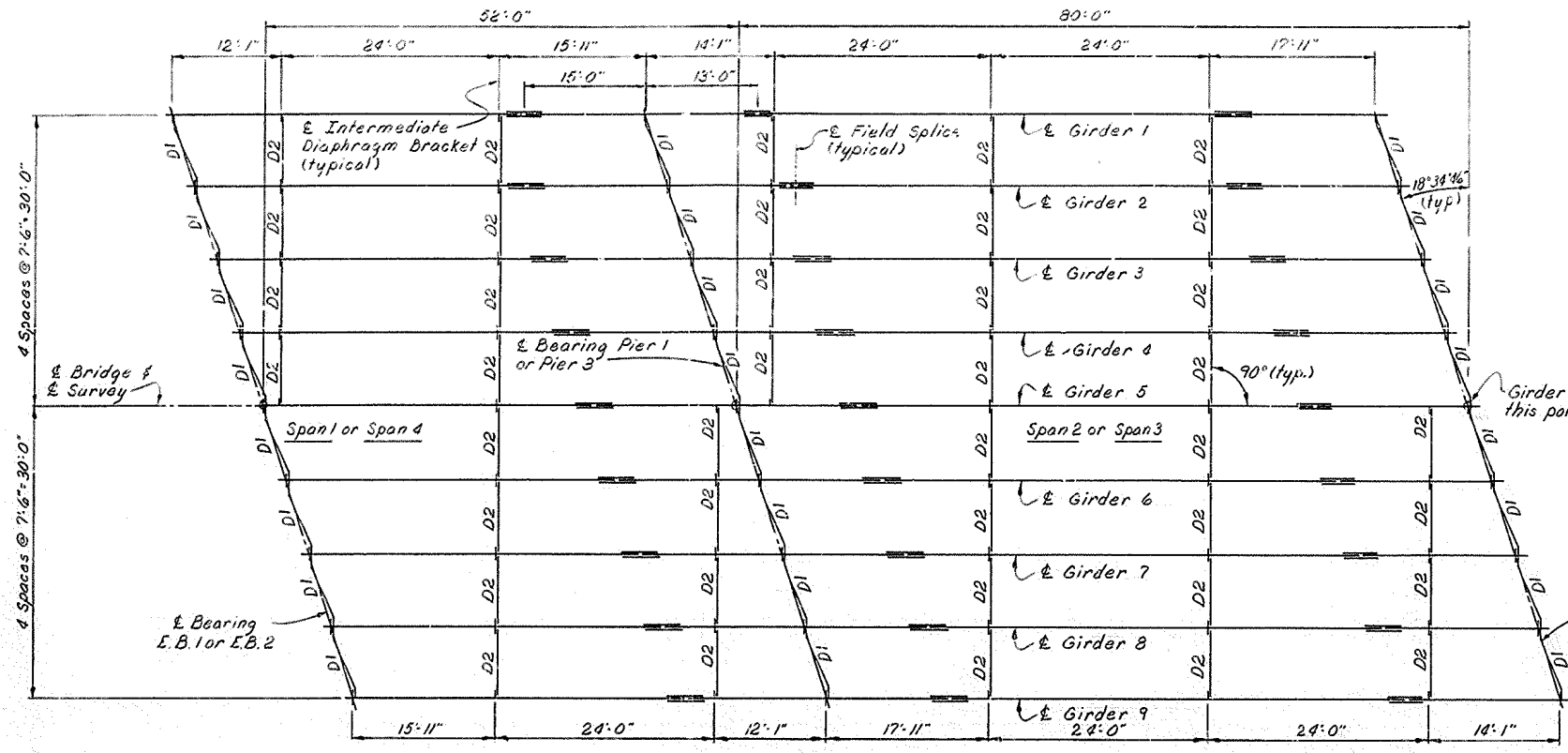
COMMONWEALTH OF KENTUCKY
DEPARTMENT OF HIGHWAYS
FRANKFORT
COUNTY OF
RUSSELL
BOWLING GREEN-SOMERSET PKWY.
ROAD
STATION 4721-0745 P. E. PROJECT NO.
CONSTRUCTION PROJECT NO. MAINTENANCE PROJECT NO. DRAWING NO.

18275

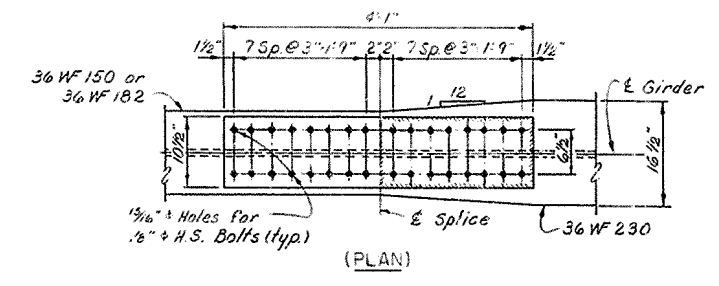
PIERS 2 & 3

DATE: 6-70
 CHECKED BY: RAS
 DRAWN BY: RAS
 SCALE: AS SHOWN
 SHEET NO.: 8 OF 8
 PROJECT NO.: 4721-0745

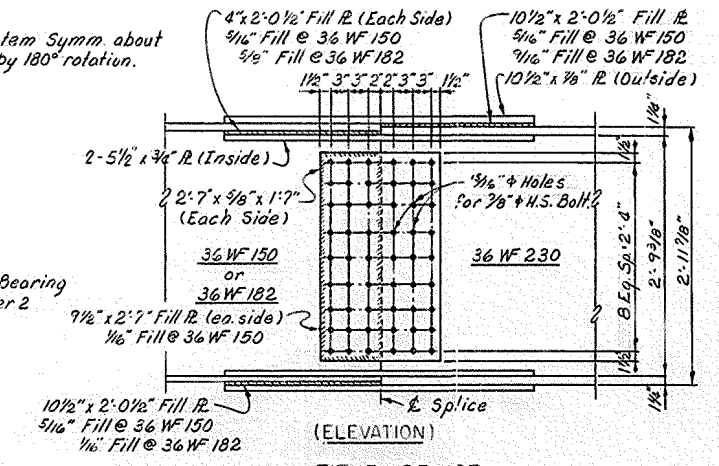
LETTING DATE



FRAMING PLAN

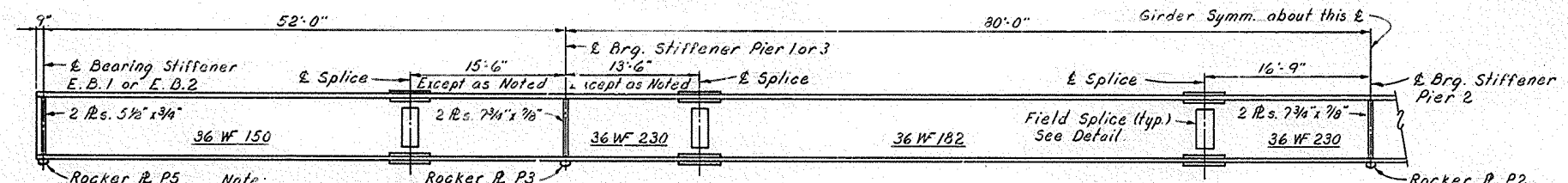


(PLAN)



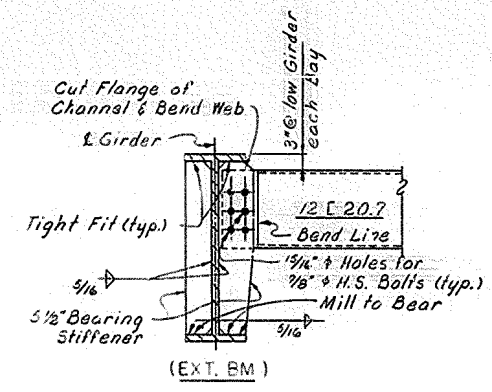
(ELEVATION)

FIELD SPLICE

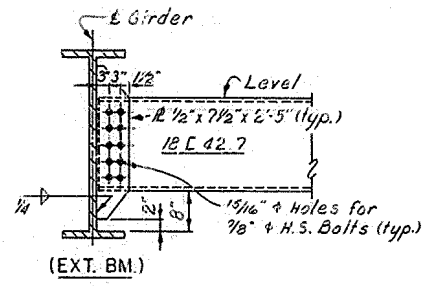


BEAM ELEVATION (PART)

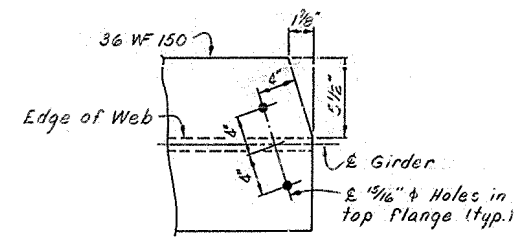
(typical)



DIAPHRAGM D1



INT. DIAPHRAGM D2



END OF FLANGE DETAIL

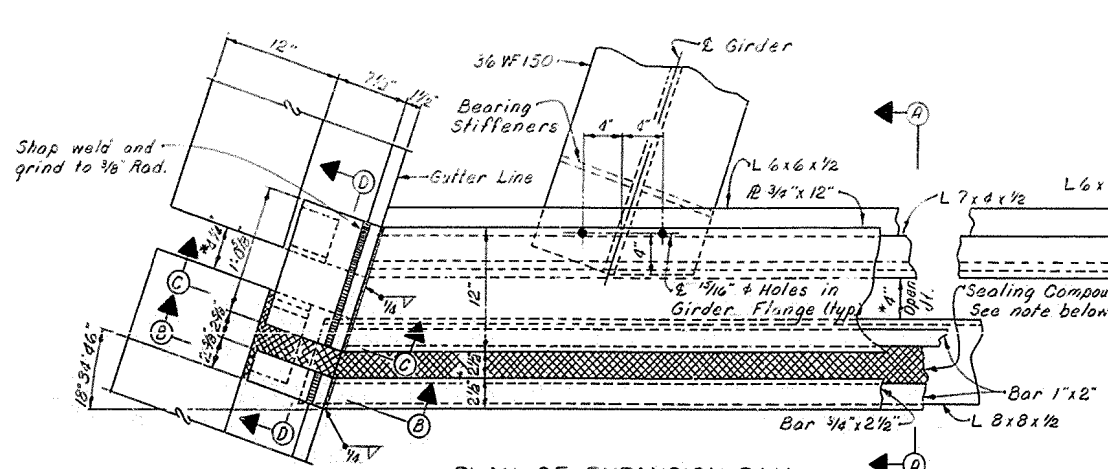
DESIGNED BY: AF
 CHECKED BY: WJG
 DATE: 6-20-20
 DATE: 6-20-20
 DRAWING NO. 18275

STRUCTURAL STEEL DETAILS

Reloc. U.S. 127 No. 2 over B.S.P. Sheet 9

COMMONWEALTH OF KENTUCKY
 DEPARTMENT OF HIGHWAYS
 FRANKFORT
 COUNTY OF
RUSSELL
 BOWLING GREEN-SOMERSET PKWY.
 ROAD
 STATION 4721+02.45 P. E. PROJECT NO.
 CONSTRUCTION PROJECT NO. MAINTENANCE PROJECT NO. DRAWING NO.
 18275

LETTING DATE:

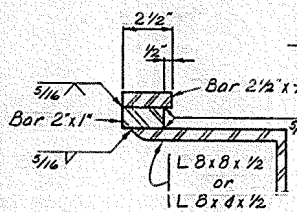


Note:
* This Dimension to be maintained @ 60°F.

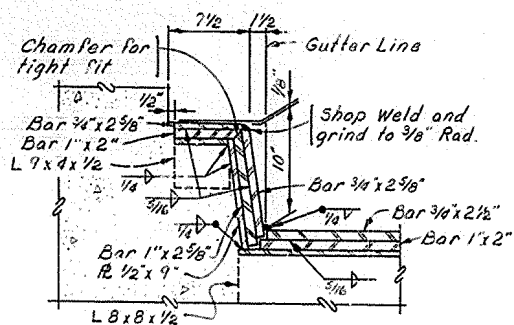
1-3" Joint Sealing Compound See K.D.H. Spec. Prov. #12. Destroy bond between Sealing Compound and Sliding Surface by using film or paper backing. Insure bond to vertical steel face by removing paint.

3/16" x 2 1/2" Bar Anchors @ 12", All Sp.

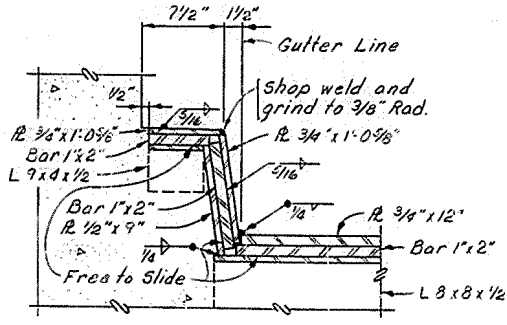
Permissiva Const. Ut.



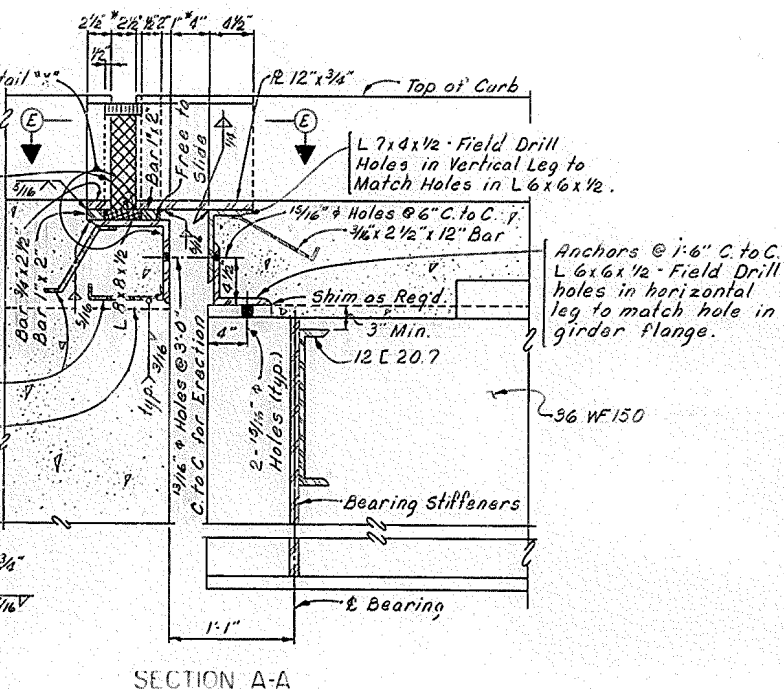
DETAIL "X"



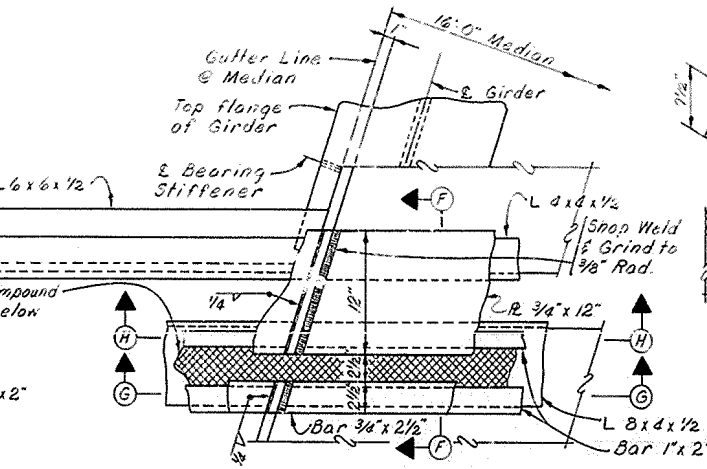
SECTION B-B



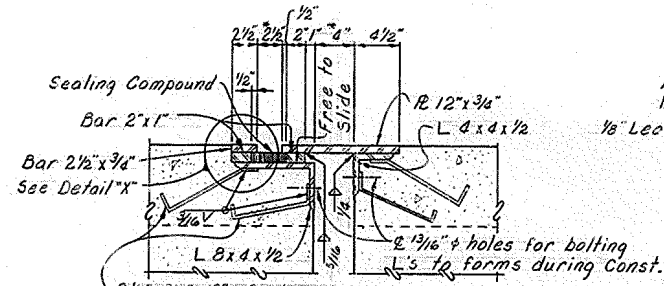
SECTION C-C



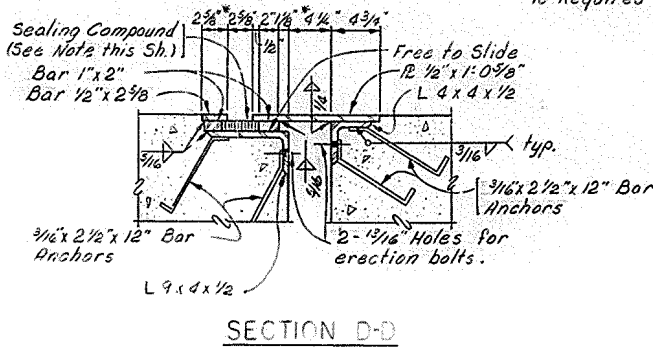
SECTION A-A



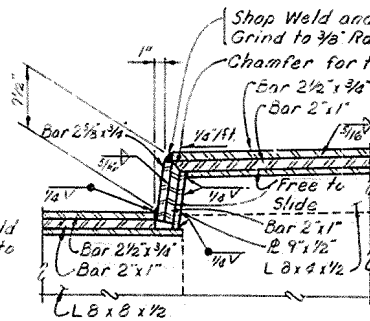
SECTION F-F @ Median



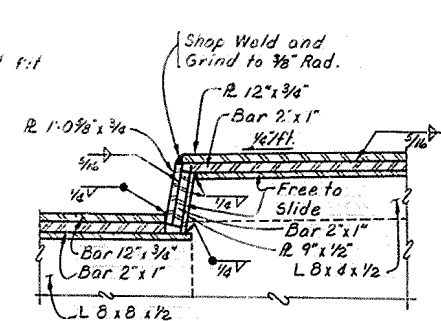
SECTION E-E



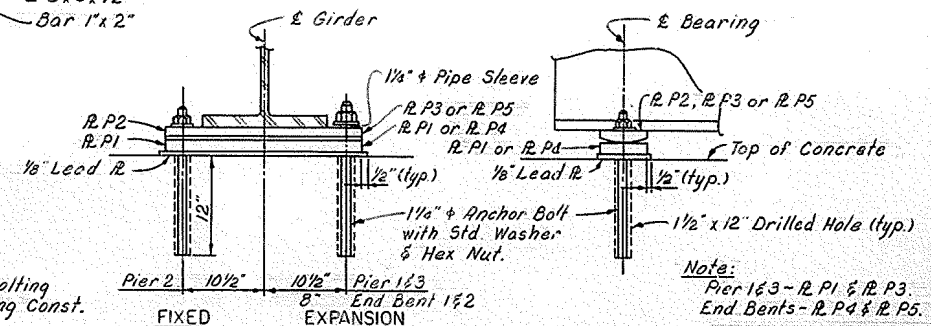
SECTION D-D



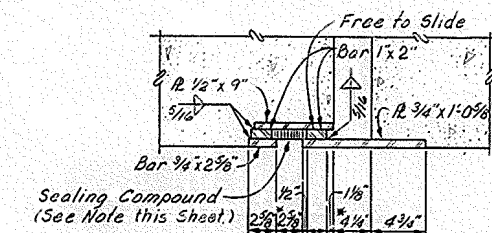
SECTION G-G



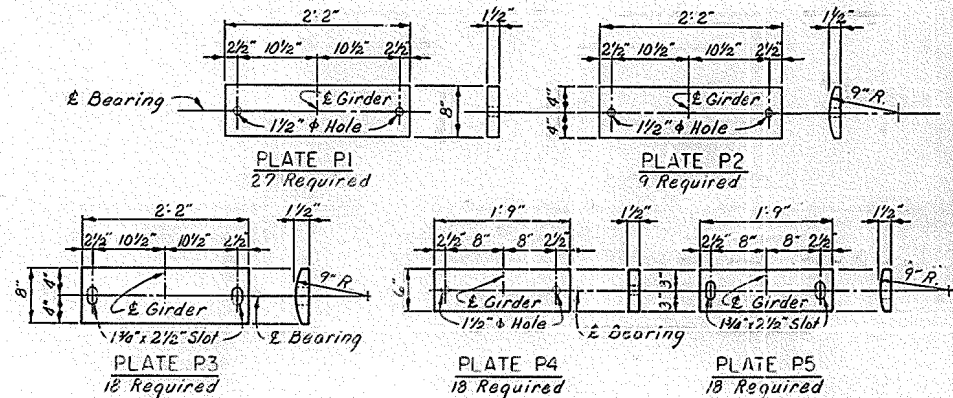
SECTION H-H



BEARING DETAILS (ELEVATIONS)



SECTION E-E



BEARING PLATE DETAILS

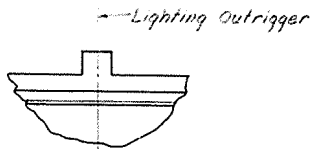
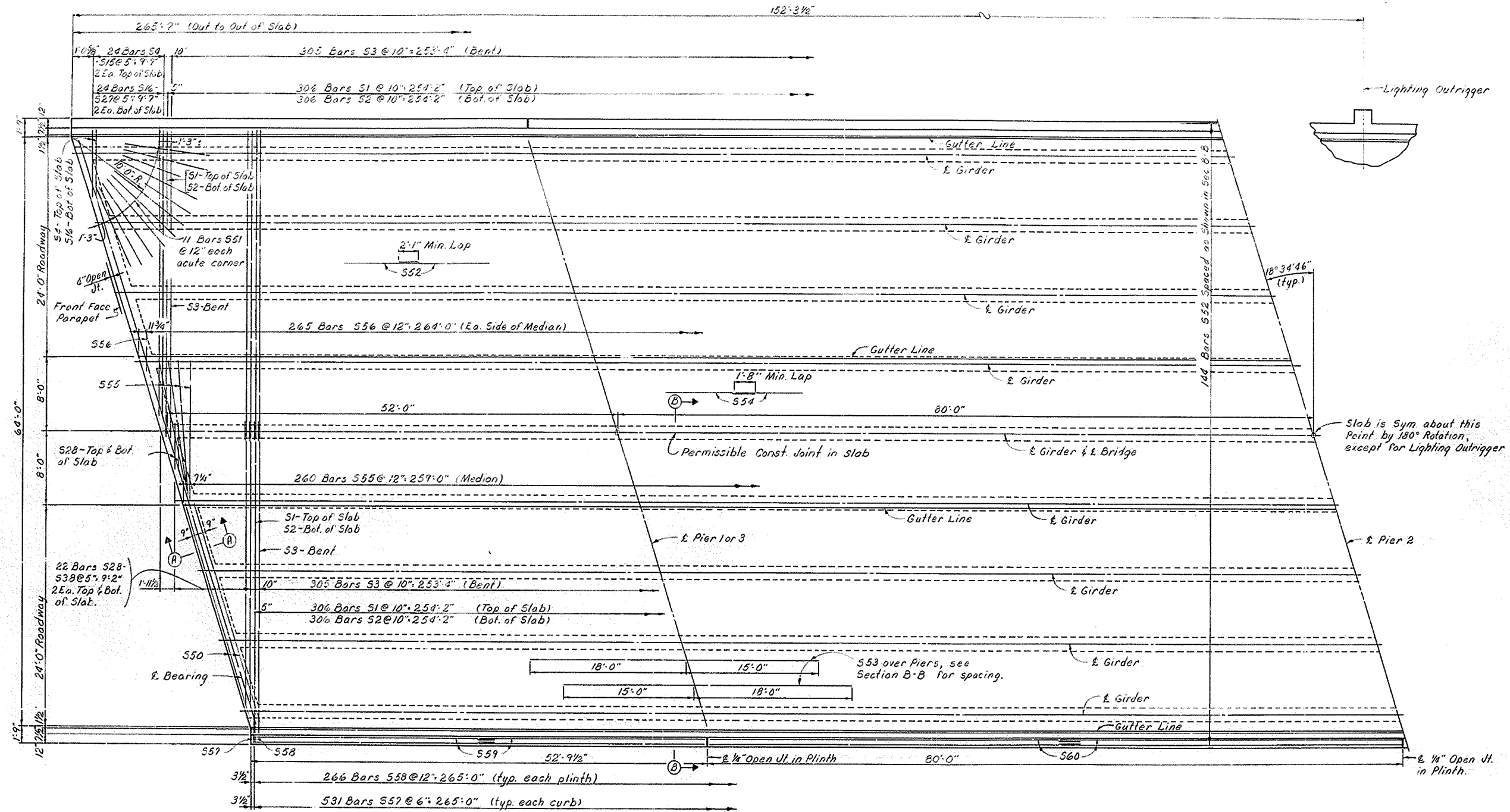
Reloc. U.S. 127 No. 2 over B.S.R. Sheet 10

COMMONWEALTH OF KENTUCKY
DEPARTMENT OF HIGHWAYS
FRANKFORT
COUNTY OF
RUSSELL
BOWLING GREEN-SOMERSET PKWY.
ROAD
STATION 4721+07.45 P.E. PROJECT NO.
CONSTRUCTION PROJECT NO. MAINTENANCE PROJECT NO. DRAWING NO.
18275

DATE: 6-20-70
 CHECKED BY: P.P.P.
 DESIGNED BY: P.P.P.
 DRAWN BY: P.P.P.
 TRACED BY: P.P.P.
 DATE: 6-20-70
 CHECKED BY: P.P.P.
 DESIGNED BY: P.P.P.
 DRAWN BY: P.P.P.
 TRACED BY: P.P.P.

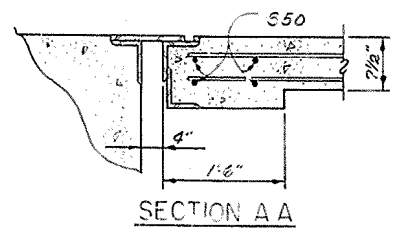
LETTING DATE:

DESIGNED BY	DATE	REVISION
BY	6-20	
CHECKED BY	DATE	REVISION
BY	6-20	
APPROVED BY	DATE	REVISION
BY		



Slab is Sym. about this Point by 180° Rotation, except for Lighting Outrigger

Note:
For Expansion Dam
Details see Sheet 10



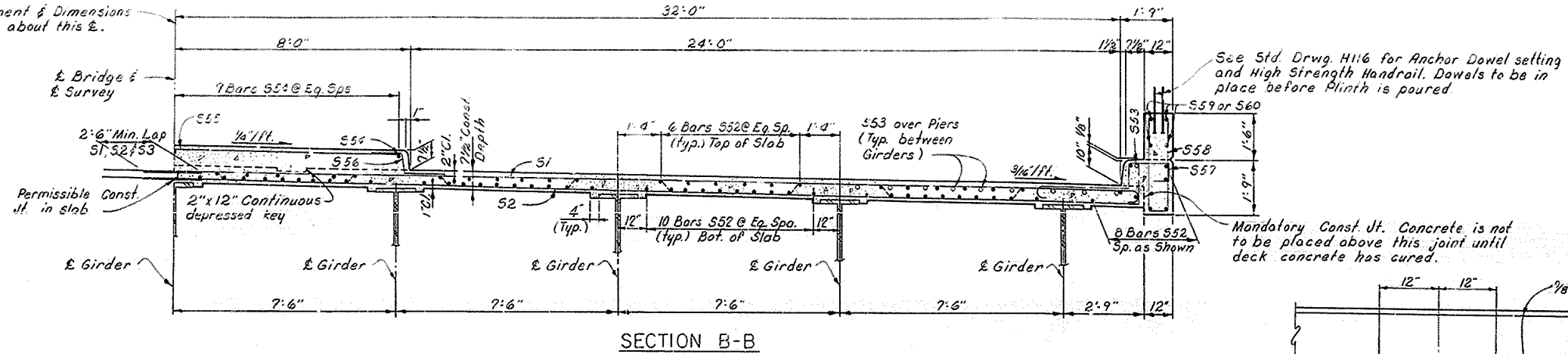
SUPERSTRUCTURE

Reloc. U.S. 127 No. 2 over B.S.P. Sheet 11

COMMONWEALTH OF KENTUCKY
 DEPARTMENT OF HIGHWAYS
 FRANKFORT
 COUNTY OF
 RUSSELL
 BOWLING GREEN - SOMERSET PKWY.
 ROAD
 STATION 4221+02.45 P.E. PROJECT NO.
 CONSTRUCTION PROJECT NO. MAINTENANCE PROJECT NO. DRAWING NO.
 18275

LETTING DATE

Reinforcement & Dimensions are Symm. about this E.



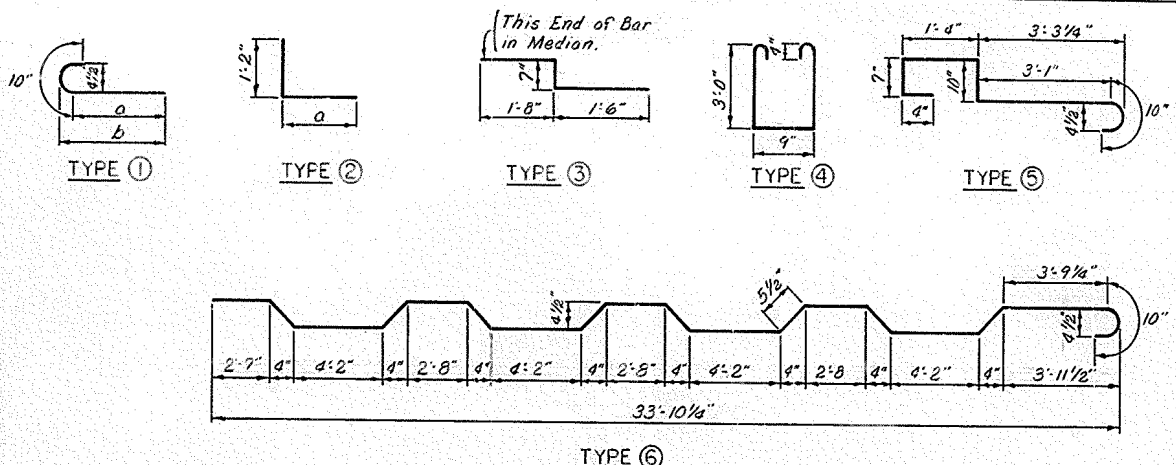
See Std. Drwg. H116 for Anchor Dowel setting and High Strength Handrail. Dowels to be in place before Plinth is poured.

Mandatory Const. Jt. Concrete is not to be placed above this joint until deck concrete has cured.

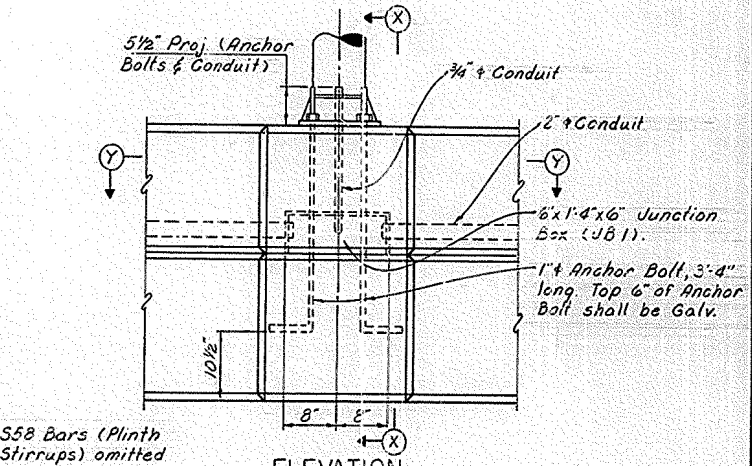
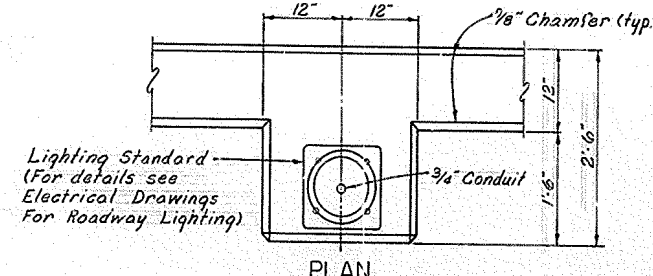
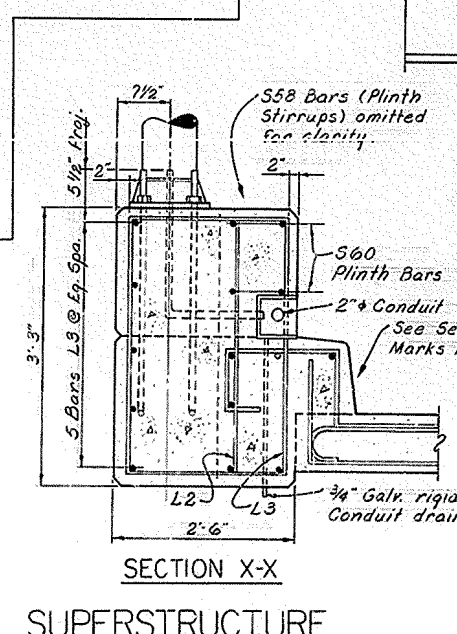
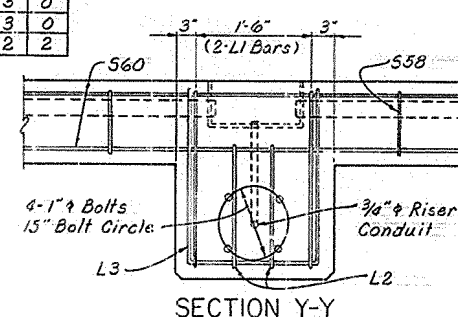
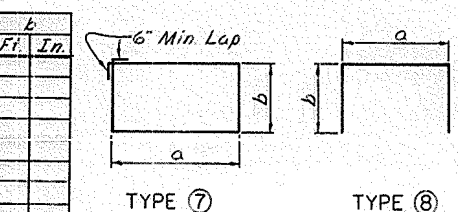
BILL OF REINFORCEMENT

Mark	Type	No.	Bar Size	Length	Location	a	b	c
				FT. IN.		FT. IN.	FT. IN.	FT. IN.
S1	(1)	612	#5	34 6	Slab	33 8	33 10 1/2	
S2	(2)	412	#5	35 0	"			
S3	(3)	610	#5	36 6	"			
S4	(1)	4	#5	4 0	"	3 2	3 4 1/4	
S5	"	4	#5	6 5	"	5 7	5 9 1/4	
S6	"	4	#5	7 11	"	7 1	8 3 1/4	
S7	"	4	#5	11 5	"	10 7	10 9 1/4	
S8	"	4	#5	13 10	"	13 1	13 3 1/4	
S9	"	4	#5	16 4	"	15 6	15 8 1/4	
S10	"	4	#5	18 10	"	18 0	18 2 1/4	
S11	"	4	#5	22 4	"	21 6	21 8 1/4	
S12	"	4	#5	23 10	"	23 0	23 2 1/4	
S13	"	4	#5	26 3	"	25 5	25 7 1/4	
S14	"	4	#5	28 9	"	27 11	28 1 1/4	
S15	(1)	4	#5	31 3	"	30 5	30 7 1/4	
S16	(2)	4	#5	4 6	"	3 4		
S17	"	4	#5	6 11	"	5 9		
S18	"	4	#5	9 5	"	8 3		
S19	"	4	#5	11 11	"	10 9		
S20	"	4	#5	14 5	"	13 3		
S21	"	4	#5	16 10	"	15 8		
S22	"	4	#5	19 4	"	18 2		
S23	"	4	#5	22 10	"	21 8		
S24	"	4	#5	24 4	"	23 2		
S25	"	4	#5	26 9	"	25 7		
S26	"	4	#5	29 3	"	28 1		
S27	(2)	4	#5	31 9	"	30 7		
S28	Str.	8	#5	6 8	"			
S29	"	8	#5	9 2	"			
S30	"	8	#5	11 7	"			
S31	"	8	#5	12 1	"			
S32	"	8	#5	16 7	"			
S33	"	8	#5	19 1	"			
S34	"	8	#5	21 6	"			
S35	"	8	#5	24 0	"			
S36	"	8	#5	26 6	"			
S37	"	8	#5	29 0	"			
S38	Str.	8	#5	31 5	Slab			
S39								
S40								
S41								
S42								
S43								
S44								
S45								
S46								
S47								
S48								
S49								

NOT USED



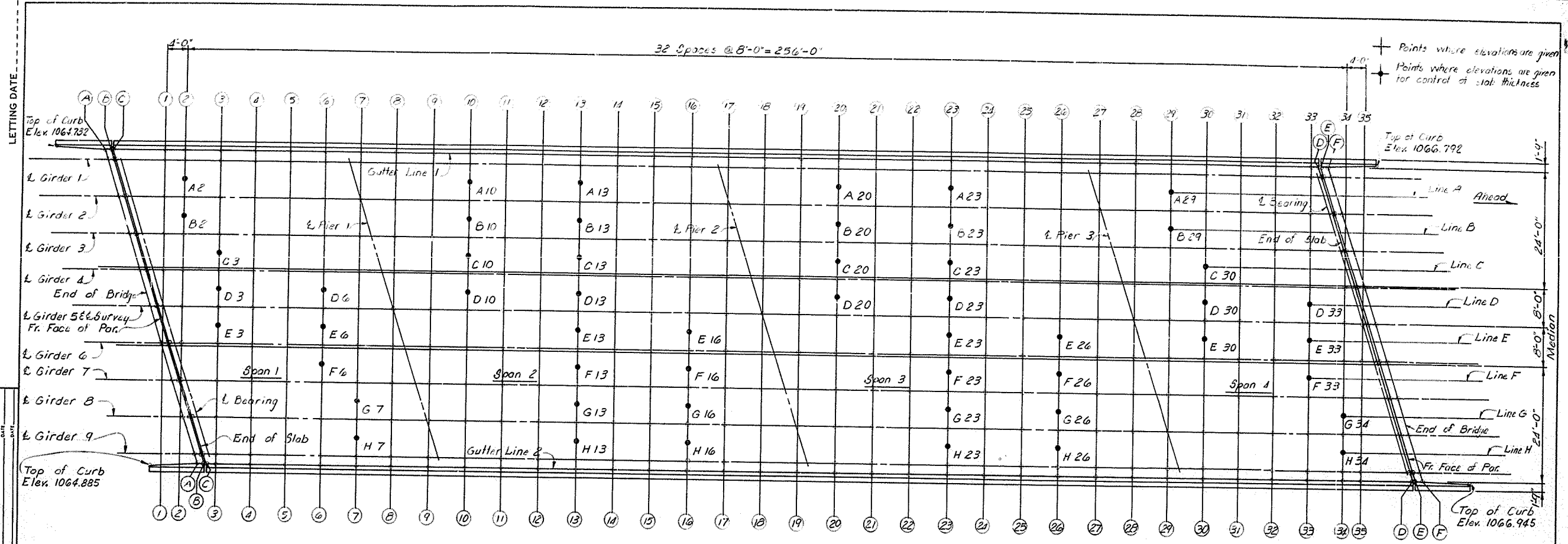
Mark	Type	No.	Bar Size	Length	Location	a	b
				FT. IN.		FT. IN.	FT. IN.
S50	Str.	24	#5	23 11	Slab		
S51	Str.	22	#6	10 0	"		
S52	Str.	1008	#5	39 8	"		
S53	Str.	186	#10	33 0	"		
S54	Str.	117	#4	39 8	Median		
S55	Str.	266	#4	15 6	"		
S56	(3)	530	#4	3 8	"		
S57	(5)	1062	#5	6 9	Curb		
S58	(4)	532	#5	7 3	Plinth		
S59	Str.	32	#4	27 1	"		
S60	Str.	48	#4	27 6	"		
L1	(7)	2	#5	11 1	Outrigger	2 2	3 0
L2	(7)	2	#5	9 11	"	1 7	3 0
L3	(8)	5	#5	6 0	"	1 9	2 2



ESTIMATE OF QUANTITIES		
Item	Units	
Concrete Class "AA"	(Cu. Yds.)	604.9
Steel Reinforcement	(Lbs.)	160,411

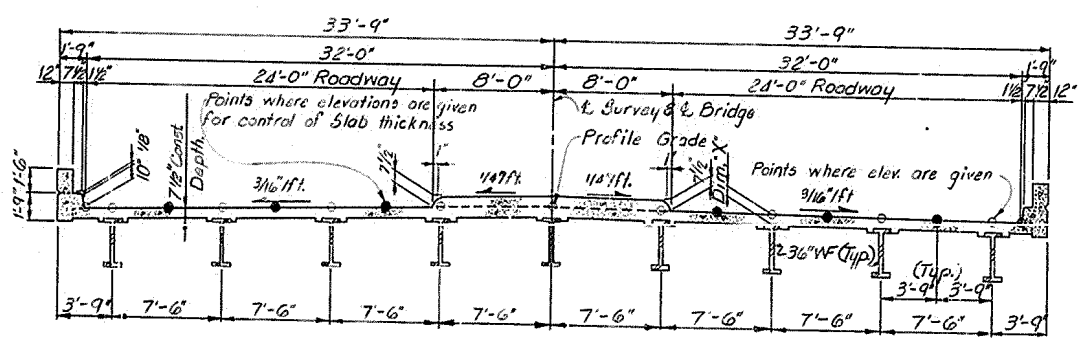
Reloc. U.S. 127 No. 2 over B.S.P. Sheet 12

COMMONWEALTH OF KENTUCKY
 DEPARTMENT OF HIGHWAYS
 FRANKFORT
 COUNTY OF
RUSSELL
 BOWLING GREEN - SOMERSET PKWY.
 ROAD
 STATION 4721+07.45 P.E. PROJECT NO.
 CONSTRUCTION PROJECT NO. MAINTENANCE PROJECT NO. DRAWING NO.
 18275



PLAN
(Showing points where elevations are given)

Note:
A-2 denotes intersection of
Line A and section 2 (Typ.)



TYPICAL SECTION THRU DECK

DATE: 6-72
BY: P.A.P.
CHECKED BY: M.F.
DATE: 6-72
BY: P.A.P.
CHECKED BY: M.F.
DATE: 6-72
BY: P.A.P.
CHECKED BY: M.F.

CONSTRUCTION ELEVATIONS

Reloc. U.S. 127 No. 2 over B.S.P. Sheet 13

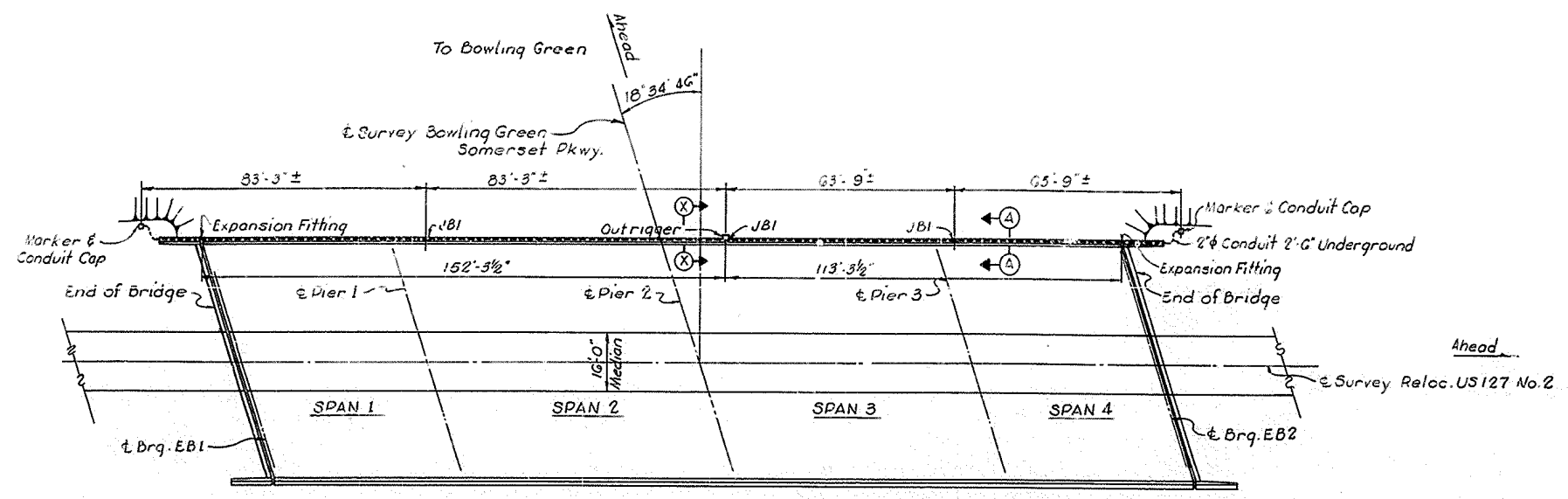
COMMONWEALTH OF KENTUCKY
DEPARTMENT OF HIGHWAYS
FRANKFORT
COUNTY OF
RUSSELL
BOWLING GREEN - SOMERSET PKWY.
ROAD
STATION 472+07.45 P. E. PROJECT NO.
CONSTRUCTION PROJECT NO. MAINTENANCE PROJECT NO. DRAWING NO. 18275



TABLE 1 - ELEVATIONS

Loc	Gutter Line 1 Top Conc.	GIRDER 1			GIRDER 2			GIRDER 3			GIRDER 4			GIRDER 5 & 6 SURV			GIRDER 6			GIRDER 7			GIRDER 8			GIRDER 9			Gutter Line 2 Top Conc.
		Top Conc.	Top Beam	Dim. 'X'	Top Conc.	Top Beam	Dim. 'X'	Top Conc.	Top Beam	Dim. 'X'	Top Conc.	Top Beam	Dim. 'X'	Top Conc.	Top Beam	Dim. 'X'	Top Conc.	Top Beam	Dim. 'X'	Top Conc.	Top Beam	Dim. 'X'	Top Conc.	Top Beam	Dim. 'X'	Top Conc.	Top Beam	Dim. 'X'	
A-A	1063.123	1063.123			1064.109			1064.254			1064.310			1064.513			1064.123			1064.323			1064.227			1064.123			1064.123
B-B	1063.123	1063.123			1064.111			1064.259			1064.315			1064.518			1064.123			1064.323			1064.227			1064.123			1064.123
C-C	1063.123	1063.123			1064.113			1064.261			1064.317			1064.520			1064.123			1064.323			1064.227			1064.123			1064.123
D-D	1063.123	1063.123			1064.115			1064.263			1064.319			1064.522			1064.123			1064.323			1064.227			1064.123			1064.123
E-E	1063.123	1063.123			1064.117			1064.265			1064.321			1064.524			1064.123			1064.323			1064.227			1064.123			1064.123
F-F	1063.123	1063.123			1064.119			1064.267			1064.323			1064.526			1064.123			1064.323			1064.227			1064.123			1064.123
G-G	1063.123	1063.123			1064.121			1064.269			1064.325			1064.528			1064.123			1064.323			1064.227			1064.123			1064.123
H-H	1063.123	1063.123			1064.123			1064.271			1064.327			1064.530			1064.123			1064.323			1064.227			1064.123			1064.123
I-I	1063.123	1063.123			1064.125			1064.273			1064.329			1064.532			1064.123			1064.323			1064.227			1064.123			1064.123
J-J	1063.123	1063.123			1064.127			1064.275			1064.331			1064.534			1064.123			1064.323			1064.227			1064.123			1064.123
K-K	1063.123	1063.123			1064.129			1064.277			1064.333			1064.536			1064.123			1064.323			1064.227			1064.123			1064.123
L-L	1063.123	1063.123			1064.131			1064.279			1064.335			1064.538			1064.123			1064.323			1064.227			1064.123			1064.123
M-M	1063.123	1063.123			1064.133			1064.281			1064.337			1064.540			1064.123			1064.323			1064.227			1064.123			1064.123
N-N	1063.123	1063.123			1064.135			1064.283			1064.339			1064.542			1064.123			1064.323			1064.227			1064.123			1064.123
O-O	1063.123	1063.123			1064.137			1064.285			1064.341			1064.544			1064.123			1064.323			1064.227			1064.123			1064.123
P-P	1063.123	1063.123			1064.139			1064.287			1064.343			1064.546			1064.123			1064.323			1064.227			1064.123			1064.123
Q-Q	1063.123	1063.123			1064.141			1064.289			1064.345			1064.548			1064.123			1064.323			1064.227			1064.123			1064.123
R-R	1063.123	1063.123			1064.143			1064.291			1064.347			1064.550			1064.123			1064.323			1064.227			1064.123			1064.123
S-S	1063.123	1063.123			1064.145			1064.293			1064.349			1064.552			1064.123			1064.323			1064.227			1064.123			1064.123
T-T	1063.123	1063.123			1064.147			1064.295			1064.351			1064.554			1064.123			1064.323			1064.227			1064.123			1064.123
U-U	1063.123	1063.123			1064.149			1064.297			1064.353			1064.556			1064.123			1064.323			1064.227			1064.123			1064.123
V-V	1063.123	1063.123			1064.151			1064.299			1064.355			1064.558			1064.123			1064.323			1064.227			1064.123			1064.123
W-W	1063.123	1063.123			1064.153			1064.301			1064.357			1064.560			1064.123			1064.323			1064.227			1064.123			1064.123
X-X	1063.123	1063.123			1064.155			1064.303			1064.359			1064.562			1064.123			1064.323			1064.227			1064.123			1064.123
Y-Y	1063.123	1063.123			1064.157			1064.305			1064.361			1064.564			1064.123			1064.323			1064.227			1064.123			1064.123
Z-Z	1063.123	1063.123			1064.159			1064.307			1064.363			1064.566			1064.123			1064.323			1064.227			1064.123			1064.123
AA-AA	1063.123	1063.123			1064.161			1064.309			1064.365			1064.568			1064.123			1064.323			1064.227			1064.123			1064.123
BB-BB	1063.123	1063.123			1064.163			1064.311			1064.367			1064.570			1064.123			1064.323			1064.227			1064.123			1064.123
CC-CC	1063.123	1063.123			1064.165			1064.313			1064.369			1064.572			1064.123			1064.323			1064.227			1064.123			1064.123
DD-DD	1063.123	1063.123			1064.167			1064.315			1064.371			1064.574			1064.123			1064.323			1064.227			1064.123			1064.123
EE-EE	1063.123	1063.123			1064.169			1064.317			1064.373			1064.576			1064.123			1064.323			1064.227			1064.123			1064.123
FF-FF	1063.123	1063.123			1064.171			1064.319			1064.375			1064.578			1064.123			1064.323			1064.227			1064.123			1064.123
GG-GG	1063.123	1063.123			1064.173			1064.321			1064.377			1064.580			1064.123			1064.323			1064.227			1064.123			1064.123
HH-HH	1063.123	1063.123			1064.175			1064.323			1064.379			1064.582			1064.123			1064.323			1064.227			1064.123			1064.123
II-II	1063.123	1063.123			1064.177			1064.325			1064.381			1064.584			1064.123			1064.323			1064.227			1064.123			1064.123
JJ-JJ	1063.123	1063.123			1064.179			1064.327			1064.383			1064.586			1064.123			1064.323			1064.227			1064.123			1064.123
KK-KK	1063.123	1063.123			1064.181			1064.329			1064.385			1064.588			1064.123			1064.323			1064.227			1064.123			1064.123
LL-LL	1063.123	1063.123			1064.183			1064.331			1064.387			1064.590			1064.123			1064.323			1064.227			1064.123			1064.123
MM-MM	1063.123	1063.123			1064.185			1064.333			1064.389			1064.592			1064.123			1064.323			1064.227			1064.123			1064.123
NN-NN	1063.123	1063.123			1064.187			1064.335			1064.391			1064.594			1064.123			1064.323			1064.227			1064.123			1064.123
OO-OO	1063.123	1063.123			1064.189			1064.337			1064.393			1064.596			1064.123			1064.323			1064.227			1064.123			1064.123
PP-PP	1063.123	1063.123			1064.191			1064.339			1064.395			1064.598			1064.123			1064.323			1064.227			1064.123			1064.123
QQ-QQ	1063.123	1063.123			1064.193			1064.341			1064.397			1064.600			1064.123			1064.323			1064.227			1064.123			1064.123
RR-RR	1063.123	1063.123			1064.195			1064.343			1064.399			1064.602			1064.123			1064.323			1064.227			1064.123			1064.123
SS-SS	1063.123	1063.123			1064.197			1064.345			1064.401			1064.604			1064.123			1064.323			1064.227			1064.123			1064.123
TT-TT	1063.123	1063.123			1064.199			1064.347			1064.403			1064.606			1064.123			1064.323			1064.227			1064.123			1064.123
UU-UU	1063.123	1063.123			1064.201			1064.349			1064.405			1064.608			1064.123			1064.323			1064.227			1064.123			1064.123
VV-VV	1063.123	1063.123			1064.203			1064.351			1064.407			1064.610			1064.123			1064.323			1064.227			1064.123			1064.123
WW-WW	1063.123	1063.123			1064.205			1064.353			1064.409			1064.612			1064.123			1064.323			1064.227			1064.123			1064.123
XX-XX	1063.123	1063.123			1064.207			1064.355			1064.411			1064.614			1064.123			1064.323			1064.227			1064.123			1064.123
YY-YY	1063.123	1063.123			1064.209			1064.357			1064.413			1064.616			1064.123			1064.323			1064.227			1064.123			1064.123
ZZ-ZZ	1063.123	1063.123			1064.211			1064.359			1064.415			1064.618			1064.123			1064.323			1064.227			1064.123			1064.123
AAA-AAA	1063.123	1063.123			1064.213																								

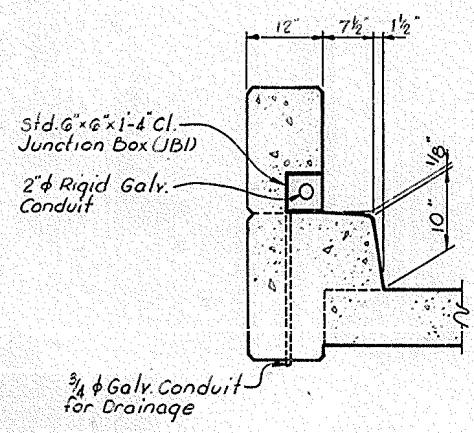
LETTING DATE



Note: For SECTION X-X
See Sheet 12

PLAN OF CONDUIT
Showing Conduit and Junction Box Layout

Note:
Markers shall consist of 4" x 4" x 36" reinforced concrete post w/ 4-#4 deformed reinforcing steel per post and a 2" brass disc cast in the end of the post inscribed "End of Duct". Markers are to be 2" above grade w/ disk exposed



SECTION A-A

BILL OF MATERIAL	
Item	Quantity
2" Rigid Galvanized Conduit	300 Lin. Ft.
Std. 6" x 6" x 1-4" Junction Boxes (JBI) (1)	5 Ea.
2" Conduit Connection	6 Ea.
2" Galvanized Cap	2 Ea.
Expansion Fitting	2 Ea.
3/4" Conduit	10 Lin. Ft.

- ① a. OZ Electric, Type YU
b. Spring City Electric Co., Type 1R
c. Hope Electric Products Co., Type HG200
d. or approved equal
- ② a. Crouse-Hinds, Type XJG41 W/GC100 Bonding Jumper
b. OZ Electric Co., Type EX200 W/BJ1500-24 Bonding Jumper
c. Spring City Electric Co., EF200 W/EJ200 Bonding Jumper
d. or approved equal

Reloc. US 127 No 2 over B.S.P. Sheet 15

COMMONWEALTH OF KENTUCKY
DEPARTMENT OF HIGHWAYS
FRANKFORT
COUNTY OF
RUSSELL
BOWLING-GREEN-SOMERSET PKWY.
ROAD
STATION 4721+07.45 P. E. PROJECT NO.
CONSTRUCTION PROJECT NO. MAINTENANCE PROJECT NO. DRAWING NO.
18275

ELECTRICAL CONDUIT

DESIGNED BY: PJP
 CHECKED BY: MFS
 DATE: _____
 DRAWN BY: _____
 DATE: _____
 REVISION: _____
 DATE: _____
 REVISION: _____
 DATE: _____

