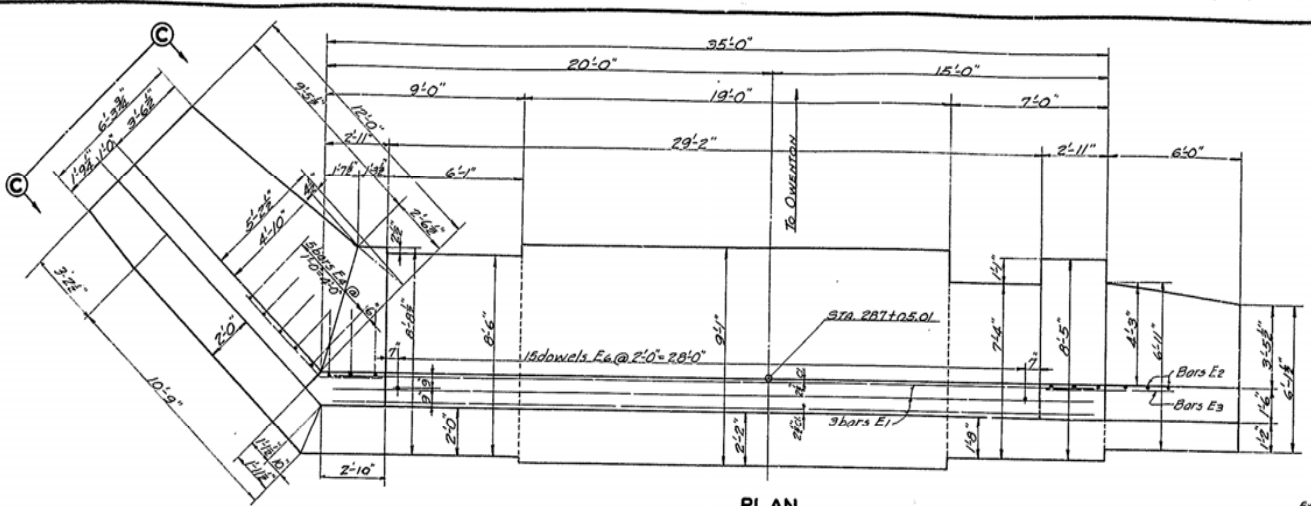
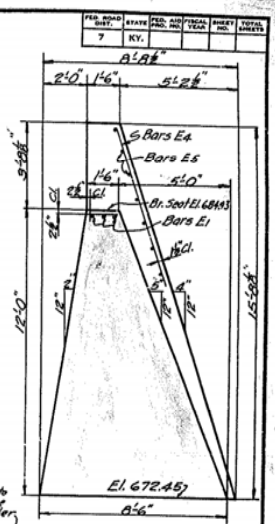


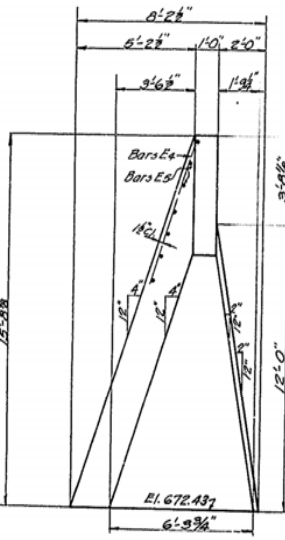
SECTION D-D



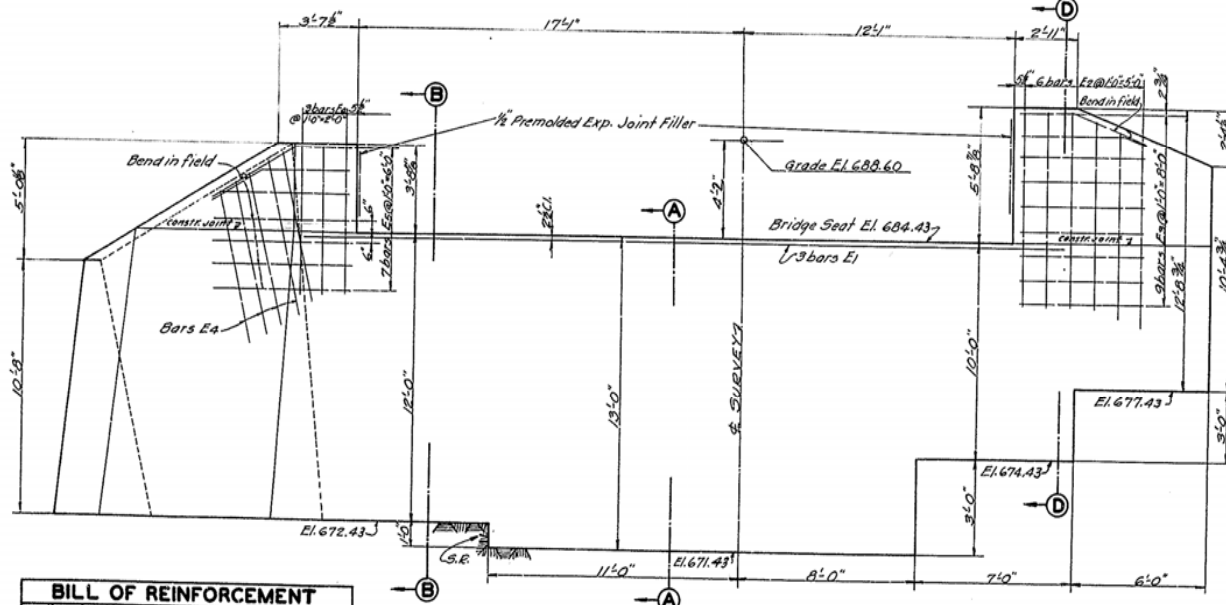
PLAN



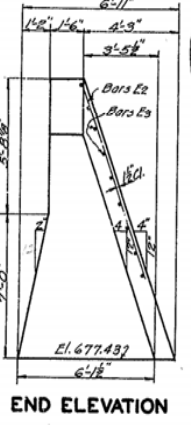
SECTION B-B



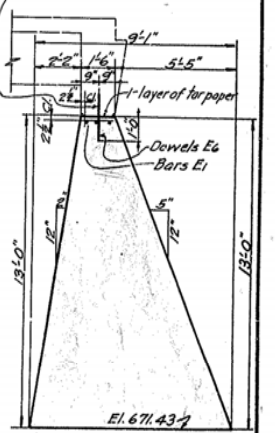
END ELEVATION C-C OF WING WALL



FRONT ELEVATION



END ELEVATION



SECTION A-A

BILL OF REINFORCEMENT					
MARK	TYPE	NO	SIZE	LENGTH EX. LIN.	LOCATION
E1	Str.	3	3/4"	34.0	Bridge Seat
E2	"	6	"	8.6	High Parapet
E3	"	9	1/2"	5.6	"
E4	"	8	3/4"	6.9	Low Par and Wing
E5	"	7	1/2"	7.6	"
E6	"	15	"	2.0	Dowels

NOTE - The location of steps in footing and the footing elevations shown are approximate only. Footings are to be stepped to fit a satisfactory rock foundation, using the side batters shown.

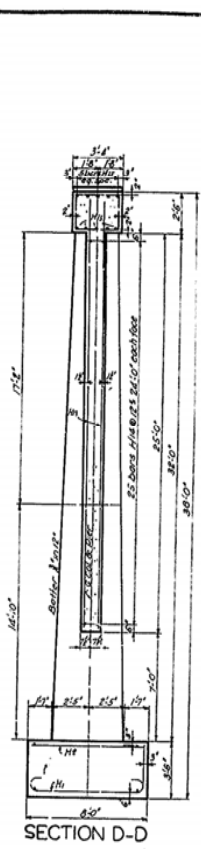
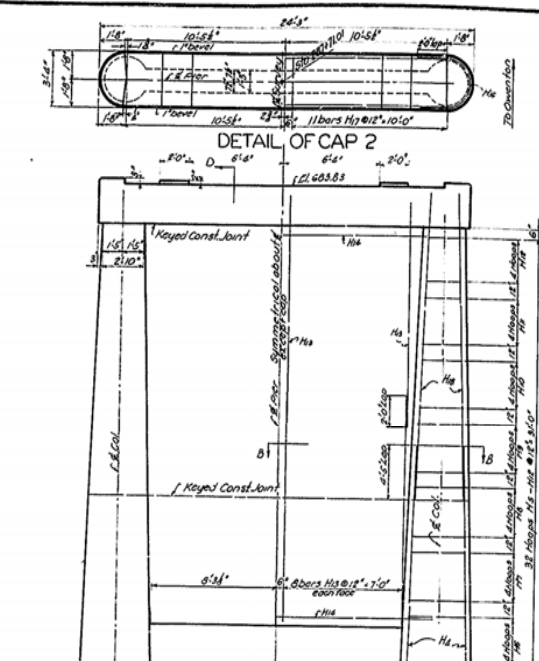
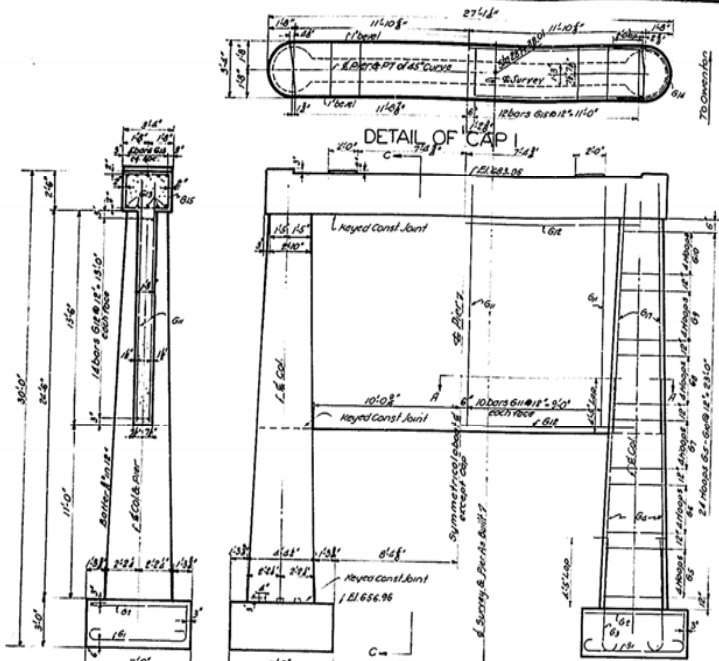
ESTIMATE OF QUANTITIES
 Concrete Class "A" 118.2 Cu Yds.
 Reinforcement 400 Lbs.

DETAILS OF ABUTMENT NO. 1

EAGLE CREEK BRIDGE AT LUSBY SHEET 20F16

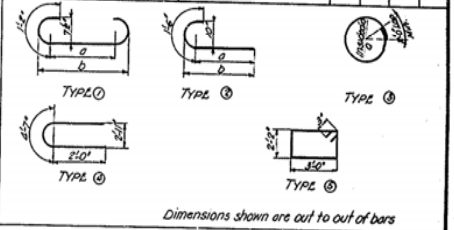
COMMONWEALTH OF KENTUCKY
 DEPARTMENT OF HIGHWAYS
 FRANKFORT COUNTY OF
OWEN
 OWENTON - CORINTH
 ROAD PROJECT NO.
 STATION
 MP 94-73-2
 DRAWING NO. 6837

DESIGNED BY: R. G. BISHOP
 CHECKED BY: C. G. ALLEN
 DATE: 7/27/57

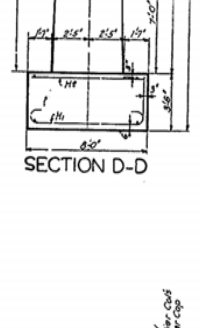
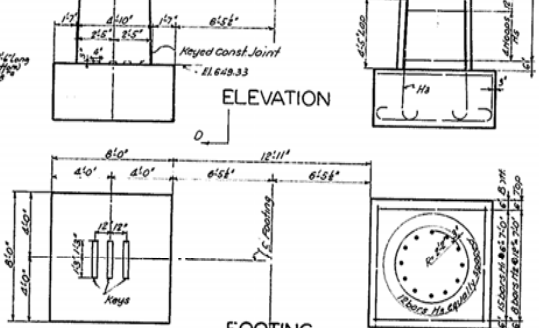
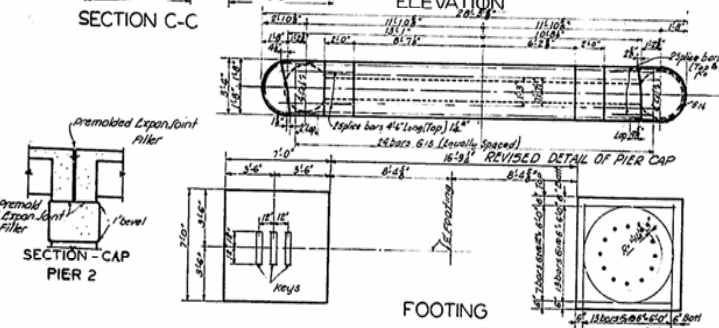


5-1/2" @ 41" 5/8" Extra splice bars in cap
 3-1/2" @ 41" 5/8" Extra splice bars in cap
 2-1/2" @ 41" 5/8" Extra splice bars in cap

BILL AND TYPES OF REINFORCEMENT - PIER 1									
MARK	TYPE	No	SIZE	LENGTH	LOCATION	a		b	
						FT.	IN.	FT.	IN.
61	①	22	3/4"	8 2	Footings	5	10	6	5 1/2
62	Str.	28	1"	6 6	"				
63	①	24	1/2"	7 11	Dowels	6	5	6	10
64	Str.	24	1/2"	15 6	Col.				
65	①	8	3/4"	14 0	Hoops - Col.	3	9 1/2		
66	"	8	1/2"	13 2	"	3	6 1/2		
67	"	8	1/2"	12 4	"	3	5 1/2		
68	"	8	1/2"	11 7	"	3	5		
69	"	8	1/2"	10 10	"	2	5 1/2		
70	"	8	1/2"	10 0	"	2	5 1/2		
71	"	40	1/2"	15 0	Web Wall				
72	"	28	1/2"	23 9	"				
73	"	10	1"	23 9	Cap				
74	"	4	8	7	"				
75	①	24	1/2"	10 6	"				
76	Str.	10	3/4"	2 0	Dowels - Cap				
77	"	24	3/4"	15 6	Col.				



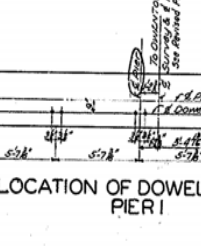
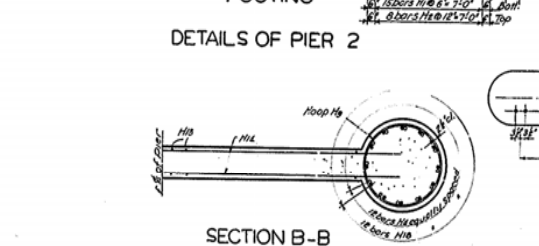
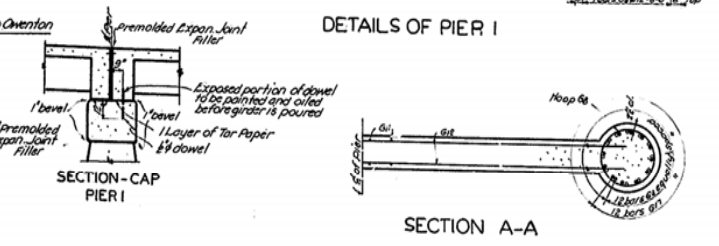
Dimensions shown are out to out of bars



BILL AND TYPES OF REINFORCEMENT - PIER 2									
MARK	TYPE	No	SIZE	LENGTH	LOCATION	a		b	
						FT.	IN.	FT.	IN.
78	①	60	3/4"	9 2	Footings	6	10	7	5 1/2
79	Str.	32	1"	7 6	"				
80	①	24	1/2"	8 5	Dowels	6	11	7	Δ
81	Str.	24	1/2"	19 3	Col.				
82	①	8	3/4"	15 6	Hoops - Col.	4	13 1/2		
83	"	8	1/2"	14 9	"	4	12 1/2		
84	"	8	1/2"	14 0	"	3	12 1/2		
85	"	8	1/2"	13 2	"	3	12 1/2		
86	"	8	1/2"	12 4	"	3	11 1/2		
87	"	8	1/2"	11 7	"	3	10 1/2		
88	"	8	1/2"	10 10	"	2	10 1/2		
89	"	8	1/2"	10 0	"	2	10 1/2		
90	Str.	64	1/2"	14 6	Web Wall				
91	"	50	1/2"	20 11	"				
92	"	10	1"	20 11	Cap				
93	①	4	8	7	"				
94	Str.	22	3/4"	10 6	"				
95	Str.	24	3/4"	19 3	Col.				

ESTIMATE OF QUANTITIES

	Pier 1	Pier 2
Concrete Class A' cy.	800	513 721
Reinforcement lbs.	3200	5560 6640



DETAILS OF PIERS 1 & 2

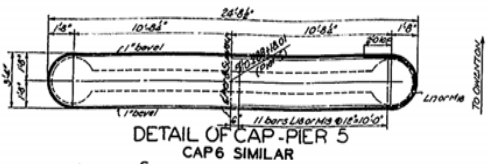
BRIDGE OVER EAGLE CREEK AT LUSBY SHEET 4 OF 6

COMMONWEALTH OF KENTUCKY
 DEPARTMENT OF HIGHWAYS
 FRANKFORT
 COUNTY OF
OWEN
 GWENTON - CORINTH

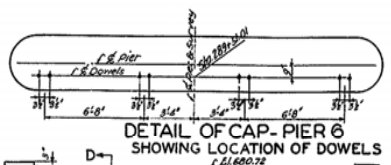
ROAD PROJECT NO. STATION

DRAWING NO. 6337

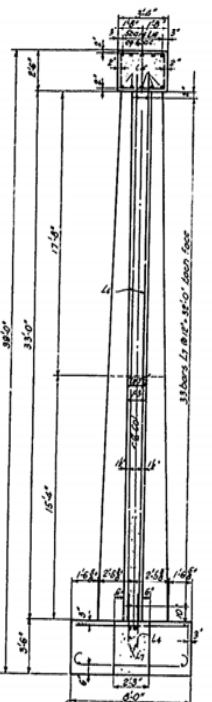
PER. DRAW. NO.	DATE	BY	CHKD.	APP. FOR	SCALE
7	KY.				



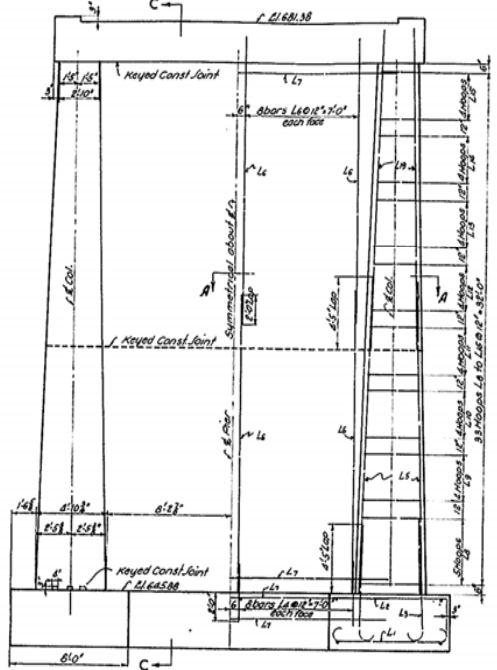
DETAIL OF CAP-PIER 5
CAP 6 SIMILAR



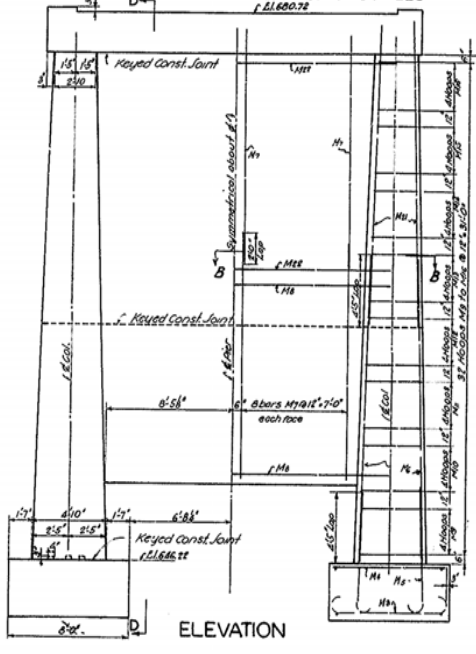
DETAIL OF CAP-PIER 6
SHOWING LOCATION OF DOWELS



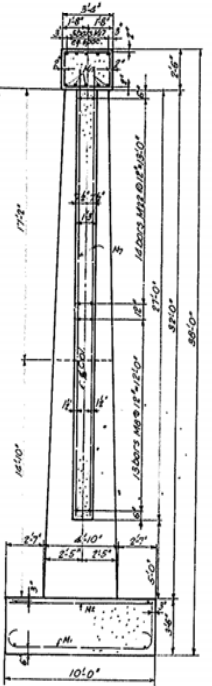
SECTION C-C



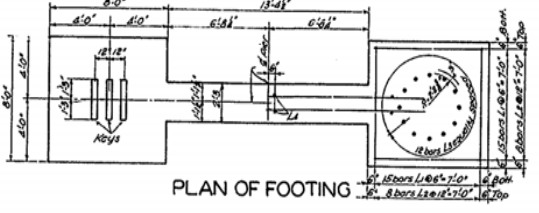
ELEVATION



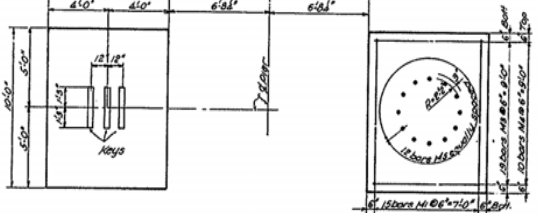
ELEVATION



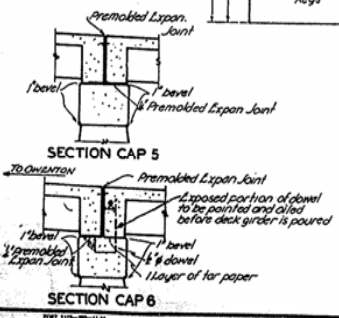
SECTION D-D



PLAN OF FOOTING

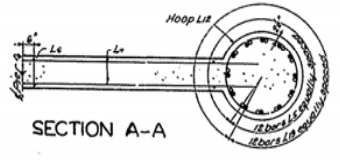


PLAN OF FOOTING

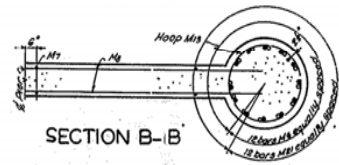


SECTION CAP 5

SECTION CAP 6



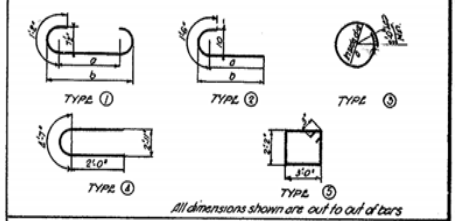
SECTION A-A



SECTION B-B

DETAILS OF PIER 5 & PIER 6

BILL AND TYPES OF REINFORCEMENT — PIER 5				a		b		
MARK	TYPE	NO.	SIZE	LENGTH	FT.	IN.	FT.	IN.
L4	⊙	60	3/4"	9	2		8	10
L4	Str	52	1/2"	7	6		7	5 1/2
L4	⊙	24	1 1/2"	5	5		6	11
L4	Str	32	1 1/2"	4	0		7	4
L4	•	24	1 1/2"	19	9			
L4	•	64	1 1/2"	18	6			
L4	•	70	•	21	4			
L4	⊙	10	•	15	9		4	5 1/2
L4	•	8	•	14	9		4	0 1/2
L4	•	8	•	14	0		3	2 1/2
L4	•	8	•	13	2		3	6 1/2
L4	•	8	•	12	4		3	3 1/2
L4	•	8	•	11	7		3	0 1/2
L4	•	8	•	10	10		2	5 1/2
L4	•	8	•	10	0		2	6 1/2
L4	Str	10	1 1/2"	21	4			
L4	⊙	4	•	8	7			
L4	⊙	22	1 1/2"	10	6			
L4	Str	24	3/4"	19	9			



All dimensions shown are out to out of bars

BILL AND TYPES OF REINFORCEMENT — PIER 6				a		b		
MARK	TYPE	NO.	SIZE	LENGTH	FT.	IN.	FT.	IN.
M4	⊙	30	3/4"	11	2		8	10
M4	Str	16	1/2"	9	6		7	5 1/2
M4	⊙	38	1 1/2"	9	2		6	10
M4	Str	20	1 1/2"	7	6		7	4
M4	⊙	24	1 1/2"	8	5		6	11
M4	Str	24	•	19	3			
M4	•	64	1 1/2"	15	6			
M4	•	26	1 1/2"	21	4		4	5 1/2
M4	⊙	8	•	15	6		4	0 1/2
M4	•	8	•	14	9		4	0 1/2
M4	•	8	•	14	0		3	2 1/2
M4	•	8	•	13	2		3	6 1/2
M4	•	8	•	12	4		3	3 1/2
M4	•	8	•	11	7		3	0 1/2
M4	•	8	•	10	10		2	5 1/2
M4	•	8	•	10	0		2	6 1/2
M4	Str	10	1 1/2"	21	4			
M4	⊙	4	•	8	7			
M4	⊙	22	1 1/2"	10	6			
M4	Str	8	1 1/2"	2	0			
M4	•	24	3/4"	19	3			
M4	•	28	1 1/2"	21	4			

ESTIMATE OF QUANTITIES
Per 5 Per 6
Concrete Class A c.y. 843 78.6
Reinforcement lbs. 7290 8270

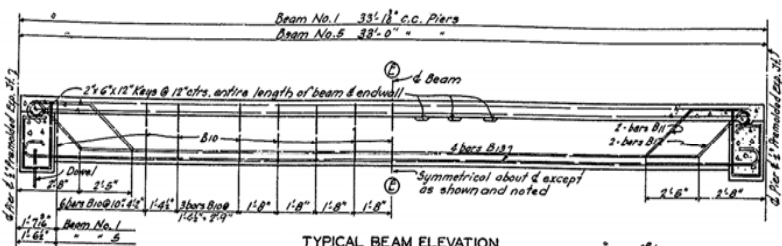
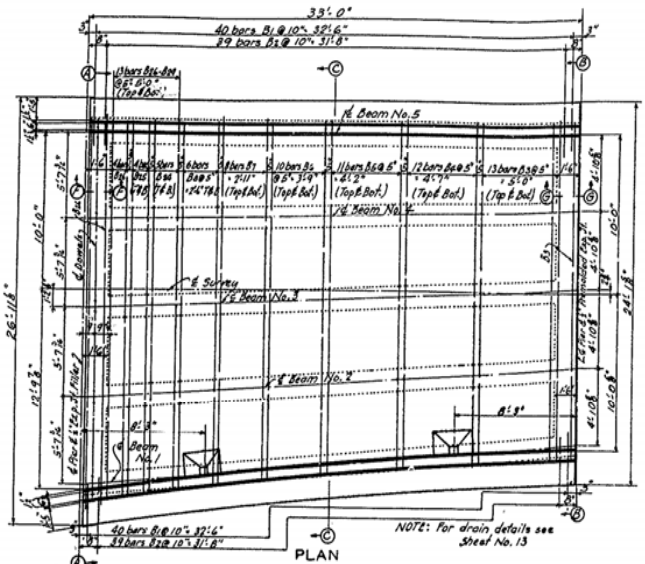
BRIDGE OVER EARL CREEK AT LUSBY SHEET 6 OF 16

COMMONWEALTH OF KENTUCKY
DEPARTMENT OF HIGHWAYS
FRANKFORT COUNTY OF
OWEN
OWENTON - CORINTH
ROAD PROJECT NO.

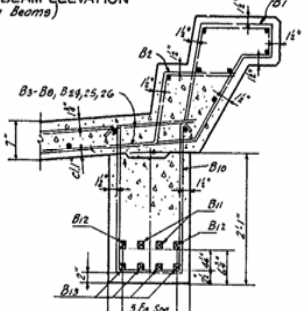
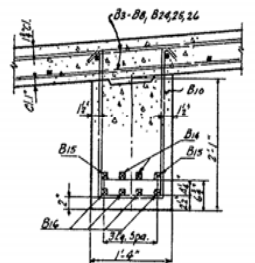
STATION _____

DATE: _____

NO. 6837

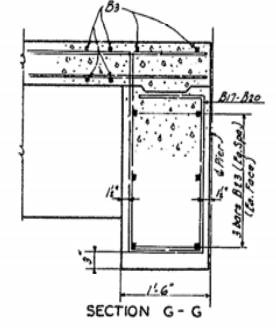
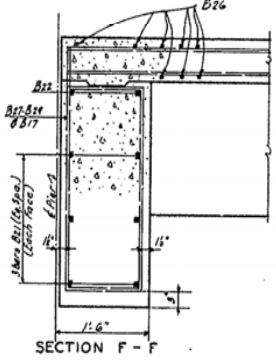


TYPICAL BEAM ELEVATION (Outside Beams)



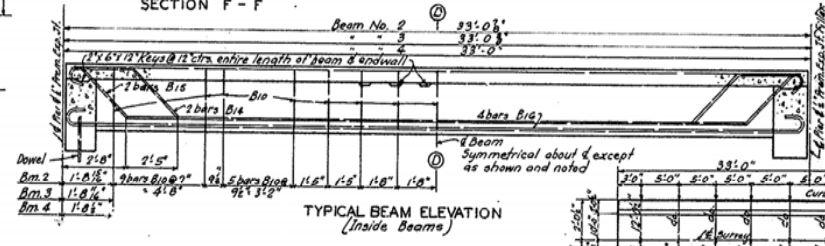
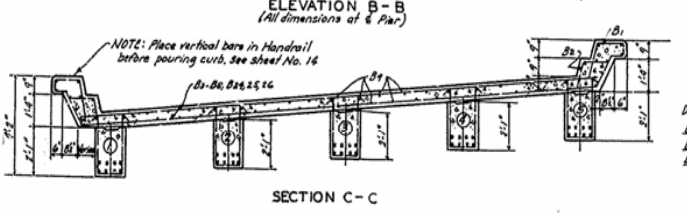
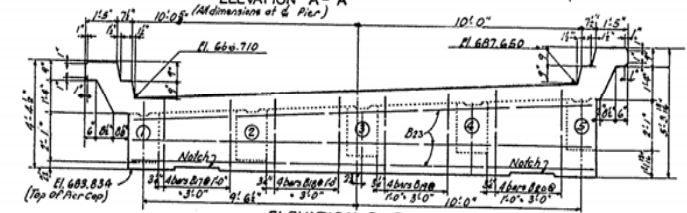
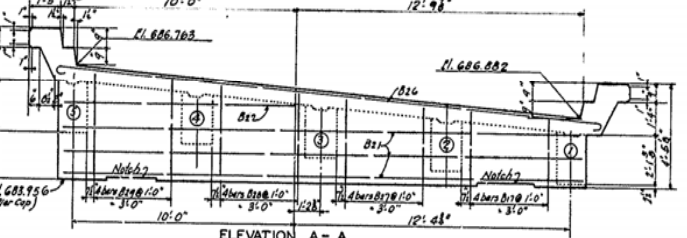
SECTION D-D

SECTION E-E



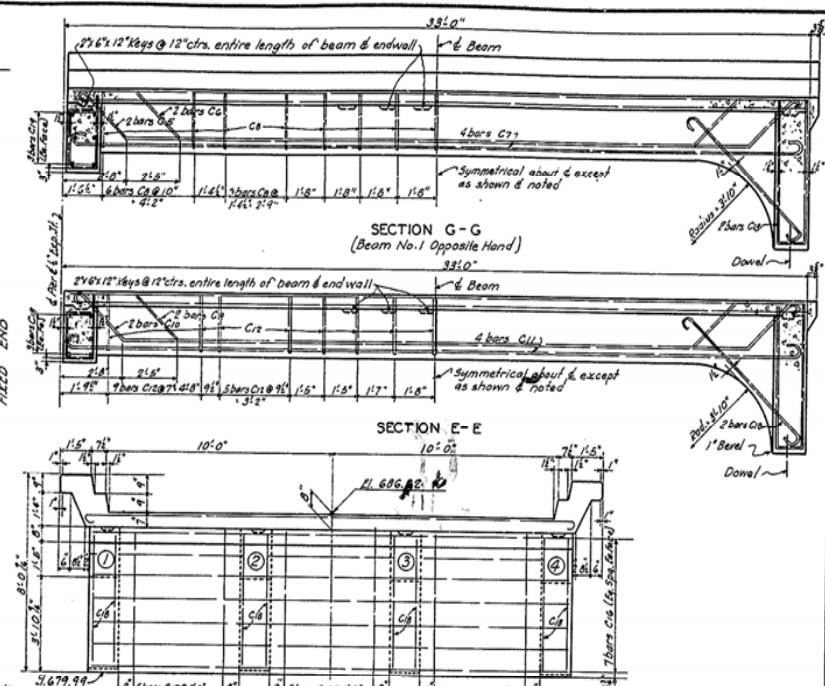
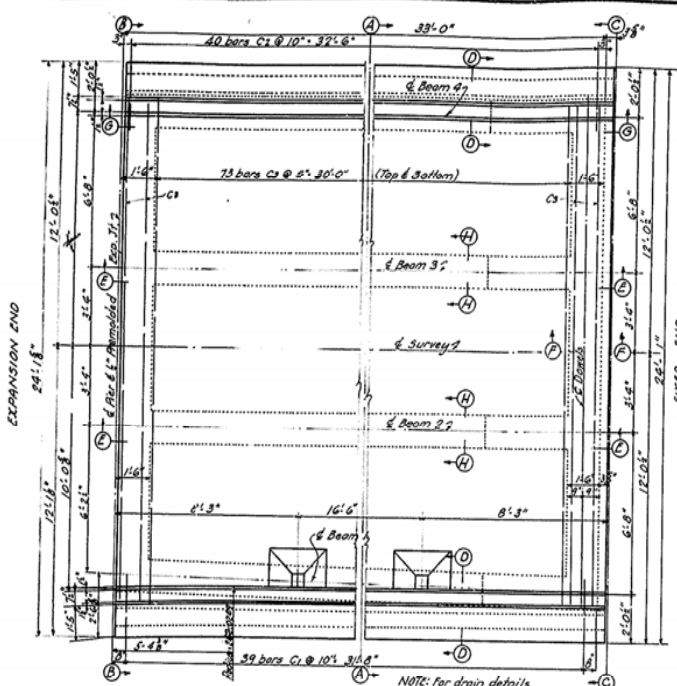
SECTION F-F

SECTION G-G

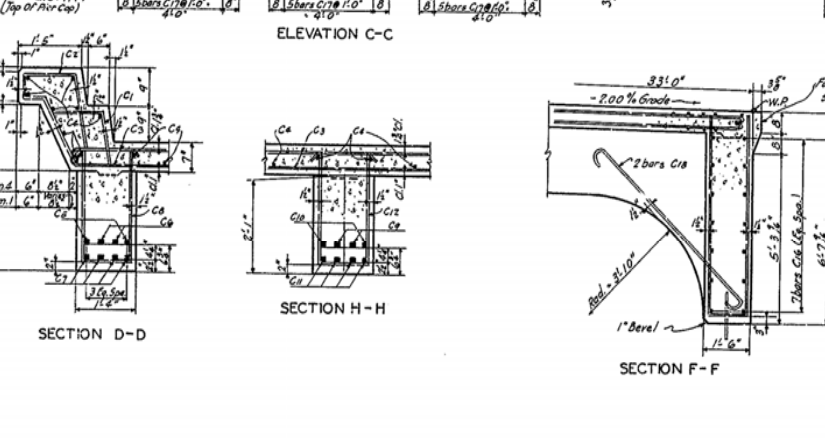
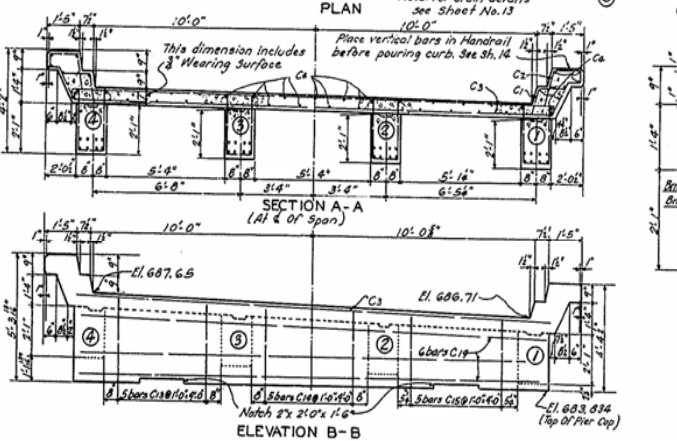
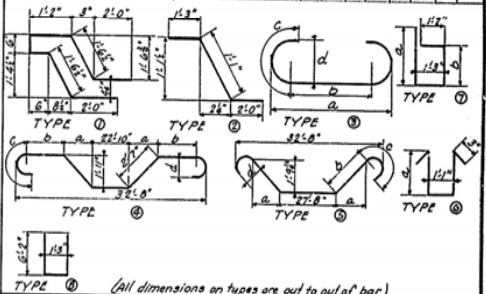


TYPICAL BEAM ELEVATION (Inside Beams)

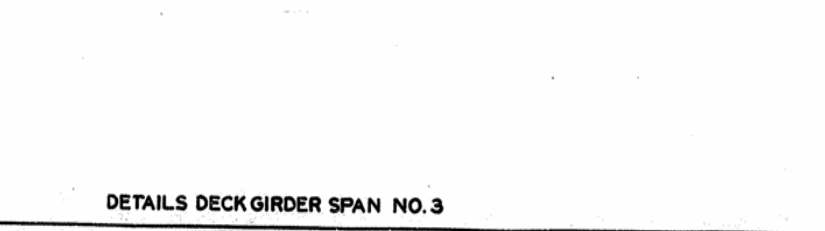
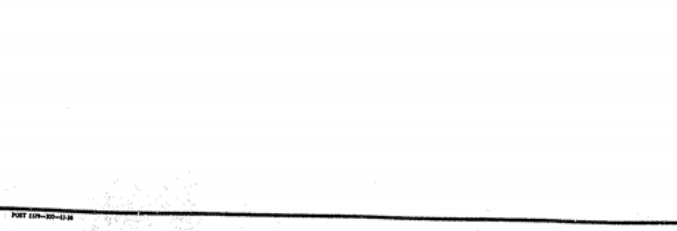
BILL AND TYPES OF REINFORCEMENT											
MARK	TYPE	NO.	SIZE	AMOUNT	LOCATION	7/8"	1"	1 1/8"	1 1/4"	1 1/2"	1 3/4"
B1	①	80	1"	8.9	Curbs						
B2	②	78	"	4.2	"						
B3	③	28	"	22.10	Slab	21	5	21	2	0	10
B4	④	14	"	23.1	"	21	8	21	5	0	10
B5	⑤	22	"	23.4	"	21	11	21	9	0	10
B6	⑥	20	"	23.9	"	22	4	21	1</		



BILL AND TYPES OF REINFORCEMENT											
BAR TYPE	NO.	SIZE	LENGTH	LOCATION	7/8"	1"	1 1/8"	1 1/2"	1 3/4"	2"	TOTAL
C1	2	7/8"	4	2							
C2	7	8/8"	8	9							
C3	3	1/2"	22	10							
C4	8	4	22	0							
C5	5	4	17	5							
C6	6	4	36	0							
C7	3	8	34	10							
C8	2	50	6	1							
C9	4	4	14	6							
C10	5	4	35	10							
C11	3	8	35	3							
C12	6	7/8"	6	3							
C13	7	5	7	6							
C14	5	5	7	0							
C15	5	6	4	"							
C16	8	14	21	0							
C17	15	3	5	"							
C18	3	8	9	4							
C19	3	6	20	6							



ESTIMATE OF QUANTITIES	
Concrete, Class "A"	45.4 Cu. Yds.
Reinforcement	11,360 Lbs.



DETAILS DECK GIRDER SPAN NO. 3

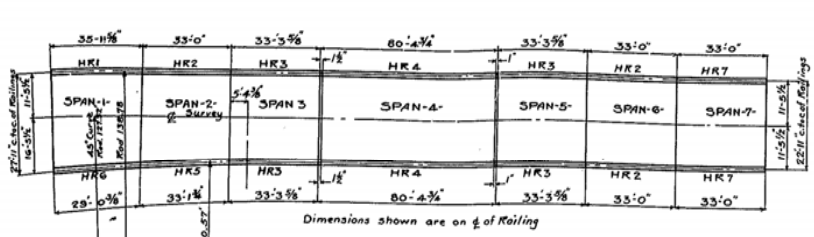
BRIDGE OVER EAGLE CREEK AT LUBBY SHEET 9 OF 16

COMMONWEALTH OF KENTUCKY
 DEPARTMENT OF HIGHWAYS
 FRANKFORT
 COUNTY OF
OWEN
 OWENTON - CORINTH

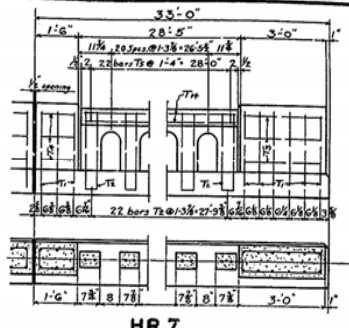
ROAD PROJECT NO.

STATION DRAWING NO. 6837

DATE: _____
 CHECKED BY: _____
 DESIGNED BY: _____
 DRAWN BY: _____



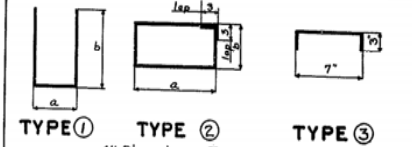
PLAN OF RAILING FOR ENTIRE BRIDGE



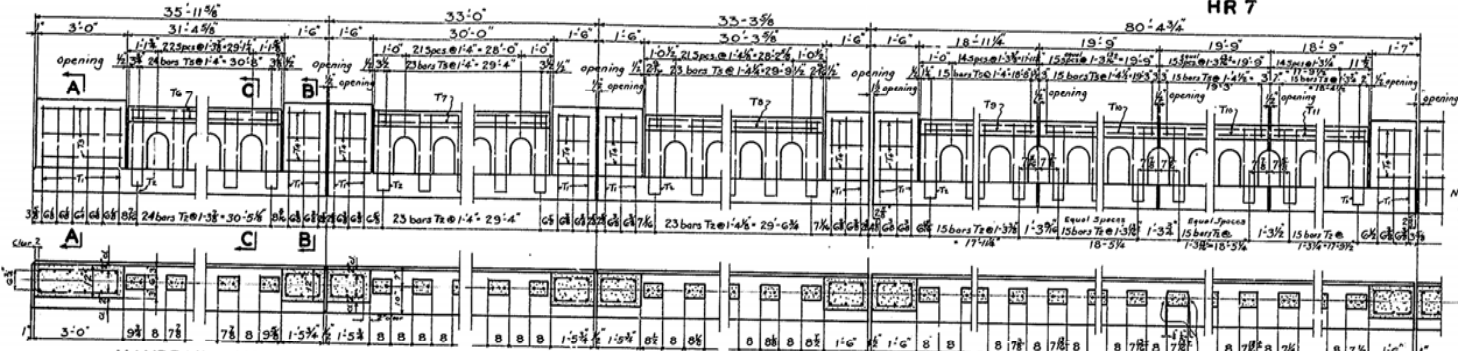
HR 7

BILL AND TYPES OF REINFORCEMENT

Mark	Type	No.	Size	Length Feet In.	Location	a	b
T1	⊙	90	1/2"	5 7	Posts	0 7 1/2	2 7
T2	⊙	391	1/2"	5 1	Spindles	0 4 1/2	2 5
T3	⊙	72	3/4"	6 10	End Posts	2 8 0	8
T4	⊙	391	1/2"	3 10	Posts	1 2 0	8
T5	⊙	72	3/4"	0 11	Posts	-	-
T6	⊙	391	1/2"	0 11	Posts	-	-
T7	⊙	3	1/2"	3 1 0	"	-	-
T8	⊙	9	"	2 9 11	"	-	-
T9	⊙	6	"	2 9 11	"	-	-
T10	⊙	12	"	1 8 5	"	-	-
T11	⊙	6	"	1 8 5	"	-	-
T12	⊙	3	"	2 4 0	"	-	-
T13	⊙	3	"	2 4 0	"	-	-
T14	⊙	6	"	2 8 0	"	-	-



Note: All bar dimensions are to & of bars except as noted. All Concrete corners of Handrail to be beveled 1/4" unless otherwise shown - Posts and Spindles to be vertical, and top of Posts and Rails to be parallel to Curb Grade.

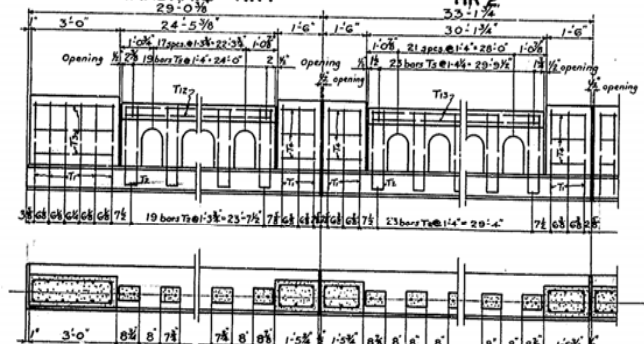


HANDRAIL HR 1

HR 2

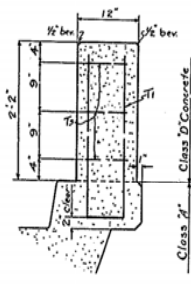
HR 3

HR 4

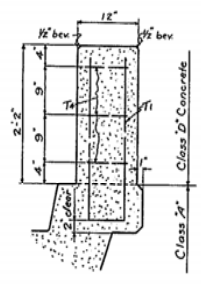


HANDRAIL HR 6

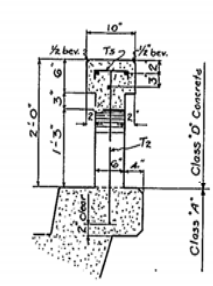
HR 5



SECTION A-A



SECTION B-B



SECTION C-C

ESTIMATE OF QUANTITIES

Concrete Class "D"	20.5	Cuyds.
Reinforcement	3680	Lbs.

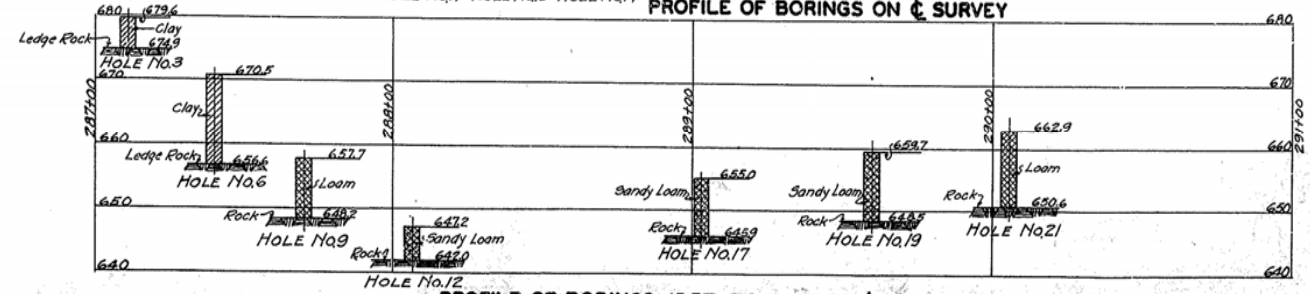
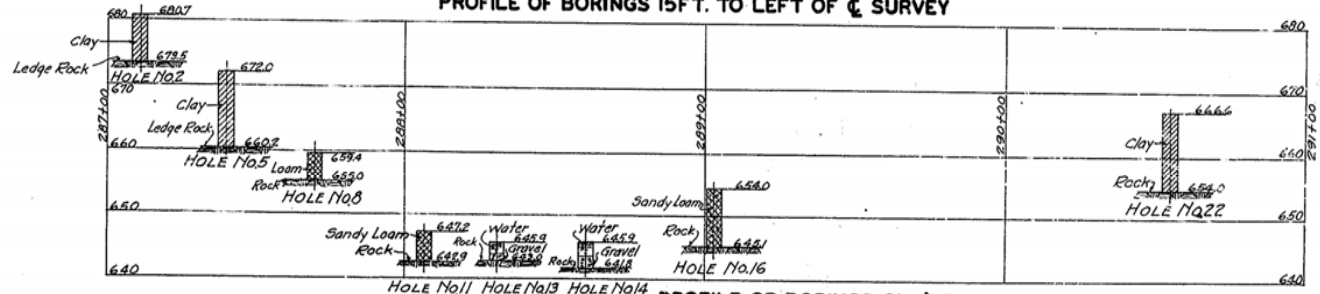
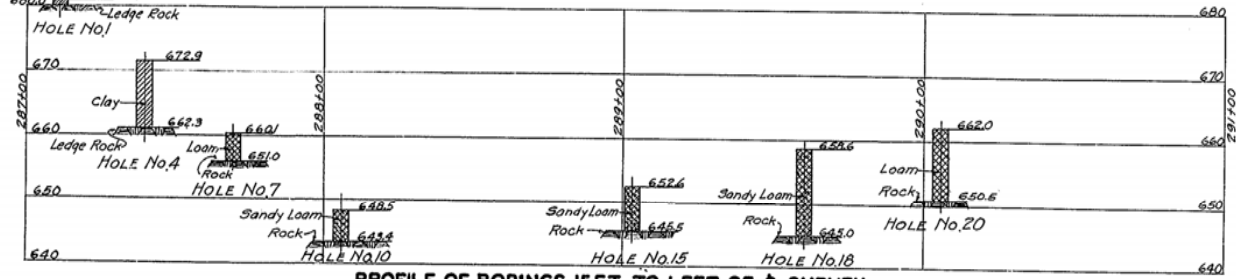
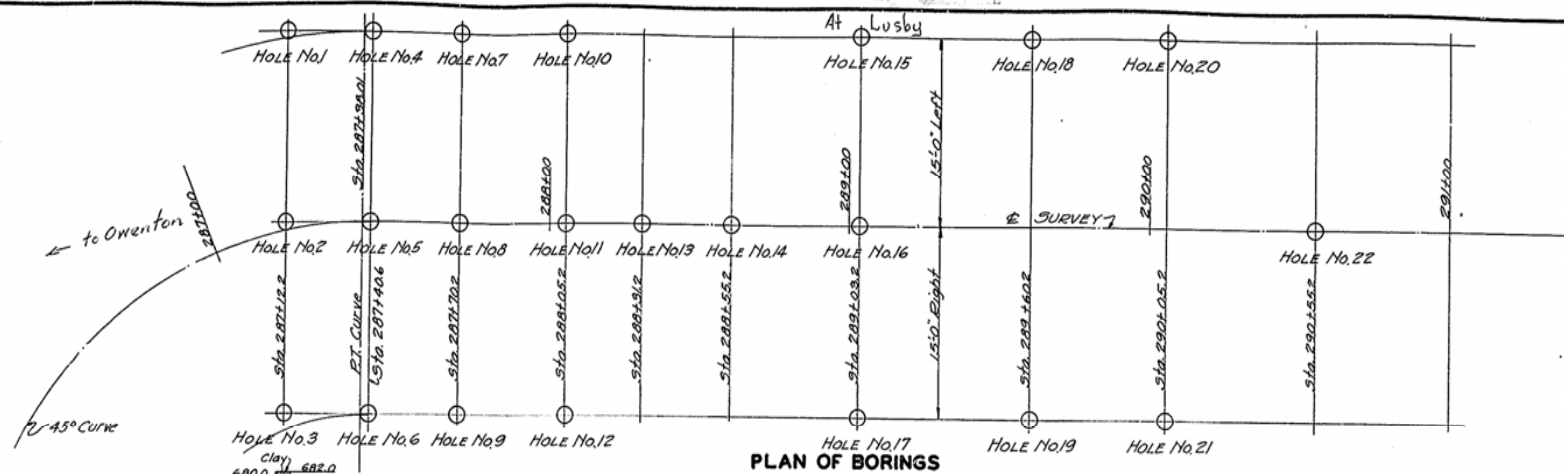
Bridge over Eagle Creek at Lugby Sheet 14 of 16
COMMONWEALTH OF KENTUCKY
 DEPARTMENT OF HIGHWAYS
 FRANKFORT
 COUNTY OF OWEN

OWENTON - CORINTH
 ROAD

STATION PROJECT NO.
 6837

HANDRAIL DETAILS FOR ENTIRE BRIDGE

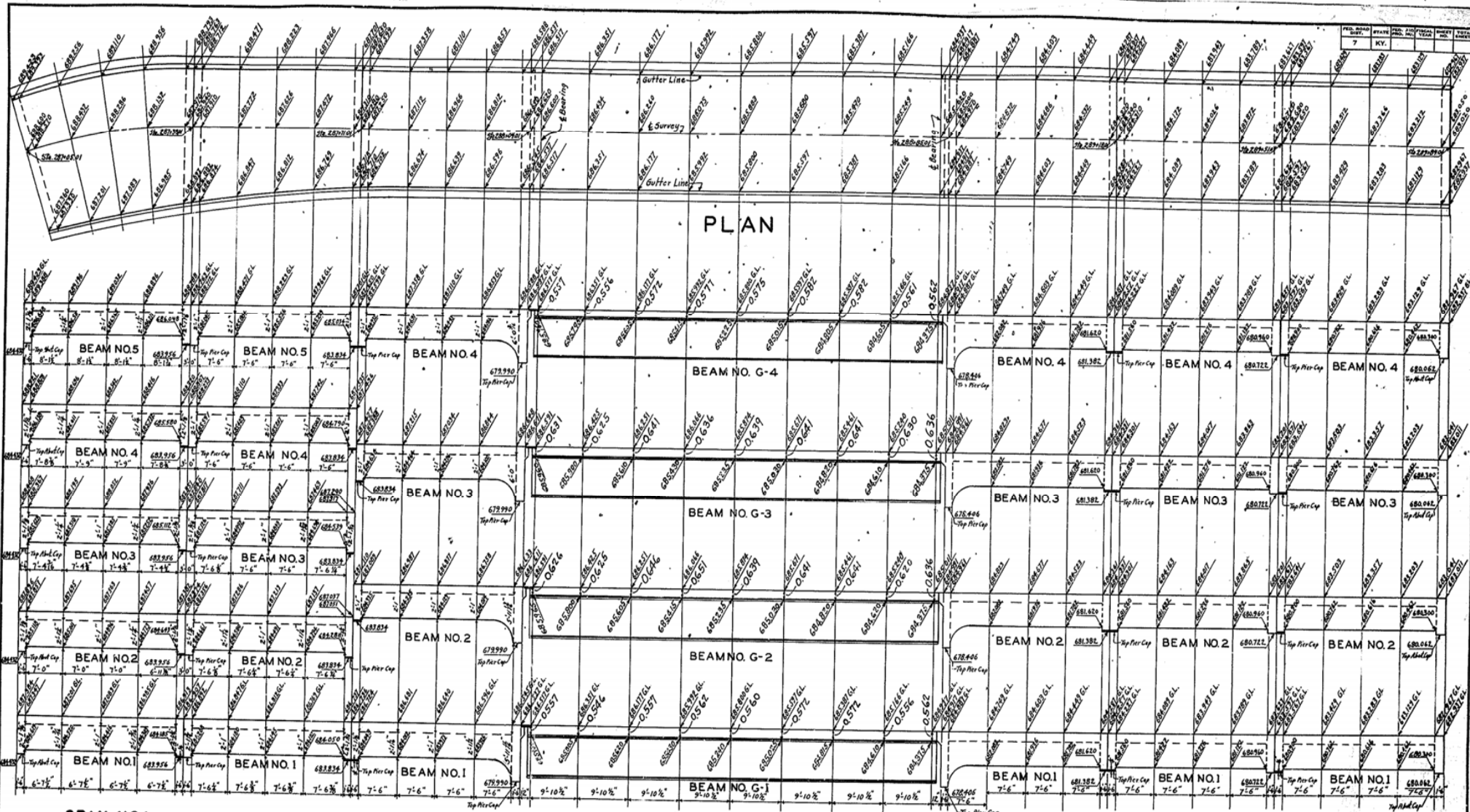
FED. ROAD DIST. NO.	STATE	FED. AID PROJ. NO.	FED. AID DIVISION	SHEET NO.	TOTAL SHEETS
7	KY.				



NOTE - The subsurface data shown hereon was obtained by borings at the locations indicated, and represents the best information available to the Department of Highways as to conditions existing at the site of work. This data is furnished for information only and bidders must draw their own conclusions as to conditions to be encountered. The Department of Highways does not give any guarantee as to the accuracy of the data furnished, or as to conditions which will actually be found to exist when work is being executed.

EAGLE CREEK BRIDGE AT LUSBY SHEET 16 OF 16
COMMONWEALTH OF KENTUCKY
 DEPARTMENT OF HIGHWAYS
 FRANKFORT
 COUNTY OF
OWEN
 OWENTON-CORINTH
 STATION 288+44.51 PROJECT NO. 94-73-2
 DRAWING NO. 6837

DATE: 11/15/51
 CHECKED BY: C.P.C.
 DRAWN BY: E.G. HIGGINS
 PROJECT NO. 94-73-2
 SHEET NO. 16 OF 16



PLAN

SPAN NO. 1

SPAN NO. 2

SPAN NO. 3

SPAN NO. 4

SPAN NO. 5

SPAN NO. 6

SPAN NO. 7

Note: Top elevations given on all beams are on $\frac{1}{2}$ of beams except where gutter line elevation is indicated. All bottom elevations given are on $\frac{1}{2}$ of beams. All elevations shown on Concrete Spans include a construction camber at center of Span equal to $\frac{1}{320}$ of the Span and are to be maintained with falsework in place. All elevations given on Steel Span No. 4 include a camber equal to the deflection of girders due to dead load of concrete deck. On Steel Span No. 4 actual elevation of top of steel to be taken in field by the Resident Engineer at all points indicated on each girder with steel erected and carrying no other loading. These elevations, deducted from slab elevations given on girders, equal distance from top of steel girder to top of slab or gutter line as indicated.

Note: Additions - Elevations of top of steel girders in place without other loading. Dimensions from top of steel girders to top of concrete slab or gutter line as indicated.

4/7/38

CONSTRUCTION ELEVATIONS

EAGLE CREEK BRIDGE AT LUSBY SHEET 150P16

COMMONWEALTH OF KENTUCKY
 DEPARTMENT OF HIGHWAYS
 FRANKFORT COUNTY OF
OWEN
 OWENTON-CORINTH
 ROAD
 STATION _____ PROJECT NO. _____
 DRAWING NO. 68

DESIGNED BY E. E. ...
 CHECKED BY ...
 DATE 4/7/38