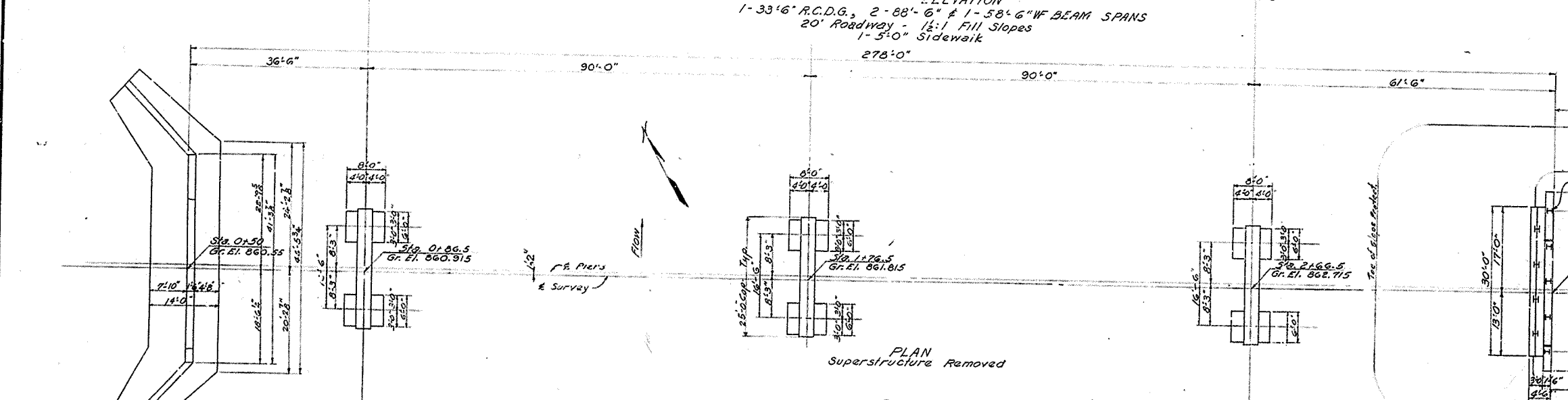
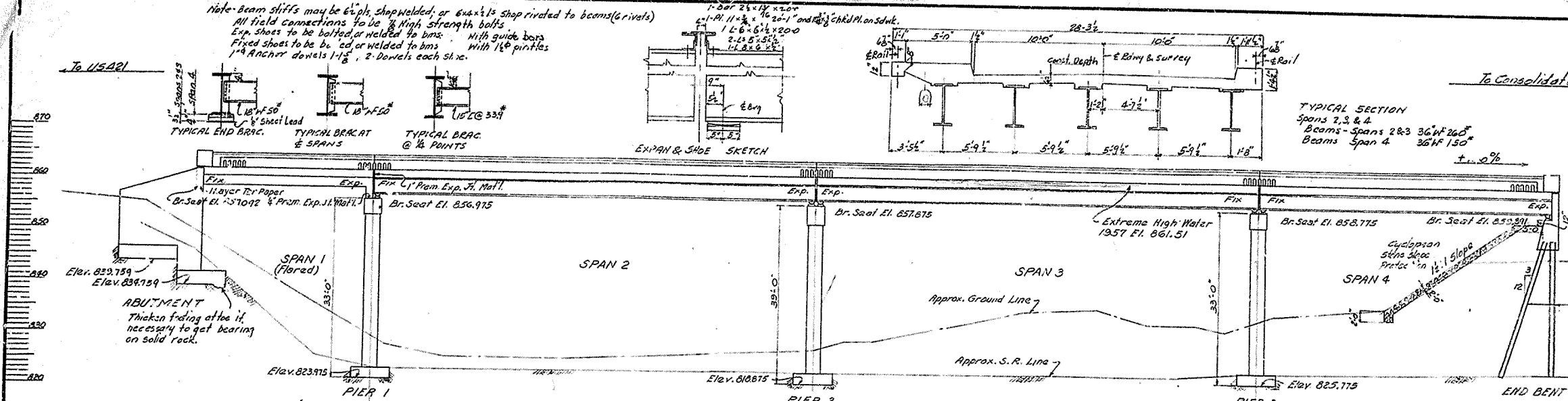


Note: Beam stiff's may be 6" pl. shop welded; or 6"x4" pl. shop riveted to beams (girders)  
 All field connections to be 1/2" high strength bolts  
 Exp. shoes to be bolted or welded to bms. With guide bars  
 Fixed shoes to be ad. or welded to bms. With 1/4" pintles  
 1" Anchor donels 1-1/2", 2-Donels each sl. x.



**SPECIFICATIONS:**  
 KENTUCKY DEPARTMENT OF HIGHWAYS, 1956 STANDARDS WITH AMENDMENTS.  
 BRIDGE DESIGNED FOR H-15-44 AS SPECIFIED IN A.A.S.H.O., 1957 SPECIFICATIONS.  
 CONCRETE: CLASS "A" CONCRETE TO BE USED THROUGHOUT EXCEPT IN HANDRAILS. CLASS "D" CONCRETE TO BE USED IN HANDRAILS.  
 REINFORCEMENT: DIMENSIONS FROM FACE OF CONCRETE TO BARS ARE CLEAR DISTANCES EXCEPT AS OTHERWISE SHOWN. DIMENSIONS FOR BAR SPACING ARE DISTANCES CENTER TO CENTER OF BARS.  
 BEVELED EDGES: ALL EXPOSED EDGES SHALL BE BEVELED 7/8" UNLESS OTHERWISE NOTED.  
 PRFM. EXP. JT. MAT'L. AND COP. STR.: THE COST OF THESE ITEMS TO BE INCLUDED IN THE UNIT PRICE BID FOR CLASS "A" CONCRETE.  
 TAR PAPER: TO BE COMMERCIAL GRADE TAR PAPER OR ROOFING FELT APPROXIMATELY 1/16" THICK. THE COST OF THIS ITEM TO BE INCLUDED IN THE UNIT PRICE BID FOR CLASS "A" CONCRETE.  
**TEST PILES:** TEST PILES SHALL BE DRIVEN WHERE DESIGNATED ON PLANS TO DETERMINE THE LENGTH OF PILE REQUIRED. ALL TEST PILES SHALL BE ACCURATELY LOCATED SO THAT THEY MAY BE USED IN THE FINISHED STRUCTURE.  
**PILEING:** PILES SHALL BE DRIVEN TO REFUSAL OR TO SUPPORT A MINIMUM LOAD OF 50 TONS PER PILE.  
**ANCHOR BOLTS:** HOLES OF SIZES AND DEPTHS SHOWN ON STEEL DETAILS SHALL BE DRILLED FOR ANCHOR BOLTS BY THE CONTRACTOR WHO SHALL BE RESPONSIBLE FOR KEEPING HOLES DRY IN FREEZING WEATHER. AFTER BRACE PLATES ARE PROPERLY SET AND ANCHOR BOLTS ARE PLACED IN DRILLED HOLES, THE HOLES SHALL BE FILLED FLUSH WITH THE TOPS OF BRACE PLATES WITH MELTEN LEAD. ANCHOR BOLTS SHALL BE HEATED TO A BLUE HEAT AT THE TIME OF POURING TO ASSURE FLOW OF LEAD TO THE BOTTOM OF HOLES. THE COST OF DRILLING ANCHOR BOLT HOLES, FURNISHING LEAD AND FILLING HOLES SHALL BE INCLUDED IN THE LUMP SUM BID FOR STRUCTURAL STEEL.  
**BEARING AREAS:** BEARING AREAS TO RECEIVE SUPERSTRUCTURE SHALL BE FINISHED SMOOTH AND LEVEL AT THE ELEVATIONS SHOWN ON THE PLANS.  
**STRUCTURAL STEEL:** SEE SHEET FOR NOTE AND SPECIFICATIONS. FOR PURPOSE OF PAYMENT "LUMP SUM BID" FOR STRUCTURAL STEEL INCLUDES STRUCTURAL STEEL, BOLTS, AND LEAD PLATES. THE APPROXIMATE WEIGHT OF STRUCTURAL STEEL IS 2,077.22 LBS.  
**SHOP AND MILL INSPECTION:** KENTUCKY DEPARTMENT OF HIGHWAYS.  
**WELDING MATERIAL:** WELDING MATERIAL SHALL CONFORM TO THE AMERICAN WELDING SOCIETY SPECIFICATIONS FOR WELDED HIGHWAY AND RAILWAY BRIDGES, 1956 EDITION AND AMENDMENTS.  
**PAINT:** ALL STRUCTURAL STEEL NOT IN CONTACT WITH CONCRETE SHALL BE GIVEN ONE SHOP COAT OF RED LEAD PAINT, TYPE 1 ACCORDING TO THE SPECIFICATIONS. ALL EXPOSED SURFACES NOT IN CONTACT WITH CONCRETE SHALL BE GIVEN TWO FIELD COATS OF ALUMINUM PAINT IN ACCORDANCE WITH SPECIFICATIONS.  
**PAINTING EXPANSION DAMS:** ALL PARTS OF EXPANSION DAMS WHICH CANNOT BE PAINTED AFTER ERECTION SHALL HAVE TWO COATS OF ALUMINUM PAINT APPLIED BEFORE ERECTION.  
**MATERIAL:** All structural steel to be ASTM A7-58T. High strength bolts, nuts, and washers to be ASTM A325-58T. Steel lead to be ASTM B29-58  
**SLOPE PROTECTION:** To be dry cyclopean slope protection in accordance with specifications

**BILL OF INCIDENTAL MATERIAL**

ITEM	NO.	DESCRIPTION & LOCATION
1" Prem. Exp. Jt. Mat'l.	3	12" x 28" @ Piers 1, 2, 3 & End Bent
" " " "	3	10" x 8" " "
" " " "	3	11" x 8" @ E Spans 2, 3 & 4
" " " "	3	10" x 8" " "
" " " "	2	18" x 12" Between Abutments and Span-Abut.
Tar Paper	1	18" x 250' Span 1 over Pier 1
Galk. Pipe Drains	2	See Detail Sh. 18
Copper Strip	3	1" x 25' @ Piers 1, 2 & End Bent
" " "	3	1" x 25' @ E Spans 2, 3 & 4

Bridge over Middle Fork Ky. River Sheet 1 of 10

**COMMONWEALTH OF KENTUCKY**  
 DEPARTMENT OF HIGHWAYS  
 FRANKFORT  
 COUNTY OF

**LESLIE**  
 US 421-LESLIE COUNTY  
 CONSOLIDATED HIGH SCHOOL  
 ROAD

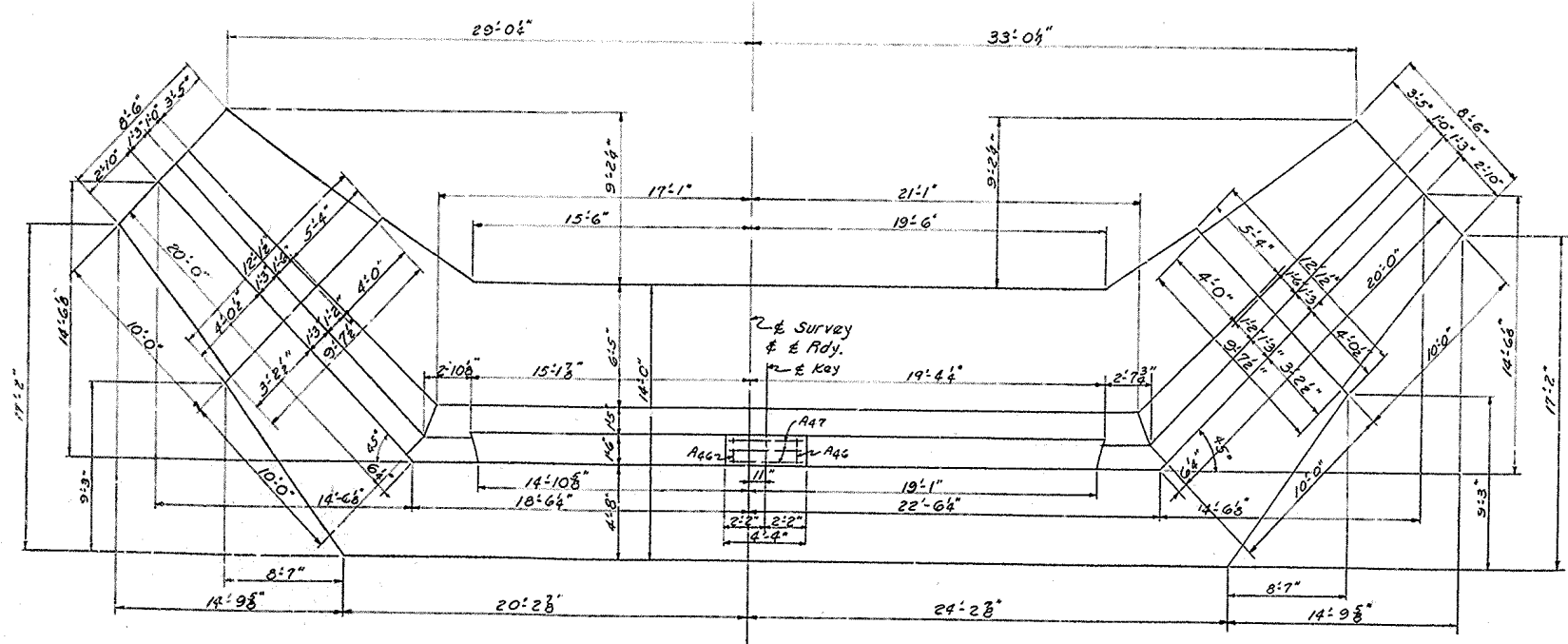
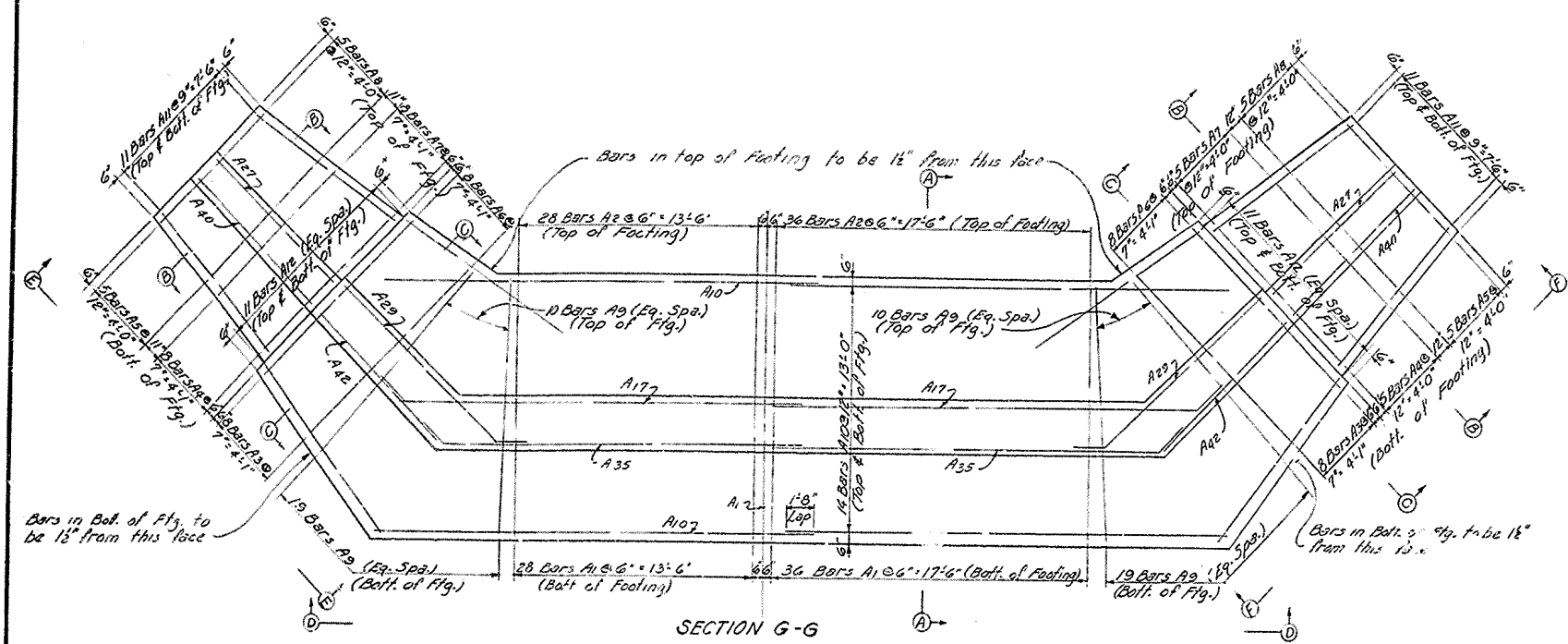
STATION 1189 PROJECT NO. SP59-108-66

BRIDGE NUMBER 14016

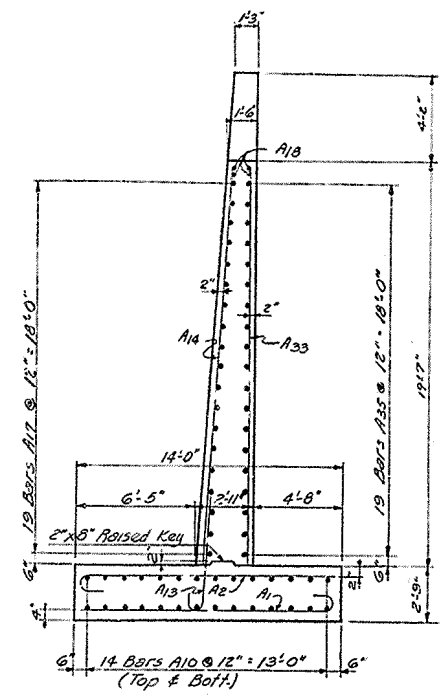
REVISIONS:  
 DATE BY  
 DATE BY  
 DATE BY

DESIGNED BY: [Signature]  
 CHECKED BY: [Signature]  
 DATE: [Date]

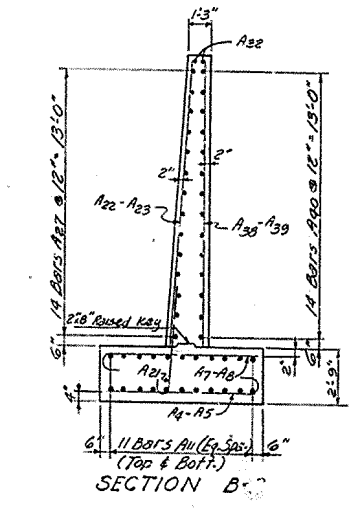
FIG. NO.	DATE	REVISED	BY	FOR	TOTAL SHEETS
7	KY.				



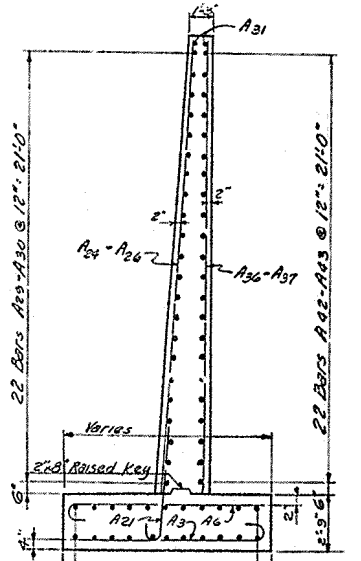
PLAN



SECTION A-A



SECTION B-B



SECTION C-C

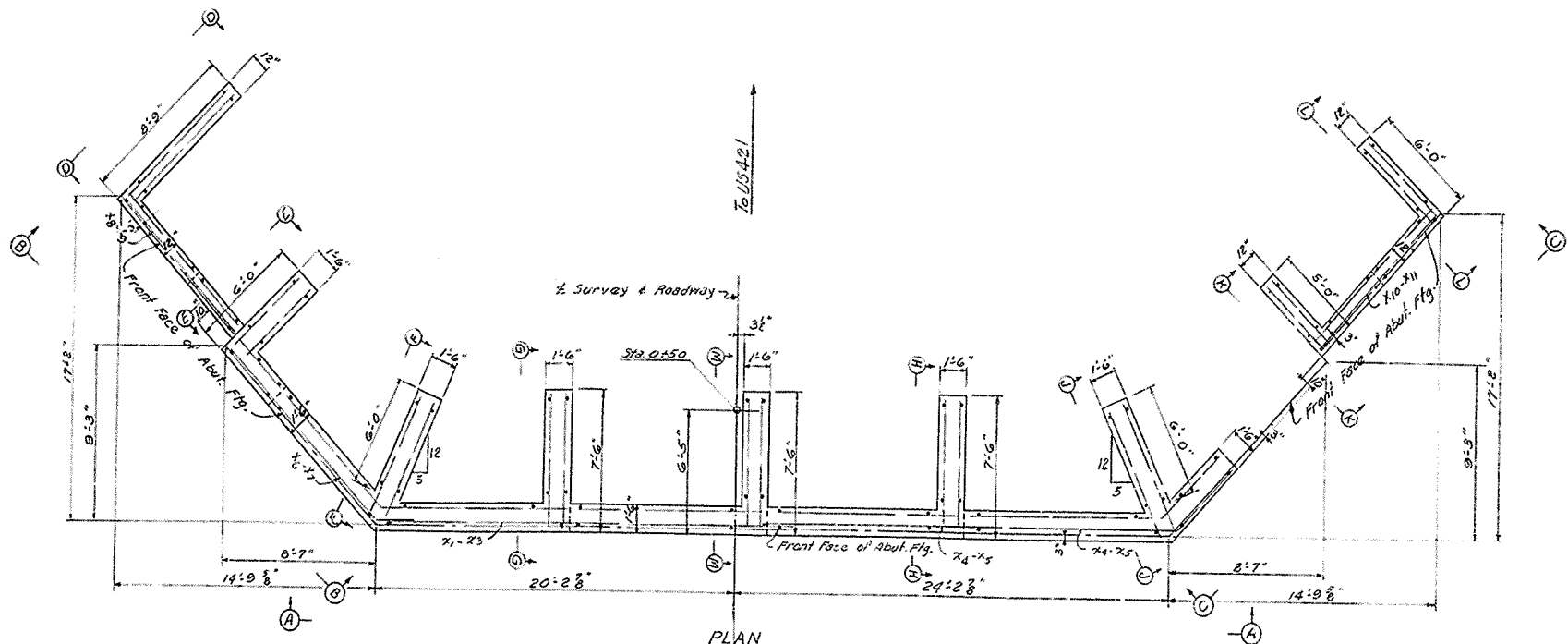
DESIGNED BY	DATE	REVISION	DATE
DRAWN BY	DATE	REVISION	DATE
CHECKED BY	DATE	REVISION	DATE
TRACED BY	DATE	REVISION	DATE

Bridges over Middle Fork Kentucky River, Sheet 2

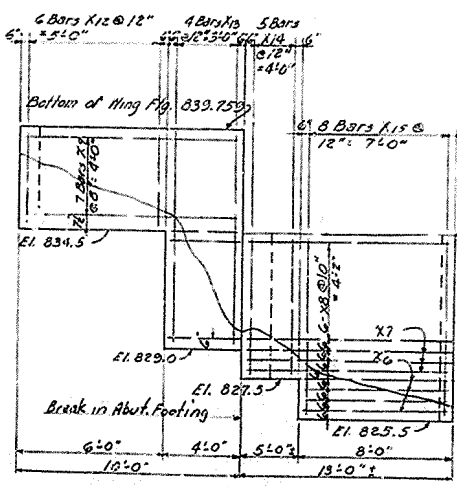
**COMMONWEALTH OF KENTUCKY**  
 DEPARTMENT OF HIGHWAYS  
 FRANKFORT  
 COUNTY OF  
**LESLIE**  
 U.S. 421-LESLIE COUNTY  
 CONSOLIDATED HIGH SCHOOL  
 ROAD

STATION	PROJECT NO.
BRIDGE NUMBER	NO. 14016

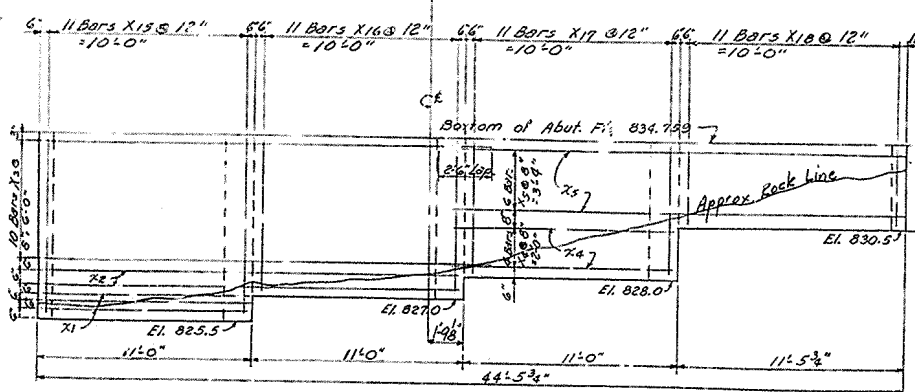
FED. ROAD DIST.	STATE	FED. AID PROJ. NO.	PROJ. FILE	PROJECT NO.	SHEET NO.
7	KY.				



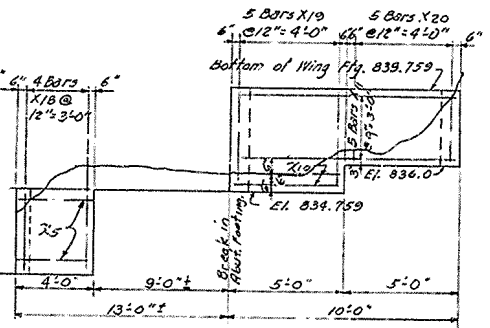
PLAN



ELEVATION B-B



ELEVATION A-A  
(Showing Reinforcement in Front Face)



ELEVATION C-C

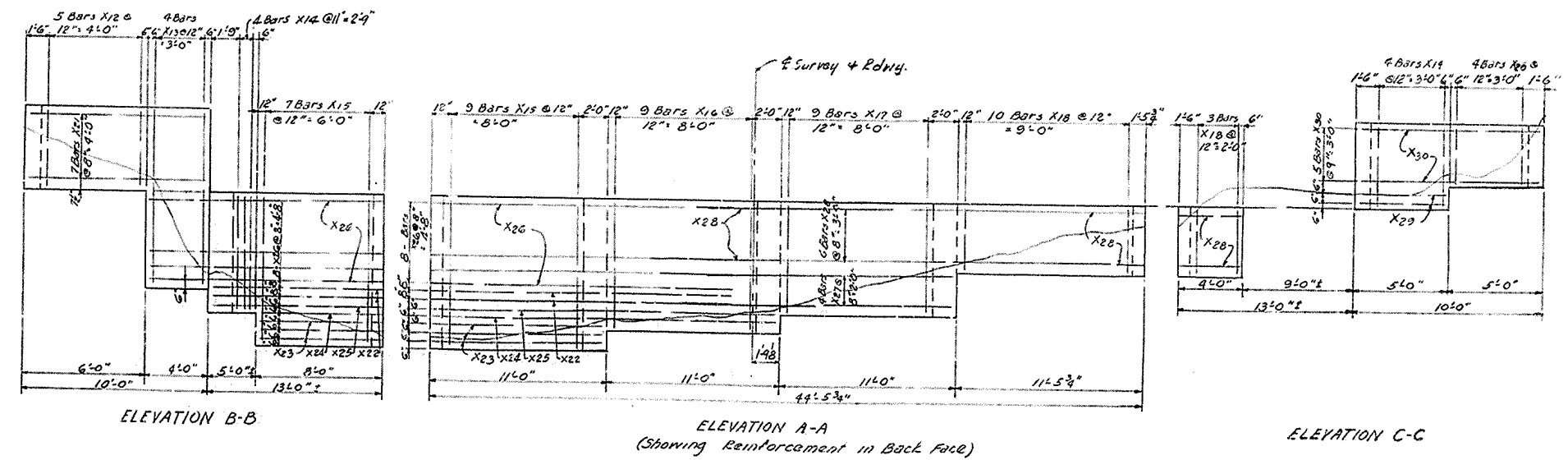
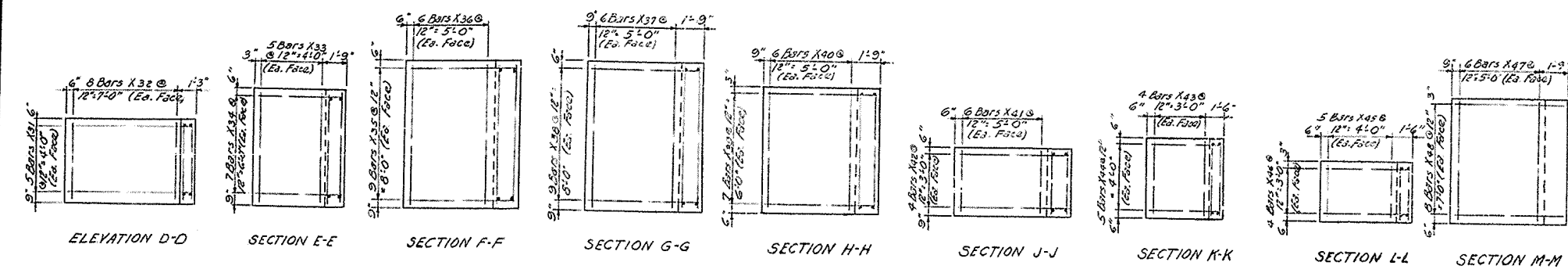
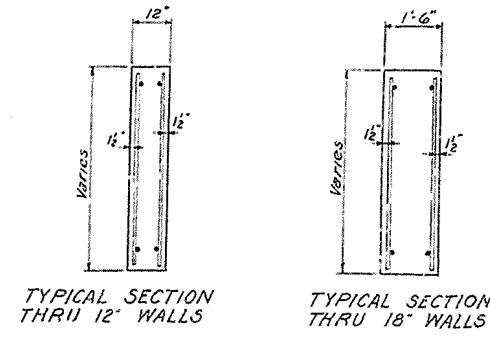
DESIGNED BY	CHECKED BY	DATE	REVISION	DATE
BY	BY			
DATE	DATE			
REVISION	REVISION			
DATE	DATE			

SUB FOOTING FOR ABUTMENT

Bridge over Middle Fork Ky. River Sheet 2A

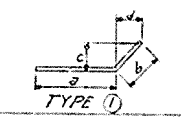
**COMMONWEALTH OF KENTUCKY**  
 DEPARTMENT OF HIGHWAYS  
 FRANKFORT  
 COUNTY OF  
**LESLIE**  
 US 421-LESLIE COUNTY  
 CONSOLIDATED HIGH SCHOOL  
 ROAD

STATION 1+89 PROJECT NO. 5P-59-108-66  
 BRIDGE NUMBER DRAWING NO. 1A016



Note - Wall and counterforts to bear on solid Rock.  
If solid rock is found above bottom elevations shown, footing is to be stepped and reinforcement sloped and bent to fit in field.

BILL OF REINFORCEMENT											
MARK	TYPE	NO.	SIZE	LENGTH	LOCATION	J		D		J	
				FT. IN.		FT.	IN.	FT.	IN.	FT.	IN.
X1	5#	3	#4	10' 9"	Front Face - Wall						
X2	"	2	"	21' 9"	"						
X3	"	10	"	22' 9"	"						
X4	"	4	"	12' 3"	"						
X5	(1)	6	"	27' 6"	"	23	9	3	9	2	8
X6	5#	4	"	1' 9"	"						
X7	(1)	3	"	15' 3"	"	12	9	2	6	1	9
X8	"	6	"	19' 3"	"	16	9	2	6	1	9
X9	5#	7	"	9' 9"	"						
X10	"	2	"	4' 9"	"						
X11	"	5	"	9' 9"	"						
X12	"	11	"	5' 0"	"						
X13	"	8	"	10' 6"	"						
X14	"	9	"	10' 6"	"						
X15	"	35	"	3' 0"	"						
X16	"	20	"	7' 6"	"						
X17	"	20	"	4' 6"	"						
X18	"	28	"	4' 0"	"						
X19	"	9	"	4' 9"	"						
X20	"	9	"	3' 6"	"						
X21	"	7	"	6' 9"	Back						
X22	(1)	2	"	26' 6"	"	18	9	7	9	5	5 1/2
X23	(1)	3	"	18' 6"	"	10	9	7	9	5	5 1/2
X24	"	1	"	29' 6"	"	21	9	7	9	5	5 1/2
X25	"	1	"	32' 6"	"	21	9	12	9	7	7 1/2
X26	"	8	"	32' 6"	"	18	9	16	9	11	10 1/2
X27	5#	4	"	18' 1"	"						
X28	(1)	6	"	27' 1"	"	27	4	3	9	2	8
X29	5#	2	"	4' 9"	"						
X30	"	5	"	9' 9"	"						
X31	"	10	"	9' 6"	Counterforts D-D						
X32	"	16	"	5' 0"	"						
X33	"	10	"	7' 0"	"						
X34	"	14	"	5' 9"	"						
X35	"	18	"	7' 4"	"						
X36	"	12	"	9' 0"	"						
X37	"	12	"	9' 0"	"						
X38	"	18	"	7' 3"	"						
X39	"	18	"	7' 3"	"						
X40	"	12	"	6' 6"	"						
X41	"	12	"	4' 6"	"						
X42	"	8	"	7' 4"	"						
X43	"	8	"	4' 9"	"						
X44	"	10	"	4' 9"	"						
X45	"	10	"	3' 6"	"						
X46	"	8	"	5' 3"	"						
X47	"	12	"	7' 6"	"						
X48	"	16	"	7' 3"	"						



ESTIMATE OF QUANTITIES (Sheet 7A and 2B)

Concrete Class A 45.9 Cu. Yd.

Reinforcement 4129. Lb.

Structure Excavation Common 110 Cu. Yd.

" " S.R. 30 Cu. Yd.

Bridge over Middle Fork Ky. River Sheet 2B

**COMMONWEALTH OF KENTUCKY**  
DEPARTMENT OF HIGHWAYS  
FRANKFORT  
COUNTY OF  
**LESLIE**  
U.S. 421-LESLIE COUNTY  
CONSOLIDATED HIGH SCHOOL  
ROAD  
S.P. 66-572-1  
PROJECT NO. SP 67-108-66

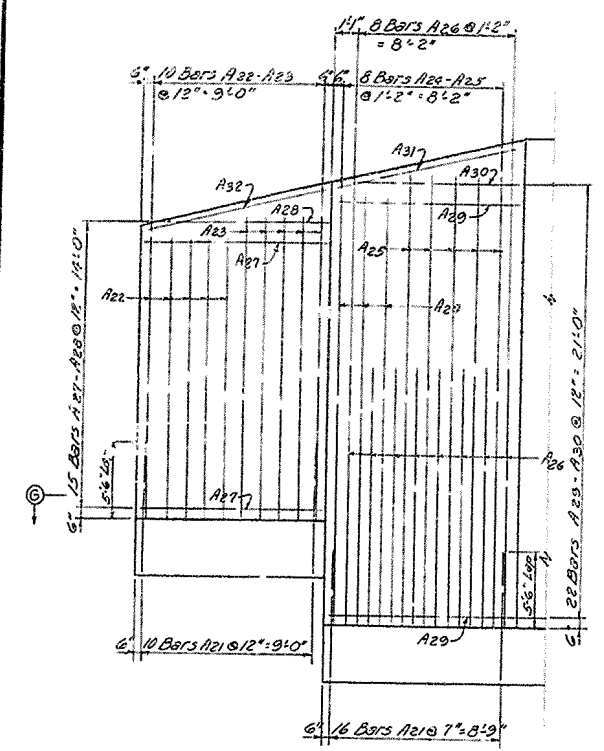
STATION 1+83  
BRIDGE NUMBER

NO. 14016

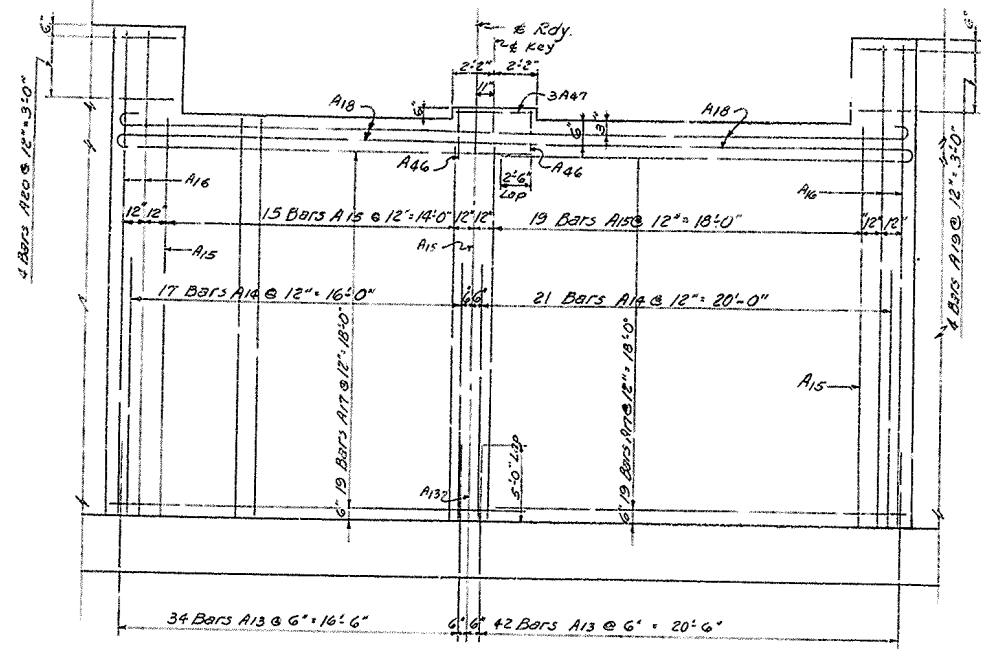
SUB FOOTING FOR ABUTMENT

DESIGNED BY: [Signature]  
CHECKED BY: [Signature]  
DATE: 8/22  
REVISIONS:  
DATE: [Blank]  
DATE: [Blank]

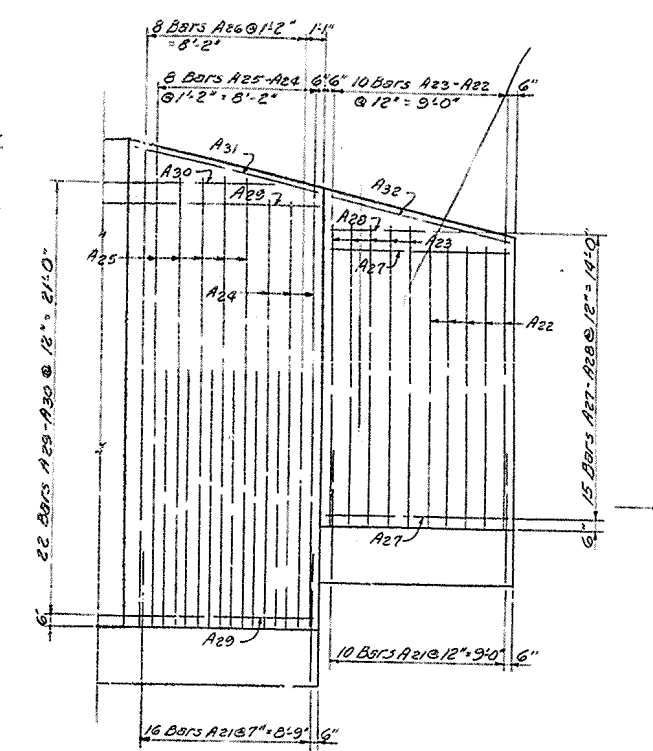
FED. ROAD DIST.	STATE	FISCAL YEAR	PROJECT NO.	SHEET NO.	TOTAL SHEETS
7	KY.				



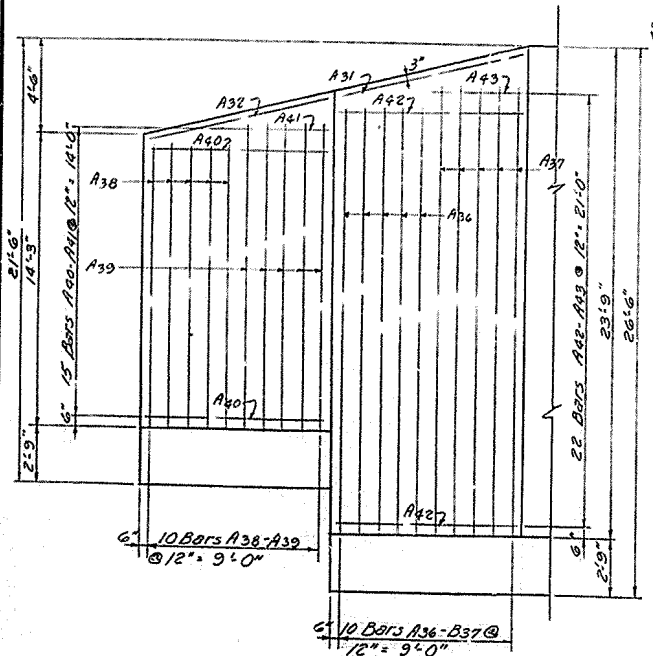
ELEVATION E-E



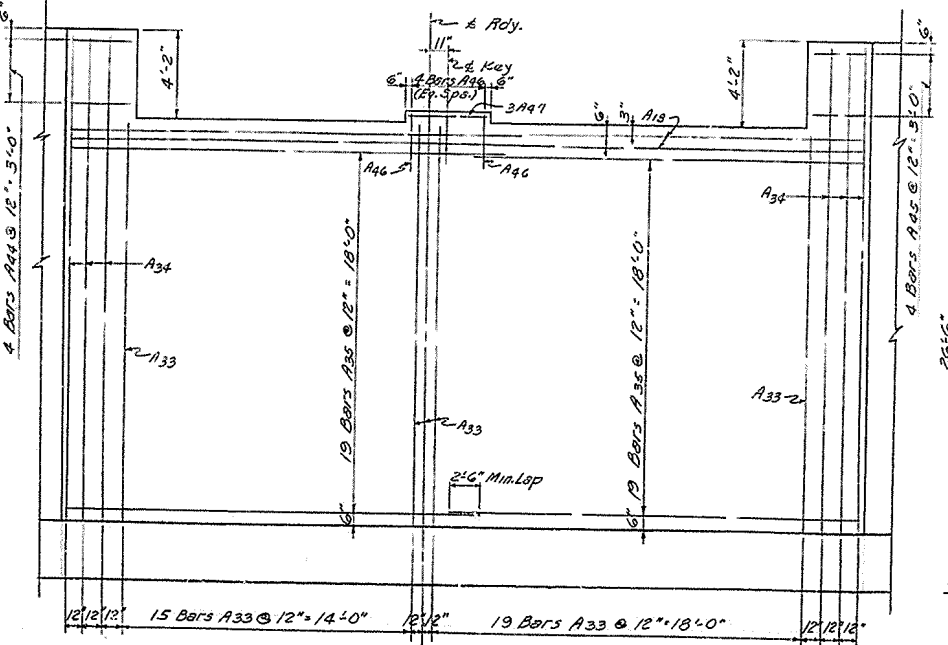
ELEVATION D-D  
(Showing Reinforcement in Back Face of Wall)



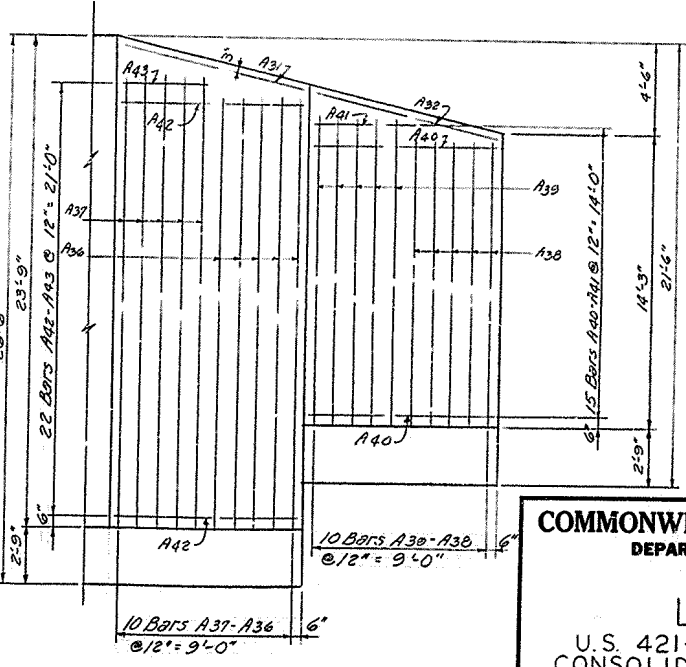
ELEVATION F-F



ELEVATION E-E



ELEVATION D-D  
(Showing Reinforcement in Front Face of Wall)



ELEVATION F-F

DESIGNED BY: [Signature]  
 CHECKED BY: [Signature]  
 DATE: [Date]  
 REVISIONS:  
 NO. DATE BY  
 1 11/15/57 [Signature]  
 2 11/15/57 [Signature]  
 3 11/15/57 [Signature]

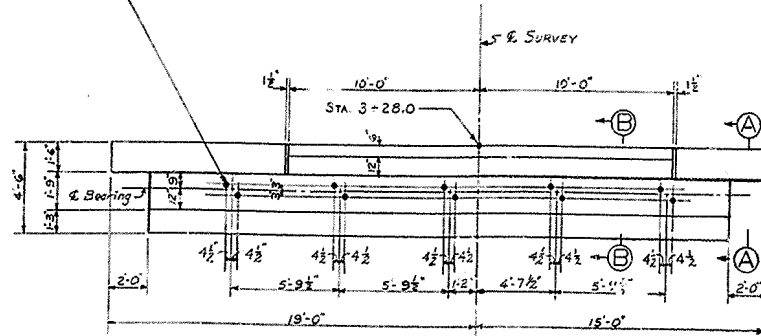
Bridge over Middle Fork  
 Kentucky River Sheet 3

**COMMONWEALTH OF KENTUCKY**  
 DEPARTMENT OF HIGHWAYS  
 FRANKFORT  
 COUNTY OF  
**LESLIE**  
 U.S. 421-LESLIE COUNTY  
 CONSOLIDATED HIGH SCHOOL  
 ROAD

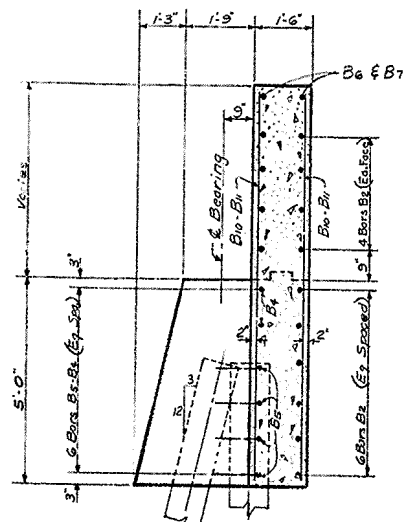
STATION: [Blank]  
 BRIDGE NUMBER: [Blank]  
 PROJECT NO.: [Blank]

DRAWING INDEX  
 NO. 14016

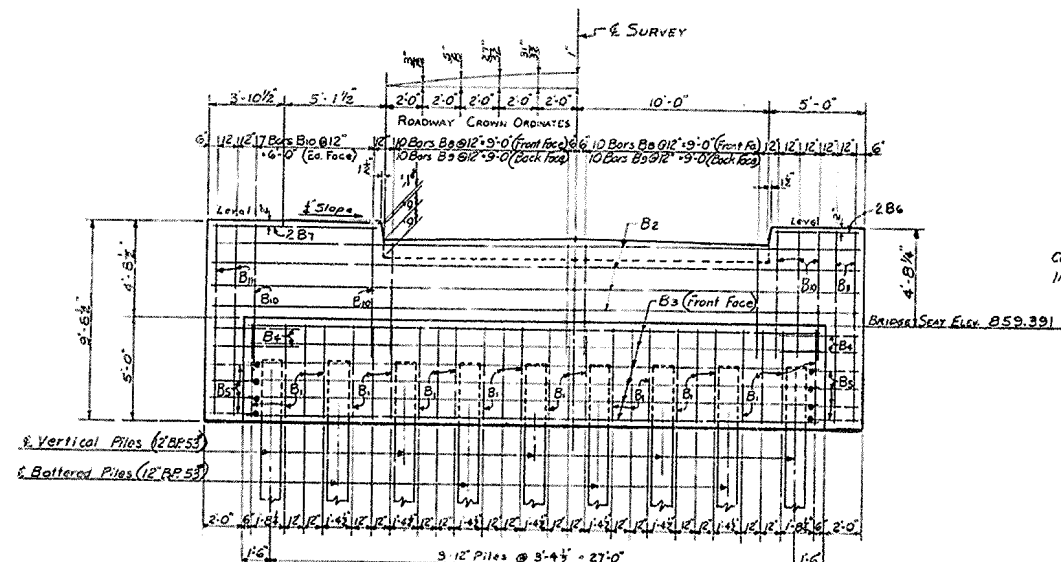
Field Drill  $1\frac{1}{2}$ "  $\phi$  Holes 12" Deep for 1" Anchor Bolts



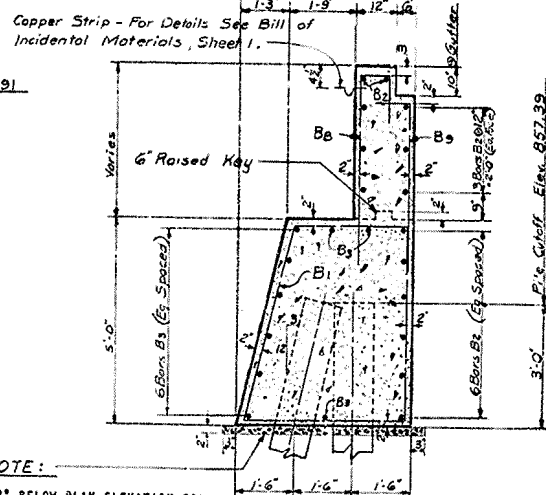
PLAN



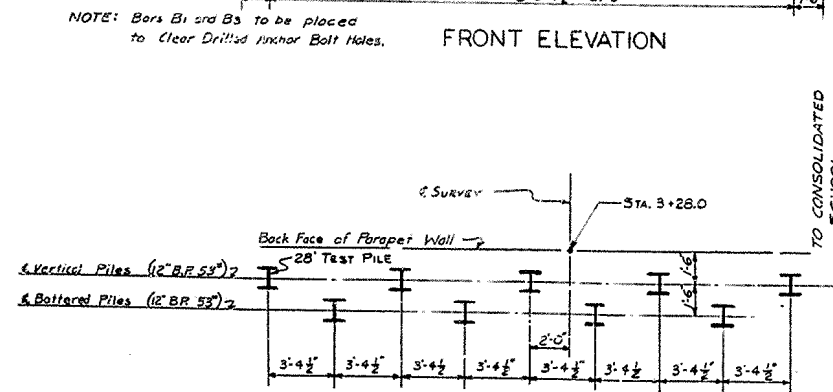
SECTION A-A



FRONT ELEVATION



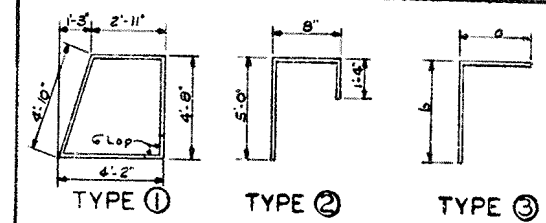
SECTION B-B



PLAN SHOWING PILE LAYOUT  
(DIMENSIONS ARE TAKEN AT BOTTOM OF CAP)

NOTE:  
DRESS SUBGRADE TO 2" BELOW PLAN ELEVATION FOR BOTTOM OF CONCRETE CAP. ADD A 2" LAYER OF NO. 6 CRUSHED STONE OR GRAVEL AND TAMP THIS LAYER INTO THE SUBGRADE. PLACE 1 TO 2 CONCRETE HORTAR UP TO BOTTOM OF CAP ELEVATION. SIDEFORMS FOR CAP MAY BE SET AS SOON AS HORTAR HAS SET A SUFFICIENT TIME TO SUPPORT MEN OR FORMS WITHOUT BEING DISTURBED. THESE LAYERS OF STONE AND HORTAR ARE TO BE USED ALONG BOTTOM OF CAP INSTEAD OF FORMS AND ARE CONSIDERED AS INCIDENTAL MATERIAL IN LIEU OF BOTTOM FORMS. THE COST OF THESE ITEMS TO BE INCLUDED IN THE UNIT PRICE BID FOR CLASS "A" CONCRETE.

BILL OF REINFORCEMENT										
MARK	TYPE	No.	SIZE	LENGTH						
				FT. IN.	a	b	c	d		
					FT. IN.	FT. IN.	FT. IN.	FT. IN.	FT. IN.	FT. IN.
B1	①	26	#5	17 4						
B2	STR	14	#	33 8						
B3	"	9	#	29 8						
B4	"	4	#	3 2						
B5	③	8	#	3 7		1 0	2 8			
B6	STR	2	#	4 7						
B7	STR	2	#	8 7						
B8	②	20	#	6 10						
B9	③	20	#6	6 7		1 3	5 5			
B10	STR	20	#	6 0						
B11	STR	8	#	9 4						



PILE RECORD				
Pile No.	Cutoff Elev. as shown on plans.	Tip of Pile Elevation as driven	Pile Length in place (Lin. Ft.)	Calculated Bearing Capacity
1	857.39			
2	"			
3	"			
4	"			
5	"			
6	"			
7	"			
8	"			
9	"			

NOTE: THIS PILE RECORD DOES NOT REPLACE OTHER RECORDS OF PILES REQUIRED TO BE KEPT AND SUBMITTED BY THE RESIDENT ENGINEER. AFTER ALL PILES HAVE BEEN DRIVEN, THE ENGINEER SHALL RECORD THE TIP OF PILE ELEVATION AS DRIVEN, LENGTH OF PILE IN PLACE AND CALCULATE THE BEARING CAPACITY OF EACH PILE, AND RETURN ONE BLUEPRINT COPY OF THIS SHEET WITH THIS DATA TO THE BRIDGE ENGINEER TO BE RECORDED ON ORIGINAL PLANS. LENGTH OF PILES IN PLACE SHOWN HERE ON ARE THE ACTUAL LENGTH OF PILES IN THE FINISHED STRUCTURE BELOW CUTOFF ELEVATION AND IS NOT NECESSARILY THE PAY ITEM.

ESTIMATE OF QUANTITIES

CONCRETE, CLASS "A"	30.3	Cu. Yds.
REINFORCEMENT	1943	LBS.
12" B.P. 53", FURNISHING	252	Lin. Ft.
12" B.P. 53", DRIVING	252	Lin. Ft.

PILE BENT

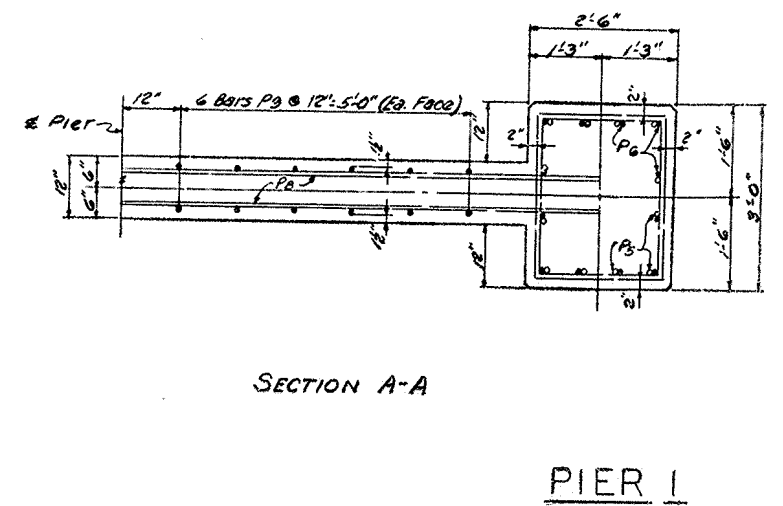
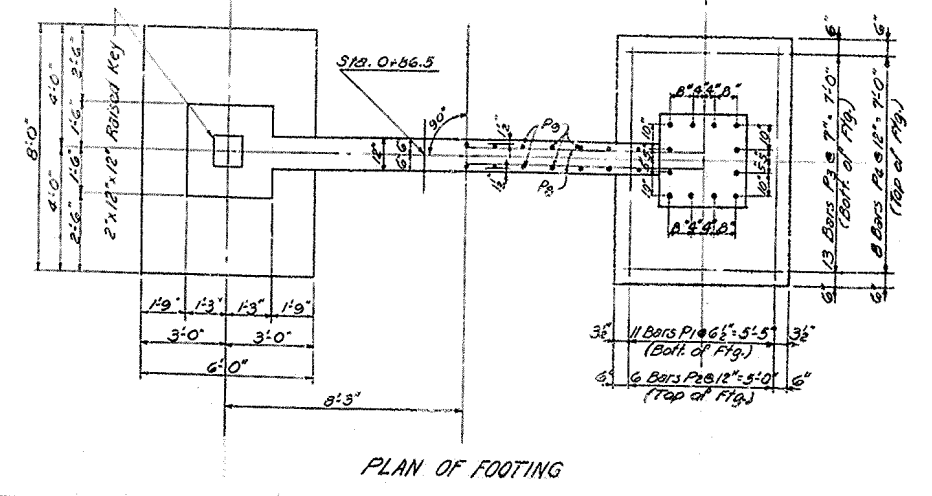
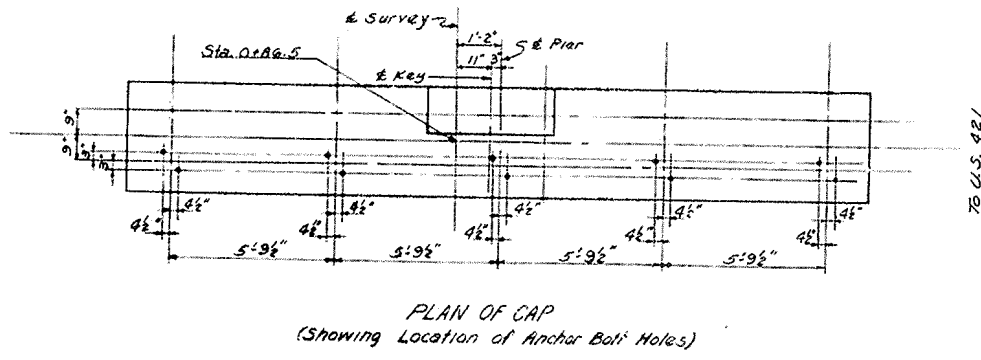
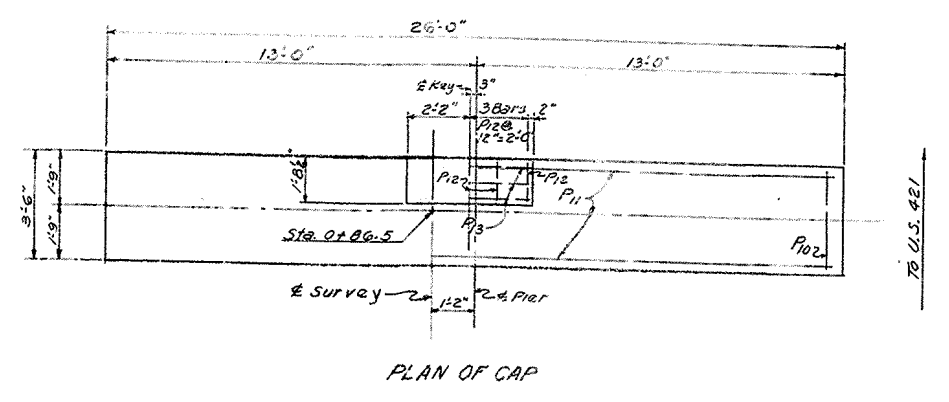
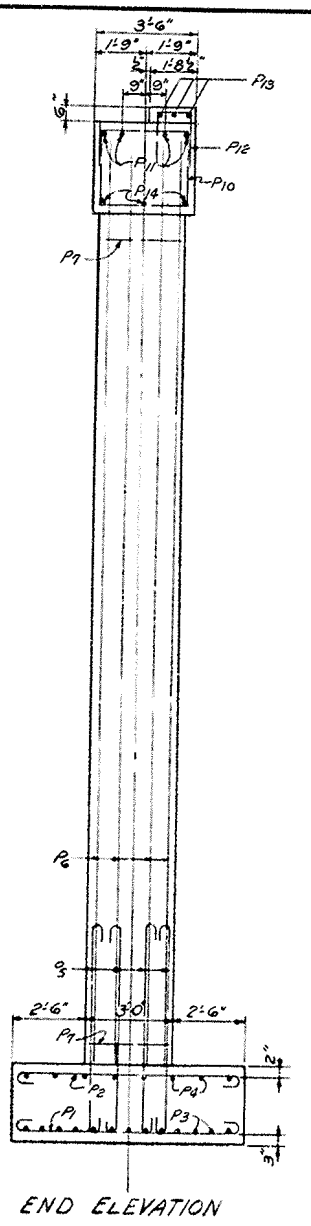
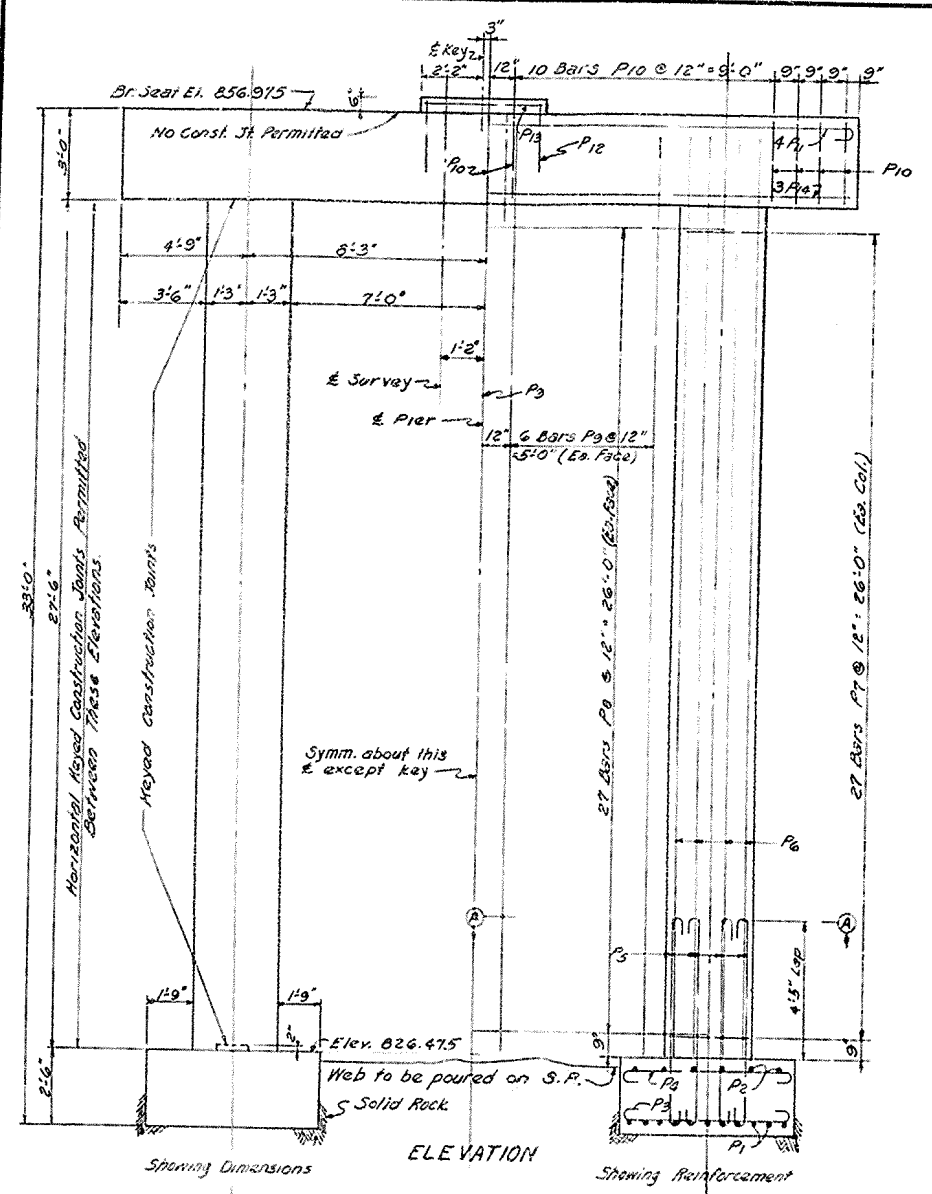
BRIDGE OVER MIDDLE FORK KY. RIVER Sheet 4

**COMMONWEALTH OF KENTUCKY**  
DEPARTMENT OF HIGHWAYS  
FRANKFORT  
COUNTY OF  
**LESLIE**  
U.S. 421 - LESLIE COUNTY  
CONSOLIDATED HIGH SCHOOL  
ROAD

STATION 1+89 PROJECT NO.  
BRIDGE NUMBER DRAWING NO. 14016

DESIGNED BY: J.V.S. CHECKED BY: J.V.S. DATE: 6/29/59  
 TRACED BY: J.V.S. CHECKED BY: J.V.S. DATE: 6/29/59  
 REVISIONS: DATE DATE  
 1 6/29/59  
 2 6/29/59

PL. NO.	DATE	STATE	PL. NO.	FISCAL YEAR	SHEET NO.	TOTAL SHEETS
7		KY.				



ESTIMATE OF QUANTITIES  
 Concrete 48.7 Cu. Yds.  
 Reinforcement 5090 Lbs.

Bridge over Middle Fork Kentucky River Sheet 5

**COMMONWEALTH OF KENTUCKY**  
 DEPARTMENT OF HIGHWAYS  
 FRANKFORT  
 COUNTY OF  
**LESLIE**  
 U.S. 421-LESLIE COUNTY  
 CONSOLIDATED HIGH SCHOOL  
 ROAD

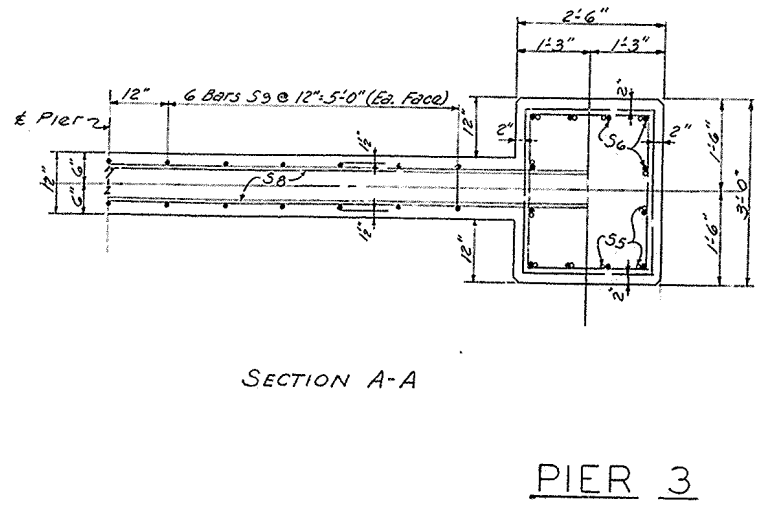
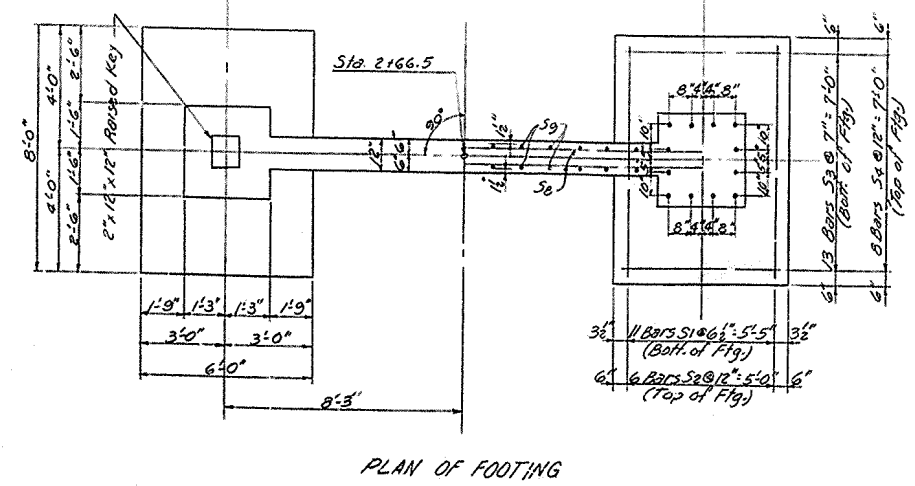
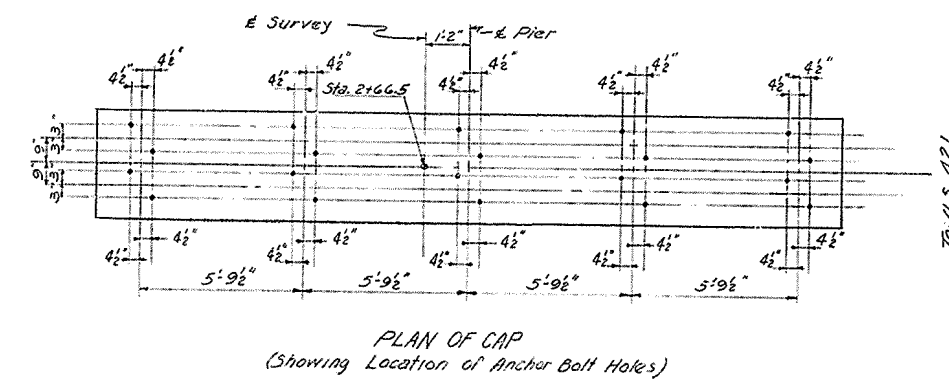
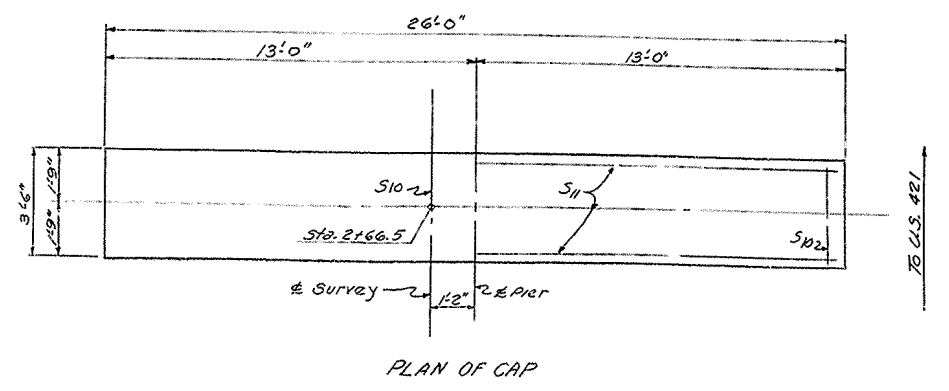
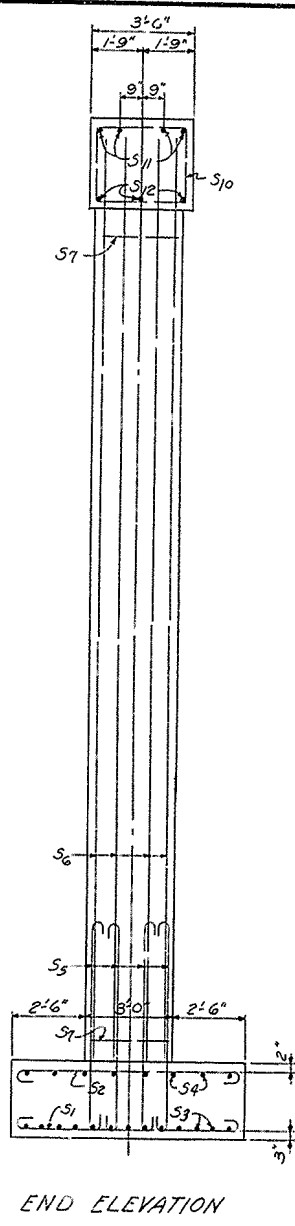
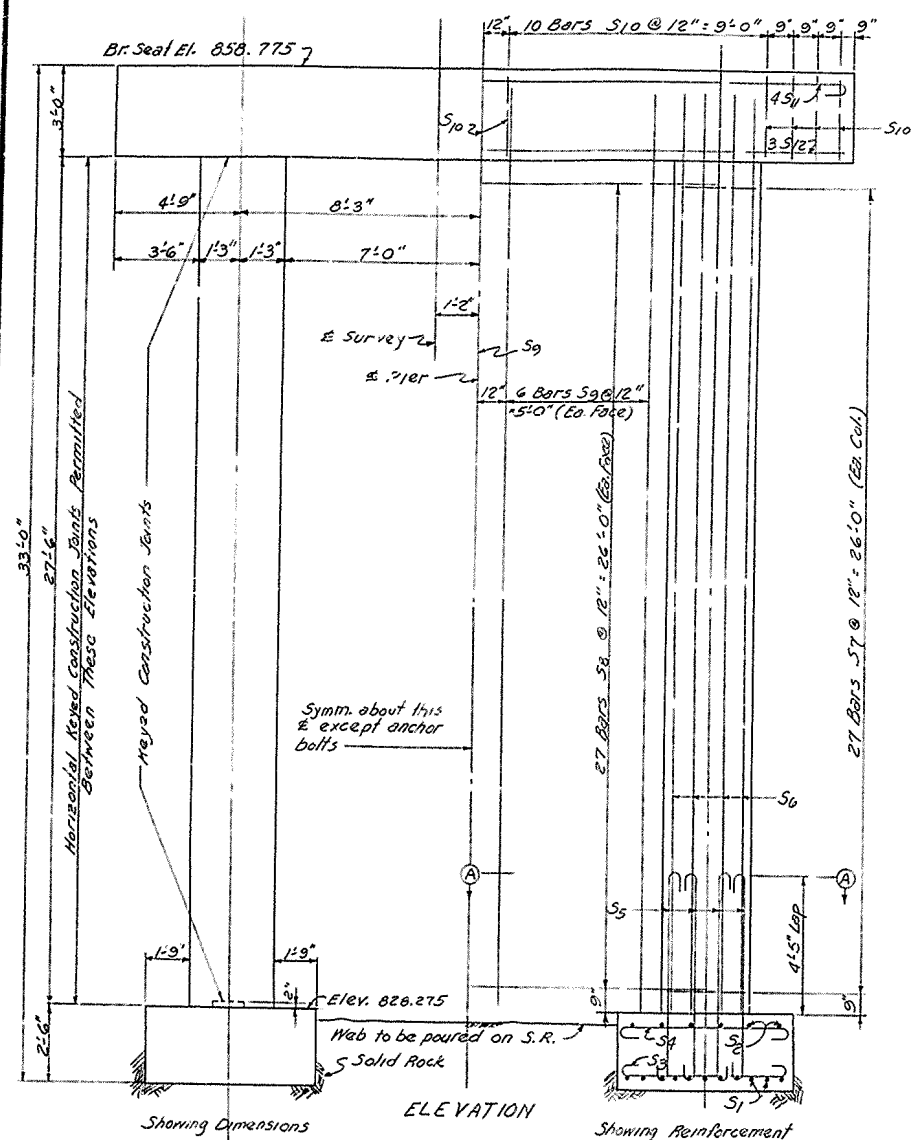
STATION 1+89 PROJECT NO.  
 BRIDGE NUMBER DRAWING NO. 14016

DESIGNED BY	CHECKED BY	DATE	REVISION	DATE
W. B. B.	W. B. B.	4/12		
W. B. B.	W. B. B.	4/12		
W. B. B.	W. B. B.	4/12		





FED. ROAD DIST.	STATE	FED. AID PROJ. NO.	FISCAL YEAR	SHEET NO.	TOTAL SHEETS
7	KY.				



ESTIMATE OF QUANTITIES  
 Concrete Class "A" 48.5 Cu.Yds.  
 Reinforcement 5058 Lbs.

Bridge over Middle Fork Kentucky River Sheet 7

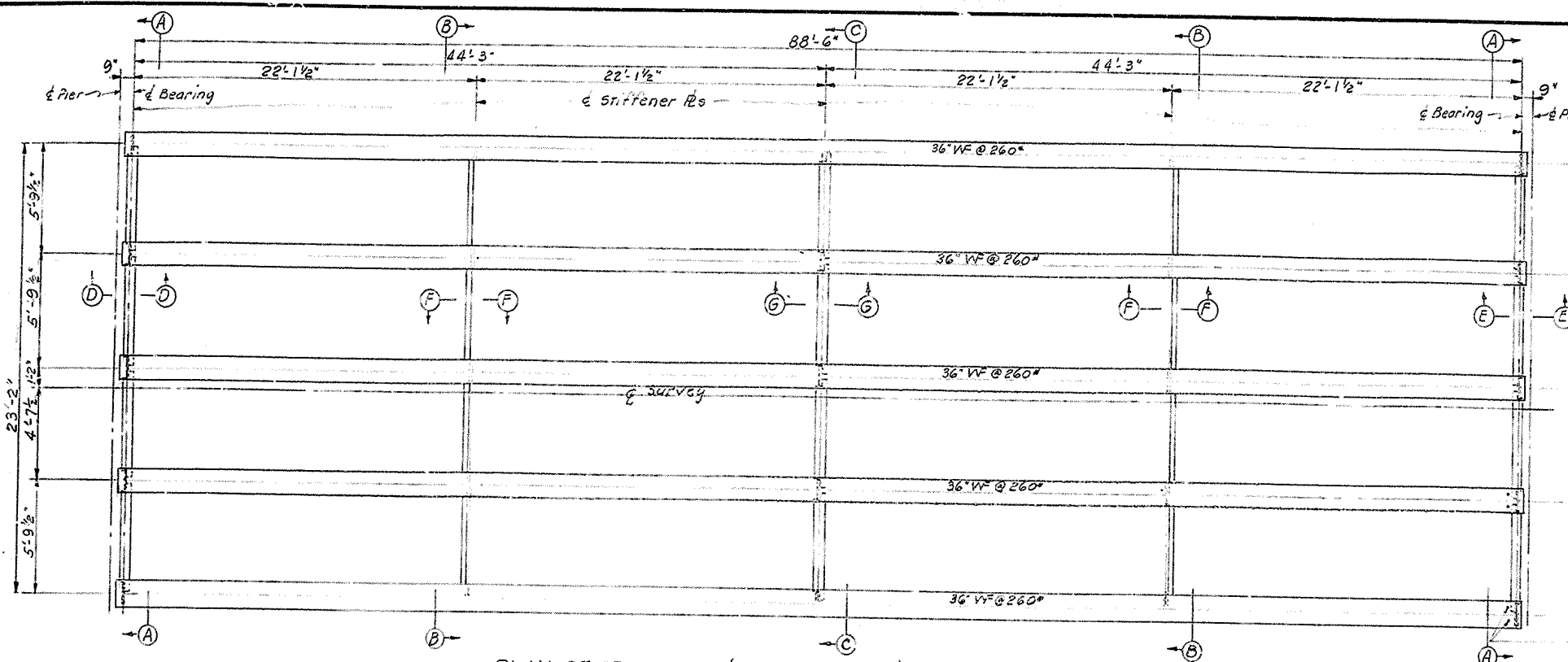
**COMMONWEALTH OF KENTUCKY**  
 DEPARTMENT OF HIGHWAYS  
 FRANKFORT  
 COUNTY OF  
 LESLIE  
 U.S. 421-LESLIE COUNTY  
 CONSOLIDATED HIGH SCHOOL  
 ROAD

STATION 1+89 PROJECT NO.  
 BRIDGE NUMBER DRAWING INDEX  
 NO. 14016

DESIGNED BY: E.A. DATE: 11/11/54  
 CHECKED BY: DATE: 11/11/54  
 REVISIONS: 11/11/54  
 TRACED BY: DATE: 11/11/54







**STRUCTURAL STEEL NOTE-**

STIFFENERS - 6"x4"x1/2" Ls shop riveted to 36" WF Beams may be substituted for 6"x1/2" stiffener plates, shop welded to beams if desired.

SHOES - Plates must be true and free of warps.

MILL TEST REPORTS - Notarized statements in triplicate shall be furnished the Dept. of Highways showing that material furnished meets the specifications.

MATERIALS - A.S.T.M. Specifications herein designated shall govern the materials furnished:

Structural Steel	A7-58T
High Strength Bolts, Nuts, & Washers	A325-58T
Molten Lead & Lead Plates	B29-55
Angles	A109-58T or A7-58T

SHOP PLANS - The Contractor shall furnish the Department of Highways with complete detail plans in accordance with Article 5-2-34 of the Specifications.

MASONRY BEARING PLATES - One-eight (1/8) inch thick lead plates or preformed fabric pads may be used.

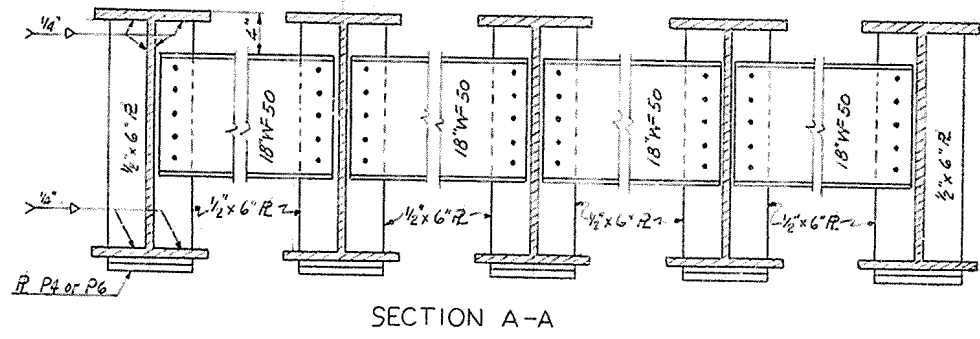
DIMENSIONS - Dimensions are for a normal temperature of 60°F. with dead load on the structure.

FIELD CONNECTIONS - All field connections to be 1/8" high strength bolt.

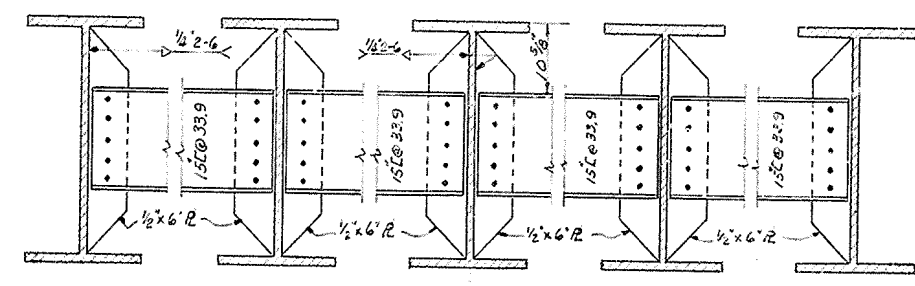
PAINT - All structural steel shall be given one shop coat of type I Red Lead Paint, and two field coats of aluminum paint in accordance with the specifications. However, shop paint shall not be applied to contact surfaces where high strength seal bolts are used for field connections, or surfaces in contact with concrete.

Holes for Expansion Dam this end Span 2  
Holes for Expansion Dam far end Span 3

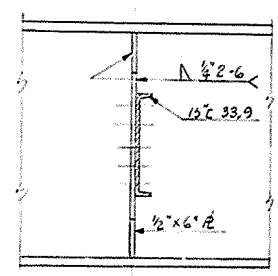
PLAN OF SPAN NO. 2 (DECK REMOVED)  
(Span 3 same except as noted for shoes and dams)



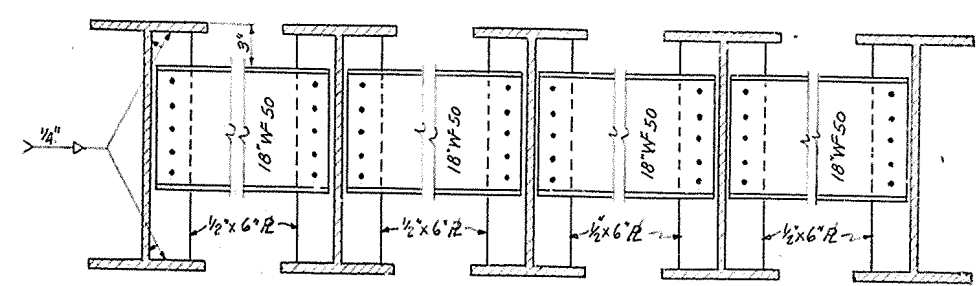
SECTION A-A



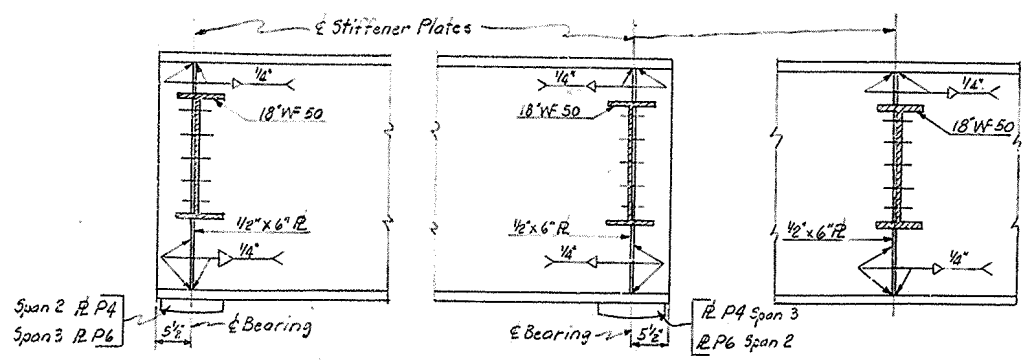
SECTION B-B



SECTION F-F



SECTION C-C



SECTION D-D

SECTION E-E

SECTION G-G

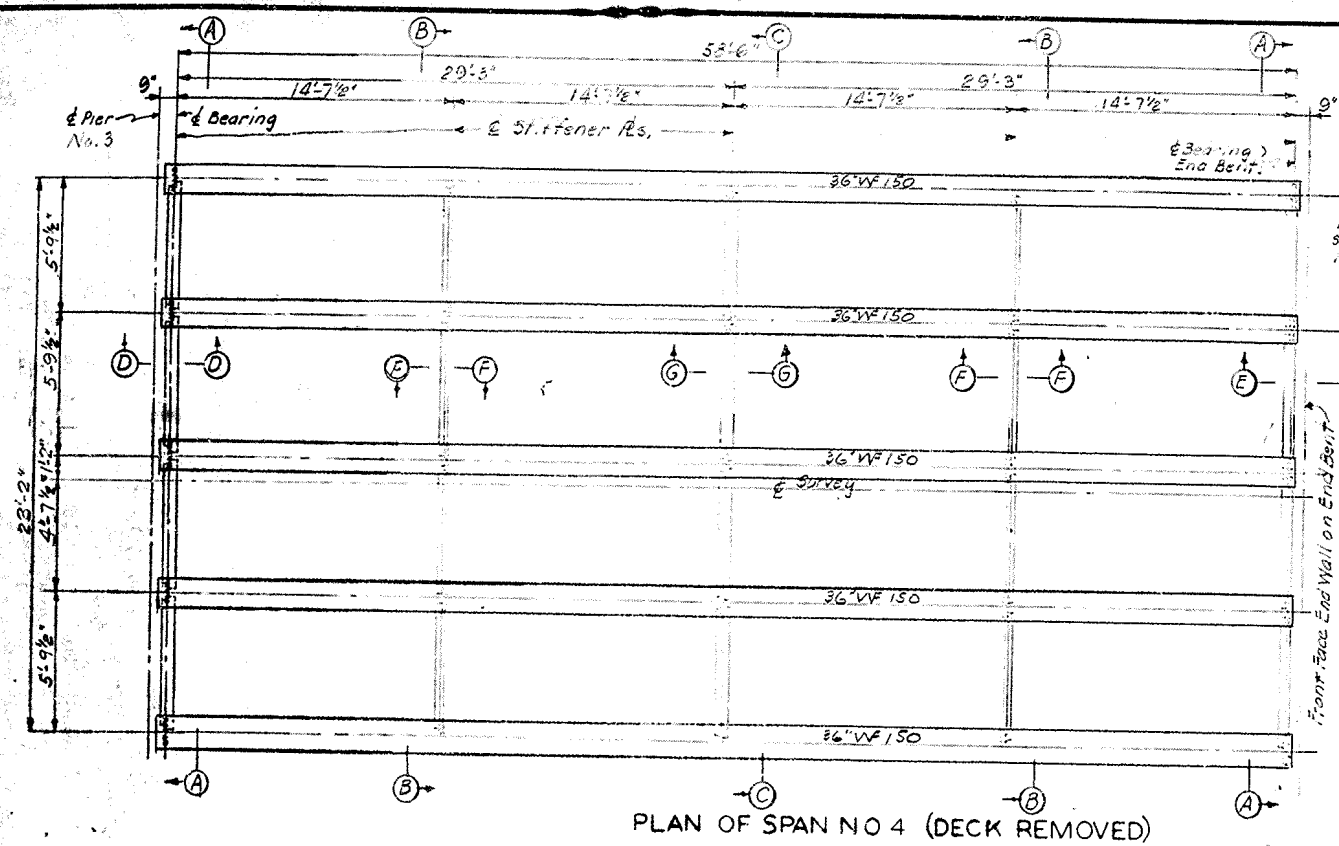
DETAILS OF SPANS NO. 2 & NO. 3

DESIGNED BY: D.T.O. DATE: 6/17  
 CHECKED BY: R.P.P. DATE: 6/17  
 APPROVED BY: R.P.P. DATE: 6/17

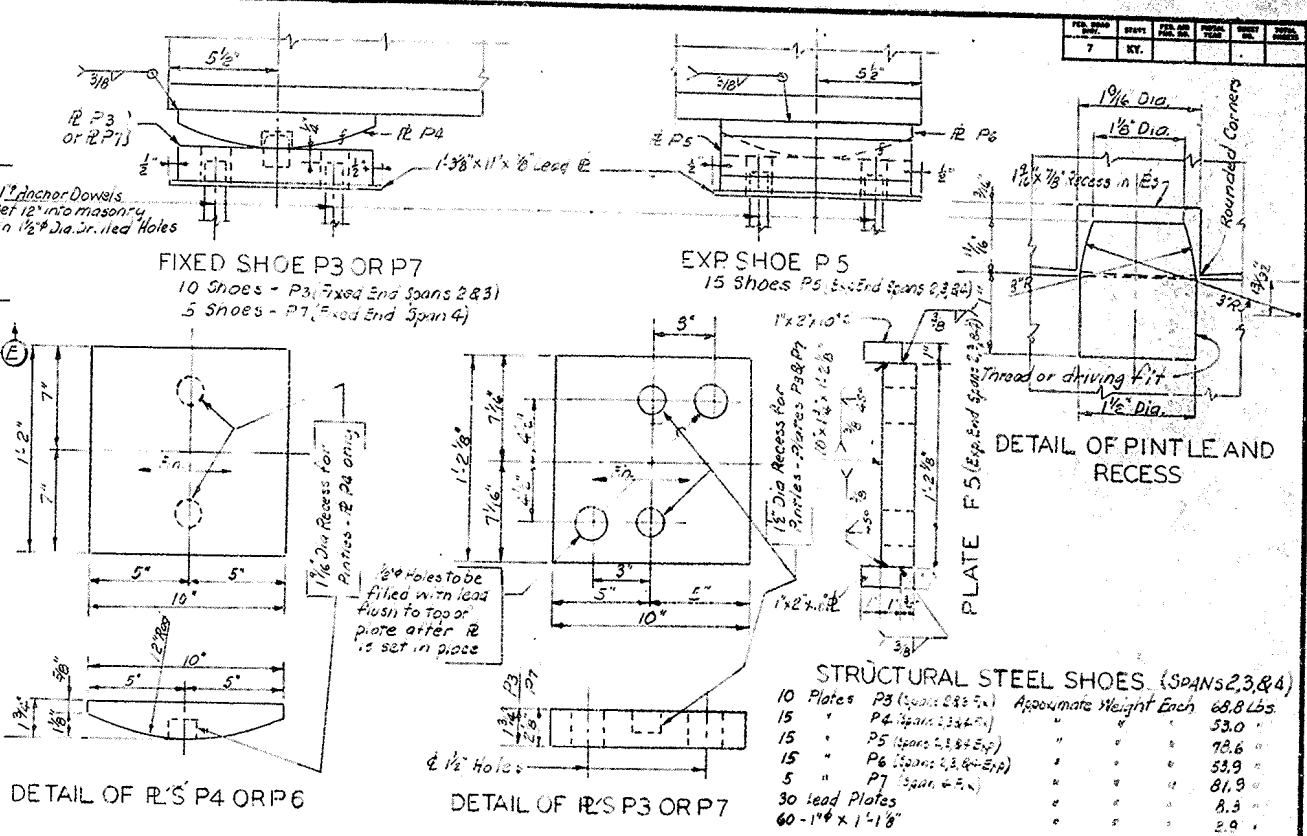
Bridge Over Middle Fork Ky. River Sheet 10

**COMMONWEALTH OF KENTUCKY**  
 DEPARTMENT OF HIGHWAYS  
 FRANKFORT  
 COUNTY OF  
 LESLIE  
 US 421-LESLIE COUNTY  
 CONSOLIDATED HIGH SCHOOL  
 ROAD

STATION 1+89 PROJECT NO. SP 59-108-66  
 BRIDGE NUMBER DRAWING INDEX  
 NO. 14016



PLAN OF SPAN NO 4 (DECK REMOVED)



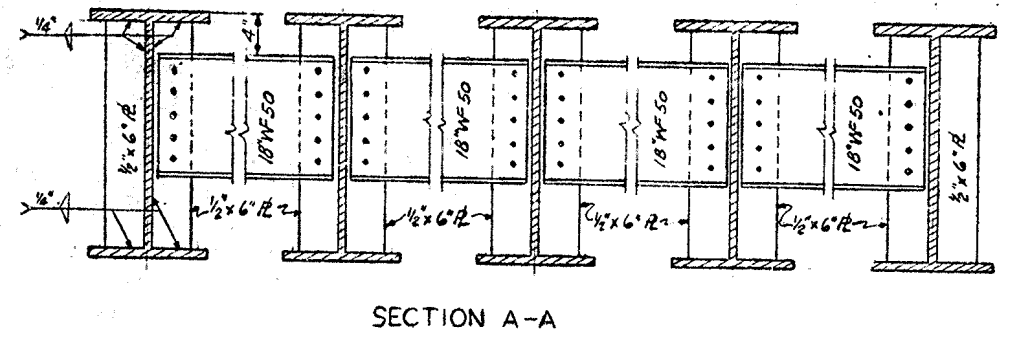
DETAIL OF R'S P4 OR P6

DETAIL OF R'S P3 OR P7

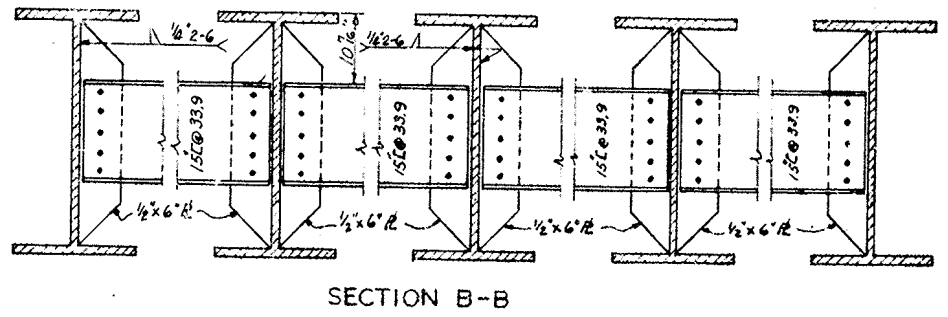
STRUCTURAL STEEL SHOES (SPANS 2,3, & 4)

Quantity	Description	Approximate Weight Each	Total Weight
10	Plates P3 (Spans 2,3, & 4)	68.8 Lbs	688 Lbs
15	P4 (Spans 2,3, & 4)	33.0	495
15	P5 (Spans 2,3, & 4)	78.6	1179
5	P6 (Spans 2,3, & 4)	53.9	269.5
5	P7 (Span 4)	81.9	409.5
30	Lead Plates	8.3	249
60	1" x 1" x 1/8"	2.9	174

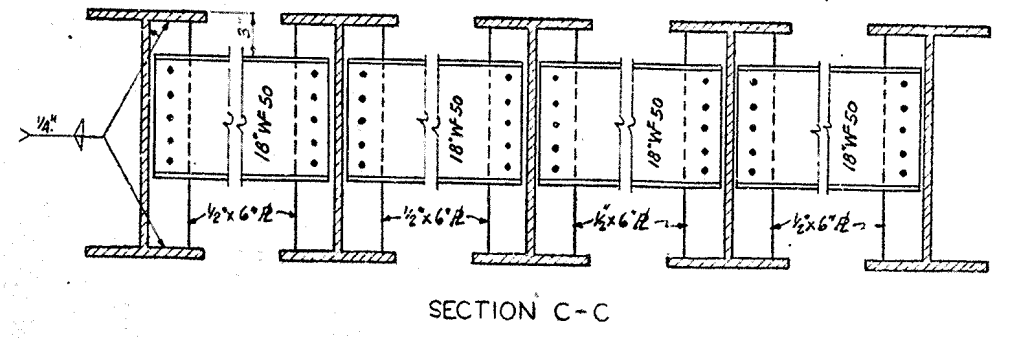
DETAIL OF PINTLE AND RECESS



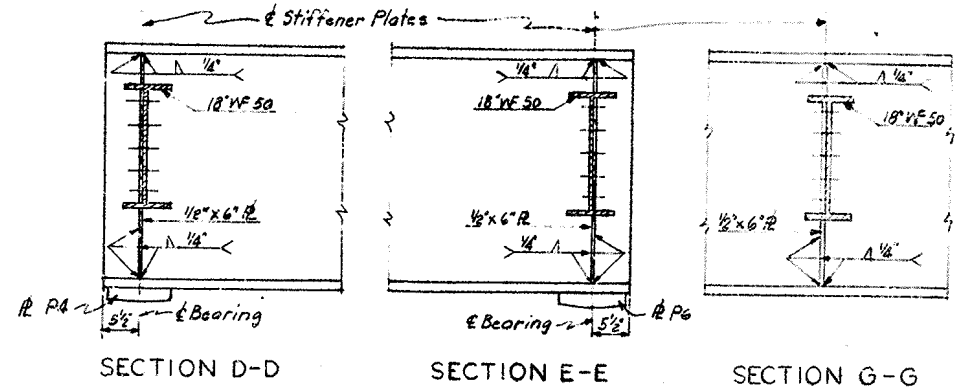
SECTION A-A



SECTION B-B



SECTION C-C



SECTION D-D

SECTION E-E

SECTION G-G

DETAILS OF SPAN NO. 4

NOTE - Surface finish of steel shall be in accordance with the following specifications:

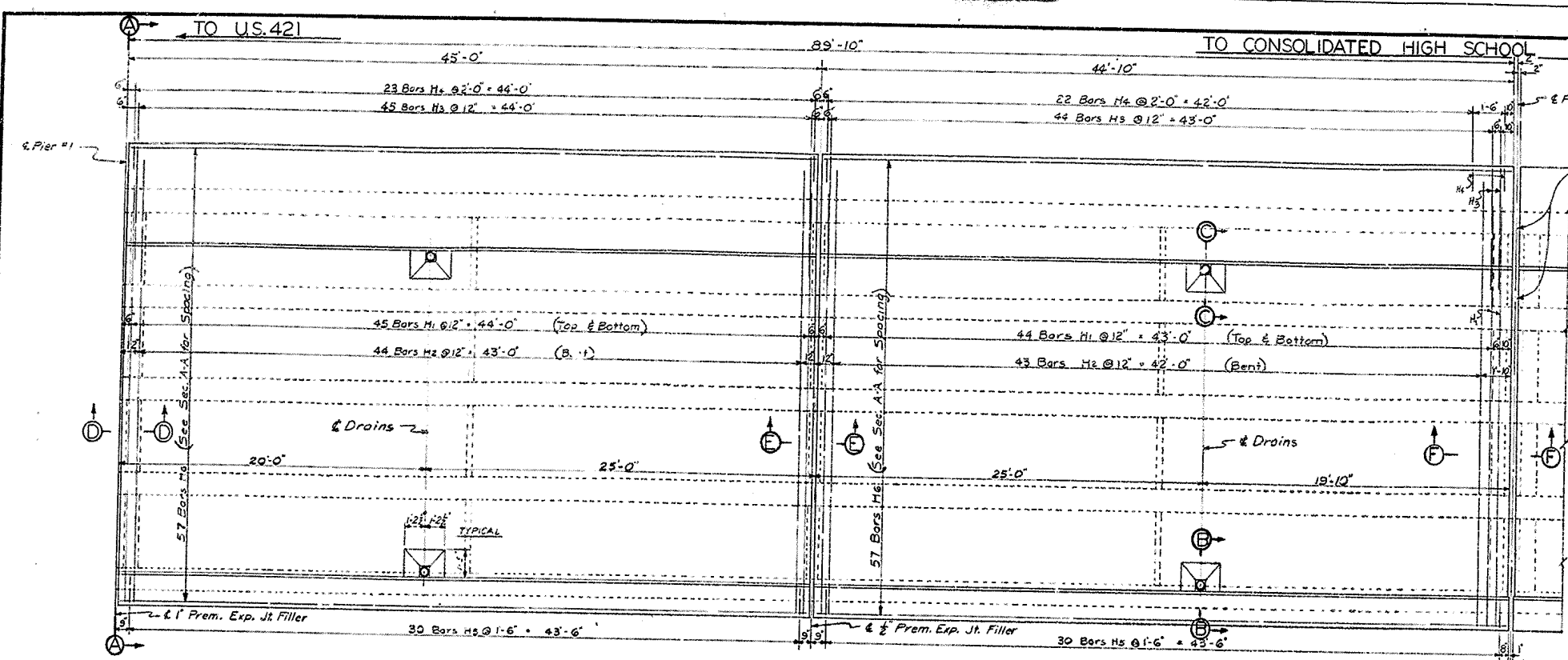
Heavy Plates in Contact with Shoes	A.S.A. 1200
Milled Ends of Compression Members, Strippers and Fillers	A.S.A. 500
Bridge Rollers & Roaders	A.S.A. 250
Pins and Pin Holes	A.S.A. 125
Sliding Bearings	A.S.A. 125

Bridges Over Middle Fork Ky. River Sheet 11

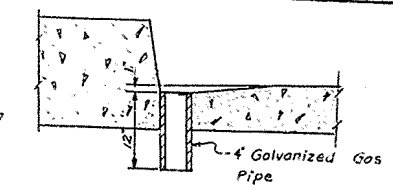
**COMMONWEALTH OF KENTUCKY**  
 DEPARTMENT OF HIGHWAYS  
 FRANKFORT  
 COUNTY OF  
**LESLIE**  
 US 421-LESLIE COUNTY  
 CONSOLIDATED HIGH SCHOOL  
 ROAD

STATION 1+83 PROJECT NO. SP59-108-66

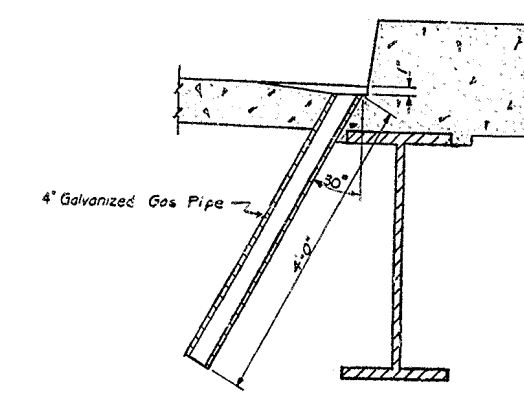
BRIDGE NUMBER 14016



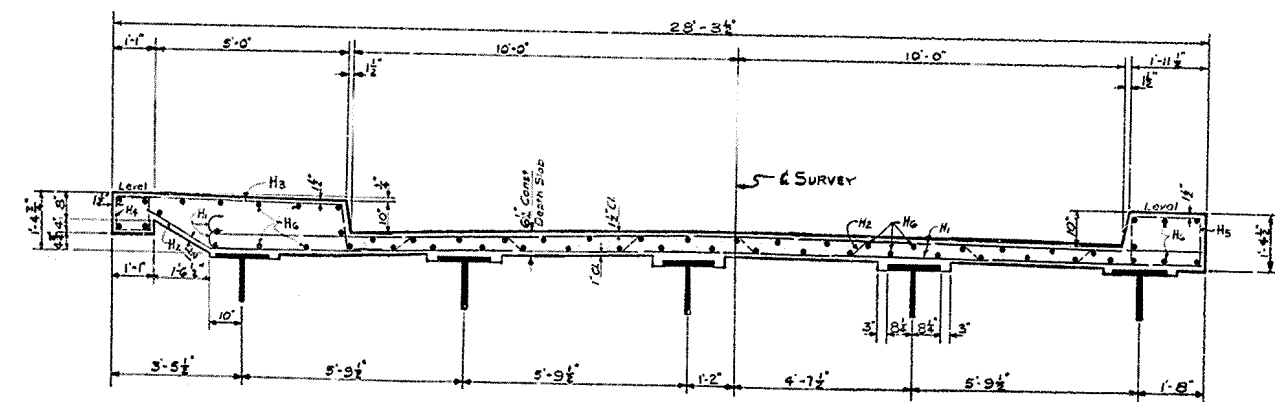
PLAN OF SPAN NO. 2  
(SPAN NO. 3 OPP. HAND)



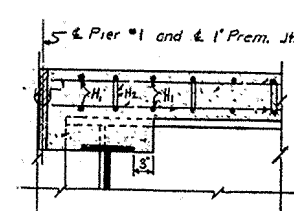
SECTION C-C



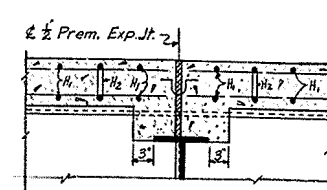
SECTION B-B



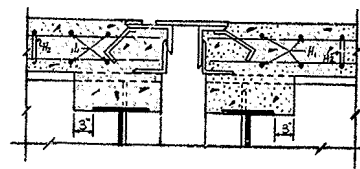
SECTION A-A



SECTION D-D

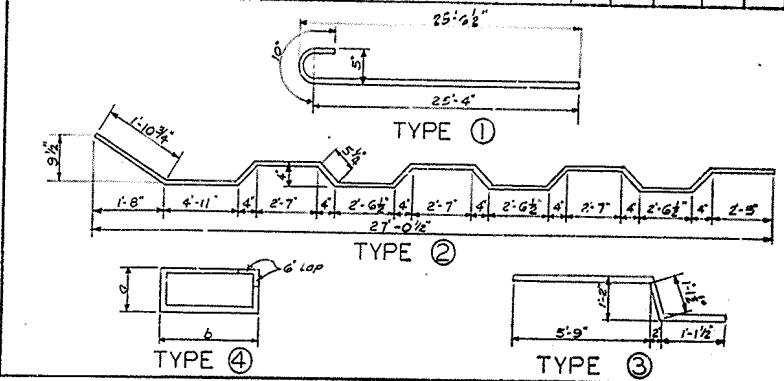


SECTION E-E



SECTION F-F

MARK		TYPE	NUMBER	SIZE	LENGTH	LOCATION	a		b	
			SPAN 2	SPAN 3	FT.	IN.	FT.	IN.	FT.	IN.
H1	①		180	180	*5	26	2	Transverse in Slab		
H2	②		87	87	*5	28	0	" " " (Bent)		
H3	③		90	90	*4	7	10	" " Sidewalk		
H4	④		46	46	*4	3	11	Curb		0 9 0 10
H5	⑤		60	60	*4	6	7	Curb		1 2 1 9
H6	STR.		228	228	*4	23	2	Longitudinal in Slab		



	ESTIMATE OF QUANTITIES		
	SPAN 2	SPAN 3	
Concrete, Class A	78.3	78.3	Cu. Yds.
Reinforcement	11,837	11,837	Lbs

BRIDGE OVER MIDDLE FORK KY. RIVER Sheet 12

**COMMONWEALTH OF KENTUCKY**  
DEPARTMENT OF HIGHWAYS  
FRANKFORT  
COUNTY OF  
**LESLIE**  
U.S. 421 - LESLIE COUNTY  
CONSOLIDATED HIGH SCHOOL  
ROAD

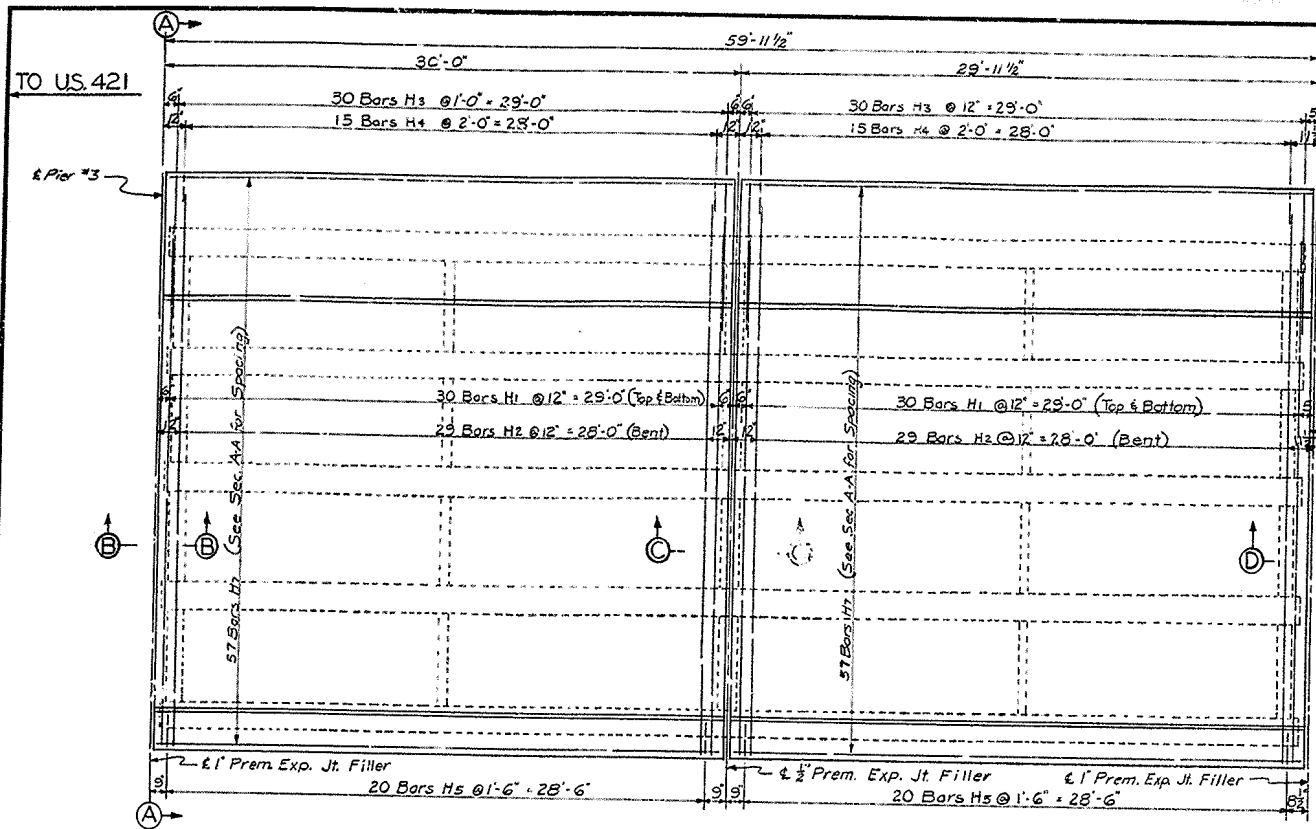
STATION 1+89 PROJECT NO. 14016

DRAWING NO. 14016

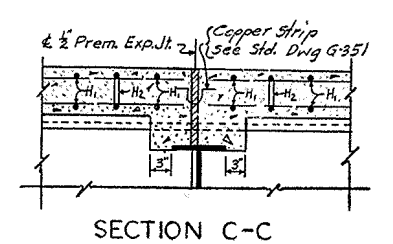
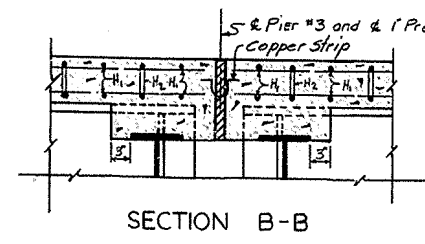
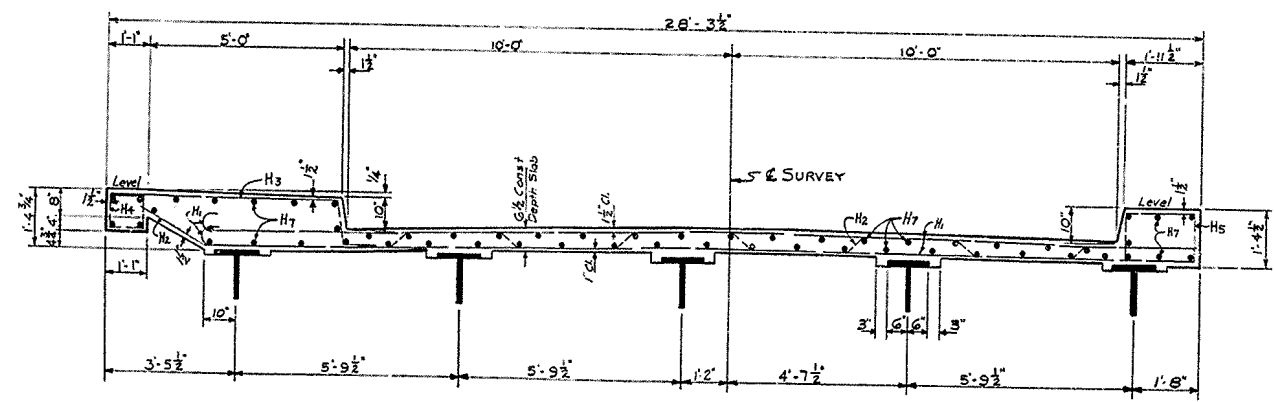
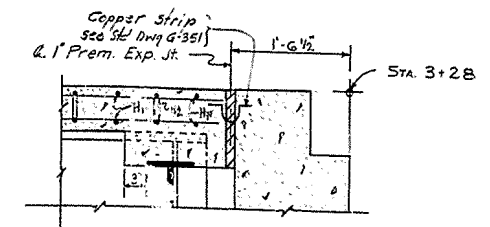
R.C. SLAB - SPANS 2 AND 3

DESIGNED BY: R.R. DATE: 6/27/32  
 CHECKED BY: T.K.S. DATE: 7/1/32  
 TRACED BY: DATE:

FY	ESTD	STATE	FED. AID	FISCAL	SHEET	TOTAL
7		KY.				

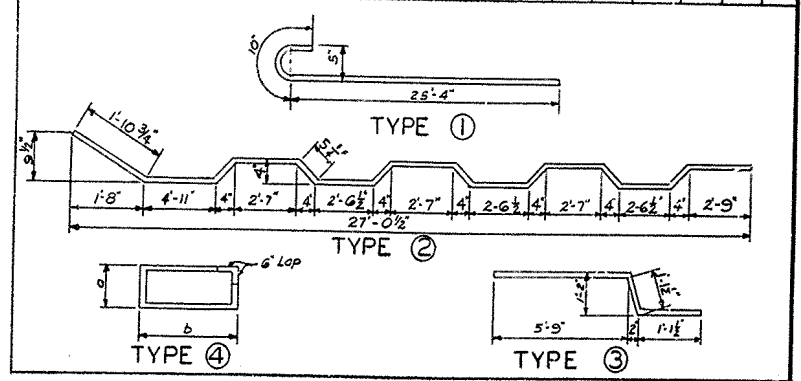


TO CONSOLIDATED HIGH SCHOOL →



BILL OF REINFORCEMENT

MARK	TYPE	NO	SIZE	LENGTH		LOCATION	a		b	
				FT.	IN.		FT.	IN.		
H <sub>1</sub>	①	120	#5	26	2	Transverse in Slab				
H <sub>2</sub>	②	58	#5	28	0	" " (Bent)				
H <sub>3</sub>	③	60	#4	7	10	" " Sidewalk				
H <sub>4</sub>	④	30	#4	3	11	Curb	0	9	0	10
H <sub>5</sub>	⑤	40	#4	6	7	Curb	1	2	1	9
H <sub>6</sub>						Not Used				
H <sub>7</sub>	STR.	114	#4	29	8	Longitudinal in Slab				



ESTIMATE OF QUANTITIES

Concrete, Class A'	50.6	Cu. Yds.
Reinforcement	7,796	Lbs.

BRIDGE OVER MIDDLE FORK KY RIVER Sheet 13

**COMMONWEALTH OF KENTUCKY**  
 DEPARTMENT OF HIGHWAYS  
 FRANKFORT  
 COUNTY OF  
**LESLIE**  
 U.S. 421 - LESLIE COUNTY  
 CONSOLIDATED HIGH SCHOOL  
 ROAD

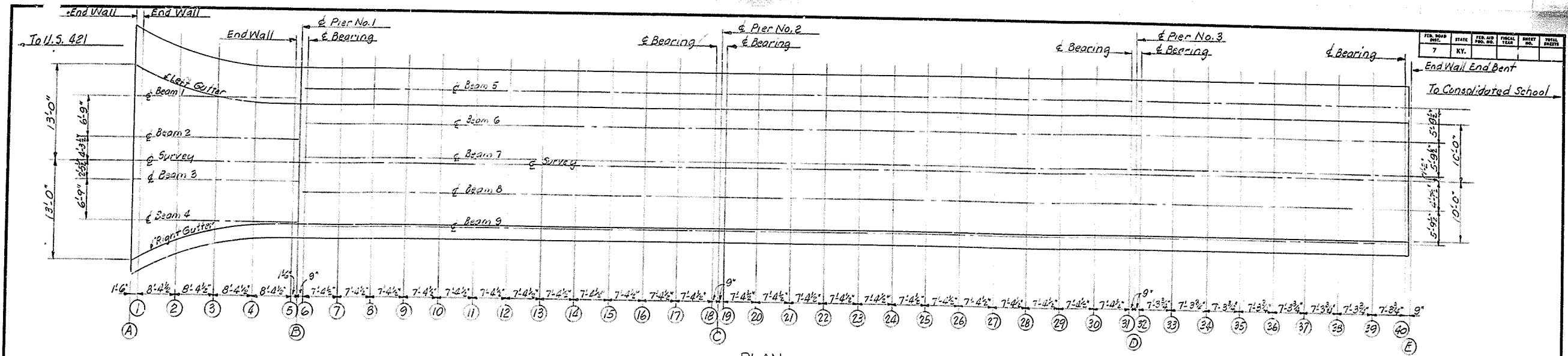
STATION 1+89 PROJECT NO.  
 BRIDGE NUMBER DRAWING INDEX  
 NO. 14016

R.C. SLAB - SPAN 4

DESIGNED BY: G.B.D. DATE: \_\_\_\_\_  
 CHECKED BY: T.Y.S. DATE: \_\_\_\_\_  
 TRACED BY: \_\_\_\_\_ DATE: \_\_\_\_\_  
 REVISIONS: \_\_\_\_\_ DATE: \_\_\_\_\_





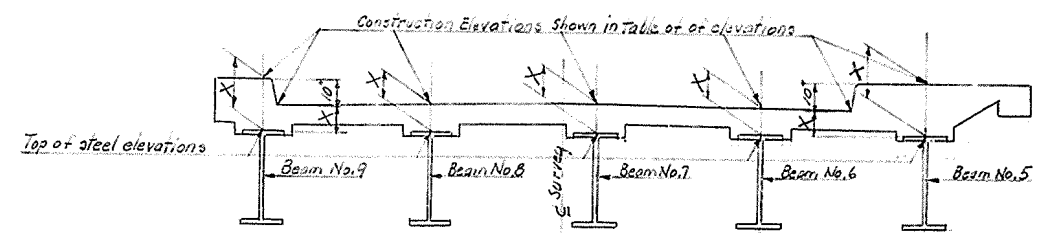


PLAN  
(Showing Construction Elevation Points)

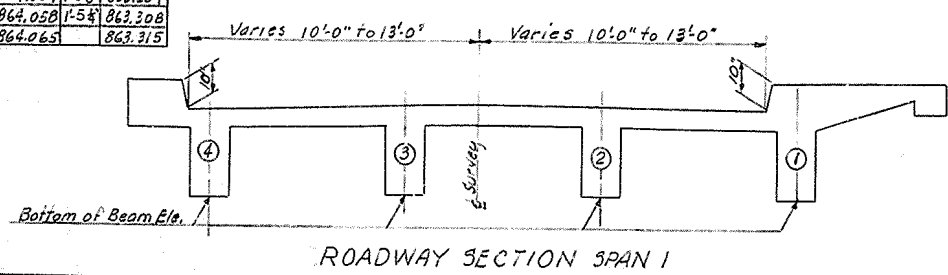
CONSTRUCTION ELEVATIONS SPANS NOS. 2, 3, & 4															CONSTRUCTION ELEVATIONS SPAN NO. 1							
POINT	E BEAM NO. 5			E BEAM NO. 6			E BEAM NO. 7			E BEAM NO. 8			E BEAM NO. 9			POINT	TOP OF SLAB ELEVATIONS					
	TOP OF WALK	TOP OF STEEL	(X) TOP OF GUTTER	TOP OF STEEL	(X) TOP OF GUTTER	TOP OF SLAB	TOP OF STEEL	(X) TOP OF GUTTER	TOP OF SLAB	TOP OF STEEL	(X) TOP OF GUTTER	TOP OF SLAB	TOP OF STEEL	(X) TOP OF GUTTER	ROADWAY TO CURB		ROADWAY TO CURB	ROADWAY TO CURB	ROADWAY TO CURB	ROADWAY TO CURB	ROADWAY TO CURB	
6	861.683	860.325	1'-4" 860.899	860.882	860.340	6" 860.921	860.350	6" 860.905	860.337	6" 860.839	860.332	6" 861.673	1'-4" 860.923	A	860.467	860.490	860.541	860.550	860.527	860.508	860.467	
7	861.804	860.430	1'-4" 860.960	861.003	860.445	6" 861.043	860.456	7" 861.026	860.436	7" 860.960	860.437	6" 861.794	1'-4" 861.044	E	860.482	860.502	860.556	860.565	860.542	860.522	860.482	
8	861.917	860.520	1'-4" 861.073	861.116	860.548	6" 861.155	860.566	7" 861.138	860.530	7" 861.073	860.530	6" 861.906	1'-4" 861.156	3	860.579	860.585	860.630	860.662	860.638	860.608	860.579	
9	862.021	860.604	1'-5" 861.177	861.220	860.638	7" 861.257	860.660	7" 861.242	860.630	7" 861.177	860.625	6" 862.010	1'-4" 861.260	4	860.667	860.677	860.736	860.750	860.746	860.697	860.667	
10	862.116	860.700	1'-5" 861.272	861.315	860.731	7" 861.354	860.750	7" 861.333	860.727	7" 861.272	860.712	6" 862.125	1'-4" 861.355	5	860.746	860.746	860.815	860.830	860.825	860.760	860.746	
11	862.203	860.788	1'-5" 861.359	861.402	860.806	7" 861.441	860.830	7" 861.424	860.815	7" 861.359	860.792	6" 862.192	1'-4" 861.442	B	860.817	860.817	860.885	860.900	860.895	860.829	860.817	
12	862.281	860.860	1'-5" 861.437	861.480	860.887	7" 861.519	860.907	7" 861.502	860.903	7" 861.437	860.867	6" 862.270	1'-4" 861.520		860.932	860.832	860.900	860.915	860.910	860.842	860.832	
13	862.350	860.920	1'-5" 861.506	861.549	860.945	7" 861.589	860.962	7" 861.572	860.970	7" 861.506	860.940	6" 862.340	1'-4" 861.572									
14	862.411	861.980	1'-5" 861.567	861.610	861.025	7" 861.644	861.020	7" 861.633	861.043	7" 861.567	861.008	6" 862.400	1'-4" 861.644									
15	862.462	861.048	1'-5" 861.619	861.662	861.086	7" 861.701	861.085	7" 861.685	861.105	7" 861.619	861.068	6" 862.459	1'-4" 861.701									
16	862.512	861.112	1'-4" 861.673	861.706	861.148	6" 861.745	861.139	7" 861.728	861.152	6" 861.663	861.120	6" 862.446	1'-4" 861.745									
17	862.562	861.160	1'-4" 861.678	861.741	861.198	6" 861.780	861.179	7" 861.763	861.180	7" 861.698	861.160	6" 862.531	1'-4" 861.781									
18	862.582	861.222	1'-4" 861.724	861.767	861.235	6" 861.806	861.217	7" 861.790	861.204	7" 861.724	861.209	6" 862.558	1'-4" 861.806									
C	862.574	861.732	861.732	861.775	861.775	861.775	861.775	861.775	861.775	861.775	861.775	862.565	861.815									
19	862.583	861.185	1'-4" 861.737	861.782	861.218	6" 861.821	861.208	7" 861.805	861.192	7" 861.737	861.180	6" 862.573	1'-4" 861.821									
20	862.704	861.297	1'-4" 861.840	861.902	861.324	6" 861.941	861.302	7" 861.926	861.297	7" 861.860	861.278	7" 862.674	1'-5" 861.941									
21	862.817	861.398	1'-5" 861.973	862.016	861.422	7" 862.055	861.410	7" 862.038	861.402	7" 861.973	861.378	7" 862.806	1'-5" 862.055									
22	862.912	861.490	1'-5" 862.077	862.120	861.520	7" 862.159	861.510	7" 862.142	861.500	7" 862.077	861.470	7" 862.910	1'-5" 862.159									
23	863.016	861.587	1'-5" 862.172	862.215	861.600	7" 862.254	861.605	7" 862.238	861.590	7" 862.172	861.555	7" 863.005	1'-5" 862.254									
24	863.102	861.670	1'-5" 862.259	862.312	861.680	7" 862.341	861.683	7" 862.324	861.673	7" 862.259	861.630	7" 863.091	1'-5" 862.341									
25	863.181	861.740	1'-5" 862.337	862.380	861.735	7" 862.419	861.752	8" 862.402	861.743	7" 862.337	861.720	7" 863.100	1'-5" 862.419									
26	863.250	861.815	1'-5" 862.406	862.449	861.800	7" 862.488	861.810	7" 862.472	861.803	8" 862.406	861.786	7" 863.240	1'-5" 862.488									
27	863.311	861.860	1'-5" 862.467	862.510	861.850	7" 862.549	861.870	8" 862.533	861.862	8" 862.467	861.832	7" 863.300	1'-5" 862.549									
28	863.362	861.910	1'-5" 862.519	862.562	861.897	8" 862.601	861.915	8" 862.585	861.928	7" 862.519	861.897	7" 863.353	1'-5" 862.601									
29	863.407	861.940	1'-5" 862.563	862.606	861.950	7" 862.645	861.945	8" 862.628	861.988	7" 862.563	861.961	7" 863.396	1'-5" 862.645									
30	863.442	861.987	1'-5" 862.598	862.641	861.998	7" 862.680	861.978	8" 862.663	862.020	7" 862.598	862.012	7" 863.431	1'-5" 862.680									
31	863.468	862.017	1'-5" 862.624	862.667	862.032	7" 862.706	862.040	8" 862.690	862.040	7" 862.624	862.040	7" 863.458	1'-5" 862.706									
D	863.476	862.632	862.632	862.675	862.675	862.675	862.675	862.675	862.675	862.675	862.675	863.465	862.715									
32	863.483	862.020	1'-5" 862.639	862.682	862.040	7" 862.721	862.030	8" 862.705	862.057	7" 862.639	862.030	7" 863.473	1'-5" 862.721									
33	863.581	862.130	1'-5" 862.717	862.780	862.140	7" 862.819	862.130	8" 862.803	862.155	7" 862.717	862.130	7" 863.570	1'-5" 862.819									
34	863.672	862.228	1'-5" 862.828	862.871	862.250	7" 862.910	862.232	8" 862.892	862.240	7" 862.828	862.235	7" 863.661	1'-5" 862.910									
35	863.755	862.320	1'-5" 862.912	862.955	862.345	7" 862.994	862.320	8" 862.977	862.330	7" 862.912	862.312	7" 863.745	1'-5" 862.994									
36	863.832	862.395	1'-5" 862.988	863.031	862.430	7" 863.070	862.410	7" 863.054	862.410	7" 862.988	862.380	7" 863.832	1'-5" 863.070									
37	863.902	862.475	1'-5" 863.058	863.101	862.480	7" 863.140	862.480	7" 863.123	862.480	7" 863.058	862.440	7" 863.902	1'-5" 863.140									
38	863.964	862.535	1'-5" 863.120	863.163	862.540	7" 863.203	862.540	7" 863.186	862.550	7" 863.120	862.508	7" 863.964	1'-5" 863.203									
39	864.020	862.590	1'-5" 863.176	863.219	862.600	7" 863.258	862.600	7" 863.241	862.600	7" 863.176	862.561	7" 864.009	1'-5" 863.258									
40	864.068	862.638	1'-5" 863.224	863.267	862.638	7" 863.306	862.628	8" 863.290	862.645	7" 863.224	862.620	7" 864.058	1'-5" 863.306									
E	864.076	863.232	863.232	863.275	863.275	863.275	863.275	863.275	863.275	863.275	863.275	864.065	863.315									

CONSTRUCTION NOTE SPANS 2, 3 & 4

- Take elevations on top of steel at points indicated after diaphragms are in place and any false work has been removed, but before forms for concrete slabs have been placed. Read elevations to three decimals using target rod, and enter readings in table under "Steel Elevations".
- Compute Dimension (X) as follows: "Construction Elevations" minus "Steel Elevations" equals dimension (X). Construction Elevations include camber due to weight of concrete slab, handrail and future surfacing.
- For setting templates measure Dimension (X) above top of steel for top of template. Do not set templates by elevations.



TYPICAL ROADWAY SECTIONS  
SPANS 2, 3, & 4



ROADWAY SECTION SPAN 1

CONSTRUCTION NOTE SPAN 1  
Construction elevations shown hereon contain construction camber and must be maintained with false work in place.

CONSTRUCTION ELEVATIONS

Bridge Over Middle Fork Kentucky River Sheet 15

**COMMONWEALTH OF KENTUCKY**  
DEPARTMENT OF HIGHWAYS  
FRANKFORT  
COUNTY OF

**LESLIE**  
U.S. 421 LESLIE COUNTY  
CONSOLIDATED HIGH SCHOOL  
ROAD

STATION 1439 PROJECT NO. SP 54-108-66

BRIDGE NUMBER DRAWING INDEX

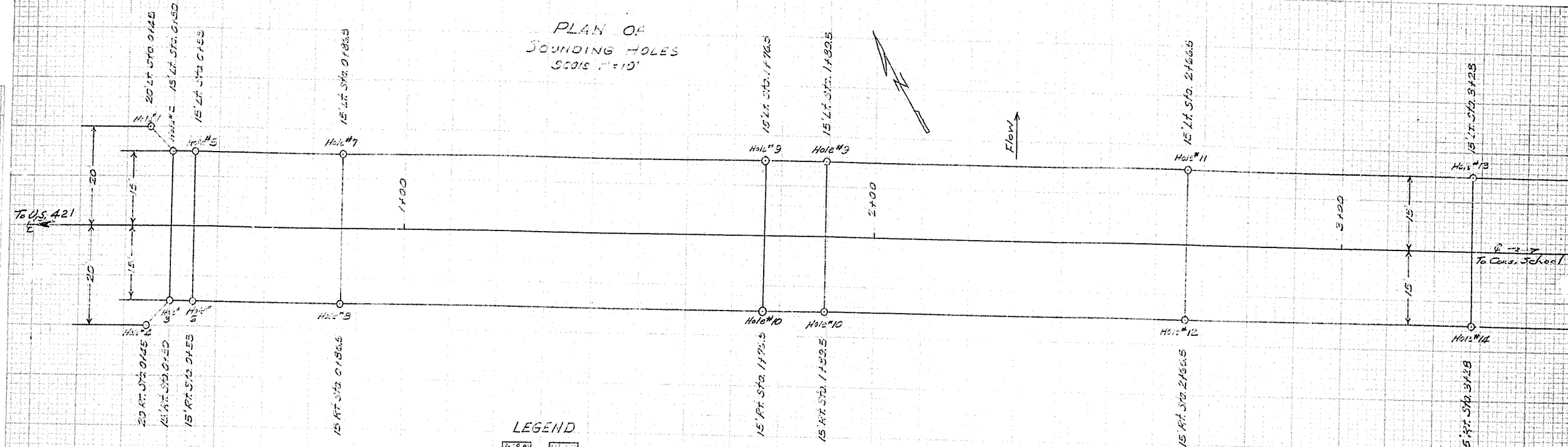
14016

LESLIE COUNTY  
S.P. 66-572-1-L  
U.S. 421-LESLIE CO. CONSOLIDATED HIGH SCHOOL RD

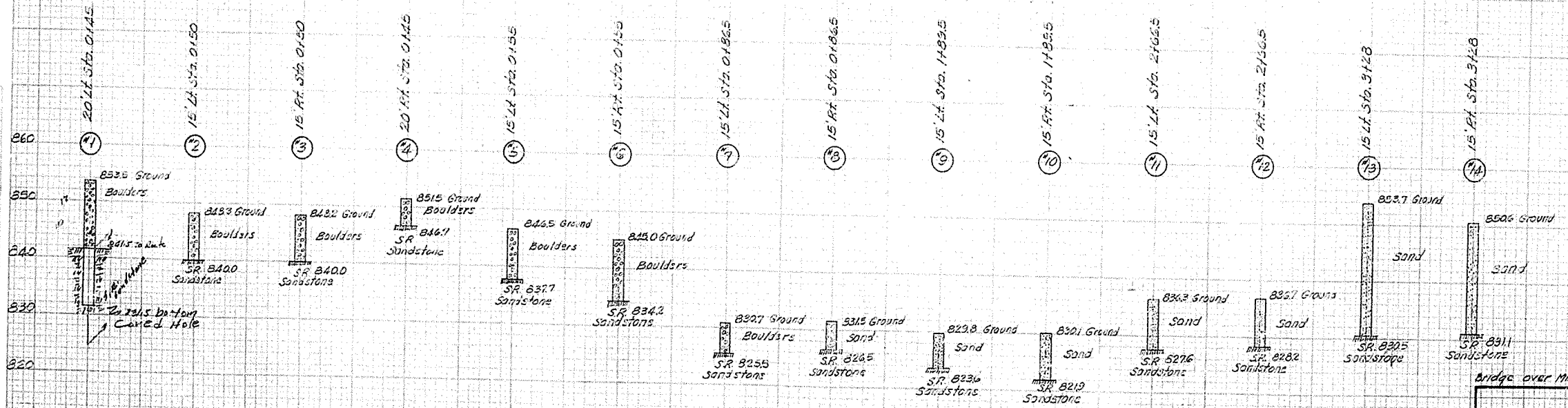
NOTE: Holes # 9 & 10 LABR. STA. 1476.5  
WAS NOT SOUNDED DUE TO HIGH WATER  
Holes # 9 & 10 WERE MOVED AHEAD TO STA. 1489.5

BRIDGE SURVEY STA. 1489.90'  
- LOSS OF SOUNDINGS -

PLAN OF  
SOUNDING HOLES  
SCALE 1"=10'



LEGEND  
Boulders  
Sand



1"=10' Vert.

KENTUCKY  
DEPARTMENT OF HIGHWAYS  
COUNTY OF  
LESLIE

U.S. 421-LESLIE CO. CONSOLIDATED HIGH SCHOOL  
ROAD

STATE PROJECT	SECTION	DATE
No. 57-56-572	1-L	SP 59-108-60
Station 1489		

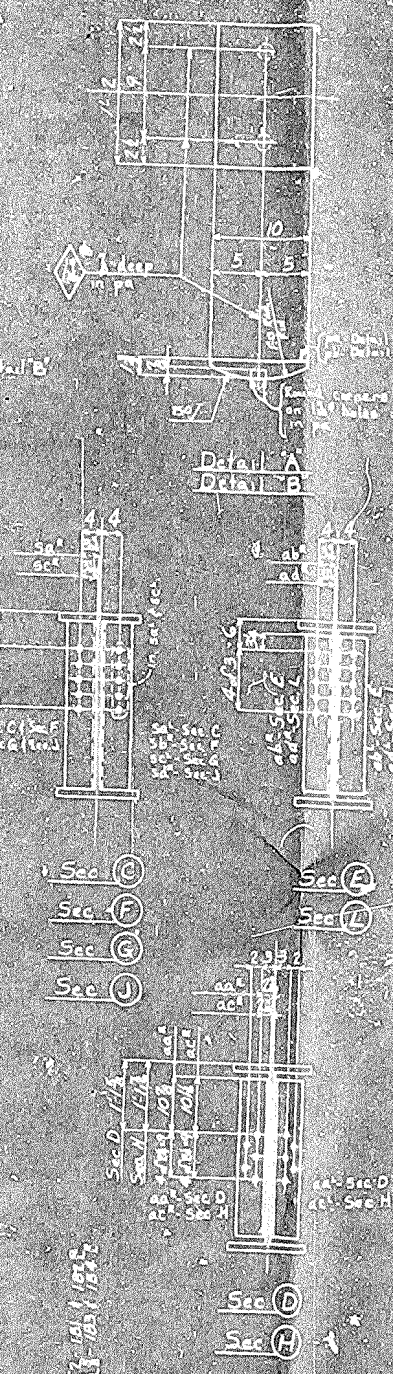
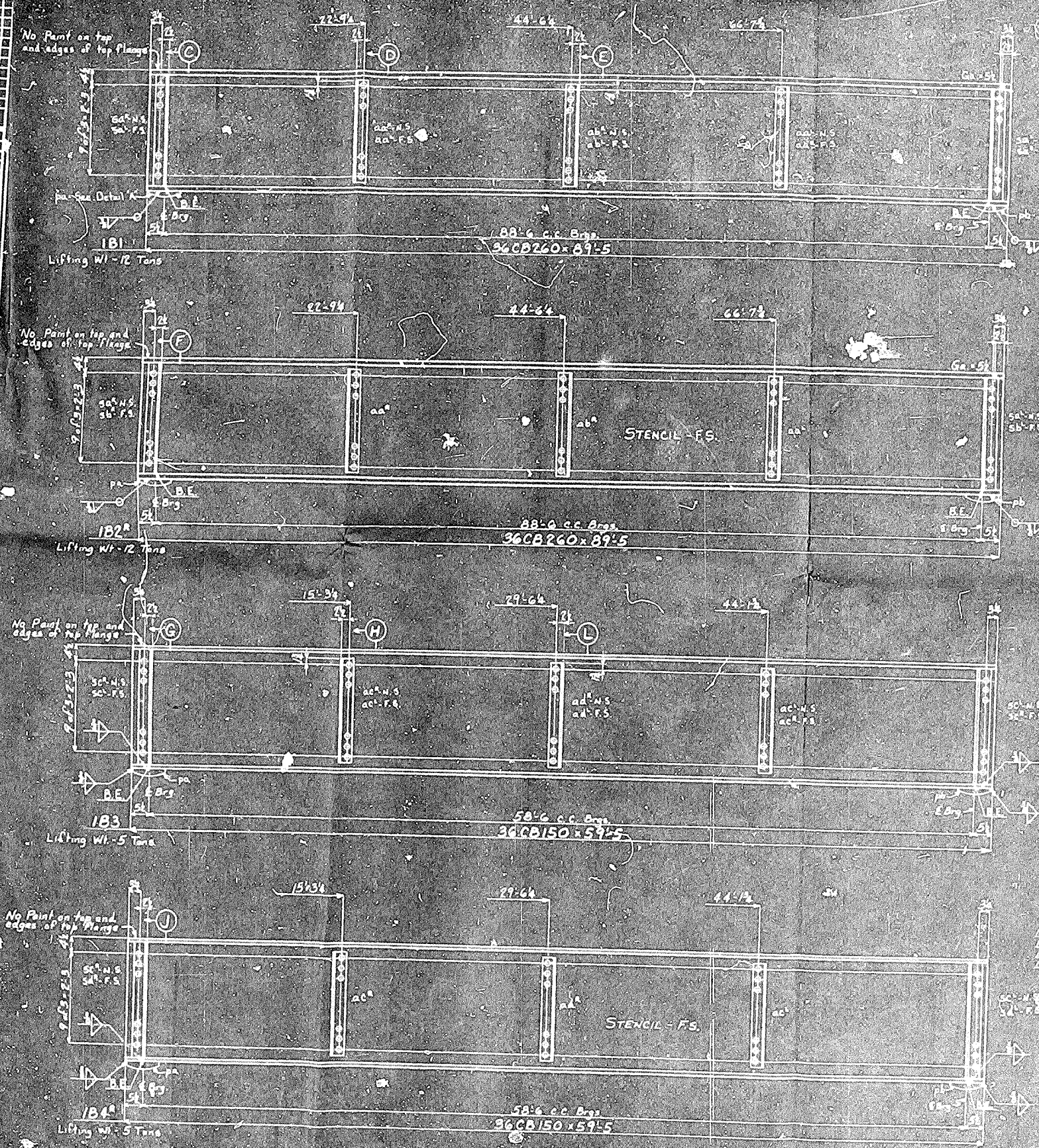
BRIDGE OVER MIDDLE PARK KY. RIVER Sheet 16  
Drawing No. 1489

PLATE 3 CROSS SECTION OF RIVER CHANNEL  
DRAWN BY M. W. B. STANGARD  
CHECKED BY W. L. W. AND E. W. B. STANGARD  
ENGINE DIVISION

FINAL SURVEY  
NOT RECK  
NEAR CHECKED

ORIGINAL SURVEY  
NOT RECK  
NEAR CHECKED





Beam No.	Section	Material	Weight	Notes
181	Top Flange	St. 36	12.0	
181	Bottom Flange	St. 36	12.0	
182	Top Flange	St. 36	12.0	
182	Bottom Flange	St. 36	12.0	
183	Top Flange	St. 36	5.0	
183	Bottom Flange	St. 36	5.0	
184	Top Flange	St. 36	5.0	
184	Bottom Flange	St. 36	5.0	

APPROVED FOR DESIGN ONLY  
 JULY 1959  
 E. J. ...

**OFFICE COPY**

181	182	183	184
36CB260	36CB260	36CB150	36CB150
89.5	89.5	59.5	59.5
12.0	12.0	5.0	5.0

**NOTES**  
 B.E. denotes Bearing End of all Members  
 Rivets 7/8"  
 Open Holes - 1" for H.S. Bolts  
 All open holes the contact surfaces including those adjacent to the washers when provided, shall be dressed and painted. The open holes shall scale contact surfaces and shall be filled with all open scale, burrs, etc. and other defects within 1/8" of holes.  
 BRIDGE OVER MIDDLE FORK OF KENTUCKY RIVER  
 LESUE COUNTY CONSOLIDATED HIGH SCHOOL  
 LESUE COUNTY, HYDEN, KENTUCKY

AMERICAN BRIDGE 2

DRAWING MADE AT AMERICAN BRIDGE PLANT  
 WORK EXECUTED AT AMERICAN BRIDGE PLANT  
 IN CHARGE OF M. DANIEL 272  
 DRAW. MADE BY JDC DATE 2-23-59  
 DRAW. CHECKED BY JDC DATE 4-30-59  
 ORDER NO. 13718  
 SHEET NO. 1

BRIDGE





