

# KENTUCKY DEPARTMENT OF HIGHWAYS

## BRIDGE OVER CUMBERLAND RIVER

### CUMBERLAND COUNTY

**LIST OF DRAWINGS**

- 1 TITLE SHEET & ESTIMATE
  - 2 LA-CUT
  - 3 25' SIMPLE SPAN
  - 4 20' SIMPLE SPAN
  - 5 30' SIMPLE SPAN CONCRETE SLAB DETAILS
  - 6 CONSTRUCTION ELEVATIONS 20' SIMPLE SPAN
  - 7 175' 50' 175' CONCRETE SPAN UNIT
  - 8 DETAILS OF CONCRETE SPAN UNIT [FRAMES]
  - 9 DETAILS OF CONCRETE SPAN UNIT [CLIPS & END BEARING STIFFENERS]
  - 10 4' EXPANSION DAM DETAILS
  - 11 HOOKERS & RICES
  - 12 ANCHOR BOLT PLAN
  - 13 CONCRETE SLAB DETAILS [CONCRETE SPAN UNIT]
  - 14 CONCRETE RAILING
  - 15 ANCHOR BOLT PLAN
  - 16 CONSTRUCTION ELEVATIONS [CONCRETE SPAN UNIT]
  - 17 4' BENT
  - 18 6' ABUTMENT
- 19 25' EXPANSION DAM MATERIAL & COPPER STRIP

ESTIMATE OF QUANTITIES						
SUPERSTRUCTURE CONTRACT						
ITEM	STRUCTURAL STEEL	CONCRETE	WOOD	REINFORCEMENT	PAINT	WELDING
LOCATION	CUB. YD.	CLASS "D"	CUB. YD.	LINEAL FT.	SQ. YD.	LINEAL FT.
SPAN 1	74.1			15847	36.3	85
SPANS 2, 3, 4	498.4			106092	280.5	600
HANDRAIL			63.2	17479		
PILE BENT	63.6	2.5		6465		
ABUTMENT	53.6	2.4		4421		
<b>TOTAL</b>	<b>LUMP SUM</b>	<b>689.7</b>	<b>67.1</b>	<b>150304</b>	<b>316.8</b>	<b>685</b>

NOTE: FOR PURPOSE OF PAYMENT THE LUMP SUM ITEM FOR STRUCTURAL STEEL INCLUDES STRUCTURAL STEEL, CAST STEEL, CAST IRON, GALVANIZED WIRE STRAND AND CLIPS AND SHEET LEAD.

**NOTE** - APPROXIMATELY 1539150 POUNDS OF STRUCTURAL STEEL IS INCLUDED IN THE LUMP SUM BID FOR STRUCTURAL STEEL

SUPERSTRUCTURE CONTRACT			
BILL OF INCIDENTAL MATERIAL			
ITEM	NO.	SIZE & DESC.	LOCATION
Copper Strip	25	1/2" x 33' 1"	SPAN 1
"	6	1/2" x 33' 1"	SPAN 2
Prem Exp Jt Matl	25	1/2" x 8 1/2" x 33' 5"	SPAN 1
"	50	1/2" x 9" x 33' 5"	SPAN 2
"	5	1" x 8 1/2" x 33' 5"	SPAN 3
"	10	1" x 9" x 33' 5"	SPAN 4
"	1	1" x 11 1/2" x 33' 5"	1st Bent
"	2	1" x 10" x 33' 5"	1st Bent

NOTE: QUANTITIES SHOWN ABOVE ARE APPROXIMATE ONLY AND THE CONTRACTOR IS RESPONSIBLE FOR FURNISHING ENOUGH MATERIAL TO COMPLETE THE WORK IN ACCORDANCE WITH THE PLANS AND SPECIFICATIONS.

**GENERAL NOTE**

SPECIFICATIONS - KENTUCKY DEPARTMENT OF HIGHWAYS [1956 STANDARD WITH AMENDMENTS]

DESIGN LOADING - BRIDGE DESIGNED FOR H20-44 LOADING AS SPECIFIED IN AASHTO SPECIFICATIONS 1953.

CONCRETE - CLASS "A" CONCRETE TO BE USED THROUGHOUT EXCEPT IN HANDRAIL. CLASS "D" CONCRETE TO BE USED IN HANDRAIL.

REINFORCEMENT - DIMENSIONS FROM FACE OF CONCRETE TO BARS ARE CLEAR DISTANCES EXCEPT AS OTHERWISE SHOWN. DIMENSIONS FOR BAR STACING ARE DISTANCES CENTER TO CENTER OF BARS.

BEVELED EDGES - ALL EXPOSED EDGES SHALL BE BEVELED 1/4" UNLESS OTHERWISE NOTED.

STRUCTURAL STEEL - SHALL BE SHIP FOR SPECIFICATIONS AND GENERAL NOTE.

CL. DRAINS - WELDED SHEET PILE CONNECTIONS NOTE AND SPECIFICATIONS FOR WROUGHT IRON DRAIN PIPE.

PAINT - SEE SPECIFICATIONS AND GENERAL NOTE.

EXPANSION JOINT MATERIAL & COPPER STRIPS - THE COST OF THESE ITEMS TO BE INCLUDED IN THE UNIT PRICE BID FOR CLASS "A" CONCRETE.

WELDING - WELDING REQUIRED BY THESE PLANS OR PERMITTED BY THE ENGINEER SHALL BE DONE IN ACCORDANCE WITH THE SPECIFICATIONS FOR WELDING HIGHWAY AND RAILROAD BRIDGES, A.W.S. EDITION 1956 AND SUBSEQUENT ADOPTED AMENDMENTS.

WELDING & WELDING MATERIAL - NO DIRECT PAYMENT SHALL BE MADE FOR WELDING OR WELDING MATERIAL BUT PRICE FOR SAME TO BE INCLUDED IN LUMP SUM PRICE BID FOR STRUCTURAL STEEL.

RECORD SHOP DRAWINGS - A SET OF LUMP SUM TRACINGS OF APPROVED DRAWINGS OF SHOP DETAILS SHALL BECOME THE PROPERTY OF THE DEPARTMENT OF HIGHWAYS WHEN THE CONTRACT IS COMPLETED AND BEFORE FINAL PAYMENT IS MADE. NO DIRECT PAYMENT SHALL BE MADE FOR THE RECORD DRAWINGS BUT SHALL BE INCLUDED IN THE LUMP SUM PRICE BID FOR STRUCTURAL STEEL.

PAINTING EXP DAMS - ALL PARTS OF EXPANSION DAMS WHICH CAN NOT BE PAINTED AFTER ERECTION, SHALL HAVE TWO COATS OF ALUMINUM PAINT APPLIED BEFORE ERECTION.

EXISTING BEARING AREAS: THE SUPERSTRUCTURE CONTRACTOR SHALL PERFORM THE NECESSARY FIELD MEASUREMENTS TO CHECK THE ALIGNMENT AND ELEVATIONS OF THE EXISTING SUBSTRUCTURE BEARING AREAS BEFORE BEGINNING THE PREPARATION OF THE SHOP DETAIL PLANS. IF NECESSARY, THE SUPERSTRUCTURE CONTRACTOR MAY BE REQUIRED TO GRIND THE EXISTING BEARING AREAS OR ADJUST THE SHOP DETAILS TO PROVIDE PROPER SEATING OF THE BEARING PLATES. NO DIRECT PAYMENT SHALL BE MADE FOR THESE MEASUREMENTS AND ADJUSTMENTS WHICH COSTS ARE INCLUDED AND INCLUDED IN THE LUMP SUM BID FOR STRUCTURAL STEEL.

NAVIGATION AND WATERWAY PROVISION: ALL WORK SHALL BE SO CONDUCTED SO THAT THE FREE NAVIGATION OF THE WATERWAY SHALL NOT BE UNREASONABLY INTERFERED WITH AND THE PRESENT NAVIGABLE DEPTHS SHALL NOT BE IMPAIRED. THE CHANNEL OR CHANNELS THROUGH THE STRUCTURE SHALL BE PROMPTLY CLEARED OF ALL FALSEWORK, PILING, OR OTHER OBSTRUCTIONS PLACED THEREIN OR CAUSED BY THE CONSTRUCTION OF THE BRIDGE, TO THE SATISFACTION OF THE SAID DISTRICT ENGINEER, WHEN IN HIS JUDGEMENT THE CONSTRUCTION WORK HAS REACHED A POINT WHERE SUCH ACTION SHOULD BE TAKEN, AND IN ANY CASE NOT LATER THAN NINETY DAYS AFTER THE BRIDGE HAS BEEN OPENED TO TRAFFIC.

REFERENCES:  
STANDARD DRAWING C-251  
SHEETS 3, 4, 9 AND 10 SUBSTRUCTURE D.W.G. NO. 12956

BRIDGE OVER CUMBERLAND RIVER SHEET 1 OF 16

**COMMONWEALTH OF KENTUCKY**  
DEPARTMENT OF HIGHWAYS  
FRANKFORT  
COUNTY OF  
**CUMBERLAND**  
BURKESVILLE - TENN. STATE-LINE  
ROAD

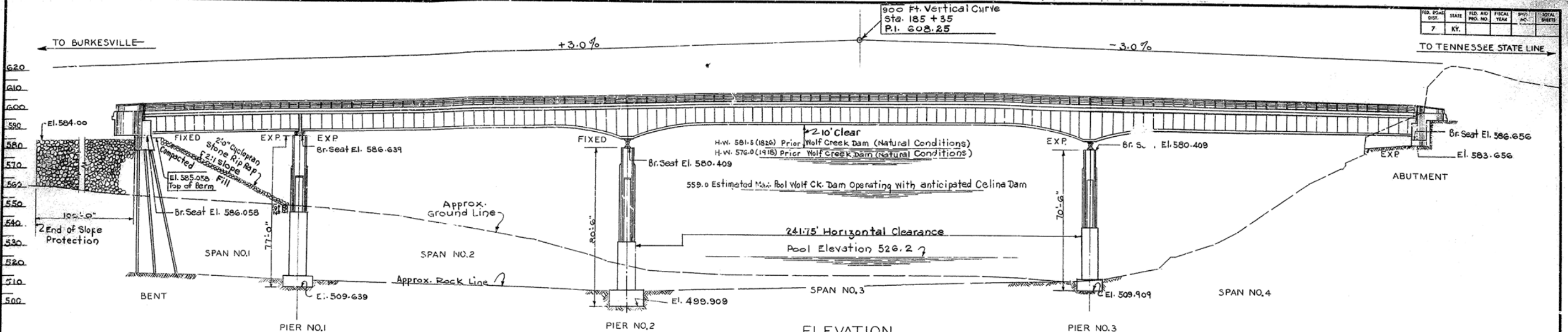
STATION 184+91.187 PROJECT NO. 12567

BRIDGE NUMBER 12567 DRAWING NO. 12567

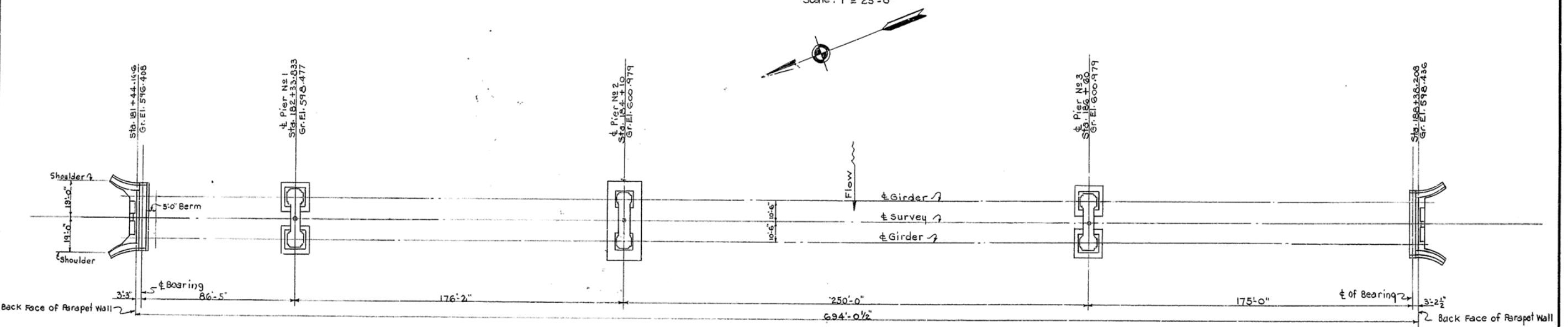
JUL 23 1963

DESIGNED BY: [Name] CHECKED BY: [Name]  
 DRAWN BY: [Name] DATE: [Date]  
 REVISIONS: [Table with columns for NO., DATE, and DESCRIPTION]

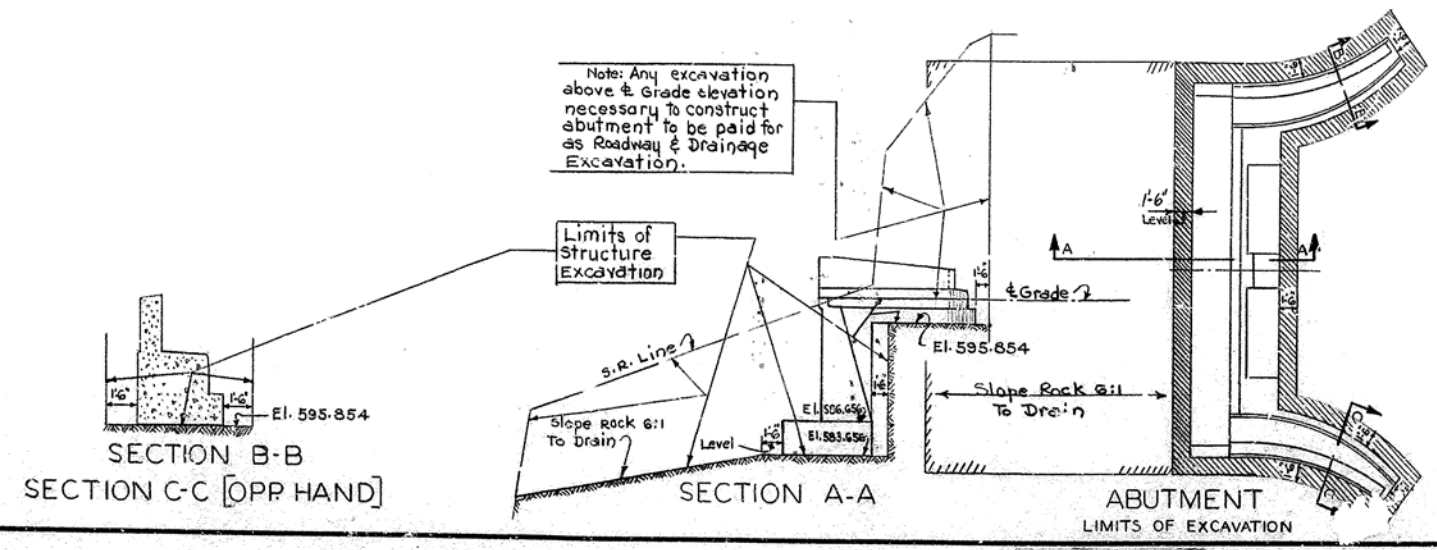
FED. ROAD DIST.	STATE	FED. AID PROJ. NO.	FISCAL YEAR	SPR. NO.	TOTAL SHEETS
7	KY.				



**ELEVATION**  
 33'-0" Plate Girder Span ~ 175'-250'-175' Continuous Unit  
 2:1 Slopes, 26' Roadway, 2x 2'-6" Sidewalks, H20-44 Loading  
 Scale: 1" = 25'-0"



**PLAN**  
 Superstructure Removed



NOTE: Any final dressing of Abutment excavation for wing footings that may be necessary shall be performed by the Superstructure Contractor & cost of this work shall be included in the unit price bid for class "A" concrete.

≡ LAYOUT ≡

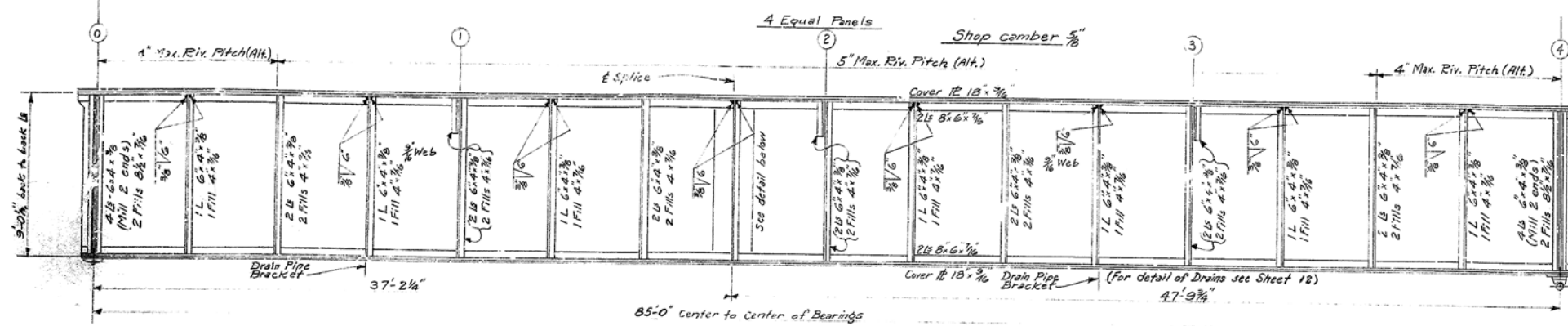
DESIGNED BY: J.E. BISHOP, CIVIL ENGINEER  
 CHECKED BY: J.E. BISHOP, CIVIL ENGINEER  
 DATE: 12/27/67

BRIDGE OVER CUMBERLAND RIVER SHEET 2

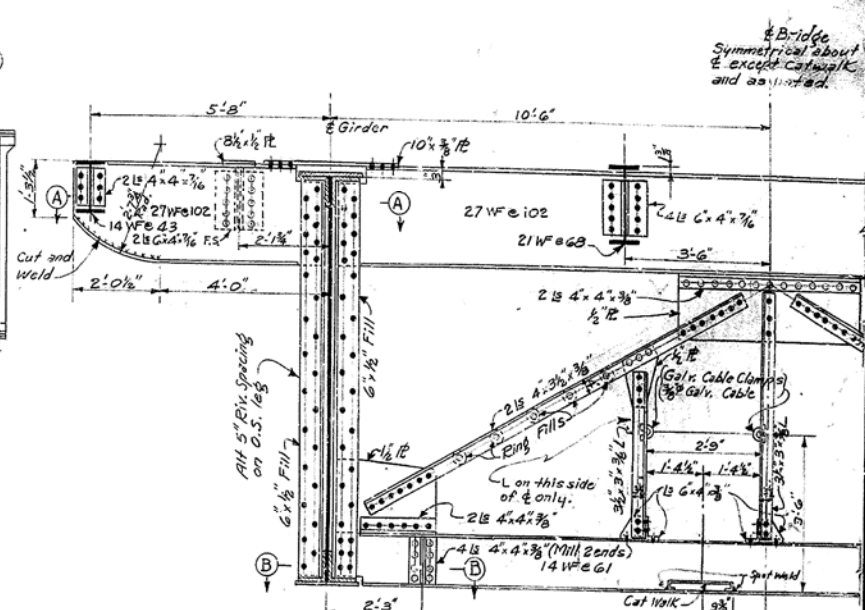
**COMMONWEALTH OF KENTUCKY**  
 DEPARTMENT OF HIGHWAYS  
 FRANKFORT  
 COUNTY OF  
**CUMBERLAND**  
 BURKESVILLE-TENNESSEE STATE LINE

ROAD PROJECT NO.  
 STATION 184 + 91.187

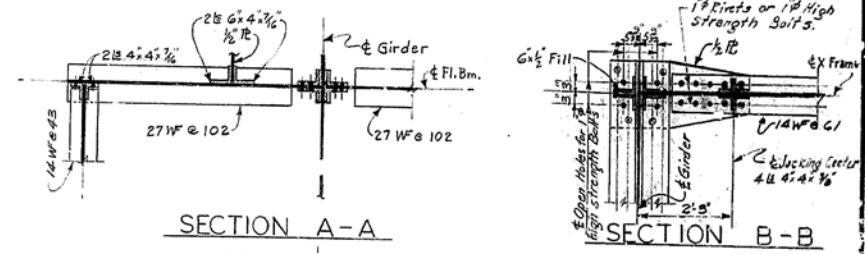
BRIDGE NUMBER 12967



**ELEVATION OF GIRDER**  
All dimensions are horizontal

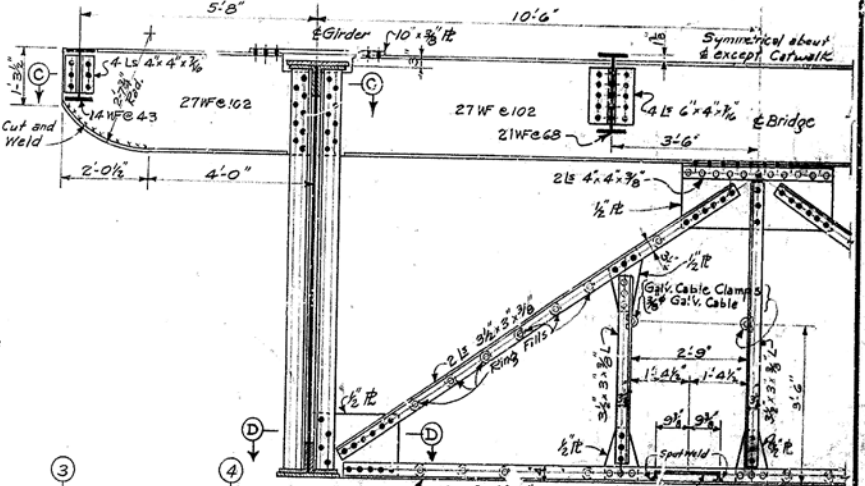


**END X FRAME AT PANEL POINT 4**

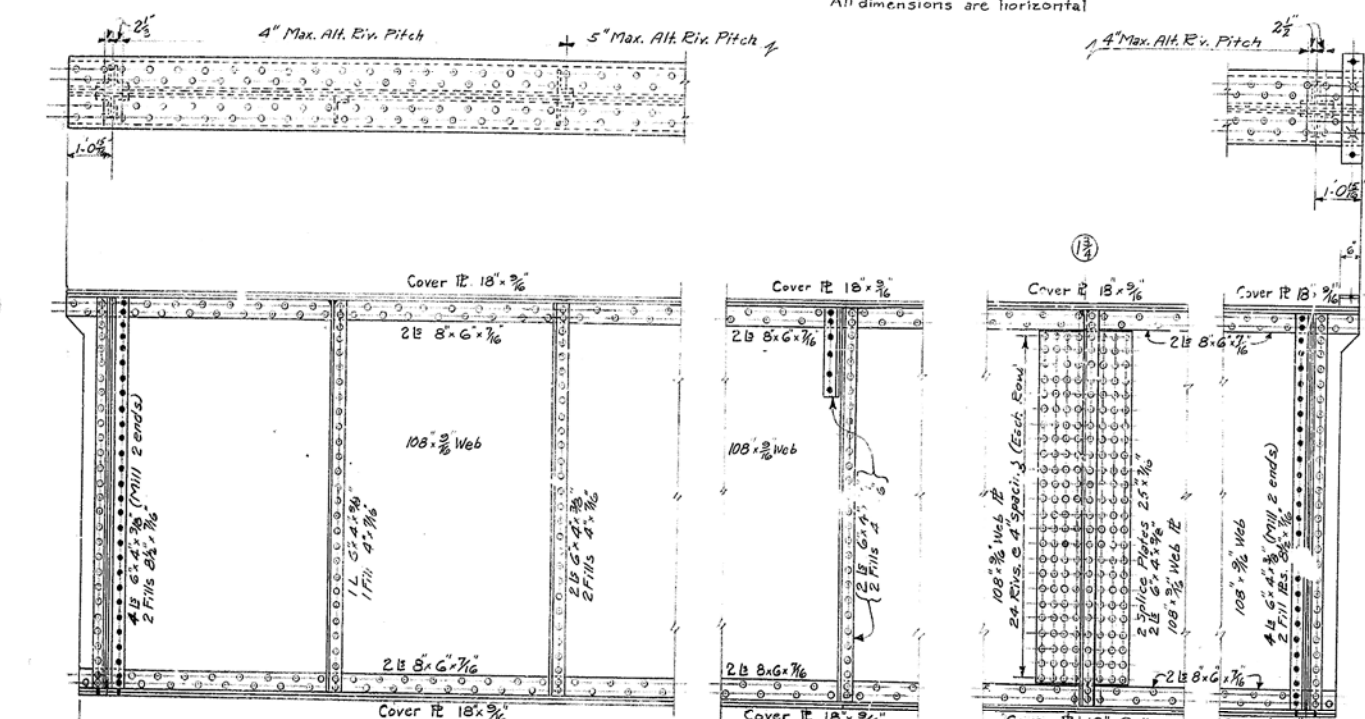


**SECTION A-A**

**SECTION B-B**

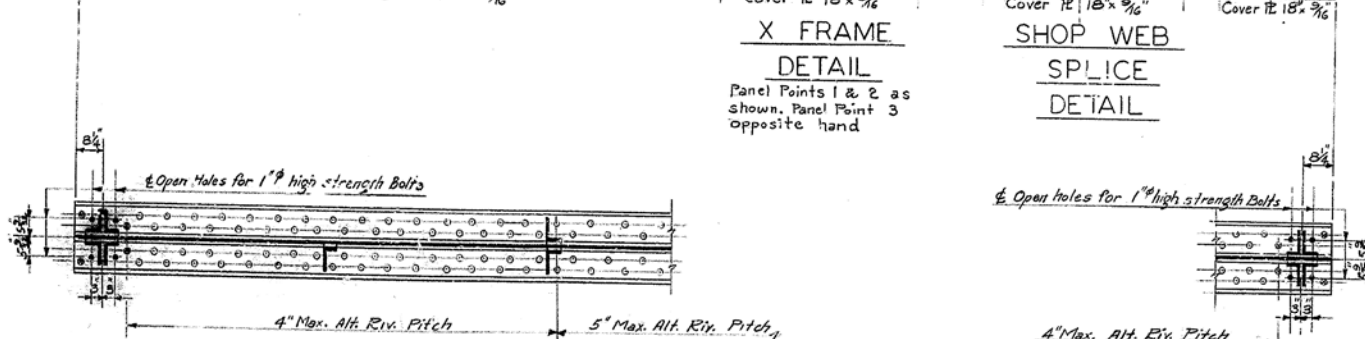


**INTERMEDIATE X FRAME**  
Typical of Panel Points 1, 2 and 3



**X FRAME DETAIL**

**SHOP WEB SPLICE DETAIL**



**DETAIL AT ABUTMENT 1**

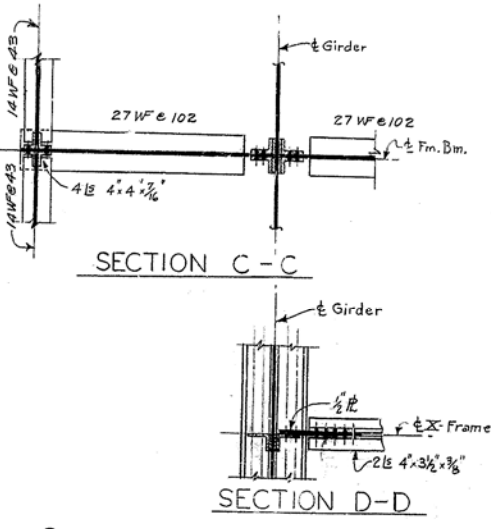
**DETAIL AT PIER 1**

**ESTIMATE OF QUANTITIES**  
125620 Lbs.

- \* Structural Steel
- Cast steel
- Cast iron
- Sheet lead
- 3/8" Galvanized Cable
- 6" Wrought Iron Pipe
- For Material Specifications see Sheet No. 9
- For General Note, see Sheet No. 7
- \* Included in "Structural Steel"

**STRUCTURAL STEEL DETAILS**

**85' SPAN**



**SECTION C-C**

**SECTION D-D**

27WF102 Deck	14WF43	14WF43	14WF43	14WF43
	do	do	do	do
27WF102 X Frame	21WF68	21WF68	21WF68	21WF68
	do	do	do	do
27WF102 Brack	14WF43	14WF43	14WF43	14WF43
	do	do	do	do

**FRAMING DIAGRAM**

Bridge over Cumberland River

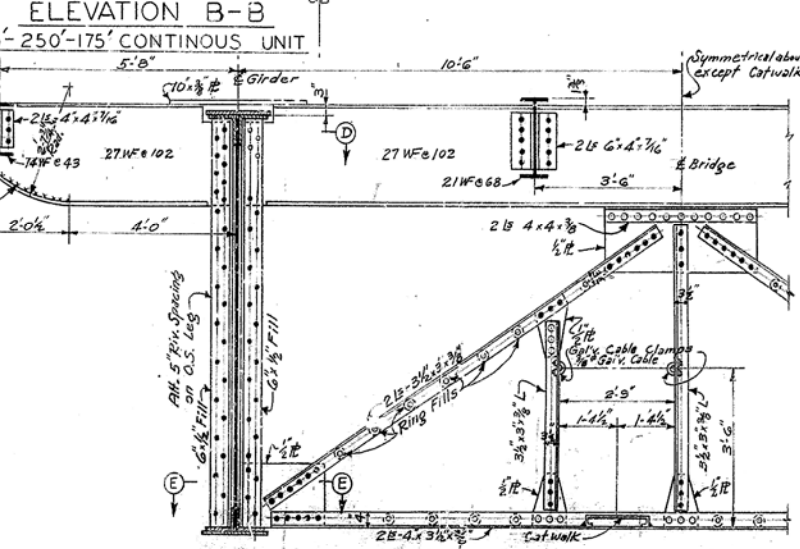
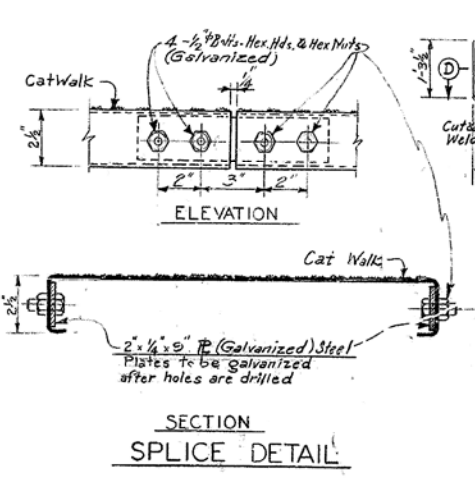
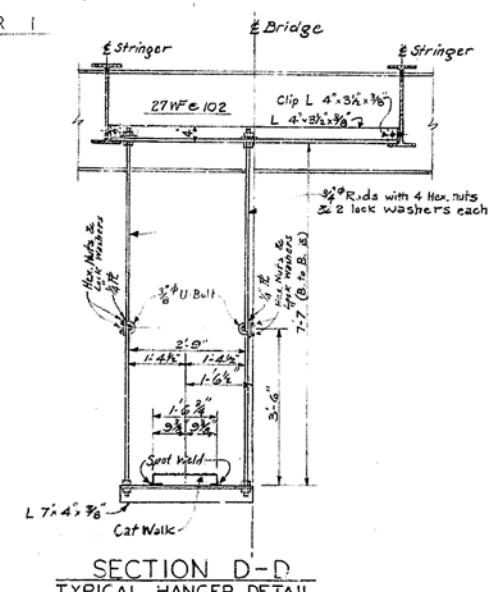
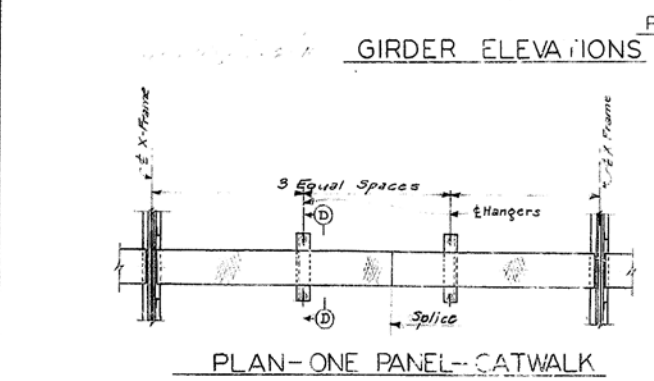
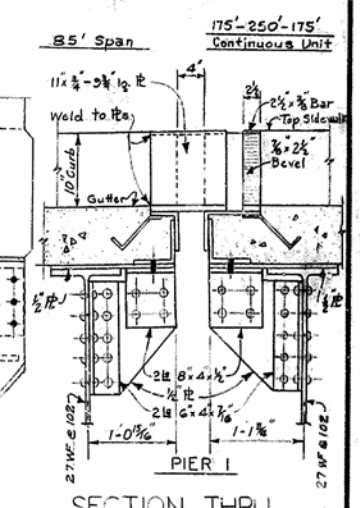
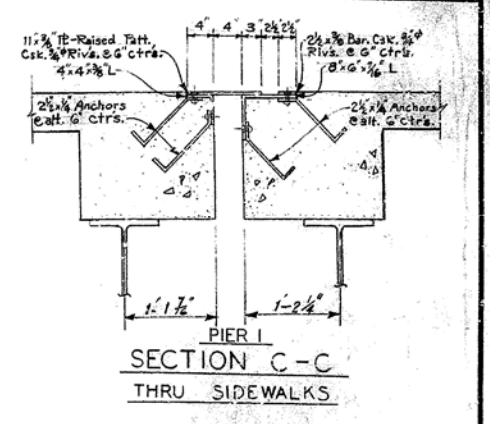
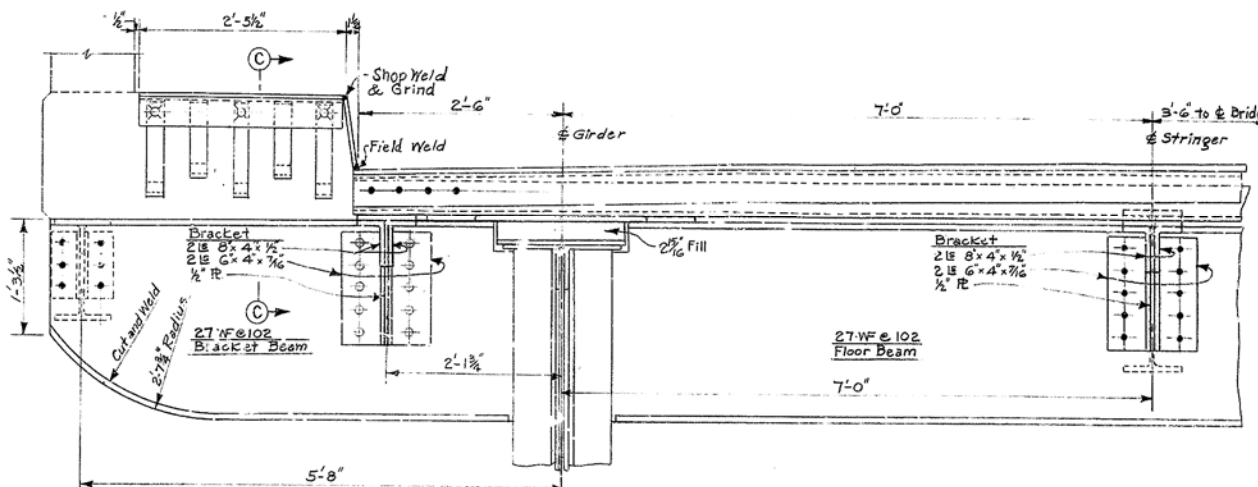
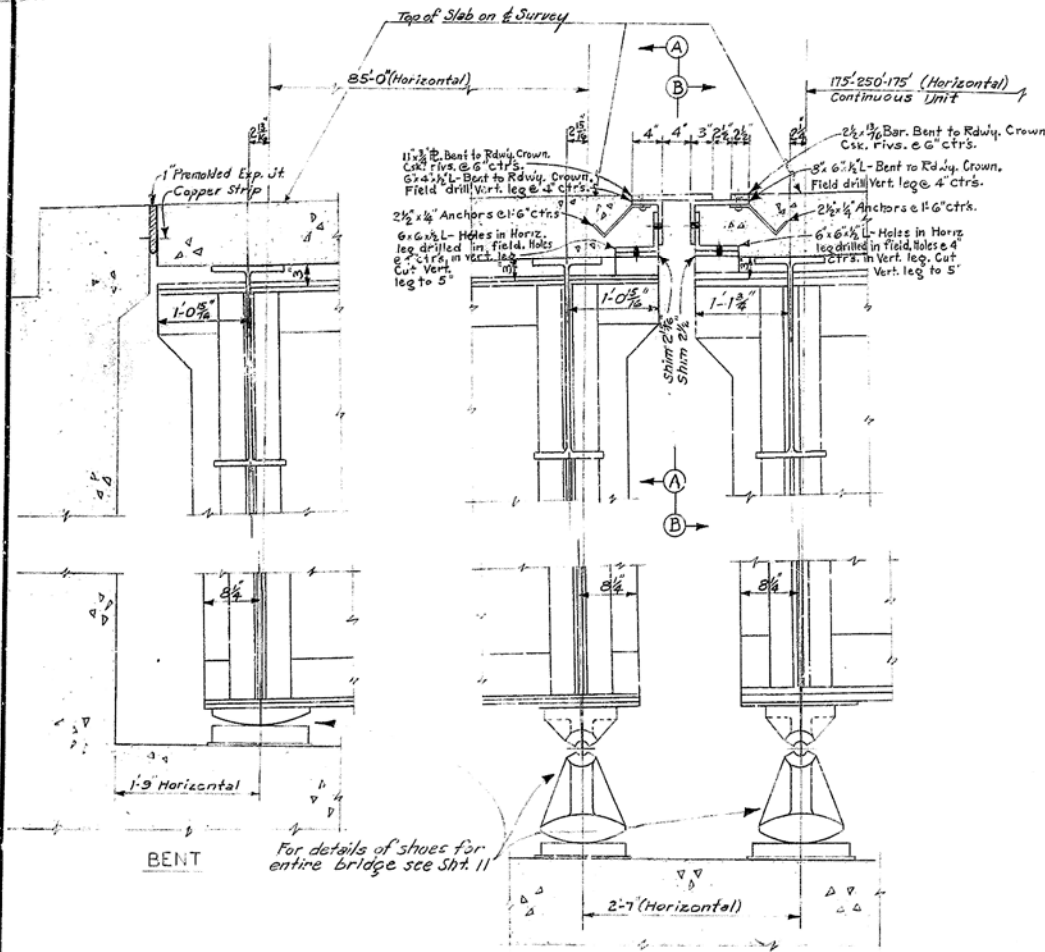
**COMMONWEALTH OF KENTUCKY**  
DEPARTMENT OF HIGHWAYS  
FRANKFORT  
COUNTY OF  
**CUMBERLAND**  
BURKESVILLE-TENN. STATE LINE  
ROAD

STATION 184+31.187 PROJECT NO. \_\_\_\_\_  
BRIDGE NUMBER \_\_\_\_\_ DRAWING NO. 12967

DESIGNED BY: \_\_\_\_\_ DATE: \_\_\_\_\_  
 CHECKED BY: \_\_\_\_\_ DATE: \_\_\_\_\_  
 TRACED BY: \_\_\_\_\_ DATE: \_\_\_\_\_

All rivets are 3/8" unless otherwise noted

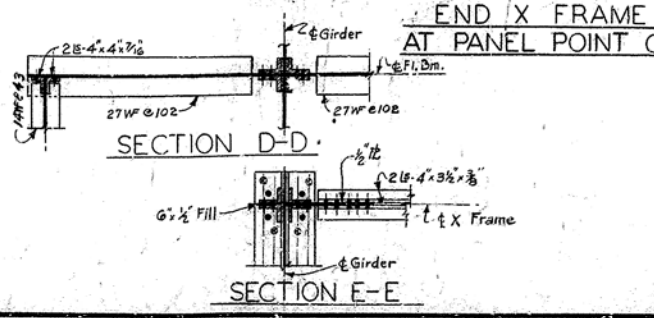
FED. ROAD DIST.	STATE	FED. AID PROJ. NO.	FISCAL YEAR	BRIDGE NO.	TOTAL NUMBER
7	KY.				



**NOTE:**  
Catwalk to be furnished in standard lengths 18 3/4 wide on 2 1/2 inch channels, 1/2 gage galvanized steel as manufactured by the Globe Co. any under the trade name "Safety Grip Strut" or equal. The galvanized surface shall be serrated (non-skid) steel. The steel is to be hot rolled pickled and oiled drawing quality 10-20 carbon. The unit price bid per lin. ft. of Catwalk shall include furnishing Catwalk, 2 1/4 inch Splice Plates, 4 1/2 inch galvanized Bolts & Nuts, welding material, tools, labor and incidentals necessary to complete the installation. Approximately 170 lineal feet of 7/8 inch 7-wire class "A" extra galvanized common steel wire strand and galvanized cable clamps shall be included in the lump sum bid price for structural steel. Steel wires shall conform to A.S.T.M. Specification A 182-58.

All rivets are 3/4 inch unless otherwise noted.

**STRUCTURAL STEEL DETAILS**  
**85' SPAN**

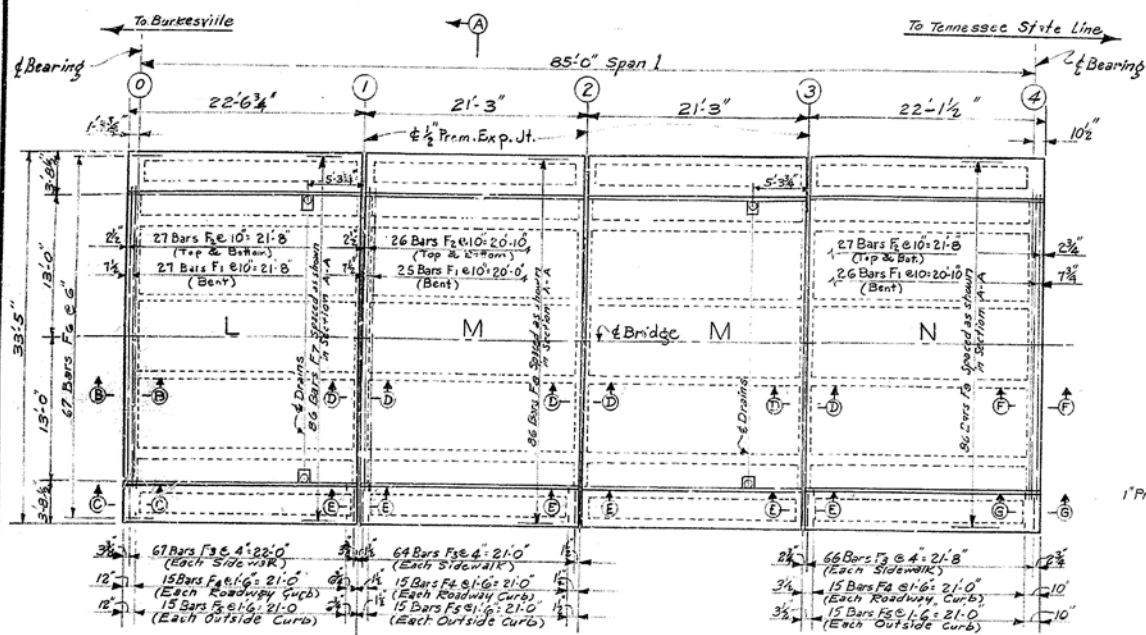


END X FRAME Bridge over Cumberland River Sheet No. 4  
AT PANEL POINT O

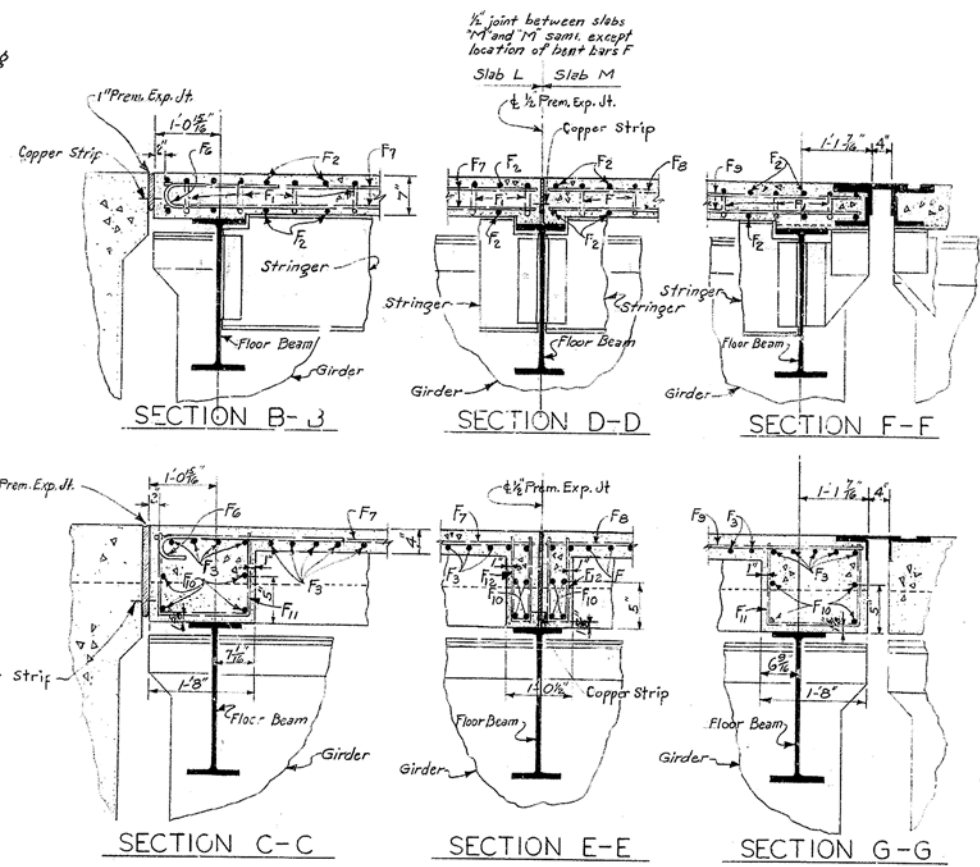
**COMMONWEALTH OF KENTUCKY**  
DEPARTMENT OF HIGHWAYS  
FRANKFORT  
COUNTY OF  
CUMBERLAND  
BURKESVILLE - TENN. STATE LINE  
ROAD

STATION 124+21.187 PROJECT NO.  
BRIDGE NUMBER 12967

DESIGNED BY: [Signature] CHECKED BY: [Signature] DATE: [Date]  
 DRAWN BY: [Signature] CHECKED BY: [Signature] DATE: [Date]

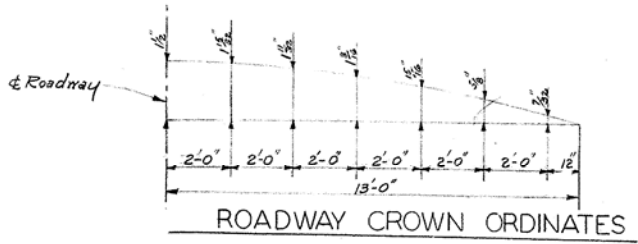
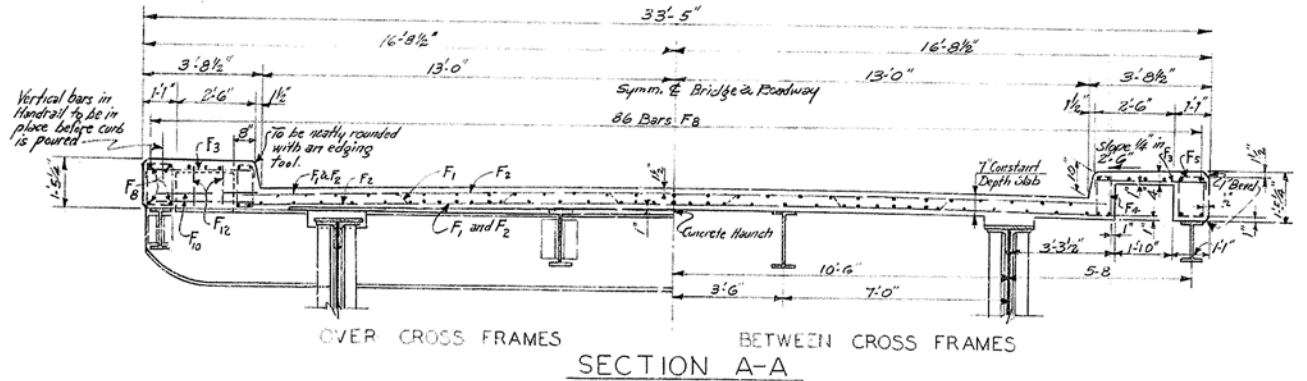
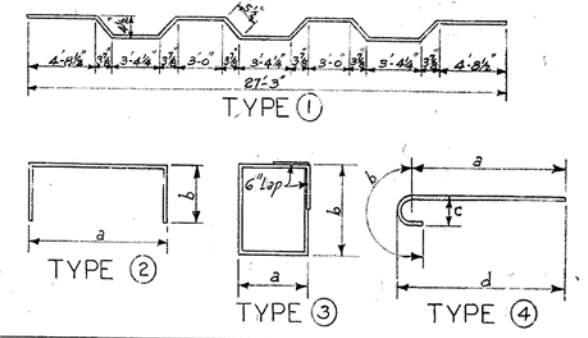


PLAN OF SLAB  
(All dimensions are horizontal)



For details of Copper Strip see Std. Dwg. G-351 and sheet 1 of this drawing.

BILL OF REINFORCEMENT (4 Slabs L, M, N & N')									
MARK	TYPE	No.	SIZE	LENGTH	LOCATION	a	b	c	d
				FT. IN.		FT. IN.	FT. IN.	FT. IN.	FT. IN.
F1	①	103	#5	28 3	Transverse - All slabs				
F2	Str.	212	#5	27 3	" "				
F3	②	522	#3	3 9	" - Side walks	3 4	0 3		
F4	③	120	#4	4 2	Roadway Curbs - All Slabs	0 6	1 2 1/2		
F5	"	120	#4	4 10	Outside " "	0 10	1 2 1/2		
F6	④	67	#5	3 10	End of Slab L & Bent	3 0	0 10	0 5	3 2 1/2
F7	Str.	86	#4	22 3	Longitudinal - Slab L				
F8	"	172	#4	20 11	" - Slab M				
F9	"	86	#4	21 10	" - Slab N				
F10	"	64	#3	3 9	Diaphragm - All Slabs				
F11	⑤	8	#3	3 10	" - Slabs L & N	1 6	1 2 1/2		
F12	"	24	#3	2 8	" - " M	0 4	1 2 1/2		



ESTIMATE OF QUANTITIES

Concrete, Class 'A'	74.1 Cu. Yds.
Reinforcement	15847 Lbs.

DETAILS OF FLOOR SLABS  
85' SPAN

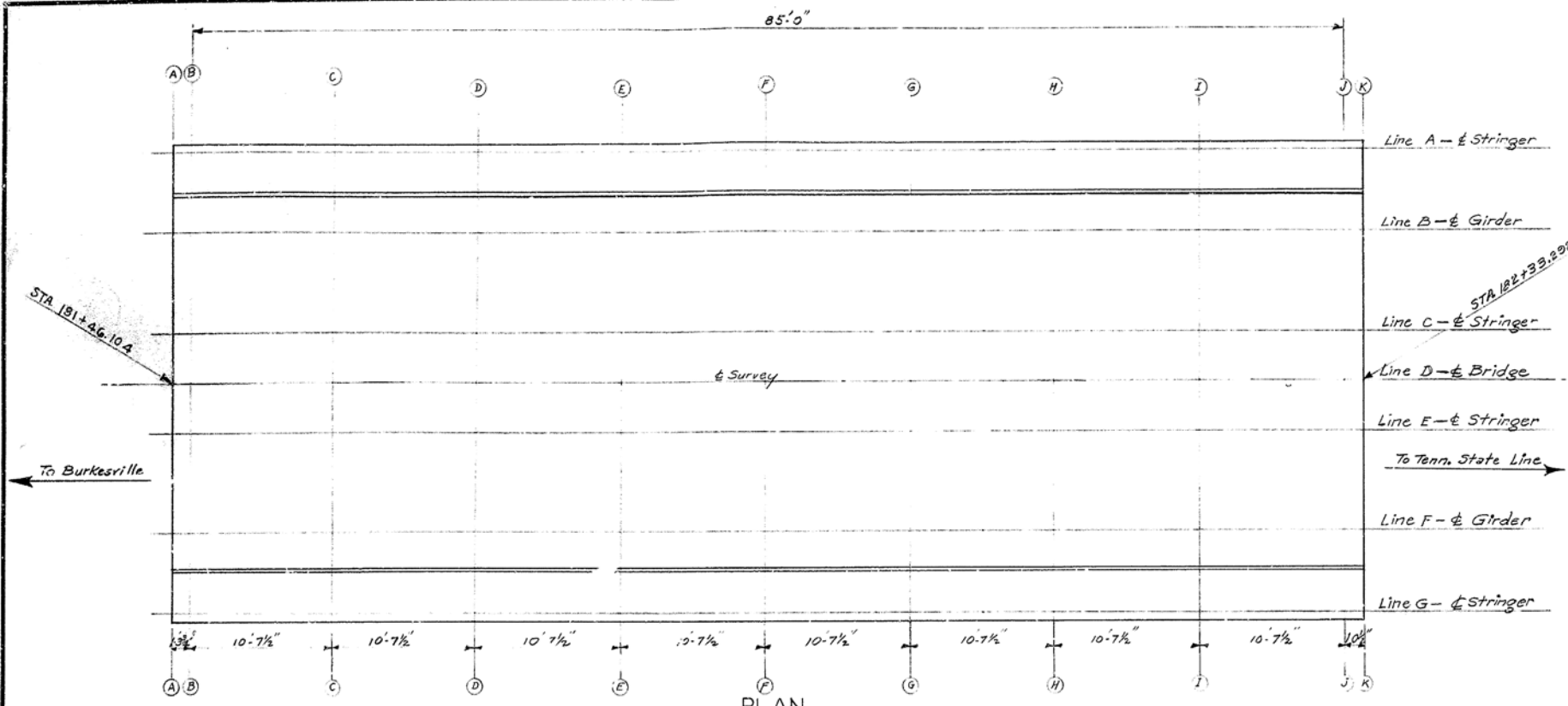
Bridge over Cumberland River Sheet No. 5

**COMMONWEALTH OF KENTUCKY**  
DEPARTMENT OF HIGHWAYS  
FRANKFORT  
COUNTY OF  
**CUMBERLAND**  
BURKESVILLE - TENN. STATE LINE  
ROAD

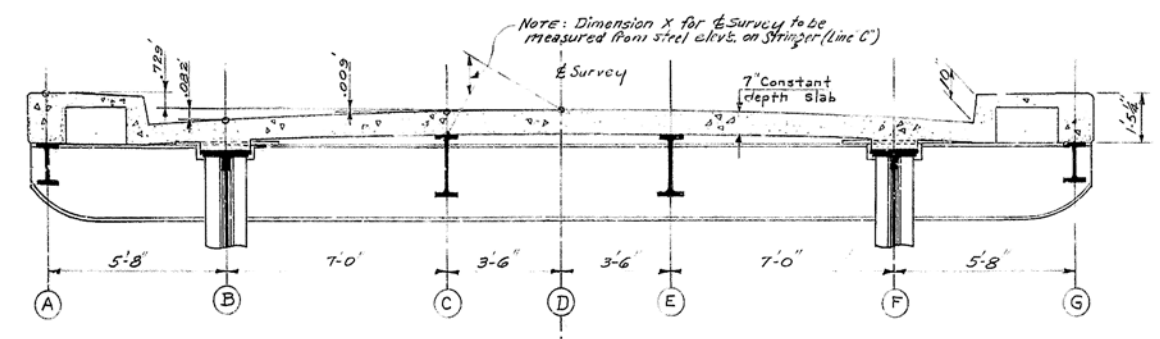
STATION 184+91.187 PROJECT NO. \_\_\_\_\_

BRIDGE NUMBER	DRAWING NO.	INDEX
	12967	

DESIGNED BY: \_\_\_\_\_ CHECKED BY: \_\_\_\_\_ DATE: \_\_\_\_\_  
 DRAWN BY: \_\_\_\_\_ CHECKED BY: \_\_\_\_\_ DATE: \_\_\_\_\_  
 REVISIONS: \_\_\_\_\_ DATE: \_\_\_\_\_  
 TRACED BY: \_\_\_\_\_ DATE: \_\_\_\_\_



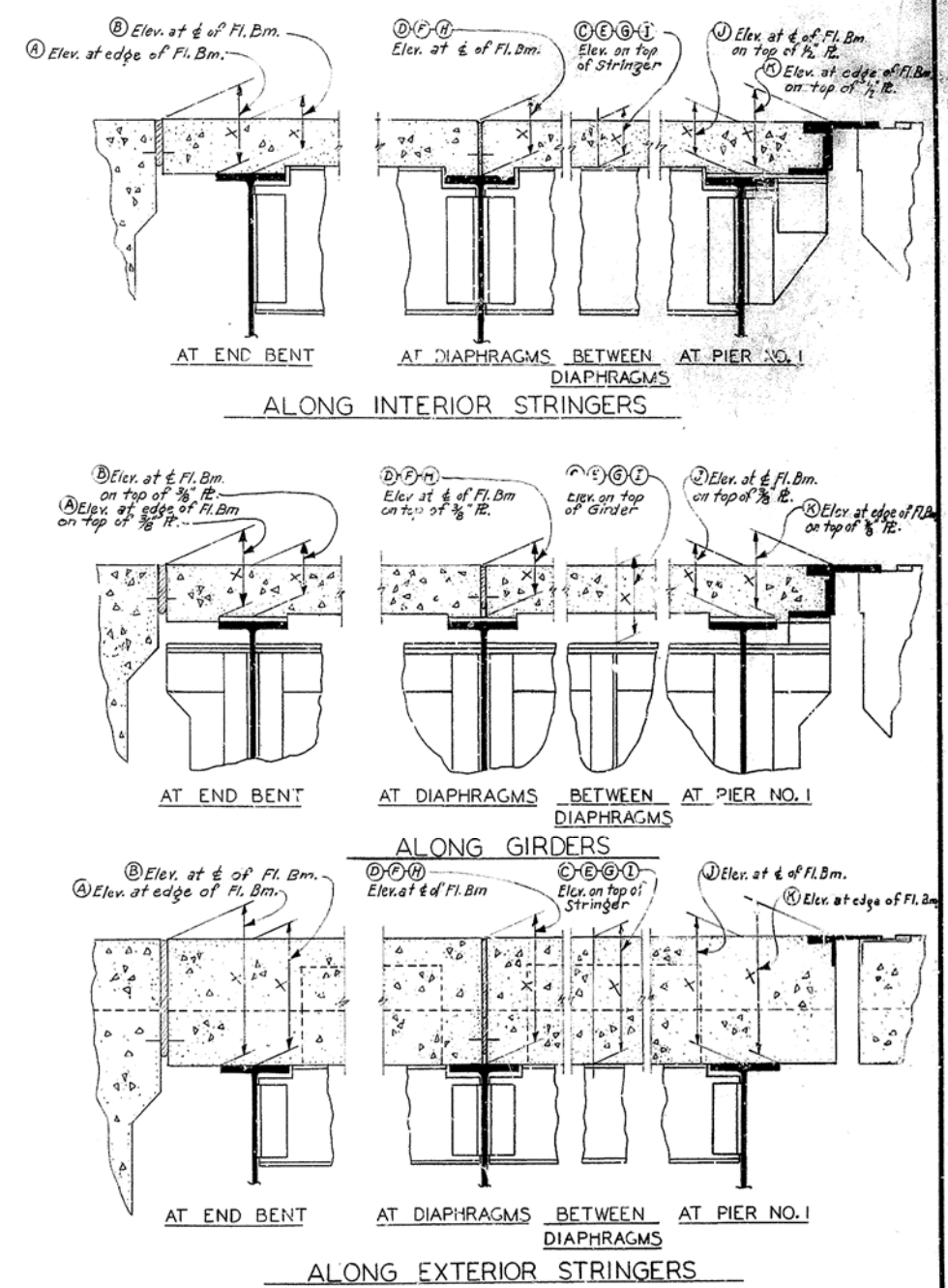
Take elevations on top of steel at points indicated after cross frames are in place and after all falsework has been removed, but before forms for concrete have been put in place. Read elevations to three decimals using target rod and enter readings in Table under Steel El. Compute Dim. X as follows: Construction Elevation minus Steel Elevation = Dimension X. Construction Elevations include Camber due to weight of concrete floor slab, future surfacing and handrail. For setting templates measure Dimension X above top of steel for top of template. Do not set templates by elevations. Construct Handrails parallel to curb grade. Do not add camber to Handrail.



TYPICAL CROSS SECTION

SECTION	LINE A			LINE B			LINE C			LINE D			LINE E			LINE F			LINE G			
	Const. El.	Steel El.	Dim. X	Const. El.	Steel El.	Dim. X	Const. El.	Steel El.	Dim. X	Const. El.	Steel El.	Dim. X	Const. El.	Steel El.	Dim. X	Const. El.	Steel El.	Dim. X	Const. El.	Steel El.	Dim. X	
(A)	597.188	595.780	1.408	596.371	595.830	0.541	596.450	595.790	0.660	596.459	595.800	0.659	596.377	595.820	0.557	597.188	595.770	1.418				
(B)	597.222	595.790	1.432	596.411	595.835	0.576	596.484	595.800	0.684	596.493	595.810	0.683	596.411	595.830	0.581	597.222	595.780	1.442				
(C)	597.507	596.070	1.437	596.636	595.910	0.796	596.769	596.200	0.567	596.778	596.200	0.578	596.636	595.890	0.806	597.507	596.060	1.447				
(D)	597.782	596.360	1.422	596.971	596.420	0.551	597.044	596.380	0.664	597.053	597.044	0.674	596.971	596.400	0.571	597.782	596.350	1.432				
(E)	598.044	596.620	1.424	597.233	596.470	0.763	597.306	596.770	0.536	597.315	597.306	0.559	597.233	597.450	0.783	598.044	596.600	1.444				
(F)	598.294	596.880	1.414	597.483	596.755	0.528	597.556	596.710	0.646	597.565	597.556	0.666	597.483	596.930	0.533	598.294	596.870	1.424				
(G)	598.532	597.100	1.432	597.721	596.940	0.781	597.794	597.235	0.559	597.803	597.794	0.564	597.721	596.910	0.811	598.532	597.090	1.442				
(H)	598.759	597.320	1.439	597.948	597.390	0.558	598.021	597.340	0.681	598.030	598.021	0.691	597.948	597.350	0.578	598.759	597.310	1.449				
(I)	598.974	597.545	1.429	598.163	597.350	0.813	598.236	597.460	0.576	598.245	598.236	0.606	598.163	597.330	0.833	598.974	597.530	1.444				
(J)	599.178	597.725	1.453	598.367	597.755	0.612	598.440	597.755	0.685	598.449	598.440	0.685	598.367	597.760	0.607	599.178	597.690	1.488				
(K)	599.195	597.725	1.470	598.384	597.765	0.619	598.457	597.765	0.672	598.466	598.457	0.677	598.384	597.765	0.677	599.195	597.695	1.500				

CONSTRUCTION ELEVATIONS 85' SPAN



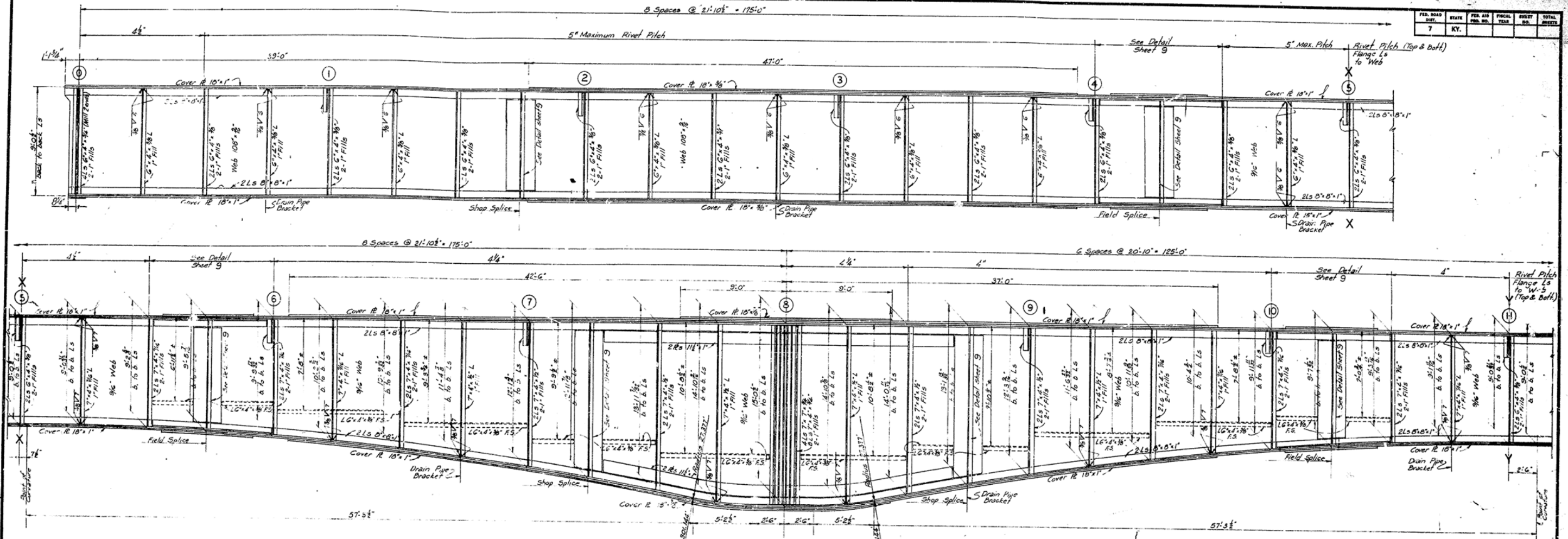
DESIGNED BY: M. S. ... CHECKED BY: ... DATE: ...  
 DRAWN BY: ... CHECKED BY: ... DATE: ...  
 REVISED BY: ... DATE: ...

Bridge over Cumberland River Sheet 6

**COMMONWEALTH OF KENTUCKY**  
 DEPARTMENT OF HIGHWAYS  
 FRANKFORT  
 COUNTY OF  
**CUMBERLAND**  
 BURKESVILLE - TENN STATE LINE  
 ROAD

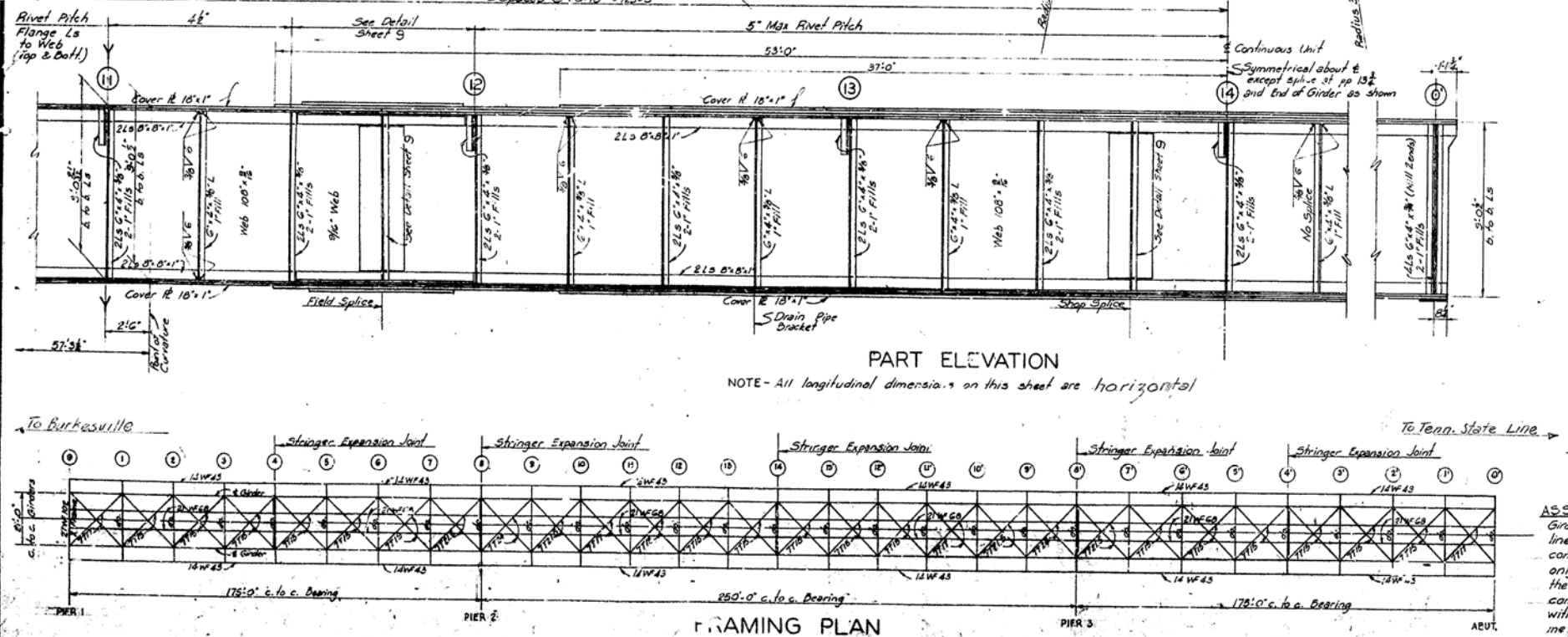
STATION 184+91.187 PROJECT NO. 12967  
 BRIDGE NUMBER

FED. ROAD DIST.	STATE	PER. AIR. PROJ. NO.	FISCAL YEAR	SHEET NO.	TOTAL SHEETS
7	KY.				



**PART ELEVATION**

NOTE - All longitudinal dimensions on this sheet are horizontal



**175' - 250' - 175' CONTINUOUS UNIT**

**GENERAL NOTE**

**SPECIFICATIONS** - Kentucky Department of Highways, 1956 Standard with Amendments.

**DESIGN LOADING** - Bridge designed for H20-44 Loading as specified in AASHTO Specifications, 1953 Edition.

**STRUCTURAL STEEL** - All material shall conform to A.S.T.M. Specifications (See Table Sheet 9)

**RIVETS AND OPEN HOLES** - All rivets in girders, laterals and connections to riveted girders to be 1" dia, open holes 1 1/4", unless noted. All rivets in stringers, floor beams, brackets, cross frames etc., and connections to same shall be 3/4", open holes 1 1/8", unless noted. General reaming shall be required.

**WELD PLATES** - Edges of spliced web plates shall be faced so as to provide close contact through the entire depth.

**DIMENSIONS** - Dimensions are for a normal temperature of 60° Fahrenheit with full dead load on the structure.

**WELDING** - Welding to be in accordance with American Welding Society Specifications for Welded Highway and Railroad Bridges, Edition of 1956 and amendments.

**TEST REPORTS** - Notarized test reports or certified statements in triplicate shall be furnished the Department of Highways showing that all of the structural steel furnished meets the specifications.

**PAINT** - All structural steel shall be given one shop coat and one field coat of red lead (TRPE4) paint and two field coats of aluminum paint in accordance with Kentucky Department of Highways Specification 1356 as provided in this note. Bolts shall be assembled with a hardened washer under the bolt head and nut. Bolt, nut, and washer material shall conform to ASTM Specification A325-58 T Bolts shall be Regular Hexagon Head Semifinished Bolts (ASA Designation B18.2), except the radius of fillet under bolt head shall not be less than 2 1/2" for size 3/4" and under, 3 1/2" for size 1" inclusive, and 4 1/2" for size over 1". Nuts shall be Heavy Hexagon Semifinished Nuts (ASA Designation B18.2). Washers shall be heavy plain (carbonized) washers (ASA Designation DET.2). Where bearing faces of bolted parts are not parallel, beveled washers shall be used to compensate for lack of parallelism. Where clearance makes it necessary, washers may be clipped on one side at a point not closer than 7/8" of the bolt diameter from the center of the washer. The bearing surface under each washer shall be free of paint, lacquer, dirt, oil, loose scale, burrs, pits and other defects that would prevent solid seating or interfere with the development of friction between the parts. A torque wrench or a pneumatic impact wrench may be used to tighten the bolts. All nuts shall be tightened to give the bolt tension values given in the following table:

BOLT SIZE (IN.)	1/2	3/8	3/4	7/8	1	1 1/8	1 1/4
REQUIRED BOLT TENSION (LB.)	11,500	17,300	25,600	32,400	42,500	50,800	64,500
EQUIVALENT TORQUE (LB. FT.)	100	180	320	470	710	960	1350

**ASSEMBLY NOTE** - Girders shall be assembled in the shop, parts adjusted to lines, camber and fit for drilling or reaming of field connections. This applies to field splices in girders only. Girders shall remain assembled for inspection by the Department of Highways Inspector. Other field connections shall be drilled or reamed in the shop with connecting parts assembled or reamed to a metal template without assembly.

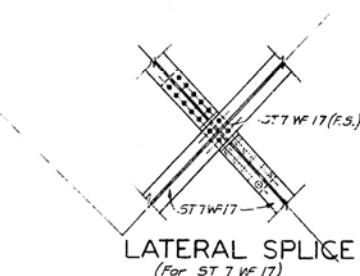
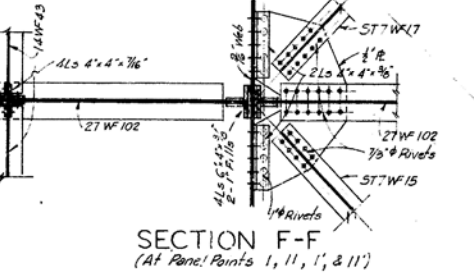
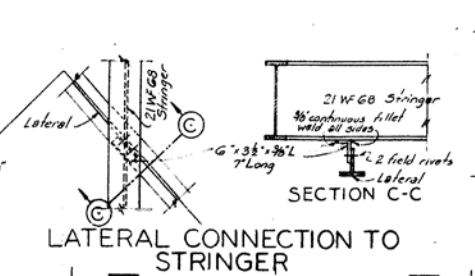
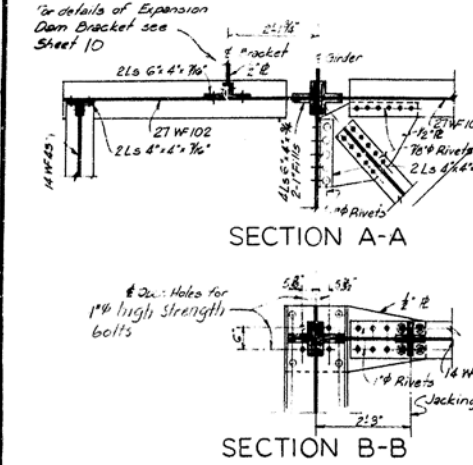
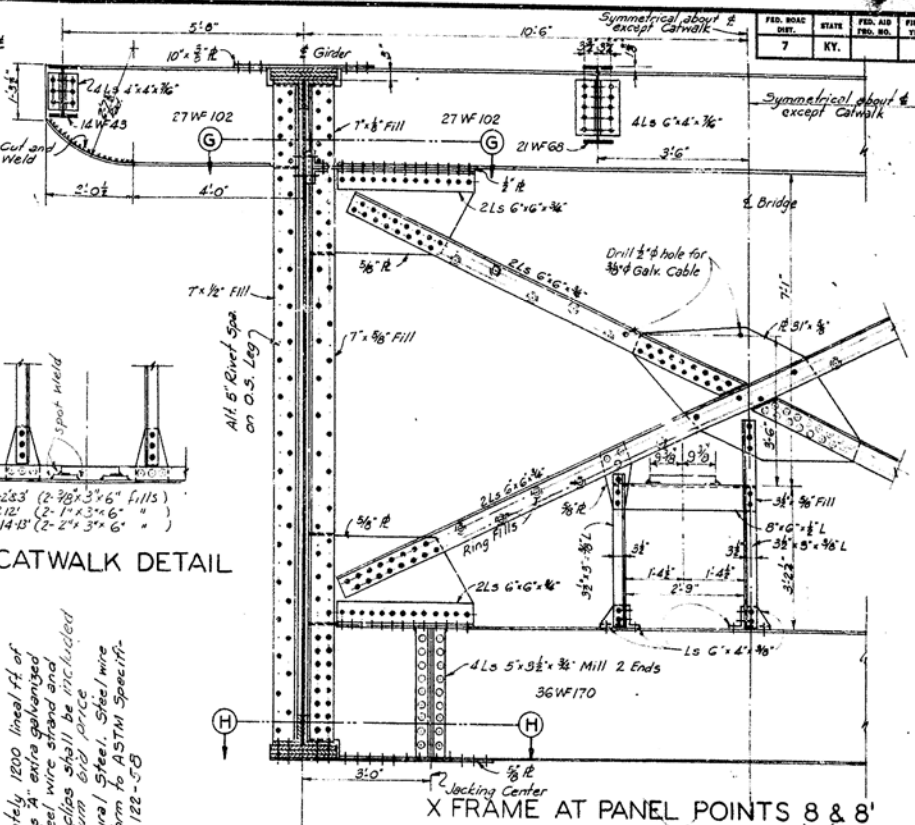
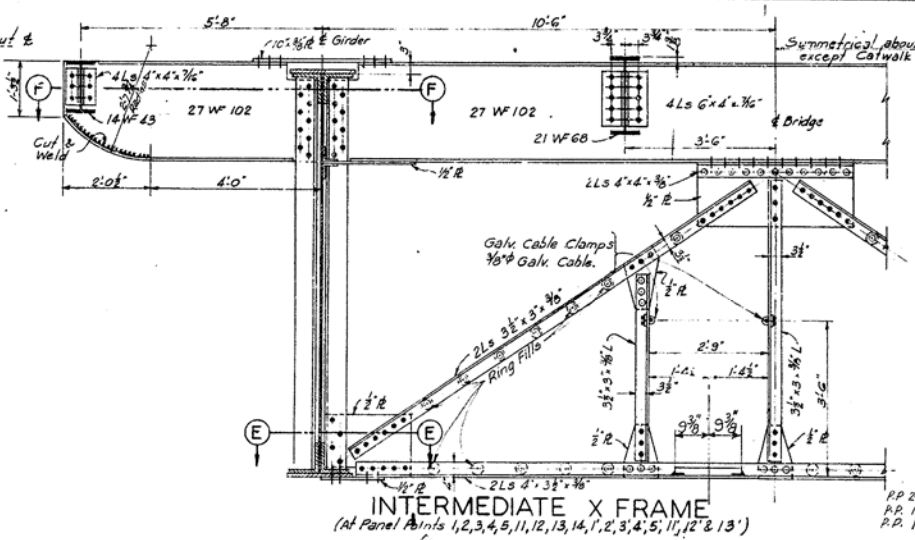
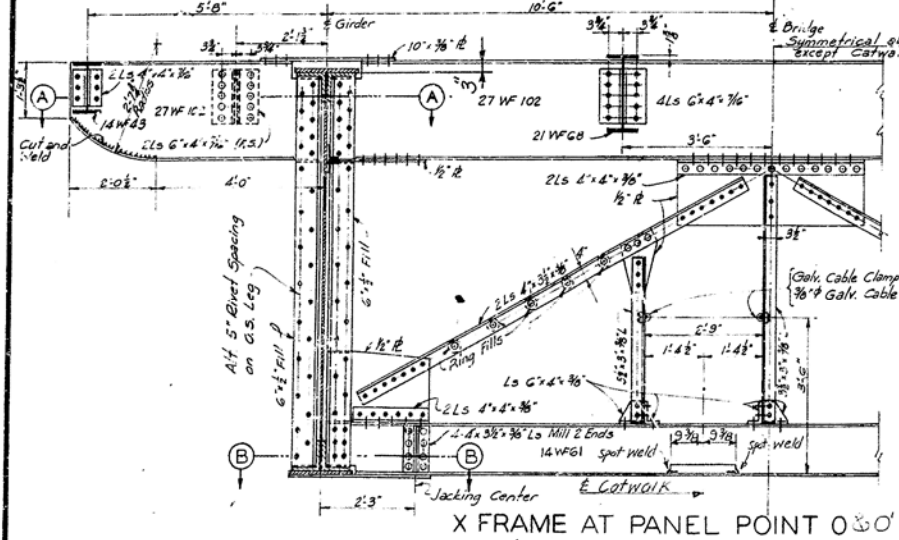
Bridge over Cumberland River sheet 7

**COMMONWEALTH OF KENTUCKY**  
 DEPARTMENT OF HIGHWAYS  
 FRANKFORT  
 COUNTY OF  
**CUMBERLAND**  
 BURKESVILLE - TENN. STATE LINE

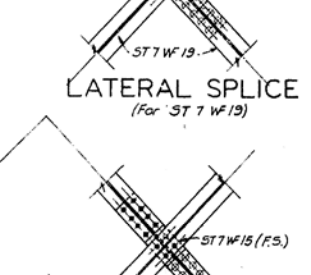
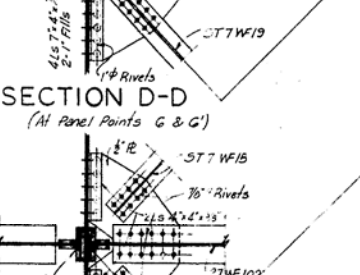
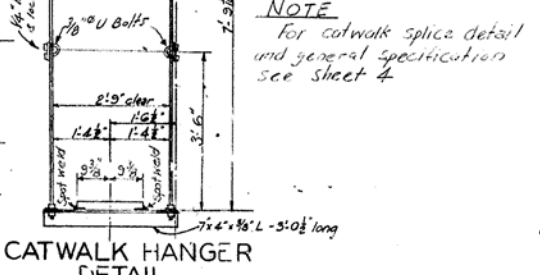
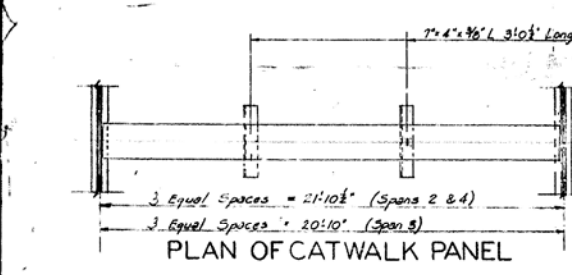
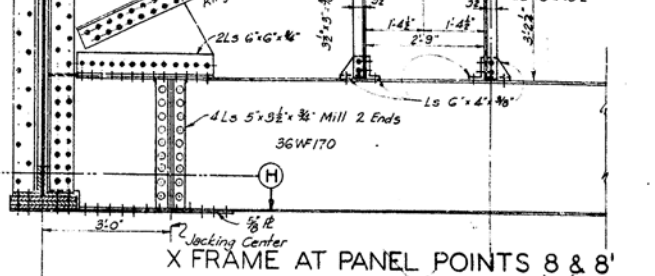
ROAD  
 STATION 184+71.187 PROJECT NO.  
 BRIDGE NUMBER 2967

REVISIONS: REVISION 1, DATE 11/11/57, BY [Signature], CHECKED BY [Signature], DESIGNED BY [Signature], DRAWN BY [Signature], ESTIMATED BY [Signature], QUANTITY BY [Signature], DATE 11/11/57.

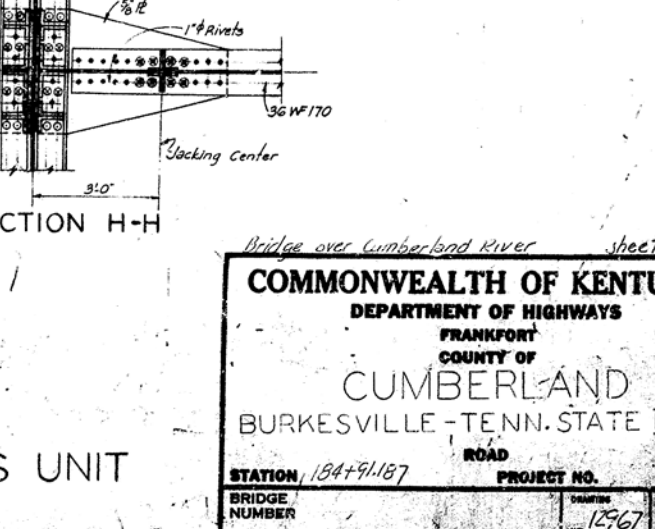
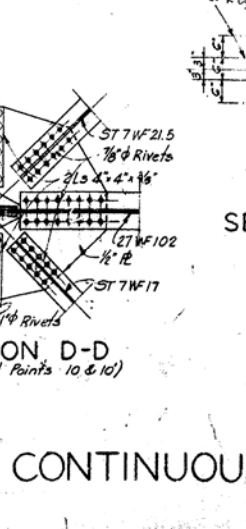
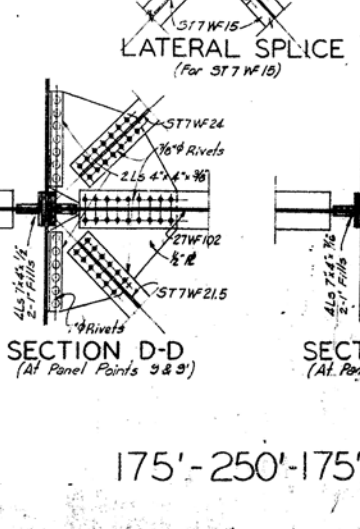
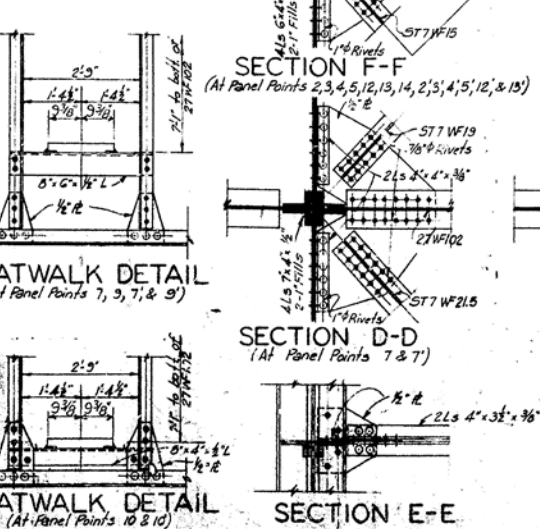
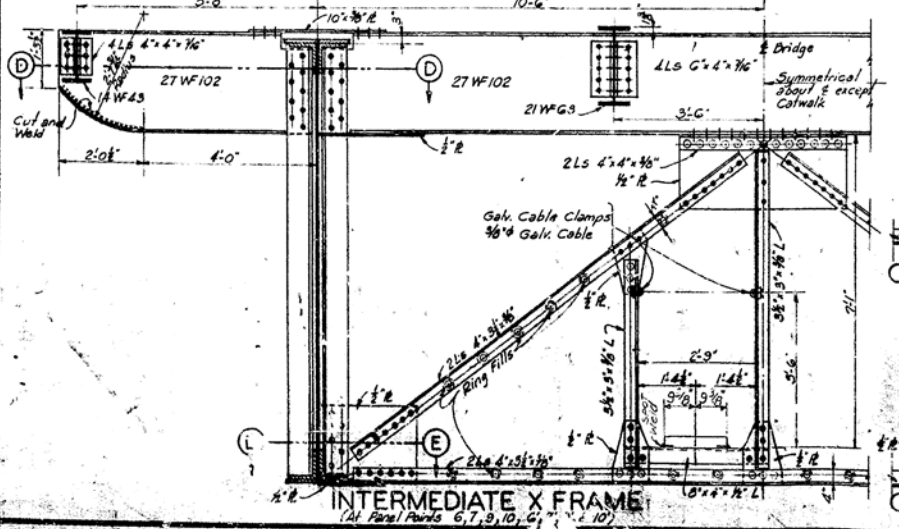
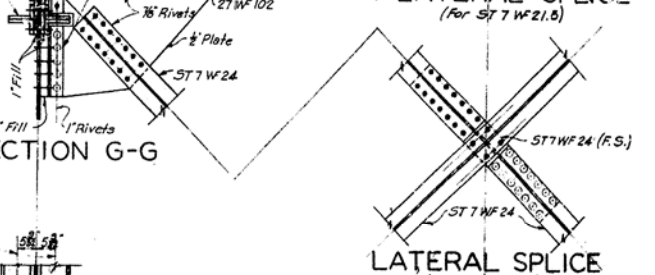
FED. ROAD DIST.	STATE	FED. AID PROJ. NO.	FISCAL YEAR	RIVER MILE	TOTAL PROJECT
7	KY.				



**NOTE -**  
Approximately 1200 lineal ft. of 7 wire Class A extra galvanized common steel wire strand and galvanized clips shall be included in lump sum bid price for Structural Steel. Steel wire shall conform to ASTM Specification A 128-53



**NOTE -**  
For details of Stringer Expansion see Sheet 10



DESIGNED BY: [Name] CHECKED BY: [Name] DATE: [Date]  
 REVISIONS: [List of revisions]  
 APPROVED BY: [Name] DATE: [Date]

175'-250'-175' CONTINUOUS UNIT

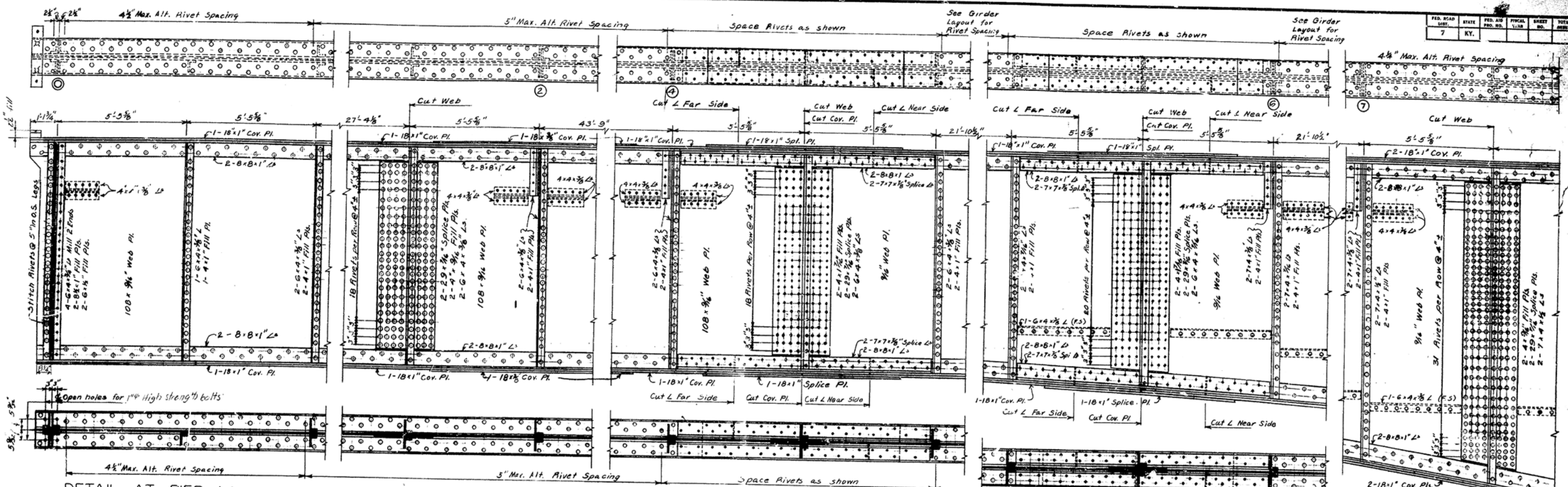
Bridge over Cumberland River sheet 8

**COMMONWEALTH OF KENTUCKY**  
DEPARTMENT OF HIGHWAYS  
FRANKFORT  
COUNTY OF  
**CUMBERLAND**  
BURKESVILLE - TENN. STATE LINE  
ROAD

STATION 184+91.187 PROJECT NO. [Number]  
BRIDGE NUMBER 12967



FED. ROAD DIST.	STATE	FED. AID PROJ. NO.	FISCAL YEAR	SHEET NO.	TOTAL SHEETS
7	KY.				

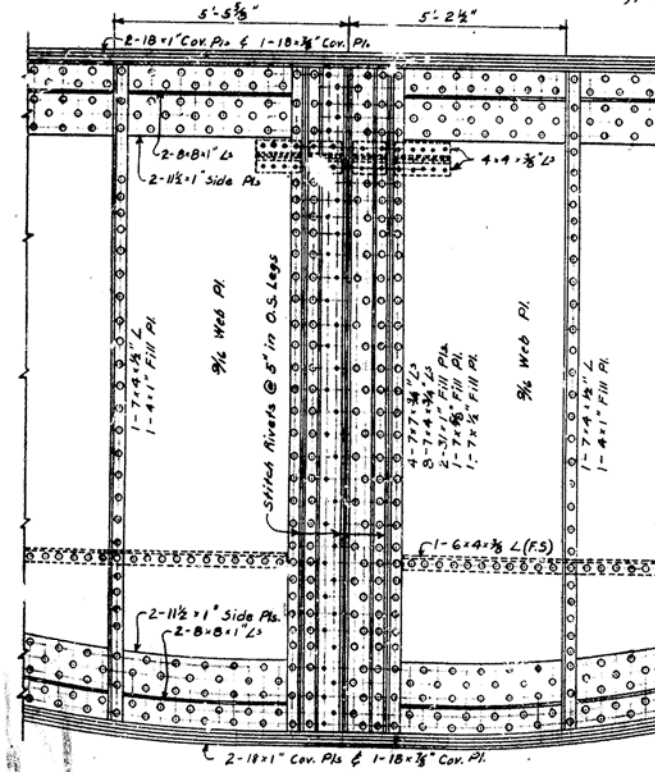


DETAIL AT PIER 1 (PANEL PT. D)

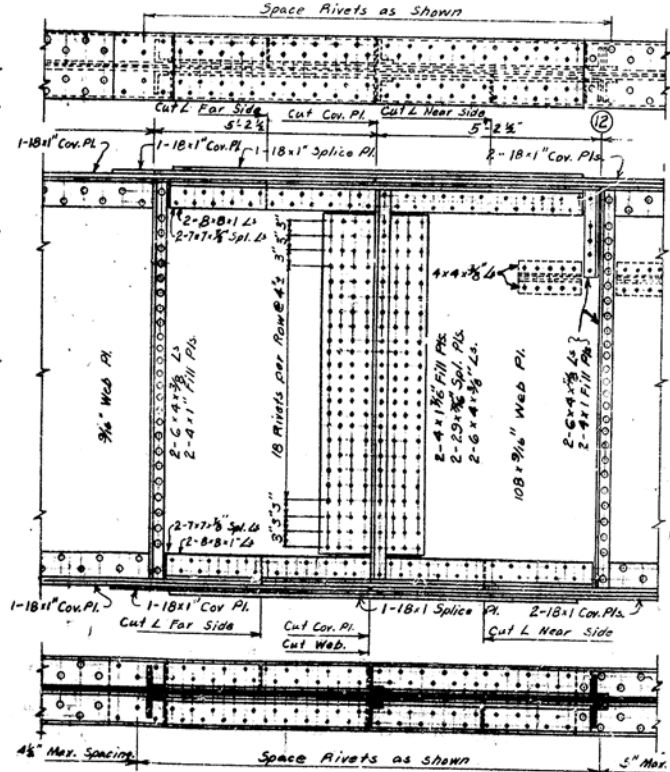
SHOP WEB SPLICE PANEL PT. 1 3/4  
(Typical Web Splice where depth of Web = 108")

FIELD SPLICE PANEL PT. 4 1/4

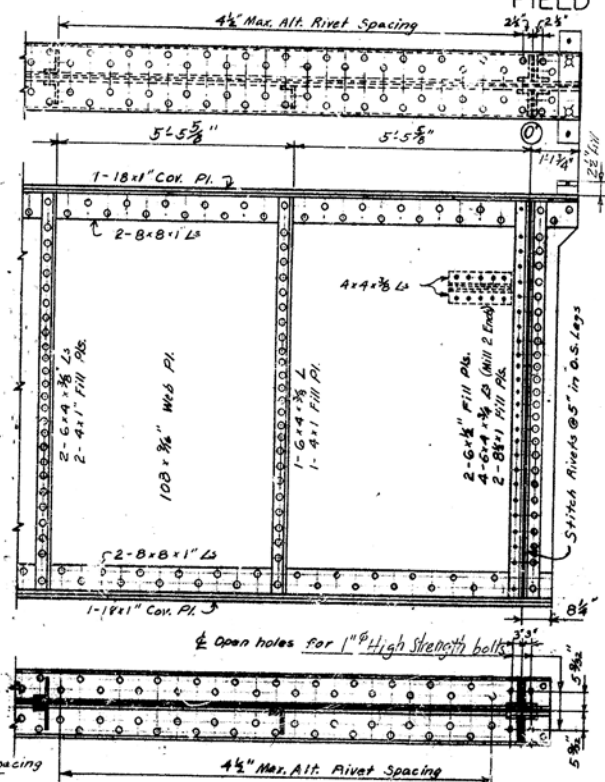
FIELD SPLICE PANEL PT. 5 1/4



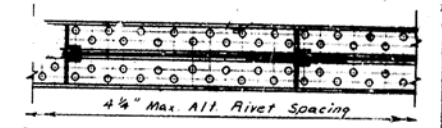
DETAIL AT PIER 2 (PANEL PT. B)  
(See details on Sheet for location of holes for)



FIELD SPLICE PANEL PT. 11 3/4



DETAIL AT ABUTMENT (PANEL PT. D')



SHOP WEB SPLICE PANEL PT. 7 1/4  
(Splice at Panel Pt. 8 1/2 is similar)

MATERIAL SPECIFICATIONS

Structural Carbon Steel	A 7-58T
Structural Rivet Steel	A 141-53
Cast Steel	A 27-58 (Grade 70-36)
Steel Pins	AUG-58T (Grade 106-1330 incl.)
Cast Iron	A 48-56
Sheet Lead & Lead for anchor dowel holes	B 29-55
High Strength Bolts, Nuts and Washers	A 325-58T
Zinc Coated Steel Wire Strand	A 122-58

ESTIMATE OF QUANTITIES

* Structural Steel	1413,530	Lbs.
Cast Steel		Lbs.
3/8 Galv. Steel Cais		Lbs.
Cast Iron		Lbs.
Sheet Lead		Lbs.
6" Wrought Iron Pipe	280.5	Lin. Ft.

\* Included in Structural Steel

Bridge over Cumberland River - Sheet 9

**COMMONWEALTH OF KENTUCKY**  
DEPARTMENT OF HIGHWAYS  
FRANKFORT  
COUNTY OF  
**CUMBERLAND**  
BURKESVILLE-TENN. STATE LINE

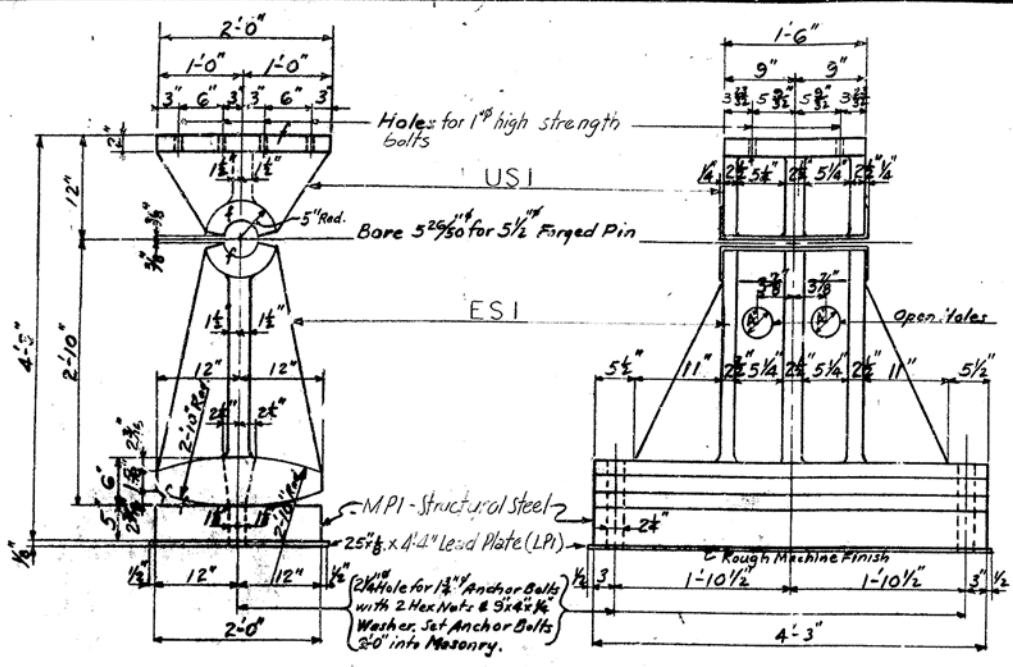
ROAD PROJECT NO.	
STATION 184+91.187	PROJECT NO.
BRIDGE NUMBER	DRAWING NO. 12967

175-250-175 CONTINUOUS UNIT

DESIGNED BY: E.C. STAPFORDS  
 CHECKED BY: [Name]  
 REVISIONS: REVISION 1 - [Date]  
 REVISION 2 - [Date]  
 REVISION 3 - [Date]  
 REVISION 4 - [Date]  
 REVISION 5 - [Date]  
 REVISION 6 - [Date]  
 REVISION 7 - [Date]  
 REVISION 8 - [Date]  
 REVISION 9 - [Date]  
 REVISION 10 - [Date]  
 REVISION 11 - [Date]  
 REVISION 12 - [Date]  
 REVISION 13 - [Date]  
 REVISION 14 - [Date]  
 REVISION 15 - [Date]  
 REVISION 16 - [Date]  
 REVISION 17 - [Date]  
 REVISION 18 - [Date]  
 REVISION 19 - [Date]  
 REVISION 20 - [Date]  
 REVISION 21 - [Date]  
 REVISION 22 - [Date]  
 REVISION 23 - [Date]  
 REVISION 24 - [Date]  
 REVISION 25 - [Date]  
 REVISION 26 - [Date]  
 REVISION 27 - [Date]  
 REVISION 28 - [Date]  
 REVISION 29 - [Date]  
 REVISION 30 - [Date]  
 REVISION 31 - [Date]  
 REVISION 32 - [Date]  
 REVISION 33 - [Date]  
 REVISION 34 - [Date]  
 REVISION 35 - [Date]  
 REVISION 36 - [Date]  
 REVISION 37 - [Date]  
 REVISION 38 - [Date]  
 REVISION 39 - [Date]  
 REVISION 40 - [Date]  
 REVISION 41 - [Date]  
 REVISION 42 - [Date]  
 REVISION 43 - [Date]  
 REVISION 44 - [Date]  
 REVISION 45 - [Date]  
 REVISION 46 - [Date]  
 REVISION 47 - [Date]  
 REVISION 48 - [Date]  
 REVISION 49 - [Date]  
 REVISION 50 - [Date]  
 REVISION 51 - [Date]  
 REVISION 52 - [Date]  
 REVISION 53 - [Date]  
 REVISION 54 - [Date]  
 REVISION 55 - [Date]  
 REVISION 56 - [Date]  
 REVISION 57 - [Date]  
 REVISION 58 - [Date]  
 REVISION 59 - [Date]  
 REVISION 60 - [Date]  
 REVISION 61 - [Date]  
 REVISION 62 - [Date]  
 REVISION 63 - [Date]  
 REVISION 64 - [Date]  
 REVISION 65 - [Date]  
 REVISION 66 - [Date]  
 REVISION 67 - [Date]  
 REVISION 68 - [Date]  
 REVISION 69 - [Date]  
 REVISION 70 - [Date]  
 REVISION 71 - [Date]  
 REVISION 72 - [Date]  
 REVISION 73 - [Date]  
 REVISION 74 - [Date]  
 REVISION 75 - [Date]  
 REVISION 76 - [Date]  
 REVISION 77 - [Date]  
 REVISION 78 - [Date]  
 REVISION 79 - [Date]  
 REVISION 80 - [Date]  
 REVISION 81 - [Date]  
 REVISION 82 - [Date]  
 REVISION 83 - [Date]  
 REVISION 84 - [Date]  
 REVISION 85 - [Date]  
 REVISION 86 - [Date]  
 REVISION 87 - [Date]  
 REVISION 88 - [Date]  
 REVISION 89 - [Date]  
 REVISION 90 - [Date]  
 REVISION 91 - [Date]  
 REVISION 92 - [Date]  
 REVISION 93 - [Date]  
 REVISION 94 - [Date]  
 REVISION 95 - [Date]  
 REVISION 96 - [Date]  
 REVISION 97 - [Date]  
 REVISION 98 - [Date]  
 REVISION 99 - [Date]  
 REVISION 100 - [Date]

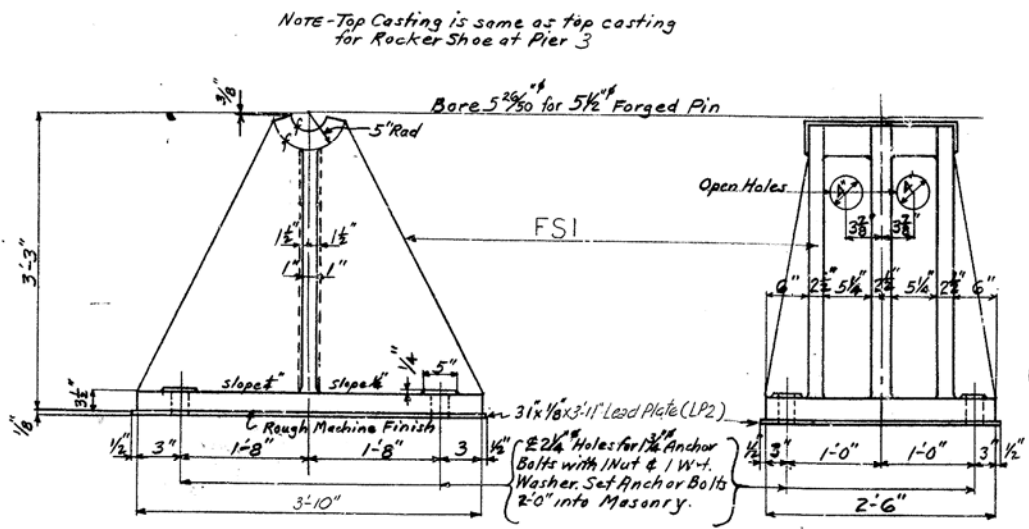


FED. ROAD DIST.	STATE	FED. AID PROJ. NO.	FED. PROJ. NO.	SHEET NO.	TOTAL SHEETS
7	KY.				



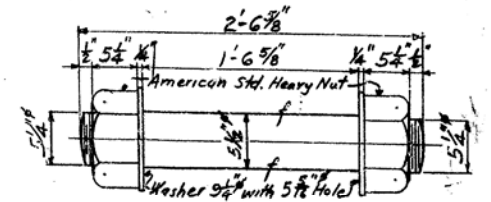
EXPANSION ROCKER - PIER 3

- 2- Required - \* Weight each approx. 3877 lbs. Cast Steel
- 2- Required - MPI Weight each 1723 lbs. Structural Steel
- 2- Required - LP1 66 lbs. Lead Plate
- \* Includes US1 & ESI

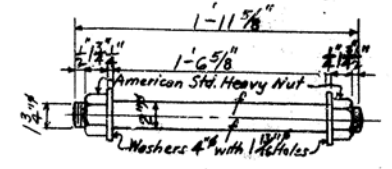


FIXED SHOE - PIER 2

- 2- Required - \* Weight each 4752 lbs. Cast Steel
- 2- Required - LP2 74 lbs. Lead Plate
- \* Includes US1 & FS1

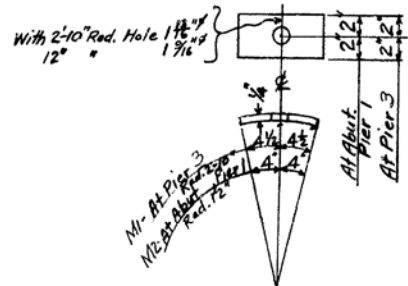


STEEL PIN - P1  
4 Required Complete with 2 Nuts & 2 Washers each.



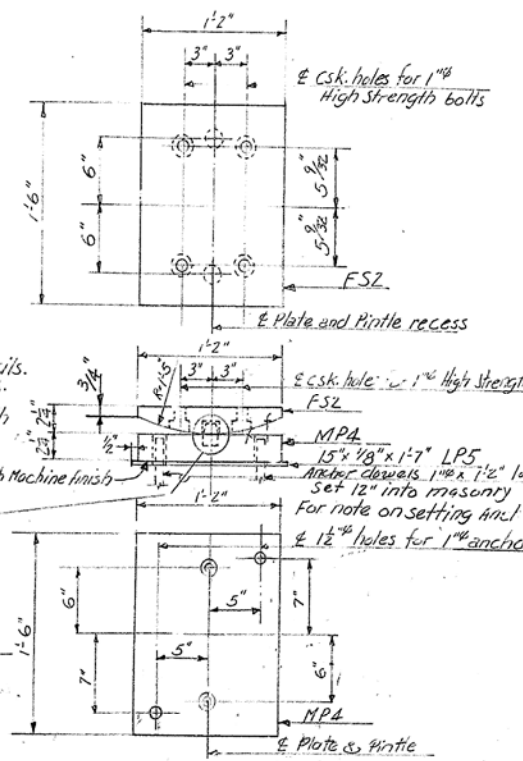
STEEL PIN - P2  
6 Required Complete with 2 Nuts & 2 Washers each.  
STEEL PINS P1 & P2 - A.S.T.M. A108-52T

SURFACE FINISH OF STEEL - SPECIFICATIONS	
STEEL SLABS	A.S.A. 2000
HEAVY PLATES IN CONTACT IN SHOES TO BE WELDED	A.S.A. 1000
MILLED ENDS OF COMPRESSION MEMBERS, STIFFENERS & FILLERS	A.S.A. 500
BRIDGE ROLLERS & ROCKERS	A.S.A. 250
PINS & PIN HOLES	A.S.A. 125



STRUCTURAL STEEL WASHERS  
4 Required with 2-10" Radius - MI  
12 " " " 1-0" " - M2

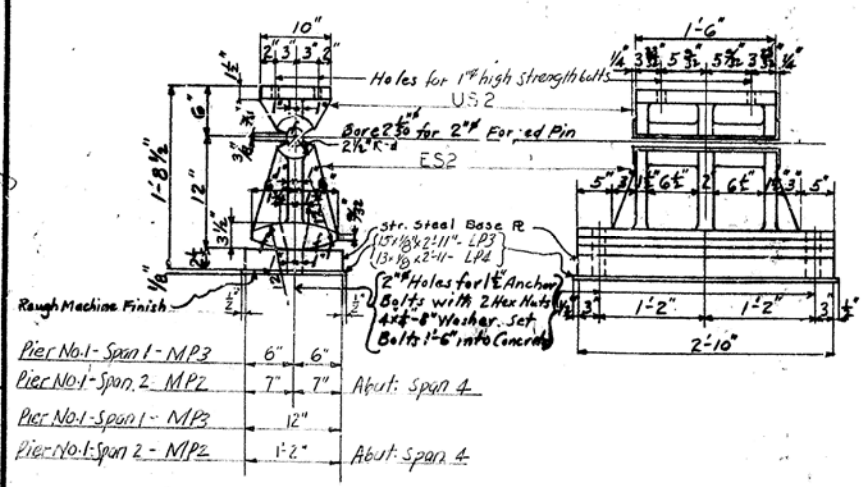
FOUNDY NOTE FOR CAST STEEL  
Cast two coupons on one piece from each heat, 1 1/2" x 7" to make tensile tests as per A.S.T.M. Specifications, A27-58 (Grade 70-36). Stamp test coupon and all castings with proper heat numbers using 7/8" steel stencils. Coupons to be located so as not to interfere with machining of castings. Coupons to be removed by Department's shop inspector and forwarded to the Department's laboratory for testing. Chip surface of casting smooth where coupon is detached.



FIXED SHOE - BENT

- 2- Required - FS2 Weight each 120 lbs. Structural Steel
- 2- " - MP4 157 lbs. " "
- 2- " - LP5 14 lbs. Lead Plate
- 4- " - Anchor dowels weight each 3 lbs. Structural Steel

NOTE  
WHITE LEAD AND TALLOW: Finished surfaces of steel pins and pin bearing surfaces in cast steel shoes shall be coated with white lead and tallow in accordance with current specifications with amendments.  
PLATES: Plates must be true and free of warp.  
SHOP PLANS: The contractor shall furnish the Department of Highways with complete shop detail plans for approval. Castings US1, ESI, FS1, US2 & ESI may be made up of plates welded together, conforming to A.S.T.M. A373-58T (structural steel for welding) using size and dimensions shown hereon instead of cast steel castings as shown. MPI, MP2, MP3, MP4 & FS2 to conform to A.S.T.M. A7-58T.  
LEAD PLATE ALTERNATE: 1/8" lead plates or preformed fabric pads may be used.



EXPANSION ROCKER - PIER 1 & ABUTMENT

- 6 Required - \* Weight each approx. 628 lbs. Cast Steel
- 4 " - MPI Weight each 333 lbs. Structural Steel
- 4 " - MP3 285 lbs. " "
- 2 " - LP3 26 lbs. Lead Plate
- 2 " - LP4 23 lbs. " "
- \* Includes US2 & ES2

ROCKERS & SHOES

Bridge over Cumberland River Sheet 11

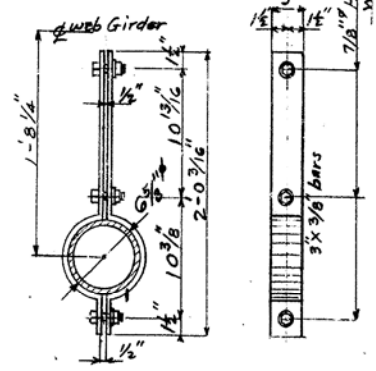
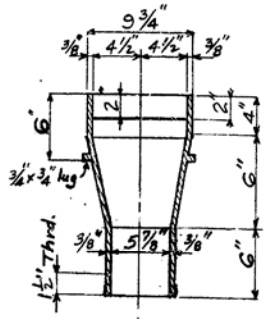
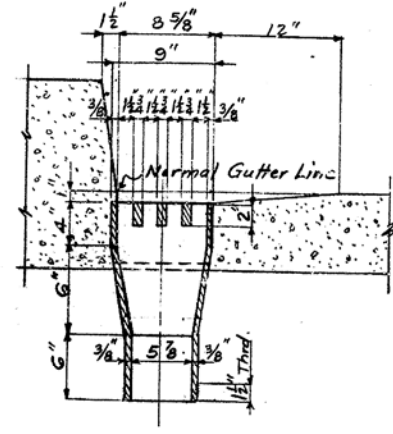
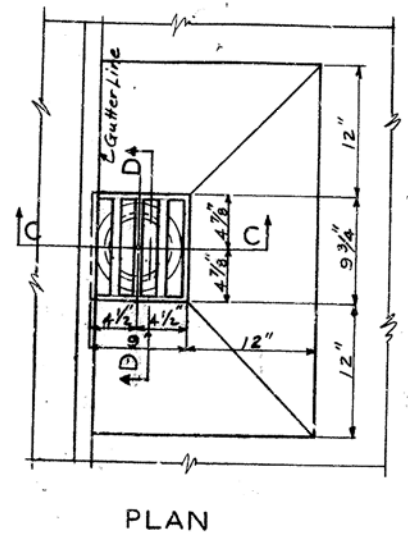
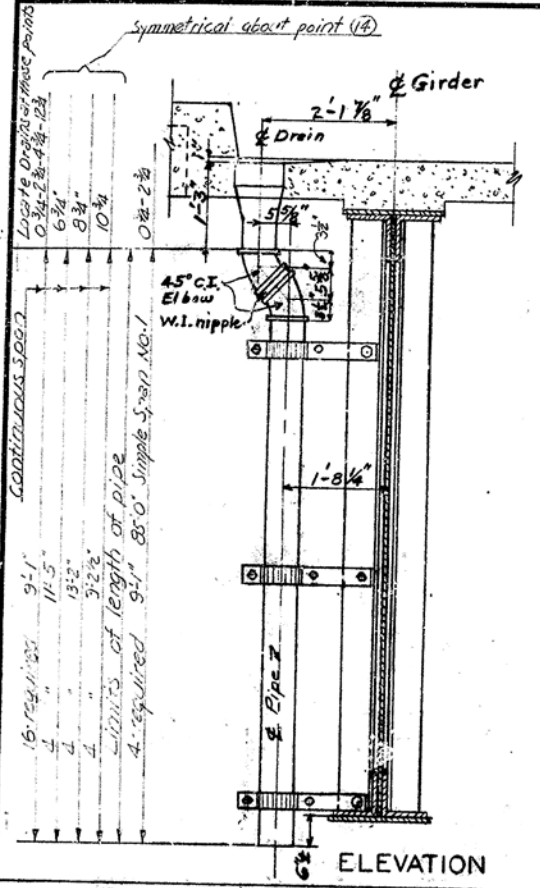
**COMMONWEALTH OF KENTUCKY**  
DEPARTMENT OF HIGHWAYS  
FRANKFORT  
COUNTY OF  
CUMBERLAND  
BURKESVILLE-TENN. STATE LINE

ROAD PROJECT NO. 12967

STATION 104+91.10  
BRIDGE NUMBER

DESIGNED BY: G. G. SACK  
 CHECKED BY: [blank]  
 DATE: 3/17/71  
 DRAWN BY: [blank]  
 DATE: [blank]

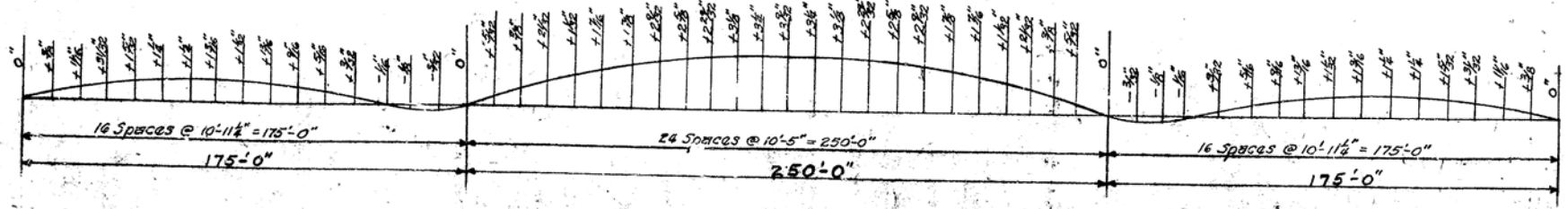
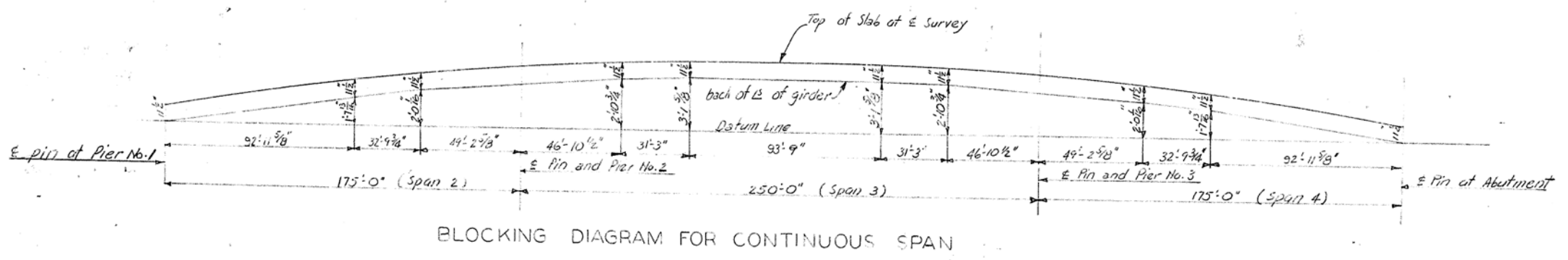
FED. ROAD DIST.	STATE	PROJ. NO.	SHEET NO.	TOTAL SHEETS
7	KY.			



**FOUNDRY NOTE -**  
 All Drains to be gray iron castings ASTM A48-56 except that tensile and transverse tests are not required. Form T-521 Report of Field Inspection of Castings is to be submitted to the Laboratory. Drains are to be furnished by the Superstructure Contractor and the cost of furnishing and placing same is to be included in lump sum price bid for structural steel.

**WROUGHT IRON PIPE -** wrought iron pipe is to be 6" standard weight 13.0# per linear foot in accordance with ASTM A72-56T. Pipe, fittings and connections are to be paid for at unit price per linear foot of pipe and connections complete in place. (Length to be measured along centerline of pipe between limits shown on drawings.) Pipe and all fittings to be given one coat of red lead paint and two field coats of aluminum paint in accordance with the specifications.

**DRAINS**  
 4- Required for 85' Simple Span - For location see sheet - 3&5  
 28- Required for Continuous Span - For location see sheet - 7&13  
 weight Drain 57# each



**CAMBER DIAGRAM [CONTINUOUS UNIT]**  
 TOTAL DEAD LOAD

Note - Camber Diagram shown on this sheet includes the weight of concrete deck, Handrail, Future Surfacing and Structural Steel.

Bridge over Cumberland River Sheet 12.3

**COMMONWEALTH OF KENTUCKY**  
 DEPARTMENT OF HIGHWAYS  
 FRANKFORT  
 COUNTY OF

**CUMBERLAND**  
 BURKESVILLE-TENN. STATE LINE

ROAD PROJECT NO.

STATION 134+91.137 PROJECT NO.

BRIDGE NUMBER 42961

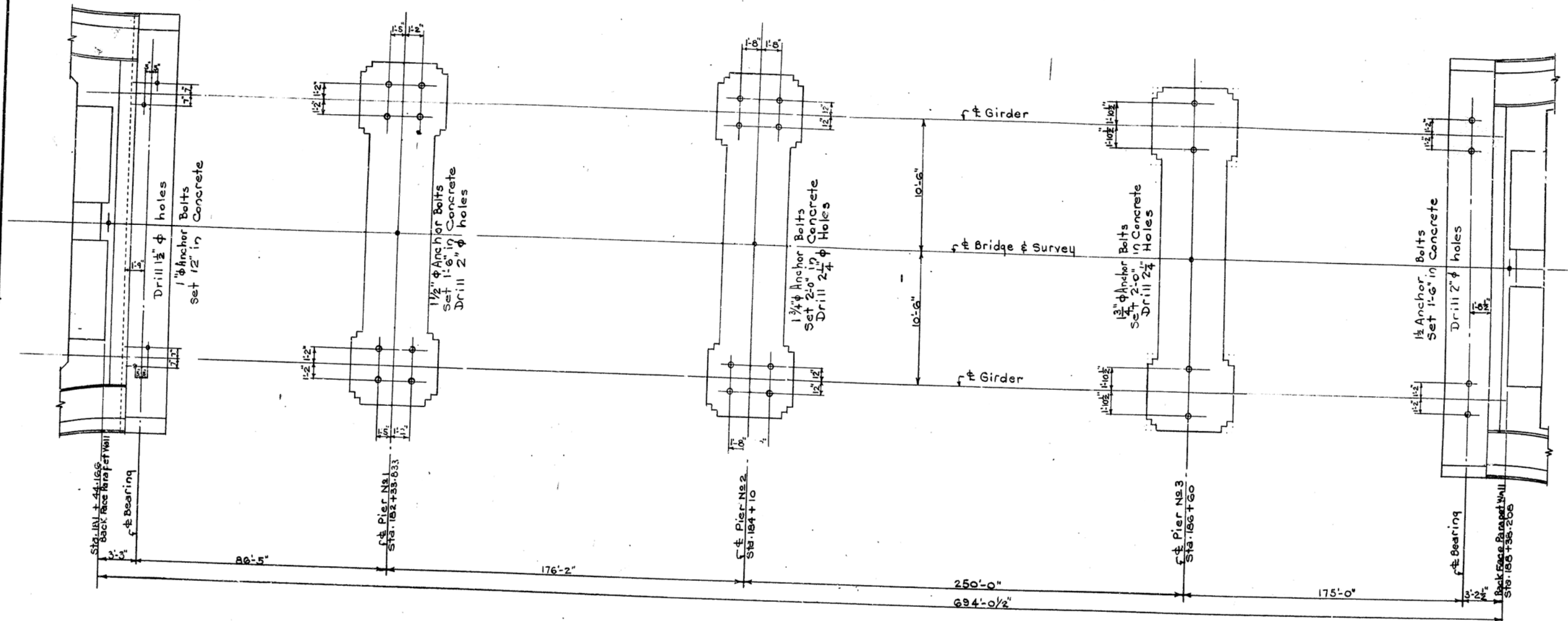
**DRAINS, WROUGHT IRON PIPE & CAMBER DIAGRAM**

CHECKED BY: [Signature] DATE: 3/23/33  
 DESIGNED BY: [Signature] DATE: 3/23/33  
 DRAWN BY: [Signature] DATE: 3/23/33  
 REVISIONS: Revised from Job Co. 11274  
 SPECIAL CHECKED - [Signature] DATE: 9/17/37





FIG. ROAD DIST.	STATE	FED. AID PROJ. NO.	FISCAL YEAR	SHEET NO.	TOTAL SHEETS
7	KY.				



**NOTE**

Holes of depth & dimensions shown, shall be drilled for anchor bolts by Superstructure Contractor, who shall be responsible for keeping holes dry in wet & freezing weather. After Base Plates or Castings are properly set & Anchor Bolts are placed in drilled holes, molten lead shall be poured in holes & packed until holes are completely filled flush to top of base plates or castings. The cost of drilling anchor bolt holes, furnishing lead & filling holes with molten lead shall be included in the lump sum price bid for structural steel. At the time of setting, anchor dowels are to be heated to a blue heat to assure free flow of lead to bottom of holes.

DESIGNED BY	DATE	DATE
CHECKED BY	DATE	DATE
TRACED BY	DATE	DATE

**ANCHOR BOLT PLAN**

Bridge over Cumberland River Sheet 15

**COMMONWEALTH OF KENTUCKY**  
 DEPARTMENT OF HIGHWAYS  
 FRANKFORT  
 KENTUCKY

**CUMBERLAND**  
 BURKESVILLE-TENNESSEE STATE LINE

ROAD PROJECT NO.  
 STATION 184+91.187

BRIDGE NUMBER  
 DRAWING NO. 12967

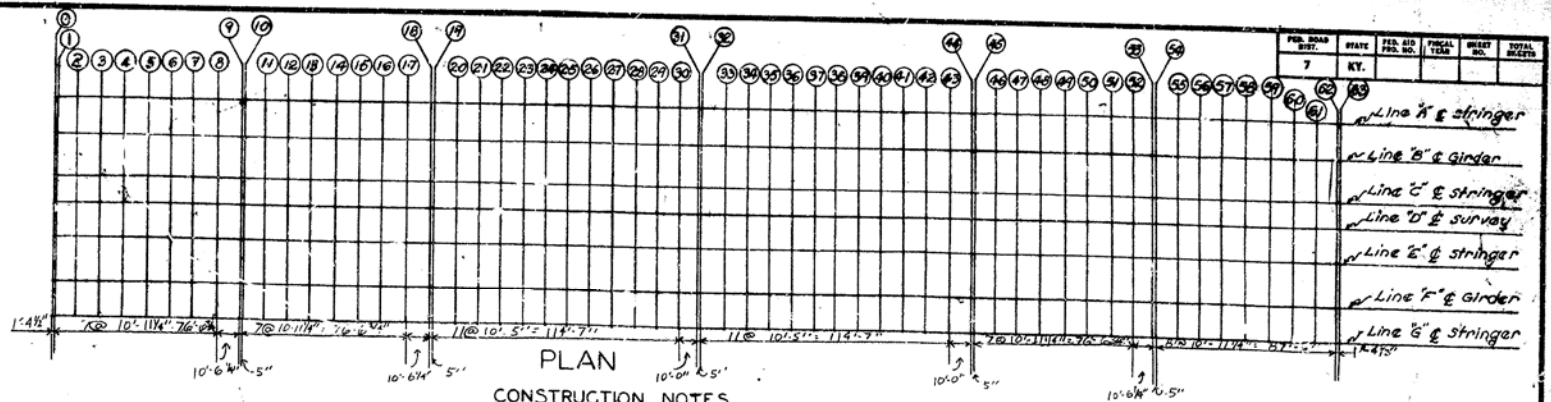
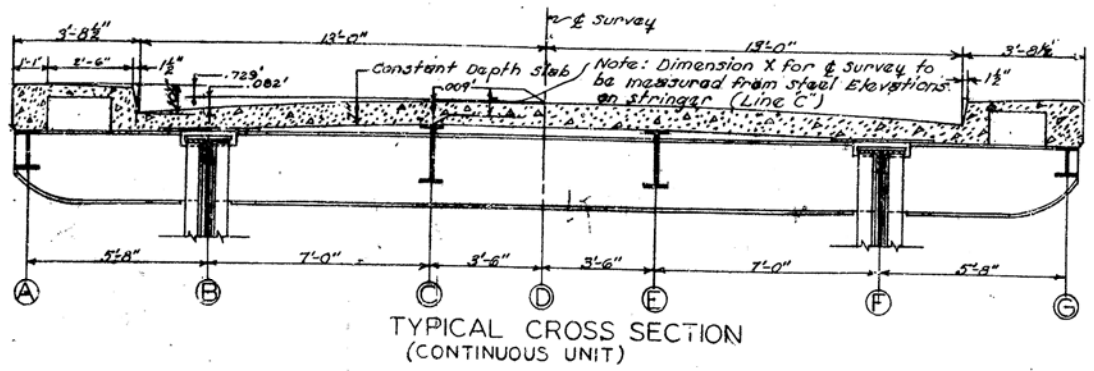
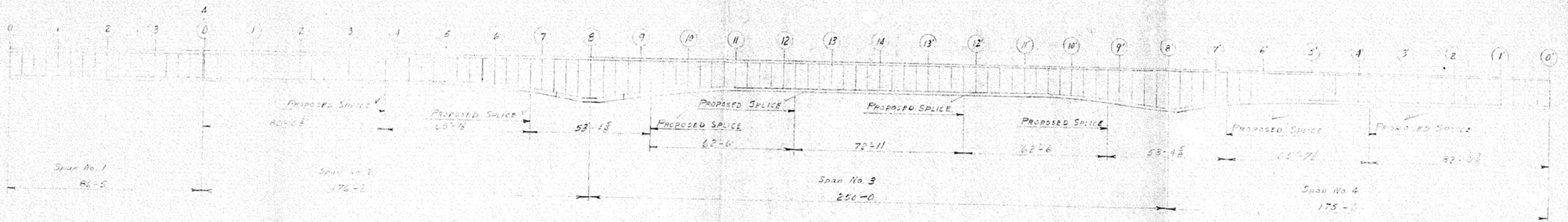


TABLE OF ELEVATIONS FOR SETTING SLAB FORMS FOR CONTINUOUS UNIT (175'-250'-175')

SECTION	STATION	LINE A		LINE B		LINE C		LINE D		LINE E		LINE F		LINE G	
		CONST. EL.	STEEL EL.	CONST. EL.	STEEL EL.	CONST. EL.	STEEL EL.	CONST. EL.	STEEL EL.	CONST. EL.	STEEL EL.	CONST. EL.	STEEL EL.	CONST. EL.	STEEL EL.
1	597.201	597.750	598.390	597.810	598.450	597.810	598.450	597.810	598.450	597.810	598.450	597.810	598.450	597.810	598.450
2	599.229	760.145	598.418	815.603	598.418	815.603	598.418	815.603	598.418	815.603	598.418	815.603	598.418	815.603	598.418
3	599.466	598.000	598.655	850.805	598.655	850.805	598.655	850.805	598.655	850.805	598.655	850.805	598.655	850.805	598.655
4	599.692	255.143	598.881	298.283	598.881	298.283	598.881	298.283	598.881	298.283	598.881	298.283	598.881	298.283	598.881
5	599.908	470.143	599.077	320.777	599.077	320.777	599.077	320.777	599.077	320.777	599.077	320.777	599.077	320.777	599.077
6	600.110	600.145	599.299	708.591	599.299	708.591	599.299	708.591	599.299	708.591	599.299	708.591	599.299	708.591	599.299
7	600.300	845.145	599.489	740.749	599.489	740.749	599.489	740.749	599.489	740.749	599.489	740.749	599.489	740.749	599.489
8	600.476	522.040	599.645	599.085	599.645	599.085	599.645	599.085	599.645	599.085	599.645	599.085	599.645	599.085	599.645
9	600.640	195.144	599.829	100.722	599.829	100.722	599.829	100.722	599.829	100.722	599.829	100.722	599.829	100.722	599.829
10	600.784	360.142	599.973	222.541	599.973	222.541	599.973	222.541	599.973	222.541	599.973	222.541	599.973	222.541	599.973
11	600.921	510.142	600.119	368.751	600.119	368.751	600.119	368.751	600.119	368.751	600.119	368.751	600.119	368.751	600.119
12	601.058	655.140	600.247	470.547	600.247	470.547	600.247	470.547	600.247	470.547	600.247	470.547	600.247	470.547	600.247
13	601.177	770.140	600.366	527.739	600.366	527.739	600.366	527.739	600.366	527.739	600.366	527.739	600.366	527.739	600.366
14	601.292	890.140	600.481	547.534	600.481	547.534	600.481	547.534	600.481	547.534	600.481	547.534	600.481	547.534	600.481
15	601.402	980.140	600.591	544.681	600.591	544.681	600.591	544.681	600.591	544.681	600.591	544.681	600.591	544.681	600.591
16	601.507	1000.075	600.696	584.684	600.696	584.684	600.696	584.684	600.696	584.684	600.696	584.684	600.696	584.684	600.696
17	601.610	1190.142	600.799	699.699	600.799	699.699	600.799	699.699	600.799	699.699	600.799	699.699	600.799	699.699	600.799
18	601.704	1280.142	600.893	799.893	600.893	799.893	600.893	799.893	600.893	799.893	600.893	799.893	600.893	799.893	600.893
19	601.788	1380.142	600.987	905.987	600.987	905.987	600.987	905.987	600.987	905.987	600.987	905.987	600.987	905.987	600.987
20	601.877	1437.140	600.986	955.986	600.986	955.986	600.986	955.986	600.986	955.986	600.986	955.986	600.986	955.986	600.986
21	601.883	1415.146	600.972	943.972	600.972	943.972	600.972	943.972	600.972	943.972	600.972	943.972	600.972	943.972	600.972
22	601.906	1455.151	600.955	938.955	600.955	938.955	600.955	938.955	600.955	938.955	600.955	938.955	600.955	938.955	600.955
23	601.946	1520.152	600.925	890.925	600.925	890.925	600.925	890.925	600.925	890.925	600.925	890.925	600.925	890.925	600.925
24	601.989	1580.153	600.908	860.908	600.908	860.908	600.908	860.908	600.908	860.908	600.908	860.908	600.908	860.908	600.908
25	602.027	1655.154	600.893	810.893	600.893	810.893	600.893	810.893	600.893	810.893	600.893	810.893	600.893	810.893	600.893
26	602.079	1710.155	600.878	770.878	600.878	770.878	600.878	770.878	600.878	770.878	600.878	770.878	600.878	770.878	600.878
27	602.100	1765.155	600.863	730.863	600.863	730.863	600.863	730.863	600.863	730.863	600.863	730.863	600.863	730.863	600.863
28	602.109	1820.155	600.848	690.848	600.848	690.848	600.848	690.848	600.848	690.848	600.848	690.848	600.848	690.848	600.848
29	602.139	1875.154	600.833	650.833	600.833	650.833	600.833	650.833	600.833	650.833	600.833	650.833	600.833	650.833	600.833
30	602.169	1930.154	600.818	610.818	600.818	610.818	600.818	610.818	600.818	610.818	600.818	610.818	600.818	610.818	600.818
31	602.186	1985.154	600.803	570.803	600.803	570.803	600.803	570.803	600.803	570.803	600.803	570.803	600.803	570.803	600.803
32	602.200	2040.154	600.788	530.788	600.788	530.788	600.788	530.788	600.788	530.788	600.788	530.788	600.788	530.788	600.788
33	602.209	2095.154	600.773	490.773	600.773	490.773	600.773	490.773	600.773	490.773	600.773	490.773	600.773	490.773	600.773
34	602.239	2150.153	600.758	450.758	600.758	450.758	600.758	450.758	600.758	450.758	600.758	450.758	600.758	450.758	600.758
35	602.265	2205.153	600.743	410.743	600.743	410.743	600.743	410.743	600.743	410.743	600.743	410.743	600.743	410.743	600.743
36	602.291	2260.153	600.728	370.728	600.728	370.728	600.728	370.728	600.728	370.728	600.728	370.728	600.728	370.728	600.728
37	602.317	2315.153	600.713	330.713	600.713	330.713	600.713	330.713	600.713	330.713	600.713	330.713	600.713	330.713	600.713
38	602.326	2370.153	600.698	290.698	600.698	290.698	600.698	290.698	600.698	290.698	600.698	290.698	600.698	290.698	600.698
39	602.369	2425.153	600.683	250.683	600.683	250.683	600.683	250.683	600.683	250.683	600.683	250.683	600.683	250.683	600.683
40	602.391	2480.153	600.668	210.668	600.668	210.668	600.668	210.668	600.668	210.668	600.668	210.668	600.668	210.668	600.668
41	602.372	2535.153	600.653	170.653	600.653	170.653	600.653	170.653	600.653	170.653	600.653	170.653	600.653	170.653	600.653
42	602.386	2590.153	600.638	130.638	600.638	130.638	600.638	130.638	600.638	130.638	600.638	130.638	600.638	130.638	600.638
43	602.369	2645.153	600.623	90.623	600.623	90.623	600.623	90.623	600.623	90.623	600.623	90.623	600.623	90.623	600.623
44	602.339	2700.153	600.608	50.608	600.608	50.608	600.608	50.608	600.608	50.608	600.608	50.608	600.608	50.608	600.608
45	602.249	2755.153	600.593	10.593	600.593	10.593	600.593	10.593	600.593	10.593	600.593	10.593	600.593	10.593	600.593
46	602.189	2810.153	600.578	0.578	600.578	0.578	600.578	0.578	600.578	0.578	600.578	0.578	600.578	0.578	600.578
47	602.119	2865.153	600.563	0.563	600.563	0.563	600.563	0.563	600.563	0.563	600.563	0.563	600.563	0.563	600.563
48	602.046	2920.153	600.548	0.548	600.548	0.548	600.548	0.548	600.548	0.548	600.548	0.548	600.548	0.548	600.548
49	601.986	2975.153	600.533	0.533	600.533	0.533	600.533	0.533	600.533	0.533	600.533	0.533	600.533	0.533	600.533
50	601.926	3030.153	600.518	0.518	600.518	0.518	600.518	0.518	600.518	0.518	600.518	0.518	600.518	0.518	600.518
51	601.883	3085.153	600.503	0.503	600.503	0.503	600.503	0.503	600.503	0.503	600.503	0.503	600.503	0.503	600.503
52	601.827	3140.153	600.488	0.488	600.488	0.488	600.488	0.488	600.488	0.488	600.488	0.488	600.488	0.488	600.488
53	601.777	3195.153	600.473	0.473	600.473	0.473	600.473	0.473	600.473	0.473	600.473	0.473	600.473	0.473	600.473
54	601.712	3250.153	600.458	0.458	600.458	0.458	600.458	0.458	600.458	0.458	600.458	0.458	600.458	0.458	600.458
55	601.648	3305.153	600.443	0.443	600.443	0.443	600.443	0.443	600.443	0.443	600.443	0.443	600.443	0.443	600.443
56	601.583	3360.153	600.428	0.428	600.428	0.428	600.428	0.428	600.428	0.428	600.428	0.428	600.428	0.428	600.428
57	601.517	3415.153	600.413	0.413	600.413	0.413	600.413	0.413							





NOTE: These revisions to be at Contractor's expense with no additional cost to the Kentucky Department of Highways.

Sheet ok except as noted  
 F.M.E. Feb. 17, 1960

Dwg. No. 12967

# 12967

OFFICE COPY

## SHE 1 OF 2

Project No 5 234 (31)  
 BRIDGE OVER CUMBERLAND RIVER  
 CUMBERLAND COUNTY  
 KENTUCKY

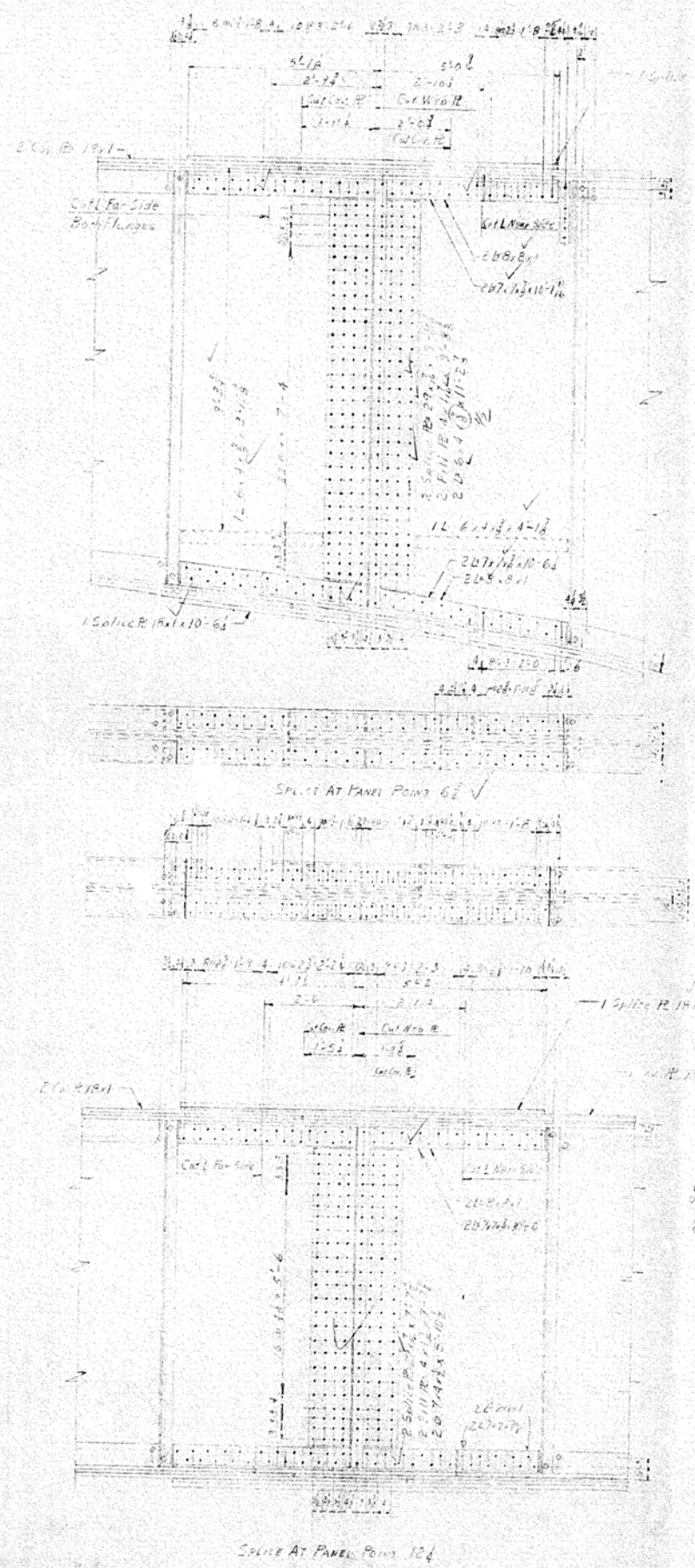
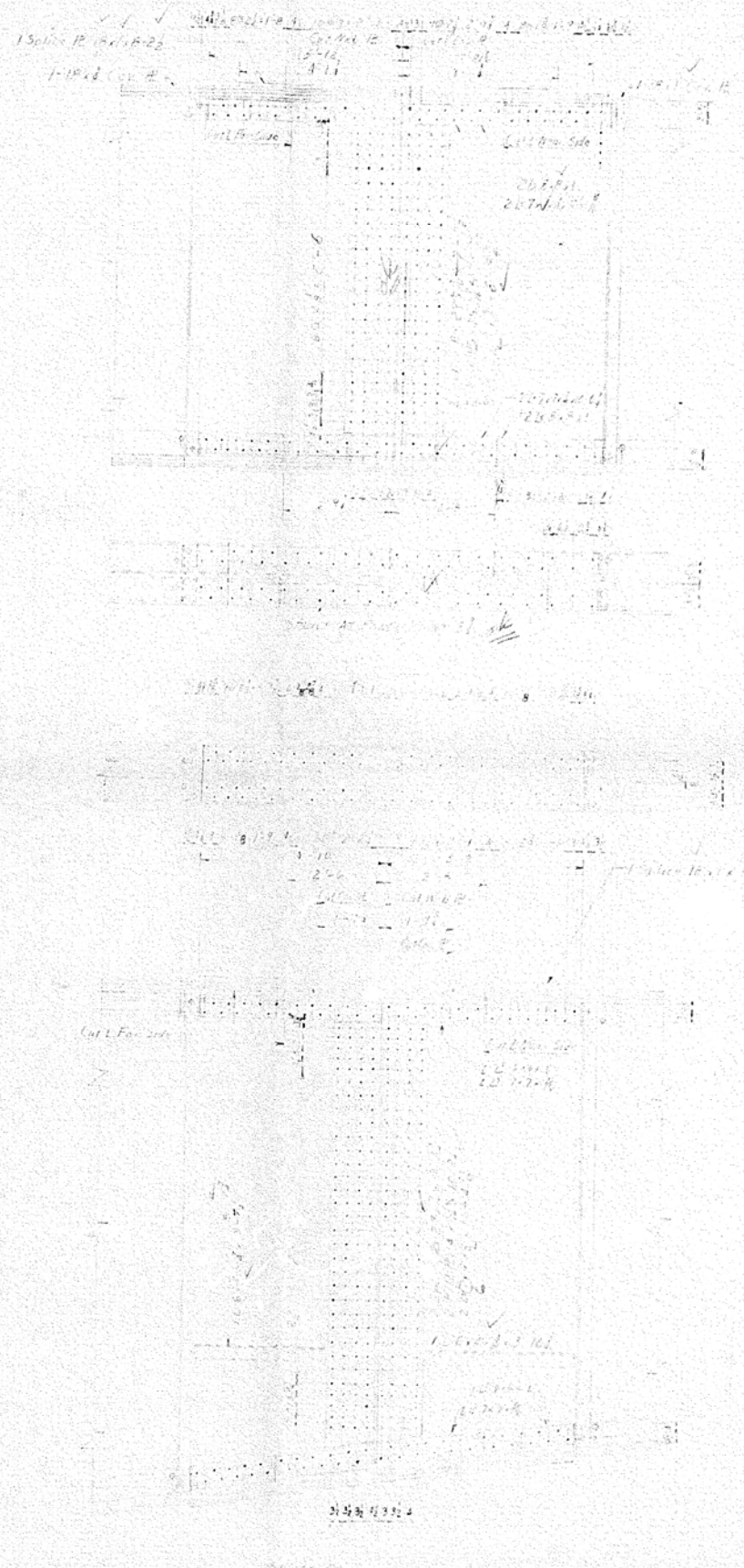
LOCATION OF PROPOSED SPLICES

THE MT. VERNON BRIDGE CO.  
 MT. VERNON, OHIO

In Charge of Job Date 1-21-60  
 Made by C.L.C. Check by

Cont. No.   SHEET 01

BRIDGE



Shut ok except as noted  
 JMB, Feb 17, 1960

2

OFFICE COPY

Project No 234(3)  
 Bridge for Commerce River  
 Cambridge, Ohio, Kentucky

THE MT. KILPATRICK BRIDGE CO.  
 1471 W. 12th St., OHIO

Made by C.L.S. 2/26/60

Sheet D2

BRIDGE