

# KENTUCKY DEPARTMENT OF HIGHWAYS

## LAUREL COUNTY

### DANIEL BOONE PARKWAY

### DANIEL BOONE PARKWAY OVER LICK CREEK RD.

PLANS PREPARED BY:  
 KROBOTH ENGRS. INC.  
 CONSULTING ENGINEERS

REFERENCE AND ESTIMATE OF QUANTITIES															
Location	Item	Sheet No.	Concrete Class # Cu. Yds.	Concrete Class # Cu. Yds.	Steel Reinforce- ment (Lbs)	Structural Steel (Lump Sum)	High Strength Reinforce- ment (Lb. Ft.)	Protective Coating Linseed Oil (Gals.)	Styrene- Butadiene (Gals.)	Structure Excavation Comm. Cu. Yds.	S. Rock Cu. Yds.	Piling (2 B.P. 55) Furnish Lin. Ft.	Drive Lin. Ft.	Crushed Ag. Stone Protective (Sq. Yds.)	End Bent Backfill (Cu. Yds.)
Title & Quantities		1													
Notes		2													
Layout		3													
End Bent 1		4 & 5	50.2	15.5	6432		8	1	110			480	480	250	50
Pile Record		5													
Pier 1		6	62.5		12766			3	115	20					
Pier 2		6	54.0		11260			3	135	30					
Abutment 2		7 & 8	58.2	15.7	8964		8	1	175	35					50
Spans 1, 2, 3		9, 10 & 11		283.1	104,534			600	6						
High Strength Reinforce- ment		3, 6, 11 & 12				284									
Construction Elevations		12 & 13													
Soundings		14													
Sub-total Substructure			224.9	81.2	37,452		16	8	535	85		480	480	250	100
Sub-total Superstructure				283.1	104,534	①	284	600	6						
Total			224.9	314.3	141,986	①	284	616	14	535	85	480	480	250	100

① Approximate Weight of Structural Steel = 18,700\*

**SPECIAL PROVISIONS:**

- \*8A - Linseed Oil Protective Coating
- \*12 - Joint Sealing Compound
- \*30-B - Membrane Curing of Concrete Structures
- \*35-B - Class "AA" Concrete
- \*77-B - Styrene-Butadiene Protective Coating
- \*79 - Concrete Bridge Deck Finishing Machine
- \*80 - Blast Cleaning & Paint Structural Steel

**REFERENCES:**

(Standard Drawings listed below are the Current Edition and are to be used with these Plans)

HIGC AE-1C 17.40 ED 3C  
 P212A SF. 2A SS. 2B

**BILL OF INCIDENTAL MATERIAL**

Item	No.	Description	Location
Joint Sealing Compound	2	1" x 3/8" x 47.3'	Exp. Dorn @ EB1 & Abut. 2
Four Bolt Insert Assembly	4	See Roadway Plans	End of Wings
1/2" Cork Exp. Mat.	4	1/4" x 6" x 6' x 2'	Top of Keys EB1 & Abut. 2

Daniel Boone Parkway over Lick Creek at Steel Mill

**COMMONWEALTH OF KENTUCKY**

DEPARTMENT OF HIGHWAYS

FRANKFORT

COUNTY OF

**LAUREL**

DANIEL BOONE PARKWAY

ROAD

STATION: 11+00 TO 11+50 PROJECT NO. 4143

SCALE NUMBER: 1" = 40' DRAWING NO. 1774B

## GENERAL NOTES

**SPECIFICATIONS:**

KENTUCKY DEPARTMENT OF HIGHWAYS STANDARD SPECIFICATIONS FOR ROAD AND BRIDGE CONSTRUCTION, CURRENT EDITION WITH REVISIONS, SHALL APPLY TO THIS PROJECT.

**DESIGN LOAD:**

THIS BRIDGE IS DESIGNED FOR HS 20-44 LIVE LOAD AS SPECIFIED IN 1965 AASHTO SPECIFICATIONS OR ALTERNATE LOADING OF TWO 24-KIP AXLES SPACED FOUR FEET APART, WHICHEVER PRODUCES THE GREATER STRESS. THIS BRIDGE IS DESIGNED FOR A WIND LOAD BASED ON A WIND VELOCITY OF 84 m.p.h.

**DESIGN STRESSES:**

FOR CLASS "AA" REINFORCED CONCRETE:

f <sub>s</sub> -- 20,000 PSI	u -- 300 PSI FOR SUMMATION OF PERIMETERS
f <sub>c</sub> -- 1,000 PSI (1,200 PSI FOR SLABS)	f'c -- 4,000 PSI
u -- 200 PSI FOR EMBEDMENT	u -- 8

FOR CLASS "A" REINFORCED CONCRETE:

f <sub>s</sub> -- 20,000 PSI	u -- 300 PSI FOR SUMMATION OF PERIMETERS
f <sub>c</sub> -- 1,200 PSI	f'c -- 3,000 PSI
u -- 200 PSI FOR EMBEDMENT	u -- 10

**FOUNDATION PRESSURE:**

FOUNDATIONS ARE DESIGNED FOR A MAXIMUM PRESSURE OF 8000 PSF FOR PIER 2 AND ABUTMENT 2 AND A MAXIMUM PRESSURE OF 8000 PSF FOR PIER 1. END BENT PILES ARE DESIGNED FOR A MAXIMUM AXIAL LOAD OF 80.0 TONS PER PILE AND A MAXIMUM HORIZONTAL SHEAR OF 6 TONS PER PILE. THESE MAXIMUMS ARE FOR GROUP 1 LOADS WITH INCREASES ALLOWED FOR OTHER LOADING GROUPS.

**CONCRETE:**

CLASS "AA" CONCRETE IS TO BE USED THROUGHOUT THE SUPERSTRUCTURE EXCEPT IN THE CONCRETE HANDRAIL, AND IS TO BE USED IN THE PORTIONS OF THE SUBSTRUCTURE ABOVE THE BEARING SEATS. CLASS "A" CONCRETE IS TO BE USED IN THE SUBSTRUCTURE BELOW THE BEARING SEATS.

**REINFORCEMENT:**

DIMENSIONS SHOWN FROM THE FACE OF CONCRETE TO BARS ARE CLEAR DISTANCES. SPACING OF BARS IS FROM CENTER TO CENTER OF BARS.

**BEVELED EDGES:**

ALL EXPOSED EDGES SHALL BE BEVELED 7/8" UNLESS OTHERWISE SHOWN.

**BILL OF INCIDENTAL MATERIAL:**

THE QUANTITIES SHOWN IN THE BILL OF INCIDENTAL MATERIAL ARE APPROXIMATE ONLY AND THE CONTRACTOR IS RESPONSIBLE FOR FURNISHING ENOUGH MATERIAL TO COMPLETE THE WORK IN ACCORDANCE WITH THE PLANS AND SPECIFICATIONS. THE COST OF THESE ITEMS IS TO BE INCLUDED IN THE UNIT PRICE BID FOR CLASS "AA" CONCRETE.

**PREMOILED CORN EXPANSION JOINT MATERIAL AND FABRIC BEARING PADS:**

THE COST OF THESE ITEMS ARE TO BE INCLUDED IN THE UNIT PRICE BID FOR CLASS "AA" CONCRETE.

**STRUCTURAL STEEL:**

"LUMP SUM BID" FOR STRUCTURAL STEEL SHALL BE FULL PAYMENT FOR ALL STRUCTURAL STEEL, RIVETS, BOLTS, WASHERS, STEEL PINS, CAST IRON, LEAD PLATES, MOLTEN LEAD, BRONZE PLATES, FLOOR DRAINS, WELDING AND WELDING MATERIALS, PAINT AND ALL LABOR NECESSARY TO ERECT THE STEEL IN ACCORDANCE WITH THE PLANS AND SPECIFICATIONS. THE APPROXIMATE WEIGHT OF STRUCTURAL STEEL SHOWN IN THE ESTIMATE OF QUANTITIES DOES NOT INCLUDE OVERRUN OR WELD MATERIAL.

**PILING: (PILOT BEARING)**

PILING SHALL BE DRIVEN TO REFUSAL OR TO SOLID ROCK. TEST PILES SHALL BE DRIVEN WHERE DESIGNATED ON THE PLANS TO DETERMINE THE LENGTH REQUIRED. ALL TEST PILES SHALL BE ACCURATELY LOCATED SO THAT THEY MAY BE USED IN THE FINISHED STRUCTURE.

**ANCHOR BOLT HOLES:**

HOLES OF DEPTH AND DIMENSIONS SHOWN SHALL BE DRILLED FOR ANCHOR BOLTS OR DOWELS BY THE SUPERSTRUCTURE CONTRACTOR WHO SHALL BE RESPONSIBLE FOR KEEPING HOLES DRY IN FREEZING WEATHER. AFTER BASE PLATES ARE PROPERLY SET AND ANCHOR BOLTS ARE PLACED IN DRILLED HOLES, MOLTEN LEAD SHALL BE POURED IN HOLES AND PACKED UNTIL HOLES ARE COMPLETELY FILLED FLUSH TO TOP OF BASE PLATES. THE COST OF DRILLING ANCHOR BOLT HOLES, FURNISHING LEAD, AND FILLING HOLES WITH MOLTEN LEAD SHALL BE INCIDENTAL TO AND INCLUDED IN THE LUMP SUM BID FOR STRUCTURAL STEEL.

**TAR PAPER:**

TAR PAPER IS TO BE COMMERCIAL GRADE TAR PAPER OR ROOFING FELT APPROXIMATELY 1/16" THICK. THE COST OF THIS ITEM IS TO BE INCLUDED IN THE UNIT PRICE BID FOR CLASS "AA" CONCRETE.

**HANDRAIL:**

THE CONTRACTOR SHALL PROVIDE THROUGHOUT THE PROJECT HIGH STRENGTH ALUMINUM HANDRAIL ACCORDING TO STANDARD DRAWING, H11G, CURRENT EDITION.

**POURING SEQUENCE:**

POUR THE GIRDER STEM IN ONE CONTINUOUS OPERATION IN HORIZONTAL LAYERS FOR EACH GIRDER. POUR ENDWALLS AND DIAPHRAGMS WITH GIRDER STEM BY PROVIDING VERTICAL CONSTRUCTION JOINTS MIDWAY BETWEEN GIRDERS. THE POURING SEQUENCE OF THE SLAB MAY BE CHANGED WITH THE WRITTEN APPROVAL OF THE ENGINEER.

**PROTECTIVE COATING:**

THE PROTECTIVE COATING SHALL BE ACCORDING TO "THE SPECIAL PROVISION NO. 77 FOR STYRENE-BUTADIENE PROTECTIVE COATING".

**CONSTRUCTION IDENTIFICATION:**

THE NAMES OF THE PRIME CONTRACTOR AND THE SUB-CONTRACTOR SHALL BE IMPRINTED IN THE CONCRETE WITH ONE-INCH LETTERS AT A LOCATION DESIGNATED BY THE ENGINEER. THE CONTRACTOR SHALL FURNISH ALL PLANS, EQUIPMENT, AND LABOR NECESSARY TO DO THE WORK FOR WHICH NO DIRECT PAYMENT WILL BE MADE.

**SHOP PLANS:**

THE CONTRACTOR SHALL FURNISH THE DEPARTMENT OF HIGHWAYS WITH COMPLETE SHOP DETAIL PLANS FOR APPROVAL.

**LINSEED OIL**

**PROTECTIVE COATING:**

LINSEED OIL PROTECTIVE COATING SHALL BE APPLIED IN ACCORDANCE WITH THE SPECIAL PROVISION, EXCEPT THAT IT SHALL ONLY BE APPLIED TO THE BRIDGE DECK BETWEEN THE GUTTER LINES AND SHALL NOT BE APPLIED UNTIL AFTER THE STYRENE BUTADIENE PROTECTIVE COATING HAS BEEN APPLIED TO THE CURBS AND PLINTHS.

**PAINT:**

ALL STRUCTURAL STEEL SHALL BE CLEANED AND PAINTED IN ACCORDANCE WITH THE SPECIAL PROVISION FOR BLAST CLEANING AND PAINTING STRUCTURAL STEEL, CURRENT EDITION. THE EXPOSED SURFACES OF EXPANSION DAMS AND ARMORED EDGES, NOT ACCESSIBLE AFTER ERECTION, SHALL BE GIVEN THE THREE FIELD COATS OF PAINT BEFORE ERECTION. THE PINS AND PIN BEARING SURFACES SHALL BE COATED IN THE SHOP WITH A MIXTURE OF WHITE LEAD AND TALLOW IN ACCORDANCE WITH THE SPECIFICATIONS.

**MEMBRANE CURING COMPOUND:**

WHITE PIGMENTED CURING COMPOUND SHALL BE APPLIED TO THE BRIDGE DECK IN ACCORDANCE WITH THE SPECIAL PROVISION, EXCEPT THAT THE MEMBRANE COMPOUND USED SHALL HAVE A RESINOUS BASE.

**MATERIALS:**

ASTM SPECIFICATIONS CURRENT EDITION AS DESIGNATED BELOW SHALL GOVERN MATERIALS FINISHED:

- A36-G7 STRUCTURAL STEEL FOR ARMORED EDGES, EXPANSION DAMS, SHOES AND ROCKERS
- A108-G17 PINTLES (GRADES 1016 TO 1030 INCLUSIVE)
- A23-G4T MILD STEEL ELECTRODES FOR MANUAL SHIELDED METAL ARCH WELDING.
- B29-G6 LEAD PLATES AND MOLTEN LEAD.

NOTES

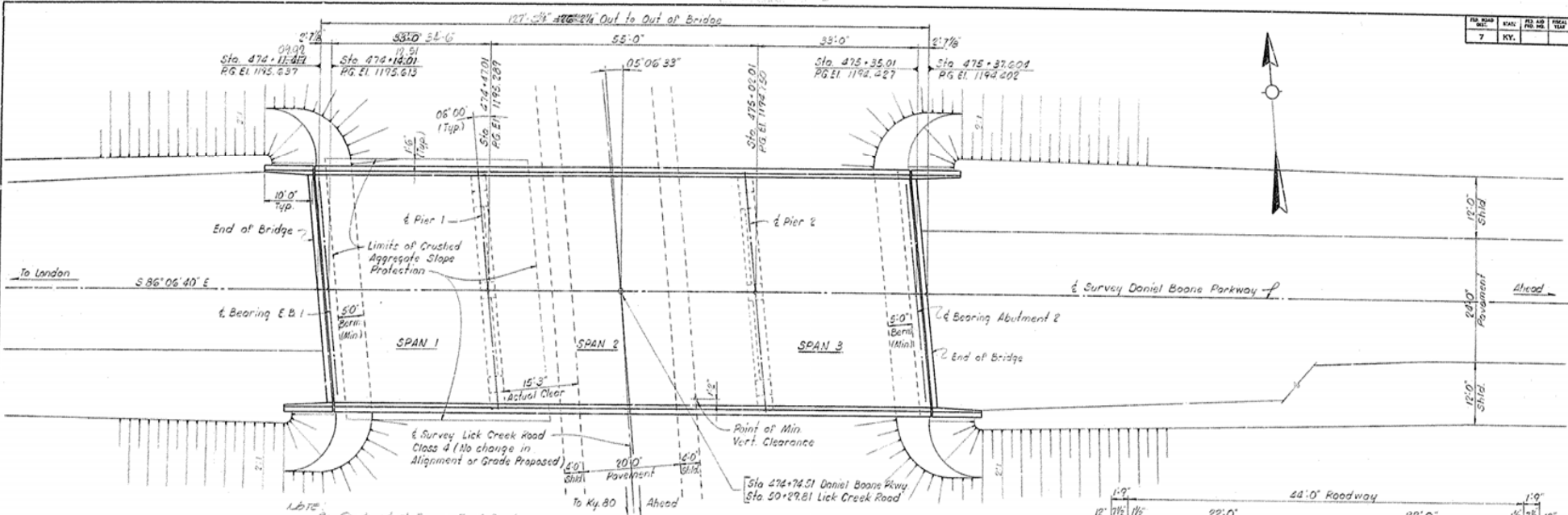
Daniel Boone Parkway over Lick Creek Rd. Sheet 2

**COMMONWEALTH OF KENTUCKY**  
 DEPARTMENT OF HIGHWAYS  
 FRANKFORT  
 COUNTY OF  
**LAUREL**  
 DANIEL BOONE PARKWAY  
 ROAD

STATION 474+74.51	PROJECT NO.
BRIDGE NUMBER	17748

DRAWN BY: J.P. DATE: 11/15/67  
 CHECKED BY: J.P. DATE: 11/15/67  
 APPROVED BY: J.P. DATE: 11/15/67  
 MATERIALS BY: J.P. DATE: 11/15/67

FILE NO.	DATE	BY	CHKD.	APP'D.	SCALE
7	KY.				



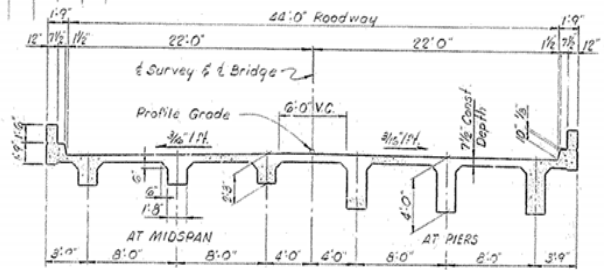
**PLAN**

NOTE: By Contractor's Error End Bent not fully flared out wrong, resulting in Span 1 being 1 1/2 ft longer than Original Design. Extra Steel & Character of Contractor's Expense

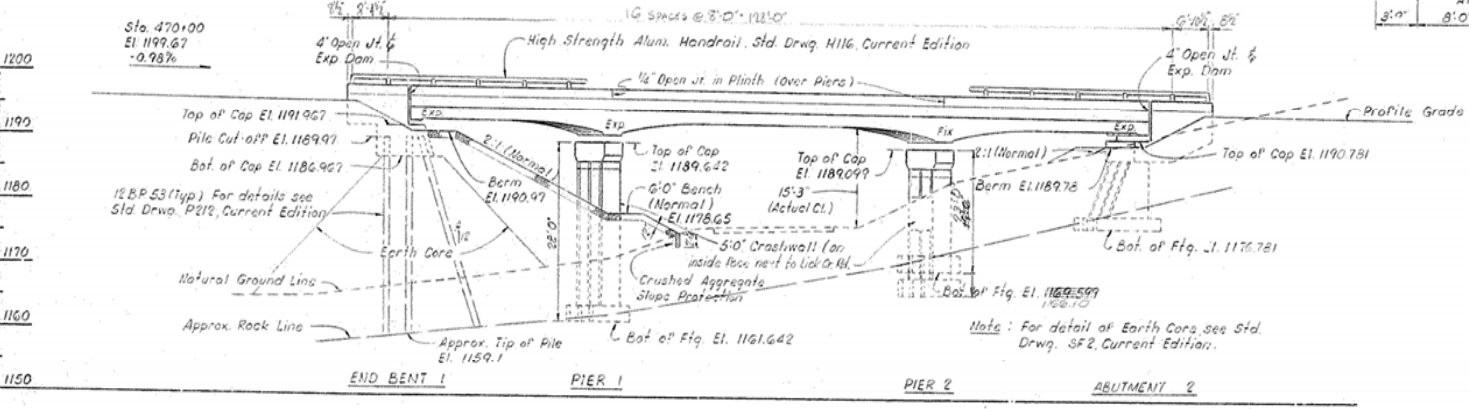
33'-55'-33" Continuous R.C.D.G.  
4' Roadway 9' Curbs  
32' Shoulders at Bridge

HS 20-44 Loading  
06' 00" Skew Left  
2:1 Slopes

Note:  
Attach guardrails to all End Bent wings  
For details see the Guardrail Connector to Bridge Wings drawing which is included with the Roadway Plans.



TYPICAL SECTION THRU DECK



ELEVATION

Note: For detail of Earth Core, see Std. Drwg. SP2, Current Edition.

Daniel Boone Parkway over Lick Creek Rd. Sheet 3

**COMMONWEALTH OF KENTUCKY**  
DEPARTMENT OF HIGHWAYS  
FRANKFORT  
COUNTY OF  
**LAUREL**  
DANIEL BOONE PARKWAY  
ROAD

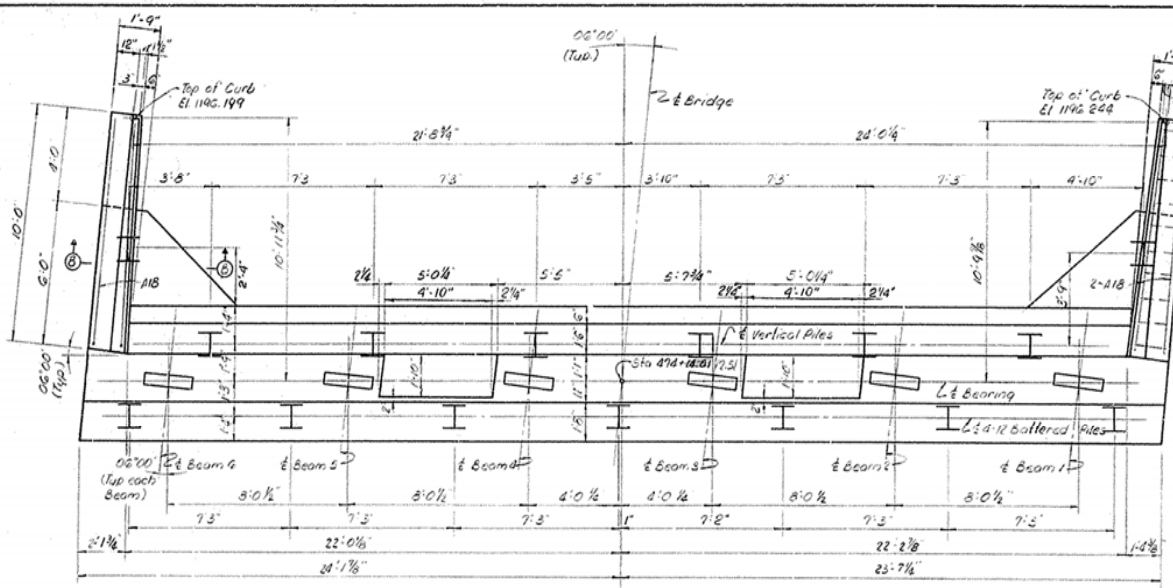
STATION 474+12.51 PROJECT NO. 17748

BRIDGE NUMBER DRAWING NO. DECK

LAYOUT

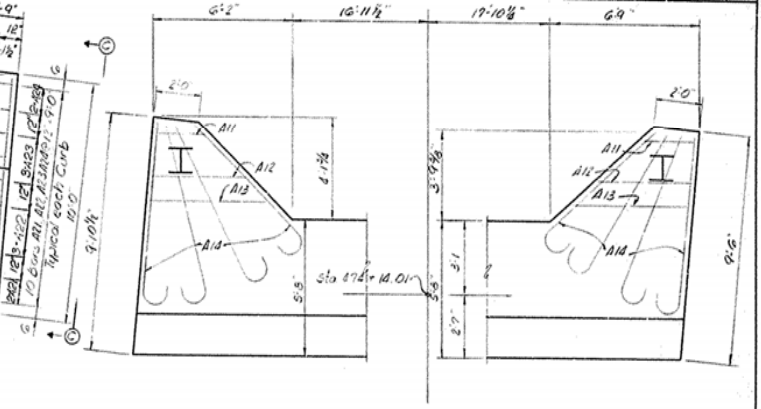


NO.	DATE	BY	CHKD.	APP'D.	REVISION
7					

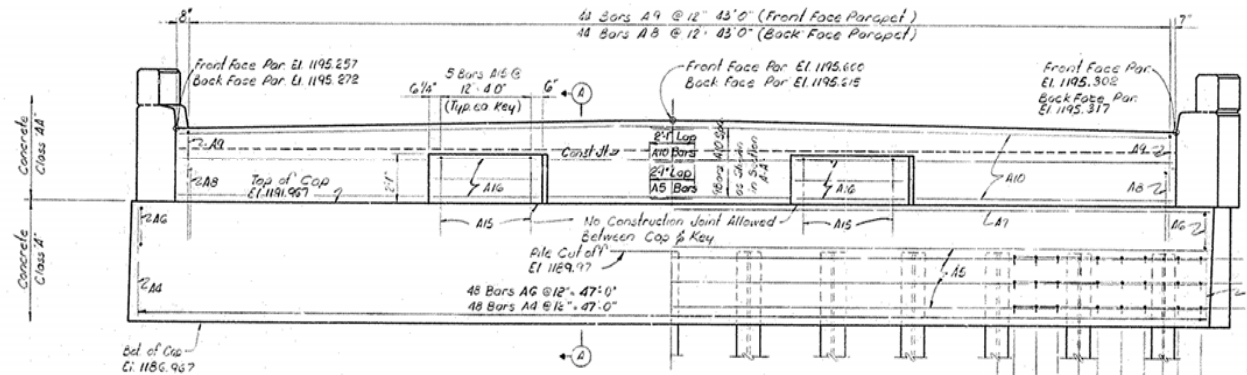


PLAN OF CAP

NOTE  
 By Contractors Error End Bent No. 1 Was  
 Stated Wrong During Construction, Span 1  
 Is 13.1 Bays Longer Than Original Design. Extra  
 Concrete & Steel Required is At Contractors  
 Expense

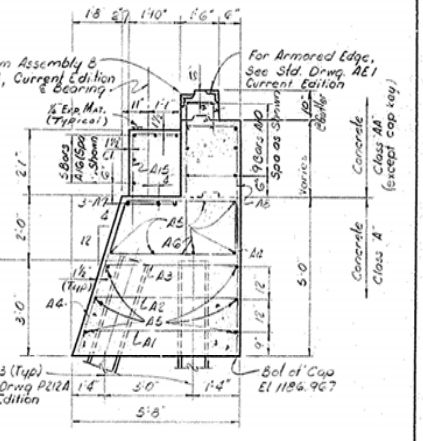


WING CAP PLAN

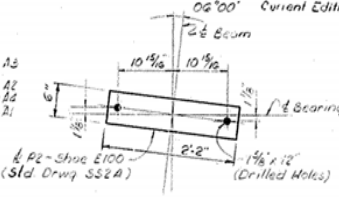


ELEVATION

Note:  
 Expansion Dam Assembly &  
 See Std. Drwg. ED 3, Current Edition  
 Top of Cap bars are to  
 be accurately located in  
 accordance with the plane  
 so they will not interfere  
 with the drilling of the  
 Anchor Bolt Holes.



SECTION A-A



ANCHOR BOLT LAYOUT

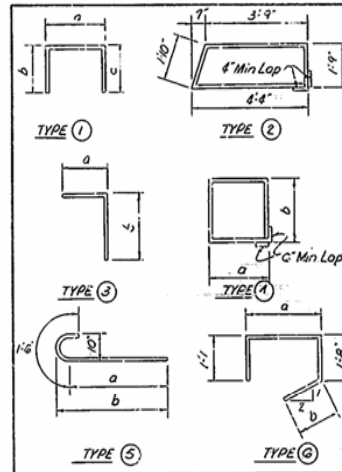
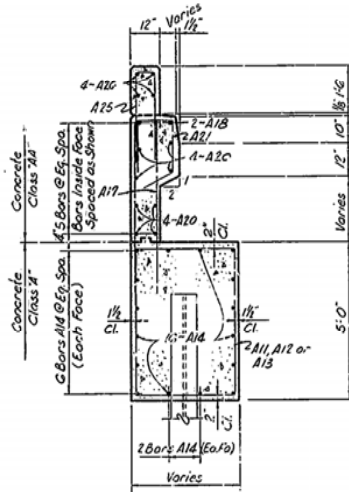
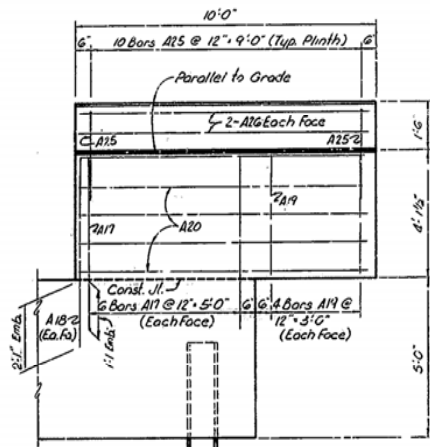
END BENT 1

Daniel Boone Parkway over Lick Creek Rd. Sheet 4

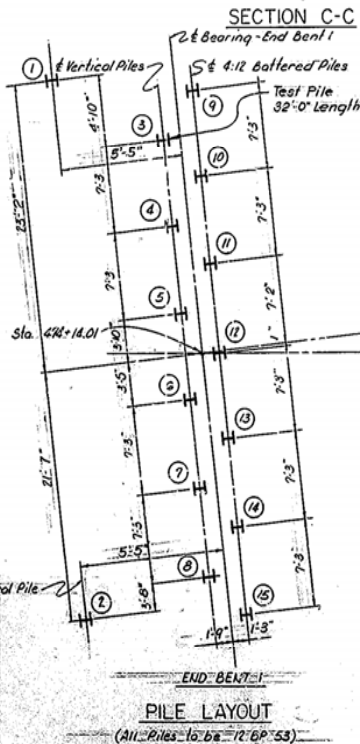
**COMMONWEALTH OF KENTUCKY**  
 DEPARTMENT OF HIGHWAYS  
 FRANKFORT  
 COUNTY OF  
 LAUREL  
 DANIEL BOONE PARKWAY  
 ROAD

STATION 474.74.51 PROJECT NO. 17743





MARK	TYPE	NUMBER	LENGTH FL In.	LOCATION	BILL OF REINFORCEMENT							
					a	b	c	d	e	f		
A1	(1)	40	#4 5 8	Cap	5	2	0	4	0	4		
A2	(1)	40	#4 5 4	"	4	10	0	4	0	4		
A3	(1)	40	#4 5 0	"	4	6	0	4	0	4		
A4	Str	96	#4 4 8	"								
A5	"	24	#5 2 4 9	"								
A6	(2)	48	#4 12 1	"								
A7	Str	3	#8 4 6 6	"								
A8	(3)	44	#4 5 1	Parapet	1	8	3	3				
A9	(1)	44	#4 6 8	"	1	3	3	11	1	6		
A10	Str	18	#5 23 6	"								
A11	(4)	2	#4 14 1	Wing Cap	2	0	4	8				
A12	(4)	2	#4 16 5	"	4	2	4	8				
A13	(4)	2	#4 20 1	"	5	2	4	8				
A14	(5)	32	#4 8 7	"	7	1	7	4				
A15	(3)	10	#4 5 11	Key	2	10	3	2				
A16	Str	10	#4 4 8	"								
A17	"	24	#6 5 1	Wing								
A18	(3)	4	#8 15 7	"	9	8	6	1				
A19	Str	16	#4 3 10	"								
A20	"	16	#4 9 8	"								
A21	(6)	4	#4 4 11	Curb	1	5	1	1				
A22	(6)	6	#4 4 9	"	1	2	1	0				
A23	(6)	6	#4 4 6	"	1	0	0	11				
A24	(6)	4	#4 4 4	"	0	11	0	10				
A25	(1)	20	#4 5 4	Plinth	8	2	5	2	5			
A26	Str	8	#6 9 8	"								



**NOTE:**  
 THIS PILE RECORD DOES NOT REPLACE OTHER RECORDS OF PILES REQUIRED TO BE KEPT AND SUBMITTED BY THE RESIDENT ENGINEER. AFTER ALL PILES HAVE BEEN DRIVEN THE RESIDENT ENGINEER SHALL RECORD THE TIP OF PILE ELEVATION AS DRIVEN, THE LENGTH OF PILE IN PLACE, THE CALCULATED BEARING CAPACITY OF EACH PILE, AND SHALL RETURN ONE BLUE PRINT COPY OF THIS SHEET WITH THIS DATA TO THE DIVISION OF BRIDGES SO THAT THE DATA MAY BE RECORDED ON THE ORIGINAL PLANS. LENGTHS OF PILES IN PLACE SHOWN HEREON ARE THE ACTUAL LENGTHS OF PILES IN THE FINISHED STRUCTURE BELOW CUT-OFF ELEVATION AND ARE NOT NECESSARILY PAY ITEMS.

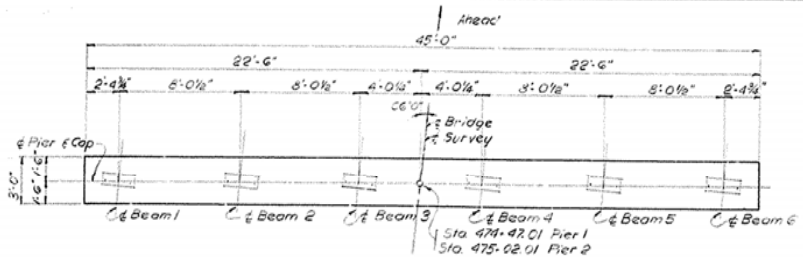
PILE RECORD			
END BENT 1			
PILE NO.	CUT-OFF ELEVATION	TIP OF PILE ELEVATION	LENGTH OF PILE IN PLACE
1	1189.97		
2			
3			
4			
5			
6			
7			
8			
9			
10			
11			
12			
13			
14			
15			

ESTIMATE OF QUANTITIES	
Item	Location
Concrete, Class 'A' (Cu Yds)	50.2
Concrete, Class 'AA' (Cu Yds)	15.5
Steel Reinforcement (Lbs)	4432

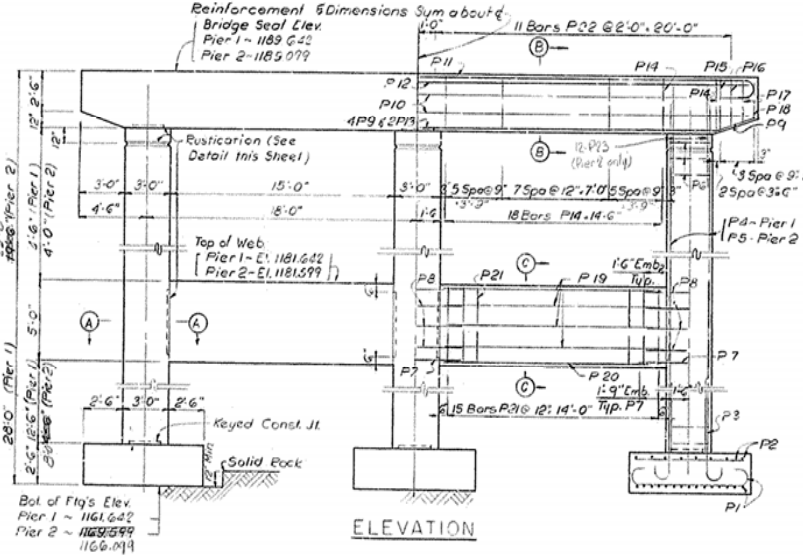
David Boone Parkway over Lick Creek Rd. Sbd. 5

**COMMONWEALTH OF KENTUCKY**  
 DEPARTMENT OF HIGHWAYS  
 FRANKFORT  
 COUNTY OF  
**LAUREL**  
 DANIEL BOONE PARKWAY  
 ROAD  
 STATION 174+51 PROJECT NO. 17748

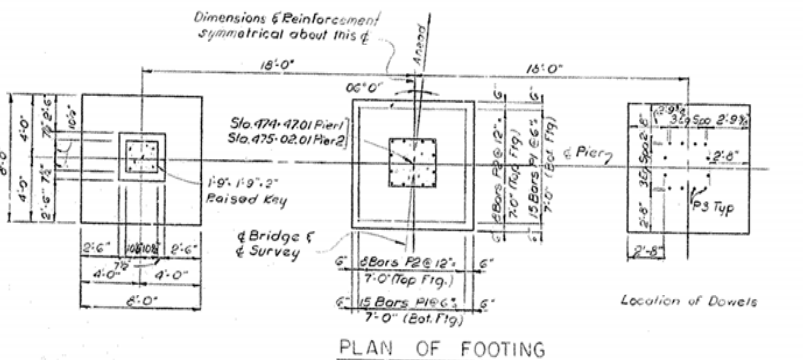
PILE RECORD 8  
 END BENT 1



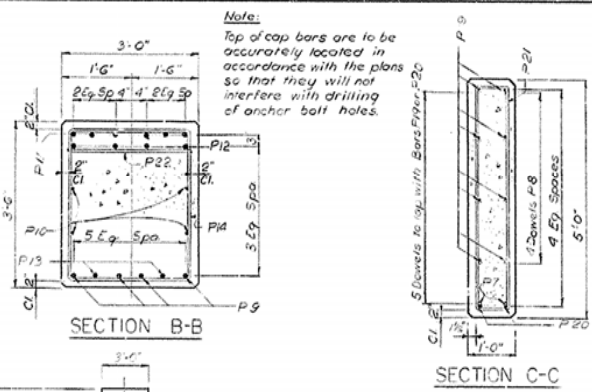
PLAN OF CAP



ELEVATION

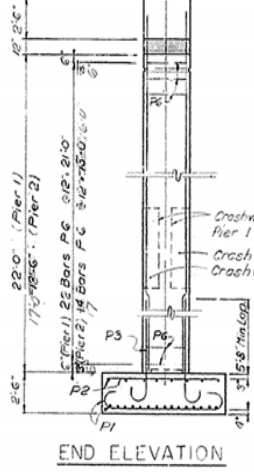


PLAN OF FOOTING

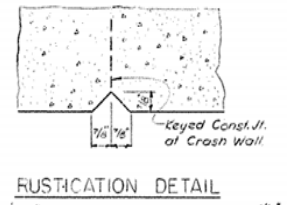


SECTION B-B

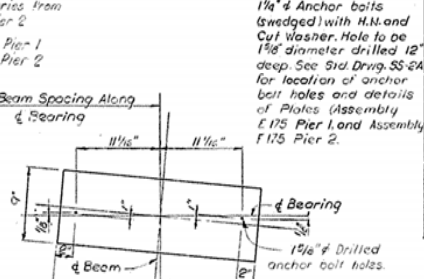
SECTION C-C



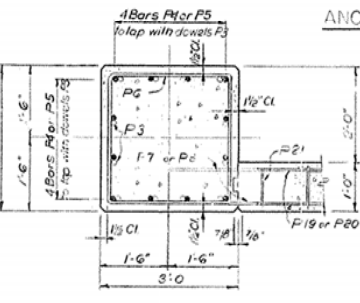
END ELEVATION



RUSTICATION DETAIL

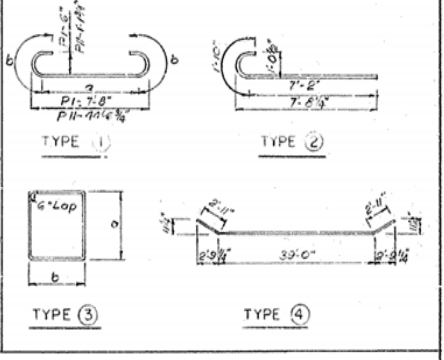


ANCHOR BOLT LAYOUT



SECTION A-A

Pier	Type	Number	Bar	Length	Location	Pier 1		Pier 2	
						Ft	In	Ft	In
P1	①	90	90	6	9	0	7	2	0
P2	Str	48	48	5	7	8			
P3	②	36	36	10	9	0			
P4	Str	36		10	24	10			
P5	Str	36		10	15	4			
P6	③	66	488	4	11	9	2	9	2
P7	Str	8	8	6	3	3			
P8	④	32	32	4	3	0			
P9	⑤	4	4	11	44	10			
P10	Str	4	4	11	44	8			
P11	⑥	6	6	11	47	7	43	5	2
P12	Str	4	4	11	44	8			
P13	⑦	2	2	11	39	0			
P14	⑧	32	32	12	8		3	2	2
P15	⑨	2	2	11	11		3	0	2
P16	⑩	2	2	11	5		2	6	8
P17	⑪	2	2	11	10		2	6	2
P18	⑫	2	2	11	5		2	3	2
P19	Str	16	16	14	6	Crash Wall			
P20	⑬	4	4	14	6				
P21	⑭	30	30	11	7		4	2	0
P22	Str	22	22	4	8	Cap			
P23	Str	36	36	7	9	Cap - Pier 2			



ESTIMATE OF QUANTITIES		
Item	Pier 1	Pier 2
Concrete, Class 'A' (Cu Yds)	68.5	540.575
Steel Reinforcement (Lbs.)	12766	71531

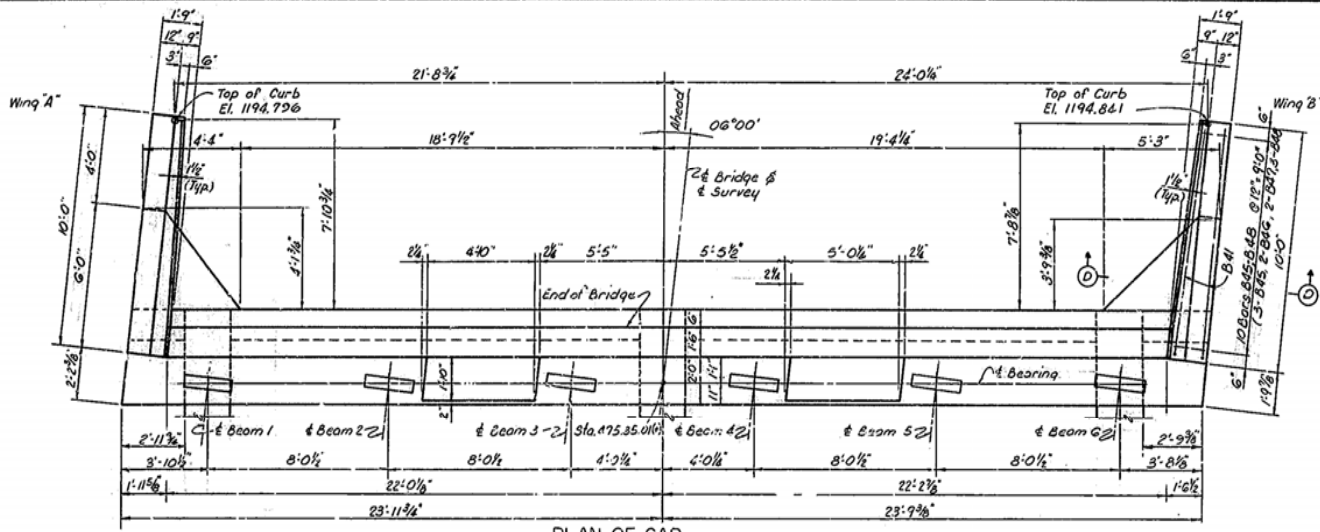
Daniel Boone Parkway over Lick Creek Rd. Sheet: 6

**COMMONWEALTH OF KENTUCKY**  
 DEPARTMENT OF HIGHWAYS  
 FRANKFORT  
 COUNTY OF  
 LAUREL  
 DANIEL BOONE PARKWAY  
 ROAD

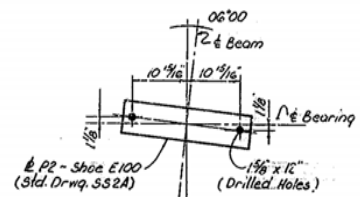
STATION 479+74.51 PROJECT NO.  
 BRIDGE NUMBER 17768 DRAWING NO. INDEX

**BRIDGE**

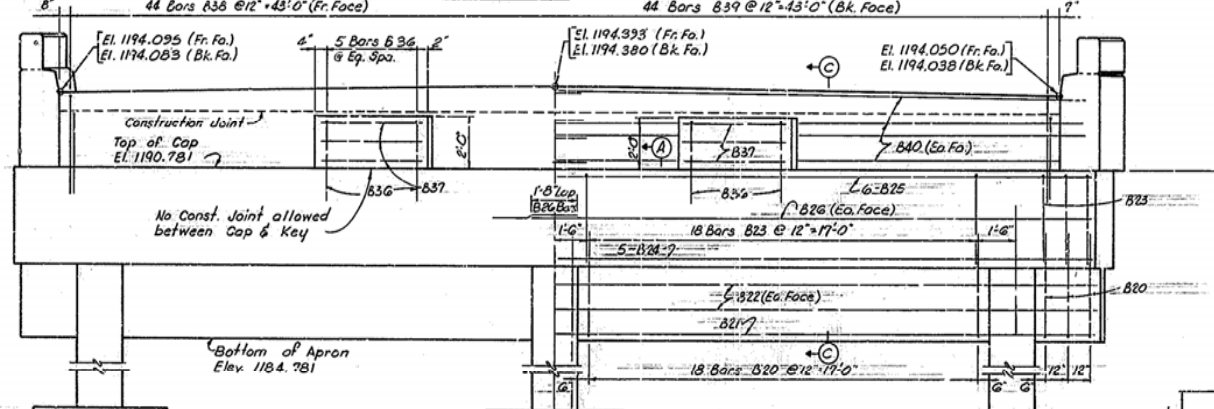
NO.	DATE	BY	CHKD	APP'D	REVISION
7	KY.				



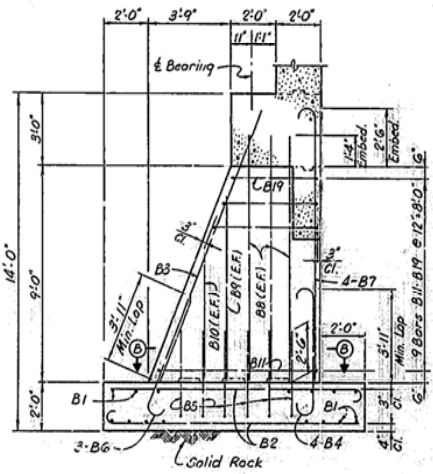
PLAN OF CAP



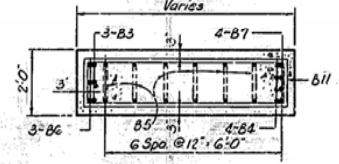
ANCHOR BOLT LAYOUT



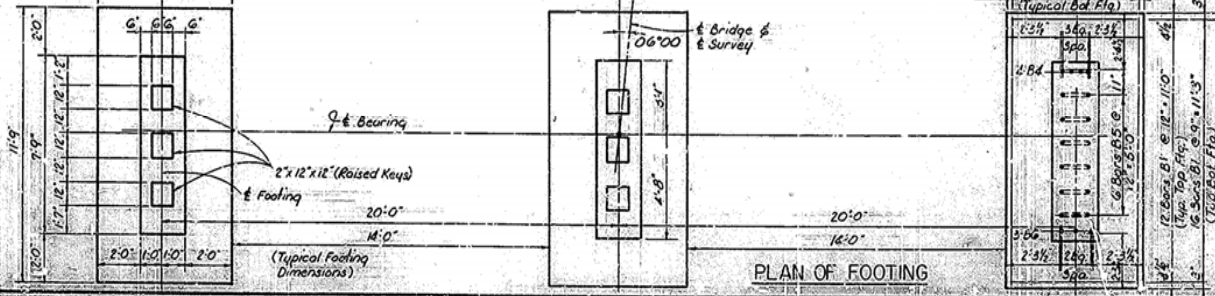
ELEVATION



SECTION A-A



SECTION B-B



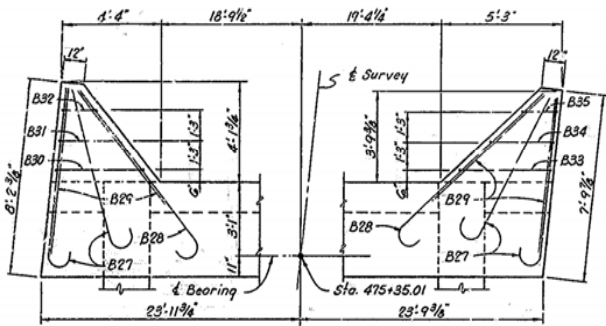
PLAN OF FOOTING

ABUTMENT 2

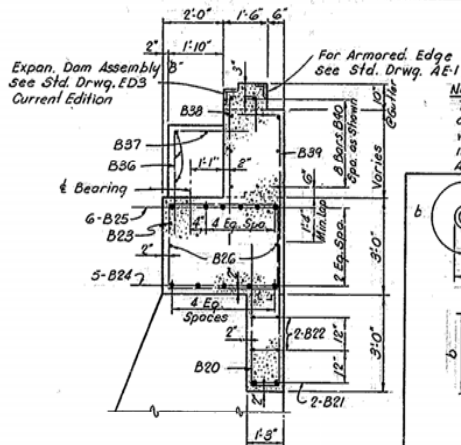
Daniel Boone Parkway over Lick Creek Rd. Sheet 7.

**COMMONWEALTH OF KENTUCKY**  
 DEPARTMENT OF HIGHWAYS  
 FRANKFORT  
 COUNTY OF  
 LAUREL  
 DANIEL BOONE PARKWAY  
 ROAD

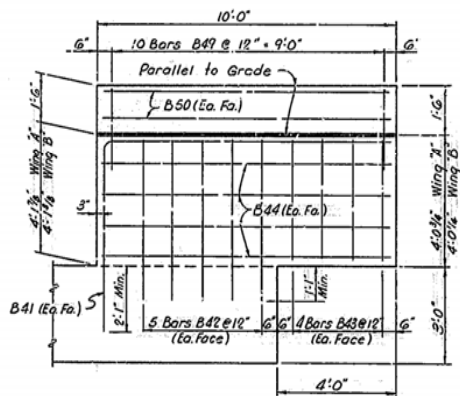
STATION 2+74.51 PROJECT NO. 177483



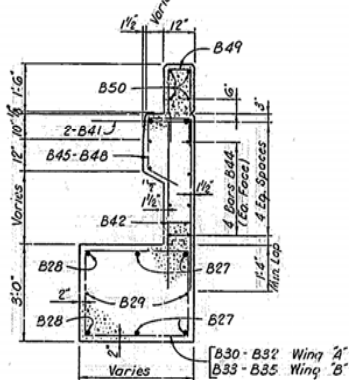
PART PLAN OF CAP



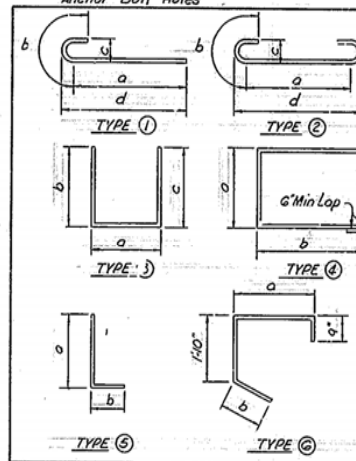
SECTION C-C



WING "B" ELEVATION  
WING "A" ELEVATION (OPPOSITE HAND)



SECTION D-D



Note:  
Top of Cap bars are to be accurately located in accordance with the Plans so they will not interfere with the drilling of Anchor Bolt Holes.

BILL OF REINFORCEMENT

MARK	TYPE	NUMBER	BAR SIZE	LENGTH FT. IN.	LOCATION	a		b		c		d	
						FT. IN.	FT. IN.	FT. IN.	FT. IN.	FT. IN.	FT. IN.		
B1	Str.	84	#6	5 8	Footing								
B2	(1)	42	#6	12 1		11	2	0	11	0	6	11	5
B3	Str.	9	#7	12 5	Column								
B4	(2)	12	#8	7 7	Fig. Danel	4	7	1	6	0	10	5	5
B5	(3)	18	#6	9 2		1	5	4	0	4	0		
B6	(1)	9	#8	6 8		5	2	1	6	0	10	5	7
B7	(1)	12	#7	12 4	Column	11	2	1	2	0	7	11	5 1/2
B8	Str.	18	#5	10 4									
B9		6	#5	7 11									
B10		6	#5	5 5									
B11	(4)	3	#4	17 11		1	6	7	1				
B12		3	#4	17 1		1	6	6	6				
B13		3	#4	16 3		1	6	6	3				
B14		3	#4	15 5		1	6	5	10				
B15		3	#4	14 7		1	6	5	5				
B16		3	#4	13 9		1	6	5	0				
B17		3	#4	12 11		1	6	4	7				
B18		3	#4	12 1		1	6	4	2				
B19	(4)	3	#4	11 3		1	6	3	9				
B20	(3)	42	#5	9 1	Apron	0	11	4	2	0	2		
B21	Str.	2	#8	47 5									
B22		4	#6	47 5									
B23	(4)	42	#5	13 5	Cap	3	8	2	8				
B24	Str.	5	#9	47 5									
B25		5	#10	47 5									
B26		4	#4	24 7									
B27	(1)	8	#8	8 4		6	10	1	6	0	10	7	3
B28		4	#8	9 10		8	4	1	6	0	10	8	9
B29	Str.	4	#4	7 0									
B30	(4)	1	#5	13 9		3	10	2	8				
B31		1	#5	11 7		2	9	2	8				
B32		1	#5	9 6		1	8	2	8				
B33		1	#5	14 1		4	0	2	8				
B34		1	#5	11 7		2	9	2	8				
B35	(4)	1	#5	9 1		1	6	2	8				
B36	(6)	10	#5	6 6	Key	3	7	3	0				
B37	Str.	8	#4	4 8									
B38	(3)	44	#5	7 3	Parapet	1	2	4	9	11	6		
B39	(6)	44	#5	5 6		3	11	1	8				
B40	Str.	16	#5	24 7									
B41	(6)	4	#8	15 6	Wing	6	1	9	7				
B42	Str.	20	#4	5 1									
B43		16	#4	3 8									
B44		16	#5	9 8									
B45	(6)	6	#5	5 3	Curb	1	4	1	6				
B46	(6)	4	#5	4 11		1	3	1	3				
B47	(6)	4	#5	4 7		1	1	1	1				
B48	(6)	6	#5	4 3		0	11	0	11				
B49	(3)	20	#5	6 1	Plinth	0	9	2	9	2	9		
B50	Str.	8	#4	9 8									

ESTIMATE OF QUANTITIES

ITEM	QUANTITY
Concrete, Class "A"	58.2 Cu. Yds.
Concrete, Class "AA"	15.7 Cu. Yds.
Steel Reinforcement	8994 Lbs.

Daniel Boone Parkway over Lick Creek Rd. Sheet B

COMMONWEALTH OF KENTUCKY  
DEPARTMENT OF HIGHWAYS  
FRANKFORT  
COUNTY OF  
LAUREL  
DANIEL BOONE PARKWAY  
ROAD

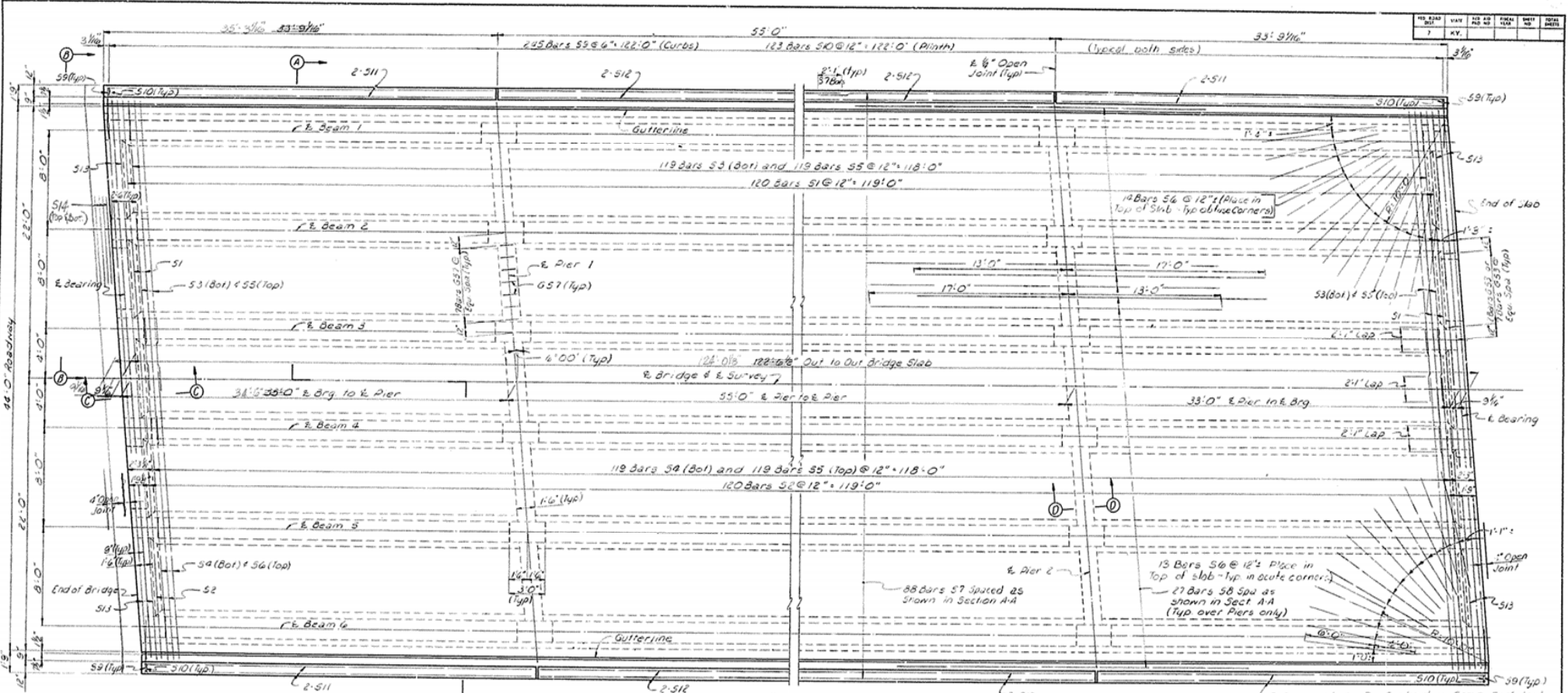
STATION 474+74.51 PROJECT NO.

BRIDGE NUMBER 17748

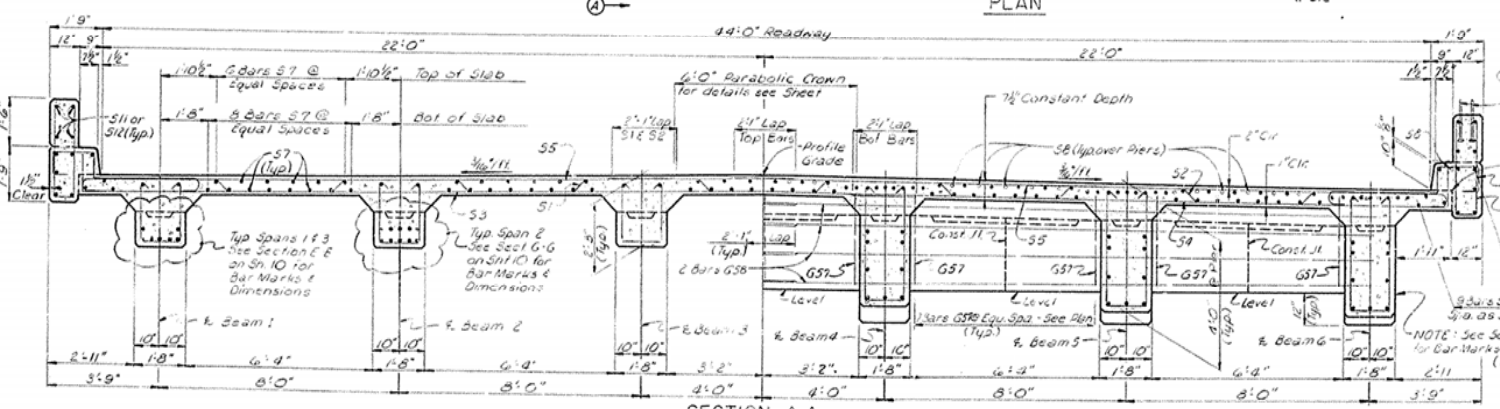
ABUTMENT 2



KS ROAD DIST.	STATE	AZ. DIST.	LOCAL DIST.	SHEET NO.	TOTAL SHEETS
7	KY.				



PLAN



SECTION A-A

SUPERSTRUCTURE

NOTE: By Contractors Error Excl. 2nd No. 1 Post Stakes Along During Construction, Resulting in Span 2 Being 156' Longer Than Original Design. Extra Concrete & Steel 228' 15 1/2' Contractors Expense.

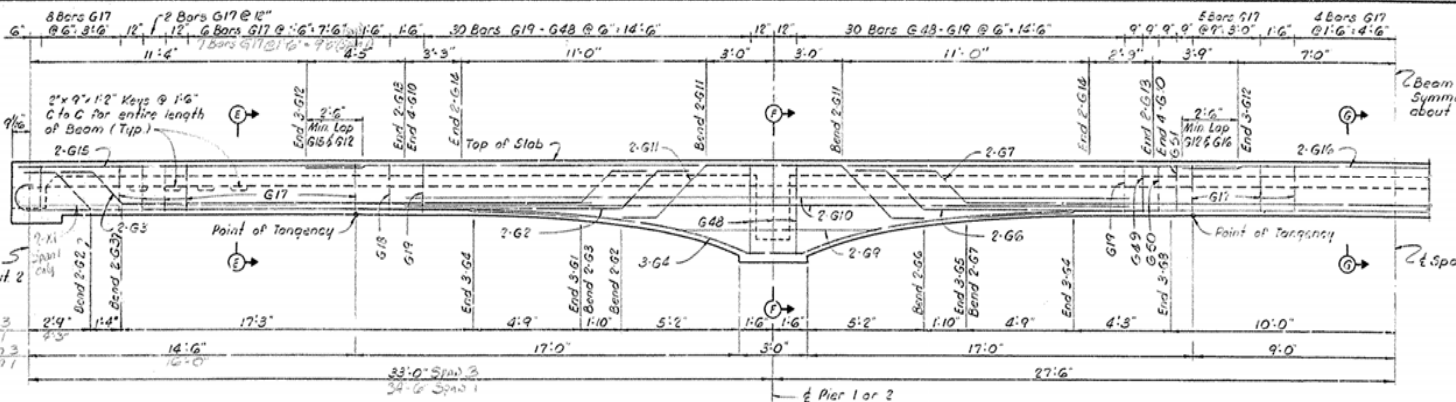
See Std. Drawg. 1116, Current Edition for spacing of Dowels for Handrail Posts. Dowels to be in place before Abutment is poured.

Mandatory Const. Jt. Conc. is not to be placed above this Jt until Deck Concrete is properly cured.

Daniel Boone Parkway over Lick Creek Rd. Sheet 9

**COMMONWEALTH OF KENTUCKY**  
 DEPARTMENT OF HIGHWAYS  
 FRANKFORT  
 COUNTY OF  
**LAUREL**  
 DANIEL BOONE PARKWAY  
 ROAD  
 STATION 474 + 74.51 PROJECT NO. \_\_\_\_\_  
 BRIDGE NUMBER \_\_\_\_\_ INDEX \_\_\_\_\_  
DRAWING NO. 1774B

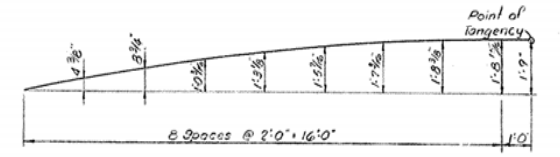
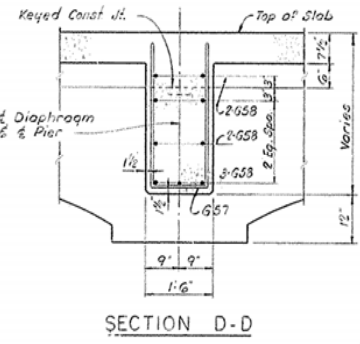
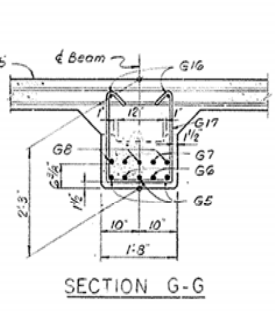
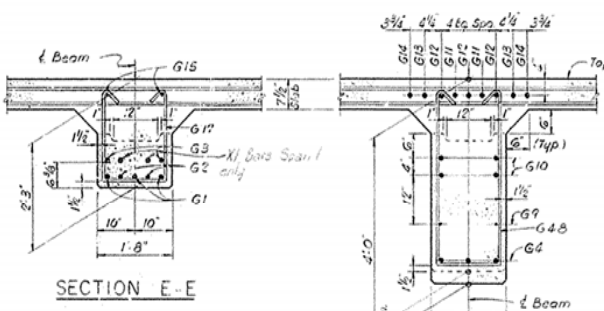




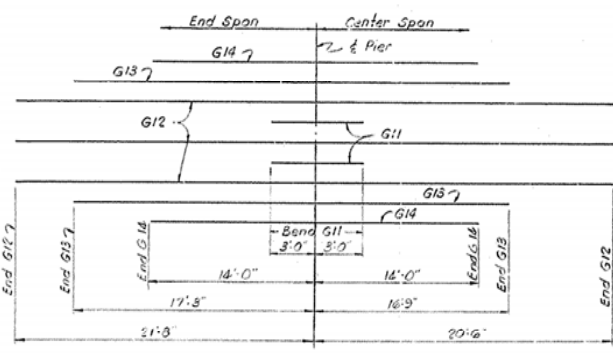
LONGITUDINAL SECTION ON C BEAM

Item	E.B. 1 or Abut 2		Pier 1 or 2	
	Int. Bm.	Ext. Bm.	Int. Bm.	Ext. Bm.
Dead Load	15.0	14.0	81.5	36.0
Live Load	42.6	38.5	57.3	32.2
Impact	0.3	7.5	10.9	9.2
Total	65.7	60.0	157.7	143.4

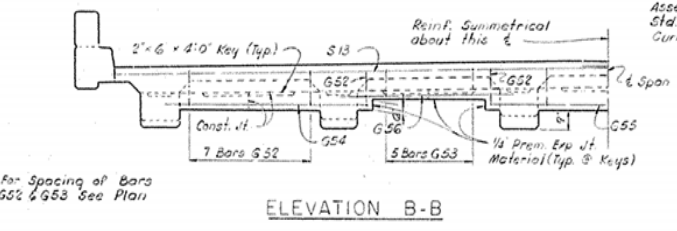
NOTE: Dead Loads include weight of shoes. Reactions are at bearing. Live Load and Impact are maxima for one beam and are not substructure loads.



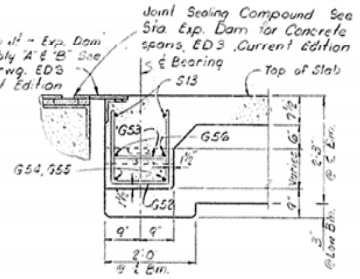
ORDINATES FOR PARABOLIC SOFFIT



PLAN (Showing Reinforcement in Top Row @ Piers)



ELEVATION B-B



SECTION C-C

SUPERSTRUCTURE

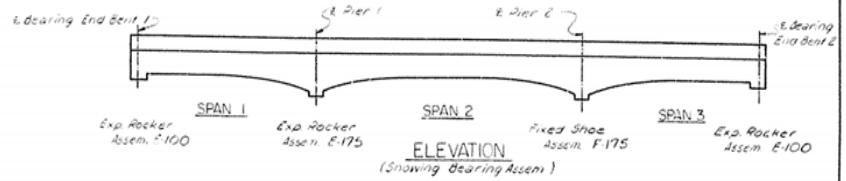
Daniel Boone Parkway over Lick Creek Rd. Sheet 10

**COMMONWEALTH OF KENTUCKY**  
 DEPARTMENT OF HIGHWAYS  
 FRANKFORT  
 COUNTY OF  
**LAUREL**  
 DANIEL BOONE PARKWAY  
 ROAD

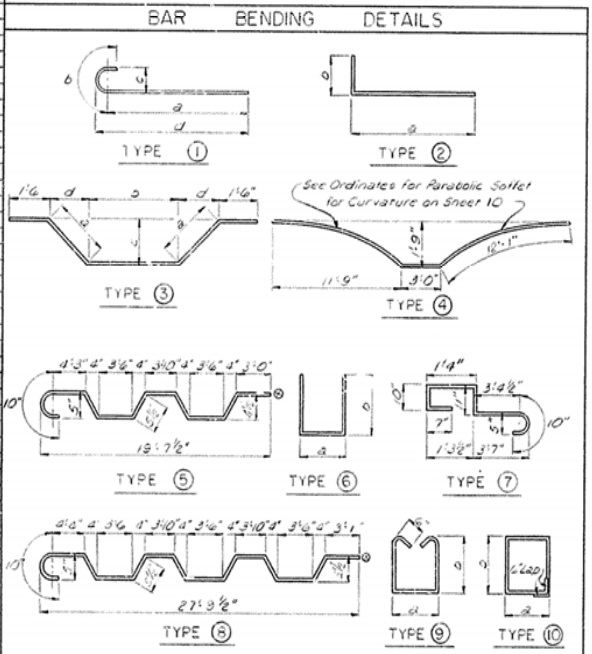
STATION 474+74.51 PROJECT NO. 17748



BILL OF REINFORCEMENT													
Mark	Type	NO.	SIZE	Length ft. in.	Location	a		b		c		d	
						ft.	in.	ft.	in.	ft.	in.	ft.	in.
G1	(1)	36	#11	26.5	Beams	2.4	5	0	1	1.5	2.4	11 1/2	
G2	(2)	24	#11	32.8	"	2	3	2.2	2	1	1.7	11 1/2	
G3	(3)	24	#11	28.6	"	1	9	2.2	0	1	2.2	11 1/2	
G4	(4)	36	#11	27.2	"								
G5	Str	18	#11	38.0	"								
G6	(5)	12	#11	49.2	"	2	3	4.1	6	1	1.7	11 1/2	
G7	(6)	12	#11	44.6	"	1	9	3.8	0	1	2.2	11 1/2	
G8	Str	18	#11	20.0	"								
G9	Str	24	#4	9.0	"								
G10	Str	48	#8	33.6	"								
G11	(3)	24	#11	15.4	"		2	6	0	2	2.2	2 3/4	
G12	Str	36	#11	41.2	"								
G13	Str	24	#11	34.0	"								
G14	Str	24	#11	28.0	"								
G15	Str	24	#4	14.3	"								
G16	Str	12	#6	19.0	"								
G17	(3)	300	#5	6.0	"	1	5	1	10 1/2				
G18	(9)	12	#5	6.1	"	1	5	1	10 3/8				
G19	(9)	24	#5	6.1	"								
G20				6.2	"								
G21				6.2	"								
G22				6.3	"								
G23				6.4	"								
G24				6.4	"								
G25				6.5	"								
G26				6.6	"								
G27				6.7	"								
G28				6.8	"								
G29				6.10	"								
G30				6.11	"								
G31				7.0	"								
G32				7.1	"								
G33	SAME			7.3	"								
G34	SAME			7.4	"								
G35	SAME			7.7	"								
G36				7.8	"								
G37				7.9	"								
G38				7.11	"								
G39				8.1	"								
G40				8.3	"								
G41				8.5	"								
G42				8.7	"								
G43				8.9	"								
G44				9.0	"								
G45				9.2	"								
G46				9.4	"								
G47	(3)	24	#5	9.6	"								
G48	(3)	36	#5	9.7	"								
G49	(9)	12	#5	6.1	"								
G50	(9)	12	#5	6.1	"	1	5	1	10 3/8				
G51	(9)	12	#5	6.0	"	1	5	1	10 1/2				
G52	(6)	50	#5	4.1	Beams	1	3	1	10 1/2				
G53	(6)	20	#5	3.1	Endwalls	1	3	1	10				
G54	Str	8	#5	5.6	"								
G55	Str	4	#5	10.8	"								
G56	Str	8	#5	8.3	"								
G57	(6)	70	#5	4.5	Pier Diaphragms	1	3	2	8				
G58	Str	36	#5	2.5	"								
X1	Str	12	#11	25.0	Beams of Span 1								
S1	(5)	120	#5	20.11	Slab								
S2	(6)	120	#5	29.5	"								
S3	(2)	119	#5	29.0	"	27	10	1	2				
S4	(2)	119	#5	21.0	"	13	10	1	2				
S5	(7)	238	#5	24.5	"	23	7	0	10	0	23	3/2	
S6	Str	54	#6	10.0	All Corners of Slab								
S7	Str	252	#5	32.3	Slab								
S8	Str	54	#5	30.0	Slab over Piers								
S9	(7)	490	#5	7.7	Slab into Curbs								
S10	(9)	246	#5	7.7	Curbs into Plinths	0	9	3	0				
S11	Str	16	#4	33.6	Plinths								
S12	Str	16	#4	28.0	"								
S13	Str	8	#5	23.9	"								
S14	Str	8	#5	45.5	Slab								



NOTE: Pour each beam in one continuous pour in horizontal layers. Pour end walls and diaphragms with beams by providing vertical keyed construction joints midway between beams. Pour slab in one continuous pour. Bearing assembly details are on Std. Drawg. 682A and are typical as shown above for each beam.



This end of Bars S1 and S2 toward E. Bridge

ESTIMATE OF QUANTITIES	
ITEM	QUANTITY
Concrete, Class AA (Co. Yab)	283.1
Steel Reinforcement (Lad)	102.53

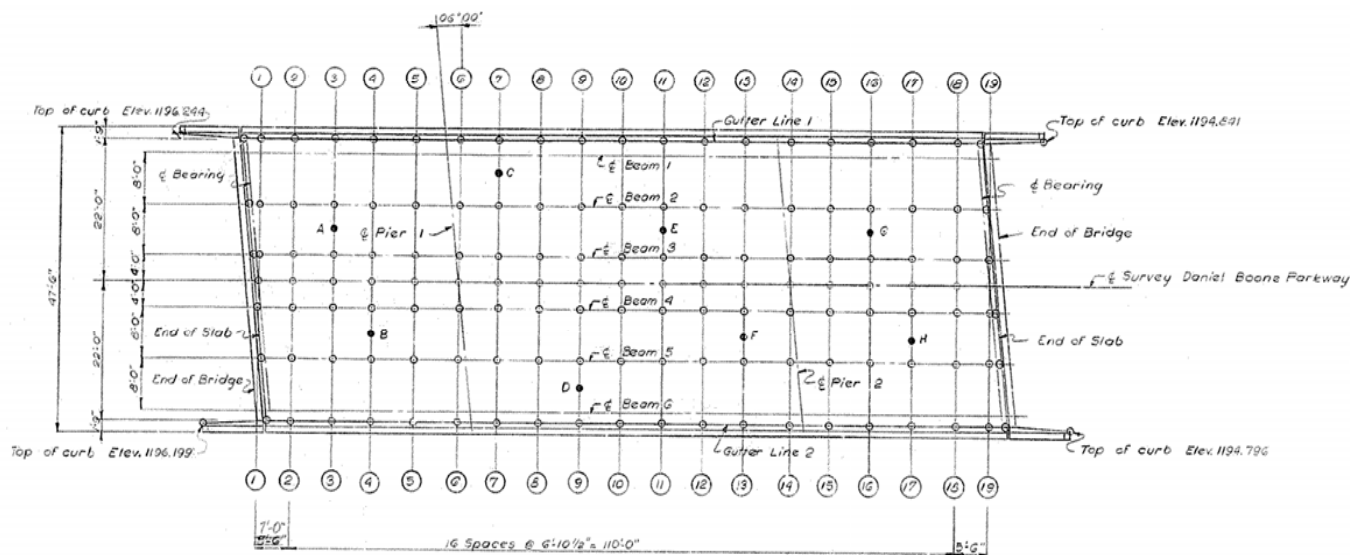
Daniel Boone Parkway over Lick Creek Rd. Sheet 11

**COMMONWEALTH OF KENTUCKY**  
DEPARTMENT OF HIGHWAYS  
FRANKFORT  
COUNTY OF  
**LAUREL**  
DANIEL BOONE PARKWAY  
ROAD

STATION 2+74.51 PROJECT NO. 1774B  
BRIDGE NUMBER DRAWING NO. 1774B

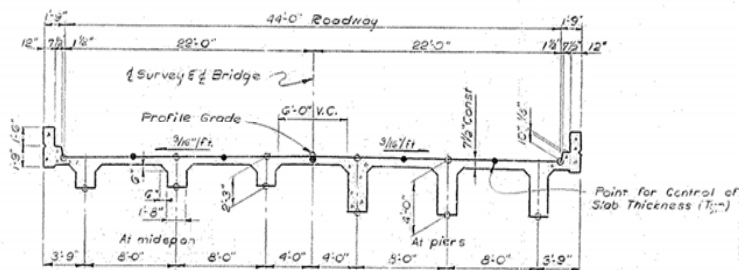
**SUPERSTRUCTURE**

**BRIDGE**



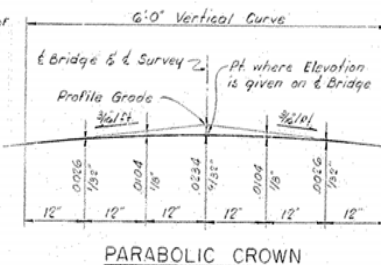
PLAN

Point	Pinn Elev. Top of Slab	Field Elev. Bot of Slab	Computed Slab Thickness
A	1195.371	1194.74	0.631
B	1195.299	1194.69	0.609
C	1194.991	1194.38	0.651
D	1194.888	1194.26	0.628
E	1194.881	1194.25	0.631
F	1194.709	1194.07	0.639
G	1194.490	1193.85	0.640
H	1194.428	1193.51	0.918



TYPICAL SECTION THRU DECK

- Note:
- Points where Elevations are given
  - Points where Elevations are given for Control of Slab Thickness



PARABOLIC CROWN

After the slab forms are erected and before the slab reinforcement is placed, the resident engineer shall take field elevations at the slab thickness check points and enter them in the table in the space provided. The slab thickness shall then be computed. If the computed slab thickness varies more than 1/4" from the plan thickness, allowing 1/360 of the slab span for deflection of the form work, the form shall be adjusted until the computed slab thickness is within the tolerance allowed.

A COPY OF THIS SHEET, SHOWING THE FINAL DATUM, SHALL BE SENT TO THE DIRECTOR, DIVISION OF BRIDGES.

CONSTRUCTION ELEVATIONS

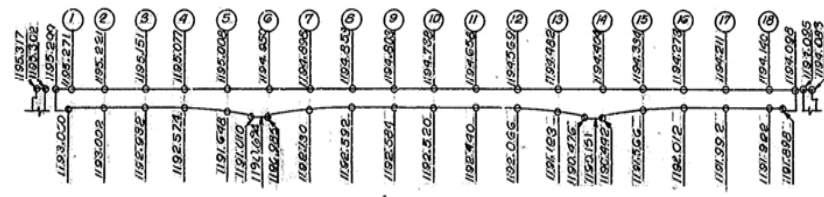
Daniel Boone Parkway over Lee Creek Rd. Sheet 12

**COMMONWEALTH OF KENTUCKY**  
 DEPARTMENT OF HIGHWAYS  
 FRANKFORT  
 COUNTY OF  
 LAUREL  
 DANIEL BOONE PARKWAY  
 ROAD  
 STATION 474.74.51 PROJECT NO.  
 BRIDGE NUMBER 17748 DRAWING NO. 17748

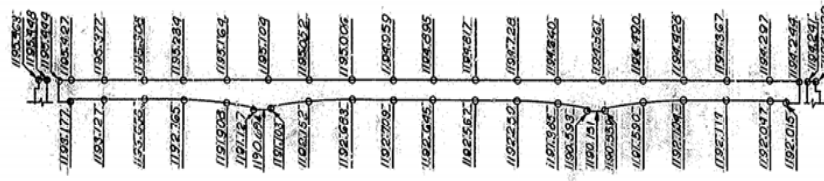
BRIDGE

Elevations for Gutter Line 1

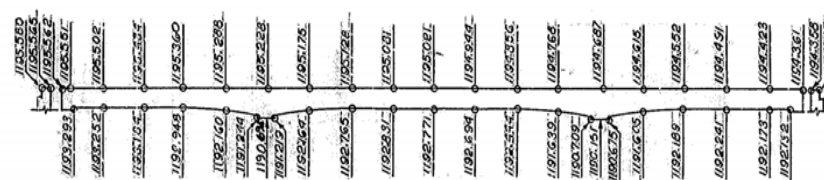
BEAM 1



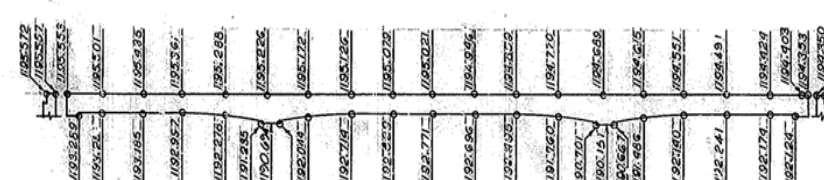
BEAM 2



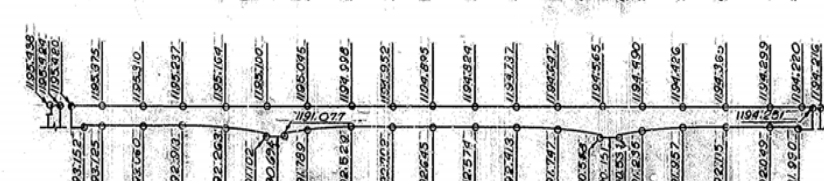
BEAM 3



BEAM 4

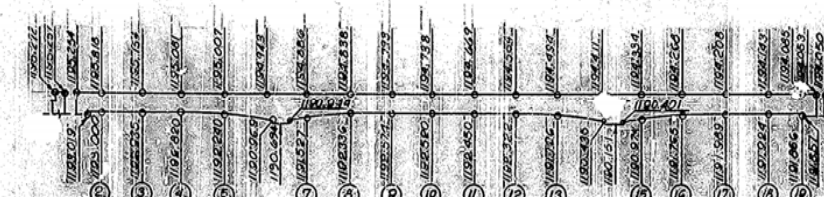


BEAM 5



Elevations for Gutter Line 2

BEAM 6



SECTIONS ON G BEAMS

Note:

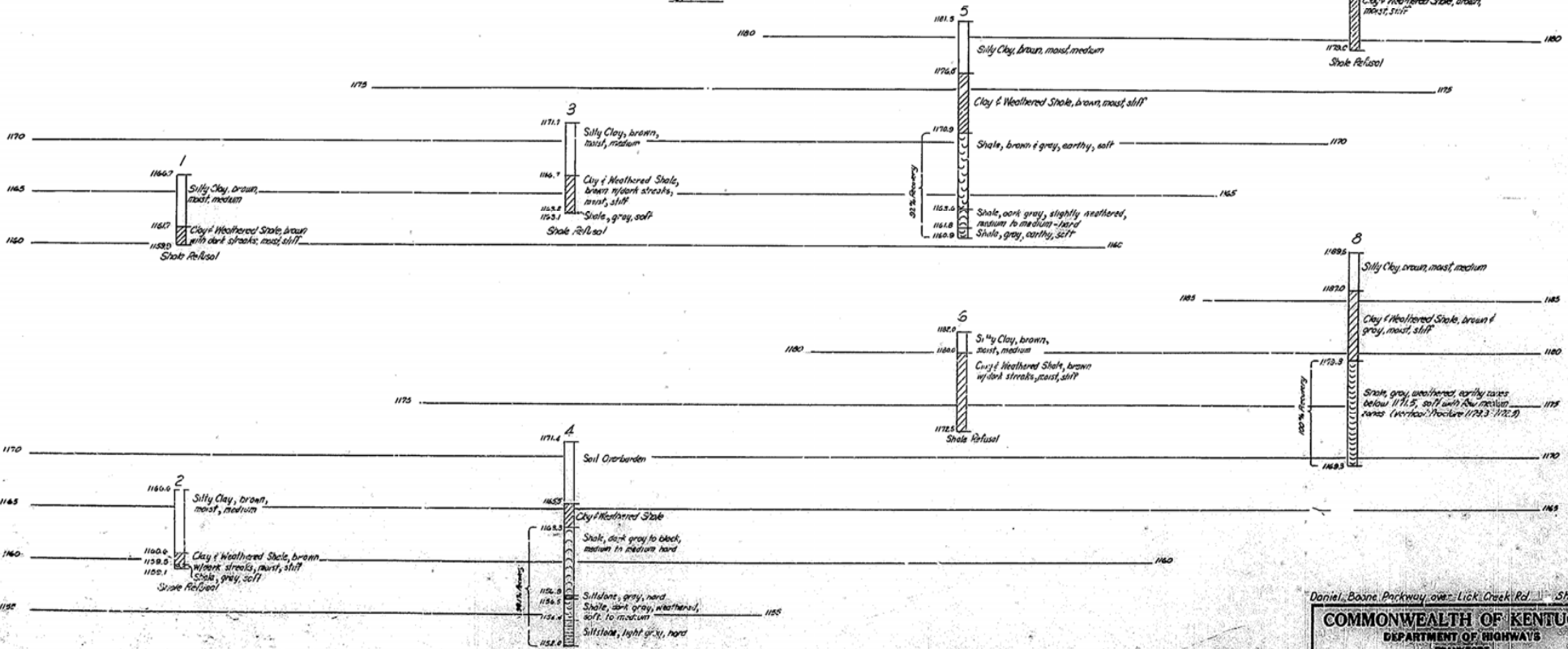
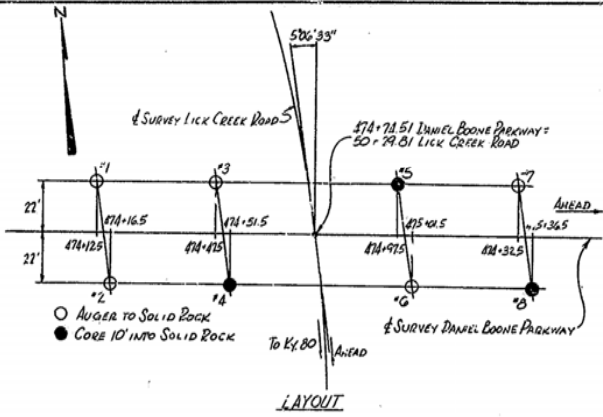
For Plan location of Elevations Points & Wing Elevations See Sheet 12.

CRIDGE ELEVATIONS

LINE	TOP OF SLAB
1	1195.489
2	1192.540
3	1195.473
4	1195.400
5	1195.328
6	1195.264
7	1195.212
8	1195.166
9	1195.119
10	1195.074
11	1194.984
12	1194.897
13	1194.808
14	1194.727
15	1194.654
16	1194.591
17	1194.530
18	1194.463
19	1194.404

CONSTRUCTION ELEVATION

COMMONWEALTH OF KENTUCKY  
 DEPARTMENT OF HIGHWAYS  
 TRANSPORTATION DIVISION  
 COUNTY OF  
 LAUREL  
 DANIEL BOONE PARKWAY  
 ROAD  
 STATION 24+24.51 PROJECT NO. 1773



LOGS OF BORINGS  
SCALE: 1"=5' (vertical)

SOUNDINGS



Daniel Boone Parkway over Lick Creek Rd. Sheet 14

**COMMONWEALTH OF KENTUCKY**  
DEPARTMENT OF HIGHWAYS  
FRANKFORT  
COUNTY OF  
**LAUREL**  
DANIEL BOONE PARKWAY  
ROAD

STATION 474+74.51 PROJECT NO. 1774-B

BRIDGE NUMBER 1774-B