

SIGNING

ESTIMATE OF QUANTITIES

NOTES :

- (1) PAYMENT FOR GROUND MOUNTED SIGN SUPPORTS TYPE A AND TYPE C SHALL BE BASED ON THE NOMINAL WEIGHT OF THE BEAMS. THE NECESSARY GALVANIZING, HARDWARE, ETC. IS TO BE CONSIDERED INCIDENTAL. QUANTITIES FOR TYPE C SUPPORTS SHALL INCLUDE ALL NECESSARY HARDWARE TO FORM COMPLETE BREAK-AWAY BEAMS. SEE PANEL SIGN DETAIL SHEET.
- (2) QUANTITY SHALL INCLUDE ALL COPY AND HARDWARE NECESSARY TO FORM COMPLETE SIGNS. NO DEDUCTION IN AREA IS TO BE MADE FOR ROUNDING OF CORNERS.
- (3) WITH PERMISSION OF THE ENGINEER, SHEETING SIGNS ON THE RAMPS AND SIDE ROADS MAY BE MOVED TO BE COMPATIBLE WITH THE EXISTING SIGNS.
- (4) QUANTITY IS ESTIMATED. THE EXACT LENGTH SHALL BE DETERMINED BY THE CONTRACTOR AND APPROVED BY THE ENGINEER.
- (5) WHERE REQUIRED, BRACING FOR SHEETING SIGNS SHALL BE INCIDENTAL TO STEEL POST. SEE SHEETING SIGN DETAIL SHEET.
- (6) QUANTITY SHALL INCLUDE ALL MATERIAL NECESSARY TO FORM A COMPLETE BREAK-AWAY ASSEMBLY. TYPE I POSTS AND CONCRETE SHALL BE PAID SEPARATELY. SEE SHEETING SIGN DETAIL SHEET AND STD. DWG. NO. RGX-065-03.
- (7) QUANTITY SHALL INCLUDE SIGN AND POST.
- (8) ALL MATERIALS REMOVED AND NOT REUSED, SUCH AS SIGNS, SIGN LIGHTS, SIGN SUPPORTS, ETC. SHALL BECOME THE PROPERTY OF THE CONTRACTOR.
- (9) THE REMOVAL OF ALL TYPE I OR II POSTS AND ALL SHEETING SIGNS SHALL BE INCIDENTAL TO THE PROJECT WITH NO ADDITIONAL PAYMENT BEING ALLOWED. ALL MATERIAL SHALL BE STORED IN ACCORDANCE WITH NOTE (8) ABOVE.
- (10) WHERE THE REMOVAL OF OVERHEAD STRUCTURE CONCRETE BASE IS CALLED FOR, THE BASE IS TO BE REMOVED TO A MINIMUM OF ONE FOOT (1') BELOW THE GROUND LINE, BACKFILLED TO EXISTING GROUND LINE, AND THE DISTURBED AREAS RESEEDED.
- (11) WHERE THE REMOVAL OF BEAM SIGN SUPPORTS IS CALLED FOR, THE BEAM AND ANY CONCRETE PROJECTING ABOVE THE GROUND LINE ARE TO BE CUT OFF A MINIMUM OF ONE FOOT (1') BELOW EXISTING GROUND LINE OR THE ENTIRE BEAM AND CONCRETE BASE ARE TO BE REMOVED COMPLETELY AND BACKFILLED TO EXISTING GROUND LINE.
- (12) QUANTITY SHALL INCLUDE W-BARS AND ALL HARDWARE NECESSARY FOR ATTACHING SIGNS TO SUPPORTS.
- (13) QUANTITY IS ESTIMATED. THE EXACT NUMBER SHALL BE DETERMINED BY THE CONTRACTOR AND APPROVED BY THE ENGINEER. SEE SIGNING POSITIONING DETAIL SHEET FOR DELINEATOR PLACEMENT.

FILE NAME: X:\PROJECTS\2022\2231\210490 KYC PWMT REHAB 2022-2024\0401 MADISON 1-75 SIGNING\T01005N.DGN
 USER: tvonbehren
 DATE PLOTTED: December 31, 2024
 E-SHEET NAME: InRoads v8.11.9.397

ITEM	CODE NUMBER	UNIT	KY 876	US 25	KY 627	US 421/	TOTALS
			Exit 87	Exit 90	Exit 95	US 25	
GROUND MOUNTED SIGN SUPPORTS							
① TYPE A	6400	LBS.					
TYPE C	6441	LBS.					
FOOTINGS FOR SIGNS							
CONCRETE - CLASS "A" FOR SIGNS	6490	CU.YD.	1.38		2.3	0.92	4.6
REINFORCEMENT STEEL	6491	LBS.					
SIGN BASE MATERIAL							
ALUMINUM							
② PANEL SIGNS	6405	SQ.FT.					
③ SHEETING SIGNS							
0.080 GAUGE	6406	SQ.FT.					
0.125 GAUGE	6407	SQ.FT.	84.5	61.25	118	67	330.75
STEEL POST ④⑤							
TYPE 1	6410	LN.FT.	87		144	60	291
TYPE 2	6411	LN.FT.					
⑥ TYPE D	21596ND	EACH	6		10	4	20
⑦ MILE MARKERS	6412	EACH					
REFERENCE MARKERS	4903	EACH					
DELINEATORS							
WHITE	6413	EACH					
AMBER	6414	EACH					
REMOVAL ITEMS ⑧⑨							
REMOVE OVERHEAD SIGN SUPPORT STRUCTURE	6449	EACH					
⑩ REMOVE OVERHEAD SIGN SUPPORT STRUCTURE CONCRETE BASE	6450	EACH					
⑪ REMOVE SIGN SUPPORT BEAMS	6451	EACH					
REMOVE SIGN	21373ND	EACH					
MOVE CANTILEVER SIGN SUPPORT	20995ND	EACH					
REMOVE AND RELOCATE SIGN	20418ED	EACH					
STEEL "W" BEAM GUARDRAIL							
SINGLE FACE	2351	LN.FT.					
DOUBLE FACE	2352	LN.FT.					
END TREATMENT TYPE 1	2367	EACH					
END TREATMENT TYPE 2A	2369	EACH					

ITEM	CODE NUMBER	UNIT	KY 876	US 25	KY 627	US 421/	TOTALS
			Exit 87	Exit 90	Exit 95	US 25	
OVERHEAD SIGN SUPPORTS ⑫							
OSS ALUMINUM 60 FT TRUSS	6422	EACH					
OSS ALUMINUM 65 FT TRUSS	6424	EACH					
OSS ALUMINUM 70 FT TRUSS	6426	EACH					
OSS ALUMINUM 75 FT TRUSS	6436	EACH					
OSS ALUMINUM 80 FT TRUSS	6438	EACH					
OSS ALUMINUM 85 FT TRUSS	6443	EACH					
OSS ALUMINUM 90 FT TRUSS	6445	EACH					
OSS ALUMINUM 95 FT TRUSS	6453	EACH					
OSS ALUMINUM 100 FT TRUSS	6455	EACH					
OSS ALUMINUM 105 FT TRUSS	6457	EACH					
OSS ALUMINUM 110 FT TRUSS	6459	EACH					
OSS ALUMINUM 115 FT TRUSS	6461	EACH					
OSS ALUMINUM 120 FT TRUSS	6463	EACH					
OSS ALUMINUM 125 FT TRUSS	6465	EACH					
OSS ALUMINUM 130 FT TRUSS	6467	EACH					
OSS ALUMINUM 135 FT TRUSS	6469	EACH					
OSS ALUMINUM 140 FT TRUSS	6471	EACH					
OSS GALV STEEL CANTILEVER MOD	6201	EACH					
OSS GALV STEEL CANTILEVER	6415	EACH					
SIGN BRIDGE ATTACHMENT BRACKET							
	6448	EACH					
MISCELLANEOUS							
BARRIER MOUNTING BRACKET	4904	EACH					
BARRIER WALL POST	20912ND	EACH					
ROADWAY CROSS SECTION	20419ND	EACH					
FLEXIBLE DELINEATOR POSTS							
⑬ WHITE	6417	EACH					
YELLOW	6418	EACH					
STAKING	2726	L.S.					
FLASHING ARROW	2775	EACH					
DEMOBILIZATION	2569	L.S.					
MAINTAIN & CONTROL TRAFFIC	2650	L.S.					
SIGN POST REFLECTOR	24265EC	EACH	6	8	8	4	26
BARCODE SIGN INVENTORY	24631EC	EACH	8	7	11	6	32
PAVEMARKING THERMO-WRONG WAY ARROW	24689EC	EACH	2	4	2	2	10

COUNTY OF	ITEM NO.	SHEET NO.
MADISON	7-22115.00	T2

SIGNING SPECIFICATION NOTES

THE FOLLOWING PUBLICATIONS ARE APPLICABLE TO THE WORK DESCRIBED HEREIN:

KENTUCKY DEPARTMENT OF HIGHWAYS STANDARD SPECIFICATIONS FOR ROAD AND BRIDGE CONSTRUCTION (CURRENT EDITION)
 STANDARD HIGHWAY SIGNS AND MARKINGS (CURRENT EDITION) -- FEDERAL HIGHWAY ADMINISTRATION MANUAL ON UNIFORM TRAFFIC CONTROL DEVICES (CURRENT EDITION) -- FEDERAL HIGHWAY ADMINISTRATION

SCOPE OF WORK

TO FURNISH, FABRICATE AND ERECT IN PLACE ALL MATERIALS NECESSARY TO FORM COMPLETED SIGNS AS INDICATED AT LOCATIONS DESCRIBED ELSEWHERE IN THESE PLANS. NEW SIGNS ARE TO BE INSTALLED AT EXISTING LOCATIONS UNLESS OTHERWISE NOTED ON THE PLANS.

SIGN SUBSTRATES

SIGN SUBSTRATES SHALL CONFORM TO SECTION 833 OF KENTUCKY'S STANDARD SPECIFICATIONS FOR ROAD AND BRIDGE CONSTRUCTION (CURRENT EDITION) AND THESE PLANS. PANEL SIGNS SHALL BE LABELED AS P-#. SHEETING SIGNS SHALL BE LABELED AS S-#.

SIGN MATERIALS

SIGN SHEETING:

SIGN SHEETING SHALL CONFORM TO SECTION 830 OF KENTUCKY'S STANDARD SPECIFICATIONS FOR ROAD AND BRIDGE CONSTRUCTION (CURRENT EDITION) AND THESE PLANS. ONLY SHEETING ON THE DEPARTMENT'S LIST OF APPROVED MATERIALS SHALL BE USED.

ALL RETROREFLECTIVE MATERIALS SHALL BE FABRICATED AND ASSEMBLED IN ACCORDANCE WITH MANUFACTURER'S SPECIFICATIONS AND/OR RECOMMENDATIONS.

PERMANENT SIGNS AND SIGN COMPONENTS SHALL BE FABRICATED USING TYPE XI SHEETING:

THE FOLLOWING SIGNS SHALL BE FABRICATED USING TYPE XI FLUORESCENT YELLOW SHEETING:

- HORIZONTAL ALIGNMENT SIGNS AND PLAQUES
- ALL ADVISORY SPEED PLAQUES
- WARNING MESSAGES ON PANEL SIGNS

THE FOLLOWING SIGNS SHALL BE FABRICATED USING TYPE XI FLUORESCENT YELLOW-GREEN SHEETING:

- ALL SCHOOL AND SCHOOL BUS WARNING SIGNS.
- BICYCLE WARNING SIGNS AND 'SHARE THE ROAD' PLAQUES OR DIAGONAL DOWNWARD POINTING ARROW PLAQUES THAT SUPPLEMENT BICYCLE WARNING SIGNS.
- PEDESTRIAN WARNING SIGNS AND DIAGONAL DOWNWARD POINTING ARROW PLAQUES THAT SUPPLEMENT PEDESTRIAN WARNING SIGNS
- IN-STREET PEDESTRIAN CROSSING (RI-6) SIGNS AND OVERHEAD PEDESTRIAN CROSSING (RI-9) SIGNS
- SUPPLEMENTAL PLAQUES TO ANY OF THE PREVIOUSLY LISTED FLUORESCENT YELLOW-GREEN SIGNS LISTED ABOVE

ALL OTHER PERMANENT SIGNS (INCLUDING THE BACKGROUNDS OF PANEL SIGNS) SHALL BE FABRICATED USING TYPE XI SHEETING.

LETTERS, SYMBOLS, AND BORDERS:

PANEL OVERLAY SECTIONS SHALL BE AFFIXED WITH A "POP" RIVET WITH A MINIMUM DIAMETER OF 3/16 INCH, AND THE LENGTH SHALL BE AS NECESSARY TO PROPERLY APPLY COPY IN A WORKMANLIKE MANNER.

HARDWARE:

ALL HARDWARE FOR THE ASSEMBLY OF PANEL SIGNS AND THE ATTACHMENT OF THESE SIGNS TO THEIR SUPPORTS SHALL BE AS RECOMMENDED BY THE PANEL MANUFACTURER. PLACEMENT OF POST CLIP SHALL BE AS SHOWN ON THE SIGNING MISCELLANEOUS DETAIL SHEET.

ALL HARDWARE FOR THE ERECTION OF SHEETING SIGNS SHALL BE CADMIUM PLATED STEEL IN ACCORDANCE WITH ASTM B-776 AND ASTM A-307.

FONTS:

STANDARD ALPHABETS SHALL BE USED FOR ALL LEGENDS ON PANEL GUIDE SIGNS.

GROUND-MOUNTED SIGN SUPPORTS

GENERAL:

ALL SIGNS SHALL BE POSITIONED AS SHOWN ON THE POSITIONING DETAIL SHEET. ALL BEAMS AND POSTS SHALL BE OF SUFFICIENT LENGTHS TO EXTEND FROM THE TOP OF THE SIGN TO THE REQUIRED BASE EMBEDMENT. EXISTING I-BEAMS ON WHICH SHEETING SIGNS ARE ATTACHED SHALL BE REMOVED AND REPLACED WITH TYPE I OR TYPE II POSTS, UNLESS THEY ARE LOCATED BEHIND GUARDRAIL.

BEAMS:

ALL BEAMS SHALL BE EITHER TYPE "A" (STANDARD BEAM INSTALLATION) OR TYPE "C" (BREAKAWAY SIGN POST SUPPORT SYSTEM INSTALLATION). TYPE "A" BEAMS ARE SHOWN ON THE PANEL SIGN DETAIL SHEET, AND THE TYPE "C" BEAMS ARE SHOWN ON THE BREAKAWAY SIGN SUPPORT SYSTEM FOR "C" BEAM SHEET. ONLY BREAKAWAY (TYPE "C") BEAM SUPPORT SYSTEMS ON THE DEPARTMENT'S LIST OF APPROVED MATERIALS SHALL BE USED. THE TYPE AND SIZE OF BEAM TO BE USED SHALL BE INDICATED FOR EACH PANEL SIGN ON THE SIGN DETAIL SHEETS. BEAM LENGTHS INCLUDED IN THESE PLANS ARE FOR INFORMATIONAL PURPOSES ONLY. THE CONTRACTOR SHALL TAKE FIELD MEASUREMENTS AT EACH SIGN LOCATION AND CROSS SECTIONS SHALL BE DEVELOPED TO VERIFY BEAM LENGTHS, WITH ANY DISCREPANCIES BROUGHT TO THE ATTENTION OF THE ENGINEER FOR RESOLUTION.

STEEL POSTS:

TYPE I STEEL POSTS SHALL BE EITHER STANDARD INSTALLATION IN SOIL, WITH SOIL STABILIZER, OR TYPE "D" (BREAKAWAY SIGN POST SUPPORT SYSTEM INSTALLATION). ONLY BREAKAWAY TYPE "D" POST SYSTEMS ON THE DEPARTMENT'S LIST OF APPROVED MATERIALS SHALL BE USED. BRACING, IF REQUIRED, SHALL BE INCIDENTAL TO TYPE I POST.

TYPE II POST SHALL BE STANDARD INSTALLATION IN SOIL WITH A SOIL STABILIZER. INSTALLATION PROCEDURES AND BRACING REQUIREMENTS ARE DETAILED ON THE SHEETING SIGN DETAIL SHEET.

ALL STEEL POSTS SHALL MEET THE REQUIREMENTS OF SECTION 832 OF THE STANDARD SPECIFICATIONS FOR ROAD AND BRIDGE CONSTRUCTION.

MILEPOST MARKERS AND ENHANCED REFERENCE MARKERS

MILEPOST MARKERS AND ENHANCED REFERENCE LOCATION SIGNS SHALL CONFORM TO THE GENERAL REQUIREMENTS SET FORTH IN THE MANUAL ON UNIFORM TRAFFIC CONTROL DEVICES (CURRENT EDITION). ADDITIONAL REQUIREMENTS ARE GIVEN ON THE SIGNING POSITIONING DETAIL SHEET AND ENHANCED REFERENCE LOCATION SIGNS DETAIL SHEET.

FOR THE LOUISVILLE AREA, FINAL LOCATION OF ENHANCED REFERENCE LOCATION SIGNS SHALL BE VERIFIED BY TRIMARC. NOTIFY A REPRESENTATIVE OF TRIMARC AT LEAST TWO WEEKS IN ADVANCE OF BEGINNING WORK ON THIS ITEM:

901 WEST MAIN STREET
 LOUISVILLE, KY 40202
 502-587-6624
 270-307-7456

MEDIAN CROSSOVER SIGNS

THE CONTRACTOR SHALL INSTALL 48" X 48", "NO U TURN" SIGNS (R3-4) AT EACH MEDIAN CROSSOVER. THIS IS TO BE DONE WHETHER ALL NEEDED INSTALLATIONS ARE MENTIONED IN THE FOLLOWING SHEETS OR NOT. AT CROSSOVERS ON MEDIANS SIXTY FEET (60') WIDE OR LESS, THE SIGNS SHALL BE MOUNTED PERPENDICULAR TO THE ROADWAY ON THE SAME POSTS IN THE CENTER OF THE MEDIAN, ONE FACING TRAFFIC IN EACH DIRECTION. AT CROSSOVERS ON MEDIANS OVER SIXTY FEET (60') WIDE, THE SIGNS SHALL BE MOUNTED PERPENDICULAR TO THE ROADWAY ON SEPARATE POSTS AT THE MEDIAN SHOULDER ON THE FAR SIDE OF THE CROSSOVER, ONE FACING TRAFFIC IN EACH DIRECTION. FOR ADDITIONAL GUIDANCE, SEE SEPJA DRAWING FOR FLEXIBLE DELINEATOR POST ARRANGEMENT FOR INTERCHANGE RAMP AND CROSSOVERS.

CONCRETE BASES

ALL CONCRETE BASES SHALL BE OF CLASS "A" CONCRETE FOR SIGNS AND SHALL BE AS SHOWN ELSEWHERE IN THESE PLANS. EXCAVATION NECESSARY TO CONSTRUCT BASES AND FOOTINGS IS INCIDENTAL TO THE COST OF CLASS "A" CONCRETE FOR SIGNS.

CONCRETE BASES (CONTINUED)

WHERE THE REMOVAL OF OVERHEAD STRUCTURE CONCRETE BASE IS CALLED FOR, THE BASE IS TO BE REMOVED TO A MINIMUM OF ONE FOOT (1') BELOW THE GROUND LINE, BACKFILLED TO EXISTING GROUND LINE, AND THE DISTURBED AREAS RESEEDED.

WHERE THE REMOVAL OF BEAM SIGN SUPPORTS IS CALLED FOR, THE BEAM AND ANY CONCRETE PROJECTING ABOVE THE GROUND LINE ARE TO BE CUT OFF A MINIMUM OF ONE FOOT (1') BELOW EXISTING GROUND LINE OR THE ENTIRE BEAM AND CONCRETE BASE ARE TO BE REMOVED COMPLETELY AND BACKFILLED TO EXISTING GROUND LINE.

SAMPLES, TESTING, ETC.

BEFORE BEGINNING INSTALLATION, THE CONTRACTOR SHALL FURNISH TO THE PROJECT ENGINEER DRAWINGS, DESCRIPTIONS, MANUFACTURER'S CUTS ETC. FOR WRITTEN APPROVAL OF ALL MATERIALS TO BE USED. MILL TEST REPORTS FOR BEAMS, STEEL PANELS, AND EACH DIFFERENT GAUGE OF ALUMINUM OR STEEL SHEETING USED MUST BE SUBMITTED TO THE DIVISION OF CONSTRUCTION AND APPROVED PRIOR TO ERECTION.

MISCELLANEOUS

THE COST FOR REMOVING EXISTING PANEL SIGNS SHALL BE INCIDENTAL TO THE COST OF THE PROJECT.

ON SHEETING SIGNS WHERE THERE ARE MORE THAN ONE SIGN ASSEMBLY MOUNTED BESIDE EACH OTHER, THE POSTS SHALL BE SPACED TO PROVIDE APPROXIMATELY SIX INCHES (6") OF SPACING BETWEEN SIGNS.

CLEARING AND GRUBBING, AND TREE TRIMMING, WHEN REQUIRED FOR CONSTRUCTION OR VISIBILITY OF SIGNS, SHALL BE INCIDENTAL TO THE CONTRACT.

SIGN COVERING IS NOT RECOMMENDED. HOWEVER, IF IT IS ABSOLUTELY NECESSARY TO COVER THE SIGN FACE TEMPORARILY FOLLOWING ERECTION, USE CAUTION SINCE SOME COVERINGS MAY CAUSE PERMANENT DAMAGE TO THE SIGN FACE FOLLOWING EXPOSURE TO MOISTURE, SUNLIGHT, ETC. POROUS CLOTH OR GEOTEXTILE FABRIC COVERS WHICH ARE FOLDED OVER THE SIGN EDGES AND SECURED AT THE BACK OF THE SIGN HAVE BEEN USED SUCCESSFULLY FOR LIMITED PERIODS. DO NOT USE TAPE, PAPER, PLASTIC, OR SHEET METAL COVERS. ANY SIGNS THAT ARE DAMAGED AS A RESULT OF COVERING SHALL BE REPLACED BY THE CONTRACTOR AT NO ADDITIONAL COST TO THE DEPARTMENT.

TYPE I AND II STEEL POSTS IN SOIL SHALL BE DRIVEN 32" TO 34" BELOW THE GROUND LINE AS SHOWN. HOWEVER, IF SOLID ROCK IS ENCOUNTERED, THE CONTRACTOR SHALL DRILL HOLES OF THE REQUIRED DEPTH INTO THE ROCK AND BACKFILL WITH CONCRETE. THE COST SHALL BE INCIDENTAL TO STEEL POST, AND SOIL STABILIZERS WILL NOT BE REQUIRED.

ANY AREA DISTURBED SHALL BE SIDE GRADED TO THE EXISTING SLOPES AND RESEEDED AS DIRECTED BY THE ENGINEER, AT NO ADDITIONAL COST TO THE DEPARTMENT.

REMOVE AND DO NOT REPLACE THE WHITE ON BLUE GENERAL SERVICES SIGNS AT THE EXIT RAMP TERMINALS, "EMERGENCY STOPPING ONLY" SIGNS, AND THE ROUTE MARKER THAT IS LOCATED INSIDE THE INTERCHANGE PAST THE EXIT GORE AREA.

INSTALLATION OF ADVISORY EXIT AND RAMP SPEED SIGNS (W13-2 AND W13-3) SHALL CONFORM TO THE MANUAL ON UNIFORM TRAFFIC CONTROL DEVICES (MUTCD).

ALL EXISTING SHEETING SIGNS WITHIN THE LIMITS OF THIS PROJECT ARE TO BE REMOVED AND REPLACED WITH NEW SIGNS AND POSTS. SIGNS AND POSTS SHALL CONFORM TO CURRENT STANDARDS/SPECIFICATIONS. THE COST FOR REMOVING EXISTING SHEETING SIGNS AND POSTS, RELOCATING EXISTING SIGNS AND POSTS TO CONFORM TO THE SIGNING PLANS AND SPECIFICATIONS, AND ALL HARDWARE REQUIRED, SHALL BE INCIDENTAL TO THE PROJECT. IN ADDITION TO REPLACING ALL EXISTING SIGNS, ALL SIGNS SHOWN ON THE SIGNING PLANS MUST BE INSTALLED. FOR SIGN SIZES AND SPECIFICATIONS, SEE THE CURRENT PROJECT SIGNING PLAN DETAIL SHEETS.

THE COST FOR SIGN BRACKETS AND ANY OTHER HARDWARE REQUIRED TO ATTACH NEW SIGNS ON EXISTING TRUSSES AND CANTILEVERS SHALL BE INCLUDED IN THE UNIT PRICE OF SIGN BASE MATERIAL FOR PANEL SIGNS.

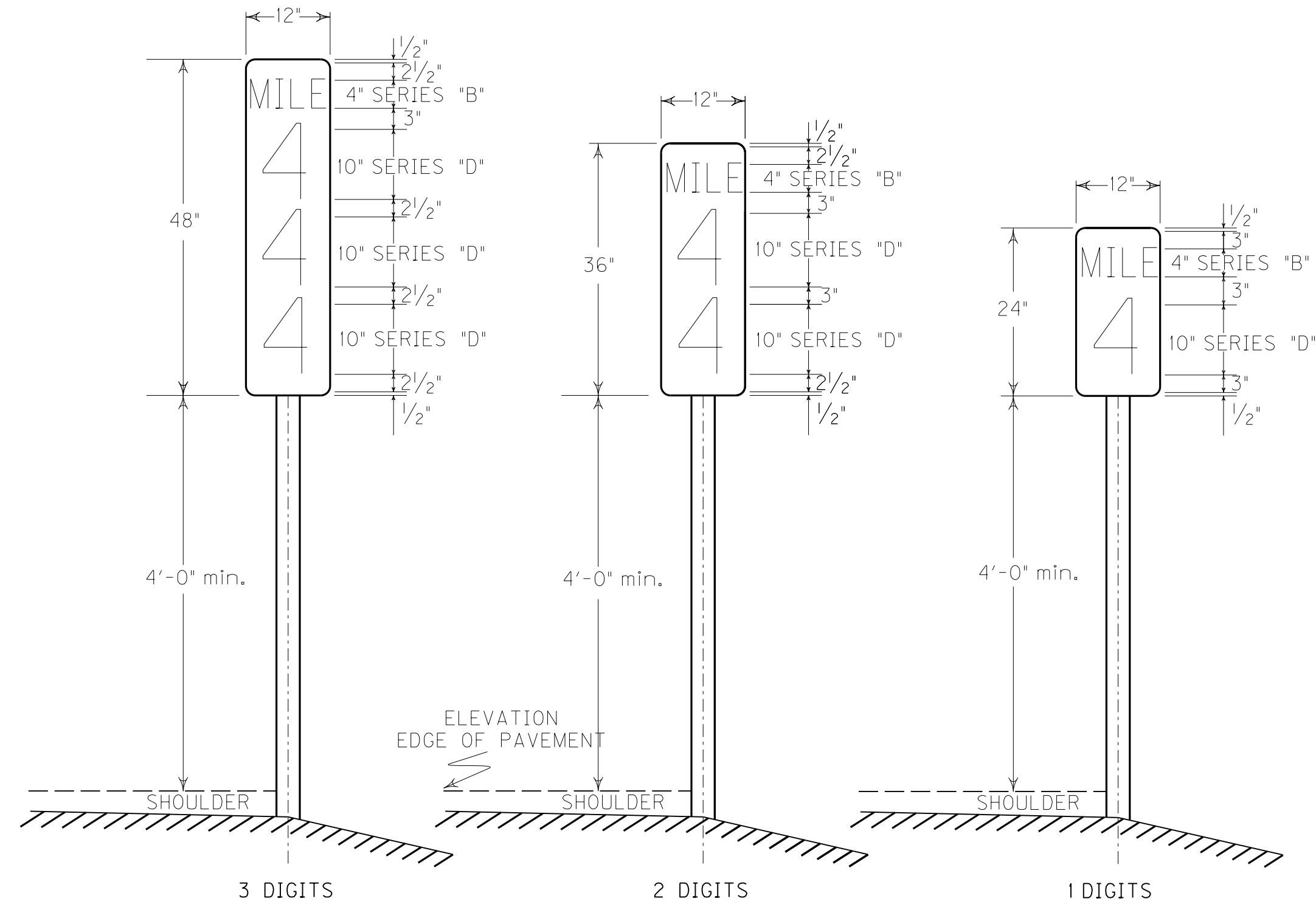
DUPLICATE SIGNS SHALL NOT BE DISPLAYED DURING THE CONSTRUCTION OF THIS PROJECT. SHEETING SIGNS (DI-1, DI-2, DI-3) EQUAL TO OR LESS THAN 72" X 42" REQUIRE TWO TYPE I OR TYPE II POSTS.

THE HORIZONTAL CLEARANCE "X" ON ALL THE SHEETING SIGNS SHOULD BE A MINIMUM OF 6' FROM THE EDGE OF THE SHOULDER TO THE EDGE OF THE SIGN OR A MINIMUM OF 12' FROM THE EDGE OF THE SIGN TO THE EDGE OF THE TRAVELLED WAY AS SHOWN IN THE SIGNING POSITIONING DETAIL SHEET.

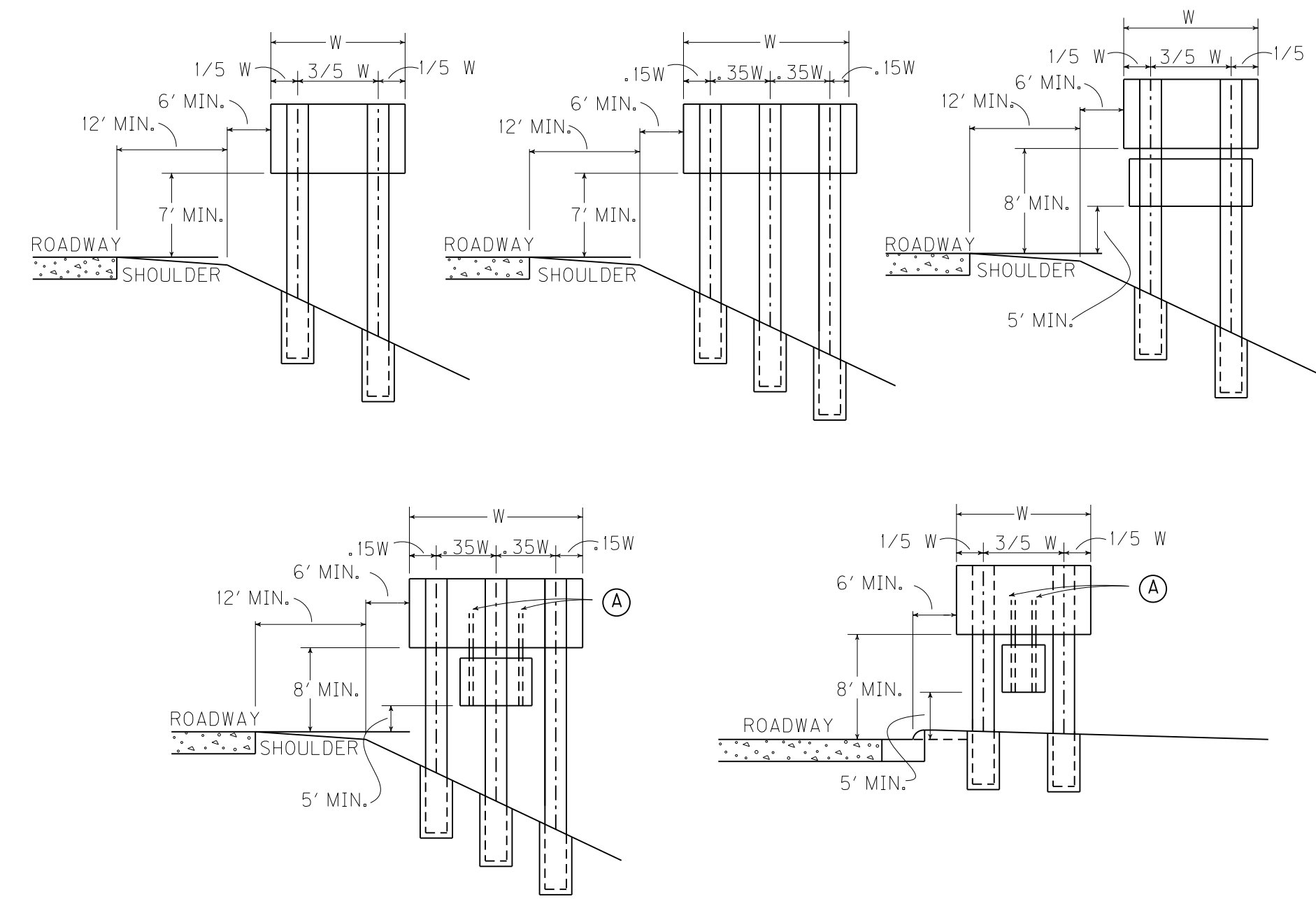
IF ANY SIGN IS LOCATED NEAR A LUMINAIRE OR ANOTHER POLE, IT SHALL BE INSTALLED IN ADVANCE OF THE POLE SO THAT THE MOTORISTS VIEW OF THE SIGN WILL NOT BE OBSTRUCTED.

SIGNS THAT DO NOT COMPLY WITH THE MUTCD SHALL BE REMOVED BY THE CONTRACTOR AS APPROVED AND DIRECTED BY THE ENGINEER.

MILEPOST MARKERS



PANEL SIGNS



(A) ATTACHMENT OF SECONDARY SIGN TO MAJOR SIGN IS TO BE MADE WITH TWO (2) 3" X 3" X 3/16" ANGLES OF SUFFICIENT LENGTH TO EXTEND FROM THE LOWER EDGE OF THE SECONDARY SIGN TO AT LEAST THREE FEET UP THE BACK OF THE MAJOR SIGN. A MINIMUM OF ONE POST CLIP PER FOOT SHALL BE USED IN ATTACHING EXTRUSIONS TO EACH ANGLE.

TYPICAL SIGN PANEL DIMENSIONS AND MILEPOST LOCATIONS

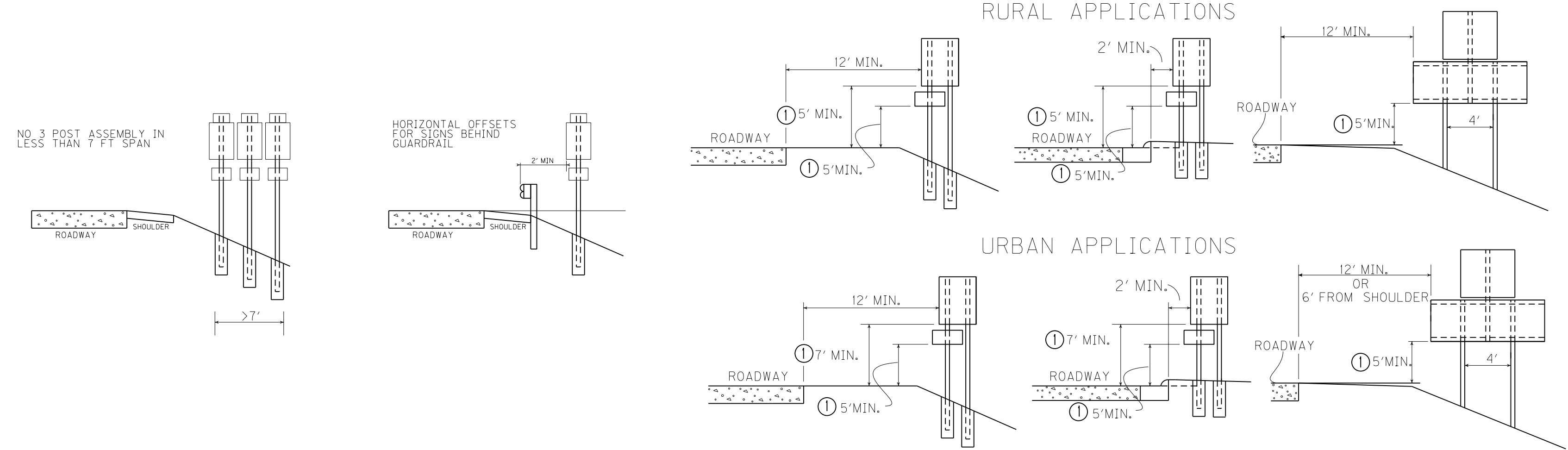
MILE POST NUMBER	STATION NUMBER *	MILE POST NUMBER	STATION NUMBER *
	BOUND LANE (S)		BOUND LANE (S)

NOTE: STATION NUMBERS ARE GIVEN FOR NOTED DIRECTION OF TRAVEL ONLY. CORRESPONDING MILEPOST MARKERS FOR OTHER DIRECTION SHOULD BE PLACED DIRECTLY OPPOSITE THOSE FOR WHICH STATION NUMBERS ARE GIVEN.

IN JEFFERSON COUNTY, FINAL LOCATION OF MILEPOST MARKERS SHALL BE VERIFIED BY TRIMARC, NOTIFY TRIMARC AT LEAST TWO WEEKS PRIOR TO BEGINNING WORK ON THIS ITEM:

901 WEST MAIN STREET
LOUISVILLE, KY 40202
502-587-6624
270-307-7456

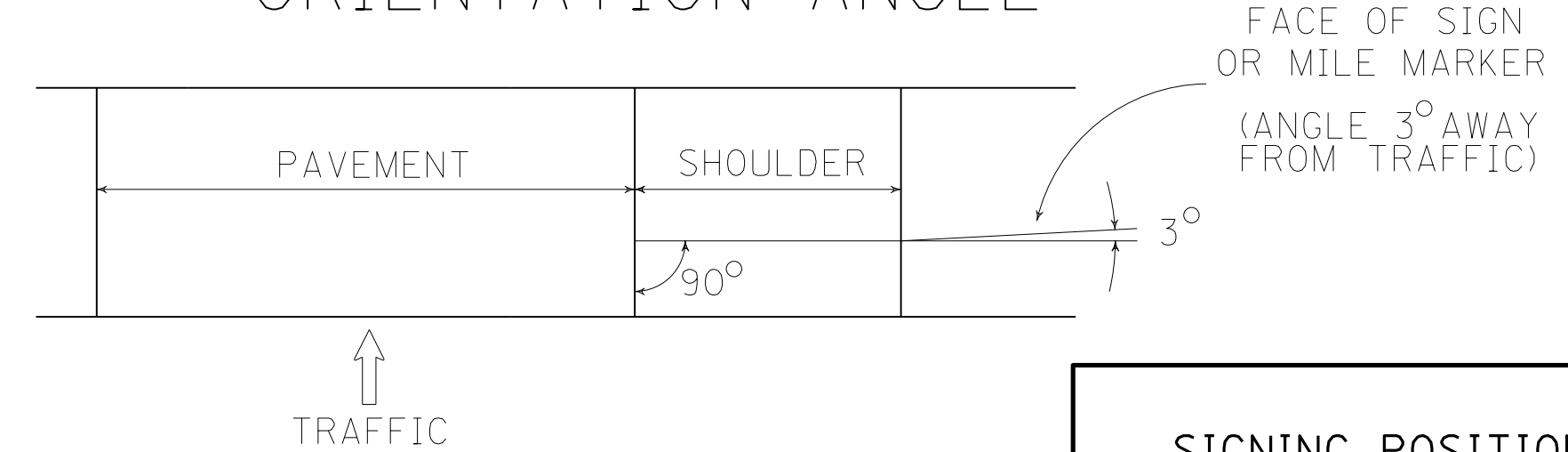
SHEETING SIGNS



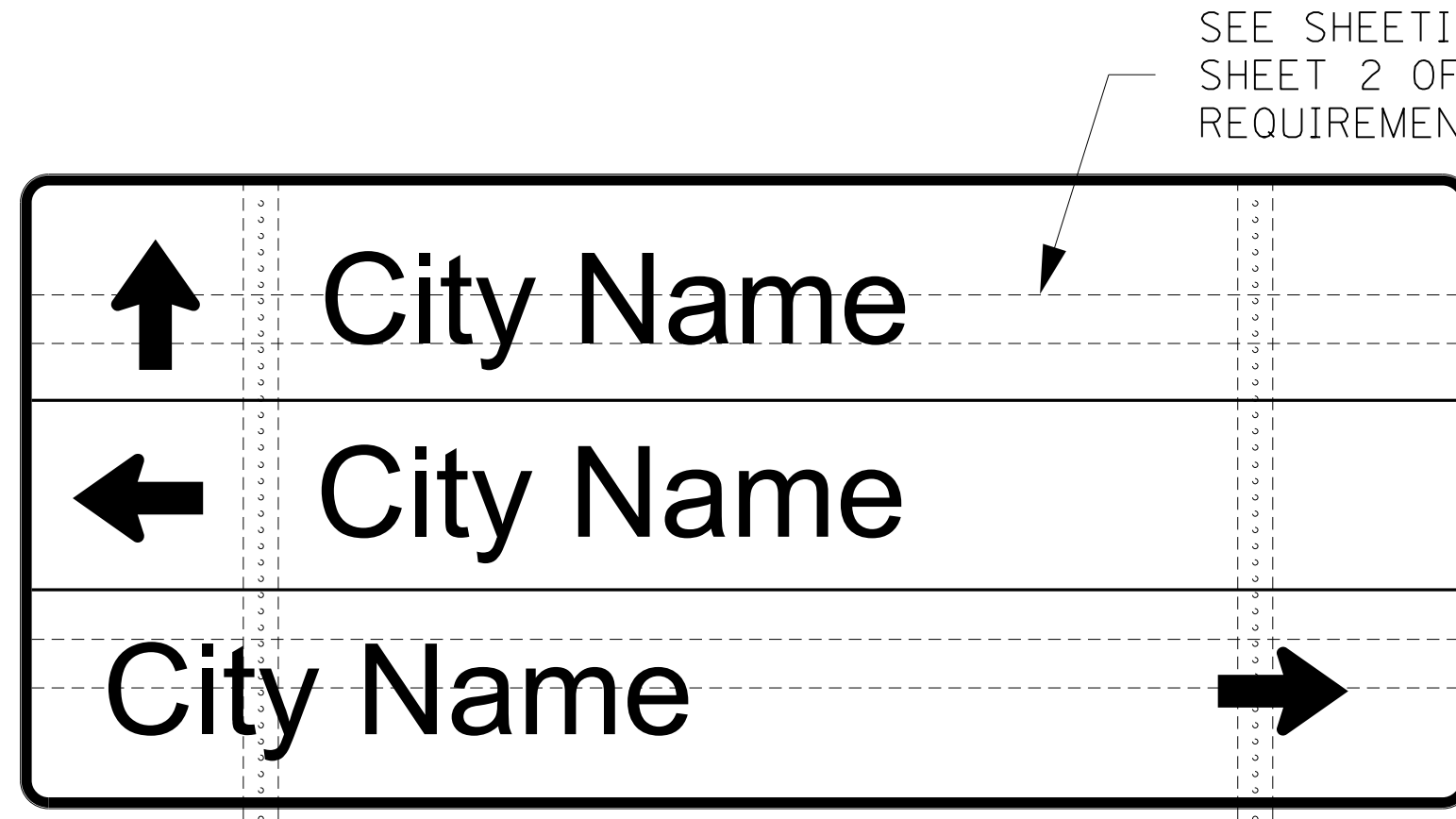
NOTE: SHOULD A SIGN BE LOCATED AT A POINT WHERE GUARDRAIL IS CALLED FOR OR EXISTING, ALL SIGN SUPPORTS SHALL BE PLACED BEHIND THE GUARDRAIL AND LATERAL OFFSET SHALL BE MEASURED FROM THE GUARDRAIL.

(1) NOT TO EXCEED 8' IN URBAN AREAS AND 6' IN RURAL AREAS UNLESS SPECIFIED BY THE ENGINEER

ORIENTATION ANGLE

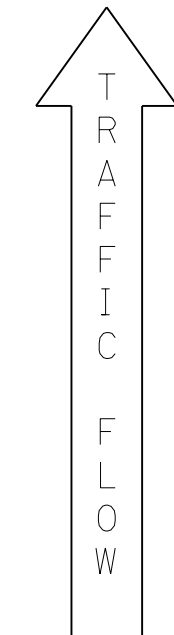
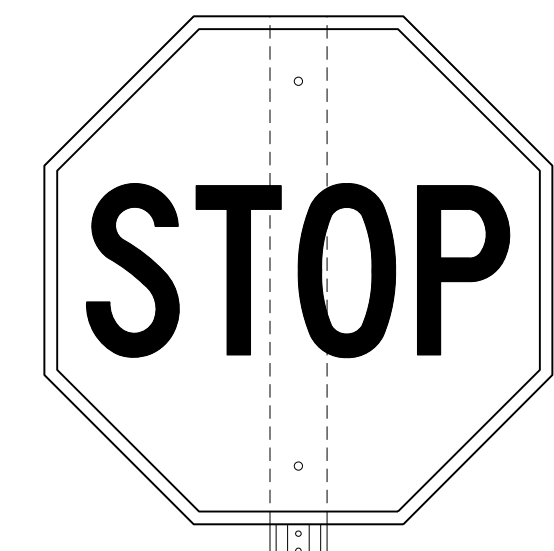


FILE NAME: X:\PROJECTS\2022\2231\210490 KYTC PVMNT REHAB 2022-2024\0401 MADISON 1-75 \SIGNING\T00300SN.DGN
 USER: fvonbehren
 DATE PLOTTED: July 23, 2013
 E-SHEET NAME:
 Power InRoads v8.11.9.397



SEE SHEETING SIGN DETAIL SHEET 2 OF 2 FOR BRACING REQUIREMENTS

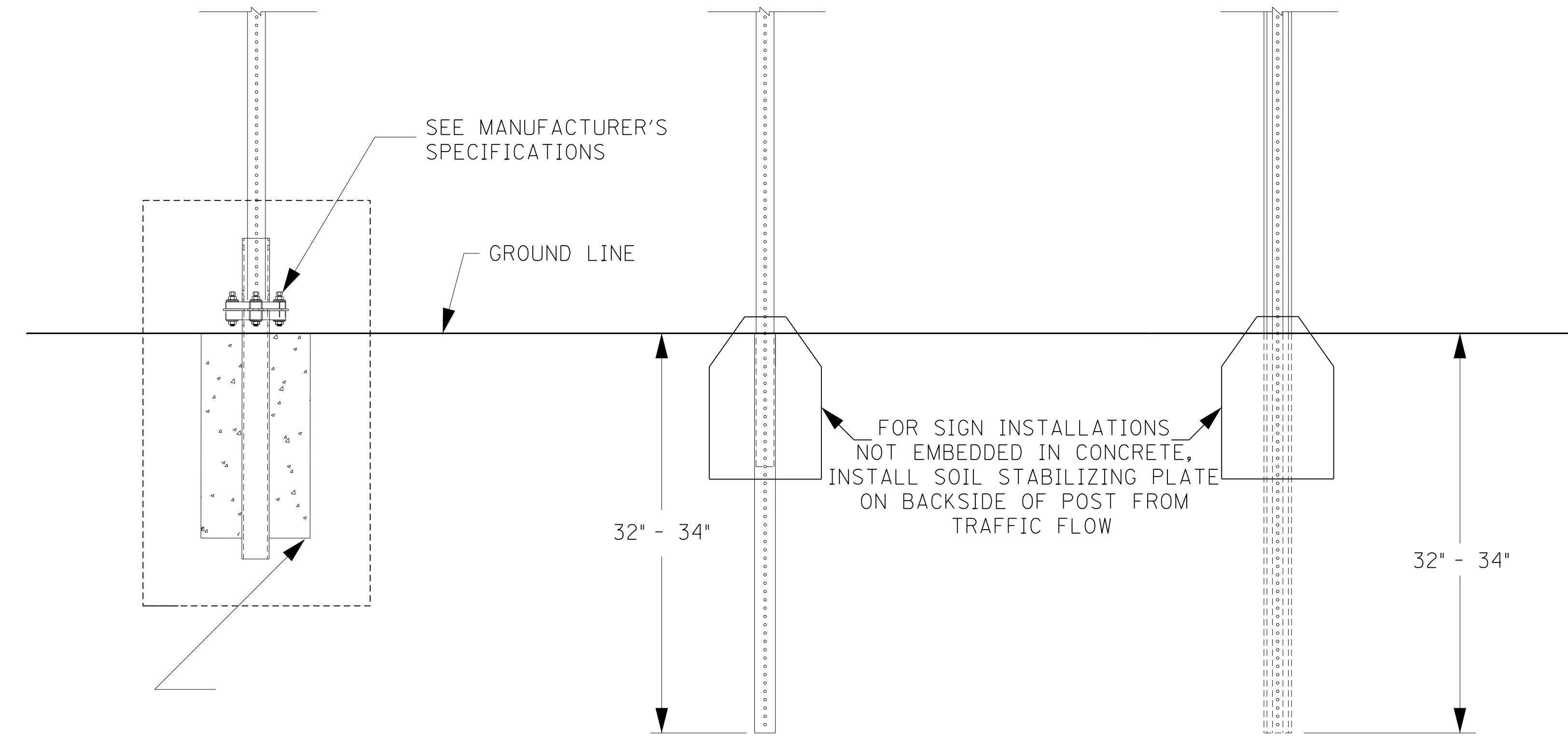
NOTE: SEE SIGN DETAIL SHEETS FOR QUANTITY, LENGTH, SIZE AND GAUGE OF TYPE I POSTS



PLAN VIEW
NOT TO SCALE

PLAN VIEW
NOT TO SCALE

PLAN VIEW
NOT TO SCALE



SEE MANUFACTURER'S SPECIFICATIONS

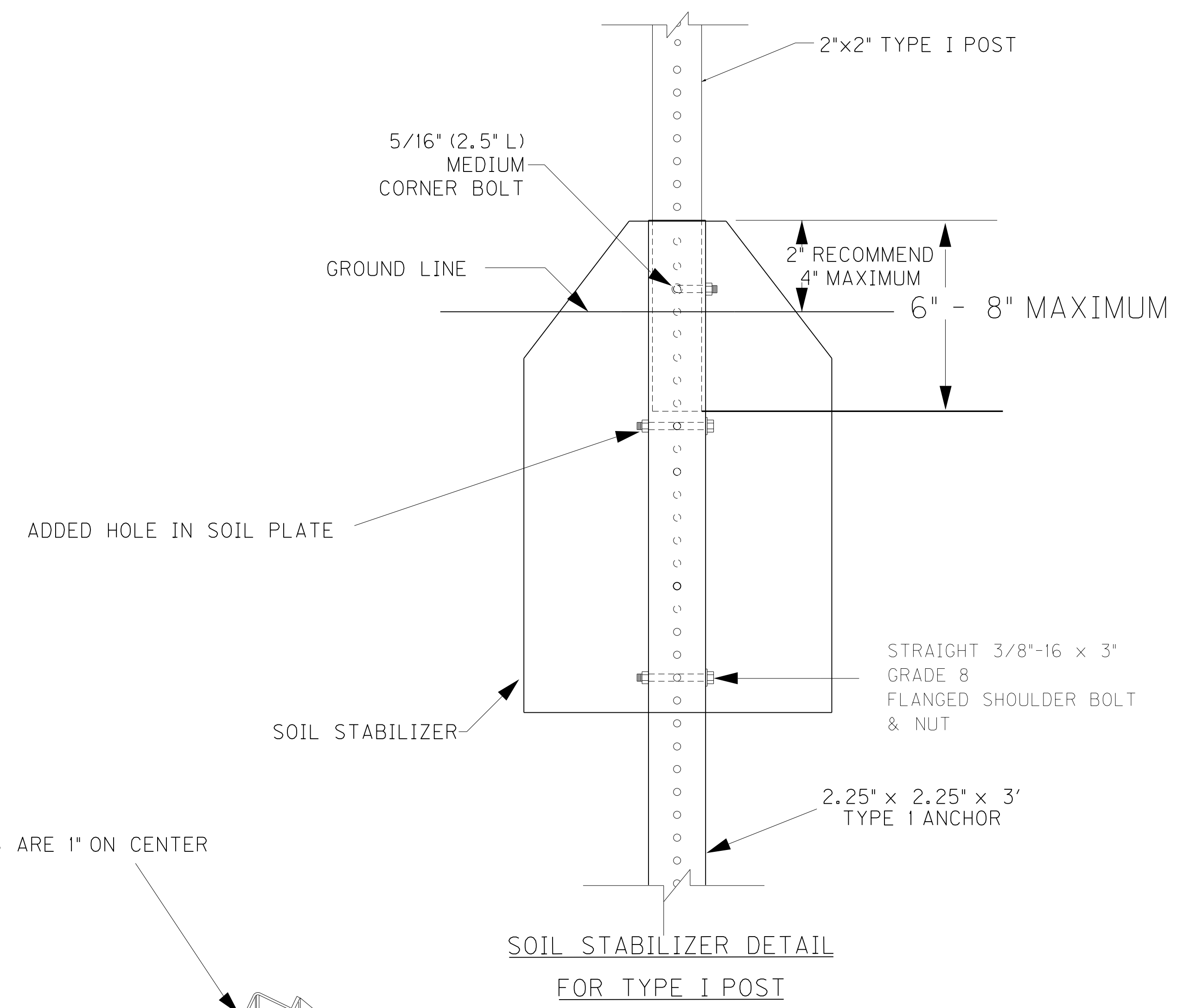
GROUND LINE

FOR SIGN INSTALLATIONS NOT EMBEDDED IN CONCRETE, INSTALL SOIL STABILIZING PLATE ON BACKSIDE OF POST FROM TRAFFIC FLOW

TYPE I
SQUARE TUBING POST
WITH TYPE "D" SUPPORT

TYPE I
SQUARE TUBING POST
WITH SOIL STABILIZER

TYPE II
CHANNEL POST
WITH SOIL STABILIZER



ADDED HOLE IN SOIL PLATE

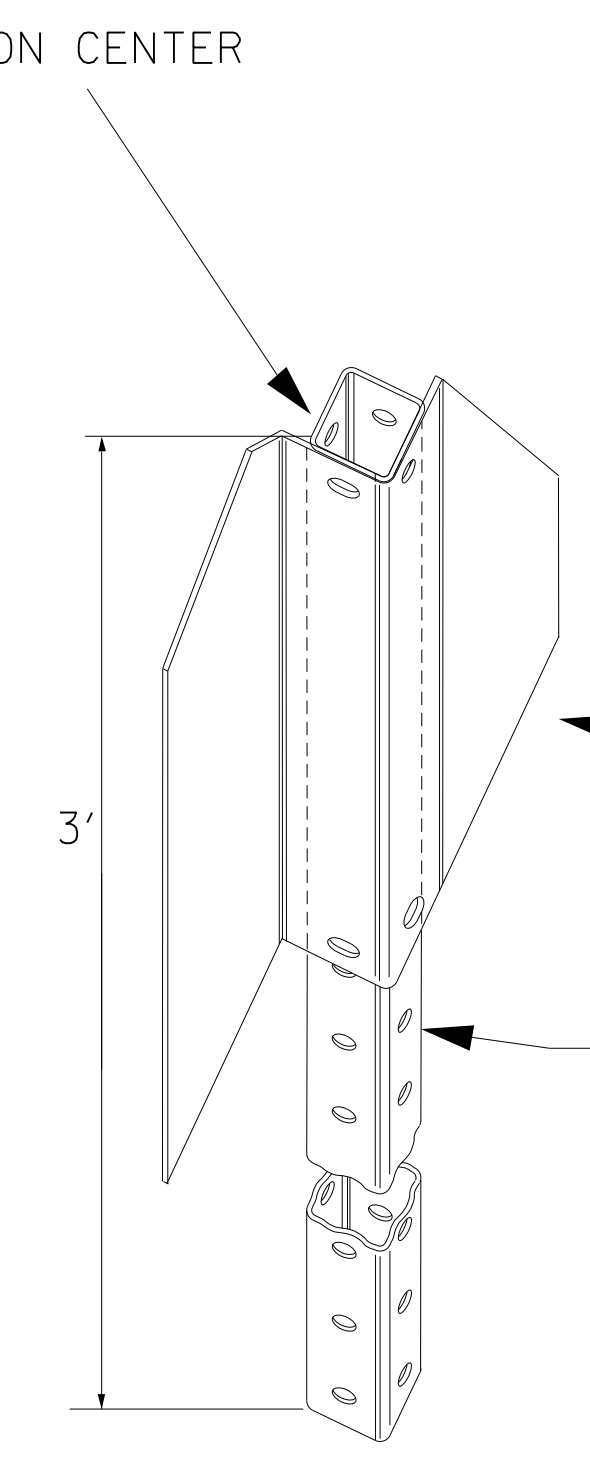
SOIL STABILIZER

STRAIGHT 3/8"-16 x 3" GRADE 8 FLANGED SHOULDER BOLT & NUT

2.25" x 2.25" x 3" TYPE I ANCHOR

SOIL STABILIZER DETAIL
FOR TYPE I POST

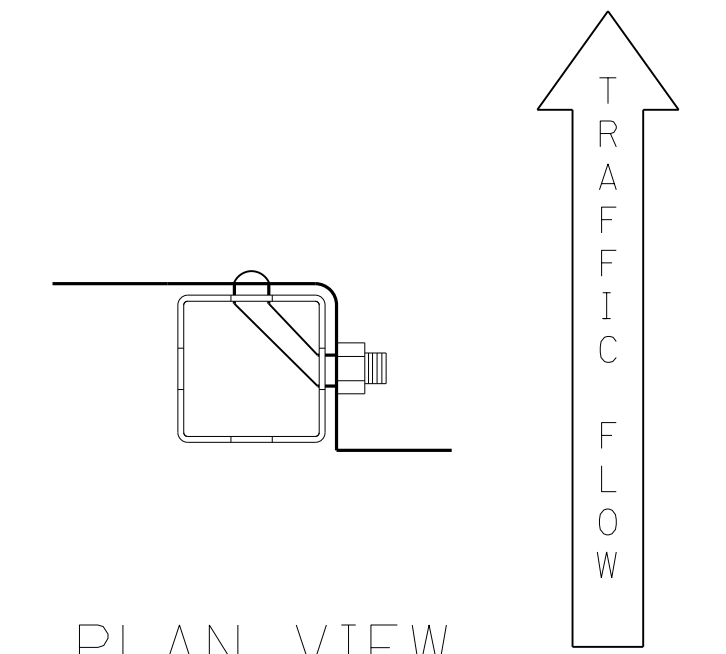
HOLES ARE 1" ON CENTER



SOIL STABILIZER

TYPE I - SQUARE TUBING OR TYPE II CHANNEL POST

SOIL STABILIZER DETAIL

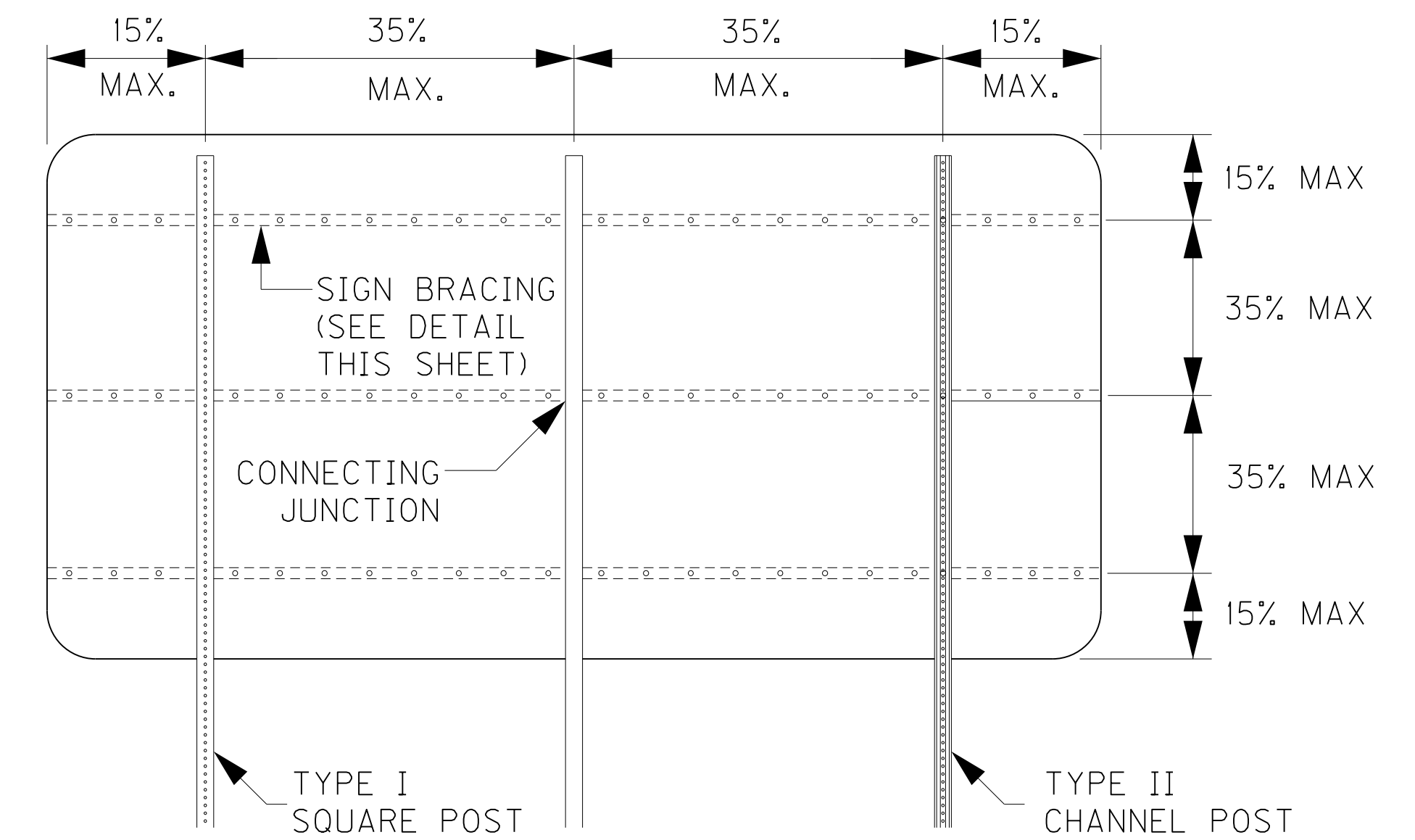
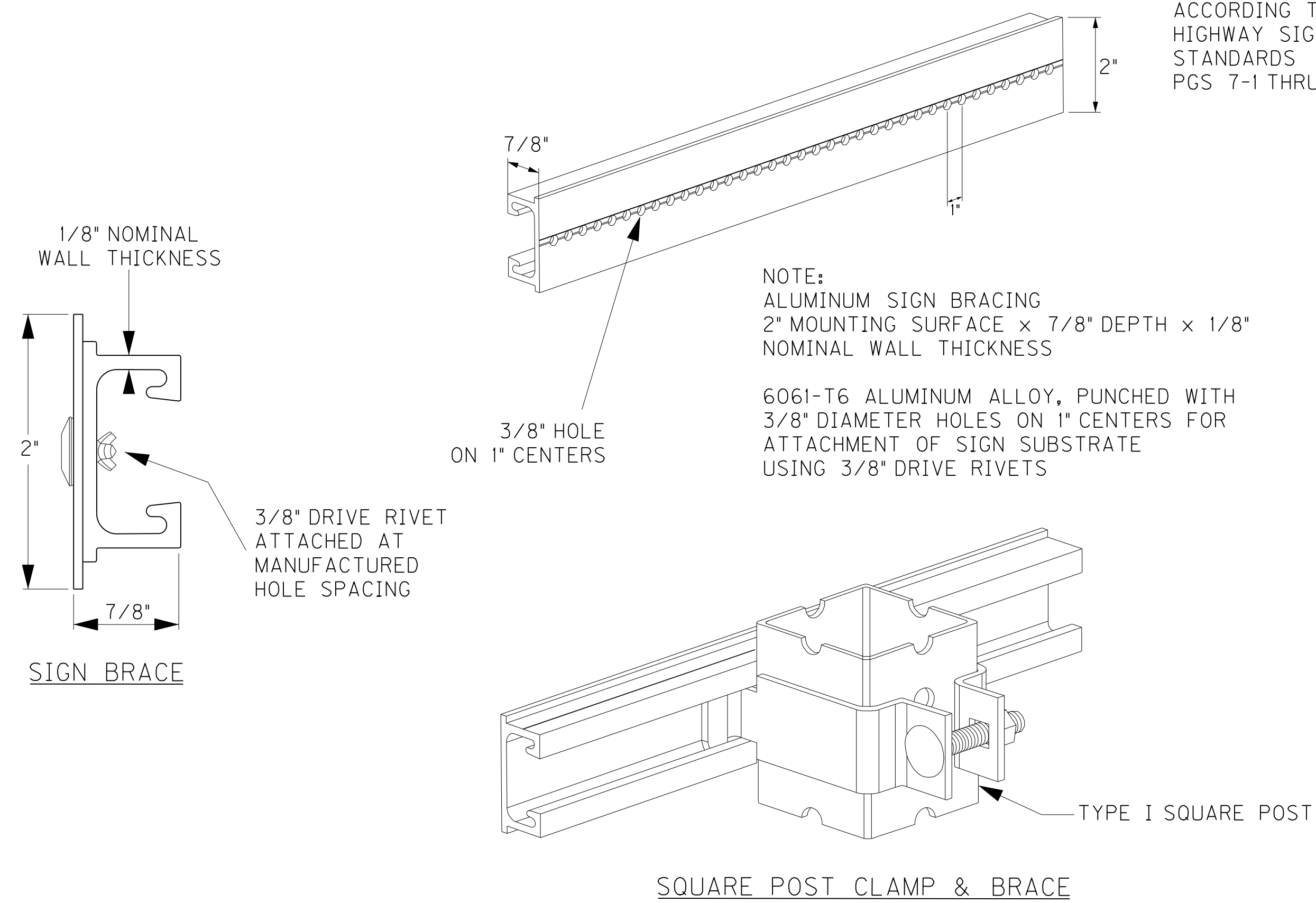


PLAN VIEW
NOT TO SCALE

NOT TO SCALE

FILE NAME: X:\PROJECTS\2022\2231\210490 KYTC PWMT REHAB 2022-2024\0401 MADISON 1-75 SIGNING.T00400SN.DGN
 USER: bmcocoy
 DATE PLOTTED: January 2, 2025
 E-SHEET NAME: v10.14.4

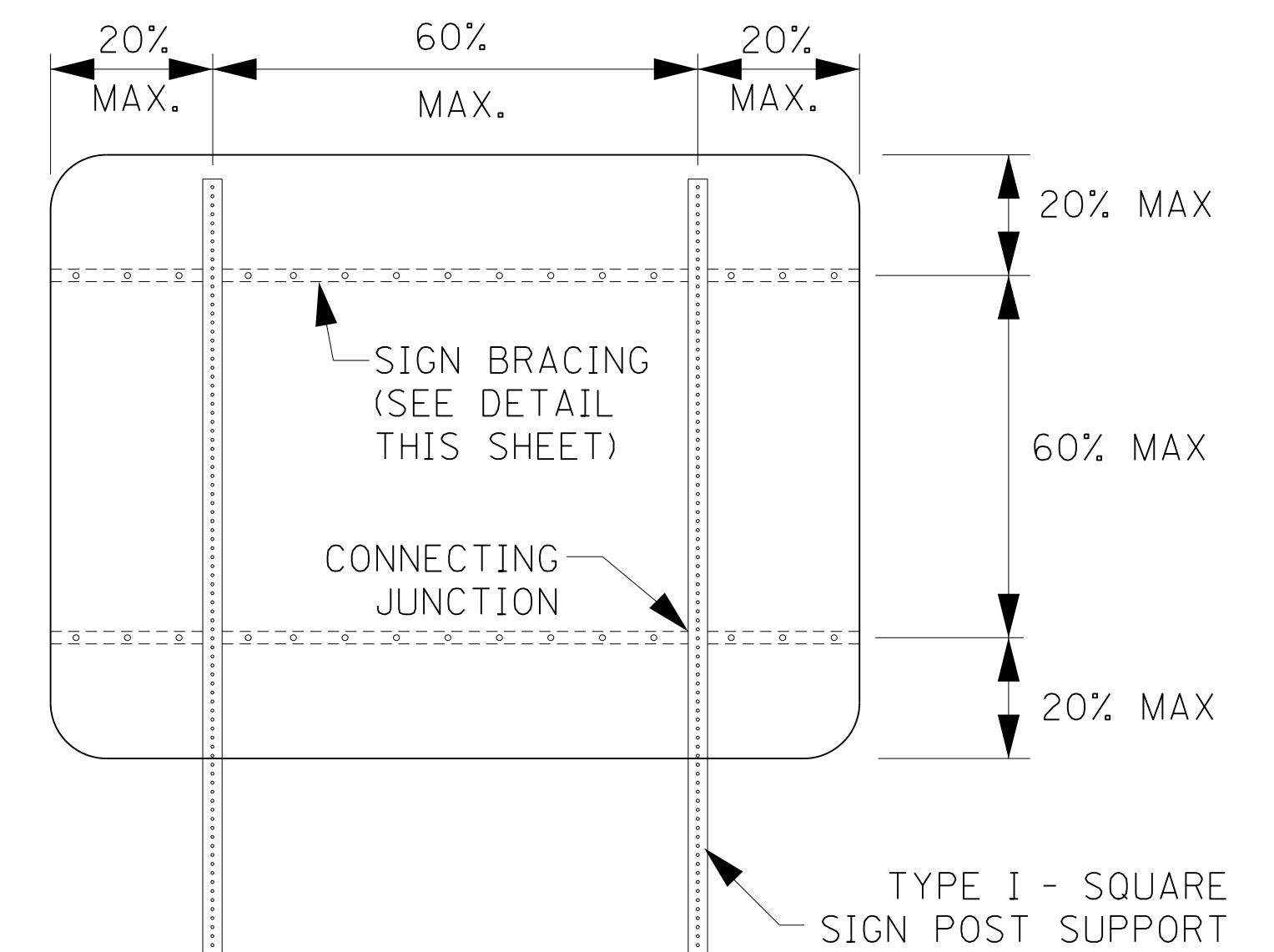
FOR ATTACHMENT OF SIGNS LESS THAN 72" IN WIDTH USING MANUFACTURED 3/8" HOLES ACCORDING TO 2004 STANDARD HIGHWAY SIGNS BLANK STANDARDS PGS 7-1 THRU 7-6



3 POST - BRACING DIAGRAM

NOTE:
1. MAXIMUM AREA PER CONNECTING JUNCTION = 16 SQ. FT.

2. BRACING SHOULD NOT BE SPLICED WITHIN 6" OF A BRACE TO POST JUNCTION.

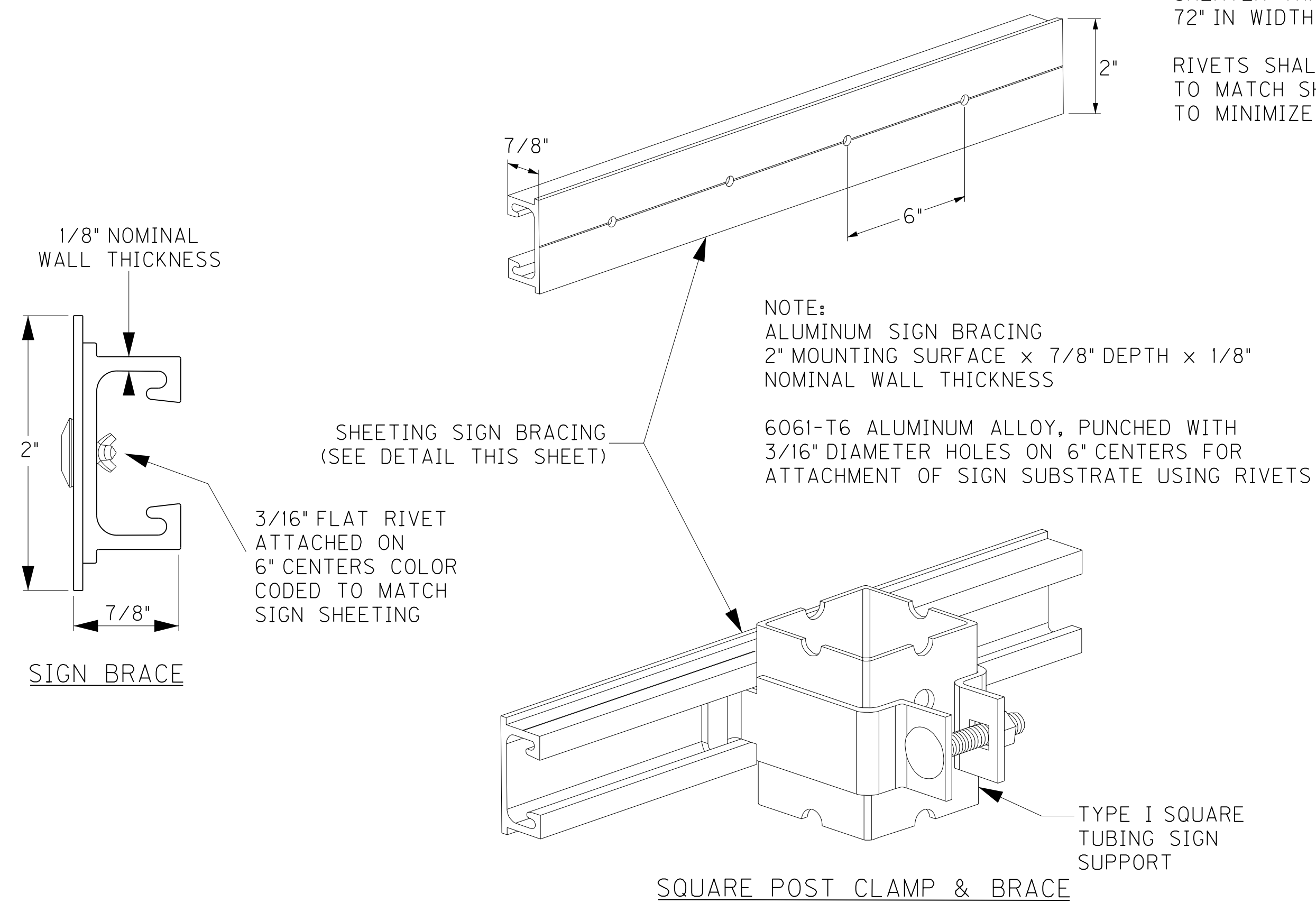


2 POST - BRACING DIAGRAM

NOTE:
USE OF SIGN BRACING NOT SHOWN ON THIS SHEET MAY BE PERMITTED BY PROJECT ENGINEER AND/OR DISTRICT TRAFFIC ENGINEER.

FOR ATTACHMENT OF SIGNS GREATER THAN, OR EQUAL TO, 72" IN WIDTH.

RIVETS SHALL BE COLOR CODED TO MATCH SHEETING IN ORDER TO MINIMIZE GLARE FROM RIVETS



FILE NAME: X:\PROJECTS\2022\2231\210490 KYTC PVMNT REHAB 2022-2024\0401 MADISON 1-75 SIGNING.T005005N.DGN

USER: bmcocoy
DATE PLOTTED: January 2, 2025

E-SHEET NAME: v10.14.4
Designer: openRoads

NOT TO SCALE

SHEETING SIGNS DETAIL SHEET

COUNTY OF	ITEM NO.	SHEET NO.
MADISON	7-22115.00	T6

SIGN/SIGN ASSEMBLY NUMBER	SIZES IN INCHES		MESSAGES ①	SPECIFICATION	SIGN LOCATION			
	HORIZ.	VERT.			SIDE OF ROAD	FACING TRAFFIC TRAVELING	ON ROAD	AT STATION (APPROXIMATE)
S-1	42	30		R5-1A In Termini (Place On Existing Post Assembly, Below "Do Not Enter" Sign. As Shown On The "Wrong Way Treatments At Diamond Interchanges" Exhibit.)	LT	NB	KY 876 RAMP A EXIT 87	
S-2	42	30		R5-1A In Termini (Place On Existing Post Assembly, Below "Do Not Enter" Sign. As Shown On The "Wrong Way Treatments At Diamond Interchanges" Exhibit.)	RT	NB	KY 876 RAMP A EXIT 87	
S-3	48	48		R3-1 2 Type 1 Posts with Type D Supports On Cross Road Shoulder	RT	NB	KY 876 RAMP A EXIT 87	③
S-4	42	30		R5-1A In Termini (Place On Existing Post Assembly, Below "Do Not Enter" Sign. As Shown On The "Wrong Way Treatments At Diamond Interchanges" Exhibit.)	LT	SB	KY 876 RAMP C EXIT 87	
S-5	42	30		R5-1A In Termini (Place On Existing Post Assembly, Below "Do Not Enter" Sign. As Shown On The "Wrong Way Treatments At Diamond Interchanges" Exhibit.)	RT	SB	KY 876 RAMP C EXIT 87	
S-6	42	30		R5-1A Mid Ramp 1 Type 1 Post with Type D Support	LT	SB	KY 876 RAMP C EXIT 87	③

SIGN/SIGN ASSEMBLY NUMBER	SIZES IN INCHES		MESSAGES ①	SPECIFICATION	SIGN LOCATION			
	HORIZ.	VERT.			SIDE OF ROAD	FACING TRAFFIC TRAVELING	ON ROAD	AT STATION (APPROXIMATE)
S-7	42	30		R5-1A Mid Ramp 1 Type 1 Post with Type D Support	RT	SB	KY 876 RAMP C EXIT 87	③
S-8	48	48		R3-1 2 Type 1 Posts with Type D Supports On Cross Road Shoulder	RT	SB	KY 876 RAMP C EXIT 87	③
S-9	42	30		R5-1A In Termini (Place On Existing Post Assembly, Below "Do Not Enter" Sign. As Shown On The "Wrong Way Treatments At Diamond Interchanges" Exhibit.)	LT	NB	US 25 RAMP A EXIT 90	
S-10	42	30		R5-1A In Termini (Place On Existing Post Assembly, Below "Do Not Enter" Sign. As Shown On The "Wrong Way Treatments At Diamond Interchanges" Exhibit.)	RT	NB	US 25 RAMP A EXIT 90	
S-11	42	30		R5-1A In Termini (Place On Existing Post Assembly, Below "Do Not Enter" Sign. As Shown On The "Wrong Way Treatments At Diamond Interchanges" Exhibit.)	RT	NB	US 25 RAMP A EXIT 90	
S-12	42	30		R5-1A In Termini (Place On Existing Post Assembly, Below "Do Not Enter" Sign. As Shown On The "Wrong Way Treatments At Diamond Interchanges" Exhibit.)	LT	NB	US 25 RAMP A EXIT 90	




SPECIAL NOTES:

1. THE COLORS SHALL BE AS SHOWN IN THE "MANUAL ON UNIFORM TRAFFIC CONTROL DEVICES" AND "STANDARD HIGHWAY SIGNS".
2. SHEETING SIGNS SHALL BE FABRICATED FROM 0.125 GAUGE MATERIAL IF ANY DIMENSION IS GREATER THAN 36" (THIRTY-SIX INCHES), OTHERWISE 0.080 GAUGE MATERIAL SHALL BE USED.
3. LOCATION SPECIFIED BY ENGINEER. REFER TO THE WRONG WAY TREATMENTS AT DIAMOND INTERCHANGE EXHIBIT.

FILE NAME: X:\PROJECTS\2022\2231\210490 KYC PVMT REHAB 2022-2024\0401 MADISON 1-75 SIGNING\T06000SN.DGN
 USER: bmcocoy
 DATE PLOTTED: January 2, 2025
 SHEET NAME: T019000SN
 Designer: v10.14.4.4 E-SHEET

SHEETING SIGNS DETAIL SHEET

COUNTY OF	ITEM NO.	SHEET NO.
MADISON	7-22115.00	T7

SIGN/SIGN ASSEMBLY NUMBER	SIZES IN INCHES		MESSAGES ①	SPECIFICATION	SIGN LOCATION			
	HORIZ.	VERT.			SIDE OF ROAD	FACING TRAFFIC TRAVELING	ON ROAD	AT STATION (APPROXIMATE)
S-13	42	30		R5-1A In Termini (Place On Existing Post Assembly, Below "Do Not Enter" Sign. As Shown On The "Wrong Way Treatments At Diamond Interchanges" Exhibit.)	RT	NB	US 25 RAMP A EXIT 90	
S-14	42	30		R5-1A In Termini (Place On Existing Post Assembly, Below "Do Not Enter" Sign. As Shown On The "Wrong Way Treatments At Diamond Interchanges" Exhibit.)	LT	SB	US 25 RAMP C EXIT 90	
S-15	42	30		R5-1A In Termini (Place On Existing Post Assembly, Below "Do Not Enter" Sign. As Shown On The "Wrong Way Treatments At Diamond Interchanges" Exhibit.)	RT	SB	US 25 RAMP C EXIT 90	
S-16	42	30		R5-1A In Termini (Place On Existing Post Assembly, Below "Do Not Enter" Sign. As Shown On The "Wrong Way Treatments At Diamond Interchanges" Exhibit.)	LT	NB	KY 627 RAMP A EXIT 95	
S-17	42	30		R5-1A In Termini (Place On Existing Post Assembly, Below "Do Not Enter" Sign. As Shown On The "Wrong Way Treatments At Diamond Interchanges" Exhibit.)	RT	NB	KY 627 RAMP A EXIT 95	
S-18	42	30		R5-1A Mid Ramp 1 Type 1 Post with Type D Support	LT	NB	KY 627 RAMP A EXIT 95	③

SIGN/SIGN ASSEMBLY NUMBER	SIZES IN INCHES		MESSAGES ①	SPECIFICATION	SIGN LOCATION			
	HORIZ.	VERT.			SIDE OF ROAD	FACING TRAFFIC TRAVELING	ON ROAD	AT STATION (APPROXIMATE)
S-19	42	30		R5-1A Mid Ramp 1 Type 1 Post with Type D Support	RT	NB	KY 627 RAMP A EXIT 95	③
S-20	48	48		R3-1 2 Type 1 Posts with Type D Supports On Cross Road Shoulder	RT	NB	KY 627 RAMP A EXIT 95	③
S-21	48	48		R3-2 2 Type 1 Posts with Type D Supports On Cross Road Median	MED	NB	KY 627 RAMP A EXIT 95	③
S-22	42	30		R5-1A In Termini (Place On Existing Post Assembly, Below "Do Not Enter" Sign. As Shown On The "Wrong Way Treatments At Diamond Interchanges" Exhibit.)	LT	SB	KY 627 RAMP C EXIT 95	
S-23	42	30		R5-1A In Termini (Place On Existing Post Assembly, Below "Do Not Enter" Sign. As Shown On The "Wrong Way Treatments At Diamond Interchanges" Exhibit.)	RT	SB	KY 627 RAMP C EXIT 95	
S-24	42	30		R5-1A Mid Ramp 1 Type 1 Post with Type D Support	LT	SB	KY 627 RAMP C EXIT 95	③

SPECIAL NOTES:


1. THE COLORS SHALL BE AS SHOWN IN THE "MANUAL ON UNIFORM TRAFFIC CONTROL DEVICES" AND "STANDARD HIGHWAY SIGNS".
2. SHEETING SIGNS SHALL BE FABRICATED FROM 0.125 GAUGE MATERIAL IF ANY DIMENSION IS GREATER THAN 36" (THIRTY-SIX INCHES), OTHERWISE 0.080 GAUGE MATERIAL SHALL BE USED.
3. LOCATION SPECIFIED BY ENGINEER. REFER TO THE WRONG WAY TREATMENTS AT DIAMOND INTERCHANGE EXHIBIT.

FILE NAME: X:\PROJECTS\2022\2231\210490 KYTC PVMNT REHAB 2022-2024\0401 MADISON 1-75 SIGNING\T007005N.DGN
 USER: bmcocoy
 DATE PLOTTED: January 2, 2025
 E-SHEET NAME: T019005N
 Designer: v10.14.4

SHEETING SIGNS DETAIL SHEET

COUNTY OF	ITEM NO.	SHEET NO.
MADISON	7-22115.00	T8

SIGN/SIGN ASSEMBLY NUMBER	SIZES IN INCHES		MESSAGES ①	SPECIFICATION	SIGN LOCATION					
	HORIZ.	VERT.			SIDE OF ROAD	FACING TRAFFIC TRAVELING	ON ROAD	AT STATION (APPROXIMATE)		
S-25	42	30		R5-1A	RT	SB	KY 627 RAMP C	③		
				Mid Ramp			EXIT 95			
				1 Type 1 Post with Type D Support						
S-26	48	48		R3-1	RT	SB	KY 627 RAMP C	③		
				2 Type 1 Posts with Type D Supports			EXIT 95			
				On Cross Road Shoulder						
S-27	42	30		R5-1A	LT	NB	US 421/ US 25			
				In Termini			RAMP A			
				(Place On Existing Post Assembly, Below "Do Not Enter" Sign. As Shown On The "Wrong Way Treatments At Diamond Interchanges" Exhibit.)			EXIT 97			
S-28	42	30		R5-1A	RT	NB	US 421/ US 25			
				In Termini			RAMP A			
				(Place On Existing Post Assembly, Below "Do Not Enter" Sign. As Shown On The "Wrong Way Treatments At Diamond Interchanges" Exhibit.)			EXIT 97			
S-29	48	48		R3-1	RT	NB	US 421/ US 25	③		
				2 Type 1 Posts with Type D Supports			RAMP A			
				On Cross Road Shoulder			EXIT 97			
S-30	42	30		R5-1A	LT	SB	US 421/ US 25			
				In Termini			RAMP C			
				(Place On Existing Post Assembly, Below "Do Not Enter" Sign. As Shown On The "Wrong Way Treatments At Diamond Interchanges" Exhibit.)			EXIT 97			

SIGN/SIGN ASSEMBLY NUMBER	SIZES IN INCHES		MESSAGES ①	SPECIFICATION	SIGN LOCATION					
	HORIZ.	VERT.			SIDE OF ROAD	FACING TRAFFIC TRAVELING	ON ROAD	AT STATION (APPROXIMATE)		
S-31	42	30		R5-1A	RT	SB	US 421/ US 25			
				In Termini			RAMP C			
				(Place On Existing Post Assembly, Below "Do Not Enter" Sign. As Shown On The "Wrong Way Treatments At Diamond Interchanges" Exhibit.)			EXIT 97			
S-32	48	48		R3-1	RT	SB	US 421/ US 25	③		
				2 Type 1 Posts with Type D Supports			RAMP C			
				On Cross Road Shoulder			EXIT 97			
S-										
S-										
S-										
S-										
S-										
S-										
S-										
S-										
S-										
S-										
S-										
S-										
S-										
S-										
S-										
S-										
S-										

FILE NAME: X:\PROJECTS\2022\2231\210490 KYTC PWMT REHAB 2022-2024\0401 MADISON 1-75 SIGNING\TO0800SN.DGN
 USER: bmcocx
 DATE PLOTTED: January 2, 2025
 Designer: v10.14.4.4 E-SHEET NAME: TO1900SN

SPECIAL NOTES:

1. THE COLORS SHALL BE AS SHOWN IN THE "MANUAL ON UNIFORM TRAFFIC CONTROL DEVICES" AND "STANDARD HIGHWAY SIGNS".
2. SHEETING SIGNS SHALL BE FABRICATED FROM 0.125 GAUGE MATERIAL IF ANY DIMENSION IS GREATER THAN 36" (THIRTY-SIX INCHES), OTHERWISE 0.080 GAUGE MATERIAL SHALL BE USED.
3. LOCATION SPECIFIED BY ENGINEER. REFER TO THE WRONG WAY TREATMENTS AT DIAMOND INTERCHANGE EXHIBIT.

SHEETING SIGN DETAIL SHEET