



Subject: Pre-Bid Meeting Minutes	
Client: KYTC District 1	
Project: CID 18-4001 McCracken Co KY 1954 HSIP	Project No: 1-9002.00
Meeting Date: January 17, 2018	Meeting Location: KYTC District 1 Office
Notes by: Jason Littleton	

The Mandatory Pre-Bid meeting for Call No. 105, CID 18-4001, the highway safety improvements project (HSIP) on KY 1954 in McCracken County from mile point 0.0 to mile point 3.04 was held at the KYTC District 1 office in Paducah on January 17, 2018. The meeting began with Chris Kuntz giving a brief overview of the project. He stated that the intent of this meeting was to ensure that all parties were on the same page specifically as it related to the reconstruction of KY 1954 around the United States Army Corps of Engineers (USACE) and City of Paducah floodwall/levee. He then handed the meeting off to Keith Damron of American Engineers, Inc. (AEI) for the presentation. (See attached.)

Keith reviewed some key aspects of this project, including the project scope which is to improve safety. Following are some other key points:

- Stay within existing R/W or fence lines. Existing R/W was determined to be 25' either side of centerline.
- Jordan Leonard and Jacob Northington will be the resident engineers for this project.
- Plan sheets provided are for informational purposes only and were developed to estimate quantities. All items will need to be field verified by the contractor prior to submitting bids.
- “The Special Notes Applicable to the Project – General Notes and Description of Work” were discussed. Items included:
 1. Super Elevation of Curves (near Krebs Station Rd KY 899)
 2. Guardrail Replacement
 3. Trim & Remove Trees, Stumps and Brush
 4. Shouldering & Ditching
 5. Pipe & Pipe Culvert Headwall
 6. Striping
 7. Remove and Relocate Signs (with Advisory Speeds)
 8. Reconstruction Clark Line Curve (Over the Levee)
 9. Erosion Control Blanket
 10. DGA Wedge & Chip Seal
 11. Intermediate Anchor/Collar
 12. Final Dressing, Cleanup, Seeding Protection and Restoration Progress Photos

The note for coordination with utility companies applies for the entire project. The utilities throughout the project up to the beginning of the Clark Line Road reconstruction are approximate and have not been specifically located and are the responsibility of the contractor to locate and coordinate with utility companies. The utilities for the Clark Line Road section have been field located based upon KY811/BUD locates with utilities impacted by the project having been relocated or in the process of being relocated with the exception of the Power Line Tower that will have to be raised after the project begins

It was mentioned that not all pipes or pipe extensions will have a proposed headwall. This is due to R/W limitations.

The superelevation through the curves at Jones Road and KY 999 are the only two curves being improved with this project, along with the Clark Line reconstruction. The adjustment of the superelevation in this location will require some work to tie in the approaches to the newly superelevated KY 1954.

Tree trimming is focused mainly in the area of the Kreb's Station curves mentioned above and other locations as shown in the summary sheets.

It was emphasized that no quantity for entrance pipes were included on this project for areas where ditching and shouldering are proposed. Any requests by property owners for entrance pipe replacements will be made through the resident engineer and the KYTC District Permits office.

Signs are proposed to be removed and replaced. DO NOT order any signs until the signing plan has been approved by KYTC District Traffic section. Doing so will result in any signs not approved by the District Traffic section not being reimbursed by KYTC. KYTC will perform ball bank tests to determine the appropriate advisory speeds for curve signs and will provide the list of needed advisory speed signs.

Reconstruction of KY 1954 over the USACE/City of Paducah floodwall/levee

- USACE Standard Operating Procedures shall be followed in the vicinity of the levee.
- City of Paducah Engineer, Rick Murphy, has granted KYTC an easement across the levee for roadway maintenance and construction. USACE SOP requires that benching on the existing levee face be done in 3' horizontal and 1' vertical cuts.
- The bid item for Special Embankment was used for providing and placing the material to meet USACE specifications.
- Extension of existing levee pipes shall be made using HOBAS pipe and couplings. This will match the existing liner pipes through the levee.
 - Dan Davis with HOBAS Pipe can be reached:
Dan Davis
(678) 549-2919
ddavis@hobaspipe.com
- When pipe connections to existing liner pipes are made, the City of Paducah Engineer, Rick Murphy, shall be on site and given 48 hr. prior notice to this activity.
- The existing headwall is to remain in place and buried during construction.
- At no point during construction is the levee crest to be lowered by more than 3'.
- Progress photos of the levee construction, benching and pipe extension shall be obtained by the contractor for documentation to be provided to the USACE.
- The progress photos should be of a perspective that the scale of the construction activities is discernable (i.e. not zoomed into an area where the scale is unknown).
 - Pick several areas to be used for progressive photos throughout construction.
 - Photos should be taken during the stripping or topsoil, construction of the levee benching, pipe extension and connection, etc.

An updated TCP was presented using the 2018 calendar dates for holidays, etc. This will be made available through an addendum. This project has a fixed completion date of January 15, 2019. Liquidated damages will be assessed on this project.

-----End of Minutes-----

AEI AMERICAN ENGINEERS, INC.
1000 3RD ST.
CINCINNATI, OH 45202

MCCRACKEN COUNTY

KY 1954 (Husband Road)

HSIP Project

CID 18-4001
MP 0.00 – 3.04

PreBid Meeting

January 17, 2018

Kentucky

AEI AMERICAN ENGINEERS, INC.
1000 3RD ST.
CINCINNATI, OH 45202

PROPOSED PROJECT

MCCRACKEN COUNTY

HUSBAND ROAD

KY 1954

END PROJECT KY 1954
STA. 240+00.00, MP 3.04

KY 1954
END P/W
STA. 255+80

KY 1954
BEGIN P/W
STA. 249+50

BEGIN PROJECT KY 1954
STA. 100+00.00, MP 0.00

Project Location

Kentucky

AEI AMERICAN ENGINEERS, INC.
1000 3RD ST.
CINCINNATI, OH 45202

Project Scope

Improve Safety

Kentucky

AEI AMERICAN ENGINEERS, INC.
9700 381 02

Project Criteria

Stay within 25' Right of Way/fence lines
except where specifically indicated
Up To 8% Super Elevation
9'-11' Lanes
18" DGA Shoulder
Flatten Slopes 3:1 When Possible

Kentucky

AEI AMERICAN ENGINEERS, INC.
9700 381 02

Plans Sheets are for Information to Develop Quantity
Summary sheets - All items will need to be verified.

Summary Sheets for each item are to provide an estimate
of quantities. They will need verified in the field.

Kentucky

AEI AMERICAN ENGINEERS, INC.
9700 381 02

Special Notes Applicable to Project—General Notes & Description of Work
(Begin Page 18 of 251)

CAUTION
The information in this proposal and shown on the plans, summary
sheets, and the type of work listed herein are approximate only and are
not to be taken as an accurate evaluation of the materials and
conditions to be encountered during construction; the bidder must draw
his/her own conclusions. The Department does not give any guarantee
as to the accuracy of the data and no claim for money or time
extension will be considered if the conditions encountered are not in
accordance with the information shown.

Kentucky

AEI AMERICAN ENGINEERS, INC.
4000 20th ST.
COLUMBIA, KY 40302

Other Description of Work Items

(Page 19-23 of 251)

- 9. Erosion Control Blanket
- 10. DGA Wedge & Chip Seal
- 11. Intermediate Anchor/Collar
- 12. Final Dressing, Cleanup, Seeding Protection and Restoration Progress Photos

Kentucky

AEI AMERICAN ENGINEERS, INC.
4000 20th ST.
COLUMBIA, KY 40302

1. Superelevation of Krebs Station Curves (near Rd KY 899)

Kentucky

AEI AMERICAN ENGINEERS, INC.
4000 20th ST.
COLUMBIA, KY 40302


Typical Krebs Station Curves

Kentucky

AEI AMERICAN ENGINEERS, INC.
9000 281 ST.

5. Pipe & Pipe Culvert Headwall

- Pipe Extension
- Replacement with Headwalls
- Safety Box Inlet



Kentucky

AEI AMERICAN ENGINEERS, INC.
9000 281 ST.

6. Striping & Centerline Rumble Strips

- Permanent Striping
- Temporary Striping

Kentucky

AEI AMERICAN ENGINEERS, INC.
9000 281 ST.

7. Remove and Relocate Signs (with Advisory Speeds)



District Traffic Section will perform ball bank appropriate advisory speeds of curves before signs are ordered.

Kentucky

AEI AMERICAN ENGINEERS, INC.
4000 38th ST.
COLUMBIA, KY 40306

8. Reconstruction Clark Line Curve (Over the Levee)

- US Army Corps of Engineers Requirements Apply
- Paducah City Engineer - Rick Murphy
- Special Levee Benching
- Levee Pipe Extension - Hobas Pipe Requirements

Kentucky

AEI AMERICAN ENGINEERS, INC.
4000 38th ST.
COLUMBIA, KY 40306

Normal Section
Sta. 284+00 TO Sta. 284+40

Inverted Section
Sta. 284+00 TO Sta. 284+40

Typical Clark Line Rd. Curve

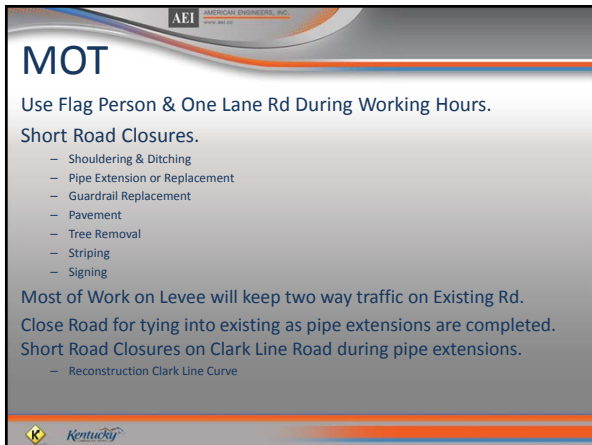
Kentucky

AEI AMERICAN ENGINEERS, INC.
4000 38th ST.
COLUMBIA, KY 40306

8. Reconstruction Clark Line Curve (Over the Levee)

Kentucky







AEI AMERICAN ENGINEERING, INC.
www.aei.com

Completion Date and Liquidated Damages

MCCORMICK COUNTY Contract ID: 104451
4429-2010-000 Page 11 of 20

SPECIAL NOTE FOR COMPLETION DATES & LIQUIDATED DAMAGES

The ultimate Road completion date for this project will be **11/15/17**. Liquidated Damages for failure to complete the project on time will be assessed following Section 108.09.

In addition to the requirements of Section 108.09, the Department will assess Liquidated Damages in the amount of **\$1,000** per day, per occurrence, for failure to perform cleanup and removal of debris and wood waste within the required time. Work will be suspended until the debris has been removed from the right-of-way.


In addition to the requirements of Section 108.09, the Department will assess Liquidated Damages for any and all road closures that exceed the approved time limits. Liquidated Damages in the amount of **\$1,000** per hour will be assessed for each hour or fraction of an hour that KY 1914 remains closed after any approved road closure days.

Contrary to Section 108.09, Liquidated Damages will be assessed for the months of December through March.

Contrary to Section 108.09, Liquidated Damages will be assessed regardless of whether seasonal limitations prohibit the Contractor from performing work on the controlling operation.


All liquidated damages will be applied accumulatively.

All other applicable portions of Section 108 apply.

 Kentucky

AEI AMERICAN ENGINEERING, INC.
www.aei.com

QUESTIONS ?

 Kentucky

CID 18-4001

Call No. 105

McCracken County

KY 1954 (Husband Road) HSIP

Pre-Bid Meeting Questions & Answers

1. Will there be any survey network information shared with the contractors?
 - A. Coordinate Information will be provided; however, the contractor is to verify the accuracy of the control network. Any work associated with survey network verification will be incidental to the bid item for Staking.
2. Who will run permeability tests on special embankment material?
 - A. The contractor will be responsible for all quality control and testing on the project. Testing results will be given to KYTC, the City of Paducah and the USACE. Independent testing of special embankment material will be incidental to the Staking bid item.
3. Are there any requirements on progress photo quality?
 - A. Digital progress photos are required on this project. Take photos with landmarks in the background for reference. Avoid "close-up" photos of construction.
4. Can a temporary signal be used for MOT purposed?
 - A. Yes, they will be allowed at the discretion of the engineer, however, signals will not be provided by KYTC and no extra payment will be allowed by KYTC.
5. What specifications are to be used for the material to grout the HOBAS pipe connection?
 - A. Grout shall meet KYTC and manufacturer specifications for non-shrink grout. Any grout used around the connection of the HOBAS pipe will be incidental to the bid item for HOBAS pipe.
6. Can Pre-Bid meeting presentation be provided to contractors?
 - A. Yes, the Pre-Bid meeting presentation will be provided to the contractors via PDF file with the meeting minutes.
7. Will an As-Built survey, beyond As-Built plans, be required for levee crossing area?
 - A. No, a separate As-Built survey will not be required for the levee crossing area. Traditional As-Built markups of the design plans will fulfill all requirements.
8. Will an independent company be required to perform testing?
 - A. Yes, independent testing will be required for all work within 15' of the toe of the existing levee. Work associated with the independent testing will be incidental to the Staking bid item.
9. Will cradling be required under HOBAS pipe extension?
 - A. Yes, cradling/bedding will be required under the HOBAS pipe extension where the connection to the existing pipes are made. This is to prevent shearing of the pipes are embankment is placed over them. Work associated with cradling/bedding of HOBAS pipe extension will be incidental to the bid item for HOBAS pipe.

