

Table with columns for flight plan, VFR, IFR, and other flight-related information.

Commissioner R. Winn Turney, Deputy Commissioner Steve Parker, and Greater Commonwealth Aviation Division contact information.

Kentucky Aeronautical Chart

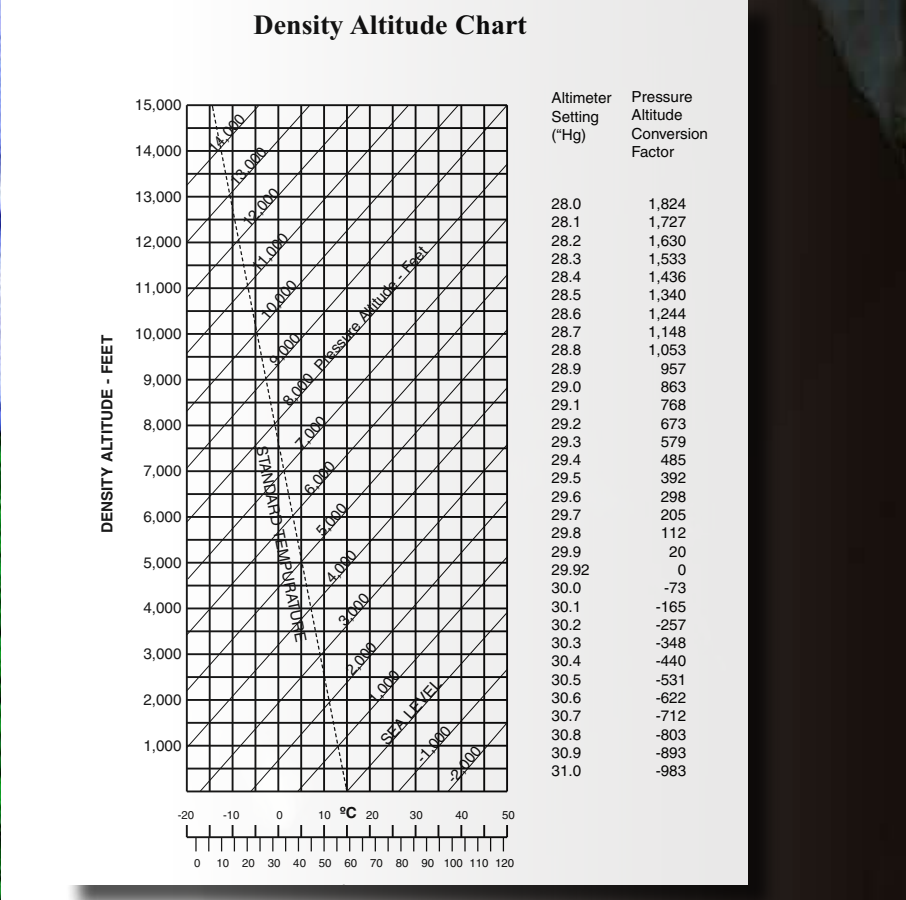


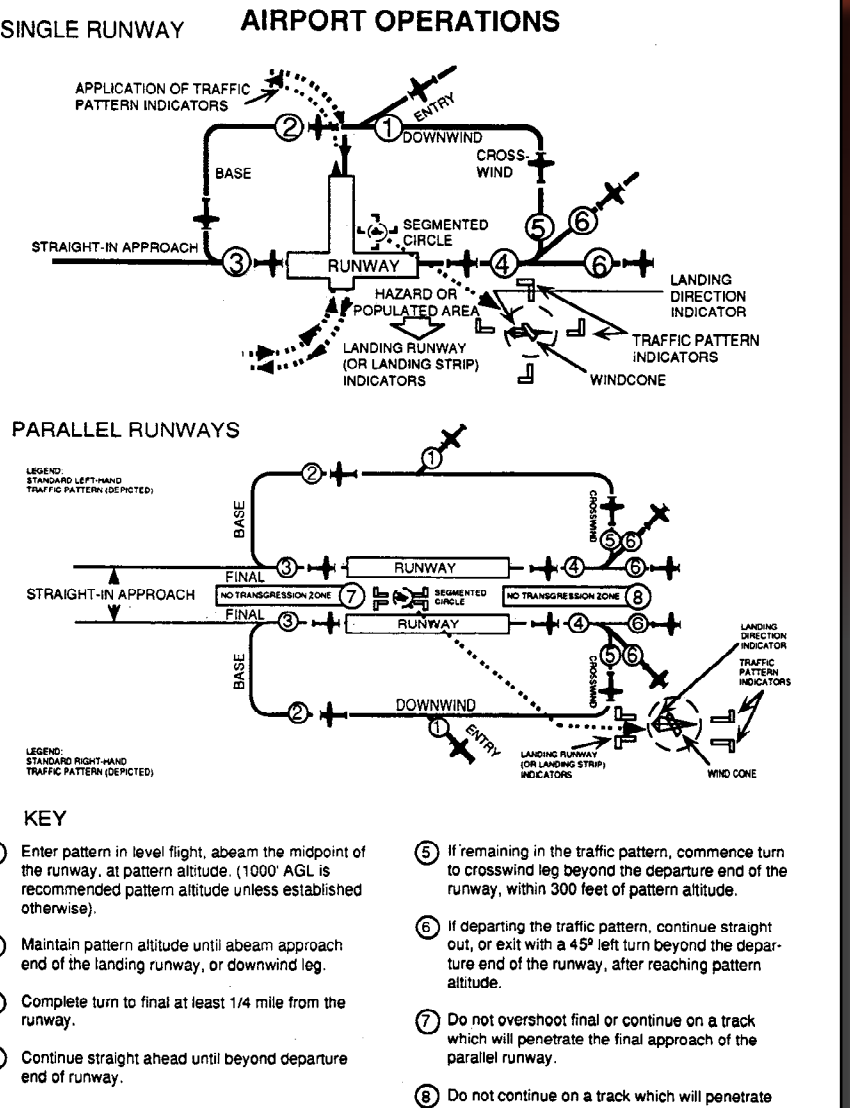
Table titled 'LIGHT GUN SIGNALS' with columns for color and type of signal, movement of vehicles, equipment and personnel, aircraft on the ground, and aircraft in flight.

Table titled 'Summary of Recommended Communication Procedures' with columns for facility at airport, frequency use, and communication procedures.

The Kentucky Aviators depicted in the artwork are from top to bottom, left to right: Row One, Dr. Story Muggins (NASA), Col. Terrence Wiscuit (NASA), Row Two, Capt. Francis G. Powers (USAF), Maj. Julius W. Calloway (USAF), Brig. Gen. E. Daniel Cherry (USAF), Row Three, Jesse Oren Creech (AAS), Maj. Gen. Philip Anthony (USAF), Row Four, Albert Lee Ueltschi, Matthew B. Seltzer, Brig. Gen. Noel F. Parrish (USAF), Willis Brown Christophel, Sgt. Gen. David Lee 'Mac' Hill (USAF), Rose Will Monroe.

Table titled 'Kentucky Airports' listing airports by city and identifier.

Table titled 'AIRPORT SIGN SYSTEMS' listing types of signs and their purposes.

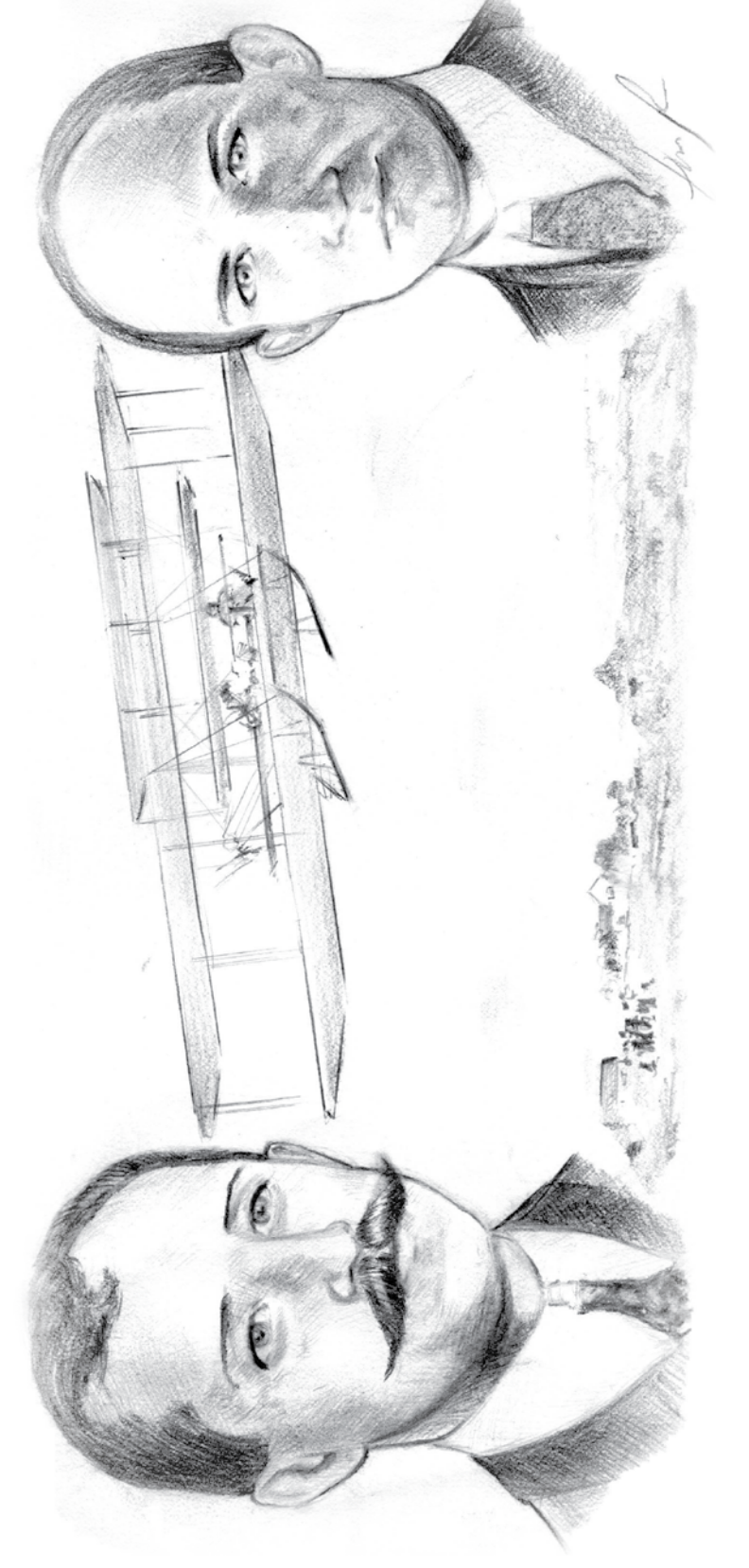
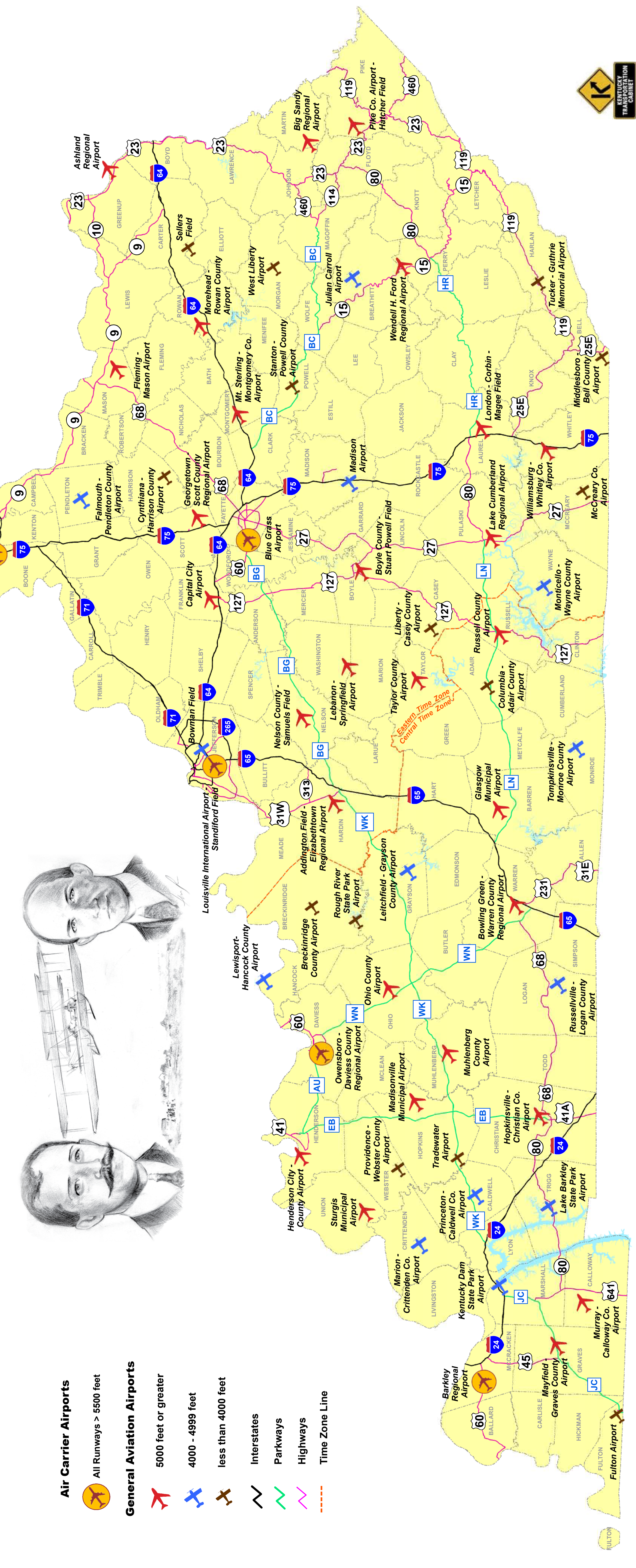


Text explaining the center piece art by Ken Chandler, designed by Ken Chandler, depicting a sample of some famous and historical Kentucky Aviators (and Women). This art is the property of the Kentucky Department of Aviation. To see more of Ken's work you can contact him at: DMS@KY.gov or Ken@KenChandler.com.

Table titled 'KY Automated Weather Stations (AWOS/ASOS)' listing station ID, type, frequency, and phone number.

Table titled 'Aircraft Satellites' listing satellite name, equipment capability, and other details.

KENTUCKY AIR TRANSPORTATION SYSTEM 2009



- Legend for map symbols: Air Carrier Airports, General Aviation Airports, 5000 feet or greater, 4000 - 4999 feet, less than 4000 feet, Interstates, Parkways, Highways, Time Zone Line.

Small text at the bottom right corner providing additional information and contact details.