



KYTC District 3

Major Incident Detour Guide

Rev 3 August 2018

**To notify KYTC of any incident or hazardous condition
see current D-3 IM Contact List.**

**For SAFE Patrol roadway assistance contact TOC 24/7
502-564-2080**

Objective

1. Designate and document, in advance, alternate routes and response plan
2. Implement tools to communicate plan to responders and traveling public
3. Identify agencies responsible for implementing plan

Incident Duration & Plan Implementation

For use only for complete closure of roadway with **anticipated duration >2 hrs**, OR lane closures during heavy traffic periods at discretion of KYTC and Incident Command. For incidents with anticipated duration of –

<2 hrs: Local diversion / detour only, decision & implementation responsibility of local emergency agencies responding – i.e. FD, EMA, Law Enforcement.

>2 hrs: Responsibility transitions to KYTC for implementation & maintenance of diversion / detour until roadway is at least partially reopened.

Detour route and termination is ultimately at the discretion of the Incident Command with input from KYTC based on particular incident conditions (hazmat evacuation zone, weather conditions, etc).

District plan contact: Jon Lam, D-3 IM Coordinator (270)-784-8570 or jon.lam@ky.gov

Contents

Segment	Page
I-65 0 - 2 MM.....	3
I-65 2 - 6 MM.....	4
I-65 6-20 MM.....	5
I-65 20-22 MM.....	6
I-65 22-30 MM.....	7
I-65 30-36 MM.....	8
I-65 36-38 MM.....	9
I-65 38-43 MM.....	10
I-65 43-48 MM NB	11
I-65 43-48 MM SB	12
I-65 48-53 MM.....	13
I-65 53-58 MM.....	14
Exit Diversion Setup - 2 lanes to Exit	15
Exit Diversion Setup - 3 lanes to Exit.....	16

I-65 DETOUR ROUTE TN STATE LINE - EXIT 2 SIMPSON COUNTY



KYTC Incident Contact 24/7:
TOC (502)-564-2080

KSP Post 3 270-782-2010
Local Police 270-586-8819
EMA 270-586-0531

NB
↑
>Ex 117 NB (in TN) to TN 52
>Rt on TN 52 E
>Left on US31W N for 5.6 mi
>Return to I-65 @ 2 mm

SB
↓
>Ex 2 SB to US31W
>Left on US31W S, go 5.6 mi
>Rt on TN 52 W
>Return to I-65 @ 117 mm TN

SB: Close SB entr. ramp including
2 LH turn lanes from US31W NB

Divert 3 SB lanes to Ex 2

EXIT 2
Franklin

SB: DMS @ I-65 32 & 55 SB
CRASH AHEAD
2 MM
LANES BLOCKED **ALL TRAFFIC**
DETOUR
EXIT 2

NB: TDOT DMS NB
CRASH AHEAD
IN KY
LANES **DETOUR**
EX 117
US31W N

NB only: Close NB ramp
from KY Welcome Center

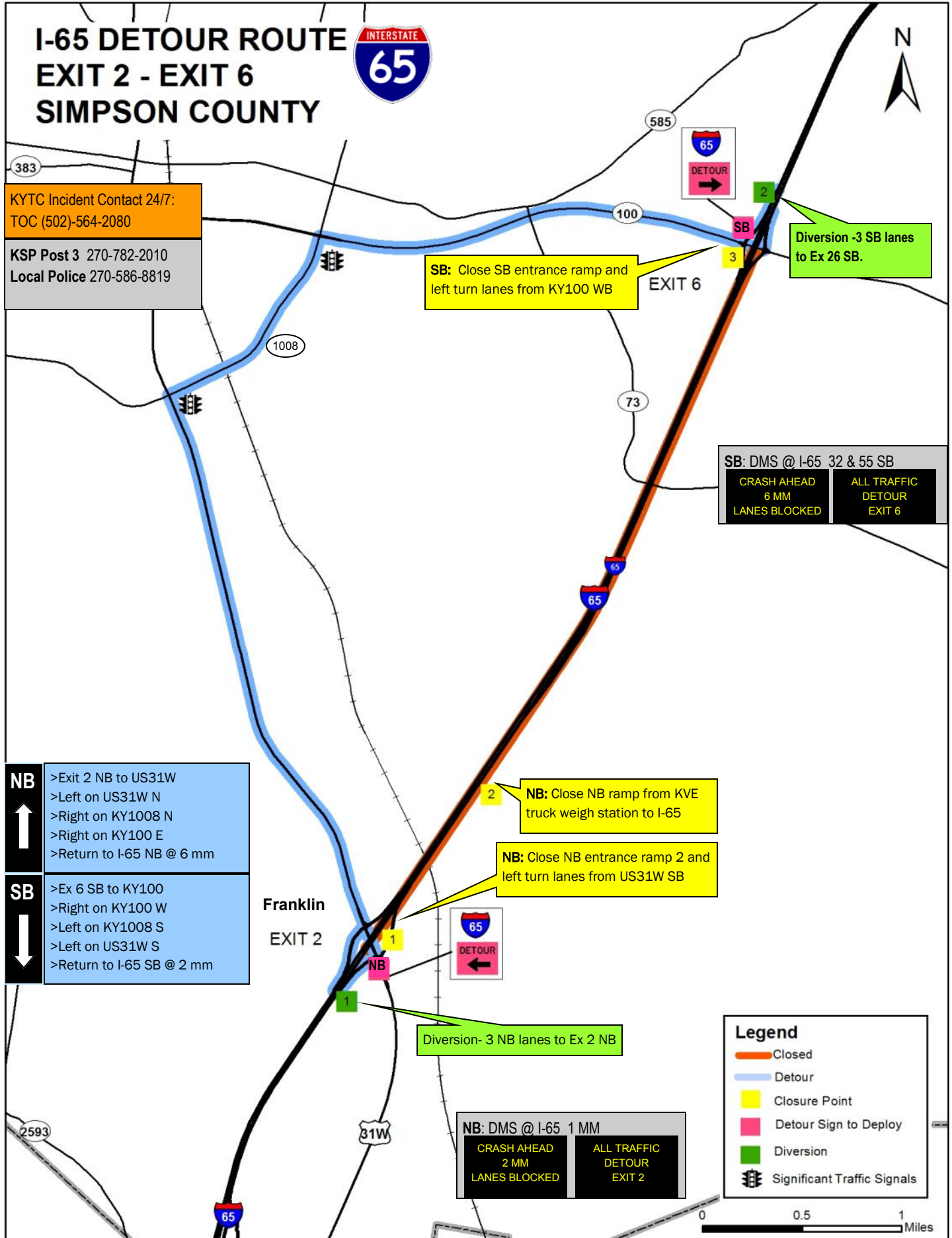
KY / SIMPSON CO

TN / SUMNER CO

Legend

- Closed
- Detour
- Closure Point
- Detour Sign to Deploy
- Diversion
- Significant Traffic Signals





I-65 DETOUR ROUTE EXIT 6 - EXIT 20 SIMPSON COUNTY WARREN COUNTY

KYTC Incident Contact 24/7:
TOC (502)-564-2080

KSP Post 3 270-782-2010
Local Police (Simpson) 270-586-8819
(Warren) 270-393-4000
EMA (Simpson) 270-586-0531
(Warren) 270-842-1633

SB: DMS @ I-65 32 & 55 MM

CRASH AHEAD 20 MM LANES BLOCKED	ALL TRAFFIC DETOUR EXIT 20 B
---------------------------------------	------------------------------------

SB: DMS @ US231 6 MM NB

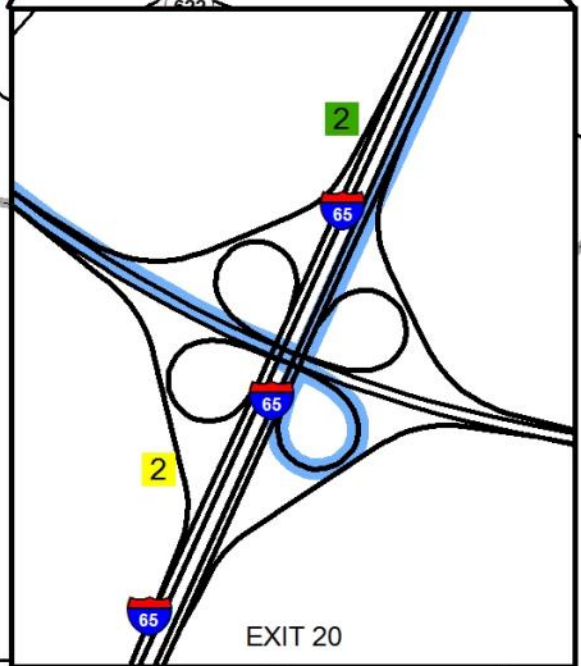
CRASH I-65 SOUTH LANES BLOCKED	DETOUR NATCHER PKWY N TO US31W
--------------------------------------	--------------------------------------

NB ↑

- >Ex 6 NB to KY100 W
- >Left on KY100 W
- >Right on KY1008 N (Harding Rd)
- >Right on US31W N for 14.5 mi
- >Right on Wm. Natcher Pkwy S
- >Return to I-65 at 20 mm

SB ↓

- >Ex 20B to Wm. Natcher Pkwy NB
- >WNP Ex 6 to US31W
- >Left on US31W S for 14.5 mi
- >Left on KY1008 S (Harding Rd)
- >Left on KY100 E
- >Return to I-65 SB @ 6 mm



Close NB ramp from KY100

NB: DMS @ US31W 7 MM

I-65 USE NATCHER PKWY SOUTH	
-----------------------------------	--

NB: DMS @ I-65 1 MM

CRASH AHEAD 6 MM LANES BLOCKED	ALL TRAFFIC DETOUR EXIT 6
--------------------------------------	---------------------------------

NB: DMS @ WNP 5 MM SB

CRASH I-65 SOUTH LANES BLOCKED	DETOUR EXIT 6 US31W S
--------------------------------------	-----------------------------

Legend

- Closed
- Detour
- Closure Point
- Detour Sign to Deploy
- Diversion
- Significant Traffic Signals



Diversion—3 NB lanes to Ex 6 NB



I-65 DETOUR ROUTE EXIT 20- EXIT 22 WARREN COUNTY

- | | |
|----------------|--|
| NB
↑ | <ul style="list-style-type: none"> > Exit 20A to Natcher Pkwy SB > Left on US231 N @ end of pkwy > Return to I-65 NB @ 22 mm |
| SB
↓ | <ul style="list-style-type: none"> > Ex 22 to US231 S > Left on US231 S > Rt on Natcher Pkwy NB @ 0 mm > Exit 2B from Natcher to I-65 SB > Return to I-65 SB @ 20 mm |

KYTC Incident Contact 24/7:
TOC (502)-564-2080

KSP Post 3 270-782-2010
Local Police 270-393-4000
EMA 270-392-1351 / 270-842-1633

Legend

- Closed
- Detour
- Closure Point
- Detour Sign to Deploy
- Diversion
- Significant Traffic Signals



NB: DMS @ I-65 1 & 17 MM

CRASH AHEAD 20 MM LANES BLOCKED	ALL TRAFFIC DETOUR EXIT 20 A
---------------------------------------	------------------------------------

SB: DMS @ NATCHER 5 MM SB

CRASH I-65 NORTH LANES BLOCKED	DETOUR US231 N TO I-65 N
--------------------------------------	--------------------------------

SB: DMS @ I-65 92 MM

CRASH AHEAD 22 MM ALT. ROUTE	BOWLING GREEN EXIT 91 WK PKWY W
------------------------------------	---------------------------------------

SB: DMS @ I-65 32 & 55 MM

CRASH AHEAD 22 MM LANES BLOCKED	ALL TRAFFIC DETOUR EXIT 22
---------------------------------------	----------------------------------

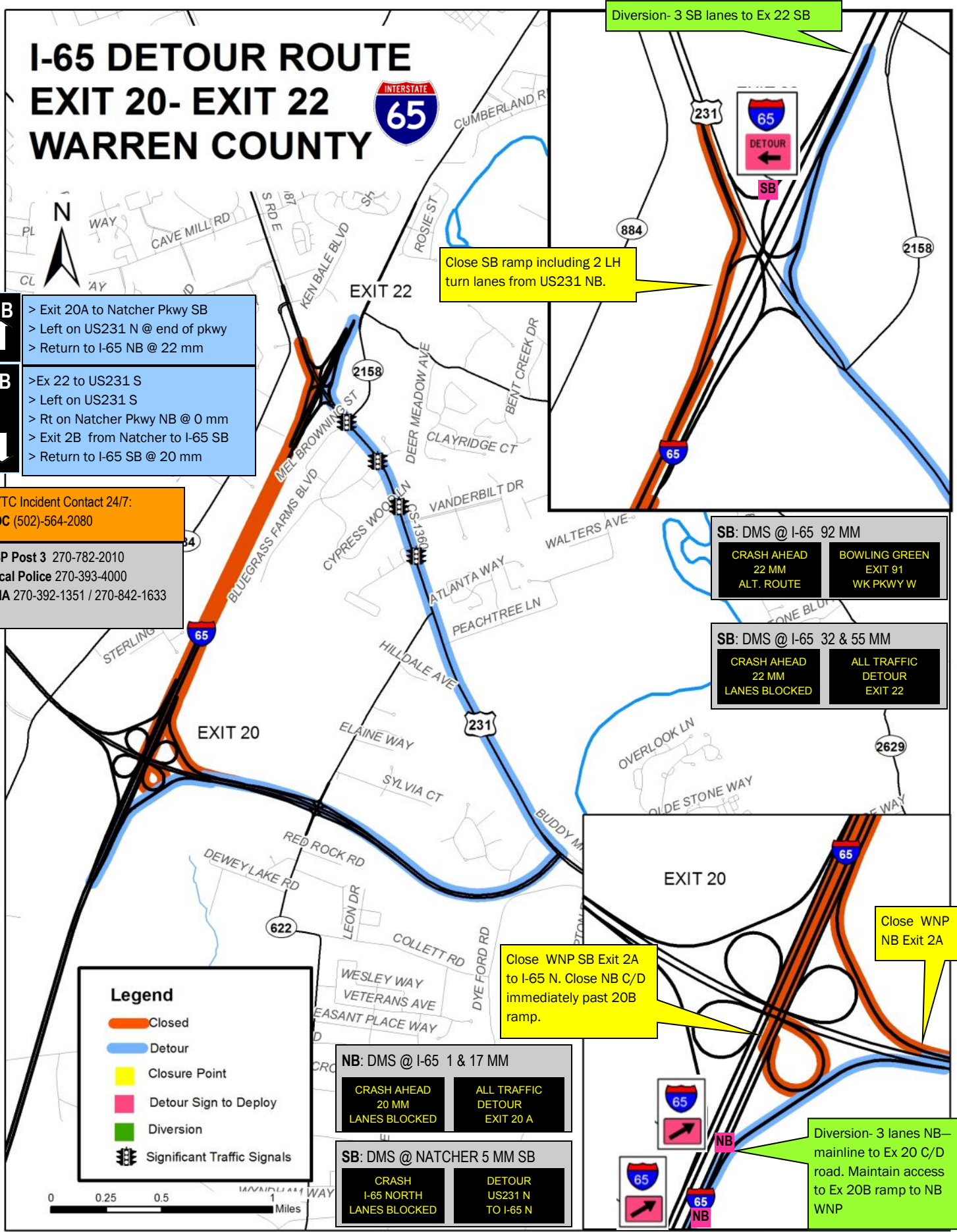
Close WNP SB Exit 2A to I-65 N. Close NB C/D immediately past 20B ramp.

Close WNP NB Exit 2A

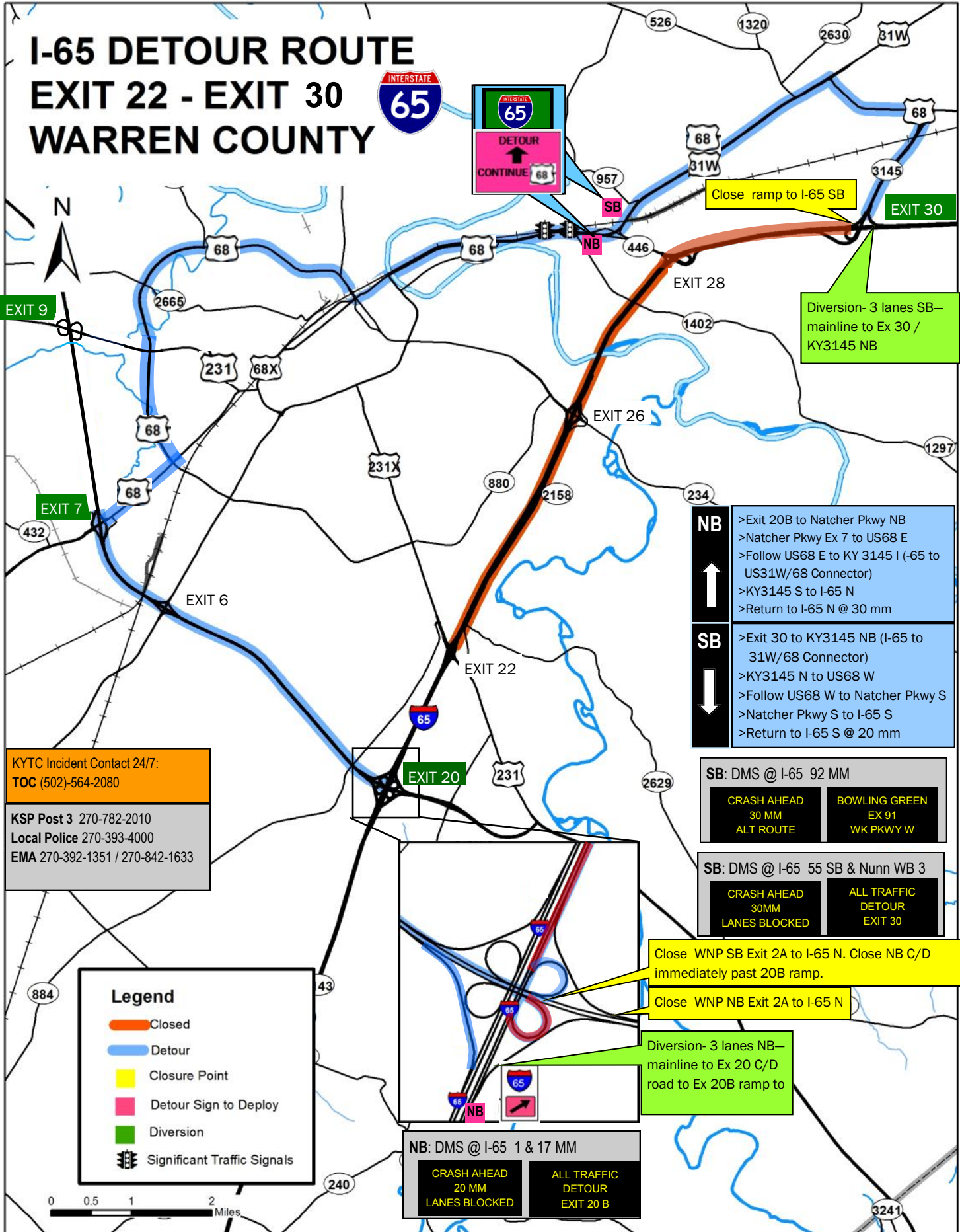
Diversion- 3 lanes NB—mainline to Ex 20 C/D road. Maintain access to Ex 20B ramp to NB WNP

Close SB ramp including 2 LH turn lanes from US231 NB.

Diversion- 3 SB lanes to Ex 22 SB



I-65 DETOUR ROUTE EXIT 22 - EXIT 30 WARREN COUNTY



KYTC Incident Contact 24/7:
TOC (502)-564-2080

KSP Post 3 270-782-2010
Local Police 270-393-4000
EMA 270-392-1351 / 270-842-1633

- NB** ↑
- >Exit 20B to Natcher Pkwy NB
 - >Natcher Pkwy Ex 7 to US68 E
 - >Follow US68 E to KY 3145 I (-65 to US31W/68 Connector)
 - >KY3145 S to I-65 N
 - >Return to I-65 N @ 30 mm
- SB** ↓
- >Exit 30 to KY3145 NB (I-65 to 31W/68 Connector)
 - >KY3145 N to US68 W
 - >Follow US68 W to Natcher Pkwy S
 - >Natcher Pkwy S to I-65 S
 - >Return to I-65 S @ 20 mm

SB: DMS @ I-65 92 MM

CRASH AHEAD 30 MM ALT ROUTE	BOWLING GREEN EX 91 WK PKWY W
--	--

SB: DMS @ I-65 55 SB & Nunn WB 3

CRASH AHEAD 30MM LANES BLOCKED	ALL TRAFFIC DETOUR EXIT 30
---	---

NB: DMS @ I-65 1 & 17 MM

CRASH AHEAD 20 MM LANES BLOCKED	ALL TRAFFIC DETOUR EXIT 20 B
--	---

Close WNP SB Exit 2A to I-65 N. Close NB C/D immediately past 20B ramp.

Close WNP NB Exit 2A to I-65 N

Diversion- 3 lanes NB—mainline to Ex 20 C/D road to Ex 20B ramp to

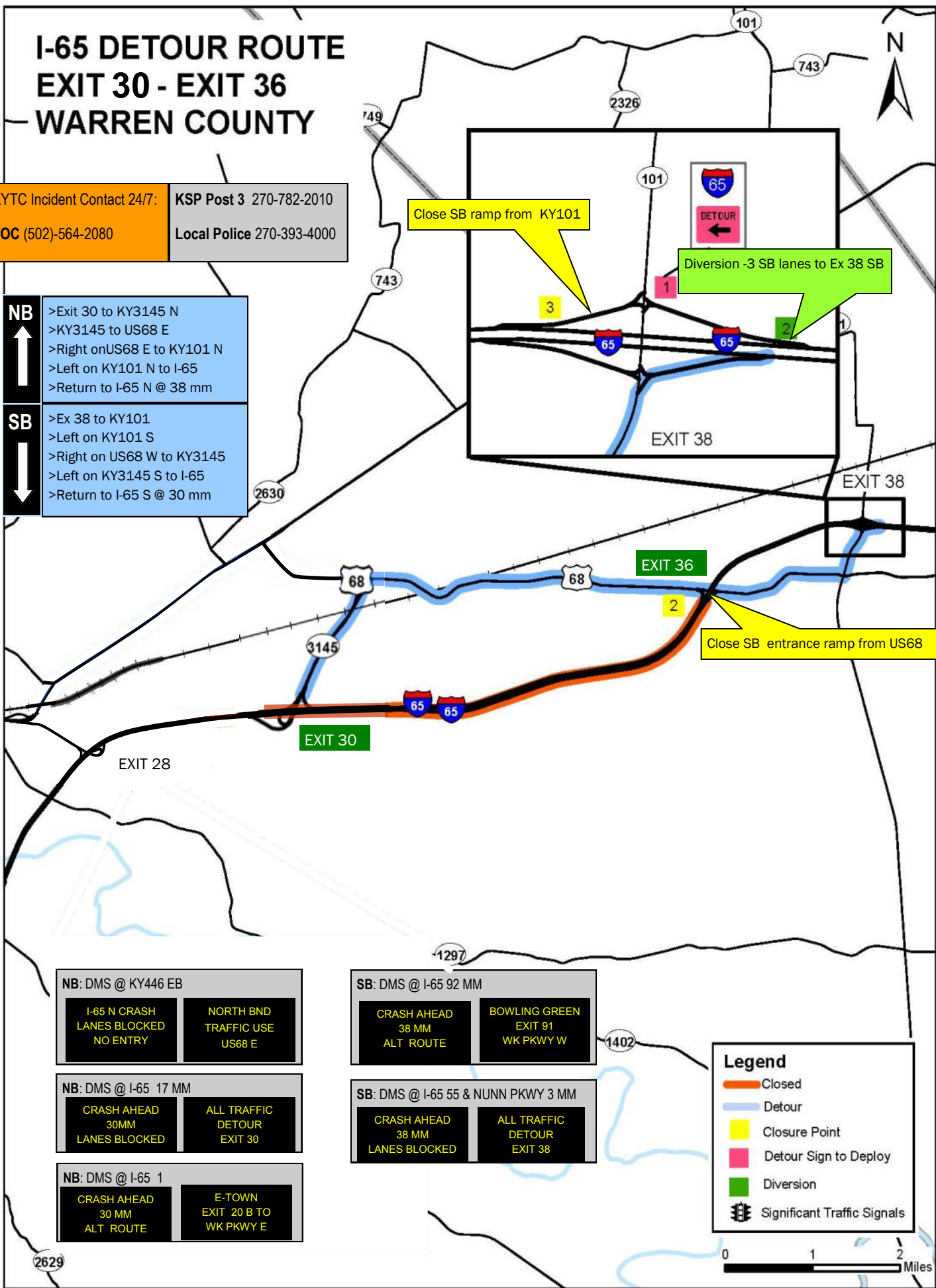
Diversion- 3 lanes SB—mainline to Ex 30 / KY3145 NB

Close ramp to I-65 SB

I-65 DETOUR ROUTE EXIT 30 - EXIT 36 WARREN COUNTY

KYTC Incident Contact 24/7: KSP Post 3 270-782-2010
TOC (502)-564-2080 Local Police 270-393-4000

- NB**
 ↑
 >Exit 30 to KY3145 N
 >KY3145 to US68 E
 >Right on US68 E to KY101 N
 >Left on KY101 N to I-65
 >Return to I-65 N @ 38 mm
- SB**
 ↓
 >Ex 38 to KY101
 >Left on KY101 S
 >Right on US68 W to KY3145
 >Left on KY3145 S to I-65
 >Return to I-65 S @ 30 mm



NB: DMS @ KY446 EB
 I-65 N CRASH LANES BLOCKED NO ENTRY
 NORTH BND TRAFFIC USE US68 E

NB: DMS @ I-65 17 MM
 CRASH AHEAD 30MM LANES BLOCKED
 ALL TRAFFIC DETOUR EXIT 30

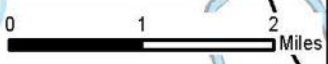
NB: DMS @ I-65 1
 CRASH AHEAD 30 MM ALT ROUTE
 E-TOWN EXIT 20 B TO WK PKWY E

SB: DMS @ I-65 92 MM
 CRASH AHEAD 38 MM ALT ROUTE
 BOWLING GREEN EXIT 91 WK PKWY W

SB: DMS @ I-65 55 & NUNN PKWY 3 MM
 CRASH AHEAD 38 MM LANES BLOCKED
 ALL TRAFFIC DETOUR EXIT 38

Legend

- Closed
- Detour
- Closure Point
- Detour Sign to Deploy
- Diversion
- Significant Traffic Signals



I-65 DETOUR ROUTE EXIT 36 - EXIT 38 WARREN COUNTY



KYTC Incident Contact 24/7:
TOC (502)-564-2080

KSP Post 3 270-782-2010
Local Police 270-393-4000
EMA 270-392-1351 / 270-842-1633

SB: DMS @ I-65 92 MM

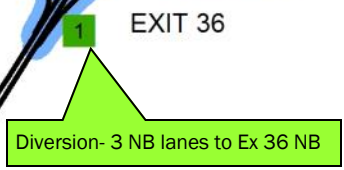
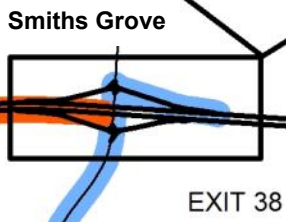
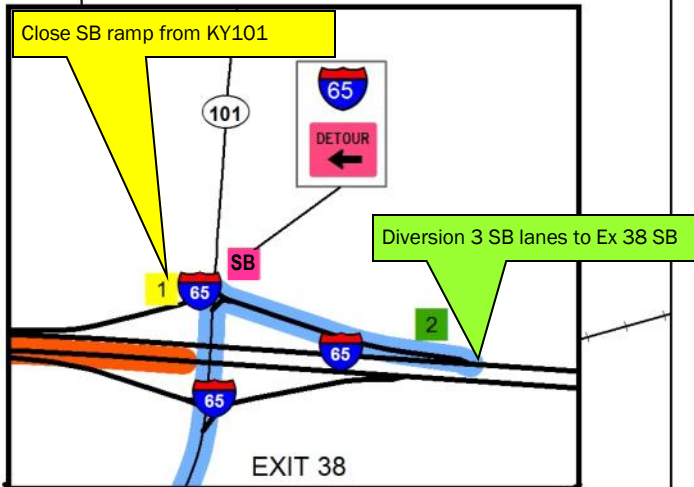
CRASH AHEAD 38 MM ALT ROUTE	BOWLING GREEN EX 91 WK PKWY W
--	--

SB: DMS @ I-65 55 SB & Nunn WB 3

CRASH AHEAD 38 MM LANES BLOCKED	ALL TRAFFIC DETOUR EXIT 38
--	---

NB
↑
>Exit 36 to US68
>Right on US68 E
>Left on KY101 N (to Smiths Grove)
>Return to I-65 NB @ 38 mm

SB
↓
>Exit 38 to KY101
>Left on KY101 S
>Right on US68 W
>Return to I-65 SB @ 36 mm



NB: DMS @ I-65 1 MM

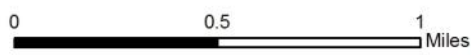
CRASH AHEAD 36 MM ALT ROUTE	E-TOWN EX 20 B TO WK PKWY E
--	--

NB: DMS @ I-65 17 NB & KY446 EB

CRASH AHEAD 36 MM LANES BLOCKED	ALL TRAFFIC DETOUR EXIT 36
--	---

Legend

- Closed
- Detour
- Closure Point
- Detour Sign to Deploy
- Diversion
- Significant Traffic Signals



I-65 DETOUR ROUTE EXIT 38 - EXIT 43 BARREN COUNTY EDMONSON COUNTY WARREN COUNTY

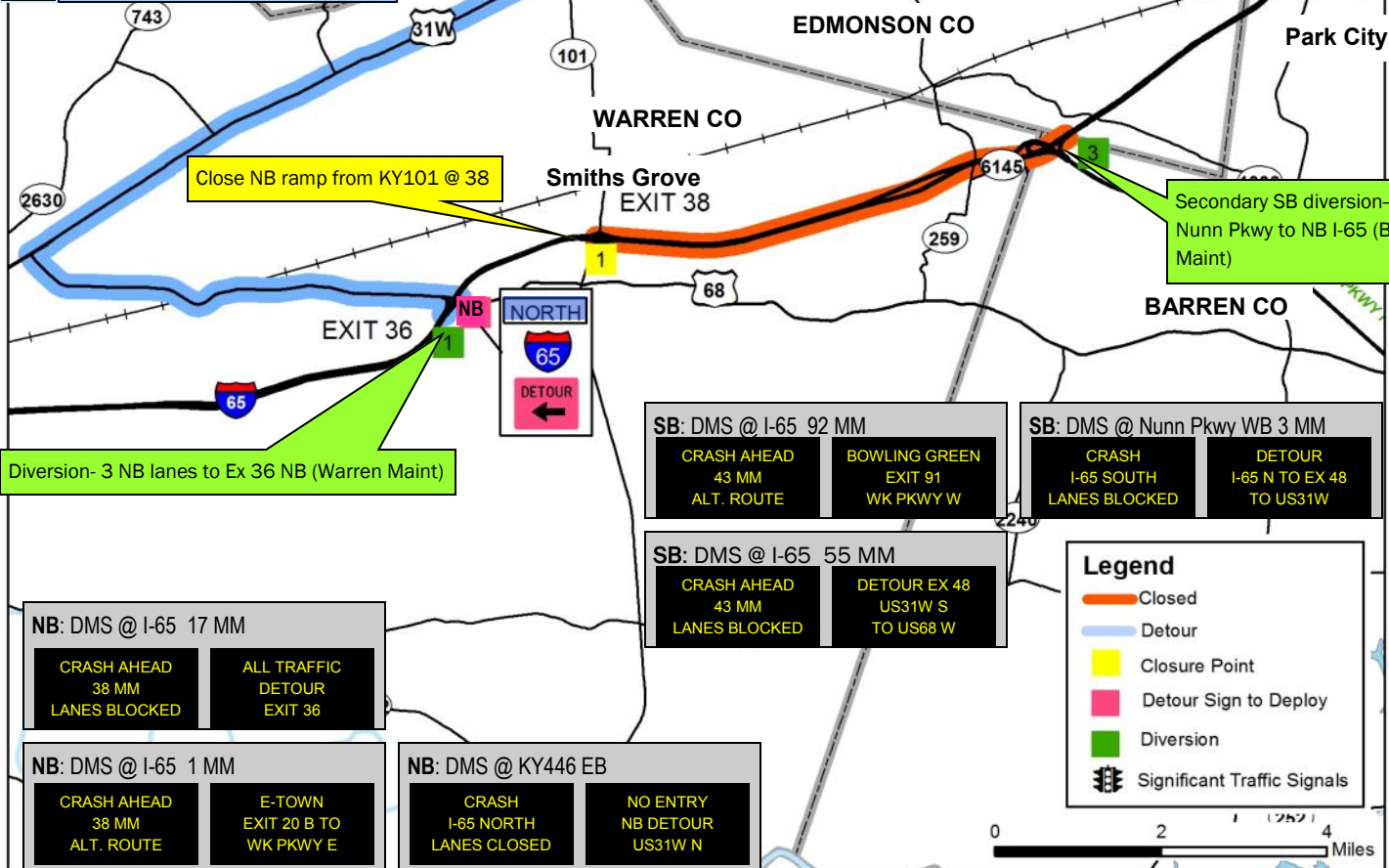


KYTC Incident Contact 24/7:
TOC (502)-564-2080

KSP Post 3 270-782-2010
Local Police (Warren) 270-393-4000
(Barren) 270-651-1175
EMA (Warren) 270-392-1351 / 270-842-1633

NB
↑
>Ex 36 to US68
>Left on US68 W for 5.4 mi
>Right on US31W N for 16.8 mi
>Left on KY255 N
>Return to I-65 NB @ 48 mm

SB
↓
>Ex 48 to KY255
>Left on KY255 S
>Right on US31W S for 16.8 mi
>Left on US68 5.4 mi to I-65 SB @ 36 mm OR
Continue on US31W to KY446/I-65



Primary SB diversion from I65 SB to Exit 48 SB exit (Barren Maint).

Close SB ramp from KY255

Close NB ramp from KY101 @ 38

Secondary SB diversion—WB Nunn Pkwy to NB I-65 (Barren Maint)

Diversion- 3 NB lanes to Ex 36 NB (Warren Maint)

SB: DMS @ I-65 92 MM
CRASH AHEAD 43 MM ALT. ROUTE
BOWLING GREEN EXIT 91 WK PKWY W

SB: DMS @ Nunn Pkwy WB 3 MM
CRASH I-65 SOUTH LANES BLOCKED
DETOUR I-65 N TO EX 48 TO US31W

SB: DMS @ I-65 55 MM
CRASH AHEAD 43 MM LANES BLOCKED
DETOUR EX 48 US31W S TO US68 W

Legend

- Closed
- Detour
- Closure Point
- Detour Sign to Deploy
- Diversion
- Significant Traffic Signals

NB: DMS @ I-65 17 MM
CRASH AHEAD 38 MM LANES BLOCKED
ALL TRAFFIC DETOUR EXIT 36

NB: DMS @ I-65 1 MM
CRASH AHEAD 38 MM ALT. ROUTE
E-TOWN EXIT 20 B TO WK PKWY E

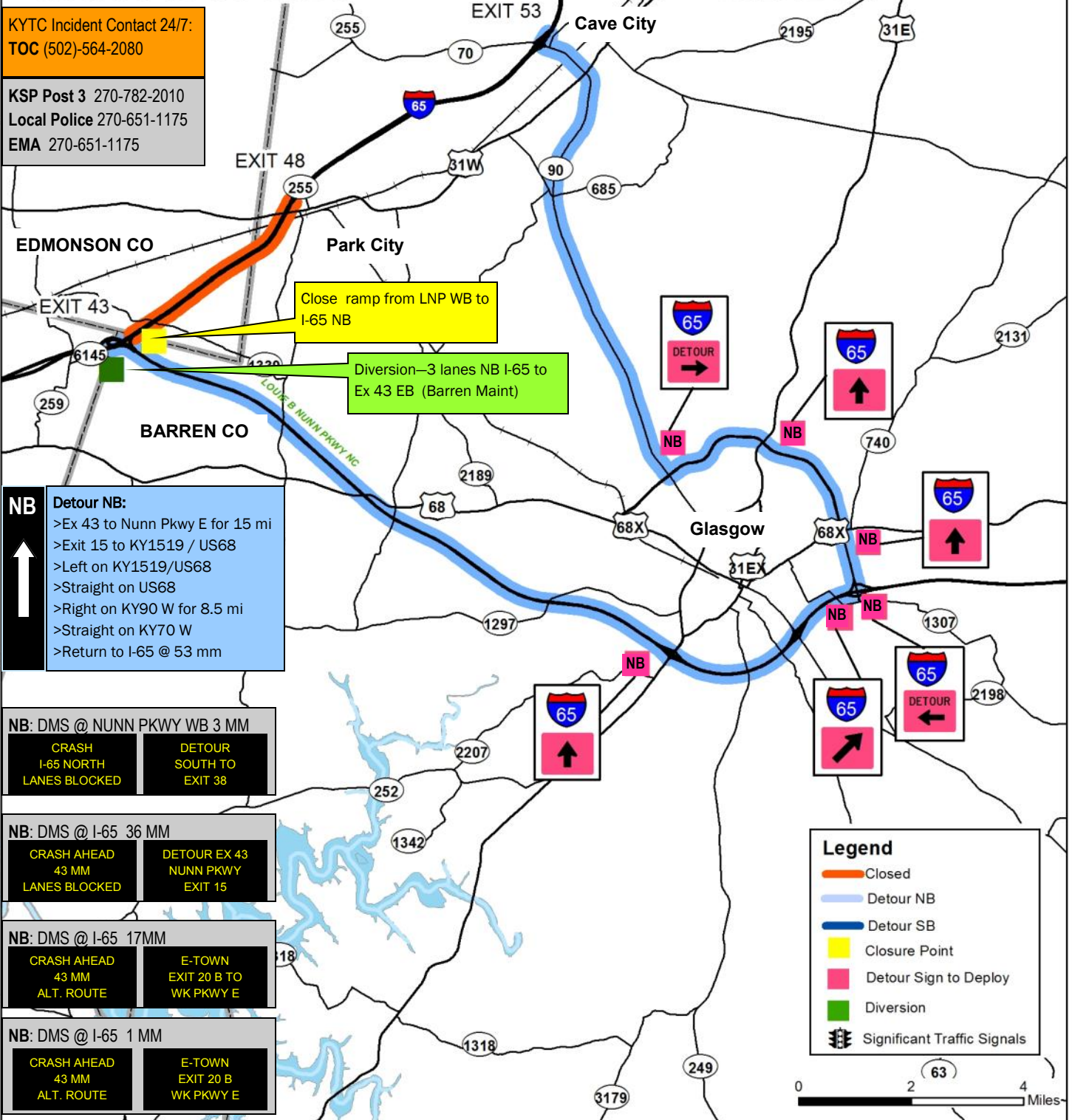
NB: DMS @ KY446 EB
CRASH I-65 NORTH LANES CLOSED
NO ENTRY NB DETOUR US31W N

I-65 DETOUR ROUTE EXIT 43 - EXIT 48 NORTH BOUND BARREN COUNTY EDMONSON COUNTY WARREN COUNTY



KYTC Incident Contact 24/7:
TOC (502)-564-2080

KSP Post 3 270-782-2010
Local Police 270-651-1175
EMA 270-651-1175



Close ramp from LNP WB to I-65 NB

Diversion—3 lanes NB I-65 to Ex 43 EB (Barren Maint)

NB
↑
Detour NB:
>Ex 43 to Nunn Pkwy E for 15 mi
>Exit 15 to KY1519 / US68
>Left on KY1519/US68
>Straight on US68
>Right on KY90 W for 8.5 mi
>Straight on KY70 W
>Return to I-65 @ 53 mm

NB: DMS @ NUNN PKWY WB 3 MM
CRASH I-65 NORTH LANES BLOCKED
DETOUR SOUTH TO EXIT 38

NB: DMS @ I-65 36 MM
CRASH AHEAD 43 MM LANES BLOCKED
DETOUR EX 43 NUNN PKWY EXIT 15

NB: DMS @ I-65 17MM
CRASH AHEAD 43 MM ALT. ROUTE
E-TOWN EXIT 20 B TO WK PKWY E

NB: DMS @ I-65 1 MM
CRASH AHEAD 43 MM ALT. ROUTE
E-TOWN EXIT 20 B WK PKWY E

Legend

- Closed
- Detour NB
- Detour SB
- Closure Point
- Detour Sign to Deploy
- Diversion
- Significant Traffic Signals

I-65 DETOUR ROUTE

EXIT 43 - EXIT 48

SOUTH BOUND

BARREN COUNTY

EDMONSON COUNTY

WARREN COUNTY



KYTC Incident Contact 24/7:
TOC (502)-564-2080

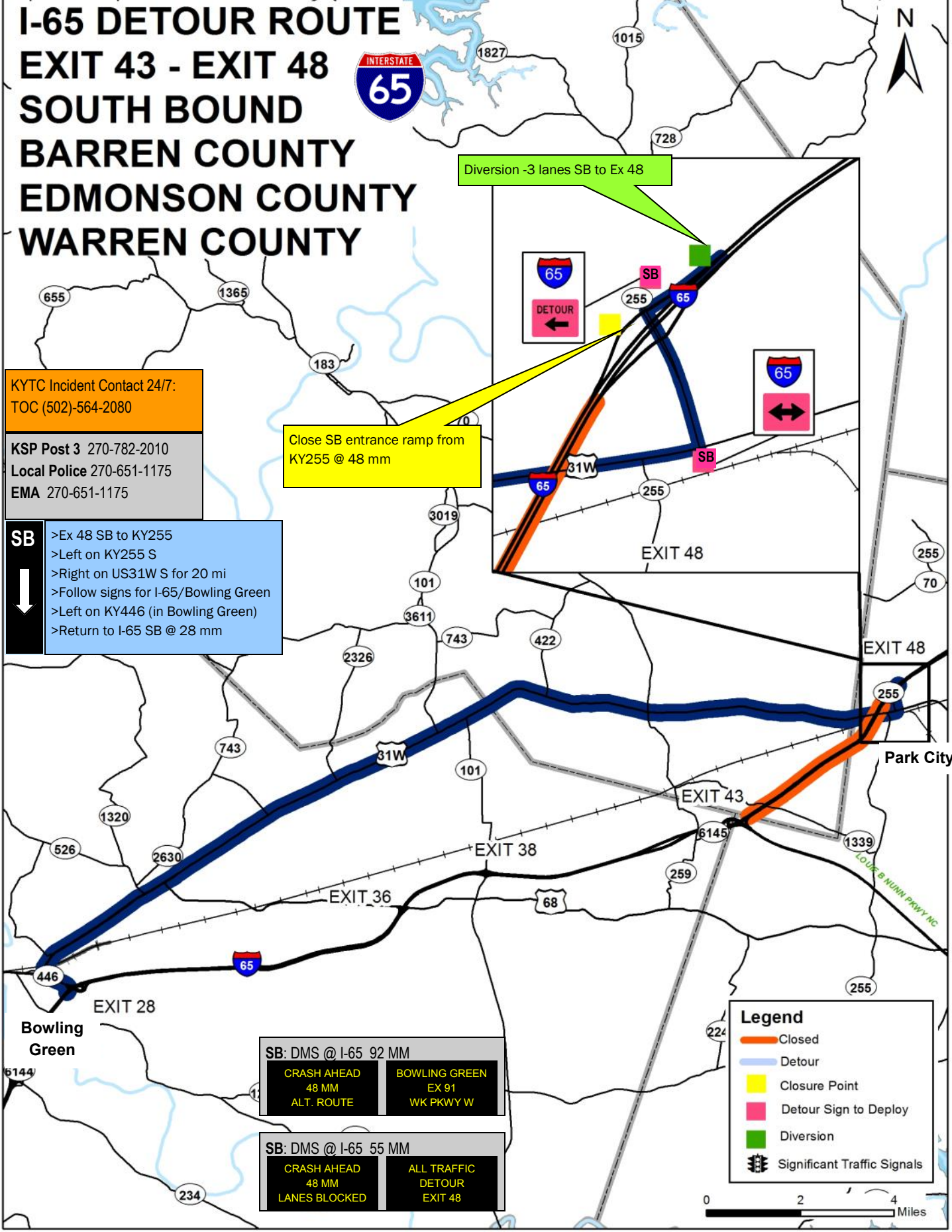
KSP Post 3 270-782-2010
Local Police 270-651-1175
EMA 270-651-1175

SB

- >Ex 48 SB to KY255
- >Left on KY255 S
- >Right on US31W S for 20 mi
- >Follow signs for I-65/Bowling Green
- >Left on KY446 (in Bowling Green)
- >Return to I-65 SB @ 28 mm

Close SB entrance ramp from KY255 @ 48 mm

Diversion -3 lanes SB to Ex 48



SB: DMS @ I-65 92 MM

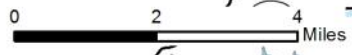
CRASH AHEAD 48 MM ALT. ROUTE	BOWLING GREEN EX 91 WK PKWY W
---	--

SB: DMS @ I-65 55 MM

CRASH AHEAD 48 MM LANES BLOCKED	ALL TRAFFIC DETOUR EXIT 48
--	---

Legend

- Closed
- Detour
- Closure Point
- Detour Sign to Deploy
- Diversion
- Significant Traffic Signals



I-65 DETOUR ROUTE EXIT 48 - EXIT 53 BARREN COUNTY



KYTC Incident Contact 24/7:
TOC (502)-564-2080

KSP Post 3 270-782-2010
Local Police 270-651-1175
EMA 270-651-1175

- | | |
|----------------|---|
| NB
↑ | <ul style="list-style-type: none"> >Ex 48 to KY255 >Right on KY255 S >Left on US31W N for 5.9 mi >Left on KY90 W, straight on KY70 W >Return to I-65 NB @ 53 mm |
| SB
↓ | <ul style="list-style-type: none"> >Ex 53 SB to KY70 >Left on KY70 E, straight on KY90E >Right on US31W S for 5.9 mi >Right on KY255 N >Return to I-65 SB @ 48 mm |

Diversion—3 lanes I-65 SB to SB Ex 53

Close SB ramp from KY70

Close NB ramp from KY255

Diversion—3 lanes I-65 NB to NB exit 48

SB: DMS @ I-65 92 MM

CRASH AHEAD 53 MM ALT. ROUTE	BOWLING GREEN EX 91 WK PKWY W
------------------------------------	-------------------------------------

SB: DMS @ I-65 55 MM

CRASH AHEAD 53 MM LANES BLOCKED	ALL TRAFFIC DETOUR EXIT 53
---------------------------------------	----------------------------------

NB: DMS @ I-65 36 NB & Nunn WB 3 MM

CRASH AHEAD 48 MM LANES BLOCKED	ALL TRAFFIC DETOUR EXIT 48
---------------------------------------	----------------------------------

NB: DMS @ I-65 17 MM

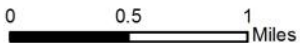
CRASH AHEAD 48 MM ALT. ROUTE	E-TOWN EX 20 B TO WK PKWY E
------------------------------------	-----------------------------------

NB: DMS @ I-65 1 MM

E-TOWN USE EX 20 TO WK PKWY E	CRASH AHEAD 48 MM ALT. ROUTE
-------------------------------------	------------------------------------

Legend

- Closed
- Detour
- Closure Point
- Detour Sign to Deploy
- Diversion
- Significant Traffic Signals



I-65 DETOUR ROUTE EXIT 53 - EXIT 58 BARREN COUNTY HART COUNTY



KYTC Incident Contact 24/7:
TOC (502)-564-2080

KSP Post 3 270-782-2010
Local Police (Barren Co) 270-651-1175
(Hart Co.) 270-782-2010
EMA (Barren Co) 270-651-1175
(Hart Co) 270-524-2832

NB
↑
>Ex 53 to KY70 E
>Right on KY70E
>Straight on KY90 E
>Left on US31W N for 4.7 mi
>Left on KY218 W for 2.3 mi
>Return to I-65 @ 58 mm

SB
↓
>Ex 58 to KY218
>Left on KY218 E for 2.3 mi
>Right on US31W S for 4.7 mi
>Right on KY90 W
>Straight on KY70 W
>Return to I-65 SB @ 53 mm

Close SB ramp from KY218

Diversion - 2 SB lanes to Ex 58 SB (Hart Maint)

SB: DMS @ I-65 92 MM

CRASH AHEAD 58 MM ALT. ROUTE	BOWLING GREEN EX 91 WK PKWY W
---	--

Close NB ramp from KY70

Diversion- 3 NB lanes to Ex 53 NB (Barren Maint)

NB: DMS @ I-65 1 & 17 MM NB

CRASH AHEAD 53 MM ALT. ROUTE	E-TOWN EXIT 20 B TO WK PKWY E
---	--

NB: DMS @ I-65 36 NB & Nunn WB 3 MM

CRASH AHEAD 53 MM LANES BLOCKED	ALL TRAFFIC DETOUR EXIT 53
--	---

Legend

- Closed
- Detour
- Closure Point
- Detour Sign to Deploy
- Diversion
- Significant Traffic Signals

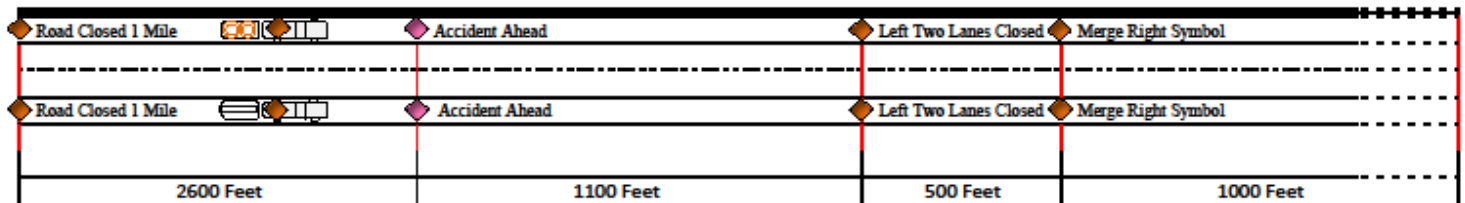


Diversion Setup - 2 Lanes to Exit

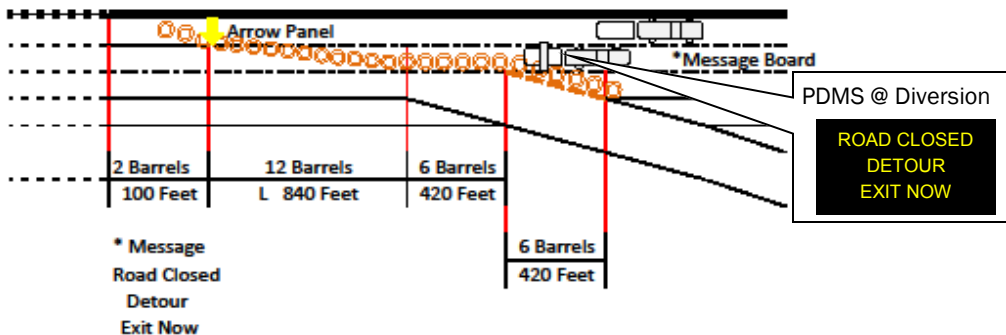
No personnel should be posted on foot within the traveled way of this setup.

Any personnel that are assigned to assist motorists with directions or questions should be posted at the exit end of the ramp. Personnel should make any contact with motorists as brief as possible to maintain flow of traffic off ramps. Detour routes have been signed to minimize need for directions.

Single Lane Closure with Exit Detour



# Signs		Barrel Spacing	
Road Closed 1 Mile	2	Tapers	1 X Speed Limit
Accident Ahead	2	Tangents	2 x Speed limit
Left two lanes Closed	2		"two skips between each barrel"
Merge Right Symbol	2		



Entrance Ramp / Access Closure

Type III barricades with "ROAD CLOSED" sign shall be used to close access and should be placed at the entry end of the ramp.

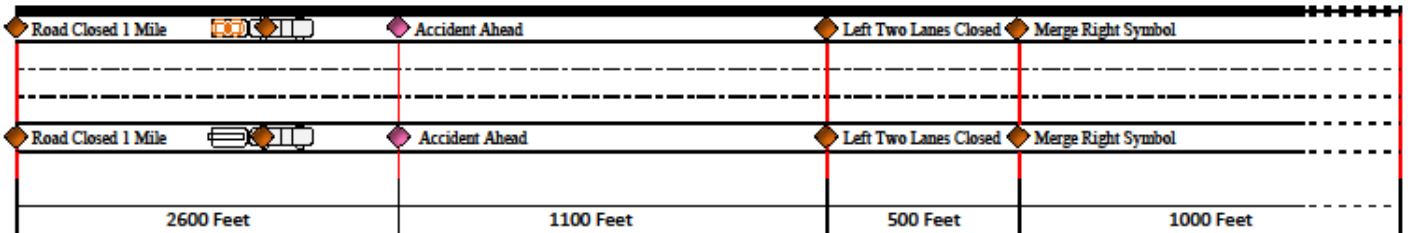
Any dedicated left turn lanes to the ramp should be closed with channelizers and if available a "RAMP CLOSED" sign may be placed in the closed turn lane.

Diversion Setup - 3 Lanes to Exit

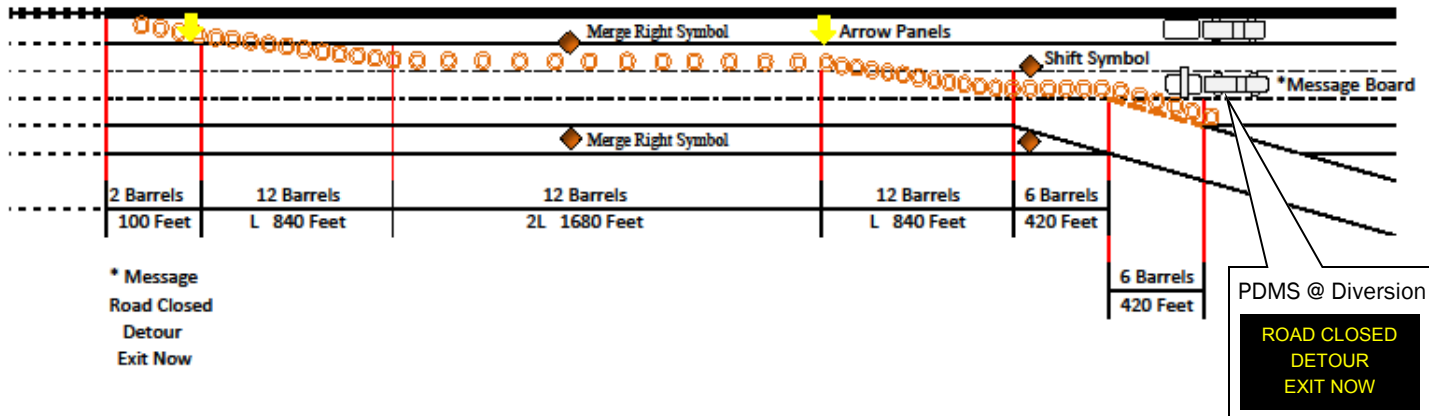
No personnel should be posted on foot within the traveled way of this setup.

Any personnel that are assigned to assist motorists with directions or questions should be posted at the exit end of the ramp. Personnel should make any contact with motorists as brief as possible to maintain flow of traffic off ramps. Detour routes have been signed to minimize need for directions.

Two Lane Closure with Exit Detour



# Signs	Barrel Spacing
Road Closed 1 Mile 2	Tapers 1 X Speed Limit
Accident Ahead 2	Tangents 2 x Speed limit "two skips between each barrel"
Left two lanes Closed 2	
Merge Right Symbol 4	



Entrance Ramp / Access Closure

Type III barricades with "ROAD CLOSED" sign shall be used to close access and should be placed at the entry end of the ramp.

Any dedicated left turn lanes to the ramp should be closed with channelizers and if available a "RAMP CLOSED" sign may be placed in the closed turn lane.

