



LN9008

KYTC District 3

Major Incident Detour Guide

Rev. 1 June 2015

**To notify KYTC of any incident or hazardous condition
see current D-3 IM Contact List.**

**For SAFE Patrol roadway assistance contact TOC 24/7
502-564-2080**

Objective

1. Designate and document, in advance, alternate routes and response plan
2. Implement tools to communicate plan to responders and traveling public
3. Identify agencies responsible for implementing plan

Incident Duration & Plan Implementation

For use only for complete closure of roadway with **anticipated duration >2 hrs**, OR lane closures during heavy traffic periods at discretion of KYTC and Incident Command. For incidents with anticipated duration of –

<2 hrs: Local diversion / detour only, decision & implementation responsibility of local emergency agencies responding – i.e. FD, EMA, Law Enforcement.

>2 hrs: Responsibility transitions to KYTC for implementation & maintenance of diversion / detour until roadway is at least partially reopened.

Detour route and termination is ultimately at the discretion of the Incident Command with input from KYTC based on particular incident conditions (hazmat evacuation zone, weather conditions, etc).

District plan contact: Jon Lam, D-3 IM Coordinator (270)-392-8760 jon.lam@ky.gov

Contents

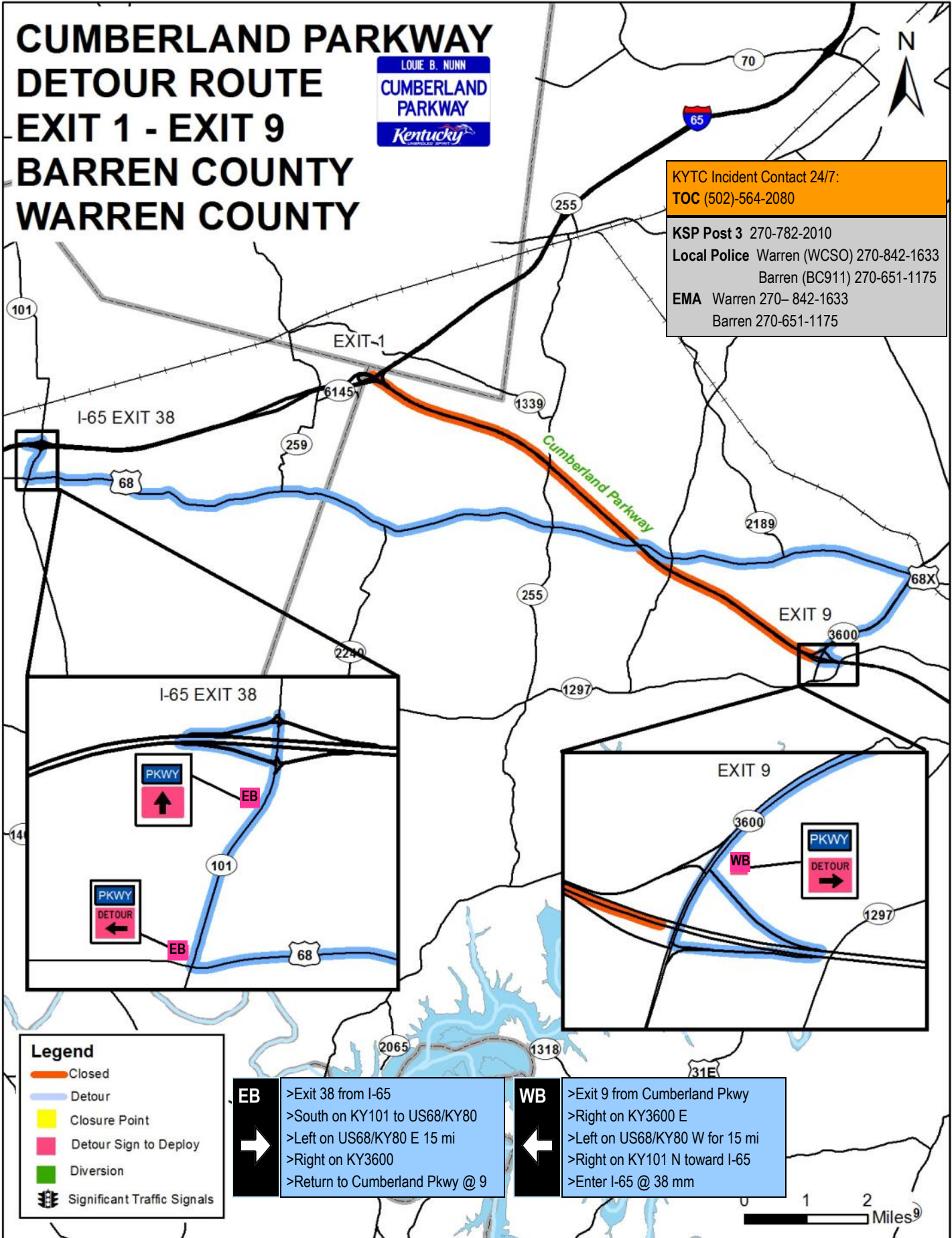
Segment	Page
LN9008 0 - 9 MM.....	3
LN9008 9-11 MM.....	4
LN9008 11-14 MM.....	5
LN9008 14-15 MM.....	6
LN9008 15-27 MM.....	7
LN9008 27-29 MM.....	8
LN9008 29-49 MM.....	9
Exit Diversion Setup - 2 lanes to Exit	10
Exit Diversion Setup - 3 lanes to Exit.....	11

CUMBERLAND PARKWAY DETOUR ROUTE EXIT 1 - EXIT 9 BARREN COUNTY WARREN COUNTY



KYTC Incident Contact 24/7:
TOC (502)-564-2080

KSP Post 3 270-782-2010
Local Police Warren (WCSO) 270-842-1633
 Barren (BC911) 270-651-1175
EMA Warren 270- 842-1633
 Barren 270-651-1175



Legend

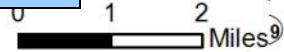
- Closed
- Detour
- Closure Point
- Detour Sign to Deploy
- Diversion
- Significant Traffic Signals

EB

- >Exit 38 from I-65
- >South on KY101 to US68/KY80
- >Left on US68/KY80 E 15 mi
- >Right on KY3600
- >Return to Cumberland Pkwy @ 9

WB

- >Exit 9 from Cumberland Pkwy
- >Right on KY3600 E
- >Left on US68/KY80 W for 15 mi
- >Right on KY101 N toward I-65
- >Enter I-65 @ 38 mm

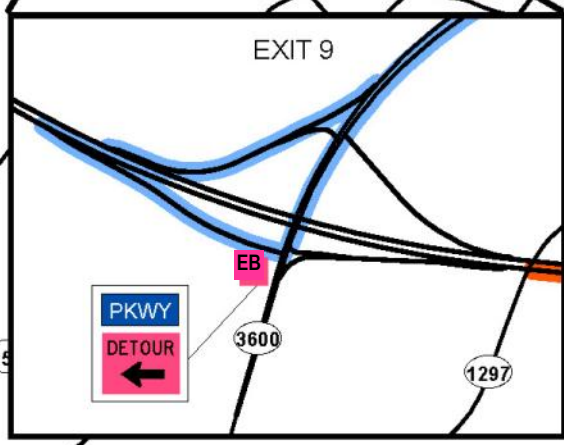
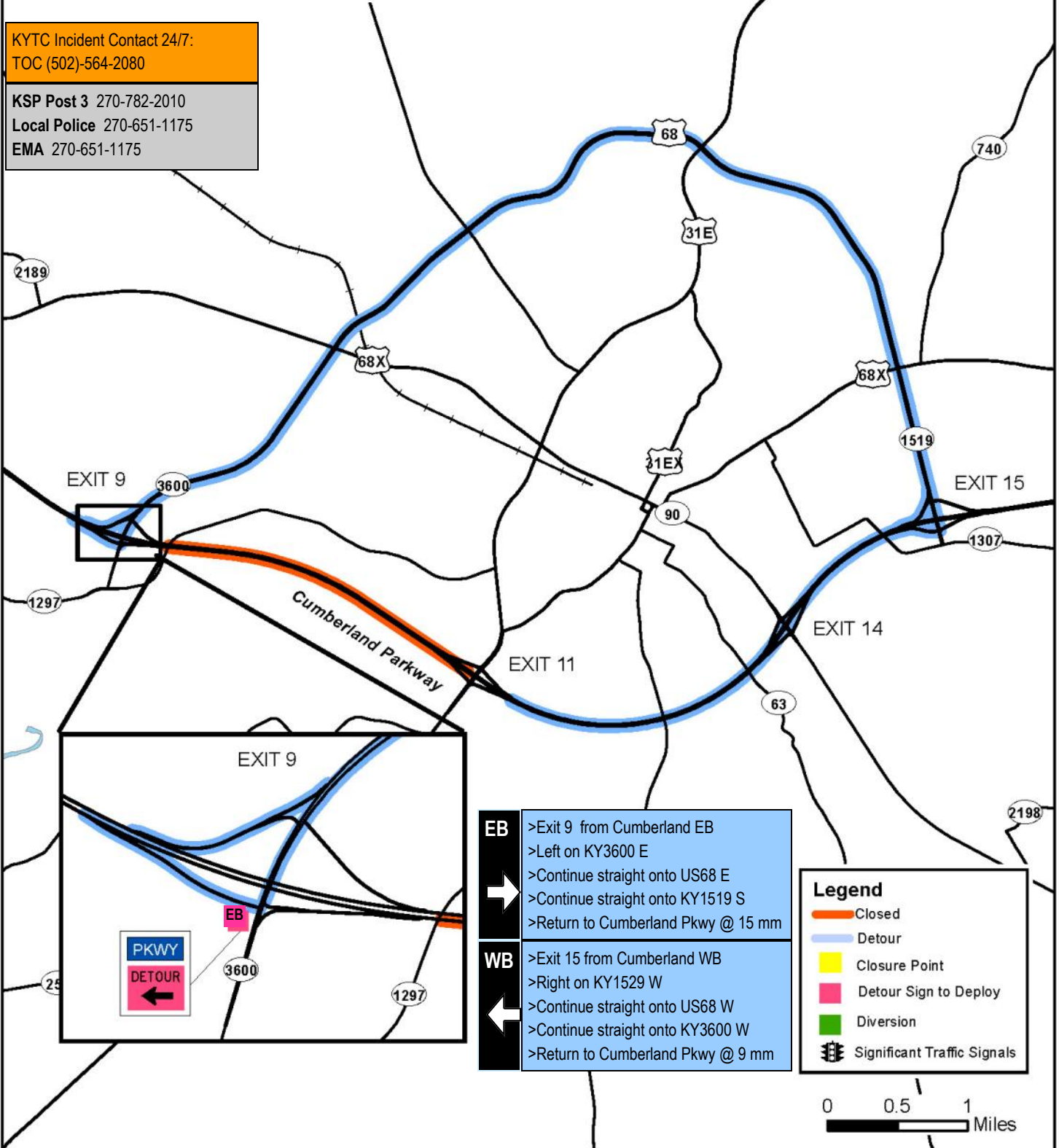


CUMBERLAND PARKWAY DETOUR ROUTE EXIT 9 - EXIT 11 BARREN COUNTY



KYTC Incident Contact 24/7:
TOC (502)-564-2080

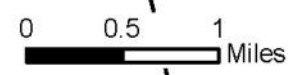
KSP Post 3 270-782-2010
Local Police 270-651-1175
EMA 270-651-1175



- | | |
|-----------|---|
| EB | <ul style="list-style-type: none"> >Exit 9 from Cumberland EB >Left on KY3600 E >Continue straight onto US68 E >Continue straight onto KY1519 S >Return to Cumberland Pkwy @ 15 mm |
| WB | <ul style="list-style-type: none"> >Exit 15 from Cumberland WB >Right on KY1529 W >Continue straight onto US68 W >Continue straight onto KY3600 W >Return to Cumberland Pkwy @ 9 mm |

Legend

- Closed
- Detour
- Closure Point
- Detour Sign to Deploy
- Diversion
- Significant Traffic Signals

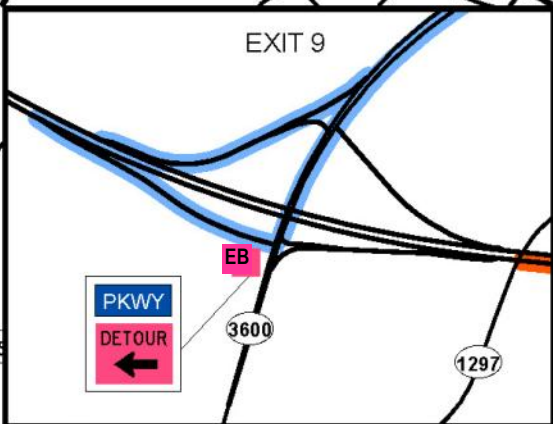
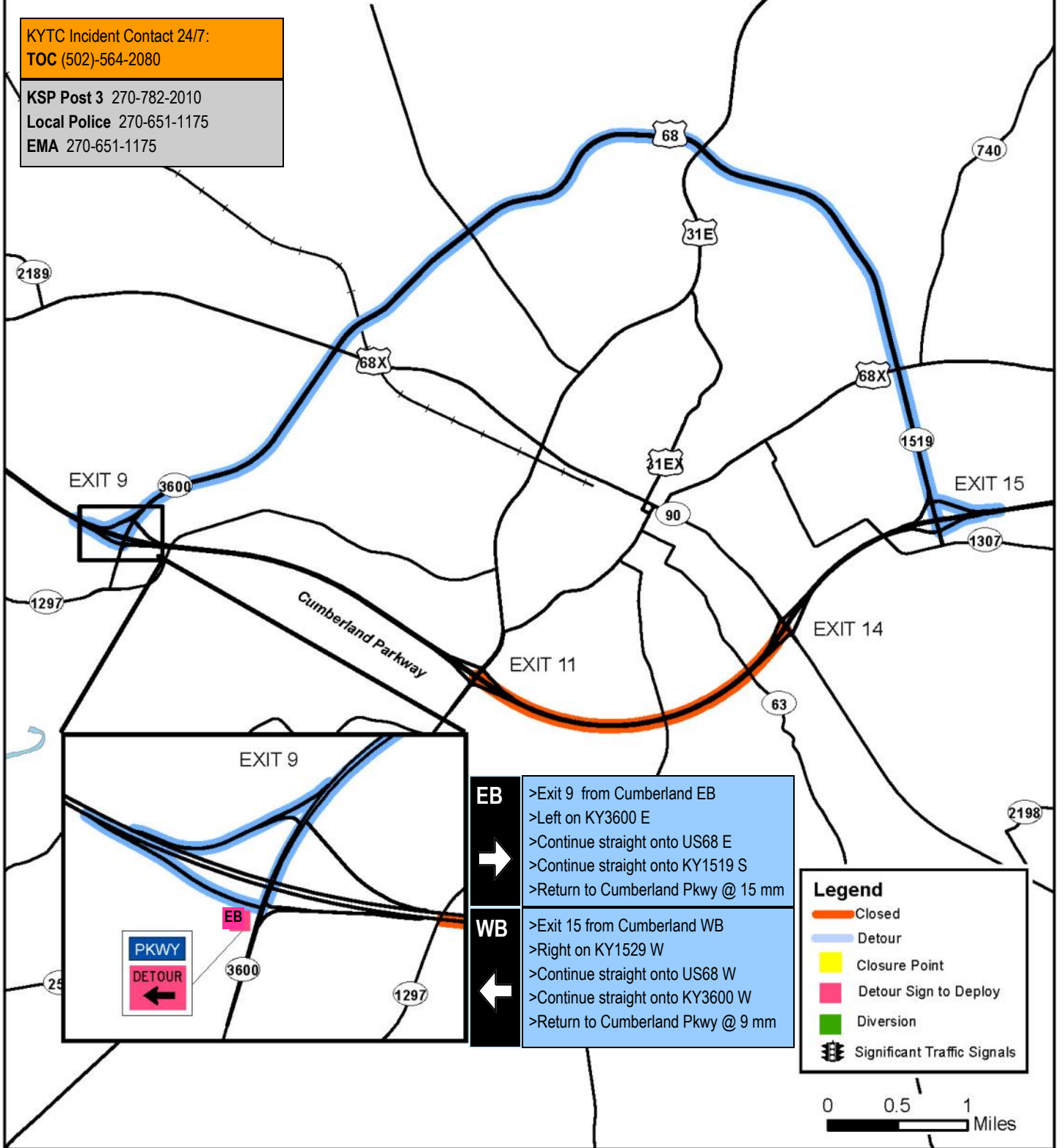


CUMBERLAND PARKWAY DETOUR ROUTE EXIT 11 - EXIT 14 BARREN COUNTY



KYTC Incident Contact 24/7:
TOC (502)-564-2080

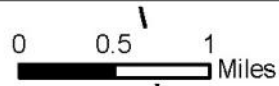
KSP Post 3 270-782-2010
Local Police 270-651-1175
EMA 270-651-1175



- | | |
|-----------|---|
| EB | <ul style="list-style-type: none"> >Exit 9 from Cumberland EB >Left on KY3600 E >Continue straight onto US68 E >Continue straight onto KY1519 S >Return to Cumberland Pkwy @ 15 mm |
| WB | <ul style="list-style-type: none"> >Exit 15 from Cumberland WB >Right on KY1529 W >Continue straight onto US68 W >Continue straight onto KY3600 W >Return to Cumberland Pkwy @ 9 mm |

Legend

- Closed
- Detour
- Closure Point
- Detour Sign to Deploy
- Diversion
- Significant Traffic Signals

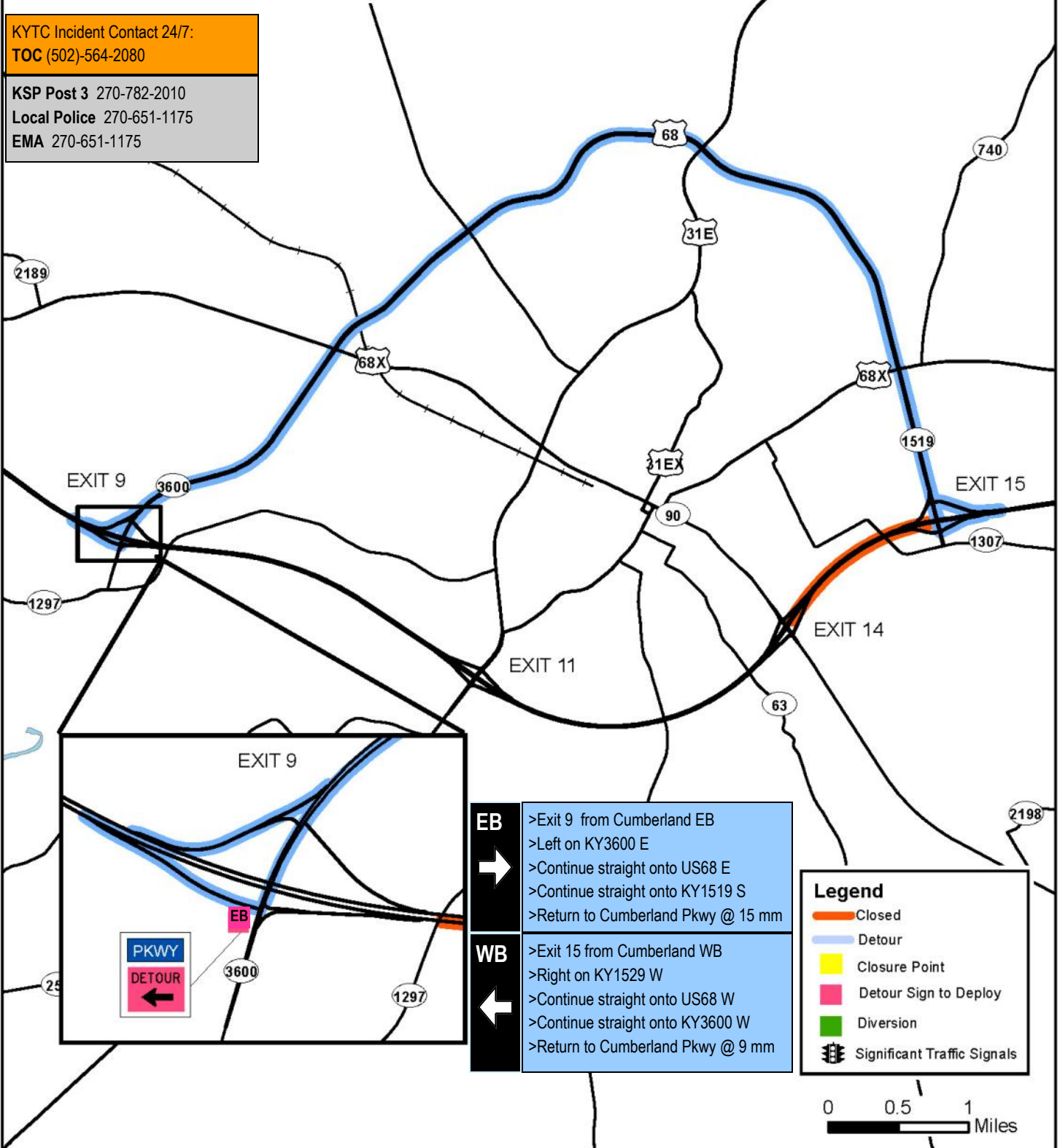


CUMBERLAND PARKWAY DETOUR ROUTE EXIT 14 - EXIT 15 BARREN COUNTY



KYTC Incident Contact 24/7:
TOC (502)-564-2080

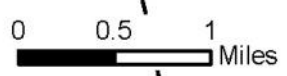
KSP Post 3 270-782-2010
Local Police 270-651-1175
EMA 270-651-1175



- | | |
|----------------|--|
| EB
→ | >Exit 9 from Cumberland EB
>Left on KY3600 E
>Continue straight onto US68 E
>Continue straight onto KY1519 S
>Return to Cumberland Pkwy @ 15 mm |
| WB
← | >Exit 15 from Cumberland WB
>Right on KY1529 W
>Continue straight onto US68 W
>Continue straight onto KY3600 W
>Return to Cumberland Pkwy @ 9 mm |

Legend

- Closed
- Detour
- Closure Point
- Detour Sign to Deploy
- Diversion
- Significant Traffic Signals



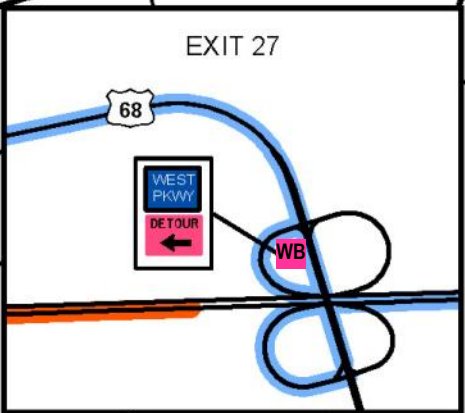
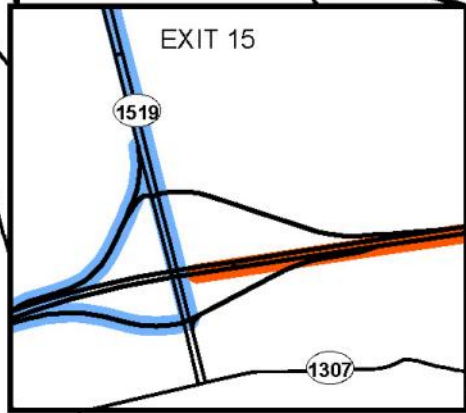
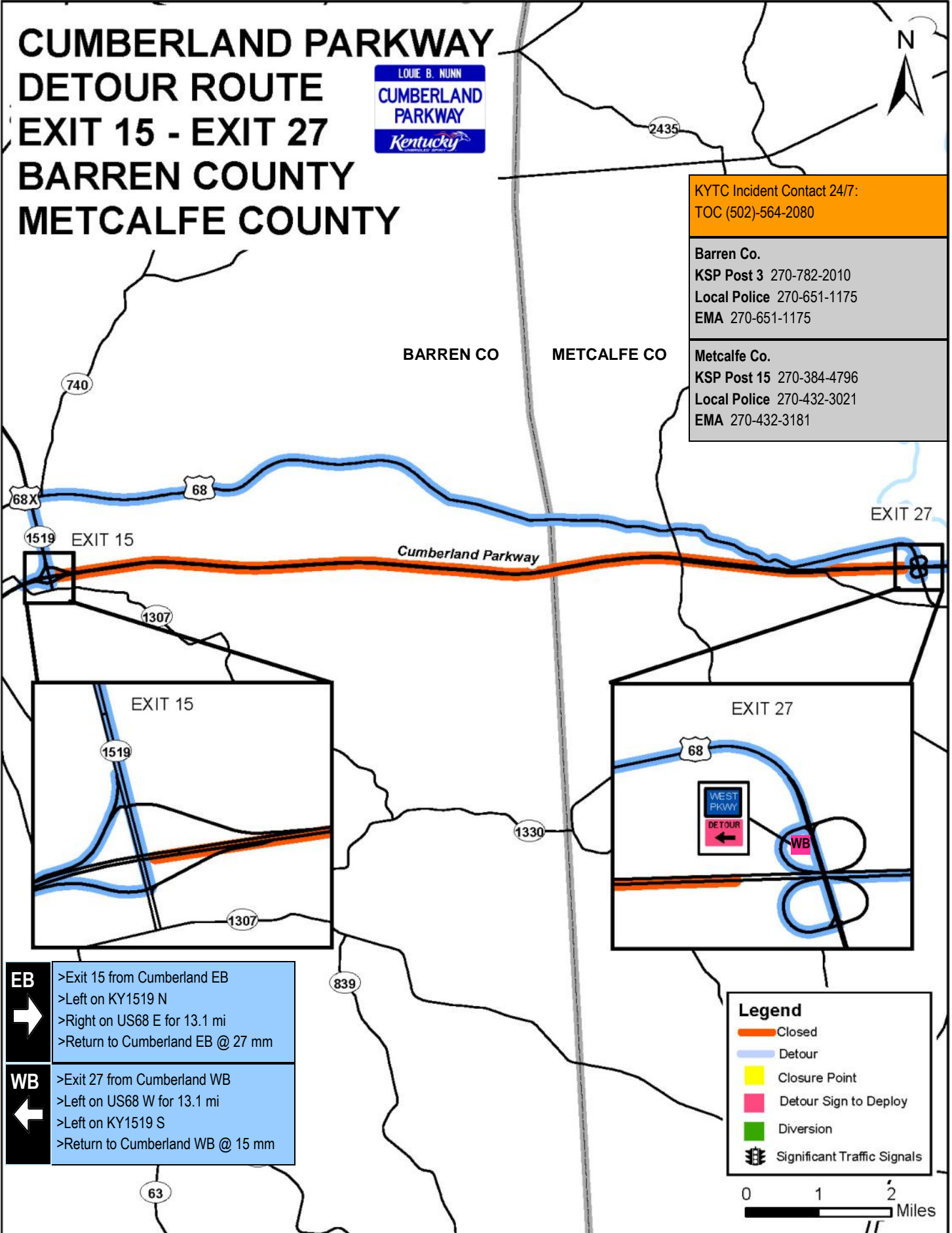
CUMBERLAND PARKWAY DETOUR ROUTE EXIT 15 - EXIT 27 BARREN COUNTY METCALFE COUNTY



KYTC Incident Contact 24/7:
TOC (502)-564-2080

Barren Co.
KSP Post 3 270-782-2010
Local Police 270-651-1175
EMA 270-651-1175

Metcalfe Co.
KSP Post 15 270-384-4796
Local Police 270-432-3021
EMA 270-432-3181

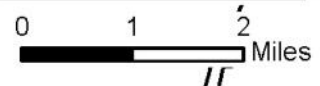


EB
➔
>Exit 15 from Cumberland EB
>Left on KY1519 N
>Right on US68 E for 13.1 mi
>Return to Cumberland EB @ 27 mm

WB
➔
>Exit 27 from Cumberland WB
>Left on US68 W for 13.1 mi
>Left on KY1519 S
>Return to Cumberland WB @ 15 mm

Legend

- Closed
- Detour
- Closure Point
- Detour Sign to Deploy
- Diversion
- Significant Traffic Signals

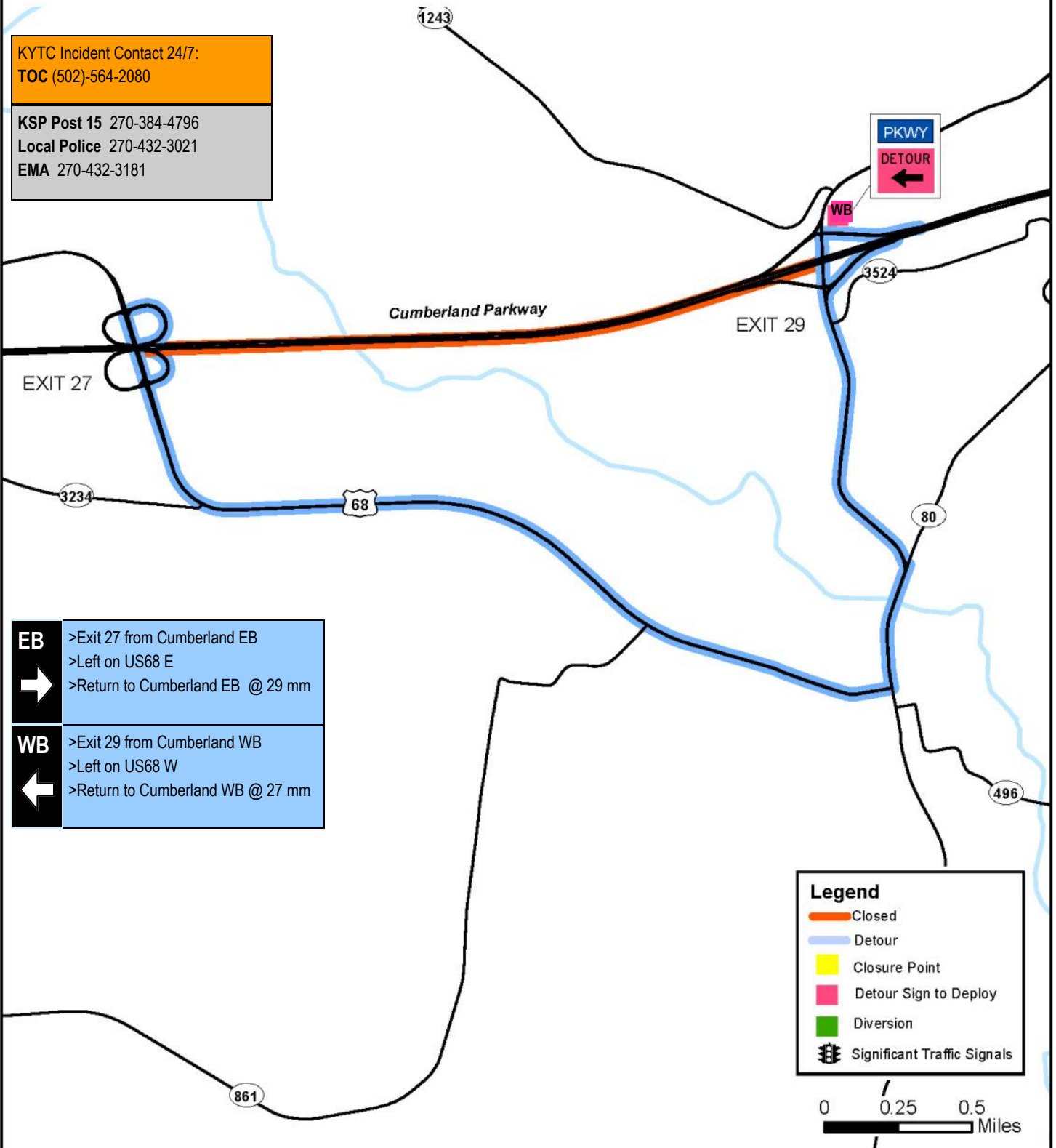


CUMBERLAND PARKWAY DETOUR ROUTE EXIT 27 - EXIT 29 METCALFE COUNTY



KYTC Incident Contact 24/7:
TOC (502)-564-2080

KSP Post 15 270-384-4796
Local Police 270-432-3021
EMA 270-432-3181



- | | |
|----------------|--|
| EB
➔ | >Exit 27 from Cumberland EB
>Left on US68 E
>Return to Cumberland EB @ 29 mm |
| WB
➔ | >Exit 29 from Cumberland WB
>Left on US68 W
>Return to Cumberland WB @ 27 mm |

Legend

- Closed
- Detour
- Closure Point
- Detour Sign to Deploy
- Diversion
- Significant Traffic Signals

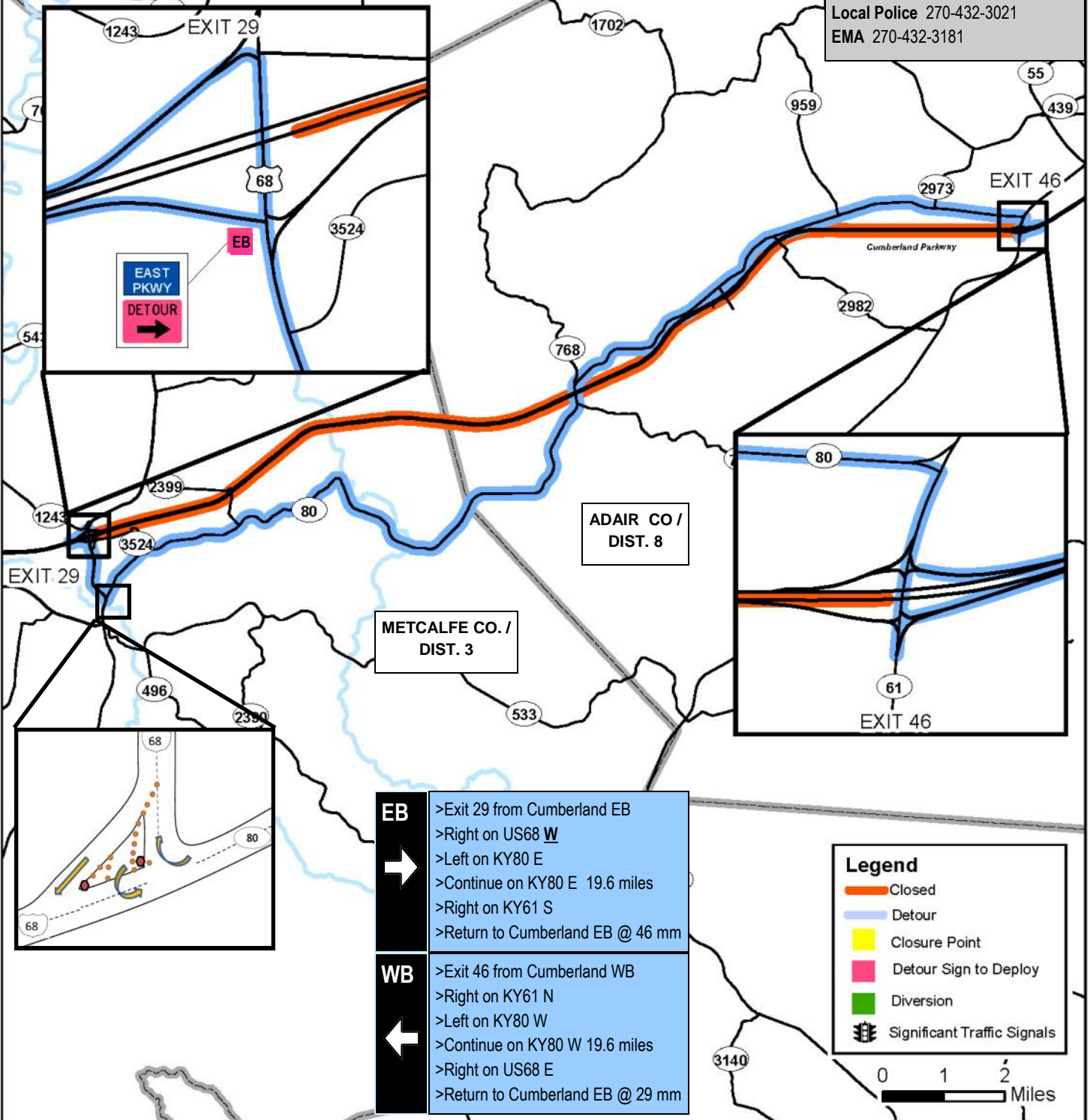


CUMBERLAND PARKWAY DETOUR ROUTE EXIT 29 - EXIT 46 ADAIR COUNTY METCALFE COUNTY



KYTC Incident Contact 24/7:
TOC (502)-564-2080

Metcalfe Co.
KSP Post 15 270-384-4796
Local Police 270-432-3021
EMA 270-432-3181



- | | |
|-----------|---|
| EB | <ul style="list-style-type: none"> >Exit 29 from Cumberland EB >Right on US68 <u>W</u> >Left on KY80 E >Continue on KY80 E 19.6 miles >Right on KY61 S >Return to Cumberland EB @ 46 mm |
| WB | <ul style="list-style-type: none"> >Exit 46 from Cumberland WB >Right on KY61 N >Left on KY80 W >Continue on KY80 W 19.6 miles >Right on US68 E >Return to Cumberland EB @ 29 mm |

Legend

- Closed
- Detour
- Closure Point
- Detour Sign to Deploy
- Diversion
- Significant Traffic Signals

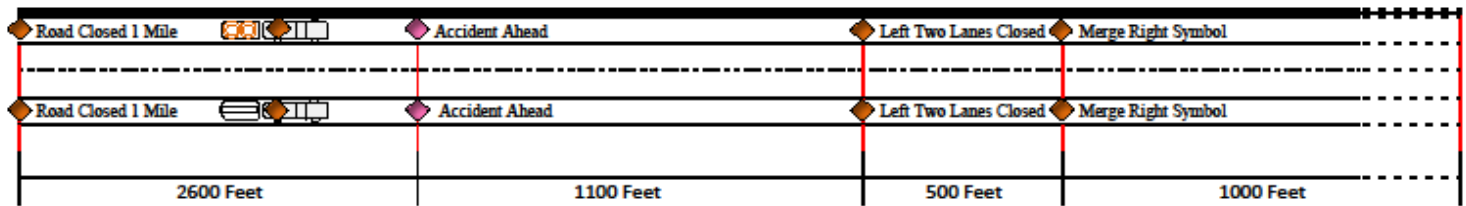


Diversion Setup - 2 Lanes to Exit

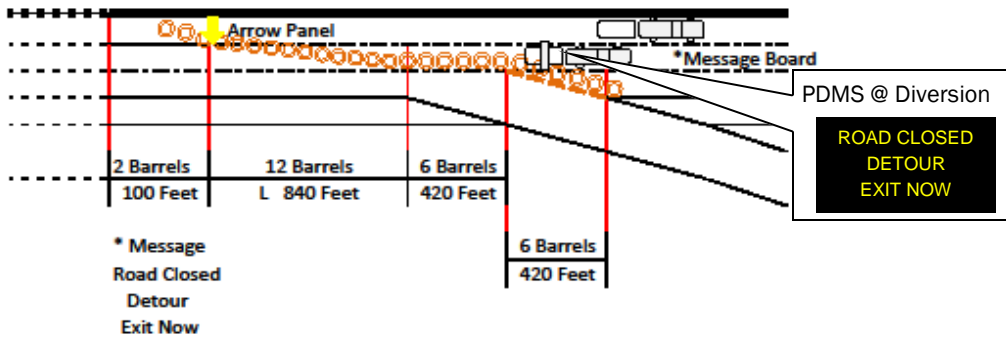
No personnel should be posted on foot within the traveled way of this setup.

Any personnel that are assigned to assist motorists with directions or questions should be posted at the exit end of the ramp. Personnel should make any contact with motorists as brief as possible to maintain flow of traffic off ramps. Detour routes have been signed to minimize need for directions.

Single Lane Closure with Exit Detour



# Signs		Barrel Spacing	
Road Closed 1 Mile	2	Tapers	1 X Speed Limit
Accident Ahead	2	Tangents	2 x Speed limit
Left two lanes Closed	2		"two skips between each barrel"
Merge Right Symbol	2		



Entrance Ramp / Access Closure

Type III barricades with "ROAD CLOSED" sign shall be used to close access and should be placed at the entry end of the ramp.

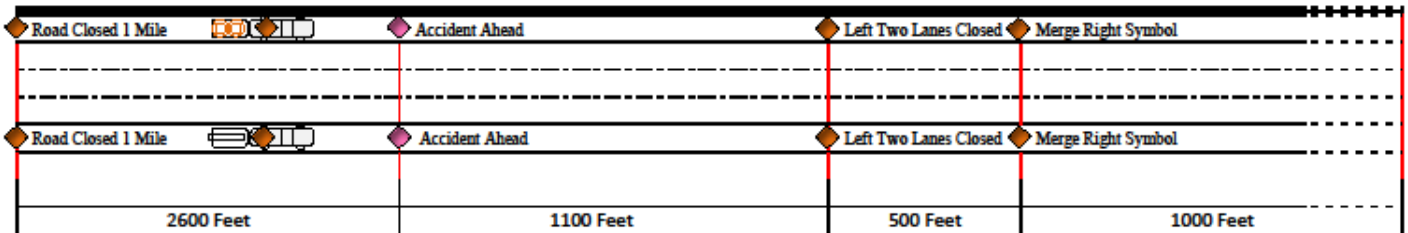
Any dedicated left turn lanes to the ramp should be closed with channelizers and if available a "RAMP CLOSED" sign may be placed in the closed turn lane.

Diversion Setup - 3 Lanes to Exit

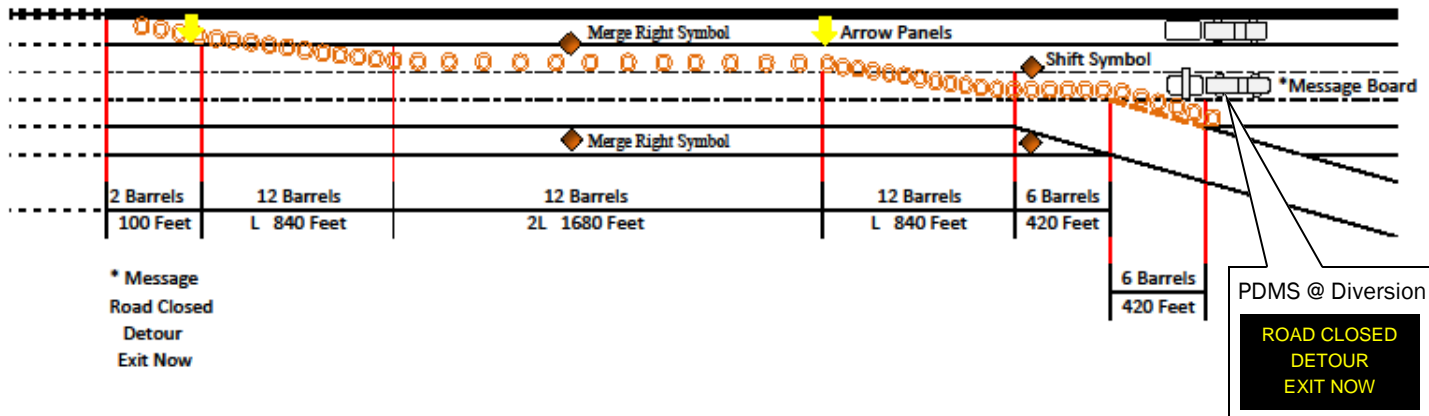
No personnel should be posted on foot within the traveled way of this setup.

Any personnel that are assigned to assist motorists with directions or questions should be posted at the exit end of the ramp. Personnel should make any contact with motorists as brief as possible to maintain flow of traffic off ramps. Detour routes have been signed to minimize need for directions.

Two Lane Closure with Exit Detour



<p># Signs</p> <p>Road Closed 1 Mile 2</p> <p>Accident Ahead 2</p> <p>Left two lanes Closed 2</p> <p>Merge Right Symbol 4</p>	<p>Barrel Spacing</p> <p>Tapers 1 X Speed Limit</p> <p>Tangents 2 x Speed limit "two skips between each barrel"</p>
---	---



Entrance Ramp / Access Closure

Type III barricades with "ROAD CLOSED" sign shall be used to close access and should be placed at the entry end of the ramp.

Any dedicated left turn lanes to the ramp should be closed with channelizers and if available a "RAMP CLOSED" sign may be placed in the closed turn lane.

