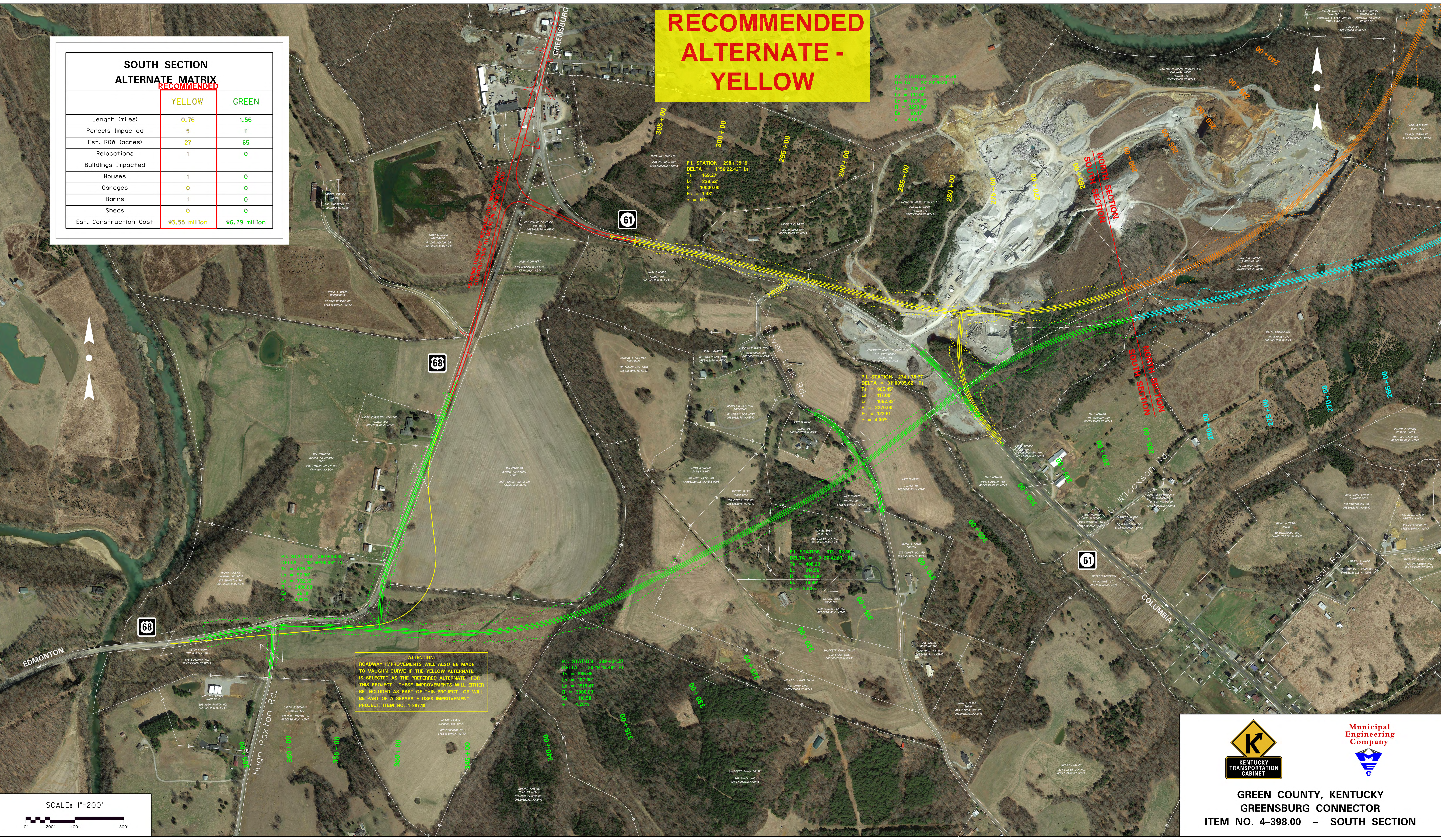


RECOMMENDED ALTERNATE - YELLOW

SOUTH SECTION ALTERNATE MATRIX RECOMMENDED		
	YELLOW	GREEN
Length (miles)	0.76	1.56
Parcels Impacted	5	11
Est. ROW (acres)	27	65
Relocations	1	0
Buildings Impacted		
Houses	1	0
Garages	0	0
Barns	1	0
Sheds	0	0
Est. Construction Cost	\$3.55 million	\$6.79 million



P.I. STATION: 288+89.19
 DELTA = 1°56'22.43" Lt.
 Ts = 169.27'
 Lc = 338.52'
 R = 10000.00'
 Es = 1.43'
 e = NC

P.I. STATION: 289+04.78
 DELTA = 2°20'49.24" Lt.
 Ts = 726.47'
 Lc = 102.00'
 R = 1250.00'
 Es = 0.231'
 e = 4.00%

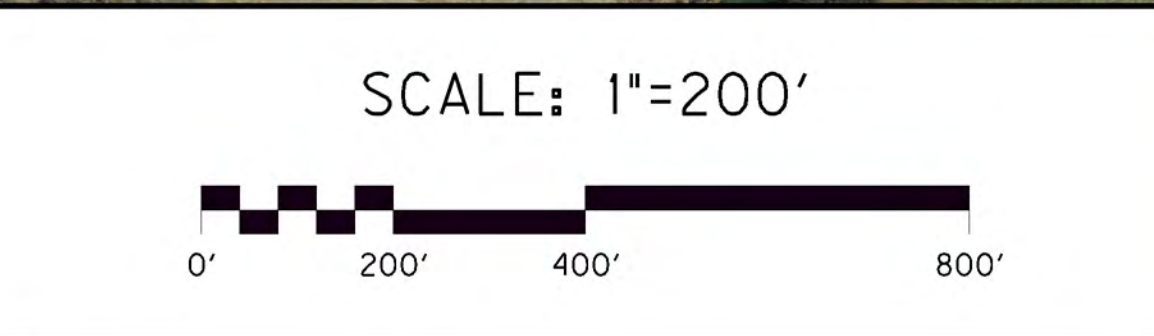
P.I. STATION: 274+75.27
 DELTA = 31°00'05.62" Rt.
 Ts = 905.45'
 Lc = 117.00'
 R = 1952.93'
 Es = 123.61'
 e = -4.00%

P.I. STATION: 300+00.00
 DELTA = 72°00'00.00" Lt.
 Ts = 475.23'
 Lc = 97.00'
 R = 752.32'
 Es = 3480.00'
 e = 0.00%

P.I. STATION: 315+03.84
 DELTA = 2°25'42.94" Rt.
 Ts = 410.00'
 Lc = 15.0000'
 R = 10000.00'
 Es = 100.00'
 e = 4.20%

P.I. STATION: 338+43.87
 DELTA = 30°14'48.48" Rt.
 Ts = 668.63'
 Lc = 107.00'
 R = 1518.94'
 Es = 100.0000'
 e = 4.20%

ATTENTION:
 ROADWAY IMPROVEMENTS WILL ALSO BE MADE TO VAUGHN CURVE IF THE YELLOW ALTERNATE IS SELECTED AS THE PREFERRED ALTERNATE FOR THIS PROJECT. THESE IMPROVEMENTS WILL EITHER BE INCLUDED AS PART OF THIS PROJECT OR WILL BE PART OF A SEPARATE US&S IMPROVEMENT PROJECT, ITEM NO. 4-397.10





KENTUCKY
TRANSPORTATION
CABINET



Municipal
Engineering
Company

GREEN COUNTY, KENTUCKY
GREENSBURG CONNECTOR
 ITEM NO. 4-398.00 - SOUTH SECTION