

LEITCHFIELD WESTERN BYPASS

Welcome

The Kentucky Transportation Cabinet (KYTC) welcomes you to the Public Information Meeting for the extension of the William Thomason Byway (KY 3155) from KY 54 to KY 259. The purpose of this meeting is to present the project purpose and need and present the alternates that have been developed to address the needs and meet the goals of the project. In order to assist in the design and development of this project, we request the public provide comments on the project alternates and the potential improvements for your community.

KYTC appreciates your involvement in the project and we encourage you to visit the informational displays and speak with the project team members regarding any questions you may have concerning the project. Please complete the survey form and place it in the box near the sign-in table or take the form home with you and submit it later. All written comments will be accepted for the official meeting record up to 10 days after the public meeting by mail or email to:

Brad Bottoms, PE
KYTC District 4 Office
634 East Dixie Highway
Elizabethtown, KY 42701
Bradley.Bottoms@ky.gov

Public Meeting Exhibits

Six different alternates are being considered by the project team. These alternates include:
Alternate A, B, C, D, E, and No Build.

The purpose of this meeting is to gather public information and input on the preliminary alternatives design construction for the Western Bypass. The information we gather tonight, the data

we get from environmental consultants, and the engineers studies will help decide the preferred alignment for the project.

Purpose and Need

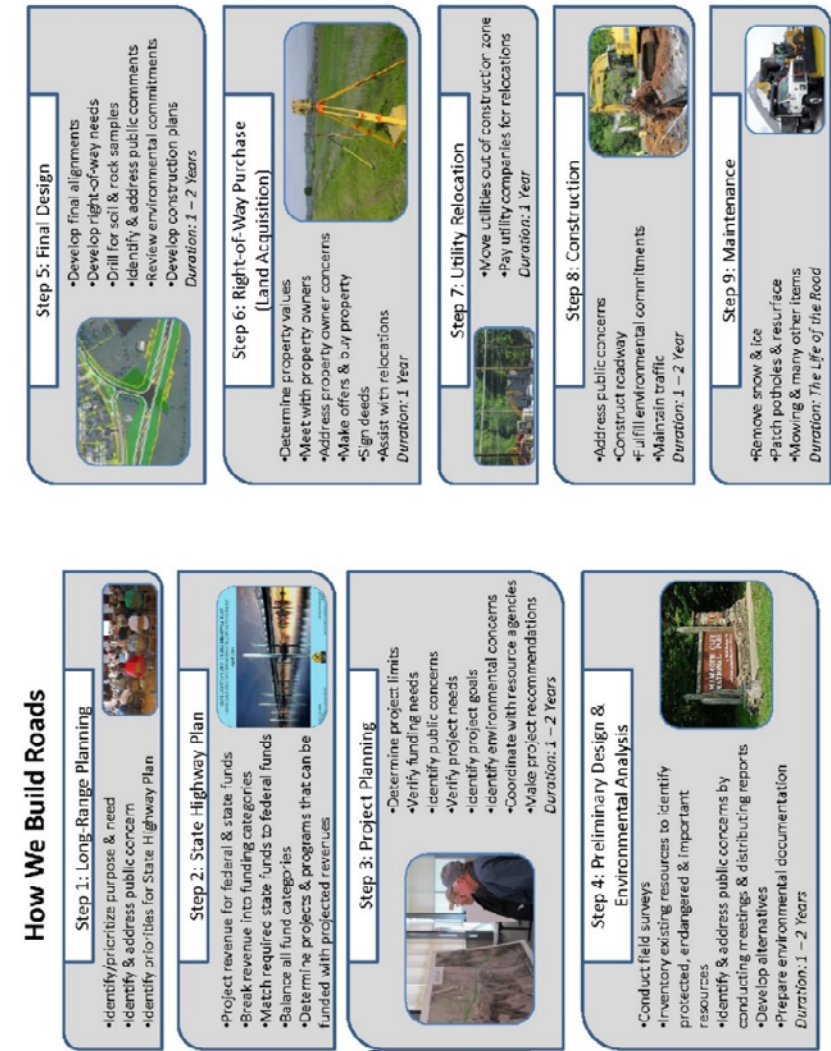
The planning study identified several issues relating to movement within and around Leitchfield. The most significant roadway facility in the region is the Western Kentucky Parkway located south of Leitchfield on KY 259. The major north/south facility in Leitchfield is KY 259. Additionally, US 62 and KY 54 are significant east to west roadways which serve Leitchfield and connect to KY 259 within the Leitchfield city limits. There are significant manufacturers and quarries west of Leitchfield along those two routes which generate significant truck traffic to the WK Parkway. Also, Grayson County High School and Oran P. Lawler Elementary School are significant traffic generators located west of Leitchfield. This project would allow vehicles west of Leitchfield to reach KY 259 just north of the WK Parkway while avoiding the more congested downtown area.

The proposed project calls for the extension of the southern leg of William Thomason Byway (KY 3155) west of KY 259. The goals of a western bypass include;

- 1) Improved Traffic Flow,
- 2) Improved Safety;
- 3) Economic Development,
- 4) Improve Highway Access for Trucks,
- 5) Improve Access, and
- 6) Enhance System Efficiency and Connections.

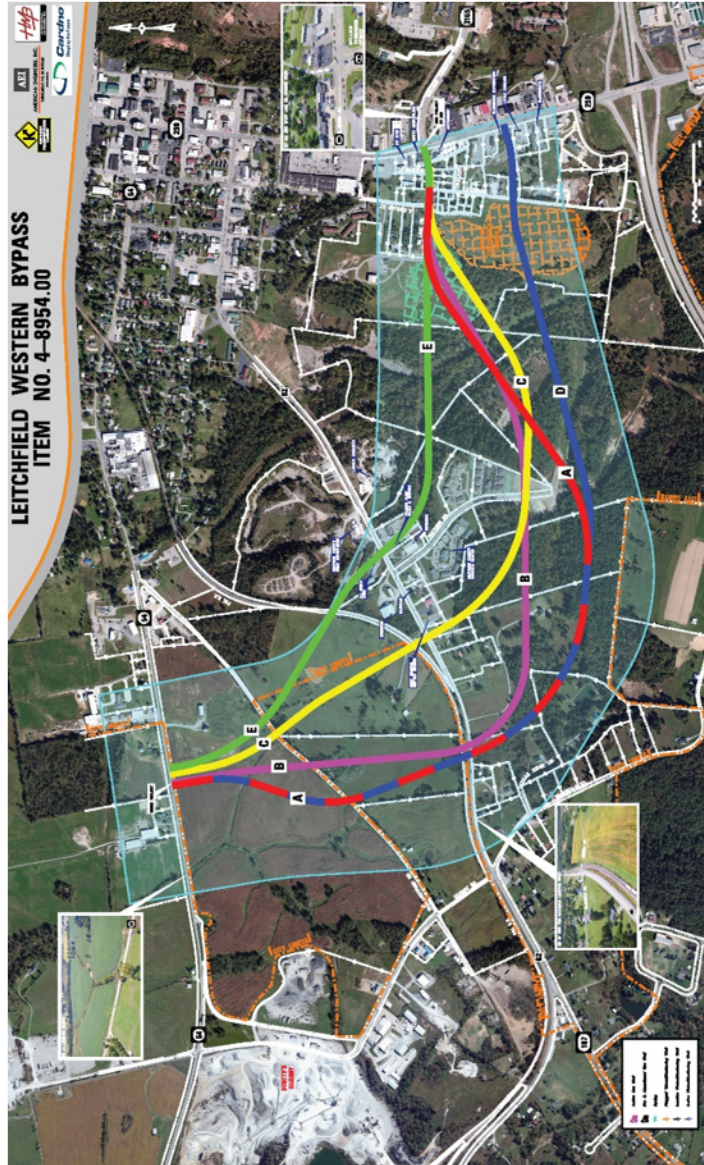
Public meeting displays will be available on District 4's website:

<https://transportation.ky.gov/DistrictFour/Pages/default.aspx>



We are here ★

Project Location
5 Alternates (A, B, C, D, and E)



CONTACT INFORMATION

Brad Bottoms, PE
KYTC District 4 Office
634 East Dixie Highway
Elizabethtown, KY 42701

Email: Bradley.Bottoms@ky.gov

Phone: (270)766-5066



AMERICAN ENGINEERS, INC.

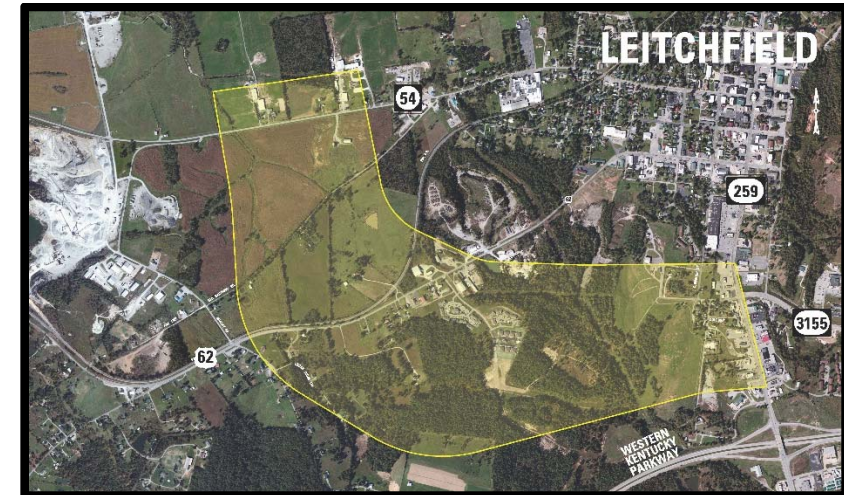
DESIGNING YOUR FUTURE

www.aei.cc

LEITCHFIELD WESTERN BYPASS

Item No. 04-8954.00
Extension of KY 3155 from KY 54 to KY 259

Public Information Meeting
August 7, 2018



STUDY AREA



ARTIST RENDERING



AMERICAN ENGINEERS, INC.
DESIGNING YOUR FUTURE
www.aei.cc

