

Lake Barkley State Park 1M9

Cadiz, Kentucky USA

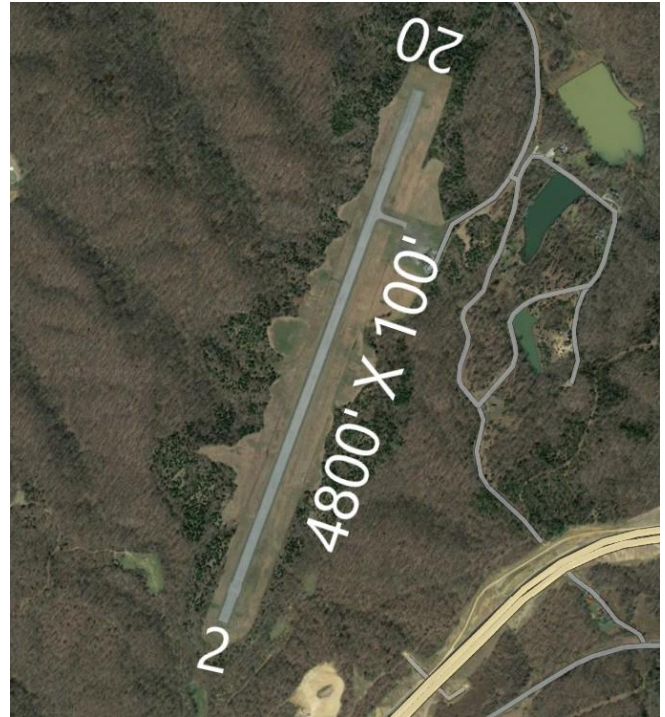
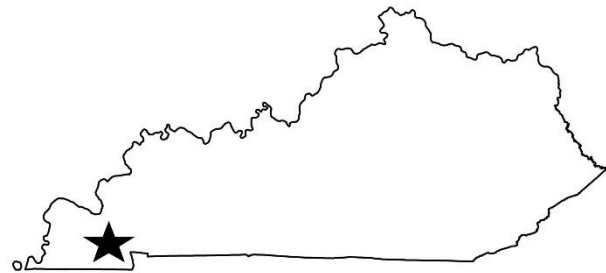
Lat/Long: 36-49-04.0850N 087-54-27.0600W
36-49.068083N 087-54.451000W
36.8178014,-87.9075167
(estimated)

Elevation: 570.9 ft. / 174.0 m (surveyed)

3D View: RWY 2 [Google Earth](#) RWY 20 [Google Earth](#)

For Additional Airport Information:

[AirNav: 1M9 - Lake Barkley State Park Airport](#)



Airport Communications:

CTAF/UNICOM: 123.0

Airport Operations:

Airport use: Open to the public
Activation date: 08/1980
Control tower: no
ARTCC: MEMPHIS CENTER
FSS: LOUISVILLE FLIGHT SERVICE STATION
NOTAMs facility: LOU (NOTAM-D service available)
Attendance: UNATNDD
Wind indicator: lighted
Segmented circle: yes
Lights: ACTVT REIL RWY 02 & 20; PAPI RWY 20;
MIRL RWY 02/20 - CTAF.
Beacon: white-green (lighted land airport)
Operates sunset to sunrise.

Airport Services:

Parking: tiedowns
Airframe service: NONE
Powerplant service: NONE
Bottled oxygen: NONE

Ground Transportation:

Courtesy Car:
Shuttle:
Uber / Lyft:
Taxi:
Rental:

Airport Contact Information:

Phone: 270-924-1131
Airport Manager: David Miller
Email: david.miller@ky.gov

Airport Accommodations / Area Attractions:

[Lake Barkley - Home](#) | [Facebook](#)
[Lake Barkley State Resort Park](#) | [Ky Parks](#)

Airport Comments: