

# Socioeconomic Data Files

Nathan Wilkinson, KYTC

# Data Inputs Used During Trip Generation

- Household and Population Data
- Institutional (Schools and Hospitals)
- Journey to Work Data
- Employment Data
- Special Generators?
- Additional Inputs?
  - What kind of time investment is typically involved in SE data collection?

# Data Sources

- Household and population information comes from the 2000 census
  - Current year estimates?
  - Additional sources?
- Schools and hospitals GIS layers maintained by Division of Planning
  - Verify information with local school board



# Data Sources Cont.

- Journey to work data comes from census CTPP
  - Is there data available that is more detailed than the county to county level?
- Multiple sources of Employment Data
  - Woods & Poole
    - Data collected via phone surveys
    - Data includes future forecasts
    - Data only available in county to county format
  - Dunn & Bradstreet
    - Data collected via phone surveys
    - Estimates tend to be lower than other sources
  - State sources:
    - Cabinet for Economic Development (CED)
    - Education Cabinet, Office of Employment and Training (EOT)
  - Local resources:
    - School Board
    - Planning and Zoning Commission
    - Chamber of Commerce

# Various Employment Estimates for Nelson County

Source	Year	# of Employees
Census	2000	13,756
Dun & Bradstreet	2003	12,986
Woods & Poole	2003	19,600
OET	2007	14,463
LEHD	2007	14,176



# Case Study: Using Employment Data from CED for Carroll County





# Case Study: Using Employment Data from CED Cont.

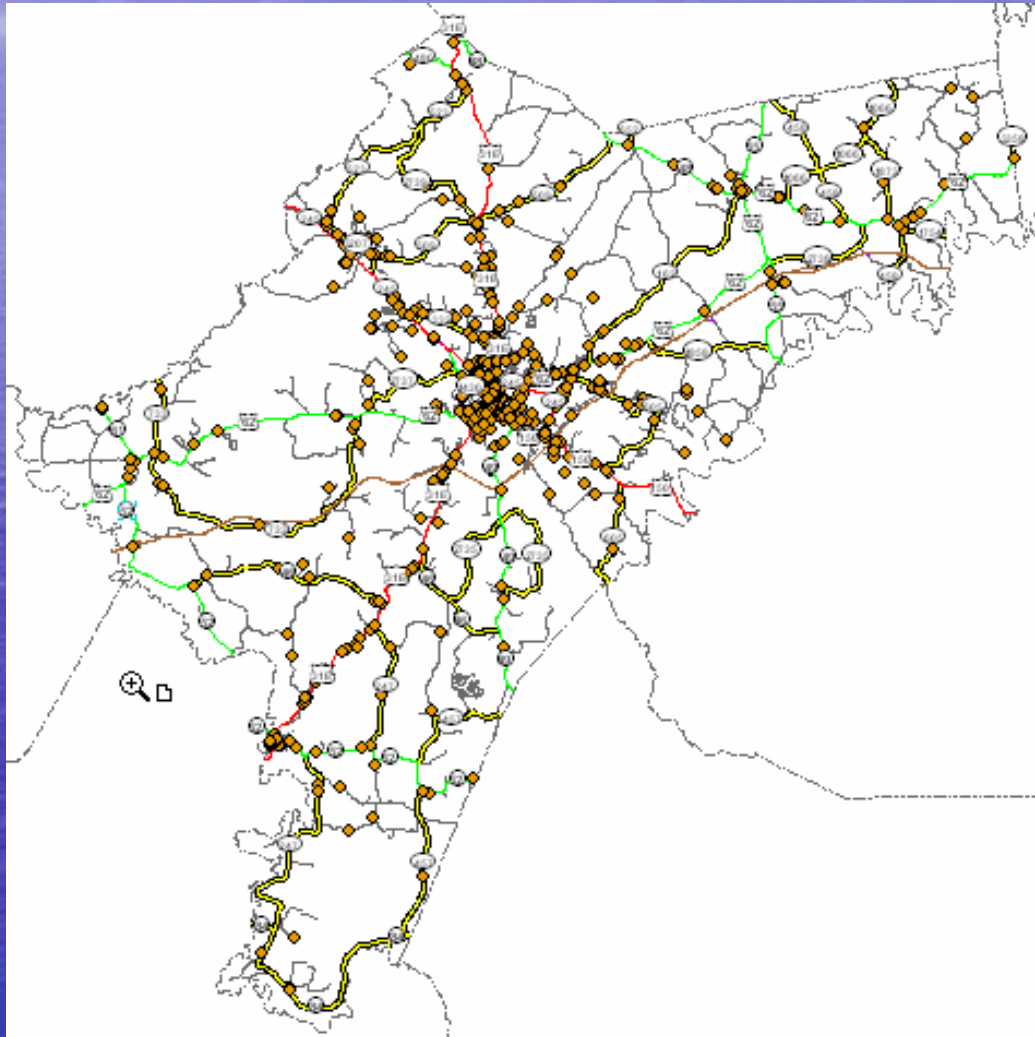


# Case Study: Using Employment Data From Office of Employment and Training (OET)

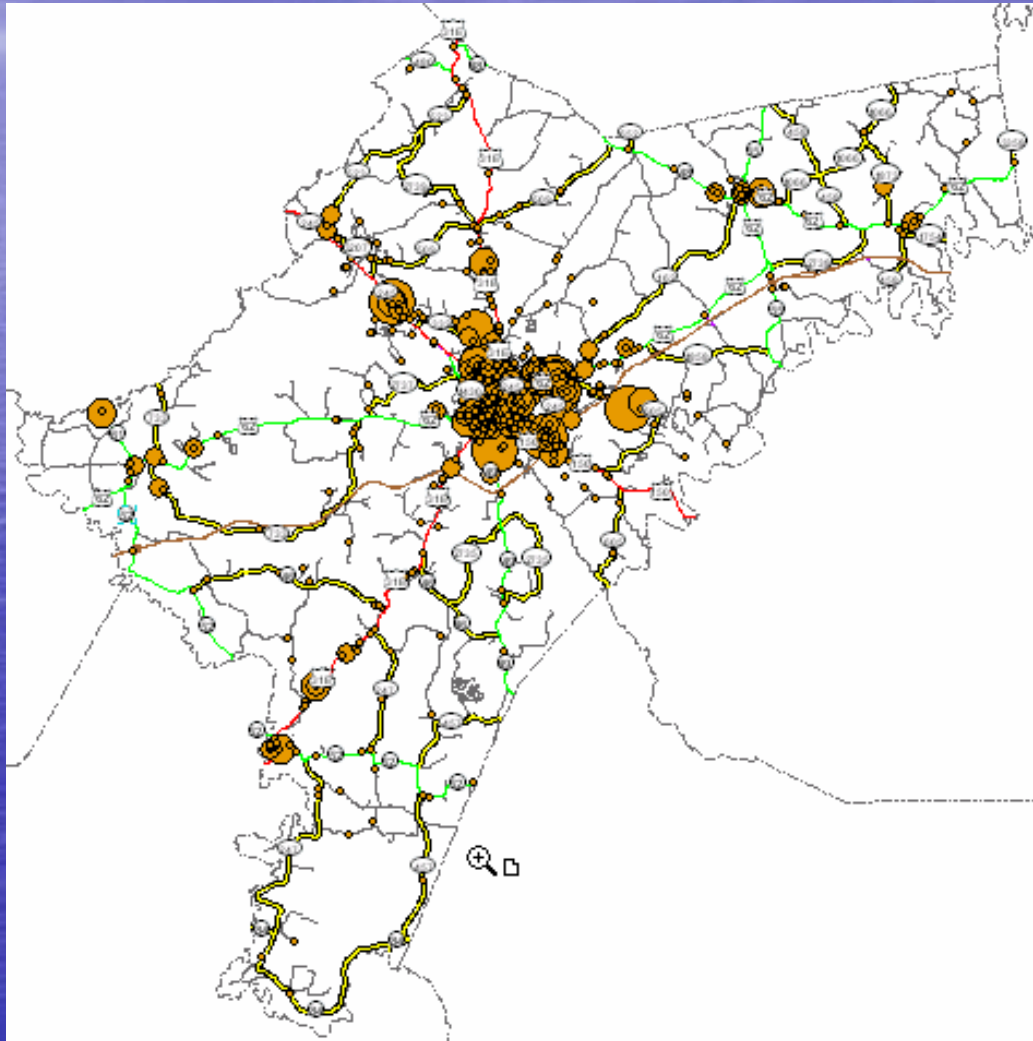
- Most robust data set, most similar to census estimates, includes NAICS codes
- Data must be requested on county by county basis
- Used as source of employment data for Nelson County Model
- Geocoded using TransCAD's locate by address tool
- Software located approximately 900 of 1000 records; those not located were placed manually
- Data Cleanup: Disaggregating employees i.e. all school workers assigned to board of education building
- After employment figures and their locations have been checked, data is aggregated by census block



# Case Study: Using Employment Data From OET for Nelson County



# Case Study: Using Employment Data From OET for Nelson County



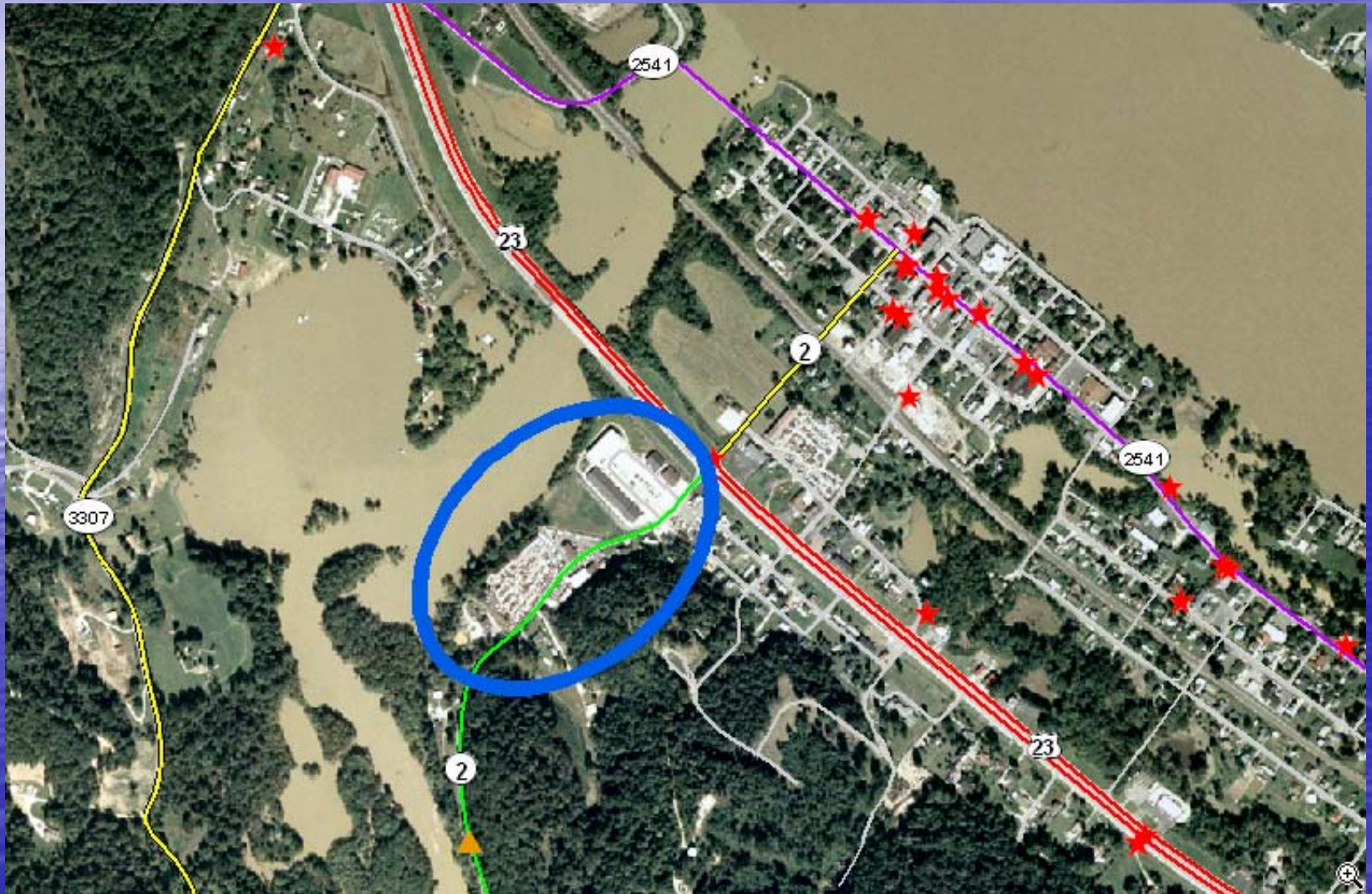


# Employment Data Sources

- Multiple sources with different costs/benefits
- Use combination of data sources if necessary/possible
- Hierarchy favoring local data over state data and state data over national data
- Limitations to employment data
- Field observations and aerial photos



# Case Study: Using Field Observations and Aerial Photos for Carroll County






# Forecasting Future SE Data

- Planning & Zoning/Land Use data
- Woods & Poole future forecast
- Kentucky State Data Center
- Oldham & Spencer County population estimates:

County	2003 KSDC	2003 W & P	2030 KSDC	2030 W & P
Oldham	50,591	50,954	75,973	97,370
Spencer	14,309	13,767	31,906	20,811



• THE END