

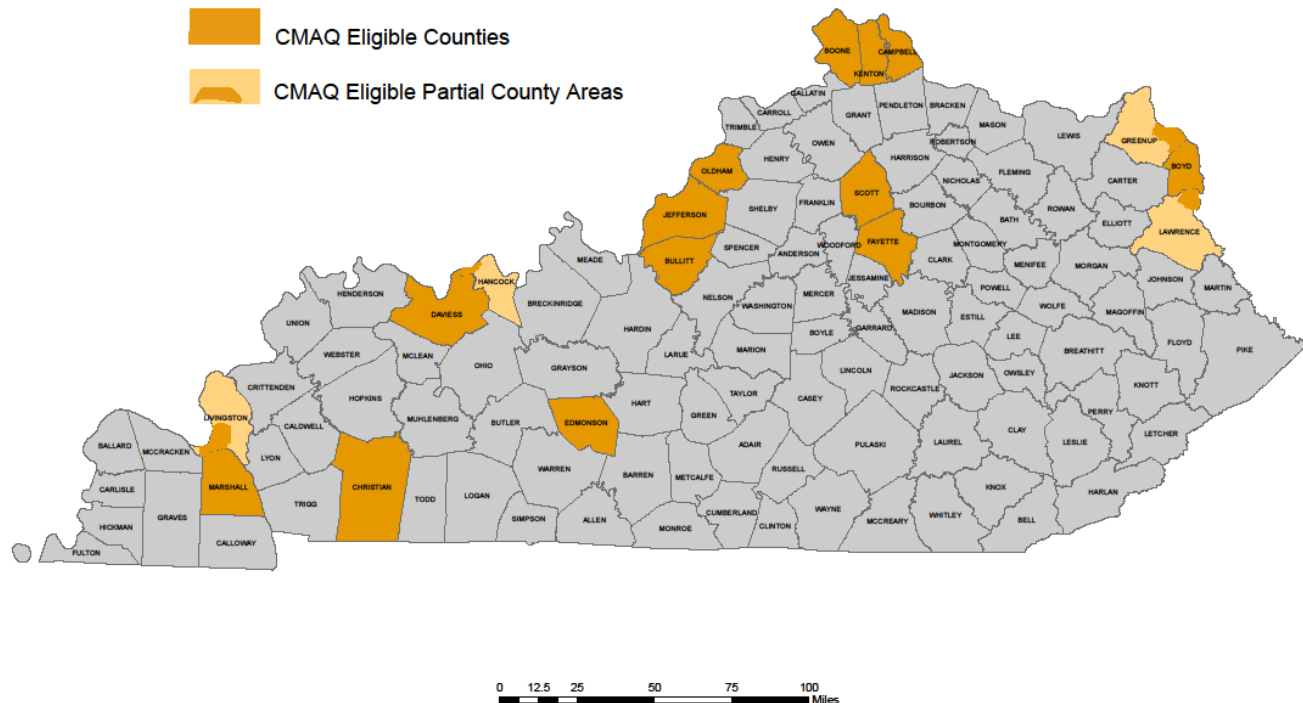
## Congestion Mitigation & Air Quality Program

Jackie Jones  
Kentucky Transportation Cabinet  
Office of Local Programs



# KY Eligible CMAQ Areas

## Kentucky Counties Eligible for CMAQ



# CMAQ Funds Available

<b>Unobligated Apportionment Balance</b> (as of 4-12-2016)	\$	<b>47,195,787</b>
CMAQ Program Projects yet to be obligated (FY08-FY16)	\$	32,077,103
10% for State Forces	\$	3,207,710
<b>Total CMAQ Program Projects yet to be obligated</b>	<b>\$</b>	<b>35,284,813</b>
CMAQ funds released due to no expenditures	\$	-
CMAQ funds programmed as Advance Construct	\$	3,834,387
<b>Subtotal</b> (Apportionment balance - CMAQ announced but not obligated - CMAQ released- CMAQ AC)	<b>\$</b>	<b>8,076,587</b>
<b>90% of \$(8,076,587)</b>	<b>\$</b>	<b>7,268,928</b>
<b>90% of \$(7,268,928) for projects</b> (10% set aside for state forces)	<b>\$</b>	<b>6,542,035</b>



# M & M Cartage

- Public/Private Partnership with Louisville Metro
- Consists of two parts:
  - Construction of CNG Fueling Station(s)
  - Cost Differential for purchase of CNG powered trucks



# M & M Cartage-Fueling Stations

- In partnership with Kentuckiana Clean Fuels and Louisville Metro
- Up to 3 new CNG fueling stations in Jefferson County
- Stations will be open to the public
- Fast Fill
- Total federal cost of \$2,321,090



*Photo-Kentuckiana Clean Fuels*





# M & M Cartage-Trucks

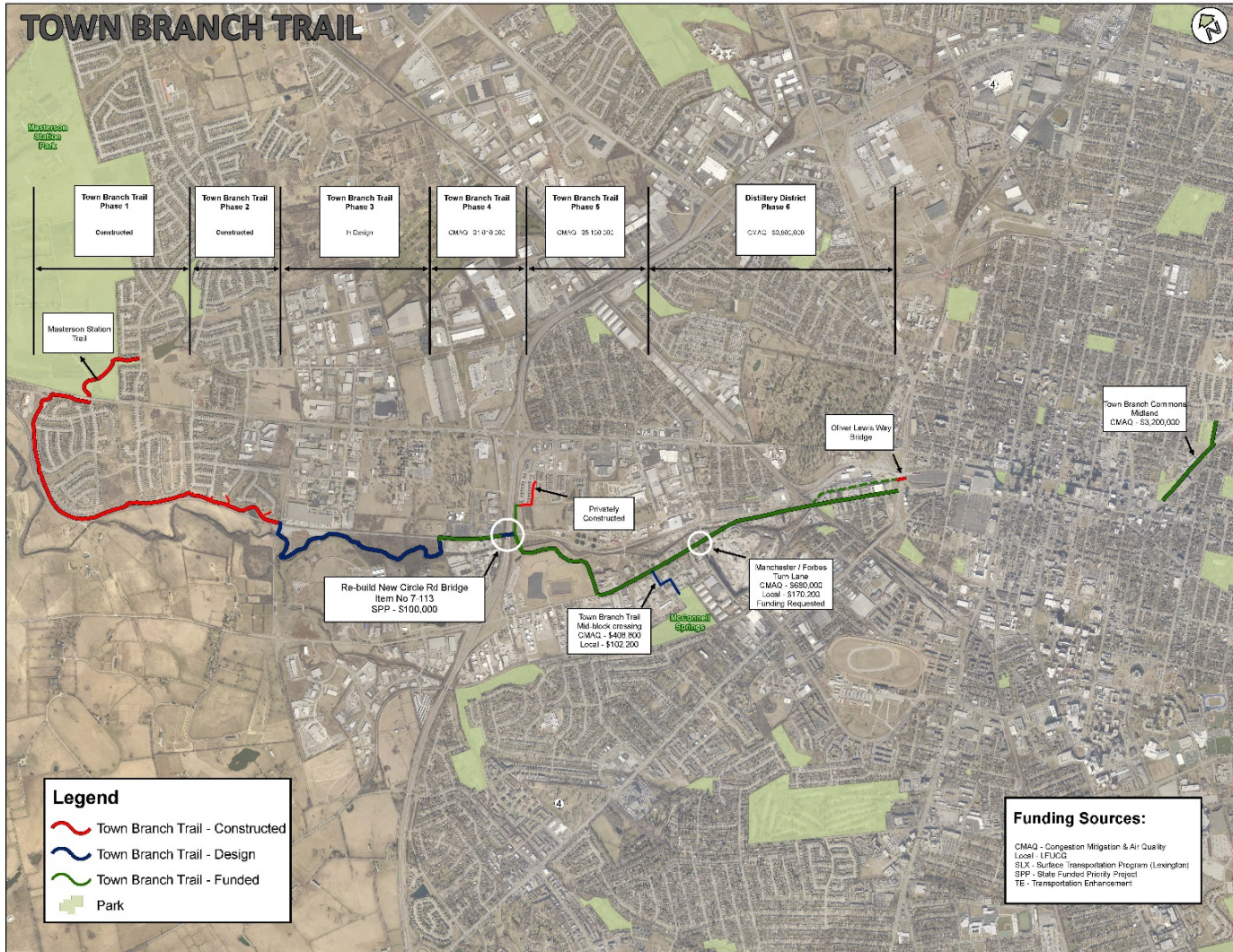
- Purchase up to 5 Class 8 CNG trucks which will replace 5 diesel trucks
- Trucks are used almost exclusively in the Jefferson County area
- Total federal cost of \$300,000



*Photo-M & M Cartage*



# Town Branch Trail



# Questions



Jackie Jones

[Jackie.Jones@ky.gov](mailto:Jackie.Jones@ky.gov)

502-782-4734

[www.transportation.ky.gov/Local-Programs](http://www.transportation.ky.gov/Local-Programs)

