



**CALL NO. 405**

**CONTRACT ID. 122956**

**WEBSTER COUNTY**

**FED/STATE PROJECT NUMBER 117GR12M102-FE02**

**DESCRIPTION BRIDGE CLEANING IN WEBSTER COUNTY**

**WORK TYPE BRIDGE PAINTING & CLEANING**

**PRIMARY COMPLETION DATE 7/31/2013**

**LETTING DATE: September 14, 2012**

Sealed Bids will be received electronically through the Bid Express bidding service until 10:00 AM EASTERN DAYLIGHT TIME September 14, 2012. Bids will be publicly announced at 10:00 AM EASTERN DAYLIGHT TIME.

**REQUIRED BID PROPOSAL GUARANTY:** Not less than 5% of the total bid.

## **TABLE OF CONTENTS**

<b>PART I</b>	<b>SCOPE OF WORK</b> <ul style="list-style-type: none"><li>• PROJECT(S), COMPLETION DATE(S), &amp; LIQUIDATED DAMAGES</li><li>• CONTRACT NOTES</li><li>• STATE CONTRACT NOTES</li><li>• SPECIAL NOTE(S) APPLICABLE TO PROJECT</li><li>• MATERIAL SUMMARY</li></ul>
<b>PART II</b>	<b>SPECIFICATIONS AND STANDARD DRAWINGS</b> <ul style="list-style-type: none"><li>• SPECIFICATIONS REFERENCE</li><li>• SUPPLEMENTAL SPECIFICATION</li></ul>
<b>PART III</b>	<b>EMPLOYMENT, WAGE AND RECORD REQUIREMENTS</b> <ul style="list-style-type: none"><li>• LABOR AND WAGE REQUIREMENTS</li><li>• EXECUTIVE BRANCH CODE OF ETHICS</li><li>• KENTUCKY EQUAL EMPLOYMENT OPPORTUNITY ACT OF 1978</li><li>• PROJECT WAGE RATES</li></ul>
<b>PART IV</b>	<b>INSURANCE</b>
<b>PART V</b>	<b>BID ITEMS</b>

**PART I**  
**SCOPE OF WORK**

CONTRACT ID - 122956

ADMINISTRATIVE DISTRICT - 02

PROJECT(S) IDENTIFICATION AND DESCRIPTION:

COUNTY - WEBSTER  
117GR12M102-FE02

BRIDGE CLEANING IN WEBSTER COUNTY

COUNTY - WEBSTER PES - MB11700411201  
FE02 117 0041 B00019N  
BRIDGE CLEANING IN WEBSTER COUNTY US 41 OVER DEER CREEK. BRIDGE CLEANING.  
GEOGRAPHIC COORDINATES LATITUDE 37°34'21" LONGITUDE 87°31'09"

COUNTY - WEBSTER PES - MB11700561201  
FE02 117 0056 B00012N  
BRIDGE CLEANING IN WEBSTER COUNTY KY 56 OVER GREEN RIVER. BRIDGE CLEANING.  
GEOGRAPHIC COORDINATES LATITUDE 37°36'46" LONGITUDE 87°29'23"

COUNTY - WEBSTER PES - MB11701431201  
FE02 117 0143 B00043N  
BRIDGE CLEANING IN WEBSTER COUNTY KY 143 OVER VAUGHN DITCH. BRIDGE CLEANING.  
GEOGRAPHIC COORDINATES LATITUDE 37°27'48" LONGITUDE 87°53'54"

COUNTY - WEBSTER PES - MB11702701202  
FE02 117 0270 B00049N  
BRIDGE CLEANING IN WEBSTER COUNTY KY 270 OVER DRAINAGE DITCH. BRIDGE CLEANING.  
GEOGRAPHIC COORDINATES LATITUDE 37°27'48" LONGITUDE 87°46'51"

COUNTY - WEBSTER PES - MB11702701203  
FE02 117 0270 B00050N  
BRIDGE CLEANING IN WEBSTER COUNTY KY 270 OVER CRAB ORCHARD CREEK. BRIDGE CLEANING.  
GEOGRAPHIC COORDINATES LATITUDE 37°27'43" LONGITUDE 87°46'46"

COUNTY - WEBSTER PES - MB11702701204  
FE02 117 0270 B00051N  
BRIDGE CLEANING IN WEBSTER COUNTY KY 270 OVER FREDERICKS DITCH. BRIDGE CLEANING.  
GEOGRAPHIC COORDINATES LATITUDE 37°27'33" LONGITUDE 87°46'35"

COUNTY - WEBSTER PES - MB11703701201  
FE02 117 0370 B00020N  
BRIDGE CLEANING IN WEBSTER COUNTY KY 370 OVER DEER CREEK. BRIDGE CLEANING.  
GEOGRAPHIC COORDINATES LATITUDE 37°34'22" LONGITUDE 87°27'54"

COUNTY - WEBSTER PES - MB11728391201  
FE02 117 2839 B00121N  
BRIDGE CLEANING IN WEBSTER COUNTY KY 2839 OVER BRANCH TO JACKSONS BRANCH. BRIDGE  
PAINTING & CLEANING.  
GEOGRAPHIC COORDINATES LATITUDE 37°33'54" LONGITUDE 87°39'08"

COMPLETION DATE(S):

COMPLETION DATE - July 31, 2013  
APPLIES TO ENTIRE CONTRACT

## **CONTRACT NOTES**

### **PROPOSAL ADDENDA**

All addenda to this proposal must be applied when calculating bid and certified in the bid packet submitted to the Kentucky Department of Highways. Failure to use the correct and most recent addenda may result in the bid being rejected.

### **BID SUBMITTAL**

Bidder must use the Department's Expedite Bidding Program available on the Internet web site of the Department of Highways, Division of Construction Procurement. ([www.transportation.ky.gov/contract](http://www.transportation.ky.gov/contract))

The Bidder must download the bid file located on the Bid Express website ([www.bidx.com](http://www.bidx.com)) to prepare a bid packet for submission to the Department. The bidder must submit electronically using Bid Express.

### **JOINT VENTURE BIDDING**

Joint venture bidding is permissible. All companies in the joint venture must be prequalified in one of the work types in the Qualifications for Bidders for the project. The bidders must get a vendor ID for the joint venture from the Division of Construction Procurement and register the joint venture as a bidder on the project. Also, the joint venture must obtain a digital ID from Bid Express to submit a bid. A joint bid bond of 5% may be submitted for both companies or each company may submit a separate bond of 5%.

### **UNDERGROUND FACILITY DAMAGE PROTECTION**

The contractor is advised that the Underground Facility Damage Protection Act of 1994, became law January 1, 1995. It is the contractor's responsibility to determine the impact of the act regarding this project, and take all steps necessary to be in compliance with the provision of the act.

### **SPECIAL NOTE FOR PIPE INSPECTION**

Contrary to Section 701.03.08 of the 2012 Standard Specifications for Road and Bridge Construction and Kentucky Method 64-114, certification by the Kentucky Transportation Center for prequalified Contractors to perform laser/video inspection is not required on this contract. It will continue to be a requirement for the Contractor performing any laser/video pipe inspection to be prequalified for this specialized item with the Kentucky Transportation Cabinet-Division of Construction Procurement.

### **REGISTRATION WITH THE SECRETARY OF STATE BY A FOREIGN ENTITY**

Pursuant to KRS 176.085(1)(b), an agency, department, office, or political subdivision of the Commonwealth of Kentucky shall not award a state contract to a person that is a foreign entity required by [KRS 14A.9-010](#) to obtain a certificate of authority to transact business in the Commonwealth (“certificate”) from the Secretary of State under [KRS 14A.9-030](#) unless the person produces the certificate within fourteen (14) days of the bid or proposal opening. If the foreign entity is not required to obtain a certificate as provided in [KRS 14A.9-010](#), the foreign entity should identify the applicable exception. Foreign entity is defined within [KRS 14A.1-070](#).

**For all foreign entities required to obtain a certificate of authority to transact business in the Commonwealth, if a copy of the certificate is not received by the contracting agency within the time frame identified above, the foreign entity’s solicitation response shall be deemed non-responsive or the awarded contract shall be cancelled.**

Businesses can register with the Secretary of State at <https://secure.kentucky.gov/sos/ftbr/welcome.aspx>.

### **SPECIAL NOTE FOR PROJECT QUESTIONS DURING ADVERTISEMENT**

Questions about projects during the advertisement should be submitted in writing to the Division of Construction Procurement. This may be done by fax (502) 564-7299 or email to [kytc.projectquestions@ky.gov](mailto:kytc.projectquestions@ky.gov). The Department will attempt to answer all submitted questions. The Department reserves the right not to answer if the question is not pertinent or does not aid in clarifying the project intent.

The deadline for posting answers will be 3:00 pm Eastern Daylight Time, the day preceding the Letting. Questions may be submitted until this deadline with the understanding that the later a question is submitted, the less likely an answer will be able to be provided.

The questions and answers will be posted for each Letting under the heading “Questions & Answers” on the Construction Procurement website ([www.transportation.ky.gov/contract](http://www.transportation.ky.gov/contract)). The answers provided shall be considered part of this Special Note and, in case of a discrepancy, will govern over all other bidding documents.

### **ACCESS TO RECORDS**

The contractor, as defined in KRS 45A.030 (9) agrees that the contracting agency, the Finance and Administration Cabinet, the Auditor of Public Accounts, and the Legislative Research Commission, or their duly authorized representatives, shall have access to any books, documents, papers, records, or other evidence, which are directly pertinent to this

contract for the purpose of financial audit or program review. Records and other prequalification information confidentially disclosed as part of the bid process shall not be deemed as directly pertinent to the contract and shall be exempt from disclosure as provided in KRS 61.878(1)(c). The contractor also recognizes that any books, documents, papers, records, or other evidence, received during a financial audit or program review shall be subject to the Kentucky Open Records Act, KRS 61.870 to 61.884.

In the event of a dispute between the contractor and the contracting agency, Attorney General, or the Auditor of Public Accounts over documents that are eligible for production and review, the Finance and Administration Cabinet shall review the dispute and issue a determination, in accordance with Secretary's Order 11-004. (See attachment)

10/18/2011

**SPECIAL NOTE FOR RECIPROCAL PREFERENCE**

**Reciprocal preference to be given by public agencies to resident bidders**

**By reference, KRS 45A.490 to 45A.494 are incorporated herein and in compliance regarding the bidders residency. Bidders who want to claim resident bidder status should complete the Affidavit for Claiming Resident Bidder Status along with their bid in the Expedite Bidding Program. Submittal of the Affidavit should be done along with the bid in Bid Express.**

03/01/2011



**SPECIAL NOTES  
DISTRICT NO. 2  
BRIDGE CLEANING AND PREVENTIVE MAINTENANCE  
WEBSTER COUNTY  
117GR12M102**

**FE02 117 0056 B00012N 14.65**

Webster County ~ KY 56 over Green River

***Geographic Coordinates***

Latitude – 37° 36' 45.75''

Longitude – 087° 29' 22.51''

**Description**

1 ~ 225 ft ~1~315 ft~1~225 Continuous Steel Spans~1~100 ft Simple Steel Span

**FE02 117 0041 B00019N 6.87**

Webster County ~ US 41 over Deer Creek

Latitude – 37° 34' 20.54''

Longitude – 087° 31' 09.00''

**Description**

1 ~ 70 ft ~1~100 ft~1~70 Continuous Steel Spans

**FE02 117 0370 B00020N 3.44**

Webster County ~ KY 370 over Deer Creek

Latitude – 37° 34' 22.70''

Longitude – 087° 27' 53.86''

**Description**

1 ~ 32 ft Simple Steel Span~1~1~70 ft~1~100~1~70 ft Continuous Steel Spans~1 ~ 32 ft Simple Steel Span

**FE02 117 0143 B00043N 9.48**

Webster County ~ KY 143 over Vaughn Ditch

Latitude – 37° 27' 48.42''

Longitude – 087° 53' 54.04''

**Description**

1~80 ft Steel Pony Truss Span

**FE02 117 0270 B00049N 7.74**

Webster County ~ KY 270 over Drainage Ditch

Latitude – 37° 27' 48.72''

Longitude – 087° 46' 51.23''

**Description**

1~50 ft Simple Steel Span

**FE02 117 0270 B00050N 7.86**

Webster County ~ KY 270 over Crab Orchard Creek

Latitude – 37° 27' 43.84''

Longitude – 087° 46' 46.31''

**Description**

1~80 ft Steel Pony Truss Span

**FE02 117 0270 B00051N 8.13**

Webster County ~ KY 270 over Fredericks Ditch

Latitude – 37° 27' 32.61''

Longitude – 087° 46' 35.30''

**Description**

1~50 ft Simple Steel Span

**FE02 117 2839 B00121N 1.53**

Webster County ~ KY 2839 over Branch to Jacksons Ditch

Latitude – 37° 33' 54.34''

Longitude – 087° 39' 07.94''

**Description**

30 ft~30 ft Simple Steel Spans

## **SPECIAL NOTES FOR CLEANING AND PREVENTIVE MAINTENANCE**

SPECIAL NOTE FOR BRIDGE CLEANING AND PREVENTIVE MAINTENANCE

SPECIAL NOTE FOR ENVIRONMENTAL AND WORKER SAFETY  
REGULATIONS

SPECIAL NOTE FOR PRE-BID CONFERENCE

SPECIAL NOTE FOR UTILITIES AND SIGNS

SPECIAL NOTE FOR PROTECTING NESTING BIRDS AND BATS

GENERAL NOTE FOR MAINTAINING AND CONTROLLING TRAFFIC

## **SPECIAL NOTE FOR BRIDGE CLEANING AND PREVENTIVE MAINTENANCE**

Perform all work in accordance with the Kentucky Transportation Cabinet, Department of Highway's 2012 Standard Specification for Road and Bridge Construction applicable Supplemental Specifications, Standard Drawings, this Note and Attached Detailed Drawings. Section references are to the Standard Specifications.

This work consists of the following: (1) Furnish all labor, materials, tools, and equipment; (2) bag and remove large debris; (3) Power wash all structural steel members, drainage system, joints, bearing devices, end bent, abutment, and pier caps as specified in these notes and as shown in the detailed drawings; (4) Remove stratified rust and apply lubricant to the bearings; (5) Apply concrete sealer to the bearings; (6) Coating Rusted Steel Members.

### **A. SUBMITTALS**

The Contractor shall comply with the submittal requirements detailed in Section 108 of the 2012 Standard Specifications for Road and Bridge Construction and submit the following **written** items to the Project Engineer **14 days** prior to the Pre-Construction Conference:

1. A detailed Progress of Work Schedule. The Progress of Work Schedule will be reviewed and approved by the KYTC Engineer.
2. Traffic Control Plan. The Traffic Control Plan will be reviewed and approved by the KYTC Engineer.
3. Worker Protection Plan. The Worker Protection Plan will be reviewed by the KYTC Engineer.
4. Environmental Compliance Plan, including a Waste Management and a Ground Water and Surface Water Protection Plan. The Environmental Compliance Plans will be reviewed by the KYTC Engineer.

**All submittals must be received, accepted and/or approved prior to beginning any work.**

### **B. SCOPE OF WORK**

#### **DEBRIS REMOVAL**

All debris shall be collected from the structural steel, bearings, abutment/end bent/pier caps, drainage system, joints and bridge deck. Equipment for collecting debris from bridge decks shall be determined by the Contractor, subject to the approval of the Engineer. The Contractor shall use care not to damage any coating system on the structures. The Contractor shall prevent any debris from entering any body of water, bridge drainage system, or traffic lanes. All debris collected shall be disposed of in a suitable off-site disposal facility. If cleaning the drainage system is required, prior to any cleaning work, confirm that the bridge drainage system is not blocked by un-removable debris by rodding with a sewer rod or similar tool.

A blocked drainage system is considered to be one from which debris cannot be removed using the means specified in this note. If the Engineer has been notified, and concurs that the drainage system is blocked prior to performing other cleaning work, then proceed at

the direction of the engineer. If the Contractor does not inspect the bridge drainage system and notify the engineer prior to beginning work any blocked drains will be considered to be the result of the Contractor's operations, and all clearing and cleaning of the drainage system shall be done as part of the work of the specification.

### **POWER WASHING**

All structural steel, bearings, abutment/end bent caps and back walls, pier caps, drainage system and joints shall be power washed. See detailed narrative for each structure. All equipment for pressure washing shall be operated at a pressure of approximately 1,000 psi. (plus or minus 200 psi) at the working location with a minimum flow rate of 3.5 gal/minute provided that these pressures do not damage any components of the structure. Pressure and flow rates shall be reduced to a level satisfactory to the Engineer should any damage occur due to power washing procedures. Pressure washing shall be operated at distance of approximately six inches from and perpendicular to the surface. All pressure washing wands shall be equipped with a gauge to accurately determine the amount pressure used. Pressure washing of any bridge element will proceed from top of wash area to bottom of wash area. Wash water will not be released to a bridge element previously washed.

#### **FE02 117 0056 B00012N 14.65**

Webster County ~ KY 56 over Green River

#### **FE02 117 0041 B00019N 6.87**

Webster County ~ US 41 over Deer Creek

#### **FE02 117 0270 B00020N 3.44**

Webster County ~ KY 370 over Deer Creek

Wash all exposed steel with 10 feet of any joint. See detailed drawing for joint locations.

#### **FE02 117 0143 B00043N 9.48**

Webster County ~ KY 143 over Vaughn Ditch

#### **FE02 117 0270 B00050N 7.86**

Webster County ~ KY 270 over Crab Orchard Creek

Completely wash all truss members from out to out of structure.

#### **FE02 117 0270 B00049N 7.74**

Webster County ~ KY 270 over Drainage Ditch

#### **FE02 117 0270 B00051N 8.13**

Webster County ~ KY 270 over Fredericks Ditch

#### **FE02 117 2839 B00121N 1.53**

Webster County ~ KY 2839 over Branch to Jacksons Ditch

Completely wash all beams from out to out of structure.

### **STRATIFIED OR PACK RUST REMOVAL**

All stratified or pack rust shall be removed by wire brushes, scrapers or impact devices (hand hammers or power chisels). All surfaces where stratified and or pack rust have be removed shall be clean to an SSPC SP-2 level. All debris collected shall be disposed of in a suitable off-site disposal facility. Surfaces shall include all bearing divices and primary steel members (stringers, floor beams, beams and girders) within 4 feet longitudinal of a joint.

### **BEARING GREASING**

After all bearings are power washed all surfaces of the bearing including bearing plates and points of movement shall have lubricant applied. Allow bearings to dry before lubricant is applied. Lubricant must be applied within 48 hours of completing washing. The lubricate shall be 'Never Seez – Mariner's Choice' produce by Bostik Inc., Mobil Centaur Moly NLGI Grades 1 or 2' produced by Mobil Oil, 'Premalube #1 WG' produced by Certified Labs or an approved equivalent. See attached detailed drawings for locations of bearings for each structure.

### **CONCRETE SEALING**

All abutment/end bent caps, pedestals and back walls and pier caps shall be sealed after debris removal and power washing. Use compressed air to remove any loose debris from the surfaces that are to be sealed after power washing. Apply sealer to abutment / end bent / pier caps to all horizontal surfaces including pedestals and vertical surfaces 3 feet below the top of cap or ground line whichever is greater. Allow the surfaces to be sealed 24 hours minimum to dry before any sealer is applied. The sealer must be applied within 72 hours of pressure washing. The sealer used shall be 'Belzona 5122 Clear Cladding' produced by Belzona International in accordance with the manufactures application instructions.

### **COATING RUSTED STEEL MEMBERS**

After all stratified rust is removed from the member surface using a within 4 feet longitudinal of the joint. After removing debris, rust and washing apply a protective coating to the rusted areas of the structural steel with 4 feet of the joint. The coating should be applied to primary steel members (stringers, floor beams, beams and girders). The coating used shall be Rhomar Black-Max or approved equivalent.

## **C. STRUCTURE COMPONENT DEFINITIONS**

### **STRUCTURAL STEEL**

All structural steel indicated in the scope of work. Steel beams, Truss members, Etc. See attached detailed drawings.

### **DRAINAGE SYSTEM**

The drainage system includes all gutter lines 3 onto the deck, inside face of cub or barrier wall grate, drain castings, couplings, funneling systems, drains, scuppers and downspouts.

## **JOINTS**

All joints indicated in the attached detailed drawings for each structure. This includes all troughs below the joint if applicable.

## **BEARINGS**

See attached detailed drawings for locations of bearings for each structure.

## **ABUTMENT, END BENT AND PIER CAPS**

See attached detailed drawings for areas to be addressed for each structure.

### **D. WASH WATER**

All wash water shall be tested for chlorides and other contaminants at the point of use. All wash water must contain less than 10 microgram/sq. cm chloride (~conductivity of less than 80 micro Seimen/cm.) Contractor must provide and maintain conductivity test equipment.

### **E. ACCESS AND INSPECTION**

#### **ACCESS**

The Contractor shall provide OSHA compliant safe access for all cleaning operations and inspection.

#### **INSPECTION**

The Cabinet will provide inspection for all items required in this contract. Visual inspection will be required upon completion of each work item for each structure component or at the discretion of the Engineer at anytime. All visual inspection shall be performed for an arm's length distance.

**Debris Removal:** Visual Inspection

**Power Washing:** Visual Inspection

Conduct wiping tests to ensure the cleanliness of steel surfaces.

After washing has been completed per specification, the inspector will conduct wiping tests to establish the cleanliness of coated/steel surfaces. Wiping tests will consist of wiping with black and white cloths (rags). After wiping, each cloth (white and black) will be stored in a waterproof containment and retained until completion of all cleaning for a structure as a reference cloth.

**Stratified Rust or Pack Rust Removal:** Visual Inspection and Scraper Test

Any surface cleaned to SSPC SP2 will be inspected by a dull scraper test to ascertain adherence of coating edges.

**Bearing Greasing:** Visual Inspection

**Concrete Sealing:** Visual Inspection

**Coating Rusted Steel Members:** Visual Inspection

**F. DAMAGE**

Any damage to structure that occurs during the cleaning operations shall be repaired by the Contractor to satisfaction of the Engineer at additional expense to the cabinet.

**G. MEASUREMENT**

‘BRIDGE CLEANING AND PREVENTIVE MAINTENANCE’. The Cabinet shall measure this item as a lump sum.

**H. PAYMENT**

‘BRIDGE CLEANING AND PREVENTIVE MAINTENANCE’. The contract price for this item will be paid as a lump sum. The payment for this bid item at the contract unit price of Lump Sum shall be considered full compensation for complete and accepted work for all work items described in this note which includes all labor, materials, equipment needed to complete all specified items in this contract for ‘BRIDGE CLEANING AND PREVENTIVE MAINTENANCE’.

**I. SITE VISIT**

We encourage all contractors to visit each site prior to bidding in order to become familiar with the requirement of this work.



## **SPECIAL NOTE FOR ENVIRONMENTAL AND WORKER SAFETY REGULATIONS**

### **(A) Governing regulations**

The coatings on the structures in this contract may contain lead, which is classified as a hazardous (toxic) material. Be knowledgeable of and comply with, all **lead-related** environmental and health regulations governing the Contractor's operations. Comply with regulations current at the time the work is performed and all requirements herein. Collect, transport to waste storage sites, and store hazardous wastes in accordance with applicable environmental and health regulations. The contractor is solely responsible for collection, transport, storage and disposal of all industrial wastes.

### **(B) Liabilities and Obligations**

The contractor shall be solely responsible for compliance with all applicable environmental and health and safety regulations to the satisfaction of the applicable government regulatory agencies and the Department. The Department assumes no obligations or liabilities for work stoppages or fines due to enforcement actions by government regulatory agencies or to related delays that the Department deems necessary.

### **(C) State and Local Regulatory Agencies**

State and local regulatory agencies charged with enforcing **most** regulations affecting the generation of hazardous wastes and worker safety issues are:

Kentucky Occupational Safety and Health Program, Labor Cabinet, Commonwealth of Kentucky, Frankfort, Kentucky

Environmental and Public Protection Cabinet, Commonwealth of Kentucky, Frankfort, Kentucky

### **(D) Groundwater and Surface water Protection**

The contractor shall prepare and implement a groundwater and surface water protection plan in accordance with **401 KAR 5:037 (Ground Water), KRS 224.70-110 and 401 KAR 10:031 (Surface water)** with the exception that hazardous waste or hazardous materials container volume is not limited to greater than 55 gallons or weight to 100 pounds.

**SPECIAL NOTE FOR PRE-BID CONFERENCE  
BRIDGE CLEANING AND PREVENTIVE MAINTENANCE  
DISTRICT 2  
121GR12M102 CID Number 122956**

The Department will conduct a Pre-Bid Conference for the subject project on **Wednesday September 5, 2012 at 10:00 AM Central Daylight Time**

**Kentucky Department of Highways  
District 2 Office  
1840 North Main St.  
Madisonville, KY 42431  
270-824-7080**

Any company that is interested in bidding on the subject project or being part of a joint venture shall be represented at the conference by at least **one person of sufficient authority to bind the company**. No individual can represent more than one company. At the conference and, during the subsequent field review of the subject bridges, a roster shall be taken of the representatives present. **Only companies represented at the conference and during the field review will be eligible to have their bids opened at the date of letting.**

The purpose of the conference is to familiarize all prospective bidders with the contract requirements within the scope of the contract.

Department of Highways officials present at the conference will answer questions concerning the projects.

No site visit will be required, however the Contractor is encourage to visit each site prior to bidding to become familiar with the requirements of this work. The Cabinet will not consider any claims due to the Contractor having not familiarized the requirements of this work.

### **SPECIAL NOTE FOR UTILITIES AND SIGNS**

All utilities, traffic lighting, navigational lighting and traffic signs shall be maintain and protected from damage.

## **SPECIAL NOTE FOR PROTECTING NESTING BIRDS AND BATS**

Should an active nest of an osprey or peregrine falcon be located or suspected during bridge work, the KYTC-DEA biologist should be notified. The biologist will notify Kentucky Department of Fish and Wildlife Resources (KDFWR). If an osprey or peregrine falcon is observed diving at bridge personnel or circling the immediate area of bridge work, it can be assumed that a raptor nest is on the bridge. Once contacted, KDFWR can conduct a site visit to confirm the species and nest location. Osprey nests are conspicuous- a few feet wide and made of sticks and vegetation. However, peregrine falcon nests are inconspicuous. Peregrine falcons nest directly on the bridge structure itself, either inside a beam or in a protected area. Bridge workers should be alerted to the possibility of nesting raptors from Mid-February to August 15. Once the nest location is known, bridge workers shall not work within 300 hundred feet of the nest until August 15 or until after the chicks have fledged. KDFWR can monitor the nest and notify the Kentucky Transportation Cabinet once young have fledged.

All nests of other protected migratory birds on bridges should be presumed to be active and occupied between April 15 and August 15. In order to avoid disturbance/destruction of songbird nests (cliff swallow, eastern phoebe, etc.) on bridges the areas within 10 feet laterally of the nest should not be cleaned or washed; pressure washing should start at the 10 feet line and progress away from the nest. Nestlings will fledge within a matter of weeks.

If a roosting bat is encountered, cease cleaning operations in that area, contact the KYTC-DEA biologist and do not disturb the site until they can evaluate the area and make recommendations.

## GENERAL NOTE FOR MAINTAIN AND CONTROL TRAFFIC

All lane closures on this project shall be in accordance with Kentucky Department of Highways Standard Drawings No. **TTC-100, TTC-105, TTC-110 and the FHWA Manual for Uniform Traffic Control Devices (Current Editions) unless otherwise specified.** Lane closures should be used only when absolutely necessary and kept to the shortest duration possible in order to minimize disruption to the traveling public. No work will be conducted over unprotected traffic at any location. At the discretion of the Engineer, lane closures may be restricted on holiday weekends.

The contractor shall be required to submit in writing, to the department, his complete work schedule 14 days prior to the Pre-Construction Conference. The contractor shall be required to coordinate his efforts with those of any other contractor in the construction area so as to eliminate any lane closures which conflict with this traffic note.

In the event it becomes necessary to make emergency repairs at this project by state forces or by other outside contractors, the (painting) contractor shall agree to alter his work pattern as directed by the engineer so as not to interfere with the emergency work.

The contractor shall be required to furnish all traffic control devices whenever his operations endanger or interfere with vehicular traffic as determined by the engineer. The contractor shall furnish any additional traffic control devices necessary to protect traffic and his workmen. Any costs associated with the added traffic control devices (including arrow boards) shall be incidental to the contract lump sum amount for "maintain and control traffic."

Placement of all devices for lane closures shall start and proceed in the direction of flow of traffic. Removal of devices shall start at the end of the construction area and proceed toward oncoming traffic. The contractor shall provide for the installation of all necessary traffic control devices before beginning work and their immediate removal as soon as work is suspended or completed. During the fully operational periods, when no lane closures are permitted, all equipment shall be totally removed from the job site. Traffic control signs shall be removed or covered (if left in a curb lane).

The contractor's vehicles shall always move with and not across or against the flow of traffic. Vehicles shall enter or leave work areas in a manner that will not be hazardous to or interfere with normal roadway traffic. Vehicles shall not park or stop except within designated work areas.

Personal vehicles shall not be permitted to park within the state right-of-way. The contractor's vehicles shall be prohibited from crossing the roadway and all pedestrian movement of the contractor's personnel on the roadway shall be limited to within the closed work area.

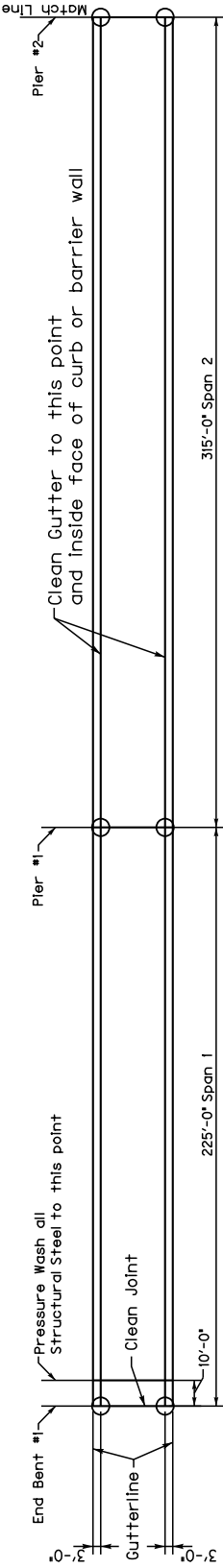
Any lane or shoulder closure shall include the use of a TMA placed between oncoming traffic and equipment or vehicles.

The Engineer may elect to use Variable Message Boards when necessary.

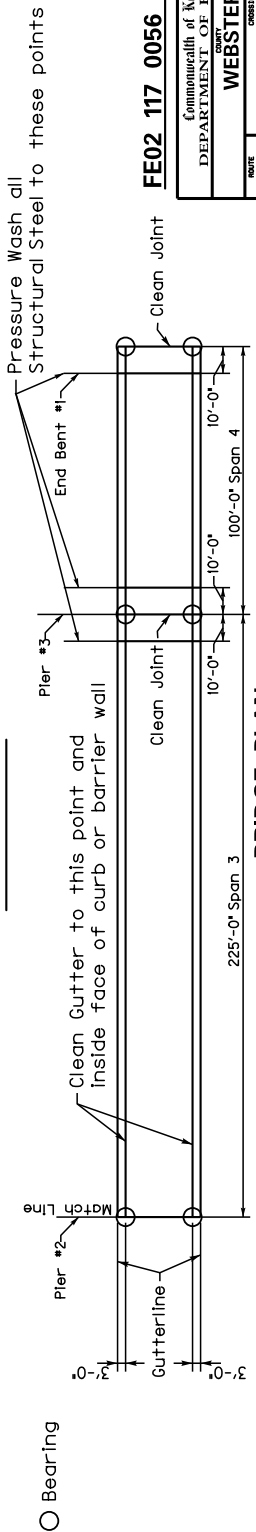
**Payment**

Payment of the contract lump sum amount for "maintain and control traffic" shall be full compensation for all items necessary to maintain and control traffic on this project. All traffic control items shall remain the property of the contractor when the work is complete.

Maintain one usable 11 foot min. lane. Flagging or traffic signals shall be used. If traffic signals are used the Contractor shall use flagging to minimize impact on school bus traffic when school is in session. The Contractor shall be responsible for establishing the dates and times when school bus traffic will impact the job site.



**BRIDGE PLAN**



FE02 117 0056 B00012N

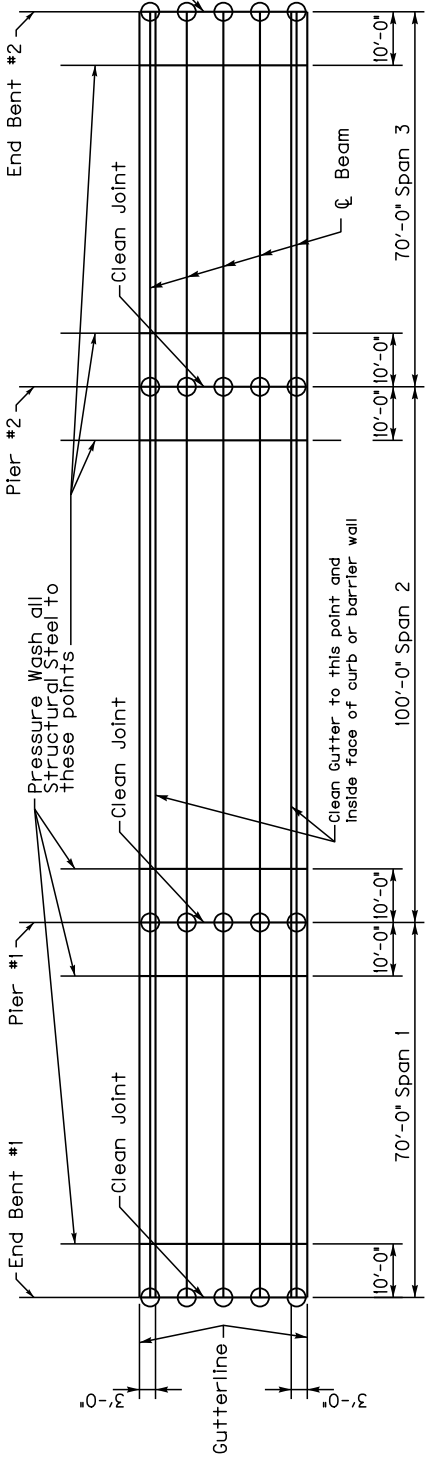
Commonwealth of Kentucky  
DEPARTMENT OF HIGHWAYS

COUNTY  
WEBSTER

ROUTE  
KY 56

CRS  
Green River

BRIDGE PLAN



**BRIDGE PLAN**

FE02 117 0041 B00019N

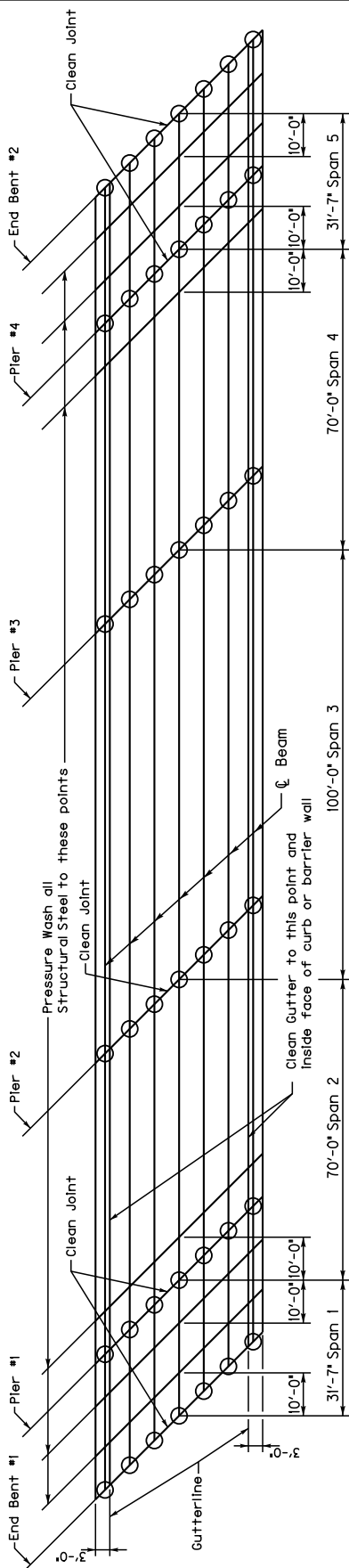
Commonwealth of Kentucky  
DEPARTMENT OF HIGHWAYS

COUNTY  
WEBSTER

ROUTE  
US 41

CRS  
Deer Creek

BRIDGE PLAN



## BRIDGE PLAN

**FE02 117 0370 B00020N**

Commonwealth of Kentucky

DEPARTMENT OF HIGHWAYS

ROUTE

KY 370

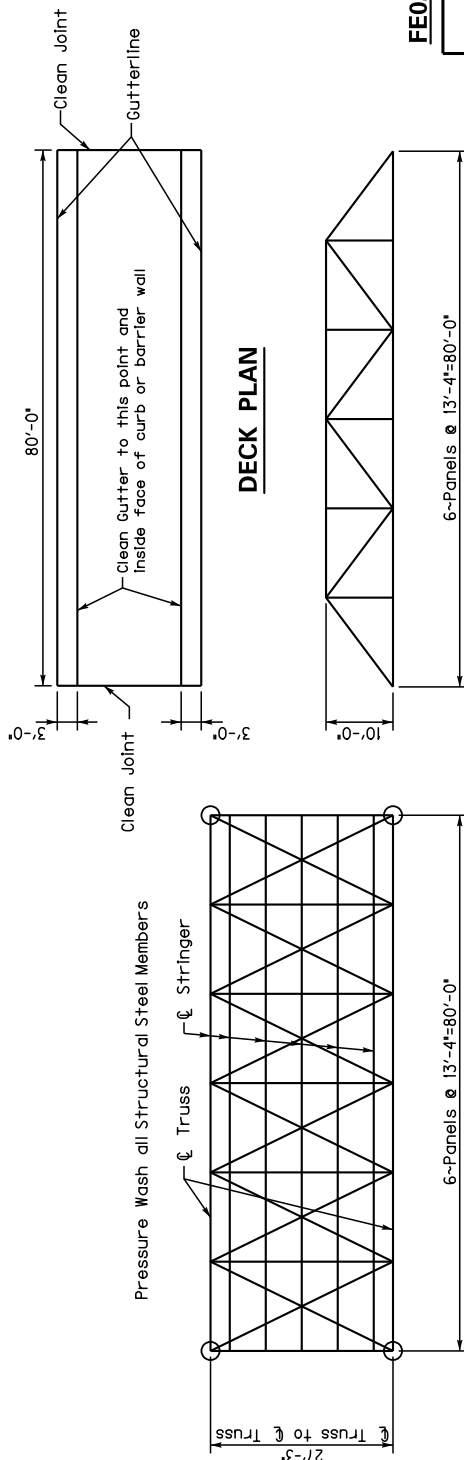
COUNTY

WEBSTER

COASTING

Deer Creek

BRIDGE PLAN



## BRIDGE PLAN

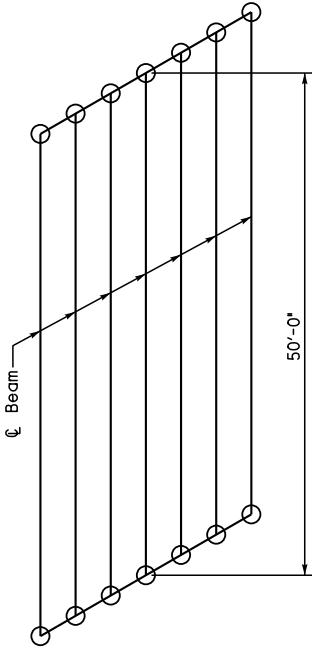
## BRIDGE ELEVATION

**FE02 117 0143 B00043N**

Commonwealth of Kentucky DEPARTMENT OF HIGHWAYS	
COUNTY <b>WEBSTER</b>	
ROUTE KY 143	CROSSING Vaughn Ditch
<b>BRIDGE PLAN</b>	



Pressure Wash all Structural Steel Members



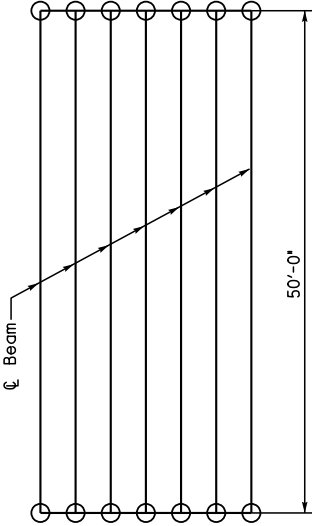
○ Bearing

**BRIDGE PLAN**

**FE02 117 0270 B00049N**

Commonwealth of Kentucky	
DEPARTMENT OF HIGHWAYS	
COUNTY	WEBSTER
ROUTE	Drainage Ditch
KY 270	
CROSSING	
BRIDGE PLAN	

Pressure Wash all Structural Steel Members



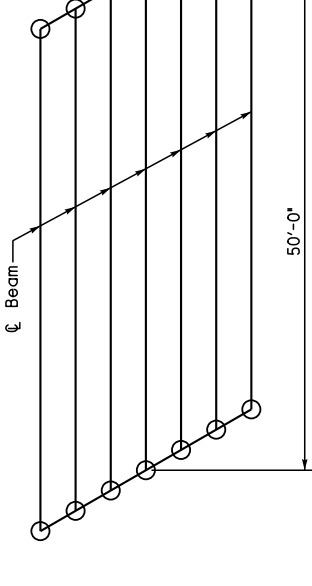
○ Bearing

**BRIDGE PLAN**

**FE02 117 0270 B00051N**

Commonwealth of Kentucky	
DEPARTMENT OF HIGHWAYS	
COUNTY	WEBSTER
ROUTE	Fredricks Ditch
KY 270	
CROSSING	
BRIDGE PLAN	

Pressure Wash all Structural Steel Members



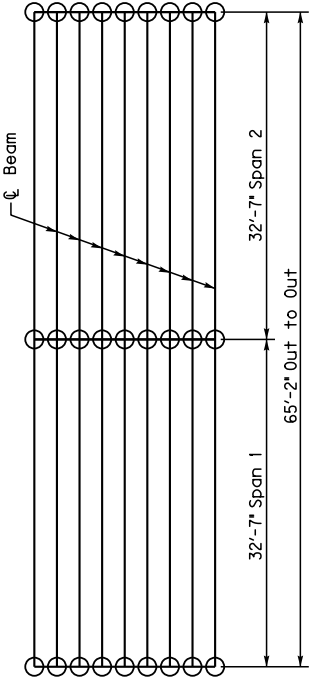
○ Bearing

**BRIDGE PLAN**

**FE02 117 0270 B00050N**

Commonwealth of Kentucky	
DEPARTMENT OF HIGHWAYS	
COUNTY	WEBSTER
ROUTE	Vaughn Ditch
KY 143	
CROSSING	
BRIDGE PLAN	

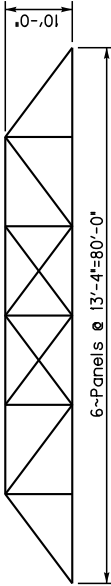
Pressure Wash all Structural Steel Members  
Clean all vegetation from bridge deck.



○ Bearing

**FE02 117 2839 B00121N**

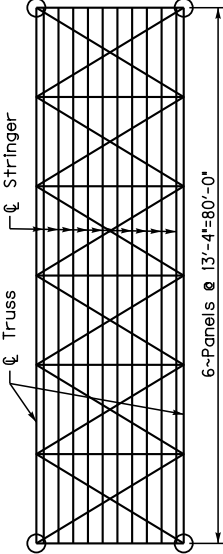
Commonwealth of Kentucky	
DEPARTMENT OF HIGHWAYS	
COUNTY	WEBSTER
ROUTE	Branch to Jacksons Ditch
KY 2839	
CROSSING	
BRIDGE PLAN	



**BRIDGE ELEVATION**

○ Bearing

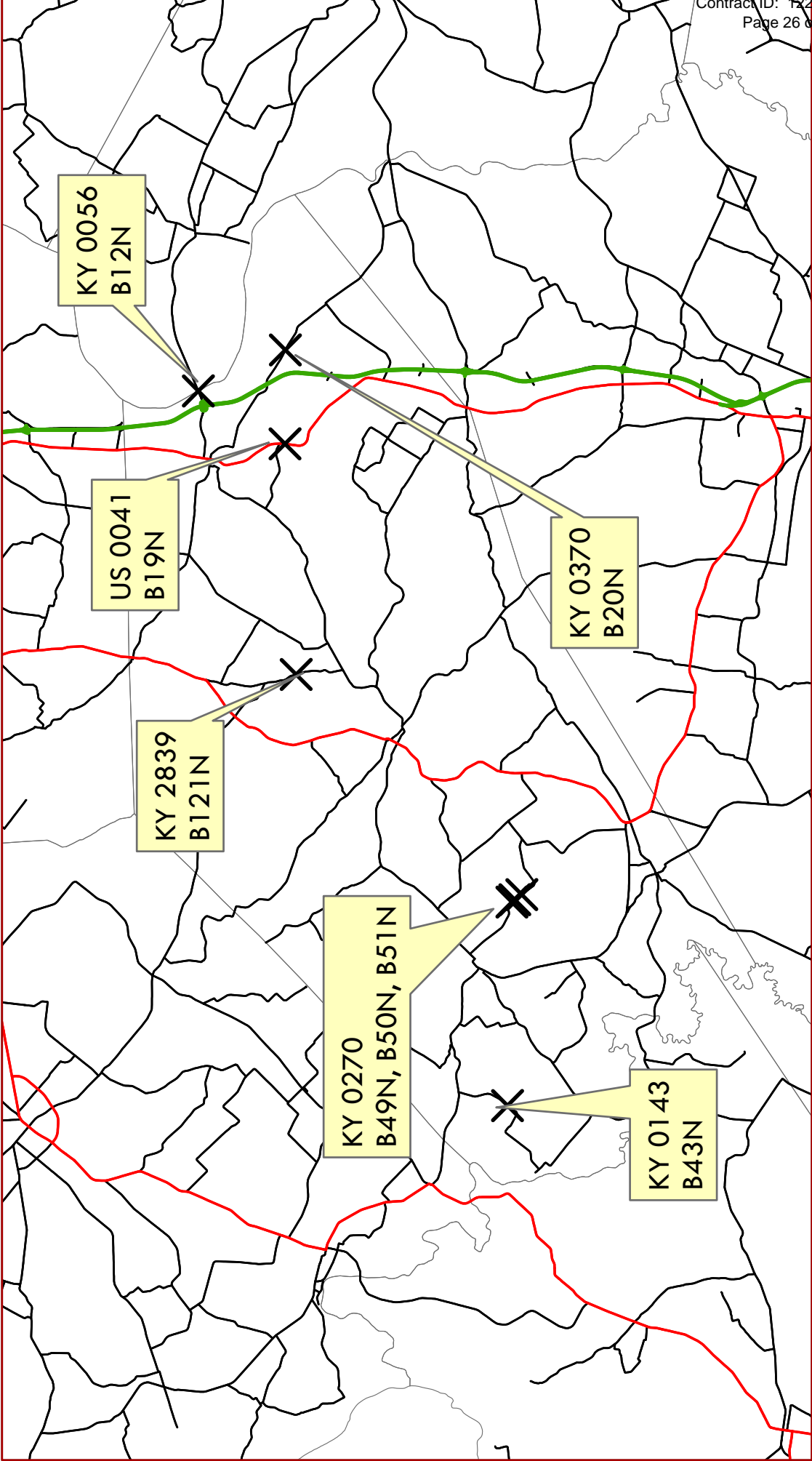
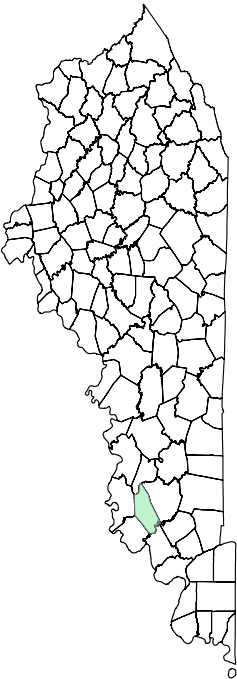
Pressure Wash all Structural Steel Members



**FE02 117 0270 B00050N**

Commonwealth of Kentucky	
DEPARTMENT OF HIGHWAYS	
COUNTY	WEBSTER
ROUTE	Vaughn Ditch
KY 143	
CROSSING	
BRIDGE PLAN	

**WEBSTER COUNTY  
BRIDGE CLEANING**



MATERIAL SUMMARY

CONTRACT ID: 122956

FE02 117 0041 B00019N  
BRIDGE CLEANING IN WEBSTER COUNTY US 41 OVER DEER CREEK

PES NO: MB11700411201

LINE NO	BID CODE	DESCRIPTION	QUANTITY	UNIT
0010	02650	MAINTAIN & CONTROL TRAFFIC 117B00019N	1.00	LS
0020	23949EC	BRIDGE CLEANING & PREVENTIVE MAINTENAN 117B00019N	1.00	LS
0040	02568	MOBILIZATION	1.00	LS
0050	02569	DEMOBILIZATION	1.00	LS

FE02 117 0056 B00012N  
BRIDGE CLEANING IN WEBSTER COUNTY KY 56 OVER GREEN RIVER

PES NO: MB11700561201

LINE NO	BID CODE	DESCRIPTION	QUANTITY	UNIT
0020	02650	MAINTAIN & CONTROL TRAFFIC 117B00012N	1.00	LS
0010	23949EC	BRIDGE CLEANING & PREVENTIVE MAINTENAN 117B00012N	1.00	LS
0030	02568	MOBILIZATION	1.00	LS
0040	02569	DEMOBILIZATION	1.00	LS

FE02 117 0143 B00043N  
BRIDGE CLEANING IN WEBSTER COUNTY KY 143 OVER VAUGHN DITCH

PES NO: MB11701431201

LINE NO	BID CODE	DESCRIPTION	QUANTITY	UNIT
0010	02650	MAINTAIN & CONTROL TRAFFIC 117B00043N	1.00	LS
0020	23949EC	BRIDGE CLEANING & PREVENTIVE MAINTENAN 117B00043N	1.00	LS
0030	02568	MOBILIZATION	1.00	LS
0040	02569	DEMOBILIZATION	1.00	LS

FE02 117 0270 B00049N  
BRIDGE CLEANING IN WEBSTER COUNTY KY 270 OVER DRAINAGE DITCH

PES NO: MB11702701202

LINE NO	BID CODE	DESCRIPTION	QUANTITY	UNIT
0010	02650	MAINTAIN & CONTROL TRAFFIC 117B00049N	1.00	LS
0020	23949EC	BRIDGE CLEANING & PREVENTIVE MAINTENAN 117B00049N	1.00	LS
0030	02568	MOBILIZATION	1.00	LS
0040	02569	DEMOBILIZATION	1.00	LS

MATERIAL SUMMARY

CONTRACT ID: 122956

FE02 117 0270 B00050N  
BRIDGE CLEANING IN WEBSTER COUNTY KY 270 OVER CRAB ORCHARD CREEK

PES NO: MB11702701203

LINE NO	BID CODE	DESCRIPTION	QUANTITY	UNIT
0010	02650	MAINTAIN & CONTROL TRAFFIC 117B00050N	1.00	LS
0020	23949EC	BRIDGE CLEANING & PREVENTIVE MAINTENAN 117B00050N	1.00	LS
0030	02568	MOBILIZATION	1.00	LS
0040	02569	DEMOBILIZATION	1.00	LS

FE02 117 0270 B00051N  
BRIDGE CLEANING IN WEBSTER COUNTY KY 270 OVER FREDERICKS DITCH

PES NO: MB11702701204

LINE NO	BID CODE	DESCRIPTION	QUANTITY	UNIT
0010	02650	MAINTAIN & CONTROL TRAFFIC 117B00051N	1.00	LS
0020	23949EC	BRIDGE CLEANING & PREVENTIVE MAINTENAN 117B00051N	1.00	LS
0030	02568	MOBILIZATION	1.00	LS
0040	02569	DEMOBILIZATION	1.00	LS

FE02 117 0370 B00020N  
BRIDGE CLEANING IN WEBSTER COUNTY KY 370 OVER DEER CREEK

PES NO: MB11703701201

LINE NO	BID CODE	DESCRIPTION	QUANTITY	UNIT
0010	02650	MAINTAIN & CONTROL TRAFFIC 117B00020N	1.00	LS
0020	23949EC	BRIDGE CLEANING & PREVENTIVE MAINTENAN 117B00020N	1.00	LS
0030	02568	MOBILIZATION	1.00	LS
0040	02569	DEMOBILIZATION	1.00	LS

FE02 117 2839 B00121N  
BRIDGE CLEANING IN WEBSTER COUNTY KY 2839 OVER BRANCH TO JACKSONS BRANCH

PES NO: MB11728391201

LINE NO	BID CODE	DESCRIPTION	QUANTITY	UNIT
0010	02650	MAINTAIN & CONTROL TRAFFIC 117B00121N	1.00	LS
0020	23949EC	BRIDGE CLEANING & PREVENTIVE MAINTENAN 117B00121N	1.00	LS
0030	02568	MOBILIZATION	1.00	LS
0040	02569	DEMOBILIZATION	1.00	LS

**PART II**

**SPECIFICATIONS AND STANDARD DRAWINGS**

### **SPECIFICATIONS REFERENCE**

Any reference in the plans or proposal to previous editions of the *Standard Specifications for Road and Bridge Construction* and *Standard Drawings* are superseded by *Standard Specifications for Road and Bridge Construction, Edition of 2012* and *Standard Drawings, Edition of 2012 with the 2012 Revision*.

**Supplemental Specifications to the Standard Specifications for Road and  
Bridge Construction, 2012 Edition**

**(Effective with the August 17, 2012 Letting)**

<b>Subsection:</b>	402.03.02 Contractor Quality Control and Department Acceptance.
<b>Part:</b>	D) Testing Responsibilities.
<b>Number:</b>	4) Density.
<b>Revision:</b>	Replace the second sentence of the Option A paragraph with the following: Perform coring by the end of the following work day.
<b>Subsection:</b>	606.03.17 Special Requirements for Latex Concrete Overlays.
<b>Part:</b>	A) Existing Bridges and New Structures.
<b>Number:</b>	1) Prewetting and Grout-Bond Coat.
<b>Revision:</b>	Add the following sentence to the last paragraph: Do not apply a grout-bond coat on bridge decks prepared by hydrodemolition.
<b>Subsection:</b>	609.03 Construction.
<b>Revision:</b>	Replace Subsection 609.03.01 with the following: 609.03.01 A) Swinging the Spans. Before placing concrete slabs on steel spans or precast concrete release the temporary erection supports under the bridge and swing the span free on its supports. 609.03.01 B) Lift Loops. Cut all lift loops flush with the top of the precast beam once the beam is placed in the final location and prior to placing steel reinforcement. At locations where lift loops are cut, paint the top of the beam with galvanized or epoxy paint.

## **PART III**

### **EMPLOYMENT, WAGE AND RECORD REQUIREMENTS**



## **TRANSPORTATION CABINET DEPARTMENT OF HIGHWAYS**

### **LABOR AND WAGE REQUIREMENTS APPLICABLE TO OTHER THAN FEDERAL-AID SYSTEM PROJECTS**

- I. Application
- II. Nondiscrimination of Employees (KRS 344)
- III. Payment of Predetermined Minimum Wages
- IV. Statements and Payrolls

#### **I. APPLICATION**

1. These contract provisions shall apply to all work performed on the contract by the contractor with his own organization and with the assistance of workmen under his immediate superintendence and to all work performed on the contract by piecework, station work or by subcontract. The contractor's organization shall be construed to include only workmen employed and paid directly by the contractor and equipment owned or rented by him, with or without operators.

2. The contractor shall insert in each of his subcontracts all of the stipulations contained in these Required Provisions and such other stipulations as may be required.

3. A breach of any of the stipulations contained in these Required Provisions may be grounds for termination of the contract.

#### **II. NONDISCRIMINATION OF EMPLOYEES**

##### **AN ACT OF THE KENTUCKY GENERAL ASSEMBLY TO PREVENT DISCRIMINATION IN EMPLOYMENT KRS CHAPTER 344 EFFECTIVE JUNE 16, 1972**

The contract on this project, in accordance with KRS Chapter 344, provides that during the performance of this contract, the contractor agrees as follows:

1. The contractor shall not fail or refuse to hire, or shall not discharge any individual, or otherwise discriminate against an individual with respect to his compensation, terms, conditions, or privileges of employment, because of such individual's race, color, religion, national origin, sex, disability or age (between forty and seventy); or limit, segregate, or classify his employees in any way which would deprive or tend to deprive an individual of employment opportunities or otherwise adversely affect his status as an employee, because of such individual's race, color, religion, national origin, sex, disability or age (between forty and seventy). The contractor agrees to post in conspicuous places, available to employees and applicants for employment, notices to be provided setting forth the provisions of this nondiscrimination clause.

2. The contractor shall not print or publish or cause to be printed or published a notice or advertisement relating to employment by such an employer or membership in or any classification or referral for employment by the employment agency, indicating any preference, limitation, specification, or discrimination, based on race, color, religion, national origin, sex, disability or age (between forty and seventy), except that such notice or advertisement may indicate a preference, limitation, or specification based on religion, or national origin when religion, or national origin is a bona fide occupational qualification for employment.

3. If the contractor is in control of apprenticeship or other training or retraining, including on-the-job training programs, he shall not discriminate against an individual

because of his race, color, religion, national origin, sex, disability or age (between forty and seventy), in admission to, or employment in any program established to provide apprenticeship or other training.

4. The contractor will send to each labor union or representative of workers with which he has a collective bargaining agreement or other contract or understanding, a notice to be provided advising the said labor union or workers' representative of the contractor's commitments under this section, and shall post copies of the notice in conspicuous places available to employees and applicants for employment. The contractor will take such action with respect to any subcontract or purchase order as the administering agency may direct as a means of enforcing such provisions, including sanctions for non-compliance.

#### **III. PAYMENT OF PREDETERMINED MINIMUM WAGES**

1. These special provisions are supplemented elsewhere in the contract by special provisions which set forth certain predetermined minimum wage rates. The contractor shall pay not less than those rates.

2. The minimum wage determination schedule shall be posted by the contractor, in a manner prescribed by the Department of Highways, at the site of the work in prominent places where it can be easily seen by the workers.

#### **IV. STATEMENTS AND PAYROLLS**

1. All contractors and subcontractors affected by the terms of KRS 337.505 to 337.550 shall keep full and accurate payroll records covering all disbursements of wages to their employees to whom they are required to pay not less than the prevailing rate of wages. Payrolls and basic records relating thereto will be maintained during the course of the work and preserved for a period of one (1) year from the date of completion of this contract.

2. The payroll records shall contain the name, address and social security number of each employee, his correct classification, rate of pay, daily and weekly number of hours worked, itemized deductions made and actual wages paid.

3. The contractor shall make his daily records available at the project site for inspection by the State Department of Highways contracting office or his authorized representative.

Periodic investigations shall be conducted as required to assure compliance with the labor provisions of the contract. Interrogation of employees and officials of the contractor shall be permitted during working hours.

Aggrieved workers, Highway Managers, Assistant District Engineers, Resident Engineers and Project Engineers shall report all complaints and violations to the Division of Contract Procurement.

The contractor shall be notified in writing of apparent violations. The contractor may correct the reported violations and notify the Department of Highways of the action taken or may request an informal hearing. The request for hearing shall be in writing within ten (10) days after receipt of the notice of the reported violation. The contractor may submit

records and information which will aid in determining the true facts relating to the reported violations.

Any person or organization aggrieved by the action taken or the findings established as a result of an informal hearing by the Division of Contract Procurement may request a formal hearing.

4. The wages of labor shall be paid in legal tender of the United States, except that this condition will be considered satisfied if payment is made by a negotiable check, on a solvent bank, which may be cashed readily by the employee in the local community for the full amount, without discount or collection charges of any kind. Where checks are used for payments, the contractor shall make all necessary arrangements for them to be cashed and shall give information regarding such arrangements.

5. No fee of any kind shall be asked or accepted by the contractor or any of his agents from any person as a condition of employment on the project.

6. No laborers shall be charged for any tools used in performing their respective duties except for reasonably avoidable loss or damage thereto.

7. Every employee on the work covered by this contract shall be permitted to lodge, board, and trade where and with whom he elects and neither the contractor nor his agents, nor his employees shall directly or indirectly require as a condition of employment that an employee shall lodge, board or trade at a particular place or with a particular person.

8. Every employee on the project covered by this contract shall be an employee of either the prime contractor or an approved subcontractor.

9. No charge shall be made for any transportation furnished by the contractor or his agents to any person employed on the work.

10. No individual shall be employed as a laborer or mechanic on this contract except on a wage basis, but this shall not be construed to prohibit the rental of teams, trucks or other equipment from individuals.

No Covered employee may be employed on the work except in accordance with the classification set forth in the schedule mentioned above; provided, however, that in the event additional classifications are required, application shall be made by the contractor to the Department of Highways and (1) the Department shall request appropriate classifications and rates from the proper agency, or (2) if there is urgent need for additional classification to avoid undue delay in the work, the contractor may employ such workmen at rates deemed comparable to rates established for similar classifications provided he has made written application through the Department of Highways, addressed to the proper agency, for the supplemental rates. The contractor shall retroactively adjust, upon receipt of the supplemental rates schedule, the wages of any employee paid less than the established rate and may adjust the wages of any employee overpaid.

11. No contractor or subcontractor contracting for any part of the contract work which may require or involve the employment of laborers or mechanics shall require or permit any laborer or mechanic in any work-week in which he is employed on such work, to work in excess of eight hours in any calendar day or in excess of forty hours in such work-week unless such laborer or mechanic receives compensation at a rate not less than one and one half times his basic rate of pay for all hours worked in excess of eight hours in any calendar day or in excess of forty hours in such work-week. A laborer, workman or mechanic and an employer may enter into a written agreement or a collective bargaining agreement to work more than eight (8) hours a calendar day but not more than ten (10) hours a calendar day for the straight time hourly rate. This agreement shall be in writing and shall be executed prior to the employee working in excess of eight (8) hours, but not more than ten (10) hours, in any one (1) calendar day.

12. Payments to the contractor may be suspended or withheld due to failure of the contractor to pay any laborer or

mechanic employed or working on the site of the work, all or part of the wages required under the terms of the contract. The Department may suspend or withhold payments only after the contractor has been given written notice of the alleged violation and the contractor has failed to comply with the wage determination of the Department of Highways.

13. Contractors and subcontractors shall comply with the sections of Kentucky Revised Statutes, Chapter 337 relating to contracts for Public Works.

Revised 2-16-95

## **EXECUTIVE BRANCH CODE OF ETHICS**

In the 1992 regular legislative session, the General Assembly passed and Governor Brereton Jones signed Senate Bill 63 (codified as KRS 11A), the Executive Branch Code of Ethics, which states, in part:

KRS 11A.040 (6) provides:

No present or former public servant shall, within six (6) months of following termination of his office or employment, accept employment, compensation or other economic benefit from any person or business that contracts or does business with the state in matters in which he was directly involved during his tenure. This provision shall not prohibit an individual from returning to the same business, firm, occupation, or profession in which he was involved prior to taking office or beginning his term of employment, provided that, for a period of six (6) months, he personally refrains from working on any matter in which he was directly involved in state government. This subsection shall not prohibit the performance of ministerial functions, including, but not limited to, filing tax returns, filing applications for permits or licenses, or filing incorporation papers.

KRS 11A.040 (8) states:

A former public servant shall not represent a person in a matter before a state agency in which the former public servant was directly involved, for a period of one (1) year after the latter of:

- a) The date of leaving office or termination of employment; or
- b) The date the term of office expires to which the public servant was elected.

This law is intended to promote public confidence in the integrity of state government and to declare as public policy the idea that state employees should view their work as a public trust and not as a way to obtain private benefits.

If you have worked for the executive branch of state government within the past six months, you may be subject to the law's prohibitions. The law's applicability may be different if you hold elected office or are contemplating representation of another before a state agency.

Also, if you are affiliated with a firm which does business with the state and which employs former state executive-branch employees, you should be aware that the law may apply to them.

In case of doubt, the law permits you to request an advisory opinion from the Executive Branch Ethics Commission, Room 136, Capitol Building, 700 Capitol Avenue, Frankfort, Kentucky 40601; telephone (502) 564-7954.

**Kentucky Equal Employment Opportunity Act of 1978**

The requirements of the Kentucky Equal Employment Opportunity Act of 1978 (KRS 45.560-45.640) shall not apply to this Contract.

TRANSPORTATION CABINET  
DIVISION OF CONSTRUCTION PROCUREMENT  
COMPLIANCE SECTION  
PROJECT WAGE RATES

---

WORKERS.....MINIMUM HOURLY  
RATE.....\$7.25

Note: Parts III and IV of “Labor and Wage Requirements Applicable to Other Than Federal-Aid System Projects” do not apply to this project.

# EMPLOYEE RIGHTS

## UNDER THE FAIR LABOR STANDARDS ACT

THE UNITED STATES DEPARTMENT OF LABOR WAGE AND HOUR DIVISION

### FEDERAL MINIMUM WAGE

**\$7.25** PER HOUR

BEGINNING JULY 24, 2009

#### OVERTIME PAY

At least 1½ times your regular rate of pay for all hours worked over 40 in a workweek.

#### CHILD LABOR

An employee must be at least **16** years old to work in most non-farm jobs and at least **18** to work in non-farm jobs declared hazardous by the Secretary of Labor.

Youths **14** and **15** years old may work outside school hours in various non-manufacturing, non-mining, non-hazardous jobs under the following conditions:

**No more than**

- **3** hours on a school day or **18** hours in a school week;
- **8** hours on a non-school day or **40** hours in a non-school week.

Also, work may not begin before **7 a.m.** or end after **7 p.m.**, except from June 1 through Labor Day, when evening hours are extended to **9 p.m.** Different rules apply in agricultural employment.

#### TIP CREDIT

Employers of “tipped employees” must pay a cash wage of at least \$2.13 per hour if they claim a tip credit against their minimum wage obligation. If an employee's tips combined with the employer's cash wage of at least \$2.13 per hour do not equal the minimum hourly wage, the employer must make up the difference. Certain other conditions must also be met.

#### ENFORCEMENT

The Department of Labor may recover back wages either administratively or through court action, for the employees that have been underpaid in violation of the law. Violations may result in civil or criminal action.

Employers may be assessed civil money penalties of up to \$1,100 for each willful or repeated violation of the minimum wage or overtime pay provisions of the law and up to \$11,000 for each employee who is the subject of a violation of the Act's child labor provisions. In addition, a civil money penalty of up to \$50,000 may be assessed for each child labor violation that causes the death or serious injury of any minor employee, and such assessments may be doubled, up to \$100,000, when the violations are determined to be willful or repeated. The law also prohibits discriminating against or discharging workers who file a complaint or participate in any proceeding under the Act.

#### ADDITIONAL INFORMATION

- Certain occupations and establishments are exempt from the minimum wage and/or overtime pay provisions.
- Special provisions apply to workers in American Samoa and the Commonwealth of the Northern Mariana Islands.
- Some state laws provide greater employee protections; employers must comply with both.
- The law requires employers to display this poster where employees can readily see it.
- Employees under 20 years of age may be paid \$4.25 per hour during their first 90 consecutive calendar days of employment with an employer.
- Certain full-time students, student learners, apprentices, and workers with disabilities may be paid less than the minimum wage under special certificates issued by the Department of Labor.

For additional information:



**1-866-4-USWAGE**

(1-866-487-9243)

TTY: 1-877-889-5627



**WWW.WAGEHOUR.DOL.GOV**

## **PART IV**

## **INSURANCE**

## INSURANCE

The Contractor shall procure and maintain the following insurance in addition to the insurance required by law:

- 1) Commercial General Liability-Occurrence form – not less than \$2,000,000 General aggregate, \$2,000,000 Products & Completed Aggregate, \$1,000,000 Personal & Advertising, \$1,000,000 each occurrence.
- 2) Automobile Liability- \$1,000,000 per accident
- 3) Employers Liability:
  - a) \$100,000 Each Accident Bodily Injury
  - b) \$500,000 Policy limit Bodily Injury by Disease
  - c) \$100,000 Each Employee Bodily Injury by Disease
- 4) The insurance required above must be evidenced by a Certificate of Insurance and this Certificate of Insurance must contain one of the following statements:
  - a) "policy contains no deductible clauses."
  - b) "policy contains \_\_\_\_\_ (amount) deductible property damage clause but company will pay claim and collect the deductible from the insured."
- 5) KENTUCKY WORKMEN'S COMPENSATION INSURANCE. The contractor shall furnish evidence of coverage of all his employees or give evidence of self-insurance by submitting a copy of a certificate issued by the Workmen's Compensation Board.

The cost of insurance is incidental to all contract items. All subcontractors must meet the same minimum insurance requirements.



# **PART V**

## **BID ITEMS**

CONTRACT ID: 122956  
COUNTY: WEBSTER  
PROPOSAL: 117GR12M102-FE02

PAGE: 1  
LETTING: 09/14/12  
CALL NO: 405

LINE NO	ITEM	DESCRIPTION	APPROXIMATE QUANTITY	UNIT	UNIT PRICE	AMOUNT
SECTION 0001 BRIDGES						
0010	02650	MAINTAIN & CONTROL TRAFFIC 117B00012N	( 1.00 )	LS		
0020	02650	MAINTAIN & CONTROL TRAFFIC 117B00019N	( 1.00 )	LS		
0030	02650	MAINTAIN & CONTROL TRAFFIC 117B00020N	( 1.00 )	LS		
0040	02650	MAINTAIN & CONTROL TRAFFIC 117B00043N	( 1.00 )	LS		
0050	02650	MAINTAIN & CONTROL TRAFFIC 117B00049N	( 1.00 )	LS		
0060	02650	MAINTAIN & CONTROL TRAFFIC 117B00050N	( 1.00 )	LS		
0070	02650	MAINTAIN & CONTROL TRAFFIC 117B00051N	( 1.00 )	LS		
0080	02650	MAINTAIN & CONTROL TRAFFIC 117B00121N	( 1.00 )	LS		
0090	23949EC	BRIDGE CLEANING & PREVENTIVE MAINTENANCE 117B00012N	( 1.00 )	LS		
0100	23949EC	BRIDGE CLEANING & PREVENTIVE MAINTENANCE 117B00019N	( 1.00 )	LS		
0110	23949EC	BRIDGE CLEANING & PREVENTIVE MAINTENANCE 117B00020N	( 1.00 )	LS		
0120	23949EC	BRIDGE CLEANING & PREVENTIVE MAINTENANCE 117B00043N	( 1.00 )	LS		
0130	23949EC	BRIDGE CLEANING & PREVENTIVE MAINTENANCE 117B00049N	( 1.00 )	LS		
0140	23949EC	BRIDGE CLEANING & PREVENTIVE MAINTENANCE 117B00050N	( 1.00 )	LS		
0150	23949EC	BRIDGE CLEANING & PREVENTIVE MAINTENANCE 117B00051N	( 1.00 )	LS		
0160	23949EC	BRIDGE CLEANING & PREVENTIVE MAINTENANCE 117B00121N	( 1.00 )	LS		
SECTION 0002 DEMOB						
0170	02568	MOBILIZATION (NO MORE THAN 5%)		LUMP		
0180	02569	DEMOBILIZATION (AT LEAST 1.5%)		LUMP		
		TOTAL BID				