

Pre-Bid Meeting
November 9, 2015

W. Manslick Road (KY 2055)/Mt. Holly Road (KY 2055)/
Fairdale Road/Mitchell Hill Road Intersection Improvements

Item No.: 5-8501
Contract ID: 151271

- Sign-In sheet attached
- Four contractors attended:
 - MAC Construction
 - E&B Paving, Inc.
 - Louisville Paving
 - Flynn Brothers
- The meeting was convened at 10:00 a.m. by Beth Niemann, Project Manager for KYTC.
 - Team members were introduced.
 - Beth began the PowerPoint presentation (PowerPoint presentation attached) with a slide that showed the proposed layout of all utilities within the project area that will be undergrounded.
 - Beth then turned the presentation over to Caroline Justice (D5 Utilities) to go over some utility coordination items.
 - Caroline discussed several utility coordination items: conduit installation; material supply; electrical service; water and sanitary installation; AC pipe removal.
 - Beth went over: possible staging areas; preliminary agreement with Parcel 6 property owner; maintenance of traffic items; tree cutting restriction.
- No Questions were asked.
- The meeting was adjourned at approximately 10:15 a.m.

Minutes submitted by: Beth Niemann

Jefferson County

Manslick Road (KY 2055)/ Mt. Holly Road (KY
2055)/ Fairdale Road / Mitchell Hill Road
Intersection Improvements

5-8501

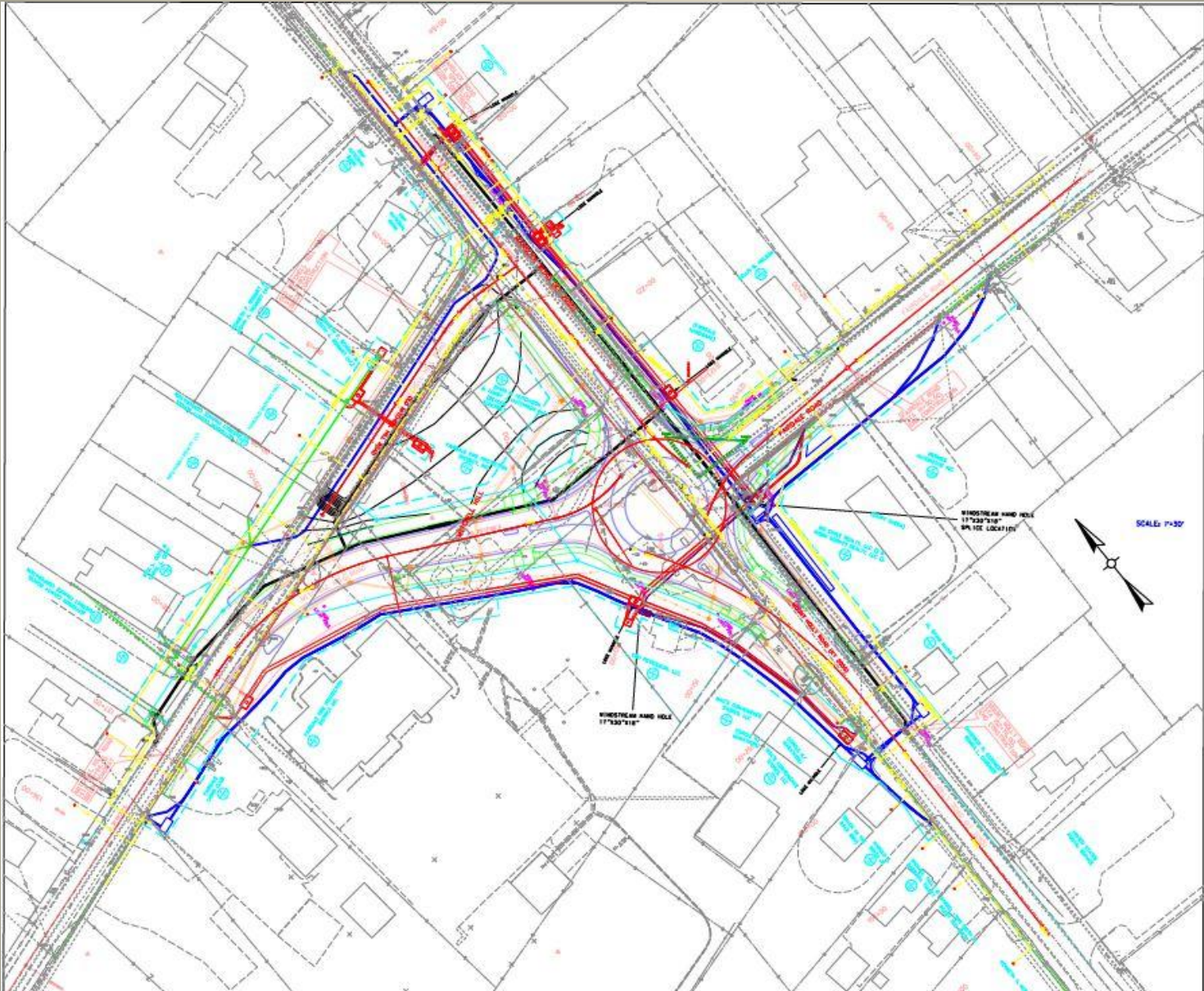
Pre-Bid Conference

November 9, 2015

Introduction of Team Members

- Beth Niemann – D5 Design
- Caroline Justice – D5 Utility Relocation
- Tom Boykin – D5 Right-of-Way
- Tom Wright – D5 Project Preservation
- Heath Phillips – D5 Construction
- Kevin Bailey – D5 Construction
- Matt Bullock – D5 CDE
- Susan Oatman – D5 Environmental Coord.
- Craig Mount – BTM Engineering

Roundabout - Utilities



Utility Coordination

❖ Contractor Conduit Installation

- LG&E – Electric
 - Street Lighting
- AT&T – KY
- TIME WARNER
- WINDSTREAM

❖ Utility Owners To Supply Materials

❖ Remaining utility installation to be completed by utility owner

Utility Coordination

❖ Electrical Service Coordination

- P1 - PRP National Bank
- P4 – Fairdale Fire Department

Utility Coordination

❖ Contractor Water & Sanitary Installation

- LWCo
 - LWCo to supply copper tubing and fire hydrants
- MSD
 - Contractor to supply all materials

Utility Coordination

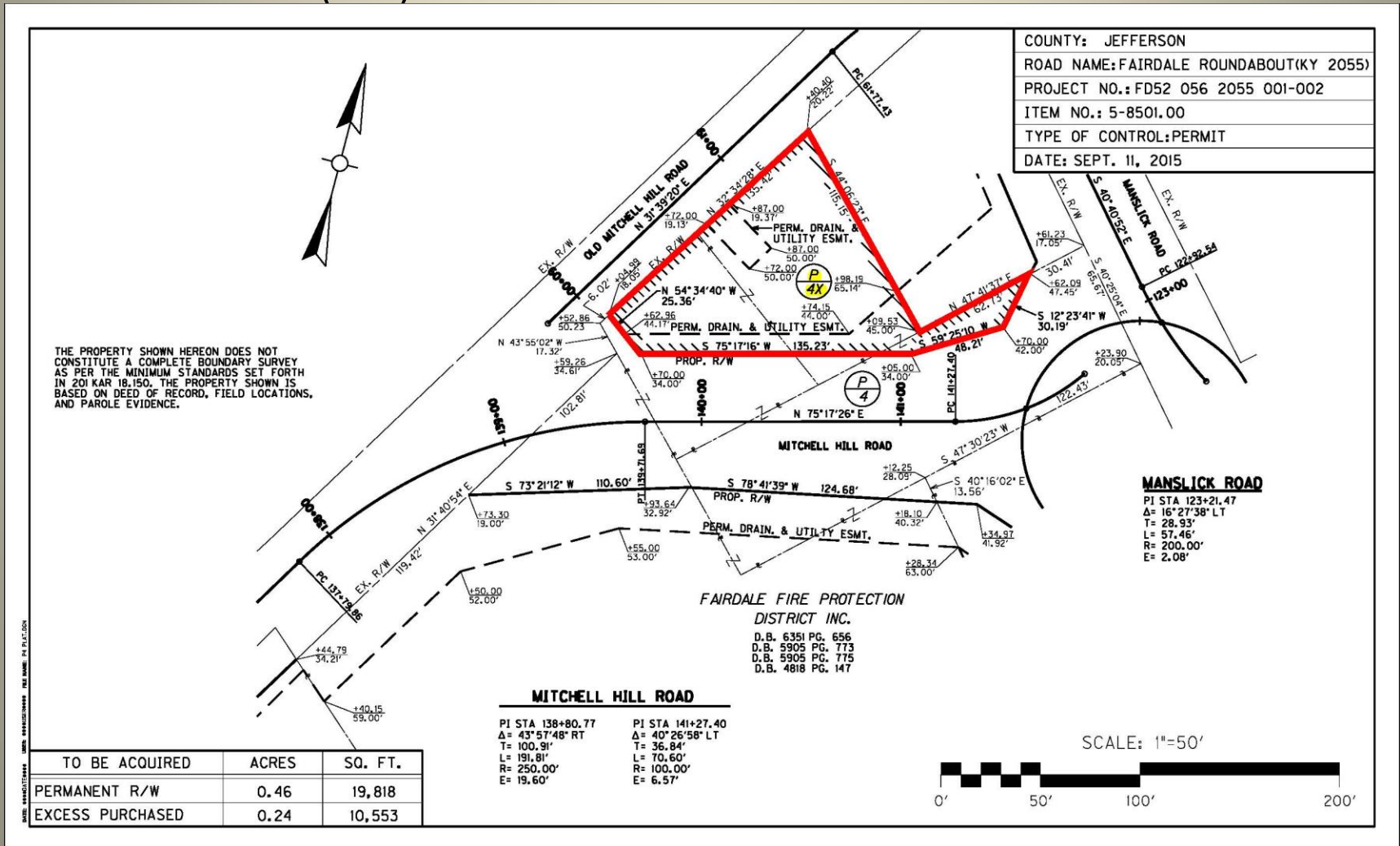
❖ AC Pipe Removal

- Contractor is responsible for coordination and scheduling with Environmental Contractor for the removal of the AC pipe including tie-in coordination.
 - Russell Brooks, Linebach-Funkhouser, Inc. (LFI)
 - 502-432-2199
 - rbrooks@lfienv.com

Utility Coordination

❖ Staging Area

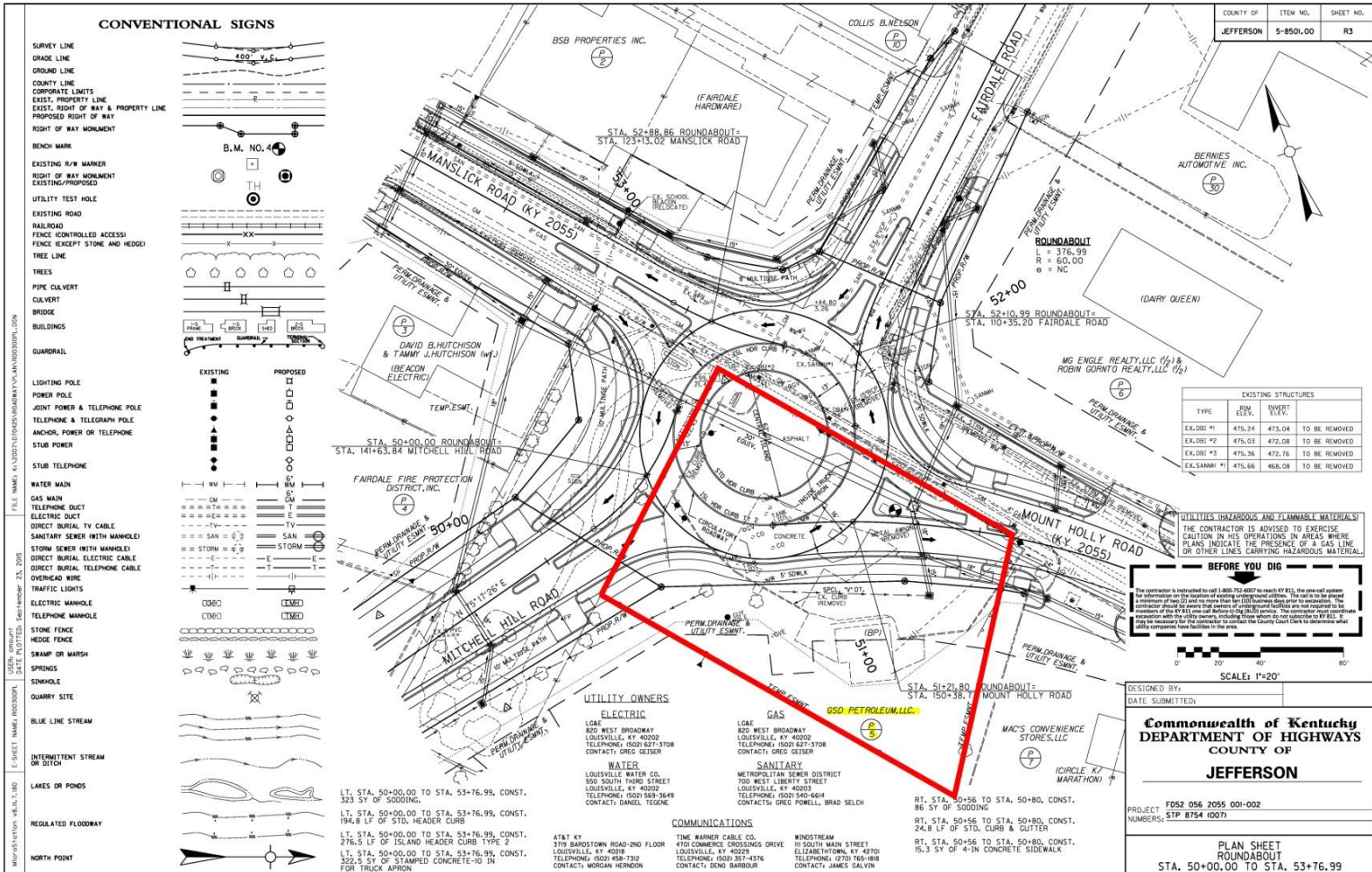
- Parcel 4X (P4X)



Utility Coordination

❖ Staging Area

- Parcel 5 (P5) - Coordinate with KYTC Environmental Contractor



Utility Coordination

❖ Staging Area

- Parcel 5 (P5) - Coordinate with KYTC

Environmental Contractor (Russell Brooks, LFI)

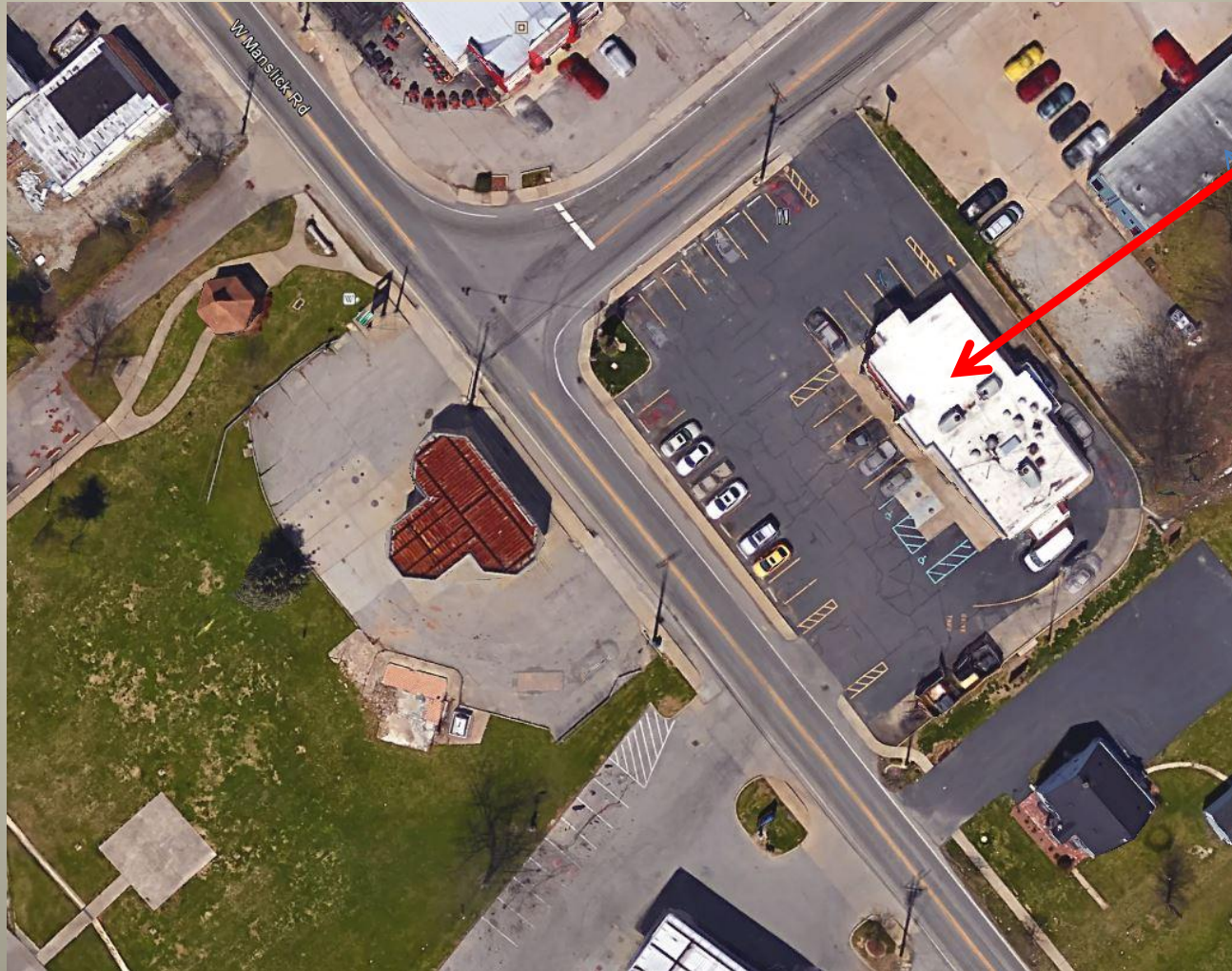
- Removal of USTs on this parcel were on schedule to be completed by the end of last week (November 6th).
- Soil analysis will take 2-3 weeks and final closure could take up to 90 days.

Items to Note

- ❖ Work time limit – parking spaces – Parcel 6
 - Finalizing negotiations with property owner.
 - Items included in preliminary agreement: limit the number of parking spaces that will be removed from service during construction and a time limit for any work that effects parking capacity in their lot.

Items to Note

- ❖ Work time limit – parking spaces



Dairy Queen
Parcel 6

Items to Note

❖ Maintenance of Traffic

- Fairdale Fire Department – Contractor shall maintain access at all times. Any changes in access shall be approved by the fire department and Engineer (KYTC)
 - Chief Donald Witty: 502-366-0122 (Office); 502-375-0175 (Cell)
- Fairdale Elementary School - Main entrance to school off of Mitchell Hill Road
- Fairdale Road Closure – Full closure limited to 15 days. There is an error on plan sht. R29: Maintenance of Traffic Notes – under ‘Lane Closures’ it states closure limit as 14 days. The correct number is 15 days as is stated under ‘Phase II’. An addendum will be sent out this week.
- Pedestrian Safety – School zone.

Items to Note

❖ Tree Cutting Restriction

- No clearing of trees 3 inches or greater from April 1st – October 14th

Questions?

SIGN-IN SHEET

KYTC D5

NAME(PRINT)	NAME(SIGNATURE)	COMPANY / AGENCY	PHONE	EMAIL
1 BETT NIEMTHAL	Bett Niemthal	KYTE D5	502-552-210	cbett@btm.ky.gov
2 Craig Mount	C. G. Mount	BTM	(502) 459-8402	cmount@btm.ky.gov
3 CHRIS CUMMINS	Chris Cummins	KYTE DEP	502 564-7250	Chris.Cummins@ky.gov
4 BRYAN WINSLOW	Bry Winslow	MAC CONST	812 941-7895	bryan@macconstruction.com
5 Russell Brooks	Russell Brooks	LEI	502 895 5009	RBR00KS@LEIENV.COM
6 SUSAN OATMAN	Susan Oatman	KYTE D5	502-210-5448	SUSAN.oatman@ky.gov
7 Neil Stroud	Neil Stroud	EAB Paving Inc.	812 282 1349	neil.stroud@ebpaving.com
8 ROB ASKE	Rob Aske	"	"	ROB.ASKE@ESPASINK.COM
9 Erika Dmury	Erika Dmury	KYTE - CO	502 544 4380	erika.dmury@ky.gov
10 KENNY ROLLER	Kenny Roller	Louisville Paving	502-471-1154	kroller@loppaving.com
11 Heath Phillips	Heath Phillips	KYTE - D5	502-492-5252	heath.phillips@ky.gov
12 Jason Rice	Jason Rice	Flynn Brothers	502-364-9100	jrice@flynnbrothers.com
13 TOM WRIGHT	Tom Wright	KYTE D5 P&P	502-210-5440	tom.wright@ky.gov
14 Tom Boykin	Tom Boykin	KYTE D5	502 210-5478	Tomboykin@ky.gov
15				
16				
17				
18				