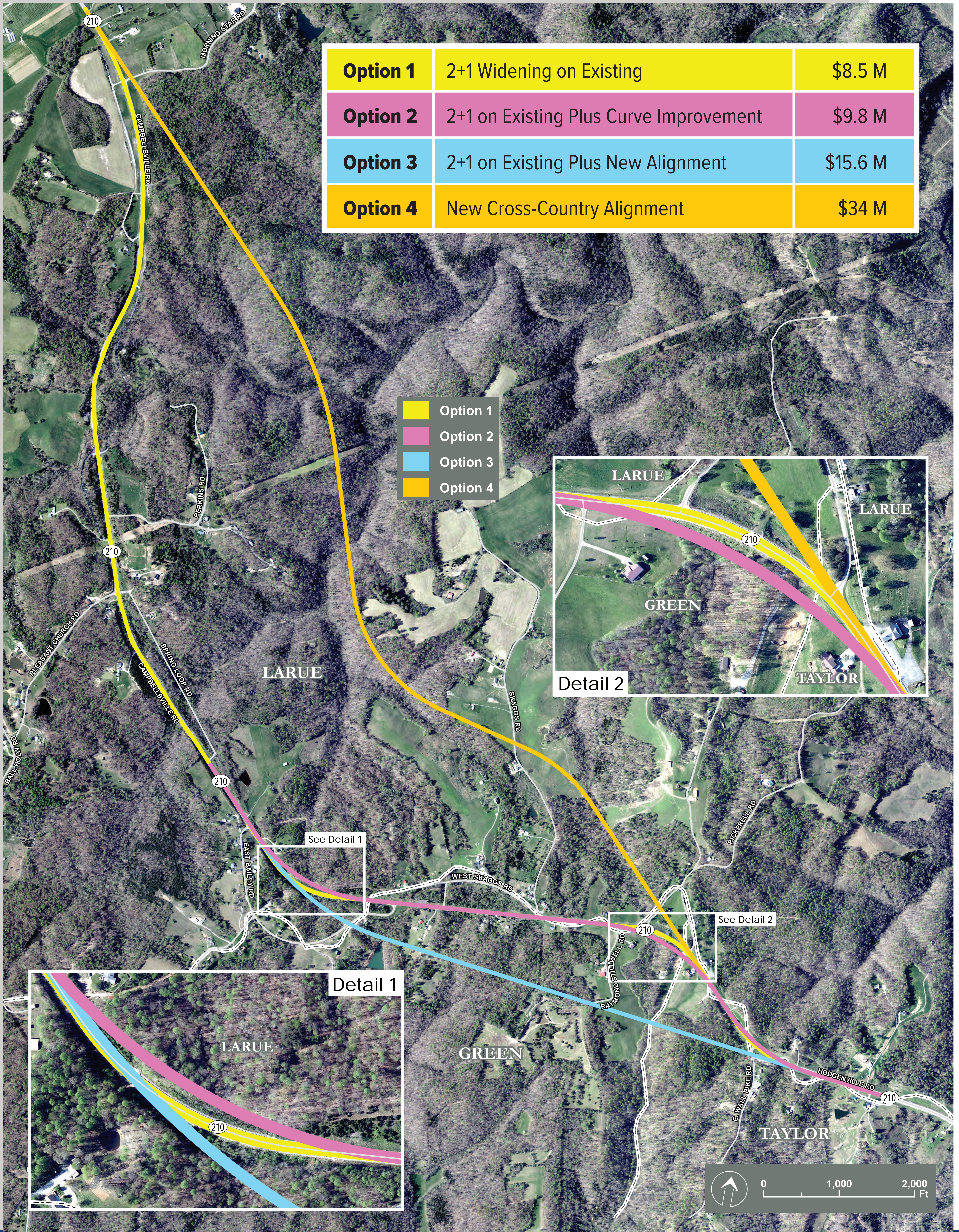


KY-210 IMPROVEMENT PROJECT

Section 2 Options



| | | |
|-----------------|--|----------|
| Option 1 | 2+1 Widening on Existing | \$8.5 M |
| Option 2 | 2+1 on Existing Plus Curve Improvement | \$9.8 M |
| Option 3 | 2+1 on Existing Plus New Alignment | \$15.6 M |
| Option 4 | New Cross-Country Alignment | \$34 M |

- Option 1
- Option 2
- Option 3
- Option 4

